

SERVING NORTHEAST REGION

FREE

TRUCK AND EQUIPMENT POST

Wishing You A Trucking Good Year



2000 INTERNATIONAL 9100I. NRC BODY WITH UNDER REACH, CUMMINS POWER, 9 SPEED TRANS, SINGLE AXLE W/PUSHER, AIR RIDE, \$87,000. 603-863-1400



CASE IH JX75 FARM TRACTOR. 771 HOURS, 4WD, GOOD TIRES, NEEDS NEW SEAT, \$17,000 OBO. ASHBY, MA 978-386-0264



2024 GMC 3500 12' VAN BODY. New Savana, Plywood Lined, Pass Thru Door, Roll Up Rear Door, Driver Power Adjst Seat, PW, PL, V8, Locking Differential, \$49,900. 860-281-6726



2019 KUBOTA BX23S BACKHOE TRACTOR. 670 HOURS, RUNS GREAT, \$14,500. BROWNFIELD, ME 207-461-6219



2026 SURE-TRAC 7'X12' DUMP TRAILER. HEAVY DUTY SCISSOR LIFT, 12,000 LBS GVW, \$10,975. 203-234-7788

Optative Group

**52-01
JAN 7th, 2026**

**INTERNET & PRINT
FOR ONLY \$28.00**

www.TruckAndEquipmentPost.com

888-887-0505



FINANCING FOR EQUIPMENT, TRUCKS, TRAILERS & More!

866-633-6003 PRE-APPROVED AUCTION LOANS

PATRIOT FINANCIAL HAS HELPED 1000'S OF BUSINESS OWNERS GROW THEIR BUSINESS.



FINANCING SOLUTIONS FOR SMALL BUSINESSES AND MID-SIZED COMPANIES

- Fast And Simple Approval Process
 - 2-4 Hour Turn Around
- 0 Down 60 Or 72 Months With Qualified Credit & Time In Business
 - No Age Restrictions
- No Prepayment Penalties After 12 Months For Qualified Credit And Time In Business
 - All Credits Welcome
 - Competitive Rates
 - Flexible Terms
- Customized Solutions
- Experienced Professionals

CALL FOR MORE INFO 866-633-6003



Auction Financing

Get a pre-approved loan for auctions. We work with several auction houses. See our website for auction schedules.



Dealer Solutions Financing Plans

We work directly with dealers to help finance customers having bank financing challenges.

Patriot can help finalize your deals.

Easy application process.

<https://www.patriotfinancialllc.com/apply-now/>

PATRIOT FINANCIAL LLC

FOR MORE INFO, CALL MIKE - 866-633-6003

407 W Lincoln Hwy.

Suite 300

Exton, PA 19341

Visit Our Website:

www.PatriotFinancialLLC.com

PATRIOT ALWAYS FINDS A WAY TO SAY YES | WE WILL GET YOU FINANCED



SALES & RENTALS INC.
T-QUIP

DAILY / WEEKLY / MONTHLY

EQUIPMENT RENTALS

**WHEEL LOADERS • ROCK TRUCKS • EXCAVATORS
ROLLERS • SKID STEERS • CRUSHERS • SCREENERS
DOZERS • BACKHOES • GRADERS • TELEHANDLERS
TRACKED DUMPERS • SPECIALTY ATTACHMENTS**



603-623-3669



www.TQUIP.com

UNBELIEVABLE! BY POPULAR DEMAND THIS SALE WILL BE 12-DAYS!

33RD ANNUAL FLORIDA AUCTION THE GREATEST LIVE & TIMED SALE OF THE YEAR!

12 Glorious Days of Selling New & Like New Rental Fleet Equipment.

THURSDAY, JANUARY 29TH – MONDAY, FEBRUARY 9TH @ 9:00 AM
716 CR 475, BUSHNELL, FLORIDA 33513



HIGHLIGHTS INCLUDE: **8 ROLL OFF TRUCKS:** (8) Virtually New Kenworth T880(tri.), **42 ARTICULATED HAUL TRUCKS:** (2) Like New JD 460P, 2023 JD 460E, (2) 2024-2023 JD 260P, (2) 2019 Cat 745, (2) Bell B50D, (4) 2022 Bell B45E, Volvo A45G, (2) 2021 Volvo A40G, (10) Unused Fiori D120SW, (10) Unused Fiori D90SW, (5) Unused Fiori D50, **129 HYDRAULIC EXCAVATORS:** 2023 Hitachi ZX890LCH-6, (4) New & 2023 Cat 340-2D, (2) 2023 Cat 336-2D, New Cat 325-2D, New Cat 323, (3) 2021 Cat 320GC, (2) New & 2024 Cat 320-2D, 2023 Cat 320GC, Unused & 2024 Cat 320, 2011 Cat 320D, (2) New & 2025-2024-2023-2022 Cat 315GC, 2022 Cat 315-2D, 2021 Cat 314FCR, 2024-(4) 2023-(3) 2022-(2) 2021 Cat 313GC, (2) 2019 Cat 311FLRR, Cat 305.5E, 2017 Cat 303ECR, (3) Cat 302.7D, (2) JD 245G, 2023 JD 135P, 2023-2022 JD 135G, (2) 2023 Linkbelt 245X4, 2023-2021 Linkbelt 145X4, 2022 Doosan DX85R-3, (6) New Unused Develon DX50Z-7-US30, (27) New Unused Develon DX27Z-7-US30, (2) 2022 Kobelco SK35SR-6E, (4) New AGT QK16R, (4) New AGT H15R, (2) New AGT MX15RX, (2) New AGT MX12RX, (2) New CFG MH12RX, (4) ZJZ ZJZ-13, (4) ZJZ ZJZ-12, (4) ZJZ ZJZ-08, New ATS Power ATS-ME18, New ATS Power ATS-ME18-ZW, (6) New ATS Power ATS-ME18, (3) New ATS ATS-RT15R, (3) New ATS ATS-RT12R, (2) New ATS ATS-NT18K, **5 LONG REACH EXCAVATORS:** 2022 Cat 326, 2023 Linkbelt 250X4-LR, 2022 Linkbelt 250LR, (2) 2023 Linkbelt 210X4LR, **24 RUBBER TIRED LOADERS:** 2024 Cat 988, 2024 Cat 950GC, 2019 Cat 938M, 2019 Cat 938, (2) 2019 Cat 930M, New Cat 930, New Cat 920, (2) New & 2023 Cat 910, 2018 Cat 906, (2) 2023 JD 644P, (5) 2023 JD 544P, 2019 Komatsu WA500-8, (2) Komatsu WA320-3L, **31 CRAWLER TRACTORS:** (2) 2024 Cat D8, Unused & (3) 2022 Cat D7, (3) Unused Cat D6LGP, 2020-2019 Cat D6T, Cat D6N, 2017 Cat D5K2XL, (3) 2021 Cat D3LGP, Cat D3KLP, 2018 Cat D3K2LGP, 2018 Cat D3K2XL, 2024-2023 Cat D1LGP, (2) 2022 JD 750LLGP, 2023 JD 700LLGP, (2) 2026-2024 JD 650PLGP, 2023 JD 650KLP, 2023 JD 650KLP, (2) 2026 JD 450PLGP, **CRAWLER LOADER:** New Cat 963, **PIPE LAYER:** JD 700KLP, **6 CRAWLER CARRIERS:** (4) Morooka MST2200VD, 2020 Morooka MST1500VD, 2019 Terramac RT9, **MOTOR GRADER:** Volvo G946(AWD), **3 TRACTOR LOADER BACKHOES:** 2023 Cat 420XE, 2021-2019 Cat 416F2, **46 TELESCOPIC FORKLIFTS:** (6) Unused JLG 1255, 2018 JLG 1055, (4) Unused Skytrak 10054, (6) Unused Skytrak 10042, JLG 6042, (4) Unused JLG G5-18A, (6) 2023 Magni TH5.5.19, 2020-(2) 2019 Cat TL1255, 2019 Cat TH1255, 2019 Cat TL1055C, (2) Cat TL1055C, (3) Cat TL642C, 2017 Cat TH255, 2018 Skyjack SJ1056, Case 686GXR, Xtreme XRM 1254, JCB 514-56, JCB 512-568, (2) JCB 510-56, (2) JCB 507, **ASPHALT PAVER:** Volvo PF-2182, **2 ASPHALT ROLLERS:** 2019 Sakai SW884, 2017 Sakai SW880-1, **13 VIBRATORY ROLLERS:** 2015 Dynapac CA2500, (2) New & 2022 Dynapac CA1500D, New Dynapac CA1300D, (2) Dynapac CA134D, 2022 Hamm H131, Bomag BW211, (2) Bomag BW177D-5, Cat CS563D, 2019 Wacker RC110P, **40 RUBBER TRACKED SKID STEERS:** 2021 Cat 299D2XHP, 2021-(2) 2020-2019 Cat 299D3, Cat 299D2, Cat 299D2XPS, 2020 Cat 299D, 2024-2023-2020 Cat 289D3, 2019 Cat 279D, (5) Unused Cat 275XPS, (5) Unused Cat 265KPS, (2) 2021 Cat 259D3, 2019-2015 Cat 259D, 2021 Bobcat T66, (2) 2018-2017-2016 Takeuchi TL10V-2, **5 SKID STEERS:** 2016 Cat 272D, 2017-2015 Cat 262D, (2) Cat 246, ASV RT75, **5 FORKLIFTS:** (5) Unused Doosan GC18S, **51 BOOM LIFTS:** JLG 1250, (2) JLG 860S, JLG 800S, (3) JLG 800AJ, (4) New JLG 660SJ, (2) JLG 600AJ, (5) JLG 600S, (2) Unused JLG 460SJ, 2018-(2) 2015 JLG 400S, (3) 2019-2017 Snorkel TB86J, 2019 Mec 60J, 2015 Genie Z6240J, Genie S60X, (3) Genie S40, **5 ELECTRIC BOOM LIFTS:** Genie Z30/20N, (3) JLG M600JP, JLG E450AJ, **44 SCISSOR LIFTS:** (4) 2018 Genie GS-1930, Snorkel 3219, JLG 3246ES, 2017 JLG 1932R, JLG 1930ES, **14 TRACTOR LOADERS:** (10) Unused NH Workmaster-120(4x4), (4) Unused NH Workmaster-95(4x4), **SCREENING PLANT:** New Unused McCluskey EDS-7000, **HORIZONTAL GRINDER:** Peterson 6710B, **23 MINI TRACK LOADERS:** New AGT LRT23, (2) New AGT MX-CRT23, (2) New AGT MX-MRT14, New AGT MX-MRW14, New AGT SDA-140T, (2) New AGT YSRT14, (2) New MMS MS380, (2) New MMS MS36C, (4) ZJZ ZJZ-380, (2) New ATS Power ATS-T460, (4) New Landhonor LDH-HT380Q1, **MINI TIRED LOADER:** New AGT SDA-140W, **AIR COMPRESSOR:** 2017 Doosan C185, **GENERATOR:** Generac MMG55D, **16 LIGHT PLANTS:** 2019 Generac DX27Z-7, (2) 2021 Generac MLT4060K, (3) 2019-2017 Generac MLT3060K, **2 WOOD PROCESSING EQUIPMENT:** New AGT YC-32G Sawmill, New AGT YC-26G Sawmill, **CRUSHER:** New SKLP SK100YG, **5 CONCRETE EQUIPMENT:** (2) New MMS MS90B Hand Power Trowel, Allen Eng. 7560XL-51C Cube Sprayer, (2) 2021 Whiteman WBH-16F Concrete Buggy, **SWEEPER:** Broce RCT350, **4 VAN TRUCKS:** 2024 Freightliner, 2017 Freightliner M2, 2016 Freightliner, 2006 Hino, **5 WATER TRUCKS:** (2) 2024 Kenworth T480(4,000gal., t/a), 2023-2022 Kenworth T370(4,000gal., t/a), Freightliner M2 106(4,000gal., t/a), **9 FLATBED TRUCKS:** (2) 2022-(2) 2021-2020-2018 Chevy 3500, 2020 GMC 3500, 2022 Ford F750, 2017 Freightliner M2(t/a), **3 CAB & CHASSIS:** (2) Unused Chevy 6500, 2017 Ford F550, **5 BOOM TRUCKS:** 2015 Kenworth T880(tri.), 2015 Kenworth T800(tri.), 2015 Western Star 4700(tri.), 2014 Western Star(t/a), 2014 Freightliner 114SD(tri.), **9 UTILITY TRUCKS:** 2024 Chevy, 2022-2021 Chevy 3500HD, 2021-(2) 2019 Chevy 3500, 2019 GMC 3500HD, 2012 IH 4300, 2008 Ford F350, **SERVICE TRUCK:** Unused Ford F750, **FUEL/LUBE TRUCK:** 2019 Ford F550XL, **24 TRUCK TRACTORS:** (2) 2026 Peterbilt 567(tri.), (7) 2020 Kenworth T680(t/a), 2021 Volvo(tri.), 2019 Volvo VNL860(t/a), (4) 2015-(5) 2014 Volvo VNL64T780(t/a), (2) 2015 Freightliner Cascadia CA125(t/a), 2008-2004 IH Paystar 5600i(t/a), **5 DUMP TRUCKS:** (2) 2026 Peterbilt 567(tri.), 2013 Freightliner M2 106(t/a), 2016 Kenworth(t/a), IH Paystar 5000(t/a), **4 PICKUP TRUCKS:** 2021 Chevy 2500HD, 2016 Ford F250, 2018 Ford F150XLT, 2015 GMC Sierra 2500HD, **2 VANS:** 2013-2006 Ford E350, **REFRIGERATED TRAILER:** 2014 Great Dane 53ft.(t/a), **2 DUMP TRAILERS:** 2017 Freedom 14ft.(t/a), Pace 16ft.(t/a), **12 DETACHABLE TRAILERS:** (6) 2026 Witzco RG52(tri.), **2 DUMP TRAILERS:** 2017 Freedom 14ft.(t/a), 2007 Pace 16ft.(t/a), **REFRIGERATED TRAILER:** 2014 Great Dane 53ft.(t/a), **11 TAGALONGS:** New Delta 210PHT 26ft.(t/a), (10) New Delta 27TB(t/a, tilt), **CAR HAULER:** 2022 Sun Country, **10 HAY EQUIPMENT:** (10) New Landhonor BS-12-2500G Bale Spear, **2 RECREATIONAL VEHICLES:** (2) New SKLP SK-E48 Electric Bicycle, **9 MULTI-USE CONTAINERS,** **4 CONTAINERS,** **17 STORAGE BUILDINGS,** **2 PORTABLE BATHROOMS,** **171 EXCAVATOR BUCKETS,** **36 EXCAVATOR THUMBS,** **EXCAVATOR PARTS,** **1,125 ATTACHMENTS,** **273 NEW SUPPORT EQUIPMENT,** **89 SUPPORT EQUIPMENT,** **4 SURVEY EQUIPMENT.**

SALE SITE PHONE: (407) 239-2700

FL LICENSE: AB-1091 • FL AUCTIONEER: AU-1548 Jack Lyon



ALEX LYON & SON

SALES MANAGERS & AUCTIONEERS, INC., BRIDGEPORT, NY 13030

Phone: (315) 633-2944 • Go to WWW.LYONAUCTION.COM for More Details



*Holiday Greetings and
Best Wishes for a New Year*

**WASHED STONE
PROCESSED GRAVEL
SAND
TOP SOIL
RIP RAP
FILL**



**Please Call for pricing
401-447-2777**



AUTHORIZED FISHER DEALER • AUTHORIZED FISHER DEALER • AUTHORIZED FISHER DEALER

6 Enterprise Drive
Londonderry, NH 03053
www.donovancompany.com



1-800-458-3867
sales@donovancompany.com
parts@donovancompany.com



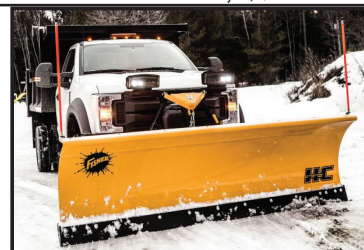
Largest Authorized Dealer in TAX-FREE NH



HD2™ - Straight Blade available in
7' 6", 8', 8' 6" and 9' widths



FISHER XV2™ Built to power
through any storm!



HC SERIES - 9' & 10' heavy contractor
made to move large amounts of snow!



FISHER TEMPEST™ POLY



BRINE PRO™ 2000

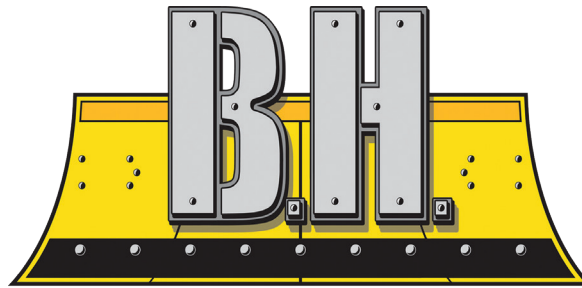


FISHER TEMPEST™

WWW.DONOVANCOMPANY.COM

www.bhtrailersandplows.com

6 Center Parkway
Plainfield, CT
06374
860-949-7863



TRAILERS AND PLOWS

2207 Hartford Ave.
Johnston, RI
02919
401-214-3735



LAST ONE!



BOSS
SNOWPLOW
SALE
WHILE
SUPPLIES
LAST!



**CM Aluminum Skirted
Flat Bed, Gooseneck
& Receiver Hitch Built In**
Starting at \$7,495



**CM SK Skirted Flat Bed
Gooseneck and Receiver Hitch
Built In, Starting at \$6,995**



**CM Aluminum Tradesman
Low Pro Service Body
Gooseneck & Receiver Hitch
Built In, Starting at \$14,995**



**CM Steel Tradesman
Low Pro Service Body with
Gooseneck & Receiver Hitch
Built In, Starting at \$10,495**



**BCL 82 x 24
Full Power Tilt, Steel
Deck With 12K Winch**
14,000Lb. GVWR, \$10,900



**SPARTAN 85 X 24
7Ft. Tall, Ramp Door
.080 Polycore Skin**
9,990Lb. GVWR, \$10,995



**LOAD TRAIL CH14
83 x 22 20+2 with
24" Wide Standup Ramps**
14,000Lb. GVWR, \$6,150



**LOAD TRAIL DE14
83 X 14 with Tarp Kit,
Ramps and D-Rings**
14,000Lb. GVWR, \$8,995





Commercial
Vehicle Center



MCGOVERN
FORD AT DRUM HILL

Call Mike Smokler 603-493-6561



2025 T250 REFRIGERATED VAN.
Thermo King V-320, V6 Gas, FN6117
\$76,988



2026 F350 LANDSCAPER DUMP.
Super Cab, 4X4, 7.3 Gas, Remote
Start, Tool Box, 3 Way Gate, Curb
Side Door, FN6526. **\$80,640**



2026 F250 SUPER CAB. 8'6" Fisher
SS V-Plow, 7.3 Gas, STX Package,
FN6530. **\$66,835**

OVER 75 SUPER DUTIES IN STOCK - COLORS AND CONFIGURATIONS



**F350, F450, & F550
CHASSIS AVAILABLE**



2025 F550 DUMP. 9' Steel Body,
7.3 Gas, 4WD, Tool Box, Remote Start,
Payload Plus, FN6493. **\$81,228**



2026 F350 LANDSCAPER DUMP. 4X4,
7.3 Gas, Remote Start, Tool Box, 3 Way
Gate, Curb Side Door, FN6509. **\$78,735**



2025 F550 DUMP. 9' Steel Body, Diesel,
4WD, Tool Box, Remote Start, Payload
Plus, FN6519. **\$91,002**



2026 F450 SUPER CAB DUMP. 9'
Stainless Steel Body, Diesel, 4WD,
Work Surface, Dual Alternator, FN6576.
\$101,159



2025 F350 SUPER CAB UTILITY.
Reading Service Body, SRW, 4X4, 7.3L
Gas, Remote Start, FN6190. **\$76,900**



2024 F350 SERVICE BODY. 11'
Knapheide, V8 Gas, 4WD, DRW, Remote
Start, 120V/400W Outlet, #FN5242
\$69,900



2026 F350 SUPER CAB DUMP.
9' Stainless Steel Body, Diesel, 4WD,
Tool Box, Remote Start, FN6525.
\$95,489



2025 F350 CREW UTILITY. Diesel,
4WD, 9' Body, Spray In Liner, SRW,
Remote Start, FN6317. **\$87,682**



2026 F350 CREW KING RANCH.
Remote Start, Diesel, 4X4, Pwr Moonroof
Twin Panel, Off Road Pkg, 20" Wheels,
12,000 GVW, FN6655. **\$97,410**



2026 T250 CARGO VAN. Medium
Roof, Empty Cargo Vans In Stock,
Call Mike 603-493-6561



2025 T250 CARGO VAN.
Weatherguard Bin Package,
Medium Roof, **\$55,895**



Commercial
Vehicle Center

MichaelSmokler@mcgovernauto.com

202

**TRUCK
&
EQUIPMENT**
603-899-2000

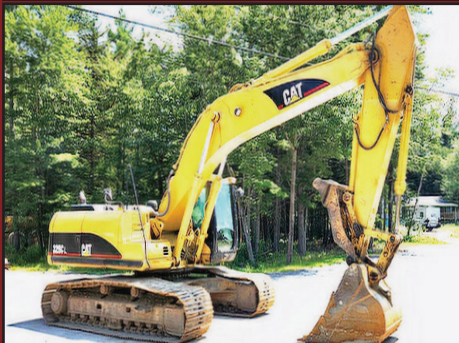
www.202truck.com
RT 202 Rindge NH
SALES & RENTALS - NO SALES TAX
FINANCING & DELIVERY



**2024 HYUNDAI HX48A2. 495
Hours, Hyd. Thumb, Blade,
Heat & A/C, Warranty, 11K
lbs., \$59,000.**



**2014 PETERBILT 337.
Paccar PX7 300HP,
26,000 GVW, Air
Ride, 10F + 16R On
Air Brakes, 138K
Miles, Hrs: 6360,
6 New 11R22.5
Tires, Curry
Utility Body with
Compressor,
\$47,500.**



**2005 CAT325CL.
10,500 Hours,
Recently
Reconditioned For
The Long Game,
CAT Full Rotation
Thumb, 48 Inch
Bucket With Recent
Teeth, Pattern
Changer, Travel
Pedal, \$65,000.**



**TRUCK AND
EQUIPMENT** **POST**

P.O. BOX 6824
PROVIDENCE, RI
02940
Tel : 888-887-0505

Email :
ads@truckandequipmentpost.com
www.truckandequipmentpost.com

YOUR INFORMATION

Name : _____ Phone : _____

Street Address : _____

City : _____ State : _____ Zip : _____

Email : _____

Payment : ☐ ☐ ☐ Check ☐ Discover ☐ Other _____

Signature : _____ Exp Date : _____

PLACE YOUR AD ONLINE AT WWW.TRUCKANDEQUIPMENTPOST.COM

☐ **STANDARD PHOTO AD** # ISSUES ☐ **JUMBOPHOTO AD** # ISSUES
\$28 for 1 issue (2 weeks) \$55 for 1 issue (2 weeks)
\$50 for 2 issues (4 weeks) \$100 for 2 issues (4 weeks)

Payment enclosed \$ _____ Each Issue runs for 2 weeks

Ad Text _____

One Item Per Ad Please. Truck And Equipment Post makes every effort to ensure ads are published accurately. Truck And Equipment Post and its staff will not be held responsible or liable for typographical errors or misprints. Truck And Equipment Post reserves the right to edit, abbreviate, remove or refuse any ads/content at its discretion. Copyright of Ads: By agreeing to place an ad with Truck And Equipment Post, you hereby grant Truck And Equipment Post the right to display and publish all or part of the advertisement under United States copyright laws.

Subscription rates include first class shipping.

Mailed to your home or business

☐ \$40.00 13 issues ☐ \$65.00 26 issues

**Just email Ads@TruckandEquipmentPost.com
and type "BAG MY MAG" in the subject line.**

NEW WE'LL EMAIL THE MAGAZINE TO YOU FOR FREE

PHOTO AD



Your description goes here as follows:
Year, Make, Model, Features, Price,
Town & State, Phone

920 W. Chestnut St. **Brockton**, MA: Mon-Fri 8 am-5 pm & Sat 8-12 **508-586-1666**



*Merry Christmas &
Happy New Year!*



*Thank you for
your support in 2025 -
we appreciate your business!*

5" LED Green Dual Row Strobe



\$107.99

ALL GREEN
25 Flash
Patterns

5 Year Warranty
8891710

Buyers
PRODUCTS COMPANY 

8 LED Rectangular Surface Mount Warning Green / Amber Clear



\$61.99

27 Selectable
Flash Patterns

5 Year Warranty
M20484GYCL-DC

 **Maxxima**[®]

Add some green this holiday season!



TRANS EAST EQUIPMENT INC.,
67 Main St Salisbury, MA
CALL DAVE Cell 978-992-7077 Or 978-462-1919

**EXIT 90 Off Rt 95
End Of Ramp**

You Pick Your Container – Over 175 Units



FAMILY OWNED & OPERATED



Serving New England

20', 40', 45', 48' And 53' CONTAINERS.
One Trip & Used Steel Storage Containers
We Deliver

Call Dave The Owner And Get The Best Deal!

CHECK ALL OUR INVENTORY – WWW.TRANSEASTEQ.COM



2010 MACK CHU 613. Fuller 8-Speed, 44 Rears,
A/C, Power Windows, 349K Miles, Asking **\$49,999 OBO.**
401-486-8552



2011 FORD F250. 4-Wheel Drive Super Duty, 180K Miles,
2000 Lb. Capacity Liftgate & Snowplow Frame, **\$8,950.**
Middletown, CT 860-508-9164



CASE IH JX75 FARM TRACTOR. 771 Hours, 4WD,
Good Tires, Needs New Seat, **\$17,000 OBO.** Ashby, MA
978-386-0264

CRUSHERS, SCREENERS, DOZERS, LOADERS, EXCAVATORS, TRUCKS & MORE

YEAR END TRUCK & EQUIPMENT

AUCTION

**REGISTER
HERE**



M
MIDEAST
EQUIPMENT AUCTIONS

**TUESDAY
DECEMBER 30**

Online Bidding Only **MideastEquip.com** proxibid **Equipmentfacts**



METROPOLITAN TRUCK CENTER INC.

1074 Turnpike Street • Stoughton, MA 02072

Family Owned & Operated
Since 1980

1-800-878-5491

www.metropolitantruck.com



**NO MATTER WHAT TRUCK YOU HAVE,
WE CAN FIND THE RIGHT PLOW FOR YOU!**



Tempest Poly

Loaded with upgraded de-icing technology



TEMPEST STAINLESS STEEL



StormBoxx

**Come see the all new
Fisher StormBoxx
featuring
Trace Edge technology**



WESTERN
**STAINLESS
STEEL PLOWS
FOR HALF TON
TRUCKS
NOW AVAILABLE**



1989 AUTOCAR 10 WHEELER DUMP.
Rebuilt CAT Engine, New Tires, Barn Door, Asphalt Chutes,
Richardson Electric HD Load Cover, Pintle Hitch, Fleet Maintained,
\$20,000 OBO. 401-447-2661 Or 401-737-6663



FLAT BED, 9'. With Light, \$5500 OBO.
413-374-5331



2005 HINO 268 HOOKLIFT.
20K Lb., Galbreath Hooklift, Auto, 33,000
GVW Factory Derated to 26,000 GVW,
No CDL Needed, Pioneer Electric Tarp,
AC, In/Out Controls, Air Ride Seat, CD
Stereo, Alum Storage Box, Chrome
Bumper, New Turbo Charger,
189,721 Miles, Strong Running Truck,
\$39,900. 781-414-0635



1996 MACK CL713. E7 350 HP, Mack 13 Spd Trans 1yr Old.
20K Front, 20K Pusher, 44K Rears, J&J Alum Dump, Pintle Hook
& Air To Rear, 494,500 Miles, **\$14,500 OBO.** 617-803-9237

RENTAL WITH OPERATOR

PORTABLE JAW CRUSHER AND IMPACT CRUSHER



DAY-WEEK-MONTHLY RATES
80' STACKER AND
EXCAVATOR AVAILABLE

NEW ENGLAND
CALL KEN
508-328-0028

CANDIA TRAILER

www.CandiaTrailer.com
& LANDSCAPE EQUIPMENT CO
All Prices Cash & Carry! Installation Available!

SAVE TIME & FUEL • WE SHIP!

1-866-761-0196

NH 603-483-2541

email: contact@candiatrailers.com

35 High St, Candia 4 Coners, Candia NH
10 Minutes East of Manchester, NH • 1 hour From Boston

ALL THE RIGHT
FIXINGS FOR
YOU



DURA MAG ALUMINUM DUMP
BODIES Complete Sub-Frame,
Power Pac, LED Lights.



Pintle Plate
\$459



BUTCHER Dump Power Pac with
control Gravity Down \$595



8' Ft & 6 Ft EZ Slide In Dump
Body. With Head Board,
Tarp & Hoist.



ALUMINUM SERVICE BODY



HARSH HOIST
2.5 to 45 Ton, Single or
Double Piston. Convert
a Flatbed Body to a
Dumping Body.
HOIST & POWER
PACK
CHAMPION HOIST



UNDERBODY TOOL BOXES
Powder Coat Diamond
Aluminum Door
Diamond Aluminum Door



HOMESTEAD Enclosed Trailers.
Stocking 8 Ft - 24 Ft



2026 FORD F-750 C&C. 7.3L POWER STROKE DIESEL V8, 270HP, AC, AUTO, STK#FM9574, \$90,995.



2024 FORD F-600 SD LANDSCAPER DUMP 4X4. 6.7L POWER STROKE DIESEL, 22K GVW, AC, POWER GROUP, STK#FM8674, \$90,995



2025 FORD F-550 SD XL DUMP 4X4. 7.3L V8 GAS, AUTO, 335 HP, 18K GVW, AC, POWER GROUP, STK#FM9438, \$85,745



2025 FORD F450 SUPER CAB DUMP 4X4. 7.3L V8, AUTO, 16,500 GVW, STK#FM8714, \$74,123



2025 FORD F350 SD SUPER CAB XL DUMP 4X4. 7.3L V8, AUTO, AC, 14K GVW, STK#FM9333, \$77,246.



2026 FORD F650 SD C&C. 6.7L V8 TURBO DIESEL, AUTO, AC, 25,999 GVW, STK#FM9569, \$91,785.



2025 FORD TRANSIT-250 REFRIGERATED VAN. MEDIUM ROOF, V6, AUTO, AC, POWER GRP, STK#FM9127, \$75,998.



2025 FORD TRANSIT-250 CARGO VAN. 3.5L V6, AUTO, AC, 130" WB, STK#FM9404, \$42,440.



2026 FORD F350 SD XL DUMP 4X4. 7.3L V8 GAS, AUTO, AC, 14K GVW, SNOW PLOW PREP, STK#FM9589, \$86,630.



2024 F550 BOX TRUCK 4X4 W/TOMMY GATE: POWER GROUP, 18,000 GVW. STK.# FM7969. \$86,570



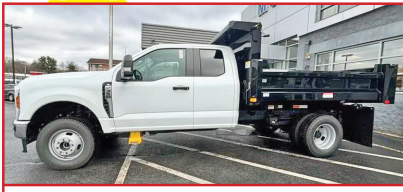
2025 FORD TRANSIT-250 MED. ROOF CARGO VAN. V6, AUTO, AC, PW, PL, 148" WB, STK#FM9391, \$45,160.



2026 FORD F550 SD SUPER CAB DUMP XL 4X4. 7.3L V8 GAS, AUTO, 18K GVW, SNOW PLOW PREP, STK#FM9745, \$94,500.



2026 FORD F650 SD DUMP. 6 SPD V8, AUTO, AC, TARP, CHUTE, HITCH, STK#FM9571, \$108,263.



2026 FORD F350 SD DUMP XL 4X4. 7.3L V8 GAS, AUTO, AC, PW, PL, SNOW PLOW PREP, 14K GVW, STK#FM9552, \$83,623.



2025 FORD F550 SD SUPER CAB DUMP XL 4X4. 7.3L V8, AUTO, AC, 18K GVW, SNOW PLOW PREP, STK#FM9063, \$74,713.



**1200 WORCESTER ROAD
(Rt.9 East)
FRAMINGHAM, MA 01701**



www.mcgovernfordofframingham.com



C.N. WOOD co., inc.

Large Selection Of Used Equipment! Call For More Info. 781-315-1680



2012 VOLVO EC250DL. Coupler, Bucket, Thumb, Nice, \$69,000., #C011156



2022 KOMATSU WA5008. 4980 Hours, Clean, \$335,000., #C010476



2017 KOMATSU PC138USLC-11. 6600 Hours, Runs Great, \$58,000., #C010790



2019 CAT PM312 MILL. Nice Unit, \$299,500., #C011669



2006 JOHN DEERE 180CW. Good Running Machine, \$35,000., #C011520



2006 JOHN DEERE 700J. 6 Way Blade, \$65,000., #C005187



2021 KOMATSU PC45MR-5. Nice Machine, \$54,000., #C010645



2019 CAT 308CR. 2 Buckets, \$72,000., #C009600



2018 KOMATSU PC238USLC-11. Coupler, Bucket, Clean, \$109,000., #C011388



2020 LEEBOY 5300 PAVER. \$98,500., #C011668



2017KOMATSU PC290LC-11. Coupler, Bucket, Nice Unit, \$98,000., #C011163



2013 KOMATSU PC78US-8. Clean, \$35,000., #C011679

Woburn, MA • Avon, MA • Whatley, MA • Johnston, RI • North Haven, CT
Westbrook, ME • Pine Bush, NY • Holmes, NY • Newington, CT

www.cn-wood.com



2018 HINO 258. Rollback Tow Truck, Automatic, Only 214K Original Miles, Truck Is In Absolutely Excellent Condition With All The Equipment, Straps Needed, **\$56,500 OBO.** 516-214-3940



CT BLAST SHOP
860-729-0453

**** Extra Large Sandblasting & Paint Booths For The Big Jobs ****



30-A Hultenius St, Plainville, CT 06062 ctblastshop@gmail.com



2002 INTERNATIONAL 4900. 2nd Owner, Fleet Maintained, 28K Miles, Allison Automatic, (New) 10' P/A Plow, Electric Cover, Air Gate, Air To The Rear, 25 Ton Pintle, 32K GVW, Winter Is Coming, This Is A Money Maker, **\$26,000.** West Warwick, RI 401-523-6116



2022 JCB 35Z-1 EXCAVATOR. Hydraulic Thumb, AC, Blade, Two Buckets, 1,140 Hours, **\$50,900.** 207-784-5712

THE TRAILER DEPOT

203-234-7788
1037 Middletown Ave. (Rt. 17)
Northford, CT

WESTERN
SNOW PLOWS



SURE-TRAC 15.4K PRO SERIES TELESCOPIC DUMP TRAILER. 7' x 14', Heavy Duty I-Beam Frame And Tongue, #454378



CM TRUCK BEDS STARTING @ \$4,500



SURE-TRAC LOW PROFILE 25.9K DECKOVER GOOSENECK TRAILER. 8' 6" x 25' + 5' Beavertail, Heavy Duty Low Profile Deck, #432778



PUNCH 14K SCISSOR DUMP. 6' 11" x 14', Power Up & Down Hydraulic Scissor Lift, 19" Sides, #100490



USED 2023 CAM SUPERLINE 15.4K Full Tilt Trailer. Slipper Spring Suspension, Diamond Plate Fenders, #536315, \$9,950



BEHNKE 14K CHANNEL SKIDLOADER TRAILER. 6' 11" x 16', Dexter Spring Suspension, LED Flush Mount Lights, #073199

www.thetrailerdepot.com

We'll Hook You Up
WE DO FEDERAL INSPECTIONS!

ALLEGIANCE

TRUCKS®



109 Lindberg Ave.
(978) 686-1800

Methuen, Ma 01844
(978) 726-9477



www.AllegianceTrucks.com

CALL FOR OTHER NEW & USED TRUCKS FOR SALE!



2021 FREIGHTLINER M2 106.
33000 GVW, 143k Cummins B6.7, Allison 2500 RDS, Swing Rear Doors, Vertical E-Track, 3 Person Seating, Stk#338559, **\$39,900.**



2021 INTERNATIONAL MV607.
174K, Cummins 6.7 260HP, Allison 2500 RDS, 26' Dry w/ Maxon GPT3 3000 Lb Tuck, Stk#359875, **\$37,900.**



2016 FORD F650 HOOKLIFT.
6.7L V8 Powerstroke Diesel, 144K, 25999 GVW, 18500 Lb Hooklift. Power Tarp, Stk#358462, **\$64,900**



2017 CHEVROLET W4500. Diesel, 78k, 16' Dry w/ 2000lb Tuckaway, Auto, PW/L, A/C, 2 Rows Of E-Track, Stk#350167, **\$22,900.**



2020 HINO 195
18' REEFER w/ Curb Side Door,
19500 GVW, Carrier 40x, 214K Miles, Roll-Up Rear Door, stk#327078, **\$27,900.**



2018 KENWORTH T270. 149K. 220 HP Paccar PX-6/PX-7. Allison 6 Sp Auto. Air brake, Air Ride. 26' 97" T x 102" W W/ Roll-Up, 3 Row E-Track, Trans Roof. Pull-Out Ramp. stk#345262, **\$39,900.**



2024 ISUZU NRR DIESEL HOOKLIFT. 19500 GVW, I-Pac. Stellar 108-12 Dual Pivot Hook, Auto, AM/FM/Aux/BT, Stk#330952, **\$98,900. Ready to go!**



2022 CHEVROLET W4500. Diesel, 59K, Auto, 16' Unicell w/ 2000lb Tuckaway, 1 Row E-Track, PW/L, A/C, P/S, AM/FM/ Bluetooth, Ready to go! Stk#350835, **\$45,900.**



1947 FARMALL C.

Bought From Tractor
Collection From MN,
New Tires, Runs Well,
\$2600. 508-314-7579



BUCKET SWEEPER, 72". Good Shape, \$3500 OBO.
413-374-5331



KUBOTA V2203 DIESEL ENGINE.

Used, Tested, Good Running, 4 Cylinder, 50 Gross HP Model, Can Be Used To Repower Your Used Equipment, Video Available Of Engine Running With Oil Pressure Gauge And Water, **\$2500.** 860-680-1841

CENTRAL MASS
TRUCK & EQUIPMENT

**Custom Gates Hydraulic Hose
Assemblies & Fittings**
Full Truck Service, Maintenance & Repair

All Makes & Models

Over 20 Years Experience Specializing In Mack's

Marshall Cefole - **978-467-7993**

Randy Rameau - **978-423-2889**

10 Gardner Road, Winchendon MA 01475



BENSON
BY WABASH NATIONAL



Bangor, ME
207-941-9600

ALLEGIANCE

TRUCKS®

Saco, ME
207-289-6688

Fort Kent, ME
207-834-6186

Jericho, VT
802-899-3753

Colchester, VT
800-639-1290



WABASH



www.AllegianceTrucks.com

CALL FOR OTHER NEW & USED TRUCKS & TRAILERS FOR SALE!



2019 INTERNATIONAL HX TRACTOR
608HP., 18Spd. Trans., Cummins,
Diesel, Ready To Go!
STK#242973
\$79,900



2018 MANAC CURTAINSIDE
STK#245998
\$34,900



2019 REITNOUER CONNESTOGA
In Stock, Ready To Go!
STK#350422
\$47,900



2004 STAIRS LOG TRAILER
STK#325145
\$7,900



2018 PETERBILT 389 TRACTOR
565HP., Cummins X15, Diesel.
In Stock, Ready To Go!
STK#349813
\$89,900



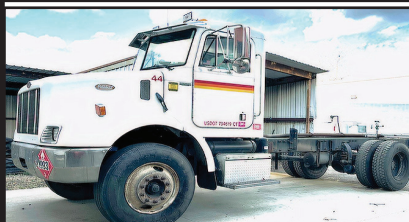
2022 INTERNATIONAL LONESTAR TRACTOR.
565HP., 18 Spd., Cummins X15, Diesel,
In Stock! STK#160851
\$89,495



2022 INTERNATIONAL HX520
565HP., Cummins X15, 18SPD. Trans.,
14.6K Front / 46K Locking Rears,
Fresh DOT Inspection. STK#202643
Call Today!



2011 INTERNATIONAL 7600 DUMP
Well Kept Single Axle Plow Truck, Dot
Inspection, Fully Serviced, New King
Pins, Front Plow & Wing Included.
STK#154960
\$36,900



2000 PETERBILT. 8 Speed, Split Commercial Truck, Power
Take-Off, PTO Equipped, 3126 CAT Engine. Only 174K Miles,
Well Maintained, **\$8900.** 203-215-0169



2023 EAST TEXAS 22' DECKOVER TRAILER. Tandem Axle, 12,000 LB GVW, LED Lights, 8-Lug
Wheels, HD Stow-Away Ramps, One Owner, **\$5,900.**, Westport, MA 508-636-5050



LOOKING FOR
SEMI-TRUCK
TIRES?

CALL 508-509-2014



THOMAS SKIDSTEER. Diesel,
Forks, Snow Bucket, Reg Bucket,
Snow Pusher, 2800 Hours, 2nd
Owner, 5 Ton Trailer That Needs
Work Included, Asking
\$11,500 OBO. 413-326-0645,
No Texts, Calls Only!

ALLEGIANCE

TRUCKS®



1400 South Willow St. **Manchester, NH**
603-623-8873

132 Pierce Rd. (Rt. 125) **Barrington, NH**
603-905-9036

www.AllegianceTrucks.com



CALL FOR OTHER NEW & USED TRUCKS FOR SALE!



2025 INTERNATIONAL MV 607 24' FLATBED. Cummins 300 HP, Auto, 25,999 GVW, 2K Miles, #347792, **\$121,900.**



2026 INTERNATIONAL MV DUMP. L9 Cummins, 3500 RDS Auto, 33K GVWR, Ready To Go, #353138, **\$146,900.**



2005 INTERNATIONAL 7600 FLATBED CRANE 6x4. Cummins ISM 385 HP, 73,200 GVW, 237K Miles, **#350752**



2026 INTERNATIONAL HX 520 6X4. Cummins 565 HP, Auto, 60K GVW, 2K Miles, #348548, **\$191,900.**



2015 WESTERN STAR 4700 SB FASSI CRANE. Detroit DD13 450 HP, 66K GVW, 208K Miles, #341199, **\$164,900.**



2024 KENWORTH T380 DUMP / CRANE. Paccar PX-9, Air Brakes, 17K Miles, #351879, **\$169,495.**



2026 INTERNATIONAL HX TANDEM CHASSIS. X15 Cummins 565HP, 4700 RDS Auto, 159" WB, #354440



2017 FREIGHTLINER M2 106 MED 4X4 W/NEW DFI TANK. Cummins, Auto, 33K GVW, 5K Miles, #339358, **\$134,900.**



USED ROLLOFF CONTAINERS. Various Sizes & Conditions, Sold As Is, **\$800-\$1900.** Boston, MA Area 617-567-2524

2007 MACK GRANITE TRI AXLE DUMP. 350,000 +/- Miles, Fleet Maintained, Good Tires, Pre-Emission, Excellent Runner, **\$50,000 OBO.** 401-447-2661 Or 401-737-6663



FISHER HOMESTEADER SNOWPLOW. 6'8", For Light Trucks Or SUV's, Great Condition, Low Hours, Used Only On Home Driveway, Poly Blade, Joystick Control, All Wiring And Lights Included, Needs Only Frame Mount To Your Vehicle, **\$1250.** 781-389-3664



Bentons Heavy Equipment Repair
(860) 917-6048

Veteran Owned and Operated

On Site Service Repairs, Preventative Maintenance and Diagnostics

Servicing CT, RI, MA & The Northeast

Bentonsheavyequipment@outlook.com



Visit Us On Facebook



ALLEGIANCE

TRUCKS®



2181 Providence Hwy, **Walpole, MA**
800-225-4808

17 O'Keefe Lane, **Warwick, RI**
800-949-2221



www.AllegianceTrucks.com

FINANCING & WARRANTIES AVAILABLE ON USED TRUCKS!



2025 INTERNATIONAL MV 607 HOOK-LIFT. Cummins 300 HP, Auto, 25,999 GVW, #347943, **\$149,900.**



2025 INTERNATIONAL MV 607 PACKER. Cummins, Auto, 25,999 GVW, 1K Miles, #347155, **\$191,900.**



2025 INTERNATIONAL MV 607 HOOK-LIFT. Cummins, Auto, 25,999 GVW, 2K Miles, #347811, **\$147,900.**



2024 FORD F550 KNAPHEIDE UTILITY W/CRANE. 6.7L Powerstroke Diesel, 19,500 GVW, #345660, **\$177,500.**



2024 INTERNATIONAL CV 515 4X4 DUMP W/FISHER PLOW. 6.6L Diesel, Auto, 23K GVW, 1K Miles, #347816, **\$141,900.**



2024 FORD F550 XL 4X4 READING WALK-IN UTILITY. 6.7L Powerstroke Diesel, 19,500 GVW, #345078, **\$108,357.**



2024 FORD F550 4 TO 5 YD CRYSTEEL 9' DUMP XL 4X4. New, 6.7L Powerstroke Diesel, 10 Spd, 19,500 GVW, stk#338631, **\$94,149.**



2024 FORD F600 11' KNAPHEIDE UTILITY XL 4X4. New, 6.7L Powerstroke Diesel, 10 Spd, 22K GVW, stk#334700, **\$92,034.**



2015 WESTERN STAR 4700SB. VIN #5KKMAXDV0FLGJ1913, PL74 Boom S/N G13800101431, 24'-4" x 102" Aluminum Flat Deck, TAG Axle, **\$99,000.**



2016 WESTERN STAR 4700SB. VIN #5KKMAXDV4GPHJ7775, PL74 Boom S/N G13800561531, 24'-4" x 102" Aluminum Flat Deck, Tag Axle, **\$109,000.**



2018 WESTERN STAR 4700SB. VIN #5KKMAXDV8JLJR1775, PL74 Boom S/N G13800981727, **\$119,000.**

Contact 603-925-4444 • www.belletetes.com

2016 MACK MP7.

6 Cylinder,
10.8 L Diesel
365 HP Engine,
US EPA Label,
\$10,500.
Meriden, CT
203-215-0169



2002 HITACHI ZX330LC EXCAVATOR.

AC, Heat, Radio,
75% Undercarriage,
Run Great, Work
Ready, 14,652
Hours, Very Clean,
Dependable,
Call For Price
978-502-8557



2013 MACK CHU 613. 18 Speed Transmission, 44 Rears, **\$59,999 OBO.** 401-486-8552

ALLEGIANCE

TRUCKS®



Hartford, North Haven, Franklin, Southbury, & Bridgeport, CT/ W. Springfield, MA



Call Peter Vecchiarelli 860-982-2014

GREAT SELECTION AND PRICE ON ALL USED INVENTORY



2018 INTERNATIONAL 4700.
Cummins B6.7, Allison Transmission,
349,720 Miles, #106624, **\$18,500**



2022 CHEVROLET LCF 4500. 16' Box
With Gate, 16K GVW, Very Clean, Low
Miles, #350835, **\$45,900**



2018 ISUZU XD. 16,000 GVW, Diesel
With Only 53,000 MILES, 12' Dumping
Rack Body, Will Go Quick.



2017 CHEVROLET Diesel. 15,000 GVW,
16' Body w/ Liftgate, 79K Miles, Clean
Truck, #350167, **\$22,495**



2021 CHEVROLET. 4.3L Diesel,
Schwarze SuperVac Updraft Sweeper,
Only 121,000 Miles, (3) In Stock, **\$34,900**



2025 ISUZU NRR. 8 Yard Loader,
19500 GVWR, 2 To Choose,
\$139,900



2013 ISUZU NQR FLAT BED.
17,950 GVWR, Tool Boxes,
#219535, **\$19,900**



2012 INTERNATIONAL WORKSTAR 7600.
475 HP, 8LL, Only 370K Miles, Runs Well, Fresh
DOT, Steel Dump, Auto Cover, Tow Plate, Ready
To Work, #162888, **\$59,900**



1994 FORD L8000 HYDRO-SEEDER. 20' Flatbed,
1500 Gallon Hydroseeder, John Deere Motor, Hydroseeder Needs
Some Welding, 33,000 GVW, Runs Good, **\$11,000 OBO.**
401-447-2661 Or 401-737-6663



2017 PETERBILT 579 - Automatic, Heavy Spec'd, 46K
Rears, 18K front, 20K drop axle, NEW Tires, Double Frame, Steel
Dump, 595,000 miles. **\$89,900** - 781-417-3018



**FISHER
SNOWPLOW.**
Stainless Steel,
9'6" V-Plow,
Like New,
Asking
\$6500.
401-783-3257

WANTED!!! MACK TRUCKS

**CAT, DEERE, BOBCAT EQUIP
IN ANY CONDITION
IMMEDIATE PAYMENT**



CALL JOHNNY MACK

johnnymack107@gmail.com
HARTFORD, CT 860-883-1186

BALLARD

TRUCK CENTERS

(508) 214-3036

drive@ballardtrucks.com

Visit us online at BallardTrucks.com or scan to view our full inventory.

2024 KENWORTH T880
DUMP TRUCK
STK#17897
\$227,500



2023 MACK GRANITE 64FR
GARBAGE TRUCK
STK#8098
\$269,000



2016 ISUZU NPR HD
BOX TRUCK
STK#7980
\$28,900



2024 MACK MD6
GARBAGE TRUCK
STK#3603
CALL FOR PRICE !



2024 VOLVO VNL64T300
DAY CAB
STK#64521
CALL FOR PRICE !



2025 REITNOUER MAXMISER
FLATBED TRAILER
STK#T749
\$60,000



2007 INTERNATIONAL
WORKSTAR 7400
GARBAGE TRUCK
STK#72665
\$25,000



2016 WESTERN STAR 4900
DAY CAB
STK#J1907
\$19,500



2025 MACK GRANITE 64FR
DUMP TRUCK
STK#7961
\$227,000



2025 TICO PROSPOTTER
YARD SPOTTER
STK#13513
CALL FOR PRICE !



2025 ISUZU NRR
REEFER BOX TRUCK
STK#04112
CALL FOR PRICE !



2025 VOLVO VHD84B300
CAB & CHASSIS
STK#690100
CALL FOR PRICE !



2020 PETERBILT 567
DUMP TRUCK
STK#78704
\$167,500



2013 INTERNATIONAL
WORKSTAR 7400 DUMP
TRUCK STK#32061
\$17,000



2025 MACK ANTHEM 64T
SLEEPER TRUCK
STK#52059
CALL FOR PRICE !



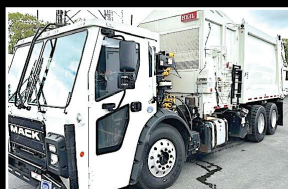
2024 ISUZU NPR HD
UTILITY TRUCK
STK#215705
\$79,950



2026 XL SPECIALED XL 110 HDGSP
LOWBOY TRAILERS
STK#25047
CALL FOR PRICE !



2026 TRAIL KING TKLB332-102
SEMI-TRAILER
STK#78566
CALL FOR PRICE !



2024 MACK LR64R
GARBAGE TRUCK
STK#08553
\$349,900



2025 MACK GRANITE 64FR
DUMP TRUCK
STK#46927
CALL FOR PRICE !



37 County Road
Route 106
Plympton MA 02367
PH: 781-582-1378
FAX: 781-585-4438



**BOSS PLOWS
INSTALLED
BOSS PLOW
PARTS IN
STOCK
CALL FOR
PRICING**



**DOWNEASTER-
BOSS-
SALDOGG
SANDERS
CALL FOR
PRICING**



**CUSTOM ALUMINUM BEDS/STEEL
CALL FOR QUOTE**



**2006 INTERNATIONAL 4000 HOOKLIFT TRUCK:
DT466 W/ALLISON AUTO., 186K MILES, 26,000
GVW 18,000 LB. SWAPLOADER HOOKLIFT. \$48,900**



**2017 Kenworth T-800 Paccar MX-13, Allison
auto, 195,000 miles with Palfinger cable pull
hoist system, tarp system, \$142,000**



**2015 Peterbilt Model 337: Paccar PX-9, Allison
auto 131,000 miles with Ampliroll AL100
Hook Lift, Pioneer tarp system, 33,000 GVW.
\$91,000**



**2010 International Lonestar Service Truck,
Cummins diesel, 13 speed \$69,000**



**READY TO GO COMPLETE TRUCK PACKAGES.
LOTS OF OPTIONS AVAILABLE
New & Used Trucks Ready To Go!**



**CM ALUMINUM FLATBEDS IN STOCK
NOW! MANY SIZES. CALL FOR PRICING**



**STEEL FLATBEDS
IN STOCK NOW! MANY SIZES.
CALL FOR PRICING.**

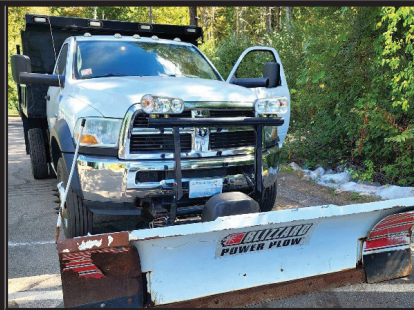


**2004 KENWORTH T300 DUMP TRUCK: CAT C7
W/ALLISON AUTO., 151K MILES, 33,000 GVW.
\$21,900.**

**SALES,
SERVICE,
PARTS**

**CALL TOLL FREE: 781-582-1378
WWW.CAREYTRUCKEQUIPMENT.COM**

**CUSTOM METAL
FABRICATION
AVAILABLE**



2011 DODGE 5500. 4x4, 12K Miles, Original Owner, Fleet Maintained, Cummins, Automatic, 8/10 Expandable P/A Plow, 2.5 Yard Stainless Steel Electric Sander, Electric Cover, Winter Is Coming, This Is A Money Making Truck, **\$55,000.** West Warwick, RI 401-523-6116

American SEMI REBUILDERS

**SPECIALIZING
IN FRAME RAIL
REPLACEMENTS,
TRUCK
RESTORATIONS,
& REPAIRS**



FULLY LICENSED AND INSURED

27 Depot Street, Unit K-2, Center Barnstead, NH 03225

- We Do What it takes to keep you moving**
- Quality work done right the first time**
- Over 40 Years Experience**

603-269-0046



**1987 INTERNATIONAL
PAYSTAR 5000.**

S/N 2HTTGGJT9HC004517,
Asking \$15,000 OBO.

508-579-4763 Or Email
WebsterDudleySand@gmail.com



2021 JCB 3CX ECO BACKHOE. 700 Hours,
\$95,000. 207-784-5712



Jukonski Truck Sales



WWW.TRUCKSELLERS.COM

se habla español

680 NEWFIELD ST. (RT 3) MIDDLETOWN, CONN • **800-378-0342** • MON-FRI 9-5

DON'T MISS OUT: YOUR IDEAL TRUCK AWAITS!



2024 HINO S5. Utility 16' Box, Diesel, Auto, 19,500 GVWR, BRAND NEW TRUCK, #T-R7308872, **\$69,900**



2020 ISUZU NQR 20' Box, Diesel, Auto, 102K, 17,950 GVWR, #T-L7900132, **\$32,900**



2021 HINO L6 26' Box With Liftgate, Diesel, Auto, 25,950 GVWR, #T-M5T51007, **\$56,900**



2020 ISUZU NQR 22' Box, Diesel, Auto, 74K, 17,950 GVWR, #T-L7900477, **\$39,900**



2023 ISUZU NPR HD 16' Box, Gasoline, Auto, 14,500 GVWR, #T-PS200269, **\$48,900**



2026 BRAND NEW HINO L6, Diesel, 25,950 GVWR, 26' Box W/ Liftgate, 3 AVAILABLE.



2022 ISUZU NPR HD DC. 18' Landscape Body, V8, Auto, 50K Miles, 14,500 GVWR, #T-NS200905, **\$59,900**



2024 ISUZU NPR HD DC 14' Dump, Gasoline, Auto, 8K Miles, 14,500 GVWR, #T-RS204003, **\$76,900**

90 DAY POWERTRAIN WARRANTY AVAILABLE ON ALL CERTIFIED TRUCKS. INCLUDES INJECTORS AND TURBO



DIMMICK GROUP PETERBILT
1-800-NEW-PETE
1-800-639-7383



DIMMICK GROUP PETERBILT



Price Reduced Call Rooster 603-553-3000

2025 LIDDELL 60 TON.

Flat Deck Detachable, 24.5 Rubber, Aluminum Outers, Rear Strobes, 102" Swing/Set-Up For A Neck Extension, Lift Axle, Wheel Covers. **In Stock.**



2025 TALBERT 55 TON.

Available In All Our Locations



2023 PETERBILT 389 SLEEPER.
 Cummins 565 HP, 131,629 Miles,
\$180,000. South Royalton, VT



2019 WESTERN STAR 4900.
 Sleeper Bunk, **\$79,000.**
South Royalton, VT



FELLING TAG TRAILERS.
 Multiple in stock, NH & VT



2016 FELLING FT-45-2 LP. Bow
 NH, **\$21,900.**



2025 PETERBILT 589.
 605 Cummins, 18 Speed, 3:73 Ratio,
 250" WB, Has Engine & Trans
 Warranty Remaining. 70,000 Miles



2025 PETERBILT 536.
 w/ NRC 22' 20TB,
 Brand New, **South Royalton, VT**



2021 PETERBILT 567. Cummins X15
 565HP, 469k Miles, **\$90,000, South**
Royalton VT



2020 PETERBILT 389. Paccar
 MX13, 18 Speed, 497k Miles,
\$85,000, South Royalton VT



2026 PETE T/A DUMP. Cummins 565
 HP, Automatic, 80,000 GVW, 17'6" MAC
 Body, Scuttle Chute, 6 In Stock, Various
 Colors, Ready To Go, **All Locations**

Royalton VT
802-763-2585

Colchester VT
802-654-4420

Bow NH
603-225-6666

Albany NY
518-459-1122

Newburgh NY
845-245-4042

Champlain NY
518-298-3835

Owego NY
607-687-1200

Rochester NY
585-321-5250

Syracuse NY
315-432-1122

Utica NY
315-732-4300



Lucky's Trailer Sales
800-877-5854

The **FELLING** Style
Quality - Craftsmanship - Pride



2026 FELLING FT 50. Air Tilt, Air Ramp, 24' deck, 6' Double incline Beavertail, 8" Ramps Air Assist, 16 D Rings, Oak Decking, 3rd Lift Axle, A Frame Tool Box, Black Paint



2026 FELLING FT 45. 24' deck, 6' Double incline Beavertail, 30" Air Assisted Ramps, 16 D Rings, Oak Decking, A Frame Tool Box, Red Paint



2026 FELLING FT 45. 22' deck, 6' Double incline Beavertail, 38" Air Assisted Ramps, 16 D Rings, Oak Decking, A Frame Tool Box, Black Paint



2026 FELLING FT 40. 20' deck, 6' Double incline Beavertail, 30" Spring Assisted Ramps, 16 D Rings, Oak Decking, A Frame Tool Box, Black Paint



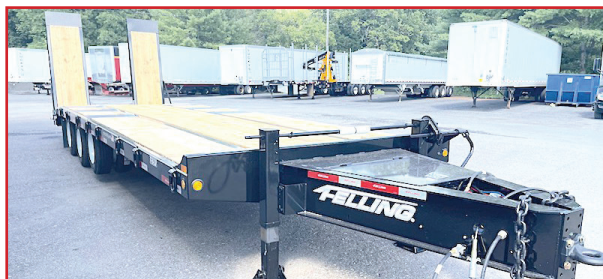
2026 FELLING FT 40. 22' deck, 6' Double incline Beavertail, 30" Spring Assisted Ramps, 16 D Rings, Oak Decking, A Frame Tool Box, Black Paint



2026 FELLING FT 45 2-LP. 20' deck, 6' Double incline Beavertail, 30" Air Assisted Ramps, 235/70/17.5 Tires, 16 D Rings, Oak Decking, A Frame Tool Box, Black Paint



2026 FELLING FT 45 2LP. 24' deck, 6' Double incline Beavertail, 30" Air Assisted Ramps, 16 D Rings, Oak Decking, A Frame Tool Box, Alum Wheels, Red Paint



2026 FELLING FT 50 3LP. 26' deck, 6' Double incline Beavertail, 30" Air Assisted Ramps, 16 D Rings, Oak Decking, A Frame Tool Box, Alum Wheels, Black Paint

402 VT RT 107 Royalton Vt - www.luckystrailers.com

ANDERSON MOTORS INC.


GMC

MICRO BIRD
by GERRARDIN

BLUE BIRD BUS SALES OF NEW ENGLAND
*** YOUR EXCLUSIVE VOLVO TRUCK DEALER ***

VOLVO POWER
IN STOCK

2026 VOLVO VHD84F300-D13, 500HP, 14 SPD. I-SHIFT, 20,000# STEERABLE PUSHER AXLE, 17' 6" TRI-AXLE BODY INSTALLED. #250111


IN STOCK

2025 VOLVO VHD64FT300-D13, 500HP, 12SPD I-SHIFT, 14,600# FRONT / 46,000# REARS, T-RIDE, FULL LOCK DIFF. #240089


IN STOCK

2025 VOLVO VHD64BT-D13, 500HP, 12SPD. I-SHIFT, 14,600# FRONT / 46,000# REARS. #240142


IN STOCK

2025 RHODES RSS2660-2 26' STEEL END DUMP TRAILER, AIR HIGH-LIFT DOUBLE ACTING TAIL GATE, HD SPECS.


INCOMING

2026 VOLVO VHD84F300-D13 500HP, 14SPD. I-SHIFT, STEERABLE PUSHER AXLE, STEEL DUMP BODY.


IN STOCK

2015 VOLVO VNM64T-D13, 435HP, 10SPD., 12,000# FRONT / 40,000# REARS.


IN STOCK

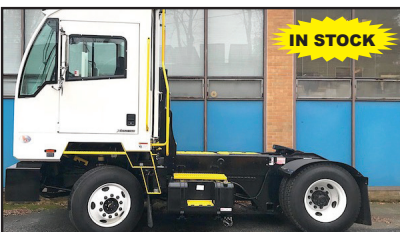
2000 VOLVO WG64B, 275HP, AUTO, 16,000# FRONT / 40,000# REARS, JOHNSERED 820 CORTU CRANE, 20' DUMP BODY. #210299A


2 AVAILABLE

2016 VOLVO VNM64T-D13, 435HP, 10SPD., 12,000# FRONT / 40,000# REARS. #230109A


IN STOCK

2026 FORD E-SERIES 14 PASSENGER COMMERCIAL SHUTTLE BUS, REAR LUGGAGE COMPARTMENT. NON CDL REQUIRED. #250158


IN STOCK

2026 AUTOCAR ACTT42, SINGLE AXLE, YARD JOCKEY, DIESEL AUTOMATIC, A/C, HYDRAULIC 5TH WHEEL.


IN STOCK

2012 FORD E-450 14 PASSENGER SHUTTLE BUS, GAS, 18,885 MILES. #250029A


IN STOCK

2025 FORD E-SERIES 14 PASSENGER COMMERCIAL SHUTTLE BUS. NON CDL LICENSE REQUIRED.

401-434-5900

WWW.ANDERSONMOTORS.COM

EMAIL • SALES@ANDERSONMOTORS.COM

170 AMARAL STREET • EAST PROVIDENCE, RI 02915

HABLAMOS ESPAÑOL



Fowler's Auto Wrecking Inc.

Belldtown Recycling Center



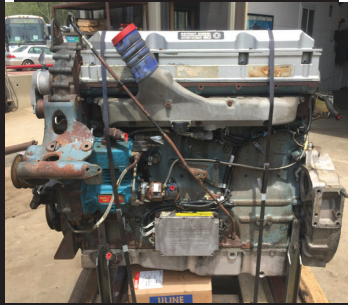
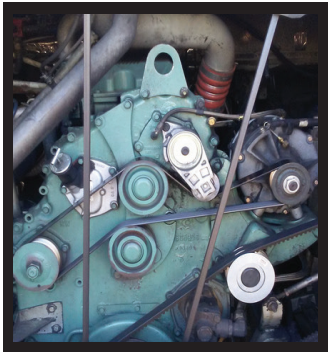
860-267-7140 • 24 Old Coach Rd East Hampton, CT

Detroit Series 60 12.7L Engines

EGR DDEC-IV
NON-EGR DDEC-IV
Good Running Take Out Engines
Recent Remanufactured Engines
Core Engines
Engine Accessories
6 Month & 1 Year Warranties Available
Call Today For Pricing



CALL: 860-267-7140



Complete Coaches For Parts

- MCI, Vanhool, and Prevost Buses For Parts
- Compressors, Condenser & Evaporator Motors
- Wheels, Tires, Suspension & Brake Parts
- Electrical Parts, Interior & Exterior Lighting
- Tag Axles & Drive Axles
- Compartment, Service, and Entrance Doors
- Fiberglass Body Panels & Glass
- Complete Electric Wiper Conversion Kits
- Radiators, Intercoolers, and Condensers
- Standard 6 Month Warranty On All Parts



**Buses Are Not Intended
For Resale - Salvage Titles**



Allison B500 Transmissions

- Allison B500 With or Without Retarders
- Good Running Take Outs
- Recent Remanufactured Units
- Core Transmissions
- Allison Shift Pad Selectors
- Allison TCM (Transmission Control Modules)
- Standard 6 Month Warranty
- Call Today For Pricing



CALL: 860-267-7140



**2004
INTERNATIONAL
4300 TOW
TRUCK.**

DT466 W/ 6
Speed Eaton,
282K Miles, 33K
GVWR With
Wheel Lift,
Ready For Work
\$24,000.



Commercial
Vehicle Center

JACK MADDEN FORD

781-762-4200



**LOW RATE FINANCING ON SUPER DUTY
TRUCKS AVAILABLE**



New & pre-owned TRANSIT CARGO VANS. All sizes available.



**2024 FORD F-550 SD XL 4WD DRW W/9' SUPER
HAULER LANDSCAPE BODY. 6.7L Diesel, 19500 GVW,
Tow Pkg, stk#17329.**



**NEW 2025 FORD E-450SD 14' ROCKPORT WORKPORT
UTILITY: DRQ, 7.3L GAS, AUTO, POWER GROUP.
STK#28681.**



**NEW FORD TRANSIT 350 SERVICE BODY AWD,
STK#69470.**



**NEW 2025 E350 12' AEROCCELL CUTAWAY.
STK# 30217.**



**NEW FORD F550 4X4 DIESEL 16' BOX.
STK#18361.**



**NEW FORD E-350 COMMERCIAL CUTAWAY WITH
16' AEROCCELL BOX TRUCK. STK#23914.**

**LARGEST
STOCKING
SUPER DUTY
DEALER**

JACK MADDEN FORD

825 Providence Hwy Rt.1 Norwood, MA
781-762-4200



Commercial
Vehicle Center

*All prices include incentives for qualified buyers. For trade assist, must have 2017 or new trade. All vehicles require dealer financing. Some prices include snowplow incentives. See dealer for complete details.

Commercial
Vehicle Center

JACK MADDEN FORD

781-762-4200



2024 FORD TRANSIT 250 CARGO VAN. V6, Auto w/OD, AC, P/W, Rear Camera, Limited Slip, stk#22914.



**NEW FORD
F350 SD XL
READING
UTILITY
4WD. 6.7L V8
TURBO DIESEL,
14K GVW,
STK#G02767**



**2025 FORD
F350 SD XL
CRYSTEEL
DUMP 4WD. 7.3L
V8 GAS, 14K
GVW, SNOW
PLOW PREP,
STK#27874**

see more photos on our website WWW.JACKMADDENFORD.COM



READY TO GO

**NEW CAB &
CHASSIS:
350-450-550
SUPER CABS,
REGULAR
CABS.**



**2024 FORD
F-550 SC XL DRW
SWITCH N GO
4WD. 6.7L Diesel,
Auto, AC, PW, PL,
Rear Camera,
19500 GVW,
Snowplow Prep,**



**NEW FORD F350 SD
9' SUPER HAULER
LANDSCAPE
BODY 4WD. 6.7L
POWER STROKE
DIESEL, 14K GVW,
SNOWPLOW PREP,
STK#17252**



**2025 FORD
FF650 SD AIR-
FLO DUMP. 7.3L
GAS, AUTO,
PLATE, HITCH,
POWER GROUP,
STK#6758**

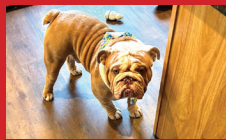
**LARGEST
STOCKING
SUPER DUTY
DEALER**

JACK MADDEN FORD

825 Providence Hwy Rt.1 Norwood, MA
781-762-4200

Commercial
Vehicle Center

*All prices include incentives for qualified buyers. For trade assist, must have 2018 or newer trade. All vehicles require dealer financing. Some prices include snowplow incentives. See dealer for complete details.



TRUCK PARTS & SALES OF CT PLYMOUTH, CT 860-584-1174



Custom Severe Duty Dump Bodies With 1/4" Hardox Sides And 3/8" Hardox Floors



Noreaster Fabrications Custom Built Plow Truck Package



Extreme Duty Plow Hitches That Do Not Come Loose Or Bend



Noreaster Fabrications Custom Central Hydraulic System With Stainless Steel Tank, Enclosure, Integral Filtering, Electronic Ground Speed Control



Custom Pintle Hitches & The Mud Flaps Says It All



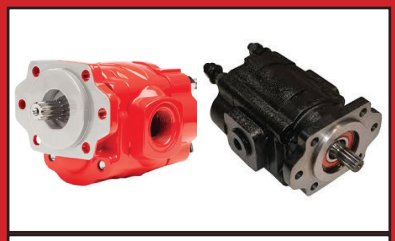
Elliptical Salt Spreader Bodies



Stainless Steel All Season Combination Spreader Dump Bodies



Hooklifts For 19,500 GVW To 80,000 lbs



All Types Of Hydraulic Pumps For Wet Lines & Dump Trucks



Pusher & Tag Axles. Fixed And Steerable



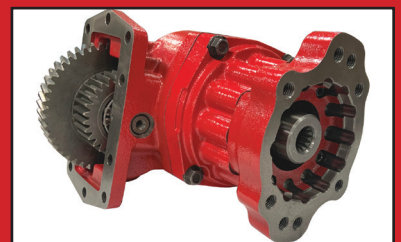
Landau And Brandon Dump Bodies



Trunion Mount Telescopic Cylinders



All Types Of Power Take Offs For Eaton



Hot Shift Power Take Offs For Allison



COLONIAL



COLONIAL DODGE CHRYSLER JEEP RAM

24 Coolidge Street - Hudson, MA 01749 • 888-601-3397

PROMASTER VANS AND WORK TRUCKS FOR PROFESSIONALS!

10 SPECIAL PURCHASE VEHICLES TO CHOOSE!



SAVE \$30,703

ONLY 24 MILES

**NEW 2025 RAM
PROMASTER
TRADESMAN SLT HIGH
ROOF MOBILE OFFICE:**
TAKE YOUR OFFICE TO
THE WORK SITE. FULLY
EQUIPPED. AUTO, PACK-
UP CAMERA & MORE.

PRICE: \$55,080

UPFIT: \$22,000

WAS: \$77,080

NOW: \$46,377. (+549 Doc.Fee)

SAVE: \$30,703..

Stk#P10466



32K MILES

**2017 FORD F250
XL SUPERCAB
STX 4WD.** Only
32K Miles, Fisher
Snowplow, Power
Grp, Remote
Start, One
Owner, **\$37,777.**,
stk#P10493



SAVE \$17,602

**NEW 2025 RAM
2500 BIG HORN 4X4
CREW CAB 4X4.** Off
Road Pkg, 8 Cyl., Auto,
AC, Power Grp, Nav,
Camera, Original MSRP
\$75,030. (+549. Doc
Fee) – Colonial Savings
\$17,602.

SALE PRICE: \$57,428.

Stk#P10444



19K MILES

**2024 GMC
CANYON CREW
CAB AWD 4X4
4WD.** Only 19K
Miles, Moonroof,
Heated/Cooled
Leather Seats, Nav,
One Owner,
SALE PRICE:
\$47,026.,
Stk#250294A



15K MILES

**2022 RAM REBEL
1500 CREW CAB
4X4.** Only 15K Miles,
8 Cyl., Auto, Heated
Seats & Steering
Wheel, Remote Start,
One Owner,
SALE PRICE:
\$48,026.,
Stk#P10469



SAVE \$15,972

**2025 RAM
PROMASTER
3500 159" EXT
HIGH ROOF VAN.**
Auto, AC, Camera,
Bluetooth,
MSRP \$60,400.,
Save \$15,972.
SALE PRICE:
\$44,428.
Stk#P10496



NIGHT EDITION

**2025 RAM 2500
LARAMIE CREW CAB
4X4.** 6.7L Cummins
Turbo Diesel, Auto,
Leather, Sunroof, 300
Miles,
Original MSRP:
\$89,170.
Save \$13,742.
SALE PRICE: \$75,428.
(+ \$549. Doc Fee)
Stk#P10495

www.ColonialDodgeChryslerJeep.com

SALVADORE

FAMILY OF DEALERSHIPS

PREOWNED SuperCenter

We've Got Your Truck
For less!

SalvadoreAuto.com | 978-630-2001 249 Timpany, Blvd., Gardner, MA 01440

PRICE DROP!



2024 CHEVROLET SILVERADO 2500HD LT
6.6L V8 TURBO DIESEL ENGINE, 10-SPEED AUTO TRANSMISSION
STK # G7537

11,150 LB GVW **NOW ONLY \$51,487**

PRICE DROP!



2024 FORD SUPER DUTY F-450 DRW
6.7L/406 V8 ENGINE, 10-SPEED AUTO TRANSMISSION
STK # N24119A

Magazine Special! **NOW ONLY \$89,943**

PRICE DROP!



2021 CHEVROLET SILVERADO 3500 HD CC WORK TRUCK
GAS 6.6L V8 ENGINE, 6-SPEED AUTO TRANSMISSION
STK # N24168A

1-3 YD DUMP BODY **NOW ONLY \$47,958**

BE WINTER READY!

DOZENS OF TRUCKS IN STOCK TO CHOOSE FROM!

ALL MAKES AND MODELS!

TOP DOLLAR FOR YOUR RADE!

978-630-2001

PRICE DROP!



2022 RAM 4500 CHASSIS CAB TRADESMAN
6.4 L/392 V8 GAS ENGINE, 6-SPEED AUTO TRANSMISSION
STK # N25128X

19.5 x 6.0 Steel Wheels! **NOW ONLY \$36,914**

PRICE DROP!



2024 RAM 2500 BIG HORN 4WD
I-6 6.7 L/408 TURBO DIESEL ENGINE, 6-SPEED AUTO TRANSMISSION
STK # P2372

Certified Pre-Owned! **NOW ONLY \$44,798**

PRICE DROP!



2024 RAM 2500 LARAMIE 4WD
I-6 6.7 L/408 TURBO DIESEL ENGINE, 6-SPEED AUTO TRANSMISSION
STK # P2380

Certified Pre-Owned! **NOW ONLY \$57,832**



RAPID PREP

877.529.2124 / rapidprep.com

Full Service Provider of Equipment, Supplies and Consumables

NATIONWIDE EQUIPMENT RENTALS, SALES & SERVICE

North Kingstown, RI

El Cajon, CA

Suffolk, VA

Lakewood, WA

RUST NEVER SLEEPS



ABRASIVES



BLAST CABINETS



SURFACE PREP
POWER TOOLS



SAFETY EQUIPMENT



CONSOLIDATED TRUCK & EQUIPMENT, INC.

**FELLING
TRAILERS**

**EXTREME
TRAILERS**

**Palmer
BODIES**

www.ConsolidatedTruckEquipment.com

**1727 FALL RIVER AVE, (RT.6) NEAR SEEKONK SPEEDWAY
SEEKONK, MA**



NEW CHALLENGER 26' STEEL DUMP TRAILER.

High Lift Gate, Single Point Suspension,
Electric Tarp, 11x24.5 Tires On
Aluminum Wheels,
Call For Price.



**2025 FELLING 20 TON TAG W/
AIR RAMPS. CALL.**



**2017 PALMER 26' STEEL DUMP TRAILER: 6KLB CENTERPOINT SUSPENSION,
ELECTRIC TARP, 8 ALUMINUM WHEELS, NEEDS NOTHING! 70% BRAKES & TIRES.
\$39,500.**



**2025 MAC 28' ALLUMINUM DUMP TRAILER: 8 ALLUMINUM
RIMS, ALLUMINUM FRAME, AIR RIDE, ½ PLASTIC LINER.**

3 AVAILABLE



5 IN STOCK

2025 MAC 26' STEEL DUMP TRAILERS:
Hi-Lift Gate, 24.5 Tires On Aluminum Rims, 60,000 LB
Center Point Suspension, Electric Load Cover, Body All
¼" Hardox,



**2025 MAC 27' STEEL BODY ALUMINUM
FRAME TRAILER: Hi-Lift Gate, Air Ride,
11x24.5 Tires On 8 Aluminum Rims, Hardox
Steel Body, Full Aluminum Side Skirts, Due
In 2 Available, Trades Accepted,**

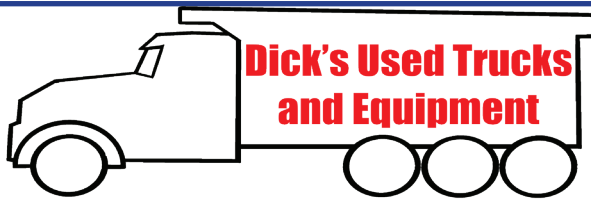


**NEW FELLING 25 TON:
AIR RAMPS, FRONT AXLE LIFT.
REDUCED! \$55,500 to \$53,000**



**1984 FRUEHAUF 26' ALUMINUM
DUMP TRAILER: GOOD
CONDITION FOR IT'S AGE. \$12,000.**

CALL US: AT 508-336-6215 • HOURS: M-F 8 to 5:30 • SAT: 9 to 12 Noon



207-623-4239



2005 CAT 930G LOADER.
Hydraulic Quick Release Bucket,
Auxiliary Hydraulics, **\$38,000**



1994 INTERNATIONAL 4300.
DT466, Steel Flatbed Body,
Knuckle Boom Crane, **\$9,500**



2000 CAT 416C BACKHOE. 4x4, Extend-
A-Hoe, Hydraulic Quick Change, Side
Dump Bucket, Twister Wrist, Rebuilt Engine,
\$25,000



1996 JOHN DEERE 410D BACKHOE.
4X4, Extend-A-Hoe, Auxiliary
Hydraulics, Hydraulic Disconnect,
\$20,000



JOHN DEERE 570A GRADER.
Enclosed Cab, Moldboard, Front
Blade, **\$19,500**



1998 FORD OIL TRUCK. 2
Compartment, 7 Speed, Cat
Engine



1987 FORD L8000 WATER
TRUCK. CAT 3208T, 5+2 Speed,
Water Tank, Pump, \$7,500



2009 MAC DUMP TRAILER.
Tri Axel, Air Ride Lift Axel, Barn
Door, **\$40,000**



2012 JOHN DEERE 310SJ BACKHOE.
4X4, Full Cab, Expanda Hoe, Wrist
With 3 Buckets, **\$38,000**



DRESSER D66 VIBRATORY
COMPACTOR. Smooth Drum,
\$9,500



CATERPILLAR 814. Semi U Blade,
Very Good Rubber, \$14,000



2007 CASE 430 SKID STEER.
OROPS, Quick Change Bucket,
Auxiliary Hydraulics, **\$14,000**

Dick's Used Trucks & Equipment • 146 River Road, Chelsea, Maine

**FAMILY
OWNED &
OPERATED
SINCE 1969**

HILLSIDE MOTORS

**300-D American Legion Highway (Rt. 177)
Westport, MA 02790
508-636-5050**

**Financing
Available
-Others in Stock**



SEE OUR OTHER PAGE – LAST PAGE OF CENTERFOLD – PAGE CF8



9K MILES

4 AVAILABLE

2025 CHEVY 2500 CREW CAB 8' LONGBED 4X4.
6.6L Gas, Auto, PW, PL, Ladder Rack, Alum. Toolboxes,
6-Passenger, Bluetooth, Back-Up Camera, 4 Available, 9K
– 17K Miles, Factory Warranty, \$56,900.



ONE TON

68K MILES

2017 FORD F350 REG. CAB 4X4 PICKUP. 6.2L V8,
Auto, AC, PW, PL, Bluetooth, Back-Up Camera, Cloth
Seats, 68K Miles, One Owner, Excellent Condition,
\$28,800. (file photo)



ALUM. FLATBED

**2019 FORD F250 SD 8' ALUMINUM FLATBED W/FOLD-
DOWN SIDES.** RWDD, 6L V8, Auto, AC, 9900 GVW, Fleet
Maintained, One Owner, 93K, Excellent Condition, \$18,400.
(Others Available Starting at \$9,800.)



WORK BIN PKG

2020 FORD TRANSIT CONNECT XL CARGO VAN. 2L
4 Cyl, Auto, AC, PW, PL, Bluetooth, Rear Camera, WIFI,
Satellite Radio, Shelf/Bin Pkg, Ladder Racks, 119K, One
Owner, Fleet Maintained, \$15,400.



4X4

**2017 GMC SIERRA 2500 HD DOUBLE CAB 8' UTILITY
4X4 w/ALUMINUM LADDER RACKS.** 6L V8, Auto, AC, PW,
PL, Back-Up Camera, 6-Passenger, One Owner, 84K, Excellent
Condition, \$30,900. (Others Available Starting At \$12,900.)



4X4

**2017 CHEVY SILVERADO 3500 HD CREW CAB 4X4
9' UTILITY.** DRW. 6L V8, Auto, AC, 6-Passenger, PW, PL,
13,400 GVW, 60" CA, 129K, Fleet Maintained, \$33,300.
(Will Separate, Others In Stock)



4X4

ONE TON

SEVERAL IN STOCK

**2018 CHEVY K3500 4X4 SRW 8' ENCLOSED UTILITY W/
POWER TAILGATE.** 6L V8, Auto, AC, PL, 85K, One Owner,
Fleet Maintained, Texas Truck, Never Seen A New England Winter,
Pristine Condition, \$28,900. (Will Separate)



**FACTORY
WARRANTY**

2024 CHEVY 4500 16' BOX W/POWER GATE.
6.6L V8, Auto, PW, PL, Back-Up Camera, Bluetooth,
14,500 GVW, Bal. of Factory Warranty, 43K, Excellent
Condition, \$48,900. (Will Separate) (file photo)

PLACE MOTOR Inc.*The "RIGHT PLACE" Since 1923***COMMERCIAL TRUCKS**

PHIL CROWLEY
866-449-7482 EXT. 213



19 Thompson Rd.
Rte. 193
Webster, MA.

**NEW 2024 FORD F-350 - F-600 4X4
CAB & CHASSIS SELL OFF**



***** FISHER PUSHERS AVAILABLE ***
10 TO 14 - 30 INCH HIGH AND UP**



**NEW 2024 FORD T-350
TRANSIT 12' BOX
SUPER BLOW OUT SPECIAL !**
\$49,923



**NEW 2024 FORD F-600 CAB &
CHASSIS 4X4 DIESEL ENGINE,
WHITE, 205WB.**
BUY FOR \$65,000*



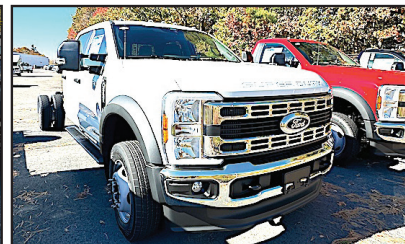
**NEW 2026 FORD TRANSIT 250 AWD
MEDIUM ROOF,
SEVERAL TO CHOOSE FROM.**
CALL FOR MORE DETAILS !



**NEW 2025 FORD F-750 CAB
AND CHASSIS
330 HP., DIFFERENT WHEEL
BASES AVAILABLE.**
CALL FOR MORE DETAILS !



**NEW FORD F-450 & F-550 4X4
SUPER-CAB - CAB CHASSIS,
60 AND 84 CA.**
SEVERAL TO CHOOSE FROM.
CALL FOR MORE DETAILS !



**NEW 2026 FORD F-550 CREW
CAB 4X4
DIESEL, 84 CA.**
CALL FOR MORE DETAILS !

**All Factory Rebates Back To Deal*



**MASSACHUSETTS OLDEST FORD
DEALER SINCE 1923**





PLACE MOTOR Inc.

The "Right Place" Since 1923

COMMERCIAL TRUCKS

Call Phil Crowley "The Truck Guy"
866-449-7482 ext. 213



19 Thompson Rd.
Rte. 193 Webster, Ma.

NEW 2024 FORD F-250 - F-350 4X4 PICK-UP'S SELL-OFF !



**NEW 2025 FORD F-350
CREW CAB 4X4
LARIAT TRIM, 6.7L H.O.
POWER STROKE DIESEL,
POWER MOON ROOF
AND MUCH MORE !**



**NEW 2026 FORD F-250
REGULAR CAB
XLT TRIM, 7.3L V8 GAS
ENGINE AND MORE.
CALL FOR DETAILS !**



**NEW 2026 FORD F-250
SUPER-CAB 4X4
SHORT BED AND LONG
BED AVAILABLE !**



**NEW 2026 FORD F-350
REGULAR CAB 4X4
XLT TRIM, 6.7L DIESEL.
CALL FOR MORE
DETAILS !**



**NEW 2026 FORD E-350
12' AREOCELL
SINGLE REAR WHEEL.
IN STOCK !**



**NEW 2025 FORD F-550
CAB & CHASSIS 4X4
7.3L & 6.7L DIESELS,
60 AND 84 CA.
RED & WHITE
AVAILABLE !**

0% FOR 60 MONTHS - AVAILABLE ON XL TRIM PACKAGES ONLY IN LIEU OF REBATES. All Factory Rebates Back To Dealer*

WWW.PLACEMOTOR.COM



DEJANA
Truck and Utility Equipment



**COMMERCIAL
VEHICLE CENTER**



☎ 603-623-3669
 🌐 equipmentsales@tquip.com
 📧 @tquipsalesandrentals
 📍 603 Mammoth Road
 Londonderry, NH 03053

OVER 1,000 MACHINES & ATTACHMENTS IN OUR INVENTORY



(2) 2022 KOMATSU WA270-8 A/C, AUX HYD, JRB GEM HYD Q/C, 3CY GP BKT, TIER-4 FINAL DSL, 4-SPD TRANS, 20.5R25 RADIALS, FULLY LOADED, 781+ HRS **\$169,000 EACH**



2021 HITACHI ZW370-6 A/C, 121" 8.25CY GP BKT, 389HP ISUZU TIER04 FINAL DSL, RIDE CTRL, 29.5R25 RADIALS, ONLY 1 OWNER, 6,328 HRS **\$175,000**



2021 KOMATSU WA320-8 A/C, AUX HYD, JRB HYD Q/C, 3.5CY BKT, 165HP TIER-4 FINAL, 4-SPD, RIDE CTRL, REAR CAM, LIGHT & FNDR PKG, 20.5R25 RADIALS, 2,980 HRS **\$155,000**



2020 CAT 910M A/C, 3RD & 4TH VALVE AUX HYD, HYD Q/C, 2.2CY GP BKT, RIDE CTRL, 16.9-24 TIRES, 392 HRS **\$125,000**



(2) 2019 CAT 907M A/C, 3RD VLV HYD, 55 HYD Q/C, 1.5CY GP BKT, 74HP TIER-4 DSL, HI-SPD TRVL, RIDE CTRL, 405/70R18 TIRES, 517+ HRS **\$79,500 EACH**



2017 DEERE 324K CAB, A/C, 3RD VLV AUX HYD, 88" GP BKT, RIDE CTRL, 405/70R20 RADIALS, 2,272 HRS **\$75,000**



(2) 2018 CAT 262D CAB, A/C, AUX HYD, MNL Q/C, 72" GP BKT, 2-SPD, 12X16.5 RBR, 560+ HRS **\$45,000 EACH**

NOTHING IS OUT OF REACH—CALL US FOR FINANCING OPTIONS!



2020 MCCLOSKEY 512A
5'X12' TROMMEL SCREENER, 3-5CY CPTY, 100HP TIER-3 DSL,
PINTLE HITCH, 11R22.5 TIRES, 1,509+ HRS
\$149,000

SALES & RENTALS INC.

T-EQUIP

EQUIPMENT

SALES & RENTALS



2016 KOMATSU WA500-8
A/C, 140" 9CY GP BKT, TIER-4 FINAL DSL, 4-SPD PWRSHFT
TRANS, RIDE CTRL, ENG TURBO, DIFF LOCK, TRCTN CTRL,
875/65R29 RADIALS, WORKING DAILY, 9,798 HRS
\$149,000



2018 KOMATSU D155AXI-8
A/C, SU BLADE, RIPPER, INTEL MACH CTRL, 24" PADS,
RECENT UC, UPDATED INJECTORS & FUEL PUMP, 6,155 HRS
\$249,000



2022 CAT 326
A/C, 60" REACH, AUX HYD, 60" BKT,
32" PADS, 3,807 HRS
\$165,000



(2) 2022 KOMATSU PC210LC-11
A/C, 9'7" STK, AUX HYD, HYD Q/C, 42"
BKT, HYD THUMB, TIER-4 FINAL DSL,
PTRN CHNGR, 32" TG PADS, 1,630+ HRS
\$195,000 EACH



2018 CAT 336
A/C, 12'10" STK, AUX HYD, HYD Q/C,
60" BKT, 34" PADS, 5,959 HRS
\$169,000



2022 CAT 336 A/C, 12'6" STK, AUX
HYD, HYD Q/C, 54" BKT, ST TRVL PDL,
PTRN CHNGR, REAR & SIDE CAMS,
34" TG PADS, 4,804 HRS **\$195,000**



2018 CAT 303.5E2CR
A/C, BM SWNG, AUX HYD, 34" BKT,
HYD THUMB, BLADE, 16" RBR PADS,
1,607 HRS
\$45,000



2022 KOMATSU D51PX-24
A/C, 132" 6-WAY HYD BLADE, JYSTK
CTRLS, 131HP DSL, 3-SPD HST TRANS,
DRAWBAR, 28" PADS, 2,662 HRS
\$135,000



2020 CAT TL1255 12,000LB CPTY
55' HT, EROPS, A/C, 60" FORKS W/
72" CARRIAGE, FRONT OUTRIGGERS,
4,007 HRS **\$109,000**



2019 CAT TL1055 10,000LB CPTY
55' HT, EROPS, A/C, 60" FORKS W/
72" CARRIAGE, FRONT OUTRIGGERS,
3,287 HRS **\$99,000**



2017 VOLVO SD45
OROPS, 54" SMOOTH DRUM,
VIBE DRUM, DRUM DRV, 438 HRS
\$42,500

ADDING UNITS TO OUR FLEET DAILY FOR YOUR RENTAL NEEDS

**We are cash
buyers for
quality used
trucks and
equipment!**

BROOKSIDE EQUIPMENT SALES

www.BrooksideEquipment.com

978-249-4600



2018 CAT 289D: 4,749 Hours, 2660 Lb Lift, Cab W/ A/C, Hydraulic Coupler, Pilot Controls, 2 Speed, 4 Cyl Cat C3.3B Turbo, 10.6K Lbs, stk#SK287, **\$36,500**



2015 GRADALL XL4300-III: 58" Cleanup Bucket, 9 Ft Blade, Mercedes-Benz Engine, 44K Lbs, stk#VX108, **\$39,500**



2018 CATERPILLAR 972M: 15,210 Hours, 5.6 Yard, Cab W/ A/C, Auxiliary Hydraulics, Joystick Steer, 6 Cylinder Cat Turbo, 55k Lbs, stk#LO694, **\$84,500**



2023 DEVELON DX35Z-7: 15 Hours, 18" Bucket, 2-Way Aux Hyd, Cab W/ A/C, 2 Speed, 3 Cyl Doosan, 67" Blade, 8.8K Lbs, stk#MX673, **\$44,500**



2006 CATERPILLAR 325DL: 10,620 Hours, 40" Bucket, Hydraulic Coupler, Good U/C, 6 Cyl Cat Turbo, 65K Lbs, stk#XC270, **\$57,500**



2018 CATERPILLAR 312F GC: 959 Hours, 32" Bucket, Aux Hyd, Good U/C, A/C, Cat C3.4B, 28K Lbs, Stk#XC289, **\$89,950**



2017 BOMAG BW120SL-5: 417 Hours, 48" Smooth Double Drum, Vib, Orops, 3 Cyl Kubota D1703, 24 HP, 5.6K Lbs, stk#CO614, **\$19,900**



2006 JOHN DEERE 310SG: 3,450 Hours, 4x4, X-Hoe, Cab, Turbo, Power Shift, Ride Control, 24" Bucket, Rear Aux Hyd, stk#BH627, **\$36,500**



1988 CATERPILLAR D8N: 17,302 Hours, 13 Ft Semi-U Blade, Cab W/ A/C, Good U/C, Diff Steer, 6 Cyl Cat 3406 Turbo, 1 Owner, 85K Lbs, stk#DZ536, **\$64,500**



2017 JOHN DEERE 310L: 7,150 Hours, 4x4, X-Hoe, Cab, 4-In-1 Bucket, Power Shift, Ride Control, Pilot Controls W/ Pattern Changer, 24" Digging Bucket, Rear Manual WainRoy Coupler, stk#BH013, **\$38,500**



2008 HAULOTTE HS5388RT: 2,342 Hours, 52 Ft Rough Terrain Scissor Lift, 4x4, 88" Wide, 2 Cyl Hatz Diesel, Stabilizers, stk#AE118, **\$11,500**



2016 JOHN DEERE 410L: 5,563 Hrs, 4x4, X-Hoe, Cab W/ A/C, Front Hyd Coupler w/3rd Valve, Power Shift, Ride Control, Pilot Controls w/Pattern Changer, 24" Dig Bucket, Rear Manual Coupler, stk#BH193, **\$54,500**



2017 KOMATSU WA320-8: 12,179 Hours, 3.7 Yard, Cab W/ A/C, Backup Camera, 6 Cyl Komatsu Turbo, 35K Lbs, Stk#LO101, **\$67,500**



1992 JOHN DEERE 624G: 14,801 Hours, 3 Yard, Cab, 6 Cyl JD Turbo, 23.5R25 Good Rubber, 28K Lbs, stk#LO776, **\$34,500**



2020 CATERPILLAR 306CR: 438 Hours, 12" Digging Bucket, Hydraulic Thumb, 78" Angle Blade, Cab W/ A/C, Swing Boom, 4 Cyl Cat Turbo, 57 HP, 16k Lbs, stk#XC531B, **\$79,500**



2019 JOHN DEERE 317G: 668 Hours, 2125 Lb Lift, Cab W/ A/C, Hyd Coupler, Joystick Controls W/ Pattern Changer, Turbo, Aux Hyd, 8.2K Lbs, stk#SK381, **\$39,500**



2016 GENIE S60X: 4,915 Hours, 60 Ft Boom Lift, 4x4, 8 Ft Basket, 4 Cyl Deutz Turbo Diesel 48 HP, Skypower, stk#AE843, **\$25,500**



2020 VOLVO ECR88D: 1,891 Hours, 36" Bucket, Auxiliary Hydraulics, Cab W/ A/C, 91" Blade, 2 Speed, Swing Boom, 4 Cyl Volvo Turbo, Manual Coupler, 21K Lbs, stk#XC078, **\$57,500**



2021 CATERPILLAR 259D3: 1,294 Hours, 2010 Lb Lift, Cab W/ A/C, Aux Hyd, Hyd Coupler, Pilot Controls, 72" Bucket, 9K Lbs, stk#SK696, **\$44,500**



2023 CATERPILLAR D1: 3,934 Hours, 6-Way, Cab W/ A/C, Joystick Steer, Backup Camera, Leveling System, 4 Cyl Cat Turbo, 18K Lbs, stk#DZ141, **\$79,900**

60 STATE RD, PHILLIPSTON, MASS

978-249-4600

EMAIL: KEVIN@BROOKSIDEEQUIPMENT.COM

SALVADORE
FAMILY OF DEALERSHIPS

#1 RAM CHASSIS CAB DEALER
IN NEW ENGLAND

BUSINESS LINK
The fast lane for small business.

We've Got Your Truck!

978-616-6127 | SalvadoreRam.com | Gardner, MA



RAM
PROFESSIONAL

WRAP UP
THE YEAR

EVENTO DE VENTAS



SAVE \$11,000!



Ready for Upfit!

2024 RAM 3500HD
CHASSIS TRADESMAN
REG CAB 4X4

6.4L V8 HEAVY-DUTY
HEMI ENGINE - 6-SPD
AUTO AISIN AS69RC HD
TRANSMISSION - 60' CA

MSRP: \$63,570
NOW ONLY: \$52,570!

STK # G301689

SAVE \$4,000!



Ready for Upfit!

2025 RAM 3500
CHASSIS TRADESMAN
CREW CAB 4X4

6.7L I6 CUMMINS TURBO
DIESEL ENGINE - 8-SPD
TORQUEFLITE HD AUTO
TRANSMISSION

MSRP: \$72,990
NOW ONLY: \$67,990!

STK # N25080

SAVE \$11,000!



Ready for Upfit!

2024 RAM 3500HD
CHASSIS TRADESMAN
REG CAB 4X4

6.4L V8 HEAVY-DUTY
HEMI ENGINE - 6-SPD
AUTO AISIN AS69RC HD
TRANSMISSION - 60' CA

MSRP: \$63,570
NOW ONLY: \$52,570!

STK # G301690

SAVE \$3,000!



Ready For Upfit!

2025 RAM 3500
CHASSIS CAB BIG
HORN CREW CAB 4X4

6.7L I6 CUMMINS TURBO
DIESEL ENGINE - 8 SPEED
AUTO TORQUEFLITE HD
TRANSMISSION

MSRP: \$81,350
NOW ONLY: 78,350!

STK # N25121

SAVE \$11,000!



Ready For Upfit!

2024 RAM 5500
CHASSIS CAB
TRADESMAN REG CAB

6.7L I6 CUMMINS TURBO
DIESEL ENGINE - 6-SPD
AUTO AISIN AS69RC HD
TRANSMISSION - 60' CA

MSRP: \$79,520
NOW ONLY: \$68,520!

STK # G347604

SAVE \$4,200



Ready For Upfit!

2026 RAM 5500
CHASSIS TRADESMAN
REG CAB 4X4

6.7L I6 CUMMINS TURBO
DIESEL ENGINE - 8-SPD
AUTO TORQUEFLITE HD
TRANSMISSION

MSRP: \$79,055
NOW ONLY: \$74,855!

STK # N26008

SAVE \$11,000!



Ready For Upfit!

2024 RAM 3500HD
TRADESMAN REG
CAB 4X4

6.4L V8 HEAVY-DUTY
HEMI ENGINE - 6-SPD
AUTO AISIN AS69RC HD
TRANSMISSION - 84' CA

MSRP: \$63,130
NOW ONLY: \$52,130!

STK # G310801

SAVE UP TO \$5,000!



High Roof Cargo Van

2025 RAM
PROMASTER 2500
TRADESMAN

3.6L V6 24V VVT ENGINE -
9-SPD AUTO
TRANSMISSION - GVWR
8,900LBS - 16" WHEELS

MSRP: \$55,335
NOW ONLY: \$50,335!

STK # N25057

SAVE \$11,000!



Ready For Upfit!

2024 RAM 3500HD
CHASSIS TRADESMAN
REG CAB 4X4

6.7L I6 CUMMINS TURBO
DIESEL ENGINE - 6-SPD
AUTO AISIN AS69RC HD
TRANSMISSION - 84' CA

MSRP: \$73,920
NOW ONLY: \$62,920!

STK# G309155

SAVE \$5,750!



Ready For Upfit!

2025 RAM 2500
TRADESMAN REG
CAB 4X4

6.4L V-8 GAS ENGINE -
8-SPD AUTO
TRANSMISSION - 8' CAB

MSRP: \$54,800
NOW ONLY: \$49,050!

STK # N25050

Additional Inventory Available & Ready For Custom Upfits!

Not responsible for typographical errors. Inventory changes frequently. Pricing subject to change due to manufacturer rebates. Pricing includes all available rebates and incentives and may require vehicle to be reported as a Business sale to the manufacturer. See dealer for complete details.

Authorized Fisher
Snow Plow Dealer



HILLSIDE MOTORS

**800-D American Legion Highway (Rt. 177)
Westport, MA 02790
508-636-5050**

Financing
Available
-Others in Stock

Family Owned & Operated Since 1969



PICKUP OR FLATBED

13,000 MILES

2016 FORD F350 DRW CREW CAB PICKUP OR DUALY FLATBED 2WD. 6.2L V8, Auto, AC, Tilt, 6 Passenger, Only 13,000 Miles, One Owner, Fleet Maintained, Super Nice, \$37,700.



4X4

2021 FORD F450 16' BOX TRUCK 4X4 W/ ALUMINUM RAMP. 7.3L V8, Auto, AC, PW, PL, Tilt, Back-Up Camera, Bluetooth, 16,500 GVW, 162K, One Owner, Fleet Maintained, Super Clean, \$29,900.



PLOW AVAILABLE

2015 CHEVY 2500 8' REGULAR CAB 4x4. 6L V8, Auto, AC, PW, PL, 190K, One Owner, Fleet Maintained, \$12,700. (File Photo)



74K MILES

2016 FORD F150 REG CAB 8' BED WITH WORK CAP. Longbed, V6, Auto, AC, PW, PL, Bluetooth, Rear Camera, 74K Miles, One Owner, Fleet Maintained, Pristine Condition. \$15,900.



OTHERS AVAILABLE

2013 FORD F250 RWD ALUMINUM RACK BODY. W/Fold- Down Sides, 6.2L V8, Auto, Tilt Wheel, 10,000 GVW, One Owner, 107K, Fleet Maintained, Ready to Work, \$9,800. (File Photo)



2 AVAILABLE

2015 - 2016 CHEVY 2500 CREW CAB 8' READING ALUMINUM UTILITY. w/Top-Loading Boxes, RWD, 6L V8, Auto, AC, PW, PL, 6-Passenger, 235K, One Owner, Fleet Maintained, 2 to Choose, \$12,900. Each, Cab & Chassis Only \$9,400.



\$12,500.

2009 INTERNATIONAL DUMP. Stainless Steel Body W/Tailgate Sander, Allison Auto, 22.5 Rubber, 36,220 GVW, Load Cover, 98K Miles, One Owner, Fleet Maintained, Needs Dump Piston, \$12,500.



ONE OWNER

2017 CHEVY 3500 SRW CUBE VAN. 6L V8, Auto, AC, Tilt, Limited Slip Dif, Barn Doors, 142K, One Owner, Fleet Maintained, \$13,900.

CT AXLE

& SPINDLE REPAIR

CT Axle & Spindle Repair Ellington, CT 06029
860-281-4454 or 860-375-6045



DRIVESHAFT SERVICE NOW AVAILABLE



BEFORE

TRAILER SPINDLE REPLACEMENT WELDED IN PLACE



BEFORE

AFTER

TRUCK DRIVE SPINDLE REPLACEMENT WELDED IN PLACE



AFTER

• Drive Spindles From 1 Ton To Class 8 Trucks • Trailer Spindles From 3,500# To Class 8 Axles
Spindles can also be repaired by welding up the worn area and then remachining to factory spec.
This includes tracing threads or remachining new threads.
WELDING AND FABRICATION ALSO AVAILABLE

A Completely Mobile Spindle Repair System. We Come To You! Serving CT, MA, RI & the Northeast
Visit Our Website At: ctaxleservice.com



SELL EQUIPMENT COMPANY, INC.
106 MENDON ST. • BELLINGHAM, MA
508-966-4888 • WWW.THENICECO.COM

FOR \$ALE OR WINTER RENTAL



SNOW RENTAL

2020 KUBOTA R630

Immediately Available!
\$3,500/month for season.
1 yard bucket & optional
Snow Pusher available. OR
BUY \$63,500



**2015 Kawasaki 90Z7 - 9700
hours, 5.5 Yd bucket, QSM11
Cummins motor, Rear camera,
Heat/AC, 26.5 R25 tires 65% or
better. \$89,000.
\$6000/month for seasonal
rental.**



REED TRUCK SERVICES

24/7 Heavy Duty Towing, Accident Recovery & Emergency Road Service



**TRADES
ACCEPTED**

**939 John Stark
Hwy.
Newport, NH**



**287 Washington St.
Claremont, NH**

**HELP
WANTED**

• Authorized International Truck & Cummins • Sales • Service • Parts • Warranty •
All Makes Commercial Truck Parts, Sales, and Service

Email: scott@reedtruck.com • www.ReedTruck.com • 1-800-542-5032



2025 INTERNATIONAL HV507.19
Cummins, Allison 3500, 20 F/A, 30 R/A,
Chalmers Susp, All Municipal Options!



2024 INTERNATIONAL CV515 4x4.
Fully Equipped With Plow Gear And Dump
Body.



2026 INTERNATIONAL HX620.
X15@565hp, 4700 RDS Allison, 20 F/A,
46 R/A, Ready For A 15' Dump.



2024 INTERNATIONAL HV613. A26,
Allison 4500, 22 F/A, 46 Locking Rears,
Hend HMX Suspension, In Stock!!



2024 INTERNATIONAL HX520. X15 Cummins,
Allison Auto 4500, 20/46 Axles, Air Ride, Aluminum
Wheels, Dump Body & Plow Gear Being Installed



2023 FREIGHTLINER 114SD DUMP W/Plow And
Wing. 470 HP, Allison 4500, 20 F/A, 46 R/A, Viking-
Cives Equipment, Low Miles.



2018 INTERNATIONAL 4300. Non CDL,
Cummins Engine, Allison Trans, AB, AR, 16'
Morgan Body, \$34,900., Will Separate



2023 INTERNATIONAL LT625. 13,200
F/A, 40 R/A, Cummins X15 450 HP, 10 Spd
Manual, Clean Tractor, 106K Miles, \$71,500.



2019 GMC 3500 DENALI CREW CAB 4x4.
Diesel 4x4, All Options, Well Maintained,
One Owner, One Driver, 115,500 Miles.



2012 FREIGHTLINER SD114. DD13 Engine,
Allison AUTO Trans, Everest 14' Live Floor Body,
Truck, Includes Plow And Wing Blades. Well
Maintained Muni Trade, \$49,900.



2004 - 2013 INTERNATIONAL 7400 Dump. 16
F/A, Locking 30 R/A, DT300 HP, Eng Brake, Allison,
AC, 40,780 GVW, Everest Gear, Plow, Wing, Sander,
Air To Rear, \$6,500. to \$26,500.



2020 International MV607 21' 20TB NRC
Galvanized Flatbed w/Underreach. 33K GVW, 300
HP Cummins, Allison, Rear Locker, AB, AR, AC,
Well Maintained, Stored Inside, Owner/Operated.
\$85,900.

**939 John Stark Hwy.
Newport, NH**



REED TRUCK SERVICES

24/7 Heavy Duty Towing, Accident Recovery & Emergency Road Service

FLEETRITE

**287 Washington St.
Claremont, NH**

CLEANING THE BACK ROW! THESE GOTTA GO! CALL FOR MORE INFO. MAKE OFFERS!



2009 FREIGHTLINER BUS.
Cummins, Allison, 2 Full Size Freightliners &
2 International CE300 Buses
Priced From \$1,800-\$5,800.



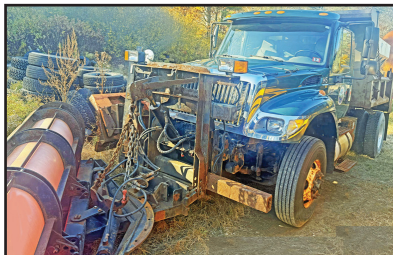
2005 STERLING L8500 DUMP/PLOW TRUCK.
C7 Cat, Allison, 44,000 GVW, Needs some work.
Live Floor Dump.



2006 FREIGHTLINER M2 112 LANAU DUMP BODY. 450 HP Mercedes, 16908LL Trans, 18 F/A, 46 R/A, Solid Truck, Used For Paving. **\$52,500.**



2010 FREIGHTLINER SLEEPER.
14 F/A, 46 R/A, DD15, 18 Spd, Wet System, Clean Solid Truck, Used In Paving Company. **\$42,500.**



2004 INTERNATIONAL 7400. DT466, Allison, Locking 30K Rear, Rev Plow, Wing With Or W/O Newer SS Sander, Call For Price



2014 GMC/COLLINS BUS.
Gas, Auto, Wheel Chair Lift, **\$8,900.**
(Other Buses In Stock)

Email: scott@reedtruck.com • www.ReedTruck.com • 1-800-542-5032



CHAMPION HOIST.

9 Ft Or 11 Ft Underbody
Subframe Hoist.

Candia Trailer, Truck Bodies, & Snow
Equipment, On Sale. 866-761-0196

Coletta's Sales & Service

For all of your truck, trailer, and truck body needs

- ★ **Collision Center**
- ★ **Vehicle Service & Inspection**
- ★ **Towing & Road Service**
- ★ **Equipment Hauling**
- ★ **Part Sales & Delivery**
- ★ **Authorized Morgan Truck Body Distributor**



250 Niantic Ave, Providence RI 02907
www.colettas.com

401-421-3232



2009 INTERNATIONAL VAC-CON VACUUM/JETTER COMBO MODEL 7400.
67K Miles, 7970 Hours, 7.6L L6 Diesel, Allison Automatic, 3-Stage Fan, Pony Motor, 12 Yards, 1000 Gallon Fresh Water, 50 GPM/3,000 PSI, **\$79,900.** Manchester, NH 603-759-1070



2016 FORD F550 DUMP TRUCK. 4WD, Diesel, Stainless Steel Dump Body, Fold Down Sides, 66,635 Miles, 603-952-4500

CT • RI • MA • NY

CALL IAN OR JIM
800-229-9421100 YARD
STEEL DUMP TRAILERSWE WILL SAVE YOU MONEY ...
AND PUT A SMILE ON YOUR FACE!**STUMP & BRUSH
TRANSPORTATION & DISPOSAL****\$1800/LOAD****DEMOLITION DEBRIS
TRANSPORTATION & DISPOSAL****\$2750/LOAD****SAME DAY DISPATCH
TOP \$\$ PAID FOR YOUR
SCRAP STEEL, COPPER, & ALUMINUM!!!****2002 STERLING 109500 10-WHEEL DUMP.** 209K Miles, CAT C10 350HP, 8 Sp, 445 Tires on 20K Front, 11-24.5 On 52K Rear, 72K GVW, 4.89 Ratio, Full Locking Rears, Dual Steering Boxes, 14' Rugged Dump Body, New Radiator, Pintle On Rear, 11' Highway Plow, Easily Removable Harness. **\$36,500 OBRO.** 508-269-1515**2001 INTERNATIONAL
4900 FUEL DELIVERY
TRUCK.** 2400 Gallon Aluminum Tank, 232K Miles, DT466, 6 Speed, **\$14,500.**, Lawrence, MA
603-973-080911 Commercial Way
Milford, MA 01757**HILLVIEW EQUIPMENT**
SALES & RENTALS 24/7 • **508-474-8063***Rt. 495 to exit 48,
Route 109W,
Left to Birch St,
right to Industrial Dr.
Left to Commercial Way***2017 CAT 315F LCR** Blade,
Piping, 4800 Hours. **\$119,000****2019 CATERPILLAR 325FL** 8,900
Hrs, New Thumb & Quick Coupler, Aircon,
Nice Machine. **\$99,000****2016 KOMATSU PC45-5
AIRCON,** 2400 Hours, New Thumb
& Quick Coupler. **\$45,000****2007 LULL 1044C-54**
4,000 Hours, Erops, Cabin.
\$69,000**2014 CATERPILLAR 725C**
9,100 Hrs, Ready To Work. **\$145,000****2018 CATERPILLAR 312F** 6,000
Hrs, Wide Pads, Aircon, Nice Machine.
\$89,000**2014 CATERPILLAR 320E**
4,000 Hrs, Piping, Aircon, Very Clean.
\$119,000**2017 CATERPILLAR 314F CR**
5,400 Hrs, Blade, Piping, Aircon.
\$99,000**2007 CAT 315C** 5,400 Hours,
Aircon, 55 Feet Long Reach.
\$99,000**2020 CAT 910M**
3,000 Hours, Quick Coupler.
\$99,000**2015 CAT 320E** 7500 Hours, Aircon,
Thumb, Quick Coupler.
\$89,000**1995 LULL 644-42** 4,500 Hrs,
Good Machine. **\$29,000****2011 CAT 308D** 4500 Hours,
Thumb, Blade. **\$65,000****2008 CAT D3K LGP** 1200 Hours,
Aircon, 90% Under-Carriage.
\$89,000**2008 CAT D4K LGP** 1200 Hours,
Aircon, 90% Under-Carriage.
\$89,000www.HillviewEquipment.com



Cherry Hill Construction Co., Inc
51 Ciro Road – North Branford,
CT 203-488-7929

www.CHERRYHILLEQUIPMENT.com



2006 CAT 966H.
 Long Reach Arms,
 Large Bucket.
Asking \$59,000



2023 CAT 311CU.
 5500 Hours, Aux Hyd, 29"
 Digging Bucket, 5' Grading
 Bucket, Wayne Roy Q/C,
Asking \$40,000



2006 CAT 325D,
 24,000 Hours, Q/C, Aux
 Hydraulics,
 Good Bottom.
Asking \$50,000



1975 P&H
OMEGA CRANE,
 6,509 Hours,
Asking \$19,000



1984 CAT 966D,
 8854 Hours, Aux
 Hydraulics, Side
 Dump Bucket.
Asking \$37,000



1999
INTERNATIONAL
4900 DT 466E, 98K
 Miles, Automatic,
 All Seasons Body.
Asking \$10,000



1991
CATERPILLAR
966F LOADER.
 Meter Reads 2506
 Hours,
 Aux Hydraulics,
Asking \$45,000



1998 MACK
RD688SX 10
WHEEL DUMP,
 123K Miles,
 Automatic, Mack
 E7-350,
Asking \$28,000



1995 HOGZILLA
TC1464P. Tub
 Grinder, 1,751
 Hours, **Asking**
\$115,000



2015 PETERBILT 388
Heavy Haul Tractor,
 430,650 Miles, 18 Spd,
 Engine Rebuilt a At 370k
 miles, ISX15 550 HP
 1950 Engine, 20/22/46,
 New Trans, New Rear,
 4:10 Rears, Wet Line,
 Holland 100 Ton Fifth
 Wheel, **Asking \$125,000**



1999 JOHN DEERE
200 LC.
 14,586 Hours,
Asking \$29,000

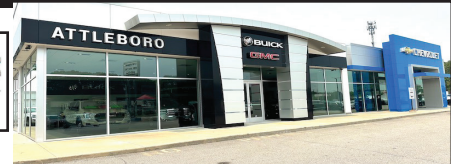
CHEVROLET, BUICK, GMC OF ATTLEBORO

A Priority Automotive Dealership

**ROUTE 1, BETWEEN 95 + 295
SOUTH ATTLEBORO, MA**

508-761-4800

PLENTY OF NEW GMC TRUCKS AVAILABLE



2026 K1500 8' BED



**PRO VALUE PKG., POWER SEAT,
ALUM. WHEELS. #26061G
PRICE INCLUDES GM TRADE-IN
ALLOWANCE REBATE.**

\$44,995

2026 CANYON AT4X



**INCLUDES AT4 LIFT KIT.
#26007G**

\$60,715

**2026 K2500 DENALI ULTIMATE
DURAMAX DIESEL**



**22" BLACK WHEELS, PLOW PREP.,
5TH WHEEL PKG. #26065G**

\$101,930

**2026 K2500 DENALI
DURAMAX DIESEL**



**DENALI RESERVE PKG., MAX TRAILERING
PKG., PLOW PREP. #26023G**

\$91,385

2026 K1500 AT4X



**6.2L V-8, ACTIVE EXHAUST,
KICKER TAILGATE AUDIO SYSTEM.
#26019G**

\$84,385

2026 K2500 CREW CAB SLT



**SLT CONV. PKG., SPRAY LINER,
PREFERRED PKG., HD SAFETY PKG.,
PLOW PREP. #26054G**

\$73,915

**2024 K3500 CREWCAB SLT
DURAMAX DIESEL**

8' BED



**SLT PREMIUM PKG., X-31 OFF
ROAD PKG. #24219G**

\$83,875

2026 K3500 DUMP TRUCK



**PLOW PREP., ASSIST STEPS,
COVER, HITCH, TRAILER BRAKE,
TOOL BOX, POLY FENDERS. #26028G**

\$77,436

2026 K2500 CREW CAB SLE



**VALUE PKG. PREFERRED PKG.,
PLOW PREP. #26017G**

\$66,315

2026 K3500 DOUBLE CAB



**CONV. PKG., SPRAY LINER,
ALUM. WHEELS, PLOW PREP.,
ASSIST STEPS, X-31 OFF ROAD
SUSP. #26084G**

\$59,175

2025 K2500 UTILITY



**CONV. PKG., PLOW PREP.
#25234G**

\$76,000

2024 C2500 UTILITY



**READING CLASSIC II BODY,
STROBES, ELECTRIC LOCKS,
SPRAY LINER. #24210G**

\$71,840

**** PLUS OVER 50 MORE AVAILABLE ****



WWW.CHEVROLETBUICKGMCOFATTLEBORO.COM



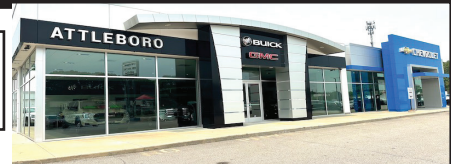
CHEVROLET, BUICK, GMC OF ATTLEBORO

A Priority Automotive Dealership

**ROUTE 1, BETWEEN 95 + 295
SOUTH ATTLEBORO, MA**

508-761-4800

PLENTY OF NEW CHEVROLET TRUCKS AVAILABLE



**2025 EXPRESS ONE TON
EXTENDED VAN**



9900 GVW, V-8, TRAILER PKG.,
ALL THE OPTIONS. #25422H

\$53,885

**2025 K3500 DUMP TRUCK
DURAMAX DIESEL**



14,000 GVE, PLOW PREP., HITCH,
COVER, CONV. PKG. #25411H

\$81,000

**2025 K3500 LT CREW CAB UTILITY
DURAMAX DIESEL**



DARK GREEN METALLIC, BUCKET SEATS,
REMOTE START, HEATED SEATS.

#25074H

\$95,300

2024 KUV



9,900 GVW, LOW ROOF,
NICELY EQUIPPED. #24414H

\$71,895

2025 DURACUBE MAX 10'



9,900 GVW, ELEC. BODY LOCKS,
LADDER RACKS, SHELVING. #25141H

\$69,000

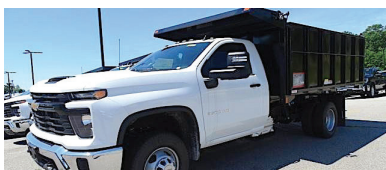
**2024 LCF 4500
14' BOX + LIFT GATE**



14,500 GVW, POWER MIRRORS,
KEYLESS ENTRY, 14' ALUM. BOX,
2500# LIFT-GATE.

\$91,995

**2024 K3500 12' LANDSCAPE DUMP
DURAMAX DIESEL**



14,000 LB GVW, HITCH, COVER, TRAILER
BRAKE, SIDE DOOR, REAR BARN DOORS.

#24311H

\$84,572

2025 K2500 DOUBLE CAB UTILITY



PLOW PREP., CONV. PKG., TRAILER
BRAKE

AND HITCH. #25120H

\$75,000

2024 4500 14' BOX



14,200 GVW, FANCY CHASSIS SPECS.,
TRANSLUCENT ROOF, RAMP, TIE-DOWN
HOOKS. #24409H

\$66,000

2025 COLORADO ZR2



FULL OFF-ROAD SPECS.
INCLUDES LIGHT BAR, SHOCKS,
STEPS, SUNROOF. #25385H

\$63,260

2025 K3500 12' RACK BODY



PLOW PREP., CONV. PKG.,
40" RACKS. #25398H

\$69,995

2025 K2500 DOUBLE CAB



CUSTOM VALUE PKG., SPRAY LINER,
PLOW PREP. #25341H

\$57,380



WWW.CHEVROLETBUICKGMCOFATTLEBORO.COM



THIS AD IS COPYRIGHTED & OWNED BY TRUCK AND EQUIPMENT POST

JP RIVARD Trailer Sales Inc

Call Matt - 508-962-4543
Matt@jprivard.com • JPRivard.com
Locations in Ayer, MA and Devens, MA

We Deliver Storage Solutions

60 PLUS YEARS SERVING THE
NORTHEAST AREA

Over 150 Containers – In Stock
With Choice Odd Sizes & Specs
FAST Delivery Is Available

Always Best Customer Service

10' ONE TRIP CONTAINERS



**New One Trip
10' Containers.**
Side Door
And Window
Included. Three
Available,
From \$3,600.

40' HIGH CUBE DOUBLE DOORS



**40' High Cube
Container, Doors
On Each End.**
Green.
\$6,600
**Delivered
Locally**

NEW 20' – TWO SIDE DOORS



**20' NEW
ONE TRIP.**
End Doors,
2 Side Doors,
From \$6,200

20' HIGH CUBE



**2 New One Trip
20' High Cube,**
9'6" Full Open
Side, Hard To
Find.
**From
\$8,000**



20' 1 TRIP - HIGH OPTIONS



FROM \$3,200

(25) New 20' One Trip Containers
Beige, Light Grey And Green, Some Lightly
Dented



40' HIGH CUBE - 1 TRIP



(5)
**New 40' One
Trip
High Cube
Containers,**
In Stock,
FROM \$4,700

40' HIGH CUBE 1 Trip, 4 Side Doors



**New 40'
High Cube
Containers,**
With 4 Side
Doors, **\$9,800**
**Delivered
Locally**

Sales Tax If Applicable + Delivery Is Not Included Unless Noted

JP RIVARD Trailer Sales Inc

Call Matt - 508-962-4543
Matt@jprivard.com • JPRivard.com
Locations in Ayer, MA and Devens, MA

FULLY GALVANIZED UNDER SIDE



(50)
HYUNDAI 53'
- Spring Ride
- Swing Doors
- Mint
Condition
\$17,900

LIFTGATE SALES & SERVICE

MAXON

WALTCO

PALFINGER

LIFTGATES

Sales And Service For
All Major Brands

48' & 53' STORAGE TRAILERS



48'-53' Swing
Door Storage
Trailers
In Stock.
From \$1,900.
(2) 53'
Insulated 53'
Swing Doors,
\$3,500 Each

YARD SPOTTER



MAGNUM YARD SPOTTER.
Single Axle, Works As It Should,
Good Inexpensive Truck, **\$7,750**

RENTAL FLATBEDS & STEP DECKS



- NEW & USED
48'X102" Rentals
- Sliding Tandems
- DOT Inspected
- USED 48'X102"
Combo Step Deck
- Spread Axle Air
Ride

COMPOSITE PLATE VAN



2013 HYUNDAI 53'. Composite
Plate Van, 4 To Choose, Spring
Suspension, Swing Doors,
Excellent Condition. **\$9,950.**

NEW GALVANIZED TRAILERS



2027 DORSEY 48' STEP DECK
COMBO. Galvanized, Great
Specs. March 2026 Delivery

2027 DORSEY 45' FLATBED.
Galvanized, Forklift Kit. March
2026 Delivery

2027 DORSEY 36' FLATBED.
Galvanized, Forklift Kit. March
2026 Delivery

*** FINANCING & LONG TERM LEASES AVAILABLE



2000 KENWORTH W900 C-15 CAT - 475 HP, 18 Speed, 1,153,922 Miles (In-Frame Rebuild At 700k Miles), 40% Tires, 40% Brakes Tag Brakes Are Good, Needs A Clutch Brake, New Elbows, Needs Exhaust Work. **\$44,900** 781-417-3018

2022 KENWORTH T880. 510 HP, Automatic, Heavy Spec, 120K Miles, One Owner, **\$179,900.** Located In Chichester, NH 603-765-9140



NORTHEASTERN PETROLEUM SERVICE & SUPPLY

617-522-8390 Ext 103 • 51 B St. Bay 2 Hanover, Ma

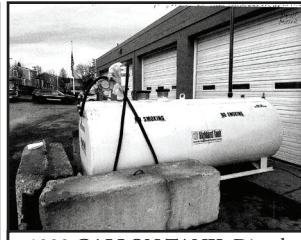
After Hours Call 617-696-1979

We Are Looking For Newer Tank Trucks To List, Dual Equipped, Tandems & Auto. Trans, Can Sell From Your Location

Jerry Mello Cell: 617-799-1461 24/7 Email: jerrym@nepss.com



2007 IH. Automatic, DT466, 156K Miles, 2 Compt 2000/800 Gal, 4E Neptune Meter, Go To Work Condition, **\$29,000/BO**



1000 GALLON TANK. Diesel Only, 4' X 12', 10 GA, UL-142 DW Skid, HD 3/4 HP Pump & Water Absorb Filter Used One Month On Our Job. New **\$13,500.** Slightly Used **\$10,900** FOB Hanover



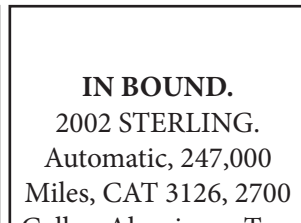
2002 TANK & PUMP. 5000 Gallon 2 Wall Diesel Tank, 2 Suction Pumps, Excellent Condition, Will Deliver, **\$19,000.** Call 617-799-1461



2004 FREIGHTLINER M2. Boston Steel 2700 Gal, 1-Compt, V-Root, Bottom Load, Stainless Single Wrap, Air Motor, Mercedes 260 HP, Automatic, 201,149 Miles **\$49,000.**



HIGHLAND IN STOCK NEW.1000 Gal 2 Wall Skid Tanks. 10-GA, Other Sizes Available



IN BOUND. 2002 STERLING. Automatic, 247,000 Miles, CAT 3126, 2700 Gallon Aluminum Two Compartment Tank, Near Our Shop.



2007 Pete 357 T/A Tanker. Amthor 5000 Gal, 3 Compt, 66,000 GVW, 8 Spd, CAT C-13, 416,049 Miles **\$79,000 MUST SELL, BEST OFFER**



2012 FORD TRANSIT CONNECT XLT. 101,557 Miles, Shelves, Serviced And Ready To Work, Tires 50%, **\$11,900**



SITE TRUCK. 1985 GMC EXTRA THICK STEEL TANK. Detroit Engine, 5+2 Trans, 1500/500 Gal Compts Testing Top & Bottom All Liquids, 3" Pump, Good Cond, **\$7,500/BO**



2004 PETE 330. Boston Steel 2700 Gal, 2 Compt 2000 & 700, CAT power, Automatic, Stainless Steel Reel, M-7 Meter, Bottom Load, 176,783 Miles **\$45,000**



2007 PETE 335. 2800 Gal ALMAC 4 Compt., 800/8a00/700/500, M-7 2" Meter, ISC Cummins 260 Hp, 8 Speed, **\$55,000 MUST SELL, BEST OFFER**

SOME TRUCKS AT CUSTOMER LOCATIONS



(203) 752-0213
WWW.EQUIP-SALES.COM
NORTH HAVEN, CT 06473

PARTS ► SALES ► SERVICE ► RENTALS



2022 ROCKSTER R1100S

CLOSED CIRCUIT IMPACT CRUSHER. SERVICE RECORDS FROM DAY 1. CAT ENGINE, CENTRAL GREASE SYSTEM, REMOTE CONTROL, MAGNET, SCREEN BOX, 2 WAY RETURN BELT. 4,385 HRS. EXTREMELY RELIABLE & PRODUCTIVE MACHINE. \$265,000



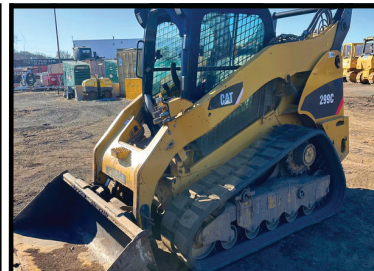
1992 FORD L8000

DISTRIBUTOR TRUCK. 171K MILES. IMMACULATE! 1 OWNER TRUCK, 1900 GAL ETNYRE BODY, 33K GVW, AIR BRAKE, 7 SPEED, FORD DIESEL. \$32,500



2013 DEERE 700K XLT

3,800 HRS, ONE OWNER, GPS VALVING, FULL CAB, TIGHT, GOOD BOTTOM. \$76,500



2009 CATERPILLAR 299C

4,850 HRS, ONE OWNER SINCE NEW, FULL CAB, RECENT U/C, HYD Q/C, READY TO GO. ALWAYS WELL KEPT. \$29,500



2015 KOMATSU WA320-7

5,200 HRS, JRB Q/C, BUCKET, FORKS, RIDE CONTROL, FULL CAB, VERY WELL MAINTAINED. \$72,500



2015 CATERPILLAR D6K2 XL

8,082 HOURS, 1 OWNER, FULL MAINTENANCE RECORDS, NEWER U/C, TURN KEY WORK READY UNIT, GO TO WORK TOMORROW! \$78,500

**WE TAKE
ANYTHING IN
TRADE**

Jolly John's
Truck & Equipment



**FINANCING
AVAILABLE**

WE PAY CASH FOR YOUR TRUCKS & EQUIPMENT



2021 VOLVO ECR 50F MINI EXCAVATOR,
4 Cyl Volvo, Heat & A/C, 2 Speed Travel,
Backfill Blade, Aux Hyds, Hyd Thumb, 6' Stick,
Hyd Coupler, **\$49,900**



2011 PETERBILT 365 TRI-AXLE 6x4 DUMP.
Cat C13 6 Cylinder 12.5L Diesel 335 HP,
Allison Automatic, 16540 FA, 59500 RA, Air
Ride Cab, PTO, Wet Kit, 16' 5" x 5' 3" Steel
Body, **\$84,900**

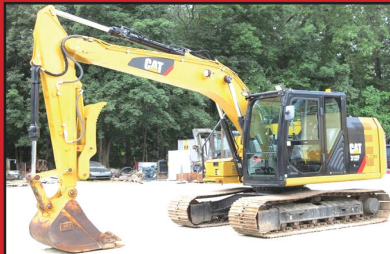


2015 GEHL RS6-42 TELESCOPIC FORKLIFT
4x4x4, 4 Cyl John Deere Turbo Diesel, Heat ,
A/C, 42' Reach, Foam Filled Tires, Aux Hyd, Tilt
Mast, 60" Forks, **\$34,900**

FINANCING AVAILABLE



2007 FORD F450XL FLATBED, V8 Diesel
Engine, 15' x 96" Bed, Liftgate, Aluminum Tool
Boxes, Power Windows And Locks, Freshly
Serviced. **\$11,900**



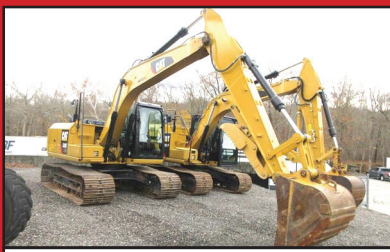
2018 CATERPILLAR 312F EXCAVATOR.
Control Pattern Changer, Rear View Camera,
10' 4" Stick, 24" Triple Grouser Track Shoes,
39" Digging Bucket, Hyd Thumb, A/C. **\$88,900**



2015 KENWORTH T370 T/A DUMP TRUCK Cummins
6 Cylinder ISL9 350 Diesel, Auto, Double Differential
Locks, 16K FA, 40K RA, Alum Wheels, PTO, OX Steel
Body, Electric Roll Tarp, Pintle Hitch, Jake, **\$86,900**



2018 FORD 350XLT, ONE OWNER,
EXTENDED CAB BUCKET TRUCK. 4x4, 6.7L
Powerstroke Turbo Diesel, 9' Reading Utility
Body, 29' Bucket Unit, **\$49,900**



**2018 CATERPILLAR 313FLGC HYDRAULIC
EXCAVATOR** , Cat C3.4B 4Cyl Turbo Diesel,
Cab w/ Heat & A/C, 2 Speed Travel, 28" Track
Pads, 9'10" Stick, Hyd Thumb, Bucket With
Teeth. **\$91,000**



2012 KENWORTH T470 T/A DUMP TRUCK, Paccar
PX-8, 8.3L Diesel, 330 HP, Eaton Fuller 8LL Manual
Trans, 18K & 46K, PTO, Brandon 14' Steel Body, Just
Serviced & Ready To Work. **\$62,900**



2018 MERCEDES BENZ 2500 12 PASSENGER VAN.
All The Mercedes-Benz Luxury, Turbo Diesel , Power
Locks, Low Miles, Perfect For Church Group Or Club.
You Can Uber Or Lyft Too. Excellent Condition **\$37,900**



2015 MITSUBISHI FUSO FE160 Box Truck.
Mitsubishi F1C 4 Cylinder 3.0L Diesel 161
HP, Morgan 16' x 96" x 91" Body, Liftgate,
Completely Serviced & Ready To Go. **\$19,900**



**2022 WACKER NEUSON SM100
TRACKED SKID STEER.** 3 Cyl Yanmar
Turbo Diesel, Aux Hyd, GP Bucket With
Boce, Meter Reads 208 Hours, **\$27,900**

Call Nick 860-861-1326 or Mike 860-861-4199
www.jollyjohnstruckandequipment.com



UNITED
ROTARY BRUSH CORPORATION

Atlantic
Plow Blades



United Rotary Brush Corp

Need Spreader Chains?

ckiley@united-rotary.com

(774)226-1300



**Brooms
Cutting edges
Snow plows**



Miniker Daniels Plows



2003 KOBELCO SK250.

Bottom 85%, 4200 Hours, Runs
Excellent, AC, Asking **\$65,000.**

203-464-0121



1998 FREIGHTLINER CLASSIC N14. Cummins Red Top Engine
460 HP, 13 Speed, Full Lockers, 200 In. Wheelbase, 24.5 Tires All
Around, 445K Miles, 100% Work Ready! **\$50,000 OBO**, Serious
Inquiries Only. 856-230-6084

**2000
INTERNATIONAL
9100I.** NRC Body With
Under Reach, Cummins
Power, 9 Speed Trans,
Single Axle W/Pusher, Air
Ride, **\$87,000.**
603-863-1400



BEAM TRUCK & BODY INC.

433 CUMBERLAND HILL ROAD, WOONSOCKET, RI 02895

RI Dealer #647

401-767-2639



NEW - USED & RECONDITIONED DISPOSAL EQUIPMENT



GOOD USED 2020 PAKMOR 16 YARD
REAR LOADER. HAS REEVING
SYSTEM, CANNOT GO ON AN UNDER
CDL CHASSIS. 33K OR GREATER.



20 YARD CURBTENDER
GOOD USED 2017 UNIT.



2010 INTERNATIONAL 7400:
42,000 MILES W/ HEIL 22 YD.
AUTOMATED PACKER. **\$60,000**
WILL SPLIT.

**STELLAR NXT18L HOOK
LIFTS IN STOCK !**

NEEDS 120" TO 130"
CA. DOES 10' TO 14'
CONTAINERS.
36" / 54" MANUALLY
ADJUSTABLE HOOK
HEIGHT. PERFECT FOR
F-600'S



2004 KENWORTH T800:
396,914 MILES, AMERICAN 75,000#
ROLL-OFF, CAT C12 W/ FULLER 8LL, 60,000#
GVW CALL FOR MORE DETAILS !

**IN STOCK READY TO
INSTALL
NEW EQUIPMENT**
* HAD-185-120-36/54"
* T40S AMERICAN
PALFINGER
* 20' BOX WITH WALTCO
LIFT-GATE 2500LBS. **\$6,000**



2000 INTERNATIONAL WITH
2023AMERICAN / PALFINGER 250S
HOOK-LIFT, LOW MILES.
\$70,000

WWW.BEAMTRUCK.NET

ALTA EQUIPMENT COMPANY

AltaEquipNE.com
800-Go-2-ALTA
800-462-2582



100% SNOW REMOVAL MASTER 0% FOR 60 MONTHS FINANCING

★★★SECTION 179★★★

Here's How It Works:

100% Bonus Depreciation — Deduct the entire cost of eligible equipment (purchase date after January 19, 2025) in the first year — no phase-down schedule. Up from 40% in 2024!

Expanded Section 179 Expensing — Deduction limit raised to \$2.5M with a phase-out threshold starting at \$4M and fully phasing out at \$6.5M.

Improved Cash Flow — Get your tax savings immediately instead of over several years.

Invest in Growth — Lower after-tax costs make upgrading equipment or expanding capacity more affordable than ever.

Flexible Options — Let us help guide you through the options and find the best fit for your business. Choose which assets to expense for maximum tax efficiency!



*0% interest for five years (sixty months) pending credit approval. Limited time offer while JCB 407 wheel loader inventory lasts. Other terms and conditions may apply. Talk to your local Alta Equipment Company representative for complete details. Section 179 limits and information presented here are for illustrative purposes only; the Section 179 limits and information provided are subject to change by the IRS. Please visit the IRS website or consult a qualified tax professional for confirmation of the current Section 179 limits and information related to your situation.



Your #1 Seasonal Equipment Source!

603-669-2250

IN STOCK NOW - Elevate your winter game with Hilltip IceStriker™
1000-5500 SSC Series Sand & Salt Spreaders

1.0 to 5.5 cu yd capacity available - comes standard with Hilltip's
StrikeSmart™ controller with ground speed control and patented
HTrack™ 2-way online tracking control system. Contact Sales today!



6 ENTERPRISE DRIVE • LONDONDERRY, NH 03053 • WWW.DONOVANCOMPANY.COM



2023 WACKER NEUSON WL 28 LOADER. Edition W2804: Winter, High Performance, 4 Snow Tires, Purchased New 11.25.24, 31 Hours, Warranty 11.25.26, With V60 120" Hyd. Snow Pusher **\$77,000.** Or W/Out \$67,500 401-300-9041



2009 FORD F550. 4x4, Cab & Chassis, 191,208 Low Hours & Low Miles On Jasper Motor, New Turbos, Runs And Drives Great, Just Removed The Body For Sale, **\$12,500.** 774-208-5144



MEYER 8 FT. POLY-PRO SNOWPLOW. Power Angle, Light Use, Can Be Used On Fisher, NAP, **\$350.** 413-326-0645

2019 PETERBILT 348 HEAVY HAUL DRILL RIG TRUCK. 14,500 Miles, Paccar Diesel, Eaton Fuller 13-Speed, EZ-Bore 90-42 Drill Unit With 100' Kelly Bar, Hydraulic Outriggers, Allison Automatic, Excellent Condition, CARB Compliant, **\$169,000** Or Real Estate Trade. Torrance, CA 310-567-3941



T & TAYLOR & LLOYD, INC. T &

SEE OUR INVENTORY: WWW.TAYLORANDLLOYD.COM



2023 FREIGHTLINER M2 16' REEFER. Cummins, Non CDL, Air Brakes, Allison Auto, 10K Miles, TK Reefer, 2 Side Doors, Sliding Partition, Hours & Reefer Match The Miles, Like Brand New But **\$40,000 Cheaper**



2025 INTERNATIONAL HV607 SBA CAB & CHASSIS. Cummins B6.7 325 HP, Allison 3500, 10K F/A, 23K R/W/Locking Diff, Call For More Info.



2025 INTERNATIONAL HV507 CAB & CHASSIS. Cummins L9 330 HP, Allison Auto, 165" WB, 18K F/A, 30K R/A, Call For More Info.



2025 INTERNATIONAL MV 607. Brand New, 254 WB, Allison 3500 RDS, Cummins 300 HP, Air ride

617-429-3370 CALL JACK COAKLEY • 8 Railroad Avenue Bedford, Ma

STONEHAM

BEST DEALS ON YEAR END CLOSE OUT SALE!!

617-733-0773


2025 F600 ROLL OFF HOIST. 10 Ton Switch N Go, Diesel, Remote Start, 4WD, 22,000 GVW, Two Large Tool Boxes, #257983. **\$104,490**



2024 F550 LANDSCAPER. 9'6" Dump, Curb Side Door, Rear Swing Doors, 4WD, Diesel, Remote Start, #241203. **\$85,695**



2024 F550 LANDSCAPER. Diesel, Auto, 4WD, Remote Start, Dual Battery, Payload Plus, #241879, **\$83,855**



2025 F350 SUPER CAB DUMP. Curb Side Door, Pwr Slid Rear Window, Remote Start, 4WD, V8 Gas, #25621. **\$74,345**



2025 F450 FLATBED. Wood Floor, Pockets, 4WD, 7.3L Gas, Remote Start, #25585. **\$78,250**



2025 F550 DUMP. Diesel, Remote Start, 4WD, Payload Upgrade, Pro Power Onboard, Tool Box #251464. **\$89,750**



2025 F350 ALUMINUM LANDSCAPER. Super Cab, Pwr Slid Rear Window, Remote Start, 4WD, V8 Gas, #251217. **\$76,545**



2025 F350 XLT. Super Cab, V8 Gas, 4X4, Remote Start, Upfit Switches, Dual Battery, Pwr Slid Rear Window, #251642. **\$58,859**



2025 F600 DUMP. 4-5 Yd, 7.3 V8 Gas, Remote Start, 4WD, 22,000 GVW, Pro Power Onboard, Tool Box, Coal Chute, #251380. **\$77,900**



2026 F350. 8' Fisher Plow, 1.5 Poly Sander, V8 Gas, 4X4, Remote Start, Upfit Switches, Dual Battery, #26038. **Call Bill 617-733-0773**



2025 T350 HD UTILITY. Alum Body, Adjustable Shelving, 50.5" Wide Loading, Floor D-Rings, SRW, V6, Ladder Racks, #252580. **\$80,800**



2025 F350 DUMP. Remote Start, 4WD, V8 Gas, #25601. **\$71,150**



2025 F750 DUMP. 10' Body, Coal Shute, Air Brakes, Diesel, Auto, Polish Alum Wheels, #25168. **\$119,199**



2025 F550 XLT DUMP. Polish Alum Wheels, 3-4 Yard Body, Payload Upgrade, Remote Start, 4WD, V8 Gas, #25196. **\$82,985**



2025 F350 DUMP. 4X4, 7.3L Gas, Remote Start, Upfit Switches, Snow Plow Prep, Dual Battery, #25581. **\$71,450**



Commercial
Vehicle Center

Call Bill Pollack 1-617-733-0773
or billpollack@stonehamford.com



Commercial
Vehicle Center

STONEHAM**617-733-0773****WORK VAN SALE EVENT – BIG OPTIONS!****ALL WHEEL DRIVE**

2026 T250 CARGO VAN.
Low Roof, Load Area Protection Pkg,
Cruise, AWD. #26536



2024 T350 EMPTY CARGO VAN.
High Roof, Privacy Glass, V6, PW, PL,
#241751. **\$56,399**



2024 T350 HIGH ROOF VAN. Two Alternators,
Two Batteries, Pwr Outlet, HD Scuff Plate, HD
Frt Axle, V6, RWD, #241198. **\$57,890**



2025 T150 CARGO VAN.
Low Roof, Load Area Protection Pkg,
SYNC 4. #25629. **\$52,299**



2024 T350 HIGH ROOF CARGO VAN. Rear
Wheel Drive, Privacy Glass, V6 Gas, PW, PL,
Heated Mirrors, #241192 **ON SALE \$57,995**



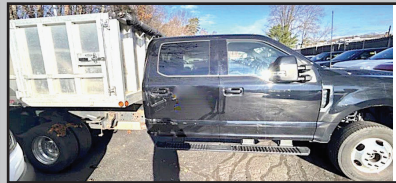
2025 T250 WORK VAN. Ranger Upfit, Tank
Rack, Equip Hooks, Shelving, #252639,
Call Bill 617-733-0773

USED TRUCKS SPECIALS

2024 T250 WORK VAN.
Bin Package, Ladder Racks,
719 Miles, #24135P, **\$49,999**



2022 T350 HI CUBE. AWD,
12' Van Body, Roll Up Door, Step
Bumper, 47,413 Miles, #22250P.



2022 F350 CREW LANDSCAPER. Lariat,
Leather Heated Frt Seats, Aluminum
Dump, 38,300 Miles, #251654A. **\$59,000**



2024 T350 HI CUBE.
Curb Side Door, Rockport Body,
#243361. Call Bill 617-733-0773



2024 T250 CARGO VAN.
14,652 Miles, #24098P,
\$36,099



2018 E350 MOVERS VAN. 45,646
Miles, Pull Out Ramp, 2 Rows E-Track,
Rockport Body, 55 Gallon Fuel Tank,
12,500 GVW. #24084PA. **\$24,395**



**2022 F550 KUV
UTILITY.** Rack
Storage Behind
Cab, 4WD, 7.3
Gas, 36,905 Miles,
#22252P. **\$49,499**



2024 F750 DUMP.
5,200 Miles,
#252235A (nap).
\$78,900

Commercial
Vehicle Center**www.StonehamFordTrucks.com**

211 MAIN ST. STONEHAM, MA 02180

Mon-Fri 8:30am-8pm Sat 9- 5pm Sunday 11-4

ALL PRICES NET & INCLUDE ALL AVAILABLE REBATES TO DEALER

Call Bill Pollack 1-617-733-0773 or billpollack@stonehamford.com

Commercial
Vehicle Center



NATIONWIDE TRUCK PARTS LLC

1-800-457-8826

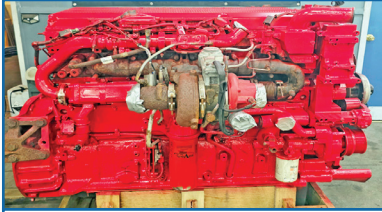
www.NationwideHeavyTruckParts.com

sales@nationwideheavytruckparts.com

11 S. Keyser Avenue - Taylor, PA 18517

**QUALITY USED HEAVY TRUCK PARTS, USED DIESEL ENGINES,
TRANSMISSIONS & MORE.**

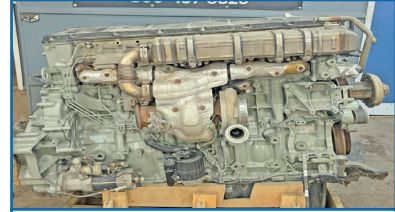
All Parts Tested & Sold With A Standard Warranty. Large Inventory - Call With Your Needs.



2014 ISX15 \$13,000



2012 Detroit DD15 \$12,000



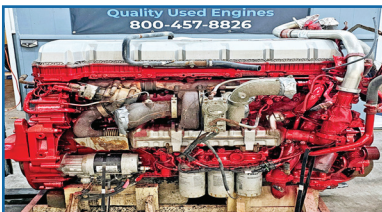
2019 Detroit DD15 \$12,500



DT12 Transmissions \$3,500



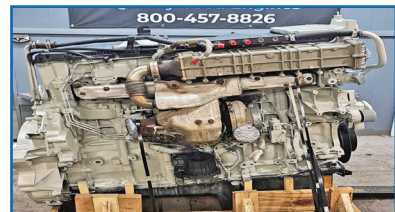
2013 Volvo D13 \$9,000



2012 Mack MP8 \$10,500



2012 ISX15 \$12,000



2015 Detroit DD13 \$12,000



2019 Cummins X15 \$16,500



2018 Paccar MX13 \$16,500



Late Model Rears



FRO Transmissions \$1,000



2009 Cummins ISX \$9,500



2012 Detroit DD13 \$12,500

NORTHEAST TRAILER



20 Business Park Drive
Smithfield, RI 02917
Hours: M-F 8:30-4:30

401-941-4445



100+ CARTAGE TRAILERS
45' to 53' Swing or Roll
Door, For Sale or Rent



(4) 2023 20' x 8' Refrigerated
Shipping Containers, Tri-Fold
Swing Doors, For Sale or Rent



(3) 2014 GREAT DANES
48'x 102", Aluminum Roofs
Roll Doors, \$5,950 Each



2009 WABASH 48'x 102"x 13'6"
Refrigerated Trailer, No Reefer Unit
6,600Lb. Maxon Lift Gate, \$9,500



2009 GREAT DANE Trailer
53'x 102"x 13'6", Swing Door, Air
Ride, Aluminum Roof, \$7,000



2000 ABLE BODY
Yard Tractor
\$7,950



2005-2008 53' ROLL DOORS
Aluminum Roof, Spring Ride
\$7,500 Each



SEPTIC TANK TRUCK BODY
Split Tank
\$6,500



Low Profile 22.5"
SUPER SINGLE TIRES on
Aluminum Wheels, \$250 Each



4,000 GALLON
ABOVE GROUND FUEL TANK
\$5,500



(3) 2022 1-Trip High Cube Shipping
Containers, 1 With Single Door-\$8,500
2 With Double Doors-\$9,250 Each



4 EXPORT FLATBEDS
\$3,750 Each

WWW.NETRAILER.COM

WWW.TRUCKANDEQUIPMENTPOST.COM

63 Bridge St
Salem, MA 01970
978-745-2500



105 County Rd
Ipswich, MA 01938
978-356-2916



PRO-TECH®

Summer Special on ProTech Pushers
IN STOCK & AVAILABLE!

**SUMMERTIME
SAVINGS!!!**

❄️ **LE12L: 12' Live Edge for Loader**

MSRP: \$14,889.00

3 AVAILABLE

B&C Price: \$10,995.00 +Coupler

❄️ **LE14L: 14' Live Edge for Loader**

MSRP: \$16,499.00

SOLD OUT

❄️ **LE16L: 16' Live Edge for Loader**

MSRP: \$18,299.00

SOLD OUT

ARCTIC

Snow & Ice Products

❄️ **Arctic LD-8 Sectional Sno Pusher for SkidSteer**

MSRP: \$12,457.04

SOLD OUT



In Stock & Available Couplers:

- Post Mount x 2
- JRB416 x 3
- CAT IT-28 x 3
- Volvo L50-L120 x 1



Truck Bodies & Equipment
www.BrakeAndClutch.com

WWW.SCRANTONGMC.COM
777 TALCOTTVILLE ROAD VERNON, CT • 860-281-6726



2024 GMC SAVANA CUTAWAY. 12' DURACUBE MAX SERVICE BODY, BACK UP CAMERA, LADDER RACKS, #R9713,
**WAS \$72,138,
 NOW \$63,179**



2024 GMC SAVANA 3500 12' CUTAWAY, 6.0L V8, AUTOMATIC,
**WAS \$66,590,
 NOW \$49,900**



2025 GMC SIERRA 3500 SERVICE BODY. CREW CAB, 4X4, GAS, DUAL REAR WHEEL, #S9219, \$74,999



2025 GMC SIERRA 3500 CREW CAB. 6.6L GAS, 4X4, DRW, READING SERVICE BODY, #T9376



2025 GMC SIERRA 2500HD PRO DOUBLE CAB. 4X4, SERVICE BODY, #S9241



2025 GMC SAVANA 14' DURACUBE MAX, ELECTRIC LOCKS, #S9318



2025 GMC SAVANA 17' AEROCCELL VAN BODY WITH RAMP, #S9359



2025 GMC SIERRA 2500 HD DOUBLE CAB 4X4. GAS, AUTOMATIC, READING SERVICE BODY, #S9240, \$66,999



2025 GMC SAVANA 3500 CARGO VAN. 6.6L V8, LOCKING DIFFERENTIAL, REMOTE START, #9180 \$51,999



2025 GMC SIERRA 3500 CREW CAB SERVICE BODY. DRW, REMOTE LOCKS, S9242



MANY OTHER TRUCKS IN STOCK. CALL FOR DETAILS

WWW.SCRANTONGMC.COM



NICK SCARVALAS
Commercial Sales
857-247-9023 or 617-249-5603



**Commercial
Vehicle Center**

END OF YEAR SALES EVENT



2025 F550 SUPER CAB DUMP. 11' Aluminum Body, Diesel, Remote Start, 4WD, F214289, MSRP \$106,990. **SAVE \$13,000. SALE PRICE \$93,990**



2026 E450 SERVICE VAN. 14' DuraCube, 7.3 V8 Gas, 4 Bar Rack, Ladder To Roof, 50" Rear Door Opening, F212803, MSRP \$86,990. **SAVE \$10,000. SALE PRICE \$76,990**



2024 F550 CREW DUMP. V8 Gas, Payload Plus, Remote Start, 4WD, F211685 MSRP \$85,990. **SAVE \$16,000. SALE PRICE \$71,990**



2025 T350 15 PASSENGER VAN. V6, PW, PL, Power Heated Mirrors, Rear Camera, USB Ports, F213505 MSRP \$60,225 **SAVE \$3,000. SALE PRICE \$57,225**



2025 F350 SUPER CAB UTILITY. 4X4, V8 Gas, 8'8" Aluminum Body, SRW, Pwr Outlet, Dual Battery, F213365. MSRP \$83,990. **SAVE \$13,500. SALE PRICE \$70,490**



2024 F550 DUMP. Super Cab, Two Tool Boxes, 7.3L Gas, Payload Plus, Remote Start, Pwr Rear Window, F212014 MSRP \$89,990 **SAVE \$11,500. SALE PRICE \$78,490**

250 COMMERCIAL TRUCKS IN STOCK



2025 T350 HI CUBE. 10' Rockport Van, 78" Inside Hght, Step Bumper, Roll Up Door, SRW, F214085 MSRP \$69,990. **SAVE \$12,000. SALE PRICE \$57,990**



2026 F350 CREW CAB UTILITY. 4X4, V8 Gas, 8'8" Alum Body, Pwr Rear Window, Upfit Switches, Dual Battery, F213637. MSRP \$81,990. **SAVE \$5,000. SALE PRICE \$76,990**



2025 F350 UTILITY. 4X4, 7.3L, 11' Alum Body, 72" Inside Ht, Central Locking, Remote Start, F213337. MSRP \$97,990. **SAVE \$6,000. SALE PRICE \$91,990**



2025 F350 SUPER CAB SERVICE. 4X4, 7.3L, Polish Alum Wheels, Remote Start, Dual Battery, Pwr Rear Window, F213113. MSRP \$84,990. **SAVE \$12,000. SALE PRICE \$72,990**



2025 T350 HD FREIGHT VAN. Plywood Lined, 10 D-Rings, Pass Thru Door, 12' Unicell, Galvanized Step Bumper, F212923. MSRP \$70,990. **SAVE \$13,000. SALE PRICE \$57,990**



ORGANIZE VAN PACKAGES

(9) 2025 T250 LOW ROOF & MED ROOF VANS. Various Upfit Performance Systems, **Starting @ 45,225**

QUIRK FORD
540 Southern Artery (Rt 3A) Quincy, MA
www.quirkford.com • 617-249-5660

**Business
Financing with
NO Co-signer
Required**

Prices include all available rebates. Rebates include Customer Cash, FMCC Bonus Cash, and Commercial Upfit Bonus Cash. Customer must qualify for rebates. Call for specific details. Prices are subject to change. * In Lieu Of Rebates

NICK SCARVALAS
Commercial Sales
857-247-9023 or 617-249-5603



**Commercial
Vehicle Center**

END OF YEAR SALES EVENT



2025 T250 CARGO VAN. HD Floor, Bulkhead, Load Area Protection, Tie Down Hooks, Pwr Outlet, 31 Gal Tank, F213150. MSRP \$59,270. SAVE \$7,000. **SALE PRICE \$52,270**



3 AVAILABLE

2025 F650 DUMP. Diesel, Automatic, Air To Rear, Pintle, Tool Box, F212112 MSRP \$124,990. SAVE \$15,000. **SALE PRICE \$109,990**



2025 F650 DUMP. Diesel, Automatic, Air To Rear, Pintle, I-Pac Tool Box, F212088, MSRP \$129,990. SAVE \$15,000. **SALE PRICE \$114,990**



2025 F550 SWITCH N GO. Roll Off Hoist, Diesel, 2 Tool Boxes, Remote Start, 4WD F213110, MSRP \$116,990. SAVE \$16,000. **SALE PRICE \$100,990**



2025 E450 14 Ft VAN. Wabash Body, Pull Out Ramp, Roll Up Door, Poly Lined, Pass Thru Door, 14,500 GVW, 7.3 Gas, F211369, MSRP \$69,990. SAVE \$11,000. **SALE PRICE \$58,990**



2025 F550 UTILITY. Diesel, 4X4, 11' Body, 48.5" In Side Hgt, Liner, Remote Start, F213173 MSRP \$114,990. SAVE \$14,000. **SALE PRICE \$100,990**

250 COMMERCIAL TRUCKS IN STOCK



2025 F550 CHIPPER/LEAF DUMP. 12' Forestry Pkg, Diesel, 4X4, Two Tool Boxes, Remote Start, F213118. MSRP 105,990. SAVE \$8,000. **SALE PRICE \$97,990**



2025 F350 SERVICE. Steel Body, DRW, 7.3L Gas, 4WD, Remote Start, F214252 MSRP \$82,990. SAVE \$10,000. **SALE PRICE \$72,990**



2025 F550 LANDSCAPER. 4WD, Diesel, 19,500 GVW, Remote Start, High Capacity Trailer Pkg. F213108 MSRP \$106,990. SAVE \$14,000. **SALE PRICE \$92,990**



2025 F350 SERVICE. Aluminum Body, DRW, 7.3L Gas, 4WD, Remote Start, F213168 MSRP \$84,990 SAVE \$7,000. **SALE PRICE \$77,990**



2025 F350 SUPER CAB DUMP. 7.3 Gas, Remote Start, Skid Plates, Dual Battery, Pwr Rear Window, 4WD, F213056 MSRP \$81,990. SAVE \$11,000. **SALE PRICE \$70,990**



2025 F350 ALUMINUM DUMP. 4 Removable Sides, Rear Bard Doors, 7.3 Gas, Remote Start, Dual Battery, 4WD, F212857 MSRP \$87,990. SAVE \$8,000. **SALE PRICE \$79,990.**

QUIRK FORD
540 Southern Artery (Rt 3A) Quincy, MA
www.quirkford.com • 617-249-5660

**Business
Financing with
NO Co-signer
Required**

Prices include all available rebates. Rebates include Customer Cash, FMCC Bonus Cash, and Commercial Uplift Bonus Cash. Customer must qualify for rebates. Call for specific details. Prices are subject to change. * In Lieu Of Rebates



PAT'S TRUCK SALES



Office: 603-347-1386 - After Hrs: 978-490-6197



2009 IH 7600 T/A DUMP. Cummins 410, Automatic, 136,571 Miles, 20 Ft Axle, 46 Rears, Polish Aluminum Wheels, New Tires, **\$87,900**



2016 MACK GU813. MP7-405 HP, Automatic, 394,775 Miles, Tri-Axle Dump, Super Clean, **\$93,000.**



2018 MACK. Tri-Axle Dump, 219,750 Miles, MP8-505 HP, Automatic, Beau-Roc Body, Go To Work, **\$135,000.**



2022 BOBCAT E42 EXCAVATOR. 1,088 Hours, Hydraulic Thumb, **\$52,500**



2016 MACK GRANITE. Tri-Axle Dump, 209,500 Miles, MP7-425 HP, Automatic, 16 Ft Ox Body, Excellent Condition, **\$119,500.**



2007 FREIGHTLINER M2 CAB & CHASSIS. 35,000 GVW, Mercedes 7.2 300 HP, Allison Automatic, 83,909 Miles, **\$22,900**



2015 FORD F250 UTILITY. 4x4, Plow, V8 Gas, Auto, Knapheide Body, 44,067 Miles, **\$24,900**



2019 IH 4300. 10,868 Miles, Cummins 6.7 300 HP, Automatic, 25,999 GVW, 10 Ft Stainless Steel Dump Body, **\$55,900**



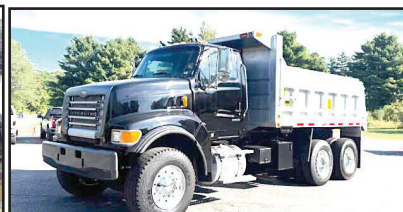
2005 STERLING LT9500 S/A TRACTOR. Pre Emission CAT C9 350 Hp, Automatic, 25,200 Miles, 37,000 GVW, Super Clean, **\$25,900**



2017 MACK GU813. Tri Axle Dump, MP8-435HP, Automatic, 178,263 Miles, **\$135,000**



2015 GMC 3500HD DUMP. 4X4, Diesel, Tool Boxes, 73,455 Miles, Serviced W/ New Updates, **\$34,900**



2005 STERLING LT9500 DUMP. 15 FT Aluminum Body, CAT C13 430 HP, Automatic, 111,020 Miles, 66K GVW, **\$57,900**

Visit Us - www.patstrucksales.com • 77 Route 125, Kingston, NH

CALL PATRICK
1 (401) 309-1960



BLUM'S FIELD SERVICE
-ON-SITE HEAVY EQUIPMENT & DIESEL REPAIR
-MOBILE WELDING & FABRICATION

- MACHINE SERVICES
- ATTACHMENTS INSTALLS
- BUCKET REBUILDS & WEAR PROTECTION
- HYDRAULIC CYLINDER RESEAL

SERVICING
RI, MA, CT



Powerglide Air Test Kit
Complete Powerglide Pro Tree Transbrake \$279.95
TH400 Deep Cast Aluminum Pan
TH400 Billet Direct Drum Spring Retainer & Aluminum Modulator/Solenoid Hold Down
Powerglide Overhaul Kit

Powerglide Deep Oil Pan
Powerglide Reverse Spring Retainer Tool
Powerglide Bushing Driver Set
Do-it-yourself Powerglide Pro Tree Transbrake Kit \$164.95
1.80 Long Powerglide Gear Set

Powerglide Handbook written by Carl H. Munroe \$21.95
Powerglide Vent Tanks

TSR RACING PRODUCTS
1-800-394-5889
179 Belvedere Road
Gilsum, NH 03448
WWW.TSR-RACING.COM



Tight Link Fence Co.
Residential ~ Commercial ~ Industrial
Mark Dillon
774-365-0222



2011 FORD F350. Diesel, 4X4, 270,000 Miles, Fleet Maintained, New Tires, New Batteries, New Alternator, 8' Boss Wing Plow, Excellent Bed, **\$12,200 OBO.** 401-447-2661 Or 401-737-6663

508-328-8938 **THE TRUCK STORE** **Mon-Fri 8:30-5pm**
Happy New Year! www.TruckStoreSales.com Happy New Year! **Saturday 8:30-4pm**
1700 Broadway - Rte 138 - Raynham, MA • Take Exit 8 Off Rte 495, East Rte 138, On Your Left

 2015 ISUZU REFER BODY: 186 K Miles, Diesel/Auto.Call.	 2018 PETE CHASSIS 80K MILES and 2020 KW CHASSIS 47K MILES IN STOCK NOW! CALL.	 2002 VOLVO HEAVY TRI AXLE DUMP: 465 HP, 8LL, NEW BRAKES, Excellent Rubber.	 2000 MACK RD 688SX 14' Dump Body, 350 H.P., Auto., 18F/58R, LOW miles, Very clean.
 2020 + 2022 HINO REEFER VANS. DIESEL, AUTO, CALL.	 2005 MACK GRANITE SPLIT REAR LOAD RUBBISH BODY 35K Miles.	 2020 HINO HOOK-LIFT. DIESEL, AUTO, 38K MILES,	 2019 & 2022 INTERNATIONAL REFER BODIES: VERY LOW MILES
 2022 PETERBILT C/O. Under CDL, 60K Miles, Auto, Reefer Or Flatbed Available.	 2022 HINO 268 Flat Bed: Diesel, Automatic, ONLY 2,000 Miles! Will up fit w/Refer Body or Van Body. 2 AVAILABLE.	 USED 12' to 26' REFER & VAN BODIES Call with your needs.	 2017 FREIGHTLINER M-2: CUMMINS Diesel, Auto, PTO Accept. Will Separate.

ALSO AVAILABLE: USED FLATBED BODIES, ROLL OFF BODIES, LATE MODEL ISUZU/HINO 4 CYL DIESEL ENGINES.

COLONIAL

CHEVROLET OF ACTON • CALL US 978-263-1000



HAPPY NEW YEAR



SALE PRICE
\$69,999*

BRAND NEW 2024 Chevrolet Silverado HD3500: 4x4, dual rear wheels, DuraMag aluminum Landscape dump body, 6.6 gas, WT Convenience Package, snowplow prep package, Stk# 24704 MSRP \$80,068. Colonial Discount \$9,569, GM Rebate \$500



SALE PRICE
\$69,999*

BRAND NEW 2024 Chevrolet Silverado HD3500 4x4, dual rear wheels, DuraMag aluminum Landscape dump body, 6.6 gas, WT Convenience Package, snowplow prep package Stk# 24703 MSRP \$80,068. Colonial Discount \$9,569, GM Rebate \$500



SALE PRICE
\$66,599*

BRAND NEW 2024 Chevrolet Silverado HD2500 4x4, Knapheide Aluminum service body, 6.6 gas, snowplow prep package Stk# A24802 MSRP \$73,988. Colonial Discount \$6,989, GM Rebate \$500



SALE PRICE
\$59,999*

BRAND NEW 2024 Chevrolet Silverado HD2500 4x4, Knapheide service body, 6.6 gas, snowplow prep package Stk# A24809 MSRP \$69,103. Colonial Discount \$8,604, GM Rebate \$500



SALE PRICE
\$59,999*

BRAND NEW 2024 Chevrolet Express KUV Service Body, 6.6 gas, cloth seats, power windows, door locks, mirrors, cruise control, remote vehicle start and more, single rear wheel Stk# A24798 MSRP \$66,903 Colonial Discount \$5,404, GM Rebate 1,500



SALE PRICE
\$59,999*

BRAND NEW 2024 Chevrolet Express KUV Service Body, 6.6 gas, cloth seats, power windows, door locks, mirrors, cruise control, remote vehicle start and more, single rear wheel Stk# A24808 MSRP \$66,903 Colonial Discount \$5,404, GM Rebate 1,500



SALE PRICE
\$48,999*

BRAND NEW Chevrolet Express Baybridge 10' Box Van, roll-up door, power windows/door locks/mirrors, cruise control and more. single rear wheel Stk# A24806 MSRP \$55,690. Colonial Discount \$5,691, GM Rebate \$1,500



SALE PRICE
\$63,999*

BRAND NEW 2025 Chevrolet Express Dejana Dura-Cube MAX, toolboxes drivers/passenger sides, power windows/door locks/mirrors, cruise control and more, single rear wheel Stk# A25716 MSRP \$68,695 Colonial Discount \$4,696



SALE PRICE
\$53,999*

BRAND NEW 2025 Chevrolet Express Dejana Duracube II, roll-up door, power windows/door locks/mirrors, cruise control and more, single rear wheel Stk# A25710 MSRP \$59,080. Colonial Discount \$5,081

171 Great Road • Acton, MA 01720 • www.buycolonialchevrolet.com

*GM rebates subject to change, some vehicle may qualify for additional rebates/Business Choice rebate might be available to qualifying customers. Please call for availability.



SANDER CHAINS
USA Made
All Makes
300 In Stock

S.A. McLean
207-793-4267



622 Elm St, Limerick, ME • www.s-a-mclean.com



HYUNDAI 757-7.
Wheel Loader



1998 INTERNATIONAL 4800.
Four Wheel Drive, Automatic,
14k Miles, 14 Ft Of Frame.



WARREN 10' ALUMINUM
DUMP BODY



INTERNATIONAL 2574 CAB & CHASSIS. Automatic, 300 Cummins,
24k Miles



STEWART STEVENSON. 4x4,
Automatic



STEWART STEVENSON
4X4. Automatic, 1,000
Gallon Tank Brush Truck



2004 INTERNATIONAL
CAB & CHASSIS. 4x4, DT
466, Automatic



SWENSON 10'
STAINLESS DUMP
BODY



MACK. 4x4 , Snowblower
Unit, 7k Miles



OSHKOSH. 6x6



6x6 Auto Brush Poly Tank
& Pump Unit.



1994 FORD F700 CAB & CHASSIS. Cummins, Automatic,
20k Miles, Under CDL



JOHN DEERE 544H LOADER.
6600 Hours, With P/A Plow &
Wing Quick Hitch



1998 INT'L 2574. 14.5 ft. Of
Frame, Automatic, Cummins,
14k Miles, No Rust.



CAT 966B LOADER.



12' HIGHWAY POWER
ANGLE V- PLOW



HIGHWAY SALT BRINE PRODUCTION
UNIT. W/3000 Gallon Tan



1994 FREIGHTLINER
E-ONE. 24k Miles,
300 Hp



13' SWENSON.
Stainless Steel Dump
& Sander Body

ALL MAKES

EQUIPMENT & PARTS

CONTACT

ROLAND CARTER 603-340-6776 • ANDOVER NH 03216

**EQUIPMENT SALES
EQUIPMENT PARTS
EQUIPMENT
ATTACHMENTS
FINANCING AVAILABLE**



New & Used
Buckets &
Attachments.



Rebuilt & Good Used Engines.



New Undercarriage.
Free Undercarriage Inspection.



Equipment
Hydraulic
Parts.



Salvage
Equipment
Parts.

info@allmakesequipmentandparts.com • www.amepinc.com

We Are Hiring a

DIESEL MECHANIC



WB HILL



Specializing in Tank Truck &
Trailer Sales, General Repairs,
Parts, Waterjet Cutting, and
Fabrication.

305 Shaker Rd P.O. Box 428
East Longmeadow, MA 01028
413-525-3678

Health Insurance

Dental
PTO

Vacations

Uniforms

Competitive Wages

Retirement Savings Plan



MOBILE WELDING & EQUIPMENT REPAIR LLC.

Burrillville, RI

401-633-4587

- Full Bucket Rebuilds
- Cylinder Resealing
- Wear Plates
- Adapter Replacement
- Hardfacing
- General Maintenance
- Computer Diagnostics
- On Site Hose Replacement



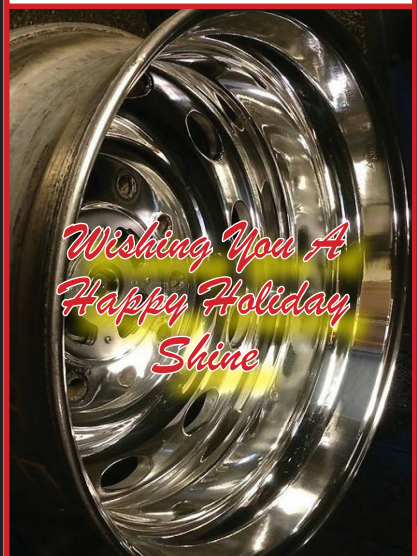
**2019 KUBOTA BX23S
BACKHOE TRACTOR. 670 Hours,**
Runs Great, **\$14,500.**
Brownfield, ME 207-461-6219



2016 JOHN DEERE 350G EXCAVATOR - Machine in Great Condition, Extremely Clean and Tight, 6173 Hours, Enclosed Cab with Heat and A/C, Tracks in Good Condition, Well Maintained, Ready to Work. Priced to Sell **\$74,900** 781-417-3018



**\$110 Per
Wheel Polish**



*Wishing You A
Happy Holiday
Shine*

Service & Mechanic On Site

**ACUSHNET WHEEL
POLISHING**

Used Rims Available

508-509-2014

62 SOUTH MAIN ST.,
ACUSHNET, MA



2017 FORD T350 HI CUBE VAN. Rail Liftgate W/ Aluminum Plate Form Deck, 3 Bare Ladder Rack, 132,135 Miles, **\$21,995.** 603-952-4500

401 Diesel Inc.

Mobile Diesel Mechanic
Cummins-Caterpillar-Detroit Diesel

Marine/On-Highway/Industrial

- PM Service
- Engine Repair
- Engine Overhaul
- Cummins Check Engine Light
- Cummins ECM Calibration
- Onan Generator Service
- Cummins/Onan RV Service



Cummins Onan
Marine Generators



Call/Text Tylar **401-793-6139**

CURTIS

**O: 508-363-1889
C: 774-272-5676 or 508-726-8653**

LEICESTER, MA

EQUIPMENT RENTALS

WINTER RENTALS!



**2018
HYUNDAI
940 TM 3
YD.
LOADER
\$3300 Per
Month
Buy for
\$75,000**

SKIDSTEERS FOR RENT



**AREA
HYDRAULICS**

810 Quaker Hwy. Uxbridge, MA

508-278-6670

Cylinder Resealing

We Make Hose Assemblies

After Hours Service Available!



JOSEPH

EQUIPMENT COMPANY

300 GAY ST • MANCHESTER, NH 03103

SATURDAYS • WE ARE OPEN ALL DAY

PHONE: 603-641-8608

FAX: 603-666-3716



293 NORTH - EXIT 2 -

LEFT ONTO BROWN AVE -

RIGHT ONTO WINSTON ST. - LEFT ONTO GAY ST.
300 GAY STREET ON THE RIGHT



100 STORAGE CONTAINERS TO CHOOSE FROM. 20', 40', and 40' High Cube.
Call For More Information.



2013 KOMATSU D155AX-7 DOZER. 8900 Hours, Sigma Blade With 3 Shank Ripper, Rebuilt Fuel Rail, Replaced DPF Sensors, Alternator & Belt, Fan Belt, Recharged A/C, New Compressor, New Batteries, New Corner Bits On Blade, EGR Servo Replaced, DPF Was Baked & Cleaned., \$125,000. **Call For More Information.**



2010 TRAIL KING. 55 Ton, 26' Deck, 102" Wide, Pony Engine Or Wet Line, Full Fenders, Lift On Third, New Wood Decking, Texas Trailer-No Rust, Long Gooseneck, 2 Pin Position.
Call For More Information.



1998 FONTAINE, MODEL. 50 Ton, Detaches At Both Ends, 25' Flat Level Deck - 20" Loaded Deck Height, 25' Beam Deck Insert, 20" Loaded Deck Height, Non Ground Bearing, Air Ride, Boom Trough & Deck Cut Out, Lift Axle, Outriggers, Aluminum Wheels, Strobe Lights. **Call For More Information.**



2010 R & S 26' DUMP TRAILER. Hardox Construction, Tandem Axle, New Paint, New Canvas, New Tires, Single Point Suspension, Like New Condition. **Call For More Information.** Batteries. **Call For More Information.**



IN STOCK - 2025 FONTAINE LXTN40. 40 Ton Extendable, 34' Closed - 60' Open. Also Available 29' Closed - 50' Open. Tandem Axle, Set Up For 3rd, Air Ride, Non Ground Bearing, 102" Swing Clearance, 20" Deck Height, Alum Wheels. In Stock, No Waiting. Available In Manchester NH And At The Factory In Springville AL. 3rd And 4th Axles Available. **Call For More Information.**



1976 ROGERS 100 TON. Quad Axle, 11' Wide, 37' Usable Deck, Recently Completely Rebuilt, Excellent Condition, Currently Located In AZ.
Call For More Information.



2019 PUP TRAILERS. (14 Available To Choose From, 28' Long, 102" Wide, 13'6" High.
Call For More Information.



2017 LIDDELL 60 TON DSR. 4 Axle, 26' DSR Deck, 9' Wide, 8'6" Bogie, 26' Beam Deck, 4th Axle, Alum Wheels, Gooseneck Extension, Power Pack, Excellent Shape, **Call For More Information.**



2012 FONTAINE 55 TON DSR. 26 Ft DECK, 5 Ft DSR Extension And 28 Foot Beam Deck, Fontaine 4th Axle And Spreader Bar, Alum Wheels, Org Paint, One Owner, 275 Tires, Lift On 3rd.
Call For More Information.



2009 TALBERT 70 TON DROP SIDE RAIL, Severe Duty, Completely Reconditioned, Sandblasted And Painted. New Seals, Brakes, Bearings, Hubcaps And Decals, 26' Steel Deck, 9' Wide, With 26' Beam Insert. 30,000 Lb Axles, 3 Axle, Set Up For 4th, Spring Ride, 315 Rubber.
Call For More Information



2019 FONTAINE 53 - 90. Tri Axle, Air Ride, Slider, Like New Condition, Southern Trailer, No Rust. 3 Available To Choose From Ranging From 2019 To 2016. **Call For More Information.**

www.josephequipment.com

Trades Welcome • Financing Available

THIS AD IS COPYRIGHTED & OWNED BY TRUCK AND EQUIPMENT POST

JOSEPH

EQUIPMENT COMPANY

300 GAY ST • MANCHESTER, NH 03103

SATURDAYS • WE ARE OPEN ALL DAY

PHONE: 603-641-8608

FAX: 603-666-3716



**293 NORTH - EXIT 2 -
LEFT ONTO BROWN AVE -
RIGHT ONTO WINSTON ST. - LEFT ONTO GAY ST.
300 GAY STREET ON THE RIGHT**



ERIN 165T SCREENER ON TRACKS.
Makes 3 Products, CAT Power, Heavy Duty Grizzly, Remote Control, Very Good Condition.
Call For More Information.



2009 TALBERT 70 TON DROP SIDE RAIL.
Severe Duty, Recently Reconditioned, Sandblasted And Painted, New Seals, Brakes, Bearings, Hubcaps And Decals, 26' Steel Deck, 9' Wide, With 26' Beam Insert. 30,000 Lb. Axles, 3 Axle, Set Up For 4th, Spring Ride, 315 Rubber, One Owner.
Call For More Information.



2024 POWER SCREEN CHIEFTAIN. 1700X,
176 Hours, On Tracks, Like New Condition.
Call For More Information.



2020 JOHN DEERE 304L.
1 Yard Loader, Quick Disconnect, 3rd Valve, Forks And Bucket, A/C, Road Speed, 1200 Hours, Like New Condition.
Call For More Information.



1997 CATERPILLAR 960F WHEEL LOADER.
Sandblasted And Painted, New Decals, A/C, Scale, 23.5 X 25 Rubber, Bolt On Cutting Edge, Very Good Condition. **Call For More Information.**



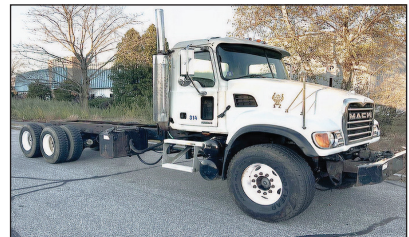
2019 VOLVO EW60 RUBBER TIRE EXCAVATOR. (2 Available To Choose From) A/C, Blade, Thumb. Quick Disconnect, Aux Hyd, Wrist-O-Twist Bucket, Digging Bucket, 1,900 Hours, Like New Condition.
Call For More Information.



85' GENIE LIFT WITH JIB. 4 X 4, Diesel, 6,400 Hours. **Call For More Information.**



1996 AUTOCAR TRACTOR.
425C, CAT Power, Mechanical 8LL, 46K Rears, 74,000 Original Miles, Previously Owned By The State Of Florida.
Call For More Information.



2005 MACK GRANITE CAB & CHASSIS.
350, Allison Automatic, 46 Rears, 18 Front, Long Wheel Base, Double Frame, 80,000 Original Miles, 2 To Choose. **Call For More Information.**



2019 CAT 232D SKIDSTEER. Quick Disconnect, Bucket And 9' Power Angle Plow, 3rd Valve, 1,130 Hours, One Owner, Like New Condition.
Call For More Information.



2009 CATERPILLAR 924H WHEEL LOADER.
Quick Disconnect, New Motor From CAT With Paperwork, Very Good Condition.
Call For More Information.



2011 CATERPILLAR 246C XPS. Skidsteer, 2 Speed, Full Cab, A/C, Cushion Tires, Forks And Bucket, Extra Counterweights, 4,000 Hours, One Owner, Original Paint. **Call For More Information.**

www.josephequipment.com

Trades Welcome • Financing Available

THIS AD IS COPYRIGHTED & OWNED BY TRUCK AND EQUIPMENT POST

JOSEPH

EQUIPMENT COMPANY

300 GAY ST • MANCHESTER, NH 03103

SATURDAYS • WE ARE OPEN ALL DAY

PHONE: 603-641-8608

FAX: 603-666-3716



**293 NORTH - EXIT 2 -
LEFT ONTO BROWN AVE -
RIGHT ONTO WINSTON ST. - LEFT ONTO GAY ST.
300 GAY STREET ON THE RIGHT**



1997 MACK RD. 350, 12 Speed, 44 Rears, 18 Front, Double Frame, 24.5 Rubber, A/C, Engine Brake, Perfect Condition.
Call For More Information.



2007 MACK GRANITE WATER TRUCK. 4000 Gallon, Hydraulically Driven, Spray Heads Front And Back, 350, 8 Speed, 44 Rears, No Rust, Truck From Arizona. **Call For More Information.**



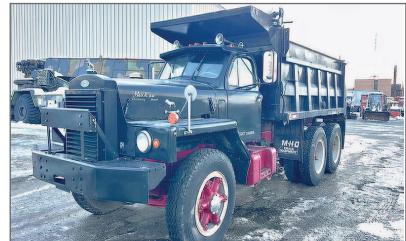
2018 WESTERN STAR 4900 (3 AVAILABLE TO CHOOSE FROM). Allison Automatic, 550 HP, DT15 Engine, Full Rears, 2 Line Wet System, Fleet Maintained, Dual Stacks, Alum Wheels, A/C, P/S, Original Paint, One Owner. **Call For More Information.**



1997 KENWORTH T800. Twin Steer Wide Nose, 550 Cummins, 18 Speed, Long Wheel Base, 30' From Back Of Cab To End Of Frame, Newair Ride, Double Frame, 164,000 Original Miles, New Michelin Tires In Back. **Call For More Information.**



1994 PETERBILT. CAT Power, Wet System, Spring Ride, Was Working Daily, Asking \$22,500.
Call For More Information



1963 MACK B81 10 WHEEL DUMP. 250 Turbo, 5 X 4 Quad, 55K Lb. Rears, 24" Rubber, Power Steering. **Call For More Information.**



1995 MACK CH. 460, 12 Speed, 44K Lb. Rears, Spring Ride, New Motor, New Hood, New Tires, Wet System, Asking \$27,500.
Call For More Information.



2015 KENWORTH T880. Miles: 571K, 500 Paccar, Automatic, 3.91 Gear Ratio, 46K Rears, Full Lockers, 24.5 Rubber, A/C, Power Steering, Air Ride, Aluminum Wheels, Fleet Maintained, One Owner. **Call For More Information.**



2019 PETERBILT 389. 605 Cummins Power, 18 Speed, 4 Axle, 46K Rears, Air Ride, 300" Wheel Base, Headache Rack, Full Fenders, 60" Bunk, Loaded. **Call For More Information.**



1998 MACK RD688SX DUMP TRUCK. 350 HP, Fuller 8 Speed, 58 Rears All Redone By Southeast Truck, 24" Rubber, Rebuilt Engine, Double Frame, Working Daily, Heated Body, New Brakes All Around, New King Pins, New Clutch/Bell Housing, All New Rear Suspension.
Call For More Information.



1994 PETERBILT. CAT Power, 10 Speed, 40K Lb. Rears, Wet System, Asking \$22,500.
Call For More Information.



2005 FONTAINE 60 TON 9' WIDE DSR. Detaches Both Ends, New Deck, Long Gooseneck, Alum Wheels, Reconditioned 4 Years Ago. **Call For More Information.**

www.josephequipment.com

Trades Welcome • Financing Available

THIS AD IS COPYRIGHTED & OWNED BY TRUCK AND EQUIPMENT POST

JOSEPH

EQUIPMENT COMPANY

300 GAY ST • MANCHESTER, NH 03103

PHONE: 603-641-8608

OPEN
ALL DAY
SATURDAY



FONTAINE

FAX: 603-666-3716



2026 FONTAINE RENEGADE LXLN12 -12
Inch Loaded Deck Height With
4 Inch Ground Clearance When Fully Loaded,
30 Tons In 16 Feet On Tandem Bogie Or 30
Tons In 20 Feet With 3rd Axle Flip, Low Profile,
3rd Axle Capability, 32 Feet 11 Clear Deck
Length. IN STOCK, NO WAITING.
CALL FOR MORE INFORMATION.



2026 FONTAINE MAGNITUDE 50 Tri Axle,
Set Up For 4Th, 50 Ton, Air Ride, 24' Deck, 20"
Loaded Deck Height, Alum Or Steel Wheels,
Strobe Lights, Outriggers And D-Rings.
Call For More Information.



2026 KRUZ TERMINATOR,
26' Steel Frame, Single Point Suspension,
2-Way Gate, 11 X 24.5 Tires, Alum
Wheels, 2 Speed Landing Gear.
Call For More Information.



IN STOCK - NO WAITING - 2025 GALLEGOS 42'
FRAME TYPE DUMP TRAILER. 96 YARD, 102"
WIDE, 90" SIDES, TRI AXLE, HENDRICKSON AIR
RIDE INTRAXX, ABS BRAKES, LIFT ON FRONT
AXLE, FLIP N GO ELECTRIC CANVAS, LED
LIGHTS, BARN DOOR.
CALL FOR MORE INFORMATION.



2026 KRUZ 26' STEEL TUB,
Aluminum Frame Dump Trailer,
Air Ride, 2 Axle, Alum Wheels, 450 Hardox,
24.5 16 Ply Tires. **TAKING ORDERS**
Call For More Information.



2026 FONTAINE 55H MODULAR DSR,
Beam Deck Also Available, Tri Axle,
60" Axle Spacing, Hydraulic Removable,
Non Ground Bearing, Set Up For
Gooseneck Ext, Spreader Bar And 4Th Axle
Flip, Air Ride, Alum Wheels, 22.5 Rubber.
Call For More Information.



2026 FONTAINE 60 TON MODULAR
2+3+1,
26' Dsr, 184" Swing Clearance, Set Up
For 2 Axle Jeep, 14" Deck Height, Air
Ride, Alum Wheels, 275/70R X 22.5
Rubber, Non Ground Bearing.
Call For More Information.



IN STOCK NO WAITING. FONTAINE MAGNITUDE 65
2+3+2 CAPABLE, 28" DROP SIDE RAIL DECK, 3 AXLE,
SET UP FOR 4 AXLE, 14.75" DECK HEIGHT, 102" WIDE,
60.5" AXLE SPACING, EQ2 SPREADER BAR WITH
INTERMEDIATE AXLE, HYDRAULIC REMOVABLE, NON
GROUND BEARING WITH 2 PIN POSITION AT 114" AND
102", TRIPLE CYLINDER, 70" HYDRAULIC FLIP BOX,
HEAVY DUTY SNAP IN OUTRIGGERS, D-RINGS,
ALUM WHEELS, 275/70R X 22.5 TIRES.
CALL FOR MORE INFORMATION.



2026 KRUZ, 70 Yard, Tri Axle, 70,000
Single Point, Lift On Third Axle, 1/4 Inch
450 Hardox, Floor, Sides, Nose, Gate,
12 Panel Gate, 11 X 24.5 Rubber, Alum
Wheels. **Taking Orders.**
Call For More Information.



2026 FONTAINE TRAVERSE HYDRAULIC
TAIL, 48' Long, 102" Wide, Air Ride,
Hydraulic Upper Deck.
Hydraulic Winch, Remote Control,
Alum Wheels, Dual Controls. **Taking Orders**
Call For More Information.



2026 FONTAINE 60 TON MODULAR,
26' Dsr, 60" Axle Spacing, 184" Swing
Clearance, Set Up For 2 Axle Jeep, 14"
Deck Height, Air Ride, Alum Wheels,
275/70R X 22.5 Rubber, Non Ground
Bearing. **In Stock.**
Call For More Information.



1998 KAYLN SIEBERT.
75Ton 3+3+3, Air Ride, West Coast
Bogie, 3 Axle, Air Ride Jeep With Power
Tower, 10' Wide Trailer, 60' Overall
Length, 48' Of Useable Deck, 275/70 X
22.5 Rubber, Sandblasted & Painted,
Excellent Shape, Alum Wheels On Jeep
And Booster. **Call For More Information**

Trades Welcome • Financing Available • www.josephequipment.com

THIS AD IS COPYRIGHTED & OWNED BY TRUCK AND EQUIPMENT POST

TRAILER RENTALS • TRAILER RENTALS • TRAILER RENTALS •

WE RENT STEP DECKS • LOW BEDS • HI FLATS • DEMO/SCRAP • TRAILERS

JOSEPH EQUIPMENT COMPANY

300 GAY ST. • Manchester, NH 03103

NOW TAKING ORDERS FOR DUMP TRAILERS AND LOWBEDS FOR SPRING AND SUMMER DELIVERY

14" DECK HEIGHT



NEW 2026 FONTAINE RENEAGE LXL 14' Deck Height, 30' Deck W/ 6" Ground Clearance, 2 Axle, Set Up For 3rd Hydraulic Detachable Or Mechanical Detachable. In Stock No Waiting. Call For More Information



2026 FONTAINE MAGNITUDE 603T Modular Drop Side Rail With 28' Deck, Hydraulic Removable Neck, Non Ground Bearing, Air Ride, Tri Axle, Third Axle Lift, Set Up For 4TH, Alum Wheels, 275/70 X 22.5 Tires, Loaded. Call For More Information.



2026 FONTAINE MAGNITUDE 59AK 55 Ton Extendable Trailer, 30' To 50', Modular, Detaches Both Ends, Hyd Removable, Non Ground Bearing, 20' Deck Height, Will Take 10' Deck Ext For A Total Of 60', 275 Rubber Tri Axle, Air Lift On 3rd Set Up For 4TH, Set Up For Gooseneck Ext. Call For More Information

55 TON EXTENDABLE

PHONE: 603-641-8608
FAX: 603-666-3716

WE RENT WALKING FLOORS • DUMPS • HIGH FLAT EXTENDABLES • JEEPS



NEW 2026 FONTAINE SPECIALIZED MAGNITUDE 56L Tri Axle Air Ride, Set Up Of 4TH Axle, Non Ground Bearing, 25' Deck, Led Lights, Aluminum Wheels, Strobe Light Package, Lift On 3RD Axle, 2 Pin Position, Loaded. In Stock No Waiting. Call For More Information



IN STOCK - 2026 FONTAINE MAGNITUDE 60HD-4X Deck Extends From 30' To 51', 65 Ton When Closed, Built To Handle A 60 Ton Load With Ease, 30' Clear Deck Length Extends To 51', 22' Loaded Deck Height, 6" Ground Clearance, 7 Position Hydraulic Detachable Gooseneck, 7 Position Air Ride Tridem Bogie, 402 Jeep Ready, 36" And 63" Flip Box Ready, 60/90 Flip Axle Ready, EOC Spreader Bar Ready, Loaded. Call For More Information.



2026 FONTAINE WORKHORSE 58LCC FLD Tri Axle, Lift On Third, Air Ride, Hydraulic 4th Axle Flip, Air Lift On Third, 18' Deck Height, 26' Deck, Low Boom Well, Covered Rear Bogie, Dual Cam Pawl Assembly With 7 Ride Height Positions, Removable Kingpin At 108 inch Radius, Alternate Kingpin At 96" Radius, Load Scale, Tire Inflation, Air Controls, 275 Rubber, Alum Wheels. In Stock, No Waiting. Call For More Information.

WE RENT STINGERS • SPREADER BARS • DOUBLE DROP EXTENSIBLES TRAILERS

70 TON 2+3+2



2026 FONTAINE 704/2+3+2 DROP SIDE TAIL, 4 Axle, 28' Deck, Hydraulic Detachable, In Stock, No Waiting, Non Ground Bearing, 102' Wide, 65' Flip Box, Spreader Bar And 352J Jeep, Alum Wheels, 275/70R X 22.5 Tires, 28' Beam Deck Available. Call For More Information.



NEW 2026 FONTAINE 55 TON, Drop Side Rail, Tri Axle, Air Ride, Set Up For 4TH, Non Ground Bearing, Led Lights, Aluminum Wheels, Strobe Lights, Loaded. In Stock No Waiting. Call For More Information



NEW 2026 SPECIALIZED 55 TON BEAM TRAILER, 3+1 Modular NGB, Detach Both Ends, T/A, Air, Lift On 3rd, Set Up 4TH, Set Up For Gooseneck Extension, Call For More Information

Trades Welcome • Financing Available • www.josephequipment.com

THIS AD IS COPYRIGHTED & OWNED BY TRUCK AND EQUIPMENT POST