

SERVING NEW ENGLAND

FREE

TRUCK AND EQUIPMENT POST

Buyer - Seller - Swapper



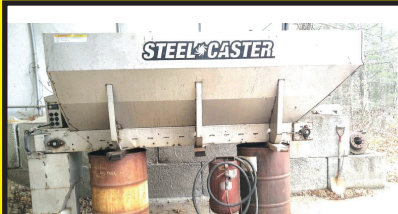
2020 PETERBILT 389 EXT HOOD. 565 CUMMINS, 18 SPEED, 46K REARS, FRONT DISC BRAKES, PLATINUM INTERIOR, 128K MILES, WET LINE, 10K EXT WARRANTY. \$185,000. 860-428-5333



2016 KUBOTA KX040. 6-WAY BLADE, TWIN PORT, 984 HOURS, \$48,500. 860-601-5982



2005 GMC W4500. 82,000 MILES, 14' FLAT BED, \$12,000. 508-883-6878



TORWEL SS 9 FOOT SANDER. ELECTRIC, 3 YARDS, TWO YEARS OLD, CALL FOR PRICE. HOME: 508-248-5176 OR CELL: 508-494-9604



2014 WABASH 53' X 102". SWING DOORS, AIR RIDE, VERY HARD TO FIND, CALL FOR PRICING (978) 992-7077

Optative Group



**Issue 52-01
Dec 29th, 2021**

**INTERNET & PRINT
FOR ONLY \$25.00**

www.TruckAndEquipmentPost.com

888-887-0505



ALLEGIANCE

TRUCKS®



Hartford, N.Haven, Torrington, & Franklin, CT / W. Springfield, MA



Call Mike McDonald 860-308-6599



10 WHEEL DUMP

2008 STERLING ACTERRA 10 Wheel Dump, Cummins Power, 10 Speed Manual Trans, 52K GVW, 16' Dump Body Only a Few Years Old, Clean Truck, Low Miles, Only a Few Years Old, Clean Truck, 90K Miles, Asking \$31,900



Clean Tandem Chassis

2015 IH 4400 6x4 CHASSIS, MaxDT 270HP, Auto Trans, 254" WB, 14K & 40K Axles, 54K GVW, Only 153K Miles, Clean Truck, #FH606767, \$22,800



L10 Cummins Dump

1996 IH 2674 Town Dump, Plow Truck, Big Cummins L10-300HP, Allison Auto, Newer 10' All Season Body, Front Plow Blade, Only 82K Miles, #234679, \$28,900



26' TANDEM

2016 IH 4400 TANDEM N9SCR 315HP, 3000RDS AUTO, 54K GVW 26' VAN, 205K MILES, JTS791, \$44,800



22' Reefer

2015 IH 4300 REEFER TRUCK. ISB Cummins, Allison Auto, 184K Miles, Under CDL, 22' Reefer Body With Carrier Unit, Clean Lease Truck, #FL710653, \$59,900



26' w/Gate

2014 IH 4300, Max DT 230 HP, Manual, 175K Miles, 26' Van w/ Gate, Lease Maintained, #JTS754, \$259,900



Cummins/ Allison Auto

2017 IH 4300 Extended Cab, Cummins 240HP, Allison Auto, 174k Miles, Under CDL, Getting 26' Van with large truck under lift gate, \$75,900



Heavy Haul Spec

2015 PRO STAR HEAVY TRACTOR. N13, 475 HP, 18 Speed, Only 272K Miles, 46K RA,, Clean Lease Maintained Truck, #JTS875 \$55,800

**Happy Holiday's
From Everyone
At Allegiance
Trucks**



Collision Mitigation

2017 IH Prostar Tandem Day Cabs. ISX Cummins, 10 Speed, Miles In 200's, Collision Mitigation, \$68,900



PRE EMISSIONS

2007 ISUZU NQR. 17950 GVW, Diesel, Auto, 16' Rack Flatbed, Lift gate, 142K Miles, Nice PRE EMISSION Truck, #102140, \$26,900



MANY TO CHOOSE

SERVERAL 2015 - 2018 ISUZU'S. Van Bodies, Lift Gates Or Ramps, Gas & Diesel, Call For Info



GAS AUTO

2015 ISUZU NPR, 14500 GVW, Gas Motor, Auto, 16' Van, ONLY 110K miles, Clean Truck, #220880, \$38,900



90K MILES

2014 DODGE PROMASTER 2500 CARGO VAN. 90K Miles, Gas, Auto, AC, #216822, \$26,900

Allegiance now has locations in MA, CT, NY, ME, VT, RI, NH, & NJ!

For all locations visit our website!

www.AllegianceTrucks.com



ALLEGIANCE

TRUCKS®

109 Lindberg Ave. | Methuen, Ma 01844
 (978) 686-1800 | (603) 560-0668
 Formerly General Truck Center



ASK YOUR TAX PROFESSIONAL ABOUT THE SECTION 179 TAX DEDUCTION FOR 2021



2016 HINO 195 New 14' Steel Flat Body. 18000 GVW, 176K Miles, Ready To Go Today! stk#217957, **\$29,900.**



2019 GMC SAVANA G2500. 34K Miles! 6.0L V8, 8600 GVW, Sliding P/S, Swing Rear Doors, Shelving, P/W/L., Heated Mirrors, Back-up Camera, AM/FM/Aux., Ready To Go Today! **\$36,900.**



2015 NPR-HD. 148K, 14500 GVW, Diesel. 16'x91"Tx96"W, 2 Row E-Track, 1500lb Tuckaway, P/W/L, A/C, Qualifies for 3 Years/90,000 Mile Gold Star Isuzu Warranty, stk#206764, **\$37,900.**



2008 CHEVY 3500 RACK TRUCK. 31K Miles! 6.0L V8 312 HP. 14" Steel Rack Body w/ Removable Stake Pockets, 1600 Lb Tuckaway Gate, AM/FM/CD, A/C, **\$21,900!**

Allegiance now has locations in MA, CT, NY, ME, VT, RI, NH, & NJ!

For all locations visit our website!



www.AllegianceTrucks.com



*TAXES NOT INCLUDED, 100K MILE LIMIT, .20 CENTS EVERY MILE ABOVE 100K. Dealer is not responsible for errors in price, or in description of vehicles

TRUCKCOUNTRY.US

USED TRUCK PARTS



ONLINE 24-7



**CADET FLAT BED BODIES
IN STOCK NOW!**



**8' DUMP BODY.
Rock Solid, DRW, #215485,
\$4,500**



**9' DUMP BODY.
Straight And Solid, #215541,
\$4,500**



**READING L PACK TOOL
BOX. Solid, #215541,
\$1,500**



**8' READING UTILITY BODY,
SRW, Solid,
\$2,800**



**12' FLAT BED BODY. DRW,
#215545, \$4,500**



**8' FLAT BED BODY. DRW,
#215538, \$1,500**



**11' UTILITY BODY. 84" CA,
Rock Solid, #205320,
\$3,500**



**REBUILT FORD SUPER DUTY
SEATS \$650**



1-860-423-6004

Mon-Fri 8-5

1535 WEST MAIN STREET, WILLIMANTIC, CT

Sat 9-1



CONSOLIDATED TRUCK & EQUIPMENT, INC.

**FELLING
TRAILERS**

**EXTREME
TRAILERS**



www.ConsolidatedTruckEquipment.com

**32 INDUSTRIAL COURT, (RT.6) SEEKONK, MASSACHUSETTS.
ACROSS FROM SEEKONK SPEEDWAY.**



2002 BENSON 28' ALUMINUM DUMP TRAILER. Steel Frame, Rayco Suspension, Electric Tarp, 11x24.5 Tires. Very Good Condition, Needs Liner, **\$24,500.**



1988 TRAILKING 28' ALUMINUM DUMP TRAILER; New Liner, New Piston, New Load Cover, 11x24.5 tires @ 50%, Aluminum Wheels, RAYCO Suspension. **\$12,500**



2004 BENSON 28' ALUMINUM DUMP TRAILER. Steel Frame, Rayco Suspension, Electric Tarp, 11x24.5 Tires. New Liner, **\$28,500.**



2002 EAST 28' ALUMINUM DUMP TRAILER. Aluminum Frame, Air Ride, Electric Tarp, New Liner, 11x24.5 Tires, **\$29,500.**



2016 CHALLENGER 26' Steel Dump Trailer New Paint, Tires and Brakes 80%, 8 Aluminum Wheels, Center Point Suspension, Electric Tarp, HI-LIFT Gate, NEEDS NOTHING READY TO WORK **\$42,500.00**



MAC 28' ALUMINUM SMOOTH SIDE TRAILERS. Air Ride Suspension. Please call for pricing.



HONEST BOB'S GOT TRAILER LOADS OF TRAILERS! MAC and EXTREME FLATBED TRAILERS 48' x 102" COME AND GET 'EM



BRAND NEW EAGER BEAVER 20XPT TRAILERS. 6' RAMPS. BEST PRICING AROUND. Please give us a call.



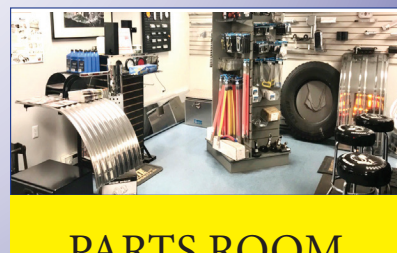
NEW MAC 53' Front Axle Slide, 36" Deck Height. Tool Bx, 10' Upper Deck. (it's the trailer on the bottom). Call for Price.



Brand New Challenger Body & Chassis, 26' Long, 54" & 60" Sides & Gate, Single Point 60K suspension, Hardox Body, Hi-Lift Gate, aluminum disc wheels, electric load cover 16 Ply Tires. Please Call For Pricing



2015 MAC 53' Step Deck: 10' Upper Deck, Front Axle slide. Very Good Condition. Call for price.



**PARTS ROOM
SPECIALS !**

CALL US: AT 508-336-6215 • HOURS: 7:30 - 5:30

WWW.TRUCKANDEQUIPMENTPOST.COM

RENTAL WITH OPERATOR

PORTABLE JAW CRUSHER • MCCLOSKEY J40 2021



DAY-WEEK-MONTHLY RATES
PLUS 80' STACKER AVAILABLE

MA-RI-CT CALL KEN
508-328-0028

2016 JOHN DEERE 300G.
Hydraulic Q/C, 54" Bucket, Like New Working Daily, Must See!!, **\$122,500**, Call Dan, 203-506-3860



2020 HI-WAY SANDER, 12 FT. Stainless, 10-Yard, New Chain, Good Bearings, Lights, And Chute, With Stainless Fenders And Liquid Tanks, Ready To Go, **\$7000**. Leominster, MA 978-230-1504

Our Road Leads To
Selling - Browsing - Buying
"Don't Be Left In The In The Dust"
Advertising With The Post Gets You The Most

Truck And Equipment Post
P.O. Box 6824
Providence, RI 02940

Email: ads@TruckAndEquipmentPost.com

Phone: **888-887-0505**



MIKE'S
Truck & Trailer
Repair inc.



Truck & Car
Computer
Diagnostics



Full Service Truck and Auto Repair Center.

447 York Ave, Pawtucket, RI 02861 • (401) 725-2188

MEDIUM/HEAVY TRUCK & RV SERVICES

FEDERAL DOT & RI STATE INSPECTIONS

- *All makes engine repairs
- *Fuel pumps
- *Brake work
- *Electrical repair
- *Injectors
- *Oil changes
- *Trailer repair
- *Turbo



- *Lift gate problems
- *Welding fabrication
- *Heavy equipment
- *Front ends
- *Rear roll-up door repairs
- *Installation
- *Wiring circuits



FORD 6.0 DIESEL POWER STROKE SPECIALIST !



FORD 6.0 DIESEL POWER STROKE SPECIALIST !



visit our website @ mikestruckandtrailerpawt.com • RI# 459ca



2014 INTERNATIONAL TERRASTAR, 19,000 Mi, Automatic, 4wd, Under Cdl, 12' Fisher Power Angle Plow W/ Fish Stick, 158" Wb, Ready To Work, **\$44,500**, CALL US. 508-381-3939. Hopedale, MA



CUSTOM DESIGNED UTILITY BODY. 1/2 Completed, Built For Mechanics Crane, 84" CA, **\$1800 OBO**. 203-206-2104 For Details.


**COMMERCIAL
VEHICLE CENTER**

508-403-9192

SEASONS GREETINGS FROM OUR FAMILY TO YOURS.


**2022 F350 REG. CAB 4x4 DRW 2-3
YARD RUGBY DUMP BODY: 6.2L V8,
Power Group. Stk.#N10390**



**2022 F350 DRW 4x4 IROQUOIS BRAVE
SERIES STEEL DUMP BODY:
V8 Gas, Power Group. Stk.#N10302**



**2021 F450 CREW CAB DRW 4x4 READING
SERVICE BODY: 7.3L V8, POWER GROUP,
KEYLESS ENTRY. STK#N9990**



**2022 F350 SUPER CAB 4x4 READING
DUMP BODY: V8 Gas, Power Group.
Stk.#N10283**



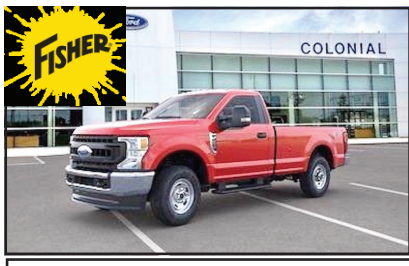
**2021 F350 DRW 4x4 DURAMAG ALUMINUM
LANDSCAPE DUMP: POWER GROUP, 7.3L V8,
KEYLESS ENTRY. STK#N9849**



**2022 F350 REG. CAB DRW 2-3 YARD
RUGBY DUMP BODY: 6.2L Gas, Power
Group. Stk.#N10290**



**2022 F350 4x4 DUMP BODY: W/
Diamond Plate IPac & Tool Box, V8
Gas, Power Group. Stk.#N10377**



**2022 F250 REG. CAB 4x4 W/ FISHER
8' SNOW PLOW: 6.2L V8, Power Group.
Stk.#N10365**



**2019 F450 SUPER CAB XL READING UTILITY
4X4: 6.8L V10, AUTO, LTD SLIP, POWER
GROUP, REMOTE START, STK#N8786**



**2020 F550 CAB & CHASSIS XL 4X4: 6.7L
V8 POWER STROKE TURBO DIESEL, AUTO,
POWER GROUP, STK#N10084**



**NEW 2021
F350XLT
4x4 Cab &
Chassis: 145"
WB, V8 Gas,
Power Group.
Stk.#N10184**


11 PILGRIM HILL ROAD Plymouth, MA 02360
www.COLONIALFORD.com
America's Hometown Dealership

*all rebates to dealer. must finance with Ford Motor Credit.
0% financing in lieu of all rebates* Discounts & Dealer Discounts.





2017 FORD E-450 HANDICAP SHUTTLE BUS,
14/ 12 / 2 Wheel Chairs, 36,000 Original Miles.
401-434-5900



8 FOOT POWER ANGLE SWEEPER FOR SKID STEER
\$1,900.00 Call Today! 781-417-3018



ALLEGIANCE
TRUCKS®

LIBERTY
INTERNATIONAL TRUCKS



603-905-9036
Barrington, NH

603-623-8873
Manchester, NH



2008
STERLING
ACTERRA
7500 PLOW
/ SPREADER
TRUCK. Mercedes
Diesel, Auto, 10' All
Season Body, Rear
Spreader, Front &
Wing Plows, 36,220
GVW, stk#204011,
\$19,900.

www.LibertyInternationalTrucks.com

What's In Your Toolbox?

- **BUY, SELL, TRADE - FAST**
- **FROM NEW TO USED, IT'S ALWAYS FRESH**
- **AND A HANDY RESOURCE, TOO**

1-888-887-0505

www.TruckAndEquipmentPost.com



2007 FREIGHTLINER M2. Automatic Trans,
238,668 Miles, CAT C7 Diesel, **\$20,500 OBO.**
Waltham, MA 617-593-0034



RAPID PREP

Full Service Provider of Equipment,
Supplies and Consumables

NATIONWIDE EQUIPMENT
RENTALS, SALES & SERVICE

North Kingstown, RI
El Cajon, CA • Suffolk, VA
Lakewood, WA

877.529.2124 / rapidprep.com

RUST NEVER SLEEPS



ENHANCED PORTABLE BLASTER PACKAGE



DUST FREE
SLURRY BLASTING



SAFETY EQUIPMENT



11 Commercial Way
Milford, MA 01757

HILLVIEW EQUIPMENT



SALES & RENTALS 24/7
CALL JUDE 1-508-498-0777

www.HillviewEquipment.com



Rt. 495 to exit 19,
Route 109W,
Left to Birch St,
right to Industrial Dr.
Left to
Commercial Way

EXCELLENT EQUIPMENT * OUTSTANDING PRICES!



OUTSTANDING
MACHINE

**2017 CAT 336FL: LONG STICK, GREAT
BOTTOM, COMPLETE SERVICE
NEEDS ZERO! BUY TODAY WORK
TOMORROW..... PRICED RIGHT !!**



3
AVAILABLE

**2017 CAT 330 FL: GREAT LOW HOUR
MACHINE, QUICK CONNECT, AUX.
HYDRAULICS. CALL!**

NOS FINANCIAMOS PARA EMPREITEIROS BRASILEIROS!!



BEST
PRICE !!

**2015 CAT 314EL: WITHOUT BLADE,
AUX HYDRAULICS, COMPLETELY GONE
THROUGH, LOW HOURS.
BEST PRICE !!**



WORK
READY !!

**2011 CAT 321DI: OUTSTANDING NO
EMISSION MACHINE WITH QUICK COUPLER,
AUX. HYDRAULICS, ALL THE TOYS.
WORK READY !!**



**2016 CAT 908M FAST RUNNER: VERY CLEAN
MACHINE WITH BUCKET & FORKS, NEW TIRES
AND CREEPER GEAR....
READY NOW! CALL JUDE 508-498-0777**



CALL!!

**CAT 336DL: NOT MANY OF THEM LEFT
IN THIS CONDITION, SOME WITH LOW
HOURS.... ALL READY FOR WORK. CALL!!**



AWP

FLEET DISCOUNTS

\$75 & UP

ACUSHNET WHEEL POLISHING

Used Rims Available

508-961-7528

62 SOUTH MAIN ST.,
ACUSHNET, MA



*"Wishing You
A Happy Holiday
Shine"*

Service & Mechanic On Site



2009 KENWORTH T370. Paccar PX-8, 260 HP, 33,000 GVW, Allison 3000, H.S. Transmission, 24 Ft. Morgan Flatbed, A/C, Cruise Control, Power Windows/Locks, 181K Miles, **\$39,500.** Rich, 203-228-3667



2008 CHEVY 8500 OIL TRUCK. 180K Miles, CAT C7 Engine, Diesel, Allison Automatic, 3000 Gallon Aluminum Tank, **\$37,500 OBO.** 401-255-7325



2008 MANAC HI BOY TRAILER.
Aluminum Trailer, Real Nice Condition, **\$19,999.**
401-486-8552

What's In Your Toolbox?

- BUY, SELL, TRADE - FAST
- FROM NEW TO USED, IT'S ALWAYS FRESH
- AND A HANDY RESOURCE, TOO

1-888-887-0505

www.TruckAndEquipmentPost.com





HINO TRUCKS
A Toyota Group Company



Jukonski Truck Sales



FUSO

WWW.TRUCKSELLERS.COM *se habla español*

680 NEWFIELD ST. (RT 3) MIDDLETOWN, CONN • **800-378-0342** • MON-FRI 8-6 SAT 8-NOON

15 USED TRUCKS IN STOCK



2020 MITSUBISHI FUSO FE 140.
20' Box And Only 889 Miles, #1782,
\$61,900



2014 FREIGHTLINER M2. 300
Cummins, Allison Auto, 24' Flatbed,
#6571, **\$47,900**



2018 ISUZU NRR Refrigerated,
Side Door, Only 34K Miles, #6135,
\$58,900



2013 HINO 338. 20' Rack
Body, Diesel, #0158, **\$33,900**

PAYING TOP DOLLAR FOR USED TRUCKS!!!



2014 FREIGHTLINER M2.
Cummins Diesel, 24' Box, #9941,
\$64,900



2014 FREIGHTLINER M2. 20' Box,
New Arrival Call For Details, #5346,
\$49,900



2017 HINO 195. Diesel, 20' Box,
106K Miles, #5430, **\$53,900**



2018 HINO 268A. Hard To Find
26' Box, Lift Gate, #8267, **\$79,900**

90 DAY POWERTRAIN WARRANTY AVAILABLE ON ALL CERTIFIED TRUCKS. INCLUDES INJECTORS AND TURBO

*We're dreaming
of a
White Christmas!*

Cutting Edges in Stock

Popular sizes ranging from 7'6" to 12' including X blades

Plow Replacement Parts



Buyers Snow Plow
Hydraulic Fluid

\$8.99 /quart



SNO-RAKE
48" Handle

\$31.95

Happy Holidays!





Cherry Hill Construction Co., Inc
51 Ciro Road – North Branford,
CT 203-488-7929
www.CHERRYHILLEQUIPMENT.com



2001 CAT 365BL EXCAVATOR.
 15693 Hours,
 Asking \$80,000



1993 CAT 966F LOADER. 28,800 Hours,
 Asking \$66,000



1993 CAT 966F II LOADER. 34,000 Hours,
 Asking \$68,000



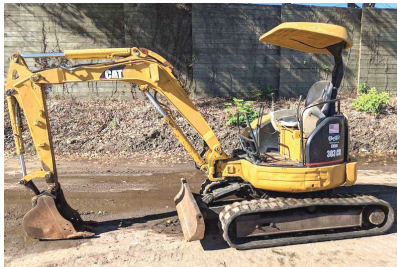
2007 MACK CV713 Granite Roll-Off, 450,000 miles, 18K Front, 40K Rears, Fixed Pusher Axle, AI-427 engine, 8 LL Eaton Fuller, Rudco Hoist, Auto Tarp, Auto Can Lockers. Asking \$66,000



2011 MACK TRI AXLE DUMP. MP8-425, 8LL, 20K Fronts, 40K Rears, 389,445 Miles, Rebuilt Engine, Asking \$85,000



2003 CAT 322CL Excavator, Fresh Paint, Runs And Operates Good, Bottom 50%, Asking \$45,000, Grapple Available At Additional Cost



2001 CAT 303CR.
 Only 5700 Hours,
 Asking \$17,000



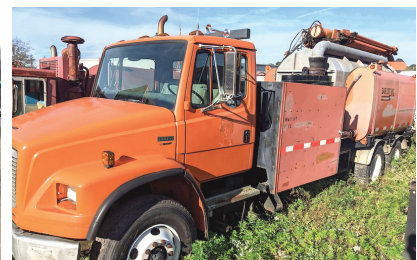
2011 FORD F550. Diesel, 4x4, Maintainer Body With Crane (H6520), Hydraulic Compressor, Out Riggers, Wireless Remote For Crane, 275K Miles, Asking \$49,500



1995 HOGZILLA TC-1464P GRINDER.
 Cummins K-19 Motor,
 1,477 Hours,
 Asking \$172,000



2005 TEREX (POWERSCREEN) WARRIOR 1800. Rebuilt CAT 3054 Tier 2 Engine, 16' x 5' Screen Deck, Completely Gone Through, Ready For Work, Asking \$110,000



1997 INTERNATIONAL FL-80 VAC TRUCK. Only 45K Miles, 57 Hours On PTO Pump, Asking \$7,000



2015 VOLVO ECR305CL:
6,000 Hours, QC, Aux. Hydraulics,
Rear View Camera. **\$99,000**
Call Bryn 508-381-3939.
Hopedale, MA

THOMPSON TRACTOR LLC.
860-963-1918
A DL HOLKE COMPANY
15 RT. 171 WOODSTOCK, CT 06281
DAVE'S CELL 508-864-8874
THOMPSONTRACTORLLC.COM

*Season's
Greetings*



2017 DEERE 310-SL:
LOADED-COUPLER W/ BUCKET & FORKS.
\$84,500



2021 HYUNDAI 60CR-9A: 150 HOURS,
LOADED - ALL THE OPTIONS,
HYD. THUMB & COUPLER. **AS NEW \$69,750**

INVENTORY AT * WWW.THOMPSONTRACTORLLC.COM



2001 JOHN DEERE 110,
840 Hours, No Rust,
Everything Works, Good Heat.
Ready To Work.
\$32,500 Call Today!
508-222-9072



2023 RHODES ASSS2660-2 26' ALUM. DUMP
TRAILER, Steel Frame, Single Point Suspension.
Incoming! 401-434-5900



2010 FORD F550. 6.4 Diesel, 4x4, 14 Foot PTO Dump
With 9 Foot Fisher Plow, Ready To Work, **\$32,000.**
Swansea, MA, 508-207-6240

What's In Your Toolbox?



- **BUY, SELL, TRADE - FAST**
- **FROM NEW TO USED,**
IT'S ALWAYS FRESH
- **AND A HANDY**
RESOURCE, TOO

1-888-887-0505

www.TruckAndEquipmentPost.com

CUSTOM-DESIGNED RADIANT KITS

Simple. Efficient. Affordable.

- **Radiant Heating**
- **Radiant Cooling**
- **Heated Driveways**

AMERICAN RADIANT

Technologies & Supplies LLC.

Toll Free: 833-758-2888





Lorusso Heavy Equipment, LLC
160 Elm St Walpole, MA 02801
Tel. 508-660-7600



MECALAC TA3SH Site Dumper.
Sale Or Rent,
Call For Pricing.



AJCE Hammers
Multiple Sizes Available and
In Stock Call for Pricing



2019 MECALAC 6MCR Skid Steer/Excavator.
Skid Bucket And 24" Bucket,
\$93,000.00



2019 HYUNDAI R60CR-9A Mini Excavator. \$63,500.00



2021 HYUNDAI HL930A.
In stock now!
Call for Pricing.



2022 MECALAC AX850 Mini Wheel Loader - \$74,000.00
Financing available
0% for 48 months.



2021 HYUNDAI HL955A.
Please Call For Pricing.



2000 John Deere 200LC Excavator. 8250 hours.
\$45,000.00



2017 HYUNDAI HX145LCRD Excavator - \$99,000.00



2013 Takeuchi TB285 Mini Excavator. 4691 Hours.
\$48,000.00.



engcon®
AUTOMATIC
QUICK-
COUPLER
TILT/ROTATION
SYSTEMS

Available for all
makes and models.
Call for pricing.



JCB 525-60 Telehandler.
Call for Pricing.



www.lhequip.com • Call Us for All of Your Rental Needs • www.fb.com/LHELCC



CANDIA TRAILER.COM 1-866-761-0196

& LANDSCAPE EQUIPMENT CO

35 High St, Junction Rte. 27 & 43., Candia NH

All Prices Cash & Carry! Installation Available! 10 Minutes East of Manchester, NH • 1 hour From Boston

**BEST DEALS NOW!
PRE-SEASON
PRICING**



VXF Generation II



TE Generation II



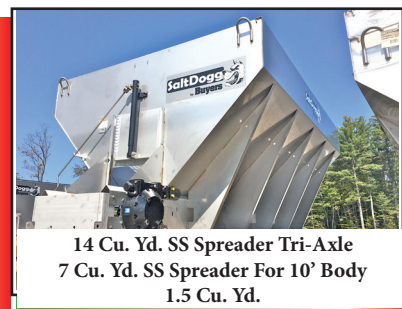
MD Series Plow
Start At **\$3,995** Installed



Heavy Duty Poly 3/4 Cubic
Yard Spreader, **\$2,800**



Commercial 4 Cu. Yd Poly
Spreader. Call For Pre-Season
Price



14 Cu. Yd. SS Spreader Tri-Axle
7 Cu. Yd. SS Spreader For 10' Body
1.5 Cu. Yd.

**Our Road Leads To
Selling - Browsing - Buying
“Don't Be Left In The Dust”
Advertising With The Post Gets You The Most**

Truck And Equipment Post
P.O. Box 6824
Providence, RI 02940

Email: ads@TruckAndEquipmentPost.com

Phone: **888-887-0505**



1996 MACK RD688S. 18 Speed, 44K Rears, 18K Front
Axle, 62K GVW W/ Palfinger, Crane Model 32000, 7900 Lbs
@ 26', Original Owner, **\$25,000.** 978-422-3311



1990 KUBOTA 4540A BACKHOE. Fits
L-Series TLBs, **\$4500.** Contact Tim 401-248-3412

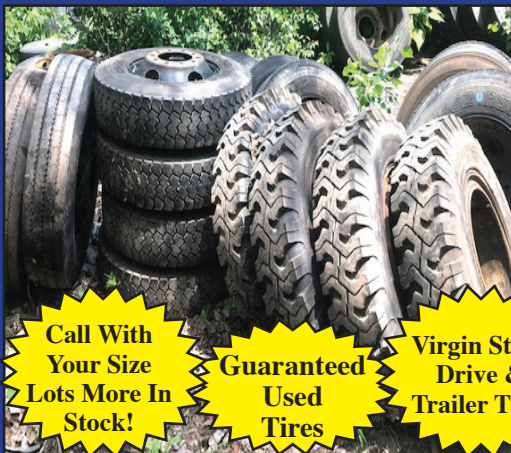
R & R INDUSTRIES

www.RRTrucksAndEquipment.com • Sales@RandRind.com

195 Rocus Street, Springfield MA 01104

**We Buy All
Scrap Metals**

413-733-2118



Call With
Your Size
Lots More In
Stock!

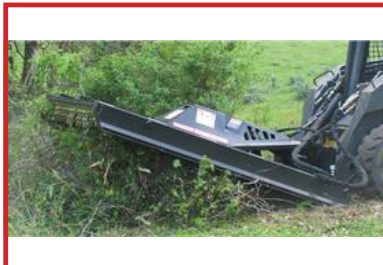
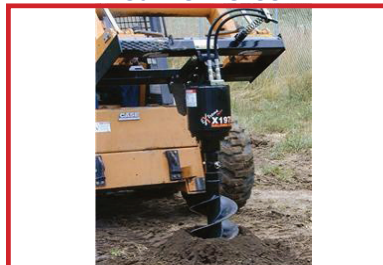
Guaranteed
Used
Tires

Virgin Steer,
Drive &
Trailer Tires

**Truck Tires
Many Matched Sets
Of 4 And 8
& Rims Too**
295/75/225
10:00 x 22.5
11:00 x 22.5
12:00 x 22.5
9:00 x 20
10:00 x 20
8:25 x 20
11x20



Chadwick-BaRoss

**FINANCING
AVAILABLE****WWW.CHADWICK-BAROSS.COM****FFC • BRADCO • MCMILLEN • MAJOR • SWEEPSTER • HARLEY****HARLEY RAKES****CALL FOR DETAILS & PRICING !****ROCK BUCKETS****STARTING AT \$1,675, IN STOCK!!****72" PICKUP SWEEPER****72" PICK UP SWEEPERS.. \$4,200****VIBRATORY ROLLER****CALL FOR PRICING
ROOT RAKE****PREPERATOR****CALL FOR PRICING
BRUSH CUTTER****HIGH DUMP BUCKETS****CALL FOR PRICING****CALL FOR PRICING****SIDE DISCHARGE BUCKETS IN STOCK !****5FT-\$5,100 - 6FT-\$5,300****AUGER'S IN STOCK****5500LB FORKS****\$950****IN STOCK****CALL FOR PRICING !****CHELMSFORD
15 KATRINA ROAD
CHELMSFORD, MA 01824
978-256-9571 • 800-804-0775****\$2,550.00****OXFORD, CT
10 FOX HOLLOW ROAD
OXFORD, CT 06478
978-256-9571 • 800-804-0775****NEW SKID STEER HAMMERS****CALL FOR PRICING !****WARWICK, RI
31 JAMES P. MURPHY
INDUSTRIAL HIGHWAY
WEST WARWICK, RI 02893
844-238-7673****GO TO PALADINBRANDS.COM FOR FULL LINE OF ATTACHMENTS.**



Chadwick-BaRoss

WWW.CHADWICK-BAROSS.COM


**NEW DYNAPAC
CC900G ROLLERS
IN STOCK!
FINANCING
AVAILABLE**



**MULTIQUIP
CONCRETE
BUGGIES
IN STOCK!
FINANCING
AVAILABLE**



**RUBBER TRACKS
FOR ALL MAKES
AND
MODELS
CALL FOR
PRICING !!!**



**NEW CHICAGO
PNEUMATIC 185
COMPRESSORS
CALL FOR PRICING!
FINANCING AVAILABLE**

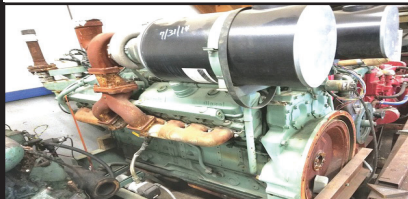
**CHELMSFORD, MA
15 KATRINA ROAD CHELMSFORD, MA 01824
978-256-9571 • 800-804-0775**

**SALES • SERVICE • RENTALS • PARTS
FULL LINE OF SKID STEER ATTACHMENTS AVAILABLE.
GO TO WWW.PALADINBRANDS.COM**

**OXFORD, CT
10 FOX HOLLOW RD OXFORD, CT 06478
860-261-0730**

**WEST WARWICK, RI
31 JAMES P. MURPHY INDUSTRIAL HIGHWAY
WEST WARWICK, RI 02893
844-238-7673**

Takeuchi
The Power of Product and Support



RUNNING TAKEOUT ENGINES.
Detroit Diesel 16V92T, 2-Valve,
Cummins 855 Small Cam. Call For Price/Info
Goodwinmarine@gmail.com, Hull, MA 781-925-1593

**2006 BOBCAT
T190. Full Cab,
Q/C, 4,000 Hours,
Well Maintained
One Owner,
\$22,500,
Call Dan,
203-506-3860**



1980 PETTIBONE HOISTING CRANE. Detroit Engine,
Crane Excellent Condition,
No Leaks, **\$22,000.** 978-590-9374

SAM'S Tree Service
"We handle the jobs, the Big Guys turn down!"

- Licensed Arborist #913
- Insured
- Competitive Pricing
- Free Estimates

sammal@cox.net
401-269-1133

- Brush Chipping • Tree Removal
- Tree Pruning • Stump Grinding
- Residential Land Clearing

What's In Your Toolbox?

• **BUY, SELL, TRADE - FAST**
• **FROM NEW TO USED, IT'S**
ALWAYS FRESH
• **AND A HANDY**
RESOURCE, TOO

1-888-887-0505
www.TruckAndEquipmentPost.com

RENTAL WITH OPERATOR

PORTABLE JAW CRUSHER • MCCLOSKEY J40 2021



**DAY-WEEK-MONTHLY RATES
PLUS 80' STACKER AVAILABLE**

**MA-RI-CT CALL KEN
508-328-0028**



2000 MACK. 460 Hp, E7 18 Speed, Locking Rears, 966,000 Miles, New Carriers In Both Rears, Pintle Hook, Air Ride, Good Tires, All Aluminum Wheels, **\$18,000.** 207-590-9275



2002 INTERNATIONAL 2574 PLOW TRUCK, Closed Loop System, Wing And Front Plow, Stainless Steel Sander, Asking **\$10,000/ BO,** Call Bob 413-531-1908



SNOWPLOW FOR SALE, Best Offer. 508-965-3693

**MICHIGAN
LOADER.**

Runs Great, Piston
Leaks, Good Rubber,
\$10,000.
401-438-3000



**10, 15, 20, AND
30-YARD
DUMPSTERS.**

All Cable Lift, All In Good
Useable Condition,
\$3000 To \$4500.
401-440-7750





HEIL
TRAILER
SOLUTIONS BUILT FOR YOU.

www.wbhill.com

WB HILL

Serving You With New Ideas








WB HILL

TRANSTECH

HEIL

**MERRY
CHRISTMAS**

305 Shaker Rd,
East Longmeadow, MA
413-525-6665
www.wbhill.com



2019 ROCKSTER RTT720 TROMMEL - Like New with 700 Hours, CAT Diesel, Your Choice of 1/2" or 1" Screens - For Sale or Rent!!! **\$199,000,** CALL DAN AT 203-506-3860



2007 FORD F750 DUMP TRUCK.

CAT C7 7.2 L Engine, Automatic Transmission, Good Condition, Comes With 10' Power Angle Plow, Air Connection To Back Of Truck For Trailer, 33,000 GVW, Tires In Good Condition, Clean Title, **\$45,000. OBO,** 508-962-4135

YEAR END AUCTION

ANNUAL FORD-NEW HOLLAND EQUIPMENT AUCTION

~ Capital Tractor ~

Very Late Model Cat, Ford, New Holland, John Deere, Case Construction & Agricultural Equipment, Aerial Lifts, Forklifts, Utility Equipment, Large Quantity Support, Attachments, Trucks and Trailers

WEDNESDAY, DECEMBER 29TH @ 9:30 AM
ALBANY (Greenwich), NEW YORK



ADDRESS: 389 Old Schuylerville Road, Greenwich, New York 12834
 (Washington County Fairgrounds)

HIGHLIGHTS INCLUDE: **4 ARTICULATED HAUL TRUCKS:** (2)Cat 725, JD 400D, Terex TA300, **2 ROUGH TERRAIN CRANES:** Grove RT740B, P&H S35, **CARRY DECK CRANE:** Grove IND-36, **22 HYDRAULIC EXCAVATORS:** 2017 Cat 330FL, (2)2019 Cat 325FLCR, 2010 Cat 321DLCL, 2018 Cat 313FL, 2020-2019 Cat 310, (2)Cat 308E2CR, 2012 Cat 303.5, 2019 Komatsu PC360LC, Komatsu PC130-6, Unused Doosan DX225, 2019-2016 JD 250G, 2013 Volvo EC220DL, Like New Takeuchi TB260, (2)Like New Takeuchi TB257FRCR, Hitachi ZX85, Bobcat 435ZHS, NH E55B, **RUBBER TIRED EXCAVATOR:** Gradall XL3100, **ROCK GRINDER:** Genesis Cyclone GC950MR, **MOTOR SCRAPER:** Cat 621B, **14 RUBBER TIRED LOADERS:** 2008 Cat 908H, (2)Demo Cat 906M, (3)New Liebherr L506, (2)2017 Hyundai HL970, 2008 JD 644J, JD 544J, Komatsu WA500-3, Komatsu WA380-3, Kawasaki 70ZX, Case 21D, **2 RUBBER TIRED LOADER/FORKLIFTS:** (2)Unused Diechi T60, **3 CRAWLER TRACTORS:** 2015 Cat D6NLGP, 2014 Cat D3K2XL, JD 750JLT, **3 CRAWLER DUMPS:** (3)Like New Yanmar C50R-5A, **MOTOR GRADER:** JD 670A, **TRACTOR LOADER BACKHOE:** JD 310SG(4x4), **ASPHALT ROLLER:** Hycap C-820, **TRENCH ROLLER:** Wacker, **4 RUBBER TRACKED SKID STEERS:** Cat 257, Bobcat T190, Takeuchi TL230, Takeuchi TL10, **4 SKID STEERS:** (2)2016 Cat 246D, NH LS180, Case SV185, **TRENCHER:** 2010 Barreto 1342-TK, **13 TELESCOPIC FORKLIFTS:** 2014 Skytrak 10054(4x4), (3)2014 Skytrak 8042(4x4), 2015 Skytrak 6042(4x4), Cat TH580B, (2)JLG G1255, JLG 943(4x4), JCB 550, JCB 250-50, 2016 Case TX170, Gradall 534D-6, **2 ROUGH TERRAIN FORKLIFTS:** 2015 Manitou N50-4, Bobcat V417RT, **FORKLIFT:** Clark, **5 BOOM LIFTS:** 2008 JLG 1200SJP, JLG E300AJ, 2008 Genie S85, Genie S45, 2010 Snorkel AB85RJ, **5 SCISSOR LIFTS:** Haulotte 3368RT(4x4), (2)Skyjack SJ3219, (2)Hybrid 1430, **3 AIR COMPRESSORS:** 2007-(2)2006 Airman PDS185S, **16 GENERATORS:** (13)New Power/Leroy 30Kw, Cat 263KVA, (2)Fremont MEP-804A, **2 WELDERS:** Lincoln Commander 500, Miller Pipe Pro 304, **5 LIGHT PLANTS:** (4)2016-2015 Magnum Pro MLT3060M, **3 ARROW/MESSAGE BOARDS:** (3)AMSIG CMS-T331, **2 SCREENING PLANTS:** 2019 Anaconda TD516, Terex Titan 1800, **9 AGRICULTURAL TRACTORS:** JD 8520(4x4), JD 7800(4x4), JD 4755(4x4), Unused NH T6020(4x4), Unused NH T5060(4x4), Unused NH T5050(4x4), Like New Kubota M5-091(4x4), Cat Challenger-45, **2 TRACTOR LOADERS:** 2015 NH Boomer 3050(4x4), Kubota L5030(4x4), **YARD HORSE:** 2009 Kalmar, **2 BUCKET TRUCKS:** 2002 IH Transtar 4700, Ford F550, **UTILITY TRUCK:** 2016 Chevy 3500HD, **DISTRIBUTOR TRUCK:** Peterbilt 377, **12 TRUCK TRACTORS:** 2019 Kenworth T880(t/a), 2009 Kenworth T800(t/a), 1991 Kenworth(tri., heavy haul), 2019 Western Star 4900X(t/a), 2009-2008-2000 Western Star 4900(t/a), (2)2015 Freightliner Cascadia(t/a), 2013 Cat CT660S(t/a), 2001 Peterbilt 379(tri), Mack RW713(t/a), **5 DUMP TRUCKS:** (2)Like New Peterbilt 567(tri), 2018 Freightliner 122SD(tri), 2009 IH 7600 Workstar(t/a), 1990 IH 9300(t/a), **3 PICKUP TRUCKS:** 2012-2010 Ford F150XLT, Dodge(gas), **5 DETACHABLE GOOSENECK TRAILERS:** (3)2022 Witzco RG52(tri), 2021 Load King 55-ton(tri), 2006 Fontaine TL55FLD(tri), **14 TAGALONG TRAILERS:** 2020 Talbert AC-20(20-t, t/a), (12)New Delta 20'(t/a, tilt), 1999 Eager Beaver 20-ton(t/a), **EQUIPMENT TRAILER:** 2014 Ledwell 48ft(t/a), **FLATBED TRAILER:** 1997 Fontaine 48ft(t/a), **6 DUMP TRAILERS:** (6)2021 Delta(14ft., t/a), **4 SERVICE BODIES:** (4)New 8ft. Duramag, **UTILITY BODY:** Ford F800, **MULTI-USE CONTAINER:** New 40ft. High Cube, **3 CONTAINERS:** New 9ft., 8ft., 7ft.(w/door & window each), **MOBILE HOUSE:** New Bastone 20ft., **4 PORTABLE BATHROOMS:** (2)Bastone 110V Portable Toilets w/Shower, (2)Bastone 110v Portable Toilet w/Double Stall, **10 STORAGE BUILDINGS:** (2)Golden Mount 40ft.x80ft.x20ft., (2)Golden Mount 30ft. x65ft.x15ft., (2)Golden Mount 20ft.x30ft.x12ft., (2)Golden Mount 20ft.x20ft., (2)Golden Mount 40ft.x20ft., **2 SNOW EQUIPMENT:** 2017 Larue Snowblower, Snow Plow, **TRENCH BOX:** Pro-Tec ATS88(8x8), **8 SCRAP RECYCLING:** (4)Greatbear 1-yd. Self Dumping Hopper, 2-cu. yd. Self Dumping Hopper, (21.75-cu. yd. Trash Self Dumping Hopper, 1.75-yd HD Trash Hopper, **5 PRESSURE WASHERS:** (3)New Easy Kleen Magnum Gold, (2)Greatbear 4000psi, **2 CRANE ACC., 6 HAMMERS, 9 THUMBS, 2 BUCKETS, STEEL SHEARS, 15 PALLETS STONE, 49 ATTACHMENTS:** (44)Skid Steer, **116 NEW SUPPORT EQUIPMENT.**



For BID ONLINE
 technical assistance call
 Proxibid: (855) 636-6461
 Nextlot: (919) 361-1111

SALE SITE PHONE: (315) 378-5037 Mike

ALEX LYON & SON

SALES MANAGERS & AUCTIONEERS, INC., BRIDGEPORT, NY 13030

Ph: (315) 633-2944 • Fax: (315) 633-5635



Go to **WWW.LYONAUCTION.COM** for a Complete List, Descriptions, and Pictures

#1 RAM CHASSIS CAB DEALER IN NEW ENGLAND!**SALVADORETRUCKS.COM****RAM****888-605-4346****SALVADORE AUTO**
Family of Dealerships**ON THE JOB****2022 RAM 2500HD CREW CAB**
BIG HORN 4X4**LAST ONE!****CALL FOR PRICING!**6.7L CUMMINS TURBO DIESEL - LVL C
EQUIPMENT GROUP - SNOW CHIEF PKG -
SPORT APPEARANCE PKG - STK#: N22046**Trucks On The Lot
And More On The Way!**More 2500/3500/4500
& 5500HD series trucks
in transit, pre-upfit and
ready to work! All body
variations available!
Call us for the right
truck for your business
needs!**2021 RAM 5500HD C&C**
TRADESMAN REG CAB 4X4**16' FLAT DECK**120" CAB TO AXLE - 6.7L CUMMINS
TURBO DIESEL - UCONNECT 3 - CHROME
APPEARANCE PKG - DRW - TRADESMAN LVL 1
STK#: N21041**2021 RAM 2500HD**
TRADESMAN REG CAB 4X4
UTILITY SERVICE BODY**Multiple Available!**56" CAB TO AXLE, 6.4L HEMI V8 - CHROME
APPEARANCE PKG - TRADESMAN LVL 1 -
UCONNECT 3 - HEAVY DUTY SNOW PLOW
PREP - DURAMAG & KNAPHEIDE BODIES
AVAILABLE. STK #: N21242**COME SEE LARRY
THE TRUCK GUY!****More Than 30 Years of
Commercial Truck Experience!****2022 RAM 3500HD****TRADESMAN CREW CAB 4X4****JUST ARRIVED!**6.4L HEMI GAS - CHROME APPEARANCE -
TRADESMAN LVL 1 - SNOW PLOW PREP -
CHROME SIDE STEPS - SPRAY IN
BEDLINER. STK: N22066**2021 RAM 5500HD C&C**
TRADESMAN REG CAB 4X4
INCOMING WITH UP-FIT84" CAB TO AXLE - 6.7L CUMMINS TURBO
DIESEL - 11T SWITCHING HOIST SYSTEM -
TRADESMAN LVL 1 - UCONNECT 3 - SNOW
PLOW PREP - REAR VIEW CAMERA STK: N22071**2022 RAM 3500HD C&C**
TRADESMAN REG CAB 4X4
NEW ARRIVAL!**CALL FOR PRICING!**60" CAB TO AXLE - 6.7L CUMMINS TURBO
DIESEL - DRW - CHROME APPEARANCE
PKG - TRADESMAN LVL 1 - UCONNECT 3 -
UPFIT READY - STK#: N22012**2021 RAM 5500HD C&C**
TRADESMAN CREW CAB 4X4
INCOMING WITH UP-FIT**CALL FOR PRICING!**60" CAB TO AXLE - 6.4L HEMI GAS - 9'
IROQUOIS STEEL DUMP BODY - CHROME
APPEARANCE PKG - TRADESMAN LVL 1 -
SNOW PLOW PREP STK: N21256442 West Broadway, Gardner, MA 01440 | SalvadoreAuto.com

NOT RESPONSIBLE FOR TYPOGRAPHICAL ERRORS. INCLUDES QUALIFYING REBATES. PRICING SUBJECT TO CHANGE AFTER 12/31/2021

SALVADORETRUCKS.COM



RAM

SALVADORE AUTO

.com

Family of Dealerships

888-605-4346

**2022 RAM 3500HD**

CREW CAB LARAMIE 4X4 8' BED

JUST ARRIVED!

6.7 CUMMINS HIGH OUTPUT - LARAMIE
LVL A PKG - SNOW CHIEF - UCONNECT
5 - 12" DISPLAY - SUNROOF - 5TH
WHEEL PREP STK: N22048

2021 RAM 3500HD C&C

TRADESMAN REG CAB 4X4

DEWEZE FLATBED!

60" CAB TO AXLE - 6.4L HEMI GAS - AISIN
TRANSMISSION - CHROME APPEARANCE
PKG - TRADESMAN LVL 1 - UCONNECT 3 -
DUAL REAR WHEEL STK: N21231

2022 RAM 3500HD C&C

TRADESMEN CREW CAB 4X4

JUST ARRIVED!

60" CAB TO AXLE - 6.4L HEMI GAS - AISIN
TRANSMISSION - TRADESMAN LVL 1 -
CHROME APPEARANCE PKG - UCONNECT
3 - DUAL REAR WHEEL STK: N22064

2022 RAM 3500HD C&C

TRADESMAN REG CAB 4X4

9' DURAMAG HIGH CAP DUMP!

60" CAB TO AXLE - 6.7 CUMMINS TURBO
DIESEL - CHROME APPEARANCE PKG -
TRADESMAN LVL 1 - UCONNECT 3 - DUAL
REAR WHEEL STK: N22006

#1

**RAM Chassis Cab
Dealer in all of
New England!**

2022 RAM 5500HD C&C

TRADESMAN RED CAB 4X4

UP-FIT READY!

84" CAB TO AXLE - 6.7 CUMMINS TURBO
DIESEL - CHROME APPEARANCE PKG -
REAR VIEW CAMERA - UCONNECT 3 - 19.5"
POLISHED ALCOA WHEELS STK: N22054

2022 RAM 5500HD C&C

TRADESMAN REG CAB 4X4

INCOMING WITH UP-FIT!

84" CAB TO AXLE - 6.7L CUMMINS TURBO
DIESEL - 9' AIR-FLOW HIGH CAP STEEL DUMP
BODY W/ BRUTE I-PAK - TRADESMAN LVL 1 -
UCONNECT 3 - REAR VIEW CAMERA
STK: N22054

2022 RAM 5500HD C&C

TRADESMAN REG CAB 4X4

INCOMING WITH UP-FIT!

84" CAB TO AXLE - 6.7 CUMMINS TURBO
DIESEL - 9' DURAMAG ALUMINUM DUMP BODY
W/ BRUTE I-PAK - CHROME APPEARANCE PKG -
UCONNECT 3 - 19.5" POLISHED ALCOA WHEELS
STK: N22010

2021 RAM 5500HD C&C

TRADESMEN REG CAB 4X4

**12' KNAPHEIDE STAKE BODY
W/ TOMMY GATE**

84" CAB TO AXLE - 6.7 CUMMINS TURBO
DIESEL - CHROME APPEARANCE PKG -
TRADESMAN LVL 1 - SNOW PLOW PREP -
MAX TOW PKG STK: N21256

442 West Broadway, Gardner, MA 01440 | SalvadoreAuto.com

NOT RESPONSIBLE FOR TYPOGRAPHICAL ERRORS. INCLUDES QUALIFYING REBATES. PRICING SUBJECT TO CHANGE AFTER 12/31/2021.



(203) 510-6626
Watertown CT



26 Years Of Oversized Equipment Hauling

Big To Small We Can Haul - New England Service
www.hayesheavyhauling.com



2012 LINK BELT SPIN ACE 80. Progressive Hyd Thumb, Brand New 2' Bucket, Hyd Q/C, Full Cab, Heat & AC, Runs Great, Tight Machine, **\$59,900**, Call Dan 203-506-3860



2014 CATERPILLAR 924K WHEEL LOADER, 8900 Hours, New Cutting Edge, 60% Radials All Around, Machine Is READY FOR WINTER! **\$87,900** Call Today ! 781-417-3018



USED ACCESSORIES. Unlimited Skid Steer Blower, 7 Ft. Skid Pro, Great Condition, **\$2800 OBO.** Call 508-212-0334 And Ask For Larry,

What's In Your Toolbox?

- BUY, SELL, TRADE - FAST
- FROM NEW TO USED, IT'S ALWAYS FRESH
- AND A HANDY RESOURCE, TOO

1-888-887-0505
www.TruckAndEquipmentPost.com



HOLLISTON TRUCK

1569 WASHINGTON ST, HOLLISTON, MASS 01746
WWW.HOLLISTONTRUCK.COM • CALL 508-429-7678

**WANTED :
GOOD USED
DUMP BODIES**

LARGE SELECTION OF UNDER CDL TRUCKS !



2007 FORD F-650: CAT C7-230HP, 142K MILES, ALLISON 3500RDS AUTO, 26K GVW, 5.64 GEARED RATIO, 11R 22.5 TIRES, SINGLE FRAME, AIR-BRAKES, A/C, PTO, 10' STEEL DUMP, 1 CHUTE, TARP, PINTLE, AIR-TO-REAR. **\$37,000**



2012 FREIGHTLINER M2 : CUMMINS ISB-245HP, 39K MILES, ALLISON AUTO, 26K GVW, SPRING SUSP, SINGLE FRAME, 265/70R 19.5 TIRES, AIR-BRAKES, A/C, PTO, MONROE UTILITY BODY, UNDER MOUNT COMPRESSOR & GENERATOR, HOSE REELS, PINTLE HITCH. **\$45,000**



2009 INTERNATIONAL 4300: DT466-260HP, 155K MILES, ALLISON 3500RDS AUTO, 26K GVW, SPRING SUSP, 5.64 GEARED RATIO, 11R 22.5 TIRES, SINGLE FRAME, AIR-BRAKES, A/C, PTO, NEW 15' STEEL DUMP W/ BARN DOORS, PINTLE PLATE, AIR-TO-REAR, TOOL BOX. **\$40,000**



2010 FORD F-650 : CUMMINS ISB-230HP, 205K MILES, ALLISON 3500RDS AUTO, 26K GVW, SPRING SUSP, SINGLE FRAME, 10R 22.5 TIRES, AIR-BRAKES/SEAT, A/C, PTO, 8' STEEL DUMP, 1-PACK TOOL BOX, TARP, PINTLE. **\$33,000**



2003 INTERNATIONAL 7400: DT530-285HP, 71K MILES, 8LL, 54K GVW, SPRING SUSP, EXHAUST BRAKE, 5.64 GEARED RATIO, 11R 22.5 TIRES, DOUBLE FRAME, AIR-BRAKES, A/C, PTO, 14' STEEL DUMP, ELECTRIC TARP, AIR-GATE, PINTLE PLATE. **\$43,000**



2007 INTERNATIONAL 4300: DT466-260HP, PRE-EMISSIONS, 87K MILES, ALLISON 3500RDS AUTO, 26K GVW, SPRING SUSP, 5.64 GEARED RATIO, 11R 22.5 TIRES, SINGLE FRAME, AIR-BRAKES, A/C, PTO NEW 14' STEEL DUMP, BARN DOORS, PINTLE, AIR-TO-REAR, TOOL BOX. **\$45,000**

THE DUMP TRUCK SPECIALISTS



16th Annual RED TAG SALE

From December 15th Thru December 31st

**Select Trailers, Truck Bodies, Golf Carts,
& Snow Plows are marked down to the
lowest price of the year! Don't miss out
on the Savings!**

Save even More when you take advantage of
Section 179 tax savings! Write off up to
\$1,000,000 in equipment purchases for 2021

**Connecticut Trailers & PowerSports
7 Bolton Center Rd Bolton, CT
860-649-7223
CTTRAILERS.com**

ANDERSON MOTORS INC.


GMC

MICRO BIRD
by GERRARDIN

BLUE BIRD BUS SALES OF NEW ENGLAND
*** YOUR EXCLUSIVE VOLVO TRUCK DEALER ***


2023 VOLVO VHD84B300-D13, 500HP, 14SPD. AUTO, 18' HEAVY DUTY STEEL DUMP, HIGH LIFT-GATE. *INCOMING*



2022 VOLVO VHD64FT300-D13, 500HP, 12SPD. I-SHIFT, AUTOMATIC, 14,600# FRONT / 46,000# REARS, T-RIDE.#21077



2023 VOLVO VHD84F300-D13, 500HP, 14SPD. I-SHIFT, AUTOMATIC, 14,600# FRONT / 46,000# REARS, STEERABLE PUSHER. INCOMING



2023 VOLVO VHD84B300-D13, 500HP, 14SPD I-SHIFT, H.D. STEEL DUMP, HIGH-LIFT DOUBLE ACTING TAIL-GATE, PINTLE PKG. INCOMING



2023 VOLVO VHD64BT300-D13, 500HP, 12SPD. I-SHIFT, 46,000# T-RIDE, HYD. WET-SYSTEM. INCOMING



2001 STERLING 9500 SERIES TRI-AXLE DUMP TRUCK, SERIES 60 ENGINE, ALLISON AUTOMATIC. #200134A



2023 RHODES RSS2660-2 26' STEEL END DUMP TRAILER, AIR HIGH-LIFT DOUBLE ACTING TAIL GATE, HD SPECS. INCOMING



2023 RHODES ASSS2660-2 26' ALUMINUM END DUMP TRAILER, STEEL FRAME, STEEL POINT SUSPENSION. INCOMING !



2022 FORD TRANSIT 14 PASSENGER COMMERCIAL SHUTTLE BUSES, GAS, INDIVIDUAL SEATING. INCOMING



2017 FORD E-450 HANDICAP SHUTTLE BUS, 14/ 12 / 2 WHEEL CHAIRS, 36,000 ORIGINAL MILES.



2019 FORD E-450 24 PASSENGER COMMERCIAL SHUTTLE BUS, GAS, AUTOMATIC, A CDL LICENSE IS REQUIRED. #190016



2022 CHEVY G5 14 PASSENGER MFSAB, GAS, AUTOMATIC, NON CDL. INCOMING

401-434-5900

WWW.ANDERSONMOTORS.COM

EMAIL • SALES@ANDERSONMOTORS.COM

170 AMARAL STREET • EAST PROVIDENCE, RI 02915

HABLAMOS ESPAÑOL



**FULL FABRICATION SHOP.
CUSTOM CHIPPER TOPS &
BODIES. CUSTOM REAR
GATES ALSO AVAILABLE.**

CALL CHRIS CAREY AUTO PLYMPTON, MA
781-582-1378

CTE INC. CONSOLIDATED TRUCK & EQUIPMENT, INC.

**FELTING
TRAILERS**

**EXTREME
TRAILERS**

**Palmer
TRAILERS**

www.ConsolidatedTruckEquipment.com
32 INDUSTRIAL COURT, (RT.6) SEEKONK, MASSACHUSETTS.
ACROSS FROM SEEKONK SPEEDWAY.

HURRY THEY WON'T LAST LONG!



2022 EXTREME ALUMINUM FLATBED TRAILERS: 48' x 102" Aluminum Landing Gear, Air Ride, Spread Axle, 8 Aluminum Wheels, Galvanized King Pin Plate and Suspension, 3 Available \$38,950.00 (while they last). One Available With Rear Axle Slide \$42,900.00, 508-336-6215



MAC TOOLS MAXIMIZER TOOLBOX. New Condition, Never Used, 88"L, 27"W, 46"H, Made In USA, **\$7000.00**, Offers Considered, 203-206-2104



2016 DOOSAN DX 180LC-5. Like New, 800 Hours, Heat, Air, Radio, Hammer Lines W/ Auxiliary Hydraulics, 48" Bucket, Bottom Too Wide For My 25-Ton Tag, 9'7" Wide, 21-1/2 Tons, Awesome Machine, Dealers Sell For \$125-130K W/ More Hours, Full Warranty On The Entire Machine Until 2025 or 5000 Hours, Selling Cheaper To Move Fast, **\$100,000.00**. If You Need Financing, I Have A Guy. Norwalk, CT 203-858-3516, Mike



1987 FORD F-800 DIESEL. 2002 Torwel Stainless Sander, 6 Cy, New Honda Engine 2 Years Ago, **\$18,500.** 508-997-4921



TRANS EAST EQUIPMENT INC.,
67 Main St Salisbury, MA
CALL DAVE Cell 978-992-7077 Or 978-462-1919

**EXIT 60 Off Rt 95
End Of Ramp**



1995 OTTAWA YARD HORSE.
Tandem Axle, Good Runner,
\$26,500



2001 MACK RD 22' FLATBED. 20 Pusher, 44 Rears On Camelback, 350, 8LL, Moffit Kit, **\$23,500**



48' x 102" FLATBED TRAILER.
Several Available, **Starting @ \$12,500**



2014 WABASH 53' x 102".
Three Available, Swing Doors, Air Ride, Very Hard To Find, Call For Pricing



1999-2001 53' TRAILERS.
Swing Doors, Some Spring Ride & Some Air Ride, Six Available, **\$12,500 And Up**



2006 TRAILMOBILE 36' TRAILERS.
Rail Gate, Some With Heaters, **\$4,500 and Up**



MACK SUPERLINERS.
Several Available, Various Power, Transmissions, And GVW's, Call Us With Your Specs



20' And 40' CONTAINERS.
New & Used, Stacking 'em High, Call With your Needs, We Can Deliver.



JACK MADDEN FORD

888-817-7979

**WE'VE GOT
YOUR TRUCK!**



BUILT FOR AMERICA

**HURRY TAKE ADVANTAGE OF
TAX BREAK 179***

Consult with your accountant now*



SUPER DUTY WORK TRUCKS

**\$200.00 COUPON
ON ALL FACTORY
RETAIL SUPER DUTY**

SPECIAL ORDER TODAY FOR YEAR END DELIVERY

**\$200.00 COUPON
ON ALL FACTORY
RETAIL SUPER DUTY**

visit or website for more information*



NEW F250XL 2WD CREW CAB:
6.2L, Power Group.
WWW.JACKMADDENFORD.COM



**NEW F550XL 4x4 SWITCH -N- GO BODY: 6.7L DIESEL,
POWER GROUP. NAP**
WWW.JACKMADDENFORD.COM



2021 F350 SUPER CAB XL 4x4:
7.3L V8, POWER GROUP
WWW.JACKMADDENFORD.COM



NEW F550 XL 4x4 DUMP BODY:
6.7L Diesel, Power Group.
WWW.JACKMADDENFORD.COM



JACK MADDEN FORD



825 Providence Hwy Rt.1 Norwood, MA

888-817-7979



*All prices include incentives for qualified buyers. For trade assist, must have 2017 or new trade. All vehicles require dealer financing.
Some prices include snowplow incentives. See dealer for complete details.

COMMERCIAL
VEHICLE CENTER

JACK MADDEN FORD

888-817-7979

**WE'VE GOT
YOUR TRUCK!**



BUILT FOR AMERICA

**HURRY TAKE ADVANTAGE OF
TAX BREAK 179***



Consult with your accountant now*

SUPER DUTY WORK TRUCKS

**\$200.00 COUPON
ON ALL FACTORY
RETAIL SUPER DUTY**

**SPECIAL ORDER TODAY
FOR YEAR END DELIVERY**

**\$200.00 COUPON
ON ALL FACTORY
RETAIL SUPER DUTY**

visit or website for more information*



**NEW F350 XL SUPER CAB 4X4 DURAMAX
UTILITY BODY: W/SPRAY LINING, 8.3L
V8, POWER GROUP.
WWW.JACKMADDENFORD.COM**



**NEW E350 CUTAWAY
WWW.JACKMADDENFORD.COM**



**NEW F350 XL DUMP 4WD. DRW,
7.3L, V8 Gas, Auto
WWW.JACKMADDENFORD.COM**



**NEW F350 4X4 CHASSIS'S
Available.
CALL FOR INFORMATION
WWW.JACKMADDENFORD.COM**



**NEW F550 XL DRW 4x4
11' Dump Body:
CALL FOR INFORMATION
WWW.JACKMADDENFORD.COM**



**NEW F350XL DRW 4x4 LANDSCAPE
BODY: 6.7L DIESEL. Power Group.
WWW.JACKMADDENFORD.COM**



JACK MADDEN FORD

825 Providence Hwy Rt.1 Norwood, MA
888-817-7979

COMMERCIAL
VEHICLE CENTECOMMERCIAL
VEHICLE CENTE

*All prices include incentives for qualified buyers. For trade assist, must have 2017 or new trade. All vehicles require dealer financing. Some prices include snowplow incentives. See dealer for complete details.

CAREY AUTO
INC
TRUCK EQUIPMENT
SALES



37 County Road
Route 106
Plympton MA 02367
PH: 781-582-1378
FAX: 781-585-4438



**LANAU DUMP BODIES
IN STOCK READY TO GO.
CALL FOR APPOINTMENT.**



DOWNEASTER DUMP BODIES IN STOCK NOW!
Includes Cab Shield and Hoist. Call for Pricing Today.



12' ALUMINUM LANDSCAPER IN STOCK.
OTHER SIZES AVAILABLE. CALL FOR DETAILS.



07 KW New 14' Dump Hardox 450: Cummings Low Miles Allison Automatic, New Auto Tarp Complete Refurbish on Truck. All New tires.
\$86,000



2011 HINO ALUMINUM SINGLE COMPARTMENT TANK:
AUTOMATIC, 33K GVWR. \$49,900.



2007 KW T800 17' LANAU DUMP BODY W/Highlight Lift Gste: Cummins Engine. New Rods & Mains, 18 Speed. Call for more details. \$95,000.



HOOK LIFTS IN STOCK NOW!
BIG OR SMALL WE HAVE THEM ALL. CALL US TODAY.

**SALES,
SERVICE,
PARTS**

CALL TOLL FREE: 781-582-1378
WWW.CAREYTRUCKEQUIPMENT.COM

**CUSTOM METAL
FABRICATION
AVAILABLE**



2016 ROCKSTER R700 - Closed Circuit Impactor, Legal Load, Volvo Diesel, 500 Hours, **\$315,000**
- CALL DAN AT 203-506-3860



14' SNO-BANDIT PUSH BLADE. Rubber Edge, Used 2 Seasons, **\$4800.**
508-997-4921

COMMERCIAL HOT WATER PRESSURE UNITS



Electric Motor – Gas Engine
- 1725 RPM Motor & Pump
- Becket Burner
- TEFCO 120 V Baldor Motor
- 50 Ft Hose
- 4' Lance Trigger Gun
- 1000 to 4000 PSI Options
- Poly Fuel Tank
NEW Starting @ \$2,295
USED Starting @ \$1,095

R & E STEAM EQUIPMENT

Call Earl Warwick **617-899-8775**

Why Travel Anywhere
 When You Could Access
 The Magazine At Your *Finger Tips*
www.truckandequipmentpost.com

- Selling
 - Browsing
 - Buying
- We Got You Covered*



2023 RHODES RSS2660-2: 26' Steel End Dump Trailer, Air-Lift Double Acting Tail-Gate, HD Specs. Incoming! 401-434-5900



12' FUNNEL PLOW, \$2000.
 11' Plow **\$800 And Up OBO,**
 For 11' Funnels And Straight Plows. 413-374-5331



1996 INTERNATIONAL 4700 SERIES. 33,000 GVW, DT-466, 6+1 Trans, 1750 Etnyre Tank, Rear 172 C.I., Ford Motor, Fuel Burners, 12 Ft. Bars, Runs Well, **\$11,500 OBO.** Call Ray, 860-346-2833

CAREY AUTO
 INC
 TRUCK EQUIPMENT
 SALES

37 County Road
 Route 106
 Plympton MA 02367
 PH: 781-582-1378
 FAX: 781-585-4438

SWITCH-N-GO SYSTEMS & CONTAINERS IN STOCK.



READY TO GO COMPLETE TRUCK PACKAGES.
LOTS OF OPTIONS AVAILABLE.
New & Used Trucks Ready To Go!

CALL TOLL FREE: 866-637-4076
WWW.CAREYTRUCKEQUIPMENT.COM

**SALES,
 SERVICE,
 PARTS**

**CUSTOM METAL
 FABRICATION
 AVAILABLE**



781-315-1680
Call Dan Rott



GREAT SELECTION OF NEW & USED HEAVY EQUIPMENT & ATTACHMENTS
FINANCING AVAILABLE ON ALL UNITS UP TO 60 MONTHS.
CALL FOR DETAILS.



2019 RT120. 128 Hours,
 \$89,000. #AV0016



2002 KAWASAKI 65TM.
 Coupler, Bucket, Runs
 Great, \$39,500. #CE3983



2021 MAULDIN
 M415XT GRADER.
 Loaded, \$164,000 #MA0069



2021 MAULDIN
 MT300 TACH
 WAGON. \$19,500.
 #MA0072



2017 VOLVO EC380EL.
 Coupler, Bucket,
 Hydraulics, \$219,000.00
 #CE4014



2014 VOLVO DD110B.
 8 Amp, 67" Roller, 1850
 Hours, \$58,000. #CE3005



2012 VOLVO EW210D.
 Nice Machine, \$87,000.
 #CE3806



2017 VOLVO EC220EL.
 Coupler, Bucket,
 Hydraulics, \$136,000.
 #CE3987



2015 VOLVO L350F.
 10 Yard, \$299,500.
 #CE3526

WOBURN, MA - AVON, MA - JOHNSTON, RI www.WoodCoMachinery.com



4 Nora Lane
Pomfret Center, CT
860-428-5333



1934 CHEVY. Steel Body,
 ZZ350 Engine, 700R4
 Transmission, Corvette Rear,
 1432 Miles, Perfect Condition,
\$60,000 OBO



FINN HYDRO SEEDER.
 Gas Engine, Skid Mounted,
\$4,000 OB



SKYJACK SCISSOR LIFT.
 19 Ft Platform Height, With
 Slide Out Deck, **\$4,000 OB**



HITACHI ZX50
EXCAVATOR. OROPS, 79
 Inch Front Blade, Zero Tail
 Swing, Nice Machine,
\$31,000 OBO



NEW 2021 DECTA 20 Ft TAG-A-
LONG TRAILER. Tilt Deck, 14,000
 GVW, Electric Brakes, Adjustable
 Hitch, **\$12,000 OBO**



NEW Golden Mountain Storage
Building Front Doors,
 40'x20' and 30'x20' **\$3,100 Each**



2004 WITZCO 50 TON TRAILER.
 Ground Bearing, Spring Ride, Great
 Condition, **\$35,000**



2004 TRAILKING
55 TON TRAILER.
 Non Ground Bea



2020 PETERBILT 389 EXT
HOOD. 565 Cummins, 18
 Speed, 46k Rears, Front Disc
 Brakes, Platinum Interior,
 128k Miles, Wet Line, 10k Ext
 Warranty, **\$185,000.**



2020 MAC 40'x 102'x 72'.
 Half Round, Spread Axle,
 Never Used, **\$85,000 Firm**



78" SCREENING BUCKET.
 Fits A Skid Steer, Complete
 Hoses, Couplers, Brand New
 And Un Used. **\$4,000**



NEW TERAN
TH300
HYDRAULIC
BREAKER.
\$4,500.



NEW 72 INCH BRUSH/
MOWER. For Skidsteer,
\$4,200.



2000 CHEVY 3500 1 TON
DUALY UTILITY BODY.
 150k Miles, Garaged Its
 Entire Life & Runs Great.
\$6,500



1939 FORD DELUX
CONVERTIBLE. Steel
 Body, Restomod, ZZ350 ci,
 700R4, Best Of Everything
\$65,000 OBO

CANDIA TRAILER

www.CandiaTrailer.com
 & LANDSCAPE EQUIPMENT CO
All Prices Cash & Carry! Installation Available!

SAVE TIME & FUEL • WE SHIP!

1-866-761-0196
 NH 603-483-2541 • Fax 603-483-2842

35 High St, Candia 4 Coners, Candia NH
 10 Minutes East of Manchester, NH • 1 hour From Boston

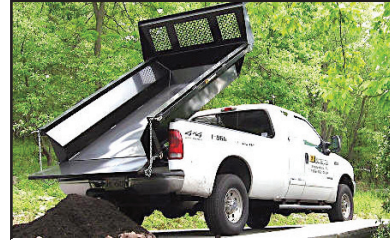
**"Helping
 You With
 The Right
 Fit"**



DURA MAG ALUMINUM FLATBED BODIES. Industry's Highest Quality, Call With Your Specs. **Starting @ \$2,695**



ALUMINUM DUMP BODIES. Complete Sub Frame, Power Pac, LED Lights, **Starting @ \$7,997.**



8' EZ Slide In Dump Body. With Head Board, Tarp & Hoist, **\$3,995**



POWER TILT
USA Made
20 FT POWER TILT 7 TON EQUIPMENT TRAILER



Aluminum Car Hauler Trailer. 10,000 GVW, American Made,



CTECH – Drawer Units That Fit Into Your Utility Body



DUMP TRAILERS. 12', 14', 16 Ft. Twin Piston, Powder Coat, Ramps, Battery,



LANDSCAPER TRAILERS.



IN STOCK – Trailer Wheels. Tire & Rim, All Sizes, Call With Your Specs



HOMESTEAD Enclosed Trailers. Stocking 8 Ft – 24 Ft



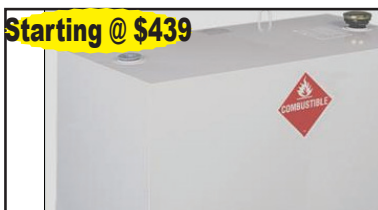
DURA MAG SERVICE BODY. All Aluminum, Heavy Duty Ladder Rack



TAKE OFF BEDS. Ford – GM – Dodge
Call With Your Specs



DOT Truck & Trailer Lights. And Oval Amber Mini Lightbar – WE SHIP



Starting @ \$439

TRANSFER TANK & PUMP. Made In USA, 12 Ft Hose, Nozzle Gun, 15 gpm, In Stock – We Ship



FILL RITE \$349

SAVE TIME & FUEL • WE SHIP!**CANDIA TRAILERS.COM**

& LANDSCAPE EQUIPMENT CO

1-866-761-0196**TAX FREE NEW HAMPSHIRE**

Galion

IN STOCK GALION DUMP BODIES.
8 Ft Thru 16 Ft. Call With Your Specs Today

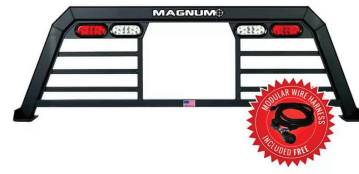
**HARSH HOIST**

2.5 to 45 Ton, Single or
 Double Piston. Convert
 a Flatbed Body to a
 Dumping Body.
**HOIST & POWER
 PACK**

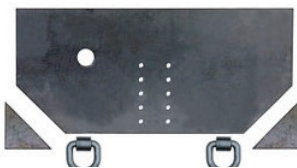
Starting @ \$1,685
USA Made



**BUTCHER Dump Power Pac with
 control Gravity Down \$525**



HEADACHE RACKS – Aluminum, USA Made, Available
 w/ Window Cut Out Or Without, Hi & Low Profiles, LED
 Light Options, Sport Series And Pro Series



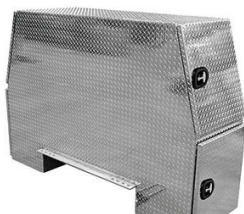
Pintle Plate \$199



**15 Ton Pintle Hook \$59 –
 WE SHIP**



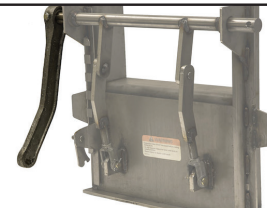
Retractable Step
One Step \$119
Two Step \$129
Three Step \$139



Aluminum I-Pack Toolbox \$2,795



**CUSTOM AND STANDARD
 INSTALLATIONS**



**Shuttle Door
 \$199**

UNDERBODY TOOL BOXES – Stainless Steel Hinges & Handles
Powder Coat

**Diamond Aluminum Door
 (black in color)**

24"x18"x18" \$259
30"x18"x18" \$299
36"x18"x18" \$339
48"x18"x18" \$369



**Diamond Plate Aluminum
 Underbodies**

18"x18"x18" \$288
24"x18"x18" \$309
30"x18"x18" \$339
36"x18"x18" \$369
48"x18"x18" \$479
60"x18"x18" \$580

LOAD COVER

**7' X 12' Mesh tarp & Hardware Kit
 \$259**



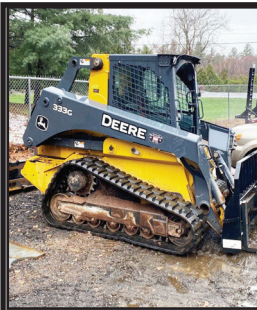
PAYMENTS AS LOW AS \$99 A MONTH*

THE SNOW LEASE IS BACK. JCB wheel loaders and skid steers are ideal for snow removal, but you don't stop working when the snow melts. Keep your machine. Make higher lease payments in the winter while you're turning cold wet snow into cold hard cash. Keep your machine working year round with lowered payments the other 7 months of the year, just \$99 a month for skid steers.

*All applications are subject to credit review and approval. Security deposit may be required based on applicant's credit. Five (5) "ON-SEASON" (November - March) increased payments and seven (7) "OFF-SEASON" (April - October) reduced payments per year based on 5-year/5,000 hour lease terms. First payment due in advance and must be an "ON-SEASON" payment. Minimum "OFF-SEASON" payment is \$99 + applicable taxes. Offer valid only on specific models. Offer may change without prior notice, and additional terms and conditions may apply. Call for complete details.



800-Go2-ALTA | AltaEquipNE.com



2016 JOHN DEERE 333G.
Full Cab, Forks, Bucket,
Aux Plumbing, New
Tracks, 2100 Hours,
\$48,500,
Call Dan,
203-506-3860



1997 VOLVO WG M11 Cummins, 18 Speed,
Comes With Stainless Steel Sander And Closed Loop System,
\$15,000/BO, 413-531-1908



PORTABLE LINE BORING

WELDING • FABRICATION • REPAIRS

DAVID GOKEY

AFFORDABLE LINE BORING

Serving CT, MA, RI, Southern NH, VT

413-530-0242 Call/
Text

davidgokey70@gmail.com

MC, Visa, AMEX, Discover

Why Travel *Anywhere*
When You Could Access
The Magazine At Your *Finger Tips*
www.truckandequipmentpost.com



- Selling
 - Browsing
 - Buying
- We Got You Covered*



1995 48" HAULMARK TRI-AXLE.
5th Wheel,
\$10,000 OBO.
508-400-7414



KOMATSU 450 LOADER.
Parts Machine
Complete Except
Motor, **\$7,500.**
401-438-3000



YALE LPG FORKLIFT.
22,000 Lb.
Capacity,
Cushion Tires,
Runs Well,
\$15,000 OBO.
860-291-2436

ALL MAKES

EQUIPMENT & PARTS

CONTACT

ROLAND CARTER 603-340-6776 • ANDOVER NH 03216

**EQUIPMENT SALES
EQUIPMENT PARTS
EQUIPMENT
ATTACHMENTS
FINANCING AVAILABLE**



Rebuilt & Good Used Engines.



Equipment Hydraulic Parts.



New & Used Buckets & Attachments.



**New Undercarriage.
Free Undercarriage Inspection.**



Salvage Equipment Parts.

info@allmakesequipmentandparts.com • www.amepinc.com

We are cash
buyers for
quality used
trucks and
equipment!

BROOKSIDE EQUIPMENT SALES

WWW.BROOKSIDEEQUIPMENT.COM

978-249-4600

2004 FREIGHTLINER FLD 120:

308,782 Hours, 10 Wheel
Daycab, Cat C15 Twin
Turbo, 475 HP, Fuller
8LL, Air Ride, 14K F,
46K R, Wetline,
Stk#TK793, **\$29,500**



**FULL FABRICATION SHOP.
CUSTOM CHIPPER TOPS &
BODIES. CUSTOM REAR
GATES ALSO AVAILABLE.**

CALL CHRIS CAREY AUTO
PLYMPTON, MA
781-582-1378

60 STATE RD, PHILLIPSTON, MASS

978-249-4600

EMAIL: KEVIN@BROOKSIDEEQUIPMENT.COM

2015 BOBCAT:

1300 Hours,
New Tires, Very
Good Sharp Clean
Bobcat, **\$10,000**,
401-641-0825



2001 FREIGHTLINER

FL80. 3400 GL Techweld,
6 New Tires, New Real 2y Old,
364K Miles, New Hose,
New Air Compressor, No Leaks,
Blackmar, 6sp,
New Spring, New Cross Mers,
\$28,000 OBO.
Pawtucket, RI 401-473-7669

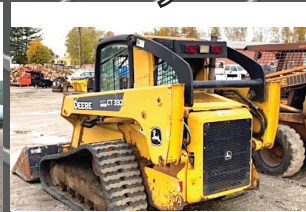


Atkinson Truck & Equipment Sales

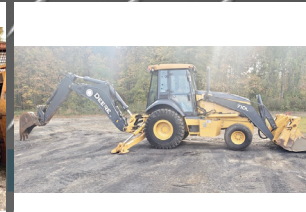
Atkinson, NH 978-852-7842



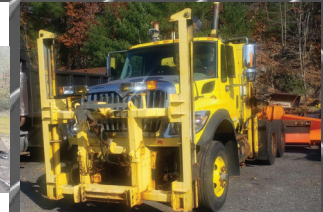
**2007 TEREX PR330T ROAD
MILLER.** Cummins, 2,012
Hours, Grinding Drums 2', 3' &
4', Conveyor, Rubber Track Pads,
\$54,500



**DEERE CT 332 RUBBER
TRACK SKID STEER.** Deere
Diesel High Flow Enclosed Cab
With Heat, **\$26,500**



**2018 JOHN DEERE 710L
BACKHOE.** 4 In 1 Bucket,
Aux Hydraulics, **\$47,500.**



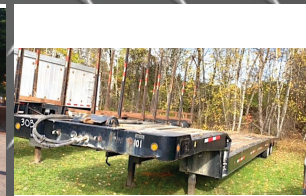
2007 INTERNATIONAL 7600.
Cummins Engine, Automatic,
18k Frt, 46k Rears, Double Wing
Setup, Sander Control, **\$16,500**



**CAT IT28G RUBBER TIRE
LOADER.** 6 Cyl Diesel, Quick
Coupler, Aux Hydraulics, 20.5R25
Tires, **\$32,500**



**1973 MACK R685T TRUCK
TRACTOR.** 237 Hp, 5 Speed,
Single Axle, Tag Axle, Show
Truck, **\$14,500**



**2000 LANDOLL 35 TON
RECOVERY TRAILER.**
With 40k Winch Excellent
Condition, **\$26,500**



**CAT 910F RUBBER TIRE
LOADER.**
4 Cyl CAT Diesel, Quick Coupler, Aux
Hydraulics, 15.5R25 Tires, **\$22,500**



HILLSIDE MOTORS

**800-D American Legion Highway (Rt. 177)
Westport, MA 02790
508-636-5050**



Family Owned & Operated Since 1969

HURRY! SPEND YOUR BUCKS ON TRUCKS, NOT UNCLE SAM, THE TAX MAN!



DURAMAX DIESEL

2009 CHEVROLET K2500 HD 4X4 REG CAB 8' BED. LT PKG,
Duramax Diesel, Allison Trans, PW, PL, Tilt, Cruise, AC, Alloys,
Spray-In Bedliner, One Owner, 127K, Excellent Condition, \$27,500.



¾ TON

2019 CHEVROLET EXPRESS 2500 CARGO VAN. ¾ TON. V6,
Auto, AC, PW, PL, Tilt, Cruise, Solid Steel Body, Aluminum Drop-
Down Ladder Racks, 8600 GVW, 107K, Fleet Maintained, One
Owner, Mint Condition, \$29,900.



4X4

2002 CHEVY 3500 HD BUCKET TRUCK w/
UTILITY BODY. Onan Generator, Altec Boom, 8.1L,
Auto, 137K, Clean Truck, \$13,900.



NEW TAKE-OFF

NEW TAKE-OFF 8' RACK BODY w/Removable Sides,
SRW, Great Replacement For A Rusty Pickup Bed,
Immaculate Condition, \$3,800.



LONG BED 4X4

2015 CHEVROLET SILVERADO 2500HD REG. CAB 4X4. Longbed, LT
PKG. 6L V8, Auto, AC, PW, PL, Tilt, Cruise, Cloth Int, Rear Defrost, SS
Running Boards, Tonneau Cover, Spray-In Bedliner, Alum. Wheels, 43K
Miles (tmu), Rust Free, Impeccable Condition, \$32,800.



AMBULANCE BODY. Removed From 2009 GMC
5500, Clean Tight Body, Excellent Condition, \$2,500.



8' KNAPHEIDE UTILITY BODY SRW. Complete
With Rear Step Bumper & Hitch, Master Locking
System, Single Rear Wheel, \$3,800.



**CAB &
CHASSIS
ONLY**

2012 INTERNATIONAL CAB & CHASSIS - NO BODY. Allison
Auto, 26,000 GVW, Typical Maxx Force Diesel Engine That Is Junk,
Does Not Run, TMU, Don't Know What's Wrong W/Engine, Don't
Ask, Good Parts Truck, \$2,900.



ALLEGIANCE

— TRUCKS® —

LIBERTY

INTERNATIONAL TRUCKS



603-905-9036

132 Pierce Rd. (Rt. 125)
Barrington, NH
(17 miles from Portsmouth)



603-623-8873

1400 South Willow St.
Manchester, NH
(1 hour from Boston)

ASK YOUR TAX PROFESSIONAL ABOUT THE SECTION 179 DEDUCTION - YOU MAY BE ELIGIBLE TO DEDUCT THE FULL PRICE.



2007 WESTERN STAR 4900FA DUMP
8x4. 470 HP Detroit, 10 Spd, 62,900
GVW, 372K Miles, stk#212908,
\$79,900.



2009 FREIGHTLINER M2 w/Altec
D3050A-TR 50' Digger Derrick. 450
HP, 8LL, 18K F/A, 40K R/A, 79K
Miles, stk#228690, **\$64,900.**



2011 IH PAYSTAR 5500 14' DUMP.
Cummins ISX 15 450 HP, 18 Spd,
SS Henderson Spreader, 12' Plow,
58K GVW, 261K Miles, stk#219728,
\$79,900.



2007 STERLING ACTERRA w/2800
Gallon Tank. MB 260 HP, Allison
Auto, LCR2 Meter, 33K GVW, 109K
Miles, stk#227273, **\$44,900.**



2007 IH WORKSTAR 7600 6X6
Utility W/Altec AM900 72' Bucket
Boom, Cummins 385HP, Allison
Auto, 62K GVW, 109K Miles,
stk#203059, **\$59,900.**



2016 IH DURASTAR 4300 26'
FLATBED. 260HP Cummins ISB,
Allison Auto, 96" W, 32,900 GVW,
215K Miles, stk#227453, **\$59,900.**



2019 IH HX 6x4 w/50K LB
AMPLIROLLHOOK-LIFT. 430HP,
Allison Auto, Tarp, 66K GVW, 142K
Miles, stk#226406, **\$154,900.**



2019 FREIGHTLINER 114SD 10x4 w/Curry
4700 Gallon Vac Tank. DD13 505HP, 18
Spd, 86K GVW, Quad Axles, 65K Miles,
stk#216733, **\$149,900.**



2013 FREIGHTLINER 108SD CREW
CAB 12' ENCLOSED SERVICE
BODY. Cummins 350HP, Roll-Up
Side Door & Rear Door, 91K Miles,
stk#210608, **\$49,900.**



2014 FREIGHTLINER 367 w/Altec
HC45-127S 45 Ton 55' Crane.
Cummins 425 HP, 8LL, 80K GVW,
25K Miles, stk#231569, **\$299,900.**



2017 IH PROSTAR. Cummins ISX15
400 HP, 10 Spd, 33K GVW, 160" WB,
499K Miles, stk#100156, **\$54,900.**



2011 MACK MRU613 C&C.
MP7 325 HP, Allison Auto, 195" WB,
66K GVW, 212K Miles, stk#203066,
\$44,900.

www.LibertyInternationalTrucks.com



ALLEGIANCE

— TRUCKS® —

LIBERTY

INTERNATIONAL TRUCKS


603-905-9036

132 Pierce Rd. (Rt. 125)
Barrington, NH
(17 miles from Portsmouth)


603-623-8873

1400 South Willow St.
Manchester, NH
(1 hour from Boston)

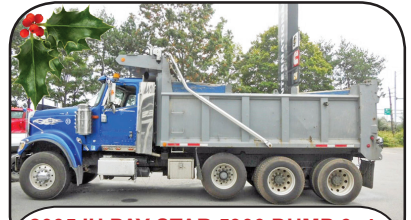
**ASK YOUR TAX PROFESSIONAL ABOUT THE SECTION 179 DEDUCTION -
YOU MAY BE ELIGIBLE TO DEDUCT THE FULL PRICE.**



2007 MACK GRANITE CV713 ROLL-OFF. 427HP, Maxi 10 Spd, 264" WB, Camelback, 70K GVW, 395K Miles, stk#230248, **\$74,900.**



2008 STERLING ACTERRA 7500 PLOW / SPREADER TRUCK. Mercedes Diesel, Auto, 10' All Season Body, Rear Spreader, Front & Wing Plows, 36,220 GVW, stk#204011, **\$19,900.**



2005 IH PAY STAR 5900 DUMP 6x4. 475HP Cummins, 8LL, Tri Axle, 86K GVW, 625K Miles, stk#204074, **\$64,900**



2020 IH HX615 w/50K LB Marrel Hooklift. 450 HP, Allison Auto, Adj Hook Height, Pioneer Tarp System, 66K GVW, 90K Miles, stk#226410, **\$159,900.**



2013 PETERBILT 365 44" FLAT TOP SLEEPER 6x4. Cummins ISX 425HP, 8LL, Air Ride, 53,200 GVW, 20K Miles, stk#203082, **\$59,900.**



2016 MACK TITAN TD713 8x4. MP10 605HP, 18 Spd, Tri Axle, 20K F/A, 46K R/A, 258" WB, 217K Miles, stk#203068, **\$124,900**



2004 PETERBILT 330 w/Alum 2700 Gallon 2-Comp Tank. CAT C7 330HP, Allison Auto, 33K GVW, 236K Miles, stk#204692, **\$69,900.**



2007 IH WORKSTAR 7600 C&C 6x6. Cummins ISM 385HP, Allison Auto, 62K GVW, 87K Miles, stk#203057, **\$59,900.**



2007 PETERBILT 357 C&C. CAT C9 335 HP, Allison 4500RDS Auto, 79,200 GVW, 222" WB, 166K Miles, stk#203032, **\$42,900.**



2003 FREIGHTLINER FLD120 ROLL-OFF 8x4. Detroit 350HP, 8LL, American ARU-75-22XL, Walking Beam, 89,200 GVW, stk#203088, **\$39,900.**



2017 IH PROSTAR. Cummins ISX15 400HP, 10 Spd, Engine Brake, 495aK Miles, stk#100151, **\$54,900.**



2010 IH PAYSTAR 5900 TRI AXLE DUMP. Diesel, Eaton Fuller, MAC Body, 60,600 GVW, 532K Miles, stk#212630, **\$84,900.**

www.LibertyInternationalTrucks.com



SALES & RENTALS

(603) 623-3669 • TQUIP.com

Londonderry, NH | Rutland, VT | Orlando, FL

• OVER 1000 MACHINES & ATTACHMENTS IN OUR INVENTORY! •



2016 KOMATSU WA470-8
EROPS, A/C, 6CY BUCKET,
HELPERX SCALE W/ PRINTER,
AUTO LUBE, REAR CAM,
26.5R25 RADIALS, 9982 HRS
\$139,000



2019 KUBOTA SVL75-2
CAB, A/C, 2-SPEED, AUX HYD,
SKIDSTEER Q/C, POWER LATCH,
1149 HOURS
\$59,500



2016 CAT 938M
EROPS, A/C, HYD Q/C, 3CY GP BUCKET,
AUTO LUBE, REAR VIEW CAM,
20.5R25 RADIALS, 9208 HRS
\$99,000



2016 CAT 930K
EROPS, A/C, HYD Q/C, 3CY GP BKT,
20.5X25 RUBBER TIRES, CAT FUSION
FORKS AVAIL, 4058 HRS
\$119,000



2017 CAT 930M
EROPS, A/C, HYD Q/C, 3CY CAT GP BKT,
20.5X25 RBR, Q/C FUSION STYLE FORKS
AVAIL, 3790 HRS
\$129,000



2020 KOMATSU WA320-8
EROPS, A/C & HEAT, JRB HYD Q/C,
3.5CY GEM GP BKT, REAR CAM,
20.5-R25 TIRES, FORKS AVAIL, 1575 HRS
CALL FOR PRICING



2008 CAT 928HZ
EROPS, A/C, 3.5CY BUCKET,
PIN-ON FORKS, RIDE CTRL, AUTO LUBE,
20.5R25 RADIALS, 8502 HOURS
\$75,000



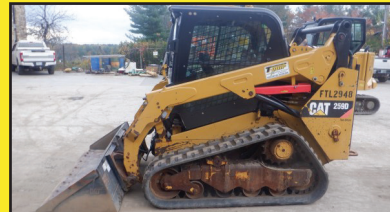
(3) 2018 KOMATSU WA270-8s
EROPS, A/C, JRB HYD Q/C,
3CY JRB GP BKT, 20.5R25 RADIALS,
FORKS AVAIL, 1680+ HRS
\$129,000 EACH



2016 KOMATSU WA200-7
EROPS, A/C, AUX HYD, JRB HYD Q/C,
2.5CY JRB GP BUCKET, 23.5R25 TIRES,
4063 HOURS
\$109,000



2017 CAT 906M
EROPS, A/C, AUX HYD, HYD Q/C,
1.5CY BUCKET, RIDE CONTROL,
340/80R18 RADIALS, 6627 HRS
\$65,000



2015 CAT 259D
CAB, A/C & HEAT, AUX HYD,
ELEC Q/C, 78" CAT GP BKT, VERTICAL
LIFT, 16" RUBBER TRACKS, 1968 HRS
\$49,500

• HAMMERS • BUCKETS • GRAPPLES • THUMBS • FORKS • COUPLERS •



LOOK NEW INVENTORY!

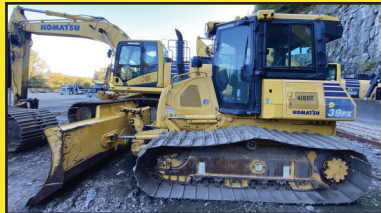
2013 CAT 12M2 VHP+
CAB, A/C & HEAT,
14' MOLDBOARD,
DUAL-JOYSTICK, PLUMBED
FOR GPS, 30.5L-32 TIRES,
5246 HOURS
LOCATED IN ORLANDO FL
\$129,000

SALES & RENTALS INC.
T-QUIP
YOUR 1ST CHOICE IN SALES
& RENTALS

(603) 623-3669
TQUIP.com



2013 HAMM 3307
OROPS, 66" SMOOTH DRUM,
VIBRATORY DRUM, DRUM DRIVE,
PAD FOOT KIT AVAIL, 1081 HRS
\$49,500



2017 KOMATSU D39PX-24
EROPS, A/C, 6-WAY BLADE,
DIFFERENTIAL STEERING,
REAR VIEW CAM, 6476 HOURS
\$79,000



2017 JCB 536-60AG+
8,000LB LIFT CAPTY, 20' LIFT HT, 10' RCH,
EROPS, A/C, AUX HYD, HYD Q/C, 3CY
BKT & 48" FORKS, HYD LVL, 460/70R24
RADIALS, 4349 HRS **\$59,500**



2015 CAT 308E2CR
A/C, COMBO AUX HYD, HYD Q/C, 30"
DIGGING BKT, HYD THUMB, BLADE, REAR
CAM, 18" TRKS W/ RBR LNRS, 11 HRS
\$89,500



2015 VOLVO EC140EL
A/C, STD STK, HYD Q/C, 36" ROCKLAND
BKT, HYD THUMB, BLADE, CTRL PTRN
CHGR, LONG UC, 24" PADS, 1698 HRS
\$115,000



2017 DOOSAN DX225LC-5
A/C, STANDARD STICK, AUX HYD,
42" DOOSAN DIGGING BUCKET,
24" PADS, 1416 HOURS
\$139,000



HARD TO FIND!!

2017 MCCLOSKEY 516RT
5'X16' TROMMEL SCREEN,
8-10YD CPTY, 3/4" SCREEN,
100HP DSL, HYD GRIZZLY
BAR, HYD RADIAL STACKER,
3080 HOURS
\$179,000



2006 VOLVO G946
CAB, A/C & HEAT, 14' MOLDBOARD,
ALL WHEEL DRIVE, SIDE WING,
RIPPER, 6677 HRS
\$89,000

NEW TO OUR RENTAL FLEET:



(4) KOMATSU WA380s
A/C & HEAT, HYD Q/C, 4CY BKT,
RIDE CTRL, REAR CAM, 23.5 RADIALS



(3) KOMATSU WA320s
A/C & HEAT, HYD Q/C, 3.5CY BKT,
RIDE CTRL, REAR CAM, 20.5R25 RADIALS



(5) KOMATSU WA270s
A/C & HEAT, AUX HYD, HYD Q/C, 3CY
BKT, RIDE CTRL, CAM, 20.5R25 RADIALS

• ADDING UNITS TO OUR RENTAL FLEET DAILY FOR YOUR RENTAL NEEDS! •

**We are cash
buyers for
quality used
trucks and
equipment!**

BROOKSIDE EQUIPMENT SALES

www.BrooksideEquipment.com

978-249-4600



2004 WESTERN STAR 4900EX: 670,048 Miles, Triaxle Daycab, Cat C15, 500 HP, Fuller 18 Speed, Air Ride, 14,320 F, 25K P, 46K R, Wetline, stk#TK938, \$47,500



2014 KENWORTH T800: 321,593 Miles, Triaxle Sleeper, 60" Bunk, Cummins ISX15, 600 HP, 2 Spd Aux Behind Auto Trans, Air Ride, Wetline, 20K F, 22.5K P, 52K R, Headache Rack, Diesel Heated For Cab & Bunk, stk#TK747, \$124,500



2004 FREIGHTLINER FLD120: 308,782 Hours, 10 Wheel Daycab, Cat C15 Twin Turbo, 475 HP, Fuller 8LL, Air Ride, 14K F, 46K R, Wetline, stk#TK793, \$29,500



2017 MACK GRANITE GU813: 68,798 Miles, Triaxle, 16 Ft Steel Ox Body, Mack MP7-405M, 405 HP, Mack 10 Speed, Camelback Suspension, 20K F, 44K R, stk#TK597, \$147,500



2000 CATERPILLAR CS-323C: 2,160 Hours, 50" Smooth Single Drum, Drum Drive, Vibratory, Good Rubber, 10K Lbs, stk#CO277, \$29,900



2011 KOMATSU PC228USLC-8: 12,381 Hours, 36" Bucket, Hydraulic Coupler, Auxiliary Hydraulics, A/C, Backup Camera, Reduce Tail Swing, 6 Cyl Komatsu Turbo, 155 Hp, No DEF, No Regen, 52K Lbs, stk#XC112, \$56,500



2017 HYUNDAI HX145 LCR: 2,815 Hours, 40" Bucket, 2-Way Auxiliary Hydraulics, A/C, Reduced Tail Swing, Good U/C, 4 Cyl Perkins 1204F Turbo, 116 HP, 8.6" Wide, 34K LBS, stk#XC590, \$87,500



2013 JCB 520-50: 2,478 Hours, 4400 Lb Lift, 16.5" Lift Height, 9'3" Horizontal Reach, 4x4, 42" Forks, 4 Cyl Perkins Turbo, 77 HP, Auxiliary Hydraulics, Stk#FL199, \$34,500



2015 KOBELCO SK210 LC-9: 1,904 Hours, 48" Bucket, Hydraulic Thumb, 2 Speed, A/C, Good U/C, 4 Cylinder Hino Turbo, 49K Lbs, stk#XC555, \$109,500



2018 KUBOTA KX080-4: 1,883 Hours, 30" Bucket, Cab W/ A/C, Hydraulic Thumb, 7.2" Angle Blade, 2 Speed, Swing Boom, 4 Cyl Kubota V3307 Turbo, 65 HP, 19.5K Lbs, stk#XC475, \$77,500



2017 CATERPILLAR 336FL: 7,095 Hours, 56" Bucket, A/C, 2 Speed, Backup Camera, 6 Cyl Cat C9.3 Turbo, 314 HP, 83K Lbs, stk#XC809, \$116,500



2012 CATERPILLAR M322D: 9,657 Hours, 5 Ft Cleanup Bucket, 2-Way Auxiliary Hydraulics, 2-Section Boom, Winaray Wrist/Coupler, A/C, Backup Camera, 6 Cyl Cat C6.6 Acert Turbo, 47K Lbs, stk#WX352, \$72,500



2016 HITACHI ZX350LC-6N: 8,337 Hours, 66" Bucket, Hydraulic Coupler, A/C, 6 Cyl Isuzu Turbo, 281 HP, 78K Lbs, stk#XC160, \$79,500



2012 JLG 450AJ: 3,282 Hours, 45 Ft Knuckle Boom, Jib, 6 Ft Basket, 4x4, Deutz Diesel, stk#AE813, \$27,500



1998 JOHN DEERE 310E: 4,878 Hours, 4x4, X-Hoe, Cab W/ Heat, 2-Stick Backhoe Controls, 24" Digging Bucket, stk#BH973, \$29,500



2015 CASE SV300: 2,683 Hours, 3000 Lb Lift, Cab W/ A/C, High Flow, Hydraulic Coupler, 2 Speed, Joystick Controls, 8.3K Lbs, stk#SK774, \$34,500



2016 KOMATSU PC360LC-11: 5,090 Hours, 58" Bucket, A/C, Backup Camera, Very Good U/C, 6 Cyl Komatsu Turbo, 271 HP, 81K Lbs, stk#XC481, \$127,500



2019 LEEBOY 685D: 101 Hours, AWD, 11 Ft Mold Board, Front Scarifier, Cab W/ A/C, 4 Cyl Cummins Turbo, Hitch, stk#GR374, \$139,500



2013 VOLVO EW160D: 3,692 Hours, 34" Digging Bucket & 5 Ft Tilt Cleanup Bucket, 8.4" Blade, A/C, Hydraulic Coupler, Hydraulic Thumb, 2-Section Boom, 6 Cyl Volvo Turbo, 154 HP, 40K Lbs, stk#WX431, \$79,500

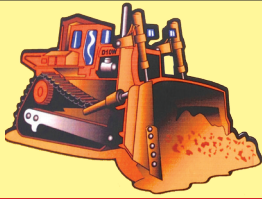


2017 DYNAPAC CC1000: 1,083 Hours, 39" Smooth Double Drum, Vibratory, 3 Cyl Kubota D1105, 24 Hp, OROPS, 3.9K Lbs, stk#CO000, \$19,900

60 STATE RD, PHILLIPSTON, MASS

978-249-4600

EMAIL: KEVIN@BROOKSIDEEQUIPMENT.COM



THE N.I.C.E. COMPANY

9 Rosenfeld Drive, Hopedale, MA

508-381-3939 • www.theniceco.com

YEAR END DEALS!



**2014 INTERNATIONAL TERRASTAR,
19,000 Mi, Automatic, 4wd, Under Cdl,
12' Fisher Power Angle Plow W/ Fish Stick,
158" Wb, Ready To Work, \$44,500, CALL US.**



2014 Vermeer FT300, 2500 hrs., Mulcher, Cab w/ AC, Industrial 30XL Winch, Rear View Camera. Reduced to \$169,000



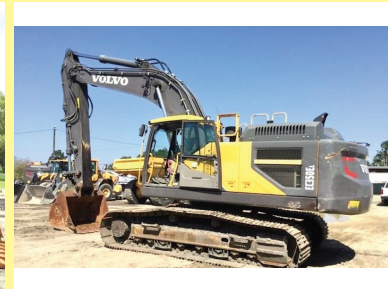
**2003 CAT D8R, New Engine,
2,000 hours 80% Under Carriage,
Recent Equalizer Bar Work Ready!
\$169,000.**



**2009 CAT D6K LGP, 7500 hours,
Enclosed Cab, Good Value, Work
Ready! \$69,000.**



**2011 Volvo L350F, 9700 Hours, Spade
Nose, Runs Good, Very Clean Machine.
"Reduced to \$199,000.**



**2016 Volvo EC350EL, 4500 Hours,
Aux. Plumbing, 12' Stick, 65" bucket.
\$129,000**



**2018 Doosan DX300 LC,
2,500 hours, As New, Backup Camera,
AC, \$175,000.**



**2018 Anaconda DF410, 550 hours,
38" x 11" Feeder Belt, Rear & Side
Discharge Conveyors, 4' x 10' Double Deck
Screen. Reduced to \$129,000**



**2013 Terex TA300, 5000 hours,
80% Front Tires, 40% Rear Tires, Work
Ready! \$139,000.**



508-917-6178



**TAKE ADVANTAGE OF TAX CREDIT 179.
CALL YOUR ACCOUNTANT.**



**2021 F350 XL 4x4 SERVICE
BODY: 6.2L Gas, Power Group.
Stk.#FM1657**



**2022 F350 XL 4x4 Regular Cab
Rack Body W/Lift Gate:
Power Group, V8. Stk.#FM1675**



**NEW TRANSIT T350 EXT. LENGTH VAN:
Hi Roof, 3.5L V6, Power Group, Back Up
Camera, A/C, Barn Doors.**



**2022 F650 DONOVAN 5-6 YARD DUMP
BODY: 1 Coal Chute**



**2021 F350 SUPER DUTY XL 4x4
RUGBY DUMP BODY: 6.2L, 14,000#
GVW, Power Group.**



**2022 F750 DONOVAN 5-6 YARD DUMP
BODY:**



**2020 FORD TRANSIT COMMERCIAL
CARGO VAN. 3.5L V6, Power Group,
Rear Camera,**



**2022 F250 XL 4x4 W/FISHER VEE
PLOW: 6.2L V8 Gas, Power Group.**



**2022 F550 XL 4x4 MAX SCAPPER
ALUMINUM DUMP BODY: Barn Doors
and Side Door, 7.3L V8, Power Group.
Stk.#FM1636**

**1200 WORCESTER ROAD
(Rt.9 East)
FRAMINGHAM, MA 01701**



www.mcgovernfordofframingham.com



METROPOLITAN TRUCK CENTER INC.

1074 Turnpike St. Stoughton, MA 02072

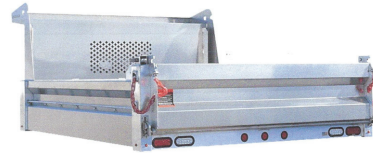
www.metropolitantruck.com

**MAKE YOUR
APPOINTMENT TODAY!**

866-514-1214

**GREAT
SELECTION
OF
BODIES IN
STOCK!**

EVERYTHING YOU NEED FOR A TRUCK BODY!!!



CUSTOMIZED ALUMINUM BODIES TO FIT YOUR EVERY NEED



**DURAMAG S-SERVICE
BODIES**



DURAMAG S-SERVICE BODY



DURAMAG S-SERVICE BODY



AIR-FLO DUMP BODIES



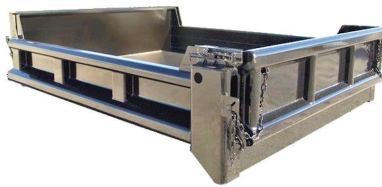
E-Z DUMP



RUGBY PLATFORM BODY



**GALION STAINLESS STEEL
DUMP BODIES**



GALION STEEL DUMP BODY



DURAMAG PRO-TOOL



CERRONE

Chevrolet - Buick - GMC Of Attleboro
A Priority Automotive Dealership

ROUTE 1, BETWEEN 95 + 295
SOUTH ATTLEBORO, MA

508-761-4800

PLENTY OF NEW GMC TRUCKS AVAILABLE



2021 C2500 UTILITY



NICELY EQUIPPED WITH A DURAMAG
 ALUMINUM BODY. #21161G

\$54,439

2021 K1500 DOUBLE CAB SLE



V-8, X-31 OFF ROAD PKG. #21251G

\$49,660

2022 K1500 CREW CAB SLE



#22028G

\$48,270

2021 K1500 DOUBLE CAB ELEVATION



X-31 OFF ROAD, V-8, 20" WHEELS.
 #21258G

\$51,560

2022 K1500 CREW CAB AT4



6.2L V-8 PLUS ALL THE OPTIONS.
 #22029G

\$65,495

2022 CREW CAB ELEVATION



V-8, BUCKET SEATS,
 NICELY EQUIPPED. #220119

\$58,310

2022 K3500 CREW CAB
DENALI DUALY



14,000 GVW, DENALI ULTIMATE PKG.
 #NF118368

\$71,995

2021 K1500 DOUBLE CAB ELEVATION



BUCKET SEATS, ELEVATION BLACK PKG.,
 PREFERRED PKG., X31 OFF ROAD PKG.
 #21259G

\$54,640

2021 K1500 CREW CAB SLE
DURAMAX DIESEL



PREFERRED PKG.,
 CONVENIENCE PKG & VALUE PKG.,
 X-31 OFF ROAD PKG. #MZ378386

\$52,605

**** PLUS OVER 50 MORE AVAILABLE ****



WWW.CERRONEGM.COM
WWW.CERRONETRUCKSALES.COM



CERRONE**Chevrolet - Buick - GMC Of Attleboro**
A Priority Automotive Dealership**ROUTE 1, BETWEEN 95 + 295**
SOUTH ATTLEBORO, MA**508-761-4800****PLENTY OF NEW CHEVROLET TRUCKS AVAILABLE****2022 K1500 CREW CAB**
TRAIL BOSS LT**LEATHER BUCKET SEATS, SUNROOF,**
CONV. PKG 2, ASSIST STEPS. #22012H**\$59,730****2021 C5500 DUMP TRUCK****17,500 GVW, HEAVY DUTY CHASSIS**
SPECS., 9'5 S+H BODY, POWER COVER,
HITCH, TOOL BOX. #21150H**\$75,660****2021 C5500 DUMP TRUCK****17,500 GVW, NICE CHASSIS**
EQUIPMENT, 9' AIR FLOW BODY WITH
I-PACK, POWER COVER. #21110H**\$80,900****2021 K1500 CREW CAB**
TRAIL BOSS LT**BUCKET SEATS, PREFERRED PKG.**
#21228H**\$54,180****2022 C2500 DOUBLE CAB**
UTILITY**CONV. PKG., HITCH, TRAILER BRAKE,**
SPRAY-IN-LINER. #22015H**\$57,158****2022 K1500 CREW CAB**
HIGH COUNTRY**6.2L V-8, HIGH COUNTRY DELUXE PKG.**
#22014H**\$69,015****2021 COLORADO EX-CAB****LOCKING AXLE, CONV. PKG.**
#M1296901**\$27,250****2022 COLORADO CREW CAB LT****CONV. PKG., LOCKING AXLE,**
TRAILER PKG. #22023H**\$33,640****2022 K1500 SILVERADO CREW CAB RST****Z71 OFF ROAD PKG., TRAILER EQUIP.**
#NZ143242**\$50,995****PLUS OVER 30 MORE AVAILABLE****WWW.CERRONEGM.COM**
WWW.CERRONETRUCKSALES.COM

THIS AD IS COPYRIGHTED & OWNED BY TRUCK AND EQUIPMENT POST

CERRONE**Chevrolet - Buick - GMC Of Attleboro**
A Priority Automotive Dealership**ROUTE 1, BETWEEN 95 + 295**
SOUTH ATTLEBORO, MA**508-761-4800****CHEVROLET'S MEDIUM DUTY TRUCK CENTER**

- * REGULAR CABS, TILT CABS, CREW CABS 2WD OR 4WD**
- * GVW'S UP TO 25,950 BODY LENGTHS UP TO 22'**
- * DUMPS, PLATFORM/ RACKS, SWITCH-N-GO, CAR CARRIERS, TOW TRUCKS, SERVICE BODIES, MOVING VANS. IF YOU NEED IT DONE, WE CAN DO IT.**
- * NIGHT SERVICE WITH 30,000LB. LIFTS**
- * GM'S #1 FLEET DEALER IN SE MA., RI, CT.**

CALL OUR COMMERCIAL TEAM. "YOU'LL BE GLAD YOU DID !"**2021 C5500 DUMP TRUCK****#21150H \$75,660****2021 C5500 DUMP TRUCK****#21110H \$80,900**
WWW.CERRONEGM.COM
WWW.CERRONETRUCKSALES.COM


THIS AD IS COPYRIGHTED & OWNED BY TRUCK AND EQUIPMENT POST

STEEER'S

MOBILE WELDING & EQUIPMENT REPAIR

LLC.

Burrillville, RI • 401-633-4587

- Full Bucket Rebuilds • Cylinder Resealing
- Wear Plates • Adapter Replacement • Hardfacing
- General Maintenance • Computer Diagnostics
- On Site Hose Replacement



1992 MACK CH 613. Tandem Axle, E7-400, Fuller 9-speed, Camel Back Suspension, 587,989 Miles, Wet System, Pintle Hook, Ready To Work. Call For Complete Details, (413) 569-6421 OR (860) 559-5011



2001 STERLING 9500 SERIES TRI-AXLE DUMP TRUCK, Series 60 Engine, Allison Automatic. 401-434-5900

2000 MACK.
11 FT Power
Angle Plow, 10
Yd Highway S. S.
Sander with Storm
Guard Computer,
263,000 miles,
\$43,000.
Call Steve
781-389-4507



CM FLATBEDS: STEEL AND ALUMINUM. Call With Your Needs.

Call Chris 781-582-1378. Plympton, MA

DAVE'S ENTERPRISES

66 BRALEY RD. FREETOWN INDUSTRIAL PARK EAST FREETOWN, MA



2006 FREIGHTLINER DUMP W/NEW 10' GOODWIN BODY Being Installed: MB Diesel, Allison Auto, Electric Tarp, Hitch, D-Ring, Air To Rear. Call.



3 AVAILABLE

2006 FREIGHTLINER W/25' STEEL FLATBED W/MOFFETT SYSTEM: 450 HP MB Diesel, 8LL, 46R/20F, Call.



2007 CHEVY C7500 W/20K STELLAR HOOKLIFT: CAT Turbo, Allison Auto., 123K Original Miles, Joy Stick Controller, New Aluminum Rims & Tires. \$59,500.



2005 MACK DM688 BOOM TRUCK: 350 HP, 8LL, IMT Crane, 55' Range, Will lift 3,000 Lbs. Fully Extended. Joy stick controls. 103K Original miles. Kept in warehouse for 15 years. Runs like new. Cost new \$300,000. Buy for \$72,500.



2007 MACK GRANITE CV713 25' STEEL FLATBED W/MOFFETT SYSTEM: 400 HP Mack Diesel, 46R/20F, 8LL, Call.



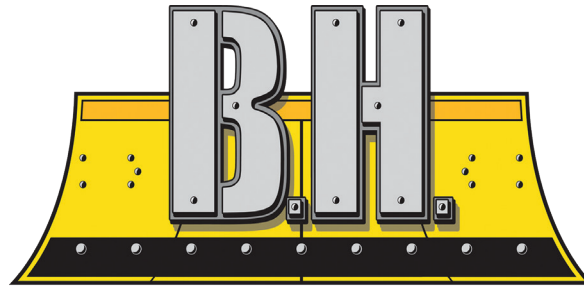
2007 GMC C6500 Dump Body: Auto., Under CDL. Great Buy. \$24,500

508-726-0077

WWW.TRUCKANDEQUIPMENTPOST.COM

www.bhtrailersandplows.com

6 Center Parkway
Plainfield, CT
06374
860-949-7863



2207 Hartford Ave.
Johnston, RI
02919
401-214-3735

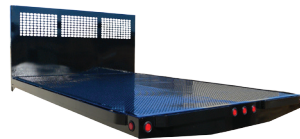
TRAILERS AND PLOWS



**BOSS Skid Steer Pushers In Stock!
Buy Now Before Surcharges Start!**



CROWNLINe Flat Bed
Single Wheel, Short & Long
Bed, \$2,350 with Install Kit



CM PL Flat Beds
9-14 Ft. In Stock
Rack Body Panels Available



DURAMAG Flat Beds
with 10 Inch Apron



CM RD BEDS
Over 100 Beds In Stock!



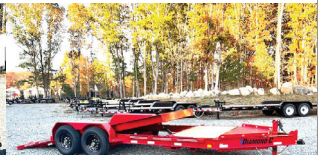
2022 LOAD TRAIL TH16 20Ft.
Split Tilt, 16+4 with Tool Box
17,500Lb. GVWR, \$14,595



2022 LOAD TRAIL 5X10
Utility 4' Fold-In Gate,
4 U-Hooks 2,995Lb. GVWR,
\$2,995



2022 MAXX-D D7K,
6x12 Dump, Tarp Kit, Ramps,
12,000Lb. GVWR, \$11,995



2022 DIAMOND C HDT207
82" X 20', Fork Pockets & Tool
Box, 14,900Lb. GVWR,
\$13,295





11 FT POWER ANGLE PLOW And Plow Frame,
In Great Shape, **\$1500.** Call And Ask For Larry,
508-212-0334



READING UTILITY BODY. Removed From Ford F800,
90" CA, Many Options, Good Condition, **\$1500.**
Call 203-206-2104 For Details

What's In Your Toolbox?



- BUY, SELL, TRADE - FAST
- FROM NEW TO USED, IT'S ALWAYS FRESH
- AND A HANDY RESOURCE, TOO

1-888-887-0505

www.TruckAndEquipmentPost.com

CT • RI • MA • NY

CALL IAN OR JIM
800-229-9421



100 YARD
STEEL DUMP TRAILERS

WE WILL SAVE YOU MONEY ...
AND PUT A SMILE ON YOUR FACE!

STUMP & BRUSH TRANSPORTATION & DISPOSAL

\$1500/LOAD

DEMOLITION DEBRIS TRANSPORTATION & DISPOSAL

\$2150/LOAD

**SAME DAY DISPATCH
TOP \$\$ PAID FOR YOUR
SCRAP STEEL, COPPER, & ALUMINUM!!!**

BEAM TRUCK & BODY INC.

RI Dealer #647

433 CUMBERLAND HILL ROAD, WOONSOCKET, RI 02895



401-767-2639



NEW - USED & RECONDITIONED DISPOSAL EQUIPMENT



2007 ISUZU FVR: UNDER CDL, AIR-BRAKES, 111K MILES, ALLISON AUTO, MOUNTING 2011 10YD NEW WAY SIDE LOADER W/ TIPPER. CHASSIS BLASTED & PAINTED, BODY PAINTED YOUR CHOICE OF COLORS.



2010 MACK MR 20 & 46 ALLISON W/ NEW WAYNE 40 YD. FRONT LOADER, 26,351 MILES. \$164,000 W/ FET



2010 INTERNATIONAL 7400: 42,000 MILES W/ HEIL 22 YD. AUTOMATED PACKER. \$60,000 WILL SPLIT.

IN STOCK READY TO INSTALL NEW EQUIPMENT

- * PHT12S AMERICAN PALFINGER
- * PHT22L AMERICAN PALFINGER
- * T29ST AMERICAN PALFINGER
- * T40S AMERICAN PALFINGER



2004 KENWORTH T300:
396,914 MILES, AMERICAN 75,000# ROLL-OFF, CAT C12 W/
FULLER 8LL, 60,000# GVW CALL FOR MORE DETAILS!

IN STOCK READY TO INSTALL NEW EQUIPMENT

- * STELLAR FLEX 36
- * STELLAR SLIDER 20S
- * PAKMOR R112B REAR LOADER

WWW.BEAMTRUCK.NET



1995 CHEVROLET 3500HD. Diesel, Automatic, **\$6500 OBO.** Farmington, CT 860-690-5852



2022 CHEVY G5 14 PASSENGER MFSAB, Gas, Automatic, NON CDL. 401-434-5900



2009 CHEVROLET K2500 HD 4X4 REG CAB 8' BED. LT PKG, Duramax Diesel, Allison Trans, PW, PL, Tilt, Cruise, AC, Alloys, Spray-In Bedliner, One Owner, 127K, Excellent Condition, **\$27,500.**, Westport, MA 508-636-5050



2000 IH TANDEM AXLE. Turn Key & Plow, Tarco Spreader, Calcium System, Plow, **\$13,000/BO,** 413-531-1908

Powerglide Air Test Kit

Complete Powerglide Pro Tree Transbrake \$279.95

TH400 Deep Cast Aluminum Pan

TH400 Billet Direct Drum Spring Retainer & Aluminum Modulator/Solenoid Hold Down

Powerglide Overhaul Kit

Powerglide Deep Oil Pan

Powerglide Reverse Spring Retainer Tool

Powerglide Bushing Driver Set

Do-it-yourself Powerglide Pro Tree Transbrake Kit \$164.95

1.80 Long Powerglide Gear Set

1-800-394-5889
179 Belvedere Road
Gilsum, NH 03448

Powerglide Handbook written by Carl H. Munroe \$21.95

Powerglide Vent Tanks

WWW.TSR-RACING.COM

*Holiday Greetings and
Best Wishes for a New Year*

**WASHED STONE
PROCESSED GRAVEL
SAND
TOP SOIL
RIP RAP
FILL**



**Please Call for pricing
401-447-2777**



SNOW & ICE CONTROL - ONE STOP SHOP
NEW SECOND LOCATION NOW OPEN
105 COUNTY RD, IPSWICH MA



PRO-TECH®

SNO PUSHER



QuattroPlow



1-978-745-2500

Ipswich: 978-356-2916

Truck Bodies & Equipment

63 Bridge St. Salem, MA

www.BrakeAndClutch.com

ABBOTT Equipment Sales

Lebanon, Maine 207-252-1191 or 207-457-1191



2017 KOMATSU WA320-8 WHEEL LOADER. 3 Yd JRB Quick Connect Bucket # 2591, **\$94,500**



2013 CAT 299D MULTI TERRAIN SKID STEER LOADER. 3,840 Hrs, Heat, A/C, 2 Sp. Self Leveling, # 2586, **\$52,000.**



ALL SEASON STAINLESS STEEL DUMP BODY.
Several To Choose,
Starting @ \$7,500



1980 Grove 10-12 Crane.
Detroit 453 Engine, 30' Reach,
\$15,000



2007 CAT Generator.
1,363 Low Hours, #2073,
\$6,500



1997 IH 4900 Plow Truck.
DT466, 6 Speed, 35,000 GVW,
Plow Gear, NP, NW, #2540
\$5,900



2004 Dynapac CA150.
66" Vibratory Roller,
#2425, **\$38,000**



1993 Eagle 15 X 36 Crusher.
Cummins, seco Scalper,
Enclosed Contrl Tower,
Vibratory Grizzle Feeder, Frt
Discharge, #1934, **\$82,000**



2003 Volvo A350 Rock Truck.
35 Ton,
#2511, **\$79,500**



2009 Mack GU713.
T/A Plow Truck, 187,008 Miles,
10 Speed, Plow, Wing, Sander,
SS Body, **\$36,000**



EXTEC 5000 SCREENING PLANT
W/ VIBRATING GRIZZLY. Double
Deck Screen W/ Vibrating Head, 3 Way
Split Product Machine, Deutz Diesel, Good
Condition, # 2596 **\$39,000**



2015 HYUNDA HL9SS
LOADER. 86" Bucket, 4,380
Hours, Articulated Wheel
Loader, #2598. **\$92,000**



2006 IH S7600. Plow,
Wing, Sander, Cummins
380 Hp, Allison 4650
HDP, 18 Ft, 40 Rears,
#1919, **\$19,000**



2005 INT'L 4900
PLOW TRUCK.
DT466, Automatic, 41,000
GVW, Spreader, 45,000
Miles, #2483, **\$19,950**



2015 BOBCAT S770.
93 HP, A/C, 2,625 Hours,
\$41,500



2007 MACK CV713 PLOW
TRUCK. Single Plow Frame &
Plow Wing, 139,931 Miles, 13' S/S
Combo Body W/ Calcium Tanks,
10 SPEED TRANS. # 2292,
\$34,000.



2007 MACK CV712
PLOW TRUCK.
137,000 Miles, Stainless
Henderson Body, #2362,
\$25,000



1999 Pete 60" Sleeper.
Heavy Spec, Tri Axle,
Detroit 450 Hp, 18 Speed,
20 Frt, Steerable 20, 46
Rears, #2142, **\$37,900**



2008 JD 3520 Tractor.
4x4, 520 Loader,
Low Hours,
#2474, **\$15,500**



2015 HYUNDA HL9SS.
Articulated Wheel Loader,
86" Bucket, 4,500 Hours,
#2599. **\$92,000**



1998 Nordberg CV40-D
Screener. Deere Power,
#2557
\$25,500



2009 MACK GRANITE GU713
PLOW TRUCK. MP7 Mack
Motor, 10 Speed, 50,777 Miles,
Plow, Wing, Spinner, 13' S/S All
Season Combo Body, # 2519,
\$36,500.

AbbottEquipmentSales.com AbbottEquipmentSales@gmail.com

ABBOTT Equipment Sales

Lebanon, Maine 207-252-1191 or 207-457-1191



1975 CAT 910 WHEEL LOADER. 5,500 Original Hours From Municipality, # 2582, **\$20,000**



1994 Komatsu PC220 LC-6L. Good Undercarriage, 10' Stick, ESCO 24" Bucket, Aux Hydraulics, EROPS, Heat, Ser#A80292, Stk #2552, **\$35,500**



1999 Komatsu PC220LC-6LE. Geith Coupler, Aux hydraulics, 48" Bucket, Heat & AC, 60% Undercarriage, 14,773 Hours, #2551, **\$38,500**



Military AM General. Cummins, Automatic, 20 Frt Axle, 40 Rears, #2538, **\$8,900**



2007 Ford E450 Work Van. Three Bar Roof Racks, Bin Pkg, Power Windows/Locks/Mirrors, AC, Cruise, 134k Miles, 5.4L V8, #2526 **\$4,700**



2006 New Holland LB75B. Backhoe, X-Tend-A-Hoe, 4WD, 6,104 Hours, Enclosed Cab, #2453 **\$29,000**



2009 JD 310SJ. Backhoe, Ext Hoe, 4WD, 4 In 1 Bucket, Quick Coupler, Aux Hyd, 8,618 Hours, #2239, **\$29,500**



TERAN CAT 304
30" DIGGING BUCKET.
2411,
\$1,400



2007 JD 50D. Mini Excavator, 1,437 Hours, Enclosed cab, #2365, **\$33,500**



2009 MACK GRANITE GU713 PLOW TRUCK. MP7 Mack Motor, 10 Speed, 144,000 Miles, Plow, Wing, Spinner, # 2528, **\$35,000**



Hyster H60XL Forklift. 5,828 Hours, #1313 **\$6,000**



2009 Mack GU712. MP7, 10 Speed, Plow, Wing, Calcium Tanks, SS Sander Combo Dump, 139,000 Miles, #2518, **\$28,000**



1984 TCM FG30N7 Forklift. 2,338 Hours, #1325, **\$6,500**



1997 Blaw-Knox PF161. Omni1-A 8"- 13" Htd Vibratory Screen, Steering Bogies, Dual Stations, Rubber Tires, #2549, **\$12,500**



2008 CAT 140M Grader. 4,747 Hrs, 169" Blade, Cat Acert Engine, 1400x24 Tires, #2161 **\$95,000**



Stainless Steel Sander. Several To Choose, Starting @ **\$4,000**



2014 Great Dane 48' Refrigerated Trailer. Thermo King, #2392 **\$10,900**



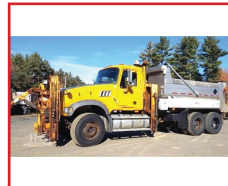
2009 Mack GU713. 206,000 Miles, 10 Speed, SS Sander, Plow, Wing, + Spinner, Calcium Tanks, #2324 **\$35,000**



2007 Kenworth T800. CAT C5, 13 Speed, 18 Frt, 40 Rears, 182K Miles, Palfinger Knuckleboom, #2515, **\$60,000**



2009 Mack GU712. MP7, 10 Speed, SS Sander, Plow, Wing, Calcium Tanks, Dump, 20 Ft, 23 Rear, #2559 **\$26,500**



2011 Mack GU713. Plow, Wing, Sander MP7, 10 Speed, 20 Frt, 46 Rears, **\$38,500**



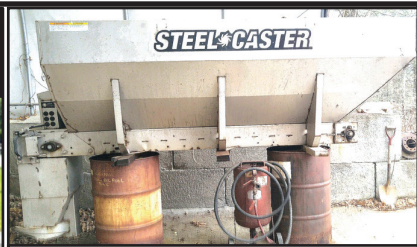
2010 Mack GU713. Plow, Wing, Sander MP7, 10 Speed, 20 Frt, 46 Rears, #2563 **\$36,500**

AbbottEquipmentSales.com AbbottEquipmentSales@gmail.com

SANTA SLED FOR SALE



1965 PLYMOUTH SPORT FURY. 383 Big Block, Bacha Numbered Car Read On Original Fender Tag And Built Sheet, \$35,000. **860-428 5333**



TORWEL SS 9 FOOT SANDER. Electric, 3 Yards, Two Years Old, Call For Price. Home: 508-248-5176 Or Cell: 508-494-9604



RD OLSON 5x12 TRACK SCREENER. 1870 Hours, Self-Cleaning Ball Deck, CAT Diesel, For Sale or Rent, \$145,000. Call Dan At 203-506-3860



1985 INTERNATIONAL S1900 W/ HYDROSEEDER, DT466 Engine, 13 Speed, 44K Rears, Finn 4,000 Gallon Hydroseeder Unit, 4 Cylinder Deere Diesel Engine. \$12,500, Call Today! 781-417-3018



2005 GMC W4500. 82,000 Miles, 14' Flat Bed, \$12,000. 508-883-6878

BLACK FRIDAY SPECIAL HURRY!



BUYERS 11X42 SNOW PLOWS

SS & Steel. New! Last Years Leftover Prices! Limited Amount.
Call Honest Bob: CTE, Seekonk, MA **508-336-6215**



AREA HYDRAULICS

810 Quaker Hwy. Uxbridge, MA

508-278-6670

We Have Cutting Edges In Stock!

Open 24 Hours During Storms!

We Make Hose Assemblies

WHELEN® Cylinder Resealing

Howes Lubricator

Buyers
PRODUCTS COMPANY



1999 AMGEN M35A3. CAT 3116, 12 Ft Wood Chip Dump Body, Listed For Parts, \$2500. Call And Ask For Larry, 508-212-0334

Looking To
Sell • Buy • Browse
Truck And Equipment Post
P.O. Box 6824
Providence, RI 02940
www.truckandequipmentpost.com
888-887-0505



Fowler's Auto Wrecking Inc.

Belletown Recycling Center

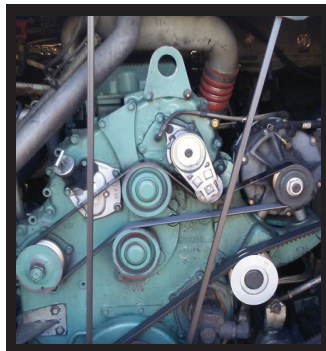


Detroit Series 60 12.7L Engines

EGR DDEC-IV
NON-EGR DDEC-IV
Good Running Take Out Engines
Recent Remanufactured Engines
Core Engines
Engine Accessories
6 Month & 1 Year Warranties Available
Call Today For Pricing



CALL: 860-267-7140



Telephone: 860-267-7140

Complete Coaches For Parts

- MCI, Vanhool, and Prevost Buses For Parts
- Compressors, Condenser & Evaporator Motors
- Wheels, Tires, Suspension & Brake Parts
- Electrical Parts, Interior & Exterior Lighting
- Tag Axles & Drive Axles
- Compartment, Service, and Entrance Doors
- Fiberglass Body Panels & Glass
- Complete Electric Wiper Conversion Kits
- Radiators, Intercoolers, and Condensers
- Standard 6 Month Warranty On All Parts



**Buses Are Not Intended
For Resale - Salvage Titles**



24 Old Coach Rd, East Hampton, CT 06424

Allison B500 Transmissions

- Allison B500 With or Without Retarders
- Good Running Take Outs
- Recent Remanufactured Units
- Core Transmissions
- Allison Shift Pad Selectors
- Allison TCM (Transmission Control Modules)
- Standard 6 Month Warranty
- Call Today For Pricing



CALL: 860-267-7140



BelltownRecycling@yahoo.com

Belltown Motors

ENGINE WORK – COLLISION REPAIR – TOWING

860-365-0807



2004 RFP BOX.

24 x 102, Barn Doors, Mint Condition,
\$4,800



2005 IH 4300 Rollback Flatbed Wrecker. DT466 w/ 411K,
Engine Overhaul At 280K, 21' Century Aluminum Deck w/
Wheel Lift, DOT Inspected & Ready For Work, \$25,000



PLACE MOTOR Inc.

The "Right Place" Since 1923

COMMERCIAL TRUCKS

Call Phil Crowley "The Truck Guy"
866-449-7482 ext. 213

19 Thompson Rd.
Rte. 193 Webster, Ma.



STAINLESS STEEL SANDERS



POLY CAST SANDERS



V-PLOW
7.6 TO 10.6



STRAIGHT BLADE
7.6 TO 10'

© 2017 Dejana

SNOW IS
COMING
GET
READY
WE HAVE
IT IN
STOCK!



XLS BLADES

SNOW IS
COMING
GET
READY
WE HAVE
IT IN
STOCK!

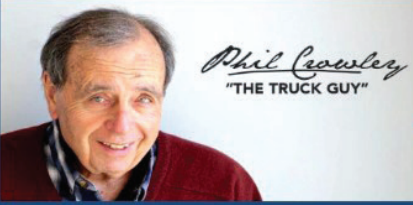
WWW.PLACEMOTOR.COM



DEJANA
Truck and Utility Equipment



COMMERCIAL
VEHICLE CENTER

PLACE MOTOR Inc.*The "RIGHT PLACE" Since 1923***COMMERCIAL TRUCKS**

PHIL CROWLEY
866-449-7482 EXT. 213



19 Thompson Rd.
Rte. 193
Webster, MA.



2021 FORD F-550 4X4 ENCLOSED UTILITY,
GAS, POWER WINDOWS / LOCKS, ONLY 6K FOR MILES,
CALL FOR MORE DETAILS !



2019 FORD F-350 CREW CAB 4X4, XL TRIM,
6.7L DIESEL, POWER WINDOWS, POWER LOCKS,
40K FOR MILES AND MORE !!



2019 FORD RANGER CREW CAB 4X4 XLT TRIM,
19,000 MILES.
CALL FOR MORE DETAILS !



2019 Ford F-150 4X2 XL TRIM, 42K MILES,
POWER LIFT-GATE AND MORE.
CALL FOR MORE DETAILS !



2019 FORD F-150 CREW CAB 4X4 LARIAT,
3.0L DIESEL, POWER MOON-ROOF, 28K MILES AND
MORE ! \$45,923



2020 Ford F-150 SUPER-CAB 4X4 STX TRIM,
ONLY 9K FOR MILES.
CALL FOR MORE DETAILS !



**MASSACHUSETTS OLDEST FORD
DEALER SINCE 1923**



401-654-6711

Insurance experts
for all your business
and individual needs



A. RICCIOTTI INSURANCE ASSOCIATES, LLC
START WITH A STRONG FOUNDATION

**1998 INTERNATIONAL 4700 DUMP.**

Remanufactured 466E With 0 Miles, 10 Ft Dump Body With
3 Chutes, In Excellent Condition, **\$6000 Firm.**
Call 508-212-0334 And Ask For Larry.

202

TRUCK
&
EQUIPMENT
603-899-2000

www.202truck.com
RT 202 Rindge NH
SALES & RENTALS - NO SALES TAX
FINANCING & DELIVERY



1998 J DEERE 450G LT IV. 3400 Hours,
Very Nice Orig. Tractor, Lever Steer, Good
Undercarriage, Very Clean, \$26,000.



2003 CAT 430DIT. 4133 Hours, Very Clean,
Low Hour Machine, Not Rusty, Fully Serviced,
Powershift, E-Hoe, A/C, \$42,000.



2013 CASE CX80. 2481 Hours,
Cleaned, Serviced, Painted, Wain-Roy Style
Coupler W/24" Bucket, Aux. Hyd., Hybrid
Rubber Coated Steel Tracks, \$52,000.



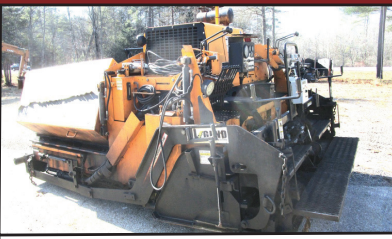
2005 JLG 400S. 40' Reach, Deutz
Diesel, 4X4, 2260 Hrs, Foam-Filled
Tires, \$18,000.



2015 CAT 262D. 292 Hrs, 2 Spd, A/C, Very
Clean Machine, New Tires, \$45,000.



2017 BOBCAT GRADER 96. Perfect
Condition, 8' Wide, Used Very Little,
Compare To \$17K New, \$12,500.



2015 LEEBOY 8500 PAVER. 2400 Hrs,
Last Year Of Spray Down From Fuel Tank,
Needs Nothing, \$47,500.



1996 PETE 357. 3406 B/C W/2000 Miles On
Rebuild, Re-Man Trans With Clutch, New Radiator
King Pins, Rebrushed Rears, 612K Miles, 12+44,
Clean Double Frame, 205" W.B., \$35,000.



2005 TALBERT 55TON. Trailer Has Seen Very
Little Use Overall, 1000 Miles On New Paint,
Tires And Aluminum Outside Wheels 4 Years
Ago, Stored Inside, Rebuilt Title, \$50,000



2017 INTERSTATE 20 TON. 27' Flat, 6' Slope,
8' Hyd. Ramps, Dual Landing Gear, New
Brakes, Paving Trailer, No Rust, \$20,000.



2003 KENWORTH T800. 475 HP CAT 6NZ C-15,
8LL, 20, 20 + Full Lock 46 On Chalmers, 4:56
Ratio, 17' High Tensile Steel Body, Pintle Hook,
Usable Dbl Frame, Needs Work, \$35,000.



2007 STERLING LT9500. Mercedes 450
H.P., 20+20+46 Full Locking Rears, Perfect
Double Frame, 16' Steel Body, Pintle,
272K Miles, \$47,500.

NICK SCARVALAS
Commercial Sales
857-247-9023 or 617-249-5603



**COMMERCIAL
VEHICLE CENTER**

ALL TRUCKS ON SALE NOW



SAVE \$2,000

2021 F350 SUPER CAB DUMP. V8 Gas, 9' Dump Body, Rear Camera, Pwr Equipt, 4WD, Running Boards, Plow Prep, F204906
MSRP \$63,925. SALE PRICE \$61,925



SAVE \$2,000

2021 F350 DUMP. 2-3 Yard, V8 Gas, Duel Battery, Power Equipt, Step Boards, Rear Camera, F205092
MSRP \$63,060. SALE PRICE \$61,060



SAVE \$2,000

2022 F350 SUPER CAB UTILITY. 8' Duramag Body, Diesel, Navigation, Fog Lights, Step Boards, 14,000 GVW, F205105
MSRP \$72,940. SALE PRICE \$61,926



SAVE \$2,000

2021 F350 12' RACK BODY. V8 Gas, Rear View Camera, 2WD, Power Equipt Pkg, F204814. **MSRP \$55,145. SALE PRICE \$55,145**



SAVE \$2,000

2022 E450 SERVICE BODY. 14' Rockport Body, 7.3 V8 Gas, 3 Bar Ladder Racks, Ladder to Roof, Pwr Windows & Locks, F205434 **MSRP \$68,380. SALE PRICE \$66,380**



2022 F350 DUMP. 4x4, V8 Gas, 9' Body, I-PacTool Box, Power Equipt Pkg, 360 Dual Strobe Amber, F205336
MSRP \$68,380

500 COMMERCIAL TRUCKS IN STOCK



SAVE \$2,000

2021 F350 SUPER CAB 4X4. Landscaper Specs, 9' Dump, Curb Door, V8 Gas, Power Equipt, Rear Camera, Plow Prep, F204919
MSRP \$67,645. SALE PRICE \$65,645



SAVE \$2,000

2021 F350 ALUMINUM UTILITY. 4x4, Duramag Body, Compartment Lights, V8 Gas, Power Equipt Pkg, DRW, F204951 **MSRP \$65,480. SALE PRICE \$63,380**



SAVE \$2,000

2021 F350 LANDSCAPE DUMP. 4x4, Curb Side Door, V8 Gas, Power Equipt Pkg, Duel Battery, F204948
MSRP \$64,949. SALE PRICE \$62,949



SAVE \$2,000

2022 F350 RUGBY DUMP. Diesel, 9' Body, Rear Camera, Pwr Equipt, 4WD, Running Boards, Plow Prep, F205280
MSRP \$81,775. SALE PRICE \$79,775



2022 TRANSIT VAN. Duel Sliding Side Cargo Doors, Partition, Rear View Camera, Pwr Windows & Locks, F205590 **\$37,555**



2021 F350 SERVICE UTILITY. 4x4, Reading Body, V8 Gas, Power Equipt Pkg, DRW, F204952

QUIRK FORD
540 Southern Artery (Rt 3A) Quincy, MA
www.quirkfords.com • 617-249-5660

**Business
Financing with
NO Co-signer
Required**

Prices include all available rebates. Rebates include Customer Cash, FMCC Bonus Cash, and Commercial Uplift Bonus Cash. Customer must qualify for rebates. Call for specific details. Prices are subject to change. * In Lieu Of Rebates



(603) 623-3669 • TQUIP.com
LONDONDERRY, NH | RUTLAND, VT

DAILY | WEEKLY | MONTHLY
HEAVY EQUIPMENT RENTALS

Call Zach: (603) 854-8207

**EXCAVATORS • DOZERS • ROCK TRUCKS • WHEEL LOADERS
 TRACKED DUMPERS • ROLLERS • SKID STEERS • BACKHOES
 CRUSHERS • SCREENERS • MOTOR GRADERS • TELEHANDLERS**



SPECIALTY ATTACHMENTS AVAILABLE

Call Jameson: (603) 703-8529

**BUCKETS • HAMMERS • GRAPPLES • THUMBS • BROOMS • RIPPERS
 COUPLERS • FORKS • SHEARS • PULVERIZERS • MOWERS • & MORE!**





LET'S TALK ABOUT YOUR CHARACTER COLLATERAL CREDIT

AND HOW WE CAN
HELP YOU WITH
EQUIPMENT FINANCING

Whether you need **equipment financing** or **capital** to help run your business, we want to get to know you, your goals, and what you have to offer. Our unique "Three C's" approval process isn't based on credit alone. We are a family-run, relationship-based lender with extensive experience in the construction industry.



Let's get to know each other. Follow this code, or call us to apply.



UNIVERSAL FINANCE

GET APPROVED FOR A LOAN TODAY | CALL: 781-653-7593

What's In Your Toolbox?



- **BUY, SELL, TRADE - FAST**
- **FROM NEW TO USED,**
IT'S ALWAYS FRESH
- **AND A HANDY**
RESOURCE, TOO

1-888-887-0505

www.TruckAndEquipmentPost.com

WANTED!!! MACK TRUCKS

**CAT, DEERE, BOBCAT EQUIP
IN ANY CONDITION
IMMEDIATE PAYMENT**



CALL JOHNNY MACK

johnnymack107@gmail.com

HARTFORD, CT 860-883-1186

COLONIAL



OF PLYMOUTH

1620

"America's Hometown Dealership!"

COMMERCIAL
VEHICLE CENTER

508-403-9192

**2021 FORD F350 SD
REG CAB 8' XL STX
FX4 4X4:**

6.2L 8 CYL., AUTO,
REMOTE START,
HITCH, WIFI,
POWER GROUP,
TOW CAMERA
SYSTEM, SYNC
COMMUNICATIONS
& ENTERTAINMENT
SYSTEM, ALUM.
WHEELS,
STK#N9697

SPECIAL
PURCHASE!

WWW.COLONIALFORD.COM

**2014 VERMEER FT300:**

2500 Hours, MULDER CAB, AC,
Industrial 30XL Winch, Rear View
Camera. **REDUCED \$169,000**

Call Us At 508-381-3939



2022 VOLVO VHD64FT300-D13, 500HP., 12SPD.
I-Shift, Automatic, 14,600# Front / 46,000# Rears, T-Ride.
IN STOCK! 401-434-5900

2006 LULL 944E-42, 3,757 Hours,
Cummins Turbo Diesel, Newly Repainted
& Reconditioned, 4WD, 4-Wheel Steer,
Modulated Powershift W/Integral Full
Gear-Drive Drop Box, 4-Sp Forward
& 3-Sp Reverse, Stabil-Trak Rear Axle
Stability System, 3 Selectable
Steering Modes: 4-Wheel Circle,
4-Wheel Crab, & More, **\$52,500.**
603-738-5217



**1587 Portland Cobalt Rd
Portland, CT 860-342-2600**

See more @ **MORINDIESELFORESTRY.COM**

CAST 33T Carbon
25HP Kubota, 2 Speed Travel,
117" Lift Height,
2300lb Capacity, **\$53,900**



OMEF Tree Shears
Available From
2.5 – 50 Ton, Collectors &
Rotators Available



**TNA 61" Knock Around
Grapple.** For Universal
Mini Or Bobcat MT
Starting @ \$3,695



CAST 825D.
25HP Kubota, Telescopic
Boom, 117" Lift Height, 2000lb
Capacity, Demo Special
\$41,000



**WOODCRACKER C250
TREE SHEAR.** Full Rotation,
Accumulator, 8 – 15 Ton
Excavator, Like New, **\$29,000**



EXCAVATOR GRAPPLES
5-8 Ton **\$8,000** &
9-19 Ton **\$10,000**



FAE UML/SSL-150
Sonic Forestry Mulcher
For High Flow Skid Steer



**AWASSOS MD80 LOG
SKIDDER.** 83 HP Yanmar,
Hydrostatic, 12,000 lb,
Call For A Demo

R & R INDUSTRIES

**We Buy All
Scrap Metals**

www.RRTrucksAndEquipment.com • Sales@RandRind.com

195 Rocus Street, Springfield MA 01104

413-733-2118

TOP \$ PAID FOR ALL METALS

*** ALL FERROUS & NON FERROUS METALS***
COPPER/BRASS/ALUMINUM/STAINLESS/IRON
& STEEL* MACHINERY* HEAVY EQUIPMENT*
CARS/TRUCKS*



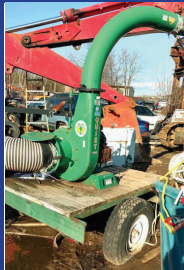
6.0 KW DIESEL GENERATOR.
 Was A Backup Unit On A Fire Truck, Low Hours, Meticulously Maintained, Ready To Hook Up To Your House, Boat, RV, etc, Only \$3,600/BO



MICHIGAN 125A LOADER. 4-53 GM Diesel, Runs & Works Great, No Brakes, Only \$9,995



1995 ISUZU NPR. 4 Cyl Turbo Diesel, Only 224K Original Miles, Auto, Heat & AC, Runs And Drives Great, Only \$5,795



BILLY GOAT QUIET LOADER.
 23 HP, Koehler Motor, 12" Intake Hose, Low Hours, With Free Trailer Or Mount On Your Chassis Or Trailer, **\$2,195**



(4) GOODYEAR LOADER TIRES.
 22 x 65 x R25, Comparable To 20.5 x 25, On 12 Lug Rims, Excellent Condition, Only \$2,000 For Everything



48' MANAC FLATBED TRAILER. Nice Deck, Good Tires, Needs Minor Rust Repair, Only \$6,500



DEUTZ DIESEL MOTOR. 3 Cylinder, Air Cooled, Model F3-6L912, From Boom Lift, Low Hours, Never Worked Hard, Sold With A Guarantee, \$2,500



GALION 13.5' STEEL DUMP BODY COMPLETE WITH HOIST, TANK etc, Excellent Condition, Ready To Mount On Your Chassis, Only \$3,350, Others To Choose



CRAFTSMAN II TRACTOR. 18HP, 6 Speed Hi Low Tranny, Snow Plow, 44" Mower Deck, Tire Chains, Biggest Craftsman I've Ever Seen, Like New, \$850



10' SNOW PLOW. Manual Angle, Super Heavy Duty, For Big Truck, Loader etc, Has Guide Wheels To Hold Weight & Save Your Front End, Only Needs Paint, Pre Season Special \$950
 Lots More Blades Starting @ \$200



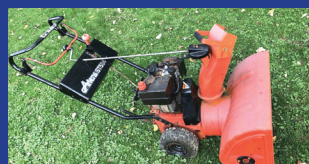
HEADACHE RACK FOR PETERBILT TRACTOR.
 Extruded Aluminum, Chain Hangers, Good Condition, Was \$850, Now Only \$650



1990 CHEVY C-70 Factory Marmon-Harrington AWD, Only 27K Miles, GM 8.2L Diesel, 5+2 Speed, Runs & Drives Great, \$12,000 Complete Or \$10,000 C & C Only



GRAVELY 566 TRACTOR POWER UNIT. Runs Excellent, 12HP Electric Start, With Snow Blower Attachment, \$695



SNOW BLOWERS. Many In Stock, From \$100 - \$300. Call Bruce



STORAGE UNITS 12', 14', 16', 18', 20', 24', 30', & 40' Storage Or Instant Garage \$650 & Up



UNUSED 345 GALLON PLASTIC FEEDER TANK. Ace Manufacturing, Only \$350, Smaller Units Available



**We Deliver All Over
The Northeast.
Call For Pricing
Marty 203-460-6340**

SHIPPING CONTAINERS

**New, One-Trip, And Used
Wind And Water-Tight Units.
We Have 20', 40' Standards
And 40' H/C**



**2001 GMC T7500 OIL
TANK. 2800 Trans Tech,
Automatic Smith Meter With
Veeder Root, \$25,000 OBO.
Pawtucket, RI 401-473-7669**

Lowbed  **Johnson**

1-800-660-2412

**Moves Construction Equipment
Serving Massachusetts and Southern New Hampshire**

**1990
MICHIGAN
L70 LOADER.**
Runs Strong,
Comes With Bucket,
\$13,500/OB,
413-531-1908



**THE
TRAILER
DEPOT**

203-234-7788
1037 Middletown Ave. (Rt. 17)
Northford, CT

**CM
TRUCK BEDS
AUTHORIZED DEALER**



SURE-TRAC 9.9K EQUIPMENT TRAILER.
7' x 20', Heavy Duty Tube Bulkhead, 2' Beavertail, #345871



**WESTERN V PLOW. MVP PLUS,
Stainless Steel V Plow**



CAM SUPERLINE 20 TON HD DECKOVER.
8' 6" x 27', 22' Flat + 5' Beavertail, 102" Overall Width,
35" Deck Height, #523215



CAM SUPERLINE 15.4K HD DUMP TRAILER.
6' 9" x 14', Tubular Mainframe, 6' Steel Ladder Ramps Under
Bed, #523845



**CAM SUPERLINE 13.2K EXTRA WIDE SPLIT TILT
TRAILER.** 6' 11" x 20', 83" Between Fenders, Slipper
Spring Suspension, #523913



PACE 7K ENCLOSED LANDSCAPE TRAILER.
7' x 16', 32" x 74" Side Door, Ramp Door With Spring Assist,
#027542

www.thetrailerdepot.com

We'll Hook You Up
WE DO FEDERAL INSPECTIONS!



Quality Iron Solutions

709 Keith Ave., Pembroke NH 03275

Call Kevin Buck: 603-860-7875 • email: info@QualityIronSolutions.com

www.QualityIronSolutions.com

**IN STOCK
NOW!**

Happy Holidays



**2014
INTERNATIONAL
7400 C&C 6x4.**
Maxxforce 315 HP
Diesel, Auto, 40K
R/A, 16K F/A, 56,000
GVW, 186K Miles,
Runs Excellent,
\$38,500.



**2016 DODGE RAM
5500 DUMP 4x4**
w/Plow, Sander &
Flatbed. Cummins
6.7L Turbo Diesel,
Auto, Hyd. Brake
System, 114K Miles,
\$47,500.



**1998 CAT
D250E.** All
Maintenance
Done, 17K Hours
Ready to Work,
\$67,000.



**1978 DRESSER
TD20-E.** Refreshed
Motor, Very Good
Bottom, Runs
Strong, 6,725
Hours, Parts &
Service Manual,
Ready To Go,
\$29,000.



**1992 GMC
TOPKICK DUMP
6x4.**
3116 CAT 250HP
13 Speed, 96K
Miles, Clean
Frame & Body,
\$21,000.



**2019 NEW
HOLLAND
EC30.**
40 Hours,
Hyd Thumb,
\$48,000.



**1987 CAT
D35HP.** Certified
Rebuild 7,500
Hours Ago, Super
Clean, Ready To
Work, **\$59,000.**



**2012 DYNAPAC
CA3500D** Compactor.
84" Roller, 1523
Hours,
Ready For The Job
Site,
\$49,900
(Rental Rates: \$500/
day, \$1,500/wk, or
\$4,500/mo.)



VIBROSCREEN SCM-75 HEAVY DUTY SCREENER

Vibrating Head w/2 Decks, Up to 300 Cubic Yards/Hour, 50
HP Diesel Engine, Ideal For 6 Yard Loader, Fifth Wheel Hitch,
Single Axle, Double Wheels, Hydraulic Landing Gear, Gross
Weight 22,000 LBS Tongue Weight 8,540 LBS
Rental Rates: Daily \$700 • Weekly \$2,100 • Monthly \$6,000



WWW.SCRANTONMOTORS.COM



NOW IN ROUTE (3) 2022 GMC SIERRA 3500. 2WD, DOUBLE CAB SERVICE BODIES, NAP, #N9489



2022 GMC SIERRA 2500. 2WD WORK TRUCK, A RARE FIND, #N9501

777 TALCOTTVILLE ROAD VERNON, CT • 860-870-6539



2006 FORD F-450 XL SUPER DUTY. Power Stroke Turbo Diesel V8, Auto, 4WD, Rack Body, 99K Miles, 4000 Lb. Crane, 1600 Lb. Eagle Lift Gate, Toolboxes, **\$13,900 OBO.**
603-498-3942, Ask For Jim

HD 110 HAMM SMOOTH DRUM ROLLER
\$39,900
Call Today!
781-417-3018



What's In Your Toolbox?



- **BUY, SELL, TRADE - FAST**
- **FROM NEW TO USED, IT'S ALWAYS FRESH**
- **AND A HANDY RESOURCE, TOO**

1-888-887-0505

www.TruckAndEquipmentPost.com

CANDIA TRAILER & LANDSCAPING

35 High St, Candia, New Hampshire **603-483-2541**



TRAILER WHEELS.

**Tire & Rim,
All Sizes, Good
Time To Update
Your Utility Trailer
Wheels, Call With
Your Specs
866-761-0196**



WWW.SCRANTONMOTORS.COM



**2020 CHEVROLET XD LCF
CAB & CHASSIS.
109" WB, 5.2L 4 CYLINDER
DIESEL, #F7283**



**2021 CHEVROLET SILVERADO
CHASSIS CAB. DURAMAX
DIESEL, 2 WHEEL DRIVE,
60" CA #G7736**



**2021 CHEVROLET SILVERADO
5500 CAB & CHASSIS.
4X4, REGULAR CAB, 84" CA,
#G7893**



**2022 CHEVROLET 4500 HD
LCF. 5.2L 4 CYLINDER DIESEL,
AUTOMATIC, 150 WB, #H7861**



**2021 CHEVROLET SILVERADO
5500HD. DURAMAX DIESEL,
4 X 4, DUMP BODY, #SG7834**



**2021 CHEVROLET SILVERADO
6500 HD CHASSIS CAB.
DURAMAX DIESEL, 2WD,
#G7812**



**2021 CHEVROLET 4500 LCF
CAB & CHASSIS. GAS,
150" WB, #G7867**



**2021 CHEVROLET 4500 LCF
CAB & CHASSIS. GAS,
109" WB, #G7875**



**2021 CHEVROLET 4500 LCF
CAB & CHASSIS. GAS,
132" WB, #G7892**

WWW.SCRANTONCHEVY.COM

774 THAMES STREET NORWICH, CT • 860-870-6539

NORTHEASTERN PETROLEUM SERVICE & SUPPLY – 617-522-8390 Ext 12*Season's Greetings & Wishing You A Happy New Year***Financing Available - After Hours Call 617-696-1979****We Are Looking For Newer Tank Trucks To List, Dual Equipped, Tandems & Auto. Trans, Can Sell From Your Location**

2001 STERLING L7500 BOSTON STEEL 2,700 GAL. 2 COMPT. 2,000 Gal & 700 Gal, 35,042 Miles, CAT 3126-250HP, Automatic., Single Wrap Reel. \$26,900



2000 PETERBILT 330 CAB & CHASSIS. 190,902 Miles, CAT 3126-R 300+ HP, 10 Speed Auto-Shift, 54,600 GVW, 12R22.5 Tires, Deluxe Cab, Frame Corroded, Chassis Only, No Tank, \$9,000 OBO.



2000 FREIGHTLINER FL70 ALMAC 2, 800 GAL. 2 COMPT. 2,000 Gal. & 800 Gal, CAT 3126, 6 Speed, V-Root STD VR Ticket Printer, Suck Out Line, Nice Alum. Piping, \$18,900.



1986 MACK T/A, 3, 800 GAL. 1 COMPT. BOSTON STEEL TANK. Mack 300, 10 Speed, 11R24.5 Tires, Mid-Com M-7-1 L/C Meter, 498, 349 Miles, Reframed 5 Years Ago, Works Daily, Best Offer Over \$28,000.



2000 FORD F750 BOSTON STEEL 2,700 GAL. 1 COMPT. CAT 2156, 7 Speed, V-Root 2" L/C M-7 Ticket Printer, 126,742 Miles, \$21,000.



1999 Int'l 4900 TRANS TECH ALUMINUM 2,800 1 COMPT. 1987 Tank, DT466E, 6 Speed, 145,000 Miles, \$16,000.



1997 VOLVO FE42 BOSTON STEEL 3,300 GAL. VE D7-230HP, Allison MD 3060P Automatic, 90,000 Miles, Liquid Control, Std.V-Root LNC/TP, Air Reel, Bottom Loading, New Exhaust, New Oil Pan, \$19,900.



1996 KENWORTH T300 BOSTON STEEL 2,600 GAL 2 COMPT. 1,000 Gal & 1,600, Cummins 250 HP, 6 Speed, 11R22.5 tires, Neptune Ticket Printing Meter, Hannay Reel, Piping Has 2" Plug Valve In Rear For High Speed Pumping, Two Hose Tubes In Tank Sill, Cut Out 12V Switch On Rear Of Battery Box, 297,947 Miles, \$19,000.



1995 ALLIED 5, 000 GAL. ALUM. 2 COMPT. TANK & EQUIP. 3,000 Gal & 2,000 Gal, Bottom Loading, On 1995 Ford LN9000, Must Be Towed, \$11,900



1987 FORD LN8000 TECH WELD 3,150 GAL. 1 COMPT. 224,778 Miles, Automatic., Spring Susp, New 11R22.5 Tires, New Brakes, No Heavy Rust, Good Cond. For Age, \$13,900

**2002 KENWORTH T300
TRANS TECH ALUMINUM
2,800 GAL 2 COMPT.
1,800 Gal & 1,000 Gal, CAT
3126-246HP,
6 Speed Road Ranger
\$19,900**

TANKS & EQUIPMENT

3,400 GAL 1 COMPT BOSTON TANK. Air, Single Wrap Reel, 3" Meter, V-Root Standard Ticket Printer, Bottom Loading, R Brake Locked, Good Condition, \$7,500.

3,400 GAL 1 COMPT ALUMINUM TANK. 2 ½" Pump, 2" L/C Meter Neptune Printer, Boston 12 V Single Wrap Reel, One Tank Opening, Good Condition, \$14,000

BULK PLANT FOR SALE

Used Commercial Gasboy – White/Black Suction Pumps, One Hose, Gallons Only Gas Or Diesel, \$3,200 Each.

Two REB 4" Smith S-1 Thru Meters & One New 4" Smith Vertical Meter.
Tank Truck Rentals – S/A \$3,000/Month to \$6,000/Month, T/A Plus \$2,500
Delivery To New England 6 Mo Min. Possible Purchase at End Of Rental

SOME TRUCKS AT CUSTOMER LOCATIONS-DEALER PLATE AVAILABLE TO DRIVE AWAY

**Looking To
Sell • Buy • Browse**

**Truck And Equipment Post
P.O. Box 6824
Providence, RI 02940**

www.truckandequipmentpost.com

888-887-0505

DAVE'S ENTERPRISES

66 BRALEY RD. FREETOWN INDUSTRIAL PARK. EAST FREETOWN, MA

55' PITMAN CRANE ON FREIGHTLINER



55' PITMAN CRANE ON 22' 2004 FREIGHTLINER STEEL BODY.

450 H.P. MB DIESEL, 8LL, 20F/46 Full Locking Rears, Double Frame. Ready in 2 weeks.

\$64,500., 2,200 LB. LIFT AT 55'. CALL DAVE

508-726-0077



Residential ~ Commercial ~ Industrial

**Mark Dillon
774-365-0222**



**10 And 11 Foot Snow Plows.
Starting At \$500, 413-531-1908**



■ **www.tireauditor.com**

■ **Any Size Quoted**

12/20/2021

800-783-8473



AUDIT YOUR TIRE PRICES! Any Size Quoted

**ANY SIZE QUOTED
FREESHIP**



25570R22.5	Michelin	16P	All Pos.	\$445
25570R22.5	Import	16P	Traction	CALL
29575R22.5	ATLAS	16P	DRV09 Trac	CALL
11R22.5	Trazano	16P	CM980 Grip Trac	CALL
11R24.5	Pearly (India)	16P	PD301 Trac	CALL
42565R22.5	Major B or Import	20P	Steer	CALL
44550R22.5	Greenmax	20P	Trailer	\$595



25570R22.5 XZA 16P



GRIP TRAC



ATLAS DRV09



42565R22.5



PD 301



GTH 102

STONEHAM



617-733-0773

MANY NEW CHASSIS IN STOCK



F350, F450, F550, F600, GAS & DIESEL, 4X4, 4X2, XL, XLT, CHASSIS IN STOCK WAITING TO BE UPFITTED. CALL



2021 F250 UTILITY. 4X4, Crew Cab, V8 Gas, 8' Service Utility Body, ON SALE



2021 F550 SWITCH N GO 4X4. Roll Off Hoist, Diesel, Power Equipment Pkg, ON SALE



2021 F550 SWITCH N GO SUPER CAB. 11' Can, V8 Gas, 4X4, Rear Camera, Power Equip Pkg, #211999 ON SALE

MANY NEW FINANCE OPTIONS AVAILABLE



2021 F550 ROLL-OFF HOIST. Switch N Go, 4X4 V8 Gas, Power Equipment, Payload Plus, Red/Blk/White ON SALE



2021 F550 RACK BODY. Diesel, Payload Plus, 16' Knapheide Body, Rear Camera, Power Equip, #211937 ON SALE



2021 F350 C&C. 4X4, Diesel, Polish Aluminum Wheels, Rapid Heat, Power Equip Pkg, #211437 ON SALE

USED TRUCKS SPECIALS



2021 TRANSIT CARGO VAN. Adrian Rack & Bin Package, 10,514 Miles, Rear Defroster, Cruise, PL, PW, Pwr Heat Mirrors, #21003P, **ON SALE**



2019 E350 HI CUBE. 10' Van, V8, 20,005 Miles, PW, PL, AC, Stereo/CD, SYNC Voice, #19274P, **ON SALE**



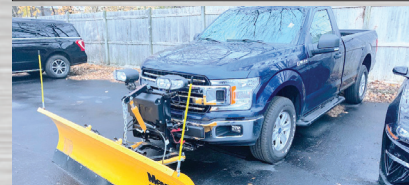
2019 T250 CARGO VAN. V6 Gas, 32,036 Miles, Cruise, Rear Camera, Scuff Plates, AC, PW, PL, #19277P, **ON SALE**



2020 F550 DUMP. Diesel, 4X4, Tool Boxes, 9' Plow, 10K Miles, #20041P **\$69,999**



2017 F350 LARIAT. Crew Cab, Loaded, SS V-Plow, 56K Miles, #22080A **ON SALE**



2019 FORD F150 XLT. 4X4, Plow Package, 12K Miles **\$46,999**



COMMERCIAL VEHICLE CENTER

www.StonehamFordTrucks.com

211 MAIN ST. STONEHAM, MA 02180

Mon-Fri 8:30am-8pm Sat 9- 5pm Sunday 11-4

ALL PRICES NET & INCLUDE ALL AVAILABLE REBATES TO DEALER

Call Bill Pollack 1-617-733-0773 or billpollack@stonehamford.com

COMMERCIAL VEHICLE CENTER



CENTRAL MASS
TRUCK & EQUIPMENT

Custom Gates Hydraulic Hose Assemblies & Fittings

Full Truck Service, Maintenance & Repair

All Makes & Models

Over 20 Years Experience Specializing In Mack's

Marshall Cefole - **978-467-7993**

Randy Rameau - **978-423-2889**

10 Gardner Road, Winchendon MA 01475




BUCKET SKID STEER SWEEPER
\$900.00 Call Today! 781-417-3018

2015 KOMATSU PC210 LC-10.
5200 Hours,
36" Bucket, Nice, Clean,
Tight, Working Daily,
\$99,000, Call Dan,
203-506-3860



Looking To
Sell • Buy • Browse
Truck And Equipment Post
P.O. Box 6824
Providence, RI 02940
www.truckandequipmentpost.com
888-887-0505

2005 FORD F350 CREW CAB.
6.0 Diesel, 4X4,
220,000 Miles,
Well Maintained, No
Engine Issues, One Owner,
\$7,500.
401-533-1673



T & TAYLOR & LLOYD, INC. & T

SEE OUR INVENTORY: WWW.TAYLORANDLLOYD.COM

2 IN STOCK



2017 INTERNATIONAL DURASTAR 4300 26' VANS.
102" x 102", Allison Auto, AC, Air Ride Suspension, Non CDL, 4400 LB Alum. Lift Gate, 2 Available, 223K & 267K Miles.



2016 INTERNATIONAL 4300 ROLLBACK 19' INDUSTRIAL CARRIER.
Wood Deck, Cummins, 6 Spd Manual, 135K Miles, Non CDL, Southern Truck, Super Clean.



2015 INTERNATIONAL 26' BOX.
Cummins ISB, Auto, Air Ride, Lift Gate, 221K Miles, Great Shape. (file photo)



(1) 2018 INTERNATIONAL LT DAY CABS.
Cummins ISX, 450 HP, Eaton Auto Shift 10 Spd, 40 R/A, 13,200 F/A, Southern Trucks, 412K Miles, Super Clean.



2021 INTERNATIONAL CV 4X4
C&C. Red, Loaded, 84" CA, Inbound.

1-617-429-3370 **Call Jack Coakley**
8 Railroad Avenue Bedford, Ma



508-917-6178

2019 FORD F450SD CREW CAB LONGBED LARIAT 4x4. FX-4 OFF-ROAD PKG, Power Stroke V8 Turbo Diesel 6.7L, Leather Power Heated/Cooled Seats, Back-Up Camera, 14,000 LB GVW, One Owner, Clean Car Fax, 33K Miles, stk#FD644, \$79,999

WWW.MCGOVERNFORDOFFRAMINGHAM.COM

1200 Worcester rd, Framingham MA



2016 KUBOTA KX040.

6-Way Blade Twin Port, 984 Hours,
\$48,500. 860-601-5982



2007 PETTIBONE 8044 FORKLIFT.
6270 Hours, 42 Ft Lift Height And Traverse,
8000 Lb Capacity, Well Maintained, Good Tires,
New Injectors & Full Cab, **\$40,000. 860-753-2016**

USED TRUCK TIRES.

11R22.5, 12R22.5,
29570R22.5, 10R22.5,
25522.5, 315R22.5

And Many More.

Call For Price,
603-930-0619



BIG WHEEL



TRUCK SALES

HEAVY DUTY TOWING AND RECOVERY



1987 MACK RD: 4000 Gallon Steel Water Tank.
Complete W/Pump and Spray Heads. **\$21,500**



2000 CHEVY 8500 S/A Dump W/
Everest Power Angle Plow & 10'
Stainless Sander. 37,000 GVW.
\$15,500



2004 LOUISVILLE W/FASSI F250 SE
CRANE 41'. 8" Boom: Mercedes Bens
460 HP Diesel, 8LL, 20F/46R, 33K Miles.
\$35,000



1998 INTERNATIONAL 2674 10
WHEEL DUMP BODY: N14 350 HP,
10 Speed, 1100 x22.5 Rubber, **\$14,500**



1997 MACK DM6095 10.5 Yard
McNEILUS CONCRETE MIXER: Non
Electric 300 MACK Motor, MACK 12
Speed, 20F/44R, 20,000LB. Lift Axle, 207K
Miles on Clock. Runs and Drives Excellent.
\$21,500.



2006 FREIGHTLINER FL70: 16'
Aluminum Rack Body w/4000 Lb.
Auto Crane. Lift Gate, 8.3L Cummins,
6 Speed, Air Brakes. **\$13,900**



2001 MACK RD 690S ROLL OFF:
300 Mack, 8LL, 20F/46R,
188K Miles. **\$31,000**

In Stock:
10' -11' Highway
Plows.
Some Power Angle
w/Frames.

42 Quanapaug Road, East Freetown, MA
508-763-5927 • FAX 508-763-2369

www.BIGWHEELTRUCKSALES.COM

WE SELL HEAVY DUTY SNOW PLOW EQUIPMENT • WE EXPORT WORLD WIDE • HEAVY DUTY TOWING SPECIALIST

Highway
SS Sanders:
Used in Great
Shape.

508-328-8938

THE TRUCK STORE**Mon-Fri 8:30-5pm
Saturday 8:30-4pm****www.TruckStoreSales.com**

1700 Broadway - Rte 138 – Raynham, MA • Take Exit 8 Off Rte 495, East Rte 138, On Your Left

**2005 MACK GRANITE LUGGER TRUCK:** Only 90K Miles.**2005 MACK CV 713
CAB & CHASSIS:
AUTOMATIC,
20F/52R,
30K MILES!****2017 FREIGHTLINER M-2:** CUMMINS Diesel, Auto, PTO Accept. Will Separate.**2014 INTERNATIONAL 43 Passenger Bus** w?wheel chair lift. Diesel, Automatic. Only 40K miles, Clean & runs great.**USED MONROE STAINLESS STEEL SANDER W/CALCIUM TANKS****2007 HINO 338:** Auto, 33K GVW. Runs Great.**2005 MACK GRANITE SPLIT REAR LOAD RUBBISH BODY** 35K Miles.**2015 INTERNATIONAL DURASTAR 50' Bucket Truck:** DT 466, Allison Auto. 14F/23R, 29K miles.**2015 MACK GRANITE ROLLOFF:** Auto., 80K miles. Call**2009 CHEVY C4500 16' THERMO KING Refer** Body w/Stand-by: Gas, Auto. 89k miles, nice clean truck.**6 AVAILABLE****2003-2004 & 2007 MOFFET FORK LIFTS.** Nice condition. Low hours.**2007 MACK MR Front Load Rubbish Truck:** Diesel, Automatic.**COMING SOON:
2020 MACK GRANITE
TRI AXLE DUMP:
AUTOMATIC.****2005 MACK Tractors:** 460 H.P., 18 speed, air ride, wet system, Jake, 46k locking rears, 350 to 400k Miles. \$25,000**2011 FREIGHTLINER M2 6 Year Rear Loader Rubbish Truck:** NON CDL.**2011 ISUZU NRR:** Diesel, Auto. Low miles. Also 2011 Available.Refer. Bodies in stock too.**USED 12' to 26' REFER & VAN BODIES** Call with your needs.**2004 MACK MR:** Stainless Steel Tank, Diesel, Auto., 12K miles. Call**2012 INTERNATIONAL HOOK TRUCK** W/TARP: Diesel, Automatic, 20K Miles. Mint Condition.**2014 ISUZU NQR REFER TRUCK:** Diesel, Automatic.**2000 MACK RD 688SX 14' Dump Body,** 350 H.P., Auto., 18F/58R, LOW miles, Very clean.**1997 MACK Standard Size CAB & CHASSIS ONLY.****1997 FREIGHTLINER
35 TON WRECKER:
Diesel 283K Miles.****2007 UD 2600 BOX TRUCK:** Hino Diesel. Auto., UNDER CDL. RUNS NICE. \$20,000**2003 MACK ROLL OFF:** 75,000 lb. Roll Off. Auto., 58R/20F, 60K miles. Call**2015 IH 26' Tandem Axle Refer:** New Refer being installed. Auto., low hours on Refer. call**2015 KENWORTH TANDEM:** 9L CUMMINS, Allison Auto PTO Provision. Will Separate.**Late model ISUZU 4 Cylinder Diesel Engine & Transmission.** Call for Details.**2006 USED MACK Engines!
ALLISON Transmissions. ALSO:
2004 MITSUBISHI
4 & 6 Cylinder Engines.**

JOSEPH

EQUIPMENT COMPANY

300 GAY ST • MANCHESTER, NH 03103

SATURDAYS • WE ARE OPEN ALL DAY

PHONE: 603-641-8608

FAX: 603-666-3716



293 NORTH - EXIT 2 -
LEFT ONTO BROWN AVE -
RIGHT ONTO WINSTON ST. - LEFT ONTO GAY ST.
300 GAY STREET ON THE RIGHT



2001 CATERPILLAR 824G, One Owner, 17K Hours, 29.5 X 25 Rubber, A/C, Fleet Maintained, Excellent Shape, **Call For More Information.**



2000 J & J 70 YARD, 36' Alum Dump, Steel Frame, Tri Axle, Liner, Cover, Excellent Shape. **Call For More Information.**



1988 MACK SUPERLINER, RW713, 350, 12 Speed, 44 Rears, Nuway Air Ride, Double Frame, Bud Wheels, New Rubber, 3rd Axle Lift. **Call For More Information**

FORKS/BUCKET FOR WA470



WA470 OR EQUIVALENT BUCKET, Set Up With Jrb Disconnect. Also Available WA470 Or Equivalent JRB Forks, 60", 9' Carriage With JRB Quick Disconnect. **Call For More Information.**



2012 JOHN DEERE 650J XLT DOZER, Hours 12K, 8' 6" Blade, Trimble Onsite GPS System, One Owner, Fleet Maintained, Original Paint, Recent Bottom (Tracks), Full Cab, Heat, A/C, Loaded. **Call For More Information.**



2002 WABASH 48 X 102 FLAT BED, Air Ride, Slider, Hub Piloted Wheels, Alum Headboard, Southern Trailer, (6) Available To Choose From. **Call For More Information.**



LABOUNTY SHEAR MSD40, One Owner, Original Paint, Excellent Shape, Set Up For 200 Size Excavator. **Call For More Information.**



2007 50' SKYJACK, MODEL SJ9250, 4 X 4 Rough Terrain Scissor Lift, Diesel, Hydraulic Sliding Platform, 2,700 Hours. **Call For More Information.**



(20) GOODYEAR E3 LOADER TIRES, 20.5 X 25 And 23.5 X 25 Tires. **Call For More Information.**



2000 J & J ALUM DUMP TRAILER, 3 Axle, Lift On 3rd, Liner, Cover, Steel Frame, Excellent Shape. **Call For More Information.**



LABOUNTY MDS100R SHEAR, Rotating Head, Excellent Shape, **Call For More Information**



LABOUNTY ROTATING SHEAR, Set Up For Komatsu PC228 Or Equivalent. **Call For More Information.**

www.josephequipment.com

Trades Welcome • Financing Available

THIS AD IS COPYRIGHTED & OWNED BY TRUCK AND EQUIPMENT POST

JOSEPH

EQUIPMENT COMPANY

300 GAY ST • MANCHESTER, NH 03103

SATURDAYS • WE ARE OPEN ALL DAY

PHONE: 603-641-8608

FAX: 603-666-3716



**293 NORTH - EXIT 2 -
LEFT ONTO BROWN AVE -
RIGHT ONTO WINSTON ST.- LEFT ONTO GAY ST.
300 GAY STREET ON THE RIGHT**



2001 EAGER BEAVER HALX, 20 Ton Tag, 20' Deck, 5' Beaver, 4.5' Ramp, Very Good Condition. Call For More Information.



2016 FREIGHTLINER M2 BUSINESS CLASS Rollback/Ramp Truck. Automatic Transmission, Cummins Power, Tow Bar, 400K Miles, One Owner, Working Daily. Call For More Information.



2006 FREIGHTLINER, CAT C13, 10 Speed, 40K Rears, Air Ride, 24.5 Hub Piloted On Alum Wheels, Very Good Condition, Working Daily. Call For More Information.



2004 TRAIL KING FLOWBOY LIVE FLOOR TRAILER, Tri Axle, Air Ride, Aluminum Wheels, Lift On 3rd, Working Daily. Call For More Information.



2012 ITI DDX100 70 TON 2+2+3 HYDRAULIC EXTENDABLE STEERABLE TRAILER. Air Ride. Comes With 10' Flip Up Gooseneck Ext, Self-Contained Power Unit, 30' Deck, 8' 6" Wide, JP40 Tandem Axle Jeep, B80 Tandem Axle Stinger With Pin On 3rd Axle. Wireless Remote, Super Singles. Call For More Information.



MACK B61SX, 18K Front, 58K Rears, Triple Frame, Quad Box, 673 Motor, One Owner, Low Miles, Restored A Few Years Ago. Very Good Condition. Call More Information.



2009 FONTAINE 55L, 55 Ton, Flat Level Deck, Tri Axle, Air Ride, Alum Wheels, One Owner, Original Paint, Very Good Condition. Call For More Information



2010 UTILITY TRAILER, 48 X 102 Combo Flatbed, Air Ride, Spread Axle, Winches And Straps, New Brakes, Original Paint, Working Daily, Excellent Shape. Call For More Information.

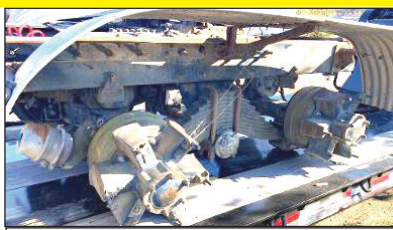


1994 TRAIL EZE SLIDING AXLE, 35 Ton, Recent Sandblasted And Paint, New Tires, New Brakes, Steel Deck, Winch, Forklift Package, Working Daily. Call For More Information.

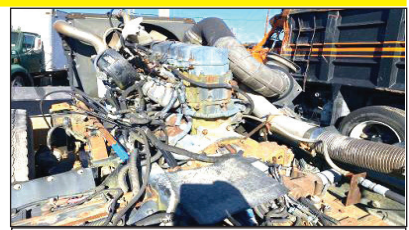
CAT 336 AND 330 GRAPPLES, KOMATSU PC 400, PC300, PC200, PC228, PC270, PC220, PC150 GRAPPLES.



HYDRAULIC SWIVEL CLAW, SET UP FOR CAT 336 OR EQUIVALENT



2001 MACK REARS, COMPLETE, NEW SUSPENSION, BRAKES AND DRUMS, 4.42 GEAR RATIO



2001 MACK 460 ENGINE COMPLETE, STILL IN CHASSIS FRAME.

www.josephequipment.com
Trades Welcome • Financing Available

THIS AD IS COPYRIGHTED & OWNED BY TRUCK AND EQUIPMENT POST

JOSEPH

EQUIPMENT COMPANY

300 GAY ST • MANCHESTER, NH 03103

SATURDAYS • WE ARE OPEN ALL DAY

PHONE: 603-641-8608

FAX: 603-666-3716

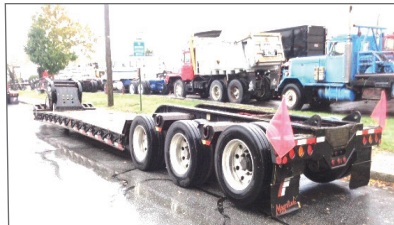


293 NORTH - EXIT 2 -
LEFT ONTO BROWN AVE -
RIGHT ONTO WINSTON ST. - LEFT ONTO GAY ST.
300 GAY STREET ON THE RIGHT

IN STOCK



NEW 2021 XL SPECIALIZED XL80SA, Sliding Axle Trailer, 2 Axle, Air Ride, 40 Ton, 53' X 102", Apitong Decking, Winch, Remote Control. Call For More Information.



2015 FONTAINE MAGNITUDE 55L+, 55 Ton, Tri Axle, Air Ride, 3 + 1 Capable, 25' Flat Level Deck, Lift On Third, 275 Rubber, Alum Wheels, Set Up For Gooseneck Extension. One Owner, Original Paint. Call For More Information.

70 TON



IN STOCK - 2020 FONTAINE LXTN40, 40 Ton Extendable, 34' Closed - 60' Open. Also Available 29' Closed - 50' Open. Tandem Axle, Set Up For 3rd, Air Ride, Non Ground Bearing, 102" Swing Clearance, 20" Deck Height, Alum Wheels. In Stock, No Waiting. Available In Manchester NH And At The Factory In Springville AL. 3rd And 4th Axles Available. Call For More Information.



IN STOCK - NO WAITING - 2020 FONTAINE RENEGADE LXLN12 - 12 Inch Loaded Deck Height With 4 Inch Ground Clearance When Fully Loaded, 30 Tons In 16 Feet On Tandem Bogie Or 30 Tons In 20 Feet With 3rd Axle Flip, Low Profile, 3rd Axle Capability, 32 Feet 11 Clear Deck Length. CALL FOR MORE INFORMATION.



2019 FONTAINE MAGNITUDE 55H DSR, 26' Deck, 14.5" Loaded Deck Height, Air Ride, Tri Axle, Lift On 3rd, With Flip 4th, Strobe Lights, LEDS, Alum Wheels, 275/70R X 22.5, Boom Trough. One Owner, Excellent Condition. Call For More Information.



2021 GALLEGOS 40 TON JEEP DOLLY, 2 Axle, Air Ride, 29' Long, 60" Axle Spread, 102" Wide, Approx Fifth Wheel Height 53", Compatible With 60 To 70 Ton Class Trailers, 275 Rubber, Alum Wheels, 2 Available To Choose. Call For More Information.

COMPLETELY RECONDITIONED



2009 TALBERT 70 TON DROP SIDE RAIL, Severe Duty, 26' Steel Deck, 9' Wide, With 26' Beam Insert, 30,000 Lb Axles, 3 Axle, Set Up For 4th, Spring Ride, 315 Rubber, One Owner, Completely Reconditioned, Sandblasted And Painted. New Seals, Brakes, Bearings, Hubcaps And Decals. Call For More Information.



NEW 2019 XL SPECIALIZED, 55 Ton, 26' Deck, 15" Loaded Deck Height, Tri Axle, Set Up For 4th, Lift On Third, Air Ride, Long Goose Neck, 2 Pin Position, Boom Trough, 275 Rubber, Alum Wheels. Front Flip Ramps, Chain Slots, Weigh Scale, Strobes With Battery Back Up, Strobe Lights, Outriggers, Extra D-Rings. Available In Black Or Red, In Stock, No Waiting. Located At The Factory In Manchester IA And Also Stock In Manchester NH. Call For More Information.



2000 TALBERT 60 TON DROP SIDE TRAILER, 26' Deck, Steel Deck, Additional 26' Beam Deck Insert, 9' Wide, Non Ground Bearing, Heavy Duty Outriggers, Tri Axle, Set Up For 4th, Spring Ride, Good Rubber, Flag Holders, One Owner, Working Daily. Call For More Information.



2003 FONTAINE 70 TON DSR TRAILER, Completely Reconditioned, Sandblasted And Painted, New Decking, New Suspension, New Brakes, Seals, Kits, Hubcaps, Decals, Dot Tape, 9' Wide, 26' Deck, 14" Deck Height, Air Ride, Lift Axle, Alum Wheels, 275 Rubber, One Owner, 2+3+2 Capable. Call For More Information



2009 EAGER BEAVER, 50 Ton, Non-Ground Bearing, Air Ride, 3 Axle, Lift On Third, One Owner, Original Paint. Call For More Information.



2000 ROGERS 35 TON, Two Axles, Front Gooseneck Fenders, New 23' Decking, Front Flip Ramps, 102" Wide, Air Ride, Non Ground Bearing, Right Off The Road, City-Owned, Call For More Information..

www.josephequipment.com

Trades Welcome • Financing Available

THIS AD IS COPYRIGHTED & OWNED BY TRUCK AND EQUIPMENT POST

JOSEPH

EQUIPMENT COMPANY

300 GAY ST • MANCHESTER, NH 03103

PHONE: 603-641-8608

OPEN
ALL DAY
SATURDAY



FONTAINE

FAX: 603-666-3716



NEW MODEL - 2022 FONTAINE RENEGADE LXLN12 - 12 Inch Loaded Deck Height With 4 Inch Ground Clearance When Fully Loaded, 30 Tons In 16 Feet On Tandem Bogie Or 30 Tons In 20 Feet With 3rd Axle Flip, Low Profile, 3rd Axle Capability, 32 Feet 11 Clear Deck Length. IN STOCK, NO WAITING. **Call For More Information.**



NEW MODEL - 2022 FONTAINE MAGNITUDE 50 Tri Axle, Set Up For 4Th, 50 Ton, Air Ride, 24' Deck, 20" Loaded Deck Height, Alum Or Steel Wheels, Strobe Lights, Outriggers And D-Rings. **Call For More Information.**



2022 KRUZ TERMINATOR, 26' Steel Frame, Single Point Suspension, 2 Way Gate, 11 X 24.5 Tires, Alum Wheels, 2 Speed Landing Gear. **Call For More Information.**

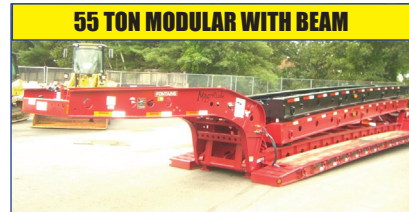


27' FLAT LEVEL DECK - IN STOCK

2022 FONTAINE 55L, 27' Flat Level Deck, Also Available In 25' And 26' Deck Length. Tri-Axle, Air Ride, 3Rd Axle Lift, Alum Wheels, Strobe Lights, Set-Up For 4Th Axle. In Stock, No Waiting. **Call For More Information.**

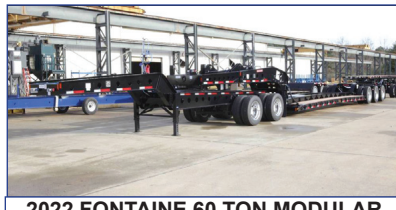


2022 KRUZ 26' STEEL TUB, Aluminum Frame Dump Trailer, Air Ride, 2 Axle, Alum Wheels, 450 Hardox, 24.5 16 Ply Tires. **TAKING ORDERS**
Call For More Information.



55 TON MODULAR WITH BEAM

2022 FONTAINE 55H MODULAR DSR, Beam Deck Also Available, Tri Axle, 60" Axle Spacing, Hydraulic Removable, Non Ground Bearing, Set Up For Gooseneck Ext, Spreader Bar And 4Th Axle Flip, Air Ride, Alum Wheels, 22.5 Rubber. **Call For More Information.**



2022 FONTAINE 60 TON MODULAR 2+3+1,

26' Dsr, 184" Swing Clearance, Set Up For 2 Axle Jeep, 14" Deck Height, Air Ride, Alum Wheels, 275/70R X 22.5 Rubber, Non Ground Bearing. **Call For More Information.**



2022 FONTAINE RENEGADE LXL, 14" Deck Height, 30' Deck W/6" Ground Clearance, 2 Axle, Set Up For Third, Hydraulic Detachable, Taking Orders
Call For More Information.



2022 KRUZ, 70 Yard, Tri Axle, 70,000 Single Point, Lift On Third Axle, 1/4 Inch 450 Hardox, Floor, Sides, Nose, Gate, 12 Panel Gate, 11 X 24.5 Rubber, Alum Wheels. Taking Orders. **Call For More Information.**



2022 FONTAINE TRAVERSE HYDRAULIC TAIL, 48' Long, 102" Wide, Air Ride, Hydraulic Upper Deck, Hydraulic Winch, Remote Control, Alum Wheels, Dual Controls. Taking Orders
Call For More Information.



2022 FONTAINE 60 TON MODULAR, 26' Dsr, 60" Axle Spacing, 184" Swing Clearance, Set Up For 2 Axle Jeep, 14" Deck Height, Air Ride, Alum Wheels, 275/70R X 22.5 Rubber, Non Ground Bearing. In Stock. **Call For More Information.**



1998 KAYLN SIEBERT. 75Ton 3+3+3, Air Ride, West Coast Bogie, 3 Axle, Air Ride Jeep With Power Tower, 10' Wide Trailer, 60' Overall Length, 48' Of Useable Deck, 275/70 X 22.5 Rubber, Sandblasted & Painted, Excellent Shape, Alum Wheels On Jeep And Booster. **Call For More Information.**

Trades Welcome • Financing Available • www.josephequipment.com

THIS AD IS COPYRIGHTED & OWNED BY TRUCK AND EQUIPMENT POST

TRAILER RENTALS • TRAILER RENTALS • TRAILER RENTALS
WE RENT STEP DECKS • LOW BEDS • HI FLATS • DEMO/SCRAP • TRAILERS

JOSEPH

EQUIPMENT COMPANY

300 GAY ST. • Manchester, NH 03103

NOW TAKING ORDERS FOR DUMP TRAILERS AND LOWBEDS FOR SPRING AND SUMMER DELIVERY

14" DECK HEIGHT

IN STOCK, NO WAITING

55 TON EXTENDABLE

NEW 2022 FONTAINE RENEGADE LXL, 14' Deck Height, 30" Deck W/6" Ground Clearance, 2 Axle, Set Up For 3rd Hydraulic Detachable Or Mechanical Detachable. In Stock No Waiting. Call For More Information



2022 FONTAINE MAGNITUDE 603T Modular Drop Side Rail With 28' Deck, Hydraulic Removable Neck, Non Ground Bearing, Air Ride, Tri Axle, Third Axle Lift, Set Up For 4Th, Alum Wheels, 275/70 X 22.5 Tires, Loaded. Call For More Information.



NEW 2022 FONTAINE SPECIALIZED MAGNITUDE 55L, Tri Axle, Air Ride, Set Up Of 4Th Axle, Non Ground Bearing, 25' Deck, Led Lights, Aluminum Wheels, Strobe Light Package, Lift On 3rd Axle, 2 Pin Position, Loaded. In Stock No Waiting. Call For More Information



2022 FONTAINE 55H MODULAR DSR, Beam Deck Also Available, Tri Axle, 60" Axle Spacing, Hydraulic Removable, Non Ground Bearing, Set Up For Gooseneck Ext, Spreader Bar And 4Th Axle Flip, Air Ride, Alum Wheels, 22.5 Rubber, Call For More Information.



NEW 2022 FONTAINE 704/2+3+2 DROP SIDE RAIL, 4 Axle, 28' Deck, Hydraulic Detachable, In Stock, No Waiting, Non Ground Bearing, 102' Wide, 65' Flip Box, Spreader Bar And 352J, Jeep, Alum Wheels, 275/70R X 22.5 Tires, 28' Beam Deck Available. Call For More Information.



NEW 2022 FONTAINE 55 TON, Drop Side Rail, Tri Axle, Air Ride, Set Up For 4Th, Non Ground Bearing, Led Lights, Aluminum Wheels, Strobe Lights, Loaded. In Stock No Waiting. Call For More Information



NEW 2022 SPECIALIZED 55 TON BEAM TRAILER, 3+1 Modular NGB, Detach Both Ends, Tri Axle, Lift On 3rd, Set Up 4Th, Set Up For Gooseneck Extension, Call For More Information



2022 FONTAINE 35 TON LOWBED, Air Ride, Tandem Axle, 29ft Flat Level Deck, Non Ground Bearing, Hyd Goose Neck, Set Up For Future 3rd Axle, In Stock. Call For More Information



WE RENT STINGERS • SPREADER BARS • DOUBLE DROP EXTENSIBLES TRAILERS

70 TON 2+3+2



WE RENT WALKING FLOORS • DUMPS • HIGH FLAT EXTENSIBLES • JEEPS



55 TON EXTENDABLE

IN STOCK



PHONE: 603-641-8608
FAX: 603-666-3716



TRAILER RENTALS • TRAILER RENTALS • TRAILER RENTALS
WE RENT STEP DECKS • LOW BEDS • HI FLATS • DEMO/SCRAP • TRAILERS

THIS AD IS COPYRIGHTED & OWNED BY TRUCK AND EQUIPMENT POST