

SERVING NORTHEAST REGION

FREE

TRUCK AND EQUIPMENT POST

What's In Your Tool Box?



2018 WESTERN STAR 4700SB. VIN #5KKMAXDV8JLJR1775, PL74 BOOM S/N G13800981727, \$119,000. 603-532-7716



2013 VOLVO BL70B BACKHOE. FRONT QUICK CONNECT, REAR EXTEND-A-HOE, AC/HEAT, FULL CAB, LOW HOURS, \$42,500. TIVERTON, RI 774-301-4240



1987 CHEVROLET K70. 155,926 MILES, 5 SPEED, 4:10 REAR, 366 CI V8, 4 WHEEL DISC BRAKES, 5000W MILLER WELDER/GENERATOR, 65' SKYHOOK CRANE 24V, 3000 LB. CAPACITY, \$15,000. ELLINGTON, CT 860-875-8107



1999 HARLEY DAVIDSON HERITAGE SPRINGER. 2400 MILES, \$12,500 OR OPEN TO TRADE FOR MINI CONSTRUCTION EQUIPMENT. GLOUCESTER, MA 978-283-0081



2004 NEVILLE 53' STEPDECK. RAMPS, SOLID TRAILER, NEW TIRES, \$7,900. BROWNFIELD, ME 207-461-6219

Optative Group

48-49
DEC 10th, 2025

**INTERNET & PRINT
FOR ONLY \$28.00**

www.TruckAndEquipmentPost.com

888-887-0505



ONE OWNER COMPLETE LIQUIDATION & ONSITE REAL ESTATE AUCTION

PUBLIC AUCTION

PITTSFIELD, NH

280 Webster Mills Rd, Pittsfield, NH 03263

DEC 6TH | 9AM

LIVE & ONLINE BIDDING

RING 2: FEATURING REAL ESTATE LOCATIONS



*All real estate is offered subject to seller confirmation. Peter D Gehres, Auctioneer NH Auction License 6220 In Cooperation with Stephen H. Schofield NH Broker 040026

RING 1: FEATURING HEAVY CONSTRUCTION EQUIPMENT, TRUCKS, TRAILERS, FARM EQUIPMENT, VEHICLES AND MORE!



Inspection dates: Dec. 1st - Auction Day 9am - 4pm ET | Auction Site - 280 Webster Mills Rd, Pittsfield, NH 03263

VIEW NOW *SCAN ME! >>*



JEFFMARTINAUCTIONEERS.COM | 844.450.6200



920 W. Chestnut St. **Brockton**, MA: Mon-Fri 8 am-5 pm & Sat 8-12 **508-586-1666**

Light It Up - GREEN!

8 LED Rectangular Surface Mount Warning Green / Amber Clear



27 Selectable Flash Patterns

5 Year Warranty
M20484GYCL-DC

\$61.99

Maxxima

48" LED Reliant® S2 Light Bar Amber/Green/White



FEDERAL SIGNAL



Hook mount, Clear domes, 4-Button Controller, 28 Flash Patterns

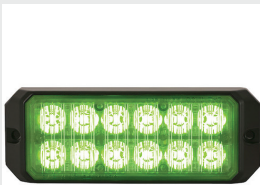
Single, dual, and tri-color capability

5 Year Warranty

RLNT48J-AGWH4

\$1,195

5" LED Green Dual Row Strobe



ALL GREEN

25 Flash Patterns

5 Year Warranty
8891710

\$107.99

Buyers
PRODUCTS COMPANY



Ultra Thin 5 Inch Green/Amber LED



Includes 3M™ self-adhesive tape for simple fastening.

5 Year Warranty
8892210

\$52.99

Buyers
PRODUCTS COMPANY



Sale ends 12/31/25 - Other green options in stock!

WHELEN

BALLARD

TRUCK CENTERS

(508) 214-3036
drive@ballardtrucks.com



Visit us online at BallardTrucks.com or scan to view our full inventory.



2020 PETERBILT 567
DUMP TRUCK
STK#78704
\$167,500



2013 INTERNATIONAL
WORKSTAR 7400 DUMP
TRUCK STK#32061
\$17,000



2025 MACK ANTHEM 64T
SLEEPER TRUCK
STK#52059
CALL FOR PRICE !



2024 ISUZU NPR HD
UTILITY TRUCK
STK#215705
\$79,950



2024 KENWORTH T880
DUMP TRUCK
STK#17897
\$227,500



2023 MACK GRANITE 64FR
GARBAGE TRUCK
STK#8098
\$269,000



2016 ISUZU NPR HD
BOX TRUCK
STK#7980
\$28,900



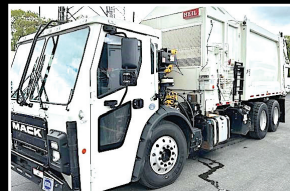
2024 MACK MD6
GARBAGE TRUCK
STK#3603
CALL FOR PRICE !



2026 XL SPECIALIZED XL 110 HDGSP
LOWBOY TRAILERS
STK#25047
CALL FOR PRICE !



2026 XL SPECIALIZED
XL110SA-S. SEMI-TRAVELING
AXLE TRAILER STK#25048
CALL FOR PRICE !



2024 MACK LR64R
GARBAGE TRUCK
STK#08553
\$349,900



2025 MACK GRANITE 64FR
DUMP TRUCK
STK#46927
CALL FOR PRICE !



2024 VOLVO VNL64T300
DAY CAB
STK#64521
CALL FOR PRICE !



2015 MACK GRANITE GU713
GARBAGE TRUCK
STK#22038
\$107,500



2022 WESTERN STAR 4700
DAY CAB
STK#3485
\$102,500



2016 WESTERN STAR 4900
DAY CAB
STK#J1907
\$19,500



2019 PETERBILT 389
DAY CAB TRUCK
STK#62930
\$94,500



2025 TICO PROSPOTTER
YARD SPOTTER
STK#13513
CALL FOR PRICE !



2025 ISUZU NRR
REEFER BOX TRUCK
STK#04112
CALL FOR PRICE !



2025 VOLVO VHD84B300
CAB & CHASSIS
STK#690100
CALL FOR PRICE !



C.N. WOOD co., INC.

Large Selection Of Used Equipment! Call For More Info. 781-315-1680



2010 ELGIN PELICAN. Runs Very Good, \$29,000., #E001079



2006 JOHN DEERE 700J. 6 Way Blade, \$65,000., #C005187



2019 CAT 308CR. 2 Buckets, \$72,000., #C009600



2019 CAT PM312 MILL. Nice Unit, \$299,500., #C011669



2006 JOHN DEERE 180CW. Good Running Machine, \$35,000., #C011520



1997 CAT D8R. Very Good Undercarriage, \$95,000., #C009605



2021 KOMATSU PC45MR-5. Nice Machine, \$54,000., #C010645



2017 GRADALL XL5100. 6197 Hours, 2 Buckets, \$95,000., #C011179



2018 KOMATSU PC238USLC-11. Coupler, Bucket, Clean, \$109,000., #C011388



2020 LEEBOY 5300 PAVER. \$98,500., #C011668



2017 KOMATSU PC290LC-11. Coupler, Bucket, Nice Unit, \$98,000., #C011163



2013 KOMATSU PC78US-8. Clean, \$35,000., #C011679

Woburn, MA ● Avon, MA ● Whatley, MA ● Johnston, RI ● North Haven, CT
Westbrook, ME ● Pine Bush, NY ● Holmes, NY ● Newington, CT

www.cn-wood.com



Commercial
Vehicle Center

JACK MADDEN FORD

781-762-4200



LOW RATE FINANCING ON 2024 TRANSITS

IN STOCK!

LOW RATE FINANCING ON ALL SUPER DUTY TRUCKS
IN STOCK!



New & pre-owned TRANSIT CARGO VANS. All sizes available.



2024 FORD F-550 SD XL 4WD DRW W/9' SUPER HAULER LANDSCAPE BODY. 6.7L Diesel, 19500 GVW, Tow Pkg, stk#17329, \$81,771.



NEW 2025 FORD E-450SD 14' ROCKPORT WORKPORT UTILITY: DRQ, 7.3L GAS, AUTO, POWER GROUP. STK#28681, \$64,263.



NEW FORD TRANSIT 350 SERVICE BODY AWD, STK#69470, \$79,745.



NEW 2025 E350 12' AEROCCELL CUTAWAY. STK# 30217 \$53,250.



NEW FORD F550 4X4 DIESEL 16' BOX. STK#18361, ~~\$94,999~~ \$93,989



NEW FORD E-350 COMMERCIAL CUTAWAY WITH 16' AEROCCELL BOX TRUCK. STK#23914, \$62,224.

**LARGEST
STOCKING
SUPER DUTY
DEALER**

JACK MADDEN FORD

825 Providence Hwy Rt.1 Norwood, MA
781-762-4200



Commercial
Vehicle Center

*All prices include incentives for qualified buyers. For trade assist, must have 2017 or new trade. All vehicles require dealer financing. Some prices include snowplow incentives. See dealer for complete details.

Commercial
Vehicle Center

JACK MADDEN FORD

781-762-4200



**LOW
FINANCING
ON 2024
TRANSITS
IN STOCK!**

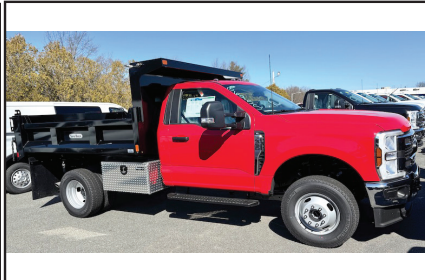


**LOW
FINANCING
ON 2024
TRANSITS
IN STOCK!**

2024 FORD TRANSIT 250 CARGO VAN. V6, Auto w/OD, AC, P/W, Rear Camera, Limited Slip, stk#22914, \$42,471.



**NEW FORD F350
4X4 SUPER DUTY
8' READING
SERVICE BODY
WITH ALUMINUM
LIFT GATE.
STK#34386,
\$68,732.**



**NEW F350
3-4 YARD
DUMP.
GAS. 10
AVAILABLE,
STK#36957,
\$68,888.**

see more photos on our website WWW.JACKMADDENFORD.COM



**NEW CAB &
CHASSIS:
350-450-550
SUPER CABS,
REGULAR
CABS.**

READY TO GO



**2024 FORD
F-550 SC XL DRW
SWITCH N GO
4WD. 6.7L Diesel,
Auto, AC, PW, PL,
Rear Camera,
19500 GVW,
Snowplow Prep,
\$89,114.**



**2024 FORD F-350
SD XL W/9' SUPER
HAULER 3-4 YARD
DUMP 4WD. 6.7L
Diesel, Auto,
14,000 GVW, PW,
PL, Snowplow
Prep, stk#10463,
\$77,033.**



**2024 FORD F-550
SD XL DRW W/9'
UNICELL ARIFLOW
4-5 YARD DUMP
4WD. 6.7L Diesel,
Auto, AC, PW, PL,
Snowplow Prep,
19,500 GVW,
\$78,190.**

**LARGEST
STOCKING
SUPER DUTY
DEALER**

JACK MADDEN FORD

825 Providence Hwy Rt.1 Norwood, MA
781-762-4200

Commercial
Vehicle Center

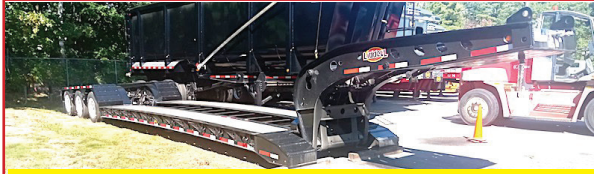
*All prices include incentives for qualified buyers. For trade assist, must have 2018 or newer trade. All vehicles require dealer financing. Some prices include snowplow incentives. See dealer for complete details.



DIMMICK GROUP PETERBILT
1-800-NEW-PETE
1-800-639-7383



DIMMICK GROUP PETERBILT



\$95,900. LESS FET

2025 LIDDELL 60 TON.

Flat Deck Detachable, 24.5 Rubber, Aluminum Outers, Rear Strobes, 102" Swing/Set-Up For A Neck Extension, Lift Axle, Wheel Covers. **In Stock.**



2025 TALBERT 55 TON.

Available In All Our Locations



2009 INTERNATIONAL. 10' Swenson Spreader, Rexroth Spreader Control System, 11' Angle Front & 10' Wing Plow, \$25,000.



2021 PETERBILT 389. Pride-Class, 605 HP, 18 Speed, 3:73 Ratio, 250" WB, 187,000 Warranty Remaining, 155,000 Miles, \$153,000. Bow NH



FELLING TAG TRAILERS.
Multiple in stock, NH & VT



2017 MAC 38' TRAILER.
Frameless Dump, Like New, Full Liner, 85% Tires & Brakes, **\$52,900**



2025 PETERBILT 589.
605 Cummins, 18 Speed, 3:73 Ratio, 250" WB, Has Engine & Trans Warranty Remaining. 70,000 Miles



2025 PETERBILT 536.
w/ NRC 22' 20TB,
Brand New, Colchester VT



2025 EAGER BEAVER 50GSL-PT.
Low Bed Trailer, New.



2026 PETERBILT SERVICE TRUCKS.
33K GVW And 26K GVW, Knapheide Body, IN STOCK ALL LOCATIONS



2026 PETE T/A DUMP. Cummins 565 HP, Automatic, 80,000 GVW, 17'6" MAC Body, Scuttle Chute, 6 In Stock, Various Colors, Ready To Go, All Locations

Royalton VT
802-763-2585

Colchester VT
802-654-4420

Bow NH
603-225-6666

Albany NY
518-459-1122

Newburgh NY
845-245-4042

Champlain NY
518-298-3835

Owego NY
607-687-1200

Rochester NY
585-321-5250

Syracuse NY
315-432-1122

Utica NY
315-732-4300

WWW.SCRANTONGMC.COM
777 TALCOTTVILLE ROAD VERNON, CT • 860-281-6726



2024 GMC SAVANA CUTAWAY. 12' DURACUBE MAX SERVICE BODY, BACK UP CAMERA, LADDER RACKS, #R9713,
**WAS \$72,138,
 NOW \$63,179**



2024 GMC SAVANA 3500 12' CUTAWAY, 6.0L V8, AUTOMATIC,
**WAS \$56,590,
 NOW \$50,260**



2025 GMC SIERRA 3500 SERVICE BODY. CREW CAB, 4X4, GAS, DUAL REAR WHEEL, #S9219, \$74,999



2025 GMC SIERRA 3500 CREW CAB. 6.6L GAS, 4X4, DRW, READING SERVICE BODY, #T9376



2025 GMC SIERRA 2500HD PRO DOUBLE CAB. 4X4, SERVICE BODY, #S9241



2025 GMC SAVANA 14' DURACUBE MAX, ELECTRIC LOCKS, #S9318



2025 GMC SAVANA 17' AEROCCELL VAN BODY WITH RAMP, #S9359



2025 GMC SIERRA 3500 CREW CAB SERVICE BODY. DRW, REMOTE LOCKS, S9242



2025 GMC SAVANA 3500 CARGO VAN. 6.6L V8, LOCKING DIFFERENTIAL, REMOTE START, #9180 \$51,999



2025 GMC SIERRA 2500 HD DOUBLE CAB 4X4. GAS, AUTOMATIC, READING SERVICE BODY, #S9240, \$66,999



MANY OTHER TRUCKS IN STOCK. CALL FOR DETAILS

WWW.SCRANTONGMC.COM



COLONIAL



CHEVROLET OF ACTON • CALL US 978-263-1000

SPECTULAR FALL SAVINGS!!!



**SALE PRICE
\$69,999***

BRAND NEW 2024 Chevrolet Silverado HD3500: 4x4, dual rear wheels, DuraMag aluminum Landscape dump body, 6.6 gas, WT Convenience Package, snowplow prep package, Stk# 24704 MSRP \$80,068. Colonial Discount \$9,569, GM Rebate \$500



**SALE PRICE
\$69,999***

BRAND NEW 2024 Chevrolet Silverado HD3500 4x4, dual rear wheels, DuraMag aluminum Landscape dump body, 6.6 gas, WT Convenience Package, snowplow prep package Stk# 24703 MSRP \$80,068. Colonial Discount \$9,569, GM Rebate \$500



**SALE PRICE
\$66,599***

BRAND NEW 2024 Chevrolet Silverado HD2500 4x4, Knapheide Aluminum service body, 6.6 gas, snowplow prep package Stk# A24802 MSRP \$73,988. Colonial Discount \$6,989, GM Rebate \$500



**SALE PRICE
\$59,999***

BRAND NEW 2024 Chevrolet Silverado HD2500 4x4, Knapheide service body, 6.6 gas, snowplow prep package Stk# A24809 MSRP \$69,103. Colonial Discount \$8,604, GM Rebate \$500



**SALE PRICE
\$59,999***

BRAND NEW 2024 Chevrolet Express KUV Service Body, 6.6 gas, cloth seats, power windows, door locks, mirrors, cruise control, remote vehicle start and more, single rear wheel Stk# A24798 MSRP \$66,903 Colonial Discount \$5,404, GM Rebate 1,500



**SALE PRICE
\$59,999***

BRAND NEW 2024 Chevrolet Express KUV Service Body, 6.6 gas, cloth seats, power windows, door locks, mirrors, cruise control, remote vehicle start and more, single rear wheel Stk# A24808 MSRP \$66,903 Colonial Discount \$5,404, GM Rebate 1,500



**SALE PRICE
\$48,999**

BRAND NEW Chevrolet Express Baybridge 10' Box Van, roll-up door, power windows/door locks/mirrors, cruise control and more. single rear wheel Stk# A24806 MSRP \$55,690. Colonial Discount \$5,691, GM Rebate \$1,500



**SALE PRICE
\$63,999***

BRAND NEW 2025 Chevrolet Express Dejana Dura-Cube MAX, toolboxes drivers/passenger sides, power windows/door locks/mirrors, cruise control and more, single rear wheel Stk# A25716 MSRP \$68,695 Colonial Discount \$4,696



**SALE PRICE
\$53,999***

BRAND NEW 2025 Chevrolet Express Dejana Duracube II, roll-up door, power windows/door locks/mirrors, cruise control and more, single rear wheel Stk# A25710 MSRP \$59,080. Colonial Discount \$5,081

171 Great Road • Acton, MA 01720 • www.buycolonialchevrolet.com

*GM rebates subject to change, some vehicle may qualify for additional rebates/Business Choice rebate might be available to qualifying customers. Please call for availability.



METROPOLITAN TRUCK CENTER INC.

1074 Turnpike Street • Stoughton, MA 02072

Family Owned & Operated
Since 1980

1-800-878-5491

www.metropolitantruck.com



**NO MATTER WHAT TRUCK YOU HAVE,
WE CAN FIND THE RIGHT PLOW FOR YOU!**



Tempest Poly

Loaded with upgraded de-icing technology



TEMPEST STAINLESS STEEL



StormBoxx

**Come see the all new
Fisher StormBoxx
featuring
Trace Edge technology**



WESTERN
**STAINLESS
STEEL PLOWS
FOR HALF TON
TRUCKS
NOW AVAILABLE**



(203) 752-0213
 WWW.EQUIP-SALES.COM
 NORTH HAVEN, CT 06473

PARTS ► SALES ► SERVICE ► RENTALS



**1 OWNER,
1 OPERATOR!**

2022 ROCKSTER R1100S

CLOSED CIRCUIT IMPACT CRUSHER. SERVICE RECORDS FROM DAY 1. CAT ENGINE, CENTRAL GREASE SYSTEM, REMOTE CONTROL, MAGNET, SCREEN BOX, 2 WAY RETURN BELT. 4,385 HRS. EXTREMELY RELIABLE & PRODUCTIVE MACHINE. **\$265,000**



**LOADED
FULL
CAB!**

2021 XCMG CV83PDU

473 HOURS, 66" SMOOTH DRUM, BOLT ON SHEEP FOOT. **\$56,500**



2022 XCMG XE75U

KUBOTA DIESEL, PATTERN CHANGER, HYDRAULIC COUPLER & THUMB PLUMBING. 200 HOURS. LOADED FULL CAB. **\$61,500**



2021 CATERPILLAR 279D3

1,457 HOURS, FULL CAB, GOOD U/C, HYD. COUPLER, 2 SPEED. **\$46,500**



2018 ROCKSTER RTT720A

1,535 HOURS, TROMMEL SCREENER, CAT TIER 3, 20' DRUM. **\$175,000**



2002 CATERPILLAR 980G II

EXCEPTIONALLY WELL MAINTAINED, SCALE, AUTO LINE, RECENT LINE BORING. BUCKET WORK, NEW TRANS, RECENT ENGINE OVERHAUL. TOO MUCH TO LIST. RUNS DAILY. **\$75,000 OBO**



Fowler's Auto Wrecking Inc.

Belldown Recycling Center



860-267-7140 • 24 Old Coach Rd East Hampton, CT



2006 POWERSCREEN 2400 TWIN SHAFT SHREDDER FOR VOLUME REDUCTION

Mobile/ Tracked Machine w/ Remote, Easy Programmed Shaft Configurations For Various Materials : Wood Waste, C & D Debris, Stumps, Green Waste, 1,600 Hours, CAT C15 Tier 3, 540 HP, New CAT ECM w/ Software Upgrade, Full Engine/ Hyd Service Just Done, New Conveyor Belt, Overband Magnet To Remove Steel, 8 x 8 Tipping Hopper, Work Ready, **\$225,000**



2004 INTERNATIONAL 4300 TOW TRUCK.

DT466 W/ 6 Speed Eaton,
282K Miles, 33K GVWR With
Wheel Lift,
Ready For Work **\$24,000.**



REED TRUCK SERVICES

24/7 Heavy Duty Towing, Accident Recovery & Emergency Road Service



**TRADES
ACCEPTED**

**939 John Stark
Hwy.
Newport, NH**



**287 Washington St.
Claremont, NH**

**HELP
WANTED**

• Authorized International Truck & Cummins • Sales • Service • Parts • Warranty •
All Makes Commercial Truck Parts, Sales, and Service

Email: scott@reedtruck.com • www.ReedTruck.com • 1-800-542-5032



2025 INTERNATIONAL HV507. L9
Cummins, Allison 3500, 20 F/A, 30 R/A,
Chalmers Susp, All Municipal Options!



SEVERAL AVAILABLE

2024 INTERNATIONAL CV515 4x4.
Fully Equipped With Plow Gear And Dump
Body.



IN STOCK

2026 INTERNATIONAL HX620.
X15@565hp, 4700 RDS Allison, 20 F/A,
46 R/A, Ready For A 15' Dump.



2024 INTERNATIONAL HV613. A26,
Allison 4500, 22 F/A, 46 Locking Rears,
Hend HMX Suspension, In Stock!!



2024 INTERNATIONAL HX520. X15
Cummins, Allison Auto 4500, 20/46
Axles, Air Ride, Aluminum Wheels,
Ready For A Dump Body



LOW MILES

2023 FREIGHTLINER 114SD DUMP W/Plow And
Wing. 470 HP, Allison 4500, 20 F/A, 46 R/A, Viking-
Cives Equipment, Low Miles.



2020 INTERNATIONAL HX615. 475 HP 8LL, 20
F/A, 46 R/A, Hendrickson HMX, 15' Beau Roc DH
Dump Body, Well Maintained, Clean Truck, 110K
Miles, **\$129,000.**

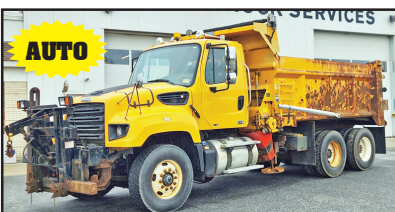


**THE PRICE
OF NEW!**

2023 INTERNATIONAL LT625. 13,200
F/A, 40 R/A, Cummins X15 450 HP, 10 Spd
Manual, Clean Tractor, 106K Miles, **\$71,500.**



2019 GMC 3500 DENALI CREW CAB 4x4.
Diesel 4x4, All Options, Well Maintained,
One Owner, One Driver, 115,500 Miles.



AUTO

2012 FREIGHTLINER SD114. DD13 Engine,
Allison AUTO Trans, Everest 14' Live Floor Body,
Truck, Includes Plow And Wing Blades. Well
Maintained Muni Trade, **\$49,900.**



6 IN STOCK

2012 INTERNATIONAL 7400 Dump. 16 F/A,
Locking 30 R/A, DT300 HP, Eng Brake, Allison, AC,
40,780 GVW, Everest Gear, Plow, Wing, Sander, Air
To Rear, **\$6,500. to \$26,500.**



2020 International MV607 21' 20TB NRC
Galvanized Flatbed w/Underreach. 33K GVW, 300
HP Cummins, Allison, Rear Locker, AB, AR, AC,
Well Maintained, Stored Inside, Owner/Operated.

**939 John Stark Hwy.
Newport, NH**



REED TRUCK SERVICES

24/7 Heavy Duty Towing, Accident Recovery & Emergency Road Service

FLEETRITE

**287 Washington St.
Claremont, NH**

CLEANING THE BACK ROW! THESE GOTTA GO! CALL FOR MORE INFO. MAKE OFFERS!



4 IN STOCK

2009 FREIGHTLINER BUS.
Cummins, Allison, 2 Full Size Freightliners &
2 International CE300 Buses
Priced From \$1,800-\$5,800.



LIVE FLOOR

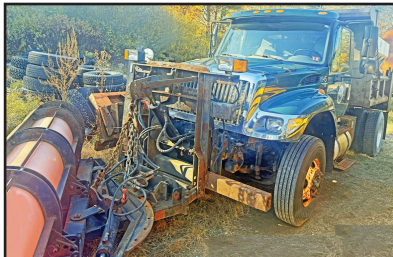
2005 STERLING L8500 DUMP/PLOW TRUCK.
C7 Cat, Allison, 44,000 GVW, Needs some work.
Live Floor Dump.



2006 FREIGHTLINER M2 112 LANAU DUMP BODY. 450 HP Mercedes, 16908LL Trans, 18 F/A, 46 R/A, Solid Truck, Used For Paving.



2010 FREIGHTLINER SLEEPER.
14 F/A, 46 R/A, DD15, 18 Spd, Wet System,
Clean Solid Truck, Used In Paving Company.



2004 INTERNATIONAL 7400. DT466, Allison,
Locking 30K Rear, Rev Plow, Wing With Or W/O
Newer SS Sander, Call For Price



2014 GMC/COLLINS BUS.
Gas, Auto, Wheel Chair Lift, **\$8,900.**
(Other Buses In Stock)

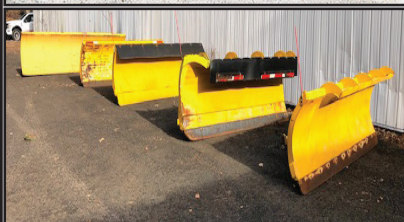
Email: scott@reedtruck.com • www.ReedTruck.com • 1-800-542-5032



MACK AWD.
Mass DOT Certified,
10 Yd Spreader, 11 Ft
Plow & 11 Ft Wing,
\$16,800.
Gloucester, MA
978-283-0081



2016 JOHN DEERE 350G EXCAVATOR - Machine in Great Condition, Extremely Clean and Tight, 6173 Hours, Enclosed Cab with Heat and A/C, Tracks in Good Condition, Well Maintained, Ready to Work. Priced to Sell **\$74,900** 781-417-3018



11' SNOW PLOWS. Power Angle,
Extra Parts, Plow Frame, 1 Plow For
Loader, **\$1,000& Up,**
East Windsor, CT 860-716-0226



2004 NEVILLE 53' STEPDECK. Ramps,
Solid Trailer, New Tires, **\$7900.**
Brownfield, ME 207-461-6219

Commercial
Truck - Huge
Savings
Opportunity

COLONIAL



Save Up to
\$15,000.*
Off Original
MSRP

COLONIAL DODGE CHRYSLER JEEP RAM

24 Coolidge Street - Hudson, MA 01749 • 888-601-3397

PROMASTER VANS AND WORK TRUCKS FOR PROFESSIONALS!

10 SPECIAL PURCHASE VEHICLES TO CHOOSE!

SAVE \$30,652



ONLY 24 MILES

NEW 2025 RAM
PROMASTER
TRADESMAN SLT HIGH
ROOF MOBILE OFFICE:
TAKE YOUR OFFICE TO
THE WORK SITE. FULLY
EQUIPPED. AUTO, PACK-
UP CAMERA & MORE.

PRICE: \$55,080

UPFIT: \$22,000

WAS: \$77,080

NOW: \$46,428.

SAVE: \$30,652.

Stk#P10466



SAVE \$16,542



NEW 2025 RAM 2500
TRADESMAN 4X4
CREW CAB 8' BOX.
8 Cyl., Auto, AC, Nav,
Power Grp, Original
MSRP \$69,970.
Colonial Savings
\$16,542.

SALE PRICE: \$53,428.
(+\$549 Doc. Fee)

Stk#P10445

SAVE \$16,602



NEW 2025 RAM
2500 BIG HORN 4X4
CREW CAB 4X4. Off
Road Pkg, 8 Cyl., Auto,
AC, Power Grp, Nav,
Camera, Original MSRP
\$75,030. (+549. Doc
Fee) – Colonial Savings
\$16,602.

SALE PRICE: \$58,977.

Stk#P10444

SAVE \$14,807



NEW LEFTOVER
2022 RAM 2500
REG CAB 8' BED.
6.4L V8 Hemi, Auto,
AC, MSRP \$51,235.,
Save \$14,807.

SALE PRICE:
\$36,428.

(+549. Doc Fee)

Stk#220440

11K MILES



2024 RAM
LARAMIE CREW
CAB 4X4. Auto,
Leather, Heated Seats,
AC, Nav, WiFi, Only
11K Miles,
\$59,428.

(+549. Doc Fee) =

\$59,977.

stk#P10450

SAVE \$14,000



2025 RAM
PROMASTER 3500
159" EXT HIGH
ROOF VAN. Auto, AC,
Camera, Bluetooth,
MSRP \$60,400., Save
\$14,000.

SALE PRICE \$46,400.

(+549. Doc Fee)

Stk#P10496

SAVE \$8,200



NEW 2025 RAM
PROMASTER 136"
WB LOW ROOF
CARGO VAN. V6,
Auto, Back-Up Camera,
AC, PW, MSRP \$50,625.
Save \$8,200.

SALE PRICE: \$42,425.

(+ 549. Doc Fee) =

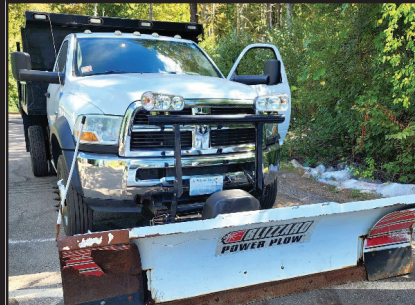
\$42,974. Stk#P10494

www.ColonialDodgeChryslerJeep.com

What's In Your Toolbox



2023 INTERNATIONAL LP BOBTAIL. Cummins Engine, Allison Automatic, Only 52,407 Miles! Truck Clean, Clean Title, Low Miles, Ready To Go To Work, Asking **\$165,000.** Call, Text, PM 203-215-0169 Or Email michael.e.cassella@gmail.com



2011 DODGE 5500. 4x4, 12K Miles, Original Owner, Fleet Maintained, Cummins, Automatic, 8/10 Expandable P/A Plow, 2.5 Yard Stainless Steel Electric Sander, Electric Cover, Winter Is Coming, This Is A Money Making Truck, **\$55,000.** West Warwick, RI 401-523-6116

CURTIS

O: 508-363-1889
C: 774-272-5676 or 508-726-8653
LEICESTER, MA

EQUIPMENT RENTALS

WINTER RENTALS!

2021 HYUNDAI 940 TM
3 Yd Loaders,
650 Hours
\$4250 Per Month
Buy For **\$110,000**



2018 JOHN DEERE SKIDSTEER
W/ CAB, **\$3000 Per Month**



2018 HYUNDAI 940 TM 3 YD. LOADER **\$4000 Per Month**
Buy for **\$75,000**

202

TRUCK
&
EQUIPMENT
603-899-2000

www.202truck.com
RT 202 Rindge NH
SALES & RENTALS - NO SALES TAX
FINANCING & DELIVERY



2004 KENWORTH W900. CAT C-15 @ 550 H.P., Full Double Frame, 20F + 46R, 2 Speed Rears, 3:90 & 5:38 Ratios, 11R24.5 Rear, 425 22.5 Front, 830K Miles, \$55,000.



2022 SANY SY35U. 382 Hours, 8500 Lbs., Hyd. Thumb, Cab Heat & A/C, Blade, Nice Clean Machine, **\$34,500.**



2014 PETERBILT 337. Paccar PX7 300HP, 26,000 GVW, Air Ride, 10F + 16R On Air Brakes, 138K Miles, Hrs: 6360, 6 New 11R22.5 Tires, Curry Utility Body with Compressor, \$47,500.



2024 HYUNDAI HX48A2. 495 Hours, Hyd. Thumb, Blade, Heat & A/C, Warranty, 11K Lbs., **\$59,000.**



2013 CAT 312EL. 5733 Hours, Good U/C, **\$59,000.** Optional Hyd. Thumb, Long Stick, 24" Shoes, **\$59,000.**



2005 CAT325CL. 10,500 Hours, Recently Reconditioned For The Long Game, CAT Full Rotation Thumb, 48 Inch Bucket With Recent Teeth, Pattern Changer, Travel Pedal, **\$65,000.**

PLACE MOTOR Inc.*The "RIGHT PLACE" Since 1923***COMMERCIAL TRUCKS**

PHIL CROWLEY
866-449-7482 EXT. 213



19 Thompson Rd.
Rte. 193
Webster, MA.

**NEW 2024 FORD F-350 - F-600 4X4
CAB & CHASSIS SELL OFF**



***** FISHER PUSHERS AVAILABLE ***
10 TO 14 - 30 INCH HIGH AND UP**



**NEW 2024 FORD T-350
TRANSIT 12' BOX
SUPER BLOW OUT SPECIAL !**
\$49,923



**NEW 2024 FORD F-600 CAB &
CHASSIS 4X4 DIESEL ENGINE,
WHITE, 205WB.**
BUY FOR \$68,723*



**NEW 2024 FORD F-550 CAB &
CHASSIS 4X4
DIESEL ENGINE, WHITE, 169WB.**
WITH FLAT BED BUY FOR \$72,623*
WITHOUT BUY FOR \$66,723*



**NEW 2025 FORD F-750 CAB
AND CHASSIS
330 HP., DIFFERENT WHEEL
BASES AVAILABLE.**
CALL FOR MORE DETAILS !



**NEW 2025 AND 2026 FORD F-550
SUPER CAB 4X4 60 AND 84 CA -
SEVERAL TO CHOOSE FROM.**
GAS & DIESEL.
CALL FOR MORE DETAILS !



**NEW 2026 FORD F-550 CREW
CAB 4X4
DIESEL, 84 CA.**
CALL FOR MORE DETAILS !

*All Factory Rebates Back To Deal



**MASSACHUSETTS OLDEST FORD
DEALER SINCE 1923**





PLACE MOTOR Inc.

The "Right Place" Since 1923

COMMERCIAL TRUCKS

Call Phil Crowley "The Truck Guy"
866-449-7482 ext. 213



19 Thompson Rd.
Rte. 193 Webster, Ma.

NEW 2024 FORD F-250 - F-350 4X4 PICK-UP'S SELL-OFF !



**NEW 2025 FORD F-350
CREW CAB 4X4
LARIAT TRIM, 6.7L H.O.
POWER STROKE DIESEL,
POWER MOON ROOF
AND MUCH MORE !**



**NEW 2025 FORD F-250
XL TRIM, 4X4, 6.9L V8
ENGINE
AND MORE !**



**NEW 2026 FORD F-250
SUPER-CAB 4X4
SHORT BED AND LONG
BED AVAILABLE !**



**NEW 2025 & 2026 FORD
F-350 REGULAR CAB
4X4
XLT TRIM, 6.7L DIESEL.
RED-BLACK & WHITE
AVAILABLE !**



**NEW 2026 FORD E-350
12' AREOCELL
SINGLE REAR WHEEL.
IN STOCK !**



**NEW 2025 FORD F-550
CAB & CHASSIS 4X4
7.3L & 6.7L DIESELS,
60 AND 84 CA.
RED & WHITE
AVAILABLE !**

0% FOR 60 MONTHS - AVAILABLE ON XL TRIM PACKAGES ONLY IN LIEU OF REBATES. All Factory Rebates Back To Dealer*

WWW.PLACEMOTOR.COM



DEJANA
Truck and Utility Equipment



**COMMERCIAL
VEHICLE CENTER**

NORTHEASTERN PETROLEUM SERVICE & SUPPLY**617-522-8390 Ext 103 • 51 B St. Bay 2 Hanover, Ma****After Hours Call 617-696-1979****We Are Looking For Newer Tank Trucks To List, Dual Equipped, Tandems & Auto. Trans, Can Sell From Your Location****Jerry Mello Cell: 617-799-1461 24/7 Email: jerrym@nepss.com**

2007 IH. Automatic, DT466, 156K Miles, 2 Compt 2000/800 Gal, 4E Neptune Meter, Go To Work Condition, **\$29,000/BO**



1000 GALLON TANK. Diesel Only, 4' X 12', 10 GA, UL-142 DW Skid, HD 3/4 HP Pump & Water Absorb Filter Used One Month On Our Job. New **\$13,500.** Slightly Used **\$10,900** FOB Hanover



BOSTON 2700 GALLON TANK. 4-Compartment, 675/675/675/675, 4-C Meter, No Hose, 17' Frame Length, Mounted On 1996 GMC Parts Chassis, Must Tow, **\$9,900**

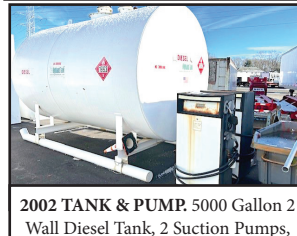
**MUST TOW**

1993 GMC TOPCAT. Trans Tech 2,800 Gal Tank, 10-92 Bikini, CAT 3126, 6 Speed, New Tires, 187,000 Miles, **\$12,000 W/ LCR Printer** OR **\$9,000 W/Out LCR Printer**



HIGHLAND IN STOCK NEW: 1000 Gal 2 Wall Skid Tanks. 10-GA, Other Sizes Available

IN BOUND.
2002 STERLING.
Automatic, 247,000 Miles, CAT 3126, 2700 Gallon Aluminum Two Compartment Tank, Near Our Shop.



2002 TANK & PUMP. 5000 Gallon 2 Wall Diesel Tank, 2 Suction Pumps, Excellent Condition, Will Deliver, **\$19,000.** Call 617-799-1461



2004 FREIGHTLINER M2. Boston Steel 2700 Gal, 1-Compt, V-Root, Bottom Load, Stainless Single Wrap, Air Motor, Mercedes 260 HP, Automatic, 201,149 Miles **\$49,000.**



SITE TRUCK. 1985 GMC EXTRA THICK STEEL TANK. Detroit Engine, 5+2 Trans, 1500/500 Gal Compts Testing Top & Bottom All Liquids, 3" Pump, Good Cond, **\$7,500/BO**



2004 PETE 330. Boston Steel 2700 Gal, 2 Compt 2000 & 700, CAT power, Automatic, Stainless Steel Reel, M-7 Meter, Bottom Load, 176,783 Miles **\$45,000**



2007 PETE 335. 2800 Gal ALMAC 4 Compt., 800/800/700/500, M-7 2" Meter, ISC Cummins 260 Hp, 8 Speed, **\$55,000 MUST SELL, BEST OFFER**



1995 FORD L8000. Trans Tech 2,700 Gal, 2 Comp, Needs New Engine 8.3L Cummins, Automatic, Must Tow, 6-94 Bikini, **\$12,000 W/ LCR Printer** OR **\$9,000 W/Out LCR Printer**

DUAL EQUIPPED

DUAL 3000 GAL/4 COMPARTMENTS - 1000/500/1000/500. CAT C7, 6 Speed, 446,598 Miles, R22.5 Tires, 2004 Freightliner, Parts Chassis, Must Tow, **\$9,000**



2007 Pete 357 T/A Tanker. Amthor 5000 Gal, 3 Compt, 66,000 GVW, 8 Spd, CAT C-13, 416,049 Miles **\$79,000 MUST SELL, BEST OFFER**



2012 FORD TRANSIT CONNECT XLT. 101,557 Miles, Shelves, Serviced And Ready To Work, Tires 60%, **\$11,900**

SOME TRUCKS AT CUSTOMER LOCATIONS

What's In Your Toolbox

NORTHEAST TRAILER



20 Business Park Drive
Smithfield, RI 02917
Hours: M-F 8:30-4:30

401-941-4445



100+ CARTAGE TRAILERS
45' to 53' Swing or Roll
Door, For Sale or Rent



(4) 2023 20' x 8' Refrigerated
Shipping Containers, Tri-Fold
Swing Doors, For Sale or Rent



(3) 2014 GREAT DANES
48'x 102", Aluminum Roofs
Roll Doors, \$5,950 Each



2009 WABASH 48'x 102"x 13'6"
Refrigerated Trailer, No Reefer Unit
6,600Lb. Maxon Lift Gate, \$9,500



2009 GREAT DANE Trailer
53'x 102"x 13'6", Swing Door, Air
Ride, Aluminum Roof, \$7,000



2000 ABLE BODY
Yard Tractor
\$7,950



2005-2008 53' ROLL DOORS
Aluminum Roof, Spring Ride
\$7,500 Each



2009 53' WABASH
DURAPLATE ROLL UP
\$6,500



Low Profile 22.5"
SUPER SINGLE TIRES on
Aluminum Wheels, \$250 Each



4,000 GALLON
ABOVE GROUND FUEL TANK
\$5,500



(3) 2022 1-Trip High Cube Shipping
Containers, 1 With Single Door-\$8,500
2 With Double Doors-\$9,250 Each



4 EXPORT FLATBEDS
\$3,750 Each

WWW.NETTRAILER.COM

WWW.TRUCKANDEQUIPMENTPOST.COM

SALVADORE

FAMILY OF DEALERSHIPS

PREOWNED
SuperCenter

SalvadoreAuto.com | 978-630-2001

We've Got Your Truck
For less!

PRICE DROP!



40/20/40 SPLIT BENCH SEAT!

2024 RAM 2500 BIG HORN 4WD
MAKE IT YOUR OWN!
I-6 6.7 L/408 TURBO
DIESEL ENGINE, 6-SPEED
AUTO TRANSMISSION
NOW ONLY: \$45,651!
STK # P2372

PRICE DROP!



18X8.0 STEEL CHROME WHEELS!

2024 RAM 2500 TRADESMAN 4WD
READY TO WORK!
GAS 6.4L/392 V8
ENGINE, 8-SPEED
AUTO TRANSMISSION
NOW ONLY \$44,295!
STK # N26047A

PRICE DROP!



A REAL BEAUTY! 1 - OWNER!

2024 RAM 2500 TRADESMAN 4WD
SPLIT BENCH SEAT!
GAS 6.4L V8 ENGINE, 8-SPEED
AUTO TRANSMISSION
NOW ONLY \$41,649
STK # P2385

PRICE DROP!



1 - OWNER!

2024 RAM 2500 BIG HORN 4WD
10,000 LB GVW!
GAS 6.4L/392 V8
ENGINE, 8-SPEED
AUTO TRANSMISSION
NOW ONLY \$40,277!
STK # P2387

249 Timpany, Blvd., Gardner, MA 01440

Dealer not responsible for typographical errors. Inventory changes frequently.

ALL MAKES

EQUIPMENT & PARTS

CONTACT

ROLAND CARTER 603-340-6776 • ANDOVER NH 03216

**EQUIPMENT SALES
EQUIPMENT PARTS
EQUIPMENT
ATTACHMENTS
FINANCING AVAILABLE**



Rebuilt & Good Used Engines.



New & Used
Buckets &
Attachments.



New Undercarriage.
Free Undercarriage Inspection.



Equipment
Hydraulic
Parts.



Salvage
Equipment
Parts.

info@allmakesequipmentandparts.com • www.amepinc.com



2018 METSO CV100 BOX SCREENER, \$65,000.
508-435-5376



1998 PETERBILT. 550 CAT, This Is My Truck So Call Me And I Will Tell You About All The New Parts & Extras, Super Clean, Fully Serviced,
\$50,000/BO
East Windsor, CT 860-716-0226

SALVADORE

FAMILY OF DEALERSHIPS



We've Got Your Truck
For less!

SalvadoreChevy.com | 978-630-2001 | 442 W. Gardner, MA

SAVE \$6,000 Or more!



Additional \$500 SAVINGS
w/ qualifying upfit or accessories!

2025 CHEVY SILVERADO
2500HD WT

CONVENCE PKG, SAFETY
PACKAGE, SNOW PLOW
PREP /CAMPER PKG &
GOOSENECK/5TH WHEEL
PKG. CTP UNIT

MSRP: \$65,885

AS LOW AS: \$59,885!

STK # C25093

SAVE \$5,980! Or more!



2026 Chevrolet Silverado
1500 Custom

TURBOMAX ENGINE,
CONVENCE PKG,
VALUE PKG,
TRAILERING PKG.

MSRP: \$53,805

AS LOW AS: \$47,825!

STK # C26039

SAVE \$3,500 Or more!



15' + 17'
AVAILABLE

Upfit and ready to work!

2025 CHEVY EXPRESS
CUTAWAY 3500HD 1WT

6.6L V8 ENGINE, CUSTOM
CLOTH SEATS, DELUX
FLOOR CONSOLE,
BLUETOOTH, POWER
CONVENCE PACKAGES

MSRP: \$61,862

AS LOW AS: \$57,862!

STK # C25322

SAVE \$15,000!



2025 CHEVY
SILVERADO EV RST

0% FINANCING FOR 60
MONTHS FOR
QUALIFIED BUYERS!

MSRP: \$89,690

AS LOW AS: \$75,690!

Extended Range!

Courtesy Transportation
Vehicle

Not responsible for typographical errors. Inventory changes frequently. Pricing subject to change due to manufacturer rebates. Pricing includes all available rebates and incentives and may require vehicle to be reported as a Business sale to the manufacturer. See dealer for complete details.



**ARIENS
11528 SNOW
BLOWER.**

Gas Powered,
One Owner,
Hardly Used,
\$500.
508-966-3364



2005 MACK. This Is My Truck
So Call Me And I Will Tell You
About All The New Parts &
Extras, Super Clean, Fully
Serviced, **\$40,000/BO**
East Windsor, CT 860-716-0226

CT • RI • MA • NY

CALL IAN OR JIM
800-229-9421



100 YARD
STEEL DUMP TRAILERS

WE WILL SAVE YOU MONEY ...
AND PUT A SMILE ON YOUR FACE!

**STUMP & BRUSH
TRANSPORTATION & DISPOSAL
\$1800/LOAD**

**DEMOLITION DEBRIS
TRANSPORTATION & DISPOSAL
\$2750/LOAD**

**SAME DAY DISPATCH
TOP \$\$ PAID FOR YOUR
SCRAP STEEL, COPPER, & ALUMINUM!!!**



37 County Road
Route 106
Plympton MA 02367
PH: 781-582-1378
FAX: 781-585-4438



**BOSS PLOWS
INSTALLED
BOSS PLOW
PARTS IN
STOCK
CALL FOR
PRICING**



**DOWNEASTER-
BOSS-
SALDOGG
SANDERS
CALL FOR
PRICING**



**CUSTOM ALUMINUM BEDS/STEEL
CALL FOR QUOTE**



**2006 INTERNATIONAL 4000 HOOKLIFT TRUCK:
DT466 W/ALLISON AUTO., 186K MILES, 26,000
GVW 18,000 LB. SWAPLOADER HOOKLIFT. \$48,900**



**2017 Kenworth T-800 Paccar MX-13, Allison
auto, 195,000 miles with Palfinger cable pull
hoist system, tarp system, \$142,000**



**2015 Peterbilt Model 337: Paccar PX-9, Allison
auto 131,000 miles with Ampliroll AL100
Hook Lift, Pioneer tarp system, 33,000 GVW.
\$91,000**



**2010 International Lonestar Service Truck,
Cummins diesel, 13 speed \$69,000**



**READY TO GO COMPLETE TRUCK PACKAGES.
LOTS OF OPTIONS AVAILABLE
New & Used Trucks Ready To Go!**



**CM ALUMINUM FLATBEDS IN STOCK
NOW! MANY SIZES. CALL FOR PRICING**



**STEEL FLATBEDS
IN STOCK NOW! MANY SIZES.
CALL FOR PRICING.**



**2004 KENWORTH T300 DUMP TRUCK: CAT C7
W/ALLISON AUTO., 151K MILES, 33,000 GVW.
\$25,900.**

**SALES,
SERVICE,
PARTS**

**CALL TOLL FREE: 781-582-1378
WWW.CAREYTRUCKEQUIPMENT.COM**

**CUSTOM METAL
FABRICATION
AVAILABLE**

**WE TAKE
ANYTHING IN
TRADE**

Jolly John's
Truck & Equipment



**FINANCING
AVAILABLE**

WE PAY CASH FOR YOUR TRUCKS & EQUIPMENT



2021 VOLVO ECR 50F MINI EXCAVATOR, 4 Cyl Volvo, Heat & A/C, 2 Speed Travel, Backfill Blade, Aux Hyds, Hyd Thumb, 6' Stick, Hyd Coupler, **\$49,900**



2012 KENWORTH T470 T/A DUMP TRUCK, Paccar PX-8, 8.3L Diesel, 330 HP, Eaton Fuller 8LL Manual Trans, 18K & 46K, PTO, Brandon 14' Steel Body, Just Serviced & Ready To Work. **\$62,900**

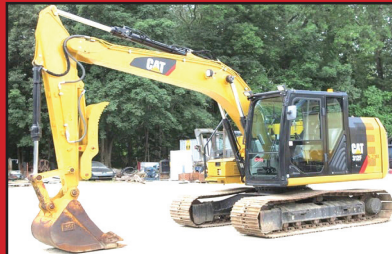


2015 MITSUBISHI FUSO FE160 Box Truck. Mitsubishi F1C 4 Cylinder 3.0L Diesel 161 HP, Morgan 16' x 96" x 91" Body, Liftgate, Completely Serviced & Ready To Go. **\$19,900**

FINANCING AVAILABLE



2007 FORD F450XL FLATBED, V8 Diesel Engine, 15' x 96" Bed, Liftgate, Aluminum Tool Boxes, Power Windows And Locks, Freshly Serviced. **\$11,900**



2018 CATERPILLAR 312F EXCAVATOR. Control Pattern Changer, Rear View Camera, 10' 4" Stick, 24" Triple Grouser Track Shoes, 39" Digging Bucket, Hyd Thumb. A/C. **\$88,900**



2015 KENWORTH T370 T/A DUMP TRUCK Cummins 6 Cylinder ISL9 350 Diesel, Auto, Double Differential Locks, 16K FA, 40K RA, Alum Wheels, PTO, OX Steel Body, Electric Roll Tarp, Pintle Hitch, Jake, **\$86,900**



2018 FORD 350XL, ONE OWNER, EXTENDED CAB BUCKET TRUCK. 4x4, 6.7L Powerstroke Turbo Diesel, 9' Reading Utility Body, 29' Bucket Unit, **\$49,900**



2019 GEHL R105 SKID STEER, Open Cab, 54" Bucket. Freshly Serviced We Will Take Most Anything In Trade, **\$13,900**



2019 ISUZU NPR HD REEFER TRUCK, V8 6.0 L Gas, Thermo King Reefer Unit, Morgan 16' x 96" x 85" Body, A/C, Power Windows & Locks. **\$22,900**



2017 CATERPILLAR 420F2 Fleet Owned & Maintained, Enclosed Cab, Aux Hyd, Hyd Coupler, 96" Loader Bucket, Extendable Stick, Quick Coupler, 18" Backhoe Digging Bucket, Rear Aux Hyd, Thumb Bracket **\$62,900**



1986 T-BROOK 26' ALUMINIUM DUMP TRAILER. Poly Liner, Load Cover, 60,000 GVW, Spring Suspension, 10' 1" Height, Fully Safety Checked And Serviced. **\$11,900**



2022 WACKER NEUSON SM100 TRACKED SKID STEER. 3 Cyl Yanmar Turbo Diesel, Aux Hyd, GP Bucket With Boce, Meter Reads 208 Hours, **\$27,900**

Call Nick 860-861-1326 or Mike 860-861-4199
www.jollyjohnstruckandequipment.com



NATIONWIDE TRUCK PARTS LLC

1-800-457-8826

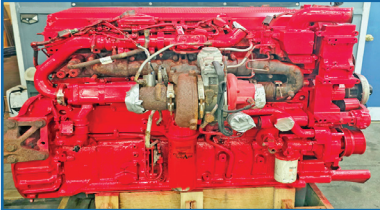
www.NationwideHeavyTruckParts.com

sales@nationwideheavytruckparts.com

11 S. Keyser Avenue - Taylor, PA 18517

QUALITY USED HEAVY TRUCK PARTS, USED DIESEL ENGINES, TRANSMISSIONS & MORE.

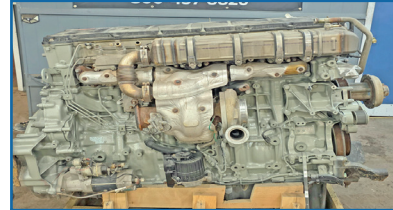
All Parts Tested & Sold With A Standard Warranty. Large Inventory - Call With Your Needs.



2014 ISX15 \$13,000



2012 Detroit DD15 \$12,000



2019 Detroit DD15 \$12,500



DT12 Transmissions \$3,500



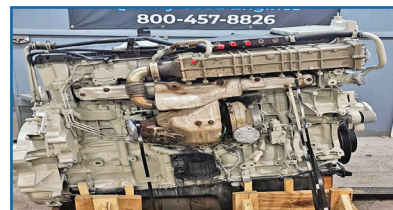
2013 Volvo D13 \$9,000



2012 Mack MP8 \$10,500



2012 ISX15 \$12,000



2015 Detroit DD13 \$12,000



2019 Cummins X15 \$16,500



2018 Paccar MX13 \$16,500



Late Model Rears



FRO Transmissions \$1,000



2009 Cummins ISX \$9,500



2012 Detroit DD13 \$12,500

63 Bridge St
Salem, MA 01970
978-745-2500



105 County Rd
Ipswich, MA 01938
978-356-2916



PRO-TECH®

Summer Special on ProTech Pushers
IN STOCK & AVAILABLE!

**SUMMERTIME
SAVINGS!!!**

❄️ **LE12L: 12' Live Edge for Loader**

MSRP: \$14,889.00

3 AVAILABLE

B&C Price: \$10,995.00 +Coupler

❄️ **LE14L: 14' Live Edge for Loader**

MSRP: \$16,499.00

SOLD OUT

❄️ **LE16L: 16' Live Edge for Loader**

MSRP: \$18,299.00

SOLD OUT

ARCTIC
Snow & Ice Products

❄️ **Arctic LD-8 Sectional Sno Pusher for SkidSteer**

MSRP: \$12,457.04

1 AVAILABLE

B&C Price: \$7,995.00 w/ SkidSteer Coupler!



In Stock & Available Couplers:

- Post Mount x 2
- JRB416 x 3
- CAT IT-28 x 3
- Volvo L50-L120 x 1



Truck Bodies & Equipment
www.BrakeAndClutch.com



STEELE'S
**MOBILE WELDING
 & EQUIPMENT REPAIR**
 LLC.

Burrillville, RI • 401-633-4587

- Full Bucket Rebuilds • Cylinder Resealing
- Wear Plates • Adapter Replacement • Hardfacing
- General Maintenance • Computer Diagnostics
- On Site Hose Replacement



450 CUMMINS.

Good Runner, Nice Motor That Came
 Out Of A Snow Machine,

\$5,000

East Windsor, CT 860-716-0226



2018 MACK PINNACLE CXU613, 279,000 Miles,
 415HP Mack MP8, Mack 12 Speed M-Drive, 12K Front,
 40K Rears, Clean & Dry, 2 Line Wet Line, Strokes, Rust
 Free Frame, Matching Virgin Rubber, Fully Serviced,
 Fed Inspection, **\$39,500** 860-836-0692, Portland, CT



Residential ~ Commercial ~ Industrial

Mark Dillon
774-365-0222

T & TAYLOR & LLOYD, INC. & T

SEE OUR INVENTORY: WWW.TAYLORANDLLOYD.COM



**2025 INTERNATIONAL HV607 SBA CAB
 & CHASSIS.** Cummins B6.7 325 HP, Allison
 3500, 10K F/A, 23K R W/Locking Diff,
 Call For More Info.



NEW 2024 CV515 SFA 4X2. 6.6L 350 HP,
 Allison 2750, Call for info



2025 INTERNATIONAL MV 607.
 Brand New, 254 WB, Allison 3500 RDS,
 Cummins 300 HP, Air ride



**2025
 INTERNATIONAL
 HV507 CAB &
 CHASSIS.** Cummins
 L9 330 HP, Allison
 Auto, 165" WB, 18K
 F/A, 30K R/A, Call For
 More Info.



**2023 FREIGHTLINER
 M2 16' REEFER.**
 Cummins, Non CDL,
 Air Brakes, Allison
 Auto, 10K Miles, TK
 Reefer, 2 Side Doors,
 Sliding Partition,
 Hours & Reefer Match
 The Miles, **Like Brand
 New But
 \$40,000 Cheaper**

617-429-3370 CALL JACK COAKLEY • 8 Railroad Avenue Bedford, Ma



SALES & RENTALS INC.
T-QUIP

DAILY / WEEKLY / MONTHLY

EQUIPMENT RENTALS

**WHEEL LOADERS • ROCK TRUCKS • EXCAVATORS
ROLLERS • SKID STEERS • CRUSHERS • SCREENERS
DOZERS • BACKHOES • GRADERS • TELEHANDLERS
TRACKED DUMPERS • SPECIALTY ATTACHMENTS**



603-623-3669



www.TQUIP.com



FINANCING FOR EQUIPMENT, TRUCKS, TRAILERS & More!

866-633-6003 PRE-APPROVED AUCTION LOANS

PATRIOT FINANCIAL HAS HELPED 1000'S OF BUSINESS OWNERS GROW THEIR BUSINESS.



FINANCING SOLUTIONS FOR SMALL BUSINESSES AND MID-SIZED COMPANIES

- Fast And Simple Approval Process
 - 2-4 Hour Turn Around
- 0 Down 60 Or 72 Months With Qualified Credit & Time In Business
 - No Age Restrictions
- No Prepayment Penalties After 12 Months For Qualified Credit And Time In Business
 - All Credits Welcome
 - Competitive Rates
 - Flexible Terms
- Customized Solutions
- Experienced Professionals

CALL FOR MORE INFO 866-633-6003



Auction Financing

Get a pre-approved loan for auctions. We work with several auction houses. See our website for auction schedules.



Dealer Solutions Financing Plans

We work directly with dealers to help finance customers having bank financing challenges.

Patriot can help finalize your deals.

Easy application process.

<https://www.patriotfinancialllc.com/apply-now/>

PATRIOT FINANCIAL LLC

FOR MORE INFO, CALL MIKE - 866-633-6003

407 W Lincoln Hwy.

Suite 300

Exton, PA 19341

Visit Our Website:

www.PatriotFinancialLLC.com

PATRIOT ALWAYS FINDS A WAY TO SAY YES | WE WILL GET YOU FINANCED

508-328-8938**THE TRUCK STORE****Mon-Fri 8:30-5pm
Saturday 8:30-4pm****www.TruckStoreSales.com****1700 Broadway - Rte 138 – Raynham, MA • Take Exit 8 Off Rte 495, East Rte 138, On Your Left**

2022 MERCEDES BENZ SPRINTER:
DRW, Beautiful Custom Kitchen perfect for
Food Truck etc., Only 4K miles. Call



2024 ISUZU NPR: Van or Refer
Body Available. 1,000 Miles, Gas.



2013 PALFINGER MOFFET FORK
LIFT: 900 HOURS.



2002 VOLVO HEAVY TRI AXLE
DUMP: 465 HP, 8LL, NEW BRAKES,
Excellent Rubber.



2015 ISUZU REFER BODY:
186 K Miles, Diesel/Auto. Call.



2018 HINO HOOKLIFT:
UNDER CDL, 57K MILES. CALL



USED MONROE STAINLESS STEEL
SANDER W/CALCIUM TANKS



2002 MACK R MODEL:
TANDEM

2005 PETERBILT
337 TANDEM CAB &
CHASSIS. Cummins,
Allison Auto,
Only 30K MILES

2 USED
HOOKLIFT
& ROLL OFF
BODIES IN
STOCK NOW!

LATE MODEL ISUZU &
HINO CUMMINS DIESEL
4 CYL DIESEL ENGINE &
TRANS,
2006 USED MACK
ENGINES, ALLISON
TRANSMISSIONS.



2018 PETE CHASSIS 80K MILES
and 2020 KW CHASSIS 47K MILES
IN STOCK NOW! CALL.

USED 2015
ROLL-OFF
BODY, CALL.

2005 MACK CV 713
CAB & CHASSIS:
AUTOMATIC,
20F/52R,
30K MILES!

USED 12' TO 26'
FLAT BED BODIES.
CALL FOR
DETAILS.

2018 HINO HOOK
LIFT:
54K MILES.
\$69,500.



2000 MACK RD 688SX 14' Dump Body,
350 H.P., Auto., 18F/58R, LOW miles, Very clean.



2020 + 2022 HINO REEFER VANS.
DIESEL, AUTO, CALL.



2005 MACK GRANITE SPLIT REAR
LOAD RUBBISH BODY 35K Miles.



2022 HINO HOOK-LIFT, DIESEL,
AUTO, 38K MILES, \$79,500. (ALSO, 2015
AVAILABLE)



2019 & 2022 INTERNATIONAL REFER
BODIES: VERY LOW MILES



2021 FORD MOVING TRUCK, Crew Cab,
Auto, Under CDL, 99K Miles.



2022 PETERBILT C/O. Under CDL, 60K
Miles, Auto, Reefer Or Flatbed Available.



2022 HINO 268 Flat Bed: Diesel, Automatic,
ONLY 2,000 Miles! Will up fit w/Refer Body
or Van Body. 2 AVAILABLE.



USED 12' to 26' REFER & VAN BODIES
Call with your needs.



(2) 2020 ISUZU NRR UTILITY BOX
TRUCKS. 18K-30K MILES, DIESEL,
AUTO, CALL.



2017 FREIGHTLINER M-2: CUMMINS
Diesel, Auto, PTO Accept. Will Separate.



2015 FREIGHTLINER 114 SD WITH NUWAY
SIDE LOAD ONE-ARMED BANDIT. 9L
CUMMINS, AUTO, EXTRA HEAVY DUTY, CALL.

**2006 CHEVY
SILVERADO 3500
DUMP.** 4x4, Includes
Western V-Plow,
\$7500 OBO.
203-917-2379



**2002 INTERNATIONAL
4900.** 2nd Owner, Fleet
Maintained, 28K Miles, Allison
Automatic, (New) 10' P/A Plow,
Electric Cover, Air Gate, Air To The
Rear, 25 Ton Pintle, 32K GVW,
Winter Is Coming, This Is A Money
Maker, **\$26,000.**
West Warwick, RI 401-523-6116

2019 CHEVY SILVERADO.
173K Miles, V8, Automatic,
4 Wheel Drive, **\$13,999.**
401-499-9873



2002 STERLING LT9500 10-WHEEL DUMP. 209K Miles, CAT C10 350HP, 8
Sp, 445 Tires on 20K Front, 11-24.5 On 52K Rear, 72K GVW, 4:89 Ratio, Full Locking
Rears, Dual Steering Boxes, 14' Rugged Dump Body, New Radiator, Pintle On Rear, 11'
Highway Plow, Easily Removable Harness. **\$36,500 OBO.** 508-269-1515

**2004
INTERNATIONAL.**
DT466.
Only 74,759 miles,
\$19,000 OBO.
774-208-2806



BEAM TRUCK & BODY INC.

433 CUMBERLAND HILL ROAD, WOONSOCKET, RI 02895

401-767-2639



NEW - USED & RECONDITIONED DISPOSAL EQUIPMENT

**STELLAR NXT18L HOOK
LIFTS IN STOCK !**
NEEDS 120" TO 130"
CA. DOES 10' TO 14'
CONTAINERS.
36" / 54" MANUALLY
ADJUSTABLE HOOK
HEIGHT. PERFECT FOR
F-600'S



2010 INTERNATIONAL 7400:
42,000 MILES W/ HEIL 22 YD.
AUTOMATED PACKER. **\$60,000**
WILL SPLIT.



20 YARD CURBTENDER
GOOD USED 2017 UNIT.



**GOOD USED 2020 PAKMOR 16 YARD
REAR LOADER.** HAS REEVING
SYSTEM. CANNOT GO ON AN UNDER
CDL CHASSIS, 33K OR GREATER.



**2000 INTERNATIONAL WITH
2023 AMERICAN / PALFINGER 250S
HOOK-LIFT, LOW MILES.**
\$70,000

**IN STOCK READY TO
INSTALL
NEW EQUIPMENT**
* HAD-185-120-36/54"
* T40S AMERICAN
PALFINGER
* 20' BOX WITH WALTCO
LIFT-GATE 2500LBS. **\$6,000**



2004 KENWORTH T800:
396,914 MILES, AMERICAN 75,000#
ROLL-OFF, CAT C12 W/ FULLER 8LL, 60,000#
GVW **CALL FOR MORE DETAILS !**

WWW.BEAMTRUCK.NET



207-623-4239



JLG 600A.
Platform Manlift,
\$18,000



KNUCKLE CRANE

1994 INTERNATIONAL 4300.
DT466, Steel Flatbed Body,
Knuckle Boom Crane, \$9,500



2009 GMC 3500. Gas, Automatic,
Flatbed, With Power Gate \$11,000



1987 FORD L8000 WATER
TRUCK. CAT 3208T, 5 + 2 Speed,
Water Tank, Pump, \$7,500



2014 FREIGHTLINER T/A
TRACTOR. Detroit Power,
10 Speed, Air Ride, \$10,000



1998 FORD OIL TRUCK. 2
Compartment, 7 Speed, Cat
Engine



1999 INTERNATIONAL
TANKER. DT466, 6 Speed, Oil
Truck, \$6,000



2009 MAC DUMP TRAILER.
Tri Axle, Air Ride Lift Axle, Barn
Door, \$40,000



2012 JOHN DEERE 310SJ BACKHOE.
4X4, Full Cab, Expanda Hoe, Wrist
With 3 Buckets, \$38,000



1988 FORD L8000 DUMP. 10 Ft Dump Body, CAT Diesel
Engine. \$9,500.



CATERPILLAR 814. Semi U Blade, Very Good Rubber,
\$14,000

Dick's Used Trucks & Equipment • 146 River Road, Chelsea, Maine

**FAMILY
OWNED &
OPERATED
SINCE 1969**

HILLSIDE MOTORS

**800-D American Legion Highway (Rt. 177)
Westport, MA 02790
508-636-5050**

**Financing
Available
-Others in Stock**



SEE OUR OTHER PAGE – LAST PAGE OF CENTERFOLD – PAGE CF8

PRISTINE



2017 CHEVY K3500 4X4 SRW 8' ENCLOSED UTILITY W/POWER TAILGATE. 6L V8, Auto, AC, PL, 85K, One Owner, Fleet Maintained, Texas Truck, Never Seen A New England Winter, Pristine Condition, **\$29,900.**

13,400 GVW



2016 GMC 3500 DRW 4X4 12' PLATFORM BODY w/Toolboxes. 6.0L V8, Auto, PW, PL, 13,400 LB GVW, 162K, Clean Truck, **\$20,700.**

74K MILES



2016 FORD F150 REG CAB 8' BED WITH WORK CAP. Longbed, V6, Auto, AC, PW, PL, Bluetooth, Rear Camera, 74K Miles, One Owner, Fleet Maintained, Pristine Condition, **\$16,900.**

4X4



2017 GMC SIERRA 2500 HD DOUBLE CAB 8' UTILITY 4X4 w/ALUMINUM LADDER RACKS. 6L V8, Auto, AC, PW, PL, Back-Up Camera, 6-Passenger, One Owner, 84K, Excellent Condition, **\$31,900. (Others Available Starting At \$12,900.)**

4X4



2021 FORD F450 16' BOX TRUCK 4X4 W/ALUMINUM RAMP. 7.3L V8, Auto, AC, PW, PL, Tilt, Back-Up Camera, Bluetooth, 16,500 GVW, 162K, One Owner, Fleet Maintained, Super Clean, **\$30,800.**

4X4



2017 CHEVY 2500 REG CAB 8' BED 4X4. 6L V8, Auto, AC, Tilt, PL, 157K, Fleet Maintained, **\$15,900. (3 Available)**

WORK BIN PKG



2020 FORD TRANSIT CONNECT XL CARGO VAN. 2L 4 Cyl, Auto, AC, PW, PL, Bluetooth, Rear Camera, WIFI, Satellite Radio, Shelf/Bin Pkg, Ladder Racks, 119K, One Owner, Fleet Maintained, **\$15,900.**

ALUM FLATBED



2018 FORD F250 SD 8' ALUMINUM FLATBED W/ FOLD-DOWN SIDES. RWD, 6L V8, Auto, AC, 9900 GVW, Fleet Maintained, One Owner, 75K, Excellent Condition, **\$18,400.**

NICK SCARVALAS
Commercial Sales
857-247-9023 or 617-249-5603



**Commercial
Vehicle Center**

2024 FALL CLEARANCE SALE



2024 F600 DUMP. Diesel, 22,000 GVW, Dual Battery, Remote Start, 4WD, F212422, MSRP \$99,990.
SAVE \$21,500. SALE PRICE \$78,490



2024 T350 UTILITY VAN. Aluminum 11' 3" Body, V6 Gas, 50.5" 2 Panel Wide Rear Door Opening, 6 LED Interior Lights, Ladder Racks, F212334, MSRP \$81,990. **SAVE \$15,000.**
SALE PRICE \$66,990



2024 T350 UTILITY VAN. Low Profile Aluminum 11' 3" Body, All Wheel Drive, V6 Gas, 50.5" 2 Panel Wide Rear Door, Interior Lights, Racks, F212359, MSRP \$84,990.
SAVE \$16,000. SALE PRICE \$68,990



2024 T350 UTILITY VAN. Low Profile Aluminum 11' 3" Body, V6 Gas, 50.5" 2 Panel Wide Rear Door, Interior Lights, Racks, F212364, MSRP \$81,990. **SAVE \$16,000.**
SALE PRICE \$65,990



2024 F550 ROLL OFF. DownEaster, Remote Start, 4WD, Diesel, Tool Box, F211918, MSRP \$109,990.
SAVE \$21,000. SALE PRICE \$88,490



2024 F550 DUMP. 3-4 Yd, Remote Start, 4WD, 7.3L Gas, Two Tool Boxes, F212014, MSRP \$89,990. **SAVE \$17,500.**
SALE PRICE \$72,490

250 COMMERCIAL TRUCKS IN STOCK



2024 F550 14' STAKE BODY. 4WD, Pintle Plate & Hook, Remote Start, V8 Diesel, Payload Plus, F211944, MSRP \$92,990. **SAVE \$21,500.**
SALE PRICE \$71,490



2024 F550 12' RACK BODY. Diesel, 4WD, High Capacity Trailering, Remote Start, Payload Plus, F212011, MSRP \$92,990. **SAVE \$22,500.**
SALE PRICE \$70,490



2024 T250 CARGO VAN. Load Area Protection, Pwr Heated Mirrors, F212196, MSRP \$53,650. **SAVE \$11,000.**
SALE PRICE \$42,650



2024 F600 DUMP. 4-5 Yard Body, Remote Start, 4WD, 7.3 Gas, 22,000 GVW, F212095, MSRP \$89,990.
SAVE \$19,500. SALE PRICE \$70,490



2025 T350 HD FREIGHT VAN. Plywood Lined, 10 D-Rings, Pass Thru Door, 12' Unicell, Galvanized Step Bumper, F212923. MSRP \$70,990. **SAVE \$12,000.**
SALE PRICE \$58,990



(20) 2025 T250 LOW ROOF & MED ROOF VANS. Various Upfit Performance Systems, **Starting @ 45,225**

QUIRK FORD
540 Southern Artery (Rt 3A) Quincy, MA
www.quirkfords.com • 617-249-5660

**Business
Financing with
NO Co-signer
Required**

Prices include all available rebates. Rebates include Customer Cash, FMCC Bonus Cash, and Commercial Upfit Bonus Cash. Customer must qualify for rebates. Call for specific details. Prices are subject to change. * In Lieu Of Rebates

NICK SCARVALAS
Commercial Sales
857-247-9023 or 617-249-5603



**Commercial
Vehicle Center**

2025 FALL SPECIALS



2025 F350 DUMP. 7.3 Gas, Pwr Window & Locks, Upfit Switches, 4WD, Carbon Gray, Tool Box, F212877, MSRP \$82,990. **SAVE \$11,000. SALE PRICE \$71,990.**



2025 F650 DUMP. Diesel, Automatic, Air To Rear, Pintle, Tool Box, F212112 MSRP \$124,990. **SAVE \$13,000. SALE PRICE \$111,990**



2025 F650 DUMP. Diesel, Automatic, Air To Rear, Pintle, I-Pac Tool Box, F212088, MSRP \$129,990. **SAVE \$14,000. SALE PRICE \$115,990.**



2025 F550 SWITCH N GO. Roll Off Hoist, Diesel, 2 Tool Boxes, Remote Start, 4WD F213110, MSRP \$116,990. **SAVE \$11,000. SALE PRICE \$105,990.**



2025 E450 14 Ft VAN. Wabash Body, Pull Out Ramp, Roll Up Door, Poly Lined, Pass Thru Door, 14,500 GVW, 7.3 Gas, F211369, MSRP \$69,990. **SAVE \$10,000. SALE PRICE \$59,990**



2025 F550 CREW SERVICE. Duramag Aluminum Body, Diesel, 4WD, Remote Start, Rear Power Window, F213213, MSRP \$111,990. **SAVE \$9,000. SALE PRICE \$102,990.**

250 COMMERCIAL TRUCKS IN STOCK



2025 F550 CHIPPER/LEAF DUMP. 12' Forestry Pkg, Diesel, 4X4, Two Tool Boxes, Remote Start, F213118. MSRP 105,990. **SAVE \$6,000. SALE PRICE \$99,990**



2025 F550 DUMP. Diesel, Payload Plus Pkg, Dual Battery, Remote Start, 4WD, Skid Plates, Dark Green, F212595 MSRP \$95,990. **SAVE \$6,000. SALE PRICE \$89,990.**



2025 F550 LANDSCAPER. 4WD, Diesel, 19,500 GVW, Remote Start, High Capacity Trailer Pkg. F213108 MSRP \$106,990. **SAVE \$9,000. SALE PRICE \$97,990**



2025 E350 HI CUBE. 12' Rockport Van, Step Bumper, Roll Up Rear Door, Pass Thru Door, 7.3L Gas, PW, PL, F212523 MSRP \$64,990. **SAVE \$13,000. SALE PRICE \$51,990**



2025 F350 SUPER CAB DUMP. 7.3 Gas, Remote Start, Skid Plates, Dual Battery, Pwr Rear Window, 4WD, F213056 MSRP \$81,990. **SAVE \$6,000. SALE PRICE \$75,990.**



2025 F350 ALUMINUM DUMP. 4 Removable Sides, Rear Bard Doors, 7.3 Gas, Remote Start, Dual Battery, 4WD, F212857 MSRP \$87,990. **SAVE \$8,000. SALE PRICE \$79,990.**

QUIRK FORD
540 Southern Artery (Rt 3A) Quincy, MA
www.quirkfords.com • 617-249-5660

**Business
Financing with
NO Co-signer
Required**

Prices include all available rebates. Rebates include Customer Cash, FMCC Bonus Cash, and Commercial Upfit Bonus Cash. Customer must qualify for rebates. Call for specific details. Prices are subject to change. * In Lieu Of Rebates



☎ 603-623-3669
 🌐 equipmentsales@tquip.com
 📧 @tquipsalesandrentals
 📍 603 Mammoth Road
 Londonderry, NH 03053

OVER 1,000 MACHINES & ATTACHMENTS IN OUR INVENTORY



(2) 2022 KOMATSU WA270-8 A/C, AUX HYD, JRB GEM HYD Q/C, 3CY GP BKT, TIER-4 FINAL DSL, 4-SPD TRANS, 20.5R25 RADIALS, FULLY LOADED, 781+ HRS **\$169,000 EACH**



2021 CAT 950GC A/C, HYD Q/C, 115" 4CY GP BKT, 225HP CAT C7.1 DSL, 23.5R25 RADIALS, 4,806 HRS **CALL FOR PRICING**



2017 DEERE 324K CAB, A/C, 3RD VLV AUX HYD, 88" GP BKT, RIDE CTRL, 405/70R20 RADIALS, 2,269 HRS **CALL FOR PRICING**



(2) 2019 CAT 907M A/C, 3RD VLV HYD, SS HYD Q/C, 1.5CY GP BKT, 74HP TIER-4 DSL, HI-SPD TRVL, RIDE CTRL, 405/70R18 TIRES, 454+ HRS **\$79,500**



2020 CAT 910M A/C, 3RD & 4TH VALVE AUX HYD, HYD Q/C, 2.2CY GP BKT, RIDE CTRL, 16.9-24 TIRES, 327 HRS **\$125,000**



2022 CAT 259D3 OOPS, AUX HYD, SS Q/C, 72" GP BKT, 18" RBR TRKS, 2,821 HRS **\$36,000**



(2) 2018 CAT 262D CAB, A/C, AUX HYD, MNL Q/C, 72" GP BKT, 2-SPD, 12X16.5 RBR, 553 HRS **\$45,000 EACH**

NOTHING IS OUT OF REACH—CALL US FOR FINANCING OPTIONS!



2020 MCCLOSKEY 512A
5'X12' TROMMEL SCREENER, 3-5CY CPTY, 100HP TIER-3 DSL,
PINTLE HITCH, 11R22.5 TIRES, 1,509+ HRS
\$149,000

SALES & RENTALS INC.

T-EQUIP

EQUIPMENT

SALES & RENTALS



2020 CAT 740GC
A/C, 3RD VLV HYD, 55 HYD Q/C, 1.5CY GP BKT, 74HP TIER-4
DSL, HI-SPD TRVL, RIDE CTRL, 405/70R18 TIRES, 7,448 HRS
\$219,000



2018 KOMATSU D155AXI-8
A/C, SU BLADE, RIPPER, INTEL MACH CTRL, 24" PADS,
RECENT UC, UPDATED INJECTORS & FUEL PUMP, 6,152 HRS
\$249,000



2022 CAT 326
A/C, 60" REACH, AUX HYD, 60" BKT,
32" PADS, 3,796 HRS
\$165,000



(2) 2022 KOMATSU PC210LC-11
A/C, 9'7" STK, AUX HYD, HYD Q/C, 42"
BKT, HYD THUMB, TIER-4 FINAL DSL,
PTRN CHNGR, 32" IG PADS, 1,622 HRS
\$209,000 EACH



2020 CAT D5K2-LGP
EROPS, A/C, 6-WAY HYD BLADE, GRD
CTRL, DRAWBAR, 3,135 HRS
\$89,500



2022 CAT 310 A/C, 8'2" STK, AUX
HYD, 30" BKT, HYD THUMB, 70HP CAT
C3.3B TIER-4 FINAL DSL, BLADE, PTRN
CHNGR, REAR CAM, 18" RBR PAD,
1,341 HRS **\$109,000**



2022 CAT 308CR A/C, 7'9" STK, AUX
HYD, HYD Q/C, 30" BKT, HYD THUMB,
TIER-4 DSL, BLADE, PTRN CHNGR, REAR
CAM, 18" RBR PADS, 1,046 HRS
\$99,000



2022 KOMATSU D51PX-24
A/C, 132" 6-WAY HYD BLADE, JYSTK
CTRLS, 131HP DSL, 3-SPD HST TRANS,
DRAWBAR, 28" PADS, 2,662 HRS
\$135,000



2022 CAT 307.5 A/C, 7' STK,
AUX HYD, 30" BKT, TIER-4 DSL, BLADE,
18" RBR PADS, 911 HRS **\$95,000**



2018 CAT 303.5E2CR
A/C, BM SWNG, AUX HYD, 34" BKT,
HYD THUMB, BLADE, 16" RBR PADS,
1,580 HRS **\$45,000**



2016 DEERE 470GLC
A/C, 11' STK, HYD Q/C, 72" BKT,
367HP TIER-4 DSL, 36" TG PADS,
7,899 HRS **\$129,000**

ADDING UNITS TO OUR FLEET DAILY FOR YOUR RENTAL NEEDS

**We are cash
buyers for
quality used
trucks and
equipment!**

BROOKSIDE EQUIPMENT SALES

www.BrooksideEquipment.com

978-249-4600



2018 CAT 289D: 4,749 Hours, 2660 Lb Lift, Cab W/ A/C, Hydraulic Coupler, Pilot Controls, 2 Speed, 4 Cyl Cat C3.3B Turbo, 10.6K Lbs, stk#SK287, **\$36,500**



2015 GRADALL XL4300-III: 58" Cleanup Bucket, 9 Ft Blade, Mercedes-Benz Engine, 44K Lbs, stk#VX108, **\$39,500**



2018 CATERPILLAR 972M: 15,210 Hours, 5.6 Yard, Cab W/ A/C, Auxiliary Hydraulics, Joystick Steer, 6 Cylinder Cat Turbo, 55k Lbs, stk#LO694, **\$84,500**



2023 DEVELON DX35Z-7: 15 Hours, 18" Bucket, 2-Way Aux Hyd, Cab W/ A/C, 2 Speed, 3 Cyl Doosan, 67" Blade, 8.8K Lbs, stk#MX673, **\$44,500**



2015 DOOSAN DL200-5: 4,492 Hours, 3 Yard, Cab, Hyd Coupler, 4 Cyl Perkins, 26K Lbs, stk#LO082, **\$46,500**



2018 CATERPILLAR 312F GC: 959 Hours, 32" Bucket, Aux Hyd, Good U/C, A/C, Cat C3.4B, 28K Lbs, Stk#XC289, **\$89,950**



2017 BOMAG BW120SL-5: 417 Hours, 48" Smooth Double Drum, Vib, Orops, 3 Cyl Kubota D1703, 24 HP, 5.6K Lbs, stk#CO614, **\$19,900**



2006 JOHN DEERE 310SG: 3,450 Hours, 4x4, X-Hoe, Cab, Turbo, Power Shift, Ride Control, 24" Bucket, Rear Aux Hyd, stk#BH627, **\$36,500**



1997 JOHN DEERE 544G TCL: 10,436 Hours, 2.75 Yard, Comes W/ 38" Forks, Cab, Hydraulic Coupler, 6 Cyl John Deere Turbo, 29k Lbs, stk#LO193, **\$39,500**



2017 JOHN DEERE 310L: 7,150 Hours, 4x4, X-Hoe, Cab, 4-In-1 Bucket, Power Shift, Ride Control, Pilot Controls W/ Pattern Changer, 24" Digging Bucket, Rear Manual WainRoy Coupler, stk#BH013, **\$38,500**



2008 HAULOTTE HS5388RT: 2,342 Hours, 52 Ft Rough Terrain Scissor Lift, 4x4, 88" Wide, 2 Cyl Hatz Diesel, Stabilizers, stk#AE118, **\$11,500**



2016 JOHN DEERE 410L: 5,563 Hrs, 4x4, X-Hoe, Cab W/ A/C, Front Hyd Coupler w/3rd Valve, Power Shift, Ride Control, Pilot Controls w/Pattern Changer, 24" Dig Bucket, Rear Manual Coupler, stk#BH193, **\$54,500**



2017 KOMATSU WA320-8: 12,179 Hours, 3.7 Yard, Cab W/ A/C, Backup Camera, 6 Cyl Komatsu Turbo, 35K Lbs, Stk#LO101, **\$67,500**



1992 JOHN DEERE 624G: 14,801 Hours, 3 Yard, Cab, 6 Cyl JD Turbo, 23.5R25 Good Rubber, 28K Lbs, stk#LO776, **\$34,500**



2020 CATERPILLAR 306CR: 438 Hours, 12" Digging Bucket, Hydraulic Thumb, 78" Angle Blade, Cab W/ A/C, Swing Boom, 4 Cyl Cat Turbo, 57 HP, 16k Lbs, stk#XC531B, **\$79,500**



2019 JOHN DEERE 317G: 668 Hours, 2125 Lb Lift, Cab W/ A/C, Hyd Coupler, Joystick Controls W/ Pattern Changer, Turbo, Aux Hyd, 8.2K Lbs, stk#SK381, **\$39,500**



2018 JLG T350: 323 Hours, 35 Ft Towable Electric Knuckle Boom, 4 Ft Basket, stk#AE065, **\$19,900**



2020 VOLVO ECR88D: 1,891 Hours, 36" Bucket, Auxiliary Hydraulics, Cab W/ A/C, 91" Blade, 2 Speed, Swing Boom, 4 Cyl Volvo Turbo, Manual Coupler, 21K Lbs, stk#XC078, **\$57,500**



2021 CATERPILLAR 259D3: 1,294 Hours, 2010 Lb Lift, Cab W/ A/C, Aux Hyd, Hyd Coupler, Pilot Controls, 72" Bucket, 9K Lbs, stk#SK696, **\$44,500**



2023 CATERPILLAR D1: 3,934 Hours, 6-Way, Cab W/ A/C, Joystick Steer, Backup Camera, Leveling System, 4 Cyl Cat Turbo, 18K Lbs, stk#DZ141, **\$79,900**

60 STATE RD, PHILLIPSTON, MASS

978-249-4600

EMAIL: KEVIN@BROOKSIDEEQUIPMENT.COM

SALVADORE

FAMILY OF DEALERSHIPS

442 W. Broadway, Gardner, Ma | SalvadoreRam.com

**RAM**

978-616-6127

**RAM CHASSIS CAB DEALER
IN NEW ENGLAND****We've Got Your Truck!****RAM
PROFESSIONAL****SAVE \$11,000!****Ready for Upfit!**2024 RAM 3500HD
CHASSIS TRADESMAN
REG CAB 4X46.4L V8 HEAVY-DUTY
HEMI ENGINE - 6-SPD
AUTO AISIN AS69RC HD
TRANSMISSION - 60" CA**MSRP: \$63,570
NOW ONLY: \$52,570!**

STK # G301689

SAVE \$10,250!**Ready for Upfit!**2024 RAM 3500HD
C&C TRADESMAN
REG CAB 4X46.7L I6 CUMMINS TURBO
DIESEL ENGINE - 6-SPD
AUTO AISIN AS69RC HD
TRANSMISSION - 60" CA**MSRP: \$71,655
NOW ONLY: \$61,405!**

STK # N24073

SAVE \$11,000!**Ready for Upfit!**2024 RAM 3500HD
CHASSIS TRADESMAN
REG CAB 4X46.4L V8 HEAVY-DUTY
HEMI ENGINE - 6-SPD
AUTO AISIN AS69RC HD
TRANSMISSION - 60" CA**MSRP: \$63,570
NOW ONLY: \$52,570!**

STK # G301690

SAVE \$3,000!**Ready For Upfit!**2025 RAM 3500
CHASSIS CAB BIG
HORN CREW CAB 4X46.7L I6 CUMMINS TURBO
DIESEL ENGINE - 8 SPEED
AUTO TORQUEFLITE HD
TRANSMISSION**MSRP: \$81,350
NOW ONLY: \$78,350!**

STK # N25121

SAVE \$11,000!**Ready For Upfit!**2024 RAM 5500
CHASIS CAB
TRADESMAN REG CAB6.7L I6 CUMMINS TURBO
DIESEL ENGINE - 6-SPD
AUTO AISIN AS69RC HD
TRANSMISSION - 60" CA**MSRP: \$79,520
NOW ONLY: \$68,520!**

STK # G347604

SAVE \$2,200**Ready For Upfit!**2026 RAM 5500
CHASSIS TRADESMAN
REG CAB 4X46.7L I6 CUMMINS TURBO
DIESEL ENGINE - 8-SPD
AUTO TORQUEFLITE HD
TRANSMISSION**MSRP: \$79,055
NOW ONLY: \$76,855!**

STK # N26008

SAVE \$11,000!**Ready For Upfit!**2024 RAM 3500HD
TRADESMAN REG
CAB 4X46.4L V8 HEAVY-DUTY
HEMI ENGINE - 6-SPD
AUTO AISIN AS69RC HD
TRANSMISSION - 84" CA**MSRP: \$63,130
NOW ONLY: \$52,130!**

STK # G310801

SAVE UP TO \$5,000!**High Roof Cargo Van**2025 RAM
PROMASTER 2500
TRADESMAN3.6L V6 24V VVT ENGINE -
9-SPD AUTO
TRANSMISSION - GVWR
8,900LBS - 16" WHEELS**MSRP: \$53,250
NOW ONLY: \$48,250!**

STK # N25056

SAVE \$11,000!**Ready For Upfit!**2024 RAM 3500HD
CHASSIS TRADESMAN
REG CAB 4X46.7L I6 CUMMINS TURBO
DIESEL ENGINE - 6-SPD
AUTO AISIN AS69RC HD
TRANSMISSION - 84" CA**MSRP: \$73,920
NOW ONLY: \$62,920!**

STK# G309155

SAVE \$11,250!**Ready For Upfit!**2024 RAM 5500 CHASIS
CAB TRADESMAN REG
CAB6.7L I6 CUMMINS TURBO
DIESEL ENGINE. 6-SPEED
AUTO AISIN AS69RC HD
TRANSMISSION - 60" C/A**MSRP: \$79,110
NOW ONLY: \$67,860!**

STK # N24078

Additional Inventory Available & Ready For Custom Upfits!

Not responsible for typographical errors. Inventory changes frequently. Pricing subject to change due to manufacturer rebates. Pricing includes all available rebates and incentives and may require vehicle to be reported as a Business sale to the manufacturer. See dealer for complete details.

Authorized Fisher
Snow Plow Dealer



HILLSIDE MOTORS

**800-D American Legion Highway (Rt. 177)
Westport, MA 02790
508-636-5050**

Financing
Available
-Others in Stock

Family Owned & Operated Since 1969



68K MILES

2020 RAM 2500 CREW CAB 8' BED 4X4. 6.4L V8, Auto, AC, PW, PL, 6-Passenger, Bluetooth, Back-up Camera, Factory Trailing Pkg, 68K, One Owner, Fleet Maintained, **\$31,900.**



OTHERS AVAILABLE

2020 CHEVY 2500 HD CREW CAB 8' UTILITY RWD. 6.6L Gas, Auto, PW, PL, 6 Passenger, Back-up Camera, Bluetooth, One Owner, Fleet Maintained, 83K, Mint Condition, **\$30,800.**



ONE OWNER

2017 CHEVY 3500 SRW CUBE VAN. 6L V8, Auto, AC, Tilt, Limited Slip Dif, Barn Doors, 142K, One Owner, Fleet Maintained, **\$13,900.**



GORGEOUS SUV

2016 CHEVY TAHOE 4X4. LT Pkg, 5.3L V8, Auto, AC, PW, PL, Dual Power Seats, 5-Passenger, Bluetooth, Limited Slip Dif, Rear Camera, Alloys, 119K, One Owner, Fleet Maintained, **\$15,900.**



\$16,900

OTHERS AVAIL.

2015 CHEVY 3500 11' ENCLOSED UTILITY RWD. 6L V8, Auto, AC, 13,200 GVW, 84" CA, Dual Tanks, 187K, Southern Truck, **\$16,900., (Cab/Chassis Only \$12,900.)**



4X4

2015 CHEVY 2500 8' REGULAR CAB 4x4 W/ FIBERGLASS WORK CAP. 6L V8, Auto, AC, PW, PL, 190K, One Owner, Fleet Maintained, **\$11,900.**



\$13,500.

2009 INTERNATIONAL DUMP. Stainless Steel Body W/Tailgate Sander, Diesel, Allison Auto, 22.5 Rubber, 36,220 GVW, Load Cover, 98K Miles, One Owner, Fleet Maintained, Needs Dump Piston, **\$13,500.**



2 AVAILABLE

2015 - 2016 CHEVY 2500 CREW CAB 8' READING ALUMINUM UTILITY. w/Top-Loading Boxes, RWD, 6L V8, Auto, AC, PW, PL, 6-Passenger, 235K, One Owner, Fleet Maintained, Rust-Free, **2 To Choose \$11,900. To \$12,900.**

ALLEGIANCE

TRUCKS®



109 Lindberg Ave.
(978) 686-1800

Methuen, Ma 01844
(978) 726-9477



www.AllegianceTrucks.com

CALL FOR OTHER NEW & USED TRUCKS FOR SALE!



2021 FREIGHTLINER M2 106.
33000 GVW, 143k Cummins B6.7, Allison 2500 RDS, Swing Rear Doors, Vertical E-Track, 3 Person Seating, Stk#338559, **\$39,900.**



2021 INTERNATIONAL MV607.
174K, Cummins 6.7 260HP, Allison 2500 RDS, 26' Dry w/ Maxon GPT3 3000 Lb Tuck, Stk#359875, **\$37,900.**



2023 FORD F450.
63K miles, 7.3 V8 300HP Gas, Auto, 16' Morgan w/ Roll-Up Rear Door, Drop-Step Bumper, 1 Row E-Track, Stk#358593 **\$49,900.**



2017 CHEVROLET W4500. Diesel, 78k, 16' Dry w/ 2000b Tuckaway, Auto, PW/L, A/C, 2 Rows Of E-Track, Stk#350167, **\$22,900.**



2020 HINO 195
18' REEFER w/ Curb Side Door,
19500 GVW, Carrier 40x, 214K Miles, Roll-Up Rear Door, stk#327078, **\$27,900.**



2018 KENWORTH T270. 149K. 220 HP Paccar PX-6/PX-7. Allison 6 Sp Auto. Air brake, Air Ride. 26' 97" T x 102" W W/ Roll-Up, 3 Row E-Track, Trans Roof. Pull-Out Ramp. stk#345262, **\$33,900.**



2024 ISUZU NRR DIESEL
HOOKLIFT. 19500 GVW, I-Pac. Stellar 108-12 Dual Pivot Hook, Auto, AM/FM/Aux/BT, Stk#330952, **\$109,900. Ready to go!**



2022 CHEVROLET W4500. Diesel, 59K, Auto, 16' Unicell w/ 2000lb Tuckaway, 1 Row E-Track, PW/L, A/C, P/S, AM/FM/ Bluetooth, Ready to go! Stk#350835, **\$49,900.**



2010 INTERNATIONAL 7000 SERIES DUMP TRUCK.
2 Axles, Plow, Sander, Standard, 304 Stainless Steel Dump Body. 1187 Hours, 600.1 Trip Hours, 9897 Miles, **\$65,000.**
860-872-1000

QUIPCAL
The Decal Experts

Decal Sets for your Construction, Forestry, Ag, Mining & Industrial Equipment - Old and New.

Prompt • Knowledgeable • Reliable • Experienced

To Check \$ Call: 215-536-5339

& Availability Email: info@CustomServicesCompany.com

Your Next Decal Set Is Here • www.QuipCal.com



DZEN TREE FARM

Where Family Traditions Are Made
215 Barber Hill Road, South Windsor, CT 06074.
Open 9 To 4 Till December 24th
www.dzentreefarm.com



2003 KOBELCO SK250.

Bottom 85%, 4200 Hours, Runs Excellent, AC, Asking **\$65,000.**
203-464-0121



BENSON
BY WABASH NATIONAL



Bangor, ME
207-941-9600

Saco, ME
207-289-6688

Fort Kent, ME
207-834-6186

Jericho, VT
802-899-3753

Colchester, VT
800-639-1290



WABASH



ALLEGIANCE

TRUCKS®

www.AllegianceTrucks.com

CALL FOR OTHER NEW & USED TRUCKS & TRAILERS FOR SALE!



2019 INTERNATIONAL HX TRACTOR
608HP., 18Spd. Trans., Cummins,
Diesel, Ready To Go!
STK#242873
\$79,900



2016 INTERNATIONAL 9900 TRACTOR
550HP., ISX Diesel, Manual Trans.,
Ready To Go! STK#242962
\$58,900



2019 REITNOUER CONNESTOGA
In Stock, Ready To Go!
STK#350422
\$47,900



2020 EAST ALUM. FLATBED
Ready To Go!
STK#285373
\$29,900



2018 MANAC CURTAINSIDE
Ready To Go!
STK#245998
\$34,900



2022 INTERNATIONAL LONESTAR TRACTOR.
565HP., 18 Spd., Cummins X15, Diesel,
In Stock! STK#160851
\$89,495



2022 INTERNATIONAL HX520
565HP., Cummins X15, 18SPD. Trans.,
14.6K Front / 46K Locking Rears.,
Fresh DOT Inspection. STK#202643
Call Today!



2011 INTERNATIONAL 7600 DUMP
Well Kept Single Axle Plow Truck, Dot
Inspection, Fully Serviced, New King
Pins, Front Plow & Wing Included.
STK#154960
\$36,900



2025 UTILITY VS2RA REFRIGERATED TRAILER,
53 FT. Carrier 7300 X4 Reefer Unit,
Just Over 1600 Hours, Basically Brand
New, Aluminum Rims, Rubbers Like
New, Title In Hand, Looking For A
Quick Sale To Move Unit, **\$75,000**
OBO. 508-344-7656 Call/Text



2018 EAGER BEAVER 20 TON TRAILER.
Good Condition, Ready For Work, **\$14,500.**
Located In Tiverton, RI 774-301-4240



KUBOTA V2203 DIESEL ENGINE.
Used, Tested, Good Running, 4 Cylinder, 50
Gross HP Model, Can Be Used To Repower Your
Used Equipment, Video Available Of Engine
Running With Oil Pressure Gauge And Water,
\$2500. 860-680-1841

CUSTOM GATES HYDRAULIC HOSE ASSEMBLIES & FITTINGS

FULL TRUCK SERVICE, MAINTENANCE & REPAIR

All Makes & Models

Over 20 Years Experience Specializing In Mack's

Marshall Cefole - **978-467-7993**

Randy Rameau - **978-423-2889**

10 Gardner Road, Winchendon MA 01475

ALLEGIANCE

TRUCKS®



1400 South Willow St. Manchester, NH
603-623-8873

132 Pierce Rd. (Rt. 125) Barrington, NH
603-905-9036

www.AllegianceTrucks.com



CALL FOR OTHER NEW & USED TRUCKS FOR SALE!



2025 INTERNATIONAL MV 607 24' FLATBED. Cummins 300 HP, Auto, 25,999 GVW, 2K Miles, #347792, **\$121,900.**



2026 INTERNATIONAL MV DUMP. L9 Cummins, 3500 RDS Auto, 33K GVWR, Ready To Go, #353138, **\$146,900.**



2005 INTERNATIONAL 7600 FLATBED CRANE 6x4. Cummins ISM 385 HP, 73,200 GVW, 237K Miles, **#350752**



2026 INTERNATIONAL HX 520 6x4. Cummins 565 HP, Auto, 60K GVW, 2K Miles, #348548, **\$191,900.**



2015 WESTERN STAR 4700 SB FASSI CRANE. Detroit DD13 450 HP, 66K GVW, 208K Miles, #341199, **\$189,900.**



2024 KENWORTH T380 DUMP / CRANE. Paccar PX-9, Air Brakes, 17K Miles, #351879, **\$189,900.**



2026 INTERNATIONAL HX TANDEM CHASSIS. X15 Cummins 565HP, 4700 RDS Auto, 159" WB, #354440



2017 FREIGHTLINER M2 106 MED 4x4 W/NEW DFI TANK. Cummins, Auto, 33K GVW, 5K Miles, #339358, **\$134,900.**

LAMTRAC LTR6140T 140HP

Forestry Mulcher,
Rental \$2,000
Weekly Or Buy
At **\$96,000**,
Portland, CT,
860-836-0692



FORD F-750 FLATBED DUMP TRUCK.

16 Ft Flatbed Dump Body,
3126 Caterpillar Diesel Engine,
Auto, Air Brakes, Good Tires,
Runs Excellent, Used Daily,
175K Miles, Title In Hand, Reli-
able & Work-Ready,
\$6,000 OBO.
Hopkinton, RI 401-742-3659



Powerglide Air Test Kit



Complete Powerglide Pro Tree Transbrake \$279.95



TH400 Deep Cast Aluminum Pan



TH400 Billet Direct Drum Spring Retainer & Aluminum Modulator/Solenoid Hold Down



Powerglide Overhaul Kit



Powerglide Deep Oil Pan



Powerglide Reverse Spring Retainer Tool



Powerglide Bushing Driver Set



Do-it-yourself Powerglide Pro Tree Transbrake Kit \$164.95



1.80 Long Powerglide Gear Set



1-800-394-5889

179 Belvedere Road
Gilsum, NH 03448

WWW.TSR-RACING.COM

Powerglide Handbook written by Carl H. Munroe \$21.95



Powerglide Vent Tanks



2001 INTERNATIONAL 4900 FUEL DELIVERY TRUCK. 2400 Gallon Aluminum Tank, 232K Miles, DT466, 6 Speed, **\$18,500.**, Lawrence, MA
603-973-0809

ALLEGIANCE

TRUCKS®



2181 Providence Hwy, **Walpole, MA**
800-225-4808

17 O'Keefe Lane, **Warwick, RI**
800-949-2221



www.AllegianceTrucks.com

FINANCING & WARRANTIES AVAILABLE ON USED TRUCKS!



2025 INTERNATIONAL MV 607 HOOK-LIFT. Cummins 300 HP, Auto, 25,999 GVW, #347943, **\$149,900.**



2025 INTERNATIONAL MV 607 PACKER. Cummins, Auto, 25,999 GVW, 1K Miles, #347155, **\$191,900.**



2025 INTERNATIONAL MV 607 HOOK-LIFT. Cummins, Auto, 25,999 GVW, 2K Miles, #347811, **\$147,900.**



2024 FORD F550 KNAPHEIDE UTILITY W/CRANE. 6.7L Powerstroke Diesel, 19,500 GVW, #345660, **\$177,500.**



2024 INTERNATIONAL CV 515 4X4 DUMP W/FISHER PLOW. 6.6L Diesel, Auto, 23K GVW, 1K Miles, #347816, **\$141,900.**



2024 FORD F550 XL 4X4 READING WALK-IN UTILITY. 6.7L Powerstroke Diesel, 19,500 GVW, #345078, **\$108,357.**



2024 FORD F550 4 TO 5 YD CRYSTEEL 9' DUMP XL 4X4. New, 6.7L Powerstroke Diesel, 10 Spd, 19,500 GVW, stk#338631, **\$94,149.**



2024 FORD F600 11' KNAPHEIDE UTILITY XL 4X4. New, 6.7L Powerstroke Diesel, 10 Spd, 22K GVW, stk#334700, **\$92,034.**



USED ROLLOFF CONTAINERS. Various Sizes & Conditions, Sold As Is, **\$800-\$1900.** Boston, MA Area 617-567-2524



CAT SKID STEER
50HP,
Excellent
Shape, With
Snow
Tires,
\$20,000
860-928-5748



2007 PETERBILT 335 ROLLBACK W/WHEEL LIFT. 23 Ft Chevron Steel Body, 26K GVW, C7 CAT, 10 Speed Trans, 222K Miles, Strobe Lights, New Tires, Very Nice Condition, **\$39,500.,** Lawrence, MA 603-973-0809



**Bentons Heavy
Equipment Repair
(860) 917-6048**

Veteran Owned and Operated

On Site Service Repairs, Preventative
Maintenance and Diagnostics

Servicing CT, RI, MA & The Northeast

Bentonsheavyequipment@outlook.com



Visit Us On Facebook



ALLEGIANCE

TRUCKS®



Hartford, North Haven, Franklin, Southbury, & Bridgeport, CT/ W. Springfield, MA



Call Peter Vecchiarelli 860-982-2014

GREAT SELECTION AND PRICE ON ALL USED INVENTORY



2018 INTERNATIONAL 4700.
Cummins B6.7, Allison Transmission,
349,720 Miles, #106624, **\$18,500**



2022 CHEVROLET LCF 4500. 16' Box
With Gate, 16K GVW, Very Clean, Low
Miles, #350835, **\$45,900**



2025 ISUZU NRR. 8 Yard Loader,
19500 GVWR, 2 To Choose,
\$139,900



2017 CHEVROLET Diesel, 15,000 GVW,
16' Body w/ Liftgate, 79K Miles, Clean
Truck, #350167, **\$22,495**



2021 CHEVROLET. 4.3L Diesel,
Schwarze SuperVac Updraft Sweeper,
Only 121,000 Miles, (3) In Stock, **\$34,900**



2012 INTERNATIONAL WORKSTAR 7600. 475
HP, 8LL, Only 370K Miles, Runs Well, Fresh DOT,
Steel Dump, Auto Cover, Tow Plate, Ready To
Work, #162888, **\$59,900**



2013 ISUZU NQR FLAT BED.
17,950 GVWR, Tool Boxes,
#219535, **\$19,900**



**NEW 2023 INTERNATIONAL
CV.** 6.6L, Automatic, 350 HP,
Landscape Dump Body, #324381
\$98,900

1987 CHEVROLET K70.

155,926 Miles, 5
Speed, 4:10 Rear,
366 CI V8, 4 Wheel
Disc Brakes, 5000W
Miller Welder/
Generator, 65'
Skyhook Crane 24V,
3000 Lb.
Capacity, **\$15,000.**
Ellington, CT
860-875-8107



1981 PETERBILT 359. Cummins
350 Big Cam 3, 13 Speed, 355 Rears,
2 New Steer Tires Matching Rubber,
Brakes & Drums 75%, New Parts,
New Clutch, New Transmission, 2 Line
Wet System, 60,000 Miles On Motor.
\$43,000, CT 203-395-9897



**\$110 Per
Wheel Polish**
**ACUSHNET WHEEL
POLISHING**
Used Rims Available
508-509-2014
62 SOUTH MAIN ST.,
ACUSHNET, MA



Season's Greetings

Service & Mechanic On Site



1989 AUTOCAR T/A DUMP.
CAT 3406B, Fleet Maintained, New
1200R24 Tires, New Canvas, New
Trunnion Suspension, 3 Chutes, Very
Clean, **\$25,000.** 401-447-2661 Or
401-737-6663

ANDERSON MOTORS INC.


GMC

MICRO BIRD
by GERRARDIN

BLUE BIRD BUS SALES OF NEW ENGLAND
*** YOUR EXCLUSIVE VOLVO TRUCK DEALER ***

VOLVO POWER
IN STOCK

2026 VOLVO VHD84F300-D13, 500HP, 14 SPD. I-SHIFT, 20,000# STEERABLE PUSHER AXLE, 17' 6" TRI-AXLE BODY INSTALLED. #250111


IN STOCK

2025 VOLVO VHD64FT300-D13, 500HP, 12SPD I-SHIFT, 14,600# FRONT / 46,000# REARS, T-RIDE, FULL LOCK DIFF. #240089


IN STOCK

2025 VOLVO VHD64BT-D13, 500HP, 12SPD. I-SHIFT, 14,600# FRONT / 46,000# REARS. #240142


INCOMING

2025 RHODES RSS2660-2 26' STEEL END DUMP TRAILER, AIR HIGH-LIFT DOUBLE ACTING TAIL GATE, HD SPECS.


INCOMING

2026 VOLVO VHD84F300-D13 500HP, 14SPD. I-SHIFT, STEERABLE PUSHER AXLE, STEEL DUMP BODY.


IN STOCK

2025 VOLVO VHD64B300-D13, 500HP, I-SHIFT TRANS., 20,000# FRONT / 52,000# REARS, 261 WB, HD CHASSIS. #240085


IN STOCK

2000 VOLVO WG64B, 275HP, AUTO, 16,000# FRONT / 40,000# REARS, JOHNSERED 820 CORTU CRANE, 20' DUMP BODY. #210299A


3 AVAILABLE

2016 VOLVO VNM64T-D13, 435HP, 10SPD., 12,000# FRONT / 40,000# REARS. #230109A


4 AVAILABLE

2020 VOLVO VNR64T300 HD TRACTOR, D-13, 500HP, 12SPD AUTO, 14,000# FRONT / 46,000# REARS, AIR-RIDE. #240087A


INCOMING

2026 AUTOCAR ACTT42, SINGLE AXLE, YARD JOCKEY, DIESEL AUTOMATIC, A/C, HYDRAULIC 5TH WHEEL.


IN STOCK

2012 FORD E-450 14 PASSENGER SHUTTLE BUS, GAS, 18,885 MILES. #250029A


IN STOCK

2025 FORD E-SERIES 14 PASSENGER COMMERCIAL SHUTTLE BUS. NON CDL LICENSE REQUIRED.

401-434-5900

WWW.ANDERSONMOTORS.COM

EMAIL • SALES@ANDERSONMOTORS.COM

170 AMARAL STREET • EAST PROVIDENCE, RI 02915

HABLAMOS ESPAÑOL

American SEMI REBUILDERS

**SPECIALIZING
IN FRAME RAIL
REPLACEMENTS,
TRUCK
RESTORATIONS,
& REPAIRS**

BEFORE



AFTER



- We Do What it takes to keep you moving**
- Quality work done right the first time**
- Over 40 Years Experience**

FULLY LICENSED AND INSURED

27 Depot Street, Unit K-2, Center Barnstead, NH 03225

603-269-0046

1996 ZIMMERMAN 6 YD MIXER.

On 1996 International, 60K Miles,
Retiring, Great Running Truck, Make
Your Own Concrete,
\$25,000 OBO 978-265-5974

2002 HITACHI ZX330LC EXCAVATOR.

AC, Heat, Radio,
75% Undercarriage,
Run Great, Work
Ready, 14,652
Hours, Very Clean,
Dependable,
\$50,000.
978-502-8557



FISHER 9'6"
V-PLOW. Stainless
Steel, Hitch & Control
Off Ford F-550,
\$3600. Shelton, CT
203-218-3726



CANDIA TRAILER

SAVE TIME & FUEL • WE SHIP!

1-866-761-0196

www.CandiaTrailer.com

& LANDSCAPE EQUIPMENT CO

All Prices Cash & Carry! Installation Available!**NH 603-483-2541**email: contact@candiatrailer.com

35 High St, Candia 4 Coners, Candia NH
10 Minutes East of Manchester, NH • 1 hour From Boston

**ALL THE RIGHT
FIXINGS FOR
YOU**



**DURA MAG ALUMINUM DUMP
BODIES** Complete Sub-Frame,
Power Pac, LED Lights.



Pintle Plate
\$459



BUTCHER Dump Power Pac with
control Gravity Down **\$595**



**8' Ft & 6 Ft EZ Slide In Dump
Body.** With Head Board,
Tarp & Hoist.



ALUMINUM SERVICE BODY



HARSH HOIST

2.5 to 45 Ton, Single or
Double Piston. Convert
a Flatbed Body to a
Dumping Body.
HOIST & POWER
PACK

CHAMPION HOIST

UNDERBODY TOOL BOXES

Powder Coat Diamond
Aluminum Door



Diamond Aluminum Door



HOMESTEAD Enclosed Trailers.
Stocking 8 Ft - 24 Ft



CONSOLIDATED TRUCK & EQUIPMENT, INC.

**FELLING
TRAILERS**

**EXTREME
TRAILERS**

**Palmer
BODIES**

www.ConsolidatedTruckEquipment.com

**1727 FALL RIVER AVE, (RT.6) NEAR SEEKONK SPEEDWAY
SEEKONK, MA**



NEW CHALLENGER 26' STEEL DUMP TRAILER.

High Lift Gate, Single Point Suspension,
Electric Tarp, 11x24.5 Tires On
Aluminum Wheels,
Call For Price.



2025 FELLING 20 TON TAG W/ AIR RAMPS. CALL.



**2012 MAC 28' 28' ALUMINUM DUMP TRAILER:
ELECTRIC TARP, 11X24.5 TIRES. GOOD WORKING
CONDITION. \$39,500.**



**2025 MAC 28' ALLUMINUM DUMP TRAILER: 8 ALLUMINUM
RIMS, ALLUMINUM FRAME, AIR RIDE, ½ PLASTIC LINER.**

3 AVAILABLE



5 IN STOCK

**2025 MAC 26' STEEL DUMP TRAILERS:
Hi-Lift Gate, 24.5 Tires On Aluminum Rims, 60,000 LB
Center Point Suspension, Electric Load Cover, Body All
¼" Hardox,**



**2025 MAC 27' STEEL BODY ALUMINUM FRAME TRAILER: Hi-
Lift Gate, Air Ride, 11x24.5 Tires On 8 Aluminum Rims, Hardox Steel
Body, Full Aluminum Side Skirts,
Due In 2 Available, Trades Accepted,**



**NEW FELLING 25 TON: AIR RAMPS,
FRONT AXLE LIFT.
REDUCED! \$55,500 to \$53,000**

CALL US: AT 508-336-6215 • HOURS: M-F 8 to 5:30 • SAT: 9 to 12 Noon

CTE
INC.**CONSOLIDATED TRUCK
& EQUIPMENT, INC.****Extreme****TELLING
TRAILERS****EXTREME
TRAILERS****Palmer
BODIES****www.ConsolidatedTruckEquipment.com****1727 FALL RIVER AVE. (RT.6) NEAR SEEKONK SPEEDWAY
SEEKONK, MA****2006 KENWORTH
T-600:**

1 REBUILT CAT
R, ALISON
O TRANS,
ALL NEW DRIVE
TIRES 11X24.5, NEW
RADIATOR, NEW
PAIN. BUY IT AS IS
OR WITH A NEW
BODY.

**CALL FOR SPECIAL
PRICE**



**2008
TRAILSTAR 26'
STEEL DUMP
TRAILER:** NEW
24.5 TIRES,
CENTERPOINT
SUSPENSION,
HI-LIFT GATE,
SEMI AUTO
TARP GOOD
WORKING
TRAILER
\$28,500.00.



**1998 MACK
R-600: 44
REARS, 8LL
TRANS, 11 X
24.5 TIRES,
WET LINE.
GOOD
RUNNER
\$26,000.00.**



**2005 BENSON
26' STEEL DUMP
TRAILER:**
CENTER POINT
SUSPENSION,
24.5 TIRES,
NEEDS
A LITTLE
TLC (MOSTLY
PAINT) **\$18,500.**



**1984
FRUEHAUF 26'
ALUMINUM
DUMP
TRAILER:**
GOOD
CONDITION
FOR IT'S AGE.
\$12,000.



**2012 MAC 28'
ALUMINUM
DUMP
TRAILER:**
ELECTRIC
TARP, 11X24.5
TIRES, GOOD
WORKING
CONDITION.
\$39,500.



**2012 MAC 26'
ALUMINUM
DUMP
TRAILER:**
ELECTRIC TARP,
24.5 TIRES @
75%, BRAKES
@75%, RAYCO
SUSPENSION,
RECENT SERVICE.
READY FOR
WORK! **\$29,500.**

CALL US: AT 508-336-6215 • HOURS: M-F 8 to 5:30 • SAT: 9 to 12 Noon



We Are Hiring a
**DIESEL
MECHANIC**

Specializing in Tank Truck &
Trailer Sales, General Repairs,
Parts, Waterjet Cutting, and
Fabrication.

305 Shaker Rd P.O. Box 428
East Longmeadow, MA 01028
413-525-3678

Health Insurance
Dental
PTO
Vacations
Uniforms
Competitive Wages
Retirement Savings Plan



1999 MACK CV700 DUMP. 6 Cyl. Diesel, 76,650 GVW,
55 Rear, 20 Front, Low Mileage, Excellent Condition,
\$48,500. Tiverton, RI 774-301-4240



**2012 FORD F550
4X4 CAB & CHASSIS.**
198K Miles, Under-Hood PTO,
New Motor At 130K, New
Transmission At 175K, Maintained And
Runs Well, 84" Cab To Axle,
\$7,500 OBO. 203-917-2379



**2011 STRICK BEVERAGE
DELIVERY VAN.**
36' X 102" X 12'8", Maxon BMR5500
Rail Gate, Heavy Duty Specs, Side
Doors, 2 To Choose, **\$14,900.**
603-496-7663

**2017 FORD F-250
SUPER DUTY REG CAB
8' READING UTILITY
4WD.** 6.2L V8, Auto, AC,
PW, PL, Tilt, Cruise, Back-up
Camera, Bluetooth, Alloys,
Running Boards, Fleet
Maintained, 10K GVW, 112K,
\$28,900., Westport, MA
508-636-5050



**NEW SERCO
8500
LOADERS.**
In Stock,
Call For Pricing,
Portland, CT,
860-836-0692



**2019 PETERBILT 348 HEAVY
HAUL DRILL RIG TRUCK.** 14,500
Miles, Paccar Diesel, Eaton Fuller 13-Speed,
EZ-Bore 90-42 Drill Unit With 100' Kelly
Bar, Hydraulic Outriggers, Allison
Automatic, Excellent Condition, CARB
Compliant, **\$199,000** Or Real Estate
Trade. Torrance, CA 310-567-3941



BOBCAT 753. Diesel, New Motor,
New Tires, New Edge – Forks, 5 Ft.
Bucket, Hydra Turn Bobcat Plow,
Ser #512711866, **\$18,500.**
Shelton, CT 203-218-3726,
hijack98@aol.com

PAT'S TRUCK SALES

Office: 603-347-1386 - After Hrs: 978-490-6197



2009 IH 7600 T/A DUMP. Cummins 410, Automatic, 136,571 Miles, 20 Ft Axle, 46 Rears, Polish Aluminum Wheels, New Tires, **\$87,900**



2016 MACK GU813. MP7-405 HP, Automatic, 394,775 Miles, Tri-Axle Dump, Super Clean, **\$93,000.**



2018 MACK. Tri-Axle Dump, 219,750 Miles, MP8-505 HP, Automatic, Beau-Roc Body, Go To Work, **\$135,000.**



2022 BOBCAT E42 EXCAVATOR. 1,088 Hours, Hydraulic Thumb, **\$52,500**



2016 MACK GRANITE. Tri-Axle Dump, 209,500 Miles, MP7-425 HP, Automatic, 16 Ft Ox Body, Excellent Condition, **\$119,500.**



2007 FREIGHTLINER M2 CAB & CHASSIS. 35,000 GVW, Mercedes 7.2 300 HP, Allison Automatic, 83,909 Miles, **\$22,900**



2015 FORD F250 UTILITY. 4x4, Plow, V8 Gas, Auto, Knapheide Body, 44,067 Miles, **\$24,900**



2019 IH 4300. 10,868 Miles, Cummins 6.7 300 HP, Automatic, 25,999 GVW, 10 Ft Stainless Steel Dump Body, **\$55,900**



2005 STERLING LT9500 S/A TRACTOR. Pre Emission CAT C9 350 Hp, Automatic, 25,200 Miles, 37,000 GVW, Super Clean, **\$25,900**



2017 MACK GU813. Tri Axle Dump, MP8-435HP, Automatic, 178,263 Miles, **\$135,000**



2015 GMC 3500HD DUMP. 4X4, Diesel, Tool Boxes, 73,455 Miles, Serviced W/ New Updates, **\$34,900**



2005 STERLING LT9500 DUMP. 15 FT Aluminum Body, CAT C13 430 HP, Automatic, 111,020 Miles, 66K GVW, **\$57,900**

Visit Us - www.patstrucksales.com • 77 Route 125, Kingston, NH

JP RIVARD Trailer Sales Inc

Call Matt - 508-962-4543
 Matt@jprivard.com • JPRivard.com
 Locations in Ayer, MA and Devens, MA

We Deliver Storage Solutions

60 PLUS YEARS SERVING THE
NORTHEAST AREA

Over 150 Containers – In Stock
With Choice Odd Sizes & Specs
FAST Delivery Is Available

Always Best Customer Service

10' ONE TRIP CONTAINERS



**New One Trip
10' Containers.**
Side Door
And Window
Included. Three
Available,
From \$3,600.

40' HIGH CUBE DOUBLE DOORS



**40' High Cube
Container, Doors
On Each End.**
Green.
\$6,600
**Delivered
Locally**

NEW 20' – TWO SIDE DOORS



**20' NEW
ONE TRIP.**
End Doors,
2 Side Doors,
From \$6,500

20' HIGH CUBE



**2 New One Trip
20' High Cube,
9'6"**
Full Open
Side, Hard To
Find. **From
\$8,500 Each**

20' 1 TRIP - HIGH OPTIONS



FROM \$3,200
 (25) New 20' One Trip Containers
 Beige, Light Grey And Green, Some Lightly
 Dented

40' HIGH CUBE - 1 TRIP



**(5)
New 40' One
Trip
High Cube
Containers,
In Stock,
FROM \$4,700**

40' HIGH CUBE 1 Trip, 4 Side Doors



**New 40'
High Cube
Containers,
With 4 Side
Doors, \$9,800
Delivered
Locally**

Sales Tax If Applicable + Delivery Is Not Included Unless Noted

JP RIVARD

Trailer Sales Inc

Call Matt - 508-962-4543
 Matt@jprivard.com • JPRivard.com
 Locations in Ayer, MA and Devens, MA

FULLY GALVANIZED UNDER SIDE



- 30 HYUNDAI 53'
- Spring Ride
- Swing Doors
- Mint Condition

\$17,900

53' AIR RIDE DURAPLATE



2022 WABASH 53'x102". Air Ride, Duraplate, Aluminum Roof, Swing Doors, New Brakes, \$25,900

48' - 53' ROAD TRAILERS



2004-2015
 48'-53'
 ROAD
 TRAILERS.
 Swing Doors,
 Roll Doors,
 Air Ride,
 Spring Ride.

YARD SPOTTER



MAGNUM YARD SPOTTER.
 Single Axle, Works As It Should,
 Good Inexpensive Truck, \$7,750

RENTAL FLATBEDS & STEP DECKS



- NEW & USED 48'X102" Rentals
- Sliding Tandems
- DOT Inspected
- USED 48'X102" Combo Step Deck
- Spread Axle Air Ride

4 Composite Plate Vans



2013 GREAT DANE AND HYUNDAI 53'. Composite Plate Vans, 4 To Choose, Spring Suspension, Swing Doors, Excellent Condition. \$10,500 Each

36'x102" - 45'x102" - 48'x102" Flatbeds. Some w/ Forklift Kits



2025 Dorsey 48'x102"
 Steel Flatbed, Spring Ride.
 Great Specs. (3) Available.

2025 Dorsey 45'x102"
 Steel Flatbed, Air Ride,
 Princeton Forklift
 Kit, Tool Box, etc. (1).

2025 Dorsey 36'x102"
 Steel Flatbed, Air Ride,
 Princeton Forklift
 Kit, Tool Box, etc. (1)

*** FINANCING & LONG TERM LEASES AVAILABLE



8' FISHER MINUTE MOUNT SNOW PLOW.

Like New, \$2,000

Or Best Offer,

East Windsor, CT 860-716-0226

Coletta's Sales & Service

For all of your truck, trailer, and truck body needs

- ★ Collision Center
- ★ Vehicle Service & Inspection
- ★ Towing & Road Service
- ★ Equipment Hauling
- ★ Part Sales & Delivery
- ★ Authorized Morgan Truck Body Distributor



250 Niantic Ave, Providence RI 02907
www.colettas.com

401-421-3232



1987 INTERNATIONAL PAYSTAR 5000.

S/N 2HTGGJT9HC004517,
Asking \$25,000 OBO.

508-579-4763 Or Email
WebsterDudleySand@gmail.com



2013 VOLVO BL70B BACKHOE.

Front Quick
Connect, Rear
Extend-A-Hoe,
AC/Heat, Full
Cab, Low Hours,
\$42,500.
Tiverton, RI
774-301-4240

AUTHORIZED FISHER DEALER • AUTHORIZED FISHER DEALER • AUTHORIZED FISHER DEALER

6 Enterprise Drive
Londonderry, NH 03053
www.donovancompany.com



1-800-458-3867

sales@donovancompany.com
parts@donovancompany.com



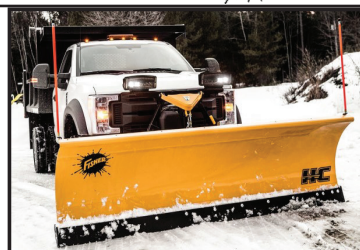
Largest Authorized Dealer in TAX-FREE NH



HD2™ - Straight Blade available in
7' 6", 8', 8' 6" and 9' widths



FISHER XV2™ Built to power
through any storm!



HC SERIES - 9' & 10' heavy contractor
made to move large amounts of snow!



FISHER TEMPEST™ POLY



Left
Over
Inventory

Special
Discounted
Price \$\$\$

BRINE PRO™ 2000



FISHER TEMPEST™

WWW.DONOVANCOMPANY.COM



Commercial
Vehicle Center



MCGOVERN
FORD AT DRUM HILL

Call Mike Smokler 603-493-6561



2025 T250 REFRIGERATED VAN.
Thermo King V-320, V6 Gas, FN6117
\$78,400



2026 F350 LANDSCAPER DUMP.
Super Cab, 4X4, 7.3 Gas, Remote
Start, Tool Box, 3 Way Gate, Curb
Side Door, FN6526. **\$80,640**



2025 F650 DUMP. Race Red, 7.3L
335HP Gas, Automatic, #FN5213,
\$94,900

OVER 75 SUPER DUTIES IN STOCK - COLORS AND CONFIGURATIONS



**F350, F450, & F550
CHASSIS AVAILABLE**



2026 F350 SUPER CAB. 8'6" Fisher
SS V-Plow, Gas, Remote Start, Dual
Battery, UpFitter Switches, FN6637.
\$70,600



2026 F350 LANDSCAPER DUMP. 4X4,
7.3 Gas, Remote Start, Tool Box, 3 Way
Gate, Curb Side Door, FN6509. **\$78,735**



2025 F350 DUMP. 10.6 Ton Hoist,
4WD, 9' Body, Tool Box, Remote
Start, 7.3 Gas, FN6449. **\$71,900**



2026 F450 SUPER CAB DUMP. 9'
Stainless Steel Body, Diesel, 4WD,
Work Surface, Dual Alternator, FN6576.
\$101,159



2025 F350 SUPER CAB UTILITY.
Reading Service Body, SRW, 4X4, 7.3L
Gas, Remote Start, FN6190. **\$79,950**



2024 F350 SERVICE BODY. 11'
Knapheide, V8 Gas, 4WD, DRW, Remote
Start, 120V/400W Outlet, #FN5242
\$65,900



2026 F350 SUPER CAB DUMP.
9' Stainless Steel Body, Diesel, 4WD,
Tool Box, Remote Start, FN6525.
Call Mike 603-493-6561



2025 F350 CREW UTILITY. Diesel,
4WD, 9' Body, Spray In Liner, SRW,
Remote Start, FN6317. **\$87,682**



2026 F350 CREW KING RANCH. Remote
Start, Diesel, 4X4, Pwr Moonroof Twin Panel,
Off Road Pkg, 20" Wheels, 12,000 GVW,
FN6655. **Call Mike 603-493-6561**



2026 T250 CARGO VAN. Medium
Roof, Empty Cargo Vans In Stock,
Call Mike 603-493-6561



2025 T250 CARGO VAN.
Weatherguard Bin Package,
Medium Roof, **\$55,895**



Commercial
Vehicle Center

MichaelSmokler@mcgovernauto.com

STONEHAM



617-733-0773

MUST GO SALE! Call For Special Price Options!



\$82,900

2024 EXPLORER PASSENGER VAN. All Wheel Drive, 8 Person Luxury Seating, Entertainment Sound & Vision, #241216. **\$82,900**



2024 F550 LANDSCAPER. 9'6" Dump, Curb Side Door, Rear Swing Doors, 4WD, Diesel, Remote Start, #241203. **\$85,695**



2024 F550 LANDSCAPER. Diesel, Auto, 4WD, Remote Start, Dual Battery, Payload Plus, #241879. **\$83,855**



2024 F550 LANDSCAPER. Gas, Auto, 4WD, Remote Start, Dual Battery, Payload Plus, #241929. **\$75,495**



2024 F550 LANDSCAPER. 12' Dump, Curb Side Door, Rear Swing Doors, 4WD, Diesel, Remote Start, #24709. **\$83,895**



\$94,795

2024 F550 SWITCHN GO. 11' Can, Diesel, Remote Start, Payload Up Grade, 4WD, #241395. **\$94,795**



\$81,200

2024 F550 LANDSCAPER. Diesel, 4WD, Remote Start, Dual Battery, 19,500 GVW, High Capacity Trailing, #24765. **\$81,200**



\$74,700

2024 F550 XLT CC. Polish Alum Wheels, Diesel, 4WD, Remote Start, PwrScope Mirrors, Payload Plus, #242997. **\$74,700**



\$87,900

2024 F550 ALUMINUM DUMP. Landscapers Spec Body, Curb Side Door, 4X4, Diesel, Remote Start, #24672. **\$87,900**



2024 F450 XLT DUMP. Diesel, Auto, Polish Alum Wheels, L-Pac Tool Box, 4WD, Remote Start, HD Trailing, #241213. **\$89,000**



2024 T350 HIGH CUBE. 10 Ft Rockport Van Body, Plywood Liner, D-Rings, 3 Bar Ladder Racks, Rear Swing Doors, 12" Step Bumper, #243204. **\$58,490**



\$62,000

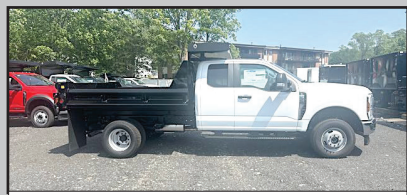
2024 T350 HD FREIGHT VAN. DRW, Pull Out Ramp, Step Bumper, E-Trac, Air Deflector, #243247. **\$62,000**



2025 F750 DUMP. 10' Body, Coal Shute, Air Brakes, Diesel, Auto, Polish Alum Wheels, #25168. **\$119,199**



2025 F550 UTILITY. Duramag Alum Body, Polish Alum Wheels, Diesel, 4WD, XLT Pkg., #25888. **\$83,595**



2025 F350 SUPER CAB DUMP. V8 Gas, Remote Start, 4WD, #251203. **\$73,000**



Commercial
Vehicle Center

Call Bill Pollack 1-617-733-0773
or billpollack@stonehamford.com



Commercial
Vehicle Center

STONEHAM**617-733-0773****WORK VAN SALE EVENT – BIG OPTIONS!**

2024 T250 CARGO VAN. Low Roof, All Wheel Drive, Load Area Protection Pkg. #243196 **\$52,000**



2024 T350 EMPTY CARGO VAN. High Roof, Privacy Glass, V6, PW, PL, #241751. **\$56,399**



2024 T350 HD HIGH ROOF. All Wheel Drive, Cargo Van, #24941. **\$66,890**



2025 T150 CARGO VAN. Low Roof, Load Area Protection Pkg, SYNC 4, #25629. **\$52,299**



2024 T350 HIGH ROOF CARGO VAN. Rear Wheel Drive, Privacy Glass, V6 Gas, PW, PL, Heated Mirrors, #241198 **ON SALE \$57,995**



2025 T350 MID ROOF VAN. Dual Battery, 31 Gal Tank, V6 Gas, PW, PL, Heated Mirrors, #241191, **\$55,500**

USED TRUCKS SPECIALS

2024 T250 CARGO VAN. Mid Roof, AWD, 20,309 Miles, #24076P, **\$52,589**



2023 T250 CARGO VAN. Low Roof, 9,260 Miles, #23181P **\$33,200**



2023 T250 CARGO VAN. Low Roof, 15,986 Miles, #23179P, **\$33,750**



2023 T250 CARGO VAN. Low Roof, 19,933 Miles, #24091P, **\$35,489**



2023 T250 CARGO VAN. Low Roof, 26,130 Miles, #23196P, **\$32,900**



2018 E350 MOVERS VAN. 45,646 Miles, Pull Out Ramp, 2 Rows E-Track, Rockport Body, 55 Gallon Fuel Tank, 12,500 GVW, #24084PA, **\$26,295**



Commercial Vehicle Center

www.StonehamFordTrucks.com

211 MAIN ST. STONEHAM, MA 02180

Mon-Fri 8:30am-8pm Sat 9- 5pm Sunday 11-4

ALL PRICES NET & INCLUDE ALL AVAILABLE REBATES TO DEALER

Call Bill Pollack 1-617-733-0773 or billpollack@stonehamford.com

Commercial Vehicle Center



AREA HYDRAULICS

810 Quaker Hwy. Uxbridge, MA
508-278-6670

Cylinder Resealing

We Make Hose Assemblies
After Hours Service Available!







KOBELCO SK200 MARK 3.
New Bottom, New Computer, Many
New Parts, Runs Great, Asking
\$35,000. 203-464-0121



2015 WESTERN STAR 4700SB. VIN #5KKMAXDV0FLGJ1913, PL74 Boom
S/N G13800101431, 24'4" X 102" Aluminum Flat Deck, Tag Axle, **\$99,000.** 603-532-7716



2005 MACK CH613. 460 Engine, 18-Speed, 46 Rears,
Great Condition, **\$34,999.** 401-486-8552

THE TRAILER DEPOT



203-234-7788

1037 Middletown Ave. (Rt. 17)
Northford, CT



AUTHORIZED DEALER



SURE-TRAC 15.4K PRO SERIES TELESCOPIC DUMP TRAILER. 7' x 14', Heavy Duty I-Beam Frame And Tongue, #454378



CM TRUCK BEDS STARTING @ \$4,500



SURE-TRAC LOW PROFILE 25.9K DECKOVER GOOSENECK TRAILER. 8' 6" x 25' + 5' Beavertail, Heavy Duty Low Profile Deck, #432778



EZ Hauler 7K ENCLOSED CONTRACTORS TRAILER. 7' x 16', HD Ladder Racks, Cat Walk, Double Barn Doors, #151857



USED 2023 CAM SUPERLINE 15.4K Full Tilt Trailer. Slipper Spring Suspension, Diamond Plate Fenders, #536315, \$9,950



BEHNKE 14K CHANNEL SKIDLOADER TRAILER. 6' 11" x 16', Dexter Spring Suspension, LED Flush Mount Lights, #073199

www.thetrailerdepot.com



WE DO FEDERAL INSPECTIONS!



**2018 CIMC MT8600
REFRIGERATED CARRIER.**

51' X 102" X 13'4", Runs Well, Flat Alum. Floor, Spring Suspension, E Track, OH Door, Excellent Condition, **\$15,500.** 603-496-7663



**2018 SERCO
75XR,**
Fixed Boom, Tight Unit, Comes With Cooler, Loader Mounted Tank And Pump, **\$20,000,** Portland, CT, 860-836-0692

T Y M



**IN-HOUSE
TYM SPECIAL!**

**2515H-24 HP
W/LOADER!**

**CALL FOR
SPECIAL
PRICING!**

**ONLY \$265.00
PER MONTH For
Qualified Buyers.**



SALES • SERVICE • PARTS • FINANCING

FOSKETT
EQUIPMENT INC.
TRACTORS & IMPLEMENTS
Woodstock, Ct

**Route 171
Woodstock, CT
860-928-5748**

www.foskettequipment.com



Jukonski Truck Sales



WWW.TRUCKSELLERS.COM

se habla espanol

680 NEWFIELD ST. (RT 3) MIDDLETOWN, CONN • **800-378-0342** • MON-FRI 9-5

DON'T MISS OUT: YOUR IDEAL TRUCK AWAITS!



2023 ISUZU NPR HD 16' Box, Gasoline, Auto, 14,500 GVWR, #T-PS200269, **\$48,900**



2026 BRAND NEW HINO L6, Diesel, 25,950 GVWR, 26' Box W/ Liftgate, 3 AVAILABLE.



2022 ISUZU NPR HD DC. 18' Landscape Body, V8, Auto, 50K Miles, 14,500 GVWR, #T-NS200905, **\$59,900**



2024 ISUZU NPR HD DC 14' Dump, Gasoline, Auto, 8K Miles, 14,500 GVWR, #T-RS204003, **\$76,900**



2024 HINO S5. Utility 16' Box, Diesel, Auto, 19,500 GVWR, BRAND NEW TRUCK, #T-R7308872, **\$69,900**



2020 ISUZU NQR 20' Box, Diesel, Auto, 102K, 17,950 GVWR, #T-L7900132, **\$32,900**



2021 HINO L6 26' Box With Liftgate, Diesel, Auto, 25,950 GVWR, #T-M5T51007, **\$56,900**



2020 ISUZU NQR 22' Box, Diesel, Auto, 74K, 17,950 GVWR, #T-L7900477, **\$39,900**

90 DAY POWERTRAIN WARRANTY AVAILABLE ON ALL CERTIFIED TRUCKS. INCLUDES INJECTORS AND TURBO

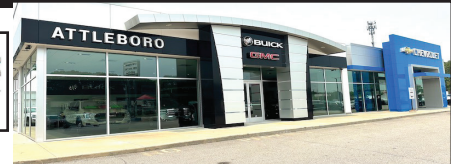
CHEVROLET, BUICK, GMC OF ATTLEBORO

A Priority Automotive Dealership

**ROUTE 1, BETWEEN 95 + 295
SOUTH ATTLEBORO, MA**

508-761-4800

PLENTY OF NEW GMC TRUCKS AVAILABLE



2026 K1500 8' BED



**PRO VALUE PKG., POWER SEAT,
ALUM. WHEELS. #26061G
PRICE INCLUDES GM TRADE-IN
ALLOWANCE REBATE.**

\$44,995

2026 CANYON AT4X



**INCLUDES AT4 LIFT KIT.
#26007G**

\$60,715

2026 K3500 DOUBLE CAB SLE



**SLE VALUE PKG., PLOW PREP.,
ASSIST STEPS. #26058G**

\$63,740

**2026 K2500 DENALI
DURAMAX DIESEL**



**DENALI RESERVE PKG., MAX TRAILERING
PKG., PLOW PREP. #26023G**

\$91,385

2026 K1500 AT4X



**6.2L V-8, ACTIVE EXHAUST,
KICKER TAILGATE AUDIO SYSTEM.
#26019G**

\$84,385

2025 14' BOX TRUCK



**12,300 GVW TRANSLUCENT ROOF,
RAMP, V-8, NICE CHASSIS SPECS.
#25195G**

\$64,000

**2024 K3500 CREWCAB SLT
DURAMAX DIESEL**



**SLT PREMIUM PKG., X-31 OFF
ROAD PKG. #24219G**

\$83,875

**2026 K2500 AT4
DURAMAX DIESEL**



**AT4 PREMIUM PKG.,
PLOW PREP. #26038G**

\$88,365

2026 K2500 CREW CAB SLE



**VALUE PKG. PREFERRED PKG.,
PLOW PREP. #26017G**

\$66,315

2026 K3500 AT4



**AT4 PREMIUM PLUS PKG. PLOW PREP.
#26048G**

\$79,975

2025 K2500 UTILITY



**CONV. PKG., PLOW PREP.
#25234G**

\$76,000

2024 C2500 UTILITY



**READING CLASSIC II BODY,
STROBES, ELECTRIC LOCKS,
SPRAY LINER. #24210G**

\$71,840

**** PLUS OVER 50 MORE AVAILABLE ****



WWW.CHEVROLETBUICKGMCOFATTLEBORO.COM



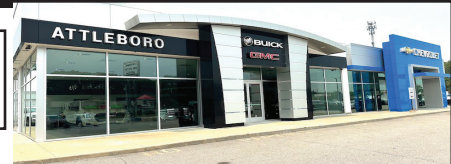
CHEVROLET, BUICK, GMC OF ATTLEBORO

A Priority Automotive Dealership

**ROUTE 1, BETWEEN 95 + 295
SOUTH ATTLEBORO, MA**

508-761-4800

PLENTY OF NEW CHEVROLET TRUCKS AVAILABLE



**2025 EXPRESS ONE TON
EXTENDED VAN**



9900 GVW, V-8, TRAILER PKG.,
ALL THE OPTIONS. #25422H

\$53,885

**2025 K3500 DUMP TRUCK
DURAMAX DIESEL**



14,000 GVE, PLOW PREP., HITCH,
COVER, CONV. PKG. #25411H

\$CALL

**2025 K3500 LT CREW CAB UTILITY
DURAMAX DIESEL**



DARK GREEN METALLIC, BUCKET SEATS,
REMOTE START, HEATED SEATS.

#25074H

\$95,300

2024 KUV



9,900 GVW, LOW ROOF,
NICELY EQUIPPED. #24414H

\$71,895

2025 DURACUBE MAX 10'



9,900 GVW, ELEC. BODY LOCKS,
LADDER RACKS, SHELVEING. #25141H

\$69,000

**2024 LCF 4500
14' BOX + LIFT GATE**



14,500 GVW, POWER MIRRORS,
KEYLESS ENTRY, 14' ALUM. BOX,
2500# LIFT-GATE.

\$91,995

**2024 K3500 12' LANDSCAPE DUMP
DURAMAX DIESEL**



14,000 LB GVW, HITCH, COVER, TRAILER
BRAKE, SIDE DOOR, REAR BARN DOORS.
#24311H

\$84,572

2025 K2500 DOUBLE CAB UTILITY



PLOW PREP., CONV. PKG., TRAILER
BRAKE
AND HITCH. #25120H

\$75,000

2024 4500 14' BOX



14,200 GVW, FANCY CHASSIS SPECS.,
TRANSLUCENT ROOF, RAMP, TIE-DOWN
HOOKS. #24409H

\$66,000

2025 COLORADO ZR2



FULL OFF-ROAD SPECS.
INCLUDES LIGHT BAR, SHOCKS,
STEPS, SUNROOF. #25385H

\$63,260

2024 K2500 CREW CAB UTILITY



PLOW PREP., CONV. PKG., TRAILER HITCH
AND BRAKE. #24174H

\$76,000

2025 K2500 DOUBLE CAB



CUSTOM VALUE PKG., SPRAY LINER,
PLOW PREP. #25341H

\$57,380



WWW.CHEVROLETBUICKGMCOFATTLEBORO.COM



THIS AD IS COPYRIGHTED & OWNED BY TRUCK AND EQUIPMENT POST



**AT YOUR SERVICE WITH
OUR NEW SERVICE!
CERTIFIED TECHNICIANS FOR
FAST RELIABLE SERVICE OF YOUR
MEDIUM DUTY VEHICLES!**



MOBILE REPAIR SERVICE FOR COMMERCIAL CUSTOMERS

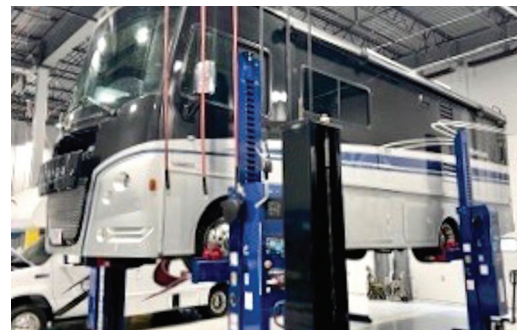
- EXPERT MAINTENANCE & REPAIRS AT YOUR JOBSITE OR BUSINESS LOCATION
- MINIMIZE DOWNTIME & KEEP YOUR FLEET MOVING



EXPANDED SERVICE DEPARTMENT

- 8 BRAND-NEW COMMERCIAL SERVICE BAYS
- CAN ACCOMMODATE FORD F-650, F-750, MOTORHOMES & LARGE VEHICLES
- STATE-OF-THE-ART EQUIPMENT

**WE'RE COMMITTED TO KEEP YOUR BUSINESS ON THE ROAD WITH
MAXIMUM UPTIME & PROFESSIONAL FORD COMMERCIAL CARE.**



**1200 WORCESTER ROAD (Rt.9 East)
FRAMINGHAM, MA 01701**



www.mcgovernfordofframingham.com



**1999 HARLEY DAVIDSON
HERITAGE SPRINGER.**

2400 Miles, **\$12,500** Or Open To
Trade For Mini Construction Equipment.
Gloucester, MA 978-283-0081

RENTAL WITH OPERATOR
PORTABLE JAW CRUSHER AND IMPACT CRUSHER



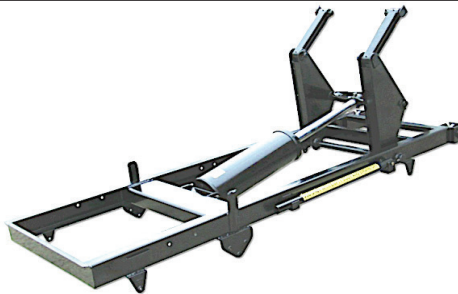
DAY-WEEK-MONTHLY RATES
80' STACKER AND
EXCAVATOR AVAILABLE

NEW ENGLAND
CALL KEN
508-328-0028

CHAMPION HOIST.

9 Ft Or 11 Ft Underbody
Subframe Hoist.

Candia Trailer, Truck Bodies,
& Snow Equipment, On Sale.
866-761-0196



KUBOTA M7040—71HP, Backhoe 11Ft. Depth, Only 530
Hours, Pre-Emissions Tractor, **\$35,000**
860-928-5748

TOREKU TRACTOR
& EQUIPMENT INC.



4 Littleton Rd, Rt2A & 110, Ayer, MA • 978-772-6619



**2005 EZ
GOGOLF CART.**

High Clearance
Suspension,
Electric Dump,
Gas Engine
Power,
\$2,800



**KUBOTA B2320
TRACTOR
LOADER.**

Nice Condition,
Always Garaged,
543 Hours,
Hydrostatic Drive,
Power Steering,
\$11,900



**2025 KUBOTA
RTV-X-CAB.**

Side By Side,
Diesel Engine,
Hydro Trans,
Hydraulic Dump,
Heat & Air
Condition Cab.
\$26,400.



**2003 KUBOTA
B2910
TRACTOR
LOADER. 729**

Hours, Works
Great, **\$12,500.**
Add 72"
Snowblower Front
Mount
\$13,500

VISIT US AT WWW.TOREKU.COM

WWW.TRUCKANDEQUIPMENTPOST.COM

WANTED!!! MACK TRUCKS

**CAT, DEERE, BOBCAT EQUIP
IN ANY CONDITION
IMMEDIATE PAYMENT**



CALL JOHNNY MACK

**johnnymack107@gmail.com
HARTFORD, CT 860-883-1186**



2018 MORBARK M15R - 1721 Hours, Very Good Condition, 5.7 L V8 Engine, 165 HP, 15 Inch Chipping capacity, Tires 50%, Hydraulic Winch. **\$34,900** 781-417-3018



1994 JOHN DEERE 490E.
5587 Hours, Hydraulic Thumb,
Rebuilt Hydraulic Pump,
\$17,995.
774-208-2806



11 Commercial Way
Milford, MA 01757

HILLVIEW EQUIPMENT

SALES & RENTALS 24/7 • 508-474-8063

*Rt. 495 to exit 48,
Route 109W,
Left to Birch St,
right to Industrial Dr.
Left to Commercial Way*



2019 CAT 938M 6,000 Hrs, Fusion Coupler Very Good Machine. **\$129,000**



2019 CATERPILLAR 325FL 8,900 Hrs, New Thumb & Quick Coupler, Aircon, Nice Machine. **\$99,000**



2006 CATERPILLAR 924G 4,000 Hrs, Ready To Work. **\$79,000**



2022 CATERPILLAR 906M 3,000 Hrs, Bucket, Aircon, Fast Runner. **\$77,000**



2014 CATERPILLAR 725C 9,100 Hrs, Ready To Work. **\$145,000**



2018 CATERPILLAR 312F 6,000 Hrs, Wide Pads, Aircon, Nice Machine. **\$89,000**



2014 CATERPILLAR 320E 4,000 Hrs, Piping, Aircon, Very Clean. **\$119,000**



2017 CATERPILLAR 314F CR 5,400 Hrs, Blade, Piping, Aircon. **\$99,000**



2013 CAT 924K 6,000 Hrs, Buckets, Forks, Fusion And 3rd Valve, Aircon. **\$89,000**



2011 CAT 320D 5,500 Hrs, Piping. **\$79,000**



1995 LULL 644-42 4,500 Hrs, Good Machine. **\$29,000**



2011 CAT 308D 4500 Hours, Thumb, Blade. **\$65,000**

www.HillviewEquipment.com



SANDER CHAINS
USA Made
All Makes
300 In Stock

S.A. McLean
207-793-4267

**WE GOT
SNOW**

622 Elm St, Limerick, ME • www.s-a-mclean.com



JOHN DEERE 544H LOADER.
6600 Hours, With P/A Plow & Wing Quick Hitch



1998 INT'L 2574. 14.5 ft. Of Frame, Automatic, Cummins, 14k Miles, No Rust.



CAT 966B LOADER.



12' HIGHWAY POWER ANGLE V- PLOW



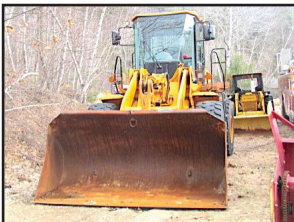
HIGHWAY SALT BRINE PRODUCTION UNIT. W/3000 Gallon Tan



1994 FREIGHTLINER E-ONE. 24k Miles, 300 Hp



13' SWENSON. Stainless Steel Dump & Sander Body



HYUNDAI 757-7. Wheel Loader



1998 INTERNATIONAL 4800. Four Wheel Drive, Automatic, 14k Miles, 14 Ft Of Frame.



WARREN 10' ALUMINUM DUMP BODY



INTERNATIONAL 2574 CAB & CHASSIS. Automatic, 300 Cummins, 24k Miles



STEWART STEVENSON. 4x4, Automatic



STEWART STEVENSON 4X4. Automatic, 1,000 Gallon Tank Brush Truck



2004 INTERNATIONAL CAB & CHASSIS. 4x4, DT 466, Automatic



SWENSON 10' STAINLESS DUMP BODY



MACK. 4x4 , Snowblower Unit, 7k Miles



OSHKOSH. 6x6



6x6 Auto Brush Poly Tank & Pump Unit.



1994 FORD F700 CAB & CHASSIS. Cummins, Automatic, 20k Miles, Under CDL



Your #1 Seasonal Equipment Source!

603-669-2250

IN STOCK NOW - Elevate your winter game with Hilltip IceStriker™
1000-5500 SSC Series Sand & Salt Spreaders
1.0 to 5.5 cu yd capacity available - comes standard with Hilltip's
StrikeSmart™ controller with ground speed control and patented
HTrack™ 2-way online tracking control system. Contact Sales today!



6 ENTERPRISE DRIVE • LONDONDERRY, NH 03053 • WWW.DONOVANCOMPANY.COM



**1994 INTERNATIONAL 4900
FUEL DELIVERY TRUCK.**

Aluminum Tank 4 Compartment,
DT 466, 6 Speed, **\$12,500.,**
Lawrence, MA
603-973-0809



**1999
KENWORTH
W900B.**
Heavy-Duty Classic
Long-Nose Truck, CAT
3406E, 475/550
HP, Eaton Fuller
Manual, Dual Rear
Axles, Chrome Stacks,
Aluminum Wheels,
Clean Frame, Strong,
Reliable, Ready To
Work. **\$78,000.**
Sudbury, MA
617-504-0169



2018 WESTERN STAR 4700SB. VIN #5KKMAXDV8JLJR1775,
PL74 Boom S/N G13800981727, **\$119,000.** 603-532-7716



CT Axle & Spindle Repair Ellington, CT 06029

860-281-4454 or 860-375-6045



**DRIVESHAFT SERVICE
NOW AVAILABLE**



BEFORE

AFTER

**TRUCK DRIVE SPINDLE REPLACEMENT
WELDED IN PLACE**



BEFORE

**TRAILER SPINDLE REPLACEMENT
WELDED IN PLACE**



AFTER

• Drive Spindles From 1 Ton To Class 8 Trucks • Trailer Spindles From 3,500# To Class 8 Axles
Spindles can also be repaired by welding up the worn area and then remachining to factory spec.

This includes tracing threads or remachining new threads.

WELDING AND FABRICATION ALSO AVAILABLE

A Completely Mobile Spindle Repair System. We Come To You! Serving CT, MA, RI & the Northeast
Visit Our Website At: ctaxleservice.com



**CALL PATRICK
1 (401) 309-1960**

BLUM'S FIELD SERVICE

**-ONSITE HEAVY EQUIPMENT & DIESEL REPAIR
-MOBILE WELDING & FABRICATION**

- **MACHINE SERVICES**
- **ATTACHMENTS INSTALLS**
- **BUCKET REBUILDS & WEAR PROTECTION**
- **HYDRAULIC CYLINDER RESEAL**

**SERVICING
RI, MA, CT**



FISHER SNOWPLOWS SPREADERS AND PARTS

Brand **New & Unused**. Call For Pricing.

Brian's Truck Equipment, Brookfield MA 01506

1-508-450-5449



2005 HINO 268 HOOKLIFT.

20K Lb., Galbreath Hooklift, Auto, 33,000 GVW Factory Derated to 26,000 GVW, No CDL Needed, Pioneer Electric Tarp, AC, In/Out Controls, Air Ride Seat, CD Stereo, Alum Storage Box, Chrome Bumper, New Turbo Charger, 189,721 Miles, Strong Running Truck, **\$39,900. 781-414-0635**



CYCLONE RAKE. Lawn & Leaf Vacuum. Includes Bag, Frame, 6.5 HP Engine, And Hoses, **\$500. 508-966-3364**

NOW AVAILABLE

AIR COMPRESSORS



RAPID PREP

877.529.2124 / rapidprep.com

**Full Service Provider of Surface Preparation Equipment,
Supplies and Consumables**

NATIONWIDE EQUIPMENT RENTALS, SALES & SERVICE

North Kingstown, RI

El Cajon, CA

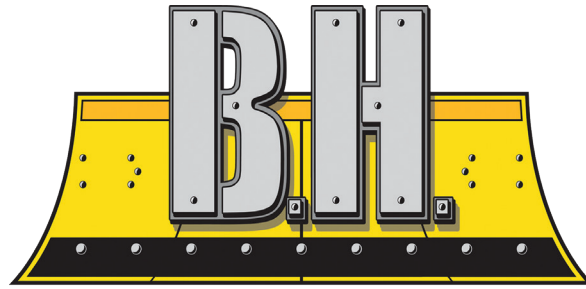
Suffolk, VA

Lakewood, WA

RUST NEVER SLEEPS

www.bhtrailersandplows.com

6 Center Parkway
Plainfield, CT
06374
860-949-7863



TRAILERS AND PLOWS

2207 Hartford Ave.
Johnston, RI
02919
401-214-3735



BOSS
SNOWPLOW
PRE-
SEASON
SALE
TIME IS
RUNNING
OUT!



CM Aluminum Skirted
Flat Bed, Gooseneck
& Receiver Hitch Built In
Starting at \$7,495



CM SK Skirted Flat Bed
Gooseneck and Receiver Hitch
Built In, Starting at \$6,995



CM Aluminum Tradesman
Low Pro Service Body
Gooseneck & Receiver Hitch
Built In, Starting at \$14,995



CM Steel Tradesman
Low Pro Service Body with
Gooseneck & Receiver Hitch
Built In, Starting at \$10,495



BCL 82 x 24
Full Power Tilt, Steel
Deck With 12K Winch
14,000Lb. GVWR, \$10,900



SPARTAN 85 X 24
7Ft. Tall, Ramp Door
.080 Polycore Skin
9,990Lb. GVWR, \$10,995



LOAD TRAIL CH14
83 x 22 20+2 with
24" Wide Standup Ramps
14,000Lb. GVWR, \$6,150



LOAD TRAIL DE14
83 X 14 with Tarp Kit,
Ramps and D-Rings
14,000Lb. GVWR, \$8,995





2001 WESTERN STAR.

6N2 Caterpillar 550 HP, Engine Just Overhauled, 8 Spd, 46 Rears, Wet System, New Suspension, New Tires & Brakes, Needs Nothing, **\$44,900.**, Lawrence, MA 603-973-0809



LOOKING FOR
SEMI-TRUCK
TIRES?



CALL 508-509-2014



2016 WESTERN STAR 4700SB. VIN #5KKMAXDV4GPHJ7775, PL74 BOOM S/N G13800561531, 24'4" X 102" Aluminum Flat Deck, Tag Axle, **\$109,000.** 603-532-7716



CENTURY/BRANSON TRACTOR—28 HP, Pre-Emissions, 4 X 4, **\$9,500** 860-928-5748

TOP RATED PRODUCTS FOR YOU

**WASHED STONE
PROCESSED GRAVEL
SAND
TOP SOIL
RIP RAP
FILL**

Please Call for pricing
401-447-2777



JOSEPH

EQUIPMENT COMPANY

300 GAY ST • MANCHESTER, NH 03103

SATURDAYS • WE ARE OPEN ALL DAY

PHONE: 603-641-8608

FAX: 603-666-3716



293 NORTH - EXIT 2 -
LEFT ONTO BROWN AVE -
RIGHT ONTO WINSTON ST. - LEFT ONTO GAY ST.
300 GAY STREET ON THE RIGHT



100 STORAGE CONTAINERS TO CHOOSE FROM. 20', 40', and 40' High Cube.
Call For More Information.



2013 KOMATSU D155AX-7 DOZER. 8900 Hours, Sigma Blade With 3 Shank Ripper, Rebuilt Fuel Rail, Replaced DPF Sensors, Alternator & Belt, Fan Belt, Recharged A/C, New Compressor, New Batteries, New Corner Bits On Blade, EGR Servo Replaced, DPF Was Baked & Cleaned., \$125,000. **Call For More Information.**



2010 TRAIL KING. 55 Ton, 26' Deck, 102" Wide, Pony Engine Or Wet Line, Full Fenders, Lift On Third, New Wood Decking, Texas Trailer-No Rust, Long Gooseneck, 2 Pin Position.
Call For More Information.



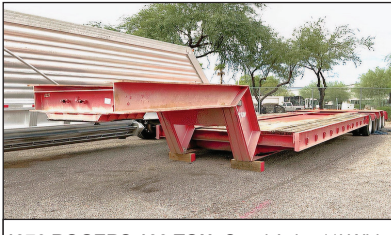
1998 FONTAINE, MODEL. 50 Ton, Detaches At Both Ends, 25' Flat Level Deck - 20" Loaded Deck Height, 25' Beam Deck Insert, 20" Loaded Deck Height, Non Ground Bearing, Air Ride, Boom Trough & Deck Cut Out, Lift Axle, Outriggers, Aluminum Wheels, Strobe Lights. **Call For More Information.**



2010 R & S 26' DUMP TRAILER. Hardox Construction, Tandem Axle, New Paint, New Canvas, New Tires, Single Point Suspension, Like New Condition. **Call For More Information.** Batteries. **Call For More Information.**



IN STOCK - 2025 FONTAINE LXTN40. 40 Ton Extendable, 34' Closed - 60' Open. Also Available 29' Closed - 50' Open. Tandem Axle, Set Up For 3rd, Air Ride, Non Ground Bearing, 102" Swing Clearance, 20" Deck Height, Alum Wheels. In Stock, No Waiting. Available In Manchester NH And At The Factory In Springville AL. 3rd And 4th Axles Available. **Call For More Information.**



1976 ROGERS 100 TON. Quad Axle, 11' Wide, 37' Usable Deck, Recently Completely Rebuilt, Excellent Condition, Currently Located In AZ.
Call For More Information.



2019 PUP TRAILERS. (14 Available To Choose From, 28' Long, 102" Wide, 13'6" High.
Call For More Information.



2017 LIDDELL 60 TON DSR. 4 Axle, 26' DSR Deck, 9' Wide, 8'6" Bogie, 26' Beam Deck, 4th Axle, Alum Wheels, Gooseneck Extension, Power Pack, Excellent Shape, **Call For More Information.**



2017 WESTERN STAR TRI AXLE DUMP TRUCK. Glider Kit, No Emissions, Model: 4900, Original 320,000, 17' Body, 60 Series Detroit 500 Hp, 8 Speed 8 LL, 46 Rears Full Lockers, 20K Pusher Axle, 18K Front, Electric Canvas, Air Gate, Perfect Double Frame, One Owner, Fleet Maintained.
Call For More Information.



2009 TALBERT 70 TON DROP SIDE RAIL, Severe Duty, Completely Reconditioned, Sandblasted And Painted. New Seals, Brakes, Bearings, Hubcaps And Decals, 26' Steel Deck, 9' Wide, With 26' Beam Insert. 30,000 Lb Axles, 3 Axle, Set Up For 4th, Spring Ride, 315 Rubber.
Call For More Information



2019 FONTAINE 53 - 90. Tri Axle, Air Ride, Slider, Like New Condition, Southern Trailer, No Rust. 3 Available To Choose From Ranging From 2019 To 2016. **Call For More Information.**

www.josephequipment.com

Trades Welcome • Financing Available

THIS AD IS COPYRIGHTED & OWNED BY TRUCK AND EQUIPMENT POST

JOSEPH

EQUIPMENT COMPANY

300 GAY ST • MANCHESTER, NH 03103

SATURDAYS • WE ARE OPEN ALL DAY

PHONE: 603-641-8608

FAX: 603-666-3716



293 NORTH - EXIT 2 -
LEFT ONTO BROWN AVE -
RIGHT ONTO WINSTON ST.- LEFT ONTO GAY ST.
300 GAY STREET ON THE RIGHT



ERIN 165T SCREENER ON TRACKS.
Makes 3 Products, CAT Power, Heavy Duty Grizzly, Remote Control, Very Good Condition.
Call For More Information.



2009 TALBERT 70 TON DROP SIDE RAIL.
Severe Duty, Recently Reconditioned, Sandblasted And Painted, New Seals, Brakes, Bearings, Hubcaps And Decals, 26' Steel Deck, 9' Wide, With 26' Beam Insert. 30,000 Lb. Axles, 3 Axle, Set Up For 4th, Spring Ride, 315 Rubber, One Owner.
Call For More Information.



TELESMITH 3042 CRUSHER. With New Die Jaws. **Call For More Information.**



2020 JOHN DEERE 304L.
1 Yard Loader, Quick Disconnect, 3rd Valve, Forks And Bucket, A/C, Road Speed, 1200 Hours, Like New Condition.
Call For More Information.



1997 CATERPILLAR 960F WHEEL LOADER.
Sandblasted And Painted, New Decals, A/C, Scale, 23.5 X 25 Rubber, Bolt On Cutting Edge, Very Good Condition. **Call For More Information.**



2019 VOLVO EW60 RUBBER TIRE EXCAVATOR. (2 Available To Choose From) A/C, Blade, Thumb. Quick Disconnect, Aux Hyd, Wrist-O-Twist Bucket, Digging Bucket, 1,900 Hours, Like New Condition.
Call For More Information.



85' GENIE LIFT WITH JIB. 4 X 4, Diesel, 6,400 Hours. **Call For More Information.**



1998 BOMAG VIBRATORY COMPACTOR.
8600 Hours, Hydrostatic Transmission, Fleet Maintained, 24,000 Operating Weight, Recently Painted, New Oil And Fuel Filters.
Call For More Information.



1989 GROVE RT875CC CRANE. 26.5 X 25 Rubber, Cummins Power, 650 Original Hours, 2 Winches, Ex-Military. **Call For More Information.**



2019 CAT 232D SKIDSTEER. Quick Disconnect, Bucket And 9' Power Angle Plow, 3rd Valve, 1,130 Hours, One Owner, Like New Condition.
Call For More Information.



2009 CATERPILLAR 924H WHEEL LOADER.
Quick Disconnect, New Motor From CAT With Paperwork, Very Good Condition.
Call For More Information.



2011 CATERPILLAR 246C XPS. Skidsteer, 2 Speed, Full Cab, A/C, Cushion Tires, Forks And Bucket, Extra Counterweights, 4,000 Hours, One Owner, Original Paint. **Call For More Information.**

www.josephequipment.com

Trades Welcome • Financing Available

THIS AD IS COPYRIGHTED & OWNED BY TRUCK AND EQUIPMENT POST

JOSEPH

EQUIPMENT COMPANY

300 GAY ST • MANCHESTER, NH 03103

SATURDAYS • WE ARE OPEN ALL DAY

PHONE: 603-641-8608

FAX: 603-666-3716



293 NORTH - EXIT 2 -
LEFT ONTO BROWN AVE -
RIGHT ONTO WINSTON ST.- LEFT ONTO GAY ST.
300 GAY STREET ON THE RIGHT



1997 MACK RD. 350, 12 Speed, 44 Rears, 18 Front, Double Frame, 24.5 Rubber, A/C, Engine Brake, Perfect Condition.
Call For More Information.



2007 MACK GRANITE WATER TRUCK. 4000 Gallon, Hydraulically Driven, Spray Heads Front And Back, 350, 8 Speed, 44 Rears, No Rust, Truck From Arizona. **Call For More Information.**



2018 WESTERN STAR 4900 (3 AVAILABLE TO CHOOSE FROM). Allison Automatic, 550 HP, DT15 Engine, Full Rears, 2 Line Wet System, Fleet Maintained, Dual Stacks, Alum Wheels, A/C, P/S, Original Paint, One Owner. **Call For More Information.**



1997 KENWORTH T800. Twin Steer Wide Nose, 550 Cummins, 18 Speed, Long Wheel Base, 30' From Back Of Cab To End Of Frame, Newair Ride, Double Frame, 164,000 Original Miles, New Michelin Tires In Back. **Call For More Information.**



2020 WESTERN STAR 4900 (4 Available To Choose From). Allison Automatic, 550 HP, DT15 Engine, 46kK Full Locking Rears, 210" Wheel Base, 2 Line Wet System, Fleet Maintained, Dual Stacks, Alum Wheels, A/C, P/S, Original Paint, One Owner, Approx 316K Miles. **Call For More Information.**



1994 FORD WATER TRUCK WITH CURRY TANK. Hydraulic Driven Pump, Double Frame, Cummins Power, Very Good Condition, Price \$27,500.
Call For More Information.



1996 MACK CL 713, 350 MACK. 13 Speed Mack, 46k Rears, 4,100 Gallon Two Compartment Tank, Remtec Inc Steel Tank, 1100 X 24.5 Rubber, 270,000 Original Miles.
Call For More Information.



2015 KENWORTH T880. Miles: 571K, 500 Paccar, Automatic, 3.91 Gear Ratio, 46K Rears, Full Lockers, 24.5 Rubber, A/C, Power Steering, Air Ride, Aluminum Wheels, Fleet Maintained, One Owner. **Call For More Information.**



2019 PETERBILT 389. 605 Cummins Power, 18 Speed, 4 Axle, 46K Rears, Air Ride, 300" Wheel Base, Headache Rack, Full Fenders, 60" Bunk Loaded. **Call For More Information.**



1998 MACK RD688SX DUMP TRUCK. 350 HP, Fuller 8 Speed, 58 Rears All Redone By Southeast Truck, 24" Rubber, Rebuilt Engine, Double Frame, Working Daily, Heated Body, New Brakes All Around, New King Pins, New Clutch/Bell Housing, All New Rear Suspension. **Call For More Information.**



2011 INTERNATIONAL 7400 WORKSTAR. DT570, 12,000 Original Miles, Allison Automatic Transmission, Air Ride, Former Florida Municipality Truck, New Tires, Excellent Shape. **Call For More Information.**



2005 MACK GRANITE GARBAGE TRUCKS. (3 Available To Choose From), 350, Allison Automatic, 46 Rears, 18 Front, Long Wheel Base, Double Frame, 80,000 Original Miles.
Call For More Information.

www.josephequipment.com

Trades Welcome • Financing Available

THIS AD IS COPYRIGHTED & OWNED BY TRUCK AND EQUIPMENT POST

JOSEPH

EQUIPMENT COMPANY

300 GAY ST • MANCHESTER, NH 03103

PHONE: 603-641-8608

OPEN
ALL DAY
SATURDAY

FONTAINE

FAX: 603-666-3716



2026 FONTAINE RENEGADE LXLN12 -12 Inch Loaded Deck Height With 4 Inch Ground Clearance When Fully Loaded, 30 Tons In 16 Feet On Tandem Bogie Or 30 Tons In 20 Feet With 3rd Axle Flip, Low Profile, 3rd Axle Capability, 32 Feet 11 Clear Deck Length. IN STOCK, NO WAITING. **CALL FOR MORE INFORMATION.**



2026 FONTAINE MAGNITUDE 50 Tri Axle, Set Up For 4Th, 50 Ton, Air Ride, 24' Deck, 20" Loaded Deck Height, Alum Or Steel Wheels, Strobe Lights, Outriggers And D-Rings. **Call For More Information.**



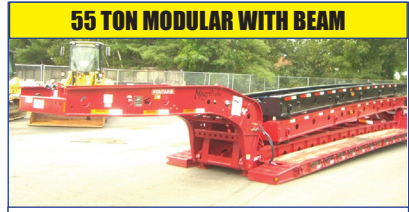
2026 KRUZ TERMINATOR, 26' Steel Frame, Single Point Suspension, 2-Way Gate, 11 X 24.5 Tires, Alum Wheels, 2 Speed Landing Gear. **Call For More Information.**



IN STOCK - NO WAITING - 2025 GALLEGOS 42' FRAME TYPE DUMP TRAILER. 96 YARD, 102" WIDE, 90" SIDES, TRI AXLE, HENDRICKSON AIR RIDE INTRAXX, ABS BRAKES, LIFT ON FRONT AXLE, FLIP N GO ELECTRIC CANVAS, LED LIGHTS, BARN DOOR. **CALL FOR MORE INFORMATION.**



2026 KRUZ 26' STEEL TUB, Aluminum Frame Dump Trailer, Air Ride, 2 Axle, Alum Wheels, 450 Hardox, 24.5 16 Ply Tires. **TAKING ORDERS** **Call For More Information.**



2026 FONTAINE 55H MODULAR DSR, Beam Deck Also Available, Tri Axle, 60" Axle Spacing, Hydraulic Removable, Non Ground Bearing, Set Up For Gooseneck Ext, Spreader Bar And 4Th Axle Flip, Air Ride, Alum Wheels, 22.5 Rubber. **Call For More Information.**



2026 FONTAINE 60 TON MODULAR 2+3+1, 26' Dsr, 184" Swing Clearance, Set Up For 2 Axle Jeep, 14" Deck Height, Air Ride, Alum Wheels, 275/70R X 22.5 Rubber, Non Ground Bearing. **Call For More Information.**



IN STOCK NO WAITING. FONTAINE MAGNITUDE 65 2+3+2 CAPABLE, 28' DROP SIDE RAIL DECK, 3 AXLE, SET UP FOR 4 AXLE, 14.75" DECK HEIGHT, 102" WIDE, 60.5" AXLE SPACING, EQ2 SPREADER BAR WITH INTERMEDIATE AXLE, HYDRAULIC REMOVABLE, NON GROUND BEARING WITH 2 PIN POSITION AT 114" AND 102", TRIPLE CYLINDER, 70" HYDRAULIC FLIP BOX, HEAVY DUTY SNAP IN OUTRIGGERS, D-RINGS, ALUM WHEELS, 275/70R X 22.5 TIRES. **CALL FOR MORE INFORMATION.**



2026 KRUZ, 70 Yard, Tri Axle, 70,000 Single Point, Lift On Third Axle, 1/4 Inch 450 Hardox, Floor, Sides, Nose, Gate, 12 Panel Gate, 11 X 24.5 Rubber, Alum Wheels. **Taking Orders.** **Call For More Information.**



2026 FONTAINE TRAVERSE HYDRAULIC TAIL, 48' Long, 102" Wide, Air Ride, Hydraulic Upper Deck. Hydraulic Winch, Remote Control, Alum Wheels, Dual Control. **Taking Orders** **Call For More Information.**



2026 FONTAINE 60 TON MODULAR, 26' Dsr, 60" Axle Spacing, 184" Swing Clearance, Set Up For 2 Axle Jeep, 14" Deck Height, Air Ride, Alum Wheels, 275/70R X 22.5 Rubber, Non Ground Bearing. **In Stock.** **Call For More Information.**



1998 KAYLN SIEBERT. 75Ton 3+3+3, Air Ride, West Coast Bogie, 3 Axle, Air Ride Jeep With Power Tower, 10' Wide Trailer, 60' Overall Length, 48' Of Useable Deck, 275/70 X 22.5 Rubber, Sandblasted & Painted, Excellent Shape, Alum Wheels On Jeep And Booster. **Call For More Information.**

Trades Welcome • Financing Available • www.josephequipment.com

THIS AD IS COPYRIGHTED & OWNED BY TRUCK AND EQUIPMENT POST

TRAILER RENTALS • TRAILER RENTALS • TRAILER RENTALS •

WE RENT STEP DECKS • LOW BEDS • HI FLATS • DEMO/SCRAP • TRAILERS

JOSEPH EQUIPMENT COMPANY

300 GAY ST. • Manchester, NH 03103

NOW TAKING ORDERS FOR DUMP TRAILERS AND LOWBEDS FOR SPRING AND SUMMER DELIVERY

14" DECK HEIGHT



NEW 2026 FONTAINE RENEAGE LXL, 14" Deck Height, 30" Deck W/ 6" Ground Clearance, 2 Axle, Set Up For 3rd Hydraulic Detachable Or Mechanical Detachable. In Stock No Waiting. Call For More Information

IN STOCK, NO WAITING



2026 FONTAINE MAGNITUDE 603T Modular Drop Side Rail With 28" Deck, Hydraulic Removable Neck, Non Ground Bearing, Air Ride, Tri Axle, Third Axle Lift, Set Up For 4th, Alum Wheels, 275/70 X 22.5 Tires, Loaded. Call For More Information.

55 TON EXTENDABLE



2026 FONTAINE MAGNITUDE 59MX, 55 Ton Extendable Trailer, 30" To 50", Modular, Detaches Both Ends, Hyd Removable, Non Ground Bearing, 20" Deck Height, Will Take 10" Deck Ext For A Total Of 60", 275 Rubber, Tri Axle, Air Lift On 3rd, Set Up For 4th, Set Up For Gooseneck Ext. Call For More Information

IN STOCK

WE RENT WALKING FLOORS • DUMPS • HIGH FLAT EXTENDABLES • JEEPS



NEW 2026 FONTAINE SPECIALIZED MAGNITUDE 56L, Tri Axle, Air Ride, Set Up Of 4TH Axle, Non Ground Bearing, 25" Deck, Led Lights, Aluminum Wheels, Strobe Light Package, Lift On 3rd Axle, 2 Pin Position, Loaded. In Stock No Waiting. Call For More Information



IN STOCK - 2026 FONTAINE MAGNITUDE 60HD-4XK, Deck Extends From 30" To 51", 65 Ton When Closed, Built To Handle A 60 Ton Load With Ease, 30" Clear Deck Length Extends To 51", 22" Loaded Deck Height, 6" Ground Clearance, 7 Position Hydraulic Detachable Gooseneck, 7 Position Air Ride Tridem Bogie, 402 Deep Ready, 36" And 63" Flip Box Ready, 60/90 Flip Axle Ready, EC2 Spreader Bar Ready, Loaded. Call For More Information.



2026 FONTAINE WORKHORSE 59LCC FLD, Tri Axle, Lift On Third, Air Ride, Hydraulic 4th Axle Flip, Air Lift On Third, 18" Deck Height, 26" Deck, Low Boom Well, Covered Rear Bogie, Dual Cam Pawl Assembly With 7 Ride Height Positions, Removable Kingpin At 108 inch Radius, Alternate Kingpin At 96" Radius, Load Scale, Tire Inflation, Air Controls, 275 Rubber, Alum Wheels. In Stock, No Waiting. Call For More Information.

WE RENT STINGERS • SPREADER BARS • DOUBLE DROP EXTENSIBLES TRAILERS

70 TON 2+3+2



2026 FONTAINE 704/2+3+2 DROP SIDE RAIL, 4 Axle, 28" Deck, Hydraulic Detachable, In Stock, No Waiting, Non Ground Bearing, 102" Wide, 65" Flip Box, Spreader Bar And 352.2 Jeep, Alum Wheels, 275/70R X 22.5 Tires, 28" Beam Deck Available. Call For More Information.



NEW 2026 FONTAINE 55 TON, Drop Side Rail, Tri Axle, Air Ride, Set Up For 4th, Non Ground Bearing, Led Lights, Aluminum Wheels, Strobe Lights, Loaded. In Stock No Waiting. Call For More Information



NEW 2026 SPECIALIZED 55 TON BEAM TRAILER, 3+1 Modular NGB, Detach Both Ends, T/A, Air, Lift On 3rd, Set Up 4th, Set Up For Gooseneck Extension, Call For More Information

Trades Welcome • Financing Available • www.josephequipment.com

THIS AD IS COPYRIGHTED & OWNED BY TRUCK AND EQUIPMENT POST