

SERVING NORTHEAST REGION

FREE

TRUCK AND EQUIPMENT **POST**

You Get The Most With The Post



2016 INTERNATIONAL 9900 TRACTOR. ISX 550 HP, MANUAL TRANSMISSION, EXCELLENT CONDITION, READY TO GO \$58,900. 207-289-6688



2018 VOLVO L90H. 3.5 YARD BUCKET, HYDRAULIC COUPLER, 3RD VALVE, CAMERA, 11,621 HOURS, \$69,500. 978-249-4600



2017 GMC 3500 HI-CUBE VAN. 16 FT UNICEL BODY, ROLL UP REAR DOOR, GALVANIZED STEP BUMPER, 106,106 MILES, SRW, \$17,817. 802-334-6587



HENKE 10' POWER ANGLE PLOW. HYDRAULIC, REVERSIBLE, CAT IT MOUNT, \$7,500 OBO. 508-962-4135



2016 PALMER CHALLENGER 26' STEEL DUMP TRAILER. SINGLE PT. SUSPENSION, WELL MAINTAINED, NEW BRAKES, REBUILT SPRINGS SUSPN., 11R24 ALUM WHEELS, HIGH LIFTGATE, ELECTRIC TARP, \$44,900. 781-389-3337

Optative Group

**46-47
NOV 26th, 2025**

**INTERNET & PRINT
FOR ONLY \$28.00**

www.TruckAndEquipmentPost.com

888-887-0505

NICK SCARVALAS
Commercial Sales
857-247-9023 or 617-249-5603



**Commercial
Vehicle Center**

2024 FALL CLEARANCE SALE



2 AVAILABLE

2024 F600 DUMP. Diesel, 22,000 GVW, Dual Battery, Remote Start, 4WD, F212422, MSRP \$99,990. SAVE \$20,500. **SALE PRICE \$79,490**



2024 T350 UTILITY VAN. Aluminum 11' 3" Body, V6 Gas, 50.5" 2 Panel Wide Rear Door Opening, 6 LED Interior Lights, Ladder Racks, F212334, MSRP \$81,990. SAVE \$15,000. **SALE PRICE \$66,990**



2 AWD AVAILABLE

2024 T350 UTILITY VAN. Low Profile Aluminum 11' 3" Body, All Wheel Drive, V6 Gas, 50.5" 2 Panel Wide Rear Door, Interior Lights, Racks, F212359, MSRP \$84,990. SAVE \$15,000. **SALE PRICE \$69,990**



3 RWD AVAILABLE

2024 T350 UTILITY VAN. Low Profile Aluminum 11' 3" Body, V6 Gas, 50.5" 2 Panel Wide Rear Door, Interior Lights, Racks, F212364, MSRP \$81,990. SAVE \$15,000. **SALE PRICE \$66,990**



2024 F550 ROLL OFF. DownEaster, Remote Start, 4WD, Diesel, Tool Box, F211918, MSRP \$109,990. SAVE \$19,500. **SALE PRICE \$90,490**



2024 F600 SWITCH N GO. 7.3 Gas, 22,000 GVW, Dual Battery, Remote Start, 4WD, F212063, MSRP \$105,990. SAVE \$21,500. **SALE PRICE \$84,940**

250 COMMERCIAL TRUCKS IN STOCK



2024 F550 CREW CAB DUMP. Remote Start, 4WD, Privacy Glass, 7.3 Gas, Pwr Rear Window, F211685, MSRP \$87,990. SAVE \$20,500. **SALE PRICE \$67,490**



2024 T250 CARGO VAN. 360 Degree Camera, Load Area Protection, Pwr Heated Mirrors, F211794. MSRP \$52,790. SAVE \$13,000. **SALE PRICE \$41,790**



2024 T250 CARGO VAN. Navigation, Load Area Protection, Pwr Heated Mirrors, F211549, MSRP \$54,975. SAVE \$6,000. **SALE PRICE \$48,975**



2024 F600 DUMP. 4-5 Yard Body, Remote Start, 4WD, 7.3 Gas, 22,000 GVW, F212095, MSRP \$89,990. SAVE \$19,500. **SALE PRICE \$70,490**



2024 T250 CARGO VAN. Navigation, 360 Degree Camera, Load Area Protection, 31 Gal Fuel Tank, Privacy Glass, F211653, MSRP \$56,990. SAVE \$13,000. **SALE PRICE \$43,990**



2024 F550 14FT STAKE BODY. V8 Gas, Payload Plus Pkg, Dual Battery, Remote Start, 4WD, Pintle Plate & Hook, F211944, MSRP \$92,990. SAVE \$20,500. **SALE PRICE \$72,490**

QUIRK FORD
540 Southern Artery (Rt 3A) Quincy, MA
www.quirkfords.com • 617-249-5660

**Business
Financing with
NO Co-signer
Required**

Prices include all available rebates. Rebates include Customer Cash, FMCC Bonus Cash, and Commercial Uplift Bonus Cash. Customer must qualify for rebates. Call for specific details. Prices are subject to change. * In Lieu Of Rebates

NICK SCARVALAS
Commercial Sales
857-247-9023 or 617-249-5603



**Commercial
Vehicle Center**

2025 FALL SPECIALS



2025 F350 DUMP. 7.3 Gas, Pwr Window & Locks, Upfit Switches, 4WD, Carbon Gray, Tool Box, F212877, MSRP \$82,990. **SAVE \$11,000. SALE PRICE \$71,990.**



2025 F650 DUMP. Diesel, Automatic, Air To Rear, Pintle, Tool Box, F212112 MSRP \$124,990. **SAVE \$13,000. SALE PRICE \$111,990**



2025 F650 DUMP. Diesel, Automatic, Air To Rear, Pintle, I-Pac Tool Box, F212088, MSRP \$129,990. **SAVE \$14,000. SALE PRICE \$115,990.**



2025 F550 SWITCH N GO. Roll Off Hoist, Diesel, 2 Tool Boxes, Remote Start, 4WD F213110, MSRP \$116,990. **SAVE \$11,000. SALE PRICE \$105,990.**



2025 E450 14 Ft VAN. Wabash Body, Pull Out Ramp, Roll Up Door, Poly Lined, Pass Thru Door, 14,500 GVW, 7.3 Gas, F211369, MSRP \$69,990. **SAVE \$9,000. SALE PRICE \$60,990**



2025 F550 CREW SERVICE. Duramag Aluminum Body, Diesel, 4WD, Remote Start, Rear Power Window, F213213, MSRP \$111,990. **SAVE \$9,000. SALE PRICE \$102,990.**

250 COMMERCIAL TRUCKS IN STOCK



2025 F550 SERVICE. Duramag Aluminum Body, Diesel, 4WD, Remote Start, F213205 MSRP \$105,990. **SAVE \$11,000. SALE PRICE \$94,990.**



2025 F550 DUMP. Diesel, Payload Plus Pkg, Dual Battery, Remote Start, 4WD, Skid Plates, Dark Green, F212595 MSRP \$95,990. **SAVE \$6,000. SALE PRICE \$89,990.**



2025 F550 LANDSCAPER. 4WD, Diesel, 19,500 GVW, Remote Start, High Capacity Trailer Pkg. F213108 MSRP \$106,990. **SAVE \$9,000. SALE PRICE \$97,990**



2025 E350 HI CUBE. 12' Rockport Van, Step Bumper, Roll Up Rear Door, Pass Thru Door, 7.3L Gas, PW, PL, F212523 MSRP \$64,990. **SAVE \$11,000. SALE PRICE \$53,990**



2025 F350 SUPER CAB DUMP. 7.3 Gas, Remote Start, Skid Plates, Dual Battery, Pwr Rear Window, 4WD, F213056 MSRP \$81,990. **SAVE \$6,000. SALE PRICE \$75,990.**



2025 F350 ALUMINUM DUMP. 4 Removable Sides, Rear Bard Doors, 7.3 Gas, Remote Start, Dual Battery, 4WD, F212857 MSRP \$87,990. **SAVE \$8,000. SALE PRICE \$79,990.**

QUIRK FORD
540 Southern Artery (Rt 3A) Quincy, MA
www.quirkford.com • 617-249-5660

**Business
Financing with
NO Co-signer
Required**

Prices include all available rebates. Rebates include Customer Cash, FMCC Bonus Cash, and Commercial Upfit Bonus Cash. Customer must qualify for rebates. Call for specific details. Prices are subject to change. * In Lieu Of Rebates

CTE INC.**CONSOLIDATED TRUCK
& EQUIPMENT, INC.****Extreme****FEELING
TRAILERS****EXTREME
TRAILERS****Palmer
BODIES****www.ConsolidatedTruckEquipment.com****1727 FALL RIVER AVE. (RT.6) NEAR SEEKONK SPEEDWAY
SEEKONK, MA**

**2006 KENWORTH
T-600:**
NEW REBUILT CAT
MOTOR, ALLISON
AUTO TRANS,
ALL NEW DRIVE
TIRES 11X24.5, NEW
RADIATOR, NEW
PAINT. BUY IT AS
IS OR WITH A NEW
BODY.
**CALL FOR SPECIAL
PRICE**



**2008
TRAILSTAR 26'
STEEL DUMP
TRAILER:** NEW
24.5 TIRES,
CENTERPOINT
SUSPENSION,
HI-LIFT GATE,
SEMI AUTO
TARP GOOD
WORKING
TRAILER
\$28,500.00.



**1998 MACK
R-600: 44
REARS, 8LL
TRANS, 11 X
24.5 TIRES,
WET LINE.
GOOD
RUNNER
\$26,000.00.**



**2005 BENSON
26' STEEL DUMP
TRAILER:**
CENTER POINT
SUSPENSION,
24.5 TIRES,
NEEDS
A LITTLE
TLC (MOSTLY
PAINT) **\$18,500.**



**1984
FRUEHAUF 26'
ALUMINUM
DUMP
TRAILER:**
GOOD
CONDITION
FOR IT'S AGE.
\$12,000.



**2012 MAC 28'
ALUMINUM
DUMP
TRAILER:**
ELECTRIC
TARP, 11X24.5
TIRES, GOOD
WORKING
CONDITION.
\$39,500.



**2005 MAC 26'
STEEL DUMP
TRAILER:**
ELECTRIC TARP,
24.5 TIRES @
60%, BRAKES
@75%, RAYCO
SUSPENSION,
RECENT SERVICE.
READY FOR
WORK! **\$29,500.**

CALL US: AT 508-336-6215 • HOURS: M-F 8 to 5:30 • SAT: 9 to 12 Noon



CONSOLIDATED TRUCK & EQUIPMENT, INC.

FELLING
TRAILERS

EXTREME
TRAILERS

Palmer
BODIES
AMORY, MO.

www.ConsolidatedTruckEquipment.com
1727 FALL RIVER AVE, (RT.6) NEAR SEEKONK SPEEDWAY
SEEKONK, MA



NEW CHALLENGER 26' STEEL DUMP TRAILER.

High Lift Gate, Single Point Suspension,
Electric Tarp, 11x24.5 Tires On
Aluminum Wheels,
Call For Price.



2025 FELLING 20 TON TAG W/ AIR RAMPS. CALL.



2012 MAC 28' 28' ALUMINUM DUMP TRAILER:
ELECTRIC TARP, 11X24.5 TIRES. GOOD WORKING
CONDITION. \$39,500.



2025 MAC 28' ALLUMINUM DUMP TRAILER: 8 ALLUMINUM
RIMS, ALLUMINUM FRAME, AIR RIDE, ½ PLASTIC LINER.



2025 MAC 26' STEEL DUMP TRAILERS:
Hi-Lift Gate, 24.5 Tires On Aluminum Rims, 60,000 LB
Center Point Suspension, Electric Load Cover, Body All
¼" Hardox,



2025 MAC 27' STEEL BODY ALUMINUM FRAME TRAILER: Hi-
Lift Gate, Air Ride, 11x24.5 Tires On 8 Aluminum Rims, Hardox Steel
Body, Full Aluminum Side Skirts,
Due In 2 Available, Trades Accepted,



NEW FELLING 25 TON: AIR RAMPS,
FRONT AXLE LIFT.
REDUCED! \$55,500 to \$53,000

CALL US: AT 508-336-6215 • HOURS: M-F 8 to 5:30 • SAT: 9 to 12 Noon



Fowler's Auto Wrecking Inc.

Belldown Recycling Center



860-267-7140 • 24 Old Coach Rd East Hampton, CT



2006 POWERSCREEN 2400 TWIN SHAFT SHREDDER FOR VOLUME REDUCTION

Mobile/ Tracked Machine w/ Remote, Easy Programmed Shaft Configurations For Various Materials : Wood Waste, C & D Debris, Stumps, Green Waste, 1,600 Hours, CAT C15 Tier 3, 540 HP, New CAT ECM w/ Software Upgrade, Full Engine/ Hyd Service Just Done, New Conveyor Belt, Overband Magnet To Remove Steel, 8 x 8 Tipping Hopper, Work Ready, **\$225,000**



2004 INTERNATIONAL 4300 TOW TRUCK.

DT466 W/ 6 Speed Eaton,
282K Miles, 33K GVWR With
Wheel Lift,
Ready For Work **\$24,000.**

ANDERSON MOTORS INC.


GMC

MICRO BIRD
by GERRARDIN


BLUE BIRD BUS SALES OF NEW ENGLAND

* YOUR EXCLUSIVE VOLVO TRUCK DEALER *



VOLVO POWER

IN STOCK

2026 VOLVO VHD84F300-D13, 500HP, 14 SPD. I-SHIFT, 20,000# STEERABLE PUSHER AXLE, 17' 6" TRI-AXLE BODY INSTALLED. #250111


IN STOCK

2025 VOLVO VHD64FT300-D13, 500HP, 12SPD I-SHIFT, 14,600# FRONT / 46,000# REARS, T-RIDE, FULL LOCK DIFF. #240089


IN STOCK

2025 VOLVO VHD64BT-D13, 500HP, 12SPD. I-SHIFT, 14,600# FRONT / 46,000# REARS. #240142


INCOMING

2025 RHODES RSS2660-2 26' STEEL END DUMP TRAILER, AIR HIGH-LIFT DOUBLE ACTING TAIL GATE, HD SPECS.


INCOMING

2026 VOLVO VHD84F300-D13 500HP, 14SPD. I-SHIFT, STEERABLE PUSHER AXLE, STEEL DUMP BODY.


IN STOCK

2025 VOLVO VHD64B300-D13, 500HP, I-SHIFT TRANS., 20,000# FRONT / 52,000# REARS, 261 WB, HD CHASSIS. #240085


IN STOCK

2000 VOLVO WG64B, 275HP, AUTO, 16,000# FRONT / 40,000# REARS, JOHNSERED 820 CORTU CRANE, 20' DUMP BODY. #210299A


3 AVAILABLE

2016 VOLVO VNM64T-D13, 435HP, 10SPD., 12,000# FRONT / 40,000# REARS. #230109A


4 AVAILABLE

2020 VOLVO VNR64T300 HD TRACTOR, D-13, 500HP, 12SPD AUTO, 14,000# FRONT / 46,000# REARS, AIR-RIDE. #240087A


INCOMING

2026 AUTOCAR ACTT42, SINGLE AXLE, YARD JOCKEY, DIESEL AUTOMATIC, A/C, HYDRAULIC 5TH WHEEL.


IN STOCK

2012 FORD E-450 14 PASSENGER SHUTTLE BUS, GAS, 18,885 MILES. #250029A


IN STOCK

2025 FORD E-SERIES 14 PASSENGER COMMERCIAL SHUTTLE BUS. NON CDL LICENSE REQUIRED.

401-434-5900

WWW.ANDERSONMOTORS.COM

EMAIL • SALES@ANDERSONMOTORS.COM

170 AMARAL STREET • EAST PROVIDENCE, RI 02915

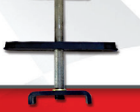
HABLAMOS ESPAÑOL



2005 MACK. This Is My Truck
So Call Me And I Will Tell You
About All The New Parts &
Extras, Super Clean, Fully
Serviced, **\$40,000/BO**
East Windsor, CT 860-716-0226



Powerglide Air Test Kit

Complete Powerglide Pro
Tree Transbrake \$279.95TH400 Deep Cast
Aluminum PanTH400 Billet Direct Drum
Spring Retainer & Aluminum
Modulator/Solenoid Hold DownPowerglide
Overhaul KitPowerglide Deep
Oil PanPowerglide Reverse
Spring Retainer ToolPowerglide Bushing
Driver SetDo-it-yourself Powerglide
Pro Tree Transbrake Kit
\$164.951.80 Long
Powerglide Gear Set

1-800-394-5889

179 Belvedere Road
Gilsum, NH 03448

WWW.TSR-RACING.COM

Powerglide
Handbook written
by Carl H. Munroe
\$21.95



Powerglide Vent Tanks



**1987 INTERNATIONAL
PAYSTAR 5000.**
S/N 2HTTGGJT9HC004517,
Asking \$25,000 OBO.
508-579-4763 Or Email
WebsterDudleySand@gmail.com

**2002 HITACHI
ZX330LC
EXCAVATOR.**
AC, Heat, Radio,
75% Undercarriage,
Run Great, Work
Ready, 14,652
Hours, Very Clean,
Dependable,
\$50,000.
978-502-8557



HAYES 
Commercial Truck Center

802-334-6587

60K MILES - SNOW READY



\$45,990

2017 F550 DUMP TRUCK. Municipal
Plow, Spreader, 4WD, Diesel, 60,818
Miles, Fully Service, Ready To Work,
#686P. **\$45,990**



NEW 2024 F600 SWITCH N GO.
7.3 V8 Gas, Auto, XLT Trim, Polish Aluminum
Wheels, Tool Box, 4WD, Upfit Switches, Body
Choices. #5987 **MUST GO! \$91,900**



**2017 GMC 3500 12FT AEROCCELL
VAN.** Interior Shelving, V8,
106,106 Miles, **\$17,817**



2017 F550 FLATBED DUMP. Diesel,
Auto, 4X4, 12 Ft Dumping Flatbed,
Headboard For Lumber Or Ladders,
Clean, 53,163 Miles, **\$37,300**



2010 F550.
4x4, 6.8L V10 Gas, 16' Aluminum Body
W/ 42" Aluminum Sides, 88,960 Miles,
\$18,900.



\$42,921

2021 F350 XLT. Diesel, 4X4, Remote
Start, 34,378 Miles, Super Clean, #62521.
\$42,921

WWW.HAYESFORDINC.COM • 439 East Main St Newport, VT

CAREY AUTO

INC
TRUCK EQUIPMENT
SALES



37 County Road
Route 106
Plympton MA 02367
PH: 781-582-1378
FAX: 781-585-4438



2010 International Lonestar Service Truck, Cummins diesel, 13 speed \$69,000



2004 KENWORTH T300 DUMP TRUCK: CAT C7
W/ALLISON AUTO., 151K MILES, 33,000 GVW.
\$25,900.



CUSTOM ALUMINUM BEDS/STEEL
CALL FOR QUOTE



2006 INTERNATIONAL 4000 HOOKLIFT TRUCK:
DT466 W/ALLISON AUTO., 186K MILES, 26,000
GVW 18,000 LB. SWAPLOADER HOOKLIFT. \$48,900



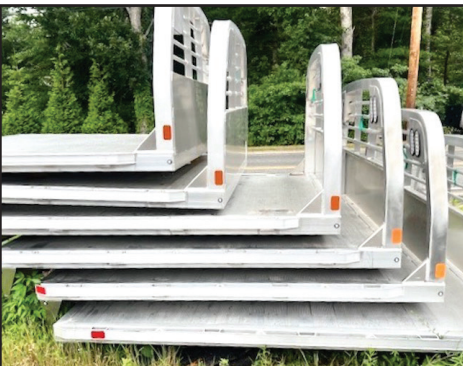
2017 Kenworth T-800 Paccar MX-13, Allison
auto, 195,000 miles with Palfinger cable pull
hoist system, tarp system, \$142,000



2015 Peterbilt Model 337: Paccar PX-9, Allison
auto 131,000 miles with Ampliroll AL100
Hook Lift, Pioneer tarp system, 33,000 GVW.
\$91,000



READY TO GO COMPLETE TRUCK PACKAGES.
LOTS OF OPTIONS AVAILABLE
New & Used Trucks Ready To Go!



CM
ALUMINUM
FLATBEDS
IN STOCK
NOW!
MANY
SIZES.
CALL FOR
PRICING



STEEL
FLATBEDS
IN STOCK
NOW!
MANY
SIZES.
CALL FOR
PRICING.

SALES,
SERVICE,
PARTS

CALL TOLL FREE: 781-582-1378
WWW.CAREYTRUCKEQUIPMENT.COM

CUSTOM METAL
FABRICATION
AVAILABLE

American SEMI REBUILDERS



**SPECIALIZING
IN FRAME RAIL
REPLACEMENTS,
TRUCK
RESTORATIONS,
& REPAIRS**

BEFORE



AFTER

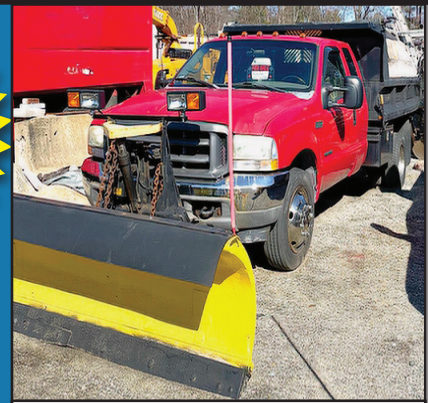


FULLY LICENSED AND INSURED

27 Depot Street, Unit K-2, Center Barnstead, NH 03225

- We Do What it takes to keep you moving**
- Quality work done right the first time**
- Over 40 Years Experience**

603-269-0046



2002 FORD F-550. Power Stroke, 100K Miles, New Bed Liner, Roll Tarp, Toolbox, 4WD, 9 Ft. Fisher Plow, Ready To Plow!
\$9500 OBO. 781-272-8725



HENKE 10' POWER ANGLE PLOW. Hydraulic, Reversible, CAT IT Mount, **\$7500 OBO.** 508-962-4135

**2004
INTERNATIONAL.
DT466.**
Only 74,759 miles,
\$24,000 OBO.
774-208-2806



RAPID PREP

877.529.2124 / rapidprep.com

Full Service Provider of Equipment, Supplies and Consumables

NATIONWIDE EQUIPMENT RENTALS, SALES & SERVICE

North Kingstown, RI

El Cajon, CA

Suffolk, VA

Lakewood, WA

RUST NEVER SLEEPS



ABRASIVES



BLAST CABINETS



SURFACE PREP
POWER TOOLS



SAFETY EQUIPMENT

63 Bridge St
Salem, MA 01970
978-745-2500



105 County Rd
Ipswich, MA 01938
978-356-2916



PRO-TECH®

Summer Special on ProTech Pushers
IN STOCK & AVAILABLE!

**SUMMERTIME
SAVINGS!!!**

❄️ **LE12L: 12' Live Edge for Loader**

MSRP: \$14,889.00

3 AVAILABLE

B&C Price: \$10,995.00 +Coupler

❄️ **LE14L: 14' Live Edge for Loader**

MSRP: \$16,499.00

SOLD OUT

❄️ **LE16L: 16' Live Edge for Loader**

MSRP: \$18,299.00

SOLD OUT

ARCTIC
Snow & Ice Products

❄️ **Arctic LD-8 Sectional Sno Pusher for SkidSteer**

MSRP: \$12,457.04

1 AVAILABLE

B&C Price: \$7,995.00 w/ SkidSteer Coupler!



In Stock & Available Couplers:

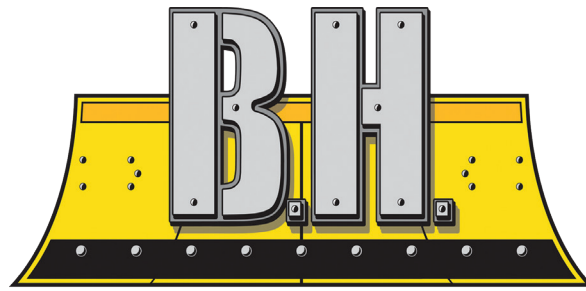
- Post Mount x 2
- JRB416 x 3
- CAT IT-28 x 3
- Volvo L50-L120 x 1



Truck Bodies & Equipment
www.BrakeAndClutch.com

www.bhtrailersandplows.com

6 Center Parkway
Plainfield, CT
06374
860-949-7863



TRAILERS AND PLOWS

2207 Hartford Ave.
Johnston, RI
02919
401-214-3735



BOSS
SNOWPLOW

**PRE-
SEASON
SALE**



**CM Aluminum Skirted
Flat Bed, Gooseneck
& Receiver Hitch Built In
Starting at \$7,495**



**CM SK Skirted Flat Bed
Gooseneck and Receiver Hitch
Built In, Starting at \$6,995**



**CM Aluminum Tradesman
Low Pro Service Body
Gooseneck & Receiver Hitch
Built In, Starting at \$14,595**



**CM Aluminum Skirted Deluxe
Flat Bed Combo
Gooseneck & Receiver Hitch
Built In, Starting at \$9,995**



**BCL 82 x 24
Full Power Tilt, Steel
Deck With 12K Winch
14,000Lb. GVWR, \$10,900**



**SPARTAN 85 X 24
7Ft. Tall, Ramp Door
.080 Polycore Skin
9,990Lb. GVWR, \$10,995**



**LOAD TRAIL CH14
83 x 22 20+2 with
24" Wide Standup Ramps
14,000Lb. GVWR, \$6,150**



**LOAD TRAIL DZ14
96 x 14 Fold Down
Side Dump Trailer
14,000Lb. GVWR, \$10,995**





Commercial
Vehicle Center



MCGOVERN
FORD AT DRUM HILL

Call Mike Smokler 603-493-6561



2025 T250 REFRIGERATED VAN. Thermo King V-320, V6 Gas, FN6117
\$78,400



2025 F600 SWITCH N GO. Diesel, 4WD, 22,000 lb GVW, Remote Start, FN6572. **\$107,900.**



2025 F650 DUMP. Race Red, 7.3L 335HP Gas, Automatic, #FN5213, **\$94,900**

OVER 75 SUPER DUTIES IN STOCK - COLORS AND CONFIGURATIONS



F350, F450, & F550 CHASSIS AVAILABLE



2024 T350 SERVICE VAN. All Wheel Drive, 11' Knapheide Aluminum Body, V6 Gas, Master Locking, Pass Thru Door, #FN5982 **\$79,900**



2026 F350 LANDSCAPER DUMP. 4X4, 7.3 Gas, Remote Start, Tool Box, 3 Way Gate, Curb Side Door, FN6509. **\$78,735**



2025 F350 DUMP. 10.6 Ton Hoist, 4WD, 9' Body, Tool Box, Remote Start, 7.3 Gas, FN6449. **\$71,900**



2026 F450 SUPER CAB DUMP. 9' Stainless Steel Body, Diesel, 4WD, Work Surface, Dual Alternator, FN6576. **\$101,159**



2025 F350 SUPER CAB UTILITY. Reading Service Body, SRW, 4X4, 7.3L Gas, Remote Start, FN6190. **\$79,950**



2024 F350 SERVICE BODY. 11' Knapheide, V8 Gas, 4WD, DRW, Remote Start, 120V/400W Outlet, #FN5242 **\$65,900**



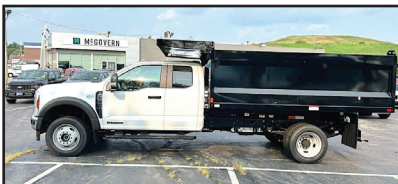
2025 F550 DUMP. 9' Body, 20" Side Ht., 4.5 Cu Yd, 2 Tool Boxes, Remote Start, 7.3 Gas, 4WD, FN6150. **\$78,900**



2025 F350 CREW UTILITY. Diesel, 4WD, 9' Body, Spray In Liner, SRW, Remote Start, FN6317. **\$87,682**



2025 F650 DUMP. Diesel, Automatic, 10'4" Body, Pintle Hook, #FN6432 **\$109,900**



2024 F550 LANDSCAPER. 12' Dump Body, Super Cab, 4X4, Diesel, Remote Start, Pwr Rear Window, Pintle Ball, #FN5098 **\$82,900**



2025 T250 CARGO VAN. Weatherguard Bin Package, Medium Roof, **\$55,895**



Commercial
Vehicle Center

MichaelSmokler@mcgovernauto.com

Commercial
Truck - Huge
Savings
Opportunity

COLONIAL



Save Up to
\$15,000.*
Off Original
MSRP

COLONIAL DODGE CHRYSLER JEEP RAM

24 Coolidge Street - Hudson, MA 01749 • 888-601-3397

PROMASTER VANS AND WORK TRUCKS FOR PROFESSIONALS!

10 SPECIAL PURCHASE VEHICLES TO CHOOSE!



\$27,652

NEW 2025 RAM
PROMASTER TRADESMAN
SLT HIGH ROOF MOBILE
OFFICE:

TAKE YOUR OFFICE TO
THE WORK SITE. FULLY
EQUIPPED. AUTO, PACK-
UP CAMERA & MORE.

PRICE: \$55,080
UPFIT: \$22,000
WAS: \$77,080
NOW: \$49,428
SAVE: \$27,652



SAVE \$15,000

NEW 2025 RAM 2500
TRADESMAN 4X4
CREW CAB 8' BOX.
8 Cyl., Auto, AC, Nav,
Power Grp, Original
MSRP \$69,970.
(+549. Doc Fee) -
Colonial Savings
\$15,000.. =
SALE PRICE \$54,970.,
Stk#P10445



SAVE \$15,602

NEW 2025 RAM
2500 BIG HORN 4X4
CREW CAB 4X4. Off
Road Pkg, 8 Cyl., Auto,
AC, Power Grp, Nav,
Camera, Original MSRP
\$75,030. (+549. Doc
Fee) - Colonial Savings
\$15,602.. =
SALE PRICE \$59,977.,
Stk#P10444



SAVE \$13,807

NEW LEFTOVER
2022 RAM 2500
REG CAB 8' BED.
6.4L V8 Hemi, Auto,
AC, MSRP \$51,235.,
Save \$13,807.
SALE PRICE
\$37,428.
(+ 549. Doc Fee),
Stk#220440



11K MILES

2024 RAM
LARAMIE CREW
CAB 4X4. Auto,
Leather, Heated
Seats, AC, Nav,
WiFi, Only 11K
Miles, \$62,428
+ \$549 Doc
Fee = **\$62,977,**
stk#P10450



15K MILES

2025 RAM 1500
CREW CAB
REBEL 4X4.
Auto, Nav, AC,
Heated Seats,
Back-Up Camera,
Only 15K Miles,
\$51,428. + \$549
Doc Fee= **\$51,977,**
stk#P10468



SAVE \$6,857

NEW 2025 RAM
PROMASTER SLT
LOW ROOF CARGO
VAN. V6, Auto, Back-
Up Camera, AC, PW,
MSRP \$46,285., Save
\$6,857.,
SALE PRICE \$39,428.
+ 549 Doc Fee)=
\$39,977, Stk#P10465

www.ColonialDodgeChryslerJeep.com

You Get The Most With The Post



**6' x 8" FISHER
HOMESTEADER
SNOWPLOW.**
For Light Truck Or
SUV, Great Condition,
Low Hours, Used On
Home Driveway Only,
All Wiring & Lights
Included, Needs Only
Frame Mount To
Your Vehicle,
\$1500.
781-389-3664

**CALL PATRICK
1 (401) 309-1960**



BLUM'S FIELD SERVICE

-ON-SITE HEAVY EQUIPMENT & DIESEL REPAIR
-MOBILE WELDING & FABRICATION

- MACHINE SERVICES
- ATTACHMENTS INSTALLS
- BUCKET REBUILDS & WEAR PROTECTION
- HYDRAULIC CYLINDER RESEAL

**SERVICING
RI, MA, CT**

20', 40', 48, And 53' CONTAINERS
One Trip & Used Steel Containers.
Various Door Configurations.
We Deliver New England.



FAMILY OWNED & OPERATED



TRANS EAST EQUIPMENT INC.,
67 Main St Salisbury, MA
CALL DAVE Cell 978-992-7077 Or 978-462-1919

**EXIT 90 Off Rt 95
End Of Ramp**

CTAXLE
& SPINDLE REPAIR

CT Axle & Spindle Repair Ellington, CT 06029
860-281-4454 or 860-375-6045



**DRIVESHAFT SERVICE
NOW AVAILABLE**



BEFORE

**TRAILER SPINDLE REPLACEMENT
WELDED IN PLACE**



BEFORE

AFTER

**TRUCK DRIVE SPINDLE REPLACEMENT
WELDED IN PLACE**



AFTER

• Drive Spindles From 1 Ton To Class 8 Trucks • Trailer Spindles From 3,500# To Class 8 Axles
Spindles can also be repaired by welding up the worn area and then remachining to factory spec.
This includes tracing threads or remachining new threads.
WELDING AND FABRICATION ALSO AVAILABLE

A Completely Mobile Spindle Repair System. We Come To You! Serving CT, MA, RI & the Northeast
Visit Our Website At: ctaxleservice.com

STONEHAM



617-733-0773

MUST GO SALE! Call For Special Price Options!



\$82,900

2024 EXPLORER PASSENGER VAN. All Wheel Drive, 8 Person Luxury Seating, Entertainment Sound & Vision, #241216. **\$82,900**



2024 F550 LANDSCAPER. 9'6" Dump, Curb Side Door, Rear Swing Doors, 4WD, Diesel, Remote Start, #241203. **\$85,695**



2024 F550 LANDSCAPER. 12'6" Dump, Curb Side Door, Rear Swing Doors, 4WD, Diesel, Remote Start, #24762. **\$82,595**



2024 F550 LANDSCAPER. Gas, Auto, 4WD, Remote Start, Dual Battery, Payload Plus, #241929. **\$75,495**



2024 F550 LANDSCAPER. 12' Dump, Curb Side Door, Rear Swing Doors, 4WD, Diesel, Remote Start, #24709. **\$83,895**



\$94,795

2024 F550 SWITCHN GO. 11' Can, Diesel, Remote Start, Payload Up Grade, 4WD, #241395. **\$94,795**



\$81,200

2024 F550 LANDSCAPER. Diesel, 4WD, Remote Start, Dual Battery, 19,500 GVW, High Capacity Trailering, #24765, **\$81,200**



\$74,700

2024 F550 XLT CC. Polish Alum Wheels, Diesel, 4WD, Remote Start, PwrScope Mirrors, Payload Plus, #242997, **\$74,700**



\$87,900

2024 F550 ALUMINUM DUMP. Landscapers Spec Body, Curb Side Door, 4X4, Diesel, Remote Start, #24672. **\$87,900**



2024 F450 XLT DUMP. Diesel, Auto, Polish Alum Wheels, L-Pac Tool Box, 4WD, Remote Start, HD Trailering, #241213, **\$89,000**



2024 F250 LARIAT CREW. Ultimate Package, Power Moonroof Twin Panel, 7.3 Gas, #243191. **\$86,495**



\$62,000

2024 T350 HD FREIGHT VAN. DRW, Pull Out Ramp, Step Bumper, E-Trac, Air Deflector, #243247. **\$62,000**



2024 T350 HIGH CUBE. 10 Ft Rockport Van Body, Plywood Liner, D-Rings, 3 Bar Ladder Racks, Rear Swing Doors, 12" Step Bumper, #243204. **\$58,490**



2024 F250 HARLEY DAVIDSON LARIAT. Diesel, Ultimate, #242073, **\$112,899**



2024 F550 LANDSCAPER. Diesel, Auto, 4WD, Remote Start, Dual Battery, Payload Plus, #241879, **\$83,855**



Commercial
Vehicle Center

Call Bill Pollack 1-617-733-0773
or billpollack@stonehamford.com



Commercial
Vehicle Center

STONEHAM**617-733-0773****WORK VAN SALE EVENT – BIG OPTIONS!**

2024 T250 CARGO VAN. Mid Roof, All Wheel Drive, Load Area Protection Pkg. #243196 **\$52,000**



2024 T250 MID ROOF VAN. All Wheel Drive, Ranger Design Shelving, Power Outlet, Dual Battery, #243001. **\$59,750.**



2024 T350 HD HIGH ROOF. All Wheel Drive, Cargo Van, #24850, **\$64,990**



2024 T250 MID ROOF VAN. Bin Shelving, Privacy Glass, V6 Gas, PW, PL, Heated Mirrors, #241330 **\$57,600**



2024 T350 HIGH ROOF CARGO VAN. Rear Wheel Drive, Privacy Glass, V6 Gas, PW, PL, Heated Mirrors, #241198 **ON SALE \$57,995**



2025 T350 MID ROOF VAN. Dual Battery, 31 Gal Tank, V6 Gas, PW, PL, Heated Mirrors, #241191, **\$55,500**

USED TRUCKS SPECIALS

2024 T250 CARGO VAN. Mid Roof, AWD, 20,309 Miles, #24076P, **\$52,589**



2023 T250 CARGO VAN. Low Roof, 9,260 Miles, #23181P **\$33,200**



2019 F450 ALUMINUM DUMP. XLT Package, 68,312 Miles, 4X4, Diesel, #241871A, **\$49,490**



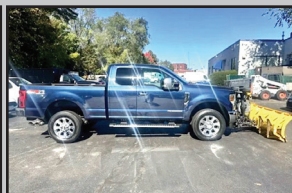
2023 T250 CARGO VAN. Low Roof, 15,986 Miles, #23179P, **\$33,750**



2023 T250 CARGO VAN. Low Roof, 19,933 Miles, #24091P, **\$35,489**



2023 T250 CARGO VAN. Low Roof, 26,130 Miles, #23196P, **\$32,900**



2018 F350 LARIAT. Super Cab, 4X4, Diesel, 82,227 Miles, Fisher Plow, #26138A **\$44,490**



2018 E350 MOVERS VAN. 45,646 Miles, Pull Out Ramp, 2 Rows E-Track, Rockport Body, 55 Gallon Fuel Tank, 12,500 GVW, #24084PA, **\$28,295**



Commercial
Vehicle Center

www.StonehamFordTrucks.com

211 MAIN ST. STONEHAM, MA 02180

Mon-Fri 8:30am-8pm Sat 9- 5pm Sunday 11-4

ALL PRICES NET & INCLUDE ALL AVAILABLE REBATES TO DEALER

Call Bill Pollack 1-617-733-0773 or billpollack@stonehamford.com



Commercial
Vehicle Center

**1987
PETERBILT 10
WHEEL. CAT 300,**
8LL, 44 Rear, 16
Fr., New 14' Steel
Dump, New Lift
Cyl., 8 New 11.24.5
Drive Tires, Electric
Canvas, Pintle, Air
Gate, Ready For
Work, **\$30,000.**
207-256-4652



1989 AUTOCAR T/A DUMP.
CAT 3406B, Fleet Maintained, New
1200R24 Tires, New Canvas, New
Trunnion Suspension, 3 Chutes, Very
Clean, **\$25,000.** 401-447-2661 Or
401-737-6663

**NEW SERCO
8500
LOADERS.**
In Stock,
Call For Pricing,
Portland, CT,
860-835-0692



Residential ~ Commercial ~ Industrial
Mark Dillon
774-365-0222

TOP RATED PRODUCTS FOR YOU

**WASHED STONE
PROCESSED GRAVEL
SAND
TOP SOIL
RIP RAP
FILL**

Please Call for pricing
401-447-2777

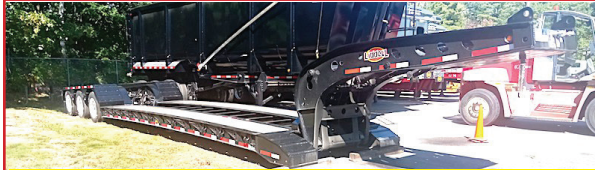




DIMMICK GROUP PETERBILT
1-800-NEW-PETE
1-800-639-7383



DIMMICK GROUP PETERBILT



Price Reduced Call Rooster 603-553-3000

2025 LIDDELL 60 TON.

Flat Deck Detachable, 24.5 Rubber, Aluminum Outers, Rear Strobes, 102" Swing/Set-Up For A Neck Extension, Lift Axle, Wheel Covers. **In Stock.**



2025 TALBERT 55 TON.

Available In All Our Locations



2009 INTERNATIONAL. 10' Swenson Spreader, Rexroth Spreader Control System, 11' Angle Front & 10' Wing Plow, **\$25,000.**



2021 PETERBILT 389. Pride-Class, 605 HP, 18 Speed, 3:73 Ratio, 250" WB, 187,000 Warranty Remaining, 155,000 Miles, **\$153,000. Bow NH**



FELLING TAG TRAILERS.
Multiple in stock, NH & VT



2016 FELLING FT-45-2 LP. Bow NH, **\$21,900.**



2025 PETERBILT 589. 605 Cummins, 18 Speed, 3:73 Ratio, 250" WB, Has Engine & Trans Warranty Remaining. 70,000 Miles



2025 PETERBILT 536.
w/ NRC 22' 20TB,
Brand New, Colchester VT



2021 PETERBILT 567. Cummins X15 565HP, 469k Miles, **\$90,000, South Royalton VT**



2020 PETERBILT 389. Paccar MX13, 18 Speed, 497k Miles, **\$85,000, South Royalton VT**



2026 PETE T/A DUMP. Cummins 565 HP, Automatic, 80,000 GVW, 17'6" MAC Body, Scuttle Chute, 6 In Stock, Various Colors, Ready To Go, All Locations

Royalton VT
802-763-2585

Colchester VT
802-654-4420

Bow NH
603-225-6666

Albany NY
518-459-1122

Newburgh NY
845-245-4042

Champlain NY
518-298-3835

Owego NY
607-687-1200

Rochester NY
585-321-5250

Syracuse NY
315-432-1122

Utica NY
315-732-4300

**2021
PRO TECH
SNOW PUSHER.**
12 Ft., Like New,
\$2900.
781-389-3337



**ARIENS
11528 SNOW
BLOWER.**
Gas Powered,
One Owner,
Hardly Used,
\$500.
508-966-3364



**2025 UTILITY VS2RA
REFRIGERATED TRAILER,**
53 Ft. Carrier 7300 X4 Reefer Unit,
Just Over 1600 Hours, Basically Brand
New, Aluminum Rims, Rubbers Like
New, Title In Hand, Looking For A
Quick Sale To Move Unit, **\$75,000**
OBO. 508-344-7656 Call/Text



2005 HINO 268 HOOKLIFT.
20K Lb., Galbreath Hooklift, Auto, 33,000
GVW Factory Derated to 26,000 GVW,
No CDL Needed, Pioneer Electric Tarp,
AC, In/Out Controls, Air Ride Seat, CD
Stereo, Alum Storage Box, Chrome
Bumper, New Turbo Charger,
189,721 Miles, Strong Running Truck,
\$39,900. 781-414-0635



BLAST HOODS.
Fully Padded Interior, Multi-Layers Of Sound
Deadening Foam, Tear Off Lense, Niosh
Approved Type Ce Supplied Air Respirator.
Rapid Prep 877-529-2124

LIVE ONSITE & ONLINE ONE OWNER COMPLETE DISPERSAL RETIREMENT AUCTION



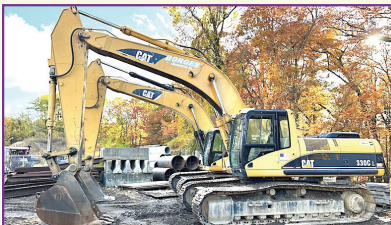
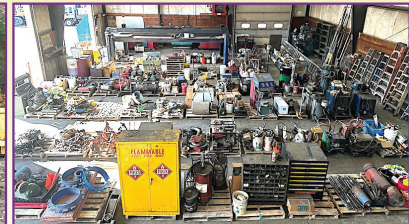
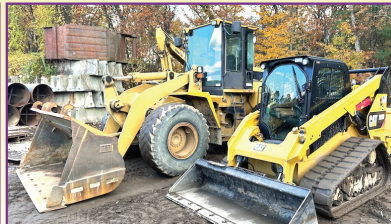
BORGES CONSTRUCTION INC

THURSDAY, NOVEMBER 20TH AT 8:00 A.M.

165 CARMELINA CIRCLE LUDLOW MA, 01056

ENTIRE INVENTORY FROM 30 YEARS OF QUALITY CONTRACTING SERVICE

EXCAVATORS, WHEEL LOADERS, SKIDSTEERS, LOADER BACKHOES, SCREENER, PAVER, ROLLERS, DUMPS, TRUCK TRACTOR, TRAILERS, SERVICE & UTILITY BODY TRUCKS, FLEET VEHICLES, JOB SITE SUPPORT EQUIPMENT, SHOP EQUIPMENT, TOOLS, FIXTURES, SUPPLIES & MORE



FOR A DETAILED AUCTION LISTING AND TO BID LIVE ONLINE PLEASE
VISIT OUR WEBSITE AT: WWW.SALESAUCTIONCOMPANY.COM
55 King Spring Road • Windsor Locks CT 06096

(860)627-7506

Massachusetts Auctioneer License No. AU0003211 Samuel M. Sales





C.N. WOOD co., inc.

Large Selection Of Used Equipment! Call For More Info. 781-315-1680



2019 CAT PM312 MILL. Nice Unit, \$299,500., #C011669



2020 LEEBOY 5300 PAVER. \$98,500., #C011668



2013 KOMATSU PC78US-8. Clean, \$35,000., #C011679



2016 JOHN DEERE 160G LC. 8695 Hours, Good Running Machine, 2 Buckets, \$59,000., #C008701



2006 JOHN DEERE 180CW. Good Running Machine, \$35,000., #C011520



1997 CAT D8R. Very Good Undercarriage, \$95,000., #C009605



2021 KOMATSU PC45MR-5. Nice Machine, \$54,000., #C010645



2017 GRADALL XL5100. 6197 Hours, 2 Buckets, \$95,000., #C011179



2018 KOMATSU PC238USLC-11. Coupler, Bucket, Clean, \$109,000., #C011388



2013 VOLVO EW210D. Rail Kit Installed, 2 PC Boom, Runs Great, \$79,500., #C006493



2017 KOMATSU PC290LC-11. Coupler, Bucket, Nice Unit, \$98,000., #C011163



2019 MECALAC 8MCR. 2 Buckets, Runs Good, 3800 Hours, \$59,000., #C011044

Woburn, MA • Avon, MA • Whatley, MA • Johnston, RI • North Haven, CT
Westbrook, ME • Pine Bush, NY • Holmes, NY • Newington, CT

www.cn-wood.com

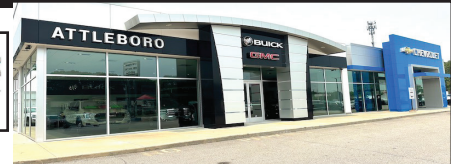
CHEVROLET, BUICK, GMC OF ATTLEBORO

A Priority Automotive Dealership

**ROUTE 1, BETWEEN 95 + 295
SOUTH ATTLEBORO, MA**

508-761-4800

PLENTY OF NEW GMC TRUCKS AVAILABLE



**2026 K1500
6 1/2' BED**



FULLY EQUIPPED WITH POWER SEAT,
ALUM. WHEELS, SPRAY LINER.
#26024G PRICE INCLUDES GM LOYALTY
REBATE

\$42,490

2026 CANYON AT4X



INCLUDES AT4 LIFT KIT.
#26007G

\$60,715

2025 K1500 DOUBLE CAB



PRO VALUE PKG., SPRAY LINER,
LOCKING AXLE. #25231G
PRICE INCLUDES GMC LOYALTY

\$40,695

**2026 K2500 DENALI
DURAMAX DIESEL**



DENALI RESERVE PKG., MAX TRAILERING
PKG., PLOW PREP. #26023G

\$91,385

2026 K1500 AT4X



6.2L V-8, ACTIVE EXHAUST,
KICKER TAILGATE AUDIO SYSTEM.
#26019G

\$84,385


2025 14' BOX TRUCK



12,300 GVW TRANSLUCENT ROOF,
RAMP, V-8, NICE CHASSIS SPECS.
#25195G

\$64,000

**2024 K3500 CREWCAB SLT
DURAMAX DIESEL**



8' BED

SLT PREMIUM PKG., X-31 OFF
ROAD PKG. #24219G

\$83,875

**2026 K2500 AT4
DURAMAX DIESEL**



AT4 PREMIUM PKG.,
PLOW PREP. #26038G

\$88,365

2026 K2500 CREW CAB SLE



VALUE PKG. PREFERRED PKG.,
PLOW PREP. #26017G

\$66,315

2026 K3500 AT4



AT4 PREMIUM PLUS PKG. PLOW PREP.
#26048G

\$79,975

2025 K2500 UTILITY



CONV. PKG., PLOW PREP.
#25234G

\$76,000

2024 C2500 UTILITY



READING CLASSIC II BODY,
STROBES, ELECTRIC LOCKS,
SPRAY LINER. #24210G

\$71,840

**** PLUS OVER 50 MORE AVAILABLE ****



WWW.CHEVROLETBUICKGMCOFATTLEBORO.COM



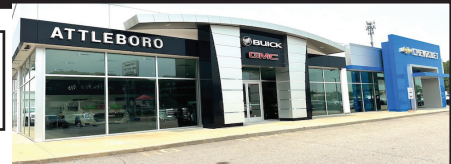
CHEVROLET, BUICK, GMC OF ATTLEBORO

A Priority Automotive Dealership

**ROUTE 1, BETWEEN 95 + 295
SOUTH ATTLEBORO, MA**

508-761-4800

PLENTY OF NEW CHEVROLET TRUCKS AVAILABLE



2025 EXPRESS 3/4 TON



**LOCKING REAR AXLE, DOOR
GLASS, TILT, CRUISE.
#25420H**

\$45,000

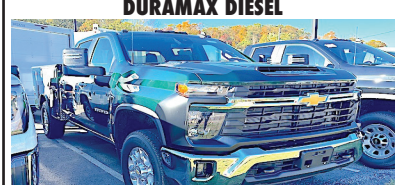
**2025 K3500 DUMP TRUCK
DURAMAX DIESEL**



**14,000 GVE, PLOW PREP., HITCH,
COVER, CONV. PKG. #25411H**

\$CALL

**2025 K3500 LT CREW CAB UTILITY
DURAMAX DIESEL**



**DARK GREEN METALLIC, BUCKET SEATS,
REMOTE START, HEATED SEATS.
#25074H**

\$95,300

2024 KUV



**9,900 GVW, LOW ROOF,
NICELY EQUIPPED. #24414H**

\$71,895

2025 DURACUBE MAX 10'



**9,900 GVW, ELEC. BODY LOCKS,
LADDER RACKS, SHELVING. #25141H**

\$69,000

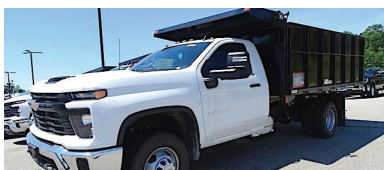
**2024 LCF 4500
14' BOX + LIFT GATE**



**14,500 GVW, POWER MIRRORS,
KEYLESS ENTRY, 14' ALUM. BOX,
2500# LIFT-GATE.**

\$91,995

**2024 K3500 12' LANDSCAPE DUMP
DURAMAX DIESEL**



**14,000 LB GVW, HITCH, COVER, TRAILER
BRAKE, SIDE DOOR, REAR BARN DOORS.
#24311H**

\$84,572

2025 K2500 DOUBLE CAB UTILITY



**PLOW PREP., CONV. PKG., TRAILER
BRAKE
AND HITCH. #25120H**

\$75,000

2024 4500 14' BOX



**14,200 GVW, FANCY CHASSIS SPECS.,
TRANSLUCENT ROOF, RAMP, TIE-DOWN
HOOKS. #24409H**

\$66,000

2025 COLORADO ZR2



**FULL OFF-ROAD SPECS.
INCLUDES LIGHT BAR, SHOCKS,
STEPS, SUNROOF. #25385H**

\$63,260

2024 K2500 CREW CAB UTILITY



**PLOW PREP., CONV. PKG., TRAILER HITCH
AND BRAKE. #24174H**

\$76,000

2025 K2500 DOUBLE CAB



**CUSTOM VALUE PKG., SPRAY LINER,
PLOW PREP. #25341H**

\$57,380



WWW.CHEVROLETBUICKGMCOFATTLEBORO.COM



THIS AD IS COPYRIGHTED & OWNED BY TRUCK AND EQUIPMENT POST

CHEVROLET, BUICK, GMC OF ATTLEBORO

A Priority Automotive Dealership

**ROUTE 1, BETWEEN 95 + 295
SOUTH ATTLEBORO, MA**

508-761-4800

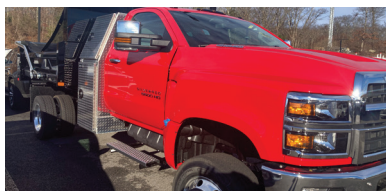
CHEVROLET'S MEDIUM DUTY TRUCK CENTER



- *REGULAR CABS, TILT CABS, CREW CABS 2WD OR 4WD
- *GVW'S UP TO 25,950 BODY LENGTHS UP TO 22'
- *DUMPS, PLATFORM/ RACKS, SWITCH-N-GO, CAR CARRIERS, TOW TRUCKS, SERVICE BODIES, MOVING VANS. IF YOU NEED IT DONE, WE CAN DO IT.
- *FULL SERVICE WITH 30,000LB. LIFTS.
- *GM'S #1 FLEET DEALER IN SE MA., RI, CT.

CALL OUR COMMERCIAL TEAM. "YOU'LL BE GLAD YOU DID !"

2024 K6500 DUMP



22,500 GVW, BACKPACK,
9' DUMP BODY, HITCH, ELECTRIC COVER.
#24351H PRICE INCLUDES REBATE.

\$97,860

2023 C6500 20' MOVING VAN



23,500 GVW, ALUM-GATE, E-TRACK,
SIDEDOOR. #23119H
PRICE INCLUDES REBATE.

\$99,995

2024 LCF LANDSCAPE DUMP



14,500 GVW, HITCH, SIDE DOOR,
READY TO WORK. #24002H
SALE PRICE INCLUDES REBATES.

\$88,205

**2024 K3500 12' LANDSCAPE DUMP
DURAMAX DIESEL**



14,000 LB GVW, HITCH, COVER,
TRAILER BRAKE, SIDE DOOR, REAR BARN
DOORS. #24311H

\$84,572

2025 BRIGHT DROP 400 AWD



11,000 GVW, MAX RANGE BATTERY,
HIGH VOLTAGE CHARGE MODULE.
#25399H

\$59,995

2025 BRIGHT DROP 600 AWD



11,000 GVW, TRANSLUCENT ROOF,
MAX RANGE BATTERY, HIGH VOLTAGE
CHARGE MODULE. #S9107196

\$61,000

**2024 K5500 CHASSIS
CREW CAB**



19,500 GVW., DUMP SPECS.
#24390H. PRICE INCLUDES GM
INCENTIVES

\$71,287

2024 KUV



9,900 GVW, LOW ROOF, NICELY
EQUIPPED. #24414H

\$71,895

2025 DURACUBE MAX 10'



9,900 GVW, ELECTRIC BODY LOCKS,
LADDER RACKS, SHELVING.
#25141H

\$69,000



WWW.CHEVROLETBUICKGMCOFATTLEBORO.COM



THIS AD IS COPYRIGHTED & OWNED BY TRUCK AND EQUIPMENT POST



2002 GMC 2500 PICKUP. 6.0 Gas, New Brakes, Exhaust, & Manifolds, 134,000 miles, Good Condition, **\$4500.**
401-392-3300



2018 MACK PINNACLE CXU613, 279,000 Miles, 415HP Mack MP8, Mack 12 Speed M-Drive, 12K Front, 40K Rears, Clean & Dry, 2 Line Wet Line, Strobes, Rust Free Frame, Matching Virgin Rubber, Fully Serviced, Fed Inspection, **\$39,500** 860-836-0692, Portland, CT



KUBOTA M7040—71HP, Backhoe 11Ft. Depth, Only 530 Hours, Pre-Emissions Tractor, **\$35,000**
860-928-5748

We Are Hiring a

DIESEL MECHANIC

Specializing in Tank Truck & Trailer Sales, General Repairs, Parts, Waterjet Cutting, and Fabrication.

305 Shaker Rd P.O. Box 428
East Longmeadow, MA 01028
413-525-3678

Health Insurance
Dental
PTO
Vacations
Uniforms
Competitive Wages
Retirement Savings Plan

TOREKU TRACTOR & EQUIPMENT INC.



4 Littleton Rd, Rt2A & 110, Ayer, MA • 978-772-6619



2005 EZ GOGOLF CART.
High Clearance Suspension, Electric Dump, Gas Engine Power, **\$2,800**



KUBOTA B2320 TRACTOR LOADER.
Nice Condition, Always Garaged, 543 Hours, Hydrostatic Drive, Power Steering, **\$11,900**



2025 KUBOTA RTV-X-CAB.
Side By Side, Diesel Engine, Hydro Trans, Hydraulic Dump, Heat & Air Condition Cab. **\$26,400.**



2003 KUBOTA B2910 TRACTOR LOADER. 729 Hours, Works Great, **\$12,500.**
Add 72" Snowblower Front Mount **\$13,500**

VISIT US AT WWW.TOREKU.COM

WWW.TRUCKANDEQUIPMENTPOST.COM



SALES & RENTALS INC.
T-QUIP

DAILY / WEEKLY / MONTHLY

EQUIPMENT RENTALS

**WHEEL LOADERS • ROCK TRUCKS • EXCAVATORS
ROLLERS • SKID STEERS • CRUSHERS • SCREENERS
DOZERS • BACKHOES • GRADERS • TELEHANDLERS
TRACKED DUMPERS • SPECIALTY ATTACHMENTS**



☎ 603-623-3669 🌐 www.TQUIP.com



5 TRUCKS TO CHOOSE FROM. 2019-2020 HINO 338. Box Trucks/Cab & Chassis. Diesel, 33k GVWR, Air Brakes, Automatic Trans, 200k Miles, All Run And Drive Beautifully, PTO Friendly, Fleet Maintained. Ideal To Turn Into A Dump Truck, Hook Lift, Roll Back. **\$15,900, CALL TODAY BONGIORNO TRUCKS FOR EXPORT 203-667-7893 JOHN**

KOBELCO SK200 MARK 3. New Bottom, New Computer, Many New Parts, Runs Great, Asking **\$35,000.** 203-464-0121



2002 STERLING 10-WHEEL DUMP. 209K Miles, CAT C10 350HP, 8 Sp, 445 Tires on 20K Front, 11-24.5 On 52K Rear, 72K GVW, 4.89 Ratio, Full Locking Rears, Dual Steering Boxes, 14' Rugged Dump Body, New Radiator, Pintle On Rear, 11' Highway Plow, Easily Removable Harness, **\$36,500 OBRO.** 508-269-1515

FORD F-750 FLATBED DUMP TRUCK. 16 Ft Flatbed Dump Body, 3126 Caterpillar Diesel Engine, Auto, Air Brakes, Good Tires, Runs Excellent, Used Daily, 175K Miles, Title In Hand, Reliable & Work-Ready, **\$6,000 OBRO.** Hopkinton, RI 401-742-3659



L&K TRUCK BODY, INC.
258 Dover Road • Chichester, New Hampshire 03258

603-798-5500
DURAMAG



2010 Mitsui. Diesel, Auto, 170K Miles, Kidron Insulated, Carrier Unit, **\$8,995**



2007 IH 4400. T/A, 54,000 GVW, Auto, RDS, Pre Emission, Kidron Refrig Body, T800 TK, **\$19,500 Or C&C Only \$9,875**



2007 IH 18' Refrig Van. Pre Emission DT466, Auto, 200K Miles, 26K GVW, TK KD II, No Rust, Excellent Cond. **\$15,995**



2008 FREIGHTLINER M2. Mercedes Diesel, Auto Trans, 26,000 GVW, Inspected, Under 200,000 Miles, **\$14,250**



2015 IH T/A C&C. 54,000 GVW, 320,000 Miles, N14 Engine, Rebuilt In Chassis & Head, New Turbo, Good Rubber, All Records **\$17,950**



1993 IH 4700. 6 Spd, DT360, 26' Flatbed Body, **\$4,500**



NEW KIDRON REFRIGERATED VAN BODIES. In Stock, 14'- 26' Insulated Van Bodies. Call Us For A Quote.



2006 IH 4200. 26' Moving Van, Non CDL, 265k Miles, DT466 Engine, Non Def, Call For More Info



2013 ISUZU 18' VAN BODY. Hydraulic Tailgate, 180,580 Miles, Call For Price



2021 ISUZU 14' STEEL DUMP. Tool Boxes, 31,490 Miles, Call For More Info



2022 ISUZU 24' VAN BODY. Power Liftgate, 75,000 Miles, **\$44,250**



2005 IH 4200. 26' Moving Van, Non CDL, Non Emission, 277K Miles, Call For More Info

BALLARD

TRUCK CENTERS

(508) 214-3036
drive@ballardtrucks.com



Visit us online at BallardTrucks.com or scan to view our full inventory.



2026 XL SPECIALIZED XL 110 HDGSP
LOWBOY TRAILERS
STK#25047
CALL FOR PRICE !



2026 XL SPECIALIZED
XL110SA-S. SEMI-TRAVELING
AXLE TRAILER STK#25048
CALL FOR PRICE !



2024 MACK LR64R
GARBAGE TRUCK
STK#08553
\$349,900



2025 MACK GRANITE 64FR
DUMP TRUCK
STK#46927
CALL FOR PRICE !



2019 PETERBILT 389
DAY CAB TRUCK
STK#62930
\$94,500



2025 TICO PROSPOTTER
YARD SPOTTER
STK#13513
CALL FOR PRICE !



2025 ISUZU NRR
REEFER BOX TRUCK
STK#04112
CALL FOR PRICE !



2025 VOLVO VHD84B300
CAB & CHASSIS
STK#690100
CALL FOR PRICE !



2024 VOLVO VNL64T300
DAY CAB
STK#64521
CALL FOR PRICE !



2015 MACK GRANITE GU713
GARBAGE TRUCK
STK#22038
\$107,500



2022 WESTERN STAR 4700
DAY CAB
STK#3485
\$102,500



2016 WESTERN STAR 4900
DAY CAB
STK#J1907
\$19,500



2025 VOLVO VNR64T300
DAY CAB
STK#681231
CALL FOR PRICE !



2013 INTERNATIONAL
WORKSTAR 7400 DUMP
TRUCK STK#32061
\$17,000



2025 MACK ANTHEM 64T
SLEEPER TRUCK
STK#52059
CALL FOR PRICE !



2024 ISUZU NPR HD
UTILITY TRUCK
STK#215705
\$79,950



2024 KENWORTH T880
DUMP TRUCK
STK#17897
\$227,500



2023 MACK GRANITE 64FR
GARBAGE TRUCK
STK#8098
\$269,000



2016 ISUZU NPR HD
BOX TRUCK
STK#7980
\$28,900



2024 MACK MD6
GARBAGE TRUCK
STK#3603
CALL FOR PRICE !



2016 JOHN DEERE 350G EXCAVATOR - Machine in Great Condition, Extremely Clean and Tight, 6173 Hours, Enclosed Cab with Heat and A/C, Tracks in Good Condition, Well Maintained, Ready to Work. Priced to Sell **\$74,900** 781-417-3018



2001 WESTERN STAR.

6NZ Caterpillar 550 HP, Engine Just Overhauled, 18 Spd, 46 Rears, Wet System, New Suspension, New Tires & Brakes, Needs Nothing, **\$44,900.**, Lawrence, MA 603-973-0809

WANTED!!! MACK TRUCKS

**CAT, DEERE, BOBCAT EQUIP
IN ANY CONDITION
IMMEDIATE PAYMENT**



CALL JOHNNY MACK

johnnymack107@gmail.com
HARTFORD, CT 860-883-1186



SELL EQUIPMENT COMPANY, INC.
106 MENDON ST. • BELLINGHAM, MA
508-966-4888 • WWW.THENICECO.COM

ALSO AVAILABE FOR RENT



**2018 Deere 210G LC, 4300 Hours, 36" bucket, QC,
Hydraulic Thumb, Aux hydraulics, Long undercarriage,
Heat, AC, Work ready. \$119,000.**



2018 DOOSAN DX300 LC-5: REDUCED to \$129,000
2100 Hours, Backup Camera, AC,
REDUCED \$129,000. Hammer Available for additional
\$30,000.



**2020 KUBOTA R630:
750 HOURS, 1.5 YARD BUCKET, QC,GOOD TIRES.
\$63,500.**



**2018 Bell B30E,
5200 hours, 6x6, AC/Heat, Diesel Engine, 30T Lift
Capacity, Tailgate, Two Available, \$179,000.**

• WE RENT • • WE RENT • • WE RENT • • WE RENT • • WE RENT •

• WE RENT • WE RENT • WE RENT • WE RENT • WE RENT

LS Tractor

25-100HP

With Loaders

BACKHOES AVAILABLE



**0% Financing
Up To 120 Months
On Select Models**

SALES • SERVICE • PARTS • FINANCING

FOSKETT

EQUIPMENT INC.
TRACTORS & IMPLEMENTS
Woodstock, Ct

**Route 171
Woodstock, CT
860-928-5748
www.foskettequipment.com**



1989 AUTOCAR. 444 Cummins, 13 Speed Eaton Fuller Transmission, 13.6 Dump Body, 58,000 Rears, 18' Front, 24" Rubber, New Clutch And Rebuilt Transmission, **\$14,500.**
401-392-3300



2003 KOBELCO SK250.
Bottom 85%, 4200 Hours, Runs Excellent, AC, Asking **\$65,000.**
203-464-0121

CANDIA TRAILER

www.CandiaTrailer.com
& LANDSCAPE EQUIPMENT CO
All Prices Cash & Carry! Installation Available!

SAVE TIME & FUEL • WE SHIP!

1-866-761-0196

NH 603-483-2541
email: contact@candiatrailer.com

35 High St, Candia 4 Coners, Candia NH
10 Minutes East of Manchester, NH • 1 hour From Boston

**ALL THE RIGHT
FIXINGS FOR
YOU**

 <p>DURA MAG ALUMINUM DUMP BODIES Complete Sub-Frame, Power Pac, LED Lights.</p>	 <p>Pintle Plate \$459</p>	 <p>BUTCHER Dump Power Pac with control Gravity Down \$595</p>	 <p>8' Ft & 6 Ft EZ Slide In Dump Body. With Head Board, Tarp & Hoist.</p>
 <p>ALUMINUM SERVICE BODY</p>	 <p>HARSH HOIST 2.5 to 45 Ton, Single or Double Piston. Convert a Flatbed Body to a Dumping Body. HOIST & POWER PACK CHAMPION HOIST</p>	<p>UNDERBODY TOOL BOXES Powder Coat Diamond Aluminum Door</p>  <p>Diamond Aluminum Door</p> 	 <p>HOMESTEAD Enclosed Trailers. Stocking 8 Ft – 24 Ft</p>

COLONIAL



CHEVROLET OF ACTON • CALL US 978-263-1000

SPECTULAR FALL SAVINGS!!!



**SALE PRICE
\$69,999***

BRAND NEW 2024 Chevrolet Silverado HD3500: 4x4, dual rear wheels, DuraMag aluminum Landscape dump body, 6.6 gas, WT Convenience Package, snowplow prep package, Stk# 24704 MSRP \$80,068. Colonial Discount \$9,569, GM Rebate \$500



**SALE PRICE
\$69,999***

BRAND NEW 2024 Chevrolet Silverado HD3500 4x4, dual rear wheels, DuraMag aluminum Landscape dump body, 6.6 gas, WT Convenience Package, snowplow prep package Stk# 24703 MSRP \$80,068. Colonial Discount \$9,569, GM Rebate \$500



**SALE PRICE
\$66,599***

BRAND NEW 2024 Chevrolet Silverado HD2500 4x4, Knapheide Aluminum service body, 6.6 gas, snowplow prep package Stk# A24802 MSRP \$73,988. Colonial Discount \$6,989, GM Rebate \$500



**SALE PRICE
\$59,999***

BRAND NEW 2024 Chevrolet Silverado HD2500 4x4, Knapheide service body, 6.6 gas, snowplow prep package Stk# A24809 MSRP \$69,103. Colonial Discount \$8,604, GM Rebate \$500



**SALE PRICE
\$59,999***

BRAND NEW 2024 Chevrolet Express KUV Service Body, 6.6 gas, cloth seats, power windows, door locks, mirrors, cruise control, remote vehicle start and more, single rear wheel Stk# A24798 MSRP \$66,903 Colonial Discount \$5,404. GM Rebate 1,500



**SALE PRICE
\$59,999***

BRAND NEW 2024 Chevrolet Express KUV Service Body, 6.6 gas, cloth seats, power windows, door locks, mirrors, cruise control, remote vehicle start and more, single rear wheel Stk# A24808 MSRP \$66,903 Colonial Discount \$5,404, GM Rebate 1,500



**SALE PRICE
\$48,999***

BRAND NEW Chevrolet Express Baybridge 10' Box Van, roll-up door, power windows/door locks/mirrors, cruise control and more, single rear wheel Stk# A24806 MSRP \$55,690. Colonial Discount \$5,691, GM Rebate \$1,500



**SALE PRICE
\$63,999***

BRAND NEW 2025 Chevrolet Express Dejana Dura-Cube MAX, toolboxes drivers/passenger sides, power windows/door locks/mirrors, cruise control and more, single rear wheel Stk# A25716 MSRP \$68,695 Colonial Discount \$4,696



**SALE PRICE
\$53,999***

BRAND NEW 2025 Chevrolet Express Dejana Dura-Cube II, roll-up door, power windows/door locks/mirrors, cruise control and more, single rear wheel Stk# A25710 MSRP \$59,080. Colonial Discount \$5,081

171 Great Road • Acton, MA 01720 • www.buycolonialchevrolet.com

*GM rebates subject to change, some vehicle may qualify for additional rebates/Business Choice rebate might be available to qualifying customers. Please call for availability.

JP RIVARD Trailer Sales Inc

Call Matt - 508-962-4543
 Matt@jprivard.com • JPRivard.com
 Locations in Ayer, MA and Devens, MA

We Deliver Storage Solutions

60 PLUS YEARS SERVING THE
NORTHEAST AREA

Over 150 Containers - In Stock
With Choice Odd Sizes & Specs
FAST Delivery Is Available

Always Best Customer Service

40' HIGH CUBE 3 DOOR



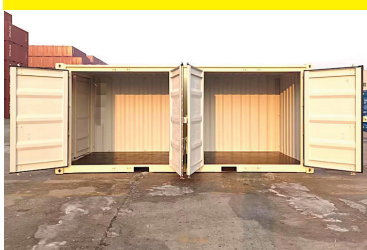
SOLD
 New One Trip
 High Cube.
 Double Doors
 On One End
 And 36" Door
 On Other \$5,600
 Delivered Locally

40' HIGH CUBE DOUBLE DOORS



40' High Cube
 Container, Doors
 On Each End.
 Green.
 \$6,600
 Delivered
 Locally

NEW 20' - TWO SIDE DOORS



20' NEW
 ONE TRIP.
 End Doors,
 2 Side Doors,
 From \$6,500

20' HIGH CUBE



2 New One Trip
 20' High Cube,
 9'6"
 Full Open
 Side, Hard To
 Find. From
 \$8,500 Each



20' 1 TRIP - HIGH OPTIONS



FROM \$3,200

(25) New 20' One Trip Containers
 Beige & Green, Some Lightly Dented



40' HIGH CUBE - 1 TRIP



(5)
 New 40' One
 Trip
 High Cube
 Containers,
 In Stock,
 FROM \$4,700

40' HIGH CUBE 1 Trip, 4 Side Doors



New 40'
 High Cube
 Containers,
 With 4 Side
 Doors, \$9,800
 Delivered
 Locally

Sales Tax If Applicable + Delivery Is Not Included Unless Noted

JP RIVARD Trailer Sales Inc

Call Matt - 508-962-4543
Matt@jprivard.com • JPRivard.com
Locations in Ayer, MA and Devens, MA

FULLY GALVAIZED UNDER SIDE



- 20 Matched Units
- 53' x 102" x 3'6" Spring Ride
- Swing Doors
- Logistic Posts
- Like New Very Low Miles

53' AIR RIDE DURAPLATE



2022 WABASH 53'x 102". Air Ride, Duraplate, Aluminum Roof, Swing Doors, New Brakes, \$25,900

48' - 53' ROAD TRAILERS

From \$5,500



2004-2015
48'-53'
ROAD
TRAILERS.
Swing Doors,
Roll Doors,
Air Ride,
Spring Ride.

YARD SPOTTER



MAGNUM YARD SPOTTER.
Single Axle, Works As It Should,
Good Inexpensive Truck, \$7,750

RENTAL FLATBEDS & STEP DECKS



- NEW & USED 48'X102" Rentals
- Sliding Tandems
- DOT Inspected
- USED 48'X102" Combo Step Deck
- Spread Axle Air Ride

28'x102"x13'6" ROAD TRAILER



2015 Stoughton 28'x102"x13'6".
Spring Ride, Aluminum Roof,
Pintle Hook, DOT Insp. \$7,500

36'x102" - 45'x102" - 48'x102" Flatbeds. Some w/ Forklift Kits



2025 Dorsey 48'x102"
Steel Flatbed, Spring Ride.
Great Specs. (3) Available.

2025 Dorsey 45'x102"
Steel Flatbed, Air Ride,
Morris Princeton Forklift
Kit, Tool Box, etc. (1).

2025 Dorsey 36'x102"
Steel Flatbed, Air Ride,
Morris Princeton Forklift
Kit, Tool Box, etc. (1)

*** FINANCING & LONG TERM LEASES AVAILABLE



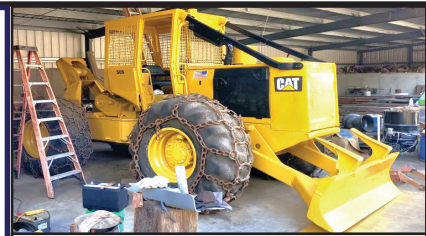
O: 508-363-1889
C: 774-272-5676 or 508-726-8653
LEICESTER, MA

EQUIPMENT RENTALS



WINTER RENTALS
3 Yard Loaders • HL 940 TM
\$4250 per month

Many More Machines To Rent
CurtisConstructionEquipment@gmail.com



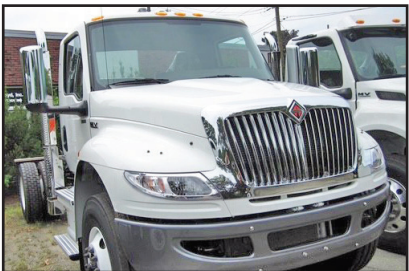
1988 CATERPILLAR 508 CABLE SKIDDER. New Engine, Machine Has Been Gone Right Through, Excellent Condition, Like Brand New, **\$28,000 OBO.** 401-441-1398



1996 FRUEHAUF BULK CEMENT TRAILER.
 1000 CF, 3 Cones, Air Ride Suspension, Good Condition,
\$6,500., Lawrence, MA
 603-973-0809

TAYLOR & LLOYD, INC.

SEE OUR INVENTORY: WWW.TAYLORANDLLOYD.COM



2025 INTERNATIONAL HV607 SBA CAB & CHASSIS. Cummins B6.7 325 HP, Allison 3500, 10K F/A, 23K R W/Locking Diff, Call For More Info.



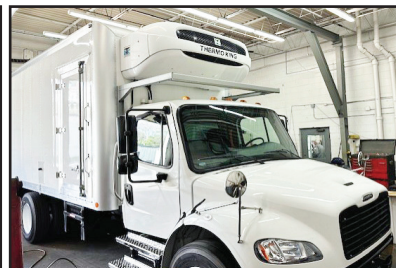
NEW 2024 CV515 SFA 4X2. 6.6L 350 HP, Allison 2750, Call for info



2025 INTERNATIONAL MV 607. Brand New, 254 WB, Allison 3500 RDS, Cummins 300 HP, Air ride



2025 INTERNATIONAL HV507 CAB & CHASSIS. Cummins L9 330 HP, Allison Auto, 165" WB, 18K F/A, 30K R/A, Call For More Info.



2023 FREIGHTLINER M2 16' REEFER. Cummins, Non CDL, Air Brakes, Allison Auto, 10K Miles, TK Reefer, 2 Side Doors, Sliding Partition, Hours & Reefer Match The Miles, Like Brand New But **\$40,000 Cheaper**

617-429-3370 CALL JACK COAKLEY • 8 Railroad Avenue Bedford, Ma

**FAMILY
OWNED &
OPERATED
SINCE 1969**

HILLSIDE MOTORS

**800-D American Legion Highway (Rt. 177)
Westport, MA 02790
508-636-5050**

**Financing
Available
-Others in Stock**



SEE OUR OTHER PAGE – LAST PAGE OF CENTERFOLD – PAGE CF8



4X4

2017 GMC SIERRA 2500 HD DOUBLE CAB 8' UTILITY 4X4 w/ALUMINUM LADDER RACKS. 6L V8, Auto, AC, PW, PL, Back-Up Camera, 6-Passenger, One Owner, 84K, Excellent Condition, \$31,900. (Others Available Starting At \$12,900.)



PRISTINE

2017 CHEVY K3500 4X4 SRW 8' ENCLOSED UTILITY W/POWER TAILGATE. 6L V8, Auto, AC, PL, 85K, One Owner, Fleet Maintained, Texas Truck, Never Seen A New England Winter, Pristine Condition, \$29,900.



GORGEOUS SUV

2016 CHEVY TAHOE 4X4. LT Pkg, 5.3L V8, Auto, AC, PW, PL, Dual Power Seats, 5-Passenger, Bluetooth, Limited Slip Dif, Rear Camera, Alloys, 119K, One Owner, Fleet Maintained, \$16,400.



ALUM FLATBED

2018 FORD F250 SD 8' ALUMINUM FLATBED W/ FOLD-DOWN SIDES. RWD, 6L V8, Auto, AC, 9900 GVW, Fleet Maintained, One Owner, 75K, Excellent Condition, \$18,900.



4X4

2017 CHEVY 2500 REG CAB 8' BED 4X4. 6L V8, Auto, AC, Tilt, PL, 157K, Fleet Maintained, \$15,900. (3 Available)



WORK BIN PKG

2020 FORD TRANSIT CONNECT XL CARGO VAN. 2L 4 Cyl, Auto, AC, PW, PL, Bluetooth, Rear Camera, WIFI, Satellite Radio, Shelf/Bin Pkg, Ladder Racks, 119K, One Owner, Fleet Maintained, \$16,400.



4X4

2021 FORD F450 16' BOX TRUCK 4X4 W/ALUMINUM RAMP. 7.3L V8, Auto, AC, PW, PL, Tilt, Back-Up Camera, Bluetooth, 16,500 GVW, 162K, One Owner, Fleet Maintained, Super Clean, \$31,400.



OTHERS AVAILABLE

2020 CHEVY 2500 HD CREW CAB 8' UTILITY RWD. 6.6L Gas, Auto, PW, PL, 6 Passenger, Back-up Camera, Bluetooth, One Owner, Fleet Maintained, 83K, Mint Condition, \$30,800.



**AT YOUR SERVICE WITH
OUR NEW SERVICE!
CERTIFIED TECHNICIANS FOR
FAST RELIABLE SERVICE OF YOUR
MEDIUM DUTY VEHICLES!**



MOBILE REPAIR SERVICE FOR COMMERCIAL CUSTOMERS

- **EXPERT MAINTENANCE
& REPAIRS AT YOUR
JOBSITE OR BUSINESS
LOCATION**
- **MINIMIZE DOWNTIME &
KEEP YOUR FLEET MOVING**



EXPANDED SERVICE DEPARTMENT

- **8 BRAND-NEW
COMMERCIAL SERVICE
BAYS**
- **CAN ACCOMMODATE FORD
F-650, F-750, MOTORHOMES
& LARGE VEHICLES**
- **STATE-OF-THE-ART
EQUIPMENT**

**WE'RE COMMITTED TO KEEP YOUR BUSINESS ON THE ROAD WITH
MAXIMUM UPTIME & PROFESSIONAL FORD COMMERCIAL CARE.**



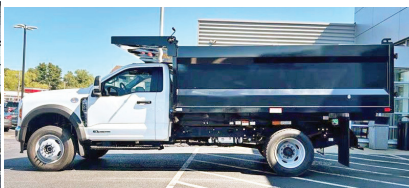
**1200 WORCESTER ROAD (Rt.9 East)
FRAMINGHAM, MA 01701**



www.mcgovernfordofframingham.com



2026 FORD F-750 C&C. 7.3L POWER STROKE DIESEL V8, 270HP, AC, AUTO, STK#FM9574, \$91,750.



2024 FORD F-600 SD LANDSCAPER DUMP 4X4. 6.7L POWER STROKE DIESEL, 22K GVW, AC, POWER GROUP, STK#FM8674, \$97,495.



2025 FORD F-550 SD XL DUMP 4X4. 7.3L V8 GAS, AUTO, 335 HP, 18K GVW, AC, POWER GROUP, STK#FM9438, \$88,975.



2025 FORD F450 SUPER CAB DUMP 4X4. 7.3L V8, AUTO, 16,500 GVW, STK#FM8714, \$79,623



2025 FORD F350 XL DUMP 4X4. 7.3L V8 AUTO, 14K GVW, STK#FM9281, \$73,440.



2026 FORD F650 SD C&C. 6.7L V8 TURBO DIESEL, AUTO, AC, 25,999 GVW, STK#FM9569, \$91,785.



2025 FORD TRANSIT-250 REFRIGERATED VAN. MEDIUM ROOF, V6, AUTO, AC, POWER GRP, STK#FM9127, \$75,998.



2026 FORD F350 SD XL SUPER CAB LANDSCAPE DUMP 4X4. V8, AUTO, PW, PL, AC, 14K GVW, STK#FM9543, \$84,393.



2026 FORD F750 SD C&C. 6.7L V8 DIESEL, AUTO, AC, PW, PL, 25,999 GVW, FM9574, \$91,750.



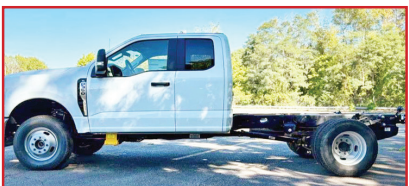
2024 F550 BOX TRUCK 4X4 W/TOMMY GATE: POWER GROUP, 18,000 GVW. STK.# FM7969. \$89,990.



2025 FORD TRANSIT-150 CARGO VAN. V6, AUTO, AC, PWR GROUP, STK#FM8858, \$45,345.



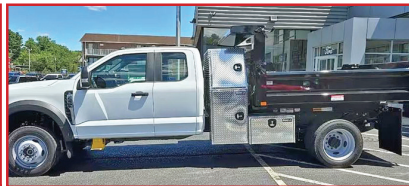
2025 FORD F550 SD XL DUMP 4X4. 7.3L V8 GAS, AUTO, POWER GRP, PLATE, HITCH, COVER, 19K GVW, STK#FM9080, \$79,231.



2026 FORD F350 SD XL SUPER CAB C&C 4WD. V8 GAS, AUTO, AC, PW, PL, 14K GVW, STK#FM9519, \$59,300.



2025 FORD TRANSIT-250 MED ROOF CARGO VAN. V6, AUTO, POWER GROUP, STK#FM9212, \$44,220.



2025 FORD F550 SUPER CAB L-PACK DUMP XL 4X4. V8, AUTO, 18K GVW, DIAMOND PLATE TOOLBOXES, STK#FM9039, \$86,925.



**1200 WORCESTER ROAD
(Rt.9 East)
FRAMINGHAM, MA 01701**



www.mcgovernfordofframingham.com



☎ 603-623-3669
 🌐 equipmentsales@tquip.com
 📧 @tquipsalesandrentals
 📍 603 Mammoth Road
 Londonderry, NH 03053

OVER 1,000 MACHINES & ATTACHMENTS IN OUR INVENTORY



(2) 2022 KOMATSU WA270-8 A/C, AUX HYD, JRB GEM HYD Q/C, 3CY GP BKT, TIER-4 FINAL DSL, 4-SPD TRANS, 20.5R25 RADIALS, FULLY LOADED, 781+ HRS **\$169,000 EACH**



2021 CAT 950GC A/C, HYD Q/C, 115" 4CY GP BKT, 225HP CAT C7.1 DSL, 23.5R25 RADIALS, 4,806 HRS **CALL FOR PRICING**



2017 DEERE 324K CAB, A/C, 3RD VLV AUX HYD, 88" GP BKT, RIDE CTRL, 405/70R20 RADIALS, 2,269 HRS **CALL FOR PRICING**



(2) 2019 CAT 907M A/C, 3RD VLV HYD, SS HYD Q/C, 1.5CY GP BKT, 74HP TIER-4 DSL, HI-SPD TRVL, RIDE CTRL, 405/70R18 TIRES, 454+ HRS **\$79,500**



2020 CAT 910M A/C, 3RD & 4TH VALVE AUX HYD, HYD Q/C, 2.2CY GP BKT, RIDE CTRL, 16.9-24 TIRES, 327 HRS **\$125,000**



2022 CAT 259D3 OOPS, AUX HYD, SS Q/C, 72" GP BKT, 18" RBR TRKS, 2,821 HRS **\$36,000**



(2) 2018 CAT 262D CAB, A/C, AUX HYD, MNL Q/C, 72" GP BKT, 2-SPD, 12X16.5 RBR, 553 HRS **\$45,000 EACH**

NOTHING IS OUT OF REACH—CALL US FOR FINANCING OPTIONS!



2020 MCCLOSKEY 512A
5'X12' TROMMEL SCREENER, 3-5CY CPTY, 100HP TIER-3 DSL,
PINTLE HITCH, 11R22.5 TIRES, 1,509+ HRS
\$149,000

SALES & RENTALS INC.

T-EQUIP

EQUIPMENT

SALES & RENTALS



2020 CAT 740GC
A/C, 3RD VLV HYD, 55 HYD Q/C, 1.5CY GP BKT, 74HP TIER-4
DSL, HI-SPD TRVL, RIDE CTRL, 405/70R18 TIRES, 7,448 HRS
\$219,000



2018 KOMATSU D155AXI-8
A/C, SU BLADE, RIPPER, INTEL MACH CTRL, 24" PADS,
RECENT UC, UPDATED INJECTORS & FUEL PUMP, 6,152 HRS
\$249,000



2022 CAT 326
A/C, 60" REACH, AUX HYD, 60" BKT,
32" PADS, 3,796 HRS
\$165,000



(2) 2022 KOMATSU PC210LC-11
A/C, 9'7" STK, AUX HYD, 42" BKT, 32" PADS, 1,622 HRS
\$209,000 EACH



2020 CAT D5K2-LGP
EROPS, A/C, 6-WAY HYD BLADE, GRD
CTRL, DRAWBAR, 3,135 HRS
\$89,500



2022 CAT 310 A/C, 8'2" STK, AUX
HYD, 30" BKT, 18" RBR PAD, 1,341 HRS
\$109,000



2022 CAT 308CR A/C, 7'9" STK, AUX
HYD, 30" BKT, 18" RBR PADS, 1,046 HRS
\$99,000



2022 KOMATSU D51PX-24
A/C, 132" 6-WAY HYD BLADE, JYSTK
CTRLS, 131HP DSL, 3-SPD HST TRANS,
DRAWBAR, 28" PADS, 2,662 HRS
\$135,000



2022 CAT 307.5 A/C, 7' STK,
AUX HYD, 30" BKT, 18" RBR PADS, 911 HRS
\$95,000



2018 CAT 303.5E2CR
A/C, BM SWNG, AUX HYD, 34" BKT,
16" RBR PADS, 1,580 HRS
\$45,000



2016 DEERE 470GLC
A/C, 11' STK, HYD Q/C, 72" BKT,
367HP TIER-4 DSL, 36" TG PADS,
7,899 HRS
\$129,000

ADDING UNITS TO OUR FLEET DAILY FOR YOUR RENTAL NEEDS

**We are cash
buyers for
quality used
trucks and
equipment!**

BROOKSIDE EQUIPMENT SALES

www.BrooksideEquipment.com

978-249-4600



2018 CAT 289D: 4,749 Hours, 2660 Lb Lift, Cab W/ A/C, Hydraulic Coupler, Pilot Controls, 2 Speed, 4 Cyl Cat C3.3B Turbo, 10.6K Lbs, stk#SK287, **\$36,500**



2015 GRADALL XL4300-III: 58" Cleanup Bucket, 9 Ft Blade, Mercedes-Benz Engine, 44K Lbs, stk#VX108, **\$39,500**



2018 CATERPILLAR 972M: 15,210 Hours, 5.6 Yard, Cab W/ A/C, Auxiliary Hydraulics, Joystick Steer, 6 Cylinder Cat Turbo, 55k Lbs, stk#LO694, **\$84,500**



2009 BOBCAT S250: 2,277 Hours, 2500 Lb Lift, Cab W/ A/C, Aux Hyd W/ High Flow, Hyd Coupler, 2 Speed, 72" Bucket, Joystick Controls, 4 Cyl Bobcat, 9.5k Lbs, stk#SK031, **\$25,500**



2015 DOOSAN DL200-5: 4,492 Hours, 3 Yard, Cab, Hyd Coupler, 4 Cyl Perkins, 26K Lbs, stk#LO082, **\$46,500**



2018 CATERPILLAR 312F GC: 959 Hours, 32" Bucket, Aux Hyd, Good U/C, A/C, Cat C3.4B, 28K Lbs, Stk#XC289, **\$89,950**



2017 BOMAG BW120SL-5: 417 Hours, 48" Smooth Double Drum, Vib, Orops, 3 Cyl Kubota D1703, 24 HP, 5.6K Lbs, stk#CO614, **\$19,900**



2006 JOHN DEERE 310SG: 3,450 Hours, 4x4, X-Hoe, Cab, Turbo, Power Shift, Ride Control, 24" Bucket, Rear Aux Hyd, stk#BH627, **\$36,500**



1997 JOHN DEERE 544G TCL: 10,436 Hours, 2.75 Yard, Comes W/ 38" Forks, Cab, Hydraulic Coupler, 6 Cyl John Deere Turbo, 29k Lbs, stk#LO193, **\$39,500**



2017 JOHN DEERE 310L: 7,150 Hours, 4x4, X-Hoe, Cab, 4-In-1 Bucket, Power Shift, Ride Control, Pilot Controls W/ Pattern Changer, 24" Digging Bucket, Rear Manual WainRoy Coupler, stk#BH013, **\$38,500**



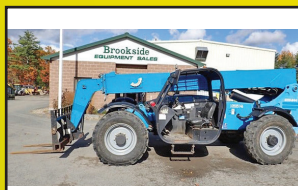
2008 HAULOTTE HS5388RT: 2,342 Hours, 52 Ft Rough Terrain Scissor Lift, 4x4, 88" Wide, 2 Cyl Hatz Diesel, Stabilizers, stk#AE118, **\$11,500**



2016 JOHN DEERE 410L: 5,563 Hrs, 4x4, X-Hoe, Cab W/ A/C, Front Hyd Coupler w/3rd Valve, Power Shift, Ride Control, Pilot Controls w/Pattern Changer, 24" Dig Bucket, Rear Manual Coupler, stk#BH193, **\$54,500**



2017 KOMATSU WA320-8: 12,179 Hours, 3.7 Yard, Cab W/ A/C, Backup Camera, 6 Cyl Komatsu Turbo, 35K Lbs, Stk#LO101, **\$67,500**



2016 GENIE GTH844: 2,903 Hours, 8k Lb Lift, 43'10" Lift Height, 4x4, Orops, 4 Ft Forks, Tilt Body, Aux Hyd, Manual Coupler, 4 Cyl Deutz Turbo, 100 HP, stk#FL097, **\$34,500**



2020 CATERPILLAR 306CR: 438 Hours, 12" Digging Bucket, Hydraulic Thumb, 78" Angle Blade, Cab W/ A/C, Swing Boom, 4 Cyl Cat Turbo, 57 HP, 16k Lbs, stk#XC531B, **\$79,500**



2019 JOHN DEERE 317G: 668 Hours, 2125 Lb Lift, Cab W/ A/C, Hyd Coupler, Joystick Controls W/ Pattern Changer, Turbo, Aux Hyd, 8.2K Lbs, stk#SK381, **\$39,500**



2018 JLG T350: 323 Hours, 35 Ft Towable Electric Knuckle Boom, 4 Ft Basket, stk#AE065, **\$19,900**



2020 VOLVO ECR88D: 1,891 Hours, 36" Bucket, Auxiliary Hydraulics, Cab W/ A/C, 91" Blade, 2 Speed, Swing Boom, 4 Cyl Volvo Turbo, Manual Coupler, 21K Lbs, stk#XC078, **\$57,500**



2021 CATERPILLAR 259D3: 1,294 Hours, 2010 Lb Lift, Cab W/ A/C, Aux Hyd, Hyd Coupler, Pilot Controls, 72" Bucket, 9K Lbs, stk#SK696, **\$44,500**



2003 GEHL 5635SXT-II: 963 Hours, 1900 Lb Lift, Cab, Aux Hyd, Manual Coupler, 4 Cyl Deutz Turbo, One Owner, 7K Lbs, stk#SK011, **\$19,900**

60 STATE RD, PHILLIPSTON, MASS

978-249-4600

EMAIL: KEVIN@BROOKSIDEEQUIPMENT.COM

SALVADORE

FAMILY OF DEALERSHIPS

442 W. Broadway, Gardner, Ma | SalvatoreRam.com

**RAM**

978-616-6127

**RAM CHASSIS CAB DEALER
IN NEW ENGLAND****We've Got Your Truck!****RAM
PROFESSIONAL****SAVE \$11,000!****Ready for Upfit!**2024 RAM 3500HD
CHASSIS TRADESMAN
REG CAB 4X46.4L V8 HEAVY-DUTY
HEMI ENGINE - 6-SPD
AUTO AISIN AS69RC HD
TRANSMISSION - 60" CA**MSRP: \$63,570
NOW ONLY: \$52,570!**

STK # G301689

SAVE \$10,250!**Ready for Upfit!**2024 RAM 3500HD
C&C TRADESMAN
REG CAB 4X46.7L I6 CUMMINS TURBO
DIESEL ENGINE - 6-SPD
AUTO AISIN AS69RC HD
TRANSMISSION - 60" CA**MSRP: \$71,655
NOW ONLY: \$61,405!**

STK # N24073

SAVE \$11,000!**Ready for Upfit!**2024 RAM 3500HD
CHASSIS TRADESMAN
REG CAB 4X46.4L V8 HEAVY-DUTY
HEMI ENGINE - 6-SPD
AUTO AISIN AS69RC HD
TRANSMISSION - 60" CA**MSRP: \$63,570
NOW ONLY: \$52,570!**

STK # G301690

SAVE \$3,000!**Ready For Upfit!**2025 RAM 3500
CHASSIS CAB BIG
HORN CREW CAB 4X46.7L I6 CUMMINS TURBO
DIESEL ENGINE - 8 SPEED
AUTO TORQUEFLITE HD
TRANSMISSION**MSRP: \$81,350
NOW ONLY: \$78,350!**

STK # N25121

SAVE \$11,000!**Ready For Upfit!**2024 RAM 5500
CHASSIS CAB
TRADESMAN REG CAB6.7L I6 CUMMINS TURBO
DIESEL ENGINE - 6-SPD
AUTO AISIN AS69RC HD
TRANSMISSION - 60" CA**MSRP: \$79,520
NOW ONLY: \$68,520!**

STK # G347604

SAVE UP TO \$1,000**MUST QUALIFY
FOR SAVINGS!****Ready For Upfit!**2026 RAM 5500
CHASSIS TRADESMAN
REG CAB 4X46.7L I6 CUMMINS TURBO
DIESEL ENGINE - 8-SPD
AUTO TORQUEFLITE HD
TRANSMISSION**MSRP: \$79,055
NOW ONLY: \$78,055!**

STK # N26008

SAVE \$11,000!**Ready For Upfit!**2024 RAM 3500HD
TRADESMAN REG
CAB 4X46.4L V8 HEAVY-DUTY
HEMI ENGINE - 6-SPD
AUTO AISIN AS69RC HD
TRANSMISSION - 84" CA**MSRP: \$63,130
NOW ONLY: \$52,130!**

STK # G310801

SAVE UP TO \$5,000!**High Roof Cargo Van**2025 RAM
PROMASTER 2500
TRADESMAN3.6L V6 24V VVT ENGINE -
9-SPD AUTO
TRANSMISSION - GVWR
8,900LBS - 16" WHEELS**MSRP: \$53,250
NOW ONLY: \$48,250!**

STK # N25056

SAVE \$11,000!**Ready For Upfit!**2024 RAM 3500HD
CHASSIS TRADESMAN
REG CAB 4X46.7L I6 CUMMINS TURBO
DIESEL ENGINE - 6-SPD
AUTO AISIN AS69RC HD
TRANSMISSION - 84" CA**MSRP: \$73,920
NOW ONLY: \$62,920!**

STK# G309155

SAVE \$11,250!**Ready For Upfit!**2024 RAM 5500 CHASIS
CAB TRADESMAN REG
CAB6.7L I6 CUMMINS TURBO
DIESEL ENGINE - 6-SPEED
AUTO AISIN AS69RC HD
TRANSMISSION - 60" C/A**MSRP: \$79,110
NOW ONLY: \$67,860!**

STK # N24078

Additional Inventory Available & Ready For Custom Upfits!

Not responsible for typographical errors. Inventory changes frequently. Pricing subject to change due to manufacturer rebates. Pricing includes all available rebates and incentives and may require vehicle to be reported as a Business sale to the manufacturer. See dealer for complete details.

Authorized Fisher
Snow Plow Dealer



HILLSIDE MOTORS

**800-D American Legion Highway (Rt. 177)
Westport, MA 02790
508-636-5050**

Financing
Available
-Others in Stock

Family Owned & Operated Since 1969



OTHERS AVAIL.

**2018
KNAPHEIDE
8' SINGLE
REAR WHEEL
UTILITY
BODY. Rhino
Liner, Rust-
Free, Removed
From Southern
Truck, \$6,400.
(Other Utilities
Available
Starting At
\$1,500.)**



74K MILES

**2016 FORD F150 REG CAB 8' BED WITH WORK
CAP. Longbed, V6, Auto, AC, PW, PL, Bluetooth, Rear
Camera, 74K Miles, One Owner, Fleet Maintained,
Pristine Condition, \$17,900.**



4X4

**2015 - 2016 CHEVY 2500 CREW CAB 8' READING
ALUMINUM UTILITY. w/Top-Loading Boxes, RWD, 6L
V8, Auto, AC, PW, PL, 6-Passenger, 235K, One Owner, Fleet
Maintained, Rust-Free, 2 To Choose \$12,900. to \$13,900.**



ONE OWNER

**2017 CHEVY 3500 SRW CUBE VAN. 6L V8, Auto,
AC, Tilt, Limited Slip Dif, Barn Doors, 142K, One
Owner, Fleet Maintained, \$14,400.**



4X4

**2015 CHEVY 2500 8' REGULAR CAB 4x4 W/
FIBERGLASS WORK CAP. 6L V8, Auto, AC, PW, PL,
190K, One Owner, Fleet Maintained,
\$12,900.**



\$16,900

OTHERS AVAIL.

**2015 CHEVY 3500 11' ENCLOSED UTILITY RWD. 6L V8,
Auto, AC, 13,200 GVW, 84" CA, Dual Tanks, 187K, Southern
Truck, \$16,900., (Cab/Chassis Only \$12,900.)**



POWER GATE

**2018 ISUZU NPR HD 16' BOX TRUCK W/POWER
TAILGATE. 6.0L Gas, Auto, AC, 14,500 GVW, E-Track,
Rear Camera, One Owner, Fleet Maintained, 152K,
Super Clean, \$18,900.**



\$14,900.

**2009 INTERNATIONAL DUMP. Stainless Steel Body W/Tailgate
Sander, Diesel, Allison Auto, 22.5 Rubber, 36,220 GVW, Load Cover,
98K Miles, One Owner, Fleet Maintained, Needs Dump Piston,
\$14,900.**

TIMED AUCTION

LATE MODEL RENTAL FLEET CONSTRUCTION EQUIPMENT & TRUCK AUCTION

Rental Fleet Construction Equipment, Support, Attachments,
Campers, Ice Cream Trucks and Trailers

OPENS: SATURDAY, NOVEMBER 15TH @ 10:00 AM

CLOSES: SATURDAY, NOVEMBER 29TH @ 10:00 AM

7697 Route 31, Bridgeport, New York 13030



HIGHLIGHTS INCLUDE: 3 CAB & CHASSIS: Unused Chevy 6500, Unused Chevy 5500, Unused Dodge 5500, **73 HYDRAULIC**

EXCAVATORS: (2)New AGT NT18K, (15)New AGT QK16R, (9)New AGT MX15RX, (5)New AGT H15R, (11)New AGT MX12RX, New CFG QK18Z, (2)New CFG QK16Z, (5)New CFG H15-(Z), (3)New CFG MH12RX, (3)New CFG QH12R, (2)New Landhero LDH-KV16, New Landhero LDH-KN16, (5)New Miva VA15, (4)New Miva VA13C, (5)New Miva VA13, **ROLLBACK TRUCK:** 2017 Peterbilt 367, **WELDING**

TRUCK: 2018 Ford F550XL, **27 TRUCK TRACTORS:** 2016-2012 Kenworth T680(t/a), 2011 Kenworth T370(s/a), (2)2016-(10)2014-2013 Volvo VNL64T300, 2017-(3)2016-2014 Volvo VNL42T300(t/a), (2)2017-(3)2015 Freightliner 125(t/a), 2017-2016 Freightliner Cascadia Evolution(t/a), **16 COLD PLATE MILK TRUCKS:** (2)2017-(2)2016-2014-2009 Kenworth T370, 2016-2011 Hino 338, (4)2013 Freightliner M2, 2003 Sterling ACT(s/a), (2)2017-2016 Volvo VNL42T300(s/a), **2 VAN TRUCKS:** (2)2016 Hino 268, **3 UTILITY TRUCKS:** (2)2019 Chevy 2500HD, 2014 GMC 2500HD, **2 RUBBER TIRED LOADERS:** 2017 JD 844K, Hough 60, **CRAWLER TRACTOR:** Komatsu D39PX-21, **JAW CRUSHER:** New SKLP SK-PSJ220, **8 TELESCOPIC FORKLIFTS:** JLG G10-55A, (2)Skytrak 10054, Skytrak 8042, Unused JLG 519, (2)Unused JLG 3013, 2016 Skytrak 6036, **FORKLIFT:** New Heli CPYD25, **12 BOOM LIFTS:** JLG 1250AJP, 2018 JLG 800S, (2)JLG 600S, (2)JLG M600, JLG E450, (4)New Mec 34J, **21 SCISSOR LIFTS:** (2)2018 Snorkel S4732E, (2)2019 Snorkel S3215L, (2)2019 Snorkel S3010P, 2019 Snorkel S3008P, (2)2019 Snorkel TM12E, Skytrak 8841, (3)Skytrak 4632, (5)Skytrak 3219, JLG 4069, **6 RUBBER TRACKED SKID STEERS:** Cat 277B, (4)Kubota SVL95, Kubota SVL75, **4 SKID STEERS:** Cat 262D, Case SV185, Case SR160B, NH L215, **18 MINI TRACK LOADERS:** 2023 Toro Dingo TX1000W, 2020 Toro Dingo TX525, New AGT LRT23, (2)New AGT MX-CRT-23, New AGT LRT23, (3)New AGT MX-MRW-14, (2)New AGT YSRT14, (3)New Landhero LDH-T460, New MMS380R, (3)New MMS MS36C, **2 MINI TIRED LOADERS:** (2)New AGT SDA-140W, **LOADER LANDSCAPE TRACTOR:** JCB 212(4x4), **6 COMMERCIAL MOWERS:** Ferris ISX800, **HYDROSEEDER:** Easy Lawn TM10, **2 LANDSCAPE EQUIPMENT:** Hermes HM301 Orchard/Vine Mower, Brillion SS120 10ft. Grass Seeder, **2 CONCRETE EQUIPMENT:** Power Buggy IBP16 Stand-On, New MMS MS90B Hand Power Trowel, **2 WOOD PROCESSING EQUIPMENT:** New AGT YC-32G Sawmill, New AGT YC-26G Sawmill, **2 WOOD CHIPPERS:** Demo & New Vermeer BC700XL, **GENERATOR:** New Airman SDG25S, **AIR COMPRESSOR:** 2008 IR P185WJD, **4 CAMPERS, UTILITY BODY:** Reading, **14 REFRIGERATED & VAN TRAILERS:** 2012-2006 Great Dane 48ft.-53ft.(Thermo King, Carrier), **7 TAGALONG TRAILERS:** Interstate 12-ton(t/a), 20ft.(t/a), 2019 Pequea 16ft.(t/a), Haul A Frame A Frame 16ft.(t/a), 2005 Quality 16ft.(t/a), Utility Concrete Forming Supply 16ft.(t/a), 2020 Hawke 12ft.(t/a), **2 EQUIPMENT TRAILERS:** (2)2018 Witzco RG50, **3 DUMP TRAILERS:** 2020 Hawke 12ft.(t/a), 2019 Hawke 12ft.(t/a), 2016 Sure-Trac ST821 12ft.(t/a), **2 PICKUP TRUCKS:** 2018-2015 Ford F150, **16 MULTI-USE CONTAINERS:** (9)New ZHW 40ft. High Cube, (3)New CTN 40ft., (4)New 20ft., **3 CONTAINERS:** (2)New CTTN 12ft., New CTTN 10ft., **12 CONCRETE FORMS:** 36in. & 24in. Gutter Molds, Stainless Steel Gutter Molds, 6in.x6in. Curb Mold, 6in.x145in. Curb Mold, 6in.x14in. Curb Mold, Misc Mold Parts, **2 SLIP FORM PAVERS:** (2)Power Curber 5700B, **4 PRESSURE WASHERS:** (4)New Easy Kleen 4,000psi, **2 RECREATIONAL VEHICLES:** JD Gator, Polaris Indy Special Snow Mobile, **5 GOLF CARTS:** (5)Club Car, **30 PALLETS OF STONE, EXCAVATOR BUCKET, 6 EXCAVATOR PARTS, 546 ATTACHMENTS:** (396)Skid Steer, (29)Excavator, (115)Mini Track Loader, (4)Forklift, Tractor, Lift, **OVER 600 NEW & USED SUPPORT EQUIPMENT, 4 SURVEY EQUIPMENT:** (4)New SKLP Laser Level.

SALE SITE PHONE: (607) 708-0436 Frank

ALEX LYON & SON

SALES MANAGERS & AUCTIONEERS, INC., BRIDGEPORT, NY 13030

Phone: (315) 633-2944 • Fax: (315) 633-5635

Go to WWW.LYONAUCTION.COM for more details



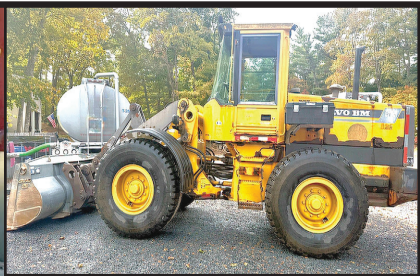


FISHER SNOWPLOWS SPREADERS AND PARTS

Brand **New & Unused**. Call For Pricing.

Brian's Truck Equipment, Brookfield MA 01506

1-508-450-5449



1996 VOLVO L70C WHEEL LOADER. 12K Hours, QR Coupling, New Bucket, Hyd. Piston/Exhaust/Univ Joints/Piston & Bushings All Replaced, Parking Brake Rebuilt, New CAT Batts, Backup Camera, Radio, Heated Cab, **\$29,000.** 12' ProTech Snow Pusher Also Available. 781-389-3337

2016 GMC 3500 DRW 4X4 12' PLATFORM BODY w/Toolboxes. 6.0L V8, Auto, PW, PL, 13,400 LB GVW, 162K, Clean Truck, **\$20,700.**, Westport, MA 508-636-5050



1967 OR '68 CATERPILLAR TRAXCAVATOR. Runs Well, Last Used In 2024, Asking **\$9,000.** 978-360-8629



Jukonski Truck Sales



WWW.TRUCKSELLERS.COM

se habla español

680 NEWFIELD ST. (RT 3) MIDDLETOWN, CONN • **800-378-0342** • MON-FRI 9-5

DON'T MISS OUT: YOUR IDEAL TRUCK AWAITS!



2023 ISUZU NPR HD 16' Box, Gasoline, Auto, 14,500 GVWR, #T-PS200269, **\$48,900**



2019 ISUZU NPR HD 16' Box, Diesel, Auto, 14,500 GVWR, #T-K7009067, **\$29,900**



2022 ISUZU NPR HD DC. 18' Landscape Body, V8, Auto, 50K Miles, 14,500 GVWR, #T-NS200905, **\$59,900**



2024 ISUZU NPR HD DC 14' Dump, Gasoline, Auto, 8K Miles, 14,500 GVWR, #T-RS204003, **\$76,900**



2024 HINO S5. Utility 16' Box, Diesel, Auto, 19,500 GVWR, **BRAND NEW TRUCK, #T-R7308872, \$69,900**



2024 HINO S5 BRAND NEW, Diesel, 19,500 GVWR Cab & Chassis, **\$56,999**



2021 HINO L6 26' Box With Liftgate, Diesel, Auto, 25,950 GVWR, #T-M5T51007, **\$56,900**



2019 HINO 195 18' Box With Carrier Reefer, Auto, 19,500 GVWR, #T-KK007975, **\$36,900**

90 DAY POWERTRAIN WARRANTY AVAILABLE ON ALL CERTIFIED TRUCKS. INCLUDES INJECTORS AND TURBO



Cherry Hill Construction Co., Inc
51 Ciro Road – North Branford,
CT 203-488-7929

www.CHERRYHILLEQUIPMENT.com



2004 MACK CV713, Tri
Axle Dump, 506,699 Miles,
Asking \$48,000



1999 JOHN DEERE
200 LC.
14,586 Hours,
Asking \$29,000



1991 CATERPILLAR 966F
LOADER. Meter Reads
2506 Hours,
Aux Hydraulics,
Asking \$45,000



1975 P&H
OMEGA CRANE,
6,509 Hours,
Asking \$19,000



1984 CAT 966D,
8854 Hours, Aux
Hydraulics, Side
Dump Bucket.
Asking \$43,000



1999
INTERNATIONAL
4900 DT 466E, 98K
Miles, Automatic,
All Seasons Body.
Asking \$10,000



1987 CAT D6H
DOZER,
With 11,989 Hours,
Asking \$37,500



1998 MACK RD688SX 10
WHEEL DUMP,
123K Miles, Automatic,
Mack E7-350,
Asking \$28,000



1995 HOGZILLA TC1464P.
Tub Grinder, 1,751 Hours,
Asking \$125,000



2015 PETERBILT 388
Heavy Haul Tractor,
430,650 Miles, 18 Spd,
Engine Rebuilt a At 370k
miles, ISX15 550 HP 1950
Engine, 20/22/46, New Trans,
New Rear, 4:10 Rears, Wet
Line, Holland 100 Ton Fifth
Wheel, **Asking \$130,000**



Commercial Truck Center

More Trucks
On Website

978-798-6428

www.durandgmc.com

More Trucks
On Website



2025 2500 WORK VAN.

Shelving & Draws
Pkg, Pwr Outlet, V6,
Pl, PW, Black, #6885.
\$50,995



2025 3500 HD UTILITY. 4WD,

Reading Steel
Body,V8, Heated
Folding Mirrors, Plow
Prep, Alum Wheels,
Upfit Switches, SRW,
#T6761 **\$68,691**



\$79,900

2025 3500 HD DUMP.

Crew Cab, 4WD,
Diesel, Heated
Trailer Mirrors, Plow
Prep, Upfit Switches,
#T6920 **\$79,900**



2025 3500 HD UTILITY.

4WD, Reading Steel
Body,V8, Heated Folding
Mirrors, Plow Prep, Dual
Alternators, Pwr Outlet,
Upfit Switches, SRW,
#T6781N
\$68,691



2025 2500 WORK VAN.

Shelving & Draws
Pkg, Pwr Outlet, V6,
Pl, PW, Red, #6883.
\$50,995



2025 2500 PRO PICK-UP. 4WD,

Fisher Plow,V8,
Heated Mirrors, Plow
Prep, Upfit Switches,
SRW, #T6944
\$62,039



2025 3500 14Ft FREIGHT HAULER.

Roll Up Door, Pass
Thru Door, Cargo
D-Rings, Pull Out
Ramp, Galvanized Step
Bumper, DRW, V8,
PW, PL, Cruise, #6891
\$56,648



2025 2500 WORK VAN.

Shelving & Draws
Pkg, V6, PL, PW,
White, #6884.
\$49,895



\$67,175

12 Ft Available

2025 3500 UTILITY.

10' Dura Cube Body,
3 Bar Ladder Rack,
Ladder to Roof, Step
Bumper, Pass Thru
Door, V8, PW, PL,
T6925 **\$67,175**



2025 3500 UTILITY VAN.

Knapheide Body,V8,
Remote Start, 220
AMP Alternator,
Cruise, PW,PL, SRW,
#T6902
\$61,528



2025 3500 12Ft FREIGHT HAULER.

Roll Up Door, Pass
Thru Door, E-Trac,
Step Bumper, SRW,
Lock Diff, V8, PW,
PL, Cruise, #T6877
\$53,125



2025 3500 HD UTILITY. Diesel, 4X4,

DRW, Knapheide
Body, 120V Power
Outlet, #T6970
\$80,993



3 To Choose

2023 GMC 2500 CARGO VAN.

V6 Gas, Auto,
18,727 Miles,
Steel Partition w/
Door, PW, PL, #3052,
\$30,990



\$75,343

2025 3500 HD LANDSCAPE DUMP.

Crew Cab, Curb Side
Door, Rear Swing,
4WD, V8, Trailer Mir-
rors, Plow Prep, Upfit
Switches, #T6803
\$75,343

495 Main St, Leominster, MA • www.durandgmc.com



CYCLONE RAKE. Lawn & Leaf Vacuum. Includes Bag, Frame, 6.5 HP Engine, And Hoses, **\$500.** 508-966-3364

FISHER 9'6"
V-PLOW. Stainless
Steel, Hitch & Control
Off Ford F-550,
\$3600. Shelton, CT
203-218-3726



QUIPCAL
The Decal Experts

Decal Sets for your Construction,
Forestry, Ag, Mining & Industrial
Equipment - Old and New.

Prompt • Knowledgeable • Reliable • Experienced
To Check \$ Call: 215-536-5339
& Availability Email: info@CustomServicesCompany.com
Your Next Decal Set Is Here • www.QuipCal.com



**2016 PALMER
CHALLENGER.** 26' Steel Dump
Trailer, Single Point Suspension,
Rebuilt New Springs 2025, 11R24
Alum Wheels, Complete Brake Job
Both Axles, High Liftgate, Flip N Go
Electric Tarp, Many More New Parts,
\$44,900. 781-389-3337



**1996 ZIMMERMAN
6 YD MIXER.**

On 1996 International, 60K Miles,
Retiring, Great Running Truck, Make
Your Own Concrete, **\$25,000.**
978-265-5974

BEAM TRUCK & BODY INC.

433 CUMBERLAND HILL ROAD, WOONSOCKET, RI 02895

401-767-2639

NEW - USED & RECONDITIONED DISPOSAL EQUIPMENT

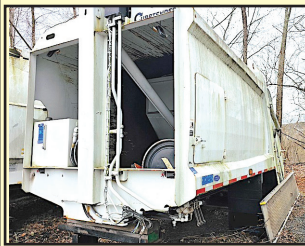


**2000 INTERNATIONAL WITH
2023 AMERICAN / PALFINGER 250S
HOOK-LIFT, LOW MILES.
\$70,000**

IN STOCK READY TO
INSTALL
NEW EQUIPMENT
* HAD-185-120-36/54"
* T40S AMERICAN
PALFINGER
* 20' BOX WITH WALTCO
LIFT-GATE 2500LBS. **\$6,000**



2004 KENWORTH T800:
396,914 MILES, AMERICAN 75,000#
ROLL-OFF, CAT C12 W/ FULLER 8LL, 60,000#
GVW CALL FOR MORE DETAILS !



**20 YARD CURBTENDER
GOOD USED 2017 UNIT.**



**GOOD USED 2020 PAKMOR 16 YARD
REAR LOADER. HAS REEVING
SYSTEM. CANNOT GO ON AN UNDER
CDL CHASSIS, 33K OR GREATER.**

**STELLAR NXT18L HOOK
LIFTS IN STOCK !**
NEEDS 120" TO 130"
CA. DOES 10' TO 14'
CONTAINERS.
36" / 54" MANUALLY
ADJUSTABLE HOOK
HEIGHT. PERFECT FOR
F-600'S



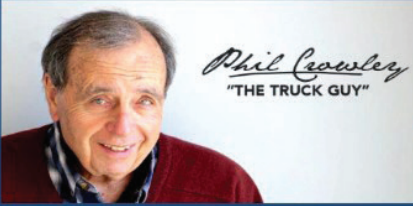
2010 INTERNATIONAL 7400:
42,000 MILES W/ HEIL 22 YD.
AUTOMATED PACKER. **\$60,000**
WILL SPLIT.

WWW.BEAMTRUCK.NET

PLACE MOTOR Inc.

The "RIGHT PLACE" Since 1923

COMMERCIAL TRUCKS



Phil Crowley
"THE TRUCK GUY"



PHIL CROWLEY
866-449-7482 EXT. 213



19 Thompson Rd.
Rte. 193
Webster, MA.

NEW 2024 FORD F-350 - F-600 4X4 CAB & CHASSIS SELL OFF



**NEW 2024 FORD T-350
TRANSIT
12' BOX
BUY FOR \$57,923***



**NEW 2024 FORD F-600 CAB &
CHASSIS 4X4
DIESEL ENGINE, WHITE,
205WB.
BUY FOR \$68,723***



**NEW 2024 FORD F-550 CAB &
CHASSIS 4X4
DIESEL ENGINE, WHITE,
169WB.
WITH FLAT BED BUY FOR
\$72,623*
WITHOUT BUY FOR \$66,723***



**NEW 2025 FORD F-750 CAB
AND CHASSIS
330 HP., DIFFERENT WHEEL
BASES AVAILABLE.
CALL FOR MORE DETAILS !**



**NEW 2025 AND 2026 FORD
F-550 SUPER CAB 4X4
60 AND 84 CA - SEVERAL TO
CHOOSE FROM.
GAS & DIESEL.
CALL FOR MORE DETAILS !**



**NEW 2026 FORD F-550
CREW CAB 4X4
DIESEL, 84 CA.
CALL FOR MORE DETAILS !**

*All Factory Rebates Back To Deal



**MASSACHUSETTS OLDEST FORD
DEALER SINCE 1923**





PLACE MOTOR Inc.

The "Right Place" Since 1923

COMMERCIAL TRUCKS

Call Phil Crowley "The Truck Guy"
866-449-7482 ext. 213



19 Thompson Rd.
Rte. 193 Webster, Ma.

NEW 2024 FORD F-250 - F-350 4X4 PICK-UP'S SELL-OFF !



**NEW 2025 FORD F-350
CREW CAB 4X4
LARIAT TRIM, 6.7L H.O.
POWER STROKE DIESEL,
POWER MOON ROOF AND
MUCH MORE !**



**NEW 2025 FORD F-250
XL TRIM, 4X4, 6.9L V8
ENGINE
AND MORE !**



**NEW 2025 FORD F-350
SUPER-CAB 4X4
CAB & CHASSIS, 60" CA,
7.3L V8 ENGINE
AND MORE !**



**NEW 2025 FORD E-350
CUTAWAY
KUV BODY
IN STOCK READY TO
WORK !**



**NEW 2026 FORD E-350
12' AREOCELL
SINGLE REAR WHEEL.
IN STOCK !**



**NEW 2025 FORD F-550
SUPER-CAB 4X4
84 AND 60 CA, 7.3L GAS
ENGINE.
BLACK IN COLOR - IN
STOCK !**

0% FOR 60 MONTHS - AVAILABLE ON XL TRIM PACKAGES ONLY IN LIEU OF REBATES. All Factory Rebates Back To Dealer*

WWW.PLACEMOTOR.COM



DEJANA
Truck and Utility Equipment



**COMMERCIAL
VEHICLE CENTER**



2004 STERLING L7500. 6-Wheeler Dump Truck, Power Angle & Wing Plows Included, Cirrus Closed Loop Grand Speed Control System Included, **\$25,000.** 508-962-4135



2018 SERCO 75XR, Fixed Boom, Tight Unit, Comes With Cooler, Loader Mounted Tank And Pump, **\$20,000,** Portland, CT, 860-835-0692



AREA HYDRAULICS

810 Quaker Hwy. Uxbridge, MA

508-278-6670



Cylinder Resealing



We Make Hose Assemblies
After Hours Service Available!



USED ROLLOFF CONTAINERS. Various Sizes & Conditions, Sold As Is, **\$800-\$1900.** Boston, MA Area 617-567-2524



CAT SKID STEER
50HP,
Excellent
Shape, With
Snow
Tires,
\$21,000
860-928-5748



11 Commercial Way
Milford, MA 01757

HILLVIEW EQUIPMENT

SALES & RENTALS 24/7 • 508-474-8063

Rt. 495 to exit 48,
Route 109W,
Left to Birch St,
right to Industrial Dr.
Left to Commercial Way



2019 CAT 938M 6,000 Hrs, Fusion Coupler Very Good Machine. **\$129,000**



2019 CATERPILLAR 325FL 8,900 Hrs, New Thumb & Quick Coupler, Aircon, Nice Machine. **\$99,000**



2006 CATERPILLAR 924G 4,000 Hrs, Ready To Work. **\$79,000**



2022 CATERPILLAR 906M 3,000 Hrs, Bucket, Aircon, Fast Runner. **\$77,000**



2014 CATERPILLAR 725C 9,100 Hrs, Ready To Work. **\$145,000**



2018 CATERPILLAR 312F 6,000 Hrs, Wide Pads, Aircon, Nice Machine. **\$89,000**



2014 CATERPILLAR 320E 4,000 Hrs, Piping, Aircon, Very Clean. **\$119,000**



2017 CATERPILLAR 314F CR 5,400 Hrs, Blade, Piping, Aircon. **\$99,000**



2013 CAT 924K 6,000 Hrs, Buckets, Forks, Fusion And 3rd Valve, Aircon. **\$89,000**



2011 CAT 320D 5,500 Hrs, Piping. **\$79,000**



1995 LULL 644-42 4,500 Hrs, Good Machine. **\$29,000**



2005 CAT 320CL 8,100 Hrs, Thumb. Ready To Go! **\$69,000**

www.HillviewEquipment.com



920 W. Chestnut St. **Brockton**, MA: Mon-Fri 8 am-5 pm & Sat 8-12 **508-586-1666**

Light It Up - GREEN!

8 LED Rectangular Surface Mount Warning Green / Amber Clear



27 Selectable Flash Patterns

5 Year Warranty
M20484GYCL-DC

\$61.99

Maxxima

48" LED Reliant® S2 Light Bar Amber/Green/White



FEDERAL SIGNAL



Hook mount, Clear domes, 4-Button Controller, 28 Flash Patterns

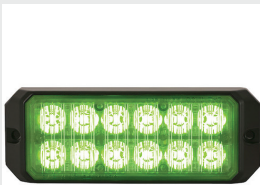
Single, dual, and tri-color capability

5 Year Warranty

RLNT48J-AGWH4

\$1,195

5" LED Green Dual Row Strobe



ALL GREEN

25 Flash Patterns

5 Year Warranty
8891710

\$107.99

Buyers
PRODUCTS COMPANY



Ultra Thin 5 Inch Green/Amber LED



Includes 3M™ self-adhesive tape for simple fastening.

5 Year Warranty
8892210

\$52.99

Buyers
PRODUCTS COMPANY



Sale ends 12/31/25 - Other green options in stock!

WHELEN



Commercial
Vehicle Center

JACK MADDEN FORD

781-762-4200



LOW RATE FINANCING ON 2024 TRANSITS
IN STOCK!
LOW RATE FINANCING ON ALL SUPER DUTY TRUCKS
IN STOCK!



New & pre-owned TRANSIT CARGO VANS. All sizes available.



2024 FORD F-550 SD XL 4WD DRW W/9' SUPER HAULER LANDSCAPE BODY. 6.7L Diesel, 19500 GVW, Tow Pkg, stk#17329, \$81,771.



NEW FORD E-350 CUTAWAY READING UTILITY. STK#21657, \$71,526.



NEW FORD TRANSIT 350 SERVICE BODY AWD, STK#69470, \$79,745.



NEW 2025 E350 12' AEROCCELL CUTAWAY. STK# 30217 \$53,250.

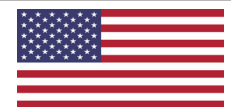


NEW FORD F550 4X4 DIESEL 16' BOX. STK#18361, ~~\$84,999~~ \$93,989

LARGEST STOCKING SUPER DUTY DEALER

JACK MADDEN FORD

825 Providence Hwy Rt.1 Norwood, MA
781-762-4200



Commercial
Vehicle Center

*All prices include incentives for qualified buyers. For trade assist, must have 2017 or new trade. All vehicles require dealer financing. Some prices include snowplow incentives. See dealer for complete details.

Commercial
Vehicle Center

JACK MADDEN FORD

781-762-4200



**LOW
FINANCING
ON 2024
TRANSITS
IN STOCK!**

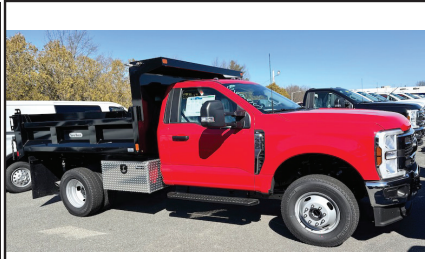


**LOW
FINANCING
ON 2024
TRANSITS
IN STOCK!**

2024 FORD TRANSIT 250 CARGO VAN. V6, Auto w/OD, AC, P/W, Rear Camera, Limited Slip, stk#22914, \$42,471.



**NEW FORD F350
4X4 SUPER DUTY
8' READING
SERVICE BODY
WITH ALUMINUM
LIFT GATE.
STK#34386,
\$68,732.**



**NEW F350
3-4 YARD
DUMP.
GAS. 10
AVAILABLE,
STK#36957,
\$68,888.**

see more photos on our website WWW.JACKMADDENFORD.COM



**NEW CAB &
CHASSIS:
350-450-550
SUPER CABS,
REGULAR
CABS.**

READY TO GO



**2024 FORD
F-550 SC XL DRW
SWITCH N GO
4WD. 6.7L Diesel,
Auto, AC, PW, PL,
Rear Camera,
19500 GVW,
Snowplow Prep,
\$89,114.**



**2024 FORD F-350
SD XL W/9' SUPER
HAULER 3-4 YARD
DUMP 4WD. 6.7L
Diesel, Auto,
14,000 GVW, PW,
PL, Snowplow
Prep, stk#10463,
\$77,033.**



**2024 FORD F-550
SD XL DRW W/9'
UNICELL ARIFLOW
4-5 YARD DUMP
4WD. 6.7L Diesel,
Auto, AC, PW, PL,
Snowplow Prep,
19,500 GVW,
\$78,190.**

**LARGEST
STOCKING
SUPER DUTY
DEALER**

JACK MADDEN FORD

825 Providence Hwy Rt.1 Norwood, MA
781-762-4200

Commercial
Vehicle Center

*All prices include incentives for qualified buyers. For trade assist. must have 2018 or newer trade. All vehicles require dealer financing. Some prices include snowplow incentives. See dealer for complete details.

202

**TRUCK
&
EQUIPMENT**
603-899-2000

www.202truck.com
RT 202 Rindge NH
SALES & RENTALS - NO SALES TAX
FINANCING & DELIVERY



2024 HYUNDAI HX48A2. 495 Hours, Hyd. Thumb, Blade, Heat & A/C, Warranty, 11K Lbs., \$59,000.



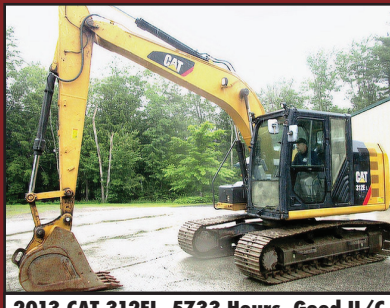
2022 SANY SY35U. 382 Hours, 8500 Lbs., Hyd. Thumb, Cab Heat & A/C, Blade, Nice Clean Machine, \$34,500.



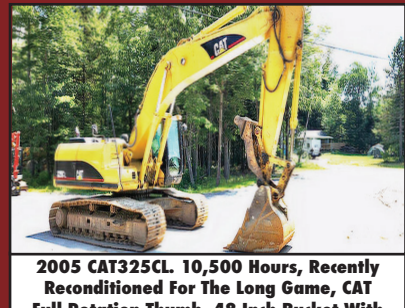
2014 PETERBILT 337. Paccar PX7 300HP, 26,000 GVW, Air Ride, 10F + 16R On Air Brakes, 138K Miles, Hrs: 6360, 6 New 11R22.5 Tires, Curry Utility Body with Compressor, \$47,500.



2016 JLG 450AJ. 2196 Hours, 45 Ft Reach, 25 Horizontal, \$29,000.



2013 CAT 312EL. 5733 Hours, Good U/C, \$59,000. Optional Hyd. Thumb, Long Stick, 24" Shoes, \$59,000. \$49,000.



2005 CAT325CL. 10,500 Hours, Recently Reconditioned For The Long Game, CAT Full Rotation Thumb, 48 Inch Bucket With Recent Teeth, Pattern Changer, Travel Pedal, \$75,000.



VINAGRO
MATERIALS

400 Lincoln Avenue, Warwick, RI.
401-943-7100, ext. 125
Monday- Friday 7AM-3PM

Available Products & Services:

Hot Mix Asphalt
Paving
&
Ready Mix Concrete

RIDOT Certified
NRMCA Certified
Mass DOT Certified

Special Order
Block Face Color
Options:

STORM GRAY

SMOKE

WALNUT

**Inter-Locking Knob Style & Flat Top Concrete Block for
Material Bins & Walls For Sale
Concrete Barrier For Sale / Rental**

Starting @ \$60.00 ea. / Barrier @ \$150.00 ea.

-Volume Discounts Available -

Please call ahead to schedule a pickup and pricing!



2'x4', 4" Landscape



2'x4' Limestone



2'x4', 4"
Landscape Corner



2'x4'
Flagstone



2'x3'x4' Sloped



2'x4', 1" Rock Face



2'x4' Chamfered



Flat Caps

Barrier Size

24"W x 32"H x 10'L



Concrete Block Sizes
& Styles

1'x2'x2' Cap & 1'x2'x4' Cap

2'x2'x2' Corners and Blocks

Available in:

Chamfered

Flagstone

Limestone

4" Landscape

1" Rock Face

2'x2'x4' Corners and Blocks

Available in:

Chamfered

Flat

Flagstone

Limestone

4" Landscape

1" Rock Face

Knob or Flat Tops

2'x3'x4' Sloped

Available in:

Chamfered

Flat

4" Landscape

1" Rock Face

**WE TAKE
ANYTHING IN
TRADE**

Jolly John's
Truck & Equipment



**FINANCING
AVAILABLE**

WE PAY CASH FOR YOUR TRUCKS & EQUIPMENT



2019 GEHL R105 SKID STEER, Open Cab, 54" Bucket. Freshly Serviced We Will Take Most Anything In Trade, **\$13,900**



2012 FORD F750XL DUMP TRUCK, Cummins ISB 6.7L Diesel, Allison Automatic Transmission, Ledwell 10' Long x 2' High Steel Body, Manual Roll Tarp, Double Tailgate Chutes, Chelsea PTO. **\$31,900**



2015 MITSUBISHI FUSO FE160 Box Truck. Mitsubishi F1C 4 Cylinder 3.0L Diesel 161 HP, Morgan 16' x 96" x 91" Body, Liftgate, Completely Serviced & Ready To Go. **\$19,900**

FINANCING AVAILABLE



2007 FORD F450XL FLATBED, V8 Diesel Engine, 15' x 96" Bed, Liftgate, Aluminum Tool Boxes, Power Windows And Locks, Freshly Serviced. **\$11,900**



2018 CATERPILLAR 312F EXCAVATOR. Control Pattern Changer, Rear View Camera, 10' 4" Stick, 24" Triple Grouser Track Shoes, 39" Digging Bucket, Hyd Thumb. A/C. **\$88,900**



2015 KENWORTH T370 T/A DUMP TRUCK Cummins 6 Cylinder ISL9 350 Diesel, Auto, Double Differential Locks, 16K FA, 40K RA, Alum Wheels, PTO, OX Steel Body, Electric Roll Tarp, Pintle Hitch, Jake, **\$86,900**



2016 FORD F450XL. 141K Miles, Power Stroke B20 V8 Diesel, Utilmaster 12' 6" Body w/ Built I Tool Boxes. Excellent Tires, Freshly Serviced, Strobe Lights, **\$20,900**



2001 FORD F450 SD 4X4 UTILITY TRUCK. 9' Plow, 7.3L Powerstroke Diesel, 4x4, 11' Knapheide Body, Freshly Serviced & Ready To Work. **\$19,900**



2019 ISUZU NPR HD REEFER TRUCK, V8 6.0 L Gas, Thermo King Reefer Unit, Morgan 16' x 96" x 85" Body, A/C, Power Windows & Locks. **\$22,900**



2017 CATERPILLAR 420F2 Fleet Owned & Maintained, Enclosed Cab, Aux Hyd, Hyd Coupler, 96" Loader Bucket, Extendable Stick, Quick Coupler, 18" Backhoe Digging Bucket, Rear Aux Hyd, Thumb Bracket **\$62,900**



1986 T-BROOK 26' ALUMINIUM DUMP TRAILER. Poly Liner, Load Cover, 60,000 GVW, Spring Suspension, 10' 1" Height, Fully Safety Checked And Serviced. **\$11,900**



2022 WACKER NEUSON SM100 TRACKED SKID STEER. 3 Cyl Yanmar Turbo Diesel, Aux Hyd, GP Bucket With Boce, Meter Reads 208 Hours, **\$27,900**

Call Nick 860-861-1326 or Mike 860-861-4199
www.jollyjohnstruckandequipment.com



(203) 752-0213
 WWW.EQUIP-SALES.COM
 NORTH HAVEN, CT 06473

PARTS ► SALES ► SERVICE ► RENTALS



2022 ROCKSTER R1100S

CLOSED CIRCUIT IMPACT CRUSHER. SERVICE RECORDS FROM DAY 1. CAT ENGINE, CENTRAL GREASE SYSTEM, REMOTE CONTROL, MAGNET, SCREEN BOX, 2 WAY RETURN BELT. 4,385 HRS. EXTREMELY RELIABLE & PRODUCTIVE MACHINE. **\$265,000**



2021 XCMG CV83PDU

473 HOURS, 66" SMOOTH DRUM, BOLT ON SHEEP FOOT. **\$56,500**



2022 XCMG XE75U

KUBOTA DIESEL, PATTERN CHANGER, HYDRAULIC COUPLER & THUMB PLUMBING. 200 HOURS. LOADED FULL CAB. **\$61,500**



2021 CATERPILLAR 279D3

1,457 HOURS, FULL CAB, GOOD U/C, HYD. COUPLER, 2 SPEED. **\$46,500**



2018 ROCKSTER RTT720A

1,535 HOURS, TROMMEL SCREENER, CAT TIER 3, 20' DRUM. **\$175,000**



2002 CATERPILLAR 980G II

EXCEPTIONALLY WELL MAINTAINED, SCALE, AUTO LINE, RECENT LINE BORING. BUCKET WORK, NEW TRANS, RECENT ENGINE OVERHAUL. TOO MUCH TO LIST. RUNS DAILY. **\$75,000 OBO**



2014 FREIGHTLINER 3500 CARGO VAN.

Dual Rear Wheels, High Roof,
128K Miles, **\$11,855.**
802-334-6587

RENTAL WITH OPERATOR PORTABLE JAW CRUSHER AND IMPACT CRUSHER



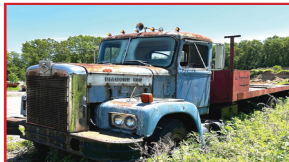
DAY-WEEK-MONTHLY RATES
80' STACKER AND
EXCAVATOR AVAILABLE

NEW ENGLAND
CALL KEN
508-328-0028

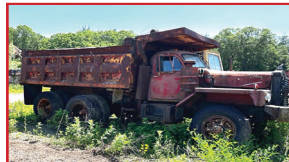
OWNER RETIRING. EVERYTHING MUST GO.
CALL WITH OFFERS 860-676-0411



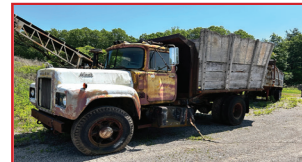
LORAIN CRANE. 40 Ton,
Cummins Lower Motor,
Detroit Upper Motor, 12'
Boom



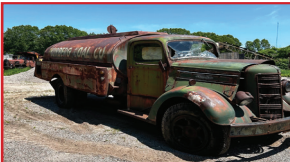
1970 DIAMOND RIO
20' SLIDER



1964 MACK B83. 270
CUMMINS, 5+4



1967 MACK. 673
MOTOR, 2 SPEED



1949 MACK OIL TRUCK



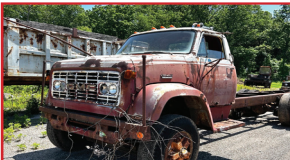
1966 FRYE DUMP
TRAILER



1972 STECO 50 YARD
DUMP TRAILER



1970 HILL 24' DUMP
TRAILER



1971 GMC 7500 CAB &
CHASSIS



CHEVROLET FOOD
TRUCK



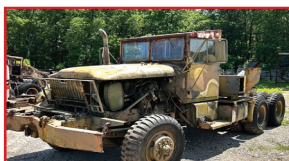
YARD HORSE JOCKEY.
460 FORD, AUTO



1968 HYSTER DROP
DECK FLAT TRAILER



1983 FORD CAMPER
CHASSIS. 460, NEW
AUTO TRANSMISSION



1989 KAISER MILITARY
TRUCK



BOBCAT TRAILER
HOMEMADE



SHED MOVER TRAILER.
NEW HYD PUMP



11' SNOW PLOWS. Power Angle, Extra Parts, Plow Frame, 1 Plow For Loader, **\$1,000& Up,** East Windsor, CT 860-716-0226



Bentons Heavy Equipment Repair

(860) 917-6048

Veteran Owned and Operated

On Site Service Repairs, Preventative Maintenance and Diagnostics

Servicing CT, RI, MA & The Northeast

Bentonsheavyequipment@outlook.com



Visit Us On Facebook



1986 LAND ROVER DEFENDER 110.

2.5L Diesel, 5 Speed, 75K Miles, Power Steering, Many Up Dates, Well Maintained, Call For Complete Details, **\$48,500.** 401-227-5757



1998 CHAMPION MOTOR GRADER 720A. Front And Wing Plows, New Steer Tires, Very Good Condition, 2583 Hours, **\$28,000.** 508-962-4135



203-234-7788
1037 Middletown Ave. (Rt. 17)
Northford, CT



SURE-TRAC LOW PROFILE 25.9K DECKOVER GOOSENECK TRAILER. 8' 6" x 25' + 5' Beavertail, Heavy Duty Low Profile Deck, #432778



CM TRUCK BEDS STARTING @ \$4,500



SURE-TRAC 15.4K PRO SERIES TELESCOPIC DUMP TRAILER. 7' x 14', Heavy Duty I-Beam Frame And Tongue, #454378



EZ Hauler 7K ENCLOSED CONTRACTORS TRAILER. 7' x 16', HD Ladder Racks, Cat Walk, Double Barn Doors, #151857



USED 2023 CAM SUPERLINE 15.4K Full Tilt Trailer. Slipper Spring Suspension, Diamond Plate Fenders, #536315, \$9,950



BEHNKE 14K CHANNEL SKIDLOADER TRAILER. 6' 11" x 16', Dexter Spring Suspension, LED Flush Mount Lights, #073199

www.thetrailerdepot.com

We'll Hook You Up
WE DO FEDERAL INSPECTIONS!



METROPOLITAN TRUCK CENTER INC.

1074 Turnpike Street • Stoughton, MA 02072

Family Owned & Operated
Since 1980

1-800-878-5491

www.metropolitantruck.com



**NO MATTER WHAT TRUCK YOU HAVE,
WE CAN FIND THE RIGHT PLOW FOR YOU!**



Tempest Poly

Loaded with upgraded de-icing technology



TEMPEST STAINLESS STEEL



StormBoxx

**Come see the all new
Fisher StormBoxx
featuring
Trace Edge technology**



WESTERN
**STAINLESS
STEEL PLOWS
FOR HALF TON
TRUCKS
NOW AVAILABLE**

NORTHEASTERN PETROLEUM SERVICE & SUPPLY**617-522-8390 Ext 103 • 51 B St. Bay 2 Hanover, Ma****After Hours Call 617-696-1979****We Are Looking For Newer Tank Trucks To List, Dual Equipped, Tandems & Auto. Trans, Can Sell From Your Location****Jerry Mello Cell: 617-799-1461 24/7 Email: jerrym@nepss.com**

2007 IH. Automatic, DT466, 156K Miles, 2 Compt 2000/800 Gal, 4E Neptune Meter, Go To Work Condition, \$29,000



1000 GALLON TANK. Diesel Only, 4' X 12', 10 GA, UL-142 DW Skid, HD 3/4 HP Pump & Water Absorb Filter Used One Month On Our Job. New \$13,500. Slightly Used \$10,900 FOB Hanover



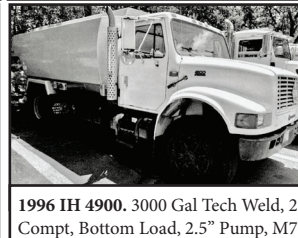
BOSTON 2700 GALLON TANK. 4-Compartment, 675/675/675/675, 4-C Meter, No Hose, 17' Frame Length, Mounted On 1996 GMC Parts Chassis, Must Tow, \$9,900

**MUST TOW**

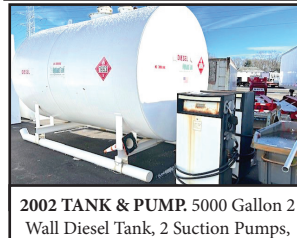
1993 GMC TOPCAT. Trans Tech 2,800 Gal Tank, 10-92 Bikini, CAT 3126, 6 Speed, New Tires, 187,000 Miles, \$12,000 W/ LCR Printer OR \$9,000 W/Out LCR Printer



HIGHLAND IN STOCK NEW: 1000 Gal 2 Wall Skid Tanks. 10-GA, Other Sizes Available



1996 IH 4900. 3000 Gal Tech Weld, 2 Compt, Bottom Load, 2.5" Pump, M7 2" L/C Meter, Vapor Recovery, DT466, Automatic, \$19,500



2002 TANK & PUMP. 5000 Gallon 2 Wall Diesel Tank, 2 Suction Pumps, Excellent Condition, Will Deliver, \$19,000. Call 617-799-1461



2004 FREIGHTLINER M2. Boston Steel 2700 Gal, 1-Compt, V-Root, Bottom Load, Stainless Single Wrap, Air Motor, Mercedes 260 HP, Automatic, 201,149 Miles \$49,000.



SITE TRUCK. 1985 GMC EXTRA THICK STEEL TANK. Detroit Engine, 5+2 Trans, 1500/500 Gal Compts Testing Top & Bottom All Liquids, 3" Pump, Good Cond, \$7,500



2004 PETE 330. Boston Steel 2700 Gal, 2 Compt 2000 & 700, CAT power, Automatic, Stainless Steel Reel, M-7 Meter, Bottom Load, 176,783 Miles \$45,000



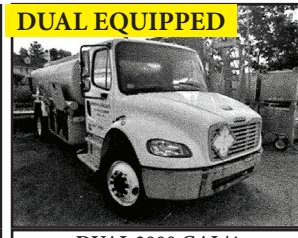
2007 PETE 335. 2800 Gal ALMAC 4 Compt., 800/800/700/500, M-7 2" Meter, ISC Cummins 260 Hp, 8 Speed, \$55,000 MUST SELL, BEST OFFER



1995 FORD L8000. Trans Tech 2,700 Gal, 2 Comp, Needs New Engine 8.3L Cummins, Automatic, Must Tow, 6-94 Bikini, \$12,000 W/ LCR Printer OR \$9,000 W/Out LCR Printer



2019 ISUZU NPR HD 16' VAN BODY. Morgan Body, Lift Gate, E-Trac, Automatic, Gas, 155,000 Miles, Very Good Condition. \$21,900.



DUAL EQUIPPED
DUAL 3000 GAL/4 COMPARTMENTS - 1000/500/1000/500. CAT C7, 6 Speed, 446,598 Miles, R22.5 Tires, 2004 Freightliner, Parts Chassis, Must Tow, \$9,000



2007 Pete 357 T/A Tanker. Amthor 5000 Gal, 3 Compt, 66,000 GVW, 8 Spd, CAT C-13, 416,049 Miles \$79,000 MUST SELL, BEST OFFER



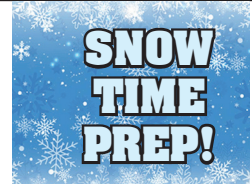
2012 FORD TRANSIT CONNECT XLT. 101,557 Miles, Shelves, Serviced And Ready To Work, Tires 60%, \$11,900

SOME TRUCKS AT CUSTOMER LOCATIONS



SANDER CHAINS
USA Made
All Makes
300 In Stock

S.A. McLean
207-793-4267



622 Elm St, Limerick, ME • www.s-a-mclean.com



JOHN DEERE 544H LOADER.
6600 Hours, With P/A Plow & Wing Quick Hitch



1998 INT'L 2574. 14.5 ft. Of Frame, Automatic, Cummins, 14k Miles, No Rust.



CAT 966B LOADER.



12' HIGHWAY POWER ANGLE V- PLOW



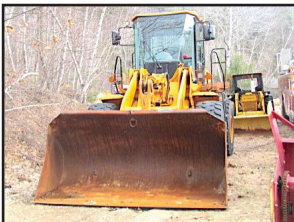
HIGHWAY SALT BRINE PRODUCTION UNIT. W/3000 Gallon Tan



1994 FREIGHTLINER E-ONE. 24k Miles, 300 Hp



13' SWENSON. Stainless Steel Dump & Sander Body



HYUNDAI 757-7. Wheel Loader



1998 INTERNATIONAL 4800. Four Wheel Drive, Automatic, 14k Miles, 14 Ft Of Frame.



WARREN 10' ALUMINUM DUMP BODY



INTERNATIONAL 2574 CAB & CHASSIS. Automatic, 300 Cummins, 24k Miles



STEWART STEVENSON. 4x4, Automatic



STEWART STEVENSON 4X4. Automatic, 1,000 Gallon Tank Brush Truck



2004 INTERNATIONAL CAB & CHASSIS. 4x4, DT 466, Automatic



SWENSON 10' STAINLESS DUMP BODY



MACK. 4x4 , Snowblower Unit, 7k Miles



OSHKOSH. 6x6



6x6 Auto Brush Poly Tank & Pump Unit.



1994 FORD F700 CAB & CHASSIS. Cummins, Automatic, 20k Miles, Under CDL

SALVADORE
FAMILY OF DEALERSHIPS

**PREOWNED
SuperCenter**

SalvadoreAuto.com | 978-630-2001

**We've Got Your Truck
For less!**



**2021 CHEVY
SILVERADO 3500HD CC
WORK TRUCK 4WD
ONLY 15,140 MILES!**

GAS 6.6L V8 ENGINE,
ELECTRIC HOIST, DUAL
REAR WHEELS

**NOW ONLY: \$50,998!
STK # N24168A**

DUMP BODY!



**2022 RAM 4500
CHASSIS CAB
TRADESMAN RWD
READY TO WORK!**

GAS 6.4L/392 V8 ENGINE,
AISIN 6-SPEED AUTO
TRANSMISSION

**NOW ONLY \$39,498!
STK # N25128X**

A REAL BEAUTY! 1 - OWNER!

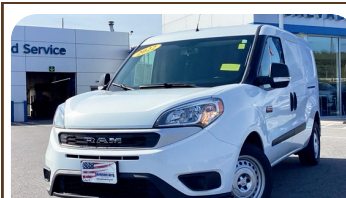


**2020 FORD SUPER
DUTY F-350 SRW
LARIAT 4WD
INCLUDES PLOW!**

GAS 6.6L V8 ENGINE,
ELECTRIC HOIST, DUAL
REAR WHEELS

**NOW ONLY \$49,498
STK # C26112A**

**8 1/2' FISHER
STAINLESS XV PLOW**



**2022 RAM
PROMASTER CITY
CARGO TRADESMAN
MAKE IT YOUR OWN!**

GAS 2.4L I4 ENGINE, 9-
SPEED 948TE AUTO
TRANSMISSION

**NOW ONLY \$27,298!
STK # P2366**

16X6.5 SILVER STEEL WHEELS!

249 Timpany, Blvd., Gardner, MA 01440

Dealer not responsible for typographical errors. Inventory changes frequently.

CT • RI • MA • NY

**CALL IAN OR JIM
800-229-9421**



**100 YARD
STEEL DUMP TRAILERS**

**WE WILL SAVE YOU MONEY
AND PUT A SMILE ON YOUR FACE!**

**STUMP & BRUSH
TRANSPORTATION & DISPOSAL**

\$1800/LOAD

**DEMOLITION DEBRIS
TRANSPORTATION & DISPOSAL**

\$2750/LOAD

**SAME DAY DISPATCH
TOP \$\$ PAID FOR YOUR
SCRAP STEEL, COPPER, & ALUMINUM!!!**

**1985 JOHN
DEERE 550B
BULLDOZER.**

Strong Motor,
Fair Bottom,
**\$11,000 Or
Best Offer.**
Somers, CT
860-573-6899



THOMAS SKIDSTEER. Diesel,
Forks, Snow Bucket, Reg Bucket,
Snow Pusher, 2800 Hours, 2nd
Owner, 5 Ton Trailer That Needs
Work Included, Asking **\$11,500**
OBO. 413-326-0645, No Texts,
Calls Only!

SALVADORE

FAMILY OF DEALERSHIPS



We've Got Your Truck
For less!

SalvadoreChevy.com | 978-630-2001 | 442 W. Gardner, MA

SAVE \$6,000 Or more!



Additional \$500 SAVINGS
w/ qualifying upfit or accessories!

2025 CHEVY SILVERADO
2500HD WT

CONVINCENCE PKG, SAFETY
PACKAGE, SNOW PLOW
PREP /CAMPER PKG &
GOOSENECK/5TH WHEEL
PKG. CTP UNIT

MSRP: \$65,885

AS LOW AS: \$59,885!

STK # C25093

SAVE \$5,980! Or more!



2026 Chevrolet Silverado
1500 Custom

TURBOMAX ENGINE,
CONVINCENCE PKG,
VALUE PKG,
TRAILERING PKG.

MSRP: \$53,805

AS LOW AS: \$47,825!

STK # C26039

SAVE \$3,500 Or more!



15' + 17'
AVAILABLE

Upfit and ready to work!

2025 CHEVY EXPRESS
CUTAWAY 3500HD 1WT

6.6L V8 ENGINE, CUSTOM
CLOTH SEATS, DELUX
FLOOR CONSOLE,
BLUETOOTH, POWER
CONVINCENCE PACKAGES

MSRP: \$61,862

AS LOW AS: \$57,862!

STK # C25322

SAVE \$14,000!



2025 CHEVY
SILVERADO EV RST

0% FINANCING FOR 60
MONTHS FOR
QUALIFIED BUYERS!

MSRP: \$89,690

AS LOW AS: \$75,690!

Courtesy Transportation
Vehicle

Not responsible for typographical errors. Inventory changes frequently. Pricing subject to change due to manufacturer rebates. Pricing includes all available rebates and incentives and may require vehicle to be reported as a Business sale to the manufacturer. See dealer for complete details.



FORD 1320—3 Cylinder Diesel, 4-Wheel Hydrostatic Drive,
1,316 Hours, **\$8,950** 860-928-5748



KUBOTA V2203 DIESEL ENGINE.

Used, Tested, Good Running, 4 Cylinder, 50
Gross HP Model, Can Be Used To Repower Your
Used Equipment, Video Available Of Engine
Running With Oil Pressure Gauge And Water,
\$2500. 860-680-1841

ALL MAKES

EQUIPMENT & PARTS

CONTACT

ROLAND CARTER 603-340-6776 • ANDOVER NH 03216

**EQUIPMENT SALES
EQUIPMENT PARTS
EQUIPMENT
ATTACHMENTS
FINANCING AVAILABLE**



Rebuilt & Good Used Engines.



Equipment
Hydraulic
Parts.



New & Used
Buckets &
Attachments.



New Undercarriage.
Free Undercarriage Inspection.



Salvage
Equipment
Parts.

info@allmakesequipmentandparts.com • www.amepinc.com

PAT'S TRUCK SALES

Office: 603-347-1386 - After Hrs: 978-490-6197



2009 IH 7600 T/A DUMP. Cummins 410, Automatic, 136,571 Miles, 20 Frt Axle, 46 Rears, Polish Aluminum Wheels, New Tires, **\$87,900**



2009 STERLING LT9500 T/A DUMP. Detroit 500 HP, Automatic, 161,760 Miles, 20 Frt Axle, 46 Rears, Polish Aluminum Wheels, New Tires, **\$86,900**



2006 IH 7600 DUMP. Cummins 425 HP Pre Emissions, Automatic, 128,568 Miles, 20 Frt Axle, 46 Rears, Polish Aluminum Wheels, 16' Body, 3 Shutes, Pintle, **\$89,900**



2022 BOBCAT E42 EXCAVATOR. 1,088 Hours, Hydraulic Thumb, **\$52,500**



2006 IH 7600 DUMP. Cummins 425 HP Pre Emissions, Automatic, 138,305 Miles, 20 Frt Axle, 13,200 Pusher, 46 Rears, Polish Aluminum Wheels, 16' Body, Pintle, **\$89,900**



2007 FREIGHTLINER M2 CAB & CHASSIS. 35,000 GVW, Mercedes 7.2 300 HP, Allison Automatic, 83,909 Miles, **\$23,900**



2015 FORD F250 UTILITY. 4x4, Plow, V8 Gas, Auto, Knapheide Body, 44,067 Miles, **\$24,900**



2019 IH 4300. 10,868 Miles, Cummins 6.7 300 HP, Automatic, 25,999 GVW, 10 Ft Stainless Steel Dump Body, **\$57,500**



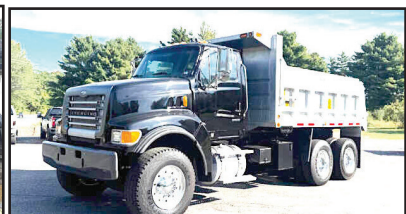
2005 STERLING LT9500 S/A TRACTOR. Pre Emission CAT C9 350 Hp, Automatic, 25,200 Miles, 37,000 GVW, Super Clean, **\$26,900**



2004 STERLING LT9500 DUMP. 15 FT Steel Body, CAT C13 430 HP, Automatic, 110,211 Miles, 20K Frt Axle, 46 Rears, **\$69,900**



2015 GMC 3500HD DUMP. 4X4, Diesel, Tool Boxes, 73,455 Miles, Serviced W/ New Updates, **\$34,900**



2005 STERLING LT9500 DUMP. 15 FT Aluminum Body, CAT C13 430 HP, Automatic, 111,020 Miles, 66K GVW, **\$61,500**

Visit Us - www.patstrucksales.com • 77 Route 125, Kingston, NH



NATIONWIDE TRUCK PARTS LLC

1-800-457-8826

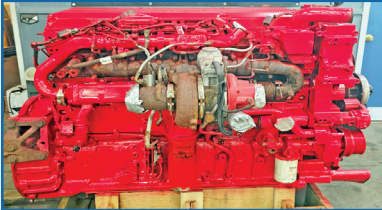
www.NationwideHeavyTruckParts.com

sales@nationwideheavytruckparts.com

11 S. Keyser Avenue - Taylor, PA 18517

QUALITY USED HEAVY TRUCK PARTS, USED DIESEL ENGINES, TRANSMISSIONS & MORE.

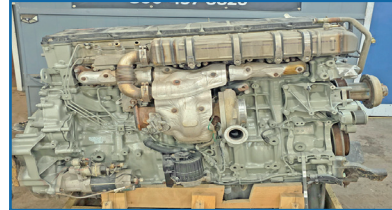
All Parts Tested & Sold With A Standard Warranty. Large Inventory - Call With Your Needs.



2014 ISX15 \$13,000



2012 Detroit DD15 \$12,000



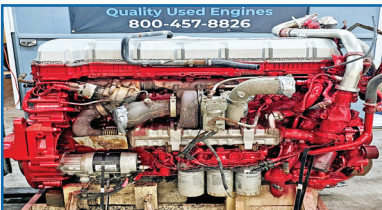
2019 Detroit DD15 \$12,500



DT12 Transmissions \$3,500



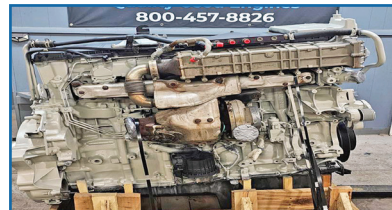
2013 Volvo D13 \$9,000



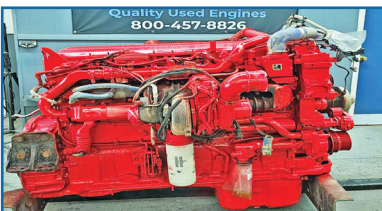
2012 Mack MP8 \$10,500



2012 ISX15 \$12,000



2015 Detroit DD13 \$12,000



2019 Cummins X15 \$16,500



2018 Paccar MX13 \$16,500



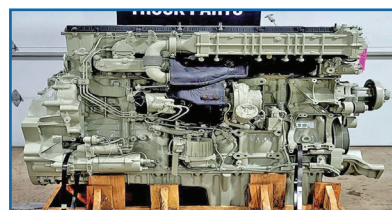
Late Model Rears



FRO Transmissions \$1,000



2009 Cummins ISX \$9,500



2012 Detroit DD13 \$12,500

NORTHEAST TRAILER



20 Business Park Drive
Smithfield, RI 02917
Hours: M-F 8:30-4:30

401-941-4445



(4) 2023 20' x 8' Refrigerated SHIPPING CONTAINERS, Tri-Fold Swing Doors, \$19,500 Each



(3) 2014 GREAT DANES 48' x 102", Aluminum Roofs Roll Doors, \$5,950 Each



2009 WABASH 48' x 102" x 13'6" Refrigerated Trailer, No Reefer Unit 6,600Lb. Maxon Lift Gate, \$9,500



Misc. 53' STORAGE TRAILERS SWING OR ROLL DOOR For Sale or Rent



2009 GREAT DANE Trailer 53' x 102" x 13'6", Swing Door, Air Ride, Aluminum Roof, \$7,000



2000 ABLE BODY Yard Tractor \$7,950



2005-2008 53' ROLL DOORS Aluminum Roof, Spring Ride \$7,500 Each



2009 53' WABASH DURAPLATE ROLL UP \$6,500



Low Profile 22.5" SUPER SINGLE TIRES on Aluminum Wheels, \$250 Each



4,000 GALLON ABOVE GROUND FUEL TANK \$5,500



(3) 2022 1-Trip High Cube Shipping Containers, 1 With Single Door-\$8,500 2 With Double Doors-\$9,250 Each



4 EXPORT FLATBEDS \$3,750 Each

WWW.NETRAILER.COM

You Get The Most With The Post



REED TRUCK SERVICES

24/7 Heavy Duty Towing, Accident Recovery & Emergency Road Service



**TRADES
ACCEPTED**

**939 John Stark
Hwy.
Newport, NH**



**287 Washington St.
Claremont, NH**

**HELP
WANTED**

• Authorized International Truck & Cummins • Sales • Service • Parts • Warranty •
All Makes Commercial Truck Parts, Sales, and Service

Email: scott@reedtruck.com • www.ReedTruck.com • 1-800-542-5032



2025 INTERNATIONAL HV507. L9
Cummins, Allison 3500, 20 F/A, 30 R/A,
Chalmers Susp, All Municipal Options!



SEVERAL AVAILABLE
2024 INTERNATIONAL CV515 4x4.
Fully Equipped With Plow Gear And Dump
Body.



IN STOCK
2026 INTERNATIONAL HX620.
X15@565hp, 4700 RDS Allison, 20 F/A,
46 R/A, Ready For A 15' Dump.



2024 INTERNATIONAL HV613. A26,
Allison 4500, 22 F/A, 46 Locking Rears,
Hend HMX Suspension, In Stock!!



2024 INTERNATIONAL HX520. X15
Cummins, Allison Auto 4500, 20/46
Axles, Air Ride, Aluminum Wheels,
Ready For A Dump Body



LOW MILES
2023 FREIGHTLINER 114SD DUMP W/Plow And
Wing. 470 HP, Allison 4500, 20 F/A, 46 R/A, Viking-
Cives Equipment, Low Miles.



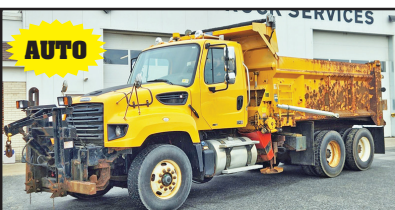
2020 INTERNATIONAL HX615. 475 HP 8LL, 20
F/A, 46 R/A, Hendrickson HMX, 15' Beau Roc DH
Dump Body, Well Maintained, Clean Truck, 110K
Miles, **\$129,000.**



**THE PRICE
OF NEW!**
2023 INTERNATIONAL LT625. 13,200
F/A, 40 R/A, Cummins X15 450 HP, 10 Spd
Manual, Clean Tractor, 106K Miles, **\$71,500.**



2019 GMC 3500 DENALI CREW CAB 4x4.
Diesel 4x4, All Options, Well Maintained,
One Owner, One Driver, 115,500 Miles.



AUTO
2012 FREIGHTLINER SD114. DD13 Engine,
Allison AUTO Trans, Everest 14' Live Floor Body,
Truck, Includes Plow And Wing Blades. Well
Maintained Muni Trade, **\$49,900.**



6 IN STOCK
2012 INTERNATIONAL 7400 Dump. 16 F/A,
Locking 30 R/A, DT300 HP, Eng Brake, Allison, AC,
40,780 GVW, Everest Gear, Plow, Wing, Sander, Air
To Rear, **\$6,500. to \$26,500.**



2020 International MV607 21' 20TB NRC
Galvanized Flatbed w/Underreach. 33K GVW, 300
HP Cummins, Allison, Rear Locker, AB, AR, AC,
Well Maintained, Stored Inside, Owner/Operated.

WWW.SCRANTONGMC.COM

777 TALCOTTVILLE ROAD VERNON, CT • 860-281-6726



2024 GMC SAVANA CUTAWAY. 12' DURACUBE MAX SERVICE BODY, BACK UP CAMERA, LADDER RACKS, #R9713, **WAS \$72,138, NOW \$63,179**



2024 GMC SAVANA 3500 12' CUTAWAY, 6.0L V8, AUTOMATIC, **WAS \$56,590, NOW \$50,260**



2025 GMC SIERRA 3500 SERVICE BODY. CREW CAB, 4X4, GAS, DUAL REAR WHEEL, #S9219, \$74,999



2025 GMC SIERRA 3500 CREW CAB. 6.6L GAS, 4X4, DRW, READING SERVICE BODY, #T9376



2025 GMC SIERRA 2500HD PRO DOUBLE CAB. 4X4, SERVICE BODY, #S9241



2025 GMC SAVANA 14' DURACUBE MAX, ELECTRIC LOCKS, #S9318



2025 GMC SAVANA 17' AEROCELL VAN BODY WITH RAMP, #S9359



2025 GMC SIERRA 3500 CREW CAB SERVICE BODY. DRW, REMOTE LOCKS, S9242



2025 GMC SAVANA 3500 CARGO VAN. 6.6L V8, LOCKING DIFFERENTIAL, REMOTE START, #9180 \$51,999



2025 GMC SAVANA 2500 CARGO VAN. 6.6L V8, CHROME APPEARANCE PACKAGE, BLUE TOOTH, #9128 \$44,999



2025 GMC SIERRA 2500 HD DOUBLE CAB 4X4. GAS, AUTOMATIC, READING SERVICE BODY, #S9240, \$66,999



MANY OTHER TRUCKS IN STOCK. CALL FOR DETAILS

WWW.SCRANTONGMC.COM



508-328-8938**THE TRUCK STORE****Mon-Fri 8:30-5pm
Saturday 8:30-4pm****www.TruckStoreSales.com****1700 Broadway - Rte 138 – Raynham, MA • Take Exit 8 Off Rte 495, East Rte 138, On Your Left**

2022 MERCEDES BENZ SPRINTER:
DRW, Beautiful Custom Kitchen perfect for
Food Truck etc., Only 4K miles. Call



2024 ISUZU NPR: Van or Refer
Body Available. 1,000 Miles, Gas.



**2013 PALFINGER MOFFET FORK
LIFT: 900 HOURS.**



**2002 VOLVO HEAVY TRI AXLE
DUMP: 465 HP, 8LL, NEW BRAKES,
Excellent Rubber.**



2015 ISUZU REFER BODY:
186 K Miles, Diesel/Auto. Call.



2018 HINO HOOKLIFT:
UNDER CDL, 57K MILES. CALL



**USED MONROE STAINLESS STEEL
SANDER W/CALCIUM TANKS**



**2002 MACK R MODEL:
TANDEM**

**2005 PETERBILT
337 TANDEM CAB &
CHASSIS. Cummins,
Allison Auto,
Only 30K MILES**

**2 USED
HOOKLIFT
& ROLL OFF
BODIES IN
STOCK NOW!**

**LATE MODEL ISUZU &
HINO CUMMINS DIESEL
4 CYL DIESEL ENGINE &
TRANS,
2006 USED MACK
ENGINES, ALLISON
TRANSMISSIONS.**



**2018 PETE CHASSIS 80K MILES
and 2020 KW CHASSIS 47K MILES
IN STOCK NOW! CALL.**

**USED 2015
ROLL-OFF
BODY, CALL.**

**2005 MACK CV 713
CAB & CHASSIS:
AUTOMATIC,
20F/52R,
30K MILES!**

**USED 12' TO 26'
FLAT BED BODIES.
CALL FOR
DETAILS.**

**2018 HINO HOOK
LIFT:
54K MILES.
\$69,500.**



**2000 MACK RD 688SX 14' Dump Body,
350 H.P., Auto., 18F/58R, LOW miles, Very clean.**



**2020 + 2022 HINO REEFER VANS.
DIESEL, AUTO, CALL.**



**2005 MACK GRANITE SPLIT REAR
LOAD RUBBISH BODY 35K Miles.**



**2022 HINO HOOK-LIFT, DIESEL,
AUTO, 38K MILES, \$79,500. (ALSO, 2015
AVAILABLE)**



**2019 & 2022 INTERNATIONAL REFER
BODIES: VERY LOW MILES**



**2021 FORD MOVING TRUCK, Crew Cab,
Auto, Under CDL, 99K Miles.**



**2022 PETERBILT C/O. Under CDL, 60K
Miles, Auto, Reefer Or Flatbed Available.**



**2022 HINO 268 Flat Bed: Diesel, Automatic,
ONLY 2,000 Miles! Will up fit w/Refer Body
or Van Body. 2 AVAILABLE.**



**USED 12' to 26' REFER & VAN BODIES
Call with your needs.**



**(2) 2020 ISUZU NRR UTILITY BOX
TRUCKS. 18K-30K MILES, DIESEL,
AUTO, CALL.**



**2017 FREIGHTLINER M-2: CUMMINS
Diesel, Auto, PTO Accept. Will Separate.**



**2015 FREIGHTLINER 114 SD WITH NUWAY
SIDE LOAD ONE-ARMED BANDIT. 9L
CUMMINS, AUTO, EXTRA HEAVY DUTY, CALL.**

ALLEGIANCE

TRUCKS®



109 Lindberg Ave.
(978) 686-1800

Methuen, Ma 01844
(978) 726-9477



www.AllegianceTrucks.com

CALL FOR OTHER NEW & USED TRUCKS FOR SALE!



2021 FREIGHTLINER M2 106.
33000 GVW, 143k Cummins B6.7, Allison 2500 RDS, Swing Rear Doors, Vertical E-Track, 3 Person Seating, Stk#338559, **\$69,900.**



2021 INTERNATIONAL MV607.
174K, Cummins 6.7 260HP, Allison 2500 RDS, 26' Dry w/ Maxon GPT3 3000 Lb Tuck, Stk#359875, **\$37,900.**



2023 FORD F450.
63K miles, 7.3 V8 300HP Gas, Auto, 16' Morgan w/ Roll-Up Rear Door, Drop-Step Bumper, 1 Row E-Track, Stk#358593 **\$49,900.**



2017 CHEVROLET W4500. Diesel, 78k, 16' Dry w/ 2000lb Tuckaway, Auto, PW/L, A/C, 2 Rows Of E-Track, Stk#350167, **\$27,500.**



2020 HINO 195
18' REEFER w/ Curb Side Door,
19500 GVW, Carrier 40x, 214K Miles, Roll-Up Rear Door, stk#327078, **\$27,900.**



2018 KENWORTH T270. 149K. 220 HP Paccar PX-6/PX-7. Allison 6 Sp Auto. Air brake, Air Ride. 26' 97" T x 102" W W/ Roll-Up, 3 Row E-Track, Trans Roof. Pull-Out Ramp. stk#345262, **\$39,900.**



2024 ISUZU NRR DIESEL
HOOKLIFT. 19500 GVW, I-Pac. Stellar 108-12 Dual Pivot Hook, Auto, AM/FM/Aux/BT, Stk#330952, **\$109,900. Ready to go!**



2022 CHEVROLET W4500. Diesel, 59K, Auto, 16' Unicell w/ 2000lb Tuckaway, 1 Row E-Track, PW/L, A/C, P/S, AM/FM/ Bluetooth, Ready to go! Stk#350835, **\$49,900.**



2018 MORBARK M15R - 1721 Hours, Very Good Condition, 5.7 L V8 Engine, 165 HP, 15 Inch Chipping capacity, Tires 50%, Hydraulic Winch. **\$34,900** 781-417-3018

2012 FORD F550
4X4 CAB & CHASSIS.
198K Miles, Under-Hood PTO,
New Motor At 130K, New
Transmission At 175K,
Maintained And Runs Well,
84" Cab To Axle,
\$16,000. 203-917-2379



Burrillville, RI • 401-633-4587

- Full Bucket Rebuilds • Cylinder Resealing
- Wear Plates • Adapter Replacement • Hardfacing
- General Maintenance



450 CUMMINS.

Good Runner, Nice Motor That Came
Out Of A Snow Machine,
\$5,000

East Windsor, CT 860-716-0226



BENSON
BY WABASH NATIONAL



Bangor, ME
207-941-9600

Saco, ME
207-289-6688

Fort Kent, ME
207-834-6186

Jericho, VT
802-899-3753

Colchester, VT
800-639-1290



WABASH



ALLEGIANCE

TRUCKS®

www.AllegianceTrucks.com

CALL FOR OTHER NEW & USED TRUCKS & TRAILERS FOR SALE!



2019 INTERNATIONAL HX TRACTOR
608HP, 18Spd. Trans., Cummins, Diesel, Ready To Go!
STK#242873
\$79,900



2016 INTERNATIONAL 9900 TRACTOR
550HP, ISX Diesel, Manual Trans., Ready To Go! STK#242962
\$58,900



2024 INTERNATIONAL CV
4X4. Plow Packa, Automatic, Diesel, 350HP, STK#349163
Call For Details



2020 EAST ALUM. FLATBED
Ready To Go!
STK#285373
\$29,900



2018 MANAC CURTAINSIDE
Ready To Go!
STK#245998
\$34,90



2026 INTERNATIONAL HX
Cummins X15, 565HP, 18-Speed, 20K Front / 20K Steerable Lift Axle, 46K Dual Lock Rear Axles. STK#356149
\$267,900



2026 INTERNATIONAL HX TRACTOR
565HP, X15 Cummins, Diesel, Auto, Ready To Go!
STK#352780
\$199,900



2011 INTERNATIONAL 7600 DUMP
Well Kept Single Axle Plow Truck, Dot Inspection, Fully Serviced, New King Pins, Front Plow & Wing Included. STK#154960
\$36,900



2002 INTERNATIONAL 4900. 2nd Owner, Fleet Maintained, 28K Miles, Allison Automatic, (New) 10' P/A Plow, Electric Cover, Air Gate, Air To The Rear, 25 Ton Pintle, 32K GVW, Winter Is Coming, This Is A Money Maker, **\$26,000.**
West Warwick, RI 401-523-6116



1998 VOLVO EC280. Runs Great & New Sprockets, Bucket Cracked & Needs To Be Welded, 6205 Hours On It, **\$25,000.**
603-759-9596



8' FISHER MINUTE MOUNT SNOW PLOW.
Like New, **\$2,000**
Or Best Offer,
East Windsor, CT 860-716-0226

CENTRAL MASS
TRUCK & EQUIPMENT

Custom Gates Hydraulic Hose Assemblies & Fittings
Full Truck Service, Maintenance & Repair

All Makes & Models

Over 20 Years Experience Specializing In Mack's

Marshall Cefole - **978-467-7993**

Randy Rameau - **978-423-2889**

10 Gardner Road, Winchendon MA 01475

ALLEGIANCE

TRUCKS®



1400 South Willow St. **Manchester, NH**
603-623-8873

132 Pierce Rd. (Rt. 125) **Barrington, NH**
603-905-9036

www.AllegianceTrucks.com



CALL FOR OTHER NEW & USED TRUCKS FOR SALE!



2025 INTERNATIONAL MV 607 24' FLATBED. Cummins 300 HP, Auto, 25,999 GVW, 2K Miles, #347792, **\$121,900.**



2024 INTERNATIONAL LONESTAR SLEEPER. Cummins X15 565 HP, 13 Spd, 53,200 GVW, 128K miles, #349103, **\$144,900.**



2005 INTERNATIONAL 7600 FLATBED CRANE 6x4. Cummins ISM 385 HP, 73,200 GVW, 237K Miles, **#350752**



2026 INTERNATIONAL HX 520 6X4. Cummins 565 HP, Auto, 60K GVW, 2K Miles, #348548, **\$191,900.**



2015 WESTERN STAR 4700 SB FASSI CRANE. Detroit DD13 450 HP, 66K GVW, 208K Miles, #341199, **\$189,900.**



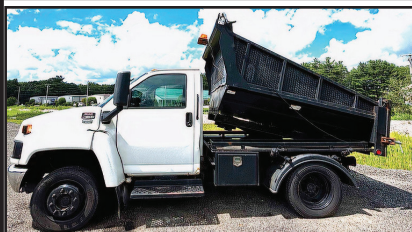
2024 KENWORTH T380 DUMP / CRANE. Paccar PX-9, Air Brakes, 17K Miles, #351879, **\$189,900.**



2023 MACK GRANITE TRI-AXLE DUMP TRUCK. MP8m 40K Miles, Allison 4500 RDS Automatic, 16.5' Steel Body, READY TO GO, stk#352102



2017 FREIGHTLINER M2 106 MED 4X4 W/NEW DFI TANK. Cummins, Auto, 33K GVW, 5K Miles, #339358, **\$134,900.**



2003 GMC 4500. Duramax Diesel, 8 Foot Dump Body, 70,000 Miles, **\$14,500.** 401-392-3300

1994 JOHN DEERE 490E. 5587 Hours, Hydraulic Thumb, Rebuilt Hydraulic Pump, **\$22,995.** 774-208-2806



Coletta's Sales & Service

For all of your truck, trailer, and truck body needs

- ★ Collision Center
- ★ Vehicle Service & Inspection
- ★ Towing & Road Service
- ★ Equipment Hauling
- ★ Part Sales & Delivery
- ★ Authorized Morgan Truck Body Distributor



250 Niantic Ave, Providence RI 02907
www.colettas.com

401-421-3232



1998 PETERBILT. 550 CAT, This Is My Truck So Call Me And I Will Tell You About All The New Parts & Extras, Super Clean, Fully Serviced, **\$50,000/BO** East Windsor, CT 860-716-0226

ALLEGIANCE

TRUCKS®



2181 Providence Hwy, **Walpole, MA**
800-225-4808

17 O'Keefe Lane, **Warwick, RI**
800-949-2221



www.AllegianceTrucks.com

FINANCING & WARRANTIES AVAILABLE ON USED TRUCKS!



2025 INTERNATIONAL MV 607 HOOK-LIFT. Cummins 300 HP, Auto, 25,999 GVW, #347943, **\$149,900.**



2025 INTERNATIONAL MV 607 PACKER. Cummins, Auto, 25,999 GVW, 1K Miles, #347155, **\$191,900.**



2025 INTERNATIONAL MV 607 HOOK-LIFT. Cummins, Auto, 25,999 GVW, 2K Miles, #347811, **\$147,900.**



2024 FORD F550 KNAPHEIDE UTILITY W/CRA. 6.7L Powerstroke Diesel, 19,500 GVW, #345660, **\$177,500.**



2024 INTERNATIONAL CV 515 4X4 DUMP W/FISHER PLOW. 6.6L Diesel, Auto, 23K GVW, 1K Miles, #347816, **\$141,900.**



2024 FORD F550 XL 4X4 READING WALK-IN UTILITY. 6.7L Powerstroke Diesel, 19,500 GVW, #345078, **\$108,357.**



2024 FORD F550 4 TO 5 YD CRYSTEEL 9' DUMP XL 4X4. New, 6.7L Powerstroke Diesel, 10 Spd, 19,500 GVW, stk#338631, **\$94,149.**



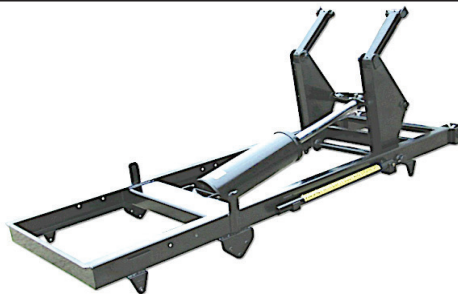
2024 FORD F600 11' KNAPHEIDE UTILITY XL 4X4. New, 6.7L Powerstroke Diesel, 10 Spd, 22K GVW, stk#334700, **\$92,034.**

CHAMPION HOIST.

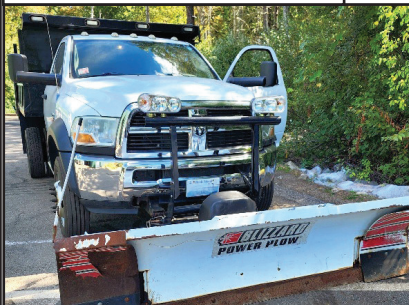
9 Ft Or 11 Ft Underbody
Subframe Hoist.

Candia Trailer, Truck Bodies,
& Snow Equipment, On Sale.

866-761-0196



2023 INTERNATIONAL LP BOBTAIL. Cummins Engine, Allison Automatic, Only 52,407 Miles! Truck Clean, Clean Title, Low Miles, Ready To Go To Work, Asking **\$175,000.** Call, Text, PM 203-215-0169 Or Email michael.e.cossello@gmail.com



2011 DODGE 5500. 4x4, 12K Miles, Original Owner, Fleet Maintained, Cummins, Automatic, 8/10 Expandable P/A Plow, 2.5 Yard Stainless Steel Electric Sander, Electric Cover, Winter Is Coming, This Is A Money Making Truck, **\$50,000.** West Warwick, RI 401-523-6116



\$110 Per Wheel Polish
ACUSHNET WHEEL POLISHING
Used Rims Available
508-509-2014
62 SOUTH MAIN ST.,
ACUSHNET, MA



Service & Mechanic On Site

ALLEGIANCE

— TRUCKS® —



Hartford, North Haven, Franklin, Southbury, & Bridgeport, CT/ W. Springfield, MA



Call Peter Vecchiarelli 860-982-2014

GREAT SELECTION AND PRICE ON ALL USED INVENTORY



(3) 2020 ISUZU NQR. Diesel 65K Miles, Auto, Hard To Find 109" WB, Clean Nice Trucks, #346044, **\$39,900**



2022 CHEVROLET LCF 4500. 16' Box With Gate, 16K GVW, Very Clean, Low Miles, #350835, **\$45,900**



2025 ISUZU NRR. 8 Yard Loader, 19500 GVWR, 2 To Choose, **\$139,900**



2006 ISUZU NPR. Gas, 12,000 GVW, 14' Enclosed Landscape Body, #351240, **\$1,500 As Is**



2021 CHEVROLET. 4.3L Diesel, Schwarze SuperVac Updraft Sweeper, Only 121,000 Miles, (3) In Stock, **\$34,900**



2012 INTERNATIONAL WORKSTAR 7600. 475 HP, 8LL, Only 370K Miles, Runs Well, Fresh DOT, Steel Dump, Auto Cover, Tow Plate, Ready To Work, #162888, **\$59,900**

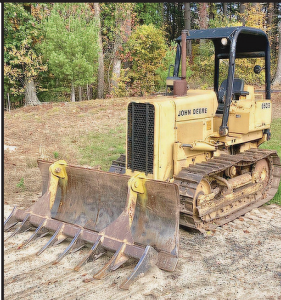


2013 ISUZU NQR FLAT BED. 17,950 GVWR, Tool Boxes, #219535, **\$19,900**



NEW 2023 INTERNATIONAL CV. 6.6L, Automatic, 350 HP, Landscape Dump Body, #324381 **\$98,900**

1986 JOHN DEERE 550B BULLDOZER.
Root Rake Attachment, New Bottom, **\$29,500 Or Best Offer.**
Somers, CT
860-573-6899



MEYER 8 FT. POLY-PRO SNOWPLOW.
Power Angle, Light Use, Can Be Used On Fisher, NAP, **\$350.** 413-326-0645



LOOKING FOR SEMI-TRUCK TIRES?

CALL 508-509-2014



LAMTRAC LTR6140T 140HP
Forestry Mulcher, Rental \$2,000 Weekly Or Buy At **\$96,000**, Portland, CT, 860-835-0692



2013 FORD F350. 62L Gas Engine, 62,000 Miles, Plow And Sander Included, **\$24,999.** 401-486-8552



207-623-4239



JLG 600A.
Platform Manlift,
\$18,000



KNUCKLE CRANE

1994 INTERNATIONAL 4300.
DT466, Steel Flatbed Body,
Knuckle Boom Crane, \$9,500



2009 GMC 3500. Gas, Automatic,
Flatbed, With Power Gate \$11,000



1987 FORD L8000 WATER
TRUCK. CAT 3208T, 5 + 2 Speed,
Water Tank, Pump, \$7,500



2014 FREIGHTLINER T/A
TRACTOR. Detroit Power,
10 Speed, Air Ride, \$10,000



1998 FORD OIL TRUCK. 2
Compartment, 7 Speed, Cat
Engine



1999 INTERNATIONAL
TANKER. DT466, 6 Speed, Oil
Truck, \$6,000



2009 MAC DUMP TRAILER.
Tri Axle, Air Ride Lift Axle, Barn
Door, \$40,000



2012 JOHN DEERE 310SJ BACKHOE.
4X4, Full Cab, Expanda Hoe, Wrist
With 3 Buckets, \$38,000



1988 FORD L8000 DUMP. 10 Ft Dump Body, CAT Diesel
Engine. \$9,500.



CATERPILLAR 814. Semi U Blade, Very Good Rubber,
\$14,000

Dick's Used Trucks & Equipment • 146 River Road, Chelsea, Maine

JOSEPH

EQUIPMENT COMPANY

300 GAY ST • MANCHESTER, NH 03103

SATURDAYS • WE ARE OPEN ALL DAY

PHONE: 603-641-8608

FAX: 603-666-3716



**293 NORTH - EXIT 2 -
LEFT ONTO BROWN AVE -
RIGHT ONTO WINSTON ST. - LEFT ONTO GAY ST.
300 GAY STREET ON THE RIGHT**



**100 STORAGE CONTAINERS TO CHOOSE
FROM. 20', 40', and 40' High Cube.
Call For More Information.**



2013 KOMATSU D155AX-7 DOZER. 8900 Hours, Sigma Blade With 3 Shank Ripper, Rebuilt Fuel Rail, Replaced DPF Sensors, Alternator & Belt, Fan Belt, Recharged A/C, New Compressor, New Batteries, New Corner Bits On Blade, EGR Servo Replaced, DPF Was Baked & Cleaned., \$125,000. **Call For More Information.**



**2010 TRAIL KING. 55 Ton, 26' Deck, 102" Wide, Pony Engine Or Wet Line, Full Fenders, Lift On Third, New Wood Decking, Texas Trailer-No Rust, Long Gooseneck, 2 Pin Position.
Call For More Information.**



1998 FONTAINE, MODEL. 50 Ton, Detaches At Both Ends, 25' Flat Level Deck - 20" Loaded Deck Height, 25' Beam Deck Insert, 20" Loaded Deck Height, Non Ground Bearing, Air Ride, Boom Trough & Deck Cut Out, Lift Axle, Outriggers, Aluminum Wheels, Strobe Lights. Call For More Information.



2010 R & S 26' DUMP TRAILER. Hardox Construction, Tandem Axle, New Paint, New Canvas, New Tires, Single Point Suspension, Like New Condition. **Call For More Information. Batteries. Call For More Information.**



IN STOCK - 2025 FONTAINE LXTN40. 40 Ton Extendable, 34' Closed - 60' Open. Also Available 29' Closed - 50' Open. Tandem Axle, Set Up For 3rd, Air Ride, Non Ground Bearing, 102" Swing Clearance, 20" Deck Height, Alum Wheels. In Stock, No Waiting. Available In Manchester NH And At The Factory In Springville AL. 3rd And 4th Axles Available. **Call For More Information.**



1976 ROGERS 100 TON. Quad Axle, 11' Wide, 37' Usable Deck, Recently Completely Rebuilt, Excellent Condition, Currently Located In AZ. **Call For More Information.**



2019 PUP TRAILERS. (14 Available To Choose From, 28' Long, 102" Wide, 13'6" High. **Call For More Information.**



2017 LIDDELL 60 TON DSR. 4 Axle, 26' DSR Deck, 9' Wide, 8'6" Bogie, 26' Beam Deck, 4th Axle, Alum Wheels, Gooseneck Extension, Power Pack, Excellent Shape, **Call For More Information.**



2017 WESTERN STAR TRI AXLE DUMP TRUCK. Glider Kit, No Emissions, Model: 4900, Original 320,000, 17' Body, 60 Series Detroit 500 Hp, 8 Speed 8 LL, 46 Rears Full Lockers, 20K Pusher Axle, 18K Front, Electric Canvas, Air Gate, Perfect Double Frame, One Owner, Fleet Maintained. **Call For More Information.**



2009 TALBERT 70 TON DROP SIDE RAIL, Severe Duty, Completely Reconditioned, Sandblasted And Painted. New Seals, Brakes, Bearings, Hubcaps And Decals, 26' Steel Deck, 9' Wide, With 26' Beam Insert. 30,000 Lb Axles, 3 Axle, Set Up For 4th, Spring Ride, 315 Rubber. **Call For More Information**



2019 FONTAINE 53 - 90. Tri Axle, Air Ride, Slider, Like New Condition, Southern Trailer, No Rust. 3 Available To Choose From Ranging From 2019 To 2016. **Call For More Information.**

www.josephequipment.com

Trades Welcome • Financing Available

THIS AD IS COPYRIGHTED & OWNED BY TRUCK AND EQUIPMENT POST

JOSEPH

EQUIPMENT COMPANY

300 GAY ST • MANCHESTER, NH 03103

SATURDAYS • WE ARE OPEN ALL DAY

PHONE: 603-641-8608

FAX: 603-666-3716



293 NORTH - EXIT 2 -
LEFT ONTO BROWN AVE -
RIGHT ONTO WINSTON ST.- LEFT ONTO GAY ST.
300 GAY STREET ON THE RIGHT



ERIN 165T SCREENER ON TRACKS.
Makes 3 Products, CAT Power, Heavy Duty Grizzly, Remote Control, Very Good Condition.
Call For More Information.



2009 TALBERT 70 TON DROP SIDE RAIL.
Severe Duty, Recently Reconditioned, Sandblasted And Painted, New Seals, Brakes, Bearings, Hubcaps And Decals, 26' Steel Deck, 9' Wide, With 26' Beam Insert. 30,000 Lb. Axles, 3 Axle, Set Up For 4th, Spring Ride, 315 Rubber, One Owner.
Call For More Information.



TELESMITH 3042 CRUSHER. With New Die Jaws. **Call For More Information.**



2020 JOHN DEERE 304L.
1 Yard Loader, Quick Disconnect, 3rd Valve, Forks And Bucket, A/C, Road Speed, 1200 Hours, Like New Condition.
Call For More Information.



1997 CATERPILLAR 960F WHEEL LOADER.
Sandblasted And Painted, New Decals, A/C, Scale, 23.5 X 25 Rubber, Bolt On Cutting Edge, Very Good Condition. **Call For More Information.**



2019 VOLVO EW60 RUBBER TIRE EXCAVATOR. (2 Available To Choose From) A/C, Blade, Thumb. Quick Disconnect, Aux Hyd, Wrist-O-Twist Bucket, Digging Bucket, 1,900 Hours, Like New Condition.
Call For More Information.



85' GENIE LIFT WITH JIB. 4 X 4, Diesel, 6,400 Hours. **Call For More Information.**



1998 BOMAG VIBRATORY COMPACTOR.
8600 Hours, Hydrostatic Transmission, Fleet Maintained, 24,000 Operating Weight, Recently Painted, New Oil And Fuel Filters.
Call For More Information.



1989 GROVE RT875CC CRANE. 26.5 X 25 Rubber, Cummins Power, 650 Original Hours, 2 Winches, Ex-Military. **Call For More Information.**



2019 CAT 232D SKIDSTEER. Quick Disconnect, Bucket And 9' Power Angle Plow, 3rd Valve, 1,130 Hours, One Owner, Like New Condition.
Call For More Information.



2009 CATERPILLAR 924H WHEEL LOADER.
Quick Disconnect, New Motor From CAT With Paperwork, Very Good Condition.
Call For More Information.



2011 CATERPILLAR 246C XPS. Skidsteer, 2 Speed, Full Cab, A/C, Cushion Tires, Forks And Bucket, Extra Counterweights, 4,000 Hours, One Owner, Original Paint. **Call For More Information.**

www.josephequipment.com

Trades Welcome • Financing Available

THIS AD IS COPYRIGHTED & OWNED BY TRUCK AND EQUIPMENT POST

JOSEPH

EQUIPMENT COMPANY

300 GAY ST • MANCHESTER, NH 03103

SATURDAYS • WE ARE OPEN ALL DAY

PHONE: 603-641-8608

FAX: 603-666-3716



293 NORTH - EXIT 2 -
LEFT ONTO BROWN AVE -
RIGHT ONTO WINSTON ST.- LEFT ONTO GAY ST.
300 GAY STREET ON THE RIGHT



1997 MACK RD. 350, 12 Speed, 44 Rears, 18 Front, Double Frame, 24.5 Rubber, A/C, Engine Brake, Perfect Condition.
Call For More Information.



2007 MACK GRANITE WATER TRUCK. 4000 Gallon, Hydraulically Driven, Spray Heads Front And Back, 350, 8 Speed, 44 Rears, No Rust, Truck From Arizona. **Call For More Information.**



2018 WESTERN STAR 4900 (3 AVAILABLE TO CHOOSE FROM). Allison Automatic, 550 HP, DT15 Engine, Full Rears, 2 Line Wet System, Fleet Maintained, Dual Stacks, Alum Wheels, A/C, P/S, Original Paint, One Owner. **Call For More Information.**



1997 KENWORTH T800. Twin Steer Wide Nose, 550 Cummins, 18 Speed, Long Wheel Base, 30' From Back Of Cab To End Of Frame, Newair Ride, Double Frame, 164,000 Original Miles, New Michelin Tires In Back. **Call For More Information.**



2020 WESTERN STAR 4900 (4 Available To Choose From). Allison Automatic, 550 HP, DT15 Engine, 46kK Full Locking Rears, 210" Wheel Base, 2 Line Wet System, Fleet Maintained, Dual Stacks, Alum Wheels, A/C, P/S, Original Paint, One Owner, Approx 316K Miles. **Call For More Information.**



1994 FORD WATER TRUCK WITH CURRY TANK. Hydraulic Driven Pump, Double Frame, Cummins Power, Very Good Condition, Price \$27,500.
Call For More Information.



1996 MACK CL 713, 350 MACK. 13 Speed Mack, 46k Rears, 4,100 Gallon Two Compartment Tank, Remtec Inc Steel Tank, 1100 X 24.5 Rubber, 270,000 Original Miles.
Call For More Information.



2015 KENWORTH T880. Miles: 571K, 500 Paccar, Automatic, 3.91 Gear Ratio, 46K Rears, Full Lockers, 24.5 Rubber, A/C, Power Steering, Air Ride, Aluminum Wheels, Fleet Maintained, One Owner, **Call For More Information.**



2019 PETERBILT 389. 605 Cummins Power, 18 Speed, 4 Axle, 46K Rears, Air Ride, 300" Wheel Base, Headache Rack, Full Fenders, 60" Bunk, Loaded, **Call For More Information.**



1998 MACK RD688SX DUMP TRUCK. 350 HP, Fuller 8 Speed, 58 Rears All Redone By Southeast Truck, 24" Rubber, Rebuilt Engine, Double Frame, Working Daily, Heated Body, New Brakes All Around, New King Pins, New Clutch/Bell Housing, All New Rear Suspension.
Call For More Information.



2011 INTERNATIONAL 7400 WORKSTAR. DT570, 12,000 Original Miles, Allison Automatic Transmission, Air Ride, Former Florida Municipality Truck, New Tires, Excellent Shape. **Call For More Information.**



2005 MACK GRANITE GARBAGE TRUCKS. (3 Available To Choose From), 350, Allison Automatic, 46 Rears, 18 Front, Long Wheel Base, Double Frame, 80,000 Original Miles.
Call For More Information.

www.josephequipment.com

Trades Welcome • Financing Available

THIS AD IS COPYRIGHTED & OWNED BY TRUCK AND EQUIPMENT POST

JOSEPH

EQUIPMENT COMPANY

300 GAY ST • MANCHESTER, NH 03103

PHONE: 603-641-8608

OPEN
ALL DAY
SATURDAY

FONTAINE

FAX: 603-666-3716



2026 FONTAINE RENEGADE LXLN12 -12
Inch Loaded Deck Height With
4 Inch Ground Clearance When Fully Loaded,
30 Tons In 16 Feet On Tandem Bogie Or 30
Tons In 20 Feet With 3rd Axle Flip, Low Profile,
3rd Axle Capability, 32 Feet 11 Clear Deck
Length. IN STOCK, NO WAITING.
CALL FOR MORE INFORMATION.



2026 FONTAINE MAGNITUDE 50 Tri Axle,
Set Up For 4Th, 50 Ton, Air Ride, 24' Deck, 20"
Loaded Deck Height, Alum Or Steel Wheels,
Strobe Lights, Outriggers And D-Rings.
Call For More Information.



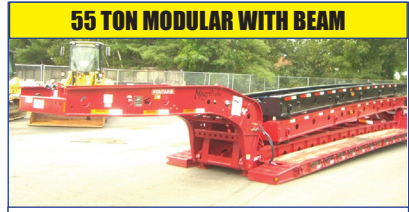
2026 KRUZ TERMINATOR,
26' Steel Frame, Single Point Suspension,
2-Way Gate, 11 X 24.5 Tires, Alum
Wheels, 2 Speed Landing Gear.
Call For More Information.



IN STOCK - NO WAITING - 2025 GALLEGOS 42'
FRAME TYPE DUMP TRAILER. 96 YARD, 102"
WIDE, 90" SIDES, TRI AXLE, HENDRICKSON AIR
RIDE INTRAXX, ABS BRAKES, LIFT ON FRONT
AXLE, FLIP N GO ELECTRIC CANVAS, LED
LIGHTS, BARN DOOR.
CALL FOR MORE INFORMATION.



2026 KRUZ 26' STEEL TUB,
Aluminum Frame Dump Trailer,
Air Ride, 2 Axle, Alum Wheels, 450 Hardox,
24.5 16 Ply Tires. **TAKING ORDERS**
Call For More Information.



2026 FONTAINE 55H MODULAR DSR,
Beam Deck Also Available, Tri Axle,
60" Axle Spacing, Hydraulic Removable,
Non Ground Bearing, Set Up For
Gooseneck Ext, Spreader Bar And 4Th Axle
Flip, Air Ride, Alum Wheels, 22.5 Rubber.
Call For More Information.



2026 FONTAINE 60 TON MODULAR
2+3+1,
26' Dsr, 184" Swing Clearance, Set Up
For 2 Axle Jeep, 14" Deck Height, Air
Ride, Alum Wheels, 275/70R X 22.5
Rubber, Non Ground Bearing.
Call For More Information.



IN STOCK NO WAITING. FONTAINE MAGNITUDE 65
2+3+2 CAPABLE, 28' DROP SIDE RAIL DECK, 3 AXLE,
SET UP FOR 4 AXLE, 14.75" DECK HEIGHT, 102" WIDE,
60.5" AXLE SPACING, EQ2 SPREADER BAR WITH
INTERMEDIATE AXLE, HYDRAULIC REMOVABLE, NON
GROUND BEARING WITH 2 PIN POSITION AT 114" AND
102", TRIPLE CYLINDER, 70" HYDRAULIC FLIP BOX,
HEAVY DUTY SNAP IN OUTRIGGERS, D-RINGS,
ALUM WHEELS, 275/70R X 22.5 TIRES.
CALL FOR MORE INFORMATION.



2026 KRUZ, 70 Yard, Tri Axle, 70,000
Single Point, Lift On Third Axle, 1/4 Inch
450 Hardox, Floor, Sides, Nose, Gate,
12 Panel Gate, 11 X 24.5 Rubber, Alum
Wheels. **Taking Orders.**
Call For More Information.



2026 FONTAINE TRAVERSE HYDRAULIC
TAIL, 48' Long, 102" Wide, Air Ride,
Hydraulic Upper Deck.
Hydraulic Winch, Remote Control,
Alum Wheels, Dual Controls. **Taking Orders**
Call For More Information.



2026 FONTAINE 60 TON MODULAR,
26' Dsr, 60" Axle Spacing, 184" Swing
Clearance, Set Up For 2 Axle Jeep, 14"
Deck Height, Air Ride, Alum Wheels,
275/70R X 22.5 Rubber, Non Ground
Bearing. **In Stock.**
Call For More Information.



1998 KAYLN SIEBERT.
75Ton 3+3+3, Air Ride, West Coast
Bogie, 3 Axle, Air Ride Jeep With Power
Tower, 10' Wide Trailer, 60' Overall
Length, 48' Of Useable Deck, 275/70 X
22.5 Rubber, Sandblasted & Painted,
Excellent Shape, Alum Wheels On Jeep
And Booster. **Call For More Information.**

Trades Welcome • Financing Available • www.josephequipment.com

THIS AD IS COPYRIGHTED & OWNED BY TRUCK AND EQUIPMENT POST

TRAILER RENTALS • TRAILER RENTALS • TRAILER RENTALS •

WE RENT STEP DECKS • LOW BEDS • HI FLATS • DEMO/SCRAP • TRAILERS

JOSEPH EQUIPMENT COMPANY

300 GAY ST. • Manchester, NH 03103

NOW TAKING ORDERS FOR DUMP TRAILERS AND LOWBEDS FOR SPRING AND SUMMER DELIVERY

14" DECK HEIGHT



NEW 2026 FONTAINE RENEAGE LXL, 14" Deck Height, 30" Deck W/ 6" Ground Clearance, 2 Axle, Set Up For 3rd Hydraulic Detachable Or Mechanical Detachable. In Stock No Waiting. Call For More Information

WE RENT WALKING FLOORS • DUMPS • HIGH FLAT EXTENDABLES • JEEPS



2026 FONTAINE MAGNITUDE 603T Modular Drop Side Rail With 28" Deck, Hydraulic Removable Neck, Non Ground Bearing, Air Ride, Tri Axle, Third Axle Lift, Set Up For 4th, Alum Wheels, 275/70 X 22.5 Tires, Loaded. Call For More Information

IN STOCK, NO WAITING



IN STOCK - 2026 FONTAINE MAGNITUDE 60HD-4XK, Deck Extends From 30' To 51', 65 Ton When Closed, Built To Handle A 60 Ton Load With Ease, 30" Clear Deck Length Extends To 51', 22" Loaded Deck Height, 6" Ground Clearance, 7 Position Hydraulic Detachable Gooseneck, 7 Position Air Ride Tridem Bogie, 402 Deep Ready, 36" And 63" Flip Box Ready, 60/90 Flip Axle Ready, EC2 Spreader Bar Ready, Loaded. Call For More Information



2026 FONTAINE MAGNITUDE 59AK, 55 Ton Extendable Trailer, 30' To 50', Modular, Detaches Both Ends, Hyd Removable, Non Ground Bearing, 20" Deck Height, Will Take 10' Deck Ext For A Total Of 60', 275 Rubber Tri Axle, Air Lift On 3rd, Set Up For 4th, Set Up For Gooseneck Ext, Call For More Information

55 TON EXTENDABLE

PHONE: 603-641-8608
FAX: 603-666-3716



70 TON 2+3+2

WE RENT STINGERS • SPREADER BARS • DOUBLE DROP EXTENSIBLES TRAILERS



2026 FONTAINE 704/2+3+2 DROP SIDE TAIL, 4 Axle, 28" Deck, Hydraulic Detachable, In Stock, No Waiting, Non Ground Bearing, 102" Wide, 65" Flip Box, Spreader Bar And 352" Jeep, Alum Wheels, 275/70R X 22.5 Tires, 28" Beam Deck Available. Call For More Information



NEW 2026 FONTAINE 55 TON, Drop Side Rail, Tri Axle, Air Ride, Set Up For 4th, Non Ground Bearing, Led Lights, Aluminum Wheels, Strobe Lights, Loaded. In Stock No Waiting. Call For More Information



NEW 2026 SPECIALIZED 55 TON BEAM TRAILER, 3+1 Modular NGB, Detach Both Ends, Tri Axle, Air Lift On 3rd, Set Up 4th, Set Up For Gooseneck Extension, Call For More Information

Trades Welcome • Financing Available • www.josephequipment.com

THIS AD IS COPYRIGHTED & OWNED BY TRUCK AND EQUIPMENT POST