

SERVING NEW ENGLAND

FREE

TRUCK AND EQUIPMENT POST

Your Local Source For The Trades



2006 MACK GRANITE. 427 HP, 20F/52R, HEIL REAR LOADER WINCH AND CART TIPPER, 297K MILES, \$47,000. SOUTHBRIDGE, MA 774-230-6724



1998 CATERPILLAR D8R. 3406, EROPS, AIR CONDITIONING, STEREO, SEMI U BLADE, 85% UNDERCARRIAGE, 3RD VALVE FOR RIPPER, NEW BATTERIES, WORK READY. \$109,500. 603-759-5918



2011 INTERNATIONAL 4300. 170K MILES, ALLISON AUTOMATIC, POWER WINDOWS & LOCKS, NEW AIRBAGS, BRAKES, BEEN SHORTENED BUT RAILS NOT CUT YET, TRUCK IS STRAIGHT FROM DOWN SOUTH - SUPER CLEAN! NO RUST AT ALL!! \$17,000. 508-509-3461



2016 MITE II TROMMEL SCREEN MACHINE. 30' CONVEYOR/STACKER, 125 HRS, NEW CONDITION, MAKES A GREAT SCREENED LOAM, IDEAL FOR LANDSCAPER, \$42,500 OBRO. EPSOM, NH 603-736-5550



2009 UTILITY 40' X 102" TRAILER. EQUIPPED WITH AIRPORT ROLLER BED SYSTEM, VERY HARD TO FIND, SUPER CLEAN, \$8,500. 978-992-7077

Optative Group



**Issue 44-45
Nov 4th 2020**

**INTERNET & PRINT
FOR ONLY \$25.00**

www.TruckAndEquipmentPost.com

888-887-0505

GENERAL TRUCK CENTER INC.

Selling Cab Overs Since 1961!!

109 Lindberg Ave. Methuen MA 01844 • www.generalttruckcenter.com

978-686-1800 **603-560-0668**
Nights and Weekends

ASK US HOW WE CAN LOOK IN YOUR MAINTENANCE COSTS FOR 6 YEARS WITH PSMP




| | | | |
|---|--|---|---|
|  <p>2020 HINO 338 Oil Chassis. Air Brake/Spring Ride, Allison 3500 RDS Auto, Vertical Exhaust, Chrome Package, Cold Package And More! stk#9705, \$81,900.</p> |  <p>2014 Hino 268A. 168k. 26'x102x103 Body. Curbside. 3000lb Gate. 2 Rows of E-Track. Wood Slats. Cold Package. stk#15193 \$44,900.</p> |  <p>2013 HINO 338. 271" WB, 6 Sp Manual, 197K Miles, B/U Alarm, AM/FM/CD, Air Brake/Air Ride Seat, Heated Mirrors/Block Heater, A/C, Exhaust Brake, stk#15078, \$15,500.</p> |  <p>2016 HINO 195. 170K Miles, 18'x85x102, Step-Up Rear Bumper, Cold Package (Heated Mirrors/Block Heater), 102" Mirrors, P/W/L, stk#15232, \$27,900.</p> |
|  <p>2016 HINO 195. 17950 GVW. 176K Mi, 14' Steel Flat Body, Stake Pockets Avail, Heated Power Mirrors, Block Heater, A/C, AM/FM/CD, P/W/L, stk#15202, \$29,900.</p> |  <p>2020 HINO 268A. Air Brake. Alum Wheels. Chrome Bumper. 26x103x102. Curbside Door. 2 Rows E-Track. stk#9528, \$85,875.</p> |  <p>2020 HINO 195 NEW! Carrier 660 Self-Cont w/ Supreme Kold King XL 16', Freezing Temp Capacity, Roll-up, 91"x96", Insulated, 2 Step Bump, stk#9586, \$88,900.!</p> |  <p>2020 HINO 195 NEW! Carrier 660 Self-Cont w/ Supreme Kold King XL 16', Freezing Temp Capacity, Roll-up, 91"x96", Insulated, 2 Step Bump, stk#9592, \$88,900.!</p> |
|  <p>2013 HINO 268A. 138K. 6 Sp Man, 24x97x96, 2500 Lb Tuck, Heat Mirr, P/W/L, Cruise, A/C, AM/FM/CD, Air Brake/Spring Ride, stk#15237, \$33,900.</p> |  <p>2014 GMC SAVANA 2500HD. 163K, 4.8L V8 285 HP, 6 Speed Auto, Swing Rear Doors, 3 Rows of Wood Slats, AM/FM, A/C, stk#15323, \$11,900.</p> |  <p>2016 ISUZU NPD-HD. 97K, 16'x91"x96", 2 Row E-Track, P/W/L, A/C, AM/FM/CD, Cruise, 3 Yr/90K Add Mileage Warranty Avail! stk#15333, \$32,900.</p> |  <p>2014 ISUZU NPR-HD 16' Morgan Insulated w/ Tri-Fold Rear Swing Doors. 14500 GVW, 99K!, Carrier 40x. AM/FM/USB, Ext Warr Avail. stk#15040, \$29,900.</p> |
|  <p>2016 ISUZU NPR-HD. 67K Miles! Gas V8. NEW 20' Aluminum Dry Body w/ 1 Row E-Track, P/W/L, A/C, AM/FM/CD/Bluetooth, stk#15229, \$34,900.</p> |  <p>2014 ISUZU NPR-HD. Diesel, 119K Miles! 150" WB, Auto, Includes 3 YR/90K Isuzu Extended Warranty, stk#15101, \$22,900.</p> |  <p>2014 ISUZU NPR-HD 16' Alum Body. Diesel, 119K, 1 Row E-Track. Metal Roof, AM/FM/CD/Bluetooth/USB Radio, P/W/L, Back-Up Alarm And More! stk#15100, \$29,900.</p> |  <p>2015 ISUZU NPR-HD. 89K! 6.0 V8 Gas, 6 Speed Auto, 16' Morgan Dry Body W/ 2000 Lb Liftgate, Inc 2 Yr Warranty, stk#15346, \$28,900.</p> |
|  <p>2014 ISUZU NPR-HD. 150" WB, 163K Miles. 6 Sp. Auto, 4 Cyl Diesel. P/W/L, A/C, AM/FM/CD/USB w/Bluetooth, stk#15169, \$22,900.</p> |  <p>2014 ISUZU NPR-HD's. 5 To Choose From. 150" WB Ready For 16' Bodies, AM/FM/CD, A/C, P/W/L, Heated Mirrors. stk#15040-15062, \$22,900.</p> | |  <p>2016 NPR-HD. Diesel, 99K, 16' Dry w/ 1500 Lb Tuck, 91Tx96W, 2 Rows E-Track w/ Wood Slats, Metal Roof, 3 Yr/90K Additional Warr Avail! stk#15332, \$32,900.</p> |

*TAXES NOT INCLUDED, 100K MILE LIMIT, .20 CENTS EVERY MILE ABOVE 100K. Dealer is not responsible for errors in price or description of vehicles

GENERAL

TRUCK CENTER

Call us at
978-686-1800

or Visit us at:
www.generaltruckcenter.com

ISUZU
TRUCK

**FINANCING OPTIONS FOR NEW VEHICLES STARTING AT 1.99% AT 36 MONTHS,
3.49% FOR 48 MONTHS, 4.49% FOR 60 MONTHS, 5.09% FOR 72 MONTHS.**



**Great Selection of New Isuzu FTR's –
Refrigerated Trucks & Vans.
8 Wheelbases
152" – 248" For Bodies 14' to 30'.
5.2L Diesel, 25,950 GVW.**



**New Isuzu NPR-HD Dry Freight &
Reefer Bodies. Gas & Diesel,
109" to 176" WB, Up to 14,500 GVW,
10' to 20' Bodies.**

109 Lindberg Ave. Methuen, MA 01844

Lowbed →
Johnson

1-800-660-2412

Moves Construction Equipment
Serving Massachusetts and Southern New Hampshire



2001 POWER SCREEN POWER GRID 800.
3 Cylinder Deutz Engine, 36 Inch Discharge Belt, Runs And
Operates Perfectly, Asking **\$34,000.** 203-666-1411



VALMET 503 WOODSTAR.
3-Wheel Fellerbuncher, Only
3300 Hours, Runs Great, 20 Inch
Danglehead, Excellent Tires And
Chains, **\$24,000.** Call Steve,
860-208-9125



CAT D5M DOZER HI-TRACK.

Full Cab, AC Cold, Radio,
Deluxe Interior, Runs
Fantastic, No Leaks, Blade
Like New, Undercar-
riage 50%, 5000 Hrs,
Good Paint, Ready To
Work, Just Been Serviced,
\$62,900.
781-844-3868



2017 HIGH POLISHED DIESEL TANK. 40 Gallon With Step, Brand New Condition, With Back Frames Coming Off Peterbilt Truck, Best Offer. Call Brian, **\$600**, 978-375-1127



ANTIQUE GRANITE POSTS.

12" X 12", 13" X 14" +/- Up To 10 Ft. Long, Was **\$60** Per Linear Foot, Buy Now For **\$38** Per Linear Foot, Limited Supply. Dartmouth, MA 508-995-8067



2001 GMC K3500 CREW CAB 4X4 DRW W/EZ-DUMPER. SLE Pkg, 8.1L V8, Allison Auto, PW, PL, Dual Power Buckets, Fully Loaded, Never Plowed, 171K, Clean Truck, **\$15,900.**, Fresh Trade, Wouldn't Fit in Customer's Garage, (Will Separate), Westport, MA 508-636-5050



2004 CAT 236B SKID STEER, Fully Enclosed, 2,400 Hours, 75% Tires, New Cutting Edge, Very Clean & Ready To Work ! **\$18,900** Call Today ! 781-417-3018

Dario Diesel
TRUCK CENTER
Truck Sales, Service & Parts Since 1959
182 SW CUTOFF, RT 20, Worcester, MA



NEW VOLVO & HINO TRUCKS



2021 VOLVO VNL64T740 70" Sleeper 6x4. D13 500HP, 12 Spd, Leather Seats, 237" WB, 53,200 GVW. stk#VN641



BENDIX DISC BRAKES

2020 VOLVO VNL64T300. Cummins X15 500HP, Eaton Fuller 10 Spd AMT Trans, 185" WB, 52K GVW, 40K R/A, stk#VN624



2020 VOLVO VHD64T300. 6x4. D13 500HP, 18 Spd Eaton Fuller, 60,600 GVW. stk#VHD289



2020 HINO 195 C&C. 210 HP Diesel, Auto, 150" WB, 315 Miles, 19.5 R/A, Ready For 16-18' Body. stk#H292



2021 VOLVO VNL64T40 70" Sleeper 6x4. D13 500 HP, 53,200 GVW, 237" WB, 317 Miles, stk#VN639

USED TRUCK SPECIALS



2016 VOLVO VNL64T730 77" Sleeper 6x4. D13 500HP, 12 Spd, 40K R/A, One Owner, 483K Miles, stk#U597N, \$53,950.



2016 VOLVO VNL64T780 77" Sleeper 6x4. D13 500HP, New Trans @425K, 40K R/A, 472K Miles, stk#U603VN, \$59,950.

Visit www.dariodiesel.com • 877-218-8132

Your Local Source For The Trades



1996 MACK RD. Tri-Axle Dump Truck, E7 -350 HP, Fuller 8 SP LL Transmission, 335K Miles, Jake Brake, A/C, New Dump Piston, Straight Frame, Truck Well Maintained, Ready For Work! **\$25,550 OBO**, Motivated. 401-862-1850



INTERNATIONAL V190 DUMP, Good Shape, V-8 Gas, **\$5,000**, 860-928-5748



2006 VOLVO L70E - One Owner Machine, Hyd. Coupler, Forks & 3.0 cu yd GP Bucket, 28,500 LBS, 151HP, Heat & AC Perfect For Snow - **\$45,000**
CALL DAN AT 203-506-3860

1995 JOHN DEERE 653E FELLER BUNCHER, 18" Head, Heat And A/C, Runs Very Good! 16,200 Frame Hours, Woods Ready! **\$34,900**
Call Today!
781-417-3018



2019 CAM TRAILER.
Tilt, 18,400 GVW, Barely Used, Excellent Condition, **\$9500**.
860-617-4569



60 Kingstown Road,
Richmond, RI
401-447-2777

2020 PRICE SHEET

STONE (PER TON)

3/8" - \$13.25

1/2" - \$13.25

3/4" - \$13.25

1 1/2" - \$12.75



GRAVEL (PER TON)

3" MINUS - \$10.50

5" MINUS - \$9.75

3/4" PROCESSED - \$12.00

1 1/2" PROCESSED - HOMEOWNER - \$10.00

1 1/2" PROCESSED - DOT SPEC - \$11.00

STONE DUST/BEDDING - \$10.50

FILL

SCREENED - \$8.75

RIP RAP

4" - 6" - \$15.50

8" - 12" - \$16.00



OTHER PRODUCTS: SCREENED STONE DUST \$18.00 • SCREENED STONE \$9.00
TOP SOIL \$22.00

*ALL PRICES ARE FOB, PLEASE CALL FOR DELIVERY PRICING. *STONE AND GRAVEL ARE STANDARD CRUSHER RUN - SIEVE ANALYSIS AVAILABLE UPON REQUEST. *RIDOT SPECS AVAILABLE. *VOLUME DISCOUNTS AVAILABLE.

STONEHAM



617-733-0773

MANY NEW FINANCE OPTIONS AVAILABLE



2020 F350 ALUMINUM SERVICE BODY.
4X4, V8 Gas, Auto, STX Package, rear View Camera, 4G Wifi, #201212
\$50,895



2020 F450 4X4 DUMP. 9' Body, 3-4 Yd, Diesel, Power Equip Pkg. Running Boards, #201075 **ON SALE**



2019 F550 ALUMINUM LANDSCAPER. 4X4, 9' Truck Craft Landscape Spec Dump, Diesel, Payload Up Grade, PW, PL, 19,000 GVW, #194131 **\$60,499.**



2019 T350 PASSENGER VAN. V6, Auto, AC, PW, PL, Rear View Camera, Running Boards, Bluetooth, Luggage Area, #194401 **\$35,995**



2020 F550 LANDSCAPE DUMP. 4X4, Diesel, 19,500 GVW, PW, PL, Running Boards, 12' Body, Payload Up Grade, #201065 **ON SALE**



2019 E350 CONTRACTOR SPECS. V8 Gas, Auto, PW, PL, AC, #194940 **\$39,499**

MANY NEW FINANCE OPTIONS AVAILABLE



2020 F350 RWD STAKE BODY. V8 Gas Engine, 10 Speed Automatic Transmission, 12' Rugby Body, Power Equipment, SYNC AppLink For Navigation & Music, #201204 **\$43,995**



2020 T240 CARGO VAN. V6 Gas, Auto, PW, PL, Rear View Camera, Cargo Floor Liner, #202549



2019 E350 SERVICE UTILITY VAN. Premium CD Stereo, PW, PL, Ladder Racks, Pass Thru Door, Remote Keyless, Cruise, #104933 **\$44,399.**



NEW E350 DURA CUBE 14' VAN BODY. Pull Out Ramp, Roll Up Rear Door, Step Bumper, V8 Gas, Pass Thru Door, E-Tracks, #21025



2019 E350 10' CUBE VAN. SRW, V8, PW, PL, CD Stereo, CYNC Voice, Remote Key, AC, Pass Thru Door, #194866 **\$35,295**



2019 E350 KNAPHEIDE UTILITY BODY. V8 Gas, PW, PL, AC, Premium CD Stereo, Cruise, SYNC, Remote Key, Strop Lights, #194935 **\$43,300**

COMMERCIAL
VEHICLE CENTER
www.StonehamFordTrucks.com

211 MAIN ST. STONEHAM, MA 02180

Mon-Fri 8:30am-8pm Sat 9-5pm Sunday 11-4

ALL PRICES NET & INCLUDE ALL AVAILABLE REBATES TO DEALER

Call Bill Pollack 1-617-733-0773 or billpollack@stonehamford.comCOMMERCIAL
VEHICLE CENTER

STONEHAM**617-733-0773****MANY NEW FINANCE OPTIONS AVAILABLE**

2019 E350 UTILITY BODY. 12' Dura Cube, Ladder Racks, 50" Rear Door, PW, PL, V8 Gas, Premium CD Stereo, Remote Key, #194957 **\$43,290**



2019 F350 SERVICE BODY. 4X4, Electric Locking Axle, V8 Gas, SYNC, Power Equipment Group, Step Boards, Plow Prep, 110 Outlet, #194793 **\$44,295**



2019 F550 SERVICE BODY. 4X4, V10 Gas, Auto, PW, PL, #194261 **\$53,095**



2020 F450 DUMP TRUCK. Diesel, Auto, 4X4, Stereo, SYNC, Power Group Package, Step Boards, PW, PL, Power Heated Mirrors, #201076. **\$60,595**



NEW F350 STAINLESS STEEL DUMP BODY. 4X4, V8 Gas, Automatic, PW, PL, #20528



2019 F350 4X4 PICKUP. 8'6" Stainless Steel V-Plow, V8 Gas, 11,300 GVW, Skid Plates, Power package, #194761 **\$43,295**

MANY NEW FINANCE OPTIONS AVAILABLE

2020 F350 DURAMAG SERVICE BODY. 4X4, V8 Gas, SRW, 8' Aluminum Body, PW, PL, Heated Mirrors, STX Package, #201212 **ON SALE**



2020 F550 LANDSCAPE DUMP. 4x4, Parkhurst 9' Body, V8 Gas, Plow Prep, Payload Upgrade, Power Equip Pkg., #201232 **\$56,595**



2019 F350 DUMP TRUCK. Diesel, Auto, 4X4, Stereo, SYNC, Power Group Package, Step Boards, PW, PL, Power Heated Mirrors, #194501 **\$52,200**



2020 F350 ALUMINUM SERVICE BODY. Remote Start, 4x4, 8' Boss Plow, V8 Gas, Duramag Body, STX Pkg, Pw Equip Pkg, Rear View Camera, #20413. **\$54,799**



2020 PASSENGER WAGON DELUX. All Wheel Drive, Frt & Rear AC, Premium Stereo, Privacy Glass, Frt & Rear View Camera, Many Features, #202485 **On Sale**



2020 F250 WORK TRUCK. 4X4, 8' Boss Plow, Power Equipment Package, STX Package, 10,000 GVW, #20367 **\$43,895**

COMMERCIAL
VEHICLE CENTER**www.StonehamFordTrucks.com**

211 MAIN ST. STONEHAM, MA 02180

Mon-Fri 8:30am-8pm Sat 9-5pm Sunday 11-4

ALL PRICES NET & INCLUDE ALL AVAILABLE REBATES TO DEALER

Call Bill Pollack 1-617-733-0773 or billpollack@stonehamford.com

COMMERCIAL
VEHICLE CENTER



11 Commercial Way
Milford, MA 01757

HILLVIEW EQUIPMENT

SALES & RENTALS 24/7

CALL JUDE 1-508-498-0777

www.HillviewEquipment.com

Rt. 495 to exit 19,
Route 109W,
Left to Birch St,
right to Industrial Dr. Left to
Commercial Way



**2007 CAT
315CL:**
GREAT SHAPE,
WORK READY
PIECE, REBUILT
INJECTOR PUMP.
**\$70,000
BRO**



**2000 CAT
D300 SERIES
II:** THIS IS A
GREAT RUNNING
TRUCK W/ NO
ISSUES, GOOD
RUBBER AND A
TAILGATE!
\$89,000 BRO



**NEW & USED ROCK BLASTER
HAMMERS**



**2011 BOBCAT
S630:**
LOW HOURS,
OUTSTANDING
MACHINE!
\$39,000 BRO



**1999 CAT
345B1:** GREAT
MACHINE, USED VERY
LITTLE, COMES W/ 1
YEAR OLD 12K ROCK
BLASTER HAMMER,
THIS MACHINE CAN
POUND ROCK INTO
DUST! **\$199,000
BRO**



**KOMATSU PC
160LC:** VERY
GOOD CONDITION,
LOW HOURS,
QUICK CONNECT,
HYDRAULIC
THUMB.
\$69,000



**2005 CAT
345 CL:**
NO STONE LEFT
UNTURNUED! RECENT
BOTTOM & FINALS,
RECENT HYDRAULIC
PUMP, CHANGED THE
CAB, NEW WIRING
HARNES, VALVE BANK
WORK, READY TO
WORK!
\$125,000 BRO



**2013 LULL
644E-42:**
(6) YES I
HAVE SIX VERY
CLEAN.....
**STARTING @
\$49,000**



**EIK LONG
REACH
PACKAGES
FROM
20 TO 160
METRIC
TONS.
READY FOR YOUR
JOB SITE.**

"MONSTER SALE"

NEW INVENTORY COMING !



**6 TO CHOOSE
FROM !
PRICES START
@ \$55,000**

**2017 CAT
908M:**
VERY CLEAN,
LOW LOW
HOURS, GREAT
RUBBER,
COMES WITH 3RD
VALVE, FORKS
AND A BUCKET!



**2003 CAT
330CL:**
GREAT MACHINE
W/ STRONG
BOTTOM, NEW
CHAINS- JUST
COMPLETED JOB,
FULLY SERVICED W/
HYDRAULIC THUMB.
\$79,000 BRO



**2004 725
TRUCK:**
WELL
MAINTAINED,
WORKING DAILY!
**\$79,000
BRO**



**2016 CAT
308E2:**
FRESH OUT OF
THE SHOP &
READY TO WORK!
BEST PRICE
AROUND.
CALL!



**2014 CAT
312E:**
OUTSTANDING
MACHINE, GREAT
BOTTOM, LOW
HOURS, QC, AUX.
HYDRAULICS.
**\$89,000
BRO**



2013 CAT 314:
VERY LOW HOURS,
BLADE, AUX.
HYDRAULICS, HARD
TO FIND ! READY TO
WORK !
\$129,000 BRO

★ THIS MONTH'S SPECIALS! ★



**2011 CAT
924HZ:**
VERY NICE
CONDITION
WITH 3RD
VALVE.
**ASKING
\$79,000**



**2016 CAT
336FL:**
OUTSTANDING
MACHINE WITH
VERY LOW
HOURS,
IN SPOTLESS
CONDITION.
BEST PRICE IN
NEW ENGLAND!
CALL



2005 PALFINGER KNUCKLE BOOM PK 32002. Has A 62 Ft Reach, In Good Working Condition, Always Well Maintained, **\$14,500 OBO.** 508-699-2067



2003 MACK DM 5 STORY FASSI CRANE: 400 HP on Camelback Full Lockers, 8LL. **\$35,000.** Call Dave. 508-726-0077. East Freetown, MA



CM FLATBEDS: STEEL AND ALUMINUM. Call With Your Needs. Call Chris 781-582-1378. Plympton, MA



1997 MACK SANDER COMBO. Low Miles, Well-Maintained, State Ready W/Closed Loop System, Good Rubber, New Paint, **\$18,500.** Call John, 413-522-3729



1985 REX SP 700. Vibratory Compactor, New John Deere 4 Cylinder Engine, Rebuilt Drum, Runs And Operates Perfectly, Needs Paint, Asking **\$12,500.** 203-666-1411



1999 MACK CH613. 460 Engine, 8 LL, 11.00 24.5 Tires, Excellent Condition. **\$23,000.** Shaftsbury, VT 802-447-0758



2013 CHEVY 3500 EXPRESS. White, V8, Auto, PS/PB, AM/FM, A/C, PW/PL, Side Service Door, E-Trac, 14ft With Tuck Away Lift Gate, 185K, Owner Driven And Maintained, **\$12,500.** 860-849-2028



2020 FORD F-250 SRW SUPER-CAB 4x4 XLT DURA-MAG ALUMINUM UTILITY, STK#20421, Watertown, MA Call Stan 617-610-5540



2007 FORD F250. 4x4 Rust-Free, Mechanically Completely Reconditioned, Brakes, Tires, Shocks, Etc. Etc., 5.4 Gas, Auto, A/C, PW, PL, Nice Interiors, Racks, Tool Boxes, New Ford Hitches, Like New Fisher Plows, 50-80K Miles, **\$14,500.** 5 Available. 978-462-1000, www.Westsidetruckequipment.com



Chadwick-BaRoss

1-401-640-9303
WWW.SRISALES.NET

 31 JAMES P. MURPHY INDUSTRIAL HIGHWAY
 WEST WARWICK, RI 02893

SOUTHERN RHODE ISLAND EQUIPMENT
FFC • BRADCO • MCMILLEN • MAJOR • SWEEPSTER • HARLEY
HARLEY RAKES

CALL FOR DETAILS & PRICING !

ROCK BUCKETS

STARTING AT \$1,625, IN STOCK!!

72" PICKUP SWEEPER

72" PICK UP SWEEPERS.. \$4,200

VIBRATORY ROLLER

CALL FOR PRICING

PREPERATOR

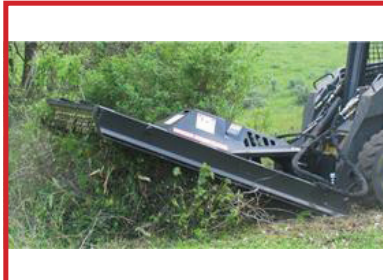
CALL FOR PRICING

HIGH DUMP BUCKETS

CALL FOR PRICING

ROOT RAKE

CALL FOR PRICING

BRUSH CUTTER

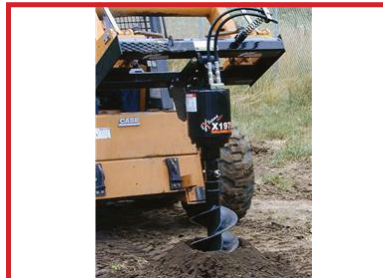
5FT-\$5,100 - 6FT-\$5,300

5500LB FORKS

IN STOCK

SIDE DISCHARGE BUCKETS IN STOCK !

CALL FOR PRICING !

AUGER'S IN STOCK

\$2,150.00

NEW SKID STEER HAMMERS
 \$6,200
 WHILE THEY LAST !!!

FINANCING AVAILABLE / PALADIN ATTACHMENTS.
GO TO PALADINBRANDS.COM FOR FULL LINE OF ATTACHMENTS.



Chadwick-BaRoss

1-401-640-9303 • 1-401-594-8408

WWW.SRISALES.NET

SOUTHERN RHODE ISLAND EQUIPMENT 31 JAMES P. MURPHY INDUSTRIAL HIGHWAY WEST WARWICK, RI 02893

DYNAPAC**Husqvarna****MULTIQUIP****SANY OFFERS A 5 YEAR 5,000 HOUR WARRANTY W/ 0% FINANCING AVAILABLE !**

NEW SANY SY60C
CAB-HEAT-AIR-
STEREO, HYD.
THUMB, QUICK
COUPLER, 24"
BKT. MACHINE
WEIGHT 13,448LB.
\$59,000



NEW SANY SY50U
CAB-HEAT-AIR-
STEREO, HYD.
THUMB, QUICK
COUPLER, 24"
BKT. MACHINE
WEIGHT 11,684LB.
\$53,500



NEW SANY SY35U
CAB-HEAT-AIR-
STEREO, HYD.
THUMB, QUICK
COUPLER, 24"
BKT. MACHINE
WEIGHT 8,499LB.
\$41,500



RUBBER TRACKS
FOR ALL MAKES
AND
MODELS
CALL FOR
PRICING !!!



2013 BOBCAT S770
CAB-HEAT-AIR,
RUBBER 80%,
CALL FOR PRICING,
FINANCING
AVAILABLE!

SALES • SERVICE • RENTALS • PARTS
FULL LINE OF SKID STEER ATTACHMENTS AVAILABLE.
GO TO WWW.PALADINBRANDS.COM

WWW.SRISALES.NET
WWW.CHADWICK-BAROSS.COM

Takeuchi
The Power of Product and Support



2005 MAC 28 FT
ALUMINUM DUMP
TRAILER. Air Suspension,
Poly Liner, Aluminum/Steel Wheels,
Richards Hydraulic Cover, LED Lights,
2-way gate, Very Good Condition,
Call for Price.
203-640-5891



2008 FORD F350. 4x4, Rust-Free Cab, 6.4 Diesel, Auto, PW, PL,
95K Miles, Central Hydraulics, Good Interior, 9' Dump Body, Hitch,
Strobe Lights, Nice 9' Fisher Plow, 8' Gas, SS Sander, Fully Serviced,
\$18,500. 978-462-1000, www.Westsidetruckequipment.com



1997 ECONOLINE
24 TON TRAILER.
Deck Over, 20 Deck, 33" Height,
802-500-7099

Village
TRUCK SALES

800 Cheshire Rd. (Rt 8), Lanesboro MA 01237

(413) 442-0407 • (888) 474-5224

www.villagetrucksales.com

ALL UNITS ACQUIRED FROM MUNICIPAL FLEETS

2008 PAYSTAR
w/ FABCO ALL WHEEL
DRIVE. 21K Miles, C13 CAT,
18 Speed, P/A Plow, Right
Wing, All Season Body, New
Certified Closed Loop Sys,
\$124,995



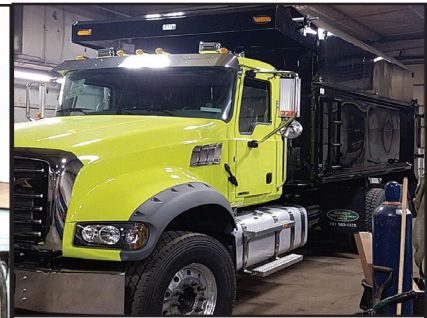
2006 PAYSTAR W/
FABCO ALL WHEEL
DRIVE. Single Axle,
C13 CAT, 8LL, P/A Plow, Right
Wing, All Season Body, New
Certified Closed Loop Sys,
\$69,995



2000 PAYSTAR AWD.
Stainless Steel Highway 2020
EXT, Frame Mounted Sander,
3406E CAT, 15 Speed, One Way
Plow, Right Wing, New Certified
Closed Loop Sys,
\$49,995

**KAWASAKI
80Z2
LOADER.**

3.5 Yd., Cummins
Powered Solid
Engine,
Powerful Snow
Machine!!
\$15,000.
For Details
Call Paul,
860-212-4846



**FULL FABRICATION SHOP.
CUSTOM CHIPPER TOP'S &
BODIES. CUSTOM REAR
GATES ALSO AVAILABLE.
CALL CHRIS
CAREY AUTO PLYMPTON, MA
781-582-1378**



RUNNING TAKEOUT ENGINES.
Detroit Diesel 16V92T, 2-Valve,
Cummins 855 Small Cam. Call For Price/Info
Goodwinmarine@gmail.Com, Hull, MA 781-925-1593

2012 FORD F350. 49K Mi.,
6.2L, Auto, 10,500 GVWR, Orig
Owner, Cab & Chassis, Alum
Dump Body, Fold-Down
Removable Sides, Truckcraft Body,
Reverse Camera, Remote Start,
Bluetooth, 2 Toolboxes,
Pwr Mirrors, Strobe Lights & More,
\$36,900. Johnston RI
401-640-0389



**1999 MACK
RD600.**

Roll-Off Truck.
9 Speed,
Automatic
Canvas,
\$22,500
OBO.
508-958-4094 Or
508-496-7277



FORD F650 DUMP TRUCK. Red, Manual Transmission With
Brand New Transmission. **\$8,000.** 401-289-2252



9' GRAVEL BODY. Came Off a Freightliner, #154399,
\$2,500, 860-423-6004



2009 JOHN DEERE 544W - Direct Fit Bucket, Tight
Clean and Work Ready - **\$69,500**
CALL DAN FOR PRICE AT 203-506-3860

**2016 F150 ROUSCH
CREW CAB 4x4:**

Power Group, V6, Near
New. Very well maintained
26K Miles. **\$39,000.**
Call Bryn. Hopedale, MA
855-313-2441





2016 VOLVO VHD HEAVY TRACTOR. 485 HP, 46 Rears, 13.6 Front Axle, Full Locking Rears, Air Slider, T-Ride, 265K Miles. Truck In Excellent Condition, **\$64,000 OBO.** 508-672-4436 Or 774-488-6535, Fred



1998 VOLVO A35C.
S/N:A35CV4467, 14,150 Hrs., 35 Ton,
Good Tires, Good Body, **\$54,000.**
Chris: 860-460-0767,
email: chm@terrafirmas.com



2006 PETERBILT 379 SLEEPER TRACTOR, 185Spd., 475 CAT Motor, 65% Michelin Rubber, High/Low Pressure Hydraulics, One Driver, Low Miles-600K, Brakes Good, Ready To Work! **\$54,900** Call Today 781-417-3018



2007 MITSUBISHI FUSO FG 140. 14' Dumping Landscape Body, With Beavertail Attachment, Drive Your Mower Right On, Includes 10" SS Plow, **\$20,000/BO** 413-268-3600 or 413-535-7210



HOLLISTON TRUCK

1569 WASHINGTON ST, HOLLISTON, MASS 01746
WWW.HOLLISTONTRUCK.COM • CALL 508-429-7678

**WANTED :
GOOD USED
DUMP BODIES**

LARGE SELECTION OF UNDER CDL TRUCKS !



2011 FREIGHTLINER M2: CUMMINS ISB-250HP, 98K MILES, ALLISON 3500 RDS AUTO, 37K GVW, SPRING SUSP., 5.14 GEARED RATIO, SINGLE FRAME, 11R 22.5 TIRES, AIR-BRAKES/SEAT, A/C, PTO, 10' STEEL DUMP, TELESCOPIC PISTON, AIR-GATE, 2 CHUTES, ELECTRIC TARP, PINTLE PLATE, AIR-TO-REAR. **\$43,000**



2009 INTERNATIONAL 4300: DT466-260HP, 97K MILES, ALLISON 3500 RDS AUTO, 26K GVW, SPRING SUSP., 5.64 GEARED RATIO, 11R 22.5 TIRES, SINGLE FRAME, AIR-BRAKES, A/C, PTO, 9' STEEL DUMP, 3 CHUTES, AIR-GATE, ELECTRIC TARP, PINTLE. **\$38,000**



2010 FREIGHTLINER M2: CUMMINS ISB-240HP, 47K MILES, ALLISON AUTO, 26K GVW, SPRING SUSP. W/ HELPERS, AIR-BRAKES/SEAT, A/C, DUAL PTO, 13' STEEL MONROE ENCLOSED UTILITY BOX, UNDER MOUNT AIR-COMP & GENERATOR, PW INVERTER, TOOL LIFT, PINTLE & MORE! **\$42,000**



2007 FORD F-650: CAT C7-230HP, ALLISON 3500 RDS AUTO, 26K GVW, SPRING SUSP., LOCKING DIFF., 11R 22.5 TIRES, DBL FRAME, AIR-BRAKES, A/C, PTO, 9' STEEL DUMP, 2 CHUTES, PINTLE REC. **\$36,000**



2010 FREIGHTLINER M2: CUMMINS ISB-240HP, 21K MILES, ALLISON AUTO, 26K GVW, SPRING SUSP., 4.78 GEARED RATIO, SINGLE FRAME, AIR-BRAKES/SEAT, A/C, PTO, 13.5' STEEL DUMP, BARN DOORS, 4' SIDES, TOOL BOXES, PINTLE, AIR-TO-REAR. **\$45,000**



2008 PETERBILT 340: PACCAR PX8-300HP, 123K MILES, EXHAUST BRAKE, ALLISON 3500 RDS AUTO, 36K GVW, 5.26 GEARED RATIO, LOCKING DIFF, AIR-RIDE SUSP., 11R 22.5 TIRES, AIR-BRAKES/SEAT, A/C, PTO, ELLIOTT ECH-3-70 SIGN CRANE, 70' REACH, WINCH, HITCH REC., PINTLE **\$38,000**

THE DUMP TRUCK SPECIALISTS

WWW.TRUCKANDEQUIPMENTPOST.COM



COMMERCIAL TRUCK HEADQUARTERS

888-605-4346

2019 RAM 5500 TRADESMAN Box Truck 4X4

SAVE \$6,091!



ONLY \$49,279!

BRIGHT WHITE, 6.4L V8 HEMI,
REGULAR CAB 4X2 204.5 WB Regular
Cab. STK# N19337

2021 RAM PROMASTER BOX TRUCK

COMING SOON!



CALL FOR DETAILS!

2020 RAM 5500 TRADESMAN CREW CAB

SAVE \$5,921!



ONLY \$67,955!

BRIGHT WHITE, 6.7L I6 TURBO
DIESEL CREW CAB 4X4 6.7L I6
CUMMINS. STK# N20166

2019 RAM 5500 RACKBODY CREW CAB

SAVE \$10,355



ONLY \$60,615!

BRIGHT WHITE, 6.7L CUMMINS TURBO
DIESEL, READING RACK BODY STK#
N19209

COME SEE LARRY



The Truck Guy!

More Than 30 Years of
Commercial Truck Experience!

2019 RAM 5500 RACKBODY CREW CAB

SAVE \$10,257!



ONLY \$61,133!

BRIGHT WHITE 6.7 L I6 CUMMINS
TURBO DIESEL, READING RACK
BODY STK# N19302

2019 RAM 5500 TRADESMAN REGULAR CAB RACK BODY

SAVE \$7,803!



ONLY \$63,007

BRIGHT WHITE, 6.7 L CUMMINS TURBO
DIESEL, READING RACK BODY,
REGULAR CAB STK# N19264

2019 RAM 5500 DUMP BODY REGULAR CAB

SAVE \$8,092!



ONLY \$68,250!

BRIGHT WHITE, READING DUMP
BODY, 6.7L I6 CUMMINS DIESEL
STK# N19332

2020 RAM 3500 TRADESMAN CHASSIS CREW CAB

SAVE \$5,287



ONLY \$64,945!

BRIGHT WHITE 6.7 L I6 CUMMINS
TURBO DIESEL STK# N20161

442 West Broadway, Gardner, MA 01440 SalvadoreAuto.com

NOT RESPONSIBLE FOR TYPOGRAPHICAL ERRORS. INCLUDES QUALIFYING REBATES.
SOME REBATES AND PRICING MAY VARY AFTER 10/31/2020. SEE DEALER FOR COMPLETE DETAILS


ON THE JOB


COMMERCIAL TRUCK HEADQUARTERS

888-605-4346

2019 RAM 5500 TRADESMAN

Chassis Regular Cab 4X4

SAVE \$5,020

ONLY \$51,425!

BRIGHT WHITE DUMP BODY
143.5 WB, UConnect w/5" Display.
STK# N19190

2020 RAM 3500 TRADESMAN

REGULAR CAB

SAVE \$3,088

ONLY \$54,467

DIAMOND BLACK PEARLCOAT, 6.7 L
16 CUMMINS TURBO DIESEL,
REGULAR CAB
STK# N20151

2019 RAM 3500 TRADESMAN

REGULAR CAB

DUMP BODY!

CALL FOR DETAILS!

BRIGHT WHITE 6.7 L 16 CUMMINS
TURBO DIESEL, DUMP BODY
STK# N19307

2020 RAM 5500 TRADESMAN

REGULAR CAB

SAVE \$6,383!

ONLY \$65,387!

BRIGHT WHITE, 6.7 L 16 CUMMINS
TURBO DIESEL, DUMP BODY
STK# N20037

**LARGEST
SELECTION
IN THE AREA!
INVENTORY
ARRIVING WEEKLY!**

2019 RAM 2500 TRADESMAN

NEW ARRIVAL

CALL FOR DETAILS

HD2 plow included, FLAME RED,
REGULAR CAB, 6.4L V8
STK#: N19352

2020 RAM 2500 TRADESMAN

SAVE \$3,716!

ONLY \$52,164

DIAMOND BLACK, 6.7L 16 Cummins,
CREW CAB, spray in liner, trailer
tow, STK#N20156

2020 RAM 2500 BIG HORN

COMING SOON

CALL FOR DETAILS
CALL FOR DETAILS!

2021 RAM SWITCH N' GO

COMING SOON!

CALL FOR DETAILS

442 West Broadway, Gardner, MA 01440 SalvadoreAuto.com

NOT RESPONSIBLE FOR TYPOGRAPHICAL ERRORS. INCLUDES QUALIFYING REBATES.
SOME REBATES AND PRICING MAY VARY AFTER 10/31/2020. SEE DEALER FOR COMPLETE DETAILS



1988 FORD L8000. 2008 Hi Way 15' Sander Body And 11' Power Angle Plow, Allison Transmission, Ford 7.8 Diesel, **\$12,900.** Kingston, NH 603-944-8202



1980 CATERPILLAR 773 OFF ROAD TRUCK. S/N: 63G671, 50 Ton, Ready To Go To Work, **\$19,500**
Chris, 860-460-0767 Or
Chm@Terrafirmas.com



1999 FREIGHTLINER 18.5' BOX TRUCK. 176K Miles, 80% Rubber, Juice Brakes, Rear Lift Gate, Under CDL, Very Clean, Drives Perfect, **\$7500.** 603-899-2000



CAM 20 TON TRAILER: Double Break Beaver Tail W/40"X80"Air Powered Ramps. Please Give Chris A Call For More Details. 781-582-1378. Plympton, MA



RAPID PREP

Full Service Provider of Equipment,
Supplies and Consumables

NATIONWIDE EQUIPMENT
RENTALS, SALES & SERVICE

North Kingstown, RI
Chula Vista, CA • Chesapeake, VA
Lakewood, WA

877.529.2124 / rapidprep.com

RUST NEVER SLEEPS



ENHANCED PORTABLE BLASTER PACKAGE



DUST FREE
SLURRY BLASTING



SAFETY EQUIPMENT



9' MEYERS POWER ANGLE SNOW PLOW. Complete, Including Truck Side Equip, Removed from 2012 GMC 3500, Will fit 2007-2017 GM 2500's & 3500's, 2 Available, **\$1,200.** Each Cash, Westport, MA 508-636-5050



2007 INTERNATIONAL HOOK TRUCK. Maxxforce DT 570, Allison 6 Speed Auto, 112,545 Miles, Stellar Shuttle, Pintle Hitch & 2" Receiver, Air To Rear, Force Hydraulics For Plow And Sander, New Front Tires, Newer Rear, 16K F, 23K R, **\$40,000.** 860-637-7860



2006 INTERNATIONAL 4400 OIL TRUCK. Aluminum 3200 Gal Tank, Allison Automatic, 360K Miles On DT466, Runs Perfect, **\$16,900.** 401-255-7325



HYDRAULIC BOAT TRAILER. Runs Off Battery Charged Through Trailer Plug, Tires/Bearings Good, Hauls Up To Most 29' Boats, 7K Lb. Cap. Over Road, 11K Lbs. In Yard, Clear Title, **\$8,000.** Hull, MA 781-925-1593



INTERNATIONAL 4900 SANDER: Cummins, 8 Speed, Stainless Steel Sander. Set-up for Power Angle Plow. Ready to work. Plow available. **\$17,500.** Call Chris 781-582-1378 Plympton, MA



2015 FORD F350 SUPER DUTY. Dual Wheel Crew Cab. We Bought This Beautiful Truck From The Original Owner, It Is A Lariat, Powered By A 6.7L Power Stroke Diesel, This Truck Spent Winters In Florida And The Frame Is Remarkably Clean, **\$45,000.** 508-234-6767

SHIPPING CONTAINERS.

Wind And Watertight. 20', 40' Standard And 40 H/C, Available For Pick Up Or Delivery For A Fee, Call For Price. 203-460-6340



1985 CATERPILLAR D5B. Enclosed Cab, Straight Blade With Tilt, Good Bottom, Tight Pins & Bushings, Rebuilt Engine & Trans, Hydraulic Steering, Runs And Operates Perfectly, Needs Paint, Asking **12,500.** 203-666-1411

NORTHLAND **JCB**
ALTA EQUIPMENT GROUP

northlandjcb.com
888-485-0383
info@northlandjcb.com

PAYMENTS AS LOW AS \$99*



Lease brand new equipment for less than a winter rental with payments as low as \$99 per month* on skid steers and wheel loaders.

Snow rentals last five months, but business doesn't melt away when the snow does. Put your machine to work year-round. Your higher payments will cost less than a winter rental. Keep the equipment the remainder of the year with seven payments as low as \$99*!

*All applications are subject to credit review and approval. Security deposit may be required based on applicant's credit. "ON-SEASON" (Nov – Mar increased payment). 7 "OFF-SEASON" (Apr – Oct reduced payment). First payment due in advance, and must be an "ON" payment. Minimum "OFF" payment is \$99 + applicable taxes. Offer valid only on specific models. Offer may change without prior notice, and additional terms and conditions may apply. Speak to an authorized Northland JCB representative for more details.

NY • MA • NH • VT • ME • CT • RI



2004 FORD E-450. Diesel, 16 Ft., New Turbo, New Oil Pump, New Tires, Refer Unit Just Serviced, Cruise Control, AC, CD, 157K, New Brakes, Rotors, & Calipers Just Done, Runs Excellent, **\$11,300 OBO.**
857-333-1443



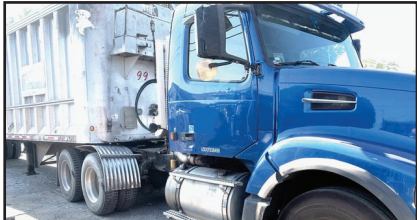
1990 CHEVY C70. Tandem Axle Dump With 11' Plow, 8.2 Diesel, 8 Speed, 52,000 GVW, No Rot, Dump Body And Frame In Very Good Condition, Smooth Dump Floor, Former Government With Low Miles, **\$13,500.** Kingston, NH 603-944-8202



2005 CASE 621D LOADER. Equipped With 2 Buckets, 1 General Purpose And 1 Side Dump, Also A 12' Power Angle Plow, **\$47,500 OBO.**
508-272-8007



2005 TIGERCAT MDL 822 FELLER BUNCHER, Completely Brand New Undercarriage/Rolls, Track Assembly, Idlers And Sprockets, 5,400 Hours, Heat & A/C, 22" Head, No Leaks, No Dents, Very Clean Machine! Serviced And Ready To Work. **\$114,900** Call Today 781-417-3018



2003 VOLVO TRACTOR. Day Cab, Blue With 2000 Mac Walking Floor Trailer, 582,437.8 Miles, Selling As A Package Deal, **\$60,000.** 401-289-2252



CRAIG TILT BUCKET. Fits CAT 315 With 70MM Pins, Used 6 Hrs., New At Milton CAT Over \$9,000., Sell For **\$6,000.**
Call 603-456-6029

MIKE'S Truck & Trailer Repair inc. Truck & Car Computer Diagnostics Full Service Truck and Auto Repair Center.
447 York Ave, Pawtucket, RI 02861 • (401) 725-2188

MEDIUM/HEAVY TRUCK & RV SERVICES FEDERAL DOT & RI STATE INSPECTIONS

- *All makes engine repairs
- *Fuel pumps
- *Brake work
- *Electrical repair
- *Injectors
- *Oil changes
- *Trailer repair
- *Turbo
- *Lift gate problems
- *Welding fabrication
- *Heavy equipment
- *Front ends
- *Rear roll-up door repairs
- *Installation
- *Wiring circuits



FORD 6.0 DIESEL POWER STROKE SPECIALIST !



visit our website @ mikestruckandtrailerpawt.com • RI# 459ca

NICK SCARVALAS**Commercial Sales****857-247-9023 or 617-249-5603****COMMERCIAL
VEHICLE CENTER****TIME TO GET READY FOR WINTER PLOWING****SAVE \$15,000**

2019 F350 DUMP 4X4. I-Pac Tool Box, 9' Rugby, Diesel Power, Power Equip Group, PW, PL, SYNC, F201566 MSRP \$70,560.
SALE PRICE \$55,650

**SAVE \$15,000**

2019 F550 RUGBY DUMP. 4x4, Diesel 440 Hp, PW, PL, Pw Htd Mirrors, Cruise, Stereo, Snow Plow Prep, 19,500 GVW, 8.5 Ton Hoist, F201150 MSRP \$72,399
SALE PRICE \$57,399

**SAVE \$13,000**

2019 F550 IROQUOIS 12' LANDSCAPE DUMP. 4x4, Diesel 440 Hp, Rear View Camera, Plow Prep, 19,500 GVW, 9 Ton Hoist, F201864 MSRP \$75,775
SALE PRICE \$62,775

**SAVE \$7,000**

2020 F550 KNAPHIEDE 16' FLATBED. Diesel 440 Hp, 10 Speed Automatic, PW, PL, Payload Plus Pkg., F203278 MSRP \$69,280 **SALE PRICE \$62,280**

**SAVE \$15,000**

2019 F550 9' DUMP. 4x4, Diesel 440 Hp, PW, PL, Pw Htd Mirrors, Cruise, Stereo, Snow Plow Prep, 19,500 GVW, 10.6 Ton Hoist, F201429 MSRP \$71,999
SALE PRICE \$56,999

**SAVE \$12,000**

2019 F550 SUPER CAB LANDSCAPER. 4x4, Diesel, PW, PL, Pw Htd Mirrors, Cruise, Stereo, Plow Prep, 19,500 GVW, 10.6 Ton Hoist, F202033 MSRP \$77,555
SALE PRICE \$65,555

500 COMMERCIAL TRUCKS IN STOCK**SAVE \$14,000**

2019 F550 CHIPPER BODY. Diesel, Automatic, 4WD, 12' Body, Remote Start, Payload Plus, Rear View Camera, Tool Box, F201613. MSRP \$80,999.
SALE PRICE \$66,999

**SAVE \$20,000**

2019 F650 DUMP TRUCK. V10-320 Hp, Automatic, 5-7 Yd Rugby Body, Tool Box, 20 Ton Pintle Hook, Electric Load Cover, F201296. MSRP \$89,710.
SALE PRICE \$69,710

**SAVE \$15,000**

2019 F550 SWITCH N GO SUPER CAB. 11' Roll Off Hoist, Tool Box, Diesel, Payload Plus, Plow Pkg, 4WD, Stereo, F201558 MSRP \$83,999. **SALE PRICE \$68,999**

**SAVE \$20,000**

2019 F650 TITAN 10ft BODY. V10-320 Hp, Automatic, Tool Box, PW, PL, CD Stereo, Electric Load Cover, F201235. MSRP \$89,710. **SALE PRICE \$69,710**

**SAVE \$15,000**

2019 F550 LANDSCAPE BODY. 4x4, Diesel, Auto, PW, PL, Rear View Camera, 19,500 GVW, Iroquois Body F201194 MSRP \$75,999
SALE PRICE \$60,999

**SAVE \$18,000**

2019 F550 KARGO KING ROLL OFF. Rear Barn Doors, Curb Side Door, Tool Box, 4x4, Diesel, Payload Plus Pkg., F200688 MSRP \$86,999
SALE PRICE \$68,999

QUIRK FORD

540 Southern Artery (Rt 3A) Quincy, MA
www.quirkford.com • 617-249-5660

**Business
Financing with
NO Co-signer
Required**

Prices include all available rebates. Rebates include Customer Cash, FMCC Bonus Cash, and Commercial Uplift Bonus Cash. Customer must qualify for rebates. Call for specific details. Prices are subject to change. * In Lieu Of Rebates

NICK SCARVALAS**Commercial Sales****857-247-9023 or 617-249-5603****COMMERCIAL
VEHICLE CENTER****GREAT FINANCING ON ALL CUTAWAY VANS****3 IN STOCK****SAVE \$11,000**

2019 E350 Knapheide SRW.
Electric Locks, AC, Cruise, CD, PW, PL,
SYNC Voice, F202120
MSRP \$56,315.
SALE PRICE \$45,315.

**SAVE \$5,000**

2021 E350 12' SERVICE VAN. Power Locking
System, Pass Thru Door, 3 Rail Ladder
Rack, Ladder to Roof, LED Lighting, PW, PL,
F202953 MSRP \$56,795
SALE PRICE \$51,795

**3 IN STOCK****SAVE \$12,000**

2019 E350 10' VAN BODY.
Roll Up Rear Door, Step Bumper, Pass Thru
Door, AC, Cruise, CD, PW, PL, SYNC Voice,
F200626 MSRP \$45,999.
SALE PRICE \$33,999.

**SAVE \$6,371**

2020 T250 CARGO VAN. All Wheel Drive,
Freight Wall Lining, PW, Rear View Camera,
Polish Aluminum Wheels, F202293 MSRP
\$47,370 **SALE PRICE \$40,999**

**SAVE \$3,706**

2020 T250 CARGO VAN. Blue Jeans Metallic,
Freight Wall Lining, PW, Rear View Camera,
Privacy Glass, F201161 MSRP \$25,705
SALE PRICE \$21,999

**SAVE \$5,000**

2021 E350 UTILITY VAN. Ladder Racks,
Electric Locks, Rear View Camera, PW, PL,
Driver Tech Pkg. F202846 MSRP \$58,395
SALE PRICE \$53,395

500 COMMERCIAL TRUCKS IN STOCK**SAVE \$7,936**

2020 T250 CARGO VAN. Adrian Partition,
Wing Kit, 3 Bar Ladder Rack, PW, Rear View
Camera, Cargo Lining, F201859 MSRP
\$40,935 **SALE PRICE \$32,999**

**SAVE \$7,500**

2019 T350 HD LUXURY PASSENGER VAN.
Privacy Glass, Anti Theft Alarm, Leather
Heated, Navigation, Remote Start, F201225
MSRP \$56,680.
SALE PRICE \$49,180

**20 IN STOCK****SAVE \$6,101**

2020 TRANSIT 15 PASSENGER VAN. Rear
View Camera, USB Ports, 4G Wifi, PW, PL,
F202284 MSRP \$44,100.
SALE PRICE \$37,999

**SAVE \$5,956**

2020 T250 CREW WORK VAN. 5 Passenger,
Privacy Glass, Rear Defroster, Fog Lamps,
Rear View Camera, F202837 MSRP \$43,205.
SALE PRICE \$37,249

**SAVE \$5,000**

2021 E450 14 Ft SERVICE VAN. Power
Locking System, 3 Rail Ladder Rack, 14,500
GVW, PW, PL, F203485 MSRP \$56,680
SALE PRICE \$51,680

**SAVE \$6,121**

2020 T250 MID ROOF CARGO VAN. Protect
Lined Cargo Area, Anti Theft System, Polish
Alum Wheels, Rear Camera, F202293
MSRP \$47,370.
SALE PRICE \$41,249

QUIRK FORD

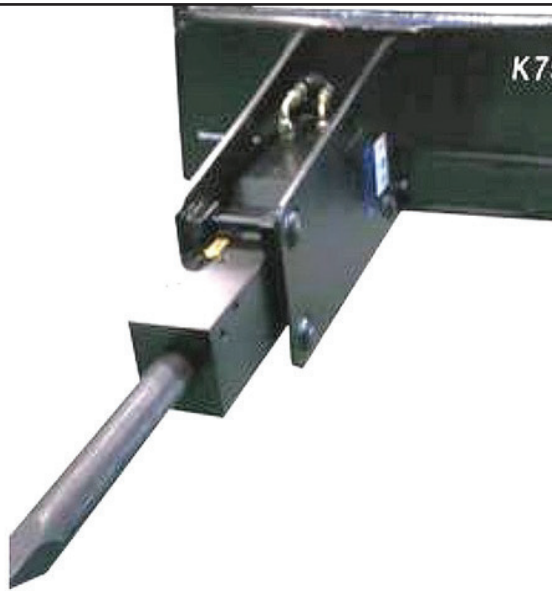
540 Southern Artery (Rt 3A) Quincy, MA
www.quirkford.com • 617-249-5660

**Business
Financing with
NO Co-signer
Required**

Prices include all available rebates. Rebates include Customer Cash, FMCC Bonus Cash, and Commercial Uplift Bonus Cash. Customer must qualify for rebates. Call for specific details. Prices are subject to change. * In Lieu Of Rebates

**BREAKER
HAMMER.**

For 6000 Lb.
Skidsteer,
Brand New In
Crate, **\$4,000.**
401-390-4976

**9' JRB POWER ANGLE PLOW.**

Heavy Duty, 44" Tall Blade, 2" Top Hook,
36" Wide, 1-1/2" Bottom Pin, Very Good,
\$2,245. Kingston, NH 603-944-8202



2011 INTERNATIONAL 4400 CAB & CHASSIS, Low
Miles:75,000, Automatic Transmission, 10K Fronts, 23K Rears, 33,000
GVW, Good Rubber, 11R 22.5, Frame Is 25' Long, 24' Dump Body
Would Fit On Frame! **\$15,900** Call Today! 781-417-3018



2018 VOLVO VNM64T200-D13, 455HP. 12SPD.
I-Shift, 14,600 Front/ 46,000# Rear, Air-Ride, Extended
Warranty. Call Today! 401-434-5900

AWP



**FLEET
DISCOUNTS**

**\$75
& UP**

**ACUSHNET WHEEL
POLISHING**
Used Rims Available
508-961-7528
62 SOUTH MAIN ST.,
ACUSHNET, MA



Service & Mechanic On Site

**2012
WILSON
SCROLLING
FLOOR
TRAILER.**

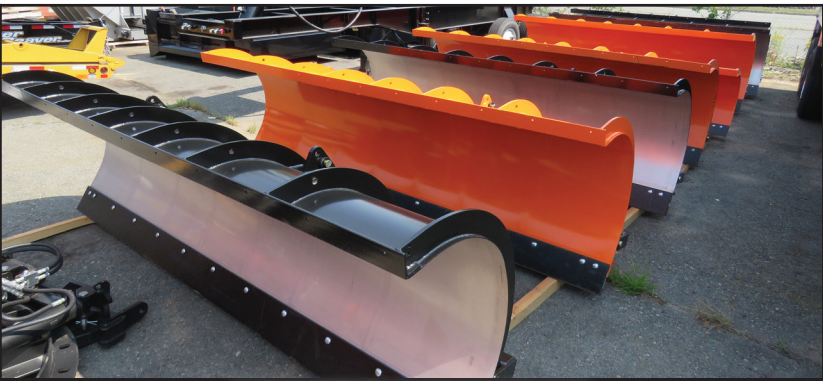
Capacity Approx.
92 Cubic Yards,
\$53,000.
Derry, NH
603-425-0300.
Email
Evelyn@M-Rwood.com
For More Pictures

**2017 KENWORTH W900 TRI
AXLE DUMP.**

147,400 Miles,
Cummins ISX, 18 Speed,
802-500-7099



2000 CATERPILLAR 988B WHEEL LOADER. Factory Rebuild, S/N: 50W75734, 18,250 Hours, 50% Tires, 3408 Engine, 7 Yard Spade Nose Bucket With Teeth, Good Running Condition, **\$38,000.** 860-460-0767



ARE YOU READY???
STAINLESS STEEL & STEEL HIWAY PLOWS
11X36 & 11X42. OTHER SIZES AVAILABLE.
CALL NOW FOR BEST PRICING. CTE SEEKONK, MA
508-336-6215



1996 WESTERN STAR TRACTOR.
 Heavy Spec, Cummins,
 Wet Line, **\$20,000,**
 413-268-3600
 or 413-535-7210



2006 PALFINGER PW380. 2800 Lbs. @50',
\$7,500. 603-899-2000



Jukonski

Truck Sales



WWW.TRUCKSELLERS.COM

se habla español

680 NEWFIELD ST. (RT 3) MIDDLETOWN, CONN • **800-378-0342** • MON-FRI 8-6 SAT 8-NOON

NO PAYMENTS & 0% ON NEW HINO'S TILL JANUARY 2021



CERTIFIED

2015 ISUZU NPR HD. Gas, 16' Box, 76K Low Miles, 14,500 GVW, Lift Gate, #5567, **\$25,900**



CERTIFIED

2015 HINO 195 RACK BODY. 105K Miles, 18' Body, Diesel, Auto, #2661, **\$34,900**



CERTIFIED

2016 ISUZU NPR HD DC. Only 36K Miles, Crew Cab, 16' Flatbed, Diesel, Auto, #1889, **\$36,900**



NOW IN STOCK

3.99%

2020 MITSUBISHI FUSO FE140. 16' Box, Gas, When They Are Gone, They Are Gone, #4473, **\$41,900**

2019 Hino 195 & 155: 3.49% APR and 2 Years & Free Maintenance*



30 In Stock

2020 HINO 195. 30 IN STOCK. No More Till The Middle Of Next Year



CERTIFIED REEFER

2017 IH 4300. Thermo King Reefer, Cummins ISB, 102K Miles, #3459, Blow Out Price **\$35,900**



CERTIFIED

2017 FORD F650. Easy Entry Roll Off Body, 6.8L, Only 44K Miles, Hard To Find, #0047, **\$49,900**



NEW 2020

BRAND NEW 2020 MITSUBISHI FUSO FE140. With I Pack Tool Box, #4454, **\$47,900**

NO PAYMENTS NO INTEREST TILL 2021 ON ALL NEW HINO'S



CAT 322L TRACK EXCAVATOR. Gd. Running, Strong, Dry Machine, Rebuilt Engine, Good Heat & AC, Bucket Is In Great Shape Plumbed 2-Way Hydraulic System, Approx. 11,000 Hrs., Ready To Work, Delivery Possible, **\$38,900.** 781-844-3868



1995 DODGE RAM 3500, Rack Body, Dually, Needs Engine And Trans. Work, Needs Some TLC. **\$1,500**
Call Today! 781-417-3018



1998 FREIGHTLINER FL70, 33,000 GVW, Diesel 6Spd. Trans., 12' Dump W/Plow, 190K Miles, 12,000# Front/23,000# Rears. 401-434-5900



11' HIGHWAY PLOW. Great Condition, **\$700.**
Seekonk, MA 774-991-0354

401-654-6711

Insurance experts
for all your business
and individual needs



A. RICCIOTTI INSURANCE ASSOCIATES, LLC
START WITH A STRONG FOUNDATION

CAREY AUTO
INC
TRUCK EQUIPMENT
SALES



37 County Road
Route 106
Plympton MA 02367
PH: 781-582-1378
FAX: 781-585-4438

**SWITCH-N-GO SYSTEMS & CONTAINERS
IN STOCK.**



READY TO GO COMPLETE TRUCK PACKAGES.
LOTS OF OPTIONS AVAILABLE.
New & Used Trucks Ready To Go!

CALL TOLL FREE 866-637-4076
WWW.CAREYTRUCKEQUIPMENT.COM

**SALES,
SERVICE,
PARTS**

**CUSTOM METAL
FABRICATION
AVAILABLE**

**1988
KENWORTH
T600.**

CAT 425 H.P.,
14 Speed Eaton
Fuller, 12F + 38R
On Air, New Brakes
Everything, New
Tires, 919K Miles,
\$11,500.
603-899-2000



1985 MACK

MH613. One
Owner, Neway Air,
38,000 capacity,
Registered &
Inspected, One
Driver, 6 Speed,
Mack 300, 600K
Miles, **\$14,700.**
508-668-2716



2016 MITE II TROMMEL SCREEN MACHINE.
30' Conveyor/Stacker, 125 Hrs, New Condition, Makes A Great
Screened Loom, Ideal For Landscaper, **\$42,500 OBRO.**
Epsom, NH 603-736-5550



PORTABLE LINE BORING

WELDING • FABRICATION • REPAIRS

DAVID GOKEY

AFFORDABLE LINE BORING

Serving CT, MA, RI, Southern NH, VT

413-530-0242 Call/Text

davidgokey70@gmail.com

MC, Visa, AMEX, Discover



1998 MACK CH600.

427, 18 Spd., Fuller, Air Ride, AC, 14K Front, 46K Rear, 11/24.5 Aluminum Wheels, 2 New Rear Ends, Working Daily, Others Available, **\$18,500.** 978-208-0205



LOADER FORKS. Good Shape, Heavy Duty, 10,000 Lbs., 42" Outside To Outside Pins, 26" Center Pin To Top Of Hook. **\$3000.** Leominster, MA 978-230-1504



2001 INTERNATIONAL 5800. Good Rubber, Heavy Spec Truck For Plowing, Wing Plow, Hydraulic Stainless Sander, And Funnel Plow, Runs Strong, Not New But Will Make You Good Money With The State, **\$16,000 OBO.** Mike, 401-439-5005

2003 KENWORTH T-800 26' FLATBED: W/ MOFFET System: CAT C-15 475 HP, 20F/46R, 8LL, Full Lockers. **\$42,500.** Call Dave.508-726-0077 East Freetown, MA



2005 JOHN DEERE 330C LC - Recently Re-Packed Both Boom & Stick Cylinders, Geith Hydraulic Coupler, A/C, Work Ready - **\$67,500** CALL DAN AT 203-506-3860



1998 MACK CL713 TRI-AXLE DUMP TRUCK. 20K LB Front Axle, 425/65 22.5 Rubber, New Rear Axle W/ New Carrier, 350 HP, Mack Motor, 440,000 Miles, 13SPD, Maxitorque Transmission, Double Frame, 17' Dump Body W/ Hydraulic Tarp, Ready To Work! **\$38,900** Call Today 781-417-3018

1995 MACK RD TRI AXLE.

Set Up Nice, Pintle Hitch W/Air, Chutes On Tailgate For Asphalt, Hard Steel Bibeau Body W/2-Way Gate Setup, Htd Body, Low 230K Miles, Needs Small Cosmetics, Runs Exc., CT Title, **\$19,500.** Norwalk, CT 203-858-3516, Mike



R & R INDUSTRIES

**We Buy All
Scrap Metals**

www.RRTrucksAndEquipment.com • Sales@RandRind.com

195 Rocus Street, Springfield MA 01104

413-733-2118

TOP \$ PAID FOR ALL METALS

*** ALL FERROUS & NON FERROUS METALS***
COPPER/BRASS/ALUMINUM/STAINLESS/IRON
& STEEL* MACHINERY* HEAVY EQUIPMENT*
CARS/TRUCKS*



1982 FORD L8000. New CAT 3208, 5 Speed, 18' Flatbed, 6 New Tires, Runs Great, No Rust. **Only \$4,995/ BO**



WABASH 48' Open Top Bulk Haul Trailer. Excellent Condition, **\$2,500/ BO**



2005 DODGE 2500 SPRINTER CARGO VAN. Mercedes Diesel, Runs Great, Long Wheel Base, Bad Rear End, Easy Repair, **\$5,705/BO**



NICHOLS TWIN MILL MODEL TM481. Nice Machine, Bought It & Never Used It, Extremely Versatile, Runs On 208, 220, Or 440 Volts, **Only \$2,250/BO**



CAT D6 BULL DOZER. Direct Electric Start, Good Bottom, Runs Great, **Only \$5,500/ BO**



MILITARY DROP DECK RECOVERY TRAILER. 28' Lower Deck, 11' Upper Deck, **\$2,500/BO**



SOLAR GAS TURBINE GENERATOR. 1,000 KVA, 800 KW, Jet Engine Powered, Will Power A Small City, New Cost Over \$750K, Blue Prints & Manuals, **Only \$49,900/ BO**



CASE 580 CONSTRUCTION KING LOADER BACKHOE. Diesel Power, Runs Great, Everything Works, Looks Bad, Good For Farm Or Home Use, Needs Very Little, **\$5,995/ BO**



CLARK C-500 FORKLIFT. 5000# Capacity, No Leaks, Runs Great, Triple Mast, Side Shift, Propane Powered, Only 2100 Hours, **Only \$3,350**



27' FRUEFAUF TANDEM AXLE PUP TRAILER. Roll Up Door, Great Condition, **Only \$2,700/ BO**



1995 FORD L9000 S/A DUMP. 8.3L Cummins Diesel, Allison Auto, Runs Great, New Battery, 35K GVW, Cab Is Fair, A Steal @ **\$6,395**



1939 MACK MODEL EO. Single Axle Dump. Complete And Ready To Restore. Call For More Info. Let's Make A Deal



BRADCO 630 TRENCHER. Skid Steer Attachment, Serial #6SS351. Works Perfectly, **\$2,650/ BO**



2006 FORD F350 MECHANICS TRUCK. 7.3L Powerstroke Diesel, 5 Speed, DRW, Only 137K, 6 New Tires, 11' Walk In Service Body w/ Sliding Roof, Lots Of New Parts, **\$6,295/BO**



STORAGE UNITS 12', 14', 16', 18', 20', 24', 30', & 40' Storage Or Instant Garage **\$650 & Up**



RAPIHAN CONVEYOR. Model PPB, 16' x 12", 230V, Single Phase, 3/4 HP, Excellent Condition, **\$2,100/BO**

202

**TRUCK
&
EQUIPMENT**
603-899-2000

www.202truck.com
RT 202 Rindge NH
SALES & RENTALS - NO SALES TAX
FINANCING & DELIVERY



2012 & 2018 VOLVO SD45D & SD45B.
700 Hrs & 190 Hrs., Both 54"
Drums, \$35,000 + \$55,000. Pad Foot
Shell Kit Available For Either, **\$1000.**

**WINTER LOADER
Backhoe And Skid Steer
Rental
Competitive Rates**

Call Us!!



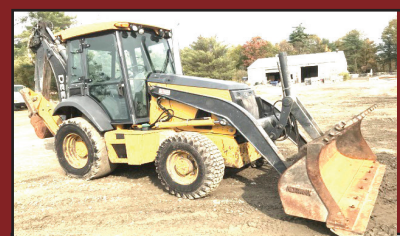
2020 HYUNDAI ROBEX 35Z-9A. Heat,
A/C, 36 Hrs, Hyd. Thumb, Aux. Hyd.,
Blade, 24" Bucket, **\$46,000.**



2014 J DEERE 524K. 4850 Hrs., New
Turbo, Ride Control, Coupler, 20.5 Radials,
2.75 Cy Bucket, Serviced, **\$69,000.**



2012 CAT 420E IT. 4600 Hrs., Powershift,
Ride Control, A/C, New Buckets Front &
Rear, Loaded, Ready To Work, **\$45,000.**



2014 J DEERE 310 SK. 7200 Hrs,
E-Hoe, Heat & A/C, Pilot Controls, New
Transmission, All New Tires, **\$35,000.**



2003 CAT 315CL. 10,200 Hrs., CAT Hyd.
Thumb & New 36" CAT Bucket, Fair
Cosmetics, Runs Well, (NAP), **\$41,000.**



2018 LINKBELT 210 X 4. 2900 Hrs, New
50" Esco Bucket & Thumb,
Best Price Out There!! **\$99,000.**



2015 KOMATSU 210LC-10. 3380 Hrs, 2-way
Hydraulics, Pattern Changer, Clean &
Ready To Work, **\$83,000.**



2009 MACK PINNACLE CXU612. MP-7 @ 395
H.P., 10 Spd., 12F + 23R On Air, 157" W. B.,
New DPF Muffler Just Done, 6 Sensors,
590K Miles, **\$7500.**



2007 KENWORTH T-800. C-13 @ 410 H.P.,
Allison Auto, 64,000 G.V.W., 24.5' Flatbed,
53' Palfinger PW380, 2800 Lbs. @ 50',
255K, **\$42,000.** Will Separate



2000 FREIGHTLINER FL112. CAT C-12, 10
Spd., 18F + 46R on Hendrickson Spring,
Full Lockers, 307K Miles, 15K Hours, 32'
Palfinger PW260, Material Handler, All
Virgin Continentals, **\$12,500.**



2007 INTERNATIONAL CF500. VT275 V6, 4.5L
200 H.P., Auto, A/C Not Working, 6'3" Side
Open Height, 12'2" Width, 14' Body, Dry
Cargo, Hyd. Liftgate, 225K Miles, **\$7500.**



2005 FREIGHTLINER CL120. Mercedes 450
H.P., 12+40 Air Ride, Very Good Virgin
Rubber, 261K Miles, **\$9500.**



2006 PALFINGER PW380. Will Lift 2500 Lbs.
@ 50', 25' Diamond Plate Steel Body
Included, Good Working Condition,
Hardwired Remote Included, **\$7500.**

WWW.SCRANTONMOTORS.COM



2020 CHEVROLET SILVERADO MEDIUM DUTY
REGULAR CAB & CHASSIS. COMMERCIAL DURAMAX
6.6L V8 TURBO DIESEL, 6 SPEED AUTO, #SF7163



2019 CHEVROLET LCF 4500 CAB & CHASSIS.
COMMERCIAL VORTEC 6.0L V8, #SE7394



2020 CHEVROLET LCF 4500HD CAB & CHASSIS.
4 CYL DIESEL, AISIN 6 SPEED AUTO, #F7282



2020 CHEVROLET SILVERADO 2500HD. REGULAR
CAB, 4X4, 6.0L V8 GAS, #F7138



2019 CHEVROLET SILVERADO 6500. 13' KNAPHEIDE
SERVICE BODY, DURAMAX DIESEL, #E6452



2020 CHEVROLET SILVERADO 5500 DUMP BODY. 4X4,
DURAMAX DIESEL, #F7104



2019 CHEVROLET SILVERADO 5500 CREW CAB.
DURAMAX DIESEL, 16' DURACUBE MAX SERVICE
BODY, WITH LADDER RACKS, #E6586



2020 CHEVROLET SILVERADO 3500HD. CREW CAB,
4X4, DRW, DURAMAX DIESEL, READING SERVICE
BODY, #F7332



2020 CHEVROLET EXPRESS 2500 CARGO VAN.
2.8L Diesel, Automatic, #F7409



2020 CHEVROLET 5500 MEDIUM DUTY CAB &
CHASSIS. Regular Cab, 4 x 4, #F7457



2020 CHEVROLET EXPRESS 3500 EXTENDED. 12
Passenger Van, #F7484



2020 CHEVROLET EXPRESS 2500 CARGO VAN. V6,
Gas, Automatic, #F7469

MANY OTHER TRUCKS IN STOCK. CALL FOR DETAILS

WWW.SCRANTONCHEVY.COM

774 THAMES STREET NORWICH, CT • 860-870-6539

CANDIA TRAILER.COM 1-866-761-0196

& LANDSCAPE EQUIPMENT CO

35 High St, Junction Rte. 27 & 43., Candia NH

All Prices Cash & Carry! Installation Available! 10 Minutes East of Manchester, NH • 1 hour From Boston

**BEST DEALS NOW!
PRE-SEASON
PRICING**



VXF Generation II



TE Generation II



**Gen I - MD Series Plow
Starting At \$3680 Installed**



**Heavy Duty Poly 3/4 Cubic
Yard Spreader, \$2,650**



**Commercial 4 Cu. Yd Poly
Spreader. Call For Pre-Season
Price**



**14 Cu. Yd. SS Spreader Tri-Axle
7 Cu. Yd. SS Spreader For 10' Body
1.5 Cu. Yd. SS Spreader Starting @ \$3,895**



2001 FORD F450.
Diesel, 4X4, Exc. Shape,
Dump Body New, S.S.
Sander, 9 Ft. V-Plow,
Ready To Go. Asking
\$12,500.
413-530-5369

**2006 JOHN
DEERE 753G
FELLER
BUNCHER,**
New U/C, Deere
WF22 Head, Strong
Machine, 15,000
Hours, Ready To
Work!
\$69,900
Call Toda !
781-417-3018



2006 LEEBOY 300.
Asphalt Roller, Diesel, Everything
Runs And Works As It Should,
Added New Halogen Lights,
\$6000. 781-760-5494



2007 INTERNATIONAL 7600 WHEELER. 400 HP Cummins, 10 Spd., 66K GVWR, 20F,
46 Rears, Brand New Tires, Alcoa Rims, Pintle Hitch, Air To Rear, Rust-Free, Never Seen Winter,
Only 64K Miles, All Around Brand New Cond., **\$76,500.** 978-423-6843

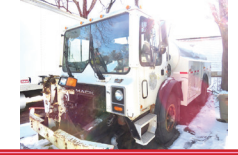
508-328-8938

THE TRUCK STORE

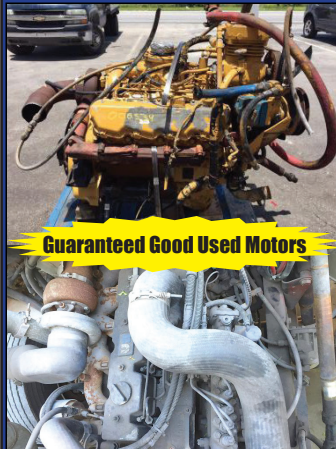
www.TruckStoreSales.com

Mon-Fri 8:30-5pm
Saturday 8:30-4pm

1700 Broadway - Rte 138 – Raynham, MA • Take Exit 8 Off Rte 495, East Rte 138, On Your Left

2020 INTERNATIONAL 26' BOX TRUCK:
Cummins Diesel, Automatic. ONLY 6K miles!
2005 MACK CV 713
CAB & CHASSIS:
AUTOMATIC,
20F/52R,
30K MILES!
2016 KENWORTH C/O CHASSIS: Cummins
Diesel, Allison Auto., Under CDL. 65K miles.
Many Bodies available.2014 INTERNATIONAL 43 Passenger Bus
w?wheel chair lift. Diesel, Automatic. Only 40K
miles, Clean & runs great.**100k Miles**2007 Kenworth T300 Thermo King TS200 Refer
body 330 CAT, Allison automatic, 12F/40R.2013 HINO Diesel, Automatic, 20K Pound HOOK
LIFT, Under CDL. Excellent Condition.2014 IH Ext Cab 10' Dump Body: Diesel,
Auto., &0K mls. Under CDL \$39,9952015 INTERNATIONAL DURASTAR 50' Bucket
Truck: DT 466, Allison Auto. 14F/23R, 29K miles.2017 IH 24' Refer Body: Auto.,
82k miles. Call2009 CHEVY C4500 16' THERMO KING Refer
Body w/Stand-by: Gas, Auto. 89k miles, nice
clean truck.**6 AVAILABLE**2003-2004 & 2007 MOFFET FORK
LIFTS. Nice condition. Low hours.2007 MACK MR Front Load Rubbish
Truck: Diesel, Automatic.2004 MACK Tri Axle 32 Yard Rear Load Rubbish
Truck. 350 HP MACK, Allison Automatic.2005 MACK Tractors: 460 H.P., 18 speed, air ride,
wet system, Jake, 46k locking rears, 350 to 400k
Miles. \$25,0002005 GMC C 6500 WAYNE SUPER 6 yard Body.
Big DURAMAX Diesel, Allison Auto. Under CDL.
Only 90K miles. Very nice, Runs like new.2016 ISUZU NRR: Diesel, Auto. Low miles.
Also 2011 Available. Refer. Bodies in stock too.USED 12' to 26' REFER & VAN BODIES
Call with your needs.2004 MACK MR: Stainless Steel Tank,
Diesel, Auto., 12K miles. Call2007 INTERNATIONAL 26' Moving
Truck. Clean. Call for more info.1999 MACK HD: 17.5 yard dump, 12 yard SS Sander.
room for lift axle. 400HP. Hurry! Snow is on the
way. Will sell Sander separately 12' plow and
wing plow.2000 MACK RD 688SX 14' Dump Body,
350 H.P., Auto., 18F/58R, LOW miles, Very clean.2013 HINO Refer Body: Diesel, Auto.,
3 Available. Many other HINOS available!
Excellent Condition.2016 FREIGHTLINER Cummins Diesel,
Automatic, Only 38K miles. Will Sell with or
w/o body.2006 PETERBILT 25 Yard Rear Load Rubbish
Truck: Auto., Cummins, 86K miles. Call2003 MACK ROLL OFF: 75,000 lb. Roll
Off. Auto., 58R/20F, 60K miles. Call2015 IH 26' Tandem Axle Refer: New Refer being
installed. Auto., low hours on Refer. call
Late model ISUZU 4 Cylinder
Diesel Engine & Transmission.
Call for Details.
2006 USED MACK Engines!
ALLISON Transmissions. ALSO:
2004 MITSUBISHI
4 & 6 Cylinder Engines.

R&R INDUSTRIES
 www.RRTrucksAndEquipment.com • Sales@RandRind.com
 195 Rocus Street, Springfield MA 01104 **413-733-2118**
We Buy All Scrap Metals



Guaranteed Good Used Motors

DIESEL MOTORS FOR SALE

Kubota V1305 Rebuilt

Kubota V1505

Duetz

Detroit 3-71

(2) CAT C-7

International DT 466E

International MaxxForce

Cummins 5.9L 24 Valve

Many More
Motors,
Call



**2011 KENWORTH W900
HEAVY SPEC TRACTOR.** Headache
Rack With Cabinet, Strobe Lights, Wet
Line, Leather Seats, 18 Speed, Cummins
ISX, 550,896 Miles, 802-500-7099



FARMALL CUB: Excellent Shape, Good Snowplow,
\$2,900 860-928-5748

**THERMO KING
REFRIGERATOR
BOX,
\$5600 or best offer.**

Larry 401-610-0489 or

Scott 401-692-9896



**THE
TRAILER
DEPOT**



203-234-7788
 1037 Middletown Ave. (Rt. 17)
 Northford, CT

**DUMP TRAILERS IN STOCK.
WHILE THEY LAST**

WESTERN
 Plows & Sanders In Stock



SURE-TRAC 9.9K OPEN LANDSCAPE TRAILER.
 7' x 20', Steel Frame Pressure Treated 2 x 6 Decking, Spring
 Assist Rear Ramp, #308319



BIG TEX DECKOVER. 8' 6" x 30, 25' + 5' Beavertail,
 102" Overall Width, 23,900 GVW, Low Profile Bed, Pierced
 Frame, #016674



**SCHEDULE YOUR PLOW OR SPREADER
INSTALLATION TODAY!**



**CAM SUPERLINE 16.1K LOW PROFILE DUMP
TRAILER.** Heavy Duty, Tubular Main Frame, 6' Steel
 Ladder Ramps Under Bed, #510312



SURE-TRAC 8 TON DUMP TRAILER. 6' 10" x 18',
 14' Dump + 4' Stationary Deck, Scissor Dump, Combo Barn
 Door Spreader Gate, #252743



**SURE-TRAC 15K DECKOVER GOOSENECK
TRAILER.** 8' 6" x 20 + 5' Beavertail, 32" Deck Height,
 Spring Assist Flip Over Ramps, #296436

www.thetrailerdepot.com

We'll Hook You Up
 WE DO FEDERAL INSPECTIONS!



800 Cheshire Rd. (Rt 8), Lanesboro MA 01237
(413) 442-0407 • (888) 474-5224
www.village trucksales.com

**Numerous Snow Plows, Wings, & Stainless Steel Sanders Now In Stock.
 Call Now With Your Needs**



ONLY 21K

2008 PAYSTAR
 w/ FABCO ALL
 WHEEL DRIVE.
 21K Miles, C13
 CAT, 18 Speed,
 P/A Plow, Right
 Wing, All Season
 Body, New
 Certified Closed
 Loop Sys,
\$124,995



2006 PAYSTAR
 W/ FABCO ALL
 WHEEL DRIVE.
 Single Axle, C13
 CAT, 8LL, P/A
 Plow, Right Wing,
 All Season Body,
 New Certified
 Closed Loop Sys,
\$69,995



2004 IH 7600
PLOW TRUCK.
 CAT C12, 8LL,
 Air Ride, 66,000
 GVW, All Season
 Body, One Way
 Plow & Wing,
 Fresh Paint on
 Body, **\$31,500**



2007 IH
PAYSTAR 5000
AWD. Cummins
 ISM, 8LL, 58,000
 Miles, Plow &
 Wing, SS Sander,
\$47,000



2000 PAYSTAR
 AWD, Stainless
 Steel Highway
 2020 EXT, Frame
 Mounted Sander,
 3406E CAT, 15
 Speed, One Way
 Palow, Right Wing,
 New Certified
 Closed Loop Sys,
\$49,995



MACK RM 685.
 4x4, Brand New
 Tires 1200 R24,
 Belly Scraper,
 Concrete Ballast,
 Came From
 Airport, Never
 Seen Salt,
\$12,500



2007
STERLING.
 CAT Power,
 Auto Trans,
 77K Miles,
 Power Angle
 Plow, Right
 Wing, 26K
 GVW, **\$21,500**



1991 JOHN
DEERE 544E
LOADER.
 5600 Hours,
\$17,500



1976 FORD
F600 SERVICE
TRUCK.
 4x4, Only 8,500
 Miles, **\$11,500**



NEW HOLLAND
TS90 BOOM
MOWER.
 Enclosed Cab,
 Diesel, Heat, AC,
 Alamo Boom
 Axe, Fresh From
 Municipal Fleet,
\$43,000



1999 BLAW
KNOX RW100A
Road Widener,
 John Deere
 Power, **\$12,500**



18'16 Available
Starting @ \$6,500

2003 VOLVO VHD. 330 Cummins ISB, Allison Auto, 20K Front, 46K T Rears

JACK MADDEN FORD**30 Trucks W/Plows Ready To Go!**

**NEW 2020 FORD F250 STX 4X4 W/ 8' FOOT FISHER
PLOW. stk.# 23321 \$41,999* 888-817-7979**



2005 MACK CV713 TRI-AXLE DUMP TRUCK,
Parts Truck, Crack On Frame,
E7 Mack Motor, Will Need Batteries. **\$15,000**
Call Today! 781-417-3018



2015 MITSUBISHI FE160. Rack Body, 4 Cyl. Diesel, Auto,
A/C, Rust-Free, 109K Miles, Always Serviced, Like New 14' Heavy
Duty Non-Dump Rack Body, No Gate, Work Ready, 978-462-1000,
www.Westsidetruckequipment.com



2003 CHEVROLET SILVERADO 4500HD. 2 Wheel
Drive, 10' Power Angle Plow, 9' Stainless Steel Sander,
Rebuilt Transmission, Duramax, 113K Miles, **\$8000.**
603-899-2000

2001 CAT 365BL.

S/N: 9TZ00407, 14,950
hrs., 158,000 lb. Machine,
Good Undercarriage, Runs
Well, 3.65 CY Bucket, Good
Condition, **\$88,000.**

Chris 860-460-0767, email:
chm@terrafirmas.com



Lunenburg MA
617-548-1330



**Stewart
Stevenson Snow
Blower Truck.**
Works awesome
ready to roll, 2600
hours **\$29,000**



**1988 WHITE/
AUTOCAR.**
Ten Wheeler,
370K Miles,
New Sander,
Closed Loop,
Standard Trans,
\$24,000



**2018 KENWORTH
W900 Tractor.** 500
Cummins, Loaded,
40 Rears, 12 Front,
New Big Rubber,
240k Miles, Big
PTO Pump For Live
Floor **\$89,000.**



**2013 MACK CXU613
TRACTOR.** M-Drive
Auto, Mack Motor
450 Horsepower, New
Rubber, Back Rack,
Tool Box, Big PTO
Pump for Live Floor
Trailer, 40 Rears,
12 Front, Very Clean,
328k Miles, **\$34,500.**



2015 KUBOTA SVL75-2 SKID STEER.
Serial # 21871, 400 Hours, Cab, AC/Heat, Pilot Controls, Auxiliary Hydraulics, Bucket And Forks. Excellent Condition, Asking **\$49,000 OBRO.** Lisbon, CT 860-334-7031

THOMPSON TRACTOR LLC.
860-963-1918
A DL HOLKE COMPANY
15 RT. 171 WOODSTOCK, CT 06281
DAVE'S CELL 508-864-8874
THOMPSONTRACTORLLC.COM

**ALWAYS A BUYER
FOR CLEAN
LATE MODEL
EQUIPMENT !!**

***2014 HAMM 3205 SMOOTH
DRUM ROLLER**

***2017 NEW HOLLAND E55BX
EXCAVATOR**

***2017 CASE TR-340 SKID STEER**

***2017 HYUNDAI HL 955 LOADER**

***2016 DEERE 444-K LOADER**



LATE MODEL DEERE 310SLs
ALL LOADED WITH WARRANTY REMAINING,
CALL FOR SPECS.

INVENTORY AT * WWW.THOMPSONTRACTORLLC.COM



KOEHRING 6625 EXCAVATOR. GM Diesel 8.2, Fix Up Or Parts, **\$6,900 OBO.** Falmouth, MA 774-392-2406



JOHN DEERE 440D TURBO. 7300 Hrs, 18.4 X 26 Tires, Winch, 1 New Set Of Chains Avail., Very Nice, **\$29,000.** 603-899-2000



11 FOOT POWER ANGLE PLOW. New Cutting Edge, Great Condition, **\$1100.** Seekonk, MA 774-991-0354



1997 MACK MR690S.
Front Load Rubbish Packer Truck
With McNeilus Body Just Refurbished,
All New Brakes, New Floor, Lights &
Much More, **\$51,500.**
Call Jesse 401-855-1178



1989 NORDBERG 1352 OMNICON PORTABLE CONE CRUSHER.
S/N: 5202-577, Simplicity 6203, 6' X 20', Triple Deck Horizontal Screen, 200 HP, 480 Volt Soft Start Electric Motor, Three Axle Nordberg Carrier, **\$98,000 OBO.** Chris 860-460-0767 Or Chm@TerraFirmaus.Com

YOUR DIRECT FUNDING SOURCE



EQUIPMENT FINANCING

- A to D Credit Approvals - *Rates Tailored to the Customer*
- 24 Hour Approvals - Simple One Page Applications
- Terms Range 24 to 60 Months
- No Money Down Options
- No Age Requirement on Equipment
- No Minimum Fleet Size
- Start-up Programs



WORKING CAPITAL

- Pledge your equipment to secure the **CASH** you need
- Let us tell you how older equipment can work for your business
- A simple application form is all that's needed



UNIVERSAL FINANCE

UNIVERSALFINCO.COM/CAPITAL

CONTACT US TODAY | 781 417-3018



RECLAIMED GRANITE. Over 20 Acres Of Posts, Landings, Slope Curb, With Drill Holes & Beautiful Patina, Hand Cut Wall Granite From 1800's Mills Around New England, 8K Tons Available, 1 To 5 Ton Granite Blocks.
Dartmouth, MA 508-995-8067



2009 CATD6K LGP DOZER:
7300 Hours, Enclosed Cab w/AC,
6 Way Blade. **REDUCED \$69,000**
Call Bryn, Hopedale, MA.
855-313-2441

**2000
JLG-E300AJP,**
New Battery, Runs
Excellent!
Call For More Details.
\$8,300
508-222-9072



**1998 INTERNATIONAL
4700, DT466E,** Automatic,
26,000 GVW, No Roof on Box,
\$3000. 508-922-1197



Serving You With New Ideas



**SERVING YOU
WITH NEW IDEAS
THROUGHOUT
NEW ENGLAND &
NEW YORK**

Visit
www.wbhill.com

**For Specs &
More Photos**

For More Tractors, Trailers, Tank Trucks, Pictures & Videos,
Please Give Us A Call Or Visit Our Website, Facebook, Or YouTube Page!

305 Shaker Rd, East Longmeadow, MA
413-525-6665
www.wbhill.com



**2015 PETE 579 RAISED
ROOF SLEEPER.** 455 HP, 14,000
Frt Axle, 40,000 Rears On Air Ride,
Automatic, 802-500-7099

T-SALES & RENTALS INC.
T-QUIP
 YOUR ^{1ST} CHOICE IN SALES
 & RENTALS



DAILY | WEEKLY | MONTHLY
• RENTALS •
(603) 623-3669
www.TQUIP.com

603 MAMMOTH RD IN LONDONDERRY, NH • 239 RANDBURY RD IN RUTLAND, VT



EXCAVATORS
 6,000 - 110,000 LB MACHINES
HAMMER MACHINES AVAILABLE!



WHEELED EXCAVATORS
 48,000 LB MACHINES
THREE CAT M322Ds AVAILABLE!



LONG-REACH EXCAVATORS
 70,000 - 90,000 LB MACHINES
60' REACH!



WHEEL LOADERS
 1.5 - 9 CY CAPACITY
FORKS & JIBS AVAILABLE!



TRACKED DUMPERS
 24,000 LB CAPACITY
RUBBER-TRACKED MOROOKAS!



OFF-HIGHWAY TRUCKS
 25 - 40 TON MACHINES
CATERPILLAR & KOMATSU!



GRADERS
 14' MOLDBOARDS
RIPPERS AVAILABLE!



SKID STEERS
 8,000 - 12,000 LB MACHINES
WHEELED & TRACKED!



DOZERS
 15,000 - 78,000 LB MACHINES
TWO CAT D8Ts AVAILABLE!



ROLLERS / COMPACTORS
 48" - 84" DRUMS
ENCLOSED CABS!



LIFTS / TELEHANDLERS
 6,000 - 12,000 LB MACHINES
UP TO 55' REACH!



SCREENERS
 1-3 - 6-8 YD CAPACITY
CRUSHERS AVAILABLE!

SPECIALTY ATTACHMENTS AVAILABLE

HAMMERS | SHEARS | BUCKETS | GRAPPLES | MUNCHERS | THUMBS | FORKS | JIBS | TAILGATES | WINCHES | RIPPERS | PLOWS | SWEEPERS

CANDIA TRAILER

www.CandiaTrailer.com

& LANDSCAPE EQUIPMENT CO

All Prices Cash & Carry! Installation Available!

SAVE TIME & FUEL • WE SHIP!

1-866-761-0196

NH 603-483-2541 • Fax 603-483-2842

35 High St, Candia 4 Coners, Candia NH
10 Minutes East of Manchester, NH • 1 hour From Boston

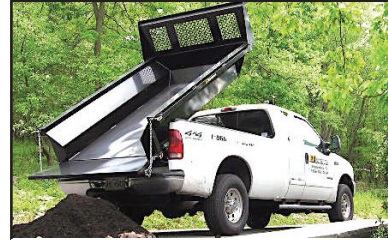
"Helping
You With
The Right
Fit"



DURA MAG ALUMINUM FLATBED BODIES. Industry's Highest Quality, Call With Your Specs. **Starting @ \$2,395.**



ALUMINUM DUMP BODIES. Complete Sub Frame, Power Pac, LED Lights, **Starting @ \$7,997.**



8' EZ Slide In Dump Body. With Head Board, Tarp & Hoist, **\$3,095**



POWER TILT
USA Made
20 FT POWER TILT 7 TON EQUIPMENT TRAILER \$6,637



Aluminum Car Hauler Trailer. 10,000 GVW, American Made, **Starting @ \$5,895.**



CTECH - Drawer Units That Fit Into Your Utility Body



DUMP TRAILERS. 12', 14', 16 Ft. Twin Piston, Powder Coat, Ramps, Battery, **Starting @ \$6,885**



LANDSCAPER TRAILERS. **Starting @ \$2,895**



CTECH - High Quality & Durable Drawer Units For Service Body



HOMESTEAD Enclosed Trailers. Stocking 8 Ft - 24 Ft, **Starting @ \$2,795**



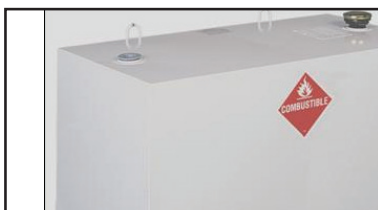
DURA MAG SERVICE BODY. All Aluminum, Heavy Duty Ladder Rack



CTECH - Custom Fit Drawer Units For Your Service Body



DOT Truck & Trailer Lights. And Oval Amber Mini Lightbar - WE SHIP



TRANSFER TANK & PUMP. Made In USA, 12 Ft Hose, Nozzle Gun, 15 gpm, In Stock - We Ship **\$339**



SAVE TIME & FUEL • WE SHIP!**CANDIA TRAILERS.COM**

& LANDSCAPE EQUIPMENT CO

1-866-761-0196**TAX FREE NEW HAMPSHIRE**

Galion

IN STOCK GALION DUMP BODIES.
8 Ft Thru 16 Ft. Call With Your Specs Today

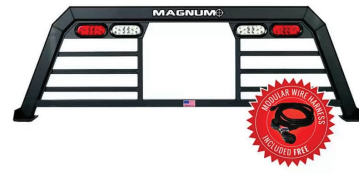
**HARSH HOIST**

2.5 to 45 Ton, Single or
 Double Piston. Convert
 a Flatbed Body to a
 Dumping Body.
**HOIST & POWER
 PACK**

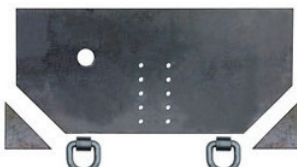
Starting @ \$1,585
USA Made



**BUTCHER Dump Power Pac with
 control Gravity Down \$465**



HEADACHE RACKS – Aluminum, USA Made, Available
 w/ Window Cut Out Or Without, Hi & Low Profiles,
 LED Light Options, Sport Series And Pro Series



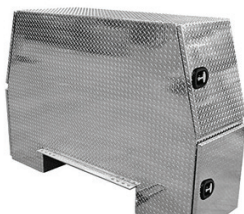
Pintle Plate \$179



**15 Ton Pintle Hook \$59 –
 WE SHIP**



Retractable Step
One Step \$99
Two Step \$109
Three Step \$119



Aluminum I-Pack Toolbox \$2690



**CUSTOM AND STANDARD
 INSTALLATIONS**



**Shuttle Door
 \$179**

UNDERBODY TOOL BOXES – Stainless Steel Hinges & Handles
Powder Coat
Diamond Aluminum Door
(black in color)

24"x18"x18" \$239
30"x18"x18" \$259
36"x18"x18" \$294
48"x18"x18" \$334



**Diamond Plate Aluminum
 Underbodies**

24"x18"x18" \$299
30"x18"x18" \$329
36"x18"x18" \$359
48"x18"x18" \$449

LOAD COVER

**7' X 12' Mesh tarp & Hardware Kit
 \$239**

Cherry Hill
CONSTRUCTION INC.

Cherry Hill Construction Co., Inc
51 Ciro Road – North Branford,
CT 203-488-7929
www.CHERRYHILLEQUIPMENT.com



2004 KENWORTH T800 Roll-off, 600,000 miles, 20K Front, 40K Rears, Fixed Pusher Axle, 8 LL Eaton Fuller (1yr old), C15 475 Engine, Galbreath Hoist, Auto Tarp, Auto Can Lockers. **Asking \$59,000.**



2007 MACK CV713 Granite Roll-Off, 450,000 miles, 18K Front, 40K Rears, Fixed Pusher Axle, AI-427 engine, 8 LL Eaton Fuller, Rudco Hoist, Auto Tarp, Auto Can Lockers. **Asking \$79,000**



1968 JOHN DEERE 570 MOTOR GRADER.
Good Running Machine, Rebuilt Motor, Ready To Work.
Asking \$15,000



1995 HOGZILLA TC-1464P GRINDER.
Cummins K-19 Motor, 1,477 Hours,
Asking \$175,000



1955 CHEVROLET. New 350 Engine, Automatic, Modern Front End, Disc Brakes, Heat, AC, CD, Leather Interior,
Asking \$52,000



1971 MACK DM685S.
S/N 9104, 14'6" Bibeau Body/ Boards, Richards Tarp, Runs Daily, New Paint **Asking \$16,000**



1998 BLAW-KNOX – PF3200 PAVER.
SERIAL #320025-22 REBUILT SCREED,
NEW PAINT **ASKING \$25,000**



2010 VOEGLER VISION 5200-2.
Crawler Asphalt Paver, #07740075,
Cummins QSG 6.7, Rubber Tracks
Carlson EZIV-1019, 10'-19' Hyd Ext
Screed,
Asking \$35,000



2005 BANDIT 3680, CAT C15, New Twin Disc Clutch, Newer Mill Bearings, 60 Tooth Mill, Asking \$125,000.



Tight Link Fence Co.
Residential ~ Commercial ~ Industrial
Mark Dillon
774-365-0222



2019 FORD TRANSIT LA WEST, Executive Shuttle,
14 Passenger.
Call For More Details! 401-434-5900



2007 FORD F550 STAKE BODY.
6.0 Diesel, Auto, 155K Miles. Runs And
Drives Great, 12' Stakebody, Non-Dump,
Full Maintenance Record,
Ready For Work, **\$9500.**
508-509-4076



**2013 MAC 50'
CONESTOGA
TRAILER.**
802-500-7099



**2013 INTERNATIONAL
WORK STAR 25' STEEL
FLATBED W/MOFFET
SYSTEM:** 425 HP Turbo Diesel,
8LL, 46 Rears Full Lockers. 300K
miles. **\$37,500** Call Dave
508-726-0077. East Freetown, MA

TAYLOR & LLOYD, INC.

SEE OUR INVENTORY: WWW.TAYLORANDLLOYD.COM



2020 INTERNATIONAL HV Roll-Off.
475 HP, A26, Automatic, 52K Rears, 22K Fronts And Rudco 75,000
LB Roll-Off Hoist.



**2012
INTERNATIONAL
4300 24' Box.**
Auto, Air Brakes,
Lift Gate, Under CDL,
136K Miles, **\$18,900.**
(file photo)



**2007 Isuzu W4500 Supreme Van Body w/
Thermo-King Reefer.** Gas, Automatic, 33K
Miles, Like New For The Year.



2020 INTERNATIONAL CV. 22K GVW,
Allison Auto, Alum Wheels And Premium
Interior With Switch-N-Go Multi Lift Cable
Hoist.



2020 INTERNATIONAL MV C&C.
Cummins L9, Allison Automatic, 6 Speed
With Overdrive, Air Brakes, Spring Ride,
33,000 GVW.

1-617-429-3370

Call Jack Coakley
8 Railroad Avenue Bedford, Ma

**JOHN DEERE
544E.**

With Title, In Excellent Shape, Tight - No Leaks, Machine Has Been Plowing A Parking Lot Last 10 Years, Snow Pusher & Chains Available, Low Hours On New Motor & Transmission, Owner Retiring, **\$25,000.** Ron, 508-400-7597



**2006 MACK
GRANITE.** 427 HP, 20F/52R, Heil Rear Loader Winch And Cart Tipper, 297K Miles, **\$47,000.** Southbridge, MA 774-230-6724



1990 FORD L8000 BOOM TRUCK, 33K GVW, 155K Miles, 6Spd., 7.8L Straight 6 Turbo Diesel, PTO Driven Hydraulic For Crane, PTO Driven Air-Compressor, Dual Outriggers, 2 Stage Boom, Awesome Truck For Your Lifting Needs. Must See ! **\$9,900** Call Today ! 781-417-3018



**2020 PETERBILT 337
CAR CARRIER.** Jerr-Dan Aluminum, Wheel Lift, 300 HP, Automatic, Polish Aluminum Wheels, 26,000 GVW, 802-500-7099

**WANTED!!!
MACK TRUCKS**

**CAT, DEERE, BOBCAT EQUIP
IN ANY CONDITION
IMMEDIATE PAYMENT**



CALL JOHNNY MACK
johnnymack107@gmail.com
HARTFORD, CT 860-883-1186



**2019 FORD E-450 14 PASSENGER SHUTTLE
BUS,** Commercial Shuttle Bus, Gas, Automatic, NON CDL Required. Call For More Details! 401-434-5900



**P&H ALL-TERRAIN T-200
CRANE.** Nice Versatile Crane For Many Uses, Drives Well On The Road, **\$19,000.** Call Jesse, 401-855-1178

Connecticut Trailers



7 Bolton Center Rd. Bolton, CT
(860) 649-7223 Visit www.CTTRAILERS.com For More Savings

Our Sales Team Ready To Help

& POWERSPORTS



We Are Looking For Used Trailers! We Will Buy Your Trailer Outright. Bring Trailer And Proof Of Ownership (Title If Over 3000 GVWR) And We Will Give You A Check On The Spot!



2020 CM Aluminum Truck Beds AL RD, #12159, Sale Price \$4,695



10' AIR TOW FLATBED TRAILER. 7,495 GVW, Electric Brakes, T12082, Sale Price \$9,995



2020 CM STEEL FLAT BEDS RD. Super Durable Powdercoat Finish, #T12415, Sale Price \$2,550



7'6" SnowEx Regular Duty 4 Way Plow Package, #S0076, Sale Price \$4,950 Cash & Carry



WELLS CARGO ROAD FORCE V-FRONT. Sidewall Flow Thru Vents, Barn Doors, #T12468, Sale Price \$3,995



CUSHMAN HAULER. 6 Passenger Crew Cab, 4x4, 3 Cylinder, 50 HP!, #P0150, MSRP \$16,367, Special Intro Price \$14,495

Prices good 30 days after publication. Advertised price does not include state or local taxes, registration costs or dealer Conveyance Fee Of \$119.00



37 County Road
Route 106
Plympton MA 02367
PH: 781-582-1378
FAX: 781-585-4438



**BOSS PLOWS
IN STOCK CALL
FOR YOUR'S
TODAY!**



**DOWN EASTER
SANDERS IN STOCK!
GAS, ELECTRIC,
HYDRAULIC. WE HAVE
EVERYTHING YOU
NEED. CALL US WE
CAN HELP.**



**2005 MACK CH 600: WET SYSTEM. READY TO
WORK. \$29,500**



**HOOKLIFTS
IN STOCK NOW!!!
BIG OR SMALL WE HAVE THEM ALL.
CALL US TODAY**



**2007 FREIGHTLINER M2 W/AMPLIROL
54" HOOK. 18,500LB. CAPACITY. CAT DIESEL, 33K GWR.
\$40,000**



**2007 HINO ALUMINUM SINGLE COMPARTMENT TANK.
AUTOMATIC, 33K GWR. CALL FOR PRICING.**

**SALES,
SERVICE,
PARTS**

**CALL TOLL FREE: 781-582-1378
WWW.CAREYTRUCKEQUIPMENT.COM**

**CUSTOM METAL
FABRICATION
AVAILABLE**



1997 TALBERT BEAM TRAILER.

4 Axles,
802-500-7099



Burrillville, RI • 401-633-4587

- Full Bucket Rebuilds • Cylinder Resealing
- Wear Plates • Adapter Replacement • Hardfacing
- General Maintenance • Computer Diagnostics
- On Site Hose Replacement



1988 ALLIS CHALMERS 45 HYDRO. 45 Inch Cone, New Manganese & Hydro Set Seals, 200 HP Electric Motor, 5X16 Triple Deck Screen, Closed Circuit Conveyors, Triple Axle Chassis, Serial #C-53463, **\$130,000.** Gales Ferry, CT. Chris, 860-460-0767 or Chm@Terrafirmas.com



2020 RHODES 26' Aluminum Double Walled Smooth Side Dump Trailer, Alum. Frame, Air-Ride. 401-434-5900



**1587 Portland Cobalt Rd
Portland, CT 860-342-2600**

See more @ MORINDIESELFORESTRY.COM



GET READY FOR SNOW!
SnowWolf And
Metal Pless
In Stock



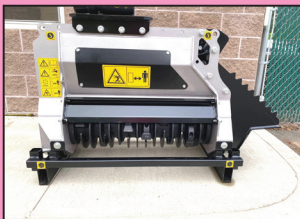
KOBELCO SK70.
Power Packed Excavator With
Mulcher For Sale Or Rent



HITACHI 50U With FAE
Forestry Mulcher
For Sale Or Rent



CAST LOADERS.
Kubota Diesel, Telescopic
Boom, Aux Hydraulics



FAE BL1 Forestry Mulcher
For 4.5 to 8 Ton Machines
\$19,000



**CAST SSQ22 WORKY
QUAD STAND** On Mini Skid
Steer, Aux Hydraulics, Perfect
Sidewalk Machine, **\$19,995**



FAE STC/SSL Skid Steer
Stone Crusher, Crushes
Rocks Up To
12" And 6" deep



FAE DML/SSL-150VT
Low Flow Skid Steer Mulcher-
DEMO UNIT



C.N. WOOD co., INC.



Contact us today to learn more!

ASV@CN-WOOD.COM • 781.305.7221



Compact Track Loaders engineered to perform at your level!

All finance subject to credit approval.



RT-25 (48" wide)
3,755 lbs • Cab w/Heat
As low as **\$465/mo**



RT-40 (48" wide)
4,175 lbs • Cab w/Heat & AC
As low as **\$579/mo**



RT-65
7,630 lbs • Cab w/Heat & AC
As low as **\$735/mo**

LEASE PAYMENTS (+ANY APPLICABLE TAX)

0% FINANCE AVAILABLE



VT-70 (vertical lift)
8,070 lbs • Cab w/Heat & AC
As low as **\$755/mo**



RT-75
9,180 lbs • Cab w/Heat & AC
As low as **\$880/mo**



RT-120
11,625 lbs • Cab w/Heat & AC
As low as **\$1,109/mo**

Woburn, MA • Avon, MA • Whately, MA • Johnston, RI • North Haven, CT • Westbrook, ME

www.cn-wood.com

Authorized Fisher
Snow Plow Dealer



HILLSIDE MOTORS

800-D American Legion Highway (Rt. 177)
Westport, MA 02790
508-636-5050

Financing Available
- Others In Stock

Family Owned & Operated Since 1969

8' LONG BED



2015 GMC K3500 HD CREW CAB 4X4 8' Long Bed.
6.0L V8, Auto, AC, PW, PL, 6-Passenger Seating, One Owner,
Excellent Condition, 71K, \$29,500.

LIKE NEW



TORO WORKMAN 3200 Commercial Utility Vehicle w/Twin Piston
Hydraulic Dump, Central Hydraulics, Differential Lock, Heavy Duty
Commercial Work Unit, Not A Plastic Play Toy, One Owner, Garage
Kept, Only 600 Hours, Mint Condition, \$8,500.

CUMMINS 4X4



2012 DODGE 3500 Cummins Crew Cab 4x4 DRW 9' Flatbed.
Cummins Turbo Diesel, Auto, AC, PW, PL, 6-Passenger, 60" CA,
Toolboxes, Ladder Rack, 119K, One Owner, \$27,900.



2011 CHEVROLET SILVERADO 3500 HD Ex Cab Utility w/Rhino
Liner & System-One Alum. Ladder Racks, 2WD, 6.0L V8, Auto, AC,
Tilt, Cruise, 6-Passenger, RWD, 119K, One Owner, Fleet Maintained,
Super Clean, \$20,900.



2007 CHEVY C3500 HD Ex Cab DRW 9' Utility 2WD. 6L V8, Auto,
AC, Tilt, 6-Passenger, 60" CA, One Owner, 105K, Florida Truck,
\$18,900. (Will Separate)



2011 CHEVROLET K2500 HD 4x4 C&C. 6L V8, Auto, AC, PW, PL,
Tilt, Cruise, 184K, Fleet Maintained, One Owner, \$9,900.



2009 GREAT DANE 40' DRY FREIGHT TRAILER. Power
Folding Tailgate & Side Delivery Door, Air Ride, One Owner, Fleet
Maintained, \$6,500.



2012 CHEVROLET 3500 HD 9' Reading Utility. DRW, 2WD, 6L
V8, Auto, AC, 60" CA, 13,200 GVW, 232K, Supervisor's Truck, Fleet
Maintained, Excellent Condition, \$12,500.


877-761-7888

132 Pierce Rd. (Rt. 125)
Barrington, NH
(17 miles from Portsmouth)


877-540-3817

1400 South Willow St.
Manchester, NH
(1 hour from Boston)

THINK SNOW! GET YOUR PLOW TRUCK NOW!


33K miles

2009 IH WORKSTAR 7400
10' Dump w/Stainless Steel
Spreader, Plow & Wing. DT466
260HP, Allison Auto, 36,220 GVW,
33K Miles, stk#15731, **\$44,900.**



2010 IH WORKSTAR 7400 Sander
Body w/Plow & Wing. DT285HP,
Allison Auto RDS, Engine Brake,
98K Miles, stk#15578, **\$34,900.**



2004 IH WORKSTAR 7400 10'
Dump w/Plow, Wing & Underbody
Spreader. Pre Emission DT466
250HP, Allison Auto, 36,220 GVW,
58K Miles, stk#Con 107, **\$34,900.**



2016 IH DURASTAR 4300 CREW
C&C. Cummins ISB 240HP, Allison
Auto, 297" WB, 26K GVW, 98K Miles,
stk#15268, **\$54,900.**



2014 IH DURASTAR 4300 21'
JerrDan 2-Car Carrier. Cummins
240HP, Allison Auto, 26K GVW,
217" WB, 135K Miles, stk#Con-114,
\$57,500.



2016 PETERBILT 567 44" Sleeper.
Cummins ISX 425HP, 8LL, Engine
Brake, 53,200 GVW, 41K Miles,
stk#15728, **\$69,900.**



2016 FREIGHTLINER CASCADIA
113. Detroit 410HP, Auto 12 Spd,
Engine Brake, 167" WB, 52K GVW,
499K Miles, stk#15214, **\$35,900.**



2017 FREIGHTLINER BUS CLASS
M2 106 26' Morgan Van. ISB
Cummins 240HP, Auto, 102" W,
Lift Gate, 33K GVW, 38K Miles,
stk#15069, **\$63,900.**



2014 PETERBILT 337 26' Van w/
Lift Gate. PX7 220HP, Allison Auto,
102"W, 96" H, 33K GVW, 187K Miles,
stk#14195, **\$41,900.**



2016 IH DURASTAR 4300 24' Alum.
Van. Cummins ISB 240HP, Allison
Auto, E-Track, Tuck-Away Lift Gate,
2599 GVW, 127K Miles, stk#15184,
\$54,900.



2019 IH MV 26' Morgan Van.
Cummins 260HP, Allison Auto,
102"x102", E-Track, 25999 GVW, 87K
Miles, stk#15737, **\$62,900.**



2016 IH DURASTAR 4300 20'
Reefer Body w/Thermo King T800.
Cummins ISB 240HP, 102"H, 97"
W, Allison Auto, 25,999 GVW, 202K
Miles, stk#15436, **\$44,900.**

www.LibertyInternationalTrucks.com

Your Local Source For The Trades



877-761-7888
132 Pierce Rd. (Rt. 125)
Barrington, NH
(17 miles from Portsmouth)



877-540-3817
1400 South Willow St.
Manchester, NH
(1 hour from Boston)

THINK SNOW! GET YOUR PLOW TRUCK NOW!



2010 MACK GRANITE GU713 10.5
Yard McNeilus Rear Discharge Mixer.
MP7 405HP, Allison 4500RDS Auto,
70180 GVW, 71K Miles, stk#15599,
\$92,900.



2009 FREIGHTLINER BUS CLASS
M2 106 10' Dump w/Plow & Wing.
ISC Cummins 275HP, Allison Auto,
39K Miles, stk#15514, **\$34,900.**



2014 IH WORKSTAR 7400 w/Front
Plow, Wing Plow & Stainless Steel
Sander. DT 300HP, Allison Auto,
36,220 GVW, 58K Miles, stk#15171,
\$49,900.



2007 PETERBILT 357 C&C 6x4.
CAT C9 335HP, Allison 4500RDS,
217" WB, Hendrickson HM460,
66K GVW, 251K Miles, stk#15503,
\$43,900.



2012 PETERBILT 388 6x4. Cummins
ISX15 500HP, 8LL, AC, Engine
Brake, 60,320 GVW, 477K Miles,
stk#15313, \$64,900.



2009 KENWORTH W900.
ISX Cummins 485HP, 10 Speed,
Engine Brake, 8 Bag Air Ride,
214" WB, 52K GVW, 224K Miles,
stk#15001, **\$39,900.**



2011 MACK MRU613 25 Yard Heil
Packer w/Cart & Container Tipper.
6x4, 325HP MP7, Allison Auto,
Camelback, 66K GVW, 179K Miles,
stk#15631, **\$104,900.**



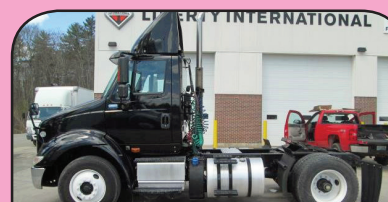
2014 FREIGHTLINER 114SD 16'
Flatbed w/Fassi Knuckleboom.
DD13 410HP, 8LL, 12" Removable
Sides, 56K GVW, 98K Miles,
stk#15705, **\$79,500.**



2013 MACK PINNACLE CXU613.
MP8 415HP, 10 Speed, Engine
Brake, 191" WB, 52K GVW, 13K
Miles, stk#15729, **\$54,900.**



2012 IH DURASTAR 4300 Extra Cab
C&C. DT466 260HP, Allison RDS,
Engine Brake, 213" WB, 33K GVW,
156K Miles, stk#13746, \$28,900.



2015 IH TRANSTAR 8600. 370HP, 10
Spd Ultra Shift, AC, Engine Brake,
33K GVW, 345K Miles, stk#13794,
\$21,900.



2013 KENWORTH T800. ISX
Cummins 550HP, 18 Spd, AC,
Engine Brake, 242" WB, 86K GVW,
419K Miles, stk#15727, \$84,900.

www.LibertyInternationalTrucks.com



SALES & RENTALS

(603) 623-3669

www.TQUIP.com

Londonderry, NH | Rutland, VT | Orlando, FL

• OVER 1000 MACHINES & ATTACHMENTS IN OUR INVENTORY! •



2012 CAT 308ECR
A/C, STD STK, AUX HYD,
HYD Q/C, 30" DIGGING
BUCKET, HYD THUMB &
BLADE, ZERO TAIL,
18" RUBBER TRACKS,
2700 HRS
\$69,000

20% of all Pinky
rental proceeds go to:

M
Breast Cancer
SUPPORT



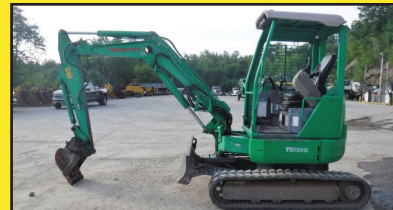
2016 DEERE 26G
OROPS, 6200LB OPER WT, 3'10" STK, TAG
MANUAL Q/C, 18" TAG DIGGING BKT,
TAG HYD THUMB, HYD BLADE, 857 HRS
\$27,500



2013 BOBCAT E32M
OROPS, 7200LB OPER WT, 4'3" STK, TAG
MECHANICS Q/C, 16" DIGGING BKT,
HYD THUMB, HYD BLADE, 2400 HRS
\$32,500



2014 DEERE 35D
A/C, 4'4" STK, WR-STYLE MECH Q/C,
18" DIGGING BKT, HYD THUMB, HYD
BLADE, RUBBER TRACKS, 1244 HRS
\$39,000



2014 TAKEUCHI TB138FR
OROPS, 8400LB OPER WT, 5'2" STK, AUX
HYD, TAG MANUAL Q/C, 18" TAG BKT,
HYD BLADE, 2000 HRS
\$28,500



2010 CATERPILLAR 303CR
A/C, AUX HYD, 10" DIGGING BKT, HYD
BLADE, RUBBER TRACKS, 2444 HRS
\$35,000



2014 KOMATSU PC160LC-8
A/C, 8'7 STK, 24" PADS, AUX HYD,
36" STRICKLAND DIGGING BKT,
ESCO HYD THUMB, 4384 HRS
\$99,000



2012 KOMATSU PC360LC-10
A/C, 10'6" STK, AUX HYD, GEITH HYD
Q/C, 62" ESCO DIGGING BKT, HAMMER
AUTO LUBE, 32" PADS, 6630 HRS
\$125,000



2014 KOMATSU D37PX-23
EROPS, A/C, 6-WAY BLADE,
24" LGP PADS, 1902 HRS
\$99,000



2015 CATERPILLAR D5K2-LGP
EROPS, A/C, CAT DIESEL, 10'6" BLADE,
6-WAY BLADE, 26" PADS, 3738 HRS
\$89,500



2007 KOMATSU HM350-1
A/C, 6X6, 35-TON CAPACITY,
26.5R25 RADIALS @ 80%,
EXCELLENT CONDITION, 11,900 HRS
\$99,000

• CALL US TODAY FOR YOUR YEAR-ROUND SALES & RENTAL NEEDS! •



**75 LATE-MODEL WHEEL
LOADERS & SKID STEERS!
FOR YOUR WINTER NEEDS!**

• 1.5 TO 7CY
CAPACITY BUCKETS

• 8, 10, 12 & 14FT
PUSHERS AVAILABLE

**CALL FOR SPECIAL
WINTER PRICING!**

T-SALES & RENTALS INC.
T-QUIP
**YOUR CHOICE IN SALES
& RENTALS**

(603) 623-3669
www.TQUIP.com



2015 DEERE 323E
CAB, A/C, AUX HYD, MANUAL Q/C,
72" BRADCO GP BUCKET,
13" RUBBER TRACKS, 952 HRS
\$39,500



2016 CATERPILLAR 289D
A/C, AUX HYD, Q/C, JYSTK STR, 80" GP
BKT, **HIGH-FLOW HYD**, C/W PKG, REAR
CAM, 17" RUBBER TRACKS, 2064 HRS
\$42,500



2014 MOROOKA MST2200VD
A/C, 250HP, HST, 12' DUMP BODY,
30,000LB CPTY, 8CY HEAVING CPTY,
30" RUBBER TRACKS, 3900 HRS
\$89,000



2017 CAT 907M
EROPS, A/C, 1.4CY GP BKT,
340X80R18 RADIALS, 2420 HRS
\$65,000



2018 CAT 908M
EROPS, A/C, CAT HYD Q/C, 1.4CY GP
BKT, 2-SPD TRAVEL, 405X70R20 RUBBER,
ALL OPTIONS, CAT FORKS AVAIL, 200 HRS
\$79,000



2019 KOMATSU WA270-8
EROPS, A/C, HYD Q/C, 3CY BKT,
2-SPOOL ENG, 20.5R25 RADIALS, FORKS
AVAIL AT ADD'L COST, 1330 HRS
\$125,000



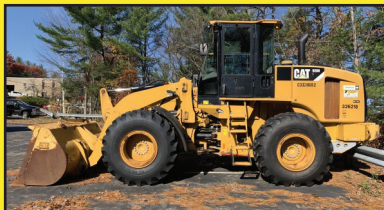
2013 KOMATSU WA320-6
EROPS, A/C, KOMATSU DIESEL,
JRB HYD Q/C, 3.5CY JRB GP BKT,
FORKS AVAIL AT ADD'L COST, 8150 HRS
\$79,000



2016 KOMATSU WA380-8
EROPS, A/C, HYD Q/C, 4CY BKT, RIDE
CTRL, NEW 23.5 RADIALS, 72" HD FORKS
AVAIL AT ADD'L COST, 4482 HRS
\$149,000



2018 KOMATSU WA380-8
EROPS, A/C, HYD Q/C, 5CY BKT,
2-SPOOL ENG, 20.5R25 RADIALS, 72" HD
FORKS AVAIL AT ADD'L COST, 4153 HRS
\$159,000



2010 CATERPILLAR 928HZ
EROPS, A/C, 2.5CY GP BKT,
20.5R25 RUBBER, 9200 HRS
\$79,000



2010 KOMATSU WA480-6
EROPS, A/C, 6CY BKT, RIDE CTRL, 26.5
RADIALS, 11,871 HRS
\$79,500



2011 KOMATSU WA500-6
EROPS, A/C, 7CY GP BKT, DUAL STEER,
29.5R25 RADIALS, COMPLETE 1000HR SVC
& INSPECTION BY KOMATSU, 8395 HRS
\$129,000

• HAMMERS • BUCKETS • GRAPPLES • THUMBS • FORKS • BROOMS •

**We are cash
buyers for
quality used
trucks and
equipment!**

BROOKSIDE EQUIPMENT SALES

WWW.BROOKSIDEEQUIPMENT.COM

978-249-4600



2014 HYUNDAI HL757TM-9A: 4,313 Hours, 3.5 Yard, Cab W/ A/C, Hydraulic Coupler W/ 3rd Valve, 6 Cyl Cummins Turbo, Backup Camera, 33K LBS, stk#L0015, **\$72,500**



2012 JOHN DEERE 650K LGP: 3,641 Hours, 6-Way Blade, Joystick Steer, LGP, Good U/C, 4 Cyl John Deere Turbo, 21K Lbs, stk#DZ243, **\$47,500**



2016 LINK-BELT 130X2: 969 Hours, 36" Bucket, Hydraulic Coupler, 8'6" Blade, A/C, Auxiliary Hydraulics, Good U/C, 2 Speed, 4 Cyl Isuzu Turbo, 97 HP, 29K Lbs, stk#XC331, **\$89,900**



2016 CATERPILLAR 308E2 CR: 3,381 Hours, 34" Bucket, Cab W/ A/C, Auxiliary Hydraulics, 77" Blade, 2 Speed, Swing Boom, Pattern Changer, 19K LBS, stk#XC534, **\$59,900**



2013 JLG G9-43A: 2,587 Hours, 9K LB Lift, 43 Ft Lift Height, 30 Ft Horizontal Reach, 4x4, Orops, Tilt Body, 6 Ft Forks, 4 Cyl Cummins Turbo, 100 HP, Aux Hyd, stk#FL992, **\$44,500**



2012 JOHN DEERE 624K: 9,731 Hours, 3.5 Yard Machine, 8 Ft Forks, Aux Hyd, 6 Cyl JD Turbo, 20.5R25 Good Rubber, 36K Lbs, stk#L0708, **\$62,500**



2017 CATERPILLAR 304E2 CR: 1,146 Hours, 22" Bucket, Auxiliary Hydraulics, 77" Blade, 2 Speed, Swing Boom, 9K Lbs, stk#MX774, **\$39,500**



2013 CASE 580N: 2,066 Hours, 4x4, X-Hoe, Cab, Turbo, Pilot Controls, 22" Bucket, stk#BH499, **\$37,500**



2007 GENIE S60: 4,167 Hours, 60 Ft Boom Lift, 4x4, 8 Ft Basket, 3 Cyl Deutz Diesel, 48 HP, stk#AE458, **\$24,500**



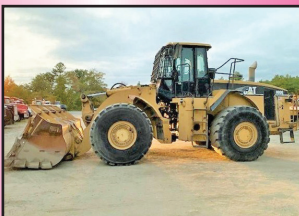
1995 JOHN DEERE 550G LT IV: 4,649 Hours, 6-Way, Orops, Pedal Steer, 4 Cyl John Deere Turbo, Good U/C, 18K Lbs, stk#DZ024, **\$24,500**



2013 CATERPILLAR 908H2: 4,184 Hours, 1.2 Yard, Cab W/ A/C, Hydraulic Coupler W/ 3rd Valve, 4 Cyl Cat C3.3B Turbo, 74 HP, 14.5K Lbs, stk#BH331, **\$44,500**



2006 CATERPILLAR 446D: 7,183 Hours, 4x4, X-Hoe, Cab W/ A/C, Turbo, Powershift, Pilot Controls, 23" Digging Bucket, Rear Manual Coupler, stk#BH580, **\$37,500**



2005 CATERPILLAR 980G: 18,905 Hours, 7.25 Yard, Cab W/ A/C, Autoshift, 6 Cyl Cat Turbo, Command Steer, 66K Lbs, stk#LQ395, **\$49,500**



2010 CAT IT38H: 12,216 Hours, 4 Yard, Cab W/ A/C, Hydraulic Coupler W/ 3rd Valve, 6 Cyl Cat C6.6 Acert Turbo, 36K Lbs, stk#LQ392, **\$59,500**



2016 BOBCAT S595: 773 Hours, 2200 Lb Lift, Cab W/ A/C, Aux Hyd, Hyd Coupler, 2 Speed, Hand/Foot Controls, 6.8K LBS, stk#SK313, **\$34,500**



2000 JOHN DEERE 260: 1,078 Hours, 2,400 Lb Lift Capacity, Enclosed Cab, Aux Hyd, 72" Bucket, 3 Cyl JD Turbo, 8,250 Lbs, stk#SK238, **\$15,900**



2014 CAT 312E: 2,040 Hours, 34" Bucket, Manual Thumb, Hydraulic Coupler, 2 Speed, Good U/C, Backup Camera, 4 Cyl Cat C4.4 Acert Turbo, 30K Lbs, stk#XC696, **\$77,500**



1987 TROJAN 2000Z: 3 Yard Bucket & 11 Ft Plow, Cab, 6 Cyl Deutz Diesel, 30K Lbs, stk#L0812, **\$18,500**



2003 ASPHALT ZIPPER AZ480T: 650 Hours, 48" Asphalt Zipper On Williamson Trailer, 6 Cyl John Deere 6068 Turbo Diesel, One Owner, stk#PA114, **\$24,500**



2015 CATERPILLAR CT660S: 173,730 Miles, 10 Wheel Daycab, Cat CT13 Twin Turbo, 475 HP, Fuller 13 Speed, 13,200 F, 46k R, Air Ride, A/C, 198" Wheelbase, stk#TK650, **\$39,500**

60 STATE RD, PHILLIPSTON, MASS

978-249-4600

EMAIL: KEVIN@BROOKSIDEEQUIPMENT.COM

ALLEGIANCE TRUCKS

2181 Providence Highway | Walpole, MA 02081

(508) 668-3112 | (800) 225-4808

www.AllegianceTrucks.com



NEW-2019 INTERNATIONAL RH
Navistar A26, 10-Speed Automatic.
GVW 32,000. Stock #800120



NEW-2020 INTERNATIONAL MV
Cummins ISB, 6-Speed Automatic.
GVW 25,999. Stock #401581



NEW-2019 INTERNATIONAL CV
Navistar 6.6L D, 6-Speed Automatic.
GVW 19,500. Stock #300059



NEW-2018 INTERNATIONAL RH
Navistar A26, 10-Speed Manual
GVW 52,000. Stock #800127



NEW-2021 INTERNATIONAL LT
Cummins ISX15, 10-Speed Auto.
GVW 52,000. Stock # 800132



NEW-2020 FORD F550
6.7L Power Stroke, 6-Speed Auto.
GVW 19,500. Stock #550854



NEW-2019 FORD F550
Ford 6.7L, 6-Speed Automatic.
GVW 19,500. Stock #550821



NEW-2019 FORD F550
6.7L Power Stroke, 6-Speed Auto.
GVW 19,500. Stock #550773



NEW-2019 FORD F650
Ford 6.8L, 6-Speed Automatic.
GVW 25,999. Stock #650598

CALL SALES FOR MORE DETAILS!

☐ Marty Castrechini

☐ David Pardi

☐ Steve Albano

☐ Dominick LaGambina

☐ Kathy Wilkinson

OCT 9 BER
BREAST CANCER AWARENESS MONTH

Support. Admire and Honor

NOW Locations in MA, CT, NY & ME! For all locations visit our website! www.AllegianceTrucks.com



PRODUCTS & SERVICES

1-508-917-8889 | eess-llc.com

9 Pioneer Drive | North Oxford, MA 01537



FRONT LOADERS

Heil® front loaders are legendary. Renowned for their durability, dependability and toughness, they are a proven leader in waste collection.

The **Curotto-Can**



THE CUROTTO CAN

A front loader equipped with a Curotto-Can® has the fastest load time of any automated system which means you can service more customers and maximize your productivity.



REAR LOADERS

The family of Heil® rear loaders are available in a variety of body sizes from small, under CDL 9 yd and 11 yd up to big, high compaction 32 yd commercial bodies.



SPLIT BODY REAR LOADERS

The Heil® 4060 split body is the #1 choice for haulers who pick up multiple waste streams and prefer to use 1 truck instead of 2.



SIDE LOADERS

Heil® Automated side loaders are built to last and engineered to optimize your productivity, improve efficiency and reduce your costs.



CNG TRUCKS

Heil® has a patented CNG front load body tailgate that can store 105 DGE. Heil also offers top of body, front of body & frame mounted CNG systems.

Galbreath



CABLE ROLL-OFF HOISTS

Galbreath® roll-off cable hoists remain the standard for the waste industry and have hoists to meet most applications and regionally specific needs.

Galbreath



HOOKLIFT HOISTS

Galbreath® hook hoists offer greater versatility, maneuverability, exceptionally fast cycle times and up to a 62-degree dump angle for clean discharge.

Galbreath



CONTAINER HANDLERS

The Galbreath® Loaded Container Handler (SLCH) transports front load and rear load containers on top of the truck and containers are sit level to minimize trash spillage.

Galbreath



CONTAINER HANDLERS

The CH8000 Container Handler is ideal for container delivery, pickup and placement, as well as moving empty or full containers around a yard.

PETERSEN INDUSTRIES



GRAPPLE TRUCKS

Petersen grapple trucks are used by over 1,000 municipalities, public works departments and waste collection companies.

PETERSEN INDUSTRIES



CONTAINER TRANSPORTERS

Petersen container transporter trucks can haul more containers faster, easier and more efficiently.



PRODUCTS & SERVICES

1-508-917-8889 | eess-llc.com

9 Pioneer Drive | North Oxford, MA 01537



BAYNE TIPPERS & LIFTERS

Bayne offers a diverse line of cart tippers and lifters that are second to none, with models that work with almost any application and budget.



PERKINS LIFTERS

Offering over 70 products and accessories for cart tippers and lifters that are both durable and dependable.



LIFTING & DUMPING SYSTEM

QWIK-TIP RHINO-XL is a patented commercial rear load container attachment designed to improve safety and speed up collections of commercial accounts.



JOHNNY JAWS

Johnny Jaws enables any front loader to also dump rear load containers



ON-BOARD TRUCK SCALES

Electronic on-board technology for real-time accurate weight data.



3RD EYE CAMERA SYSTEMS

3rd Eye offers the very best truck onboard camera systems, collision avoidance radar, vehicle analytics, DVR's and more.

TRUCK RENTALS

FULL LINE OF GARBAGE TRUCK & ROLLOFF RENTALS



EESS has a dedicated rental fleet of professionally maintained garbage trucks & Roll Off rental trucks. Front, side and rear loaders all immediately available as well as roll off trucks.

PARTS

WE'VE GOT THE PARTS YOU NEED IN STOCK



EESS has an extensive parts inventory, from small parts to major components. We stock genuine OEM parts have the parts you need.

SERVICE

FULL TRUCK & BODY SERVICE AND REPAIRS



EESS performs all levels of service and repair work. From standard preventive maintenance to complete body refurbishment and everything in-between.

MOBILE SERVICE

WE GET YOU BACK ON THE ROAD FAST



EESS provides on-call mobile support and on-site assistance to repair or troubleshoot your equipment.



WHOLE TREE CHIPS FOR EROSION CONTROL, LANDSCAPING, ETC. 100 YARDS FOR \$800.00. FREE DELIVERY IN 50 MILE RADIUS FROM CONCORD, NH. CALL 603-456-6029



2014 CAT 312E:
11' Stick, QC, A/C Cab,
3000 Hours, **\$83,500.**
Call Bryn. 855-313-2441.
Hopedale, MA



**FORD F650
DUMP TRUCK.**
Red, Automatic
Transmission, **\$8,000.**
401-289-2252



1980 AUTO CAR DC7344.
Built For Snow, 6 Cyl. Diesel, 5+4 Trans,
4x4, 48K Original Miles, 2nd Owner,
Solid Cab, Solid Dump Body, Excellent
Tires, No Issues, Comes With 11-1/2
Highway Plow, Will Accept Power Angle
Plow, Route Available, **\$16,500 OBO.**
Warren, 508-269-1515

GREAT ROAD FARM & GARDEN
687 GREAT ROAD
LITTLETON, MA 01460
978-486-9200



greatroadfarmandgarden@gmail.com
www.greatroadfarmandgarden.com



TYM 394 HST WITH LOADER \$25,000
Hydraulic lift capacity 2646 lbs, diesel
engine, heated and a/c cab



TYM 454 WITH LOADER \$26,300
4 cyl diesel engine, loader
capacity
is 2478 lb, with 3rd function kit



TYM 264 WITH LOADER \$14,500
Diesel engine, loader has
1380 lbs lift capacity, hitch lift
capacity is 1534 lbs



CUB CADET ULTIMA ZTX4 54" ZERO TURN
24 HP KOHLER ENGINE MOWER
\$5699.99



**CUB CADET PRO X 660 COMMERCIAL
STANDER \$8549.99 til 10/31/2020**
25 HP Kawasaki commercial grade
engine, 60" 10 gauge steel floating
deck, dual 12 cc hydro gear



**CUB CADET 2018 CHALLENGER
550 UV**
\$9699.99



**CUB CADET 2018 CHALLENGER
750EPS UV**
\$10,241.99 with PLOW

**Help wanted: Diesel/small
engine technician**
Responsible for maintenance
and repair of diesel engines,
inspect, diagnose and repair
farm tractors, maintain record
of parts, inventory, serviced
equipment and more
Pay based on experience
Locally owned & operated
garden, pet, power equipment
and farm store located in
Littleton, MA
Visit website for application :
greatroadfarmandgarden.com

R&R INDUSTRIES
 www.RRTrucksAndEquipment.com • Sales@RandRind.com
 195 Rocus Street, Springfield MA 01104 **413-733-2118**

We Buy All Scrap Metals



Truck Tires
 Many Matched Sets
 Of 4 And 8
 & Rims Too
 295/75/225
 10:00 x 22.5
 11:00 x 22.5
 12:00 x 22.5
 9:00 x 20
 10:00 x 20
 8:25 x 20
 11x20

Call With Your Size
 Lots More In Stock!

Guaranteed Used Tires

Virgin Steer, Drive & Trailer Tires



2004 CAT 420E IT BACKHOE.

Bucket & Fork Attachments,
 Extend-A-Hoe, A/C, Good Rubber,
 4WD, Low Hours, Excellent Machine,
\$39,500. Call Jim,
 413-530-5369



GRASSHOPPER 725D: 25hp Diesel, 1450 Hrs.,
 With Vac System **\$6,900.** 860-928-5748

**2017 KENWORTH
 W900.** Sleeper, Wet Line,
 Full Fenders, Cummins ISX
 600 Hp, 18 Speed, Air Ride
 On 46,000 Rears,
802-500-7099



TARPS



www.KaplanTarps.com 888-611-TARP

Roll Tarps • Dump Tarps • Flatbed Tarps • Custom Tarps
Parts - Systems - Service

SNOW & ICE CONTROL - ONE STOP SHOP
NEW SECOND LOCATION NOW OPEN
 105 COUNTY RD, IPSWICH MA
PRE-SEASON SALE



NEW FUSION EDGE



1-978-745-2500

Ipswich: 978-356-2916

Truck Bodies & Equipment

63 Bridge St. Salem, MA

www.BrakeAndClutch.com

**JOHN DEERE 550 DOZER.**

Bottom In Really Good Shape, 6-Way Blade, Runs Excellent, New Paint, Stairs With Levers Not On Floor, Machine Is Tight, Use Once Or Twice A Year, Asking **\$14,000.**
Norwalk, CT 203-858-3516, Mike



2011 INTERNATIONAL 4300. 170K Miles, Allison Automatic, Power Windows & Locks, New Airbags, Brakes Been Shortened But Rails Not Cut Yet, Truck Is Straight From Down South - Super Clean! No Rust At All!! **\$17,000.**
508-509-3461



**SNOWPLOWS AND
SANDER,
\$800 And Up OBO.**
413-374-5331



2011 REITNOUER TRI-AXLE LIVE FLOOR TRAILER, Heavy Duty Keith Live Floor, Mint Trailer & Floor, Air-Ride W/ Lift Axle, Barn Door And Roll-Over Tarp. **\$57,900** Call Today! 781-417-3018



**2017
ROCKSTER
R1100DS -** Closed Circuit Impact Crusher, CAT Powered, Wireless Remote, Cross Belt Magnet, **\$280,000**
CALL DAN
203-506-3860



1965 FORD F-600 DUMP TRUCK. 330 Truck Motor, 4 Speed With Splitter. Truck Is In Excellent Condition. I Have Owned It For Over 43 Years And Restored It. It's Just Doesn't Get Used Anymore. Asking **\$12,500.**
Call Ron @781-729-5043

**Branson
TRACTORS**

**ZERO DOWN
4.49% FOR UP TO
84 MONTHS!**

**47 Horsepower
Special!**



SALES • SERVICE • PARTS • FINANCING

FOSKETT
EQUIPMENT INC.
TRACTORS & IMPLEMENTS
Woodstock, Ct

**Route 171
S. Woodstock, CT
860-928-5748
www.foskettequipment.com**

CERRONE

A Priority Automotive Dealership

**ROUTE 1, BETWEEN 95 + 295
SOUTH ATTLEBORO, MA**

508-761-4800

WE COME TO YOU - GIVE US A CALL !



**NEW 5500 LCF
DROPSIDE DUMP**
17,950 GVW, A/C, POWER HEATED MIRRORS,
HITCH, COVER. #18364H

WAS \$76,830

\$61,495



2020 4WD RAMP TRUCK

\$108,000



**2019 5500 LCF
BACKPACK DUMP**
17,950 GVW, A/C, POWER HEATED MIRRORS,
HITCH, COVER. #19008H

WAS \$80,620

\$64,995



**2020 C2500 UTILITY
ALUMINUM BODY**

9,900 GVW, CONV. PKG., REAR CAMERA,
SPRAY-IN-LINER, BACK RACK. #20247G

WAS \$53,340

\$45,495



**2020 K3500 UTILITY
ALUMINUM BODY**

11,100 GVW, CONV. PKG., PLOW PREP,
ELECTRIC BODY LOCK, HITCH, TRAILERING
EQUIPMENT, BACK-RACK. #20252H

WAS \$55,760

\$49,995



**2020 K3500 DOUBLE CAB UTILITY
ALUMINUM BODY**

11,400 GVW, CONV. PKG., PLOW PREP.,
ALL THE RIGHT SPECS. #20222G

WAS \$60,288

\$52,995



**2020 K3500 DENALI DUALY
DURAMAX DIESEL**

DENALI ULTIMATE PKG., 5TH WHEEL PKG.

#20296G

WAS \$82,715

\$73,995



**2020 K3500 DUMP TRUCK
DURAMAX DIESEL**

14,000 GVW, CONV. PKG., PLOW PREP.

#20334G

\$59,995



2020 K3500 DUMP TRUCK

14,000 GVW, CONV. PKG., PLOW PREP.

#20341H

WAS \$53,284

\$48,995



2020 C2500 PICKUPS

9,900 GVW, CONV. PKG.,
TRAILER PKG., SPRAY-IN-LINER. PERFECT FLEET
SPECS. #20164G

WAS \$39,668

\$34,995



**2020 K3500 CREW CAB
DURAMAX DIESEL**

DARK GREEN CHASSIS FOR 9' BODY, 14,000
GVW, CONV. PKG., PLOW PREP., POWER SEAT.

#20359H

WAS \$56,378

\$50,495



2020 C3500 CHASSIS

14,000 GVW, 84" CA FOR 12' BODY, CONV.
PKG. #20362G

WAS \$40,393

\$34,995



WWW.CERRONEGM.COM
WWW.CERRONETRUCKSALES.COM

SALES PRICES INCLUDE ALL REBATES INCLUDING LOYALTY, CONQUEST, TRADE-IN

THIS AD IS COPYRIGHTED & OWNED BY TRUCK AND EQUIPMENT POST



CERRONE

A Priority Automotive Dealership

ROUTE 1, BETWEEN 95 + 295

SOUTH ATTLEBORO, MA

508-761-4800

WE SPECIALIZE IN FLEETS WITH 10+ TRUCKS. CALL US



2020 3/4 TON VANS



8,600 GVW, COMMUNICATION PKG., CHROME TRIM. #20323H
WAS \$37,230

\$32,495

2020 ONE TON VANS



9,600 GVW, GOOD SPECS. #20183G
WAS \$38,865

\$33,995

2019 KUV



9,900 GVW, FULL POWER EQUIPMENT. #19391H
WAS \$52,433

\$44,995

2019 10' HI-CUBE



9,900 GVW, ROLL-UP DOOR, PARTITION, LINING. #19354H
WAS \$45,633

\$37,495

2020 12' HI-CUBE DUAL REAR WHEELS



12,300 GVW, ROLL-UP DOOR, TIE DOWN RINGS, LINING. #20055G
WAS \$47,403

\$39,995

2020 3/4 TON VAN



ENHANCED CONV. PKG., V-8, H.D. TRAILERING. #20325G
WAS \$36,425

\$31,995

2020 KUV



9,900 GVW, GREAT SPECS. #20314G
WAS \$53,893

\$46,495

2020 12' DURACUBE MAX DUAL REAR WHEELS



12,300 GVW, ELECTRIC BODY LOCKS, SHELVEING, LADDER RACKS. #20359G
WAS \$56,373

\$49,995

2020 14' DURACUBE MAX



14,500 GVW, NICE OWNER OPERATOR SPECS. #20233H
WAS \$74,455

\$66,995

2020 12' BOX TRUCK



14,500 GVW, ENHANCED AUDIO SYSTEM, AIR DEFLECTOR, ROLL-UP DOOR, LINING, ETC. #20269H
WAS \$59,680

\$48,995

2019 18' REEFER



14,500 GVW, HEAT & COOL WITH STANDBY, SIDE DOOR, NICE UNIT. #19378H
WAS \$82,337

\$68,995

NEW 20' BOX TRUCK



17,950 GVW, GOOD BODY SPECS., SAVE THOUSANDS OFF LIST PRICE. #17457H
WAS \$77,791

\$56,995



WWW.CERRONEGM.COM
WWW.CERRONETRUCKSALES.COM

SALES PRICES INCLUDE ALL REBATES INCLUDING LOYALTY, CONQUEST, TRADE-IN

THIS AD IS COPYRIGHTED & OWNED BY TRUCK AND EQUIPMENT POST



CERRONE

A Priority Automotive Dealership

**ROUTE 1, BETWEEN 95 + 295
SOUTH ATTLEBORO, MA**



508-761-4800



CHEVROLET'S MEDIUM DUTY TRUCK CENTER

- *REGULAR CABS, TILT CABS, CREW CABS 2WD OR 4WD
- *GVW'S UP TO 25,950 BODY LENGTHS UP TO 22'
- *DUMPS, PLATFORM/ RACKS, SWITCH-N-GO, CAR CARRIERS, TOW TRUCKS, SERVICE BODIES, MOVING VANS. IF YOU NEED IT DONE, WE CAN DO IT.
- *NIGHT SERVICE WITH 30,000LB. LIFTS
- *GM'S #1 FLEET DEALER IN SE MA., RI, CT.

CALL OUR COMMERCIAL TEAM. "YOU'LL BE GLAD YOU DID!"

**2020 K5500 DUMP TRUCK
DARK GREEN**

DIESEL



19,500 GVW, RUGGED DUTY CHASSIS SPECS., 11' BODY, 20" SIDES, ELECTRIC COVER, POLY FENDERS. #20334H
WAS \$82,487

\$74,995

2019 C5500 CHASSIS

DIESEL



17,500 GVW, DARK GREEN MET., 60" CA FOR 8' BODY. #19359H
WAS \$53,577

\$46,995

**2019 C5500 CHASSIS
CREW CAB**

DIESEL



19,500 GVW, 84" CA. #19364H
WAS \$60,567

\$51,995

2020 K5500 CHASSIS

DIESEL



17,500 GVW, 108" CA. #20155H
WAS \$58,072

\$53,695

2020 K5500 CHASSIS

DIESEL



19,500 GVW, 108" CA. #20285H
WAS \$61,212

\$55,695

**2020 K5500 CHASSIS
CREW CAB**

DIESEL



19,500 GVW, 84" CA. #20296H
WAS \$66,312

\$59,695

2020 LCF 5500 CHASSIS

DIESEL



17,950 GVW, 132" WB FOR 14'-16' BODY. #20199H
WAS \$62,028

\$48,875

2019 K5500 RACKBODY

DIESEL



17,500 GVW, 12' RACKBODY, HITCH. #19203H
WAS \$67,024

\$61,875

**2019 LCF 5500XD CREW CAB
12' ALUM. LANDSCAPER**

DIESEL



19,500 GVW, SIDEDOOR, HITCH. #19125H
WAS \$84,270

\$68,875



**WWW.CERRONEGM.COM
WWW.CERRONETRUCKSALES.COM**



THIS AD IS COPYRIGHTED & OWNED BY TRUCK AND EQUIPMENT POST



JG Remillard Equipment Sales.

603-759-5918



1998 CATERPILLAR D8R. 3406, EROPS with Air Conditioning, Stereo, Semi U Blade, 85% Undercarriage, 3rd Valve for Ripper, New Batteries, Work Ready. **\$109,500**



1983 CATERPILLAR D7G. 3306 DIT Caterpillar Diesel Engine, Powershift Transmission, 85% Bottom, Straight Blade with Tilt, EROPS, 5,537 Original Hours. Just off the job, Work Ready. **\$45,000**



1978 CATERPILLAR 225. 3208, Comes with Bucket and Pemberton Steel Shear, Aux. Hydraulics, Runs and Works Good. **\$17,500**



CATERPILLAR 980C. 3406, Powershift Transmission with 4 Speeds Forward and Reverse, 29.5-25 Tires, 5 Cubic Yard Bucket, Good Condition, Work Ready. **\$37,500**



DROTT 40 RUBBER TIRED EXCAVATOR. Three Buckets, One Grapple, **\$7,500.**



JOHN DEERE 450G LGP. 73hp E4045T John Deere Diesel, Powershift Transmission With 4 Speeds Forward and Reverse, Runs and Works 100%, Recent Undercarriage, 6-Way Blade with Pin-On Root Rake, Working Daily. **\$27,500**



1979 CATERPILLAR D3. 3204, Powershift Transmission, 60% Undercarriage, OROPS With Sweeps, Excellent Condition, Working Daily. **\$12,500**



GALION RT-150 ROUGH TERRAIN CRANE. 15 Ton Capacity, 453 Detroit Diesel Engine, 3 Stage Boom, Pin on Manlift Basket, Four Wheel Steer, Four Outriggers, Enclosed Cab. Runs Like New. Steering Cylinders Leak, and Need to be Repacked. **\$12,500**



1997 CHEVY C-8500 SINGLE AXLE DUMP TRUCK. 91,000 Original Miles, 3116 Caterpillar, 6 Speed Transmission, 2 Speed Rear End, Air Brakes, Near New Michelin Rubber, Front Plow, Wing, & Hiway E-2020 Stainless Steel Sander, Recent Chain, Serviced Regularly, Recent Brakes. Currently Working. **\$10,000**



1984 FORD L-9000 TANDEM AXLE DUMP TRUCK. 671, 8LL, 44,000lb Rears. 14' Dump Body, 11R22.5 Tires, Runs Excellent. **\$7,900**



1955 MACK B81 TANDEM AXLE DUMP TRUCK. 237 with Jake Brake, 20 Speed Quadbox Transmission, 58K Rears. Great Farm or Site Truck. **\$4,500**



1988 EAGER BEAVER 20 TON TAG-A-LONG TRAILER. Air Brakes, 96" Wide, 17' Deck, 5' Tail and Ramps, Near New 8.25 R 15 TR Tires. Good Condition, **\$3,900**



1998 FORD F-650 DUMP TRUCK. 5.9 Cummins, 5+2, Under CDL, 10' Fisher MM 2 Plow. Excellent Condition. **\$11,500**



1980 GENERAL 15 TON TAG-A-LONG TRAILER. Tri Axle, Beaver Tail, Good Condition. **\$2,500**



2012 KOMATSU SK-1026 SKID STEER. Bucket And Forks. **\$22,500**



1991 CATERPILLAR CB-434 VIBRATORY ROLLER. Runs Good. **\$8,500**



1989 VOLVO TRACTOR. 365 Cummins, 9 Speed, Wet Kit, Headache Rack, **\$14,500**



CATERPILLAR V80E 8,000LB FOLKLIFT. **\$8,500**



CATERPILLAR 980 WHEEL LOADER. 42H Series. Runs Good, **\$12,500**



GMC 7000 DUMP TRUCK. **\$3,500**



2008 FORD F-250. V10, 2WD. **\$2,800**



JOHN DEERE 401C. Diesel, Bucket, PTO, 3Pt Hitch. **\$5,900**



MITSUBISHI MOWER TRACTOR. 4WD, Diesel, Mower, 3pt Hitch. **\$5,900**



1989 FORD L-9000 TANK TRUCK. 7.8 Diesel, 6 Speed, 2,750 Gallon Tank. **\$6,500**

Visit Us jgremillardequipmentsales.com

WWW.TRUCKANDEQUIPMENTPOST.COM

R & E STEAM EQUIPMENT

- Steam Cleaning Equipment -

Used Hot Water Units Starting @ \$1095.

New Hot Water Units Starting @ 2295.

Rent For 12-24 Months Own It For \$1.00

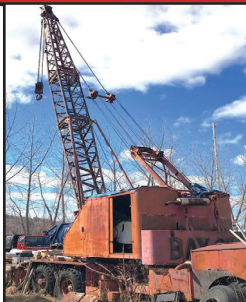
(617) 899-8775

Earl Warwick



2007 FREIGHTLINER TANDEM.
Reefer Unit Is In Exc. Cond., Low Hours,
26 Foot Body, Lift Gate, Tires 90%, Truck
Ready To Work, Needs Nothing,
\$22,500. 413-530-5369

**BAY CITY
CRANE.**
W/ Big Waukesha Gas
Engine ! **\$2,500**
401-258-7526



2000 VOLVO VNL.
Volvo Engine With
1,000,000 Miles, Good
Condition, Ready To Work,
Only **\$12,500 OBO.**
401-450-5611



ALL MAKES

EQUIPMENT & PARTS

CONTACT

ROLAND CARTER 603-340-6776 • ANDOVER NH 03216

**EQUIPMENT SALES
EQUIPMENT PARTS
EQUIPMENT
ATTACHMENTS
FINANCING AVAILABLE**



info@allmakesequipmentandparts.com • www.amepinc.com

MACK CL HOOD.

Like New W/ Clear Headlights,
\$800. New Floor Pan In Box,
\$250. Southbridge, MA
774-230-6724

BIG WHEEL**TRUCK SALES****HEAVY DUTY TOWING AND RECOVERY**

2005 HINO 14' FLAT BEDS:
AUTOMATICS. GREAT SHAPE.



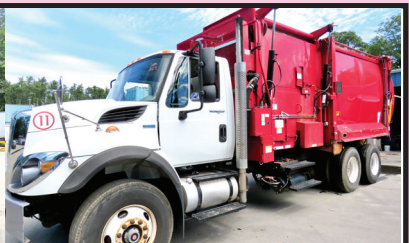
**2004 PETERBILT 330 26 x 102 MORGAN
REFER BOX:** CAT C-7, Automatic. Thermo-King Refer Unit. Call for info.



**2005 FREIGHTLINER 26' FURNITURE
MOVER:** C-7, Air Ride, Low Pro Automatic. Call for details.



2013 INTERNATIONAL KANN PACKER BODY: W/Double Trash Holder Lifts. MaxiForce IH Diesel w/only 10K Miles, Automatic, Only 63K miles on Truck. Very Clean and Runs Perfect. **ONLY \$35,000.**



**2015 FREIGHTLINER FL 70 24' x 102"
CARRIER REFER BOX TRUCK:** Cummins Power, Automatic, Air Brakes, Roll up Rear Door, Aluminum Ramp. Call for Pricing.



**2005 STERLING 24' FLATBED with
PRENTICE TELEDYNE Fork Lift:**
C-13 CAT, 8LL, 20F/46R. Truck and Lift in Very Good Condition



**2011 MITSUBISHI FE 145 Cab &
Chassis:** Will take 14' Body, 14,500 GVW, 150K miles. **\$9,500**



2001-2003 INTERNATIONAL 4900'S:
24' Aluminum Boxes w/4 Side Doors. 2 Live Tandems, 5 S/A with Lift Axles. Call.



**1988 FORD L8000 SINGLE AXLE W/
LIFT AXLE 13' DUMP.** Paver Special, 10 Speed Trans w/2 Speed Rear, 7.8 Ford Diesel, Runs Excellent, **\$12,500.**



2003 STERLING 26'x102" BOX TRUCK:
CAT C10, 10 Speed Road Ranger, 16F/40R, 24.5 Tires. Runs & Drives Like New. Please call for more information



**2004 KW T30 20' VAN BODY
w/ 6' SLEEPER:**
CAT 3126 300 HP, 9 Speed. Perfect for Long Distance Mover. Call.



42 Quanapaug Road, East Freetown, MA

508-763-5927 • FAX 508-763-2369

www.BIGWHEELTRUCKSALES.COM

WE SELL HEAVY DUTY SNOW PLOW EQUIPMENT • WE EXPORT WORLD WIDE • HEAVY DUTY TOWING SPECIALIST





CALL DOMENIC AT 339-933-9142 • domenic@buycolonialford.com



NATIONAL BREAST CANCER AWARENESS MONTH

| | | |
|---|---|--|
| <p style="background-color: yellow; text-align: center; font-weight: bold;">MEDIUM DUTIES IN STOCK</p>  <p>2021 F650 5-7 Yard S&H DUMP BODY: 330 H.P., Air Brakes, Auto Tarp. IN STOCK F650 & F750 Gas & Diesel. Call us.</p> |  <p>2019 F350 XL 4x4 9' READING ALUMINUM SERVICE BODY: 6.2L Gas, Power Group Rear Camera, Aluminum Wheels, Remote Start. Stk.# N7643</p> |  <p style="text-align: right; background-color: yellow; font-weight: bold;">DIESEL</p> <p>2019 F550 SUPER CAB XL 4x4 CHASSIS: Only 25K Miles, Blue Tooth, Power Group, Dual Tanks, Goose Neck Set up, stk.#R6733 \$54,985*</p> |
| <p style="background-color: yellow; text-align: center; font-weight: bold;">DIESEL</p>  <p>2019 F350 XL 9' Aluminum Landscaper: 4x4 Barn Doors, Side Door. Full Cab Shield. Power Group, Bluetooth. Stk.# N8693</p> | <p style="background-color: yellow; text-align: center; font-weight: bold;">DIESEL</p>  <p>2019 F350 XL 4x4 Super Cab 9' READING Dump Body: Power Group, Bluetooth, Rear Camera. Stk.# N8451</p> |  <p>2019 F350 4x2 Chassis 84" Cab to Axle: 6.2L Gas, Power Group, Bluetooth, stk.# N8142</p> |
| <p style="background-color: yellow; text-align: center; font-weight: bold;">GREEN</p>  <p>2019 F550 XL 4x4 9' 4-5 Yard READING Dump Body: 6.8L V8 Gas, Power Group, Rear Camera, Remote Start. Stk.# N8546</p> | <p style="background-color: yellow; text-align: center; font-weight: bold;">DIESEL</p>  <p style="text-align: right; background-color: yellow; font-weight: bold;">BLUE</p> <p>2019 F450XLT Super CAB 4x4 9' READING SERVICE BODY: Navigation, Aluminum Wheels, Power Seat, Power Scope Mirrors, Available in Black, Green, Blue, Red, White. Stk.#N8336</p> | <p style="background-color: yellow; text-align: center; font-weight: bold;">DIESEL</p>  <p>2019 F550 XLT 4x4 9' 4-5 Yard IROQUOIS Dump Body, Diamond Plate L-Pack Tool Box, NAV, Aluminum Wheels, Rear Camera. Stk.# N8638</p> |
|  <p>2019 TRANSIT 350 READING ALUMINUM SERVICE BODY: Remote Locks, Lighted Compartments, Trailer Hitch, Rear Camera, 9,500 GVW Stk.# N8731 LIST PRICE: \$57,939 SALE PRICE \$47,982*</p> | <p style="background-color: yellow; font-weight: bold;">2020 SUPER DUTIES IN STOCK</p>  <p style="font-weight: bold; text-align: center;">PLOW TRUCKS IN STOCK! RESERVE YOURS TODAY.</p> | |
|  <p>2020 F350 XLT Super Cab 4x4 8' READING Aluminum Service Body: 7.3 L Gas, 10 Speed Automatic, Power Group, Rear Camera, Heated Seats, Remote Start. Stk.# N9278. Also available in Black, White, Green & Blue.</p> | | |




11 PILGRIM ROAD
Plymouth, MA 02360
www.BuyColonialFord.com
America's Hometown Dealership
*all rebates to dealer. must finance with Ford Motor Credit.
 0% financing in lieu of all rebates* Discounts & Dealer Discounts.






BRAKE & CLUTCH INC.



**CONSOLIDATED TRUCK
& EQUIPMENT INC.**
WWW.CTEL.INFO



WE ARE NOW AN AUTHORIZED *FELLING TRAILERS* DEALER.



NEW Felling FT-16 IT-I Series
Construction Drop-Deck Trailers.
2K-17K Capacities.



NEW FELLING FT-60-4 LP Low-
Profile Deck-Over Construction
Trailers. 20K-60K Capacities.



NEW FELLING FT-50-3 TA Deck-
Over Construction Trailers. 20K-50K
Capacities.



NEW FELLING FT-30-2 T Deck-Over
Construction Trailers. 14K-50K
Capacities.



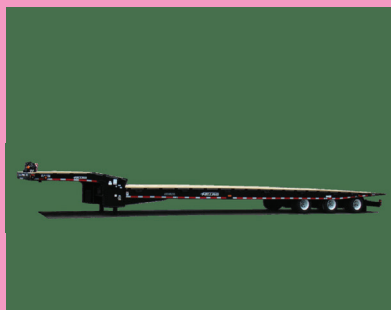
NEW FELLING FT-70-2 PL-HT
Commercial Hydraulic Tail Perimeter
Frame Semi Model Trailers. 35-50
Ton Capacities.



NEW FELLING FT-80-3 HX
Commercial HX High Flat Trailers.
35-50 Ton Capacities.



NEW FELLING XF-110-3 HDG
Commercial X-Force HDG Trailers.
35-60 Ton Capacities.



NEW FELLING FT-80-3 TSA Tilt Slide
Axle Commercial Trailers. 35-50 Ton
Capacities.



NEW FELLING FT-8 R Utility
Cable Reel Series Trailers. 2K-14K
Capacities.

**CALL US: AT 508-336-6215 • HOURS: 7:30 -5:30
32 INDUSTRIAL COURT. (RT 6) SEEKONK, MA**



**CONSOLIDATED TRUCK
& EQUIPMENT INC.**
WWW.CTEI.INFO

**YES WE
ARE OPEN**



**TRAILERS
FELLING TRAILERS**

**COME VISIT OUR NEW LOCATION. 32 INDUSTRIAL COURT, (RT.6)
SEEKONK, MASSACHUSETTS. ACROSS FROM SEEKONK SPEEDWAY.**

4 Available!



Brand New Challenger Body & Chassis,
26' Long, 54" & 60" Sides & Gate, Single
Point 60K suspension, Hardox Body, Hi-
Lift Gate, aluminum disc wheels, electric
load cover.

16 Ply Tires.

Please Call For Pricing



**HONEST BOB'S GOT TRAILER LOADS OF
TRAILERS!**

**MAC and EXTREME FLATBED TRAILERS
48' x 102" COME AND GET 'EM**



**2012 FELLING FT-40-2: 20 TON TILT TOP
TAG TRAILER: 30'X102' Wide floor, Air Tilt,
Tires @ 75%, Aluminum Rims. Very Good
Condition. \$18,500**



**2016 MAC 53' Aluminum Step Deck. Rear
Ramps, Tool Box & Winch. Trailer has every
option possible. It's only had 2 loads on it. So
yeah, it's like totally new. \$58,000**



IN STOCK

**MAC 28' ALUMINUM SMOOTH SIDE
TRAILERS. Air Ride Suspension. Please
call for pricing.**



**2002 EAGER BEAVER 35 TON 102 x 22'
Deck, Non Ground Baring. One Owner.
\$15,000**



**BRAND NEW EAGER BEAVER 20XPT
TRAILERS. 6' RAMPS. BEST PRICING
AROUND. Please give us a call.**

PARTS ROOM SPECIALS !

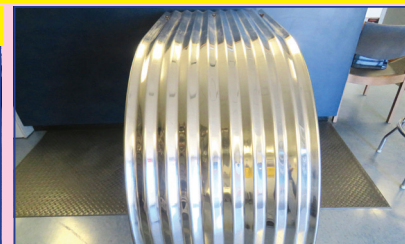


**REPLACEMENT HYVACYL HYDRAULIC
DUMP PISTON, call with your needs!**



ARE YOU READY?

**Steel & Stainless Steel Hiway Plows. 11x42 &
11x36. Other Sizes Available. Call NOW for
Best Pricing.**



**Lifetime 64" Corrugated Fenders,
\$210. each**

CALL US: AT 508-336-6215 • HOURS: 7:30 -5:30



**CONSOLIDATED TRUCK
& EQUIPMENT INC.**
WWW.CTEL.INFO



SELLING TRAILERS

**COME VISIT OUR NEW LOCATION. 32 INDUSTRIAL COURT, (RT.6)
SEEKONK, MASSACHUSETTS. ACROSS FROM SEEKONK SPEEDWAY.**



AUTHORIZED TRINITY BELT TRAILER DEALER.
Sizes up to 120 yards. Please Call for specs & pricing.



NEW MAC 53'
Front Axle Slide,
36" Deck Height.
Tool Bx, 10' Upper
Deck. (it's the trailer
on the bottom).
Call for Price.



2015 MAC
53' Step Deck:
10' Upper Deck,
Front Axle slide.
Very Good
Condition.
Call for price.



1999 TI-BROOK
24' x 54" ALUMINUM
DUMP TRAILER: Steel
Frame,
Slide-N-Go Manual Tarp,
Air Ride, 11x24.5 Tires
@ 75%, Brakes 50%,
Steel Floor, Steel Wheels,
\$19,500.



2006 EAST
48' x 102"
Aluminum Flat
Bed Trailer:
11x22.5 Tires. Very
Nice Condition.
\$16,500.



NEW MAC
48' Step Deck:
Front Axle Slide,
10' Upper Deck,
Tool Box.
Call for price.



2006 MANAC
48' x 102" Tri Axle:
Good Workin
Condition.
\$28,500



2003 BENSON 26' Rock Trailer: HiLift Gate,
Center Point Suspension. **\$18,500.**



2000 FREIGHTLINER FL112 17' TRI AXEL
DUMP: CAT C-12, 11x24.5 Tires. 3 Chueets &
Trailer Hitch. **\$35,500.**



1997 J & J 26' STEEL DUMP TRAILER: New Paint,
New Hard Ox Floor, New Piston, 50% Brakes, & 11x
24.5 Tires. Electric Tarp. Ready to work. **\$17,500.**

CALL US: AT 508-336-6215 • HOURS: 7:30 - 5:30



2007 INTERNATIONAL 7700. Ten Wheeler, CAT 430 HP, C-13-8LL Locks, 20F, 52K Lb. Rears, Hendrickson Spring, 106K Miles, New Tires & Alcoa Aluminum Wheels, Steel Dump, Pintle Plate Hitch With Air To Rear, Looks & Runs New, **\$78,900.** 978-423-6843



1999 MACK CH600.
427, 18 Spd., 14K Front, 46K Rear,
11R24.5's, Air Ride, AC, Aluminum
Rims, Recent Motor With Receipts.
Working Daily. Others Available,
\$19,500.
978-208-0205



2005 HITACHI 50U - 12,000lb, Mini Excavator, Brand New Tracks, Zero Tail Swing, 24" Bkt, Manual Coupler, Hyd Thumb, 3,286 Hrs, Ready to Work - **\$32,500**
CALL DAN AT 203-506-3860

1955-1/2 CHEVY PANEL. Runs Excellent, Completely Done Over To Stock, 235, 6 Cyl., 4 Sp.,
\$13,500.

Larry@Redbearfam.Com
For Info Sheets.



GET READY FOR SNOW! CAT 966C. SN:76J12621, 6 Cy, Diesel 3306, 4 Yd. Bucket B.O.C.E, Tires 23.5.25, **\$32,800 OBO.** Falmouth, MA 774-392-2406



1997 PETE 330.
2300 Gal. Vac, Used For Oil Tank
Removals, Road Ready, Newer
Engine, Good Overall Condition,
Asking **\$22,000.** Milford, CT
203-882-9391



2005 FORD F-550 XL SUPER DUTY, 6 Wheel Dump Truck, Automatic, Turbo Diesel, V-8, 50% Rubber, Tarp, 4X4, 163K Miles, 9' Fisher Plow, Very Good Condition, Ready To Work! **\$11,900**
Call Today! 781-417-3018

**2015 REITNOUER
FLATBED TRAILER.**

Winches, Straps,
Tool Box,
802-500-7099





**2004
INTERNATIONAL 7600.**
11' Wing Plow,
7 Yd. SS Sander,
Cummins Engine, **\$18,500.**
413-374-5331



**WINTER IS
COMING!**



AREA HYDRAULICS
810 Quaker Hwy. Uxbridge, MA
508-278-6670

We have Cutting Edges In Stock!
We have Buyers and Fisher Parts In Stock!
**Available During
Storms!**

WHELEN®

Buyers
PRODUCTS COMPANY



**2006 KENWORTH
T2000.** 500K Miles, CAT
Engine, 13 Speed, Ready To
Work, 2005 Fontaine Trailer,
Good Condition,
\$29,500 OBO, Will
Separate. 401-450-5611



2019 ROCKSTER RTT720 TROMMEL - Like New
with 50 Hours, CAT Diesel, Your Choice of 1/2" or
1" Screens - **\$210,000,** CALL DAN AT 203-506-3860

BEAM TRUCK & BODY INC.

RI Dealer #647

433 CUMBERLAND HILL ROAD, WOONSOCKET, RI 02895



401-767-2639



NEW - USED & RECONDITIONED DISPOSAL EQUIPMENT



2003 FREIGHTLINER ROLL-OFF,
66K GVW, MILEAGE UNKNOWN, FULLER
8LL, CUMMINS, CALL FOR MORE INFO !



2003 IH 4400 CREW-CAB HOOK-LIFT, 109K
MILES, DT466, ALLISON 3500 RDS, 40K GVW,
GAL BREATH 30K HOOK WITH 54/62 HOOK
-HEIGHT DOES 16' BOXES,
CALL FOR MORE INFO !



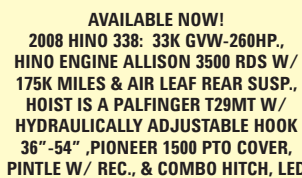
2007 ISUZU FVR: UNDER CDL, AIR-BRAKES, 111K
MILES, ALLISON AUTO, MOUNTING 2011 10YD NEW
WAY SIDE LOADER W/ TIPPER, CHASSIS BLASTED &
PAINTED, BODY PAINTED YOUR CHOICE OF COLORS.



**2010 MACK MR 20 & 46 ALLISON W/
NEW WAYNE 40 YD. FRONT LOADER,**
26,351 MILES. \$164,000 W/ FET



2012 PETERBILT 388 ROLL-OFF, 485 CUMMINS,
8 SPEED, 20 FRONT/ 52 REARS W/ LIFT AXLE,
COVER SYSTEM, CALL FOR DETAILS !



AVAILABLE NOW!
2008 HINO 338: 33K GVW-260HP,
HINO ENGINE ALLISON 3500 RDS W/
175K MILES & AIR LEAF REAR SUSP.,
HOIST IS A PALFINGER T29MT W/
HYDRAULICALLY ADJUSTABLE HOOK
36" - 54", PIONEER 1500 PTO COVER,
PINTLE W/ REC., & COMBO HITCH, LED
LIGHTS, 11R22.5 RUBBER ON STEEL
DISC WHEELS. HOIST IS RATED FOR
29,000# AND WILL HANDLE
12-16' BOXES. \$65,000



2006 FORD F-750, UNDER CDL, REAR
LOADER, 35K MILES, WAYNE 6 YARD
REL, CALL FOR MORE INFO !



2010 INTERNATIONAL 7400: 42,000
MILES W/ HEIL 22 YD. AUTOMATED
PACKER. \$60,000 WILL SPLIT.

WWW.BEAMTRUCK.NET

RENTAL FLEET CONSTRUCTION EQUIPMENT AUCTION



~ Synergy Rentals ~



*Very Late Model JLG, Genie, Skyjack Boom & Scissor Lifts,
Skytrak & Genie Telescopes, Hydraulic Excavators, Tractor Loader Backhoes,
Skid Steers, Welders, Utility Vehicles, Brooms, Support Equipment*

TUESDAY, NOVEMBER 17TH @ 9:30 AM • ORLANDO (Kissimmee), FLORIDA



ADDRESS: 12601 Avalon Road,
Winter Garden Florida 34787



NOTE: Synergy Rentals, one of the Premier Rental Companies in the Southeast is selling Rent Ready Aerials, Utility and Construction Equipment that will suit anybody.

HIGHLIGHTS INCLUDE: **48 TELESCOPIC FORKLIFTS:** 2015-20014 Cat TL1055C, 2015 Cat TL943C, 2015 Cat TL642C, 2013 Genie GTH-1056, 2013 Genie GTH-844, 2012 Genie GTH-5519, 2015 Genie GTH-636, 2012 JCB 512-56, Unused Skytrak 10054, (2)Unused & (6)Skytrak 8042, (29) Skytrak 6036, **19 BOOM LIFTS:** 2012 Genie Z-80-60, 2019 Genie Z-60/37J, (5)Genie S-60, 2006 Genie S-40, (2)Unused JLG 450AJ, (6)2018 JLG 450AJ, JLG 400S, (2)2016 JLG E300AJP, **153 SCISSOR LIFTS:** JLG 530LRT, (11)JLG 430LRT, (17)JLG 330LRT, (6)JLG 3246ES, (2)Unused JLG 300AJP, (10)JLG 2646ES, (6)JLG 20MVL, (6)JLG FT140, (3)Unused JLG 1932, (61)JLG 1930ES, (4)JLG 1230ES, (3)Genie GS-4069, (2)2012 Genie GS-3246, 2012 Genie GS-3232, 2013 Genie-2669, (4)2012 Genie GS-2646, 2012 Genie GS-2632, (4)2012 Genie GS-2032, (4)2012 Genie GS-1930, 2013 Genie AWP30, 2019 Genie SLC-24, JLG 2646ES, Skyjack SJ6826RT, Skyjack SJ3219, Skyjack SJ3215, **17 RUBBER TRACKED SKID STEERS:** (9)2019 Bobcat T870, 2015 Bobcat T750, 2015-2014 Takeuchi TL10, (3)2017-(2)2016 Takeuchi TL8, **MOTOR GRADER:** Cat 12M2, **19 HYDRAULIC EXCAVATORS:** 2015 Komatsu PC490LC-10, Komatsu PC300LC, 2013 JD 350G, (2)2013 Hitachi ZX290LC-5, 2014 Doosan DX225LC-3, 2006 Volvo EC210BLC, 2018 Case CX130D, 2016 Cat 304E2CR, 2012 Kubota KX91R, 2017-2015 Takeuchi TB260, (4)2018-2017-2016 Takeuchi TB240, 2018 Takeuchi TB230, **LONG REACH BOOM & STICK:** New 55ft. Long Stick & Bucket, **2 AGRICULTURAL TRACTORS:** (2)JD 9520(4x4), **4 RUBBER TIRED LOADERS:** 2014 JD 624K, (2)2015 JD 544K, 2007 Doosan Mega 250V, **2 TRACTOR LOADER BACKHOES:** 2014 JD 310K, 2013 JD 310SK, **2 VIBRATORY ROLLERS:** 2015-2014 Bomag BW211D50, **4 ASPHALT ROLLERS:** 2015 Cat CB64B, 2014 Cat CB64, 2015 Cat CB54B, Hypac 340C, **20 SWEEPERS:** (20)2016 Terramite Comand8, **11 WELDERS:** (11)2018 Miller CST-280, **7 CONCRETE EQUIPMENT:** (5)2014 Canycom SC-75, (2)2013 Toro MB1600, **BUCKET TRUCK:** 2010 Freightliner, **5 TRUCK TRACTORS:** 2017-2015-2013 Mack CXU613(t/a), 2012 IH 8600(t/a), 2012 IH Prostar(t/a), **FLATBED TRAILER:** 2018 Transcraft 53ft(t/a), **4 UTILITY VEHICLES:** (3)2017 Club Car 1700, 2017 Bobcat 3400XD, **4 NEW & USED TIRES:** (2)New (4)23.5x25, 24-Ply, New Unused (4)23.5x25, 24-Ply, New (4)20.5x25, 24-Ply, **2 PRESSURE WASHERS:** (2)New Easy Kleen Magnum Gold, **CONCRETE PULVERIZER:** New Bodine CP-200, **2 EXCAVATOR THUMBS:** (2)New Bodine TH-180, **ATTACHMENTS:** (1)Tractor, **5 SUPPORT EQUIPMENT:** 2010 Edco TS-8-75L Tile Stripper, 2018 Gen Equip GP8H 8in. Manhole Blower, 2017 Husqvarna X2000 10in. Saw, 2014 Miscellane 20in. Floor Buffer, Miscellane 20in. Floor Buffer.



For BID ONLINE
technical assistance call
Proxibid: (855) 636-6461
Nextlot: (919) 361-1111

SALE SITE PHONE: (407) 239-2700

FL LICENSE: AB-1091 • **FL AUCTIONEER:** AU-1548 Jack Lyon

ALEX LYON & SON

SALES MANAGERS & AUCTIONEERS, INC., BRIDGEPORT, NY 13030



Phone: (315) 633-2944 • **Fax:** (315) 633-5635

Go to **WWW.LYONAUCTION.COM** for a Complete List, Descriptions, and Pictures

VERY LARGE TIMED AUCTION

CONSTRUCTION & UTILITY EQUIPMENT & TRUCK AUCTION

Crawler Tractors, Rubber Tired Loaders, Hydraulic Excavators, Boom Lifts, Scissor Lifts, Forklifts, Skid Steers, Air Compressors, Light Plants, Generators, Very Large Quantity Support, Attachments, Tagalongs, Dump, Service, Bucket and Reefer Trucks, Pickups

Opens: SATURDAY, OCTOBER 31ST @ 8:00 AM

Closes: THURSDAY, NOVEMBER 5TH @ 12:00 Noon

SYRACUSE (Bridgeport), NEW YORK



**ADDRESS: 7697 NY-31,
Bridgeport, New York 13030**



HIGHLIGHTS INCLUDE: **4 AGRICULTURAL TRACTORS:** JD 7220(4x4), JD 4650(4x4), Case/IH 5140(4x4), NH 7840(4x4), **18 HYDRAULIC EXCAVATORS:** 2016 Cat 314EL, 2017 Cat 313F, 2008 Cat 305CCR, (3)Komatsu PC138US, JD 200DLC, 2014 JD 60G, 2012 JD 50D, (2)2018 JD 35G, (3)2018 JD 26G, 2013 Takeuchi TB285, 2012-2008 Kubota KX91-3, 2012 Kubota KX80, **INTEGRATED TOOL CARRIER:** Cat IT24F, **2 RUBBER TIRED LOADERS:** Unused Cat 908M, 2012 JD 624K, **2 CRAWLER TRACTORS:** 2015 Dressta TD8R(6-way blade), JD 450J, **3 TRACTOR LOADER BACKHOES:** JD 410J(4x4), JD 310SG(4x4), 2011 Takeuchi 310(4x4), **ASPHALT PAVER:** Barber Greene BG220, **VIBRATORY ROLLER:** Unused Bomag BW177-5, **2 ASPHALT ROLLERS:** Unused Hamm H111, 2014 Volvo DD110B, **6 RUBBER TRACKED SKID STEERS:** 2015 Cat 289D, Cat 289C, Cat 279D, 2017 Kubota SVL75, 2016 Bobcat T770, Takeuchi TL150, **2 SKID STEERS:** 2017 JD 332G, 2015 Bobcat S650, **7 TELESCOPIC FORKLIFTS:** (3)JLG G12-55, 2015 Cat TL943C, Gradall 534D-9, Skytrak 6036, 2012 Genie GTH-5519, **15 FORKLIFTS:** Cat GP20K, 2013 Hyster S030FT, Hyster S60FT, 2012 Hyster S050FT, 2016 Hyster, Hyster W025ZA, 2010 Hyster E050, Hyster H50F, Hyster H30, Yale GLC050, Yale NR040, Yale GLC030, 2014 Yale GLP030, (2)Toyota 8FGU30, **22 BOOM LIFTS:** Genie S-80X, 2013 Genie Z-45/25J, (2)2011 Genie Z-40/23N, 2014 Genie Z45/22, 2013-(3)2010 JLG 800AJ, 2011 JLG 600AJ, (3)JLG 600S, 2011 JLG M600JP, JLG 400S, 2012-(3)2009 JLG E400AJPN, (3)JLG E300AJ, **25 SCISSOR LIFTS:** 2013 Genie GS-3369R, Genie GS-3232, 2014 Genie GR-20, (3)Genie GS-1930, (3)2013 Mec 2659ERT, (2)2013 Mec 4069ERT, 2014 JLG 3248RS, 2014 JLG 20MVL, (2)Skyjack 8841, (3)Skyjack 7127, 2014 Skyjack SJ114632, 2015 Skyjack SJ3226, 2014 Skyjack SJ113219, (2)2012 Skyjack SJ3219, 2013 Skyjack SJ16, **4 PERSONNEL LIFTS:** Genie AWP40S, (2)Genie GR20, Genie SLC24, **2 AIR COMPRESSORS:** 2012 Atlas Copco XAS375, 2012 Atlas Copco XAS185, **11 LIGHT PLANTS:** (6)2017 Magnum MLT6SK, (5)2011 Allmand Nite Lite Pro, **TRENCHER:** 2017 Ditch Witch RT45, **2 CONCRETE EQUIPMENT:** 2017 Imer Wheelman-2 Mixer, 2017 Whiteman Trowel Machine, **6 COLD PLATE MILK TRUCKS:** (6)Kenworth T300, **REEFER TRUCK:** Kenworth T300, **ICE CREAM TRUCK:** Kenworth T300, **BUCKET TRUCK:** 2000 GMC 7H4, **3 VAN TRUCKS:** (3)Kenworth T300, **17 TRUCK TRACTORS:** 2012 IH 8600, 2012 IH 8000, (2)2001 Freightliner FDL(t/a), 2000 Volvo ACL(t/a), **10 DUMP TRUCKS:** 2013 Cat CT660, 2012 IH 8600, 2012 IH 8000, 2008 IH Prostar(t/a), (2)2001 Freightliner FDL(t/a), 2013 Volvo VNL64, 2000 Volvo ACL(t/a), 2006 Sterling L9000(t/a), 2011 Kenworth T660(t/a), 2012 Freightliner, Cascadia(t/a), (2)Volvo VNL42, 2004 Freightliner, **2 VANS:** 2007 Ford E350, 2010 Chevy C2500, **5 PICKUP TRUCKS:** Ford F350, (2)Ford F150, 2012 Chevy 2500 Silverado, 2009 Chevy 1500, **4 FUEL TRAILERS:** (4)Heil 11,000-12,55ga., t/a, **14 TAGALONG TRAILERS:** (13)New Delta 27TB(tilt, tri), 2015 Best TB6X12, **2 DETACHABLE GOOSENECK TRAILERS:** 2001 Trailking TK110HDG, Holden 35-ton, **DUMP TRAILER:** 2018 Felling FT-6DT, **WATER TRAILER:** Wylie 500gal., **TANKER TRAILER:** Walker Milk(t/a), **4 UTILITY VEHICLES:** (4)JD 825i, **4 PORTABLE BATHROOM STATIONS:** (2)New Bastone 110v Portable Toilets w/Shower, (2)New Bastone 110v Portable Toilet w/Double Stall, **13 STORAGE BUILDINGS:** (2)New Golden Mount 40ft.x80ft.x20ft., (3)New Golden Mount 40ft.x20ft., (2)New Golden Mount 30ft.x65ft.x15ft., (3)New Golden Mount 20ft.x30ft.x12ft., (3)New Golden Mount 20ft.x20ft., **MULTI-USE CONTAINER:** New 40ft. High Cube, **3 CONTAINERS:** New 9ft., New 8ft., New 7ft., **8 SCRAP RECYCLING EQUIPMENT:** New 2-cu. yd. Self Dumping Hopper, (2)New 1.75-cu. yd. Self Dumping Hopper, New 1.75-yd. HD Trash Hopper, (4)New Greatbear 1-yd Self Dumping Hopper, **10 SNOW EQUIPMENT:** (10)New 96in. Snow Pusher, **MOBILE HOUSE:** New Bastone 20ft., **GROUND HEATER:** 2014 Thor LD301, **11 HEATING EQUIPMENT:** Mid-State Master Heater, (2)2014 Allmand BR MH1000, 2013 Allmand BR MH1000, 2014 Frostfight IHS-700, (2)2013 Flagro FVO-1000TR, 2014 Flagro FVO-400, 2014 Mac 750F, 2015 Mac 800G, **2 AIR CONDITIONING UNITS:** (2)2016 Movincool Climatepro18, **7 PRESSURE WASHERS:** (4)New Easy Kleen, (2)New Greatbear 4000psi Hot Water, 2016 Alkota 3305X4, **30 PALLETS STONE, 5 EXCAVATOR BUCKETS, 41 ATTACHMENTS:** (41)Skid Steer, **113 NEW SUPPORT EQUIPMENT, 40 SUPPORT EQUIPMENT.**

SALE SITE PHONE: (315) 633-2944

ALEX LYON & SON

SALES MANAGERS & AUCTIONEERS, INC., BRIDGEPORT, NY 13030

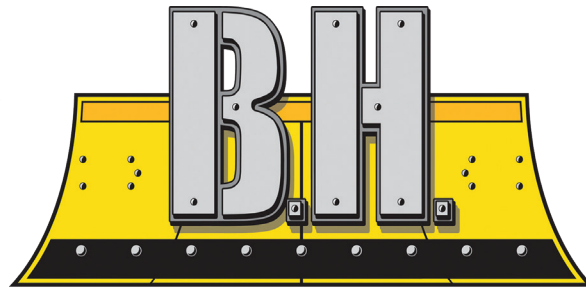
Phone: (315) 633-2944 • Fax: (315) 633-5635

Go to WWW.LYONAUCTION.COM for a Complete List, Descriptions, and Pictures

For BID ONLINE
technical assistance call
Proxibid: (855) 636-6461
Nextlot: (919) 361-1111

www.bhtrailersandplows.com

6 Center Parkway
Plainfield, CT
06374

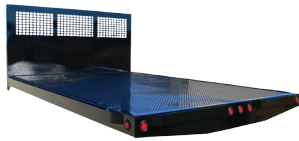


2207 Hartford Ave.
Johnston, RI
02919

TRAILERS AND PLOWS

860-949-7863

BOSS PRE-SEASON SNOW PLOW SALE!



CM PL Flat Bed 8-14 Ft. in
stock Rack Body Panels
available Starting at \$1,995



DURAMAG Flat Beds
with 10 inch apron,
Starting at \$2,325



DURAMAG Heavy Duty
Dump Body, 9 Foot,
Only \$4,995



DURAMAG Landscape Body,
Extruded Side with Side
Door, 11 Foot, \$10,795



BIG TEX TRAILERS BACK IN STOCK!
Loads Arriving Daily!



BOSS PLOWS
Straight, Half-Ton, and V-Plows
In Stock!



BOSS Skid Steer Pushers
Steel and Rubber Cutting
Edges Available



CM RD Beds
Over 100 Beds
IN STOCK!!

Cash and Carry!
Starting At
\$2,595



CM Service Bodies
All Sizes
IN STOCK!!

Cash and Carry!
Starting At
\$5,995





STAN TAGARELIS
Commercial/Fleet Sales
617-610-5540 (MOBILE)



LEE DAUM
Commercial/Fleet Sales
781-248-3428 (mobile)

625 PLEASANT STREET - WATERTOWN, MA 02472



2020 F-550 4X4 12' LANDSCAPE DUMP.
POWER PKG., STK#20291



2020 F-350 4X4 DUMP. GAS, 2/3 YARD
DURA-CLASS, STK#20344



2020 F-550 CHASSIS. 7.3 GAS, READY FOR
YOUR BODY, STK#20275



2020 F-250 SRW SUPER-CAB 4x4 XLT
DURA-MAG ALUMINUM UTILITY, STK#20421



IT'S COMING!!!
2020 F-250/350 PLOW TRUCKS
BOSS / FISHER PLOWS
IN STOCK READY TO GO
CALL FOR DETAILS



2020 F-350 4X4 DRW READING UTILITY.
GAS, PWR. PKG., STK#20331

REFRIGERATION



2020 TRANSIT CONNECT REFRIGERATION
VAN, STK#20005



2021 E-350 15' AEROCCELL BOX. POWER
PKG., STK#21008

REFRIGERATION



2020 TRANSIT REFRIGERATION VAN.
READY TO GO, STK#20184

WWW.WATERTOWNFORD.COM



**COMMERCIAL
VEHICLE CENTER**



EXIT 17 OFF THE
MASS PIKE
EXIT 26 OFF 128
ALL AVAILABLE REBATES TO DEALER



888-263-8050

Call Dan Rott



**GREAT SELECTION OF NEW & USED HEAVY EQUIPMENT & ATTACHMENTS
FINANCING AVAILABLE ON ALL UNITS UP TO 60 MONTHS. CALL FOR DETAILS.**



2012 TAKEUCHI
TB250. Coupler, Thumb,
Bucket, \$36,000.
#CE3539



2016 CAT 926M. 740
Hours, Very Clean,
\$119,000. #CE3497



2019 SDLG 938.
Coupler, Bucket Forks,
180 Hours, \$88,000.
#SD0013



2012 DOOSAN
DX235LCR. 3750
Hours, \$80,000.
#CE3636



2015 BOMAG BW190.
1445 Hours, Nice
Shape, \$68,000. #CE3687



2006 VOLVO EW180B.
2 Buckets, Runs Well,
\$59,500. #CE3683



36" JRB DIG BUCKET.
300 Size, \$1200.
#CENE748



30" S-2 VOLVO STYLE
BUCKET.
\$2400. #CENE471



24" S-2 VOLVO
Hook Up. \$2900.
#CENE481

WOBURN, MA - AVON, MA - JOHNSTON, RI www.WoodCoMachinery.com

TRUCKCOUNTRY.US

USED TRUCK PARTS



ONLINE 24-7



14' READING RACK BODY.
With Power Lift Gate, #205336,
\$4,500



USED TOMMY GATE LIFT GATE. Like New, Just Removed From Pick Up, #205403, \$1,000



2003-09 DODGE DUALY 8' PICK UP BED. Rock Solid, #205373, \$2,500



9' STAINLESS STEEL DUMP BODY. DRW, #205407, \$5,500



8' FIBERGLASS UTILITY BODY, #205395, \$1,500



REBUILT FORD SUPER DUTY SEATS. Gray Vinyl & Black Cloth, \$650 Each



2005-07 FORD SUPER DUTY REGULAR CAB & DOORS. No Rust, #205347, \$2,500



3rd GENERATION DODGE SHORT BED. Rock Solid, #205397, \$2,800



8' SRW KNAPHEIDE UTILITY BODY. Very Solid, #205372, \$2,500



1-860-423-6004

Mon-Fri 8-5
Sat 9-1

1535 WEST MAIN STREET, WILLIMANTIC, CT



JACK MADDEN FORD

888-817-7979

**ANNOUNCING!
MEDICAL
PROFESSIONALS
BONUS CASH***

BUILT TO LEND A HAND!

30 TRUCKS WITH PLOWS READY TO GO



NEW 2020 FORD F250 STX 4X4 PLOW TRUCK W/8' FISHER PLOW.

Stk.# 23321 \$41,999*



**NEW F350 XL 4X4 DRW 9' DUMP BODY:
STK#93157. \$56,114***



**NEW F350 SUPER DUTY F350 XL 4x4 Utility Body:
6.2L Gas, Power Group. Stk.#79367 \$45,605***



GO TO WWW.JACKMADDENFORD.COM

JACK MADDEN FORD

825 Providence Hwy Rt.1 Norwood, MA

888-817-7979



*All prices include incentives for qualified buyers. For trade assist, must have 2016 or new trade. All vehicles require dealer financing. Some prices include snowplow incentives. See dealer for complete details.



JACK MADDEN FORD

888-817-7979

**SPECIAL
WINTER
PRICING ON
PLOW TRUCKS.**

BUILT TO LEND A HAND!

30 TRUCKS WITH PLOWS READY TO GO



**New E350 CUTAWAY 158" WB
6.2L V8, Power Group. stk.# 34032 \$41,798.***



**NEW F350XL DRW 4x4 LANDSCAPE BODY:
6.7L DIESEL. Power Group.
Stk.#93162 \$59,072***



**NEW 2019 F350 XL 4X4 L PAC DUMP BODY: 6.2L V8,
POWER GROUP, A/C. stk.# 4282 \$71,053.***



**NEW F550 XL Reg. CAB DRW 4X4 DUMP: 6.8L Gas,
Power Group. Stk.#5990 \$54,132***



**NEW 2019 F550 4X4 CHASSIS'S Available.
CALL FOR INFORMATION**



**NEW F550 XL DRW 4x4 11' Dump Body:
stk#89754 \$53,264.***



GO TO WWW.JACKMADDENFORD.COM

JACK MADDEN FORD

825 Providence Hwy Rt.1 Norwood, MA

888-817-7979



*All prices include incentives for qualified buyers. For trade assist, must have 2016 or new trade. All vehicles require dealer financing. Some prices include snowplow incentives. See dealer for complete details.

One Month Only!



SALE ENDS 11/15/20



TurboTarp2™ expands from 60 to 104 inches to fit any body length and can be bolted or welded on. The perfect choice for landscapers and other light-duty bodies, this system comes pre-assembled and installs quickly and easily. It features an extremely durable extruded aluminum tarp roller bar and a splined tarp groove in the roller tube for faster change-outs. A foldaway handle with ratchet device locks the system – no strap required.



FITS BOXES & TRAILERS UP TO 23'

Box Width: 60" to 104"

w/Sprocket

1809015

\$199



The Bullet™ is designed to cover dump bodies up to 23 feet long. Available with either straight or 30° angled arms of anodized aluminum that will never rust! The tarp moves smoothly on an extruded aluminum roller bar, powered by the Durabuilt™ 12V direct-drive electric motor with rotary switch. (The motor is backed by a three-year full replacement warranty.)



FITS BOXES & TRAILERS UP TO 23'

Straight Arms, 4 Flat Coil Springs, Rotary Switch
1800987

\$1169

Arms: 30° Bend, 4 Flat Coil Springs, Rotary Switch
1801974

\$1169

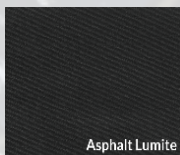
FITS BOXES & TRAILERS UP TO 38'

Trailer Bullet, Straight Arms, 22-Copil UB Torsion Springs, Rotary Switch
1801010

\$2149

Asphalt Lumite Tarps

WATER-RESISTANT ASPHALT LUMITE
Lighter than vinyl materials.



| | | | |
|-----------------|-----------------|------------------|------------------|
| 7'x12' \$92.73 | 7'x20' \$136.36 | 7'6"x10 \$92.73 | 7'6"x18 \$121.82 |
| 7'x14' \$92.73 | 7'x22' \$150.91 | 7'6"x12 \$92.73 | 7'6"x20 \$136.36 |
| 7'x16' \$107.27 | | 7'6"x14 \$92.73 | 7'6"x22 \$150.91 |
| 7'x18' \$121.82 | | 7'6"x16 \$107.27 | |

920 W. CHESTNUT STREET
BROCKTON: 508-586-1666



42 WINTER STREET
PEMBROKE: 781-826-1666



2006 BOBCAT A300 SKID STEER LOADER. AWS, 2735 Hrs, 4 Cyl. Diesel, Enclosed Cab W/Heat-A/C, 81HP Pre-Emission Turbo Engine W/ 2-Speed Travel, Selectable Joystick Pilot & 7-Pin Auxiliary Controls, 3000 Lb. Lift Capacity, Well Maintained! **\$34,000.** Johnston RI 401-640-0389



Custom Gates Hydraulic Hose Assemblies & Fittings

Full Truck Service, Maintenance & Repair

All Makes & Models

Over 20 Years Experience Specializing In Mack's

Marshall Cefole - **978-467-7993**

Randy Rameau - **978-423-2889**

10 Gardner Road, Winchendon MA 01475



2008 JOHN DEERE 848H.

10,900 Hrs., Grapple Extensions, Built-Up Blade, New 35.5-32 Tires On Rear, 40% Tires And Chains On Front, Excellent Condition Inside And Out, Sell For **\$68,000.** Call 603-456-6029



1989 CATERPILLAR 235B. Long Stick, 42 Inch Bucket, Runs And Operates Perfectly, New Bottom, Two Extra Buckets, Auxiliary Plumbing, **\$18,000.** 203-666-1411



2020 RHODES. 26' Aluminum Double Walled Smooth Side Dump Trailer, Steel Frame, 70,000# Single Point. Call 401-434-5900



2012 F750 GODWIN NEW ENGLANDER:

6.7 Cummins, Automatic, Hitch Plate, Air to Rear Ready in 2 Weeks. Call Dave 508-726-0077. East Freetown, MA

CT • RI • MA • NY



100 YARD
STEEL DUMP TRAILERS

CALL IAN OR LENNY
800-229-9421

WE WILL SAVE YOU MONEY
AND PUT A SMILE ON YOUR FACE!

STUMP & BRUSH TRANSPORTATION & DISPOSAL

\$950/LOAD

DEMOLITION DEBRIS TRANSPORTATION & DISPOSAL

\$2150/LOAD

**SAME DAY DISPATCH
TOP \$\$ PAID FOR YOUR
SCRAP STEEL, COPPER, & ALUMINUM!!!**



2005 CAT D3G XL - 3300 hours, new undercarriage, Runs Well! \$34,000

• WE RENT • • WE RENT • • WE RENT • • WE RENT • • WE RENT • • WE RENT • • WE RENT •

GLOBAL Truck Traders, Inc.

603-239-7008



524 KEENE RD. (RT.10) WINCHESTER, NH 03470 • WWW.GLOBALTRUCKTRADERS.COM



**WE BUY MACKS & ALL OTHER TRUCKS!
IMMEDIATE PAYMENT – CALL TODAY!
Do you have a Mack or other used truck for
sale?**

**Running trucks, parts trucks, damaged
trucks of all makes & models wanted.
Call Bruce or DONNY 603-239-7008**

**485HP HEAVY SPECS**

2007 FREIGHTLINER COLUMBIA 120 C&C. Mercedes
485HP, Allison Auto, Engine Brake, 212" WB, Heavy Specs, 64K
GVW, 411K Miles, stk#49114, **\$29,900.**

**44K REARS ON AIR**

1996 MACK CH613. E-7 427 HP, 8LL, Engine Brake, 56K GVW, 192" WB,
Double Frame, 654K Miles, stk#59920, **\$19,900.**

**AUTOMATIC**

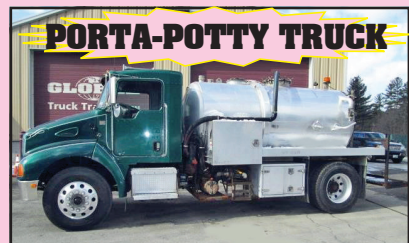
2013 MACK CXU612. Only 405K Miles, Mack 345 HP with Mdrive Automatic
Transmission. Excellent Running And Ready to Haul Your Loads, stk#4904, **\$19,900.**



1979 MACK R685ST. 300 HP E6 2V,
Engine Brake, 5 Spd, Fully Restored
w/ New Frame & Tires, 50K GVW, 8K
Miles, stk#5630, **\$17,500.**

**35K GVW**

2012 MACK VISION CXN612. MP7 345
HP, Fuller 10 Speed,
35K GVW, 156" WB, 479K Miles, Runs
Great, stk#4761, **\$18,900.**

**PORTA-POTTY TRUCK**

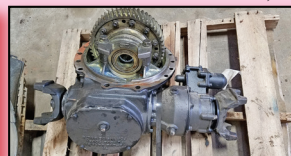
**2007 KENWORTH T300 Porta Potty
Truck.** CAT C7, Fuller 8LL, 190" WB,
Progress Aluminum 3-Compartment
Tank, 295K Miles, stk#208829, **\$24,900.**



**SPOKE, HUB & BUDD
WHEELS, BEARINGS,
SEALS, CONVERSIONS!**



**INSPECTED & REBUILT
ENGINES**



**DIFFERENTIALS,
PUMPKINS, CHUCKS...
INSPECTED GEAR SETS
AND ALL THE PARTS TO
REBUILD YOUR OWN!**



**REAR AXLE HOUSINGS.
CAST, STEEL, AIR RIDE
AND CAMELBACK.**

YOUR NUMBER ONE CHOICE FOR MACK PARTS, CALL DONNY at 603-239-7008

524 KEENE RD. (RT.10) WINCHESTER, NH 03470 WWW.GLOBALTRUCKTRADERS.COM

PORT DELIVERY AVAILABLE • FINANCING AVAILABLE



1997 INTERNATIONAL SANDER.

Closed Loop System, Ready For State Plowing W/Wing On Right Side, **\$5800.** Call Jim, 413-530-5369

Powerglide Air Test Kit
Complete Powerglide Pro Tree Transbrake \$279.95
TH400 Deep Cast Aluminum Pan
TH400 Billet Direct Drum Spring Retainer & Aluminum Modulator/Solenoid Hold Down
Powerglide Overhaul Kit
Powerglide Deep Oil Pan
Powerglide Reverse Spring Retainer Tool
Powerglide Bushing Driver Set
Do-it-yourself Powerglide Pro Tree Transbrake Kit \$164.95
1.80 Long Powerglide Gear Set
Powerglide Vent Tanks
Powerglide Handbook written by Carl H. Munroe \$21.95

TSR RACING PRODUCTS
1-800-394-5889
179 Belvedere Road
Gilsum, NH 03448
WWW.TSR-RACING.COM



14 FT TENCO SANDER DUMP BODY.

In Good Condition,
\$6500.
413-374-5331



RD OLSON 5x12 TRACK SCREENER - 1400Hrs,
Open Throat Feeder, Self Cleaning Ball Deck, CAT Dsl -
CALL DAN AT 203-506-3860 FOR PRICING

CUSTOM-DESIGNED RADIANT KITS

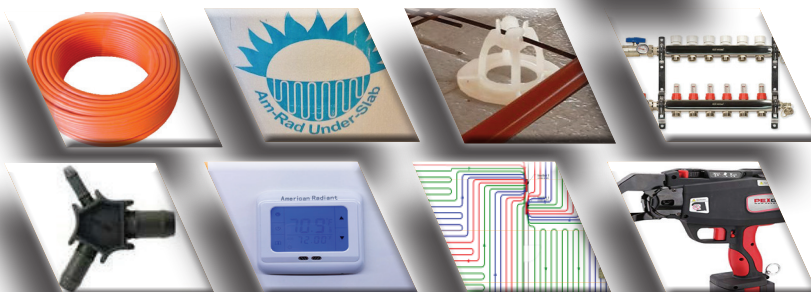
Simple. Efficient. Affordable.

- Radiant Heating
- Radiant Cooling
- Heated Driveways

AMERICAN RADIANT

Technologies & Supplies LLC.

Toll Free: 833-758-2888



2010 PRENTICE SKIDDER,
Four Way Grapple
W/ Winch, Ready
To Work!
\$22,000
Call Today!
781-417-3018



2017 5TH WHEEL SETUP.

Brand New Condition, Air Operated,
Came Off Peterbilt But I Believe Can Go
On Any Truck. **\$700,** 978-375-1127,
Ask For Brian



NUTMEG INTERNATIONAL TRUCKS

**ISUZU
TRUCK**
Franklin CT
Hartford CT
North Haven CT
W. Springfield MA
Torrington CT

50+ QUALITY NEW TO PRE OWNED TRUCKS IN STOCK
**120 DAY WARRANTY
AVAILABLE USED TRUCKS**
Call Mike McDonald 860-308-6599
Check Out Our Entire Inventory At www.nutmegtrucks.com
All Of Our Retail Trucks Pass A Thorough Inspection & DOT. Ready To Work For You Now!
**HABLA
ESPAÑOL**

WORK TRUCK CENTRAL


16' DUMP W/TALL SIDES

2015 PETERBILT DUMP, PK7 250HP, ALLISON 2500RDS, 167K MILES, UNDER CDL, 25999GVW, BRAND NEW 16' W/ 48" SIDES & BARN DOORS, TOW PLATE, LOAD COVER, GREAT TRUCK, #M274560, \$68,800.


TOWN DUMPS READY TO ROLL

SEVERAL TOWN PLOW DUMP TRUCKS AVAILABLE AND COMING IN. CALL MIKE FOR DETAILS AND PRICING


HOOKLIFT ONLY 19K MILES

2016 IH 4300 HOOKLIFT, CUMMINS 240HP, ALLISON 2500RDS, ONLY 19K MILES, STELLAR HOOK LIFT, LOOKS AND DRIVES LIKE NEW, #GH742678U, \$77,800


CLEAN TANDEM C&C

2013 IH 4400 6X4 CAB & CHASSIS, MAXDT 466 270HP, ALLISON 3000, 14K & 40K AXLES, 54K GVW. ONLY 167K MILES, 254" WB, SUPER CLEAN, #DH406364U, \$24,800


TRUCK OF THE MONTH

2012 IH 4300. UNDER CDL, MAXDT 230HP, ALLISON AUTO, 192K MILES, AIR BRAKES, 24" WITH PEAK, JTS 698, \$23,900


TANDEM W/ 35K-48K MILES

(3) 2019 IH 4400 TANDEM CAB & CHASSIS, CUMMINS L9 300HP, ALLISON 3000, AIR RIDE, 242" WB, MILES 35K TO 48K, LIKE NEW TRUCKS WITH WARRANTIES, 5 AVAILABLE # KH049347U, \$68,800


26' TANDEM

2016 IH 4400 TANDEM N9SCR 315HP, 3000RDS AUTO, 54K GVW 26' VAN, 205K MILES, JTS791, \$51,800


LIKE NEW W/ WARRANTY

(2) 2019 IH MV'S, CUMMINS 260 HP, ALLISON 2500RDS, MILES 79K & 81K, 26X102X103 VANS WITH ALUM GATES, LOOK LIKE NEW TRUCKS W/ WARRANTY OUT TIL 1-23 & 1-24. # KH352032U, \$69,800


26' FLATBED MOFFETT CRADLE

2006 IH 7400 FLATBED, DT570 310HP, ALLISON 3000 AUTO, 250K, ENGINE REBUILT YEARS AGO, NEW INJECTORS 2 YEARS AGO, 26' FLATBED W/ MOFFETT CRADLE. LOTS OF NEW PARTS, LOOKS AND RUNS GREAT! # 6J347896, \$39,800


TANDEM RACK W/ GATE

2013 IH 4400 6X4, MAXDT 270 HP, ALLISON AUTO, AIR RIDE, 14/52 AXLES, 24' RACK BODY WITH RAIL GATE, #DH406365U, \$33,800


EXT CAB

2014 IH 4300 EXTENDED CAB, MAXDT 230HP, 127K MILES, AUTO 18' VAN W/ GATE, U# JTS762 PRICE \$24,800


LEASE MAINTAINED

2015 IH 4300, MAXDT 230HP, 251K MILES, AUTO, 33K GVW CDL TRUCK, 26' VAN W/ LIFT GATE, # JTS764, \$19,800


28' VAN

2016 IH 4300 CUMMINS 245HP, 2500RDS AUTO, 145K MILES, 33K GVW, 28' VAN, JTS790, \$46,800


24' W/ STEP SIDE DOOR

(2) 2013 IH 4300, MAXDT 230 HP, AUTO TRANS, AIR BRAKES, UNDER CDL, 25999 GVW, 211K MILES, 24' VAN W/ STEP SIDE DOOR, LIFT GATE. # JTS728 & JTS729 \$19,800


ONLY 85K MILES

2012-13 ISUZU NPR HD. DIESEL, AUTO, 14' HACKNEY UTILITY BODIES, 85K & 121K MILES, \$23,800 & \$20,800


S/A TRACTOR ISX

(3)-2016 IH PROSTAR SINGLE AXLE TRACTORS, CUMMINS ISX 410HP, 10SPD, 160" WB, 2-100GLN TANKS, A/C & POWER, AIR RIDE, MILES 449K, 455K, 495K, NUTMEG MAINTAINED, UNIT# JTS784, 796, 797. CALL FOR PRICE


MANY TO CHOOSE

SLEEPERS & DAY CABS IN STOCK, CALL MIKE TODAY!


1,580 MILES

2020 ISUZU NQR. 17,950 GVW, 20' VAN, ALUMINUM LIFT GATE, ONLY 1,580 MILES, THIS TRUCK IS LIKE NEW, 5 YEAR EXTENDED WARRANTY, SAVE THOUSANDS, \$59,900


TRI AXLE

1999 FONTAINE 24' LOW BOY 3 AXLE TRAILER, EXTRA TIRES & WHEELS, NEW LIFT CYLINDERS, CALL MIKE FOR PRICING


NEW NEVER USED

NEW SENNEBOGEN 718E WITH 27 IDLE HOURS, LOADED W/ EVERY OPTION, EXTRA SET OF TIRES & RIMS, NEVER CUT A TREE! EXTENDED WARRANTY TOO! CALL MIKE FOR PRICING

LET'S KEEP AMERICA ROLLING

ANDERSON MOTORS INC.


GMC

MICRO BIRD
by GERRARDIN

BLUE BIRD BUS SALES OF NEW ENGLAND
*** YOUR EXCLUSIVE VOLVO TRUCK DEALER ***


2021 VOLVO VHD84F300-D13, 435HP, 8LL TRANS., 17'6" HEAVY DUTY STEEL DUMP BODY. #200020



(3) 2018 VOLVO VNM64T200-D13, 455HP, 12SPD. I-SHIFT, 14,600 FRONT/ 46,000# REAR, AIR-RIDE. MILEAGE RANGE 237K -258K.



2020 AUTO-CAR ACTT42, SINGLE AXLE HYDRAULIC SPOTTER, CUMMINS B6.7L ENGINE, ALLISON 3000 SERIES TRANS. #190264



2020 RHODES 26' ALUMINUM DOUBLE WALLED SMOOTH SIDE DUMP TRAILER, ALUM. FRAME, AIR-RIDE.



2020 FORD TRANSIT 14 PASSENGER COMMERCIAL SHUTTLE BUSES, GAS, INDIVIDUAL SEATING.



2020 RHODES 26' ALUMINUM DOUBLE WALLED SMOOTH SIDE DUMP TRAILER, STEEL FRAME, SINGLE POINT SUSPENSION.



2018 VOLVO VNM64T200-D13, 455HP, 12SPD. I-SHIFT, 14,600 FRONT/ 46,000# REAR, AIR-RIDE, EXTENDED WARRANTY.



1998 FREIGHTLINER FL70, 33,000 GVW, DIESEL, 6SPD. TRANS., 12' DUMP W/ PLOW, 190K MILES, 12,000# FRONT / 23,000# REARS.



2018 VOLVO VNM64T200-D13, 455HP, 12SPD. I-SHIFT, 14,600 FRONT/ 46,000# REAR, AIR-RIDE, EXTENDED WARRANTY.



2019 FORD E-450, 14 PASSENGER COMMERCIAL SHUTTLE BUS, GAS, AUTOMATIC, NON CDL REQUIRED. #190017



2019 FORD E-450 24 PASSENGER COMMERCIAL SHUTTLE BUS, GAS, AUTOMATIC, A CDL LICENSE IS REQUIRED. #190016



2019 FORD TRANSIT LA WEST, EXECUTIVE SHUTTLE, 14 PASSENGER. #190319

401-434-5900

WWW.ANDERSONMOTORS.COM

EMAIL • SALES@ANDERSONMOTORS.COM

170 AMARAL STREET • EAST PROVIDENCE, RI 02915

HABLAMOS ESPAÑOL



METROPOLITAN TRUCK CENTER INC.

1074 Turnpike St. Stoughton, MA 02072

www.metropolitantruck.com

866-514-1214



PUT YOUR 1/2 TON TO WORK & MAKE SOME MONEY!!



**THE
WESTERN HTS IS
A FULL SIZE,
FULL-FEATURED
SNOW PLOW
DESIGNED
FOR TODAY'S
LIGHTER 1/2 TON
4WD TRUCKS!**

ONE-PIECE POLY HOPPER



**AVAILABLE IN THREE SIZES.
1.5, 1.8 AND 2.5 CUBIC YARDS,
STAINLESS STEEL BOTTOM SILL.
MAKES CORROSION
A THING OF THE PAST**



**OUR WINTER SALE AND INSTALLATION SPECIAL
IS GOING ON NOW PLEASE CALL US FOR YOUR APPOINTMENT**





PLACE MOTOR Inc.

The "Right Place" Since 1923

COMMERCIAL TRUCKS

Call Phil Crowley "The Truck Guy"
866-449-7482 ext. 213

19 Thompson Rd.
Rte. 193 Webster, Ma.

WE HAVE WHAT YOU NEED



NEW 2020 FORD TRANSIT
CONNECT VANS.
8 TO CHOOSE FROM !
CALL FOR SPECIAL PRICING !



NEW 2020 FORD TRANSIT VAN,
LOW-ROOF & MEDIUM ROOF
IN STOCK !



2019 CHASSIS AVAILABLE
CALL FOR OUR SPECIAL PRICING !
1- F450 4X4 DIESEL 60 CA
1- F-550 4X4 DIESEL 84 CA



NEW 2020 FORD F-350 4X4 DUMP
6.2L V8 ENGINE, POWER WINDOWS,
POWER LOCKS, AND MORE !



NEW 2020 FORD F-550 4X4 DUMP,
STEEL & STAINLESS BODIES
AVAILABLE, GAS & DIESEL !



NEW 2020 FORD F-350 4X4
CAB & CHASSIS, GAS ENGINE,
POWER WINDOWS / LOCKS
AND SO MUCH MORE !
WHITE*BLUE*GREY AVAILABLE



NEW 2021 FORD E-350 12' AEROCELL
BODY, POWER WINDOWS, POWER
LOCKS, AND MUCH MUCH MORE !



NEW 2020 FORD F-350 SUPER-CAB 4X4
CAB & CHASSIS, GAS ENGINE, POWER
WINDOWS/LOCKS AND SO MUCH MORE !



NEW 2020 FORD F-550 CREW-CAB
4X4, DIESEL, 84 CA.

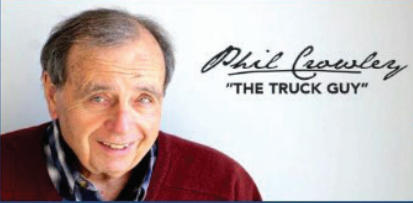
WWW.PLACEMOTOR.COM



DEJANA
Truck and Utility Equipment



**COMMERCIAL
VEHICLE CENTER**

PLACE MOTOR Inc.*The "RIGHT PLACE" Since 1923***COMMERCIAL TRUCKS**

PHIL CROWLEY
866-449-7482 EXT. 213



19 Thompson Rd.
Rte. 193
Webster, MA.



**2018 FORD TRANSIT
WAGON**
**15 PASSENGER,
MEDIUM ROOF,
RUNNING BOARDS,
15,000 MILES AND
SO MUCH MORE !**
\$29,000

MORE OF WHAT YOU NEED

**NEW 2020 FORD F-250 SUPER-CAB 4X4,
STX PACKAGE, 6.2L,
POWER WINDOWS/LOCKS
AND MORE !**
ALSO AVAILABLE IN WHITE



**2015 FORD F-350 CREW-CAB LARIAT 4X4,
6.2L V8, POWER MOON-ROOF, ULTIMATE
PACKAGE AND SO MUCH MORE !**



*** 2007 THROUGH CURRENT ***
8' BED TAKE-OFFS, \$600.00 A PIECE.
14 AVAILABLE !
CALL FOR MORE DETAILS.

• www.placemotor.com • www.placemotor.com • www.placemotor.com • www.placemotor.com •



**2013 FORD F-350 CATERING TRUCK, ONE
OWNER.**
CALL FOR MORE DETAILS !



**NEW 2020 FORD F-150 CREW-CAB 4X4,
PLATINUM, MOON ROOF, DIESEL ENGINE
AND MUCH MORE !**



**NEW 2020 FORD RANGER CREW-CAB
LARIAT AND XLT'S AVAILABLE !**



**MASSACHUSETTS OLDEST FORD
DEALER SINCE 1923**





Lorusso Heavy Equipment, LLC
 160 Elm St Walpole, MA 02801
 Tel. 508-660-7600



MECALAC TA3SH Site Dumper.
 Sale Or Rent,
 Call For Pricing.



AJCE Hammers
 Multiple Sizes Available and
 In Stock Call for Pricing



2015 Hyundai HL757TM-9A
 Wheel Loader. 3,000 Hours.
\$82,750.00



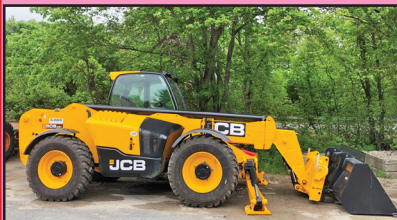
2016 HYUNDAI HL980. 1350
 Hours. **\$230,000.00**



2018 Hyundai HX130LCRD Excavator.
 Coupler, 30" bucket and thumb
 included. 202 hours. **\$133,000.00**



2014 Hyundai HL757-9A
 Wheel Loader. 1213 hours.
\$92,000.00



JCB 509-455 Telehandler. Forks,
 Loader Bucket. Mint Condition!
 165 Hours. **\$135,000.00**

SPECIAL
Mecalac
FINANCE RATES
AVAILABLE

Call for more information



2015 HYUNDAI
RI60LC-9A
 Excavator.
 4380
 Hours,
\$70,000.00



2000 John Deere 200LC
 Excavator. 8250 hours.
\$45,000.00



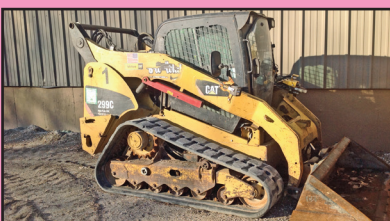
2014 TAKEUCHI TL8 Skid
 Steer. 1379 Hours.
 Call For Pricing.



2016 MECALAC 8MCR w/
 Active Lock Coupler. 1356
 Hours, **\$70,000.00**



1996 CAT 426B Loader/
 Backhoe. **\$18,000.00**



2008 CAT 299C Skid Steer.
 7500 Hours, **\$22,000.00**



2016 TAKEUCHI TW65 Wheel
 Loader. Skid Adapter, Forks,
 916 Hours, Call For Pricing.

engcon



www.lhequip.com • Call Us for All of Your Rental Needs • www.fb.com/LHELLC





JOSEPH
EQUIPMENT COMPANY



300 GAY ST • MANCHESTER, NH 03103

SATURDAYS
WE ARE OPEN ALL DAY
PHONE: 603-641-8608
FAX: 603-666-3716

293 NORTH - EXIT 2 -
LEFT ONTO BROWN AVE -
RIGHT ONTO WINSTON ST.-
LEFT ONTO GAY ST.
300 GAY STREET
ON THE RIGHT



IN STOCK -
CUSTOM COLORS

2021 KRUZ TRAILER

26' STEEL \$54,500

INCLUDES FET & FREIGHT (FOB NH)



HEAVY DUTY 26' STEEL DUMP TRAILER
1/4" HARDOX 450 WEAR RESISTANT
FLOOR, SIDE, NOSE, & GATE
70,000 LB SINGLE POINT SUSPENSION
30,000 LB AXLE WITH HUB PILOTED WHEELS
50,000 LB 2 SPEED MARK V LANDING GEAR
12 PANEL HIGH LIFT HDTAILGATE
LED LIGHTS
55" SIDES

16 PLY 11 X 24.5 TIRES
POLISHED ALUM WHEELS
ANGLE IRON TOP RAIL
CUSTOM TOW HOOKS
FULL POLISHED ALUM FENDERS
CUSTOM PAINT AVAILABLE
ALL SIZE TRAILERS AND SUSPENSION
OPTIONS AVAILABLE
ALUMINUM TRAILERS ALSO AVAILABLE
HEAVY DUTY ASPHALT SPILL APRON

www.josephequipment.com

Trades Welcome • Financing Available

THIS AD IS COPYRIGHTED & OWNED BY TRUCK AND EQUIPMENT POST

RAVENS**ROGERS****Kruz**

JOSEPH

EQUIPMENT COMPANY


FONTAINE
SATURDAYS • WE ARE OPEN ALL DAY**PHONE: 603-641-8608****FAX: 603-666-3716**

293 NORTH - EXIT 2 -
LEFT ONTO BROWN AVE -
RIGHT ONTO WINSTON ST. - LEFT ONTO GAY ST.
300 GAY STREET ON THE RIGHT



1989 TRAIL KING 65 TON BEAM TRAILER. 24' Beam, 3 Axles, Spring Ride, Non Ground Bearing, 8' 6" Wide, Long Gooseneck, 12 X 24 Radial Tires. Recently Sandblasted And Painted, Newer Brakes, Seals, Hubcaps, Decals And Flaps, Ex-NYC Trailer, Excellent Condition. **Call For More Information.**



2000 FONTAINE TA35, 35 Ton, 2 Axle, Non Ground Bearing, Air Ride, 24' Deck, 20" Deck Height, 102" Wide, Original Paint, 255 Lo Pro Rubber, Hub Piloted Wheels, Front Fenders, Many New Parts, Excellent Condition, Call For More Information.



2019 FONTAINE MAGNITUDE 55H DSR, 26' Deck, 14.5" Loaded Deck Height, Air Ride, Tri Axle, Lift On 3rd, With Flip 4th, Strobe Lights, LEDS, Alum Wheels, 275/70R X 22.5, Boom Trough. One Owner, Excellent Condition. Call For More Information.



2000 ROGERS 50 TON Quad Axle Lowboy. Air Ride, Hyd Detachable Neck, Air Lift On 4th Axle, 255 Tires. **Call For More Information.**



2000 ASPEN 50 TON, 4 Axle, 26' Dsr, 14" Deck Height, Lo Pros, Hub Piloted, Non Ground Bearing, 2 Lift Axles, Power Pack. Call For More Information.



2002 WABASH 48 X 102 FLAT BED, Air Ride, Slider, Hub Piloted Wheels, Alum Headboard, Southern Trailer, (6) Available To Choose From. **Call For More Information.**



1990 TRAIL KING EXTENDABLE, Air Ride, Mechanical Detachable, 2 Axle With Pin On Third, Detach Both Ends, Very Good Condition. **Call For More Information.**



2007 50' SKYJACK, MODEL SJ9250, 4 X 4 Rough Terrain Scissor Lift, Diesel, Hydraulic Sliding Platform, 2,700 Hours. **Call For More Information.**



GOODYEAR OMNITRAC MSS II 1200/24 Tube Type Radial Tires - All New - Omnitrac MSS II - All Positions Front And Rear Tires - Grippers Tires - Limited Supply. **Call For More Information.**



1987 CATERPILLAR 130G GRADER, 8,500 Hours, Articulated, Full Cab, Power Shift, 3304 Diesel Engine, 3rd Valve, Sliding, Tilting. 12' Moboard **Call For More Information.**



2017 FONTAINE 70 TON, 704 Model, 2+3+2 Capable Or Run As 4 In A Row. New, Never Used, Leftovers, 28' Flat Level Deck. Also Available, 28' Beam Deck. 102" Wide, 60" Axle Spacing, Hydraulic Removable, Ar, Non Ground Bearing With 2 Pin Position At 114" And 102", Triple Cylinder, Heavy Duty Snap In Outriggers, D-Rings, Strobe Lights, 275/70R X 22.5 Tires. Both Black In Color, Currently Located In Al. In Stock, No Waiting. **Call For More Information.**



2003 TALBERT 25 Ton Tag Along Trailer, Tri Axle, Original Paint, One Owner, Excellent Condition. **Call For More Information.**

www.josephequipment.com

Trades Welcome • Financing Available

THIS AD IS COPYRIGHTED & OWNED BY TRUCK AND EQUIPMENT POST



JOSEPH

EQUIPMENT COMPANY

300 GAY ST • MANCHESTER, NH 03103

SATURDAYS • WE ARE OPEN ALL DAY

PHONE: 603-641-8608

FAX: 603-666-3716





293 NORTH - EXIT 2 -
LEFT ONTO BROWN AVE -
RIGHT ONTO WINSTON ST. - LEFT ONTO GAY ST.
300 GAY STREET ON THE RIGHT

IT'S "DEMO TIME" - MANY TO CHOOSE FROM



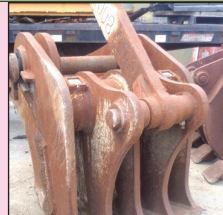
**NYE GRAPPLE FOR
KOMATSU PC300**



**LABOUNTY GRAPPLE
FOR KOMATSU
PC400-PC490**



**LABOUNTY PC400
PULVERIZER**



**NYE PC800, PC 750
PULVERIZER**



**NYE PC800
DEMOLITION
GRAPPLE**



2009 DYNAPAC COMPACTOR, With 580 Original Hours, Model CC622, 84" Double Drum Drive Vibratory Roller, Cummins Power, Original Paint, Excellent Shape. **Call For More Information.**



KOHLER 500KW GENSET, 60 Series Detroit, Completely Enclosed With Switch Gear Panel, Low Hours. **Call For More Information.**



INTERNATIONAL WATER TRUCK, 4000 Gallon, Diesel, Tandem, Curry Tank With Spray Heads Front And Back, Side Spray Heads Also, Very Good Condition. **Call For More Information.**



SABRE PUSH BOATS (2 AVAILABLE) Jet Drive, Twin Diesel, Rebuilt Motor, With Transport Cradle, Very Good Condition. **Call For More Information.**



CATERPILLAR D8L DOZER, Full Cab, A/C, Straight W/Tilt, Low Hours, 50% Bottom, Excellent Condition. **Call For More Information.**



2002 CATERPILLAR 3406 GENSET, 1,400 Hours, 400 KW. **Call For More Information.** Also Available, Cummins Genset, 150 Kw, 3 Phase, 325 Hours, Complete, Big Cam Cummins Motor. **Call For More Information.**



2010 LULL 944E 42 Telescopic Reach Forklift Telehandler, 7,200 Hours, Extends To 42', One Owner, Quick Disconnect, Plumbed For 3rd Valve, Sliding Carriage, Original Paint, Solid Tires. **Call For More Information.**



1987 MACK DM686SX WATER TRUCK, One Owner, 2 Axle, 18 Front, 58 Rears, 22" Tires, Curry 4000 Gallon Water Tank, Spring Ride, Spray Heads Front And Back, Hydraulically Driver Water Pump. **Call For More Information.**



1999 FREIGHTLINER FL70 DISTRIBUTOR TRUCK, Cummins 24V Diesel, 5 Speed Trans, 2000 Gallon Distributor Maximizer Lee Roy Rosco Body, A/C, P/S, Spring Suspension, 33K GVW, Rear Camera System, 11r22.5 Rubber, Low Miles, Hand Held Wand, **Call For More Information.**

www.josephequipment.com

Trades Welcome • Financing Available

THIS AD IS COPYRIGHTED & OWNED BY TRUCK AND EQUIPMENT POST



JOSEPH

EQUIPMENT COMPANY

300 GAY ST • MANCHESTER, NH 03103



SATURDAYS • WE ARE OPEN ALL DAY

PHONE: 603-641-8608

FAX: 603-666-3716



293 NORTH - EXIT 2 -
LEFT ONTO BROWN AVE -
RIGHT ONTO WINSTON ST. - LEFT ONTO GAY ST.
300 GAY STREET ON THE RIGHT



2020 FONTAINE MAGNITUDE 55LCC FLD, Tri Axle, Air Ride, Set Up For 4th, Air Lift On Third, 18" Deck Height, 26' Deck, Dual Cam Pawl Assembly With 7 Ride Height Positions. Removable Kingpin At 108 Inch Radius, Alternate Kingpin At 96" Radius, 275 Rubber, Alum Wheels. Not Spreader Bar Or Goose Neck Extension Capable. Available In Black And Red. **Call For More Information.**



IN STOCK - 2020 KRUZ, 70 Yard, 2 Axle, 70,000 Single Point Suspension, 25,000 Lb. Axles, 36' Long, 90" Sides, 1/4 Inch 450 Hardox, Floor, Sides, Nose, Gate, Barn Door-12 Panel Gate, Tow Hooks, Led Lights, 11 X 24.5 Rubber, Aluminum Wheels, Ladders Front And Back, Holland Mark V 50,000 Lb. Landing Gear. In Stock, No Waiting. **Call For More Information.**



40 TON EXTENDABLE
IN STOCK - 2020 FONTAINE LXTN40, 40 Ton Extendable, 34' Closed - 60' Open. Also Available 29' Closed - 50' Open. Tandem Axle, Set Up For 3rd, Air Ride, Non Ground Bearing, 102" Swing Clearance, 20" Deck Height, Alum Wheels. In Stock, No Waiting. Available In Manchester NH And At The Factory In Springville AL. 3rd And 4th Axles Available. **Call For More Information.**



IN STOCK - NO WAITING - 2020 FONTAINE RENEGADE LXLN12 -12 Inch Loaded Deck Height With 4 Inch Ground Clearance When Fully Loaded, 30 Tons In 16 Feet On Tandem Bogie Or 30 Tons In 20 Feet With 3rd Axle Flip, Low Profile, 3rd Axle Capability, 32 Feet 11 Clear Deck Length. **CALL FOR MORE INFORMATION.**



IN STOCK - 2020 KRUZ 26' STEEL TUB, Aluminum Frame Dump Trailer, Air Ride, 2 Axle, Alum Wheels, 450 Hardox, 13,700 Lbs. 24.5 16 Ply Tires. 3 Panel Alum Gate, Taking Orders. **Call For More Information.**



2020 KRUZ 40' ROUND BOTTOM TRI AXLE DUMP TRAILER, 85 Yard, Air Ride, Barn Door, In Stock No Waiting. 2 Available To Choose From. **Call For More Information.**



2020 RAVENS FLEET HAWK, All Alum Flatbed Trailer, 48 X 102 Wide, Spread Axle, Air Ride, Hub Piloted Wheels, In Stock, Ready To Go, Special Factory Pricing. **Call For More Information.**



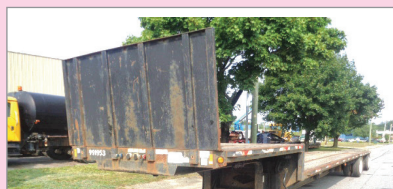
NEW 2019 XL SPECIALIZED, 55 Ton, 26' Deck, 15" Loaded Deck Height, Tri Axle, Set Up For 4th, Lift On Third, Air Ride, Long Goose Neck, 2 Pin Position, Boom Trough, 275 Rubber, Alum Wheels. Front Flip Ramps, Chain Slots, Weigh Scale, Strobes With Battery Back Up, Strobe Lights, Outriggers, Extra D-Rings. Available In Black Or Red, In Stock, No Waiting. Located At The Factory In Manchester IA And Also Stock In Manchester NH. **Call For More Information.**



2017 VANTAGE P-42. 1000 Cubic Feet, 2 Axle Aluminum Pneumatic Bulk Trailer, Air Ride, 295/75r22.5 Tires, No Rust, Trailer From Texas. **Call For More Information..**



2008 PITTS LB35, 35 Ton, Drop Deck With Beaver Tail And 8' Hydraulic Ramps, Self-Contained Hydraulic System, 102" Wide, Roll Down Landing Gear, Tool Boxes, Original Paint, 1 Owner, Very Good Condition. **Call For More Information.**



2002 FONTAINE 48 X 102 STEP DECK, Air Ride, Spread Axle, New Tires, New Wiring Harness, Original Paint, Southern Trailer, Very Good Condition. **Call For More Information.**



2020 KRUZ 40' DUMP TRAILER, Tri Axle, Frameless, Air Ride, Damaged, **Call For More Information.**

www.josephequipment.com

Trades Welcome • Financing Available

THIS AD IS COPYRIGHTED & OWNED BY TRUCK AND EQUIPMENT POST



JOSEPH

EQUIPMENT COMPANY

300 GAY ST • MANCHESTER, NH 03103

PHONE: 603-641-8608



FAX: 603-666-3716



NEW MODEL - 2021 FONTAINE RENEGADE LXLN12 - 12 Inch Loaded Deck Height With 4 Inch Ground Clearance When Fully Loaded, 30 Tons In 16 Feet On Tandem Bogie Or 30 Tons In 20 Feet With 3rd Axle Flip, Low Profile, 3rd Axle Capability, 32 Feet 11 Clear Deck Length. IN STOCK, NO WAITING, **CALL FOR MORE INFORMATION.**



NEW MODEL - 2021 FONTAINE MAGNITUDE 50 Tri Axle, Set Up For 4Th, 50 Ton, Air Ride, 24' Deck, 20" Loaded Deck Height, Alum Or Steel Wheels, Strobe Lights, Outriggers And D-Rings. **Call For More Information.**



2021 KRUZ TERMINATOR, 26' Steel Frame, Single Point Suspension, 2 Way Gate, 11 X 24.5 Tires, Alum Wheels, 2 Speed Landing Gear. **Call For More Information.**

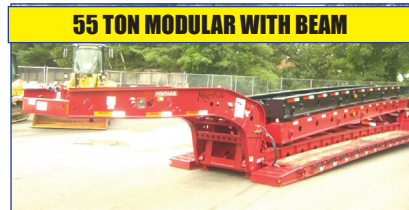


27' FLAT LEVEL DECK - IN STOCK

2021 FONTAINE 55L, 27' Flat Level Deck, Also Available In 25' And 26' Deck Length. Tri-Axle, Air Ride, 3Rd Axle Lift, Alum Wheels, Strobe Lights, Set-Up For 4Th Axle. In Stock, No Waiting. **Call For More Information.**



2021 KRUZ 26' STEEL TUB, Aluminum Frame Dump Trailer, Air Ride, 2 Axle, Alum Wheels, 450 Hardox, 24.5 16 Ply Tires. **TAKING ORDERS**
Call For More Information.



55 TON MODULAR WITH BEAM

2021 FONTAINE 55H MODULAR DSR, Beam Deck Also Available, Tri Axle, 60" Axle Spacing, Hydraulic Removable, Non Ground Bearing, Set Up For Gooseneck Ext, Spreader Bar And 4Th Axle Flip, Air Ride, Alum Wheels, 22.5 Rubber. **Call For More Information.**



2021 FONTAINE 60 TON MODULAR 2+3+1,

26' Dsr, 184" Swing Clearance, Set Up For 2 Axle Jeep, 14" Deck Height, Air Ride, Alum Wheels, 275/70R X 22.5 Rubber, Non Ground Bearing. **Call For More Information.**



2021 FONTAINE RENEGADE LXL, 14" Deck Height, 30' Deck W/6" Ground Clearance, 2 Axle, Set Up For Third, Hydraulic Detachable, Taking Orders
Call For More Information.



2021 KRUZ, 70 Yard, Tri Axle, 70,000 Single Point, Lift On Third Axle, 1/4 Inch 450 Hardox, Floor, Sides, Nose, Gate, 12 Panel Gate, 11 X 24.5 Rubber, Alum Wheels. Taking Orders. **Call For More Information.**



2021 FONTAINE TRAVERSE HYDRAULIC TAIL, 48' Long, 102" Wide, Air Ride, Hydraulic Upper Deck, Hydraulic Winch, Remote Control, Alum Wheels, Dual Controls. Taking Orders
Call For More Information.



2021 FONTAINE 60 TON MODULAR, 26' Dsr, 60" Axle Spacing, 184" Swing Clearance, Set Up For 2 Axle Jeep, 14" Deck Height, Air Ride, Alum Wheels, 275/70R X 22.5 Rubber, Non Ground Bearing. In Stock. **Call For More Information.**



1998 KAYLN SIEBERT. 75Ton 3+3+3, Air Ride, West Coast Bogie, 3 Axle, Air Ride Jeep With Power Tower, 10' Wide Trailer, 60' Overall Length, 48' Of Useable Deck, 275/70 X 22.5 Rubber, Sandblasted & Painted, Excellent Shape, Alum Wheels On Jeep And Booster. **Call For More Information.**

Trades Welcome • Financing Available • www.josephequipment.com

THIS AD IS COPYRIGHTED & OWNED BY TRUCK AND EQUIPMENT POST

TRAILER RENTALS • TRAILER RENTALS • TRAILER RENTALS •

WE RENT STEP DECKS • LOW BEDS • HI FLATS • DEMO/SCRAP • TRAILERS



RAVENS

JOSEPH

EQUIPMENT COMPANY

300 GAY ST. • Manchester, NH 03103

PHONE: 603-641-8608
FAX: 603-666-3716

IN STOCK, NO WAITING

WE RENT WALKING FLOORS • DUMPS • HIGH FLAT EXTENSIBLES • JEEPS

NEW 2021 FONTAINE RENEGADE LXL, 14' Deck Height, 30' Deck W/6' Ground Clearance, 2 Axle, Set Up For 3rd Hydraulic Detachable Or Mechanical Detachable. In Stock No Waiting. Call For More Information



NEW 2021 FONTAINE MAGNITUDE 603T Modular Drop Side Rail With 28' Deck, Hydraulic Removable Neck, Non Ground Bearing, Air Ride, Tri Axle, Third Axle Lift, Set Up For 4Th, Alum Wheels, 275/70 X 22.5 Tires, Loaded. Call For More Information.



NEW 2021 FONTAINE 55 TON, Drop Side Rail, Tri Axle, Air Ride, Set Up For 4Th, Non Ground Bearing, Led Lights, Aluminum Wheels, Strobe Lights, Loaded. In Stock No Waiting. Call For More Information



NEW 2021 FONTAINE 704/2+3+2 DROP SIDE RAIL, 4 Axle, 28' Deck, Hydraulic Detachable, In Stock, No Waiting, Non Ground Bearing, 102' Wide, 65' Flip Box, Spreader Bar And 352J, Jeep, Alum Wheels, 275/70R X 22.5 Tires, 28' Beam Deck Available. Call For More Information.



NEW 2021 FONTAINE 55H MODULAR DSR, Beam Deck Also Available, Tri Axle, 60' Axle Spacing, Hydraulic Removable, Non Ground Bearing, Set Up For Gooseneck Ext, Spreader Bar And 4Th Axle Flip, Air Ride, Alum Wheels, 22.5 Rubber, Call For More Information.



NEW 2021 FONTAINE 35 TON LOWBED, Air Ride, Tandem Axle, 29Ft Flat Level Deck, Non Ground Bearing, Hyd Goose Neck, Set Up For Future 3rd Axle, In Stock. Call For More Information



70 TON 2+3+2

WE RENT STINGERS • SPREADER BARS • DOUBLE DROP EXTENSIBLES TRAILERS



55 TON EXTENSIBLE

NEW ROGERS 55 TON DROPSIDE RAIL LOWBED TRAILER, 25Ft Steel Deck, Tri-Axle, Air Ride, Lift On Third Axle, Strobe Light Pkg, Covered Bogle, 15' Loaded Deck Height, 2 Pin Position, 4Th Axle Set Up (In Stock), Non Ground Bearing In Stock And No Waiting



14" DECK HEIGHT

NOW TAKING ORDERS FOR DUMP TRAILERS AND LOWBEDS FOR FALL DELIVERY

IN STOCK, NO WAITING

55 TON EXTENSIBLE

IN STOCK

TRADES WELCOME • FINANCING AVAILABLE • WWW.JOSEPHEQUIPMENT.COM



FONTAINE

TRAILER RENTALS • TRAILER RENTALS • TRAILER RENTALS •

THIS AD IS COPYRIGHTED & OWNED BY TRUCK AND EQUIPMENT POST.