

SERVING NEW ENGLAND

FREE

TRUCK AND EQUIPMENT POST

Your Local Source For The Trades



2009 STERLING T/A DUMP. MERCEDES BENZ - 410 HP, 8LL, 20K FRONT, 46K REARS., SPRING SUSPENSION, 14FT STEEL DUMP BODY, CLEAN, DOT READY, 108,946 MILES.
\$56,500. 802-688-9304



2002 GRADALL XL 3100. RUNS GREAT, NEW REAR TIRES, JUST SERVICED, READY TO WORK, COMES WITH DIGGING, RIPPING, AND GRADING BUCKETS, \$23,000. 508-509-3461



2001 ISUZU NPR SEALCOAT TRUCK. SEAL RIGHT 550 TANK, 160K MILES, MANY NEW PARTS, RUNS GREAT, REAL MONEY MAKER!
\$14,000 OBO. 860-634-0303



2022 HUSTLER 72" SUPER Z. HYPERDRIVE 35 HP, KAWASAKI GAS ENGINE, GRASS COLLECTOR, ELECTRIC DUMP HOPPER, POWER UP & DOWN CUT DECK, 10.5 HOURS, LIKE NEW CONDITION. PAID \$22,414., SELL FOR \$18,000. 860-460-0767



1994 HILL 26' ALUMINUM DUMP TRAILER. QUICKSILVER LINER, RAYCO SUSPENSION, \$15,000. 774-239-1294

Optative Group



**Issue 42-43
OCT 19th, 2022**

**INTERNET & PRINT
FOR ONLY \$28.00**

www.TruckAndEquipmentPost.com

888-887-0505



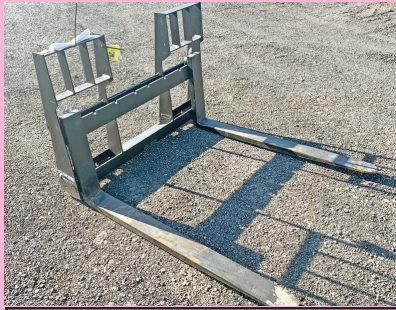
781-315-1680
Call Dan Rott



GREAT SELECTION OF NEW & USED HEAVY EQUIPMENT & ATTACHMENTS
FINANCING AVAILABLE ON ALL UNITS UP TO 60 MONTHS.
CALL FOR DETAILS.



2013 VOLVO L70G.
 Coupler, Bucket, Runs
 Great, \$83,000. #CE4106



NEW SKID STEER
 FORK. 48", \$995.



2014 VOLVO
 DD140B. 1860
 Hours, \$37,500. #CE3292



2019 VOLVO A40G.
 Tailgate, Clean, 4950
 Hours, \$489,000.
 #CE4104



NEW MAULDIN
 1560T PAVER. \$ Call,
 #MA0078



2014 VOLVO DD140B.
 780 Hours, \$39,900.
 #CE3291



2014 VOLVO EC480EL.
 Coupler, Bucket, Nice
 Shape, \$219,000.
 #CE4129



NEW
 YANMAR
 SV08.
 Pin On
 Bucket,
 Ready
 To Go,
 \$ Call,
 #YN0001



2022 MAULDIN 1860T
 TRACKED PAVER.
 \$ Call, #MA0077

WOBURN, MA - AVON, MA - SMITHFIELD, RI www.WoodCoMachinery.com





Westminister VT

802-688-9304

802-518-3031

**SALES • SERVICE • PARTS**1058 Westminister
Heights Road
Westminister, VT 05158

2003 MACK T/A DUMP. Mack E7- 350 Hp, 8LL, 20 Frt Axle on 425 Floats, 46 Rears, 11R22.5, Camelback Spring Susp, Dbl Frame. 14' BENSON Aluminum Body, 61" Sides, Elect Tarp, Pintle Plate, 188,633 Miles #065180, **\$34,500.**



2009 STERLING T/A DUMP. MBE - 410 Hp, 8LL, 20k Front, 46k Rears., Spring Susp., 14ft Steel Dump Body, Clean, DOT Ready. 108,946 Miles. #AH8468, **\$56,500**



2009 IH 7500 S/A DUMP. W/ Highway Plow, IH 350 HP, 8LL, Spring Susp., 12R22.5, Pwr Windows/Locks/Mirrors, Heated Windshield, 10' MG Steel Body, 44,517 Miles. #113416, **\$50,000.**



2005 IH 7300 S/A DUMP. Non CDL, Pre-Emission, DT466 - 250 Hp, Allison Automatic, 10' Body w/ Tailgate Spreader, Highway Plow, 51,268 Miles, #127156, **\$27,500**



2007 IH 7500 Dump Plow Truck. IH HT570, 10 Speed., 14,780 Front Axle, 23,000 Rear Axle, Dbl Frame, 12R22.5 Tires, Tenco Steel Body, Front & Wing Plow, 103,920 Miles, #463536, **\$23,500**



2007 FORD F750 Dump. Ford 5.9L, Allison Automatic, 12,350 Front Axle, 23,000 Rear Axle, Spring Susp., 11R22.5. Galion Goodwin Steel Body, Pin Plate, 3 Chutes, Hand Crank Tarp, Highway Plow, DOT Ready, 72,348 Miles, #519076, **\$41,500**



2012 IH 7500 SA Dump Truck. Diesel, Allison Automatic, Steel Body, Highway Plow, DOT Ready, Serviced, 69,680 Miles, #608863, **\$54,500**



2008 INTERNATIONAL 7400. Municipal Plow Truck, Plow & Sander Electronic Controls, 10' Tenco Side Dump Body, 10' Tenco Reversible Frt Plow, 9' Tenco Wing, 105,280 Miles, #639665, **Call**



2000 STERLING L7500. 3126B CAT, Spicer 7 Speed, Spring Susp, 4.56 Ratio, 11R22.5, Highway Plow, Steel Dump Body, 73,080 Miles, # F34819, **\$13,500**



2014 WESTERN STAR 4700 T/A. Detroit DD13, 8LL, 82,636 Miles, 20 Front axle, 46 Rears. Frt Plow & Wing Plow, DOT Ready, Serviced, 82,636 Miles, # FX1681, **\$86,500.**



2007 FREIGHTLINER M2. 300Hp MB, 8LL, 14,700 Frt Axle, 23 Rears, Spring Susp., 4.56 Ratio, 10' TENCO Sander Dump Body, Highway Plow, 100,519 Miles, # X85292, **\$43,000**



2007 FREIGHTLINER M2. CAT C7 300 HP, 8LL, Single Axle Spring Suspension, 37,240 GVW, 10' TENCO Sander Dump Body., Front & Wing Plows, 81,384 Miles, # Y16404, **\$24,500**

AdvantageTruckNE.COM • Follow us @WeKnowTrucks



**1587 Portland Cobalt Rd
Portland, CT 860-342-2600**



See more @ MORINDIESELFORESTRY.COM



XCMG XE18U 4,000lb Unit, Kubota Powered, Aux Hydraulics, 5yr/ 5000hr Warranty **\$34,715**



XCMG XE27U 6,000lb Unit, Kubota Engine, Dual Aux Hydraulics, 5yr/ 5000hr Warranty **\$44,715**



XCMG XE35U 9,200lb Unit, Yanmar Engine, Dual Aux Hydraulics, 5yr/ 5000hr Warranty **\$56,590**



XCMG XE55U 12,500lb Unit, Kubota Powered, Dual Aux Hydraulics, 5yr/ 5000hr Warranty **\$74,090**



XCMG XE80U 19,500lb Machine, 73HP Kubota, Dual Aux Hydraulics, 5yr/ 5000hr Warranty **\$106,590**



XCMG XE55U w/ FAE Forestry Mulcher
Rental **\$600 Daily/ \$2,250 Weekly**



AWASSOS MD80 LOG SKIDDER. 83 HP Yanmar, Hydrostatic, 12,000 lb, Call For A Demo



CAST WX22 Track Side Walk Machine, 42" Track Width, 6.5' Lift Height, Aux Hyd, 60" Angle Blade, **\$32,300**



RYAN'S EQUIPMENT 4860 & 6060 Rotating Grapples Starting @ **\$9,600**



TNA 51" Knock Around Grapples w/ Mini Plates **\$3,695**



FAE BL1/EX 4-8 Ton Excavator Mulcher w/ Mount & Hoses **\$21,000**



DENIS CIMAF DAH-080C FORESTRY MULCHER For 8-10 Ton Machines **\$32,000**



DENIS CIMAF DAF-1500 SKID STEER MULCHER 23+ GPM, **\$37,500**



NIXTER FORESTRY MULCHERS. We Have Models For Every Application





Princeton, MA
978-660-3305

CRUSH - GRIND - SHRED

- Stump Removal And Disposal • Stumps/Brush/Oversized Wood
- Gravel Concrete Asphalt • Compost
- Light Metal/Fiberglass/Tires/Plastics • 2 Product Screen And Magnet
- Municipal/Landscape/Contractor Yard Clean Out
- Compact/Easy Transport/Quiet
- Interchangeable Shafts To Match Any Material



2017 KUBOTA M6060: Powershuttle Cab 4x4 Tractor
W/ Loader, **\$44,900**,
Belchertown, MA 413-253-5456



2009 KENWORTH T370. Paccar PX-8, 260 HP, 33,000
GVW, Allison 3000, H.S. Transmission,
24 Ft. Morgan Flatbed, A/C, Cruise Control, Power Windows/
Locks, 181K Miles, **\$34,000**. Rich, 203-228-3667



2007 FORD F350. Knapheide Service Body, 4x4, 9' Plow,
Diesel, **\$15,000**, 413-246-0880



KUBOTA L3600--36HP, \$11,900
860-928-5748



2023 MAC DUMP TRAILER. 28' Tandem Aluminum,
Air Ride, Call For Complete Specs/Pricing, 603-496-7663

EQUIP
SALES AND LEASING CORP.
WE BUY • WE SELL • WE RENT
WWW.EQUIP-SALES.COM
(203) 752-0213



2022 ROCKSTER R1100
CLOSED CIRCUIT
IMPACTOR, CAT
STAGE 5, AUTO
GREASE SYSTEM,
MAGNET & OPTIONAL
BLOWER.



2000 CAT 345B MH
1 OWNER, HAS FULL HYDRAULICS & MAGNET
GEN/SET. ATTACHMENTS AVAILABLE. 15K HRS,
RUNS STRONG!



2022 ANACONDA DF410
TRACK SCREENER EQUIPPED WITH 10'X4' SCREEN
BOX. ONE OF THE MOST RELIABLE SCALPING
SCREENS ON THE MARKET! 190 HRS.



2020 ROCKSTER R1100
CLOSED CIRCUIT IMPACTOR, VOLVO, AUTO
GREASE SYSTEM & MAGNET. 3000 HRS.



1989 DRESSER TD15E
1300 ORIGINAL HRS! FULL CAB, A/C,
80% U/C. CUMMINS 8.3L. RUNS
STRONG!



1987 MICHIGAN 275C
EROPS, A/C, CUMMINS ENGINE.
MUST SEE!



2018 ROCKSTER RTT720A
TROMMEL SCREENER, CAT TIER 3,
20' DRUM. 225 HRS.



2021 ROCKSTER RST18
60' TRACK STACKER, CAT DIESEL,
SCALE. 300 HRS.





NEW HOLLAND LS180.
3200 Hrs, Just Serviced, New Rims/Tires, Enclosed Cab W/Heat, **\$21,000.**, Possible Trade For Dump Truck. John, 978-407-8065



2017 PETERBILT, 337, 73,100 Miles, 33k Lb. Gvwr, 6 Cylinder, 8.3L Paccar Px8 Motor, Allison Transmission, Dana Spicer Rear Axle, Heat/Ac, Power Windows/Locks, Air Ride/Cruise/Air Suspension, Electric Tarp, 22.5 Tires 80%. **\$93,500**, Call Bryn 508-381-3939. Hopedale, MA





**WOODWARD
DETAILING**



ATTENTION FLEET OWNERS
Fluid Film Undercoating Applications
Woodward Detailing LLC Offers
Mobile Rust Inhibitor Application

**We Can Come To Your Location And Apply A Heavy Coat On Your Fleet Vehicles
Protect What Makes You Money
The New England Roads Are Ruining Your Vehicles Every Winter!**

Call Us Today To Book Your Fleet Of Trucks, Vans, Or Whatever You Don't Want To Rust



"We Offer Fluid Film In Black Or Tan – Your Pick"

860-428-4237

SALT = RUST





2005 FORD F-250 CREW CAB. Rust Free. Diesel!! Original. Florida Truck. Insane Horsepower. Complete Rebuild. Way Too Much To List. Serious Inquiries. Only. Truck Is In Amazing Condition. **\$20,950.** Call For All The Details!!! Rare Find In This Condition!!! 508-295-9444 EXT. 160



2001 GENIE Z30/20N ARTICULATED ELECTRIC BOOM LIFT. 36' Working Height, 21' Hor. Reach, Newer Batteries, Newer Controller, Ser# Z30N-4923, 995 Hours, Needs Hyd. Repair At Upper Boom Knuckle, Fair Cond., **\$8500 OBO.** Quincy, MA 781-706-0732



**RIVERS
EDGE**
Truck & Trailer Repair

**183 River Road
Uxbridge, MA**

- Financing Available -

Emile 401-692-0780
Scott 401-692-0781
unitransgiguere@earthlink.net
www.riversedgetrucktrailerrepair.com



HEAVY SPECS

2001 Peterbilt 330 20" Box Truck. 39,000 GVW, Heavy Spec, 6 Speed Trans, Miles 417,807, Heavy Front Axle Floater Tires Cums. **\$19,000**



EQUIPMENT HAULER

2013 Trailer-EZE TE80XT Dovetail. Ready For Work Totally Rebuilt Sandblasted & Painted New Decals, Hydraulic Tail And Platform, Air Ride, Scale, Winch, Remote, Trailer Looks Brand-New, **\$45,000.**



Commercial Pressure Washer. 16hp V-Twin, Becket Burner For Hot Water, Had Serviced & Never Used, Excellent Condition, **\$4,000.**



FLATBED TRAILERS

2004-2005 Fontaine Trailers. Sliders 48'X 102" Wide, Wood Decks, Go To Work Trailers, With Moffet Kit, **\$11,000.** Or W/Out \$9,000.



2012 Business Class M2 Freightliner 112. 370 Horse Power Detroit, DD13 10 Speed, Air Ride, 448,000 Miles Excellent Shape **\$19,000**



271K MILES

2014 Business Class M2 Freightliner 112. 370 Horse Power Detroit DD13, 10 Speed, Air Ride, 271,000 Miles Excellent Shape **\$24,000**



THREE LINE WET

1995 Freightliner FLD. Detroit 12.7 Ltr 470 HP, Eaton Fuller 18 Speed, 40k Air Ride Rears, 14k Front Axle, 11.24.5 Rubber, Triple Wet Lines. Pentel Hitch With Hook Ups Air/Electric, Odom Changed 254,385 Miles, Actual Mile 870,000 Approx. 200k On Rebuild, Clean In And Out **\$35,000.** Best Offer



VAC TRI AXLE

2003 Mack GH Vac Truck. Triaxle Air Ride, 427 E7, 711,476 Miles, Rods & Main @500K, Runs Excellent, 10 Speed Eaton Fuller, 11.22 5 Rubber, Tank 5000 Gallons Built 2011, NVE 506 Pump All Hose Connection Go To Work, Runs And Drives Excellent **\$50,000.** Best Offer





ALLEGIANCE

TRUCKS®



Hartford, N.Haven, Torrington, & Franklin, CT / W. Springfield, MA



Call Mike McDonald 860-308-6599

Used Truck Sale, Aggressive Pricing on All Trucks, Call Today



2015 & 2016 ISUZU NQR's Diesel, Auto 18' Van Body Step Bumpers, Miles Range 91K - 225K. Pricing \$29,900 to \$42,900.

Under CDL 26' Box



Group of 2018 IH 4300, Under CDL, 26' Van Body Trucks, Cummins Power, Auto Transmissions, Air Ride, Miles 110K To 185K, Starting @ \$64,900



2017 IH 4300. Cummins 250 HP, Under CDL, 121K Miles, 24x102x96 Van Body w/ Lift Gate, #126078, \$79,900



Group Of 2017 IH Prostar Tandem Day Cab, N13 410HP, 10 Speed, Miles In 600's, Warranty Available, \$36,900.



(5) 2018 INTERNATIONAL LT 73" Sleeper, N13 Power, 450HP, 10 Speed, Miles In 400's, Nice Truck, \$59,900.



Several 2017 PETERBILT 579 DAY CABS, ISX 15 Cummins, Auto's & Manual's, Miles in 5's & 6's, Pricing Starts At \$54,900



SEVERAL 2018 IH LT 56" Single Bunk Sleeper, ISX 450HP, Auto's, Miles in mid 300's, Clean, \$89,900



SEVERAL 2020 LT SLEEPERS. ISX Cummins Power, Auto, Warranty, \$89,900



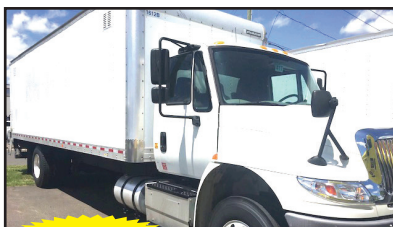
(3) 2017 FREIGHTLINER Cascadia Tandem Day Cab, DD15, 455HP, 10 Speed Manual Collision Mitigation, Nice Trucks, \$57,900



SEVERAL 2016 GMC CUBE VANS. Gas, Auto, 120 - 135K Miles, 16' Vans With Walk Ramps, \$29,900



2017-2019 GROUP OF ISUZU VAN BODY TRUCKS. Lift Gates, Gas & Diesel. Super Clean. Call Today!



SEVERAL 2017 IH 4300's. Cummins 240 HP, Allison Auto, Under CDL, 100-150K Miles, 26' Van w/ Lift Gates

Allegiance now has locations in MA, CT, NY, ME, VT, RI, NH, & NJ!

For all locations visit our website!

www.AllegianceTrucks.com





920 W. Chestnut St. Brockton, MA:
508-586-1666 Mon - Fri 8-5, Sat 8-NOON

42 Winter St. Pembroke, MA:
781-826-1666 Mon - Fri 8-3
EastCoastTruckStuff.com

We deliver!

Maxxima LED HEAVY DUTY WORK LIGHTS

16 LEDs



4.7" X 1.6" Deep
2100 Lumens
\$53.99
MWL-41

16 LEDs



5.9" X 3.6" 1.5" Deep
2100 Lumens
\$53.99
MWL-42

16 LEDs



4.7" X 4.2" X 1.7" Deep
2100 Lumens
\$53.99
MWL-43



MINI



2" MINI LED Spot Work Lamp
900 Lumens
\$18.99
TLED-U104

360° SIDE OUTPUT



4.25" Square Spot & Flood LED
with 360° side light output
4000 Lumens
\$65.99
TLED-U120

Grote

HAND-HELD



Go Anywhere Hand Held
1100 Lumens
\$88.99
BZ501-5

Specials end 10/15/22



OSH KOSH SNOW FIGHTER. Frame Just Blasted & Painted, Comes With Everything, Too Much To List, **\$39,995.**
508-524-3209



(2) 2023 MAC DUMP TRAILERS. 35' Triaxle Aluminum, One With Two-Way Gate, Aluminum Frame, Man Door, Intraox 300 Air Ride, Front Lift, Polished Wheels, Wide Stance Rear Hinge, Call For Complete Specs/Pricing, 603-496-7663



2010 INTERNATIONAL 7600 COMBO. 45,500 Miles, 66K GVW, 13 Speed, 11 Ft Plows, Maxxforce Engine, Certified Cirrus Controller, 100-Gallon Liquid Tank, 13 Ft All Season Body, Lots Of New Parts, **\$38,000 OBO.**
774-922-0138



2008 FORD F350 XLT. 28K On A Drop-In Motor And 600 HP Built Transmission, With Boss V-Plow 8.2, Asking **\$22,500.** 413-636-3454



2005 CHEVY HD2500. 4x4 Utility Body Pick Up, Solid, Good Work Truck, 145K. A/C, Heated Mirrors, Strobe Lights, **\$13,000 OBO.**
East Bridgewater, MA 508-378-2628



BLUE 30" X 56 FT. RADIAL STACKING CONVEYOR. 42" Wide X 24" Deep Truss, 2.5" X 2.5" X 1/4" Angle, 10 Hp., 240/480 Volt, 3 Phase Motor, Folding Upper Section, **\$7200.**
Gales Ferry, CT
860-460-0767



ROBERTSON'S AUTO

508-295-9444, Ext. 160

VANS WE GOT 'EM! 17', 18', 19'.



FROM 2016 TO 2019: 1500 1/2 TON to 2500 3/4 TON. SHELVING, RACKS, BINS & LADDER RACKS. 40 to 80K MILES. STARTING AT JUST \$29,950.

ALL MAKES

EQUIPMENT & PARTS

ROLAND CARTER 603-340-6776 • ANDOVER NH 03216

CONTACT

**EQUIPMENT SALES
EQUIPMENT PARTS
EQUIPMENT
ATTACHMENTS
FINANCING AVAILABLE**



Rebuilt & Good Used Engines.



New & Used Buckets & Attachments.



**New Undercarriage.
Free Undercarriage Inspection.**



Equipment Hydraulic Parts.



Salvage Equipment Parts.

info@allmakesequipmentandparts.com • www.amepinc.com





COMMERCIAL HOT WATER PRESSURE UNITS



- Electric Motor – Gas Engine
- 1725 RPM Motor & Pump
- Becket Burner
- TEFCO 120 V Baldor Motor
- 50 Ft Hose
- 4' Lance Trigger Gun
- 1000 to 4000 PSI Options
- Poly Fuel Tank

NEW Starting @ \$2,295
USED Starting @ \$1,095



R & E STEAM EQUIPMENT
 Call Earl Warwick **617-899-8775**



2022 HUSTLER 72" SUPER Z.

Hyperdrive 35 HP, Kawasaki Gas Engine, Grass Collector With Electric Dumping Hopper, Electric Mower Deck Raise And Lower, 10.5 Hours Of Use, Like New Condition. Paid \$22,414., Sell For **\$18,000.** 860-460-0767



WOODY CORDWOOD LIFTER--Complete, New Condition, **Call For Price**, 860-928-5748

2012 INTERNATIONAL 7600 SBA BOOM TRUCK:
 475hp, 15k Pusher, 8ll, 20f/46 Full Lock Rears, Hiab Xs335 Hipro Remote Boom. 230k Miles, Cold A/C. Everything Works. Still Certified. East Freetown, MA.
 Call Dave: 508-726-0077



THE TRAILER DEPOT

203-234-7788
 1037 Middletown Ave. (Rt. 17)
 Northford, CT

CM TRUCK BEDS
AUTHORIZED DEALER



SURE-TRAC 22.5K LOW PROFILE DECKOVER GOOSENECK. 8' 6" x 25' + 5' Beavertail, Bi-Directional Springs In Ramps, Oil Bath Axles, #372758



PACE AMERICAN 9.9K ENCLOSED LANDSCAPE TRAILER. 8' 6" x 16', Round Top, Beavertail, Reinforced Ramp Door W/ Tapered Edge, #033090



CAM SUPERLINE 15.4K LOW PROFILE HEAVY DUTY DUMP TRAILER. Tubular Mainframe, Slipper Spring Suspension, #530174



SURE-TRAC 14K TILT TRAILER. 7' x 18', Tube Main Frame, Tapered Entry For Full Width Loading, #372875



ALUMA TRUCK BEDS



CAM SUPERLINE EXTRA WIDE 17.6K SPLIT TILT TRAILER. 6' 11" x 20', Oak Decking, 102" Overall Width, #527509

www.thetrailerdepot.com

We'll Hook You Up
 WE DO FEDERAL INSPECTIONS!





**2013 Terex TA300, 6000 hours,
80% Front Tires, 40% Rear Tires, Work
Ready! \$139,000.**





2015 FORD F150 4X4 PICKUP. Excellent Condition, 160K Miles, Brand New Tires, Truck Needs Nothing, **\$24,000.** 401-413-5851



2022 ECONOLINE 10 TON DECKOVER. 20' + 5' 25 Foot Tag Trailer w/ Stand Up Ramps & Toolbox, **\$18,499,** Belchertown, MA 413-253-5456



Burrillville, RI • 401-633-4587

- Full Bucket Rebuilds • Cylinder Resealing
- Wear Plates • Adapter Replacement • Hardfacing
- General Maintenance • Computer Diagnostics
- On Site Hose Replacement



2002 GRADALL XL 3100. Runs Great, New Rear Tires, Just Serviced, Ready To Work, Comes With Digging, Ripping, And Grading Buckets, **\$23,000.** 508-509-3461



SWENSON SANDER. Good Condition, **\$1500 OBO.** 401-486-8552

BIG WHEEL TRUCK SALES
HEAVY DUTY TOWING AND RECOVERY



2011 FREIGHTLINER M2 HEAVY LONG CAB & CHASSIS: DETROIT DD13 12.8 410 H.P., RTO 1690 8LL MERITOR RT-46-160, 46,000 LB. FULL LOCKERS, 20KFRONT ON FLOATS. ONLY 358K MILES, 11X22.5 REARS ON BUDDS. A-1 CONDITION! **\$75,000.**



2006 VOLVO TWIN SCREW TRACTOR: VOLVO V12, 10 SPEED TRANSMISSION. RUNS GREAT. **\$15,500.**



2000 MACK RD 688 17.5 Aluminum Dump Body: 460 MACK, 8LL, 46 Rears on Air Ride, 551K Miles. Runs Excellent. Ready To Work. **\$39,500.**



In Stock:
10'-11' Highway
Plows.
Some Power Angle
w/Frames.

42 Quanaoag Road, East Freetown, MA

508-763-5927 • FAX 508-763-2369

www.BIGWHEELTRUCKSALES.COM

WE SELL HEAVY DUTY SNOW PLOW EQUIPMENT • WE EXPORT WORLD WIDE • HEAVY DUTY TOWING SPECIALIST

Highway
SS Sanders:
Used in Great
Shape.



METROPOLITAN TRUCK CENTER INC.

1074 Turnpike St. Stoughton, MA 02072

www.metropolitantruck.com

**MAKE YOUR
APPOINTMENT TODAY!**

866-514-1214

**GREAT
SELECTION
OF
BODIES IN
STOCK!**

EVERYTHING YOU NEED FOR A TRUCK BODY!!!



DURAMAG S-SERVICE BODIES



DURAMAG S-SERVICE BODY



DURAMAG S-SERVICE BODY



AIR-FLO DUMP BODIES



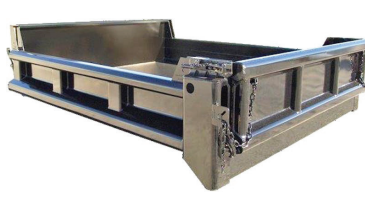
E-Z DUMP



RUGBY PLATFORM BODY



**GALION STAINLESS STEEL
DUMP BODIES**



GALION STEEL DUMP BODY



**SWAP HOGG SMOOTH SIDE
CONTAINERS**



CUSTOMIZED ALUMINUM BODIES TO FIT YOUR EVERY NEED



NORTHEASTERN PETROLEUM SERVICE & SUPPLY**617-522-8390 Ext 103****Financing Available - After Hours Call 617-696-1979****We Are Looking For Newer Tank Trucks To List, Dual Equipped, Tandems & Auto. Trans, Can Sell From Your Location****Jerry Mello Cell: 617-799-1461. Email: jerrym@nepss.com**

2000 PETERBILT 330 CAB & CHASSIS. 190,902 Miles, CAT 3126-R 300+ HP, 10 Speed Auto-Shift, 54,600 GVW, 12R22.5 Tires, Deluxe Cab, Frame Corroded, Chassis Only, No Tank, **\$9,000 OBO.**



2000 FREIGHTLINER FL70 ALMAC 2, 800 GAL. 2 COMPT. 2,000 Gal. & 800 Gal, CAT 3126, 6 Speed, V-Root STD VR Ticket Printer, Suck Out Line, Nice Alum. Piping, **\$18,900. B.O.**



2004 STERLING BOSTON TANK. 2700 Gallon, 137,509 Miles, CAT 3126, 6 Speed, L/C M71 Meter, **\$17,900**



1986 MACK T/A, 3, 800 GAL. 1 COMPT. BOSTON STEEL TANK. Mack 300, 10 Speed, 11R24.5 Tires, Mid-Com M-7-1 L/C Meter, 498, 349 Miles, Reframed 5 Years Ago, Works Daily, Best Offer Over **\$28,000.**



2000 FORD F750 BOSTON STEEL 2,700 GAL. 1 COMPT. CAT 2156, 7 Speed, V-Root 2" L/C M-7 Ticket Printer, 126,742 Miles, **\$21,000.**



2001 STERLING CONDOR 5,300 GAL BOSTON TANK. 1 Compartment, L/C Meter, CAT C-12 355 Hp, Jake Brake, 155,953 Miles, Allison Automatic, **\$65,000**

1996 VOLVO FE42.
84,043 Miles, Std Trans,
Boston 2700 Aluminum
1-C Tank, Std Ticket Printer,
33,000 GVW,
\$12,900



1996 KENWORTH T300 BOSTON STEEL 2,600 GAL 2 COMPT. 1,000 Gal & 1,600, Cummins 250 HP, 6 Speed, 11R22.5 tires, Neptune Ticket Printing Meter, Hannay Reel, Piping Has 2" Plug Valve In Rear For High Speed Pumping, Two Hose Tubes In Tank Sill, Cut Out 12V Switch On Rear Of Battery Box, 297,947 Miles, **\$19,000.**



1987 FORD LN8000 TECH WELD 3,150 GAL. 1 COMPT. 224,778 Miles, Automatic, Spring Susp, New 11R22.5 Tires, New Brakes, No Heavy Rust, Good Cond. For Age, **\$13,900**

1997 VOLVO FE. 113,162 Miles,
Automatic Trans, Tech Weld 3400
Aluminum 1-C Tank, Std Ticket
Printer, 39,000 GVW, **\$12,900**

**2002 KENWORTH T300 TRANS
TECH ALUMINUM
2,800 GAL 2 COMPT.
1,800 Gal & 1,000 Gal,
CAT 3126-246HP,
6 Speed Road Ranger **\$19,900****

TANKS & EQUIPMENT

COMMERCIAL GASBOY.
White/Black Suction Pumps, One Hose,
Gallons Only, Gas Or Diesel,
\$2,900 EACH

**SURPLUS TRUCK TANK PARTS 50%
Discount, CALL**

TANK TRUCK RENTALS- CALL

**** WANTED ****

**FOUR -
10,000 Gallon Tanks,
10 Ft In Diameter,
S Wall, Fuel Oil Tanks
With Stands**



**STOCK NEW
500 & 1000
Gal Dual
Wall Skid
Tanks. 10-GA,
Factory Paint
Can Be
Custom
Equipped Or
As Is.**

SOME TRUCKS AT CUSTOMER LOCATIONS-DEALER PLATE AVAIL TO DRIVE AWAY



THOMPSON TRACTOR LLC.

860-963-1918

A DL HOLKE COMPANY

15 RT. 171 WOODSTOCK, CT 06281

DAVE'S CELL 508-864-8874

THOMPSONTRACTORLLC.COM

**ALWAYS A BUYER
FOR CLEAN
LATE MODEL
EQUIPMENT !!**



2021 BOBCAT E45: HYD. THUMB & COUPLER, LONG ARM, 2 BUCKETS, 700 HOURS. \$69,000



2014 CASE 580 SN-WT: LOADED WITH 900 HOURS, PERFECT CONDITION! \$84,750

INVENTORY AT * WWW.THOMPSONTRACTORLLC.COM



2016 KUBOTA M8560: Cab Tractor w/ Loader, Full Cab With Heat & AC, \$58,900, Belchertown, MA 413-253-5456

**WOODS
SG40 STUMP
GRINDER.**
First Of Its Class
In Its Day, Just
Need Skidsteer
With High Flow,
\$4500.
860-817-0197



2019 WITZCO CHALLENGER, 35 Ton Low Bed, Non Ground Bearing, Pony Motor - Add On, Awesome Condition! \$34,900, Call Today 781-417-3018

**2020 CHEVY 2500
CREW CAB SILVERADO
CAB & CHASSIS 2WD.**
6.6L Gas, Auto, AC, Power Package,
Parts Only Title, 24,000 Miles, Runs
Mint, Will Sell Complete, Would Make
Great Donor Vehicle For A Hotrod
Project, **\$8,000.**,
Call With Any Questions,
Westport, MA 508-636-5050



RAPID PREP

Full Service Provider of Equipment,
Supplies and Consumables

NATIONWIDE EQUIPMENT
RENTALS, SALES & SERVICE

North Kingstown, RI
El Cajon, CA • Suffolk, VA
Lakewood, WA

877.529.2124 / rapidprep.com

RUST NEVER SLEEPS



ENHANCED PORTABLE BLASTER PACKAGE



SURFACE PREP
POWER TOOLS



SAFETY EQUIPMENT



STONEHAM



617-733-0773



2023 E350 12 FT BOX VAN. DRW, 7.3 L Gas, Step Bumper, E-Track, Pass Thru Cabin Door, Roll Up Rear Door, Cruise, Pwr Windows & Locks, #23023 \$63,999



2022 F250 UTILITY. 4X2, SRW, V8 Gas, Power Equipment, Running Boards, UpFitted Switches, #221971 \$67,500



2023 F650 DUMP. 7.3L V8 Gas, Automatic, 10' Dump Body, White Or Black, ON SALE



2022 BRONCO WILDTRAK 4X4



WE HAVE YOUR BRONCO



2022 BRONCO BADLANDS 4X4



2022 F150 BLACK OPS. 4X4, Crew Cab, Unique Specials



2022 F150 SUPER SNAKE SHELBY. Major Head Turner



2022 F250 PLATINUM CREW. 4X4, TREMOR Package, Diesel.



USED TRUCKS SPECIALS



2022 F350 CREW PLATINUM. 4X4, V8 Gas, Fisher Plow Frame, Strobes, V8 Gas, 5K Miles, ON SALE



2022 T250 CARGO VAN. Many To Choose From, 5K - 10K Miles



2021 FORD TRANSIT CONNECT. 41K Miles, ON SALE



COMMERCIAL
VEHICLE CENTER

www.StonehamFordTrucks.com

211 MAIN ST. STONEHAM, MA 02180

Mon-Fri 8:30am-8pm Sat 9- 5pm Sunday 11-4

ALL PRICES NET & INCLUDE ALL AVAILABLE REBATES TO DEALER

Call Bill Pollack 1-617-733-0773 or billpollack@stonehamford.com



COMMERCIAL
VEHICLE CENTER



CTE INC.**CONSOLIDATED TRUCK
& EQUIPMENT, INC.****Bigman****FELLING
TRAILERS****EXTREME
TRAILERS****Palmer
BODIES**
LIGHTS • MOUNTS**www.ConsolidatedTruckEquipment.com****32 INDUSTRIAL COURT, (RT.6) SEEKONK, MASSACHUSETTS.
ACROSS FROM SEEKONK SPEEDWAY.**

6 NEW MAC
26' STEEL DUMP
TRAILERS: HI LIFT
GATE, CENTER POINT
SUSPENSION, AUTO
TARPS, 11 X 24.5
TIRES, ALUMINUM
WHEELS.
CALL FOR PRICING.



BRAND NEW EAGER BEAVER
20XPT TRAILERS. 6' RAMPS.
BEST PRICING AROUND.
Please give us a call.

**IN STOCK NOW!**

MAC
28'ALUMINUM
SMOOTH SIDE
TRAILERS.
Air Ride
Suspension.
Please call for
pricing.



Brand New Challenger Body & Chassis,
26' Long, 54" & 60" Sides & Gate, Single
Point 60K suspension, Hardox Body,
Hi-Lift Gate, aluminum disc wheels,
electric load cover 16 Ply Tires. Please
Call For Pricing




**2002 BENSON 28' ALUMINUM
DUMP TRAILER.** Steel Frame,
Rayco Suspension, Electric
Tarp, 11x24.5 Tires. Very Good
Condition, Needs Liner, **\$24,500.**



NEW MAC 53' Front Axle Slide,
36" Deck Height. Tool Bx, 10' Upper
Deck. (it's the trailer on the bottom).
\$20,000

CALL US: AT 508-336-6215 • HOURS: 7:30 -5:30**WWW.TRUCKANDEQUIPMENTPOST.COM**



SALVADORE

— Family of Dealerships —

BUSINESS LINK
The fast lane for small business.

ON THE JOB

888-605-4346

SalvadoreRam.com

2022 RAM 5500HD C&C

TRADESMAN REG CAB 4X4

9' Landscape Body



60" CAB TO AXLE - 6.7L CUMMINS TURBO DIESEL - AISIN TRANSMISSION - CHROME APPEARANCE PKG - UCONNECT 5
STK: N22135

2022 RAM 3500HD 4x4

TRADESMAN CREW CAB

8' READING UTILITY BODY



6.4L HEMI V8 - CHROME APPEARANCE PKG - SNOW CHIEF PKG - ELECTRONIC TRANSFER CASE STK # N22165

2022 RAM 5500HD C&C

TRADESMAN REG CAB 4X4

16' DRY FREIGHT CONTAINER



120" CAB TO AXLE - 6.7L CUMMINS TURBO DIESEL - AISIN TRANSMISSION - TRADESMAN LVL 1 - CHROME APPEARANCE PKG - UCONNECT 3 - 19.5" ALOCA WHEELS
STK: N22133

2022 RAM 3500HD C&C

TRADESMAN REG CAB 4X4

9' STEEL DUMP



60" CAB TO AXLE - 6.4L HEMI V8 - CHROME APPEARANCE PKG - UCONNECT 3 - AISIN TRANSMISSION - SHIRT ON THE FLY TRANSFER CASE STK # N22163

COME SEE LARRY The Truck Guy!



**More Than 30 Years of
Commercial Truck Experience!**

2022 RAM 2500HD

TRADESMAN REG CAB 4X4

WITH 8' FISHER HDX!



6.4L HEMI GAS - CHROME APPEARANCE - TRADESMAN LVL 1 - SNOW CHIEF GROUP - ELECTRONIC TRANSFER CASE STK: N22167

2022 RAM 5500HD C&C

TRADESMAN REG CAB 4X4

9' AIRFLO PRO-CLASS DUMP!



60" CAB TO AXLE - 6.7L CUMMINS TURBO DIESEL - CHROME APPEARANCE PKG - TRADESMAN LVL 1 - SNOW PLOW PREP - STK# N22177

2022 RAM 5500HD C&C

TRADESMAN REG CAB 4X4

8'6" Painted Fisher Plow

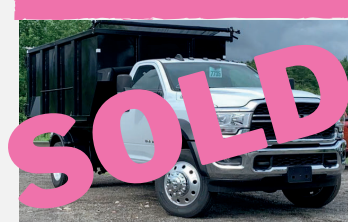


8'6" PAINTED FISHER XV2 - 6.4L HEMI V8 - SNOW CHIEF PKG - CHROME APPEARANCE PKG - TRADESMAN LVL 1 - ELECTRIC TRANSFER CASE STK # N22143

2022 RAM 5500HD C&C

TRADESMAN REG CAB 4X4

SWITCH-N-GO HOIST SYSTEM!



84" CAB TO AXLE - 6.7 CUMMINS TURBO DIESEL - CHROME APPEARANCE PKG - TRADESMAN LVL 1 - SNOW PLOW PREP - 19.5" POLISHED ALCOA WHEELS - CONTAINER BODY AVAILABLE STK: N22106

442 West Broadway, Gardner, MA 01440 | SalvadoreRam.com

NOT RESPONSIBLE FOR TYPOGRAPHICAL ERRORS. INVENTORY CHANGES FREQUENTLY. CALL FOR PRICING AND DETAILS.





**#1 RAM CHASSIS CAB
DEALER IN NEW ENGLAND!**

BUSINESS LINK
The fast lane for small business.

ON THE JOB

888-605-4346

2022 RAM 2500HD 4X4 TRADESMAN CREW CAB

NEW ARRIVAL



6.7L CUMMINS TURBO DIESEL - CHROME
APPEARANCE PKG - UCONNECT 5 W/8.4"
SCREEN - SNOW CHIEF GROUP STK: N22170

2022 RAM 3500HD C&C TRADESMAN CREW CAB 4X4

INCOMING & UPFIT READY!



60" CAB TO AXLE - 6.7L CUMMINS TURBO
DIESEL - AISIN TRANSMISSION - CHROME
APPEARANCE PKG - UCONNECT 3 - SNOW
CHIEF GROUP - BODIES AVAILABLE FOR
UPFITSTK: METR01

2022 RAM 2500HD 4x4 LIMITED LONGHORN

NEW ARRIVAL



6.7L CUMMINS TURBO DIESEL - LONGHORN
LEVEL 1 - AUTO-LEVEL AIR SUSPENSION -
UCONNECT 5 W/ 12" SCREEN - SNOW CHIEF
GROUP - RAM-BOXES STK: N22173

2022 RAM PROMASTER CUTAWAY LOW ROOF 11' READING CLASSIC

UTILITY SERVICE BODY



81" CAB TO AXLE - 3.6L V6 GAS - PREMIUM
APPEARANCE GROUP - UCONNECT 3 -
BACK UP CAMERA - WIDE POWER TOW
MIRRORS STK: HTE1

Trucks On The Lot And More On The Way!

More 2500/3500/4500
& 5500HD series trucks
in transit, pre-upfit and
ready to work! All body
variations available!
Call us for the right truck
for your business needs!

2022 RAM PROMASTER 3500

13.5' DURALITE VAN BODY!



104" CAB TO AXLE - 3.6L V6 GAS -
PREMIUM APPEARANCE GROUP -
UCONNECT 3 - WIDE POWER TOW
MIRRORS. STK: HTE2

2022 RAM PROMASTER 2500

159" WB HIGH ROOF!



PRE UP-FIT KARGO MASTER VAN
PACKAGE - PARTITION - SHELVING UNIT -
RUBBER FLOOR - SPEED CONTROL -
INTERIOR LIGHT GROUP STK: HTE3

2022 RAM 3500HD C&C TRADESMAN REG CAB 4X4

**INCOMING WITH 9' DURAMAG
DUMP BODY!**



60" CAB TO AXLE - 6.7L CUMMINS TURBO
DIESEL - AISIN TRANSMISSION - CHROME
APPEARANCE PKG - UCONNECT 3 - SNOW
CHIEF GROUP STK: HTE4

2022 RAM 2500HD TRADESMAN REG CAB 4X4

**NEW ARRIVAL! SYSTEM-ONE
LADDER RACK!**



6.4L V8 HEMI GAS - CHROME
APPEARANCE PKG - TRADESMAN LVL 1
- SNOW PLOW PREP - ELECTRONIC
TRANSFER CASE STK: N22182

442 West Broadway, Gardner, MA 01440 | SalvatoreRam.com

NOT RESPONSIBLE FOR TYPOGRAPHICAL ERRORS. INVENTORY CHANGES FREQUENTLY. CALL FOR PRICING AND DETAILS.





508-917-6178



2022 FORD F250 XL 4X4: With Fisher HD2 Snowplow, 7.3L V8, 10 Spd, Auto, Power Group, AC, stk#FM3481



2022 FORD TRANSIT 350 14' MORGAN VAN: DRW, 3.5L V6, 10 Spd Auto w/OD, AC stk#FM3486



2022 FORD F250 XLT 4X4: 6.2L V8, 6 Spd Auto, Rear Camera, AC, Power Group, Snow Plow Prep Pkg, Stk#FM3454



2 IN STOCK

2022 FORD F-650 DEJANA FLATBED RACK. DRW, 7.3L V8, 6 Spd Auto, Power Group, AC, Back-Up Camera, Thiemann Lift Gate, stk#FM2784



4 IN STOCK

2022 FORD E-450 SD UTILIMASTER PANEL VAN. 7.3L 8 Cyl. 6 Spd, Power Group, AC, Back-Up Camera, Walk-Thru, Fold-Up Alum. Shelving, stk#FM2834 \$82,170.



22 IN STOCK

NEW TRANSIT T350 EXT. LENGTH VAN: Hi Roof, 3.5L V6, Power Group, Back Up Camera, A/C, Barn Doors, 22 In Stock, AWD & RWD



15 IN STOCK

2022 F650 DONOVAN 5-6 YARD DUMP BODY: 1 Coal Chute



2 IN STOCK

2021 F350 SUPER DUTY XL 4x4 DUMP BODY: 6.2L, 14,000# GVW, Power Group. Stk#FM3317



2023 FORD F650SD DUMP: 6.7L V8 Power Stroke Turbo Diesel, Auto, Pioneer Tarp, Stk#FM3421



12 IN STOCK

2022 F350 4X4 KNAPHEIDE SERVICE BODY: 6.2L GAS, POWER GROUP, STK# FM3354, 12 IN STOCK- RED, WHITE, BLUE.



2022 E350 4X2 DURACUBE 10' CUTAWAY VAN: FULL POWER, GAS. Stk.#FM3274



2022 FORD TRANSIT 350 CUTAWAY BOX: DRW, V6, 10 Spd Auto w/OD, AC, 11,000 LB GVW, stk#FM3435



**1200 WORCESTER ROAD
(Rt.9 East)
FRAMINGHAM, MA 01701**



www.mcgobernfordofframingham.com





AREA HYDRAULICS

810 Quaker Hwy. Uxbridge, MA

508-278-6670

We Make Hose Assemblies

Cylinder Resealing

After Hours Service Available!





WHELEN®

Buyers

PRODUCTS COMPANY





BRANSON TRACTOR--36HP, Like New, 280 Hours,
\$16,000 860-928-5748

**2020 RAM 5500 HD
TRADESMAN QUAD CAB**
4WD Reading Utility Body,
6.7L Cummins Turbo Diesel,
19,500LB GVW, 1 Owner. 8K Miles,
Stock#N22141X, **\$69,949**,
Gardner, MA,
888-605-4346





2012 CASE 580N. 2400 Hours, 4X4, Extendahoe, 24" Trench Bucket, EROPS W/ Heat, Aux Hydraulics, New Rear Tires, Serviced, Very Good Condition, **\$49,900.** 603-944-8202



2020 HI-WAY STAINLESS SANDER. 12 Feet, 10 Yards, Good Bearings, Chain Has Fenders And Tanks, **\$7500.** Leominster, MA 978-230-1504

BEAM TRUCK & BODY INC.

RI Dealer #647

433 CUMBERLAND HILL ROAD, WOONSOCKET, RI 02895

401-767-2639

NEW - USED & RECONDITIONED DISPOSAL EQUIPMENT



2010 INTERNATIONAL 7400:
42,000 MILES W/ HEIL 22 YD. AUTOMATED PACKER. **\$60,000** WILL SPLIT.

**IN STOCK READY TO INSTALL
NEW EQUIPMENT**

- * PHT22L AMERICAN PALFINGER
- * T29ST AMERICAN PALFINGER
- * T40S AMERICAN PALFINGER
- * STELLAR FLEX 36
- * STELLAR SLIDERS 20S



2004 KENWORTH T300:
396,914 MILES, AMERICAN 75,000# ROLL-OFF, CAT C12 W/ FULLER 8LL, 60,000# GVW
CALL FOR MORE DETAILS !



2010 MACK MR 20 & 46 ALLISON W/ NEW WAYNE 40 YD. FRONT LOADER, 26,351 MILES.
\$164,000 W/ FET



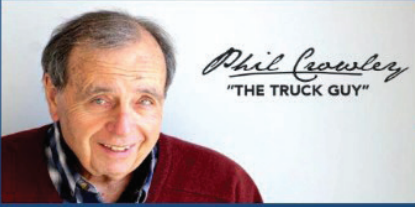
1998 INTERNATIONAL 4900, 250HP, DT466, STAND. TRANS., FRONT MOUNTED PUMP, 2015 AMPLIROLL 20K HOIST MOUNTED. PINTLE HITCH, FRESH PAINT ON CAB & HOIST, ROLL-RITE COVERING SYSTEM, HANDLES 12-14' CONTAINERS. HOOK HEIGHT IS 54", CANNOT BE MADE ADJUSTABLE. 65,472 MILES. **\$35,000**



2014 FREIGHTLINER : UNDER CDL, 18' LUMBER HAULER, STANDARD TRANS., CUMMINS ENGINE, 188K MILES. **\$45,000**

WWW.BEAMTRUCK.NET



PLACE MOTOR Inc.*The "RIGHT PLACE" Since 1923***COMMERCIAL TRUCKS**

PHIL CROWLEY
866-449-7482 EXT. 213



19 Thompson Rd.
Rte. 193
Webster, MA.

SNOW SEASON IS JUST UPON US WE HAVE YOU COVERED



**2019 FORD F-150 SUPER CAB 4X4 ,
XLT TRIM, 5.0L V-8 ENGINE, ONE OWNER !**



**2020 FORD F-150 XL 4X4,
POWER WINDOWS, POWER LOCKS,
29K FOR MILES. CALL FOR MORE DETAILS !**



**2022 FORD RANGER CREW CAB
LARIAT !**



**2023 FORD F-450 CUTAWAY
SPARAT BODY,
14 FT, LADDER RACK AND MORE !
CALL FOR MORE DETAILS.**



**2021 FORD F-150 SUPER CREW 4X4
LARIAT,
502A PACKAGE, HYBRID ENGINE,
MOON-ROOF,
9K FOR MILES, PLUS MORE ! CALL
FOR DETAILS !**



**MASSACHUSETTS OLDEST FORD
DEALER SINCE 1923**



PLACE MOTOR Inc. The "Right Place" Since 1923 **COMMERCIAL TRUCKS**

Call Phil Crowley "The Truck Guy"
866-449-7482 ext. 213

19 Thompson Rd.
Rte. 193 Webster, Ma.



2017 FORD F-550 4X4, XL TRIM, V-10 GAS, 19' STEEL CENTURY BODY, ONLY 15K FOR MILES !



2018 FORD F-250 CREW CAB 4X4 LIMITED TRIM LEVEL 58K MILES, ONE OWNER !



2019 FORD F-150 CREW CAB STX PACKAGE, 34K, ONE OWNER, 2.7L V-6 ENGINE. CALL FOR MORE DETAILS !



HURRY SUPPLY GOING DOWN !

2020 FORD T-250 TRANSIT VANS SEVERAL TO CHOOSE FROM !



2020 FORD RANGER CREW CAB 4X4, XLT TRIM, 20K FOR MILES !



2019 FORD F-150 4X2 REG CAB, 8' BED, XL TRIM, PW/PL, CRUISE CONTROL AND MORE ! 16K MILES. CALL FOR MORE DETAILS.

WWW.PLACEMOTOR.COM



DEJANA
Truck and Utility Equipment



**COMMERCIAL
VEHICLE CENTER**



ANDERSON MOTORS INC.


GMC

MICRO BIRD
by GERRARDIN

BLUE BIRD BUS SALES OF NEW ENGLAND
*** YOUR EXCLUSIVE VOLVO TRUCK DEALER ***

VOLVO POWER

2024 VOLVO VHD84B300-D13, 500HP, 14SPD. AUTO, 18' HEAVY DUTY STEEL DUMP, HIGH LIFT-GATE. *INCOMING*


INCOMING

2023 VOLVO VNR64T300-D13, 435HP, I-SHIFT AUTOMATIC, 12,000# FRONT AXLE / 40,000# REAR AXLE, REGIONAL DISTRIBUTION.


INCOMING

2024 VOLVO VHD84F300-D13, 500HP, 14SPD. I-SHIFT, AUTOMATIC, 20,000# FRONT AXLE / 46,000# REAR AXLE, STEERABLE PUSHER.



2012 INTERNATIONAL 4300, MAX FORCE ENGINE, AUTOMATIC TRANS., 25,950 GVW, AIR-BRAKES, LONG WHEEL BASE, NEEDS FUEL SYSTEM WORK, 118K MILES. #22008A



2007 GMC T7500, 25,950 GVW, LONG WHEEL BASE, HYD. BRAKES, ISUZU 7.8L ENGINE, ALLISON TRANS., 382K MILES. #220065A


INCOMING

2023 AUTOCAR ACTT42, SINGLE AXLE, YARD JOCKEY, DIESEL AUTOMATIC, A/C, HYDRAULIC 5TH WHEEL.


INCOMING

2023 RHODES RSS2660-2 26' STEEL END DUMP TRAILER, AIR HIGH-LIFT DOUBLE ACTING TAIL GATE, HD SPECS.


INCOMING

2023 RHODES ASSS2660-2 26' ALUMINUM END DUMP TRAILER, STEEL FRAME, SINGLE POINT SUSPENSION. INCOMING !


INCOMING

2023 FORD E-450, GAS, 14 PASSENGER INCLUDING HANDI-CAP LIFT SHUTTLE BUS. NON CDL LICENSE.



2016 BLUE BIRD BBCV 71 PASSENGER SCHOOL BUS, CUMMINS DIESEL, HYD. BRAKES, LOW MILES. #220100A


INCOMING

2023 FORD TRANSIT 14 PASSENGER COMMERCIAL SHUTTLE BUSES, GAS, INDIVIDUAL SEATING.


INCOMING

2023 CHEVY G5 14 PASSENGER MFSAB, GAS, AUTOMATIC, NON CDL.

401-434-5900

WWW.ANDERSONMOTORS.COM

EMAIL • SALES@ANDERSONMOTORS.COM

170 AMARAL STREET • EAST PROVIDENCE, RI 02915

HABLAMOS ESPAÑOL





2000 KENWORTH T800.
Cummins 500 HP, 8LL, Hard Steel Body, All New Brakes, 2 New Front Tires, All Aluminum Rims, 3 Stage Jake Brake, Dual Stacks, Brand New Dump Piston On Body, Richard's Canvas, Needs Miscellaneous Stuff, Only 225K Miles, Asking **\$68,500.** Norwalk, CT 203-858-3516



2014 LEEBOY 1000F PAVER.
8-13' Propane Heated Screed, Only 937 Hours, Like New, **\$67,000.** Franklin, MA 508-326-2893

CAREY AUTO
INC
TRUCK EQUIPMENT
SALES



37 County Road
Route 106
Plympton MA 02367
PH: 781-582-1378
FAX: 781-585-4438



2014 INTERNATIONAL ALUMINUM TANK TRUCK: AUTOMATIC, 79K MILES, CALL FOR PRICE AND SPECS.



2015 ISUZU: GAS, AUTO., 165K MILES. NEW 12' SWITCH-N-GO SYSTEM. \$42,000 ALSO AVAILABLE: 2009 ISUZU DIESEL.

SALES,
SERVICE,
PARTS

CALL TOLL FREE: 866-637-4076
WWW.CAREYTRUCKEQUIPMENT.COM

CUSTOM METAL
FABRICATION
AVAILABLE

HOLLISTON TRUCK

1569 WASHINGTON ST, HOLLISTON, MASS 01746
WWW.HOLLISTONTRUCK.COM • CALL 508-429-7678

**WANTED :
GOOD USED
DUMP BODIES**

LARGE SELECTION OF UNDER CDL TRUCKS !



1988 INTERNATIONAL 9300: CAT3406-450HP, JAKE BRAKE, 9SPD., 54K GVW, AIR-SUSP., DBL FRAME, 11R 24.5 TIRES, AIR-BRAKES / SEATS, A/C, PTO, 22' ROLL-BACK BODY. **\$35,000**



2007 FORD F-650: CUMMINS ISB-260HP, PRE-EMISS., 120K MILES, ALLISON 3500RDS AUTO, 26K GVW, SPRING SUSP., SINGLE FRAME, 11R 22.5 TIRES, AIR-BRAKES, A/C, ELECTRIC LIFT, 16' STEEL DUMP, BARN DOORS, TARP, PINTLE. **\$40,000**



2008 INTERNATIONAL 7400: DT466-280HP., 132K MILES, ALLISON 3500RDS AUTO, SPRING SUSP., 5.64 GEARED RATIO, 315 / 80R 22.5 FRONT TIRES, 12R 22.5 REAR TIRES, DBL FRAME, LOCK DIFF, AIR-BRAKES, A/C, PTO/CENTRAL HYD., 10' ALUM. DUMP, 1 CHUTE, AIR-GATE, CALCIUM TANK, PLUMBED FOR SPREADER. **\$45,000**



2012 FORD F-650: CUMMINS ISB-260HP., 76K MILES, ALLISON 3500RDS AUTO, 26K GVW, SPRING SUSP., SINGLE FRAME, 11R 22.5 TIRES, AIR-BRAKES, A/C, PTO, 9' STEEL DUMP, 3 CHUTES, TARP, PINTLE, AIR-TO-REAR. **\$58,000**



2013 INTERNATIONAL 4300: DT466-260HP., 43K MILES, ALLISON 3500RDS AUTO, 26K GVW, SPRING SUSP., LOCK DIFF., SINGLE FRAME, 11R 22.5 TIRES, AIR-BRAKES / SEAT, PTO, 10' STEEL DUMP, 1 CHUTE, TARP, PINTLE HITCH, AIR-TO-REAR, TOOL BOX. **\$60,000**



2009 INTERNATIONAL 7400-DT530, 315HP, 153K MILES, ALLISON 3500RDS AUTO, 56K GVW, SPRING SUSP., ENGINE BRAKE, ENGINE BRAKE, 5.64 GEARED RATIO, 315/80R 22.5 FRONT TIRES / 11R 22.5 REAR, DBL FRAME, AIR-BRAKES, A/C, 14' STEEL DUMP, ELECTRIC TARP, AIR-GATE/ **\$53,000**

THE DUMP TRUCK SPECIALISTS

WWW.TRUCKANDEQUIPMENTPOST.COM



CANDIA TRAILER

www.CandiaTrailer.com
& LANDSCAPE EQUIPMENT CO
All Prices Cash & Carry! Installation Available!

SAVE TIME & FUEL • WE SHIP!

1-866-761-0196

NH 603-483-2541 • Fax 603-483-2842

35 High St, Candia 4 Coners, Candia NH
10 Minutes East of Manchester, NH • 1 hour From Boston

**Preseason
Trailer Sales
In Stock
Ready To Go**

TRAILERS • TRAILERS • TRAILERS



DUMP TRAILERS. 12', 14', 16 Ft.
Twin Piston, Powder Coat, Ramps,
Battery, **Ready To Go**



LANDSCAPER TRAILERS. Dual
Axle & Single Axle, **Ready To Go**



**ALUMINUM CAR HAULER
TRAILER.** 10,000 GVW,
American Made



7 TON EQUIPMENT TRAILER .
20' Power Tilt, Tandem Axle,
USA Made



HOMESTEAD Enclosed Trailers.
Stocking 8 Ft – 24 Ft



UTILITY TIRE & WHEEL.
New In Stock, All Sizes,
Call With Your Specs



**ALUMINUM LANDSCAPE
TRAILERS**



DECK OVER UTILITY TRAILER.
With Mounted Spare Tire



EQUIPMENT TRAILER.
Beaver Tail, Ramps

- ALUMINUM TRUCK BODIES -



**DURA MAG ALUMINUM FLATBED
BODIES.** Industry's Highest Quality, Call
With Your Specs. **Starting @ \$2,895**



ALUMINUM DUMP BODIES.
Complete Sub Frame, Power Pac,
LED Lights.



**CTECH – Drawer Units That Fit
Into Your Utility Body**



ENCLOSED UTILITY



**ALUMINUM RACK BODY
POWER RAIL GATE**



ALUMINUM SERVICE BODY



CANDIA TRAILER

www.CandiaTrailer.com
& LANDSCAPE EQUIPMENT CO
All Prices Cash & Carry! Installation Available!

SAVE TIME & FUEL • WE SHIP!

1-866-761-0196

NH 603-483-2541 • Fax 603-483-2842

35 High St, Candia 4 Corners, Candia NH
10 Minutes East of Manchester, NH • 1 hour From Boston

**"Helping
You With
The Right
Fit"**



IN STOCK GALION DUMP BODIES. 8 Ft Thru 16 Ft. Call With Your Specs Today



8' EZ Slide In Dump Body. With Head Board, Tarp & Hoist, **\$3,995**



7' X 12' Mesh tarp & Hardware Kit **\$259**



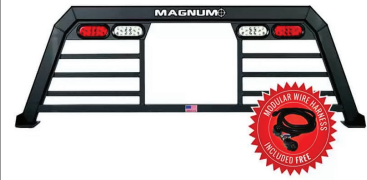
HARSH HOIST

2.5 to 45 Ton, Single or Double Piston. Convert a Flatbed Body to a Dumping Body. HOIST & POWER PACK

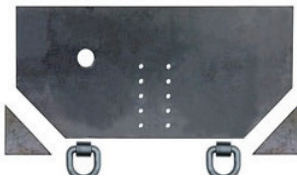
Starting @ \$1,685
USA Made



BUTCHER Dump Power Pac with control Gravity Down **\$525**



HEADACHE RACKS – Aluminum, USA Made, Available w/ Window Cut Out Or Without, Hi & Low Profiles, LED Light Options, Sport Series And Pro Series



Pintle Plate **\$209**



15 Ton Pintle Hook **\$59** – WE SHIP



Retractable Step
One Step **\$119**
Two Step **\$129**
Three Step **\$139**



Black I-Pack Toolbox **\$2,995**



TAKE OFF BEDS.
Ford – GM – Dodge
Call With Your Specs



Shuttle Door
\$199

Starting @ \$489



TRANSFER TANK & PUMP. Made In USA, 12 Ft Hose, Nozzle Gun, 15 gpm, In Stock – We Ship



FILL RITE \$379

UNDERBODY TOOL BOXES

Powder Coat Diamond Aluminum Door



Diamond Aluminum Door





**2003 CAT
420 DIT. SN#
PBLN08181, One
owner, 10,400 Hrs,
Extendhoe, Pallet
Forks, 1' Trenching
Bucket, 2' Digging
Bucket, \$27,500.
508-245-2381**



**FUEL TANK. 110 Gallons, Excellent Condition, \$500.
860-617-4569**



**Rim 22.5 & 24.5 - \$125
Floats - \$150
*Includes Valve Stem**

**ACUSHNET WHEEL
POLISHING
Used Rims Available
508-961-7528**

**62 SOUTH MAIN ST.,
ACUSHNET, MA**



Service & Mechanic On Site



**1999 ROGER CONSTRUCTION TRAILER 20 TONS: With Hydraulic
Rams In Back, Good Tires, \$14,000 Or Best Offer, 401-255-4078**



**JOHN DEERE MODEL 2950. 90 HP, 4WD,
9000 Hours, \$21,000. 860-428-6189**

CTE INC.

**CONSOLIDATED TRUCK
& EQUIPMENT, INC.**

www.ConsolidatedTruckEquipment.com

Bilbeam

**FELLING
TRAILERS**

**EXTREME
TRAILERS**

**Palmer
BODIES**

**32 INDUSTRIAL COURT, (RT.6)
SEEKONK, MASSACHUSETTS.
ACROSS FROM SEEKONK
SPEEDWAY.**

HONEST BOB'S JUNK YARD TRAILER SALE



**14' STEEL DUMP
BODY COMPLETE
W/HOIST &
LOAD COVER.
\$7,500 OBO**



**2019 MAC 28'
ALUM. DUMP
TRAILER: Roll-Over
Damage, Air Ride,
Alum Frame,
\$18,500.**



**2002 BENSON
26' STEEL ROCK
TRAILER: ½
Round Center Point
Suspension, Electric
Tarp, \$24,500.**



**2004 BENSON
26' STEEL ROCK
TRAILER: ½
Round Center Point
Suspension, Electric
Tarp, \$24,500.**



CALL US: AT 508-336-6215 • HOURS: 7:30 - 5:30



Support Breast Cancer Research and Awareness



HILLVIEW EQUIPMENT

SALES & RENTALS 24/7

CALL JUDE 1-508-498-0777

www.HillviewEquipment.com

11 Commercial Way
Milford, MA 01757

Rt. 495 to exit 19,
Route 109W,
Left to Birch St,
right to Industrial Dr.
Left to
Commercial Way

EXCELLENT EQUIPMENT * OUTSTANDING PRICES!
WE HAVE EQUIPMENT!



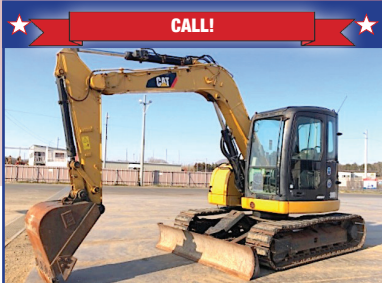
★ CALL! ★

IHI-30
PERFECT NURSERY
PIECE, LOW HOURS,
DUMP BODY.



★ CALL FOR PRICING! ★

CAT 330DL
OVER
40K INVESTED!



★ CALL! ★

CATERPILLAR 308E2: AUX. HYD.,
BLADE, STREET PADS.



★ 6 TO CHOOSE FROM ★

CATERPILLAR 311 FLRR
ALL LATE MODEL'S, CALL!



★ CALL FOR PRICING! ★

CAT 311DL: NO EMISSIONS.

NOS FINANCIAMOS PARA EMPREITEIROS BRASILEIROS!!



★ CALL FOR PRICING! ★

HITACHI ZX135: BLADE, BUCKET,
LOW HOURS.



★ CALL! ★

2008 CAT 950H: LOW HOURS, (For the
Year), GREAT OVERALL CONDITION.



★ CALL FOR PRICING! ★

HITACHI ZX120
AUX. HYD., LOW HOURS.



★ 8 TO CHOOSE FROM ★

KOMATSU PC78US
CALL!



★ CALL! ★

CAT 320
LIKE NEW MACHINE.



★ CALL! ★

HITACHI ZAXIS-70: LIKE NEW
CONDITION, BLADE, STREET PADS.

****WE GUARANTEE TO HAVE THE BEST SELECTION OF USED EQUIPMENT AROUND****



CERRONE

Chevrolet - Buick - GMC Of Attleboro
A Priority Automotive Dealership

ROUTE 1, BETWEEN 95 + 295
SOUTH ATTLEBORO, MA

508-761-4800

PLENTY OF NEW GMC TRUCKS AVAILABLE



**2022 K1500 CREW CAB
ELEVATION**



ELEVATION PACKAGE PLUS.
#NZ577624

\$56,440

2022 K2500 UTILITY



**ALUM. BODY, SPRAY LINER, BACK-RACK,
 CONV. PKG., TRAILER HITCH + BRAKE,
 PLOW PREP. #22151G**

\$67,232

2022 K1500 CREW CAB SLT



PREMIUM PLUS PKG., SUNROOF.
#NZ558832

\$64,545

**2023 K3500 CREW CAB SLT
 DURAMAX DIESEL DUALY**



**SLT PREMIUM PKG., SUNROOF,
 5TH WHEEL PKG., PLOW PREP.**
#PF135627

\$84,010

2022 SIERRA 4X4



PRO. VALUE PKG., CONNECTIVITY PKG.
#22219G

\$43,785

**2022 K3500 CREW CAB
 DUMP TRUCK**



**14,000 GVW, CONV. PKG.,
 8' DUMP, HITCH, COVER. #22211G**

\$71,290

2022 K1500 DOUBLE CAB SLE



DRIVER ALERT PKG.
#22127G

\$46,955

2022 K1500 DOUBLE CAB



**CONV. PKG., SPRAY LINER, V-8,
 X31 OFF ROAD PKG. #22205G**

\$50,640

2023 K2500 CREW CAB AT4



AT4 PREMIUM PKG., PLOW PREP.
#PF138290

\$84,855

**** PLUS OVER 50 MORE AVAILABLE ****



WWW.CERRONEGM.COM
WWW.CERRONETRUCKSALES.COM



CERRONE**Chevrolet - Buick - GMC Of Attleboro
A Priority Automotive Dealership****ROUTE 1, BETWEEN 95 + 295
SOUTH ATTLEBORO, MA****508-761-4800****PLENTY OF NEW CHEVROLET TRUCKS AVAILABLE****2022 K1500 CREW CAB LT****Z71 OFF ROAD PKG., V-8,
TRAILER BRAKE. #22196H****\$56,760****2022 K3500 RACK BODY****14,000 GVW, CONV. PKG., PLOW PREP.,
TRAILER HITCH + BRAKE. #22208H****\$62,758****2022 K3500 HIGH COUNTRY
DURAMAX DIESEL****12,250 GVW, SAFETY PKG.,
HIGH COUNTRY DELUXE,
5TH WHEEL PKG. #NF363616****\$83,715****2022 K1500 CREW CAB LTZ
DURAMAX DIESEL****CONV. PKG., LTZ PLUS PKG. #22221H****\$63,385****2022 K2500 CREW CAB
UTILITY BODY****CONV. PKG., TRAILER HITCH AND BRAKE,
PLOW PREP., ELEC. LOCKS, STROBES,
SPRAY LINER. #NF346137****\$69,283****2022 K3500 HIGH COUNTRY
DURAMAX DIESEL DUALY****HIGH COUNTRY DELUXE,
SUNROOF, MULTI-FLEX
TAILGATE. #22223H****\$84,565****2022 K1500 CREW CAB LTZ****SUN-ROOF, Z71 OFF ROAD
SUSP., LTZ CONV. PKG.
#22224H****\$64,360****WWW.CERRONEGM.COM
WWW.CERRONETRUCKSALES.COM**

THIS AD IS COPYRIGHTED & OWNED BY TRUCK AND EQUIPMENT POST





Custom Gates Hydraulic Hose Assemblies & Fittings Full Truck Service, Maintenance & Repair

All Makes & Models

Over 20 Years Experience Specializing In Mack's

Marshall Cefole - **978-467-7993**

Randy Rameau - **978-423-2889**

10 Gardner Road, Winchendon MA 01475



1985 MACK RD. 350 Mack, 13 Speed, \$15,000,
413-246-0880



**2009 INTERNATIONAL 4300
DURASTAR.** DT466, MaxxForce, Auto,
Impeccably Maintained, 143K Miles, 10'
Fold-Down Sides, 2 Toolboxes, AM/FM, PW, PS, AB,
Air Ride, Chrome Mirrors & Bumper, Pintle Plate,
Tow Hitch & Elec Plug, AC, Under CDL,
No Body Rot, Owner Retiring, Have All
Maintenance Records, Perfect Cond.,
\$38,580. 401-255-4008,
tomboscoLA@gmail.com



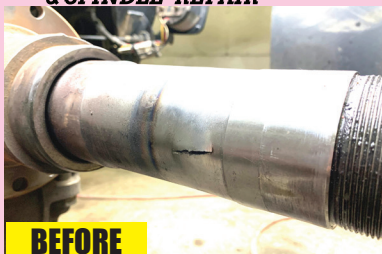
9 FT FISHER MINUTE MOUNT 2 SNOWPLOWS.
3-Plug Systems, Good Condition, Tested And Work, Will
Demonstrate, **\$1600 & Up.** Wire Harness Available Extra
Cost. 401-297-6581



2005 FREIGHTLINER M2 BUSINESS CLASS.
Allison Auto, 460 HP, Bigger Motor Mercedes Diesel, Brand New
Brakes All Around, 275K Miles, Excellent Work Truck, Jake Brake,
AC, Cruise, Hard Steel Body, Chrome Alum Rims All Around, Hitch &
Air To Pull Trailer, Asphalt Chutes On Tailgate, Asking
\$59,000. Norwalk, CT 203-858-3516

CTAXLE
& SPINDLE REPAIR

CT Axle & Spindle Repair Ellington, CT 06029 • **860-281-4454**



BEFORE



AFTER

**MACK PRESS-IN SPINDLE REPLACEMENT
DRAWN OUT, SWEATED IN**



BEFORE

**TRAILER SPINDLE REPLACEMENT
WELDED IN PLACE**



BEFORE



AFTER

**TRUCK DRIVE SPINDLE REPLACEMENT
WELDED IN PLACE**



AFTER

• Drive Spindles From 1 Ton To Class 8 Trucks • Trailer Spindles From 3,500# To Class 8 Axles
Spindles can also be repaired by welding up the worn area and then remachining to factory spec.

This includes tracing threads or remachining new threads.

WELDING AND FABRICATION ALSO AVAILABLE

A Completely Mobile Spindle Repair System. We Come To You! Serving CT, MA, RI & the Northeast
Visit Our Website At: ctaxleservice.com



Commercial
Vehicle Center



WE SUPPORT BREAST CANCER AWARENESS MONTH



**2022 FORD F750 SD PALFINGER
HOOK-LIFT: 6.7L V8, AUTO,
STK#N10588**



**2019 E-350 CUTAWAY KNAPHEIDE
ENCLOSED UTILITY: 6.2L SFI V8,
POWER GROUP, ONLY 20K MILES,
STK#P7858**



**2019 F550 CREW CAB DRW 4X4: READING
CLASSIC II ALUMINUM SERVICE BODY, SS
BOSS V-PLOW, POWER GROUP, ONE OWNER,
LOW MILES, STK#N107258**



**2020 FORD F550 SD 4WD CAB &
CHASSIS W/BOSS SNOWPLOW:
6.7L 8 CYL., 11K MILES, ONE
OWNER, STK#P7683**



**2016 FORD SD F550 4WD DUMP:
6.7L V8, AUTO, 42K MILES,
STK#N10450A**



**2022 FORD F350 DRW SUPER CAB
DURAMAG UTILITY: 6.2L 8 CYL,
AUTO, ONE OWNER, 9K MILES,
STK#P7825**



**2022 FORD E-TRANSIT T350: AUTO,
AC, NAV, POWER GROUP, WALK-THRU,
REAR CAMERA, STK#N10612**



**2018 FORD TRANSIT T-250 FULL
SIZE CARGO VAN: 6 CYL, AUTO,
9K GVW, 25K MILES, STK#P7791**



**2019 FORD F250 SD CREW CAB
LARIAT 4WD: 6.7L V8, LEATHER,
LOADED, ONE OWNER, 30K
MILES, STL#P7226A**



**2016 FORD TRANSIT T250 CARGO
VAN: 3.5L 6 CYL., ECO-BOOST,
AUTO, 9K GVW, ONE OWNER, SHELF
& BIN PKG, BACK-UP CAMERA,
STK#106277AA**



**2015 FORD F350 SD CREW CAB 4WD
LARIAT W/CAP: ALTITUDE EDITION
CUSTOM, 6.7L 8 CYL, AUTO, MANY
EXTRAS! 24K MILES, STK#P7714**



**2019 FORD F150 SUPERCREW RAPTOR
4WD: ONLY 38K MILES, SUNROOF,
NAV, ALLOYS, CAMERA, STK#P7589**



11 PILGRIM HILL ROAD Plymouth, MA 02360

www.COLONIALFORD.com

America's Hometown Dealership

*all rebates to dealer. must finance with Ford Motor Credit.

0% financing in lieu of all rebates* Discounts & Dealer Discounts.



BRAKE & CLUTCH



TRUCKCOUNTRY.US

USED TRUCK PARTS



ONLINE 24-7



WE INSTALL



RUGBY DUMP BODIES & FLATBEDS



WE INSTALL



CADET FLATBED BODIES IN STOCK



1-860-423-6004

Mon-Fri 8-5

1535 WEST MAIN STREET, WILLIMANTIC, CT

Sat 9-1



Authorized Fisher
Snow Plow Dealer



HILLSIDE MOTORS

**800-D American Legion Highway (Rt. 177)
Westport, MA 02790
508-636-5050**

Financing
Available
-Others in Stock

Family Owned & Operated Since 1969

NEVADA TRUCK



2003 CHEVY SILVERADO 2500 HD EX CAB 4X4. LT Pkg, 6' Bed, Duramax Diesel, Allison Auto, PW, PL, Tilt, Cruise, 6-Passenger, P/Seat, Lifetime Nevada Truck, Just Shipped In, Rust-Free, 161K Miles, Excellent Condition, \$23,900.

DURAMAX



2500 4X4



2011 CHEVROLET 2500 HD 4X4 SUBURBAN. 6.0L V8, Auto, AC, Fully Loaded, Camper Mirrors, 9-Passenger, Rust-Free Southern Truck, 268K, One Owner, Employee's Truck, Fleet Maintained, Excellent Condition, \$9,400.

9 PASSENGER

4x4



LongBED

2015 CHEVROLET SILVERADO 2500 DOUBLE CAB 8' BED 4x4. 6L V8, Auto, AC, PW, PL, 6-Passenger, Fully Loaded, 215K, Fleet Maintained, One Owner, Rust-Free Southern Truck, \$19,500.



2012 CHEVY 8' LONGBED.
Will Fit 2007-2014. Spray-In Bedliner, Clean Bed,
\$2,200.



2015 CHEVROLET SILVERADO 2500HD REG. CAB 4X4.
Longbed, LT PKG. 6L V8, Auto, AC, PW, PL, Tilt, Cruise, Cloth Int, Rear Defrost, SS Running Boards, Tonneau Cover, Spray-In Bedliner, Alum. Wheels, 43K Miles (tmu), Rust Free, Impeccable Condition,
\$32,500.



2017 GMC 8' LONG BED TAKE-OFF BED. Clean & Rust-Free, Will Fit 2007- 2019, Cheap Fix To Replace Your Old Bed, **\$2,500.**



USED FISHER SNOWPLOWS FOR SALE. 7'6" - 8'6"
In Stock, Straight Blades & V-Blades Available, **Prices Starting at \$1,500. Limited Supply Available.**




603-905-9036

132 Pierce Rd. (Rt. 125)
Barrington, NH
(17 miles from Portsmouth)


603-623-8873

1400 South Willow St.
Manchester, NH
(1 hour from Boston)

GET THEM WHILE THEY LAST!


2016 PETERBILT 579 SLEEPER.
Double Bunk, 450 HP, Cummins
ISX15, 52K GVW, 652K Miles,
stk#253254, **\$64,900.**



2017 IH 4300 26' DRY VAN. Cummins
240 HP, Allison Auto RDS, Lift Gate,
Roll-up Rear Door, 25,999 GVW,
149K Miles, stk#261835, **\$79,900.**



2019 FREIGHTLINER BU CLASS
w/Alum Plate Glass Body & Fassi
PK1101 Knuckle Boom Crane. DD13
350 HP, 10 Spd, 54,700 GVW, 113K
Miles, stk#252147, **\$125,950**



2006 FORD F750 SD C&C 4x4.
CAT C7 Diesel, 6 Spd, 120" CA,
Air Brakes, 33K GVW, 231K Miles,
stk#257901, **\$19,900.**



2018 KENWORTH T880. Cummins
X15 450 HP, Auto, 36,200 GVW, Air
Brakes, Alum Wheels, 305K Miles,
Fancy Truck, stk#271392, **\$67,900.**



**2018 IH 4300 26' Van W/Roll-Up
Rear Door.** Cummins B6.7 220 HP,
Allison Auto, 272" WB, 25,999 GVW,
192K Miles, stk#251224, **\$64,950.**



2019 FREIGHTLINER M2 C&C. Cummins
ISL 300 HP, Allison 3000 HS, 264" WB,
33K GVW, 148K Miles, stk#272463,
\$84,900.



2017 IH PROSTAR 6x4. N13 410 HP
Diesel, 10 Spd, Air Ride, Air Slide
5th Wheel, 52K GVW, 664K Miles,
stk#235330, **\$36,900.**



**2015 MACK GU813 25-YARD REAR
PACKER 6x4 W/2 Cart Tippers.**
MP7 345HP, Allison Auto, 64K GVW,
113K Miles, stk#252779, **\$144,500.**



2006 FREIGHTLINER M2 106 2950
Gal. Propane Bobtail. CAT C7 250
HP, Allison Auto, 33K GVW, 241K
Miles, stk#255014, **\$43,900.**



**2021 VIPERLITE 25' Steel End
Dump Trailer.** Tandem Axle, Alum
Wheels, 2-Way Gate, Auto Tarp
System, 80K GVW, stk#251287,
\$47,900.



2018 IH LT 56" SLEEPER 6x4. Cummins
X15 450 HP, Auto, Collision Mitigation,
52,350 GVW, 375K Miles, Factory
Eng & AT Warranty 600K/Nov 2023,
stk#252640, **\$69,900**

www.AllegianceTrucks.com




ABBOTT Equipment Sales

Lebanon, Maine 207-252-1191 or 207-457-1191



2009 CASE 621E WHEEL LOADER. 4,654 Hours. #2875
\$49,500



1982 GROVE RT755 50 TON R/T CRANE. 8,673 Hours, 35' to 110' 4 Section, Hydraulic Boom #2776, **\$75,000**



1997 JCB 505-19 TELEHANDLER. 9,765 Hours, #2780, **\$21,000**



2018 CAT 323 EXCAVATOR. Hyd Quick Connect, AC/Heat, Camera, #2647, **\$152,000**



2013 FREIGHTLINER M2 112. Tandem Axle, New 14' Dump Body, 234,316 Miles, #2815 **\$60,000**



CAT 315CL EXCAVATOR. Hydraulic Thumb, 10,618 Hours, #2819 **\$49,500**



1999 CAT 216 SKID STEER. 2005 Hours, #2789, **\$10,500**



2007 MACK CV713. W/ Plow And Wing. 173,441 Miles. #2346 **\$30,000**



2016 HITACHI ZX75US-5. Two Buckets, 6,578 Hours, #2693 **\$62,900**



2004 KUBOTA KX121-3 MINI. 8,175 Hours, Aux Hydraulics, 9,063 Lbs. #2787 **\$28,000**



1997 BLAW-KNOX PF161 ASPHALT PAVER. Cummins 4 Cyl. Meter Reads 8,076, #2549 **\$8,500**



1991 JOHN DEERE 770 BH MOTOR GRADE. Knock Down Blade, 2,623 Hours, #2871 **\$25,500**



1990 FORD 9,000 TRIAXLE DUMP. Cat Engine, 8 Speed, #2817 **\$18,500**



1989 DYNAPAC CA151-1D. Vibratory Compactor, 3,867 Hours, 66" Smooth Drum, #2657, **\$26,000**



2009 CAT 299C SKID STEER Auxiliary Hydraulics, #2695, **\$45,000**



1973 CAT 930 WHEEL LOADER. Cat 4 Cyl Diesel, #2768 **\$13,900**



CAT M316C EXCAVATOR. Grading Blade, 6,075 Hours, #2820 **\$52,500**



2001 JOHN DEERE 6410 TRACTOR. W/ Rotary Arm Mower By Alamo, 4,152 Hours, #2844 **\$20,000**



2014 KOMATSU PC138USLC-10 HYDRAULIC EXCAVATOR. Heat, A/C, 28" Bucket, 2,819 Hours, #2675 **\$88,000**



2008 JD 3520 Tractor. 4x4, 520 Loader, Low Hours, #2474, **\$13,000**

AbbottEquipmentSales.com AbbottEquipmentSales@gmail.com



SALES & RENTALS INC.
T-QUIP
 YOUR **1ST** CHOICE IN SALES
 & RENTALS

SALES & RENTALS
 (603) 623-3669 • TQUIP.com
 LOCATED IN LONDONDERRY NH



75+ UNITS
AVAILABLE!

**CALL TO
RESERVE YOUR
WINTER RENTALS**



LATE MODEL
LOW HOUR
MACHINES!



2018 KOMATSU WA470-8
 A/C, AUX HYD, HYD Q/C, 6CY BKT, RIDE
 CTRL, AUTOSHIFT, AUTO LUBE, FIRE SUPPR,
 REAR CAM, 26.5-25 TIRES, 7920 HRS
\$189,000



2016 HYUNDAI HL970
 A/C, 5.5CY BKT, RIDE CTRL, 26.5R25
 MATCHING RADIALS @ 90%, ONLY 5184
 HRS, SUPER CLEAN, WORK READY
\$109,000



2013 HYUNDAI HL780-9A
 EROPS, A/C, 7CY BUCKET,
 FACTORY LOADRITE SCALE, RIDE CTRL,
 29.5R25 RADIALS, 5763 HRS
CALL FOR PRICING



2018 KOMATSU WA270-8
 EROPS, A/C, JRB HYD Q/C, 3CY GEM
 BKT, RIDE CTRL, 20.5R25 RADIALS,
 JRB FORKS AVAIL, 1816 HRS
\$142,500



2017 KOMATSU WA270-8
 EROPS, A/C, JRB HYD Q/C, 3CY JRB BKT,
BRAND NEW 20.5R25 RADIALS,
 REAR VIEW CAM, 5213 HOURS
\$119,000



2016 KOMATSU WA380-8
 EROPS, A/C, JRB HYD Q/C, 4CY JRB BKT,
 RIDE CTRL, NEW 23.5R25 RADIALS,
 FORKS AVAIL, 6826 HOURS
\$149,000



2016 KOMATSU WA270-7
 EROPS, A/C, AUX HYD,
 3CY PIN-ON GP BUCKET, AUTO LUBE,
 20.5R25 RADIALS, 4070 HOURS
\$119,000



2019 CAT 906M
 EROPS, A/C, 2-SPEED, HYD Q/C,
 CAT HYD 4-IN-1 BUCKET,
 340/80R18 TIRES, 929 HOURS
\$89,000



2020 KUBOTA R630
 EROPS, A/C, AUX HYD, HYD Q/C, 1CY
 BKT, 405/70R18 RADIALS, 120 HOURS
\$89,000

• NOTHING IS OUT OF REACH—CALL US FOR FINANCING OPTIONS! •





LOOK NEW INVENTORY!

2018 KOMATSU PC55MR-5
EROPS, A/C, AUX HYD,
24" DIGGING BKT,
HYD THUMB, BLADE,
YANMAR 4CYL DSL,
16" RBR TRKS, 945 HRS
\$69,500

SALES & RENTALS INC.
T-QUIP
YOUR **1ST** CHOICE IN SALES
& RENTALS

(603) 623-3669
TQUIP.com



FOR RENT

2014 KOMATSU PC290LC-10
A/C, 60' YOUNG LONG
REACH BOOM, 60" BKT,
LONG UC, PTRN CHNGR,
AUTO LUBE, 33.5" PADS,
5970 HOURS
CALL FOR PRICING



2018 CAT M320F
70/30 CAB, A/C, VA BOOM, 8'2" STK,
AUX HYD, HYD Q/C, 96" BKT, TIER-4 DSL,
OUTRIGGERS, UC STEPS, AUTO LUBE, REAR
CAM, 10,00-20 TIRES, 1406 HOURS
CALL FOR PRICING



2019 KOMATSU PC170LC-11
A/C, AUX HYD, JRB HYD Q/C, 36" BKT,
PTRN CHGR, HYD THUMB, SEAL SVR,
24" PADS, RBR LNRS, 1590 HRS
\$189,000



2011 CAT TH514
11,000LB LIFT CPTY,
45' LIFT HT, 30' REACH, EROPS, 4X4, HYD
TILT FORKS, OUTRIGGERS, 100HP CAT
DIESEL, 14,00-24 RUBBER,



2006 CAT TH360B
7,000LB CPTY, 74' HEIGHT, EROPS, AUX
HYD, MNL Q/C, 48" FORKS, OUTRIGGERS,
FRAME LVL, 13,00-24 TIRES, 3441 HOURS
\$55,000



2012 CAT D8T
EROPS, 12'10" SU BLADE W/ TWIN TILT,
NEW HD UC, RIPPER VLV, DIFF STEER,
28" PADS, NEW \$47K ENGINE, 9490 HRS
\$299,000



2009 CAT D6T-XL
EROPS, A/C, 24" PADS, STRAIGHT BLADE
W/ TILT, REAR SCREEN, PACCAR PA56
HYDRAULIC WINCH, 10,693 HOURS
\$119,000



2017 DEERE 700K-LGP
EROPS, A/C, 6-WAY BLADE, 75% UC,
30" PADS, 3132 HOURS
\$135,000



(6) 2012-2016 MOROOKA DUMPERS
UP TO 34,000LB CPTY, 12' DUMPER, 325HP
CUMMINS DSL, HST TRANS, JYSTK TRVL
CTRL, 30-32" RBR TRKS, 2656+ HRS
FROM \$89,000 TO \$169,000



2008 KOMATSU HM350-2
35-TON CAPACITY, A/C, 6X6,
26.5R25 TIRES, 9887 HOURS
CALL FOR PRICING



(3) 2016 KOMATSU HM300-5
A/C, 6X6, 333HP, TIER-4 DIESEL ENGINE,
TRACTION CONTROL, 5606+ HRS
CALL FOR PRICING

• OVER 1000 MACHINES & ATTACHMENTS IN OUR INVENTORY! •



**We are cash
buyers for
quality used
trucks and
equipment!**

BROOKSIDE EQUIPMENT SALES

www.BrooksideEquipment.com

978-249-4600



2014 JOHN DEERE 544K: 4,894 Hours, 3 Yard Bucket, Cab W/ A/C, Hydraulic JD Coupler, 6 Cyl JD Turbo, 163 HP, 29K Lbs, stk#LO331, **\$97,500**



1999 JOHN DEERE 450G: 2,101 Hours, 6-Vay Blade, Orops, Lever Steer, 4 Cyl JD Turbo, 70 Hp, 16K Lbs, Stk#DZ428, **\$34,500**



2005 INTERNATIONAL Workstar 7500: 10 Wheel, 13 Ft Steel Henderson Body W/ 3 Chutes, IH HT570, 310 HP, Allison Auto, Hendrickson Rubber Block Suspension, Hitch W/ Air & Electric, 12K F, 40K R, stk#TK063, **\$49,500**



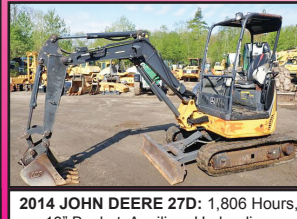
2000 JCB 214-III: 3,491 Hours, 4x4, X-Hoe, Cab W/ Heat, Turbo, 29" Digging Bucket, stk#BH974, **\$26,500**



2015 HAMM H51: 1,439 Hours, 54" Smooth Drum W/ Padfoot Shell Kit, Drum Drive, Vibratory, 4 Cyl Kubota Turbo, 73 Hp, 11K Lb + Shell Kit, Stk#CO557, **\$43,500**



2014 DOOSAN DX350LC-5: 4,342 Hours, 52" Bucket, 2-Way Auxiliary Hydraulics, 2 Speed, A/C, 5 Cyl Scania Turbo, 81K Lbs, Stk#XC082, **\$129,950**



2014 JOHN DEERE 27D: 1,806 Hours, 18" Bucket, Auxiliary Hydraulics, Manual Coupler, 61" Blade, 2 Speed, Swing Boom, 3 Cyl Yanmar, 6.5K Lbs, Stk#MX355, **\$29,900**



2014 CATERPILLAR 247B3: 2,462 Hours, 1505 Lb Lift, Cab, Pilot Controls, Hydraulic Coupler, 4 Cyl Cat C2.2 Turbo, 56 HP, 66" Bucket, 7K Lbs, Stk#SK152, **\$39,500**



2017 CATERPILLAR 336FL: 7,468 Hours, 56" Bucket, A/C, Good U/C, Backup Camera, Pattern Changer, 6 Cyl Cat C9.3 Acert Turbo, 89K Lbs, stk#XC022, **\$144,950**



2013 Skyjack SK3219: 232 Hours, 19 Ft Electric Scissor Lift, 32" Wide, 64" Basket + 3 Ft Extension, stk#AE890, **\$6,500**



2015 DOOSAN DX255 LC-5: 36" & 48" Digging Buckets, Hydraulic Coupler, A/C, Auxiliary Hydraulics, Pattern Changer, Backup Camera, 58K Lbs, stk#XC126, **\$139,500**



2008 JOHN DEERE 310J: 5,511 Hours, 4x4, X-Hoe, Enclosed Cab W/ Air, Turbo, Power Shift, 12" Bucket, stk#BH870, **\$39,500**



2004 CATERPILLAR 914G: 1.6 Yard, Cab W/ A/C, Ride Control, 4 Cyl Cat 3054C Turbo, 2 Speed, 18K Lbs, Stk#LO257, **\$49,900**



2017 HITACHI ZX75US-5: 3,561 Hours, 30" Bucket, Blade, Steel Tracks, Good U/C, A/C, 2 Spd Travel, Backup Cam, 4 Cyl Yanmar, 17.5K Lbs, Stk#XC755, **\$69,900**



2016 HYUNDAI HX220L: 4,087 Hours, 44" Bucket, Auxiliary Hydraulics, A/C, Backup Camera, 6 Cyl Cummins QSB6.7 Turbo, 173 HP, 52K Lbs, stk#XC087, **\$82,950**



2013 CASE 721F: 11,978 Hours, 3.5 Yard Machine, 4.5 Ft WBM PG20 Pipe Grapple Forks, Hydraulic WBM Coupler, Cab W/ A/C, 6 Cyl FPT Turbo, 145 HP, 32K Lbs, stk#LO297, **\$59,500**



2010 CATERPILLAR 938H: 12,725 Hours, 3.65 Yard, Cab, Hydraulic JRB Coupler, 6 Cyl Cat Turbo, 34K Lbs, stk#LO886, **\$64,500**



2017 BOBCAT S570: 1,066 Hours, 1950 Lb Lift, Enclosed Cab (Missing Door), Heat, Hand/ Foot Controls, 2 Speed, Very Good Rubber, 67" Bucket, Aux Hyd, 4 Cyl Bobcat Turbo, 6.5K Lbs, Stk#SK825, **\$32,500**



2002 CATERPILLAR M320: 12,432 Hours, 5 Ft Cleanup Bucket, 1-Way Aux Hyd, Wrist/Coupler, 2 Speed, 45K Lbs, stk#WX983, **\$39,500**



2021 SUNWARD SWE90UF: 14 Hours, 28" Bucket, 7.5" Blade, Cab W/ A/C, Auxiliary Hydraulics, Hydraulic Coupler, Swing Boom, 4 Cyl Yanmar, 62 HP, 19.5K Lbs, Stk#XC149, **\$79,500**

60 STATE RD, PHILLIPSTON, MASS

978-249-4600

EMAIL: KEVIN@BROOKSIDEEQUIPMENT.COM



ALLEGIANCE

TRUCKS®



109 Lindberg Ave. | Methuen, Ma 01844
(978) 686-1800 | (603) 560-0668
Formerly General Truck Center



CALL FOR OTHER NEW & USED TRUCKS FOR SALE!



2018 INTERNATIONAL 4300. 171K Miles, Cummins 6.7 220HP, Eaton Fuller Auto Trans, Air Brake/Air Ride, 26'x97"x102" w/ Alum Ramp, Tow Hitch, Trans Roof w/ Wood Slats, A/C, AM/FM/USB/Bluetooth, Stk#252899, **\$64,900.**



2018 INTERNATIONAL LT625 SLEEPER. 347K Miles, 450HP Cummins X15, 10 Sp Auto, 53250 - 80000 GVW, High Top, Air Brake/Air Ride, 2.79 Rears, Full Air, Inc Rem. of Ext Eng & A/T Warr Cov until 10/23 or 600K Mi, stk#252642, **\$79,950.**



2017 FREIGHTLINER Cascadia 125 Tandem Day Cab. 573k. DD15 455 HP, 52000 GVW, 10 Spd E.F. Manual Trans, 130 Gal Tank, 13,300 Lb Front Axle, 40,000 Lb R/A, 3.42 Rears. Alum Wheel, A/C. Collision Mitigation, stk#254435. **\$59,950.**



2017 ISUZU NPR-HD Gas. 14500, Auto, 16' w/2500lb 48x80 Alum Gate, 97x96, 2 Row E-Track, A/C, P/W/L, AM/FM/CD/Aux/BT, Cruise, Isuzu Ext Warr Avail - 2 Yr/50K Miles, stk#251629, **\$49,900.**



2017 PETERBILT 579. 658k. ISX 400HP, 10 Sp EF Manual, Day Cab, 2.79 Rears, Rear Air, Alum Front Wheels, Spot Mirrors, A/C, 5th Wheel Slide, Rear Axle Lock, C/C, AM/FM/CD, PW/M/L, stk#253614, **\$57,950.**



2018 GMC SAVANA 3500 CUTAWAY. 99K Miles, 6.0L V8, Auto, 12300 GVW. 16'x79"Tx96"W W/ Ramp, Wood Slats, Trans Roof, Spring Ride, AM/FM/Aux Radio, C/C, A/C, P/S, stk#268971, **\$34,900.**



2014, 2015 & 2016 ISUZU NQR Diesels Avail. 17950 GVW, 18' FRP w/ Chicago Step, Mileages Range from 98K-240K, Many To Choose From, **Starting At \$29,900. Call Today!**



2017 INTERNATIONAL 4300. 150K, 33K GVW, Allison 3000, 26'x103"x102", 3500 LB Alum Tuck, 2 Row E-Track, Cummins B6.7 260HP, AM/FM/Aux Radio, Air Brake/Air Ride, Heated Mirrors, C/C, P/W/L, stk#102484, **\$79,900.**

Allegiance now has locations in MA, CT, NY, ME, VT, RI, NH, & NJ!

For all locations visit our website!

www.AllegianceTrucks.com

*TAXES NOT INCLUDED, 100K MILE LIMIT, .20 CENTS EVERY MILE ABOVE 100K. Dealer is not responsible for errors in price, or in description of vehicles

WWW.TRUCKANDEQUIPMENTPOST.COM





Save 10% on these through Oct 30



BWISE DUMP TRAILER DTR610LP-LE. 72" x 10', 4" Single Acting Cylinder, GVWR 7,000lb, #T13986, Price was \$9,360.... NOW \$8,424!



BRAVO SCOUT V-NOSE SC8524TA3. 8.5' x 24', Dexter Drop Spring Axle, T13854 Price was \$ 23,736... NOW \$21,362!



ALUMA TANDEM AXLE TRAILER 8216. 82" x 16', GVWR 7,000lb, T14281 Price was \$11,576...NOW 10,418!



BWISE THD22-15. Hydraulic Tilt Deck Over, 102" x 22', Torsion Suspension, T14167 Price was \$ 17,815...Now \$16,033!

OVER 200 TRAILERS IN INVENTORY & MORE ON THE WAY

Connecticut Trailers

7 Bolton Center Rd. Bolton, CT

860-649-7223



Text or chat from our website: CTTRAILERS.COM

Open Mon – Sat 8-5. Service & Parts Open All Day Saturday.

THE HOME OF THE DOUBLE WARRANTY.

Prices good 30 days after publication. Advertised price does not include state or local taxes, registration costs or dealer Conveyance Fee Of \$119.00





1987-88 CORVETTE. 72 Miles, 2nd Original Owner, Good Cond., Stored In Dry Garage, New Battery, Med. Reason Forces Sale. Bill Of Sale, **\$6900.** 203-520-0981



2015 CHEVROLET SILVERADO 3500 HD 4X4 2-3 YARD STEEL DUMP BODY: Loaded, Cruise/Tilt, Remote Keyless Entry, Snow Plow Prep. Heated Mirrors, Diamond Plated Tool Boxes, Only 29,440 Miles. Stk.#G7017 Gardner, MA: 888-605-4346.



TRANS EAST EQUIPMENT INC.
67 Main St Salisbury, MA
CALL DAVE Cell 978-992-7077 Or 978-462-1919

**EXIT 60 Off Rt 95
End Of Ramp**

You Pick Your Container – Over 65 Units

**FAMILY OWN
& OPERATED**



20' And 40' CONTAINERS.
One Trip & Used Steel Storage Containers,
Call With your Needs, We Can Deliver.
Serving Southern Maine, Southern NH,
And Greater Metro Boston

CHECK ALL OUR INVENTORY – WWW.TRANSEASTEQ.COM



Jukonski Truck Sales



WWW.TRUCKSELLERS.COM

se habla español

680 NEWFIELD ST. (RT 3) MIDDLETOWN, CONN • **800-378-0342** • MON-FRI 8-6 SAT 8-NOON

PAYING TOP DOLLAR FOR USED TRUCKS



2022 FORD F750. 26' Box Truck, Only 11,645 Miles, #9960, **\$98,900**



2020 ISUZU NRR DUMP BODY. Only 10,772 Miles, Like New, #6091, **\$74,900**



2021 ISUZU NQR CREW CAB. 16' Box, Lift Gate, 13,173 Miles, 6 Crew Cabs In Stock You Can't Get A New One, #1178, **\$79,900**



2019 HINO 155. 16' Box, Automatic, 62K Miles, #7731, **\$59,900**

PAYING TOP DOLLAR FOR USED TRUCKS!!!



2015 PETERBILT 337. Brand New Dump Body, Paccar PX-7, 6.7L, Under CDL, 2 To Choose, Must Go, #9149, Got To Go **\$69,900**



2018 HINO 268A 26' BOX TRUCK. 25,950 GVW, 6 In Stock, **#8117**



2013 FREIGHTLINER M2. Brand New Dump Set Up With PTO, Cummins, Under CDL #3694, **\$59,900**



2018 ISUZU NQR DUMP BODY. Only 57,707 Miles, #2120, **\$59,900**

90 DAY POWERTRAIN WARRANTY AVAILABLE ON ALL CERTIFIED TRUCKS. INCLUDES INJECTORS AND TURBO



Branson TRACTORS

T Y M TRACTORS

Branson Tractors and TYM Tractors are NOW TYM.



SALES • SERVICE • PARTS • FINANCING
FOSKETT Route 171
 EQUIPMENT INC. S. Woodstock, CT
 TRACTORS & IMPLEMENTS 860-928-5748
Woodstock, Ct www.foskettequipment.com



1988 PETERBILT TRI-AXLE DUMP TRUCK, 12K Fronts, 46 Rears, 425 Cat Motor, 100K On Complete Rebuild, 8LL Transmission, New Rears, New Fuel Pump, Ready To Work! **\$32,500**
 Call Today 781-417-3018



2008 DEERE 410J. 4X4, Ride Control, E-Hoe, Powershift, Good Rubber, 4-In-1 Front Bucket, 8384 Hrs, **\$44,000.**
 603-899-2000



2014 DOOSAN 180: Narrow Tracks, Hyd. Thumb, Hydraulic Coupler, A/C, Two Buckets, Under 3000 Hours, **\$85,000.** Holbrook, MA 781-857-0310

OnSite Truck Repair

EXIT 39 OFF I95 (Old exit 25)

401-722-3160

34 Colfax Street • Pawtucket, RI

LARGE INVENTORY OF



FISHER PARTS
PLOWS
SANDERS

Cutting Edges • Sander Chains

SNOW SEASON IS COMING

WE HAVE WHAT YOU NEED

**COME VISIT OUR
SHOWROOM !**





NICK SCARVALAS
Commercial Sales
857-247-9023 or 617-249-5603



**COMMERCIAL
 VEHICLE CENTER**

ALL TRUCKS ON SALE NOW



2022 T350 ELECTRIC CARGO VAN. Electric Motor, Pass Thru Door, Protection Bay, Pro Power On Board, Rear Door Windows, F207123 **Sale Price \$54,175**



2023 E350 12' VAN BODY. 7.3 V8 Gas, E-Tracks, Flat Floor, Roll Up Rear Door, Pass Thru Door, ICC Step Bumper w/ HD Tow Hitch, F206231 **Sale Price \$64,999**



2023 T350 WAGON VAN. 15 Passenger, Remote Start, AC, Cruise, Reverse Sensing System, In Bound, (nap) F207289 **Sale Price \$65,320**



2022 F350 ALUMINUM LANDSCAPE SUPER CAB. Curb Side Door w/ Step Ladder, Tool Box, V8 Gas, Power Equip, 4WD, Dual Battery, F206875 **Sale Price \$79,999**



2022 F250 SERVICE BODY. STX Pkg, 4X4, V8 Gas, Power Equip Group, Skid Plates, Dual Battery, Running Boards, UpFitted Switches, F207150 **Sale Price \$68,995**



2022 F150 PLATINUM CREW. 4X4, Crew Cab, Platinum Package, FX4 Off Road Pkg, Twin Panel Moon Roof, Trailer Pkg, F207019 **Sale Price \$77,040**

250 COMMERCIAL TRUCKS IN STOCK



2022 F350 SERVICE BODY. 4X4, V8 Gas, 8' Reading, Power Equip Group, Dual Battery, Running Boards, UpFitted Switches, F207296 **Sale Price \$69,970**



2022 F250 SERVICE BODY. 4X4, V8 Gas, Power Equip Group, Skid Plates, Dual Battery, In Bound, (nap) F207164 **Sale Price \$67,995**



2023 E350 12' VAN BODY. V8 Gas, 11,500 GVW, Pwr Locks & Windows, Cruise, Keyless Entry, (nap) F207099 **Sale Price \$64,940**



2022 F350 CREW CAB. 4X4, V8 Gas, Dual Battery, Power Slide Rear Window, STX Pkg, In Bound, (nap) F207154 **Sale Price \$59,270**



2023 E350 12' SERVICE VAN. 7.3L V8, Power Windows & Locks, Pass Thru Door, Ladder Racks, 12,500 GVW, (nap) F207127 **Sale Price \$74,235**



2022 F150 XL SUPER CAB. 4X2, V6 Gas, Fog Lamps, Class IV Trailer Hitch, 17" Aluminum Wheels, Rear Window Defroster, F206893 **Sale Price \$39,145**

QUIRK FORD

540 Southern Artery (Rt 3A) Quincy, MA
www.quirkford.com • 617-249-5660

**Business
 Financing with
 NO Co-signer
 Required**

Prices include all available rebates. Rebates include Customer Cash, FMCC Bonus Cash, and Commercial Uplift Bonus Cash. Customer must qualify for rebates. Call for specific details. Prices are subject to change. * In Lieu Of Rebates





Powerglide Air Test Kit

Complete Powerglide Pro Tree Transbrake \$279.95

TH400 Deep Cast Aluminum Pan

TH400 Billet Direct Drum Spring Retainer & Aluminum Modulator/Solenoid Hold Down

Powerglide Overhaul Kit

Powerglide Deep Oil Pan

Powerglide Reverse Spring Retainer Tool

Powerglide Bushing Driver Set

Do-it-yourself Powerglide Pro Tree Transbrake Kit \$164.95

1.80 Long Powerglide Gear Set

Powerglide Handbook written by Carl H. Munroe \$21.95

Powerglide Vent Tanks

1-800-394-5889
179 Belvedere Road
Gilsum, NH 03448
WWW.TSR-RACING.COM



2011 FORD E250
CARGO VAN: 4.6 Motor 140K
Meticulously Maintained One Adult
Owner Racks & Bins Twist Key. And.
Make. Money!! Rust Free!! **\$15,950**
508-295-9444 Ext. 160



1998 KENWORTH T800. 553K, 10 Spd., 46,000 Rears,
5 Line Wet System, Rotobac 80 Grapple, **\$85,000.** For
Complete Details Call Art, 860-480-4166

**2012 INTERNATIONAL
WORKSTAR.** 270 HP Diesel,
3300 GVW, Air Brakes, 23K
Miles, With Terex Hi-Ranger
XT 60/70 Rear Mount, Asking
\$112,500 OBO.
978-256-0341



JG Remillard Equipment Sales.
603-759-5918



1981 KW W-900. 400 Cummins, 15
Speed, 38 Rears On KW 4 Spring.
Restoration Started, Needs Minor
Items To Be Finished. **\$17,500**



2007 CAT 904B LOADER. Recent Tires,
7,000 Hours, Working Daily, Comes With
Bucket, Forks, & 8' Snow Pusher. **\$30,000**



1988 MACK SUPERLINER.
350 Mack W/Jake, 12 Speed, 44
Rears, New Two Line Wet System.
\$35,000



1998 DAEWOO 330 EXCAVATOR.
Good U/C, Quick Coupler, Thumb, &
54" Bucket. **\$27,500.**



**1987 HILL 30' DUMP
TRAILER.** Aluminum Tub, Steel
Frame, Air Lift 3rd Axle, **\$17,500**



SPADE NOSE BUCKET.
Fits Cat 988A, Good Condition.
\$3,000



**1976 WESTERN STAR TRI-AXLE
DUMP.** 3406 Cat, 13 Speed, 46 Rears,
20k Pusher, 15' Dump. **\$10,000**



**2000 INTERNATIONAL
S-2500.** DT 530, Auto, Good
Tires Working Everyday. **\$15,000**



**1980 RAYGO 404 VIBRATORY
ROLLER.** 84" Drum, 453 Detroit
Power **\$9,500**



**1979 IH S-2500 Asphalt
Distributor Tank Truck.**
Work Ready! **\$7,500**



**1985 INTERNATIONAL S-2500 S/A
DUMP.** DT-466, 582, Air Brakes, 85,000
Miles. Nice Clean Truck. **\$8,500**



**1980 CATERPILLAR 215
EXCAVATOR.** Clean And
Straight, Runs Good. **\$14,500**

Visit Us jgremillard equipmentsales.com

Support Breast Cancer Research and Awareness



Fowler's Auto Wrecking Inc.

Belldown Recycling Center

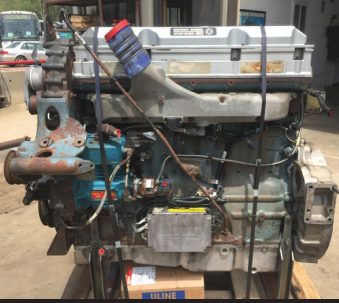
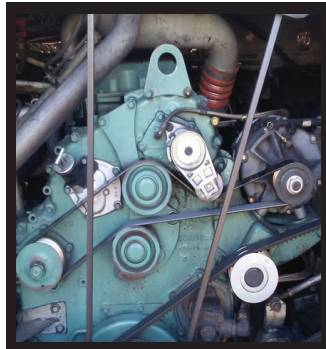


Detroit Series 60 12.7L Engines

EGR DDEC-IV
NON-EGR DDEC-IV
Good Running Take Out Engines
Recent Remanufactured Engines
Core Engines
Engine Accessories
6 Month & 1 Year Warranties Available
Call Today For Pricing



CALL: 860-267-7140



Telephone: 860-267-7140

Complete Coaches For Parts

- MCI, Vanhool, and Prevost Buses For Parts
- Compressors, Condenser & Evaporator Motors
- Wheels, Tires, Suspension & Brake Parts
- Electrical Parts, Interior & Exterior Lighting
- Tag Axles & Drive Axles
- Compartment, Service, and Entrance Doors
- Fiberglass Body Panels & Glass
- Complete Electric Wiper Conversion Kits
- Radiators, Intercoolers, and Condensers
- Standard 6 Month Warranty On All Parts



**Buses Are Not Intended
For Resale - Salvage Titles**



24 Old Coach Rd, East Hampton, CT 06424

Allison B500 Transmissions

- Allison B500 With or Without Retarders
- Good Running Take Outs
- Recent Remanufactured Units
- Core Transmissions
- Allison Shift Pad Selectors
- Allison TCM (Transmission Control Modules)
- Standard 6 Month Warranty
- Call Today For Pricing



CALL: 860-267-7140



BelltownRecycling@yahoo.com



2013 UTILITY REEFER TRAILER
Rear Roll Up Door, TK Spectrum
SB Reefer W/17305 Hrs
\$45,000, CALL Belltown Motors
860.267.7222



2007 PETERBILT 335. Cummins ISC
With New: Water Pump, Timing Cover,
& Exhaust Manifold, Recently Rebuilt
Eaton Trans, Recently Rebuilt Dana
4.33 Rear, Class 7,
\$25,000. DID Available



R & R INDUSTRIES

**We Buy All
Scrap Metals**

www.RRTrucksAndEquipment.com • Sales@RandRind.com

195 Rocus Street, Springfield MA 01104

413-733-2118

TOP \$ PAID FOR ALL METALS

*** ALL FERROUS & NON FERROUS METALS***
COPPER/BRASS/ALUMINUM/STAINLESS/IRON
& STEEL* MACHINERY* HEAVY EQUIPMENT*
CARS/TRUCKS*



TROJAN 2000 LOADER. V8 Cummins Diesel, Super Clean, Runs Perfect, Needs 2 Boom Cylinders, Repacked **Only \$10,000**



GRAPPLE FOR 30 – 60,000 LB EXCAVATOR. Shop Built, Good For Brush, Stumps, Light Steel etc, Can Be Modified To Fit Any Machine, A **Steal At Only \$2,500/BO**



LINCOLN SA200 WELDER. Runs & Works Perfectly, Cosmetically Restored, On Its Own Trailer, Can Demonstrate it Welding, No Cables, **\$3,000**



1988 MACK 50K TRI AXLE CUT OFF. Hendrickson Suspension, Air Lift 3rd Axle, Asking **\$3,500**, Also Available 350 Mack & 10 Speed Trans



2) TRANE 7.5 TON ROOFTOP HEAT & AC UNITS, 208-230V, New & Unused In Factory Crates, **\$5,000 For Both, \$3,000 Each** Call Bruce For More Info



DETROIT DIESEL 4-53. Runs Excellent, Came Off Michigan Loader, **\$1,850 With Guarantee**



2010 INTERNATIONAL PROSTAR TRACTOR. 13L Maxforce, 10 Sp, Walk In Sleeper, New Tires, Alum Rims, New Lights & Chrome, Asking **\$19,400**



KOMATSU WA320 LOADER. Generally Good Condition, Good Tires, Quick Coupler, No Bucket, Motor Is Stuck, **Only \$12,000 Or \$15,000 With New Motor**



(4) GOODYEAR LOADER TIRES. 22 x 65 x R25, Comparable To 20.5 x 25, On 12 Lug Rims, Excellent Condition, **Only \$2,000 For Everything**



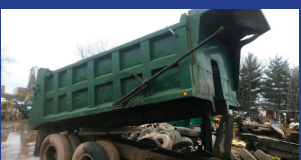
RANSOM BOBCAT T3101 COMMERCIAL ZERO TURN MOWER. Self Leveling Sully, 62" Deck w/ Deck Lift, **Only \$1,995/BO**



2012 FORD E250 SUPER DUTY CARGO VAN. Runs & Drives Well, Very Clean, CAT Was Stolen, **\$7,200**



BARCO LOG LOADER MODEL 80BC. Very Good Condition, Works Well, Truck Died, **Only \$4,995**



16' STEEL DUMP BODY. Great Condition, With Hoist, Telescopic Cylinder, Tank, ect., **Only \$4,500 Each**



2011 CHEVY 2500 PICK UP. Very Solid, Runs Great, 8' Bed w/ Ladder Rack, Not Pretty But Good Work Truck, **Only \$6,500/BO**



STORAGE UNITS 12', 14', 16', 18', 20', 24', 30', & 40' Storage Or Instant Garage **\$650 & Up**



1995 ISUZU NPR. C & C No Box, 4 Cyl Turbo Diesel, Only 224K Original Miles, Auto, Heat & AC, **Only \$4,995**





2006 FORD F250 LARIAT. For Parts Or You Can Fix,
2 Crack Exhaust Manifolds, Clogged Catalytic Converter,
2 Rear E-Brakes, **\$3500.** 508-509-5741



BUCKET. 1-Foot Wide, Fits Caterpillar 310,
Excellent Condition, **\$800.** 860-617-4569

R & R INDUSTRIES

www.RRTrucksAndEquipment.com • Sales@RandRind.com

195 Rocus Street, Springfield MA 01104

**We Buy All
Scrap Metals**

413-733-2118

**Don't See
Your Size?
Call Bruce**

**We have
rims for
most trucks.
Especially
older ones.**



Truck Tires

295/75/225
10:00 x 22.5
11:00 x 22.5
12:00 x 22.5
9:00 x 20
10:00 x 20
8:25 x 20
11x20

Loader Tires

(4) 16.9 x 28
(8) 20.5 x 25
(4) 22 x 65 x 25
(8) 14 x 24
(4) 16 x 24
(8) 17.5 x 25
(4) 33.25 x 35



2013 EAGER BEAVER 20XPT TRAILER.

24' Deck & 6' Beaver Tail,
7' Tapered Ramps,
Paver Special, Good Brakes,
\$22,000. Franklin, MA
508-326-2893

2-TON RAY-TECH HOT BOX.

Built To Slide
In Dump Truck,
Propane Fired,
New Style Heat
Elements, No
Ceramics To Break,
\$7950.
203-910-1056



T & TAYLOR & LLOYD, INC. T &

SEE OUR INVENTORY: WWW.TAYLORANDLLOYD.COM



2017 IH 4300 26' BOX. Non CDL, 117K Miles, Allison Automatic, Air Ride,
97" High x 102" Wide, Maxon 3300 Lb Lift Gate.



2019 INTERNATIONAL HV ROLL-OFF. Galbreath 75000 Hoist, Allison
4500 Trans, 52K Rears, 20K Front, 130K Miles.



(2) NEW IH CV CAB & CHASSIS 4X4'S In Stock. 84" CA, Allison Duramax Diesel, 22,500 GVW, Black & Red.



1-617-429-3370

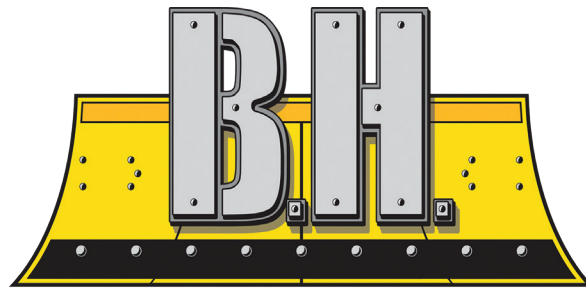
Call Jack Coakley
8 Railroad Avenue Bedford, Ma



www.bhtrailersandplows.com

6 Center Parkway
Plainfield, CT
06374

860-949-7863



TRAILERS AND PLOWS

2207 Hartford Ave.
Johnston, RI
02919

401-214-3735



2022 DIAMOND C FMAX212
40ft. with Max Ramps
Disc Brakes, Sliding Track
12,000Lb. Axles, 25,900Lb. GVWR
\$34,495



2022 DIAMOND C FMAX208
102" X 32' Hydraulic Dovetail
Blackwood Runners, Winch Plate, Solar
Charger Flood Lights, 18,000Lb. GVWR
\$25,500



CROWNLIN Truck Beds
Single Wheel, Short & Long
Beds, With Install Kit,
Starting at \$3,195



CM SK Skirted Flat Bed
Gooseneck and Receiver Hitch
Built In, Starting at \$6,995



DURAMAG Flat Beds
with 10 Inch Apron
Starting at \$3,795



CM RD Beds
Over 100 Beds In Stock!
Starting at \$4,195



2021 LOAD TRAIL CH14
83" Wide w/Stand-Up Ramps
14,000Lb. GVWR
20 Foot, \$6,795



2022 LOAD TRAIL GN14
30 Ft. with Max Ramps
Winch Plate
14,000Lb. GVWR, \$14,995

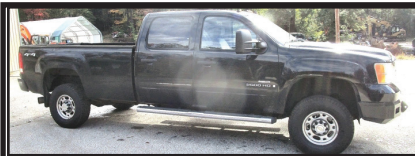


2022 LOAD TRAIL
Gooseneck ROLL OFF
14,000Lb. GVWR
2 Can Package, \$27,995



2022 DIAMOND C HDT 208
24Ft. Split Tilt, 16+8
Large Tool Box, 8K Axles
18,000Lb. GVWR, \$17,995





2009 GMC 2500. 143,300 Miles, Auto, Clean Title, Complete Suspension, Upper & Lower Ball Joints, CV Joints, Tie Rod, Idler & Pit-Man Arms, Complete 4 Wheel Brakes, Rotors & Calipers, Fuel Tank Sending Unit And Straps, 8 New Glow Plugs, Tow Haul Lever, Windshield, New Hankook Load Range E-Tires, **\$15,000.** 603-899-2000



JOHN DEERE MODEL M866T FARM TRACTOR
\$3,900 Call Today! 781-417-3018



PORTABLE LINE BORING

WELDING • FABRICATION • REPAIRS

DAVID GOKEY

AFFORDABLE LINE BORING

Serving CT, MA, RI, Southern NH, VT

413-530-0242 Call/Text

davidgokey70@gmail.com

MC, Visa, AMEX, Discover



2007 MACK CV713.
427 HP, 8LL, Electric & Air To Rear, Pintle Hook, 16' Aluminum Body, New Steel Tailgate With 3 Chutes, New Dump Floor, Dump Piston, Radiator, Front Tires, Power Steering Box, Brakes, Exhaust, 402K Miles, **\$85,000.**
Franklin, MA 508-326-2893



1974 CHAMPION D600 GRADER. Everything Works, Has Wing Tower, Motor Was Rebuilt, Was A Town Machine, **\$7500.** Leominster, MA 978-230-1504



TOP RATED PRODUCTS FOR YOU



WASHED STONE
PROCESSED GRAVEL
SAND
TOP SOIL
RIP RAP
FILL



Please Call for pricing
401-447-2777



WANTED!!! MACK TRUCKS

**CAT, DEERE, BOBCAT EQUIP
IN ANY CONDITION
IMMEDIATE PAYMENT**



CALL JOHNNY MACK

**johnnymack107@gmail.com
HARTFORD, CT 860-883-1186**



1998 INTERNATIONAL 4900 SIX WHEEL DUMP TRUCK,
7.3 International Motor, 6 Speed, Only 40,000 Miles On Complete
Rebuild, Truck Is READY TO GO! **\$17,500**
Call Today 781-417-3018

**2018
YANMAR
T175-1.**

680 Hrs, 8600
Lbs., Cab W/A/C,
Manual Cplr,
Ride Control,
Joystick, 66"
Bucket, 2 Spd,
\$45,000.
603-899-2000



2015 JOHN DEERE 310K. 2WD, 4600 Hours, Extend-A-Hoe,
4-In-1, EROPS, Heat, A/C, Radio, Plumbed Pilot Controls, Ride
Control, New Batteries And Front Tires, Very Good Condition,
\$37,900. 603-944-8202



JACQUIER AUCTIONS, INC.

FALL CONSIGNMENT ONLINE AUCTION SOUTHWICK, MA



MA#2177 NH#3044 VT057-0002340

THIS WILL BE AN ONLINE ONLY AUCTION!



Jacquier Auctions Has Been Collecting Items For Our FALL CONSIGNMENT ONLINE AUCTION To Include,
Trucks, Trailers, Snowplows, Minneapolis Moline, Wallis, And John Deere Tractors, Bulldozers, Farm
Implements, Portable Saw Mill, Tobacco Items, And Much More. Go To The Website For More Information.

Pickup Location: 16 KLAUS ANDERSON ROAD, SOUTHWICK, MA 01077

Check website for the upcoming information. www.jacquierauctions.com



CHADWICK BAROSS™

UNSTOPPABLE.

Westbrook, ME | Bangor, ME | Caribou, ME | Concord, NH | Chelmsford, MA
Whitman, MA | Oxford, CT | South Windsor, CT | West Warwick, RI



9222 2019 HYUNDAI HW140. Coupler, 3rd Valve, 24" Dig Bucket, 63" Hyd Tilt Bucket, Cab, AC/Heat, Stereo, 378 Hours, Like New, **\$141,000.**



9090 2013 DEERE 350G LC. Coupler, 54" Digging Bucket, 3rd Valve, Full Cab, AC/Heat /Stereo, New Reman Motor By Nortrax 200 Hours Ago, **\$125,500.**



SY117 2018 SANY SY215C LC. 998 Hrs, 48 Pin On Bucket, 3rd Valve Hyd., 90% U/C, Full Cab, AC/Heat, Stereo, Full Machine Warranty To 9/8/2024 Or 5K Hrs To Be Serviced By Local Sany Dealer, **\$124,500.**



9208 2014 VOLVO ECR235DL. Coupler, 3rd Valve, 36" Dig Bucket, Rear Camera, Cab, AC/Heat, Stereo, 10K Hours, Cleaned & Serviced, **Call**



9240 2018 BOBCAT E85. Full Cab, Heat/AC, Hyd. Coupler, 20" Dig Bucket, 48" Cleanup Bucket, Blade, Rubber Tracks, 2K Hours, **\$72,500.**



9246 2014 KOBELCO SK140SR LC-3. 36" Pin On Bucket, 3rd Valve, Full Cab, Ac/Heat/Radio, 3,508 Hours, **\$71,500.**



9083 2009 PRENTICE 2432 4WD. Good Used Grapple Skidder, Enclosed ROPS, 17K Hours, Ready to Go, **\$29,500.**



9040 2012 VOLVO EC300DL. Coupler, Quick Attach, Aux. Hyd., 3rd Valve, 42" Digging Bucket, Cab, AC/Heat, 4,583 Hours, **\$122,500.**



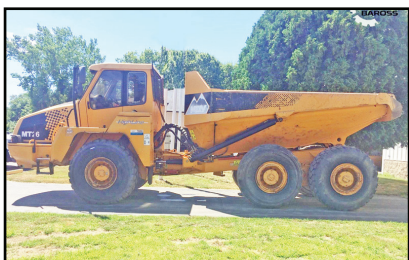
9228 2018 SDLG L918F. Hyd Coupler, (Skid Steer Style) 3rd Valve, 1 Yd GP Bucket W/Boce, Ride Control, Full Cab, AC/Heat, 700 Hours, **\$49,500.**



9204 2017 VOLVO EW60E. Coupler, 3rd Valve, 24" Dig Bucket, Blade, Full Cab, 1,385 Hours, Excellent Condition, **\$69,500.**



473 2018 TAKEUCHI TL6R. Coupler, 3rd Valve, GP Bucket, Full Cab, Ac/Heat, 1,726 Hours, **\$38,500.**



9243 2008 MOXY MT26. 26 Ton Haul Truck, Very Good Condition, Full Light Pkg, Bed Is In Excellent Condition, 1,826 Hours, **\$121,500.**

Call (207) 536-2723

chadwick-baross.com

WWW.TRUCKANDEQUIPMENTPOST.COM





Commercial
Vehicle Center

JACK MADDEN FORD

888-817-7979



SUPER DUTY WORK TRUCKS \$PECIAL ORDER TODAY



SPECIAL FACTORY \$500.00 OFF ALL RETAIL SUPER DUTY ORDERS



2022 F550 XL LANDSCAPE DUMP 4WD: DRW, 6.7L POWER STROKE DIESEL, POWER GROUP, IN STOCK NOW, WWW.JACKMADDENFORD.COM



2022 F550 XL DUMP 4WD: DRW, AUTO, 6.7L DIESEL, TOOL BOX, POWER GROUP, IN STOCK NOW, WWW.JACKMADDENFORD.COM



NEW T350 12' WORKPORT: POWER GROUP. READY TO GO!



NEW F550XL 4X4 SWITCH-N-GO BODY: GAS & DIESEL AVAILABLE. POWER GROUP. WWW.JACKMADDENFORD.COM



NEW F350 4X4 ALUMINUM DUMP BODY: DIESEL. WWW.JACKMADDENFORD.COM



NEW FORD T-350 CUTAWAY 15' BOX VAN W/ROLL-UP DOOR. WWW.JACKMADDENFORD.COM



JACK MADDEN FORD

825 Providence Hwy Rt.1 Norwood, MA
888-817-7979



Commercial
Vehicle Center



Commercial
Vehicle Center

*All prices include incentives for qualified buyers. For trade assist, must have 2017 or new trade. All vehicles require dealer financing. Some prices include snowplow incentives. See dealer for complete details.





JACK MADDEN FORD

888-817-7979



SUPER DUTY WORK TRUCKS \$PECIAL ORDER TODAY



15 USED COMMERCIAL TRUCKS IN STOCK!

2 AVAILABLE



**2022 FORD MAVERICK SUPERCREW XLT FX4 4X4:
AUTO, BACK-UP CAM, ONE OWNER, 2,519 MILES,
WWW.JACKMADDENFORD.COM**

5 AVAILABLE



**2021 FORD BRONCO 4WD: AC, POWER GROUP,
NAV, BACK-UP CAM, ONE OWNER, 7K MILES, WWW.
JACKMADDENFORD.COM**



**2019 FORD F350 SUPER DUTY CREW CAB XL FX4
LONGBED 4X4.
WWW.JACKMADDENFORD.COM**



**2017 FORD F350 SUPER DUTY CREW CAB XLT FX4 4X4.
WWW.JACKMADDENFORD.COM**



**2016 FORD F350 SUPER DUTY REG CAB XL 4X4 WITH
PLOW.
WWW.JACKMADDENFORD.COM**



**2020 FORD F350 SUPER DUTY CREW CAB LARIAT FX4
4X4 WITH SS PLOW. WWW.JACKMADDENFORD.COM**



JACK MADDEN FORD

825 Providence Hwy Rt.1 Norwood, MA
888-817-7979



***All prices include incentives for qualified buyers. For trade assist, must have 2017 or new trade. All vehicles require dealer financing. Some prices include snowplow incentives. See dealer for complete details.**



LOG SPLITTING SERVICE

20 Ton Log Splitter And Operator

Will Split 16"-18" Logs For You

781-771-8204

Southern NH & Near By MA



2010 INTERNATIONAL LONESTAR

DAY CAB. Heavy Duty Day Cab, Brand New Rebuilt IXS Engine, Engine Does Not Use DEF, 500 Turbo HP, 46K Rears, 14K Front, 18 Speed Fuller, 3.73 Gears, 360K Miles, Garage Kept, **\$84,900 OBO.** 860-668-1119 Office Or 860-250-6231 Cell



2001 ISUZU NPR SEALCOAT TRUCK. Seal Right 550 Tank, 160K Miles, Many New Parts, Runs Great, Real Money Maker! Orange Is Sticker & Peels Right Off With Black Underneath, **\$14,000 OBO.** 860-634-0303

2020 RAM 3500HD. 3000 Miles! 6.4 Hemi, 4x4, DRW, 13,500 GVW, PW, PDL, Heated Power Mirrors, Snowplow & Trailer Tow Packages, Chrome Package, Running Boards, Galion 3 Yard Body With Tarp, Western 9'6" MVP3 Plow, Western 2 Yard S/S Sander, Like New, **\$79,900.** 603-944-8202



Serving You With New Ideas



305 Shaker Rd,
East Longmeadow, MA
413-525-6665
www.wbhill.com



GREAT DANE REEFER



**2006 GREAT DANE
48' REEFER BOX TRAILER
WITH LIFT GATE \$12,000**

2012 MACK

CXU613.
792,546 Miles,
MP7 405 Engine,
40K Rears, Always
Maintained, Ready
To Work, Great For
Hauling Containers,
\$25,500. Call
978-979-6625 Or
978-531-1442



2017 DIAMOND C TRAILER. 48 HDT-LP, 20 Ft. Long Deck, 82" Wide, 18,000 GVWR, LW 3580, 7000 Lb. Axles, **\$11,900.** Bethlehem, CT 203-266-7899, Rich



JOHN DEERE 4630: 150+HP, Very Good Shape, **\$16,000** 860-928-5748





Robertson's Auto USED CAR DIVISION

508-295-9444 x160



2008 Chevrolet 3500 1 Ton 4x4: Duramax Diesel 9 ft plow, Stainless Steel Dump impeccable condition. 60k miles **\$30,950**



2019 SILVERADO LT CREW CAB 4X4 ROCKY RIDGE: THIS IS THE ONE! DON'T WAIT. EVERY OPTION. 35" MICKEY THOMPSON TIRES/ WHEELS, GIBSON EXHAUST, RETRACTABLE STEP BARS. ONLY 23K MILES. BLACK BEAUTY. 1ST \$61,950 GETS TO DRIVE IT HOME.



2018 CHEVROLET 100TH ANNIVERSARY EDITION 1500 CREW CAB 4X4: ALL THE TOYS, BEAUTIFUL CLEAN TRUCK, \$38,950.



2016 CHEVY SILVERADO LT 4X4 Z71 OFF-ROAD PKG: 80K MILES, 5.3L, CUSTOM EXHAUST, EXTRA CLEAN, \$30,950.



2016 GMC 3500 SLE 4X4 ONE TON UTILITY BODY: 59K MILES, 6.0L, VERY RARE FIND! \$41,950.



2018 GMC 2500 HD DOUBLE CAB 4X4 UTILITY BODY: W/SS PLOW, NEW TIRES & BRAKES, 101K MILES, GENTLY WORKED, VERY CLEAN, \$42,950.



2011 E350 CARGO VAN: 4.6 L, 140K METICULOUSLY MAINTAINED. ONE ADULT OWNER, RACKS AND BINS, TWIST KEY & MAKE MONEY. **\$15,950.**



2013 CHEVY 2500 HD CREW CAB 4X4: 160K MILES, CLEAN, ONE OWNER, WON'T LAST! PRICED RIGHT! \$16,570.



2018 FORD F150 CREW CAB LARIAT FX4. DIESEL, ALL THE TOYS, PANORAMIC ROOF, 80K, \$38,990.



2003 FORD E250 CARGO VAN: 42K MILES, AS NEW AS NEW GETS!! READY TO WORK, AGAIN A REAL ONE!! FRESH TRADE, \$14,950.



2009 GMC 1500 EXTENDED CAB 4X4: Z71 PKG, 5.3L, EXTREMELY CLEAN, 160K MILES, RUNS AS GOOD AS IT LOOKS! \$15,688.



2008 GMC 2500 HD EXT CAB LT 8 FT BED: LEATHER, ROOF, ALL THE RIGHT STUFF, 101K MILES, GENTLEMAN OWNED, EZ DUMPER & ORIGINAL TAILGATE INCLUDED, THE CLEANEST ONE AROUND!! \$19,950.

2680 CRANBERRY HWY. (RTE. 28) – WAREHAM, MA 02571



CAREY AUTO INC TRUCK EQUIPMENT SALES



37 County Road
Route 106
Plympton MA 02367
PH: 781-582-1378
FAX: 781-585-4438



NEED A ROLLOFF? CALL ME RIGHT NOW! THIS WON'T LAST LONG.



2014 INTERNATIONAL
4300: MAXFORCE,
AUTO TRANSMISSION,
80K MILES. NEW
PALEFINGER HAD
185, ADJUSTABLE
36"/54" HOOK,
PINTLE PLATE. READY
TO WORK.



LANAU DUMP BODIES
IN STOCK READY TO GO.
CALL FOR APPOINTMENT.



12' ALUMINUM LANDSCAPER IN STOCK.
OTHER SIZES AVAILABLE. CALL FOR DETAILS.

SWITCH-N-GO SYSTEMS & CONTAINERS IN STOCK.



DOWNEASTER DUMP BODIES IN STOCK NOW!
Includes Cab Shield and Hoist. Call for Pricing Today.



READY TO GO COMPLETE TRUCK PACKAGES.
LOTS OF OPTIONS AVAILABLE
New & Used Trucks Ready To Go!

SALES,
SERVICE,
PARTS

CALL TOLL FREE: 781-582-1378
WWW.CAREYTRUCKEQUIPMENT.COM

CUSTOM METAL
FABRICATION
AVAILABLE



RENTAL WITH OPERATOR

PORTABLE JAW CRUSHER • MCCLOSKEY J40 2021



**DAY-WEEK-MONTHLY RATES
PLUS 80' STACKER AVAILABLE**

**MA-RI-CT CALL KEN
508-328-0028**



2002 PETERBILT 330. Stellar Hook Lift, 308K 3126, 6 Spd Allison Auto, **\$27,500 080.** Southington, CT
Call 860-637-7860, Text 860-302-1253



2008 NEW HOLLAND 2320. 45 HP Shuttle 4x4 Tractor w/ Loader, **\$21,999**, Belchertown, MA
413-253-5456

2012 VOLVO SD70.
2400 Hours,
66" Drum,
V.G. Condition,
\$39,000.
603-899-2000



DOUBLE DOOR



TRI-DOOR



NEW/ONE TRIP



THE NORTHEAST CONNECTION



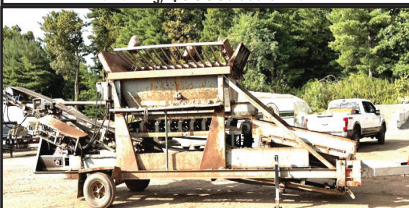
LIKE US ON f FACEBOOK.COM/CONTAINERGUYS



1993 FORD F700. Alterc 55 Ft Boom In Good Shape, 85% Tire Condition, Needs Clutch & Possible Brake Work, New Brazilian Ford Motor Installed 10 Years Ago, Selling Due To 31 Yrs Retiring, **\$5000.** 860-817-0197



USED WIND AND WATER TIGHT & CARGO WORTHY



RAWSON SCREENING PLANT. One Owner, The Engine Just Quit, All Other Components Work Well Screening Up To The Engine Issue, **\$10,000. Or \$ 12,000.** & We Put New Engine Into It. 203-537-1995



**2021 FORD F150
RAPTOR SUPER CREW 4X4.**
Loaded, Twin Panel Roof, Tonneau Cover,
Power Tech Pkg, B&O 18 Speaker Sound,
12 Screen, 13K Miles,
617-733-0773



2012 INTERNATIONAL TERRASTAR. Diesel Work Body Truck, 124K Miles, 19,500 GVW, Auto, Owner Driven, Excellent Condition, No Winters-Rust Free, **\$33,000.**
Pascoag, RI 315-399-3015, dri3313@verizon.net

SAM'S Tree Service
"We handle the jobs, the Big Guys turn down!"

- Licensed Arborist #913
- Insured
- Competitive Pricing
- Free Estimates

sammal@cox.net
401-269-1133

- Brush Chipping • Tree Removal
- Tree Pruning
- Residential Land Clearing



2005 INTERNATIONAL 4300. Extended Cab Bucket Truck, Rust-Free, Always Garaged, D1466, Auto, AC, AB, 33K GVW, Lift-All 60' Bucket Material Handler, Caption Winch, 4 Outriggers, 15' Rust-Free Utility Body, Drawers, Shelves, Top Storage, Strobe Work Lights, 978-462-1000, www.WestsideTruckEquipment.com





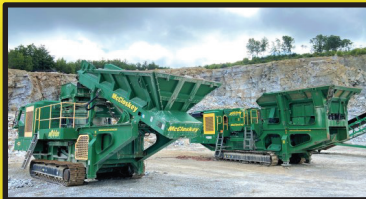
(603) 623-3669 • TQUIP.com

LOCATED IN LONDONDERRY, NH

DAILY | WEEKLY | MONTHLY HEAVY EQUIPMENT RENTALS

Call Zach: (603) 854-8207

**EXCAVATORS • DOZERS • ROCK TRUCKS • WHEEL LOADERS
TRACKED DUMPERS • ROLLERS • SKID STEERS • BACKHOES
CRUSHERS • SCREENERS • MOTOR GRADERS • TELEHANDLERS**



SPECIALTY ATTACHMENTS AVAILABLE

Call James: (603) 703-8529

**BUCKETS • HAMMERS • GRAPPLES • THUMBS • BROOMS • RIPPERS
COUPLERS • FORKS • SHEARS • PULVERIZERS • MOWERS • & MORE!**





2008 GMC 3500 HD. Utility Body, Good Condition, Runs Great, 110K Miles, **\$14,000.**, Snowplow Extra \$1500. 508-699-2067



1980s FORD LAWN TRACTOR. Hydrostatic Drive Repowered By 12.5 Briggs & Stratton, Runs, Drives, No Mower Deck Available, Needs A Little TLC To Be Perfect, **\$500 Firm.** Call Or Text 774-286-6434

ISUZU "Q" MODEL. Heaver Drivetrain Than NPR, 17,500 GVW, Pre-Emissions, Comes With Sides Not Shown, Was An Over The Road Truck Before I Converted It To A Dump, So High Highway Miles, Extra Features, **\$20,000.** Call For More Info, 203-824-0000



202

TRUCK
&
EQUIPMENT
603-899-2000

www.202truck.com
RT 202 Rindge NH
SALES & RENTALS - NO SALES TAX
FINANCING & DELIVERY



2008 J Deere 410J. 8386 Hrs, 4X4, Ext-A-Hoe, 4-In-1 Bucket, Rear Cplr, Ride Control, Aux. Hyd., **\$39,500.**



2019 CASE TR310. 1113 Hours, A/C, Manual CPL, New Tracks High Flow, Needs Nothing, **\$47,500.**



2012 DEERE 310SJ. 4X4, E-Hoe, Ride Control, Powershift, 7100 Hrs, Aux Hyd To Rear, **\$46,000.**



2012 CAT 308E CR. 2900 Hrs, Long Stick, Roadliner Shoes, 30" Bucket, **\$65,000.**



2009 CAT 312DL. 5130 Hrs, Blade, Long Stick, Mech. Thumb, 1 Owner, Just Serviced, **\$69,500.**



2017 DOOSAN DX225 LC-5. 3052 Hrs, Aux. Hyd., Hyd. Thumb, 42" Bucket, Clean Machine, 53,000 Lbs., **\$119,000.**



2018 CAT 330FL. 6070 Hrs, Dbl. Plumbed, CAT Full Rotation Thumb, Hyd. Cplr, 48" Bucket, 32" Shoes, 72,000 Lbs., **\$185,000.**



2013 KOMATSU PC290-LC10. 7360 Hrs, Long Stick, JRB Coupler, Aux. Hyd., Recent Track Chains & Sprockets, 42" Bucket, **\$95,000.**



2014 KUBOTA SVL75. 2600 Hrs, OROPS, Bucket, Forks, **\$27,500.**



2007 MACK CT713. Mack AI 427 Motor, T310 10 Speed, 20F + 44 Rears 4:64 Ratio, 17.5 Body, 3 Chutes, Hydraulic Tarp, Pintle Hook, Cruise, A/C, Air Ride Cab, 367K Miles, Very Nice 1 Owner Truck, Tight, Dry, Clean, **\$55,000.**



2004 Kenworth T800W. CAT C-15 @ 550 H.P., Full Dbl Frame, 18 Speed, 20F + 46R 2 Speed Rear 3:90 & 5:39, 830K Miles, 205" W.B., **\$80,000.**



2002 KENWORTH W900L. CAT C-15 6NZ @ 550 H.P., 186K Miles (Verified), Reman 18 Spd, 4:56 Ratio, 13.2F + 46R, 52 lb. New Way, Dbl Frame, New Tires, **\$95,000.**





2008 FORD F350. Diesel Dually, Stake Body, 2 Wheel Drive With Side Boxes, Runs Great, Good Condition, 154K Miles, **\$14,000.** 508-699-2067



2007 WESTERN STAR 4900 SLEEPER.
450 HP, Auto Shift Trans, 800K Miles, Brand New 2 Line Wet System,
40,000 LB Full Locking Rears, Air Ride Steering Front Axle, Super Clean,
\$49,500. Carver, MA 339-832-8814



2013 MITSUBISHI 14' FLATBED, 140K Miles,
4 Cyl Diesel, Inspected, Good Rubber, Just Truck
\$20,000 OBO. Call Joe 401-741-9187



2013 MILLER 7 CAR TRAILER. Ready To Roll, New Brakes, Tires Are 90%, All Lights Working And Includes All Strapping And Chains To Load, Asking **\$31,500.** 207-827-2413



2022 GRIZZLY SCREEN. 12'3" Wide X 5' 4" Depth, 9'1" Height, Slant 8'5", Space Between Ribs Is 4",
Spring Special, \$10,500. 603-899-2000



42 FT 2020 GRAND LODGE TRAILER. 3 Slides, 2 Beds Upstairs, 1 Down, Fireplace, Island Kitchen, Good Size Bath, Full Size Fridge, Like New, **\$30,000.** Call Joe, 508-561-2428, 508-866-4964

AUTHORIZED FISHER DEALER • AUTHORIZED FISHER DEALER • AUTHORIZED FISHER DEALER

**6 Enterprise Drive
Londonderry, NH 03053
www.donovancompany.com**



1-800-458-3867
sales@donovancompany.com
parts@donovancompany.com



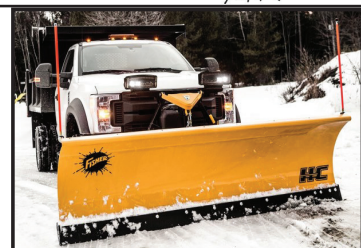
Largest Authorized Dealer in TAX-FREE NH



**HD2™ - Straight Blade available in
7' 6", 8', 8' 6" and 9' widths**



FISHER XV2™ Built to power through any storm!



**HC SERIES - 9' & 10' heavy contractor
made to move large amounts of snow!**

**FISHER POLY-CASTERS™**

BRINE PRO™ 2000



FISHER STEEL-CASTERS™

DONOVAN • DONOVAN • DONOVAN • DONOVAN • DONOVAN • DONOVAN

DONOVAN • DONOVAN • DONOVAN • DONOVAN • DONOVAN

WWW.DONOVANCOMPANY.COM

Support Breast Cancer Research and Awareness



508-328-8938**THE TRUCK STORE****Mon-Fri 8:30-5pm
Saturday 8:30-4pm****www.TruckStoreSales.com**

1700 Broadway - Rte 138 – Raynham, MA • Take Exit 8 Off Rte 495, East Rte 138, On Your Left

**2005 MACK GRANITE LUGGER TRUCK**
AUTOMATIC: Only 90K Miles.**2005 MACK CV 713
CAB & CHASSIS:
AUTOMATIC,
20F/52R,
30K MILES!****2017 FREIGHTLINER M-2: CUMMINS**
Diesel, Auto, PTO Accept. Will Separate.**2014 INTERNATIONAL 43 Passenger Bus**
w?wheel chair lift. Diesel, Automatic. Only 40K miles, Clean & runs great.**USED MONROE STAINLESS STEEL
SANDER W/CALCIUM TANKS****2007 HINO 338: Auto, 33K GVW.**
Runs Great.**2005 MACK GRANITE SPLIT REAR
LOAD RUBBISH BODY 35K Miles.****2015 INTERNATIONAL DURASTAR 50' Bucket**
Truck: DT 466, Allison Auto. 14F/23R, 29K miles.**2015 MACK GRANITE ROLLOFF:**
Auto., 80K miles. Call**2009 CHEVY C4500 16' THERMO KING Refer**
Body w/Stand-by: Gas, Auto. 89k miles, nice clean truck.**2013 PALFINGER MOFFET FORK
LIFT: 900 HOURS.****2002 VOLVO Heave Tri Axle Dump**
Chassis: 8LL, Clean Title, Slight Damage.
\$15,000**USED 26' FLAT
BED BODY CALL
FOR DETAILS.****2005 MACK Tractors: 460 H.P., 18 speed, air ride,**
wet system, Jake, 46k locking rears, 350 to 400k Miles. \$25,000**2020 HINO 258 THERMO KING REFER**
BODY: Diesel, Auto., 4K Actual Miles,
NON CDL. \$92,500**2011 ISUZU NQR: Diesel, Auto. Low miles.**
Also 2011 Available.Refer. Bodies in stock too.**USED 12' to 26' REFER & VAN BODIES**
Call with your needs.**2005 FORD F750
Hook Truck:
CAT Diesel, Auto.,
Lift Axle.
\$35,000****2012 INTERNATIONAL HOOK TRUCK**
W/TARP: Diesel, Automatic, 20K Miles.
Mint Condition.**2016 F650 DUMP BODY: AUTO,
GAS, NON CDL, LOW MILES.****2000 MACK RD 688SX 14' Dump Body,**
350 H.P., Auto., 18F/58R, LOW miles, Very clean.**2017
INTERNATIONAL:
Cummins, Auto.,
33K GVW,
Low Miles,****1997 FREIGHTLINER
35 TON WRECKER:
Diesel 283K Miles.****2,800 Gallon Aluminum Tank: Oil, Fuel,
Water, Maple Syrup....Well, maybe not.**
\$6,500**2003 MACK ROLL OFF: 75,000 lb. Roll**
Off. Auto., 58R/20F, 60K miles. Call**2015 IH 26' Tandem Axle Refer: New Refer being**
installed. Auto., low hours on Refer. call**2012 UD 18 YARD RUBBISH
TRUCK: LOW MILES. CALL.****Late model ISUZU 4 Cylinder
Diesel Engine & Transmission.**
Call for Details.**2006 USED MACK Engines!**
ALLISON Transmissions. ALSO:
2004 MITSUBISHI
4 & 6 Cylinder Engines.



2001 DODGE DAKOTA, 4 Wheel Drive Pick-up Truck, Needs Body Work to Pass Inspection Or Buy For Parts. Runs Well 106,450 Original Miles, **\$1200**, Call 401-941-4645



1998 INTERNATIONAL. Standard Trans, 7.3 Engine, 107K Miles, Runs Great, Call Arthur With Questions, **\$18,500**. 774-301-4240

Don't Let *Fall* pass you by!
Before you know it, *Winter* will be upon us!



TRUCK AND EQUIPMENT POST • P.O. Box 6824 - Providence, RI 02940
ads@TruckAndEquipmentPost.com - 888-887-0505

QUIPCAL
The Decal Experts

Decal Sets for your Construction,
Forestry, Ag, Mining & Industrial
Equipment - Old and New.

Prompt • Knowledgeable • Reliable • Experienced

To Check \$ Call: 215-536-5339

& Availability Email: info@CustomServicesCompany.com

Your Next Decal Set Is Here • www.QuipCal.com



CASE 1085 WHEELED EXCAVATOR. 2 Buckets, Nice Shape, **\$8,000**, 413-246-0880

CASSIE'S CANS PORTABLE RESTROOM SERVICE



- Portable toilet rentals for small & large construction projects
- Office replies in timely manner, Diligent weekly service
- Providing services for the whole state of RI, prices vary, call for pricing
- Women owned & operated, certified MBE

Hire the best for your construction sites.

Don't let your bathroom break make your work day even longer"

401-932-4470



**DISCOUNTED
EQUIPMENT!
SOLD AS-IS**



**10% OFF ALL IN-STOCK
RUBBER EDGE PUSHERS**



SnowWolf

SnowWolf FastTach for Skidsteer

- MSRP: \$7,790

- B&C Special: \$6,595

2 AVAILABLE

ADDITIONAL 2% DISCOUNT IF PAID BY CASH OR CHECK

HUGE SAVINGS! - 50% off all IN STOCK Snowwolf cutting edges



PRO-TECH®



SP08S: 8' Rubber Edge for Skidsteer

- MSRP: \$3,199

5 AVAILABLE

- B&C Special: \$2,795



SP10L: 10' Rubber Edge for Loader

- MSRP: \$5,899

2 AVAILABLE

- B&C Special: \$4,995



SP12M: 12' Rubber Edge for Loader

- MSRP: \$4,099

2 AVAILABLE

- B&C Special: \$3,595



IS10L: 10' Steel Edge for Loader

- MSRP: \$7,599

- B&C Special: \$5,995



SG16L: 16' Fusion Edge for Loader

- MSRP: \$12,199

- B&C Special: \$7,995



1-800-322-1111



Truck Bodies & Equipment

63 Bridge St. Salem, MA

www.BrakeAndClutch.com



What's In Your Toolbox?

- **BUY, SELL, TRADE - FAST**
- **FROM NEW TO USED,**
IT'S ALWAYS FRESH
- **AND A HANDY**
RESOURCE, TOO

1-888-887-0505

www.TruckAndEquipmentPost.com



HAYES
HEAVY HAULING LLC

(203) 510-6626
Watertown CT



Big To Small We Can Haul - New England Service

www.hayesheavyhauling.com



BARBER GREEN 42" X 60' RADIAL STACKING LATTICE CONVEYOR. 30 HP, 240/480 Volt, 3 Phase Motor, Wrap Drive, 54" Wide X 42" Deep Truss, 3.5" X 3.5" X 3/8" Angle Truss, Very Rugged Conveyor, Conveyor Belt In Good Condition, No Major Tears, **\$28,000.** Gales Ferry, CT 860-460-0767



2012 TENNANT 6100 INDOOR/OUTDOOR SWEEPER. 30" Cleaning Path, Weight 1100 Lbs., Hopper Capacity 200 Lbs., Indoor/Outdoor, Runs And Works As It Should, **\$5300.** 603-899-2000



TIME IS MONEY

NEED EQUIPMENT FINANCING FAST?

Universal Finance has a unique in-house approval process that allows fast, flexible financing options. We can get a deal approved and loan documents funded within one business day.

Let's get started.

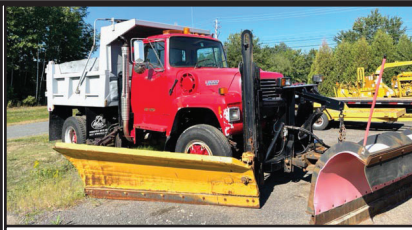
Follow this code or call us to apply.



UNIVERSAL FINANCE

GET APPROVED FOR A LOAN TODAY | CALL: 781-653-7593





FORD LN9000 PLOW TRUCK. Wing, Good Shape, Plows Available, **\$8,000**, 413-246-0880



1994 HILL 26 FOOT ALUMINUM DUMP TRAILER. Quicksilver Liner, Rayco Suspension, **\$15,000**, 774-239-1294

FOR SALE

Successful Turnkey Business

In Rural New Hampshire

Serving The Truck Body & Equipment Industries for 45 Years

Land, Buildings, And Inventory

603-361-5274



Residential ~ Commercial ~ Industrial
Mark Dillon
774-365-0222



1998 FORD 800 DUMP TRUCK. Mint Condition, Comes With Plow & Sander, **\$24,999 OBO**, 401-486-8552

TOREKU TRACTOR & EQUIPMENT INC.



4 Littleton Rd, Rt2A & 110, Ayer, MA • 978-772-6619



2012 KUBOTA BX2360V. Tractor/Loader, 212 Hours, Four Wheel Drive, **\$9,500**



KUBOTA BX2680. Factory Deluxe Cab, Heat, AC, Wipers, Work Lights, 27.5 Hours, 26 Hp, 48" Bucket, Turf Tires, 4WD, **\$24,999**



KUBOTA L22250DT-1. 26.5 Hp, 1093 Hours, 4WD, New 66" Bucket & Quick Coupler, Turf Tires, **\$15,500**



2005 KUBOTA BX2230D TRACTOR. 4WD, 23 Hp, 376 Hours, Roll Bar, Turf Tires, **\$5,995**



2017 KUBOTA RTV 1100CW UTILITY VEHICLE. 20 Hours, Like New, Cab With Heat & Air Conditioning, Radio, Alloy Wheels, **\$22,500**

VISIT US AT WWW.TOREKU.COM

WWW.TRUCKANDEQUIPMENTPOST.COM





5 Piece Locking Pliers Set:
Curved, 2 in $1\frac{7}{8}$ in $1\frac{1}{8}$ $1\frac{1}{2}$ in
Max Jaw Opening
Plain Grip
Includes Bag And 4 Piece Pliers **\$99.99**
Plus Shipping

Email: BadLarryTools@outlook.com



2006 HINO 268. With. Refer
Therm O King 580 R. Whisper 245k
Running & Driving. Refer Works.
1st **\$10,950.** Being Sold As Is.
508-295-9444 Ext. 160



1991 KODIAK 4X4 70 SERIES. 33,000 GVW, CAT Diesel
Engine, 5-Speed Manual With VO-55 Lift, Little Use, Excellent
Condition, **\$29,500 OBO.** 978-256-0341

2004 FORD F650.
Diesel, 20' Long, Steel
Tilt Bed, 223,344
Miles, Motor Rebuilt at
130,000, New Batteries,
\$17,000.
401-822-8200



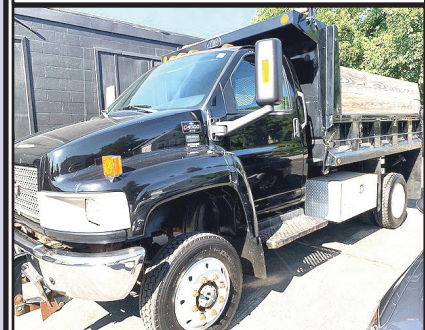
East Coast Fabrication
www.EastCoastPowderMag.com
401-749-6403



**Custom Built Aluminum Leaf Boxes,
Dumping Bodies, and Flat Beds**



CAT 225 EXCAVATOR. Excellent Shape, 90% U/C,
\$29,900, 413-246-0880



2005 CHEVY 4500 TOP KICK.
4x4 Dump Truck, 57K Dura Max Diesel,
Automatic, New Power Up And Power
Down, Hydraulic Pump, Dual Diamond
Plate, Tool Boxes, Plow Frame, Road
Ready, **\$36,000.** 401-258-3397





**8 FT FISHER MINUTE MOUNT
2 SNOWPLOWS.**
3-Plug Systems, Good Condition, Tested And Work, Will Demonstrate, **\$1400 & Up.** Wire Harness Available Extra Cost. 401-297-6581



1986 CASE IH 685: 4x4 Utility Farm Tractor w/ Loader, **\$17,900**, Belchertown, MA 413-253-5456

YELLOW STACKING CONVEYOR. 30" X 55 Ft., 42" Wide X 24" Deep Truss, 2" X 3" X 1/4" Angle, 10 Hp., 240/480 Volt, 3 Phase Motor, Solid Conveyor, **\$6,800.** Gales Ferry, CT 860-460-0767



2021 FORD F550 DUMP. Only 451 Miles, New SS V-Plow Never Used, **\$85,000**, 413-246-0880



JACK MADDEN FORD

825 Providence Hwy Rt.1 Norwood, MA

888-817-7979

IT'S A JEEP THING!



**JEeps AVAILABLE!
WRANGLER UNLIMITED SPORT, WRANGLER RUBICON.**



Lorusso Heavy Equipment, LLC
160 Elm St Walpole, MA 02801
Tel: 508-660-7600



2022 HYUNDAI HL940A.
Call For Pricing.



BRAND NEW HYUNDAI HX145A
In Stock!
Call For Pricing.



2022 MECALAC MCR Series.
6MCR, 8MCR, And 10MCR
Available. Call For Pricing.



2022 Hyundai HX85A.
Call for pricing.



2019 HYUNDAI HL940
Wheel Loader. \$115,000.00



2022 MECALAC AX850 Mini
Wheel Loader - \$74,000.00
Financing available



www.lhequip.com • Call Us for All of Your Rental Needs • www.fb.com/LHELLC



C-87L RAYCO CRAWLER

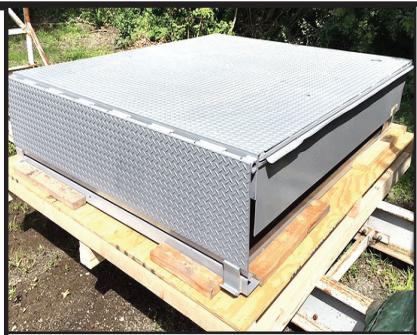
High Flo Oil, Deutz Engine (85 HP) 800 Hrs W/14" Dymax Shear & Hydraulic Winch
\$44,000

Optional Equipment Available

- 10 Ton Trailer • CBI Wood Screw • Choice of 2 Hydraulic Brush Rakes
- Hydraulic By-Pass Grapple • Hydraulic Dozer Blade • Morbark Typhoon 20' Capacity
- 325 HP John Deere Engine 5000 Hrs

Complete Package For Small Clearings & Lots

Call: 978-256-0341

**BLUE GIANT MECHANICAL LOADING DOCK RAMP.**

86" X 72" "New Old Stock",
 25,000 Lb. Capacity, **\$4,400.**
 Gales Ferry, Ct 860-460-0767



1987 ROGERS 35 TON GROUND BEARING TRAILER. Excellent Condition, **\$12,000,**
 413-246-0880

True Survivor!! **1985 CHEVROLET MONTE CARLO SS** 81 K Miles.
 Buckets & Console. Rust Free. Southern Car!! Rare Find!! **\$19,950.** Do Your Research. None Nicer!!
 Call For More Information
 508-295-9444 EXT. 160



CT • RI • MA • NY



100 YARD
 STEEL DUMP TRAILERS

CALL IAN OR JIM
800-229-9421

**WE WILL SAVE YOU MONEY
 AND PUT A SMILE ON YOUR FACE!**

**STUMP & BRUSH
 TRANSPORTATION & DISPOSAL**

\$1500/LOAD

**DEMOLITION DEBRIS
 TRANSPORTATION & DISPOSAL**

\$2150/LOAD

**SAME DAY DISPATCH
 TOP \$\$ PAID FOR YOUR
 SCRAP STEEL, COPPER, & ALUMINUM!!!**



2022 LOAD TRAIL Tandem Axle Low Profile Gooseneck
 Deck Over, 102" x 32', **\$22,499,** Belchertown, MA
 413-253-5456



**2014 CHEVROLET
 SILVERADO 3500HD**
 4wd 2-3 Yd Dump Body, 13,200lb
 Gvw, 73k Miles, Duramax Turbo
 Diesel 6.6l V8, Allison Auto,
 Stock#C22093A, **\$41,554,**
 Gardner, MA, 888-605-4346



JOSEPH

EQUIPMENT COMPANY

300 GAY ST • MANCHESTER, NH 03103

SATURDAYS • WE ARE OPEN ALL DAY

PHONE: 603-641-8608

FAX: 603-666-3716



293 NORTH - EXIT 2 -
LEFT ONTO BROWN AVE -
RIGHT ONTO WINSTON ST. - LEFT ONTO GAY ST.
300 GAY STREET ON THE RIGHT



2012 PETERBILT 386. 13 Speed, Cummins Power 565 HP, Dual Stacks, Dual Fuel Tanks, Sliding 5th Wheel, Two Line Wet System, Miles: 1,001,274 - Rebuilt Motor At 851,274, Headache Rack With Storage, Bunk, Aluminum Wheels, Good Rubber, One Owner, Fleet Maintained. **Call For More Information.**



2014 KENWORTH T300 With Raytech 8 Ton Hot Box, Air Ride, Cummins Power, 100K Original Miles, New Burners, Excellent Shape. **Call For More Information.**



2007 TALBERT. 55 Ton, Flat Level Deck, 25' 6" Deck, Tri Axle, Air Ride, Non-Ground Bearing, Set Up For 4th, Air Lift On Third, Working Daily, One Owner. **Call For More Information.**



FONTAINE 48' STEP DECK. With Beaver Tail And Ramps, Spread Axle. **Call For More Information.**



2008 RAVENS BY KRUZ ALUMINUM 26' END DUMP TRAILER. Tandem Axle, Width: 102", Length: 26', Aluminum Tub & Frame, Aluminum 12 Panel Top Hinge Gate, Aluminum Wheels, Tub Liner, Air Ride, Canvas, Very Clean. **Call For More Information.**



1994 TRAIL EZE SLIDING AXLE. 35 Ton, Recent Sandblasted And Paint, New Tires, New Brakes, Steel Deck, Winch, Forklift Package, Working Daily. **Call For More Information.**



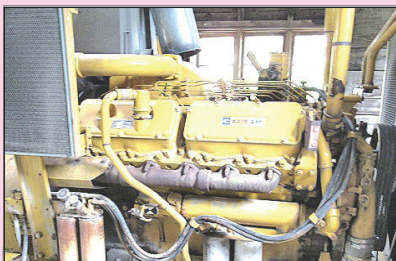
2007 LIDDELL 50 TON BEAM TRAILER. 4 Axle, Lift On Third, 4th Axle Flip, Detaches Both Ends, 28' Deck, NGB, Excellent Shape, One Owner. **Call For More Information.**



2017 UTILITY PUP TRAILER. 2 Axle, 15' 9" Deck, 96" Deck Width, 46,000 Lb GVWR, Lunette Ring Hitch, Spring Suspension, Air Brakes, Alum Wheels, 11R X 22.5 Rubber, Low Miles. **Call For More Information.**



2014 KOMATSU PC45MR. Rubber Track Mini Excavator, Full Cab, A/C, Heat, With Thumb And 3rd Valve, 2,143 Hours, Blade, Good Tracks, Very Good Condition. **Call For More Information.**



CAT 3412 GENERATOR. 600 KW, Low Hours, Complete. **Call For More Information.**



30 AND 40 YARD ROLL OFF CONTAINERS. Excellent Shape. **Call For More Information.**



SKYJACK 50' MANLIFT. Diesel, Rough Terrain, Factory Certified Rebuilt, Low Hours, Excellent Shape. **Call For More Information.**

www.josephequipment.com

Trades Welcome • Financing Available

THIS AD IS COPYRIGHTED & OWNED BY TRUCK AND EQUIPMENT POST



JOSEPH

EQUIPMENT COMPANY

300 GAY ST • MANCHESTER, NH 03103

SATURDAYS • WE ARE OPEN ALL DAY

PHONE: 603-641-8608

FAX: 603-666-3716

F

FONTAINE

293 NORTH - EXIT 2 -
LEFT ONTO BROWN AVE -
RIGHT ONTO WINSTON ST. - LEFT ONTO GAY ST.
300 GAY STREET ON THE RIGHT



2007 FONTAINE MAGNITUDE 55H DSR.
3+1 Capable, 26' Deck, 14.5" Loaded Deck Height, Air Ride, Tri Axle, Lift On 3rd, Set Up For 4th, 4th Axle Is Also Available. Will Sell With Or Without 4th Axle. Strobe Lights, LEDs, Alum Wheels, 275/70r X 22.5, Boom Trough, Very Good Condition. **Call For More Information.**



2007 TRAIL KING, MODEL TK80HDG-492.
Capacity 40 Ton, 27' Beam Deck, Detachable At Both Ends, Air Ride, Non Ground Bearing, Good Rubber, Original Paint. **Call For More Information.**



1997 CATERPILLAR 960F WHEEL LOADER.
Sandblasted And Painted, New Decals, A/C, Scale, 23.5 X 25 Rubber, Bolt On Cutting Edge, Very Good Condition. **Call For More Information.**



2019 MANAC 48 X 102. Tri Axle, Air Ride, Log Bunks, Alum Wheels, Tool Boxes, Excellent Condition. **Call For More Information.**



2008 LANDOLL TRAILER. (2 Available To Choose From), 50 Ton, Tri Axle, Dock Levelers, Headache Rack, Power Pack, Original Paint, One Owner, Very Good Condition, Fork Lift Package. **Call For More Information.**



1998 FONTAINE, MODEL. 50 Ton, Detaches At Both Ends, 25' Flat Level Deck - 20" Loaded Deck Height, 25' Beam Deck Insert, 20" Loaded Deck Height, Non Ground Bearing, Air Ride, Boom Trough & Deck Cut Out, Lift Axle, Outriggers, Aluminum Wheels, Strobe Lights. **Call For More Information.**



COMPLETELY RECONDITIONED DUCK/DUWK BOAT. New Diesel Motor, Automatic Transmission, Updated Rebuilt Differentials With Canopy, New Tubeless Tires, Brakes, Etc., Over \$100,000 Spent On Reconditioning. **Call For More Information.**



DISMANTLING CRUSHING, SCREENING PLANT. 80' Radial Stackers, Double Deck Screens, TelSmith Twin Screw Wash Plant, Custom Hopper And Custom Frame And Other Misc. Parts. **Call For More Information**



2007 KENWORTH T800. Tri Axle Dump Truck, (2 Available To Choose From) 450 HP, Cummins 8LL, 46K Rears, Full Lockers, 24.5 Rubber, Original Paint, Working Daily. **Call For More Information.**



2000 J & J ALUM DUMP TRAILER, 3 Axle, Lift On 3rd, Liner, Cover, Steel Frame, Excellent Shape, 3 Available To Choose From. **Call For More Information.**



2006 LANDOLL 660 TRAILER, 48 X 102. Sliding Axle, Alum Wheels, Air Ride, Working Daily. **Call For Information.**



2017 FONTAINE MAGNITUDE 55L. 55 Ton Flat Level Deck, 26' Deck, Air Ride, Tri Axle, 18" Deck Height, 2 Pin Position, 275 Rubber, Load Bearing Wheel Covers, One Owner, Original Paint, Working Daily. **Call For More Information.**

www.josephequipment.com

Trades Welcome • Financing Available

THIS AD IS COPYRIGHTED & OWNED BY TRUCK AND EQUIPMENT POST



JOSEPH

EQUIPMENT COMPANY

300 GAY ST • MANCHESTER, NH 03103

SATURDAYS • WE ARE OPEN ALL DAY

PHONE: 603-641-8608

FAX: 603-666-3716



293 NORTH - EXIT 2 -
LEFT ONTO BROWN AVE -
RIGHT ONTO WINSTON ST. - LEFT ONTO GAY ST.
300 GAY STREET ON THE RIGHT



ERIN 165T SCREENER ON TRACKS.
Makes 3 Products, CAT Power, Heavy Duty Grizzly, Remote Control, Very Good Condition,
Call For More Information.



JLG SCISSOR LIFT MODEL 3394RT. Dual Fuel (Gas Or Propane), Hydraulic Extension, 165 Original Hours, Good Rubber, Like New Condition, Original Paint, No Rust.
Call For More Information.



1988 MACK SUPERLINER. RW713, 500 V8, 12 Speed, New Way Air Ride, Wet System, Super Clean, New Motor, Trans, Alum Wheels, A/C, P/S., Low Miles. **Call For More Information.**



2011 PEERLESS BOOM TRAILER. Tri Axle, Air Ride, With National 20 Ton Boom, Outriggers, Tool Boxes, Like New Condition.
Call For More Information.



2012 ITI DDX100 70 TON 2+2+3 HYDRAULIC EXTENDABLE STEERABLE TRAILER. Air Ride. Comes With 10' Flip Up Gooseneck Ext, Self-Contained Power Unit, 30' Deck, 8' 6" Wide, JP40 Tandem Axle Jeep, B80 Tandem Axle Stinger With Pin On 3rd Axle. Wireless Remote, Super Singles.
Call For More Information.



1994 FONTAINE 70 TON TRI AXLE. 26' Beam Trailer With Removable Gooseneck, Air Ride, Air Brakes, Hyd Removable Gooseneck, Gooseneck Extension, Tandem Axle Pin On Booster, Plumbed For Booster Axle, 46" Usable Deck Width, 275/70R 22.5 Tires, Currently Located In Northeast MD.
Call For More Information.



(2) FONTAINE 48' DOUBLE DROP TRAILERS
Available To Choose From, Air Ride, Covered Neck And Covered Bogie, Approx 3,000 Original Miles, Ex-Navy Trailers, Excellent Shape, 100% Rust Free.
Call For More Information.



2012 KENWORTH T800.
435 HP, 10 Speed, Air Ride, 40K Rears, Dual Stacks, Aluminum Wheels, Super Clean.
Call For More Information.

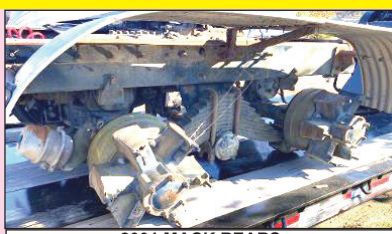


2009 FREIGHTLINER. Built As Glider, No Emissions, 60 Series Detroit, 18 Speed, 46K Rears, 28' Jerr Dan Lo Pro Body, Tri Axle, Super Single Tires, Very Good Condition. **Call For More Information.**

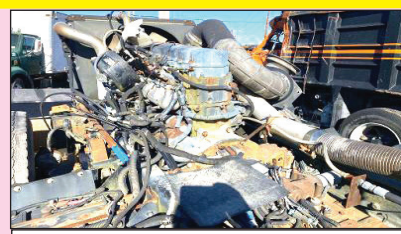
CAT 336 AND 330 GRAPPLES, KOMATSU PC 400, PC300, PC200, PC228, PC270, PC220, PC150 GRAPPLES.



LABOUNTY ROTATING SHEAR.
Set Up For Komatsu PC228 Or Equivalent.
Call For More Information.



2001 MACK REARS.
COMPLETE, NEW SUSPENSION, BRAKES AND DRUMS, 4.42 GEAR RATIO
Call For More Information



2001 MACK 460 ENGINE.
COMPLETE, STILL IN CHASSIS FRAME.
Call For More Information

www.josephequipment.com
Trades Welcome • Financing Available

THIS AD IS COPYRIGHTED & OWNED BY TRUCK AND EQUIPMENT POST



JOSEPH

EQUIPMENT COMPANY

300 GAY ST • MANCHESTER, NH 03103

SATURDAYS • WE ARE OPEN ALL DAY

PHONE: 603-641-8608

FAX: 603-666-3716



293 NORTH - EXIT 2 -
LEFT ONTO BROWN AVE -
RIGHT ONTO WINSTON ST. - LEFT ONTO GAY ST.
300 GAY STREET ON THE RIGHT

IN STOCK



NEW 2021 XL SPECIALIZED XL80SA. Sliding Axle Trailer, 2 Axle, Air Ride, 40 Ton, 53' X 102', Apitong Decking, Winch, Remote Control. Call For More Information.

NEW MODEL - IN STOCK NO WAITING



NEW MODEL - IN STOCK NO WAITING. Beat The Price Increase. Fontaine Magnitude 65 2+3+2 Capable, 28' Drop Side Rail Deck, 3 Axle, Set Up For 4 Axle, 14.75" Deck Height, 102" Wide, 60.5" Axle Spacing, Eq2 Spreader Bar With Intermediate Axle, Hydraulic Removable, Non Ground Bearing With 2 Pin Position At 114" And 102", Triple Cylinder, 70" Hydraulic Flip Box, Heavy Duty Snap In Outriggers, D-Rings, Alum Wheels, 275/70R X 22.5 Tires. Call For More Information.



IN STOCK - 2023 FONTAINE LXTN40. 40 Ton Extendable, 34' Closed - 60' Open. Also Available 29' Closed - 50' Open. Tandem Axle, Set Up For 3rd, Air Ride, Non Ground Bearing, 102" Swing Clearance, 20" Deck Height, Alum Wheels. In Stock, No Waiting. Available In Manchester NH And At The Factory In Springville AL. 3rd And 4th Axles Available. Call For More Information.



2017 FONTAINE INFINITY COMBO STEPDECK TRAILER MODEL HCITX22RSA. 53 X 102 With Ramp System, Like New Condition, Tandem Axle, Rear Slide, 80,000 Lb. Capacity, Air Ride, Container Locks, Chain Tie Downs, Winches, Approx 4,000 Original Miles, 22.5 Tires. Call For More Information.



IN STOCK, NO WAITING - 2023 GALLEGOS 36' END DUMP TTRAILER. Tri Axle, Steel Tub, Steel Frame, 89" Sides, Hendrickson Air Ride Intraxx, ABS Brakes, Holland Mark V Landing Gear, 11 X 24.5 Rubber, Lift On Front Axle, Flip N Go Electric Canvas, LED Lights, Barn Door, Currently Located In Laredo TX. Call For More Information.



2021 GALLEGOS 40 TON JEEP DOLLY, 2 Axle, Air Ride, 29' Long, 60" Axle Spread, 102" Wide, Approx Fifth Wheel Height 53", Compatible With 60 To 70 Ton Class Trailers, 275 Rubber, Alum Wheels, 2 Available To Choose. Call For More Information.

COMPLETELY RECONDITIONED



2009 TALBERT 70 TON DROP SIDE RAIL. Severe Duty, 26" Steel Deck, 9' Wide, With 26" Beam Insert, 30,000 Lb Axles, 3 Axle, Set Up For 4th, Spring Ride, 315 Rubber, One Owner, Completely Reconditioned, Sandblasted And Painted. New Seals, Brakes, Bearings, Hubcaps And Decals. Call For More Information.



1991 MACK SUPERLINER 713. Miles: 242,251, 400 Mack, 13 Speed, 46K Rears, Heavy Fronts, Mack Air Ride, Dual Power Steering, Double Frame, Dual Fuel Tanks, Two Line Wet System, Sliding 5th Wheel, Storage Box, A/C, Heat, Aluminum Wheels, Good Rubber. Call For More Information.



2023 GALLEGOS 26' STEEL FRAME. Steel Tub, 2 Axle, Lift Axle, Air Ride, High Lift Gate, 11 X 24.5 Rubber, Alum Wheels, 2 Speed Landing Gear, Electric Canvas, 1/4 Hardox Floor And Sides, In Stock, No Waiting. Call For More Information.



1996 TALBERT 70 TON. Run As 4 In A Row, 60 Ton As 2+2+2, 26" Deck, Spreader Bar Included, Reconditioned, Sandblasted And Painted, New Seals, Bearings, Brakes And Hubcaps, New Flaps, Decals And ID Tag, Hub Piloted Wheels, Long Gooseneck With Gooseneck Extension, Detaches Both Ends, Air Ride, Non Ground Bearing, Working Daily, One Owner. Call For More Information.



2018 FONTAINE 65/70 TON 28' LOWBED TRAILER. Nitrogen Spreader & Pin On Axle 2+3+2 Capable, 70 Ton As 4 In A Row, 65 Ton As 2+3+2, 28' Well, Tri-Axle, Air Ride, Lift Axle, Aluminum Wheels, Good Original Rubber, Original Paint, One Owner, Job Completion Package, Excellent Shape, Included: 2018 Fontaine Nitrogen Eq2 Stinger, 2018 Pin On 4th Axle. Call For More Information.



2022 GALLEGOS 40' STEEL DUMP TRAILER. 94 Yard With Canvas, Hardox Construction, Tri Axle, Air Ride, In Stock, No Waiting. Call For More Information.

www.josephequipment.com

Trades Welcome • Financing Available

THIS AD IS COPYRIGHTED & OWNED BY TRUCK AND EQUIPMENT POST



JOSEPH

EQUIPMENT COMPANY

300 GAY ST • MANCHESTER, NH 03103

PHONE: 603-641-8608

OPEN
ALL DAY
SATURDAY



FONTAINE

FAX: 603-666-3716



NEW MODEL - 2023 FONTAINE RENEGADE LXLN12 - 12 Inch Loaded Deck Height With 4 Inch Ground Clearance When Fully Loaded, 30 Tons In 16 Feet On Tandem Bogie Or 30 Tons In 20 Feet With 3rd Axle Flip, Low Profile, 3rd Axle Capability, 32 Feet 11 Clear Deck Length. IN STOCK, NO WAITING. **Call For More Information.**



NEW MODEL - 2023 FONTAINE MAGNITUDE 50 Tri Axle, Set Up For 4Th, 50 Ton, Air Ride, 24' Deck, 20" Loaded Deck Height, Alum Or Steel Wheels, Strobe Lights, Outriggers And D-Rings. **Call For More Information.**



2023 KRUZ TERMINATOR, 26' Steel Frame, Single Point Suspension, 2 Way Gate, 11 X 24.5 Tires, Alum Wheels, 2 Speed Landing Gear. **Call For More Information.**

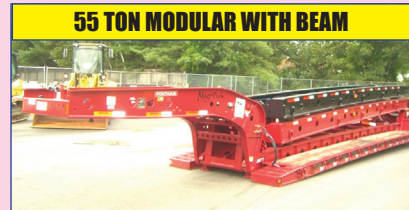


27' FLAT LEVEL DECK - IN STOCK

2023 FONTAINE 55L, 27' Flat Level Deck, Also Available In 25' And 26' Deck Length. Tri-Axle, Air Ride, 3Rd Axle Lift, Alum Wheels, Strobe Lights, Set-Up For 4Th Axle. In Stock, No Waiting. **Call For More Information.**



2023 KRUZ 26' STEEL TUB, Aluminum Frame Dump Trailer, Air Ride, 2 Axle, Alum Wheels, 450 Hardox, 24.5 16 Ply Tires. **TAKING ORDERS**
Call For More Information.



55 TON MODULAR WITH BEAM

2023 FONTAINE 55H MODULAR DSR, Beam Deck Also Available, Tri Axle, 60" Axle Spacing, Hydraulic Removable, Non Ground Bearing, Set Up For Gooseneck Ext, Spreader Bar And 4Th Axle Flip, Air Ride, Alum Wheels, 22.5 Rubber. **Call For More Information.**



2023 FONTAINE 60 TON MODULAR 2+3+1,

26' Dsr, 184" Swing Clearance, Set Up For 2 Axle Jeep, 14" Deck Height, Air Ride, Alum Wheels, 275/70R X 22.5 Rubber, Non Ground Bearing. **Call For More Information.**



2023 FONTAINE RENEGADE LXL, 14" Deck Height, 30' Deck W/6" Ground Clearance, 2 Axle, Set Up For Third, Hydraulic Detachable, Taking Orders
Call For More Information.



2023 KRUZ, 70 Yard, Tri Axle, 70,000 Single Point, Lift On Third Axle, 1/4 Inch 450 Hardox, Floor, Sides, Nose, Gate, 12 Panel Gate, 11 X 24.5 Rubber, Alum Wheels. Taking Orders.
Call For More Information.



2023 FONTAINE TRAVERSE HYDRAULIC TAIL, 48' Long, 102" Wide, Air Ride, Hydraulic Upper Deck, Hydraulic Winch, Remote Control, Alum Wheels, Dual Controls. Taking Orders
Call For More Information.



2023 FONTAINE 60 TON MODULAR, 26' Dsr, 60" Axle Spacing, 184" Swing Clearance, Set Up For 2 Axle Jeep, 14" Deck Height, Air Ride, Alum Wheels, 275/70R X 22.5 Rubber, Non Ground Bearing. In Stock.
Call For More Information.



1998 KAYLN SIEBERT. 75Ton 3+3+3, Air Ride, West Coast Bogie, 3 Axle, Air Ride Jeep With Power Tower, 10' Wide Trailer, 60' Overall Length, 48' Of Useable Deck, 275/70 X 22.5 Rubber, Sandblasted & Painted, Excellent Shape, Alum Wheels On Jeep And Booster. **Call For More Information.**

Trades Welcome • Financing Available • www.josephequipment.com

THIS AD IS COPYRIGHTED & OWNED BY TRUCK AND EQUIPMENT POST



Trades Welcome • Financing Available • www.josephequipment.com

THIS AD IS COPYRIGHTED & OWNED BY TRUCK AND EQUIPMENT POST

JOSEPH EQUIPMENT COMPANY

300 GAY ST. • Manchester, NH 03103

NOW TAKING ORDERS FOR DUMP TRAILERS AND LOWBEDS FOR SPRING AND SUMMER DELIVERY

14" DECK HEIGHT

IN STOCK, NO WAITING

55 TON EXTENDABLE

PHONE: 603-641-8608

FAX: 603-666-3716

IN STOCK

2023 FONTAINE MAGNITUDE 603T Modular Drop Side Rail With 28 Deck, Hydraulic Removable Neck, Non Ground Bearing, Air Ride, Tri Axle, Third Axle Lift, Set Up For 47th, Alum Wheels, 275/70 X 22.5 Tires, Loaded, Call For More Information.

NEW 2023 FONTAINE RENEGADE L.XI. 14" Deck Height, 30" Deck W/ 6" Ground Clearance,
2 Axle, Set Up For 3Rd Hydraulic Detachable Or Mechanical Detachable.
In Stock No Waiting. **Call For More Information**

WE RENT WALKING FLOORS • DUMPS • HIGH FLAT EXTENDABLES • JEEPS

2023 FONTAINE 55H MODULAR DSR. Beam Deck Also Available. Tri-Axle, 60" Axle Spacing. Hydraulic Removable, Non Ground Bearing, Set Up For Gooseneck Ext, Spreader Bar And 4Th Axle Flip, Air Ride, Alum Wheels, 22.5 Rubber. **Call For More Information.**

2023 FONTAINE 35 TON LOWBED. Air Ride, Tandem Axle, 29Ft Flat Level Deck, Non Ground Bearing, Hyd Goose Neck, Set Up For Future 3rd Axle, In Stock.
Call For More Information

70 TON 2+3+2

WE RENT STINGERS • SPREADER BARS • DOUBLE DROP EXTENABLES TRAILERS

NEW 2023 FONTAINE 55 TON. Drop Side Rail, Tri Axle, Air Ride, Set Up For 4Th,
Non Ground Bearing, Led Lights, Aluminum Wheels, Strobe Lights, Loaded,
In Stock No Waiting. **Call For More Information**

**NEW 2023 SPECIALIZED 55 TON BEAM TRAILER, 3+1 Modular, NGB, Detach Both Ends
T/A, A/R, Lift On 3Rd, Set Up 4Th, Set Up For Gooseneck Extension,
Call For More Information**

2023 FONTAINE 704/2+3+2 DROP SIDE RAIL, 4 Axle, 28' Deck, Hydraulic Detachable, In Stock, No Waiting, Non Ground Bearing, 102" Wide, 65" Flip Box, Spreader Bar And 352J, Jeep, Alum Wheels, 275/70R X 22.5 Tires, 28" Beam Deck Available **Call For More Information.**

