

SERVING NEW ENGLAND

FREE

TRUCK AND EQUIPMENT POST

Buyer - Seller - Swapper



2009 AQUATECH B10. STERLING LT9500 CHASSIS, CAT C-13, ALLISON 4000RDS, 31,000 MILES, 6,768 HOURS, 10 CY BODY, FLUSH-OUT SYSTEM, 360 DEGREE BOOM, POSITIVE DISPLACEMENT VACUUM, EXCELLENT FOR LOCATING UTILITY LINES, \$79,000. 203-232-3516



CEC ROADRUNNER CRUSHING/SCREENING PLANT. 400 SERIES, 40 INCH CONE, ELECTRICAL GEAR INCLUDED, 3 SECTIONS: FEED HOPPER, MAIN PLANT, CLOSED CIRCUIT SCREENER/CONE, \$239,000. 860-333-6533



2005 GMC SIERRA 2500. DURAMAX DIESEL, 125,XXX MILES, 4X4, BRAND NEW CM UTILITY BODY, \$18,500. WESTFIELD, MA 413-530-2969



CATERPILLAR B-16 FORKLIFT
16,000LB, 8' FORKS
\$12,500. 603-759-5918



CENTENNIAL TRAILER,
9 TON. ELECTRIC BRAKES,
90% RUBBER, GOOD DECK,
PULLS GREAT,
\$1250. CALL EDDY 401-226-1514

Optative Group



Issue 28-29
July 14th 2021

INTERNET & PRINT
FOR ONLY \$25.00

www.TruckAndEquipmentPost.com

888-887-0505

NICK SCARVALAS
Commercial Sales
857-247-9023 or 617-249-5603



**COMMERCIAL
VEHICLE CENTER**

ALL 2020 TRUCKS ON SALE NOW



SAVE \$5,000

2020 F550 DUMP. V8 Gas, Auto, 4X4, I-Pac Tool Box, 9' Body, Payload Plus, Power Group, F203583 MSRP \$67,240
SALE PRICE \$62,240



SAVE \$7,000

2020 F450 12' LANDSCAPER. Diesel, 4X4, Payload Upgrade, Power Equipt Group, F203169 MSRP \$73,879
SALE PRICE \$66,879



SAVE \$5,000

2020 F550 SUPER DUTY DUMP. 4X4, Diesel, PW, PL, Payload Plus Pkg, F202966 MSRP \$74,855
SALE PRICE \$69,855



SAVE \$5,000

2020 F550 9' DUMP. Diesel, 4X4, Payload Plus, Power Equipt Group, I-Pac Box, F203336 MSRP \$76,999
SALE PRICE \$71,999



SAVE \$5,000

2020 F550 SUPER DUTY DUMP. 4X4, V8 Gas, Remote Start, PW, PL, Payload Plus Pkg, F203283 MSRP \$68,195
SALE PRICE \$63,195



SAVE \$4,000

2020 F550 LANDSCAPER 4X4. Super Cab, Diesel, 12' Body, Curb Side Door, F204215 MSRP \$80,225
SALE PRICE \$76,225

500 COMMERCIAL TRUCKS IN STOCK



SAVE \$12,000

2020 F450 9' DUMP. Diesel, 4X4, Payload Plus, Power Equipt Group, SS I-Pac Box, F204211 MSRP \$74,370
SALE PRICE \$70,370



SAVE \$5,000

2020 F350 ALUMINUM DUMP. V8 Gas, 4X4, Super Cab, PW, PL, Remote Start, F203305 MSRP \$64,999
SALE PRICE \$59,999



SAVE \$2,000

2020 F550 12' LANDSCAPER. Diesel, 4X4, Payload Upgrade, Power Equipt Group, F204214 MSRP \$81,225
SALE PRICE \$76,225



SAVE \$3,000

2020 F550 SUPER DUTY DUMP. 4X4, Diesel, PW, PL, Payload Plus Pkg, F204207 MSRP \$75,680
SALE PRICE \$72,680



SAVE \$3,000

2020 F550 SUPER DUTY SERVICE. DRW, 4X4, V8 Gas, Payload Plus, Power Equipt Group, F204208 MSRP \$65,905 **SALE PRICE \$61,905**



SAVE \$3,000

2020 F550 9' DUMP. V8 Gas, 4X4, Payload Plus, Power Equipt Group, SS I-Pac Box, F204493 MSRP \$67,725
SALE PRICE \$64,725

QUIRK FORD
540 Southern Artery (Rt 3A) Quincy, MA
www.quirkford.com • 617-249-5660

**Business
Financing with
NO Co-signer
Required**

Prices include all available rebates. Rebates include Customer Cash, FMCC Bonus Cash, and Commercial Uplift Bonus Cash. Customer must qualify for rebates. Call for specific details. Prices are subject to change. * In Lieu Of Rebates

NICK SCARVALAS
Commercial Sales
857-247-9023 or 617-249-5603
WE HAVE WORK TRUCKS & FINANCING



**COMMERCIAL
VEHICLE CENTER**



SAVE \$2,000

**2021 F350 KUV SERVICE. Super Duty, Diesel, 4X4, PW, PL, AC, 8' Knapheide, F204817 MSRP \$79,640
SALE PRICE \$77,640**



SAVE \$2,000

**2021 F550 DRW UTILITY 4X4. Payload Up Grade, V8 Gas, PW, PL, F204576 MSRP \$64,253
SALE PRICE \$62,253**



SAVE \$4,000

**2020 F350 XLT SUPER DUTY. Diesel, 4X4, Stainless Steel V-Plow, Leer Cab W/ Side Utility Doors, 4,293 Miles, F204849A MSRP \$69,999
SALE PRICE \$65,999**



SAVE \$12,000

**2021 F650 SUPER CAB DUMP. Diesel, 10' Body, Tool Box, Pintle Hook, Load Cover, F203116 MSRP \$108,415
SALE PRICE \$96,415**



SAVE \$1,000

**2021 F350 9' RACK BODY. 4X4, V8 Gas, Review Camera, Power Equip Group, 2WD, F204843 MSRP \$58,155
SALE PRICE \$57,155**



SAVE \$2,000

**2021 F350 12' RACK BODY. V8 Gas, Review Camera, Power Equip Group, 2WD, F204814 MSRP \$56,195
SALE PRICE \$54,195**

500 COMMERCIAL TRUCKS IN STOCK



SAVE \$2,000

**2021 F350 SERVICE BODY. Crew Cab, 4X4, V8 Gas, Review Camera, Power Equip Group, F204804 MSRP \$61,745
SALE PRICE \$59,745**



SAVE \$2,000

**2021 T350 12' WORKPORT VAN. 3 Bar Ladder Rack, Stand Up Interior, AC, PW, PL, F204869 MSRP \$65,360
SALE PRICE \$63,360**



SAVE \$2,000

**2021 T350 SERVICE VAN. Aluminum CSV, 50% Lighter Than Steel Will Save Fuel, Cabinet Lights, AC, PW, PL, F2042665 MSRP \$64,369
SALE PRICE \$62,369**



SAVE \$2,000

**2021 F550 SWITCH N GO. Crew Cab, 4X4, V8 Gas, Payload Plus, Power Equip Group, F204202 MSRP \$80,970
SALE PRICE \$78,970**



SAVE \$2,000

**2021 F550 SWITCH N GO. Crew Cab, 4X4, Diesel, Payload Plus, Power Equip Group, F204829 MSRP \$89,675
SALE PRICE \$87,675**



SAVE \$2,000

**2021 F550 LANDSCAPER. Crew Cab, 4X4, Diesel, Payload Plus, Power Equip Group, F204579 MSRP \$82,295
SALE PRICE \$80,295**

QUIRK FORD
540 Southern Artery (Rt 3A) Quincy, MA
www.quirkford.com • 617-249-5660

**Business
Financing with
NO Co-signer
Required**

Prices include all available rebates. Rebates include Customer Cash, FMCC Bonus Cash, and Commercial Uplift Bonus Cash. Customer must qualify for rebates. Call for specific details. Prices are subject to change. * In Lieu Of Rebates



WWW.SCRANTONMOTORS.COM



MUST GO



**2019 CHEVROLET SILVERADO 5500 CREW CAB. DURAMAX DIESEL,
16' DURACUBE MAX SERVICE BODY, WITH LADDER RACKS, #E6586**



**2020 CHEVROLET XD LCF CAB & CHASSIS. 109"
WB, 5.2L 4 CYLINDER DIESEL, #F7284**



**2021 CHEVROLET EXPRESS 3500 COMMERCIAL
CUTAWAY. 6.6L GAS AUTOMATIC, #G7720**



**2020 CHEVROLET SILVERADO 5500 2WD
CAB & CHASSIS, #F7488**



**2020 CHEVROLET SILVERADO 5500 2WD
CAB & CHASSIS, #F7523**



**2021 CHEVROLET SILVERADO 6500 2WD
CAB & CHASSIS, #G7710**



**2022 CHEVROLET SILVERADO 2500HD. DURAMAX
DIESEL, 2WD, LONG BED, #F7638**

MANY OTHER TRUCKS IN STOCK. CALL FOR DETAILS

WWW.SCRANTONCHEVY.COM
774 THAMES STREET NORWICH, CT • 860-870-6539



METROPOLITAN TRUCK CENTER INC.

1074 Turnpike St. Stoughton, MA 02072

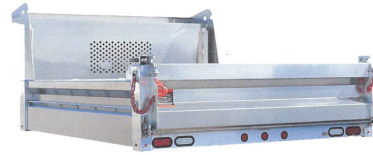
www.metropolitantruck.com

**MAKE YOUR
APPOINTMENT TODAY!**

866-514-1214

**GREAT
SELECTION
OF
BODIES IN
STOCK!**

EVERYTHING YOU NEED FOR A TRUCK BODY!!!



CUSTOMIZED ALUMINUM BODIES TO FIT YOUR EVERY NEED



**DURAMAG S-SERVICE
BODIES**



DURAMAG S-SERVICE BODY



DURAMAG S-SERVICE BODY



AIR-FLO DUMP BODIES



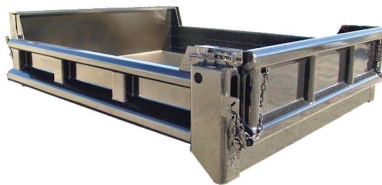
**READING STEEL SERVICE
BODIES**



RUGBY PLATFORM BODY



**GALION STAINLESS STEEL
DUMP BODIES**



GALION STEEL DUMP BODY



**57" AND 75" SINGLE AND
DUAL WHEEL**



1-OWNER, VERY LARGE JOB COMPLETION AUCTION

~ Suit-Kote ~

All Types of Construction & Paving Equipment, Utility Equipment,
Truck Tractors, Dump Trucks, Service & Pickup Trucks,
Various Types of Equipment Trailers Large and Small

**FRIDAY, JULY 16TH****9:30 AM**

**1911 Loring's Crossing,
Cortland (Syracuse), NY 13045**

HIGHLIGHTS INCLUDE: 5 ASPHALT PLANTS: Gencor 200-ton Hot Mix, Bitumaster 400TPH, Hi-Way Heatank, Aedco Drum Mix System, Portable 3-Bin Aggregate Feed System, 2 MILLING MACHINES: Terex PR330T, Roadtec RX70, SOIL RECLAIMER: Terex RS600C, 5 ASPHALT PAVERS: 2010 Terex CR552, Barber Greene BG206C, (2) Barber Greene BG260B, Barber Greene BG245C, 2 COLD MIX PAVERS: Midland 706MP, Midland 705, 4 MOTOR GRADERS: Cat 140MVHP, Cat 140G, Cat 12E, Komatsu GD655A-2, RUBBER TIRED LOADER: Komatsu WA350-1, CHIP SPREADERS: Etnyre(quad), Etnyre(4x4), WINDROW ELEVATOR: Barber Greene BG650, 3 EXCAVATORS: Volvo EC290B, Komatsu PC200LC, Cat E110B, 4 CRAWLER TRACTORS: Cat D8H, Komatsu D85E-18, Komatsu D68E-1, Terex 82-20AA, 2 LOADER BACKHOES: Cat 436, Cat 426C, ROAD WIDENER: Barber Greene RW730, RUBBER TIRED CONCRETE SAW: Vermeer CC135, 2 VIBRATORY ROLLERS: Dynapac CA152PD, IR SD25F, 2 ASPHALT ROLLERS: Volvo DD118HF, IR DD110, SKID STEER: Gehl 6635DXT, BOOM LIFT: JLG 1250AJP, FORKLIFT: Hyster H60C, AIR COMP.: IR P185EJD, GENERATOR: Marathon 65Kw, LOADER LANDSCAPE TRACTOR: Case 480E, 5 BROOM TRACTORS: (2)NH 3930, NH 3430, Ford 2810, Ford, 5 SCREENING PLANTS: Kolman Athey 101EXHD, Kolberg 24x50, P.E.P. VTS VV17, Shop Made Blending Plant, 3 CONVEYORS & STACKERS: 24in.x90ft Portable, 30in.x60ft Portable Stacking, 24in.x60ft. Portable Stacking, 6 SWEEPERS: Broce RTJ350, Laymor 8HC, (3)Laymor 6HB, 2006 IH 4200, 3 WATER TRKS: 1989 Ford LTL9000(2,700gal., t/a), 1987 Peterbilt 587(2,700gal. t/a), 1976 Ford F700(s/a), VAN TRK: 2000 IH 4700, 11 CAB & CHASSIS: 2014 IH 7300, 1992 IH 4900, 2002-2001 Ford F350XL, 1985 Ford LTL9000(t/a), Ford L8000(t/a), 1996 Mack RD688S(tri), Mack DM6855(t/a), 1988 Peterbilt 379(t/a), 1984 Peterbilt 359(t/a), 1986 Autocar DR(t/a), 4 UTILITY TRKS: 2007 Ford F350, 2003-2002 Ford F350XL, 1999 Ford F450XL, STAKE TRK: 2003 Ford F450XL, 10 DISTRIBUTOR TRKS: 2002 Sterling M7500 Acterra, 2000 Freightliner FL112(tri), 1991 Volvo/White(t/a), 1999-1989 Peterbilt 377, 1982 Ford LT8000(t/a), 1975 Ford 9000(t/a), Ford C8000(s/a), Brockway N761LL(t/a), White(s/a), MICROPAVING DISTRIBUTOR TRK: 1987 Ford L9000, 3 CALCIUM DISTRIBUTOR TRKS: (2)1999 Mack RD688S(tri), 1985 Ford LT9000(t/a), 3 LIME SPREADER TRKS: (2)2007 Western Star 4900FA(tri), 1997 Mack RD688S(tri), 11 TRK TRACTORS: Mack R685ST, 1998 Freightliner Century Class(t/a), 1988 Ford LTL9000, 1979 Ford 9000(t/a), 1977 Ford 7000, 1987 Peterbilt 349(t/a), (4)1986 Volvo/White(t/a), 1980 White Road Boss, 5 DUMP TRKS: 2001 IH 990i(tri), 2000 Volvo WG42(s/a), 1997 Mack RD688S(tri), 1988 Ford F800(s/a), 1983 Ford L9000, 21 PICKUPS: 2003 Ford F350SD, 2010-(2)2006-(2)2004-(2)2002-2000-(2)1999 Ford F250XL, (3)2010-2008-2007 Ford F150XL, (2)2006-2005-2004-2003 Ford F150XL, SUV: 2009 GMC Yukon XL Denali(4x4), VAN: 2006 Ford E350, 5 DETACHABLES: 2008-2006 Etnyre RTV60T(4-axle), 1991 Loading(tri), 1980 Rogers THSN2(t/a), 10ft.x25ft.(t/a), EQUIP. TRAILER: Folding Gooseneck Paving(t/a), TAGALONG: 1986 Hurst 4-ton(t/a), DUMP TRAILER: 1966 Highway 24ft. Aluminum(t/a), 11 TANKER TRAILERS: 1999 Advance(quad., insulated), LBT F2(insulated), 1984 Fruehauf TAG-12(8,000gal., t/a), (2)1979 Fruehauf TAH-F2(8,000gal., t/a), (2)1972 Fruehauf(9,000gal., t/a), (2)1984 VIM(8,820gal., t/a), 1976 McCoy-Taylor(7,500gal. t/a), Etnyre TR6(t/a), 5 DISTRIBUTOR TANK TRAILERS: 1998 Etnyre(7,500gal. t/a), (2)Etnyre BT-HA6 Black Topper 2000(t/a), Etnyre R6BTHA(t/a), Etnyre TRD-RA(5,878gal., t/a), 2 DISTRIBUTOR TANK CARRIER TRAILERS: (2)Bearcat(s/a), PNEUMATIC BULK TRAILER: Fruehauf(1000cu. ft.), LIVE BOTTOM TRAILERS: (2)2003 Red River(tri.), TRAILER DOLLY: Fruehauf(t/a), 4 SCRAP RECYCLING EQUIP., 27 ATTACHMENTS: (25)Skid Steer, (2)Crawler Tractor, 58 NEW SUPPORT EQUIP., HEAVY SUPPORT: 2 Cummins 3.9B hydraulic power pack Miller Trailblazer Welder, 2 Single Wheel Steerable Axle, Steering Axle 11R 22.52 PA Wheels. **SALE SITE PHONE: (508) 769-7010 Joe**

**ONCE AGAIN THE FAMOUS ALEX LYON & SON HAYCAMP & BARBECUE AUCTION**

The Fanciest Late Model Cat, Case, John Deere, Doosan
Construction Equipment, Aerial Lifts, Telescopes, Attachments,
Support, Truck Tractors, Dump Trucks, All Types of Trailers

SPECIAL NOTE

Friday Night, July 16th, is the
Annual Barbeque and Hay
Camp on the main farm.

SATURDAY, JULY 17TH**9:00 AM**

**601 N. Peterboro Street,
Canastota, NY 13032**



HIGHLIGHTS INCLUDE: LANDFILL COMPACTOR: Unused Cat 816K, ARTI. HAUL TRK: Terex TA30-7, 35 EXCAVATORS: (2)New Cat 336, Cat 335, (2)Cat 330FL, Cat 330CL, Cat 325D, Cat 321DL, 2021 Cat 320, (2)2018 Cat 320FL, 2018 Cat 316F, Cat 315F, Cat 315CL, 2016 Cat 314ELCR, (3)2019 Cat 313FL, New-2019-2016 Cat 313GC, 2015 Cat 312EL, (2)Cat 308E, 2018 Cat 308E2CR, Cat 305.5E, Cat 235, Cat 225, 2018 Doosan DX140LC-5, 2015 Komatsu PC360LC-10, 2014 Komatsu PC138US-10, JD 160D, (2)2018 Kubota KX080-4, Takeuchi TB145, 19 LOADERS: (2)2020 Cat 938M, 2014 Cat 938K, (2)Cat 930K, (4)2019-2017 Cat 926M, (2)2019 Cat 910M, JD 744E, JD 724J, 2020 JD 244L, Hyundai HL780-7A, Komatsu WA320-5, Samsung SL120, Kawasaki 80Z-7, 5 CRAWLER TRACTORS: Cat D8H, Cat D5H, Cat D5BLG, Cat D5, 2018 Cat D3KXLLI, CRAWLER LOADER: Cat 977K, 2 CRAWLER DUMPS: Morooka MST3000UD(1600hrs.), Morooka MST 700UD(50hrs.), 5 LOADER BACKHOES: 2011-2008 Cat 420E(4x4), 2015 Case 590SN, 2013 JD 310K(4x4), JD 310J(4x4), 3 VIBRATORY ROLLERS: 2020 Hamm H13i, New Bomag BW177D-5, 2017 Cat CS74B, 2 TRACKED & 5 TIRED SKID STEERS: JD 323D, Takeuchi TB285, (5)2020 Case SV280, 4 TELE. FORKLIFTS: Unused JLG 1644(cab, air), (2)Unused JLG 1255(cab, air), Cat TH62, 2 FORKLIFTS: 2011 Hyster, 2010 Hyster E050XN, 2 BOOM LIFTS: 2021 JLG 460AJ, 2021 450AJ, SCISSOR LIFTS, AIR COMP.: IR P185WJD, 6 LIGHT PLANTS: (6)2013 Magnum MLT3060, 2 ARROW/MESSAGE BOARDS: Precision, 3 AG TRACTORS: (3)New NH T6020(4x4), TRACTOR LOADER: Cub Cadet 7360SS, CONCRETE EQUIP.: Omniquip Work Pro 155 Buggy, WOOD CHIPPER: Woodchuck, IMPACT CRUSHER: 2007 Metso Minerals LT2135, COMPRESSOR TRK: 1998 Ford F-Series, 2 BOOM TRKS: 2006 Peterbilt 357(t/a), 1990 Ford, FLATBED TRK: 2006 Chevy 8500(t/a), 3 SERVICE TRKS: 2018 Ford F550(s/a), 2007 Sterling 906(s/a), 2003 Freightliner FL50(s/a), WATER TRK: 2005 IH 9200(2,500gal., s/a), 4 DUMP TRKS: (2)Unused 2022 Peterbilt 567(tri), 1994 Peterbilt 357(t/a), 2007 Ford F650, 2 TRK TRACTORS: 2006 Mack CV713(t/a), 2001 Autocar/Volvo(heavy haul, wetline), 4 DETACHABLES: 2021 Liddell C55(tri), (3)New 2021 Witzco RG52(tri), 13 TAGALONGS: (12)New 2021 Delta 20ft(tilt, t/a), 2007 Superline 20-ton(t/a), 7 DUMP TRAILERS: (6)New Delta 14ft(t/a), 2015 Griff(t/a), GOOSENECK TRAILER: 2015 Big Tex(t/a), UTILITY VEHICLE: Kubota RTV1100(4x4, diesel), PORTABLE BATHROOMS, 30 PALLETS STONE, 17 PRESSURE WASHERS: (2)New Stanley Fatmax, (6)New Simpson MSV3204, (3)Simpson PS60841, (6)New Black & Decker BDx2700, 41 ATTACHMENTS: (40)Skid Steer, Tractor, 160 NEW SUPPORT EQUIP. **SALE SITE PHONE: (863) 660-4811 Billy**



ALEX LYON & SON
SALES MANAGERS & AUCTIONEERS, INC., BRIDGEPORT, NY 13030

Ph: (315) 633-2944 • Fax: (315) 633-5635

Go to WWW.LYONAUCTION.COM for a Complete List, Descriptions, and Pictures



2004 MACK CV713
ROLL-OFF. Pusher Axle, Rebuilt
 Motor 6/1/2018, 391,000 Miles,
\$59,900. Johnston, RI
 401-639-1114



PORTABLE LINE BORING

WELDING • FABRICATION • REPAIRS

DAVID GOKEY

AFFORDABLE LINE BORING

Serving CT, MA, RI, Southern NH, VT

413-530-0242 Call/Text

davidgokey70@gmail.com

MC, Visa, AMEX, Discover



CEC PORTABLE CONE CRUSHER.

Closed Circuit Cone,
 Entire Rebuild On The
 Cone, **\$139,000.**
 860-333-6533



RUNNING TAKEOUT ENGINES.

Detroit Diesel 16V92T, 2-Valve,
 Cummins 855 Small Com. Call For Price/Info
 Goodwinmarine@gmail.com, Hull, MA 781-925-1593



2003 VOLVO EC330B LC EXCAVATOR, Hours: 16,300, No Leaks,
 New Final Drive At 11K Hrs., Pilot Valves Re-sealed, Remain Pumps At 10K
 Hrs., With Quick Attach Coupling, Comes With 46" Rock Bucket, Recent
 New Bushings And Point, Automatic Greaser, Some Welds, Needs Rollers
 but Chains OK. - 7,500lbs Hammer Available At Additional Cost, -Tramac
 Model V45 - **\$32,500** Call Today ! 781-417-3018



2012 CAT 908H2:
 4,200 Hours. Nice Machine.
\$49,000.
 Hopedale, MA Call Us At
 508-381-3939

ALL MAKES

EQUIPMENT & PARTS

CONTACT ROLAND CARTER 603-340-6776 • ANDOVER NH 03216

**EQUIPMENT SALES
 EQUIPMENT PARTS
 EQUIPMENT
 ATTACHMENTS
 FINANCING AVAILABLE**



**New & Used
 Buckets &
 Attachments.**



Rebuilt & Good Used Engines.



**New Undercarriage.
 Free Undercarriage Inspection.**



**Equipment
 Hydraulic
 Parts.**



**Salvage
 Equipment
 Parts.**

info@allmakesequipmentandparts.com • www.amepinc.com



(603) 623-3669
www.TQUIP.com

LONDONDERRY, NH • RUTLAND, VT

DAILY | WEEKLY | MONTHLY HEAVY EQUIPMENT RENTALS

Call Zach: (603) 854-8207

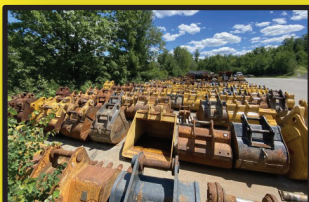
EXCAVATORS • DOZERS • ROCK TRUCKS • WHEEL LOADERS
 TRACKED DUMPERS • ROLLERS • SKID STEERS • BACKHOES
 CRUSHERS • SCREENERS • MOTOR GRADERS • TELEHANDLERS



SPECIALTY ATTACHMENTS AVAILABLE

Call Jameson: (603) 703-8529

BUCKETS • HAMMERS • GRAPPLES • THUMBS • BROOMS
 COUPLERS • FORKS • SHEARS • PULVERIZERS • MOWERS





2012 JOHN DEERE 120D. 3831 Hrs, Heat / Ice Cold AC, Radio, Dromone Hyd Quick Coupler, 24" Hyd Thumb. 48" Bucket And 36" Bucket, 42" Rake Attachment, Nice Tight, Smooth Running Machine In Immaculate Shape, **\$78,500.** 401-942-7790, Ndube88@yahoo.com

Help Wanted: SAFETY ADMINISTRATOR – Up To \$70,000 Annual Pay

Job Responsibilities:

- Provides Administrative Support To Safety Director & Project Managers
- Attends Safety Meetings, Audits, And Inspections To Ensure Compliance, Identify Corrective Action, And Implement Follow Up Assessments
- Implement And Maintain Safety Programs At Office Or Project Site Locations
- Guarantees That All Work Is Performed In Accordance With Approved Manuals, Internal Policies And Procedures
- Contract Documents And Good Business Practices
- Participates In Team Meetings And Provides On-Site Project Presence
- Administrative Duties Relating To Non-DOT Employees
- Help To Update/Implement An Attractive

Benefits

- Health & Dental Insurance: 50% Company Paid
- Vision Insurance: 25% Company Paid
- 401k With A 25% Employer Match
- Paid Time Off, Paid Holidays, Bereavement Pay

Safety Management Program

- Update Current Safety Policies To Insure Compliance
- Manage Subcontractor Agreements
- Assist In Our Drug Screening Program

Safety Administrator Qualifications / Skills:

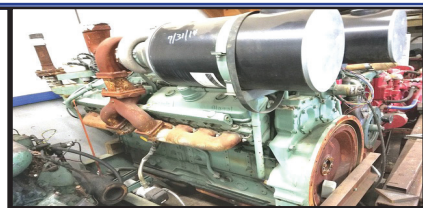
- Administrative Policies And Procedures Experience Preferred
- Conflict Management And Problem-Solving Skills
- Multi-Tasking Ability
- Communication And Organizational Skills
- Computer Savvy
- Past Experience In Safety Management/ Administrative Work Preferred
- Construction And/Or Aggregate Experience Preferred

The Personnel People, Inc.,

1 Turks Head Place, Ste. 322,
Providence, RI 02903
joyce@thepersonnelpeople.com,
www.thepersonnelpeople.com,
401-273-2500, Joyce Fastino, President

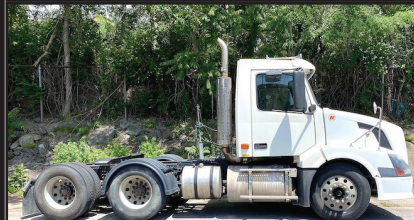


**EPIROC
HYDRAULIC
HAMMER,
\$18,000.
860-333-6533**



RUNNING TAKEOUT ENGINES.

Detroit Diesel 16V92T, 2-Valve,
Cummins 855 Small Cam. Call For Price/Info
Goodwinmarine@gmail.com, Hull, MA 781-925-1593



2006 VOLVO VNL64T-D12, 435HP, 10SPD., 46K REARS, WET-SYSTEM. CALL 401-434-5900



JOHN DEERE 444J.
New Tires, 5,000 Hours,
\$50,000.,
Pocasset, MA
774-836-8811

WANTED!!! MACK TRUCKS

**CAT, DEERE, BOBCAT EQUIP
IN ANY CONDITION
IMMEDIATE PAYMENT**



CALL JOHNNY MACK
johnnymack107@gmail.com
HARTFORD, CT 860-883-1186



JACK MADDEN FORD

888-817-7979

**ANNOUNCING!
MEDICAL
PROFESSIONALS
BONUS CASH***



BUILT FOR AMERICA



BUILT *Ford* PROUD

READY FOR DELIVERY
40 SUPER DUTY WORK TRUCKS
– CHASSIS – DUMPS – IN STOCK NOW!
 visit or website for more information*



NEW F250XL 2WD CREW CAB:
 6.2L, Power Group.



NEW F550XL 4x4 SWITCH -N- GO BODY: 6.7L DIESEL,
POWER GROUP.. NAP



2021 F350 SUPER CAB XL 4x4:
 7.3L V8, POWER GROUP



NEW F550 XL 4x4 DUMP BODY:
 6.7L Diesel, Power Group.



GO TO WWW.JACKMADDENFORD.COM

JACK MADDEN FORD

825 Providence Hwy Rt.1 Norwood, MA

888-817-7979



*All prices include incentives for qualified buyers. For trade assist, must have 2017 or new trade. All vehicles require dealer financing. Some prices include snowplow incentives. See dealer for complete details.



JACK MADDEN FORD

888-817-7979



**ATTENTION
CONTRACTORS**



BUILT FOR AMERICA



BUILT *Ford* PROUD

READY FOR DELIVERY
40 SUPER DUTY WORK TRUCKS
– CHASSIS – DUMPS – IN STOCK NOW!
 visit or website for more information*



**NEW F350 XL SUPER CAB 4X4 DURAMAX
UTILITY BODY:
W/SPRAY LINING, 8.3L V8, POWER GROUP.**



NEW E350 CUTAWAY
 See more photos
 on our website.*



**NEW F350 XL DUMP 4WD. DRW,
7.3L, V8 Gas, Auto**



NEW F350 4X4 CHASSIS'S
 Available. CALL FOR INFORMATION



**NEW F550 XL DRW 4x4 11' Dump
Body: CALL FOR INFORMATION**



**NEW F350XL DRW 4x4 LANDSCAPE BODY:
6.7L DIESEL. Power Group.**



GO TO WWW.JACKMADDENFORD.COM

JACK MADDEN FORD

825 Providence Hwy Rt.1 Norwood, MA

888-817-7979



*All prices include incentives for qualified buyers. For trade assist, must have 2016 or new trade. All vehicles require dealer financing.
 Some prices include snowplow incentives. See dealer for complete details.



1-800-394-5889
179 Belvedere Road
Gilsum, NH 03448
WWW.TSR-RACING.COM

Powerglide Air Test Kit
Complete Powerglide Pro Tree Transbrake \$279.95
TH400 Deep Cast Aluminum Pan
TH400 Billet Direct Drum Spring Retainer & Aluminum Modulator/Solenoid Hold Down
Powerglide Overhaul Kit
Powerglide Deep Oil Pan
Powerglide Reverse Spring Retainer Tool
Powerglide Bushing Driver Set
Do-it-yourself Powerglide Pro Tree Transbrake Kit \$164.95
1.80 Long Powerglide Gear Set
Powerglide Handbook written by Carl H. Munroe \$21.95
Powerglide Vent Tanks



**1980S FARMHAND
MODEL 6650 TUB
GRINDER.** Diesel,
Runs Great, **\$8900.**
413-834-2401



2019 ROCKSTER RTT720 TROMMEL - Like New
with 50 Hours, CAT Diesel, Your Choice of 1/2" or
1" Screens - **For Sale or Rent!! \$205,000,**
CALL DAN AT 203-506-3860



CEC ROADRUNNER CRUSHING/SCREENING PLANT. 400 Series,
40 Inch Cone, Electrical Gear Included, 3 Sections: Feed Hopper, Main Plant,
Closed Circuit Screener/Cone, **\$239,000.** 860-333-6533

CAREY AUTO
INC.
TRUCK EQUIPMENT
SALES

37 County Road
Route 106
Plympton MA 02367
PH: 781-582-1378
FAX: 781-585-4438

SWITCH-N-GO SYSTEMS & CONTAINERS IN STOCK.



READY TO GO COMPLETE TRUCK PACKAGES.
LOTS OF OPTIONS AVAILABLE.
New & Used Trucks Ready To Go!

CALL TOLL FREE: 866-637-4076
WWW.CAREYTRUCKEQUIPMENT.COM

**SALES,
SERVICE,
PARTS**

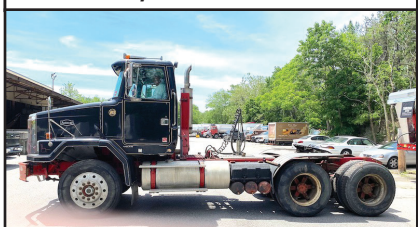
**CUSTOM METAL
FABRICATION
AVAILABLE**



(2) GREAT DANE 53' REEFER TRAILERS, Rubber Good,
Frame Good, Units Were Working But Do Not Currently Run.
2007-\$9,500 & 2006-\$8,900
Call Today! 781-417-3018



2010 HYUNDAI SANTA FE, One Owner, All Brakes
Completely Replaced, Rotors/Calipers/Pads,
All Wheel Drive, 145K Miles, A.C. Blows Ice Cold.
\$6,990 Call 401-767-2639



1997 AUTOCAR ACL64BT-N14, 435HP, 8LL Trans.,
46K Rears, Wet-System. Call! 401-434-5900



Lorusso Heavy Equipment, LLC
 160 Elm St Walpole, MA 02801
 Tel. 508-660-7600



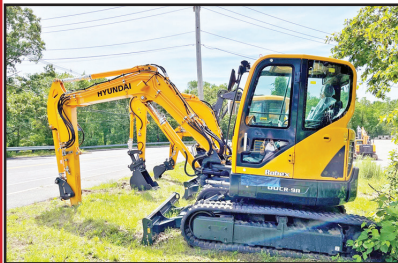
MECALAC TA3SH Site Dumper.
 Sale Or Rent,
 Call For Pricing.



AJCE Hammers
 Multiple Sizes Available and
 In Stock Call for Pricing



2013 HYUNDAI HL770-9A
 Wheel Loader. 11,000 Hours,
 \$70,000.00



2019 HYUNDAI R60CR-9A Mini
 Excavator. \$63,500.00



2018 Hyundai HX130LCRD Excavator.
 Coupler, 30" bucket and thumb
 included. 202 hours. \$115,000.00



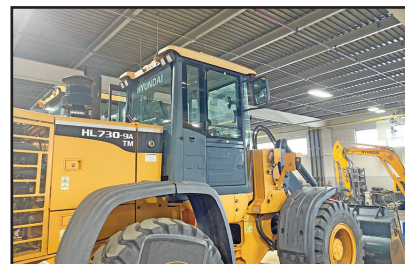
2014 Hyundai HL757-9A
 Wheel Loader. 1213 hours.
 \$92,000.00



JCB 509-455 Telehandler. Forks,
 Loader Bucket. Mint Condition!
 165 Hours. \$135,000.00



2000 John Deere 200LC
 Excavator. 8250 hours.
 \$45,000.00



2015 HYUNDAI HL730TM-9A.
 1750 Hours. Call for Pricing

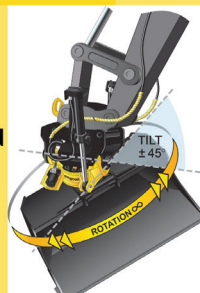


2013 Takeuchi TB285 Mini
 Excavator. 4691 Hours.
 \$48,000.00.

engcon®

**AUTOMATIC
 QUICK-
 COUPLER
 TILT/ROTATION
 SYSTEMS**

Available for all
 makes and models.
 Call for pricing.



JCB 525-60 Telehandler.
 Call for Pricing.



www.lhequip.com • Call Us for All of Your Rental Needs • www.fb.com/LHELCC



STONEHAM**617-733-0773****MANY NEW FINANCE OPTIONS AVAILABLE**

2021 F450 RACK BODY. Lift Gate, Carrier Extension Over Cab, Diesel, 2WD, PW, PL, Tool Box, #21694 **ON SALE**



2020 F350 SERVICE. 4X4, Knapeide Body, DRW, V8 Gas, 10 Speed Auto, Pwr Equip Group, #202899 **\$51,000**



2021 F600 FOUR SEASONS TRUCK. Duramag Aluminum Combination Dump & Spreader, 3- 4 Cu Yd, Tool Boxes, #21108



2020 F350 4X4 P/U. V8 Gas, Plow, PW, PL, Stacking Them Tight And Selling Them Right, **CALL**



2021 F350 XTRA CAB MASON DUMP. Aluminum Dump, Fold Down Sides, 4X4, V8 Gas, #20099 **ON SALE**



2020 F350 CREW CAB LANDSCAPER. 4X4, V8 Gas, Auto, PW, PL, Running Boards, Pwr Equip Group, #20270 **ON SALE**

MANY NEW FINANCE OPTIONS AVAILABLE

2021 F550 ALUMINUM LANDSCAPER. Truck Craft Aluminum Body, 4X4, Curb Sid Door, V8 Gas, Payload Pkg, **ON SALE**



2021 AWD PASSENGER WAGON. Flat Screen TV, Premium Sound System, Privacy Glass, #203308 **ON SALE**



2020 F350 SUPER CAB C&C. Remote Start, Navigation, Polish Alum Wheels, Powerscope Mirrors, 4G WiFi, 4X4, V8 Gas, #202331 **\$50,199**



2021 F250 SUPER CAB 4X4. Power Equipment Group, Running Boards, 10,000 GVW, Upfitter Switches, XL Pkg, #211320 **ON SALE**



2021 F350 XLT SUPER CAB 4X4. Duramag Aluminum Utility Body, Ladder Bar W/ Lights, Fisher SS V-Plow, #21486 **BUILT TO FIT YOU**



2021 F550 UTILITY SERVICE BODY. 12' Rockport, Dual Compartments, Ladder To Roof, 4 Bar Ladder Racks, #21545 **ON SALE**

COMMERCIAL
VEHICLE CENTER

www.StonehamFordTrucks.com
211 MAIN ST. STONEHAM, MA 02180

COMMERCIAL
VEHICLE CENTER

Mon-Fri 8:30am-8pm Sat 9- 5pm Sunday 11-4

ALL PRICES NET & INCLUDE ALL AVAILABLE REBATES TO DEALER

Call Bill Pollack 1-617-733-0773 or billpollack@stonehamford.com

STONEHAM**617-733-0773****MANY NEW FINANCE OPTIONS AVAILABLE**

2021 F550 DUMP TRUCK. Down Easter Body, Fisher SS HD-X Plow, Tool Box, Diesel, 4X4, #21668 **ON SALE**



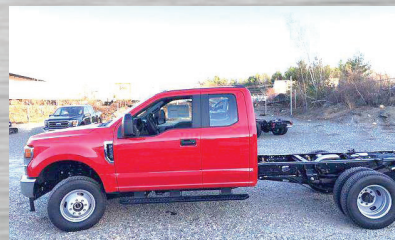
2020 F350 D/W UTILITY 4X4. V8 Gas, Plow Prep, PW, PL, Up Fit Switches, #20557 **\$50,500**



2021 F550 SWITCH N GO. 4X4, V8 Gas, Power Equipment, Payload Pkg, #211369 **ON SALE**



2021 F650 DUMP TRUCK. 7.3 V8 Gas 350 HP, Automatic, #21043 **CALL**



2021 F350 SUPER CAB C&C. 4X4, 7.3 V8 Gas, 10 Speed Automatic, Power Equip Group, 14,000 GVW, #21624 **ON SALE**



2021 F550 LANDSCAPER DUMP. 4X4, Curb Door, Diesel, Payload Plus, Power Group, #21698 **ON SALE**

MANY NEW FINANCE OPTIONS AVAILABLE

2020 F350 DUMP 4X4. Diesel, 2-3 Yd Body, Blue Jeans, PW, PL, Running Boards, #203212 **\$61,000**



2021 F600 CAB & CHASSIS 4X4. 22,000 LB GVW, V8 Gas, 10 Speed Automatic, Pwr Equip Group, #21123 **ON SALE**



2020 F550 FREIGHT BODY. 9' x 96" W, x 85.25" H Van Body. Diesel, Payload Pkg, Up Grade, #203073 (NAP) **ON SALE**



2021 F450 CAB & CHASSIS 4X4. 16,500 LB GVW, Diesel, 10 Speed Automatic, Pwr Equip Group, #202539 **ON SALE**



2020 F550 SWITCH N GO. 4X4, Diesel, Payload Up Grade, Power Equipment Group, Plow Prep, #203226 **ON SALE**



2020 F350 PICK UP 4X4. Fisher SS V-Plow, V8 Gas, PW, PL, Heated Mirrors, #202873 **ON SALE**

COMMERCIAL
VEHICLE CENTER

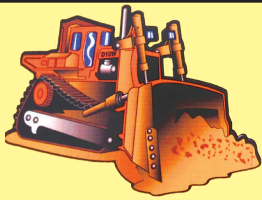
www.StonehamFordTrucks.com
211 MAIN ST. STONEHAM, MA 02180

COMMERCIAL
VEHICLE CENTER

Mon-Fri 8:30am-8pm Sat 9- 5pm Sunday 11-4

ALL PRICES NET & INCLUDE ALL AVAILABLE REBATES TO DEALER

Call Bill Pollack 1-617-733-0773 or billpollack@stonehamford.com



THE N.I.C.E. COMPANY

9 Rosenfeld Drive, Hopedale, MA

508-381-3939 • www.theniceco.com

READY FOR SPRING?



2016 CAT 262D, 2000 hours, QC, Aux. Hydraulics, AC. \$33,500.



2009 CAT D6K LGP, 7500 hours, Enclosed cab, Good Value, Work Ready, \$69,000.



2014 Vermeer FT300, 2500 hrs., Mulcher, Cab w/ AC, Industrial 30XL Winch, Rear View Camera. \$189,000



2016 Deere 756, 1300 hours, Plumbed, blade, very clean, \$74,500.



2018 Doosan DX300 LC, 1000 hours, As New, Backup Camera, AC, \$169,000.



2003 CAT D8R, New Engine, 80% Under Carriage, Recent Equalizer Bar Work Ready! \$169,000.



2012 CAT 324EL, 5500 hours, thumb, aux. hydraulics. \$99,000



2016 CAT 962M, 5500 hours, Third Valve, Good Rubber. \$129,000.



2019 Hitachi ZX210 LC-6, 1400 hrs., Aux. Hydraulics, QC, AC/Heat, 42" Digging Bucket w/ Hydraulic Thumb, Rearview Camera. \$152,500



2017 CAT 323FL, 2400 hours, Manual Thumb, QC, 28" Pads, Rear Camera \$129,000.



2017 JOHN DEERE 350G: 4,400 Hours, 32" Triple Grouser Pads, 60" Paladin Bucket. \$129,000.



2013 Terex TA300, 5000 hours, 80% Front Tires, 40% Rear Tires, Work Ready! \$99,000.

**ANTIQUE GRANITE POSTS.**

12" X 12", 13" X 14" +/- Up To 10 Ft.
Long, Was **\$60** Per Linear Foot, Buy Now
For **\$38** Per Linear Foot, Limited Supply.
Dartmouth, MA 508-995-8067

Bailey Equipment Repair LLC

Heavy Truck and Equipment Service



**Diesel repair/Diagnostics, hydraulic component repair,
Equipment undercarriage repair and welding.
All services can be done on site.**

Haddam, CT

860-918-6466

**2008 AQUATECH B10.**

Sterling LT9500 Chassis,
CAT C-13 Engine, Allison
4000RDS Transmission,
7977 Hours, 10 CY Body With
Flush-Out System, 360 Degree
Boom, Positive Displacement
Vacuum, Excellent For Locating
Utility Lines, Two Machines Available,
\$79,000. 203-232-3516

**UNIT EXCAVATOR.**

10,000 Pounds With NPK Hydraulic
Hammer, Runs And Operates Well, Heavy
Duty Setup, Can
Really Break Rocks, Long Reach, Needs
Paint, Asking **\$19,000.** 203-666-1411



FELLINGS 25-TON TRAILER.

\$30,000.,
Pocasset, MA
774-836-8811

TRUCK AND EQUIPMENT POST

HOME BROWSE THE MAGAZINE LOOKING TO SELL LOOKING TO BUY EZ SEARCH CATEGORIES CONTACT US SUBSCRIPTIONS



PLACE AN AD

**BROWSE THE
MAGAZINE**

SEARCH

SUBSCRIPTIONS

Truck And Equipment Post is a top choice for buying, selling, or browsing new & used trucks, heavy equipment & trailers throughout New England. Find 1000's of commercial trucks, construction equipment, trailers, truck bodies, truck parts, & other commercial vehicles including pickup trucks, vans, dump trucks, excavators, backhoes, tractors, skidsteers, dump & equipment trailers, truck bodies & more for sale by owner & dealers in MA, RI, CT, NH, VT, ME & nearby.
Truck And Equipment Post is More Than A Magazine. We're a great resource for the truck & equipment industry. It's What We Do!

THOMPSON TRACTOR LLC.**860-963-1918**

A DL HOLKE COMPANY

15 RT. 171 WOODSTOCK, CT 06281**DAVE'S CELL 508-864-8874****THOMPSONTRACTORLLC.COM****ALWAYS A BUYER
FOR CLEAN
LATE MODEL
EQUIPMENT !!**

2013 CASE 580 SUPER N: 4X4, EX-HO, PILOT CONTROLS, 4 IN 1 BUCKET, 5K HOURS, VERY CLEAN. \$47,750



2016 DEERE 410L: 4X4, EX-HO, RIDE CONTROL, 2 STICK W/SIDE DUMP BUCKET, 4,200 HOURS. \$56,500

INVENTORY AT * WWW.THOMPSONTRACTORLLC.COM

**2005 CHEVROLET
26' BOX TRUCK.** Isuzu Engine,
230K Miles, Includes Lift Gate,
\$10,000 OBO.
617-755-5821

SAM'S Tree Service
"We handle the jobs, the Big Guys turn down!"

- Licensed Arborist #913
- Insured
- Competitive Pricing
- Free Estimates

sammal@cox.net
401-269-1133

- Brush Chipping • Tree Removal
- Tree Pruning • Stump Grinding
- Residential Land Clearing

401-654-6711

**Insurance experts
for all your business
and individual needs**



A. RICCIOTTI INSURANCE ASSOCIATES, LLC
START WITH A STRONG FOUNDATION

**DAVE'S ENTERPRISES****66 BRALEY RD. FREETOWN INDUSTRIAL PARK EAST FREETOWN, MA**

1998 LULL 844:
4 Cylinder CUMMINS
Diesel, New Solid
BRAWLER FLEX tiers.
Excellent Condition.
Nicest LULL Around.



1995 GMC TOP KICK: New CAT 3116 275 HP,
15K Miles on Fresh Rebuild, 8LL, 16F/40R,
HENDRICKS Suspension. \$14,500



2001 FREIGHTLINER FL80: 275 HP CAT Turbo
Diesel. 8LL, Less than 100K miles. Truck
belonged to a driving school. Installing NEW
10' Dump Body. Hitch Plate, Air to Rear. Call.



2007 GMC 6500 Dump Body: Diesel,
Allison Automatic, Hitch Plate,
D-Rings, Electric Tarp. \$23,500.



**(3) USED 24.6 STEEL FLAT BED BODY
W/MOFFETT SYSTEM.** Different sizes.
\$1,000 to \$3,500.



2006 FREIGHTLINER: Mercedes Turbo Diesel, Automatic.
NEW EVERYTHING: Brake Drums, Cans, Stacks,
Aluminum Wheels, Tires, Air Tanks, Batteries, PTO,
Dump Body w/Full Auto Cover, Hitch Plate, D-Rings. Air
to Rear and Back UP Camera.



1994 L8000 Cab & Chassis Only: 10
Wheel Dual Axel: CUMMINS DIESEL,
8LL, 16F/40R. Call.

508-726-0077



781-315-1680
Call Dan Rott



GREAT SELECTION OF NEW & USED HEAVY EQUIPMENT & ATTACHMENTS
FINANCING AVAILABLE ON ALL UNITS UP TO 60 MONTHS.
CALL FOR DETAILS.



2006 VOLVO EW180B.
 Coupler, Bucket,
 Runs Excellent,
 \$49,000. #CE3804



2002 KAWASAKI 65TM.
 Coupler, Bucket, Runs
 Great, \$45,000. #CE3983



2012
 HITACHI ZX225LC.
 Coupler,
 \$76,000. #CE3790



2015 BOMAG BW190.
 1445 Hours, \$66,000.
 #CE3687



2013 KOMATSU
 PC88MR-10. 3897
 Hours, \$59,500.
 #CE3655



2014 VOLVO DD110B.
 8 Amp, 67" Roller, 1850
 Hours, \$58,000. #CE3005



2013 KOMATSU
 WA380-7. Coupler,
 Bucket, Forks, 4800
 Hours, \$159,000. #CE3893



2012 VOLVO ECR305CL.
 Coupler, Bucket, Thumb,
 Tilt Bucket, \$98,500.
 #CE3427



2016 CAT 272D.
 2150 Hours, \$32,000.
 #CE3978

WOBURN, MA - AVON, MA - JOHNSTON, RI www.WoodCoMachinery.com

CERRONE

Chevrolet - Buick - GMC Of Attleboro
A Priority Automotive Dealership



ROUTE 1, BETWEEN 95 + 295
SOUTH ATTLEBORO, MA

508-761-4800

WE COME TO YOU - GIVE US A CALL !

**NEW 5500 LCF
DROPSIDE DUMP**



17,950 GVW, A/C, POWER HEATED MIRRORS,
HITCH, COVER. #18364H
~~WAS \$76,830~~

\$61,495

2021 C3500 UTILITY



DURAMAG UTILITY BODY, BACK RACK,
SPRAY-IN-LINER, CONV. PKG. #21152G
~~WAS \$52,048~~

\$51,000

**2021 K1500 CREW CAB RST
BLACK WIDOW**



6.2L V-8, SUN-ROOF, BODY LIFT,
FLARES, LOTS MORE. #T243

\$78,850

2021 C2500 UTILITY



GREAT SPECS., DURAMAG UTILITY BODY,
SYSTEM 1 LADDER RACK, SPRAY-IN-LINER.
 #21121G
~~WAS \$53,453~~

\$49,995

**2019 4500 11' UTILITY
DURAMAX DIESEL**



16,500 GVW, NICE SPECS.,
PERFECT FOR WHEN YOU NEED MORE
ROOM+CAPACITY. #19386H
~~WAS \$67,898~~

NOW

\$58,495

2021 C2500 CHASSIS



UTILITY BODY SPECS. PRICE INCLUDES UPFIT
REBATE. #21156G
~~WAS \$38,453~~

\$36,250

2021 COLORADO EX-CAB



CONV. PKG., LOCKING AXLE. #M1221568

\$27,995

**2021 K1500 CREW CAB DENALI
DURAMAX DIESEL**



DENALI ULTIMATE PACKAGE. #211201G
~~WAS \$68,965~~

\$65,165

**2021 K1500 CREW CAB LTZ
DURAMAX DIESEL**



CONV. PKG. 1 + 2, 20" WHEELS. #21180H
~~WAS \$58,230~~

\$55,230

2021 YUKON AT4



AT4 PREMIUM PACKAGE.
 #MR378421

\$73,255

2021 K3500 12' RACK BODY



CONV. PKG., PLOW PREP, SWING REAR GATES,
HITCH, TRAILER BRAKE + PLUG. #21209G

IN STOCK

2021 C3500 12' RACK BODY



CONV. PKG., HITCH, TRAILER BRAKE + PLUG.
 #21182H

IN STOCK



WWW.CERRONEGM.COM
WWW.CERRONETRUCKSALES.COM



CERRONE

Chevrolet - Buick - GMC Of Attleboro
A Priority Automotive Dealership

ROUTE 1, BETWEEN 95 + 295
SOUTH ATTLEBORO, MA

508-761-4800

WE SPECIALIZE IN FLEETS WITH 10+ TRUCKS. CALL US



2019 20' MOVING VAN
DURAMAX DIESEL



23,000 GVW, ALUM. RAIL GATE, SIDE DOOR, E-TRACK. THE RIGHT SPECS.

#19373H

WAS \$92,398

NOW

\$79,995

2017 MICRO BIRD
15 PASSENGER BUS



14 RIDERS PLUS CARGO STORAGE AREA. ONLY 3800 MILES. #T53
SAVE OVER 40% OFF NEW !

\$36,977

2020 12' BOX TRUCK



14,500 GVW, ENHANCED AUDIO SYSTEM, AIR DEFLECTOR, ROLL-UP DOOR, LINING, ETC.

#20269H

WAS \$59,680

\$48,995

2019 10' HI-CUBE



9,900 GVW, ROLL-UP DOOR, PARTITION, LINING. #19354H

WAS \$45,633

\$41,995

DAILY SPECIALS
ON OUR WEBSITE
WWW.CERRONEGM.COM

2020 LCF 14' DURA-CUBE MAX
DIESEL



17,950 GVW, HEATED POWER MIRRORS, SHELVING, POWER BODY LOCKS, LADDER RACKS. #20199H

WAS \$84,079

\$81,000

2021 K2500 CREW CAB SLE

INCOMING

SLE VALUE PKG., PLOW PREP., X31 OFF-ROAD SUSPENSION. #MF297509

\$54,040

2021 SIERRA PICKUP



CONV. PKG., LOCKING AXLE. #MG378367

WAS \$32,895

\$31,995

2021 ACADIA SLE



DRIVER CONV. PKG., V-6, TRAILER PKG. #21133G

WAS \$41,170

\$36,495



WWW.CERRONEGM.COM
WWW.CERRONETRUCKSALES.COM



THIS AD IS COPYRIGHTED & OWNED BY TRUCK AND EQUIPMENT POST

CERRONE**Chevrolet - Buick - GMC Of Attleboro**
A Priority Automotive Dealership**ROUTE 1, BETWEEN 95 + 295**
SOUTH ATTLEBORO, MA**508-761-4800****CHEVROLET'S MEDIUM DUTY TRUCK CENTER**

- * **REGULAR CABS, TILT CABS, CREW CABS 2WD OR 4WD**
- * **GVW'S UP TO 25,950 BODY LENGTHS UP TO 22'**
- * **DUMPS, PLATFORM/ RACKS, SWITCH-N-GO, CAR CARRIERS, TOW TRUCKS, SERVICE BODIES, MOVING VANS. IF YOU NEED IT DONE, WE CAN DO IT.**
- * **NIGHT SERVICE WITH 30,000LB. LIFTS**
- * **GM'S #1 FLEET DEALER IN SE MA., RI, CT.**

CALL OUR COMMERCIAL TEAM. "YOU'LL BE GLAD YOU DID !"**NEW K5500 RACK BODY****17,500 GVW, 12' RACK BODY,
PLOW PREP. #19263H****WAS \$67,032****NOW****\$62,595****PLENTY OF
INCOMING
TRUCKS****CALL US WITH
YOUR NEEDS !****2021 C5500 DUMP TRUCK****17,500 GVW, 11' DUMP, L-PACK,
POWER COVER, STROBES, POLY FENDERS.
#21110H****NOW****\$80,906****2021 K3500 DUMP TRUCK****CONV. PKG., PLOW PREP., HITCH,
COVER, TRAILER BRAKE. #21210G
ALSO AVAILABLE IN WHITE & GREEN !****\$56,401****2021 C5500 CHASSIS****17,500 GVW, DARK GREY METALLIC,
60" CA, INCLUDES UPFIT REBATE.
#MH364913****WAS \$55,887****\$53,295****2019 4500 11' UTILITY
DURAMAX DIESEL****16,500 GVW, NICE SPECS., PERFECT FOR WHEN
YOU NEED MORE ROOM + CAPACITY. #19386H****WAS \$67,898****NOW****\$58,495****NEW 5500 CREW CAB
12' ALUM. LANDSCAPE****19,500 GVW, A/C, SAFETY PKG., HITCH
COVER, NICE SPECS.****WAS \$85,517****\$69,995****2021 K1500 PICKUP****VALUE PKG., POWER SEAT, LOCKING
AXLE, TRAILERING PKG., V-8,
PLOW PREP PKG. #21171G****WAS \$41,645****\$39,995****2020 K3500 CREW CAB LTZ
DURAMAX DUALY****TECHNOLOGY PKG., LTZ PLUS PKG.,
ONLY 4000 MILES. #T182****\$76,900****WWW.CERRONEGM.COM**
WWW.CERRONETRUCKSALES.COM



**1997
FREIGHTLINER
FL 70.** 122k Miles,
3200 Gallon Boston
Aluminum Tank,
\$16,900 OBO.
413-734-7396

What's In Your Toolbox?

- BUY, SELL, TRADE - FAST
- FROM NEW TO USED, IT'S ALWAYS FRESH
- AND A HANDY RESOURCE, TOO



1-888-887-0505

www.TruckAndEquipmentPost.com



**1989 FORD 900 MANITEX
MODEL 1570.** 15-Ton Manlift/
Crane, 85 Ft, Has Jib Winch, Hydraulic
Leak, Truck Used Bi-Weekly As Manlift,
90% Tires, **\$9000.** 860-817-0197



2001 FORD F350.
Diesel, 4X4, Exc. Shape,
Dump Body New,
S.S. Sander, 9 Ft. V-Plow,
Ready To Go. Asking
\$10,500.
413-530-5369



**2005 GMC SIERRA
2500.** Duramax
Diesel, 125,XXX Miles,
4x4, Brand New CM
Utility Body, **\$18,500.**
Westfield, MA
413-530-2969



2020 RHODES 26' Aluminum Double Walled Smooth
Side Dump Trailer, Alum. Frame, Air-Ride. 401-434-5900



1965 FORD F-600 DUMP TRUCK.
330 Truck Motor, 4 Speed With Splitter. Truck
Is In Excellent Condition. I Have Owned It For
Over 43 Years And Restored It. It's Just Doesn't
Get Used Anymore. Asking **\$10,500.**
Call Ron @781-729-5043

JUST TRAILERS, INC.

WE BUY USED TRAILERS & EQUIPMENT



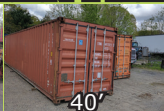
RENTALS • RENTALS • RENTALS



Box Trailer



20'



40'



Office Trailer



8X8

1863 County St. • Attleboro, Ma 02703

508-922-1119

thecla2305@gmail.com

ALL RENTALS AVAILABLE FOR RENT, SALE OR RENT TO OWN

DAVE'S ENTERPRISES

66 BRALEY RD. FREETOWN INDUSTRIAL PARK. EAST FREETOWN, MA



1998 LULL B-44: 4 Cylinder **CUMMINS** Diesel, New Solid **BRAWLER FLEX** Tires. Excellent Condition. **NICEST LULL AROUND!**

508-726-0077**2007 FREIGHTLINER TANDEM.**

Reefer Unit Is In Exc. Cond., Low Hours,
26 Foot Body, Lift Gate, Tires 90%,
Truck Ready To Work, Needs
Nothing, **\$15,500.**
413-530-5369

Looking To
Sell • Buy • Browse
Truck And Equipment Post
P.O. Box 6824
Providence, RI 02940
www.truckandequipmentpost.com
888-887-0505

2007 FREIGHTLINER M2 106.

Low Profile Business Class, CAT Cetera C-7, Allison Auto O/D, Under CDL, 26K GVW, NEW Goodyear Tires, New: Int Batteries, Brakes, A/C, Power Group Windows, Locks, Windshield Hydraulic, Electric Brakes, Pintle Plate, etc., Always Stored Inside Htd Shop, 1 Owner, Like New, **\$15,000.** Trades Accepted. Anthony, 617-594-3737

**CUSTOM-DESIGNED RADIANT KITS**

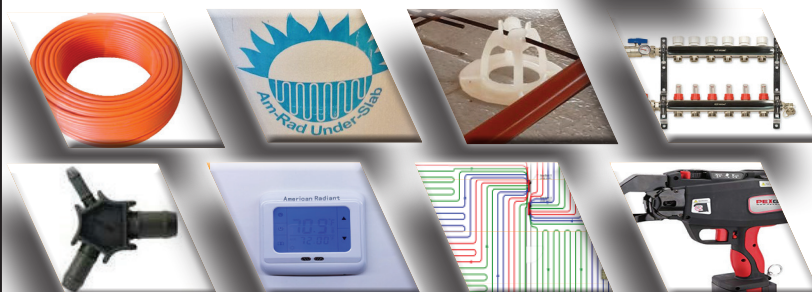
Simple. Efficient. Affordable.

- Radiant Heating
- Radiant Cooling
- Heated Driveways

AMERICAN RADIANT

Technologies & Supplies LLC.

Toll Free: 833-758-2888



2006 PETERBILT 357 TRI-AXLE DUMP, 8LL, Clean, CAT Motor, Brakes Done, Rubber 100%, New Floor In Dump Body, All Heavy. **\$64,900,** Call Today! 781-417-3018



2016 CAT 262D, 2000 hours, QC, Aux. Hydraulics, AC.
\$33,500.

CALL US. 855-313-2441.
Hopedale, MA



Quality Iron Solutions

709 Keith Ave., Pembroke NH 03275

Call Kevin Buck: 603-860-7875 • email: info@QualityIronSolutions.com

www.QualityIronSolutions.com

**SPRING
SAVINGS!**



**2004 JOHNSTON 4000
Sweeper.** 31K Miles, 7,955
hours, Runs & Sweeps, **\$12,000.**



**2005 HYUNDAI 210LC-7
EXCAVATOR.** Low Hours, 28"
Pads, Hyd. Thumb, HD Bucket,
Good Bottom, Clean, 3,517 Hours,
\$65,000.



1978 DRESSER TD20-E.
Refreshed Motor, Very Good
Bottom, Runs Strong, 6,725
Hours, Parts & Service Manual,
Ready To Go, **\$29,000.**



**1998 CAT
D250E.** All
Maintenance
Done, 17K Hours,
Ready to Work,
\$72,000.



**1992 GMC
TOPKICK 6x4,**
250HP CAT
3116, 6.6L
Diesel, 13 Spd,
96K Miles, Clean
Frame & Body
\$21,000.



2007 CAT TL943.
4965 Hours, 43'
Reach, 9K LB
Cap., Outrigger,
Hyd. Tilt Platform,
Aux. Hydraulics,
\$42,000.



**2015 JOHN
DEERE 410L EXT
HOE 4WD.**
1,500 Hours,
New Teeth, Quick
Couplers On Hoe &
Front Bucket, Runs
Strong,
\$79,900.



**1987 CAT
D35HP.** Certified
Rebuild 7,500
Hours Ago, Super
Clean, Ready To
Work, **\$59,000.**



**2012 DYNAPAC
CA3500D** Compactor.
84" Roller, 1523
Hours,
Ready For The Job
Site,
\$52,900
(Rental Rates: \$500/
day, \$1,500/wk, or
\$4,500/mo.)



VIBROSCREEN SCM-75 HEAVY DUTY SCREENER

Vibrating Head w/2 Decks, Up to 300 Cubic Yards/Hour, 50
HP Diesel Engine, Ideal For 6 Yard Loader, Fifth Wheel Hitch,
Single Axle, Double Wheels, Hydraulic Landing Gear, Gross
Weight 22,000 LBS Tongue Weight 8,540 LBS
Rental Rates: Daily \$700 • Weekly \$2,100 • Monthly \$6,000



PLACE MOTOR Inc.

The "Right Place" Since 1923

COMMERCIAL TRUCKS

Call Phil Crowley "The Truck Guy"
866-449-7482 ext. 213

19 Thompson Rd.
Rte. 193 Webster, Ma.

WE HAVE WHAT YOU NEED



NEW 2022 FORD E-350 14' AEROCCELL BODY, POWER WINDOWS, POWER LOCKS, AND MUCH MUCH MORE !



NEW 2021 Ford F-350 SUPER-CAB 4X4, CAB & CHASSIS, 6.2L V-8 ENGINE, PW / PL AND MORE !



NEW 2022 Ford F-350 E-350 12' AEROCCELL BODY, POWER WINDOWS & LOCKS AND SO MUCH MORE !



NEW 2021 FORD TRANSIT CONNECT VAN, XLT TRIM, NAVIGATION AND SO MUCH MORE !



NEW 2022 FORD F-750 CAB & CHASSIS, 330HP, AND SO MUCH MORE !



2018 FORD F-150 CREW CAB 4X4, STX TRIM, 31K MILES AND MORE ! \$36,500

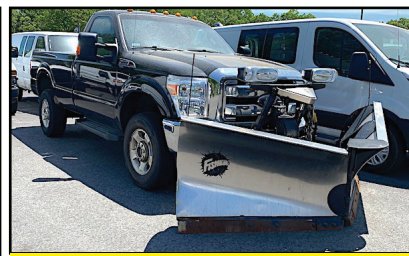


2018 FORD F-150 SUPERCREW 4X4 XLT, SPART TRIM, 2.7L V6 ENGINE, 31K MILES. CALL FOR SPECIAL PRICING !



2 TO CHOOSE FROM

2019 FORD TRANSIT CARGO VAN. \$STARTING AT \$35,995 HURRY IN WHILE SUPPLY LAST !



2015 Ford F-350 REGULAR CAB 4X4, XLT TRIM, 6.2L V-8 ENGINE, EXTREME V2 VPLOW AND MORE !

WWW.PLACEMOTOR.COM



DEJANA
Truck and Utility Equipment

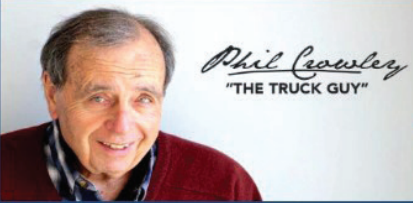


**COMMERCIAL
VEHICLE CENTER**

PLACE MOTOR Inc.

The "RIGHT PLACE" Since 1923

COMMERCIAL TRUCKS



Phil Crowley
"THE TRUCK GUY"

PHIL CROWLEY
866-449-7482 EXT. 213



19 Thompson Rd.
Rte. 193
Webster, MA.

NEW COMMERCIAL TRUCKS ON THE WAY !

***1-2022 E-350 SINGLE REAR WHEEL
W/ 12' AREOCELL BODY**

***3-2022 E-350 DUAL REAR WHEEL
W/ 15' AREOCELL BODY**

***2-F-550 REGULAR CAB 4X4 DIESEL
60 CA RED IN COLOR**

***1-F-600 REGULAR CAB 4X2 GAS 120
CA WHITE IN COLOR**

***1-F-600 REGULAR CAB 4X2 DIESEL
120 CA WHITE IN COLOR**

***1-F-600 REGULAR CAB 4X4 DIESEL
84 CA WHITE IN COLOR**

***1-F-600 REGULAR CAB 4X2 GAS 84
CA WHITE IN COLOR**

SOLD

WWW.PLACEMOTOR.COM



**MASSACHUSETTS OLDEST FORD
DEALER SINCE 1923**



SALVADORETRUCKS.COM  **RAM****SALVADORE AUTO**.com
*Family of Dealerships***888-605-4346****BUSINESS LINK**
The best know for small businesses.**ON THE JOB****2021 RAM 3500HD C&C
TRADESMEN REG CAB
NEW ARRIVAL!****CALL FOR PRICING!**60" CAB TO AXLE-6.4L V8 HEMI-
CHROME APPEARANCE PKG-DRW-UPFIT
READY STK# N21126**2021 RAM 2500HD
TRADESMEN REG CAB
MULTIPLE AVAILABLE****CALL FOR DETAILS!**6.4L HEMI V8- CHROME APPEARANCE-
SNOW CHEIF-TRADESMEN LVL 1-
STK# N21156**2021 RAM 5500HD C&C
TRADESMEN REG CAB 4X4
16' FLAT DECK****CALL FOR PRICING!**120" CAB TO AXLE-6.7L CUMMINS
DIESEL-CHROME APPEARANCE PKG
DRW- STK #: N21041**2021 RAM 5500HD C&C
TRADESMEN REG CAB 4X4
AIRFLO DUMP****CALL FOR PRICING!**80" CAB TO AXLE, 6.4L HEMI GAS-
CHROME APPEARANCE PKG-9' BODY-
DRW- STK #: N21077**COME SEE LARRY
THE TRUCK GUY!****More Than 30 Years of
Commercial Truck Experience!****2021 RAM 5500HD C&C
TRADESMEN REG CAB 4X4
NEW ARRIVAL!**84" CAB TO AXLE-6.7L CUMMINS
TURBO DIESEL-DRW-CHROME
APPEARANCE PKG STK# N21060**2021 RAM 5500HD C&C
TRADESMEN REG CAB 4X4
NEW ARRIVAL!**84" CAB TO AXLE-6.7L CUMMINS
TURBO DIESEL-DRW-CHROME
APPEARANCE PKG- UPFIT READY STK#
N21116**2021 RAM 5500HD C&C
MORE IN TRANSIT!****CALL FOR PRICING!**84" CAB TO AXLE-6.7L CUMMINS
TURBO DIESEL-SWITCH 'N' GO
HOIST SYSTEM-DUMP AND
CONTAINER BODY AVAILABLE**2021 RAM 5500HD C&C
TRADESMEN REG CAB 4X4
NEW ARRIVAL!**60" CAB TO AXLE-6.7L CUMMINS TURBO
DIESEL- FLAME RED-CHROME
APPEARANCE PKG-ALCOA WHEELS-
UPFIT READY STK# N21124442 West Broadway, Gardner, MA 01440 | SalvadoreAuto.com

NOT RESPONSIBLE FOR TYPOGRAPHICAL ERRORS. INCLUDES QUALIFYING REBATES. PRICING SUBJECT TO CHANGE 6/30/2021

2007 CAT 226B SKIDSTEER. Enclosed Cab & Heat, 8' Power Angle Plow, Forks, 2 Spare Tires On Rims, Complete Set Of Filters, **\$18,250 OBO.**

Boston, MA 617-217-8545



1998 WESTERN STAR TRI-AXLE DUMP TRUCK. CAT 435 HP,

8LL transmission, 44K Rears, Runs And Looks Good, Asking **\$29,000.** 203-666-1411, Call Or Text

SHIPPING CONTAINERS.

Wind And Watertight. 20', 40' Standard And 40 H/C, Available For Pick Up Or Delivery For A Fee, Call For Price. 203-460-6340



1999 FORD SERVICE TRUCK. 450 Diesel, Auto, New Motor, Exc. Shape, New Tires, Always Garaged, Ready To Go, No Rust, **\$10,500.** 413-530-5369



EQUIP SEALCOAT MACHINE. 400 Gallon, Works Great, **\$11,000.** 508-294-4769



CM FLATBEDS: STEEL AND ALUMINUM. Call With Your Needs. Call Chris 781-582-1378. Plympton, MA



1989 NORDBERG 1352 OMNICON PORTABLE CONE CRUSHER: S/N: 5202-577, Simplicity 6203, 6' X 20', Triple Deck Horizontal Screen, 200 HP, 480 Volt Soft Start Electric Motor, Three Axle Nordberg Carrier, **\$98,000 OBO.** Chris, 860-460-0767 Or Chm@Terrafirmus.Com

What's In Your Toolbox?



- **BUY, SELL, TRADE - FAST**
- **FROM NEW TO USED, IT'S ALWAYS FRESH**
- **AND A HANDY RESOURCE, TOO**

1-888-887-0505

www.TruckAndEquipmentPost.com



2012 HYUNDAI 380LC-9 EXCAVATOR. 6000 Hours, **\$129,000.** 860-333-6533



2017 KENWORTH T800.
310K miles, ISX 505, 18 Speed, 391 Ratio,
27,500 Light Weight, 17 1/2 Heritage
Heated Body, Will Price At
\$127,500 For Sub-Contractor Available For
Steady Work. 860-888-1906

Is Your Web Site a Clunker? Jump Start It!

Net Mechanic specializes in
New Web Sites • Updates • Maintenance

Inspections and Estimates:
www.NetMechanic.net
401-487-2943



Net Mechanic
We Get Our Hands Nerdy!

10% off with this ad



2009 AQUATECH B10.
Sterling LT9500 Chassis, CAT
C-13 Engine, Allison 4000RDS
Transmission. 31,000 Miles 6,768
Hours, 10 CY Body With Flush-Out
System, 360 Degree Boom, Positive
Displacement Vacuum, Excellent
For Locating Utility Lines, Two
Machines Available, **\$79,000.**
203-232-3516



**1996 CAT D3C 6-WAY
DOZER.** Three Speed Forward,
Three Speed Reverse Powershift,
Perfect Running Condition, Approximately
5500 Original Hours,
Asking **\$22,000.** 203-666-1411

401-654-6711

**Insurance experts
for all your business
and individual needs**



A. RICCIOTTI INSURANCE ASSOCIATES, LLC
START WITH A STRONG FOUNDATION



**1998 MACK
SEPTIC PUMPER.**
4,200 Gallon Aluminum
Tank, **\$50,000.,**
Pocasset, MA
774-836-8811



**CIMLINE #2250
CRACKSEAL MACHINE.**
Diesel Burner For Heat, Works
Great, **\$10,500.**
508-294-4769



1993 LOUISVILLE LOG TRUCK. Runs & Drives Well, **\$25,000 OBO.** 774-254-3631



COMMERCIAL
VEHICLE CENTER



MCGOVERN
AUTOMOTIVE GROUP



508-879-1320



ATTENTION LANDSCAPERS!!! WE'VE GOT YOUR TRUCKS.



2020 FORD F350 XL SUPERDUTY KNAPHEIDE UTILITY. V8, Gas, Power Group, Snow Plow Prep Pkg, On Their Way!



2021 F350 SD REG CAB XL 4WD: POWER GROUP 6.2L, stk#FM1436



NEW TRANSIT T350 EXT. LENGTH VAN: Hi Roof, 3.5L V6, Power Group, Back Up Camera, A/C, Barn Doors.



2022 F650 DONOVAN 5-6 YARD DUMP BODY: 300 HP. Stk.# FM1348 \$110,410*



2022 F750 DONOVAN 5-6 YARD DUMP BODY: 270 HP. Stk.# FM1346 \$108,410*



2020 FORD TRANSIT COMERCIAL CARGO VAN. 3.5L V6, Power Group, Rear Camera, stk#FM1242



2021 FORD F350 DUMP 4WD XL: POWER GROUP, 6.2L GAS. stk#FM1440. \$60,252



2021 FORD ECONOLINE E350 DRW CUTAWAY ENCLOSED UTILITY. 7.3L V8, Rear Camera, Power Group, stk#FM1335



**1200 WORCESTER ROAD
(Rt.9 East)
FRAMINGHAM, MA 01701**

www.McGovernFordofFramingham.com



**CHRIS UHL
617-775-9447**

CUHL@McGovernAuto.com

CAT 416 CIT.

5,900 Hours,
\$25,000.,
 Pocasset, MA
 774-836-8811



CEC PORTABLE JAW CRUSHER. 20 X 30 Portable Jaw Crusher,
 Brand New Dyes! **\$97,000.** 860-333-6533

2014 INTERNATIONAL TERRASTAR, 19,000 Mi,
 Automatic, 4wd, Under Cdl,
 12' Fisher Power Angle Plow W/
 Fish Stick, 158" Wb, Ready To Work,
\$44,500, CALL US.
 508-381-3939. Hopedale, MA

SAM'S Tree Service
 "We handle the jobs, the Big Guys turn down!"

- Licensed Arborist #913
- Insured
- Competitive Pricing
- Free Estimates

sammal@cox.net
401-269-1133

- Brush Chipping • Tree Removal
- Tree Pruning • Stump Grinding
- Residential Land Clearing

Tight Link Fence Co.

Residential ~ Commercial ~ Industrial

Mark Dillon
774-365-0222

HOLLISTON TRUCK

1569 WASHINGTON ST, HOLLISTON, MASS 01746
 WWW.HOLLISTONTRUCK.COM • CALL 508-429-7678

**WANTED :
 GOOD USED
 DUMP BODIES**

LARGE SELECTION OF UNDER CDL TRUCKS !



2008 FORD F-650: CAT C7-230HP, 54K MILES, ALLISONT 3500RDS AUTO, 26K GVW, SPRING SUSP., 5.29 GEARED RATIO, SINGLE FRAME, 11R 22.5 TIRES, AIR-BRAKES, A/C, PTO, NEW 14' STEEL DUMP, BARN DOORS, 4' SIDES, TOOL BOX, PINTLE, AIR-TO-REAR. **\$39,000**



2008 INTERNATIONAL 4300: DT466-260HP, 45K MILES, ALLISON 3500RDS AUTO, 26K GVW, SPRING SUSP., 5.64 GEARED RATIO, LOCKING DIFF., 11R 22.5 TIRES, SINGLE FRAME, AIR-BRAKES, A/C, PTO, 10' STEEL DUMP, ELECTRIC TARP, PINTLE. **\$39,000**



2013 INTERNATIONAL 4400: DT466-260HP, 121K MILES, ALLISON 3500RDS AUTO, 35K GVW, SPRING SUSP., 5.64 GEARED RATIO, LOCK DIFF., 295/75R 24.5 TIRES, SINGLE FRAME, AIR-BRAKES, A/C, PTO, NEW 10' WARREN DUMP, 1 CHUTE, ELECTRIC TARP, PINTLE, AIR-TO-REAR. **\$45,000**



2011 FREIGHTLINER M2: CUMMINS ISB-280HP, 56K MILES, EXHAUST BRAKE, ALLISON 3500RDS AUTO, SPRING SUSP., 6.14 GEARED RATIO, LOCK DIFF., SINGLE FRAME, 12R 22.5 TIRES, AIR-BRAKES/SEAT, A/C, PTO, NEW 12' WARREN DUMP, TELESCOPIC PISTON, 1 CHUTE, ELECTRIC TARP, AIR-GATE, AIR-TO-REAR. **\$50,000**



2010 FREIGHTLINER M2: CUMMINS ISB-260HP, 71K MILES, EXHAUST BRAKES, ALLISON 3500RDS AUTO, 26K GVW, SPRING SUSP., 6.14 GEARED RATIO, LOCK DIFF., SINGLE FRAME, 11R 22.5 TIRES, AIR-BRAKES/AIR-SEAT, A/C, PTO, NEW 10' WARREN DUMP, 1 CHUTE, TARP, PINTLE, AIR-TO-REAR. **\$49,000**



2010 FREIGHTLINER M2: CUMMINS ISB-260HP, 85K MILES, EXHAUST BRAKE, ALLISON 3500RDS AUTO, 26K GVW, SPRING SUSP., LOCK DIFF., 6.14 GEARED RATIO, SINGLE FRAME, AIR-BRAKES/SEAT, A/C, PTO, NEW 13' WARREN DUMP, 1 CHUTE, TARP, PINTLE, AIR-TO-REAR, TOOL BOX. **\$49,000**

THE DUMP TRUCK SPECIALISTS

Buyer - Seller - Swapper



ALLEGIANCE

TRUCKS®



Hartford, N.Haven, Torrington, & Franklin, CT / W. Springfield, MA

Call Mike McDonald 860-308-6599



WE HAVE WHAT YOU NEED FOR OIL & VOCATIONAL TRUCKS



SUPER CLEAN
2006 IH 7400 Dump/Plow Truck, DT570 285HP, 3500RDS, 43K GVW, Only 57K Miles, 10' All Season Dump Body, Load Cover, Front Plow Blade, Many New Parts & Lines, #6J286653, \$46,800



USED HOOK LIFT
2009 IH 4400 Max DT466, 2007 Emissions Engine, Allison 3500RDS, 152K Miles, 33K GVW, Can Be Derated, Brand New Swap Loader, Needs Nothing, \$69,800



SUPER CLEAN OIL TRUCK
1997 IH 4400 OIL TRUCK, DT466-230HP, 7 Speed Manual Trans, 144K Miles, Single Compartment Tech Weld Alum 2700 Gallon Tank, Bottom Load, Multi Wrap Reel, LC, VH449154, \$15,800 AS IS



16' T/A DUMP
2008 STERLING ACTERRA 10 Wheel Dump, Cummins Power, 10 Speed Manual Trans, 52K GVW, 16' Dump Body Only a Few Years Old, Clean Truck, Low Miles, Only a Few Years Old, Clean Truck, 90K Miles, Asking \$33,900



Clean Tandem Chassis
2015 IH 4400 6x4 CHASSIS, MaxDT 270HP, Auto Trans, 254" WB, 14K & 40K Axles, 54K GVW, Only 153K Miles, Clean Truck, #FH606767, \$22,800



W/ MOFFETT CRADLE
2006 IH 7400 FLATBED, DT570 310HP, ALLISON 3000 AUTO, 250K, ENGINE REBUILT YEARS AGO, NEW INJECTORS 2 YEARS AGO, 26' FLATBED W/ MOFFETT CRADLE, LOTS OF NEW PARTS, LOOKS AND RUNS GREAT! # 61347896, \$36,800



SEVERAL AVAIL
2017 IH 4300 CAB & CHASSIS, Cummins 250HP, Allison 2500RDS Auto, Miles 260-280K, Air Ride & Brake, 250" WB, Lease Maintained, Will Take 24' - 26' Box,



LOT OF TRUCK FOR \$\$
2007 FREIGHTLINER M2 10 Wheel Dump Snow Fighter, Cat Power, 8LL, Only 128K Miles, 20 & 46 Axles, 66000 GVW, 4 Year Old All Season Dump Body, Front & Wing Plow Frame, #7HX46259, \$47,800



26' W/LIFTGATE
2015 IH 4300, MAXDT 230HP, 251K MILES, AUTO, 33K GVW CDL TRUCK, 26' VAN W/ LIFT GATE, # JTS764, \$19,800



Auto Sleepers
(3) 2018 IH LT 73" Double Bunk Sleepers, ISX 460HP, Autoshifts, Collision Mitigation, Alum, Miles 495K Range, Deep Green, Sharp Trucks, \$68,900



26' TANDEM
2016 IH 4400 TANDEM N9SCR 315HP, 3000RDS AUTO, 54K GVW 26' VAN, 205K MILES, JTS791, \$44,800



Heavy Haul Spec
2015 PRO STAR HEAVY TRACTOR. N13, 475 HP, 18 Speed, Only 272K Miles, 46K RA,, Clean Lease Maintained Truck, #JTS875, \$55,800



24' w/ Gate
2015 IH 4300, Cummins 260HP, 2500RDS Auto, 248K Miles, 24' Van With Gate, Clean Truck, #JTS778, \$35,800



Collision Mitigation
INBOUND: 4-2016 IH Prostar Tandem Day Cabs, Cummins ISX, 10 Speed, 133K - 169K Miles, Collision Mitigation!, Pricing Starts at \$57,800



RUNS GREAT
2009 HINO 268A, 24' Reefer Body w/ Walk Ramp, Carrier Unit, Diesel, Auto, 435K Miles, Fleet Maintained, Runs Great, Under CDL, Air Brakes, #94551886, \$15,800



Several Avail
2017 IH 4300, Cummins 250HP, Allison 2500RDS Auto, Air Brakes, Air Ride, Under CDL, Miles 260K - 280K, Several To Choose, Cab & Chassis We Can Add 24' or 26' Van, Call For Details & Price.



With Warranty
2017 IH Prostar Tandem Day Cab, ISX 15 425HP, Auto Trans, Under 300K Miles, 52K GVW, Clean Trucks With Warranty Leftover, \$57,900

**I
N
S
T
O
C
K**



16' VAN/GATE 16'
2018 Isuzu NPR HD, 115K Miles, 14500 GVW, 16' Van & Gate, Very Clean, #J01049, \$41,800, J01014



SEVERAL AVAIL
2015 ISUZU NPR HD, Diesel, Auto, 130K Miles, 16' Van With Lift Gate, Clean Trucks, \$37,900



NEW TURBO & INJ
2015 Isuzu NPR HD, 16000 GVW, Diesel, Auto 106K Miles, 16' Van w/ Gate, #F7K00435, \$37,900



GAS MOTOR
2016 ISUZU NPR HD, GAS Motor, Auto, 104K Miles, 16' Van, Side Step Door, Walk Ramp, #3GD809813, \$34,800

**I
N
S
T
O
C
K**

Allegiance now has locations in MA, CT, NY, ME, VT, RI, NH, & NJ!

For all locations visit our website!

www.AllegianceTrucks.com



CONSOLIDATED TRUCK & EQUIPMENT, INC.

**TELLING
TRAILERS**

**EXTREME
TRAILERS**



www.ConsolidatedTruckEquipment.com

**32 INDUSTRIAL COURT, (RT.6) SEEKONK, MASSACHUSETTS.
ACROSS FROM SEEKONK SPEEDWAY.**



Brand New Challenger Body & Chassis,
26' Long, 54" & 60" Sides & Gate, Single
Point 60K suspension, Hardox Body, Hi-
Lift Gate, aluminum disc wheels, electric
load cover.
16 Ply Tires.
Please Call For Pricing



HONEST BOB'S GOT TRAILER
LOADS OF TRAILERS!
MAC and EXTREME FLATBED
TRAILERS
48' x 102" COME AND GET 'EM



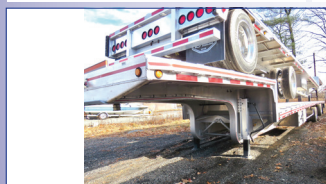
MAC 40-2: 20 TON
TOP TAG TRAILER:
30' X 102" Wide floor, Air Tilt, Tires
@ 75%, Aluminum Rims. Very
Good Condition. \$18,500



MAC 28' ALUMINUM
SMOOTH SIDE TRAILERS.
Air Ride Suspension. Please
call for pricing.



BRAND NEW EAGER
BEAVER 20XPT TRAILERS.
6' RAMPS. BEST PRICING
AROUND. Please give us a
call.



NEW MAC 53' Front Axle Slide, 36" Deck Height.
Tool Bx, 10' Upper Deck. (it's the trailer on the
bottom). Call for Price.



2015 MAC 53' Step Deck:
10' Upper Deck, Front Axle slide. Very Good
Condition. Call for price.



1999 TI-BROOK 24' x 54" ALUMINUM DUMP TRAILER:
Steel Frame, Slide-N-Go Manual Tarp, Air Ride, 11x24.5 Tires
@ 75%, Brakes 50%, Steel Floor, Steel Wheels, \$19,500.



2022 MAC 27' ALUMINUM FRAME HARD OX
BODY: Hi Lift Gate, Aluminum Rims, 24.5 Tires.
Includes Load Cover. Call for Price. Only 1 Left!

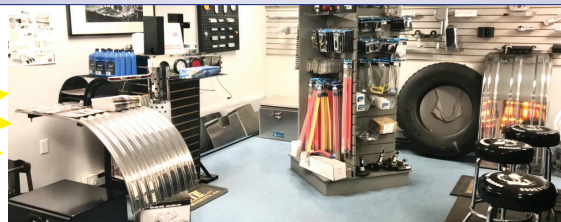


NEW MAC 48' Step Deck: Front Axle Slide,
10' Upper Deck, Tool Box.
Call for price.



2020 ALUMINUM DUMP BODY: NEW
CONDITION \$52,500

**PARTS
ROOM
SPECIALS!**



**PARTS
ROOM
SPECIALS!**

CALL US: AT 508-336-6215 • HOURS: 7:30 -5:30

Is Your Web Site a Clunker? Jump Start It!

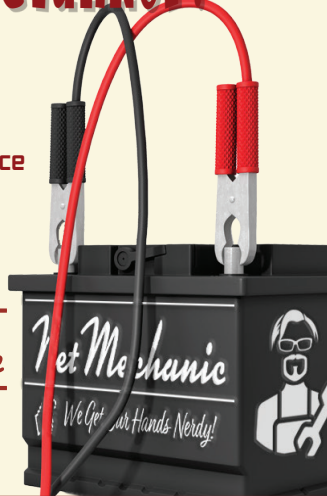
Net Mechanic specializes in
New Web Sites • Updates • Maintenance

Inspections and Estimates:
www.NetMechanic.net
401-487-2943



Net Mechanic
We Get Our Hands Nerdy!

10% off with this ad



CENTENNIAL TRAILER,

9 TON. Electric Brakes, 90% Rubber, Good Deck, Pulls Great,
\$1250. Call Eddy
401-226-1514

2003 LINKBELT 210 EXCAVATOR.

16,000 Hours,
Original Owner,
Tight And Straight,
\$32,000,
CALL DAN
203-506-3860



2000 STERLING

LT8500. 10-Wheeler,
15 Ft Bibeau Body, Brand
New Dump Piston, 100K
Miles, CAT Motor, 8LL, New
Tires, **\$73,000.**
860-333-6533

BEAM TRUCK & BODY INC.

RI Dealer #647

433 CUMBERLAND HILL ROAD, WOONSOCKET, RI 02895

401-767-2639

NEW - USED & RECONDITIONED DISPOSAL EQUIPMENT



2004 KENWORTH T300:
396,914 MILES, AMERICAN 75,000# ROLL-OFF,
CAT C12 W/ FULLER 8LL, 60,000# GVW CALL
FOR MORE DETAILS!



2006 INTERNATIONAL 4300, 349,867 MILES, DT466
OVERHAULED IN 2018, ALLISON 3500 TRANS., REPLACED
@246,809 MILES, STELLAR SLIDER 26 W/ ADJUSTABLE
HOIST - 35'75" - PIONEER RP-1500-PTO-COVERING
SYSTEM, PINTLE HITCH, 6" STEEL TOOL BOX, 295/75R22.5
FRONT / 295/75R22.5 REAR. CALL FOR MORE INFO!



2010 HYUNDAI SANTA FE. 145K
MILES, ONE OWNER, ALL BRAKES
COMPLETELY REPLACED, ROTORS-
CALIPERS-PADS, ALL WHEEL DRIVE,
A/C BLOWS ICE COLD! \$6,990



2003 IH 4400 CREW-CAB HOOK-LIFT,
109K MILES, DT466, ALLISON 3500 RDS,
40K GVW, GAL BREATH 30K HOOK
WITH 54/62 HOOK -HEIGHT DOES 16'
BOXES, CALL FOR MORE INFO!



2007 ISUZU FVR: UNDER CDL, AIR-BRAKES, 111K MILES,
ALLISON AUTO, MOUNTING 2011 10YD NEW WAY SIDE
LOADER W/ TIPPER, CHASSIS BLASTED & PAINTED,
BODY PAINTED YOUR CHOICE OF COLORS.



2010 MACK MR 20 & 46 ALLISON W/
NEW WAYNE 40 YD. FRONT LOADER,
26,351 MILES. \$164,000 W/ FET



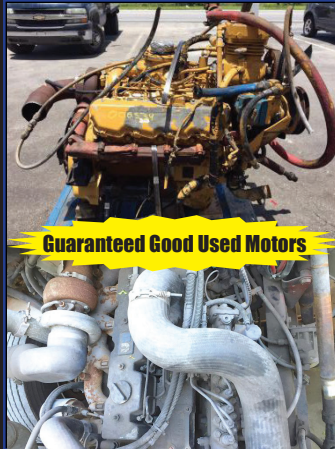
2010 INTERNATIONAL 7400: 42,000
MILES W/ HEIL 22 YD. AUTOMATED
PACKER. \$60,000 WILL SPLIT.



2006 FORD F-750, UNDER CDL, REAR
LOADER, 35K MILES, WAYNE 6 YARD
REL, CALL FOR MORE INFO!

WWW.BEAMTRUCK.NET

R&R INDUSTRIES **We Buy All Scrap Metals**
www.RRTrucksAndEquipment.com • Sales@RandRind.com **413-733-2118**
195 Rocus Street, Springfield MA 01104



Guaranteed Good Used Motors

DIESEL MOTORS FOR SALE

Many More
Motors,
Call

Kubota V1305 Rebuilt
 Kubota V1505
 3 Cyl Deutz
 Detroit 3-71, 4-71, 6V-71
 Detroit 6V92
 (2) CAT C-7
 CAT 3106 & 3208
 International DT 466E
 International MaxxForce
 Cummins 5.9L 12V & 24V



CAT 225. 3304 Engine, Strong Runner, \$19,000. Call/Text Sean, Colchester, CT 860-235-7463, Leave Message When Calling

What's In Your Toolbox?



- BUY, SELL, TRADE - FAST
- FROM NEW TO USED, IT'S ALWAYS FRESH
- AND A HANDY RESOURCE, TOO

1-888-887-0505

www.TruckAndEquipmentPost.com



NEW CAM EQUIPMENT TRAILERS IN STOCK: Deck Over, Low Pro, Tilts.
 Call Today. 781-582-1378. Plympton, MA

TAYLOR & LLOYD, INC.

SEE OUR INVENTORY: WWW.TAYLORANDLLOYD.COM



2014 INTERNATIONAL 7600 WORKSTAR 26' FLATBED
 w/Moffet Set Up, 6X4, Allison Auto, 475 HP, 52,350 GVW, PW, PL, 271K Miles.



2021 INTERNATIONAL CV 4X4 C&C.
 6.6L 350HP, Allison 2700 RDS, PW, 165" WB, 22,500 GVW.



2016 INTERNATIONAL 4300 26' Box,
 102" X 102", Non CDL, Lift Gate, Southern Truck, Cummins, 220K, Coming In June. (File Photo)



2016 INTERNATIONAL 4300
 19' Industrial Carrier, 130K Miles, Southern Truck, Non CDL 6 Spd Manual, Air Brakes, Cummins, Coming In June. (File Photo)

1-617-429-3370

Call Jack Coakley
8 Railroad Avenue Bedford, Ma

Authorized Fisher
Snow Plow Dealer



HILLSIDE MOTORS

800-D American Legion Highway (Rt. 177)
Westport, MA 02790
508-636-5050

Financing Available
- Others In Stock

Family Owned & Operated Since 1969

LBZ DURAMAX



2007 CHEVY SILVERADO CLASSIC BODY K2500HD 4X4. 8' Bed, LBZ Duramax Diesel, Allison Auto, PW, PL, Tilt, Cruise, Factory Alum Wheels, New Tires, One Owner, 169K, Fully Loaded, Personal Truck, Very Well Kept, **\$18,500.**



2014 CHEVROLET 3500 HD C&C 4X4. LWB, DRW, 6L V8, Auto, AC, 84" CA, 13,200 LB GVW, Stainless Steel Wheel Simulators, Tow Mirrors, One Owner, Gorgeous Truck, 69K, **\$24,900.**
(Others Available)

44K MILES



2015 CHEVROLET SILVERADO 3500 12' RACK DUMP DRW 4x4 w/Swing-Gates, Removable Sides, Toolboxes, 6L V8, Auto, AC, PW, PL, 84" CA, 13,200 GVW, One Owner, 44K, Super Clean, **\$44,500.**

13,200 GVW



2015 CHEVROLET K3500 4X4 DRW C&C. 6L V8, Auto, AC, PW, PL, Tilt, Cruise, 13,200 GVW, Short WB, One Owner, 89K, Very Well Kept, **\$28,900**



2011 CHEVROLET C3500 C&C. DRW, 2WD, 6L V8, Auto, AC, 84" CA, 13,200 GVW, 177K, One Owner, Clean Unit, **\$10,900.**



2013 CHEVROLET 2500HD EX CAB 8' UTILITY. SRW 2WD. 6L V8, Auto, AC, 6-Passenger, Rhino Liner, Fleet Maintained, One Owner, 105K, Excellent Condition, **\$21,500.(will separate)**



8' MARANDA M-170 FIBERGLASS SLIDE INSERT UTILITY TRUCK CAP. Space Kap, Dual Side Doors, Rear Barn Doors, Shelving, Dual Alum Drop-Down Ladder Racks, Cargo Slide Work Tray, Space Cap Rival, Excellent Condition, **\$5,500.**



9' KNAPHEIDE DRW UTILITY BODY. Removed From Rust Free Southern 2012 Chevy 3500 Truck, Has Typical Work Dents & Scratches, **\$3,000.**



ALLEGIANCE

— TRUCKS® —

LIBERTY

INTERNATIONAL TRUCKS

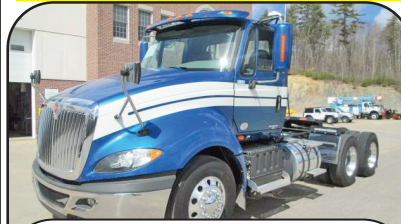

603-905-9036

132 Pierce Rd. (Rt. 125)
Barrington, NH
(17 miles from Portsmouth)


603-623-8873

1400 South Willow St.
Manchester, NH
(1 hour from Boston)

INVENTORY REDUCTION SALE - NO REASONABLE OFFER REFUSED!



2015 IH PROSTAR 6x4 Day Cab.
Cummins ISX15 425HP, 10 Spd,
52,350 GVW, 450K Miles, stk#203103,
\$39,900.



2010 IH WORKSTAR 7400 All Purpose Sander. DT 285HP, Allison Auto RDS, Front Plow & Shelving Wing, 37020 GVW, 98K Miles, stk#203037, **\$29,900.**



2009 IH WORKSTAR 7400 Stainless Steel Henderson Spreader Body. 300HP, Allison Auto, Front Poly Plow, Wing Plow, 36220 GVW, 37K Miles, stk#120501, **\$39,900.**



11 AVAILABLE

2013 PETERBILT 365 44" SLEEPER 6x4. Cummins ISX 425HP, 8LL, AC, 53,200 GVW, 24K Miles, stk#203071, **\$54,900.**



2007 PETERBILT 357 C&C. CAT C9 335HP, Allison Auto, 222" WB, 66K GVW, 8 New Tires, Fresh Paint, 186K Miles, stk#203114



2016 FREIGHTLINER BUS CLASS M2 112 8'6" Dump. Cummins ISL-G 300HP, Allison Auto, El. Tarp, Air to Rear, 33K GVW, 19K Miles, stk#203112, **\$49,900.**



2001 AUTOCAR ACL64F 10 Yard Rear Discharge Mixer. Cummins ISM 305 HP, 8LL, 73K GVW, 155K Miles, stk#203047, **\$24,900.**



2003 FREIGHTLINER FLD120 22' American ARU-75-22XL Roll-Off. Detroit Series 60 350HP, 8LL, 89,200 GVW, stk#203088, **\$39,900.**



2008 FREIGHTLINER M2 UTILITY w/Altec D2050A-TR Digger Derick. Allison 30, ISC 300HP Diesel, 50' Height, Winch, Outriggers, 54,600 GVW, 65K Miles, stk#203063



1999 IH PAYSTAR 5000 6x6 Utility w/ HI Ranger 72' Bucket. Cummins M11 330HP, Allison Auto, 64K GVW, 129K Miles, stk#203075, **\$39,900.**



2014 FREIGHTLINER 114SD Flatbed 6x4 w/Fassu D175A.2 Crane. Detroit 410HP, Fuller Ultrashift Plus, Engine Brake, 56K GVW, 64K Miles, stk#203083, **\$84,900.**



2015 IH PAYSTAR 5900 ITI Alum 110 Barrel Vac Tank 10x4. Cummins ISX 15 500HP, 18 Spd, 92400 GVW, 263K Miles, stk#203028, **\$89,900.**

www.LibertyInternationalTrucks.com



ALLEGIANCE

— TRUCKS® —

LIBERTY

INTERNATIONAL TRUCKS


603-905-9036

132 Pierce Rd. (Rt. 125)
Barrington, NH
(17 miles from Portsmouth)


603-623-8873

1400 South Willow St.
Manchester, NH
(1 hour from Boston)

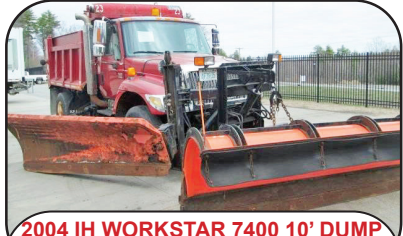
INVENTORY REDUCTION SALE – NO REASONABLE OFFER REFUSED!



2007 PETERBILT 357 C&C 8x4.
CAT C9 335HP, Allison Auto, 79,200
LB GVW, 166K Miles, stk#203032,
\$42,900.



2017 IH PROSTAR.
Cummins ISX15 400HP,
10 Spd, Engine Brake, 495K Miles,
stk#100151, **\$54,900.**



2004 IH WORKSTAR 7400 10' DUMP
w/Under Body Spreader.
Pre Emission DT466 250HP, Allison
Auto, 11' Poly Front Plow, 10' Wing,
58K Miles, stk#Con-107, **\$25,000.**



2007 IH WORKSTAR 7600 Utility w.
72' Altec Aerial Bucket. ISM 385HP,
Allison Auto, 62K GVW, 84K Miles,
stk#203057, **\$59,900.**



2017 KENWORTH T880 40" Sleeper.
PACCAR MX 500HP, 18 Spd, 59,200
GVW, 212K Miles, stk#203041,
\$84,900.



2009 FREIGHTLINER M2 UTILITY
W/ALTEC D2050-TR CRANE. Diesel,
72K Miles, 54,600 GVW, stk#207649



2011 WESTERN STAR 4900 8x4.
ISX15 550HP, 18 Spd, 80K GVW,
455K Miles, stk#203110, **\$62,900.**



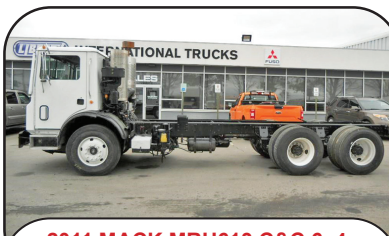
2010 IH WORKSTAR 7600 Utility
w/Terex HI Ranger 60' Bucket.
Cummins ISM 350HP, Allison Auto
4000 RDS, 56K GVW, 80K Miles,
stk#203038, **\$49,900.**



2010 IH PAYSTAR 5900 TRI AXLE
DUMP. Diesel, Eaton Fuller, MAC
Body, 60,600 GVW, 532K Miles,
stk#212630, **\$79,900.**



2011 MACK MRU600 25 Yard
McNeilus Rear Packer. MP7 325HP,
Allison Auto, 66K GVW, 176K Miles,
stk#203065, **\$104,900.**



2011 MACK MRU613 C&C 6x4.
MP7 325HP, Allison Auto, 195" WB,
66K GVW, Camelback, 212K Miles,
stk#203066, **\$44,900.**



2016 MACK TITAN TD713 8x4.
MP10 605HP, 18 Spd, Tri Axle, 20K
F/A, 46K R/A, 258" WB, 217K Miles,
stk#203068, **Call**

www.LibertyInternationalTrucks.com



SALES & RENTALS

(603) 623-3669

www.TQUIP.com

Londonderry, NH | Rutland, VT | Orlando, FL

• OVER 1000 MACHINES & ATTACHMENTS IN OUR INVENTORY! •



WEEKLY SPECIAL

2015 VOLVO EC350EL
A/C
9'4" STICK
AUXILIARY HYDRAULICS
HYDRAULIC Q/C
54" DIGGING BUCKET
REAR VIEW CAMERA
3440 HOURS
\$159,000



2010 CAT 321DLR
A/C, 11' STK, AUXHYD, CAT HYD Q/C,
36" CAT DIGGING BKT, ROCKLAND HYD
THUMB, 70% UC, 32" PADS, 7540 HRS
\$99,000



2015 KOBELCO SK210LC-9
STD STK, AUX HYD, 42" DIGGING BKT,
HEAVY LIFT OPTN, IND TRVL OPTN, REAR
CAM, 32" PADS, 6610 HRS
WAS: \$99,000 | NOW: \$89,000



2015 CAT 316EL
A/C, 9'6" STK, AUX HYD, CAT HYD Q/C,
30" CAT DIGGING BKT, REAR CAM,
24" PADS, 2236 HRS
\$115,000



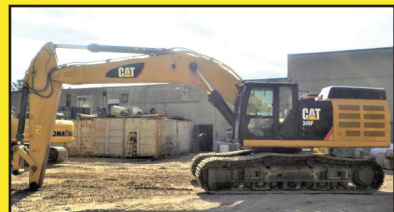
2016 CAT 336FL
A/C, 12'10" STK, AUX HYD, HYD Q/C,
60" BKT (NOT PICTURED), ST TRVL PDL, PTRN
CHNGR, AIR RIDE, 33" PADS, 4033 HRS
\$179,000



2015 HITACHI ZX225US-5
A/C, AUX HYD, TEFRA HYD Q/C, 48"
GEITH DIGGING BKT (IM4096), ORIEL HYD
THUMB, REAR CAM, 28" PADS, 2556 HRS
\$129,000



2010 VOLVO EC140LC
A/C, 10' STK, AUX HYD, HYD Q/C,
30" BKT & 60" TILT BKT, FIXED MNL THUMB,
24" PADS, 3982 HRS
\$79,500



2016 CAT 349FL
A/C, 11' STK, ST TRVL PDL, PTRN CHNGR,
77" DIGGING BKT (NOT PICTURED), 35" PADS,
REAR VIEW CAM, 7265 HRS
\$179,000



JCB 509-42
9,000LB LIFT CPTY, 42' LIFT HEIGHT, EROPS,
AUXILIARY HYDRAULICS, 4CYL DIESEL
ENGINE, SOLID TIRES, 3492 HRS
\$55,000



2017 DEERE 700K-LGP
EROPS, A/C & HEAT, 6-WAY BLADE,
30" PADS, 2671 HRS
\$135,000



2012 CAT D8T
EROPS, SU BLD W/ TWIN TILT, NEW HD UC,
RPR VLV, DIFF STR, 28" PADS, NEW \$47K
DSL ENG BY CAT DLR, 9051 HRS
\$285,000

• HAMMERS • BUCKETS • GRAPPLES • THUMBS • FORKS • COUPLERS •



2014 & 2016 CAT CT660s
A/C, 475HP CT13, CAT
AUTO TRANS, 44K LB. REARS,
20K LB. FRONTS & PUSHER
AXLE, ALUM WHLS,
DIFF LOCK, PWR WNDWS,
AIR LFT PUSHER AXLE,
DUAL STR BOXES,
211" WHEELBASE, PTO,
17'6" BEAUROC STEEL DUMP
BODY, ELEC TARP,
315/80R22.5 FRONTS,
11R24.5 REARS HRS
CALL FOR PRICING

T-SALES & RENTALS INC.
T-EQUIP
YOUR  CHOICE IN SALES
& RENTALS

(603) 623-3669
www.TQUIP.com



2014 DOOSAN DL300-5
A/C, 6CYL SCANIA DSL, HYD Q/C,
4CY GP BKT, RIDE CTRL, 23.5R25 TIRES, 72"
HD FORKS INCLUDED, 3300 HRS
\$119,000



2011 CAT 938H
EROPS, A/C & HEAT, 2-STAGE HYD
FORKLIFT ATTACHMENT, HYD REAR HITCH,
14X24 SOLID TIRES, 14,877 HRS
\$45,000



2018 CAT 910M
EROPS, AC & HEAT, 2-SPEED,
3RD VALVE HYD, 2CY GP BUCKET,
16.9-24 TIRES, 61 HRS
\$115,000



2020 CAT 908M
EROPS, A/C, 2-SPD, 74HP CAT C3.3B DSL,
1.4CY GP BKT, FORKS INCLUDED
CALL FOR PRICING



(2) 2016 TERRAMAC RT9s
18,000LB CPTY, A/C, 225HP CUMMINS
DIESEL, HST TRANS, 10'6" DUMP BODY,
28" RUBBER TRKS, 400+ HRS
\$109,000 EACH



(4) 2014 DYNAPAC CA2500Ds
EROPS, A/C & HEAT, 84" SMOOTH DRUM,
DRUM DRIVE, CUMMINS 4.5L DIESEL,
23.1X26 RUBBER TIRES, 830+ HRS
\$79,000 EACH



(2) 2016 KOMATSU HM300-5s
30-TON CPTY, A/C, 6X6, TIER-4 DSL,
TRACTION CTRL, ENGINE RETARDER,
23.5R25 RADIALS, 5200+/- HRS
\$209,000 EACH



(2) 2008 KOMATSU HM350-2s
35-TON CAPACITY, A/C & HEAT, 6X6,
26.5R25 RADIALS, 9800+ HRS
STARTING AT \$89,000



2011 LAPRADE R600LD-II
5'X16' DRUM, 3/4" SCREENS, 36"X11' RLR
BELT FDR, 30"X60' DISCH FOLDING
CONV, 4CYL DSL, T/A CHASSIS
\$69,000

NEW TO OUR RENTAL FLEET:



2021 CAT 950GCs
A/C, AUX HYD, CAT FUSION HYD Q/C,
4.5CY GP BKT, SHUTTLE SHIFT, RIDE CTRL,
REAR VIEW CAM, 23.5R25 RUBBER



2021 KOMATSU PC170LC-11s
A/C, AUX HYD, ROCKLAND HYD Q/C,
36" CRAIG HD BKT, ROCKLAND HYD
THUMB, REAR VIEW CAM, 24" PADS



2021 KOMATSU D39EX-24s
EROPS, A/C, 6-WAY BLADE,
TIER-4 DIESEL ENGINE, 20" PADS

• **CALL US TODAY FOR YOUR YEAR-ROUND SALES & RENTAL NEEDS!** •

**We are cash
buyers for
quality used
trucks and
equipment!**

BROOKSIDE EQUIPMENT SALES

WWW.BROOKSIDEEQUIPMENT.COM

978-249-4600



1995 CHEVROLET KODIAK C6500: 96,267 Miles, Cat 3116, 170 HP, Auto, 2WD, Engine-Mounted Compressor, Liftmore 3200 Crane, Miller AEAD-200LE Welder, MTB Body, stk#TK741, **\$24,500**



2007 MACK GRANITE CTP713: 123,332 Miles, 10 Whl Knuckle Boom Crane Truck, Gormach 28200-E6, 20 Ft Flatbed Dump, Mack MP7-370, Mack 10 Spd, 18K F, 44K R, Stk#TK651, **\$59,500**



2007 CATERPILLAR 120H: 3,845 Hours, 12 Ft Mold Board, Cab W/ A/C, 6 Cylinder Cat Turbo, stk#GR985, **\$79,500**



2018 CASE TR310: 495 Hours, 2100 Lb Lift, Cab W/ A/C, Aux Hyd, Joystick Controls W/ Pattern Changer, Hydraulic Coupler, Turbo, 9K Lbs, stk#SK171, **\$49,900**



2020 CATERPILLAR 910M: 91 Hours, 1.7 Yard, Cab W/ A/C, 4 Cyl Cat C4.4 Turbo, 18K Lbs, stk#LO088, **\$109,500**



2005 MACK GRANITE CV713: 451,717 Miles, 23 Ft Gallfab 7103 Roll-Off Body, 75K Lb Cap, Mack AMI-370, Mack 10 Speed, 18K F, 20K P, 44K R, Camelback Suspension, stk#TK516, **\$49,500**



2016 VOLVO SD75B: 1,980 Hours, 66" Smooth Single Drum, Drum Drive, Vib., Orops, 4 Cyl Volvo D3.8H Turbo, 73 HP, stk#CO043, **\$49,500**



2013 JCB 520-50: 2,478 Hours, 4400 Lb Lift, 16'5" Lift Height, 9'3" Horizontal Reach, 4x4, 42" Forks, 4 Cyl Perkins Turbo, 77 HP, Auxiliary Hydraulics, Stk#FL199, **\$34,500**



2014 JOHN DEERE 544K: 4,489 Hours, 2.75 Yard, Cab W/ A/C, Hydraulic Coupler, 6 Cyl John Deere Turbo, 30K Lbs, stk#LO136, **\$72,500**



2016 BOBCAT S595: 785 Hours, 2200 Lb Lift, Cab W/ A/C, Hydraulic Coupler, 66" Bucket, 4 Cyl Bobcat Turbo, 2 Speed, 7K Lbs, stk#SK133, **\$37,500**



2014 KOBELCO SK260LC-9: 1,812 Hours, Pulverizer W/ Magnet & Dynaset HMG 10KW Generator, A/C, 4 Cyl Hino Turbo, Very Good Undercarriage, stk#XC052, **\$119,500**



2002 HYSTER H170HD: 20,878 Hours, 17K Lb Lift, Cab, 17'4" Lift Height, 2WD, Sideshift, 46" Forks, 6 Cyl Perkins Turbo, stk#FL35Z, **\$19,500**



2016 JOHN DEERE 210G LC: 3,348 Hours, 48" Bucket, Hydraulic Thumb, Hydraulic Coupler, A/C, Good U/C, Backup Camera, 6 Cyl JD Turbo, 51K Lbs, stk#XC931, **\$139,500**



2002 KOMATSU WB150AWS-2: 11,440 Hours, 4x4, Cab, X-Hoe, Turbo, AWS, 18" Digging Bucket, Electronic Power Shift, 96 HP, stk#BH052, **\$21,500**



2015 JOHN DEERE 644K: 4,335 Hours, 4.25 Yard, Cab W/ A/C, Ride Control, Backup Camera, 6 Cyl John Deere Turbo, 42K Lbs, stk#LO559, **\$87,500**



2014 BELL B30E: 11,064 Hours, 30 Ton, 6x6, A/C, 6 Cyl Mercedes Turbo, stk#HT665, **\$89,500**



2017 HITACHI ZX180LC-6N: 3,254 Hours, 40" Bucket, A/C, 2 Speed, 4 Cyl Isuzu Turbo, 43K Lbs, stk#XC018, **\$97,500**



2000 DAEWOO Mega 250-III: 3 Yard, Cab, 20.5R25 Good Rubber, 6 Cyl Daewoo Turbo, 31K Lbs, stk#LO154, **\$25,500**



2013 SKYTRAK 8042: 4,336 Hours, 8K Lb Lift, 42 Ft Lift Height, 4x4, OROPS, Tilt Body, 6 Ft Forks, 4 Cyl Cummins Turbo, Stk#FL825, **\$34,500**



2014 IHI 25VX3: 1,573 Hrs, 12" Digging Bucket w/New Teeth, 2 Way Aux. Hydraulics, 2 Spd Travel, Control Pattern Selector, 0 Tail Swing, Good Rubber Tracks, Blade, Swing Boom, Yanmar Diesel, 6.1K Lbs, stk#MX532, **\$22,500**

60 STATE RD, PHILLIPSTON, MASS

978-249-4600

EMAIL: KEVIN@BROOKSIDEEQUIPMENT.COM

GENERAL TRUCK CENTER INC.

ASK US HOW WE
CAN LOCK IN YOUR
MAINTENANCE COSTS
FOR 6 YEARS WITH
PSMP

Selling Cab Overs Since 1961!!

109 Lindberg ave. Methuen MA 01844 • www.generaltruckscenter.com

978-686-1800

603-560-0668
Nights and Weekends



2014 ISUZU NPR-HD.
150" WB, 163K Miles. 6 Sp.
Auto, 4 Cyl Diesel. PW/L, A/C,
AM/FM/CD/USB w/Bluetooth,
stk#15169, **\$22,900.**



2016 ISUZU NRR.
96K, 19500 GVW,
16'x85" T x 102" W w/ Alum
Ramp, P/W/L, A/C, Block Heater,
stk#15422, **\$36,900.**



2016 ISUZU NRR.
117K! 19500 GVW,
16'x85" T x 102" W, Pull-
Out Ramp, P/W/L.
A/C. 102" Wide
Mirrors, Block Heater,
stk#15417, **\$36,900.**



2014 ISUZU NPR-HD's.
5 To Choose From. 150" WB Ready For 16' Bodies,
AM/FM/CD, A/C, P/W/L, Heated Mirrors,
stk#15040-15062, **As low as \$18,900!**



2014 ISUZU NPR-HD
Chassis. 14500 GVW, 119K
Miles! 150" Wheelbase, Auto,
Cold Package, AM/FM/CD/BT/
USB Radio, P/W/L, stk#15100
\$22,900.



2014 ISUZU NPR-HD.
Diesel, 119k Miles!
150" WB, Auto, Includes
3 YR/90K Isuzu Extended
Warranty, stk#15101,
\$22,900.



2020 HINO 195. 19500
GVW, 16' Dry w/ 1 Row
E-Track, 96" T x 91" W,
Transl Roof, Cold Package,
LED Fog lamps, stk#9909,
\$63,900.



2016 HINO 195. 170K
Miles, 18'x85x102,
Step-Up Rear Bumper,
Cold Package (Heated
Mirrors/Block Heater),
102" Mirrors, P/W/L,
stk#15232, **\$25,900.**



2010 HINO 268A. 276K,
18' Supreme Refrigerated
Body w/ Carrier Supra 650
Unit, 6300 Reefer Hours,
Air Brakes, Heated Mirrors,
Block Heater, stk#15178,
\$22,900.



2015 HINO 268A. 209K, 260HP! Air Brake/Spring
Ride, 20' Morgan w/Step-Up, Curbside.
97" T x 96" W, Supra 760 Engine Driven Unit,
stk#15412, **\$29,900.**



2015
FREIGHTLINER
M2 106 24' DRY.
Cummins 6.7,
106K, Curbside
Door, Air Brake/
Spring Ride,
Low Pro 19.5"
Alum Wheels,
stk#15384,
\$37,900.



2015 FREIGHTLINER M2
106 CAB/CHASSIS. 25950
GVW, 153K Miles, Cummins
B6.7, 253" WB - 24' Body
Applications, Air Brake/Air
Ride, stk#15434, **\$42,900.**



2015 FREIGHTLINER
M2 106 24' DRY. 202K,
Cummins 6.7, Air Brake/
Spring Ride, 4000lb Alum
Tuckaway w/Cart Stops,
stk#15433, **\$42,900.**

*TAXES NOT INCLUDED, 100K MILE LIMIT, .20 CENTS EVERY MILE ABOVE 100K. Dealer is not responsible for errors in price, or in description of vehicles

ALLEGIANCE

— TRUCKS® —



2181 Providence Highway | **Walpole**, MA 02081
(508) 668-3112 | (800) 225-4808



2020 INTERNATIONAL HV
Cummins ISL, 6-Speed Automatic.
GVW 40,000. Stock #700636



2020 INTERNATIONAL CV
Navistar 6.6LD, 6-Speed Automatic.
GVW 19,500. Stock #300065



2019 INTERNATIONAL CV
Navistar 6.6L D, 6-Speed Automatic.
GVW 19,500. Stock #300071



2019 INTERNATIONAL CV
Navistar 6.6L D, 6-Speed Automatic.
GVW 19,500. Stock # 300060



2020 INTERNATIONAL CV
Navistar 6.6L D, 6-Speed Automatic.
GVW 19,500. Stock #300061



2020 INTERNATIONAL HV
Cummins ISL, 6-Speed Auto.
GVW 37,600. Stock # 700644



2019 FORD F550
Ford 6.7L, 6-Speed Automatic.
GVW 19,500. Stock #550774



2019 FORD F550
Ford 6.7L, 6-Speed Automatic.
GVW 19,500. Stock #550835



2019 FORD F750
Ford 6.7L, 6-Speed Automatic.
GVW 25,999. Stock #750481



NEW 2020 FORD F550
7.3L EFI, 10-Speed Automatic
GVW 19,500. Stock #550871



2021 FORD F650
Ford 7.3L EFI, 6-Speed Automatic.
GVW 25,999. Stock #650616



2006 FORD F750 -USED
Cummins ISB 6-Speed Automatic.
GVW 25,999. Stock #20013

Allegiance now has locations in MA, CT, NY, ME, VT, RI, NH, & NJ!

For all locations visit our website!

www.AllegianceTrucks.com

R & R INDUSTRIES

**We Buy All
Scrap Metals**

www.RRTrucksAndEquipment.com • Sales@RandRind.com

195 Rocus Street, Springfield MA 01104

413-733-2118

TOP \$ PAID FOR ALL METALS

*** ALL FERROUS & NON FERROUS METALS***
COPPER/BRASS/ALUMINUM/STAINLESS/IRON
& STEEL* MACHINERY* HEAVY EQUIPMENT*
CARS/TRUCKS*



**TOYOTA
MODEL 01-3FG35
HD FORKLIFT.**
Dual Pneumatic
Tires, Gas Powered,
7500 lb Lift
Capacity, Runs &
Works Well,
Only \$5,500

Others Avail \$2,000
& Up



45' FRUEHAUF FLATBED TRAILER. New
Deck, Nice Tires, Lights And Brakes All Work, Steel
Headboard, Only \$3,995



1997 SNORKEL LIFT #TB-A80RDZ, 80'
Reach, Only 2800 Hours, Deutz Diesel, 4WD,
New Tires, Runs Great, \$9,995



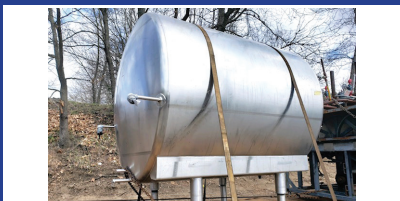
COMPLETE PIPE JACKING SYS. Power
Unit, Cylinders, Spacers, The Whole Thing!,
Call Me & Let's Make A Deal



**RANSOM BOBCAT T3101 COMMERCIAL
ZERO TURN MOWER.** Self Leveling Sully,
61" Deck With Hydraulic Lift, Only \$2,495



2000 IH SERVICE TRUCK. DT466 Diesel, 6 Speed,
Manual, Runs & Drives Great, A Drawer For Every Tool,
Built In Air Comp, Starter Pack, External Hyd, Much More,
Not Perfect, But Only \$8,850



STAINLESS STEEL MILK TANK. Like
New Condition, Many, Many Uses, Insulated,
6' Diameter x 7' Long, Only \$4,700



**GALION 13.5' STEEL DUMP BODY COMPLETE
WITH HOIST, TANK etc,** Excellent Condition, Ready To
Mount On Your Chassis, Only \$3,350, Others To Choose



**TAG A LONG 9 TON EQUIPMENT
TRAILER.** Tri Axle, Great Condition,
Only Missing A Few Floor Boards, Only \$2,850



TENNANT SWEEPER MODEL 92. New Kubota
Diesel Motor, Runs Great, Only Shows 256 Hours,
A Steal At Only \$2,295/BO



1998 ISUZU NPR. V8 Chevy Gas Motor, Auto,
Excellent Condition, 15' Flatbed Rack Body, Runs
Well, Only \$4,750



1990 CHEVY C-70 Factory Marmon-Harrington AWD, Only 27K
Miles, GM 8.2L Diesel, 5+2 Speed, Runs & Drives Great, Sold With Or
Without Digger Derrick Crane, Call For Info & Pricing



**GRAVELLY 566 TRACTOR/
POWER UNIT.** Runs Excellent, \$750,



1939 MACK MODEL EQ. Single Axle
Dump. Complete And Ready To Restore.
Call For More Info. Only \$5,500



**WORKINGTON TRAILER MOUNTED AIR
COMPRESSOR.** John Deere Diesel, Runs Like New,
Only \$4,300



**STORAGE UNITS 12', 14', 16', 18', 20',
24', 30', & 40' Storage Or Instant Garage
\$650 & Up**

ANDERSON MOTORS INC.


GMC

MICRO BIRD
by GERRARDIN

BLUE BIRD BUS SALES OF NEW ENGLAND
*** YOUR EXCLUSIVE VOLVO TRUCK DEALER ***


2022 VOLVO VHD84B300-D13, 500HP, 14SPD. AUTO, 18' HEAVY DUTY STEEL DUMP, HIGH LIFT-GATE. *INCOMING*



2022 VOLVO VNR64T300-D13, 435HP, I-SHIFT AUTO, 12K FRONT / 40K REARS.



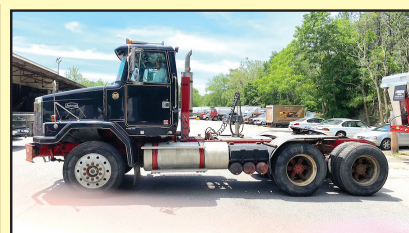
2006 VOLVO VNL64T-D12, 435HP, 10SPD., 46K REARS, WET-SYSTEM. #210102B



2020 RHODES 26' ALUMINUM DOUBLE WALLED SMOOTH SIDE DUMP TRAILER, ALUM. FRAME, AIR-RIDE.



2007 ENGLE 6600 GALLON STAINLESS STEEL WATER TANK, INCLUDES NEW PUMP.



1997 AUTOCAR ACL64BT-N14, 435HP, 8LL TRANS, 46K REARS, WET-SYSTEM. #210102C



2022 BLUE BIRD BBCV71 PASSENGER SCHOOL BUS, GAS, HYDRAULIC BRAKES.



2020 FORD TRANSIT 14 PASSENGER COMMERCIAL SHUTTLE BUSES, GAS, INDIVIDUAL SEATING.



2019 FORD E-SERIES, 14 PASSENGER W/ REAR LUGGAGE COMPARTMENT, NO CDL REQUIRED. #190024



2021 FORD E-450 WITH HANDICAP LIFT, GAS, AUTOMATIC, NON CDL.



2019 FORD E-450 24 PASSENGER COMMERCIAL SHUTTLE BUS, GAS, AUTOMATIC, A CDL LICENSE IS REQUIRED. #190016



2021 CHEVY G5 14 PASSENGER MFSAB, GAS, AUTOMATIC, NON CDL.

401-434-5900

WWW.ANDERSONMOTORS.COM

EMAIL • SALES@ANDERSONMOTORS.COM

170 AMARAL STREET • EAST PROVIDENCE, RI 02915

HABLAMOS ESPAÑOL

**1996 INTERNATIONAL 4700.**

DT466, 6+1 Trans, Etnyre 1725 Dist.
172 Ford Rear Pump Motor, Fuel
Burners, Good Tack Or Driveway Truck,
Runs Well, **\$11,600 OBO.**
Call Ray 860-346-2833



2022 MAC 27' ALUMINUM FRAME STEEL HARD OX BODY:
Hi Lift Gate, Aluminum Rims, 24.5 Tires. Includes Load Cover.

• CALL FOR PRICING •

CTE SEEKONK, MA • 508-336-6215



2003 CHEVY CABOVER 3500. V8 Gas, Automatic, Brand New Plow, 12-Yard
Chip Box/Dump, Runs, Drives, Works Perfect, **\$15,000 OBO.** 774-254-3631



**BOXES GREAT
CONDITION,
\$500 Each
Or Take Both for \$800
508-222-9072**



**1996 INTERNATIONAL
4700.** 466 DT,
6+1 Transmission, 160K, One
Owner, Load Cover, Strobes,
90% Tires, Brakes, Rotors,
Calipers, No Rot, Runs Excellent,
\$12,500. Call Eddy
401-226-1514

CAT 316 EL.
3,300 Hours, Coupler,
Thumb, 2 Buckets,
\$130,000.,
Pocasset, MA
774-836-8811



**2003 GMC CREW
CAB.** 120,000 Miles,
New Rack Body Last
Year, **\$9,500.**
508-294-4769

**1987 MORBARK
MODEL 20.** Knuckle Boom
Loader, 2400 original hours.
400 Big Cam Cummins.
\$34,000.00. 603-456-6029

**CAT 345 CL EXCAVATOR.**

Very Good Condition, Extreme Duty Boom And Stick, 54" CAT Bucket 2.8 Yd Capacity, Runs And Operates Well, **\$89,500.** Grapple Available Also, 860-605-6895

- **NEED HELP TRACKING PROJECT COSTS?**
- External Oversight Of Monthly Bookkeeping Transactions
- Setup, Training, & Troubleshooting QuickBooks
- We Provide All Your Bookkeeping Needs

401-854-3504

Ivoyer@ControlledSolutionsRI.com

www.ControlledSolutionsRI.com



controlled solutions



**FULL FABRICATION SHOP.
CUSTOM CHIPPER TOP'S
& BODIES. CUSTOM REAR
GATES ALSO AVAILABLE.**

CALL CHRIS
CAREY AUTO PLYMPTON, MA
781-582-1378

What's In Your Toolbox?

- **BUY, SELL, TRADE - FAST**
- **FROM NEW TO USED, IT'S ALWAYS FRESH**
- **AND A HANDY RESOURCE, TOO**



1-888-887-0505

www.TruckAndEquipmentPost.com



**1587 Portland Cobalt Rd
Portland, CT 860-342-2600**

See more @ MORINDIESELFORESTRY.COM



**WOODCRACKER C250
TREE SHEAR.** Full Rotation,
Accumulator, 8 – 15 Ton
Excavator, Like New, **\$29,000**



CAST LOADERS.
Kubota Diesel, Telescopic
Boom, Aux Hydraulics



**2021 CMI FORESTRY
MULCHER.**
175 HP, Cummins,
For Sale Or Rent



**2017 BANDIT BTC300
FORESTRY MULCHER**
With Stump Grinder,
Only 1300 Hours



FAE UML/SSL-150
Sonic Forestry Mulcher
For High Flow Skid Steer



EXCAVATOR GRAPPLES
5-8 Ton \$8,000 &
9-19 Ton \$10,000



**RYAN'S EQUIPMENT 52"
Power Rotation Grapple**
With Universal Mini Loader
Mount



OMEF Tree Shears
Available From 2.5 –
50 Ton, Collectors &
Rotators Available



JG Remillard Equipment Sales.

603-759-5918



1978 HOPTO 211 EXCAVATOR.
Thumb, 471 Detroit Power, Runs And
Works Excellent, **\$9,500**



1985 HILL 26' DUMP TRAILER.
Steel Frame, Steel Tub, New Piston,
24.5 Rubber **\$8,500**



1950 MACK A-50X.
510 Gasoline Engine, 5&2, A/B, Runs
Good, Needs Restoration.
\$3,500



**1978 MACK DM-600 TANDEM
DUMP, 300+, 6 Speed,
58,000 Rears, \$15,000**



1974 CAT 988A LOADER. Low
Hours On Engine Rebuild By Milton
Cat, Working Dailey, **\$19,500**



**1989 JOHN DEERE 410C 4X4
BACKHOE.** Extend-A-Hoe, Manual
Thumb. **\$17,500**



CATERPILLAR B-16 FORKLIFT.
16,000 lb Capacity, 8 Foot Forks,
\$12,500



1957 MACK B-73 S/A TRACTOR.
250 Cummins, 5&3, 29 Rear, Clean
Truck! **\$7,500**



1998 CATERPILLAR D8R. 3406, EROPS
with Air Conditioning, Stereo, Semi U
Blade, 85% Undercarriage, 3rd Valve for
Ripper, New Batteries, Work Ready. **\$98,500**



CAT 120 GRADER. 3306
CAT Engine, Direct Drive,
\$12,500



1988 FORD F-800. 7.8 Diesel, 5&2,
Air Brakes, New Tires, 110k Original
Miles. **\$12,500**



JOHN DEERE 350B DOZER.
6 Way Blade, Good U/C, **\$8,500**



1980 JOHN DEERE 644B LOADER.
Runs Excellent, New Front Tires.
\$14,500



1991 DRESSER 4-6 TON ROLLER.
IH Diesel, Water System, Good
Runner, **\$3,900**



CLARK 16,000LB FORKLIFT. 453
Detroit Power, Runs Good. **\$8,500**



**ALLIED HM600C HYDRAULIC
HAMMER.** New Point, Fits Cat 315
Size Machine, **\$5,000**



**1988 GMC BRIGADIER TANDEM
AXLE TRACTOR.** 350 Cummins, 9
Speed With PTO, 38 Rears, **\$6,500**



1988 IH S-1600.
Hot Patch Asphalt Body
Good Working Unit.
\$6,500



1988 DRESSER TD-8G DOZER.
4BT Cummins, 80% Bottom, Work
Ready! **\$17,500**



1997 Chevy C-8500.
3116, 6&2, A/B, SS Spreader, Plow
And Wing. **\$10,500**



**2012 KOMATSU SK-1026 SKID
STEER.** Bucket And Forks.
\$22,500



1989 VOLVO TRACTOR.
365 Cummins,
9 Speed, Wet Kit, Headache Rack,
\$14,500



**CATERPILLAR 980 WHEEL
LOADER.** 42H Series. Runs Good,
\$12,500



MANITEX M-938 CRANE.
Removed From Truck, 9 Ton
Capacity,
38' Reach, Super Clean! **\$12,500**

Visit Us jgremillardequipmentsales.com

Help Wanted: HEAVY EQUIPMENT REPAIR MANAGER – Up To \$150,000 Annual Pay

Ideal Candidate Will Have A Highly Developed Mechanical Background With Extensive Knowledge Of Heavy Earth Moving Equipment. Experience With Crusher And Screening Operations Is A Plus.

Responsibilities Include, But Not Limited To:

- Monitor And Track Work Orders.
- Assign Work To Technicians.
- Order Parts And Supplies For Shop Repairs And Inventory.
- Supervise And Train Technicians Including Hands-On Training
- Maintain A Clean And Safe Working Environment.
- Monitor Use Of Shop Tools And Equipment.

Benefits

- Health & Dental Insurance: 50% Company Paid
- Vision Insurance: 25% Company Paid
- 401k With A 25% Employer Match
- Paid Time Off, Paid Holidays, Bereavement Pay
- Paid Uniforms
- Paid Training For Certifications
- % Paid For Prescription Safety Glasses

- Make Sure Company Policies And Procedures Are Followed.
- Ensure Company Equipment Meets OSHA / MSHA Standards Qualifications
- Ability To Diagnose Complex Engine, Driveline, Electrical, And Hydraulic Problems Timely And Accurately.
- Experience With Diesel After Treatment And Computer Diagnostics.
- Ability To Organize And Prioritize Multiple Tasks.
- Strong Management Skills
- Must Be Proficient With Computers Including But Not Limited To: Microsoft Outlook, Excel, CAT SIS, CAT

The Personnel People, Inc.,
1 Turks Head Place, Ste. 322,
Providence, RI 02903
joyce@thepersonnelpeople.com,
www.thepersonnelpeople.com,
401-273-2500
Joyce Fastino, President

**2001 CAT 365BL.**

S/N: 9TZ00407, 14,950 hrs., 158,000 lb. Machine, Good Undercarriage, Runs Well, 3.65 CY Bucket, Good Condition,
\$88,000.

Chris 860-460-0767,
email: chm@terrafirmas.com

What's In Your Toolbox?

- **BUY, SELL, TRADE - FAST**
- **FROM NEW TO USED, IT'S ALWAYS FRESH**
- **AND A HANDY RESOURCE, TOO**

1-888-887-0505

www.TruckAndEquipmentPost.com



Burrillville, RI • 401-633-4587

- Full Bucket Rebuilds • Cylinder Resealing
- Wear Plates • Adapter Replacement • Hardfacing
- General Maintenance • Computer Diagnostics
- On Site Hose Replacement



1200 Worcester Road (Rt. 9 East),
Framingham, MA 01701
www.McGovernFordofFramingham.com



**2021 F250 SUPER CAB
4X4: W/ Poly Caster
Sander & Fisher Plow.
Power Group, V8 Gas.
See More Photos On Our
Website. Be Ready For
Next Winter. Call Chris Uhl.
617-775-9497
Or McGovern Ford
At 508-879-1320**



CHRIS UHL
CELL: 617-775-9447
EMAIL: CUHL@McGovernAuto.com



**1999 MACK R600
TRIAxLE DUMP TRUCK.** 8LL Trans,
E7460 Engine, Large Aluminum Body,
375K Miles, Runs And Looks Good, Ask-
ing **\$42,000.** 203-666-1411

YOUR DIRECT FUNDING SOURCE



EQUIPMENT FINANCING

- A to D Credit Approvals - *Rates Tailored to the Customer*
- 24 Hour Approvals - Simple One Page Applications
- Terms Range 24 to 60 Months
- No Money Down Options
- No Age Requirement on Equipment
- No Minimum Fleet Size
- Start-up Programs



WORKING CAPITAL

- Pledge your equipment to secure the **CASH** you need
- Let us tell you how older equipment can work for your business
- A simple application form is all that's needed



UNIVERSAL FINANCE

UNIVERSALFINCO.COM/CAPITAL

CONTACT US TODAY | 781-417-3018

BUSINESS NAME		
BUSINESS OWNER	PHONE	
DATE OF BIRTH	SS#	
EMAIL	OWNERSHIP %	
STREET ADDRESS		
CITY	STATE	ZIP
EQUIPMENT DESCRIPTION		COST
SIGNATURE		

Disclaimer: By signing, I hereby certify that the above information is correct to the best of my knowledge. I authorize Universal Finance Corp. and/or its lenders and assignees, under the Fair Credit Reporting Act, to obtain information from my personal credit report or other information on myself and other principals of the organization; and I authorize my banks and creditors to release any and all credit information needed for thorough evaluation. I understand that I may be required to supply additional information.



**APPLY
NOW**

Once completed, send a photo of this application to credit@universalfinco.com OR use our QR code to apply now.



2002 ELGIN PELICAN SWEEPER. 14K
Original Miles, Auto Lube, All New Brooms
All Sprayers Work Great, John Deere Diesel,
Ice Cold Air, Stereo, Excellent Condition,
\$25,000. Call Or Text 401-641-7825

SPRING CLEANING

- Steam Cleaning Equipment For Sale -



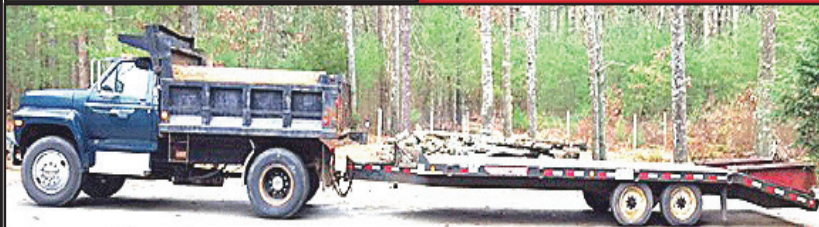
USED-Hot Water Units
Starting @ **\$1,095.**

NEW-Hot Water Units
Starting @ **\$2,295.**

RENTAL-12-24 Months
Own It For **\$1.00**



R & E STEAM EQUIPMENT
Call Earl Warwick **617-899-8775**



1994 FORD F-700. 5-Speed, Hi-Lo Axle, 28,000 GVW, 5.7 Cummins Diesel, 73K Mile, 16-Ton Towmaster Trailer,
Both In Good Condition & Mechanically Sound, **\$25,000 Truck & Trailer OBRO.** 617-429-2564

Looking To
Sell • Buy • Browse
Truck And Equipment Post
P.O. Box 6824
Providence, RI 02940
www.truckandequipmentpost.com
888-887-0505



Jukonski

Truck Sales



WWW.TRUCKSELLERS.COM

se habla español

680 NEWFIELD ST. (RT 3) MIDDLETOWN, CONN • **800-378-0342** • MON-FRI 8-6 SAT 8-NOON

15 USED TRUCKS IN STOCK

When They Are Gone They Are Gone



**3.99%
Available**

FUSO SPECIAL PURCHASE 10
In Stock, Close Out Prices On
2020 Fuso FE140 & FE160
16' To 20' Box Trucks

PAYING TOP DOLLAR FOR USED TRUCKS!!!



CERTIFIED

2017 CHEVROLET EXPRESS 3500.
Low Miles, Refrigerated Box Truck,
#0783



CERTIFIED

2017 IH 4300. Thermo King Reefer,
Cummins ISB, 102K Miles, #3459, Blow
Out Price \$39,900



CERTIFIED

2015 ISUZU NQR. ONLY 48K Miles, 5
To Choose, While They Last, #1518,
Starting @ \$33,900



CERTIFIED

2016 HINO 268A CAB & CHASSIS.
Diesel, Automatic, Impossible To Find
Truck, #1148, \$36,900

90 DAY POWERTRAIN WARRANTY AVAILABLE ON ALL CERTIFIED TRUCKS. INCLUDES INJECTORS AND TURBO



CALL STAN TAGARELIS COMMERCIAL/ FLEET SALES

(617) 610-5540

stan@watertownford.com



**2020 F-550 4X4 SWITCH & GO. DIESEL,
11' DROP BOX, STK#21146**



**2020 F-550 4X4 12' DURAMAG LANDSCAPE
BODY. DIESEL, STK#20509**



**2021 F-600 4X4 4/5 YD. DUMP. 22,000 GVW,
7.3 GAS, STK#21031**



**2021 F-350 4X4 DRW 9' READING SVC
BODY. GAS, STK#21084**



**2021 F-350 4X4 DRW 9' READING SVC
BODY. 6.7 DIESEL, STK#21057**



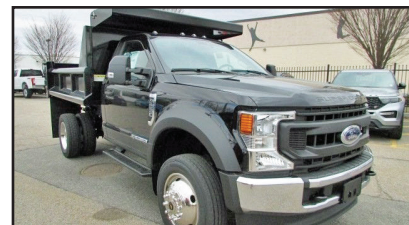
**2021 F-350 4X4 STAINLESS STEEL DUMP.
DRW, GAS, STK#21088**



**2022 E-350 SRW 10' MAX SVC BODY.
REMOTE LOCKING BOX, STK#22004**



**2021 F-350 4X4 9' DURMAG RACK BODY.
DRW, GAS, STK#21085**



**2020 F-550 4X4 DUMP. 6.7 DIESEL, 19500
GVW, STK#20511**



**2022 E-350 DRW 15' UNICELL BOX.
7.3 GAS, RAMP, STK#22001**



**2022 E-350 DRW 14' DURACUBE BOX.
RAMP, 7.3 GAS, STK#22003**



**2022 E-350 SRW 12' UNICELL BOX.
7.3 GAS, STK#22002**

625 PLEASANT STREET - WATERTOWN, MA 02472



**COMMERCIAL
VEHICLE CENTER**



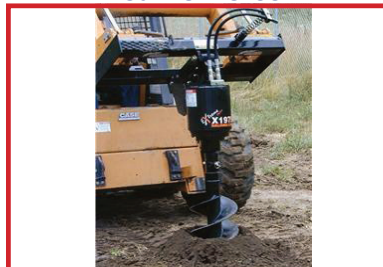
WWW.WATERTOWNFORD.COM



Chadwick-BaRoss

**FINANCING
AVAILABLE****WWW.CHADWICK-BAROSS.COM****FFC • BRADCO • MCMILLEN • MAJOR • SWEEPSTER • HARLEY****HARLEY RAKES****CALL FOR DETAILS & PRICING !****ROCK BUCKETS****STARTING AT \$1,675, IN STOCK!!****72" PICKUP SWEEPER****72" PICK UP SWEEPERS, \$4,200****VIBRATORY ROLLER****CALL FOR PRICING
ROOT RAKE****PREPERATOR****CALL FOR PRICING
BRUSH CUTTER****HIGH DUMP BUCKETS****CALL FOR PRICING****CALL FOR PRICING****SIDE DISCHARGE BUCKETS IN STOCK !****5FT-\$5,100 - 6FT-\$5,300****AUGER'S IN STOCK****5500LB FORKS****\$950****IN STOCK****CALL FOR PRICING !**

CHELMSFORD
15 KATRINA ROAD
CHELMSFORD, MA 01824
978-256-9571 • 800-804-0775

**\$2,550.00**

OXFORD, CT
10 FOX HOLLOW ROAD
OXFORD, CT 06478
978-256-9571 • 800-804-0775

**CALL FOR PRICING !**

WARWICK, RI
31 JAMES P. MURPHY
INDUSTRIAL HIGHWAY
WEST WARWICK, RI 02893
844-238-7673

GO TO PALADINBRANDS.COM FOR FULL LINE OF ATTACHMENTS.



Chadwick-BaRoss

WWW.CHADWICK-BAROSS.COM



TAKEUCHI EXCAVATORS, TRACK LOADERS, WHEEL LOADERS ! 0 % 60 MOS FINANCING



**RUBBER TRACKS
FOR ALL MAKES AND MODELS
CALL FOR PRICING !!!**

CHELMSFORD, MA

15 KATRINA ROAD CHELMSFORD, MA 01824
978-256-9571 • 800-804-0775

SALES • SERVICE • RENTALS • PARTS
FULL LINE OF SKID STEER ATTACHMENTS AVAILABLE.
GO TO WWW.PALADINBRANDS.COM

OXFORD, CT

10 FOX HOLLOW RD OXFORD, CT 06478
860-261-0730

WEST WARWICK, RI

31 JAMES P. MURPHY INDUSTRIAL HIGHWAY
WEST WARWICK, RI 02893
844-238-7673

Takeuchi
The Power of Product and Support

What's In Your Toolbox?



- BUY, SELL, TRADE - FAST
- FROM NEW TO USED, IT'S ALWAYS FRESH
- AND A HANDY RESOURCE, TOO

1-888-887-0505

www.TruckAndEquipmentPost.com

1995 FREIGHTLINER.

435K Miles On CAT Motor,
8 Speed Fuller Transmission,
New Turbo And Starter, All New
Tires, Runs Great!
Asking **\$18,000.**
Call Jim 508-479-5321



**2020 F-550 4X4 SWITCH & GO. DIESEL, 11' DROP BOX,
STK#21146, WATERTOWN, MA,
CALL STAN 617-610-5540**



JOHN DEERE 992 DLC

EXCAVATOR. Perfect Running

Condition, Very Tight, Quiet, Long Reach,
54 Inch Bucket, John Deere Engine, Needs
Paint, Asking **\$24,000.**

203-666-1411



2011 CHEVROLET 2500HD EX CAB 8' Knapheide UTILITY.
SRW 2WD, 6L V8, Auto, AC, 6-Passenger, Fleet Maintained, One Owner, 186K, Runs & Road Drives, Tranny Shifts Hard, Will Need Trans Sooner or Later, Selling As Is, Typical Work Truck Dents & Scratches, **\$9,900.**, (will separate), Westport, MA 508-636-5050



2009 CASE 721D - NEW ARRIVAL!!
JRB Coupler, Full Cab, GP Bucket, Great Snow Machine - **\$42,500**
CALL DAN AT 203-506-3860

202

**TRUCK
&
EQUIPMENT**
603-899-2000

www.202truck.com
RT 202 Rindge NH
SALES & RENTALS - NO SALES TAX
FINANCING & DELIVERY



2018 VOLVO EC 140 ELC. 1800 Hours, Blade, Coupler, Hyd. Thumb, 36" Digging & 60" Tilt Buckets, 8'6" Wide, Very Nice, \$120,000.



2015 DEERE 35G. 2700 Hrs, Good Tracks, Mech Coupler W/24" Bucket, Aux. Hyd., Pattern Changer, \$28,000.



2007 STERLING LT 9500. 450 H.P. Mercedes, 20,20+46, Full Locking Rears, Perfect Double Frame, 16' Steel Body, Pintle, 272K Miles, \$52,000.



2012 DEERE 300D Series II. 30 Ton, 4600 Hours, 4 New Rear Tires, Front @ 50%, Tailgate, Nice Truck, Reduced, \$140,000.



2014 DOOSAN DX180 LC-3. 8'6" Wide, Aux. Hyd., 36" Bucket, 39,000 Lbs., \$77,000. Also Available Full Rotation Thumb, \$7500.



2009 KOMATSU PC228 LC-3. JRB Hyd. Coupler, Aux. Hyd., V-6, 42" Bucket, 10,400 Hours, Very Clean & Original, \$44,000.



2013 CASE 721F. 4600 Hrs, 3.5 Yd, Q/A Bucket, JRB Coupler, 3rd Valve, 50% Matched Michelins, \$74,000.



2007 IH 9900. 550 HP CAT C 15, 13 Speed, 12,000 Lb Front Axle + 40,000 Lb Full Locking Rear Axles On Air, Wet Line, Single Frame, 205 WB, 550K Miles, This Has Been Our Spare Truck For The Last 3 Years, New \$5000 ECM Just Installed, Needs Nothing, \$37,500.



2009 EAGER BEAVER 20XPT. 19' Flat, 6' Tail & Ramps, No Rust, Limited Usage, \$12,000.



ALTA EQUIPMENT
COMPANY
UP TIME MATTERS



NOW HIRING TECHS

WE OFFER OUR CUSTOMERS UNPARALLELED SERVICE, SO WE HIRE THE BEST TECHS

Come work for one of the largest equipment dealers in the United States! Are you a Technician/ Mechanic with diesel, agricultural, or heavy equipment repair experience? If so, then we want you on our team! Competitive pay and excellent benefits are only the beginning!



EQUIPMENT WORLD'S
BIG IRON DEALER
OF THE YEAR

Careers@AltaEquipNE.com | 800-Go2-ALTA | AltaEquipNE.com

508-328-8938

THE TRUCK STORE

www.TruckStoreSales.com

Mon-Fri 8:30-5pm
Saturday 8:30-4pm

1700 Broadway - Rte 138 – Raynham, MA • Take Exit 8 Off Rte 495, East Rte 138, On Your Left


2005 MACK GRANITE LUGGER TRUCK: Only 90K Miles.
2005 MACK CV 713 CAB & CHASSIS: AUTOMATIC, 20F/52R, 30K MILES!

2015 FREIGHTLINER M2: 9L Cummins Diesel, Allison 3000 RDS, PTO acceptable, Low Miles, Perfect chassis for Dump, Oil Truck etc. W/or With out Reefer Body.

2014 INTERNATIONAL 43 Passenger Bus w?wheel chair lift. Diesel, Automatic. Only 40K miles, Clean & runs great.

USED MONROE STAINLESS STEEL SANDER W/CALCIUM TANKS

2015 HINO: Diesel, Automatic, Air Brakes. Vertical Exhaust. Will Separate. Excellent Condition.

2005 MACK GRANITE SPLIT REAR LOAD RUBBISH BODY 35K Miles.

2015 INTERNATIONAL DURASTAR 50' Bucket Truck: DT 466, Allison Auto. 14F/23R, 29K miles.

2017 IH 24' Refer Body: Auto., 82k miles. Call

2009 CHEVY C4500 16' THERMO KING Refer Body w/Stand-by: Gas, Auto. 89k miles, nice clean truck.

6 AVAILABLE
2003-2004 & 2007 MOFFET FORK LIFTS. Nice condition. Low hours.

2007 MACK MR Front Load Rubbish Truck: Diesel, Automatic.

2004 MACK Tri Axle 32 Yard Rear Load Rubbish Truck. 350 HP MACK, Allison Automatic.

2005 MACK Tractors: 460 H.P., 18 speed, air ride, wet system, Jake, 46k locking rears, 350 to 400k Miles. \$25,000

2005 GMC C 6500 WAYNE SUPER 6 yard Body. Big DURAMAX Diesel, Allison Auto. Under CDL. Only 90K miles. Very nice. Runs like new. ALSO: 2011 Freightliner Rubbish Truck.

2011 ISUZU NRR: Diesel, Auto. Low miles. Also 2011 Available.Refer. Bodies in stock too.

USED 12' to 26' REFER & VAN BODIES Call with your needs.

2004 MACK MR: Stainless Steel Tank, Diesel, Auto., 12K miles. Call

2012 INTERNATIONAL HOOK TRUCK W/TARP: Diesel, Automatic, 20K Miles. Mint Condition.

2014 ISUZU NQR REFER TRUCK: Diesel, Automatic.

2000 MACK RD 688SX 14' Dump Body. 350 H.P., Auto., 18F/58R, LOW miles, Very clean.

2020 HINO 258 Refer Body: Diesel, Auto., 3 Available. Many other HINOS available! 4K miles, New Condition.

2016 FREIGHTLINER Cummins Diesel, Automatic, Only 38K miles. Will Sell with or W/O body.

2007 UD 2600 BOX TRUCK: Hino Diesel, Auto., UNDER CDL. RUNS NICE. \$20,000

2003 MACK ROLL OFF: 75,000 lb. Roll Off. Auto., 58R/20F, 60K miles. Call

2015 IH 26' Tandem Axle Refer: New Refer being installed. Auto., low hours on Refer. call

2015 KENWORTH TANDEM: 9L CUMMINS, Allison Auto PTO Provision. Will Separate.
Late model ISUZU 4 Cylinder Diesel Engine & Transmission. Call for Details.
2006 USED MACK Engines! ALLISON Transmissions. ALSO: 2004 MITSUBISHI 4 & 6 Cylinder Engines.



**2005 VOLVO VNM64T
TANDEM.** Day Cab,
Cummins ISX 450 HP, 10
Speed, 664K, Miles. Fleet Truck,
\$12,500. 203-393-1771

- **NEED HELP TRACKING PROJECT COSTS?**
- External Oversight Of Monthly Bookkeeping Transactions
- Setup, Training, & Troubleshooting QuickBooks
- We Provide All Your Bookkeeping Needs

401-854-3504

lvoyer@ControlledSolutionsRI.com

www.ControlledSolutionsRI.com



**controlled
solutions**



**2013
FORD F750.**
Water Truck, 4639.3
Miles, **\$67,500.**
860-333-6533



2021 CHEVY G5 14 PASSENGER MFSAB,
Gas, Automatic, NON CDL. 401-434-5900

CT • RI • MA • NY



**100 YARD
STEEL DUMP TRAILERS**

**CALL IAN OR LENNY
800-229-9421**

**WE WILL SAVE YOU MONEY
AND PUT A SMILE ON YOUR FACE!**

**STUMP & BRUSH
TRANSPORTATION & DISPOSAL
\$950/LOAD**

**DEMOLITION DEBRIS
TRANSPORTATION & DISPOSAL
\$2150/LOAD**

**SAME DAY DISPATCH
TOP \$\$ PAID FOR YOUR
SCRAP STEEL, COPPER, & ALUMINUM!!!**



**Natural Mulch
Landscaping /Erosion Control
\$750 Delivered -
Call For Complete Details**





**COMMERCIAL
VEHICLE CENTER**


508-403-9192


WE HAVE F550'S AND F650'S IN STOCK READY TO GO!

 <p>2020 F550 XL DRW READING SERVICE BODY: 6.7L V8, DIESEL, REMOTE START, POWER GROUP, STK#N9676</p>	<div style="background-color: yellow; color: black; padding: 2px; font-weight: bold;">DIESEL</div>  <p>NEW 2019 F550 DRW 4x4 KNAPHEIDE Platform Body: Diesel Power Group. Stk.#8617</p>	 <p>2021 TRANSIT T350 AWD SERVICE VAN: 3.5L GAS, POWER GROUP, STK#N10114 (See our website for more photos)</p>
 <p>2021 F550 CREW CAB 4X4 READING SERVICE BODY: 7.3L GAS, POWER GROUP, STK#9991</p>	 <p>2021 F350 REGULAR CAB DRW 4X4: DURAMAG ALUMINUM LANDSCAPE DUMP, 7.3L V8 GAS, POWER GROUP, STK#N9851</p>	 <p>2021 F350 4X4 DRW DUMP BODY: GAS, POWER GROUP, STK#N1003</p>
<div style="background-color: yellow; color: black; padding: 2px; font-weight: bold;">DIESEL</div>  <p>2021 F550 REGULAR CAB DRW 4X4 SWITCH-N-GO HOOK-LIFT: 6.7L DIESEL, POWER GROUP, STK#N10006</p>	 <p>2021 F350 CREW CAB DRW 4X4 READING SERVICE BODY: 7.3L GAS, POWER GROUP, STK#N9838</p>	 <p>2021 F550 REGULAR CAB DRW 4X4 IROQUOIS LANDSCAPE DUMP: 6.7L DIESEL, POWER GROUP, STK#N9903</p>
 <p>NEW 2022 E350 4x4 KNAPHEIDE KUV SERVICE VAN: 7.3L Gas, Power Group. Stk.#N10093</p>	 <p>2020 F550 DRW CAB & CHASSIS 4X4: DIESEL, POWER GROUP, STK#N9875</p>	 <p>2021 F450 CREW CAB 4X4 READING SERVICE BODY: GAS, POWER GROUP, STK#N9822</p>




11 PILGRIM HILL ROAD
Plymouth, MA 02360
www.COLONIALFORD.com
America's Hometown Dealership
*all rebates to dealer. must finance with Ford Motor Credit.
0% financing in lieu of all rebates* Discounts & Dealer Discounts.








BRAKE & CLUTCH, INC.

R&R INDUSTRIES
 www.RRTrucksAndEquipment.com • Sales@RandRind.com
 195 Rocus Street, Springfield MA 01104 **413-733-2118**

We Buy All Scrap Metals



Truck Tires
 Many Matched Sets
 Of 4 And 8
 & Rims Too
 295/75/225
 10:00 x 22.5
 11:00 x 22.5
 12:00 x 22.5
 9:00 x 20
 10:00 x 20
 8:25 x 20
 11x20

Call With Your Size Lots More In Stock!

Guaranteed Used Tires

Virgin Steer, Drive & Trailer Tires

**JOHN DEERE 356.**

600 Hours, 2 Buckets,

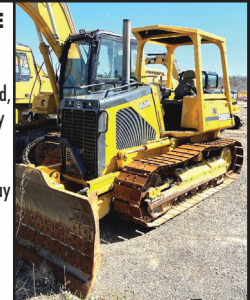
\$42,500.,

Pocasset, MA 774-836-8811

Lowbed 
Johnson

1-800-660-2412
 Moves Construction Equipment
 Serving Massachusetts and Southern New Hampshire

2001 JOHN DEERE 450H - One Owner, One Operator, Professionally Maintained, 10,400 hours, Was Only Used for Grading Driveways, This Dozer Never Worked a Hard Day In Its Life. - **\$28,500** CALL DAN AT 203-506-3860



SUMMER SPECIALS - TOP RATED PRODUCTS FOR YOU

WASHED STONE
PROCESSED GRAVEL
SAND
TOP SOIL
RIP RAP
FILL



Please Call for pricing
401-447-2777





2010 KENWORTH TRACTOR. Big Power Cummins, Exc. Shape, Never Ran In Winter, New Tires, Low Miles, Sleeper, Nice Truck, **\$69,500.** 413-530-5369

NOW HIRING
In Rhode Island

Heavy Equipment Operators
(must hold RI hoisting license)

Heavy Equipment Mechanic

Heavy Equipment Maintainer

Rock Truck Driver

Pay based on experience.

Call 401-447-2777 or email riaggregatesales@gmail.com for more information



2007 STERLING LT9500. Tri Axle Dump Truck, New Motor, Transmission Work Done, New Dump Pistons, 462,515.5 Miles, **\$69,500.** 860-333-6533



2021 FORD E-450 WITH HANDICAP LIFT, Gas, Automatic, NON CDL. 401-434-5900

BIG WHEEL



TRUCK SALES

HEAVY DUTY TOWING AND RECOVERY



1987 MACK RD: 4000 Gallon Steel Water Tank. Complete W/Pump and Spray Heads. **\$21,500**



2000 CHEVY 8500 S/A Dump W/ Everest Power Angle Plow & 10' Stainless Sander. 37,000 GVW. **\$15,500**



2005 STERLING S/A Tractor: Automatic, Mercedes Diesel, 33K GVW. **\$9,500**



1989 GMC W7 20' RAMP TRUCK: ISUZU Diesel Motor Standard Shift, **\$9,500.**



1997 MACK DM6095 10.5 Yard McNEILUS CONCRETE MIXER: Non Electric 300 MACK Motor, MACK 12 Speed, 20F/44R, 20,000LB. Lift Axle, 207K Miles on Clock. Runs and Drives Excellent. **\$21,500.**



2015 FREIGHTLINER FL 70 24'x 102" CARRIER REFER BOX TRUCK: Cummins Power, Automatic, Air Brakes, Roll up Rear Door, Aluminum Ramp. Call for Pricing.



2000 INTERNATIONAL 4900'S: 24' Aluminum Boxes w/4 Side Doors. 5 S/A with Lift Axles. Call.

42 Quanaupaug Road, East Freetown, MA
508-763-5927 • FAX 508-763-2369

www.BIGWHEELTRUCKSALES.COM

WE SELL HEAVY DUTY SNOW PLOW EQUIPMENT • WE EXPORT WORLD WIDE • HEAVY DUTY TOWING SPECIALIST

TRUCKCOUNTRY.US

USED TRUCK PARTS



ONLINE 24-7



NEW TOMMY GATE LIFT GATES IN STOCK



BUFFALO TURBINE CYCLONE DEBRIS BLOWER.
PTO Or Hydraulic Drive. Now In Stock.



9' KNAHEIDE UTILITY BODY.
DRW, 3205411, \$2,500



14' FLATBED DUMP BODY
#205437, \$2,500



8' KNAPEIDE SRW UTILITY BODY. Rock Solid, #215452, \$3,000



CADET FLAT BED BODIES.
Short Bed, SRW,
Now In Stock



1999-04 FORD SUPER DUTY CAB. With Doors, Absolutely No Rust, #215453, \$4,000



CADET FLAT BED BODIES. 8' & 9', SRW & DRW,
Now In Stock



1-860-423-6004

Mon-Fri 8-5

1535 WEST MAIN STREET, WILLIMANTIC, CT

Sat 9-1



AREA HYDRAULICS

810 Quaker Hwy. Uxbridge, MA

508-278-6670

We Make Hose Assemblies!

We Carry Skid Steer Mount Plates!

We Carry Hydraulic Oil!

WHELEN® Cylinder Resealing

**Howes
Lubricator**



2007 STERLING LT9513.

Tri Axle Dump Truck, 418,045.5
Miles, **\$59,500.**

860-333-6533

**2007 DOOSAN
DX225LC**
One Owner,
Fleet Maintained,
Direct Fit Bucket,
Dry & Tight
\$45,000
CALL DAN
203-506-3860



2011 55 TON TALBERT. 26 Ft Deck, Model CC, 18 To 20" Deck Height, New Tires,
Airbags, Shocks, Recent Brake Job With Bearings, **\$34,900.** 781-983-5950



RAPID PREP

Full Service Provider of Equipment,
Supplies and Consumables

NATIONWIDE EQUIPMENT
RENTALS, SALES & SERVICE

North Kingstown, RI
El Cajon, CA • Suffolk, VA
Lakewood, WA

877.529.2124 / rapidprep.com

RUST NEVER SLEEPS



ENHANCED PORTABLE BLASTER PACKAGE



DUST FREE
SLURRY BLASTING



SAFETY EQUIPMENT



HILLVIEW EQUIPMENT

SALES & RENTALS 24/7

CALL JUDE 1-508-498-0777

www.HillviewEquipment.com

11 Commercial Way
Milford, MA 01757

Rt. 495 to exit 19,
Route 109W,
Left to Birch St,
right to Industrial Dr.
Left to
Commercial Way

EXCELLENT EQUIPMENT * OUTSTANDING PRICES!



**3
AVAILABLE**

**2015 CAT 336FL: OUTSTANDING MACHINE,
PRICED RIGHT, QUICK CONNECT,
AUX. HYDRAULICS. CALL!**



**3
AVAILABLE**

**2017 CAT 330 FL: GREAT LOW HOUR
MACHINE, QUICK CONNECT, AUX.
HYDRAULICS. CALL!**

“ READY TO PUT A DEAL TOGETHER RIGHT NOW !!”



**2
AVAILABLE**

**2012 & 2013 CAT 329'S:
NICE MACHINES, FULLY SERVICED & READY
FOR YOUR JOB. CALL!**



**LOW
HOURS**

**2016 CAT 308E2CR: VERY NICE LOW HOUR
MACHINE W/ WRIST BUCKET & QUICK
CONNECT. CALL!**



**HARD TO
FIND TRUCK**

**2004 CAT 725: VERY HARD TO FIND TRUCK,
OUT OF RENTAL FLEET,
READY TO WORK-ALWAYS SERVICED. CALL!**



**HARD TO
FIND TRUCK**

**2007 & 2008 CAT 325DL'S: VERY GOOD
RUNNING MACHINES, HARD TO FIND IN
THIS CONDITION. CALL!**



37 County Road
Route 106
Plympton MA 02367
PH: 781-582-1378
FAX: 781-585-4438



**LANAU DUMP BODIES
IN STOCK READY TO GO.
CALL FOR APPOINTMENT.**



DOWNEASTER DUMP BODIES IN STOCK NOW!
Includes Cab Shield and Hoist. Call for Pricing Today.



12' ALUMINUM LANDSCAPER IN STOCK.
OTHER SIZES AVAILABLE. CALL FOR DETAILS.



**HOOK LIFTS
IN STOCK NOW!
BIG OR SMALL WE HAVE
THEM ALL. CALL US TODAY.**



**2011 HINO ALUMINUM SINGLE
COMPARTMENT TANK: AUTOMATIC,
33K GVWR.
\$49,900.**

**SALES,
SERVICE,
PARTS**

**CALL TOLL FREE: 781-582-1378
WWW.CAREYTRUCKEQUIPMENT.COM**

**CUSTOM METAL
FABRICATION
AVAILABLE**



**1999 VOLVO VNM64T
TANDEM.** Day Cab.
D12 Engine, 425 HP, 9 Speed,
594K Miles, **\$9500.**
203-393-1771

AWD

**FLEET
DISCOUNTS**

**\$75
& Up**

**ACUSHNET WHEEL
POLISHING**
Used Rims Available
508-961-7528
62 SOUTH MAIN ST.,
ACUSHNET, MA



**1990 KOLMAN
MR100.**
Athey Grader,
1300 Hours,
\$18,000.
860-333-6533



**THE
TRAILER
DEPOT**

203-234-7788
1037 Middletown Ave. (Rt. 17)
Northford, CT

**CM
TRUCK BEDS**
AUTHORIZED DEALER



CAM SUPERLINE HD 51.7K DECKOVER.
8'6" x 20' Flat + 5' Beavertail, 102" Overall Width, 35" Deck
Height, #520123



CAM SUPERLINE 9.9K EQUIPMENT TRAILER.
Slipper Spring Suspension, 5' Quick Release Angle Ramps,
#517573



CM TRUCK BEDS
7' - 10' Available



SURE-TRAC 14K LOW PROFILE DUMP TRAILER.
6' 10" x 12", Combo Barn Doors Spreader Gate, Ladder
Ramps, #328000



SURE-TRAC 17.6K LOW PROFILE DECKOVER.
8' 6" x 20' Flat + 5' Beavertail, 32" Deck Height, Stake
Pockets & Rub Rail, #328750



2008 CAM SUPERLINE 61.4K HD DECKOVER. 8'6" x
29', Tri Axle, Air Lift Axle, Beavertail, 102" Overall Width,
#019221

www.thetrailerdepot.com

We'll Hook You Up
WE DO FEDERAL INSPECTIONS!



920 W. Chestnut St. Brockton, MA:
508-586-1666 Mon - Fri 8-5, Sat 8-NOON

42 Winter St. Pembroke, MA:
781-826-1666 Mon - Fri 8-3
EastCoastTruckStuff.com

We deliver!

Tow safe this summer ☀️

Breakaway Switch

Helps prevent loss and damage by stopping a disconnected trailer.

Long lasting, weather-resistant components.

Works on single or multiple axle trailers.

Easily bolts or welds to a trailer frame.



\$7.99

8 Ton Combination Hitch with Mounting Kit - 2 Inch Ball

Ideal for a wide range of light to medium duty trucks with a maximum gross towing weight of 16,000 lb.

Maximum Vertical Load (M.V.L.): 3000 lb



\$76.99



Submersible Universal Mount Combination Tail Light Kit

Includes: 25 ft harness, license plate bracket, passenger side combo tail light & drivers side combo tail light with license illuminator

Three Year Warranty

\$23.99



Trailer Safety Week June 6-12

Find tips & info here:
www.TrailerSafetyWeek.com

And Secure!



2" by 30' Flat Hook Wide Handle Ratchet Strap

Working load limit of 3,335 Lbs

Standard Kinedyne Gold with Black Edge 2084F Webbing

\$19.99

513020



2" by 30' Wire Hook Ratchet Strap

Working load limit of 3,335 Lbs

Standard Kinedyne Gold with Black Edge 2084F Webbing

\$19.99

513084

1" by 12' Ratchet Tie Down Straps

4 pack/500 lb Load Limit

\$26.99



Specials end 7/5/21



1999 FREIGHTLINER FL70. 26 Ft. Straight Truck, Air Brakes, 33K GVW, Over 300K Miles, Fuel Pump, Tie Rods, Two Tires & A Rim, Gas, Air & Oil Filters Replaced W/In The Past 5 Months, Lift Gate Needs Work, Roll-Up Back Door W/ Side Passenger Door, 3-Seater, A/C, Heat, Radio, All Works, Still Running, Well Cared For Truck, Asking **\$7900.** Ashland, MA 508-395-5712



Custom Gates Hydraulic Hose Assemblies & Fittings

Full Truck Service, Maintenance & Repair

All Makes & Models

Over 20 Years Experience Specializing In Mack's

Marshall Cefole - **978-467-7993**

Randy Rameau - **978-423-2889**

10 Gardner Road, Winchendon MA 01475



**KUBOTA
860Q HYDRAULIC
HAMMER,
\$10,500.
860-333-6533**



RD OLSON 5x12 TRACK SCREENER. 1500 Hrs, Self-Cleaning Ball Deck, CAT Dsl, For Sale or Rent, **\$159,500.** Call Dan At 203-506-3860



2011 INTERNATIONAL 4400 CAB & CHASSIS, Low Miles:75,000, Automatic Transmission, 10K Fronts, 23K Rears, 33,000 GVW, Good Rubber, 11R 22.5, Frame Is 25' Long, 24' Dump Body Would Fit On Frame! **\$15,900** Call Today! 781-417-3018



CAT 289C.
1,200 Hours,
W/Attachments,
\$42,500., Pocasset, MA
774-836-8811



Serving You With New Ideas



**4600 GALLON 3 COMP ON A
PETE BL/FB AVAILABLE**



**2019 BARREL ON 05 SUBFRAME,
12,000 GAL, 5 COMP,
TRI AXLE FOR SALE**

**SERVING YOU
WITH NEW IDEAS
THROUGHOUT
NEW ENGLAND &
NEW YORK**

Visit
www.wbhill.com

**For Specs &
More Photos**

**For More Tractors, Trailers, Tank Trucks, Pictures & Videos,
Please Give Us A Call Or Visit Our Website, Facebook, Or YouTube Page!**

305 Shaker Rd, East Longmeadow, MA
413-525-6665
www.wbhill.com

SMR
SYNERGY METALS RECYCLING

1741 Fall River Ave. Seekonk, MA

774-229-2159

Comprehensive Scrap Metal Services
 We Pay Top Dollar For Aluminum, Brass, Copper,
 Steel and Batteries

Specializing in Catalytic Converters

Synergymetalsrecycling.com



2009 CAT 938G IT LOADER.
 3-½ Yard Machine, Low Hours, Nice
 Tires, Mint Cond., Always Garaged,
 Air & Heat, Nice, **\$60,500.**
 413-530-5369



2014 JOHN DEERE 250D - 8,200 Hours, Straight
 Truck, Good Rubber, Work Ready - **\$125,500**
 CALL DAN 203-506-3860

**USED 24.6 STEEL FLAT
 BED BODY:**

Different sizes. **\$1,000
 to \$3,500.** Dave. East
 Freetown, MA
 508-726-0077



MIKE'S
 Truck & Trailer
 Repair inc.

Truck & Car
 Computer
 Diagnostics

ASE
 CERTIFIED

RI EMISSIONS
 SAFETY
 TESTING

Full Service Truck and Auto Repair Center.
 447 York Ave, Pawtucket, RI 02861 • (401) 725-2188

**MEDIUM/HEAVY TRUCK & RV SERVICES
 FEDERAL DOT & RI STATE INSPECTIONS**

- *All makes engine repairs
- *Fuel pumps
- *Brake work
- *Electrical repair
- *Injectors
- *Oil changes
- *Trailer repair
- *Turbo



- *Lift gate problems
- *Welding fabrication
- *Heavy equipment
- *Front ends
- *Rear roll-up door repairs
- *Installation
- *Wiring circuits



FORD 6.0 DIESEL POWER STROKE SPECIALIST !



FORD 6.0 DIESEL POWER STROKE SPECIALIST !



visit our website @ mikestruckandtrailerpawt.com • RI# 459ca



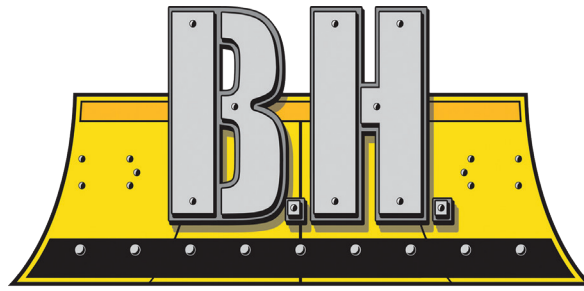
**2007 ENGLE 6600 GALLON
 STAINLESS STEEL
 WATER TANK,** Includes New Pump. CALL 401-434-5900



2001 GMC 3500 HD. Flatbed
 Plow Truck With Plow And Sander,
 Removable Paneling, 6.5L Diesel,
 Dually Automatic, Runs And Plows
 Great, Needs Work,
\$3,500 OBO.
 774-254-3631

www.bhtrailersandplows.com

**6 Center Parkway
Plainfield, CT
06374**



**2207 Hartford Ave.
Johnston, RI
02919**

TRAILERS AND PLOWS

860-949-7863



**CM PL Flat Beds
9-14 Ft. In Stock
Rack Body Panels Available**



**DURAMAG Flat Beds
with 10 Inch Apron**



**CM RD BEDS
Over 100 Beds In Stock!**



**CM SERVICE BODIES
All Sizes In Stock!**



**CROWNLINE Flat Bed
Single Wheel, Short & Long
Bed, \$2,350 with Install Kit**



**2021 LOAD TRAIL CH14, 16Ft.
14+2 with 5 Ft. Stand-Up Ramps
14,000Lb. GVWR, \$6,595**



**2021 Primo 6'x10'
All Aluminum, 26" Solid
Sides, Bi-Fold Gate, \$3,695**



**2021 LOAD TRAIL 83X22Ft.
Split Tilt 6+16 w/Tool Box,
8K Axles, 17.5" Tires, \$11,295**



**2021 DIAMOND C
FMAX216 35Ft.
40,000Lb. GVWR
Hydraulic Dove Tail
Brakes and Jacks
Aluminum Wheels
20K Winch
Oak Decking
Sliding Track
3 Inch Coupler
\$38,995 w/FET**



CANDIA TRAILER

www.CandiaTrailer.com

& LANDSCAPE EQUIPMENT CO
All Prices Cash & Carry! Installation Available!

SAVE TIME & FUEL • WE SHIP!

1-866-761-0196

NH 603-483-2541 • Fax 603-483-2842

35 High St, Candia 4 Coners, Candia NH
10 Minutes East of Manchester, NH • 1 hour From Boston

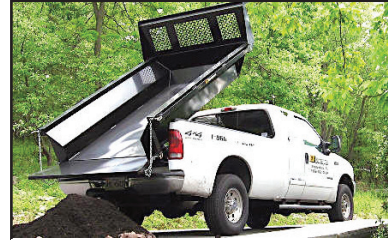
**"Helping
You With
The Right
Fit"**



DURA MAG ALUMINUM FLATBED BODIES. Industry's Highest Quality, Call With Your Specs. **Starting @ \$2,595.**



ALUMINUM DUMP BODIES. Complete Sub Frame, Power Pac, LED Lights, **Starting @ \$7,997.**



8' EZ Slide In Dump Body. With Head Board, Tarp & Hoist, **\$3,195**



POWER TILT
USA Made
20 FT POWER TILT 7 TON EQUIPMENT TRAILER



Aluminum Car Hauler Trailer. 10,000 GVW, American Made,



CTECH – Drawer Units That Fit Into Your Utility Body



DUMP TRAILERS. 12', 14', 16 Ft. Twin Piston, Powder Coat, Ramps, Battery,



LANDSCAPER TRAILERS.



CTECH – High Quality & Durable Drawer Units For Service Body



HOMESTEAD Enclosed Trailers. Stocking 8 Ft – 24 Ft, **Starting @ \$2,795**



DURA MAG SERVICE BODY. All Aluminum, Heavy Duty Ladder Rack



TAKE OFF BEDS. Ford – GM – Dodge
Call With Your Specs



DOT Truck & Trailer Lights. And Oval Amber Mini Lightbar – WE SHIP



Starting @ \$439

TRANSFER TANK & PUMP. Made In USA, 12 Ft Hose, Nozzle Gun, 15 gpm, In Stock – We Ship



\$439

SAVE TIME & FUEL • WE SHIP!**CANDIA TRAILERS.COM**

& LANDSCAPE EQUIPMENT CO

1-866-761-0196**TAX FREE NEW HAMPSHIRE**

Galion

IN STOCK GALION DUMP BODIES.
8 Ft Thru 16 Ft. Call With Your Specs Today

**HARSH HOIST**

2.5 to 45 Ton, Single or
 Double Piston. Convert
 a Flatbed Body to a
 Dumping Body.
**HOIST & POWER
 PACK**

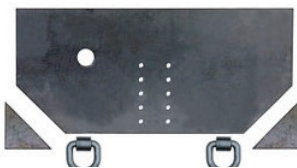
Starting @ \$1,585
USA Made



**BUTCHER Dump Power Pac with
 control Gravity Down \$495**



HEADACHE RACKS – Aluminum, USA Made, Available
 w/ Window Cut Out Or Without, Hi & Low Profiles, LED
 Light Options, Sport Series And Pro Series



Pintle Plate \$179



**15 Ton Pintle Hook \$59 –
 WE SHIP**

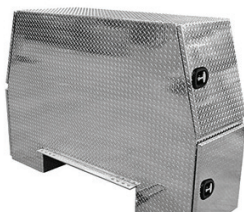


Retractable Step

One Step \$99

Two Step \$109

Three Step \$119



Aluminum I-Pack Toolbox \$2,795



**CUSTOM AND STANDARD
 INSTALLATIONS**



**Shuttle Door
 \$179**

UNDERBODY TOOL BOXES – Stainless Steel Hinges & Handles
Powder Coat
Diamond Aluminum Door
(black in color)

24"x18"x18" \$239

30"x18"x18" \$259

36"x18"x18" \$294

48"x18"x18" \$334



**Diamond Plate Aluminum
 Underbodies**

24"x18"x18" \$299

30"x18"x18" \$329

36"x18"x18" \$359

48"x18"x18" \$449

LOAD COVER

**7' X 12' Mesh tarp & Hardware Kit
 \$239**

JOSEPH**EQUIPMENT COMPANY**
300 GAY ST • MANCHESTER, NH 03103**SATURDAYS • WE ARE OPEN ALL DAY****PHONE: 603-641-8608****FAX: 603-666-3716**

293 NORTH - EXIT 2 -
LEFT ONTO BROWN AVE -
RIGHT ONTO WINSTON ST. - LEFT ONTO GAY ST.
300 GAY STREET ON THE RIGHT

2022 FONTAINE WORKHORSE 50 FLD 50 TON FLAT LEVEL DECK



2022 FONTAINE WORKHORSE

50 TON Rating In 12' 102" Swing Radius. 24' Flat Level Deck, 20" Loaded Deck Height, 8' 6" Wide, Trailer Length 50' 1". Twelve (12) Pair Of Flip Out Style Out Riggers, Nine (9) Pair Of Lash Rings. Three Axle, Lift On 3rd, Air Ride Suspension On 54 1/2" Axle Spacing, DOT Strokes With Battery Backup, Manual Ride Height Control Valve, (2) Pair Of Flag Holders. Steel Wheels 255/70R 22.5 OEM Rubber, Limited Supply

\$64,500 includes FET and Freight (FOB Factory Springville AL to Manchester NH)
Est. Wt. 18,720 # +/- 3%

CONTACT BRIAN at JOSEPH EQUIPMENT CO. 603-641-8608

EMAIL: josephequipment@aol.com

WEBSITE: www.josephequipment.com

www.josephequipment.com

Trades Welcome • Financing Available

THIS AD IS COPYRIGHTED & OWNED BY TRUCK AND EQUIPMENT POST

JOSEPH

EQUIPMENT COMPANY
300 GAY ST • MANCHESTER, NH 03103
SATURDAYS • WE ARE OPEN ALL DAY
PHONE: 603-641-8608
FAX: 603-666-3716


293 NORTH - EXIT 2 -
LEFT ONTO BROWN AVE -
RIGHT ONTO WINSTON ST. - LEFT ONTO GAY ST.
300 GAY STREET ON THE RIGHT

NEW FONTAINE STYLE PAVER TRAILER

2022 FONTAINE WORKHORSE 55PVR \$88,500

INCLUDES FET & FREIGHT (AL TO NH)

Fontaine Heavy-Haul

WORKHORSE 55PVR

MILLERS, PAVERS, ROLLERS, BROOMS...

If it's used to build a road, the Workhorse 55PVR Trailer can haul it. The 55PVR is a transportation multi-tool for road builders!



- **55 tons in 16 ft.** (3 or 4 axles close coupled)
- **50 tons in 12 ft.** (3 or 4 axles close coupled)
(GAWR and GVWR determine legal payloads)
- **Fastest, most versatile hydraulic removable gooseneck in the industry** (You can connect or disconnect on uneven ground)
- **102" swing radius for easy maneuverability**
- **5-Position gooseneck ride-height adjustment**
- **24' clear deck length with 8' 6" overall width**
- **22" loaded deck height with 6" ground clearance**

www.josephequipment.com

Trades Welcome • Financing Available

THIS AD IS COPYRIGHTED & OWNED BY TRUCK AND EQUIPMENT POST

JOSEPH

EQUIPMENT COMPANY
300 GAY ST • MANCHESTER, NH 03103

SATURDAYS • WE ARE OPEN ALL DAY

PHONE: 603-641-8608

FAX: 603-666-3716



**293 NORTH - EXIT 2 -
 LEFT ONTO BROWN AVE -
 RIGHT ONTO WINSTON ST. - LEFT ONTO GAY ST.
 300 GAY STREET ON THE RIGHT**

IN STOCK



NEW 2021 XL SPECIALIZED XL80SA, Sliding Axle Trailer, 2 Axle, Air Ride, 40 Ton, 53' X 102", Apitong Decking, Winch, Remote Control.
Call For More Information.



IN STOCK - 2020 KRUTZ, 70 Yard, 2 Axle, 70,000 Single Point Suspension, 25,000 Lb. Axles, 36' Long, 90" Sides, 1/4 Inch 450 Hardox, Floor, Sides, Nose, Gate, Barn Door-12 Panel Gate, Tow Hooks, Led Lights, 11 X 24.5 Rubber, Aluminum Wheels, Ladders Front And Back, Holland Mark V 50,000 Lb. Landing Gear. In Stock, No Waiting.
Call For More Information.



2009 EAGER BEAVER, 50 Ton, Non-Ground Bearing, Air Ride, 3 Axle, Lift On Third, One Owner, Original Paint.
Call For More Information.



2003 KENWORTH T300 SERVICE/UTILITY TRUCK, ISC 315 Cummins Diesel, Auto Transmission, A/C W/Space Saver SCBA Filling Stations, 120/240 Vac Aux Electric Reels, Rooftop Command Lights, GVWR 33,000 Lbs.
Call For More Information.



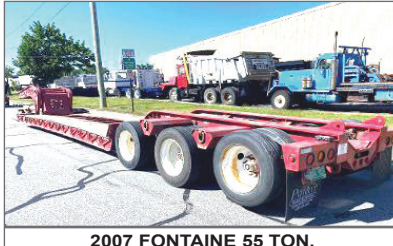
2006 TALBERT TRI AXLE LOWBED, 35 Ton, Air Ride, Non-Ground Bearing, 26' 1/2" Deck, 102" Wide, Covered Rear Deck, Beaver Tail, One Owner, Very Good Condition.
Call For Information.



2002 WABASH 48 X 102 FLAT BED, Air Ride, Slider, Hub Piloted Wheels, Alum Headboard, Southern Trailer, (6) Available To Choose From.
Call For More Information.



1960 MACK B MODEL. 6 Wheel Dump, Complete Restoration, New Dump Body, 673 Duplex, Pintle Hook. **Call For More Information.**



2007 FONTAINE 55 TON, Flat Level Deck, 25' Deck, Tri Axle, Air Ride, New Suspension, One Owner, Original Paint, Working Daily.
Call For More Information.



GOODYEAR OMNITRAC MSS II 1200/24 Tube Type Radial Tires - All New - Omnitrac MSS II - All Positions Front And Rear Tires - Grippers Tires - Limited Supply.
Call For More Information.



2008 FONTAINE 55 TON FLAT LEVEL DECK, Air Ride, Tri Axle, New Suspension, New Bushings, New Suspension Brackets, New Lift Bag. 18" Deck Height, 2 Pin Position, 275 Rubber, Strobe Lights, One Owner, Original Paint. Excellent Condition, Working Daily.
Call For More Information.



2010 FREIGHTLINER M2 BUSINESS CLASS, With Hi-Rail, Ext Cab, 8.3 Cummins, 9 Speed, IMT Crane And Body, 400 Amp Miller Welder / Compressor / Generator, Welding Torch And Cables, Lift Gate, Hydraulic Outriggers, Full Hydraulic Hose Reel, 140K Miles, Southern Truck, Excellent Condition, **Call For More Information**



1988 MACK SUPERLINER, RW713, 350, 12 Speed, 44 Rears, Nuway Air Ride, Double Frame, Bud Wheels, New Rubber, 3rd Axle Lift.
Call For More Information

www.josephequipment.com

Trades Welcome • Financing Available

THIS AD IS COPYRIGHTED & OWNED BY TRUCK AND EQUIPMENT POST

JOSEPH

EQUIPMENT COMPANY

300 GAY ST • MANCHESTER, NH 03103

SATURDAYS • WE ARE OPEN ALL DAY

PHONE: 603-641-8608

FAX: 603-666-3716



293 NORTH - EXIT 2 -
LEFT ONTO BROWN AVE -
RIGHT ONTO WINSTON ST.- LEFT ONTO GAY ST.
300 GAY STREET ON THE RIGHT

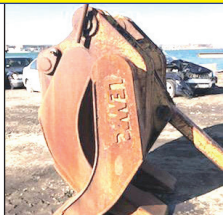
IT'S "DEMO TIME" - MANY TO CHOOSE FROM



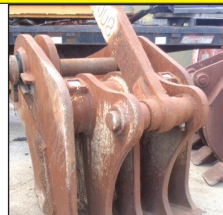
**NYE GRAPPLE FOR
KOMATSU PC300**



**LABOUNTY GRAPPLE
FOR KOMATSU
PC400-PC490**



**LEMAC 2 OVER 3
GRAPPLE FOR PC300**



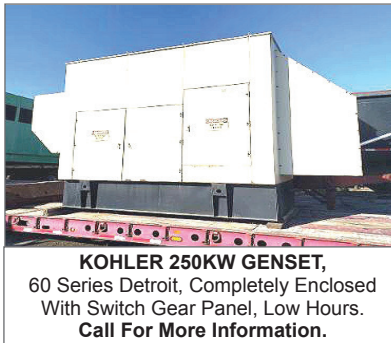
**NYE PC800, PC750
PULVERIZER**



**NYE PC800
DEMOLITION
GRAPPLE**



**2007 50'
SKYJACK,
MODEL
SJ9250,
4 X 4 Rough
Terrain Scissor
Lift, Diesel,
Hydraulic
Sliding
Platform,
2,700 Hours.
Call For More
Information.**



**KOHLER 250KW GENSET,
60 Series Detroit, Completely Enclosed
With Switch Gear Panel, Low Hours.
Call For More Information.**



**DAEWOO 6000 LBS PNEUMATIC FORKLIFT With
Side Shift, 910 Hours, Capacity: 6000 Lbs, Propane,
Pneumatic Tire, Auto Trans, 48' Forks, Mast Type
Lift, Side Shift, Three Stage, One Owner, Excellent
Condition. Call For More Information.**



**2012 GENIE
85' MANLIFT
With Sky
Power, Diesel,
4 X 4, 1 Owner,
Excellent
Shape, Just
Serviced And
Inspected - 2
Available.
Call For More
Information.**



**CATERPILLAR D8L DOZER, Full Cab, A/C,
Straight W/Tilt, Low Hours, 50% Bottom,
Excellent Condition.
Call For More Information.**



**1987 CATERPILLAR 130G GRADER, 8,500
Hours, Articulated, Full Cab, Power Shift, 3304
Diesel Engine, 3rd Valve, Sliding, Tilting, 12'
Moboard Call For More Information.**



**2000 CATERPILLAR 150 KW GENERATOR,
Three Phase, Fully Enclosed With Fuel Tank,
Complete Set Up, 700 Original Hours.
Steel Frame With Fuel Tank Underneath,
One Owner, Excellent Condition.
Call For More Information.**



**GENIE S85 MANLIFT,
85'. 4 X 4, Only 4,800 Original Hours.
Call For More Information.**



**1993 CAT D7 DOZER, 17A Series, Direct
Electric Start, Full Hydraulic, Standard Shift,
One Owner, Excellent Shape.
Call For More Information.**

www.josephequipment.com

Trades Welcome • Financing Available

THIS AD IS COPYRIGHTED & OWNED BY TRUCK AND EQUIPMENT POST

JOSEPH

EQUIPMENT COMPANY

300 GAY ST • MANCHESTER, NH 03103

SATURDAYS • WE ARE OPEN ALL DAY

PHONE: 603-641-8608

FAX: 603-666-3716



293 NORTH - EXIT 2 -
LEFT ONTO BROWN AVE -
RIGHT ONTO WINSTON ST.- LEFT ONTO GAY ST.
300 GAY STREET ON THE RIGHT



2021 GALLEGOS 42' FRAMELESS DUMP TRAILER, 96 Yard, Tri Axle, Hendrickson Air Ride Intraxx, ABS Brakes, Lift On Front Axle, Cramaro Flip N Go Canvas, Steel Wheels, LED Lights, Barn Door. Call For More Information.



2003 EAST DUMP TRAILER, 30', Tri Axle, Steel Frame, Alum Body, New Floor, Air Ride, Lift On Third, 24.5 Rubber, Very Good Condition. Call For More Information.



IN STOCK - 2020 FONTAINE LXTN40, 40 Ton Extendable, 34' Closed - 60' Open. Also Available 29' Closed - 50' Open. Tandem Axle, Set Up For 3rd, Air Ride, Non Ground Bearing, 102" Swing Clearance, 20" Deck Height, Alum Wheels. In Stock, No Waiting. Available In Manchester NH And At The Factory In Springville AL. 3rd And 4th Axles Available. Call For More Information.



IN STOCK - NO WAITING - 2020 FONTAINE RENEGADE LXLN12 -12 Inch Loaded Deck Height With 4 Inch Ground Clearance When Fully Loaded, 30 Tons In 16 Feet On Tandem Bogie Or 30 Tons In 20 Feet With 3rd Axle Flip, Low Profile, 3rd Axle Capability, 32 Feet 11 Clear Deck Length. CALL FOR MORE INFORMATION.



2019 FONTAINE MAGNITUDE 55H DSR, 26' Deck, 14.5" Loaded Deck Height, Air Ride, Tri Axle, Lift On 3rd, With Flip 4th, Strobe Lights, LEDS, Alum Wheels, 275/70R X 22.5, Boom Trough. One Owner, Excellent Condition. Call For More Information.



2021 GALLEGOS 40 TON JEEP DOLLY, 2 Axle, Air Ride, 29' Long, 60" Axle Spread, 102" Wide, Approx Fifth Wheel Height 53", Compatible With 60 To 70 Ton Class Trailers, 275 Rubber, Alum Wheels, 2 Available To Choose. Call For More Information.

COMPLETELY RECONDITIONED



2009 TALBERT 70 TON DROP SIDE RAIL, Severe Duty, 26' Steel Deck, 9' Wide, With 26' Beam Insert. 30,000 Lb Axles, 3 Axle, Set Up For 4th, Spring Ride, 315 Rubber, One Owner, Completely Reconditioned, Sandblasted And Painted. New Seals, Brakes, Bearings, Hubcaps And Decals. Call For More Information.



NEW 2019 XL SPECIALIZED, 55 Ton, 26' Deck, 15" Loaded Deck Height, Tri Axle, Set Up For 4th, Lift On Third, Air Ride, Long Goose Neck, 2 Pin Position, Boom Trough, 275 Rubber, Alum Wheels. Front Flip Ramps, Chain Slots, Weigh Scale, Strobes With Battery Back Up, Strobe Lights, Outriggers, Extra D-Rings. Available In Black Or Red, In Stock, No Waiting. Located At The Factory In Manchester IA And Also Stock In Manchester NH. Call For More Information.



2000 TALBERT 60 TON DROP SIDE TRAILER, 26' Deck, Steel Deck, Additional 26' Beam Deck Insert, 9' Wide, Non Ground Bearing, Heavy Duty Outriggers, Tri Axle, Set Up For 4th, Spring Ride, Good Rubber, Flag Holders, One Owner, Working Daily. Call For More Information.



1992 STECO END DUMP TRAILER, 60 Yard, 32' Single Point Suspension, Hub Piloted Wheels, Working Daily, Call For More Information.



2003 FONTAINE 70 TON, 9' Wide, 26' Deck, 14" Deck Height, Air Ride, Lift Axle, Alum Wheels, 275 Rubber, New Suspension, One Owner, 2+3+2 Capable. Call For More Information.



1999 FONTAINE 35 TON TRAILER, Air Ride, Non-Ground Bearing, 24' Deck, 2 Axle, Very Good Condition. Call For More Information.

www.josephequipment.com

Trades Welcome • Financing Available

THIS AD IS COPYRIGHTED & OWNED BY TRUCK AND EQUIPMENT POST

JOSEPH

EQUIPMENT COMPANY

300 GAY ST • MANCHESTER, NH 03103

PHONE: 603-641-8608

OPEN
ALL DAY
SATURDAY



FONTAINE

FAX: 603-666-3716



NEW MODEL - 2022 FONTAINE RENEGADE LXLN12 - 12 Inch Loaded Deck Height With 4 Inch Ground Clearance When Fully Loaded, 30 Tons In 16 Feet On Tandem Bogie Or 30 Tons In 20 Feet With 3rd Axle Flip, Low Profile, 3rd Axle Capability, 32 Feet 11 Clear Deck Length. IN STOCK, NO WAITING, **CALL FOR MORE INFORMATION.**



NEW MODEL - 2022 FONTAINE MAGNITUDE 50 Tri Axle, Set Up For 4Th, 50 Ton, Air Ride, 24' Deck, 20" Loaded Deck Height, Alum Or Steel Wheels, Strobe Lights, Outriggers And D-Rings. **Call For More Information.**



2022 KRUZ TERMINATOR, 26' Steel Frame, Single Point Suspension, 2 Way Gate, 11 X 24.5 Tires, Alum Wheels, 2 Speed Landing Gear. **Call For More Information.**

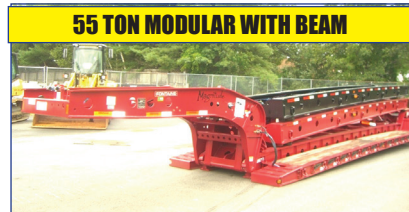


27' FLAT LEVEL DECK - IN STOCK

2022 FONTAINE 55L, 27' Flat Level Deck, Also Available In 25' And 26' Deck Length. Tri-Axle, Air Ride, 3Rd Axle Lift, Alum Wheels, Strobe Lights, Set-Up For 4Th Axle. In Stock, No Waiting. **Call For More Information.**

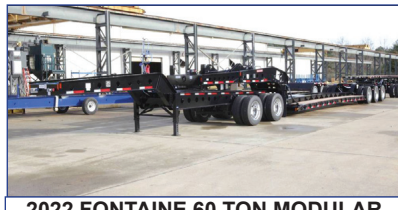


2022 KRUZ 26' STEEL TUB, Aluminum Frame Dump Trailer, Air Ride, 2 Axle, Alum Wheels, 450 Hardox, 24.5 16 Ply Tires. **TAKING ORDERS**
Call For More Information.



55 TON MODULAR WITH BEAM

2022 FONTAINE 55H MODULAR DSR, Beam Deck Also Available, Tri Axle, 60" Axle Spacing, Hydraulic Removable, Non Ground Bearing, Set Up For Gooseneck Ext, Spreader Bar And 4Th Axle Flip, Air Ride, Alum Wheels, 22.5 Rubber. **Call For More Information.**



2022 FONTAINE 60 TON MODULAR 2+3+1, 26' Dsr, 184" Swing Clearance, Set Up For 2 Axle Jeep, 14" Deck Height, Air Ride, Alum Wheels, 275/70R X 22.5 Rubber, Non Ground Bearing. **Call For More Information.**



2022 FONTAINE RENEGADE LXL, 14" Deck Height, 30' Deck W/6" Ground Clearance, 2 Axle, Set Up For Third, Hydraulic Detachable, Taking Orders
Call For More Information.



2022 KRUZ, 70 Yard, Tri Axle, 70,000 Single Point, Lift On Third Axle, 1/4 Inch 450 Hardox, Floor, Sides, Nose, Gate, 12 Panel Gate, 11 X 24.5 Rubber, Alum Wheels. Taking Orders.
Call For More Information.



2022 FONTAINE TRAVERSE HYDRAULIC TAIL, 48' Long, 102" Wide, Air Ride, Hydraulic Upper Deck, Hydraulic Winch, Remote Control, Alum Wheels, Dual Controls. Taking Orders
Call For More Information.



2022 FONTAINE 60 TON MODULAR, 26' Dsr, 60" Axle Spacing, 184" Swing Clearance, Set Up For 2 Axle Jeep, 14" Deck Height, Air Ride, Alum Wheels, 275/70R X 22.5 Rubber, Non Ground Bearing. In Stock.
Call For More Information.



1998 KAYLN SIEBERT. 75Ton 3+3+3, Air Ride, West Coast Bogie, 3 Axle, Air Ride Jeep With Power Tower, 10' Wide Trailer, 60' Overall Length, 48' Of Useable Deck, 275/70 X 22.5 Rubber, Sandblasted & Painted, Excellent Shape, Alum Wheels On Jeep And Booster. **Call For More Information.**

Trades Welcome • Financing Available • www.josephequipment.com

THIS AD IS COPYRIGHTED & OWNED BY TRUCK AND EQUIPMENT POST

TRAILER RENTALS • TRAILER RENTALS • TRAILER RENTALS •

WE RENT STEP DECKS • LOW BEDS • HI FLATS • DEMO/SCRAP • TRAILERS

JOSEPH

EQUIPMENT COMPANY

300 GAY ST. • Manchester, NH 03103

PHONE: 603-641-8608

FAX: 603-666-3716

14" DECK HEIGHT

NOW TAKING ORDERS FOR DUMP TRAILERS AND LOWBEDS FOR SPRING AND SUMMER DELIVERY



NEW 2022 FONTAINE RENEGADE LXL, 14" Deck Height, 30" Deck W/6" Ground Clearance, 2 Axle, Set Up For 3rd Hydraulic Detachable Or Mechanical Detachable. In Stock No Waiting. Call For More Information.

IN STOCK, NO WAITING



2022 FONTAINE MAGNITUDE 603T Modular Drop Side Rail With 28" Deck, Hydraulic Removable Neck, Non Ground Bearing, Air Ride, Tri Axle, Third Axle Lift, Set Up For 4Th, Alum Wheels, 275/70 X 22.5 Tires, Loaded. Call For More Information.

55 TON EXTENDABLE



2022 FONTAINE MAGNITUDE 59MX, 55 Ton Extendable Trailer, 30" To 50", Modular, Detaches Both Ends, Hyd Removable, Non Ground Bearing, 20" Deck Height, Will Take 10" Deck Ext For A Total Of 60", 275 Rubber, Tri Axle, Air Lift On 3rd, Set Up For 4Th, Set Up For Gooseneck Ext. Call For More Information.

IN STOCK

WE RENT WALKING FLOORS • DUMPS • HIGH FLAT EXTENDABLES • JEEPS



NEW 2022 FONTAINE SPECIALIZED MAGNITUDE 55L, Tri Axle, Air Ride, Set Up Of 4Th Axle, Non Ground Bearing, 25" Deck, Led Lights, Aluminum Wheels, Strobe Light Package, Lift On 3rd Axle, 2 Pin Position, Loaded. In Stock No Waiting. Call For More Information.



2022 FONTAINE 55H MODULAR DSR, Beam Deck Also Available, Tri Axle, 60" Axle Spacing, Hydraulic Removable, Non Ground Bearing, Set Up For Gooseneck Ext, Spreader Bar And 4Th Axle Flip, Air Ride, Alum Wheels, 22.5 Rubber, Call For More Information.



2022 FONTAINE 35 TON LOWBED, Air Ride, Tandem Axle, 29ft Flat Level Deck, Non Ground Bearing, Hyd Goose Neck, Set Up For Future 3rd Axle, In Stock. Call For More Information.

70 TON 2+3+2

WE RENT STINGERS • SPREADER BARS • DOUBLE DROP EXTENSIBLES TRAILERS



2022 FONTAINE 704/2+3+2 DROP SIDE RAIL, 4 Axle, 28" Deck, Hydraulic Detachable, In Stock, No Waiting, Non Ground Bearing, 102" Wide, 65" Flip Box, Spreader Bar And 352T, Jeep, Alum Wheels, 275/70R X 22.5 Tires, 28" Beam Deck Available. Call For More Information.



NEW 2022 FONTAINE 55 TON, Drop Side Rail, Tri Axle, Air Ride, Set Up For 4Th, Non Ground Bearing, Led Lights, Aluminum Wheels, Strobe Lights, Loaded. In Stock No Waiting. Call For More Information.



NEW 2022 SPECIALIZED 55 TON BEAM TRAILER, 3+1 Modular NGB, Detach Both Ends, Tri Axle, Lift On 3rd, Set Up 4Th, Set Up For Gooseneck Extension, Call For More Information.

TRAILER RENTALS • TRAILER RENTALS • TRAILER RENTALS •

Trades Welcome • Financing Available • www.josephequipment.com

THIS AD IS COPYRIGHTED & OWNED BY TRUCK AND EQUIPMENT POST