

SERVING NORTHEAST REGION

FREE

TRUCK AND EQUIPMENT POST

Buyer - Seller - Swapper



2026 PETERBILT 567 SEPTIC TANK. 4,200 GALLON ALUMINUM PIK RITE TANK, STAINLESS STEEL ENCLOSURE, 525 HP, AUTOMATIC, 603-225-6666



2021 DOOSAN DX180 LC-5. PERKINS, 1,477 HOURS. 44" BUCKET, HYDRAULIC THUMB, A/C, GOOD U/C, \$99,500. 978-249-4600



1926 FORD MODEL TT. ONE-TON TRUCK, ORIGINAL FORD CAB AND BED, 2-YEAR NUT AND BOLT GROUND-UP RESTORATION, PHOTOS AVAILABLE UPON REQUEST, \$32,900 FIRM. 603-934-2270



2013 HARLEY DAVIDSON FLHTK ULTRA CLASSIC LIMITED. 17,833 MILES, EXCELLENT CONDITION, HEATED HAND GRIPS, TOE/HEEL SHIFT, LED LIGHTING, BACKREST, AND MORE, \$11,000. MOULTONBOROUGH, NH 603-273-2243



HAWK GOOSENECK 2 HORSE TRAILER. STRAIGHT LOAD, TACK AREA. \$8,500. 207-623-4239

Optative Group

**24-25
JUNE 24th, 2026**

**INTERNET & PRINT
FOR ONLY \$28.00**

www.TruckAndEquipmentPost.com

401-644-9387

CHADWICK BAROSS™

UNSTOPPABLE.

Westbrook, ME | Bangor, ME | Caribou, ME | Concord, NH | Lancaster, NH
Whitman, MA | Chelmsford, MA | Oxford, CT | South Windsor, CT | West Warwick, RI



1996 KOMATSU WA380-1 WHEEL LOADER. GP Bucket, Full Cab w/ Heat, 12K Hours, #EQ0019408, \$25,000.



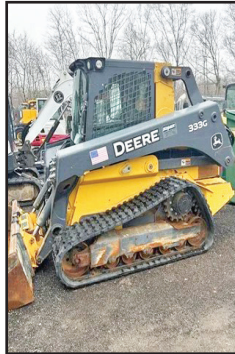
2021 JCB 1CXT EXTEND-A-HOE W/BACKHOE. Full Cab, Coupler, 3rd Valve, Heat/AC, 497 Hours, #EQ0001704, \$49,000.



2020 VOLVO ECR145EL CRAWLER EXCAVATOR. Volvo Certified, Hyd. Thumb, Bucket, Cab, Heat/AC, 1,316 Hours, #EQ0019329, \$125,500.



2020 BOBCAT E42 MINI EXCAVATOR. Coupler, 3rd Valve, Bucket, Hyd. Thumb, Angle Blade, AC, 1,592 Hours, #EQ0019724, \$45,500.



2019 JOHN DEERE 333G TRACK SKID STEER. Coupler, 3rd Valve, GP Bucket, Cab, Heat/AC, 1,533 Hours, #EQ0019888, \$48,500.



2018 BOBCAT E45 MINI EXCAVATORS. Coupler, 3rd Valve, Bucket, Hyd. Thumb, AC, Heat, Rubber Tracks, 1,578 Hours, #EQ0019836, \$41,500.



2018 VOLVO EC300EL CRAWLER EXCAVATOR. Coupler, 3rd Valve, Digging Bucket, Tilt Bucket, Thumb, Cab, AC/Heat, 5K hours, #EQ0019966, \$108,500.



2017 CATERPILLAR M318F WHEEL EXCAVATOR. Full Roto-Tilt System, Dig Bucket, Cleanup Bucket, AC/Heat, 2-Piece Boom, 10K Hours, #EQ0001650, \$85,500.



2012 VOLVO L90G WHEEL LOADER. Coupler, 3rd Valve, GP Bucket, Forks, Cab, AC/Heat, 15K Hours, #EQ0019393, \$39,600.



2011 CATERPILLAR M322D WHEELED EXCAVATOR. Wain-Roy System, Dig Bucket, Cleanup Bucket, 3rd Valve, 2-Piece Boom, 13K Hours, #EQ0001681, \$45,500.



2022 JOHN DEERE 325G TRACK SKID STEER. Coupler, 3rd Valve, GP Bucket, Cab, AC/Heat, 630 Hours, #EQ0020104, \$49,500.



2019 KUBOTA SVL95-2S TRACK SKID STEER. Coupler, 3rd Valve, GP Bucket, Cab, AC/Heat, 880 Hours, #EQ0019189, \$48,500.

Call 207-956-2702

www.chadwick-baross.com



CONSOLIDATED TRUCK & EQUIPMENT, INC.



www.ConsolidatedTruckEquipment.com

**1727 FALL RIVER AVE, (RT.6) NEAR SEEKONK SPEEDWAY
SEEKONK, MA**



2006 KENWORTH T-800 TRIAXLE:
C-13 CAT, ALLISON AUTO, (single turbo) Fresh rebuilt 0 miles, all new brakes & drums, NEW 16' Dump body, Never had a load in it! Hi-lift gate, 11x24.5 Drive tires, Flote tires on front @ 85%, 20,000 F/46,000R, 13,500 Lift axle, steerable. Too much stuff to list! New paint, **\$135,000.**
Trades accepted.



2006 MACK GRANITE: 46R/12F, CAMEL BACK Springs, Only 124,000 chassis miles. 11.24 tires @ 60%, Wet Line, needs a good paint job & some TLC. **\$28,500.**



MACK 28' Aluminum Body & Dump Frame, New 10' wide x 1/2 " Plastic Liner. New Piston. One Owner! Very Nice. **NEEDS NOTHING! \$55,000**



2018 MAC TRI-AXLE Aluminum Dump Trailer Barn Door, Plastic Liner, Slide Power Tarp, Aluminum Wheels, Frameless W/ Aluminum Draft Arms, 11x24.5 Tires @40%. VER NICE! **\$55,000.**



3 AVAILABLE

2025 MAC 28' ALLUMINUM DUMP TRAILER: 8 ALLUMINUM RIMS, ALLUMINUM FRAME, AIR RIDE, 1/2 PLASTIC LINER.



2026 FELLING FT-16-2T Tilt Top Trailer: 23' Deck x 102" Wide, Viper Red, Aluminum Wheels, 18,400lb GVW \$24,500.00 2 in stock GVW **\$24,500.00**
2 in stock.
Fire Hydrant available on request.



2025 MAC 26' STEEL DUMP TRAILERS: Hi-Lift Gate, 24.5 Tires On Aluminum Rims, 60,000 LB Center Point Suspension, Electric Load Cover, Body All 1/4" Hardox,



2025 MAC 27' STEEL BODY ALUMINUM FRAME TRAILER: Hi-Lift Gate, Air Ride, 11x24.5 Tires On 8 Aluminum Rims, Hardox Steel Body, Full Aluminum Side Skirts, Due In 2 Available, Trades Accepted,



2025 MAC 28' ALLUMINUM DUMP TRAILER: 8 ALLUMINUM RIMS, ALLUMINUM FRAME, AIR RIDE, 1/2 PLASTIC LINER.



2025 FELLING 20 TON TAG W/ AIR RAMPS. CALL.

CALL US: AT 508-336-6215 • HOURS: M-F 8 to 5:30 • SAT: 9 to 12 Noon

SALVADORE #1 RAM CHASSIS CAB DEALER
 FAMILY OF DEALERSHIPS **IN NEW ENGLAND** BUSINESS LINK
The best lease for small business.

MAKE THIS THE SUMMER
EVER!



WE HAVE YOUR TRUCK!

442 W. Broadway, Gardner, MA | SalvadoreRam.com

<p>SAVE \$4,700!</p>  <p>GVWR: 19,500 LBS!</p>	<p>2026 RAM 5500 TRADESMAN REG CAB 4X4 6.7L I6 CUMMINS TURBO DIESEL ENGINE - 8-SPD TORQUEFLITE HD AUTO TRANSMISSION MSRP: \$96,001 OUR PRICE: \$91,800 STK # N26070</p>	<p>SAVE \$9,700!</p>  <p>READY TO WORK!</p>	<p>2026 RAM 5500 TRADESMAN REGULAR CAB 4X4 6.7L I6 CUMMINS TURBO DIESEL ENGINE - 8-SPD TORQUEFLITE HD TRANSMISSION MSRP: \$104,228 OUR PRICE: \$95,027 STK # N26146</p>
<p>SAVE \$4,700!</p>  <p>READY TO UPFIT!</p>	<p>2026 RAM 5500 TRADESMAN REGULAR CAB 4X4 6.7L I6 CUMMINS TURBO DIESEL ENGINE - 8-SPD TORQUEFLITE HD AUTO TRANSMISSION MSRP: \$79,290 OUR PRICE: \$75,089! STK # N26066</p>	<p>SAVE \$4,700!</p>  <p>REPLACEMENT INCOMING! SOLD</p> <p>READY TO UPFIT!</p>	<p>2026 RAM 5500 TRADESMAN REGULAR CAB 4X4 I-6 6.7 L CUMMINS TURBO DIESEL ENGINE - 8 SPEED AUTO TORQUEFLITE HD TRANSMISSION MSRP: \$105,775 OUR PRICE: \$101,075 STK # N26078</p>
<p>SAVE \$4,700!</p>  <p>GVWR = 19,500 LBS!</p>	<p>2026 RAM 5500 TRADESMAN REGULAR CAB 4X4 6.7L I6 CUMMINS TURBO DIESEL ENGINE - 8-SPD TORQUEFLITE HD AUTO TRANSMISSION MSRP: \$104,708 OUR PRICE: \$100,507! STK # N26082</p>	<p>SAVE \$3,250</p>  <p>MANAGER SPECIAL!</p>	<p>2026 RAM 3500 TRADESMAN CREW CAB 6'4 BOX 4X4 6.4L V8 HEMI HD GAS ENGINE - 8-SPD AUTO TRANSMISSION MSRP: \$61,110 OUR PRICE: \$58,359! STK # N26131</p>
<p>SAVE \$4,300!</p>  <p>GVWR: 13,500 LBS</p>	<p>2026 RAM 3500 CHASSIS CAB TRADESMAN REG CAB 4X4 6.4L V8 HEMI HD GAS ENGINE - 8-SPD AUTO TRANSMISSION MSRP: \$79,483 OUR PRICE: \$75,637! STK # N26053</p>	<p>SAVE \$9,700!</p>  <p>READY TO WORK!</p>	<p>2026 RAM 5500 TRADESMAN REGULAR CAB 4X4 I-6 6.7 L/408 INTERCOOLED TURBO DIESEL ENGINE - 8 SPEED AUTO TRANSMISSION MSRP: \$95,228 OUR PRICE: \$86,027 STK # N26134</p>
<p>SAVE \$4,000!</p>  <p>HIGH ROOF 136 WB W/PASS SEAT!</p>	<p>2026 RAM PROMASTER CARGO VAN TRADESMAN 2500 3.6L V6 GAS ENGINE - 9-SPD AUTO TRANSMISSION MSRP: \$60,280 OUR PRICE: \$56,779 STK# N26140</p>	<p>SAVE \$4,700!</p>  <p>GVWR: 19,500 LBS!</p>	<p>2026 RAM 5500 TRADESMAN REG CAB 4X4 6.7L I6 CUMMINS TURBO DIESEL ENGINE - 8-SPD AUTO TRANSMISSION MSRP: \$105,053 OUR PRICE: \$100,852! STK # N26008</p>

Additional Inventory Available & Ready For Custom Upfits!

Not responsible for typographical errors. Inventory changes frequently. Pricing subject to change due to manufacturer rebates. Pricing includes Doc Fee, all available rebates and incentives and may require vehicle to be reported as a Business sale to the manufacturer. See dealer for complete details.

SALVADORE | PREOWNED A GREAT EXPERIENCE
 FAMILY OF DEALERSHIPS | SuperCenter COMES STANDARD

**We've Got Your Truck
 For less!**

SalvadoreAuto.com | 978-630-2001 | 249 Timpany, Blvd., Gardner, MA

PRICE DROP! 2023 RAM 3500 LIMITED 4X4
 TURBO DIESEL I-6 6.7 GAS ENGINE - 6-SPD AUTO TRANSMISSION
 STK # N26128A
 1 - OWNER! NOW ONLY \$69,968

PRICE DROP! 2021 CHEVROLET SILVERADO MD WORK TRUCK 4X4
 TURBOCHARGED DIESEL V8 6.6L ENGINE - 6-SPD AUTO TRANSMISSION
 STK # N26051A
 READY TO WORK! NOW ONLY \$59,434

PRICE DROP! 2020 RAM 3500 LONGHORN 4X4
 INTERCOOLED TURBO DIESEL I-6 6.7 ENGINE - 6 SPD AUTO TRANSMISSION
 STK # N26063A
 1 - OWNER! NOW ONLY \$51,988

READY TO WORK!

DOZENS OF TRUCKS IN STOCK TO CHOOSE FROM!

ALL MAKES AND MODELS!

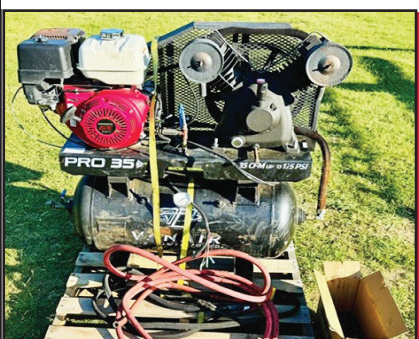
TOP DOLLAR FOR YOUR TRADE!

978-630-2001

PRICE DROP! 2024 CHEVROLET SILVERADO 2500HD WORK TRUCK 4X4
 6.6L V8 GAS ENGINE - 10-SPD AUTO TRANSMISSION
 STK # C26252A
 1 - OWNER! NOW ONLY \$42,167

PRICE DROP! 2024 RAM 2500 BIG HORN 4X4
 6.4L V8 GAS ENGINE - 8-SPD AUTO TRANSMISSION
 STK # P2429
 10,000LB GVW! NOW ONLY \$44,485

PRICE DROP! 2024 GMC CANYON DENALI 4X4
 I4 2.7L TURBOCHARGED GAS ENGINE - 8-SPD AUTO TRANSMISSION
 STK # N26073A
 ONLY 17,681 MILES! NOW ONLY \$45,248



VAN AIR PRO 35 AIR COMPRESSOR. Remote Start Package, Complete Self-Contained, Removed from 2022 Truck, Excellent Condition, **\$3,300.** Or Best Offer, Westport, MA 508-636-5050



\$110 & Up Per Wheel Polish
ACUSHNET WHEEL POLISHING
 Used Rims Available
508-509-2014
 62 SOUTH MAIN ST., ACUSHNET, MA



Service & Mechanic On Site



2011 ISUZU NPR. Beaver Tail Landscape Box Truck, 4 Cyl. Turbo Diesel, Quad Cab, Auto Tranny, 209K Miles, 16 Ft. Box, 14,500 GVW, Runs Excellent, No Rot, Ready To Work, CT Title, **\$12,500.** Waterbury, CT 203-232-0921



WALLENSTEIN 3.5 INCH CHIPPER, BX36, Hydraulic Feed, **\$5,300** 860-928-5748

CAREY AUTO INC

TRUCK EQUIPMENT SALES



37 County Road
Route 106
Plympton MA 02367
PH: 781-582-1378
FAX: 781-585-4438



**GALION BODIES IN STOCK NOW!
CALL FOR PRICING.**



**2007 PETERBILT PB340:PX8 ENGINE, 10
SPEED, 146K MILES, NEWER LANAU DUMP
BODY, 54,600 GVW. \$78,000.**



**HOOKLIFT TRUCKS IN STOCK NOW!
INSTALLATIONS: PIONEER TARPS
INSTALLED. CALL FOR PRICING.**



**CUSTOM ALUMINUM BEDS/STEEL
CALL FOR QUOTE**



**LADAU SHD DUMP BODIES. INSTALLED.
CASH-N-CARRY. CALL FOR PRICING.**



**2017 Kenworth T-800 Paccar MX-13, Allison
auto, 195,000 miles with Palfinger cable pull
hoist system, tarp system, \$142,000**



**2017 PETERBILT 220 AUTO PX7: W/
MARREL 120L-16 HOOKLIFT, Tarp system,
33K GVW. ONLY 2,000 miles. \$85,000.**



**2015 Peterbilt Model 337: Paccar PX-9, Allison
auto 131,000 miles with Ampliroll AL100
Hook Lift, Pioneer tarp system, 33,000 GVW.
\$91,000**



**READY TO GO COMPLETE TRUCK PACKAGES.
LOTS OF OPTIONS AVAILABLE
New & Used Trucks Ready To Go!**



**CM
ALUMINUM
FLATBEDS
IN STOCK
NOW! MANY
SIZES.
CALL FOR
PRICING**



**STEEL FLATBEDS
IN STOCK NOW!
MANY SIZES.
CALL FOR
PRICING.**

**SALES,
SERVICE,
PARTS**

**CALL TOLL FREE: 781-582-1378
WWW.CAREYTRUCKEQUIPMENT.COM**

**CUSTOM METAL
FABRICATION
AVAILABLE**

2-DAY CONSTRUCTION & UTILITY EQUIPMENT AUCTION

Telescopic Forklifts, Boom & Scissor Lifts, Truck Tractors, Rolloff Trucks, Dump Trucks, Boom, Water & Service Trucks, Detachable, Drop Deck, Hi-Flat, Van & Storage Trailers, Large Quantity Support & Attachments

Live: **SATURDAY, JUNE 20TH @ 9:00 AM**

Timed Opens: **MONDAY, JUNE 15TH @ 10:00 AM**

Closes: **SUNDAY, JUNE 21ST @ 10:00 AM**

ATLANTIC CITY, NEW JERSEY (AC Race Track)



ADDRESS: 4501 Leipzig Ave.,
Mays Landing, New Jersey 08330



LIVE HIGHLIGHTS INCLUDE: **2 ARTICULATED DUMPERS:** (2)New Fiori D90SW, **27 HYDRAULIC EXCAVATORS:** Cat 350L, 2018 Kobelco SK140SR-5, (3)New CFG QK20R, (2)New CFG KV16R, (2)New CFG QK16R, (3)New CFG H16R, (3)New CFG H15R, New CFG MX15RX, (3)New CFG MH13RX, New CFG H13R, (2)New CFG H12R, New CFG MH12RX, New ATS ATS-RT15R, (2)New SDLANCH ME20, New Landhero LDH-ME18, **CRAWLER TRACTOR:** Case 750MLGP, **8 TELESCOPIC FORKLIFTS:** 2023 Magni TH5.515P, 2015 Xtreme XR1255, (2)Unused JLG 3013, Skytrak 8444, Skytrak 8042, Genie GTH844, Traverse TL8040, **3 FORKLIFTS:** (3)New Heli CPYD25, **8 BOOM LIFTS:** JLG 1250AJP, JLG 860SJ, (2)JLG 800AJ, JLG 600S, JLG 400S, 2016 Snorkel TB126J, Skyjack SK63J, **7 SCISSOR LIFTS:** (3)JLG 2646ES, Genie GS-3232, (2)Genie GR-20, Skyjack SJ3219, **WELDER:** Hobart Mega Arc, **2 LIGHT PLANTS:** 2018 Allmand Night Light V, 2020 Wacker LTV6L, **13 MINI TRACK LOADERS:** (2)New ATSPower ATS-T460, (2)New SDLANCH SSL60, (2)New AGT SDA-140T, (3)New AGT MX-CRT23, New AGT MX-MRT14, New AGT YSRT14, New MMS MS360T, New MMS MS36C, **MINI TIRED LOADER:** New AGT SDA-140W, **2 CRAWLER DUMPS:** (2)New SDLANCH CD25, **2 CONCRETE EQUIPMENT:** New SDLOOL SL-M1300 Concrete Buggy, New SDLOOL SL-MT800 Concrete Buggy, **2 WOOD PROCESSING EQUIPMENT:** (2)New AGT YC-26G Sawmill, **FLATBED TRUCK:** 2015 IH(s/a), **VACUUM TRUCK:** Volvo ACL(t/a), **2 TRUCK TRACTORS:** (2)2019 Mack Anthem 64T(t/a), **PICKUP TRUCK:** 2001 Ford F250, **VAN:** 2014 Chevy 3500, **TAGALONG TRAILER:** 2026 Delta 27TB 16ft.Tilt(t/a), **3 CAR HAULERS:** (3)2021 Kaufman Low Pro 3(tri.), **UTILITY TRAILER:** 8ft.x4ft.(s/a), **WATER TRUCK BODY:** Unused Splash 15ft.(4,000gal.), **6 GOLF CARTS:** (3)New SDLANCH SDLC80, (3)New SDLOOL SL-GC42S, **5 RECREATIONAL VEHICLES:** (3)New SDLANCH MGC40 Electric Tricycle, New SDLANCH ET13 Electric Tricycle, New SKLP SK-E48 Electric Bicycle, **2 PORTABLE BATHROOM STATIONS, 8 MULTI-USE CONTAINERS, 3 REFRIGERATED CONTAINERS, 2 OFFICE CONTAINERS, 13 STORAGE BUILDINGS, 3 SCRAP RECYCLING EQUIPMENT, 19 CONTAINERS, 2 HEATING EQUIPMENT:** (2)MI-T-M 400K BTU Space Heater, **PALLETS OF STONES, EXCAVATOR BUCKET, 218 ATTACHMENTS:** (212)Skid Steer, (6)Forklift, **78 NEW SUPPORT EQUIPMENT, 4 SUPPORT EQUIPMENT.**

TIMED HIGHLIGHTS INCLUDE: **8 HYDRAULIC EXCAVATORS:** (2)New CFG QK20R, New CFG QK16R, New CFG MX15RX, New CFG H15R, (2)New CFG H13R, New CFG MH12RX, **5 MINI TRACK LOADERS:** New AGT MX-MRT14, New AGT YSRT14, New MMS MS360T, New MMS MS36C, New SDLOOL SL-323TZ, **2 SKID STEERS:** (2)New MMS MS-V1000, **3 AUTO LIFTS:** (3)New SKLP SK45T, **2 WOOD PROCESSING EQUIPMENT:** (2)New AGT Sawmills, **12 NEW STORAGE BUILDINGS, 4 MULTI-USE CONTAINERS, 8 CONTAINERS:** (3)40ft., (5)20ft., **3 GOLF CARTS:** (3)New SDLOOL, **20 PALLETS OF STONES, 300 ATTACHMENTS:** (212)Skid Steer, (23)Excavator, (16)Mini Track Loader, **64 NEW SUPPORT EQUIPMENT, 4 SURVEY EQUIPMENT:** (4)New SKLP Laser Level.

SALE SITE PHONE: (609) 204-3189 Jay



ALEX LYON & SON



SALES MANAGERS & AUCTIONEERS, INC., BRIDGEPORT, NY 13030

Phone: (315) 633-2944 • Go to WWW.LYONAUCTION.COM for more details

ANDERSON MOTORS INC.



*** YOUR EXCLUSIVE VOLVO TRUCK DEALER ***



VOLVO POWER

IN STOCK

2026 VOLVO VHD84F300-D13, 500HP, 14SPD. I-SHIFT,, STEERABLE PUSHER, 17' 6" HARDOX BODY. #250111



IN STOCK

2027 VOLVO VHD84F300-D13, 500HP, 14SPD., I-SHIFT, 20,000# STEERABLE TRI-AXLE DUMP CHASSIS. #260004



IN STOCK

2025 VOLVO VHD64BT-D13, 500HP, 12SPD. I-SHIFT, 14,600# FRONT / 46,000# REARS. #240142



3 AVAILABLE

2012 - 2017 VOLVO VNL64T300-D13, 500HP, 18SPD. TRANS., 14,000# FRONT / 46,000# REARS, AIR-RIDE.



IN STOCK

2015 VOLVO VNM64T-D13, 435HP, 10SPD., 12,000# FRONT / 40,000# REARS.



IN STOCK

1991 AUTOCAR ACL64BT300 CUMMINS BIG CAM, 8LL TRANS., 46,000 REARS, 320,548 MILES, WET-SYSTEM, PINTLE PLATE & HOOK. #240002B



IN STOCK

2000 VOLVO WG64B, 275HP, AUTO, 16,000# FRONT / 40,000# REARS, JOHNSERED 820 CORTU CRANE, 20' DUMP BODY. #210299A



2 AVAILABLE

2016 VOLVO VNM64T-D13, 435HP, 10SPD., 12,000# FRONT / 40,000# REARS. #230109A



2 AVAILABLE

2022 VOLVO VNL64T300-D13 500HP, 12 SPD. I-SHIFT ,AUTO, 14,000# FRONT / 46,000 # REAR, AIR-RIDE, HD HAULER.



IN STOCK

2026 AUTOCAR ACTT42, SINGLE AXLE, YARD JOCKEY, DIESEL AUTOMATIC, A/C, HYDRAULIC 5TH WHEEL.



IN STOCK

2012 FORD E-450 14 PASSENGER SHUTTLE BUS, GAS, 18,885 MILES. #250029A



2 AVAILABLE

2026 RHODES RSS2660-2 26' STEEL END DUMP TRAILER, AIR HIGH-LIFT DOUBLE ACTING TAIL GATE, HD SPECS.

401-434-5900

WWW.ANDERSONMOTORS.COM

EMAIL • SALES@ANDERSONMOTORS.COM

190 AMARAL STREET • EAST PROVIDENCE, RI 02915

HABLAMOS ESPAÑOL



920 W. Chestnut St. Brockton, MA:
508-586-1666 Mon - Fri 8-5, Sat 8-NOON

EastCoastTruckStuff.com

We deliver!

Summer Savings ☀

8 Ton Combination Hitch with Mounting Kit



- Buyers Products 8 Ton Combination Hitch allows you to switch from ball hitch to pintle hook towing without changing hitches.
- Handles multiple towing needs with its interchangeable design.
- Ideal for a wide range of light to medium duty trucks with a maximum gross towing weight of 16,000 lb.



2 Inch Ball
10050
\$112.99



2-5/16 Inch Ball
10055
\$105.99



4" x 30' Flat Hook Winch Strap
with Abrasion Clip
Working Load Limit: 5,400 lbs.
423021

\$19.99

5 Piece Buffing Kit



Includes:

- 1- Pro 40 Perfection Metal Polish 8oz
- 1- 1" x 2" Felt taper for 1/4" - 3/8" Chuck
- 1- 3" Goblet buff round end shank mounted
- 1- 4" Shank mounted buffing wheel 50 ply
- 1- 16" x 16" Micro fiber towel

\$31.99



Specials end 8/5/26

Pro 40 Liquid Metal Polish 16 oz



Wipe-on, let dry, wipe off metal polish that cleans, seals and protects aluminum, stainless steel and chrome effortlessly.
PRO40016



\$13.99



REED TRUCK SERVICES

24/7 Heavy Duty Towing, Accident Recovery & Emergency Road Service



**TRADES
ACCEPTED**

**939 John Stark
Hwy.
Newport, NH**



**287 Washington St.
Claremont, NH**

**HELP
WANTED**

• Authorized International Truck & Cummins • Sales • Service • Parts • Warranty •
All Makes Commercial Truck Parts, Sales, and Service

Email: scott@reedtruck.com • www.ReedTruck.com • 1-800-542-5032



2025 INTERNATIONAL HV507. L9
Cummins, Allison 3500, 20 F/A, 30 R/A,
Chalmers Susp, All Municipal Options!



SEVERAL AVAILABLE
2024 INTERNATIONAL CV515 4x4.
Fully Equipped With Plow Gear And Dump
Body.



2026 INTERNATIONAL HV613. A26,
Allison 4500, 22 F/A, 46 Locking Rears,
Hend HMX Suspension, In Stock!!



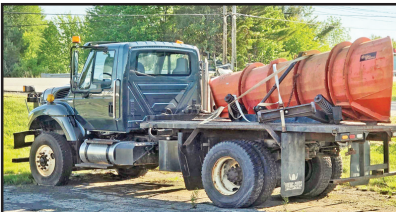
2006 FREIGHTLINER M2 112 LANAU DUMP
BODY. 450 HP Mercedes, 16908LL Trans, 18 F/A,
46 R/A, Solid Truck, Used For Paving. **\$47,500.**



DUMP BODY & PLOW GEAR BEING INSTALLED
2024 INTERNATIONAL HX520. X15 Cummins,
Allison Auto 4500, 20/46 Axles, Air Ride, Aluminum
Wheels, Dump Body & Plow Gear Being Installed



SEVERAL USED PLOW, SANDING
TRUCKS. International, Sterling,
Freightliner, Tandems And Single Axles.



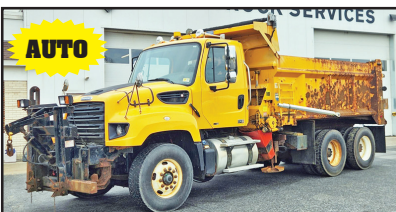
2009 INTERNATIONAL 7400. 16 F/A, 30 Locking
Rear, 8LL, MF DT466, Needs Exhaust/Emissions
Parts, **\$6,900. Complete, Will Part Out**



2003 FORD E350 EXTENDED
LENGTH VAN. Solid Work Van, Gas,
Auto, AC, **\$4500.**



2014 GMC/COLLINS BUS. Gas,
Auto, Wheel Chair Lift. **\$7,500.**



AUTO
2012 FREIGHTLINER SD114. DD13 Engine,
Allison AUTO Trans, Everest 14' Live Floor Body,
Truck, Includes Plow And Wing Blades. Well
Maintained Muni Trade, **\$49,900.**



2009 FREIGHTLINER BUS.
Cummins, Allison, 2 Full Size Freightliners &
2 International CE300 Buses
Priced From **\$1,500-\$5,500.**



2013 SWENSON S STEEL
9' SANDER. Good Condition,
\$4,800.



C.N. WOOD CO., INC.

**Large Selection Of Used Equipment!
Call For More Info. 781-315-1680**



**2013 TYMCO 500X
SWEEPER. Runs
Good, \$45,000., #E001797**



**2007 VOLVO G946. 5250
Hours, Has Snow Wing, Nice
Unit, \$59,000., #C012704**



**2014
KOMATSU
PC78US-8.
Coupler,
Bucket,
\$39,000.,
#C012526**



**2016 VACALL AS13D VACUUM
SWEEPER. Nice Running
Machine, \$79,000., #E001870**



**2016 KLEEMAN MC
100RI JAW CRUSHER. Nice
Shape, \$189,000., #C012588**



**2006 BOBCAT 334G. Very
Clean, 3290 Hours, \$28,000.,
#C012505**



**2016 JOHN
DEERE
245GLC.
Nice Unit,
\$59,000.,
#C011811**



**2019
DOOSAN
DX235LCR-5.
Good
Running
Unit,
\$69,000.,
#C012324**



**2016
KOMATSU
D61PX-24.
Nice Unit,
\$75,000.,
#C011827**



**2024 CAT 420. Only 285
Hours, Excellent, \$151,000.,
#C012436**



**2012 VACTOR 2100PD.
Everything Works,
\$109,000., #E001288**



**2019 VOLVO L70H.
Coupler, Bucket, 3650
Hours, \$109,000., #C012538**

Woburn, MA ● Avon, MA ● Whatley, MA ● Johnston, RI ● North Haven, CT
Westbrook, ME ● Pine Bush, NY ● Holmes, NY ● Newington, CT

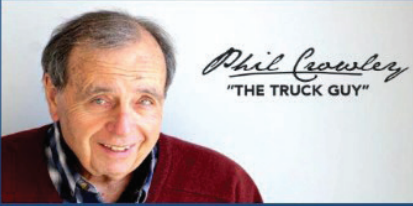
www.cn-wood.com

PLACE MOTOR Inc.

The "RIGHT PLACE" Since 1923



COMMERCIAL TRUCKS



Phil Crowley
"THE TRUCK GUY"



PHIL CROWLEY
508-943-8012



19 Thompson Rd.
Rte. 193
Webster, MA.

WWW.PLACEMOTOR.COM



WE HAVE MAVERICKS - XL + XLT & HYBRIDS !
***** 8 AVAILABLE *****



SHORT BED

NEW 2026 FORD F-350 CREW-CAB
4X4 PLATINUM, 6.7L DIESEL, WHITE
IN COLOR,
POWER MOON-ROOF AND MORE !



NEW 2026 F-450 CAB & CHASSIS
-SUPER-CAB
4X4, 6.7L DIESEL.

CALL FOR MORE DETAILS !



WHITE & BLUE

NEW 2026 FORD TRANSIT 250 AWD
MEDIUM ROOF,
SEVERAL TO CHOOSE FROM.

CALL FOR MORE DETAILS !



5 AVAILABLE

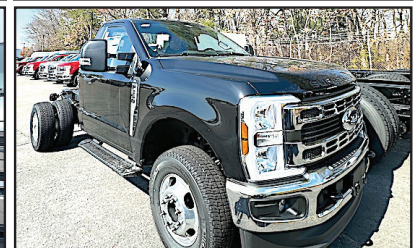
NEW 2025 & 2027 FORD F-750
CAB AND CHASSIS
330 HP., DIFFERENT WHEEL
BASES AVAILABLE.

CALL FOR MORE DETAILS !



2027 FORD E-350 AEROCELL
DUAL REAR WHEEL
15' IN LENGTH.

CALL FOR MORE DETAILS !



NEW 2026 FORD F-350 REG CAB &
CHASSIS

4X4, 7.3L GAS ENGINE.

CALL FOR MORE DETAILS !

*All Factory Rebates Back To Deal



MASSACHUSETTS OLDEST FORD
DEALER SINCE 1923





PLACE MOTOR Inc.

The "Right Place" Since 1923

COMMERCIAL TRUCKS

Call Phil Crowley "The Truck Guy"
508-943-8012



19 Thompson Rd.
Rte. 193 Webster, Ma.

WWW.PLACEMOTOR.COM



**NEW 2026 FORD F-350 4X4
SUPER-CAB PICKUP
6.7L HIGH OUTPUT DIESEL,
XLT TRIM,
SHORT BED AND MORE !**



**NEW 2026 FORD F-350
REGULAR CAB 4X4
6.8L GAS, XL TRIM.
CALL FOR DETAILS !**



**NEW 2026 FORD F-250
SUPER-CAB 4X4
SHORT BED AND LONG
BED AVAILABLE !**



AVAILABLE IN WHITE
**NEW 2026 FORD F-350
REGULAR CAB
4X4, XLT TRIM, 6.7L
DIESEL.
CALL FOR MORE DETAILS !**



**NEW 2026 & 2027
FORD E-350
12' AREOCELL
SINGLE REAR WHEEL.
IN STOCK !**



**NEW 2026 FORD F-550
CAB & CHASSIS 4X4
7.3L & 6.7L DIESELS,
60 AND 84 CA.
RED & WHITE
AVAILABLE !**

0% FOR 60 MONTHS - AVAILABLE ON XL TRIM PACKAGES ONLY IN LIEU OF REBATES. All Factory Rebates Back To Dealer*

WWW.PLACEMOTOR.COM



DEJANA
Truck and Utility Equipment

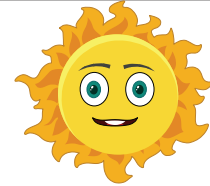


**COMMERCIAL
VEHICLE CENTER**



SANDER CHAINS
USA Made
All Makes
300 In Stock

S.A. McLean
207-793-4267



622 Elm St, Limerick, ME • www.s-a-mclean.com



INTERNATIONAL. 4x4,
Automatic,
Brush Fire Truck



12' HIGHWAY POWER
ANGLE V- PLOW



1998 International Cab
& Chassis. 14k Miles,
Automatic, 300 Cummins



13' SWENSON.
Stainless Steel Dump
& Sander Body



ASPHALT HOT
BOX. 4 Ton



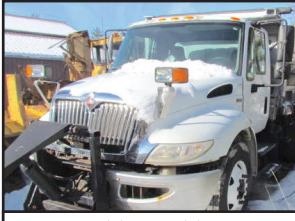
10' DUMP/SANDER
BODY.
Stainless Steel



ASPHALT HOT
BOX. Mini Falcon



TRACKLESS MT5. Diesel
Power, 7' Snowblower



2013 INTERNATIONAL
TRUCK DUMP. Sander Body,
Under CDL



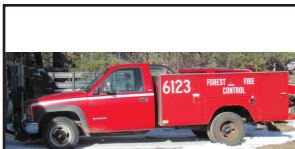
1994 FORD F700 CAB &
CHASSIS. Cummins, Automatic,
20k Miles, Under CDL



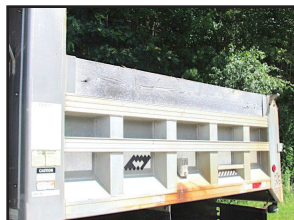
CAT 966B LOADER.



HYUNDAI 757-7.
Wheel Loader



1994 GMC 3500
UTILITY. 4x4, V8 Gas,
44k Miles, Rust Free



WARREN 10' ALUMINUM
DUMP BODY



FORD F550. Crew Cab,
15k Miles, Diesel, 4x4



1998 INTERNATIONAL 4800.
Four Wheel Drive, Automatic,
14k Miles, 14 Ft Of Frame.



STEWART STEVENSON
4X4. Automatic, 1,000
Gallon Tank Brush Truck



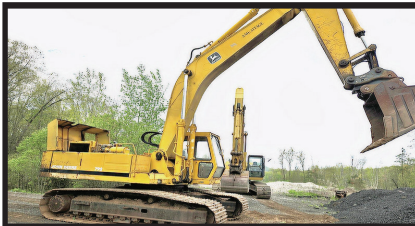
INTERNATIONAL 2574 CAB &
CHASSIS. Automatic, 300 Cummins,
24k Miles



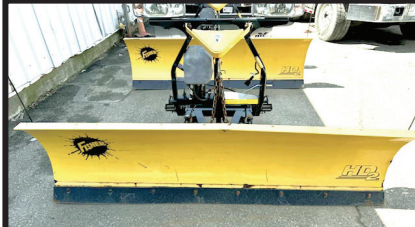
2005 GMC 5500.
14' Aluminum Dump
Flat Bed, 4x4, 30k Miles



2004 INTERNATIONAL
CAB & CHASSIS. 4x4, DT
466, Automatic



1987 JOHN DEERE 792. 68,000 Lb. Excavator, 300 Size, 2 1/4 Yard Bucket, Rebuilt Engine, Rebuilt Pumps, Newer Bottom, **\$19,900.** Pin Grabber JRB Coupler Optionally Available, 860-301-5782



MINUTE MOUNT 2 PLOW. 8 Ft, Used, In Good Condition, **\$2000.** Several To Choose, 617-840-8478

SMR SYNERGY METALS RECYCLING

1741 Fall River Ave. Seekonk, MA

774-229-2159

Comprehensive Scrap Metal Services
We Pay Top Dollar For Aluminum, Brass, Copper, Steel and Batteries

Specializing in Catalytic Converters

Synergymetalsrecycling.com

- MACHINE SERVICES
- ATTACHMENTS INSTALLS
- BUCKET REBUILDS & WEAR PROTECTION
- HYDRAULIC CYLINDER RESEAL

**SERVICING
RI, MA, CT**



CALL PATRICK
1 (401) 309-1960

BLUM'S FIELD SERVICE
-ONSITE HEAVY EQUIPMENT & DIESEL REPAIR
-MOBILE WELDING & FABRICATION



CAT 988B WHEEL LOADER,
4,991 Hours, Solid Machine, Anti-freeze in Oil. - **\$29,900**
781-417-3018

CANDIA TRAILER & SNOW EQUIPMENT

603-483-2541
email: contact@candiatrailer.com



www.CandiaTrailers.com

All Prices Cash & Carry! Installation Available!

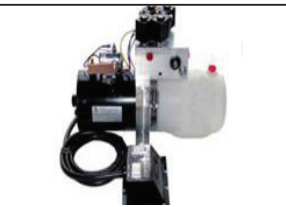
35 High St, Candia 4 Coners, Candia NH
10 Minutes East of Manchester, NH • 1 hour From Boston



DURA MAG ALUMINUM DUMP BODIES Complete Sub-Frame, Power Pac, LED Lights.



IN STOCK GALION DUMP BODIES. 8' thru 16' Call With Your Specs Today



BUTCHER Dump Power Pac with control Gravity Down \$595



8' Ft & 6 Ft EZ Slide In Dump Body. With Head Board, Tarp & Hoist.



DURAMAG SERVICE BODIES. Call With Your Specs



HARSH HOIST
2.5 to 45 Ton, Single or Double Piston. Convert a Flatbed Body to a Dumping Body.
HOIST & POWER PACK
CHAMPION HOIST

UNDERBODY TOOL BOXES
Powder Coat Diamond Aluminum Door



Diamond Aluminum Door



HOMESTEAD Enclosed Trailers. Stocking 8 Ft - 24 Ft

2 DAY LIVE & TIMED AUCTION

VERY LARGE RENTAL RETURNS AUCTION

THE FINEST EQUIPMENT FOUND THIS YEAR!!

~ In Conjunction with The Famous Alex Lyon & Son Haycamp & Barbecue ~
Only the Very Best Late Model Rental Fleet Construction Utility Equipment, Aerial Lifts, Forklifts, Hydraulic Excavators, Rubber Tired Loaders, Loader Backhoes, Boom & Scissor Lifts, Crawler Tractors, Vibratory Rollers, Truck Tractors, Dump Trucks, Trailers, Attachments and Support

Live: FRIDAY, JULY 10TH @ 9:00 AM

Timed Opens: SATURDAY, JUNE 27TH @ 9:30 AM • Closes: SATURDAY, JULY 11TH @ 9:30 AM

CANASTOTA (Syracuse), NEW YORK



ADDRESS: 601 North Peterboro St.,
Canastota, NY 13032

SPECIAL NOTE: Thursday Night, July 9th, Everyone is invited to the Famous Alex Lyon & Son Annual Barbeque and Hay Camp on the main farm to help unload the hay.



LIVE HIGHLIGHTS INCLUDE: **3 JAW CRUSHERS:** 2016 Kleeman MC110, 2017 Metso LT1213, Sandvik QJ341, **CONE CRUSHER:** Sandvik QS331, **2 ROLLOFF TRUCKS:** (2)2025 Kenworth T880(tri.), **5 DUMP TRUCKS:** 2026 Peterbilt 589, (3)2026 Peterbilt 567(tri.), 2017 Peterbilt 567(tri.), **2 LANDSCAPE DUMP TRUCKS:** (2)2024 Ford F550(50,000miles), **2 WATER TRUCKS:** (2)2025 Mack MD642(2,100gal.), **5 SERVICE TRUCKS:** 2027 Peterbilt 536, 2026 Kenworth T280, 2025 Ford F600XL, 2016 Ford F550, Unused 2025 Dodge Ram 4500, **CAB & CHASSIS:** New Unused Chevy 6500, **12 CRAWLER TRACTORS:** Demo Cat D6-20VP, 2018 Cat D6T, Cat D6TLGP, 2018 Cat D3K2LGP, 2025 Cat D1LGP, (2)2025 Cat D1, 2026 JD 650LLGP, 2026 JD 450PLGP, (2)2019 JD 550K2LT, JD 450D, **6 ARTICULATED HAUL TRUCKS:** 2024 JD 260P, 2023 JD 260E, (3)2019 Terex, 2023 Hydrema 912G, **7 ARTICULATED DUMPERS:** (2)New Fiori D120SW, (3)New Fiori D90SW, (2)New Fiori DF50, **8 TELESCOPIC FORKLIFTS:** (2)Unused JLG 1255, (2)Unused JLG 3013, Unused Skytrak 8042, (2)2023 Magni TH5.5.19, Cat TL1055, **6 BOOM LIFTS:** (2)Unused JLG 660SJ, Unused JLG 460SJ, Genie S-85, Genie S-60, 2016 Genie S-40, **46 HYDRAULIC EXCAVATORS:** 2023 Cat 340, (3)Unused Cat 320, (2)Unused Cat 317-07GC, (2)Unused Cat 315, (2)Unused Cat 308CR, Komatsu PC360LC, 2018 Kobelco SK350LC-10, Komatsu PC300LC, (2)Demo Komatsu PC238USLC-11, Hitachi ZX245USLC, 2019 JD 135G, Unused Develon DX89R-7, (4)New CFG QK20R, (3)New CFG XZ20R, New CFG YNT18, New CFG QK16R, (2)New CFG KV16R, (2)New CFG MX15RX, (4)New CFG H13R, (5)New CFG MH13RX, (6)New CFG KT13R, (2)New CFG MX12R, **11 RUBBER TIRED LOADERS:** 2025 Cat 926, 2022 Cat 906M, JD 624K, JD 624H, 2026 JD 544P, 2026 Kubota R640, 2020 Case 521G, 2019 Hitachi ZW310-6, (2)2021 JCB 409, Kawasaki 70ZV-2, **2 TRACTOR LOADER BACKHOES:** 2021 Case 580M(4x4), JD 410D(4x4), **5 VIBRATORY ROLLERS:** (2)Demo Dynapac CA2500D, 2017 Dynapac CA3500D, 2022 Hamm H16i, 2018 Bomag BW211D5(padfoot), **5 RUBBER TRACKED SKID STEERS:** 2025 Cat 265XPS, (2)2026-2025 Cat 255, 2023 Bobcat T66, **2 SKID STEERS:** JD 326E, NH LX885, **3 MINI TRACK LOADERS:** (2)2026 Kubota SCL1000, New AGT YSRT14, **ROUGH TERRAIN CRANE:** Drott 5550, **5 FORKLIFTS:** (4)New Heli CPYD25, Hyster S60XM, **27 SCISSOR LIFTS:** (11)New JCB S4550E, (14)New JCB S3246E, Skyjack SJ4632, Skyjack SJ3226, **GENERATOR:** Like New Kohler 20RCA, **AGRICULTURAL TRACTOR:** 2022 JD 6155M(4x4), **12 TRACTOR LOADERS:** (3)Unused NH Workmaster-120(4x4), Unused NH Workmaster-95(4x4), Unused NH Workmaster-70(4x4), 2016 NH Workmaster-60(4x4), (4)Demo NH Workmaster-35(4x4), Demo NH Workmaster Boomer-40(4x4), NH Workmaster-25S(4x4), **8 COMMERCIAL MOWERS:** (2)New Yakta YXR910, (2)New Yakta YXR710, (3)New Yakta YXR610, Toro Pro Line 30193, **CONCRETE EQUIPMENT:** 2020 Multiquip Ride On Power Trowel, **SWEEPER:** Broce KR350, **2 CONVEYOR TRUCKS:** 2016-2013 Kenworth T880(t/a), **CURTAIN SIDE TRUCK:** 2013 Kenworth T880(t/a), **FLATBED TRUCK:** 2015 Kenworth T880(tri.), **2 UTILITY TRUCKS:** (2)2016 Chevy 3500(4x4), **FUEL/LUB TRUCK:** 2008 Kenworth T300, **VAN TRUCK:** 2020 IH MV, **2 COLD PLATE MILK TRUCKS:** 2014-2009 Kenworth T370, **2 CONCRETE MIXER TRUCKS:** (2)2015 Kimble KF3200C(t/a), **SHEET ROCK/BLOCK TRUCK:** 2017 Kenworth T880(tri.), **3 TRUCK TRACTORS:** 2021 IH LT625(t/a), 2019 Mack Anthem 64T(t/a), 2016 Western Star 4900SF(t/a), **2 PICKUP TRUCKS:** 2022 Dodge Ram 3500, 2005 Dodge 1500, **4 DETACHABLE GOOSENECK TRAILERS:** Like New 2024 Load King 553 SS 24ft. (tri.), (3)New Witzco RG52(tri.), **EQUIPMENT TRAILER:** 2018 Ledwell 48ft. (t/a), **7 TAGALONG TRAILERS:** (6)New Delta 27TB 16ft. (tilt. t/a), 2007 Trailking 25ft. (t/a), **7 CAR HAULERS:** (2)2021-(2)2020-(3)2019 Kaufman Low Pro 3(tri.), **CAMPER:** 2010 Flagstaff Lite 31ft. (loaded, t/a), **SERVICE BODY:** New Monroe / Reading 98in., **8 UTILITY VEHICLES:** (5)New Kubota RTVXG850(4x4), (2)New Polaris Pro XD, Carryall 1700, **7 LOADING RAMPS:** (7)New DCQY-15(15-ton, 23.45ft.), **26 LIKE NEW MOBILE HOUSING UNITS:** (26)Southeastern Modular 12ft.x45ft.(2-rooms, HVAC, trailer mounted), **4 MULTI-USE CONTAINERS, CONTAINER:** New CTTN 10ft., **2 HEATING EQUIPMENT:** 2021 Heat Wagon 3050-2, LB White Tradesman K400, **2 EXCAVATOR BUCKETS, TIRES, NEW & USED, 20 ATTACHMENTS:** (17)Skid Steer, (2)Excavator, Mini Track Loader, **14 NEW SUPPORT EQUIPMENT, 5 SUPPORT EQUIPMENT.**

TIMED HIGHLIGHTS INCLUDE: **10 HYDRAULIC EXCAVATORS:** New CFG XZ20R, (2)New CFG QK20R, New CFG KV16R, New CFG MX15X, (3)New CFG KT13R, New CFG H13R, New CFG MH13RX, **4 MINI TRACK LOADERS:** (2)New AGT MX-CRT23, (2)New AGT MX-MRT14, **MULTI-USE CONTAINER:** New 40ft. High Cube, **32 ATTACHMENTS:** (25)Skid Steer, (2)Excavator, (5)Mini Track Loader, **6 NEW SUPPORT EQUIPMENT:** 5ft.x8ft. Steel Plates, (2)AGT Air Compressor, (3)AGT ATK-B1000 10,000lb. Car Lift.

SALE SITE PHONE: (315) 633-2944



ALEX LYON & SON



SALES MANAGERS & AUCTIONEERS, INC.,

BRIDGEPORT, NY 13030 • Phone: (315) 633-2944

Go to WWW.LYONAUCTION.COM for a Complete List, Descriptions, and Pictures



**METROPOLITAN
TRUCK CENTER INC.**
1074 TURNPIKE ST
STOUGHTON, MA 02072
800-878-5491



*Family owned and
operated since 1980*

SPRING INTO ACTION WITH NEW EQUIPMENT!



**EBY "FLEX"
REMOVABLE-SIDES LANDSCAPE BODY**



**SWAPP HOGG DETACHABLE
BODIES**



**DURAMAG SERVICE BODIES
"S" SERIES**



AIR FLO STEEL & SS DUMP BODIES



RUGBY PLATFORM BODIES



DOWNEASTER LANDSCAPE BODIES



HEADACHE RACKS & TOOL BOXES



**LIFTGATES
TOMMY GATE, MAXON, THIEMAN, ANTHONY**



GALION STEEL & SS DUMP BODIES

www.metropolitantruck.com



JACK MADDEN FORD
Jackmaddenford.com
781-762-4200



825 Providence Hwy Rt.1 Norwood, MA

LOW FINANCING AVAILABLE



2024 FORD TRANSIT 250 CARGO VAN. V6, Auto w/OD, AC, P/W, REAR CAMERA, LIMITEDSLIP, STK#22914.



2026 FORD E-350SD CUTAWAY ENCLOSED UTILITY. 7.3L V8 PREMIUM, AUTO, 11,500# GVW, STK#34142



2025 FORD F350 SD XL CRYSTEEL DUMP 4WD. 7.3L V8 GAS, 14K GVW, SNOW PLOW PREP, STK#27874



NEW CAB & CHASSIS: 350-450-550 SUPER CABS, REGULAR CABS



2026 FORD TRANSIT-350 READING ENCLOSED UTILITY AWD. GAS, AUTO, POWER GROUP, NAV, BACK-UP CAMERA, STK#A11376



2026 FORD F-600 SD XL C&C. DRW, 22K GW, 8 CYL., AUTO, POWER GRP, 205" WB, STK#14447



2026 FORD E-350SD ROCKPORT ENCLOSED UTILITY. 7.3L V8 PREMIUM, AUTO, AC, 10,050# GVW, TRACTION, STK#33968

Jack Madden

We're On The Auto Mile!

*ALL PRICES INCLUDE INCENTIVES FOR QUALIFIED BUYERS. FOR TRADE ASSIST, MUST HAVE 2018 OR NEWER TRADE. ALL VEHICLES REQUIRE DEALER FINANCING. SOME PRICES INCLUDE SNOW PLOW INCENTIVES. SEE DEALER FOR COMPLETE DETAILS.



Jack Madden Ford

Jackmaddenford.com

781-762-4200

825 Providence Hwy Rt.1 Norwood, MA



LOW Financing On SUPER DUTY AND TRANSITS AVAILABLE



2026 FORD F-550 SD XL 4WD. 6.7L POWER STROKE TURBO DIESEL, AUTO, AC, SNOW PLOW PREP, POWER GROUP, 19,550 LB GVW, STK#8156



NEW 2025 FORD E-450SD 14' ROCKPORT WORKPORT UTILITY: DRQ, 7.3L GAS, AUTO, POWER GROUP. STK#28681.



NEW 2025 E350 12' AEROCELL CUTAWAY. STK# 30217.



NEW FORD TRANSIT 350 SERVICE BODY AWD, STK#69470.



2026 F350 SD XL DUMP BODY: 4WD, Power Group, A/C. 7.3L V8, Barn Doors. Stk.# 43940



2026 FORD E-350 SD CUTAWAY ENCLOSED UTILITY. 7.3L V8 PREMIUM, AUTO, AC, POWER GROUP, 10,050# GVW, STK#41883

Jack Madden



We're On The Auto Mile!

*ALL PRICES INCLUDE INCENTIVES FOR QUALIFIED BUYERS. FOR TRADE ASSIST, MUST HAVE 2018 OR NEWER TRADE. ALL VEHICLES REQUIRE DEALER FINANCING. SOME PRICES INCLUDE SNOW PLOW INCENTIVES. SEE DEALER FOR COMPLETE DETAILS.



INSITE CONTRACTING
COMPLETE LIQUIDATION



PUBLIC AUCTION

JUNE 20TH | 9AM^{ET} | WINCHESTER, MA

FEATURING: HEAVY CONSTRUCTION EQUIPMENT, TRUCKS, TRAILERS, AND MISC. SUPPORT ITEMS

LIVE & ONLINE BIDDING | REGISTER TODAY

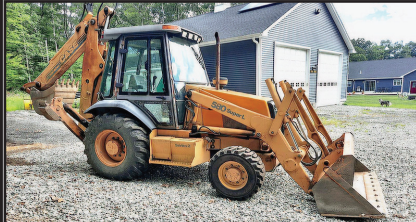
AUCTION SITE: 162 CROSS STREET, WINCHESTER, MA 01890



jeffmartinauctioneers.com | 844.450.6200



BOBCAT HARLEY RAKE. Low Hours, 6', Like New, **\$6800.** 860-301-5782



2002 CASE 580 SUPER L BACKHOE. Extend-A-Hoe, New Tires, 2 Foot And L Foot Buckets, Heat And AC, 5000 Hours, Very Good Condition, **\$27,500 OBO.** 860-617-4569

Coletta's Sales & Service

For all of your truck, trailer, and truck body needs

- ★ Collision Center
- ★ Vehicle Service & Inspection
- ★ Towing & Road Service
- ★ Equipment Hauling
- ★ Part Sales & Delivery
- ★ Authorized Morgan Truck Body Distributor



250 Niantic Ave, Providence RI 02907
www.colettas.com

401-421-3232



2022 FORD F250
XLT. 7.3L Gas,
58,000 Miles,
Short Bed, 4WD.
\$42,590.
401-533-1673



2014 KENWORTH T800 TRI-AXLE DUMP TRUCK - 457K Miles, Cummins ISX - 500 HP, Eaton Fuller Automatic Transmission, 20K Front, 46K Rears, Peterbilt Air Trac Suspension, High Lift Gate, 16-ft Demolition Body, Nice Truck, Ready to Work! - **\$79,000** - 781-417-3018

DONOVAN • DONOVAN • DONOVAN • DONOVAN • DONOVAN • DONOVAN • DONOVAN

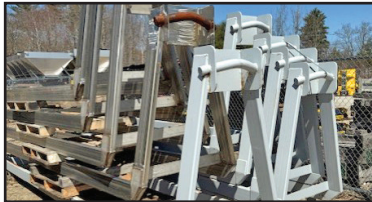
6 Enterprise Drive
Londonderry, NH 03053
www.donovancompany.com



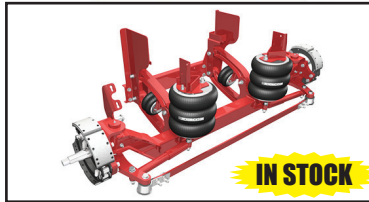
1-800-458-3867
sales@donovancompany.com
parts@donovancompany.com

DONOVAN • DONOVAN • DONOVAN • DONOVAN • DONOVAN • DONOVAN • DONOVAN

DONOVAN • DONOVAN • DONOVAN • DONOVAN • DONOVAN • DONOVAN • DONOVAN



HOOK-LIFT A-FRAMES IN STOCK.
STEEL OR STAINLESS STEEL



LIFT AXLES IN STOCK, STEER OR NON STEER BY WATSON, HENDRICKSON, RIDEWELL



STAHL'S UTILITY BODIES BUILT TO LAST

OVER 50 BODIES IN STOCK



PALFINGER/STELLAR HOOK-LIFTS



BEAU-ROC DUMPS



SWITCH-N-GO HOIST SYSTEMS & INTERCHANGEABLE BODIES

DONOVAN • DONOVAN • DONOVAN • DONOVAN • DONOVAN • DONOVAN • DONOVAN

WWW.SCRANTONGMC.COM

777 TALCOTTVILLE ROAD VERNON, CT • 860-281-6726



NEW 2024 GMC SAVANA. 12' DURACUBE MAX SERVICE BODY WITH LOCKS, BACK UP CAMERA, #R9638, \$59,977



2025 GMC SAVANA 4500 14' DURA CUBE MAX. 6.6L V8, AUTO, 177" WB, #S9347



2026 GMC SIERRA 3500 REGULAR CAB & CHASSIS. 4X4, DRW, 60" CA, #T9565, \$52,777



2025 GMC SIERRA 3500 CREW CAB. 4X4, DRW, 9' READING SERVICE BODY, GAS, #T9367, \$72,777



2025 GMC SAVANA 3500 EXTENDED CARGO VAN. 6.6L V8, CHROME APPEARANCE PACKAGE, #S9276



2026 GMC SIERRA 3500 CREW CAB & CHASSIS. 6.6L, 4X4, DRW, 60" CA, 176.8 WB, #T9606



2026 GMC SAVANA 2500 WORK CARGO VAN. 6.6L V8, POWER PACKAGE, #T9473



2025 GMC SIERRA 3500 HD CREW CAB SERVICE BODY. 4X4, DRW, 6.6L V8 GAS, ALLISON AUTOMATIC, #S9269

MANY OTHER TRUCKS IN STOCK. CALL FOR DETAILS



WWW.SCRANTONGMC.COM



BALLARD

TRUCK CENTERS

(508) 214-3036
drive@ballardtrucks.com



Visit us online at BallardTrucks.com or scan to view our full inventory.



2018 KENWORTH T370
HOOKLIFT
STK#1685
\$77,500



2007 PETERBILT 567
DAY CAB
STK#5105
\$243,500



2025 MACK GRANITE 64FR
GARBAGE TRUCK
STK#7957
\$223,000



2025 KENWORTH T880
GARBAGE TRUCK
STK#1628
\$235,500



2025 HINO L6
DUMP TRUCK
STK#50157
CALL FOR PRICE !



2025 TICO PROSPOTTER
YARD SPOTTER
STK#13513
CALL FOR PRICE !



2016 HINO 195
FLATBED DUMP
STK#1146
\$29,900



2025 VOLVO VHD84B300
CAB & CHASSIS
STK#690100
CALL FOR PRICE !



2020 PETERBILT 567
DUMP TRUCK
STK#78704
\$167,500



2025 KENWORTH T880
GARBAGE TRUCK
STK#6406
\$216,000



2018 KENWORTH T370
HOOKLIFT
STK#1684
\$72,500



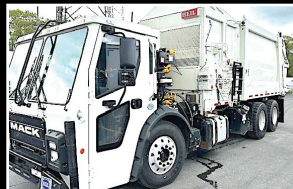
2015 MACK PINNACLE
CXU612
DAY CAB
STK#7599
CALL FOR PRICE !



2019 PETERBILT 348
FLATBED TRUCK
STK#3051
\$112,000



2016 WESTERN STAR 4900
DAY CAB
STK#J1907
\$19,500



2024 MACK LR64R
GARBAGE TRUCK
STK#08553
\$349,900



2025 MACK GRANITE 64FR
DUMP TRUCK
STK#46927
CALL FOR PRICE !



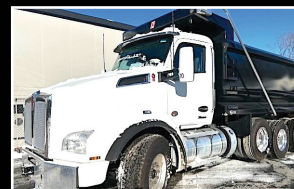
2017 ISUZU NPR XD
REEFER BOX TRUCK
STK#00292
\$32,900



2016 MACK PINNACLE
CXU612
DAY CAB STK#8986
\$14,000



2026 XL SPECIALIZED
XL100HDGS
LOWBOY TRAILER
STK#25555
CALL FOR PRICE !



2025 KENWORTH T880
DUMP TRUCK
STK#7558
\$229,000

WANTED!!! MACK TRUCKS

**CAT, DEERE, BOBCAT EQUIP
IN ANY CONDITION
IMMEDIATE PAYMENT**



CALL JOHNNY MACK

**johnnymack107@gmail.com
HARTFORD, CT 860-883-1186**



2021 CAT 304E HYDRAULIC EXCAVATOR, Extremely Clean Machine, 1,610 Hours, Quick Coupler, Swivel Blade, Thumb, Ready to Work! -**\$54,900** - 781-417-3018



KUBOTA V2203 DIESEL ENGINE. Used, Tested, Good Running, 4 Cylinder, 50 Gross HP Model, Can Be Used To Repower Your Used Equipment, Video Available Of Engine Running With Oil Pressure Gauge And Water, **\$2500.** 860-680-1841

NORTHEASTERN PETROLEUM SERVICE & SUPPLY

617-522-8390 Ext 103 • 51 B St. Bay 2 Hanover, Ma

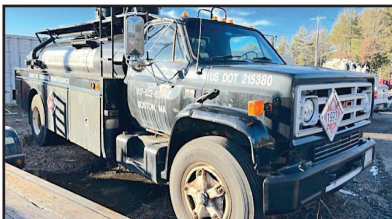
Financing Available - After Hours Call 617-696-1979

**We Are Looking For Newer Tank Trucks To List, Dual Equipped, Tandems & Auto. Trans,
Can Sell From Your Location**

Jerry Mello Cell: 617-799-1461 24/7 Email: jerrym@nepss.com



2004 STERLING LT9500. Almac 4800 Gal Tank (2800 + 2000), New Detroit Engine, 10 Speed, Tandem Axle, 250,000 Miles, Single Wrap, Bottom Load, Vapor Recovery, **\$59,000**



SITE TRUCK. 1985 GMC EXTRA THICK STEEL TANK. Detroit Engine, 5+2 Trans, 1500/500 Gal Compts Testing Top & Bottom All Liquids, 3" Pump, Good Cond. **\$7,500/BO**



MUST TOW

1993 GMC TOPCAT. Trans Tech 2,800 Gal Tank, 10-92 Bikini, CAT 3126, 6 Speed, New Tires, 187,000 Miles, **\$9,000 W/LCR Printer OR \$6,000 W/Out LCR Printer**



HIGHLAND IN STOCK
NEW.1000 Gal 2 Wall Skid Tanks.
10-GA, Other Sizes Available



2002 TANK & PUMP. 5000 Gallon 2 Wall Diesel Tank, 2 Suction Pumps, Excellent Condition, Will Deliver, **\$19,000.** Call 617-799-1461 Braintree, MA Location



2004 KENWORTH. Automatic, CAT 3126, 263k Miles, Boston Steel Co Aluminum Tank, One Compartment, **\$15,000.**



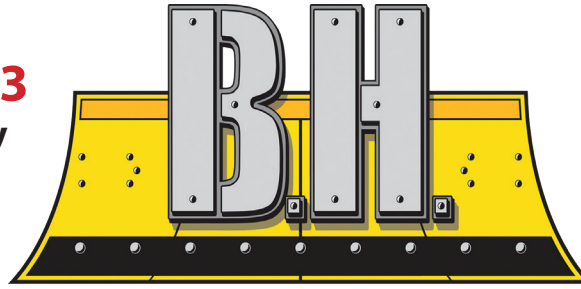
2004 KENWORTH. Automatic, CAT 3126, 169k Miles, Trans Tech Tank, One Compartment, **\$29,000**

SOME TRUCKS AT CUSTOMER LOCATIONS

www.bhtrailersandplows.com

860-949-7863

6 Center Parkway
Plainfield, CT
06374



TRAILERS AND PLOWS

Monday—Friday

8:00 A.M.—5:00 P.M.

Saturday

8:00 A.M.—2:00 P.M.

Closed Sunday



BOSS
PRESEASON
SALE!



LOADS
Of Plows
Have
Arrived!



CM Aluminum Skirted Flat Bed, Gooseneck & Receiver Hitch Built In Starting at \$7,695



CM SK Skirted Flat Bed Gooseneck and Receiver Hitch Built In, Starting at \$6,495



CM Aluminum Tradesman Low Pro Service Body Gooseneck & Receiver Hitch Built In, Starting at \$14,995



CM Steel Tradesman Low Pro Service Body with Gooseneck & Receiver Hitch Built In, Starting at \$10,495



LOAD TRAIL DE14 83 x 14 with Ramps, D-Rings and Tarp Kit 14,000Lb. GVWR, \$9,295



DIAMOND C LPX 208 80 x 20 with Max Ramps, Fork Holders, 14,040Lb. Payload 18,000Lb. GVWR, \$12,895



BIG TEX 14EB 83 x 18 with Stand-Up Ramps, 14,000Lb. GVWR 11,140Lb. Payload, \$5,995



BIG TEX 90SR 6 x 12 with Tarp Kit Ramps, D-Rings 9,990Lb. GVWR, \$8,695



PAT'S TRUCK SALES

Office: 603-347-1386 - After Hrs: 978-490-6197



2021 KENWORTH T880. 6X4 Dump, 151,700 Miles, Paccar 510Hp, Automatic, 15' Body, **\$133,900**



2022 VOLVO VHD. Tri Axle, 16' Body, D11 – 425 HP, Automatic, 80,000 GVW, 76,840 Miles, **\$159,500.**



2016 FREIGHTLINER 114 SD. 12' Dump Body, Detroit 470 HP, 78,450 Miles, Automatic, Pintle & Air, 66K GVW, **\$83,500**



2013 MACK GU813. Tri-Axle Dump, MP7 425 HP, Automatic, 176,550 Miles, 20 Frt, 18 Pusher, 46 Rears, 17' Body, **\$107,500**



2004 IH 5600i. Tri Axle Dump, Cummins ISM 425HP, 8LL, 200,601 Miles, 2019 17' Beau Rock Body, Serviced & State Inspection. **\$68,500.**



2021 PETERBILT 567. 73K Miles, 20 Frt Axle, Steerable 13,500 Pusher, 46 Rears, MX13 510 Hp, Automatic, **\$164,900**



2017 Freightliner 114SD. Tri Axle, 86,000 GVW, Detroit 12.8 DD 470HP, Automatic, 136K Miles, 17' Beau Roc Smooth Side Body, Hendrickson Suspension, **\$139,900.**



2008 IH 7600. 16' Body, 55,800 Miles, Cummins 425 HP, Automatic, 20 Frt, 13,500 Pusher, 46 Rears, Full Lockers, 3 Chutes, **\$97,500**



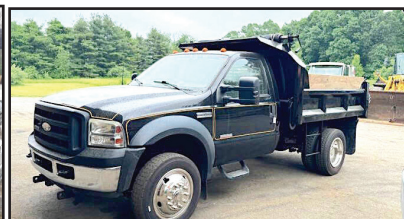
2005 Freightliner M-II. 182,455 Miles, Mercedes 450 Hp, Automatic, 15' Body, Double Frame, **\$81,500.**



2008 FREIGHTLINER M2 TRI AXLE DUMP. 61,255 Original Miles, Mercedes 450 HP, Automatic, 16' Steel OX Body, **\$94,900**



2015 GMC DUMP. 4WD, Diesel, Auto, 73,455 Miles, **\$31,500**



2007 FORD F450 DUMP. 4x4, Diesel, Auto, 104K Miles, **\$13,900**

Visit Us - www.patstrucksales.com • 77 Route 125, Kingston, NH



WRIGHT STANDER—Zero Turn Mower, Please Call for Price, **860-928-5748**



2001 INTERNATIONAL 4900 FUEL DELIVERY TRUCK.
2400 Gallon Aluminum Tank,
232K Miles, DT466, **\$9,500.00**,
Lawrence, MA 603-973-0809



TRANS EAST EQUIPMENT INC,
67 Main St Salisbury, MA
CALL DAVE Cell 978-992-7077 Or 978-462-1919

**EXIT 90 Off Rt 95
End Of Ramp**

You Pick Your Container - Over 175 Units

FAMILY OWNED & OPERATED



Serving New England

20', 40', 45', 48' And 53' CONTAINERS.
One Trip & Used Steel Storage Containers
We Deliver
Call Dave The Owner And Get The Best Deal!

CHECK ALL OUR INVENTORY - WWW.TRANSEASTEQ.COM



**INTERNATIONAL
Taylor & Lloyd Inc.**

SEE OUR INVENTORY: WWW.TAYLORANDLLOYD.COM



**2025
INTERNATIONAL
MV 607. Brand New,
254 WB, Allison
3500 RDS, Cummins
300 HP, Air ride**



**2025
INTERNATIONAL
HV607 SBA CAB &
CHASSIS. Cummins
B6.7 325 HP, Allison
3500, 10K F/A, 23K R
W/Locking Diff,
Call For More Info.**



**2025
INTERNATIONAL
HV507 CAB
& CHASSIS.
Cummins L9 330
HP, Allison Auto,
165" WB, 18K F/A,
30K R/A,
Call For More Info.**

617-429-3370 CALL JACK COAKLEY • 8 Railroad Avenue Bedford, Ma

JP RIVARD Trailer Sales Inc

Call Matt - 508-962-4543
Matt@jprivard.com • JPRivard.com
New Location: 30 Lomar Park Dr., Pepperell, MA

We Now Rent
New 20' Containers
Commercial & Residential
Short Term Or Long Term
Please Inquire

20' TRI-DOOR



(2) New One Trip 20' Tri-Doors. In Stock Now. From \$3,800.

40' HIGH CUBE DOUBLE DOORS



40' High Cube Container, Doors On Each End. Light Gray. From \$5,500

3-6 YEAR OLD USED 20'



(9) Used 3-6 Year Old 20' Containers. In Very Good Condition. Call Before They're Gone.

TWO SIDE DOOR 20'



NEW One Trip, 20" Containers, End Doors, And Two Factory Side Doors

20' 1 TRIP - HIGH OPTIONS



GREEN BACK IN STOCK



FROM \$3,000

(20) New 20' One Trip Containers Beige.

20' & 40' HIGH CUBE



New 20' & 40' High Cube Containers, One Trip. In Stock

40' HIGH CUBE 1 Trip, 4 Side Doors



New 40' High Cube Containers, With 4 Side Doors.

Sales Tax If Applicable + Delivery Is Not Included Unless Noted

JP RIVARD Trailer Sales Inc

Call Matt - 508-962-4543
 Matt@jprivard.com • JPRivard.com
 New Location: 30 Lomar Park Dr., Pepperell, MA

53' ROAD TRAILER \$12,900



(20) 2013
GREAT DANE
 53'x102"x13'6"
DRY VANS.
 Air Ride,
 Aluminum
 Roof, Swing
 Doors.

LIFTGATE SALES & SERVICE



LIFTGATES
 Sales And Service For
 All Major Brands

RENTAL FLATBEDS & STEP DECKS



- NEW & USED 48'X102" Rentals
- Sliding Tandems
- DOT Inspected
- USED 48'X102" Combo Step Deck
- Spread Axle Air Ride

STORAGE TRAILERS

48' & 53' STORAGE ONLY TRAILERS AVAILABLE.
Call Matt

NEW GALVANIZED TRAILERS



2027 DORSEY 48' STEP DECK COMBO. Galvanized, Great Specs. March 2026 Delivery

2027 DORSEY 48' FLATBED. Galvanized, Forklift Kit. March 2026 Delivery

2027 DORSEY 36' FLATBED. Galvanized, Forklift Kit. March 2026 Delivery

BOX TRUCK & TRAILER REPAIR SERVICES

What Do We Service:

- SEMI Trailers – All Types Of Repairs
- Box Trucks – Body, Liftgate & General Repairs
- Landscape Trailers – All Types Of Repairs
- Horse Trailers – All Types Of Repairs
- Fabrication Services
- Full Aluminum/Steel Welding
- PM Maintenance On Trucks & Trailers

We Rebuild Smash Bodies On Box Trucks & Semi Trailers

*** FINANCING & LONG TERM LEASES AVAILABLE

LS Tractor



**MT7101 Tractor/Loader
100HP Power Shuttle
In Stock! Ready For Work!**

**Instant \$8,000 Cash Rebate
OR Financing as Low as 0%!**

SALES • SERVICE • PARTS • FINANCING

FOSKETT
EQUIPMENT INC.
TRACTORS & IMPLEMENTS
Woodstock, Ct

**Route 171
Woodstock, CT
860-928-5748
www.foskettequipment.com**



2007 PETERBILT 335 TANDEM-AXLE DUMP TRUCK,
455,320 Miles, Allison Automatic Transmission, Cummins Diesel,
New Turbo, Runs Great. **\$44,900** -781-417-3018



2011 NEW HOLLAND B95B. 4WD, Extend-A-Hoe,
Excellent Condition, New Batteries, 2336 Hours, Asking
\$34,000. 978-502-8557



1990 WHITE F8000 OIL TRUCK. 10 Speed, Runs
Excellent, Tires In Good Condition, **\$20,000 OBO For Two**
Trucks, For Additional Information, 203-410-2470

508-328-8938

THE TRUCK STORE

**Mon-Fri 8:30-5pm
Saturday 8:30-4pm**



www.TruckStoreSales.com



1700 Broadway - Rte 138 – Raynham, MA • Take Exit 8 Off Rte 495, East Rte 138, On Your Left



**2002 VOLVO HEAVY TRI AXLE
DUMP:465 HP, 8LL, NEW BRAKES,
Excellent Rubber.**



**2000 MACK RD 688SX 14' Dump Body,
350 H.P., Auto., 18F/58R, LOW miles, Very clean.**



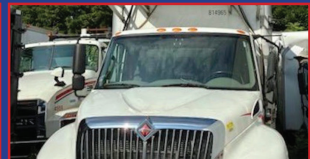
**2015 ISUZU REFER BODY:
186 K Miles, Diesel/Auto.Call.**



**2018 PETE CHASSIS 80K MILES
and 2020 KW CHASSIS 47K MILES
IN STOCK NOW! CALL.**



**2020 HINO HOOK-LIFT, DIESEL,
AUTO, 38K MILES,**



**2019 & 2022 INTERNATIONAL REFER
BODIES: VERY LOW MILES**



**2020 + 2022 HINO REEFER VANS.
DIESEL, AUTO, CALL.**



**2005 MACK GRANITE SPLIT REAR
LOAD RUBBISH BODY 35K Miles.**



**USED 12' to 26' REFER & VAN BODIES
Call with your needs.**



**2017 FREIGHTLINER M-2: CUMMINS
Diesel, Auto, PTO Accept. Will Separate.**



**2022 PETERBILT C/O. Under CDL, 60K
Miles, Auto, Reefer Or Flatbed Available.**



**2022 HINO 268 Flat Bed: Diesel, Automatic.
ONLY 2,000 Miles! Will up fit w/Refer Body
or Van Body. 2 AVAILABLE.**

ALSO AVAILABLE: USED FLATBED BODIES, ROLL OFF BODIES, LATE MODEL ISUZU/HINO 4 CYL DIESEL ENGINES.

Buyer - Seller - Swapper

ORIENTALS HOT ROD CLUB

PRESENTS

28TH NEW ENGLAND HOT ROD HALL OF FAME NATIONALS



TASCA

Racing
Family

Sponsored By

CAR SHOW



RACE

OPEN TO ALL

- HOT RODS
- MUSCLE CARS
- KUSTOMS

OPEN TO

- HOT RODS
- MUSCLE CARS
- KUSTOMS 2001 & OLDER

SUNDAY JULY 12, 2026



NEW ENGLAND DRAGWAY

EXIT 8 ROUTE 101 EPPING N.H.

603-679-8001

GATES OPEN @7:30AM,
RACING STARTS @ 9AM

PRO COMP, Gassers, East Coast Flat Heads, Fun Runs (Run Only),
Junior Dragsters, Motorcycle Masters Competition, Gamblers Race,
Nostalgia Index & Bracket Classes



207-623-4239



HAWK GOOSENECK 2 HORSE TRAILER. Straight Load, Tack Area. \$8,500



2000 STERLING. CAT Diesel, 5+2 Trans, Flatbed. \$7,000



JOHN DEERE 3520 TRACTOR. Loader, 4X4, \$12,000



1998 FORD OIL TRUCK. 2 Compartment, 7 Speed, Cat Engine



1985 FORD L8000 DUMP TRUCK. Tandem Axle, CAT 3208 Turbo, 8LL Trans., Hendrickson Suspension, \$12,000



1990 SULLAIR 750Q. Oil-Flooded Rotary Screw Air Compressor For Heavy Duty Work, CAT Engine, 750 CFM, \$7,500



2012 JOHN DEERE 310SJ BACKHOE. 4X4, Full Cab, Expanda Hoe, Wrist With 3 Buckets, \$38,000



2007 CASE 430 SKID STEER. OROPS, Quick Change Bucket, Auxiliary Hydraulics, \$14,000



1987 FORD L8000 WATER TRUCK. CAT 3208T, 5+2 Speed, Water Tank, Pump, \$7,500



2005 CAT 930G LOADER. Hydraulic Quick Release Bucket, Auxiliary Hydraulics, \$38,000



JOHN DEERE 310A BACKHOE. 2WD, Enclosed Cab, \$8,500



JOHN DEERE 644C LOADER. New Tires, \$24,000

Dick's Used Trucks & Equipment • 146 River Road, Chelsea, Maine

FAMILY OWNED & OPERATED SINCE 1969

HILLSIDE MOTORS

**800-D American Legion Highway (Rt. 177)
Westport, MA 02790
508-636-5050**

Financing Available - Others in Stock



SEE OUR OTHER PAGE – LAST PAGE OF CENTERFOLD – PAGE CF8



\$14,500

2012 FORD F250 4X4 W/8' CM FLATBED. 6.2L V8, Auto, AC, PW, PL, 9900 GVW, 96K, Very Well Kept, Has Bad Cab Mount Bushings, Priced Accordingly, **\$14,500.**, (Also, 2012 Cab & Chassis \$7,900.)



OTHERS AVAILABLE

2020 CHEVY SILVERADO 2500 CREW CAB 8' BED RWD. 6.6L V8, Auto, AC, PW, PL, Bluetooth, Back-Up Camera, 6-Passenger, 99K, One Owner, Fleet Maintained, Excellent Condition, **\$28,800.**



4X4

2022 CHEVY 2500 DOUBLE CAB 4X4 8' DURAMAG ALUMINUM UTILITY. 6.6L Gas, Auto, PW, PL, Back-Up Camera, Bluetooth, 6-Passenger, Rhino Liner, 109K, One Owner, Fleet Maintained, Mint Condition, **\$43,800.** (Others Starting at \$28,800.)



SEVERAL AVAILABLE

2015 CHEVY 3500 CAB & CHASSIS RWD. 6L V8, Auto, AC, Bluetooth, Back-up Camera, 13,200 LB GVW, 84" CA, Rust-Free Southern Truck, Fleet Maintained, **\$16,900.** (Also, 11' Enclosed Utility Body Available for Extra)



ONE TON

2015 FORD F350 SRW 4X4 SERVICE TRUCK W/POWER GATE. Vanair Compressor/Gen Jump Start System, 6.2L V8, Auto, AC, Meticulously Maintained, 113K, Rust-Free Southern Truck, **\$22,800.** Or **\$18,800.** w/o Equipment (2 Available)



9900 LB GVW

2021 CHEVY 3500 SRW 14' CUBE VAN W/SIDE DELIVERY DOOR. 6.6L V8, Auto, AC, PW, PL, Alum. Shelving, Bluetooth, Back-Up Camera, 9900 GVW, Low Pro, One Owner, 51K, Fleet Maintained, **\$32,800.**



OTHERS AVAILABLE

2024 CHEVY 4500 14' BOX W/POWER GATE. 6.6L V8, Auto, PW, PL, Back-Up Camera, Bluetooth, 14,500 GVW, Bal. of Factory Warranty, 43K, Excellent Condition, **\$42,800.** (Will Separate)



47,000 MILES

2021 FORD F450 RWD 12' BOX W/ATTIC & BARN DOORS. 7.3L V8 Gas, Auto, AC, PW, PL, 84" CA, 16,500 GVW, Bluetooth, Camera, 47K, One Owner, **\$45,900.** (Cab & Chassis \$41,900.)

NICK SCARVALAS
Commercial Sales
857-247-9023 or 617-249-5603



Commercial Vehicle Center



2026 F550 DUMP. 7.3L Gas, 4x4, Remote Start, I-Pac Toolbox, F214515. MSRP \$98,990. SAVE \$10,501. **SALE PRICE \$88,489**



2025 F550 DUMP. 9' Aluminum Body, Coal Chute, Remote Start, Diesel, 4x4, F214486. MSRP \$104,990. SAVE \$18,000. **SALE PRICE \$86,990**



2025 F550 DUMP. 7.3L Gas, 4x4, Remote Start, Two Toolboxes, F215009. MSRP \$91,990. SAVE \$16,501. **SALE PRICE \$75,989**



2025 F550 SERVICE. Diesel, 4x4, Remote Start, Cabinet Lights, F214444. MSRP \$107,990. SAVE \$19,001. **SALE PRICE \$88,989**



2026 E450 FRIEGHT VAN. 16' Rockport, 14,500 GVW, E-Trac, LED Rear Flood Light, 7.3L Gas, F213915. MSRP 81,990. SAVE \$13,501. **SALE PRICE \$68,489**



2026 F350 RACK BODY. 7.3L Gas, 4x4, Remote Start, 9' Knapheide, F214387 MSRP \$84,990. SAVE \$10,000. **SALE PRICE \$74,990**

250 COMMERCIAL TRUCKS IN STOCK



2025 T350 UTILITY. Aluminum Body, 3 Bar Ladder Rack, V6 Gas, F214504 MSRP \$89,990. SAVE \$15,000. **SALE PRICE \$74,990**



2025 T250 GENERAL TRADE PACKAGE VAN. Organize Bin Package, V6, Bulkhead W/ Window, F213807. MSRP \$60,350. SAVE \$14,762. **SALE PRICE \$45,588**



2026 T250 CARGO VAN. All Wheel Drive, Mid Roof, Load Area Protection Pkg., F214828. MSRP \$60,455. SAVE \$4,500. **SALE PRICE \$55,995**



2026 E350 HIGH CUBE. 10' Rockport, Pass Thru Door, Poly Lined, 7.3L Gas, F214618. MSRP \$69,990. SAVE \$10,000. **SALE PRICE \$59,990**



2026 F550 DUMP. Diesel, 4x4, Remote Start, Two Toolboxes, F215201. MSRP \$104,990. SAVE \$10,501. **SALE PRICE \$94,489**



2025 F550 SERVICE. Super Cab, Diesel, 4x4, Remote Start, Cabinet Lights, F213003. MSRP \$114,990. SAVE \$22,001. **SALE PRICE \$92,989**

QUIRK FORD
540 Southern Artery (Rt 3A) Quincy, MA
www.quirkford.com • 617-249-5660

Business Financing with NO Co-signer Required

Prices include all available rebates. Rebates include Customer Cash, FMCC Bonus Cash, and Commercial Uplift Bonus Cash. Customer must qualify for rebates. Call for specific details. Prices are subject to change. * In Lieu Of Rebates

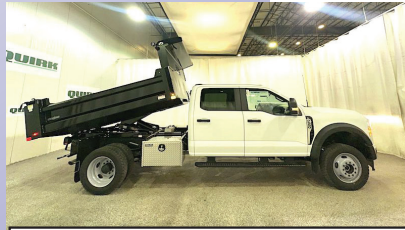
NICK SCARVALAS
Commercial Sales
857-247-9023 or 617-249-5603



Commercial Vehicle Center



2026 F350 SERVICE. Super Cab, 7.3 Gas, 4x4, Aluminum Body, SRW, F214685. MSRP \$84,990. SAVE \$7,001.
SALE PRICE \$77,989



2026 F550 CREW DUMP. 7.3L Gas, 4WD, Tool Box, 9' Body, Pwr Rear Slide Window, Remote Start, Pwr Onboard, F214581. MSRP \$98,990. SAVE \$11,000.
SALE PRICE \$87,990



2026 F450 SERVICE. Crew Cab, 7.3 Gas, 4x4, Steel Body, DRW, Pro Power, F214560. MSRP \$97,990. SAVE \$12,500.
SALE PRICE \$85,490



2026 F550 ROLL OFF. Super Cab, Switch N Go, 7.3L Gas, 4WD, Tool Box, Remote Start, Pwr Onboard, F214579. MSRP \$114,990. SAVE \$11,000.
SALE PRICE \$103,990



2025 F350 DUMP. 7.3 Gas 4x4, Remote Start, Toolbox, F214518. MSRP \$91,990. SAVE \$11,501. **SALE PRICE \$80,489**



2026 F350 DUMP. Super Cab, 4x4, 9' Body, 7.3 Gas, Remote Start, F214521. MSRP \$89,990. SAVE \$12,501.
SALE PRICE \$77,489

250 COMMERCIAL TRUCKS IN STOCK



2026 E350 UTILITY VAN. 12' DuraCube, Central Locking, 50" Door Width, V8 Gas, F214487. MSRP \$89,990. SAVE \$11,501.
SALE PRICE \$78,489



2026 F550 DUMP. Super Cab, 9' Body, 7.3 Gas, Remote Start, Dual Battery & Alternator, 19,500 GVW, F214491 MSRP \$99,990. SAVE \$10,501. **SALE PRICE \$89,489**



2026 F350 XLT DUMP. Heated Frt Seats, Remote Start, V8 Gas, 4X4, Super Cab, Pro Power, F214562. MSRP \$96,990. SAVE 11,501.
SALE PRICE \$85,489



2026 E350 FRIEGHT VAN. 16' Rockport, Galvanized Liftgate, E-Trac, LED Rear Flood Light, 7.3L Gas, F213623. MSRP \$72,990. SAVE \$15,501. **SALE PRICE \$57,489**



2026 T350 CARGO VAN. High Roof, Load Area Protection Pkg., 9500 GVW, F214402. MSRP \$59,280. AVE \$5,400. **SALE PRICE \$53,880**



2026 F550 SERICE. 16' Rockport Body, Platform & Step Bumper, 4 Bar Rack, Roof Ladder, Diesel, F214651. MSRP \$114,990. SAVE \$10,501.
SALE PRICE \$104,489

QUIRK FORD
540 Southern Artery (Rt 3A) Quincy, MA
www.quirkford.com • 617-249-5660

Business Financing with NO Co-signer Required

Prices include all available rebates. Rebates include Customer Cash, FMCC Bonus Cash, and Commercial Uplift Bonus Cash. Customer must qualify for rebates. Call for specific details. Prices are subject to change. * In Lieu Of Rebates



☎ 603-623-3669
 🌐 equipmentsales@tquip.com
 📧 @tquipsalesandrentals
 📍 603 Mammoth Road
 Londonderry, NH 03053

CHECK OUT OUR HUGE, BEAUTIFUL, TERRIFIC WHEEL LOADERS!



2022 KOMATSU WA475-10
 A/C, AUX HYD, 128" JRB BKT, AUTOSHIFT, RIDE CTRL, REAR CAM, 775/66R29 RADIALS, 10,918 HRS



2022 KOMATSU WA475-10
 A/C, 126" 6CY GP BKT, ON-BOARD SCALE, RIDE CTRL, 775/95R29 RADIALS, 5,376 HRS



2021 HITACHI ZW370-6
 A/C, 121" 8.25CY GP BKT, 389HP ISUZU T4F DSL, RIDE CTRL, 29.5R25 RADIALS, ONLY 1 OWNER, 6,790 HRS
\$159,000



2016 KOMATSU WA500-8 A/C, 140" 9CY GP BKT, TIER-4 FINAL, 4-SPD PWRSHFT, RIDE CTRL, ENG TURBO, DIFF LOCK, TRCTN CTRL, 875/65R29 RADIALS, 9,896 HRS
\$145,000



(2) 2020 DEERE 744L
 A/C, AUX HYD, 4CY 4-IN-1 BKT, RIDE CTRL, REAR CAM, 26.5R25 RADIALS, 3,351+ HRS
CALL FOR PRICING



2010 CAT 980H
 A/C, 138" GP BKT, AUTOSHIFT, COMMAND CTRL STEERING, 29.5R25 RADIALS, 16 HRS
CALL FOR PRICING



2022 DEERE 844L
 A/C, 8.5CY GP BKT, AGG HANDLER PKG, PAYLOAD SCALE, JYSTK STR, RIDE CTRL, REAR CAM, 8,241 HRS
\$199,000



2012 DEERE 744K
 A/C, 5CY GP BKT, 26.5R25 RADIALS, 11,976 HRS
\$89,000



2020 CAT 966M A/C, 6CY GP BKT, AUTO LUBE, RIDE CTRL, REAR CAM, 26.5R25 RADIALS, 11,732 HRS
\$129,000



2016 CAT 966M A/C, 6.5CY BKT, JYSTK STR, RIDE CTRL, AUTOLUBE, RIDE CTRL, 26.5R25 RADIALS, 8,746 HRS
\$159,000



2014 CAT 950K A/C, AUX HYD, HYD Q/C, 4.5CY GP BKT, AUTOSHIFT, REAR CAM, 23.5R25 RADIALS, 5,960 HRS
\$59,500

NOTHING IS OUT OF REACH—CALL US FOR FINANCING OPTIONS!



2020 PETERBILT PB348
 4000GAL TANK, 6X4, PX-9 DSL, 6-SPD ALLISON 3000
 RDS-P AUTO TRANS, PWR STR, TANDEM AXLE, 6.17 RATIO,
 11R225 TIRES, 166K MI, 4,336 HRS **\$115,000**

SALES & RENTALS INC.
T-EQUIP
EQUIPMENT
SALES & RENTALS



2015 PETERBILT 367
 10X4, A/C, 485HP PACCAR MX-13 6CYL, ENG BRAKE,
 EF AUTO, STEERABLE AIR LIFT TAG AXLE, DBL FRM,
 HENDRICKSON HAULMAAX, 18'L X 5'H HERITAGE STEEL
 BODY, ELEC ROLL TARP, HI-LIFT TAILGATE, 180K MI
\$99,000



2012 DEERE 300D-II
 30-TON CPTY, A/C, 6X6, DIFF LOCK, HEATED BODY,
 25.5R25 RADIALS, 7,127 HRS
\$129,000



EINGP GF480 20-40 TON/HR ROTARY
 DRUM TROMMEL SCREEN, 4'8"X2'11"
 TROMMEL, 2'21"X4'10" FDR HPR,
 3-PHASE ELEC MOTOR, FORKS POCKETS
CALL FOR PRICING



2020 CAT 725C2
 A/C, ENGINE BRAKE, AIR RIDE SEAT,
 TAILGATE, TRACTION CTRL, REAR CAM,
 23.5R25 RADIALS, 5,908 HRS
\$199,000



2020 DOOSAN DA30
 30-TON CPTY, A/C, TIER-4 DIESEL,
 TAILGATE, AUTO LUBE, AIR RIDE SEAT,
 23.5R25 RADIALS, 5,301 HRS
\$159,500



2011 JCB 300T
 EROPS, A/C, AUX HYD, MNL Q/C,
 84" BKT, 74HP DSL, VERTICAL LIFT,
 18" TRACKS, 3,216 HRS
\$35,000



2018 CAT 313FLGC
 A/C, 9'8" STK, AUX HYD, CAT HYD Q/C,
 36" CAT BKT, CAT HYD THUMB, PTRN
 CHNGR, 24" TG PADS, 2,681 HRS
\$99,000



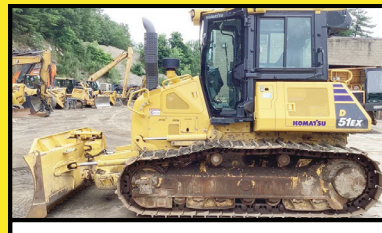
2014 KOMATSU D65EX-17
 A/C, AUX HYD, 11'2" SIGMA SU HYD
 BLADE W/ TILT, 205HP TIER-4 DSL,
 GPS RDT, RIPPER VLV, DRAWBAR,
 26" PADS, 4,105 HRS **\$119,000**



2018 JCB 512-56 12K LB CPTY,
 56' LIFT HT, AUX HYD, MNL Q/C,
 60" FORKS, FRM LVL, OUTRIGGERS,
 14.00-24 TIRES, 7,518 HRS **\$45,000**



2024 CAT 304 A/C, AUX HYD,
 CAT HYD Q/C, 24" BKT, HYD THUMB,
 BLADE, PTRN CHNGR, 16" RBR TRKS,
 143 HRS **\$99,000**



2022 KOMATSU D51EX-24
 A/C, 6-WAY HYD PAT BLADE W/ ADJ
 PITCH, 131HP T4F, HST TRANS W/ ELEC
 CTRL, SNGL PDL, DRAWBAR, PLUS UC,
 22" PADS, 1,148 HRS **\$165,000**

ADDING UNITS TO OUR FLEET DAILY FOR YOUR RENTAL NEEDS

We are cash buyers for quality used trucks and equipment!

BROOKSIDE EQUIPMENT SALES

www.BrooksideEquipment.com

978-249-4600



2019 HITACHI XC120-6: 2,353 Hours, 36" Bucket, A/C, Good U/C, Backup Camera, 4 Cylinder Isuzu Turbo, 105 HP, 28k Lbs, stk#XC106, **\$62,500**



2021 DOOSAN DX180LC-5: 1,477 Hours, 44" Bkt, Hyd Doosan Thumb, 4 Cyl Perkins Turbo, Backup Camera, A/C, Good U/C, stk#XC692, **\$99,500**



2008 HAULOTTE HS5388RT: 2,342 Hours, 52 Ft Rough Terrain Scissor Lift, 4x4, 88" Wide, 2 Cyl Hatz Diesel, Stabilizers, stk#AE118, **\$11,500**



2006 PETERBILT 357: 534,839 Miles, Triaxle, 17 Ft Steel Body, Cat C15 Acert Twin Turbo, 550 HP, Fuller 18 Spd, 18740 F, 13.2k P, 46k R, stk#TK261, **\$87,500**



2016 JOHN DEERE 544K: 9,783 Hours, 3 Yard, Cab W/ A/C, Hydraulic Coupler, 6 Cyl JD Turbo, 29k Lbs, stk#LO608, **\$69,500**



2016 FREIGHTLINER BUSINESS CLASS M2: 267,342 Miles, Cummins ISB6.7, 240 HP, Allison RDS 2500 Auto, 25.5k GVW, IMT 8600-22 Crane, stk#TK761, **\$39,500**



2016 CATERPILLAR CB54B: 4,539 Hours, 67" Smooth Double Drum, Vibratory, Caterpillar C4.4, Water System, Orops, 24k Lbs, stk#CO275, **\$24,500**



2012 CATERPILLAR 966K: 11,138 Hours, 5 Yard, Cab, Hydraulic Fusion Coupler W/ 3rd Valve, Backup Camera, New Tires, 54k Lbs, stk#LO510, **\$93,500**



2015 VOLVO L90H: 12,355 Hours, 3.5 Yard, Cab W/ A/C, Hydraulic Coupler, Ride Control, 6 Cyl Volvo Turbo, Very Good Rubber, 34k Lbs, stk#LO120, **\$67,500**



2003 FREIGHTLINER FL112: 377,047 Miles, 10 Wheel, 13'6" Steel Bibeau Body W/ 3 Chutes, Cat C12, 430 Hp, Fuller 8LL, 18k F, 46k R, Hitch, Spring Suspension, stk#TK065, **\$37,500**



2018 JOHN DEERE 624K-II: 11,553 Hours, 3.5 Yard, Cab W/ A/C, Hydraulic JRB Coupler, Ride Control, Backup Camera, 6 Cyl JD Turbo, 35k Lbs, stk#LO965, **\$69,500**



2019 TRANSCRAFT 554C: 48 Ft Tandem Axle Step Deck Trailer, 38 Ft Lower Deck, 10 Ft Upper Deck, 8'6" Wide, Air Ride, Aluminum Deck, Aluminum Wheels, stk#TR858, **\$32,500**



2019 JOHN DEERE 824K-II: 13,914 Hours, 7'4" Wicker Machine Co. Grapple, Cab W/ A/C, 6 Cyl JD Twin Turbo, 59k Lbs, stk#LO329, **\$69,500**



2006 CATERPILLAR CS-533E: 2,416 Hours, 84" Smooth Single Drum, Drum Drive, Vibratory, Orops, 4 Cylinder Caterpillar Turbo, 24k Lbs, stk#CO425, **\$49,900**



1997 PETERBILT 379: 1,198,223 Miles, 10 Wheel Sleeper, Cat 3406, 475 HP, Fuller 10 Speed, Wetline, Air Ride, 12K Lb Front, 34K Lb Rear, stk#TK946, **\$27,500**



2017 CATERPILLAR 745C: 12,847 Hours, 45 Ton, 6x6, 29.5R25 Good Rubber, 6 Cyl Caterpillar C18 Turbo, 500 HP, stk#HT667, **\$119,500**



2018 CAT 289D: 4,749 Hours, 2660 Lb Lift, Cab W/ A/C, Hydraulic Coupler, Pilot Controls, 2 Speed, 4 Cyl Cat C3.3B Turbo, 10.6K Lbs, stk#SK287, **\$36,500**



2015 GRADALL XL4300-III: 58" Cleanup Bucket, 9 Ft Blade, Mercedes-Benz Engine, 44k Lbs, stk#WX108, **\$39,500**



2004 DAEWOO SOLAR 225LL: 15,169 Hours, Rotating Grapple, 6 Cylinder Turbo, 23 1/2" Pads, 55K Lbs, stk#XC011, **\$37,500**



2015 JOHN DEERE 190G W: 7,583 Hours, 36" Bucket, 8'4" Blade, Hydraulic Coupler, A/C, Backup Camera, Isuzu Turbo, 172 Hp, 45k Lbs, stk#WX012, **\$69,500**

60 STATE RD, PHILLIPSTON, MASS

978-249-4600

EMAIL: KEVIN@BROOKSIDEEQUIPMENT.COM



Low-Rate Financing:
0% / 48 Months **Track Loaders**
0% / 60 Months **Excavators**

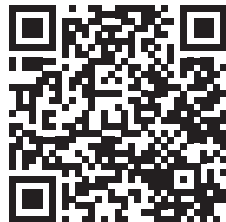


Warranty:
3 Year / 3,000 Hour
Premier Warranty

1 (800) 477-4963

BE UNSTOPPABLE.

SMALL MACHINES, BIG AVAILABILITY.



**Get Takeuchi tough
at Chadwick-BaRoss.**

Takeuchi compact excavators are now available at three additional Chadwick-BaRoss locations. Full lineup. Fully factory trained techs. Full parts availability. Fully unstoppable.

www.chadwick-baross.com

- CT: Oxford - South Windsor**
- MA: Chelmsford**
- ME: Caribou**
- NH: Concord - Lancaster**
- RI: West Warwick**

Authorized Fisher
Snow Plow Dealer



HILLSIDE MOTORS

**800-D American Legion Highway (Rt. 177)
Westport, MA 02790
508-636-5050**

Financing
Available
-Others in Stock

Family Owned & Operated Since 1969



4X4

2022 FORD F250 REG CAB 8' BED 4X4. XL Pkg, 6.2L V8, 6 Speed Auto Trans, PW, PL, Back-Up Camera, Bluetooth, 10,000 LB GVW, 58K, One Owner, Extremely Well Kept, \$38,800., (Others Available Starting at \$10,800.)



RED-LINE PKG

2018 CHEVY 1500 CREW CAB 4X4 Z71 LTZ PKG. RED-LINE EDITION. 5.3L V8, Auto, AC, Leather, Sunroof, Nav, Loaded, Tech Pkg, 108K, Southern Truck, Sharp Truck, \$25,800.



MINT CONDITION

2022 CHEVY C2500 CREW CAB 8' UTILITY. 6.6L V8, Auto, AC, Rear Camera, Bluetooth, 6-Passenger, Southern Truck, 110K, Fleet Maintained, \$33,900. (Other Crew Cabs Utilities Starting at \$11,900.)



2015 CHEVY 3500 4X4 SERVICE TRUCK W/POWER GATE. Vanair Compressor/Gen Jump Start System, 6.0L V8, Auto, AC, Meticulously Maintained, 186K, Rust-Free Southern Truck, \$21,800. Or \$17,400. w/o Equipment



20' BOX

2021 ISUZU NPR HD 20' MORGAN BOX W/ GALVANIZED TUCK-AWAY TAILGATE. 6.6L Gas, Auto, PW, PL, Bluetooth, Backup Camera, 14,500 GVW, 155K, One Owner, Excellent Condition, \$32,800. (Will Separate)



POWER GATE

2015 ISUZU NPR HD. 12' RACK BODY W/ GALVANIZED POWER GATE, 8 Cyl., Auto, AC, 3-Passenger, 14,500 GVW, 155K, One Owner, Fleet Maintained, \$19,800.



12K GVW

2024 MST 40' GOOSENECK TRAILER. Mega Ramps, Wood Deck, FILE PHOTO, Toolbox, LED Lighting, Dual 8,000Lb Axles, 12,000 GVW, Trades Accepted, Financing Available, \$9,500. CASH TALKS



4X4

2019 CHEVY 2500 DOUBLE CAB 8' UTILITY 4X4. 6L V8, Auto, AC, PW, PL, 6-Passenger, 180K, Fleet Maintained, \$19,400., (Will Separate, Others Available Starting at \$11,800.)



Burrillville, RI • 401-633-4587

- Full Bucket Rebuilds • Cylinder Resealing
- Wear Plates • Adapter Replacement • Hardfacing
- General Maintenance



2015 CHEVY 3500 CAB & CHASSIS RWD. 6L V8, Auto, AC, Bluetooth, Back-up Camera, 13,200 LB GVW, 84" CA, Rust-Free Southern Truck, 202K, Fleet Maintained, **\$14,900.**, Westport, MA 508-636-5050



SUNDOWN FLAIL MOWER—FM175 With Hydraulic Offset, Priced to Sell 860-928-5748

FLAT BED BODY. 24 Ft, Custom Built To Haul Pipe, HD Head Board & Cross Stringers, Steel Short Drop In-Sides That Lock Together, Needs A Few Short Boards & Paint, Asking **\$2,500.** Will Load On Trailer, 781-293-7345



1992 INTERNATIONAL. New Engine DT360 Diesel, Running, 5 Speed Manual, Heavy Duty Hydraulic Gate, **\$7,500** For Truck Or **\$5,500** For Engine. 860-424-6282

202

TRUCK & EQUIPMENT
603-899-2000

www.202truck.com
RT 202 Rindge NH
SALES & RENTALS - NO SALES TAX
FINANCING & DELIVERY



2020 KUBOTA KX080. 2700 Hours, Double Aux Hyd., Coupler, Hyd. Thumb, Angle Blade, New 30" Digging Bucket, 17" Trenching Bucket, **\$68,400.**



2003 PETERBILT 378. - CAT C 15 6NZ 435HP (Easily Up Graded To 550 HP), 12K Front, 40K Rears, 4:11 Ratio Low, Air Low Leaf, 10 Speed 195" WB, Single Frame, 6 New Injectors, 10 New Virgin Tires, Cab & Frame Paint Orig., From WY, NO RUST, 350K Miles, 15K ECM Hours, **\$59,000.**



2014 PETERBILT 337. 330K Miles, 6 Spd., 33,000 GVW, Paccar PX6, Clean Truck, Good Tires, New Rack & Form Cage, **\$72,000.**



1998 PETE 378. 3406E, 18 Speed, 14F, 12LA, 46R On Chalmers, 220" WB, 440K Miles, Clean, No Rust, From WY, **\$35,000.**



2008 CAT CS423E. 1,462 Hours, 66" Drum, Runs And Moves Well, **\$44,000.**



2010 MAC TRAILER MFG. 40 Ft Tandem Axle, Not Road Worthy - Front Axle Displaced, 40 Ft, 72" High, Hendrickson, Air Ride, Tandem Axle, Frame-Less, Very Fixable, **\$12,000.**

FOR SALE * MAKE A OFFER * 914-760-0936



GMC GENERATOR TRUCK. Caterpillar Motor, Automatic Transmission, 145 KW Diesel Generator. **\$15,500 OBO**



KABOTA M108. Tiger Boom Mower, Mid Mount, 3000 Hours, Very Good Condition, **\$19,500.**



INTERNATIONAL WATER TANK TRUCK. Factory Built, 6V 53 Detroit Engine, Automatic Transmission, 23,000 Miles, **\$11,000. OBO.**



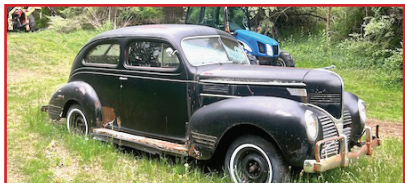
1990 FORD F800 CAB/CHASSIS. All Wheel Drive, Tandem Axle, Ford 7.8L Brazilian Diesel Engine, Automatic, 20 Ft Plus Frame Rail, 10,000 Original Miles, No Rust, **\$13,500.**



2022 TRAIL MAXX 40' GOOSENECK TRAILER. Load Ramps, 14,000 GVW, Very Low Miles, **\$10,200.**



2008 TL100 TRACTOR. 4X4, Three Point Hitch, 6,400 Hours, Runs & Operates, **\$23,500**



1938 DODGE FASTBACK. With Title, No Motor, No Transmission, Build Your Own, Rat Rod, **\$3,250**



1985 INTERNATIONAL S1800. 4WD, 9L Diesel, Automatic, Air Brakes, 6,000 Miles, 14' Van Body, 24,500 GVW, **\$12,500.**



2000 FREIGHTLINER FL50 C&C. CAT 3126 260HP Engine, 16,000 Miles, 14' Original Frame, **\$11,500**



O: 508-363-1889
C: 774-272-5676 or 508-726-8653
LEICESTER, MA

EQUIPMENT RENTALS

SUMMER RENTAL SPECIAL

HYUNDAI HL940TM.
 With Scale,
 Hyd Coupler, Aux Hyd,
 3 Yrd Bucket, 900 Hrs,
 Cummins Engine
Weekly \$2,500
Monthly \$4,950
Buy \$102,000



MANY OTHER PIECES OF CONSTRUCTION EQUIPMENT AVAILABLE!



(203) 752-0213
WWW.EQUIP-SALES.COM
NORTH HAVEN, CT 06473

PARTS ▶ SALES ▶ SERVICE ▶ RENTALS



2015 CATERPILLAR 950M
 OWNED SINCE NEW. Q/C, RIDE CONTROL, BRAND NEW FLOOR/MOLD BOARD. FULL RECORDS AVAILABLE. 11,590 HRS. **\$86,500**



2025 ROCKSTER R1100DS
 BRAND NEW CLOSED CIRCUIT IMPACTOR. CAT ENGINE, CENTRAL GREASE SYSTEM, REMOTE CONTROL, MAGNET, SCREEN BOX, 2 WAY RETURN BELT. RENT OR PURCHASE! CALL FOR MORE INFO



2018 ROCKSTER RTT720A
 TROMMEL SCREENER, PRE EMISSION CAT ENGINE, 20' DRUM. ONLY 1,532 HRS. **\$165,000**



2013 DEERE 700K XLT
 3,800 HRS, ONE OWNER, GPS VALVING, FULL CAB, TIGHT, GOOD BOTTOM. VERIFIED HOURS. **\$76,500**



2022 XCMG XE75U
 KUBOTA DIESEL, PATTERN CHANGER, HYDRAULIC COUPLER & THUMB PLUMBING. 220 HRS, LOADED FULL CAB. **\$61,500**



1999 CEC 4X10
 3,345 HRS. RECENT OVERHAUL, ALL BRAND NEW HOSES, BELT, SCRAPERS. FULL SERVICE, NEW TIRES, BRAKES & LIGHTS ALL WORK. NEW SCREENS, BALL DECK. WORKING DAILY. **\$80,000**



2002 NEW HOLLAND LS180
 SELLING THIS NEW HOLLAND LS180. RUNS AND OPERATES, FOOT PEDAL CONTROL, AUX HYDRAULICS. MISSING FRONT DOOR. LIGHTS AND HEAT WORK. 3,914 HRS. **\$13,500 OBO**

American SEMI REBUILDERS



SPECIALIZING IN FRAME RAIL REPLACEMENTS, TRUCK RESTORATIONS, & REPAIRS



FULLY LICENSED AND INSURED
27 Depot Street, Unit K-2, Center Barnstead, NH 03225 **603-269-0046**

- We Do What it takes to keep you moving
- Quality work done right the first time
- Over 40 Years Experience



2017 HARLEY DAVIDSON CUSTOM ROAD GLIDE SPECIAL. 11K Miles, **\$24,000.** 617-840-8478



2005 STERLING 6 WHEEL DUMP. 36,000 GVW, Mercedes Diesel, Alloy Wheels, Eaton Fuller Road Ranger 8LL Trans, Air Brakes, **\$29,900.** 508-889-2141

ARTICULATING BUCKET,
60". 120-135 Size Machines,
65 Mil Pins,
\$9800.
860-301-5782



2019 PETERBILT 348 HEAVY HAUL DRILL RIG TRUCK. 14,500 Miles, Paccar Diesel, Eaton Fuller 13-Speed, EZ-Bore 90-42 Drill Unit With 100' Kelly Bar, Hydraulic Outriggers, Allison Automatic, Excellent Condition, CARB Compliant, **\$159,000 OBO**
Torrance, CA 310-567-3941



**DRAINAGE ?
GRADE IMPROVEMENTS
BE READY FOR
THE NEXT BIG STORM**

**WASHED STONE
PROCESSED GRAVEL
SAND
TOP SOIL
RIP RAP
FILL**




**Please Call for pricing
401-447-2777**





ALLEGIANCETM
TRUCK CENTERS



www.allegiancetrucks.com

Chris Frissora • 845-392-6522

cfrissora@ascendancetrucks.com



2024 INTERNATIONAL HX DUMP. STK#356149, \$237,345.



2019 INTERNATIONAL HX DUMP. STK#311286, \$134,900.



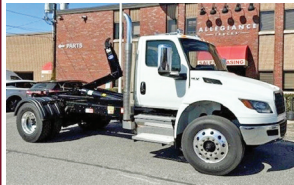
2025 INTERNATIONAL MV PACKER. STK#347155, \$189,900.



2024.FORD F600 UTILITY W/LIFTMOORE CRANE. STK#345199, \$180,075.



2024 INTERNATIONAL HX C&C. STK#329315, \$177,224.



2025 INTERNATIONAL MV HOOK-LIFT. STK#347946, \$144,900.



2023 DENNIS EAGLE PROVIEW C&C. STK#311030, \$134,900.



2025.INTERNATIONAL LT. STK#346981, \$127,214.



2025 INTERNATIONAL LT. STK#346973, \$127,089.



2025 INTERNATIONAL MV 26' VAN. STK#345571, \$124,900.



2025 INTERNATIONAL MV CHIPPER BODY. STK#347773, \$116,631.



2026 INTERNATIONAL MV 26' VAN. STK#347495, \$113,500.



2025 ISUZU FVR VAN. STK#343705, \$113,480.



2025 ISUZU NRR REFRIGERATED VAN. STK#350029, \$111,439.



2007 INTERNATIONAL WORKSTAR 7600 DUMP. STK#346260, \$114,900.



2025 ISUZU NRR GAS CREW CAB11' LANDSCAPE BODY. STK#350024, \$96,564.



2024 ISUZU NRR ROLL-OFF. STK#331044, \$95,645.



2025 INTERNATIONAL CREW CAB 20' VAN. STK#355229, \$90,846.



2025 FORD F650 10' DUMP. STK#344899, \$110,000.



2024 FORD F600 UTILITY. STK#334698, \$81,751.

*Not all brands sold at every location

STONEHAM



617-733-0773



2025 F550 SWITCH N GO. 7.3 Gas, 4WD, Remote Start, Payload Plus, #252750. **\$80,309**



2026 F550 LANDSCAPE. 7.3 Gas, Remote Start, 9' Aluminum Dump Body, 4WD, Crew Cab, #26133. **\$81,200**



2026 F550 DUMP. Diesel, Remote Start, 3-4 Yard Body, 4WD, #26466. **\$88,080**



2026 F550 DUMP. Crew Cab, V8 Gas, 4WD, Remote Start, Payload Plus, #26127. **\$80,195.**



2026 F350 LANDSCAPER. Aluminum Dump Body, 7.3 Gas, 4WD, Remote Start, Dual Battery, #26856. **\$74,348.**



2026 F350 LANDSCAPER. 7.3 Gas, 4WD, Remote Start, Dual Battery, #26882. **\$74,078.**



2026 F350 UTILITY. Super Cab, DRW, Duramag Body, Cabinet Lighting 7.3 Gas, 4WD, Remote Start, #26080. **\$75,775**



2026 F250 SERVICE. Reading Steel Body, V8 Gas, 4WD, Pwr Windows & Locks, Cruise, #26069. **\$55,550.**



2026 F550 LANDSCAPE. 7.3 Gas, Remote Start, 12' Dump Body, 4WD, #26424. **\$80,800**



2026 F550 SERVICE. Super Cab, 7.3 Gas, DRW, Remote Start, Pwr Slid Rear Window, #26424. **\$81,522**



2025 T350 SERVICE. SRW, 11' Aluminum EBY Van Body, 72" Inside Hght, Pwr Outlet 110V, Ladder Racks, #252554. **\$71,920**



2026 E450 FREIGHT HAULER. 14' Morgan Van Body, 7.3 Gas, #26010. **\$60,750**



2026 E350 UTILITY VAN. 12' DuraCube Body, 7.3 Gas, DRW, #26470. **\$68,700**



2026 E350 SERVICE. 12' Rockport Body, 7.3 Gas, SRW, #26524. **\$64,289**



2026 F350 UTILITY. 9' Steel Body, 7.3 Gas, 4WD, Remote Start, Pro Power, #26584. **\$70,187**



Call Bill Pollack 1-617-733-0773
or billpollack@stonehamford.com



STONEHAM



617-733-0773

WORK VAN SALE EVENT – BIG OPTIONS!

ALL WHEEL DRIVE



2026 T250 CARGO VAN. Low Roof, Load Area Protection Pkg, Cruise, AWD. #252368 **\$50,680**



2026 T250 CARGO VAN. Low Roof, RWD, Load Area Protection, #261595. **\$51,670**



2025 T350 HD SERVICE VAN. Polish Aluminum Wheels, Power Outlet, 11' Body, 3 Bar Racks, Ladder to Roof, #252580. **\$75,805**



2026 T350 HIGH ROOF CARGO VAN. All Wheel Drive, Load Area Protection Pkg., #261319. **\$61,595**



2026 T260 CARGO VAN. Medium Roof, Load Area Protection, #26692. **\$54,480**



2026 T350 CARGO VAN. High Roof, RWD, #261315. **\$57,595**

USED TRUCKS SPECIALS



2024 T350 WAGON. 60,616 Miles, 15 Passenger, #24249P. **\$40,490**



2024 T350 HI CUBE. 30 Miles, 3 Bar Ladder Rack, Swing Doors, Plywood Lined, D-Rings, #24152P, **\$50,445**



2024 T350 CARGO VAN. Empty Van W/ Privacy Glass, 76 Miles, #24155P. **\$50,000.**



2023 T250 CARGO VAN. 21,529 Miles, High Roof, V6, 148" WB, 9,070 GVW, #23260P. **Call 617-733-0773**



2024 T250 CARGO VAN. 14,652 Miles, #24098P, **\$33,899.**
Several T250's Available



2025 F250 XLT CREW CAB. Diesel, 4WD, 32,911 Miles, #25040P. **\$59,590.**



Commercial Vehicle Center

www.StonehamFordTrucks.com

211 MAIN ST. STONEHAM, MA 02180

Mon-Fri 8:30am-8pm Sat 9- 5pm Sunday 11-4

ALL PRICES NET & INCLUDE ALL AVAILABLE REBATES TO DEALER

Call Bill Pollack 1-617-733-0773 or billpollack@stonehamford.com



Commercial Vehicle Center

MOBILE DPF & ENGINE CLEANING – DONE RIGHT.


Restore power. Clean the engine.
Improve MPG. Stay on the road.



- ✓ Mobile DPF Cleaning & Forced Regens
- ✓ Hydrogen Engine Carbon Cleaning
- ✓ No Engine Disassembly
- ✓ Power & Fuel Economy Restoration
- ✓ On-Site & Emergency Service.



Norfolk, Massachusetts

 (508) 734-0003

www.soot-rid.com



DIMMICK GROUP PETERBILT
1-800-NEW-PETE
1-800-639-7383



DIMMICK GROUP PETERBILT



2025 TALBERT 55 TON.
 Available In All Our Locations



NEW FELLING FT-60-4LP.
 Bi-Fold Ramp, Tool Boxes, 22.5 Tires,
 Full Air Ride, South Royalton, VT



2027 PETERBILT 589 SLEEPER. Cummins X15 - 565 HP, Eaton-Fuller, #VD827250. So Royalton, VT 802-763-2585



NEW PETERBILT 537 DUMP. PX9 350HP, Allison Automatic, 12' body, Asphalt tarp. # 737134, Champlain, NY 518-298-3835



NEW PETERBILT 536. Jerr-Dan Car Carrier, Wheel Lift, 26,000 GVW, PC7-300HP, Automatic, #D761931, South Royalton, VT



NEW PETERBILT 589. Sleeper Tractor, Cummins 605 HP, #D702724. South Royalton, VT 802-763-2585



NEW PETERBILT 567. Cummins X15-525HP, 18 Speed, 17' Body, #SD761404, Newburgh, NY 845-245-4042



2026 PETERBILT 589. Cummins 500 HP, Allison Automatic, 17'6" Dump Body, Premium Interior, #TD772788, Henrietta, NY 585-321-5250



2027 PETERBILT 589 FLAT TOP SLEEPER. Cummins 565 HP, 60,300 GVW, 5th Wheel, All Polish Aluminum Wheels, #VD827239. Syracuse, NY 315-432-1122



2027 PETERBILT 567 TRACTOR. Cummins 605 HP, Tri Axle, 80,000 GVW, 5th Wheel, All Polish Aluminum Wheels, #VD832902. Utica, NY 315-732-4300



NEW PETERBILT 567. Cummins X15 500HP, 10 Speed, 20' Body, #698575, Henrietta, NY 585-321-5250

Royalton VT 802-763-2585	Colchester VT 802-654-4420	Bow NH 603-225-6666	Albany NY 518-459-1122	Newburgh NY 845-245-4042
Champlain NY 518-298-3835	Owego NY 607-687-1200	Rochester NY 585-321-5250	Syracuse NY 315-432-1122	Utica NY 315-732-4300

NORTHEAST TRAILER



20 Business Park Drive
Smithfield, RI 02917
Hours: M-F 8:30-4:30

401-941-4445



**2015 KALMAR OTTAWA
Yard Tractor, Freshly
Painted, \$22,000**



**70+ CARTAGE TRAILERS
53' Swing or Roll Door
For Sale or Rent**



**2015 UTILITY 53'x 102" x 13'6"
Rfr. Swing Door, Carrier X 7,300
Unit, 17,000 Hours, \$18,500**



**(4) 2023 20' x 8' Refrigerated
Shipping Containers, Tri-Fold
Swing Doors, For Sale or Rent**



**4 EXPORT FLATBEDS
\$3,750 Each**



**20 FOOT CONTAINERS
Starting at \$95.00
Per Month For Rent**



**2009 WABASH 48'x 102" x 13'6"
Refrigerated Trailer, No Reefer Unit
6,600Lb. Maxon Lift Gate, \$9,500**



**2009 GREAT DANE Trailer
53'x 102" x 13'6", Swing Door, Air
Ride, Aluminum Roof, \$7,000**



**2005-2008 53' ROLL DOORS
Aluminum Roof, Spring Ride
\$7,500 Each**



**SPRING AND AIR RIDE
TANDEMS
\$2,500 Spring Ride
\$3,500 Air Ride**



**4,000 GALLON
ABOVE GROUND FUEL TANK
\$5,500**



**(3) 2022 1-Trip High Cube Shipping
Containers, 1 With Single Door-\$8,500
2 With Double Doors-\$9,250 Each**

WWW.NETRAILER.COM

Buyer - Seller - Swapper

RENTAL WITH OPERATOR
PORTABLE JAW CRUSHER AND IMPACT CRUSHER

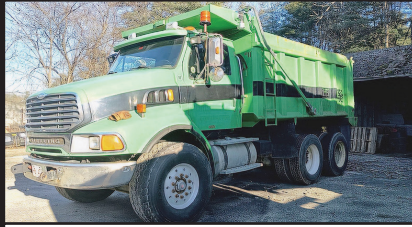


DAY-WEEK-MONTHLY RATES
80' STACKER AND
EXCAVATOR AVAILABLE

NEW ENGLAND
CALL KEN
508-328-0028



THOMAS SKIDSTEER. Diesel, Forks, Snow Bucket, Reg Bucket, Snow Pusher, 2800 Hours, 2nd Owner, 5 Ton Trailer That Needs Work Included, Asking **\$11,500 OBO.** 413-326-0645, No Texts, Calls Only!



2002 STERLING 109500 10-WHEEL DUMP. 209K Miles, CAT C10 350HP, 8 Sp, 445 Tires on 20K Front, 11-24.5 On 52K Rear, 72K GVW, 4:89 Ratio, Full Locking Rears, Dual Steering Boxes, 14' Rugged Dump Body, New Radiator, Pinfle On Rear, 11' Highway Plow, Easily Removable Harness, **\$36,500 OBR.** 508-269-1515

2015 KENWORTH T 800 TRI-AXLE. Heavy Haul Tractor, ISX 15 Motor Has Approx 490K Miles, 2024 18 Sp Fuller D52-19p Automatic, 56K Rears, 2022 20K Pusher Axle, Brand New Crate Motor Installed By Dealership at 210K Miles, All The Bells & Whistles, Headache Rack, All Kinds Of Toolboxes, Excellent Cond. Physically & Mechanically, Well-Maintained, **\$83,500.** 401-639-1114



SAFETY EQUIPMENT



PORTABLE ABRASIVE BLASTERS



AIR COMPRESSORS



ABRASIVES



RAPID PREP

Full Service Provider of Equipment, Supplies and Consumables

NATIONWIDE EQUIPMENT RENTALS, SALES & SERVICE

North Kingstown, RI
 Suffolk, VA • Suwanee, GA
 El Cajon, CA • Lakewood, WA

877.529.2124 / rapidprep.com

RUST NEVER SLEEPS

WE TAKE ANYTHING IN TRADE *Jolly John's* **FINANCING AVAILABLE**
 Find us on: **Truck & Equipment**
 facebook

WE PAY CASH FOR YOUR TRUCKS & EQUIPMENT



2022 CATERPILLAR 246D3 SKID STEER. CAT C3.3 4 CYL TURBO DIESEL, HEAT, A/C, REARVIEW CAMERA, HIGH FLOW XPS AUX HYD, AUX ELEC CONNECTOR, HYD COUPLER, GP BUCKET, METER READS 2929 HOURS, **\$39,700**



2000 PETERBILT 330 S/A DUMP TRUCK, One Owner, Works As Good As It Looks, Cat 3126, 8 Speed, 33,000 GVW, Pintle, Air To Rear, 11' Steel Dump, 2 Way Gate, Hyd Load Cover, Meter Reads 148K, **\$49,000**



2017 BOBCAT S650 SKID STEER. 4 CYL BOBCAT TURBO DIESEL, HEAT, A/C, KEYLESS START, SELECTABLE JOYSTICK CONTROLS, HIGH FLOW AUX HYD, HYD COUPLER, GP BUCKET WITH BOCE, METER READS 1935 HOURS, S/N ALJ820261 **\$36,500**

FINANCING AVAILABLE



COMING SOON !!!!! 2018 MACK PINNACLE CXU-414C TRACTOR, Mack MP8-415C 6 Cyl Turbo Diesel, 415 HP, Wet Line, Air Ride, Meter Reads 279,443 Miles, **\$39,900**



2020 HINO 195 REEFER. Hino J05E-TP 5.1L Diesel, 210 HP, Auto, Thermo King T-880R Whisper Reefer, Kidron 16' x 96" x 78" Body, Liftgate, Professionally Maintained Fleet Vehicle, Recently Serviced, Ready To Work. **\$35,900**



2013 CHEVROLET C2500 SILVERADO. Fleet Owned & Serviced, 6.0L V8, Strobe Lights, Brandfx 8' Service Body Lots Of Storage Space & Rust Free. **\$15,900**



COMING SOON!!! 2013 FORD F750XL S/A DUMP TRUCK, Cummins ISB 6.7L, 240 HP, 6 Speed, 33,000 GVW, Pintle, Air To Rear, 11' Steel Dump, Load Cover, Meter Reads 72,441 Miles, Call For Price



2016 TEREX R265T SKID STEER. 4 Cyl Cummins, Heat & A/C, 2 Speed Travel, Aux Hyd, Aux Electrical Connector, Hyd Coupler, GP Bucket w/BOCE, Freshly Serviced, New Tracks, **\$24,900**



2012 KENWORTH T470 T/A DUMP TRUCK, Paccar PX-8, 8.3L Diesel, 330 HP, Eaton Fuller 8LL Manual Trans, 18K & 46K, PTO, Brandon 14' Steel Body, Just Serviced & Ready To Work. **\$62,900**



2018 LAY-MOR SM-450 Enclosed Cab, Air Conditioner, 96" Broom, Water System, Kubota V3307-CR-TI-EF02 4 Cyl 54.6 kW 3.3L Diesel Engine, Freshly Serviced, Ready To Work, **\$29,500**



2012 GENIE S45 TELESCOPIC BOOM LIFT. 45' Max Lift Height, 2,840 Hours, 4 x 4, **\$22,900**



2007 FORD F450XL FLATBED, V8 Diesel Engine, 15' x 96" Bed, Liftgate, Aluminum Tool Boxes, Power Windows And Locks, Freshly Serviced. **\$9,900**



2015 CHEVROLET 3500 HD UTILITY BODY. 6.0L V8 Gas, Power Inverter, Air Compressor, Generator, Meter Reads 94,093, Body Is In Top Condition, Full Power, **\$19,900**

Call Nick 860-861-1326 or Mike 860-861-4199
www.jollyjohnsequipment.com



2020 PETERBILT 567 TRI-AXLE DUMP TRUCK, One Owner Truck, 302K Miles, Allison Automatic Transmission, Paccar Engine, Rear Tires 90%, Front and Tag Tires 50%, New Rear Brakes, Fronts at 50%, 20K Front, 46K Rears, Ready to Work! - **\$139,000** -781-417-3018



2014 FORD E-350 REFRIGERATED VAN. Factory Installed Thermo King Refrigerator Unit, Insulated Cargo Area, 60,800 Miles, One Owner, Great Condition, **\$21,999**. Norwalk, CT 203-981-4202



Powerglide Air Test Kit Complete Powerglide Pro Tree Transbrake \$279.95 TH400 Deep Cast Aluminum Pan TH400 Billet Direct Drum Spring Retainer & Aluminum Modulator/Solenoid Hold Down Powerglide Overhaul Kit



Powerglide Deep Oil Pan Powerglide Reverse Spring Retainer Tool Powerglide Bushing Driver Set Do-it-yourself Powerglide Pro Tree Transbrake Kit \$164.95 1.80 Long Powerglide Gear Set

1-800-394-5889
179 Belvedere Road
Gilsum, NH 03448

WWW.TSR-RACING.COM

Powerglide Handbook written by Carl H. Munroe \$21.95

Powerglide Vent Tanks



2006 KENWORTH T-800 TRIAXLE: C-13 Cat, Allison Auto, (Single Turbo) Fresh Rebuilt 0 Miles, All New Brakes & Drums, New 16' Dump Body, Never Had A Load In It! Hi-Lift Gate, 11x24.5 Drive Tires, Flote Tires On Front @ 85%, 20,000 F/46,000r, 13,500 Lift Axle, Steerable. Too Much Stuff To List! New Paint, **\$135,000. Trades Accepted.** Seekonk, MA 508-336-6215



2006 GMC 4x4. Diesel, New Auto Trans W/ 5 Yr Transf Warranty, New Lines & Cooler, 80% Rubber, 11' Closed Utility Body, Good Cmpmts, Clean, 9' Fisher P/A Plow W Good Edge, Whelen Strobes, Heavy Sprung Rear, Good Paint, Work Ready, HD Ladder Racking Sys, No Rot, Still In Service, Asking **\$23,500 Negotiable.** 781-293-7345

CT AXLE & SPINDLE REPAIR

CT Axle & Spindle Repair Ellington, CT 06029

860-281-4454 or 860-375-6045



DRIVESHAFT SERVICE NOW AVAILABLE



TRAILER SPINDLE REPLACEMENT WELDED IN PLACE



TRUCK DRIVE SPINDLE REPLACEMENT WELDED IN PLACE



• Drive Spindles From 1 Ton To Class 8 Trucks • Trailer Spindles From 3,500# To Class 8 Axles
Spindles can also be repaired by welding up the worn area and then remachining to factory spec.
This includes tracing threads or remachining new threads.
WELDING AND FABRICATION ALSO AVAILABLE

A Completely Mobile Spindle Repair System. We Come To You! Serving CT, MA, RI & the Northeast
Visit Our Website At: ctaxleservice.com

ALL MAKES

EQUIPMENT & PARTS

CONTACT

ROLAND CARTER 603-340-6776 • ANDOVER NH 03216

**EQUIPMENT SALES
EQUIPMENT PARTS
EQUIPMENT
ATTACHMENTS
FINANCING AVAILABLE**



**New & Used
Buckets &
Attachments.**



Rebuilt & Good Used Engines.



**New Undercarriage.
Free Undercarriage Inspection.**



**Equipment
Hydraulic
Parts.**



**Salvage
Equipment
Parts.**

info@allmakesequipmentandparts.com • www.amepinc.com



2019 FORD F650. Diesel, Bought Leftover 2021, 9,800 Miles, Byers Sander, **\$68,000 OBO.** 978-501-0628



1926 FORD MODEL TT.
One-Ton Truck, Original Ford Cab And Bed, 2-Year Nut And Bolt Ground-Up Restoration, Photos Available Upon Request, **\$32,900 Firm.**
603-934-2270

THE TRAILER DEPOT

203-234-7788
1037 Middletown Ave. (Rt. 17)
Northford, CT

WESTERN
SNOW PLOWS



SURE-TRAC PRO SERIES 15.4K TELESCOPIC DUMP TRAILER. 7' x 14', 24" Rigid Side Walls, Slipper Spring Suspension, #454380



CAM SUPERLINE 15.4K TELESCOPIC BEAST DUMP TRAILER. 7' x 16' x 4' High Sides, Dual Telescopic Power Up/ Gravity Down Cylinder, #546667



RE-TRAC 25.9K HEAVY DUTY LOW PROFILE DECKOVER GOOSENECK. 8'6" x 30', 5' Self Cleaning Beavertail, Cross-Trac Bracing, #487238



LIBERTY 17.5K SPLIT DECK I-BEAM TILT TRAILER. 6' 11" x 22', 8" I-Beam Frame & Tongue, Treated Pine Floor, #051773



CM TRUCK BEDS STARTING @ \$4,500



BEHNKE 14K CHANNEL SKIDLOADER TRAILER. 6' 11" x 16', Dexter Spring Suspension, LED Flush Mount Lights, #073199

www.thetrailerdepot.com

We'll Hook You Up
WE DO FEDERAL INSPECTIONS!



NATIONWIDE TRUCK PARTS LLC

1-800-457-8826

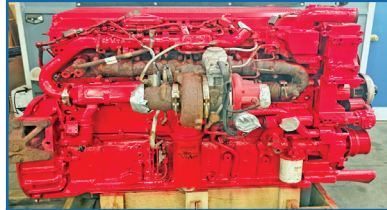
www.NationwideHeavyTruckParts.com

sales@nationwideheavytruckparts.com

11 S. Keyser Avenue - Taylor, PA 18517

**QUALITY USED HEAVY TRUCK PARTS, USED DIESEL ENGINES,
TRANSMISSIONS & MORE.**

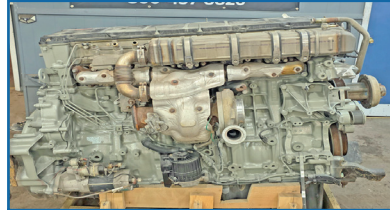
All Parts Tested & Sold With A Standard Warranty. Large Inventory - Call With Your Needs.



2014 ISX15 \$13,000



2012 Detroit DD15 \$12,000



2019 Detroit DD15 \$12,500



DT12 Transmissions \$3,500



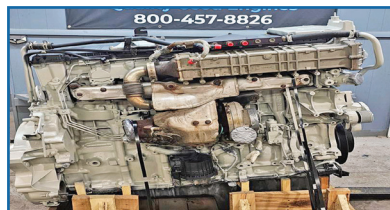
2013 Volvo D13 \$9,000



2012 Mack MP8 \$10,500



2012 ISX15 \$12,000



2015 Detroit DD13 \$12,000



2019 Cummins X15 \$16,500



2018 Paccar MX13 \$16,500



Late Model Rears



FRO Transmissions \$1,000



2009 Cummins ISX \$9,500



2012 Detroit DD13 \$12,500



MCGOVERN
FORD AT DRUM HILL

Call Mike Smokler 603-493-6561



2026 F550 SUPER CAB DUMP. Pwr Slide Rear Window, Remote Start, Payload Upgrade Pkg., 4WD, Diesel, FN6549 **\$94,575**



2026 F600 HOOKLIFT. Switch N Go, Diesel, 4X4, Pro Power, Remote Start, FN7039 **\$114,745.**



2024 E450 SERVICE. 12' Rockport Body, Rear LED Work Light, 3 Bar Rack, Pass Thru Door, 7.3L Gas, FN6897. **\$63,450**

OVER 75 SUPER DUTIES IN STOCK - COLORS AND CONFIGURATIONS



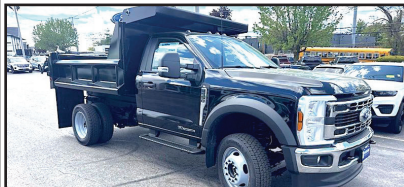
F350, F450, & F550 CHASSIS AVAILABLE



2026 T250 CARGO VAN. All Wheel Drive, V6 Gas, Low Roof, 130" WB, FN6721, **\$52,459**



2026 F350 UTILITY. Super Cab, Diesel, 4X4, Polish Aluminum Wheels, Remote Start FN6763. **\$98,260**



2026 F550 DUMP. 4WD, Diesel, Remote Start, #FN7209 **\$89,994**



2026 F450 SUPER CAB DUMP. 9' Stainless Steel Body, Diesel, 4WD, Work Surface, Dual Alternator, FN6576. **\$94,650**



2026 T250 CARGO VAN. Medium Roof, Ranger Shelving, PW, PL, FN6818. **\$54,900**



2026 F350 LANDSCAPER. 7.3L Gas, 9'5" Dump Body, 4WD, Tool Box FN6764 **\$78,665**



2026 F350 DUMP. Super Cab, 4X4, 7.3L Gas, Remote Start, 9' Body, 2-3 Yd, FN6520. **\$78,870**



2026 F550 SUPER CAB UTILITY. 7.3 Gas, 4WD, 9' Aluminum Body, Remote Start, #FN6964 **\$90,995**



2026 E350 SERVICE VAN. 7.3L Gas, 11'3" Aluminum Body, 50.5" Rear Door Opening, FN7100 **\$75,497**



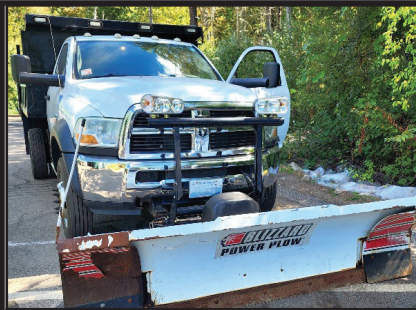
2026 T250 CARGO VAN. Medium Roof, Empty Cargo Vans In Stock, **Call Mike 603-493-6561**



2026 T250 CARGO VAN. Weatherguard Bin Package, Medium Roof, **\$55,895**



MichaelSmokler@mcgovernauto.com



2011 DODGE 5500. 4x4, 12K Miles, Original Owner, Fleet Maintained, Cummins, Automatic, 8/10 Expandable P/A Plow, 2.5 Yard Stainless Steel Electric Sander, Electric Cover, Winter Is Coming, This Is A Money Making Truck, **\$55,000.** West Warwick, RI 401-523-6116



Custom Gates Hydraulic Hose Assemblies & Fittings

Full Truck Service, Maintenance & Repair

All Makes & Models
Over 20 Years Experience Specializing In Mack's
Marshall Cefole - **978-467-7993**
Randy Rameau - **978-423-2889**
10 Gardner Road, Winchendon MA 01475



Tight Link Fence Co.

Residential ~ Commercial ~ Industrial
Mark Dillon
774-365-0222

2013 HARLEY DAVIDSON FLHTK ULTRA CLASSIC LIMITED. 17,833 Miles, Excellent Condition, Heated Hand Grips, Toe/Heel Shift, LED Lighting, Backrest, And More, **\$11,000.** Moultonborough, NH 603-273-2243



BEAM TRUCK & BODY INC.

433 CUMBERLAND HILL ROAD, WOONSOCKET, RI 02895

401-767-2639

NEW - USED & RECONDITIONED DISPOSAL EQUIPMENT



2004 KENWORTH T800:
396,914 MILES, AMERICAN 75,000#
ROLL-OFF, CAT C12 W/ FULLER 8LL, 60,000#
GVW CALL FOR MORE DETAILS !

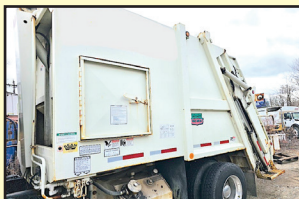
IN STOCK READY TO INSTALL
NEW EQUIPMENT
* HAD-185-120-36/54"
* T40S AMERICAN PALFINGER
* 20' BOX WITH WALTCO LIFT-GATE 2500LBS. \$6,000



2000 INTERNATIONAL WITH 2023 AMERICAN / PALFINGER 250S HOOK-LIFT WITH VERY LOW MILES ! \$50,000



2010 INTERNATIONAL 7400:
42,000 MILES W/ HEIL 22 YD. AUTOMATED PACKER. **\$60,000** WILL SPLIT.



GOOD USED 2020 PAKMOR 16 YARD REAR LOADER. HAS REEVING SYSTEM, CANNOT GO ON AN UNDER CDL CHASSIS, 33K OR GREATER.



20 YARD CURBTENDER GOOD USED 2017 UNIT.

STELLAR NXT18L HOOK LIFTS IN STOCK !
NEEDS 120" TO 130" CA. DOES 10' TO 14' CONTAINERS.
36" / 54" MANUALLY ADJUSTABLE HOOK HEIGHT. PERFECT FOR F-600'S

WWW.BEAMTRUCK.NET



CONSTRUCTION INC.

Cherry Hill Construction Co., Inc
51 Ciro Road – North Branford,
CT 203-488-7929

www.CHERRYHILLEQUIPMENT.com



2006 CAT 325D, 24,000 Hours, Q/C, Aux Hydraulics, Good Bottom. **Asking \$50,000**



2025 KENWORTH T880 TRI AXLE DUMP, 510 HP Paccar MX-13, Allison 4500 RDS A/T, 46K Rears, 20K Front, 21K Fixed Tag, 16' Logan Dump, Odometer Reading 13,114 Miles, **Asking \$228,000**



2006 CAT 966H. Long Reach Arms, Large Bucket. **Asking \$59,000**



1984 CAT 966D, 8854 Hours, Aux Hydraulics, Side Dump Bucket. **Asking \$37,000**



2005 FREIGHTLINER BUSINESS CLASS M2, 124,000 Miles, **Asking \$15,000**



1998 MACK RD 688SX 10 Wheel Dump Truck, 123K Miles, Automatic, Mack E7-350, **Asking \$28,000**



2014 CAT CT660S LUBE TRUCK, 216,900 Miles, 2000 Gallon Fuel Tank, **Asking \$50,000**



1995 HOGZILLA TC1464P. Tub Grinder, 1,751 Hours, **Asking \$105,000**



1999 JOHN DEERE 200 LC. 14,586 Hours, **Asking \$29,000**



**1993 MACK MS200
FLATBED.** Renault Diesel,
Automatic, Air Brakes, **\$6500.,**
Lawrence, MA
603-973-0809



AREA HYDRAULICS



810 Quaker Hwy. Uxbridge, MA

508-278-6670



Cylinder Resealing

We Make Hose Assemblies

After Hours Service Available!



**20' 6-BAY
ALUMINUM
LOW PROFILE VAN BODY.**
6 Roll-Up Overhead Doors,
LED Light Package,
Pristine Condition, **\$8,900.**
Cash Talks, Westport, MA
508-636-5050



**JOHN DEERE
410K.**
Tilt-Rotating Bucket,
4X4, Extendahoe,
Rear Coupler,
Auxiliary Hydraulics,
Working Lights,
Radio, Ride Controls,
Heat, A/C, 9000
Hours, Machine
Is Work Ready,
\$35,000.
774-301-4240

TOREKU TRACTOR & EQUIPMENT INC.



4 Littleton Rd, Rt2A & 110, Ayer, MA • 978-772-6619



**2026 KUBOTA
MX 5400 HSTC
TRACTOR/
LOADER.** Factory
Cab, Special In
Stock Unit, \$55,000.
- \$4,500. Rebate,
4.99% APR Finance
Available.
\$50,500 *



**2010 MASSEY
FERGUSON 1635.**
DL120 Loader, Skid
Steer Quick Attach
Bucket, 35Hp,
Hydro, Single Rear
Remote, Factory
Cab, 720 Hours,
\$22,500



**2015 KUBOTA
B2650 TRACTOR/
LOADER.**
Cab, No Doors,
60" Quick Coupler
Bucket, Choice Of
AG Tires Or R4
Tires,
\$20,500



**2026 KUBOTA
RTV X4.**
Four Seat Capacity,
Hydraulic Premium
Dump Bed, Fold
Down Bed Sides,
Alloy Sport Wheels,
\$24,149.

VISIT US AT WWW.TOREKU.COM

WWW.TRUCKANDEQUIPMENTPOST.COM

CT • RI • MA • NY

**CALL IAN OR JIM
800-229-9421**



**100 YARD
STEEL DUMP TRAILERS**

**WE WILL SAVE YOU MONEY ...
AND PUT A SMILE ON YOUR FACE!**

**STUMP & BRUSH
TRANSPORTATION & DISPOSAL
\$1800/LOAD**

**DEMOLITION DEBRIS
TRANSPORTATION & DISPOSAL
\$2750/LOAD**

**SAME DAY DISPATCH
TOP \$\$ PAID FOR YOUR
SCRAP STEEL, COPPER, & ALUMINUM!!!**



2008 FORD F-450 CRANE TRUCK. 6.4L, Good Condition, Selling As Is, Crane Does Not Work (Only Solenoid?). Looking For **\$8,500 OBO.**
603-464-5447



2007 MACK CH613. 460 HP, 18 Speed, 46 Rears, Wet Line, **\$27,500.,**
Lawrence, MA
603-973-0809



Jukonski Truck Sales



WWW.TRUCKSELLERS.COM *se habla español* 

680 NEWFIELD ST. (RT 3) MIDDLETOWN, CONN • **800-378-0342** • MON-FRI 9-5

DON'T MISS OUT: YOUR IDEAL TRUCK AWAITS!

 <p>2022 HINO S5 20' Reefer, Liftgate, Thermo King Reefer, Diesel, Auto, 83K Miles, 17,950 GVWR, #T-N7901681, \$47,900</p>	 <p>2026 BRAND NEW HINO L6, Diesel, 25,950 GVWR, 26' Box, 2 AVAILABLE (One Has Liftgate).</p>	 <p>2018 FREIGHTLINER M2 24' Box w/ Liftgate, 6.7L Cummins, Allison, 115K Miles, 33K GVWR, #T-JDJK0822, \$29,900</p>	 <p>2024 INTERNATIONAL MV607 Wood Chipper Truck, B6.7, Allison RDS, Crew Cab, 5K Miles, 25,999 GVWR, #T-RS00323, \$129,000</p>
 <p>2022 ISUZU NRR DC 14' Dump, L96 GM Gas, Auto, 50K Miles, 19,500 GVWR, #T-NSR01252 \$64,900</p>	 <p>2019 ISUZU NRR 16' Box, Liftgate, Diesel, Auto, 80K Miles, 19,500 GVWR, #T-K7304725, \$39,900</p>	 <p>2021 CHEVROLET 4500 14' Stake Bed, V8 Gas, Auto, 70K Miles, 14,500 GVWR, #T-MS200188, \$31,900</p>	 <p>2022 ISUZU NQR DC. 14' Dump, L96 GM Gas, Auto, 70K Miles, 17,950 GVWR, #T-NSR01171, \$64,900</p>

90 DAY POWERTRAIN WARRANTY AVAILABLE ON ALL CERTIFIED TRUCKS. INCLUDES INJECTORS AND TURBO



WICKED BIG

ENTERTAINMENT GROUP

PRESENTS

Wicked Big

CAR & TRUCK NATIONALS



CAR SHOW

- DRIFTING
- STUNT SHOW • MOBILE DYNO
- FOOD TRUCKS • ONSITE CAMPING
- CAR AUDIO • OEM DISPLAYS
- RAFFLES

TRUCK SHOW

- SHOW CARS • BURNOUTS
- VENDORS • SHOW TRUCKS & SO MUCH MORE

BURNOUT NATIONALS

JUNE 27-28, 2026



NEW HAMPSHIRE
MOTOR SPEEDWAY



SPEEDWAY
CHILDREN'S
CHARITIES

ADMISSION

\$30 WEEKEND PASS \$20 DAY

SPECTATORS

\$15 WEEKEND PASS \$10 DAY

WICKEDBIGENTERTAINMENTGROUP.COM

FOR MORE INFORMATION PLEASE CONTACT
INFO@WICKEDBIGCARSHOW.COM

COLONIAL WEST

COLONIAL-WEST CHEVROLET OF FITCHBURG

HAPPY 250TH ANNIVERSARY, AMERICA!



**WE SALUTE
OUR ARMED
FORCES &
VETERANS!**



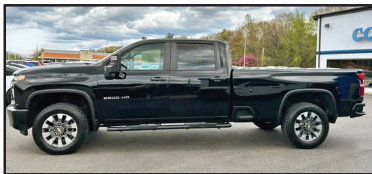
**2022 CHEVY EXPRESS 2500
CARGO VAN.** V6, Auto, Rear
Camera, WiFi, One Owner, 67K
Miles, stk#W26354A, **\$23,500.**



**2026 CHEVROLET
SILVERADO 3500HD DUMP
4WD.** 6.6L V8, Auto, Nav.,
#W26808, MSRP \$69,953.,
Buy For \$63,975.



**2026 CHEVROLET
SILVERADO 3500HD CREW
CAB DUMP.** 4WD 6.6L V8, Auto,
Nav., #W26834, MSRP \$77,953.,
Buy For \$69,975.



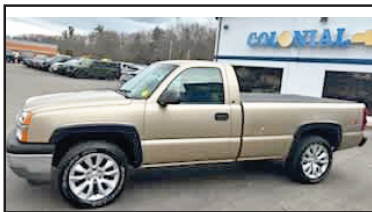
**2022 CHEVROLET
SILVERADO 2500 HD CREW
CAB LONGBED 4WD.** 6.6L
V8, Auto, Bluetooth, 48K Miles,
stk#W26781A, **\$43,500.**



**2025 CHEVROLET 2500
EXPRESS CARGO VAN.** V6,
Adrian Steel Bin Pkg., 1 Left With
A Free Bin Pkg A \$6,500 Value,
\$39,999.



SAVE \$6,947.
**2025 CHEVROLET EXPRESS
WITH 10 FT DURA CUBE
BOX.** #w25568, Original MSRP
\$71,724., **Buy For \$64,777.**



**2005 CHEVROLET 1500
SILVERADO 4X4.** 5.3L 8 cyl.,
Auto, AC, Alloys, Low Miles,
stk#W25755A, **\$16,000.**



BRAND NEW
**BRAND NEW 2024 CHEVROLET
EXPRESS CUTWAY 3500 KUV.** 6.6L Gas,
Remote Start, Rear Camera, #W24563,
Buy For \$56,975



**2026 CHEVROLET
SILVERADO 3500 HD I-PACK
DUMP 4X4.** 6.6L Gas, Nav,
Wi-Fi, Toolboxes, #W26766,
\$69,900.

314 John Fitch Hwy • Fitchburg, Ma 978-342-8713 www.Colonial-West.com

Disclosure: all prices include every applicable rebate, lease loyalty, comp lease, com rebate, finance with dealer, tax, title, and dealer fees extra, not responsible for typographical errors, prices subject to change without notice.



Fowler's Auto Wrecking Inc.

Belltown Recycling Center



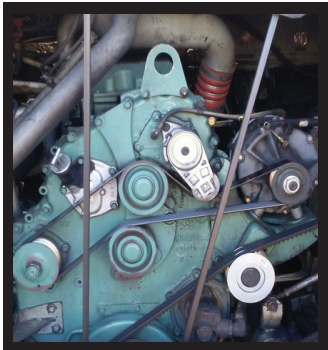
860-267-7140 • 24 Old Coach Rd East Hampton, CT

Detroit Series 60 12.7L Engines

EGR DDEC-IV
NON-EGR DDEC-IV
Good Running Take Out Engines
Recent Remanufactured Engines
Core Engines
Engine Accessories
6 Month & 1 Year Warranties Available
Call Today For Pricing



CALL: 860-267-7140



Complete Coaches For Parts

- MCI, Vanhool, and Prevost Buses For Parts
- Compressors, Condenser & Evaporator Motors
- Wheels, Tires, Suspension & Brake Parts
- Electrical Parts, Interior & Exterior Lighting
- Tag Axles & Drive Axles
- Compartment, Service, and Entrance Doors
- Fiberglass Body Panels & Glass
- Complete Electric Wiper Conversion Kits
- Radiators, Intercoolers, and Condensers
- Standard 6 Month Warranty On All Parts



Buses Are Not Intended For Resale - Salvage Titles



Allison B500 Transmissions

- Allison B500 With or Without Retarders
- Good Running Take Outs
- Recent Remanufactured Units 
- Core Transmissions
- Allison Shift Pad Selectors
- Allison TCM (Transmission Control Modules)
- Standard 6 Month Warranty
- Call Today For Pricing

CALL: 860-267-7140



2004 INTERNATIONAL 4300 TOW TRUCK.
DT466 W/ 6 Speed Eaton, 282K Miles, 33K GVWR With Wheel Lift, Ready For Work **\$24,000.**



2026 FORD TRANSIT-350 READING SERVICE UTILITY VAN. V6, AUTO, POWER GROUP, STK#FM10149, \$82,900



NEW 2024 FORD E450 ROCKPORT SERVICE UTILITY VAN. V8, AUTO, AC, 14,500 GVW, STK#FM9969, \$68,030.



2026 FORD F550 SD XL AIR-FLO DUMP 4X4. V8, AUTO, AC, 18K GVW, POWER GRP, STK#FM10423, \$101,165.



2026 FORD F350 SD XL SUPER CAB LANDSCAPE DUMP 4X4. V8, AUTO, 14K GVW, STK#FM9553, \$82,745



2026 FORD F350 SD SUPER CAB XL DUMP 4X4. 7.3L V8, AUTO, AC, 14K GVW, POWER GRP, STK#FM9996, \$83,848.



2026 FORD F650 SD DUMP. 7.3L V8, AUTO, AC, STK#FM9571, \$97,358



NEW 2025 FORD TRANSIT 250 REFRIGERATED VAN. MEDIUM ROOF, V6, AUTO, AC, POWER GRP, STJ#FM9268, \$83,185.



2026 FORD F350 SD XL SUPER CAB DUMP 4X4. V8, AUTO, 14K GVW, POWER GRP, STK#FM9544, \$77,688



NEW 2027 FORD F650 C&C. 6.7L POWER STROKE V8 DIESEL, 270 HP, AUTO, STK#FM10424, \$90,415.



2026 FORD E350 READING SERVICE UTILITY VAN. 7.3L V8, AUTO, STK#FM9761, \$71,000



2026 FORD F350 XL ALUM. LANDSCAPE DUMP 4X4. 7.3L V8, AUTO, 14K GVW, STK#FM9589, \$83,475



2026 FORD F350 SD SUPER CAB XL C&C 4X4. V8, AUTO, AC, 14K GVW, 168" WB, POWER GRP, STK#FM10069, \$62,760.



2026 FORD F350 SD DUMP XL 4X4. 7.3L V8, AUTO, AC, REAR CAMERA, 14K GVW, STK#FM10406, \$81,030.



2026 FORD TRANSIT 250 MEDIUM ROOF VAN. V6, AUTO, NAV, AC, POWER GRP, STK#FM9852, \$52,739.



2026 FORD F350 SD SUPER CAB XL C&C 4X4. V8, AUTO, AC, POWER GRP, 14K GVW, STK#FM9987, \$63,420.



**1200 WORCESTER ROAD
(Rt.9 East)
FRAMINGHAM, MA 01701**



www.mcgovernfordofframingham.com



SALES & RENTALS INC.
T-QUIP

DAILY / WEEKLY / MONTHLY

EQUIPMENT RENTALS

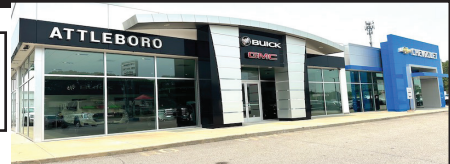
**WHEEL LOADERS ◦ ROCK TRUCKS ◦ EXCAVATORS
ROLLERS ◦ SKID STEERS ◦ CRUSHERS ◦ SCREENERS
DOZERS ◦ BACKHOES ◦ GRADERS ◦ TELEHANDLERS
TRACKED DUMPERS ◦ SPECIALTY ATTACHMENTS**



☎ 603-623-3669 🌐 www.TQUIP.com

CHEVROLET, BUICK, GMC OF ATTLEBORO

A Priority Automotive Dealership



**ROUTE 1, BETWEEN 95 + 295
SOUTH ATTLEBORO, MA**

508-761-4800

PLENTY OF NEW GMC TRUCKS AVAILABLE

2026 K1500 8' BED



V-8, NICELY EQUIPPED.
#26061G SALE PRICE INCLUDED GM TRADE-IN REBATE.
\$44,660

2026 CANYON ELEVATION 4WD



ELEVATION CONV. PKG.
#26004G
\$46,225

2026 K2500 CREW CAB SLT DURAMAX DIESEL



PLOW PREP. PKG., SPRAY LINER.
#26135G
\$78,730

2026 C2500



PERFECT FLEET SPECS., SPRAY LINER, ASSIST STEPS, CONV. PKG.
#26175G
\$49,995

2026 K1500 AT4X



6.2L V-8, ACTIVE EXHAUST, KICKER TAILGATE AUDIO SYSTEM.
#26019G
\$84,385

2026 K2500 CREW CAB SLT



SLT CONV. PKG., SPRAY LINER, PREFERRED PKG., HD SAFETY PKG., PLOW PREP. #26055G
\$73,270

2024 K3500 CREWCAB SLT DURAMAX DIESEL

8' BED



SLT PREMIUM PKG., X-31 OFF ROAD PKG. #24219G
\$83,875

2026 C2500 CHASSIS



10,000 GVW, UTILITY BODY SPECS. #26193G
\$49,566

2026 K2500 DENALI DURAMAX DIESEL



DENALI RESERVE PKG., PLOW PREP. #26039G
\$88,340

2026 K3500 DOUBLE CAB



CONV. PKG., SPRAY LINER, ALUM. WHEELS, PLOW PREP, ASSIST STEPS, X-31 OFF ROAD SUSP. #26084G
\$59,175

2025 K2500 UTILITY



CONV. PKG., PLOW PREP. #25261G
\$72,520

2026 K3500 DENALI DUALY DURAMAX DIESEL



INCLUDES 5TH WHEEL PREP. PKG. #FVNZFN
\$95,110

**** PLUS OVER 50 MORE AVAILABLE ****



WWW.CHEVROLETBUICKGMCOFATTLEBORO.COM



CHEVROLET, BUICK, GMC OF ATTLEBORO

A Priority Automotive Dealership



**ROUTE 1, BETWEEN 95 + 295
SOUTH ATTLEBORO, MA**

508-761-4800

PLENTY OF NEW CHEVROLET TRUCKS AVAILABLE

**2025 EXPRESS ONE TON
EXTENDED VAN**



**9900 GVW, V-8, TRAILER PKG.,
ALL THE OPTIONS. #25422H**

\$53,885

**2025 K3500 DUMP TRUCK
DURAMAX DIESEL**



**14,000 GVE, PLOW PREP., HITCH,
COVER, CONV. PKG. #25411H**

\$77,338

**2025 K3500 LT CREW CAB UTILITY
DURAMAX DIESEL**



**DARK GREEN METALLIC, BUCKET SEATS,
REMOTE START, HEATED SEATS.
#25074H**

\$95,300

2024 KUV



**9,900 GVW, LOW ROOF,
NICELY EQUIPPED. #24414H**

\$68,895

2025 DURACUBE MAX 10'



**9,900 GVW, ELEC. BODY LOCKS,
LADDER RACKS, SHELVEING. #25141H**

\$66,000

**2024 LCF 4500
14' BOX + LIFT GATE**



**14,500 GVW, POWER MIRRORS,
KEYLESS ENTRY, 14' ALUM. BOX,
#24235H LIFT-GATE.**

\$89,995

2025 12' BOX TRUCK



**9,900 GVW, SINGLE REAR WHEEL,
LOW FLOOR, NICE CHASSIS SPECS.
#25343H**

\$58,725

2025 K2500 LT



**REMOTE START, CONV. PKG.,
SAFETY PKG., PLOW PREP.,
HEATED SEATS. #25042H**

\$58,755

2024 4500 14' BOX



**14,200 GVW, FANCY CHASSIS SPECS.,
TRANSLUCENT ROOF, RAMP, TIE-DOWN
HOOKS. #24409H**

\$63,300

2026 C3500 12' RACK BODY



**GOOD WORK TRUCK CHASSIS
SPECS., 14,000 GVW. #26229H**

\$68,758

**2026 K3500 CREW CAB LTZ
DURAMAX DUALY**



**LTZ PLUS PKG., POLISHED ALUM. WHEELS,
FIFTH WHEEL PKG., SUNROOF, ASSIST
STEPS. #26216H**

\$87,815

**2026 K2500 TRAIL BOSS
DURAMAX DIESEL**



**SAFETY PKG., PLOW PREP.,
CONV. PKG2, NICELY EQUIPPED.
#26228H**

\$83,000



WWW.CHEVROLETBUICKGMCOFATTLEBORO.COM



THIS AD IS COPYRIGHTED & OWNED BY TRUCK AND EQUIPMENT POST

JOSEPH

EQUIPMENT COMPANY

300 GAY ST • MANCHESTER, NH 03103

SATURDAYS • WE ARE OPEN ALL DAY

PHONE: 603-641-8608

FAX: 603-666-3716



**293 NORTH - EXIT 2 -
LEFT ONTO BROWN AVE -
RIGHT ONTO WINSTON ST. - LEFT ONTO GAY ST.
300 GAY STREET ON THE RIGHT**



100 STORAGE CONTAINERS TO CHOOSE FROM. 20', 40', and 40' High Cube. Call For More Information.



2013 KOMATSU D155AX-7 DOZER. 8900 Hours, Sigma Blade With 3 Shank Ripper, Rebuilt Fuel Rail, Replaced DPF Sensors, Alternator & Belt, Fan Belt, Recharged A/C, New Compressor, New Batteries, New Corner Bits On Blade, EGR Servo Replaced, DPF Was Baked & Cleaned.. \$125,000. Call For More Information.



2013 VOLVO EW180D Rubber Tired Excavator, Blade, Outriggers, Roto Bucket And GP Bucket, 14,000 Hours. Call For More Information.



2010 DEERE GRADER. Model 772GDP, Equipped With Trimble GPS System, Rear Scarifier, 18K Hours, Excellent Condition. Call For More Information.



2012 GENIE GTH-5519 COMPACT TELEHANDLER. Hours: 2,200, Capacity: 5,500 Lbs, Max Lift Height: 19', 74 HP, Three-Mode Steering, Full-Time 4WD, Full Cab, Good Rubber, One Owner, 3rd Valve. Call For More Information.



IN STOCK - 2025 FONTAINE LXTN40. 40 Ton Extendable, 34' Closed - 60' Open. Also Available 29' Closed - 50' Open. Tandem Axle, Set Up For 3rd, Air Ride, Non Ground Bearing, 102" Swing Clearance, 20" Deck Height, Alum Wheels. In Stock, No Waiting. Available In Manchester NH And At The Factory In Springville AL. 3rd And 4th Axles Available. Call For More Information.



1976 ROGERS 100 TON. Quad Axle, 11' Wide, 37' Usable Deck, Recently Completely Rebuilt, Excellent Condition, Currently Located In AZ. Call For More Information.



2019 PUP TRAILERS. (14 Available To Choose From, 28' Long, 102" Wide, 13'6" High. Call For More Information.



2017 LIDDELL 60 TON DSR. 4 Axle, 26' DSR Deck, 9' Wide, 8'6" Bogie, 26" Beam Deck, 4th Axle, Alum Wheels, Gooseneck Extension, Power Pack, Excellent Shape. Call For More Information.



2012 FONTAINE 55 TON DSR. 26 Ft DECK, 5 Ft DSR Extension And 28 Foot Beam Deck, Fontaine 4th Axle And Spreader Bar, Alum Wheels, Org Paint, One Owner, 275 Tires, Lift On 3rd. Call For More Information.



2011 CATERPILLAR 336 DL EXCAVATOR. CAT Hyd Thumb, New Bottom, New Hyd Pump, New Lift Cylinders, New Stick Cylinder, Paperwork. Long And Long, Excellent Shape. Price: \$85,000.



2019 FONTAINE 53 - 90. Tri Axle, Air Ride, Slider, Like New Condition, Southern Trailer, No Rust. 3 Available To Choose From Ranging From 2019 To 2016. Call For More Information.

www.josephequipment.com

Trades Welcome • Financing Available

THIS AD IS COPYRIGHTED & OWNED BY TRUCK AND EQUIPMENT POST

JOSEPH EQUIPMENT COMPANY

300 GAY ST • MANCHESTER, NH 03103

SATURDAYS • WE ARE OPEN ALL DAY

PHONE: 603-641-8608

FAX: 603-666-3716



**293 NORTH - EXIT 2 -
LEFT ONTO BROWN AVE -
RIGHT ONTO WINSTON ST.- LEFT ONTO GAY ST.
300 GAY STREET ON THE RIGHT**



2005 CATERPILLAR TL943C TELEHANDLER.
With Forks And Bucket, 6K Original Hours,
Excellent Shape, Asking \$52,500.



1999 NORDBERG LT105 JAW CRUSHER.
S/N: 1390, CAT Diesel Powered, 42 X 28 Opening,
Remote Controlled Track And Operations.
Call For More Information.



2005 CATERPILLAR 315CL EXCAVATOR. Meter
Reads 6400, Cat Hyd Thumb, Solid CAT Digging
Bucket With Fiat Digging Teeth, Full Glass, Joystick
Controls, Dual Speed Travel, Working Lights.
Call For More Information.



2020 JOHN DEERE 304L.
1 Yard Loader, Quick Disconnect, 3rd Valve,
Forks And Bucket, A/C, Road Speed, 1200
Hours, Like New Condition.
Call For More Information.



1997 CATERPILLAR 960F WHEEL LOADER.
Sandblasted And Painted, New Decals, A/C, Scale,
23.5 X 25 Rubber, Bolt On Cutting Edge, Very Good
Condition. **Call For More Information.**



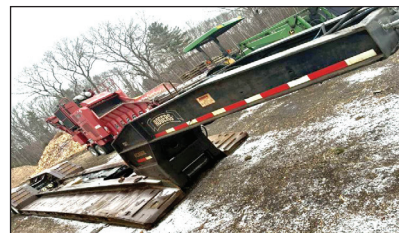
2015 FONTAINE MAG80 3+3+3 TRAILER. 28'
FLD, 9' Wide, Available With 3 Axle Jeep, Spreader,
3 Independent Axles & Flip Boxes, Excellent
Condition, Southern Trailer From TX.
Call For More Information.



2013 ROGERS 60 TON. 4 Axle, 25' Flat Level
Deck, 102" Wide, Non-Ground Bearing, 3 Axle With
Pin On 3rd, Lift On 3rd And 4th Axles, Full Fenders,
Alum Wheels, 275 Rubber, One Owner,
Excellent Shape. **Call For More Information.**



1999 CAT 950G WHEEL LOADER. Reman CAT
Engine Meter Reads 13,488, Bucket, Heat, A/C,
Full Glass, Working Lights, Ride Control, Fleet
Maintained. **Call For More Information.**



2006 ROGERS 55 TON DSR LOWBED TRAILER.
25' Deck, 3 Axle, Lift On 3rd, Air Ride, NGB, Full
Fenders, All New Suspension And Brakes,
Original Paint. **Call For More Information.**



**1994 CATERPILLAR 950F SERIES 2 WHEEL
LOADER.** Meter Reads 135,356, GPPD 23.5 X
25 Rubber. LED Lighting, Full Glass, Ride Control.
Call For More Information.



2009 CATERPILLAR 924H WHEEL LOADER.
Quick Disconnect, New Motor From CAT With
Paperwork, Very Good Condition.
Call For More Information.



2002 FONTAINE TL50. Completely Reconditioned,
18 Inch Deck Hgt, 25' Fld, 275 Rubber, Air Ride,
New Decking, New Air Bags, Sandblasted And
Painted, Long Neck, 2 Pin Position, Lift On Third,
Excellent Condition. **Call For More Information.**

www.josephequipment.com

Trades Welcome • Financing Available

THIS AD IS COPYRIGHTED & OWNED BY TRUCK AND EQUIPMENT POST

JOSEPH

EQUIPMENT COMPANY

300 GAY ST • MANCHESTER, NH 03103

SATURDAYS • WE ARE OPEN ALL DAY

PHONE: 603-641-8608

FAX: 603-666-3716



**293 NORTH - EXIT 2 -
LEFT ONTO BROWN AVE -
RIGHT ONTO WINSTON ST.- LEFT ONTO GAY ST.
300 GAY STREET ON THE RIGHT**



2021 WESTERN STAR 4900EX TRACTOR.
One Owner, Allison Automatic, 500 Detroit,
295,912 Miles, 46K Rears, Full Locking Rears, 2
Line Wet System, Fleet Maintained, Dual Stacks,
Alum Wheels, A/C, P/S, Original Paint.
Call For More Information.



2002 MACK CH613. 427, 13 Speed, From CA
Fire Dept Lowbed Tractor, 118K Original Miles.
Call For More Information.



2021 WESTERN STAR 4900. Allison Automatic, 550
HP, DT15 Engine, Full Rears, 2 Line Wet System, Fleet
Maintained, Dual Stacks, Alum Wheels, A/C, P/S, Original
Paint, One Owner, 2 Available to Choose.
Call For More Information.



2017 KENWORTH T880. Heavy Haul, 500 Cummins, 18 Speed, 46K Rears, Full Lockers, 24.5 Rubber,
Small Bunk, Wet System, 280,000 Orig Miles, New Clutch, Recent Tires, Pintle Hook.
Call For More Information.



2015 MACK CH TANDEM AXLE TRACTOR. 505
HP, 12 Speed Automatic, Miles: 451,000, Air Ride,
Wet System, Sliding 5th Wheel, Aluminum Wheels,
Dual Stacks, One Owner, Working Daily.
Call For More Information.



1995 MACK CH. 460, 12 Speed, 44K Lb.
Rears, Spring Ride, New Motor, New Hood,
New Tires, Wet System, Asking \$27,500.
Call For More Information.



2015 KENWORTH T880. Miles: 571K, 500
Paccar, Automatic, 3.91 Gear Ratio, 46K Rears,
Full Lockers, 24.5 Rubber, A/C, Power Steering,
Air Ride, Aluminum Wheels, Fleet Maintained,
One Owner, **Call For More Information.**



2019 PETERBILT 389. 605 Cummins Power, 18
Speed, 4 Axle, 46K Rears, Air Ride, 300" Wheel
Base, Headache Rack, Full Fenders, 60" Bunk,
Loaded, **Call For More Information.**



1998 MACK RD688SX DUMP TRUCK. 350 HP, Fuller
8 Speed, 58 Rears All Redone By Southeast Truck, 24"
Rubber, Rebuilt Engine, Double Frame, Working Daily,
Heated Body, New Brakes All Around, New King Pins,
New Clutch/Bell Housing, All New Rear Suspension.
Call For More Information.



1994 PETERBILT. CAT Power, 10 Speed, 40K Lb.
Rears, Wet System, Asking \$22,500.
Call For More Information.



2015 FORD F750 WATER TRUCK. 2000 Gallon
Tank, Single Axle, Automatic, Diesel, Front And
Rear Spray Heads And Hose Reel, 8K Original
Miles. **Call For More Information.**

www.josephequipment.com

Trades Welcome • Financing Available

THIS AD IS COPYRIGHTED & OWNED BY TRUCK AND EQUIPMENT POST

JOSEPH

EQUIPMENT COMPANY

300 GAY ST • MANCHESTER, NH 03103

PHONE: 603-641-8608

OPEN ALL DAY SATURDAY



FONTAINE

FAX: 603-666-3716



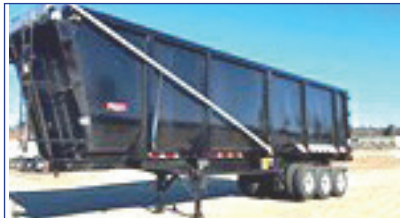
2027 FONTAINE RENEGADE LXLN12 - 12 Inch Loaded Deck Height With 4 Inch Ground Clearance When Fully Loaded, 30 Tons In 16 Feet On Tandem Bogie Or 30 Tons In 20 Feet With 3rd Axle Flip, Low Profile, 3rd Axle Capability, 32 Feet 11 Clear Deck Length. **IN STOCK, NO WAITING, CALL FOR MORE INFORMATION.**



2027 FONTAINE MAGNITUDE 50 Tri Axle, Set Up For 4Th, 50 Ton, Air Ride, 24' Deck, 20" Loaded Deck Height, Alum Or Steel Wheels, Strobe Lights, Outriggers And D-Rings. **Call For More Information.**



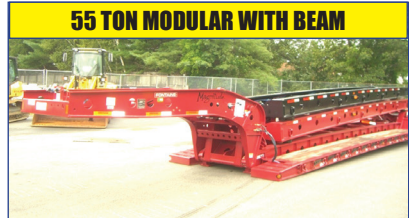
2027 KRUZ TERMINATOR, 26' Steel Frame, Single Point Suspension, 2-Way Gate, 11 X 24.5 Tires, Alum Wheels, 2 Speed Landing Gear. **Call For More Information.**



IN STOCK - NO WAITING - 2025 GALLEGOS 42' FRAME TYPE DUMP TRAILER. 96 YARD, 102" WIDE, 90" SIDES, TRI AXLE, HENDRICKSON AIR RIDE INTRAXX, ABS BRAKES, LIFT ON FRONT AXLE, FLIP N GO ELECTRIC CANVAS, LED LIGHTS, BARN DOOR. **CALL FOR MORE INFORMATION.**



2027 KRUZ 26' STEEL TUB, Aluminum Frame Dump Trailer, Air Ride, 2 Axle, Alum Wheels, 450 Hardox, 24.5 16 Ply Tires. **TAKING ORDERS Call For More Information.**



55 TON MODULAR WITH BEAM

2027 FONTAINE 55H MODULAR DSR, Beam Deck Also Available, Tri Axle, 60" Axle Spacing, Hydraulic Removable, Non Ground Bearing, Set Up For Gooseneck Ext, Spreader Bar And 4Th Axle Flip, Air Ride, Alum Wheels, 22.5 Rubber. **Call For More Information.**



2027 FONTAINE 60 TON MODULAR 2+3+1, 26' Dsr, 184" Swing Clearance, Set Up For 2 Axle Jeep, 14" Deck Height, Air Ride, Alum Wheels, 275/70R X 22.5 Rubber, Non Ground Bearing. **Call For More Information.**



IN STOCK NO WAITING. FONTAINE MAGNITUDE 65 2+3+2 CAPABLE, 28" DROP SIDE RAIL DECK, 3 AXLE, SET UP FOR 4 AXLE, 14.75" DECK HEIGHT, 102" WIDE, 60.5" AXLE SPACING, EQ2 SPREADER BAR WITH INTERMEDIATE AXLE, HYDRAULIC REMOVABLE, NON GROUND BEARING WITH 2 PIN POSITION AT 114" AND 102", TRIPLE CYLINDER, 70" HYDRAULIC FLIP BOX, HEAVY DUTY SNAP IN OUTRIGGERS, D-RINGS, ALUM WHEELS, 275/70R X 22.5 TIRES. **CALL FOR MORE INFORMATION.**



2027 KRUZ, 70 Yard, Tri Axle, 70,000 Single Point, Lift On Third Axle, 1/4 Inch 450 Hardox, Floor, Sides, Nose, Gate, 12 Panel Gate, 11 X 24.5 Rubber, Alum Wheels. **Taking Orders. Call For More Information.**



2027 FONTAINE TRAVERSE HYDRAULIC TAIL, 48' Long, 102" Wide, Air Ride, Hydraulic Upper Deck, Hydraulic Winch, Remote Control, Alum Wheels, Dual Controls. **Taking Orders Call For More Information.**



2027 FONTAINE 60 TON MODULAR, 26' Dsr, 60" Axle Spacing, 184" Swing Clearance, Set Up For 2 Axle Jeep, 14" Deck Height, Air Ride, Alum Wheels, 275/70R X 22.5 Rubber, Non Ground Bearing, **In Stock. Call For More Information.**



3+3+3

1998 KAYLN SIEBERT. 75Ton 3+3+3, Air Ride, West Coast Bogie, 3 Axle, Air Ride Jeep With Power Tower, 10' Wide Trailer, 60' Overall Length, 48' Of Useable Deck, 275/70 X 22.5 Rubber, Sandblasted & Painted, Excellent Shape, Alum Wheels On Jeep And Booster. **Call For More Information.**

Trades Welcome • Financing Available • www.josephequipment.com

THIS AD IS COPYRIGHTED & OWNED BY TRUCK AND EQUIPMENT POST

TRAILER RENTALS • TRAILER RENTALS • TRAILER RENTALS •

WE RENT STEP DECKS • LOW BEDS • HI FLATS • DEMO/SCRAP • TRAILERS

JOSEPH EQUIPMENT COMPANY

300 GAY ST. • Manchester, NH 03103

NOW TAKING ORDERS FOR DUMP TRAILERS AND LOWBEDS FOR SPRING AND SUMMER DELIVERY

14" DECK HEIGHT

IN STOCK, NO WAITING



55 TON EXTENDABLE

PHONE: 603-641-8608
FAX: 603-666-3716



NEW 2027 FONTAINE RENEGADE LXL, 14' Deck Height, 30' Deck W, 6' Ground Clearance, 2 Axle, Set Up For 3rd Hydraulic Detachable Or Mechanical Detachable. In Stock No Waiting. Call For More Information



2027 FONTAINE MAGNITUDE 603T Modular Drop Side Rail With 28' Deck, Hydraulic Removable Neck, Non Ground Bearing, Air Ride, Tri Axle, Third Axle Lift, Set Up For 4Th, Alum Wheels, 275/70 X 22.5 Tires, Loaded. Call For More Information.



2027 FONTAINE MAGNITUDE 59MX, 55 Ton Extendable Trailer, 30' To 50', Modular, Detaches Both Ends, Hyd Removable, Non Ground Bearing, 20' Deck Height, Will Take 10' Deck Ext For A Total Of 60', 275 Rubber, Tri Axle, Air Lift On 3rd, Set Up For 4Th, Set Up For Gooseneck Ext. Call For More Information



NEW 2027 FONTAINE SPECIALIZED MAGNITUDE 55L, Tri Axle, Air Ride, Set Up Of 4Th Axle, Non Ground Bearing, 25' Deck, Led Lights, Aluminum Wheels, Stroke Light Package, Lift On 3rd Axle, 2 Pin Position, Loaded. In Stock No Waiting. Call For More Information



IN STOCK - 2027 FONTAINE MAGNITUDE 60HD-4MX, Deck Extends From 30' To 51', 65 Ton When Closed, Built To Handle A 60 Ton Load With Ease, 30' Clear Deck Length Extends To 51', 22' Loaded Deck Height, 6' Ground Clearance, 7 Position Hydraulic Detachable Gooseneck, 7 Position Air Ride Tridem Bogie, 402 Deep Ready, 36" And 83" Flip Box, Ready, 60/90 Flip Axle Ready, EQ2 Spreader Bar Ready, Loaded. Call For More Information.



2027 FONTAINE WORKHORSE 59LCC FLD, Tri Axle, Lift On Third, Air Ride, Hydraulic 4th Axle Flip, Air Lift On Third, 18' Deck Height, 28' Deck, Low Boom Well, Covered Rear Bogie, Dual Cam Pawl Assembly With 7 Ride Height Positions, Removable Kingpin At 108 Inch Radius, Alternate Kingpin At 96" Radius, Load Scale, Tire Inflation, Air Controls, 275 Rubber, Alum Wheels. In Stock, No Waiting. Call For More Information.



70 TON 2+3+2

WE RENT STINGERS • SPREADER BARS • DOUBLE DROP EXTENSIBLES TRAILERS

2027 FONTAINE 704/2+3+2 DROP SIDE RAIL, 4 Axle, 28' Deck, Hydraulic Detachable, In Stock, No Waiting, Non Ground Bearing, 102' Wide, 65' Flip Box, Spreader Bar And 3522 Jeep, Alum Wheels, 275/70R X 22.5 Tires, 28' Beam Deck Available. Call For More Information.



NEW 2027 FONTAINE 55 TON, Drop Side Rail, Tri Axle, Air Ride, Set Up For 4Th, Non Ground Bearing, Led Lights, Aluminum Wheels, Stroke Lights, Loaded. In Stock No Waiting. Call For More Information



NEW 2027 SPECIALIZED 55 TON BEAM TRAILER, 3+1 Modular, NGB, Detach Both Ends, Tri Axle, Air Lift On 3rd, Set Up 4Th, Set Up For Gooseneck Extension, Call For More Information

Trades Welcome • Financing Available • www.josephequipment.com

THIS AD IS COPYRIGHTED & OWNED BY TRUCK AND EQUIPMENT POST

TRAILER RENTALS • TRAILER RENTALS • TRAILER RENTALS •