

**SERVING NEW ENGLAND**

**FREE**

# TRUCK AND EQUIPMENT POST

*Your Local Source For The Trades*



**2007 IH 72 FT AERIAL BUCKET. HURRICANE READY, 6WD, AUTOMATIC, 84,630 MILES, CUMMINS 385 HP, \$59,900. 603-623-8873**



**1998 DITCH WITCH 5700DD. 217 HOURS, H412 TRENCHER, OROPS, DEUTZ DIESEL 57 HP, A522 EXCAVATOR, 18" BUCKET, 6' DOZER BLADE, \$13,500. 978-249-4600**



**1965 FORD F-600 DUMP TRUCK. 330 V8 GAS, 4+2 TRANS, EXCELLENT CONDITION, COLLECTOR OR GO TO WORK, \$10,500. OBO, 781-729-5043**



**100' SPARTAN FIRE TRUCK. SERIES 60 DETROIT, ALLISON TRANSMISSION, RUNS & OPERATES VERY WELL, NO TANK OR PUMP, ALL LIGHTING, SIRENS & PORTABLE GROUND LADDERS, \$28,000. 508-789-0418**



**1985 HILL 26' DUMP TRAILER. STEEL FRAME, STEEL TUB, NEW PISTON, 24.5 RUBBER \$8,500. 603-759-5918**

**Optative Group**



**Issue 24-25  
June 16th 2021**

**INTERNET & PRINT  
FOR ONLY \$25.00**

**[www.TruckAndEquipmentPost.com](http://www.TruckAndEquipmentPost.com)**

**888-887-0505**





920 W. Chestnut St. Brockton, MA:  
508-586-1666 Mon - Fri 8-5, Sat 8-NOON

42 Winter St. Pembroke, MA:  
781-826-1666 Mon - Fri 8-3  
[EastCoastTruckStuff.com](http://EastCoastTruckStuff.com)

**We deliver!**

## Tow safe this summer ☀️

### Breakaway Switch

Helps prevent loss and damage by stopping a disconnected trailer.

Long lasting, weather-resistant components.

Works on single or multiple axle trailers.

Easily bolts or welds to a trailer frame.



**\$7.99**

### 8 Ton Combination Hitch with Mounting Kit - 2 Inch Ball

Ideal for a wide range of light to medium duty trucks with a maximum gross towing weight of 16,000 lb.

Maximum Vertical Load (M.V.L.): 3000 lb



**\$76.99**



### Submersible Universal Mount Combination Tail Light Kit

Includes: 25 ft harness, license plate bracket, passenger side combo tail light & drivers side combo tail light with license illuminator

Three Year Warranty

**\$23.99**



## Trailer Safety Week June 6-12

Find tips & info here:  
[www.TrailerSafetyWeek.com](http://www.TrailerSafetyWeek.com)

## And Secure!



### 2" by 30' Flat Hook Wide Handle Ratchet Strap

Working load limit of 3,335 Lbs

Standard Kinedyne Gold with Black Edge 2084F Webbing

**\$19.99**

513020



### 2" by 30' Wire Hook Ratchet Strap

Working load limit of 3,335 Lbs

Standard Kinedyne Gold with Black Edge 2084F Webbing

**\$19.99**

513084

### 1" by 12' Ratchet Tie Down Straps

4 pack/500 lb Load Limit

**\$26.99**



Specials end 7/5/21





**Lorusso Heavy Equipment, LLC**  
 160 Elm St Walpole, MA 02801  
 Tel. 508-660-7600



**MECALAC TA3SH Site Dumper.**  
 Sale Or Rent,  
 Call For Pricing.



**AJCE Hammers**  
 Multiple Sizes Available and  
 In Stock Call for Pricing



**2016 MECALAC 6MCR. Active Lock,  
 Skid Bkt, 24" Bkt, Forks, Thumb.**  
 800 Hours. \$73,000.00



**1987 CAT 926B Wheel Loader.**  
 5,968 Hours, \$18,000.00



**2018 Hyundai HX130LCRD Excavator.**  
 Coupler, 30" bucket and thumb  
 included. 202 hours. \$115,000.00



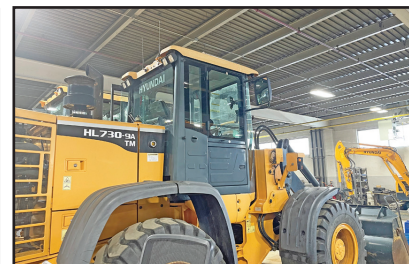
**2014 Hyundai HL757-9A  
 Wheel Loader. 1213 hours.**  
 \$92,000.00



**JCB 509-455 Telehandler. Forks,  
 Loader Bucket. Mint Condition!**  
 165 Hours. \$135,000.00



**2000 John Deere 200LC  
 Excavator. 8250 hours.**  
 \$45,000.00



**2015 HYUNDAI HL730TM-9A.**  
 1750 Hours. Call for Pricing

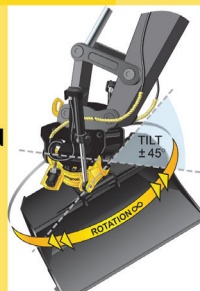


**2013 Takeuchi TB285 Mini  
 Excavator. 4691 Hours.**  
 \$48,000.00.

**engcon®**

**AUTOMATIC  
 QUICK-  
 COUPLER  
 TILT/ROTATION  
 SYSTEMS**

Available for all  
 makes and models.  
 Call for pricing.



**JCB 525-60 Telehandler.**  
 Call for Pricing.



**www.lhequip.com • Call Us for All of Your Rental Needs • www.fb.com/LHELLC**







**COMMERCIAL  
VEHICLE CENTER**

**508-403-9192**

**ATTENTION TRADESMEN-CONTRACTORS-LANDSCAPERS!!!**

**MEDIUM DUTIES IN STOCK**



**2021 F650 5-7 Yard S&H DUMP BODY:**  
330 H.P., Air Brakes, Auto Tarp. IN  
STOCK F650 & F750 Gas & Diesel.  
Call us.

**DIESEL**



**2020 F550 DRW 4X4 SWITCH-N-GO:**  
6.7L DIESEL, POWER GROUP, ONLY  
2,645 MILES, STK#N9456A

**DIESEL**



**2021 F550 DRW 4X4 READING  
SERVICE BODY: 6.7L DIESEL, POWER  
GROUP, STK#N9965**



**2021 E350 UNICELL AEROCELL  
CUTAWAY: 7.3L Gas, Power  
Group stk.# N9460**

**SAVE \$3,500**



**2021 F350 REGULAR CAB DRW 4X4:  
DURAMAG ALUMINUM LANDSCAPE  
DUMP, 7.3L V8 GAS, POWER GROUP,  
STK#N9851**



**2021 E350 4X2 READING ALUMINUM  
SERVICE BODY: 7.3L, POWER GROUP,  
STK#N9553**

**DIESEL**



**2021 F550 REGULAR CAB DRW 4X4  
SWITCH-N-GO HOOK-LIFT: 6.7L  
DIESEL, POWER GROUP, STK#N10006**



**2021 F350 CREW CAB DRW 4X4  
READING SERVICE BODY: 7.3L GAS,  
POWER GROUP, STK#N9838**



**2021 F550 REGULAR CAB DRW 4X4  
IROQUOIS LANDSCAPE DUMP: 6.7L  
DIESEL, POWER GROUP, STK#N9903**



**NEW 2020 F350 CREW CAB DRW 4X4  
SUPER HAULER LANDSCAPE DUMP:  
7.3L GAS, POWER GROUP, STK#N9282**



**2020 SUPER DUTIES IN STOCK  
PLOW TRUCKS  
IN STOCK!  
RESERVE YOURS TODAY.**



**2021 E350 4X2 DURACUBE MAX  
DEJANA SERVICE BODY: 7.3L, POWER  
GROUP, STK#N9596**



**11 PILGRIM HILL ROAD  
Plymouth, MA 02360**

**www.COLONIALFORD.com**

**America's Hometown Dealership**

\*all rebates to dealer. must finance with Ford Motor Credit.  
0% financing in lieu of all rebates\* Discounts & Dealer Discounts.



**UNICELL**

**BRAKE & CLUTCH, INC.**





**2000 GMC.** 6 Speed, Straight 6 Diesel, Turn Key, Wet System, Ready For Your Body, **\$10,200.00**  
Or **BRO.** 508-326-8220

### USED 24.6 STEEL FLAT BED BODY:

Different sizes. **\$1,000  
to \$3,500.** Dave. East  
Freetown, MA  
508-726-0077



# 202

TRUCK  
&  
EQUIPMENT  
**603-899-2000**

**www.202truck.com**  
**RT 202 Rindge NH**  
**SALES & RENTALS - NO SALES TAX**  
**FINANCING & DELIVERY**



**2006 CAT 324DL.** Good Undercarriage, 6900 Hours, Hammer Lines, Pattern Changer, Freshly Rebuilt 54 Inch CAT Bucket, Travel Pedal, 55,000 Lbs., Runs And Moves Good, **\$69,000.**



**2015 DEERE 35G.**  
2700 Hrs, Good Tracks, Mech Coupler W/24" Bucket, Aux. Hyd., Pattern Changer, **\$28,000.**



**2005 HYUNDAI ROBEX 110-7.** 5800 Hrs, Long Stick, Mech. Geith Thumb, Rebuilt 32" Bucket, Aux. Hydraulics, Blade, 8'2" Wide, AC, **\$39,000.**



**2012 DEERE 300D Series II.** 30 Ton, 4600 Hours, 4 New Rear Tires, Front @ 50%, Tailgate, Nice Truck, **\$145,000.**



**2014 DOOSAN DX180 LC-3.** 8'6" Wide, Aux. Hyd., 36" Bucket, 39,000 Lbs., **\$77,000.** Also Available Full Rotation Thumb, \$7500.



**2006 Lull 1044C.** 54 Series II, Cab W/Heat, Like New Tires, 5500 Hours, Needs Nothing, **\$45,000.**



**2013 CASE 721F.** 4600 Hrs, 3.5 Yd, Q/A Bucket, JRB Coupler, 3rd Valve, 50% Matched Michelins, **\$74,000.**



**2007 IH 9900.** 550 HP CAT C 15, 13 Speed, 12,000 Lb Front Axle + 40,000 Lb Full Locking Rear Axles On Air, Wet Line, Single Frame, 205 WB, 550K Miles, This Has Been Our Spare Truck For The Last 3 Years, New \$5000 ECM Just Installed, Needs Nothing, **\$37,500.**



**2005 EAST GENESIS, 28'.** Single Point Suspension, Very Good Tires, Brakes, And Liner, **\$24,000.**





Chadwick-BaRoss

**FINANCING  
AVAILABLE****WWW.CHADWICK-BAROSS.COM****FFC • BRADCO • MCMILLEN • MAJOR • SWEEPSTER • HARLEY****HARLEY RAKES****CALL FOR DETAILS & PRICING !****ROCK BUCKETS****STARTING AT \$1,675, IN STOCK!!****72" PICKUP SWEEPER****72" PICK UP SWEEPERS.. \$4,200****VIBRATORY ROLLER****CALL FOR PRICING  
ROOT RAKE****PREPERATOR****CALL FOR PRICING  
BRUSH CUTTER****HIGH DUMP BUCKETS****CALL FOR PRICING****ROOT RAKE****CALL FOR PRICING****BRUSH CUTTER****5FT-\$5,100 - 6FT-\$5,300****5500LB FORKS****IN STOCK****SIDE DISCHARGE BUCKETS IN STOCK !****CALL FOR PRICING !****AUGER'S IN STOCK****\$2,550.00****NEW SKID STEER HAMMERS****CALL FOR PRICING !**

**CHELMSFORD**  
**15 KATRINA ROAD**  
**CHELMSFORD, MA 01824**  
**978-256-9571 • 800-804-0775**

**OXFORD, CT**  
**10 FOX HOLLOW ROAD**  
**OXFORD, CT 06478**  
**978-256-9571 • 800-804-0775**

**WARWICK, RI**  
**31 JAMES P. MURPHY**  
**INDUSTRIAL HIGHWAY**  
**WEST WARWICK, RI 02893**  
**844-238-7673**

**GO TO PALADINBRANDS.COM FOR FULL LINE OF ATTACHMENTS.**





Chadwick-BaRoss

[WWW.CHADWICK-BAROSS.COM](http://WWW.CHADWICK-BAROSS.COM)


**\*TAKEUCHI EXCAVATORS, TRACK LOADERS, WHEEL LOADERS ! 0 % 60 MOS FINANCING\***



**RUBBER TRACKS  
FOR ALL MAKES  
AND  
MODELS  
CALL FOR  
PRICING !!!**



**2013 BOBCAT T870 :  
4900 HOURS, RUNS  
EXCELLENT.  
\$29,000  
FINANCING  
AVAILABLE !**

**CHELMSFORD, MA  
15 KATRINA ROAD CHELMSFORD, MA 01824  
978-256-9571 • 800-804-0775**

**OXFORD, CT  
10 FOX HOLLOW RD OXFORD, CT 06478  
860-261-0730**

**WEST WARWICK, RI  
31 JAMES P. MURPHY INDUSTRIAL HIGHWAY  
WEST WARWICK, RI 02893  
844-238-7673**

**SALES • SERVICE • RENTALS • PARTS  
FULL LINE OF SKID STEER ATTACHMENTS AVAILABLE.  
GO TO [WWW.PALADINBRANDS.COM](http://WWW.PALADINBRANDS.COM)**

**Takeuchi**  
*The Power of Product and Support*



**NEW CAM EQUIPMENT TRAILERS IN STOCK! DECK OVER, LOW PRO, TILTS.  
READY TO GO. CALL TODAY 781-582-1378**



**2009  
CASE 721D  
- NEW  
ARRIVAL!!  
JRB Coupler,  
Full Cab, GP  
Bucket, Great  
Snow Machine  
- \$42,500  
CALL DAN AT  
203-506-3860**



**2007 FREIGHTLINER M2 106.** Low Profile Business Class, CAT Cetera C-7, Allison Auto O/D, Under CDL, 26K GVW, NEW Goodyear Tires, New: Int Batteries, Brakes, A/C, Power Group Windows, Locks, Windshield Hydraulic, Electric Brakes, Pintle Plate, etc., Always Stored Inside Htd Shop, 1 Owner, Like New, **\$15,000.** Trades Accepted. Anthony, 617-594-3737



**2022 MAC 27' ALUMINUM FRAME STEEL HARD OX BODY:  
Hi Lift Gate, Aluminum Rims, 24.5 Tires. Includes Load Cover.  
• CALL FOR PRICING •  
CTE SEEKONK, MA • 508-336-6215**



# R & R INDUSTRIES

**We Buy All  
Scrap Metals**

[www.RRTrucksAndEquipment.com](http://www.RRTrucksAndEquipment.com) • [Sales@RandRind.com](mailto:Sales@RandRind.com)

**195 Rocus Street, Springfield MA 01104**

**413-733-2118**

## TOP \$ PAID FOR ALL METALS

**\* ALL FERROUS & NON FERROUS METALS\***  
**COPPER/BRASS/ALUMINUM/STAINLESS/IRON**  
**& STEEL\* MACHINERY\* HEAVY EQUIPMENT\***  
**CARS/TRUCKS\***



**TOYOYTA  
MODEL 01-3FG35  
HD FORKLIFT.**  
Dual Pneumatic  
Tires, Gas Powered,  
7500 lb Lift  
Capacity, Runs &  
Works Well,  
Only \$5,500

Others Avail \$2,000  
& Up



**TENNANT SWEEPER MODEL 92.** New Kubota  
Diesel Motor, Runs Great, Only Shows 256 Hours,  
A Steal At Only \$2,295/BO



**1997 SNORKEL LIFT #TB-A80RDZ, 80'**  
Reach, Only 2800 Hours, Deutz Diesel, 4WD,  
New Tires, Runs Great, \$9,995



**1983 CHEVY C70.** 8.2L Diesel, 5 + 2 Speed, Only 28K  
Miles, 28K GVW, Hydraulic Brakes,  
As C&C \$4,995 Or w/ Bucket Unit \$6,500



**RANSOM BOBCAT T3101 COMMERCIAL  
ZERO TURN MOWER.** Self Leveling Sully,  
Hydraulic Deck Lift, Only \$2,495/BO



**2000 FORD F450 CREW CAB SERVICE BODY.** 7.3L  
Powerstroke Diesel, 2WD, 6 New 19.5 Tires, Ladder Rack,  
Selling AS IS Repairable, Won't Start, \$5,500



**STAINLESS STEEL MILK TANK.** Like  
New Condition, Many, Many Uses,  
6' Diagonal x 7' Long Only \$4,700



**GALION 13.5' STEEL DUMP BODY COMPLETE  
WITH HOIST, TANK etc,** Excellent Condition, Ready To  
Mount On Your Chassis, Only \$3,350, Others To Choose



**TAG A LONG 12 TON EQUIPMENT  
TRAILER.** Tri Axle, Great Condition, Only  
Missing A Few Floor Boards, Only \$2,850



**45' FRUEHAUF FLATBED TRAILER.** New  
Deck, Nice Tires, Lights And Brakes All Work, Steel  
Headboard, Only \$3,995



**1998 ISUZU NPR.** V8 Chevy Gas Motor, Auto,  
Excellent Condition, 15' Flatbed Rack Body, Runs  
Well, Only \$4,750



**1939 MACK MODEL EQ.** Single Axle  
Dump. Complete And Ready To Restore.  
Call For More Info. Only \$5,500



**GRAVELY 566 TRACTOR/  
POWER UNIT.** Runs Excellent, \$750,



**1990 CHEVY C70 Factory Marmon-Harrington AWD,** Only 27K  
Miles, GM 8.2L Diesel, 5+2 Speed, Runs & Drives Great, Sold With  
Or Without Digger Derrick Crane, Call For Info & Pricing



**STORAGE UNITS 12', 14', 16', 18', 20',  
24', 30', & 40' Storage Or Instant Garage**  
\$650 & Up



**WORTHINGTON TRAILER MOUNTED AIR  
COMPRESSOR.** John Deere Diesel, Runs Like New,  
Only \$4,300





**ATTENTION LANDSCAPERS!!! WE'VE GOT YOUR TRUCKS.**



**2020 FORD F350 XL SUPERDUTY KNAPHEIDE UTILITY. V8, Gas, Power Group, Snow Plow Prep Pkg, On Their Way!**



**NEW TRANSIT T350 EXT. LENGTH VAN: Hi Roof, 3.5L V6, Power Group, Back Up Camera, A/C, Barn Doors. Stk.# FM1185**



**COMING IN MARCH  
2022 F650 DUMP BODY  
COMING IN APRIL**



**2021 FORD F350 XL SUPER CAB KNAPHEIDE UTILITY BODY 4X4: POWER GROUP, 6.2L GAS. STK#.FM1415**



**COMING IN APRIL  
2022 F750 DUMP BODY**



**2020 FORD TRANSIT COMERCIAL CARGO VAN. 3.5L V6, Power Group, Rear Camera, stk#FM1242**



**2021 FORD F350 DUMP 4WD XL: POWER GROUP, 6.2L GAS. FM1440**



**2021 FORD ECONOLINE E350 DRW CUTAWAY ENCLOSED UTILITY. 7.3L V8, Rear Camera, Power Group, stk#FM1335**



**1200 WORCESTER ROAD  
(Rt.9 East)  
FRAMINGHAM, MA 01701**

**[www.McGovernFordofFramingham.com](http://www.McGovernFordofFramingham.com)**



**CHRIS UHL  
617-775-9447**

**[CUHL@McGovernAuto.com](mailto:CUHL@McGovernAuto.com)**





**2021 FORD F-650  
DUMP.** Diesel, Work Ready,  
No CDL, STK#21016,  
Watertown, MA,  
Call Stan 617-610-5540



Powerglide Air Test Kit

Complete Powerglide Pro  
Tree Transbrake \$279.95TH400 Deep Cast  
Aluminum PanTH400 Billet Direct Drum  
Spring Retainer & Aluminum  
Modulator/Solenoid Hold DownPowerglide  
Overhaul KitPowerglide Deep  
Oil PanPowerglide Reverse  
Spring Retainer ToolPowerglide Bushing  
Driver SetDo-it-yourself Powerglide  
Pro Tree Transbrake Kit  
\$164.951.80 Long  
Powerglide Gear Set

**1-800-394-5889**

179 Belvedere Road  
Gilsum, NH 03448

**WWW.TSR-RACING.COM**

Powerglide  
Handbook written  
by Carl H. Munroe  
\$21.95



Powerglide Vent Tanks



**TOWER LADDER. 100'**  
Spartan Custom Fire Chassis,  
Series 60 Detroit Diesel, Allison  
Transmission, Truck Runs And  
Operates Very Well, Large Body  
Compartments, No Water Tank,  
No Fire Pump, Comes With All  
Lighting, Sirens And Portable  
Ground Ladders, **\$28,000.**  
508-789-0418



**1980  
INTERNATIONAL  
515.**  
6 Cylinder International  
Diesel Engine, 15.5-25  
Rubber, 4 In 1 Bucket,  
Lights-Heat-Wipers  
All Work, No Leaks,  
**\$10,500.** Snow  
Pusher Available Priced  
Upon Request, Gus,  
516-702-3125

## SPRING SPECIALS - TOP RATED PRODUCTS FOR YOU

**WASHED STONE  
PROCESSED GRAVEL  
SAND  
TOP SOIL  
RIP RAP  
FILL**



**Please Call for pricing  
401-447-2777**







# HILLVIEW EQUIPMENT

**SALES & RENTALS 24/7**

**CALL JUDE 1-508-498-0777**

**[www.HillviewEquipment.com](http://www.HillviewEquipment.com)**

**11 Commercial Way  
Milford, MA 01757**

***Rt. 495 to exit 19,  
Route 109W;  
Left to Birch St,  
right to Industrial Dr.  
Left to  
Commercial Way***

**EXCELLENT EQUIPMENT \* OUTSTANDING PRICES!**



**3  
AVAILABLE**

**2015 CAT 336FL: OUTSTANDING MACHINE,  
PRICED RIGHT, QUICK CONNECT,  
AUX. HYDRAULICS. CALL!**



**3  
AVAILABLE**

**2017 CAT 330 FL: GREAT LOW HOUR  
MACHINE, QUICK CONNECT, AUX.  
HYDRAULICS. CALL!**



**2  
AVAILABLE**

**2012 & 2013 CAT 329'S:  
NICE MACHINES, FULLY SERVICED & READY  
FOR YOUR JOB. CALL!**



**LOW  
HOURS**

**2016 CAT 308E2CR: VERY NICE LOW HOUR  
MACHINE W/ WRIST BUCKET & QUICK  
CONNECT. CALL!**



**HARD TO  
FIND TRUCK**

**2004 CAT 725: VERY HARD TO FIND TRUCK,  
OUT OF RENTAL FLEET,  
READY TO WORK-ALWAYS SERVICED. CALL!**



**HARD TO  
FIND TRUCK**

**2007 & 2008 CAT 325DL'S: VERY GOOD  
RUNNING MACHINES, HARD TO FIND IN  
THIS CONDITION. CALL!**





# PLACE MOTOR Inc.

The "Right Place" Since 1923

## COMMERCIAL TRUCKS

Call Phil Crowley "The Truck Guy"  
866-449-7482 ext. 213

19 Thompson Rd.  
Rte. 193 Webster, Ma.

### \*WE HAVE WHAT YOU NEED\*



**DUE IN!**

**NEW 2022 FORD E-350 14' AEROCELL BODY, POWER WINDOWS, POWER LOCKS, AND MUCH MUCH MORE !**



**PICK YOUR BODY**

**2021 NEW FORD F-450 SUPER-CAB 4X4, 60 CA DIESEL, XL TRIM. HURRY IN BEFORE IT'S GONE !**



**PICK YOUR BODY**

**2021 NEW FORD F-550 SUPER-CAB 4X4, 60 CA DIESEL, 19,500 GVW, XL TRIM.**



**PICK YOUR BODY**

**2021 NEW FORD F-450 CREW-CAB 4X4, 60 CA DIESEL, XL TRIM.**



**2020 Ford F-150 CREW CAB 4X4, KING RANCH TRIM, 12,000 MILES, POWER MOON-ROOF, 12K MILES, AND SO MUCH MORE !**



**2018 FORD F-150 CREW CAB 4X4, STX TRIM, 2 TO CHOOSE FROM. 1) 31K MILES 2) 29K MILES. STARTING AT \$36,500**

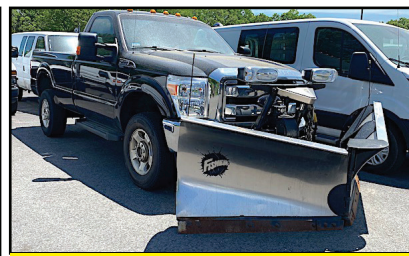


**2017 Ford F-350 CREW-CAB LARIAT 4X4, 6.7L DIESEL, ULTIMATE PKG., 44,000 MILES. \$62,995**



**2 TO CHOOSE FROM**

**2019 FORD TRANSIT CARGO VAN. \$STARTING AT \$32,995 HURRY IN WHILE SUPPLY LAST !**



**2015 Ford F-350 REGULAR CAB 4X4, XLT TRIM, 6.2L V-8 ENGINE, EXTREME V2 VPLow AND MORE !**

**WWW.PLACEMOTOR.COM**



**DEJANA**  
Truck and Utility Equipment



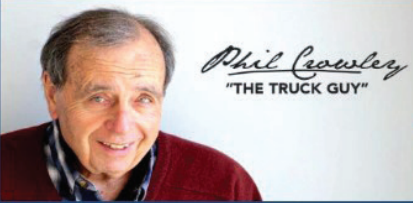
**COMMERCIAL  
VEHICLE CENTER**



# PLACE MOTOR Inc.

The "RIGHT PLACE" Since 1923

## COMMERCIAL TRUCKS



**PHIL CROWLEY**  
866-449-7482 EXT. 213



19 Thompson Rd.  
Rte. 193  
Webster, MA.

\*\*\*\*\*  
**NEW COMMERCIAL TRUCKS ON THE WAY !**  
\*\*\*\*\*

**\*3-2022 E-350 SINGLE REAR WHEEL  
W/ 12' AREOCELL BODY**

**\*3-2022 E-350 DUAL REAR WHEEL  
W/ 15' AREOCELL BODY**

**\*2-F-550 REGULAR CAB 4X4 DIESEL  
60 CA RED IN COLOR**

**\*1-F-600 REGULAR CAB 4X2 GAS 120  
CA WHITE IN COLOR**

**\*1-F-600 REGULAR CAB 4X2 DIESEL  
120 CA WHITE IN COLOR**

**\*1-F-600 REGULAR CAB 4X4 DIESEL  
84 CA WHITE IN COLOR**

**\*1-F-600 REGULAR CAB 4X2 GAS 84  
CA WHITE IN COLOR**

**SOLD**

\*\*\*\*\*  
**WWW.PLACEMOTOR.COM**



**MASSACHUSETTS OLDEST FORD  
DEALER SINCE 1923**







**ANTIQUE GRANITE POSTS.**  
12" X 12", 13" X 14" +/- Up To 10 Ft.  
Long, Was **\$60** Per Linear Foot, Buy Now  
For **\$38** Per Linear Foot, Limited Supply.  
Dartmouth, MA 508-995-8067

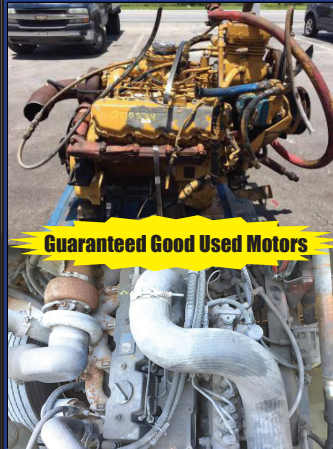
# R&R INDUSTRIES

www.RRTrucksAndEquipment.com • Sales@RandRind.com

195 Rocus Street, Springfield MA 01104

**We Buy All  
Scrap Metals**

**413-733-2118**



**Guaranteed Good Used Motors**

## DIESEL MOTORS FOR SALE

Many More  
Motors,  
Call

Kubota V1305 Rebuilt  
Kubota V1505  
3 Cyl Deutz  
Detroit 3-71, 4-71, 6V-71  
Detroit 6V92  
(2) CAT C-7  
CAT 3106 & 3208  
International DT 466E  
International MaxxForce  
Cummins 5.9L 12V & 24V



**1996? KUBOTA  
KX91-2.** 9000#, 2778  
Hours, Enclosed Cab, Blade,  
Rubber Tracks, Thumb, 12&24  
Inch Bucket, Quick Disconnect,  
New Finals, **\$15,000.**  
203-509-6395



**2005 INTERNATIONAL 4200 DUMP TRUCK.**  
26,000 GVW, Diesel, 6 Speed Manual, 96K Miles, A Real Nice  
Truck! **\$23,000.** 401-255-7415

## HIGH QUALITY WORK AT REASONABLE RATES

**\*Northern Rhode Island's Premier Asphalt Company Since 1987\***

**Residential ♦ Commercial ♦ Municipal**

**WWW.NULOOKINC.COM**



**WWW.NULOOKINC.COM**



**2005 FREIGHTLINER M2  
BUSINESS CLASS.** Complete  
Chip Seal Business, Tack /  
Emulsion Tank Truck, 60K Miles,  
CAT Engine, Excellent Condition  
With Etnyer Tank, Spray Wand,  
And Bars. Also Comes With  
Three Chip Spreader Boxes,  
**\$45,000.**  
Call Matt **401-313-5235**



**MOROOKA TRACK TRUCK MST-300.** Runs And  
Works Great, **\$6500.** Call Matt **401-313-5235**



**2008 TAKEUCHI TB 180 FR EXCAVATOR.**  
In Excellent Condition And Well Taken Care Of, 3300  
Hours, Comes With 2 Buckets, One Grading And  
One Digging, **\$47,000.** Call Matt **401-313-5235**



**EAGLE AP18 ASPHALT COLD PLANER.**  
In Excellent Condition, Fully Hydraulic Tilt Side To  
Side And Slide, Set Up To Run On A CAT Skid Steer,  
Also Has New Teeth And A Spare Set Of Teeth To Go  
With It, **\$4,000.** Call Matt **401-313-5235**



# TRUCKCOUNTRY.US

## USED TRUCK PARTS



# ONLINE 24-7



**BUFFALO TURBINE CYCLONE DEBRIS BLOWER.**  
PTO Or Hydraulic Drive. Now In Stock.



**NEW TOMMY GATE LIFT GATES IN STOCK**



**10' GALLION GODWIN DUMP BODY TUB.** Air Gate, Like New, #215449, \$3,500



**1999-04 FORD SUPER DUTY DIESEL CAB.** With Doors, Absolutely No Rust, #215453, \$4,000



**8' DRW DUMP BODY,**  
#215454,  
\$2,500



**9' KNAHEIDE UTILITY BODY.**  
DRW, #3205411, \$2,500



**14' FLATBED DUMP BODY**  
#205437, \$2,500



**8' KNAPEIDE SRW UTILITY BODY.** Rock Solid, #215452, \$3,000



# 1-860-423-6004

Mon-Fri 8-5

**1535 WEST MAIN STREET, WILLIMANTIC, CT**

Sat 9-1



# CERRONE

**Chevrolet - Buick - GMC Of Attleboro**  
**A Priority Automotive Dealership**



**ROUTE 1, BETWEEN 95 + 295**  
**SOUTH ATTLEBORO, MA**

**508-761-4800**

**WE COME TO YOU - GIVE US A CALL !**

**NEW 5500 LCF  
DROPSIDE DUMP**



17,950 GVW, A/C, POWER HEATED MIRRORS,  
HITCH, COVER. #18364H  
~~WAS \$76,830~~

**\$61,495**

**2021 K3500 DUMP TRUCK  
WOODLAND GREEN**



9' DUMP, COVER, HITCH, CONV. PKG., TRAILER  
BRAKE+PLUG. #21143H  
~~WAS \$55,838~~

**\$53,995**

**2021 K3500 DOUBLE CAB  
UTILITY**



11,400 GVW, CONV. PKG., TRAILER  
HITCH+BRAKE, PLOW PREP. #21170G  
~~WAS \$57,888~~

**\$54,995**

**2021 C2500 UTILITY**



GREAT SPECS., DURAMAG UTILITY BODY,  
SYSTEM 1 LADDER RACK, SPRAY-IN-LINER.  
 #21121G  
~~WAS \$53,453~~

**\$49,995**

**2019 4500 11' UTILITY  
DURAMAX DIESEL**



16,500 GVW, NICE SPECS.,  
PERFECT FOR WHEN YOU NEED MORE  
ROOM+CAPACITY. #19386H  
~~WAS \$67,898~~

**NOW**

**\$58,495**

**2021 C2500 CHASSIS**



UTILITY BODY SPECS. PRICE INCLUDES UPFIT  
REBATE. #21156G  
~~WAS \$38,453~~

**\$36,250**

**2021 K1500 DOUBLE CAB SLE**



V-8, DRIVER ALERT PKG., TRAILER TOW PKG.  
 #21087G  
~~WAS \$48,850~~

**\$46,200**

**2021 K1500 CREW CAB SLT**

**INCOMING**

LEATHER HEATED BUCKET SEATS, ALL-STAR  
PLUS PKG., Z71 SUSP. #ZMJXGS  
~~WAS \$54,790~~

**\$50,790**

**HERE NOW**

LEATHER HEATED BUCKET SEATS, ALL-STAR  
PLUS PKG., Z71 SUSP. #MZ326636  
~~WAS \$56,315~~

**\$52,315**

**2021 K1500 CREW CAB**

**INCOMING**

CONV. PKG., POWER SEAT, ALUM. WHEELS,  
TRAILER PKG. #MZ331574  
~~WAS \$42,945~~

**\$38,395**

**2021 K1500 CREW CAB ELEVATION  
DURAMAX DIESEL**

**OUT FOR A WASH**



BUCKET SEATS, PREFERRED PKG., TRAILER PKG.  
 #211926  
~~WAS \$55,395~~

**\$51,895**

**2021 K1500 CREW CAB LTZ  
DURAMAX DIESEL**

**HERE NOW**

LTZ CONV. PKG., SUNROOF, ASSIST STEPS,  
20" WHEELS. #MZ324302  
~~WAS \$58,230~~

**\$54,230**



**WWW.CERRONEGM.COM**  
**WWW.CERRONETRUCKSALES.COM**



THIS AD IS COPYRIGHTED & OWNED BY TRUCK AND EQUIPMENT POST



# CERRONE

**Chevrolet - Buick - GMC Of Attleboro**  
**A Priority Automotive Dealership**

**ROUTE 1, BETWEEN 95 + 295**  
**SOUTH ATTLEBORO, MA**

**508-761-4800**

**WE SPECIALIZE IN FLEETS WITH 10+ TRUCKS. CALL US**



**2019 20' MOVING VAN**  
**DURAMAX DIESEL**



**23,000 GVW, ALUM. RAIL GATE, SIDE DOOR, E-TRACK. THE RIGHT SPECS.**

**#19373H**

**WAS \$92,398**

**NOW**

**\$79,995**

**2017 MICRO BIRD**  
**15 PASSENGER BUS**



**14 RIDERS PLUS CARGO STORAGE AREA. ONLY 3800 MILES. #T53**  
**SAVE OVER 40% OFF NEW !**

**\$36,977**

**2020 12' BOX TRUCK**



**14,500 GVW, ENHANCED AUDIO SYSTEM, AIR DEFLECTOR, ROLL-UP DOOR, LINING, ETC.**

**#20269H**

**WAS \$59,680**

**\$48,995**

**2019 10' HI-CUBE**



**9,900 GVW, ROLL-UP DOOR, PARTITION, LINING. #19354H**

**WAS \$45,633**

**\$41,995**

**2021 14' HI-CUBE**



**12,300 GVW, NICELY EQUIPPED AND READY FOR WORK. #21126H**

**WAS \$49,968**

**\$45,995**

**2021 YUKON XL SLT**



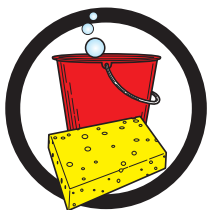
**SLT PREMIUM PKG., MAX TRAILERING PKG., REAR MEDIA + NAV PKG.**

**#21175G**

**\$73,365**

**2021 C3500 RACK TRUCK**

**OUT FOR A WASH**



**12' RACK WITH HITCH, TRAILER BRAKE, COVER, CONV. PKG. #21171H**

**WAS \$52,498**

**\$49,498**

**2021 K2500 DOUBLE CAB**



**CONV. PKG., POWER SEAT, PLOW PREP. #21155H**

**WAS \$45,390**

**\$44,595**

**2021 K3500 DOUBLE CAB**  
**ALUM. UTILITY**



**DURAMAG BODY W/ELECTRIC LOCKS, CONV. PKG., PLOW PREP. #21108H**

**WAS \$58,991**

**\$56,995**



**WWW.CERRONEGM.COM**  
**WWW.CERRONETRUCKSALES.COM**



THIS AD IS COPYRIGHTED & OWNED BY TRUCK AND EQUIPMENT POST



**CERRONE****Chevrolet - Buick - GMC Of Attleboro**  
**A Priority Automotive Dealership****ROUTE 1, BETWEEN 95 + 295**  
**SOUTH ATTLEBORO, MA****508-761-4800****CHEVROLET'S MEDIUM DUTY TRUCK CENTER**

- \* **REGULAR CABS, TILT CABS, CREW CABS 2WD OR 4WD**
- \* **GVW'S UP TO 25,950 BODY LENGTHS UP TO 22'**
- \* **DUMPS, PLATFORM/ RACKS, SWITCH-N-GO, CAR CARRIERS, TOW TRUCKS, SERVICE BODIES, MOVING VANS. IF YOU NEED IT DONE, WE CAN DO IT.**
- \* **NIGHT SERVICE WITH 30,000LB. LIFTS**
- \* **GM'S #1 FLEET DEALER IN SE MA., RI, CT.**

**CALL OUR COMMERCIAL TEAM. "YOU'LL BE GLAD YOU DID !"****NEW K5500 RACK BODY****17,500 GVW, 12' RACK BODY,  
PLOW PREP. #19263H****WAS \$67,032****NOW****\$62,595****PLENTY OF  
INCOMING  
TRUCKS****CALL US WITH  
YOUR NEEDS !****2021 C5500 DUMP TRUCK****17,500 GVW, 11' BODY, ELECTRIC COVER,  
TOOL BOX. #21110H****WAS \$77,257****NOW****\$71,795****2021 C5500 CHASSIS****DIESEL****19,500 GVW, DARK BLUE, 60"CA, INCLUDES  
UPFIT REBATE. #MH363647****WAS \$58,268****\$55,695****2021 C5500 CHASSIS****DIESEL****17,500 GVW, DARK GREY METALLIC,  
60"CA, INCLUDES UPFIT REBATE.****#MH364913****WAS \$55,887****\$53,295****2019 4500 11' UTILITY  
DURAMAX DIESEL****DIESEL****16,500 GVW, NICE SPECS., PERFECT FOR WHEN  
YOU NEED MORE ROOM+CAPACITY. #19386H****WAS \$67,898****NOW****\$58,495****NEW 5500 CREW CAB  
12' ALUM. LANDSCAPE****19,500 GVW, A/C, SAFETY PKG., HITCH  
COVER, NICE SPECS.****WAS \$85,517****\$69,995****2021 K1500 PICKUP****VALUE PKG., POWER SEAT, LOCKING  
AXLE, TRAILERING PKG., V-8,  
PLOW PREP PKG. #21171G****WAS \$41,645****\$39,995****2020 K3500 CREW CAB LTZ  
DURAMAX DUALY****TECHNOLOGY PKG., LTZ PLUS PKG.,  
ONLY 4000 MILES. #T182****\$79,900****WWW.CERRONEGM.COM**  
**WWW.CERRONETRUCKSALES.COM**

THIS AD IS COPYRIGHTED &amp; OWNED BY TRUCK AND EQUIPMENT POST





**1996 INTERNATIONAL 4700.**  
DT466, 6+1 Trans, Etnyre 1725 Dist.  
172 Ford Rear Pump Motor, Fuel  
Burners, Good Tack Or Driveway Truck,  
Runs Well, **\$11,600 OBO.**  
Call Ray 860-346-2833

# R & R INDUSTRIES

www.RRTrucksAndEquipment.com • Sales@RandRind.com

195 Rocus Street, Springfield MA 01104

**We Buy All  
Scrap Metals**

**413-733-2118**



Call With  
Your Size  
Lots More In  
Stock!

Guaranteed  
Used  
Tires

Virgin Steer,  
Drive &  
Trailer Tires

**Truck Tires**  
**Many Matched Sets**  
**Of 4 And 8**  
**& Rims Too**  
**295/75/225**  
**10:00 x 22.5**  
**11:00 x 22.5**  
**12:00 x 22.5**  
**9:00 x 20**  
**10:00 x 20**  
**8:25 x 20**  
**11x20**



**FULL FABRICATION SHOP.**  
**CUSTOM CHIPPER TOP'S**  
**& BODIES. CUSTOM REAR**  
**GATES ALSO AVAILABLE.**

CALL CHRIS  
CAREY AUTO PLYMPTON, MA  
781-582-1378



**2005**  
**JOHN DEERE**  
**230 LC**  
**EXCAVATOR.**  
New Thumb,  
7000 Hours,  
Machine Needs  
Nothing,  
**\$65,000,**  
Westfield, MA  
413- 246-0880

# HOLLISTON TRUCK

1569 WASHINGTON ST, HOLLISTON, MASS 01746  
WWW.HOLLISTONTRUCK.COM • CALL 508-429-7678

**WANTED :**  
**GOOD USED**  
**DUMP BODIES**

**LARGE SELECTION OF UNDER CDL TRUCKS !**



**2010 FREIGHTLINER M2:** CUMMINS ISC-300HP, 272K MILES, EXHAUST BRAKE, ALLISON 3500 RDS AUTO, 61K GVW, TUFF TRAC SPRING SUSP., 6.13 GEARED RATIO, DBL FRAME, AIR-BRAKES/SEAT, A/C, PTO, 13.5" STEEL DUMP, AIR-GATE, ELECTRIC TARP, PINTLE PLATE. **\$64,000**



**2008 INTERNATIONAL 4300:** DT466-260HP, 45K MILES, ALLISON 3500RDS AUTO, 26K GVW, SPRING SUSP., 5.64 GEARED RATIO, LOCKING DIFF, 11R 22.5 TIRES, SINGLE FRAME, AIR-BRAKES, A/C, PTO, 10" STEEL DUMP, ELECTRIC TARP, PINTLE. **\$39,000**



**2010 FREIGHTLINER M2:** CUMMINS ISB-260HP, 96K MILES, ALLISON 3500RDS AUTO, 26K GVW, SPRING SUSP., SINGLE FRAME, 11R 22.5 TIRES, AIR-BRAKES/SEAT, A/C, PTO, NEW 10" WARREN DUMP, 1 CHUTE, TARP, PINTLE. **\$45,000**



**2010 FREIGHTLINER M2:** CUMMINS ISB-260HP, 94K MILES, ALLISON 3500RDS AUTO, 26K GVW, SPRING SUSP., SINGLE FRAME, 11R 22.5 TIRES, AIR-BRAKES/SEAT, A/C, PTO, NEW 10" WARREN DUMP, 1 CHUTE, TARP, PINTLE. **\$45,000**



**2009 FREIGHTLINER M2:** CUMMINS ISB-280HP, 54K MILES, ALLISON 3500RDS AUTO, 37,400 GVW, SPRING SUSP., SINGLE FRAME, 12R 22.5 FRONT TIRES, 12R 22.5 REAR TIRES, AIR-BRAKES/SEAT, A/C, PTO, NEW 10" WARREN DUMP, 1 CHUTE, ELECTRIC TARP, PINTLE PLATE. **\$50,000**



**2010 FREIGHTLINER M2:** CUMMINS ISB-280HP, 52K MILES, ALLISON 3500RDS AUTO, 26K GVW, SPRING SUSP., SINGLE FRAME, 275/80R 22.5 TIRES, AIR-BRAKES/SEAT, A/C, PTO, NEW 10" WARREN DUMP, 1 CHUTE, ELECTRIC TARP, PINTLE. **\$52,000**

## THE DUMP TRUCK SPECIALISTS

WWW.TRUCKANDEQUIPMENTPOST.COM





# CONSOLIDATED TRUCK & EQUIPMENT, INC.

**TELLING  
TRAILERS**

**EXTREME  
TRAILERS**



**www.ConsolidatedTruckEquipment.com**

**32 INDUSTRIAL COURT, (RT.6) SEEKONK, MASSACHUSETTS.  
ACROSS FROM SEEKONK SPEEDWAY.**



Brand New Challenger Body & Chassis,  
26' Long, 54" & 60" Sides & Gate, Single  
Point 60K suspension, Hardox Body, Hi-  
Lift Gate, aluminum disc wheels, electric  
load cover.

16 Ply Tires.

Please Call For Pricing



HONEST BOB'S GOT TRAILER  
LOADS OF TRAILERS!  
MAC and EXTREME FLATBED  
TRAILERS  
48' x 102" COME AND GET 'EM



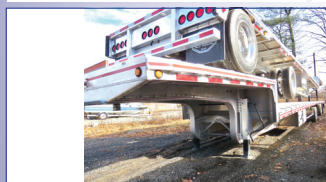
MAC 40-2: 20 TON  
TOP TAG TRAILER:  
30' X 102" Wide floor, Air Tilt, Tires  
@ 75%, Aluminum Rims. Very  
Good Condition. \$18,500



MAC 28' ALUMINUM  
SMOOTH SIDE TRAILERS.  
Air Ride Suspension. Please  
call for pricing.



BRAND NEW EAGER  
BEAVER 20XPT TRAILERS.  
6' RAMPS. BEST PRICING  
AROUND. Please give us a  
call.



NEW MAC 53' Front Axle Slide, 36" Deck Height.  
Tool Bx, 10' Upper Deck. (it's the trailer on the  
bottom). Call for Price.



2015 MAC 53' Step Deck:  
10' Upper Deck, Front Axle slide. Very Good  
Condition. Call for price.



1999 TI-BROOK 24' x 54" ALUMINUM DUMP TRAILER:  
Steel Frame, Slide-N-Go Manual Tarp, Air Ride, 11x24.5 Tires  
@ 75%, Brakes 50%, Steel Floor, Steel Wheels, \$19,500.



2022 MAC 27' ALUMINUM FRAME HARD OX  
BODY: Hi Lift Gate, Aluminum Rims, 24.5 Tires.  
Includes Load Cover. Call for Price. Only 1 Left!

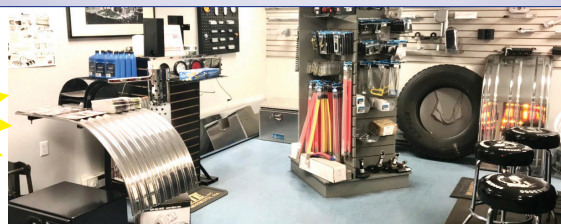


NEW MAC 48' Step Deck: Front Axle Slide,  
10' Upper Deck, Tool Box.  
Call for price.



2020 ALUMINUM DUMP BODY: NEW  
CONDITION \$52,500

**PARTS  
ROOM  
SPECIALS!**



**PARTS  
ROOM  
SPECIALS!**

CALL US: AT 508-336-6215 • HOURS: 7:30 -5:30





**FLEET DISCOUNTS**

**\$75 & UP**

**ACUSHNET WHEEL POLISHING**  
Used Rims Available  
**508-961-7528**  
62 SOUTH MAIN ST.,  
ACUSHNET, MA



**2013 Bobcat \$570.**  
Serial #A7U713201, Joy Stick, New Tires,  
New Factory Engine,  
0 Hrs, Machine 2000 Hrs, Complete Cab And  
Heat, Reasonable Offer, 603-343-7966



**2007 FORD F250.** 4x4, Rust-Free, 5.4 Gas, Auto, A/C, Options, 58K Miles, Just Mechanically Recon., New Brakes, Tires, Shocks, Cats, Fluids, Toolbox, Racks, Perfect 8' Fisher Plow, Runs Well, **\$14,500.**  
978-462-1000, www.WestsideTruckequipment.com

**2015 PICKUP,**  
Only 64,000, Like New Sander  
and Plow, Great Running Truck,  
Perfect Truck,  
**\$42,000 Firm,**  
401-641-0825



# BEAM TRUCK & BODY INC.

RI Dealer #647

433 CUMBERLAND HILL ROAD, WOONSOCKET, RI 02895

**401-767-2639**



**NEW - USED & RECONDITIONED DISPOSAL EQUIPMENT**



2007 ISUZU FVR: UNDER CDL, AIR-BRAKES, 111K MILES, ALLISON AUTO, MOUNTING 2011 10YD NEW WAY SIDE LOADER, W/ TIPPER, CHASSIS BLASTED & PAINTED, BODY PAINTED YOUR CHOICE OF COLORS.



2010 MACK MR 20 & 46 ALLISON W/ NEW WAYNE 40 YD. FRONT LOADER, 26,351 MILES. \$164,000 W/ FET



2010 INTERNATIONAL 7400: 42,000 MILES W/ HEIL 22 YD. AUTOMATED PACKER. \$60,000 WILL SPLIT.



2006 FORD F-750, UNDER CDL, REAR LOADER, 35K MILES, WAYNE 6 YARD REL, CALL FOR MORE INFO !



2004 KENWORTH T300: 396,914 MILES, AMERICAN 75,000# ROLL-OFF, CAT C12 W/ FULLER 8LL, 60,000# GVW CALL FOR MORE DETAILS !



2006 INTERNATIONAL 4300, 349,867 MILES, DT466 OVERHAULED IN 2018, ALLISON 3500 TRANS., REPLACED @249,809 MILES, STELLAR SLIDER 26 W/ ADJUSTABLE HOIST - 35'54" - PIONEER RP-1500-PTO-COVERING SYSTEM, PINTLE HITCH, 6" STEEL TOOL BOX, 295/75R22.5 FRONT / 295/75R22.5 REAR. CALL FOR MORE INFO !



2003 FREIGHTLINER ROLL-OFF, 66K GVW, MILEAGE UNKNOWN, FULLER 8LL, CUMMINS, CALL FOR MORE INFO !



2003 IH 4400 CREW-CAB HOOK-LIFT, 109K MILES, DT466, ALLISON 3500 RDS, 40K GVW, GAL BREATH 30K HOOK WITH 54/62 HOOK -HEIGHT DOES 16' BOXES, CALL FOR MORE INFO !

**WWW.BEAMTRUCK.NET**





**ALTA** EQUIPMENT  
COMPANY  
UP TIME MATTERS



# NOW HIRING TECHS

**WE OFFER OUR CUSTOMERS UNPARALLELED SERVICE, SO WE HIRE THE BEST TECHS**

Come work for one of the largest equipment dealers in the United States! Are you a Technician/ Mechanic with diesel, agricultural, or heavy equipment repair experience? If so, then we want you on our team! Competitive pay and excellent benefits are only the beginning!



EQUIPMENT WORLD'S  
**BIG IRON DEALER**  
OF THE YEAR

Careers@AltaEquipNE.com | 800-Go2-ALTA | AltaEquipNE.com





**2010 BOBCAT S300.** Serial # ASGP36393, New Tires And Rims, 3900 Hrs, Heat, New Bucket Plus 4 Mounted Flotation Tires, Ready To Work, Reasonable Offer, 603-343-7966, Karl



## AREA HYDRAULICS

810 Quaker Hwy. Uxbridge, MA

**508-278-6670**

**We Make Hose Assemblies!**

**We Carry Skid Steer Mount Plates!**

**We Carry Hydraulic Oil!**

**WHELEN® Cylinder Resealing**



**8' MARANDA M-170 FIBERGLASS SLIDE INSERT UTILITY TRUCK CAP,** Space Kap, Dual Side Doors, Rear Barn Doors. Shelving, Dual Alum. Drop-Down Ladder Racks, Cargo Slide Work Tray, Space Cap Rival, Excellent Condition, **\$5,900.**, Westport, MA 508-636-5050



**2019 MERCEDES:** 14 Passenger LA West Executive Shuttle. **Call For More Details.** 401-434-5900

# T & TAYLOR & LLOYD, INC. T &

SEE OUR INVENTORY: [WWW.TAYLORANDLLOYD.COM](http://WWW.TAYLORANDLLOYD.COM)



**2014 INTERNATIONAL 7600 26' Flat bed with Moffet Set Up, Auto, 52K GVW.**



**2000 STERLING.** 37,600 GVW, CAT C7 with 8LL Transmission, Low Low Miles, Spreader Dump Body Combo, Plow Set Up, No Blade.



**2016 INTERNATIONAL 4300 26' Box,** 102" X 102", Non CDL, Lift Gate, Southern Truck, Cummins, 220K, Coming In June. (File Photo)



**2021 INTERNATIONAL CV 4X4 C&C.** 6.6L 350HP, Allison 2700 RDS, PW, 165" WB, 22,500 GVW.



**2016 INTERNATIONAL 4300 19' Industrial Carrier,** 130K Miles, Southern Truck, Non CDL 6 Spd Manual, Air Brakes, Cummins, Coming In June. (File Photo)

**1-617-429-3370**

**Call Jack Coakley**  
8 Railroad Avenue Bedford, Ma



**NOW HIRING**  
In Rhode Island

**Heavy Equipment Operators**  
(must hold RI hoisting license)

**Heavy Equipment Mechanic**

**Heavy Equipment Maintainer**

**Rock Truck Driver**

**Pay based on experience.**

Call **401-447-2777** or email **riaggregatesales@gmail.com**  
for more information



**2014 INTERNATIONAL TERRASTAR**, 19,000 Mi,

Automatic, 4wd, Under Cdl,  
12' Fisher Power Angle Plow W/  
Fish Stick, 158" Wb, Ready To Work,  
**\$44,500**, CALL US.

508-381-3939. Hopedale, MA



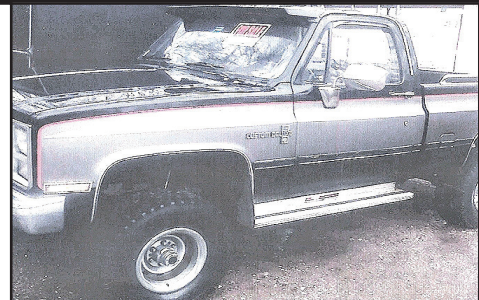
**2006 PETERBILT 357 TRI-AXLE DUMP**, 8LL, Clean, CAT  
Motor, Brakes Done, Rubber 100%, New Floor In Dump Body, All  
Heavy. **\$64,900**, Call Today! 781-417-3018

**1986 CHEVY K10.**

4X4 Short Bed, 98,500 Original  
Miles, 4 Inch Lift, Dual Exhaust,  
Runs Strong, Needs Bodywork,

**\$7500 OBO.**

207-256-4652



**MIKE'S**  
Truck & Trailer  
Repair Inc.



Truck & Car  
Computer  
Diagnostics



Full Service Truck and Auto Repair Center.

447 York Ave, Pawtucket, RI 02861 • (401) 725-2188

**MEDIUM/HEAVY TRUCK & RV SERVICES**  
**FEDERAL DOT & RI STATE INSPECTIONS**

- \*All makes engine repairs
- \*Fuel pumps
- \*Brake work
- \*Electrical repair
- \*Injectors
- \*Oil changes
- \*Trailer repair
- \*Turbo



- \*Lift gate problems
- \*Welding fabrication
- \*Heavy equipment
- \*Front ends
- \*Rear roll-up door repairs
- \*Installation
- \*Wiring circuits

**FORD 6.0 DIESEL POWER STROKE SPECIALIST !**



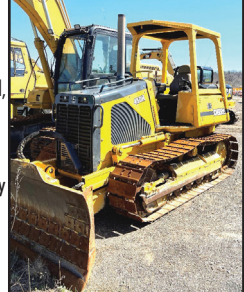
**FORD 6.0 DIESEL POWER STROKE SPECIALIST !**



visit our website @ [mikestruckandtrailerpawt.com](http://mikestruckandtrailerpawt.com) • RI# 459ca

**2001 JOHN DEERE**

**450H** - One Owner,  
One Operator,  
Professionally Maintained,  
10,400 hours, Was Only  
Used for Grading  
Driveways, This Dozer  
Never Worked a Hard Day  
In Its Life. -  
**\$28,500**  
CALL DAN AT  
203-506-3860



**2016 VOLVO VNL64T300-D13**, 500HP.,  
18 Speed, 14,600 Front/ 46,000 Rears,  
Air-Ride, 2 Line Wet-System. 401-434-5900

**2001 INTERNATIONAL 4700.** Cab Chassis,  
Long Wheelbase,  
DT466, Automatic, A/B,  
33K GVW, Solid Cab-  
Frame, New Rubber,  
Always Maintained,  
978-420-7515,  
[www.WestsideTruckEquipment.com](http://www.WestsideTruckEquipment.com)







DAILY | WEEKLY | MONTHLY  
**• RENTALS •**  
**(603) 623-3669**  
**www.TQUIP.com**

**603 MAMMOTH RD LONDONDERRY, NH • 239 RANDBURY RD RUTLAND, VT**



**EXCAVATORS**  
 6,000 - 110,000 LB MACHINES  
**HAMMER MACHINES AVAILABLE!**



**WHEELED EXCAVATORS**  
 48,000 LB MACHINES  
**TWO CAT M322Ds AVAILABLE!**



**LONG-REACH EXCAVATORS**  
 70,000 - 90,000 LB MACHINES  
**60' REACH!**



**WHEEL LOADERS**  
 1.5 - 9 CY CAPACITY  
**FORKS & JIBS AVAILABLE!**



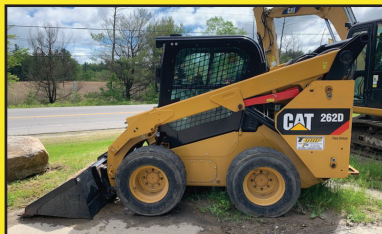
**TRACKED DUMPERS**  
 24,000 LB CAPACITY  
**RUBBER-TRACKED CARRIERS!**



**OFF-HIGHWAY TRUCKS**  
 25 - 40 TON MACHINES  
**CATERPILLAR & KOMATSU!**



**GRADERS**  
 14' MOLDBOARDS  
**RIPPERS AVAILABLE!**



**SKID STEERS**  
 8,000 - 12,000 LB MACHINES  
**WHEELED & TRACKED!**



**DOZERS**  
 15,000 - 78,000 LB MACHINES  
**THREE CAT D8Ts AVAILABLE!**



**ROLLERS / COMPACTORS**  
 48" - 84" DRUMS  
**OPEN & ENCLOSED CABS!**



**LIFTS / TELEHANDLERS**  
 6,000 - 12,000 LB MACHINES  
**UP TO 55' REACH!**



**AGGREGATE**  
 1-3 - 6-8 YD CAPACITY SCREENERS  
**JAW & CONE CRUSHERS AVAILABLE!**

**SPECIALTY ATTACHMENTS AVAILABLE**

HAMMERS | SHEARS | BUCKETS | GRAPPLES | MUNCHERS | THUMBS | FORKS | JIBS | TAILGATES | WINCHES | RIPPERS | PLOWS | SWEEPERS





# JACK MADDEN FORD

## 888-817-7979

**ANNOUNCING!  
MEDICAL  
PROFESSIONALS  
BONUS CASH\***



### BUILT FOR AMERICA



BUILT *Ford* PROUD

## 35 LANDSCAPE TRUCKS READY FOR DELIVERY!



**HARD TO FIND GREEN!  
NEW F350 XL 4x4 DUMP BODY  
Stk.#32502  
MSRP: \$58,310  
Discount: \$ 2,069  
Madden Trade Assist: \$1,000\*  
BUY FOR: \$55,241\***



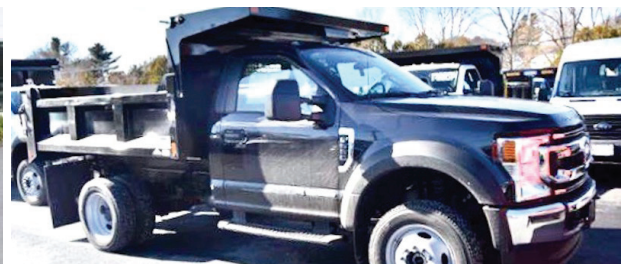
**NEW F250XL 2WD CREW CAB: 6.2L, Power Group.  
Stk.# 63249 \$40,814\***



**NEW F550XL 4X4 LANDSCAPE BODY: 6.7L DIESEL,  
POWER GROUP. NAP \$76,250\***



**2021 F350 SUPER CAB XL 4X4: 7.3L V8, POWER GROUP  
Stk.# 32500. \$58,739\***



**NEW F550 XL 4x4 DUMP BODY: 6.7L Diesel, Power  
Group. Stk.#2915 \$67,441\***



**GO TO [WWW.JACKMADDENFORD.COM](http://WWW.JACKMADDENFORD.COM)**

# JACK MADDEN FORD

**825 Providence Hwy Rt.1 Norwood, MA**

## 888-817-7979



\*All prices include incentives for qualified buyers. For trade assist, must have 2017 or new trade. All vehicles require dealer financing. Some prices include snowplow incentives. See dealer for complete details.





# JACK MADDEN FORD

## 888-817-7979



**ATTENTION  
CONTRACTORS**



BUILT FOR AMERICA

BUILT *Ford* PROUD



## 35 LANDSCAPE TRUCKS READY FOR DELIVERY!



**NEW F350 XL DUMP 4WD. DRW, 7.3L, V8 Gas, Auto, stk#13009, \$53,901.\***



**NEW F350XL DRW 4x4 LANDSCAPE BODY: 6.7L DIESEL. Power Group. Stk.#93162 \$59,072\***



**NEW F350 XL SUPER CAB 4X4 DURAMAX UTILITY BODY: W/SPRAY LINING, 8.3L V8, POWER GROUP. Stk.# 28766 MADDEN PRICE: \$57,244\***



**NEW E350 CUTAWAY  
Stk.#A37473  
See more photos on  
our website.  
BUY FOR: \$51,215\***



**NEW F350 4X4 CHASSIS'S Available.  
CALL FOR INFORMATION**



**NEW F550 XL DRW 4x4 11' Dump Body:  
CALL FOR INFORMATION**



**GO TO [WWW.JACKMADDENFORD.COM](http://WWW.JACKMADDENFORD.COM)**

# JACK MADDEN FORD

825 Providence Hwy Rt.1 Norwood, MA

## 888-817-7979



\*All prices include incentives for qualified buyers. For trade assist, must have 2016 or new trade. All vehicles require dealer financing. Some prices include snowplow incentives. See dealer for complete details.





# READY FOR SPRING?



**2014 Vermeer FT300, 2500 hrs., Mulcher, Cab w/ AC, Industrial 30XL Winch, Rear View Camera. \$189,000**



**2003 CAT D8R, New Engine, 80%  
Under Carriage, Recent Equalizer Bar  
Work Ready! \$169,000.**



**2019 Hitachi ZX210 LC-6, 1400 hrs., Aux.  
Hydraulics, QC, AC/Heat, 42" Digging Bucket  
w/ Hydraulic Thumb, Rearview Camera.  
\$152,500**



**2013 Terex TA300, 5000 hours,  
80% Front Tires, 40% Rear Tires, Work  
Ready! \$99,000.**





**1965 FORD F-600 DUMP TRUCK.**  
330 Truck Motor, 4 Speed With Splitter. Truck Is In Excellent Condition. I Have Owned It For Over 43 Years And Restored It. It's Just Doesn't Get Used Anymore. Asking **\$10,500.**  
Call Ron @781-729-5043

- **NEED HELP TRACKING PROJECT COSTS?**
- External Oversight Of Monthly Bookkeeping Transactions
- Setup, Training, & Troubleshooting QuickBooks
- We Provide All Your Bookkeeping Needs

**401-854-3504**

[lvoyer@ControlledSolutionsRI.com](mailto:lvoyer@ControlledSolutionsRI.com)

[www.ControlledSolutionsRI.com](http://www.ControlledSolutionsRI.com)



**controlled solutions**



**CM FLATBEDS: STEEL AND ALUMINUM.** Call With Your Needs.  
Call Chris 781-582-1378. Plympton, MA



**2020 RHODES 26'** Aluminum Double Walled Smooth Side Dump Trailer, Alum. Frame, Air-Ride. 401-434-5900



**Jukonski Truck Sales**



[WWW.TRUCKSELLERS.COM](http://WWW.TRUCKSELLERS.COM) *se habla español*



680 NEWFIELD ST. (RT 3) MIDDLETOWN, CONN • **800-378-0342** • MON-FRI 8-6 SAT 8-NOON

**20 USED TRUCKS IN STOCK**

When They Are Gone They Are Gone



**3.99% Available**

**FUSO SPECIAL PURCHASE 10 In Stock, Close Out Prices On 2020 Fuso FE140 & FE160 16' To 20' Box Trucks**

**PAYING TOP DOLLAR FOR USED TRUCKS!!!**



**CERTIFIED**

2016 HINO 268A CAB & CHASSIS. Diesel, Automatic, Impossible To Find Truck, #1148, \$36,900



**CERTIFIED REEFER**

**GOT TO GO**

2017 IH 4300. Thermo King Reefer, Cummins ISB, 102K Miles, #3459, Blow Out Price \$39,900



**CERTIFIED**

2019 HINO 195. Only 15K Miles, A Rare Find, Like New, #7205, \$57,900



**CERTIFIED**

2017 HINO 268A. Hard To Find 26 Footer With A Big Liftgate!, #3477, \$49,900

**90 DAY POWERTRAIN WARRANTY AVAILABLE ON ALL CERTIFIED TRUCKS. INCLUDES INJECTORS AND TURBO**



**DAVE'S ENTERPRISES**

66 BRALEY RD. FREETOWN INDUSTRIAL PARK. EAST FREETOWN, MA



**1998 LULL B-44:** 4 Cylinder **CUMMINS** Diesel, New Solid **BRAWLER FLEX** Tires. Excellent Condition. **NICEST LULL AROUND!**

**508-726-0077**

**1996 CAT D3C 6-WAY DOZER.** Three Speed Forward, Three Speed Reverse Powershift, Perfect Running Condition, Approximately 5500 Original Hours, Asking **\$23,000.**  
203-666-1411



**1999 CAT 345BL EXCAVATOR,** Approx 15k Hours, 50% U/C, Ready To Work! **\$34,900.** Call Today!  
781-417-3018

**2015 FORD F350,**  
Only 18,000 Miles,  
Sharp Truck, New Plow,  
**\$27,500,**  
401-641-0825.



## MAJOR JOB COMPLETION AUCTION MAJOR LOCAL AMUSEMENT PARK

~ Boyce Excavating ~

Motor Scrapers, Crawler Tractors, Tractor-Loader Backhoes, Skid Steers, Telescopic Forklifts, Boom & Scissor Lifts, Generators, Air Compressors, All Types Trucks and Trailers, Support and Attachments



**FRIDAY, JUNE 11<sup>TH</sup>**  
**9:30AM**

**150 Carpenter Ave.,  
Middletown, NY 10940  
(Orange County Fairgrounds)**

**HIGHLIGHTS INCLUDE:** **14 HYDRAULIC EXCAVATORS:** Cat 365BL-2, Cat 365BL, (2)Cat 345CL, Cat 330CL, Cat 330FL, Cat 325CL, Cat 320NG2D, Cat 320F, Cat 313F, Cat 313FLGC, (2)Cat 308E2CR, Unused Doosan DX225LC, **20 MOTOR SCRAPERS:** Cat 637D, (3)2011 Cat 631G, (5)Cat 631E, (3)Cat 627B, (2)Cat 621F, (3)Cat 621E, (3)Cat 621B, **9 CRAWLER TRACTORS:** Cat D11N, (2)Cat D9N, (2)Cat D9L, Cat D9G, Cat D8L, Cat D7R-2, Cat D6TLGP, **7 RUBBER TIRED LOADERS:** Cat 980C, 2009 Cat 966H, (2)Unused Cat 908M, 2020 JD 244L, Komatsu WA480, Kawasaki 70ZV, **INTEGRATED TOOL CARRIER:** Cat IT28G, **ASPHALT ROLLER:** Bomag BW120AD-2, **TRACTOR LOADER BACKHOE:** JD 310SG(4x4), **4 RUBBER TRACKED SKID STEERS:** 2017 NH C227, 2016 Takeuchi TL8, (2)Takeuchi TL130, **5 SKID STEERS:** (2)2019 Case SV340, (2)2020 Case SV280, 2018 Case SR270, **FORKLIFT:** Clark C500, **SCREENING PLANT:** 2018 Metso CV100, **WOOD CHIPPER:** 2015 Woodsman 430, **DRILLING EQUIPMENT:** 2010 Vermeer Navigator D36X50 Drill, **TRENCHER:** Vermeer T755 Commander, **SWEEPER:** 2006 Sterling SC8000, **SERVICE TRUCK:** 2006 GMC 3500, **KNUCKLEBOOM DUMP TRUCK:** 2000 Peterbilt 357(t/a), **2 COMPRESSOR TRUCKS:** (2)Ford F Series(s/a), **DISTRIBUTOR TRUCK:** 2002 Sterling M7500, **SNOW PLOW TRUCK:** Oshkosh P482-32, **2 DUMP TRUCKS:** Freightliner FL 106, 1999 Ford F450, **UTILITY TRUCK:** 1995 Ford F350XL, **SCHOOL BUS:** 2001 Freightliner FS65, **DETACHABLE GOOSENECK TRAILER:** 2021 Liddell C55(tri), **4 SCRAP RECYCLING EQUIPMENT:** New 2-cu.yd. Self Dumping Hopper, (2)New 1.75-cu.yd. Self Dumping Hopper, New 1.75-yd. HD Trash Hopper, **10 SNOW EQUIPMENT:** (10)New 96in. Snow Pusher, **4 PRESSURE WASHERS:** (4)New Easy Kleen Magnum Gold, **3 HYDRAULIC HAMMERS, 3 EXCAVATOR THUMBS, MULTI SHEAR, 2 STUMP RIPPERS, 28 ATTACHMENTS:** (26)Skid Steer, **60 NEW SUPPORT EQUIPMENT.**

**ALEX LYON & SON**

**SALES MANAGERS & AUCTIONEERS, INC.,  
BRIDGEPORT, NY 13030**

Ph: (315) 633-2944 • Fax: (315) 633-5635



SITE PHONE: (813) 777-3273 Tom

Go to **WWW.LYONAUCTION.COM** for a  
Complete List, Descriptions, and Pictures



# PAT'S TRUCK SALES

Office: 603-347-1386 - After Hrs: 978-423-6843)



**2005 PETE 335 T/A DUMP.** CAT C7 300 HP, ALLISON AUTO, 78K MILES, 14' STAINLESS STEEL BODY, ELECTRIC LOAD COVER, AIR GATE, PINTLE HOOK, NEEDS REAR PINS IN DUMP BODY, NEW TURBO, **\$42,900.**



**2017 CHEVY SILVERADO 3500HD.** 4WD, 32K MILES, GAS 360 HP, AUTO, 9' DUMP BODY, REMAINDER FACTORY WARRANTY, **\$39,900.**



**2006 IH 7400.** 10' STAINLESS STEEL DUMP BODY, DT466, ALLISON AUTO, 69K MILES, 35,000 GVW, 10' PLOW, **\$36,900**



**2011 FORD F550 12FT SWITCH & GO DUMP BODY.** 4WD, AUTO, V10 GAS, 144K MILES, **\$34,900**



**2012 FORD F550 4X4 DUMP.** DIESEL, AUTO, 98K MILES, I-PAC TOOL BOX, BOSS V-PLOW, STAINLESS STEEL TAIL GATE SPREADER, **\$35,500**



**2007 FORD F350 4X4 DUMP.** DIESEL, AUTO, 50K MILES, 9FT STEEL DUMP BODY, CLEAN AND READY TO WORK, **\$24,900**



**2011 FORD F550 DUMP 4WD.** DIESEL, AUTO, 127K MILES, MANY UP DATES, GO TO WORK CONDITION, **\$27,900**



**2017 FORD F250 PLATINUM CREW CAB.** 4X4, SHORT BED, DIESEL, 147K MILES, SUPER CLEAN, ALL OPTIONS, **\$46,900**



**2009 FREIGHTLINER M2106 6 WHEEL DUMP TRUCK.** CUMMINS 320 HP, ALLISON AUTOMATIC, 18K MILES, 10FT POWER ANGLE PLOW, 37,600 GVW, **\$39,900**



**2009 FORD F450 SERVICE TRUCK.** 87K MILES, DIESEL, AUTO, 4X4, AIR COMPRESSOR, REEL & HOSE, WELDERS TANK CARRIAGE, 12.5 FT FLATBED, WITH SECOND FLATBED ABOVE CAB, **\$23,900**



**2013 GMC 3500HD 4X4 DUMP.** DURAMAX DIESEL, AUTOMATIC, 9' FISHER PLOW, FISHER STEEL SANDER, 31K MILES, **\$37,900**



**2010 GMC 3500HD 4X4 DUMP.** DURAMAX 365 HP, AUTOMATIC, 8' STEEL BODY, 13,500 GVW, 103K MILES, GO TO WORK, **\$29,900**

**Visit Us - [www.patstrucksales.com](http://www.patstrucksales.com) • 77 Route 125, Kingston, NH**



SALVADORETRUCKS.COM  **RAM****SALVADORE AUTO**.com  
*Family of Dealerships***888-605-4346****BUSINESS LINK**  
The best way for small business.**ON THE JOB****2021 RAM 3500HD C&C**  
TRADESMEN REG CAB  
**NEW ARRIVAL!****CALL FOR PRICING!**60" CAB TO AXLE-6.4L V8 HEMI-  
CHROME APPEARANCE PKG-DRW-UPFIT  
READY STK# N21126**2021 RAM 2500HD**  
TRADESMEN REG CAB  
**MULTIPLE AVAILABLE****CALL FOR DETAILS!**6.4L HEMI V8- CHROME APPEARANCE-  
SNOW CHIEF-TRADESMEN LVL 1-  
STK# N21156**2021 RAM 2500HD**  
LARAMIE CREW CAB 4X4  
**TWO AVAILABLE****CALL FOR PRICING!**6.7L CUMMINS TURBO DIESEL-  
LARAMIE LVL 2- SPORTS APPEARANCE  
PKG- SNOW CHIEF- UCONNECT 12"  
SCREEN STK# N21113**2021 RAM 5500HD C&C**  
TRADESMEN CREW CAB  
**NEW ARRIVAL!**60" CAB TO AXLE-6.7L CUMMINS  
TURBO DIESEL-CHROME APPEARANCE  
PKG-UPFIT READY- STK# N21128**COME SEE LARRY  
THE TRUCK GUY!****More Than 30 Years of  
Commercial Truck Experience!****2021 RAM 5500HD C&C**  
TRADESMEN REG CAB 4X4  
**NEW ARRIVAL!**84" CAB TO AXLE-6.7L CUMMINS  
TURBO DIESEL-DRW-CHROME  
APPEARANCE PKG STK# N21060**2021 RAM 5500HD C&C**  
TRADESMEN REG CAB 4X4  
**NEW ARRIVAL!**84" CAB TO AXLE-6.7L CUMMINS  
TURBO DIESEL-DRW-CHROME  
APPEARANCE PKG- UPFIT READY STK#  
N21116**2019 RAM 5500 RACK C&C**  
TRADESMEN CREW CAB 4X4  
**ONLY \$59,995!**84" CAB TO AXEL-6.7L CUMMINS  
TURBO DIESEL- DRW- CHROME  
APPEARANCE PKG-12' READING  
LANDSCAPE BODY STK# N19302**2021 RAM 5500HD C&C**  
TRADESMEN REG CAB 4X4  
**NEW ARRIVAL!**60' CAB TO AXLE-6.7L CUMMINS TURBO  
DIESEL- FLAME RED-CHROME  
APPEARANCE PKG-ALCOA WHEELS-  
UPFIT READY STK# N21124442 West Broadway, Gardner, MA 01440 | [SalvadoreAuto.com](http://SalvadoreAuto.com)

NOT RESPONSIBLE FOR TYPOGRAPHICAL ERRORS. INCLUDES QUALIFYING REBATES. PRICING SUBJECT TO CHANGE 4/30/2021



SALVADORETRUCKS.COM



RAM

# SALVADORE AUTO

.com

Family of Dealerships

888-605-4346



ON THE JOB

**2019 RAM 3500HD C&C**  
TRADESMEN REG CAB 4X4  
**ONLY \$49,995!**



60" CAB TO AXLE-6.4L V8 HEMI-DRW-9'  
READING DUMP BODY STK# N19190

**2020 RAM 3500HD REG CAB**  
TRADESMEN 4X4  
**ONLY \$41,960**



6.4L V8 HEMI-CHROME APPEARANCE  
PKG- SNOW CHIEF- TRADESMEN LVL  
2-STK# N20205

**2021 RAM 5500HD C&C**  
TRADESMEN REG CAB 4X4  
**16' FLAT DECK**



120" CAB TO AXLE-6.7L CUMMINS  
DIESEL-CHROME APPEARANCE PKG-  
DRW-  
STK #: N21041

**2021 RAM 5500HD C&C**  
TRADESMEN REG CAB 4X4  
**AIRFLO DUMP**



60" CAB TO AXLE, 6.4L HEMI GAS-CHROME  
APPEARANCE PKG-9' BODY-DRW-  
STK #: N21077

**#1**  
**RAM Chassis Cab**  
**Dealer in all of**  
**New England!**

**2021 RAM 5500HD C&C**  
TRADESMEN REG CAB 4X4  
**NEW ARRIVAL!**



60" CAB TO AXLE-6.4L V8 HEMI-  
DRW-CHROME APPEARANCE PKG-  
UPFIT READY  
STK# N21126

**2020 RAM 3500HD**  
TRADESMEN REG CAB 4X4  
**DURAMAG BODY**



6.4L HEMI V8, CHROME APPEARANCE PKG,  
SNOW CHIEF, TRADESMEN LVL 2- NEW  
ROLL UP DOOR SERVICE BODY  
STK#: N20208

**2020 RAM 5500HD C&C**  
TRADESMEN CREW CAB 4X4  
**READING BODY**



60" CAB TO AXLE-6.7L CUMMINS  
TURBO DIESEL-DRW-CHROME  
APPEARANCE PKG- TRADESMEN LVL 2  
STK# N20228

**2021 RAM 5500HD C&C**  
**MORE IN TRANSIT!**



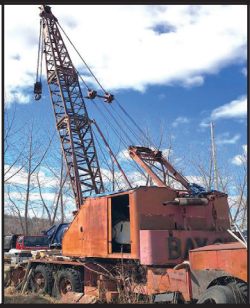
84" CAB TO AXLE-6.7L CUMMINS  
TURBO DIESEL-SWITCH 'N' GO  
HOIST SYSTEM-DUMP AND  
CONTAINER BODY AVAILABLE

442 West Broadway, Gardner, MA 01440 | SalvadoreAuto.com

NOT RESPONSIBLE FOR TYPOGRAPHICAL ERRORS. INCLUDES QUALIFYING REBATES. Pricing subject to change 4/30/2021.



**BAY CITY  
CRANE.**  
W/ Big Waukesha Gas  
Engine ! **\$2,500**  
401-258-7526



**1999 MACK R600  
TRIAxLE DUMP TRUCK.**  
8LL Trans, E7460 Engine, Large  
Aluminum Body, 375K Miles,  
Runs And Looks Good, Asking  
**\$44,000.** 203-666-1411



**2001 FORD F-250,**  
2 Wheel Drive, 7.3L Diesel,  
Auto, PS, PB, Very Light Rust,  
Excellent Frame, 5th Wheel  
Plate, Ex. Brakes, Tires.  
Call Today ! **\$9,850**  
508-222-9072



**2007 DOOSAN  
DX225LC**  
One Owner,  
Fleet Maintained,  
Direct Fit Bucket,  
Dry & Tight  
**\$45,000**  
CALL DAN  
203-506-3860



**2011 INTERNATIONAL 4400 CAB & CHASSIS,** Low  
Miles:75,000, Automatic Transmission, 10K Fronts, 23K Rears, 33,000  
GVW, Good Rubber, 11R 22.5, Frame Is 25' Long, 24' Dump Body  
Would Fit On Frame! **\$15,900** Call Today! 781-417-3018



**1994 FORD F-700.** 5-Speed, Hi-Lo Axle, 28,000 GVW, 5.7 Cummins Diesel, 73K Mile, 16-Ton Towmaster Trailer,  
Both In Good Condition & Mechanically Sound, **\$25,000 Truck & Trailer OBRO.** 617-429-2564

## American Truck Historical Society 32nd Annual Nutmeg Chapter



# ANTIQUE



# TRUCK SHOW

Flea Market Antique Toy Show and Sale

All Vehicles Welcome – Large & Small – Old & New  
Trucks – Tractors – Construction Equipment  
Everyone Registered Receives a Dash Plaque – No Formal Judging

**SUNDAY, June 27th, 2021**

**Show Hours: 8:00am – 3:00pm**

**Brooklyn Fairgrounds, Rt.169 Brooklyn, Connecticut**

**Questions contact:**

**John Raymond 860-608-5033 or 860-591-1261**

<https://www.nutmegchapteraths.com>

<https://www.facebook.com/nutmegATHS>

**SAM'S** Tree Service  
"We handle the jobs, the Big Guys turn down!"

- Licensed Arborist #913
- Insured
- Competitive Pricing
- Free Estimates

sammal@cox.net  
**401-269-1133**

- Brush Chipping • Tree Removal
- Tree Pruning • Stump Grinding
- Residential Land Clearing



**SULLAIR 85 COMPRESSOR.**

Good Running Condition,

**\$1500 OBO.**

203-509-1895





**2021 RHODES 26' STEEL DUMP TRAILER,**  
High Lift-Gate, Steel Frame,  
Single Point Suspension. 401-434-5900



**2000 STERLING LT9500 DUMP TRUCK,** Miles: 138,000, 14ft  
Dump Body But Can Fit A 16ft, Cat C10, 370hp, 81l Trans, 18k Front, 46k  
Rears, Plow Setup - Wing & Front, Closed Loop, Cab & Frame In Good  
Condition, Needs Dump Body, **\$19,900** - Call 781-417-3018

**THOMPSON TRACTOR LLC.**  
**860-963-1918**  
\*A DL HOLKE COMPANY\*  
**15 RT. 171 WOODSTOCK, CT 06281**  
**DAVE'S CELL 508-864-8874**  
**THOMPSONTRACTORLLC.COM**

**ALWAYS A BUYER  
FOR CLEAN  
LATE MODEL  
EQUIPMENT !!**



**2013 CASE 580 SUPER N: 4X4, EX-HO,**  
PILOT CONTROLS, 4 IN 1 BUCKET, 5K  
HOURS, VERY CLEAN. **\$47,750**



**2011 DEERE 450J-1T:**  
2,300 ORIGINAL HOURS, EXCELLENT  
TRACTOR. **\$47,750**

**INVENTORY AT \* WWW.THOMPSONTRACTORLLC.COM**



**Residential ~ Commercial ~ Industrial**  
**Mark Dillon**  
**774-365-0222**



**2016 ROCKSTER R700** - Closed Circuit Impactor,  
Legal Load, Volvo Diesel,  
For Sale or Rent - CALL DAN AT 203-506-3860

**THE  
TRAILER  
DEPOT**

**203-234-7788**  
1037 Middletown Ave. (Rt. 17)  
Northford, CT

**CM  
TRUCK BEDS**  
**AUTHORIZED DEALER**



**25" BIG TEX 15.9K GOOSENECK TRAILER.**  
8' 6" x 20' + 5' Dovetail, 102" Overall Width, Ramps, 7 Way  
RV Electric Plug, #02907



**30' CAM SUPERLINE 65K DECKOVER.**  
8' 6" x 30' + 5' Beavertail, 30" x 80" Air Powered Ramps,  
#520134



**CM TRUCK BEDS**  
7' - 10' Available



**CAM SUPERLINE 18.4K EQUIPMENT TRAILER.**  
6'9" x 18', 5' Angle Ramps, Slipper Spring Suspension,  
#517599



**SURE-TRAC 9.9K LOW PROFILE DUMP TRAILER.**  
6' x 10', Power Up & Down Hydraulics,  
6' Wide x 10' Long x 20" High Dump Bed, #327945



**SURE-TRAC 22.5K LOW PROFILE DECKOVER  
GOOSENECK.** 8' 6" x 30', 25' Deck + 5' Beavertail,  
Bi-Directional Springs In Ramps, #331439

**www.thetrailerdepot.com**

**We'll Hook You Up**  
**WE DO FEDERAL INSPECTIONS!**





37 County Road  
Route 106  
Plympton MA 02367  
PH: 781-582-1378  
FAX: 781-585-4438



**2011 HINO NEW PALFINGER  
HOOK: AUTO, 20K LB.  
36" / 54" HOOK. 33K GVWR.  
\$49,900**



**DOWNEASTER DUMP BODIES IN STOCK NOW!**  
Includes Cab Shield and Hoist.  
Call for Pricing Today.



**12' ALUMINUM LANDSCAPER IN STOCK.  
OTHER SIZES AVAILABLE. CALL FOR DETAILS.**



**HOOK LIFTS IN  
STOCK NOW!  
BIG OR SMALL WE  
HAVE THEM ALL.  
CALL US TODAY.**



**2011 HINO ALUMINUM  
SINGLE COMPARTMENT  
TANK: AUTOMATIC,  
33K GVWR.  
\$49,900.**

**SALES,  
SERVICE,  
PARTS**

**CALL TOLL FREE: 781-582-1378  
WWW.CAREYTRUCKEQUIPMENT.COM**

**CUSTOM METAL  
FABRICATION  
AVAILABLE**





**2019 FORD TRANSIT LA WEST,**  
Executive Shuttle, 14 Passenger.  
**Call For More Details! 401-434-5900**



**1990 FORD 18000 TIRE CHANGER TRUCK,** Miles: 155,000,  
6 Speed, 33K GVW, 7.8L Straight 6 Turbo Diesel, PTO Driven Hydraulic  
For Crane, PTO Driven Air Compressor, Dual Outriggers, 2 Stage Boom,  
**\$8,500.** Call 781-417-3018

## Is Your Web Site a Clunker? Jump Start It!

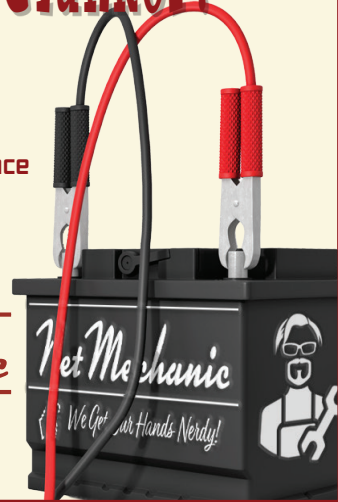
Net Mechanic specializes in  
**New Web Sites • Updates • Maintenance**

Inspections and Estimates:  
[www.NetMechanic.net](http://www.NetMechanic.net)  
401-487-2943



**Net Mechanic**  
*We Get Our Hands Nerdy!*

10% off with this ad



**Our Road Leads To  
Selling • Browsing • Buying  
“Don’t Be Left In The In The Dust”  
Advertising With The Post Gets You The Most**

**Truck And Equipment Post**  
P.O. Box 6824  
Providence, RI 02940

Email: [ads@TruckAndEquipmentPost.com](mailto:ads@TruckAndEquipmentPost.com)

Phone: **888-887-0505**



**1587 Portland Cobalt Rd  
Portland, CT 860-342-2600**

**See more @ MORINDIESELFORESTRY.COM**



**JOHN DEERE 333G**  
With Denis Cima  
Forestry Mulcher Rental



**CAST LOADERS.**  
Kubota Diesel, Telescopic  
Boom, Aux Hydraulics



**2021 CMI FORESTRY  
MULCHER.**  
175 HP, Cummins,  
For Sale Or Rent



**2017 BANDIT BTC300  
FORESTRY MULCHER**  
With Stump Grinder,  
Only 1300 Hours



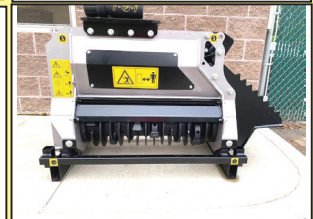
**2016 DOOSAN DX85R-3.**  
With New Steelwrist X12  
Tilt Rotator System



**EXCAVATOR GRAPPLES**  
5-8 Ton \$8,000 &  
9-19 Ton \$10,000



**DENIS CIMA DAF**  
– 180D Skid Steer  
Forestry Mulchers



**FAE BL/1 FORESTRY  
MULCHER**  
For 4 – 8 Ton Excavators





**WWW.SCRANTONMOTORS.COM**



**2019 CHEVROLET SILVERADO  
5500 CREW CAB. DURAMAX  
DIESEL,  
16' DURACUBE MAX SERVICE  
BODY, WITH LADDER RACKS,  
#E6586**



**2021 CHEVROLET SILVERADO 3500. DURAMAX  
DIESEL, 4X4, DUMP BODY, #G7706**



**2021 CHEVROLET SILVERADO 3500. DURAMAX  
DIESEL, 4X4, RACK BODY, #G7707**



**2021 CHEVROLET SILVERADO 3500. CREW CAB,  
DURAMAX DIESEL, 4X4, SERVICE BODY, #G7630**



**2020 CHEVROLET XD LCF CAB & CHASSIS. 109"  
WB, 5.2L 4 CYLINDER DIESEL, #F7284**



**2021 CHEVROLET EXPRESS 3500 COMMERCIAL  
CUTAWAY. 6.6L GAS AUTOMATIC, #G7720**



**2021 CHEVROLET 5500 CAB & CHASSIS.  
REGULAR CAB, DURAMAX DIESEL, #G7710**



**2021 CHEVROLET SILVERADO 3500HD. CREW CAB,  
4X4, 6.6L GAS, SERVICE BODY, #G7631**



**2021 CHEVROLET SILVERADO 3500. CREW CAB,  
DURAMAX DIESEL, 4X4, DRW, SERVICE BODY,  
#G7631**



**2022 CHEVROLET SILVERADO 2500HD. DURAMAX  
DIESEL, 2WD, LONG BED, #F7638**

MANY OTHER TRUCKS IN STOCK. CALL FOR DETAILS

**WWW.SCRANTONCHEVY.COM**  
**774 THAMES STREET NORWICH, CT • 860-870-6539**



Authorized Fisher  
Snow Plow Dealer



# HILLSIDE MOTORS

**800-D American Legion Highway (Rt. 177)**  
**Westport, MA 02790**  
**508-636-5050**

Financing Available  
- Others In Stock

**Family Owned & Operated Since 1969**



**DUMP BODY**



**4X4**

**44K MILES**

**2015 CHEVROLET SILVERADO 3500 12' RACK DUMP DRW 4x4 w/Swing-Gates, Removable Sides, ToolBoxes, 6L V8, Auto, AC, PW, PL, 84" CA, 13,200 GVW, One Owner, 44K, Super Clean, \$47,500**



**13,200 GVW**

**2015 CHEVROLET K3500 4X4 DRW C&C. 6L V8, Auto, AC, PW, PL, Tilt, Cruise, 13,200 GVW, Short WB, One Owner, 89K, Very Well Kept, \$29,900**



**ONE OWNER**

**2013 CHEVROLET 2500HD EX CAB 8' UTILITY. SRW 2WD. 6L V8, Auto, AC, 6-Passenger, Rhino Liner, Fleet Maintained, One Owner, 105K, Excellent Condition, \$21,900. (will separate)**



**69,000 MILES**

**4X4**

**2014 CHEVROLET 3500 HD C&C 4X4. LWB, DRW, 6L V8, Auto, AC, 84" CA, 13,200 LB GVW, Stainless Steel Wheel Simulators, Tow Mirrors, One Owner, Gorgeous Truck, 69K, \$25,500. (Others Available)**



**LBZ DURAMAX**

**2007 CHEVY SILVERADO CLASSIC BODY K2500 HD 4X4. 8' Bed, LBZ Duramax Diesel, Allison Auto, PW, PL, Tilt, Cruise, Hummer Wheels, New Tires, One Owner, 169K, Fully Loaded, Personal Truck, Very Well Kept, \$18,500.**



**13,200 GVW**

**2011 CHEVROLET C3500 12' BOX. DRW, 2WD, 6L V8, Auto, AC, 84" CA, 13,200 GVW, 177K, One Owner, Clean Unit, \$12,700. (will separate)**



**9' KNAPHEIDE DRW UTILITY BODY. Removed From Rust Free Southern 2012 Chevy 3500 Truck, Has Typical Work Dents & Scratches, \$3,300.**




**603-905-9036**

 132 Pierce Rd. (Rt. 125)  
 Barrington, NH  
 (17 miles from Portsmouth)

**603-623-8873**

 1400 South Willow St.  
 Manchester, NH  
 (1 hour from Boston)

**INVENTORY REDUCTION SALE – NO REASONABLE OFFER REFUSED!**


**2001 AUTOCAR ACL64F 10 Yard Rear Discharge Mixer.** Cummins ISM 305 HP, 8LL, 73K GVW, 155K Miles, stk#203047, **\$24,900.**



**2014 FREIGHTLINER 114SD Flatbed** 6x4 w/Fassu D175A.2 Crane. Detroit 410HP, Fuller Ultrashift Plus, Engine Brake, 56K GVW, 64K Miles, stk#203083, **\$84,900.**



**2016 FREIGHTLINER BUS CLASS M2 112 8'6" Dump.** Cummins ISL-G 300HP, Allison Auto, El. Tarp, Air to Rear, 33K GVW, 19K Miles, stk#203112, **\$49,900.**



**2012 FREIGHTLINER BUS CLASS M2 112 16' Tri Axle Dump.** DD13 380HP, 8LL, 75,940 GVW, 262K Miles, stk#203040, **\$69,900.**



**2003 FREIGHTLINER FLD120 22' American ARU-75-22XL Roll-Off.** Detroit Series 60 350HP, 8LL, 89,200 GVW, stk#203088, **\$39,900.**



**2016 IH DURASTAR 4300 20' Reefer** Body w/Thermoking T800. Cummins ISB 240HP, Allison RDS, 25,999 GVW, 202K Miles, stk#203121, **\$44,900.**



**1999 IH PAYSTAR 5000 6x6 Utility w/ HI Ranger 72' Bucket.** Cummins M11 330HP, Allison Auto, 64K GVW, 129K Miles, stk#203075, **\$39,900.**



**2002 IH PAYSTAR 5500 C&C 6X6.** Cummins ISM 350HP, Allison Auto, 260" WB, 66K GVW, 115K Miles, stk#203033, **\$59,900.**



**2015 IH PAYSTAR 5900 ITI Alum 110 Barrel Vac Tank 10x4.** Cummins ISX 15 500HP, 18 Spd, 92400 GVW, 263K Miles, stk#203028, **\$89,900.**



**2015 IH PROSTAR 6x4 Day Cab.** Cummins ISX15 425HP, 10 Spd, 52,350 GVW, 450K Miles, stk#203103, **\$39,900.**



**2010 IH WORKSTAR 7400 All Purpose Sander.** DT 285HP, Allison Auto RDS, Front Plow & Shelving Wing, 37020 GVW, 98K Miles, stk#203037, **\$29,900.**



**2009 IH WORKSTAR 7400 Stainless Steel Henderson Spreader Body.** 300HP, Allison Auto, Front Poly Plow, Wing Plow, 36220 GVW, 37K Miles, stk#120501, **\$39,900.**

**www.LibertyInternationalTrucks.com**




**603-905-9036**

132 Pierce Rd. (Rt. 125)  
Barrington, NH  
(17 miles from Portsmouth)


**603-623-8873**

1400 South Willow St.  
Manchester, NH  
(1 hour from Boston)

**INVENTORY REDUCTION SALE – NO REASONABLE OFFER REFUSED!**


**2009 IH WORKSTAR 7400 Crew Cab 6x4 Service Truck w/IMT 9/63 Crane. 300HP, 8LL, 54K GVW, 121K Miles, stk#15439, Call**



**2013 IH WORKSTAR 7500 20' Flatbed w/Hiab 288 EP-3 Rear Mounted Knuckle Boom. 330HP, Allison Auto, 58K GVW, 233K Miles, stk#203058, \$69,900.**



**2010 IH WORKSTAR 7600 Utility w/Terex HI Ranger 60' Bucket. Cummins ISM 350HP, Allison Auto 4000 RDS, 56K GVW, 80K Miles, stk#203038, \$49,900.**



**2007 IH WORKSTAR 7600 Utility w. 72' Altec Ariel Bucket. ISM 385HP, Allison Auto, 62K GVW, 84K Miles, stk#203057, \$59,900.**



**2017 KENWORTH T880 40" Sleeper. PACCAR MX 500HP, 18 Spd, 59,200 GVW, 212K Miles, stk#203041, \$84,900.**



**2003 MACK DM690S 10.5 Yard Rear Discharge Mixer. EM7 300HP, 8LL, 20K F/A, 50K R/A, 20K Lift, 18K Miles, stk#203122, \$44,900.**



**2011 WESTERN STAR 4900 8x4. ISX15 550HP, 18 Spd, 80K GVW, 455K Miles, stk#203110, \$62,900.**



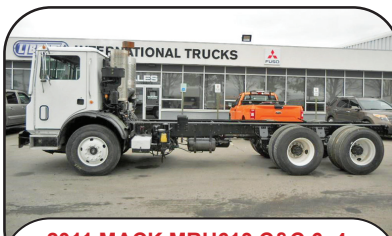
**2007 MACK GRANITE CV713 16' Dump. AMI 370HP, 10 Spd, 2 Chutes, El Tarp, 77K GVW, 326K Miles, stk#203086, \$49,900.**



**2010 MACK GRANITE GU713 10.5 Yard McNeilus Rear Discharge Mixer 6x4. MP7 405HP, Allison 4500RDA, 70180 GVW, 71K Miles, stk#203046, \$92,900.**



**2011 MACK MRU600 25 Yard McNeilus Rear Packer. MP7 325HP, Allison Auto, 66K GVW, 176K Miles, stk#203065, \$104,900.**



**2011 MACK MRU613 C&C 6x4. MP7 325HP, Allison Auto, 195" WB, 66K GVW, Camelback, 212K Miles, stk#203066, \$44,900.**



**2016 MACK TITAN TD713 8x4. MP10 605HP, 18 Spd, Tri Axle, 20K F/A, 46K R/A, 258" WB, 217K Miles, stk#203068, Call**

**www.LibertyInternationalTrucks.com**





# SALES & RENTALS

(603) 623-3669

www.TQUIP.com

Londonderry, NH | Rutland, VT | Orlando, FL

• OVER 1000 MACHINES & ATTACHMENTS IN OUR INVENTORY! •



**2015 CAT 316EL**  
A/C, 9'6" STICK,  
AUXILIARY HYDRAULICS,  
CAT HYDRAULIC Q/C,  
30" CAT DIGGING BUCKET,  
REAR VIEW CAMERA,  
24" PADS  
2236 HOURS  
**\$119,000**



**2010 CAT 321DLR**  
A/C, 11' STK, AUXHYD, CAT HYD Q/C,  
36" CAT DIGGING BKT, ROCKLAND HYD  
THUMB, 70% UC, 32" PADS, 7540 HRS  
**\$99,000**



**2013 BOBCAT E32M**  
OROPS, 4'3" STK, AUX HYD, TAG MNL  
Q/C, 16" BKT, HYD THUMB, HYD BLADE,  
ZERO TAIL, 2392 HRS  
**\$32,500**



**2014 TAKEUCHI TB260**  
A/C & HEAT, 6' STICK, SWING-AWAY  
BOOM, WB MANUAL Q/C, 24" WB BKT,  
WB HYD THUMB, 13" RBR TRKS, 4543 HRS  
**\$145,000**



FULLY  
LOADED

**2016 CAT 336FL**  
A/C & HEAT, 12'10" STK, AUX HYD, 60"  
BKT, ST TRVL PDL, PTRN CHNGR, AIR RIDE,  
REAR CAM, 33" PADS, 3766 HRS  
**\$179,000**



**JCB 509-42**  
9,000LB LIFT CPTY, 42' LIFT HEIGHT, EROPS,  
AUXILIARY HYDRAULICS, 4CYL DIESEL  
ENGINE, SOLID TIRES, 3492 HRS  
**\$55,000**



**2008 CAT D4G-XL**  
A/C & HEAT, 6-WAY BLADE, TOPCON  
READY, LONG TRACK FRAME, NEW  
SPROCKETS, BUSHINGS TURNED, 3294 HRS  
**\$59,500**



**2015 KOMATSU D39PX-23**  
EROPS, A/C & HEAT, 6-WAY BLADE,  
22" PADS, 3450 HOURS  
**\$99,000**



**2015 CAT D5K2-LGP**  
EROPS, A/C & HEAT, 6-WAY BLADE,  
26" PADS, 3056 HOURS  
**\$89,500**



**2013 CAT D6K2-XL**  
A/C, 6-WY BLD, MNL PITCH, SWEEPS,  
SCRN, BLD SHK, RPR RDY PKG, MLT-SHNK  
RPR, ACCUGRD RDY, SALT UC, LONG TRK  
FRM, 22" PADS, 4702 HRS **\$99,500**



**2012 CAT D8T**  
EROPS, SU BLD W/ TWIN TILT, NEW HD UC,  
RPR VLV, DIFF STR, 28" PADS, NEW \$47K  
DSL ENG BY CAT DLR, 9051 HRS  
**\$285,000**

FINANCING  
OPTIONS  
AVAILABLE

• HAMMERS • BUCKETS • GRAPPLES • THUMBS • FORKS • COUPLERS •



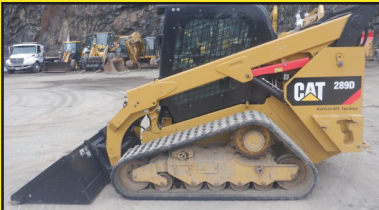


**NEW**

**2016 TERRAMAC RT9s**  
18,000LB CPTY, A/C, 225HP  
CUMMINS DIESEL, HST  
TRANS, 10'6" DUMP BODY,  
28" RUBBER TRKS, 400+ HRS  
**\$109,000 EACH**

**SALES & RENTALS INC.**  
**T-QUIP**  
YOUR **1** CHOICE IN SALES  
& RENTALS

**(603) 623-3669**  
**www.TQUIP.com**



**2018 CAT 289D**  
CAB, A/C & HEAT, 2-SPEED,  
HIGH-FLOW AUX HYD, HYDRAULIC Q/C,  
84" GP BUCKET, 2381 HRS  
**\$55,000**



**2012 WACKER NEUSON WL37**  
A/C & HEAT, HI-FLO, AUX HYD, SS HYD  
Q/C, 64" GP BKT, 3RD VLV, 15.5-55R18  
TIRES, WINTER CONV PKG, 1371 HRS  
**\$45,000**



**2017 CAT 907M**  
A/C & HEAT, CAT SKIDSTEER-STYLE HYD  
Q/C, 1.4CY CAT GP BUCKET, CAT C3.3B  
DIESEL, 340X80R18 RADIALS, 2433 HRS  
**\$65,000**



**2014 DYNAPAC CA2500D**  
EROPS, A/C & HEAT, 84" SMOOTH DRUM,  
DRUM DRIVE, CUMMINS 4.5L DIESEL,  
23.1X26 RUBBER TIRES, 830 HRS  
**\$79,000**



**2018 KOMATSU WA320-8**  
A/C, HYD Q/C, 3.5CY GP BUCKET,  
JOYSTICK STR, RIDE CONTROL,  
20.5R25 RADIALS, 4256 HRS  
**\$109,000**



**2017 CAT 972MXE**  
A/C & HEAT, 6CY BKT, JOYSTICK STR,  
RIDE CTRL, TRACTION CTRL, AUTO LUBE,  
REAR CAM, 26.5R25 TIRES, 8113 HRS  
**\$169,000**



**2012 MCCLOSKEY R155**  
CAT DSL, 55"X16' FDR, 1" & 1/2" SCREENS,  
54"X15' UNDR & 55"X20' REAR CONV,  
36"X26' SIDE CONVS, RMT CTRL, HYD LVL,  
20" PADS, 3794 HRS **\$169,000**



**2017 MCCLOSKEY 516RT**  
5'X16' TROMMEL SCREEN, 8-10YD CPTY,  
100HP DIESEL, HYD GRIZZLY BAR,  
HYD RADIAL STACKER, 2950 HRS  
**\$179,000**



**2011 LAPRADE R600LD-II**  
5'X16' DRUM, 3/4" SCREENS, 36"X11' RLR  
BELT FDR, 30"X60' DISCH FOLDING  
CONV, 4CYL DSL, T/A CHASSIS  
**\$69,000**

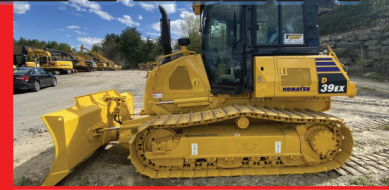
**NEW TO OUR RENTAL FLEET:**



**2021 CAT 950GCs**  
A/C, AUX HYD, CAT FUSION HYD Q/C,  
4.5CY GP BKT, SHUTTLE SHIFT, RIDE CTRL,  
REAR VIEW CAM, 23.5R25 RUBBER



**2021 KOMATSU PC170LC-11s**  
A/C, AUX HYD, ROCKLAND HYD Q/C,  
36" CRAIG HD BKT, ROCKLAND HYD  
THUMB, REAR VIEW CAM, 24" PADS



**2021 KOMATSU D39EX-24s**  
EROPS, A/C, 6-WAY BLADE,  
TIER-4 DIESEL ENGINE, 20" PADS

**• CALL US TODAY FOR YOUR YEAR-ROUND SALES & RENTAL NEEDS! •**



**We are cash  
buyers for  
quality used  
trucks and  
equipment!**

# BROOKSIDE EQUIPMENT SALES

[WWW.BROOKSIDEEQUIPMENT.COM](http://WWW.BROOKSIDEEQUIPMENT.COM)

## 978-249-4600



**2004 KENWORTH W900:** 467,030 Miles, 10 Wheel Day Cab, Cat C15, 475 HP, Fuller 18 Speed, Air Ride, 13.2K F, 46K R, Wetline, stk#TK859, **\$67,500**



**2007 MACK GRANITE CTP713:** 123,332 Miles, 10 Whl Knuckle Boom Crane Truck, Gormach 28200-E6, 20 Ft Flatbed Dump, Mack MP7-370, Mack 10 Spd, 18K F, 44K R, Stk#TK651, **\$59,500**



**2006 WESTERN STAR 4900SA:** 172,152 Miles, 10 Wheel Sheetrock Boom Truck, IMT 16000S3 Boom, 42 Ft, 5285 Lb Cap, 24"6" Flatbed, AWD, Cat C13, 410 HP, 21.5K F, 46K R, T-Ride, 15,864 Engine Hrs, Stk#TK147, **\$39,900**



**2013 INTERNATIONAL DURASTAR 4300:** 203,487 Miles, 6 Wheel Reefer Truck, 22 Ft Box, 33K GVW, IH Maxforce Twin Turbo, Fuller Ultrashift Automatic, 6,873 Engine Hours, Stk#TK517, **\$14,500**



**2007 MACK GRANITE CV713:** 422,946 Miles, Triaxle, 16 Ft Steel Ox Body, Mack AI-427, Mack 10 Speed, Camelback Suspension, 18K F, 44K R, 17,654 Engine Hours, Stk#TK211, **\$59,500**



**2005 MACK GRANITE CV713:** 451,717 Miles, 23 Ft Gallfab 7103 Roll-Off Body, 75K Lb Cap, Mack AMI-370, Mack 10 Speed, 18K F, 20K P, 44K R, Camelback Suspension, stk#TK516, **\$49,500**



**2016 VOLVO SD75B:** 1,980 Hours, 66" Smooth Single Drum, Drum Drive, Vib., Orops, 4 Cyl Volvo D3.8H Turbo, 73 HP, stk#CO043, **\$49,500**



**2013 JCB 520-50:** 2,478 Hours, 4400 Lb Lift, 16'5" Lift Height, 9'3" Horizontal Reach, 4x4, 42" Forks, 4 Cyl Perkins Turbo, 77 HP, Auxiliary Hydraulics, Stk#FL199, **\$34,500**



**2014 JOHN DEERE 544K:** 4,489 Hours, 2.75 Yard, Cab W/ A/C, Hydraulic Coupler, 6 Cyl John Deere Turbo, 30K Lbs, stk#LO136, **\$72,500**



**2016 BOBCAT S595:** 785 Hours, 2200 Lb Lift, Cab W/ A/C, Hydraulic Coupler, 66" Bucket, 4 Cyl Bobcat Turbo, 2 Speed, 7K Lbs, stk#SK133, **\$37,500**



**2014 KOBELCO SK260LC-9:** 1,812 Hours, Pulverizer W/ Magnet & Dynaset HMG 10KW Generator, A/C, 4 Cyl Hino Turbo, Very Good Undercarriage, stk#XC052, **\$119,500**



**2008 JOHN DEERE 135C RTS:** 6,339 Hours, 39" Bucket, Hydraulic Coupler, 1-Way Aux. Hydraulics, A/C, Reduced Tail Swing, 4 Cyl Isuzu Turbo, 90 HP, 31K Lbs, stk#XC890, **\$52,500**



**2016 JOHN DEERE 210G LC:** 3,348 Hours, 48" Bucket, Hydraulic Thumb, Hydraulic Coupler, A/C, Good U/C, Backup Camera, 6 Cyl JD Turbo, 51K Lbs, stk#XC931, **\$139,500**



**2008 GENIE S60:** 5,533 Hours, 60 Foot Telescopic Boom Lift, 60' Vertical Reach, 50' Horizontal Reach, 4x4, 8 Ft Basket, 4 Cyl Perkins Diesel, 51 HP, New Tires, stk#AE665, **\$23,500**



**2006 CAT M318C:** 10,764 Hours, 5 Ft Cleanup Bucket, Hydraulic Thumb, Wainroy Wrist/Coupler, 8'4" Blade, 6 Cyl Perkins/Cat Turbo, 173 HP, Town Owned Since New, 42K Lbs, stk#WX331, **\$49,900**



**2014 BELL B30E:** 11,064 Hours, 30 Ton, 6x6, A/C, 6 Cyl Mercedes Turbo, stk#HT665, **\$89,500**



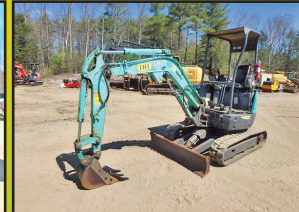
**2017 HITACHI ZX180LC-6N:** 3,254 Hours, 40" Bucket, A/C, 2 Speed, 4 Cyl Isuzu Turbo, 43K Lbs, stk#XC018, **\$97,500**



**2015 CATERPILLAR 140M2:** 10,256 Hours, Cab W/ A/C, Ripper, 14 Ft Mold Board, 6 Cylinder Cat C9.3 Acert Turbo, 17.5R25 Good Rubber, stk#GR556, **\$109,500**



**2013 SKYTRAK 8042:** 4,336 Hours, 8K Lb Lift, 42 Ft Lift Height, 4x4, OROPS, Tilt Body, 6 Ft Forks, 4 Cyl Cummins Turbo, Stk#FL825, **\$34,500**



**2014 IHI 25VX3:** 1,573 Hrs, 12" Digging Bucket w/New Teeth, 2 Way Aux. Hydraulics, 2 Spd Travel, Control Pattern Selector, 0 Tail Swing, Good Rubber Tracks, Blade, Swing Boom, Yanmar Diesel, 6.1K Lbs, stk#MX532, **\$22,500**

**60 STATE RD, PHILLIPSTON, MASS**

**978-249-4600**

**EMAIL: KEVIN@BROOKSIDEEQUIPMENT.COM**



# GENERAL TRUCK CENTER INC.

ASK US HOW WE  
CAN LOCK IN YOUR  
MAINTENANCE COSTS  
FOR 6 YEARS WITH  
PSMP

**Selling Cab Overs Since 1961!!**

**109 Lindberg ave. Methuen MA 01844 • www.generaltruckscenter.com**

**978-686-1800**

**603-560-0668**

Nights and Weekends



**2015  
FREIGHTLINER  
M2 106 24' DRY.**  
Cummins 6.7,  
106K, Curbside  
Door, Air Brake/  
Spring Ride,  
Low Pro 19.5"  
Alum Wheels,  
stk#15384,  
**\$37,900.**



**2015 FREIGHTLINER M2  
106 CAB/CHASSIS.** 25950  
GVW, 153K Miles, Cummins  
B6.7, 253" WB - 24' Body  
Applications, Air Brake/Air  
Ride, stk#15434, **\$42,900.**



**2015 FREIGHTLINER  
M2 106 24' DRY.** 202K,  
Cummins 6.7, Air Brake/  
Spring Ride, 4000lb Alum  
Tuckaway w/Cart Stops,  
stk#15433, **\$42,900.**



**2020 HINO 195.** 19500  
GVW, 16' Dry w/ 1 Row  
E-Track, 96"T x 91"W,  
Transl Roof, Cold Package,  
LED Fog lamps, stk#9909,  
**\$63,900.**



**2016 HINO 195.** 170K  
Miles, 18'x85x102,  
Step-Up Rear Bumper,  
Cold Package (Heated  
Mirrors/Block Heater),  
102" Mirrors, P/W/L,  
stk#15232, **\$25,900.**



**2015 HINO 268A.**  
26' x 97"T x 96"W, 2500LB  
Tuckaway, 2 Row E-Track,  
Allison Auto Trans, 167K  
Miles, stk#15386  
**\$47,900.**



**2015 HINO 268A.** 209K, 260HP! Air Brake/Spring  
Ride, 20' Morgan w/Step-Up, Curbside.  
97"T x 96"W, Supra 760 Engine Driven Unit,  
stk#15412, **\$29,900.**



**2010 HINO 268A.** 276K, 18'  
Supreme Refrigerated Body w/  
Carrier Supra 650 Unit, 6300  
Reefer Hours, Air Brakes, Heated  
Mirrors, Block Heater, stk#15178,  
**\$22,900.**



**2016 ISUZU NRR.**  
96K, 19500 GVW,  
16'x85"T x 102"W w/ Alum  
Ramp, P/W/L, A/C, Block Heater,  
stk#15422,  
**\$36,900.**



**2014 ISUZU NPR-HD.**  
150" WB, 163K Miles. 6 Sp.  
Auto, 4 Cyl Diesel. PW/L, A/C,  
AM/FM/CD/USB w/Bluetooth,  
stk#15169, **\$22,900.**



**2016 ISUZU NRR.** 117K!  
19500 GVW, 16'x85"T x 102"W,  
Pull-Out Ramp, P/W/L. A/C.  
102" Wide Mirrors, Block  
Heater, stk#15417, **\$36,900.**



**2014 ISUZU NPR-HD's.**  
5 To Choose From. 150" WB Ready For 16' Bodies,  
AM/FM/CD, A/C, P/W/L, Heated Mirrors,  
stk#15040-15062, **As low as \$18,900!**



**2014 ISUZU NPR-HD**  
**Chassis.** 14500 GVW, 119K  
Miles! 150" Wheelbase, Auto,  
Cold Package, AM/FM/CD/BT/  
USB Radio, P/W/L, stk#15100  
**\$22,900.**



**2014 ISUZU NPR-HD.**  
Diesel, 119k Miles!  
150" WB, Auto, Includes  
3 YR/90K Isuzu Extended  
Warranty, stk#15101,  
**\$22,900.**

\*TAXES NOT INCLUDED, 100K MILE LIMIT, .20 CENTS EVERY MILE ABOVE 100K. Dealer is not responsible for errors in price, or in description of vehicles



# ALLEGIANCE

— T R U C K S —



2181 Providence Highway | **Walpole**, MA 02081  
(508) 668-3112 | (800) 225-4808



**2020 INTERNATIONAL HV**  
Cummins ISL, 6-Speed Automatic.  
GVW 40,000. Stock #700636



**2020 INTERNATIONAL CV**  
Navistar 6.6LD, 6-Speed Automatic.  
GVW 19,500. Stock #300065



**2019 INTERNATIONAL CV**  
Navistar 6.6L D, 6-Speed Automatic.  
GVW 19,500. Stock #300071



**2019 INTERNATIONAL CV**  
Navistar 6.6L D, 6-Speed Automatic.  
GVW 19,500. Stock # 300060



**2020 INTERNATIONAL CV**  
Navistar 6.6L D, 6-Speed Automatic.  
GVW 19,500. Stock #300061



**2020 INTERNATIONAL HV**  
Cummins ISL, 6-Speed Auto.  
GVW 37,600. Stock # 700644



**2019 FORD F550**  
Ford 6.7L, 6-Speed Automatic.  
GVW 19,500. Stock #550774



**2019 FORD F550**  
Ford 6.7L, 6-Speed Automatic.  
GVW 19,500. Stock #550835



**2019 FORD F750**  
Ford 6.7L, 6-Speed Automatic.  
GVW 25,999. Stock #750481



**NEW 2020 FORD F550**  
7.3L EFI, 10-Speed Automatic  
GVW 19,500. Stock #550871



**2021 FORD F650**  
Ford 7.3L EFI, 6-Speed Automatic.  
GVW 25,999. Stock #650616



**2006 FORD F750 -USED**  
Cummins ISB 6-Speed Automatic.  
GVW 25,999. Stock #20013

**Allegiance now has locations in MA, CT, NY, ME, VT, RI, NH, & NJ!**

For all locations visit our website!

[www.AllegianceTrucks.com](http://www.AllegianceTrucks.com)





# ALLEGIANCE

## TRUCKS®



Hartford, N.Haven, Torrington, & Franklin, CT / W. Springfield, MA



**Call Mike McDonald 860-308-6599**

**WE HAVE WHAT YOU NEED FOR OIL & VOCATIONAL TRUCKS**



**SUPER CLEAN**

2006 IH 7400 Dump/Plow Truck, DT570 285HP, 3500RDS, 43K GVW, Only 57K Miles, 10' All Season Dump Body, Load Cover, Front Plow Blade, Many New Parts & Lines, #6J28653, \$46,800



**USED HOOK LIFT**

2009 IH 4400 Max DT466, 2007 Emissions Engine, Allison 3500RDS, 152K Miles, 33K GVW, Can Be Derated, Brand New Swap Loader, Needs Nothing, \$69,800



**SUPER CLEAN OIL TRUCK**

1997 IH 4400 OIL TRUCK, DT466-230HP, 7 Speed Manual Trans, 144K Miles, Single Compartment Tech Weld Alum 2700 Gallon Tank, Bottom Load, Multi Wrap Reel, LC, VH449154, \$15,800 AS IS



**SEVERAL AVAIL**

2017 IH 4300 CAB & CHASSIS. Cummins 250HP, Allison 2500RDS Auto, Miles 260-280K, Air Ride & Brake, 254" WB, Lease Maintained, Will Take 24" - 26" Box,



**Clean Tandem Chassis**

2015 IH 4400 6x4 CHASSIS, MaxDT 270HP, Auto Trans, 254" WB, 14K & 40K Axles, 54K GVW, Only 153K Miles, Clean Truck, #FH606767, \$22,800



**TANDEM RACK W/ GATE**

2013 IH 4400 6x4, MAXDT 270 HP, ALLISON AUTO, AIR RIDE, 14/52 AXLES, 24" RACK BODY WITH RAIL GATE, #DH406365U, \$29,800



**W/ MOFFETT CRADLE**

2006 IH 7400 FLATBED, DT570 310HP, ALLISON 3000 AUTO, 250K, ENGINE REBUILT YEARS AGO, NEW INJECTORS 2 YEARS AGO, 26" FLATBED W/ MOFFETT CRADLE. LOTS OF NEW PARTS, LOOKS AND RUNS GREAT! # 6J347896, \$36,800



**LOT OF TRUCK FOR \$\$**

2007 FREIGHTLINER M2 10 Wheel Dump Snow Fighter, Cat Power, 8LL, Only 128K Miles, 20 & 46 Axles, 66000 GVW, 4 Year Old All Season Dump Body, Front & Wing Plow Frame, #7HX46259, \$47,800



**Attn Landscapers**

2016 CHEVY C4500 Landscaper Truck, Only 25k Miles on Gas Motor, Auto, 14500 GVW, 14" Landscaper Box With Rear Ramp For Mowers..., Only \$51,900



**Auto Sleepers**

(3) 2018 IH LT 73" Double Bunk Sleepers, ISX 460HP, Autoshifts, Collision Mitigation, Alum, Miles 495K Range, Deep Green, Sharp Trucks, \$68,900



**CREW CAB**

2015 IH 4300 CREW CAB, Cummins 240HP, Auto, ONLY 95K Miles, Under CDL, 24x102x97 Van Body w/ Movers Peak, Lift Gate, Super Clean Truck Only \$63,900



**Heavy Haul Spec**

2015 PRO STAR HEAVY TRACTOR. N13, 475 HP, 18 Speed, Only 272K Miles, Clean Lease Maintained Truck, #JTS875, \$55,800



**24' w/ Gate**

2015 IH 4300, Cummins 260HP, 2500RDS Auto, 248K Miles, 24" Van With Gate, Clean Truck, #JTS778, \$35,800



**Collision Mitigation**

INBOUND: 4-2016 IH Prostar Tandem Day Cabs, Cummins ISX, 10 Speed, 133K - 169K Miles, Collision Mitigation!, Pricing Starts at \$57,800



**RUNS GREAT**

2009 HINO 268A. 24' Reefer Body w/ Walk Ramp, Carrier Unit, Diesel, Auto, 435K Miles, Fleet Maintained, Runs Great, Under CDL, Air Brakes, #94551886, \$15,800



**26' TANDEM**

2016 IH 4400 TANDEM N9SCR 315HP, 3000RDS AUTO, 54K GVW 26" VAN, 205K MILES, JTS791, \$44,800



**26' W/LIFTGATE**

2015 IH 4300, MAXDT 230HP, 251K MILES, AUTO, 33K GVW CDL TRUCK, 26" VAN W/ LIFT GATE, # JTS764, \$19,800



**GAS MOTOR**

2017 ISUZU NPR HD, Gas Motor, Auto, 101K Miles, 16' Van With Galvanized Liftgate, #HS803648, \$36,800



**24' W/GATE**

2015 IH 4300 33K GVW, Cummins 300HP, Allison 2500 Auto, 157K Miles, 24" Van With Gate, # FL715468, \$44,800



**GAS MOTOR**

2016 ISUZU NPR HD, GAS Motor, Auto, 104K Miles, 16' Van, Side Step Door, Walk Ramp, #3GD809813, \$34,800



**Several Avail**

2017 IH 4300, Cummins 250HP, Allison 2500RDS Auto, Air Brakes, Air Ride, Under CDL, Miles 260K - 280K, Several To Choose, Cab & Chassis We Can Add 24" or 26" Van, Call For Details & Price.

**Allegiance now has locations in MA, CT, NY, ME, VT, RI, NH, & NJ!**

For all locations visit our website!

[www.AllegianceTrucks.com](http://www.AllegianceTrucks.com)



# ANDERSON MOTORS INC.


**GMC**

**MICRO BIRD**  
by GERRARDIN

**BLUE BIRD BUS SALES OF NEW ENGLAND**
**\* YOUR EXCLUSIVE VOLVO TRUCK DEALER \***


**2022 VOLVO VHD84B300-D13, 500HP, 14SPD. AUTO, 18' HEAVY DUTY STEEL DUMP, HIGH LIFT-GATE. \*INCOMING\***



**2022 VOLVO VNR64T300-D13, 435HP, I-SHIFT AUTO, 12K FRONT / 40K REARS.**



**2016 VOLVO VNL64T300-D13, 500HP, 18SPD., 14,600 FRONT/46,000 REARS, AIR-RIDE, 2 LINE WET-SYSTEM.**



**2020 RHODES 26' ALUMINUM DOUBLE WALLED SMOOTH SIDE DUMP TRAILER, ALUM. FRAME, AIR-RIDE.**



**2007 ENGLE 6600 GALLON STAINLESS STEEL WATER TANK, INCLUDES NEW PUMP.**



**2022 BLUE BIRD BBCV71 PASSENGER SCHOOL BUS, GAS, HYDRAULIC BRAKES.**



**2019 MERCEDES 14 PASSENGER LA WEST EXECUTIVE SHUTTLE. #190312**



**2020 FORD TRANSIT 14 PASSENGER COMMERCIAL SHUTTLE BUSES, GAS, INDIVIDUAL SEATING. 2 AVAILABLE**



**2019 FORD E-SERIES, 14 PASSENGER W/ REAR LUGGAGE COMPARTMENT, NO CDL REQUIRED. #190024**



**2019 FORD E-450, 14 PASSENGER COMMERCIAL SHUTTLE BUS, GAS, AUTOMATIC, NON CDL REQUIRED. #190017**



**2019 FORD E-450 24 PASSENGER COMMERCIAL SHUTTLE BUS, GAS, AUTOMATIC, A CDL LICENSE IS REQUIRED. #190016**



**2019 FORD TRANSIT LA WEST, EXECUTIVE SHUTTLE, 14 PASSENGER. #190319**

## 401-434-5900

**WWW.ANDERSONMOTORS.COM**

**EMAIL • SALES@ANDERSONMOTORS.COM**

**170 AMARAL STREET • EAST PROVIDENCE, RI 02915**

**HABLAMOS ESPAÑOL**





**1985 REX SP 700.** Vibratory Compactor, New John Deere 4 Cylinder Engine, Rebuilt Drum, Runs And Operates Perfectly, Needs Paint, Asking **\$10,900.** 203-666-1411

## Is Your Web Site a Clunker? Jump Start It!

Net Mechanic specializes in  
New Web Sites • Updates • Maintenance

Inspections and Estimates:  
[www.NetMechanic.net](http://www.NetMechanic.net)  
401-487-2943



*Net Mechanic*  
*We Get Our Hands Nerdy!*

10% off with this ad



### 1940'S 8N DEARBORN BUCKET LOADER.

12-Volt Conversion,  
Runs Well, Needs Exhaust,  
**\$2,100 OBO.**  
860-428-1939



**NEW  
SENNEBOGEN  
718E** with  
27 Idle Hours,  
Loaded w/ EVERY  
Option, Extra Set  
Of Tires & Rims,  
Never Cut a Tree!  
Extended Warranty  
Too! Call Mike For  
Pricing,  
860-308-6599



**DROTT 18 TON  
CRANE.**  
2300 Original  
Hours, 95' Stick,  
No Jib, Nice  
Machine,  
**\$15,500,**  
Westfield, MA  
413-246-0880



**2002 ELGIN PELICAN SWEEPER.** 14K  
Original Miles, Auto Lube, All New Brooms  
All Sprayers Work Great, John Deere Diesel,  
Ice Cold Air, Stereo, Excellent Condition,  
**\$28,000.** Call Or Text 401-641-7825

# WANTED!!! MACK TRUCKS

**CAT, DEERE, BOBCAT EQUIP  
IN ANY CONDITION  
IMMEDIATE PAYMENT**



## CALL JOHNNY MACK

[johnnymack107@gmail.com](mailto:johnnymack107@gmail.com)  
**HARTFORD, CT 860-883-1186**





**2010 KENWORTH TRACTOR.** Big Power Cummins, Exc. Shape, Never Ran In Winter, New Tires, Low Miles, Sleeper, Nice Truck, **\$69,500.** 413-530-5369

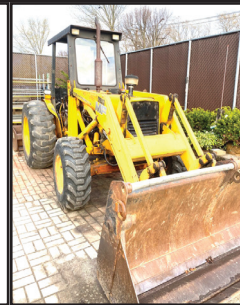


**BERKELEY 4" HIGH PRESSURE PUMP.** Self-Contained, Perkins Diesel Powered, 400 Gal./Min. At 100 Lbs. Pressure, Ready To Go **\$7000.**  
Contact 603-689-4473 or vholden8113@atlanticbb.net

**Lowbed Johnson**

**1-800-660-2412**

**Moves Construction Equipment**  
Serving Massachusetts and Southern New Hampshire



**1991 MASSEY FERGUSON.** Original Owner, 4 Cylinder Perkins Diesel, 2750 Hours, 4-In-1 Bucket With Quick Coupler And HD Forks, Gannon Power Tilt, Grading Box With Ripper Bar On Rear, **\$19,500 OBO.**  
516-702-3125

CT • RI • MA • NY

CALL IAN OR LENNY  
800-229-9421



100 YARD  
STEEL DUMP TRAILERS

WE WILL SAVE YOU MONEY ....  
AND PUT A SMILE ON YOUR FACE!

**STUMP & BRUSH  
TRANSPORTATION & DISPOSAL**

**\$950/LOAD**

**DEMOLITION DEBRIS  
TRANSPORTATION & DISPOSAL**

**\$2150/LOAD**

**SAME DAY DISPATCH  
TOP \$\$ PAID FOR YOUR  
SCRAP STEEL, COPPER, & ALUMINUM!!!**



**Natural Mulch  
Landscaping /Erosion Control  
\$750 Delivered -  
Call For Complete Details**





# Quality Iron Solutions

709 Keith Ave., Pembroke NH 03275

Call Kevin Buck: 603-860-7875 • email: [info@QualityIronSolutions.com](mailto:info@QualityIronSolutions.com)

[www.QualityIronSolutions.com](http://www.QualityIronSolutions.com)

**SPRING  
SAVINGS!**



**2004 JOHNSTON 4000 Sweeper.** 31K Miles, 7,955 hours, Runs & Sweeps, **\$12,000.**



**2003 TYMCO 600 BAH Vac Sweeper.** 62K Miles, Runs & Sweeps, **\$15,000.**



**1978 DRESSER TD20-E.** Refreshed Motor, Very Good Bottom, Runs Strong, 6,725 Hours, Parts & Service Manual, Ready To Go, **\$32,000.**



**1998 CAT D250E.** All Maintenance Done, 17K Hours, Ready to Work, **\$72,000.**



**1992 GMC TOPKICK 6x4,** 250HP CAT 3116, 6.6L Diesel, 13 Spd, 96K Miles, Clean Frame & Body **\$25,000.**



**2007 CAT TL943.** 4965 Hours, 43' Reach, 9K LB Cap., Outrigger, Hyd. Tilt Platform, Aux. Hydraulics, **\$39,900.**



**2015 JOHN DEERE 410L EXT HOE 4WD.** 1,500 Hours, New Teeth, Quick Couplers On Hoe & Front Bucket, Runs Strong, **\$79,900.**



**1987 CAT D35HP.** Certified Rebuild 7,500 Hours Ago, Super Clean, Ready To Work, **\$59,000.**



**2012 DYNAPAC CA3500D** Compactor. 84" Roller, 1523 Hours, Ready For The Job Site, **\$52,900** (Rental Rates: \$500/day, \$1,500/wk, or \$4,500/mo.)



## **VIBROSCREEN SCM-75 HEAVY DUTY SCREENER**

Vibrating Head w/2 Decks, Up to 300 Cubic Yards/Hour, 50 HP Diesel Engine, Ideal For 6 Yard Loader, Fifth Wheel Hitch, Single Axle, Double Wheels, Hydraulic Landing Gear, Gross Weight 22,000 LBS Tongue Weight 8,540 LBS  
**Rental Rates: Daily \$700 • Weekly \$2,100 • Monthly \$6,000**





800 Cheshire Rd. (Rt 8), Lanesboro MA 01237

(413) 442-0407 • (888) 474-5224

[www.villagetrucksales.com](http://www.villagetrucksales.com)

Numerous Snow Plows, Wings, &amp; Stainless Steel Sanders Now In Stock. Call Now With Your Needs



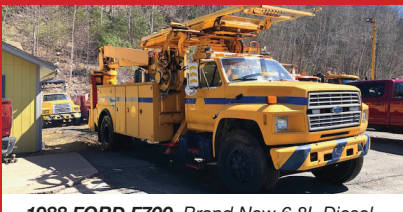
**1991 JOHN  
DEERE 544E  
LOADER,  
\$19,995**



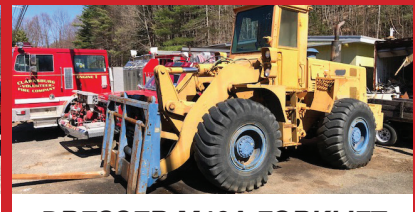
**2004 STERLING.  
CAT C12, 430 HP,  
8LL, 14' Beau Roc  
Dump, 11' One Way  
Plow, 11' Wing,  
Harder Slide In  
Spreader, Only 116K,  
\$52,500**



**1989 OSH KOSH. CAT 3306,  
8LL, Stainless Steel All Season Body, One Way  
Plow & Wing \$25,995**



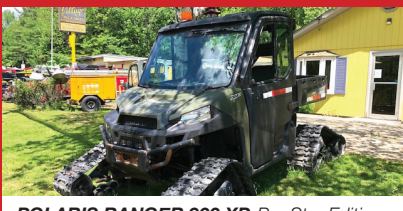
**1988 FORD F700. Brand New 6.8L Diesel,  
Platform Lift Truck, With Digger Derrick Crane  
Combo Boom, \$9,995**



**DRESSER M10A FORKLIFT  
\$14,995**



**NEW HOLLAND TS90. Alamo Boom Ax,  
Over The Rail Rotary Mower, \$29,995**



**POLARIS RANGER 900 XP. Pro Star Edition,  
Electric Power Steering, 1700 miles, Polaris  
Tracks, Tires & Wheels, \$21,995**



**DIESEL LIGHT TOWER \$3,500**



**2002 IH 4900. DT466, Auto, Clam Shell  
Trash Loader, Dumping Hopper, \$21,995**



**SULLAIR SKID MOUNTED AIR  
COMPRESSOR With Trailer, \$4,995**



**PETTIBONE CRANE 10,000 lb Capacity,  
\$8,995**



**2004 FORD F550. 4x4, Diesel, 45K Miles,  
As Cab & Chassis \$12,500,  
As Pictured w/ Sander \$16,500**



**1996 EAGER BEAVER 14 TON TAG  
TRAILER. Air Brakes, \$5,500**



**1986 CASE W14 LOADER WITH  
FORKS, \$9,995**



**1989 KME FIRE TRUCK. 8.3L Cummins,  
6 Man Cab, \$9,995**



**HENDRICKSON FIRE ENGINE. 6V71  
Motor, \$3,995**

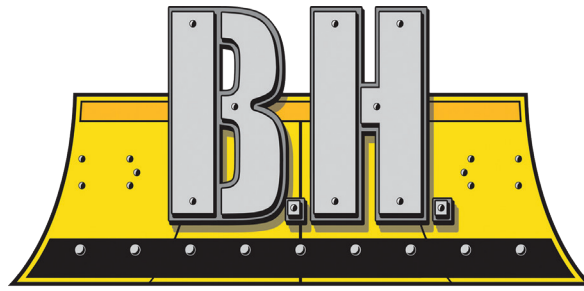


**1977 FORD F600 FIRE ENGINE. All  
Wheel Drive, Only 11K Miles, \$11,995**



**www.bhtrailersandplows.com**

**6 Center Parkway  
Plainfield, CT  
06374**



**2207 Hartford Ave.  
Johnston, RI  
02919**

**TRAILERS AND PLOWS**

**860-949-7863**



**CM PL Flat Beds  
9-14 Ft. In Stock  
Rack Body Panels Available**



**DURAMAG Flat Beds  
with 10 Inch Apron**



**CM RD BEDS  
Over 100 Beds In Stock!**



**CM SERVICE BODIES  
All Sizes In Stock!**



**CROWNLINE Flat Bed  
Single Wheel, Short & Long  
Bed, \$2,350 with Install Kit**



**2021 LOAD TRAIL CH14, 18Ft.  
16+2 with 5Ft. 24" wide Standup  
Ramps, 14,000Lb. GVWR \$6,795**



**2021 PRIMO 6'X12'  
All Aluminum, 26" Solid  
Sides, Bi-Fold Gate, \$3,995**



**2021 LOAD TRAIL 83X22Ft.  
Split Tilt 6+16 w/Tool Box,  
8K Axles, 17.5" Tires, \$11,295**



**2021  
LOAD TRAIL  
GC14  
32 FT., 30+2  
with Drive Over  
Fender, Winch  
Plate, 14,000Lb.  
GVWR  
\$11,995**





**NICK SCARVALAS****Commercial Sales****857-247-9023 or 617-249-5603****COMMERCIAL  
VEHICLE CENTER****TIME TO GET READY FOR WINTER PLOWING****SAVE \$3,000**

2020 F550 DUMP. V8 Gas, Auto, 4X4, I-Pac Too Box, 9' Body, Payload Plus, Power Group, F203583 MSRP \$67,240  
**SALE PRICE \$64,240.**

**SAVE \$3,000**

2020 F350 SUPER CAB ALUMINUM SERVICE. 4WD, V8 Gas, Adjustable Ladder Racks, Rear Camera, F203416 MSRP \$65,375 **SALE PRICE \$62,375**

**SAVE \$3,000**

2021 F550 CREW CAB SWITCH N GO. 4WD, V8 Gas, Power Equip Group, Rear Camera, F203416 MSRP \$80,970  
**SALE PRICE \$77,970**

**SAVE \$5,000**

2020 F250 STX PICK UP. 4WD, V8 Gas, 8' Fisher Plow, 197 Miles, F24492A MSRP \$49,999  
**SALE PRICE \$44,999**

**SAVE \$3,000**

2020 F350 12 Ft RACK BODY. V8 Gas, Auto, PW, PL, Pintle Hook, Rear View Camera, F204526 MSRP \$52,660  
**SALE PRICE \$49,660**

**SAVE \$4,000**

2020 F550 LANDSCAPER 4X4. Super Cab, Diesel, 12' Body, Curb Side Door, F204215 MSRP \$80,225  
**SALE PRICE \$76,225**

**500 COMMERCIAL TRUCKS IN STOCK****SAVE \$12,000**

2021 F650 SUPER CAB DUMP. 6.7 Diesel 300 HP, Auto, 10 Ft 5-7 Yard Body, Tool Box, Pintle Hook, Electric Load Cover, F203116 MSRP \$108,415  
**SALE PRICE \$96,415**

**SAVE \$3,000**

2002 F350 ALUMINUM DUMP. V8 Gas, 4X4, Super Cab, PW, PL, Remote Start, F203305 MSRP \$64,195  
**SALE PRICE \$61,195**

**SAVE \$2,000**

2020 F250 XLT SUPER DUTY. 4WD, V8 Gas, Navigation, Remote Start, F203422 MSRP \$53,745  
**SALE PRICE \$51,745**

**SAVE \$3,000**

2020 F550 DUMP TRUCK. 4X4, Diesel, Power Equip, Payload Up Grade, F204503 MSRP \$71,845  
**SALE PRICE \$68,845**

**SAVE \$3,000**

2020 F350 SUPER CAB LANDSCAPER. 4WD, V8 Gas, Power Equip, Rear Camera, F203416 MSRP \$68,575  
**SALE PRICE \$65,575**

**SAVE \$3,000**

2020 F550 SUPER CAB UTILITY. 4WD, V8 Gas, Power Equip, Rear Camera, F204208 MSRP \$65,905  
**SALE PRICE \$62,905**

**QUIRK FORD**

**540 Southern Artery (Rt 3A) Quincy, MA**  
**www.quirkford.com • 617-249-5660**

**Business  
Financing with  
NO Co-signer  
Required**

Prices include all available rebates. Rebates include Customer Cash, FMCC Bonus Cash, and Commercial Uplift Bonus Cash. Customer must qualify for rebates. Call for specific details. Prices are subject to change. \* In Lieu Of Rebates



**NICK SCARVALAS**  
**Commercial Sales**  
**857-247-9023 or 617-249-5603**



**COMMERCIAL  
VEHICLE CENTER**

## GREAT FINANCING ON ALL CUTAWAY VANS



**SAVE \$3,000**

2020 F350 ALUMINUM UTILITY. 4WD, DRW, V8 Gas, Auto, PW, PL, Plow Prep, Rear View Camera, F203285 MSRP \$57,580  
**SALE PRICE \$54,780**



**SAVE \$2,000**

2021 F350 SUPER CAB KUV. Knapheide Service Body, Diesel, 4X4, Power Equipment Group, Rear Camera, F204781 MSRP \$71,550  
**SALE PRICE \$69,550**



**SAVE \$4,000**

2020 TRANSIT XLT CARGO VAN. Rear View Camera, SYNC, Remote Entry, Pwr Heated Mirrors, USB Ports, F202660 MSRP \$29,555.  
**SALE PRICE \$25,555.**



**SAVE \$2,000**

2020 T250 CREW + CARGO VAN. 5 Passenger, Large Cargo Area, PW, PL, Rear View Camera, Cruise, AC, F204540 MSRP \$42,760  
**SALE PRICE \$40,760**



**SAVE \$6,106**

2020 T250 CARGO VAN. Rear View Camera, PW, PL, Heated Mirrors, Cargo Protection Pkg, F202635 MSRP \$39,105  
**SALE PRICE \$32,999**



**SAVE \$2,000**

2020 F350 DUMP TRUCK. 4WD, V8 Gas, Auto, PW, PL, Plow Prep, Rear View Camera, F204778 MSRP \$61,950  
**SALE PRICE \$59,950**

## 500 COMMERCIAL TRUCKS IN STOCK



**SAVE \$4,500**

2021 E450 VAN BODY. 14 Ft DuraCube, Roll Up Rear Door, Step Rear Camera, PW, PL, F204463 MSRP \$50,249  
**SALE PRICE \$45,749**



**SAVE \$6,000**

2020 T350 ALUMINUM SERVICE. Interior Up Grade Pkg, 3 Bar Ladder Rack, Rear View Camera, F204248 MSRP \$58,460  
**SALE PRICE \$52,460**



**20 IN STOCK**

**SAVE \$4,000**

2020 TRANSIT 15 PASSENGER VAN. Rear View Camera, USB Ports, 4G Wifi, PW, PL, F202808 MSRP \$45,550  
**SALE PRICE \$41,550**



**SAVE \$5,956**

2020 T250 CREW WORK VAN. 5 Passenger, Privacy Glass, Rear Defroster, Fog Lamps, Rear View Camera, F202837 MSRP \$43,205.  
**SALE PRICE \$37,249**



**SAVE \$6,000**

2020 E350 12 FT SERVICE VAN. Pw, PL, Cruise, Bucket Seats, Ladder Racks, Central Locking, F202953 MSRP \$56,795 **SALE PRICE \$51,795**



**SAVE \$4,000**

2020 T250 MID ROOF CARGO VAN. Load Area Protection Pkg, Rear View Camera, PW, PL, F203921 MSRP \$40,715  
**SALE PRICE \$36,715**

**QUIRK FORD**  
**540 Southern Artery (Rt 3A) Quincy, MA**  
**www.quirkford.com • 617-249-5660**

**Business  
Financing with  
NO Co-signer  
Required**

Prices include all available rebates. Rebates include Customer Cash, FMCC Bonus Cash, and Commercial Uplift Bonus Cash. Customer must qualify for rebates. Call for specific details. Prices are subject to change. \* In Lieu Of Rebates



# SPRING CLEANING

- Steam Cleaning Equipment For Sale -



**USED-Hot Water Units**  
Starting @ **\$1,095.**

**NEW-Hot Water Units**  
Starting @ **\$2,295.**

**RENTAL-12-24 Months**  
Own It For **\$1.00**



**R & E STEAM EQUIPMENT**  
Call Earl Warwick **617-899-8775**



**1999 MACK DM690S.**

Cab and Chassis, New Rear  
Suspension, Paint, Nose, Bumper,  
198K Miles, **\$30,000.**  
508-922-1197



**2011 BEND ENCLOSED TRAILER.** 10,000 GVW,  
Double Floor, Heavy Duty Ramp, Needs Some Repair, Ex  
Parts, **\$3,500 OBO.** 413-374-5331

## UNIT EXCAVATOR.

10,000 Pounds With NPK Hydraulic  
Hammer, Runs And Operates Well,  
Heavy Duty Setup, Can  
Really Break Rocks, Long Reach,  
Needs Paint, Asking **\$19,000.**  
203-666-1411



37 County Road  
Route 106  
Plympton MA 02367  
PH: 781-582-1378  
FAX: 781-585-4438

**SWITCH-N-GO SYSTEMS & CONTAINERS IN STOCK.**



**READY TO GO COMPLETE TRUCK PACKAGES.**  
**LOTS OF OPTIONS AVAILABLE.**  
**New & Used Trucks Ready To Go!**

**CALL TOLL FREE: 866-637-4076**  
**WWW.CAREYTRUCKEQUIPMENT.COM**

**SALES,  
SERVICE,  
PARTS**

**CUSTOM METAL  
FABRICATION  
AVAILABLE**

**2009 CAT  
321DL CR**  
Aux Hydraulics,  
Q/C. Well  
Maintained And  
Still Working  
**\$55,500**  
CALL DAN AT  
203-506-3860



**1989 NORDBERG 1352  
OMNICON PORTABLE CONE  
CRUSHER:** S/N: 5202-577, Simplicity 6203,  
6' X 20', Triple Deck Horizontal  
Screen, 200 HP, 480 Volt Soft Start Electric  
Motor, Three Axle Nordberg Carrier,  
**\$98,000 OBO.**

Chris, 860-460-0767 Or  
Chm@TerraFirmaus.Com



508-328-8938

# THE TRUCK STORE

[www.TruckStoreSales.com](http://www.TruckStoreSales.com)

**Mon-Fri 8:30-5pm**  
**Saturday 8:30-4pm**

1700 Broadway - Rte 138 – Raynham, MA • Take Exit 8 Off Rte 495, East Rte 138, On Your Left



**2005 MACK GRANITE LUGGER TRUCK: Only 90K Miles.**

**2005 MACK CV 713 CAB & CHASSIS: AUTOMATIC, 20F/52R, 30K MILES!**



**2015 FREIGHTLINER M2: 9L Cummins Diesel, Allison 3000 RDS, PTO acceptable, Low Miles, Perfect chassis for Dump, Oil Truck etc. W/or With out Reefer Body.**



**2014 INTERNATIONAL 43 Passenger Bus w?wheel chair lift. Diesel, Automatic. Only 40K miles, Clean & runs great.**



**USED MONROE STAINLESS STEEL SANDER W/CALCIUM TANKS**



**2015 HINO: Diesel, Automatic, Air Brakes. Vertical Exhaust. Will Separate. Excellent Condition.**



**2005 MACK GRANITE SPLIT REAR LOAD RUBBISH BODY 35K Miles.**



**2015 INTERNATIONAL DURASTAR 50' Bucket Truck: DT 466, Allison Auto. 14F/23R, 29K miles.**



**2017 IH 24' Refer Body: Auto., 82k miles. Call**



**2009 CHEVY C4500 16' THERMO KING Refer Body w/Stand-by: Gas, Auto. 89k miles, nice clean truck.**



**6 AVAILABLE**

**2003-2004 & 2007 MOFFET FORK LIFTS. Nice condition. Low hours.**



**2007 MACK MR Front Load Rubbish Truck: Diesel, Automatic.**



**2004 MACK Tri Axle 32 Yard Rear Load Rubbish Truck. 350 HP MACK, Allison Automatic.**



**2005 MACK Tractors: 460 H.P., 18 speed, air ride, wet system, Jake, 46k locking rears, 350 to 400k Miles. \$25,000**



**2005 GMC C 6500 WAYNE SUPER 6 yard Body. Big DURAMAX Diesel, Allison Auto. Under CDL, Only 90K miles. Very nice, Runs like new.**



**2011 ISUZU NRR: Diesel, Auto. Low miles. Also 2011 Available.Refer. Bodies in stock too.**



**USED 12' to 26' REFER & VAN BODIES Call with your needs.**



**2004 MACK MR: Stainless Steel Tank, Diesel, Auto., 12K miles. Call**



**2012 INTERNATIONAL HOOK TRUCK W/TARP: Diesel, Automatic, 20K Miles. Mint Condition.**



**2014 ISUZU NQR REFER TRUCK: Diesel, Automatic.**



**2000 MACK RD 688SX 14' Dump Body, 350 H.P., Auto., 18F/58R, LOW miles, Very clean.**



**2020 HINO 258 Refer Body: Diesel, Auto., 3 Available. Many other HINOS available! 4K miles, New Condition.**



**2016 FREIGHTLINER Cummins Diesel, Automatic, Only 38K miles. Will Sell with or W/O body.**



**2007 UD 2600 BOX TRUCK: Hino Diesel. Auto., UNDER CDL. RUNS NICE. \$20,000**



**2003 MACK ROLL OFF: 75,000 lb. Roll Off. Auto., 58R/20F, 60K miles. Call**



**2015 IH 26' Tandem Axle Refer: New Refer being installed. Auto., low hours on Refer. call**



**2015 KENWORTH TANDEM: 9L CUMMINS, Allison Auto PTO Provision. Will Separate.**

**Late model ISUZU 4 Cylinder Diesel Engine & Transmission. Call for Details.**

**2006 USED MACK Engines! ALLISON Transmissions. ALSO: 2004 MITSUBISHI 4 & 6 Cylinder Engines.**





**781-315-1680**  
**Call Dan Rott**



**GREAT SELECTION OF NEW & USED HEAVY EQUIPMENT & ATTACHMENTS**  
**FINANCING AVAILABLE ON ALL UNITS UP TO 60 MONTHS.**  
**CALL FOR DETAILS.**



2006 VOLVO EW180B.  
 Coupler, Bucket,  
 Runs Excellent,  
 \$49,000. #CE3804



2012 VOLVO  
 EW210D, 2 Pc Boom,  
 Dig & Tilt Buckets,  
 \$79,000. #CE3806



2012  
 HITACHI ZX225LC.  
 Coupler,  
 \$76,000. #CE3790



2015 BOMAG BW190.  
 1445 Hours, \$66,000.  
 #CE3687



2002 KOMATSU  
 PC300LC-7L. Good  
 Running Machine,  
 \$33,000. #CE3377A



2014 VOLVO DD110B.  
 8 Amp, 67" Roller, 1850  
 Hours, \$58,000. #CE3005



2013 KOMATSU  
 WA380-7. Coupler,  
 Bucket, Forks, 4800  
 Hours, \$159,000. #CE3893



2012 VOLVO ECR305CL.  
 Coupler, Bucket, Thumb,  
 Tilt Bucket, \$98,500.  
 #CE3427



2018 VOLVO EC300EL.  
 Coupler, Bucket, Thumb,  
 1414 Hours, \$209,000.  
 #CE3347

**WOBURN, MA - AVON, MA - JOHNSTON, RI [www.WoodCoMachinery.com](http://www.WoodCoMachinery.com)**





**2012 CAT 908H2:**  
4,200 Hours. Nice Machine.  
**\$49,000.**  
Hopedale, MA Call Us At  
508-381-3939



## PORTABLE LINE BORING

WELDING • FABRICATION • REPAIRS

**DAVID GOKEY**

**AFFORDABLE LINE BORING**

Serving CT, MA, RI, Southern NH, VT

**413-530-0242** Call/  
Text

davidgokey70@gmail.com

MC, Visa, AMEX, Discover



**2001 FORD F350.**  
Diesel, 4X4, Exc. Shape,  
Dump Body New,  
S.S. Sander, 9 Ft. V-Plow,  
Ready To Go. Asking  
**\$10,500.**  
413-530-5369



**NATUZZI LEATHER LOVE SEAT COUCHES.** 2 1/2 Years Old,  
67"W X 39" D X 35" H, Denver Red From Raymour And Flanigan,  
Paid \$1600 For The Set, Selling For **\$500 Each.** 401-369-1253



**RD OLSON 5x12 TRACK SCREENER.** 1500 Hrs, Self-  
Cleaning Ball Deck, CAT Dsl, For Sale or Rent, **\$159,500.**  
Call Dan At 203-506-3860



**2015 BOBCAT,** New Paint,  
Good Tires, Just Serviced,  
Only 1,300 Hours, **\$22,500,**  
401-641-0825

## ALL MAKES

EQUIPMENT & PARTS

CONTACT

ROLAND CARTER 603-340-6776 • ANDOVER NH 03216

**EQUIPMENT SALES  
EQUIPMENT PARTS  
EQUIPMENT  
ATTACHMENTS  
FINANCING AVAILABLE**



**New & Used  
Buckets &  
Attachments.**



**Rebuilt & Good Used Engines.**



**New Undercarriage.  
Free Undercarriage Inspection.**



**Equipment  
Hydraulic  
Parts.**



**Salvage  
Equipment  
Parts.**

info@allmakesequipmentandparts.com • www.amepinc.com





**Custom Gates Hydraulic Hose  
Assemblies & Fittings**  
**Full Truck Service, Maintenance & Repair**

All Makes & Models

Over 20 Years Experience Specializing In Mack's

Marshall Cefole - **978-467-7993**

Randy Rameau - **978-423-2889**

10 Gardner Road, Winchendon MA 01475



**CAT D4H LGP.** Very Low Hour Machine, Was Used On A Poultry Farm In PA, These Older Non-Emission Non-Computer Machines Are Harder & Harder To Come By, Blade Almost New Condition, Being Used Mostly For Pushing Poultry Poop, Machine Located In Burrillville RI, **\$45,900.** 401-651-4585



**THERMO KING REFRIGERATOR BOX, \$3300 or best offer.** Larry 401-610-0489 or Scott 401-692-9896

**1999 FORD SERVICE TRUCK.** 450 Diesel, Auto, New Motor, Exc. Shape, New Tires, Always Garaged, Ready To Go, No Rust, **\$10,500.** 413-530-5369



Serving You With New Ideas



**4600 GALLON 3 COMP ON A PETE BL/FB AVAILABLE**



**2019 BARREL ON 05 SUBFRAME, 12,000 GAL, 5 COMP, TRI AXLE FOR SALE**

**SERVING YOU  
WITH NEW IDEAS  
THROUGHOUT  
NEW ENGLAND &  
NEW YORK**

Visit  
**www.wbhill.com**

**For Specs &  
More Photos**

For More Tractors, Trailers, Tank Trucks, Pictures & Videos,  
Please Give Us A Call Or Visit Our Website, Facebook, Or YouTube Page!

305 Shaker Rd, East Longmeadow, MA  
**413-525-6665**  
**www.wbhill.com**



**2019 ROCKSTER RTT720 TROMMEL** - Like New with 50 Hours, CAT Diesel, Your Choice of 1/2" or 1" Screens - **For Sale or Rent!! \$205,000,** CALL DAN AT 203-506-3860



**2001 CAT 365BL.**  
S/N: 9TZ00407, 14,950 hrs., 158,000 lb. Machine, Good Undercarriage, Runs Well, 3.65 CY Bucket, Good Condition, **\$88,000.**

Chris 860-460-0767,  
email: [chm@terrafirmas.com](mailto:chm@terrafirmas.com)



# YOUR DIRECT FUNDING SOURCE



## EQUIPMENT FINANCING

- A to D Credit Approvals - *Rates Tailored to the Customer*
- 24 Hour Approvals - Simple One Page Applications
- Terms Range 24 to 60 Months
- No Money Down Options
- No Age Requirement on Equipment
- No Minimum Fleet Size
- Start-up Programs



## WORKING CAPITAL

- Pledge your equipment to secure the **CASH** you need
- Let us tell you how older equipment can work for your business
- A simple application form is all that's needed



**UNIVERSAL FINANCE**

UNIVERSALFINCO.COM/CAPITAL

**CONTACT US TODAY | 781-417-3018**

|                       |             |      |
|-----------------------|-------------|------|
| BUSINESS NAME         |             |      |
| BUSINESS OWNER        | PHONE       |      |
| DATE OF BIRTH         | SS#         |      |
| EMAIL                 | OWNERSHIP % |      |
| STREET ADDRESS        |             |      |
| CITY                  | STATE       | ZIP  |
| EQUIPMENT DESCRIPTION |             | COST |
| SIGNATURE             |             |      |

**Disclaimer:** By signing, I hereby certify that the above information is correct to the best of my knowledge. I authorize Universal Finance Corp. and/or its lenders and assignees, under the Fair Credit Reporting Act, to obtain information from my personal credit report or other information on myself and other principals of the organization; and I authorize my banks and creditors to release any and all credit information needed for thorough evaluation. I understand that I may be required to supply additional information.



**APPLY  
NOW**

Once completed, send a photo of this application to [credit@universalfinco.com](mailto:credit@universalfinco.com) OR use our QR code to apply now.



# CANDIA TRAILER

www.CandiaTrailer.com

& LANDSCAPE EQUIPMENT CO  
All Prices Cash & Carry! Installation Available!

SAVE TIME & FUEL • WE SHIP!

## 1-866-761-0196

NH 603-483-2541 • Fax 603-483-2842

35 High St, Candia 4 Coners, Candia NH  
10 Minutes East of Manchester, NH • 1 hour From Boston

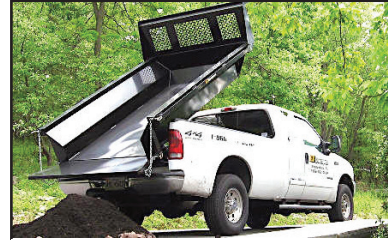
**"Helping  
You With  
The Right  
Fit"**



**DURA MAG ALUMINUM FLATBED BODIES.** Industry's Highest Quality, Call With Your Specs. **Starting @ \$2,595.**



**ALUMINUM DUMP BODIES.** Complete Sub Frame, Power Pac, LED Lights, **Starting @ \$7,997.**



**8' EZ Slide In Dump Body.** With Head Board, Tarp & Hoist, **\$3,195**



**POWER TILT**  
**USA Made**  
**20 FT POWER TILT 7 TON EQUIPMENT TRAILER**



**Aluminum Car Hauler Trailer.** 10,000 GVW, American Made,



**CTECH – Drawer Units That Fit Into Your Utility Body**



**DUMP TRAILERS.** 12', 14', 16 Ft. Twin Piston, Powder Coat, Ramps, Battery,



**LANDSCAPER TRAILERS.**



**CTECH – High Quality & Durable Drawer Units For Service Body**



**HOMESTEAD Enclosed Trailers.** Stocking 8 Ft – 24 Ft, **Starting @ \$2,795**



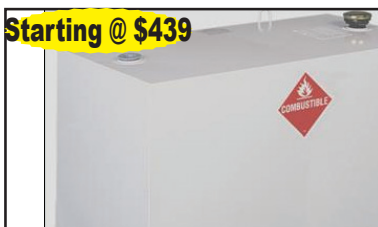
**DURA MAG SERVICE BODY.** All Aluminum, Heavy Duty Ladder Rack



**TAKE OFF BEDS.** Ford – GM – Dodge  
**Call With Your Specs**



**DOT Truck & Trailer Lights.** And Oval Amber Mini Lightbar – WE SHIP



**Starting @ \$439**

**TRANSFER TANK & PUMP.** Made In USA, 12 Ft Hose, Nozzle Gun, 15 gpm, In Stock – We Ship



**\$439**



**SAVE TIME & FUEL • WE SHIP!****CANDIA TRAILERS.COM**

&amp; LANDSCAPE EQUIPMENT CO

**1-866-761-0196****TAX FREE NEW HAMPSHIRE**

Galion

**IN STOCK GALION DUMP BODIES.**  
**8 Ft Thru 16 Ft. Call With Your Specs Today**

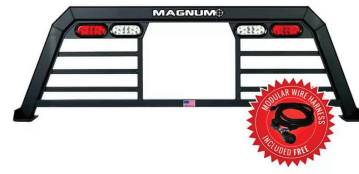
**HARSH HOIST**

2.5 to 45 Ton, Single or  
 Double Piston. Convert  
 a Flatbed Body to a  
 Dumping Body.  
**HOIST & POWER  
 PACK**

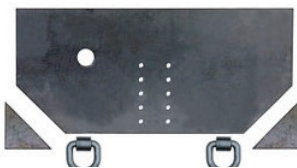
**Starting @ \$1,585**  
**USA Made**



**BUTCHER Dump Power Pac with  
 control Gravity Down \$495**



**HEADACHE RACKS** – Aluminum, USA Made, Available  
 w/ Window Cut Out Or Without, Hi & Low Profiles, LED  
 Light Options, Sport Series And Pro Series



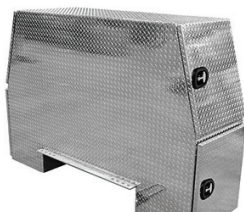
**Pintle Plate \$179**



**15 Ton Pintle Hook \$59 –  
 WE SHIP**



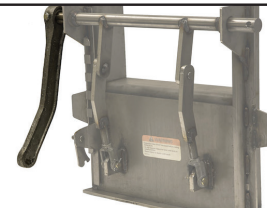
**Retractable Step**  
**One Step \$99**  
**Two Step \$109**  
**Three Step \$119**



**Aluminum I-Pack Toolbox \$2,795**



**CUSTOM AND STANDARD  
 INSTALLATIONS**



**Shuttle Door  
 \$179**

**UNDERBODY TOOL BOXES – Stainless Steel Hinges & Handles**  
**Powder Coat**  
**Diamond Aluminum Door**  
**(black in color)**

**24"x18"x18" \$239**  
**30"x18"x18" \$259**  
**36"x18"x18" \$294**  
**48"x18"x18" \$334**



**Diamond Plate Aluminum  
 Underbodies**

**24"x18"x18" \$299**  
**30"x18"x18" \$329**  
**36"x18"x18" \$359**  
**48"x18"x18" \$449**

**LOAD COVER**

**7' X 12' Mesh tarp & Hardware Kit  
 \$239**



**STONEHAM****617-733-0773****MANY NEW FINANCE OPTIONS AVAILABLE**

**2021 F450 LIMITED DUALY CREW.**  
Diesel, 4WD, All The Bells And Whistles,  
#21918 **ON SALE**



**2020 F350 SERVICE.** 4X4, Knapeide  
Body, DRW, V8 Gas, 10 Speed Auto, Pwr  
Equipt Group, #202899 **\$51,000**



**2020 F550 SUPER CAB C&C.** Remote  
Start, Navigation, Polish Alum Wheels,  
Rapid Heat, Fog Lights, 4G WiFi, 4X4,  
Diesel, #202319 **\$65,599**



**2020 T350 PASSENGER VAN.**  
V6, Auto, AC, PW, PL, Rear View  
Camera, Running Boards, Bluetooth,  
Luggage Area, #203298 **ON SALE**



**2021 T350 HD HIGH ROOF VAN.**  
Rear View Camera, Power Heated  
Mirrors, #21978, **ON SALE**



**2021 F550 RACK BODY.** Wood Floor,  
Diesel, 4X4, Power Equipt Group,  
Payload Plus, Pkg., #21343. **ON SALE**

**MANY NEW FINANCE OPTIONS AVAILABLE**

**2021 F250 STX RACK BODY.** 4X4,  
Tommy Aluminum Lift Gate, SRW, V8  
Gas, #21274 **BUILT TO FIT YOU**



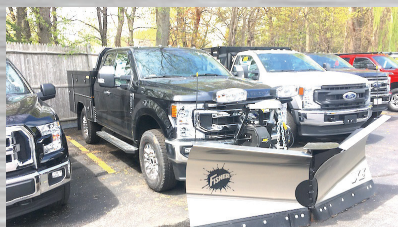
**2021 T250 CARGO VAN.** V6 Gas, Auto,  
PW, PL, Rear View Camera, Cargo Floor  
Liner, #21947



**2020 F350 SUPER CAB C&C.** Remote  
Start, Navigation, Polish Alum Wheels,  
Powerscope Mirrors, 4G WiFi, 4X4, V8  
Gas, #202331 **\$50,199**



**2020 F350 4X4 DUMP.** 9' Rugby Body,  
V8 Gas, Auto, Power Group, Plow Prep,  
Running Boards, #202621 **ON SALE**



**2021 F350 XLT SUPER CAB 4X4.**  
Duramax Aluminum Utility Body, Ladder  
Bar W/ Lights, Fisher SS V-Plow, #21486  
**BUILT TO FIT YOU**



**2021 F550 UTILITY SERVICE BODY.**  
12' Rockport, Dual Compartments,  
Ladder To Roof, 4 Bar Ladder Racks,  
#21545 **ON SALE**

COMMERCIAL  
VEHICLE CENTER**www.StonehamFordTrucks.com**

211 MAIN ST. STONEHAM, MA 02180

Mon-Fri 8:30am-8pm Sat 9-5pm Sunday 11-4

ALL PRICES NET &amp; INCLUDE ALL AVAILABLE REBATES TO DEALER

Call Bill Pollack 1-617-733-0773 or billpollack@stonehamford.com

COMMERCIAL  
VEHICLE CENTER



**STONEHAM****617-733-0773****MANY NEW FINANCE OPTIONS AVAILABLE**

**2021 E350 ROCKPORT 12' VAN.**  
Roll Up rear Door, PW, PL, AC,  
Remote Key, #21317. **ON SALE**



**2020 F350 D/W UTILITY 4X4.** V8 Gas,  
Plow Prep, PW, PL, Up Fit Switches,  
#20557 **\$50,500**



**2021 E350 14ft VAN BODY.** Aluminum  
Pull Out Walk Ramp, Roll Up Rear Door,  
V8 Gas, PW, PL, #21535 **ON SALE**



**2021 F750 DUMP TRUCK.**  
Donavan Body, Pintle Plate, Air To Rear,  
6.7L – 270Hp, Automatic, #21043



**2020 T250 MID ROOF CARGO  
VAN.** Cargo Area Protection Pkg, V6,  
Automatic, Rear View Camera, SYNC 3,  
#202985



**2021 F550 LANDSCAPER DUMP. 4X4,**  
Curb Door, Diesel, Payload Plus, Power  
Group, #21698 **ON SALE**

**MANY NEW FINANCE OPTIONS AVAILABLE**

**2020 F350 DUMP 4X4.** Diesel, 2-3 Yd  
Body, Blue Jeans, PW, PL, Running  
Boards, #203212 **\$61,000**



**2021 F350 SUPER CAB UTILITY.**  
8' Knapheide Body, 4X4, Remote Start,  
V8 Gas, STX Pkg, Pwr Equipt, (NAP)  
#211112 **ON SALE**



**2020 F550 FREIGHT BODY.** 9' x 96" W, x  
85.25" H Van Body. Diesel, Payload Pkg,  
Up Grade, #203073 (NAP) **ON SALE**



**2020 T350 SERVICE VAN.** 11' Knapheide  
Body, Remote Locking, Rear View  
Camera, #203192 **ON SALE**



**2020 F550 SWITCH N GO.**  
4X4, Diesel, Payload Up Grade, Power  
Equipment Group, Plow Prep, #203226  
**ON SALE**



**2020 F350 PICK UP 4X4.** Fisher SS  
V-Plow, V8 Gas, PW, PL, Heated Mirrors,  
#202873 **ON SALE**

COMMERCIAL  
VEHICLE CENTER**www.StonehamFordTrucks.com**

211 MAIN ST. STONEHAM, MA 02180

Mon-Fri 8:30am-8pm Sat 9-5pm Sunday 11-4

ALL PRICES NET &amp; INCLUDE ALL AVAILABLE REBATES TO DEALER

Call Bill Pollack 1-617-733-0773 or billpollack@stonehamford.com

COMMERCIAL  
VEHICLE CENTER





**Burrillville, RI • 401-633-4587**

- Full Bucket Rebuilds • Cylinder Resealing
- Wear Plates • Adapter Replacement • Hardfacing
- General Maintenance • Computer Diagnostics
- On Site Hose Replacement



**2009 CAT 938G IT LOADER.**

3-½ Yard Machine, Low Hours, Nice Tires, Mint Cond., Always Garaged, Air & Heat, Nice, **\$60,500.**

413-530-5369



**2014 JOHN DEERE 250D** - 8,200 Hours, Straight Truck, Good Rubber, Work Ready - **\$125,500**  
CALL DAN 203-506-3860

**MAULDIN 1750**

**PAVER.** 3-13 ft.

3-Cylinder Kubota G176

Grade Control,

**\$10,500 OBO.**

203-509-1895



**BIG WHEEL**



**TRUCK SALES**

**HEAVY DUTY TOWING AND RECOVERY**



**2004 KW T30 20' VAN BODY**  
w/ 6' SLEEPER:  
CAT 3126 300 HP, 9 Speed. Perfect for Long Distance Mover. Call.



**1989 GMC W7 20' RAMP TRUCK:**  
ISUZU Diesel Motor Standard Shift,  
**\$9,500.**



**2007 INTERNATIONAL 7300 S/A DUMP:**  
DT466, Auto, 16F/23R, 37K GVW, W/10' HI-WAY Hydraulic Sander & Everest Power Angle Plow, **\$15,500.**



**2005 STERLING C&C:** Mercedes, Automatic, 33K GVW, **\$9,500.**



**2013 INTERNATIONAL KANN PACKER**  
BODY: W/Double Trash Holder Lifts.  
MaxiForce IH Diesel w/only 10K Miles, Automatic, Only 63K miles on Truck. Very Clean and Runs Perfect. **ONLY \$35,000.**



**2004 PETERBILT 330**  
26 x 102 MORGAN REFER BOX:  
CAT C-7, Automatic.  
Therm-o-King Refer Unit.  
Call for info.



**2015 FREIGHTLINER FL 70 24'x 102" CARRIER REFER BOX TRUCK:**  
Cummins Power, Automatic, Air Brakes, Roll up Rear Door, Aluminum Ramp.  
Call for Pricing.



**2000 INTERNATIONAL 4900'S:**  
24' Aluminum Boxes w/4 Side Doors.  
5 S/A with Lift Axles. Call.

**42 Quanapaug Road, East Freetown, MA**  
**508-763-5927 • FAX 508-763-2369**

**www.BIGWHEELTRUCKSALES.COM**

**WE SELL HEAVY DUTY SNOW PLOW EQUIPMENT • WE EXPORT WORLD WIDE • HEAVY DUTY TOWING SPECIALIST**





**CALL STAN TAGARELIS COMMERCIAL/ FLEET SALES**

**(617) 610-5540**

**stan@watertownford.com**



**2021 F-650 DUMP.  
DIESEL, WORK READY, NO CDL,  
STK#21016**



**2020 F-550 4X4 SWITCH & GO.  
DIESEL, PWR PKG., 11' DROP BOX,  
STK#20527**



**2021 F-350 4X4 DUMP.  
7.3 GAS, PWR. PKG.,  
STK#21067**



**2020 F-550 4X4 DUMP.  
DIESEL, 19,500 GVW,  
STK#20511**



**2022 E-350 SRW 10' MAX.  
SERVICE BODY, REMOTE LOCKING BOX,  
PWR. PKG.,  
STK#22004**



**2021 TRANSIT CONNECT.  
REFRIGERATION VAN,  
THERMO-KING V-220 MAX,  
STK#21025**



**2022 E-350 DRW. GAS,  
15' UNICELL BOX, RAMP,  
STK#22001**



**2022 E-350 DRW,  
14' DURACUBE BOX RAMP,  
STK#22003**



**2022 E-350 SRW.  
12' UNICELL BOX,  
STK#22002**

**625 PLEASANT STREET - WATERTOWN, MA 02472**



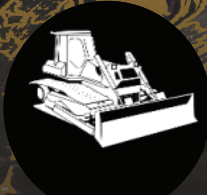
**COMMERCIAL  
VEHICLE CENTER**

BUILT **Ford** PROUD

**WWW.WATERTOWNFORD.COM**



## Bailey Equipment Repair LLC Heavy Truck and Equipment Service



Diesel repair/Diagnostics, hydraulic component repair,  
Equipment undercarriage repair and welding.  
All services can be done on site.

**Haddam, CT**

**860-918-6466**



### 2007 FREIGHTLINER TANDEM.

Reefer Unit Is In Exc. Cond., Low Hours,  
26 Foot Body, Lift Gate, Tires 90%,  
Truck Ready To Work, Needs  
Nothing, **\$15,500.**  
413-530-5369



**2019 FORD E-450 14 PASSENGER SHUTTLE BUS,** Commercial Shuttle Bus, Gas, Automatic, NON CDL Required. **Call For More Details!** 401-434-5900

### 1995 FREIGHTLINER.

435K Miles On CAT Motor,  
8 Speed Fuller Transmission,  
New Turbo And Starter, All New  
Tires, Runs Great!  
Asking **\$18,000.**  
Call Jim 508-479-5321



**RAPID PREP**

Full Service Provider of Equipment,  
Supplies and Consumables

NATIONWIDE EQUIPMENT  
RENTALS, SALES & SERVICE

North Kingstown, RI  
El Cajon, CA • Suffolk, VA  
Lakewood, WA

877.529.2124 / rapidprep.com

**RUST NEVER SLEEPS**



ENHANCED PORTABLE BLASTER PACKAGE



DUST FREE  
SLURRY BLASTING



SAFETY EQUIPMENT





1200 Worcester Road (Rt. 9 East),  
Framingham, MA 01701  
[www.McGovernFordofFramingham.com](http://www.McGovernFordofFramingham.com)



**2021 F250 SUPER CAB  
4X4: W/ Poly Caster  
Sander & Fisher Plow.  
Power Group, V8 Gas.  
See More Photos On Our  
Website. Be Ready For  
Next Winter. Call Chris Uhl.  
617-775-9497  
Or McGovern Ford  
At 508-879-1320**



**CHRIS UHL**  
**CELL: 617-775-9447**  
**EMAIL: CUHL@McGovernAuto.com**



**2004 INTERNATIONAL 7300  
BUCKET TRUCK.** 4WD, Pre-Emissions,  
Allison Automatic, Excellent Condition, Very  
Reliable, Low Miles, No Rust, Southern Truck,  
New Continental Tires, Altec 61Ft Lift, 2000 Lb.  
Jib Crane, DOT & Lift Inspections,  
Ready To Work! **\$29,500 OBO.**  
Charlemont, MA 413-339-8319

**Looking To  
Sell  
Buy  
Browse**

**Truck And Equipment Post  
P.O. Box 6824  
Providence, RI 02940**

**Email:  
[ads@TruckAndEquipmentPost.com](mailto:ads@TruckAndEquipmentPost.com)**

**Phone:  
888-887-0505**

#### RECLAIMED GRANITE.

Over 20 Acres Of Posts,  
Landings, Slope Curb,  
With Drill Holes & Beautiful  
Patina, Hand Cut Wall Granite  
From 1800's Mills Around New  
England, 8K Tons Available,  
1 To 5 Ton Granite Blocks.  
Dartmouth, MA 508-995-8067



**401-654-6711**

**Insurance experts  
for all your business  
and individual needs**



**A. RICCIOTTI INSURANCE ASSOCIATES, LLC**  
START WITH A STRONG FOUNDATION



#### JOHN DEERE 992 DLC

**EXCAVATOR.** Perfect Running  
Condition, Very Tight, Quiet, Long Reach,  
54 Inch Bucket, John Deere Engine,  
Needs Paint, Asking **\$24,000.**  
203-666-1411



**2010 CUBCADET/  
YANMAR EX3200,**  
32HP, 85 Hours,  
One Owner Garaged,  
Unused 60" Mower Deck  
With Canopy And Lawn Tires,  
**\$21,500.** 508-222-9072



# SMR SYNERGY METALS RECYCLING

1741 Fall River Ave. Seekonk, MA

**774-229-2159**

**Comprehensive Scrap Metal Services**

**We Pay Top Dollar For Aluminum, Brass, Copper,  
Steel and Batteries**

***Specializing in Catalytic Converters***

[Synergymetalsrecycling.com](http://Synergymetalsrecycling.com)



## 1998 WESTERN STAR TRI-AXLE DUMP TRUCK. CAT 435 HP,

8LL transmission,  
44K Rears, Runs And Looks Good, Asking  
**\$22,000.** 203-666-1411,  
Call Or Text



**( 2 ) GREAT DANE 53' REEFER TRAILERS,**  
Rubber Good, Frame Good, Ready To Go! 2007 - **\$9,500**  
2006- **\$8,900** — Call Today! 781-417-3018



**CAM 20 TON TRAILERS:** 30 X 80 Air Ramps. 22' Flat 6' Bt.  
Call For More Details. 781-582-1378. Plympton, MA

## CUSTOM-DESIGNED RADIANT KITS

**Simple. Efficient. Affordable.**

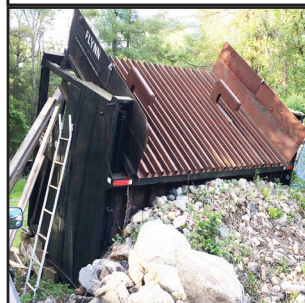
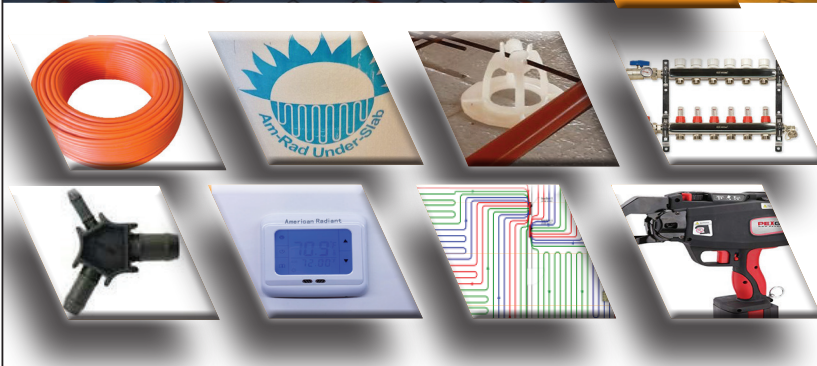
- Radiant Heating
- Radiant Cooling
- Heated Driveways

**AMERICAN RADIANT**  
Technologies & Supplies LLC.  
Toll Free: 833-758-2888



## 1996 GMC 1500 SIENNA SLT.

Blue & Gray, 4x4 P/U, 350-V8,  
Newer Auto Trans, Ext Cab, Bed Liner,  
Loaded Interior, Leather Bucket Seats Good  
Condition, 8' Fisher Plow, M/M Plow New  
Edge, Good Tires, Alloy Wheels/Locks.,  
Asking **\$4500 OBO.** Arlington, MA  
617-438-7236



**SCALPING  
SCREEN.** 8'3"  
High X 13'6" Long  
X 8' Wide,  
Produces 4" Minus  
Product, Folding  
Sides For  
Transportation  
On A Trailer, Very  
Good Condition,  
Work Ready, Call  
For Complete  
Details,  
Concord, MA,  
978-369-5514





# METROPOLITAN TRUCK CENTER INC.

1074 Turnpike St. Stoughton, MA 02072

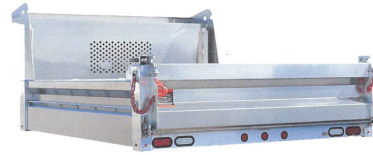
[www.metropolitantruck.com](http://www.metropolitantruck.com)

**MAKE YOUR  
APPOINTMENT TODAY!**

## 866-514-1214

### EVERYTHING YOU NEED FOR A TRUCK BODY!!!

**GREAT  
SELECTION  
OF  
BODIES IN  
STOCK!**



### CUSTOMIZED ALUMINUM BODIES TO FIT YOUR EVERY NEED



**DURAMAG S-SERVICE  
BODIES**



**DURAMAG S-SERVICE BODY**



**DURAMAG S-SERVICE BODY**



**AIR-FLO DUMP BODIES**



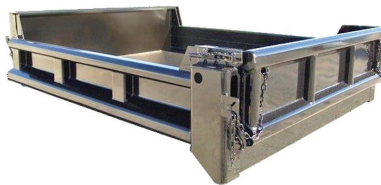
**READING STEEL SERVICE  
BODIES**



**RUGBY PLATFORM BODY**



**GALION STAINLESS STEEL  
DUMP BODIES**



**GALION STEEL DUMP BODY**



**57" AND 75" SINGLE AND  
DUAL WHEEL**







# JG Remillard Equipment Sales.

## 603-759-5918



**1985 EAGER BEAVER  
35 TON DETACHABLE  
LOWBED TRAILER.** 96" Wide, 22.5  
Tires. \$6,000.



**1985 HILL 26' DUMP TRAILER.**  
Steel Frame, Steel Tub, New Piston,  
24.5 Rubber \$8,500



**1950 MACK A-50X.**  
510 Gasoline Engine, 5&2, A/B, Runs  
Good, Needs Restoration.  
\$3,500



**1971 MACK R-600.**  
237, 10 Speed, Holmes 750 Wrecker,  
\$7,500



**1967 MACK R-MODEL CAB.**  
Rust Free, Ready To Mount On Your  
Truck. \$3,500



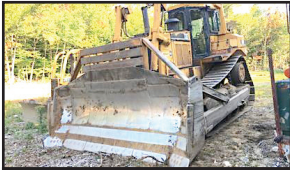
**1989 JOHN DEERE 410C 4X4  
BACKHOE.** Extend-A-Hoe, Manual  
Thumb. \$17,500



**1993 FORD L-8000 TANK TRUCK.**  
8.3 Cummins, 6 Speed, Air Brakes,  
2,500 Gallon Single Compartment  
Tank. \$8,500



**1957 MACK B-73 S/A TRACTOR.**  
250 Cummins, 5&3, 29 Rear, Clean  
Truck! \$7,500



**1998 CATERPILLAR D8R. 3406, EROPS**  
with Air Conditioning, Stereo, Semi U  
Blade, 85% Undercarriage, 3rd Valve for  
Ripper, New Batteries, Work Ready. \$98,500



**CAT 120 GRADER. 3306**  
CAT Engine, Direct Drive,  
\$12,500



**1988 FORD F-800. 7.8 Diesel, 5&2,**  
Air Brakes, New Tires, 110k Original  
Miles. \$12,500



**1988 INTERNATIONAL S-2500**  
DUMP. DT-466, Auto, Air Brakes.  
\$6,000.



**1980 JOHN DEERE 644B LOADER.**  
Runs Excellent, New Front Tires.  
\$14,500



**1991 DRESSER 4-6 TON ROLLER.**  
IH Diesel, Water System, Good  
Runner, \$3,900



**CLARK 16,000LB FORKLIFT. 453**  
Detroit Power, Runs Good. \$8,500



**ALLIED HM600C HYDRAULIC  
HAMMER.** New Point, Fits Cat 315  
Size Machine, \$5,000



**1988 GMC BRIGADIER TANDEM  
AXLE TRACTOR.** 350 Cummins, 9  
Speed With PTO, 38 Rears, \$6,500



**1988 IH S-1600.**  
Hot Patch Asphalt Body  
Good Working Unit.  
\$6,500



**1988 DRESSER TD-8G DOZER.**  
4BT Cummins, 80% Bottom, Work  
Ready! \$17,500



**1997 Chevy C-8500.**  
3116, 6&2, A/B, SS Spreader, Plow  
And Wing. \$10,500



**2012 KOMATSU SK-1026 SKID  
STEER.** Bucket And Forks.  
\$22,500



**1989 VOLVO TRACTOR.**  
365 Cummins,  
9 Speed, Wet Kit, Headache Rack,  
\$14,500



**CATERPILLAR 980 WHEEL  
LOADER. 42H Series.** Runs Good,  
\$12,500



**MANITEX M-938 CRANE.**  
Removed From Truck, 9 Ton  
Capacity,  
38' Reach, Super Clean! \$12,500

**Visit Us [jgremillardequipmentsales.com](http://jgremillardequipmentsales.com)**



- **NEED HELP TRACKING PROJECT COSTS?**
- External Oversight Of Monthly Bookkeeping Transactions
- Setup, Training, & Troubleshooting QuickBooks
- We Provide All Your Bookkeeping Needs

# 401-854-3504

lvoyer@ControlledSolutionsRI.com

www.ControlledSolutionsRI.com



## controlled solutions



**2016 CAT 262D**, 2000 hours, QC, Aux. Hydraulics, AC.  
**\$33,500.**  
 CALL US. 855-313-2441.  
 Hopedale, MA

### 1988 DRESSER 515B.

17.5-25 Rubber, 4 In 1 Bucket, 6 Cylinder Cummins Turbo Diesel, Lights-Heat-Wipers All Work, No Leaks, **\$16,500.** Snow Pusher Available Priced Upon Request, Gus, 516-702-3125

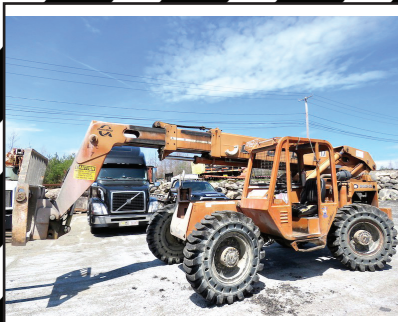


**2007 MACK ROLL-OFF PUREBRED.** Clean! 10 Speed Pre-Emissions, AI427, 18,000 Front Axle, 52,000 Rear Axle, Ext. Tail, 34" Spread, 75,000 Lb. Capacity, Auto Tarp HT, 395,590 Miles, 27,221 Hrs, **\$52,000.** 978-995-8703



## DAVE'S ENTERPRISES

66 BRALEY RD. FREETOWN INDUSTRIAL PARK EAST FREETOWN, MA



1998 LULL 844: 4 Cylinder CUMMINS Diesel, New Solid BRAWLER FLEX tiers. Excellent Condition. Nicest LULL Around.



1995 GMC TOP KICK: New CAT 3116 275 HP, 15K Miles on Fresh Rebuild, 8LL, 16F/40R, HENDRICKS Suspension. \$14,500



2001 FREIGHTLINER FL80: 275 HP CAT Turbo Diesel. 8LL, Less than 100K miles. Truck belonged to a driving school. Installing NEW 10' Dump Body. Hitch Plate, Air to Rear. Call.



2007 GMC 6500 Dump Body: Diesel, Allison Automatic, Hitch Plate, D-Rings, Electric Tarp. \$23,500.



(3) USED 24.6 STEEL FLAT BED BODY W/MOFFETT SYSTEM. Different sizes. \$1,000 to \$3,500.



2006 FREIGHTLINER: Mercedes Turbo Diesel, Automatic. NEW EVERYTHING: Brake Drums, Cans, Stacks, Aluminum Wheels, Tires, Air Tanks, Batteries, PTO, Dump Body w/Full Auto Cover, Hitch Plate, D-Rings. Air to Rear and Back UP Camera.



1994 L8000 Cab & Chassis Only: 10 Wheel Dual Axel: CUMMINS DIESEL, 8LL, 16F/40R. Call.

# 508-726-0077



**JOSEPH****EQUIPMENT COMPANY**  
**300 GAY ST • MANCHESTER, NH 03103****SATURDAYS • WE ARE OPEN ALL DAY****PHONE: 603-641-8608****FAX: 603-666-3716**

293 NORTH - EXIT 2 -  
LEFT ONTO BROWN AVE -  
RIGHT ONTO WINSTON ST. - LEFT ONTO GAY ST.  
300 GAY STREET ON THE RIGHT

## 2022 FONTAINE WORKHORSE 50 FLD 50 TON FLAT LEVEL DECK



### 2022 FONTAINE WORKHORSE

**50 TON Rating In 12' 102" Swing Radius. 24' Flat Level Deck, 20" Loaded Deck Height, 8' 6" Wide, Trailer Length 50' 1". Twelve (12) Pair Of Flip Out Style Out Riggers, Nine (9) Pair Of Lash Rings. Three Axle, Lift On 3rd, Air Ride Suspension On 54 1/2" Axle Spacing, DOT Strokes With Battery Backup, Manual Ride Height Control Valve, (2) Pair Of Flag Holders. Steel Wheels 255/70R 22.5 OEM Rubber, Limited Supply**

**\$64,500 includes FET and Freight (FOB Factory Springville AL to Manchester NH)**  
**Est. Wt. 18,720 # +/- 3%**

**CONTACT BRIAN at JOSEPH EQUIPMENT CO. 603-641-8608**

EMAIL: josephequipment@aol.com

WEBSITE: www.josephequipment.com

# **www.josephequipment.com**

**Trades Welcome • Financing Available**

THIS AD IS COPYRIGHTED & OWNED BY TRUCK AND EQUIPMENT POST



# JOSEPH

**EQUIPMENT COMPANY**
**300 GAY ST • MANCHESTER, NH 03103**
**SATURDAYS • WE ARE OPEN ALL DAY**
**PHONE: 603-641-8608**
**FAX: 603-666-3716**


293 NORTH - EXIT 2 -  
LEFT ONTO BROWN AVE -  
RIGHT ONTO WINSTON ST. - LEFT ONTO GAY ST.  
300 GAY STREET ON THE RIGHT

## NEW FONTAINE STYLE PAVER TRAILER

# 2022 FONTAINE WORKHORSE 55PVR \$88,500

**INCLUDES FET & FREIGHT (AL TO NH)**

Fontaine Heavy-Haul

## WORKHORSE 55PVR

**MILLERS, PAVERS, ROLLERS, BROOMS...**

If it's used to build a road, the Workhorse 55PVR Trailer can haul it. The 55PVR is a transportation multi-tool for road builders!



- **55 tons in 16 ft.** (3 or 4 axles close coupled)
- **50 tons in 12 ft.** (3 or 4 axles close coupled)  
(GAWR and GVWR determine legal payloads)
- **Fastest, most versatile hydraulic removable gooseneck in the industry** (You can connect or disconnect on uneven ground)
- **102" swing radius for easy maneuverability**
- **5-Position gooseneck ride-height adjustment**
- **24' clear deck length with 8' 6" overall width**
- **22" loaded deck height with 6" ground clearance**

## www.josephequipment.com

**Trades Welcome • Financing Available**

THIS AD IS COPYRIGHTED & OWNED BY TRUCK AND EQUIPMENT POST



# JOSEPH

## EQUIPMENT COMPANY

**300 GAY ST • MANCHESTER, NH 03103**

**SATURDAYS • WE ARE OPEN ALL DAY**

**PHONE: 603-641-8608**

**FAX: 603-666-3716**



**293 NORTH - EXIT 2 -  
LEFT ONTO BROWN AVE -  
RIGHT ONTO WINSTON ST. - LEFT ONTO GAY ST.  
300 GAY STREET ON THE RIGHT**



**1988 MACK SUPERLINER, RW613, 350, 12 Speed, 44 Rears, Nuway Air Ride, Double Frame, Bud Wheels, New Rubber, 3rd Axle Lift. Call For More Information**



**IN STOCK - 2020 KRUTZ, 70 Yard, 2 Axle, 70,000 Single Point Suspension, 25,000 Lb. Axles, 36' Long, 90" Sides, 1/4 Inch 450 Hardox, Floor, Sides, Nose, Gate, Barn Door-12 Panel Gate, Tow Hooks, Led Lights, 11 X 24.5 Rubber, Aluminum Wheels, Ladders Front And Back, Holland Mark V 50,000 Lb. Landing Gear. In Stock, No Waiting. Call For More Information.**



**2009 EAGER BEAVER, 50 Ton, Non-Ground Bearing, Air Ride, 3 Axle, Lift On Third, One Owner, Original Paint. Call For More Information.**



**2003 KENWORTH T300 SERVICE/UTILITY TRUCK, ISC 315 Cummins Diesel, Auto Transmission, A/C W/Space Saver SCBA Filling Stations, 120/240 Vac Aux Electric Reels, Rooftop Command Lights, GVWR 33,000 Lbs. Call For More Information.**



**1997 MACK RD600, 350, 8 Speed, 50k Lb Rears, 18k Lb Front, 16' Body, Power Steering, A/C, Canvas, Pintle Hook, Scuttle Doors. New Brakes, Sandblasted And Painted Frame, Call For More Information.**



**2002 WABASH 48 X 102 FLAT BED, Air Ride, Slider, Hub Piloted Wheels, Alum Headboard, Southern Trailer, (6) Available To Choose From. Call For More Information.**



**1960 MACK B MODEL. 6 Wheel Dump, Complete Restoration, New Dump Body, 673 Duplex, Pintle Hook. Call For More Information.**



**1985 AUTOCAR DK64 DUMP TRUCK, CAT 3406 Motor, Engine Brake, 8 Speed, Double Frame, Hendrickson RT Series Suspension, 14,000 Lb. Front, 58,000 Lb. Rears, 55" Axle Spread, 186" Wheelbase, 14' Heated Box. 24" Rubber, Working Daily. Call For More Information.**



**GOODYEAR OMNITRAC MSS II 1200/24 Tube Type Radial Tires - All New - Omnitrac MSS II - All Positions Front And Rear Tires - Grippers Tires - Limited Supply. Call For More Information.**



**2008 FONTAINE 55 TON, FLD, Currently Being Reconditioned, 25' Deck, 18" Deck Height, 2 Pin Position, Air Ride, Tri Axle, 275 Rubber, Strobes, Call For More Information.**



**2010 FREIGHTLINER M2 BUSINESS CLASS, With Hi-Rail, Ext Cab, 8.3 Cummins, 9 Speed, IMT Crane And Body, 400 Amp Miller Welder / Compressor / Generator, Welding Torch And Cables, Lift Gate, Hydraulic Outriggers, Full Hydraulic Hose Reel, 140K Miles, Southern Truck, Excellent Condition, Call For More Information**



**2016 FONTAINE 60 TON TRAILER, DSR, 28' Deck, 14" Deck Height, Triple Cylinder, Long Gooseneck, 2 Pin Position, Tri Axle, Lift On Third, Set Up For 4th, Air Ride, Alum Wheels, 275 Rubber, One Owner, Original Paint, Call For More Information.**

# www.josephequipment.com

**Trades Welcome • Financing Available**

THIS AD IS COPYRIGHTED & OWNED BY TRUCK AND EQUIPMENT POST



# JOSEPH

## EQUIPMENT COMPANY

300 GAY ST • MANCHESTER, NH 03103

**SATURDAYS • WE ARE OPEN ALL DAY**

**PHONE: 603-641-8608**

**FAX: 603-666-3716**



293 NORTH - EXIT 2 -  
LEFT ONTO BROWN AVE -  
RIGHT ONTO WINSTON ST.- LEFT ONTO GAY ST.  
300 GAY STREET ON THE RIGHT

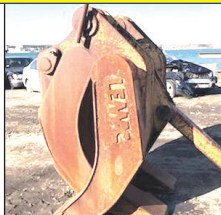
### IT'S "DEMO TIME" - MANY TO CHOOSE FROM



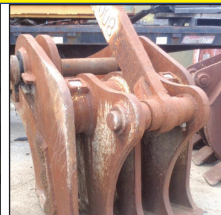
**NYE GRAPPLE FOR  
KOMATSU PC300**



**LABOUNTY GRAPPLE  
FOR KOMATSU  
PC400-PC490**



**LEMAC 2 OVER 3  
GRAPPLE FOR PC300**



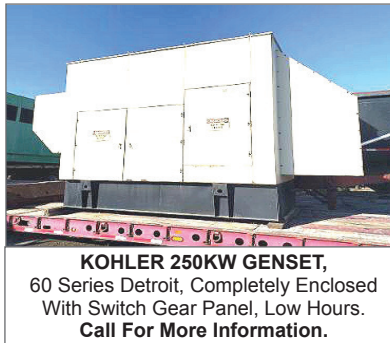
**NYE PC800, PC750  
PULVERIZER**



**NYE PC800  
DEMOLITION  
GRAPPLE**



**2007 50'  
SKYJACK,  
MODEL  
SJ9250,  
4 X 4 Rough  
Terrain Scissor  
Lift, Diesel,  
Hydraulic  
Sliding  
Platform,  
2,700 Hours.  
Call For More  
Information.**



**KOHLER 250KW GENSET,  
60 Series Detroit, Completely Enclosed  
With Switch Gear Panel, Low Hours.  
Call For More Information.**



**DAEWOO 6000 LBS PNEUMATIC FORKLIFT With  
Side Shift, 910 Hours, Capacity: 6000 Lbs, Propane,  
Pneumatic Tire, Auto Trans, 48' Forks, Mast Type  
Lift, Side Shift, Three Stage, One Owner, Excellent  
Condition. Call For More Information.**



**SABRE PUSH BOATS, Twin Diesel,  
Rebuilt Motor, Very Good Condition.  
Call For More Information.**



**CATERPILLAR D8L DOZER, Full Cab, A/C,  
Straight W/Tilt, Low Hours, 50% Bottom,  
Excellent Condition.  
Call For More Information.**



**1987 CATERPILLAR 130G GRADER, 8,500  
Hours, Articulated, Full Cab, Power Shift, 3304  
Diesel Engine, 3rd Valve, Sliding, Tilting, 12'  
Moboard Call For More Information.**



**2000 CATERPILLAR 150 KW GENERATOR,  
Three Phase, Fully Enclosed With Fuel Tank,  
Complete Set Up, 700 Original Hours.  
Steel Frame With Fuel Tank Underneath,  
One Owner, Excellent Condition.  
Call For More Information.**



**GENIE S85 MANLIFT,  
85'. 4 X 4, Only 4,800 Original Hours.  
Call For More Information.**



**1993 CAT D7 DOZER, 17A Series, Direct  
Electric Start, Full Hydraulic, Standard Shift,  
One Owner, Excellent Shape.  
Call For More Information.**

**[www.josephequipment.com](http://www.josephequipment.com)**

**Trades Welcome • Financing Available**

THIS AD IS COPYRIGHTED & OWNED BY TRUCK AND EQUIPMENT POST



# JOSEPH

## EQUIPMENT COMPANY

300 GAY ST • MANCHESTER, NH 03103

SATURDAYS • WE ARE OPEN ALL DAY

PHONE: 603-641-8608

FAX: 603-666-3716



# FONTAINE

293 NORTH - EXIT 2 -  
LEFT ONTO BROWN AVE -  
RIGHT ONTO WINSTON ST.- LEFT ONTO GAY ST.  
300 GAY STREET ON THE RIGHT



**1992 STECO END DUMP TRAILER, 60 Yard, 32' Single Point Suspension, Hub Piloted Wheels, Working Daily, Call For More Information.**



**2003 EAST DUMP TRAILER, 30', Tri Axle, Steel Frame, Alum Body, New Floor, Air Ride, Lift On Third, 24.5 Rubber, Very Good Condition. Call For More Information.**



**40 TON EXTENDABLE**  
**IN STOCK - 2020 FONTAINE LXTN40, 40 Ton Extendable, 34' Closed - 60' Open. Also Available 29' Closed - 50' Open. Tandem Axle, Set Up For 3rd, Air Ride, Non Ground Bearing, 102" Swing Clearance, 20" Deck Height, Alum Wheels. In Stock, No Waiting. Available In Manchester NH And At The Factory In Springville AL. 3rd And 4th Axles Available. Call For More Information.**



**IN STOCK - NO WAITING - 2020 FONTAINE RENEGADE LXLN12 -12 Inch Loaded Deck Height, With 4 Inch Ground Clearance When Fully Loaded, 30 Tons In 16 Feet On Tandem Bogie Or 30 Tons In 20 Feet With 3rd Axle Flip, Low Profile, 3rd Axle Capability, 32 Feet 11 Clear Deck Length. CALL FOR MORE INFORMATION.**



**2019 FONTAINE MAGNITUDE 55H DSR, 26' Deck, 14.5" Loaded Deck Height, Air Ride, Tri Axle, Lift On 3rd, With Flip 4th, Strobe Lights, LEDS, Alum Wheels, 275/70R X 22.5, Boom Trough. One Owner, Excellent Condition. Call For More Information.**



**2021 GALLEGOS 40 TON JEEP DOLLY, 2 Axle, Air Ride, 29' Long, 60" Axle Spread, 102" Wide, Approx Fifth Wheel Height 53", Compatible With 60 To 70 Ton Class Trailers, 275 Rubber, Alum Wheels, 3 Available To Choose. Call For More Information.**



**2009 TALBERT 70 TON DROP SIDE RAIL, Severe Duty, 26' Steel Deck, 9' Wide, With 26' Beam Insert. 30,000 Lb Axles, 3 Axle, Set Up For 4th, Spring Ride, 315 Rubber, One Owner, Completely Reconditioned, Sandblasted And Painted. New Seals, Brakes, Bearings, Hubcaps And Decals. Call For More Information.**



**NEW 2019 XL SPECIALIZED, 55 Ton, 26' Deck, 15" Loaded Deck Height, Tri Axle, Set Up For 4th, Lift On Third, Air Ride, Long Goose Neck, 2 Pin Position, Boom Trough, 275 Rubber, Alum Wheels. Front Flip Ramps, Chain Slots, Weigh Scale, Strobes With Battery Back Up, Strobe Lights, Outriggers, Extra D-Rings. Available In Black Or Red, In Stock, No Waiting. Located At The Factory In Manchester IA And Also Stock In Manchester NH. Call For More Information.**



**2000 TALBERT 60 TON DROP SIDE TRAILER, 26' Deck, Steel Deck, Additional 26' Beam Deck Insert, 9' Wide, Non Ground Bearing, Heavy Duty Outriggers, Tri Axle, Set Up For 4th, Spring Ride, Good Rubber, Flag Holders, One Owner, Working Daily. Call For More Information.**



**2021 GALLEGOS 42' FRAMELESS DUMP TRAILER, 96 Yard, Tri Axle, Hendrickson Air Ride Intraxx, ABS Brakes, Lift On Front Axle, Cramaro Flip N Go Canvas, Steel Wheels, LED Lights, Barn Door. Call For More Information.**



**2011 DOONAN 53' SPREAD AXLE STEP DECK, 8'6" Wide, 120 Inch Axle Spread, Air Ride, 10' Top Deck, 38' 6" Lower Deck. Call For More Information.**



**1999 FONTAINE 35 TON TRAILER, Air Ride, Non-Ground Bearing, 24' Deck, 2 Axle, Very Good Condition. Call For More Information.**

# www.josephequipment.com

Trades Welcome • Financing Available

THIS AD IS COPYRIGHTED & OWNED BY TRUCK AND EQUIPMENT POST



# JOSEPH

## EQUIPMENT COMPANY

300 GAY ST • MANCHESTER, NH 03103

PHONE: 603-641-8608

OPEN  
ALL DAY  
SATURDAY



# FONTAINE

FAX: 603-666-3716



**NEW MODEL - 2022 FONTAINE RENEGADE LXLN12** - 12 Inch Loaded Deck Height With 4 Inch Ground Clearance When Fully Loaded, 30 Tons In 16 Feet On Tandem Bogie Or 30 Tons In 20 Feet With 3rd Axle Flip, Low Profile, 3rd Axle Capability, 32 Feet 11 Clear Deck Length. IN STOCK, NO WAITING, **CALL FOR MORE INFORMATION.**



**NEW MODEL - 2022 FONTAINE MAGNITUDE 50** Tri Axle, Set Up For 4Th, 50 Ton, Air Ride, 24' Deck, 20" Loaded Deck Height, Alum Or Steel Wheels, Strobe Lights, Outriggers And D-Rings. **Call For More Information.**



**2022 KRUZ TERMINATOR**, 26' Steel Frame, Single Point Suspension, 2 Way Gate, 11 X 24.5 Tires, Alum Wheels, 2 Speed Landing Gear. **Call For More Information.**

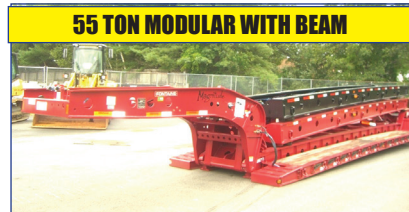


### 27' FLAT LEVEL DECK - IN STOCK

**2022 FONTAINE 55L**, 27' Flat Level Deck, Also Available In 25' And 26' Deck Length. Tri-Axle, Air Ride, 3Rd Axle Lift, Alum Wheels, Strobe Lights, Set-Up For 4Th Axle. In Stock, No Waiting. **Call For More Information.**

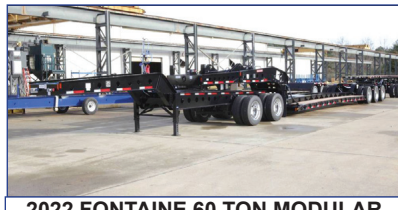


**2022 KRUZ 26' STEEL TUB**, Aluminum Frame Dump Trailer, Air Ride, 2 Axle, Alum Wheels, 450 Hardox, 24.5 16 Ply Tires. **TAKING ORDERS**  
**Call For More Information.**



### 55 TON MODULAR WITH BEAM

**2022 FONTAINE 55H MODULAR DSR**, Beam Deck Also Available, Tri Axle, 60" Axle Spacing, Hydraulic Removable, Non Ground Bearing, Set Up For Gooseneck Ext, Spreader Bar And 4Th Axle Flip, Air Ride, Alum Wheels, 22.5 Rubber. **Call For More Information.**



**2022 FONTAINE 60 TON MODULAR 2+3+1**, 26' Dsr, 184" Swing Clearance, Set Up For 2 Axle Jeep, 14" Deck Height, Air Ride, Alum Wheels, 275/70R X 22.5 Rubber, Non Ground Bearing. **Call For More Information.**



**2022 FONTAINE RENEGADE LXL**, 14" Deck Height, 30' Deck W/6" Ground Clearance, 2 Axle, Set Up For Third, Hydraulic Detachable, Taking Orders  
**Call For More Information.**



**2022 KRUZ, 70 Yard, Tri Axle, 70,000** Single Point, Lift On Third Axle, 1/4 Inch 450 Hardox, Floor, Sides, Nose, Gate, 12 Panel Gate, 11 X 24.5 Rubber, Alum Wheels. Taking Orders. **Call For More Information.**



**2022 FONTAINE TRAVERSE HYDRAULIC TAIL**, 48' Long, 102" Wide, Air Ride, Hydraulic Upper Deck, Hydraulic Winch, Remote Control, Alum Wheels, Dual Controls. Taking Orders  
**Call For More Information.**



**2022 FONTAINE 60 TON MODULAR**, 26' Dsr, 60" Axle Spacing, 184" Swing Clearance, Set Up For 2 Axle Jeep, 14" Deck Height, Air Ride, Alum Wheels, 275/70R X 22.5 Rubber, Non Ground Bearing. In Stock. **Call For More Information.**



**1998 KAYLN SIEBERT**. 75Ton 3+3+3, Air Ride, West Coast Bogie, 3 Axle, Air Ride Jeep With Power Tower, 10' Wide Trailer, 60' Overall Length, 48' Of Useable Deck, 275/70 X 22.5 Rubber, Sandblasted & Painted, Excellent Shape, Alum Wheels On Jeep And Booster. **Call For More Information.**

**Trades Welcome • Financing Available • [www.josephequipment.com](http://www.josephequipment.com)**

THIS AD IS COPYRIGHTED & OWNED BY TRUCK AND EQUIPMENT POST



**TRAILER RENTALS • TRAILER RENTALS • TRAILER RENTALS •**

**WE RENT STEP DECKS • LOW BEDS • HI FLATS • DEMO/SCRAP • TRAILERS**

# JOSEPH

## EQUIPMENT COMPANY

300 GAY ST. • Manchester, NH 03103

**PHONE: 603-641-8608**

**FAX: 603-666-3716**

**14" DECK HEIGHT**

**NOW TAKING ORDERS FOR DUMP TRAILERS AND LOWBEDS FOR SPRING AND SUMMER DELIVERY**



NEW 2022 FONTAINE RENEGADE LXL, 14" Deck Height, 30" Deck W/6" Ground Clearance, 2 Axle, Set Up For 3rd Hydraulic Detachable Or Mechanical Detachable. In Stock No Waiting. Call For More Information.

**IN STOCK, NO WAITING**

**70 TON 2+3+2**

**WE RENT STINGERS • SPREADER BARS • DOUBLE DROP EXTENSIBLES TRAILERS**



NEW 2022 FONTAINE SPECIALIZED MAGNITUDE 55L, Tri Axle, Air Ride, Set Up Of 4th Axle, Non Ground Bearing, 25' Deck, Led Lights, Aluminum Wheels, Strobe Light Package, Lift On 3rd Axle, 2 Pin Position, Loaded In Stock No Waiting. Call For More Information.

**55 TON EXTENDABLE**

**IN STOCK**

**WE RENT WALKING FLOORS • DUMPS • HIGH FLAT EXTENSIBLES • JEEPS**



2022 FONTAINE 59H MODULAR DSR, Beam Deck Also Available, Tri Axle, 60" Axle Spacing, Hydraulic Removable, Non Ground Bearing, Set Up For Gooseneck Ext, Spreader Bar And 4th Axle Flip, Air Ride, Alum Wheels, 22.5 Rubber, Call For More Information.

**IN STOCK**

**NEW 2022 FONTAINE 55 TON, Drop Side Rail, Tri Axle, Air Ride, Set Up For 4th, Non Ground Bearing, Led Lights, Aluminum Wheels, Strobe Lights, Loaded In Stock No Waiting. Call For More Information**



2022 FONTAINE 55H TON, Drop Side Rail, Tri Axle, Air Ride, Set Up For 4th, Non Ground Bearing, Led Lights, Aluminum Wheels, Strobe Lights, Loaded In Stock No Waiting. Call For More Information.

**IN STOCK**

**NEW 2022 SPECIALIZED 55 TON BEAM TRAILER, 3+1 Modular NGB, Detach Both Ends, Tri Axle, Lift On 3rd, Set Up 4th, Set Up For Gooseneck Extension, Call For More Information**



2022 FONTAINE 35 TON LOWBED, Air Ride, Tandem Axle, 29ft Flat Level Deck, Non Ground Bearing, Hyd Goose Neck, Set Up For Future 3rd Axle, In Stock. Call For More Information

**IN STOCK**

**Trades Welcome • Financing Available •**

**www.josephequipment.com**



**55 TON EXTENDABLE**

**IN STOCK**

**TRAILER RENTALS • TRAILER RENTALS • TRAILER RENTALS •**