

SERVING NORTHEAST REGION

FREE

TRUCK AND EQUIPMENT POST

Buyer - Seller - Swapper



2015 KENWORTH TRI-AXLE. 56K REARS W/PUSHER AXLE, 2019 BRAND NEW MOTOR INSTALLED, 2024 BRAND NEW AUTO TRANS, HEADACHE RACK, TOOLBOXES, CHROME RIMS, TIRES 80-90%, \$75,000 OBO. 401-639-1114



2017 PONSSE SCORPION KING. PONSSE H7 PROCESSING HEAD, NEW MERCEDES ENGINE 500HRS AGO, BALANCED BOGIES, JOYSTICKS, AUTO LUBE, FIRE SUPPRESSION, LED LIGHTS, REAR CAMERA, \$375,000. 207-854-6310



2019 FORD F650. DIESEL, 9,800 MILES, BUYERS SANDER, \$68,000 OBO. 978-501-0628



2021 MORBARK 1215 BRUSH CHIPPER. 12 IN. CHIPPER, 4 CYL GAS, HYD DOWN PRESSURE, LIKE NEW, 369 HRS., \$32,000. HUDSON, NH 603-886-1550



NEW KINGSTON 2- HORSE & DRESSING ROOM. \$30,900. 203-234-7788



22-23
JUNE 10th, 2026

INTERNET & PRINT
FOR ONLY \$28.00

www.TruckAndEquipmentPost.com

401-644-9387

LONDONDERRY, NH



196 Rockingham Road, Londonderry, NH 03053

COMPLETE LIQUIDATION
S AND S METAL RECYCLING

JUNE 11TH | 9AM



North
East

AUCTIONS

REGISTER
TODAY!



Live & Online
Bidding!

LOUDON, NH

1514 Rocky Pond Road, Loudon, NH 03307

JUNE 13TH | 9AM

JEFFMARTINAUCTIONEERS.COM | 844.450.6200

NH-6217



ALLEGIANCETM
TRUCK CENTERS



www.allegiancetrucks.com

Chris Frissora • 845-392-6522

cfrissora@ascendancetrucks.com



**2024 INTERNATIONAL
HX DUMP. STK#356149,
\$237,345.**



**2026 INTERNATIONAL
HX SLEEPER.
STK#356134, \$198,168.**



**2026 INTERNATIONAL
HX FLATBED.
STK#340381, \$198,893.**



**2024 FORD F550
UTILITY 4X4 W/CRAVE.
STK#345660, \$162,661.**



**2023 DENNIS EAGLE
PROVIEW C&C.
STK#311030, \$134,900.**



**2025 INTERNATIONAL LT.
STK#346973, \$127,089.**



**2025 INTERNATIONAL
MV 26' VAN.
STK#345571, \$124,900.**



**2025 ISUZU FVR VAN.
STK#343705, \$113,480.**



**2025 INTERNATIONAL
MV VAN. STK#347738,
\$112,899.**



**2023 INTERNATIONAL
CV DUMP. STK#324377,
\$73,694.**



**2024 INTERNAIONAL CV
C&C 4X4. STK#347935,
\$66,127.**



**2024 INTERNATIONAL
CV C&C. STK#347936,
\$65,732.**



**2021 INTERNATIONAL
HV 18' DUMP 8X4.
STK#250584, \$109,900.**



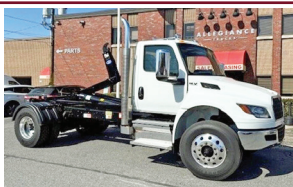
**2022 PETERBILT 348 24.5'
FLATBED W/FASSI CRANE.
STK#341826, \$94,900.**



**2007 INTERNATIONAL
WORKSTAR 7600 DUMP.
STK#346260, \$114,900.**



**2024 WABASH 48' COMBO
DROP-DECK TRAILER.
STK#325041, \$50,900.**



**2025 INTERNATIONAL
MV HOOK-LIFT.
STK#347946, \$144,900.**



**2025 ISUZU NRR
PACKER. STK#350377,
\$139,900.**



**2025 INTERNATIONAL
MV CHIPPER BODY.
STK#347773, \$116,631.**



**2025 ISUZU NRR
REFRIGERATED VAN.
STK#350029, \$111,439.**

*Not all brands sold at every location



Cherry Hill Construction Co., Inc
51 Ciro Road – North Branford,
CT 203-488-7929
www.CHERRYHILLEQUIPMENT.com



2023 Caterpillar 988K XE Wheel Loader,
3000 Hours, Asking \$950,000



2025 KENWORTH T880 TRI AXLE DUMP. 510 HP Paccar MX-13, Allison 4500 RDS A/T, 46K Rears, 20K Front, 21K Fixed Tag, 16' Logan Dump, Odometer Reading 13,114 Miles, Asking \$232,000



2006 CAT 325D,
24,000 Hours, Q/C, Aux Hydraulics, Good Bottom. Asking \$50,000



2006 CAT 966H.
Long Reach Arms, Large Bucket. Asking \$59,000



1984 CAT 966D,
8854 Hours, Aux Hydraulics, Side Dump Bucket. Asking \$37,000



2005 FREIGHTLINER BUSINESS CLASS M2,
124,000 Miles, Asking \$15,000



1998 MACK RD 688SX 10
Wheel Dump Truck, 123K Miles, Automatic, Mack E7-350, Asking \$28,000



2014 CAT CT660S LUBE TRUCK, 216,900 Miles, 2000 Gallon Fuel Tank, Asking \$50,000



1995 HOGZILLA TC1464P. Tub Grinder, 1,751 Hours, Asking \$115,000



1999 JOHN DEERE 200 LC.
14,586 Hours, Asking \$29,000



2005 MACK. This Is My Truck
So Call Me And I Will Tell You
About All The New Parts &
Extras, Super Clean, Fully
Served, **\$40,000/BO**
East Windsor, CT 860-716-0226

SMR

SYNERGY METALS RECYCLING

1741 Fall River Ave. Seekonk, MA

774-229-2159

Comprehensive Scrap Metal Services
We Pay Top Dollar For Aluminum, Brass, Copper,
Steel and Batteries

Specializing in Catalytic Converters

Synergymetalsrecycling.com



2016 VERMEER PD10 PILE DRIVER.
Contractor Owned,
Like New Condition,
Remote, Low 627
Hour Machine,
\$125,000.
401-640-0621



2008 CASE 589 M. Backhoe/Loader, 5000 Hours,
\$33,000. 207-252-1191



2014 DOOSAN DX85R-3.
Coupler, 3rd
Valve, Dig
Bucket, Hyd
Thumb Rubber
Tracks,
3,625 Hours,
\$31,500.
800-477-4963

NOW AVAILABLE

AIR COMPRESSORS



Full Service Provider of Surface Preparation Equipment,
Supplies, and Consumables

NATIONWIDE EQUIPMENT RENTALS, SALES & SERVICE

North Kingstown, RI Suffolk, VA Suwanee, GA

El Cajon, CA Lakewood, WA

RUST NEVER SLEEPS



RAPID PREP

877.529.2124 / rapidprep.com

STONEHAM



617-733-0773



2025 F550 SWITCH N GO. 7.3 Gas, 4WD, Remote Start, Payload Plus, #252750. **\$80,899**



2026 F550 DUMP. Diesel, 4WD, Remote Start, #26046 **\$75,558**



2026 F550 DUMP. 7.3 V8 Gas, Remote Start, 4WD, Payload Upgrade, dual Battery, #26048. **\$78,930**



2026 F550 DUMP. Crew Cab, V8 Gas, 4WD, Remote Start, Payload Plus, #26127. **\$80,195.**



2026 F350 LANDSCAPER. Aluminum Dump Body, 7.3 Gas, 4WD, Remote Start, Dual Battery, #26856. **\$74,348.**



2026 F350 LANDSCAPER. 7.3 Gas, 4WD, Remote Start, Dual Battery, #26882. **\$74,078.**



2026 F350 UTILITY. Super Cab, DRW, Duramag Body, Cabinet Lighting 7.3 Gas, 4WD, Remote Start, #26080. **\$75,775**



2026 F250 SERVICE. Reading Steel Body, V8 Gas, 4WD, Pwr Windows & Locks, Cruise, #26069. **\$55,550.**



2026 F350 STAKE FLATBED. 12' Body, Wood Floor, 7.3 Gas, 4WD, Remote Start, #26031. **\$62,939**



2025 T350 HD SERVICE VAN. 11' Aluminum Body, 3 Bar Ladder Rack, DRW, Polish Alum Wheels, Pwr Outlet, #252580. **\$76,855**



2025 T350 SERVICE. SRW, 11' Aluminum EBY Van Body, 72" Inside Hght, Pwr Outlet 110V, Ladder Racks, #252554. **\$72,980**



2026 E450 FREIGHT HAULER. 14' Morgan Van Body, 7.3 Gas, #26010. **\$60,750**



2026 E350 UTILITY VAN. 12' DuraCube Body, 7.3 Gas, DRW, #26470. **\$68,700**



2026 E350 SERVICE. 12' Rockport Body, 7.3 Gas, SRW, #26524. **\$64,289**



2026 F350 UTILITY. 9' Steel Body, 7.3 Gas, 4WD, Remote Start, Pro Power, #26584. **\$70,187**



Call Bill Pollack 1-617-733-0773
or billpollack@stonehamford.com



STONEHAM



617-733-0773

WORK VAN SALE EVENT – BIG OPTIONS!

ALL WHEEL DRIVE



2026 T250 CARGO VAN. Low Roof, Load Area Protection Pkg, Cruise, AWD. #252368 **\$51,660**



2026 T250 CARGO VAN. Low Roof, RWD, Load Area Protection, #261595. **\$51,670**



2025 T350 HD SERVICE VAN. Polish Aluminum Wheels, Power Outlet, 11' Body, 3 Bar Racks, Ladder to Roof, #252580. **\$76,855**



2026 T350 HIGH ROOF CARGO VAN. All Wheel Drive, Load Area Protection Pkg., #261319. **\$61,595**



ALL WHEEL DRIVE

2025 T250 CARGO VAN. Low Roof, AWD, Load Area Protection Pkg, #252355. **\$51,680**



2026 T350 CARGO VAN. High Roof, RWD, #261315. **\$55,810**

USED TRUCKS SPECIALS



2024 T250 CARGO VAN. 27 Miles, Load Area Protection, #24157P. **\$51,499**



2024 T350 HI CUBE. 30 Miles, 3 Bar Ladder Rack, Swing Doors, Plywood Lined, D-Rings, #24152P, **\$50,990**



2024 T350 CARGO VAN. Empty Van W/ Privacy Glass, 76 Miles, #24155P. **\$50,000.**



2024 E350 CUBE VAN. Pull Out Ramp, E-Trac, 26,852 Miles, #2434P. **\$40,400.**



2024 T250 CARGO VAN. 14,652 Miles, #24098P, **\$33,899.**
Several T250's Available



2024 T350 HI CUBE. 1,152 Miles, E-Trac, Pull Out Load Ramp, Pas Thru Door, Roll Up Rear Door, #24148P. **\$53,899**



Commercial Vehicle Center

www.StonehamFordTrucks.com

211 MAIN ST. STONEHAM, MA 02180

Mon-Fri 8:30am-8pm Sat 9- 5pm Sunday 11-4

ALL PRICES NET & INCLUDE ALL AVAILABLE REBATES TO DEALER

Call Bill Pollack 1-617-733-0773 or billpollack@stonehamford.com



Commercial Vehicle Center

LIVE VIRTUAL WEBCAST AUCTION COMPLETE DISPERSAL – BUSINESS CLOSED



3103 US ROUTE 5 WINDSOR VT 05089

THURSDAY JUNE 11TH 9:00 AM (Local Time)

Entire Inventory including: Wheel Loader; Skidsteer; Crawler Dozers; Motor Grader; Forklifts; Heavy Dumps; Truck Tractors; Flatbed & Utility Trucks; Lowbed, Flatbed, Drop Deck & Tagalong Trailers; Fleet Vehicles; Light Towers; Compressors; Crane & Loader Attachments; Shop Equipment, Tools & Fixtures; Job Site Support Equipment; Construction Materials & Supplies and Much More

*Select Quality Consignments Being Accepted *

** Items being sold virtual from two locations**

*** Check our website for auction details, updated listings***



FOR A DETAILED AUCTION LISTING AND TO BID LIVE ONLINE PLEASE VISIT OUR WEBSITE AT: WWW.SALESAUCTIONCOMPANY.COM
55 King Spring Road • Windsor Locks CT 06096

(860)627-7506

State of VT Auctioneer License: Samuel M Sales 057.0101114



TRUCK AND EQUIPMENT POST

**P.O. BOX 6824
PROVIDENCE, RI 02940
TEL: 401-644-9387**

EMAIL: ADS@TRUCKANDEQUIPMENTPOST.COM
WWW.TRUCKANDEQUIPMENTPOST.COM

YOUR INFORMATION

Name : _____ Phone : _____

Street Address : _____

City : _____ State : _____ Zip : _____

Email : _____

Payment : MasterCard VISA Check DISCOVER American Express Other

Account Number : _____

Signature : _____ Exp Date : _____

PLACE YOUR AD ONLINE AT WWW.TRUCKANDEQUIPMENTPOST.COM

<input type="checkbox"/> STANDARD PHOTO AD	# ISSUES	<input type="checkbox"/> JUMBO PHOTO AD	# ISSUES
\$28 for 1 issue (2 weeks)	<input type="checkbox"/>	\$55 for 1 issue (2 weeks)	<input type="checkbox"/>
\$50 for 2 issues (4 weeks)	<input type="checkbox"/>	\$100 for 2 issues (4 weeks)	<input type="checkbox"/>

Payment enclosed \$ _____ Each Issue runs for 2 weeks

Ad Text _____

One Item Per Ad Please. Truck And Equipment Post makes every effort to ensure ads are published accurately. Truck And Equipment Post and its staff will not be held responsible or liable for typographical errors or misprints. Truck And Equipment Post reserves the right to edit, abbreviate, remove or refuse any ads/content at its discretion. Copyright of Ads: By agreeing to place an ad with Truck And Equipment Post, you hereby grant Truck And Equipment Post the right to display and publish all or part of the advertisement under United States copyright laws.

Subscription rates include first class shipping.

Mailed to your home or business

\$40.00 13 issues \$65.00 26 issues

Just email Ads@TruckandEquipmentPost.com and type "BAG MY MAG" in the subject line.

NEW! WE'LL EMAIL THE MAGAZINE TO YOU FOR FREE



Your description goes here as follows:
Year, Make, Model, Features, Price,
Town & State, Phone

RENTAL WITH OPERATOR
PORTABLE JAW CRUSHER AND IMPACT CRUSHER



DAY-WEEK-MONTHLY RATES
80' STACKER AND
EXCAVATOR AVAILABLE

NEW ENGLAND
CALL KEN
508-328-0028



1994 RAY TECH RC8000. Hot Box Patch Trailer.
\$1,200. 207-252-1191



2017 HARLEY DAVIDSON CUSTOM ROAD GLIDE SPECIAL. 11K Miles, **\$24,000.** 617-840-8478



2021 CAT 304E HYDRAULIC EXCAVATOR, Extremely Clean Machine, 1,610 Hours, Quick Coupler, Swivel Blade, Thumb, Ready to Work! **-\$54,900** - 781-417-3018

2015 KENWORTH T 800 TRI-AXLE.

Heavy Haul Tractor, ISX 15 Motor Has Approx 490K Miles, 2024 18 Sp Fuller D52-19p Automatic, 56K Rears, 2022 20K Pusher Axle, Brand New Crate Motor Installed By Dealership at 210K Miles, All The Bells & Whistles, Headache Rack, All Kinds Of Toolboxes, Excellent Cond. Physically & Mechanically, Well-Maintained, **\$83,500.** 401-639-1114



NORTHEASTERN PETROLEUM SERVICE & SUPPLY

617-522-8390 Ext 103 • 51 B St. Bay 2 Hanover, Ma

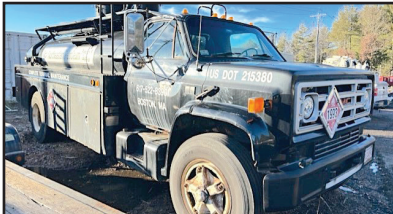
Financing Available - After Hours Call 617-696-1979

We Are Looking For Newer Tank Trucks To List, Dual Equipped, Tandems & Auto. Trans, Can Sell From Your Location

Jerry Mello Cell: 617-799-1461 24/7 Email: jerrym@nepss.com



2004 STERLING LT9500. Almac 4800 Gal Tank (2800 + 2000), New Detroit Engine, 10 Speed, Tandem Axle, 250,000 Miles, Single Wrap, Bottom Load, Vapor Recovery, **\$59,000**



SITE TRUCK. 1985 GMC EXTRA THICK STEEL TANK. Detroit Engine, 5+2 Trans, 1500/500 Gal Compts Testing Top & Bottom All Liquids, 3" Pump, Good Cond, **\$7,500/BO**



MUST TOW

1993 GMC TOPCAT. Trans Tech 2,800 Gal Tank, 10-92 Bikini, CAT 3126, 6 Speed, New Tires, 187,000 Miles, **\$9,000 W/LCR Printer OR \$6,000 W/Out LCR Printer**



HIGHLAND IN STOCK NEW. 1000 Gal 2 Wall Skid Tanks. 10-GA, Other Sizes Available

TWO TANK TRUCKS

2004 KENWORTH. Automatic Trans., CAT 3126 Engine, 263,000 Miles, Boston Steel Co Aluminum Tank, One Compartment **\$15,000**

2004 KENWORTH. Automatic Trans., CAT 3126 Engine, 169,000 Miles, Trans Tech Tank, One Compartment **\$29,000**



2002 TANK & PUMP. 5000 Gallon 2 Wall Diesel Tank, 2 Suction Pumps, Excellent Condition, Will Deliver, **\$19,000.** Call 617-799-1461 Braintree, MA Location

SOME TRUCKS AT CUSTOMER LOCATIONS



LOOKING FOR SEMI-TRUCK TIRES?

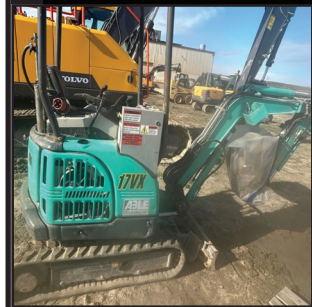


CALL 508-509-2014

2012 MULTIQUIP AR 13HAR.
Smooth Drum, Compactor, 270 Hours, Honda 2-cylinder Gas Engine, **\$11,000.** 207-252-1191



2011 NEW HOLLAND B95B. 4WD, Extend-A-Hoe, Excellent Condition, New Batteries, 2336 Hours, Asking **\$34,000.** 978-502-8557

2016 IHI 17VXE MINI EXCAVATOR.
Full Electric Machine, Hammer, 20" Dig Bucket, 36" Static Cleanup Bucket, Rubber Tracks Blade, 945 Hours, **\$19,500.** 800-477-4963

2019 PETERBILT 348 HEAVY HAUL DRILL RIG TRUCK. 14,500 Miles, Paccar Diesel, Eaton Fuller 13-Speed, EZ-Bore 90-42 Drill Unit With 100' Kelly Bar, Hydraulic Outriggers, Allison Automatic, Excellent Condition, CARB Compliant, **\$159,000 OBO** Torrance, CA 310-567-3941



L&K TRUCK BODY, INC.
258 Dover Road • Chichester, New Hampshire 03258

603-798-5500

DURAMAG  



2016 KIDRON REFRIGERATED BODY & THERMO KING. Buy For \$8,995 And The Truck Is Free. We Can Transfer to Another Truck.



2007 IH 4400. T/A, 54,000 GVW, Auto, RDS, Pre Emission, Kidron Refrig Body, T800 TK, **\$19,500 Or C&C Only \$9,875**



2007 IH 18' Refrig Van. Pre Emission DT466, Auto, 200K Miles, 26K GVW, TK KD II, No Rust, Excellent Cond. **\$15,995**



2008 FREIGHTLINER M2. Mercedes Diesel, Auto Trans, 26,000 GVW, Inspected, Under 200,000 Miles, **\$9,995**



2015 IH T/A C&C. 54,000 GVW, 320,000 Miles, N14 Engine, Rebuilt In Chassis & Head, New Turbo, Good Rubber, All Records **\$17,950**



1993 IH 4700. 6 Spd, DT360, 26' Flatbed Body, **\$4,500**



NEW KIDRON REFRIGERATED VAN BODIES. In Stock, 14'- 26' Insulated Van Bodies. Call Us For A Quote.



22' JOHNSON COLDPLATE BODY. For Ice Cream, -20 Degrees Could Be Used For Cold Storage. On A 2001 GMC Cab Over Chassis Buy The Box Chassis Is Free. **\$9,500**



2019 KENWORTH T370. 33,000 GVW, P7 250 Hp, Allison Auto Trans, 169" CA, 220,000 Miles, Needs Nothing, **\$39,850**



2021 ISUZU 14' STEEL DUMP. Tool Boxes, 31,490 Miles, Call For More Info



2022 ISUZU 24' VAN BODY. Power Liftgate, 75,000 Miles, **\$44,250**



2019 MITSUBISHI 16' KIDRON REFRIGERATED. 6L GM V8 Gas, Auto, 122,000 Miles, Roll Up Door, Carrier Diesel W/ 30 Gallon Fuel Tank, Low Hours. **\$27,500**

COLONIAL WEST

COLONIAL-WEST CHEVROLET OF FITCHBURG

HAPPY 250TH ANNIVERSARY, AMERICA!



**WE SALUTE
OUR ARMED
FORCES &
VETERANS!**



**2022 CHEVY EXPRESS 2500
CARGO VAN. V6, Auto, Rear
Camera, WiFi, One Owner, 67K
Miles, stk#W26354A, \$23,500.**



**2026 CHEVROLET
SILVERADO 3500HD DUMP
4WD. 6.6L V8, Auto, Nav.,
#W26808, MSRP \$69,953.,
Buy For \$63,975.**



**2026 CHEVROLET
SILVERADO 3500HD CREW
CAB DUMP. 4WD 6.6L V8, Auto,
Nav., #W26834, MSRP \$77,953.,
Buy For \$69,975.**



**2022 CHEVROLET
SILVERADO 2500 HD CREW
CAB LONGBED 4WD. 6.6L
V8, Auto, Bluetooth, 48K Miles,
stk#W26781A, \$43,500.**



**2025 CHEVROLET 2500
EXPRESS CARGO VAN. V6,
Adrian Steel Bin Pkg., 1 Left With
A Free Bin Pkg A \$6,500 Value,
\$39,999.**



**2025 CHEVROLET EXPRESS
WITH 10 FT DURA CUBE
BOX. #w25568, Original MSRP
\$71,724., Buy For \$64,777.**



**2005 CHEVROLET 1500
SILVERADO 4X4. 5.3L 8 cyl.,
Auto, AC, Alloys, Low Miles,
stk#W25755A, \$16,000.**



**BRAND NEW 2024 CHEVROLET
EXPRESS CUTWAY 3500 KUV. 6.6L Gas,
Remote Start, Rear Camera, #W24563,
Buy For \$56,975**



**2026 CHEVROLET
SILVERADO 3500 HD I-PACK
DUMP 4X4. 6.6L Gas, Nav,
Wi-Fi, Toolboxes, #W26766,
\$69,900.**

314 John Fitch Hwy • Fitchburg, Ma 978-342-8713 www.Colonial-West.com

Disclosure. all prices include every applicable rebate, lease loyalty, comp lease, com rebate, finance with dealer, tax, title, and dealer fees extra, not responsible for typographical errors, prices subject to change without notice.



2001 INTERNATIONAL 4900 FUEL DELIVERY TRUCK.
 2400 Gallon Aluminum Tank,
 232K Miles, DT466, **\$10,500.**,
 Lawrence, MA 603-973-0809

Coletta's Sales & Service

For all of your truck, trailer, and truck body needs

- ★ Collision Center
- ★ Vehicle Service & Inspection
- ★ Towing & Road Service
- ★ Equipment Hauling
- ★ Part Sales & Delivery
- ★ Authorized Morgan Truck Body Distributor



250 Niantic Ave, Providence RI 02907
 www.colettas.com

401-421-3232



2022 FORD F250
XLT. 7.3L Gas,
 58,000 Miles,
 Short Bed, 4WD.
\$42,590.
 401-533-1673



2004 VOLVO EW180B EXCAVATOR. Coupler 3rd Valve,
 36" Digging Bucket, 63" Hyd Tilt Bucket, Full Cab, AC/Heat,
\$55,000. 800-477-4963

BEAM TRUCK & BODY INC.

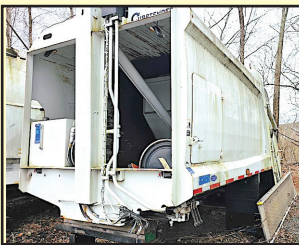
433 CUMBERLAND HILL ROAD, WOONSOCKET, RI 02895

RI Dealer #647

401-767-2639



NEW - USED & RECONDITIONED DISPOSAL EQUIPMENT



20 YARD CURBTENDER
 GOOD USED 2017 UNIT.

STELLAR NXT18L HOOK LIFTS IN STOCK!
 NEEDS 120" TO 130"
 CA. DOES 10' TO 14'
 CONTAINERS.
 36" / 54" MANUALLY
 ADJUSTABLE HOOK
 HEIGHT. PERFECT FOR
 F-600'S



2010 INTERNATIONAL 7400:
 42,000 MILES W/ HEIL 22 YD.
 AUTOMATED PACKER. **\$60,000**
 WILL SPLIT.



GOOD USED 2020 PAKMOR 16 YARD
 REAR LOADER. HAS REEVING
 SYSTEM, CANNOT GO ON AN UNDER
 CDL CHASSIS, 33K OR GREATER.



2004 KENWORTH T800:
 396,914 MILES, AMERICAN 75,000#
 ROLL-OFF, CAT C12 W/ FULLER 8LL, 60,000#
 GVW CALL FOR MORE DETAILS!

**IN STOCK READY TO
 INSTALL
 NEW EQUIPMENT**
 * HAD-185-120-36/54"
 * T40S AMERICAN
 PALFINGER
 * 20' BOX WITH WALTCO
 LIFT-GATE 2500LBS. **\$6,000**



2000 INTERNATIONAL WITH
 2023 AMERICAN / PALFINGER 250S
 HOOK-LIFT WITH VERY LOW MILES!
\$50,000

WWW.BEAMTRUCK.NET

WICKED BIG

ENTERTAINMENT GROUP

PRESENTS

Wicked Big

CAR & TRUCK NATIONALS



CAR SHOW

TRUCK SHOW

- LEGENDS RACES · DRIFTING
- STUNT SHOW · MOBILE DYNO
- FOOD TRUCKS · ONSITE CAMPING
- FOOD TRUCKS · CAR AUDIO

- SHOW CARS · BURNOUTS
- VENDORS · SHOW TRUCKS
- & SO MUCH MORE

BURNOUT NATIONALS

JUNE 27-28, 2026



NEW HAMPSHIRE
MOTOR SPEEDWAY



SPEEDWAY
CHILDREN'S
CHARITIES

ADMISSION

\$30 WEEKEND PASS \$20 DAY

SPECTATORS

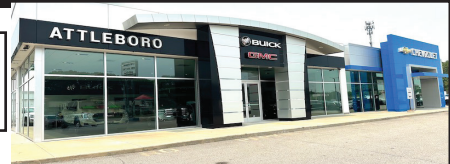
\$15 WEEKEND PASS \$10 DAY

WICKEDBIGENTERTAINMENTGROUP.COM

FOR MORE INFORMATION PLEASE CONTACT
INFO@WICKEDBIGCARSHOW.COM

CHEVROLET, BUICK, GMC OF ATTLEBORO

A Priority Automotive Dealership



**ROUTE 1, BETWEEN 95 + 295
SOUTH ATTLEBORO, MA**

508-761-4800

PLENTY OF NEW GMC TRUCKS AVAILABLE

2026 K1500 8' BED



V-8, NICELY EQUIPPED.
#26061G SALE PRICE INCLUDED GM TRADE-IN REBATE.

\$44,660

2026 CANYON ELEVATION 4WD



ELEVATION CONV. PKG.
#26004G

\$46,225

2026 K2500 CREW CAB SLT DURAMAX DIESEL



PLOW PREP. PKG., SPRAY LINER.
#26135G

\$78,730

2026 C2500



PERFECT FLEET SPECS., SPRAY LINER, ASSIST STEPS, CONV. PKG.
#26175G

\$49,995

2026 K1500 AT4X



6.2L V-8, ACTIVE EXHAUST, KICKER TAILGATE AUDIO SYSTEM.
#26019G

\$84,385

2026 K2500 CREW CAB SLT



SLT CONV. PKG., SPRAY LINER, PREFERRED PKG., HD SAFETY PKG., PLOW PREP. #26055G

\$73,270

2024 K3500 CREWCAB SLT DURAMAX DIESEL

8' BED



SLT PREMIUM PKG., X-31 OFF ROAD PKG. #24219G

\$83,875

2026 K2500 AT4X DURAMAX DIESEL



INCLUDES 5TH WHEEL PREP PKG.
#26172G

\$99,000

2026 K1500 DOUBLE CAB



V-8, PRO VALUE PKG., POWER SEAT, SPRAY LINER. PRICE INCLUDES GM TRADE-IN REBATE. #26109G

\$45,750

2026 K3500 DOUBLE CAB



CONV. PKG., SPRAY LINER, ALUM. WHEELS, PLOW PREP, ASSIST STEPS, X-31 OFF ROAD SUSP. #26084G

\$59,175

2025 K2500 UTILITY



CONV. PKG., PLOW PREP.
#25261G

\$76,000

2026 K3500 DENALI DUALY DURAMAX DIESEL



INCLUDES 5TH WHEEL PREP. PKG.
#FVNZFN

\$95,110

**** PLUS OVER 50 MORE AVAILABLE ****



WWW.CHEVROLETBUICKGMCOFATTLEBORO.COM



CHEVROLET, BUICK, GMC OF ATTLEBORO

A Priority Automotive Dealership



**ROUTE 1, BETWEEN 95 + 295
SOUTH ATTLEBORO, MA**

508-761-4800

PLENTY OF NEW CHEVROLET TRUCKS AVAILABLE

**2025 EXPRESS ONE TON
EXTENDED VAN**



**9900 GVW, V-8, TRAILER PKG.,
ALL THE OPTIONS. #25422H**

\$53,885

**2025 K3500 DUMP TRUCK
DURAMAX DIESEL**



**14,000 GVE, PLOW PREP., HITCH,
COVER, CONV. PKG. #25411H**

\$81,000

**2025 K3500 LT CREW CAB UTILITY
DURAMAX DIESEL**



**DARK GREEN METALLIC, BUCKET SEATS,
REMOTE START, HEATED SEATS.
#25074H**

\$95,300

2024 KUV



**9,900 GVW, LOW ROOF,
NICELY EQUIPPED. #24414H**

\$71,895

2025 DURACUBE MAX 10'



**9,900 GVW, ELEC. BODY LOCKS,
LADDER RACKS, SHELVING. #25141H**

\$69,000

**2024 LCF 4500
14' BOX + LIFT GATE**



**14,500 GVW, POWER MIRRORS,
KEYLESS ENTRY, 14' ALUM. BOX,
#23235H LIFT-GATE.**

\$89,995

2025 12' BOX TRUCK



**9,900 GVW, SINGLE REAR WHEEL,
LOW FLOOR, NICE CHASSIS SPECS.
#25343H**

\$58,725

2025 K2500 DOUBLE CAB UTILITY



**PLOW PREP., CONV. PKG., TRAILER
BRAKE
AND HITCH. #25120H**

\$75,000

2024 4500 14' BOX



**14,200 GVW, FANCY CHASSIS SPECS.,
TRANSLUCENT ROOF, RAMP, TIE-DOWN
HOOKS. #24409H**

\$63,300

2026 C3500 12' RACK BODY



**GOOD WORK TRUCK CHASSIS
SPECS., 14,000 GVW. #26229H**

\$68,758

**2026 K3500 CREW CAB LTZ
DURAMAX DUALY**



**LTZ PLUS PKG., POLISHED ALUM. WHEELS,
FIFTH WHEEL PKG., SUNROOF, ASSIST
STEPS. #26216H**

\$87,815

**2026 K2500 TRAIL BOSS
DURAMAX DIESEL**



**SAFETY PKG., PLOW PREP.,
CONV. PKG2, NICELY EQUIPPED.
#26228H**

\$83,000



WWW.CHEVROLETBUICKGMCOFATTLEBORO.COM



THIS AD IS COPYRIGHTED & OWNED BY TRUCK AND EQUIPMENT POST

CHEVROLET, BUICK, GMC OF ATTLEBORO

A Priority Automotive Dealership

**ROUTE 1, BETWEEN 95 + 295
SOUTH ATTLEBORO, MA**

508-761-4800



CHEVROLET'S MEDIUM DUTY TRUCK CENTER

- *REGULAR CABS, TILT CABS, CREW CABS 2WD OR 4WD
- *GVW'S UP TO 25,950 BODY LENGTHS UP TO 22'
- *DUMPS, PLATFORM/ RACKS, SWITCH-N-GO, CAR CARRIERS, TOW TRUCKS, SERVICE BODIES, MOVING VANS. IF YOU NEED IT DONE, WE CAN DO IT.
- *FULL SERVICE WITH 30,000LB. LIFTS.
- *GM'S #1 FLEET DEALER IN SE MA., RI, CT.

CALL OUR COMMERCIAL TEAM. "YOU'LL BE GLAD YOU DID !"

**2026 K3500 DENALI DUALLY
DURAMAX DIESEL**



INCLUDES 5TH WHEEL PREP. PKG.
#FVNZFN

\$95,110

2023 C6500 20' MOVING VAN



23,500 GVW, ALUM-GATE, E-TRACK,
SIDEDOOR. #23119H
PRICE INCLUDES REBATE.

\$99,995

2024 LCF LANDSCAPE DUMP



14,500 GVW, HITCH, SIDE DOOR,
READY TO WORK. #24002H
SALE PRICE INCLUDES REBATES.

\$88,205

**2026 K3500 CREW CAB LTZ
DURAMAX DUALLY**



LTZ PLUS PKG., POLISHED ALUM. WHEELS,
FIFTH WHEEL PKG., SUNROOF, ASSIST
STEPS. #26216H

\$87,815

**2025 K3500 DUMP TRUCK
DURAMAX DIESEL**



14,000 GVW, PLOW PREP., HITCH,
COVER, CONV. PKG. #25411H

\$81,000

**2024 LCF 4500
14' BOX + LIFT GATE**



14,500 GVW, POWER MIRRORS,
KEYLESS ENTRY, 14' ALUM. BOX,
2500# LIFT-GATE.

\$91,995

2025 12' BOX TRUCK



9,900 GVW, SINGLE REAR WHEEL,
LOW FLOOR, NICE CHASSIS SPECS.
#255343H

\$58,725

2024 KUV



9,900 GVW, LOW ROOF, NICELY
EQUIPPED. #24414H

\$71,895

2025 DURACUBE MAX 10'



9,900 GVW, ELECTRIC BODY LOCKS,
LADDER RACKS, SHELVING.
#25141H

\$69,000



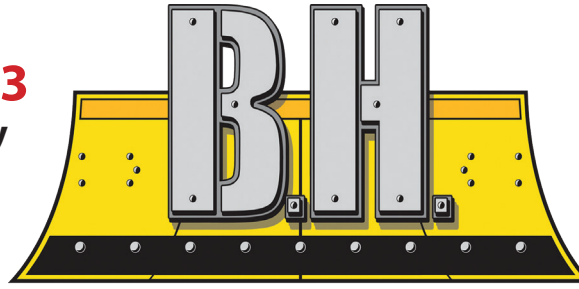
WWW.CHEVROLETBUICKGMCOFATTLEBORO.COM



www.bhtrailersandplows.com

860-949-7863

6 Center Parkway
Plainfield, CT
06374



TRAILERS AND PLOWS

Monday—Friday
8:00 A.M.—5:00 P.M.

Saturday
8:00 A.M.—2:00 P.M.

Closed Sunday



BOSS
PRESEASON
SALE!



LOADS
Of Plows
Have
Arrived!



CM Aluminum Skirted Flat Bed, Gooseneck & Receiver Hitch Built In
Starting at \$7,695



CM SK Skirted Flat Bed Gooseneck and Receiver Hitch Built In, Starting at \$6,495



CM Aluminum Tradesman Low Pro Service Body Gooseneck & Receiver Hitch Built In, Starting at \$14,995



CM Steel Tradesman Low Pro Service Body with Gooseneck & Receiver Hitch Built In, Starting at \$10,495



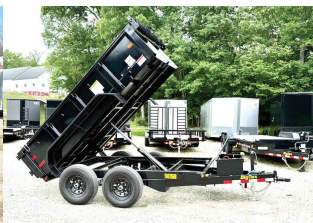
LOAD TRAIL DE14
83 x 14 with Ramps, D-Rings and Tarp Kit
14,000Lb. GVWR, \$9,295



DIAMOND C LPX 208
80 x 20 with Max Ramps, Fork Holders, 14,040Lb. Payload
18,000Lb. GVWR, \$12,895



BIG TEX 14EB
83 x 20 with Standup Ramps, 14,000Lb. GVWR
10,980Lb. Payload, \$6,495



BIG TEX 90SR
6 x 10 with Tarp Kit Ramps, D-Rings
9,990Lb. GVWR, \$7,695



20', 40', 48, And 53' CONTAINERS
One Trip & Used Steel Containers.
Various Door Configurations.
We Deliver New England.



FAMILY OWNED & OPERATED



TRANS EAST EQUIPMENT INC.
 67 Main St Salisbury, MA
CALL DAVE Cell 978-992-7077 Or 978-462-1919

EXIT 90 Off Rt 95
End Of Ramp



2008 BOBCAT A6ZB MULCHER. \$22,000.
 800-477-4963



2021 MORBARK 1215 BRUSH CHIPPER. 12 In.
 Chipper, 4 Cyl Gas, Hyd Down Pressure, Like New, 369 Hrs.,
\$32,000. Hudson, NH 603-886-1550



2007 JOHN DEERE 310J. 4X4, Extend-A-Hoe, Forks, Two
 Stick, Good Tires, 6,369 Hours, **\$38,500.** 207-252-1191

TOREKU TRACTOR & EQUIPMENT INC.



4 Littleton Rd, Rt2A & 110, Ayer, MA • 978-772-6619



NEW 2025 KUBOTA MX 4900 TRACTOR/LOADER.
 Factory Cab, Heat & Air Condition,
CASH PRICE \$15,500. 4.99% APR Finance Available



2014 KUBOTA Z724 KW.
 Zero Turn Mower, Rental Unit, Nice Condition, 708 Hours,
\$5,995



2026 KUBOTA RTV X4. Four Passenger, Can Convert to A 2 Seat & Dump Bed,
\$24,850



2026 KUBOTA RTV 850 SIDEKICK.
 Full Options Package, Lights, Mirrors, Roof, Windshield, Winch, **\$24,850**

VISIT US AT WWW.TOREKU.COM

Buyer - Seller - Swapper



Fowler's Auto Wrecking Inc.

Belltown Recycling Center



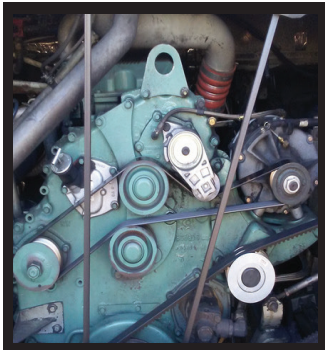
860-267-7140 • 24 Old Coach Rd East Hampton, CT

Detroit Series 60 12.7L Engines

- EGR DDEC-IV
- NON-EGR DDEC-IV
- Good Running Take Out Engines
- Recent Remanufactured Engines
- Core Engines
- Engine Accessories
- 6 Month & 1 Year Warranties Available
- Call Today For Pricing



CALL: 860-267-7140



Complete Coaches For Parts

- MCI, Vanhool, and Prevost Buses For Parts
- Compressors, Condenser & Evaporator Motors
- Wheels, Tires, Suspension & Brake Parts
- Electrical Parts, Interior & Exterior Lighting
- Tag Axles & Drive Axles
- Compartment, Service, and Entrance Doors
- Fiberglass Body Panels & Glass
- Complete Electric Wiper Conversion Kits
- Radiators, Intercoolers, and Condensers
- Standard 6 Month Warranty On All Parts



Buses Are Not Intended For Resale - Salvage Titles



Allison B500 Transmissions

- Allison B500 With or Without Retarders
- Good Running Take Outs
- Recent Remanufactured Units 
- Core Transmissions
- Allison Shift Pad Selectors
- Allison TCM (Transmission Control Modules)
- Standard 6 Month Warranty
- Call Today For Pricing

CALL: 860-267-7140



**2004
INTERNATIONAL
4300 TOW
TRUCK.
DT466 W/ 6
Speed Eaton,
282K Miles, 33K
GVWR With
Wheel Lift,
Ready For Work
\$24,000.**



C.N. WOOD CO., INC.

**Large Selection Of Used Equipment!
Call For More Info. 781-315-1680**



**2019 VOLVO L70H.
Coupler, Bucket, 3650
Hours, \$109,000., #C012538**



**2016 KLEEMAN MC
100RI JAW CRUSHER. Nice
Shape, \$189,000., #C012588**



**2006 BOBCAT 334G. Very
Clean, 3290 Hours, \$28,000.,
#C012505**



**2016 VACALL AS13D VACUUM
SWEEPER. Nice Running
Machine, \$79,000., #E001870**



**2003 SECA 800HPR JET
RODDER. \$9,500., #E001341**



**2017 KOMATSU
PC138USLC-11. Runs Well,
\$69,000., #C006512**



**2016 JOHN
DEERE
245GLC.
Nice Unit,
\$59,000.,
#C011811**



**2019
DOOSAN
DX235LCR-5.
Good
Running
Unit,
\$69,000.,
#C012324**



**2016
KOMATSU
D61PX-24.
Nice Unit,
\$75,000.,
#C011827**



**2024 CAT 420. Only 285
Hours, Excellent, \$151,000.,
#C012436**



**2012 VACTOR 2100PD.
Everything Works,
\$109,000., #E001288**



**2017 ELGIN PELICAN. runs
great, \$75,000., #E001776**

Woburn, MA • Avon, MA • Whatley, MA • Johnston, RI • North Haven, CT
Westbrook, ME • Pine Bush, NY • Holmes, NY • Newington, CT

www.cn-wood.com

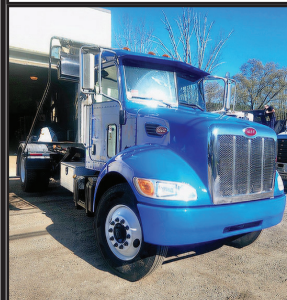
Buyer - Seller - Swapper



LEEBOY L1000R ASPHALT PAVER. 1,815 Hours, Hatz Diesel, Rubber Tires, 9' Wide, 3' Screed Slide Outs, Propane Screen Heater, **\$12,000.** 207-252-1191



2007 FREIGHTLINER M2. Straight Truck, Driven Daily, 310,373 Miles, Runs, **\$17,800.** 401-692-9896



2006 PETERBILT 335 ROLLOFF. 2015 Hoist, 33,000 GVW, Cummins, 246K Miles, Completely Rebuilt 6-Speed, Solid Truck, New Clutch, Texas Truck, Super Clean, **\$75,000.** Hope, RI 401-265-7777

CT • RI • MA • NY



100 YARD
STEEL DUMP TRAILERS

CALL IAN OR JIM
800-229-9421

WE WILL SAVE YOU MONEY ...
AND PUT A SMILE ON YOUR FACE!

**STUMP & BRUSH
TRANSPORTATION & DISPOSAL**

\$1800/LOAD

**DEMOLITION DEBRIS
TRANSPORTATION & DISPOSAL**

\$2750/LOAD

**SAME DAY DISPATCH
TOP \$\$ PAID FOR YOUR
SCRAP STEEL, COPPER, & ALUMINUM!!!**



**INTERNATIONAL
Taylor & Lloyd Inc.**

SEE OUR INVENTORY: WWW.TAYLORANDLLOYD.COM



**2025
INTERNATIONAL
MV 607.** Brand New,
254 WB, Allison
3500 RDS, Cummins
300 HP, Air ride



**2025
INTERNATIONAL
HV607 SBA CAB &
CHASSIS.** Cummins
B6.7 325 HP, Allison
3500, 10K F/A, 23K R
W/Locking Diff,
Call For More Info.



**2025
INTERNATIONAL
HV507 CAB
& CHASSIS.**
Cummins L9 330
HP, Allison Auto,
165" WB, 18K F/A,
30K R/A,
Call For More Info.

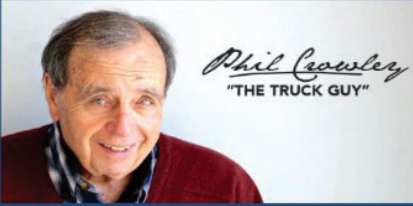
617-429-3370 CALL JACK COAKLEY • 8 Railroad Avenue Bedford, Ma

PLACE MOTOR Inc.

The "RIGHT PLACE" Since 1923



COMMERCIAL TRUCKS



Phil Crowley
"THE TRUCK GUY"



PHIL CROWLEY
508-943-8012



19 Thompson Rd.
Rte. 193
Webster, MA.

WWW.PLACEMOTOR.COM



WE HAVE MAVERICKS - XL + XLT & HYBRIDS !
***** 8 AVAILABLE *****



SHORT BED

NEW 2026 FORD F-350 CREW-CAB 4X4 PLATINUM, 6.7L DIESEL, WHITE IN COLOR, POWER MOON-ROOF AND MORE !



8' BED

NEW 2026 FORD F-350 CREW-CAB 4X4 PLATINUM 6.7L DIESEL, BLACK IN COLOR, POWER MOON-ROOF AND MORE !



WHITE & BLUE

NEW 2026 FORD TRANSIT 250 AWD MEDIUM ROOF, SEVERAL TO CHOOSE FROM. CALL FOR MORE DETAILS !



2 LEFT

NEW 2025 FORD F-750 CAB AND CHASSIS 330 HP., DIFFERENT WHEEL BASES AVAILABLE. CALL FOR MORE DETAILS !



2027 FORD E-350 AEROCCELL DUAL REAR WHEEL 15' IN LENGTH. CALL FOR MORE DETAILS !



NEW 2026 FORD F-350 CREW-CAB CHASSIS 4X4 7.3L GAS ENGINE. CALL FOR MORE DETAILS !

*All Factory Rebates Back To Deal



MASSACHUSETTS OLDEST FORD DEALER SINCE 1923





PLACE MOTOR Inc.

The "Right Place" Since 1923

COMMERCIAL TRUCKS

Call Phil Crowley "The Truck Guy"

508-943-8012



19 Thompson Rd.
Rte. 193 Webster, Ma.

WWW.PLACEMOTOR.COM



**NEW 2026 FORD F-350 4X4
SUPER-CAB PICKUP
6.7L HIGH OUTPUT DIESEL,
XLT TRIM,
SHORT BED AND MORE !**



**NEW 2026 FORD F-350
REGULAR CAB 4X4
6.8L GAS, XL TRIM.
CALL FOR DETAILS !**



**NEW 2026 FORD F-250
SUPER-CAB 4X4
SHORT BED AND LONG
BED AVAILABLE !**



AVAILABLE IN WHITE

**NEW 2026 FORD F-350
REGULAR CAB
4X4, XLT TRIM, 6.7L
DIESEL.
CALL FOR MORE DETAILS !**



**NEW 2026 FORD E-350
12' AREOCELL
SINGLE REAR WHEEL.
IN STOCK !**



**NEW 2026 FORD F-550
CAB & CHASSIS 4X4
7.3L & 6.7L DIESELS,
60 AND 84 CA.
RED & WHITE
AVAILABLE !**

0% FOR 60 MONTHS - AVAILABLE ON XL TRIM PACKAGES ONLY IN LIEU OF REBATES. All Factory Rebates Back To Dealer*

WWW.PLACEMOTOR.COM



DEJANA
Truck and Utility Equipment



COMMERCIAL
VEHICLE CENTER



DIMMICK GROUP PETERBILT
1-800-NEW-PETE
1-800-639-7383



DIMMICK GROUP PETERBILT



2025 TALBERT 55 TON.
 Available In All Our Locations



NEW FELLING FT-60-4LP.
 Bi-Fold Ramp, Tool Boxes, 22.5 Tires,
 Full Air Ride, **South Royalton, VT**



2027 PETERBILT 589 FLAT TOP SLEEPER.
 Cummins 605 HP, Tri Axle, 80,000 GVW, 5th
 Wheel, All Polish Aluminum Wheels, #VD827443.
Bow, NH 603-225-6666



2025 PETERBILT 537 DUMP. Brand New,
 PX9 350HP, Allison Automatic, 12' body,
 Asphalt tarp. # 737134,
Champlain, NY 518-298-3835



2025 PETERBILT 536.
 Jerr-Dan Car Carrier, Wheel Lift, 26,000
 GVW, PC7-300HP, Automatic, Brand New,
#D761931, South Royalton, VT



2025 PETERBILT 589.
 New Sleeper Tractor, Cummins 605
 HP, #D702724. **South Royalton, VT**
802-763-2585



2025 PETERBILT 567.
 Brand New, Cummins X15-525HP,
 18 Speed, 17' Body, #SD761404,
Newburgh, NY 845-245-4042



2026 PETERBILT 589.
 Cummins 500 HP, Allison Automatic, 17'6"
 Dump Body, Premium Interior, #TD772788,
Henrietta, NY 585-321-5250



2027 PETERBILT 589 FLAT TOP SLEEPER. Cummins 565 HP, 60,300 GVW,
 5th Wheel, All Polish Aluminum Wheels,
 #VD827239. **Syracuse, NY 315-432-1122**



2027 PETERBILT 567 TRACTOR.
 Cummins 605 HP, Tri Axle, 80,000 GVW,
 5th Wheel, All Polish Aluminum Wheels,
 #VD832902.
Utica, NY 315-732-4300



2025 PETERBILT 567. Brand New, Cummins
 X15 500HP, 10 Speed, 20' Body, #698575,
Henrietta, NY 585-321-5250

Royalton VT 802-763-2585	Colchester VT 802-654-4420	Bow NH 603-225-6666	Albany NY 518-459-1122	Newburgh NY 845-245-4042
Champlain NY 518-298-3835	Owego NY 607-687-1200	Rochester NY 585-321-5250	Syracuse NY 315-432-1122	Utica NY 315-732-4300



Tight Link Fence Co.
Residential ~ Commercial ~ Industrial
Mark Dillon
774-365-0222



2005 LABOUNTY HDR70.
Grapple,
\$10,000.
800-477-4963

202

TRUCK
&
EQUIPMENT
603-899-2000

www.202truck.com
RT 202 Rindge NH
SALES & RENTALS - NO SALES TAX
FINANCING & DELIVERY



2021 KUBOTA KX040-4. 994 Hours, Hydraulic Thumb, Blade, Cab, 18" Bucket, Nice Machine, **\$49,500.**



2020 KUBOTA KX080. 2700 Hours, Double Aux Hyd., Coupler, Hyd. Thumb, Angle Blade, New 30" Digging Bucket, 17" Trenching Bucket **\$68,400.**



2003 PETERBILT 378. - CAT C 15 6NZ 435HP (Easily Up Graded To 550 HP), 12K Front, 40K Rears, 4:11 Ratio Low, Air Low Leaf, 10 Speed 195" WB, Single Frame, 6 New Injectors, 10 New Virgin Tires, Cab & Frame Paint Orig., From WY, NO RUST, 350K Miles, 15K ECM Hours, **\$59,000.**



2014 PETERBILT 337. 330K Miles, 6 Spd., 33,000 GVW, Paccar PX6, Clean Truck, Good Tires, New Rack & Form Cage, **\$72,000.**



2014 PETERBILT 337. Paccar PX7 300HP, 26,000 GVW, Manual 6 Speed, Air Ride, 10F + 16R On Air Brakes, 138K Miles, Hours: 6360, 6 New 11R22.5 Tires, 14 Ft Curry Utility Body With Compressor, WB 190", Cab To Read Axle 120", **\$42,500.**



1998 PETE 378. 3406E, 18 Speed, 14F, 12LA, 46R On Chalmers, 220" WB, 440K Miles, Clean, No Rust, From Wyoming, **\$35,000.**



2008 CAT CS423E. 1,462 Hours, 66" Drum, Runs And Move Well, **\$44,000**



1996 Ford 655E. 2 Owner Machine, Everything Works As It Should, 4x4, E-Hoe, Forks Included, Manual Thumb Has Been Added. **\$22,000.**



2016 PETERBILT 348. Cummins PX-9, 300 H.P., Allison Auto, 20K Front + 30K rear, Tenco 11 Ft Plow 10 Ft Wing, All Season Body, Air To Rear 43,350 Miles, **\$35,000.**

JP RIVARD Trailer Sales Inc

Call Matt - 508-962-4543
Matt@jprivard.com • JPRivard.com
New Location: 30 Lomar Park Dr., Pepperell, MA

We Now Rent
New 20' Containers
Commercial & Residential
Short Term Or Long Term
Please Inquire

20' TRI-DOOR



(2) New One Trip 20' Tri-Doors. In Stock Now. From \$4,000.

40' HIGH CUBE DOUBLE DOORS



40' High Cube Container, Doors On Each End. Light Gray. From \$5,500

3-6 YEAR OLD USED 20'



(20) Used 3-6 Year Old 20' Containers. In Very Good Condition. Call Before They're Gone.

TWO SIDE DOOR 20'



NEW One Trip, 20" Containers, End Doors, And Two Factory Side Doors

20' 1 TRIP - HIGH OPTIONS



GREEN BACK IN STOCK



(50) New 20' One Trip Containers Beige, And Green,

20' & 40' HIGH CUBE



New 20' & 40' High Cube Containers, One Trip. In Stock

40' HIGH CUBE 1 Trip, 4 Side Doors



New 40' High Cube Containers, With 4 Side Doors.

Sales Tax If Applicable + Delivery Is Not Included Unless Noted

Buyer - Seller - Swapper

JP RIVARD Trailer Sales Inc

Call Matt - 508-962-4543
Matt@jprivard.com • JPRivard.com
New Location: 30 Lomar Park Dr., Pepperell, MA

FULLY GALVANIZED UNDER SIDE



(20)
HYUNDAI 53'
- Spring Ride
- Swing Doors
- Mint
Condition
\$16,900

LIFTGATE SALES & SERVICE



LIFTGATES
Sales And Service For
All Major Brands

RENTAL FLATBEDS & STEP DECKS



- NEW & USED
48'X102" Rentals
- Sliding Tandems
- DOT Inspected
- USED 48'X102"
Combo Step Deck
- Spread Axle Air
Ride

STORAGE TRAILERS

48' & 53' STORAGE
ONLY TRAILERS
AVAILABLE.
Call Matt

NEW GALVANIZED TRAILERS



2027 DORSEY 48' STEP DECK
COMBO. Galvanized, Great
Specs. March 2026 Delivery

SOLD
2027 DORSEY 53' FLATBED.
Galvanized, Forklift Kit. March
2026 Delivery

2027 DORSEY 36' FLATBED.
Galvanized, Forklift Kit. March
2026 Delivery

**BOX TRUCK &
TRAILER
REPAIR SERVICES**

What Do We Service:

- SEMI Trailers – All Types Of Repairs
- Box Trucks – Body, Liftgate & General Repairs
- Landscape Trailers – All Types Of Repairs
- Horse Trailers – All Types Of Repairs
- Fabrication Services
- Full Aluminum/Steel Welding
- PM Maintenance On Trucks & Trailers

We Rebuild Smash Bodies On Box Trucks
& Semi Trailers

*** FINANCING & LONG TERM LEASES AVAILABLE

SALVADORE | PREOWNED **SuperCenter** A GREAT EXPERIENCE
 FAMILY OF DEALERSHIPS **COMES STANDARD**

**We've Got Your Truck
 For less!**

SalvadoreAuto.com | 978-630-2001 | 249 Timpany, Blvd., Gardner, MA

PRICE DROP! 2025 CHEVROLET SILVERADO 2500HD LT
 6.6L V8 GAS ENGINE - 10-SPD AUTO TRANSMISSION
 STK # G7624
 EZ LIFT TAILGATE! NOW ONLY \$58,304

PRICE DROP! 2023 RAM PROMASTER CARGO VAN 1500 LOW ROOF 136 WB
 V-6 3.6 L/220 GAS ENGINE - 9-SPD AUTO TRANSMISSION
 STK # P2427
 READY TO WORK! NOW ONLY \$27,985

PRICE DROP! 2024 RAM 2500 BIG HORN 4X4 PICKUP
 CUMMINS 6.7L I6 TURBODIESEL ENGINE - 6 SPD AUTO TRANSMISSION
 STK # P2426
 1 - OWNER! NOW ONLY \$48,398

READY TO WORK!

DOZENS OF TRUCKS IN STOCK TO CHOOSE FROM!

ALL MAKES AND MODELS!

TOP DOLLAR FOR YOUR TRADE!
 978-630-2001

PRICE DROP! 2024 RAM 2500 BIG HORN 4X4 PICKUP
 6.4L V8 GAS ENGINE - 8-SPD AUTO TRANSMISSION
 STK # P2423
 1 - OWNER! NOW ONLY \$42,345

PRICE DROP! 2023 RAM 3500 LIMITED 4X4 PICKUP
 CUMMINS 6.7L I6 TURBODIESEL ENGINE - 6-SPD AUTO TRANSMISSION
 STK # N26128A
 12,300 LB GVW! NOW ONLY \$70,470

PRICE DROP! 2021 CHEVROLET SILVERADO 5500HD WT
 DURAMAX 6.6L V8 TURBODIESEL ENGINE - 6 SPD AUTO TRANSMISSION
 STK # N26051A
 19,500LB GVW! NOW ONLY \$60,485

ALL MAKES

EQUIPMENT & PARTS

CONTACT

ROLAND CARTER 603-340-6776 • ANDOVER NH 03216

**EQUIPMENT SALES
 EQUIPMENT PARTS
 EQUIPMENT ATTACHMENTS
 FINANCING AVAILABLE**



New & Used Buckets & Attachments.



Rebuilt & Good Used Engines.



New Undercarriage. Free Undercarriage Inspection.



Equipment Hydraulic Parts.



Salvage Equipment Parts.

info@allmakesequipmentandparts.com • www.amepinc.com



1992 INTERNATIONAL. New Engine DT360 Diesel, Running, 5 Speed Manual, Heavy Duty Hydraulic Gate, **\$7,500** For Truck Or **\$5,500** For Engine. 860-424-6282



450 CUMMINS. Good Runner, Nice Motor That Came Out Of A Snow Machine, **\$3,000** East Windsor, CT 860-716-0226

SALVADORE

FAMILY OF DEALERSHIPS

442 W. Broadway, Gardner, MA | SalvadoreRam.com



RAM

978-616-6127

**RAM CHASSIS CAB DEALER
IN NEW ENGLAND**



WE HAVE YOUR TRUCK!



<p>SAVE \$4,700!</p>  <p>GVWR: 19,500 LBS!</p>	<p>2026 RAM 5500 TRADESMAN REG CAB 4X4 6.7L I6 CUMMINS TURBO DIESEL ENGINE - 8-SPD TORQUEFLITE HD AUTO TRANSMISSION MSRP: \$96,001 OUR PRICE: \$91,800 STK # N26070</p>	<p>SAVE \$9,700!</p>  <p>READY TO WORK!</p>	<p>2026 RAM 5500 TRADESMAN REGULAR CAB 4X4 6.7L I6 CUMMINS TURBO DIESEL ENGINE - 8-SPD TORQUEFLITE HD TRANSMISSION MSRP: \$104,228 OUR PRICE: \$95,027 STK # N26146</p>
<p>SAVE \$4,700!</p>  <p>READY TO UPFIT!</p>	<p>2026 RAM 5500 CHASSIS CAB TRADESMAN CREW CAB 4X4 6.7L I6 CUMMINS TURBO DIESEL ENGINE - 8-SPD TORQUEFLITE HD AUTO TRANSMISSION MSRP: \$83,150 OUR PRICE: \$78,949! STK # N26064</p>	<p>SAVE \$4,700!</p>  <p>REPLACEMENT INCOMING!</p> <p>SOLD</p> <p>READY TO UPFIT!</p>	<p>2026 RAM 5500 TRADESMAN REGULAR CAB 4X4 I-6 6.7 L CUMMINS TURBO DIESEL ENGINE - 8-SPD AUTO TORQUEFLITE HD TRANSMISSION MSRP: \$105,775 OUR PRICE: \$101,075 STK # N26078</p>
<p>SAVE \$4,700!</p>  <p>GVWR: 19,500 LBS!</p>	<p>2026 RAM 5500 TRADESMAN REGULAR CAB 4X4 6.7L I6 CUMMINS TURBO DIESEL ENGINE - 8-SPD TORQUEFLITE HD AUTO TRANSMISSION MSRP: \$104,708 OUR PRICE: \$100,507! STK # N26082</p>	<p>SAVE \$3,750</p>  <p>SOLD</p> <p>GVWR = 12,300 LB!</p>	<p>2026 RAM 3500 LONGHORN CREW CAB 8' BOX 4X4 6.7L I6 CUMMINS HO TURBO DIESEL ENGINE - 8-SPD AUTO TORQUEFLITE HD TRANSMISSION MSRP: \$104,665 OUR PRICE: \$101,411! STK # N26118</p>
<p>SAVE \$4,300!</p>  <p>GVWR: 13,500 LBS</p>	<p>2026 RAM 3500 CHASSIS CAB TRADESMAN REG CAB 4X4 6.4L V8 HEMI HD GAS ENGINE - 8-SPD AUTO TRANSMISSION MSRP: \$79,483 OUR PRICE: \$75,637! STK # N26053</p>	<p>SAVE \$9,700!</p>  <p>READY TO WORK!</p>	<p>2026 RAM 5500 TRADESMAN REGULAR CAB 4X4 I-6 6.7 L/408 INTERCOOLED TURBO DIESEL ENGINE - 8-SPD AUTO TRANSMISSION MSRP: \$95,228 OUR PRICE: \$86,027 STK # N26134</p>
<p>SAVE \$3,500!</p>  <p>READY TO WORK!</p>	<p>2026 RAM 2500 TRADESMAN REGULAR CAB 8' BOX 6.4L V8 HEMI HD GAS ENGINE - 8-SPD TRANSMISSION MSRP: \$65,565 OUR PRICE: \$52,569 STK# N26097</p>	<p>SAVE \$4,700!</p>  <p>GVWR: 19,500 LBS!</p>	<p>2026 RAM 5500 TRADESMAN REG CAB 4X4 6.7L I6 CUMMINS TURBO DIESEL ENGINE - 8-SPD AUTO TRANSMISSION MSRP: \$79,055 OUR PRICE: \$74,854! STK # N26008</p>

Additional Inventory Available & Ready For Custom Upfits!

Not responsible for typographical errors. Inventory changes frequently. Pricing subject to change due to manufacturer rebates. Pricing includes Doc Fee, all available rebates and incentives and may require vehicle to be reported as a Business sale to the manufacturer. See dealer for complete details.



2002 STERLING LT9500 10-WHEEL DUMP. 209K Miles, CAT C10 350HP, 8 Sp, 445 Tires on 20K Front, 11-24.5 On 52K Rear, 72K GVW, 4.89 Ratio, Full Locking Rears, Dual Steering Boxes, 14" Rugged Dump Body, New Radiator, Pintle On Rear, 11" Highway Plow, Easily Removable Harness, **\$36,500 OBRO.** 508-269-1515

2012 FORD F250 4X4 W/8' CM FLATBED.
6.2L V8, Auto, AC, PW, PL, 9900 GVW, File Photo, 96K, Very Well Kept, **\$15,900.;** Westport, MA 508-636-5050



2012 SALSICO 813 WOOD CHIPPER. 394 Hours, **\$14,500.** 207-252-1191

ARTICULATING BUCKET, 60". 120-135 Size Machines, 65 Mil Pins, **\$9800.** 860-301-5782



2010 MAC TRAILER MFG. 40 Ft Tandem Axle, Not Road Worthy - Front Axle Displaced, 40 Ft, 72" High, Hendrickson, Air Ride, Tandem Axle, Frame-Less, Very Fixable, **\$12,000.** 603-899-2000



2022 TAKEUCHI TB210R. 48 Hours, **\$19,500.** 800-477-4963



2019 FORD F650. Diesel, Bought Leftover 2021, 9,800 Miles, Byers Sander, **\$68,000 OBO.** 978-501-0628



MINUTE MOUNT 2 PLOW. 8 Ft, Used, In Good Condition, **\$2000.** Several To Choose, 617-840-8478

508-328-8938

THE TRUCK STORE

**Mon-Fri 8:30-5pm
Saturday 8:30-4pm**



www.TruckStoreSales.com



1700 Broadway - Rte 138 - Raynham, MA • Take Exit 8 Off Rte 495, East Rte 138, On Your Left



2002 VOLVO HEAVY TRI AXLE DUMP:465 HP, 8LL, NEW BRAKES, Excellent Rubber.



2000 MACK RD 688SX 14' Dump Body, 350 H.P., Auto., 18F/58R, LOW miles, Very clean.



2015 ISUZU REFER BODY: 186 K Miles, Diesel/Auto.Call.



2018 PETE CHASSIS 80K MILES and 2020 KW CHASSIS 47K MILES IN STOCK NOW! CALL.



2020 HINO HOOK-LIFT. DIESEL, AUTO, 38K MILES,



2019 & 2022 INTERNATIONAL REFER BODIES: VERY LOW MILES



2020 + 2022 HINO REEFER VANS. DIESEL, AUTO, CALL.



2005 MACK GRANITE SPLIT REAR LOAD RUBBISH BODY 35K Miles.



USED 12' to 26' REFER & VAN BODIES Call with your needs.



2017 FREIGHTLINER M-2: CUMMINS Diesel, Auto, PTO Accept. Will Separate.



2022 PETERBILT C/O. Under CDL., 60K Miles, Auto, Reefer Or Flatbed Available.



2022 HINO 268 Flat Bed: Diesel, Automatic, ONLY 2,000 Miles! Will up fit w/Refer Body or Van Body. 2 AVAILABLE.

ALSO AVAILABLE: USED FLATBED BODIES, ROLL OFF BODIES, LATE MODEL ISUZU/HINO 4 CYL DIESEL ENGINES.

FAMILY OWNED & OPERATED SINCE 1969

HILLSIDE MOTORS

**800-D American Legion Highway (Rt. 177)
Westport, MA 02790
508-636-5050**

Financing Available - Others in Stock



SEE OUR OTHER PAGE – LAST PAGE OF CENTERFOLD – PAGE CF8



4X4

2022 CHEVY 2500 DOUBLE CAB 4X4 8' DURAMAG ALUMINUM UTILITY. 6.6L Gas, Auto, PW, PL, Back-Up Camera, Bluetooth, 6-Passenger, Rhino Liner, 109K, One Owner, Fleet Maintained, Mint Condition, **\$43,800.**



9900 LB GVW

2021 CHEVY 3500 SRW 14' CUBE VAN W/SIDE DELIVERY DOOR. 6.6L V8, Auto, AC, PW, PL, Alum. Shelving, Bluetooth, Back-Up Camera, 9900 GVW, Low Pro, One Owner, 51K, Fleet Maintained, **\$34,800.**



OTHERS AVAILABLE

2024 CHEVY 4500 14' BOX W/POWER GATE. 6.6L V8, Auto, PW, PL, Back-Up Camera, Bluetooth, 14,500 GVW, Bal. of Factory Warranty, 43K, Excellent Condition, **\$44,800. (Will Separate)**



4X4

2022 FORD F250 REG CAB 8' BED 4X4. XL Pkg, 6.2L V8, 6 Speed Auto Trans, PW, PL, Back-Up Camera, Bluetooth, 10,000 LB GVW, 58K, One Owner, Extremely Well Kept, **\$38,800. (Others Available Starting at \$10,800.)**



RED-LINE PKG

2018 CHEVY 1500 CREW CAB 4X4 Z71 LTZ PKG. RED-LINE EDITION. 5.3L V8, Auto, AC, Leather, Sunroof, Nav, Loaded, Tech Pkg, 108K, Southern Truck, Sharp Truck, **\$26,800.**



ONE TON

2015 FORD F350 SRW 4X4 SERVICE TRUCK W/POWER GATE. Vanair Compressor/Gen Jump Start System, 6.2L V8, Auto, AC, Meticulously Maintained, 113K, Rust-Free Southern Truck, **\$23,800. Or \$19,800. w/o Equipment (2 Available)**



OTHERS AVAILABLE

2020 CHEVY SILVERADO 2500 CREW CAB 8' BED RWD. 6.6L V8, Auto, AC, PW, PL, Bluetooth, Back-Up Camera, 6-Passenger, 99K, One Owner, Fleet Maintained, File Photo, Excellent Condition, **\$28,800.**



12K GVW

2024 MST 40' GOOSENECK TRAILER. Mega Ramps, Wood Deck, FILE PHOTO, Toolbox, LED Lighting, Dual 8,000lb Axles, 12,000 GVW, Trades Accepted, Financing Available, **\$9,800., CASH TALKS**



JACK MADDEN FORD
Jackmaddenford.com
781-762-4200



825 Providence Hwy Rt.1 Norwood, MA



2024 FORD TRANSIT 250 CARGO VAN. V6, Auto w/OD, AC, P/W, REAR CAMERA, LIMITEDSLIP, STK#22914.

LOW FINANCING AVAILABLE



2026 FORD E-350SD CUTAWAY ENCLOSED UTILITY. 7.3L V8 PREMIUM, AUTO, 11,500# GVW, STK#34142



2025 FORD F350 SD XL CRYSTEEL DUMP 4WD. 7.3L V8 GAS, 14K GVW, SNOW PLOW PREP, STK#27874



NEW CAB & CHASSIS: 350-450-550 SUPER CABS, REGULAR CABS



2026 FORD TRANSIT-350 READING ENCLOSED UTILITY AWD. GAS, AUTO, POWER GROUP, NAV, BACK-UP CAMERA, STK#A11376



2026 FORD F-600 SD XL C&C. DRW, 22K GW, 8 CYL., AUTO, POWER GRP, 205" WB, STK#14447



2026 FORD E-350SD ROCKPORT ENCLOSED UTILITY. 7.3L V8 PREMIUM, AUTO, AC, 10,050# GVW, TRACTION, STK#33968



We're On The Auto Mile!

*ALL PRICES INCLUDE INCENTIVES FOR QUALIFIED BUYERS. FOR TRADE ASSIST. MUST HAVE 2018 OR NEWER TRADE. ALL VEHICLES REQUIRE DEALER FINANCING. SOME PRICES INCLUDE SNOWPLOW INCENTIVES. SEE DEALER FOR COMPLETE DETAILS.



Jack Madden Ford

Jackmaddenford.com

781-762-4200

825 Providence Hwy Rt.1 Norwood, MA



Commercial Vehicle Center

LOW Financing On SUPER DUTY AND TRANSITS AVAILABLE



2026 FORD F-550 SD XL 4WD. 6.7L POWER STROKE TURBO DIESEL, AUTO, AC, SNOW PLOW PREP, POWER GROUP, 19,550 LB GVW, STK#8156



NEW 2025 FORD E-450SD 14' ROCKPORT WORKPORT UTILITY: DRQ, 7.3L GAS, AUTO, POWER GROUP. STK#28681.



NEW 2025 E350 12' AEROCELL CUTAWAY. STK# 30217.



NEW FORD TRANSIT 350 SERVICE BODY AWD, STK#69470.



NEW FORD E-350 COMMERCIAL CUTAWAY WITH 16' AEROCELL BOX-TRUCK. STK#23914.



2026 FORD E-350 SD CUTAWAY ENCLOSED UTILITY. 7.3L V8 PREMIUM, AUTO, AC, POWER GROUP, 10,050# GVW, STK#41883

Jack Madden



We're On The Auto Mile!

*ALL PRICES INCLUDE INCENTIVES FOR QUALIFIED BUYERS. FOR TRADE ASSIST. MUST HAVE 2018 OR NEWER TRADE. ALL VEHICLES REQUIRE DEALER FINANCING. SOME PRICES INCLUDE SNOW PLOW INCENTIVES. SEE DEALER FOR COMPLETE DETAILS.



☎ 603-623-3669
 🌐 equipmentsales@tquip.com
 📧 @tquipsalesandrentals
 📍 603 Mammoth Road
 Londonderry, NH 03053

CHECK OUT OUR HUGE, BEAUTIFUL, TERRIFIC WHEEL LOADERS!



2020 CAT 982M A/C, 8.5CY 140" TOOTH BKT, ON-BOARD CAT SCALE, JYSTK STR, AUTO LUBE, 875/65R29 L5 MATCHING RADIALS, NEW \$60K REMAN TRANS @ 8374 HRS **\$219,000**



(2) 2020 DEERE 744L A/C, AUX HYD, 4CY 4-IN-1 BKT, RIDE CTRL, REAR CAM, 26.5R25 RADIALS, 3,351+ HRS **CALL FOR PRICING**



2021 HITACHI ZW370-6 A/C, 121" 8.25CY GP BKT, 389HP ISUZU T4F DSL, RIDE CTRL, 29.5R25 RADIALS, ONLY 1 OWNER, 6,790 HRS **\$159,000**



2016 KOMATSU WA500-8 A/C, 140" 9CY GP BKT, TIER-4 FINAL, 4-SPD PWRSHFT, RIDE CTRL, ENG TURBO, DIFF LOCK, TRCTN CTRL, 875/65R29 RADIALS, 9,896 HRS **\$145,000**



2022 KOMATSU WA475-10 A/C, 126" 6CY GP BKT, ON-BOARD SCALE, RIDE CONTROL, 775/95R29 RADIALS, 5,376 HRS **CALL FOR PRICING**



2010 CAT 980H A/C, 138" GP BKT, AUTOSHIFT, COMMAND CTRL STEERING, 29.5R25 RADIALS, 16 HRS **CALL FOR PRICING**



2022 DEERE 844L A/C, 8.5CY GP BKT, AGG HANDLER PKG, PAYLOAD SCALE, JYSTK STR, RIDE CTRL, REAR CAM, 8,241 HRS **\$199,000**



2012 DEERE 744K A/C, 5CY GP BKT, 26.5R25 RADIALS, 11,976 HRS **\$89,000**



2020 CAT 966M A/C, 6CY GP BKT, AUTO LUBE, RIDE CTRL, REAR CAM, 26.5R25 RADIALS, 11,732 HRS **\$129,000**



2016 CAT 966M A/C, 6.5CY BKT, JYSTK STR, RIDE CTRL, AUTOLUBE, RIDE CTRL, 26.5R25 RADIALS, 8,746 HRS **\$159,000**



2014 CAT 950K A/C, AUX HYD, HYD Q/C, 4.5CY GP BKT, AUTOSHIFT, REAR CAM, 23.5R25 RADIALS, 5,960 HRS **\$59,500**

NOTHING IS OUT OF REACH—CALL US FOR FINANCING OPTIONS!



2020 PETERBILT PB348
 4000GAL TANK, 6X4, PX-9 DSL, 6-SPD ALLISON 3000
 RDS-P AUTO TRANS, PWR STR, TANDEM AXLE, 6.17 RATIO,
 11R225 TIRES, 166K MI, 4,336 HRS **\$115,000**

SALES & RENTALS INC.
T-EQUIP
EQUIPMENT
SALES & RENTALS



2015 PETERBILT 367 10X4, A/C, 485HP PACCAR MX-13
 6CYL, ENG BRAKE, EF AUTO, DIFF LOCK, 4.10:1 RATIO, 80K
 LB GVWR, 425/65R22.5 F & 11R24.5 R TIRES, STEERABLE AIR
 LIFT TAG AXLE, DUAL STR BOXES, DBL FRM, HENDRICKSON
 HAULMAXX, 254" WB, 18'L X 5'H HERITAGE STEEL BODY,
 ELEC ROLL TARP, HI-LIFT TAILGATE, 180K MI **\$99,000**



2012 DEERE 300D-II
 30-TON CPTY, A/C, 6X6, DIFF LOCK, HEATED BODY,
 25.5R25 RADIALS, 7,127 HRS
\$129,000



EINGP GF480 20-40 TON/HR ROTARY
 DRUM TROMMEL SCREEN, 4'8"X2'11"
 TROMMEL, 2'2"X4'10" FDR HPR,
 3-PHASE ELEC MOTOR, FORKS POCKETS
CALL FOR PRICING



2020 CAT 725C2
 A/C, ENGINE BRAKE, AIR RIDE SEAT,
 TAILGATE, TRACTION CTRL, REAR CAM,
 23.5R25 RADIALS, 5,908 HRS
\$199,000



2020 DOOSAN DA30
 30-TON CPTY, A/C, TIER-4 DIESEL,
 TAILGATE, AUTO LUBE, AIR RIDE SEAT,
 23.5R25 RADIALS, 5,301 HRS
\$159,500



2011 JCB 300T
 EROPS, A/C, AUX HYD, MNL Q/C,
 84" BKT, 74HP DSL, VERTICAL LIFT,
 18" TRACKS, 3,216 HRS
\$35,000



2018 CAT 313FLGC
 A/C, 9'8" STK, AUX HYD, CAT HYD Q/C,
 36" CAT BKT, CAT HYD THUMB, PTRN
 CHNGR, 24" TG PADS, 2,681 HRS
\$99,000



2014 KOMATSU D65EX-17
 A/C, AUX HYD, 11'2" SIGMA SU HYD
 BLADE W/ TILT, 205HP TIER-4 DSL,
 GPS RDT, RIPPER VLV, DRAWBAR,
 26" PADS, 4,105 HRS **\$119,000**



2018 JCB 512-56 12K LB CPTY,
 56' LIFT HT, AUX HYD, MNL Q/C,
 60" FORKS, FRM LVL, OUTRIGGERS,
 14.00-24 TIRES, 7,518 HRS **\$45,000**



2024 CAT 304 A/C, AUX HYD,
 CAT HYD Q/C, 24" BKT, HYD THUMB,
 BLADE, PTRN CHNGR, 16" RBR TRKS,
 143 HRS **\$99,000**



2007 CAT D6K-XL A/C, 10' 6-WAY HYD
 ST BLADE, TOPCON GRD CTRL SYS,
 DRAWBAR, NEW UC @ 75%, 22" PADS,
 7,871 HRS **\$89,000**

ADDING UNITS TO OUR FLEET DAILY FOR YOUR RENTAL NEEDS

We are cash buyers for quality used trucks and equipment!

BROOKSIDE EQUIPMENT SALES

www.BrooksideEquipment.com

978-249-4600



2019 HITACHI XC120-6: 2,353 Hours, 36" Bucket, A/C, Good U/C, Backup Camera, 4 Cylinder Isuzu Turbo, 105 HP, 28k Lbs, stk#XC106, **\$62,500**



2021 DOOSAN DX180LC-5: 1,477 Hours, 44" Bkt, Hyd Doosan Thumb, 4 Cyl Perkins Turbo, Backup Camera, A/C, Good U/C, stk#XC692, **\$99,500**



2008 HAULOTTE HS5388RT: 2,342 Hours, 52 Ft Rough Terrain Scissor Lift, 4x4, 88" Wide, 2 Cyl Hatz Diesel, Stabilizers, stk#AE118, **\$11,500**



2016 JOHN DEERE 410L: 5,563 Hrs, 4x4, X-Hoe, Cab W/ A/C, Front Hyd Coupler w/3rd Valve, Power Shift, Ride Control, Pilot Controls w/Pattern Changer, 24" Dig Bucket, Rear Manual Coupler, stk#BH193, **\$54,500**



2016 JOHN DEERE 544K: 9,783 Hours, 3 Yard, Cab W/ A/C, Hydraulic Coupler, 6 Cyl JD Turbo, 29k Lbs, stk#LO608, **\$69,500**



2006 FORD F750 XLT SD: 121,872 Miles, 6 Wheel Service Truck, Stellar Body, Cat C7, 230 HP Manual, Under CDL, 25,999 GVW, Stellar 10620 Crane (10k Lb, 22 Ft), Miller Bobcat 225T Welder, stk#TK556, **\$37,500**



2016 CATERPILLAR CB54B: 4,539 Hours, 67" Smooth Double Drum, Vibratory, Caterpillar C4.4, Water System, Orops, 24K Lbs, stk#CO275, **\$24,500**



2012 CATERPILLAR 966K: 11,138 Hours, 5 Yard, Cab, Hydraulic Fusion Coupler W/ 3rd Valve, Backup Camera, New Tires, 54k Lbs, stk#LO510, **\$93,500**



2015 VOLVO L90H: 12,355 Hours, 3.5 Yard, Cab W/ A/C, Hydraulic Coupler, Ride Control, 6 Cyl Volvo Turbo, Very Good Rubber, 34k Lbs, stk#LO120, **\$67,500**



2003 FREIGHTLINER FL112: 377,047 Miles, 10 Wheel, 13'6" Steel Bibeau Body W/ 3 Chutes, Cat C12, 430 Hp, Fuller 8LL, 18k F, 46k R, Hitch, Spring Suspension, stk#TK065, **\$37,500**



2018 JOHN DEERE 624K-II: 11,553 Hours, 3.5 Yard, Cab W/ A/C, Hydraulic JRB Coupler, Ride Control, Backup Camera, 6 Cyl JD Turbo, 35k Lbs, stk#LO965, **\$69,500**



2005 FREIGHTLINER BCM2: 142,464 Miles, 10 Ft Steel Body W/ 3 Chutes, Cat C7, 230 HP, Allison Automatic, 14.6K F, 23K R, Hitch, Spring Suspension, stk#TK778, **\$24,500**



2019 JOHN DEERE 824K-II: 13,914 Hours, 7'4" Wicker Machine Co. Grapple, Cab W/ A/C, 6 Cyl JD Twin Turbo, 59k Lbs, stk#LO329, **\$69,500**



2006 CATERPILLAR CS-533E: 2,416 Hours, 84" Smooth Single Drum, Drum Drive, Vibratory, Orops, 4 Cylinder Caterpillar Turbo, 24K Lbs, stk#CO425, **\$49,900**



1997 PETERBILT 379: 1,198,223 Miles, 10 Wheel Sleeper, Cat 3406, 475 HP, Fuller 10 Speed, Wetline, Air Ride, 12K Lb Front, 34K Lb Rear, stk#TK946, **\$27,500**



2012 JOHN DEERE 225D LC: 5,332 Hours, 42" Bucket, Hyd JRB Coupler, 2-Way Auxiliary Hydraulics, A/C, 4 Cyl Isuzu Turbo, Reduced Tail Swing, 54K Lbs, stk#XC446, **\$64,500**



2018 CAT 289D: 4,749 Hours, 2660 Lb Lift, Cab W/ A/C, Hydraulic Coupler, Pilot Controls, 2 Speed, 4 Cyl Cat C3.3B Turbo, 10.6K Lbs, stk#SK287, **\$36,500**



2015 GRADALL XL4300-III: 58" Cleanup Bucket, 9 Ft Blade, Mercedes-Benz Engine, 44K Lbs, stk#WX108, **\$39,500**



2004 DAEWOO SOLAR 225LL: 15,169 Hours, Rotating Grapple, 6 Cylinder Turbo, 23 1/2" Pads, 55K Lbs, stk#XC011, **\$37,500**



2015 JOHN DEERE 190G W: 7,583 Hours, 36" Bucket, 8'4" Blade, Hydraulic Coupler, A/C, Backup Camera, Isuzu Turbo, 172 Hp, 45k Lbs, stk#WX012, **\$69,500**

60 STATE RD, PHILLIPSTON, MASS

978-249-4600

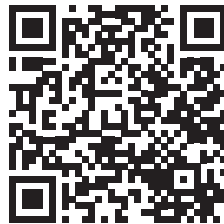
EMAIL: KEVIN@BROOKSIDEEQUIPMENT.COM



BE
UNSTOPPABLE.

1 (800) 477-4963

SMALL MACHINES, BIG AVAILABILITY.



Get Takeuchi tough
at Chadwick-BaRoss.

Takeuchi compact excavators are now available at three additional Chadwick-BaRoss locations. Full lineup. Fully factory trained techs. Full parts availability. Fully unstoppable.

Concord, NH | Lancaster, NH | Caribou, ME

**Chelmsford, MA | West Warwick, RI
Oxford, CT | South Windsor, CT**

Authorized Fisher
Snow Plow Dealer



HILLSIDE MOTORS

**800-D American Legion Highway (Rt. 177)
Westport, MA 02790
508-636-5050**

Financing
Available
-Others in Stock

Family Owned & Operated Since 1969

ONE TON



2015 CHEVY 3500 4X4 SERVICE TRUCK W/POWER GATE. Vanair Compressor/Gen Jump Start System, 6.0L V8, Auto, AC, Meticulously Maintained, 186K, Rust-Free Southern Truck, \$23,800. Or \$18,400. w/o Equipment

MINT CONDITION



2022 CHEVY C2500 CREW CAB 8' UTILITY. 6.6L V8, Auto, AC, Rear Camera, Bluetooth, 6-Passenger, Southern Truck, 110K, Fleet Maintained, \$34,400. (Other Crew Cabs Utilities Starting at \$12,900.)

DURAMAX



2022 CHEVY 3500 REG CAB 11' DURAMAG UTILITY 4X4. Duramax Diesel, Allison, Vanair Pro 35 Air Compressor, Bluetooth, Camera, Rust-Free Southern Truck, 235K, Highway Miles, Fleet Maintained, \$34,800. (Will Separate)

9 PASSENGER 4X4



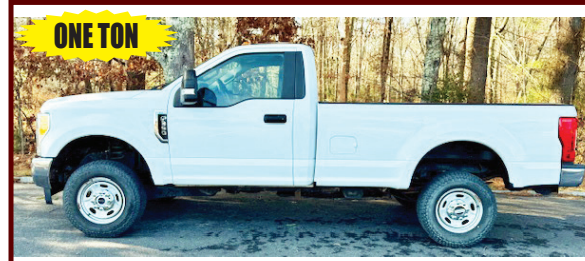
2017 CHEVY 1500 SUBURBAN 9 PASSENGER LS 4X4. 5.3L V8, Auto, AC, Dual Power Seats, Back-Up Camera, BlueTooth, One Owner, 111K, Fleet Maintained, Southern Truck, Mint Condition, \$25,800

4X4



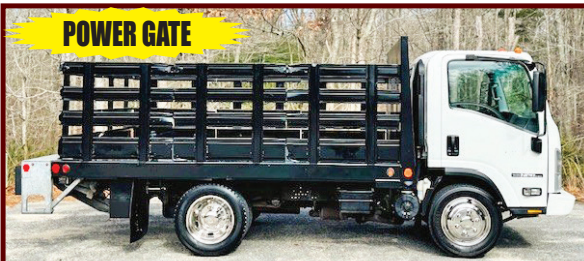
2021 FORD F450 16' BOX 4X4 W/ALUM. RAMP. 7.3L V8, Auto, AC, PW, PL, Back-Up Camera, Bluetooth, 16,500 GVW, 162K, One Owner, Fleet Maint, Mint, \$26,800. (Or Cab/Chassis \$22,800.)

ONE TON



2018 FORD F250 REG CAB 8' BED 4X4. XLT Trim, 6.2L V8, Auto, PW, PL, AC, Back-Up Camera, Bluetooth, Running Boards, 86K, One Owner, Excellent Condition, \$26,800.

POWER GATE

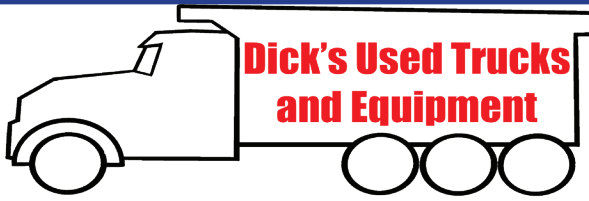


2015 ISUZU NPR HD. 12' RACK BODY W/ GALVANIZED POWER GATE, 8 Cyl., Auto, AC, 3-Passenger, 14,500 GVW, 155K, One Owner, Fleet Maintained, \$20,800.

20' BOX



2021 ISUZU NPR HD 20' MORGAN BOX W/ GALVANIZED TUCK-AWAY TAILGATE. 6.6L Gas, Auto, PW, PL, Bluetooth, Backup Camera, 14,500 GVW, 155K, One Owner, Excellent Condition, \$35,800. (Will Separate)



**Dick's Used Trucks
and Equipment**

207-623-4239



HAWK GOOSENECK 2 HORSE TRAILER. Straight Load, Tack Area. \$8,500



2000 STERLING. CAT Diesel, 5+2 Trans, Flatbed. \$7,000



JOHN DEERE 3520 TRACTOR. Loader, 4X4, \$12,000



1998 FORD OIL TRUCK. 2 Compartment, 7 Speed, Cat Engine



1985 FORD L8000 DUMP TRUCK. Tandem Axle, CAT 3208 Turbo, 8LL Trans., Hendrickson Suspension, \$12,000



1990 SULLAIR 750Q. Oil-Flooded Rotary Screw Air Compressor For Heavy Duty Work, CAT Engine, 750 CFM, \$7,500



2012 JOHN DEERE 310SJ BACKHOE. 4X4, Full Cab, Expanda Hoe, Wrist With 3 Buckets, \$38,000



2007 CASE 430 SKID STEER. OROPS, Quick Change Bucket, Auxiliary Hydraulics, \$14,000



1987 FORD L8000 WATER TRUCK. CAT 3208T, 5+2 Speed, Water Tank, Pump. \$7,500



2005 CAT 930G LOADER. Hydraulic Quick Release Bucket, Auxiliary Hydraulics, \$38,000



JOHN DEERE 310A BACKHOE. 2WD, Enclosed Cab, \$8,500



JOHN DEERE 644C LOADER. New Tires, \$24,000

Dick's Used Trucks & Equipment • 146 River Road, Chelsea, Maine

NICK SCARVALAS
Commercial Sales
857-247-9023 or 617-249-5603



Commercial Vehicle Center



2026 F550 DUMP. 7.3L Gas, 4x4, Remote Start, I-Pac Toolbox, F214515. MSRP \$98,990. SAVE \$10,501. **SALE PRICE \$88,489**



2025 F550 DUMP. 9' Aluminum Body, Coal Chute, Remote Start, Diesel, 4x4, F214486. MSRP \$104,990. SAVE \$18,000. **SALE PRICE \$86,990**



2025 F550 LANDSCAPER. Diesel, 4x4, Remote Start, F213108 MSRP \$106,990. SAVE \$22,001. **SALE PRICE \$84,989**



2025 F550 SERVICE. Diesel, 4x4, Remote Start, Cabinet Lights, F214444. MSRP \$107,990. SAVE \$19,001. **SALE PRICE \$88,989**



2026 E450 FRIEIGHT VAN. 16' Rockport, 14,500 GVW, E-Trac, LED Rear Flood Light, 7.3L Gas, F213915. MSRP 81,990. SAVE \$13,501. **SALE PRICE \$68,489**



2026 F350 RACK BODY. 7.3L Gas, 4x4, Remote Start, 9' Knapheide, F214387 MSRP \$84,990. SAVE \$10,000. **SALE PRICE \$74,990**

250 COMMERCIAL TRUCKS IN STOCK



2025 T350 UTILITY. Aluminum Body, 3 Bar Ladder Rack, V6 Gas, F214504 MSRP \$89,990. SAVE \$15,000. **SALE PRICE \$74,990**



2025 T250 GENERAL TRADE PACKAGE VAN. Organize Bin Package, V6, Bulkhead W/ Window, F213807. MSRP \$60,350. SAVE \$14,762. **SALE PRICE \$45,588**



2026 T250 CARGO VAN. All Wheel Drive, Mid Roof, Load Area Protection Pkg., F214828. MSRP \$60,455. SAVE \$4,500. **SALE PRICE \$55,995**



2026 E350 HIGH CUBE. 10' Rockport, Pass Thru Door, Poly Lined, 7.3L Gas, F214618. MSRP \$69,990. SAVE \$10,000. **SALE PRICE \$59,990**



2026 E450 FREIGHT HAULER. 16'5"x 96" Body, Two Rows E-Trac, Pull Out Ramp, Plywood Lined, Roll Up Rear Door, 7.3 Gas, F213020 MSRP \$74,990. SAVE \$16,501. **SALE PRICE \$58,489**



2025 F550 SERVICE. Super Cab, Diesel, 4x4, Remote Start, Cabinet Lights, F213003. MSRP \$114,990. SAVE \$22,001. **SALE PRICE \$92,989**

QUIRK FORD
540 Southern Artery (Rt 3A) Quincy, MA
www.quirkford.com • 617-249-5660

Business Financing with NO Co-signer Required

Prices include all available rebates. Rebates include Customer Cash, FMCC Bonus Cash, and Commercial Uplift Bonus Cash. Customer must qualify for rebates. Call for specific details. Prices are subject to change. * In Lieu Of Rebates

NICK SCARVALAS
Commercial Sales
857-247-9023 or 617-249-5603



Commercial Vehicle Center



2026 F350 SERVICE. Super Cab, 7.3 Gas, 4x4, Aluminum Body, SRW, F214685. MSRP \$84,990. SAVE \$7,001.
SALE PRICE \$77,989



2026 F550 CREW DUMP. 7.3L Gas, 4WD, Tool Box, 9' Body, Pwr Rear Slide Window, Remote Start, Pwr Onboard, F214581. MSRP \$98,990. SAVE \$11,000.
SALE PRICE \$87,990



2026 F450 SERVICE. Crew Cab, 7.3 Gas, 4x4, Steel Body, DRW, Pro Power, F214560. MSRP \$99,990. SAVE \$12,501.
SALE PRICE \$87,489



2026 F550 ROLL OFF. Super Cab, Switch N Go, 7.3L Gas, 4WD, Tool Box, Remote Start, Pwr Onboard, F214579. MSRP \$114,990. SAVE \$11,000.
SALE PRICE \$103,990



2025 F350 DUMP. 7.3 Gas 4x4, Remote Start, Toolbox, F214518. MSRP \$91,990. SAVE \$11,501. **SALE PRICE \$80,489**



2026 F350 DUMP. Super Cab, 4x4, 9' Body, 7.3 Gas, Remote Start, F214521. MSRP \$89,990. SAVE \$12,501.
SALE PRICE \$77,489

250 COMMERCIAL TRUCKS IN STOCK



2026 E350 UTILITY VAN. 12' DuraCube, Central Locking, 50" Door Width, V8 Gas, F214487. MSRP \$89,990. SAVE \$11,501.
SALE PRICE \$78,489



2026 F550 DUMP. Super Cab, 9' Body, 7.3 Gas, Remote Start, Dual Battery & Alternator, 19,500 GVW, F214491 MSRP \$99,990. SAVE \$10,501. **SALE PRICE \$89,489**



2026 F250 XLT SERVICE. V8 Gas, 4X4, Aluminum Body, SRW, Super Cab, F214686. MSRP \$82,990. SAVE 7,001.
SALE PRICE \$75,989



2026 E350 FRIEIGHT VAN. 16' Rockport, Galvanized Liftgate, E-Trac, LED Rear Flood Light, 7.3L Gas, F213623. MSRP \$72,990. SAVE \$15,501. **SALE PRICE \$57,489**



2026 T350 CARGO VAN. High Roof, Load Area Protection Pkg., 9500 GVW, F214402. MSRP \$59,280. SAVE \$8,393. **SALE PRICE \$50,887**



2026 F550 SERICE. 16' Rockport Body, Platform & Step Bumper, 4 Bar Rack, Roof Ladder, Diesel, F214651. MSRP \$114,990. SAVE \$10,501.
SALE PRICE \$104,489

QUIRK FORD
540 Southern Artery (Rt 3A) Quincy, MA
www.quirkford.com • 617-249-5660

Business Financing with NO Co-signer Required

Prices include all available rebates. Rebates include Customer Cash, FMCC Bonus Cash, and Commercial Uplift Bonus Cash. Customer must qualify for rebates. Call for specific details. Prices are subject to change. * In Lieu Of Rebates



VOLVO BUCKET.
Quick Attach, Fits L-120, Very Nice,
\$3,500, East Windsor, CT
860-716-0226

Powerglide Air Test Kit
Complete Powerglide Pro Tree Transbrake \$279.95
TH400 Deep Cast Aluminum Pan
TH400 Billet Direct Drum Spring Retainer & Aluminum Modulator/Solenoid Hold Down
Powerglide Overhaul Kit

Powerglide Deep Oil Pan
Powerglide Reverse Spring Retainer Tool
Powerglide Bushing Driver Set
Do-it-yourself Powerglide Pro Tree Transbrake Kit \$164.95
1.80 Long Powerglide Gear Set

Powerglide Handbook written by Carl H. Munroe \$21.95
Powerglide Vent Tanks

TSR RACING PRODUCTS
1-800-394-5889
179 Belvedere Road
Gilsum, NH 03448
WWW.TSR-RACING.COM



CAT 988B WHEEL LOADER,
4,991 Hours, Solid Machine, Anti-freeze in Oil. - **\$29,900**
781-417-3018



2024 CFG KU45 MINI EXCAVATOR. Enclosed Cab, AC, Radio, Aux. Hyd. Plumbing, 10 Hours, Like New, **\$30,000.**
Hudson, NH 603-886-1550



1999 FINN B260 STRAW BLOWER. 350 Hours, **\$22,000.** 207-252-1191

HAYES **Commercial Truck Center** **802-334-6587**



REDUCED
2017 F550. 4X4, Diesel, 61,268 Miles, Excellent Condition, #686P.
\$39,900.



2014 IH 4300 24FT MORGAN VAN. Cummins 280 HP, Allison Automatic, 171K Miles, Plywood Lined, E-Trac, Power Liftgate, Owner/Operator, Excellent Condition, **\$17,900**



2026 F750 XLT. Diesel 330 HP, 850 lbs Torque, Air Brakes, De-rated 25,999 GVW, Lockers, Air Seat, Automatic W/ PTO Prov., Dual Alternator, #6269



84" CA
NEW 2025 F550 XLT CHASSIS. 19,500 GVW, Diesel, 4X4, 84" CA. Call Mark For Special Pricing.



\$38,900
NEW T350 CARGO VAN. Demo Model, **SALE PRICE \$38,900**



2019 F550 LARIAT. Crew Cab, Diesel, Liftgate, Owner/Operator
Call for Details!!

WWW.HAYESFORDINC.COM • 439 East Main St Newport, VT

BALLARD

TRUCK CENTERS

(508) 214-3036
drive@ballardtrucks.com



Visit us online at BallardTrucks.com or scan to view our full inventory.



2020 PETERBILT 567
DUMP TRUCK
STK#78704
\$167,500



2025 KENWORTH T880
GARBAGE TRUCK
STK#6406
\$216,000



2018 KENWORTH T370
HOOKLIFT
STK#1684
\$72,500



2015 MACK PINNACLE
CXU612
DAY CAB
STK#7599
CALL FOR PRICE !



2019 PETERBILT 348
FLATBED TRUCK
STK#3051
CALL FOR PRICE !



2016 WESTERN STAR 4900
DAY CAB
STK#J1907
\$19,500



2024 MACK LR64R
GARBAGE TRUCK
STK#08553
\$349,900



2025 MACK GRANITE 64FR
DUMP TRUCK
STK#46927
CALL FOR PRICE !



2017 ISUZU NPR XD
REEFER BOX TRUCK
STK#00292
\$32,900



2016 MACK PINNACLE
CXU612
DAY CAB STK#8986
\$14,000



2026 XL SPECIALIZED
XL100HDGS
LOWBOY TRAILER
STK#25555
CALL FOR PRICE !



2025 KENWORTH T880
DUMP TRUCK
STK#7558
\$229,000



2018 KENWORTH T370
HOOKLIFT
STK#1685
\$77,500



2016 ISUZU NPR HD
FLATBED
STK#07056
\$24,900



2025 MACK GRANITE 64FR
GARBAGE TRUCK
STK#7957
\$223,000



2025 KENWORTH T880
GARBAGE TRUCK
STK#1628
\$235,500



2025 HINO L6
DUMP TRUCK
STK#50157
CALL FOR PRICE !



2025 TICO PROSPOTTER
YARD SPOTTER
STK#13513
CALL FOR PRICE !



2026 TRAIL KING TK50LP
FLATBED TRAILER
STK#78401
CALL FOR PRICE !



2025 VOLVO VHD84B300
CAB & CHASSIS
STK#690100
CALL FOR PRICE !

AREA HYDRAULICS

810 Quaker Hwy. Uxbridge, MA
508-278-6670

Cylinder Resealing

We Make Hose Assemblies
After Hours Service Available!

Parker
Buyers
PRODUCTS COMPANY



2013 JOHN DEERE 329E.
Track Loader Skid Steer, 3333 Hours, Excellent Condition, Snow Bucket, Forks, GP Bucket, New Tracks, Serviced and Ready, **\$42,500.**
203-537-3151



2000 VOLVO A30C.
16,769 Hours, Runs Strong, Good Tires, **\$48,000.**
207-252-1191

2015 WESTERN STAR 4900. Cummins 500 HP, 18 Sp, 400K Miles, 17,200 Hours, Miles & Hours Subjected To Change, Still In Use, 17.5 Body, Steerable Tag Axle, Financing Possible, **\$125,000**
TEXT 860-329-1607



1979 MACK. 300 HP, 12 Sp, Beau Roc Body, Lift Boom, 44 Rears, Newer Motor, Newer Tires, Runs Strong, Good Records, No Rust, **\$22,000 OBO.** Call/Text Griswold, CT 860-706-1266

CANDIA TRAILER

& SNOW EQUIPMENT

603-483-2541

email: contact@candiatrailer.com

www.CandiaTrailers.com

All Prices Cash & Carry! Installation Available!

35 High St, Candia 4 Coners, Candia NH
10 Minutes East of Manchester, NH • 1 hour From Boston





DURA MAG ALUMINUM DUMP BODIES Complete Sub-Frame, Power Pac, LED Lights.



IN STOCK GALION DUMP BODIES. 8' thru 16' Call With Your Specs Today



BUTCHER Dump Power Pac with control Gravity Down **\$595**



8' Ft & 6 Ft EZ Slide In Dump Body. With Head Board, Tarp & Hoist.



DURAMAG SERVICE BODIES. Call With Your Specs



HARSH HOIST
2.5 to 45 Ton, Single or Double Piston. Convert a Flatbed Body to a Dumping Body. HOIST & POWER PACK
CHAMPION HOIST

UNDERBODY TOOL BOXES
Powder Coat Diamond Aluminum Door

Diamond Aluminum Door




HOMESTEAD Enclosed Trailers. Stocking 8 Ft – 24 Ft



GO GREEN!

8 LED Rectangular Surface Mount Warning Green / Amber Clear



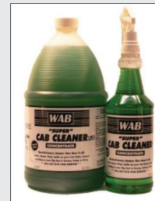
27 Selectable Flash Patterns

5 Year Warranty
M20484GYCL-DC

\$67.99

Maxxima

Super Cab Cleaner



Removes grease and grime from seats, carpet, vinyl, plastic and almost anything on your rig that is greasy, grimy or dirty.

Quart: \$9.25 Gallon: \$18.99
5 Gallons: \$82.95

Ultra Thin 5 Inch Green/Amber LED



Includes 3M™ self-adhesive tape for simple fastening.

5 Year Warranty
8892210

\$49.99



Brushes



Extra Soft Wash Brush, Nyltex Bristle, 10" block, one threaded & tapered hole(193)

\$19.69



Extra Soft Bi-Level Wash Brush, Nyltex Bristle, 10" two sided plastic block. (195)

\$25.99

Special ends 6/15/26

920 W. Chestnut St. **Brockton, MA**
Mon-Fri 8 am- 5 pm & Saturdays 8-12
508-586-1666

ANDERSON MOTORS INC.



*** YOUR EXCLUSIVE VOLVO TRUCK DEALER ***



VOLVO POWER

IN STOCK

2026 VOLVO VHD84F300-D13, 500HP, 14SPD. I-SHIFT,, STEERABLE PUSHER, 17' 6" HARDOX BODY. #250111



IN STOCK

2027 VOLVO VHD84F300-D13, 500HP, 14SPD., I-SHIFT, 20,000# STEERABLE TRI-AXLE DUMP CHASSIS. #260004



IN STOCK

2025 VOLVO VHD64BT-D13, 500HP, 12SPD. I-SHIFT, 14,600# FRONT / 46,000# REARS. #240142



3 AVAILABLE

2012 - 2017 VOLVO VNL64T300-D13, 500HP, 18SPD. TRANS., 14,000# FRONT / 46,000# REARS, AIR-RIDE.



IN STOCK

2015 VOLVO VNM64T-D13, 435HP, 10SPD., 12,000# FRONT / 40,000# REARS.



IN STOCK

1991 AUTOCAR ACL64BT300 CUMMINS BIG CAM, 8LL TRANS., 46,000 REARS, 320,548 MILES, WET-SYSTEM, PINTLE PLATE & HOOK. #240002B



IN STOCK

2000 VOLVO WG64B, 275HP., AUTO, 16,000# FRONT / 40,000# REARS, JOHNSERED 820 CORTU CRANE, 20' DUMP BODY. #210299A



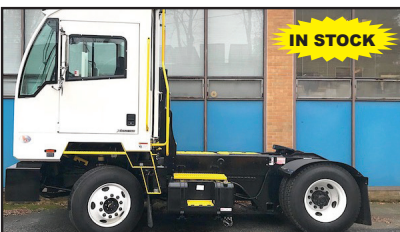
2 AVAILABLE

2016 VOLVO VNM64T-D13, 435HP, 10SPD., 12,000# FRONT / 40,000# REARS. #230109A



2 AVAILABLE

2022 VOLVO VNL64T300-D13 500HP, 12 SPD. I-SHIFT ,AUTO, 14,000# FRONT / 46,000 # REAR, AIR-RIDE, HD HAULER.



IN STOCK

2026 AUTOCAR ACTT42, SINGLE AXLE, YARD JOCKEY, DIESEL AUTOMATIC, A/C, HYDRAULIC 5TH WHEEL.



IN STOCK

2012 FORD E-450 14 PASSENGER SHUTTLE BUS, GAS, 18,885 MILES. #250029A



2 AVAILABLE

2026 RHODES RSS2660-2 26' STEEL END DUMP TRAILER, AIR HIGH-LIFT DOUBLE ACTING TAIL GATE, HD SPECS.

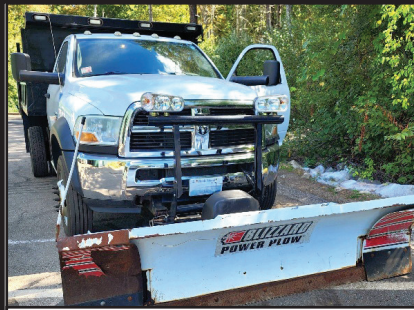
401-434-5900

WWW.ANDERSONMOTORS.COM

EMAIL • SALES@ANDERSONMOTORS.COM

190 AMARAL STREET • EAST PROVIDENCE, RI 02915

HABLAMOS ESPAÑOL



2011 DODGE 5500. 4x4, 12K Miles, Original Owner, Fleet Maintained, Cummins, Automatic, 8/10 Expandable P/A Plow, 2.5 Yard Stainless Steel Electric Sander, Electric Cover, Winter Is Coming, This Is A Money Making Truck, **\$55,000.** West Warwick, RI 401-523-6116

American SEMI REBUILDERS

SPECIALIZING IN FRAME RAIL REPLACEMENTS, TRUCK RESTORATIONS, & REPAIRS



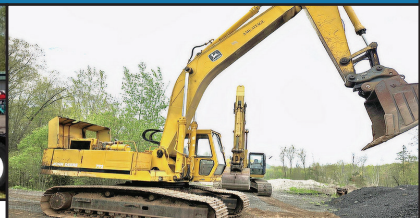
FULLY LICENSED AND INSURED
27 Depot Street, Unit K-2, Center Barnstead, NH 03225

- We Do What it takes to keep you moving**
- Quality work done right the first time**
- Over 40 Years Experience**

603-269-0046



DUMP TRAILERS, \$12,000
East Windsor, CT, 860-716-0226



1987 JOHN DEERE 792. 68,000 Lb. Excavator, 300 Size, 2 1/4 Yard Bucket, Rebuilt Engine, Rebuilt Pumps, Newer Bottom, **\$19,900.** Pin Grabber JRB Coupler Optionally Available, 860-301-5782

**DRAINAGE ?
GRADE IMPROVEMENTS
BE READY FOR
THE NEXT BIG STORM
WASHED STONE
PROCESSED GRAVEL
SAND
TOP SOIL
RIP RAP
FILL**



**Please Call for pricing
401-447-2777**





(203) 752-0213
WWW.EQUIP-SALES.COM
NORTH HAVEN, CT 06473

PARTS ▶ SALES ▶ SERVICE ▶ RENTALS



2015 CATERPILLAR 950M
 OWNED SINCE NEW. Q/C, RIDE CONTROL, BRAND NEW FLOOR/MOLD BOARD. FULL RECORDS AVAILABLE. 11,590 HRS. **\$86,500**



2015 CATERPILLAR M322D
 PURCHASED FROM H.O. PENN, FLEET MAINTAINED, ALL RECORDS AVAILABLE. NEEDS NOTHING, COMES WITH WAYNE ROY COUPLER, GRADING & DIGGING BUCKET. CLEAN, PRE EMISSION MACHINE. 8,427 HRS. **\$65,000**



2018 ROCKSTER RTT720A
 TROMMEL SCREENER, PRE EMISSION CAT ENGINE, 20' DRUM. ONLY 1,532 HRS. **\$165,000**



2013 DEERE 700K XLT
 3,800 HRS, ONE OWNER, GPS VALVING, FULL CAB, TIGHT, GOOD BOTTOM. VERIFIED HOURS. **\$76,500**



2022 XCMG XE75U
 KUBOTA DIESEL, PATTERN CHANGER, HYDRAULIC COUPLER & THUMB PLUMBING. 220 HRS, LOADED FULL CAB. **\$61,500**



1999 CEC 4X10
 3,345 HRS. RECENT OVERHAUL, ALL BRAND NEW HOSES, BELT, SCRAPERS. FULL SERVICE, NEW TIRES, BRAKES & LIGHTS ALL WORK. NEW SCREENS, BALL DECK. WORKING DAILY. **\$80,000**



2002 NEW HOLLAND LS180
 SELLING THIS NEW HOLLAND LS180. RUNS AND OPERATES, FOOT PEDAL CONTROL, AUX HYDRAULICS. MISSING FRONT DOOR. LIGHTS AND HEAT WORK. 3,914 HRS. **\$14,500 OBO**

WWW.SCRANTONGMC.COM

777 TALCOTTVILLE ROAD VERNON, CT • 860-281-6726



NEW 2024 GMC SAVANA. 12' DURACUBE MAX SERVICE BODY WITH LOCKS, BACK UP CAMERA, #R9771, \$59,977



2025 GMC SAVANA 4500 14' DURA CUBE MAX. 6.6L V8, AUTO, 177" WB, #S9347



2026 GMC SAVANA 2500 WORK CARGO VAN. 6.6L V8, POWER PACKAGE, #T9473



2025 GMC SIERRA 3500 HD CREW CAB SERVICE BODY. 4X4, DRW, 6.6L V8 GAS, ALLISON AUTOMATIC, #S9269



2025 GMC SAVANA 3500 EXTENDED CARGO VAN. 6.6L V8, CHROME APPEARANCE PACKAGE, #S9276



2026 GMC SIERRA 3500 CREW CAB & CHASSIS. 6.6L, 4X4, DRW, 60" CA, 176.8 WB, #T9606



2026 GMC SIERRA 3500 REGULAR CAB & CHASSIS. 4X4, DRW, 60" CA, #T9565, \$52,777



2025 GMC SIERRA 3500 CREW CAB. 4X4, DRW, 9' READING SERVICE BODY, GAS, #T9367, \$72,777



WWW.SCRANTONGMC.COM



MANY OTHER TRUCKS IN STOCK. CALL FOR DETAILS



\$110 Per Wheel Polish
ACUSHNET WHEEL POLISHING
 Used Rims Available
508-509-2014
 62 SOUTH MAIN ST., ACUSHNET, MA




2001 MACK. Fuller 8 Speed Transmission, Needs Nothing,
\$34,999. 401-486-8552



2014 CAT D6K. Enclosed Cab, Heat And A/C, 6-Way Blade Excellent Undercarriage, 9,477 Hours,
\$60,000. 207-252-1191

1994 FORD L8000 HYDRO-SEEDER.
 20' Flatbed, 1500 Gallon Hydroseeder, John Deere Motor, Hydroseeder Needs Some Welding, 33,000 GVW, Runs Good,
\$8,500 OBO.
 401-447-2661
 Or 401-737-6663




2007 PETERBILT 335 TANDEM-AXLE DUMP TRUCK, 455,320 Miles, Allison Automatic Transmission, Cummins Diesel, New Turbo, Runs Great. **\$44,900** -781-417-3018

THE TRAILER DEPOT

203-234-7788
 1037 Middletown Ave. (Rt. 17)
 Northford, CT

WESTERN
 SNOW PLOWS



LIBERTY 17.5K SPLIT DECK I-BEAM TILT TRAILER. 6' 11" x 22', 8" I-Beam Frame & Tongue, Treated Pine Floor, ##051773



CM TRUCK BEDS STARTING @ \$4,500



BEHNKE 14K CHANNEL SKIDLOADER TRAILER. 6' 11" x 16', Dexter Spring Suspension, LED Flush Mount Lights, #073199



SURE-TRAC PRO SERIES 15.4K TELESCOPIC DUMP TRAILER. 7' x 14', 24" Rigid Side Walls, Slipper Spring Suspension, #454380



CAM SUPERLINE 15.4K TELESCOPIC BEAST DUMP TRAILER. 7' x 16' x 4" High Sides, Dual Telescopic Power Up/ Gravity Down Cylinder, #546667



RE-TRAC 25.9K HEAVY DUTY LOW PROFILE DECKOVER GOOSENECK. 8' 6" x 30', 5' Self Cleaning Beavertail, Cross-Trac Bracing, #487238

www.thetrailerdepot.com

We'll Hook You Up
 WE DO FEDERAL INSPECTIONS!



CONSOLIDATED TRUCK & EQUIPMENT, INC.



www.ConsolidatedTruckEquipment.com
1727 FALL RIVER AVE, (RT.6) NEAR SEEKONK SPEEDWAY
SEEKONK, MA



NEW CHALLENGER 26' STEEL DUMP TRAILER.
High Lift Gate, Single Point Suspension,
Electric Tarp, 11x24.5 Tires On
Aluminum Wheels,
Call For Price.



NEW FELLING 25 TON:
AIR RAMPS,
FRONT AXLE LIFT.



2006 W/ TIRAR. 46 rears, C-15 Cat motor, Air Ride, 11 x 24.5 Tires On Aluminum Rims, Wet Line, Good Straight Truck, One Owner, \$38,000.



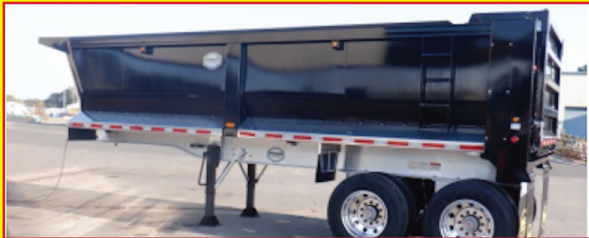
2025 MAC 28' ALLUMINUM DUMP TRAILER: 8 ALLUMINUM RIMS, ALLUMINUM FRAME, AIR RIDE, ½ PLASTIC LINER.



2026 FELLING FT-16-2T Tilt Top Trailer: 23' Deck x 102" Wide, Viper Red, Aluminum Wheels, 18,400lb GVW \$24,500.00 2 in stock GVW **\$24,500.00**
2 in stock.
Fire Hydrant available on request.



2025 MAC 26' STEEL DUMP TRAILERS: Hi-Lift Gate, 24.5 Tires On Aluminum Rims, 60,000 LB Center Point Suspension, Electric Load Cover, Body All ¼" Hardox,



2025 MAC 27' STEEL BODY ALUMINUM FRAME TRAILER: Hi-Lift Gate, Air Ride, 11x24.5 Tires On 8 Aluminum Rims, Hardox Steel Body, Full Aluminum Side Skirts, Due In 2 Available, Trades Accepted,



2025 FELLING 20 TON TAG W/ AIR RAMPS.
CALL.

CALL US: AT 508-336-6215 • HOURS: M-F 8 to 5:30 • SAT: 9 to 12 Noon



**BOBCAT HARLEY
RAKE.** Low Hours,
6', Like New,
\$6800.
860-301-5782

**CALL PATRICK
1 (401) 309-1960**



BLUM'S FIELD SERVICE

**ONSITE HEAVY EQUIPMENT & DIESEL REPAIR
MOBILE WELDING & FABRICATION**

- MACHINE SERVICES
- ATTACHMENTS INSTALLS
- BUCKET REBUILDS & WEAR PROTECTION
- HYDRAULIC CYLINDER RESEAL

**SERVICING
RI, MA, CT**



**Custom Gates Hydraulic Hose
Assemblies & Fittings**

Full Truck Service, Maintenance & Repair

All Makes & Models

Over 20 Years Experience Specializing In Mack's

Marshall Cefole - **978-467-7993**

Randy Rameau - **978-423-2889**

10 Gardner Road, Winchendon MA 01475



2020 PETERBILT 567 TRI-AXLE DUMP TRUCK, One Owner Truck, 302K Miles, Allison Automatic Transmission, Paccor Engine, Rear Tires 90%, Front and Tag Tires 50%, New Rear Brakes, Fronts at 50%, 20K Front, 46K Rears, Ready to Work! - **\$139,000** -781-417-3018



2016 KUBOTA SSV65 SKIDSTEER. Enclosed Cab, Heat, AC, Hyd., QC, Foot Pedal, GP Bucket, 1135 Hrs., **\$31,000.** Hudson, NH 603-886-1550



Jukonski Truck Sales



WWW.TRUCKSELLERS.COM *se habla español*



680 NEWFIELD ST. (RT 3) MIDDLETOWN, CONN • 800-378-0342 • MON-FRI 9-5

DON'T MISS OUT: YOUR IDEAL TRUCK AWAITS!



2024 INTERNATIONAL MV607 Wood Chipper Truck, B6.7, Allison RDS, Crew Cab, 5K Miles, 25,999 GVWR, # T-RS300323, **\$129,000**



2026 BRAND NEW HINO L6, Diesel, 25,950 GVWR, 26' Box, 2 AVAILABLE (One Has Liftgate).



2018 FREIGHTLINER M2 24' Box w/ Liftgate, 6.7L Cummins, Allison, 115K Miles, 33K GVWR, #T-JDK0822, **\$29,900**



2022 HINO S5 20' Reefer , Liftgate, Thermo King Reefer, Diesel, Auto, 83K Miles, 17,950 GVWR, # T-N7901681, **\$47,900**



2022 ISUZU NRR DC 14' Dump, L96 GM Gas, Auto, 50K Miles, 19,500 GVWR, #T-NSR01252 **\$64,900**



2019 ISUZU NRR 16' Box, Liftgate, Diesel, Auto, 80K Miles, 19,500 GVWR, # T-K7304725, **\$39,900**



2021 CHEVROLET 4500 14' Stake Bed, V8 Gas, Auto, 70K Miles, 14,500 GVWR, #T-MS200188, **\$31,900**



2022 ISUZU NQR DC. 14' Dump, L96 GM Gas, Auto, 70K Miles, 17,950 GVWR, # T-NSR01171, **\$64,900**

90 DAY POWERTRAIN WARRANTY AVAILABLE ON ALL CERTIFIED TRUCKS. INCLUDES INJECTORS AND TURBO



NATIONWIDE TRUCK PARTS LLC

1-800-457-8826

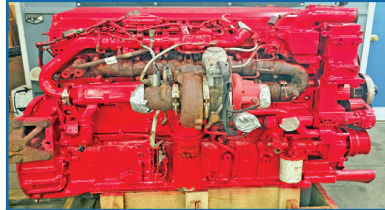
www.NationwideHeavyTruckParts.com

sales@nationwideheavytruckparts.com

11 S. Keyser Avenue - Taylor, PA 18517

**QUALITY USED HEAVY TRUCK PARTS, USED DIESEL ENGINES,
TRANSMISSIONS & MORE.**

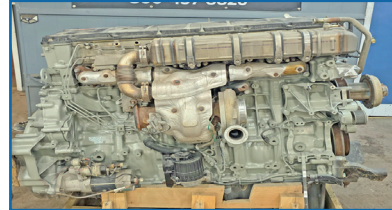
All Parts Tested & Sold With A Standard Warranty. Large Inventory - Call With Your Needs.



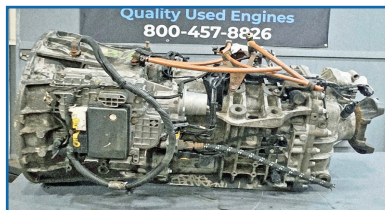
2014 ISX15 \$13,000



2012 Detroit DD15 \$12,000



2019 Detroit DD15 \$12,500



DT12 Transmissions \$3,500



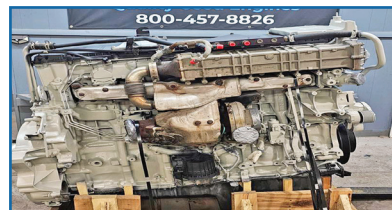
2013 Volvo D13 \$9,000



2012 Mack MP8 \$10,500



2012 ISX15 \$12,000



2015 Detroit DD13 \$12,000



2019 Cummins X15 \$16,500



2018 Paccar MX13 \$16,500



Late Model Rears



FRO Transmissions \$1,000



2009 Cummins ISX \$9,500



2012 Detroit DD13 \$12,500



**METROPOLITAN
TRUCK CENTER INC.**
1074 TURNPIKE ST
STOUGHTON, MA 02072
800-878-5491



*Family owned and
operated since 1980*

SPRING INTO ACTION WITH NEW EQUIPMENT!



**EBY "FLEX"
REMOVABLE-SIDES LANDSCAPE BODY**



**SWAPP HOGG DETACHABLE
BODIES**



**DURAMAG SERVICE BODIES
"S" SERIES**



AIR FLO STEEL & SS DUMP BODIES



RUGBY PLATFORM BODIES



DOWNEASTER LANDSCAPE BODIES



HEADACHE RACKS & TOOL BOXES



**LIFTGATES
TOMMY GATE, MAXON, THIEMAN, ANTHONY**



GALION STEEL & SS DUMP BODIES

www.metropolitantruck.com



CAT 3408 MOTOR. V8, CAT Power Take Off, Twin Disc Clutch, Runs Like New, **\$5,000,** East Windsor, CT 860-716-0226



Burrillville, RI • 401-633-4587

- Full Bucket Rebuilds • Cylinder Resealing
- Wear Plates • Adapter Replacement • Hardfacing
- General Maintenance



1989 AUTOCAR 10 WHEELER DUMP. Rebuilt CAT Engine, New Tires, Barn Door, Asphalt Chutes, Richardson Electric HD Load Cover, Pintle Hitch, Fleet Maintained, **\$16,000 OBO.** 401-447-2661 Or 401-737-6663



1989 KOEHRING LTR 110 CRANE. 1,461 Hours, **\$22,000.** 207-252-1191



CT Axle & Spindle Repair Ellington, CT 06029

860-281-4454 or 860-375-6045



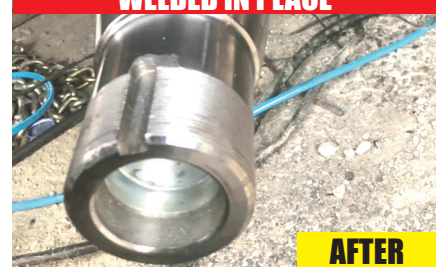
DRIVESHAFT SERVICE NOW AVAILABLE



TRAILER SPINDLE REPLACEMENT WELDED IN PLACE



TRUCK DRIVE SPINDLE REPLACEMENT WELDED IN PLACE



- Drive Spindles From 1 Ton To Class 8 Trucks • Trailer Spindles From 3,500# To Class 8 Axles
- Spindles can also be repaired by welding up the worn area and then remachining to factory spec. This includes tracing threads or remachining new threads.
- WELDING AND FABRICATION ALSO AVAILABLE**

A Completely Mobile Spindle Repair System. We Come To You! Serving CT, MA, RI & the Northeast
Visit Our Website At: ctaxleservice.com

WANTED!!! MACK TRUCKS

**CAT, DEERE, BOBCAT EQUIP
IN ANY CONDITION
IMMEDIATE PAYMENT**



CALL JOHNNY MACK

**johnnymack107@gmail.com
HARTFORD, CT 860-883-1186**



2014 VOLVO DD140B. Smooth Drum, Hydrostat, 3,000 Hours, **\$40,000.** 800-477-4963



KUBOTA V2203 DIESEL ENGINE. Used, Tested, Good Running, 4 Cylinder, 50 Gross HP Model, Can Be Used To Repower Your Used Equipment, Video Available Of Engine Running With Oil Pressure Gauge And Water, **\$2500.** 860-680-1841

EQUIPMENT FOR SALE • 401-640-4321



2020 PARADIGM HYDRO EXCAVATOR. Mounted on 2020 Freightliner, 33K Mileage, Cold Weather Package, High & Low Air Compressor. **\$239,000**



2016 FORD F550 DUMP. 6.7 Diesel, 4x4, 81K Miles, Auto Tarp Load Cover, Asphalt Chutes, Pintle, **\$40,000.**



2023 FORD F550 DUMP. 6.7 Diesel, 4x4, 6,519 Miles, Auto Tarp Load Cover, Asphalt Chutes, Pintle, **\$75,000.**



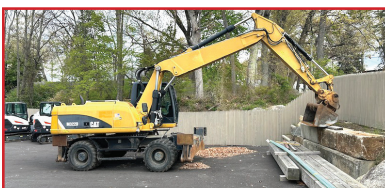
2019 FORD F450 STAKEBODY. 6.7 Diesel, 4x4, 8' Blade Tool Boxes, Pintle, 95K Miles, **\$45,000**



2020 INTERNATIONAL DUMP. Cummins 350 HP, Automatic, 33,000 GVW, 155K Milage, **\$70,000**



2018 FREIGHTLINER DUMP. Cummins, Automatic, 33,000 GVW, 169K Mileage, **\$70,000.**



2015 CAT M322D RUBBER TIRED EXCAVATOR. 8K Hours, Clean, Dry, Strong, Grade Bucket, Two Dig Buckets, **\$78,000.**



2023 BOBCAT E60. Long Arm, Deluxe Cab, Hyd Thumb, 684 Hours, Grade & Dig Buckets, **\$78,000.**
- **2023 BOBCAT E50.** Long Arm, Deluxe Cab, Hyd Thumb, 1190 Hours, Grade & Dig Buckets, **\$59,000.**



MCGOVERN
FORD AT DRUM HILL

Call Mike Smokler 603-493-6561



2026 F550 SUPER CAB DUMP. Pwr Slide Rear Window, Remote Start, Payload Upgrade Pkg., 4WD, Diesel, FN6549 **\$82,900**



NEW 2024 FORD E450 ROCKPORT SERVICE UTILITY VAN. V8, AUTO, AC, 14,500 GVW, STK#FM9969, **\$68,030.**



2026 FORD F550 SD XL AIR-FLO DUMP 4X4. V8, AUTO, AC, 18K GVW, POWER GRP, STK#FM10423, **\$101,165.**

OVER 75 SUPER DUTIES IN STOCK - COLORS AND CONFIGURATIONS



F350, F450, & F550 CHASSIS AVAILABLE



2026 FORD F350 SD SUPER CAB XL DUMP 4X4. 7.3L V8, AUTO, AC, 14K GVW, POWER GRP, STK#FM9996, **\$83,848.**



2026 F350 UTILITY. Super Cab, Diesel, 4X4, Polish Aluminum Wheels, Remote Start FN6763. **\$98,260**



NEW 2025 FORD TRANSIT 250 REFRIGERATED VAN. MEDIUM ROOF, V6, AUTO, AC, POWER GRP, STJ#FM9268. **\$83,185.**



2026 F450 SUPER CAB DUMP. 9' Stainless Steel Body, Diesel, 4WD, Work Surface, Dual Alternator, FN6576. **\$77,688**



NEW 2027 FORD F650 C&C. 6.7L POWER STROKE V8 DIESEL, 270 HP, AUTO, STK#FM10424, **\$90,415.**



2026 F350 DUMP. 4X4, 7.3L Gas, Remote Start, 9' Body, 2-3 Yd, FN6521. **\$71,000**



2026 F350 DUMP. Super Cab, 4X4, 7.3L Gas, Remote Start, 9' Body, 2-3 Yd, FN6520. **\$83,475**



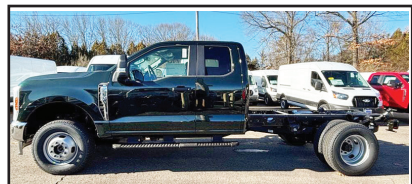
2026 FORD F350 SD SUPER CAB XL C&C 4X4. V8, AUTO, AC, 14K GVW, 168" WB, POWER GRP, STK#FM10069, **\$62,760.**



2026 E350 SERVICE VAN. 7.3L Gas, 11'3" Aluminum Body, 50.5" Rear Door Opening, FN7100 **\$76,497**



51 IN STOCK
2026 FORD TRANSIT 250 MEDIUM ROOF VAN. V6, AUTO, NAV, AC, POWER GRP, STK#FM9852, **\$52,739.**



2026 FORD F350 SD SUPER CAB XL C&C 4X4. V8, AUTO, AC, POWER GRP, 14K GVW, STK#FM9987, **\$63,420.**



MichaelSmokler@mcgovernauto.com

WE TAKE ANYTHING IN TRADE

Jolly John's

Truck & Equipment

FINANCING AVAILABLE

Find us on:  **facebook**

WE PAY CASH FOR YOUR TRUCKS & EQUIPMENT



2022 CATERPILLAR 246D3 SKID STEER. CAT C3.3 4 CYL TURBO DIESEL, HEAT, A/C, REARVIEW CAMERA, HIGH FLOW XPS AUX HYD, AUX ELEC CONNECTOR, HYD COUPLER, GP BUCKET, METER READS 2929 HOURS. **\$39,700**



2018 CATERPILLAR 289D TRACK SKID STEER. 4 CYL CAT TURBO DIESEL, HEAT, A/C, REARVIEW CAMERA, 18" TRACK PADS, BACKFILL BLADE, SWING BOOM, AUX HYD, 7' STICK, HYD COUPLER, BUCKET WITH TEETH, METER READS 2643 HOURS. **\$39,700**



2017 BOBCAT S650 SKID STEER. 4 CYL BOBCAT TURBO DIESEL, HEAT, A/C, KEYLESS START, SELECTABLE JOYSTICK CONTROLS, HIGH FLOW AUX HYD, HYD COUPLER, GP BUCKET WITH BOCE, METER READS 1935 HOURS, S/N ALJ820261 **\$36,500**

FINANCING AVAILABLE



2017 FORD F350 SUPER DUTY 4X4. Crew Cab, V8 6.2L Gas, DRW, 9' Knapheide Service Body, Air Hose Reel, Strobe Lights, Aux Lighting. Ready to go. **\$30,900**



2020 HINO 195 REEFER. Hino J05E-TP 5.1L Diesel, 210 HP, Auto, Thermo King T-880R Whisper Reefer, Kidron 16' x 96" x 78" Body, Liftgate, Professionally Maintained Fleet Vehicle, Recently Serviced, Ready To Work. **\$35,900**



2013 CHEVROLET C2500 SILVERADO. Fleet Owned & Serviced, 6.0L V8, Strobe Lights, Brandfx 8' Service Body Lots Of Storage Space & Rust Free. **\$15,900**



2014 GENIE S-65, 65' Max Platform Height, 500 lb Max Weight Capacity, Jib, Power To Platform, Perkins 4 Cylinder 2.2 L Diesel Engine, 355/55D625 Tires **\$26,500**



2016 TEREX R265T SKID STEER. 4 Cyl Cummins, Heat & A/C, 2 Speed Travel, Aux Hyd, Aux Electrical Connector, Hyd Coupler, GP Bucket w/BOCE, Freshly Serviced, New Tracks, **\$24,900**



2012 KENWORTH T470 T/A DUMP TRUCK, Paccar PX-8, 8.3L Diesel, 330 HP, Eaton Fuller 8LL Manual Trans, 18K & 46K, PTO, Brandon 14' Steel Body, Just Serviced & Ready To Work. **\$62,900**



2018 LAY-MOR SM-450 Enclosed Cab, Air Conditioner, 96" Broom, Water System., Kubota V3307-CR-TI-EF02 4 Cyl 54.6 kW 3.3L Diesel Engine, Freshly Serviced, Ready To Work, **\$29,500**



2016 DRYAIR 300GTS. 223000 BTU Ground Heater, Furnace Oil Fueled, Single Phase, 120 V Input, No Generator Present, Ball Hitch Carrier Trailer, Electric Brakes, No Title - Sold With Bill Of Sale Only. **\$16,900**



2007 FORD F450XL FLATBED, V8 Diesel Engine, 15' x 96" Bed, Liftgate, Aluminum Tool Boxes, Power Windows And Locks, Freshly Serviced. **\$9,900**

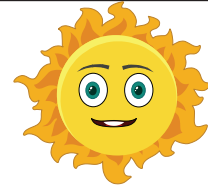
Call Nick 860-861-1326 or Mike 860-861-4199
www.jollyjohnsequipment.com



SANDER CHAINS
USA Made
All Makes
300 In Stock

S.A. McLean

207-793-4267



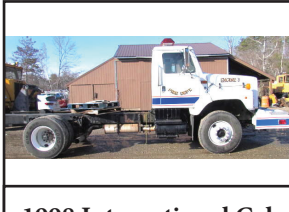
622 Elm St, Limerick, ME • www.s-a-mclean.com



INTERNATIONAL. 4x4,
Automatic,
Brush Fire Truck



12' HIGHWAY POWER
ANGLE V- PLOW



1998 International Cab
& Chassis. 14k Miles,
Automatic, 300 Cummins



13' SWENSON.
Stainless Steel Dump
& Sander Body



ASPHALT HOT
BOX. 4 Ton



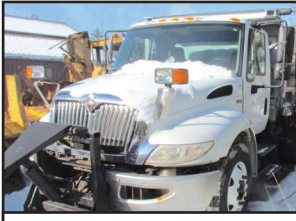
10' DUMP/SANDER
BODY.
Stainless Steel



ASPHALT HOT
BOX. Mini Falcon



TRACKLESS MT5. Diesel
Power, 7' Snowblower



2013 INTERNATIONAL
TRUCK DUMP. Sander Body,
Under CDL



1994 FORD F700 CAB &
CHASSIS. Cummins, Automatic,
20k Miles, Under CDL



CAT 966B LOADER.



HYUNDAI 757-7.
Wheel Loader



1994 GMC 3500
UTILITY. 4x4, V8 Gas,
44k Miles, Rust Free



WARREN 10' ALUMINUM
DUMP BODY



FORD F550. Crew Cab,
15k Miles, Diesel, 4x4



1998 INTERNATIONAL 4800.
Four Wheel Drive, Automatic,
14k Miles, 14 Ft Of Frame.



STEWART STEVENSON
4X4. Automatic, 1,000
Gallon Tank Brush Truck



INTERNATIONAL 2574 CAB &
CHASSIS. Automatic, 300 Cummins,
24k Miles



2005 GMC 5500.
14' Aluminum Dump
Flat Bed, 4x4, 30k Miles



2004 INTERNATIONAL
CAB & CHASSIS. 4x4, DT
466, Automatic

CAREY AUTO INC

TRUCK EQUIPMENT SALES



37 County Road
Route 106
Plympton MA 02367
PH: 781-582-1378
FAX: 781-585-4438



**GALION BODIES IN STOCK NOW!
CALL FOR PRICING.**



**2007 PETERBILT PB340:PX8 ENGINE, 10
SPEED, 146K MILES, NEWER LANAU DUMP
BODY, 54,600 GVW. \$78,000.**



**HOOKLIFT TRUCKS IN STOCK NOW!
INSTALLATIONS: PIONEER TARPS
INSTALLED. CALL FOR PRICING.**



**CUSTOM ALUMINUM BEDS/STEEL
CALL FOR QUOTE**



**LADAU SHD DUMP BODIES. INSTALLED.
CASH-N-CARRY. CALL FOR PRICING.**



**2017 Kenworth T-800 Paccar MX-13, Allison
auto, 195,000 miles with Palfinger cable pull
hoist system, tarp system, \$142,000**



**2015 Peterbilt Model 337: Paccar PX-9, Allison auto 131,000 miles
with Ampliroll AL100 Hook Lift, Pioneer tarp system, 33,000 GVW.
\$91,000**



**READY TO GO COMPLETE TRUCK PACKAGES.
LOTS OF OPTIONS AVAILABLE
New & Used Trucks Ready To Go!**



**CM
ALUMINUM
FLATBEDS
IN STOCK
NOW! MANY
SIZES.
CALL FOR
PRICING**



**STEEL FLATBEDS
IN STOCK NOW!
MANY SIZES.
CALL FOR
PRICING.**

**SALES,
SERVICE,
PARTS**

**CALL TOLL FREE: 781-582-1378
WWW.CAREYTRUCKEQUIPMENT.COM**

**CUSTOM METAL
FABRICATION
AVAILABLE**

NORTHEAST TRAILER



20 Business Park Drive
Smithfield, RI 02917
Hours: M-F 8:30-4:30

401-941-4445



**2015 KALMAR OTTAWA
Yard Tractor, Freshly
Painted, \$22,000**



**70+ CARTAGE TRAILERS
53' Swing or Roll Door
For Sale or Rent**



**2015 UTILITY 53'x 102" x 13'6"
Rfr. Swing Door, Carrier X 7,300
Unit, 17,000 Hours, \$18,500**



**(4) 2023 20' x 8' Refrigerated
Shipping Containers, Tri-Fold
Swing Doors, For Sale or Rent**



**4 EXPORT FLATBEDS
\$3,750 Each**



**20 FOOT CONTAINERS
Starting at \$95.00
Per Month For Rent**



**2009 WABASH 48'x 102" x 13'6"
Refrigerated Trailer, No Reefer Unit
6,600Lb. Maxon Lift Gate, \$9,500**



**2009 GREAT DANE Trailer
53'x 102" x 13'6", Swing Door, Air
Ride, Aluminum Roof, \$7,000**



**2005-2008 53' ROLL DOORS
Aluminum Roof, Spring Ride
\$7,500 Each**



**SPRING AND AIR RIDE
TANDEMS
\$2,500 Spring Ride
\$3,500 Air Ride**



**4,000 GALLON
ABOVE GROUND FUEL TANK
\$5,500**



**(3) 2022 1-Trip High Cube Shipping
Containers, 1 With Single Door-\$8,500
2 With Double Doors-\$9,250 Each**

WWW.NETRAILER.COM

WWW.TRUCKANDEQUIPMENTPOST.COM



SALES & RENTALS INC.
T-QUIP

DAILY / WEEKLY / MONTHLY

EQUIPMENT RENTALS

**WHEEL LOADERS ◦ ROCK TRUCKS ◦ EXCAVATORS
ROLLERS ◦ SKID STEERS ◦ CRUSHERS ◦ SCREENERS
DOZERS ◦ BACKHOES ◦ GRADERS ◦ TELEHANDLERS
TRACKED DUMPERS ◦ SPECIALTY ATTACHMENTS**



☎ 603-623-3669 🌐 www.TQUIP.com



REED TRUCK SERVICES

24/7 Heavy Duty Towing, Accident Recovery & Emergency Road Service **FLEETRITE®**

**TRADES
ACCEPTED**

**939 John Stark
Hwy.
Newport, NH**



**287 Washington St.
Claremont, NH**

**HELP
WANTED**

**• Authorized International Truck & Cummins • Sales • Service • Parts • Warranty •
All Makes Commercial Truck Parts, Sales, and Service**

Email: scott@reedtruck.com • www.ReedTruck.com • 1-800-542-5032



**2025 INTERNATIONAL HV507. L9
Cummins, Allison 3500, 20 F/A, 30 R/A,
Chalmers Susp. All Municipal Options!**



SEVERAL AVAILABLE
**2024 INTERNATIONAL CV515 4x4.
Fully Equipped With Plow Gear And Dump
Body.**



IN STOCK
**2026 INTERNATIONAL HX620.
X15@565hp, 4700 RDS Allison, 20 F/A,
46 R/A, Ready For A 15' Dump.**



**2026 INTERNATIONAL HV613. A26,
Allison 4500, 22 F/A, 46 Locking Rears,
Hend HMX Suspension, In Stock!!**



DUMP BODY & PLOW GEAR BEING INSTALLED
**2024 INTERNATIONAL HX520. X15 Cummins,
Allison Auto 4500, 20/46 Axles, Air Ride, Aluminum
Wheels, Dump Body & Plow Gear Being Installed**



**SEVERAL USED PLOW, SANDING
TRUCKS. International, Sterling,
Freightliner, Tandems And Single Axles.**



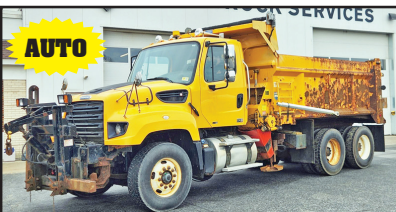
**2006 FREIGHTLINER M2 112 LANAU DUMP
BODY. 450 HP Mercedes, 16908LL Trans, 18 F/A,
46 R/A, Solid Truck, Used For Paving. \$47,500.**



**2010 FREIGHTLINER SLEEPER.
14 F/A, 46 R/A, DD15, 18 Spd, Wet System, Clean
Solid Truck, Used In Paving Company. \$36,500.**



**2014 GMC/COLLINS BUS. Gas,
Auto, Wheel Chair Lift. \$8,500.**



AUTO
**2012 FREIGHTLINER SD114. DD13 Engine,
Allison AUTO Trans, Everest 14' Live Floor Body,
Truck, Includes Plow And Wing Blades. Well
Maintained Muni Trade, \$49,900.**



**2009 FREIGHTLINER BUS.
Cummins, Allison, 2 Full Size Freightliners &
2 International CE300 Buses
Priced From \$1,500-\$5,500.**



**2013 SWENSON S STEEL
9' SANDER. Good Condition,
\$4,800.**

JOSEPH

EQUIPMENT COMPANY

300 GAY ST • MANCHESTER, NH 03103

SATURDAYS • WE ARE OPEN ALL DAY

PHONE: 603-641-8608

FAX: 603-666-3716



**293 NORTH - EXIT 2 -
LEFT ONTO BROWN AVE -
RIGHT ONTO WINSTON ST. - LEFT ONTO GAY ST.
300 GAY STREET ON THE RIGHT**



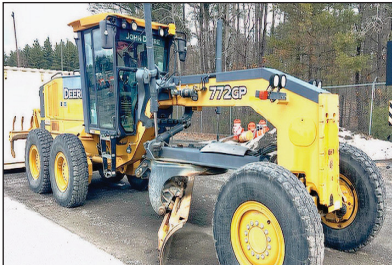
100 STORAGE CONTAINERS TO CHOOSE FROM. 20', 40', and 40' High Cube. Call For More Information.



2013 KOMATSU D155AX-7 DOZER. 8900 Hours, Sigma Blade With 3 Shank Ripper, Rebuilt Fuel Rail, Replaced DPF Sensors, Alternator & Belt, Fan Belt, Recharged A/C, New Compressor, New Batteries, New Corner Bits On Blade, EGR Servo Replaced, DPF Was Baked & Cleaned.. \$125,000. Call For More Information.



2013 VOLVO EW180D Rubber Tired Excavator, Blade, Outriggers, Roto Bucket And GP Bucket, 14,000 Hours. Call For More Information.



2010 DEERE GRADER. Model 772GDP, Equipped With Trimble GPS System, Rear Scarifier, 18K Hours, Excellent Condition. Call For More Information.



2012 GENIE GTH-5519 COMPACT TELEHANDLER. Hours: 2,200, Capacity: 5,500 Lbs, Max Lift Height: 19', 74 HP, Three-Mode Steering, Full-Time 4WD, Full Cab, Good Rubber, One Owner, 3rd Valve. Call For More Information.



IN STOCK - 2025 FONTAINE LXTN40. 40 Ton Extendable, 34' Closed - 60' Open. Also Available 29' Closed - 50' Open. Tandem Axle, Set Up For 3rd, Air Ride, Non Ground Bearing, 102" Swing Clearance, 20" Deck Height, Alum Wheels. In Stock, No Waiting. Available In Manchester NH And At The Factory In Springville AL. 3rd And 4th Axles Available. Call For More Information.



1976 ROGERS 100 TON. Quad Axle, 11' Wide, 37' Usable Deck, Recently Completely Rebuilt, Excellent Condition, Currently Located In AZ. Call For More Information.



2019 PUP TRAILERS. (14 Available To Choose From, 28' Long, 102" Wide, 13'6" High. Call For More Information.



2017 LIDDELL 60 TON DSR. 4 Axle, 26' DSR Deck, 9' Wide, 8'6" Bogie, 26" Beam Deck, 4th Axle, Alum Wheels, Gooseneck Extension, Power Pack, Excellent Shape. Call For More Information.



2012 FONTAINE 55 TON DSR. 26 Ft DECK, 5 Ft DSR Extension And 28 Foot Beam Deck, Fontaine 4th Axle And Spreader Bar, Alum Wheels, Org Paint, One Owner, 275 Tires, Lift On 3rd. Call For More Information.



2011 CATERPILLAR 336 DL EXCAVATOR. CAT Hyd Thumb, New Bottom, New Hyd Pump, New Lift Cylinders, New Stick Cylinder, Paperwork. Long And Long, Excellent Shape. Price: \$85,000.



2019 FONTAINE 53 - 90. Tri Axle, Air Ride, Slider, Like New Condition, Southern Trailer, No Rust. 3 Available To Choose From Ranging From 2019 To 2016. Call For More Information.

www.josephequipment.com

Trades Welcome • Financing Available

THIS AD IS COPYRIGHTED & OWNED BY TRUCK AND EQUIPMENT POST

JOSEPH EQUIPMENT COMPANY

300 GAY ST • MANCHESTER, NH 03103

SATURDAYS • WE ARE OPEN ALL DAY

PHONE: 603-641-8608

FAX: 603-666-3716



**293 NORTH - EXIT 2 -
LEFT ONTO BROWN AVE -
RIGHT ONTO WINSTON ST.- LEFT ONTO GAY ST.
300 GAY STREET ON THE RIGHT**



2019 CATERPILLAR TL943C TELEHANDLER.
With Forks And Bucket, 6K Original Hours,
Excellent Shape, Asking \$52,500.



1999 NORDBERG LT105 JAW CRUSHER.
S/N: 1390, CAT Diesel Powered, 42 X 28 Opening,
Remote Controlled Track And Operations.
Call For More Information.



2005 CATERPILLAR 315CL EXCAVATOR. Meter
Reads 6400, Cat Hyd Thumb, Solid CAT Digging
Bucket With Fiat Digging Teeth, Full Glass, Joystick
Controls, Dual Speed Travel, Working Lights.
Call For More Information.



2020 JOHN DEERE 304L.
1 Yard Loader, Quick Disconnect, 3rd Valve,
Forks And Bucket, A/C, Road Speed, 1200
Hours, Like New Condition.
Call For More Information.



1997 CATERPILLAR 960F WHEEL LOADER.
Sandblasted And Painted, New Decals, A/C, Scale,
23.5 X 25 Rubber, Bolt On Cutting Edge, Very Good
Condition. **Call For More Information.**



2015 FONTAINE MAG80 3+3+3 TRAILER. 28'
FLD, 9' Wide, Available With 3 Axle Jeep, Spreader,
3 Independent Axles & Flip Boxes, Excellent
Condition, Southern Trailer From TX.
Call For More Information.



2013 ROGERS 60 TON. 4 Axle, 25' Flat Level
Deck, 102" Wide, Non-Ground Bearing, 3 Axle With
Pin On 3rd, Lift On 3rd And 4th Axles, Full Fenders,
Alum Wheels, 275 Rubber, One Owner,
Excellent Shape. **Call For More Information.**



1999 CAT 950G WHEEL LOADER. Reman CAT
Engine Meter Reads 13,488, Bucket, Heat, A/C,
Full Glass, Working Lights, Ride Control, Fleet
Maintained. **Call For More Information.**



2006 ROGERS 55 TON DSR LOWBED TRAILER.
25' Deck, 3 Axle, Lift On 3rd, Air Ride, NGB, Full
Fenders, All New Suspension And Brakes,
Original Paint. **Call For More Information.**



**1994 CATERPILLAR 950F SERIES 2 WHEEL
LOADER.** Meter Reads 135,356, GPPD 23.5 X
25 Rubber. LED Lighting, Full Glass, Ride Control.
Call For More Information.



2009 CATERPILLAR 924H WHEEL LOADER.
Quick Disconnect, New Motor From CAT With
Paperwork, Very Good Condition.
Call For More Information.



2018 MTM GRANITE STEEL DUMP TRAILER.
26' Heavy Duty Steel Dump With High Lift Gate,
Single Point Suspension, Spring Ride, Alum
Wheels, 24 Inch Tires, Electric Canvas, One
Owner, Original Paint, Excellent Shape.
Call For More Information.

www.josephequipment.com

Trades Welcome • Financing Available

THIS AD IS COPYRIGHTED & OWNED BY TRUCK AND EQUIPMENT POST

JOSEPH

EQUIPMENT COMPANY

300 GAY ST • MANCHESTER, NH 03103

SATURDAYS • WE ARE OPEN ALL DAY

PHONE: 603-641-8608

FAX: 603-666-3716



**293 NORTH - EXIT 2 -
LEFT ONTO BROWN AVE -
RIGHT ONTO WINSTON ST.- LEFT ONTO GAY ST.
300 GAY STREET ON THE RIGHT**



2021 WESTERN STAR 4900EX TRACTOR. One Owner, Allison Automatic, 500 Detroit, 295,912 Miles, 46K Rears, Full Locking Rears, 2 Line Wet System, Fleet Maintained, Dual Stacks, Alum Wheels, A/C, P/S, Original Paint. **Call For More Information.**



2002 MACK CH613. 427, 13 Speed, From CA Fire Dept Lowbed Tractor, 118K Original Miles. **Call For More Information.**



2021 WESTERN STAR 4900. Allison Automatic, 550 HP, DT15 Engine, Full Rears, 2 Line Wet System, Fleet Maintained, Dual Stacks, Alum Wheels, A/C, P/S, Original Paint, One Owner, 2 Available to Choose. **Call For More Information.**



2006 MACK GRANITE. 1500 Gallon John Deere Diesel Hydro Seeder, 370 HP, 10 Speed, 46K Rears, 20K Front, 200K Original Miles, Excellent Shape. **Call For More Information**



1994 PETERBILT. CAT Power, Wet System, Spring Ride, Was Working Daily, Asking \$22,500. **Call For More Information**



2015 MACK CH TANDEM AXLE TRACTOR. 505 HP, 12 Speed Automatic, Miles: 451,000, Air Ride, Wet System, Sliding 5th Wheel, Aluminum Wheels, Dual Stacks, One Owner, Working Daily. **Call For More Information.**



1995 MACK CH. 460, 12 Speed, 44K Lb. Rears, Spring Ride, New Motor, New Hood, New Tires, Wet System, Asking \$27,500. **Call For More Information.**



2015 KENWORTH T880. Miles: 571K, 500 Paccar, Automatic, 3.91 Gear Ratio, 46K Rears, Full Lockers, 24.5 Rubber, A/C, Power Steering, Air Ride, Aluminum Wheels, Fleet Maintained, One Owner, **Call For More Information.**



2019 PETERBILT 389. 605 Cummins Power, 18 Speed, 4 Axle, 46K Rears, Air Ride, 300" Wheel Base, Headache Rack, Full Fenders, 60" Bunk, Loaded, **Call For More Information.**



1998 MACK RD688SX DUMP TRUCK. 350 HP, Fuller 8 Speed, 58 Rears All Redone By Southeast Truck, 24" Rubber, Rebuilt Engine, Double Frame, Working Daily, Heated Body, New Brakes All Around, New King Pins, New Clutch/Bell Housing, All New Rear Suspension. **Call For More Information.**



1994 PETERBILT. CAT Power, 10 Speed, 40K Lb. Rears, Wet System, Asking \$22,500. **Call For More Information.**



2015 FORD F750 WATER TRUCK. 2000 Gallon Tank, Single Axle, Automatic, Diesel, Front And Rear Spray Heads And Hose Reel, 8K Original Miles. **Call For More Information.**

www.josephequipment.com

Trades Welcome • Financing Available

THIS AD IS COPYRIGHTED & OWNED BY TRUCK AND EQUIPMENT POST

JOSEPH

EQUIPMENT COMPANY

300 GAY ST • MANCHESTER, NH 03103

PHONE: 603-641-8608

OPEN ALL DAY SATURDAY



FONTAINE

FAX: 603-666-3716



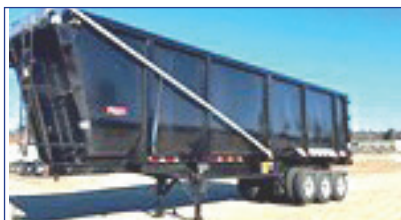
2027 FONTAINE RENEGADE LXLN12 - 12 Inch Loaded Deck Height With 4 Inch Ground Clearance When Fully Loaded, 30 Tons In 16 Feet On Tandem Bogie Or 30 Tons In 20 Feet With 3rd Axle Flip, Low Profile, 3rd Axle Capability, 32 Feet 11 Clear Deck Length. **IN STOCK, NO WAITING, CALL FOR MORE INFORMATION.**



2027 FONTAINE MAGNITUDE 50 Tri Axle, Set Up For 4Th, 50 Ton, Air Ride, 24' Deck, 20" Loaded Deck Height, Alum Or Steel Wheels, Strobe Lights, Outriggers And D-Rings. **Call For More Information.**



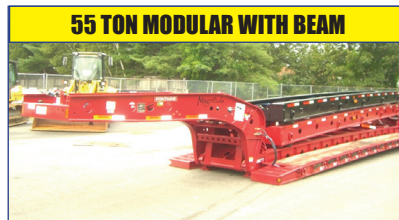
2027 KRUZ TERMINATOR, 26' Steel Frame, Single Point Suspension, 2-Way Gate, 11 X 24.5 Tires, Alum Wheels, 2 Speed Landing Gear. **Call For More Information.**



IN STOCK - NO WAITING - 2025 GALLEGOS 42' FRAME TYPE DUMP TRAILER. 96 YARD, 102" WIDE, 90" SIDES, TRI AXLE, HENDRICKSON AIR RIDE INTRAXX, ABS BRAKES, LIFT ON FRONT AXLE, FLIP N GO ELECTRIC CANVAS, LED LIGHTS, BARN DOOR. **CALL FOR MORE INFORMATION.**



2027 KRUZ 26' STEEL TUB, Aluminum Frame Dump Trailer, Air Ride, 2 Axle, Alum Wheels, 450 Hardox, 24.5 16 Ply Tires. **TAKING ORDERS Call For More Information.**



55 TON MODULAR WITH BEAM

2027 FONTAINE 55H MODULAR DSR, Beam Deck Also Available, Tri Axle, 60" Axle Spacing, Hydraulic Removable, Non Ground Bearing, Set Up For Gooseneck Ext, Spreader Bar And 4Th Axle Flip, Air Ride, Alum Wheels, 22.5 Rubber. **Call For More Information.**



2027 FONTAINE 60 TON MODULAR 2+3+1, 26' Dsr, 184" Swing Clearance, Set Up For 2 Axle Jeep, 14" Deck Height, Air Ride, Alum Wheels, 275/70R X 22.5 Rubber, Non Ground Bearing. **Call For More Information.**



IN STOCK NO WAITING. FONTAINE MAGNITUDE 65 2+3+2 CAPABLE, 28" DROP SIDE RAIL DECK, 3 AXLE, SET UP FOR 4 AXLE, 14.75" DECK HEIGHT, 102" WIDE, 60.5" AXLE SPACING, EQ2 SPREADER BAR WITH INTERMEDIATE AXLE, HYDRAULIC REMOVABLE, NON GROUND BEARING WITH 2 PIN POSITION AT 114" AND 102", TRIPLE CYLINDER, 70" HYDRAULIC FLIP BOX, HEAVY DUTY SNAP IN OUTRIGGERS, D-RINGS, ALUM WHEELS, 275/70R X 22.5 TIRES. **CALL FOR MORE INFORMATION.**



2027 KRUZ, 70 Yard, Tri Axle, 70,000 Single Point, Lift On Third Axle, 1/4 Inch 450 Hardox, Floor, Sides, Nose, Gate, 12 Panel Gate, 11 X 24.5 Rubber, Alum Wheels. **Taking Orders. Call For More Information.**



2027 FONTAINE TRAVERSE HYDRAULIC TAIL, 48' Long, 102" Wide, Air Ride, Hydraulic Upper Deck, Hydraulic Winch, Remote Control, Alum Wheels, Dual Controls. **Taking Orders Call For More Information.**



2027 FONTAINE 60 TON MODULAR, 26' Dsr, 60" Axle Spacing, 184" Swing Clearance, Set Up For 2 Axle Jeep, 14" Deck Height, Air Ride, Alum Wheels, 275/70R X 22.5 Rubber, Non Ground Bearing, **In Stock. Call For More Information.**



3+3+3

1998 KAYLN SIEBERT, 75Ton 3+3+3, Air Ride, West Coast Bogie, 3 Axle, Air Ride Jeep With Power Tower, 10' Wide Trailer, 60' Overall Length, 48' Of Useable Deck, 275/70 X 22.5 Rubber, Sandblasted & Painted, Excellent Shape, Alum Wheels On Jeep And Booster. **Call For More Information.**

Trades Welcome • Financing Available • www.josephequipment.com

THIS AD IS COPYRIGHTED & OWNED BY TRUCK AND EQUIPMENT POST

TRAILER RENTALS • TRAILER RENTALS • TRAILER RENTALS •

WE RENT STEP DECKS • LOW BEDS • HI FLATS • DEMO/SCRAP • TRAILERS

JOSEPH PLET

EQUIPMENT COMPANY

300 GAY ST. • Manchester, NH 03103



NOW TAKING ORDERS FOR DUMP TRAILERS AND LOWBEDS FOR SPRING AND SUMMER DELIVERY

14" DECK HEIGHT

IN STOCK, NO WAITING

55 TON EXTENDABLE

**PHONE: 603-641-8608
FAX: 603-666-3716**



NEW 2027 FONTAINE RENEGADE LXL, 14" Deck Height, 30" Deck W/ 6" Ground Clearance, 2 Axle, Set Up For 3rd Hydraulic Detachable Or Mechanical Detachable. In Stock, No Waiting. Call For More Information



2027 FONTAINE MAGNITUDE 603T Modular Drop Side Rail With 28" Deck, Hydraulic Removable Neck, Non Ground Bearing, Air Ride, Tri Axle, Third Axle Lift, Set Up For 4Th, Alum Wheels, 275/70 X 22.5 Tires, Loaded. Call For More Information.

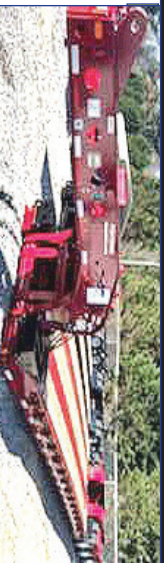


2027 FONTAINE MAGNITUDE 59MX, 55 Ton Extendable Trailer, 30" To 50", Modular, Detaches Both Ends, Hyd Removable, Non Ground Bearing, 20" Deck Height, Will Take 10" Deck Ext For A Total Of 60", 275 Rubber, Tri Axle, Air Lift On 3rd, Set Up For 4Th, Set Up For Gooseneck. Ext. Call For More Information

WE RENT WALKING FLOORS • DUMPS • HIGH FLAT EXTENDABLES • JEEPS



NEW 2027 FONTAINE SPECIALIZED MAGNITUDE 55L, Tri Axle, Air Ride, Set Up Of 4Th Axle, Non Ground Bearing, 25" Deck, Led Lights, Aluminum Wheels, Stroke Light Package, Lift On 3rd Axle, 2 Pin Position, Loaded. In Stock No Waiting. Call For More Information



IN STOCK - 2027 FONTAINE MAGNITUDE 60HD-4KX, Deck Extends From 30' To 51', 65 Ton When Closed, Built To Handle A 60 Ton Load With Ease, 30" Clear Deck Length Extends To 51', 22" Loaded Deck Height, 6" Ground Clearance, 7 Position Hydraulic Detachable Gooseneck, 7 Position Air Ride Tri-axle Bogie, 402 Deep Ready, 36" And 63" Flip Box, Ready, 60/90 Flip Axle Ready, EQ2 Spreader Bar Ready, Loaded. Call For More Information.



2027 FONTAINE WORKHORSE 59LCC FLD, Tri Axle, Lift On Third, Air Ride, Hydraulic 4th Axle Flip, Air Lift On Third, 18" Deck Height, 28" Deck, Low Boom Well, Covered Rear Bogie, Dual Cam Pawl Assembly With 7 Ride Height Positions, Removable Kingpin At 108 Inch Radius, Alternate Kingpin At 96" Radius, Load Scale, Tire Inflation, Air Controls, 275 Rubber, Alum Wheels. In Stock, No Waiting. Call For More Information.

70 TON 2+3+2

WE RENT STINGERS • SPREADER BARS • DOUBLE DROP EXTENSIBLES TRAILERS



2027 FONTAINE 704/2+3+2 DROP SIDE TRAIL, 4 Axle, 28" Deck, Hydraulic Detachable, In Stock, No Waiting, Non Ground Bearing, 102" Wide, 65" Flip Box, Spreader Bar And 352J Jeep, Alum Wheels, 275/70R X 22.5 Tires, 28" Beam Deck Available. Call For More Information.



NEW 2027 FONTAINE 55 TON, Drop Side Rail, Tri Axle, Air Ride, Set Up For 4Th, Non Ground Bearing, Led Lights, Aluminum Wheels, Stroke Lights, Loaded. In Stock No Waiting. Call For More Information



NEW 2027 SPECIALIZED 55 TON BEAM TRAILER, 3+1 Modular, NGB, Detach Both Ends, T/A, Air, Lift On 3rd, Set Up 4Th, Set Up For Gooseneck/Extension, Call For More Information

TRAILER RENTALS • TRAILER RENTALS • TRAILER RENTALS •

Trades Welcome • Financing Available • www.josephequipment.com

THIS AD IS COPYRIGHTED & OWNED BY TRELICK AND EQUIPMENT POST



Buyer - Seller - Swapper