

SERVING NEW ENGLAND

FREE

TRUCK AND EQUIPMENT POST

BUYER - SELLER - SWAPPER



2025 PETERBILT 589. CUMMINS 605 HP, 18 SPEED, 13,500 FRT AXLE, 46,000 REARS, 3:73 RATIO, 250" WHEELBASE, 121" HOOD, LOADED UP NICE, BOW, NH 603-225-6666



BARFORD SR165 SREENER-SCALPER. TRIPLE DECK, 5' X 16' SCALPER SCREENER, BRAND NEW, \$295,000 603-399-5029



2021 ISUZU NPR-HD 16' DRY VAN. DIESEL, 94K, 14,500 GVW, 1500LB MAXON TUCK-A-WAY LIFTGATE, ISUZU EXT WARR AVAIL., \$52,900. METHUEN, MA 978-686-1800



2500 GALLON TANK. CONVERTED TO WATER, READY TO MOUNT, \$8500. SOUTH PARIS, ME 978-314-1413



2024 BRAVO HD TRADESMEN. 9,999 GVWR, DOUBLE REAR DOORS, ON SALE \$17,950. 860-649-7223

Optative Group

**INTERNET & PRINT
FOR ONLY \$28.00**

www.TruckAndEquipmentPost.com

**Issue 22-23
JUNE 12th, 2024**

888-887-0505


MAXX-D
Norfolk Power Equipment (508)384-0011 www.norfolkpower.com


MAXX-D U4X8318 18' x 83" 10K TANDEM AXLE UTILITY. 2-5.2K BRAKE AXLES, 2- 5/16" ADJ COUPLER, 1 DOVETAIL/ 4' SPRING GATE, 9,990 LB GVWR, \$7,750.00



MAXX-D U3X8318 14' x 83" 7K TANDEM AXLE UTILITY. 2-3.5K BRAKE AXLES, 2X8 TREATED WOOD FLOOR, 7,000 LB GVWR, \$6,999.99



MAXX-D U5X8318 20' x 83" 14K ANGLE TANDEM AXLE. 2-7K ELECTRIC BRAKE AXLES, 2- 5/16" ADJ COUPLER, 1-10K DROP LEG JACK, 16,000 LB GVWR, \$9,599.99



MAXX-D DKX8314 14' x 83" 14K 83" DUMP TRAILER. 2-7K ELECTRIC BRAKE AXLES, 2- 5/16" ADJ COUPLER, 10 GAUGE FLOOR AND SIDES, 16,000 LB GVWR, \$14,900.00



MAXX-D DKX8314 14' x 83" 14K 83" DUMP TRAILER. 2-7K ELECTRIC BRAKE AXLES, 2- 5/16" ADJ COUPLER, 10 GAUGE FLOOR AND SIDES, 1-BEAM TONGUE W/ TOOLBOX, 16,000 LB GVWR, \$14,900.00



MAXX-D ROX8314G-065284, 14'x83" 14K GOOSENECK ROLL OFF. 2-8K ELECTRIC BRAKE AXLES LIPPERT, 2 5/16" 30K ROUND GN COUPLER, STANDARD HEIGHT I BEAM NECK, 17,500 LB GVWR, \$22,999.00



MAXX-D T8X10224-059447, 24'x102" 14K HD CHANNEL POWER TILT. WELD 4 D-RINGS BETWEEN THE FENDERS, 2-8K ELECTRIC BRAKE AXLES LIPPERT, 2- 5/16" ADJ COUPLER, 2X8 TREATED WOOD FLOOR, 16,000 LB GVWR, \$17,500.00



MAXX-D DJX8316, 16' x 83" 14K 83" I-BEAM DUMP TRAILER. 2-8K ELECTRIC BRAKE AXLES LIPPERT, 2- 5/16" ADJ COUPLER, 3/16" FLOOR ONLY/10 GAUGE SIDES, 8" X 15LB I-BEAM FRAME W/ 6X20 HOIST, 16,000 LB GVWR, \$24,999.00



MAXX-D DTX8316-071710, 16'x83"-14K 83" TELESCOPING DUMP. 2-8K ELECTRIC BRAKE AXLES LIPPERT, 2- 5/16" ADJ COUPLER, 3/16" FLOOR ONLY/10 GAUGE SIDES, 8" X 15LB I-BEAM FRAME W/ TELESCOPING CYLLINDER, 17,500 LB GVWR, \$20,200.00



MAXX-D DTX8316-071710, 16'x83"-14K 83" TELESCOPING DUMP. 2- 5/16" ADJ COUPLER, 3/16" FLOOR ONLY/10 GAUGE SIDES, 8" X 15LB I-BEAM FRAME W/ TELESCOPING CYLINDER, I-BEAM TONGUE W/ TOOLBOX, 17,500 LB GVWR, \$19,999.00



MAXX-D U3X8316, 16' x 83" 7K TANDEM AXLE UTILITY. 2-3.5K BRAKE AXLES, 2" ADJ COUPLER, 2X8 TREATED WOOD FLOOR, 2x3x 3/16" ANGLE FRAME, 2K PIPE MOUNT SWIVEL JACK, 4" CHANNEL WRAP TONGUE, 7,000 LB GVWR, \$5,999.00



MAXX-D D6X6010-042203, 10'x60"- 7K 60" DUMP. 2-5.2K BRAKE AXLES, 2- 5/16" ADJ COUPLER, 10 GAUGE FLOOR & SIDES, 5X2 11GA TUBE FRAME W/ 4X16 SCISSOR, 5" CHANNEL WRAP TONGUE W/ TOOLBOX, 7K DROP-LEG JACK, 9,990 LB GVWR, \$10,500.00

Wrentham & Carver Parts & Sales Departments Open on Saturdays

**5 Cushing Dr
Wrentham, MA 02093**

**846 Broncos Hwy
Burrillville, RI 02830**

**45 North Main St
Carver, MA 02330**



2015 FORD F-650. 8,600
Miles, Donovan Dump Body W/Stone
Shoot, Garaged Since New, Excellent
Condition, Clean, 1 Owner, Automatic,
V10 Gas Engine, **\$75,000.**
978-821-3036



**2010
KOMATSU
D39-22
DOZER.**
Very Good
Overall
Condition,
4998 Hours,
Runs And
Works Great,
**\$52,000
OBRO.**
207-229-2120



1995 FORD L8000 FUEL OIL TRUCK. 8.3 Cummins,
6 Speed, 2800 Gal. Tank Tech Tank, Good Condition, Many Extra
Parts, **\$9800 OBRO.** Call Ray, 860-346-2833

2008 JOHN DEERE 710J.
4X4 Extend A Hoe, 90% Tires All
Around, New Batteries, Recently
Serviced At Dealer, Clamshell
Rear Bucket, 9502 Hours, Asking
\$39,900 OBRO.
RI 401-559-4390



**RIVERS
EDGE**
Truck & Trailer Repair

**183 RIVER ROAD
Uxbridge, MA
- Financing Available -**

Emile 401-692-0780
Scott 401-692-0781
unitransiguere@earthlink.net
www.riversedgetrucktrailerrepair.com



2013 FREIGHTLINER CASCADIA.
DD 13 Engine, 10 Speed. Disc Brakes,
Fresh Painted Frame, Super Clean,
672,000 Miles, New Rods & Mains,
Go To Work Condition, **\$18,000**



2018 KENWORTH T680 SLEEPER.
350,000 Miles, AP Unit, 455
Hp Paccar Engine, Automatic
Transmission, Mint Condition,
\$40,000



2013 FREIGHTLINER CASCADIA.
DD-13,
10 Speed, Clean, 913,000 Miles, New
Dealer Motor Installed at 600,000
miles, 300,000 On New Motor,
\$15,000



**2007 NUVAN
48' X 102" CURTAIN SIDE
TRAILER.**
Fairly New Curtain Sides,
\$15,000



2015 FREIGHTLINER CASCADIA
125. DD-13, 10 Speed, Air Ride,
Clean Truck, 653,000 Miles, All
Aluminum Wheels, Super Clean
Interior, Go To Work Truck, **\$17,000**



2001 HYSTER 155/XL2. Propane
V6 Vortec, 13,200 lb Lifting Capacity,
Fresh Tune Up, Runs Excellent,
Everything Works, **\$15,000**



2014 FREIGHTLINER M2.
24 Foot Box Truck With Lift Gate,
Cummins, Allison Automatic,
399,369 Miles, Super Clean Truck
Two To Choose **\$18,000 each.**



**2014 INTERNATIONAL PAY STAR
SLEEPER.**
500,000 Miles, 10 Speed, Excellent
Condition, AP Unit.
\$17,000



**155 AMARAL ST
EAST PROVIDENCE, RI 02915
401-336-6366**

WWW.RHODEISLANDTRUCKCENTER.COM

**155 AMARAL ST
EAST PROVIDENCE, RI 02915
401-336-6366**



2017 ISUZU NPR-HD
16' BOX TRUCK, GAS ENGINE.
#HS804043
ONLY \$27,980



2018 FREIGHTLINER M2
26' BOX TRUCK, 260HP.,
6.7 L DIESEL. #JHJP3987
ONLY \$45,980



2024 ISUZU NRR
12' LANDSCAPE DUMP, 176" WB,
19,500 GVW, 6.6L GAS V8.
3 AVAILABLE
CALL FOR PRICE



2024 ISUZU FTR
PALFINGER HOOK-LIFT,
HOLDS 10' TO 14' CONTAINERS,
25,950 GVW.
CALL FOR PRICE

**SPOTLIGHT
TRUCK**



2024 ISUZU NRR
16' KIDRON REEFER BODY,
CARRIER S7
REFRIGERATION UNIT,
DIESEL ENGINE. #R7307487
CALL FOR PRICE

**VISIT OUR ONLINE PARTS
STORE**

**SHOP FROM ANYWHERE
START TO FINISH PURCHASE
SET UP SHIPPING
SECURE CHECK-OUT**

SCAN BELOW





2025 FREIGHTLINER CASCADIA
72" DOUBLE BUNK SLEEPER,
DD15 505 HP DIESEL,
AUTOMATED MANUAL.
3 AVAILABLE !
CALL FOR PRICE



2024 ISUZU FTR
26' BOX TRUCK, 25,950 GVW,
260HP, CUMMINS DIESEL.
#RSA01507
CALL FOR PRICE



2024 ISUZU NPR-HD
16' BOX BODY, 150" WB, 14,500 GVW,
6.6L GAS V8
#RS213313
CALL FOR PRICE



2025 FREIGHTLINER M2
26' BOX TRUCK, 26,000 GVW,
260HP CUMMINS DIESEL.
#SHVH1857
CALL FOR PRICE



ENFIELD, CT 06082
1-800-247-4313
 Ask for Eric or Alden
WWW.CAMEROTA.COM



2016 PALFINGER ILT40 LIFTGATE \$3000
 4000LB CAPACITY, ALUMINUM PLATFORM WITH HYDRAULIC STABILIZERS



18FT STORAGE BODY \$2000
 TRANSLUCENT ROOF, WOODEN FLOOR, SIDE VENTS, ROLL-UP REAR DOOR,
 GREAT FOR STORAGE, SEVERAL OTHER STYLE BODIES AVAILABLE



2013 PACCAR PX-6 ENGINE - \$9500
 PACCAR PX-6, 325HP @ 2300 RPM
 ONLY 62,652 MILES, CPL 3072



2015 CUMMINS ISX15 - \$17500
 CUMMINS ISX15 450HP WITH 444,400 MILES
 CPL 3937, EPA 2013, INTERNATIONAL PROSTAR APPLICATION



2005 GMC C4500 6.6L DURAMAX - \$5500
 6.6L DURAMAX DIESEL WITH 212,157 MILES
 300HP, LLY CODE, MEDIUM DUTY APP.



2019 ISUZU 4HK1TC DIESEL ENGINE - \$10000
 ISUZU 4HK1TC DIESEL ENGINE WITH 91,719 MILES
 AND 844 HOURS, EPA 2018



2023 ISUZU 4HK1TC DIESEL ENGINE - \$14000
 ISUZU 4HK1TC DIESEL ENGINE WITH 6,508 MILES
 AND 569 HOURS, EPA 2022



2019 ISUZU 6.0L VORTEC GAS ENGINE - \$3500
 2019 ISUZU 6.0L VORTEC GAS ENGINE - \$3500
 ISUZU 6.0L GAS ENGINE WITH 53,371 MILES, EPA 2019

FRONT AXLES -
ALL MAKES AND MODELS!



AXLE HOUSINGS -
ALL MAKES AND MODELS!





REED TRUCK SERVICES

24/7 Heavy Duty Towing, Accident Recovery & Emergency Road Service



**TRADES
ACCEPTED**

**939 John Stark
Hwy.
Newport, NH**



**287 Washington St.
Claremont, NH**

**HELP
WANTED**

• Authorized International Truck & Cummins • Sales • Service • Parts • Warranty •
All Makes Commercial Truck Parts, Sales, and Service

Email: scott@reedtruck.com • www.ReedTruck.com • 1-800-542-5032



2018 INTERNATIONAL 4300. Non CDL, Cummins Engine, Allison Trans, AB, AR, 16' Morgan Body, \$42,500., Will Separate



NEW INTERNATIONAL CV 4x4, AND HV 4X2 AND 6X4 MUNICIPAL CHASSIS. Available, Call For Specs!



2024 INTERNATIONAL CV515 4x4. Municipal Spec. Limited Availability, Call For Details!



2012 INTERNATIONAL 7400 Dump. 16 F/A, Locking 30 R/A, DT300 HP, Eng Brake, Allison Trans, Ac, 40,780 GVW, Everest Gear, Plow, Wing, Sander, Air To Rear, \$38,500.



2017 Ford F550 4x4 Dump. Sander, Power Rev Plow, Nice Condition 60,000 Miles.



2013 FREIGHTLINER SD114. DD13 Engine, Allison Trans, Everest 14' Live Floor Body, Truck Includes Plow And Wing Blades. Well Maintained Muni Trade. \$59,900.



2012 MACK GRANITE. MP7 Mack Engine, MDrive Trans, 12K F/A, 40K RS405 Rears, 3.55 ratio. Jack Knife Accident Damage. Second Parts Mack Available Also.



2016 INTERNATIONAL 4300 Cab & Chassis. AR/AB, Cummins Engine, Allison Auto, Non-CDL. \$39,500



2011 FREIGHTLINER M2 106. Cummins, Allison Trans, Locking Diff., Reversible Plow And Wing Included, Side Dump, With Dickey John System. \$44,500.



2006 STERLING, 380 HP, 8LL, 18FA, 46 Rears, Pwr Reversible Blade And Wing, Live Floor Sander Dump, Double Spinners, \$29,800



2008 INTERNATIONAL 7400. DT300 HP, 8LL Trans, 30K Locker, 41,100 GVW, Asking \$19,500.



SEVERAL USED 2006-2016 INTERNATIONAL IC SCHOOL BUSES. Most Of These Need Some Work, Priced Starting at \$1,800.



800-529-2515
WWW.EQUIP-SALES.COM
NORTH HAVEN, CT 06473

PARTS • SALES • SERVICE • RENTALS

OPTION TO
RENT WITH
AN
EXCAVATOR &
STACKER!



2023 ROCKSTER R1100DS
BRAND NEW IMPACTOR. RENT WITH OPERATOR.
DAY/WEEK/MONTH RENTALS. CALL FOR MORE DETAILS. 950 HRS.
STK# CR-34



2022 ROCKSTER R1100S
CLOSED CIRCUIT IMPACTOR, CAT STAGE 5, AUTO GREASE
SYSTEM, MAGNET & OPTIONAL BLOWER. 2,440 HRS. **STK# CR-30**



2014 DEERE 250D
RENT ONLY. CALL FOR MORE
INFORMATION! **STK# ATDT-19**



2019 VOLVO EC160EL
PIN GRABBER COUPLER & AUXILIARY
HYDRAULICS. 1,440 HRS. **STK# EX-99**



2023 ANACONDA DF514
760 HRS, DOUBLE DECK, 3 PRODUCT BELTS.
BELT FED FEEDER, JCB ENGINE. **STK# SCR-47**



2008 BOMAG BW213DH-40
84" SMOOTH DRUM, VIBRATORY, 13 TON.
4,500 HRS. **STK# R-60**



2021 ANACONDA TR7542
75' TRACK STACKING CONVEYOR, JCB TIER
4, BELT SCALE. 1,190 HRS. **STK# STKR-13**



2006 DEERE 450J LT
RUNS GREAT. WORK READY. 5,400
HRS. **STK# DZ-36**



2022 ANACONDA DF410
TRACK SCREENER EQUIPPED WITH 10'X4' SCREEN
BOX. RENT OR BUY! 1,000 HRS. **STK# SCR-45**



2016 MCCLOSKEY J40 V2
RENT ONLY! CALL FOR MORE INFORMATION.
STK# CR-31

LATE MODEL RENTAL FLEET CONSTRUCTION EQUIPMENT AUCTION

Late Model Rental Fleet Equipment, Including
Trucks & Trailers, Attachments, Support



SATURDAY, JUNE 22ND

9:00 AM

**4501 Leipzig Ave.,
Mays Landing, NJ 08330
(AC Race Track)**



HIGHLIGHTS INCLUDE: 8 **TELESCOPIC FORKLIFTS:** (1)Unused JLG 1255(4x4), (5)New Unused Skytrak 10054(4x4), (2)2023 Skytrak 8042(4x4), 7 **HYDRAULIC EXCAVATORS:** Kobelco SK485LC-8, Kobelco SK330LC, (2)2023 Bobcat E35, (2)2023 Bobcat E20, Kubota KX91-3, **RUBBER TIRED LOADER:** 2013 Komatsu WA380-7, **CRAWLER CARRIER:** 2019 Terramac RT9, 6 **RUBBER TRACKED SKID STEERS:** (4)2023 Bobcat T76, (2)2023 Bobcat T64, 2 **MINI TRACK LOADERS:** (2)New Diggitt SCL85, 2 **TRACTOR LOADERS:** (2)Unused NH Workmaster-70(4x4), **VAN TRUCK:** 2005 IH 4300, **SERVICE TRUCK:** 2004 Chevy C4500, 5 **TRUCK TRACTORS:** (3)2019 Mack Anthem 64T(t/a), 2018-2010 IH ProStar(t/a), 3 **DETACHABLE GOOSENECK TRAILERS:** (3)New Unused Witzco RG52(tri.), **WALKING FLOOR TRAILER:** 1992 PEE(t/a), **BEAM TRAILER:** 1990 Talbert T3D-85-HRG(tri.), 2 **VAN TRAILERS:** (2) Trailmobile 28ft., 16 **MULTI-USE CONTAINERS,** 4 **CONTAINERS,** 8 **MOBILE HOUSES,** 7 **PORTABLE BATHROOM STATIONS,** 34 **STORAGE BUILDINGS,** 32 **SCRAP RECYCLING EQUIPMENT,** 7 **PRESSURE WASHERS:** (4)New Easy Kleen 4000psi, (2)New Greatbear 4000psi, New Realm 2000psi, **SNOW EQUIPMENT,** 6 **STONE BOXES,** 49 **PALLETS OF STONES,** 44 **EXCAVATOR BUCKETS,** 10 **EXCAVATOR THUMBS,** 2 **HYDRAULIC HAMMERS,** 51 **ATTACHMENTS:** (49)Skid Steer, 312 **NEW SUPPORT EQUIPMENT.**

SALE SITE PHONE: (609) 204-3189 Jay



ALEX LYON & SON



SALES MANAGERS & AUCTIONEERS, INC., BRIDGEPORT, NY 13030

Phone: (315) 633-2944 • **Go to** WWW.LYONAUCTION.COM **for more details**



2013 INTERNATIONAL 7600. 10 Wheel Vacuum Truck W/ Jetter, 350 HP Maxford Diesel, Automatic, A/C, W/Options Camel Brand Equipment, Recent Blower-Pump, 32K Miles, Work Ready, Call For Details, 978-462-1000, www.WestsideTruckEquipment.com

**1963 MASSEY
FERGUSON 304 LOADER/
BACKHOE.** Perkins Diesel,
4-Spd Powershuttle Trans, 4087
Hrs, Spare Tires, Runs, Needs TLC,
Owned Since New, **\$3300.**
Call/Text RI 401-339-4492 or
401-848-2477, Leave Message



2013 MITSUBISHI 14' FLATBED. 140K Miles,
4 Cyl Diesel, Inspected, Good Rubber, **\$12,000 OBO.**
Call Joe 401-741-9187



1979 GMC 6000 FLATBED. Completely Rblt V-8
Engine, 5 Spd 2 Spd, 12 Ft Bed, 1000 Gal. FMC Tree Sprayer,
Used Last Season, Will Sell Separately, **\$11,000.**
908-217-0414

RENTAL WITH OPERATOR

PORTABLE JAW CRUSHER AND IMPACT CRUSHER



**DAY-WEEK-MONTHLY RATES
80' STACKER AND
EXCAVATOR AVAILABLE**

**NEW ENGLAND
CALL KEN
508-328-0028**



2015 FREIGHTLINER SEVERE DUTY. 10 Wheel Vacuum Truck W/Rear Jetter, Cummins Power, Automatic, A/C, W/Options 14 KF-40KR Aqua Tech Equipment, Recent Water Pump-Tanks, 34K Miles, Call For More Details, 978-462-1000, www.WestsideTruckEquipment.com



8' OMAHA SRW ENCLOSED UTILITY BODY. W/Barn Doors, Aluminum Drop-Down Ladder Racks, **\$3,600.,** Westport, MA 508-636-5050

WANTED!!! MACK TRUCKS

**CAT, DEERE, BOBCAT EQUIP
IN ANY CONDITION
IMMEDIATE PAYMENT**



CALL JOHNNY MACK

**johnnymack107@gmail.com
HARTFORD, CT 860-883-1186**

TOREKU TRACTOR & EQUIPMENT INC.



4 Littleton Rd, Rt2A & 110, Ayer, MA • 978-772-6619



**2019 KUBOTA
L3560 HST
TRACTOR/
LOADER.**
72" Bucket,
Backhoe 9 Ft
Digging, 18"
Bucket, Hydraulic
Thumb, 1162 Hours,
Turf Tires, Canopy,
\$29,900



**2004 KUBOTA
B7800 HSD.**
30 HP Diesel, 356
Hours, Woods
Loader, Curtis
Cab, \$14,000,
REDUCED!!!
\$13,500



**CROSS
COUNTRY
LANDSCAPE
TRAILER.**
New, 16' Long,
Spring Assisted
Ramp Gate.
\$5,450



**CROSS
COUNTRY
EQUIPMENT
HAULER.**
New, 18' Long,
Ladder Ramps,
10,000 GVW.
\$6,770

VISIT US AT WWW.TOREKU.COM

WWW.TRUCKANDEQUIPMENTPOST.COM

BALLARD
Truck Center
SALES | PARTS | SERVICE

508.214.3036
BallardTrucks.com

Locations in MA, NH and RI!!!!

Your go to for new/used trucks. 30 years and counting.



2018 HINO 268
26' DRY BODY, 2 EASY TRACKS,
POWER WINDOWS / LOCKS,
HEATED POWER MIRRORS, NON CDL.
\$38,900



2016 VOLVO VHD84F200 DUMP TRUCK
VOLVO D13-435HP, M DRIVE,
T-RIDE SUSPENSION AND MORE.
CALL FOR MORE DETAILS !
\$127,500



2019 MACK GRANITE 64FT DAY CAB
MACK MP8 DIESEL, 505HP.,
12SPD MDRIVE HD, AIR-RIDE.
CALL FOR MORE DETAILS
\$144,500



2017 MACK GRANITE GU713
ROLL-OFF GARBAGE, 75,000# AMERICAN
HOIST, ALUM. WHEELS, DOT &
SERVICED, ELECTRIC COVER
AND SO MUCH MORE !
CALL FOR PRICING !



2024 VOLVO VNL64T860 SLEEPER,
D13-455HP., 12SPD. PREMIUM I-SHIFT,
PREMIUM SLEEPER CONTROL PANEL
AND MORE.
CALL FOR PRICING !



2024 ISUZU SWITCH AND GO! 12FT
BODY. DUAL ALARM SWITH. AUTO
TRANS.
CALL FOR PRICING



2023 ISUZU NRR BEER TRUCK
EQUIPMENT BODY, DIESEL, SUPREME
KOLD KING INSULATED BODY.
CALL FOR MORE DETAILS & PRICING



2020 VOLVO VNR64T300
DAY CAB, D13-425HP., 12SPD. I-SHIFT,
AIR-RIDE SUSPENSION AND MORE.
CALL FOR MORE DETAILS !
\$59,900



2020 MACK PINNACLE 64T
DAY CAB, MACK MP8 DIESEL,
12SPD. M-DRIVE HD.
CALL FOR MORE DETAILS
\$132,500

BALLARD
Truck Center

508.214.3036

www.BallardTrucks.com





Burrillville, RI • 401-633-4587

- Full Bucket Rebuilds • Cylinder Resealing
- Wear Plates • Adapter Replacement • Hardfacing
- General Maintenance



2000 CAT 312BL EXCAVATOR. Long Stick, 10,200 Hours, Good Running Machine, **\$25,000.**
508-981-8882



2019 CHEVY 2500. Double Cab, 43K Miles, Great Condition, Asking **\$45,000 OBO.** Looking For High Roof Van, Trades Considered, 401-297-6867



2012 CATERPILLAR D6K BULLDOZER, Serial : DHA01857, 5500 Hrs, Enclosed Heat & AC, 6 Way Blade, Joystick Controls, Needs Chains/Pads, **\$54,900** Call 781-417-3018

1986 MACK DM. Well Maintained, 10-70, 6 Speed Transmission, 300 Engine, Very Good Frame, Excellent Body, New Tires, Heated Body, New Batteries, No Leaks, New Sticker, Ready To Work, **\$27,000.**
802-249-2759



BEAM TRUCK & BODY INC.

RI Dealer #647

433 CUMBERLAND HILL ROAD, WOONSOCKET, RI 02895

401-767-2639



NEW - USED & RECONDITIONED DISPOSAL EQUIPMENT



2004 IH 4300, DT466, AUTOMATIC, AMERICAN HAS200 HOOK-LIFT, 36" JIB HEIGHT, 20K CAPACITY, PINTLE WITH FACTORY AIR-TO-REAR, 342K MILES, RUNS PERFECT, FRESH BRAKES AND SERVICE. HOOK CANNOT BE MADE ADJUSTABLE. \$25,000

**IN STOCK READY TO INSTALL
NEW EQUIPMENT**

- * PHT22L AMERICAN PALFINGER
- * T29ST AMERICAN PALFINGER
- * T40S AMERICAN PALFINGER



2004 KENWORTH T300: 396,914 MILES, AMERICAN 75,000# ROLL-OFF, CAT C12 W/ FULLER 8LL, 60,000# GVW CALL FOR MORE DETAILS !



MAXON LIFT-GATE, TUCK AWAY, ALUMINUM, 3,000# CAPACITY, VERY GOOD CONDITION. \$1,250



2010 INTERNATIONAL 7400: 42,000 MILES W/ HEIL 22 YD. AUTOMATED PACKER. \$60,000 WILL SPLIT.



2000 INTERNATIONAL WITH 2023 AMERICAN / PALFINGER 250S HOOK-LIFT, LOW MILES. \$70,000

WWW.BEAMTRUCK.NET

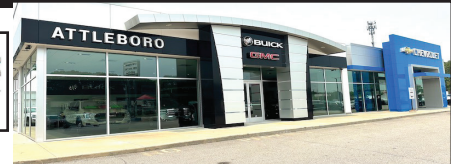
CHEVROLET, BUICK, GMC OF ATTLEBORO

A Priority Automotive Dealership

**ROUTE 1, BETWEEN 95 + 295
SOUTH ATTLEBORO, MA**

508-761-4800

PLENTY OF NEW GMC TRUCKS AVAILABLE



2024 DENALI DUALY DURAMAX DIESEL



DENALI RESERVE PKG., 5TH WHEEL
PKG. #24189G

\$92,595

2024 K1500 SHORT-BED



TURBO-MAX, POWER SEAT, ALUM.
WHEELS, PRO VALUE PKG. #24159G
PRICE INCLUDES REBATES PLUS GMC
LOYALTY

\$39,695

2024 K2500 DOUBLE CAB SLE



SLE VALUE PKG., PRO SAFETY PKG.,
ASSIST STEPS, PLOW PREP., X31 OFF
ROAD SUSP. #24178G

\$63,635

2024 K1500 DOUBLE CAB



PRO VALUE PKG., SPRAY LINER,
LOCKING AXLE. #24162G
PRICE INCLUDES GMC LOYALTY.

\$40,625

2024 K1500 CREW CAB



6 1/2' BED, PRO VALUE PKG.,
SPRAY LINER, TRAILER BRAKE.
#24148G

\$49,430

2024 C2500 UTILITY



10,000 GVW, CONV. PKG., H.D. SUSP.
PKG., BACK-RACK, SPRAY LINER.
#24028H

\$69,000

2023 K2500 CREW CAB SLE UTILITY BODY



REMOTE START, PLOW PREP.,
18" WHEELS, READING ALUM. BODY,
BACK RACK, SPRAY LINER, ELECTRIC
LOCKS. #23142G

\$81,652

2024 K1500 CREW CAB AT4X



6.2L V-8, HIGH CLEARANCE STEPS,
ACTIVE EXHAUST. #24120G

\$84,335

2024 K3500 UTILITY



11,300 GVW, CONV. PKG., PLOW PREP.,
DURAMAG ALUM. UTILITY W/ POWER
LOCKS, SPRAY LINER, BACK-RACK.
#24029G

\$74,466

2024 HUMMER PICKUP



INFINITY ROOF, TONNEAU COVER.
#24145G

\$112,610

2023 12' HI-CUBE



9,900 GVW, V-8, POWER EQUIPMENT,
FLAT FLOOR, REAR SWING DOORS.
#23393G

\$52,685

2024 CANYON AT4X



#24114G

\$56,390

**** PLUS OVER 50 MORE AVAILABLE ****



WWW.CHEVROLETBUICKGMCOFATTLEBORO.COM



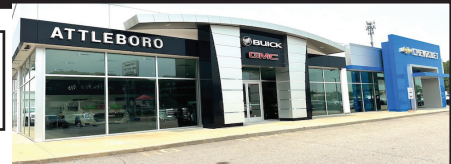
CHEVROLET, BUICK, GMC OF ATTLEBORO

A Priority Automotive Dealership

**ROUTE 1, BETWEEN 95 + 295
SOUTH ATTLEBORO, MA**

508-761-4800

PLENTY OF NEW CHEVROLET TRUCKS AVAILABLE



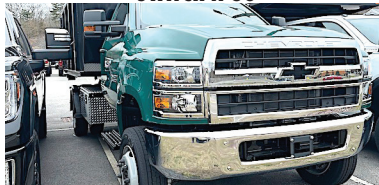
2023 C6500 MOVING VAN



23,500 GVW, ALUM. GATE, E-TRACK,
SIDEDOOR. #23119H

\$110,000

2023 K5500 SWITCH-N-GO



19,500 GVW, 11' BODY,
GREAT CHASSIS SPECS.
#23334H

\$103,664

2024 EXPLORER CONV. VAN



EXTENDED 9-PASSENGER, 32" SMART TV,
PANORAMIC RAISED ROOF, 20" WHEELS,
FULL CHASSIS OPTIONS. #24249H

\$99,400

2024 K3500 DOUBLE CAB UTILITY BODY



11,600 GVW, CONV. PKG., PLOW PREP.,
READING ALUM. UTILITY, SPRAY-LINER.
#24070H

\$76,392

2024 K2500 CREW CAB UTILITY



10,000 GVW, CONV. PKG., PLOW PREP.,
READING BODY, HITCH, SPRAY LINER.
#24176H

\$76,535

2024 K1500 CREW CAB RST



V-8, BUCKET SEATS, Z71 OFF ROAD PKG.,
#24266H SALE PRICE INCLUDES
REBATES.

\$56,860

2023 K3500 DUMP TRUCK ALUM. 2-YARD



11,100 GVW, CONV. PKG., HITCH,
COVER, 2 YARD BODY FOR THOSE
SMALLER LOADS. #23112H

\$68,664

2024 K1500 CREW CAB HIGH COUNTRY



6.2L V08, HIGH COUNTRY PREM. 2 PKG.,
ADAPTIVE RIDE, ACTIVE EXHAUST.
#24279H

\$79,255

2024 K2500 UTILITY



10,000 GVW, READING CLASSIC II BODY,
CONV. PKG., PLOW PREP. SPRAY LINER.
#24220H

\$72,700

2024 LCF 4500 CREW CAB



POWER HEATED MIRRORS, KEYLESS
ENTRY,
FITS A 12' BODY. #24002H

\$72,925

2024 C3500 12' RACK BODY



14,000 GVW, CONV. PKG., 40" SIDES,
HITCH.
#24123H

\$66,000

2024 LCF 4500 14' BOX + LIFT-GATE



14,500 GVW, POWER MIRRORS,
KEYLESS ENTRY, 14' ALUM. BOX,
2500# LIFT-GATE. #24235H

\$95,462



WWW.CHEVROLETBUICKGMCOFATTLEBORO.COM



THIS AD IS COPYRIGHTED & OWNED BY TRUCK AND EQUIPMENT POST

Welcome to the PRIORITY AUTOMOTIVE GROUP

"Our top priority is you!" *Bill Gibb*
Owner / Dealer Principal

**PRIORITY
PREMIUM**
LUXURY BRANDS AT
PRIORITY ONE PRICING



**PRIORITY
PREMIUM
RENTALS**

Jeep



KIA



GMC
WE ARE PROFESSIONAL GRADE

DODGE



Kia of Groton
KiaofGroton.com

Westerly
Chrysler Dodge Jeep RAM
WesterlyJeepRAM.com

Kia of Attleboro
KiaofAttleboro.com

Chevrolet Buick GMC of Attleboro
ChevroletBuickGMCofAttleboro.com

Newport Chrysler Dodge Jeep RAM
NewportJeepRAM.com

Hyundai of Newport / Priority Premium / Priority Premium Rentals
HyundaiofNewport.com

**1998 MACK
CL700 TRIAXLE.**
306,742.0 Miles,
8 Speed Transmission,
Clean with Newer
Body, **\$63,000.**
Connecticut,
860-428-3725



DUMP TRAILERS. 3 To Choose, Steel Frames, Aluminum Bodies, Bedliners, Nice Shape, Used For Leaf
Pick Up, **\$18,000 Each**, Your Choice. East Windsor, CT 860-716-0226

202

**TRUCK
&
EQUIPMENT**
603-899-2000

www.202truck.com
RT 202 Rindge NH
SALES & RENTALS - NO SALES TAX
FINANCING & DELIVERY



2015 CAT 308E2CR. 1913 Hours, Hyd.
Thumb, Coupler, Blade, Very Clean,
Ready to Work, **\$78,000.**

**EQUIPMENT
RENTALS**
**Check Our
Website
For What's Available
For Rental**



2011 CAT 312D. 5931 Hours, Coupler,
Hyd. Thumb, Serviced, Ready to Work,
\$79,000.



2008 LULL 644E-42. 6000#, 42' Reach,
4300 Hours, Owned By A Small Builder,
Very Good Condition, Foam-Filled Tires,
\$34,000.



2006 PETE 378. 475 CAT, 13 Sp, 14,600
F + 40 Rears, 3:70 Ratio, Low Air Leaf
13,500 Steerable L/A, 171 Cab To Axle,
315x 22.5 Front Tires, 295/75 R 22.5
Rear, 11,600 Hours, ECM 175,400 Miles,
392K Miles Tach Matches ECM, 19'10"
Frame Behind Cab, Dual P.T. O's, 1 For
Vac Pump, 1 For Water, **\$49,000.**



2019 CAT 906M. Great For
Landscaping!!! 1000 Hours, 2 Speed,
Heat, Hydraulic Q/C, 1.2 Yr Bucket,
Forks, 12,500 Lbs, **\$77,000.**



2019 WESTERN STAR 4900FA.
DD 16, 600 HP, 18 Speed, 13,200F
+ 46R On Full Lock Air, 220" W.B.,
\$92,500.



2016 CAT 304E2CR. 1580 Hours, New
Bushings, Clean, Ready To Work,
\$32,000. Add \$4000 For New Thumb



2004 KENWORTH T800W. CAT C-15
@ 550 H.P., Full Double Frame, 20F
+ 46R 2 Speed Rears, 3:90 & 5:38
Ratios, 11R24.5 Rear, 425 22.5 Front,
830K Miles, **\$85,000.**



MCGOVERN
FORD AT DRUM HILL

Call Dan Gauthier 978-836-6139



2024 F650 REFRIGERATED 20' VAN BODY.
Thermo King, Maxon Galvanize Liftgate, Rear 3 Section Door, E-Track, Aluminum Floor & Scuff Plate, Diesel, Automatic, #FN4679



2023 T250 REFRIGERATED CARGO VAN.
Thermo King, Curb Side Door, Rear Swing Doors, Skid Floor, V6, Cruise, #FN4585



2023 E450 DRY FREIGHT VAN.
Attic, Roll Up Rear Doors, Pull Out Ramp, Step Bumper, 2 Rows E-Track, 7.3L Gas, PW, PL, Cruise, #FN4066

OVER 75 SUPER DUTIES IN STOCK - COLORS AND CONFIGURATIONS



2023 F350 DUMP.
4X4, Diesel, Remote Start, 9 Ft Body, Tool Box, Plate & Pintle, PW, PL, #FN4412



2023 F450 DUMP.
4X4, 7.3L V8 Gas, Remote Start, 9 Ft Body, Running Boards, Plate & Pintle, PW, PL, #FN4617



2023 F600 DUMP.
4X4, Diesel, Remote Start, 9 Ft Body, Dual Battery, Plate & Pintle, PW, PL, #FN5153



2023 F350 STAKE BODY.
4X4, 7.3L V8 Gas, Remote Start, 12 Ft Knapheide, Running Boards, Plate & Pintle, PW, PL, #FN4617



2024 F550 SWITCH N GO. 4X4, Diesel,
Remote Start, 12 Ft Can, Dual Battery, Payload Plus Pkg, #FN5097



2024 F550 SWITCH N GO.
Super Cab, 4X4, Diesel, #FN5100



2023 F450 GOOSENECK UTILITY BODY. 4X4,
7.3L V8 Gas, Remote Start, Knapheide Body, PW, PL, #FN4616



2025 F650 CHASSIS.
7.3L Gas, Automatic, 158" Wheelbase, #FN5220. Six Available.



2024 F550 SUPER CAB UTILITY. Diesel,
4X4, Polish Alum Wheels, Remote Start, Heated Frt Seats, XLT Pkg, Payload Upgrade. FN4959



2024 F350 SERVICE BODY. V8 Gas,
Remote Start, 4X4, Reading Body, Dual Battery, Step Boards, Skid Plates, FN4924



2024 F550 SUPER CAB UTILITY. Diesel,
4X4, Polish Alum Wheels, Remote Start, XLT Pkg, FN4599. **4 In Stock. Also 9 Ft & 11 Ft Body, 1 Blue**



2023 T350 HIGH ROOF CARGO VAN.
New, All Wheel Drive, Transit Trail Pkg, Pwr Outlet, Dual Battery, Dual Alternators, Roof Vent, Lots Of Extras, FN4629



**COMMERCIAL
VEHICLE CENTER**

dgauthier@mcgovernauto.com



LUCKY'S PETERBILT

THE DIMMICK GROUP
1-800-NEW-PETE
1-800-639-7383



2003-2009 DRY-VAN TRAILERS.
 48' And 53', Road Worthy, Air Ride Suspension, Roll-Up Door, Clean Titles, Many To Choose From. **\$6,900 Each.**
1-800-New-Pete and 603-553-3000



2024 28' GALLEGOS DUMP TRAILER. ¼" 450 Hardox, 64" Sides, High Lift Gate, Air Ride, 30K Axles & Suspension, IN STOCK,
Available All Locations, 603-553-3000.



2025 36' & 64" STEEL DUMP. ¼" Hardox, High Lift Gate, All Aluminum Wheels, Lift Axle, 30K Axles, 30K Hendrickson Suspension, Camaro Flip Tarp.



2024 GALLEGOS.
 92 Yard Scrap Trailer, In Stock - Ready To Go!
In Bow NH 603-553-3000



LIDDELL 60 TON LOWBED.
 26' Well, Lift Axle, 275's, Wheel Covers, Rear Strobes, Set Up For A 4th Axle, NH Location,
Call Rooster 603-553-3000



2005 MACK TRACTOR. Pre-Emission 460 HP, 18 Spd., 14K Front, 46 Rears On Air, 24.5 Rubber 75% , 2 Line Hydraulics, +/- 500K Miles, Clean, Ready To Work,
\$42,500. 603-553-3000



2024 TALBERT 55 TON.
 Available In
All Our Locations



2023 ETNYRE BLACKHAWK 55 TON LOWBED.
 26' Deck, Lift Axle, 275/22.5 Rubber, Strobes, Aluminum Outer Wheels, New in Stock, **All Locations**



2025 STEP DECK.
 48' Spread Axle, 48' Tri-Axle W/Rear Lift, 53' Tri-Axle W Rear Lift, Tool Boxes, Head Boards, Winches, All Aluminum Wheels

Royalton VT
802-763-2585

Colchester VT
802-654-4420

Bow NH
603-225-6666

Albany NY
518-459-1122

Newburgh NY
845-245-4042

Owego NY
607-687-1200

Rochester NY
585-321-5250

Syracuse NY
315-432-1122

Utica NY
315-732-4300

SALVADORE
FAMILY OF DEALERSHIPS



CHEVROLET Together let's drive™

978-616-1416



5 On the Way!

2024 SILVERADO EV
CREW CAB 3WT 4WD
GM ULTIMUM ELECTRIC
PLATFORM 393 MILES ON
A FULL CHARGE AND
100,000 MILES WARRANTY
- WELL EQUIPPED
MSRP: \$74,900
FLEET & COMMERCIAL
CUSTOMERS -
RESERVE YOURS TODAY!



12' Duramax Box

2022 CHEVROLET
SILVERADO 5500HD
C&C

6.6L DURAMAX TURBO-
DIESEL V8 ENGINE -
GVWR OF 19500 LBS

MSRP: \$76,845
NOW: \$61,845

STK # C22187



Crew Cab! Ready for Upfit!

2024 CHEVROLET
SILVERADO 5500HD
C&C
6.6L V8 DURAMAX TURBO
DIESEL ENGINE - GVWR
19,500LBS - AUTO
TRANSMISSION

MSRP: \$79,142
NOW: \$76,192

STK # C24248



Fuel Saver Body!

2023 CHEVROLET
EXPRESS COMMERCIAL
CUTAWAY

17' UNICELL AEROCCELL
VAN BODY, WALK RAMP,
AIR DEFLECTOR,
ALUMINUM ROLL UP
DOOR, BULKHEAD DOOR,

MSRP: \$60,055

STK # C23231

NEW SILVERADO EV IS ON THE WAY - RESERVE YOURS NOW - 978-616-1416!

SalvadoreChevy.com | 442 West Broadway, Gardner, MA 01440

Not responsible for typographical errors. Pricing subject to change due to manufacturer rebates.

CT • RI • MA • NY

CALL IAN OR JIM
800-229-9421



100 YARD
STEEL DUMP TRAILERS

WE WILL SAVE YOU MONEY
AND PUT A SMILE ON YOUR FACE!

**STUMP & BRUSH
TRANSPORTATION & DISPOSAL**

\$1800/LOAD

**DEMOLITION DEBRIS
TRANSPORTATION & DISPOSAL**

\$2500/LOAD

**SAME DAY DISPATCH
TOP \$\$ PAID FOR YOUR
SCRAP STEEL, COPPER, & ALUMINUM!!!**



2016 KOMATSU PC228USLC-10

5225 Hours, 36" Digging Bucket, 60" Tilt Bucket, Ready to
Work! **\$99,000** - Call 781-417-3018



1988 WESTERN STAR HERITAGE.

Strong 400 Cummins, 15 Speed Road Ranger
Trans, Locking 410 Rockwell Rears, Air Ride,
Wet System. Stainless Steel Mufflers, Stacks &
Air Cleaners, **\$8500 Neg.** 781-775-8456,

Leave Message

R & R INDUSTRIES

**We Buy All
Scrap Metals**

www.RRTrucksAndEquipment.com • Bruce@RandRind.com

195 Rocus Street, Springfield MA 01104

413-733-2118

TOP \$ PAID FOR ALL METALS

*** ALL FERROUS & NON FERROUS METALS***
COPPER/BRASS/ALUMINUM/STAINLESS/IRON
& STEEL* MACHINERY* HEAVY EQUIPMENT*
CARS/TRUCKS*



**ROTATING
HYDRAULIC
GRAPPLE.**
Originally From A
Forklift, But Can
Be Adapted To An
Excavator.
\$2000 /BO



**BRIDGESTONE
LOADER TIRES.**
Only 2 Left,
29.5 x 29, 28 Ply,
\$3,000/BO
For Both



20.5 x 25 LOADER TIRES. Very Good
Condition, **\$200 - \$350 Each**, Many Other
Sizes Available Call Bruce



DORSEY 22' STEEL DUMP TRAILER. Good Condition,
Only **\$5,500/BO** Call For More Info



1997 FREIGHTLINER FL-60 CAB & CHASSIS.
Only 81K Miles, 5.9L Cummins, Manual Trans,
Runs Great, Clean Title, **Only \$6,000**



**HERCULES B6-68P Extendable Boom For
A Forklift.** Adjustable Lift Angle.
8000 lb Capacity. **Only \$1,500**



**PIN ON
ROOT
RAKE.** For
Small Dozer
Or Loader,
7' Wide,
**Only \$2,000/
BO**



28' STEEL DUMP TRAILER. Good
Condition, Great Scrap Hauler, Needs
Paint, **Only \$6,500/BO**



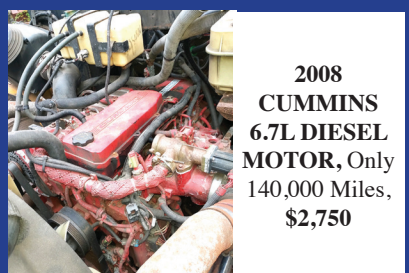
**2011 CHEVY 1500. 4x4, 5.3L, Auto, Runs
& Drives, Door Is Damaged, Otherwise Good
Condition, No Rust, Good Work Truck, Clean Title,
Only \$5,500/ BO**



**DETROIT DIESEL 4-53
MOTOR.** Runs Great, **Only \$1,500**



21' STORAGE BODY. Excellent Condition, Roll
Up Door, Aluminum Floor, Grandma's Attic For
Extra Storage, **\$2,000**



**2008
CUMMINS
6.7L DIESEL
MOTOR,** Only
140,000 Miles,
\$2,750



CUMMINS KT 19-C 19 LITER MOTOR.
450 HP, From Large Earth Mover,
Only **\$4,500/BO**, Priced For Quick Sale



2004 MANAC 48' FLATBED TRAILER.
Good Tires & Brakes, Sliding Strap Winches,
\$5,000/BO



1982 FORD L7000. Reman CAT 3208, 5 Speed, New
Cab & Hood, 18' Flatbed, Zero Rust, 27,500 GVW,
Clean Title, Reduced For Quick Sale, **Only \$5,000**



BIG BUCKET FOR CAT 988-992 LOADER.
Model #53517/6K8346, Ser# 5K3539, Superb
Condition, Call For More Details, **Only \$4,950/BO**

STONEHAM


617-733-0773


2024 F600 WOOD CHIPPER. L-Pac Tool Boxes, Chipper Dump Body, Diesel, 4WD, Remote Start, #241204, Call 617-733-0773



2024 F750 DUMP. 6-8 Yard Body, Pintle Hook, 7.3L Gas, Automatic, #24408, Call 617-733-0773



2024 F550 LANDSCAPER. Crew Cab, Curb Side Door, Swing Rears, 4WD, Diesel, Auto, Remote Start, Payload Up Grade, #24985, Call 617-733-0773



2024 F550 LANDSCAPER. 12' Crysteel Dump, Curb Side Door, Swing Rears, 4WD, Diesel, Payload Up Grade, #24709, Or White Cab #24655 Call 617-733-0773



2024 F550 LANDSCAPER. 12' Dejana Dump, Curb Side Door, Combo Tailgate/Swing Rear Doors, 4WD, Diesel, Payload Up Grade, #241016, Call 617-733-0773



2024 F550 LANDSCAPER. 12' Duramag Aluminum Dump, Curb Side Door, Swing Rear Doors, 4WD, Diesel, Payload Up Grade, #24672, Or White Cab #24654 Call 617-733-0773



2024 F550 LANDSCAPER. 7.3L V8 Gas, Auto, 10' Dump, Curb Side Door, Swing Rear Doors, 4WD, Payload Up Grade, #24217, Call 617-733-0773



2024 F550 LANDSCAPER. Duramag Aluminum Dump, 7.3L Gas, Curb Side Door, Combo Tailgate/Swing Rear, 4WD, Payload Up Grade, #24220, Call 617-733-0773



2024 F350 DUMP. 9' Dejana Body, 4WD, Diesel, Remote Start, Plow Prep, #241113, Or White Cab #241078 Call 617-733-0773



2024 F550 CREW CAB. 9' Dejana Body, 4WD, 7.3L Gas, Remote Start, Plow Prep, #24409 Call 617-733-0773



2024 F450 ROCKPORT SERVICE. 7.3L Gas, 4WD, 12' Body, Platform Stairway Rear Bumper, Ladder Racks, #24938 Call 617-733-0773



2024 E350 FREIGHT VAN. 14' Body, Roll Up Rear Door, Pull Out Ramp, 2 Rows E- Trac, Step Bumper, 110v Outlet, PW, PL, #24077, Call 617-733-0773



2024 E350 HI CUBE. 12' Rockport Body, Lined Smooth Interior, Pass Thru Door, Roll Up Rear, 7.3L Gas, Cruise, #24544 Call 617-733-0773



2024 F550 UTILITY. 9' Body, 4X4, Diesel, Call 617-733-0773



2024 F600 DUMP. 7.3L Gas, 9' Rugby Body, 4X4, 22,000 GVW, Remote Start, #24899 Call 617-733-0773



2024 T350 SERVICE VAN. Rockport Body, Ladder Racks, AC, Cruise, PW, PL, #241211, Call 617-733-0773



2024 T250 MEDIUM ROOF VAN. All Wheel Drive, AC, PW, PL #24401, Call 617-733-0773



2024 T350 HIGH ROOF VAN. All Wheel Drive, Transit Trail Package, Roof Vent, #241043, Call 617-733-0773



2024 F250 PLATINUM CREW CAB. 7.3L Gas, 4X4, Power Sun Roof, #24591, Call 617-733-0773



2024 F350 XLT SUPER CAB. 7.3L Gas, 4X4, Sport Package, Pwr Rear Window, XLT Premium Pkg, #24182, Call 617-733-0773



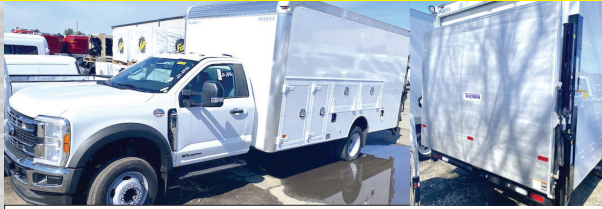
Call Bill Pollack 1-617-733-0773
or billpollack@stonehamford.com



STONEHAM


617-733-0773

NEW 2023 LEFTOVERS MUST GO!!!!!!!!!!!!!!!!!!!!!!



2023 F550 CUSTOM UTILITY BODY. 16 Ft Van Body, 54" Aluminum Platform Rail Lift, Plus Extra Features, Diesel, Call For Complete Details
617-733-0773



2023 F550 14' FREIGHT VAN. 7.3L Gas, Rear Swing Doors, #232845, \$82,749. Call Bill 617-733-0773



2023 F350 ALUMINUM STAKE BODY. Super Cab, SRW, 7.3L Gas, 2WD, Combo Receiver, #231908. Call 617-733-0773



2023 F550 DUMP. Remote Start, Pro Power, Diesel, 4X4, Payload Upgrade, #232357. Call 617-733-0773



2023 F350 ALUMINUM DUMP. 4X4, 7.3L Gas, Duramag Body, Full Cab Shield, #232871. Call 617-733-0773



2023 F250 4X4. V8 Gas, Fisher Plow, #231242, \$54,399.



2023 F350 4X4. V8 Gas, #231446, \$49,300.



2023 F350 4X4. 7.3L Gas, #232670, \$56,500.



2023 F350 LANDSCAPER. Super Cab, 4X4, 7.3L Gas, 9' Dump Body, #232736, \$73,990.



2023 F350 DUMP. 4X4, Tool Boxes, 7.3L V8 Gas, #232851, \$74,003

USED TRUCKS SPECIALS



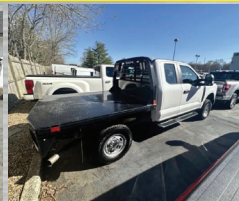
2021 F250 LARIAT. Crew Cab, 4X4, 54,538 Miles, #232374A, \$63,500



2021 F350 LARIAT. Crew Cab, 4X4, 11,836 Miles, #231996A, \$65,500



2022 F550 DUMP. V8 Gas, 8,225 Miles, 4WD, Plow, #22085P, \$79,900



2023 F250 FLATBED 4X4. Super Cab, V8 Gas, 15,111 Miles, #24595A



2023 F350 LARIAT. Super Cab, 4X4, 5,660 Miles, #232135A, \$59,500



2022 T250 HIGH ROOF CARGO. 39,647 Miles, #22094P, \$44,999



2022 T150 CARGO VAN. 28,979 Miles, #22060P, \$39,999



2022 RANGER CREW CAB. 4X4, Plow, 38,012 Miles, #22095P, \$33,990



2021 F600 FLATBED DUMP. Gas, 4X4, 24,221 Miles, Tool Box, Custom Rack, #21166P, \$51,500



2021 F350 PLATINUM. DRW, 4X4, 27,284 Miles, #24475A, \$77,000.



www.StonehamFordTrucks.com

211 MAIN ST. STONEHAM, MA 02180

Mon-Fri 8:30am-8pm Sat 9- 5pm Sunday 11-4

ALL PRICES NET & INCLUDE ALL AVAILABLE REBATES TO DEALER

Call Bill Pollack 1-617-733-0773 or billpollack@stonehamford.com





CT BLAST SHOP

860-729-0453

**** Extra Large Sandblasting & Paint Booths For The Big Jobs ****



30-A Hultenius St, Plainville, CT 06062
ctblastshop@gmail.com



2011 HINO 268: 9,000 Hours,
 Under CDL, Turbo Diesel, Air Brakes,
 PTO, 10' Dump Body W/Scuttle, 10' Fisher
 Plow, Locking Diff., Allison Auto, Power
 Tarp, Pwr. Mirrors & Windows.
ONLY 9,000 ORIGINAL MILES!!
\$69,000 Mendon, MA
 508-966-4888



1999 FORD F550. 191,000 Miles, New Mirrors,
 AC, Heat, Lights, Etc., Great Truck, **\$12,500.**
 Phil, 617-293-6198

**1998 INTERNATIONAL
 4700.** Diesel, Automatic,
 2010 Pak Rat Cart Tipper
 Body, 97,500 Miles, 13,250
 Hours, New 245/70 R 19.5
 Rear Tires, **\$8,000.**
 401-932-4680



203-234-7788
 1037 Middletown Ave. (Rt. 17)
 Northford, CT



**SURE-TRAC 22K PRO SERIES IMPLEMENT
 TRAILER.** Heavy Duty I-Beam Frame And Tongue, Torsion
 Suspension, #399028



USED 2005 QUALITY 14K EQUIPMENT TRAILER.
 Beavertail, Heavy Duty Ramps, Tandem Axle, #000944,
\$4,950



**USED 2023 SURE-TRAC 22.5K LOW PRO DECKOVER
 GOOSENECK TRAILER.** 8' x 25' + 5' Beavertail, Ramps
 Extend Full Width Of Trailer, #372758, **\$15,000**



CM TRUCK BEDS STARTING @ \$4,500



CAM SUPERLINE 13.2K DUMP TRAILER.
 6'9" X 14', Low Profile Beast Dump Trailer, 3 Way Spreader
 Doors, #535758



**USED CAM SUPERLINE 11.9K FULL DECK TILT
 TRAILER.** 6'3" x 12', Slipper Spring Suspension, Pressure
 Treated Pine Decking, #515842, **\$6,500**

www.thetrailerdepot.com

We'll Hook You Up
WE DO FEDERAL INSPECTIONS!



RENTALS • SALES • SERVICE

207-784-1541
207-222-0201

Lewiston, ME

Gorham, ME



**2024 AMMANN
ARS 30
ROLLER.** Pad
Foot Roller, 48\"
Drum, Dozer
Blade, **\$76,000.**



**2023
AMMANN
ARS 70
ROLLER.**
7 Ton Dirt
Roller,
\$91,000.



**2024
AMMANN
ARS 30
ROLLER.**
Smooth
Drum Roller,
48\"
Drum,
\$71,500.



**2023
AMMANN
ARX 45-2
ROLLER.**
Dual Drum,
Diesel,
\$62,500.



**2024 AMMANN
ARX 10.1
ROLLER.** Gas
Engine, 1.5 Ton
Roller, Asphalt
Roller, **\$20,000.**
Four Units In
Stock



**2023
AMMANN
ARX 16-2
ROLLER.**
Dual Drum,
Diesel, Dual
Compaction,
\$35,200.



**2017 JLG
19-32
SCISSOR
LIFT.** 4
Available,
Under 200
Hours



**1998 GMC
KODIAK
CRANE
TRUCK.**
17.5 Ton, Call
For Details

**Maines Only Ammann Dealer – Walk Behind Compactors In Stock
20 South Ave, Lewiston, ME - Serving New England Since 1977**

NICK SCARVALAS
Commercial Sales
857-247-9023 or 617-249-5603



**COMMERCIAL
VEHICLE CENTER**

ALL TRUCKS ON SALE NOW



2023 F550 LANDSCAPER SPECS. Extra High Sides & Three Way Rear Gate Dump Body, Curb Side Door, Diesel, Remote Start, 19,500 GVW, 4WD, F209942 **Sale Price \$84,990**



2024 F750 DUMP. Diesel 270 HP, Automatic, 10' Body. 3 Coal Doors, Air To Rear, Pintle Hook, Electric Tarp, F210326. **Sale Price \$129,990**



2024 F250 SUPER CAB SERVICE. Duramag Aluminum Body, 4X4, V8 Gas, UpFit Switches, Dual Battery, Off Road Pkg, F210402 **Sale Price \$69,990**



2023 F550 FLATBED SERVICE. 4WD, 7.3L Gas, Knapheide Body, 5 Bar Ladder Rack, 5 Tool Boxes, Remote Start, F209797 **Sale Price \$75,990**



2024 E350 16' ROCKPORT VAN. Roll Up Rear Door, Step Bumper, E-Track, Pass Thru Door, 7.3L Gas, Cruise, F210222 **Sale Price \$59,990**



2024 F350 CREW DUMP. Diesel, Remote Start, F209911. **Sale Price \$77,990**

250 COMMERCIAL TRUCKS IN STOCK



2023 T350 12 Ft SERVICE BODY. DuraCube MAX, 6'5" Inside Height, 3 bar Ladder Racks, PW, PL, Cruise, F209010. **Sale Price \$74,990**



2024 E350 12' ROCKPORT VAN. Roll Up Rear Door, Pull Out Ramp, D-Rings, Pass Thru Door, 7.3L Gas, Cruise, SRW, F210272 **Sale Price \$55,990**



2025 E450 ROCKPORT 14' VAN BODY. Pull Out Ramp, D-Rings, Roll Up Rear Door, Pass Thru Door, 7.3L Gas, Power Equipment, F210785. **Sale Price \$64,990**



2024 F350 UTILITY BODY. 11 Ft Reading Body, 4X4, V8 Gas, Remote Start, Dual Battery, F209850 **Sale Price \$69,990**



2023 F550 ALUMINUM LANDSCAPER. Super Cab, Green Gem Color, 4WD, Diesel, Payload Plus Pkg, F209285 **Sale Price \$85,990**



2024 F350 SUPER CAB SERVICE. Duramag Aluminum Body, 4X4, V8 Gas, UpFit Switches, Dual Battery, Off Road Pkg, F210370 **Sale Price \$73,990**

QUIRK FORD
540 Southern Artery (Rt 3A) Quincy, MA
www.quirkford.com • 617-249-5660

**Business
Financing with
NO Co-signer
Required**

Prices include all available rebates. Rebates include Customer Cash, FMCC Bonus Cash, and Commercial Upfit Bonus Cash. Customer must qualify for rebates. Call for specific details. Prices are subject to change. * In Lieu Of Rebates

NICK SCARVALAS
Commercial Sales
857-247-9023 or 617-249-5603



**COMMERCIAL
VEHICLE CENTER**

ALL TRUCKS ON SALE NOW



2023 F550 DUMP. Diesel, Remote Start, 19,500 GVW, 4WD, Dual Battery, F209809 **Sale Price \$78,990**



2023 F550 SUPER CAB DUMP. 4-5 Yard AirFlo Body, 11 Ton Hoist, 22" Sides, 4X4, Diesel, Payload UpGrade, Color Green Gem, F209283 **Sale Price \$81,990**



2023 F550 LANDSCAPER. 3 Way Rear Gate Dump Body, Curb Door, Diesel, Remote Start, 19,500 GVW, 4WD, F209909 **Sale Price \$82,990**



2023 F550 DUMP. I-Pac, 4X4, Diesel, Remote Start, Payload Pkg, Trailer Pkg, F210127. **Sale Price \$83,990**



2024 F350 RACK BODY. 12.6 Ft Flatbed, Remote Start, 4WD, V8 Gas, DRW, Pintle Plate & Ball, F209844. **Sale Price \$67,990**



2023 F550 SUPER CAB DUMP. 9' Body, 7.3L Gas, 4X4, Remote Start, Payload Upgrade, F210168 **Sale Price \$75,990**

250 COMMERCIAL TRUCKS IN STOCK



2023 F550 DUMP. 9' Body, Diesel, 4X4, Remote Start, Payload Upgrade, F209662 **Sale Price \$78,990**



2024 E450 FREIGHT VAN. 16 Ft Body, E-Trac, Pull Out Ramp, Step Bumper, 7.3L V8 Gas, PW, PL, Cruise, F210171. **Sale Price \$59,990**



2024 F450 CREW DRW LIMITED. Call For Complete Details, F210951 **Sale Price \$109,720**



2024 F550 STAKE BODY. 4WD, Diesel, Remote Start, 19,500 GVW, Stainless Wheel Covers, F209974 **Sale Price \$84,990**



2023 F550 SUPER CAB C&C. Diesel, 4X4, Payload Upgrade, Green Gem, F209274 **Sale Price \$69,990**



2024 T250 CARGO VAN. V6 Gas, F210361 **Sale Price \$48,760**

QUIRK FORD

540 Southern Artery (Rt 3A) Quincy, MA
www.quirkfords.com • 617-249-5660

**Business
Financing with
NO Co-signer
Required**

Prices include all available rebates. Rebates include Customer Cash, FMCC Bonus Cash, and Commercial Uplift Bonus Cash. Customer must qualify for rebates. Call for specific details. Prices are subject to change. * In Lieu Of Rebates



WALLENSTEIN CHIPPER/SHREDDER—
3" Capacity, 13HP Engine
\$5,900
860-928-5748

R & R INDUSTRIES

We Buy All Scrap Metals

www.RRTrucksAndEquipment.com • Bruce@RandRind.com

195 Rocus Street, Springfield MA 01104

413-733-2118



2015 FORD F150 XLT. 4X4 Pickup, Extended Cab, Excellent Condition, 160K Miles, Brand New Tires, Truck Needs Nothing, **\$12,900.** 401-413-5851



Guaranteed Good Used Motors

DIESEL MOTORS FOR SALE

Detroit 3-71, 4-71, 6V-71, 4-53
Detroit 6V92/ 8V92/ 6V53/ 8V71
1988 Mack 300
Many More Motors, Call
(4) CAT 3208 / 3406B/ 3126
International DT 466 Mechanical
International MaxxForce
Cummins 5.9L & 8.3L
Kubota V1305 - Rebuilt
Kubota V1505 – New

LOCATED IN
BURRILLVILLE, RI.
SERVICING
RI, MA, CT

***COMPETITIVE RATES &
QUALITY WORK***

***ON CALL DURING ALL
SNOW STORMS,
YOU WILL
NOT BE LEFT
STRANDED***

CALL PATRICK
1(401) 309-1960



BLUM'S FIELD SERVICE

-ONSITE HEAVY EQUIPMENT & DIESEL REPAIR
-MOBILE WELDING & FABRICATION



2002 BRUSH BANDIT 200-PLUS Brush/Wood Chipper. Caterpillar Diesel, Working Winch, Many Recent Upgrades, Ready To Work, **\$19,850.** 508-435-4976



JG Remillard Equipment Sales.

603-759-5918

 <p>2006 TRAIL KING 35 TON DETACHABLE LOWBED. Hydraulic Tail, Winch, 8'6" Wide, 21' Deck, 8' Over Wheels, 8' Tail. \$34,500</p>	 <p>GRADALL 534B-9 EXTENDING BOOM FORKLIFT. Perkins Diesel, 4X4. \$25,000</p>	 <p>TOFT HYDRAULIC HAMMERS. Brand New, Three Available, Fits Caterpillar 312, 307, & 304 Size Machines \$5,000 - \$8,500</p>	 <p>1988 CAT D-3C DOZER. 60% U/C, Runs Excellent, \$19,500</p>
 <p>DRY STORAGE TRAILERS. 45' & 48' (3) Available. \$2,500 Each</p>	 <p>2003 Blaw Knox PF840 Paver. Kubota Diesel, 6 Ton Hopper Capacity, Paves 8'-13' Wide, Work Ready. \$10,000</p>	 <p>1972 GALLION T-500 GRADER. Cummins Power, Auto Trans., Runs Good. \$4,200</p>	 <p>READ RD-150 SCREENER. John Deere Diesel Powered, 4" Top Deck, 3/4" Bottom Deck, \$39,500</p>
 <p>MILLER D-4 WELDER. Perkins Diesel, Runs And Welds Excellent. \$3,500</p>	 <p>1999 DYNAPAC ROLLER. Pad-Foot Vibratory Trench Roller. \$6,500</p>	 <p>2000 CAT 322BL EXCAVATOR. Manual Thumb, Plumbed For Hammer, No Welds, Runs And Works Well. \$37,500</p>	 <p>CATERPILLAR SR-4 100KW PORTABLE GENERATOR. 3208 Diesel Power, Runs And Works Good. \$9,500</p>

Visit Us jgremillardequipmentsales.com

WWW.SCRANTONMOTORS.COM
777 TALCOTTVILLE ROAD VERNON, CT • 860-281-6726



2024 GMC SAVANA 2500 CARGO VANS. V8, AUTOMATIC



2024 GMC SIERRA 3500 CREW CAB. 4X4, 6.6L GAS, DRW, RUGBY DUMP BODY, #R9400



2024 GMC SIERRA 3500 DOUBLE CAB. 4X4, GAS, READING SERVICE BODY, #R9355



2024 GMC SIERRA CREW CAB. 4X4, DRW, 6.6L GAS, ALLISON AUTO, READING SERVICE BODY, #R9406



2023 GMC SAVANA DURA CUBE SERVICE VAN. #P9594



2024 GMC SIERRA 3500HD CREW CAB & CHASSIS. 4X4, 6.6L V8 GAS, 10 SPEED ALLISON AUTO, #R9564



2024 GMC SIERRA 3500 CREW CAB. SRW, READING SERVICE BODY, 6.6L V8, #SR9588



2024 GMC SIERRA 3500 DUMP. DURAMAX DIESEL, 2WD, DRW, #R9315

MANY OTHER TRUCKS IN STOCK. CALL FOR DETAILS



WWW.SCRANTONMOTORS.COM





800 Cheshire Rd. (Rt 8), Lanesboro MA 01237

(413) 442-0407 • (888) 474-5224

www.villagetrucksales.com

Numerous Snow Plows, Wings, & Stainless Steel Sanders Now In Stock. Call Now With Your Needs



2011 INTERNATIONAL 4700.
All Season Body, Plow & Wing,
\$25,000



CASE 580K LOADER BACKHOE.
4 Wheel Drive,
\$14,000



2009 IH Cummins,
Allison Auto, Quick Swap Body Frame,
\$12,500



2007 MACK GRANITE T/A TRACTOR.
MD7, 10 Speed, 2 Line Wet Line, 52K
Rears, 14K Fronts, 335K Miles, 2 To
Choose, **\$30,000**



1998 IH 4700. 60' Man Basket w/ Winch,
T444E, Auto, 10,550 Miles, Never Been
On The Road, All Airport Work, **\$39,995**



1981 IH S1900.
DT466, 5 + 2 Speed, Rotary Brush
Grapple, **\$8,500**



1967 MACK R600.
Holmes 750 Wrecker, 673 Mack, Tri Plex
Transmission,
\$35,000



2003 FORD UTILITY BODY. ONLY 38K
MILES, 4x4, Diesel, Auto, Clean Truck,
\$15,000



2003 GRADALL XL3100.
Fresh Municipal Trade, Runs And
Operates Smooth,
\$30,000



BRAND NEW 2014 CAM SUPERLINE
PIPE TRAILER. New Never Used,
\$5,995



CHAMPION 720A-VHP
ROAD GRADER.
\$15,000



1990 SEA NYMPH FIRE BOAT.
Evinrude Outboard Motor, Trailer,
\$10,000



800 Cheshire Rd. (Rt 8), Lanesboro MA 01237

(413) 442-0407 • (888) 474-5224

www.villagetrucksales.com

Numerous Snow Plows, Wings, & Stainless Steel Sanders Now In Stock. Call Now With Your Needs



2005 MACK CV713 TRACTOR.
14K Front, 48K Rears, 400K
Miles, Wet Line,
\$20,000



2004 IH 7600. Palfinger PK24001
Knuckle Boom Crane, Cummins
ISM, 13 Speed, 20K/ 46K On
Springs, **\$25,000**



2009 IH PAYSTAR. Cummins ISM, 9
Speed, 245K, Aluminum Dump, Set Up
For Plow, Wing, Sander, No DEF, **\$59,995**



2011 HINO.
Diesel, Auto, 23K Miles,
Signalier TR-45 45' Platform
Bucket, **\$39,995**



2004 IH 7600.
CAT C-12, 8LL Transmission,
160K Miles, **\$12,500**



2005 IH 7600.
Cummins ISM, Brand New 8LL,
187K, Plow & Wing, SS Tarco
Sander, **\$27,500**



2017 IH 4300. 26' Box Truck,
Auto, Box Is Damaged,
Will Remove, **\$27,500**



2007 STERLING TRACTOR.
Mercedes Power, 8LL, 260K,
14K Front, 46K Rears, Double
Frame, Wet Line, **\$30,000**



2004 KENWORTH W900.
CAT C12, 10 Speed, 12K Front,
40K Rears, Air Ride,
\$30,000



**1994 FORD CARGO
8000.** 8.3L Cummins,
Auto, 16' Flatbed,
37,500 GVW, **\$4,500**



**DAVEY AIR
COMPRESSOR.**
Ford Industrial Diesel,
\$3,500



**1999 IH 4700 BOX
TRUCK.** T444E, 6
Speed, 12' Box,
\$3,000



1977 FLEETSTAR 2050A.
653 Detroit, Allison Auto,
45K Miles, Holmes 750
Wrecker,
\$20,000



JACK MADDEN FORD

781-762-4200

Commercial Vehicle Center

2017 • 2018 • 2020




SUPER DUTY OVER STOCK! IMMEDIATE DELIVERY!






**NEW F550 DRW
4X4 DUMP
BODY: POWER
GROUP. IN
STOCK READY
FOR DELIVERY.**



**2023 F650 XL
DUMP: DRW,
AUTOMATIC,
TOOLBOX,
POWER GROUP.
IN STOCK NOW.**

see more photos on our website WWW.JACKMADDENFORD.COM

6 AVAILABLE



**NEW E450 XL
BAYBRIDGE
16' ATTIC BOX
TRUCK: DRW,
RAMP, POWER
GROUP. ALSO:
15' ATTIC
AVAILABLE.**



**NEW E450
AEROCCELL
BOX
TRUCK.
IN STOCK
NOW!**



**NEW F350
CREW CAB 8'
READING SRW
UTILITY BODY:
AVAILABLE FOR
IMMEDIATE
DELIVERY.**

2 IN STOCK



**NEW F550XL
4X4
SWITCH-N-GO
BODY:
GAS & DIESEL
AVAILABLE.
POWER GROUP.**



JACK MADDEN FORD

825 Providence Hwy Rt.1 Norwood, MA

781-762-4200






*All prices include incentives for qualified buyers. For trade assist, must have 2017 or new trade. All vehicles require dealer financing.
 Some prices include snowplow incentives. See dealer for complete details.



JACK MADDEN FORD
781-762-4200



2017 • 2018 • 2020




WE'VE GOT THE TRUCKS!



**NEW 2024 F350
SUPER DUTY
SUPER CAB DUMP
BODY
SINGLE REAR
WHEELS.**



**NEW F350 XL 4X4 READING SERVICE BODY.
BLUETOOTH, WIFI, POWER GROUP.**

**NEW & PRE-OWNED TRANSIT CARGO VANS.
ALL SIZES AVAILABLE.**





NEW F550 IN STOCK NOW!



**2024 E450 10', 12' & 14' WORKPORT UTILITY BODIES.
IN STOCK NOW!**



JACK MADDEN FORD
825 Providence Hwy Rt. 1 Norwood, MA
781-762-4200






*All prices include incentives for qualified buyers. For trade assist, must have 2017 or new trade. All vehicles require dealer financing. Some prices include snowplow incentives. See dealer for complete details.

ANDERSON MOTORS INC.


GMC

MICRO BIRD
by GERRARDIN

BLUE BIRD BUS SALES OF NEW ENGLAND
*** YOUR EXCLUSIVE VOLVO TRUCK DEALER ***


INCOMING
 2025 VOLVO VHD84B300-D13, 500HP, 14SPD. AUTO, 18' HEAVY DUTY STEEL DUMP, HIGH LIFT-GATE.



IN STOCK
 2025 VOLVO VNL64T740, D13-455HP, 12SPD. I-SHIFT, 13,200# FRONT / 40,000# REARS, AIR-RIDE SUSPENSION. #230133



INCOMING
 2025 VOLVO VHD84F300-D13, 500HP, 14SPD. I-SHIFT, AUTOMATIC, 20,000# FRONT AXLE / 46,000# REAR AXLE, STEERABLE PUSHER.



IN STOCK
 2019 VOLVO VNR64T300, 500HP, 12SPD. I-SHIFT, 14,600# FRONT / 46,000# REARS, AIR-RIDE, 336,928 MILES.



IN STOCK
 2015 VOLVO VNM64T-D13, 435HP, 10SPD., 12,000# FRONT / 40,000# REARS, 359,337 MILES. #220105A



IN STOCK
 2016 VOLVO VNM64T-D13, 435HP, 10SPD., 12,000# FRONT / 40,000# REARS, #2300110A



IN STOCK
 NEW 2025 RHODES 26' DOUBLE WALLED ALUM. DUMP TRAILER, STEEL FRAME, SINGLE POINT SUSPENSION, 85,000 GVWR.



IN STOCK
 2025 VOLVO WG64B, 275HP. AUTO, 16,000# FRONT / 40,000# REARS, JOHNSON 820 CORTU CRANE, 20' DUMP BODY. #210299A



INCOMING
 2025 RHODES RSS2660-2 26' STEEL END DUMP TRAILER, AIR HIGH-LIFT DOUBLE ACTING TAIL GATE, HD SPECS.



IN STOCK
 2024 FORD E-350-MFSAB, DUAL REAR WHEEL, 14 PASSENGER, GAS, AUTOMATIC.



INCOMING
 2024 AUTOCAR ACTT42, SINGLE AXLE, YARD JOCKEY, DIESEL AUTOMATIC, A/C, HYDRAULIC 5TH WHEEL.



IN STOCK
 2016 VOLVO VNM64T-D13, 435HP, 10SPD., 12,000# FRONT / 40,000# REARS. #230109A

401-434-5900

WWW.ANDERSONMOTORS.COM

 EMAIL • SALES@ANDERSONMOTORS.COM

170 AMARAL STREET • EAST PROVIDENCE, RI 02915

HABLAMOS ESPAÑOL



2016 FORD F-550. 6.7 Diesel, Reading Crane Body, 3200# Liftmoore Crane, 5000 Miles On New Rear Tires & Front Brakes, 102,638 Miles, All Service Records, **\$45,000.**
Kennebunk, ME 207-252-4797



CAT 930M. 6100 Hrs, Very Minor Rust U/side Of Wheel Wells, Bckt VG Cond., Good Cutting Edge, QC W/Fusion Cplr, Tires VG Cond. 2nd Owner, Only Used For Snow, Former Town Mach, Ride Control, B/Up Camera, Heat, AC, Def, Htd/Pwr Adj Mirrors, R/Def, Stereo, Bluetooth, Strobes, Lights All Around, Svcd By Milton CAT, Excellent, Ready To Work, Not Using Enough To Keep, Like New, **\$109,000.** Adj Forks Avail For Add'l \$7,500. 508-954-9055

New F350 CREW CAB DRW 4X4: Diesel, Power Group. In Stock Ready For Immediate Delivery. Call For Details, Norwood, MA 617-429-7385



1998 GRAND ILE. Refurbished 2019, 15 Yard Tires, Self-Contained, Must See, **\$3700.**
Phil, 617-293-6198

RS EQUIPMENT

1-800-696-3600

Contact Russell – 508-493-5775 or Russ@rsequipment.com



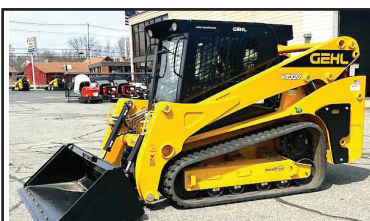
WEBER PLATE COMPACTERS.

Rammers,
Small Forward Plates,
And
Diesel Reversible.



2012 HYSTER 1555.

Closed Cab, Heat, Propane Powered, 13,500lb Lift Capacity, 20-Foot Mast, 900 Hours,
\$67,500



NEW GEHL VT 320. 114 Hp Duetz Diesel, 4 Season Tracks, Fully Hydraulic Self-Adjusting Tracks, Heat/AC, High-Flow Auxiliary Hydraulics, Back Up Camera/Bluetooth Radio,
\$92,900



NEW GEHL R190.

69 Horse Power Yanmar Diesel, Close Cab, Heat/ AC, Blue Tooth Radio, Pilot Controls,
\$59,000



NEW GEHL RT 135.

Pilot Controls, Fully Loaded, Heat/AC, Self-Adjusting, Hydraulic Tracks, 45hp Yanmar Diesel,
\$56,000



2015 SKY TRAK 6036.

6,000lb Lifting Capacity, Open Rops, Cummins Diesel, 36 Foot Max Lift, 1797 Hours,
\$47,500

2900 County St, Somerset, MA - www.rsequipment.com





KUBOTA L3301 TRACTOR—34HP, 300 Hrs.,
Loader And Forks Included **\$20,000** 860-928-5748



**SCHMIDT PORTABLE
ABRASIVE BLASTERS FOR
RENT OR
PURCHASE.**
Call Rapid Prep
877-529-2124

DAVE'S ENTERPRISES

66 BRALEY RD. FREETOWN INDUSTRIAL PARK EAST FREETOWN, MA



1996 FORD LTL WATER TRUCK. Air Control Valves Inside Cab,
3406 CAT, 10 Speed, Water Cannon Will Spray 80 Feet Easy,
3500 Gallon Tank, Good Sight Truck, Runs Great



2008 CHEVY 7500. 26,000 GVW, 7 Spd, 134K, AC, C-7 CAT
Turbo Diesel With 18,000 LB Newer Stellar Hooklift With Air
Controls, Also Has Pintle Hitch & D-Rings.

1995 MACK RD600. 350,
Mack 12 Speed, 44R,
20 Front, 20 Pusher,
New 24.6' Steel Body,
Fairly New Palfinger PW
32001 Crane, 72' Reach,
Will Pick 2,000 Lbs, Full
Extend of Side, Joystick
Controls, Remote Control
Compatible.



508-726-0077

C&C Finance llc

Proudly Serving **Veterans, Family And Friends**

864-546-1853

Call Today For Pre-Approval

*Sleepers, Day Cabs, Dumps, Vocational Trailers, Yellow Iron,
Agricultural Equip.*

First Time Buyers, O/O, Fleet Owners

*Our Array Of Lenders Allow Us To Provide Banking Solutions In
The Transportation, Agricultural And Construction Industries.*

**A To D Credits
Dealers Welcome**



S.A. McLean

207-793-4267

622 Elm St, Limerick, ME • www.s-a-mclean.com



1980/98 MACK. 6 Speed,
11k Miles, 4000 Gallon
Tank. Will Separate.



**MACK T/A
TANKER.** 3000
Gallon Tank



**MACK T/A
TANKER.** Aluminum
4400 Gallon Tank



**GALION 503G
MOTOR GRADER.**
One Owner



**966B CAT
LOADER.**



MILITARY TRUCK 6x6. 1300 Gallon
Poly Tank, High Pressure Fire Pump,
Cummins Power, Automatic



HYUNDAI 757-7.
Wheel Loader



2012 FORD F550 C & C.
4x4, Automatic



ARMY TRUCK 6x6. 1,800
Gallon Tank, Diesel



1998 INTERNATIONAL. 4WD,
DT466E, Automatic, 14k Miles



GIGGIT DH35 MIST SPRAYER.
Dust Control Units



TRACKLESS MT 5 Cummins,
w/ Boom Flail Mower.



1985 MACK 54k miles,
Automatic Trans.



**KAWESAKI Z70 WHEEL
LOADER.**
8000 Hours, Good Runner.



**INTERNATIONAL RESCUE
VEHICLE.** Diesel, Automatic,
28k Miles



1980 INT'L F1954. 6x4, Cab &
Chassis, Diesel, Automatic, 11k
Original Miles, 39,000 lb GVW



1998 INT'L 2574. Automatic,
Cummins, 14k Miles, Rust Free,
Can Separate, 1300 Gallon Body.



1996 CHEVY 3500.
30k Miles, Gas, Automatic, 4x4, Rust
Free, Will Separate.



1994 FORD F700.
20k Miles, Diesel, Automatic, Can
Separate

TERRYVILLE CHEVROLET

NATION-WIDE SHIPPING AVAILABLE!



Commercial Truck Center

Call Bob Dimeo

860-690-8786

www.terryvillechevy.com



2024 CHEV 3500 HD. I-Pac Tool Box, Dump Body, Duramax Diesel, Automatic, 4X4, Rear Camera, Pintle Hook, #30441



2024 CHEV 3500 CREW CAB. 4X4, Duramax Diesel, Automatic, 2-3 Yard Dump Body, #30312



2024 CHEV 3500 HD . V8 Gas, Dump Body, 4WD, I-Pac Tool Box, Automatic, Rear Camera, Pintle Hook, #30440



2024 CHEV LCF 5500HG. 16 Ft Rack Body, V8 Gas, Automatic, PW, PL, Rear View Camera, #30256



2023 CHEV 4500HD. 14.5 Ft Flatbed Body, Wood Floor, Pintle Plate & Hitch, Duramax Diesel, Automatic, Up-Fit Switches, PW, PL, #30095



2023 CHEV 5500 CAB & CHASSIS. Duramax Diesel, Automatic, PW, PL, Cruise, #30370



2024 CHEV LCF 5500HG. V8 Gas, Auto, 16' Morgan Van Body, 8 D-Rings, Plywood Lined, Step Toe Bumper, Roll-Up Door, #30255.



2023 CHEV 4500HD. 18 Ft Knapheide Service Body, Duramax Diesel, Automatic, Up-Fit Switches, PW, PL, #30196



2024 CHEV 5500 CREW CAB DUMP. 4x4, Diesel, Automatic, PW, PL, Cruise, Rear Camera, Pintle Hook, #30389



2024 CHEV 2500HD UTILITY. 4 Door Double Cab, Knapheide Body, 4X4, V8 Gas, Auto., PW, PL, Cruise, Rear Camera, #30416

BUSINESS ELITE * 302 MAIN ST, TERRYVILLE, CT



TRANS EAST EQUIPMENT INC.
67 Main St Salisbury, MA
CALL DAVE Cell 978-992-7077 Or 978-462-1919

**EXIT 90 Off Rt 95
End Of Ramp**

You Pick Your Container – Over 175 Units

FAMILY OWNED & OPERATED



Serving New England

20', 40', 45', 48' And 53' CONTAINERS.
One Trip & Used Steel Storage Containers
We Deliver

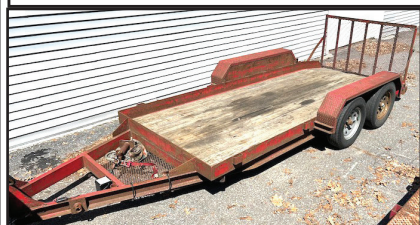
Call Dave The Owner And Get The Best Deal!

CHECK ALL OUR INVENTORY – WWW.TRANSEASTEQ.COM

**2018
MORBARK
MODEL M15RX
BRUSH CHIP-
PER,**
4.3 PSI 145 HP
Gas Engine,
1,303 Hours, 15"
Chipping Capacity,
55 3/4" X 34 1/4"
Infeed Opening, 20
1/2 X 15" Throat
Opening,
\$32,900
Call 781-417-3018



KUBOTA B2410—24HP, \$10,000 860-928-5748



2002 CAM SUPERLINER EQUIPMENT TRAILER.
Tandem Axle, 7000 GVW, 14' Bed, 65" Wide, Original Paint,
Go To Work Condition, **\$1,400** Ayer, MA, 978-772-6619

PAT'S TRUCK SALES

Office: 603-347-1386 - After Hrs: 978-490-6197



**2005 CHEVROLET 4500
DUMP.** 4WD, Duramax Diesel,
Automatic, 126,200 Miles,
12 Ft Dump Body, **\$34,900**



2022 RAM 2500. V8 Gas,
7,000 Miles, **\$51,000.**
Add Plow **\$3,000**, Add Sander
\$3,000



2006 INTERNATIONAL 5000 T/A DUMP.
Cummins ISX 435 HP, Pre Emissions,
Allison RDS 4500, 214,096 Miles, Elite
Interior, Beau Roc 14 Ft Body, New
Polish Alum Wheels, Air Gate, Pintle,
Electric Tarp, **\$92,500**



**2017 FORD F550 LANDSCAPER
DUMP.** New Engine, V10 Gas,
4X4, Automatic, Curb Side Door,
PW, PL, **\$43,900.**



2015 FORD F550 DUMP.
Diesel, Auto, 91,300 Miles,
9' Dump, Coal Shute, 9' Plow,
\$37,500



2014 FREIGHTLINER T/A DUMP.
Detroit 505 HP, Automatic,
160,367 Miles, 20 Frt Axle,
46 Rears, Double Frame, **\$134,900**



2012 FORD F550 DUMP.
V10 Gas, Auto, 16,200 Miles,
11' Dump, 4WD, **\$39,900**



2020 FORD F550 DUMP. 7.3L
Gas, New Short Block & Up
Dates By Ford Dealership,
Automatic, 4WD, **\$52,900**

Visit Us - www.patstrucksales.com • 77 Route 125, Kingston, NH

BUYER • SELLER • SWAPPER

SALVADORE
FAMILY OF DEALERSHIPS



978-616-6127

SalvadoreRam.com



#1 RAM CHASSIS CAB DEALER IN NEW ENGLAND



Multiple Colors Available!

2024 RAM 2500
TRADESMAN
CREW CAB 4X4
6.4L V8 HEAVY DUTY HEMI
MDS ENGINE - 8-SPD
AUTO TRANSMISSION -
6'4" BOX
MSRP: \$58,220
NOW: \$49,398
STK # N24047



Dump Truck

2024 RAM 5500HD
C&C TRADESMAN
REG CAB 4X4
6.7L I6 CUMMINS TURBO
DIESEL ENGINE - 6-SPD
AUTO TRANSMISSION -
60" CA
MSRP: \$95,644
NOW: \$90,664
STK # N24039



Rack Body

2024 RAM 5500HD
C&C TRADESMAN
CREW CAB 4X4
6.7L I6 CUMMINS TURBO
DIESEL ENGINE - 6-SPD
AUTO TRANSMISSION -
84" CA
MSRP: \$94,550
STK # N24068



Dump Truck

2023 RAM 3500HD
C&C TRADESMAN
REG CAB 4X4
6.4L V8 HEAVY DUTY HEMI
MDS ENGINE - 6-SPD
AUTO TRANSMISSION -
60" CA
MSRP: \$75,110
NOW: \$68,110
STK # N23074



Duramag Service Body

2024 RAM 3500
TRADESMAN REG
CAB 4X4
6.4L V8 HEAVY DUTY HEMI
MDS ENGINE - 8-SPD
AUTO TRANSMISSION -
18" WHEELS
MSRP: \$75,305
NOW: \$72,545
STK # N24062



Reading Service Body

2024 RAM 3500HD
TRADESMAN CREW
CAB 4X4
6.4L V8 HEAVY DUTY HEMI
MDS ENGINE - 8-SPD
AUTO TRANSMISSION -
18" WHEELS
MSRP: \$74,740
NOW: \$72,115
STK # N24064



Lots of Tech!

2024 RAM 3500HD
LIMITED LONGHORN
CREW CAB 4X4
6.7L I6 CUMMINS HO
TURBO DIESEL ENGINE -
6-SPD AUTO
TRANSMISSION - 8' BOX
MSRP: \$99,490
NOW: \$94,837
STK # N24054



Multiple in Stock! High Roof!

2024 RAM
PROMASTER 2500
TRADESMAN
3.6L V6 24V VVT ENGINE -
9-SPD AUTO
TRANSMISSION - GVWR
8,900LBS - 16" WHEELS
MSRP: \$55,705
STK # N24057



Duramag Service Body

2023 RAM 3500HD
TRADESMAN REG
CAB 4X4
6.4L V8 HEAVY DUTY HEMI
MDS ENGINE - 8-SPD
AUTO TRANSMISSION -
18" WHEELS
MSRP: \$79,425
NOW: \$69,425
STK # N23145



With Plow! Two In Stock!

2023 RAM 2500
TRADESMAN REG
CAB
6.4L V8 HEAVY DUTY HEMI
MDS ENGINE - 8-SPD
AUTO TRANSMISSION - 8'
BOX
MSRP: \$72,484
NOW: \$58,095
STK # N23126

442 West Broadway, Gardner, MA 01440 | SalvadoreRam.com

Not responsible for typographical errors. Inventory changes frequently. Please call for pricing and details. Pricing subject to change due to manufacturer rebates.



920 W. Chestnut St. Brockton, MA:
508-586-1666 Mon - Fri 8-5, Sat 8-NOON

42 Winter St. Pembroke, MA:
781-826-1666 Mon - Fri 8-3
EastCoastTruckStuff.com

We deliver!

Your One Stop Light Shop!

9 LEDs

Maxxima



2" Round
Clearance Marker
10 Year Warranty

\$7.89
M09100R

16 LEDs

Maxxima



6.3" W X 5.9" H X 2.3" D
5000 Lumens
5 Year Warranty

\$189.00
MWL-62

12 LEDs

Maxxima



6" Surface Mount
Stainless Steel bezel included
10 year warranty

\$10.64
M20332Y

24 LEDs

Trucklite



Signal-Stat, Stop/Turn/Tail
2 Year Warranty

\$26.44
6050

6 LEDs

Trucklite



4" Grommet Mount Fit 'N Forget
R Back-up Light Round LED &
Amber Strobe

\$58.84
44350C

Pigtails

Trucklite



Stop/Turn/Tail
Plug, Right Angle
PL-3, Fit 'N Forget
Plug, 8.5 in.
\$19.31



Stop/Turn Plug
16 Gauge GPT
Wire, Right Angle
PL-2, Stripped End/
Ring Terminal, 11 in.
\$2.35

**Grommets, Pigtails, Strobes, Light Bars, All Sizes
Of Clearance Markers & More!**

GRAND
GENERAL

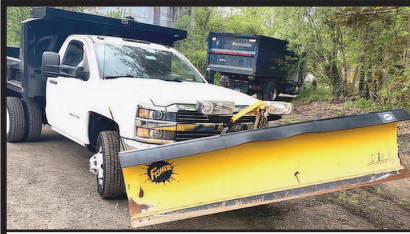
Grote

TRUX
accessories

ECCO

ECCO

WHELEN
ENGINEERING COMPANY INC



2015 CHEVY SILVERADO. One Ton, 6.0 Gas, Automatic, 11K Miles, 9 Ft Fisher Plow, 4X4, Hitch, Tarp, Chute, Absolutely As New, Loaded, **\$38,900.** 203-733-4342



NEW HOLLAND TS90 ALAMO BOOM MOWER. 2WD, Cab/Radio/AC, 5154 Hrs, Rotary Brush Cutter Head Attached, 3-Point Hitch, PTO, Rear Remotes, Flail Grass Head & Broom Available, 2 Tractors To Choose, **\$29,900 Each OBO,** Offers Encouraged. RI 401-559-4390



PORTABLE LINE BORING

WELDING • FABRICATION • REPAIRS

DAVID GOKEY

AFFORDABLE LINE BORING

Serving CT, MA, RI, Southern NH, VT

413-530-0242 Call/Text

davidgokey70@gmail.com

MC, Visa, AMEX, Discover



2016 FORD F-350XL LARIAT. 6.7L Power Stroke, 4X4, Automatic, All Factory Options Including Moonroof, Leather, Reading Utility Body, Transfer Tank, 88,754 Miles, **\$45,000.** New Canaan, CT 203-943-4125

T & TAYLOR & LLOYD, INC. T &

SEE OUR INVENTORY: WWW.TAYLORANDLLOYD.COM



2023
INTERNATIONAL
CV 515 CAB &
CHASSIS 4X2.
Allison Auto, 22,500
LB GVW, Air
Ride Suspension,
Wheelbase for a
14' Body.
Call For Price



2024
INTERNATIONAL
CV515 4X4. Municipal
Spec, International 6.6
350HP, Allison 2700
RDS, 7,500 Front,
15,500 Rear, 165" WB,
Great For Dump or
Hook Loader.



CLEAN 2011
FREIGHTLINER
M2 106
BUSINESS CLASS
DUMP with Plow.
300HP Cummins
ISB, Low Miles
24,174 Allison
Automatic,
Call For Price



1100 GALLON
FIBERGLASS
TANK WITH
SPRAYER
SYSTEM. Multiple
Uses, Mounted On
A 1/2" Steel Plate
For Easy Transfer,
\$1,500. or BRO

781-275-9290 CALL JIM T. • 8 Railroad Avenue Bedford, Ma

JP RIVARD

Trailer Sales Inc

Call Matt - 508-962-4543

Locations in Ayer, MA and Devens, MA

*We Deliver
Storage Solutions*

60 PLUS YEARS SERVING THE
NORTHEAST AREA

Over 150 Containers – In Stock
With Choice Odd Sizes & Specs
FAST Delivery Is Available
Always Best Customer Service

40' HIGH CUBE - 1 TRIP



**New 40' One
Trip
High Cube
Containers,
In Stock,
\$5,400
Used Also
Available.**

20' CARGO WORTHY



**Good
Selection Of
Used Cargo
Worthy
Containers
In Stock,
\$2,795**

40' HIGH CUBE 1 Trip, 4 Side Doors



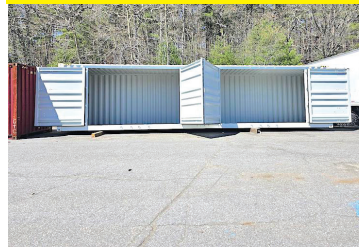
**New 40'
High Cube
Containers,
With 4 Side
Doors, In
Stock, \$10,900**

20' WIND & WATER TIGHT



**Good
Selection Of
Used Wind &
Water Tight
Containers
In Stock,
\$2,495**

40' HIGH CUBE 1 Trip, 2 Side Doors



**New 40'
High Cube
Containers,
With 2 Side
Doors,
In Stock,
\$10,900**

20' 1 TRIP, SIDE DOOR



**New 20' Beige
1 TRIP,
New 36"
Personnel Fire
Proof Side
Door. \$5,495**

CUSTOM MODIFICATIONS



**We Install
Side Doors,
Windows,
Roll Up
Doors,
And More.**

20' FULL OPEN SIDE



BEIGE AND GRAY IN STOCK

**New One
Trip 20' Full
Open Side
Containers
In Stock,
\$7,750**

20' 1 TRIP - HIGH OPTIONS



**New 20'
One Trip
Containers
In Stock, Beige
Or Gray,
\$3,690**

SALES TAX IF APPLICABLE + DELIVERY IS NOT INCLUDED



STONEHAM FORD



2023 F550 CUSTOM UTILITY BODY. 16 Ft Van, 54" Aluminum Platform Rail Lift, Plus Extra Features, Diesel, Call 617-733-0773



JOHN DEERE M WITH HYDRAULIC LIFT, Cultivators, \$2,950 860-928-5748



BLAST HOODS. Fully Padded Interior, Multi-Layers Of Sound Deadening Foam, Tear Off Lense, Niosh Approved Type Ce Supplied Air Respirator. Rapid Prep 877-529-2124



1994 INTERNATIONAL 4900. DT466 Engine, 5 Spd 2 Spd, 12 Ft Custom Aluminum Body, Steel Reinforced, 45 Ft Boom With Optional Bucket, Disc Brakes, **\$24,000 OBO.** 908-217-0414



2022 BWISE DLP 18-21 -H DUMP TRAILER. 82X18, 10GA One PC Flr, 12GA 48" Solid Fixed Sides, 21K GVWR, Adj. Pintle Ring, 6' Hyd. 2-Way Gate, 7K SS Axle Elec., ST235/85R16G 8 Lug Radial G Ply Tires, Alum. Wheels, Spring-Loaded Arm Tarp Kit, Group 27 Deep Cy Batt, Hyd. Jack, Wireless Remote, & More, **\$25,000.** 203-575-0335

HOLLISTON TRUCK

1569 WASHINGTON ST, HOLLISTON, MASS 01746
WWW.HOLLISTONTRUCK.COM • CALL 508-429-7678

**WANTED :
GOOD USED
DUMP BODIES**

LARGE SELECTION OF UNDER CDL TRUCKS !



2007 FORD F-650 CAT C7-260HP, 77K MILES, ALLISON 3500RDS AUTO, SPRING SUSP., SINGLE FRAME, AIR-BRAKES, SCRANTON 6 YARD PACKER AND SO MUCH MORE ! **\$49,000**



2006 FREIGHTLINER M2 107K MILES, 4X4, ALLISON 3500RDS AUTO, 37K GVW, SPRING SUSP., DBL FRAME, 12R 22.5 TIRES, 5.38 GEAR RATIO, AIR-BRAKES, PTO, 105" CA, 175" WB, 14.6' FRAME AND SO MUCH MORE ! **\$30,000**



2010 FREIGHTLINER M2 CUMMINS ISB-220HP, 117K MILES, ALLISON AUTO, 26K GVW, SPRING SUSP., SINGLE FRAME, AIR-BRAKES, A/C, 11' STEEL DUMP AND MUCH MORE ! **\$45,000**



2015 PETERBILT 348 PACCAR PX9-350HP, JAKE BRAKE, ALLISON 3000RDS AUTO, 60K GVW, SPRING SUSP., AIR-BRAKE, PTO, 13.6' ALUM. DUMP, AIR-GATE AND SO MUCH MORE ! **\$75,000**



2011 INTERNATIONAL 4300, DT466-250HP, 96K MILES, EXHAUST BRAKE, 26K GVW, SPRING SUSP., SINGLE FRAME, AIR-BRAKES, PTO, 10' ALUM. DUMP, AIR-GATE AND MORE ! **\$40,000**



2006 WESTERN STAR 4900, PRE-EMISSIONS, MBE900-450HP, JAKE BRAKE, 8LL, 77K GVW, SPRING SUSP., PTO, AIR-BRAKES, 17' STEEL DUMP, AIR-GATE AND SO MUCH MORE. CALL FOR MORE DETAILS ! **\$75,000**

THE DUMP TRUCK SPECIALISTS

WWW.TRUCKANDEQUIPMENTPOST.COM



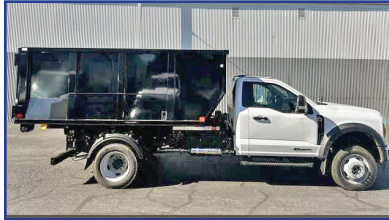
STAN TAGARELIS • 617-610-5540
STAN@WATERTOWNFORD.COM



TIM DUFFY • 781-267-5057
TIM@WATERTOWNFORD.COM



**2023 F-350 4X4 XLT
 SUPERCAB DUMP.
 7.3 GAS, XLT VALUE PKG.
 ALUMINUM DUMP,
 TOOL BOX,
 STK 23449**



**2024 F-550 4X4 SWITCH AND GO.
 6.7 DIESEL, 19500 GVW, HI-CAP
 TRAILER TOW,
 CONTAINER BODY,
 STK 24221**



**2024 F-550 4X4
 12' LANDSCAPE DUMP.
 6.7 DIESEL, 19500 GVW, HI-CAP
 TRAILER TOW,
 XL CHROME PKG. REAR
 CAMERA,
 STK 24222**



**2024 F-350 DRW 4X4 9' READING
 CLASSIC II SERVICE BODY,
 7.3 GAS,
 STK 24039**



**2024 F-350 4X4 L-PACK DUMP.
 7.3 GAS, LTD SLIP AXLE,
 REMOTE START,
 ALUMINUM L-PACK
 CHROME PKG.,
 STK 24029**



**2024 F-550 4X4
 SUPERCAB DUMP.
 6.7 DIESEL, 19500 GVW,
 REAR CAMERA,
 CHROME PKG,
 STK 24229**



**2024 E-450 DRW
 14' BOX W/ RAMP.
 7.3 GAS, 14500 GVW,
 E-TRACK,
 POWER GRP,
 STK 24013**



**2025 E-350 DRW
 12' WORKPORT
 SERVICE VAN.
 7.3 GAS, POWER GRP,
 STK 25001**



**2024 T-250 MEDIUM ROOF
 TRANSIT VAN.
 3.5L V-6 GAS, EXTERIOR
 UPGRADE PKG.
 REVERSE SENSING, PARTITION,
 RACKS AND BINS,
 STK 24228**

625 PLEASANT STREET WATERTOWN, MA 02472



**COMMERCIAL
 VEHICLE CENTER**

WWW.WATERTOWNFORD.COM

Authorized Fisher
Snow Plow Dealer



HILLSIDE MOTORS

**800-D American Legion Highway (Rt. 177)
Westport, MA 02790
508-636-5050**

Financing
Available
-Others in Stock

Family Owned & Operated Since 1969



\$7,900.

OTHERS AVAILABLE

2022 KAUFMAN 43' GOOSENECK TRAILER. Tri Axle, 8 Lug Wheels, 15,500 GVW, Excellent Condition, \$7,900.



FACTORY WARRANTY

2021 BMW X1 AWD. 4 Cyl. Turbo, Panoramic Roof, NAV, Heated Seats, Lane Departure, Apple Car Play, One Owner, 35K, Bal. Of Factory Warranty, Wife's Personal Vehicle, Pristine Condition, \$29,900



40,000 MILES

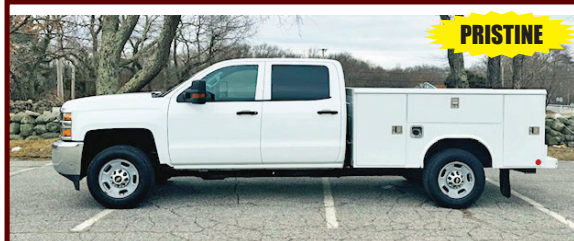
2020 CHEVY CREW CAB SILVERADO 3500 HD DRW 4X4 9' FLATBED. 6.6L V8 Gas, Auto, AC, PW, 6-Passenger, 13,400 GVW, 60" CA, 40K Miles, One Owner, Fleet Maintained, \$43,800. (file photo)



4X4

UTILITY BODY AVAIL.

2018 CHEVY 2500 HD CREW CAB 8' BED 4X4. (Or 8' Utility Body at Addl Cost), 6L V8, Auto, AC, PW, PL, 6-Pass, Tilt, Delay, 173K, Southern Truck, Never Seen A New England Winter, One Owner, Fleet Maintained, \$19,900. (Others Available)



PRISTINE

2018 CHEVY 2500 CREW CAB 8' READING UTILITY. RWD, 6L V8, Auto, AC, PW, PL, 6-Pass., 9900 GVW, 157K, Southern Truck, Fleet Maintained, One Owner, Rust-Free, Meticulously Kept, \$24,900.



SIDE DOOR

2002 GREAT DANE 28' DRY FREIGHT TRAILER w/Overhead R/Door, Side Door, E-Track, Translucent Roof, Solid 5th Wheel Plate, Good Floor, Cross Stringers & Landing Gear, Heavy Spec, 39K GVW, Clean, Fleet Maintained, \$3,500.



OTHERS AVAILABLE

(2) 1989 GREAT DANE 45' X 96" PLATFORM TRAILERS. Model #GP-245, Tandem Axle, 90,000 GVW, Good Landing Gear, Clean, **Starting at \$4,500..** (Others Available Flatbed & Dry Freight)



COMMERCIAL PLATFORM BEDS

Starting at
\$3,850

(101" Wide x 10' Long w/ Steel Deck)
Others Up To 24' Long. Available Options Including Lifetime Rubber Infused Wood Flooring, Hoist Kit Assembly, Side Kits, Plus More!



Contractors Package
2023 WELLS CARGOROAD FORCE. 14' Enclosed Cargo Trailer, Rear Ramp Door, #T14714, \$11,748



2023 NORSTAR DXB8314 DUMP TRAILER. 6' 11" x 14', 14,000 GVWR, #T14959 Was \$13,521 Sale Price \$11,959



2023 BRAVO 28' ENCLOSED TRAILER. Dexter Drop Spring Axles, #T14392, \$22,531



2024 REISER OPEN CAR HAULER. 82" x 16', #T14875, \$5,234



USED 2022 REISER UTILITY TRAILER. 82" x 14', #T14978A, \$3,750



\$5,000 OFF
2024 BRAVO HD TRADESMEN. 9990 GVWR, Double Rear Doors, #T14673, Was \$22,918, Now \$17,950

OVER 200 TRAILERS IN INVENTORY & MORE ON THE WAY
Connecticut Trailers

7 Bolton Center Rd. Bolton, CT

860-649-7223

**Connecticut
Trailers**
& POWERSPORTS

Text or chat from our website: CTTRAILERS.COM

Open Mon – Sat 8-5. Service & Parts Open All Day Saturday.

THE HOME OF THE DOUBLE WARRANTY.

Prices good 30 days after publication. Advertised price does not include state or local taxes, registration costs or dealer Conveyance Fee Of \$119.00



508-917-6178



50! F350-F450- F550-600 CAB & CHASSIS STOCK!



**2023 F250 XL SUPER CAB 4X4:
8' FISHER PLOW, 6.8L V8, POWER
GROUP. STK.# FM6741 \$57,425**



**2023 FORD F350 XL 4X4 RACK. 7.3L
V8, AUTO, POWER GROUP, 14K GVW,
STK#FM6804, \$72,431.**



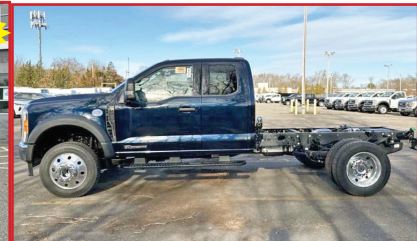
**2024 FOR TRANSIT 250 HR CARGO
VAN AWD. V6, AUTO, WALK-THRU,
9,070 GVW, STK#FM7511**



**2023 FORD F350 XL SUPER CAB DUMP.
STK#6723, \$57,095.**



**2024 FORD E450 CUTAWAY UNICELL VAN.
7.3L V8, Auto, Walk-Thru, Ramp, Roll-Up Door,
14500 GVW, stk#FM5058, \$62,630.**



**2023 FORD F450 XLT SUPER CAB C&C
4X4. 6.7L V8, AUTO, POWER GROUP,
168" WB, STK#FM6218, \$73,495.**



**2023 FORD TRANSIT REFRIGERATED
VAN. AUTO, THERMO-KING REEFER,
STK#FM4547 \$77,499.**



**2023 FORD F450 SUPER CAB XLT 4X4
LANDSCAPE DUMP. 6.7 V8 POWER STROKE
DIESEL, 16,500 GVW, STK#FM5584**



**2024 FORD F650 SUPER DUTY C&C.
7.3L V8 GAS, AUTO, 25,999 GVW,
STK#FM7228**



**1200 WORCESTER ROAD
(Rt.9 East)
FRAMINGHAM, MA 01701**



www.mcgovernfordofframingham.com



SALES & RENTALS
 (603) 623-3669 • TQUIP.com
 Londonderry, NH

• OVER 1000 MACHINES & ATTACHMENTS IN OUR INVENTORY! •



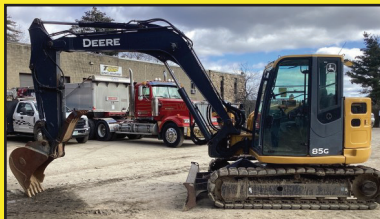
2015 CAT CT660S CAT CT13 6CYL 12.4L 430HP DSL, ENG BRAKE, EF RTO-16908LL 8-SPD MNL TRANS, DIFF LOCK, 62K LB GVWR, AIR RIDE CAB, 385/65R22.5 F & 11R22.5 R TIRES, AIR LIFT PSHR AXLE, HENDRICKSON RT/RTE SERIES SPRING SUSP, 204" WB, PTO, DBL FRM, OX BODIES 16'L x 4'6"H STL BDY, ELEC ROLL TARP, 143K MI, 6236 HRS **\$89,000**



2022 PETERBILT 567 PREMIUM 8X4, PACCAR MX-13 6CYL 12.9L 455HP DSL, EXHAUST BRAKE, ALLISON 6-SPD AUTO TRANS, DBL DIFF LOCKS, 20K LB F & 46K LB R AXLES, 77K LB GVWR, AIR RIDE CAB, ALUM WHLS, 315/80R22.5 F & 11R22.5 R TIRES, AIR LIFT PSHR AXLE, DUAL STR BOXES, AIR TRAC AIR RIDE SUSP, 244" WB, PTO, DBL FRM, 18'L HERITAGE BDY, ELEC TARP, 3K MI **\$219,000**



2020 DEERE 380G
 A/C, AUX HYD, ADD'L 2-WAY ROTATOR LINES, HYD Q/C, 60" BKT, STK-MNTD GRPL PLATE, SCREEN, 32" PADS, 2219 HRS **\$195,000**



2020 DEERE 85G
 A/C, AUX HYD, HYD Q/C, 24" BKT, HYD THUMB, 56.9HP YANMAR TIER-4 DSL, BLADE, PTRN CHNGR, 18" TRKS, 2187 HRS **\$89,000**



2022 DOOSAN DX140LC
 A/C, AUX HYD, HYD Q/C, 30" BKT, WNDW GRD, BLADE, REAR CAM, 24" PADS, 60" TILT BKT (IM4593) AVAIL, ONLY 70 HRS **\$139,000**



2018 CAT 330FL
 A/C, 10'7" STK, AUX HYD, 40" BKT, 2-SPD, 239HP CAT C7.1 TIER-4 FINAL DSL, PTRN CHNGR, 32" TG PADS, 2814 HRS **\$185,000**



2017 CAT 336FL
 A/C, LONG STK, AUX HYD, HYD Q/C, 54" DIGGING BKT, REAR VIEW CAM, 32" PADS, 4128 HRS **\$169,000**



2020 DEERE 410E
 A/C, ENGINE RETARDER, TAILGATE, 29.5R25 MATCHING RADIALS, ONLY ONE OWNER, 4412 HOURS **\$269,000**



2020 ANACONDA SR514 SCREENER
 A32" BELT FDR, HYD RAISE GRIZZLY, JCB DSL, 14'X5' DBL DCK SCRNR, 42" W FEED CONV, 24" W LEFT DISCH CONV, 24" W RIGHT DISCH CONV, 48" W END DISCH CONV, 16" TG PADS, 150+ HRS **CALL FOR PRICING**



BUCKETS • COUPLERS • HAMMERS • FORKS
 GRAPPLERS • THUMBS • BROOMS • RIPPERS
 PULVERIZERS • SHEARS • MOWERS • TIRES
 & MORE!

CALL JAMES:
603-703-8529

• ADDING UNITS TO OUR FLEET DAILY FOR YOUR RENTAL NEEDS! •



PRICE REDUCED

2015 CAT 966M
EROPS, A/C, 6.25CY
124" GP BUCKET,
JOYSTICK STEERING,
REAR VIEW CAMERA,
26.5R25 RADIALS,
8813 HRS
\$189,000

SALES & RENTALS INC.
T-QUIP

**YOUR 1ST CHOICE IN SALES
& RENTALS**

(603) 623-3669

TQUIP.com



PRICE DROP

2021 CAT 950GC
CAB, A/C, 4.25CY GP
BKT, COLD WTHR PKG,
CAT C7.1 TIER-4 DSL, 4-
SPD PWRSHFT, RIDE
CTRL, AIR RIDE ST, REAR
CAM, C/W, 23.5R25
RADIALS, 334 HRS
\$229,000



(3) 2022 CAT 906Ms
CAB, AUX HYD, HYD Q/C,
74" 1.2CY GP BKT, 2-SPD, CAT C3.3B
TIER-4 DSL, 405/70R18 TIRES, 300+ HRS
\$85,000 EACH



2019 JCB 411HT
CAB, AUX HYD, HYD Q/C,
93" 2CY BKT, AIR RIDE ST, REAR CAM,
15.5-25 TIRES, 4862 HRS
CALL FOR PRICING



2014 KOMATSU WA150-6
CAB, 2CY PIN-ON BKT, 17.5R25 RADIALS,
FORKS AVAILABLE AT ADD'L COST, 5024 HRS
\$59,000



2014 DEERE 744K
A/C, 6CY PIN-ON GP BKT, RIDE CTRL,
DUAL STEER, REAR CAM, 26.5R25
RADIALS, ONLY 1 OWNER, 7650 HRS
\$169,000



(2) 2019 DRESSTA TD-8S
EROPS, AUX HYD, 6-WAY HYD BLADE,
94HP CUMMINS, DRAWBAR, REAR CAM,
16" PADS OR 26" LGP PADS, 557-818 HRS
\$89,000 EACH



2021 DEERE 650K-XLT
EROPS, A/C, 6-WAY HYD BLADE,
3-SPD HST TRANS, TIER-4 DSL, TURBO,
18" PADS, 1018 HRS
\$159,000



(2) 2019 BOMAG BW211D-5s
EROPS, A/C, 84" SMOOTH DRUM,
2-SPEED, VIBRATORY DRUM, DRUM DRV,
23.1X26 TIRES, 1965+ HRS
\$89,000 EACH

LOCATED AT T-QUIP OF FLORIDA



2019 HYDREMA 922HM
CAB, A/C, REAR DISCHARGE,
TAILGATE, 2831 HRS
\$149,000



2019 HYDREMA 912HM
CAB, A/C, REAR DISCHARGE,
800/45-30.5 TIRES, 2538 HRS
\$125,000



2022 DEERE 650K-LGP
A/C, 6-WAY HYD BLADE, WIDE PADS,
4-YR OR 5K HR WNTY, 1220 HRS
\$169,000

• NOTHING IS OUT OF REACH—CALL US FOR FINANCING OPTIONS! •

**We are cash
buyers for
quality used
trucks and
equipment!**

BROOKSIDE EQUIPMENT SALES

www.BrooksideEquipment.com

978-249-4600



2015 YANMAR S190R: 1,226 Hours, 1900 Lb Lift, Cab, 4 Cyl Yanmar, 68 HP, Joystick Controls, Aux Hyd, Good Rubber, 6.9K Lbs, Stk#SK705, **\$21,950**



2015 DYNAPAC CC1200: 596 Hours, 47" Smooth Double Drum, Vibratory, Drops, 3 Cyl Kubota D1703 Diesel, 34 HP, Stk#CO801, **\$19,900**



2012 BOBCAT E80: 2,265 Hours, 18" Digging & 4 Ft Cleanup Bucket, Cab W/ A/C, Hydraulic Thumb, Manual Coupler, 4 Cyl Yanmar, 90" Blade, Swing Boom, 19K Lbs, Stk#XC011, **\$47,500**



2020 YANMAR SV40: 1,769 Hours, 18" Bucket, Auxiliary Hydraulics, Hydraulic Coupler, 69" Blade, 4 Cyl Yanmar, Swing Boom, drops, 9.6K Lbs, Stk#MX850, **\$37,500**



2016 CATERPILLAR 938M: 13,231 Hours, 3.5 Yard, Cab W/ A/C, Hydraulic Fusion Coupler, Backup Camera, 36K Lbs, Stk#LO374, **\$87,500**



2011 JLG 800S: 4,326 Hours, 80 Ft Boom Lift, 4x4, 8 Ft Basket, 3-Phase Skypower, 4 Cyl Deutz Diesel, Stk#AE321, **\$29,950**



2015 CATERPILLAR 420F IT: 7,093 Hours, 4x4, X-Hoe, Cab W/ A/C, Front Hyd Coupler W/ 3rd Valve, Turbo, Power Shift, Ride Control, 18" Digging Bucket, Pilot Controls W/ Pattern Changer, Stk#BH518, **\$49,950**



2017 MOROOKA MST2200VD: 2,552 Hours, 24K Lb Capacity, 9' X 12'6" Flatbed Dump, Cab, 250 HP, 32K Lbs, Stk#DU018, **\$59,500**



2003 JLG 4394RT: 3,292 Hours, 43 Ft Rough Terrain Scissor Lift, 4x4, Stabilizers, 4 Cyl Gas, 94" Wide, Stk#AE756, **\$15,500**



2018 CATERPILLAR 312F GC: 959 Hours, 32" Bucket, Aux Hyd, Good U/C, A/C, Cat C3.4B, 28K Lbs, Stk#XC289, **\$99,500**



1980 CASE 450B: 1,592 Hours, 6-Way Blade, Drops W/ Sweeps, Good U/C, Lever Steer, No Brakes, 1 Owner, Stk#DZ587, **\$17,900**



2020 CAT 908M: 3,208 Hours, 1.7 Yard, Cab W/ A/C, Hydraulic Coupler W/ 3rd Valve, 4 Cyl Cat C3.3B Turbo, 73 HP, 14.1K Lbs, Stk#LO491, **\$69,900**



2018 NIFTYLIFT SD50: 50 Ft Knuckle Boom, 4x4, 3 Ft Basket, 3 Cyl Kubota Diesel, Stk#AE252, **\$37,500**



2017 CATERPILLAR D5K2 XL: 5,307 Hours, 6-Way Blade, Cab, Joystick Steer, Backup Camera, Grade Control System, 21K Lbs, Stk#DZ662, **\$89,500**



2015 CATERPILLAR 950M: 11,009 Hours, 4.5 Yard, Cab W/ A/C, Hydraulic Coupler, Backup Camera, 6 Cyl Cat Twin Turbo, 43K Lbs, Stk#LO420, **\$117,500**



2016 TAKEUCHI TL12R2: 3,809 Hours, 2975 Lb Lift, Cab W/ A/C, Aux Hyd, Pilot Controls, Backup Camera, Hydraulic Coupler, Turbo, 84" Bucket, 12.6K Lbs, Stk#SK049, **\$39,500**



2014 VOLVO BL70B: 5,808 Hours, 4x4, X-Hoe, Cab, Turbo, Power Shift, Ride Control, Pilot Controls, 24" Bucket, Hydraulic Thumb, Wrist/Coupler, Stk#BH212, **\$34,900**



2005 VOLVO BL70: 4,880 Hours, 4x4, X-Hoe, Cab, Turbo, Ride Control, 24" Digging Bucket, Stk#BH699, **\$24,500**



2017 CASE 621G: 11,197 Hours, 3 Yard, 4-In-1 Bucket, Cab W/ A/C, Hydraulic Coupler W/ 3rd Valve, Good Rubber, 29K Lbs, Stk#LO849, **\$64,500**



2021 DOOSAN DX225LC-5: 4,082 Hours, 24" Bucket, A/C, Hydraulic Thumb, 6 Cyl Doosan Turbo, Good U/C, 51K Lbs, Stk#XC129, **\$97,500**

60 STATE RD, PHILLIPSTON, MASS

978-249-4600

EMAIL: KEVIN@BROOKSIDEEQUIPMENT.COM

Herb Chambers

of Millbury



RAM

BUSINESS LINK

ATTENTION! LANDSCAPERS & CONTRACTORS!

NEW RAM CREW CAB DUMP BODIES



NEW RAM 5500 REG. CAB DUMP BODIES



NEW RAM CREW & REG CAB UTILITY BODIES



NEW RAM CHASSIS IN STOCK



NEW RAM BOX TRUCKS IN STOCK



NEW RAM PROMASTERS IN STOCK



IN STOCK NOW FOR IMMEDIATE DELIVERY

RAM 5500

MORE INBOUND

RAM 3500

- '22 CREW CAB DUMP – DIESEL, 4X4
- '23 REG CAB – 84 CA – BARE, DIESEL, 4X4
- '24 REG CAB DUMP – DIESEL, 4X4
- '24 REG CAB DUMP – DIESEL, 4X4
- '24 REG CAB 16' BOX W/RAMP – GAS, 4X2
- '24 REG CAB 14' BOX W/LIFT GATE – GAS, 4X2
- '24 REG CAB 14' RACK BODY W/ LIFT GATE – 4X2
- '23 REG CAB – 60 CA, BARE, DIESEL, 2-WHITE & RED, 4X4
- '23 CREW CAB UTILITY- GAS, 4X4
- '23 CREW CAB – 60 CA, GAS, 4X4
- '24 REG CAB DUMP – GAS, 4X4
- '24 REG CAB DUMP -GAS, 4X4
- '24 CREW CAB LANDSCAPER – GAS, 4X4
- '24 CREW CAB – 60 CA, GAS, 4X4

ALSO IN STOCK:

REG. CAB & CREW CAB UTILITY BODIES (6), RAM 2500/3500 REG. CAB P/UPS (10 AVAILABLE)
PROMASTER VANS (10), PROMASTER CUTAWAYS W/12' BOX (2)

2 LATTI FARM RD RTE. 20, MILLBURY, MA
(Easy To Reach At The Junction Of Rtes. 90
(Mass Pike), 146 + 20.)

www.HerbChambersChryslerOfMillbury.com

CALL ROB: 508-719-9658

McDonough Equipment Sales

603-399-5029



BARFORD SR165 SCREENER/SCALPER. Triple Deck, 5'X16' Scalper Screener, Brand New, **\$295,000.**



2020 KOMATSU PC138US-11 EXCAVATOR. Hydraulic Thumb, Coupler Plumbed, Zero Swing, Heat, AC, Steel Tracks w/ Rubber Pad Inserts, 2,107 Hours **\$129,000**



2015 DOOSAN DX140 LCR. Plumbed, Coupler, Active Thumb, Blade Like New, 3000 Hours, **\$78,000**



2019 BOBCAT T870 SKID STEER. Hi Flow, Heated Seat, AC, Rear Camera, Joysticks, Forks & 86" Bucket, 1,491 Hours, **\$65,000**



JLG EC600SJP MAN LIFT. New, 4WD, All Terrain, 500 lbs Capacity, Electric Powered, 60 Ft. Height, 8' Basket, 27 Hours, **\$99,000**



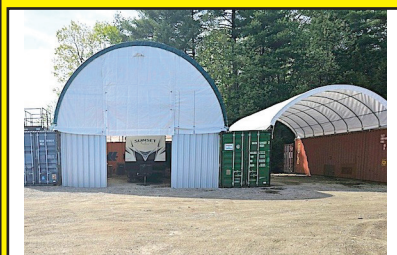
2024 TYM T754 TRACTOR/LOADER. 74 HP, 4WD, 83" QA Bucket, Zero Hours **\$44,000.**



68" BOBCAT SWEEPER. Attachment, Gutter Broom, **\$4,800.**



JLG 1932E2. Scissor Lift, **\$6,800**



SHELTER. 40' Long, 16' High, 30' Wide, Great For Sand Blasting & Painting, **For Lease**



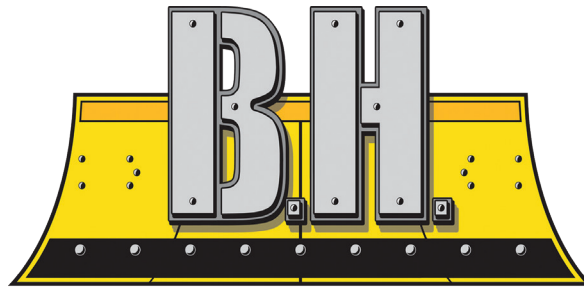
20 Ft CONTAINER. One Tripper, **\$4,300** Or RENT At Your Location Or Our Location



20 Ft CONTAINER. Used, Water Tight, **\$2,400** Or RENT At Your Location Or Our Location

www.bhtrailersandplows.com

6 Center Parkway
Plainfield, CT
06374
860-949-7863



TRAILERS AND PLOWS

2207 Hartford Ave.
Johnston, RI
02919
401-214-3735



**SPRING IS
HERE!
Over 100
Beds In Stock!
Check
Website
For
Clearance
Items!**



**CM Aluminum Skirted
Flat Bed, Gooseneck
& Receiver Hitch Built In
Starting at \$7,495**



**CM SK Skirted Flat Bed
Gooseneck and Receiver Hitch
Built In, Starting at \$6,995**



**DURAMAG Flat Beds
with 10 Inch Apron
Starting at \$3,995**



**CM RD Beds
Over 100 Beds In Stock!
Starting at \$4,195**



**LOAD TRAIL CH14 83X20 with
5Ft. Tall 2Ft. Wide Ramps
11,055Lb. Payload
14,000Lb. GVWR, \$6,695**



**BIG TEX 60PI
77 X 16
With Stand-Up Gate
6,000Lb. GVWR, \$3,995**



**BIG TEX 14LP 83 x 14
With Ramps, 4 D-Rings
Tarp Kit & Stabilizer Jacks
14,000Lb. GVWR, \$10,895**



**DIAMOND C FMAX 212 35Ft.
30+5 w/Max Ramps, Hyd. Brakes
& Jacks, Solar Charger, HD Susp.
25,900Lb. GVWR, \$29,500**



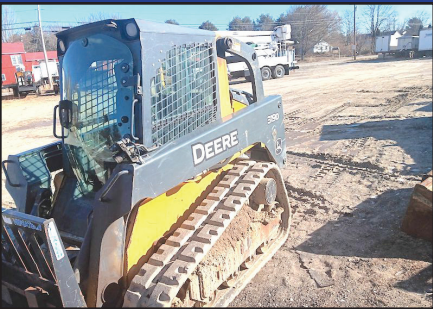


207-623-4239



2002 GMC C8500 BUCKET TRUCK.

95 Feet Reach,
CAT Power,
Allison Automatic,
28,710 Miles,
\$40,000



**JOHN DEERE
319D.**
Track/
Skidsteer
Loader,
Enclosed Cab,
Good Tracks,
\$28,000



**2015 CAT D6N
LPG DOZER.** Six
Way Blade, 5,100
Hours, Good
Undercarriage,
\$180,000



**2006 PACE
GOOSENECK
48' TRI-AXLE
TRAILER.**
Winch, Generator,
\$9,500.



**2012
FREIGHTLINER
M2.** Flatbed Body
With Beavertail,
Winch, Sleeper Bunk,
Polish Aluminum
Wheels, Cummins,
Automatic, Air Ride,
\$42,000



**2003
CATERPILLAR
322CL
EXCAVATOR.**
Twist-A-Wrist,
\$45,000



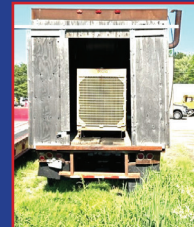
**1992
MICHIGAN L50
LOADER.** Bucket
And Forks,
\$18,000



1998 KENWORTH T600 TRACTOR. C12,
10 Speed, 46,000 Rears, Full Lockers, Air Ride,
\$17,000.



**EAGLE PICHER R80
FORKLIFT.**
6000 LB Capacity, Side
Shift,
\$10,000.



GENERATOR. Self
Contain In Trailer,
Cummins 855, Model
440FDR71112JJW, 250
KVA, 200 KW, 480 Volt,
300 AMP, 275 Gallon Fuel
Tank, **\$7,500.**

Dick's Used Trucks & Equipment 146 River Road, Chelsea, Maine

BUYER • SELLER • SWAPPER



2016 KENWORTH W900L. 560 Cummins, 18 Spd., 13,200 Front, 40,000 Rears, Wet System, 593K, Motor Was Done At 407K, Truck Runs And Goes Great, **\$79,000 OBRO.** 207-229-2120



1998 CHEVY 3500HD DUMP TRUCK. 109,434 Miles, 6.5L Diesel, Automatic, Light Wt. 6,146 Lbs., Gross Wt. 15,000 Lbs., Purchased New, One Owner, Fold Down Sides, Electric Dump, **\$12,000.** 860-930-7013



1981 FRUEHAUF 50 YD DUMP TRAILER, \$14,000 Or Best Offer. Call Steve, 508-294-1489

QUIPCAL
The Decal Experts

Decal Sets for your Construction, Forestry, Ag, Mining & Industrial Equipment - Old and New.

Prompt • Knowledgeable • Reliable • Experienced

To Check \$ Call: 215-536-5339
& Availability Email: info@CustomServicesCompany.com

Your Next Decal Set Is Here • www.QuipCal.com



Jukonski Truck Sales



WWW.TRUCKSELLERS.COM se habla español

680 NEWFIELD ST. (RT 3) MIDDLETOWN, CONN • 800-378-0342 • MON-FRI 9-5

DON'T MISS OUT: YOUR IDEAL TRUCK AWAITS!



2024 HINO S5 BRAND NEW. 176" WB, Diesel, 19,500 GVWR. Cab & Chassis 14 Available.



2021 HINO L6 26' Box Truck, Hino Diesel Engine, Auto, 148K, 25950 GVW, #T-M5T50288, **\$63,900**



2017 CHEVROLET 3500 HD Beverage Truck, Diesel, 13,000 GVWR, 80K, 12' Hackney Body #T-H7F00113, **\$39,900**



2022 ISUZU NRR Flatbed With Wrap Around Ramp, Diesel, Only 8K Miles, 19500 GVWR, # T-N7300513 **\$59,900**



2021 MITSUBISHI FUSO FE180 14'Dump, 17995 GVWR, Gas, 8K Miles, 5 Dump Trucks Avail. #T-MGMA8772



2022 ISUZU NPR HD Moving Storage Box Flatbed Diesel, LIKE NEW Low mileage, 4 Like Them In Stock. Stock# T-N7015549. **\$54,900**

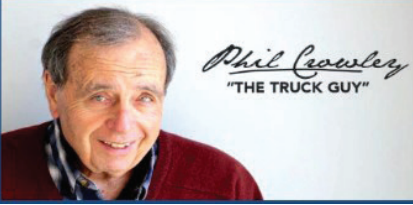


2016 INTERNATIONAL 4300 26' Morgan box, ISB Cummins, 211K, NON CDL 25,999 GVWR, #T-GH210787 **\$34,900**



2023 MORGAN Brand New 24' Body 24' Long 96" Width 97" Height. #BODNB22850260, **\$18,499**

90 DAY POWERTRAIN WARRANTY AVAILABLE ON ALL CERTIFIED TRUCKS. INCLUDES INJECTORS AND TURBO

PLACE MOTOR Inc.*The "RIGHT PLACE" Since 1923***COMMERCIAL TRUCKS**

PHIL CROWLEY
866-449-7482 EXT. 213



19 Thompson Rd.
Rte. 193
Webster, MA.



6 TO CHOOSE FROM

**NEW 2024 FORD F-250 & F-350
REGULAR CAB 4X4 PICKUPS.
VARIETY OF COLORS !**



**NEW 2024 FORD F-250 SUPER-
CAB 4X4 PICKUP, SHORT BED.
CALL FOR MORE DETAILS !**



**NEW 2024 FORD F-250
SUPER-CAB 4X4 7.3L V-8 GAS,
XLT TRIM. CALL FOR MORE DETAILS !**



**NEW 2024 FORD F-250 CREW-CAB
4X4, XLT TRIM, 7.3L V8, GAS
ENGINE. CALL FOR PRICING !**



3 AVAILABLE

**NEW 2024 FORD F-250 CREW-CAB
4X4, LARIAT TRIM, 6.7L HO DIESEL
ENGINE, POWER MOON-ROOF AND
MORE !**



**NEW 2024 FORD F-250 CREW-CAB
LARIAT TRIM, 6.7L DIESEL
ENGINE & MORE !**



**NEW 2023 FORD F-250 4X2
REGULAR CAB PICKUP, GAS
ENGINE, XL TRIM AND MORE !**



**NEW 2023 FORD F-600 4X4,
7.3L V8 GAS, 4-5 YARD DUMP.
CALL FOR MORE DETAILS !**



**NEW 2023 FORD F-600
4X4 CAB & CHASSIS, 84" CA,
DIESEL ENGINE.**

PICK YOUR BODY



**MASSACHUSETTS OLDEST FORD
DEALER SINCE 1923**



PLACE MOTOR Inc.

The "Right Place" Since 1923

COMMERCIAL TRUCKS

Call Phil Crowley "The Truck Guy"
866-449-7482 ext. 213



19 Thompson Rd.
Rte. 193 Webster, Ma.

PICK YOUR BODY



2023 FORD F-350 4X4 CAB &
CHASSIS
GAS ENGINE, 84" CA.

PICK YOUR BODY



2023 FORD F-450 4X2 CAB &
CHASSIS XLT TRIM, V8 GAS
ENGINE, 120" CA.

PICK YOUR BODY



2023 FORD F-450 4X2
6.7L DIESEL, XL TRIM, 60" CA

PICK YOUR BODY



2023 FORD F-450 4X2,
DIESEL, 108 CA.
CALL FOR MORE DETAILS !



2023 FORD F-350 4X4 DUMP WITH
I-PACK, XL TRIM, V8 GAS ENGINE, 84"
CA. CALL FOR MORE DETAILS !



2024 FORD E-450 17' AREOCELL
BODY W/ WALK RAMP.
CALL FOR MORE DETAILS !



2024 FORD E-350
15' AREOCELL BODY W/ WALK RAMP.
CALL FOR MORE DETAILS !



2021 FORD F-350 4X4 REGULAR CAB
XLT TRIM, 7.3L V8 GAS ENGINE AND
MORE. CALL FOR MORE DETAILS !



2024 FORD F-650 SUPER-CAB
7.3L V8 GAS ENGINE, UNDER 1,000
MILES. CALL FOR MORE DETAILS !

WWW.PLACEMOTOR.COM



DEJANA
Truck and Utility Equipment



COMMERCIAL
VEHICLE CENTER

CANDIA TRAILER

www.CandiaTrailer.com
& LANDSCAPE EQUIPMENT CO
All Prices Cash & Carry! Installation Available!

SAVE TIME & FUEL • WE SHIP!

1-866-761-0196
NH 603-483-2541 • Fax 603-483-2842

35 High St. Candia 4 Coners, Candia NH
10 Minutes East of Manchester, NH • 1 hour From Boston

**CUSTOM
BODY
SPECIALIST**



DUMP TRAILERS. 12', 14', 16 Ft.
Twin Piston, Powder Coat, Ramps,
Battery, **Ready To Go**



7 TON EQUIPMENT TRAILER .
20' Power Tilt, Tandem Axle,
USA Made Also Aluminum Trailers



**ALUMINUM LANDSCAPE
TRAILERS**



**DURA MAG ALUMINUM FLATBED
BODIES.** Industry's Highest Quality,
Call With Your Specs.



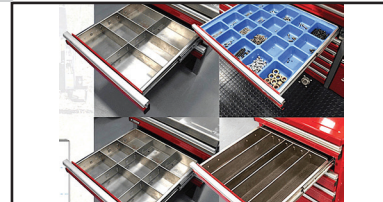
ENCLOSED UTILITY



MOTIONLATCH TECHNOLOGY. One-
Hand, One-Motion Drawer Pull. Dual
Latches Keep Drawers Closed During
Transit.



Drawer Tool Organizers – CTECH
Storage Solutions



Divider-Holder Tabs Will Accommodate
A Wide Range Metal Dividers



CTECH – Drawer Units That Fit
Into Your Utility Body



LANDSCAPER TRAILERS. Dual Axle
& Single Axle,
Ready To Go



HOMESTEAD Enclosed Trailers.
Stocking 8 Ft – 24 Ft

- ALUMINUM TRUCK BODIES -



**DURA MAG ALUMINUM DUMP
BODIES** Complete Sub-Frame,
Power Pac, LED Lights.



**CUSTOM ALUMINUM
FLATBED BODIES**



TAKE OFF BEDS.
Ford – GM – Dodge
Call With Your Specs



ALUMINUM SERVICE BODY

CANDIA TRAILER

www.CandiaTrailer.com
& LANDSCAPE EQUIPMENT CO
All Prices Cash & Carry! Installation Available!

SAVE TIME & FUEL • WE SHIP!

1-866-761-0196
NH 603-483-2541 • Fax 603-483-2842

35 High St, Candia 4 Coners, Candia NH
10 Minutes East of Manchester, NH • 1 hour From Boston

**NEW YEAR
NEW BODY
CALL US**



IN STOCK GALION DUMP BODIES. 8 Ft Thru 16 Ft. Call With Your Specs Today



8 Ft & 6 Ft EZ SLIDE-IN DUMP BODY. Complete Head Board, Tarp, & Hoist.



HARSH HOIST

2.5 to 45 Ton, Single or Double Piston. Convert a Flatbed Body to a Dumping Body. HOIST & POWER PACK

USA Made



BUTCHER Dump Power Pac with control Gravity Down **\$595**



LOAD COVER

7' X 12' Mesh tarp & Hardware Kit **\$269**



Pintle Plate
\$459

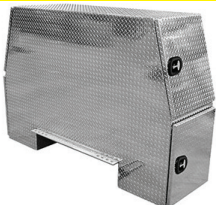


15 Ton Pintle Hook **\$89** – WE SHIP



Retractable Step
One Step **\$119**
Two Step **\$129**
Three Step **\$139**

I-PACK TOOL BOX



Diamond, Aluminum, Or Black



HEADACHE RACKS – Aluminum, USA Made, With Or Without Window Cut Out, Hi & Low Profiles, LED Light Options, Sport Series & Pro Series.



Shuttle Door
\$199



TRANSFER TANK & PUMP. Made In USA, 12 Ft Hose, Nozzle Gun, 15 gpm, In Stock – We Ship



UNDERBODY TOOL BOXES

Powder Coat Diamond Aluminum Door



Diamond Aluminum Door



TRUCKCOUNTRY.US

USED TRUCK PARTS



ONLINE 24-7



**8' DUMP BODY, DRW,
Recently Reconditioned,
#245849, \$4,500**



**10' DUMPING WOOD FLAT
BED BODY, #235793, \$2,000**



**8.5' DUMP BODY. Recently
Reconditioned, #235793,
\$4,500**



**9' CM FLAT BED BODY, DRW,
#245833, \$2,000**



**11' CM FLAT BED BODY
#235791, \$2,500**



**8' MASON DUMP BODY.
Needs A Little Love, \$1,500**



**12' FLAT BED BODY. With
Wood Floor, #225630, \$2,000**



**9' SUB FRAME HOIST.
Pump, Recent New Piston,
#254815, \$1,500**



**13' FLAT BED BODY. Wood
Deck, #225615, \$2,000**



1-860-423-6004

Mon-Fri 8-5

Closed
Sat & Sun

1535 WEST MAIN STREET, WILLIMANTIC, CT

KCV Trailer Rentals

SLedue@KCVtrailers.com

207-883-5181, x2 Scarborough, ME

KCV**\$150 or \$200/mo**
Delivery Fee Extra**20' or 40' Container Rentals**

Various size/colors give extra storage for commercial/home projects.

**FOR SALE - 2016 International Prostars**

Three (3) to choose from, Automatic, Day Cab, Single Axle, Cummins engine with a Eaton transmissions.

685k Miles	611k Miles	542k Miles
\$15,950	\$16,950	\$18,950

**\$2.5k to 3.5k****20+ Used 40' HIGH CUBE Containers**

Units in blue, red, green, and gray. Price x 5.5% tax + \$125/hr for delivery.

Nine feet high. Discount for multiple units sold.

**2018 WESTERN STAR.** 505 HP, Allison 7 Speed Auto W/ Low Hole, 390K Miles, Excellent Shape, With 2020 26' Rhodes Dump Trailer, New Brakes, Drums, & Springs, Both In Excellent Condition., **\$135,000 For Both.** 774-488-6535**ECONOLINE MODEL DPM23DA 12 TON TRAILER.** Heavy Duty With Dove Tail, Air Brakes, Needs Floor & Tires, Single Axle 10,000, Empty Wt 5500, 23' Bed Tongue, Wt 5000, Gross Wt 24,000, Asking **\$7500.** 203-575-0335**1995 SUTPHEN PUMPER FIRE TRUCK.** Very Good Condition, Runs Great, Everything Works, **\$12,500.** 860-605-6895**MASTRIANO MOTORS****202 N Broadway,
Salem NH****Financing
Available****2021 FORD F350 SUPER CAB UTILITY.** 4X4, Diesel, 92,247 Miles, Reading Body, Ladder Racks, M6141 **\$54,944****2013 FORD F550 CREW UTILITY.** 4WD, Diesel, 55,085 Miles, Knapheide Body, Gooseneck Hitch, M6167 **\$47,944****2021 CHEV3500 FRIEGHT HAULER.** Interior Shelving, Sliding Curb Side, Roll Up Rear Door, 78,808 Miles, M6160, **\$32,944****2016 FORD F350 DUMP.** 4X4, V8 Gas, 83,172 Miles, PW, PL, Tool Boxes, M6120. **\$34,944****2015 GMC 3500 SERVICE VAN.** V8, Auto, PW, PL, 3 Bar ladder Rack, M6068. **\$28,944****2015 GMC 3500HD SERVICE BODY.** Diesel, 4X4, 105,894 Miles, Polish Alum Wheels, M6151 **\$36,944****2013 FORD F350 DUMP.** Super Cab, 4X4, Diesel, Auto, 86,557 Miles, Marauder Body, Coal Shute, M5661B. **\$41,944****603-952-4500 – Visit www.dieselland.com**



11 Commercial Way
Milford, MA 01757

HILLVIEW EQUIPMENT

SALES & RENTALS 24/7 • CALL JUDE 1-508-498-0777

www.HillviewEquipment.com

Excellent Equipment • Outstanding Prices

**FRESH
MACHINES
MONTHLY**

WE HAVE EQUIPMENT!

*Rt. 495 to exit 19,
Route 109W,
Left to Birch St,
right to Industrial Dr.
Left to Commercial Way*

**FRESH
MACHINES
MONTHLY**

★ **VERY NICE • CLEAN** ★



**2017 CAT 320 NEXT GEN., 4,000 HOURS,
VERY NICE, CLEAN, FAST!
CALL JUDE**

★ **CALL!** ★



**2019 CAT 312F- LOW HOURS, AUXILIARY
HYDRAULICS, VERY NICE.**

★ **CALL JUDE 508-498-0777** ★



**2016 CAT 308 E2, QUICK COUPLER,
HYD THUMB., BLADE,
HAVE 6 WITH LOW HOURS, BEST PRICING!**

★ **CALL JUDE 508-498-0777** ★



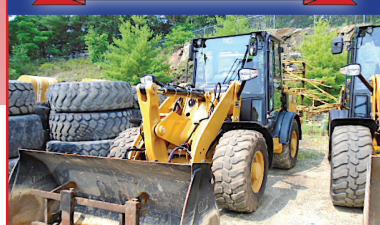
**2011 CAT 311D, GREAT SHAPE, GOOD
BOTTOM, AUX HYDRAULICS, WORK READY.**

★ **CALL JUDE 508-498-0777** ★



**2006 CAT 930G, LOW HOURS (for the year),
NEW TIRES, QUICK COUPLER,
READY FOR WORK !**

★ **CALL! LIKE NEW!** ★



**2021 CAT 906M-COMES WITH BUCKET & FORKS,
AUTO GREASE,
LOW, LOW HOURS, LIKE NEW....**

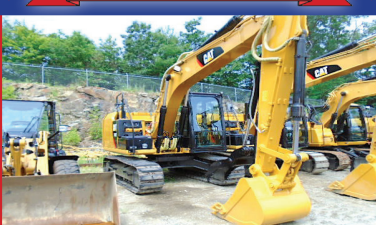
NOS FINANCIAMOS PARA EMPREITEIROS BRASILEIROS!!

★ **CALL JUDE 508-498-0777** ★



**2012 CAT D3LGP, LOW HOURS, EXCELLENT
CONDITION, BEST PRICE !**

★ **CALL! PRICED RIGHT** ★



**2017 CAT 312E- VERY CLEAN, FULLY SERVICED
WITH NEW HYDRAULIC THUMB .. PRICED RIGHT
AND WORK READY.**

★ **CALL JUDE 508-498-0777** ★



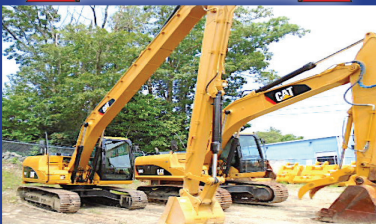
**2011 CAT 312D, LOW HOURS, HYDRAULIC
THUMB, WORK READY-NO EMISSIONS.**

★ **VERY NICE LOW HOUR MACHINE** ★



**2014 CAT 910M: VERY NICE LOW HOUR
MACHINE, A/C, QUICK COUPLER.
CALL JUDE**

★ **CALL NOW!** ★



**2011 CAT 312D- W/ NEW 45' LONG REACH,
VERY UNIQUE AND VERSATILE
MACHINE....**

★ **CALL!** ★



**2017 CAT 320FGC- VERY NICE MACHINE, VERY
COMFORTABLE & FAST,
AUXILIARY HYDRAULICS... PRICED TO MOVE...**

****WE GUARANTEE TO HAVE THE BEST SELECTION OF USED EQUIPMENT AROUND****



11 Commercial Way
Milford, MA 01757

HILLVIEW EQUIPMENT

SALES & RENTALS 24/7

www.HillviewEquipment.com

Rt. 495 to exit 19,
Route 109W,
Left to Birch St,
right to Industrial Dr.
Left to Commercial Way



CHECK OUT OUR WIDE ARRAY OF BUCKETS FROM DIGGING TO CLEAN OUT !
DESIGNED TO FIT CAT 307-349 & KOMATSU PC300-450
CALL 508-473-1300 GET DIGGING TODAY !



NOS FINANCIAMOS PARA EMPREITEIROS BRASILEIROS!!
EMAIL JIM GALLAGHER TODAY AT [JGALLAGHER@HILLVIEWEQUIPMENT.COM](mailto:jgallagher@hillviewequipment.com)
****WE GUARANTEE TO HAVE THE BEST SELECTION OF USED EQUIPMENT AROUND****

**1989 MACK
RW613
SUPERLINER
TRACTOR,**
Heavy Rear Ends
- 46,000, Needs
Rubber ALL Around,
350 HP Mack
Motor, 10 speed
Trans. 2 Line Wet
System, 400k
Miles, **\$14,900,**
- Call
781-417-3018



1994 CAT 320L. Excavator
W/ Hydraulic Thumb, 11K Hours,
Long Stick & Long Undercarriage,
Good Condition, Good Bottom,
Heavy Duty Bucket Rebuilt,
1 Owner, Well Maintained,
6-Cylinder Turbo Diesel Engine,
Ready To Work, Heat, Radio,
\$60,000. 978-821-3036



2003 CHEVY C4500 UTILITY TRUCK.

81,068 Miles, No Accidents, 6.0L
Reg. Gas, Automatic, Light Wt.
7,268 Lbs., Gross Wt. 16,000 Lbs.,
Purchased New, 1 Owner,
\$21,000. 860-930-7013

FOR SALE

Successful Turnkey Business

In Rural New Hampshire

**Serving The Truck Body &
Equipment Industries for 45 Years**

Land, Buildings, And Inventory

603-361-5274

ALLEGIANCE

— T R U C K S —



109 Lindberg Ave. | Methuen, Ma 01844
(978) 686-1800 | (978) 726-9477



CALL FOR OTHER NEW & USED TRUCKS FOR SALE!



2020 HINO 195 18' REEFER w/ Curb Side Door,
19500 GVW, Carrier 40x, 211K Miles, Roll-Up Rear Door, stk#327078, **\$39,900.**



2021 ISUZU NPR-HD Diesel.
94K, 14500 GVW, 16' Dry w/ 1500lb Maxon Tuck, Isuzu Ext Warr Avail, stk#336700, **\$52,900.**



2020 INTERNATIONAL MV607 4x2.
176K, Cummins B6.7, Allison 2100HS 6sp Auto, Crew Cab. 24' Attic Peak Box, 3300 Lb Tuckaway Liftgate, Ready For Moving Season! stk#202566, **\$69,900.**



2009 FREIGHTLINER M2 106.
64000 GVW, Cummins ISL 300 HP, 44K Miles! Allison 3000 6 Sp Auto, 274" WB w/ Utility Flatbed. 46K Rears, stk#323956, **\$69,900**



2013 KENWORTH T370 DUMP. 33K GVW, 93K Miles! 325 HP PC-6, Allison 3500 RDS, 21000 Lb Rear Axle, 5.57 Rear Axle, stk#332258, **\$79,900.**



2019 HINO 155.
98K, 14500 GVW, 16' w/ 2500lb Tuck, 6sp Auto, Power Windows/Locks, A/C, 2 Row E-Track, stk#334953, **\$39,900.**



2018 FREIGHTLINER M2.
61K Miles! 26' Dry 97" T x 96" W, Waltco 3000 Lb Tuckaway, Curb Side Door, Alum Wheels, 90 G Fuel Tank, stk#335169, **\$69,900.**



2019 INTERNATIONAL MV607.
193K, Cummins 6.7, 220 HP, Allison 2500 RDS 6 Sp Auto, 26' Supreme, 97" T x 96" W, 2500 Lb Maxon Tuck, stk#327683, **\$39,900.**

Allegiance now has locations in MA, CT, NY, ME, VT, RI, NH, NJ & PA!



For all locations visit our website!



www.AllegianceTrucks.com



BENSON
BY WABASH NATIONAL



ALLEGIANCE

— TRUCKS® —



WABASH



Bangor, ME
207-941-9600

Saco, ME
207-289-6688

Fort Kent, ME
207-834-6186

CALL FOR OTHER NEW & USED TRUCKS & TRAILERS FOR SALE!



GOING FAST

TROUT RIVER TRAILERS.
WE HAVE SEVERAL UNITS IN
DIFFERENT COLORS,
CALL FOR PRICING!



NEW PMI TRAILERS IN STOCK

PMI LOG TRAILERS.
MADE TO ORDER,
CALL FOR A QUOTE ON THE SPECS
YOU WOULD LIKE.



**WE HAVE NEW AND USED
WABASH FLATBEDS, REEFERS
AND DRY VANS.**
CALL FOR PRICING!



2019 ISUZU NQR
17950 GVW, ONLY 125K MILES,
DIESEL, AUTO, 16' BOX WITH
TRI-DOORS. HARD TO FIND!
\$43,900



2 To Choose From

**USED CENTER-MOUNT LOG
TRAILERS**
CALL FOR MORE DETAILS!
\$39,900



2019 INTERNATIONAL LT625,
10SPD. TRANS., 450 CUMMINS, AIR-
RIDE, AIR-BRAKES, VERY NICE, CLEAN
LOW MILE SLEEPER. UNIT#243045
\$36,900



**2019 INTERNATIONAL HX520 FLAT
TOP SLEEPER:** 605 CUMMINS, 18SPD.
TRANS. AIR-BRAKES, 346,773 MILES.
UNIT # 242973 **\$109,995**



2019 INTERNATIONAL LT625.
73 INCH BUNK, 12 SPD AUTOMATIC,
400983 MILES, 450 CUMMINS, unit#
228077, **\$44,900**



2018 INTERNATIONAL LT,
SX 450HP, 10SPD., 450K MILES,
73" SLEEPER. UNIT #243073
\$34,900



ALLEGIANCE

— TRUCKS® —

Jericho, VT
802-899-3753

Colchester, VT
800-639-1290



ALL WHEEL DRIVE

2014 FL 108SD, CUMMINS ISL,
350HP., 3000RDS AUTO, 40780
GVW, FRONT, WING & BELLY
PLOWS. #331049 **\$54,900**



2015 IH 7400 SINGLE AXLE PLOW
DUMP, ONLY 60K MILES, 350HP.,
ALLISON AUTO, 37780 GVW,
ALL-SEASON DUMP, FRONT & WING
PLOW.#158226 **\$49,900**



**2005 INTERNATIONAL WORKSTAR
7400,** PRE-EMISSION DUMP
TRUCK, 245HP-DT466, 8LL TRANS,
NICE SPECS., FRONT & WING
PLOWS, READY TO WORK AND
PLOW. UNIT#228236 **\$16,900**



2015 IH 7400, 350HP., ALLISON
3500RDS, 37780 GVW,
ALL SEASON DUMP, FRONT & WING
BLADES. UNIT#229444 **\$39,900**



www.AllegianceTrucks.com



ALLEGIANCE

TRUCKS®



1400 South Willow St. **Manchester, NH**
603-623-8873

132 Pierce Rd. (Rt. 125) **Barrington, NH**
603-905-9036



CALL FOR OTHER NEW & USED TRUCKS FOR SALE!



2008 MACK GU700 STAINLESS DUMP. 345 HP MP7, 10 Spd, Calcium Tank, Spreader, 41K GVW, 87K Miles, stk#203288, **\$28,900.**



2008 FORD F450 XL UTILITY W/ WELDER & CRANE. 6.4L Powerstroke Diesel, Auto, 16K GVW, 124K Miles, stk#324494, **\$29,900.**



2015 MACK GU700 DUMP w/PLOW & SANDER. MP8 455 HP, 4500RDS, 66K GVW, 100K Miles, stk#332734, **\$139,900.**



2008 HINO 338 C&C. 250 HP, 6 Spd Fuller, 188" WB, 33K GVW, 97K Miles, stk#325396, **\$8,900.**



2022 VOLVO VNL.D13 405 HP, 12 Spd I-Shift, 50K GVW, 188K Miles, Clean, Hard To Find! Stk#325335, **\$82,900.**



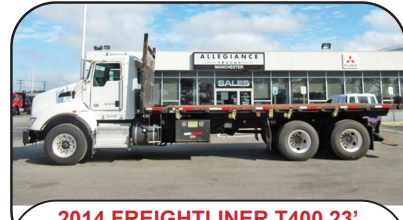
2012 FREIGHTLINER CASCADIA 126. Detroit 410 HP, 10 Spd, 254" WB, Air Ride, Air Brakes, 62K GVW, 433K Miles, stk#328663, **\$25,900.**



2003 STERLING L7500 VACON 12 YD 1500 GAL TANK. CAT 3126, 275 HP, Rexroth Hydrostatic Motor & Drive, FMC Water Pump, Roots Blower, 60K GVW, 34K Miles, stk#329407, **\$49,900.**



2001 INTERNATIONAL 4900 TRANSTECH TANK. DT466 230 HP, 5 Spd, 2 Comp., LCR II Meter, 33K GVW, 184K Miles, Stk#327652, **\$19,900.**



2014 FREIGHTLINER T400 23' DUMPING FLATBED. 300 HP, 10 Spd, 58,740 GVW, 151K Miles, stk#326497, **\$99,900.**



2009 FREIGHTLINER M2 106 FLATBED W/CABLE REEL LOADER. Cummins 300 HP, 6 Spd 3000 RDS-P, 64K GVW, 44K Miles, stk#323956, **\$69,900**



2004 INTERNATIONAL PAYSTAR ALTEC AM85 BUCKET. CAT Diesel, 61K GVW, 117K Miles, stk#330263, **\$74,900.**



2019 FREIGHTLINER M2 106 LANDSCAPER W/TEREX BOOM. Cummins 220HP, 5 Spd 2500 RDS, 26K GVW, 36K Miles, stk#332212, **\$114,900.**

Allegiance now has locations in MA, CT, NY, ME, VT, RI, NH, NJ & PA!



For all locations visit our website!



www.AllegianceTrucks.com

BUYER • SELLER • SWAPPER

ALLEGIANCE

TRUCKS®



2181 Providence Hwy, **Walpole, MA**
800-225-4808

17 O'Keefe Lane, **Warwick, RI**
800-949-2221



FINANCING & WARRANTIES AVAILABLE ON USED TRUCKS!



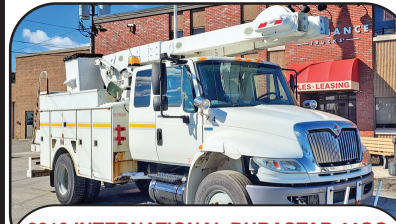
2024 FORD F650 5-7 YD CRYSTEEL 10' DUMP. 7.3L Gas, 25,999 GVW, Hoist, Tarp, stk#330516, **\$104,176.**



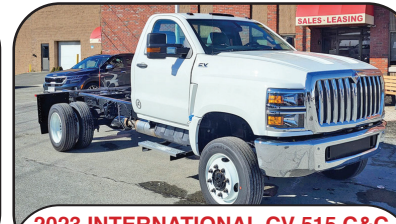
2023 FORD F550 3-4 YD 9' DUMP 4x4. 7.3L, Gas, Tarp, Pintle, Plate, Chute, 19K GVW, stk#325681, **\$79,950.**



2024 FORD F600 11' KNAPHEIDE UTILITY 4x4. 6.7L Powerstroke Diesel, 22K GVW, Camera, Ltd Slip, stk#334700, **\$96,868.**



2010 INTERNATIONAL DURASTAR 4400 UTILITY ALTEC BUCKET TRUCK. DT466 300HP, 6 Spd 3000 RDS-P, 35K GVW, 177K Miles, stk#134935, **\$19,900**



2023 INTERNATIONAL CV 515 C&C 4x4. 6.6L, 350 HP, 84" CA, 165" WB, 19,500 GVW, Ready For Body! Stk#277488, **\$67,900.**



2020 HINO 195 REFRIGERATED VAN. Carrier Reefer, 210 HP, 6 Spd Auto, Side Door, 19,500 GVW, 211K Miles, stk#327078, **\$39,900.**



2019 INTERNATIONAL LT 625 6x4 SLEEPER. Cummins X15 400 HP, 10 Spd, 52,350 GVW, 430K Miles, stk#331656, **\$33,900.**



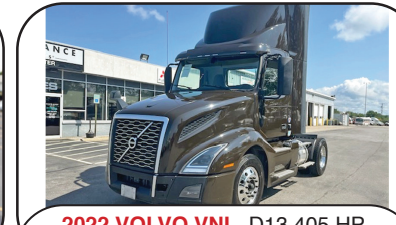
NEW 2023 FORD F600 C&C XL. 6.7L Powerstroke Diesel, 450 HP, 145" WB, 22K GVW, stk#322917, **\$89,655**



NEW 2024 INTERNATIONAL RH 613 6x4 DAY CAB. 410 HP Diesel, Air Ride, 52,350 GVW, 2K Miles, stk#330354, **\$142,900.**



NEW 2022 FORD E450 18' UTILIMASTER WALK-IN VAN. Ready For Package Delivery! Auto, 14K GVW, stk#330182, **\$83,995.**



2022 VOLVO VNL. D13 405 HP, I-Shift, 160" WB, Air Ride, 50K GVW, 188K Miles, Clean, Hard to Find! stk#325335, **\$82,900.**



NEW 2024 FORD E450 CUBE VAN. Gas, 6 Spd, 14,500 GVW, 176" WB, 376 Miles, Walk-Thru, stk#328363, Cube Vans Ready for Delivery! **\$66,635.**

Allegiance now has locations in MA, CT, NY, ME, VT, RI, NH, NJ & PA!



For all locations visit our website!



www.AllegianceTrucks.com

ALLEGIANCE

TRUCKS®



Hartford, N.Haven, Franklin, CT / W. Springfield, MA

Call Mike McDonald 860-308-6599



GREAT SELECTION AND PRICE ON ALL USED INVENTORY

31 yd Side Loader



2012 IH 7400 Tandem Trash Truck,
31 Yard Labrie Side Load, 300 HP,
Auto, ONLY 38K Miles, All Works,
Runs Well, #102910, **\$29,900**

GOING FAST



SEVERAL 2017 IH Prostar Day
Cabs, ISX Power, Auto, Miles Upper
3's & 400's, Nice Trucks, **\$26,900**

**SOUTHERN
ROLL OFF**



2017 MACK ROLL OFF.
MP8 425HP, Allison 4500RDS, 298k
miles, 75K lbs Galbreath Hoist,
\$149,900

ALL WHEEL DRIVE



2011 IH 7400 6x6, ALL WHEEL
DRIVE, Altec Bucket A77-T, Only 54K
Miles, Auto Trans, #311746,
\$49,900



2021 ISUZU NPR-XD, Diesel, Auto, Only 93K
Miles, 16000 GVW, 16' Box & Gate, Clean,
#336700, **\$52,900**

LIFT GATE



2019 HINO 155, Diesel, Auto, 98K
Miles, 16' Van & Gate, **\$39,900**



2021 IH MV, Cummins, Allison, 26'
Van Body With Gate, 163K Miles,
\$58,900



2018 ISUZU NPR HD, Gas
Motor, Auto, 75K Miles, 16' Box
With Gate, # 336697, **\$39,900**



2015 IH 4300, 83K Miles,
N9SCR 300HP, 3000RDS, 2800
Gallon, 2 Compartment Tank,
#332414, **\$75,900**



2019 IH 4300 Cummins, Allison,
26' Van Body With Gate,
162K Miles, **\$53,900**



New 2022 INTERNATIONAL CV
Diesel, 350HP, Allison Auto, 4x4,
New 12' Chipper Dump Body,
\$99,900



2023 BRAND NEW MERCEDES SPRINTER
REEFER, Diesel, Auto, 9050 GVW, 14.5' High
Roof, Kidron TK520RT Max30 Unit, 20 degree,
Extended Warranty.



2012 IH 4400. Only 164K Miles, 270 HP,
Auto 3500RDS, 33K GVW, 20' Box w/ Walk
Ramp, 3 Sides Doors!, #104520,
\$17,900 AS IS.



2020 INTERNATIONAL MV CREW
CAB, Cummins, Allison Auto,
24x102x109 Body, 176K Miles, Clean
Truck, Hard To Find #202566, **\$65,900**

Allegiance now has locations in MA, CT, NY, ME, VT, RI, NH, NJ & PA!



For all locations visit our website!



www.AllegianceTrucks.com

WE TAKE ANYTHING IN TRADE

Jolly John's

Find us on:  **facebook**

FINANCING AVAILABLE

Truck & Equipment

We Pay CASH For Your Trucks & Equipment

 <p>2012 VOLVO MC70 SKID STEER. Serviced & Ready To Go. Not A Fancy Machine, But Equipped To Do What you Want, Work, Has Handy One Arm Lift Bucket. \$18,900</p>	 <p>2019 KOMATSU PC80MR HYDRAULIC EXCAVATOR. Komatsu Diesel, Cab, A/C, Heat, 2 Speed, Front Blade, Aux Hyd, Zero Tail Swing, Rubber Tracks, Quick Coupler, Digging Bucket. \$49,900</p>	 <p>2015 FORD F-550 BOX TRUCK, Low Mileage, One Owner, Well Maintained. V10-6.8L Gasoline, Automatic, Power Windows And Locks, \$29,900</p>
 <p>2015 SKY TRAK 6042 TELESCOPIC FORKLIFT. Enclosed Cab, Max Lift Height 42 Feet, 6000 lb Lift Capacity, 48" Forks, Manual Coupler, Frame Leveling, Aux Hydraulics. \$44,900</p>	 <p>2020 HYUNDAI HL940 WHEEL LOADER, Enclosed cab, A/C, 360 Degree Cameras, Ride Seat, Ride Control, AutoShift, On Board Scale, Aux Hyd, Hyd Coupler, 102" Bucket. \$99,000</p>	 <p>2015 CATERPILLAR 415 F2 LOADER BACKHOE. Locally Owned & Well Maintained. Enclosed ROP, 4x4 Or 4x2 Whenever You Need It, Coupler & Thumb On Back Hoe, Rear Auxiliary Hydraulics Front & Rear, \$74,900</p>
 <p>2006 NEW HOLLAND LW130B WHEEL LOADER, Low Hours And Equipped The Way You Want It. Like New Tires, Freshly Serviced And Ready To Work. \$59,900</p>	 <p>2021 BOBCAT T66 SKID STEER, 2442 Hours, One Owner. Equipped With Heat And Air, Dual Controls, We Will Take Most Anything In Trade, \$55,900</p>	 <p>2022 SOUTH GEORGIA CARGO S/A FOOD TRAILER. Fully Equipped And Ready For Business. Just Add Propane. See Our Website For All The Equipment Included. Must Be Seen, \$25,900</p>
 <p>2019 CATERPILLAR 242D SKID STEER. Locally Owned One Owner Well Cared for With Low Hours. Pilot Controls, AC, Heat, Wipers, 2 Speed And Radio. \$37,900</p>	 <p>2019 GEHL RT215 Tracked Skid Steer. This Is Equipped With 2 speed, Heat & AC, Freshly Serviced And Ready To Go, \$42,900</p>	 <p>2008 INTERNATIONAL 7300 4X4, CHIPPER TRUCK. LOW 79,060 MILES, Maxforce Diesel, Automatic, A/C, Jake, Dump Body, Just Recently Serviced And Ready To Go. \$49,900</p>
 <p>2000 FONTAINE HT70A 48 FT TANDEM AXLE STEP DECK TRAILER, Air Ride Suspension, 7'6" Upper deck, 33' Main Deck, 7'6" 2 Position Dovetail, 102" Usable Deck Width, New Self Contained Hyd System, Deck Over Tires, Winch, 255/70R/22.5 Tires. Fully Serviced And Ready To Go. \$28,900</p>	 <p>2006 MACK CV-713 GRANITE TRI-AXLE DUMP TRUCK, 427 HP, 10 Speed Maxtorque, 18K/20K/40K, 17.5" Steel Dump, Owned Local Business. Freshly Serviced & Touched Up. Ready To Work. \$59,900</p>	 <p>2013 GENIE GTH-5519 TELEHANDLER, Max Lift 5500 lbs, Up To 18'10". This Unit Has Been Serviced And Safety Checked And Is Ready To Work, \$39,500</p>

Call Nick 860-861-1326 or Mike 860-861-4199

www.jollyjohnstruckandequipment.com



CONSOLIDATED TRUCK & EQUIPMENT, INC.

**FELLING
TRAILERS**

**EXTREME
TRAILERS**

**Palmer
BODIES**
ANCHOR, MASS

www.ConsolidatedTruckEquipment.com
1727 FALL RIVER AVE, (RT.6) NEAR SEEKONK SPEEDWAY
SEEKONK, MA



2025 MAC 26' STEEL DUMP TRAILERS: Hi-Lift Gate, 24.5 Tires On Aluminum Rims, 60,000 LB Center Point Suspension, Electric Load Cover, Body All 1/4" Hardox, Trades Accepted, No Wives, Girlfriends or Kids- We Have Enough!) Call For Special Pricing.



2025 MAC 27' STEEL BODY ALUMINUM FRAME TRAILER: Hi-Lift Gate, Air Ride, 11x24.5 Tires On 8 Aluminum Rims, Hardox Steel Body, Full Aluminum Side Skirts, Due In 3/1/2024. 2 Available, Trades Accepted, Call For Price.



1987 PIONEER 26' STEEL DUMP TRAILER: New Brakes, Dry Piston, Barn Doors, Good Stump or Rock Trailer, \$12,500.



ONLY 3 LEFT
SPECIAL PRICING \$49,280
 2024 EXTREME 48' X 102' ALL ALUMINUM FLAT BED TRAILER.
 \$49,280.



2 IN STOCK
 FELLING 16' Tilt Deck Equipment Trailer: 18,400 GVWR. Also: 5' Stationary Deck, Black Locking tool box. CALL.



3 IN STOCK
 NEW EAGER BEAVER TRAILERS.
 20-TON, 21' Deck, 6' Beaver Tail, Call For Details.



NEW CHALLENGER 26' STEEL DUMP TRAILER. High Lift Gate, Single Point Suspension, Electric Tarp, 11x24.5 Tires On Aluminum Wheels, Call For Price.



3 AVAILABLE
 2025 MAC 28' ALUMINUM DUMP TRAILER: 8 ALUMINUM RIMS, ALUMINUM FRAME, AIR RIDE, 1/2" PLASTIC LINER, ROLL-RITE TARP. CALL FOR PRICE.

COME VISIT OUR
 ALL NEW PARTS
 DEPARTMENT



CALL US: AT 508-336-6215 • HOURS: M-F 8 to 5:30 • SAT: 9 to 12 Noon



2008 GMC C6500 CHIP / DUMP TRUCK, 8.1L Gas Engine, 6 Speed Manual Trans., Only 125k Miles, New Rear Tires, Front Tires at 50%, **\$14,900** - Call 781-417-3018



1988 WESTERN STAR HERITAGE. CAT 425, 15 Speed Road Ranger Trans, Locking 410 Rockwell Rears, All Aluminum Tanks, Air Ride, Wet System, Stainless Steel Mufflers, Stacks And Air Cleaners, **\$8500 Neg.** 781-775-8456, Leave Message



AREA HYDRAULICS

810 Quaker Hwy. Uxbridge, MA

508-278-6670



Cylinder Resealing

We Make Hose Assemblies

After Hours Service Available!

WHELEN®

Buyers
PRODUCTS COMPANY



JOHN DEERE 1050—33HP, \$9,500 860-928-5748



2001 FREIGHTLINER CENTURY CST120. Cummins ISM, No Emissions **\$10,500** Chichestor, NH, Call/Text 603-331-1151



SAFETY EQUIPMENT



BLAST CABINETS



SURFACE PREP POWER TOOLS



ABRASIVES



RAPID PREP

Full Service Provider of Equipment,
Supplies and Consumables

NATIONWIDE EQUIPMENT
RENTALS, SALES & SERVICE

North Kingstown, RI
El Cajon, CA • Suffolk, VA
Lakewood, WA

877.529.2124 / rapidprep.com

RUST NEVER SLEEPS



\$100 Per Wheel Polish
ACUSHNET WHEEL POLISHING
 Used Rims Available
508-961-7528
 62 SOUTH MAIN ST.,
 ACUSHNET, MA



Service & Mechanic On Site



CAT D 5C BULLDOZER.
 Ser #5HS00834, 4500 Hours, 6 Way Blade, Newer Chains And Sprockets, Excellent Bottom End, Enclosed Cab, New Cutting Edge, Heat, No AC, New CAT Seat, Price: \$42,000. Excellent Condition! Ready To Work! **\$42,000.** Chris, 1-860-460-0767, Chm@Terrafirmas.com

1995 FORD F800.
 8.3L Cummins, 8LL, 14K Front, 40K Rears, Decent Rubber, 205K Miles, Truck Runs, Drives, Stops, 3000 Gallon Presvac Steel Tank, New Valves, Demag Wittig Pump, Very Strong, In Good Shape, **\$21,950.**
 Call For More Photos, 508-660-1300





1998 MACK RD688S TRI-AXLE DUMP TRUCK,
 Aluminum Dump Body – 18', Runs Good, 755k Miles, 350HP Mack Motor, 8LL Transmission, Heavy Spec'd, Rear Wheel Bearings Just Repaired, Minor Exhaust Repair Needed, **\$24,900,**
 Call 781-417-3018

CT AXLE
 & SPINDLE REPAIR

CT Axle & Spindle Repair Ellington, CT 06029
860-281-4454 or 860-375-6045

BEFORE



BEFORE



AFTER

**MACK PRESS-IN SPINDLE REPLACEMENT
DRAWN OUT, SWEATED IN**

BEFORE



BEFORE



AFTER

**TRAILER SPINDLE REPLACEMENT
WELDED IN PLACE**

BEFORE



BEFORE



AFTER

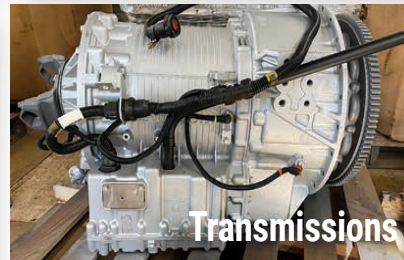
**TRUCK DRIVE SPINDLE REPLACEMENT
WELDED IN PLACE**

• Drive Spindles From 1 Ton To Class 8 Trucks • Trailer Spindles From 3,500# To Class 8 Axles
 Spindles can also be repaired by welding up the worn area and then remachining to factory spec.
 This includes tracing threads or remachining new threads.
 WELDING AND FABRICATION ALSO AVAILABLE

A Completely Mobile Spindle Repair System. We Come To You! Serving CT, MA, RI & the Northeast
 Visit Our Website At: ctaxleservice.com

Looking for used MCI bus parts?

Look to Fowler's *first!*



**Fowler's Auto Wrecking Inc. is America's leading source
for used MCI bus parts.**

From engines to transmissions, from body parts to glass, wheels and tires, Fowler's is your one-stop shop for all MCI 102DL3, D4500, and J4500 used bus parts.

WE OFFER:

- Fair & competitive pricing
- Fast, friendly, and knowledgeable customer service
- Standard 6 month warranty on all used bus parts
- Testing of all used bus parts
- UPS & Freight services for out of state customers

Visit www.FowlersAutoWrecking.com/bus-parts – or visit us on eBay at
www.Ebay.com/str/fowlersautowrecking – to start your search today !

When it comes to MCI bus parts, look to Fowler's *first!*



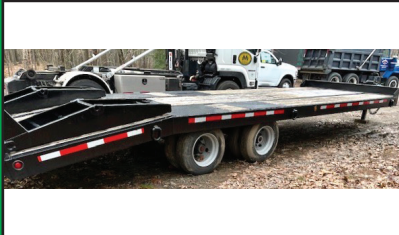
Fowler's Auto Wrecking Inc.
860-267-7140

24 Old Coach Rd, East Hampton, CT 06424 | www.fowlersautowrecking.com

CAREY AUTO INC TRUCK EQUIPMENT SALES



37 County Road
Route 106
Plympton MA 02367
PH: 781-582-1378
FAX: 781-585-4438



2004 20 TON EAGER BEAVER TRAILER.
\$14,000



STEEL FLATBEDS
IN STOCK NOW! MANY SIZES.
CALL FOR PRICING.



(3) USED KNUCKLE CRANES.
CALL FOR DETAILS.



15' BUYERS STAINLESS
DUMP BODY. \$5,000



CM DELUX 9'4" 94/60/34.
\$10,500.



2013 FORD F750 DUMP TRUCK: 6.7
CUMMINS DIESEL, ONLY 128K MILES.
\$24,000.



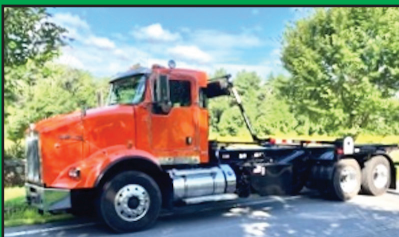
DOWNEASTER DUMP BODIES IN STOCK NOW!
Includes Cab Shield and Hoist.
Call for Pricing Today.



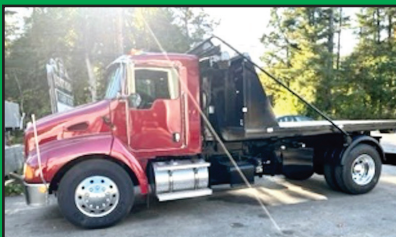
SWITCH-N-GO SYSTEMS & CONTAINERS IN STOCK.



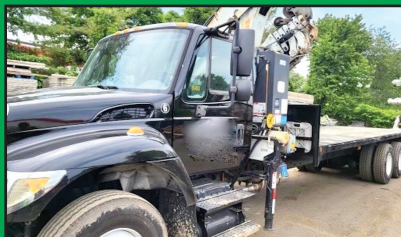
READY TO GO COMPLETE TRUCK PACKAGES.
LOTS OF OPTIONS AVAILABLE
New & Used Trucks Ready To Go!



2015 KENWORTH W/NEW STELLAR Roll Off,
CUMMINS, Automatic. 18F/46R, PIONEER 5500
Tarping System. \$135,000.



2017 KENWORTH T300 W/NEW HAD 185:
CUMMINS DIESEL, AUTOMATIC. HOOK 36"/54".
HR 1500 TARP SYSTEM. \$85,000.00



2004 IH 7400 21,500 miles automatic Effer
Crane 60' of reach with winch on end
\$75,000

SALES,
SERVICE,
PARTS

CALL TOLL FREE: 781-582-1378
WWW.CAREYTRUCKEQUIPMENT.COM

CUSTOM METAL
FABRICATION
AVAILABLE

T-QUIP
SALES & RENTALS INC.
Londonderry, NH

603-623-3669
www.TQUIP.com

DAILY | WEEKLY | MONTHLY EQUIPMENT RENTALS



TRACKED DUMPERS
ROCK TRUCKS
EXCAVATORS
ROLLERS
DOZERS
BACKHOES
WHEEL LOADERS
SKID STEERS
CRUSHERS
SCREENERS
TELEHANDLERS
MOTOR GRADERS
SPECIALTY ATTACHMENTS

SALVADORE

FAMILY OF DEALERSHIPS

PREOWNED
SuperCenter

SalvadoreAuto.com
978-616-6127



1 Owner

2022 CHEVROLET
EXPRESS CARGO VAN

49,084 MILES - 4.3L V6
ENGINE - 8-SPEED
AUTOMATIC
TRANSMISSION -
AUTOMATIC HEADLIGHTS

NOW ONLY \$32,998

STK # G7385



Duramag Service Body

2019 RAM 3500HD
TRADESMAN C&C 4X4

70,381 MI - 6.7L I6
CUMMINS TURBODIESEL
ENGINE - 6-SPD AUTO
TRANSMISSION - DRW

NOW ONLY : \$46,798

STK # N24071A



Dump Body!

2017 RAM 5500HD
TRADESMAN

51,922 MILES - CUMMINS
6.7L I6 TURBODIESEL
ENGINE - AISIN 6-SPD
AUTO TRANSMISSION -
DUMP BODY - DRW

NOW ONLY \$54,498

STK # N23043A



New Arrival!

2021 MAHINDRA
2660 TRACTOR

60 HP - HEAT AND A/C -
SKID STEER FRONT
COUPLER HYDRAULIC
PORTS FRONT AND REAR -
100 HOURS -
HYDROSTATIC
TRANSMISSION

NOW ONLY: \$39,500

249 Timpany, Blvd., Gardner, MA 01440

Not responsible for typographical errors. Inventory changes frequently.

**2001 JOHN
DEERE JD450H.**
2,316 Low Hours,
AC & Heat, Runs
Great, **\$52,000.**
Connecticut,
860-428-3725



**1994 INTERNATIONAL
4900 DUMP TRUCK.**

DT466 Diesel, Automatic,
196,000 miles, Light Wt.
13,000, Gross Wt. 25,000,
Dump Bed, Fold Down Sides,
Never In Any Accident,
\$15,000.

860-930-7013



**COMMERCIAL HOT WATER
PRESSURE UNITS**
**Machine Can Be Rented For 12, 24, Or 36
Months At The End Of Which You Own It For \$1**

Electric Motor – Gas Engine

- 1725 RPM Motor & Pump

- Becket Burner

-TEFCO 120 V Baldor Motor

- 50 Ft Hose

- 4' Lance Trigger Gun

- 1000 to 4000 PSI Options

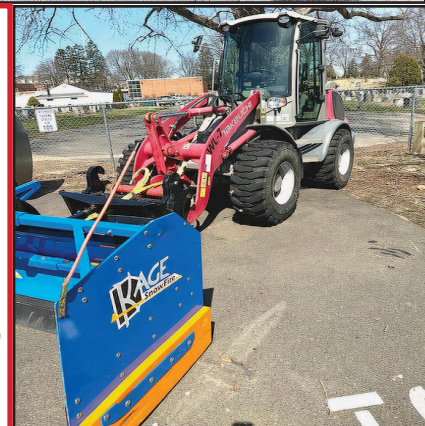
- Poly Fuel Tank

NEW Starting @ \$2,495

USED Starting @ \$1,295



R & E STEAM EQUIPMENT
Call Earl Warwick **617-899-8775**



2015 TAKEUCHI TW65 WHEEL LOADER.

513 Hours, AM/FM Radio, Heat, AC, Passenger Side

Rear Fender Has Crack, Pre Def, Comes With

Takeuchi To Skid Adaptor, Plate, Forks, Bucket, 9'

Kage Pusher, **\$65,000 OBO.** 475-689-0048



METROPOLITAN TRUCK CENTER INC.

1074 Turnpike St. Stoughton, MA 02072

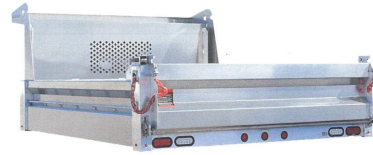
www.metropolitantruck.com

**MAKE YOUR
APPOINTMENT TODAY!**

866-514-1214

EVERYTHING YOU NEED FOR A TRUCK BODY!!!

**GREAT
SELECTION
OF
BODIES IN
STOCK!**



CUSTOMIZED ALUMINUM BODIES TO FIT YOUR EVERY NEED



**EBY FLEX REMOVABLE
SIDES LANDSCAPE BODY**



**ALL YOUR LIFT GATE NEEDS- THIEMAN
GATES, TOMMY GATES, ANTHONY
GATES, MAXON GATES**



DURAMAG S-SERVICE BODY



AIR-FLO DUMP BODIES



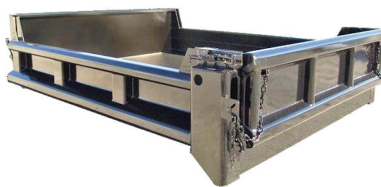
E-Z DUMP



RUGBY PLATFORM BODY



**GALION STAINLESS STEEL
DUMP BODIES**



GALION STEEL DUMP BODY



**SWAP HOGG SMOOTH SIDE
CONTAINERS**



**ALTA EQUIPMENT
COMPANY****AltaEquipNE.com**
800-Go-2-ALTA
800-462-2582**0% FOR 60***

OR Get a **5-year 3,000-hour warranty** plus cash in your pocket up to **\$5,500** depending on the model.* Either way, **YOU WIN!**



*0% financing for 60 months. Terms and conditions apply, contact your Alta Equipment Company for details.



ALTA EQUIPMENT COMPANY

800-Go-2-ALTA
800-462-2582



2017 JCB HYDRADIG 110W \$73,500
#368310: 2,767 hrs, 25 MPH TRANS, SMOOTH RIDE SYSTEM (SRS), HIGH FLOW, 6' 6" STK, NO ATTACHMENTS



2020 JCB 220X \$159,000
#301244: 1,000 hrs, EROPS, AC, HEAT, GP BKT



2021 DYNAPAC CA1400D \$116,998
#281270: 61 hrs 66" 7.2T SOIL 75HP KUBOTA ROPS



2019 CATERPILLAR 259D3 \$55,900
#375126: 1,155 hrs, CAB, AC, ADVANCED LCD DISPLAY, 2 SPD, STAND FLOW, QC, BKT



2020 JCB Teleskid 2TS-7T \$62,000
#343737: 800 hrs, EROPS, AC, 2SPD, TELESCOPIC POWER BOOM, QC, BKT



2018 JCB 409 \$49,900
#369720: 1,000 hrs, EROPS, AUX HYD, QC, BKT



2019 LEEBOY 7000C \$80,000
#363986: 1,800 hrs, LEGEND LP KUBOTA STL TRAC LED LIGHTS



2019 JCB TELESKID 3TS-8T \$78,000
#370528: 210 hrs, CAB, HIGH FLOW, QC, BUCKET ONLY, 13' 3" LIFT HEIGHT, 8' REACH, DIG 3' BELOW GRADE



2019 JOHN DEERE 2025R \$23,900
#371130: 81 hrs 24 HP COMPACT TRACTOR W/LOADER & CAB W/HEAT

6 Jonspin Road
Wilmington, MA
978-658-5900

114 Hall St
Concord, NH
603-325-4721

23 Foss Road
Lewiston, ME
207-784-1501

3 Chalet Road
Middleboro, MA
774-766-6062

1897 Berlin Turnpike
Berlin, CT
959-900-9550

1401 Hooksett Rd
Hooksett, NH
603-644-8787

NORTHEASTERN PETROLEUM SERVICE & SUPPLY**617-522-8390 Ext 103 • 51 B St. Bay 2 Hanover, Ma****Financing Available - After Hours Call 617-696-1979****We Are Looking For Newer Tank Trucks To List, Dual Equipped, Tandems & Auto. Trans, Can Sell From Your Location****Jerry Mello Cell: 617-799-1461 24/7 Email: jerrym@nepss.com**

2012 Ford F450 Service Body.
V10 Gas, Auto, 2WD, Needs
Exhst Manifold Repair, 165
Miles, 9' Fiberglass Body,
\$15,000



1999 FREIGHTLINER FL70.
2700 Gal Tank, CAT 3126, 6
Speed, 116,711 Miles, LC Meter M
Series 2", Hannay Reel, Bikini Style
Tank, **\$19,000**



2017 Peterbilt 337 Tanker.
2800 Gal Trans Teck 2 Compt,
Neptune Printer, PX-300HP,
Automatic, 183,627 Miles,
\$125,000



1996 Int'l 4900 Tanker. 3000
Tech Weld, 2.5" Pump, Air
Controls, Epson Meter, DT466
Engine, Automatic, 95,673
Miles, **\$19,000**

**NEW PUMP OUT SYSTEM**

1985 Int'l 1954 Tanker. 2700
Gal Tech Weld, Top Load, 2.5"
Pump, Smith Meter, Newer Pump
Out System, DT466, 5+2 Trans,
294,646 Miles, **\$19,000**



2007 PETE 335. 2800
Gal ALMAC 4 Compt.,
800/800/700/500, M-7 2"
Meter, ISC Cummins 260 Hp,
8 Speed, **\$55,000**



2007 Pete 357 T/A Tanker.
Amthor 5000 Gal, 3
Compt, 66,000 GVW, 8
Spd, CAT C-13,
416,049 Miles **\$92,000**



2004 FRGHTLR M2. Mercedes
260 HP, Automatic, Boston
Steel 2700 Gallon Tank, V-Root,
Stainless Steel Reel, Air Motor,
Bottom Load, 201,148 Miles
\$48,000



2007 IHT 4400 Tanker.
2 Compartment 2000/800,
Auto, DT-466, 156K Miles,
4E Neptune Meter, **\$39,000**



2002 5000 GALLON DW
DIESEL TANK. With Two
Suction Pumps And Hardware,
Excellent Condition, **\$24,500.**



2004 PETE 330. Boston Steel 2700
Gal, 2 Compt 2000 & 700, CAT
power, Automatic, Stainless Steel
Reel, M-7 Meter, Bottom Load,
176,783 Miles **\$55,000**



1987 Ford LN8000 Tech
Weld. 3,150 Gal.. 225k Miles,
Auto, New Tires, New Brakes,
Good Cond., **\$10, 900**



2000 Frghliner FL70. ALMAC
2 Compt. 2000 & 800, CAT 3126,
6 Spd, V-Root STD VR Printer,
Suck Line, **\$12,900**



HIGHLAND IN STOCK NEW.1000 Gal 2
Wall Skid Tanks. 10-GA,
Other Sizes Available



2005 MACK CXN613.
Boston 3400 Gallon 2000+1400, 2 Reels,
Bottom Load, Mack 385 Hp, 10 Speed,
358,476 Miles, T/A 48,000 GVW,
\$59,000



2012 FORD E250 CARGO VAN.
Bin Pkg., V8 Gas, Auto., 112K
Miles, Fleet Maintained, **\$10,000.**
617-799-1461

SOME TRUCKS AT CUSTOMER LOCATIONS

**CAT D6H
DOZER.**

Very Good
Condition, Runs
And Operates
Great, 6600 Hours,
\$54,500.

Tom
860-605-6895

**2001 FREIGHTLINER FL70.**

Allison Auto, CAT 7.2, 26K GVW,
140,XXX Miles, PTO Equipped,
\$11,500

Or Best Reasonable Offer,
401-345-9426

LS Tractor

NEW AND IMPROVED MODELS!

MT2E AND MT46

32 and 46 HP
MODELS
IN STOCK!

0% FINANCING

UP TO 96 MONTHS!

OR 2.99% UP TO 120 MONTHS



SALES • SERVICE • PARTS • FINANCING

FOSKETT

EQUIPMENT INC.

TRACTORS & IMPLEMENTS

Woodstock, Ct

Route 171
Woodstock, CT
860-928-5748

www.foskettequipment.com

**DRAINAGE ?
GRADE IMPROVEMENTS
BE READY FOR
THE NEXT BIG STORM**

**WASHED STONE
PROCESSED GRAVEL
SAND
TOP SOIL
RIP RAP
FILL**



**Please Call for pricing
401-447-2777**



ABBOTT Equipment Sales

Lebanon, Maine 207-252-1191 or 207-457-1191



2011 621E. 2 3/4 Yd. Bucket, ACS Quick coupler, 3rd Valve Hyd., A/C, Heat, \$48,000.



10 TO Choose
2011 MACK GU713. 10 To Choose From, 10 Speed, 20 Frt Axle, 46 Rears, Henderson All Season Stainless Body, Plow, Wing, Spinner, \$34,500.



2012 CASE 621F. 2-3/4 Pin On Bucket, A/C, Heat, Radio, 3,722 Hours, Well Maintained. \$63,000



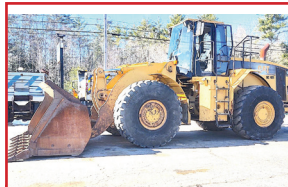
2011 CAT 314D LCR EXCAVATOR. 10' Dipper Stick, AIM 24" Digging Bucket, 8'6" Backfill Blade, Auxiliary Hydraulics, Enclosed Cab, Heat & AC, Good U/C, \$54,500



2015 KUBOTA R630 WHEEL LOADER. 3,107 Hours, 5,500lbs Kivel Forks, 74" Bucket, Quick Attach, #3231 \$54,000



2011 TAKEUCHI TB 180 FR. 9,292 Hours, One Owner, Well Maintained, 24" Bucket, Aux Hyd., Swing Boom, Blade, \$31,500



2000 CAT 980G. 71/2 Yd Bucket 29.5 25 Radial Tires 17k Hours, In Good Cond. Ready To Go To Work. \$59,500.



2017 BOBCAT E26 MINI EXCAVATOR. Three Buckets, Hammer, And Thumb, \$30,000



2014 KOMATSU PC 138-10. Enclosed Cab, A/C, Heat, Am/Fm Radio, 28" Digging Bucket With Side Cutters. 2,821 Hours. \$72,000



2014 KUBOTA KX057-4. 2,986 Hours, Blade, 24" Digging Bucket, Coupler, Heat & A/C, No Thumb, #3157, \$45,000



2001 JOHN DEERE 310SG. 4x4, Extend-A-Hoe, 24" Bucket, Aux Hydraulics, Coupler, EROPS, Heat, AC 3,758 Hours, \$32,000



2004 BOBCAT S250H SKID STEER LOADER. 2,819 Hours, 3098, \$17,500



2008 CATERPILLAR 320D LLR. C6.4 Engine, 9'3" Stick, 24" Bucket, Auxiliary Hydraulics, Enclosed ROPS Cab, Heat & AC, \$65,000



2015 JD 624K LOADER. Light Use, No Quick Coupler, 15K Hours, \$64,000



2014 EAGER BEAVER 50GSL-PT LOWBED TRAILER. Well Length 24', Total Length 40', #3184. \$39,900.



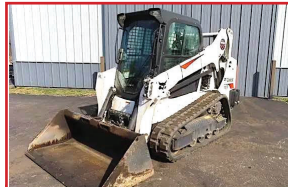
2003 NEW HOLLAND TS100 TRACTOR. 4x4, Roadside Mower, With A US Mower, \$29,000



CAT M316C EXCAVATOR. Grading Blade, 6,075 Hours, # 2820 \$40,000



2016 KUBOTA SVL95-2S. 1689 Hours, #3152, \$51,000



2019 BOBCAT T595. 67" Bucket, Bolt On Edge, Coupler, High Flow Aux Hydraulics, Counter Weights, Joystick, Tracks In Good Condition, \$44,000.



3 TO Choose
2010 MACK GU712. 5 To Choose From, MP7 Engine, 10 Speed, 20 Frt Axle, 33 Rear, Henderson All Season Stainless Body, Plow, Wing, Spinner, \$27,000.

AbbottEquipmentSales.com AbbottEquipmentSales@gmail.com

508-328-8938**THE TRUCK STORE****Mon-Fri 8:30-5pm
Saturday 8:30-4pm****www.TruckStoreSales.com**

1700 Broadway - Rte 138 – Raynham, MA • Take Exit 8 Off Rte 495, East Rte 138, On Your Left

**2022 ISUZU REEFER TRUCK.
16,000 Miles.****2021 FORD MOVING TRUCK, Crew Cab,
Auto, Under CDL, 99K Miles.****2022 PETERBILT C/O. Under CDL, 60K
Miles, Auto, Reefer Or Flatbed Available.****2022 HINO 268 Flat Bed: Diesel, Automatic,
ONLY 2,000 Miles! Will up fit w/Refr Body
or Van Body. 2 AVAILABLE.****2000 MACK RD 688SX 14' Dump Body,
350 H.P., Auto., 18F/58R, LOW miles, Very clean.****2007 HINO. AUTO. RUNS GREAT.****2005 MACK GRANITE SPLIT REAR
LOAD RUBBISH BODY 35K Miles.****2018 HINO 155 BOX TRUCK:
Diesel, Auto., ONLY 94K miles.****2017 FREIGHTLINER CASCADIA
Tandem Axle Day Cab. ISX Cummins 450
HP, Auto, 175K Miles, \$69,500.****2022 ISUZU NQR. 10,000 Miles,
Reefer Body Available.****2013 PALFINGER MOFFET FORK
LIFT: 900 HOURS.****2002 VOLVO Heave Tri Axle Dump
Chassis: 8LL, Clean Title, Slight Damage.
\$15,000****USED 12' to 26' REFER & VAN BODIES
Call with your needs.****2022 FREIGHTLINER 26' BOX TRUCK:
Cummins, Auto., Under CDL.****2017 FREIGHTLINER M-2: CUMMINS
Diesel, Auto, PTO Accept. Will Separate.****2020 ISUZU NPR BEVERAGE TRUCK:
AUTO.. Will Separate.****2012 UD 18 YARD RUBBISH
TRUCK: LOW MILES. CALL.****2015 IH 26' Tandem Axle Refer: New Refer being
installed. Auto., low hours on Refer. call****USED MONROE STAINLESS STEEL
SANDER W/CALCIUM TANKS****2002 MACK R MODEL:
TANDEM****LATE MODEL ISUZU &
HINO CUMMINS DIESEL
4 CYL DIESEL ENGINE &
TRANS,
2006 USED MACK
ENGINES, ALLISON
TRANSMISSIONS.****2 USED
HOOK-LIFT
BODIES
IN STOCK.****1997 FREIGHTLINER
35 TON WRECKER:
Diesel 283K Miles.****2005 PETERBILT
337 TANDEM
CAB & CHASSIS.
Cummins, Allison
Auto, Low Miles****USED
26' & 18'
FLAT BED BODIES
BED BODY
CALL FOR
DETAILS.****2005 MACK CV 713
CAB & CHASSIS:
AUTOMATIC,
20F/52R,
30K MILES!****2017
INTERNATIONAL
CAB & CHASSIS:
CUMMINS DIESEL,
AUTOMATIC.
LOW MILES.****USED 2015
ROLL-OFF
BODY, CALL.**

NORTHEAST TRAILER



20 Business Park Drive
Smithfield, RI 02917
Hours: M-F 8:30-4:30

401-941-4445



**2018 AUTOCAR
X-SPOTTER Yard Tractor**
\$45,000



**2005-2008 53' ROLL DOORS
Aluminum Roof, Spring Ride**
\$7,500 Each



**2009 UTILITY 48'X102" Roll Door
Multi-Temp Reefer, 2 Curbside Doors**
Flat Floor, 14K Engine Hours, \$9,000



**2009 48' GREAT DANE
Working Gate, 2 Rows E-Track**
Logistics Post, \$7,500



(2) 2013 30' STRICK TRAILERS
Working Gates, Aluminum Roofs
Logistics Posts, \$5,500 Each



**2007 48' GREAT DANE with
Working Tuck-Away Gate, 2
Side Doors, Air Ride, \$6,500**



2012 UTILITY 48'x 102' Combo
Flatbed, Aluminum Deck, Steel Frame
Air Ride, Spread Axle, \$16,900



**(3) 2022 1-Trip High Cube Shipping
Containers, 1 With Single Door-\$8,500**
2 With Double Doors-\$9,250 Each



(1) 20 FT. One-Trip CONTAINER
With Single Door
\$5,900



SPRING AND AIR RIDE TANDEMS
\$3,000 Spring Ride
\$4,000 Air Ride



2003 TRAILMOBILE
48' Drop Deck Flatbed
\$11,500



**22.5 and 24.5
MOUNTED TRAILER TIRES**
\$175 Each

WWW.NETRAILER.COM

BUYER • SELLER • SWAPPER



1-800-394-5889
179 Belvedere Road
Gilsum, NH 03448
WWW.TSR-RACING.COM

Powerglide Air Test Kit
Complete Powerglide Pro Tree Transbrake \$279.95
TH400 Deep Cast Aluminum Pan
TH400 Billet Direct Drum Spring Retainer & Aluminum Modulator/Solenoid Hold Down
Powerglide Overhaul Kit
Powerglide Deep Oil Pan
Powerglide Reverse Spring Retainer Tool
Powerglide Bushing Driver Set
Do-it-yourself Powerglide Pro Tree Transbrake Kit \$164.95
1.80 Long Powerglide Gear Set
Powerglide Handbook written by Carl H. Munroe \$21.95
Powerglide Vent Tanks



1998 INTERNATIONAL 4700 DT. 466E Diesel, Automatic, 80,000 Miles - Less Than 4,000 A Year, Purchased New, One Owner, Fold-Down Sides, 12,400 Lt. Weight, 25,500 Gross Weight, Asking **\$21,000.** 860-930-7013

CENTRAL MASS
TRUCK & EQUIPMENT

**Custom Gates
Hydraulic Hose
Assemblies &
Fittings
Full Truck Service,
Maintenance &
Repair**

All Makes & Models
Over 20 Years Experience
Specializing In Mack's

• Marshall Cefole •

978-467-7993

• Randy Rameau •

978-423-2889

10 Gardner Road,
Winchendon MA 01475

2014 INTERNATIONAL 4400 ROLL OFF HOIST.

300 HP, Allison Auto, 20K Pusher axle, Pioneer Tarp, Palfinger T29 Hook Lift, 36/54 Hydraulic Adjustable, PW, PL, Heated Mirrors, 185K Miles, **\$70,000.** 781-389-4512



ALL MAKES

EQUIPMENT & PARTS

CONTACT

ROLAND CARTER 603-340-6776 • ANDOVER NH 03216

**EQUIPMENT SALES
EQUIPMENT PARTS
EQUIPMENT
ATTACHMENTS
FINANCING AVAILABLE**



Rebuilt & Good Used Engines.



**New & Used
Buckets &
Attachments.**



**New Undercarriage.
Free Undercarriage Inspection.**



**Equipment
Hydraulic
Parts.**



**Salvage
Equipment
Parts.**

info@allmakesequipmentandparts.com • www.amepinc.com

**2013 FREIGHTLINER CASCADIA.**

888+ Miles, Well Maintained, Absolutely No Issues, DD15 Engine, 10 Spd, Refrigerator, Dash & Side Cam TV, Inverter, Etc., Selling Because I Closed Down Operation, **\$17,000.** 631-572-4247



2500 GALLON TANK. Converted To Water, Ready To Mount, **\$8500.** South Paris, ME 978-314-1413



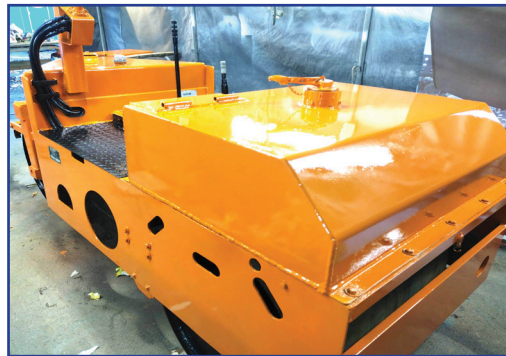
Residential ~ Commercial ~ Industrial

Mark Dillon
774-365-0222



FARMALL SUPER A TRACTOR—Rear Weights, Hyd. Lift, Runs Good, **\$2,400** 860-928-5748

EQUIPMENT BODY REPAIR & PAINTING



- Welding
- Expert Fiberglass Repair
- Body Repair
- Sand Blasting
- Metal Fabrication
- Family Owned
- Exterior Painting
- Rust Proofing & Frame Painting
- 38 Years

USA Auto Body & Heavy Equipment

8 Gordan Rd Unit 3 Bow NH

603-223-1757

JOSEPH

EQUIPMENT COMPANY

300 GAY ST • MANCHESTER, NH 03103

SATURDAYS • WE ARE OPEN ALL DAY

PHONE: 603-641-8608

FAX: 603-666-3716



**293 NORTH - EXIT 2 -
LEFT ONTO BROWN AVE -
RIGHT ONTO WINSTON ST. - LEFT ONTO GAY ST.
300 GAY STREET ON THE RIGHT**



2012 55 TON FONTAINE. (2 Available To Choose From 2009 And 2012), Tri Axle With Pin On 4 Axle, 25 Foot Deck, Powerpack, Full Fenders, Air Ride, Texas Trailer—Rust Free, **Call For More Information.**



2014 MANAC TRI AXLE EXTENDABLE STEP DECK. Extends 53' To 69', Low Deck Height, 17.5 Rubber, Air Ride, Excellent Shape, One Owner, Original Paint. **Call For More Information.**



100 STORAGE CONTAINERS TO CHOOSE FROM. 20', 40' And 40' High Cube. **Call For More Information.**



2004 FONTAINE TH55 TRAILER. 25' FLD, Air Ride, Tri Axle, Lift On Third, 275 Rubber, Alum Wheels, Original Paint, One Owner, Very Good Condition. **Call For More Information.**



1996 MACK CL 713, 350 MACK. 13 Speed Mack, 46k Rears, 4,100 Gallon Two Compartment Tank, Remtec Inc Steel Tank, 1100 X 24.5 Rubber, 270,000 Original Miles. **Call For More Information.**



2006 TRANSCRAFT EAGLE II. High Flat, 48 X 102, Combo, Headboard, Slider, Alum Wheels, 2 Axle, 1 Owner. (2 Available To Choose From). **Call For More Information.**



2007 LIDDELL 50 TON BEAM TRAILER. 4 Axle, Lift On Third, 4th Axle Flip, Detaches Both Ends, 28' Deck, NGB, Excellent Shape, One Owner. **Call For More Information.**



1987 AUTOCAR DK64. Tandem Dump With J & J Alum Rock Body, Dual Piston, Ledge Gate, Cummins Power, 8 Spd, 58K Rears, 24" Rubber, Spring Ride. **Call For More Information.**



2009 CATERPILLAR 924H WHEEL LOADER. Quick Disconnect, New Motor From CAT With Paperwork, Very Good Condition, **Call For More Information.**



2019 PETERBILT 389. 605 Cummins Power, 18 Speed, 4 Axle, 46K Rears, Air Ride, 300" Wheel Base, Headache Rack, Full Fenders, 60" Bunk, Loaded, **Call For More Information.**



2011 CATERPILLAR 246C XPS. Skidsteer, 2 Speed, Full Cab, A/C, Cushion Tires, Forks And Bucket, Extra Counterweights, 4,000 Hours, One Owner, Original Paint. **Call For More Information.**



2018 FONTAINE TRAVERSE. Hydraulic Tail, Tandem Axle, Hydraulic Upper, Currently Being Sandblasted And Painted, One Owner, Winch, Remote Control, Weigh Scale, NAP **Call For More Information.**

www.josephequipment.com

Trades Welcome • Financing Available

THIS AD IS COPYRIGHTED & OWNED BY TRUCK AND EQUIPMENT POST

JOSEPH

EQUIPMENT COMPANY

300 GAY ST • MANCHESTER, NH 03103

SATURDAYS • WE ARE OPEN ALL DAY

PHONE: 603-641-8608

FAX: 603-666-3716



293 NORTH - EXIT 2 -
LEFT ONTO BROWN AVE -
RIGHT ONTO WINSTON ST. - LEFT ONTO GAY ST.
300 GAY STREET ON THE RIGHT



1997 CATERPILLAR 960F WHEEL LOADER. Sandblasted And Painted, New Decals, A/C, Scale, 23.5 X 25 Rubber, Bolt On Cutting Edge, Very Good Condition. **Call For More Information.**



2005 FONTAINE TL50 LOWBED TRAILER. 25' Level Deck, 18" Deck Height, 3 Axle, Air Ride, Alum Wheels, Recently Reconditioned, Very Good Condition. **Call For More Information.**



NYE ROOT RAKE.
For 50,000 - 70,000 Lb. Excavator.
Call For More Information.



1997 KENWORTH T800. Twin Steer Wide Nose, 550 Cummins, 18 Speed, Long Wheel Base, 30' From Back Of Cab To End Of Frame, Newair Ride, Double Frame, 164,000 Original Miles, New Michelin Tires In Back. **Call For More Information.**



IN STOCK - 2025 FONTAINE MAGNITUDE 60HD-MX. Deck Extends From 30' To 51', 65 Ton When Closed, Built To Handle A 60 Ton Load With Ease, 30' Clear Deck Length Extends To 51', 22" Loaded Deck Height, 6" Ground Clearance, 7 Position Hydraulic Detachable Gooseneck, 7 Position Air Ride Tridem Bogle, 402 Jeep Ready, 36" And 83" Flip Box Ready, 60/90 Flip Axle Ready, EQ2 Spreader Bar Ready, Loaded. **Call For More Information.**



1998 FONTAINE, MODEL. 50 Ton, Detaches At Both Ends, 25' Flat Level Deck - 20" Loaded Deck Height, 25' Beam Deck Insert, 20" Loaded Deck Height, Non Ground Bearing, Air Ride, Boom Trough & Deck Cut Out, Lift Axle, Outriggers, Aluminum Wheels, Strobe Lights. **Call For More Information.**



2009 CATERPILLAR 336D. 93 Hours On New Motor, New Swing Drive, 3rd Valve, Hydraulic Thumb, Excellent Shape. **Call For More Information.**



2015 TRAIL KING 55 TON. (4 Available To Choose From Ranging In Years From 2009 To 2015), Air Ride, Full Fenders, Hydraulic Power Pack, 25 Foot Deck, No Rust-Texas Trailer, Lift Axle, Set Up For 4th Axle, Chain Boxes, Outriggers, 4th Axle Available. **Call For More Information.**



2010 SPEC TECH TRI AXLE END DUMP TRAILER. Alum Frame, Alum Tub, Spring Ride, 2 Way Gate, Liner And Cover, Ready To Work, Excellent Condition. **Call For More Information.**



USED FONTAINE PIN. On 4th Axles For 55 Ton Fontaine Lowbed Trailers (NAP), Alum Wheels. **Call For More Information.**



2003 INTERNATIONAL DURASTAR 4300. DT466 Motor, 6 Speed Transmission, 21' Chevron Body, Rebuilt Motor, A/C, P/S, Spring Ride, One Owner, Original Paint, Very Good Condition. **Call For More Information.**



1994 FORD WATER TRUCK WITH CURRY TANK. Hydraulic Driven Pump, Double Frame, Cummins Power, Very Good Condition, Price \$27,500. **Call For More Information.**

www.josephequipment.com

Trades Welcome • Financing Available

THIS AD IS COPYRIGHTED & OWNED BY TRUCK AND EQUIPMENT POST

JOSEPH

EQUIPMENT COMPANY

300 GAY ST • MANCHESTER, NH 03103

SATURDAYS • WE ARE OPEN ALL DAY

PHONE: 603-641-8608

FAX: 603-666-3716



293 NORTH - EXIT 2 -
LEFT ONTO BROWN AVE -
RIGHT ONTO WINSTON ST.- LEFT ONTO GAY ST.
300 GAY STREET ON THE RIGHT



ERIN 165T SCREENER ON TRACKS.
Makes 3 Products, CAT Power, Heavy Duty Grizzly, Remote Control, Very Good Condition, Call For More Information.



1982 LINKBELT RTC8060 CRANE. 60 Ton, 2 Winches, Cummins Power, 29.5 X 25 Tires, Recent Inspection, Call For More Information.



TELESMITH 3042 CRUSHER. With New Die Jaws. Call For More Information.



2008 PETERBILT TRI AXLE. CAT Power, Alum Body, Air Ride, 46K Lb. Rears, Low Miles, Very Good Condition, Price \$55,000. Call For More Information.



2016 GREAT DANE 53' X 102" DROP DECK. Tri Axle, Air Ride, Lift On Rear Axle, Excellent Condition, Southern Trailer, No Rust, Call For More Information. Call For More Information.



1994 FONTAINE 70 TON TRI AXLE. 26' Beam Trailer With Removable Gooseneck, Air Ride, Air Brakes, Hyd Removable Gooseneck, Gooseneck Extension, Tandem Axle Pin On Booster, Plumbed For Booster Axle, 46" Usable Deck Width, 275/70R 22.5 Tires, Currently Located In Northeast MD. Call For More Information.



2004 CATERPILLAR 966G SERIES II LOADER. 26.5 X 25 Radial Tires, Rebuilt Bucket, Complete Rebuilt Motor With Paperwork, 0 Hours Weigh Scale. Call For More Information.

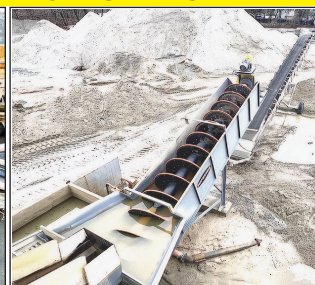
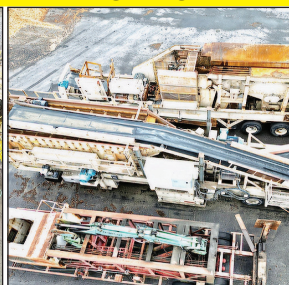
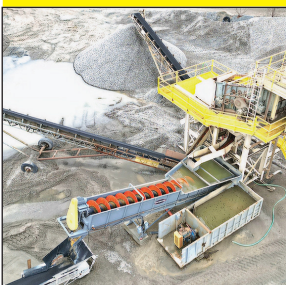


2019 FONTAINE 53 - 90. Tri Axle, Air Ride, Slider, Like New Condition, Southern Trailer, No Rust. 3 Available To Choose From Ranging From 2019 To 2016. Call For More Information.



KOBELCO JAW. Size 30/42, 3 Axle Carrier, 125HP Jaw Motor, Jaw Dies New, Hyd Feeder, Pump Driven By 40 HP Electric Motor, Hyd Legs, On-Board Switchgear, 42"x35' Jump Conveyor, Nordberg/Metso HP300 Closed Circuit Cone Plant, 300 HP Motor, Hyd Adjust, 6x20' 3 Deck Screen, 3 Axle Carrier, Hyd Legs, CAT Generator 800KW 3412E Model, 6x16' Wash Plant, Skid Mounted, Diester 6x16 Incline Screen. Call For More Information.

3042 JAW CRUSHER, HP300 CONE-CLOSED CIRCUIT, DIESTER WASHPLANT, CONVEYORS, GENERATORS, WILL SELL SEPARATELY OR AS A WHOLE PLANT



www.josephequipment.com

Trades Welcome • Financing Available

THIS AD IS COPYRIGHTED & OWNED BY TRUCK AND EQUIPMENT POST

JOSEPH

EQUIPMENT COMPANY

300 GAY ST • MANCHESTER, NH 03103

SATURDAYS • WE ARE OPEN ALL DAY

PHONE: 603-641-8608

FAX: 603-666-3716



293 NORTH - EXIT 2 -
LEFT ONTO BROWN AVE -
RIGHT ONTO WINSTON ST.- LEFT ONTO GAY ST.
300 GAY STREET ON THE RIGHT



1998 MACK RD688SX DUMP TRUCK. 350 HP, Fuller 8 Speed, 58 Rears All Redone By Southeast Truck, 24" Rubber, Rebuilt Engine, Double Frame, Working Daily, Heated Body, New Brakes All Around, New King Pins, New Clutch/Bell Housing, All New Rear Suspension. **Call For More Information.**

NEW MODEL - IN STOCK NO WAITING



NEW MODEL - IN STOCK NO WAITING. Beat The Price Increase. Fontaine Magnitude 65 2+3+2 Capable, 28' Drop Side Rail Deck, 3 Axle, Set Up For 4 Axle, 14.75" Deck Height, 102" Wide, 60.5" Axle Spacing, Eq2 Spreader Bar With Intermediate Axle, Hydraulic Removable, Non Ground Bearing With 2 Pin Position At 114" And 102". Triple Cylinder, 70" Hydraulic Flip Box, Heavy Duty Snap In Outriggers, D-Rings, Alum Wheels, 275/70R X 22.5 Tires. **Call For More Information.**



IN STOCK - 2025 FONTAINE LXTN40. 40 Ton Extendable, 34' Closed - 60' Open. Also Available 29' Closed - 50' Open. Tandem Axle, Set Up For 3rd, Air Ride, Non Ground Bearing, 102" Swing Clearance, 20" Deck Height, Alum Wheels. In Stock, No Waiting. Available In Manchester NH And At The Factory In Springville AL. 3rd And 4th Axles Available. **Call For More Information.**



2017 FONTAINE INFINITY. Combo Stepdeck Trailer Model HCITX22RSA, 53 X 102, With Ramp System, Like New Condition, Tandem Axle, Rear Slide, 80,000 Lb. Capacity, Air Ride, Container Locks, Chain Tie Downs, Winches, Approx 4,000 Original Miles, 22.5 Tires. **Call For More Information.**



2019 PUP TRAILERS. (14 Available To Choose From) 28' Long, 102" Wide, 13'6" High. **Call For More Information.**



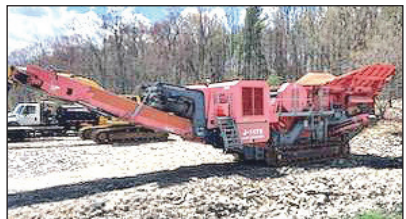
1998 BOMAG VIBRATORY COMPACTOR. 8600 Hours, Hydrostatic Transmission, Fleet Maintained, 24,000 Operating Weight. **Call For More Information.**



1999 TALBERT DSR TRAILER. 25' Steel Deck, 102" Wide, Low Pro Tires, Air Ride, Lift Axle, Non-Ground Bearing, Rear Wheel Pockets, Good Rubber, Working Daily. **Call For More Information.**



1998 VOLVO L180C LOADER. 26.5 X 25 Radial Michelin Tires, One Owner, Working Daily, Excellent Shape. **Call For More Information.**



TEREX TRACK CRUSHER MODEL J1175. 4300 Hours, Excellent Shape. **Call For More Information.**



2013 KOMATSU PC360 LC. 6300 Hours, Quick Disconnect, Recent Pump, Very Good Condition, \$110,000. **Call For More Information.**



2011 INTERNATIONAL 7400 WORKSTAR. DT570, 12,000 Original Miles, Allison Automatic Transmission, Air Ride, Former Florida Municipality Truck, New Tires, Excellent Shape. **Call For More Information.**



2011 FORD F350. Power Stroke Diesel, Automatic, Dual Wheels, One Owner, 123,000 Miles. **Call For More Information**

www.josephequipment.com

Trades Welcome • Financing Available

THIS AD IS COPYRIGHTED & OWNED BY TRUCK AND EQUIPMENT POST

JOSEPH

EQUIPMENT COMPANY

300 GAY ST • MANCHESTER, NH 03103

PHONE: 603-641-8608

OPEN
ALL DAY
SATURDAY



FONTAINE

FAX: 603-666-3716



NEW MODEL - 2025 FONTAINE RENEGADE LXLN12 - 12 Inch Loaded Deck Height With 4 Inch Ground Clearance When Fully Loaded, 30 Tons In 16 Feet On Tandem Bogie Or 30 Tons In 20 Feet With 3rd Axle Flip, Low Profile, 3rd Axle Capability, 32 Feet 11 Clear Deck Length. IN STOCK, NO WAITING. **CALL FOR MORE INFORMATION.**



NEW MODEL - 2025 FONTAINE MAGNITUDE 50 Tri Axle, Set Up For 4Th, 50 Ton, Air Ride, 24' Deck, 20" Loaded Deck Height, Alum Or Steel Wheels, Strobe Lights, Outriggers And D-Rings. **Call For More Information.**



2025 KRUZ TERMINATOR, 26' Steel Frame, Single Point Suspension, 2 Way Gate, 11 X 24.5 Tires, Alum Wheels, 2 Speed Landing Gear. **Call For More Information.**

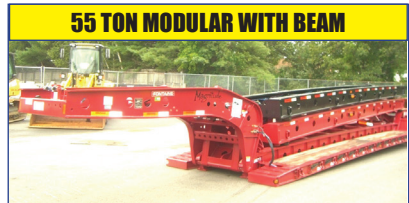


27' FLAT LEVEL DECK - IN STOCK

2025 FONTAINE 55L, 27' Flat Level Deck, Also Available In 25' And 26' Deck Length. Tri-Axle, Air Ride, 3Rd Axle Lift, Alum Wheels, Strobe Lights, Set-Up For 4Th Axle. In Stock, No Waiting. **Call For More Information.**



2025 KRUZ 26' STEEL TUB, Aluminum Frame Dump Trailer, Air Ride, 2 Axle, Alum Wheels, 450 Hardox, 24.5 16 Ply Tires. **TAKING ORDERS**
Call For More Information.



55 TON MODULAR WITH BEAM

2025 FONTAINE 55H MODULAR DSR, Beam Deck Also Available, Tri Axle, 60" Axle Spacing, Hydraulic Removable, Non Ground Bearing, Set Up For Gooseneck Ext, Spreader Bar And 4Th Axle Flip, Air Ride, Alum Wheels, 22.5 Rubber. **Call For More Information.**



2025 FONTAINE 60 TON MODULAR 2+3+1, 26' Dsr, 184" Swing Clearance, Set Up For 2 Axle Jeep, 14" Deck Height, Air Ride, Alum Wheels, 275/70R X 22.5 Rubber, Non Ground Bearing. **Call For More Information.**



2025 FONTAINE RENEGADE LXL, 14" Deck Height, 30' Deck W/6" Ground Clearance, 2 Axle, Set Up For Third, Hydraulic Detachable, Taking Orders
Call For More Information.



2025 KRUZ, 70 Yard, Tri Axle, 70,000 Single Point, Lift On Third Axle, 1/4 Inch 450 Hardox, Floor, Sides, Nose, Gate, 12 Panel Gate, 11 X 24.5 Rubber, Alum Wheels. Taking Orders. **Call For More Information.**



2025 FONTAINE TRAVERSE HYDRAULIC TAIL, 48' Long, 102" Wide, Air Ride, Hydraulic Upper Deck, Hydraulic Winch, Remote Control, Alum Wheels, Dual Controls. Taking Orders
Call For More Information.



2025 FONTAINE 60 TON MODULAR, 26' Dsr, 60" Axle Spacing, 184" Swing Clearance, Set Up For 2 Axle Jeep, 14" Deck Height, Air Ride, Alum Wheels, 275/70R X 22.5 Rubber, Non Ground Bearing. In Stock. **Call For More Information.**



1998 KAYLN SIEBERT. 75Ton 3+3+3, Air Ride, West Coast Bogie, 3 Axle, Air Ride Jeep With Power Tower, 10' Wide Trailer, 60' Overall Length, 48' Of Useable Deck, 275/70 X 22.5 Rubber, Sandblasted & Painted, Excellent Shape, Alum Wheels On Jeep And Booster. **Call For More Information.**

Trades Welcome • Financing Available • www.josephequipment.com

THIS AD IS COPYRIGHTED & OWNED BY TRUCK AND EQUIPMENT POST

TRAILER RENTALS • TRAILER RENTALS • TRAILER RENTALS •

WE RENT STEP DECKS • LOW BEDS • HI FLATS • DEMO/SCRAP • TRAILERS

JOSEPH EQUIPMENT COMPANY

300 GAY ST. • Manchester, NH 03103

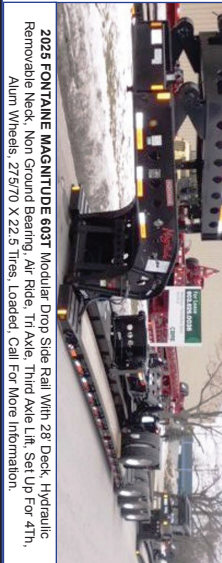
NOW TAKING ORDERS FOR DUMP TRAILERS AND LOWBEDS FOR SPRING AND SUMMER DELIVERY

14" DECK HEIGHT



NEW 2025 FONTAINE RENEGADE LXL, 14' Deck Height, 30' Deck W/ 6' Ground Clearance, 2 Axle, Set Up For 3rd Hydraulic Detachable Or Mechanical Detachable. In Stock No Waiting. Call For More Information

IN STOCK, NO WAITING



2025 FONTAINE MAGNITUDE 603T Modular Drop Side Rail With 28' Deck, Hydraulic Removable Neck, Non Ground Bearing, Air Ride, Tri Axle, Third Axle Lift, Set Up For 4th, Alum Wheels, 275/70 X 22.5 Tires, Loaded. Call For More Information.

55 TON EXTENDABLE



2025 FONTAINE MAGNITUDE 59MX, 55 Ton Extendable Trailer, 30' To 50', Modular, Detachable Both Ends, Hyd Removable, Non Ground Bearing, 20' Deck Height, With Take 10' Deck Ext For A Total Of 60', 275 Rubber Tri Axle, Air Lift On 3rd Set Up For 4th, Set Up For Gooseneck Ext. Call For More Information

WE RENT WALKING FLOORS • DUMPS • HIGH FLAT EXTENDABLES • JEEPS



NEW 2025 FONTAINE SPECIALIZED MAGNITUDE 65L, Tri Axle, Air Ride, Set Up Of 4th Axle, Non Ground Bearing, 25' Deck, Led Lights, Aluminum Wheels, Strobe Light Package, Lift On 3rd Axle, 2 Pin Position, Loaded. In Stock No Waiting. Call For More Information



2025 FONTAINE 65H MODULAR AR DSR, Beam Deck Also Available, Tri Axle, 60' Axle Spacing, Hydraulic Removable, Non Ground Bearing, Set Up For Gooseneck Ext, Spreader Bar And 4th Axle Flip, Air Ride, Alum Wheels, 22.5 Rubber, Call For More Information.



2025 FONTAINE 35 TON LOWBED, Air Ride, Tandem Axle, 29ft Flat Level Deck, Non Ground Bearing, Hyd Goose Neck, Set Up For Future 3rd Axle, In Stock. Call For More Information

70 TON 2+3+2

WE RENT STINGERS • SPREADER BARS • DOUBLE DROP EXTENSIBLES TRAILERS



NEW 2025 FONTAINE 704/2+3+2 DROP SIDE RAIL, 4 Axle, 28' Deck, Hydraulic Detachable, In Stock, No Waiting, Non Ground Bearing, 102' Wide, 65' Flip Box, Spreader Bar And 352J Jeep, Alum Wheels, 275/70R X 22.5 Tires, 28 Beam Deck Available. Call For More Information.



NEW 2025 FONTAINE 65 TON, Drop Side Rail, Tri Axle, Air Ride, Set Up For 4th, Non Ground Bearing, Led Lights, Aluminum Wheels, Strobe Lights, Loaded. In Stock No Waiting. Call For More Information



NEW 2025 SPECIALIZED 65 TON BEAM TRAILER, 3+1 Modular NGB, Detach Both Ends, Tri Axle, Air, Lift On 3rd, Set Up 4th, Set Up For Gooseneck Extension, Call For More Information

Trades Welcome • Financing Available • www.josephequipment.com

THIS AD IS COPYRIGHTED & OWNED BY TRUCK AND EQUIPMENT POST