

SERVING NEW ENGLAND

FREE

TRUCK AND EQUIPMENT POST

Your Local Source For The Trades



2009 FREIGHTLINER M2 106. 56,000 GVW, CUMMINS ISC/07 300 HP, 9 SPEED, AIR RIDE, AC, 24'6 X 96" STEEL DECK, RUB RAILS, 387K MILES, MOUNTED RECIEVE FORKLIFT ATTACHMENT, 274 WB, \$46,000. 508-277-4172



CEC 512 PORTABLE ROADRUNNER. 5X12 DECK WITH 7900 HOURS, RECENT ENGINE SWAP AND DRIVE MOTOR FOR FEED BELT, RUNS AND OPERATES AS IT SHOULD, \$79,500. 508-212-8710



2002 INTERNATIONAL. DT466, 6 SPEED, 33,000 GVW, SPRING SUSPENSION, AIR BRAKES, 10 FT. STEEL DUMP BODY, POWDER COATED, 3 CHUTES, PINTLE HOOK, EXCELLENT CONDITION, \$24,000 OBO. 774-301-4240



2021 KUBOTA SSV75 SKIDSTEER. 50 HOURS, 75" BUCKET, 74.3 HP, AC/HEAT, RADIO, 12V POWER OUTLET, \$49,900. 978-979-1262



2009 GREAT DANE REFRIGERATED PUP TRAILER. THERMOKING UNIT, MAXON RAIL GATE W/ FLAT ALUMINUM DECK, \$9,995. 978-992-7077

Optative Group



**Issue 22-23
JUNE 1st, 2022**

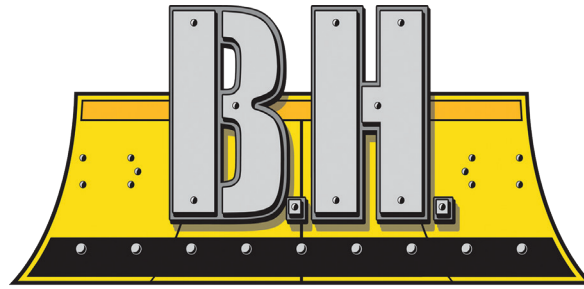
**INTERNET & PRINT
FOR ONLY \$25.00**

www.TruckAndEquipmentPost.com

888-887-0505

www.bhtrailersandplows.com

6 Center Parkway
Plainfield, CT
06374
860-949-7863



2207 Hartford Ave.
Johnston, RI
02919
401-214-3735

TRAILERS AND PLOWS



Over 400 Trailers In Stock! Shipments Arriving Daily



CROWNLIN Truck Beds
Single Wheel, Short & Long
Beds, With Install Kit,
Starting at \$3,195



CM SK Skirted Flat Bed
Gooseneck and Receiver Hitch
Built In, Starting at \$6,495



DURAMAG Flat Beds
with 10 Inch Apron
Starting at \$3,595



CM RD Beds
Over 100 Beds In Stock!
Starting at \$3,995



2021 LOAD TRAIL CH14
83" Wide w/Stand-Up Ramps
14,000Lb. GVWR
18Ft. \$6,795 20Ft. \$6,995



2022 DIAMOND C FMAX210
32Ft. Hydraulic Dove Tail
2 Speed Jack
25,000Lb. GVWR, \$29,995



2022 LOAD TRAIL
Gooseneck ROLL OFF
14,000Lb. GVWR
2 Can Package, \$27,995



2022 DIAMOND C HDT208
22Ft. Split Tilt, Large
Tool Box, Fork Pockets
18,000Lb. GVWR, \$18,195



NICK SCARVALAS
Commercial Sales
857-247-9023 or 617-249-5603



**COMMERCIAL
VEHICLE CENTER**

ALL TRUCKS ON SALE NOW

ELECTRIC



2022 T350 ELECTRIC CARGO VAN. Oxford White Exterior, Cargo Protection Pkg, Rear View Camera, All Electric Motor, F206482, **\$66,805**



2022 E350 12' ROCKPORT VAN. 7.3L V8 Gas Engine, Auto, Power Windows & Locks, Remote Keyless, Cruise, 10,050 GVW, SRW, Roll Up Rear Door, LED Rear Flood Light, F206402, **\$63,749**



2022 E350 12' ROCKPORT VAN. Rail Lift Gate, 7.3 V8, Power Windows & Locks, 10,050 GVW, Cruise, Remote Key, F206517, **\$60,105**



2022 F150 XLT SUPERCAB 4X4. XLT Sport Pkg, 20" Six-Spoke Alloy Wheels, Remote Start, LED Spot Side Lights, F205949 MSRP \$52,515 **SAVE \$6,000 SALE PRICE \$46,515**



2022 E350 12' SERVICE VAN. Rockport Body, 7.3 V8, Pwr Windows & Locks, Pass Thru Door, 3 Bar Ladder Racks, F206516, **\$72,999**



2022 T350 HD FREIGHT VAN. DRW, Roll Up Rear Door, Step Bumper, Rear View Camera, F206510, **\$58,450**

500 COMMERCIAL TRUCKS IN STOCK



2022 F250 XLT CREW CAB 4X4. Power Moon Roof Twin Panel, Power Rear Window, Heated Frt Seats, Up Fit Switches, Tailgate Step, Dark Blue, F206595, **\$66,105**



2022 F350 SUPERCAB 4X4. 7.3 V8 Gas, STX Pkg, Tonneau Cover, Power Slide Rear Window, Up Fitted switches, Remote Start, Spray In Bedliner, Very Dark Blue, F206314 **MSRP \$59,930**



2022 F150 XLT CREW 4X4. B&O 8 Speaker Sound System, Tow Technology, Bed Utility Pkg, Co-Pilot 360, F205988 MSRP \$57,185 **SAVE \$3,000 SALE PRICE \$54,185**



2021 F150 4X4. Power Equipment Pkg, Running Boards, Fog Lights, Trailer Hitch, Rear Defroster, Cruise, F205365 **SALE PRICE \$39,455**



2022 F150 XLT CREW 4X4. Tow Technology, Power Sliding Rear Window, Bed Utility Pkg, Co-Pilot 360, F205885 MSRP \$56,870. **SALE PRICE \$52,870**




2022 T350 WAGON VAN. 15 Passenger, Privacy Glass, Rear View Camera, AC, PW, PL, F206739, **\$62,410**

QUIRK FORD

540 Southern Artery (Rt 3A) Quincy, MA
www.quirkford.com • 617-249-5660

**Business
Financing with
NO Co-signer
Required**

Prices include all available rebates. Rebates include Customer Cash, FMCC Bonus Cash, and Commercial Uplift Bonus Cash. Customer must qualify for rebates. Call for specific details. Prices are subject to change. * In Lieu Of Rebates




**WOODWARD
DETAILING**

***ATTENTION FLEET OWNERS**

Fluid Film Undercoating Applications
Woodward Detailing LLC Offers
Mobile Rust Inhibitor Application

**We Can Come To Your Location And Apply A Heavy Coat On Your Fleet Vehicles
Protect What Makes You Money
The New England Roads Are Ruining Your Vehicles Every Winter!**

Call Us Today To Book Your Fleet Of Trucks, Vans, Or Whatever You Don't Want To Rust




Delivery Vans


"We Offer Fluid Film In Black Or Tan – Your Pick"

860-428-4237


SALT = RUST




Trailers




Dump Trucks




**2002 MORBARK MODEL 22
4 KNIFE.** 3000 Hrs On Milton-Cat
V12 At Cost \$56,447. New Clutch,
Transition Shute, Hood Liners,
Bellyband, Tires, Batteries, ECM
& Wire Harness, Wireless Remote
Control & Paddles. Rebuilt Anvil.
Recent Feed Bed Chain & Sprockets.
\$140,000. 603-456-6029



2004 DEERE 700H LT – 9900 Hours, Set Up
For Top-Con GPS, Don't Let The Hours Scare You. Well
Maintained - **\$48,500** CALL DAN AT 203-506-3860



2008 MANAC HI BOY TRAILER.
Aluminum Trailer, Real Nice Condition, **\$19,999 OBO.**
401-486-8552



VOLVO EC140EL EXCAVATOR. 1200 Hours,
42" Bucket, 6' Grading Bucket And A Ripper, Excellent Condition,
Works Daily, **\$169,000.** 860-617-4569





Woolwich, Maine

Join OUR Team!

CDL A Truck Driver Heavy Equipment Mechanic

Woolwich, Maine / Travel Required

Apply online @
www.reed-reed.com



LIKE US ON
facebook



Follow us on
Instagram

CHADWICK BAROSS™

UNSTOPPABLE.

Westbrook, ME | Bangor, ME | Caribou, ME | Concord, NH | Chelmsford, MA
Whitman, MA | Oxford, CT | South Windsor, CT | West Warwick, RI



9204 2017 VOLVO EW60E. 1,385 Hours, Coupler, 3rd Valve, 24" Digging Bucket, Full Cab, Excellent Condition, **\$69,500.**



9090 2013 DEERE 350G LC. Coupler, 54" Digging Bucket, 3rd Valve, Full Cab, AC/Heat/Stereo, New Reman Motor By Nortrax 200 Hours Ago, **\$125,500.**



SY117 2018 SANY SY215C LC. 998 Hrs, 48 Pin On Bucket, 3rd Valve Hyd., 90% U/C, Full Cab, AC/Heat, Stereo, Full Machine Warranty To 9/8/2024 Or 5K Hrs To Be Serviced By Local Sany Dealer, **\$124,500.**



9224 2007 CASE 590 II 4X4. Front GP Bucket, Extenda-Hoe, Wain Roy System, 48" Cleanup Bucket, 24" Dig. Bucket, Full Cab, AC, Heat, 6K Hours, **\$34,900.**



9092 2007 VOLVO L70E. Coupler, 3rd Valve, GP Bucket, Cab/AC/Heat, 7K Hours, **\$57,500.**



LB885 2020 LINK-BELT 210 4X4. Coupler, 3rd Valve, Hyd Thumb, 42" Dig Bucket, Full Cab, Heat, AC, 243 Hours, New Condition, **\$195,000.**



9083 2009 PRENTICE 2432 4WD. Good Used Grapple Skidder, Enclosed ROPS, 17K Hours, Ready to Go, **\$29,500.**



9040 2012 VOLVO EC300DL. Coupler, Quick Attach, Aux. Hyd., 3rd Valve, 42" Digging Bucket, Cab, AC/Heat, 4,583 Hours, **\$122,500.**



9999 2002 CATERPILLAR 950G. 4.25 YD Bucket (needs floor), Good Rubber, Full Cab, AC, Heat, One Owner, 11K hours, **\$58,500.**



9213 2004 TAKEUCHI TB053FR. 1,886 Hours, Coupler, 3rd Valve, Hyd. Thumb, 12" & 30" Digging Buckets, Blade, Full Cab, **\$34,500.**



9197 2005 DEERE 244J. Coupler, 3rd Valve, GP Bucket, Full Cab/AC/Heat, 3K Hours, **\$41,500.**



9201 2021 KOBELCO SK210 LC-10. Only 440 Hrs, Pin On 48" Digging Bucket, Hydraulic Thumb, Full Cab, A/C/Heat/Radio, Brand New Condition, **\$179,500.**

Call (207) 536-2723

chadwick-baross.com



HOT DEAL

2016 MOROOKA MST3000VD

34,000LB CPTY, 325HP, CUMMINS DSL, HST TRANS, UP TO 8.5 MPH, JOYSTICK TRAVEL CTRL, 12' DUMP BODY, 32" RUBBER TRACKS, 2656 HOURS

\$169,000

SALES & RENTALS INC.
T-QUIP

YOUR  CHOICE IN SALES & RENTALS

(603) 623-3669

TQUIP.com



LOOK NEW INVENTORY!

2020 KUBOTA R630

EROPS, A/C, AUX HYD, HYD Q/C, 1CY GP BUCKET, 405/70R18 TIRES, 118 HOURS

\$89,000



2016 HYDREMA 912HM

22K LB CPTY, A/C, 141HP CUMMINS DSL, 7.3CY BODY, ARTIC CHASSIS, AUTO TIP SPD ADJ, 800/45-30.5 RBR, 3358 HRS

\$139,000



2015 CAT 289

CAB, A/C, 2-SPD, HI-FLO AUX HYD, HYD Q/C, 78" GP BKT, JYSTK STRG, REAR CAM, 16" RBR TRKS, 2912 HRS

\$55,000



2012 CAT D8T

EROPS, 12'10" SU BLADE W/ TWIN TILT, NEW HD UC, RIPPER VLV, DIFF STEER, 28" PADS, NEW S47K ENGINE, 9307 HRS

\$299,000



2006 VOLVO G946

CAB, A/C, 14' MOLDBOARD, ALL-WHEEL DRIVE, SIDE WING, RIPPER, 6677 HOURS

\$89,000



2014 KOMATSU PC290LC-10

AUX HYD, 48" STRICKLAND HD BKT, STRICKLAND HYD THUMB, LONG UC, SEAL SVR, 4362 HRS

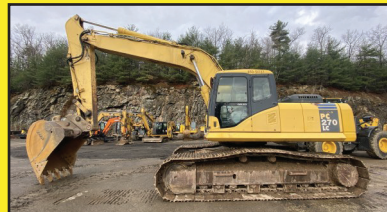
\$169,000



2012 CAT 336EL

A/C, 12' 10" STK, AUX HYD, HYD Q/C, 48" CAT BKT, CAT HYD THUMB, SEAL SVR, 28" SG PADS, 6639 HOURS

\$179,000



2006 KOMATSU PC270LC-7L

A/C, AUX HYD, GEITH HYD Q/C, 48" ESCO BKT, 32" TBG PADS, LONG UC, 1 OWNER, 8173 ORIGINAL HRS

CALL FOR PRICING



2010 CAT 420E

A/C, EXTENDAHOE, AUX HYD, HYD & MNL Q/C, 92" & 24" BKTS, PILOT CTRLS, SIDE SHFT, PTRN CHNGR, 6281 HRS

\$52,500



(8) 2013-2017 CAT 308E2CRs

A/C, COMBO AUX HYD, HYD Q/C, 30" BKT, HYD THUMB, BLADE, CTRL VLV, REAR CAM, 18" RBR LNRS, 1433 HRS

STARTING AT \$75,000



2022 DOOSAN DX62R-3

A/C, OFF-SET BOOM, COMBO AUX HYD, HYD Q/C, 18" BKT, HYD BLADE, PTRN CHNGR, REAR CAM, 16" RBR TRKS, 8 HRS

\$99,000

• ADDING UNITS TO OUR FLEET DAILY FOR YOUR RENTAL NEEDS! •

NORTHEASTERN PETROLEUM SERVICE & SUPPLY

617-522-8390 Ext 12

Financing Available - After Hours Call 617-696-1979

We Are Looking For Newer Tank Trucks To List, Dual Equipped, Tandems & Auto. Trans, Can Sell From Your Location



2001 STERLING L7500 BOSTON STEEL
2,700 GAL. 2 COMPT. 2,000 Gal & 700 Gal,
35,042 Miles, CAT 3126-250HP, Automatic.,
Single Wrap Reel. **\$26,900**



2000 PETERBILT 330 CAB & CHASSIS.
190,902 Miles, CAT 3126-R 300+ HP, 10
Speed Auto-Shift, 54,600 GVW, 12R22.5
Tires, Deluxe Cab, Frame Corroded, Chassis
Only, No Tank. **\$9,000 OBO.**



2000 FREIGHTLINER FL70 ALMAC 2,
800 GAL. 2 COMPT. 2,000 Gal. & 800 Gal,
CAT 3126, 6 Speed, V-Root STD VR Ticket
Printer, Suck Out Line, Nice Alum. Piping,
\$18,900.



2004 STERLING BOSTON TANK.
2700 Gallon, 137,509 Miles, CAT
3126, 6 Speed, L/C M71 Meter,
\$17,900



1986 MACK T/A, 3, 800 GAL. 1 COMPT.
BOSTON STEEL TANK. Mack 300, 10 Speed,
11R24.5 Tires, Mid-Com M-7-1 L/C Meter, 498,
349 Miles, Reframed 5 Years Ago, Works Daily, Best
Offer Over **\$28,000.**



1997 IH 4900 3000 GALLON TANK.
Boston Reel, Bottom Load, DT-466, 6
Speed, 33,000 GVW, Steel Tank, **\$6,900**



2000 FORD F750 BOSTON STEEL 2,700 GAL. 1
COMPT. CAT 2156, 7 Speed, V-Root 2" L/C M-7
Ticket Printer, 126,742 Miles, **\$21,000.**



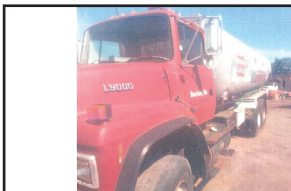
1999 Int'l 4900 TRANS TECH
ALUMINUM 2,800 1 COMPT. 1987 Tank,
DT466E, 6 Speed, 145,000 Miles, **\$16,000.**



1997 VOLVO FE42 BOSTON STEEL 3,300 GAL. VE D7-
230HP, Allison MD 3060P Automatic, 90,000 Miles, Liquid
Control, Std.V-Root LNC/TP, Air Reel, Bottom Loading,
New Exhaust, New Oil Pan, **\$19,900.**



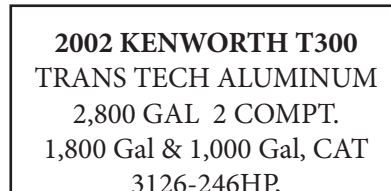
1996 KENWORTH T300 BOSTON STEEL 2,600 GAL. 2
COMPT. 1,000 Gal & 1,600, Cummins 250 HP, 6 Speed,
11R22.5 tires, Neptune Ticket Printing Meter, Hannay Reel,
Piping Has 2" Plug Valve In Rear For High Speed Pumping,
Two Hose Tubes In Tank Sill, Cut Out 12V Switch On Rear
Of Battery Box, 297,947 Miles, **\$19,000.**



1995 ALLIED 5, 000 GAL. ALUM. 2 COMPT.
TANK & EQUIP. 3,000 Gal & 2,000 Gal, Bottom
Loading, On 1995 Ford LN9000, Must Be Towed,
\$11,900



1987 FORD LN8000 TECH WELD 3,150 GAL. 1
COMPT. 224,778 Miles, Automatic., Spring Susp,
New 11R22.5 Tires, New Brakes, No Heavy Rust,
Good Cond. For Age, **\$13,900**



2002 KENWORTH T300
TRANS TECH ALUMINUM
2,800 GAL 2 COMPT.
1,800 Gal & 1,000 Gal, CAT
3126-246HP,
6 Speed Road Ranger
\$19,900

TANKS & EQUIPMENT

3,400 GAL 1 COMPT BOSTON TANK. Air,
Single Wrap Reel, 3" Meter, V-Root Standard
Ticket Printer, Bottom Loading, R Brake
Locked, Good Condition, **\$7,500.**

3,400 GAL 1 COMPT ALUMINUM TANK.
2 ½" Pump, 2" L/C Meter Neptune Printer,
Boston 12 V Single Wrap Reel, One Tank
Opening, Good Condition, **\$14,000**

**** WANTED **** FOUR - 10,000 Gallon Tanks, 10 Ft In Diameter,
S Wall, Fuel Oil Tanks With Stands

-FOR SALE- USED COMMERCIAL GASBOY. White/Black
Suction Pumps, One Hose, Gallons Only, Gas Or Diesel,
\$3,200 Each

TANK TRUCK RENTALS- CALL

SOME TRUCKS AT CUSTOMER LOCATIONS-DEALER PLATE AVAIL TO DRIVE AWAY






www.wbhill.com

Serving You With New Ideas



2001 FREIGHTLINER. With Boston Steel Tank, CAT Motor, 181K Miles, Standard Trans, \$15,000



Military Diesel Generators



Roadside Message Boards.
Good For Parts Only



TENANT RIDING FLOOR SWEEPER.
Call For Pricing

305 Shaker Rd, East Longmeadow, MA
413-525-6665 • www.wbhill.com



CM FLATBEDS: STEEL AND ALUMINUM.
Call With Your Needs.
Call Chris 781-582-1378. Plympton, MA



AS NEW - 48" HYDRAULIC DITCHING BUCKET.
Tilting, Grading, 65 MM Pins, Fits Most CAT 312 Or 120 Size Excavators, \$5500.
603-899-2000



1989 INTERNATIONAL 1900 DUMP TRUCK W/ SANDER, PLOW & BLADE
132,079 Miles. \$8,900 Call Today! 781-417-3018

TRUCK AND EQUIPMENT POST

P.O. BOX 6824
PROVIDENCE, RI
02940
Tel : 888-887-0505

Email :
ads@truckandequipmentpost.com
www.truckandequipmentpost.com

YOUR INFORMATION

Name : _____ Phone : _____

Street Address : _____

City : _____ State : _____ Zip : _____

Email : _____

Payment : ☐ MasterCard ☐ VISA ☐ Check ☐ Other

Account Number : _____

Signature : _____ Exp Date : _____

PLACE YOUR AD ONLINE AT WWW.TRUCKANDEQUIPMENTPOST.COM

☐ STANDARD PHOTOAD # ISSUES
☐ \$25 for 1 issue (2 weeks)
☐ \$45 for 2 issues (4 weeks)

☐ JUMBO PHOTOAD # ISSUES
☐ \$50 for 1 issue (2 weeks)
☐ \$90 for 2 issues (4 weeks)

Payment enclosed \$ _____ Each Issue runs for 2 weeks

Ad Text _____

One Item Per Ad Please. Truck And Equipment Post makes every effort to ensure ads are published accurately. Truck And Equipment Post and its staff will not be held responsible or liable for typographical errors or misprints. Truck And Equipment Post reserves the right to edit, abbreviate, remove or refuse any ads/content at its discretion. Copyright of Ads: By agreeing to place an ad with Truck And Equipment Post, you hereby grant Truck And Equipment Post the right to display and publish all or part of the advertisement under United States copyright laws.

Subscription rates include first class shipping.

☐ Mailed to your home or business
☐ \$40.00 13 issues ☐ \$65.00 26 issues

Just email Ads@TruckandEquipmentPost.com
and type "BAG MY MAG" in the subject line.

NEW! WE'LL EMAIL THE MAGAZINE TO YOU FOR FREE



Your description goes here as follows:
Year, Make, Model, Features, Price,
Town & State, Phone



781-315-1680
Call Dan Rott



GREAT SELECTION OF NEW & USED HEAVY EQUIPMENT & ATTACHMENTS
FINANCING AVAILABLE ON ALL UNITS UP TO 60 MONTHS.
CALL FOR DETAILS.



2012 VOLVO L120G.
 Coupler And Bucket, Very
 Clean, \$98,000. #CE4035



NEW SKID STEER
 FORK. 48", \$995.



2014 VOLVO
 DD140B. 1860
 Hours, \$49,500. #CE3292



2003 JOHN DEERE
 444H. Coupler, Bucket,
 \$44,000. #CE938



2015 VOLVO L20F.
 Coupler, Bucket,
 \$49,000. #CE4112



2014 VOLVO DD140B.
 780 Hours, \$59,500.
 #CE3291



2012 VOLVO EW210D.
 Nice Machine, \$87,000.
 #CE3806



2020 FUCHS MHL310F2.
 278 Hours, With Attached
 Grapple, \$259,000.
 #FU0012



2019 FUCHS MHL340F2.
 With Grapple,
 1325 Hours,
 \$342,000. #C000578

WOBURN, MA - AVON, MA - SMITHFIELD, RI www.WoodCoMachinery.com



SALVADORE

Family of Dealerships

SalvadoreRam.com

**#1 RAM CHASSIS CAB
DEALER IN NEW ENGLAND!**

BUSINESS LINK
The fast lane for small business.

ON THE

JOB

888-605-4346

2022 RAM 3500HD C&C
TRADESMAN REG CAB 4X4
INCOMING WITH UPFIT!



60" CAB TO AXLE - 6.7L CUMMINS TURBO DIESEL - AISIN TRANSMISSION - CHROME APPEARANCE PKG - UCONNECT 3 - SNOW CHIEF GROUP STK: NET1

2022 RAM 3500HD C&C
TRADESMAN CREW CAB 4X4
UPFIT READY!



60" CAB TO AXLE - 6.7L CUMMINS TURBO DIESEL - AISIN TRANSMISSION - CHROME APPEARANCE PKG - UCONNECT 3 - SNOW CHIEF GROUP - BODIES AVAILABLE FOR UPFITSTK: METRO1

2022 RAM 5500HD C&C
TRADESMAN REG CAB 4X4
UPFIT READY!



60" CAB TO AXLE - 6.7L CUMMINS TURBO DIESEL - AISIN TRANSMISSION - CHROME APPEARANCE PKG - UCONNECT 3 - SNOW CHIEF GROUP - BODIES AVAILABLE FOR UPFIT STK: N22120

2022 RAM PROMASTER
CUTAWAY LOW ROOF
11' READING CLASSIC
UTILITY SERVICE BODY



81" CAB TO AXLE - 3.6L V6 GAS - PREMIUM APPEARANCE GROUP - UCONNECT 3 - BACK UP CAMERA - WIDE POWER TOW MIRRORS STK: HTE1

**Trucks On The Lot
And More On The Way!**

More 2500/3500/4500 & 5500HD series trucks in transit, pre-upfit and ready to work! All body variations available! Call us for the right truck for your business needs!

2022 RAM PROMASTER 3500
13.5' DURALITE VAN BODY!



104" CAB TO AXLE - 3.6L V6 GAS - PREMIUM APPEARANCE GROUP - UCONNECT 3 - WIDE POWER TOW MIRRORS. STK: HTE2

2022 RAM PROMASTER 2500
159" WB HIGH ROOF!



PRE UP-FIT KARGO MASTER VAN PACKAGE - PARTITION - SHELVING UNIT - RUBBER FLOOR - SPEED CONTROL - INTERIOR LIGHT GROUP STK: HTE3

2022 RAM 3500HD C&C
TRADESMAN REG CAB 4X4
INCOMING WITH 9' DURAMAG DUMP BODY!



60" CAB TO AXLE - 6.7L CUMMINS TURBO DIESEL - AISIN TRANSMISSION - CHROME APPEARANCE PKG - UCONNECT 3 - SNOW CHIEF GROUP STK: HTE4


2022 RAM 2500HD
TRADESMAN REG CAB 4X4
INCOMING WITH SYSTEM-ONE LADDER RACK!



6.4L V8 HEMI GAS - CHROME APPEARANCE PKG - TRADESMAN LVL 1 - SNOW PLOW PREP - ELECTRONIC TRANSFER CASE STK: HTE5

442 West Broadway, Gardner, MA 01440 | SalvadoreAuto.com

NOT RESPONSIBLE FOR TYPOGRAPHICAL ERRORS. INCLUDES QUALIFYING REBATES. PRICING SUBJECT TO CHANGE AFTER 5/31/2022



SALVADORE

— Family of Dealerships —

BUSINESS LINK
The fast lane for small business.

ON THE JOB

888-605-4346

SalvadoreRam.com

2022 RAM 2500HD CREW CAB TRADESMAN 4X4

LAST ONE!



6.7 CUMMINS TURBO DIESEL -
TRADESMAN LVL 2 PKG - SNOW CHIEF -
COLD WEATHER - CHROME APPEARANCE
STK: N22105

Trucks On The Lot And More On The Way!

More 2500/3500/4500
& 5500HD series trucks
in transit, pre-upfit and
ready to work! All body
variations available!
Call us for the right truck
for your business needs!

2021 RAM 3500HD C&C TRADESMAN RED CAB 4X4

**DEWEZE FLATBED & 8.5'
Fisher XV2!**



60" CAB TO AXLE - 6.4L HEMI GAS - AISIN
TRANSMISSION - TRADESMAN LVL 1 -
CHROME APPEARANCE PKG - UCONNECT 3
STK: N21231

2022 RAM 3500HD C&C TRADESMAN REG CAB 4X4 9' READING SL SERVICE BODY!



60" CAB TO AXLE, 6.4L HEMI V8 - CHROME
APPEARANCE PKG- TRADESMAN LVL 1-
UCONNECT 3 - HEAVY DUTY SNOW PLOW
PREP- DUAL REAR WHEEL STK #: HTE6

COME SEE LARRY The Truck Guy!



**More Than 30 Years of
Commercial Truck Experience!**

2022 RAM 2500HD

TRADESMAN REG CAB 4X4
INCOMING WITH 8' FISHER HDX!



6.4L HEMI GAS - CHROME APPEARANCE -
TRADESMAN LVL 1 - SNOW CHIEF GROUP -
ELECTRONIC TRANSFER CASE STK: HTE7

2022 RAM 3500HD C&C TRADESMAN REG CAB 4X4

9' AIRFLO PRO-CLASS DUMP!



60" CAB TO AXLE - 6.4L HEMI V8 GAS - AISIN
TRANSMISSION - TRADESMAN LVL 1 -
UCONNECT 3 - SNOW PLOW PREP - REAR
VIEW CAMERA - DUAL REAR WHEEL
STK: HTE8

2022 RAM 5500HD TRADESMAN REG CAB 4X4

**9' AIRFLO HIGH CAP DUMP
W/ COAL CHUTE!**



60" CAB TO AXLE - 6.7L CUMMINS TURBO
DIESEL - DUAL REAR WHEEL - CHROME
APPEARANCE PKG - TRADESMAN LVL 1-
UCONNECT 3 - UPFIT READY STK: N22085

2022 RAM 5500HD C&C TRADESMAN REG CAB 4X4

**INCOMING WITH SWITCH-N-GO
HOIST SYSTEM!**



84" CAB TO AXLE - 6.7 CUMMINS TURBO
DIESEL - CHROME APPEARANCE PKG -
TRADESMAN LVL 1 - SNOW PLOW PREP -
19.5" POLISHED ALCOA WHEELS -
CONTAINER BODY AVAILABLE STK: HTE9

442 West Broadway, Gardner, MA 01440 | SalvadoreRam.com

NOT RESPONSIBLE FOR TYPOGRAPHICAL ERRORS. INCLUDES QUALIFYING REBATES. PRICING SUBJECT TO CHANGE AFTER 5/31/2022

CUMMINS TAKE-OUT 5.9 12V. LOW MILEAGE, \$3500. THOMPSON, CT 860-428-1460



2023 RHODES ASSS2660-2 26' ALUM. DUMP TRAILER, Steel Frame, Single Point Suspension. Incoming! 401-434-5900

Powerglide Air Test Kit
Complete Powerglide Pro Tree Transbrake \$279.95
TH400 Deep Cast Aluminum Pan
TH400 Billet Direct Drum Spring Retainer & Aluminum Modulator/Solenoid Hold Down
Powerglide Overhaul Kit

Powerglide Deep Oil Pan
Powerglide Reverse Spring Retainer Tool
Powerglide Bushing Driver Set
Do-it-yourself Powerglide Pro Tree Transbrake Kit \$164.95
1.80 Long Powerglide Gear Set

Powerglide Handbook written by Carl H. Munroe \$21.95
Powerglide Vent Tanks

1-800-394-5889
179 Belvedere Road
Gilsum, NH 03448
WWW.TSR-RACING.COM



2001 MACK RD688S.
Runs And Drives Strong,
Solid Dump Box,
Only 163K Miles.
\$24,500.
Must Sell, 603-545-1637



2015 CAT 336FL EXCAVATOR,
Hydraulic Thumb,
Hours: 4000,
U/C: 85%,
Plumbed, Very
Clean & Ready
To Work!
\$179,900
Call Today!
781-417-3018

TOREKU TRACTOR & EQUIPMENT INC.



4 Littleton Rd, Rt2A & 110, Ayer, MA • 978-772-6619



2016 KUBOTA B2320 TRACTOR. With Loader And New Front Bucket, New Front Tires, BH65 Back Hoe, 16" Bucket & Thumb, **\$23,500**



2007 KUBOTA BX24 TLB.
Loader And Backhoe,
Good Condition,
Low Hours,
Runs Great,
\$18,500



NEW 2019 KUBOTA F3990. Front Cut, 60" Mower, New Left Over Unit,
Spring Special \$28,200



CAM ADVANTAGE P10610PDT DUMP TRAILER.
9990 GVW, New, **\$7,500**

VISIT US AT WWW.TOREKU.COM

You Get The Most With The Post



ALLEGIANCE

TRUCKS®



Hartford, N.Haven, Torrington, & Franklin, CT / W. Springfield, MA

Call Mike McDonald 860-308-6599



BRAND NEW BODY

2012 FREIGHTLINER M2 Dump Truck, Under CDL, 23K GVW, Cummins Power, Allison Auto, 165K Miles, Brand Spanking New 11' Low Side Dump Body, Auto Load Cover \$64,900



Under CDL 26' Box

Group of 2018 IH 4300, Under CDL, 26' Van Body Trucks, Cummins Power, Auto Transmissions, Air Ride, Miles 110K To 185K, Call Today For Pricing



L10 CUMMINS DUMP

1996 IH 2674 Town Dump, Plow Truck, Big Cummins L10-300HP, Allison Auto, Newer 10' All Season Body, Front Plow Blade, Only 82K Miles, #234679, \$19,900



LOW MILES

Coming Soon 2017 FREIGHTLINER CASCADIA DAY CAB. Only 420K Miles, DD13, Auto Trans, Clean White Truck, Alum Wheels, \$78,900



Lease Maintained By Us

2016 IH Prostar, ISX Cummins, 10 Speed, 560K Miles, Lease Maintained By Nutmeg, \$63,900



HEAVY DUTY

2015 PRO STAR HEAVY TRACTOR. N13, 475 HP, 18 Speed, Only 272K Miles, 46K RA,, Clean Lease Maintained Truck, #JTS875 \$55,800



CUMMINS

Several 2017 PETERBILT 579 DAY CABS, ISX 15 Cummins, Auto's & Manual's, Miles in 5's & 6's, Pricing Starts At \$79,900



DOUBLE BUNK

Several 2017 PROSTAR 73" Double Bunk Sleepers, Cummins ISX, 13 Speed, Miles In 4's & 5's, Pricing starts at \$92,900



MANY TO CHOOSE

2017-2019 GROUP OF ISUZU VAN BODY TRUCKS. Lift Gates, Gas & Diesel. Super Clean, Call Today!



ISX 450

SEVERAL 2018 IH LT 56" Single Bunk Sleeper, ISX 450HP, Auto's, Miles in mid 300's, Clean, \$114,900



LANDSCAPER BODY

2019 ISUZU NPR HD, Gas Motor, Auto Trans, Brand New Enclosed Landscape body, ONLY 14K Miles On Truck !! \$64,900



LOAN STAR

2016 IH LOAN STAR SLEEPER. Cummins ISX15, 450 HP, 10 Speed, 676K Miles, Runs & Looks Great, Just Arrived, Call Today!



24' w/Liftgates

2017 & 2015 IH 4300 With 24' Van Bodies & Liftgates, Miles 121k, 151k, 212k 232k, Pricing 2017= \$79,900, 2015= \$64,900



PETE SLEEPER

2016 PETERBILT 579 SLEEPER. ISX Cummins 450 HP, Auto, 650K Miles, Clean Truck, #253254, \$84,900



SUPER CLEAN

2014 PETERBILT 389 LONG NOSE SLEEPER. ISX 450HP, 18 Speed, 70" Mid Roof Sleeper, 800K, Super Clean, \$84,900

Allegiance now has locations in MA, CT, NY, ME, VT, RI, NH, & NJ!

For all locations visit our website!

www.AllegianceTrucks.com

ALLEGIANCE

— TRUCKS® —



109 Lindberg Ave. | Methuen, Ma 01844
(978) 686-1800 | (603) 560-0668
Formerly General Truck Center



CALL FOR OTHER NEW & USED TRUCKS FOR SALE!



2012 FREIGHTLINER M2.
167K Miles, 23K GVW,
Automatic, NEW Iriquois 11'
Steel Dump Body, Tarp, Alum
Wheels, Ready to go today!
Stk#212721, **\$64,900.**



2017 PETERBILT
579. 658k. ISX 400HP,
10 Sp EF Manual,
Day Cab, 2.79 Rears,
Rear Air, Alum Front
Wheels, Spot Mirrors,
A/C, 5th Wheel Slide,
Rear Axle Lock, C/C,
AM/FM/CD, PW/M/L,
stk#253614,
\$82,900.



2018
INTERNATIONAL
LT625 SLEEPER.
347K Miles, 450HP
Cummins X15, 10 Sp
Auto, 53250 - 80000
GVW, High Top, Air
Brake/Air Ride, 2.79
Rears, Full Air, Inc
Rem. of Ext Eng &
A/T Warr Cov until
10/23 or 600K Mi,
stk#252642, **\$114,900**



2018 INTERNATIONAL
DURASTAR 4300. 110K
Miles! Cummins B6.7
220HP Engine, Allison
2200HS Auto, Air Brake/
Air Ride, 26'x97"x102"
Supreme w/ Alum Ramp,
Trailer Hitch, Trans Roof
w/ Slats & 2 row E-Track.,
A/C, AM/FM/USB/
Bluetooth, Tilt Wheel and
More! stk#251089,
\$88,900.



2015 HINO 338.
183K, 260 HP,
Allison 2500 RDS
(PTO) Auto, Air
Brake/Spring Ride,
20' Morgan w/
Anthony Railgate,
90 Gal Fuel Tank,
Stk#235253,
\$57,900.



2017 ISUZU NPR-
HD. Gas! 137K,
297HP, Auto, 19.5"
Wheels, A/C, P/S,
PW/L, Heated
Mirrors, AM/FM/
AUX/Bluetooth,
Ex Pic Shown,
Stk#251442,
\$46,900.



2018
INTERNATIONAL
4300. 173K, Cummins
B6.7, 6 Sp Auto,
26'x97"Tx102"W
w/ NEW 3300lb
Tuckaway Alum Panel
55x80, 11R22.5
Wheels, 70 Gal Fuel
Tank, A/C. AM/FM/
Bluetooth/Aux Radio,
Air Brake/Air Ride,
Stk#252901, **\$89,900.**

Allegiance now has locations in MA, CT, NY, ME, VT, RI, NH, & NJ!

For all locations visit our website!

www.AllegianceTrucks.com

*TAXES NOT INCLUDED, 100K MILE LIMIT, .20 CENTS EVERY MILE ABOVE 100K. Dealer is not responsible for errors in price, or in description of vehicles

WOODWARD DETAILING

COMPLETE MOBILE DETAILING

- FOR FLEET VEHICLES • MAINTENANCE PACKAGES AVAILABLE
- CERAMIC COATING FOR VEHICLE WRAPS
 - PERSONAL VEHICLE DETAILING
- FLUID FILM UNDERCOATING APPLICATIONS
- CALL TODAY TO BOOK APPOINTMENT


860-428-4237

FIND US ON FACEBOOK AND INSTAGRAM



2007 CASE CX330 – Clean, Tight, Dry, Brand New Engine, 70% U/C, Hyd Q/C. - **\$69,500**
CALL DAN 203-506-3860



2006 FORD F-550 CREW CAB XL. 4X4 Diesel. 60/40/60 Seat, NEW FLAT BED, Pintle Hitch. 148,748 Miles, **\$21,699.** Call Mike, 401-439-5005



2005 FORD F250 CREW CAB FX4 4x4 BIG FOOT. XLT, Power Stroke Diesel, Many Upgrades, Motorcraft New Injectors, Lift Kit, No Rust, **\$24,550.**, Wareham, MA, Call Vito, 508-295-9444, Ext. 160

2009 FREIGHTLINER M2 106 FLATBED. 56,000 GVW, Cummins ISC/07 300 HP, 9 Speed, Air Ride, AC, 24'6 Steel Deck 96" Wide Plus Rub Rails, 387K Miles, Truck Mounted Forklift Attachment, 274 WB, **\$46,000.** Uxbridge, MA 508-277-4172



Atkinson Truck & Equipment Sales

Atkinson, NH 978-852-7842



2006 KOBELCO 135SRLC. Hydraulic Excavator, 5,500 Hours, Aux Hydraulics, **\$44,500.**



BOBCAT E50. Hydraulic Excavator, 5,900 Hours, X Change Bucket, Kubota Diesel, Aux Hydraulics, **\$28,500**



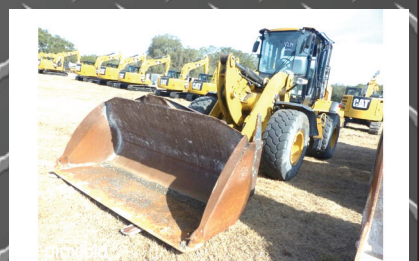
2019 NEW HOLLAND C190. Rubber Track Skid Steer, 1,350 Hours, Enclosed Cab, Heat, AC, 2 Speed Travel, High Flow Aux Hydraulics **\$57,500.**



2002 BOBCAT 328. Hydraulic Excavator, 2,100 Hours, Aux Hydraulics, **\$19,500**



2022 STAG SE 26Z Mini Excavator. Kubota Engine, Knock Down Blade, Extra Bucket, **\$34,500.** Two To Choose From



2015 CAT 938K. 7,800 Hours, Ride Control, Fusion Quick Change, 3rd Valve, Heat/AC, 20.5" Tires, Southern Machine, **\$95,500**

www.AtkinsonTruckAndEquipmentSales.com

WWW.TRUCKANDEQUIPMENTPOST.COM



Ford | COMMERCIAL
VEHICLE CENTER

JACK MADDEN FORD

888-817-7979



SUPER DUTY WORK TRUCKS

SPECIAL ORDER TODAY

SPECIAL FACTORY \$500.00 OFF ALL RETAIL SUPER DUTY ORDERS



NEW T350 12' CARGO PORT.
ALSO, COMING IN NEW 12' WORKPORT.
WWW.JACKMADDENFORD.COM



NEW F550XL 4X4 SWITCH-N-GO BODY:
GAS & DIESEL AVAILABLE. POWER GROUP.
WWW.JACKMADDENFORD.COM



NEW E350 CSV.
WWW.JACKMADDENFORD.COM



NEW E350 15' UNICELL BOX TRUCK.
WWW.JACKMADDENFORD.COM



JACK MADDEN FORD

825 Providence Hwy Rt.1 Norwood, MA

888-817-7979



Ford | COMMERCIAL
VEHICLE CENTE

Ford | COMMERCIAL
VEHICLE CENTE

*All prices include incentives for qualified buyers. For trade assist, must have 2017 or new trade. All vehicles require dealer financing. Some prices include snowplow incentives. See dealer for complete details.



JACK MADDEN FORD

888-817-7979



SUPER DUTY WORK TRUCKS

SPECIAL ORDER TODAY

SPECIAL FACTORY \$500.00 OFF ALL RETAIL SUPER DUTY ORDERS



NEW F350 XL DUMP 4WD. DRW, 7.3L, V8 Gas, Auto
WWW.JACKMADDENFORD.COM



NEW F350 4X4 ALUMINUM DUMP BODY: DIESEL.
WWW.JACKMADDENFORD.COM



NEW F550 XL DRW 4x4
CALL FOR INFORMATION
WWW.JACKMADDENFORD.COM



NEW F350 4X4 ALUMINUM DUMP BODY: DIESEL.
WWW.JACKMADDENFORD.COM



JACK MADDEN FORD

825 Providence Hwy Rt.1 Norwood, MA
888-817-7979



*All prices include incentives for qualified buyers. For trade assist, must have 2017 or new trade. All vehicles require dealer financing. Some prices include snowplow incentives. See dealer for complete details.



HILLVIEW EQUIPMENT

SALES & RENTALS 24/7

CALL JUDE 1-508-498-0777

www.HillviewEquipment.com

11 Commercial Way
Milford, MA 01757

Rt. 495 to exit 19,
Route 109W,
Left to Birch St,
right to Industrial Dr.
Left to
Commercial Way

EXCELLENT EQUIPMENT * OUTSTANDING PRICES!
WE HAVE EQUIPMENT!

★ 3 TO CHOOSE FROM ★



DYNAPAC ROLLER 84"
CALL FOR PRICING!

★ 6 TO CHOOSE FROM ★



CATERPILLAR 311 FLRR
ALL LATE MODEL'S, CALL!

★ 3 TO CHOOSE FROM ★



HITACHI ZX200
ALL LOW HOURS, CALL!

NOS FINANCIAMOS PARA EMPREITEIROS BRASILEIROS!!

★ CALL FOR PRICING! ★



HITACHI ZX135
BLADE, BUCKET,
LOW HOURS.

★ CALL! ★



CATERPILLAR 950K LOADER
VERY NICE, READY FOR
WORK!

★ CALL FOR PRICING! ★



HITACHI ZX120
AUX. HYD., LOW HOURS.

★ 8 TO CHOOSE FROM ★



KOMATSU PC78US
CALL!

★ CALL! ★



HITACHI ZAXIS-200
LIKE NEW!

★ CALL FOR PRICING! ★



CAT 324EL: AUX. HYD.
MANUAL THUMB,
VERY NICE MACHINE.

****WE GUARANTEE TO HAVE THE BEST SELECTION OF USED EQUIPMENT AROUND****



HILLVIEW EQUIPMENT

SALES & RENTALS 24/7
CALL JUDE 1-508-498-0777

www.HillviewEquipment.com

11 Commercial Way
Milford, MA 01757

Rt. 495 to exit 19,
Route 109W,
Left to Birch St,
right to Industrial Dr.
Left to
Commercial Way

EXCELLENT EQUIPMENT * OUTSTANDING PRICES!
WE HAVE EQUIPMENT !

★ CALL! ★	★ CALL FOR PRICING! ★	★ CALL! ★
		
CATERPILLAR 308E2 AUX. HYD., BLADE, STREET PADS.	CAT 311DL NO EMISSIONS.	2008 CAT 950H LOW HOURS, (For the Year), GREAT OVERALL CONDITION.

NOS FINANCIAMOS PARA EMPREITEIROS BRASILEIROS!!

★ CALL! ★	★ CALL FOR PRICING! ★	★ CALL! ★
		
CAT 320GC LIKE NEW MACHINE.	KOMATSU PC138US ZERO SWING, AUX. HYD., QUICK COUPLER.	HITACHI ZAXIS-70 LIKE NEW CONDITION, BLADE, STREET PADS.

★ CALL FOR PRICING! ★	★ CALL! ★	★ CALL FOR PRICING! ★
		
CAT 311D STREET PADS & BLADE.	IHI-30 PERFECT NURSERY PIECE, LOW HOURS, DUMP BODY.	CAT 330DL OVER 40K INVESTED!

****WE GUARANTEE TO HAVE THE BEST SELECTION OF USED EQUIPMENT AROUND****



Robertson's Auto USED CAR DIVISION

508-295-9444 x160



2017 FORD F350 S.D. KING RANCH CREW CAB 4X4. 6.7L DIESEL, 48K MILES, RARE FIND!! \$69,500.



2021 FORD F350 SUPER DUTY CREW CAB LARIAT 4X4: 10K MILES, BLACK ON BLACK! CALL FOR MORE INFO, \$72,500.



2018 CHEVROLET 100TH ANNIVERSARY EDITION 1500 CREW CAB 4X4: ALL THE TOYS, BEAUTIFUL CLEAN TRUCK, \$38,950.



2018 CHEVROLET Z71 DOUBLE CAB 4X4: 80K MILES, BLACK ON BLACK, A TRUE GENTLEMEN'S TRUCK, LOOKS & RUNS NEW, FRESH TRADE-IN, NEW TIRES, \$35,950.



2005 GMC 2500 HD UTILITY 4X4. PLOW, CLEAN, CLEAN, \$11,950.



2014 CHEVROLET LT DOUBLE CAB 4X4: 6.3L, MECHANIC OWNED, METICULOUSLY MAINTAINED, FACTORY 20" ALLOY WHEELS, \$18,950.



2019 GMC 16' BOX TRUCK. 104K MILES, \$33,500.



1993 GMC 3500 DUALY 4X4. SOUTHERN TRUCK, 454 MOTOR, 130K MILES, \$8,500.



2005 FORD F250 4X4 CREW CAB. BIG FOOT, NO RUST, \$24,550.



2005 FORD RANGER EDGE 4X4. RARE, NO RUST, \$7,550.



2009 CHEVROLET 2500 HD CREW CAB LTZ 4X4. 6.0, 87K MILES, \$26,500.



2006 FORD F150 XL. 8' BED, 4.2, 6 CYL., 4X2, 72K MILES, CLEAN, \$7,250.

2680 CRANBERRY HWY. (RTE. 28) – WAREHAM, MA 02571



CATCH BASIN BUCKETS. Re-Pined Bushings, Re-Sealed, **\$1,500.** Call Tom 508-509-0569



1980 FORD LN600 DUMP.
370 Gas Engine, 5 Speed, 2 Speed Rear, Rot-Free Cab, Hydraulic Vacuum Brakes, Under CDL, Comes With A Parts Truck, Been Parked 2 Years, Needs TLC, Tow It Home, **\$3,250 OBO.**
Leicester, MA 774-641-3338, Mark



Rim 22.5 & 24.5 - \$125
Floats - \$150

***Includes Valve Stem**

ACUSHNET WHEEL
POLISHING

Used Rims Available

508-961-7528

62 SOUTH MAIN ST.,
ACUSHNET, MA



2022 GRIZZLY SCREEN. 12'3" Wide X 5'4" Depth, 9'1" Height, Slant 8'5", Space Between Ribs Is 4", **\$12,750.**
603-899-2000



Service & Mechanic On Site



2012 JOHN DEERE 320D. 1838 Hours, Joysticks, Power Bucket Release, 68HP, 2100 Lb. Lift, Serviced, **\$25,900.** 603-944-8202

THE
TRAILER
DEPOT

203-234-7788
1037 Middletown Ave. (Rt. 17)
Northford, CT

CM
TRUCK BEDS
AUTHORIZED DEALER



CAM SUPERLINE 20 TON HD DECKOVER. 8' 6" x 27', 22' Flat + 5' Beavertail, 40" x 80" Air Ramps With 36" Extension, #525644



CAM SUPERLINE 13.2K HD LOW PROFILE DUMP TRAILER. 6' 9" X 14', Tubular Main Frame, #526610



CAM SUPERLINE 13.2K SPLIT TILT EQUIPMENT HAULER. 6' 9" x 20', Slipper Spring Suspension, Aluminum Tool Box, #526594



SURE-TRAC 7 TON LOW PROFILE DUMP TRAILER. 6'10" x 16', Combination Barn Door Spreader Gate, Side Steps, #362181



SURE-TRAC 7K ALUMINUM OPEN CAR HAULER. 7' x 18', Extruded Aluminum Flooring, 6" C-Channel Frame, #335741



CM TRUCK BEDS -
STARTING AT \$4,300

www.thetrailerdepot.com

We'll Hook You Up
WE DO FEDERAL INSPECTIONS!



PLACE MOTOR Inc.

The "Right Place" Since 1923

COMMERCIAL TRUCKS

Call Phil Crowley "The Truck Guy"
866-449-7482 ext. 213

19 Thompson Rd.
Rte. 193 Webster, Ma.



2019 FORD F-150 SUPERCAB,
4X4, XLT TRIM, NAVIGATION,
LEATHER TRIM, 41,000 MILES.



2019 FORD F-150 4X2 REG CAB,
8' BED, XL TRIM, PW/PL, CRUISE CONTROL AND MORE !
18K FOR MILES. CALL FOR MORE DETAILS.



2019 FORD F-150 CREW CAB,
4X4, SPORT PKG., 38,000 MILES, ONE OWNER
CLEAN !



2019 FORD T-250 TRANSIT VAN, 22K MILES, POWER
WINDOWS, POWER LOCKS AND MORE !



2017 FORD F-550
4X4,
XL TRIM, V-10 GAS,
19' STEEL CENTURY
BODY,
ONLY 15K FOR
MILES !

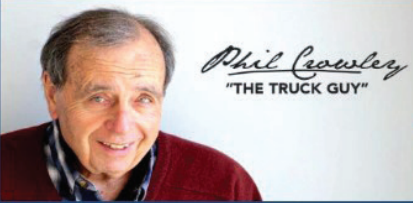
WWW.PLACEMOTOR.COM



DEJANA
Truck and Utility Equipment



COMMERCIAL
VEHICLE CENTER

PLACE MOTOR Inc.*The "RIGHT PLACE" Since 1923***COMMERCIAL TRUCKS**

PHIL CROWLEY
866-449-7482 EXT. 213



19 Thompson Rd.
Rte. 193
Webster, MA.



**2017 FORD F-250 CREW CAB 4X4, XLT TRIM,
37,000 MILES, ONE OWNER, POWER DRIVER
SEAT, FULL LENGTH CONSOLE AND MORE !**



**2003 FORD F-650 RACK DUMP, AIR-BRAKES,
6 SPEED TRANS., 40,000 MILES.
CALL FOR MORE DETAILS !**



**2020 FORD F-150 SUPERCAB 4X4,
XL TRIM, ONLY 2K FOR MILES.
CALL FOR MORE DETAILS !**



**2020 FORD RANGER CREW-CAB, 4X4 LARIAT,
24K FOR MILES, CALL FOR MORE DETAILS !**



**2 TO CHOOSE
FROM**

**2019 FORD E-450
DELIVERY VAN,
INSIDE SHELVING.
CALL FOR
MORE DETAILS !**



**MASSACHUSETTS OLDEST FORD
DEALER SINCE 1923**



508-328-8938

THE TRUCK STORE**Mon-Fri 8:30-5pm
Saturday 8:30-4pm****www.TruckStoreSales.com**

1700 Broadway - Rte 138 – Raynham, MA • Take Exit 8 Off Rte 495, East Rte 138, On Your Left

2005 MACK GRANITE LUGGER TRUCK
AUTOMATIC: Only 90K Miles.**2005 MACK CV 713
CAB & CHASSIS:
AUTOMATIC,
20F/52R,
30K MILES!**2017 FREIGHTLINER M-2: CUMMINS
Diesel, Auto, PTO Accept. Will Separate.2014 INTERNATIONAL 43 Passenger Bus
w?wheel chair lift. Diesel, Automatic. Only 40K
miles, Clean & runs great.USED MONROE STAINLESS STEEL
SANDER W/CALCIUM TANKS2007 HINO 338: Auto, 33K GVW.
Runs Great.2005 MACK GRANITE SPLIT REAR
LOAD RUBBISH BODY 35K Miles.2015 INTERNATIONAL DURASTAR 50' Bucket
Truck: DT 466, Allison Auto. 14F/23R, 29K miles.2015 MACK GRANITE ROLLOFF:
Auto., 80K miles. Call2009 CHEVY C4500 16' THERMO KING Refer
Body w/Stand-by: Gas, Auto. 89k miles, nice
clean truck.**6 AVAILABLE**2003-2004 & 2007 MOFFET FORK
LIFTS. Nice condition. Low hours.2002 VOLVO Heave Tri Axle Dump
Chassis: 8LL, Clean Title. Slight Damage.
\$15,000**COMING SOON:
2020 MACK GRANITE
TRI AXLE DUMP:
AUTOMATIC.**2005 MACK Tractors: 460 H.P., 18 speed, air ride,
wet system, Jake, 46k locking rears, 350 to 400k
Miles. \$25,0002020 HINO 258 THERMO KING REFER
BODY: Diesel, Auto., 4K Actual Miles,
NON CDL \$92,5002011 ISUZU NRR: Diesel, Auto. Low miles.
Also 2011 Available.Refer. Bodies in stock too.USED 12' to 26' REFER & VAN BODIES
Call with your needs.**2005 FORD F750
Hook Truck:
CAT Diesel, Auto.,
Lift Axle.
\$35,000**2012 INTERNATIONAL HOOK TRUCK
W/TARP: Diesel, Automatic, 20K Miles.
Mint Condition.EXPORT 2004 MACK RD 6 Wheel
Dump: Diesel, Automatic. \$12,0002000 MACK RD 688SX 14' Dump Body.
350 H.P., Auto., 18F/58R, LOW miles, Very clean.**2017
INTERNATIONAL:
Cummins, Auto.,
33K GVW,
Low Miles,****1997 FREIGHTLINER
35 TON WRECKER:
Diesel 283K Miles.**2,800 Gallon Aluminum Tank: Oil, Fuel,
Water, Maple Syrup....Well, maybe not.
\$6,5002003 MACK ROLL OFF: 75,000 lb. Roll
Off. Auto., 58R/20F, 60K miles. Call2015 IH 26' Tandem Axle Refer: New Refer being
installed. Auto., low hours on Refer. call2015 KENWORTH TANDEM: 9L
CUMMINS, Allison Auto PTO Provision.
Will Separate.**Late model ISUZU 4 Cylinder
Diesel Engine & Transmission.
Call for Details.****2006 USED MACK Engines!
ALLISON Transmissions. ALSO:
2004 MITSUBISHI
4 & 6 Cylinder Engines.**



2023 FORD E-450, Gas, 14 Passenger Including
HandiCap Lift Shuttle Bus,
Non CDL License. 401-434-5900



1993 FREIGHTLINER 22' FLATBED. 33,000 GVW,
Recent DOT Inspection, New Motor, Runs Great, **\$7800**.
Madison, CT 203-245-2731



ATTENTION FLEET OWNERS

MOBILE TRUCK/EQUIP DETAILING

We Come To You!

Call Woodward Detailing Today!

860-428-4237



**Fleet Trucks, Equipment
Company Vehicles. Call Us For Details!**



**2009 CHEVY 1500
4X4 RARE SHORT
BOX**: 84k Miles. Absolutely
The Right One. Rare Find
In This Condition! Not A
Nicer One In This Country.
\$15,950. Wareham, MA
508-295-9444 Ext. 160



KOHLMAN SCREENING PLANT. JD Diesel W/ Turbo,
480 Volt Generator, Combo Control Panel, 3 Sets Screens,
\$15,900 OBO. 508-947-0507



TRANS EAST EQUIPMENT INC.
67 Main St Salisbury, MA
CALL DAVE Cell 978-992-7077 Or 978-462-1919

**1ST ANNUAL DAVE'S
RETIREMENT SALE**



1985 MACK RW600 SUPERLINER. Tri
Axle, E-6 4 Valve 300, Fuller 8LL, Very Clean,
\$34,500



1989 MACK RW700 SUPERLINER. Tri-
Axle, 350 Mack Motor, 12 Speed Air Shift, 44
Mack Rears, 20# Pusher, 386K Original Miles,
\$38,500



1989 MACK RW700 SUPERLINER. Very
Clean Original Double Frame, Fresh Motor
Work, 300 HP, 12 Speed Air Shift, 44's
Camelback Mack Suspension, **\$28,500**



2013 MACK CXU SLEEPER. MP-8, 10 Speed
Fuller, 12 Ft Axle, 40 Rears on Air, Super
Clean, Fleet Maintain, 730K Miles, Asking
\$38,900



**2009 GREAT DANE REFRIGERATED PUP
TRAILER**. ThermoKing Unit, Maxon Rail
Gate w/ Flat Aluminum Deck, **\$9,995**



32' VAN TRAILER.
Heater, Several Units Available,
Starting @ **\$3,500** And Up

7 MACK SUPERLINERS ON SALE * 65 YEARS IN THE TRUCKING BUSINESS**

ABBOTT Equipment Sales

Lebanon, Maine 207-252-1191 or 207-457-1191



2018 KUBOTA KX080-4 MINI EXCAVATOR. Auxiliary Hydraulics, 36" Bucket, Hydraulic Coupler, 1450 Hours, # 2618, **\$80,000**



1975 CAT 910 WHEEL LOADER. 5,500 Original Hours From Municipality, # 2582, **\$16,500**



1996 INGERSOLL-RAND SD-115 VIBRATORY COMPACTOR. Deutz Diesel Motor, #2606 **\$31,500**



2003 GRADALL 544D-10 TELEHANDLER. 10,000 Lb Capacity, 42' Forward Reach, 55' Max Load Height, #2604, **\$43,000**



2016 Hitachi ZX75US-5. 6,578 Hours, Quick Connect, Two Buckets #2693 **\$65,000.**



1995 CAT 120H MOTOR GRADER. 10,210 Hours, #2660. **\$70,000**



2004 DynaPac CA150. 66" Vibratory Roller, #2425, **\$38,000**



1999 BOMAG BW172D-2 VIBRATORY COMPACTOR. 1,195 Hours. #2707, **\$27,000**



2007 MACK CV712 DUMP. Plow And Spreader, 10 Speed Manual, 130,943 Miles, #2361 **\$25,000**



2007 EXTEC E7. Tracked Screening Plant # 2648, **\$69,000**



2009 MACK GU712. Plow And Spreader. 10 Speed Manual, 111,108 Miles, Henderson S/S Bed With Calcium Tanks. #2530 **\$26,000**



2008 JOHN DEERE 320. Skid Steer, 3,305 Hours, #2654 **\$17,500**



2009 CAT 299C SKID STEER Auxiliary Hydraulics, #2695, **\$45,000**



2013 JOHN DEERE 35G MINI EXCAVATOR. 4,575 Hours, #2584, **\$28,500**



2010 MACK GU713. Dump w/ plow, wing & sander, 145,760 miles # 2563, **\$33,000**



1989 DYNAPAC CA151-1D. Vibratory Compactor, 3,867 Hours, 66" Smooth Drum, #2657, **\$28,500**



2014 KOMATSU PC138USLC-10 HYDRAULIC EXCAVATOR. Heat, A/C, 28" Bucket, 2,819 Hours, #2675 **\$98,000.**



2008 JD 3520 Tractor. 4x4, 520 Loader, Low Hours, #2474, **\$15,000**



1997 BLAW-KNOX PF161. Rubber Tired Asphalt Paver, Meter Reads 8,076, #2549, **\$10,500**



2016 Takeuchi TB260. Mini Hydraulic Excavator w/ Thumb, 383 Hours, #2694 **\$77,000**

AbbottEquipmentSales.com AbbottEquipmentSales@gmail.com



METROPOLITAN TRUCK CENTER INC.

1074 Turnpike St. Stoughton, MA 02072

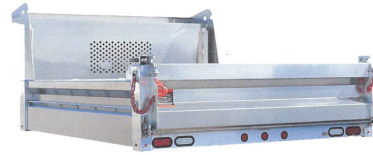
www.metropolitantruck.com

**MAKE YOUR
APPOINTMENT TODAY!**

866-514-1214

**GREAT
SELECTION
OF
BODIES IN
STOCK!**

EVERYTHING YOU NEED FOR A TRUCK BODY!!!



CUSTOMIZED ALUMINUM BODIES TO FIT YOUR EVERY NEED



**DURAMAG S-SERVICE
BODIES**



DURAMAG S-SERVICE BODY



DURAMAG S-SERVICE BODY



AIR-FLO DUMP BODIES



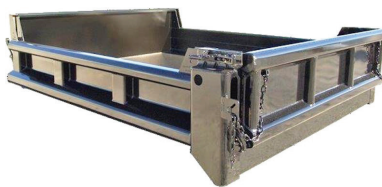
E-Z DUMP



RUGBY PLATFORM BODY



**GALION STAINLESS STEEL
DUMP BODIES**



GALION STEEL DUMP BODY

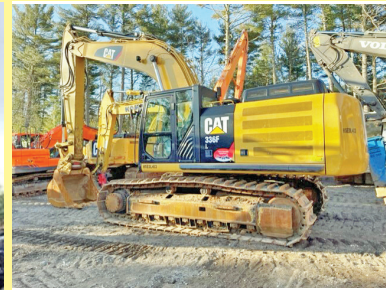


DURAMAG PRO-TOOL





SPRING SPECIALS



**2014 CAT D6K2 XL, 960 hours, Heat/
AC/radio, Very Clean, 1 Owner Machine.
\$169,000.**



A yellow Deere 470G compact track loader is shown from a side-rear perspective. The machine features a black boom with 'DEERE' and '470G' markings. The body is yellow with '470G' and 'DEERE' printed on the side. It has a black engine compartment and a rear-mounted hydraulic tank. The tracks are black and appear to be in good condition. The machine is parked on a dirt surface with a clear blue sky in the background.

A yellow and grey Volvo excavator is shown from a side profile, parked on a dirt lot. The excavator's arm is raised, and its bucket is open. The Volvo logo is visible on the arm. The background shows a clear blue sky and some distant structures.

A large yellow and black CAT 320F crawler excavator is shown from a side profile. The machine is parked on a dirt surface. The CAT logo and model number '320F' are visible on the side of the engine compartment. The excavator has a long boom and bucket, and its tracks are clearly visible.

**2013 Terex TA300, 5000 hours,
80% Front Tires, 40% Rear Tires, Work
Ready! \$139,000.**



Princeton, MA
978-660-3305

CRUSH - GRIND - SHRED

- Stump Removal And Disposal • Stumps/Brush/Oversized Wood
- Gravel Concrete Asphalt • Compost
- Light Metal/Fiberglass/Tires/Plastics • 2 Product Screen And Magnet
- Municipal/Landscape/Contractor Yard Clean Out
- Compact/Easy Transport/Quiet
- Interchangeable Shafts To Match Any Material



SAM'S Tree Service
"We handle the jobs, the Big Guys turn down!"

- Licensed Arborist #913
- Insured
- Competitive Pricing
- Free Estimates

sammal@cox.net
401-269-1133

- Brush Chipping • Tree Removal
- Tree Pruning
- Residential Land Clearing

EMPIRE SAND-BLASTER P350.
Excellent Condition,
\$2,800. Call Tom
508-509-0569



2012 GMC 3500 HD DURAMAX. 168K Miles, Clean Title, Easy Fix, We Have The Parts, **\$9,500.**, Wareham, MA, Call Vito, 508-295-9444, Ext. 160

2001 FREIGHTLINER FL80. 3400 GL Techweld, 6 New Tires, New Real 2y Old, 364K Miles, New Hose, New Air Compressor, No Leaks, Blackmar, 6sp, New Spring, New Cross Mers, **\$28,000 OBO.** Pawtucket, RI 401-473-7669



HOLLISTON TRUCK

1569 WASHINGTON ST, HOLLISTON, MASS 01746
WWW.HOLLISTONTRUCK.COM • CALL 508-429-7678

**WANTED :
GOOD USED
DUMP BODIES**

LARGE SELECTION OF UNDER CDL TRUCKS !



2010 FORD F-650 : CUMMINS ISB-230HP, 205K MILES, ALLISON 3500RDS AUTO, 26K GVW, SPRING SUSP., SINGLE FAME, 10R 22.5 TIRES, AIR-BRAKES/SEAT, A/C, PTO, 8' STEEL DUMP, 1-PACK TOOL BOX, TARP, PINTLE. **\$33,000**



2007 INTERNATIONAL 7400: DT570-315HP, PRE-EMISS, 153K MILES, ALLISON 3500RDS AUTO, 62K GVW, 16K FRONT, 46K REAR, BEAM SUSP., FULL LOCKING REARS, EXHAUST BRAKE, 5.64 GEARED RATIO, 315/80R 22.5 TIRES / 11R 22.5 REAR TIRES, DBL FRAME, AIR-BRAKES, A/C, PTO, SWAP-LOADER SL400 HOOK-LIFT, 40,000#, 54" HOOK HEIGHT, 12-18" BODIES, 14' STEEL DUMP, TARP. **\$70,000**



2005 FREIGHTLINER M2: MBE900-230HP, 25K MILES, ALLISON 3500RDS AUTO, 26K GVW, SPRING SUSP., 5.99 GEARED RATIO, SINGLE FRAME, 295/75R 22.5 TIRES, AIR-SEAT, A/C, PTO, 10' ALUM. DUMP, 2 CHUTES, TARP, PINTLE, PLUMBED FOR SANDER, FLOW FRAME. **\$39,000**



2013 INTERNATIONAL 7400: DT466-260HP, 69K MILES, ALLISON 3500 RDS AUTO, 25K GVW, SPRING SUSP., LOCK DIFF, SINGLE FRAME, 11R 22.5 TIRES, AIR-BRAKES/SEAT, PTO, NEW 15' STEEL DUMP, 4' SIDES, BARN DOORS, PINTLE HITCH, AIR-TO-REAR. **\$49,000**



2008 INTERNATIONAL 4400: DT466-285HP, 131K MILES, ALLISON 3500RDS AUTO, SPRING SUSP., LOCK DIFF, SINGLE FRAME, 11R 22.5 TIRES, AIR-BRAKES/SEAT, A/C, PTO, 12' STEEL DUMP, 1 CHUTE, ELECTRIC TARP, PINTLE HITCH, AIR-TO-REAR. **\$45,000**



2010 INTERNATIONAL 7400: DT530-300HP, 119K MILES, EXHAUST BRAKE, ALLISON 4500RDS AUTO, 50K GVW, SPRING SUSP., 7.16 GEARED RATIO, DBL FRAME, 315/80R 22.5 TIRES, AIR-BRAKES/SEAT, PTO, 10' STEEL DUMP, AIR-GATE, ELECTRIC TARP, PINTLE HITCH. **\$59,000**

THE DUMP TRUCK SPECIALISTS

WWW.TRUCKANDEQUIPMENTPOST.COM



37 County Road
Route 106
Plympton MA 02367
PH: 781-582-1378
FAX: 781-585-4438



**HOOK LIFTS IN STOCK NOW!
BIG OR SMALL WE HAVE
THEM ALL.
CALL US TODAY.**



**LANAU DUMP BODIES
IN STOCK READY TO GO.
CALL FOR APPOINTMENT.**



**12' ALUMINUM LANDSCAPER IN STOCK.
OTHER SIZES AVAILABLE. CALL FOR DETAILS.**

SWITCH-N-GO SYSTEMS & CONTAINERS IN STOCK.



**DOWNEASTER DUMP BODIES IN STOCK NOW!
Includes Cab Shield and Hoist. Call for Pricing Today.**

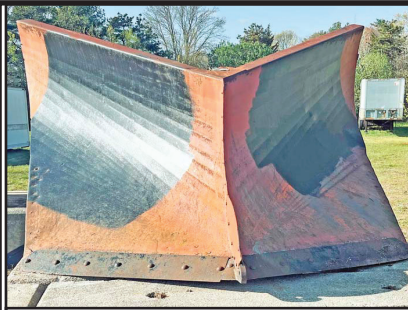


**READY TO GO COMPLETE TRUCK PACKAGES.
LOTS OF OPTIONS AVAILABLE
New & Used Trucks Ready To Go!**

**SALES,
SERVICE,
PARTS**

**CALL TOLL FREE: 781-582-1378
WWW.CAREYTRUCKEQUIPMENT.COM**

**CUSTOM METAL
FABRICATION
AVAILABLE**



GIANT V- PLOW SNOWPLOW,
PERFECT TO CLEAR ROADWAYS, MAKE
A SIGN OR USE AS LAWN ORNAMENT!
GREAT CONVERSATION PIECE,
\$1,500. OBO, CASH TALKS,
WESTPORT, MA 508-636-5050



DOUBLE DOOR



TRI-DOOR



NEW/ONE TRIP



THE NORTHEAST CONNECTION

LIKE US ON [FACEBOOK.COM/CONTAINERGUYS](https://www.facebook.com/containerguys)

USED WIND AND WATER TIGHT & CARGO WORTHY

SMALL ENGINE TECHNICIAN WANTED!

Retail Store In Littleton, MA
Looking For An Outdoor Power Equipment Mechanic.
Convenient Location, Competitive Pay, Simple Ira.
Stop By 687 Great Road Or Send An Email To
Greatroadfarmandgarden@gmail.com.



SNOW BUCKET. Fits Early John Deere 644, **\$1,500.**
Call Tom 508-509-0569

T & TAYLOR & LLOYD, INC. & T

SEE OUR INVENTORY: WWW.TAYLORANDLLOYD.COM



2022
INTERNATIONAL
CV C&C. 84" CA,
22,500 GVW, Allison
Auto, Loaded.
Call For Price.



2015 FREIGHTLINER
BUSINESS CLASS
M2 106 C&C. 350 HP
Cummins ISL, Allison
Auto, 20K F/A, 46K
R/A, 176K Miles.



2011 INTERNATIONAL
PROSTAR SLEEPER.
Low miles, 480K, Cummins
ISX, 10 speed fuller, 40K
Air Ride Rear, 12K Front,
Double Bunk.

1-617-429-3370

Call Jack Coakley
8 Railroad Avenue Bedford, Ma



PORTABLE LINE BORING

WELDING • FABRICATION • REPAIRS

DAVID GOKEY

AFFORDABLE LINE BORING

Serving CT, MA, RI, Southern NH, VT

413-530-0242

Call/Text

davidgokey70@gmail.com

MC, Visa, AMEX, Discover



2003 READ CV90 SCREENER. 1000 Hours, John Deere Diesel, 1" - 1 3/4" - 4" Screens, **\$68,500.** Call Ted, 603-627-8519



2018 CAT 336+FL, 2500 Hrs, Single Grouser Pads, 54" Bucket, Qc, Ac/Heat/Radio, Rear Camera, Long Undercarriage, \$274,500. Camera, Long Undercarriage, **\$279,000** CALL US. 508-381-3939. Hopedale, MA

2012 CASE 580N.
2400 Hours, 4X4, Extendahoe, 24" Trench Bucket, EROPS W/ Heat, Aux Hydraulics, New Rear Tires, Serviced, Very Good Condition, **\$53,900.**
603-944-8202



36" GEITH BUCKET.
3.5 Pin, 16" Spread, 18." Center To Center, **\$1,500.**
Call Tom
508-509-0569

PAT'S TRUCK SALES

Office: 603-347-1386 - After Hrs: 978-490-6197



2018 FORD F-350 4X4.
Diesel, Auto, 22,835 Original Miles, Excellent Condition, **\$56,900**



2007 FORD F-350 4X4.
V10 Gas, Auto, 78K Miles, **\$24,500**



2014 GMC 3500HD 4X4.
6.0 V8 Gas, Auto, 75k miles, 9 Ft Plow **\$36,500**



2014 GMC 3500HD 4X4.
Diesel, Auto, 134k Miles, Fisher Stainless Steel Plow, **\$33,500**



2009 STERLING LT 9500 S/A TRACTOR. Mercedes 450 Hp, Allison RDS 4500, Head Ache Rack, 35K GVW, Air Brakes, 37K Miles, **\$54,500**



2014 RAM 5500 4X4.
Cummins Diesel, Auto, 91K Miles, Fully Serviced & Ready, **\$42,500**



2013 RAM 5500 4X4.
6.7 Cummins, Auto, 66K Miles, 9' Dump Body, Alum Rear Barn Doors, Alum Pocket Rack Sides, **\$43,500**



2007 VOLVO VHD.
Volvo D12 405 Hp, Allison Auto, 156K Miles, 16' Steel Dump Body, 20 Frt Axle, 46 Rears, **\$92,900**

Visit Us - www.patstrucksales.com • 77 Route 125, Kingston, NH

STONEHAM



617-733-0773



NEW F650 SUPERCAB DUMP. 300 Hp Diesel, air Brakes, 10 Ft Body, Swing Gate, ON SALE



NEW F550 DUMP. Three To Choose, Red, White, And Black, Diesel, 4X4, (NAP), IN BOUND

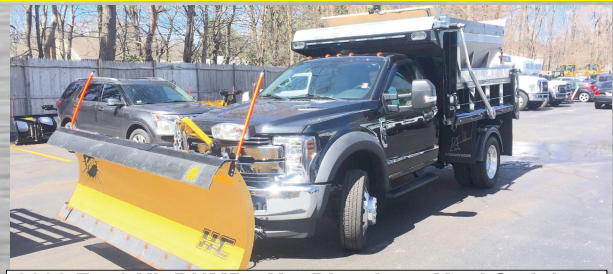


2022 F250 UTILITY BODY. 4X2, V8 Gas, PW, PL, ON SALE

USED TRUCKS SPECIALS



2020 F350 STX ALUMINUM RACK. 4X4, 8 Ft Fisher Plow, Whelan Light Bar, \$52,999



2020 F550 XL DUMP. 4X4, Diesel, 4.5 Yard Stainless Steel Sander, 9 Ft Municipal Fisher Plow, Stropes, Camera, \$82,999



2019 F250 PLATINUM CREW 4X4. 19,215 Miles, V8 Gas, Platinum Ultimate Package, #22194A ON SALE



2020 F350 LARIAT 4X4. Diesel, Loaded, 17K Miles, \$79,999



2019 F350 LARIAT CREW. Diesel, 4X4, 53,925 Miles, Lariat Ultimate Pkg, Power Moonroof Twin Panel, Chrome Pkg, Off Road Pkg, #22164A ON SALE



2021 E350 16' VAN BODY. 7.3 V8 Gas, PW, PL, 12,500 GVW, Roll Up Door, Power Lift Gate, 54,709 Miles, #21005P ON SALE



2020 T250 MID ROOF VAN. 5 Units, IN BOUND, Call For Price



2018 F150 XLT CREW CAB. 4X4, Leather, Remote Start, Navigation, 38,630 Miles, ON SALE



COMMERCIAL
VEHICLE CENTER

www.StonehamFordTrucks.com

211 MAIN ST. STONEHAM, MA 02180

Mon-Fri 8:30am-8pm Sat 9- 5pm Sunday 11-4

ALL PRICES NET & INCLUDE ALL AVAILABLE REBATES TO DEALER

Call Bill Pollack 1-617-733-0773 or billpollack@stonehamford.com



COMMERCIAL
VEHICLE CENTER



FULL FABRICATION SHOP. CUSTOM CHIPPER TOPS & BODIES. CUSTOM REAR GATES ALSO AVAILABLE. Call Chris Carey Auto
Plympton, MA 781-582-1378



2001 DEERE 450H -
1 Owner,
Well Maintained, Runs
Great, 100% Work
Ready
\$28,500
CALL DAN AT
203-506-3860



STEERE'S
MOBILE WELDING & EQUIPMENT REPAIR
LLC.

Burrillville, RI • 401-633-4587

- Full Bucket Rebuilds • Cylinder Resealing
- Wear Plates • Adapter Replacement • Hardfacing
- General Maintenance • Computer Diagnostics
- On Site Hose Replacement



Tight Link Fence Co.
Residential ~ Commercial ~ Industrial
Mark Dillon
774-365-0222



2023 VOLVO VNR64T300-D13, 435HP, I-Shift, Automatic, 12,000# Front / 40,000# Rears, Regional Distribution, Incoming ! 401-434-5900



1587 Portland Cobalt Rd
Portland, CT 860-342-2600

See more @ MORINDIESELFORESTRY.COM



NIXTER FORESTRY MULCHERS.
We Have Models For
Every Application



AWASSOS MD80 LOG SKIDDER. 83 HP Yanmar, Hydrostatic, 12,000 lb, Call For A Demo



TNA 61" Knock Around Grapple. For Universal Mini Or Bobcat MT
Starting @ \$3,695



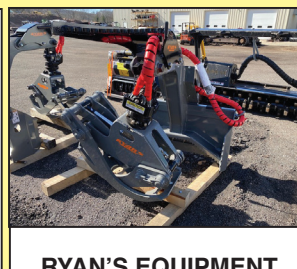
RYAN'S EQUIPMENT 60" Power Rotating Skid Steer Grapple With Winch



Ryan's Equipment 52" Grapple For MT Series Bobcat \$5,900



SKID STEER ½" LEXAN DOORS. CAT, Deere, & Bobcat In Stock, Fits Existing Frames \$950



RYAN'S EQUIPMENT 70" Power Rotating Skid Steer Grapple



REPLACEMENT FORESTRY MULCHER TEETH. For All Major Makes, Now In Stock

RENTAL WITH OPERATOR

PORTABLE JAW CRUSHER • MCCLOSKEY J40 2021



**DAY-WEEK-MONTHLY RATES
PLUS 80' STACKER AVAILABLE**

**MA-RI-CT CALL KEN
508-328-0028**



2012 LINK BELT SPIN ACE 80. Tight And Dry Machine, Very Reliable, Hydraulic Q/C And Thumb, **\$57,500** CALL DAN 203-506-3860



1987 MACK DUMP TRUCK W/ PLOW. Runs great. **\$25,000.** Call John, 413-522-3729



2023 AUTOCAR ACTT42: Single Axle, Yard Jockey, Diesel Automatic, A/C, Hydraulic 5TH Wheel. Incoming! 401-434-5900

**2014 KOMATSU
WA270 LOADER.**

With Coupler,
2400 Hours,
\$114,000. Call
Ted, 603-627-8519



BEAM TRUCK & BODY INC.

RI Dealer #647

433 CUMBERLAND HILL ROAD, WOONSOCKET, RI 02895

401-767-2639



NEW - USED & RECONDITIONED DISPOSAL EQUIPMENT



2004 KENWORTH T300:
396,914 MILES, AMERICAN 75,000# ROLL-OFF,
CAT C12 W/ FULLER 8LL, 60,000# GVW
CALL FOR MORE DETAILS!

**IN STOCK READY TO INSTALL
NEW EQUIPMENT**

- * PHT12S AMERICAN PALFINGER
- * PHT22L AMERICAN PALFINGER
- * T29ST AMERICAN PALFINGER
- * T40S AMERICAN PALFINGER
- * STELLAR FLEX 36
- * STELLAR SLIDERS 20S



2010 INTERNATIONAL 7400: 42,000 MILES
W/ HEIL 22 YD. AUTOMATED PACKER. \$60,000
WILL SPLIT.



2022 PETERBILT 220 : UNDER CDL, PACCAR PX-7 260HP,
ALLISON 2500RDS TRANS., AMERICAN HOOK-LIFT, HAD-185-
120-36/54 HOIST WITH AN ADJUSTABLE JIB FROM 36"-54" AND
CAPACITY OF 20,000#, HANDLES CONTAINERS FROM 10-14 FEET.



2014 FREIGHTLINER : UNDER CDL, 18'
LUMBER HAULER, STANDARD TRANS.,
CUMMINS ENGINE, 188K MILES. **\$45,000**



**2010 MACK MR 20 & 46 ALLISON W/ NEW WAYNE 40
YD. FRONT LOADER, 26,351 MILES.
\$164,000 W/ FET**

WWW.BEAMTRUCK.NET

THOMPSON TRACTOR LLC.
860-963-1918
 "A DL HOLKE COMPANY"
 15 RT. 171 WOODSTOCK, CT 06281
 DAVE'S CELL 508-864-8874
THOMPSONTRACTORLLC.COM

**ALWAYS A BUYER
 FOR CLEAN
 LATE MODEL
 EQUIPMENT !!**



**2021 BOBCAT E45'S
 W/ HYD. THUMB & COUPLERS.
 \$79,500 EACH**



**2016 KOMATSU WA 320-7 :
 ALL NEW RADIALS, LOW HOURS.
 \$97,500**

INVENTORY AT * WWW.THOMPSONTRACTORLLC.COM



2016 GMC SIERRA DENALI. 61,000 Miles, 6.2L Engine,
 4WD/AWD, In Perfect Shape,
\$40,000. 860-753-2016

**1986 HILBILT 26'
 FRAMELESS DUMP
 TRAILER.**

Needs A Little Work,
\$6,000.
 Call Tom
 508-509-0569



1995 PETERBILT 378 TRI-AXLE DUMP TRUCK, Set Back
 Wheel Base, Cat Motor 425, 20K Fronts, 46K Rears, 300K Miles, 18 Speed,
 Runs Everyday! **\$45,000,** Call Today 781-417-3018

**2000 20 TON
 INTERSTATE
 TAG TRAILER.**
 Good Brakes, Good Tires,
 All There Structurally,
\$7800.
 Call Jesse, 401-855-1178



**CAREY AUTO
 INC.
 TRUCK EQUIPMENT
 SALES**

37 County Road
 Route 106
 Plympton MA 02367
 PH: 781-582-1378
 FAX: 781-585-4438



**2011 HINO
 ALUMINUM
 SINGLE
 COMPARTMENT
 TANK:
 AUTOMATIC,
 33K GVWR.
 \$49,900.**

**2014 CAT
 D6K2 XL,**
 960 hours,
 Heat/AC/radio,
 Very Clean,
 1 Owner Machine.
\$179,000.
 Call Us At
 508-381-3939



**2015 ISUZU:
 GAS, AUTO.,
 165K MILES.
 NEW 12'
 SWITCH-N-GO
 SYSTEM.
 \$42,000**



1985 AUTO CAR TRIAXLE. Needs Rear End
 Bushings, **Best Offer.** 203-509-1895

**SALES
 SERVICE,
 PARTS**

**CALL TOLL FREE: 866-637-4076
 WWW.CAREYTRUCKEQUIPMENT.COM**

**CUSTOM METAL
 FABRICATION
 AVAILABLE**

Authorized Fisher
Snow Plow Dealer



HILLSIDE MOTORS

**800-D American Legion Highway (Rt. 177)
Westport, MA 02790
508-636-5050**

Financing
Available
-Others in Stock

Family Owned & Operated Since 1969



DURAMAX DIESEL

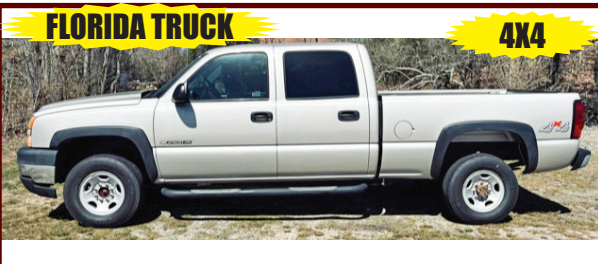
2014 CHEVROLET 3500HD 12' FLATBED w/Tool Boxes. 2WD, DRW, Duramax Diesel, Allison Auto, AC, Tilt, 84" CA, 13,500 GVW, One Owner, 114K, Rust-Free Southern Truck, Super Clean, \$29,500.



4x4

LongBED

2015 CHEVROLET SILVERADO 2500 DOUBLE CAB 8' BED 4x4. 6L V8, Auto, AC, PW, PL, 6-Passenger, Fully Loaded, 215K, Fleet Maintained, One Owner, Rust-Free Southern Truck, \$24,500.



FLORIDA TRUCK

4x4

2006 CHEVROLET 2500 HD CREW CAB 6' BED 4X4. LT PKG, 8.1L V8, Allison Auto, PW, PL, Tilt, Cruise, Fully Loaded, 15,500 LB Towing Capacity, 144K, Rust-Free Florida Truck, Immaculate Condition, \$23,500.



BODIES AVAILABLE

2015 CHEVY 2500 HD CREW CAB 8' LONGBED 2WD C&C. 6L V8, Auto, AC, Tilt, Cruise, 6-Passenger, One Owner, 243K, Fleet Maintained, Clean Truck, \$15,500. (Different Types of Bodies Available at Addl Charge)



LANDSCAPE TRAILER. Dual Axle, 7,000 LB GVW, Ramp Tailgate, (file photo), \$3,800.



2020 KNAPHEIDE 8' UTILITY BODY.
With Roll-N-Lock Tonneau Cover For Cargo Area,
\$5,500.



8' OMAHA SRW ENCLOSED UTILITY BODY. W/Barn Doors, Aluminum Drop-Down Ladder Racks, Very Clean, Removed From 2016 Southern Truck, Never Seen A New England Winter, \$5,000. (Others Available)



CAB & CHASSIS

2004 GMC C7500 CAB & CHASSIS, Please Read Entire Ad, Being Sold For Parts, Box Body Sold, Allison Auto, Motor Does Not Run, \$2,900.



603-905-9036

132 Pierce Rd. (Rt. 125)
Barrington, NH
(17 miles from Portsmouth)



603-623-8873

1400 South Willow St.
Manchester, NH
(1 hour from Boston)

GET THEM WHILE THEY LAST!



2014 FREIGHTLINER 367 w/Altec
HC45-127S 45 Ton 190' Crane.
Cummins 425 HP, 8LL, 80K GVW,
25K Miles, stk#231569, **\$299,900.**



2020 IH HX620 16' DUMP w/Vibrator.
8x4, Cummins ISX15 485HP, Allison
Auto, 86K GVW, 154K Miles,
stk#252297, **\$194,900.**



2016 FREIGHTLINER M2 106 C&C
6X4, 270 HP, Cummins L9 Diesel,
9 Spd, 60K GVW, 225" WB, 164" CT,
229K Miles, stk#252752, **\$79,900.**



2021 LAC VIPERLITE DUMP
TRAILER. Load Cover, T/A, 80,000
GVW, stk#251286, **\$52,900.**



2019 IH LT625 73" Double
Bunk High Rise Sleeper 6x4.
Cummins X15 450HP, Ultra Shift
12 Spd, 52,350 GVW, 429K Miles,
stk#160330, **\$118,900.**



2011 TRAIL KING 42' PNEUMATIC
TANK TRAILER. 1033 C.F, Air
Ride, Alum Wheels, 70,580 GVW,
stk#251288, **\$34,900.**



2005 TRAIL LINK PNEUMATIC
TANK TRAILER. Dry Bulk, 1000 CF,
42' Overall Length, 2 Axle, Air Ride,
71,178 GVW, stk#251280, **\$24,900.**



2020 VIPERLITE 24' Steel Dump
Trailer. High Lift, Tailgate, Alum.
Wheels, 80K GVW, stk#251281,
\$54,900.



2021 MAC 22' Alum. Frameless End
Dump Trailer. Air Ride, Slurry Locks,
Electric Tarp, 80K GVW, stk#251284,
\$52,900.



2021 VIPERLITE 25' Steel End
Dump Trailer. T/A, Alum. Wheels,
Beam Suspension, 2-Way Rear
Gate, Auto Tarp, 80K GVW,
stk#251287, **\$49,900.**



2006 FREIGHTLINER M2 113 Boston
Steel 5K Gallon Tank 8x4. CAT C11
305HP, 10 Speed, 3 Compartment,
Reels, 80K GVW, 312K Miles,
stk#236015, **\$54,900.**



2007 PETERBILT 340 4200-GALLON
4-COMP. TANK 6x4. Cummins ISC 315
HP, 10 Spd, Air Ride, LCR Meter, 54,600
GVW, 424K Miles, stk#250541, **\$64,900.**

www.AllegianceTrucks.com



WWW.SCRANTONMOTORS.COM



**2022 GMC SIERRA
3500HD REGULAR
CAB & CHASSIS.
6.6L V8 GAS, 4X4,
DRW, #N9640**



**2022 GMC SAVANA AEROCELL CUBE
BODY. #N9630**



**2022 GMC SIERRA 3500HD DOUBLE CAB &
CHASSIS. DURAMAX DIESEL, DRW, #N9670**



**2022 GMC SIERRA
3500HD. 4X4,
DURAMAX DIESEL,
RUGBY DUMP
BODY, #N9636**



**2022 GMC SIERRA 3500HD. 6.6L V8 GAS,
DRW, READING SERVICE BODY, #N9641**

INCOMING SOON:

**2022 GMC 2500 WORK
TRUCK 2WD**

2022 GMC 14' CLASSIC CUBE

**2022 GMC CANYON CREW
CAB'S**

**2022 GMC DOUBLE CAB
SERVICE BODIES
3 RED & 3 WHITE**



**2022 GMC SIERRA 3500HD REGULAR CAB
& CHASSIS SLE. 4X4, GAS, #N9584**



**2022 GMC SIERRA 2500HD. WORK
TRUCK, 6.6L V8 GAS, #N9652**



**2022 GMC SIERRA 3500HD DOUBLE CAB.
READING SERVICE BODY, GAS, #N6611**

MANY OTHER TRUCKS IN STOCK. CALL FOR DETAILS

WWW.SCRANTONMOTORS.COM

777 TALCOTTVILLE ROAD VERNON, CT • 860-870-6539



SALES & RENTALS

(603) 623-3669 • TQUIP.com

Londonderry, NH | Rutland, VT | Orlando, FL

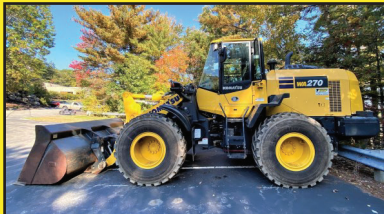
• **OVER 1000 MACHINES & ATTACHMENTS IN OUR INVENTORY!** •



(2) 2021 CAT 950GCs
EROPS, A/C, AUX HYD, CAT FUSION HYD Q/C, 4.5CY GP BKT, SHUTTLE SHIFT, RIDE CTRL, REAR CAM, 23.5R25 RBR, 450+ HOURS
CALL FOR PRICING



2017 KOMATSU WA500-8
EROPS, A/C, 9.8CY GP BKT, JYSTK STR, RIDE CTRL, 7.5CY BKT, AUTO LUBE, 70% 29.5X25 LO-PRO RADIALS, 13,971 HRS
\$179,000



(4) 2019 KOMATSU WA270-8
EROPS, A/C, AUX HYD, JRB HYD Q/C, 3.25CY GEM GP BKT, 20.5R25 RADIALS, FORKS AVAIL, 300+ HRS
CALL FOR PRICING



2016 KOMATSU WA380-8
EROPS, A/C, JRB HYD Q/C, 4CY JRB BKT, RIDE CTRL, NEW 23.5R25 RADIALS, FORKS AVAIL, 6821 HOURS
\$149,000



2012 CAT 966K
EROPS, A/C, 5.5CY BUCKET, RIDE CONTROL, 26.5R25 RADIALS, MJR ENG WORK COMPL 11/2021
\$139,000



2005 CEC 6X16 SCREENER
6'X16' 2-DECK SCREEN, FEEDER, DISCHARGE CONVEYORS, TRACK-MOUNTED W/ 20" PADS, 6283 HOURS
\$85,000



(10) CAT 906s & 908s
EROPS, A/C, 2-SPEED, HYD Q/C, 1.5CY GP BUCKET, FORKS AVAIL AT ADD'L COST, 950+ HOURS
STARTING AT \$59,000



(6) 2013-2015 DYNAPAC CA2500s
EROPS, A/C, 84" SMOOTH DRUM, VIB DRUM DRV, CUMMINS 4.5L DSL, 23.1X26 RBR, 915+ HRS
STARTING AT \$45,000



(5) 2012-2015 MOROOKA MST2200VDs
30,000LB CPTY, 8CY HEAPING CPTY, A/C, 250HP, CAT C7 DSL, HST TRANS, 12' DUMP BODY, 30" RBR TRKS, 20+ HRS
STARTING AT \$89,000



2018 METSO CV50MT
2-DECK SCREENER BOX, EXTRA SET OF SCREENS, 511 HOURS
\$69,000



(2) 2008 KOMATSU HM350-2
35-TON CAPACITY, A/C, 6X6, 26.5R25 TIRES, 9900+ HOURS
CALL FOR PRICING

• **NOTHING IS OUT OF REACH—CALL US FOR FINANCING OPTIONS!** •



HOT DEAL

2016 MOROOKA MST3000VD
34,000LB CPTY, 325HP,
CUMMINS DSL, HST TRANS,
UP TO 8.5 MPH, JOYSTICK
TRAVEL CTRL, 12' DUMP
BODY, 32" RUBBER TRACKS,
2656 HOURS
\$169,000

SALES & RENTALS INC.
T-QUIP

YOUR 1ST CHOICE IN SALES
& RENTALS

(603) 623-3669

TQUIP.com



LOOK NEW INVENTORY!

2020 KUBOTA R630
EROPS, A/C, AUX HYD,
HYD Q/C, 1CY GP BUCKET,
405/70R18 TIRES,
118 HOURS
\$89,000



2016 HYDREMA 912HM
22K LB CPTY, A/C, 141HP CUMMINS DSL,
7.3CY BODY, ARTIC CHASSIS, AUTO TIP
SPD ADJ, 800/45-30.5 RBR, 3358 HRS
\$139,000



2015 CAT 289
CAB, A/C, 2-SPD, **HI-FLO** AUX HYD, HYD
Q/C, 78" GP BKT, JYSTK STRG, REAR CAM,
16" RBR TRKS, 2912 HRS
\$55,000



2012 CAT D8T
EROPS, 12'10" SU BLADE W/ TWIN TILT,
NEW HD UC, RIPPER VLV, DIFF STEER,
28" PADS, **NEW \$47K ENGINE**, 9307 HRS
\$299,000



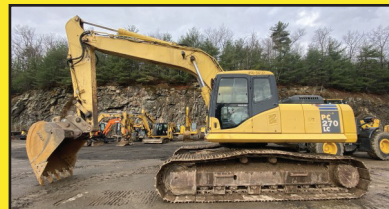
2006 VOLVO G946
CAB, A/C, 14' MOLDBOARD,
ALL-WHEEL DRIVE, SIDE WING,
RIPPER, 6677 HOURS
\$89,000



2014 KOMATSU PC290LC-10
AUX HYD, 48" STRICKLAND HD BKT,
STRICKLAND HYD THUMB, LONG UC,
SEAL SVR, 4362 HRS
\$169,000



2012 CAT 336EL
A/C, 12' 10" STK, AUX HYD, HYD Q/C,
48" CAT BKT, **CAT HYD THUMB**, SEAL SVR,
28" SG PADS, 6639 HOURS
\$179,000



2006 KOMATSU PC270LC-7L
A/C, AUX HYD, GEITH HYD Q/C,
48" ESCO BKT, 32" TBG PADS, LONG UC,
1 OWNER, 8173 ORIGINAL HRS
CALL FOR PRICING



2010 CAT 420E
A/C, EXTENDAHOE, AUX HYD, HYD &
MNL Q/C, 92" & 24" BKTS, PILOT CTRLS,
SIDE SHFT, PTRN CHNGR, 6281 HRS
\$52,500



(8) 2013-2017 CAT 308E2CRs
A/C, COMBO AUX HYD, HYD Q/C,
30" BKT, HYD THUMB, BLADE, CTRL VLV,
REAR CAM, 18" RBR LNRS, 1433 HRS
STARTING AT \$75,000



2022 DOOSAN DX62R-3
A/C, OFF-SET BOOM, COMBO AUX HYD,
HYD Q/C, 18" BKT, HYD BLADE, PTRN
CHNGR, REAR CAM, 16" RBR TRKS, 8 HRS
\$99,000

• ADDING UNITS TO OUR FLEET DAILY FOR YOUR RENTAL NEEDS! •

**We are cash
buyers for
quality used
trucks and
equipment!**

BROOKSIDE EQUIPMENT SALES

www.BrooksideEquipment.com

978-249-4600



2015 CATERPILLAR 966M: 14,549 Hours, 5.5 Yard Bucket, Joystick Steer, Auto Ride Control, 6 Cyl Cat Turbo, 52K Lbs. stk#LO013, **\$129,500**



2008 JOHN DEERE 310J: 5,511 Hours, 4x4, X-Hoe, Enclosed Cab W/ Air, Turbo, Power Shift, 12" Bucket, stk#BH870, **\$39,500**



2012 HYUNDAI HL740-9: 8,225 Hours, 3 Yard Bucket, Manual Coupler, Aux Hyd, Cab W/ A/C, 6 Cyl Cummins Turbo, 143 HP, 28K Lbs. stk#LO446, **\$49,900**



2013 YANMAR SV100-1: 1,210 Hours, 35" Bucket, Hydraulic Thumb, Cab W/ A/C, Hydraulic Coupler, 7.7" Blade, 4 Cyl Yanmar Turbo, Swing Boom, 22K Lbs. stk#XC789, **\$82,500**



2014 IHI IC120: 2,227 Hours, 12 Ton Capacity, 12 Ft X 9 Ft Dump Bed W/ Rack Body Sides, Cab W/ A/C, 6 Cyl Cummins Turbo, 289 HP, stk#DU051, **\$79,500**



1994 CATERPILLAR D5H XL-II: 8,019 Hours, 6-Way Blade, Cab W/ A/C, Lever Steer, High Track, 4 Cyl Cat 3304 Turbo, 130 HP, Good U/C, 31K Lbs. stk#DZ284, **\$47,500**



2007 INGERSOLL-RAND VHP400WIR: 3,772 Hours, 400 CFM Trailer-Mounted Air Compressor, Pintle Hitch, 6 Cyl JD Turbo Diesel, 170 HP, stk#CGA62, **\$16,500**



2009 CAT D6N LGP: 3,546 Hours, 6-Way Blade, Vanguard Pipelayer, OROPS, Good U/C, LGP, High Track, 6 Cyl Cat C6.6 Acert Turbo, 24" Pads, stk#DZ609, **\$119,500**



2017 CATERPILLAR 336FL: 7,468 Hours, 56" Bucket, A/C, Good U/C, Backup Camera, Pattern Changer, 6 Cyl Cat C9.3 Acert Turbo, 89K Lbs. stk#XC022, **\$149,500**



2011 CATERPILLAR 12M: 8,902 Hours, Cab W/ A/C, 14 Ft Mold Board, Scarifier, 6 Cyl Caterpillar C6.6 Turbo, stk#GR077, **\$97,500**



2015 DOOSAN DX255 LC-5: 36" & 48" Digging Buckets, Hydraulic Coupler, A/C, Auxiliary Hydraulics, Pattern Changer, Backup Camera, 58K Lbs. stk#XC126, **\$139,500**



2012 SKYJACK SJIII3219: 147 Hours, 19 Ft Electric Scissor Lift, 32" Wide, 5 Ft Basket + 3 Ft Extension, stk#AE924, **\$6,500**



2017 CATERPILLAR 349FL: 10,226 Hours, 70" Caterpillar Bucket, A/C, Pattern Changer, 6 Cyl Cat C13 Turbo, 112K Lbs. stk#XC016, **\$149,500**



2017 JOHN DEERE 644K: 10,301 Hours, 76" Wicker WP1F Pipe Forks, Cab W/ A/C, Ride Control, Backup Camera, 6 Cyl JD Twin Turbo, 41K Lbs. stk#LO440, **\$119,500**



2016 HYUNDAI HX220L: 4,087 Hours, 44" Bucket, Auxiliary Hydraulics, A/C, Backup Camera, 6 Cyl Cummins QSB6.7 Turbo, 173 HP, 52K Lbs. stk#XC087, **\$87,500**



2015 CASE SV300: 2,683 Hours, 3000 Lb Lift, Cab W/ A/C, High Flow, Hydraulic Coupler, 2 Speed, Joystick Controls, 8.3K Lbs. stk#SK774, **\$34,500**



2014 BANDIT 4000FM: 1,187 Hours, Crawler Mulcher, 7 Ft Mulcher Head, Cab W/ A/C, 6 Cyl John Deere Turbo, Good U/C. stk#FO033, **\$159,500**



1994 CATERPILLAR 938F: 9,582 Hours, 3.4 Yard, Cab W/ Heat, Aux Hyd, 6 Cyl Cat 3116 Turbo, 140 HP, Very Good Rubber, 30K Lbs. stk#LO192, **\$32,500**



2002 CATERPILLAR M320: 12,432 Hours, 5 Ft Cleanup Bucket, 1-Way Aux Hyd, Wrist/Coupler, 2 Speed, 45K Lbs. stk#WX983, **\$39,500**

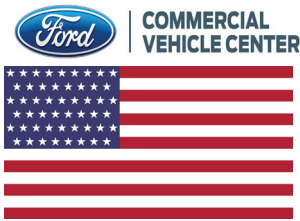


2016 JOHN DEERE 672GP: 5,858 Hours, AWD, Cab W/ A/C, Backup Camera, 14 Ft Mold Board, Rear Scarifier, 6 Cyl JD Turbo, stk#GR590, **\$159,500**

60 STATE RD, PHILLIPSTON, MASS

978-249-4600

EMAIL: KEVIN@BROOKSIDEEQUIPMENT.COM



508-917-6178



**McGOVERN'S GOT TRUCKS! COME SEE US FIRST.
YOU'LL BE GLAD YOU DID.**



**2021 F350 XL 4x4 SERVICE BODY:
6.2L Gas, Power Group.**



**2022 F350 XL 4x4 Regular Cab
Rack Body: Power Group, V8.**



**NEW TRANSIT T350 EXT. LENGTH VAN:
Hi Roof, 3.5L V6, Power Group, Back Up
Camera, A/C, Barn Doors.**



**2022 F650 DONOVAN 5-6 YARD DUMP
BODY: 1 Coal Chute**



**2021 F350 SUPER DUTY XL 4x4
RUGBY DUMP BODY: 6.2L, 14,000#
GVW, Power Group.**



**2022 F750 DONOVAN 5-6 YARD DUMP
BODY:**



**2020 FORD TRANSIT COMMERCIAL
CARGO VAN. 3.5L V6, Power Group,
Rear Camera,**



**2022 F250 XL 4x4 W/FISHER VEE
PLOW: 6.2L V8 Gas, Power Group.**



**2022 F550 XL 4x4 MAX SCAPPER
ALUMINUM DUMP BODY: Barn Doors
and Side Door, 7.3L V8, Power Group.**

**1200 WORCESTER ROAD
(Rt.9 East)
FRAMINGHAM, MA 01701**



www.mcgovernfordofframingham.com



Over 250 in stock! Best selection in 2 years!



B-WISE T512-6 TRAILER. 60" x 12', Gravity Tilt, 2 5/16" Adjustable Coupler, Stake Pockets, #T13782, \$6,995



B-WISE CHANNEL FRAME LOW PROFILE DTR10. 72" x 10', One Piece Tailgate, Single Acting Cylinder, #T13949, \$8,995



Over 60 In Stock. Ready To Install Or Pick Up Now Starting @ \$4,308

OVER 200 TRAILERS IN INVENTORY & MORE ON THE WAY
Connecticut Trailers

7 Bolton Center Rd. Bolton, CT

860-649-7223



Text or chat from our website: CTTRAILERS.COM

Open Mon – Sat 8-5. Service & Parts Open All Day Saturday.

THE HOME OF THE DOUBLE WARRANTY.

Prices good 30 days after publication. Advertised price does not include state or local taxes, registration costs or dealer Conveyance Fee Of \$119.00

R & R INDUSTRIES

**We Buy All
Scrap Metals**

www.RRTrucksAndEquipment.com • Sales@RandRind.com

195 Rocus Street, Springfield MA 01104

413-733-2118

TOP \$ PAID FOR ALL METALS

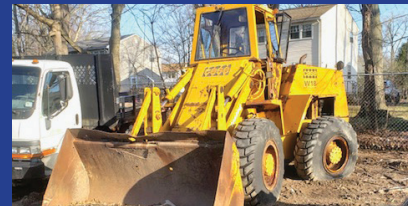
*** ALL FERROUS & NON FERROUS METALS***
COPPER/BRASS/ALUMINUM/STAINLESS/IRON
& STEEL* MACHINERY* HEAVY EQUIPMENT*
CARS/TRUCKS*



TROJAN 2000 LOADER. V8 Cummins Diesel, Super Clean, Runs Perfect, Needs 2 Boom Cylinders, Repacked **Only \$12,500**



JOHN DEERE 644 LOADER. Runs & Works Well, Good 23.5 x 25 Tires, Not Pretty But A Real Workhorse, **Only \$15,000**



CASE W-18 WHEEL LOADER. Nice 12.5 x 25 Tires, New Arrival



1996 KENTUCKY 53' DROP DECK MOVING TRAILER. Multiple Side Doors, Belly Storage, Bone Dry, Good 22.5 Tires & Brakes, **\$6,500/ BO**



LINCOLN ARC WELDER SA-200. Looks, Runs, And Works Great, Sits On It's Own Trailer, **Only \$3,000**



BRADCO TRENCHER MODEL 638. For A Bobcat Or Skid Steer, Works Like New, **Only \$2,250/BO**



48' MANAC FLATBED TRAILER. Nice Deck, Good Tires, Needs Minor Rust Repair, **Only \$6,200**



1990 PETERBILT 379 TRI AXLE ROLL OFF. Rebuilt Cummins L10, 8 LL, Extra Long 25' Rails, Power Tarp, Nice Truck, Drive It Home, **\$19,500**



10' DUMP BODY. Excellent Condition, Built In Sander, Complete With Frame & Mounts, Front Mounted Telescopic Cylinder, Side Load To Feed Sander, **Only \$3,995**



RANSOM BOBCAT T3101 COMMERCIAL ZERO TURN MOWER. Self Leveling Sully, Hydraulic Deck Lift, **Only \$1,995**



2012 FORD E250 SUPER DUTY CARGO VAN. Runs & Drives Well, Very Clean, CAT Was Stolen, **\$7,200**



KUBOTA V1505. Diesel Hydraulic Power Unit, Complete With Pump, Tank..., Runs & Works Like New, Have A Video Of It In Action, **Only \$2,295**



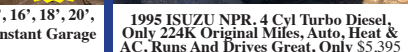
16' STEEL DUMP BODY. Great Condition, With Hoist, Telescopic Cylinder, Tank, ect., **Only \$4,500 Each**



TIMBERWOLF WOOD CHIPPER. Motor Is NG, Otherwise Complete, **Only \$4,895**



STORAGE UNITS 12', 14', 16', 18', 20', 24', 30', & 40' Storage Or Instant Garage \$650 & Up



1995 ISUZU NPR. 4 Cyl Turbo Diesel, Only 224K Original Miles, Auto, Heat & AC, Runs And Drives Great, **Only \$5,395**

CT • RI • MA • NY

CALL IAN OR JIM
800-229-9421100 YARD
STEEL DUMP TRAILERSWE WILL SAVE YOU MONEY
AND PUT A SMILE ON YOUR FACE!**STUMP & BRUSH
TRANSPORTATION & DISPOSAL****\$1500/LOAD****DEMOLITION DEBRIS
TRANSPORTATION & DISPOSAL****\$2150/LOAD****SAME DAY DISPATCH
TOP \$\$ PAID FOR YOUR
SCRAP STEEL, COPPER, & ALUMINUM!!!****2.5 YARD BUCKET.** 80" Bucket, 3.5" Pin, 19" Spread,
\$3,000. Call Tom 508-509-0569**KENT 40G HYDRAULIC HAMMER.** Just
Rebuilt With Warranty,
Bracket Fits A Komatsu PC400, Needs At
Least A 330 Excavator, **\$19,900.**
Call Jesse 401-855-1178, 401-771-3409**DURAMAG****Cadet**
Truck Bodies
CM
TRUCK BEDS

SPRINGFIELD

AUTO & TRUCK
EQUIPMENT

1626 BAY ST. SPRINGFIELD, MA

413-426-9976**WWW.SPRINGFIELDTRUCK.COM****OVER
75 BODIES
IN STOCK**2018 CHEVY 2500 HD 53K MILES, 4X4
EXCELLENT CONDITION, ALUMINUM WHEELS
, NEW TIRES, FISHER FLEET FLEX TRUCK SIDE
WIRING AND MOUNT. \$35,000NEW DOWNEASTER 6' DUMP
INSERT WITH HEADBOARD,
IN STOCK. \$3,499DURAMAG ALUMINUM SERVICE BODIES
IN STOCK 7'-11' & CM SERVICE BODIES
IN STOCK 7'-11'CM HAULER BODIES
IN STOCK 6' AND 8'
W/GOOSENECK AND
BUMPER HITCH.8' - 11' DOWNEASTER
DUMP BODIES IN STOCK.8' - 12' PLATFORM BODIES
IN STOCK CM AND CADET11' GM / FORD MEDIUM
DUTY ALUMINUM
SERVICE BODIES IN STOCK


**COMMERCIAL
VEHICLE CENTER**

508-403-9192

MANAGER'S SPECIALS - IN STOCK NOW! HURRY!


**2022 FORD F350 SD REG CAB FX4 4WD:
FISHER PLOW, 6.2L, 10 SPD AUTO, 2 LCD
MONITORS, AC, BLUETOOTH, IN STOCK
NOW! Stk#N10402**



**NEW 2022 FORD F650 SUPER CAB w/
READING MASTER MECHANIC BODY &
PALFINGER PSC10829 CRANE: Diesel, Auto,
Power Group, Loaded w/Extras, Call us for
details. stk#N10507**



**2021 FORD F350 SD REG CAB XL 4X4:
FISHER SS V- PLOW, 6.2L V8, 10 SPD
AUTO, PARKING CAMERA, POWER GRP,
AC, IN STOCK NOW! stk#N9697**



**2022 FORD F350 SD EX CAB STX
4X4: 7.3L V8, AUTO, REAR CAMERA,
AC, SNOWPLOW PREP PKG, POWER
GROUP, IN STOCK NOW! stk#N10493**



**2022 FORD F350 SD REG CAB FX4 4X4:
FISHER XV2 V-PLOW, 7.3L V8, AUTO,
AC, POWER GRP, 10,400 GVW, IN
STOCK NOW! stk#N10322**



**2022 F350XL 4X4 REGULAR CAB
READING MARAUDER DUMP BODY:
Diamond Plate L PAK, 7.3L Gas, Power
Group. Stk.#N10378**



DIESEL
**2022 F350 4X4 DRW IROQUOIS DUMP
BODY: BUYERS I-PACK & TOOLBOXES,
6.7L DIESEL, POWER GROUP,
STK#N10300**



SAVE THOUSANDS
**NEW 2021 F350XLT 4x4 Cab &
Chassis: 145" WB, V8 Gas, Power
Group. Stk.#N10184**



**2020 F350 4X4 DRW 9' 3-4 YARD
IROQUOIS DUMP BODY: V8, GAS,
POWER GROUP, STK#N9110**



**2022 F350 REG. CAB 4x4 DRW 2-3
YARD RUGBY DUMP BODY: 6.2L V8,
Power Group. Stk.#N10390**




**2022 F450 REGULAR CAB DRW 4X4
KNAPHEIDE SERVICE BODY: V8 GAS,
POWER GROUP. STK#N10374**



**2021 F350 DRW 4X4 DURAMAG ALUMINUM
LANDSCAPE DUMP: POWER GROUP, 7.3L V8,
KEYLESS ENTRY. STK#N9849**


11 PILGRIM HILL ROAD Plymouth, MA 02360
www.COLONIALFORD.com
America's Hometown Dealership
*all rebates to dealer. must finance with Ford Motor Credit.
0% financing in lieu of all rebates* Discounts & Dealer Discounts.

AREA HYDRAULICS

810 Quaker Hwy. Uxbridge, MA


508-278-6670


We Make Hose Assemblies



We Carry Hydraulic Oil and a


Wide Variety of Buyers Products

Cylinder Resealing









FULL FABRICATION SHOP. CUSTOM CHIPPER TOPS & BODIES. CUSTOM REAR GATES ALSO AVAILABLE.

Call Chris Carey Auto
Plympton, MA 781-582-1378

RIPPERS. Two Sizes: 3.5", 13 Spread, 18" Center To Center, \$3,500. And 2.5" Ripper With 14" Spread, 21" Center To Center, **\$2,500.**

Call Tom 508-509-0569






2009 FORD F350 4X4. 6.4 Diesel, 160K Miles, Easy Fix, Clean Title, Most Of The Parts In The Bed Of Truck, **\$9,500.,** Wareham, MA, Call Vito, 508-295-9444, Ext. 160

2002 INTERNATIONAL.

DT466, 6 Speed, 33,000 GVW, Spring Suspension, Air Brakes, 10 Ft. Steel Dump Body, Powder Coated, 3 Chutes, Pintle Hook, Excellent Condition,

\$24,000 OBO.

774-301-4240



BIG WHEEL TRUCK SALES

HEAVY DUTY TOWING AND RECOVERY



2000 CHEVY 8500 S/A
Dump W/ Everest Power Angle Plow & 10' Stainless Sander.
37,000 GVW.
\$15,500



2000 MACK RD 688 17.5
Aluminum Dump Body: 460 MACK, 8LL, 46 Rears on Air Ride, 551K Miles. Runs Excellent. Ready To Work.
\$39,500.



1997 MACK DM6095 10.5
Yard McNEILUS CONCRETE MIXER: Non Electric 300 MACK Motor, MACK 12 Speed, 20F/44R, 20,000LB. Lift Axle, 207K Miles on Clock. Runs and Drives Excellent.
\$21,500.



ELGIN PELEQUIN SWEEPER:
John Deere Diesel. Runs Great.
\$5,500.

42 Quanapoag Road, East Freetown, MA

508-763-5927 • FAX 508-763-2369

www.BIGWHEELTRUCKSALES.COM

WE SELL HEAVY DUTY SNOW PLOW EQUIPMENT • WE EXPORT WORLD WIDE • HEAVY DUTY TOWING SPECIALIST

In Stock:
10' -11' Highway Plows.
Some Power Angle w/Frames.

Highway SS Sanders:
Used in Great Shape.

TRUCKCOUNTRY.US

USED TRUCK PARTS



ONLINE 24-7



INSTALLATION AVAILABLE



9' RUGBY ALUMINUM DUMP BODY #225599, \$10,000



9' UTILITY BODY. DRW, No Rust, #215557, \$3,500



CADET FLAT BED BODIES IN STOCK NOW!



11' ELECTRIC DUMP BODY. #225585, \$4,500



UTILITY BODY. Heavy Duty Crane, Transfer Tank, #225587, \$6,500



10.5' ELECTRIC FLATBED DUMP BODY. Very Clean, #225593, \$5,500



1994-2002 DODGE RAM 8' BED. Super Super Clean, #215563, \$3,500



L PACK TOOL BOX. Steel, Nice, #215566, \$1,200



9' ELECTRIC DUMP BODY. #225591, \$4,500



1-860-423-6004

Mon-Fri 8-5

1535 WEST MAIN STREET, WILLIMANTIC, CT

Sat 9-1

CANDIA TRAILER

www.CandiaTrailer.com
& LANDSCAPE EQUIPMENT CO
All Prices Cash & Carry! Installation Available!

SAVE TIME & FUEL • WE SHIP!

1-866-761-0196

NH 603-483-2541 • Fax 603-483-2842

35 High St, Candia 4 Coners, Candia NH
10 Minutes East of Manchester, NH • 1 hour From Boston

**Preseason
Trailer Sales
In Stock
Ready To Go**

TRAILERS • TRAILERS • TRAILERS



DUMP TRAILERS. 12', 14', 16 Ft.
Twin Piston, Powder Coat, Ramps,
Battery, **Ready To Go**



LANDSCAPER TRAILERS. Dual
Axle & Single Axle, **Ready To Go**



**ALUMINUM CAR HAULER
TRAILER.** 10,000 GVW,
American Made



7 TON EQUIPMENT TRAILER .
20' Power Tilt, Tandem Axle,
USA Made



HOMESTEAD Enclosed Trailers.
Stocking 8 Ft – 24 Ft



UTILITY TIRE & WHEEL.
New In Stock, All Sizes,
Call With Your Specs



**ALUMINUM LANDSCAPE
TRAILERS**



DECK OVER UTILITY TRAILER.
With Mounted Spare Tire



EQUIPMENT TRAILER.
Beaver Tail, Ramps

- ALUMINUM TRUCK BODIES -



**DURA MAG ALUMINUM FLATBED
BODIES.** Industry's Highest Quality, Call
With Your Specs. **Starting @ \$2,895**



ALUMINUM DUMP BODIES.
Complete Sub Frame, Power Pac,
LED Lights.



**CTECH – Drawer Units That Fit
Into Your Utility Body**



ENCLOSED UTILITY



**ALUMINUM RACK BODY
POWER RAIL GATE**



ALUMINUM SERVICE BODY

CANDIA TRAILER

www.CandiaTrailer.com
& LANDSCAPE EQUIPMENT CO
All Prices Cash & Carry! Installation Available!

SAVE TIME & FUEL • WE SHIP!

1-866-761-0196

NH 603-483-2541 • Fax 603-483-2842

35 High St, Candia 4 Coners, Candia NH
10 Minutes East of Manchester, NH • 1 hour From Boston

**"Helping
You With
The Right
Fit"**



IN STOCK GALION DUMP BODIES. 8 Ft Thru 16 Ft. Call With Your Specs Today



8' EZ Slide In Dump Body. With Head Board, Tarp & Hoist, **\$3,995**



7' X 12' Mesh tarp & Hardware Kit **\$259**



HARSH HOIST

2.5 to 45 Ton, Single or Double Piston. Convert a Flatbed Body to a Dumping Body.
HOIST & POWER PACK

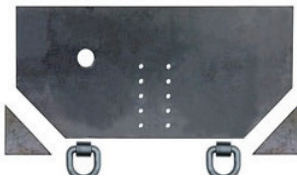
Starting @ **\$1,685**
USA Made



BUTCHER Dump Power Pac with control Gravity Down **\$525**



HEADACHE RACKS – Aluminum, USA Made, Available w/ Window Cut Out Or Without, Hi & Low Profiles, LED Light Options, Sport Series And Pro Series



Pintle Plate **\$209**



15 Ton Pintle Hook **\$59** –
WE SHIP



Retractable Step
One Step **\$119**
Two Step **\$129**
Three Step **\$139**



Black I-Pack Toolbox **\$2,995**



TAKE OFF BEDS.
Ford – GM – Dodge
Call With Your Specs



Shuttle Door
\$199

Starting @ **\$489**



TRANSFER TANK & PUMP. Made In USA, 12 Ft Hose, Nozzle Gun, 15 gpm, In Stock – We Ship



FILL RITE **\$379**

UNDERBODY TOOL BOXES

Powder Coat Diamond Aluminum Door



Diamond Aluminum Door



ANNUAL SPRING AUCTION

SATURDAY, MAY 21, 2022 @ 10:00AM EST



Job Site Box, Delta 637210
 Job Site Box, Renegade
 Job Site Box
 Core Cut CC2500 Saw
 Husqvarna K970 Concrete Saw
 Husqvarna K760 Cut-n-Break Saw
 Husqvarna K760 Cut-n-Break Saw
 DC Welder AC Generator, Model ACX-170S
 Waker Neuson GP2500 Generator (4 qty)
 Webber Mt CR9 Reversible Plate Compactor
 Reversible Vibrator Plate Compactor, Doosan
 BXR-300H (2 qty)
 Jumping Jack, 2007 Weber Mt SRV62
 Jumping Jack, Waker Neuson BS50-2i
 2020 Trimble GPS System
 Topcon Solutions RL-H4C Lazer (3 qty)
 2008 Spectra Precision LL300 Lazer (3 qty)
 NWi Northwest Instrument Inc. NSL500B
 Transit Level
 NWi Northwest Instrument Inc. NETH503
 Theodolite
 2018 Trimble GPS System
 2005 CAT D6R LGP Dozer Series II
 1989 Komatsu D135 Dozer
 CAT D4D Bulldozer
 2019 CAT 336GS Excavator
 Akerman H16D Excavator
 1998 Samsung SE350LG-2 Excavator
 1998 Kobelco SK300LC Hydraulic Excavator
 1999 Samsung SE170 Excavator
 2019 Volvo EC60E Mini Excavator
 John Deere 85G Excavator
 2016 Volvo ECR58D Mini Excavator
 2019 SDLG L938F Wheel Loader
 2017 SDLG L918F Wheel Loader

1988 Michigan L190 Wheel Loader
 1969 CAT 950 Wheel Loader
 2014 Volvo MCT135C Skid Steer
 2011 Volvo SD116DX Vibratory Roller
 2019 Volvo DD30B Roller
 2005 Kenworth T800 Tri-Axle Dump Truck
 2021 International F-5070 Truck
 2004 Peterbilt 379 Tri-Axle Tractor
 2016 Ram 5500 Chassis Truck
 2001 Kenworth T300 Truck
 2000 Freightliner FL70 Truck
 2000 Ford F-350 Pickup Truck
 2003 Ford F-550 Truck
 2016 Ford F-350 Pickup Truck (2 qty)
 2016 Ford F-350 Pickup Truck
 2016 Ford F-350 Pickup Utility Truck
 US Cargo 7x14 Trailer, 7000 lbs
 2016 Hydraulic Rammer Hammer,
 Allied 1655
 Hydraulic Rammer Hammer, HR09
 100 Gal Truck Mounted Fuel Tank (4 qty)
 2019 Sweeper Attachment
 CAT D35C Articulating Dump Truck
 2019 Ram 3500 Chassis Pickup Truck (2 qty)
 1998 Manac 12248101 Flatbed Stretch Trailer
 2001 Chevrolet 3500 Duramax 1-Ton Pickup
 2002 Sterling L7501 Flatbed Truck
 2004 Sterling MT9500 Tractor
 2005 Ford F350 Power Stroke Crew Cab
 2007 Chevy 2500 HD Crew Cab
 2007 GMC 4500 Isuzu Box Truck, Gas
 1997 Chevrolet Suburban MPV
 2006 Chevrolet 2500HD DuraMax Utility
 Pickup Truck
 1998 Chevrolet C3500 Single Axle Dump Truck

2007 Chevrolet Suburban MPV
 Taft 5000 DE Tractor
 1996 Landoll 327 Trailer
 TAG Trailer (2 qty)
 Bucket (2 qty)
 Plow (3 qty)
 CompAir - Kellog Air Compressor Model 137
 Skid Steer Tires (4)
 Michelin Radial 23.5 x 25 Tire
 Denyo Generator
 Truck Tire Changer
 Water Pump (Red)
 Generator (Red)
 Gravely Snow Blower
 Bucket, Gannon - 3 fingers
 Bucket, Gannon - 5 fingers
 Ripper Attachment
 Bucket, 2020 Steelwrist DB4T-S40
 Rockland ripper EP30 EQ18139
 Home lite water pump (2 qty)
 1998 Ingersol Rand P130WJD Generator
 2014 Paladin 11520-0022 Plow
 International Flatbed Rolloff
 40 FT Conex Box
 Concrete Frost Blankets
 Jackhammer - Pneumatic
 Jackhammer - Pneumatic 2
 1400 Gallon Water with New Pump
 12 Ton PJ Trailer with Monster Ramps
 Geo Fencing
 Western Fuel Cube 1,000 Gallon w/Pump
 Water and Sewer Fittings
 Railroad Ties
 Underground Water Pipe, NEW
 and much more!

VIEW DETAILS AT >> www.MideastEquip.com | 860-370-9993



Live and Virtual Online Bidding

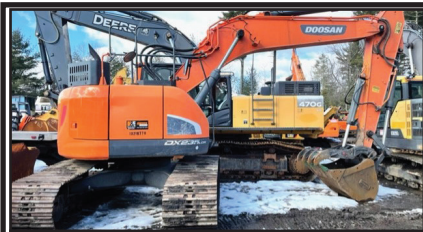
Registration Begins 8:30AM | Bidding Starts 10:30AM EST

50 East Dudley Town Road, Bloomfield, CT 06002

Inspection Dates:

Thursday, May 19 & Friday, May 20

10:00 AM - 5:00 PM EST



2017 DOOSAN DX235LCR-5, 2500hrs. reduced tail swing, 36" bucket, hyd. thumb, aux. hydraulics, heat/AC, good condition, work ready. **\$139,000**. Call Bryn 508-381-3939. Hopedale, MA



AUTOCAR CONVEYOR BODY. Brand New, Never Used, Truck Can Be Fixed Or Used For Parts, **Best Offer.** 203-509-1895



TRANS EAST EQUIPMENT INC.
67 Main St Salisbury, MA
CALL DAVE Cell 978-992-7077 Or 978-462-1919

**EXIT 60 Off Rt 95
End Of Ramp**

You Pick Your Container – Over 65 Units



20' And 40' CONTAINERS.
One Trip & Used Steel Storage Containers,
Call With your Needs, We Can Deliver.
Serving Southern Maine, Southern NH,
And Greater Metro Boston

CHECK ALL OUR INVENTORY – WWW.TRANSEASTEQ.COM



Jukonski Truck Sales



WWW.TRUCKSELLERS.COM *se habla español*

680 NEWFIELD ST. (RT 3) MIDDLETOWN, CONN • **800-378-0342** • MON-FRI 8-6 SAT 8-NOON

PAYING TOP DOLLAR FOR USED TRUCKS



CERTIFIED

2015 PETERBILT 337 With Brand New PTO Dump Set Up, Paccar PX-7, Eaton Fuller 6 Speed, #9149, **\$89,900**



CERTIFIED

2013 FREIGHTLINER M2 With Brand New Dump Set Up With PTO, Cummins ISB, Air Ride, #9520, **\$69,900**



CERTIFIED

2019 GMC SAVANA CARGO VAN. Only 15K Miles, #2071, **\$43,900**



CERTIFIED

2019 FORD TRANSIT. Only 38K Miles, 10' Aluminum Body, #0677, **\$41,900**

PAYING TOP DOLLAR FOR USED TRUCKS!!!



CERTIFIED

HINO 268A. Lift Gate, Allison 2200 RDS, 111K Miles, #1800, **\$63,900**



CERTIFIED

2015 HINO 268A. 26' Morgan Body, NAP, #9420, **\$69,900**



CERTIFIED

2015 HINO 338 CAB & CHASSIS. Would Make A Great Hook Lift Or Oil Truck, PTO Transmission, **\$58,900**



CERTIFIED

2018 FORD TRANSIT CARGO VAN. High Top, Auto, AC, PW, PL, #7621, **\$36,900**

90 DAY POWERTRAIN WARRANTY AVAILABLE ON ALL CERTIFIED TRUCKS. INCLUDES INJECTORS AND TURBO



Fowler's Auto Wrecking Inc.

Belltown Recycling Center

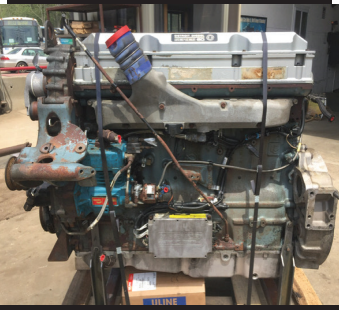
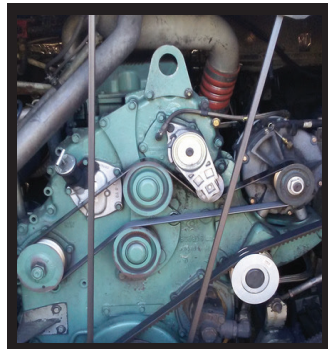


Detroit Series 60 12.7L Engines

EGR DDEC-IV
NON-EGR DDEC-IV
Good Running Take Out Engines
Recent Remanufactured Engines
Core Engines
Engine Accessories
6 Month & 1 Year Warranties Available
Call Today For Pricing



CALL: 860-267-7140



Telephone: 860-267-7140

Complete Coaches For Parts

- MCI, Vanhool, and Prevost Buses For Parts
- Compressors, Condenser & Evaporator Motors
- Wheels, Tires, Suspension & Brake Parts
- Electrical Parts, Interior & Exterior Lighting
- Tag Axles & Drive Axles
- Compartment, Service, and Entrance Doors
- Fiberglass Body Panels & Glass
- Complete Electric Wiper Conversion Kits
- Radiators, Intercoolers, and Condensers
- Standard 6 Month Warranty On All Parts



**Buses Are Not Intended
For Resale - Salvage Titles**



24 Old Coach Rd, East Hampton, CT 06424

Allison B500 Transmissions

- Allison B500 With or Without Retarders
- Good Running Take Outs
- Recent Remanufactured Units
- Core Transmissions
- Allison Shift Pad Selectors
- Allison TCM (Transmission Control Modules)
- Standard 6 Month Warranty
- Call Today For Pricing



CALL: 860-267-7140



BelltownRecycling@yahoo.com



2007 PETERBILT 335. Cummins ISC With New: Water Pump, Timing Cover, & Exhaust Manifold, Recently Rebuilt Eaton Trans, Recently Rebuilt Dana 4.33 Rear, Class 7, \$30,000, DID Available



**FIAT-ALLIS
MODEL 11-B
DOZER.**
10 Foot
Wide 4-Way
Blade, Good
Undercarriage,
\$12,950.
Call Shawn,
781-572-5328



2016 ROCKSTER R700 - Closed Circuit Impactor,
Legal Load! Rent / Buy Top Shelf Support
CALL DAN AT 203-506-3860



2002 LEE BOY 8500 PAVER. Hart's Diesel, New
Screed, Extension Hardware & Heat Tubes 2021,
\$31,899. Call Mike 401-439-5005



**CASE 580
SUPER I
BACKHOE.**
Extendahoe,
Tight Machine,
Heat/AC,
Two Buckets,
New Tires,
\$30,000.
860-617-4569



2000 FREIGHTLINER. Strong Motor, 250 HP, Needs A Little
Work, Foundation Rock Truck, Pretty Clean, **\$12,000.**
Call For Information, Jon 603-670-3895



1972 MASSEY FERGUSON 135. Perkins Gasoline Engine,
2WD, PTO 3PT Hitch, Fresh Paint, Runs Well,
\$6,850. 401-516-5162

CAT C12 Engine FOR SALE!



**Complete & Professional Rebuild w/
ALL BRAND NEW CAT parts.
MUST SELL due to Owners Illness.**

430 HP, Long-block.

New head/springs.

New injection pump.

New injectors.

New harmonic balance.

New water pump.

Air compressor, Oil cooler,

Turbo charger.

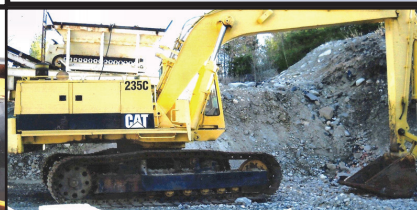
**Over \$25k invested in parts and
labor at Hillside Machine;**

Invoice available to view.

Serial #9NS06876 - Arr. 156-2102

Call w/ Reasonable Offer!

Rich 617-515-4433



CAT 235C EXCAVATOR. Bucket And Pins New, Bottom
Good, Needs Glass Work, Will Trade CAT 988.
Thompson, CT 860-428-1460



**1993
TELEDYNE
PRINCETON.**
Piggyback Forklift
Model WG2500,
14 HP Kohler
Engine Needs
Some Tinkering,
Only 397 Hours
On Meter, Asking
\$1500 OBO.
860-309-0723

JUST TRAILERS, INC.

WE BUY USED TRAILERS & EQUIPMENT



RENTALS • RENTALS • RENTALS



Box Trailer



20'



40'



Office Trailer



8X8

1863 County St. • Attleboro, Ma 02703

508-922-1119

thecla2305@gmail.com

ALL RENTALS AVAILABLE FOR RENT, SALE OR RENT TO OWN



2023 RHODES RSS2660-2: 26' Steel End Dump Trailer, Air-Lift Double Acting Tail-Gate, HD Specs. Incoming! 401-434-5900

R & R INDUSTRIES

www.RRTrucksAndEquipment.com • Sales@RandRind.com

195 Rocus Street, Springfield MA 01104

We Buy All Scrap Metals

413-733-2118



SULLISCREW MODEL 85 AIR COMPRESSOR.
Gas,
\$1100 OBO.
203-509-1895



Guaranteed Good Used Motors

DIESEL MOTORS FOR SALE

Kubota V1305 Rebuilt
Kubota V1505
Detroit 3-71, 4-71, 6V-71
Detroit 6V92/ 8V92/ 6V53
(2) CAT C-7
(4) CAT 3208
International DT 466 Mechanical
International MaxxForce
Cummins 5.9L 12V & 24V



2016 CHEVY SILVERADO LT DOUBLE CAB 4X4: 72 K MILES, DARK GREY, LIGHT GREY INTERIOR. NEVER WORKED.
\$31,500. Wareham, MA
508-295-9444 Ext. 160



2015 JOHN DEERE 310K. 2WD, 4600 Hours, Extend-A-Hoe, 4-In-1, EROPS, Heat, A/C, Radio, Plumbed, Pilot Controls, Ride Control, New Batteries And Front Tires, Very Good Condition, **\$37,900.** 603-944-8202

DONOVAN • DONOVAN • DONOVAN • DONOVAN • DONOVAN • DONOVAN • DONOVAN

6 Enterprise Drive
Londonderry, NH 03053
www.donovancompany.com



1-800-458-3867
Local: 603-669-2250
Fax: 603-669-0501



2006 USED "AQUA-TECH" on M2 Freightliner With 122,000 Miles And 9500 Hours On The Combo Unit. Model #B10 With 1,000 Gallon Water Tank & 10 Yd. Debris Body. Roots 624 Blower. Good Condition. As Is Condition, **\$59,750.00**



IN STOCK



PALFINGER/AMERICAN HOOKLIFTS

IN STOCK



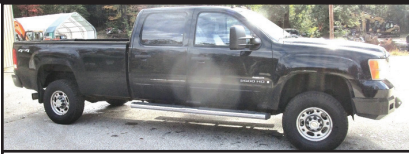
BEAU-ROC / BRANDON DUMPS

IN STOCK



SWITCH-N-GO Hoist systems & interchangeable bodies

DONOVAN • DONOVAN • DONOVAN • DONOVAN • DONOVAN • DONOVAN • DONOVAN



2009 GMC 2500. 143,300 Miles, Auto, Clean Title, Complete Suspension, Upper & Lower Ball Joints, CV Joints, Tie Rod, Idler & Pit-Man Arms, Complete 4 Wheel Brakes, Rotors & Calipers, Fuel Tank Sending Unit And Straps, 8 New Glow Plugs, Tow Haul Lever, Windshield, New Hankook Load Range E-Tires, **\$19,500.** 603-899-2000



CEC 512 PORTABLE ROADRUNNER. 5X12 Deck With 7900 Hours, Recent Engine Swap And Drive Motor For Feed Belt, Runs And Operates As It Should, **\$79,500.** 508-212-8710



2012 FORD E-350 BOX VAN. 142,000 Miles, **\$15,500 OBO.** 413-734-7396

202

TRUCK
&
EQUIPMENT
603-899-2000

www.202truck.com
RT 202 Rindge NH
SALES & RENTALS - NO SALES TAX
FINANCING & DELIVERY



2010 J DEERE 410J. 6574 Hrs, Powershift, Ride Control, E-Hoe, Pilot Controls, A/C, 4 In 1 Bucket, 2WD, **\$35,000.**



NEW 2021 LINK-BELT 75X3. 9 Hrs, Road Liner Pads, Aux. Hyd., 30" Bucket, **\$115,000.**



2004 LULL 944E-42. 42" Reach, Foam Filled Tires, **\$36,000.**



2012 CAT 308ECR. 2954 Hrs, Aux. Hyd., Roadliner Parts, 30" Bucket, **\$65,000.**



2011 CAT 314D LCR. 3805 Hrs, Hyd. Thumb, 48" Bucket, 32" Bucket, NPK GH-6 Hammer, **\$99,000.**



2015 CAT 308E2. 3805 Hrs, CAT Hyd. Thumb & Cplr, 48" Straight Edge Bucket, 32" Digging Bucket, NPK GH-6 Hammer, **\$69,000.**



1996 DAEWOO SOLAR 130LC-V. 9900 Hrs, 36" Bucket, Hyd. Thumb, U/C Fair, Glass & Sheet Metal Good, Does Everything It Should, 8' 6" Wide, **\$29,500.**



2013 KOMATSU PC290 LC-10. 7360 Hrs, Long Stick, JRB Cplr, Aux. Hyd., Recent Track Chains & Sprockets, 42" Bucket, **\$95,000.**



2011 HITACHI 2X200-3. 7093 Hrs, Aux. Hyd., 24" Shoes, 42" Bucket, 9' 2" Wide, **\$77,000.**



2011 CAT 938H. Nice Tractor, 12,000 Hrs, Ride Control, Fusion Cplr, 3rd Valve, 3.6 Yd. Bucket W/New Edge, Pipe Machine, Lots Of Idle Time, **\$79,000.**



2018 YANMAR T175-1. 680 Hrs, 8600 Lbs., Cab W/A.C., Manual Cplr, Ride Control, Joystick, 66" Bucket, 2 Spd, **\$49,000.**



2009 VOLVO L70F. Cab & Motor Burnt, Had 11,000 Hrs, Pic's On Website, **\$12,500.**



CONSOLIDATED TRUCK & EQUIPMENT, INC.

**SELLING
TRAILERS**

**EXTREME
TRAILERS**



www.ConsolidatedTruckEquipment.com

**32 INDUSTRIAL COURT, (RT.6) SEEKONK, MASSACHUSETTS.
ACROSS FROM SEEKONK SPEEDWAY.**



6 NEW MAC 26' STEEL DUMP TRAILERS: HI LIFT GATE, CENTER POINT SUSPENSION, AUTO TARPS, 11 X 24.5 TIRES, ALUMINUM WHEELS. CALL FOR PRICING.



2022 MAC 48 x 102 Live Floor Trailer: Very Lightly used. RAYCO Suspension. Auto Roll Over Tarp. \$89,500.



2022 EAGER BEAVER 50 TON: GSL-PT REAR AXLE LIFT, 24' X 102" WIDE DECK \$87,700.00 PRICE INCLUDES FET TAX.



BRAND NEW EAGER BEAVER 20XPT TRAILERS. 6' RAMPS. BEST PRICING AROUND. Please give us a call.



COMING IN

MAC 28' ALUMINUM SMOOTH SIDE TRAILERS. Air Ride Suspension. Please call for pricing.



Brand New Challenger Body & Chassis, 26' Long, 54" & 60" Sides & Gate, Single Point 60K suspension, Hardox Body, Hi-Lift Gate, aluminum disc wheels, electric load cover 16 Ply Tires. Please Call For Pricing



2002 BENSON 28' ALUMINUM DUMP TRAILER. Steel Frame, Rayco Suspension, Electric Tarp, 11x24.5 Tires. Very Good Condition, Needs Liner, \$24,500.



NEW MAC 53' Front Axle Slide, 36" Deck Height. Tool Bx, 10' Upper Deck. (it's the trailer on the bottom). Call for Price.

CALL US: AT 508-336-6215 • HOURS: 7:30 -5:30

KINGPIN**860-428-5333 860-928-1200****TRUCK N TRAILER Pomfret Center, CT****www.kingpinheavyequipment.com**

visit our website inventory changes weekly

TRUCKS - TRAILERS - ATTACHMENTS - EQUIPMENT - CUSTOM CARS

2011 GEHL 5640.
82 Hp, Heat, AC,
Deutz, 2257 Hours,
Newly Painted **\$21,500**



2015 JD 318E. 73Hp,
3398 Hrs, 2 Spd, 78" Bkt,
\$27,500. 2000 JD 240.
53Hp, 2149 Hrs, 2 Spd,
70" Bkt, **\$23,500.**

**** HELP WANTED ****
Class A & B Drivers Needed
Triaxle & Dump Trailers
M and E Transportation, Located
in Pomfret, CT
4 Days Per Week @ 12 Hrs Per Day
Full Benefits
Medical & Dental. Paid Holidays,
Vacation Days, Sick & Personal
Days And 401k Plan!
Excellent Equipment.
Year Round Work.
Triaxle: \$25 Per Hr & Dump
Trailer: \$27 Per Hr
Time & A Half After 40 Hrs



Ingersoll Rand DD23.
Vibratory Roller,
40" Drum, New Paint,
Runs Great, Deutz Engine
\$11,000



BLAW-KNOX PF-410 PAVER.
John Deere 4039 Diesel Engine,
6128 Hr, 13" Steel Tracks W/ 17"
Rubber Pad Tracks, Rakes, Belts
& Hoses Included, 8' Open To 11'
Hopper. 102"W X 178"L X 118"H,
\$13,000



**BOBCAT & JOHN
DEERE**
Quick Attachment Back
Hoe, Nice, New Paint,
\$6,000



**TARGET
ECONOLINE
CONCRETE SAW
CUTTER, \$3,000**

**SPRING
BLOW OUT
SALE 10% OFF
EVERYTHING**



**1995 BOMAG
VIBRATORY ROLLER.**
74 h.p., Deutz Engine,
5,384 Hours, One Owner,
\$17,000



**2016 GMC 1500
ELEVATION 4X4.** 106,000
Miles, Loaded, V8, Auto, Nice
truck, One Owner
\$27,000 OBO



**Cub Cadet
Tractor 7275 ,
\$11,000**



2008 Mack CHU613.
MP8 500 Hp, Eaton 13
Spd, 44k Rears, Air Ride
Cab, 455k Original Miles.
\$50,000 OBO

CHROME SHOP

Summer 2022
- United Pacific
- Road Works
- Grand General
- Buyers Product
- Hogebuilt
- Maxxima
- Phoenix Design
- Trux Accessories
- Twelve Gauge
- Grand Rock
- Steering Creations



10' KNAPHEIDE BODY.
Ladder Rack, Pipe Rack &
Fuel Cell. **\$3,500**
Also - 9' **UTILITY BODY.**
2014 Palfinger, great shape.
\$2,500



**2022 PETERBILT 389 EXT
HOOD.** 565/605 Cummins, 18
Speed Ultra Shift, 46k Rears,
Air Track, Platinum Interior,
Never Used, **\$245,000 FIRM**



**SS Highway
E2020 Sander.**
10 Yards Excellent
shape **\$4500.**



**2015 KUBOTA
L4630.** 49 Hp, Heat
& A/C, 2,900 Hours.
\$25,000



**2004 Hitachi ZX50 Mini
Excavator.** 40 Hp Isuzu,
102 Ft lbs Torque, 10,560
lbs Machine, 0 Tail Swing,
OOPS, 79" Blade, Runs
Great, Newly Painted **\$27,000**



**TIFFIN PALFINGER
PW 250 TRUCK CRANE.**
Complete Ready To Mount
On Truck. Good Working
Condition. **\$16,000**



**Utility Trailer
with Easy Lawn
Hydroseeder.**
Tandem axle, poly
Tank. **\$8,500.**



**2002 International Service
Truck.** Cummins diesel
automatic transmission. service
body. dual wheel single axle.
161,835 miles **\$19,000**



**1999 TRAIL KING
65 TON.** Air Ride.
Nice Shape. **\$30,000**

NEW SKIDSTEER ATTACHMENTS

72" Bucket	\$1,500.	Hydraulic Tree Sheer.	\$4,500
72" Bucket w/Teeth	\$1,800.	Hydraulic Compactor.	\$4,000
72" Tiller	\$2,500.	Hydraulic Breakers Complete.	\$4,000
72" Hydraulic Root Grapple	\$3,500.	Puller Post	\$1,000
72" Sweep Broom JCT Angle	\$2,500.	Teran TH300 Hyd Breaker.	\$3,500
Top Cat Arm Mower.	\$5,000.	12" & 18" Hydraulic Augers	\$2,800
Mower King Chipper	\$3,000.	Brush Hogs 5' & 6'	\$4,000
Mower King Trencher	\$4,500.	9' Crawler Tooth Bucket Used	\$1,500
Landhonor Trailer Mover New	\$750.	Wolverine Concrete Mixer	\$3,500

ALL MAKES

EQUIPMENT & PARTS

CONTACT

ROLAND CARTER 603-340-6776 • ANDOVER NH 03216

**EQUIPMENT SALES
EQUIPMENT PARTS
EQUIPMENT
ATTACHMENTS
FINANCING AVAILABLE**



Rebuilt & Good Used Engines.

New & Used
Buckets &
Attachments.New Undercarriage.
Free Undercarriage Inspection.Equipment
Hydraulic
Parts.Salvage
Equipment
Parts.

info@allmakesequipmentandparts.com • www.amepinc.com



2002 PETERBILT.

Single Axle, CAT C7, 10 Speed,
2017 Ampliroll 20,000 Lb., 56 Inch Hook
Lift, 400K Plus Miles, Lower End & Clutch
Recently Done, Asking
\$28,500 OBO.
Tyngsboro, MA 978-808-1660



2021 KUBOTA SSV75 SKIDSTEER. 50 Hours,
75" Bucket, 74.3 HP, AC/Heat, Radio, 12V Power Outlet,
\$49,900. 978-979-1262 For More Details



**LABOUNTY CONCRETE
PULVERIZER.** In Excellent Condition,
Very Low Time On This Attachment, Fits
A Komatsu PC400 Or Similar Excavator,
\$15,900. Call Jesse, 401-855-1178



2020 HIGHLAND RIDGE MESA LITE CAMPER.
Two Full Size Bunks, Queen Size Master, Full Bath, One Slide Out,
Stainless Appliances And The Large U-Shaped Dinette, Outdoor
Kitchen, **\$36,000.** 603-899-2000

RARE !! 1995 CHEVROLET 1500:

6.5 Turbo Diesel,
140 K Pampered Miles.
Lowered — Done Right. Runs
And Like New!
\$19,500 Hurry!!
Wareham, MA
508-295-9444 Ext. 160



2010 WESTERN STAR TRI AXLE.

400 HP Series 60 Detroit Rebuilt
200K Miles Ago, 13 Speed, 68,000 Rears,
Full Lockers, 75,000 Lb. Hoist, 8 New Tires 24.5
(Not Caps) Virgin, Brand New Hood & Hardware,
New Wiring Harness, Air Charger, AC Coup, Too
Many New Parts To List, Asking
\$65,000 OBO. 508-839-1300



2001 GMC T7500 OIL

TANK. 2800 Trans Tech,
Automatic Smith Meter With
Veeder Root, **\$25,000 OBO.**
Pawtucket, RI 401-473-7669



920 W. Chestnut St. Brockton, MA:
508-586-1666 Mon - Fri 8-5, Sat 8-NOON

42 Winter St. Pembroke, MA:
781-826-1666 Mon - Fri 8-3
EastCoastTruckStuff.com

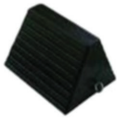
We deliver!

Spring Safety Check



ECCO Back-up Alarm

\$19.99 510 ✓



Rubber Chock Block

\$20.19 GT2048 ✓



Triangle Flare Kit

3 Triangles with case

\$23.99 1005DTS ✓



Safety Kit

- Three warning triangles
- One 2.75 lb. 10 B.C. Fire Extinguisher with bracket mounted to inside of lid.
- Three 20-minute fuses

\$108.99 SAFETYKIT1015 ✓

Special ends 6/15/22

SafeTruck by MS. CARITA™
Flags



18" Red or Orange Jersey
Fray-resistant knit polyester

Grommets **\$5.79/ea**

Staff **\$7.19/ea**

Bungee **\$8.49/ea**

Flag Magnets **\$9.99/ea**

Good to have...

UNIVERSAL SPILL KIT



Absorbs 5 Gallons

\$47.49

CERRONE

Chevrolet - Buick - GMC Of Attleboro
A Priority Automotive Dealership

ROUTE 1, BETWEEN 95 + 295
SOUTH ATTLEBORO, MA

508-761-4800

PLENTY OF NEW GMC TRUCKS AVAILABLE



2022 C2500 UTILITY



**DURAMAG ALUM. BODY, CENTRAL POWER
 LOCKING, SPRAY-IN-LINER, SYSTEM 1
 RACK.**
#22114G

\$60,281

2022 SIERRA



**CONV. PKG., LOCKING AXLE,
 ENHANCED CAPACITY PKG. #22049G**

\$33,720

2022 K1500 DOUBLE CAB SLE



DRIVER ALERT PKG., 18" WHEELS.
#22122G

\$46,995

2022 K2500 DOUBLE CAB



**CONV. PKG., PLOW PREP., X-31
 OFF ROAD SUSP., RARE 8' BED.**
#22155G

\$48,260

2022 K1500 DOUBLE CAB ELEVATION



#22098G

\$47,515

2022 K1500 DOUBLE CAB



**V-8, CONNECTIVITY PKG.,
 VALUE PKG. #22153G**

\$46,125

2022 CANYON AT4 DURAMAX DIESEL



OFF-ROAD STEPS., TRAILERING PKG.
#22152G

\$45,035

2022 K1500 CREW CAB AT4



**6.2L V-8, PREMIUM PKG., SUNROOF,
 20" WHEELS. #22154G**

\$64,995

2022 K2500 CREW CAB AT4 DURAMAX DIESEL



AT4 PREMIUM PKG., PLOW PREP.
#NF290683

\$81,600

**** PLUS OVER 50 MORE AVAILABLE ****



WWW.CERRONEGM.COM
WWW.CERRONETRUCKSALES.COM



CERRONE**Chevrolet - Buick - GMC Of Attleboro**
A Priority Automotive Dealership**ROUTE 1, BETWEEN 95 + 295**
SOUTH ATTLEBORO, MA**508-761-4800****PLENTY OF NEW CHEVROLET TRUCKS AVAILABLE****2022 K3500 UTILITY**

POWER SEAT, ALUM.
LOW PREP, READING ALUM.
BOY. B.K RACKS, STROBES, SPRAY-IN-
COVER, TOOLBOX. #22071H

\$71,120**2022 K3500 DUMP TRUCK**

CONV. PKG., TRAILER BRAKE,
PLOW PREP., RUGBY 9' BODY,
COVER, HITCH. #22124H

\$60,995**2021 C5500 DUMP TRUCK**

17,500 GVW, NICE CHASSIS
EQUIPMENT, 9' AIR FLOW BODY WITH
I-PACK, POWER COVER. #21110H

\$80,900**2022 C3500 CHASSIS**

14,000# GVW, CONV. PKG.
#NF121234

\$39,955

**WE HAVE
40 NEW
CHEVY TRUCKS
CALL FOR
DETAILS !!**

2022 K1500 CREW CAB

CUSTOM CONV. PKG.,
POWER SEAT. #22132H

\$43,750**DIESEL MEDIUM DUTY CHASSIS**

K5500	4WD	17,500 GVW	108" CA	GREEN	\$61,223
K5500	4WD	17,500 GVW	84" CA	SILVER	\$60,248
K5000	4WD	17,500 GVW	84" CA	WHITE	\$62,028
K5500	4WD	19,500 GVW	84" CA	WHITE	\$62,001
K6500	4WD	22,500 GVW	84" CA	WHITE	\$63,928

RESERVE YOURS TODAY !

WWW.CERRONEGM.COM
WWW.CERRONETRUCKSALES.COM



THIS AD IS COPYRIGHTED & OWNED BY TRUCK AND EQUIPMENT POST



Lorusso Heavy Equipment, LLC
 160 Elm St Walpole, MA 02801
 Tel. 508-660-7600



2022 Hyundai HX85A.
 Call for pricing.



2021/2022 Hyundai R17Z-9A.
 Call for pricing.



2022 MECALAC AX850 Mini Wheel Loader -
\$74,000.00
 Financing available



BRAND NEW HYUNDAI HX145LCRS in Stock!
 Call For Pricing.



2000 John Deere 200LC Excavator.
8250 hours.
\$45,000.00



2022 MECALAC 8MCR Back in Stock!
 Call For Pricing.



2004 JCB 190T Compact Track Loader. 1270 Hours.
\$28,000.00



2013 Hyundai HL770-9. 2 Available. Call for hours and pricing.



2016 JCB 525-60CE Telehandler. 5500lbs, 20 Foot Reach,
\$45,000.00

engcon



www.lhequip.com • Call Us for All of Your Rental Needs • www.fb.com/LHELLC





**2004 LEE
BOY 400
ROLLER.**
793 Hours,
\$11,999.
Call Mike
401-439-5005



GROVE 20 TON HYDRAULIC CRANE. Needs TLC,
Runs Well, **\$10,000.** Thompson, CT 860-428-1460



Custom Gates Hydraulic Hose Assemblies & Fittings

Full Truck Service, Maintenance & Repair

All Makes & Models

Over 20 Years Experience Specializing In Mack's

Marshall Cefole - **978-467-7993**

Randy Rameau - **978-423-2889**

10 Gardner Road, Winchendon MA 01475

QUIPCAL
The Decal Experts

Decal Sets for your Construction,
Forestry, Ag, Mining & Industrial
Equipment - Old and New.

Prompt • Knowledgeable • Reliable • Experienced

To Check \$ Call: 215-536-5339

& Availability Email: info@CustomServicesCompany.com

Your Next Decal Set Is Here • www.QuipCal.com



2018 ROCKSTER R1100 – Closed Circuit Impactor, 1
Owner, 1 Operator Since New. Rent / Buy - CALL DAN FOR
PRICE AT 203-506-3860

TOP RATED PRODUCTS FOR YOU

**WASHED STONE
PROCESSED GRAVEL
SAND
TOP SOIL
RIP RAP
FILL**



**Please Call for pricing
401-447-2777**



ALTA RENTS

AVAILABLE TO RENT TODAY!



JCB 512-83R Rotoating Telehandlers



Bergmann C815s Wheel Dumpers



Bergmann C912s Track Dumpers



JCB 131X Excavators



JCB 150X Excavators



JCB 220X Excavators



JCB 245XR Reduced Tailswings



JCB 509-42 Lift & Place Telehandlers



JCB 510-56 Lift & Place Telehandlers



JCB 35Z Zero Tailswing Excavators



JCB 85Z Zero Tailswing Excavators



JCB Hydradig 110W Wheel Excavators



Vibroscreen Box Screeners



Vibroscreen Trommels



JCB Wheel Loaders

888-RNT-ALTA | AltaRentsNE.com

COMMERCIAL HOT WATER PRESSURE UNITS



- Electric Motor – Gas Engine
- 1725 RPM Motor & Pump
- Becket Burner
- TEFCO 120 V Baldor Motor
- 50 Ft Hose
- 4' Lance Trigger Gun
- 1000 to 4000 PSI Options
- Poly Fuel Tank



NEW Starting @ \$2,295
USED Starting @ \$1,095

R & E STEAM EQUIPMENT
 Call Earl Warwick **617-899-8775**



2019 ROCKSTER RST18 - 60' Track Stacker
 W/ Belt Scale. 3 To Choose From!! **\$72,500**
 CALL DAN AT 203-506-3860



2007 JOHN DEERE TRACTOR. 4x4 3120 Hydrostatic Trans., 300X Loader, 447 Backhoe W/ Ballast Box, R4 Tires, Original Owner Used On Home Projects, Excellent Cond., Garaged When Not In Use, 350 Hours, **\$21,000.** Coventry, CT, Call Bob At 860-818-8000



2008 EAST TRAILER, \$29,999 OBO.
 401-486-8552

2004 LEEBOY 8500 T.
 In Good Shape, Runs Good,
 Always Maintained By The
 Dealer, Legend Screen Open Up
 To 15ft. New Burners, Live Floor,
\$36,000. OBO.
 207 289-7828



RAPID PREP

Full Service Provider of Equipment,
 Supplies and Consumables

NATIONWIDE EQUIPMENT
 RENTALS, SALES & SERVICE

North Kingstown, RI
 El Cajon, CA • Suffolk, VA
 Lakewood, WA

877.529.2124 / rapidprep.com

RUST NEVER SLEEPS



ENHANCED PORTABLE BLASTER PACKAGE



SURFACE PREP
 POWER TOOLS



SAFETY EQUIPMENT



800 Cheshire Rd. (Rt 8), Lanesboro MA 01237

(413) 442-0407 • (888) 474-5224

www.villagetrucksales.com

Numerous Snow Plows, Wings, & Stainless Steel Sanders Now In Stock. Call Now With Your Needs



**PISTON BULLEY. 14' Blade,
Dump Body, Low Hours,
\$35,900**



**2004 STERLING. 17 Ton
National Crane, Mercedes
Diesel, 5 Speed, 20K Miles,
\$69,995**



**2007 INTERNATIONAL
PAYSTAR. AWD, CAT C-13,
18 Speed, \$79,995**



**2011 WESTERN STAR.
500 Cummins, 8 LL, Only 56K
Miles, All Season Body, Never
Seen Salt, Plow & Wing, \$79,995**



**1987 OSH KOSH CAB &
CHASSIS \$9,995**



**2008 FORD F450. Fisher Extreme V
Plow, SS Hydraulic Sander,
Only 29K Miles, V10 Gas, 4x4,
Auto, \$25,000**



**NEW HOLLAND TN65D.
Side Flail Mower,
Transmission Issue, \$6,500**



**CASE 1390 TRACTOR.
Diesel, 2WD, \$4,500**



**2003 NEW HOLLAND T590.
Alamo Boom Axe,
Low Hours, \$29,995**



**2003 IH 7300.
Only 58K Miles, 10' Plow,
Sander, Diesel, \$19,995**



**1987 OSH KOSH. Cummins
Diesel, 8 LL, Stainless Steel
All Season Body, \$12,500**



**2012 DODGE RAM 3500 CAB
& CHASSIS. Gas, 4x4, DRW,
\$12,500**



**2010 FORD TRANSIT
CONNECT. 130K Miles, Fresh
From Municipal Fleet, \$7,495**



2019 FORD E-450 24 PASSENGER COMMERCIAL SHUTTLE BUS, Gas, Automatic, CDL License Is Required. Call Today! 401-434-5900



2011 FORD F550. 4WD, 6.7 Diesel, 9 Ft Power Angle Plow, 9 Ft Poly Wing, 3 Yard Swenson Hydraulic Spreader, 9 Ft Dump Body, All Hydraulic Operated, 97K Miles, **\$29,500**. 401-474-0314



2018 RD OLSEN 5 x 12 DOUBLE DECK TRACK SCREENER. The Best Screener On The Market, Backed By A Top Shelf Dealer, CALL DAN 203-506-3860



(203) 510-6626
Watertown CT



*26 Years Of
Oversized Equipment
Hauling*

Big To Small We Can Haul - New England Service
www.hayesheavyhauling.com

**1997 BENSON
26' ALUMINUM DUMP
TRAILER**. 60,000 Lb. Single Point
Spring Suspension, Dumps Straight,
Flip And Go Canvas, **\$16,900**.
Call Jesse, 401-855-1178





LET'S TALK ABOUT YOUR CHARACTER COLLATERAL CREDIT

AND HOW WE CAN
HELP YOU WITH
EQUIPMENT FINANCING

Whether you need **equipment financing** or **capital** to help run your business, we want to get to know you, your goals, and what you have to offer. Our unique "Three C's" approval process isn't based on credit alone. We are a family-run, relationship-based lender with extensive experience in the construction industry.



Let's get to know each other. Follow this code, or call us to apply.



UNIVERSAL FINANCE

GET APPROVED FOR A LOAN TODAY | CALL: 781-653-7593

ANDERSON MOTORS INC.


GMC

MICRO BIRD
by GERRARDIN

BLUE BIRD BUS SALES OF NEW ENGLAND
*** YOUR EXCLUSIVE VOLVO TRUCK DEALER ***


2023 VOLVO VHD84B300-D13, 500HP, 14SPD. AUTO, 18' HEAVY DUTY STEEL DUMP, HIGH LIFT-GATE. *INCOMING*



2023 VOLVO VHD84B300-D13, 500HP, 14SPD I-SHIFT, H.D. STEEL DUMP, HIGH-LIFT DOUBLE ACTING TAIL-GATE, PINTLE PKG. INCOMING



2023 VOLVO VHD84F300-D13, 500HP, 14SPD. I-SHIFT, AUTOMATIC, 20,000# FRONT AXLE / 46,000# REAR AXLE, STEERABLE PUSHER. INCOMING



2023 VOLVO VNR64T300-D13, 435HP, I-SHIFT AUTOMATIC, 12,000# FRONT AXLE / 40,000# REAR AXLE, REGIONAL DISTRIBUTION. INCOMING



2023 VOLVO VHD64BT300-D13, 500HP, 12SPD. I-SHIFT, 46,000# T-RIDE, HYD. WET-SYSTEM. INCOMING



2023 AUTOCAR ACTT42, SINGLE AXLE, YARD JOCKEY, DIESEL AUTOMATIC, A/C, HYDRAULIC 5TH WHEEL. INCOMING



2023 RHODES RSS2660-2 26' STEEL END DUMP TRAILER, AIR HIGH-LIFT DOUBLE ACTING TAIL GATE, HD SPECS. INCOMING



2023 RHODES ASSS2660-2 26' ALUMINUM END DUMP TRAILER, STEEL FRAME, SINGLE POINT SUSPENSION. INCOMING !



2022 FORD TRANSIT 14 PASSENGER COMMERCIAL SHUTTLE BUSES, GAS, INDIVIDUAL SEATING. INCOMING



2023 FORD E-450, GAS, 14 PASSENGER INCLUDING HANDI-CAP LIFT SHUTTLE BUS. NON CDL LICENSE. INCOMING



2019 FORD E-450 24 PASSENGER COMMERCIAL SHUTTLE BUS, GAS, AUTOMATIC, A CDL LICENSE IS REQUIRED. #190016



2023 CHEVY G5 14 PASSENGER MFSAB, GAS, AUTOMATIC, NON CDL. INCOMING

401-434-5900

WWW.ANDERSONMOTORS.COM

EMAIL • SALES@ANDERSONMOTORS.COM

170 AMARAL STREET • EAST PROVIDENCE, RI 02915

HABLAMOS ESPAÑOL

JOSEPH

EQUIPMENT COMPANY

300 GAY ST • MANCHESTER, NH 03103

SATURDAYS • WE ARE OPEN ALL DAY

PHONE: 603-641-8608

FAX: 603-666-3716



293 NORTH - EXIT 2 -
LEFT ONTO BROWN AVE -
RIGHT ONTO WINSTON ST. - LEFT ONTO GAY ST.
300 GAY STREET ON THE RIGHT



2017 UTILITY PUP TRAILER. 2 Axle, 15' 9" Deck, 96" Deck Width, 46,000 Lb GVWR, Lunette Ring Hitch, Spring Suspension, Air Brakes, Alum Wheels, 11r X 22.5 Rubber, Low Miles. **Call For More Information.**



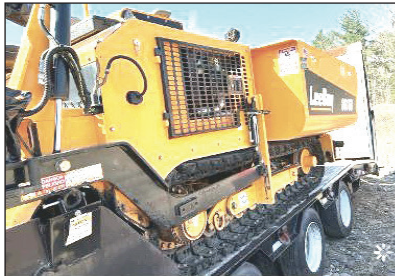
2014 KENWORTH T300 With Raytech 8 Ton Hot Box, Air Ride, Cummins Power, 100K Original Miles, New Burners, Excellent Shape. **Call For More Information.**



CATERPILLAR OLYMPIAN GENSET. 100kw, 3 Phase, Perkins Diesel, 270 Original Hours, With Fuel Tank, Excellent Shape. **Call For More Information.**



2007 INTERNATIONAL 7300. 4 X 4 Material Handler Bucket Truck, 6 Cylinder Turbo Diesel, Eaton Fuller 6 Speed, Hi-Ranger 5TC-55 Insulated Material Handling Bucket With 55' Max Platform Height & 60'-61' Max Work Height, PTO, 4 Hyd Stabilizers, Service Body, Tow Package, Air Brakes, Cruise Control, Heat, A/C, Differential Lock. **Call For More Information.**



LEE BOY 8616B PAVER. Electric Heaters, 550 Hours, Excellent Shape, Extends To 16' Wide. **Call For More Information..**



1996 TALBERT TRAILER. 50 Ton, NGB, Air Ride, Detaches Both Ends, Was Working Daily, Trade In, Needs Some Attention. **Call For More Information.**



1999 MACK RD688SX DUMP TRUCK. 350 Mack Motor, 8 Speed, 58K Rears, 24" Rubber, 15.6 Body, Pintle Hook, Scuttle Doors, P/S, Jake Brake, A/C, 256K Original Hours. **Call For More Information.**



2000 CATERPILLAR 446B TURBO BACKHOE. 4 X 4, Extend A Hoe, Plumbed, One Owner, Original Paint, 8000 Hours Excellent Shape, Quick Disconnect In Rear, 2 Buckets. **Call For More Information.**



2014 KOMATSU PC45MR. Rubber Track Mini Excavator, Full Cab, A/C, Heat, With Thumb And 3rd Valve, 2,143 Hours, Blade, Good Tracks, Very Good Condition. **Call For More Information.**



1987 FRUEHAUF 40 TON. 3 Axle Lowbed, One Owner, Excellent Shape, Trade In, Covered Rear Bogie. **Call For More Information.**



1980 ROGERS 75 TON, 10' Wide, 24' Drop Side Rail Steel Deck, 3 Axle, Lo Pro Tires, Ground Bearing, One Owner, Excellent Shape. **Call For More Information.**



SKYJACK 50' MANLIFT. Diesel, Rough Terrain, Factory Certified Rebuilt, Low Hours, Excellent Shape. **Call For More Information.**

www.josephequipment.com

Trades Welcome • Financing Available

THIS AD IS COPYRIGHTED & OWNED BY TRUCK AND EQUIPMENT POST

JOSEPH

EQUIPMENT COMPANY

300 GAY ST • MANCHESTER, NH 03103

SATURDAYS • WE ARE OPEN ALL DAY

PHONE: 603-641-8608

FAX: 603-666-3716



293 NORTH - EXIT 2 -
LEFT ONTO BROWN AVE -
RIGHT ONTO WINSTON ST. - LEFT ONTO GAY ST.
300 GAY STREET ON THE RIGHT



2001 FONTAINE TRAILER MODEL HG70, Capacity 35 Ton, 48' Long, 102" Wide, 20K Winch, Two Axle, Air Ride, Aluminum Wheels, Good Rubber, No Rust, Excellent Shape. **Call For More Information.**



2010 KENWORTH T800 TRACTOR. ISX Cummins 485, 8 Speed, 46K Full Locking Rears, 11 X 24.5 Alum Wheels, Dual Stacks, 2 Line Wet System, Cement Blower, One Owner, Original Paint, New In Chassis Motor Approx. 150K Miles Ago With Paperwork. Air Ride. **Call For More Information.**



1988 MACK SUPERLINER, RW713, 350, 12 Speed, 44 Rears, Nuway Air Ride, Double Frame, Bud Wheels, New Rubber, 3rd Axle Lift. Call For More Information

FORKS/BUCKET FOR WA470



WA470 OR EQUIVALENT BUCKET, Set Up With Jrb Disconnect. Also Available WA470 Or Equivalent JRB Forks, 60", 9' Carriage With JRB Quick Disconnect. **Call For More Information.**



2012 JOHN DEERE 650J XLT DOZER, Hours 12K, 8' 6" Blade, Trimble Onsite GPS System, One Owner, Fleet Maintained, Original Paint, Recent Bottom (Tracks), Full Cab, Heat, A/C, Loaded. **Call For More Information.**



CATERPILLAR 972G LOADER, New Motor, New Transmission, New Rubber, **Call For More Information.**



2005 VOLVO EW55B WHEELED EXCAVATOR With 3rd Valve, Thumb, Bucket And Wrist O Twist, Excellent Shape, One Owner. **Call For More Information.**



ERIN 165T SCREENER ON TRACKS, Makes 3 Products, Cat Power, Heavy Duty Grizzly, Remote Control. Very Good Condition, **Call For More Information**



(20) GOODYEAR E3 LOADER TIRES, 20.5 X 25 And 23.5 X 25 Tires. **Call For More Information.**



2000 J & J ALUM DUMP TRAILER, 3 Axle, Lift On 3rd, Liner, Cover, Steel Frame, Excellent Shape. **Call For More Information.**



LABOUNTY MDS100R SHEAR, Rotating Head, Excellent Shape, **Call For More Information**



KOMATSU WA500-7 OR -8 GP BUCKET, Bolt-On Cutting Edge, Excellent Shape. **Call For More Information.**

www.josephequipment.com

Trades Welcome • Financing Available

THIS AD IS COPYRIGHTED & OWNED BY TRUCK AND EQUIPMENT POST

JOSEPH

EQUIPMENT COMPANY

300 GAY ST • MANCHESTER, NH 03103

SATURDAYS • WE ARE OPEN ALL DAY

PHONE: 603-641-8608

FAX: 603-666-3716



**293 NORTH - EXIT 2 -
LEFT ONTO BROWN AVE -
RIGHT ONTO WINSTON ST.- LEFT ONTO GAY ST.
300 GAY STREET ON THE RIGHT**



2012 CHEVY CREW CAB. 3500 FLAT BED UTILITY TRUCK - 4 X 4, 6.6 Duramax Diesel, 8.5' Bed, Allison Automatic Transmission, Miles: 133,481, Crew Cab, Hitch On Back, Under Bed Storage, Dual Rear Wheels, Deck Set Up For Racking, Fleet Maintained, One Owner, **Call For More Information.**



2004 FORD F750 XLT SUPER DUTY. CAT Power, Allison Automatic, 33k GVW, 108K Original Miles, 10' Dump Body, Pintle Hook, Canvas, Power Windows, A/C, Loaded, Excellent Shape. **Call For More Information.**



1988 MACK SUPERLINER. RW713, 500 V8, 12 Speed, New Way Air Ride, Wet System, Super Clean, New Motor, Trans, Alum Wheels, A/C, P/S., Low Miles. **Call For More Information.**



1995 WALLACE 48 X 102 STEP DECK With 5' Beaver Tail And 8' Hydraulic Ramps, Self-Contained, Excellent Shape, Alum Wheels, 255 Rubber, Working Daily. **Call For More Information.**



2012 ITI DDX100 70 TON 2+2+3 HYDRAULIC EXTENDABLE STEERABLE TRAILER. Air Ride. Comes With 10' Flip Up Gooseneck Ext, Self-Contained Power Unit, 30' Deck, 8' 6" Wide, JP40 Tandem Axle Jeep, B80 Tandem Axle Stinger With Pin On 3rd Axle. Wireless Remote, Super Singles. **Call For More Information.**



MACK B61SX. 18K Front, 58K Rears, Triple Frame, Quad Box, 673 Motor, One Owner, Low Miles, Restored A Few Years Ago. Very Good Condition. **Call More Information.**



1984 CATERPILLAR 120 MOTOR GRADER. Certified Rebuilt 1984. 12' Blade, Front Scarifier. **Call For More Information**



PICKING STATION WITH CONVEYOR. Railed Walk Way, Landing Gear, Very Good Condition. **Call For More Information.**

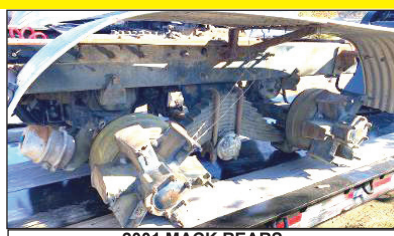


1994 TRAIL EZE SLIDING AXLE. 35 Ton, Recent Sandblasted And Paint, New Tires, New Brakes, Steel Deck, Winch, Forklift Package, Working Daily. **Call For More Information.**

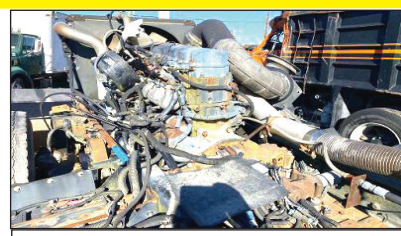
CAT 336 AND 330 GRAPPLES, KOMATSU PC 400, PC300, PC200, PC228, PC270, PC220, PC150 GRAPPLES.



LABOUNTY ROTATING SHEAR. Set Up For Komatsu PC228 Or Equivalent. **Call For More Information.**



2001 MACK REARS. COMPLETE, NEW SUSPENSION, BRAKES AND DRUMS, 4.42 GEAR RATIO **Call For More Information**



2001 MACK 460 ENGINE. COMPLETE, STILL IN CHASSIS FRAME. **Call For More Information**

www.josephequipment.com
Trades Welcome • Financing Available

THIS AD IS COPYRIGHTED & OWNED BY TRUCK AND EQUIPMENT POST

JOSEPH

EQUIPMENT COMPANY

300 GAY ST • MANCHESTER, NH 03103

SATURDAYS • WE ARE OPEN ALL DAY

PHONE: 603-641-8608

FAX: 603-666-3716



293 NORTH - EXIT 2 -
LEFT ONTO BROWN AVE -
RIGHT ONTO WINSTON ST.- LEFT ONTO GAY ST.
300 GAY STREET ON THE RIGHT

IN STOCK



NEW 2021 XL SPECIALIZED XL80SA. Sliding Axle Trailer, 2 Axle, Air Ride, 40 Ton, 53' X 102", Apitong Decking, Winch, Remote Control. Call For More Information.

NEW MODEL - IN STOCK NO WAITING



NEW MODEL - IN STOCK NO WAITING. Beat The Price Increase. Fontaine Magnitude 65 2+3+2 Capable, 28' Drop Side Rail Deck, 3 Axle, Set Up For 4 Axle, 14.75" Deck Height, 102" Wide, 60.5" Axle Spacing, Eq2 Spread Bar With Intermediate Axle, Hydraulic Removable, Non Ground Bearing With 2 Pin Position At 114" And 102". Triple Cylinder, 70" Hydraulic Flip Box, Heavy Duty Snap In Outriggers, D-Rings, Alum Wheels, 275/70R X 22.5 Tires. Call For More Information.



IN STOCK - 2023 FONTAINE LXTN40. 40 Ton Extendable, 34' Closed - 60' Open. Also Available 29' Closed - 50' Open. Tandem Axle, Set Up For 3rd, Air Ride, Non Ground Bearing, 102" Swing Clearance, 20" Deck Height, Alum Wheels. In Stock, No Waiting. Available In Manchester NH And At The Factory In Springville AL. 3rd And 4th Axles Available. Call For More Information.



CATERPILLAR 615 SCRAPER STYLE WATER TRUCK, 4000 GALLON TANK, VERY GOOD CONDITION, CALL FOR MORE INFORMATION.



1981 AUTOCAR DC64, 400 CAT MOTOR, 8 SPEED, 46K REARS, DOUBLE FRAME, A/C, P/S, WET SYSTEM, 22" RUBBER, RUNS, DRIVES, VERY GOOD CONDITION, CALL FOR MORE INFORMATION.



2021 GALLEGOS 40 TON JEEP DOLLY, 2 Axle, Air Ride, 29' Long, 60" Axle Spread, 102" Wide, Approx Fifth Wheel Height 53", Compatible With 60 To 70 Ton Class Trailers, 275 Rubber, Alum Wheels, 2 Available To Choose. Call For More Information.

COMPLETELY RECONDITIONED



2009 TALBERT 70 TON DROP SIDE RAIL. Severe Duty, 26' Steel Deck, 9' Wide, With 26' Beam Insert. 30,000 Lb Axles, 3 Axle, Set Up For 4th, Spring Ride, 315 Rubber, One Owner, Completely Reconditioned, Sandblasted And Painted. New Seals, Brakes, Bearings, Hubcaps And Decals. Call For More Information.



NEW 2019 XL SPECIALIZED. 55 Ton, 26' Deck, 15" Loaded Deck Height, Tri Axle, Set Up For 4th, Lift On Third, Air Ride, Long Goose Neck, 2 Pin Position, Boom Trough, 275 Rubber, Alum Wheels. Front Flip Ramps, Chain Slots, Weigh Scale, Strobes With Battery Back Up, Strobe Lights, Outriggers, Extra D-Rings. Available In Black Or Red, In Stock, No Waiting. Located At The Factory In Manchester IA And Also Stock In Manchester NH. Call For More Information.

IN STOCK, NO WAITING



2023 KRUTZ TERMINATOR. 26' Steel Frame, 2 Axle, 70,000 Lb. Single Point Suspension, High Lift Gate, 11 X 24.5 Tires, Alum Wheels, 2 Speed Landing Gear, Axle, 1/4 Hardox Floor And Sides. In Stock, 2 Available To Choose From, Also Taking Orders. Call For More Information.



1996 TALBERT 60 TON 2+2+2, 70 Ton As 4 In A Row, 26' Deck, Spread Bar Included, Hub Piloted Wheels, Long Gooseneck With Gooseneck Extension, Detaches Both Ends, Air Ride, Non-Ground Bearing, Working Daily, One Owner, Original Paint. Call For More Information.



2018 FONTAINE 65/70 TON 28' LOWBED TRAILER. Nitrogen Spreader & Pin On Axle 2+3+2 Capable, 70 Ton As 4 In A Row, 65 Ton As 2+3+2, 28' Well, Tri-Axle, Air Ride, Lift Axle, Aluminum Wheels, Good Original Rubber, Original Paint, One Owner, Job Completion Package, Excellent Shape, Included: 2018 Fontaine Nitrogen Eq2 Stinger, 2018 Pin On 4th Axle. Call For More Information.



2022 GALLEGOS 40' STEEL DUMP TRAILER. 94 Yard With Canvas, Hardox Construction, Tri Axle, Air Ride, In Stock, No Waiting. Call For More Information.

www.josephequipment.com

Trades Welcome • Financing Available

THIS AD IS COPYRIGHTED & OWNED BY TRUCK AND EQUIPMENT POST

JOSEPH

EQUIPMENT COMPANY

300 GAY ST • MANCHESTER, NH 03103

PHONE: 603-641-8608

OPEN
ALL DAY
SATURDAY



FONTAINE

FAX: 603-666-3716



NEW MODEL - 2023 FONTAINE RENEGADE LXLN12 - 12 Inch Loaded Deck Height With 4 Inch Ground Clearance When Fully Loaded, 30 Tons In 16 Feet On Tandem Bogie Or 30 Tons In 20 Feet With 3rd Axle Flip, Low Profile, 3rd Axle Capability, 32 Feet 11 Clear Deck Length. IN STOCK, NO WAITING. **Call For More Information.**



NEW MODEL - 2023 FONTAINE MAGNITUDE 50 Tri Axle, Set Up For 4Th, 50 Ton, Air Ride, 24' Deck, 20" Loaded Deck Height, Alum Or Steel Wheels, Strobe Lights, Outriggers And D-Rings. **Call For More Information.**



2023 KRUZ TERMINATOR, 26' Steel Frame, Single Point Suspension, 2 Way Gate, 11 X 24.5 Tires, Alum Wheels, 2 Speed Landing Gear. **Call For More Information.**

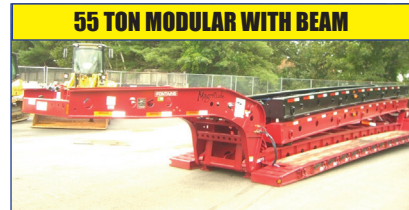


27' FLAT LEVEL DECK - IN STOCK

2023 FONTAINE 55L, 27' Flat Level Deck, Also Available In 25' And 26' Deck Length. Tri-Axle, Air Ride, 3Rd Axle Lift, Alum Wheels, Strobe Lights, Set-Up For 4Th Axle. In Stock, No Waiting. **Call For More Information.**

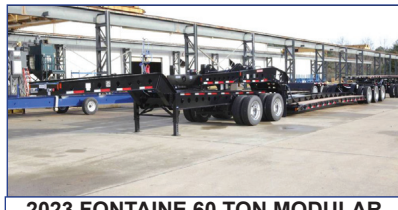


2023 KRUZ 26' STEEL TUB, Aluminum Frame Dump Trailer, Air Ride, 2 Axle, Alum Wheels, 450 Hardox, 24.5 16 Ply Tires. **TAKING ORDERS**
Call For More Information.



55 TON MODULAR WITH BEAM

2023 FONTAINE 55H MODULAR DSR, Beam Deck Also Available, Tri Axle, 60" Axle Spacing, Hydraulic Removable, Non Ground Bearing, Set Up For Gooseneck Ext, Spreader Bar And 4Th Axle Flip, Air Ride, Alum Wheels, 22.5 Rubber. **Call For More Information.**



2023 FONTAINE 60 TON MODULAR 2+3+1,

26' Dsr, 184" Swing Clearance, Set Up For 2 Axle Jeep, 14" Deck Height, Air Ride, Alum Wheels, 275/70R X 22.5 Rubber, Non Ground Bearing. **Call For More Information.**



2023 FONTAINE RENEGADE LXL, 14" Deck Height, 30' Deck W/6" Ground Clearance, 2 Axle, Set Up For Third, Hydraulic Detachable, Taking Orders
Call For More Information.



2023 KRUZ, 70 Yard, Tri Axle, 70,000 Single Point, Lift On Third Axle, 1/4 Inch 450 Hardox, Floor, Sides, Nose, Gate, 12 Panel Gate, 11 X 24.5 Rubber, Alum Wheels. Taking Orders.
Call For More Information.



2023 FONTAINE TRAVERSE HYDRAULIC TAIL, 48' Long, 102" Wide, Air Ride, Hydraulic Upper Deck, Hydraulic Winch, Remote Control, Alum Wheels, Dual Controls. Taking Orders
Call For More Information.



2023 FONTAINE 60 TON MODULAR, 26' Dsr, 60" Axle Spacing, 184" Swing Clearance, Set Up For 2 Axle Jeep, 14" Deck Height, Air Ride, Alum Wheels, 275/70R X 22.5 Rubber, Non Ground Bearing. In Stock.
Call For More Information.



1998 KAYLN SIEBERT. 75Ton 3+3+3, Air Ride, West Coast Bogie, 3 Axle, Air Ride Jeep With Power Tower, 10' Wide Trailer, 60' Overall Length, 48' Of Useable Deck, 275/70 X 22.5 Rubber, Sandblasted & Painted, Excellent Shape, Alum Wheels On Jeep And Booster. **Call For More Information.**

Trades Welcome • Financing Available • www.josephequipment.com

THIS AD IS COPYRIGHTED & OWNED BY TRUCK AND EQUIPMENT POST

TRAILER RENTALS • TRAILER RENTALS • TRAILER RENTALS •

WE RENT STEP DECKS • LOW BEDS • HI FLATS • DEMO/SCRAP • TRAILERS

JOSEPH

EQUIPMENT COMPANY

300 GAY ST. • Manchester, NH 03103

WE RENT WALKING FLOORS • DUMPS • HIGH FLAT EXTENSIBLES • JEEPS

WE RENT STINGERS • SPREADER BARS • DOUBLE DROP EXTENSIBLES TRAILERS

14" DECK HEIGHT

NOW TAKING ORDERS FOR DUMP TRAILERS AND LOWBEDS FOR SPRING AND SUMMER DELIVERY

IN STOCK, NO WAITING

55 TON EXTENSIBLE

IN STOCK

NEW 2023 FONTAINE RENEGADE LXL, 14' Deck Height, 30" Deck W/6" Ground Clearance, 2 Axle, Set Up For 3rd Hydraulic Detachable Or Mechanical Detachable. In Stock No Waiting. Call For More Information.

2023 FONTAINE MAGNITUDE 603T Modular Drop Side Rail With 28' Deck, Hydraulic Removable Neck, Non Ground Bearing, Air Ride, Tri Axle, Third Axle Lift, Set Up For 4Th, Alum Wheels, 275/70 X 22.5 Tires, Loaded. Call For More Information.

2023 FONTAINE MAGNITUDE 59MX, 55 Ton Extendable Trailer, 30 To 50', Modular, Detaches Both Ends, Hyd Removable, Non Ground Bearing, 20' Deck Height, Will Take 10' Deck Ext For A Total Of 60', 275 Rubber, Tri Axle, Air Lift On 3rd, Set Up For 4Th, Set Up For Gooseneck Ext. Call For More Information.

NEW 2023 FONTAINE SPECIALIZED MAGNITUDE 55L, Tri Axle, Air Ride, Set Up Of 4Th Axle, Non Ground Bearing, 25' Deck, Led Lights, Aluminum Wheels, Strobe Light Package, Lift On 3rd Axle, 2 Pin Position, Loaded. In Stock No Waiting. Call For More Information.

2023 FONTAINE 55H MODULAR DSR, Beam Deck Also Available, Tri Axle, 60' Axle Spacing, Hydraulic Removable, Non Ground Bearing, Set Up For Gooseneck Ext, Spreader Bar And 4Th Axle Flip, Air Ride, Alum Wheels, 22.5 Rubber, Call For More Information.

2023 FONTAINE 35 TON LOWBED, Air Ride, Tandem Axle, 29ft Flat Level Deck, Non Ground Bearing, Hyd Goose Neck, Set Up For Future 3rd Axle, In Stock. Call For More Information.

70 TON 2+3+2

NEW 2023 FONTAINE 55 TON, Drop Side Rail, Tri Axle, Air Ride, Set Up For 4Th, Non Ground Bearing, Led Lights, Aluminum Wheels, Strobe Lights, Loaded. In Stock No Waiting. Call For More Information.

NEW 2023 SPECIALIZED 55 TON BEAM TRAILER, 3+1 Modular NGB, Detach Both Ends, Tri Axle, Lift On 3rd, Set Up 4Th, Set Up For Gooseneck Extension, Call For More Information.

2023 FONTAINE 704/2+3+2 DROP SIDE RAIL, 4 Axle, 28' Deck, Hydraulic Detachable, In Stock, No Waiting, Non Ground Bearing, 102' Wide, 65' Flip Box, Spreader Bar And 352T Jeep, Alum Wheels, 275/70R X 22.5 Tires, 28' Beam Deck Available. Call For More Information.

2023 FONTAINE 55 TON, Drop Side Rail, Tri Axle, Air Ride, Set Up For 4Th, Non Ground Bearing, Led Lights, Aluminum Wheels, Strobe Lights, Loaded. In Stock No Waiting. Call For More Information.

2023 FONTAINE 55 TON, Drop Side Rail, Tri Axle, Air Ride, Set Up For 4Th, Non Ground Bearing, Led Lights, Aluminum Wheels, Strobe Lights, Loaded. In Stock No Waiting. Call For More Information.

Trades Welcome • Financing Available •

www.josephequipment.com

PHONE: 603-641-8608
FAX: 603-666-3716

FONTAINE

TRAILER RENTALS • TRAILER RENTALS • TRAILER RENTALS •

THIS AD IS COPYRIGHTED & OWNED BY TRUCK AND EQUIPMENT POST