

SERVING NORTHEAST REGION

FREE

# TRUCK AND EQUIPMENT POST

*Buyer - Seller - Swapper*



2023 INTERNATIONAL HX TRI AXLE DUMP. 101,521 Miles, Cummins ISX15 500 HP, ALLISON AUTOMATIC, \$195,000. 845-392-6522



2019 BOMAG BW161AD-5. 200 HOURS, 66" WIDE, ARTICULATED TANDEM VIBRATORY ROLLER, \$99,000. 845-744-2006



2020 INTERNATIONAL DUMP. CUMMINS 350 HP, AUTOMATIC, 33,000 GVW, 67K MILEAGE, LOADED, \$85,000. 401-640-4321



2016 VERMEER PD10 PILE DRIVER. CONTRACTOR OWNED, LIKE NEW CONDITION, REMOTE, 627 HOUR MACHINE, \$125,000. 401-640-0621



2007 MAC. 37' FRAMELESS HIGH SIDES, EXCELLENT 1/2" LINER, ELEC FLIP TARP, 2 WAY GATE, WAS USED FOR WOOD CHIPS AND COMPOST, \$37,500. 207-939-6676

**Optative Group**

**INTERNET & PRINT FOR ONLY \$28.00**

[www.TruckAndEquipmentPost.com](http://www.TruckAndEquipmentPost.com)

20-21  
MAY 27th, 2026

**401-644-9387**

# WICKED BIG

ENTERTAINMENT GROUP

PRESENTS

## Wicked Big

### CAR & TRUCK NATIONALS



#### CAR SHOW

- LEGENDS RACES · DRIFTING
- STUNT SHOW · MOBILE DYNO
- FOOD TRUCKS · ONSITE CAMPING
- FOOD TRUCKS · CAR AUDIO

#### TRUCK SHOW

- SHOW CARS · BURNOUTS
- VENDORS · SHOW TRUCKS  
& SO MUCH MORE

#### **BURNOUT NATIONALS**

## JUNE 27-28, 2026



#### ADMISSION

\$30 WEEKEND PASS \$20 DAY

#### SPECTATORS

\$15 WEEKEND PASS \$10 DAY

[WICKEDBIGENTERTAINMENTGROUP.COM](http://WICKEDBIGENTERTAINMENTGROUP.COM)

FOR MORE INFORMATION PLEASE CONTACT  
[INFO@WICKEDBIGCARSHOW.COM](mailto:INFO@WICKEDBIGCARSHOW.COM)

# MOBILE DPF & ENGINE CLEANING – DONE RIGHT.

Restore power. Clean the engine.  
Improve MPG. Stay on the road.



- ✓ Mobile DPF Cleaning & Forced Regens
- ✓ Hydrogen Engine Carbon Cleaning
- ✓ No Engine Disassembly
- ✓ Power & Fuel Economy Restoration
- ✓ On-Site & Emergency Service.



Norfolk, Massachusetts

☎ (508) 734-0003

[www.soot-rid.com](http://www.soot-rid.com)



**(203) 752-0213**  
**WWW.EQUIP-SALES.COM**  
**NORTH HAVEN, CT 06473**

**PARTS ▶ SALES ▶ SERVICE ▶ RENTALS**



**2015 CATERPILLAR 950M**  
OWNED SINCE NEW. Q/C, RIDE CONTROL, BRAND NEW FLOOR/MOLD BOARD. FULL RECORDS AVAILABLE. 11,590 HRS. **\$86,500**



**2015 CATERPILLAR M322D**  
PURCHASED FROM H.O. PENN, FLEET MAINTAINED, ALL RECORDS AVAILABLE. NEEDS NOTHING, COMES WITH WAYNE ROY COUPLER, GRADING & DIGGING BUCKET. CLEAN, PRE EMISSION MACHINE. 8,427 HRS. **\$65,000**



**2006 INGERSOLL-RAND DD24**  
2,770 HRS. WELL MAINTAINED, READY TO WORK. JUST SERVICED. **\$14,500**



**2013 DEERE 700K XLT**  
3,800 HRS, ONE OWNER, GPS VALVING, FULL CAB, TIGHT, GOOD BOTTOM. VERIFIED HOURS. **\$76,500**



**2022 XCMG XE75U**  
KUBOTA DIESEL, PATTERN CHANGER, HYDRAULIC COUPLER & THUMB PLUMBING. 220 HRS, LOADED FULL CAB. **\$61,500**



**2018 ROCKSTER RTT720A**  
TROMMEL SCREENER, PRE EMISSION CAT ENGINE, 20' DRUM. ONLY 1,532 HRS. **\$165,000**



**2002 NEW HOLLAND LS180**  
SELLING THIS NEW HOLLAND LS180. RUNS AND OPERATES, FOOT PEDAL CONTROL, AUX HYDRAULICS. MISSING FRONT DOOR. LIGHTS AND HEAT WORK. 3,914 HRS. **\$14,500 OBO**

# BALLARD

TRUCK CENTERS

(508) 214-3036  
drive@ballardtrucks.com



Visit us online at [BallardTrucks.com](http://BallardTrucks.com) or scan to view our full inventory.



2020 PETERBILT 567  
DUMP TRUCK  
STK#78704  
**\$167,500**



2022 PETERBILT 348  
HOOKLIFT TRUCK  
STK#9218  
**\$155,000**



2018 KENWORTH T370  
HOOKLIFT  
STK#1684  
**\$72,500**



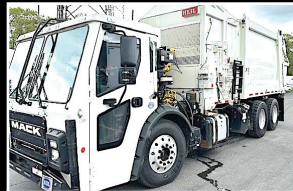
2015 MACK PINNACLE  
CXU612  
DAY CAB  
STK#7599  
**CALL FOR PRICE !**



2019 PETERBILT 348  
FLATBED TRUCK  
STK#3051  
**CALL FOR PRICE !**



2026 MACK PIONEER 64T  
SLEEPER  
STK#00278  
**CALL FOR PRICE !**



2024 MACK LR64R  
GARBAGE TRUCK  
STK#08553  
**\$349,900**



2025 MACK GRANITE 64FR  
DUMP TRUCK  
STK#46927  
**CALL FOR PRICE !**



2017 ISUZU NPR XD  
REEFER BOX TRUCK  
STK#00292  
**\$32,900**



2025 REITNOUER MAXMISER  
FLATBED TRAILER  
STK#T749  
**\$60,000**



2026 XL SPECIALIZED  
XL100HDGS  
LOWBOY TRAILER  
STK#25555  
**CALL FOR PRICE !**



2025 KENWORTH T880  
DUMP TRUCK  
STK#7558  
**\$229,000**



2018 KENWORTH T370  
HOOKLIFT  
STK#1685  
**\$77,500**



2007 MACK CHN613  
DAY CAB  
STK#9339  
**\$49,000**



2023 MACK GRANITE 64FR  
GARBAGE TRUCK -  
ROLL-OFF  
STK#6429  
**\$189,500**



2021 PETERBILT 567  
FLATBED  
STK#1389  
**\$165,000**



2025 HINO L6  
DUMP TRUCK  
STK#50157  
**CALL FOR PRICE !**



2025 TICO PROSPOTTER  
YARD SPOTTER  
STK#13513  
**CALL FOR PRICE !**



2016 HINO 195  
FLATBED DUMP  
STK#1146  
**\$29,900**



2025 VOLVO VHD84B300  
CAB & CHASSIS  
STK#690100  
**CALL FOR PRICE !**



**JACK MADDEN FORD**  
Jackmaddenford.com  
781-762-4200



**825 Providence Hwy Rt.1 Norwood, MA**



**2024 FORD TRANSIT 250 CARGO VAN. V6, Auto w/OD, AC, P/W, REAR CAMERA, LIMITEDSLIP, STK#22914.**

**0%  
Financing  
Available**



**NEW FORD F350 SD XL READING UTILITY 4WD. 6.7L V8 TURBO DIESEL, 14K GVW, STK#G02767**



**2025 FORD F350 SD XL CRYSTEEL DUMP 4WD. 7.3L V8 GAS, 14K GVW, SNOW PLOW PREP, STK#27874**



**NEW CAB & CHASSIS: 350-450-550 SUPER CABS, REGULAR CABS**



**2026 FORD TRANSIT-350 READING ENCLOSED UTILITY AWD. GAS, AUTO, POWER GROUP, NAV, BACK-UP CAMERA, STK#A11376**



**2026 FORD F-600 SD XL C&C. DRW, 22K GW, 8 CYL., AUTO, POWER GRP, 205" WB, STK#14447**



**2025 FORD. FF650 SD AIR-FLO DUMP. 7.3L GAS, AUTO, PLATE, HITCH, POWER GROUP, OO STK#6758**

Jack Madden



We're On The Auto Mile!

\*ALL PRICES INCLUDE INCENTIVES FOR QUALIFIED BUYERS. FOR TRADE ASSIST, MUST HAVE 2018 OR NEWER TRADE. ALL VEHICLES REQUIRE DEALER FINANCING. SOME PRICES INCLUDE SNOWPLOW INCENTIVES. SEE DEALER FOR COMPLETE DETAILS.



# Jack Madden Ford

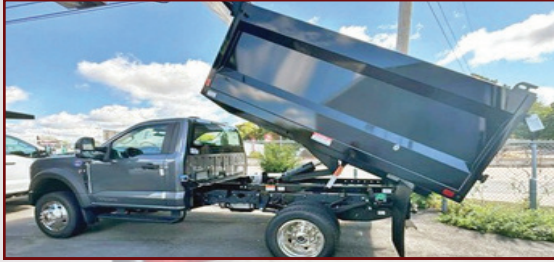
Jackmaddenford.com

781-762-4200

825 Providence Hwy Rt.1 Norwood, MA



## 0% Financing On SUPER DUTY AND TRANSITS Available



2024 FORD F-550 SD XL 4WD DRW W/9' SUPER HAULER LANDSCAPE BODY. 6.7L Diesel, 19500 GVW, Tow Pkg, stk#17329.



NEW 2025 FORD E-450SD 14' ROCKPORT WORKPORT UTILITY: DRQ, 7.3L GAS, AUTO, POWER GROUP. STK#28681.



NEW 2025 E350 12' AEROCELL CUTAWAY. STK# 30217.



NEW FORD TRANSIT 350 SERVICE BODY AWD, STK#69470.



NEW FORD E-350 COMMERCIAL CUTAWAY WITH 16' AEROCELL BOX-TRUCK. STK#23914.



2025 FORD F-350 REGULAR CAB DRW 4WD READING SERVICE TRUCK STOCK #11997

Jack Madden



We're On The Auto Mile!

\*ALL PRICES INCLUDE INCENTIVES FOR QUALIFIED BUYERS. FOR TRADE ASSIST, MUST HAVE 2018 OR NEWER TRADE. ALL VEHICLES REQUIRE DEALER FINANCING. SOME PRICES INCLUDE SNOW PLOW INCENTIVES. SEE DEALER FOR COMPLETE DETAILS.





# TRUCK AND EQUIPMENT POST

**P.O. BOX 6824  
PROVIDENCE, RI 02940  
TEL: 401-644-9387**

**EMAIL:  
ADS@TRUCKANDEQUIPMENTPOST.COM  
WWW.TRUCKANDEQUIPMENTPOST.COM**

## YOUR INFORMATION

NAME : \_\_\_\_\_ PHONE : \_\_\_\_\_  
 STREET ADDRESS : \_\_\_\_\_  
 CITY : \_\_\_\_\_ STATE : \_\_\_\_\_ ZIP : \_\_\_\_\_  
 EMAIL : \_\_\_\_\_

PAYMENT :      CHECK  
     OTHER ACCOUNT NUMBER : \_\_\_\_\_  
 SIGNATURE : \_\_\_\_\_ EXP DATE : \_\_\_\_\_

## PLACE YOUR AD ONLINE AT WWW.TRUCKANDEQUIPMENTPOST.COM

**STANDARD PHOTO AD # ISSUES**

\$28 FOR 1 ISSUE (2 WEEKS)   
 \$50 FOR 2 ISSUES (4 WEEKS)

**PHOTO AD**



Your description goes here as follows:  
 Year, Make, Model, Features, Price, Town  
 & State, Phone

**JUMBO PHOTO AD**

\$55 FOR 1 ISSUE (2 WEEKS)   
 \$100 FOR 2 ISSUES (4 WEEKS)

**PAYMENT ENCLOSED \$ \_\_\_\_\_ EACH ISSUE RUNS FOR 2 WEEKS**

**AD TEXT** \_\_\_\_\_  
 \_\_\_\_\_  
 \_\_\_\_\_

\*1 item per ad please. We reserve the right to edit or refuse ad content.

## SUBSCRIPTION RATES INCLUDE FIRST CLASS SHIPPING.

**MAILED TO YOUR HOME OR BUSINESS**

\$55.00 13 ISSUES  \$80.00 26 ISSUES

**Just email Ads@TruckandEquipmentPost.com  
and type "BAG MY MAG" in the subject line.**

**NEW WE'LL EMAIL THE MAGAZINE TO YOU FOR FREE**

One Item Per Ad Please. Truck And Equipment Post makes every effort to ensure ads are published accurately. Truck And Equipment Post and its staff will not be held responsible or liable for typographical errors or misprints. Truck And Equipment Post reserves the right to edit, abbreviate, remove or refuse any ads/content at its discretion. Copyright of Ads: By agreeing to place an ad with Truck And Equipment Post, you hereby grant Truck And Equipment Post the right to display and publish all or part of the advertisement under United States copyright laws.

# LONDONDERRY, NH



196 Rockingham Road, Londonderry, NH 03053

**COMPLETE LIQUIDATION  
S AND S METAL RECYCLING**

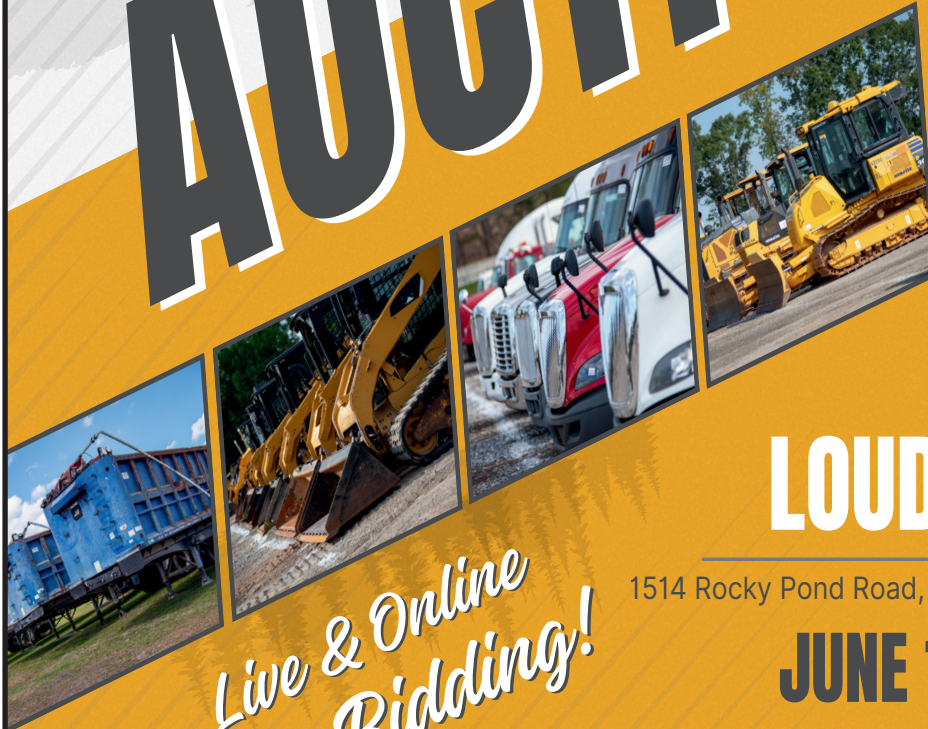
**JUNE 11<sup>TH</sup> | 9AM**



North  
East

# AUCTIONS

**REGISTER  
TODAY!**



# LOUDON, NH

1514 Rocky Pond Road, Loudon, NH 03307

**JUNE 13<sup>TH</sup> | 9AM**

JEFFMARTINAUCTIONEERS.COM | 844.450.6200

*Live & Online  
Bidding!*

NH-6217



SALES & RENTALS INC.  
**T-QUIP**

**DAILY / WEEKLY / MONTHLY**

**EQUIPMENT RENTALS**

**WHEEL LOADERS ◦ ROCK TRUCKS ◦ EXCAVATORS  
ROLLERS ◦ SKID STEERS ◦ CRUSHERS ◦ SCREENERS  
DOZERS ◦ BACKHOES ◦ GRADERS ◦ TELEHANDLERS  
TRACKED DUMPERS ◦ SPECIALTY ATTACHMENTS**



**☎ 603-623-3669    🌐 www.TQUIP.com**

# ANDERSON MOTORS INC.



**\* YOUR EXCLUSIVE VOLVO TRUCK DEALER \***



**VOLVO POWER**

**IN STOCK**

2026 VOLVO VHD84F300-D13, 500HP, 14SPD. I-SHIFT, STEERABLE PUSHER, 17' 6" HARDOX BODY. #250111



**IN STOCK**

2027 VOLVO VHD84F300-D13, 500HP, 14SPD., I-SHIFT, 20,000# STEERABLE TRI-AXLE DUMP CHASSIS. #260004



**IN STOCK**

2025 VOLVO VHD64BT-D13, 500HP, 12SPD. I-SHIFT, 14,600# FRONT / 46,000# REARS. #240142



**3 AVAILABLE**

2012 - 2017 VOLVO VNL64T300-D13, 500HP, 18SPD. TRANS., 14,000# FRONT / 46,000# REARS, AIR-RIDE.



**IN STOCK**

2015 VOLVO VNM64T-D13, 435HP, 10SPD., 12,000# FRONT / 40,000# REARS.



**IN STOCK**

1991 AUTOCAR ACL64BT300 CUMMINS BIG CAM, 8LL TRANS., 46,000 REARS, 320,548 MILES, WET-SYSTEM, PINTLE PLATE & HOOK. #240002B



**IN STOCK**

2000 VOLVO WG64B, 275HP., AUTO, 16,000# FRONT / 40,000# REARS, JOHNSERED 820 CORTU CRANE, 20' DUMP BODY. #210299A



**2 AVAILABLE**

2016 VOLVO VNM64T-D13, 435HP, 10SPD., 12,000# FRONT / 40,000# REARS. #230109A



**2 AVAILABLE**

2022 VOLVO VNL64T300-D13 500HP, 12 SPD. I-SHIFT ,AUTO, 14,000# FRONT / 46,000 # REAR, AIR-RIDE, HD HAULER.



**IN STOCK**

2026 AUTOCAR ACTT42, SINGLE AXLE, YARD JOCKEY, DIESEL AUTOMATIC, A/C, HYDRAULIC 5TH WHEEL.



**IN STOCK**

2012 FORD E-450 14 PASSENGER SHUTTLE BUS, GAS, 18,885 MILES. #250029A



**2 AVAILABLE**

2026 RHODES RSS2660-2 26' STEEL END DUMP TRAILER, AIR HIGH-LIFT DOUBLE ACTING TAIL GATE, HD SPECS.

# 401-434-5900

[WWW.ANDERSONMOTORS.COM](http://WWW.ANDERSONMOTORS.COM)

EMAIL • [SALES@ANDERSONMOTORS.COM](mailto:SALES@ANDERSONMOTORS.COM)

190 AMARAL STREET • EAST PROVIDENCE, RI 02915

**HABLAMOS ESPAÑOL**



**DIMMICK GROUP PETERBILT**  
**1-800-NEW-PETE**  
**1-800-639-7383**



DIMMICK GROUP PETERBILT



**2025 TALBERT 55 TON.**  
 Available In All Our Locations



**NEW FELLING FT-60-4LP.**  
 Bi-Fold Ramp, Tool Boxes, 22.5 Tires,  
 Full Air Ride, **South Royalton, VT**



**2027 PETERBILT 589 FLAT TOP SLEEPER.** Cummins 605 HP, Tri Axle, 80,000 GVW, 5th Wheel, All Polish Aluminum Wheels, #VD827443. **Bow, NH 603-225-6666**



**2025 PETERBILT 537 DUMP.** Brand New, PX9 350HP, Allison Automatic, 12' body, Asphalt tarp. # 737134, **Champlain, NY 518-298-3835**



**2027 PETERBILT 567 TRACTOR.** Cummins 605 HP, Tri Axle, 80,000 GVW, 5th Wheel, All Polish Aluminum Wheels, #VD832902. **Utica, NY 315-732-4300**



**2025 PETERBILT 589.** New Sleeper Tractor, Cummins 605 HP, #D702724. **South Royalton, VT 802-763-2585**



**2025 PETERBILT 567.** Brand New, Cummins X15-525HP, 18 Speed, 17' Body, #SD761404, **Newburgh, NY 845-245-4042**



**2026 PETERBILT 589.** Cummins 500 HP, Allison Automatic, 17'6" Dump Body, Premium Interior, #TD772788, **Henrietta, NY 585-321-5250**



**2025 PETERBILT 567.** Brand New, Cummins X15 500HP, 10 Speed, 20' Body, #698575, **Henrietta, NY 585-321-5250**



**2025 PETERBILT 536.** Jerr-Dan Car Carrier, Wheel Lift, 26,000 GVW, PC7-300HP, Automatic, Brand New, #D761931, **South Royalton, VT**



**2027 PETERBILT 589 FLAT TOP SLEEPER.** Cummins 565 HP, 60,300 GVW, 5th Wheel, All Polish Aluminum Wheels, #VD827239. **Syracuse, NY 315-432-1122**

<b>Royalton VT</b> 802-763-2585	<b>Colchester VT</b> 802-654-4420	<b>Bow NH</b> 603-225-6666	<b>Albany NY</b> 518-459-1122	<b>Newburgh NY</b> 845-245-4042
<b>Champlain NY</b> 518-298-3835	<b>Owego NY</b> 607-687-1200	<b>Rochester NY</b> 585-321-5250	<b>Syracuse NY</b> 315-432-1122	<b>Utica NY</b> 315-732-4300



**2026 FORD TRANSIT-350 READING SERVICE UTILITY VAN. V6, AUTO, POWER GROUP, STK#FM10149, \$82,900**



**NEW 2024 FORD E450 ROCKPORT SERVICE UTILITY VAN. V8, AUTO, AC, 14,500 GVW, STK#FM9969, \$68,030.**



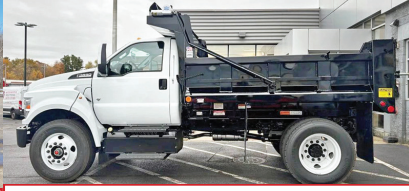
**2026 FORD F550 SD XL AIR-FLO DUMP 4X4. V8, AUTO, AC, 18K GVW, POWER GRP, STK#FM10423, \$101,165.**



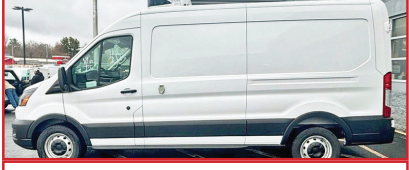
**2026 FORD F350 SD XL SUPER CAB LANDSCAPE DUMP 4X4. V8, AUTO, 14K GVW, STK#FM9553, \$82,745**



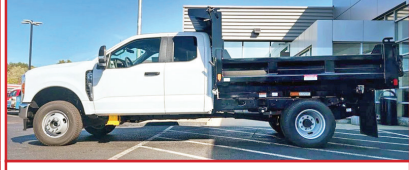
**2026 FORD F350 SD SUPER CAB XL DUMP 4X4. 7.3L V8, AUTO, AC, 14K GVW, POWER GRP, STK#FM9996, \$83,848.**



**2026 FORD F650 SD DUMP. 7.3L V8, AUTO, AC, STK#FM9571, \$97,358**



**NEW 2025 FORD TRANSIT 250 REFRIGERATED VAN. MEDIUM ROOF, V6, AUTO, AC, POWER GRP, STJ#FM9268, \$83,185.**



**2026 FORD F350 SD XL SUPER CAB DUMP 4X4. V8, AUTO, 14K GVW, POWER GRP, STK#FM9544, \$77,688**



**NEW 2027 FORD F650 C&C. 6.7L POWER STROKE V8 DIESEL, 270 HP, AUTO, STK#FM10424, \$90,415.**



**2026 FORD E350 READING SERVICE UTILITY VAN. 7.3L V8, AUTO, STK#FM9761, \$71,000**



**2026 FORD F350 XL ALUM. LANDSCAPE DUMP 4X4. 7.3L V8, AUTO, 14K GVW, STK#FM9589, \$83,475**



**2026 FORD F350 SD SUPER CAB XL C&C 4X4. V8, AUTO, AC, 14K GVW, 168" WB, POWER GRP, STK#FM10069, \$62,760.**



**2026 FORD F350 SD DUMP XL 4X4. 7.3L V8, AUTO, AC, REAR CAMERA, 14K GVW, STK#FM10406, \$81,030.**



**2026 FORD TRANSIT 250 MEDIUM ROOF VAN. V6, AUTO, NAV, AC, POWER GRP, STK#FM9852, \$52,739.**



**2026 FORD F350 SD SUPER CAB XL C&C 4X4. V8, AUTO, AC, POWER GRP, 14K GVW, STK#FM9987, \$63,420.**



**1200 WORCESTER ROAD  
(Rt.9 East)  
FRAMINGHAM, MA 01701**



**[www.mcgovernfordofframingham.com](http://www.mcgovernfordofframingham.com)**



**1999 JOHN DEERE 590D EXCAVATOR.** Good Bottom And Bucket, **\$18,900.**  
401-855-1178

# American SEMI REBUILDERS

**SPECIALIZING IN FRAME RAIL REPLACEMENTS, TRUCK RESTORATIONS, & REPAIRS**



- We Do What it takes to keep you moving
- Quality work done right the first time
- Over 40 Years Experience

FULLY LICENSED AND INSURED

27 Depot Street, Unit K-2, Center Barnstead, NH 03225

**603-269-0046**



**2004 PETERBILT WATER TRUCK.** 485 HP CAT, 8LL, Heavy Spec, 320K Miles, Very Clean, **\$89,000 OBO.**  
Located In Chichester, NH  
603-765-9140



**2008 CASE 589 M.** Backhoe/Loader, 5000 Hours, **\$33,000.** 207-252-1191

**DONOVAN • DONOVAN • DONOVAN • DONOVAN • DONOVAN • DONOVAN • DONOVAN**

6 Enterprise Drive  
Londonderry, NH 03053  
www.donovancompany.com



1-800-458-3867  
sales@donovancompany.com  
parts@donovancompany.com

DONOVAN • DONOVAN • DONOVAN • DONOVAN • DONOVAN • DONOVAN • DONOVAN

DONOVAN • DONOVAN • DONOVAN • DONOVAN • DONOVAN • DONOVAN • DONOVAN

**SWITCH-N-GO SWITCH-N-GO BODIES SWITCH-N-GO**



**MD Drop Box**



**Contractors Dump**



**Flat-Bed w/Beaver Tail**



**Work Ready Sub-Frame**

**OVER 50 BODIES IN STOCK**



**PALFINGER/STELLAR HOOK-LIFTS**



**BEAU-ROC DUMPS**



**SWITCH-N-GO HOIST SYSTEMS & INTERCHANGEABLE BODIES**

**DONOVAN • DONOVAN • DONOVAN • DONOVAN • DONOVAN • DONOVAN • DONOVAN**



**CONSTRUCTION INC.**

**Cherry Hill Construction Co., Inc**  
**51 Ciro Road – North Branford,**  
**CT 203-488-7929**

**www.CHERRYHILLEQUIPMENT.com**



**2023 Caterpillar 988K XE Wheel Loader,**  
**3000 Hours, Asking \$950,000**



**2025 KENWORTH**  
**T880 TRI AXLE**  
**DUMP. 510 HP**  
Paccar MX-13,  
Allison 4500 RDS  
A/T, 46K Rears, 20K  
Front, 21K Fixed Tag,  
16' Logan Dump,  
Odometer Reading  
13,114 Miles,  
**Asking \$237,000**



**2006 CAT 325D,**  
24,000 Hours, Q/C,  
Aux Hydraulics, Good  
Bottom. **Asking \$50,000**



**2006 CAT 966H.**  
Long Reach Arms,  
Large Bucket.  
**Asking \$59,000**



**1984 CAT 966D,**  
8854 Hours, Aux  
Hydraulics, Side Dump  
Bucket. **Asking \$37,000**



**2005 FREIGHTLINER**  
**BUSINESS CLASS M2,**  
124,000 Miles,  
**Asking \$15,000**



**1998 MACK RD 688SX 10**  
**Wheel Dump Truck, 123K**  
Miles, Automatic, Mack E7-350,  
**Asking \$28,000**



**2014 CAT CT660S LUBE**  
**TRUCK, 216,900 Miles,**  
2000 Gallon Fuel Tank,  
**Asking \$50,000**



**1995 HOGZILLA TC1464P. Tub Grinder,**  
1,751 Hours, **Asking \$115,000**



**1999 JOHN DEERE 200 LC.**  
14,586 Hours, **Asking \$29,000**

# Coletta's Sales & Service

For all of your truck, trailer, and truck body needs

- ★ Collision Center
- ★ Vehicle Service & Inspection
- ★ Towing & Road Service
- ★ Equipment Hauling
- ★ Part Sales & Delivery
- ★ Authorized Morgan Truck Body Distributor



250 Niantic Ave, Providence RI 02907  
www.colettas.com

**401-421-3232**



**DYNAPAC 250D ROLLER.**  
84" Drum, 2 To Choose, **\$45,000**  
**Each.** Located in Chichester, NH  
603-765-9140

**2000 VOLVO A30C.**  
16,769 Hours, Runs Strong, Good Tires, **\$48,000.**  
207-252-1191



**2006 MACK CV713.**  
E7 427 HP, 350K Miles, All New Brakes, 17' Beau Roc Dump Body With New Piston, Good Condition, Ready To Work, **\$58,000.**  
617-279-5532



## CTAXLE & SPINDLE REPAIR

**CT Axle & Spindle Repair Ellington, CT 06029**  
**860-281-4454 or 860-375-6045**



**DRIVESHAFT SERVICE NOW AVAILABLE**



**BEFORE**

**TRAILER SPINDLE REPLACEMENT WELDED IN PLACE**



**BEFORE**

**AFTER**

**TRUCK DRIVE SPINDLE REPLACEMENT WELDED IN PLACE**



**AFTER**

• Drive Spindles From 1 Ton To Class 8 Trucks • Trailer Spindles From 3,500# To Class 8 Axles  
Spindles can also be repaired by welding up the worn area and then remachining to factory spec.  
**This includes tracing threads or remachining new threads.**  
**WELDING AND FABRICATION ALSO AVAILABLE**

A Completely Mobile Spindle Repair System. We Come To You! Serving CT, MA, RI & the Northeast  
Visit Our Website At: [ctaxleservice.com](http://ctaxleservice.com)

# NORTHEAST TRAILER



20 Business Park Drive  
Smithfield, RI 02917  
Hours: M-F 8:30-4:30

## 401-941-4445



**70+ CARTAGE TRAILERS**  
53' Swing or Roll Door  
For Sale or Rent



**(2) 2014 WABASH 53'x 102"  
x 13'6" Swing Door, Air Ride**  
Alum. Roof, \$12,750 Each



**2015 UTILITY 53'x 102" x 13'6"  
Rfr. Swing Door, Carrier X 7,300**  
Unit, 17,000 Hours, \$18,500



**(4) 2023 20' x 8' Refrigerated**  
Shipping Containers, Tri-Fold  
Swing Doors, For Sale or Rent



**8 EXPORT FLATBEDS**  
\$3,750 Each



**20 FOOT CONTAINERS**  
Starting at \$95.00  
Per Month For Rent



**2009 WABASH 48'x 102" x 13'6"  
Refrigerated Trailer, No Reefer Unit**  
6,600Lb. Maxon Lift Gate, \$9,500



**2009 GREAT DANE Trailer**  
53'x 102" x 13'6", Swing Door, Air  
Ride, Aluminum Roof, \$7,000



**2005-2008 53' ROLL DOORS**  
Aluminum Roof, Spring Ride  
\$7,500 Each



**SPRING AND AIR RIDE**  
TANDEMS  
\$2,500 Spring Ride  
\$3,500 Air Ride



**4,000 GALLON**  
ABOVE GROUND FUEL TANK  
\$5,500



**(3) 2022 1-Trip High Cube Shipping**  
Containers, 1 With Single Door-\$8,500  
2 With Double Doors-\$9,250 Each

## WWW.NETRAILER.COM

WWW.TRUCKANDEQUIPMENTPOST.COM

**WE TAKE ANYTHING IN TRADE**

# Jolly John's

Truck & Equipment

**FINANCING AVAILABLE**

Find us on: facebook

**WE PAY CASH FOR YOUR TRUCKS & EQUIPMENT**



**2017 FORD F350 SUPER DUTY 4X4.** Crew Cab, V8 6.2L Gas, DRW, 9' Knapheide Service Body, Air Hose Reel, Strobe Lights, Aux Lighting. Ready to go. **\$30,900**



**2020 HINO 195 REEFER.** Hino J05E-TP 5.1L Diesel, 210 HP, Auto, Thermo King T-880R Whisper Reefer, Kidron 16' x 96" x 78" Body, Liftgate, Professionally Maintained Fleet Vehicle, Recently Serviced, Ready To Work. **\$35,900**



**2007 FORD F450XL FLATBED,** V8 Diesel Engine, 15' x 96" Bed, Liftgate, Aluminum Tool Boxes, Power Windows And Locks, Freshly Serviced. **\$9,900**

## FINANCING AVAILABLE



**2020 GMG 6094RT.** 60' Max Platform Height, 1200 lb Max Weight Capacity, Platform Extension, Power To Platform, Stabilizers, Upper Control Box, Tier 4, 2020 US EPA Label, Kubota V2403 4 Cyl, **\$39,995**



**2018 CATERPILLAR 312F EXCAVATOR.** Control Pattern Changer, Rear View Camera, 10' 4" Stick, 24" Triple Grouser Track Shoes, 39" Digging Bucket, Hyd Thumb, A/C. **\$83,900**



**2013 CHEVROLET C2500 SILVERADO.** Fleet Owned & Serviced, 6.0L V8, Strobe Lights, Brandfx 8' Service Body Lots Of Storage Space & Rust Free. **\$15,900**



**2014 GENIE S-65,** 65' Max Platform Height, 500 lb Max Weight Capacity, Jib, Power To Platform, Perkins 4 Cylinder 2.2 L Diesel Engine, 355/55D625 Tires **\$26,500**



**2016 TEREX R265T SKID STEER.** 4 Cyl Cummins, Heat & A/C, 2 Speed Travel, Aux Hyd, Aux Electrical Connector, Hyd Coupler, GP Bucket w/BOCE, Freshly Serviced, New Tracks, **\$24,900**



**2012 KENWORTH T470 T/A DUMP TRUCK,** Paccar PX-8, 8.3L Diesel, 330 HP, Eaton Fuller 8LL Manual Trans, 18K & 46K, PTO, Brandon 14' Steel Body, Just Serviced & Ready To Work. **\$62,900**



**2018 LAY-MOR SM-450 Enclosed Cab,** Air Conditioner, 96" Broom, Water System., Kubota V3307-CR-TI-EF02 4 Cyl 54.6 kW 3.3L Diesel Engine, Freshly Serviced. Ready To Work, **\$29,500**



**2016 DRYAIR 300GTS.** 223000 BTU Ground Heater, Furnace Oil Fueled, Single Phase, 120 V Input, No Generator Present, Ball Hitch Carrier Trailer, Electric Brakes, No Title - Sold With Bill of Sale Only, **\$16,900**



**2022 WACKER NEUSON SM100 TRACKED SKID STEER.** 3 Cyl Yanmar Turbo Diesel, Aux Hyd, GP Bucket With Boce, Meter Reads 208 Hours, **\$27,900**

**Call Nick 860-861-1326 or Mike 860-861-4199**  
**www.jollyjohnsequipment.com**



**METROPOLITAN  
TRUCK CENTER INC.**  
1074 TURNPIKE ST  
STOUGHTON, MA 02072  
**800-878-5491**



*Family owned and  
operated since 1980*

**SPRING INTO ACTION WITH NEW EQUIPMENT!**



**EBY "FLEX"  
REMOVABLE-SIDES LANDSCAPE BODY**



**SWAPP HOGG DETACHABLE  
BODIES**



**DURAMAG SERVICE BODIES  
"S" SERIES**



**AIR FLO STEEL & SS DUMP BODIES**



**RUGBY PLATFORM BODIES**



**DOWNEASTER LANDSCAPE BODIES**



**HEADACHE RACKS & TOOL BOXES**



**LIFTGATES  
TOMMY GATE, MAXON, THIEMAN, ANTHONY**



**GALION STEEL & SS DUMP BODIES**

**[www.metropolitantruck.com](http://www.metropolitantruck.com)**

**NICK SCARVALAS**  
**Commercial Sales**  
**857-247-9023 or 617-249-5603**



**2025 F550 DUMP.** V8 Gas 4x4, Remote Start, Toolbox, F214894. MSRP \$89,990. SAVE \$14,001. **SALE PRICE \$75,989**



**2025 F550 DUMP.** 9' Aluminum Body, Coal Chute, Remote Start, Diesel, 4x4, F214486. MSRP \$104,990. SAVE \$18,000. **SALE PRICE \$86,990**



**2025 F550 LANDSCAPER.** Diesel, 4x4, Remote Start, F213108 MSRP \$106,990. SAVE \$22,000. **SALE PRICE \$85,990**



**2025 F550 SERVICE.** Diesel, 4x4, Remote Start, Cabinet Lights, F214444. MSRP \$107,990. SAVE \$19,001. **SALE PRICE \$88,989**



**2026 E450 FRIEIGHT VAN.** 16' Rockport, 14,500 GVW, E-Trac, LED Rear Flood Light, 7.3L Gas, F213915. MSRP 81,990. SAVE \$11,501. **SALE PRICE \$70,489**



**2026 F350 RACK BODY.** 7.3L Gas, 4x4, Remote Start, 9' Knapheide, F214387 MSRP \$84,990. SAVE \$10,000. **SALE PRICE \$74,990**

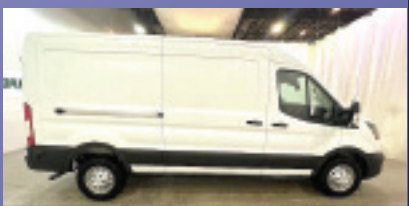
**250 COMMERCIAL TRUCKS IN STOCK**



**2025 T350 UTILITY.** Aluminum Body, 3 Bar Ladder Rack, V6 Gas, F214504 MSRP \$89,990. SAVE \$15,000. **SALE PRICE \$74,990**



**2025 T250 GENERAL TRADE PACKAGE VAN.** Organize Bin Package, V6, Bulkhead W/ Window, F213807. MSRP \$60,350. SAVE \$9,501. **SALE PRICE \$50,849**



**2026 T250 CARGO VAN.** All Wheel Drive, Mid Roof, Load Area Protection Pkg., F214828. MSRP \$60,455. SAVE \$4,500. **SALE PRICE \$55,995**



**2026 E350 HIGH CUBE.** 10' Rockport, Pass Thru Door, Poly Lined, 7.3L Gas, F214618. MSRP \$69,990. SAVE \$10,000. **SALE PRICE \$59,990**



**2026 E450 FREIGHT HAULER.** 16'5" x 96" Body, Two Rows E-Trac, Pull Out Ramp, Plywood Lined, Roll Up Rear Door, 7.3 Gas, F213020 MSRP \$74,990. SAVE \$15,501. **SALE PRICE \$59,489**



**2025 F550 SERVICE.** Super Cab, Diesel, 4x4, Remote Start, Cabinet Lights, F213003. MSRP \$114,990. SAVE \$21,001. **SALE PRICE \$93,989**

**QUIRK FORD**  
**540 Southern Artery (Rt 3A) Quincy, MA**  
**www.quirkford.com • 617-249-5660**

**Business Financing with NO Co-signer Required**

Prices include all available rebates. Rebates include Customer Cash, FMCC Bonus Cash, and Commercial Uplift Bonus Cash. Customer must qualify for rebates. Call for specific details. Prices are subject to change. \* In Lieu Of Rebates

**NICK SCARVALAS**  
**Commercial Sales**  
**857-247-9023 or 617-249-5603**



**Commercial  
 Vehicle Center**



**2026 F350 SERVICE.** Super Cab, 7.3 Gas, 4x4, Aluminum Body, SRW, F214685. MSRP \$84,990. SAVE \$5,501.  
**SALE PRICE \$79,489**



**2026 F550 CREW DUMP.** 7.3L Gas, 4WD, Tool Box, 9' Body, Pwr Rear Slide Window, Remote Start, Pwr Onboard, F214581. MSRP \$98,990. SAVE \$11,000.  
**SALE PRICE \$87,990**



**2026 F450 SERVICE.** Crew Cab, 7.3 Gas, 4x4, Steel Body, DRW, Pro Power, F214560. MSRP \$99,990. SAVE \$10,501.  
**SALE PRICE \$89,489**



**2026 F550 ROLL OFF.** Super Cab, Switch N Go, 7.3L Gas, 4WD, Tool Box, Remote Start, Pwr Onboard, F214579. MSRP \$114,990. SAVE \$11,000.  
**SALE PRICE \$103,990**



**2025 F350 DUMP.** 7.3 Gas 4x4, Remote Start, Toolbox, F214518. MSRP \$91,990. SAVE \$9,501. **SALE PRICE \$82,489**



**2026 F350 DUMP.** Super Cab, 4x4, 9' Body, 7.3 Gas, Remote Start, F214521. MSRP \$89,990. SAVE \$10,501. **SALE PRICE \$79,489**

**250 COMMERCIAL TRUCKS IN STOCK**



**2026 E350 UTILITY VAN.** 12' DuraCube, Central Locking, 50" Door Width, V8 Gas, F214487. MSRP \$89,990. SAVE \$10,000.  
**SALE PRICE \$79,990**



**2026 F550 DUMP.** Super Cab, 9' Body, 7.3 Gas, Remote Start, Dual Battery & Alternator, 19,500 GVW, F214491 MSRP \$99,990. SAVE \$9,000. **SALE PRICE \$90,990**



**2026 E350 UTILITY VAN.** 9' Rockport, Central Locking, V8 Gas, PW, PL, F214809. MSRP \$79,990. SAVE \$10,000.  
**SALE PRICE \$69,990**



**2026 E350 FRIEIGHT VAN.** 16' Rockport, Galvanized Liftgate, E-Trac, LED Rear Flood Light, 7.3L Gas, F213623. MSRP \$72,990. SAVE \$13,501. **SALE PRICE \$59,489**



**2026 T350 CARGO VAN.** High Roof, Load Area Protection Pkg., 9500 GVW, F214402. MSRP \$59,280. SAVE \$4,500. **SALE PRICE \$54,780**



**2026 F550 SERICE.** 16' Rockport Body, Platform & Step Bumper, 4 Bar Rack, Roof Ladder, Diesel, F214651. MSRP \$114,990. SAVE \$10,501.  
**SALE PRICE \$104,489**

**QUIRK FORD** **Business Financing with NO Co-signer Required**  
**540 Southern Artery (Rt 3A) Quincy, MA**  
**www.quirkford.com • 617-249-5660**

Prices include all available rebates. Rebates include Customer Cash, FMCC Bonus Cash, and Commercial Uplift Bonus Cash. Customer must qualify for rebates. Call for specific details. Prices are subject to change. \* In Lieu Of Rebates

**AREA HYDRAULICS**  
 810 Quaker Hwy. Uxbridge, MA  
**508-278-6670**  
 Cylinder Resealing  
 We Make Hose Assemblies  
 After Hours Service Available!

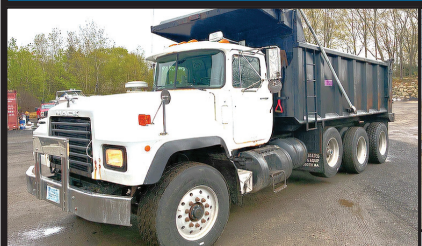




**2019 HITACHI ZX200-6 EXCAVATOR.** 2,508 Hours, AC, Control Pattern Changer, Cab Screens, Cameras, 9 ft 8 in Stick, Auxiliary Hydraulics, **\$115,000.** 207-252-1191



**1988 FORD L9000 6-WHEEL DUMP.** Cummins Engine, 8LL Trans, Steel Dump, Electric Tarp, Pintle W/Air, **\$14,500.,** Lawrence, MA 603-973-0809



**2001 MACK.** Fuller 8 Speed Transmission, Needs Nothing, **\$34,999.** 401-486-8552

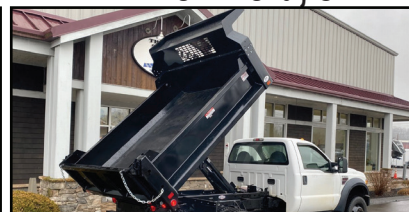


**2002 STERLING L19500 10-WHEEL DUMP.** 209K Miles, CAT C10 350HP 8 Sp, 445 Tires on 20K Front, 11-24.5 On 52K Rear, 72K GVW, 4:89 Ratio, Full Locking Rears, Dual Steering Boxes, 14' Rugged Dump Body, New Radiator, Pintle On Rear, 11' Highway Plow, Easily Removable Harness, **\$36,500 OBRO.** 508-269-1515

**THE TRAILER DEPOT** **203-234-7788** **WESTERN**  
 1037 Middletown Ave. (Rt. 17) **S N O W P L O W S**  
 Northford, CT



**CAM SUPERLINE 15.4K TELESCOPIC BEAST DUMP TRAILER.** 7' x 16' x 4' High Sides, Dual Telescopic Power Up/ Gravity Down Cylinder, #546667



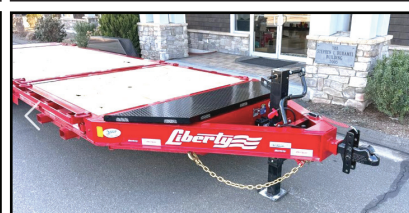
**CM TRUCK BEDS STARTING @ \$4,500**



**BEHNKE 14K CHANNEL SKIDLOADER TRAILER.** 6' 11" x 16', Dexter Spring Suspension, LED Flush Mount Lights, #073199



**SURE-TRAC PRO SERIES 15.4K TELESCOPIC DUMP TRAILER.** 7' x 14', 24" Rigid Side Walls, Slipper Spring Suspension, #454380



**LIBERTY 15.4K SPLIT DECK I-BEAM TRAILER.** 6' 11" x 22', (2) 7,000 lb Dexter Oil Bath Axles, 8" I-Beam Frame & Tongue, #051750



**RE-TRAC 25.9K HEAVY DUTY LOW PROFILE DECKOVER GOOSENECK.** 8'6" x 30', 5' Self Cleaning Beavertail, Cross-Trac Bracing, #487238

[www.thetrailerdepot.com](http://www.thetrailerdepot.com) **We'll Hook You Up**  
 WE DO FEDERAL INSPECTIONS!



**ALLEGIANCE**<sup>TM</sup>  
TRUCK CENTERS



[www.allegiancetrucks.com](http://www.allegiancetrucks.com)

Chris Frissora • 845-392-6522

[cfrissora@ascendancetrucks.com](mailto:cfrissora@ascendancetrucks.com)



**2025 INTERNATIONAL MV  
FLATBED.** STK#347755,  
**\$103,334.**



**2025 INTERNATIONAL MV  
VAN.** STK#347315,  
**\$113,900.**



**2025 INTERNATIONAL MV  
C&C.** STK#347813,  
**\$84,076.**



**2025 INTERNATIONAL LT.**  
STK#346982,  
**\$127,091.**



**2026 FORD F550 FORESTRY  
DUMP.** STK#362835,  
**\$105,425.**



**2026 FORD E450 16' BOX.**  
STK#356929,  
**\$72,742.**



**2024 INTERNATIONAL  
HX DUMP.** STK#356149,  
**\$237,345.**



**2025 ISUZU NRR RACK.**  
STK#342165,  
**\$83,720.**



**2025 ISUZU NPR HD VAN.**  
STK#340644,  
**\$68,412.**



**2025 ISUZU NRR  
REFRIGERATED VAN.**  
STK#350029, **\$111,439.**



**2024 ISUZU NRR HOOK-  
LIFT.** STK#330818,  
**\$95,508.**



**2024 INTERNATIONAL CV  
C&C.** STK#347749,  
**\$65,732.**



**2021 INTERNATIONAL  
HV DUMP.** STK#250584,  
**\$109,900.**



**2023 INTERNATIONAL  
HX DUMP.** STK#252005,  
**\$195,000.**



**2024 PMI ULTRA LIGHT  
TRAILER.** STK#332654,  
**\$69,500.**



**2026 HINO L6 VAN.**  
STK#349362,  
**\$113,737.**



**2023 INTERNATIONAL CV  
UTILITY.** STK#331509,  
**\$68,769.**



**2023 INTERNATIONAL  
CV. LANDSCAPE DUMP.**  
STK#324381, **\$98,056.**



**2025 INTERNATIONAL LT.**  
STK#347774,  
**\$127,327.**

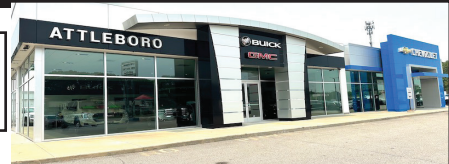


**2024 INTERNAATIONAL HX  
C&C.** STK#329315,  
**\$177,224.**

\*Not all brands sold at every location

# CHEVROLET, BUICK, GMC OF ATTLEBORO

**A Priority Automotive Dealership**



**ROUTE 1, BETWEEN 95 + 295  
SOUTH ATTLEBORO, MA**

**508-761-4800**

**PLENTY OF NEW GMC TRUCKS AVAILABLE**

**2026 K1500 8' BED**



V-8, NICELY EQUIPPED.  
#26061G SALE PRICE INCLUDED GM TRADE-IN REBATE.  
**\$44,660**

**2026 CANYON AT4X**



INCLUDES AT4 LIFT KIT.  
#26007G  
**\$60,715**

**2026 K2500 CREW CAB SLT DURAMAX DIESEL**



PLOW PREP. PKG., SPRAY LINER.  
#26135G  
**\$78,730**

**2026 C2500**



PERFECT FLEET SPECS., SPRAY LINER, ASSIST STEPS, CONV. PKG.  
#26175G  
**\$49,995**

**2026 K1500 AT4X**



6.2L V-8, ACTIVE EXHAUST, KICKER TAILGATE AUDIO SYSTEM.  
#26019G  
**\$84,385**

**2026 K2500 CREW CAB SLT**



SLT CONV. PKG., SPRAY LINER, PREFERRED PKG., HD SAFETY PKG., PLOW PREP. #26055G  
**\$73,270**

**2024 K3500 CREWCAB SLT DURAMAX DIESEL**

**8' BED**



SLT PREMIUM PKG., X-31 OFF ROAD PKG. #24219G  
**\$83,875**

**2026 K2500 AT4X DURAMAX DIESEL**



INCLUDES 5TH WHEEL PREP PKG.  
#26172G  
**\$99,000**

**2026 K1500 DOUBLE CAB**



V-8, PRO VALUE PKG., POWER SEAT, SPRAY LINER. PRICE INCLUDES GM TRADE-IN REBATE. #26109G  
**\$45,750**

**2026 K3500 DOUBLE CAB**



CONV. PKG., SPRAY LINER, ALUM. WHEELS, PLOW PREP, ASSIST STEPS, X-31 OFF ROAD SUSP. #26084G  
**\$59,175**

**2025 K2500 UTILITY**



CONV. PKG., PLOW PREP. #25261G  
**\$76,000**

**2026 K3500 DENALI DUALY DURAMAX DIESEL**



INCLUDES 5TH WHEEL PREP. PKG. #FVNZFN  
**\$95,110**

**\*\* PLUS OVER 50 MORE AVAILABLE \*\***



**WWW.CHEVROLETBUICKGMCOFATTLEBORO.COM**



# CHEVROLET, BUICK, GMC OF ATTLEBORO

**A Priority Automotive Dealership**



**ROUTE 1, BETWEEN 95 + 295  
SOUTH ATTLEBORO, MA**

**508-761-4800**

## PLENTY OF NEW CHEVROLET TRUCKS AVAILABLE

**2025 EXPRESS ONE TON  
EXTENDED VAN**



**9900 GVW, V-8, TRAILER PKG.,  
ALL THE OPTIONS. #25422H**

**\$53,885**

**2025 K3500 DUMP TRUCK  
DURAMAX DIESEL**



**14,000 GVE, PLOW PREP., HITCH,  
COVER, CONV. PKG. #25411H**

**\$81,000**

**2025 K3500 LT CREW CAB UTILITY  
DURAMAX DIESEL**



**DARK GREEN METALLIC, BUCKET SEATS,  
REMOTE START, HEATED SEATS.  
#25074H**

**\$95,300**

**2024 KUV**



**9,900 GVW, LOW ROOF,  
NICELY EQUIPPED. #24414H**

**\$71,895**

**2025 DURACUBE MAX 10'**



**9,900 GVW, ELEC. BODY LOCKS,  
LADDER RACKS, SHELVING. #25141H**

**\$69,000**

**2024 LCF 4500  
14' BOX + LIFT GATE**



**14,500 GVW, POWER MIRRORS,  
KEYLESS ENTRY, 14' ALUM. BOX,  
#23235H LIFT-GATE.**

**\$89,995**

**2025 12' BOX TRUCK**



**9,900 GVW, SINGLE REAR WHEEL,  
LOW FLOOR, NICE CHASSIS SPECS.  
#25343H**

**\$58,725**

**2025 K2500 DOUBLE CAB UTILITY**



**PLOW PREP., CONV. PKG., TRAILER  
BRAKE  
AND HITCH. #25120H**

**\$75,000**

**2024 4500 14' BOX**



**14,200 GVW, FANCY CHASSIS SPECS.,  
TRANSLUCENT ROOF, RAMP, TIE-DOWN  
HOOKS. #24409H**

**\$63,300**

**2025 COLORADO ZR2**



**FULL OFF-ROAD SPECS.  
INCLUDES LIGHT BAR, SHOCKS,  
STEPS, SUNROOF. #25385H**

**\$63,260**

**2026 K3500 CREW CAB LTZ  
DURAMAX DUALY**



**LTZ PLUS PKG., POLISHED ALUM. WHEELS,  
FIFTH WHEEL PKG., SUNROOF, ASSIST  
STEPS. #26216H**

**\$87,815**

**2026 K2500 TRAIL BOSS  
DURAMAX DIESEL**



**SAFETY PKG., PLOW PREP.,  
CONV. PKG2, NICELY EQUIPPED.  
#26228H**

**\$83,000**



**WWW.CHEVROLETBUICKGMCOFATTLEBORO.COM**



THIS AD IS COPYRIGHTED & OWNED BY TRUCK AND EQUIPMENT POST

# WANTED!!! MACK TRUCKS

**CAT, DEERE, BOBCAT EQUIP  
IN ANY CONDITION  
IMMEDIATE PAYMENT**

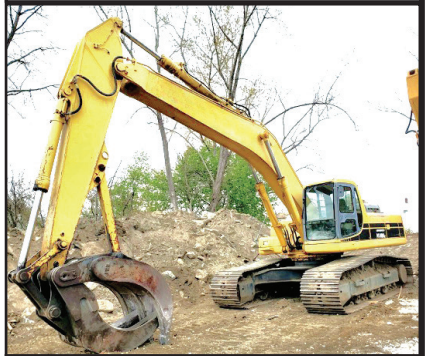


## CALL JOHNNY MACK

**johnnymack107@gmail.com  
HARTFORD, CT 860-883-1186**



**2005 MACK CV713 T/A DUMP.** 168,131 Miles, 58K Rears, 14' Dump Body, **\$60,000.** 207-252-1191



**1999 KOMATSU PC400LC-6LK.** Only 3500 Hours, Good Undercarriage, Bucket, Komatsu Engine, **\$67,000.** 401-855-1178 For Demo

## TOREKU TRACTOR & EQUIPMENT INC.



**4 Littleton Rd, Rt2A & 110, Ayer, MA • 978-772-6619**



**2002 KUBOTA L3010 HST TRACTOR/LOADER.** New Quick Coupler, New Bucket, 3742 Hours, Cab Roof & Windshield, Serviced & Ready, **\$15,500.**



**ALL TRAILERS ON SALE**

**MUST GO!**

**2022 18' LANDSCAPER TRAILER.** New, 8,000 GVW, **\$5,960**



**2022 KUBOTA L4060 HST TRACTOR/LOADER.** Front Hydraulics, 161 Hours, Like New, **\$32,500**



**2022 EXTREM KRT-424 DUMP TRAILER.** 4,990 GVW, Good Size To Haul With SUV or Small Truck, **\$6,395**

**VISIT US AT WWW.TOREKU.COM**



**GO GREEN!**

**8 LED Rectangular Surface Mount Warning Green / Amber Clear**



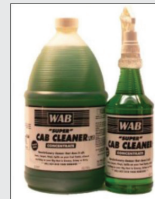
27 Selectable Flash Patterns

5 Year Warranty  
M20484GYCL-DC

**\$67.99**

**Maxxima**

**Super Cab Cleaner**



Removes grease and grime from seats, carpet, vinyl, plastic and almost anything on your rig that is greasy, grimy or dirty.

**Quart: \$9.25    Gallon: \$18.99**  
**5 Gallons: \$82.95**

**Ultra Thin 5 Inch Green/Amber LED**



Includes 3M™ self-adhesive tape for simple fastening.

5 Year Warranty  
8892210

**\$49.99**



**Brushes**



Extra Soft Wash Brush, Nyltex Bristle, 10" block, one threaded & tapered hole(193)

**\$19.69**



Extra Soft Bi-Level Wash Brush, Nyltex Bristle, 10" two sided plastic block. (195)

**\$25.99**

Special ends 6/15/26

920 W. Chestnut St. **Brockton, MA**  
Mon-Fri 8 am- 5 pm & Saturdays 8-12  
**508-586-1666**



**2005 MACK.** This Is My Truck  
So Call Me And I Will Tell You  
About All The New Parts &  
Extras, Super Clean, Fully  
Serviced, **\$40,000/BO**  
East Windsor, CT 860-716-0226



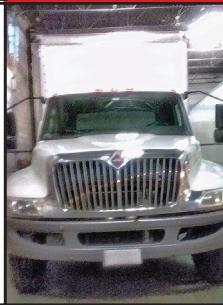
**\$110 Per  
Wheel Polish**  
**ACUSHNET WHEEL  
POLISHING**  
Used Rims Available  
**508-509-2014**  
62 SOUTH MAIN ST.,  
ACUSHNET, MA



**Service & Mechanic On Site**



**WALLENSTEIN  
3.5 INCH  
CHIPPER,**  
BX36, Hydraulic  
Feed, **\$5,300**  
860-928-5748



**2020  
INTERNATIONAL MV.**  
Cummins 6.7, Allison Auto,  
235K Miles, 26 Ft Box  
102x102, Big Tuck  
Away Lift Gate,  
Spring Suspension, Excellent  
Condition, Everything Works  
Perfectly, No Issues, No  
Lights, **\$24,900.**  
781-888-9015



**1998 KOMATSU D41E-6 DOZER.** 9,287 Hours, Heat, AC,  
Ripper, Good U/C, **\$35,000.** 207-252-1191



# Jukonski Truck Sales



[WWW.TRUCKSELLERS.COM](http://WWW.TRUCKSELLERS.COM) *se habla español*



680 NEWFIELD ST. (RT 3) MIDDLETOWN, CONN • **800-378-0342** • MON-FRI 9-5

**DON'T MISS OUT: YOUR IDEAL TRUCK AWAITS!**



**2024 INTERNATIONAL MV607 Wood  
Chipper Truck,** B6.7, Allison RDS,  
Crew Cab, 5K Miles, 25,999 GVWR,  
# T-RS300323, **\$129,000**



**2026 BRAND NEW HINO L6,** Diesel,  
25,950 GVWR, 26' Box, 2 AVAILABLE  
(One Has Liftgate).



**2018 FREIGHTLINER M2 24'**  
Box w/ Liftgate, 6.7L Cummins, Allison,  
115K Miles, 33K GVWR, #T-JDJK0822,  
**\$29,900**



**2021 CHEVROLET 4500 14' Stake Bed,**  
V8 Gas, Auto, 70K Miles, 14,500 GVWR,  
#T-MS200188, **\$31,900**



**2022 ISUZU NRR DC 14' Dump,** L96  
GM Gas, Auto, 50K Miles, 19,500  
GVWR, #T-NSR01252 **\$64,900**



**2019 ISUZU NRR 16' Box,** Liftgate,  
Diesel, Auto, 80K Miles, 19,500 GVWR,  
# T-K7304725, **\$39,900**



**2022 HINO S5 20' Reefer ,** Liftgate, Thermo  
King Reefer, Diesel, Auto, 83K Miles, 17,950  
GVWR, # T-N7901681, **\$47,900**



**2022 ISUZU NQR DC. 14' Dump,** L96  
GM Gas, Auto, 70K Miles, 17,950 GVWR,  
# T-NSR01171, **\$64,900**

**90 DAY POWERTRAIN WARRANTY AVAILABLE ON ALL CERTIFIED TRUCKS. INCLUDES INJECTORS AND TURBO**

# WWW.SCRANTONGMC.COM

777 TALCOTTVILLE ROAD VERNON, CT • 860-281-6726



NEW 2024 GMC SAVANA CUTAWAY. 16' CLASSIC CUBE WITH 12' WALK RAMP, #R9660, \$52,977



NEW 2024 GMC SAVANA. 12' DURACUBE MAX SERVICE BODY WITH LOCKS, BACK UP CAMERA, #R9638, \$59,977



NEW 2024 GMC SAVANA CUTAWAY. DRW, 12' DURACUBE MAX SERVICE BODY, #R9868, \$61,977



2025 GMC SAVANA 3500 EXTENDED CARGO VAN. 6.6L V8, CHROME APPEARANCE PACKAGE, #S9276



2026 GMC SIERRA 3500 CREW CAB & CHASSIS. 6.6L, 4X4, DRW, 60" CA, 176.8 WB, #T9606



2026 GMC SIERRA 3500 REGULAR CAB & CHASSIS. 4X4, DRW, 60" CA, #T9565, \$52,777



2025 GMC SIERRA 3500 CREW CAB. 4X4, DRW, 9' READING SERVICE BODY, GAS, #T9367, \$72,777

MANY OTHER TRUCKS IN STOCK. CALL FOR DETAILS



# WWW.SCRANTONGMC.COM





# CONSOLIDATED TRUCK & EQUIPMENT, INC.

**FELLING TRAILERS**

**EXTREME TRAILERS**



[www.ConsolidatedTruckEquipment.com](http://www.ConsolidatedTruckEquipment.com)

**1727 FALL RIVER AVE, (RT.6) NEAR SEEKONK SPEEDWAY  
SEEKONK, MA**



### NEW CHALLENGER 26' STEEL DUMP TRAILER.

High Lift Gate, Single Point Suspension, Electric Tarp, 11x24.5 Tires On Aluminum Wheels, Call For Price.



### NEW FELLING 25 TON: AIR RAMPS, FRONT AXLE LIFT.



2006 WESTERN STAR. 46 rears, C-15 Cat motor, Air Ride, 11 x 24.5 Tires On Aluminum Rims, Wet Line, Good Straight Truck, One Owner, \$38,000.



2025 MAC 28' ALLUMINUM DUMP TRAILER: 8 ALLUMINUM RIMS, ALLUMINUM FRAME, AIR RIDE, 1/2 PLASTIC LINER.



2026 FELLING FT-16-2T Tilt Top Trailer: 23' Deck x 102" Wide, Viper Red, Aluminum Wheels, 18,400lb GVW \$24,500.00 2 in stock GVW \$24,500.00 2 in stock. Fire Hydrant available on request.



2025 MAC 26' STEEL DUMP TRAILERS: Hi-Lift Gate, 24.5 Tires On Aluminum Rims, 60,000 LB Center Point Suspension, Electric Load Cover, Body All 1/4" Hardox,



2025 MAC 27' STEEL BODY ALUMINUM FRAME TRAILER: Hi-Lift Gate, Air Ride, 11x24.5 Tires On 8 Aluminum Rims, Hardox Steel Body, Full Aluminum Side Skirts, Due In 2 Available, Trades Accepted,



2025 FELLING 20 TON TAG W/ AIR RAMPS. CALL.

CALL US: AT 508-336-6215 • HOURS: M-F 8 to 5:30 • SAT: 9 to 12 Noon



**WANCO PORTABLE VARIABLE MESSAGE SIGNS.** Model NTCIP, Solar Panel Battery Charging, Package Deal For Both, **\$4800.** 401-855-1178



**LOOKING FOR SEMI-TRUCK TIRES?**



**CALL 508-509-2014**



**SWANSEA NURSERY and LANDSCAPING SUPPLIES**  
508-672-0577  
205 Stevens Road • Swansea, MA 02777

LOAM • MULCH • TOPIARY • ARBORVITAE  
FLOWERING SHRUBS • FLOWERS • GRASSES  
FRUIT TREES • SHADE TREES



**2007 JOHN DEERE 310J.** 4X4, Extend-A-Hoe, Forks, Two Stick, Good Tires, 6,369 Hours, **\$38,500.** 207-252-1191



# INTERNATIONAL Taylor & Lloyd Inc.

**SEE OUR INVENTORY: [WWW.TAYLORANDLLOYD.COM](http://WWW.TAYLORANDLLOYD.COM)**



**2025 INTERNATIONAL MV 607.** Brand New, 254 WB, Allison 3500 RDS, Cummins 300 HP, Air ride



**2025 INTERNATIONAL HV607 SBA CAB & CHASSIS.** Cummins B6.7 325 HP, Allison 3500, 10K F/A, 23K R W/Locking Diff, Call For More Info.



**2025 INTERNATIONAL HV507 CAB & CHASSIS.** Cummins L9 330 HP, Allison Auto, 165" WB, 18K F/A, 30K R/A, Call For More Info.

**617-429-3370 CALL JACK COAKLEY • 8 Railroad Avenue Bedford, Ma**

**SALVADORE**

FAMILY OF DEALERSHIPS

442 W. Broadway, Gardner, MA | SalvadoreRam.com



**RAM**

978-616-6127

**RAM CHASSIS CAB DEALER  
IN NEW ENGLAND**



**WE HAVE YOUR TRUCK!**



**SAVE \$4,700!**



**GVWR: 19,500 LBS!**

2026 RAM 5500  
TRADESMAN REG  
CAB 4X4

6.7L I6 CUMMINS TURBO  
DIESEL ENGINE - 8-SPD  
TORQUEFLITE HD AUTO  
TRANSMISSION

**MSRP: \$96,001  
OUR PRICE: \$91,800**  
STK # N26070

**SAVE \$9,700!**



**READY TO WORK!**

2026 RAM 5500  
TRADESMAN  
REGULAR CAB 4X4

6.7L I6 CUMMINS TURBO  
DIESEL ENGINE - 8-SPD  
TORQUEFLITE HD  
TRANSMISSION

**MSRP: \$104,228  
OUR PRICE: \$95,027**  
STK # N26146

**SAVE \$4,700!**



**READY TO UPFIT!**

2026 RAM 5500 CHASSIS  
CAB TRADESMAN  
CREW CAB 4X4

6.7L I6 CUMMINS TURBO  
DIESEL ENGINE - 8-SPD  
TORQUEFLITE HD AUTO  
TRANSMISSION

**MSRP: \$83,150  
OUR PRICE: \$78,949!**  
STK # N26064



**SAVE \$4,700!**

**READY TO UPFIT!**

2026 RAM 5500  
TRADESMAN  
REGULAR CAB 4X4

I-6 6.7 L CUMMINS TURBO  
DIESEL ENGINE - 8 SPEED  
AUTO TORQUEFLITE HD  
TRANSMISSION

**MSRP: \$105,775  
OUR PRICE: \$101,075**  
STK # N26078

**SAVE \$4,700!**



**GVWR: 19,500 LBS!**

2026 RAM 5500  
TRADESMAN  
REGULAR CAB 4X4

6.7L I6 CUMMINS TURBO  
DIESEL ENGINE - 8-SPD  
TORQUEFLITE HD AUTO  
TRANSMISSION

**MSRP: \$104,708  
OUR PRICE: \$100,507!**  
STK # N26082

**SAVE \$3,750**



**GVWR = 12,300 LB!**

2026 RAM 3500  
LONGHORN CREW  
CAB 8' BOX 4X4

6.7L I6 CUMMINS HO TURBO  
DIESEL ENGINE - 8-SPD  
AUTO TORQUEFLITE HD  
TRANSMISSION

**MSRP: \$104,665  
OUR PRICE: \$101,414!**  
STK # N26118

**SAVE \$1,800!**



**GVWR: 13,500 LBS**

2026 RAM 3500 CHASSIS  
CAB TRADESMAN REG  
CAB 4X4

6.4L V8 HEMI HD GAS  
ENGINE - 8-SPD AUTO  
TRANSMISSION

**MSRP: \$79,483  
OUR PRICE: \$75,637!**  
STK # N26053

**SAVE \$9,700!**



**READY TO WORK!**

2026 RAM 5500  
TRADESMAN  
REGULAR CAB 4X4

I-6 6.7 L/408  
INTERCOOLED TURBO  
DIESEL ENGINE - 8 SPEED  
AUTO TRANSMISSION

**MSRP: \$95,228  
OUR PRICE: \$86,027**  
STK # N26134

**SAVE \$3,500!**



**READY TO WORK!**

2026 RAM 2500  
TRADESMAN  
REGULAR CAB 8' BOX

6.4L V8 HEMI HD GAS  
ENGINE - 8-SPD  
TRANSMISSION

**MSRP: \$65,565  
OUR PRICE: \$52,569**  
STK# N26097

**SAVE \$4,700!**



**GVWR: 19,500 LBS!**

2026 RAM 5500  
TRADESMAN REG  
CAB 4X4

6.7L I6 CUMMINS TURBO  
DIESEL ENGINE - 8-SPD  
AUTO TRANSMISSION

**MSRP: \$79,055  
OUR PRICE: \$74,854!**  
STK # N26008

**Additional Inventory Available & Ready For Custom Upfits!**

Not responsible for typographical errors. Inventory changes frequently. Pricing subject to change due to manufacturer rebates. Pricing includes Doc Fee, all available rebates and incentives and may require vehicle to be reported as a Business sale to the manufacturer. See dealer for complete details.

**SALVADORE**  
FAMILY OF DEALERSHIPS

PREOWNED  
**SuperCenter**

A GREAT EXPERIENCE  
COMES STANDARD

**WE'VE GOT YOUR TRUCK**  
*For Less!*

SalvadoreAuto.com | 978-630-2001 | 249 Timpany, Blvd., Gardner, MA

**PRICE DROP!**



2023 RAM PROMASTER CARGO VAN 1500 LOW ROOF 136 WB  
V-6 3.6 L/220 GAS ENGINE - 9-SPD AUTO TRANSMISSION  
STK # P2427  
**1 - OWNER! NOW ONLY \$27,885**

**PRICE DROP!**



2014 TOYOTA TUNDRA TRUCK SR5 4X4  
V-8 5.7 L/346 GAS ENGINE - 6-SPD AUTO TRANSMISSION  
STK # C26232X  
**1 - OWNER! NOW ONLY \$23,989**

**PRICE DROP!**



2023 CHEVROLET SILVERADO 1500 LT TRAIL BOSS 4X4  
V8 5.3L/325 GAS ENGINE - 10 SPD AUTO TRANSMISSION W/PADDLE SHIFTERS  
STK # C26258A  
**EZ LIFT POWER TAILGATE! NOW ONLY \$37,413**

**READY TO WORK!**  
.....  
**DOZENS OF TRUCKS IN STOCK TO CHOOSE FROM!**  
.....  
**ALL MAKES AND MODELS!**  
.....  
**TOP DOLLAR FOR YOUR TRADE!**  
.....  
**978-630-2001**

**PRICE DROP!**



2021 CHEVROLET SILVERADO 5500HD WORK TRUCK  
DURAMAX 6.6L V8 TURBODIESEL ENGINE - 6-SPD AUTO TRANSMISSION  
STK # N26051A  
**ONLY 45,985 MILES! NOW ONLY \$59,996**

**PRICE DROP!**



2025 CHEVROLET SILVERADO 2500HD LT  
V8 6.6L/ GAS ENGINE - 10-SPD AUTO TRANSMISSION  
STK # G7624  
**EZ LIFT POWER TAILGATE! NOW ONLY \$57,980**

**PRICE DROP!**



2018 TOYOTA TUNDRA LIMITED 4X4  
V-8 5.7 L/346 GAS ENGINE - 6 SPD AUTO TRANSMISSION  
STK # N26132B  
**ONLY 56,425 MILES! NOW ONLY \$41,925**



**DUMP TRAILER. \$12,000.** East Windor, CT 860-716-0226



**2011 NEW HOLLAND B95B.** 4WD, Extend-A-Hoe, Excellent Condition, New Batteries, 2336 Hours, Asking **\$34,000.** 978-502-8557



**2001 INTERNATIONAL 4900 FUEL DELIVERY TRUCK.** 2400 Gallon Aluminum Tank, 232K Miles, DT466, **\$10,500.,** Lawrence, MA 603-973-0809



**2022 DODGE RAM 4500 HD.** 4x4, Crew Cab, I-Pac Tool Box, Dump 73,436 Miles, Cummins, **\$55,000.** 207-252-1191



**1992 INTERNATIONAL.** New Engine DT360 Diesel, Running, 5 Speed Manual, Heavy Duty Hydraulic Gate, **\$7,500** For Truck Or **\$5,500** For Engine. 860-424-6282



**2022 FORD F250 XLT.** 7.3L Gas, 58,000 Miles, Short Bed, 4WD. **\$42,590.** 401-533-1673

**2017 CASE TR340.**  
1069 Hours, Bucket,  
Forks, Snowplow, &  
Wood Processing At-  
tachment,  
**\$40,000 OBO.**  
860-487-7820 Or  
860-753-2016



**KVERNELAND 3 BOTTOM PLOW,** Automatic Reset,  
**\$1,500** 860-928-5748



**1994 RAY TECH RC8000.** Hot Box Patch Trailer.  
**\$1,200.** 207-252-1191

# 202

**TRUCK  
&  
EQUIPMENT**  
**603-899-2000**

**www.202truck.com**  
**RT 202 Rindge NH**  
**SALES & RENTALS - NO SALES TAX**  
**FINANCING & DELIVERY**



**2021 KUBOTA KX040-4.** 994 Hours,  
Hydraulic Thumb, Blade, Cab, 18" Bucket,  
Nice Machine, **\$49,500.**



**2020 KUBOTA KX080.**  
2700 Hours, Double Aux Hyd., Coupler, Hyd.  
Thumb, Angle Blade, New 30" Digging Bucket, 17"  
Trenching Bucket **\$68,400.**



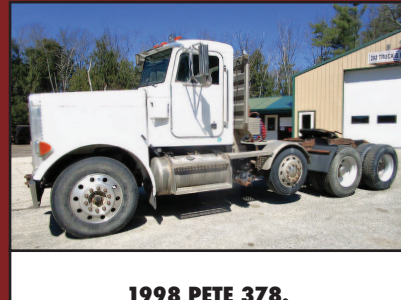
**2006 MACK GRANITE. CV713- 427,** Automatic,  
Beau-Roc 15'6" Dump, 18F+ 46R, 3 Chutes,  
Trailer Ready Pintle, Local Truck Well Taken  
Care Of All Service Done Locally. **\$55,000**



**2014 PETERBILT 337.**  
330K Miles, 6 Spd., 33,000 GVW,  
Paccar PX6, Clean Truck, Good Tires,  
New Rack & Form Cage, **\$72,000.**



**2014 PETERBILT 337.** Paccar PX7 300HP,  
26,000 GVW, Manual 6 Speed, Air Ride, 10F  
+ 16R On Air Brakes, 138K Miles, Hours:  
6360, 6 New 11R22.5 Tires, 14 Ft Curry  
Utility Body With Compressor, WB 190",  
Cab To Read Axle 120", **\$42,500.**



**1998 PETE 378.**  
3406E, 18 Speed, 14F, 12LA,  
46R On Chalmers, 220" WB,  
440K Miles, Clean,  
No Rust, From Wyoming,  
**\$35,000.**



**2008 CAT CS423E.** 1,462 Hours, 66" Drum, Runs And Move Well,  
**\$44,000**



**1996 Ford 655E.** 2 Owner Machine, Everything Works As It Should,  
4x4, E-Hoe, Forks Included, Manual Thumb Has Been Added.  
**\$23,500.**

**FAMILY OWNED & OPERATED SINCE 1969**

# HILLSIDE MOTORS

**800-D American Legion Highway (Rt. 177)  
Westport, MA 02790  
508-636-5050**

**Financing Available - Others in Stock**



**SEE OUR OTHER PAGE – LAST PAGE OF CENTERFOLD – PAGE CF8**



**2 AVAILABLE**

**2025 ED 16' DUMP TRAILER W/STOW-AWAY RAMPS.** 14,000 GVW, Barn Doors, LED Lights, D-Rings, One Owner, Minimal Use, Mint Condition, **\$10,400.**  
**(Also, 14' Dump Trailer Available, \$9,200.)**



**4X4**

**2018 FORD F250 REG CAB 8' BED 4X4.** XLT Trim, 6.2L V8, Auto, PW, PL, AC, Back-Up Camera, Bluetooth, Running Boards, 86K, One Owner, Excellent Condition, **\$27,700.**



**OTHERS AVAILABLE**

**2020 CHEVY SILVERADO 2500 CREW CAB 8' BED RWD.** 6.6L V8, Auto, AC, PW, PL, Bluetooth, Back-Up Camera, 6-Passenger, 99K, One Owner, Fleet Maintained, File Photo, Excellent Condition, **\$28,800.**



**RED-LINE PKG**

**2018 CHEVY 1500 CREW CAB 4X4 Z71 LTZ PKG. RED-LINE EDITION.** 5.3L V8, Auto, AC, Leather, Sunroof, Nav, Loaded, Tech Pkg, 108K, Southern Truck, Sharp Truck, **\$27,700.**



**9900 LB GVW**

**2021 CHEVY 3500 SRW 14' CUBE VAN W/SIDE DELIVERY DOOR.** 6.6L V8, Auto, AC, PW, PL, Alum. Shelving, Bluetooth, Back-Up Camera, 9900 GVW, Low Pro, One Owner, 51K, Fleet Maintained, **\$36,800.**



**12K GVW**

**2024 MST 40' GOOSENECK TRAILER.** Mega Ramps, Wood Deck, FILE PHOTO, Toolbox, LED Lighting, Dual 8,000lb Axles, 12,000 GVW, Trades Accepted, Financing Available, **\$10,800., CASH TALKS**



**ONE TON**

**2015 FORD F350 SRW 4X4 SERVICE TRUCK W/POWER GATE.** Vanair Compressor/Gen Jump Start System, 6.2L V8, Auto, AC, Meticulously Maintained, 113K, Rust-Free Southern Truck, **\$25,400. or \$21,400. w/o Equipment (2 Available)**



**OTHERS AVAILABLE**

**2024 CHEVY 4500 14' BOX W/POWER GATE.** 6.6L V8, Auto, PW, PL, Back-Up Camera, Bluetooth, 14,500 GVW, Bal. of Factory Warranty, 43K, Excellent Condition, **\$46,900. (Will Separate)**

# PLACE MOTOR Inc.

The "RIGHT PLACE" Since 1923



## COMMERCIAL TRUCKS



*Phil Crowley*  
"THE TRUCK GUY"



PHIL CROWLEY  
508-943-8012



19 Thompson Rd.  
Rte. 193  
Webster, MA.

**WWW.PLACEMOTOR.COM**



**WE HAVE MAVERICKS - XL + XLT & HYBRIDS !**  
\*\*\* 8 AVAILABLE \*\*\*



SHORT BED

NEW 2026 FORD F-350 CREW-CAB  
4X4 PLATINUM, 6.7L DIESEL, WHITE  
IN COLOR,  
POWER MOON-ROOF AND MORE !



8' BED

NEW 2026 FORD F-350 CREW-CAB  
4X4 PLATINUM 6.7L DIESEL,  
BLACK IN COLOR, POWER  
MOON-ROOF AND MORE !



WHITE & BLUE

NEW 2026 FORD TRANSIT 250 AWD  
MEDIUM ROOF,  
SEVERAL TO CHOOSE FROM.  
**CALL FOR MORE DETAILS !**



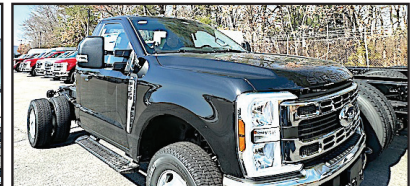
2 LEFT

NEW 2025 FORD F-750 CAB  
AND CHASSIS  
330 HP., DIFFERENT WHEEL  
BASES AVAILABLE.  
**CALL FOR MORE DETAILS !**



2027 FORD E-350 AEROCCELL  
DUAL REAR WHEEL  
15' IN LENGTH.

**CALL FOR MORE DETAILS !**



NEW 2026 FORD F-350 CREW-CAB  
CHASSIS 4X4  
7.3L GAS ENGINE.

**CALL FOR MORE DETAILS !**

\*All Factory Rebates Back To Deal



**MASSACHUSETTS OLDEST FORD  
DEALER SINCE 1923**





# PLACE MOTOR Inc.

The "Right Place" Since 1923

## COMMERCIAL TRUCKS

Call Phil Crowley "The Truck Guy"  
508-943-8012



19 Thompson Rd.  
Rte. 193 Webster, Ma.

# WWW.PLACEMOTOR.COM



**NEW 2026 FORD F-350 4X4  
SUPER-CAB PICKUP  
6.7L HIGH OUTPUT DIESEL,  
XLT TRIM,  
SHORT BED AND MORE !**



**NEW 2026 FORD F-350  
REGULAR CAB 4X4  
6.8L GAS, XL TRIM.  
CALL FOR DETAILS !**



**NEW 2026 FORD F-250  
SUPER-CAB 4X4  
SHORT BED AND LONG  
BED AVAILABLE !**



**NEW 2026 FORD F-350  
REGULAR CAB  
4X4, XLT TRIM, 6.7L  
DIESEL.  
CALL FOR MORE DETAILS !**



**NEW 2026 FORD E-350  
12' AREOCELL  
SINGLE REAR WHEEL.  
IN STOCK !**



**NEW 2026 FORD F-550  
CAB & CHASSIS 4X4  
7.3L & 6.7L DIESELS,  
60 AND 84 CA.  
RED & WHITE  
AVAILABLE !**

0% FOR 60 MONTHS - AVAILABLE ON XL TRIM PACKAGES ONLY IN LIEU OF REBATES. All Factory Rebates Back To Dealer\*

# WWW.PLACEMOTOR.COM



COMMERCIAL  
VEHICLE CENTER

**SALES & RENTALS INC.**  
**T-QUIP**  
 YOUR **1<sup>ST</sup>** CHOICE IN SALES  
 & RENTALS

☎ 603-623-3669  
 🌐 equipmentsales@tquip.com  
 📧 @tquipsalesandrentals  
 📍 603 Mammoth Road  
 Londonderry, NH 03053

**WE HAVE BIG, LARGE, HUGE, GREAT, HANDSOME LOADERS!!**



**2020 CAT 982M** A/C, 8.5CY 140" TOOTH BKT, ON-BOARD CAT SCALE, JYSTK STR, AUTO LUBE, 875/65R29 L5 MATCHING RADIALS, NEW \$60K REMAN TRANS @ 8374 HRS **\$219,000**



**(2) 2020 DEERE 744L** A/C, AUX HYD, 4CY 4-IN-1 BKT, RIDE CTRL, REAR CAM, 26.5R25 RADIALS, 3,351+ HRS



**2021 HITACHI ZW370-6** A/C, 121" 8.25CY GP BKT, 389HP ISUZU T4F DSL, RIDE CTRL, 29.5R25 RADIALS, ONLY 1 OWNER, 6,790 HRS **\$159,000**



**2016 KOMATSU WA500-8** A/C, 140" 9CY GP BKT, TIER-4 FINAL, 4-SPD PWRSHFT, RIDE CTRL, ENG TURBO, DIFF LOCK, TRCTN CTRL, 875/65R29 RADIALS, 9,896 HRS **\$145,000**



**2022 KOMATSU WA475-10** A/C, 126" 6CY GP BKT, ON-BOARD SCALE, RIDE CONTROL, 775/95R29 RADIALS, 5,376 HRS **CALL FOR PRICING**



**2010 CAT 980H** A/C, 138" GP BKT, AUTOSHIFT, COMMAND CTRL STEERING, 29.5R25 RADIALS, 16 HRS **CALL FOR PRICING**



**2022 DEERE 844L** A/C, 8.5CY GP BKT, AGG HANDLER PKG, PAYLOAD SCALE, JYSTK STR, RIDE CTRL, REAR CAM, 8,241 HRS **\$199,000**



**2020 CAT 966M** A/C, 6CY GP BKT, AUTO LUBE, RIDE CTRL, REAR CAM, 26.5R25 RADIALS, 11,732 HRS **\$129,000**



**2017 CAT 299D2** A/C, XPS HI-FLO AUX HYD, 110HP TIER-4 FINAL DSL, 2-SPD HST, HYD Q/C, 80" BKT, 18" RBR TRKS, 2,489 HRS **\$55,000**



**2023 CAT 279D3** CAB, A/C, HYD Q/C, 74" BKT, 14-PIN ELEC KIT, JOYSTICK STR, REAR CAM, 18" RBR TRKS, 2,648 HRS **\$59,500**



**(2) 2018 CAT 262D** CAB, A/C, AUX HYD, MNL Q/C, 72" GP BKT, 2-SPD, 12X16.5 RBR, 930+ HRS **\$39,500 EACH**

**NOTHING IS OUT OF REACH—CALL US FOR FINANCING OPTIONS!**



**2020 PETERBILT PB348**  
 4000GAL TANK, 6X4, PX-9 DSL, 6-SPD ALLISON 3000  
 RDS-P AUTO TRANS, PWR STR, TANDEM AXLE, 6.17 RATIO,  
 11R225 TIRES, 166K MI, 4,336 HRS **\$115,000**

**SALES & RENTALS INC.**  
**T-EQUIP**  
**EQUIPMENT**  
**SALES & RENTALS**



**2015 PETERBILT 367** 10X4, A/C, 485HP PACCAR MX-13  
 6CYL, ENG BRAKE, EF AUTO, DIFF LOCK, 4.10:1 RATIO, 80K  
 LB GVWR, 425/65R22.5 F & 11R24.5 R TIRES, STEERABLE AIR  
 LIFT TAG AXLE, DUAL STR BOXES, DBL FRM, HENDRICKSON  
 HAULMAXX, 254" WB, 18'L X 5'H HERITAGE STEEL BODY,  
 ELEC ROLL TARP, HI-LIFT TAILGATE, 180K MI **\$99,000**



**2012 DEERE 300D-II**  
 30-TON CPTY, A/C, 6X6, DIFF LOCK, HEATED BODY,  
 25.5R25 RADIALS, 7,127 HRS  
**\$129,000**



**2012 KOMATSU PC290LC-10**  
 A/C, 60' YOUNG BM, 60" CLEANUP  
 BKT, TIER-3 DSL, PTRN CHNGR,  
 AUTOLUBE, REAR CAM, LONG UC, 32"  
 TG PADS, 6,630 HRS **\$79,000**



**2015 CAT 336FL** A/C, 13' STK,  
 AUX HYD, HYD Q/C, 54" AMI BKT,  
 314HP CAT C15 ACERT TIER-4 FINAL DSL,  
 PTRN CHNGR, HEATED ST, REAR CAM,  
 24" SG PADS, 5,688 HRS **\$149,000**



**2020 DOOSAN DA30**  
 30-TON CPTY, A/C, TIER-4 DIESEL,  
 TAILGATE, AUTO LUBE, AIR RIDE SEAT,  
 23.5R25 RADIALS, 5,301 HRS  
**\$159,500**



**2023 CAT 315GC**  
 A/C, 8'2" STK, AUX HYD, HYD Q/C, 36"  
 CAT BKT, ENG TURBO, GRD CTRL, PTRN  
 CHNGR, 20" RBR PADS, 1,594 HRS  
**\$142,500**



**2023 CAT 313GC**  
 A/C, 8'2" STK, AUX HYD, HYD Q/C,  
 36" BKT, HYD THUMB, GRD CTRL, PTRN  
 CHNGR, REAR CAM, 28" PADS, 721 HRS  
**\$135,000**



**2014 KOMATSU D65EX-17**  
 A/C, AUX HYD, 11'2" SIGMA SU HYD  
 BLADE W/ TILT, 205HP TIER-4 DSL,  
 GPS RDT, RIPPER VLV, DRAWBAR,  
 26" PADS, 4,105 HRS **\$119,000**



**2020 CAT TL1255** 12,000LB CPTY,  
 55' HT, EROPS, A/C, 60" FORKS W/  
 72" CARRIAGE, FRONT OUTRIGGERS,  
 4,007 HRS **\$99,000**



**2019 CAT TL1055** 10,000LB CPTY,  
 55' HT, EROPS, A/C, 60" FORKS W/  
 72" CARRIAGE, FRONT OUTRIGGERS,  
 3,287 HRS **\$99,000**



**2020 GMG 4069RT** 800LB CPTY,  
 40' PTFM HT, 59" EXT PTFM, 4WD, 3CYL  
 KUBOTA D1105 TIER-4 DSL, 27X12-15  
 TIRES, 25 HRS **\$15,000**

**ADDING UNITS TO OUR FLEET DAILY FOR YOUR RENTAL NEEDS**

**We are cash buyers for quality used trucks and equipment!**

# BROOKSIDE EQUIPMENT SALES

[www.BrooksideEquipment.com](http://www.BrooksideEquipment.com)

**978-249-4600**



**2014 CATERPILLAR 304E CR:** 3,867 Hrs, 18" Dig Bucket & 4' Cleanup Bucket, Cab W/A/C, Hyd. Thumb, Manual Coupler, Pattern Changer, 2 Spd, 77" Blade, 4 Cyl Cat C2.4, 6.9k Lbs, stk#MX925, **\$39,500**



**2021 DOOSAN DX180LC-5:** 1,477 Hours, 44" Bkt, Hyd Doosan Thumb, 4 Cyl Perkins Turbo, Backup Camera, A/C, Good U/C, stk#XC692, **\$99,500**



**2008 HAULOTTE HS5388RT:** 2,342 Hours, 52 Ft Rough Terrain Scissor Lift, 4x4, 88" Wide, 2 Cyl Hatz Diesel, Stabilizers, stk#AE118, **\$11,500**



**2016 JOHN DEERE 410L:** 5,563 Hrs, 4x4, X-Hoe, Cab W/A/C, Front Hyd Coupler w/3rd Valve, Power Shift, Ride Control, Pilot Controls w/Pattern Changer, 24" Dig Bucket, Rear Manual Coupler, stk#BH193, **\$54,500**



**2016 JOHN DEERE 544K:** 9,783 Hours, 3 Yard, Cab W/A/C, Hydraulic Coupler, 6 Cyl JD Turbo, 29k Lbs, stk#LO608, **\$69,500**



**2020 PETERBILT 567:** 267,896 Miles, Triaxle, 17 Ft Steel Tebco Body W/ High Lift Gate, Paccar MX11, 430 HP, Allison Automatic, 20k F, 46k R, Rubber Block Suspension, Disc Brakes, stk#TK837, **\$124,500**



**2016 CATERPILLAR CB54B:** 4,539 Hours, 67" Smooth Double Drum, Vibratory, Caterpillar C4.4, Water System, Orops, 24K Lbs, stk#CO275, **\$24,500**



**2012 CATERPILLAR 966K:** 11,138 Hours, 5 Yard, Cab, Hydraulic Fusion Coupler W/ 3rd Valve, Backup Camera, New Tires, 54k Lbs, stk#LO510, **\$93,500**



**2015 VOLVO L90H:** 12,355 Hours, 3.5 Yard, Cab W/A/C, Hydraulic Coupler, Ride Control, 6 Cyl Volvo Turbo, Very Good Rubber, 34k Lbs, stk#LO120, **\$67,500**



**2003 FREIGHTLINER FL112:** 377,047 Miles, 10 Wheel, 13'6" Steel Bibeau Body W/ 3 Chutes, Cat C12, 430 Hp, Fuller 8LL, 18k F, 46k R, Hitch, Spring Suspension, stk#TK065, **\$37,500**



**2018 JOHN DEERE 624K-II:** 11,553 Hours, 3.5 Yard, Cab W/A/C, Hydraulic JRB Coupler, Ride Control, Backup Camera, 6 Cyl JD Turbo, 35k Lbs, stk#LO965, **\$69,500**



**2023 CATERPILLAR D1:** 3,934 Hours, 6-Way, Cab W/A/C, Joystick Steer, Backup Camera, Leveling System, 4 Cyl Cat Turbo, 18K Lbs, stk#DZ141, **\$79,900**



**2019 JOHN DEERE 824K-II:** 13,914 Hours, 7'4" Wicker Machine Co. Grapple, Cab W/A/C, 6 Cyl JD Twin Turbo, 59k Lbs, stk#LO329, **\$69,500**



**2006 CATERPILLAR CS-533E:** 2,416 Hours, 84" Smooth Single Drum, Drum Drive, Vibratory, Orops, 4 Cylinder Caterpillar Turbo, 24K Lbs, stk#CO425, **\$49,900**



**2021 SANY SY35U:** 134 Hours, 24" Bucket, Hyd Thumb, Cab W/A/C, 68" Blade, Manual Coupler, 3 Cyl Yanmar, 24 Hp, 8.5K Lbs, stk#MX558, **\$39,500**



**2012 JOHN DEERE 225D LC:** 5,332 Hours, 42" Bucket, Hyd JRB Coupler, 2-Way Auxiliary Hydraulics, A/C, 4 Cyl Isuzu Turbo, Reduced Tail Swing, 54K Lbs, stk#XC446, **\$64,500**



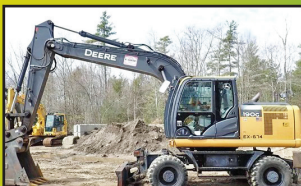
**2018 CAT 289D:** 4,749 Hours, 2660 Lb Lift, Cab W/A/C, Hydraulic Coupler, Pilot Controls, 2 Speed, 4 Cyl Cat C3.3B Turbo, 10.6K Lbs, stk#SK287, **\$36,500**



**2015 GRADALL XL4300-III:** 58" Cleanup Bucket, 9 Ft Blade, Mercedes-Benz Engine, 44K Lbs, stk#WX108, **\$39,500**



**2004 DAEWOO SOLAR 225LL:** 15,169 Hours, Rotating Grapple, 6 Cylinder Turbo, 23 1/2" Pads, 55K Lbs, stk#XC011, **\$37,500**



**2015 JOHN DEERE 190G W:** 7,583 Hours, 36" Bucket, 8'4" Blade, Hydraulic Coupler, A/C, Backup Camera, Isuzu Turbo, 172 Hp, 45k Lbs, stk#WX012, **\$69,500**

**60 STATE RD, PHILLIPSTON, MASS**

**978-249-4600**

**EMAIL: KEVIN@BROOKSIDEEQUIPMENT.COM**

# EQUIPMENT FOR SALE • 401-640-4321



**2020 PARADIGM HYDRO EXCAVATOR.**  
 Mounted on 2020 Freightliner, 33K Mileage, Cold Weather Package, High & Low Air Compressor.  
**\$239,000**



**2016 FORD F550 DUMP.**  
 6.7 Diesel, 4x4, 81K Miles, Auto Tarp Load Cover, Asphalt Chutes, Pintle,  
**\$40,000.**



**2020 INTERNATIONAL DUMP.**  
 Cummins 350 HP, Automatic, 33,000 GVW, 67K Mileage, Loaded,  
**\$85,000**



**2023 FORD F550 DUMP.**  
 6.7 Diesel, 4x4, 6,519 Miles, Auto Tarp Load Cover, Asphalt Chutes, Pintle,  
**\$75,000.**



**2005 STERLING DUMP.** 104K Miles, Recent New Motor, 57,000 GVW, 8LL, 300 Hp, New Paint.  
**\$39,000**



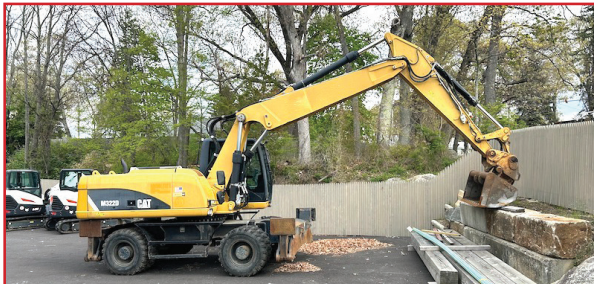
**2019 FORD F450 STAKEBODY.**  
 6.7 Diesel, 4x4, 8' Blade Tool Boxes, Pintle, 95K Miles,  
**\$45,000**



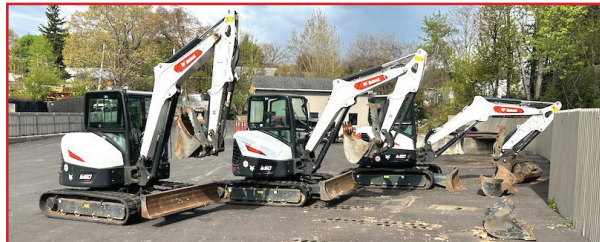
**2020 INTERNATIONAL DUMP.**  
 Cummins 350 HP, Automatic, 33,000 GVW, 155K Mileage,  
**\$70,000**



**2018 FREIGHTLINER DUMP.**  
 Cummins, Automatic, 33,000 GVW, 169K Mileage,  
**\$70,000.**



**2015 CAT M322D RUBBER TIRED EXCAVATOR.** 8K Hours, Clean, Dry, Strong, Grade Bucket, Two Dig Buckets, **\$78,000.**



**2023 BOBCAT E60.** Long Arm, Deluxe Cab, Hyd Thumb, 684 Hours, Grade & Dig Buckets, **\$78,000.**  
 - **2023 BOBCAT E50.** Long Arm, Deluxe Cab, Hyd Thumb, 1826 Hours, Grade & Dig Buckets, **\$54,000.**  
 - **2023 BOBCAT E50.** Long Arm, Deluxe Cab, Hyd Thumb, 1190 Hours, Grade & Dig Buckets, **\$59,000.**

Authorized Fisher  
Snow Plow Dealer



# HILLSIDE MOTORS

**800-D American Legion Highway (Rt. 177)  
Westport, MA 02790  
508-636-5050**

Financing  
Available  
-Others in Stock

**Family Owned & Operated Since 1969**



**20' BOX**

2021 ISUZU NPR HD 20' MORGAN BOX W/  
GALVANIZED TUCK-AWAY TAILGATE. 6.6L Gas, Auto,  
PW, PL, Bluetooth, Backup Camera, 14,500 GVW, 155K,  
One Owner, Excellent Condition, \$38,800. (Will Separate)



**POWER GATE**

2015 ISUZU NPR HD. 12' RACK BODY W/  
GALVANIZED POWER GATE, 8 Cyl., Auto, AC,  
3-Passenger, 14,500 GVW, 155K, One Owner, Fleet  
Maintained, \$21,800.



**9 PASSENGER 4X4**

2017 CHEVY 1500 SUBURBAN 9 PASSENGER LS 4X4.  
5.3L V8, Auto, AC, Dual Power Seats, Back-Up Camera,  
BlueTooth, One Owner, 111K, Fleet Maintained, Southern  
Truck, Mint Condition, \$27,900



2021 CHEVY 4500 CREW CAB 16' BOX TRUCK W/  
FURNITURE PEAK & ALUM. RAMP. 6 Pass, 6.6L Gas,  
Auto, Side Door, Rear Barn Doors, Back-Up Camera,  
Bluetooth, One Owner, 105K, Well Kept, \$52,800.



**DURAMAX**

2022 CHEVY 3500 REG CAB 11' DURAMAG UTILITY 4X4.  
Duramax Diesel, Allison, Vanair Pro 35 Air Compressor, Bluetooth,  
Camera, Rust-Free Southern Truck, 235K, Highway Miles, Fleet  
Maintained, \$35,900. (Will Separate)



**MINT CONDITION**

2022 CHEVY C2500 CREW CAB 8' UTILITY. 6.6L  
V8, Auto, AC, Rear Camera, Bluetooth, 6-Passenger,  
Southern Truck, 110K, Fleet Maintained, \$34,400.  
(Other Crew Cabs Utilities Starting at \$12,900.)



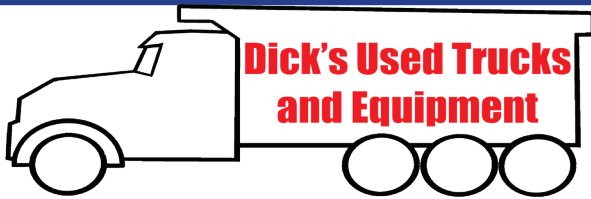
**ONE TON**

2015 CHEVY 3500 4X4 SERVICE TRUCK W/POWER  
GATE. Vanair Compressor/Gen Jump Start System, 6.0L  
V8, Auto, AC, Meticulously Maintained, 186K, Rust-Free  
Southern Truck, \$24,500. Or \$19,400. w/o Equipment



**4X4**

2021 FORD F450 16' BOX 4X4 W/ALUM. RAMP.  
7.3L V8, Auto, AC, PW, PL, Back-Up Camera,  
Bluetooth, 16,500 GVW, 162K, One Owner, Fleet  
Maint, Mint, \$27,900. (Or Cab/Chassis \$23,900.)



**207-623-4239**



**2000 CAT 416C BACKHOE.** 4x4, Extend-A-Hoe, Hydraulic Quick Change, Side Dump Bucket, Twister Wrist, Rebuilt Engine, \$25,000



**KNUCKLE CRANE**  
**1994 INTERNATIONAL 4300.** DT466, Steel Flatbed Body, Knuckle Boom Crane, \$9,500



**2005 CAT 930G LOADER.** Hydraulic Quick Release Bucket, Auxiliary Hydraulics, \$38,000



**1998 FORD OIL TRUCK.** 2 Compartment, 7 Speed, Cat Engine



**1985 FORD L8000 DUMP TRUCK.** Tandem Axle, CAT 3208 Turbo, 8LL Trans., Hendrickson Suspension, \$12,000



**1990 SULLAIR 750Q.** Oil-Flooded Rotary Screw Air Compressor For Heavy Duty Work, CAT Engine, 750 CFM, \$7,500



**2012 JOHN DEERE 310SJ BACKHOE.** 4X4, Full Cab, Expanda Hoe, Wrist With 3 Buckets, \$38,000



**2009 MAC DUMP TRAILER.** Tri Axle, Air Ride Lift Axel, Barn Door, \$40,000



**1987 FORD L8000 WATER TRUCK.** CAT 3208T, 5+2 Speed, Water Tank, Pump, \$7,500



**2007 CASE 430 SKID STEER.** OROPS, Quick Change Bucket, Auxiliary Hydraulics, \$14,000



**JOHN DEERE 310A BACKHOE.** 2WD, Enclosed Cab, \$8,500



**DRESSER D66 VIBRATORY COMPACTOR.** Smooth Drum, \$9,500

**Dick's Used Trucks & Equipment • 146 River Road, Chelsea, Maine**

# STONEHAM



617-733-0773



**2025 F550 SWITCH N GO.** 7.3 Gas, 4WD, Remote Start, Payload Plus, #252750. **\$80,899**



**2026 F550 DUMP.** Diesel, 4WD, Remote Start, #26496. **\$87,920.**



**2026 F550 DUMP.** 7.3 V8 Gas, Remote Start, 4WD, Payload Upgrade, dual Battery, #26048. **\$78,930**



**2026 F550 DUMP.** Crew Cab, V8 Gas, 4WD, Remote Start, Payload Plus, #26127. **\$80,195.**



**2026 F350 LANDSCAPER.** Aluminum Dump Body, 7.3 Gas, 4WD, Remote Start, Dual Battery, #26856. **\$74,348.**



**2026 F350 LANDSCAPER.** 7.3 Gas, 4WD, Remote Start, Dual Battery, #26882. **\$74,078.**



**2026 F350 UTILITY.** Super Cab, DRW, Duramag Body, Cabinet Lighting 7.3 Gas, 4WD, Remote Start, #26080. **\$75,775**



**2026 F250 SERVICE.** Reading Steel Body, V8 Gas, 4WD, Pwr Windows & Locks, Cruise, #26069. **\$62,450.**



**2026 F350 STAKE FLATBED.** 12' Body, Wood Floor, 7.3 Gas, 4WD, Remote Start, #26031. **\$65,895**



**2025 T350 HD SERVICE VAN.** 11' Aluminum Body, 3 Bar Ladder Rack, DRW, Polish Alum Wheels, Pwr Outlet, #252580. **\$76,855**



**2025 T350 SERVICE. SRW,** 11' Aluminum EBY Van Body, 72" Inside Hght, Pwr Outlet 110V, Ladder Racks, #252554. **\$72,980**



**2026 E450 FREIGHT HAULER.** 14' Morgan Van Body, 7.3 Gas, #26010. **\$61,750**



**2026 E350 FREIGHT VAN.** 14'5" DuraCube Body, E-Trac, Plywood Lined, Pull Out Ramp, 7.3 Gas, DRW, #27005.



**2026 E350 SERVICE.** 12' Rockport Body, 7.3 Gas, SRW, #26524. **\$65,298**



**2026 F350 UTILITY.** 9' Steel Body, 7.3 Gas, 4WD, Remote Start, Pro Power, #26584. **\$71,815**



Call Bill Pollack 1-617-733-0773  
or [billpollack@stonehamford.com](mailto:billpollack@stonehamford.com)



# STONEHAM



617-733-0773

## WORK VAN SALE EVENT – BIG OPTIONS!

### ALL WHEEL DRIVE



**2026 T250 CARGO VAN.** Low Roof, Load Area Protection Pkg, Cruise, AWD. #252368 **\$51,660**



**2026 T250 CARGO VAN.** Low Roof, RWD, Load Area Protection, #261595. **\$51,670**



**2025 T350 HD SERVICE VAN.** Polish Aluminum Wheels, Power Outlet, 11' Body, 3 Bar Racks, Ladder to Roof, #252580. **\$76,855**



**2026 T350 HIGH ROOF CARGO VAN.** All Wheel Drive, Load Area Protection Pkg., #261319. **\$61,595**



**2025 T250 CARGO VAN.** Low Roof, AWD, Load Area Protection Pkg, #252355. **\$51,680**



**2026 T350 CARGO VAN.** High Roof, RWD, #261315. **\$55,810**

## USED TRUCKS SPECIALS



**2024 T250 CARGO VAN.** 27 Miles, Load Area Protection, #24157P. **\$51,499**



**2024 T350 HI CUBE.** 30 Miles, 3 Bar Ladder Rack, Swing Doors, Plywood Lined, D-Rings, #24152P, **\$50,990**



**2024 T350 CARGO VAN.** Empty Van W/ Privacy Glass, 76 Miles, #24155P. **\$50,000.**



**2024 E350 CUBE VAN.** Pull Out Ramp, E-Trac, 26,852 Miles, #2434P. **\$40,400.**



**2024 T250 CARGO VAN.** 14,652 Miles, #24098P, **\$33,899.**  
Several T250's Available



**2024 T350 HI CUBE.** 1,152 Miles, E-Trac, Pull Out Load Ramp, Pas Thru Door, Roll Up Rear Door, #24148P. **\$53,899**



Commercial Vehicle Center

[www.StonehamFordTrucks.com](http://www.StonehamFordTrucks.com)

211 MAIN ST. STONEHAM, MA 02180

Mon-Fri 8:30am-8pm Sat 9- 5pm Sunday 11-4

ALL PRICES NET & INCLUDE ALL AVAILABLE REBATES TO DEALER

Call Bill Pollack 1-617-733-0773 or [billpollack@stonehamford.com](mailto:billpollack@stonehamford.com)



Commercial Vehicle Center



**2015 WESTERN STAR 4900.** Cummins 500 HP, 18 Sp, 400K Miles, 17,200 Hours, Miles & Hours Subjected To Change, Still In Use, 17.5 Body, Steerable Tag Axle, Financing Possible, **\$125,000** TEXT 860-329-1607



**450 CUMMINS.**  
Good Runner, Nice Motor That Came Out Of A Snow Machine, **\$3,000**  
East Windsor, CT 860-716-0226



Keeping you protected so you can stay on the road and on time.

**Commercial Auto**  
As Assured by Protected

**WE INSURE**  
Single Power Units to Fleets & Cargo Vans to Tractors

**Coverage include:**  
General Liability  
Motor Carrier Liability  
Motor Truck Cargo  
FMCSA Filings  
ELD Discounts

**GET YOUR QUOTE TODAY!  
(401) 654-6711**

**A. RICCIOTTI INSURANCE ASSOCIATES, LLC**  
START WITH A STRONG FOUNDATION

**2011 DODGE 5500.** 4x4, 12K Miles, Original Owner, Fleet Maintained, Cummins, Automatic, 8/10 Expandable P/A Plow, 2.5 Yard Stainless Steel Electric Sander, Electric Cover, Winter Is Coming, This Is A Money Making Truck, **\$55,000.** West Warwick, RI 401-523-6116

**1965 CAT 955H CRAWLER LOADER.**  
Runs Great, **\$7400.**  
401-855-1178 For Demo

508-328-8938

**THE TRUCK STORE**

**Mon-Fri 8:30-5pm  
Saturday 8:30-4pm**



[www.TruckStoreSales.com](http://www.TruckStoreSales.com)



1700 Broadway - Rte 138 - Raynham, MA • Take Exit 8 Off Rte 495, East Rte 138, On Your Left



**2002 VOLVO HEAVY TRI AXLE DUMP;**465 HP, SLL, NEW BRAKES, Excellent Rubber.



**2000 MACK RD 688SX 14' Dump Body,** 350 H.P., Auto., 18F/58R, LOW miles, Very clean.



**2015 ISUZU REFER BODY:** 186 K Miles, Diesel/Auto.Call.



**2018 PETE CHASSIS 80K MILES and 2020 KW CHASSIS 47K MILES IN STOCK NOW! CALL.**



**2020 HINO HOOK-LIFT. DIESEL, AUTO, 38K MILES,**



**2019 & 2022 INTERNATIONAL REFER BODIES: VERY LOW MILES**



**2020 + 2022 HINO REEFER VANS. DIESEL, AUTO, CALL.**



**2005 MACK GRANITE SPLIT REAR LOAD RUBBISH BODY 35K Miles.**



**USED 12' to 26' REFER & VAN BODIES** Call with your needs.



**2017 FREIGHTLINER M-2: CUMMINS Diesel, Auto, PTO Accept. Will Separate.**



**2022 PETERBILT C/O. Under CDL, 60K Miles, Auto, Reefer Or Flatbed Available.**



**2022 HINO 268 Flat Bed: Diesel, Automatic, ONLY 2,000 Miles! Will up fit w/Refer Body or Van Body. 2 AVAILABLE.**

ALSO AVAILABLE: USED FLATBED BODIES, ROLL OFF BODIES, LATE MODEL ISUZU/HINO 4 CYL DIESEL ENGINES.

# COLONIAL WEST

## COLONIAL-WEST CHEVROLET OF FITCHBURG

### HAPPY 250TH ANNIVERSARY, AMERICA!



HAVE A SAFE & HAPPY MEMORIAL DAY!



30K MILES

**2023 FORD TRANSIT CARGO VAN.** Only 30K Miles, V6, Auto, WiFi, Back-Up Camera, stk#5676A, **\$29,900.**



**2026 CHEVROLET SILVERADO 3500HD DUMP 4WD.** 6.6L V8, Auto, Nav., #W26808, MSRP \$69,953., **Buy For \$63,975.**



**2026 CHEVROLET SILVERADO 3500HD CREW CAB DUMP.** 4WD 6.6L V8, Auto, Nav., #W26834, MSRP \$77,953., **Buy For \$69,975.**



**2025 CHEVROLET SILVERADO 3500 CREW CAB HIGH COUNTRY DRW 4X4.** 6.6L Duramax Diesel, 11K Miles, Moonroof, Leather, Loaded, #5771, **\$79,990.**



1 LEFT W/FREE BIN PKG!

**2025 CHEVROLET 2500 EXPRESS CARGO VAN.** V6, Adrian Steel Bin Pkg., 1 Left With A Free Bin Pkg A \$6,500 Value, **\$39,999.**



SAVE \$6,947.

**2025 CHEVROLET EXPRESS WITH 10 FT DURA CUBE BOX.** #w25568, Original MSRP \$71,724., **Buy For \$64,777.**



**2005 CHEVROLET 1500 SILVERADO 4X4.** 5.3L 8 cyl., Auto, AC, Alloys, Low Miles, stk#W25755A, **\$16,000.**



BRAND NEW

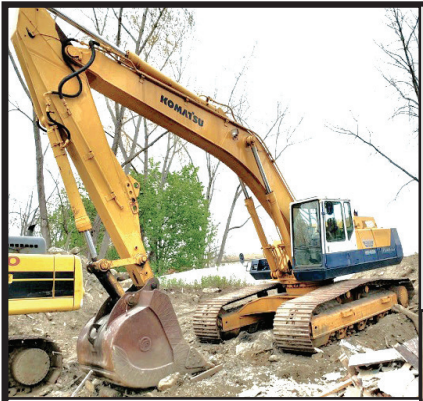
**BRAND NEW 2024 CHEVROLET EXPRESS CUTWAY 3500 KUV.** 6.6L Gas, Remote Start, Rear Camera, #W24563, **Buy For \$59,975**



**2026 CHEVROLET SILVERADO 3500 HD I-PACK DUMP 4X4.** 6.6L Gas, Nav, Wi-Fi, Toolboxes, #W26766, **\$69,900.**

**314 John Fitch Hwy • Fitchburg, Ma 978-342-8713 www.Colonial-West.com**

Disclosure. all prices include every applicable rebate, lease loyalty, comp lease, com rebate, finance with dealer, tax, title, and dealer fees extra, not responsible for typographical errors, prices subject to change without notice.



**1995 KOMATSU PC400LC-5LC.** Only 5124 Hours, Cummins Motor, Good Bottom, Plumbed For Hammer, **\$43,000.**  
401-855-1178 For Demo

**A. RICCIOTTI**  
INSURANCE ASSOCIATES, LLC  
START WITH A STRONG FOUNDATION

**Types of Risks to Insure:**  
Trucking for Hire • Fleet Coverage  
Box Trucks  
Tractors  
Dump Trucks  
Flatbeds  
Pickup Trucks  
Trailers

**FMCSA Filings**  
Coverages:  
Commercial Auto Liability  
Motor Carrier  
Motor Truck Cargo  
Physical Damage  
General Liability

Landscapers • Snowplow Operators • Garbage

**401-654-6711**  
Available States: RI • CT • MA • NJ • TX • OH • GA • IN



**2010 INTERNATIONAL WORKSTAR COMBO.**  
Sander Body, 11 Ft Front Plow, 9 Ft Wing, Maxxforce 475 HP Engine, Alison Automatic, 94K Miles, **\$35,000.** 401-640-5334



**11' KNAPHEIDE ENCLOSED UTILITY BODY.** Removed From Georgia Truck, Rust-Free, Fits 84" Cab To Axle, **\$10,700.,** Westport, MA 508-636-5050

# What's In Your Toolbox?



- **BUY, SELL, TRADE - FAST**
- **FROM NEW TO USED, IT'S ALWAYS FRESH**
- **AND A HANDY RESOURCE, TOO**

**1-888-887-0505**

**www.TruckAndEquipmentPost.com**

# CAREY AUTO INC

TRUCK EQUIPMENT SALES



37 County Road  
Route 106  
Plympton MA 02367  
PH: 781-582-1378  
FAX: 781-585-4438



**GALION BODIES IN STOCK NOW!  
CALL FOR PRICING.**



**2007 PETERBILT PB340:PX8 ENGINE, 10 SPEED, 146K MILES, NEWER LANAU DUMP BODY, 54,600 GVW. \$78,000.**



**HOOKLIFT TRUCKS IN STOCK NOW!  
INSTALLATIONS: PIONEER TARPS  
INSTALLED. CALL FOR PRICING.**



**CUSTOM ALUMINUM BEDS/STEEL  
CALL FOR QUOTE**



**LADAU SHD DUMP BODIES. INSTALLED.  
CASH-N-CARRY. CALL FOR PRICING.**



**2017 Kenworth T-800 Paccar MX-13, Allison auto, 195,000 miles with Palfinger cable pull hoist system, tarp system, \$142,000**



**2015 Peterbilt Model 337: Paccar PX-9, Allison auto 131,000 miles with Ampliroll AL100 Hook Lift, Pioneer tarp system, 33,000 GVW. \$91,000**



**READY TO GO COMPLETE TRUCK PACKAGES.  
LOTS OF OPTIONS AVAILABLE  
New & Used Trucks Ready To Go!**



**CM ALUMINUM FLATBEDS IN STOCK NOW! MANY SIZES. CALL FOR PRICING**



**STEEL FLATBEDS IN STOCK NOW!  
MANY SIZES. CALL FOR PRICING.**

**SALES,  
SERVICE,  
PARTS**

**CALL TOLL FREE: 781-582-1378  
WWW.CAREYTRUCKEQUIPMENT.COM**

**CUSTOM METAL  
FABRICATION  
AVAILABLE**



# REED TRUCK SERVICES

24/7 Heavy Duty Towing, Accident Recovery & Emergency Road Service **FLEETRITE**

**TRADES ACCEPTED**

**939 John Stark Hwy. Newport, NH**



**287 Washington St. Claremont, NH**

**HELP WANTED**

• Authorized International Truck & Cummins • Sales • Service • Parts • Warranty • All Makes Commercial Truck Parts, Sales, and Service

Email: [scott@reedtruck.com](mailto:scott@reedtruck.com) • [www.ReedTruck.com](http://www.ReedTruck.com) • 1-800-542-5032



**2025 INTERNATIONAL HV507. L9**  
Cummins, Allison 3500, 20 F/A, 30 R/A, Chalmers Susp, All Municipal Options!



**SEVERAL AVAILABLE**  
**2024 INTERNATIONAL CV515 4x4.**  
Fully Equipped With Plow Gear And Dump Body.



**IN STOCK**  
**2026 INTERNATIONAL HX620.**  
X15@565hp, 4700 RDS Allison, 20 F/A, 46 R/A, Ready For A 15' Dump.



**2026 INTERNATIONAL HV613. A26,**  
Allison 4500, 22 F/A, 46 Locking Rears, Hend HMX Suspension, In Stock!!



**DUMP BODY & PLOW GEAR BEING INSTALLED**  
**2024 INTERNATIONAL HX520. X15 Cummins,**  
Allison Auto 4500, 20/46 Axles, Air Ride, Aluminum Wheels, Dump Body & Plow Gear Being Installed



**SEVERAL USED PLOW, SANDING TRUCKS.** International, Sterling, Freightliner, Tandems And Single Axles.



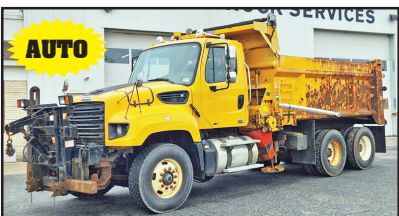
**2006 FREIGHTLINER M2 112 LANAU DUMP BODY.** 450 HP Mercedes, 16908LL Trans, 18 F/A, 46 R/A, Solid Truck, Used For Paving. **\$52,500.**



**2010 FREIGHTLINER SLEEPER.**  
14 F/A, 46 R/A, DD15, 18 Spd, Wet System, Clean Solid Truck, Used In Paving Company. **\$39,500.**



**2014 GMC/COLLINS BUS.** Gas, Auto, Wheel Chair Lift. **\$8,500.**



**AUTO**  
**2012 FREIGHTLINER SD114.** DD13 Engine, Allison AUTO Trans, Everest 14' Live Floor Body, Truck, Includes Plow And Wing Blades. Well Maintained Muni Trade, **\$49,900.**



**2009 FREIGHTLINER BUS.**  
Cummins, Allison, 2 Full Size Freightliners & 2 International CE300 Buses  
Priced From **\$1,500-\$5,500.**



**2013 SWENSON S STEEL 9' SANDER.** Good Condition, **\$4,800.**



**2016 VERMEER PD10 PILE DRIVER.**  
Contractor Owned, Like New Condition, Remote, Low 627 Hour Machine, **\$125,000.**  
401-640-0621



**CAT 3408 MOTOR. V8, CAT Power Take Off, Twin Disc Clutch, Runs Like New, \$5,000,**  
860-716-0226, East Windsor, CT

**LS Tractor**

**MT MODELS**

**0% Financing Up To 120 Months OR Up To \$8,000 Cash Discount On Select Models!**

**SALES • SERVICE • PARTS • FINANCING**

**FOSKETT**  
EQUIPMENT INC.  
TRACTORS & IMPLEMENTS  
*Woodstock, Ct*

**Route 171  
Woodstock, CT  
860-928-5748**  
[www.foskettequipment.com](http://www.foskettequipment.com)

**BEAM TRUCK & BODY INC.**  
433 CUMBERLAND HILL ROAD, WOONSOCKET, RI 02895  
**401-767-2639**  
NEW - USED & RECONDITIONED DISPOSAL EQUIPMENT

RI Dealer #647

**20 YARD CURBTENDER  
GOOD USED 2017 UNIT.**

**STELLAR NXT18L HOOK LIFTS IN STOCK !**  
NEEDS 120" TO 130" CA. DOES 10' TO 14' CONTAINERS.  
36" / 54" MANUALLY ADJUSTABLE HOOK HEIGHT. PERFECT FOR F-600'S

**2010 INTERNATIONAL 7400:**  
42,000 MILES W/ HEIL 22 YD. AUTOMATED PACKER. **\$60,000**  
WILL SPLIT.

**GOOD USED 2020 PAKMOR 16 YARD REAR LOADER.** HAS REEVING SYSTEM, CANNOT GO ON AN UNDER CDL CHASSIS, 33K OR GREATER.

**2004 KENWORTH T800:**  
396,914 MILES, AMERICAN 75,000# ROLL-OFF, CAT C12 W/ FULLER 8LL, 60,000# GVW CALL FOR MORE DETAILS !

**IN STOCK READY TO INSTALL NEW EQUIPMENT**  
\* HAD-185-120-36/54"  
\* T40S AMERICAN PALFINGER  
\* 20' BOX WITH WALTCO LIFT-GATE 2500LBS. **\$6,000**

**2000 INTERNATIONAL WITH 2023 AMERICAN / PALFINGER 250S HOOK-LIFT WITH VERY LOW MILES !**  
**\$50,000**

**WWW.BEAMTRUCK.NET**

# JP RIVARD Trailer Sales Inc

Call Matt - 508-962-4543  
Matt@jprivard.com • JPRivard.com  
New Location: 30 Lomar Park Dr., Pepperell, MA

We Now Rent  
New 20' Containers  
Commercial & Residential  
Short Term Or Long Term  
Please Inquire

### 20' TRI-DOOR



(2) New One Trip 20' Tri-Doors. In Stock Now. From \$4,000.

### 40' HIGH CUBE DOUBLE DOORS



40' High Cube Container, Doors On Each End. Light Gray. From \$5,500

### 3-6 YEAR OLD USED 20'



(20) Used 3-6 Year Old 20' Containers. In Very Good Condition. Call Before They're Gone.

### 20' HIGH CUBE



1 New One Trip 20' High Cube, 9'6" Full Open Side, Hard To Find. From \$7,000

### 20' 1 TRIP - HIGH OPTIONS



**GREEN BACK IN STOCK**



**FROM \$3,000**  
(50) New 20' One Trip Containers Beige, Light Grey And Green, Some Lightly Dented

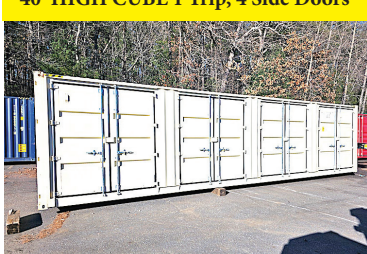
### 20' & 40' HIGH CUBE



**FROM \$4,500**

New 20' & 40' High Cube Containers, One Trip. In Stock

### 40' HIGH CUBE 1 Trip, 4 Side Doors



New 40' High Cube Containers, With 4 Side Doors, \$9,800 Delivered Locally

Sales Tax If Applicable + Delivery Is Not Included Unless Noted

# JP RIVARD Trailer Sales Inc

Call Matt - 508-962-4543  
Matt@jprivard.com • JPRivard.com  
New Location: 30 Lomar Park Dr., Pepperell, MA

### FULLY GALVANIZED UNDER SIDE



(20)  
HYUNDAI 53'  
- Spring Ride  
- Swing Doors  
- Mint  
Condition  
**\$16,900**

### LIFTGATE SALES & SERVICE



LIFTGATES  
Sales And Service For  
All Major Brands

### RENTAL FLATBEDS & STEP DECKS



- NEW & USED  
48'X102" Rentals  
- Sliding Tandems  
- DOT Inspected  
- USED 48'X102"  
Combo Step Deck  
- Spread Axle Air  
Ride

### STORAGE TRAILERS

48' & 53' STORAGE  
ONLY TRAILERS  
AVAILABLE.  
Call Matt

### NEW GALVANIZED TRAILERS



2027 DORSEY 48' STEP DECK  
COMBO. Galvanized, Great  
Specs. March 2026 Delivery

**SOLD**  
2027 DORSEY 48' FLATBED.  
Galvanized, Forklift Kit. March  
2026 Delivery

2027 DORSEY 36' FLATBED.  
Galvanized, Forklift Kit. March  
2026 Delivery

**BOX TRUCK &  
TRAILER  
REPAIR SERVICES**

#### What Do We Service:

- SEMI Trailers – All Types Of Repairs
- Box Trucks – Body, Liftgate & General Repairs
- Landscape Trailers – All Types Of Repairs
- Horse Trailers – All Types Of Repairs
- Fabrication Services
- Full Aluminum/Steel Welding
- PM Maintenance On Trucks & Trailers

We Rebuild Smash Bodies On Box Trucks  
& Semi Trailers

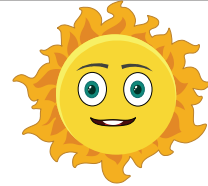
\*\*\* FINANCING & LONG TERM LEASES AVAILABLE



**SANDER CHAINS**  
USA Made  
All Makes  
300 In Stock

# S.A. McLean

**207-793-4267**



**622 Elm St, Limerick, ME • [www.s-a-mclean.com](http://www.s-a-mclean.com)**



**1998 International Cab & Chassis.** 14k Miles, Automatic, 300 Cummins



**INTERNATIONAL.** 4x4, Automatic, Brush Fire Truck



**13' SWENSON.** Stainless Steel Dump & Sander Body



**12' HIGHWAY POWER ANGLE V- PLOW**



**ASPHALT HOT BOX.** Mini Falcon



**ASPHALT HOT BOX.** 4 Ton



**TRACKLESS MT5.** Diesel Power, 7' Snowblower



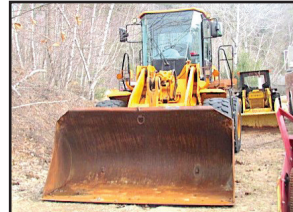
**10' DUMP/SANDER BODY.** Stainless Steel



**CAT 966B LOADER.**



**2013 INTERNATIONAL TRUCK DUMP.** Sander Body, Under CDL



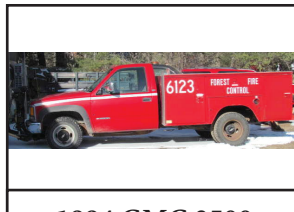
**HYUNDAI 757-7.** Wheel Loader



**1994 FORD F700 CAB & CHASSIS.** Cummins, Automatic, 20k Miles, Under CDL



**WAUSAU/EVEREST.** Loader Snowblower



**1994 GMC 3500 UTILITY.** 4x4, V8 Gas, 44k Miles, Rust Free



**1998 INTERNATIONAL 4800.** Four Wheel Drive, Automatic, 14k Miles, 14 Ft Of Frame.



**WARREN 10' ALUMINUM DUMP BODY**



**SANDER CHAINS.** USA Made, All Makes In Stock



**STEWART STEVENSON 4X4.** Automatic, 1,000 Gallon Tank Brush Truck



**2004 INTERNATIONAL CAB & CHASSIS.** 4x4, DT 466, Automatic



**INTERNATIONAL 2574 CAB & CHASSIS.** Automatic, 300 Cummins, 24k Miles



# NATIONWIDE TRUCK PARTS LLC

**1-800-457-8826**

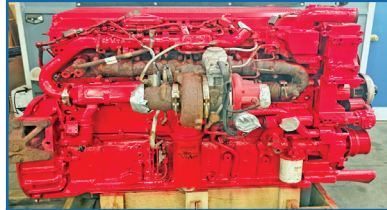
[www.NationwideHeavyTruckParts.com](http://www.NationwideHeavyTruckParts.com)

[sales@nationwideheavytruckparts.com](mailto:sales@nationwideheavytruckparts.com)

11 S. Keyser Avenue - Taylor, PA 18517

**QUALITY USED HEAVY TRUCK PARTS, USED DIESEL ENGINES,  
TRANSMISSIONS & MORE.**

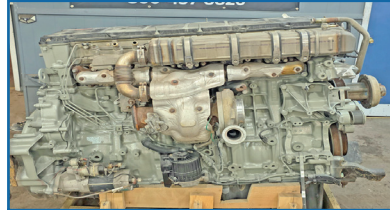
**All Parts Tested & Sold With A Standard Warranty. Large Inventory - Call With Your Needs.**



**2014 ISX15 \$13,000**



**2012 Detroit DD15 \$12,000**



**2019 Detroit DD15 \$12,500**



**DT12 Transmissions \$3,500**



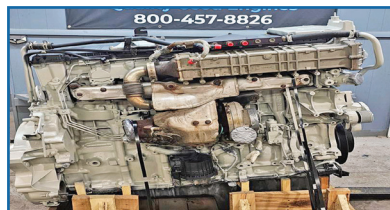
**2013 Volvo D13 \$9,000**



**2012 Mack MP8 \$10,500**



**2012 ISX15 \$12,000**



**2015 Detroit DD13 \$12,000**



**2019 Cummins X15 \$16,500**



**2018 Paccar MX13 \$16,500**



**Late Model Rears**



**FRO Transmissions \$1,000**



**2009 Cummins ISX \$9,500**



**2012 Detroit DD13 \$12,500**



# C.N. WOOD CO., INC.

**Large Selection Of Used Equipment!  
Call For More Info. 781-315-1680**



**2019 VOLVO L70H.  
Coupler, Bucket, 3650  
Hours, \$109,000., #C012538**



**2016 KLEEMAN MC  
100RI JAW CRUSHER. Nice  
Shape, \$189,000., #C012588**



**2006 BOBCAT 334G. Very  
Clean, 3290 Hours, \$28,000.,  
#C012505**



**2016 VACALL AS13D VACUUM  
SWEEPER. Nice Running  
Machine, \$79,000., #E001870**



**2003 SECA 800HPR JET  
RODDER. \$9,500., #E001341**



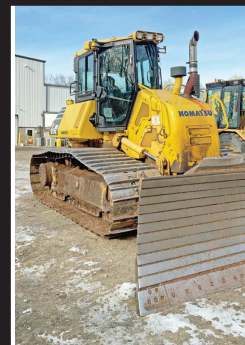
**2017 KOMATSU  
PC138USLC-11. Runs Well,  
\$69,000., #C006512**



**2016 JOHN  
DEERE  
245GLC.  
Nice Unit,  
\$59,000.,  
#C011811**



**2019  
DOOSAN  
DX235LCR-5.  
Good  
Running  
Unit,  
\$69,000.,  
#C012324**



**2016  
KOMATSU  
D61PX-24.  
Nice Unit,  
\$75,000.,  
#C011827**



**2024 CAT 420. Only 285  
Hours, Excellent, \$151,000.,  
#C012436**



**2012 VACTOR 2100PD.  
Everything Works,  
\$109,000., #E001288**



**2017 ELGIN PELICAN. runs  
great, \$75,000., #E001776**

Woburn, MA • Avon, MA • Whatley, MA • Johnston, RI • North Haven, CT  
Westbrook, ME • Pine Bush, NY • Holmes, NY • Newington, CT

**www.cn-wood.com**

*Buyer - Seller - Swapper*



# Fowler's Auto Wrecking Inc.

## Belltown Recycling Center



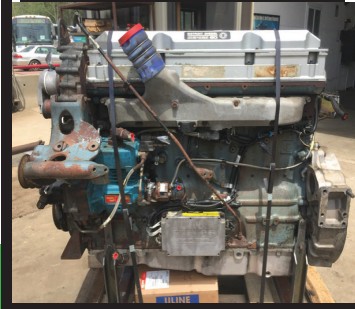
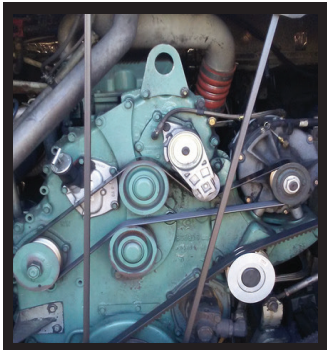
**860-267-7140 • 24 Old Coach Rd East Hampton, CT**

### Detroit Series 60 12.7L Engines

- EGR DDEC-IV
- NON-EGR DDEC-IV
- Good Running Take Out Engines
- Recent Remanufactured Engines
- Core Engines
- Engine Accessories
- 6 Month & 1 Year Warranties Available
- Call Today For Pricing



**CALL: 860-267-7140**



### Complete Coaches For Parts

- MCI, Vanhool, and Prevost Buses For Parts
- Compressors, Condenser & Evaporator Motors
- Wheels, Tires, Suspension & Brake Parts
- Electrical Parts, Interior & Exterior Lighting
- Tag Axles & Drive Axles
- Compartment, Service, and Entrance Doors
- Fiberglass Body Panels & Glass
- Complete Electric Wiper Conversion Kits
- Radiators, Intercoolers, and Condensers
- Standard 6 Month Warranty On All Parts



**Buses Are Not Intended For Resale - Salvage Titles**



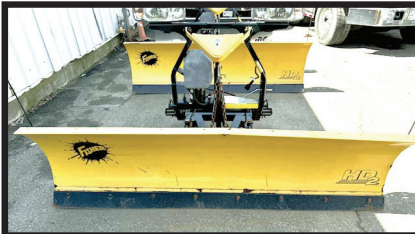
### Allison B500 Transmissions

- Allison B500 With or Without Retarders
- Good Running Take Outs
- Recent Remanufactured Units 
- Core Transmissions
- Allison Shift Pad Selectors
- Allison TCM (Transmission Control Modules)
- Standard 6 Month Warranty
- Call Today For Pricing

**CALL: 860-267-7140**



**2004  
INTERNATIONAL  
4300 TOW  
TRUCK.  
DT466 W/ 6  
Speed Eaton,  
282K Miles, 33K  
GVWR With  
Wheel Lift,  
Ready For Work  
\$24,000.**



**MINUTE MOUNT 2 PLOW.** 8 Ft, Used, In Good Condition, \$2000. Several To Choose, 617-840-8478

**CALL PATRICK  
1 (401) 309-1960**



**BLUM'S FIELD SERVICE**

**-ON-SITE HEAVY EQUIPMENT & DIESEL REPAIR  
-MOBILE WELDING & FABRICATION**

- MACHINE SERVICES
- ATTACHMENTS INSTALLS
- BUCKET REBUILDS & WEAR PROTECTION
- HYDRAULIC CYLINDER RESEAL

**SERVICING  
RI, MA, CT**



Powerglide Air Test Kit Complete Powerglide Pro Tree Transbrake \$279.95 TH400 Deep Cast Aluminum Pan TH400 Billet Direct Drum Spring Retainer & Aluminum Modulator/Solenoid Hold Down Powerglide Overhaul Kit



Powerglide Deep Oil Pan Powerglide Reverse Spring Retainer Tool Powerglide Bushing Driver Set Do-it-yourself Powerglide Pro Tree Transbrake Kit \$164.95 1.80 Long Powerglide Gear Set

**1-800-394-5889**  
179 Belvedere Road  
Gilsun, NH 03448

**Powerglide Handbook written by Carl H. Munroe \$21.95**

**Powerglide Vent Tanks**

**WWW.TSR-RACING.COM**



**1979 MACK.** 300 HP, 12 Sp, Beau Roc Body, Lift Boom, 44 Rears, Newer Motor, Newer Tires, Runs Strong, Good Records, No Rust, \$22,000 OBO. Call/Text Griswold, CT 860-706-1266



**2012 SALSICO 813 WOOD CHIPPER.** 394 Hours, \$14,500. 207-252-1191

**CANDIA TRAILER & SNOW EQUIPMENT** **603-483-2541**  
email: [contact@candiatrailers.com](mailto:contact@candiatrailers.com)

**WE BUILD  
CUSTOM  
TRUCK  
BODIES**

[www.CandiaTrailers.com](http://www.CandiaTrailers.com)

**All Prices Cash & Carry! Installation Available!**

35 High St, Candia 4 Coners, Candia NH  
10 Minutes East of Manchester, NH • 1 hour From Boston



**DURA MAG ALUMINUM DUMP BODIES** Complete Sub-Frame, Power Pac, LED Lights.



**IN STOCK GALION DUMP BODIES.** 8' thru 16' Call With Your Specs Today



**BUTCHER Dump Power Pac with control Gravity Down \$595**



**8' Ft & 6 Ft EZ Slide In Dump Body.** With Head Board, Tarp & Hoist.



**DURAMAG SERVICE BODIES.** Call With Your Specs



**HARSH HOIST**  
2.5 to 45 Ton, Single or Double Piston. Convert a Flatbed Body to a Dumping Body.  
**HOIST & POWER PACK**  
**CHAMPION HOIST**



**UNDERBODY TOOL BOXES**  
Powder Coat Diamond Aluminum Door  
Diamond Aluminum Door



**HOMESTEAD Enclosed Trailers.** Stocking 8 Ft - 24 Ft



**2005 HINO 268 HOOKLIFT.**  
 20K Lb., Galbreath Hooklift, Auto, 33,000 GVW  
 Factory Derated to 26,000 GVW,  
 No CDL Needed, Pioneer Electric Tarp,  
 AC, In/Out Controls, Air Ride Seat, CD Stereo, Alum  
 Storage Box, Chrome  
 Bumper, New Turbo Charger,  
 189,721 Miles, Strong Running Truck,  
**\$31,900.** 781-414-0635



**2013 SUMMIT SHEET POST.** 48x102 Tri-Axle, Rear Lift, Hallco Floor,  
 Air Ride, 24.5, Side Roll Tarp, Great Trailer For Demo, Yard Waste, Stumps, Etc.,  
 Two Available, 207-939-6676



**1989 AUTOCAR  
 10 WHEELER DUMP.**  
 Rebuilt CAT Engine, New Tires,  
 Barn Door, Asphalt Chutes,  
 Richardson Electric HD Load Cover,  
 Pintle Hitch, Fleet Maintained,  
**\$16,000 OBO.**  
 401-447-2661  
 Or 401-737-6663



**LEEBOY L1000R ASPHALT PAVER.** 1,815 Hours, Hatz  
 Diesel, Rubber Tires, 9' Wide, 3' Screenshot, Propane  
 Screen Heater, **\$12,000.** 207-252-1191



**SAFETY  
 EQUIPMENT**



**NOW AVAILABLE  
 AIR COMPRESSORS**



**ABRASIVES**



**PORTABLE ABRASIVE  
 BLASTERS**



**RAPID PREP**  
 877.529.2124 / rapidprep.com

Full Service Provider of Equipment, Supplies, and Consumables  
**NATIONWIDE EQUIPMENT RENTALS, SALES & SERVICE**

North Kingstown, RI    Suffolk, VA    Suwanee, GA  
 El Cajon, CA    Lakewood, WA

**RUST NEVER SLEEPS**

# ALL MAKES

EQUIPMENT & PARTS

CONTACT

ROLAND CARTER 603-340-6776 • ANDOVER NH 03216

**EQUIPMENT SALES  
EQUIPMENT PARTS  
EQUIPMENT  
ATTACHMENTS  
FINANCING AVAILABLE**



**New & Used  
Buckets &  
Attachments.**



**Rebuilt & Good Used Engines.**



**New Undercarriage.  
Free Undercarriage Inspection.**



**Equipment  
Hydraulic  
Parts.**



**Salvage  
Equipment  
Parts.**

[info@allmakesequipmentandparts.com](mailto:info@allmakesequipmentandparts.com) • [www.amepinc.com](http://www.amepinc.com)



## VOLVO BUCKET.

Quick Attach, Fits L-120, Very Nice,  
**\$3,500**, 860-716-0226,  
East Windsor, CT



**1989 KOEHRING LTR 110 CRANE.** 1,461 Hours,  
**\$22,000.** 207-252-1191

**R.J. POIRIER**

**HEAVY EQUIPMENT  
REPAIR, INC.**

413-245-3882  
208 Holland Road  
Brimfield, MA 01010

Sales Contact: R.J. Poirier  
[rjpoirier@rjpoirier.com](mailto:rjpoirier@rjpoirier.com)



- 2012 CAT LT106 CRUSHER.....CALL
- 2015 CAT D5K2. Low Hours.....CALL
- (2) 2021 CAT D9T. 9SU, Blade.....CALL
- 2017 CAT 988K. High Lift, 9 Yard Spade.....CALL
- (3) 2014 CAT 775GS. Dual Slope Bodies.....SOLD
- 2019 CAT 980M. New L-4 Tires, 7.75 Yard GP.....SOLD
- 2018 CAT 966M. New Tires, GP Bucket.....CALL
- 2015 CAT 972M XE. 7 Yard GP Bucket.....CALL
- 2021 CAT 982M. New Tires, 9.75 Yard GP Bucket.....SOLD
- (2) 2019 CAT 988K. High Lift.....SOLD
- 2017 VOLVO EC 750.....SOLD

[www.rjpoirier.com](http://www.rjpoirier.com)

*Buyer - Seller - Swapper*

**RENTAL WITH OPERATOR**  
**PORTABLE JAW CRUSHER AND IMPACT CRUSHER**



**DAY-WEEK-MONTHLY RATES**  
**80' STACKER AND**  
**EXCAVATOR AVAILABLE**

**NEW ENGLAND**  
**CALL KEN**  
**508-328-0028**



**2017 HARLEY DAVIDSON CUSTOM ROAD GLIDE SPECIAL.** 11K Miles, **\$24,000.** 617-840-8478



**TAKEUCHI TW80 SERIES 3 WHEEL LOADER.** 416 Hours, Road Gear, In Excellent Condition! Everything Works As It Should, **\$68,000.** No Trades, 860-836-6207



**2008 FORD F-450 CRANE TRUCK.** 6.4L, Good Condition, Selling As Is, Crane Does Not Work (Only Solenoid?). Looking For **\$12,000 OBO.** 603-464-5447



**2014 CAT D6K.** Enclosed Cab, Heat And A/C, 6-Way Blade Excellent Undercarriage, 9,477 Hours, **\$60,000.** 207-252-1191

**NORTHEASTERN PETROLEUM SERVICE & SUPPLY**

**617-522-8390 Ext 103 • 51 B St. Bay 2 Hanover, Ma**

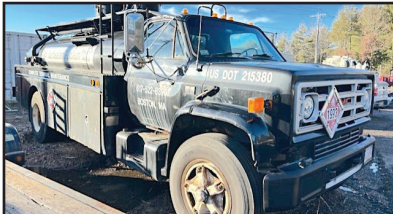
**Financing Available - After Hours Call 617-696-1979**

**We Are Looking For Newer Tank Trucks To List, Dual Equipped, Tandems & Auto. Trans, Can Sell From Your Location**

**Jerry Mello Cell: 617-799-1461 24/7 Email: [jerrym@nepss.com](mailto:jerrym@nepss.com)**



**2004 STERLING LT9500.** Almac 4800 Gal Tank (2800 + 2000), New Detroit Engine, 10 Speed, Tandem Axle, 250,000 Miles, Single Wrap, Bottom Load, Vapor Recovery, **\$59,000**



**SITE TRUCK.** 1985 GMC EXTRA THICK STEEL TANK, Detroit Engine, 5+2 Trans, 1500/500 Gal Compts Testing Top & Bottom All Liquids, 3" Pump, Good Cond, **\$7,500/BO**



**MUST TOW**

**1993 GMC TOPCAT.** Trans Tech 2,800 Gal Tank, 10-92 Bikini, CAT 3126, 6 Speed, New Tires, 187,000 Miles, **\$9,000 W/LCR Printer OR \$6,000 W/Out LCR Printer**

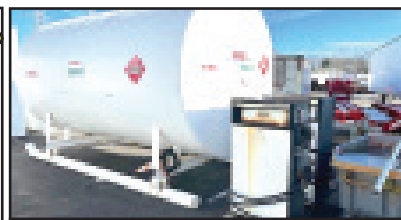


**HIGHLAND IN STOCK NEW.** 1000 Gal 2 Wall Skid Tanks. 10-GA, Other Sizes Available

**TWO TANK TRUCKS**

**2004 KENWORTH.** Automatic Trans., CAT 3126 Engine, 263,000 Miles, Boston Steel Co Aluminum Tank, One Compartment **\$15,000**

**2004 KENWORTH.** Automatic Trans., CAT 3126 Engine, 169,000 Miles, Trans Tech Tank, One Compartment **\$29,000**



**2002 TANK & PUMP.** 5000 Gallon 2 Wall Diesel Tank, 2 Suction Pumps, Excellent Condition, Will Deliver, **\$19,000.** Call 617-799-1461 Braintree, MA Location

SOME TRUCKS AT CUSTOMER LOCATIONS



**2005 FORD F350 XL  
SUPER DUTY SERVICE TRUCK.**  
4x4, Automatic Transmission, 5.4L  
Triton Gas Engine, 120K Miles,  
Service Body With Racks, Runs Great,  
**\$6,800.** 401-855-1178

**SMR**  
**SYNERGY METALS RECYCLING**

1741 Fall River Ave. Seekonk, MA

**774-229-2159**

**Comprehensive Scrap Metal Services**  
**We Pay Top Dollar For Aluminum, Brass, Copper,  
Steel and Batteries**

*Specializing in Catalytic Converters*

[Synergymetalsrecycling.com](http://Synergymetalsrecycling.com)



**Tight Link Fence Co.**

Residential ~ Commercial ~ Industrial

**Mark Dillon**  
**774-365-0222**



**1999 FINN B260 STRAW BLOWER.** 350 Hours,  
**\$22,000.** 207-252-1191

**DRAINAGE ?  
GRADE IMPROVEMENTS  
BE READY FOR  
THE NEXT BIG STORM**

**WASHED STONE  
PROCESSED GRAVEL  
SAND  
TOP SOIL  
RIP RAP  
FILL**



**Please Call for pricing**  
**401-447-2777**



**CENTRAL MASS  
TRUCK &  
EQUIPMENT**

**Custom Gates  
Hydraulic Hose  
Assemblies &  
Fittings**  
**Full Truck Service,  
Maintenance &  
Repair**

All Makes & Models  
Over 20 Years Experience  
Specializing In Mack's

• Marshall Cefole •

**978-467-7993**

• Randy Rameau •

**978-423-2889**

10 Gardner Road,  
Winchendon MA 01475



**2007 MAC. 37' Frameless High Sides, Excellent 1/2" Liner, Elec Flip Tarp, 2 Way Gate, Was Used For Wood Chips And Compost, \$37,500.**  
207-939-6676



**2006 PETERBILT 335 ROLLOFF.** 2015 Hoist, 33,000 GVW, Cummins, 246K Miles, Completely Rebuilt 6-Speed, Solid Truck, New Clutch, Texas Truck, Super Clean, **\$75,000.** Hope, RI 401-265-7777



**BOWIE HYDROSEEDER/STRAW BLOWER.** Skid Mounted, Hydraulic Chain Drive, **\$5,000.** 207-252-1191



**KUBOTA V2203 DIESEL ENGINE.**

Used, Tested, Good Running, 4 Cylinder, 50 Gross HP Model, Can Be Used To Repower Your Used Equipment, Video Available Of Engine Running With Oil Pressure Gauge And Water, **\$2500.** 860-680-1841

CT • RI • MA • NY



100 YARD  
STEEL DUMP TRAILERS

CALL IAN OR JIM  
800-229-9421

WE WILL SAVE YOU MONEY ...  
AND PUT A SMILE ON YOUR FACE!

**STUMP & BRUSH  
TRANSPORTATION & DISPOSAL**

**\$1800/LOAD**

**DEMOLITION DEBRIS  
TRANSPORTATION & DISPOSAL**

**\$2750/LOAD**

**SAME DAY DISPATCH  
TOP \$\$ PAID FOR YOUR  
SCRAP STEEL, COPPER, & ALUMINUM!!!**



**ALMAC 2800 GALLON TANK.** Brand New And Ready For Install!!  
On The Ground In Westbrook, Maine, 2-Compartment, Bottom Load, Full Specs  
Available, **\$59,855.** 207-854-9751, [www.MesserBuilt.com](http://www.MesserBuilt.com)

**2012 MULTIQUIP  
AR13HAR.**  
Smooth Drum,  
Compactor,  
270 Hours, Honda  
2-cylinder Gas  
Engine,  
**\$11,000.**  
207-252-1191



**1996 GMC  
TOPKICK.**  
22,000 GVW.  
241K Miles,  
CAT Motor,  
Allison Tranny,  
Chip Truck, Dump  
Truck, Remov-  
able 2-Pc Hood  
On Body, Large  
Utility Box Behind  
Cab, Tires 80%,  
**\$7000.**  
Call/Text  
978-375-1127



**1994 FORD L8000  
HYDRO-SEEDER.**

20' Flatbed, 1500 Gallon  
Hydroseeder, John Deere Motor,  
Hydroseeder Needs Some Weld-  
ing, 33,000 GVW, Runs Good,  
**\$8,500 OBO.**  
401-447-2661  
Or 401-737-6663



**STEERE'S**  
**MOBILE WELDING  
& EQUIPMENT REPAIR**  
LLC.

**Burrillville, RI  
401-633-4587**

- Full Bucket Rebuilds
- Cylinder Resealing
- Wear Plates
- Adapter Replacement
- Hardfacing
- General Maintenance
- Computer Diagnostics
- On Site Hose Replacement



**TRANS EAST EQUIPMENT INC,**  
67 Main St Salisbury, MA  
**CALL DAVE** Cell 978-992-7077 Or 978-462-1919

**EXIT 90 Off Rt 95  
End Of Ramp**

**You Pick Your Container – Over 175 Units**

**FAMILY OWNED & OPERATED**



**Serving New England**

**20', 40', 45', 48' And 53' CONTAINERS.**  
**One Trip & Used Steel Storage Containers**  
**We Deliver**  
**Call Dave The Owner And Get The Best Deal!**

**CHECK ALL OUR INVENTORY – [WWW.TRANSEASTEQ.COM](http://WWW.TRANSEASTEQ.COM)**

# TRUCK AND EQUIPMENT POST

HOME BROWSE THE MAGAZINE LOOKING TO SELL ▾ LOOKING TO BUY ▾ EZ SEARCH CATEGORIES ▾ CONTACT US SUBSCRIPTIONS



**PLACE AN AD**

**BROWSE THE  
MAGAZINE**

**SEARCH** 

**SUBSCRIPTIONS**

Truck And Equipment Post is a top choice for buying, selling, or browsing new & used trucks, heavy equipment & trailers throughout New England. Find 1000's of commercial trucks, construction equipment, trailers, truck bodies, truck parts, & other commercial vehicles including pickup trucks, vans, dump trucks, excavators, backhoes, tractors, skidsteers, dump & equipment trailers, truck bodies & more for sale by owner in CT, RI, MA, VT, NH, and Maine.

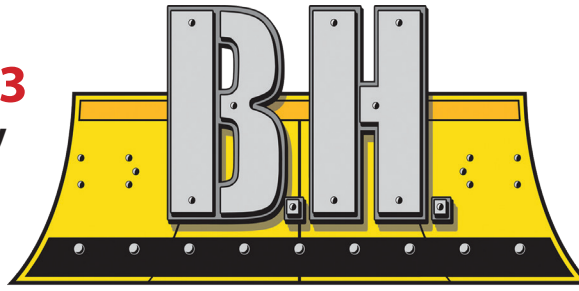
Truck And Equipment Post is More Than A Magazine. We're a great resource for the truck & equipment industry. It's What We Do!

## *Your Local Source For The Trades*

[www.bhtrailersandplows.com](http://www.bhtrailersandplows.com)

**860-949-7863**

6 Center Parkway  
Plainfield, CT  
06374



Monday—Friday  
8:00 A.M.—5:00 P.M.  
Saturday  
8:00 A.M.—2:00 P.M.  
Closed Sunday

**TRAILERS AND PLOWS**



**LOADS**  
of  
**BRAND**  
**NEW**  
**TRAILERS**  
Arriving  
Daily!!  
Come See!



**CM Aluminum Skirted Flat Bed, Gooseneck & Receiver Hitch Built In Starting at \$7,695**



**CM SK Skirted Flat Bed Gooseneck and Receiver Hitch Built In, Starting at \$6,495**



**CM Aluminum Tradesman Low Pro Service Body Gooseneck & Receiver Hitch Built In, Starting at \$14,995**



**CM Steel Tradesman Low Pro Service Body with Gooseneck & Receiver Hitch Built In, Starting at \$10,495**



**LOAD TRAIL DE14 83 x 14 with Ramps, D-Rings and Tarp Kit 14,000Lb. GVWR, \$9,195**



**DIAMOND C LPX 208 80 x 20 with Max Ramps, Fork Holders, 14,040Lb. Payload 18,000Lb. GVWR, \$12,895**



**BIG TEX 14EB 83 x 20 with Standup Ramps, 14,000Lb. GVWR 10,980Lb. Payload, \$6,495**



**BIG TEX 90SR 6 x 10 with Tarp Kit Ramps, D-Rings 9,990Lb. GVWR, \$7,695**





Commercial Vehicle Center



**MCGOVERN**  
FORD AT DRUM HILL

**Call Mike Smokler 603-493-6561**



**2026 F550 SUPER CAB DUMP.** Pwr Slide Rear Window, Remote Start, Payload Upgrade Pkg., 4WD, Diesel, FN6549 **\$82,900**



**NEW 2024 FORD E450 ROCKPORT SERVICE UTILITY VAN.** V8, AUTO, AC, 14,500 GVW, STK#FM9969, **\$68,030.**



**2026 FORD F550 SD XL AIR-FLO DUMP 4X4.** V8, AUTO, AC, 18K GVW, POWER GRP, STK#FM10423, **\$101,165.**

**OVER 75 SUPER DUTIES IN STOCK - COLORS AND CONFIGURATIONS**



**F350, F450, & F550 CHASSIS AVAILABLE**



**2026 FORD F350 SD SUPER CAB XL DUMP 4X4.** 7.3L V8, AUTO, AC, 14K GVW, POWER GRP, STK#FM9996, **\$83,848.**



**2025 T250 REFRIGERATED VAN.** Low Roof, Carrier 30S, V6 Gas, FN6036. **\$62,950**



**NEW 2025 FORD TRANSIT 250 REFRIGERATED VAN.** MEDIUM ROOF, V6, AUTO, AC, POWER GRP, STJ#FM9268. **\$83,185.**



**2026 F450 SUPER CAB DUMP.** 9' Stainless Steel Body, Diesel, 4WD, Work Surface, Dual Alternator, FN6576. **\$77,688**



**NEW 2027 FORD F650 C&C.** 6.7L POWER STROKE V8 DIESEL, 270 HP, AUTO, STK#FM10424, **\$90,415.**



**2026 F350 DUMP.** 4X4, 7.3L Gas, Remote Start, 9' Body, 2-3 Yd, FN6521. **\$71,000**



**2026 F350 DUMP.** Super Cab, 4X4, 7.3L Gas, Remote Start, 9' Body, 2-3 Yd, FN6520. **\$83,475**



**2026 FORD F350 SD SUPER CAB XL C&C 4X4.** V8, AUTO, AC, 14K GVW, 168" WB, POWER GRP, STK#FM10069, **\$62,760.**

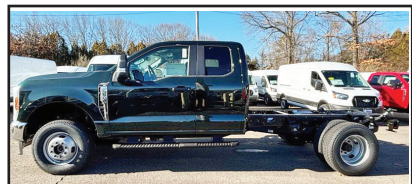


**2026 FORD F350 SD DUMP XL 4X4.** 7.3L V8, AUTO, AC, REAR CAMERA, 14K GVW, STK#FM10406, **\$81,030.**



**51 IN STOCK**

**2026 FORD TRANSIT 250 MEDIUM ROOF VAN.** V6, AUTO, NAV, AC, POWER GRP, STK#FM9852, **\$52,739.**



**2026 FORD F350 SD SUPER CAB XL C&C 4X4.** V8, AUTO, AC, POWER GRP, 14K GVW, STK#FM9987, **\$63,420.**



Commercial Vehicle Center

**MichaelSmokler@mcgovernauto.com**

# JOSEPH

**EQUIPMENT COMPANY**

**300 GAY ST • MANCHESTER, NH 03103**

**SATURDAYS • WE ARE OPEN ALL DAY**

**PHONE: 603-641-8608**

**FAX: 603-666-3716**



**293 NORTH - EXIT 2 -  
LEFT ONTO BROWN AVE -  
RIGHT ONTO WINSTON ST. - LEFT ONTO GAY ST.  
300 GAY STREET ON THE RIGHT**



**100 STORAGE CONTAINERS TO CHOOSE FROM. 20', 40', and 40' High Cube. Call For More Information.**



**2013 KOMATSU D155AX-7 DOZER. 8900 Hours, Sigma Blade With 3 Shank Ripper, Rebuilt Fuel Rail, Replaced DPF Sensors, Alternator & Belt, Fan Belt, Recharged A/C, New Compressor, New Batteries, New Corner Bits On Blade, EGR Servo Replaced, DPF Was Baked & Cleaned.. \$125,000. Call For More Information.**



**2013 VOLVO EW180D Rubber Tired Excavator, Blade, Outriggers, Roto Bucket And GP Bucket, 14,000 Hours. Call For More Information.**



**2010 DEERE GRADER. Model 772GDP, Equipped With Trimble GPS System, Rear Scarifier, 18K Hours, Excellent Condition. Call For More Information.**



**2012 GENIE GTH-5519 COMPACT TELEHANDLER. Hours: 2,200, Capacity: 5,500 Lbs, Max Lift Height: 19', 74 HP, Three-Mode Steering, Full-Time 4WD, Full Cab, Good Rubber, One Owner, 3rd Valve. Call For More Information.**



**IN STOCK - 2025 FONTAINE LXTN40. 40 Ton Extendable, 34' Closed - 60' Open. Also Available 29' Closed - 50' Open. Tandem Axle, Set Up For 3rd, Air Ride, Non Ground Bearing, 102" Swing Clearance, 20" Deck Height, Alum Wheels. In Stock, No Waiting. Available In Manchester NH and At The Factory In Springville AL. 3rd And 4th Axles Available. Call For More Information.**



**1976 ROGERS 100 TON. Quad Axle, 11' Wide, 37' Usable Deck, Recently Completely Rebuilt, Excellent Condition, Currently Located In AZ. Call For More Information.**



**2019 PUP TRAILERS. (14 Available To Choose From, 28' Long, 102" Wide, 13'6" High. Call For More Information.**



**2017 LIDDELL 60 TON DSR. 4 Axle, 26' DSR Deck, 9' Wide, 8'6" Bogie, 26' Beam Deck, 4th Axle, Alum Wheels, Gooseneck Extension, Power Pack, Excellent Shape. Call For More Information.**



**2012 FONTAINE 55 TON DSR. 26 Ft DECK, 5 Ft DSR Extension And 28 Foot Beam Deck, Fontaine 4th Axle And Spreader Bar, Alum Wheels, Org Paint, One Owner, 275 Tires, Lift On 3rd. Call For More Information.**



**2011 CATERPILLAR 336 DL EXCAVATOR. Cat Hyd Thumb, New Bottom, New Hyd Pump, New Lift Cylinders, New Stick Cylinder, Paperwork. Long And Long, Excellent Shape. PRICE \$85,000.**



**2019 FONTAINE 53 - 90. Tri Axle, Air Ride, Slider, Like New Condition, Southern Trailer, No Rust. 3 Available To Choose From Ranging From 2019 To 2016. Call For More Information.**

**S-T-R-E-T-C-H**

**www.josephequipment.com**

**Trades Welcome • Financing Available**

THIS AD IS COPYRIGHTED & OWNED BY TRUCK AND EQUIPMENT POST

# JOSEPH EQUIPMENT COMPANY

**300 GAY ST • MANCHESTER, NH 03103**

**SATURDAYS • WE ARE OPEN ALL DAY**

**PHONE: 603-641-8608**

**FAX: 603-666-3716**



**293 NORTH - EXIT 2 -  
LEFT ONTO BROWN AVE -  
RIGHT ONTO WINSTON ST.- LEFT ONTO GAY ST.  
300 GAY STREET ON THE RIGHT**



**2019 CATERPILLAR TL943C TELEHANDLER.**  
With Forks And Bucket, 6K Original Hours,  
Excellent Shape, Asking \$52,500.



**1999 NORDBERG LT105 JAW CRUSHER.**  
S/N: 1390, CAT Diesel Powered, 42 X 28 Opening,  
Remote Controlled Track And Operations.  
**Call For More Information.**



**2024 POWER SCREEN CHIEFTAIN. 1700X,**  
176 Hours, On Tracks, Like New Condition.  
**Call For More Information.**



**2020 JOHN DEERE 304L.**  
1 Yard Loader, Quick Disconnect, 3rd Valve,  
Forks And Bucket, A/C, Road Speed, 1200  
Hours, Like New Condition.  
**Call For More Information.**



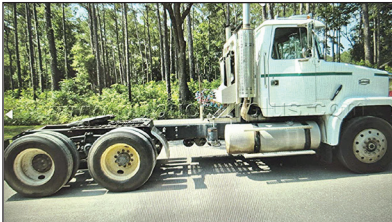
**1997 CATERPILLAR 960F WHEEL LOADER.**  
Sandblasted And Painted, New Decals, A/C, Scale,  
23.5 X 25 Rubber, Bolt On Cutting Edge, Very Good  
Condition. **Call For More Information.**



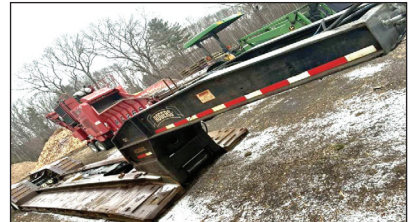
**2015 FONTAINE MAG80 3+3+3 TRAILER.**  
28' FLD, 9' Wide, Available With 3 Axle Jeep,  
Spreader, 3 Independent Axles & Flip Boxes,  
Excellent Condition, Southern Trailer From TX.  
**Call For More Information.**



**2013 ROGERS 60 TON.** 4 Axle, 25' Flat Level  
Deck, 102" Wide, Non-Ground Bearing, 3 Axle With  
Pin On 3rd, Lift On 3rd And 4th Axles, Full Fenders,  
Alum Wheels, 275 Rubber, One Owner,  
Excellent Shape. **Call For More Information.**



**1996 AUTOCAR TRACTOR.**  
425C, CAT Power, Mechanical 8LL,  
46K Rears, 74,000 Original Miles,  
Previously Owned By The State Of Florida.  
**Call For More Information.**



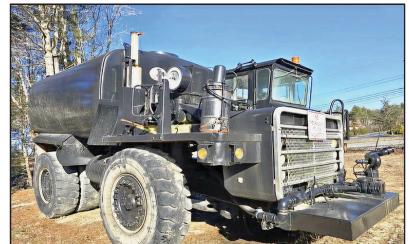
**2006 ROGERS 55 TON DSR LOWBED  
TRAILER.** 25' Deck, 3 Axle, Lift On 3rd, Air  
Ride, NGB, Full Fenders, All New Suspension  
And Brakes, Original Paint.  
**Call For More Information.**



**2019 CAT 232D SKIDSTEER.** Quick Disconnect,  
Bucket And 9' Power Angle Plow, 3rd Valve,  
1,130 Hours, One Owner, Like New Condition.  
**Call For More Information.**



**2009 CATERPILLAR 924H WHEEL LOADER.**  
Quick Disconnect, New Motor From CAT With  
Paperwork, Very Good Condition.  
**Call For More Information.**



**EUCLID 312TD RIGID WATER TRUCK.** 7,000  
Gallon Tank, Cummins Power, 188 X 33 Tires,  
Excellent Shape, Asking \$22,500.

**www.josephequipment.com**

**Trades Welcome • Financing Available**

THIS AD IS COPYRIGHTED & OWNED BY TRUCK AND EQUIPMENT POST

# JOSEPH

## EQUIPMENT COMPANY

**300 GAY ST • MANCHESTER, NH 03103**

**SATURDAYS • WE ARE OPEN ALL DAY**

**PHONE: 603-641-8608**

**FAX: 603-666-3716**



**293 NORTH - EXIT 2 -  
LEFT ONTO BROWN AVE -  
RIGHT ONTO WINSTON ST.- LEFT ONTO GAY ST.  
300 GAY STREET ON THE RIGHT**



**2021 WESTERN STAR 4900EX TRACTOR.**  
One Owner, Allison Automatic, 500 Detroit,  
295,912 Miles, 46K Rears, Full Locking Rears, 2  
Line Wet System, Fleet Maintained, Dual Stacks,  
Alum Wheels, A/C, P/S, Original Paint.  
**Call For More Information.**



**2002 MACK CH613.**  
427, 13 Speed, From CA Fire Dept  
Lowbed Tractor, 118K Original Miles.  
**Call For More Information.**



**2021 WESTERN STAR 4900.** Allison Automatic, 550  
HP, DT15 Engine, Full Rears, 2 Line Wet System, Fleet  
Maintained, Dual Stacks, Alum Wheels, A/C, P/S, Original  
Paint, One Owner, 2 Available to Choose.  
**Call For More Information.**



**MACK DM WATER TRUCK.** 300 HP, 3,500 Gallon  
Water Tank, 6 Speed Air Shift, 58k Rears, 11 X 24.5  
Tires, Air Operated Spray Heads From Cab, Excellent  
Shape. **Call For More Information.**



**1994 PETERBILT.**  
CAT Power, Wet System, Spring Ride,  
Was Working Daily, Asking \$22,500.  
**Call For More Information**



**2015 MACK CH TANDEM AXLE TRACTOR.** 505  
HP, 12 Speed Automatic, Miles: 451,000, Air Ride,  
Wet System, Sliding 5th Wheel, Aluminum Wheels,  
Dual Stacks, One Owner, Working Daily.  
**Call For More Information.**



**1995 MACK CH. 460,** 12 Speed, 44K Lb.  
Rears, Spring Ride, New Motor, New Hood,  
New Tires, Wet System, Asking \$27,500.  
**Call For More Information.**



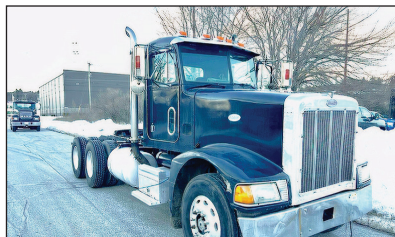
**2015 KENWORTH T880.** Miles: 571K, 500  
Paccar, Automatic, 3.91 Gear Ratio, 46K Rears,  
Full Lockers, 24.5 Rubber, A/C, Power Steering,  
Air Ride, Aluminum Wheels, Fleet Maintained,  
One Owner, **Call For More Information.**



**2019 PETERBILT 389.** 605 Cummins Power, 18  
Speed, 4 Axle, 46K Rears, Air Ride, 300" Wheel  
Base, Headache Rack, Full Fenders, 60" Bunk,  
Loaded, **Call For More Information.**



**1998 MACK RD688SX DUMP TRUCK.** 350 HP, Fuller  
8 Speed, 58 Rears All Redone By Southeast Truck, 24"  
Rubber, Rebuilt Engine, Double Frame, Working Daily,  
Heated Body, New Brakes All Around, New King Pins,  
New Clutch/Bell Housing, All New Rear Suspension.  
**Call For More Information.**



**1994 PETERBILT.** CAT Power, 10 Speed, 40K Lb.  
Rears, Wet System, Asking \$22,500.  
**Call For More Information.**



**2015 FORD F750 WATER TRUCK.** 2000 Gallon  
Tank, Single Axle, Automatic, Diesel, Front And  
Rear Spray Heads And Hose Reel, 8K Original  
Miles. **Call For More Information.**

**www.josephequipment.com**

**Trades Welcome • Financing Available**

THIS AD IS COPYRIGHTED & OWNED BY TRUCK AND EQUIPMENT POST

# JOSEPH

**EQUIPMENT COMPANY**

**300 GAY ST • MANCHESTER, NH 03103**

**PHONE: 603-641-8608**

**OPEN ALL DAY SATURDAY**



**FAX: 603-666-3716**



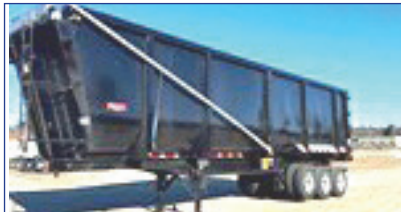
**2027 FONTAINE RENEGADE LXLN12** - 12 Inch Loaded Deck Height With 4 Inch Ground Clearance When Fully Loaded, 30 Tons In 16 Feet On Tandem Bogie Or 30 Tons In 20 Feet With 3rd Axle Flip, Low Profile, 3rd Axle Capability, 32 Feet 11 Clear Deck Length. **IN STOCK, NO WAITING, CALL FOR MORE INFORMATION.**



**2027 FONTAINE MAGNITUDE 50** Tri Axle, Set Up For 4Th, 50 Ton, Air Ride, 24' Deck, 20" Loaded Deck Height, Alum Or Steel Wheels, Strobe Lights, Outriggers And D-Rings. **Call For More Information.**



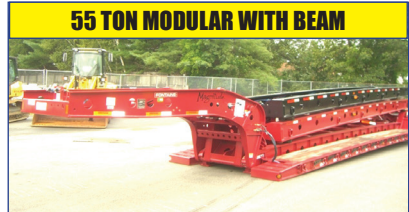
**2027 KRUZ TERMINATOR**, 26' Steel Frame, Single Point Suspension, 2-Way Gate, 11 X 24.5 Tires, Alum Wheels, 2 Speed Landing Gear. **Call For More Information.**



**IN STOCK - NO WAITING - 2025 GALLEGOS** 42' FRAME TYPE DUMP TRAILER. 96 YARD, 102" WIDE, 90" SIDES, TRI AXLE, HENDRICKSON AIR RIDE INTRAXX, ABS BRAKES, LIFT ON FRONT AXLE, FLIP N GO ELECTRIC CANVAS, LED LIGHTS, BARN DOOR. **CALL FOR MORE INFORMATION.**



**2027 KRUZ 26' STEEL TUB**, Aluminum Frame Dump Trailer, Air Ride, 2 Axle, Alum Wheels, 450 Hardox, 24.5 16 Ply Tires. **TAKING ORDERS Call For More Information.**



**55 TON MODULAR WITH BEAM**

**2027 FONTAINE 55H MODULAR DSR**, Beam Deck Also Available, Tri Axle, 60" Axle Spacing, Hydraulic Removable, Non Ground Bearing, Set Up For Gooseneck Ext, Spreader Bar And 4Th Axle Flip, Air Ride, Alum Wheels, 22.5 Rubber. **Call For More Information.**



**2027 FONTAINE 60 TON MODULAR 2+3+1**, 26' Dsr, 184" Swing Clearance, Set Up For 2 Axle Jeep, 14" Deck Height, Air Ride, Alum Wheels, 275/70R X 22.5 Rubber, Non Ground Bearing. **Call For More Information.**



**IN STOCK NO WAITING. FONTAINE MAGNITUDE 65** 2+3+2 CAPABLE, 28" DROP SIDE RAIL DECK, 3 AXLE, SET UP FOR 4 AXLE, 14.75" DECK HEIGHT, 102" WIDE, 60.5" AXLE SPACING, EQ2 SPREADER BAR WITH INTERMEDIATE AXLE, HYDRAULIC REMOVABLE, NON GROUND BEARING WITH 2 PIN POSITION AT 114" AND 102", TRIPLE CYLINDER, 70" HYDRAULIC FLIP BOX, HEAVY DUTY SNAP IN OUTRIGGERS, D-RINGS, ALUM WHEELS, 275/70R X 22.5 TIRES. **CALL FOR MORE INFORMATION.**



**2027 KRUZ, 70 Yard, Tri Axle, 70,000** Single Point, Lift On Third Axle, 1/4 Inch 450 Hardox, Floor, Sides, Nose, Gate, 12 Panel Gate, 11 X 24.5 Rubber, Alum Wheels. **Taking Orders. Call For More Information.**



**2027 FONTAINE TRAVERSE HYDRAULIC TAIL**, 48' Long, 102" Wide, Air Ride, Hydraulic Upper Deck, Hydraulic Winch, Remote Control, Alum Wheels, Dual Controls. **Taking Orders Call For More Information.**



**2027 FONTAINE 60 TON MODULAR**, 26' Dsr, 60" Axle Spacing, 184" Swing Clearance, Set Up For 2 Axle Jeep, 14" Deck Height, Air Ride, Alum Wheels, 275/70R X 22.5 Rubber, Non Ground Bearing, **In Stock. Call For More Information.**



**3+3+3**

**1998 KAYLN SIEBERT**, 75Ton 3+3+3, Air Ride, West Coast Bogie, 3 Axle, Air Ride Jeep With Power Tower, 10' Wide Trailer, 60' Overall Length, 48' Of Useable Deck, 275/70 X 22.5 Rubber, Sandblasted & Painted, Excellent Shape, Alum Wheels On Jeep And Booster. **Call For More Information.**

**Trades Welcome • Financing Available • [www.josephequipment.com](http://www.josephequipment.com)**

THIS AD IS COPYRIGHTED & OWNED BY TRUCK AND EQUIPMENT POST

**TRAILER RENTALS • TRAILER RENTALS • TRAILER RENTALS •**

**WE RENT STEP DECKS • LOW BEDS • HI FLATS • DEMO/SCRAP • TRAILERS**

# JOSEPH

## EQUIPMENT COMPANY

300 GAY ST. • Manchester, NH 03103

**NOW TAKING ORDERS FOR DUMP TRAILERS AND LOWBEDS FOR SPRING AND SUMMER DELIVERY**

**14" DECK HEIGHT**

**IN STOCK, NO WAITING**

**55 TON EXTENDABLE**



**PHONE: 603-641-8608**

**FAX: 603-666-3716**



**NEW 2027 FONTAINE RENEGADE LXL**, 14' Deck Height, 30' Deck W/ 6" Ground Clearance, 2 Axle, Set Up For 3rd Hydraulic Detachable Or Mechanical Detachable. In Stock, No Waiting. Call For More Information



**2027 FONTAINE MAGNITUDE 603T** Modular Drop Side Rail With 28" Deck, Hydraulic Removable Neck, Non Ground Bearing, Air Ride, Tri Axle, Third Axle Lift, Set Up For 4TH, Alum Wheels, 275/70 X 22.5 Tires, Loaded. Call For More Information



**2027 FONTAINE MAGNITUDE 59MX**, 55 Ton Extendable Trailer, 30' To 50', Modular, Detaches Both Ends, Hyd Removable, Non Ground Bearing, 20" Deck Height, Will Take 10' Deck Ext For A Total Of 60', 275 Rubber, Tri Axle, Air Lift On 3rd, Set Up For 4th, Set Up For Gooseneck Ext. Call For More Information

**WE RENT WALKING FLOORS • DUMPS • HIGH FLAT EXTENDABLES • JEEPS**



**NEW 2027 FONTAINE SPECIALIZED MAGNITUDE 55L**, Tri Axle, Air Ride, Set Up Of 4TH Axle, Non Ground Bearing, 25' Deck, Led Lights, Aluminum Wheels, Stroke Light Package, Lift On 3RD Axle, 2 Pin Position, Loaded. In Stock No Waiting. Call For More Information



**IN STOCK - 2027 FONTAINE MAGNITUDE 60HD-4MX**, Deck Extends From 30' To 51', 65 Ton When Closed, Built To Handle A 60 Ton Load With Ease, 30" Clear Deck Length Extends To 51', 22" Loaded Deck Height, 6" Ground Clearance, 7 Position Hydraulic Detachable Gooseneck, 7 Position Air Ride Tri-axle Bogie, 402 Deep Ready, 36" And 83" Flip Box, Ready, 60/90 Flip Axle Ready, EQ2 Spreader Bar Ready, Loaded. Call For More Information.



**2027 FONTAINE WORKHORSE 59LCC FLD**, Tri Axle, Lift On Third, Air Ride, Hydraulic 4th Axle Flip, Air Lift On Third, 18" Deck Height, 28' Deck, Low Boom Well, Covered Rear Bogie, Dual Cam Pawl Assembly With 7 Ride Height Positions, Removable Kingpin, At 108 inch Radius, Alternate Kingpin At 96" Radius, Load Scale, Tire Inflation, Air Controls, 275 Rubber, Alum Wheels. In Stock, No Waiting. Call For More Information.

**70 TON 2+3+2**

**WE RENT STINGERS • SPREADER BARS • DOUBLE DROP EXTENSIBLES TRAILERS**



**2027 FONTAINE 704/2+3+2 DROP SIDE TAIL**, 4 Axle, 28' Deck, Hydraulic Detachable, In Stock, No Waiting, Non Ground Bearing, 102' Wide, 65" Flip Box, Spreader Bar And 352' Jeep, Alum Wheels, 275/70R X 22.5 Tires, 28 Beam Deck Available. Call For More Information.



**NEW 2027 FONTAINE 55 TON**, Drop Side Rail, Tri Axle, Air Ride, Set Up For 4TH, Non Ground Bearing, Led Lights, Aluminum Wheels, Stroke Lights, Loaded. In Stock No Waiting. Call For More Information



**NEW 2027 SPECIALIZED 55 TON BEAM TRAILER**, 3+1 Modular, NGB, Detach Both Ends, Tri Axle, Air Lift On 3rd, Set Up 4th, Set Up For Gooseneck Extension, Call For More Information

**Trades Welcome • Financing Available • www.josephequipment.com**

THIS AD IS COPYRIGHTED & OWNED BY TRUCK AND EQUIPMENT POST