

SERVING NORTHEAST REGION

FREE

TRUCK AND EQUIPMENT POST

Buyer - Seller - Swapper



1967 MACK R611. 673 DIESEL, TRI PLEX, HOLMES 750, \$30,000. 413-442-0407



2011 NEW HOLLAND B95B. 4WD, EXTEND-A-HOE, EXCELLENT CONDITION, NEW BATTERIES, 2336 HOURS, ASKING \$34,000. 978-502-8557



2017 FORD F550 XL DUMP TRUCK. 169" W.B., 2WD, DIESEL 6.7 ENGINE 54,040 MILES, NAVY BLUE, 11' BED, ASKING \$37,000. 401-265-8817



TENNANT SENTINEL MOBILE SWEEPER. CAT ENGINE, 4 YARDER, 87" SWEEPING, 20,000 GVW, 1100 MILES, 3100 HOURS, NEEDS SOME TLC! \$9500. WATERBURY, CT 203-232-0921



NEW FELLING FT-60-4LP. BI-FOLD RAMP, TOOL BOXES, 22.5 TIRES, FULL AIR RIDE, 802-763-2585

Optative Group

16-17
APRIL 29th, 2026

INTERNET & PRINT FOR ONLY \$28.00

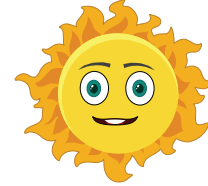
www.TruckAndEquipmentPost.com

888-887-0505



SANDER CHAINS
USA Made
All Makes
300 In Stock

S.A. McLean
207-793-4267



622 Elm St, Limerick, ME • www.s-a-mclean.com



1998 International Cab & Chassis. 14k Miles, Automatic, 300 Cummins



INTERNATIONAL. 4x4, Automatic, Brush Fire Truck



13' SWENSON. Stainless Steel Dump & Sander Body



12' HIGHWAY POWER ANGLE V- PLOW



ASPHALT HOT BOX. Mini Falcon



ASPHALT HOT BOX. 4 Ton



TRACKLESS MT5. Diesel Power, 7' Snowblower



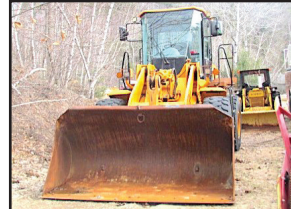
10' DUMP/SANDER BODY. Stainless Steel



CAT 966B LOADER.



2013 INTERNATIONAL TRUCK DUMP. Sander Body, Under CDL



HYUNDAI 757-7. Wheel Loader



1994 FORD F700 CAB & CHASSIS. Cummins, Automatic, 20k Miles, Under CDL



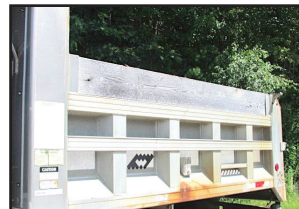
WAUSAU/EVEREST. Loader Snowblower



1994 GMC 3500 UTILITY. 4x4, V8 Gas, 44k Miles, Rust Free



1998 INTERNATIONAL 4800. Four Wheel Drive, Automatic, 14k Miles, 14 Ft Of Frame.



WARREN 10' ALUMINUM DUMP BODY



SANDER CHAINS. USA Made, All Makes In Stock



STEWART STEVENSON 4X4. Automatic, 1,000 Gallon Tank Brush Truck



2004 INTERNATIONAL CAB & CHASSIS. 4x4, DT 466, Automatic



INTERNATIONAL 2574 CAB & CHASSIS. Automatic, 300 Cummins, 24k Miles



NATIONWIDE TRUCK PARTS LLC

1-800-457-8826

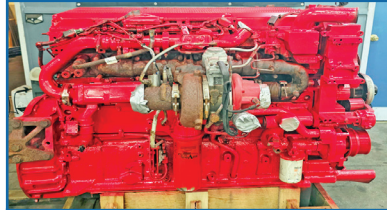
www.NationwideHeavyTruckParts.com

sales@nationwideheavytruckparts.com

11 S. Keyser Avenue - Taylor, PA 18517

QUALITY USED HEAVY TRUCK PARTS, USED DIESEL ENGINES, TRANSMISSIONS & MORE.

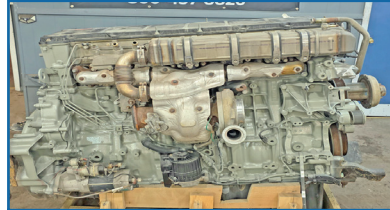
All Parts Tested & Sold With A Standard Warranty. Large Inventory - Call With Your Needs.



2014 ISX15 \$13,000



2012 Detroit DD15 \$12,000



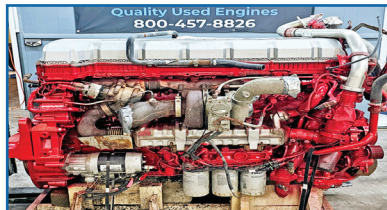
2019 Detroit DD15 \$12,500



DT12 Transmissions \$3,500



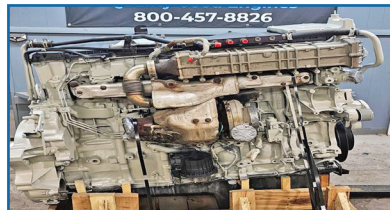
2013 Volvo D13 \$9,000



2012 Mack MP8 \$10,500



2012 ISX15 \$12,000



2015 Detroit DD13 \$12,000



2019 Cummins X15 \$16,500



2018 Paccar MX13 \$16,500



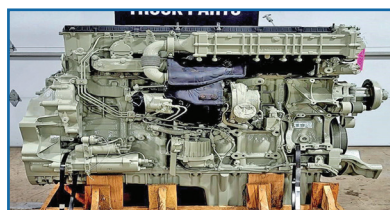
Late Model Rears



FRO Transmissions \$1,000



2009 Cummins ISX \$9,500



2012 Detroit DD13 \$12,500

ONE OWNER ESTATE AUCTION COMPLETE LIQUIDATION

~ William Pykus ~

Good Quality Construction & Aggregate Equipment, Trucks,
Trailers, Attachments and Support

FRIDAY, MAY 1ST @ 9:30 AM • HONESDALE, PENNSYLVANIA



ADDRESS: 1880 Great Bend Turnpike,
Honesdale, Pennsylvania 18431



HIGHLIGHTS INCLUDE: **JAW CRUSHER:** 2018 McCloskey J-50 v2(50x27, 450-tons/hour), **CONE CRUSHER:** 2018 McCloskey C44(44in. Telesmith cone crawler, up to 44-tons/hour), **3 SCREENING PLANTS:** 2019 McCloskey S250 #D Screen(track, double deck, folding conveyor), McCloskey R155(scalper screener 55in.), Extec S-5(2-deck, 3-product), **RADIAL STACKER:** 2017 McCloskey ST-80(36in. x 80in.), **9 CRAWLER TRACTORS:** JD 700J, (2)JD 700HLGP, JD 650J, (2)JD 550KLG, JD 450H, Dresser TD-25C(ripper), Dresser TD-20, **CRAWLER LOADER:** Cat 977K, **ARTICULATED HAUL TRUCK:** Terex 30-ton, **11 HYDRAULIC EXCAVATORS:** JD 370C, JD 350G, JD 350D, JD 230LC, (2)JD 160G, JD 160DLC, JD 85G, Bobcat E63, Volvo EC340DLC, 2021 Doosan DX85R-3, **2 RUBBER TIRED LOADERS:** Hyundai 780-3, JD 744K, **TRACTOR LOADER BACKHOE:** Komatsu WA150, **RUBBER TRACKED SKID STEER:** Bobcat T750, **TELESCOPIC FORKLIFT:** 2020 Snorkel, SR9244, **GENERATOR:** Cat C18, **LOG SKIDDER:** Franklin, **3 SOIL COMPACTORS:** Bomag BW212D-2, Case 1102D, Intensus CV25D, **MOTOR GRADER:** JD 672B, **ASPHALT PAVER:** BlawKnox 5510, **DISTRIBUTOR TRUCK:** 2015 Hino(Ethyre), **7 DUMP TRUCKS:** Western Star(tri.), (3)Peterbilt(tri.), IH(tri.), Mack Granite(tri.), Volvo(t/a), **2 TRUCK TRACTORS:** 2019 Mack Anthem 64T(t/a), 2016 Western Star 4900SF(t/a), **SLINGER TRUCK:** IH, **2 MASON TRUCKS:** (2)Ford F550, **2 WATER TRUCKS:** Mack R Model, Ford Cabover, **BREAD TRUCK, FUEL TRUCK:** IH 4300, **2 SERVICE TRUCKS:** Ford F550, Ford F450, **STAKE TRUCK:** Ford F550, **UTILITY TRUCK:** Ford F350, **PICKUP TRUCKS, DETACHABLE TRAILER:** Eager Beaver 50GSL, **2 TAGALONG TRAILERS:** 2020 Rampant 25-ton, Loadrite 5-ton, **2 CONTAINERS:** 20ft. Conex Sea Box, Conex Explosives Container, **AIR COMPRESSOR:** 185Kw, **11 ATTACHMENTS:** (2) JD Wheel Loader, JD Backhoe, Swanson Tailgate Spreader, (7)Plow Blades, **PARTS BONE YARD:** Mack, Peterbilt, Autocar, Bucket Truck, 2 TD25 Parts, Fergusson Tractor, Aluminum Dump Body, Misc. Pipe, Small Building, IH 6x6 Log Picker, **PLUS:** Large Quantity of Support Equipment.

SALE SITE PHONE: (315) 633-2944

PA AUCTIONEER LICENSE: AU003051E

AUCTION CO.: AY000220L



ALEX LYON & SON

SALES MANAGERS & AUCTIONEERS, INC., BRIDGEPORT, NY 13030

Phone: (315) 633-2944 • Fax: (315) 633-5635

Go to WWW.LYONAUCTION.COM for a Complete List, Descriptions, and Pictures



ONE OWNER SEVERAL JOB COMPLETIONS

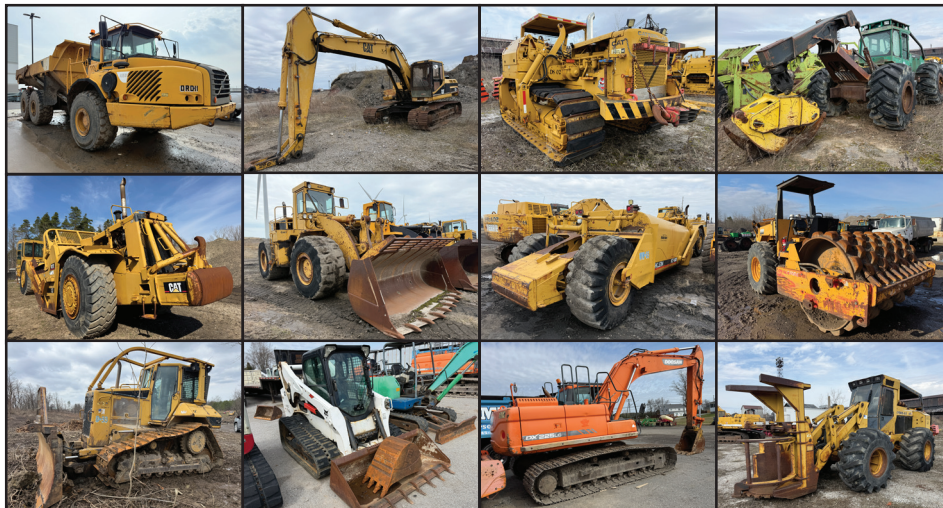
~ Zoladz Construction Co., Inc. ~

Good Quality Cat, John Deere, Komatsu, Volvo Earthmoving Equipment

FRIDAY, MAY 8TH @ 9:30 AM • LACKAWANA (Buffalo), NEW YORK



ADDRESS: 6 Dona Street,
Lackawana, New York 14218
(Follow signage to Iron City Facility)



HIGHLIGHTS INCLUDE: **5 ARTICULATED HAUL TRUCKS:** (2)Volvo A40E, (2)Volvo A40D, Volvo A35D, **WATER WAGON:** Cat 623B, **32 HYDRAULIC EXCAVATORS:** Volvo EC700, Cat 325L, Cat 320CL, Cat 306E, JD 450CLC, JD 350DLC, JD 330CLC, JD 200CLC, JD 160LC, JD 85D, Liugong CLG925D, Komatsu PC400LC-7, Komatsu PC400LC-7EO, Komatsu PC220LC-8, Komatsu PC120, Komatsu PC88MR-8, Kobelco 485, Kobelco SK350LC, Kobelco SK330, Kobelco SK295LC, Kobelco SK210LC, Case CX210, Case CX160B, Hyundai 80CR-9, (2)Doosan DX225LC-3, (2)2018 Bobcat E85, Takeuchi TB260, Takeuchi TB180FR, Takeuchi TB145, IHI 65NX, IHI 35, **VACUUM EXCAVATOR:** 2019 Vermeer Vac/Tron(t/a), **2 MOTOR GRADERS:** JD 672A, JD 570A, **4 MOTOR SCRAPERS:** Cat 637, (3)Cat 627E, **5 RUBBER TIRED LOADERS:** Cat 988B, JD 824J, Komatsu WA420, Komatsu WA75, Michigan L320, **6 CRAWLER TRACTORS:** Cat D6NLGP, JD 1050C, JD 750KLGP, JD 700HLT, JD 700HXL, Case 850G, **3 PIPE LAYERS:** (2)Cat 583H(side boom), Cat 583H, **ASPHALT PAVER:** Leeboy L7000T, **3 VIBRATORY ROLLERS:** Dynapac CA25, (2)Hamm 3410, **AGGREGATE EQUIPMENT:** 2022 Astec GT4280R Conveyor, **2 FORKLIFTS:** TCM FG15N, Cat V50, **5 RUBBER TRACKED SKID STEERS:** (2)2026 Cat 265XPS, 2018 Cat 239D, 2019 Bobcat T770, 2019 NH C237, **2 SKID STEERS:** NH LX985, Bobcat S630, **ROCK SAW:** Vermeer CC90, **FELLER BUNCHER:** Hydro-Axe 611E, **LOG SKIDDER:** Timberjack 660D, **MOBILE DROP SPREAD TRACTOR:** Terra-Gator 1844, **4 BOOM LIFTS:** (3)Genie S-85, JLG 600S, **2 SCISSOR LIFTS:** (2)JLG 3248RS, **AIR COMPRESSOR:** Airman PDS185S, **GENERATOR:** Cat D348 565Kw, **WATER TRUCK:** IH 4200, **ATTENUATOR TRUCK:** Ford F750, **2 ROLLOFF TRUCKS:** 2011 IH 7400(tri.), 2010 Peterbilt, **2 TRAFFIC CONE TRUCKS:** IH 4700, GMC Topkick, **SERVICE TRUCK:** Ford F650XL(s/a), **FUEL TRUCK:** Ford LN9000(s/a), **TRUCK TRACTOR:** 2019 Mack Anthem 64T(t/a), **FLATBED TRAILER:** Reitnauer 45ft.(t/a), **3 UTILITY VEHICLES:** (3)Unused Polaris Pro XD(4x4, Side-By-Side), **2 HYDRAULIC HAMMERS:** NPK H6A, NPK GH-15, **3 ATTACHMENTS:** (2)Pipe Layer, Skid Steer, **PLUS:** Quantity of Support & Attachments.

SALE SITE PHONE: (315) 633-2944



ALEX LYON & SON

SALES MANAGERS & AUCTIONEERS, INC., BRIDGEPORT, NY 13030

Phone: (315) 633-2944 • Fax: (315) 633-5635

Go to WWW.LYONAUCTION.COM for a Complete List, Descriptions, and Pictures



JP RIVARD Trailer Sales Inc

Call Matt - 508-962-4543
Matt@jprivard.com • JPRivard.com
Locations in Ayer, MA and Devens, MA

We Now Rent
New 20' Containers
Commercial & Residential
Short Term Or Long Term
Please Inquire

20' TRI-DOOR



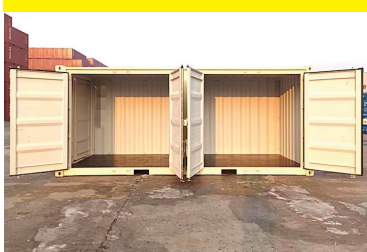
(2) New One Trip 20' Tri-Doors. In Stock Now. From \$4,200.

40' HIGH CUBE DOUBLE DOORS



40' High Cube Container, Doors On Each End. Light Gray. From \$5,500

NEW 20' - TWO SIDE DOORS



20' NEW ONE TRIP. End Doors, 2 Side Doors, Dark Gray From \$6,000

20' HIGH CUBE



1 New One Trip 20' High Cube, 9'6" Full Open Side, Hard To Find. From \$7,500

20' 1 TRIP - HIGH OPTIONS



GREEN BACK IN STOCK



FROM \$3,200
(50) New 20' One Trip Containers Beige, Light Grey And Green, Some Lightly Dented

20' & 40' HIGH CUBE



FROM \$4,500

New 20' & 40' High Cube Containers, One Trip. In Stock

40' HIGH CUBE 1 Trip, 4 Side Doors



New 40' High Cube Containers, With 4 Side Doors, \$9,800 Delivered Locally

Sales Tax If Applicable + Delivery Is Not Included Unless Noted

Buyer - Seller - Swapper

JP RIVARD Trailer Sales Inc

Call Matt - 508-962-4543
 Matt@jprivard.com • JPRivard.com
 Locations in Ayer, MA and Devens, MA

FULLY GALVANIZED UNDER SIDE



(20)
HYUNDAI 53'
 - Spring Ride
 - Swing Doors
 - Mint
 Condition

\$16,900

LIFTGATE SALES & SERVICE



Sales And Service For
 All Major Brands

RENTAL FLATBEDS & STEP DECKS



- NEW & USED
 48'X102" Rentals
 - Sliding Tandems
 - DOT Inspected
 - USED 48'X102"
 Combo Step Deck
 - Spread Axle Air
 Ride

STORAGE TRAILERS

48' & 53' STORAGE
 ONLY TRAILERS
 AVAILABLE.
 Some Insulated,
 Call Matt

NEW GALVANIZED TRAILERS



2027 DORSEY 48' STEP DECK
 COMBO. Galvanized, Great
 Specs. March 2026 Delivery

2027 DORSEY 53' FLATBED.
 Galvanized, Forklift Kit. March
 2026 Delivery

2027 DORSEY 36' FLATBED.
 Galvanized, Forklift Kit. March
 2026 Delivery

**BOX TRUCK &
 TRAILER
 REPAIR SERVICES**

What Do We Service:

- SEMI Trailers – All Types Of Repairs
- Box Trucks – Body, Liftgate & General Repairs
- Landscape Trailers – All Types Of Repairs
- Horse Trailers – All Types Of Repairs
- Fabrication Services
- Full Aluminum/Steel Welding
- PM Maintenance On Trucks & Trailers

We Rebuild Smash Bodies On Box Trucks
 & Semi Trailers

*** FINANCING & LONG TERM LEASES AVAILABLE

TRUCK AND EQUIPMENT POST

**P.O. BOX 6824
PROVIDENCE, RI 02940
TEL: 888-887-0505**

**EMAIL:
ADS@TRUCKANDEQUIPMENTPOST.COM
WWW.TRUCKANDEQUIPMENTPOST.COM**



YOUR INFORMATION



NAME : _____ **PHONE :** _____

STREET ADDRESS : _____

CITY : _____ **STATE :** _____ **ZIP :** _____

EMAIL : _____

PAYMENT :   CHECK

  OTHER **ACCOUNT NUMBER :** _____

SIGNATURE : _____ **EXP DATE :** _____

PLACE YOUR AD ONLINE AT WWW.TRUCKANDEQUIPMENTPOST.COM

STANDARD PHOTO AD # ISSUES

\$28 FOR 1 ISSUE (2 WEEKS)

\$50 FOR 2 ISSUES (4 WEEKS)

JUMBO PHOTO AD

\$55 FOR 1 ISSUE (2 WEEKS)

\$100 FOR 2 ISSUES (4 WEEKS)

PHOTO AD



Your description goes here as follows:
Year, Make, Model, Features, Price, Town & State, Phone

PAYMENT ENCLOSED \$ _____ EACH ISSUE RUNS FOR 2 WEEKS

AD TEXT _____

*1 item per ad please. We reserve the right to edit or refuse ad content.

SUBSCRIPTION RATES INCLUDE FIRST CLASS SHIPPING.

MAILED TO YOUR HOME OR BUSINESS

\$55.00 13 ISSUES \$80.00 26 ISSUES

**Just email Ads@TruckandEquipmentPost.com
and type "BAG MY MAG" in the subject line.**

NEW WE'LL EMAIL THE MAGAZINE TO YOU FOR FREE

One Item Per Ad Please. Truck And Equipment Post makes every effort to ensure ads are published accurately. Truck And Equipment Post and its staff will not be held responsible or liable for typographical errors or misprints. Truck And Equipment Post reserves the right to edit, abbreviate, remove or refuse any ads/content at its discretion. Copyright of Ads: By agreeing to place an ad with Truck And Equipment Post, you hereby grant Truck And Equipment Post the right to display and publish all or part of the advertisement under United States copyright laws.



920 W. Chestnut St. Brockton, MA:
508-586-1666 Mon - Fri 8-5, Sat 8-NOON

Spring Safety Checklist

First Aid Kit
\$21.80 FA-10



Fire Extinguisher
10 BC
440161MTLK
\$39.99



ECCO Back-up Alarm
\$22.99 510



Rubber Chock Block
\$20.99 GT2048



Triangle Flare Kit
3 Triangles with case
\$32.99 1005DTS



Universal Spill Kit
Absorbs 5 Gallons
\$56.99 SPILLKIT



A Variety of Decals and Flags
in Stock!



18" Red or Orange Jersey
Fray-resistant knit polyester



- Grommets \$7.85
- Staff \$9.86
- Wire Loop \$9.00
- Bungee \$12.49
- Flag Magnets \$11.29

24" Flags In Stock



3" x 3"

\$2.85



1.5" x 5"

\$2.99



\$3.14



\$3.00



11.75" x 17.25"

\$10.99



4.5" x 11"

\$5.15



37 County Road
Route 106
Plympton MA 02367
PH: 781-582-1378
FAX: 781-585-4438



**GALION BODIES IN STOCK NOW!
CALL FOR PRICING.**



**2007 PETERBILT PB340:PX8 ENGINE, 10
SPEED, 146K MILES, NEWER LANAU DUMP
BODY, 54,600 GVW. \$78,000.**



**HOOKLIFT TRUCKS IN STOCK NOW!
INSTALLATIONS: PIONEER TARPS
INSTALLED. CALL FOR PRICING.**



**CUSTOM ALUMINUM BEDS/STEEL
CALL FOR QUOTE**



**LADAU SHD DUMP BODIES. INSTALLED.
CASH-N-CARRY. CALL FOR PRICING.**



**2017 Kenworth T-800 Paccar MX-13, Allison
auto, 195,000 miles with Palfinger cable pull
hoist system, tarp system, \$142,000**



**2015 Peterbilt Model 337: Paccar PX-9, Allison
auto 131,000 miles with Ampliroll AL100
Hook Lift, Pioneer tarp system, 33,000 GVW.
\$91,000**



**2001 Peterbilt 379 Tractor, 868,000 miles, 60
series Detroit, 8LL 12F/45R, 58,000 GVW
\$78,000**



**READY TO GO COMPLETE TRUCK PACKAGES.
LOTS OF OPTIONS AVAILABLE
New & Used Trucks Ready To Go!**



**CM
ALUMINUM
FLATBEDS
IN STOCK
NOW! MANY
SIZES.
CALL FOR
PRICING**



**STEEL FLATBEDS
IN STOCK NOW!
MANY SIZES.
CALL FOR
PRICING.**

**SALES,
SERVICE,
PARTS**

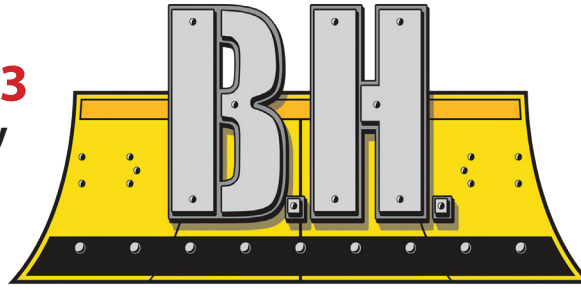
**CALL TOLL FREE: 781-582-1378
WWW.CAREYTRUCKEQUIPMENT.COM**

**CUSTOM METAL
FABRICATION
AVAILABLE**

www.bhtrailersandplows.com

860-949-7863

6 Center Parkway
Plainfield, CT
06374



TRAILERS AND PLOWS

Monday—Friday
8:00 A.M.—5:00 P.M.
Saturday
8:00 A.M.—2:00 P.M.
Closed Sunday



**WARRIOR
Beds**

Aluminum
Starting at \$3,995
Steel
Starting at \$2,895
30K Gooseneck
Hitch Built-In



CM Aluminum Skirted Flat Bed, Gooseneck & Receiver Hitch Built In Starting at \$7,695



CM SK Skirted Flat Bed Gooseneck and Receiver Hitch Built In, Starting at \$6,495



CM Aluminum Tradesman Low Pro Service Body Gooseneck & Receiver Hitch Built In, Starting at \$14,995



CM Steel Tradesman Low Pro Service Body with Gooseneck & Receiver Hitch Built In, Starting at \$10,495



LOAD TRAIL DE14 83 x 14 with Ramps, D-Rings and Tarp Kit 14,000Lb. GVWR, \$9,195



DIAMOND C LPX 208 80 x 20 with Max Ramps, Fork Holders, 14,040Lb. Payload 18,000Lb. GVWR, \$12,895



BIG TEX 14EB 83 x 20 with Standup Ramps, 14,000Lb. GVWR 10,980Lb. Payload, \$6,495

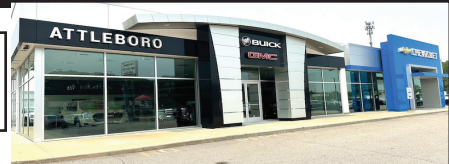


BIG TEX 90SR 6 x 10 with Tarp Kit Ramps, D-Rings 9,990Lb. GVWR, \$7,695



CHEVROLET, BUICK, GMC OF ATTLEBORO

A Priority Automotive Dealership



**ROUTE 1, BETWEEN 95 + 295
SOUTH ATTLEBORO, MA**

508-761-4800

PLENTY OF NEW GMC TRUCKS AVAILABLE

2026 K1500 8' BED



V-8, NICELY EQUIPPED.
#26061G SALE PRICE INCLUDED GM
TRADE-IN REBATE.
\$44,660

2026 CANYON AT4X



INCLUDES AT4 LIFT KIT.
#26007G
\$60,715

**2026 K2500 CREW CAB SLT
DURAMAX DIESEL**



PLOW PREP. PKG., SPRAY LINER.
#26135G
\$78,730

**2026 K3500 DENALI ULTIMATE
DURAMAX DIESEL**



INCLUDES PLOW PREP. PKG.
#TF213303
\$99,995

2026 K1500 AT4X



6.2L V-8, ACTIVE EXHAUST,
KICKER TAILGATE AUDIO SYSTEM.
#26019G
\$84,385

2026 K2500 CREW CAB SLT



SLT CONV. PKG., SPRAY LINER,
PREFERRED PKG., HD SAFETY PKG.,
PLOW PREP. #26055G
\$73,270

**2024 K3500 CREWCAB SLT
DURAMAX DIESEL**

8' BED



SLT PREMIUM PKG., X-31 OFF
ROAD PKG. #24219G
\$83,875

**2026 K1500 DOUBLE CAB
GRAPHITE EDITION**



GRAPHITE EDITION PLUS PRO VALUE
PKG. PRICE INCLUDES GM TRADE-IN
REBATE. #26068G
\$41,995

2026 K1500 DOUBLE CAB



V-8, PRO VALUE PKG., POWER SEAT,
SPRAY LINER. PRICE INCLUDES GM
TRADE-IN REBATE. #26109G
\$45,750

2026 K3500 DOUBLE CAB



CONV. PKG., SPRAY LINER,
ALUM. WHEELS, PLOW PREP,
ASSIST STEPS, X-31 OFF ROAD
SUSP. #26084G
\$59,175

2025 K2500 UTILITY



CONV. PKG., PLOW PREP.
#25234G
\$76,000

2026 K2500 SLE



ALL THE OPTIONS !
#TF227835
\$60,945

**** PLUS OVER 50 MORE AVAILABLE ****



WWW.CHEVROLETBUICKGMCOFATTLEBORO.COM



CHEVROLET, BUICK, GMC OF ATTLEBORO

A Priority Automotive Dealership



**ROUTE 1, BETWEEN 95 + 295
SOUTH ATTLEBORO, MA**

508-761-4800

PLENTY OF NEW CHEVROLET TRUCKS AVAILABLE

**2025 EXPRESS ONE TON
EXTENDED VAN**



**9900 GVW, V-8, TRAILER PKG.,
ALL THE OPTIONS. #25422H**

\$53,885

**2025 K3500 DUMP TRUCK
DURAMAX DIESEL**



**14,000 GVE, PLOW PREP., HITCH,
COVER, CONV. PKG. #25411H**

\$81,000

**2025 K3500 LT CREW CAB UTILITY
DURAMAX DIESEL**



**DARK GREEN METALLIC, BUCKET SEATS,
REMOTE START, HEATED SEATS.
#25074H**

\$95,300

2024 KUV



**9,900 GVW, LOW ROOF,
NICELY EQUIPPED. #24414H**

\$71,895

2025 DURACUBE MAX 10'



**9,900 GVW, ELEC. BODY LOCKS,
LADDER RACKS, SHELVING. #25141H**

\$69,000

**2024 LCF 4500
14' BOX + LIFT GATE**



**14,500 GVW, POWER MIRRORS,
KEYLESS ENTRY, 14' ALUM. BOX,
#23235H LIFT-GATE.**

\$89,995

2025 12' BOX TRUCK



**9,900 GVW, SINGLE REAR WHEEL,
LOW FLOOR, NICE CHASSIS SPECS.
#25343H**

\$58,725

2025 K2500 DOUBLE CAB UTILITY



**PLOW PREP., CONV. PKG., TRAILER
BRAKE
AND HITCH. #25120H**

\$75,000

2024 4500 14' BOX



**14,200 GVW, FANCY CHASSIS SPECS.,
TRANSLUCENT ROOF, RAMP, TIE-DOWN
HOOKS. #24409H**

\$63,300

2025 COLORADO ZR2



**FULL OFF-ROAD SPECS.
INCLUDES LIGHT BAR, SHOCKS,
STEPS, SUNROOF. #25385H**

\$63,260

**2026 K3500 CREW CAB LTZ
DURAMAX DUALY**



**LTZ PLUS PKG., POLISHED ALUM. WHEELS,
FIFTH WHEEL PKG., SUNROOF, ASSIST
STEPS. #TF23345**

\$87,815

2025 K2500 DOUBLE CAB



**CUSTOM VALUE PKG., SPRAY LINER,
PLOW PREP. #25341H**

\$57,380



WWW.CHEVROLETBUICKGMCOFATTLEBORO.COM



THIS AD IS COPYRIGHTED & OWNED BY TRUCK AND EQUIPMENT POST

TRUCK AND EQUIPMENT POST

HOME BROWSE THE MAGAZINE LOOKING TO SELL ▾ LOOKING TO BUY ▾ EZ SEARCH CATEGORIES ▾ CONTACT US SUBSCRIPTIONS



PLACE AN AD

BROWSE THE MAGAZINE

SEARCH 

SUBSCRIPTIONS

Truck And Equipment Post is a top choice for buying, selling, or browsing new & used trucks, heavy equipment & trailers throughout New England. Find 1000's of commercial trucks, construction equipment, trailers, truck bodies, truck parts, & other commercial vehicles including pickup trucks, vans, dump trucks, excavators, backhoes, tractors, skidsteers, dump & equipment trailers, truck bodies & more for sale by owner in CT, RI, MA, VT, NH, and Maine.
Truck And Equipment Post is More Than A Magazine. We're a great resource for the truck & equipment industry. It's What We Do!

Your Local Source For The Trades



(203) 752-0213
WWW.EQUIP-SALES.COM
NORTH HAVEN, CT 06473

PARTS ▶ SALES ▶ SERVICE ▶ RENTALS



**1 OWNER,
1 OPERATOR!**

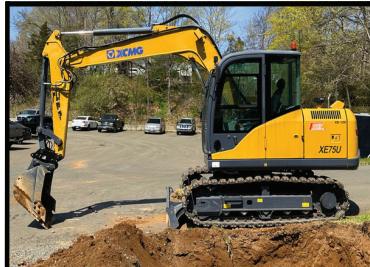
2022 ROCKSTER R1100S
CLOSED CIRCUIT IMPACT CRUSHER. SERVICE RECORDS FROM DAY 1. CAT ENGINE, CENTRAL GREASE SYSTEM, REMOTE CONTROL, MAGNET, SCREEN BOX, 2 WAY RETURN BELT. 4,930 HRS. EXTREMELY RELIABLE & PRODUCTIVE MACHINE. **\$256,500**



2001 INGERSOLL-RAND DD24
3,743 HRS. VERY WELL MAINTAINED. JUST WENT THROUGH THE SHOP, FRESHLY SERVICED & PAINTED. READY TO WORK. **\$13,999**



2013 DEERE 700K XLT
3,800 HRS, ONE OWNER, GPS VALVING, FULL CAB, TIGHT, GOOD BOTTOM. VERIFIED HOURS. **\$76,500**



2022 XCMG XE75U
KUBOTA DIESEL, PATTERN CHANGER, HYDRAULIC COUPLER & THUMB PLUMBING. 220 HRS, LOADED FULL CAB. **\$61,500**



2023 ROCKSTER R1100DS
CLOSED CIRCUIT IMPACTOR, ONE OWNER, ONE OPERATOR. CAT ENGINE, REMOTE CONTROL, MAGNET, SCREEN BOX, 2 WAY RETURN BELT. 3,895 HOURS. CALL FOR PRICE



2002 NEW HOLLAND LS180
SELLING THIS NEW HOLLAND LS180. RUNS AND OPERATES, FOOT PEDAL CONTROL, AUX HYDRAULICS. MISSING FRONT DOOR. LIGHTS AND HEAT WORK. 3,914 HRS. **\$14,500 OBO**



DIMMICK GROUP PETERBILT
1-800-NEW-PETE
1-800-639-7383



DIMMICK GROUP PETERBILT



NEW FELLING FT-60-4LP.
 Bi-Fold Rampd, Tool Boxes, 22.5 Tires,
 Full Air Ride, **South Royalton, VT**



2025 TALBERT 55 TON.
 Available In All Our Locations



NEW PETERBILT 567 ROLLOFF.
 X15 Cummins 565/1850, Allison Automatic,
 46k Rears 277" Wheelbase, #TD772802
Royalton, VT 802-763-2585



2025 PETERBILT 537 DUMP. Brand New,
 PX9 350HP, Allison Automatic, 12' body,
 Asphalt tarp. # 737134,
Champlain, NY 518-298-3835



2026 PETERBILT 589. Cottrell Car Hauler
 Tractor, Cummins N5 565 HP, Automatic,
 Platinum Interior, #TD766500



2026 PETERBILT 589.
 X15 Cummins 565 HP, Allison Auto,
 19' Body, #TD772800, **Henrietta,**
NY 585-321-5250



2025 PETERBILT 567.
 Brand New, Cummins X15-525HP,
 18 Speed, 17' Body, #SD761404,
Newburgh, NY 845-245-4042



2026 PETERBILT 589.
 Cummins 500 HP, Allison Automatic, 17'6"
 Dump Body, Premium Interior, #TD772788,
Henrietta, NY 585-321-5250



2025 PETERBILT 567. Brand New,
 Cummins X15 500HP, 10 Speed, 20' Body,
 #698575, **Henrietta, NY 585-321-5250**



2025 PETERBILT 536.
 Jerr-Dan Car Carrier, Wheel
 Lift, 26,000 GVW, PC7-300HP,
 Automatic, Brand New, #D761931,
South Royalton, VT



2025 PETERBILT 589. Brand New, Short
 Hood, X15 Cummins 565HP, Allison Auto,
 19'6" Body, High Liftgate. #TD772797,
Henrietta, NY 585-321-5250

Royalton VT 802-763-2585	Colchester VT 802-654-4420	Bow NH 603-225-6666	Albany NY 518-459-1122	Newburgh NY 845-245-4042
Champlain NY 518-298-3835	Owego NY 607-687-1200	Rochester NY 585-321-5250	Syracuse NY 315-432-1122	Utica NY 315-732-4300



BOWIE HYDROSEEDER/STRAW BLOWER. Skid Mounted, Hydraulic Chain Drive, **\$5,000.**
207-252-1191



2015 CHEVROLET 3500.
6 L Gas, Automatic, 9 Foot Enclosed, Fiberglass Composite Body, No Rust, Clean Interior, 99,000 Miles **\$16,500. OBO.**
914-760-0936



TRANS EAST EQUIPMENT INC,
67 Main St Salisbury, MA
CALL DAVE Cell 978-992-7077 Or 978-462-1919

**EXIT 90 Off Rt 95
End Of Ramp**

You Pick Your Container – Over 175 Units

FAMILY OWNED & OPERATED



Serving New England

20', 40', 45', 48' And 53' CONTAINERS.
One Trip & Used Steel Storage Containers
We Deliver
Call Dave The Owner And Get The Best Deal!

CHECK ALL OUR INVENTORY – WWW.TRANSEASTEQ.COM

CANDIA TRAILER

www.CandiaTrailer.com
& LANDSCAPE EQUIPMENT CO
All Prices Cash & Carry! Installation Available!

SAVE TIME & FUEL • WE SHIP!

1-866-761-0196

NH 603-483-2541

email: contact@candiatrailers.com

35 High St, Candia 4 Coners, Candia NH
10 Minutes East of Manchester, NH • 1 hour From Boston

**ALL THE RIGHT
FIXINGS FOR
YOU**



DURA MAG ALUMINUM DUMP BODIES Complete Sub-Frame, Power Pac, LED Lights.



IN STOCK GALION DUMP BODIES. 8' thru 16' Call With Your Specs Today



BUTCHER Dump Power Pac with control Gravity Down **\$595**



8' Ft & 6 Ft EZ Slide In Dump Body. With Head Board, Tarp & Hoist.



ALUMINUM SERVICE BODY



HARSH HOIST
2.5 to 45 Ton, Single or Double Piston. Convert a Flatbed Body to a Dumping Body. **HOIST & POWER PACK**
CHAMPION HOIST

UNDERBODY TOOL BOXES

Powder Coat Diamond Aluminum Door



Diamond Aluminum Door



HOMESTEAD Enclosed Trailers. Stocking 8 Ft – 24 Ft

Coletta's Sales & Service

For all of your truck, trailer, and truck body needs

- ★ Collision Center
- ★ Vehicle Service & Inspection
- ★ Towing & Road Service
- ★ Equipment Hauling
- ★ Part Sales & Delivery
- ★ Authorized Morgan Truck Body Distributor



250 Niantic Ave, Providence RI 02907
www.colettas.com

401-421-3232



**CALL PATRICK
1 (401) 309-1960**

BLUM'S FIELD SERVICE

-ONSITE HEAVY EQUIPMENT & DIESEL REPAIR
-MOBILE WELDING & FABRICATION

- MACHINE SERVICES
- ATTACHMENTS INSTALLS
- BUCKET REBUILDS & WEAR PROTECTION
- HYDRAULIC CYLINDER RESEAL

**SERVICING
RI, MA, CT**



2019 HITACHI ZX200-6 EXCAVATOR. 2,508 Hours, AC, Control Pattern Changer, Cab Screens, Cameras, 9 ft 8 in Stick, Auxiliary Hydraulics, **\$115,000.** 207-252-1191

**2022 TRAIL MAXX
40 FOOT GOOSENECK
TRAILER.** Load Ramps,
14,000 GVW, Very Low Miles,
\$10,200.
914-760-0936



WANTED!!! MACK TRUCKS

**CAT, DEERE, BOBCAT EQUIP
IN ANY CONDITION
IMMEDIATE PAYMENT**



CALL JOHNNY MACK

**johnnymack107@gmail.com
HARTFORD, CT 860-883-1186**

**2014 CAT 314E
LCR,** 7614 Hours,
C4.4 ACERT Engine,
Blade, Hydraulic
Coupler, Runs Great,
Ready to work,
Price: **\$59,900**
781-417-3018



KUBOTA V2203 DIESEL ENGINE.
Used, Tested, Good Running, 4 Cylinder, 50
Gross HP Model, Can Be Used To Repower Your
Used Equipment, Video Available Of Engine
Running With Oil Pressure Gauge And Water,
\$2500. 860-680-1841

2-DAY LIVE & TIMED AUCTION SOMETHING SUPER SPECIAL 2 MAJOR AUCTION COMPANIES IN ONE AUCTION

~ Alex Lyon & Son Sales Managers & Auctioneers & Petrowsky Inc. ~

Very Late Model Construction & Utility Equipment, Forklifts, Boom & Scissor Lifts,
Earthmoving Equipment, Aggregate, Dump Trucks, Truck Tractors, Service & Utility Trucks,
Trailers, Large Quantity of Attachments, Buckets and Support Equipment

LIVE: FRIDAY, APRIL 24TH @ 9:30 AM

TIMED OPENS: SATURDAY, APRIL 11TH @ 10:00 AM

CLOSES: SATURDAY, APRIL 25TH @ 10:00 AM

UNCASVILLE, CONNECTICUT



ADDRESS: 1080 Route 32, Uncasville, Connecticut 06382



HIGHLIGHTS INCLUDE: **2 ROLLOFF TRUCKS:** (2) Virtually New Kenworth T880(tri.), **NEW CAB & CHASSIS:** 2025 Dennis Eagle Proview(dual steer), **3 NEW DUMP TRUCKS:** (2)2026 Peterbilt 567(tri.), **NEW TRUCK TRACTOR:** 2026 Peterbilt 589(heavy haul, tri.), **WATER TRUCK:** 2025 Mack MD642(2,100gal.), **4 SERVICE TRUCKS:** 2026 Peterbilt 536, Unused Ford F600XL, Ford F650, Ford F550, **SCREENING PLANT:** Demo McCloskey EDS-7000, **TROMMEL SCREENING PLANT:** Powerscreen 620, **TUB GRINDER:** Morbark 1500, **11 TELESCOPIC FORKLIFTS:** (2)Unused JLG 1255, (2)2023 Magni TH5.19, 2017 Genie GTH-1056, Unused Skytrak 8042, Skyjack SJ1056TH, (3)Cat TL642C, 2017 Cat TH255, **10 BOOM LIFTS:** 2016 JLG 800AJ, (2)Unused JLG 660SJ, JLG 600AJ, (2)Unused JLG 460SJ, JLG 400S, Haulotte HB68J, Grove AMZ68T, Skyjack SJ66T, **TRACKED BOOM LIFT:** Unused Platform TL18.90, **27 HYDRAULIC EXCAVATORS:** 2024 Cat 340-2D, 2025 Cat 320GC, 2025 Cat 320, Cat 320D, Komatsu HB365LC-3, Komatsu PC390LC-2, 2023 JD 300G, JD 225DLC, Volvo EC220DL, (2)New CFG QK20R, (2)New CFG QK16R, (2)New CFG MX15RX, (4)New CFG H15R, (2)New CFG MH12RX, (2) New CFG H12R, New ATS Power ATS-ME18, New ATS XX12R, Landhonor LHR-ME10X1, **23 RUBBER TIRED LOADERS:** (2)2024 Cat 950, (5)2025-(2)2018 Cat 938M, (4) Unused & (2)2025 Cat 926, JCB 426, (6)2021 JCB 409, Fiat FR12B, **6 CRAWLER TRACTORS:** Like New Cat D6LGP, Cat D3NG, 2024 Cat D3LGP, 2022 Cat D3K2, 2018 Cat D3K2LGP, Cat D3K2XL, **2 MOTOR GRADERS:** Cat 16G, Champion, **4 ARTICULATED DUMPERS:** (4)Unused Fiori D120SW, **3 TRACTOR LOADER BACKHOES:** 2020 Cat 420F2, JD 410G, JD 310SK, **TRUCK CRANE:** P&H HSMC25, **VIBRATORY ROLLER:** Cat CS-533EFR, **SOIL STABILIZER:** Bomag MPH122-2, **17 RUBBER TRACKED SKID STEERS:** 2021-2020 Cat 299D3, (2)2026-(2)2025 Cat 265XPS, Cat 259D, (3)2025 Cat 255, 2026 Bobcat T770, Bobcat T650, Bobcat T300, Unused Kubota SVL65, 2024 NH C337, NH C238, 2020 NH C232, **3 SKID STEERS:** Bobcat 883, NH LX885, Cat 262D, **4 MINI TRACK LOADERS:** (2)New ATS Power ATS-T460, (2)New Landhonor LHR-T460K1, **4 FORKLIFTS:** (4) New Heli CPYD25, **13 SCISSOR LIFTS:** (10)Unused JCB S4550E, (3)2017 Skyjack SJIII3219, **3 AIR COMPRESSORS:** Doosan HP1600, Atlas Copco XAS-185, Sullair 185CFM, **2 GENERATORS:** 2020 Magnum Pro MLG15, Kohler 60Kw, **HEATING EQUIPMENT:** Wacker E3000, **9 TRACTOR LOADERS:** (2)Unused NH Workmaster-120(4x4), Unused NH Workmaster-95(4x4), 2016 NH Workmaster-60(4x4), Demo NH Workmaster-40(4x4), Demo NH Boomer-40(4x4), Demo NH Workmaster-35(4x4), (2)Demo NH Workmaster-25S(4x4), **MOWING TRACTOR:** JD 5310, **SLOPE MOWER:** Ferris ZMT180, **COMMERCIAL MOWER:** Toro Groundmaster, **WINDROWER MIXER:** Wildcat M700E, **SPREADER:** Poke Sirius Combi, **CONCRETE EQUIPMENT:** Electric Power Trowel, **FIRE TRUCK:** KME Spartan, **9 VAN TRUCKS:** (5)2020-(4)2019 Hino, **CAB & CHASSIS:** Unused Chevy 5500, **CONVEYER TRUCK:** 2015 Kenworth T880(tri.), **HOOK LIFT TRUCK:** 2020 Kenworth T370, **GARBAGE TRUCK:** Mack MR600(t/a), **3 TRUCK TRACTORS:** 2020 Freightliner Cascadia, 2010 IH 4400, 2006 Western Star(t/a), **5 DUMP TRUCKS:** 2019 Ford F550XL, 2007 IH 7000(t/a), 2001 Mack RD688S, Mack, 2000 Volvo, **3 DETACHABLE GOOSENECK TRAILERS:** (3)New Unused Witzco RG52(tri.), **TAGALONG TRAILER:** 2025 Splash Sales 24ft.(t/a), **DUMP TRAILER:** Hill Frameless Aluminum, **2 OFFICE TRAILERS:** Monaco 40ft., 32ft.x8ft., **2 WATER TRUCK BODIES:** Unused Splash 15ft.(4,000gal.), Unused Splash 10ft.(2,100gal.), **6 SERVICE BODIES:** (6)New Monroe/Reading 98in. Series, **5 UTILITY VEHICLES:** (5)New Polaris Pro XD(4x4), **SNOW EQUIPMENT:** Fisher 7ft.-5in. Snow Plow, **7 MULTI-USE CONTAINERS:** (4)New 20ft., New ZHW 40ft. High Cube, New Voler 40ft. High Cube, New 20ft., **2 STORAGE BUILDINGS:** (2)New Landhonor Greenhouse, **3 SCRAP RECYCLING EQUIPMENT:** (2)New 2 Cubic Yard Self Dumping Hopper, New 1.5 Cubic Yard Self Dumping Hopper, **4 PRESSURE WASHERS:** (4)New Easy Kleen 4,000psi, **30 PALLETS OF STONE, HYDRAULIC SHEARS:** Unused Cat S385C, **GRAPPLE:** Labounty Rotating, **CONCRETE PULVERIZER, HYDRAULIC HAMMER, 13 EXCAVATOR BUCKETS, 182 ATTACHMENTS:** (142)Skid Steer, (21)Excavator, (12)Wheel Loader, Backhoe, (6) Mini Track Loader, **155 NEW SUPPORT EQUIPMENT.**

ALEX LYON & SON
SALES MANAGERS & AUCTIONEERS, INC.,
BRIDGEPORT, NY 13030
Phone: (315) 633-2944
WWW.LYONAUCTION.COM



In Conjunction With
PETROWSKY INC.
UNCASVILLE, CT 06382
Phone: (860) 848-4200
WWW.PETROWSKYAUCTIONS.COM



207-623-4239



2000 CAT 416C BACKHOE. 4x4, Extend-A-Hoe, Hydraulic Quick Change, Side Dump Bucket, Twister Wrist, Rebuilt Engine, \$25,000



KNUCKLE CRANE
1994 INTERNATIONAL 4300. DT466, Steel Flatbed Body, Knuckle Boom Crane, \$9,500



2005 CAT 930G LOADER. Hydraulic Quick Release Bucket, Auxiliary Hydraulics, \$38,000



1998 FORD OIL TRUCK. 2 Compartment, 7 Speed, Cat Engine



1985 FORD L8000 DUMP TRUCK. Tandem Axle, CAT 3208 Turbo, 8LL Trans., Hendrickson Suspension, \$12,000



1990 SULLAIR 750Q. Oil-Flooded Rotary Screw Air Compressor For Heavy Duty Work, CAT Engine, 750 CFM, \$7,500



2012 JOHN DEERE 310SJ BACKHOE. 4X4, Full Cab, Expanda Hoe, Wrist With 3 Buckets, \$38,000



2009 MAC DUMP TRAILER. Tri Axel, Air Ride Lift Axel, Barn Door, \$40,000



1987 FORD L8000 WATER TRUCK. CAT 3208T, 5+2 Speed, Water Tank, Pump, \$7,500



2007 CASE 430 SKID STEER. OROPS, Quick Change Bucket, Auxiliary Hydraulics, \$14,000

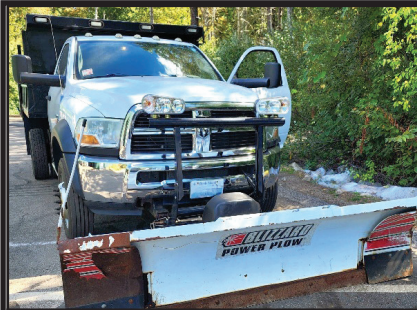


JOHN DEERE 310A BACKHOE. 2WD, Enclosed Cab, \$8,500



DRESSER D66 VIBRATORY COMPACTOR. Smooth Drum, \$9,500

Dick's Used Trucks & Equipment • 146 River Road, Chelsea, Maine



2011 DODGE 5500. 4x4, 12K Miles, Original Owner, Fleet Maintained, Cummins, Automatic, 8/10 Expandable P/A Plow, 2.5 Yard Stainless Steel Electric Sander, Electric Cover, Winter Is Coming, This Is A Money Making Truck, **\$55,000.** West Warwick, RI 401-523-6116

SMR SYNERGY METALS RECYCLING

1741 Fall River Ave. Seekonk, MA

774-229-2159

Comprehensive Scrap Metal Services
We Pay Top Dollar For Aluminum, Brass, Copper, Steel and Batteries

Specializing in Catalytic Converters

Synergymetalsrecycling.com



2002 HITACHI ZX330LC EXCAVATOR. AC, Heat, Radio, 75% Undercarriage, Run Great, Work Ready, 14,652 Hours, Very Clean, Dependable, **Call For Price** 978-502-8557



2020 FREIGHTLINER 122SD. 18 Sp New Trans 0 Miles, Heavy Rears, DD16 560 HP, Full Lockers, 2 Line Wet System, New PTO & Pump 0 Hours, 498K Miles. Surplus To Our Needs, Excellent Condition, **\$38,500.** Salisbury, MA 978-270-1495



2008 JOHN DEERE 350D LC. 60" Digging Bucket, Coupler, 50% Undercarriage, 32" Triple Bar Grousers, 14,277 Hours, **\$36,000.** 207-252-1191

NORTHEASTERN PETROLEUM SERVICE & SUPPLY

617-522-8390 Ext 103 • 51 B St. Bay 2 Hanover, Ma

Financing Available - After Hours Call 617-696-1979

We Are Looking For Newer Tank Trucks To List, Dual Equipped, Tandems & Auto. Trans, Can Sell From Your Location

Jerry Mello Cell: 617-799-1461 24/7 Email: jerrym@nepss.com



2004 STERLING LT9500. Almac 4800 Gal Tank (2800 + 2000), New Detroit Engine, 10 Speed, Tandem Axle, 250,000 Miles, Single Wrap, Bottom Load, Vapor Recovery, **\$59,000**



SITE TRUCK. 1985 GMC EXTRA THICK STEEL TANK. Detroit Engine, 5+2 Trans, 1500/500 Gal Compts Testing Top & Bottom All Liquids, 3" Pump, Good Cond, **\$7,500/BO**



MUST TOW

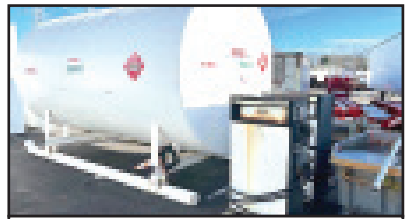
1993 GMC TOPCAT. Trans Tech 2,800 Gal Tank, 10-92 Bikini, CAT 3126, 6 Speed, New Tires, 187,000 Miles, **\$9,000 W/LCR Printer OR \$6,000 W/Out LCR Printer**



HIGHLAND IN STOCK NEW. 1000 Gal 2 Wall Skid Tanks. 10-GA, Other Sizes Available



1000 GALLON TANK. Diesel Only, 4' X 12', 10 GA, UL-142 DW Skid, HD 3/4 HP Pump & Water Absorb Filter Used One Month On Our Job. New **\$13,500.** **\$10,900 FOB Hanover**



2002 TANK & PUMP. 5000 Gallon 2 Wall Diesel Tank, 2 Suction Pumps, Excellent Condition, Will Deliver, **\$19,000.** Call 617-799-1461 Braintree, MA Location

SOME TRUCKS AT CUSTOMER LOCATIONS

RENTAL WITH OPERATOR

PORTABLE JAW CRUSHER AND IMPACT CRUSHER



DAY-WEEK-MONTHLY RATES
80' STACKER AND
EXCAVATOR AVAILABLE

NEW ENGLAND
CALL KEN
508-328-0028



INTERNATIONAL WATER TANK TRUCK. Factory Built, 6V 53 Detroit Engine, Automatic Transmission, 23,000 Miles, **\$11,000.** OBO. 914-760-0936



2002 STERLING 109500 10-WHEEL DUMP. 209K Miles, CAT C10 350HP, 8 Sp, 445 Tires on 20K Front, 11-24.5 On 52K Rear, 72K GVW, 4:89 Ratio, Full Locking Rears, Dual Steering Boxes, 14' Rugged Dump Body, New Radiator, Pintle On Rear, 11' Highway Plow, Easily Removable Harness, **\$36,500 OBO.** 508-269-1515



2007 JOHN DEERE 310J. 4X4, Extend-A-Hoe, Forks, Two Stick, Good Tires, 6,369 Hours, **\$38,500.** 207-252-1191



2010 MACK CHU 613. Fuller 8-Speed, 44 Rears, A/C, Power Windows, 349K Miles, Asking **\$44,999 OBO.** 401-486-8552



11 Commercial Way
Milford, MA 01757

HILLVIEW EQUIPMENT

SALES & RENTALS 24/7 • 508-474-8063

*Rt. 495 to exit 48,
 Route 109W,
 Left to Birch St,
 right to Industrial Dr.
 Left to Commercial Way*



2011 CAT 308D 4500 Hours, Thumb, Blade. **\$65,000**



2014 CAT 311F 4,000 Hours, Thumb, Coupler. **\$79,000**



2019 CAT 311F 6,200 Hours, Thumb, Quick Coupler, Aircon, Nice Machine! **\$79,000**



2019 CAT 311F 2,900 Hours, Blade, Thumb, Coupler. **\$99,000**



2018 CATERPILLAR 312F 6,000 Hrs, Wide Pads, Aircon, Nice Machine. **\$89,000**



2007 CAT 315C 5,400 Hours, Aircon, 55 Feet Long Reach. **\$99,000**



2018 CAT 320 NEXT GEN 3000 Hours, Piping, Aircon, Heat, Clean Machine. **\$129,000**



2015 CAT 336FL 7,000 Hrs., Thumb, Coupler, Aircon. Ready To Work! **\$159,000**



2015 CAT 336FL 7,300 Hours, Piping, Quick Coupler, Long Stick, Nice Bucket. **\$159,000**



2018 CATERPILLAR 725C With Tailgate, 9,100 Hrs., Ready To Work **\$159,000**



2011 IHI C100 TRACK DUMP 2,300 Hours, Ready To Work! **\$79,000**



2012 LULL 1044 4,000 Hours, Erops, Cabin. **\$69,000**



2010 KOMATSU D21 1700 Hours, Erops, Nice Machine. **\$45,000**



2008 CAT D3K LGP 4,000 Hours, Aircon, 90% Under-Carriage. **\$69,000**



NEW 10' EXTENSION STICKS Fits CAT 320 And Other Machines! **\$25,000**

www.HillviewEquipment.com



MCGOVERN
FORD AT DRUM HILL

Call Mike Smokler 603-493-6561



2026 F550 SUPER CAB DUMP. Pwr Slide Rear Window, Remote Start, Payload Upgrade Pkg., 4WD, Diesel, FN6549 **\$97,570**



2025 F550 SUPER CAB DUMP. 4X4, 7.3 Gas, 19,550 GVW, 9' Body, 2-3 Yd, FN7033.



2024 E450 SERVICE. 12' Rockport Body, Rear LED Work Light, 3 Bar Rack, Pass Thru Door, 7.3L Gas, FN6897. **\$64,850**

OVER 75 SUPER DUTIES IN STOCK - COLORS AND CONFIGURATIONS



F350, F450, & F550 CHASSIS AVAILABLE



2026 T350 CARGO VAN. All Wheel Drive, V6 Gas, Low Roof, 130" WB, FN6723, **\$54,495**



2026 F550 SUPER CAB SERVICE. Pwr Slide Rear Window, Remote Start, Payload Upgrade Pkg., 4WD, 7.3L Gas, FN6964 **\$90,990**



2026 F350 LANDSCAPER. Super Cab, 4X4, 7.3 Gas, 9.5' Body, 8 Ton Hoist, Remote Start, FN6785. **\$84,975**



2026 F450 SUPER CAB DUMP. 9' Stainless Steel Body, Diesel, 4WD, Work Surface, Dual Alternator, FN6576. **\$95,650**



2026 T250 CARGO VAN. Medium Roof, Ranger Shelving, PW, PL, FN6818. **\$54,900**



2026 F350 DUMP. 4X4, 7.3L Gas, Remote Start, 9' Body, 2-3 Yd, FN6521. **\$78,135**



2026 F350 DUMP. Super Cab, 4X4, 7.3L Gas, Remote Start, 9' Body, 2-3 Yd, FN6520. **\$80,179**



2025 F350 CREW UTILITY. Diesel, 4WD, 9' Body, Spray In Liner, SRW, Remote Start, FN6317. **\$73,900**



2026 F250. 9' Fisher HD2, Upfit Switches, Remote Start, FN6676. **\$56,900**



2026 T250 CARGO VAN. Medium Roof, Empty Cargo Vans In Stock, **Call Mike 603-493-6561**



2026 T250 CARGO VAN. Weatherguard Bin Package, Medium Roof, **\$55,895**



MichaelSmokler@mcgovernauto.com

BALLARD

TRUCK CENTERS

(508) 214-3036
drive@ballardtrucks.com



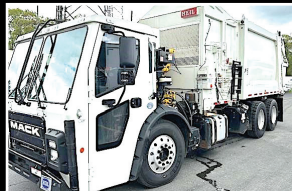
Visit us online at BallardTrucks.com or scan to view our full inventory.



2026 XL SPECIALIZED XL 110
HDGSP LOWBOY TRAILERS
STK#25047
CALL FOR PRICE !



2021 KENWORTH T370
GARBAGE TRUCK -
PACKER
STK#1387
\$119,000



2024 MACK LR64R
GARBAGE TRUCK
STK#08553
\$349,900



2025 MACK GRANITE 64FR
DUMP TRUCK
STK#46927
CALL FOR PRICE !



2018 KENWORTH T370
HOOKLIFT
STK#1685
\$77,500



2023 CHEVROLET 3500
CUTAWAY -BOX TRUCK
STK#12773
CALL FOR PRICE !



2023 MACK GRANITE 64FR
GARBAGE TRUCK -
ROLL-OFF
STK#6429
\$189,500



2021 PETERBILT 567
FLATBED
STK#1389
\$165,000



2025 HINO L6
DUMP TRUCK
STK#50157
CALL FOR PRICE !



2025 TICO PROSPOTTER
YARD SPOTTER
STK#13513
CALL FOR PRICE !



2016 HINO 195
FLATBED DUMP
STK#1146
\$29,900



2025 VOLVO VHD84B300
CAB & CHASSIS
STK#690100
CALL FOR PRICE !



2007 MACK PINNACLE CXP613
DAY CAB
STK#2504
\$11,000



2025 REITNOUER MAXMISER
FLATBED TRAILER
STK#T749
\$60,000



2026 XL SPECIALIZED
XL100HDGS
LOWBOY TRAILER
STK#25555
CALL FOR PRICE !



2025 KENWORTH T880
DUMP TRUCK
STK#7558
\$229,000



2020 PETERBILT 567
DUMP TRUCK
STK#78704
\$167,500



2022 PETERBILT 348
HOOKLIFT TRUCK
STK#9218
\$155,000



2025 MACK GRANITE 64BR
GARBAGE-ROLL-OFF
STK#5158
\$229,900



2015 MACK PINNACLE
CXU612
DAY CAB
STK#7599
CALL FOR PRICE !

SALVADORE
FAMILY OF DEALERSHIPS

PREOWNED
SuperCenter

A GREAT EXPERIENCE
COMES STANDARD

SalvadoreAuto.com | 978-630-2001 | 249 Timpany, Blvd., Gardner, MA

SPRING INTO TRUCK
Savings!

PRICE DROP!



2023 JEEP GLADIATOR RUBICON 4X4
V-6 3.0 L/182 TURBO DIESEL ENGINE - 8-SPD AUTO TRANSMISSION - 1 OWNER
STK # C26259A
ONLY 19,895 MILES! NOW ONLY \$43,888

PRICE DROP!



2023 RAM 3500 LIMITED 4X4
I-6 6.7 L/408 TURBO DIESEL ENGINE - 6-SPD AUTO TRANSMISSION - 1 OWNER
STK # N26128A
12,300LB GVW! NOW ONLY \$73,909

PRICE DROP!



2025 CHEVROLET SILVERADO 2500HD ZR2 4X4
V8 6.6L GAS ENGINE - 10 SPD AUTO TRANSMISSION - 1 OWNER
STK # N26018A
ONLY 11,159 MILES! NOW ONLY \$74,958

READY TO WORK!

DOZENS OF TRUCKS IN STOCK TO CHOOSE FROM!

ALL MAKES AND MODELS!

TOP DOLLAR FOR YOUR TRADE!

978-630-2001

PRICE DROP!



2023 JEEP GLADIATOR RUBICON 4X4
V-6 3.6 L/220 GAS ENGINE - 8-SPD AUTO TRANSMISSION
STK # N26127A
1 - OWNER! NOW ONLY \$37,990

PRICE DROP!



2017 RAM PROMASTER CARGO VAN 2500 HIGH ROOF 159 WB
V-6 3.6 L/220 GAS ENGINE - 6-SPD AUTO TRANSMISSION
STK # N26052A
READY TO WORK! NOW ONLY \$21,546

PRICE DROP!



2023 CHEVROLET EXPRESS CARGO VAN WORK RWD
V6 4.3L/ GAS ENGINE - 8 SPD AUTO TRANSMISSION
STK # G7552
READY TO WORK! NOW ONLY \$27,907



LEEBOY L1000R ASPHALT PAVER. 1,815 Hours, Hatz Diesel, Rubber Tires, 9' Wide, 3' Screed Slide Outs, Propane Screen Heater, \$12,000. 207-252-1191



2017 FORD F550 XL DUMP TRUCK. 169" W.b., 2wd, Diesel 6.7 Engine 54,040 Miles, Navy Blue, 11' Bed, Asking \$37,000. 401-265-8817



2006 MACK CV713 GRANITE. Tri-Axle, Great Condition, Needs Nothing, \$49,999 OBO. 401-486-8552







Powerglide Air Test Kit

Complete Powerglide Pro Tree Transbrake \$279.95

TH400 Deep Cast Aluminum Pan

TH400 Billet Direct Drum Spring Retainer & Aluminum Modulator/Solenoid Hold Down

Powerglide Overhaul Kit







Powerglide Deep Oil Pan

Powerglide Reverse Spring Retainer Tool

Powerglide Bushing Driver Set

Do-it-yourself Powerglide Pro Tree Transbrake Kit \$164.95

1.80 Long Powerglide Gear Set



8' READING ALUMINUM UTILITY BODY W/TOP LOADING BOXES. Single Rear Wheel, Rhino Liner, Southern Body, Very Clean, Asking \$8,300., Westport, MA 508-636-5050



1-800-394-5889
179 Belvedere Road
Gilsum, NH 03448

Powerglide Handbook written by Carl H. Munroe \$21.95



Powerglide Vent Tanks



WWW.TSR-RACING.COM

STONEHAM



617-733-0773



2025 F550 DUMP. 7.3 Gas, 4WD, Remote Start, Payload Up Grade, Dual Battery, Office Work, #25678. **\$75,000.**



2025 F550 LANDSCAPER. 7.3 Gas, 4WD, Remote Start, Pro Power 2KW, Dual Battery, #251390. **\$75,000.**



2026 F550 DUMP. 7.3 V8 Gas, Remote Start, 4WD, Payload Upgrade, dual Battery, #26048. **\$79,845.**



2025 F550 LANDSCAPER. Super Cab, Pro Power Onboard, Pwr Slid Rear Window, Remote Start, 4WD, V8 Gas, #251375. **\$71,700.**



2026 F350 LANDSCAPER. Aluminum Dump Body, 7.3 Gas, 4WD, Remote Start, Dual Battery, #26856. **\$75,330.**



2026 F550 CREW LANDSCAPER. 10' Aluminum Dump Body, 7.3 Gas, 4WD, Remote Start, Dual Battery, #26126. **\$85,700.**



2025 F550 DUMP. Payload Plus, Super Cab, 4X4, Gas, Remote Start, Pwr Slid Rear Window, Dual Battery, In Bound



2026 F250 SERVICE. Reading Steel Body, V8 Gas, 4WD, Pwr Windows & Locks, Cruise, #26069. **\$62,900.**



2025 F550 LANDSCAPER. Payload Plus, 4X4, 7.3 V8 Gas, Remote Start, Dual Battery, #25933. **\$77,777**



2025 T350 HD SERVICE VAN. 11' Aluminum Body, 3 Bar Ladder Rack, DRW, Polish Alum Wheels, Pwr Outlet, #252580. **\$80,855**



2025 T350 SERVICE. SRW, 11' Aluminum EBY Van Body, 72" Inside Hght, Pwr Outlet 110V, Ladder Racks, #252554. **\$75,400**



2025 F350 XLT PICK UP. 4X4, V8 Gas, Up Fit Switches, Tough Bed Liner, #252693. **Call Bill 617-733-0773**



2025 F350 XLT CREW. 360 Camera, Short Bed, Upfit Switches, Remote Start, 4WD, 7.3L Gas, Pwr Rear Window, #251706. **\$58,809**



2026 F250 UTILITY. V8 Gas, 4X4, 8' Steel Body, Central Locking, #26070. **\$62,150**



2026 F350 SERVICE. Super Cab, 4X4, SRW, Reading Steel Body, V8 Gas, Remote Start, Pwr Rear Slide Window, #25750. **\$71,730**



Call Bill Pollack 1-617-733-0773
or billpollack@stonehamford.com



STONEHAM



617-733-0773

WORK VAN SALE EVENT – BIG OPTIONS!

ALL WHEEL DRIVE



2026 T250 CARGO VAN. Low Roof, Load Area Protection Pkg, Cruise, AWD. #252368 **\$55,680**



2025 T250 CARGO VAN. Low Roof, Load Area Protection, 9,150 GVW, V6 Gas, RWD, New, #252349 **\$52,100**



2025 T350 HD UTILITY VAN. DuraCube Body, 78" Inside Hght, Pwr Locks, Ladder Racks #252555 **\$72,300**



NEW 2024 T350 HIGH ROOF CARGO VAN. Cargo Van With Privacy Glass, 9,500 GVW, V6 Gas, PW, PL, #24153P **\$49,899**



2025 T250 CARGO VAN. Low Roof, AWD, Load Area Protection Pkg, #252355. **\$55,655**



2026 T350 CARGO VAN. High Roof, RWD, #261315. Call Bill 617-733-0773

USED TRUCKS SPECIALS



2024 T250 CARGO VAN. 27 Miles, Load Area Protection, #24157P. **\$51,499**



2024 T350 HI CUBE. 30 Miles, 3 Bar Ladder Rack, Swing Doors, Plywood Lined, D-Rings, #24152P, **\$50,990**



2024 F550 DUMP. 7.3 V8 Gas, 9,589 Miles, Two Tool Boxes, Boss Plow, Remote Start, #24170P. **\$73,000**



2026 F450 Dual Rear Wheel Pick-Up. 4WD, Diesel, Polish Aluminum Wheels, #26002P. Call Bill 617-733-0773



2024 T250 CARGO VAN. 14,652 Miles, #24098P, **\$33,899.** Several T250's Available



2024 T350 HI CUBE. 1,152 Miles, E-Trac, Pull Out Load Ramp, Pas Thru Door, Roll Up Rear Door, #24148P. **\$53,899**



Commercial Vehicle Center

www.StonehamFordTrucks.com

211 MAIN ST. STONEHAM, MA 02180

Mon-Fri 8:30am-8pm Sat 9- 5pm Sunday 11-4

ALL PRICES NET & INCLUDE ALL AVAILABLE REBATES TO DEALER

Call Bill Pollack 1-617-733-0773 or billpollack@stonehamford.com



Commercial Vehicle Center

AREA HYDRAULICS
 810 Quaker Hwy. Uxbridge, MA
508-278-6670
 Cylinder Resealing
 We Make Hose Assemblies
 After Hours Service Available!





DYNAPAC 250D ROLLER.
 84" Drum, 2 To Choose, **\$45,000**
 Each. Located in Chichester, NH
 603-765-9140



1994 RAY TECH RC8000. Hot Box Patch Trailer.
\$1,200. 207-252-1191

1994 FORD L8000 HYDRO-SEEDER.
 20' Flatbed, 1500 Gallon Hydroseeder, John Deere Motor, Hydroseeder Needs Some Welding, 33,000 GW, Runs Good,
\$8,500 OBO.
 401-447-2661
 Or 401-737-6663



202 TRUCK & EQUIPMENT **603-899-2000**
www.202truck.com
 RT 202 Rindge NH
SALES & RENTALS - NO SALES TAX
FINANCING & DELIVERY



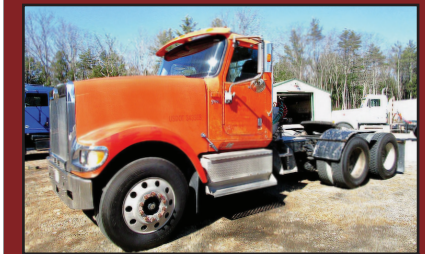
2021 KUBOTA KX040-4. 994 Hours, Hydraulic Thumb, Blade, Cab, 18" Bucket, Nice Machine, **\$49,500.**



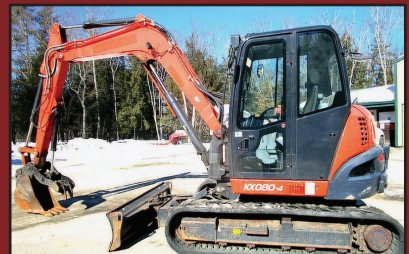
2000 PETE 378. 3406E, 435 H.P., 10 Spd, 12F + 40R On Pete Air Leaf, 4:11 Ratio, Single Frame, 200" WB, 280K Miles, Good Tires And Brakes, No Rust, From Wyoming, **\$35,000.**



2024 HYUNDAI HX48A2 - 495 Hours, Hyd. Thumb, Blade, Heat & A/C, Warranty, 11K Lbs., **\$52,500.**



2004 IH 99001. 258,753 Original Miles, CAT C-15 525 H.P., Eaton Fuller 10 Spd, Wetline, 14F + 46R, Double Frame, 24.5 All Around, Cruise Control, Fleet Maintained, DOT Inspected, 201" W.B., **\$32,000.**



2020 KUBOTA KX080. 2700 Hours, Double Aux Hyd., Coupler, Hyd. Thumb, Angle Blade, **\$67,500.**



1998 PETE 378. 3406E, 18 Speed, 14F, 12LA, 46R On Chalmers, 220" WB, 440K Miles, Clean, No Rust, From Wyoming, **\$35,000.**

PAT'S TRUCK SALES

Office: 603-347-1386 - After Hrs: 978-490-6197



2021 KENWORTH T880. 6X4 Dump, 151,700 Miles, Paccar 510Hp, Automatic, 15' Body, **\$133,900**



2016 Freightliner Tri Axle Dump. 23,688 Miles, DD13 Detroit 470 HP, Automatic, 20/20/46 86K GVW, 17' Beau Roc Smooth Side AR450 Steel Body, **\$139,900**



2007 IH 7600 T/A DUMP. 18,770 Miles, 2000 Hours, CAT C13 430 Hp, Pre Emissions, Automatic, 15.5 Ft Steel Body, **\$119,500.**



2022 BOBCAT E42 EXCAVATOR. 1,088 Hours, Hydraulic Thumb, **\$49,500**



2004 IH 5600i. Tri Axle Dump, Cummins ISM 425HP, 8LL, 200,601 Miles, 2019 17' Beau Rock Body, Serviced & State Inspection. **\$68,500.**



2021 PETERBILT 567. 73K Miles, 20 Frt Axle, Steerable 13,500 Pusher, 46 Rears, MX13 510 Hp, Automatic, **\$164,900**



2016 Freightliner 114SD. Tri Axle, 86,000 GVW, Detroit 12.8 DD 470HP, Automatic, 29,604 Miles, 17' Beau Roc Smooth Side Body, Hendrickson Suspension, **\$139,900.**



2020 PETERBILT 567 TRI AXLE DUMP. 295K Miles, MX11 430 HP, Automatic, Super Clean, 20 Frt, 13,500 Pusher, 46 Rears, Electric Tarp, Lockers, **\$133,900**



2005 Freightliner M-II. 182,455 Miles, Mercedes 450 Hp, Automatic, 15' Body, Double Frame, **\$81,500.**



2007 VOLVO VHD. Pre Emissions D12 435 HP, Automatic, 270K Miles, 16' OX Body, **\$93,500**



2016 Freightliner 114SD T/A DUMP. Detroit DD13 470 HP, Automatic, 12 Ft Body, Pintle, 78,450 Miles, Excellent Condition, **\$89,900**



2009 MACK. Tri Axle, 16' Dump, 241K Miles, MP7, Allison, Sister Truck is Black, **\$110,500**

Visit Us - www.patstrucksales.com • 77 Route 125, Kingston, NH

WE TAKE ANYTHING IN TRADE

Jolly John's

Truck & Equipment

FINANCING AVAILABLE



WE PAY CASH FOR YOUR TRUCKS & EQUIPMENT



2017 FORD F350 SUPER DUTY 4X4. Crew Cab, V8 6.2L Gas, DRW, 9' Knapheide Service Body, Air Hose Reel, Strobe Lights, Aux Lighting. Ready to go. **\$30,900**



2012 JLG S600AJ, Articulated Telehandler, Local Trade, Call Nick Or Mike For All The Details, **\$14,900**

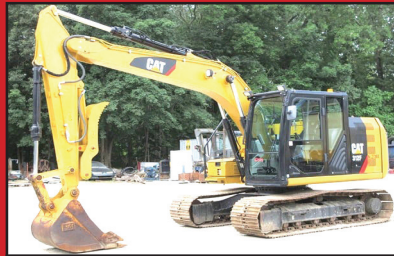


2007 FORD F450XL FLATBED, V8 Diesel Engine, 15' x 96" Bed, Liftgate, Aluminum Tool Boxes, Power Windows And Locks, Freshly Serviced. **\$9,900**

FINANCING AVAILABLE



2020 GMG 6094RT. 60' Max Platform Height, 1200 lb Max Weight Capacity, Platform Extension, Power To Platform, Stabilizers, Upper Control Box, Tier 4, 2020 US EPA Label, Kubota V2403 4 Cyl, **\$39,995**



2018 CATERPILLAR 312F EXCAVATOR. Control Pattern Changer, Rear View Camera, 10' 4" Stick, 24" Triple Grouser Track Shoes, 39" Digging Bucket. Hyd Thumb. A/C. **\$88,900**



2023 LAY-MOR SM300 SWEEPER. Open Operator Station, 96" Broom, Water System, Yanmar 3 Cylinder 1.2L Diesel, Freshly Serviced, Ready To Work. Towable w/ Pintle Hitch. **\$21,900**



2014 GENIE S-65, 65' Max Platform Height, 500 lb Max Weight Capacity, Jib, Power To Platform, Perkins 4 Cylinder 2.2 L Diesel Engine, 355/55D625 Tires **\$26,500**



2016 FORD TRANSIT CONNECT. One Owner, Fleet Maintained, A/C, Power Windows & Locks, Strobe Lights, Recently Serviced And Ready To Work. **\$8,795**



2012 KENWORTH T470 T/A DUMP TRUCK, Paccar PX-8, 8.3L Diesel, 330 HP, Eaton Fuller 8LL Manual Trans, 18K & 46K, PTO, Brandon 14' Steel Body, Just Serviced & Ready To Work. **\$62,900**



2018 LAY-MOR SM-450 Enclosed Cab, Air Conditioner, 96" Broom, Water System., Kubota V3307-CR-TI-EF02 4 Cyl 54.6 kW 3.3L Diesel Engine, Freshly Serviced. Ready To Work, **\$29,500**



2020 FORD F150 4X4 CREW CAB, 5.0 L V8 Gas, Automatic, Protect Tool Box, Spray-On Bed Liner, 7000 lb GVWR, 6' Bed, Fully Serviced And Ready For You, **\$18,900**



2022 WACKER NEUSON SM100 TRACKED SKID STEER. 3 Cyl Yanmar Turbo Diesel, Aux Hyd, GP Bucket With Boce, Meter Reads 208 Hours, **\$27,900**

Call Nick 860-861-1326 or Mike 860-861-4199
www.jollyjohnsequipment.com



2022 DODGE RAM 4500 HD. 4x4, Crew Cab, I-Pac Tool Box, Dump 73,436 Miles, Cummins, **\$55,000.**
207-252-1191



2001 MACK RD 688S. Great Condition, Needs Nothing, Asking **\$29,999 OBO.** 401-486-8552



2007 KENWORTH T800. Pre-Emissions CAT C-13 Motor, 8LL Transmission 1 Yr Old, Triaxle Roll-Off, **\$31,000.**
Salisbury, MA 978-270-1495

RED TRACTOR Days



TYM Red Tractor Days!!

**0% Financing For
60 Months on Select Models
OR CASH Rebates!**



SALES • SERVICE • PARTS • FINANCING

FOSKETT
EQUIPMENT INC.
TRACTORS & IMPLEMENTS
Woodstock, Ct

**Route 171
Woodstock, CT
860-928-5748**

www.foskettequipment.com

508-328-8938

THE TRUCK STORE

**Mon-Fri 8:30-5pm
Saturday 8:30-4pm**



www.TruckStoreSales.com



1700 Broadway - Rte 138 – Raynham, MA • Take Exit 8 Off Rte 495, East Rte 138, On Your Left



2018 PETE CHASSIS 80K MILES and **2020 KW CHASSIS 47K MILES**
IN STOCK NOW! CALL.



2002 VOLVO HEAVY TRI AXLE DUMP:465 HP, 8LL, NEW BRAKES, Excellent Rubber.



2000 MACK RD 688SX 14' Dump Body, 350 H.P., Auto., 18F/58R, LOW miles, Very clean.



2015 ISUZU REFER BODY: 186 K Miles, Diesel/Auto.Call.



2005 MACK GRANITE SPLIT REAR LOAD RUBBISH BODY 35K Miles.



2020 HINO HOOK-LIFT, DIESEL, AUTO, 38K MILES,



2019 & 2022 INTERNATIONAL REFER BODIES: VERY LOW MILES



2020 + 2022 HINO REEFER VANS. DIESEL, AUTO, CALL.



2022 HINO 268 Flat Bed: Diesel, Automatic, ONLY 2,000 Miles! Will up fit w/Refer Body or Van Body. 2 AVAILABLE.



USED 12' to 26' REFER & VAN BODIES Call with your needs.



2017 FREIGHTLINER M-2: CUMMINS Diesel, Auto, PTO Accept. Will Separate.



2022 PETERBILT C/O. Under CDL, 60K Miles, Auto, Reefer Or Flatbed Available.

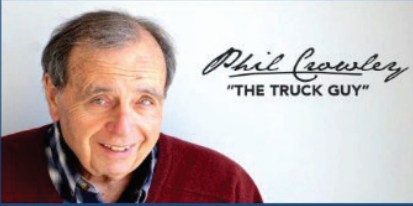
ALSO AVAILABLE: USED FLATBED BODIES, ROLL OFF BODIES, LATE MODEL ISUZU/HINO 4 CYL DIESEL ENGINES.

PLACE MOTOR Inc.

The "RIGHT PLACE" Since 1923



COMMERCIAL TRUCKS



Phil Crowley
"THE TRUCK GUY"



PHIL CROWLEY
866-449-7482 EXT. 213



19 Thompson Rd.
Rte. 193
Webster, MA.

WWW.PLACEMOTOR.COM



WE HAVE MAVERICKS - XL + XLT & HYBRIDS !
*** 8 AVAILABLE ***



SHORT BED

NEW 2026 FORD F-350 CREW-CAB 4X4 PLATINUM, 6.7L DIESEL, BLACK IN COLOR, POWER MOON-ROOF AND MORE !



8' BED

NEW 2026 FORD F-350 CREW-CAB 4X4 PLATINUM 6.7L DIESEL, BLACK IN COLOR, POWER MOON-ROOF AND MORE !



WHITE & BLUE

NEW 2026 FORD TRANSIT 250 AWD MEDIUM ROOF, SEVERAL TO CHOOSE FROM. CALL FOR MORE DETAILS !



2 LEFT

NEW 2025 FORD F-750 CAB AND CHASSIS 330 HP., DIFFERENT WHEEL BASES AVAILABLE. CALL FOR MORE DETAILS !



2027 FORD E-350 AEROCCELL DUAL REAR WHEEL 15' IN LENGTH. CALL FOR MORE DETAILS !



NEW 2026 FORD F-350 CREW-CAB CHASSIS 4X4 7.3L GAS ENGINE. CALL FOR MORE DETAILS !

*All Factory Rebates Back To Deal



MASSACHUSETTS OLDEST FORD DEALER SINCE 1923





PLACE MOTOR Inc.

The "Right Place" Since 1923

COMMERCIAL TRUCKS

Call Phil Crowley "The Truck Guy"
866-449-7482 ext. 213



19 Thompson Rd.
Rte. 193 Webster, Ma.

WWW.PLACEMOTOR.COM



**NEW 2026 FORD F-350 4X4
SUPER-CAB PICKUP
6.7L HIGH OUTPUT DIESEL,
XLT TRIM,
SHORT BED AND MORE !**



**NEW 2026 FORD F-350
REGULAR CAB 4X4
6.8L GAS, XL TRIM.
CALL FOR DETAILS !**



**NEW 2026 FORD F-250
SUPER-CAB 4X4
SHORT BED AND LONG
BED AVAILABLE !**



AVAILABLE IN WHITE

**NEW 2026 FORD F-350
REGULAR CAB
4X4, XLT TRIM, 6.7L
DIESEL.
CALL FOR MORE DETAILS !**



**NEW 2026 FORD E-350
12' AREOCELL
SINGLE REAR WHEEL.
IN STOCK !**



**NEW 2026 FORD F-550
CAB & CHASSIS 4X4
7.3L & 6.7L DIESELS,
60 AND 84 CA.
RED & WHITE
AVAILABLE !**

0% FOR 60 MONTHS - AVAILABLE ON XL TRIM PACKAGES ONLY IN LIEU OF REBATES. All Factory Rebates Back To Dealer*

WWW.PLACEMOTOR.COM



DEJANA
Truck and Utility Equipment



COMMERCIAL
VEHICLE CENTER



2015 WESTERN STAR 4700SB. VIN #5KKMAXDV0FLGJ1913, PL74 Boom S/N G13800101431, 24'-4" x 102" Aluminum Flat Deck, Tag Axle, **\$99,000..**

1996 GMC TOPKICK. 22,000 GVW. 241K Miles, CAT Motor, Allison Tranny, Chip Truck, Dump Truck, Removable 2-Pc Hood On Body, Large Utility Box Behind Cab, Tires 80%, **\$7000.** Call/Text 978-375-1127



2016 WESTERN STAR 4700SB. VIN #5KKMAXDV4GPHJ7775, PL74 Boom S/N G13800561531, 24'-4" x 102" Aluminum Flat Deck, Tag Axle, **\$109,000.**



2018 WESTERN STAR 4700SB. VIN #5KKMAXDV8JLJR1775, PL74 Boom S/N G13800981727, **\$119,000.**

Contact 603-925-4444 • www.belletetes.com



TENNANT SENTINEL MOBILE SWEEPER. CAT Powered, 4 Yd Capacity, Sweeping Path 87", 20,000 GVW, 1100 Miles, 3100 Hours, Runs But Needs Some TLC! **\$9500.** Waterbury, CT 203-232-0921

Taylor & Lloyd, Inc.

SEE OUR INVENTORY: WWW.TAYLORANDLLOYD.COM



2025 INTERNATIONAL MV 607. Brand New, 254 WB, Allison 3500 RDS, Cummins 300 HP, Air ride



2025 INTERNATIONAL HV607 SBA CAB & CHASSIS. Cummins B6.7 325 HP, Allison 3500, 10K F/A, 23K R W/Locking Diff, Call For More Info.



2025 INTERNATIONAL HV507 CAB & CHASSIS. Cummins L9 330 HP, Allison Auto, 165" WB, 18K F/A, 30K R/A, Call For More Info.

617-429-3370 CALL JACK COAKLEY • 8 Railroad Avenue Bedford, Ma

FAMILY OWNED & OPERATED SINCE 1969

HILLSIDE MOTORS

**800-D American Legion Highway (Rt. 177)
Westport, MA 02790
508-636-5050**

Financing Available - Others in Stock



SEE OUR OTHER PAGE – LAST PAGE OF CENTERFOLD – PAGE CF8



4X4

2018 FORD F250 REG CAB 8' BED 4X4. XLT Trim, 6.2L V8, Auto, PW, PL, AC, Back-Up Camera, Bluetooth, Running Boards, 86K, One Owner, Excellent Condition, \$28,400.



ONE TON

2015 FORD F350 SRW 4X4 SERVICE TRUCK W/POWER GATE. Vanair Compressor/Gen Jump Start System, 6.2L V8, Auto, AC, Meticulously Maintained, 113K, Rust-Free Southern Truck, \$26,900. or \$22,900. w/o Equipment (2 Available)



FULLY LOADED

018 CHEVY 1500 CREW CAB 4X4 Z71 LTZ PKG. RED-LINE EDITION. 5.3L V8, Auto, AC, Leather, Sunroof, Nav, Loaded, Tech Pkg, 103K, Southern Truck, Sharp Truck, (file photo), \$28,300.



56,000 MILES

2017 FORD F250 SD 8' ALUMINUM FLATBED W/FOLDDOWN SIDES. RWD, 6L V8, Auto, AC, 9900 GVW, Fleet Maintained, One Owner, 56,000 Miles, Excellent Condition, \$22,900. (Also, 2019 w/100K, \$19,900.) (Others Available Starting at \$10,900.)



POWER GATE

2015 ISUZU NPR HD 12' RACK BODY W/GALVANIZED POWER GATE. 8 Cyl., Auto, AC, 3-Passenger, 14,500 GVW, 155K, One Owner, Fleet Maintained, \$23,800.



4X4

2019 CHEVY K3500 9' FLATBED DRW 4X4. 6L V8, Auto, AC, PW, PL, 60" CA, 124K, One Owner, Fleet Maintained, \$29,900., Will Separate, (Others Available, Gas & Diesel)



OTHERS AVAILABLE

2024 CHEVY 4500 14' BOX W/POWER GATE. 6.6L V8, Auto, PW, PL, Back-Up Camera, Bluetooth, 14,500 GVW, Bal. of Factory Warranty, 43K, Excellent Condition, \$47,900. (Will Separate)



MINT CONDITION

2022 CHEVY C2500 CREW CAB 8' UTILITY. 6.6L V8, Auto, AC, Rear Camera, Bluetooth, 6-Passenger, Southern Truck, 110K, Fleet Maintained, \$34,400.

NICK SCARVALAS
Commercial Sales
857-247-9023 or 617-249-5603



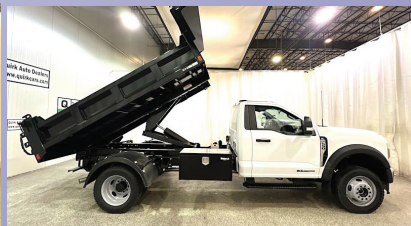
Commercial Vehicle Center



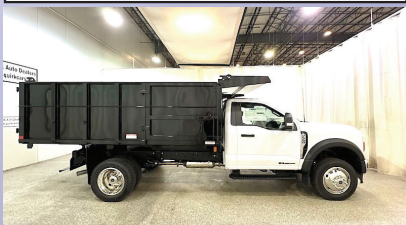
2026 F550 DUMP. Super Cab, 4X4, 7.3 Gas, Remote Start, Tool Box, 19,550 GVW, F214691 MSRP \$90,990. **SAVE \$16,000. SALE PRICE \$74,990**



2025 F550 DUMP. 9' Aluminum Body, Coal Chute, Remote Start, Diesel, 4X4, F214486 MSRP \$104,990 **SAVE \$18,000. SALE PRICE \$86,990**



2025 F550 DUMP. Diesel, Two Fuel Tanks 40 & 26, Remote Start, 4WD, 19,550 GVW, F214404 MSRP \$104,990. **SAVE \$17,000. SALE PRICE \$87,990**



2026 F550 LANDSCAPER. 7.3L Gas, 4x4, Remote Start, F214432 MSRP \$114,990. **SAVE \$2,500. SALE PRICE \$112,490**



2026 E450 FRIEIGHT VAN. 16' Rockport, 14,500 GVW, E-Trac, LED Rear Flood Light, 7.3L Gas, F213915. MSRP \$74,990. **SAVE \$10,000. SALE PRICE \$64,990**



2026 F350 RACK BODY. 7.3L Gas, 4x4, Remote Start, 9' Knapheide, F214387 MSRP \$84,990. **SAVE \$10,000. SALE PRICE \$74,990**

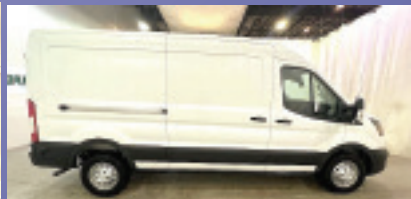
250 COMMERCIAL TRUCKS IN STOCK



2025 T350 UTILITY. Aluminum Body, 3 Bar Ladder Rack, V6 Gas, F214504 MSRP \$89,990. **SAVE \$15,000. SALE PRICE \$74,990**



2025 T250 GENERAL TRADE PACKAGE VAN. Organize Bin Package, V6, Bulkhead W/ Window, F213806 MSRP \$57,430. **SAVE \$10,000. SALE PRICE \$47,430**



2026 T250 CARGO VAN. All Wheel Drive, Mid Roof, Load Area Protection Pkg., F214828. MSRP \$60,455. **SAVE \$4,500. SALE PRICE \$55,995**



2026 E350 HIGH CUBE. 10' Rockport, Pass Thru Door, Poly Lined, 7.3L Gas, F214618. MSRP \$69,990. **SAVE \$10,000. SALE PRICE \$59,990**



2026 E450 FREIGHT HAULER. 16'5"x 96" Body, Two Rows E-Trac, Pull Out Ramp, Plywood Lined, Roll Up Rear Door, 7.3 Gas, F213020 MSRP \$74,990. **SAVE \$13,000. SALE PRICE \$61,990**



2026 E350 UTILITY VAN. 11'3" Aluminum Body, Three Bar Ladder Rack, 7.3L Engine, Pwr Equip Pkg., F214434. MSRP \$84,990. **SAVE \$11,000. SALE PRICE 73,990**

QUIRK FORD
540 Southern Artery (Rt 3A) Quincy, MA
www.quirkford.com • 617-249-5660

Business Financing with NO Co-signer Required

Prices include all available rebates. Rebates include Customer Cash, FMCC Bonus Cash, and Commercial Uplift Bonus Cash. Customer must qualify for rebates. Call for specific details. Prices are subject to change. * In Lieu Of Rebates

NICK SCARVALAS
Commercial Sales
857-247-9023 or 617-249-5603



Commercial Vehicle Center



2026 E350 SERVICE VAN. 12' DuraCube Body, Three Bar Ladder Rack, 7.3L Engine, Pwr Equipt Pkg., F214487. MSRP \$89,999. SAVE \$10,000. **SALE PRICE \$79,990**



2026 F550 CREW DUMP. 7.3L Gas, 4WD, Tool Box, 9' Body, Pwr Rear Slide Window, Remote Start, Pwr Onboard, F214581. MSRP \$98,990. SAVE \$11,000. **SALE PRICE \$87,990**



2025 F650 DUMP. Diesel, Automatic, Air To Rear, Pintle, I-Pac Tool Box, F212088, MSRP \$129,990. SAVE \$20,000. **SALE PRICE \$109,990**



2026 F550 ROLL OFF. Super Cab, Switch N Go, 7.3L Gas, 4WD, Tool Box, Remote Start, Pwr Onboard, F214579. MSRP \$114,990. SAVE \$11,000. **SALE PRICE \$103,990**



2026 F350 DUMP. Super Cab, 9' Duramag Aluminum Body, 7.3 Gas, Remote Start, Dual Battery & Alternator, F214264 MSRP \$87,990. SAVE \$12,000. **SALE PRICE \$75,990**



2026 T150 CARGO VAN. Load Area Protection Pkg., Blue Metallic, F214457. MSRP \$53,090. SAVE \$4,500. **SALE PRICE \$48,590**

250 COMMERCIAL TRUCKS IN STOCK



2026 E350 UTILITY VAN. 12' DuraCube, Central Locking, 50" Door Width, V8 Gas, F214487. MSRP \$89,990. SAVE \$10,000. **SALE PRICE \$79,990**



2026 F550 DUMP. Super Cab, 9' Body, 7.3 Gas, Remote Start, Dual Battery & Alternator, 19,500 GVW, F214491 MSRP \$99,990. SAVE \$9,000. **SALE PRICE \$90,990**



2026 E350 UTILITY VAN. 9' Rockport, Central Locking, V8 Gas, PW, PL, F214809. MSRP \$79,990. SAVE \$10,000. **SALE PRICE \$69,990**



2026 E350 FRIEIGHT VAN. 16' Rockport, Galvanized Liftgate, E-Trac, LED Rear Flood Light, 7.3L Gas, F213623. MSRP \$72,990. SAVE \$11,000. **SALE PRICE \$61,990**



2026 T350 CARGO VAN. High Roof, Load Area Protection Pkg., 9500 GVW, F214402. MSRP \$59,280. SAVE \$4,500. **SALE PRICE \$54,780**



2026 F450 FLATBED. 16'6" Body, Wood Floor, Galvanized Pintle Plate, 7.3 Gas, Remote Start, 16,500 GVW, F214276 MSRP \$89,990. SAVE \$10,000. **SALE PRICE \$79,990**

QUIRK FORD
540 Southern Artery (Rt 3A) Quincy, MA
www.quirkford.com • 617-249-5660
Business Financing with NO Co-signer Required

Prices include all available rebates. Rebates include Customer Cash, FMCC Bonus Cash, and Commercial Uplift Bonus Cash. Customer must qualify for rebates. Call for specific details. Prices are subject to change. * In Lieu Of Rebates

SALES & RENTALS INC.
T-QUIP
 YOUR **1ST** CHOICE IN SALES
 & RENTALS

☎ 603-623-3669
 🌐 equipmentsales@tquip.com
 📧 @tquipsalesandrentals
 📍 603 Mammoth Road
 Londonderry, NH 03053

OVER 1,000 MACHINES & ATTACHMENTS IN OUR INVENTORY



2020 CAT 982M A/C, 8.5CY 140" TOOTH BKT, ON-BOARD CAT SCALE, JYSTK STR, AUTO LUBE, 875/65R29 L5 MATCHING RADIALS, NEW \$60K REMAN TRANS @ 8374 HRS **\$219,000**



2014 CAT 950K A/C, AUX HYD, HYD Q/C, 120" GP BKT, AUTOSHIFT, REAR VIEW CAM, 23.5R25 RADIAL TIRES, 5,959 HRS **\$129,000**



2021 HITACHI ZW370-6 A/C, 121" 8.25CY GP BKT, 389HP ISUZU T4F DSL, RIDE CTRL, 29.5R25 RADIALS, ONLY 1 OWNER, 6,790 HRS **\$159,000**



2016 KOMATSU WA500-8 A/C, 140" 9CY GP BKT, TIER-4 FINAL, 4-SPD PWRSHFT, RIDE CTRL, ENG TURBO, DIFF LOCK, TRCTN CTRL, 875/65R29 RADIALS, 9,798 HRS **\$145,000**



2020 CAT 910M A/C, 3RD & 4TH VALVE AUX HYD, HYD Q/C, 2.2CY GP BKT, RIDE CTRL, 16.9-24 TIRES, 392 HRS **\$125,000**



2019 CAT 907M A/C, 3RD VLV HYD, 55 HYD Q/C, 1.5CY GP BKT, 74HP TIER-4 DSL, HI-SPD TRVL, RIDE CTRL, 405/70R18 TIRES, 807 HRS **\$79,500**



2017 CAT 906M AUX HYD, EURO HYD Q/C, 1.2CY BKT, TIER-3 DSL, 2-SPD, 405-70R18 TIRES, 2,238 HRS **\$52,500**



2017 DEERE 324K CAB, A/C, 3RD VLV AUX HYD, 88" GP BKT, RIDE CTRL, 405/70R20 RADIALS, 2,303 HRS **\$69,000**



2017 CAT 299D2 A/C, XPS HI-FLO AUX HYD, 110HP TIER-4 FINAL DSL, 2-SPD HST, HYD Q/C, 80" BKT, 18" RBR TRKS, 2,489 HRS **\$55,000**



2023 CAT 279D3 CAB, A/C, HYD Q/C, 74" BKT, 14-PIN ELEC KIT, JOYSTICK STR, REAR CAM, 18" RBR TRKS, 2,648 HRS **\$59,500**



(2) 2018 CAT 262D CAB, A/C, AUX HYD, MNL Q/C, 72" GP BKT, 2-SPD, 12X16.5 RBR, 930+ HRS **\$39,500 EACH**

NOTHING IS OUT OF REACH—CALL US FOR FINANCING OPTIONS!



2020 PETERBILT PB348
 4000GAL TANK, 6X4, PX-9 DSL, 6-SPD ALLISON 3000
 RDS-P AUTO TRANS, PWR STR, TANDEM AXLE, 6.17 RATIO,
 11R225 TIRES, 166K MI, 4,336 HRS **\$115,000**

SALES & RENTALS INC.
T-EQUIP
EQUIPMENT
SALES & RENTALS



2015 PETERBILT 367 10X4, A/C, 485HP PACCAR MX-13
 6CYL, ENG BRAKE, EF AUTO, DIFF LOCK, 4.10:1 RATIO, 80K
 LB GVWR, 425/65R22.5 F & 11R24.5 R TIRES, STEERABLE AIR
 LIFT TAG AXLE, DUAL STR BOXES, DBL FRM, HENDRICKSON
 HAULMAXX, 254" WB, 18'L X 5'H HERITAGE STEEL BODY,
 ELEC ROLL TARP, HI-LIFT TAILGATE, 180K MI **\$99,000**



(3) 2016 KOMATSU HM300-5
 A/C, 6X6, 333HP TIER-4 DSL, TRCTN CTRL, REAR CAM,
 90% MATCHING 23.5R25 RADIALS, 7,400+ HRS
STARTING AT \$139,000



2012 KOMATSU PC290LC-10
 A/C, 60' YOUNG BM, 60" CLEANUP
 BKT, TIER-3 DSL, PTRN CHNGR,
 AUTOLUBE, REAR CAM, LONG UC, 32"
 TG PADS, 6,630 HRS **\$79,000**



2015 CAT 336FL A/C, 13' STK,
 AUX HYD, HYD Q/C, 54" AMI BKT,
 314HP CAT C15 ACERT TIER-4 FINAL DSL,
 PTRN CHNGR, HEATED ST, REAR CAM,
 24" SG PADS, 5,688 HRS **\$149,000**



2018 CAT 320
 A/C, AUX HYD, HYD Q/C, 36" BKT,
 TIER-4 FINAL DSL, PTRN CHNGR,
 32" TG PADS, 6,254 HRS **\$99,000**



2023 CAT 315GC
 A/C, 8'2" STK, AUX HYD, HYD Q/C, 36"
 CAT BKT, ENG TURBO, GRD CTRL, PTRN
 CHNGR, 20" RBR PADS, 1,594 HRS
\$142,500



2023 CAT 313GC
 A/C, 8'2" STK, AUX HYD, HYD Q/C,
 36" BKT, HYD THUMB, GRD CTRL, PTRN
 CHNGR, REAR CAM, 28" PADS, 721 HRS
\$135,000



2014 KOMATSU D65EX-17
 A/C, AUX HYD, 11'2" SIGMA SU HYD
 BLADE W/ TILT, 205HP TIER-4 DSL,
 GPS RDT, RIPPER VLV, DRAWBAR,
 26" PADS, 4,105 HRS **\$119,000**



2020 CAT TL1255 12,000LB CPTY,
 55' HT, EROPS, A/C, 60" FORKS W/
 72" CARRIAGE, FRONT OUTRIGGERS,
 4,007 HRS **\$99,000**



2019 CAT TL1055 10,000LB CPTY,
 55' HT, EROPS, A/C, 60" FORKS W/
 72" CARRIAGE, FRONT OUTRIGGERS,
 3,287 HRS **\$99,000**



2020 GMG 4069RT 800LB CPTY,
 40' PTFM HT, 59" EXT PTFM, 4WD, 3CYL
 KUBOTA D1105 TIER-4 DSL, 27X12-15
 TIRES, 25 HRS **\$15,000**

ADDING UNITS TO OUR FLEET DAILY FOR YOUR RENTAL NEEDS

We are cash buyers for quality used trucks and equipment!

BROOKSIDE EQUIPMENT SALES

www.BrooksideEquipment.com

978-249-4600



2018 CAT 289D: 4,749 Hours, 2660 Lb Lift, Cab W/ A/C, Hydraulic Coupler, Pilot Controls, 2 Speed, 4 Cyl Cat C3.3B Turbo, 10.6K Lbs, stk#SK287, **\$36,500**



2015 GRADALL XL4300-III: 58" Cleanup Bucket, 9 Ft Blade, Mercedes-Benz Engine, 44K Lbs, stk#WX108, **\$39,500**



2013 HAULOTTE HB44J: 3,358 Hours, 45 Ft Boom Lift, 4x4, 7'6" Basket, Jib, Deutz Diesel, 42 HP, stk#AE986, **\$19,500**



2015 JOHN DEERE 190G W: 7,583 Hours, 36" Bucket, 8'4" Blade, Hydraulic Coupler, A/C, Backup Camera, Isuzu Turbo, 172 Hp, 45k Lbs, stk#WX012, **\$69,500**



2016 JOHN DEERE 544K: 9,783 Hours, 3 Yard, Cab W/ A/C, Hydraulic Coupler, 6 Cyl JD Turbo, 29k Lbs, stk#LO608, **\$69,500**



2020 PETERBILT 567: 267,896 Miles, Triaxle, 17 Ft Steel Tecco Body W/ High Lift Gate, Paccar MX11, 430 HP, Allison Automatic, 20k F, 46k R, Rubber Block Suspension, Disc Brakes, stk#TK837, **\$124,500**



2017 BOMAG BW120SL-5: 417 Hours, 48" Smooth Double Drum, Vib, Orops, 3 Cyl Kubota D1703, 24 HP, 5.6K Lbs, stk#CO614, **\$19,900**



2012 CATERPILLAR 966K: 11,138 Hours, 5 Yard, Cab, Hydraulic Fusion Coupler W/ 3rd Valve, Backup Camera, New Tires, 54k Lbs, stk#LO510, **\$93,500**



2014 CATERPILLAR 304E CR: 3,867 Hrs, 18" Dig Bucket & 4' Cleanup Bucket, Cab W/ A/C, Hyd. Thumb, Manual Coupler, Pattern Changer, 2 Spd, 77" Blade, 4 Cyl Cat C2.4, 6.9k Lbs, stk#MX925, **\$39,500**



2013 CATERPILLAR 324EL: 11,764 Hours, 40" Bucket, A/C, 6 Cyl Cat Twin Turbo, New Engine In 2024, 58k Lbs, stk#XC780, **\$49,500**



2008 HAULOTTE HS5388RT: 2,342 Hours, 52 Ft Rough Terrain Scissor Lift, 4x4, 88" Wide, 2 Cyl Hatz Diesel, Stabilizers, stk#AE118, **\$11,500**



2016 JOHN DEERE 410L: 5,563 Hrs, 4x4, X-Hoe, Cab W/ A/C, Front Hyd Coupler w/3rd Valve, Power Shift, Ride Control, Pilot Controls w/Pattern Changer, 24" Dig Bucket, Rear Manual Coupler, stk#BH193, **\$54,500**



2019 JOHN DEERE 824K-II: 13,914 Hours, 7'4" Wicker Machine Co. Grapple, Cab W/ A/C, 6 Cyl JD Twin Turbo, 59k Lbs, stk#LO329, **\$74,500**



2007 CATERPILLAR 730: 14,979 Hours, 30 Ton, 6x6, Tailgate, 6 Cyl Cat C11 Turbo, stk#HT432, **\$69,500**



2020 CATERPILLAR 306CR: 438 Hours, 12" Digging Bucket, Hydraulic Thumb, 78" Angle Blade, Cab W/ A/C, Swing Boom, 4 Cyl Cat Turbo, 57 HP, 16k Lbs, stk#XC531B, **\$79,500**



2021 MACK GRANITE GR84F: 240,677 Miles, Triaxle, 17 Ft Steel Body, Mack MP7-425M, 425 HP, Allison Auto, 18K F, 13K P, 46K R, Rubber Block Suspension, A/C, stk#TK740, **\$134,500**



2015 VOLVO L90H: 12,355 Hours, 3.5 Yard, Cab W/ A/C, Hydraulic Coupler, Ride Control, 6 Cyl Volvo Turbo, Very Good Rubber, 34k Lbs, stk#LO120, **\$67,500**



2003 FREIGHTLINER FL112Z: 377,047 Miles, 10 Wheel, 13'6" Steel Bibeau Body W/ 3 Chutes, Cat C12, 430 Hp, Fuller 8LL, 18k F, 46k R, Hitch, Spring Suspension, stk#TK065, **\$37,500**



2018 JOHN DEERE 624K-II: 11,553 Hours, 3.5 Yard, Cab W/ A/C, Hydraulic JRB Coupler, Ride Control, Backup Camera, 6 Cyl JD Turbo, 35k Lbs, stk#LO965, **\$69,500**



2023 CATERPILLAR D1: 3,934 Hours, 6-Way, Cab W/ A/C, Joystick Steer, Backup Camera, Leveling System, 4 Cyl Cat Turbo, 18K Lbs, stk#DZ141, **\$79,900**

60 STATE RD, PHILLIPSTON, MASS

978-249-4600

EMAIL: KEVIN@BROOKSIDEEQUIPMENT.COM

SALVADORE

FAMILY OF DEALERSHIPS

442 W. Broadway, Gardner, MA | SalvadoreRam.com



RAM

978-616-6127

**RAM CHASSIS CAB DEALER
IN NEW ENGLAND**



SPRING INTO MUD SEASON SAVINGS!



<p>SAVE \$4,700!</p>  <p>GVWR: 19,500 LBS!</p>	<p>2026 RAM 5500 TRADESMAN REG CAB 4X4 6.7L I6 CUMMINS TURBO DIESEL ENGINE - 8-SPD TORQUEFLITE HD AUTO TRANSMISSION MSRP: \$80,015 OUR PRICE: \$75,315! STK # N26070</p>	<p>SAVE \$4,300!</p>  <p>READY TO UPFIT!</p>	<p>2026 RAM 3500 CHASSIS CAB TRADESMAN REG CAB 4X4 6.4L V8 HEMI HD GAS ENGINE - 8-SPD AUTO TRANSMISSION MSRP: \$59,440 OUR PRICE: \$55,140 STK # N26053</p>
<p>SAVE \$4,700!</p>  <p>READY TO UPFIT!</p>	<p>2026 RAM 5500 CHASSIS CAB TRADESMAN CREW CAB 4X4 6.7L I6 CUMMINS TURBO DIESEL ENGINE - 8-SPD TORQUEFLITE HD AUTO TRANSMISSION MSRP: \$83,150 OUR PRICE: \$78,450! STK # N26064</p>	<p>SAVE \$4,700!</p>  <p>READY FOR THE JOB!</p>	<p>2026 RAM 5500 TRADESMAN REGULAR CAB 4X4 I-6 6.7 L CUMMINS TURBO DIESEL ENGINE - 8 SPEED AUTO TORQUEFLITE HD TRANSMISSION MSRP: \$105,775 OUR PRICE: \$101,075 STK # N26078</p>
<p>SAVE \$4,700!</p>  <p>GVWR: 19,500 LBS!</p>	<p>2026 RAM 5500 TRADESMAN REGULAR CAB 4X4 6.7L I6 CUMMINS TURBO DIESEL ENGINE - 8-SPD TORQUEFLITE HD AUTO TRANSMISSION MSRP: \$80,720 ONLY: \$76,020 STK # N26082</p>	<p>SAVE \$4,700</p>  <p>READY FOR UPFIT!</p>	<p>2026 RAM 5500 CHASSIS TRADESMAN REG CAB 4X4 6.7L I6 CUMMINS TURBO DIESEL ENGINE - 8-SPD AUTO TORQUEFLITE HD TRANSMISSION MSRP: \$79,055 NOW ONLY: \$74,355! STK # N26008</p>
<p>SAVE \$3,500!</p>  <p>COLOR = FLAME RED</p>	<p>2026 RAM 2500 TRADESMAN CREW CAB 8' BOX 4X4 6.4L V8 HEMI HD GAS ENGINE - 8-SPD AUTO TRANSMISSION MSRP: \$58,420 NOW ONLY: \$54,920! STK # N26041</p>	<p>SAVE \$2,750!</p>  <p>READY TO WORK!</p>	<p>2026 RAM 2500 LARAMIE CREW CAB I-6 6.7 L/408 INTERCOOLED TURBO DIESEL ENGINE - 8 SPEED AUTO TRANSMISSION MSRP: \$103,860 NOW ONLY: \$101,110 STK # N26014</p>
<p>SAVE \$3,500!</p>  <p>READY TO WORK!</p>	<p>2026 RAM 2500 TRADESMAN REGULAR CAB 8' BOX 6.4L V8 HEMI HD GAS ENGINE - 8-SPD TRANSMISSION MSRP: \$65,565 ONLY: \$62,065 STK# N26097</p>	<p>SAVE \$3,000!</p>  <p>GVWR: 10,000 LBS!</p>	<p>2026 RAM 2500 BIG HORN CREW CAB 6'4 BOX 4X4 6.4L V8 HEMI HD GAS ENGINE - 8-SPD AUTO TRANSMISSION MSRP: \$67,680 NOW ONLY: \$64,680! STK # N26073</p>

Additional Inventory Available & Ready For Custom Upfits!

Not responsible for typographical errors. Inventory changes frequently. Pricing subject to change due to manufacturer rebates. Pricing includes all available rebates and incentives and may require vehicle to be reported as a Business sale to the manufacturer. See dealer for complete details.

Authorized Fisher
Snow Plow Dealer



HILLSIDE MOTORS

**800-D American Legion Highway (Rt. 177)
Westport, MA 02790
508-636-5050**

Financing
Available
-Others in Stock

Family Owned & Operated Since 1969



OTHERS AVAILABLE

2013 FORD F250 RWD ALUMINUM RACK BODY.
W/Fold- Down Sides, 6.2L V8, Auto, Tilt Wheel,
10,000 GVW, One Owner, 107K, Fleet Maintained,
Ready to Work, **\$11,400.**



9 PASSENGER 4X4

2017 CHEVY 1500 SUBURBAN 9 PASSENGER LS 4X4.
5.3L V8, Auto, AC, Dual Power Seats, Back-Up Camera,
BlueTooth, One Owner, 111K, Fleet Maintained, Southern
Truck, Mint Condition, **\$29,900.**



**2021 CHEVY 4500 CREW CAB 16' BOX TRUCK W/
FURNITURE PEAK & ALUM. RAMP.** 6 Pass, 6.6L Gas,
Auto, Side Door, Rear Barn Doors, Back-Up Camera,
Bluetooth, One Owner, 105K, Well Kept, **\$52,800.**



RUST-FREE MECHANIC'S SPECIAL

2015 CHEVY 1500 CAB & CHASSIS 2WD. 4.3L V6, Auto,
AC, 162K, One Owner, Rust-Free Southern Truck, Engine
Skips, Selling As Is, Mechanic's Special, **\$5,900.**



4X4

2021 F450 16' BOX 4X4 W/ALUM. RAMP. 7.3L
V8, Auto, AC, PW, PL, Back-Up Camera, Bluetooth,
16,500 GVW, 162K, One Owner, Fleet Maint, Mint,
\$29,900. (Or Cab/Chassis \$25,900.)



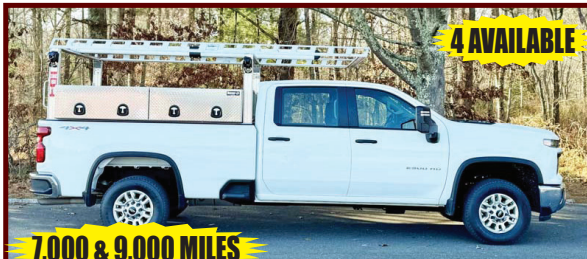
DURAMAX

2022 CHEVY 3500 REG CAB 11' DURAMAG UTILITY 4X4.
Duramax Diesel, Allison, Vanair Pro 35 Air Compressor, Bluetooth,
Camera, Rust-Free Southern Truck, 235K, Highway Miles, Fleet
Maintained, **\$37,900. (Will Separate)**



ONE TON

**2015 CHEVY 3500 4X4 SERVICE TRUCK W/POWER
GATE.** Vanair Compressor/Gen Jump Start System, 6.0L
V8, Auto, AC, Meticulously Maintained, 186K, Rust-Free
Southern Truck, **\$25,900. or \$20,900. w/o Equipment**



4 AVAILABLE

7,000 & 9,000 MILES

2025 CHEVY 2500 CREW CAB 8' LONGBED 4X4.
6.6L Gas, Auto, PW, PL, Ladder Rack, Alum. Toolboxes,
6-Passenger, Bluetooth, Back-Up Camera, 4 Available, 7,000
& 9,000 Miles, Factory 100K Warranty, **\$56,900.**



ALLEGIANCETM
TRUCK CENTERS



www.allegiancetrucks.com

Chris Frissora • 845-392-6522

cfrissora@ascendancetrucks.com



2025 INTERNATIONAL MV C&C.
STK#347759,
\$82,908.



2024 FORD F600 CRANE UTILITY.
STK#345199,
\$180,075



2026 INTERNATIONAL HX DUMP.
STK#356149,
\$237,345.



2023 INTERNATIONAL CV UTILITY.
STK#331509,
\$68,769.



2024 ISUZU NRR HOOK-LIFT. STK#330818,
\$95,508.



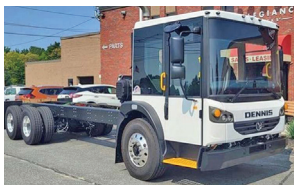
2024 INTERNATIONAL CV C&C.
stk#347749
\$65,732.



2025 INTERNATIONAL LT.
STK#347504,
\$127,570.



2023 INTERNATIONAL CV LANDSCAPE DUMP.
STK#324381, \$98,056.



2024 DENNIS EAGLE PROVIEW C&C.
STK#340060, \$134,900.



2024 WABASH DROP-DECK TRAILER. STK#325041,
\$50,900.



2024 PMI ULTRA LIGHT TRAILER. STK#332654,
\$69,500



2026 INTERNATIONAL HX DUMP. STK#358270,
\$219,778.



2025 ISUZU NRR RACK.
STK#342165,
\$83,720.



2025 ISUZU NRR LANDSCAPE DUMP.
stk#343706,
\$81,900.



2025 FORD E450 17' CUTAWAY CUBE W/ATTIC.
STK#345022, \$62,933.



2026 HINO L6 VAN.
STK#349362,
\$113,737.



2024 INTERNATIONAL CV C&C.
STK#347770,
\$66,127.



2019 INTERNATIONAL MV 26' VAN.
STK#301849,
\$17,495.



2025 ISUZU NPR HD VAN.
STK#340644,
\$68,412.



2022 PETERBILT 568 17' DUMP.
STK#354611,
\$169,900.

*Not all brands sold at every location



Burrillville, RI • 401-633-4587

- Full Bucket Rebuilds • Cylinder Resealing
- Wear Plates • Adapter Replacement • Hardfacing
- General Maintenance



2008 GMC 8500 DUMP TRUCK.

70K Miles, Allison Automatic,
7.8 Isuzu Diesel, 15' Galion Dump Body,
Air Gate, Air To Rear, Locking Rear Axles,
56,000 GVWR, **\$28,000.**
401-215-8842

**2012 MULTIQUIP
AR13HAR.**
Smooth Drum,
Compactor,
270 Hours, Honda
2-cylinder Gas
Engine,
\$11,000.
207-252-1191



**GMC GENERATOR
TRUCK.** Caterpillar Mo-
tor, Automatic
Transmission, 145 KW
Diesel Generator.
\$15,500 OBO,
914-760-0936



BEAM TRUCK & BODY INC.

433 CUMBERLAND HILL ROAD, WOONSOCKET, RI 02895

RI Dealer #647



401-767-2639



NEW - USED & RECONDITIONED DISPOSAL EQUIPMENT



2004 KENWORTH T800:
396,914 MILES, AMERICAN 75,000#
ROLL-OFF, CAT C12 W/ FULLER 8LL, 60,000#
GVW CALL FOR MORE DETAILS !

**IN STOCK READY TO
INSTALL
NEW EQUIPMENT**
* HAD-185-120-36/54"
* T40S AMERICAN
PALFINGER
* 20' BOX WITH WALTCO
LIFT-GATE 2500LBS. \$6,000



**2000 INTERNATIONAL WITH
2023 AMERICAN / PALFINGER 250S
HOOK-LIFT WITH VERY LOW MILES !
\$50,000**



2010 INTERNATIONAL 7400:
42,000 MILES W/ HEIL 22 YD.
AUTOMATED PACKER. **\$60,000**
WILL SPLIT.



**GOOD USED 2020 PAKMOR 16 YARD
REAR LOADER. HAS REEVING
SYSTEM, CANNOT GO ON AN UNDER
CDL CHASSIS, 33K OR GREATER.**



**20 YARD CURBTENDER
GOOD USED 2017 UNIT.**

**STELLAR NXT18L HOOK
LIFTS IN STOCK !
NEEDS 120" TO 130"
CA. DOES 10' TO 14'
CONTAINERS.
36" / 54" MANUALLY
ADJUSTABLE HOOK
HEIGHT. PERFECT FOR
F-600'S**

WWW.BEAMTRUCK.NET



CONSOLIDATED TRUCK & EQUIPMENT, INC.



www.ConsolidatedTruckEquipment.com

**1727 FALL RIVER AVE, (RT.6) NEAR SEEKONK SPEEDWAY
SEEKONK, MA**



NEW CHALLENGER 26' STEEL DUMP TRAILER.

High Lift Gate, Single Point Suspension, Electric Tarp, 11x24.5 Tires On Aluminum Wheels, **Call For Price.**

**NEW FELLING 25 TON:
AIR RAMPS,
FRONT AXLE LIFT.**



3 AVAILABLE

2025 MAC 28' ALLUMINUM DUMP TRAILER: 8 ALLUMINUM RIMS, ALLUMINUM FRAME, AIR RIDE, ½ PLASTIC LINER.



2026 FELLING FT-16-2T Tilt Top Trailer: 23' Deck x 102" Wide, Viper Red, Aluminum Wheels, 18,400lb GVW \$24,500.00 2 in stock GVW **\$24,500.00** 2 in stock.

Fire Hydrant available on request.



2025 MAC 26' STEEL DUMP TRAILERS: Hi-Lift Gate, 24.5 Tires On Aluminum Rims, 60,000 LB Center Point Suspension, Electric Load Cover, Body All ¼" Hardox,



2025 MAC 27' STEEL BODY ALUMINUM FRAME TRAILER: Hi-Lift Gate, Air Ride, 11x24.5 Tires On 8 Aluminum Rims, Hardox Steel Body, Full Aluminum Side Skirts, Due In 2 Available, Trades Accepted,



2025 FELLING 20 TON TAG W/ AIR RAMPS. CALL.

CALL US: AT 508-336-6215 • HOURS: M-F 8 to 5:30 • SAT: 9 to 12 Noon



2005 HINO 268 HOOKLIFT.
 20K Lb., Galbreath Hooklift, Auto, 33,000 GVW
 Factory Derated to 26,000 GVW,
 No CDL Needed, Pioneer Electric Tarp,
 AC, In/Out Controls, Air Ride Seat, CD Stereo, Alum
 Storage Box, Chrome
 Bumper, New Turbo Charger,
 189,721 Miles, Strong Running Truck,
\$39,900. 781-414-0635



**1999 MACK
 RD688S
 ROLL-OFF.**
 E7-350 E-Tech,
 8 Speed Eaton,
 Tires 50%, Brakes
 75%, Runs Great,
\$22,500.
 845-505-4770



**1989 AUTOCAR
 10 WHEELER DUMP.**
 Rebuilt CAT Engine, New Tires,
 Barn Door, Asphalt Chutes,
 Richardson Electric HD Load Cover,
 Pintle Hitch, Fleet Maintained,
\$16,000 OBO.
 401-447-2661
 Or 401-737-6663



2012 SALSCO 813 WOOD CHIPPER. 394 Hours,
\$14,500. 207-252-1191

**DRAINAGE ?
 GRADE IMPROVEMENTS
 BE READY FOR
 THE NEXT BIG STORM**

**WASHED STONE
 PROCESSED GRAVEL
 SAND
 TOP SOIL
 RIP RAP
 FILL**



**Please Call for pricing
 401-447-2777**





C.N. WOOD co., INC.

Large Selection Of Used Equipment! Call For More Info. 781-315-1680



2019 DOOSAN DX235LCR-5. Good Running Unit, \$69,000., #C012324



2016 VACALL AS13D VACUUM SWEEPER. Nice Running Machine, \$79,000., #E001870



2010 ELGIN PELICAN. Good Running Unit, \$69,000., #W000016



1995 SERCO SW200 JET RODDER. \$8,500., #E001753



2003 SEICA 800HPR JET RODDER. \$9,500., #E001341



2017 KOMATSU PC138USLC-11. Runs Well, \$69,000., #C006512



2016 JOHN DEERE 245GLC. Nice Unit, \$59,000., #C011811



2019 KOMATSU D39PX-24. Clean, 3012 Hours, \$89,000., #C003403



2016 KOMATSU D61PX-24. Nice Unit, \$75,000., #C011827



2019 CAT PM312 MILL. Nice Unit, \$285,000., #C011669



2012 VACTOR 2100PD. Everything Works, \$109,000., #E001288



2017 ELGIN PELICAN. runs great, \$75,000., #E001776

Woburn, MA ● Avon, MA ● Whatley, MA ● Johnston, RI ● North Haven, CT
Westbrook, ME ● Pine Bush, NY ● Holmes, NY ● Newington, CT

www.cn-wood.com



JACK MADDEN FORD
Jackmaddenford.com
781-762-4200



825 Providence Hwy Rt.1 Norwood, MA



2024 FORD TRANSIT 250 CARGO VAN. V6, Auto w/OD, AC, P/W, REAR CAMERA, LIMITEDSLIP, STK#22914.

**0%
Financing
Available**



NEW FORD F350 SD XL READING UTILITY 4WD. 6.7L V8 TURBO DIESEL, 14K GVW, STK#G02767



2025 FORD F350 SD XL CRYSTEEL DUMP 4WD. 7.3L V8 GAS, 14K GVW, SNOW PLOW PREP, STK#27874



NEW CAB & CHASSIS: 350-450-550 SUPER CABS, REGULAR CABS



2026 FORD TRANSIT-350 READING ENCLOSED UTILITY AWD. GAS, AUTO, POWER GROUP, NAV, BACK-UP CAMERA, STK#A11376



NEW FORD F350 SD 9' SUPER HAULER LANDSCAPE BODDY 4WD. 6.7L POWER STROKE DIESEL, 14K GVW, SNOWPLOW PREP, STK#17252

Jack Madden



We're On The Auto Mile!



2025 FORD. FF650 SD AIR- FLO DUMP. 7.3L GAS, AUTO, PLATE, HITCH, POWER GROUP, OO STK#6758

*ALL PRICES INCLUDE INCENTIVES FOR QUALIFIED BUYERS. FOR TRADE ASSIST, MUST HAVE 2018 OR NEWER TRADE. ALL VEHICLES REQUIRE DEALER FINANCING. SOME PRICES INCLUDE SNOWPLOW INCENTIVES. SEE DEALER FOR COMPLETE DETAILS.



Jack Madden Ford

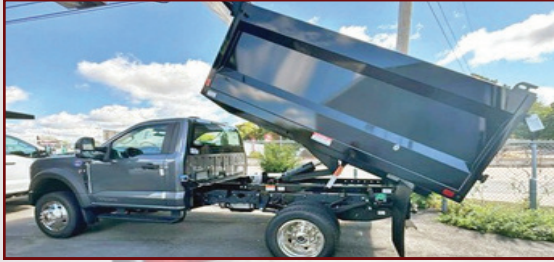
Jackmaddenford.com

781-762-4200

825 Providence Hwy Rt.1 Norwood, MA



0% Financing On SUPER DUTY AND TRANSITS Available



2024 FORD F-550 SD XL 4WD DRW W/9' SUPER HAULER LANDSCAPE BODY. 6.7L Diesel, 19500 GVW, Tow Pkg, stk#17329.



NEW 2025 FORD E-450SD 14' ROCKPORT WORKPORT UTILITY: DRQ, 7.3L GAS, AUTO, POWER GROUP. STK#28681.



NEW 2025 E350 12' AEROCELL CUTAWAY. STK# 30217.



NEW FORD TRANSIT 350 SERVICE BODY AWD, STK#69470.



NEW FORD E-350 COMMERCIAL CUTAWAY WITH 16' AEROCELL BOX-TRUCK. STK#23914.



2025 FORD F-350 REGULAR CAB DRW 4WD READING SERVICE TRUCK STOCK #11997

Jack Madden



We're On The Auto Mile!

*ALL PRICES INCLUDE INCENTIVES FOR QUALIFIED BUYERS. FOR TRADE ASSIST, MUST HAVE 2018 OR NEWER TRADE. ALL VEHICLES REQUIRE DEALER FINANCING. SOME PRICES INCLUDE SNOW PLOW INCENTIVES. SEE DEALER FOR COMPLETE DETAILS.



Custom Gates Hydraulic Hose Assemblies & Fittings
Full Truck Service, Maintenance & Repair

All Makes & Models
 Over 20 Years Experience Specializing In Mack's
 Marshall Cefole - **978-467-7993**
 Randy Rameau - **978-423-2889**
 10 Gardner Road, Winchendon MA 01475



2000 FREIGHTLINER FL50.
 3126 Caterpillar Diesel
 230 Hp, 16,000 Miles, Original
 14 Foot Frame **\$11,500 OBO.**
 914-760-0936



1998 KOMATSU D41E-6 DOZER. 9,287 Hours, Heat, AC, Ripper, Good U/C, **\$35,000.** 207-252-1191

2021 FORD F-150 LARIAT.
 57,000 Miles, 4WD, 3.5 Engine,
 Very Clean, Leather Interior,
\$37,000 OBO.
 401-215-8842



Jukonski

Truck Sales



WWW.TRUCKSELLERS.COM

se habla español



680 NEWFIELD ST. (RT 3) MIDDLETOWN, CONN • **800-378-0342** • MON-FRI 9-5

DON'T MISS OUT: YOUR IDEAL TRUCK AWAITS!



BRAND NEW
2024 HINO S5 Cab and Chassis,
 Diesel, Auto, 19,500 GVWR, BRAND
 NEW TRUCK, #T-R7308872



2026 BRAND NEW HINO L6, Diesel,
 25,950 GVWR, 26' Box, 2 AVAILABLE
 (One Has Liftgate).



2018 FREIGHTLINER M2 24'
Box w/ Liftgate, 6.7L Cummins, Allison,
 115K Miles, 33K GVWR, #T-JDJK0822,
\$29,900



2015 ISUZU NPR HD DC Cab &
Chassis, Diesel, Auto, 99K Miles, 14,500
 GVWR, #JTS-F7003553, **\$25,900**



2023 ISUZU NRR 20' Box w/ Liftgate,
 Diesel, Auto, 16K Miles, 19,500 GVWR,
 #T-P7308011, **\$67,900**



2021 CHEVROLET 4500 14' Stake Bed,
 V8 Gas, Auto, 70K Miles, 14,500 GVWR,
 #T-MS200188, **\$31,900**



2022 ISUZU NRR DC 14' Dump,
 L96 GM Gas, Auto, 50K Miles, 19,500
 GVWR, #T-NSR01252 **\$64,900**



2022 ISUZU NQR DC. 14' Dump, L96
 GM Gas, Auto, 70K Miles, 17,950 GVWR,
 #T-NS502155, **\$59,900**

90 DAY POWERTRAIN WARRANTY AVAILABLE ON ALL CERTIFIED TRUCKS. INCLUDES INJECTORS AND TURBO



**METROPOLITAN
TRUCK CENTER INC.**
1074 TURNPIKE ST
STOUGHTON, MA 02072
800-878-5491



*Family owned and
operated since 1980*

SPRING INTO ACTION WITH NEW EQUIPMENT!



**EBY "FLEX"
REMOVABLE-SIDES LANDSCAPE BODY**



**SWAPP HOGG DETACHABLE
BODIES**



**DURAMAG SERVICE BODIES
"S" SERIES**



AIR FLO STEEL & SS DUMP BODIES



RUGBY PLATFORM BODIES



DOWNEASTER LANDSCAPE BODIES



HEADACHE RACKS & TOOL BOXES



**LIFTGATES
TOMMY GATE, MAXON, THIEMAN, ANTHONY**



GALION STEEL & SS DUMP BODIES

www.metropolitantruck.com

COLONIAL WEST

COLONIAL-WEST CHEVROLET OF FITCHBURG

DRIVERS, START YOUR ENGINES!



RACE IN FOR YOUR NEXT TRUCK!



30K MILES

2023 FORD TRANSIT CARGO VAN. Only 30K Miles, V6, Auto, WiFi, Back-Up Camera, stk#5676A, **\$32,500.**



LOADED

2018 GMC SIERRA 1500 CREW CAB DENALI 4X4. V8 Gas, Heated/Cooled Leather Seats, Sunroof, Bluetooth, Nav, One Owner, stk#W26111A, **\$29,995.**



40K MILES

2024 GMC SIERRA 2500 HD CREW CAB 4X4. 6.6L V8 Gas, Auto, Heated Leather Seats, Sunroof, One Owner, 40K Miles, stk#W26785A, **\$57,500.**



2025 CHEVROLET SILVERADO 3500 CREW CAB HIGH COUNTRY DRW 4X4. 6.6L Duramax Diesel, 11K Miles, Moonroof, Leather, Loaded, #5771, **\$83,500.**



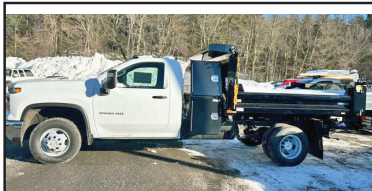
12 TO CHOOSE

2025 CHEVROLET 2500 EXPRESS CARGO VANS. With V6 And Adrian Steel Bin Packages. 12 To Choose From MSRP With Bin Packs, #w25554, \$51,720., **Buy For \$44,777.**



SAVE \$6,947.

2025 CHEVROLET EXPRESS WITH 10 FT DURA CUBE BOX. #w25568, Original MSRP \$71,724., **Buy For \$64,777.**

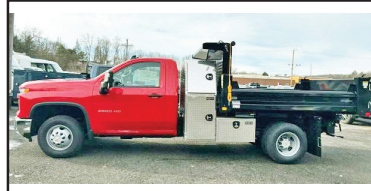


2026 CHEVROLET SILVERADO 3500 HD I-PACK DUMP 4X4. 6.6L, Auto, Nav, Wi-Fi, #W26769, **\$68,900.**



BRAND NEW

BRAND NEW 2024 CHEVROLET EXPRESS CUTWAY 3500 KUV. 6.6L Gas, Remote Start, Rear Camera, #W24563, **Buy For \$59,975**



2026 CHEVROLET SILVERADO 3500 HD I-PACK DUMP 4X4. 6.6L Gas, Nav, Wi-Fi, Toolboxes, #W26766, **\$69,900.**

314 John Fitch Hwy • Fitchburg, Ma 866-263-8712 www.Colonial-West.com

Disclosure. all prices include every applicable rebate, lease loyalty, comp lease, com rebate, finance with dealer, tax, title, and dealer fees extra, not responsible for typographical errors, prices subject to change without notice.



SALES & RENTALS INC.
T-QUIP

DAILY / WEEKLY / MONTHLY

**EQUIPMENT
RENTALS**

**WHEEL LOADERS ◦ ROCK TRUCKS ◦ EXCAVATORS
ROLLERS ◦ SKID STEERS ◦ CRUSHERS ◦ SCREENERS
DOZERS ◦ BACKHOES ◦ GRADERS ◦ TELEHANDLERS
TRACKED DUMPERS ◦ SPECIALTY ATTACHMENTS**



603-623-3669



www.TQUIP.com

NORTHEAST TRAILER



20 Business Park Drive
Smithfield, RI 02917
Hours: M-F 8:30-4:30

401-941-4445



**70+ CARTAGE TRAILERS
53' Swing or Roll Door
For Sale or Rent**



**2015 UTILITY 53'x 102" x 13'6"
Rfr. Swing Door, Carrier X 7,300
Unit, 17,000 Hours, \$18,500**



**(4) 2023 20' x 8' Refrigerated
Shipping Containers, Tri-Fold
Swing Doors, For Sale or Rent**



**(3) 2014 GREAT DANES
48'x 102", Aluminum Roofs
Roll Doors, \$5,950 Each**



**8 EXPORT FLATBEDS
\$3,750 Each**



**20 FOOT CONTAINERS
Starting at \$95.00
Per Month For Rent**



**2009 WABASH 48'x 102" x 13'6"
Refrigerated Trailer, No Reefer Unit
6,600Lb. Maxon Lift Gate, \$9,500**



**2009 GREAT DANE Trailer
53'x 102" x 13'6", Swing Door, Air
Ride, Aluminum Roof, \$7,000**



**2005-2008 53' ROLL DOORS
Aluminum Roof, Spring Ride
\$7,500 Each**



**SPRING AND AIR RIDE
TANDEMS
\$2,500 Spring Ride
\$3,500 Air Ride**



**4,000 GALLON
ABOVE GROUND FUEL TANK
\$5,500**



**(3) 2022 1-Trip High Cube Shipping
Containers, 1 With Single Door-\$8,500
2 With Double Doors-\$9,250 Each**

WWW.NETRAILER.COM

Buyer - Seller - Swapper

ANDERSON MOTORS INC.



* YOUR EXCLUSIVE VOLVO TRUCK DEALER *



VOLVO POWER

IN STOCK

2026 VOLVO VHD84F300-D13, 500HP, 14SPD. I-SHIFT, STEERABLE PUSHER, 17' 6" HARDOX BODY. #250111



IN STOCK

2027 VOLVO VHD84F300-D13, 500HP, 14SPD. I-SHIFT, 20,000# STEERABLE TRI-AXLE DUMP CHASSIS. #260004



IN STOCK

2025 VOLVO VHD64BT-D13, 500HP, 12SPD. I-SHIFT, 14,600# FRONT / 46,000# REARS. #240142



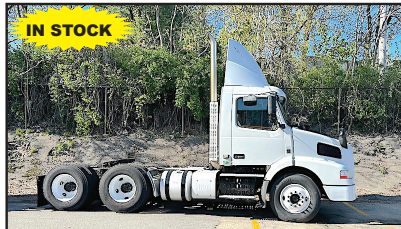
3 AVAILABLE

2012 - 2017 VOLVO VNL64T300-D13, 500HP, 18SPD. TRANS., 14,000# FRONT / 46,000# REARS, AIR-RIDE.



IN STOCK

1991 AUTOCAR ACL64BT300 CUMMINS BIG CAM, 8LL TRANS., 46,000 REARS, 320,548 MILES, WET-SYSTEM, PINTLE PLATE & HOOK. #240002B



IN STOCK

2015 VOLVO VNM64T-D13, 435HP, 10SPD., 12,000# FRONT / 40,000# REARS.



IN STOCK

2000 VOLVO WG64B, 275HP, AUTO, 16,000# FRONT / 40,000# REARS, JOHNSERED 820 CORTU CRANE, 20' DUMP BODY. #210299A



2 AVAILABLE

2016 VOLVO VNM64T-D13, 435HP, 10SPD., 12,000# FRONT / 40,000# REARS. #230109A



2 AVAILABLE

2022 VOLVO VNL64T300-D13 500HP, 12 SPD. I-SHIFT ,AUTO, 14,000# FRONT / 46,000 # REAR, AIR-RIDE, HD HAULER.



IN STOCK

2026 AUTOCAR ACTT42, SINGLE AXLE, YARD JOCKEY, DIESEL AUTOMATIC, A/C, HYDRAULIC 5TH WHEEL.



IN STOCK

2012 FORD E-450 14 PASSENGER SHUTTLE BUS, GAS, 18,885 MILES. #250029A



2 AVAILABLE

2026 RHODES RSS2660-2 26' STEEL END DUMP TRAILER, AIR HIGH-LIFT DOUBLE ACTING TAIL GATE, HD SPECS.

401-434-5900

WWW.ANDERSONMOTORS.COM

EMAIL • SALES@ANDERSONMOTORS.COM

190 AMARAL STREET • EAST PROVIDENCE, RI 02915

HABLAMOS ESPAÑOL



1995 MORBARK MODEL 2500 TREE CHIPPER. Auto Feed, 350 HP John Deere, Chips 16" Log, Good For Medium Size Land Clearing Company, New Clutch & Other Parts, 4000 Hours, **\$32,500.** Litchfield, CT 860-567-9349



2011 ISUZU NRR. Elgin ODRA MT4H Broom Badger High Dump Sweeper, Mint Condition, Stainless Hope, New Conveyer Assembly, 40,000 Miles, 4,000 Hours, New Brooms, Many New Parts, Ready To Work, **\$95,000 OBO.** 516-404-4194



Buying and Selling
ALL BOBCATS



BROKEN, BURNT, ANY SHAPE FOR THE RIGHT MONEY!

401-585-0635



LIBBY MEP-007B GENERATOR. 100K Watts, 3-Phase, CAT Power, 1,497 Hours, Needs Fuel Pump, Not Sure Of Running Condition, Skid Mount, **\$3,500.** 207-252-1191



SAFETY EQUIPMENT



PORTABLE ABRASIVE BLASTERS



AIR COMPRESSORS



ABRASIVES



RAPID PREP

Full Service Provider of Equipment,
Supplies and Consumables

NATIONWIDE EQUIPMENT
RENTALS, SALES & SERVICE

North Kingstown, RI
Suffolk, VA · Suwanee, GA
El Cajon, CA · Lakewood, WA

877.529.2124 / rapidprep.com

RUST NEVER SLEEPS



Fowler's Auto Wrecking Inc.

Belltown Recycling Center



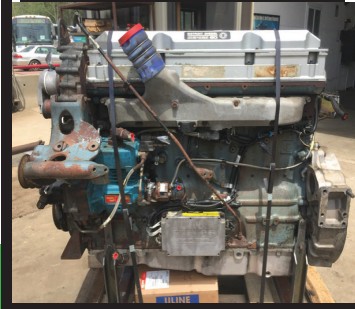
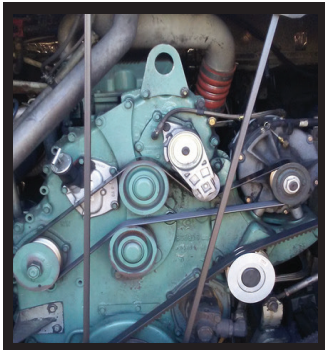
860-267-7140 • 24 Old Coach Rd East Hampton, CT

Detroit Series 60 12.7L Engines

- EGR DDEC-IV
- NON-EGR DDEC-IV
- Good Running Take Out Engines
- Recent Remanufactured Engines
- Core Engines
- Engine Accessories
- 6 Month & 1 Year Warranties Available
- Call Today For Pricing



CALL: 860-267-7140



Complete Coaches For Parts

- MCI, Vanhool, and Prevost Buses For Parts
- Compressors, Condenser & Evaporator Motors
- Wheels, Tires, Suspension & Brake Parts
- Electrical Parts, Interior & Exterior Lighting
- Tag Axles & Drive Axles
- Compartment, Service, and Entrance Doors
- Fiberglass Body Panels & Glass
- Complete Electric Wiper Conversion Kits
- Radiators, Intercoolers, and Condensers
- Standard 6 Month Warranty On All Parts



Buses Are Not Intended For Resale - Salvage Titles



Allison B500 Transmissions

- Allison B500 With or Without Retarders
- Good Running Take Outs
- Recent Remanufactured Units 
- Core Transmissions
- Allison Shift Pad Selectors
- Allison TCM (Transmission Control Modules)
- Standard 6 Month Warranty
- Call Today For Pricing

CALL: 860-267-7140



**2004
INTERNATIONAL
4300 TOW
TRUCK.
DT466 W/ 6
Speed Eaton,
282K Miles, 33K
GVWR With
Wheel Lift,
Ready For Work
\$24,000.**



800 Cheshire Rd. (Rt 8), Lanesboro MA 01237

(413) 442-0407 • (888) 474-5224

www.villagetrucksales.com

Numerous Snow Plows, Wings, & Stainless Steel Sanders Now In Stock. Call Now With Your Needs



2004 & 06 IH 760. Cummins ISM, Allison Auto, 25 Yard Pak-Mor, 60K & 80K Miles, **\$20,000 Your Choice**



1967 MACK R611. 673 Diesel, Tri Plex, Holmes 750, **\$30,000**



1977 IH 2050. 653 Detroit Diesel, Allison Auto, Holmes 750, **\$15,000**



2006 INTERNATIONAL. DT466, 6 Speed, 2,000 Gallon, 2 Compartment, **\$15,000**



1999 IH 2674. N14, 8 LL, 14' Dumping Flatbed, **\$9,500**



1996 PAYSTAR 5000 S/A DUMP. AWD, N4 Cummins, **\$19,500**



1985 CHEVROLET K30. 6.2L Diesel, 4 Speed, 4x4, **\$10,000**



2002 FORD F450. 7.3L Powerstroke Diesel, Leaf Compactor Vac Body, **\$10,000**



1999 FREIGHTLINER FL 70. Altec Digger Derrick, CAT Diesel, Auto, State College Owned, Only 41K Miles, **\$10,000**



2013 IH WORKSTAR. Labrie Curbside Recycling Truck, Low Miles, **\$15,000**



1995 CHEVROLET KODIAK. CAT Diesel, 5 + 2, 69K Miles, 5 Ton Knuckle Boom Crane, 12' Rack Body, **\$10,000**



1998 IH 4700. T444e, Auto, Only 10K Miles, From Muni Airport, Working Basket, **\$25,000**



2009 IH WORKSTAR. Only 66K Miles, Auto, All Season Body, Set Up For Plow & Wing, **\$17,500**



800 Cheshire Rd. (Rt 8), Lanesboro MA 01237

(413) 442-0407 • (888) 474-5224

www.villagetrucksales.com

Numerous Snow Plows, Wings, & Stainless Steel Sanders Now In Stock. Call Now With Your Needs



2013 MACK GRANITE.
All Season Stainless Steel Rear Spreader Body, Plow & Wing, MP8 Mack Diesel, 10 Speed, Only 143K, **\$49,995**



2015 FREIGHTLINER M2 TRACTOR. 12K Front, 40K Rear On Air, Detroit Engine, 10 Speed, Municipal Truck, 159K Miles, **\$29,995**



2015 FREIGHTLINER M2 TRACTOR. 12K Front, 40K Rear On Air, Detroit Engine, 10 Speed, Municipal Truck, 169K Miles, **\$29,995**



NEW HOLLAND TS100. Diesel, Alamo Boom Axe, Over Rail Mower, 5100 Hours, **\$39,995**



7,700 Miles
2003 FORD F550 4x4. Skytel 45' Bucket Truck. Only 7,700 Miles, College Owned, Stored Inside, Super Clean, **\$40,000**



1998 CHEVROLET C7500. Gas, Auto, 12' Hydraulic Dumping Flatbed, **\$6,500**



2007 VOLVO 10 WHEEL DUMP. D12 Volvo, All Season Body, Set Up For Plow & Wing, **\$20,000**



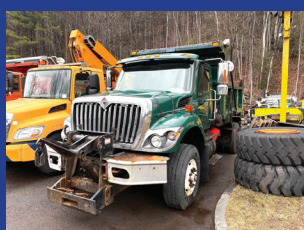
2004 FORD F350 10' RACK BODY. 4x4, V10 Gas, Auto, Low Miles, **\$6,000**



STERLING TANDEM AXLE. 8 Speed, Stainless Steel Sander, Plow & Wing, Dump Body Included, **\$23,500**



1993 INTERNATIONAL DT466, 5 Speed, Stainless Steel Sander, Brand New Differential, **\$8,500**



2011 INTERNATIONAL SINGLE AXLE DUMP. All Season Body, **\$12,500**



NEW HOLLAND B95c. Extenda Hoe, 4 In 1 Bucket, **\$30,000**



2009 IH WORKSTAR S/A DUMP. Diesel, Auto, **\$12,000**



2013 IH WORKSTAR. Auto, 56K Miles, All Season Body, Set Up For Plow & Wing, **\$10,000**



1990 FORD F8000 CAB/ CHASSIS. All Wheel Drive, Tandem Axle, Ford 7.8L Brazilian Diesel Engine, Automatic, 20 Ft Plus Frame Rail, 10,000 Original Miles, No Rust, **\$13,500.** 914-760-0936



\$110 Per Wheel Polish
ACUSHNET WHEEL POLISHING
Used Rims Available
508-509-2014
62 SOUTH MAIN ST.,
ACUSHNET, MA



Service & Mechanic On Site



Tight Link Fence Co.
Residential ~ Commercial ~ Industrial
Mark Dillon
774-365-0222



1999 FINN B260 STRAW BLOWER. 350 Hours, \$22,000. 207-252-1191

CTAXLE
& SPINDLE REPAIR

CT Axle & Spindle Repair Ellington, CT 06029
860-281-4454 or 860-375-6045



DRIVESHAFT SERVICE NOW AVAILABLE



TRAILER SPINDLE REPLACEMENT WELDED IN PLACE



TRUCK DRIVE SPINDLE REPLACEMENT WELDED IN PLACE



• Drive Spindles From 1 Ton To Class 8 Trucks • Trailer Spindles From 3,500# To Class 8 Axles
Spindles can also be repaired by welding up the worn area and then remachining to factory spec.
This includes tracing threads or remachining new threads.
WELDING AND FABRICATION ALSO AVAILABLE

A Completely Mobile Spindle Repair System. We Come To You! Serving CT, MA, RI & the Northeast
Visit Our Website At: ctaxleservice.com



CONSTRUCTION INC.

Cherry Hill Construction Co., Inc
51 Ciro Road – North Branford,
CT 203-488-7929

www.CHERRYHILLEQUIPMENT.com



2006 CAT 966H.
Long Reach Arms,
Large Bucket.
Asking \$59,000



2003 JOHN DEERE 50C,
8445 Hours,
Asking \$21,000



2006 CAT 325D,
24,000 Hours, Q/C,
Aux Hydraulics, Good Bottom.
Asking \$50,000



1975 P&H OMEGA CRANE,
6,509 Hours,
Asking \$19,000



1984 CAT 966D,
8854 Hours, Aux Hydraulics,
Side Dump Bucket. **Asking \$37,000**



2005 FREIGHTLINER BUSINESS CLASS M2,
124,000 Miles,
Asking \$15,000



1991 CATERPILLAR 966F LOADER. Meter Reads
2506 Hours, Aux Hydraulics,
Asking \$45,000



2014 CAT CT660S LUBE TRUCK,
216,900 Miles,
2000 Gallon Fuel Tank,
Asking \$50,000



1995 HOGZILLA TC1464P.
Tub Grinder, 1,751 Hours,
Asking \$115,000



2015 PETERBILT 388 Heavy Haul Tractor,
430,650 Miles, 18 Spd, Engine Rebuilt a At 370k miles, ISX15 550 HP 1950 Engine, 20/22/46, New Trans, New Rear, 4:10 Rears, Wet Line, Holland 100 Ton Fifth Wheel, **Asking \$125,000**



1999 JOHN DEERE 200 LC. 14,586 Hours,
Asking \$29,000



REED TRUCK SERVICES

24/7 Heavy Duty Towing, Accident Recovery & Emergency Road Service



**TRADES
ACCEPTED**

**939 John Stark
Hwy.
Newport, NH**



**287 Washington St.
Claremont, NH**

**HELP
WANTED**

• Authorized International Truck & Cummins • Sales • Service • Parts • Warranty •
All Makes Commercial Truck Parts, Sales, and Service

Email: scott@reedtruck.com • www.ReedTruck.com • 1-800-542-5032



2025 INTERNATIONAL HV507. L9
Cummins, Allison 3500, 20 F/A, 30 R/A,
Chalmers Susp, All Municipal Options!



SEVERAL AVAILABLE

2024 INTERNATIONAL CV515 4x4.
Fully Equipped With Plow Gear And Dump
Body.



IN STOCK

2026 INTERNATIONAL HX620.
X15@565hp, 4700 RDS Allison, 20 F/A,
46 R/A, Ready For A 15' Dump.



2026 INTERNATIONAL HV613. A26,
Allison 4500, 22 F/A, 46 Locking Rears,
Hend HMX Suspension, In Stock!!



DUMP BODY & PLOW GEAR BEING INSTALLED

2024 INTERNATIONAL HX520. X15 Cummins,
Allison Auto 4500, 20/46 Axles, Air Ride, Aluminum
Wheels, Dump Body & Plow Gear Being Installed



**SEVERAL USED PLOW, SANDING
TRUCKS.** International, Sterling,
Freightliner, Tandems And Single Axles.



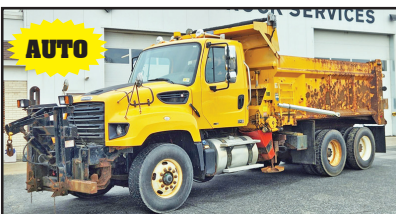
**2006 FREIGHTLINER M2 112 LANAU DUMP
BODY.** 450 HP Mercedes, 16908LL Trans, 18 F/A,
46 R/A, Solid Truck, Used For Paving. **\$52,500.**



2010 FREIGHTLINER SLEEPER.
14 F/A, 46 R/A, DD15, 18 Spd, Wet System, Clean
Solid Truck, Used In Paving Company. **\$39,500.**



2019 GMC 3500 DENALI CREW CAB 4x4.
Diesel 4x4, All Options, Well Maintained,
One Owner, One Driver, 115,500 Miles.
\$42,500



AUTO

2012 FREIGHTLINER SD114. DD13 Engine,
Allison AUTO Trans, Everest 14' Live Floor Body,
Truck, Includes Plow And Wing Blades. Well
Maintained Muni Trade, **\$49,900.**



2009 FREIGHTLINER BUS.
Cummins, Allison, 2 Full Size Freightliners &
2 International CE300 Buses
Priced From **\$1,500-\$5,500.**



**2013 SWENSON S STEEL
9' SANDER.** Good Condition,
\$4,800.

WWW.SCRANTONGMC.COM

777 TALCOTTVILLE ROAD VERNON, CT • 860-281-6726



NEW 2024 GMC SAVANA CUTAWAY. 16' CLASSIC CUBE WITH 12' WALK RAMP, #R9660, \$52,977



NEW 2024 GMC SAVANA. 12' DURACUBE MAX SERVICE BODY WITH LOCKS, BACK UP CAMERA, #R9638, \$59,977



2025 GMC SAVANA 3500 EXTENDED CARGO VAN. 6.6L V8, CHROME APPEARANCE PACKAGE, #S9276



NEW 2024 GMC SAVANA CUTAWAY. 12' DURACUBE MAX SERVICE BODY, #R9868, \$61,977



2026 GMC SIERRA 3500 REGULAR CAB & CHASSIS. 4X4, DRW, 60" CA, #T9565, \$52,777



2025 GMC SIERRA 3500 CREW CAB. 4X4, DRW, 9' READING SERVICE BODY, GAS, #T9367, \$72,777

MANY OTHER TRUCKS IN STOCK. CALL FOR DETAILS



WWW.SCRANTONGMC.COM



CT • RI • MA • NY



100 YARD
STEEL DUMP TRAILERS

CALL IAN OR JIM
800-229-9421

WE WILL SAVE YOU MONEY
AND PUT A SMILE ON YOUR FACE!

**STUMP & BRUSH
TRANSPORTATION & DISPOSAL**

\$1800/LOAD

**DEMOLITION DEBRIS
TRANSPORTATION & DISPOSAL**

\$2750/LOAD

**SAME DAY DISPATCH
TOP \$\$ PAID FOR YOUR
SCRAP STEEL, COPPER, & ALUMINUM!!!**



2005 MACK CV713 T/A DUMP. 168,131 Miles, 58K Rears, 14' Dump Body, **\$60,000.** 207-252-1191



2008 CHEVY C5500 BUCKET TRUCK. Duramax Diesel, Allison Automatic, 138K Miles, 42' Working Height, Very Clean Truck, Great Tires All Around, Utility Body In Great Condition, Hydraulic Connections In Bucket, Runs & Drives Very Well, **\$17,999.** 401-215-8842

THE TRAILER DEPOT

203-234-7788
1037 Middletown Ave. (Rt. 17)
Northford, CT

WESTERN
SNOW PLOWS



LIBERTY 15.4K TELESCOPIC DUMP TRAILER. 6' 11" x 16', Dexter Electric Brake Axle, Diamond Plate Steel Fenders, #051125



CM TRUCK BEDS STARTING @ \$4,500



BEHNKE 14K CHANNEL SKIDLOADER TRAILER. 6' 11" x 16', Dexter Spring Suspension, LED Flush Mount Lights, #073199



CAM SUPERLINE 9.9K EQUIPMENT TRAILER. 6' 5" x 16', Slipper Spring Suspension, 5' Quick Release Ladder Ramps, #544289



SURE-TRAC 15.4K PRO SERIES TELESCOPIC DUMP TRAILER. 7' x 14', Heavy Duty I-Beam Frame And Tongue, #454378



CAM SUPERLINE 11K TILT TRAILER. 6' x 14', 5200 lb Slipper Spring Brake Axles, #546762

www.thetrailerdepot.com

We'll Hook You Up
WE DO FEDERAL INSPECTIONS!

MOBILE DPF & ENGINE CLEANING — DONE RIGHT.


Restore power. Clean the engine.
Improve MPG. Stay on the road.



- ✓ Mobile DPF Cleaning & Forced Regens
- ✓ Hydrogen Engine Carbon Cleaning
- ✓ No Engine Disassembly
- ✓ Power & Fuel Economy Restoration
- ✓ On-Site & Emergency Service.



Norfolk, Massachusetts

 (508) 734-0003

www.soot-rid.com



AWP
TOWING & ROADSIDE

LOOKING FOR
SEMI-TRUCK
TIRES?

CALL 508-509-2014



2008 CASE 589 M. Backhoe/Loader, 5000 Hours, \$33,000. 207-252-1191



1985 INTERNATIONAL S1854. 4X4, 9L V8 Diesel, Automatic Transmission, 24,500 GVW, Air Brakes, 6000 Miles Original, 14 Foot Van Body, Build Your Own Off-Road RV **\$12,500. OBO.** 914-760-0936



2013 MACK CHU 613. 18 Speed Transmission, 44 Rears, \$54,999 OBO. 401-486-8552



2011 NEW HOLLAND B95B. 4WD, Extend-A-Hoe, Excellent Condition, New Batteries, 2336 Hours, Asking **\$34,000.** 978-502-8557

TOREKU TRACTOR & EQUIPMENT INC.



4 Littleton Rd, Rt2A & 110, Ayer, MA • 978-772-6619



1988 KUBOTA L2250DT TRACTOR. 1093 Hours, Diesel, 4WD, BF400G Loader, New SSQA Coupler, New 66" Bucket, **\$15,500**



2022 KUBOTA L4060 HSD TRACTOR/LOADER. 182 Hours, 40 HP, R4 Tires, Loader Has 3rd Function Valve, 72" Bucket, **\$32,500**



2008 KUBOTA B2320 TRACTOR LOADER. 543 Hours, Works Good, **\$11,900**



2022 CROSS COUNTRY DUMP TRAILER. New 610DT8LP, 6' X 10' Body, Load Cover, Includes Battery, **\$9,995.**

VISIT US AT WWW.TOREKU.COM

JOSEPH

EQUIPMENT COMPANY

300 GAY ST • MANCHESTER, NH 03103

SATURDAYS • WE ARE OPEN ALL DAY

PHONE: 603-641-8608

FAX: 603-666-3716



**293 NORTH - EXIT 2 -
LEFT ONTO BROWN AVE -
RIGHT ONTO WINSTON ST. - LEFT ONTO GAY ST.
300 GAY STREET ON THE RIGHT**



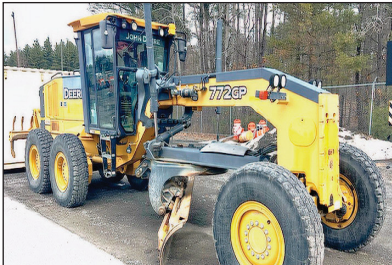
100 STORAGE CONTAINERS TO CHOOSE FROM. 20', 40', and 40' High Cube. Call For More Information.



2013 KOMATSU D155AX-7 DOZER. 8900 Hours, Sigma Blade With 3 Shank Ripper, Rebuilt Fuel Rail, Replaced DPF Sensors, Alternator & Belt, Fan Belt, Recharged A/C, New Compressor, New Batteries, New Corner Bits On Blade, EGR Servo Replaced, DPF Was Baked & Cleaned.. \$125,000. Call For More Information.



2013 VOLVO EW180D Rubber Tired Excavator, Blade, Outriggers, Roto Bucket And GP Bucket, 14,000 Hours. Call For More Information.



2010 DEERE GRADER. Model 772GDP, Equipped With Trimble GPS System, Rear Scarifier, 18K Hours, Excellent Condition. Call For More Information.



2012 GENIE GTH-5519 COMPACT TELEHANDLER. Hours: 2,200, Capacity: 5,500 Lbs, Max Lift Height: 19', 74 HP, Three-Mode Steering, Full-Time 4WD, Full Cab, Good Rubber, One Owner, 3rd Valve. Call For More Information.



IN STOCK - 2025 FONTAINE LXTN40. 40 Ton Extendable, 34' Closed - 60' Open. Also Available 29' Closed - 50' Open. Tandem Axle, Set Up For 3rd, Air Ride, Non Ground Bearing, 102" Swing Clearance, 20" Deck Height, Alum Wheels. In Stock, No Waiting. Available In Manchester NH and At The Factory In Springville AL. 3rd And 4th Axles Available. Call For More Information.



1976 ROGERS 100 TON. Quad Axle, 11' Wide, 37' Usable Deck, Recently Completely Rebuilt, Excellent Condition, Currently Located In AZ. Call For More Information.



2019 PUP TRAILERS. (14 Available To Choose From, 28' Long, 102" Wide, 13'6" High. Call For More Information.



2017 LIDDELL 60 TON DSR. 4 Axle, 26' DSR Deck, 9' Wide, 8'6" Bogie, 26' Beam Deck, 4th Axle, Alum Wheels, Gooseneck Extension, Power Pack, Excellent Shape. Call For More Information.



2012 FONTAINE 55 TON DSR. 26 Ft DECK, 5 Ft DSR Extension And 28 Foot Beam Deck, Fontaine 4th Axle And Spreader Bar, Alum Wheels, Org Paint, One Owner, 275 Tires, Lift On 3rd. Call For More Information.



1985 GMC WATER TRUCK. All Wheel Drive, 5,000 Gallon Tank, Hyd Driven Water Pump, Spray Heads, 46k Rears, Excellent Shape. Call For More Information.



2019 FONTAINE 53 - 90. Tri Axle, Air Ride, Slider, Like New Condition, Southern Trailer, No Rust. 3 Available To Choose From Ranging From 2019 To 2016. Call For More Information.

www.josephequipment.com

Trades Welcome • Financing Available

THIS AD IS COPYRIGHTED & OWNED BY TRUCK AND EQUIPMENT POST

JOSEPH EQUIPMENT COMPANY

300 GAY ST • MANCHESTER, NH 03103

SATURDAYS • WE ARE OPEN ALL DAY

PHONE: 603-641-8608

FAX: 603-666-3716



**293 NORTH - EXIT 2 -
LEFT ONTO BROWN AVE -
RIGHT ONTO WINSTON ST.- LEFT ONTO GAY ST.
300 GAY STREET ON THE RIGHT**



2015 CATERPILLAR TL943C TELEHANDLER.
With Forks And Bucket, 6K Original Hours,
Excellent Shape, **Asking \$52,500.**



2015 CATERPILLAR 450F. Rubber Tired Backhoe,
4 In1 Bucket, 3rd Valve, 3,200 Original Hours,
Extend-A-Hoe, Auxiliary Hydraulics In The Rear,
A/C, Heat, Original Paint, One Owner.
Call For More Information.



2024 POWER SCREEN CHIEFTAIN. 1700X,
176 Hours, On Tracks, Like New Condition.
Call For More Information.



2020 JOHN DEERE 304L.
1 Yard Loader, Quick Disconnect, 3rd Valve,
Forks And Bucket, A/C, Road Speed, 1200
Hours, Like New Condition.
Call For More Information.



1997 CATERPILLAR 960F WHEEL LOADER.
Sandblasted And Painted, New Decals, A/C, Scale,
23.5 X 25 Rubber, Bolt On Cutting Edge, Very Good
Condition. **Call For More Information.**



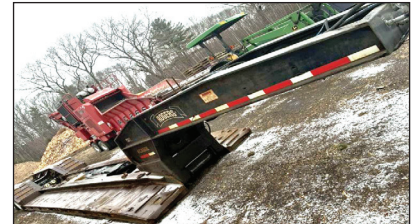
**2019 VOLVO EW60 RUBBER TIRE
EXCAVATOR.** A/C, Blade, Thumb. Quick
Disconnect, Aux Hyd, Wrist-O-Twist Bucket,
Digging Bucket, 1,900 Hours, Like New
Condition. **Call For More Information.**



2013 ROGERS 60 TON. 4 Axle, 25' Flat Level
Deck, 102" Wide, Non-Ground Bearing, 3 Axle With
Pin On 3rd, Lift On 3rd And 4th Axles, Full Fenders,
Alum Wheels, 275 Rubber, One Owner,
Excellent Shape. **Call For More Information.**



1996 AUTOCAR TRACTOR.
425C, CAT Power, Mechanical 8LL,
46K Rears, 74,000 Original Miles,
Previously Owned By The State Of Florida.
Call For More Information.



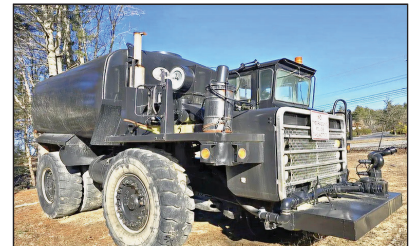
**2006 ROGERS 55 TON DSR LOWBED
TRAILER.** 25' Deck, 3 Axle, Lift On 3rd, Air
Ride, NGB, Full Fenders, All New Suspension
And Brakes, Original Paint.
Call For More Information.



2019 CAT 232D SKIDSTEER. Quick Disconnect,
Bucket And 9' Power Angle Plow, 3rd Valve,
1,130 Hours, One Owner, Like New Condition.
Call For More Information.



2009 CATERPILLAR 924H WHEEL LOADER.
Quick Disconnect, New Motor From CAT With
Paperwork, Very Good Condition.
Call For More Information.



EUCLID 312TD RIGID WATER TRUCK. 7,000
Gallon Tank, Cummins Power, 188 X 33 Tires,
Excellent Shape, **Asking \$22,500.**

www.josephequipment.com

Trades Welcome • Financing Available

THIS AD IS COPYRIGHTED & OWNED BY TRUCK AND EQUIPMENT POST

JOSEPH

EQUIPMENT COMPANY

300 GAY ST • MANCHESTER, NH 03103

SATURDAYS • WE ARE OPEN ALL DAY

PHONE: 603-641-8608

FAX: 603-666-3716



**293 NORTH - EXIT 2 -
LEFT ONTO BROWN AVE -
RIGHT ONTO WINSTON ST.- LEFT ONTO GAY ST.
300 GAY STREET ON THE RIGHT**



2021 WESTERN STAR 4900EX TRACTOR.
One Owner, Allison Automatic, 500 Detroit,
295,912 Miles, 46K Rears, Full Locking Rears, 2
Line Wet System, Fleet Maintained, Dual Stacks,
Alum Wheels, A/C, P/S, Original Paint.
Call For More Information.



2002 MACK CH613.
427, 13 Speed, From CA Fire Dept
Lowbed Tractor, 118K Original Miles.
Call For More Information.



2021 WESTERN STAR 4900. Allison Automatic, 550
HP, DT15 Engine, Full Rears, 2 Line Wet System, Fleet
Maintained, Dual Stacks, Alum Wheels, A/C, P/S, Original
Paint, One Owner, 2 Available to Choose.
Call For More Information.



2006 MACK GRANITE. 1500 Gallon John Deere
Diesel Hydro Seeder, 370 HP, 10 Speed, 46K Rears,
20K Front, 200K Original Miles, Excellent Shape.
Call For More Information



1994 PETERBILT.
CAT Power, Wet System, Spring Ride,
Was Working Daily, Asking \$22,500.
Call For More Information



2015 MACK CH TANDEM AXLE TRACTOR. 505
HP, 12 Speed Automatic, Miles: 451,000, Air Ride,
Wet System, Sliding 5th Wheel, Aluminum Wheels,
Dual Stacks, One Owner, Working Daily.
Call For More Information.



1995 MACK CH. 460, 12 Speed, 44K Lb.
Rears, Spring Ride, New Motor, New Hood,
New Tires, Wet System, Asking \$27,500.
Call For More Information.



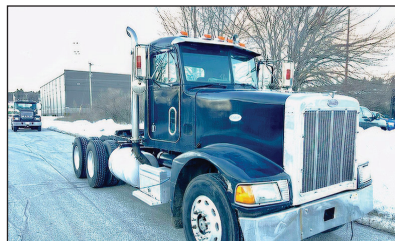
2015 KENWORTH T880. Miles: 571K, 500
Paccar, Automatic, 3.91 Gear Ratio, 46K Rears,
Full Lockers, 24.5 Rubber, A/C, Power Steering,
Air Ride, Aluminum Wheels, Fleet Maintained,
One Owner, **Call For More Information.**



2019 PETERBILT 389. 605 Cummins Power, 18
Speed, 4 Axle, 46K Rears, Air Ride, 300" Wheel
Base, Headache Rack, Full Fenders, 60" Bunk,
Loaded, **Call For More Information.**



1998 MACK RD688SX DUMP TRUCK. 350 HP, Fuller
8 Speed, 58 Rears All Redone By Southeast Truck, 24"
Rubber, Rebuilt Engine, Double Frame, Working Daily,
Heated Body, New Brakes All Around, New King Pins,
New Clutch/Bell Housing, All New Rear Suspension.
Call For More Information.



1994 PETERBILT. CAT Power, 10 Speed, 40K Lb.
Rears, Wet System, Asking \$22,500.
Call For More Information.



2015 FORD F750 WATER TRUCK. 2000 Gallon
Tank, Single Axle, Automatic, Diesel, Front And
Rear Spray Heads And Hose Reel, 8K Original
Miles. **Call For More Information.**

www.josephequipment.com

Trades Welcome • Financing Available

THIS AD IS COPYRIGHTED & OWNED BY TRUCK AND EQUIPMENT POST

JOSEPH

EQUIPMENT COMPANY

300 GAY ST • MANCHESTER, NH 03103

PHONE: 603-641-8608

OPEN ALL DAY SATURDAY



FONTAINE

FAX: 603-666-3716



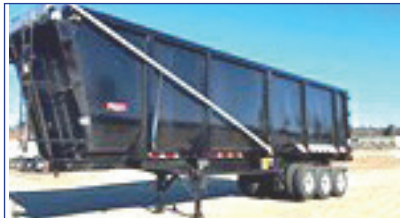
2026 FONTAINE RENEGADE LXLN12 - 12 Inch Loaded Deck Height With 4 Inch Ground Clearance When Fully Loaded, 30 Tons In 16 Feet On Tandem Bogie Or 30 Tons In 20 Feet With 3rd Axle Flip, Low Profile, 3rd Axle Capability, 32 Feet 11 Clear Deck Length. **IN STOCK, NO WAITING, CALL FOR MORE INFORMATION.**



2026 FONTAINE MAGNITUDE 50 Tri Axle, Set Up For 4Th, 50 Ton, Air Ride, 24' Deck, 20" Loaded Deck Height, Alum Or Steel Wheels, Strobe Lights, Outriggers And D-Rings. **Call For More Information.**



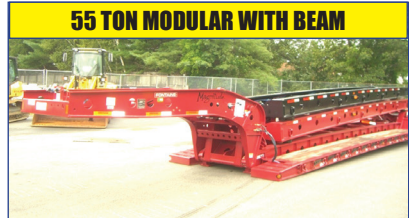
2026 KRUZ TERMINATOR, 26' Steel Frame, Single Point Suspension, 2-Way Gate, 11 X 24.5 Tires, Alum Wheels, 2 Speed Landing Gear. **Call For More Information.**



IN STOCK - NO WAITING - 2025 GALLEGOS 42' FRAME TYPE DUMP TRAILER. 96 YARD, 102" WIDE, 90" SIDES, TRI AXLE, HENDRICKSON AIR RIDE INTRAXX, ABS BRAKES, LIFT ON FRONT AXLE, FLIP N GO ELECTRIC CANVAS, LED LIGHTS, BARN DOOR. **CALL FOR MORE INFORMATION.**



2026 KRUZ 26' STEEL TUB, Aluminum Frame Dump Trailer, Air Ride, 2 Axle, Alum Wheels, 450 Hardox, 24.5 16 Ply Tires. **TAKING ORDERS Call For More Information.**



55 TON MODULAR WITH BEAM

2026 FONTAINE 55H MODULAR DSR, Beam Deck Also Available, Tri Axle, 60" Axle Spacing, Hydraulic Removable, Non Ground Bearing, Set Up For Gooseneck Ext, Spreader Bar And 4Th Axle Flip, Air Ride, Alum Wheels, 22.5 Rubber. **Call For More Information.**



2026 FONTAINE 60 TON MODULAR 2+3+1, 26' Dsr, 184" Swing Clearance, Set Up For 2 Axle Jeep, 14" Deck Height, Air Ride, Alum Wheels, 275/70R X 22.5 Rubber, Non Ground Bearing. **Call For More Information.**



IN STOCK NO WAITING. FONTAINE MAGNITUDE 65 2+3+2 CAPABLE, 28" DROP SIDE RAIL DECK, 3 AXLE, SET UP FOR 4 AXLE, 14.75" DECK HEIGHT, 102" WIDE, 60.5" AXLE SPACING, EQ2 SPREADER BAR WITH INTERMEDIATE AXLE, HYDRAULIC REMOVABLE, NON GROUND BEARING WITH 2 PIN POSITION AT 114" AND 102", TRIPLE CYLINDER, 70" HYDRAULIC FLIP BOX, HEAVY DUTY SNAP IN OUTRIGGERS, D-RINGS, ALUM WHEELS, 275/70R X 22.5 TIRES. **CALL FOR MORE INFORMATION.**



2026 KRUZ, 70 Yard, Tri Axle, 70,000 Single Point, Lift On Third Axle, 1/4 Inch 450 Hardox, Floor, Sides, Nose, Gate, 12 Panel Gate, 11 X 24.5 Rubber, Alum Wheels. **Taking Orders. Call For More Information.**



2026 FONTAINE TRAVERSE HYDRAULIC TAIL, 48' Long, 102" Wide, Air Ride, Hydraulic Upper Deck, Hydraulic Winch, Remote Control, Alum Wheels, Dual Controls. **Taking Orders Call For More Information.**



2026 FONTAINE 60 TON MODULAR, 26' Dsr, 60" Axle Spacing, 184" Swing Clearance, Set Up For 2 Axle Jeep, 14" Deck Height, Air Ride, Alum Wheels, 275/70R X 22.5 Rubber, Non Ground Bearing, **In Stock. Call For More Information.**



3+3+3

1998 KAYLN SIEBERT, 75Ton 3+3+3, Air Ride, West Coast Bogie, 3 Axle, Air Ride Jeep With Power Tower, 10' Wide Trailer, 60' Overall Length, 48' Of Useable Deck, 275/70 X 22.5 Rubber, Sandblasted & Painted, Excellent Shape, Alum Wheels On Jeep And Booster. **Call For More Information.**

Trades Welcome • Financing Available • www.josephequipment.com

THIS AD IS COPYRIGHTED & OWNED BY TRUCK AND EQUIPMENT POST

TRAILER RENTALS • TRAILER RENTALS • TRAILER RENTALS •

WE RENT STEP DECKS • LOW BEDS • HI FLATS • DEMO/SCRAP • TRAILERS

JOSEPH

EQUIPMENT COMPANY

300 GAY ST. • Manchester, NH 03103

NOW TAKING ORDERS FOR DUMP TRAILERS AND LOWBEDS FOR SPRING AND SUMMER DELIVERY

14" DECK HEIGHT

IN STOCK, NO WAITING



55 TON EXTENDABLE

PHONE: 603-641-8608
FAX: 603-666-3716



NEW 2026 FONTAINE RENEGADE LXL, 14" Deck Height, 30" Deck W/ 6" Ground Clearance, 2 Axle, Set Up For 3rd Hydraulic Detachable Or Mechanical Detachable. In Stock, No Waiting. Call For More Information



2026 FONTAINE MAGNITUDE 603T Modular Drop Side Rail With 28" Deck, Hydraulic Removable Neck, Non Ground Bearing, Air Ride, Tri Axle, Third Axle Lift, Set Up For 4Th, Alum Wheels, 275/70 X 22.5 Tires, Loaded. Call For More Information.



2026 FONTAINE MAGNITUDE 59MX, 55 Ton Extendable Trailer, 30" To 50", Modular, Detaches Both Ends, Hyd Removable, Non Ground Bearing, 20" Deck Height, Will Take 10" Deck Ext For A Total Of 60", 275 Rubber, Tri Axle, Air Lift On 3rd, Set Up For 4Th, Set Up For Gooseneck, Ext. Call For More Information



NEW 2026 FONTAINE SPECIALIZED MAGNITUDE 55L, Tri Axle Air Ride, Set Up Of 4Th Axle, Non Ground Bearing, 25" Deck, Led Lights, Aluminum Wheels, Stroke Light Package, Lift On 3rd Axle, 2 Pin Position, Loaded. In Stock No Waiting. Call For More Information



IN STOCK - 2026 FONTAINE MAGNITUDE 60HD-4MX, Deck Extends From 30' To 51', 65 Ton When Closed, Built To Handle A 60 Ton Load With Ease, 30" Clear Deck, Length Extends To 51', 22" Loaded Deck Height, 6" Ground Clearance, 7 Position Hydraulic Detachable Gooseneck, 7 Position Air Ride Tri Axle Bogie, 402 Deep Ready, 36" And 63" Flip Box, Ready, 60/90 Flip Axle Ready, EQ2 Spreader Bar Ready, Loaded. Call For More Information.



2026 FONTAINE WORKHORSE 59LCC FLD, Tri Axle, Lift On Third, Air Ride, Hydraulic 4th Axle Flip, Air Lift On Third, 18" Deck Height, 28" Deck, Low Boom Well, Covered Rear Bogie, Dual Cam Pawl Assembly With 7 Ride Height Positions, Removable Kingpin At 108 inch Radius, Alternate Kingpin At 96" Radius, Load Scale, Tire Inflation, Air Controls, 275 Rubber, Alum Wheels. In Stock, No Waiting. Call For More Information.



70 TON 2+3+2

WE RENT STINGERS • SPREADER BARS • DOUBLE DROP EXTENSIBLES TRAILERS

2026 FONTAINE 704/2+3+2 DROP SIDE TAIL, 4 Axle, 28" Deck, Hydraulic Detachable, In Stock, No Waiting, Non Ground Bearing, 102" Wide, 65" Flip Box, Spreader Bar And 352J Jeep, Alum Wheels, 275/70R X 22.5 Tires, 28" Beam Deck Available. Call For More Information.



NEW 2026 FONTAINE 55 TON, Drop Side Rail, Tri Axle, Air Ride, Set Up For 4Th, Non Ground Bearing, Led Lights, Aluminum Wheels, Stroke Lights, Loaded. In Stock, No Waiting. Call For More Information



NEW 2026 SPECIALIZED 55 TON BEAM TRAILER, 3+1 Modular, NGB, Detach Both Ends, Tri Axle, Air Lift On 3rd, Set Up 4Th, Set Up For Gooseneck/Extension, Call For More Information

Trades Welcome • Financing Available • www.josephequipment.com

THIS AD IS COPYRIGHTED & OWNED BY TRUCK AND EQUIPMENT POST

TRAILER RENTALS • TRAILER RENTALS • TRAILER RENTALS •

Buyer - Seller - Swapper