

SERVING NORTHEAST REGION

FREE

TRUCK AND EQUIPMENT POST

A Good Tool Since 2009



2020 PETERBILT 389 PRIDE & CLASS. 238K MILES, 20/20/52, CUMMINS X15 605HP, 603-226-6666



2011 KOMATSU PC88MR-8. 6,705 HOURS, 23" DIGGING BUCKET, CAB W/ A/C, SWING BOOM, ROADLINER PADS, 7'7" BLADE, AUX HYD, 18.5K LBS, \$32,500. 978-249-4900



2017 FORD F550 FLATBED DUMP. DIESEL, AUTO, 4X4, 12 FT DUMPING FLATBED, HEADBOARD FOR LUMBER OR LADDERS, CLEAN, 53,163 MILES, \$39,900. 802-334-6587



350 GALLON HIGH PRESSURE POLY FIRE PUMP UNIT, 23 HP, SKID MOUNT. 207-793-4267



2006 BENSON 26' STEEL IRON MAN DUMP TRAILER. 11X24.5 TIRES, ELECTRIC TARP, 60,000LB CENTER POINT SUSPENSION GOOD CONDITION, \$22,000. 508-336-6215

Optative Group

**Issue 16-17
APRIL 30th, 2025**

**INTERNET & PRINT
FOR ONLY \$28.00**

www.TruckAndEquipmentPost.com

888-887-0505

SWAP HOGG™

www.SwapHogg.com



207-729-5101

www.downeastermfg.com

***Check out our website to
find a dealer near you!**



Interchangeable Truck Body Systems

ROLL WITH THE BEST



**Fab Frames & Multi-Deck
Platforms**



**Smooth Deck Platform Bodies
& Platform Bodies w/
Dovetails**



**Dump Bodies w/ Solid Sides
& Drop Sides**



**Containers & Chipper
Bodies**



PAT'S TRUCK SALES

Office: 603-347-1386 - After Hrs: 978-490-6197



**2011
FREIGHTLINER
DUMP.**
10,983 Miles,
Cummins ISM
300Hp, 8LL Trans,
10' Body, Pintle
Hook, Air To Rear,
\$45,900



2002 VOLVO VHD DUMP.
400 HP, Automatic, 14'
Body, Double Frame, 20
Frt, 46 Rears, 137,815
Miles, **\$78,500**



**2007 MACK TRI AXLE
DUMP.**
Pre-emission Mack
427 HP, Automatic,
364,299 Miles, 16'
Steel Body, 20k Frt
Axle, 16K Pusher Axle,
44k Rears, Many New
Up Dates,
\$79,900



2005 IH 7600 DUMP.
Cummins 410 HP,
Automatic, 206,450 Miles,
14' Steel Body, 20k Frt
Axle, 40k Rears, Double
Frame, Very Clean,
\$84,900



**2001 Peterbilt 330 Hook Lift &
Crane.** Palfinger Knuckle Boom,
Palfinger Roll Off Hoist, CAT 3126,
6 Speed, 260,588 Miles,
Ready To Work, **\$37,500**



2005 STERLING LT9500 DUMP. CAT
C13 430 HP, Automatic, 122,500 Miles,
New Alum Wheels & Tires, 15' Aluminum
Body w/ New Hyd Piston, Double Frame,
\$72,500



**2005 STERLING LT9500 S/A
TRACTOR.** Pre Emmission CAT
C9 350 Hp, Automatic, 25,200
Miles, 37,000 GVW, Super Clean,
\$39,900



2009 IH 4300 DUMP. 46K
Miles, DT466, Automatic,
10' Godwin Body,
33,000 GVW, **\$44,900**



2015 FORD F250 UTILITY.
4x4, Plow, V8 Gas, Auto,
Knapheide Body, 44,067 Miles,
\$25,900



2005 STERLING LT9500 DUMP.
CAT C13 430Hp, Automatic,
Double Frame, 66K GVW, Full
Lockers, 98,975 Miles, **\$78,500**



2012 IH 4300 DUMP. DT466,
Automatic, 79,336 Miles, 33,000#
GVW, Air Brakes, 10' Body,
Pintle Hook, **\$44,900**



2015 GMC 3500HD DUMP.
4X4, Diesel, Tool Boxes,
73,455 Miles, Serviced W/
New Updates, **\$35,000**



2011 FREIGHTLINER DUMP.
Cummins 6.7L, Auto, 99,187
Miles, 33,000# GVW, Pintle Hook,
Tool Box, 3 Shutes, Polish Alum
Wheels, **\$44,900**



**2015 FREIGHTLINER 114
DUMP.** 14' Brandon Body,
Detroit 505 Hp, Automatic, ,
51,830 Miles, **\$119,900**



2008 FORD F650 DUMP. Under
CDL, 25,999 GVW, Cummins 6.7,
Automatic, 128,794 Miles, 10'
Body, Pintle Hook, **\$39,900**



2007 FORD F450 DUMP.
Diesel, Auto, 104,259 Miles,
4WD, **\$16,990**

Visit Us - www.patstrucksales.com • 77 Route 125, Kingston, NH

UNBELIEVABLE AUCTION

JOSEPH PROVVIDENZA

CAR, TRUCK & TRAILER COLLECTION

38 Years of Collecting Makes This a One-of-A-Kind Collection
Being Offered on the Open Market - As Good As It Gets!

SUNDAY, MAY 4TH @ 9:30 AM
DANSVILLE (Rochester), NEW YORK



ADDRESS: 10010 Main Street, Dansville, New York 14437

NOTE: This Unbelievable Collection is being offered at Public Auction. The cars here are unbelievable with matching numbers and they are the best.



HIGHLIGHTS INCLUDE: **11 COLLECTIBLE AUTOMOBILES:** 1989 Shelby Shadow CSX-VNT(#281/500), 1989 Shelby Shadow CSX-VNT(#200/500), 1988 Shelby CSX-T(#719/1,000), 1987 Shelby Charger GLHS(#954/1,000), 2011 BMW M3 Competition Coupe(6 speed), 1999 Ferrari F355 Berlinetta GTP(6-speed), 2015 Lotus Exige LF1, 1992 Mosler Consulier Sport Exotic Race Car, 1990 Mosler Consulier GTP-LX Exotic Car, 2004 Dodge SRT-4 Sports Car, 1975 BMW E9 3.0 CSL Group 4 Tribute, **4 PICKUP TRUCKS:** 2012 Dodge Ram 3500HD Laramie(4x4), 2021 Dodge Ram TRX 1500(4x4), 2012 Dodge Ram 2500HD Laramie(4x4), 1990 Dodge Ramcharger W150LE(4x4), **TRUCK TRACTOR:** 2012 Peterbilt 389(t/a), **GOOSENECK TRAILER:** 2022 Diamond C FMAX 212 40ft., **ENCLOSED TRAILER:** 2012 Forest River Lightning 28ft. (t/a, aluminum), **CAR HAULER:** 2023 Sundowner All Aluminum 52ft.(3-car, 3ft. flip-out ramp extension), **2 ENCLOSED CAR HAULERS:** 2023 Sundowner Extra Series All Aluminum 40ft.(2-car), 2020 United Trailers USHGN-8.548TR70(2-car, tri.).

Co-Managed by Expressway Motor Sales
SALE SITE PHONE: (585) 725-8704 Kyle



ALEX LYON & SON



SALES MANAGERS & AUCTIONEERS, INC., BRIDGEPORT, NY 13030

Phone: (315) 633-2944 • Go to **WWW.LYONAUCTION.COM** for more details

BALLARD

TRUCK CENTERS

(508) 214-3036
drive@ballardtrucks.com



Visit us online at BallardTrucks.com or scan to view our full inventory.



2024 KENWORTH T880
DUMP TRUCK
STK#55934
\$224,500



2019 MACK GRANITE 64FT
DAY CAB
STK#3601
\$135,500



2025 ISUZU FTR
LANDSCAPE TRUCK
STK#00950
CALL FOR PRICE !



2021 MACK PINNACLE 64T
DAY CAB
STK#08140
\$129,500



2025 VOLVO VNR64T300
DAY CAB
STK#681231
CALL FOR PRICE !



2025 VOLVO VHD84B300
DUMP TRUCK
STK#690101
CALL FOR PRICE !



2025 MACK ANTHEM 64T
SLEEPER TRUCK
STK#52059
CALL FOR PRICE !



2024 ISUZU NPR HD
UTILITY TRUCK
STK#215705
\$92,131



2025 REITNOUER BIG BUBBA
SEMI-TRAILER DROP DECK
STK#T751
\$62,000



2024 TRAIL KING TKLB332
LIVE FLOOR TRAILERS
STK#T741
\$110,000



2024 MACK MD6
HOOKLIFT TRUCK
STK#73990
\$147,500



2024 ISUZU NPR XD
LANDSCAPE TRUCK
STK#02476
\$75,950



2024 VOLVO VNL64T300
DAY CAB
STK#64521
CALL FOR PRICE !



2015 MACK GRANITE GU713
GARBAGE TRUCK
STK#22038
\$104,000



2019 VOLVO VHD64FT300
DAY CAB
STK#873305
\$77,900



2016 HINO 195
FLATBED DUMP
STK#1146
\$34,900



2015 ISUZU NPR XD
LANDSCAPE TRUCK
#K00389
\$28,900



2020 MACK GRANITE 64FR
DUMP TRUCK
#14931
\$194,500



2020 PETERBILT 567
DUMP TRUCK
STK#35140
\$183,000



2025 VOLVO VHD84B300
CAB & CHASSIS
STK#690100
CALL FOR PRICE !



CONSOLIDATED TRUCK & EQUIPMENT, INC.

**SELLING
TRAILERS**

**EXTREME
TRAILERS**



www.ConsolidatedTruckEquipment.com

**1727 FALL RIVER AVE, (RT.6) NEAR SEEKONK SPEEDWAY
SEEKONK, MA**



3 AVAILABLE

2025 MAC 28' ALLUMINUM DUMP TRAILER: 8 ALLUMINUM RIMS, ALLUMINUM FRAME, AIR RIDE, ½ PLASTIC LINER.



5 IN STOCK

2025 MAC 26' STEEL DUMP TRAILERS:
Hi-Lift Gate, 24.5 Tires On Aluminum Rims, 60,000 LB Center Point Suspension, Electric Load Cover, Body All ¼" Hardox,



2025 MAC 27' STEEL BODY ALUMINUM FRAME TRAILER: Hi-Lift Gate, Air Ride, 11x24.5 Tires On 8 Aluminum Rims, Hardox Steel Body, Full Aluminum Side Skirts, Due In 2 Available, Trades Accepted,



**NEW FELLING 25 TON: AIR RAMPS, FRONT AXLE LIFT.
REDUCED! \$55,500 to \$53,000**



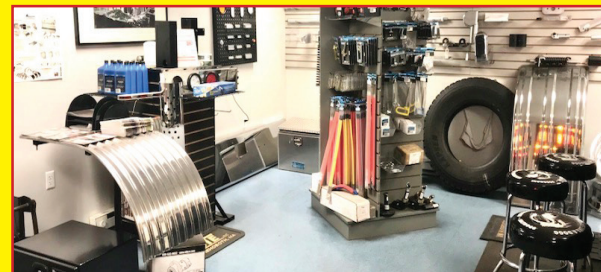
2006 Benson 26' Steel Iron Man Dump Trailer 11x24.5 Tires, Electric Tarp, 60000lb Center point Suspension Good Condition \$22000.00



2005 Benson 26' Steel Iron Man Dump Trailer Good Condition 60000lb Centerpoint Suspension, Flip Tarp, 11x24.5 tires \$22000.00

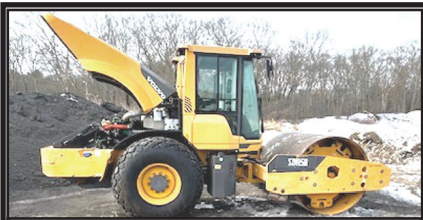


2017 EAST 28' Steel Dump Trailer with Aluminum Frame, air ride, Hi lift gate, 11 x 24.5 Tires on aluminum rims, electric load cover. \$45000.00

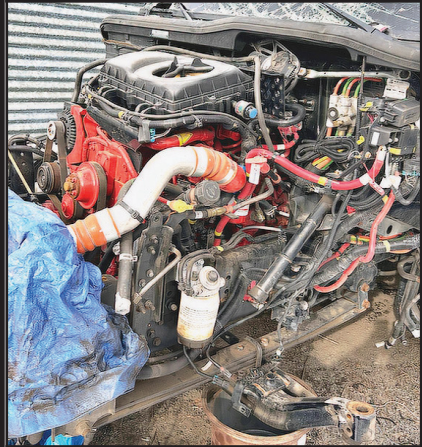


**VISIT OUR PARTS DEPARTMENT.
HOURS: 7:30 A.M. TO 5:30 P.M.**

CALL US: AT 508-336-6215 • HOURS: M-F 8 to 5:30 • SAT: 9 to 12 Noon



2018 VOLVO SD115B VIBRATORY ROLLER/COMPACTOR. EROPS, AC, Heat, Volvo Diesel Engine, 84" Smooth Drum, 3,242 Hours, **\$69,000.**
Call Rick 401-692-9233



2023 INTERNATIONAL MV607 USED ENGINE. 13,000 Miles, **\$15,000.**
Also Transmission And Lift Gate, Many Other Parts Available. Call Dan, 860-274-6735

CT • RI • MA • NY

CALL IAN OR JIM
800-229-9421



100 YARD
STEEL DUMP TRAILERS

WE WILL SAVE YOU MONEY ...
AND PUT A SMILE ON YOUR FACE!

**STUMP & BRUSH
TRANSPORTATION & DISPOSAL**

\$1800/LOAD

**DEMOLITION DEBRIS
TRANSPORTATION & DISPOSAL**

\$2750/LOAD

**SAME DAY DISPATCH
TOP \$\$ PAID FOR YOUR
SCRAP STEEL, COPPER, & ALUMINUM!!!**

CTAXLE
& SPINDLE REPAIR

CT Axle & Spindle Repair Ellington, CT 06029

860-281-4454 or 860-375-6045



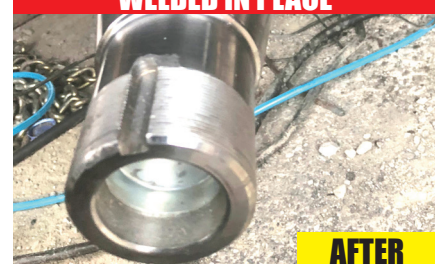
**DRIVESHAFT SERVICE
NOW AVAILABLE**



**TRAILER SPINDLE REPLACEMENT
WELDED IN PLACE**



**TRUCK DRIVE SPINDLE REPLACEMENT
WELDED IN PLACE**



• Drive Spindles From 1 Ton To Class 8 Trucks • Trailer Spindles From 3,500# To Class 8 Axles
Spindles can also be repaired by welding up the worn area and then remachining to factory spec.
This includes tracing threads or remachining new threads.
WELDING AND FABRICATION ALSO AVAILABLE

A Completely Mobile Spindle Repair System. We Come To You! Serving CT, MA, RI & the Northeast
Visit Our Website At: ctaxleservice.com

STUMP & BRUSH

**100 Cu Yd
Trailers**

\$1,600 Per Load

RI, MA, CT

Call Ken

508-328-0028



MASSEY FERGUSON 1528: Tractor with 982 Hrs., 28HP, Diesel, Hydro. 4x4, **\$11,900** 860-928-5748



2019 PETERBILT MODEL 389. X15 Cummins 505 HP, 10 Speed Eaton, 20# Front, 20# Steerable Lift Axle, 46 Rears, Air Trac Suspensions, 18 Ft Body, All New Tires, 3 New Batteries, 452,244 Miles, **\$155,000.** 860-234-4299



2003 KOBELCO SK250.

Bottom 85%, 4200 Hours, Runs Excellent, AC, Asking **\$65,000.**
203-464-0121

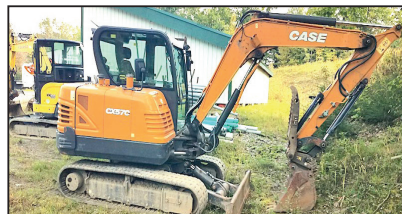


2012 HONDA ODYSSEY TOURING. 240,000 Miles, Dealer Maintained, Entertainment Center, Sunroof, Minor Scuff Marks, **\$3,600.** 401-533-1673

1989 AUTOCAR T/A DUMP. CAT 3406B, Fleet Maintained, New 1200R24 Tires, New Canvas, New Trunnion Suspension, 3 Chutes, Very Clean, **\$27,000.** 401-447-2661 Or 401-737-6663



Twin State Utilities Corp.
40 Harriet Dr. Bristol, NH
603-530-2871



2019 CASE CX57. Dig/Grade Buckets, 2,327 Hours, Hydraulic Thumb, **\$52,000.**



2018 HYUNDAI HX-160LC-9. 2,300 Hours, Dig/Grade Buckets, Hydraulic Thumb, Blade, Gorilla GXS-120 Hammer, **\$129,000.**



2020 KAUFMANN 25K TRAILER. DUAL TANDEM, ELECTRIC BRAKE, EXT RAMPs, SPARE, **\$9,350.**



2020 FELLING DOUBLE REEL TRAILER. ELECTRO-HYDRAULIC, 14K, (2) 120" X 66" REELS, 3" SHAFT W/SEPARATE HYDRAULICS, **\$16,750.**



2019 DYNAPAC CC900G. SINGLE VIBRATING DRUM, GAS, 85 HOURS, **\$12,250.** ALSO, 7K TILT TRAILER, **\$3,500.**



2012 INGERSOLL RAND COMPRESSOR. 1,475 Hours, Diesel, **\$9,200.**



2018 BLUE DIAMOND 24" COLD PLANER. Tilt/Side Shift, 12 Hours Of Use, High Flow, **\$16,500.**

Acushnet Wheel Polishing



GET A QUOTE

Services:

- Semi-Truck Tires Available (NEW)
- Semi-Truck Rims Available (NEW/USED)
- Semi-Truck Wheel Polishing

📍 62 S. Main St. Acushnet, MA 02743 📞 508-509-2014



2011 VOLVO EC480DL EXCAVATOR. Hyd. Thumb, 8519 Hrs, Ready To Work, **\$98,000.** Call Jesse 401-855-1178



2011 DOOSAN DX350, 8,050 Hrs, Plumbed, Coupler, Runs Great, Tight and Dry, **\$69,900,** 781-417-3018



2023 JOHN DEERE GATOR XUV590M. S4 4X4, Power Steering, Winch Ready, Road Lights, Roof, Windshield, Mirrors & Horn Kit, 4-Seater. 97 Hours, Asking **\$23,500.** Belmont, NH, Can Meet In Southern NH, Rob 603-396-6881



TURBO BRAND HYDROSEEDER. 9 HP Honda, 4000 Sq Ft, 300-Gal, 125 Ft Of Hose, Mounted To 5000 GVW Single Axle Trailer, Electric Brakes, Pintle Hook, 6-Prong Plug, Long Standing Bus Closing, **\$5000.** Call/Text Billerica, MA 978-375-1127 Brian



GOLDEN CAPITAL

YOU FIND IT • WE FINANCE IT.

**Sellers/Vendors
- Let Us Help
Expedite Sales!**

**Financing Made
Easy For Any Equipment,
Trucks Or Trailers,
Any Industry!**

**Golden Capital Equipment Financing
Is Your Trusted Finance Partner To
Save You Money And Get The
Equipment
And Trucks You Need.**



**WE FINANCE
EQUIPMENT, TRUCKS
& TRAILERS**

WHY CHOOSE GOLDEN CAPITAL?

- Any Equipment, Trucks & Trailers – We Finance It All! No Age Restrictions On Equipment
- New, Used, Or Private Party Sales – Flexible Options To Fit Your Situation.
- Quick Approvals - Decisions Within 24 Hours.
- Dedicated Support - Our Team Is Here To Help Every Step Of The Way.
- For All Business Types - No Minimum Time In Business.
- Finance Options For All - No Minimum Credit Score.
- Finance Solutions Tailored To Your Needs - \$5,000 Over \$10,000,000
- Sellers/Vendors – Let Us Expedite Sales!

**Don't Let Financing Hold You Back - Grow
Your Business With Confidence! Let's Help
You Secure The Equipment You Need!**

CONTACT US TODAY!

314-488-0245

www.Golden-Cap.com



920 W. Chestnut St. Brockton, MA:
508-586-1666 Mon - Fri 8-5, Sat 8-NOON

Spring Safety Checklist

First Aid Kit

\$21.80 FA-10



Fire Extinguisher

10 BC
440161MTLK

\$35.99



ECCO Back-up Alarm

\$21.99 510



Rubber Chock Block

\$20.55 GT2048



Triangle Flare Kit

3 Triangles with case

\$25.99 1005DTS



Universal Spill Kit

Absorbs 5 Gallons

\$56.99 SPILLKIT



**A Variety of Decals and Flags
in Stock!**

SafeTruck by MS. CARITA™

18" Red or Orange Jersey

Fray-resistant knit polyester



Grommets **\$7.85**

Staff **\$9.19**

Wire Loop **\$9.00**

Bungee **\$12.49**

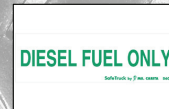
Flag Magnets **\$11.29**

24" Flags In Stock



3" x 3"

\$3.00



1.5" x 5"

\$2.90



\$3.14



\$3.20



11.75" x 17.25"

\$10.99

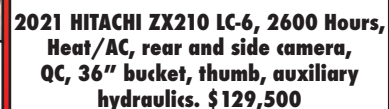
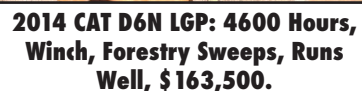
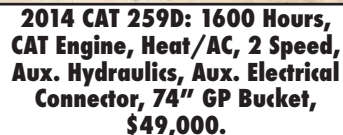
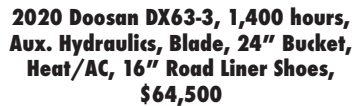
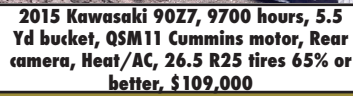


4.5" x 11"

\$5.15



THINK SPRING!



NORTHEAST TRAILER



20 Business Park Drive
Smithfield, RI 02917
Hours: M-F 8:30-4:30

401-941-4445



2018 GREAT DANE 45'x102"
Roll Door, Aluminum Roof
Plate Wall, Logistic Seams
2 Rows of E-Track, \$18,500



(2) 2011 GREAT DANES 48'x102"
Roll Door, Aluminum Roof
3 Rows of E-Track, \$9,000 Each



(4) 2009 GREAT DANE Trailers
53'x102"x13'6", Swing Door, Air
Ride, Alum. Roof, \$7,000 Each



1998 and Up: KENTUCKY
53'x102"x13'6"
Drop Frame Vans, Multiple Side Doors
Great Hay Trailers, Starting at \$4,250



2005-2008 53' ROLL DOORS
Aluminum Roof, Spring Ride
\$7,500 Each



2009 53' WABASH
DURAPLATE ROLL UP
\$6,500



2009 48' GREAT DANE
Working Gate, 2 Rows E-Track
Logistics Post, \$7,500



Low Profile 22.5"
SUPER SINGLE TIRES on
Aluminum Wheels, \$250 Each



2007 48' GREAT DANE with
Working Tuck-Away Gate, 2
Side Doors, Air Ride, \$6,500



(3) 2022 1-Trip High Cube Shipping
Containers, 1 With Single Door-\$8,500
2 With Double Doors-\$9,250 Each



(1) 20 FT. One-Trip CONTAINER
With Single Door
\$5,900



4 EXPORT FLATBEDS
\$3,750 Each

WWW.NETRAILER.COM

A Good Tool Since 2009

16TH ANNUAL SPRING 2 DAY AUCTION

DAY 1 Friday, May 2nd 9am • DAY 2 Saturday, May 3rd 8am

Over 2000 Lots

55 King Spring Rd, Windsor Locks, CT 06096

Over 2000 Lots

Northern Connecticut's Largest Industrial Auction Company
SPECIALIZING IN ALL TYPES OF EARTHMOVING AND HEAVY EQUIPMENT, FLEET VEHICLES, TRUCKS, TRAILERS, AERIAL AND MATERIAL HANDLING EQUIPMENT, LANDCARE AND FARM EQUIPMENT SALES



Inventory of Super Clean, Late Model, Surplus Equipment & Vehicles from Major Area Contractors, Municipalities, Dealers & Rental Companies. Featuring Equipment From: MDC, Brightview Landscape, Harwinton Paving, L. E. Rose, General Paving & Construction, Eastern MA Contractor Retirement & Others

PLEASE CALL AHEAD WITH CONSIGNMENTS. SPACE IS LIMITED.

**FOR A DETAILED AUCTION LISTING AND TO BID
 LIVE ONLINE PLEASE VISIT OUR WEBSITE AT:
 WWW.SALESAUCTIONCOMPANY.COM
 55 King Spring Road • Windsor Locks CT 06096**

(860)627-7506



ANDERSON MOTORS INC.


GMC

MICRO BIRD
by GERRARDIN

BLUE BIRD BUS SALES OF NEW ENGLAND
*** YOUR EXCLUSIVE VOLVO TRUCK DEALER ***


2026 VOLVO VHD84F300-D13
 500HP, 14SPD. I-SHIFT, STEERABLE
 PUSHER AXLE, STEEL DUMP BODY.



2025 VOLVO VHD64FT300-D13,
 500HP, 12SPD I-SHIFT, 14,600# FRONT /
 46,000# REARS, T-RIDE, FULL LOCK DIFF.
 #240089



2025 BOLLINGER B4 ELECTRIC
 POWERTRAIN, 158 KWH BATTERY PACKAGE,
 15,500 GVW, 158"WB, 138" CA.



2025 VOLVO VHD64BT-D13, 500HP,
 12SPD. I-SHIFT, 14,600# FRONT /
 46,000# REARS. #240142



2025 VOLVO VNL64T740-D13,
 500HP, I-SHIFT, APU INSTALLED.
 #240154 - #240155



2025 RHODES RSS2660-2 26' STEEL END
 DUMP TRAILER, AIR HIGH-LIFT DOUBLE
 ACTING TAIL GATE, HD SPECS.



2020 VOLVO VNR64T300 HD TRACTOR,
 D-13, 500HP, 12SPD AUTO, 14,000# FRONT /
 46,000# REARS, AIR-RIDE. #240087A



2000 VOLVO WG64B, 275HP, AUTO,
 16,000# FRONT / 40,000# REARS,
 JOHNSERED 820 CORTU CRANE,
 20' DUMP BODY. #210299A



2026 VOLVO VNR64T300-D13
 435HP, 12SPD. I-SHIFT,
 12,000# FRONT / 40,000# REARS,
 AIR-RIDE. #240148 - #240149



2024 AUTOCAR ACTT42, SINGLE AXLE,
 YARD JOCKEY, DIESEL AUTOMATIC,
 A/C, HYDRAULIC 5TH WHEEL.



2016 VOLVO VNM64T-D13,
 435HP, 10SPD., 12,000# FRONT /
 40,000# REARS. #230109A



NEW 2024 CHEVY COMMERCIAL
 HANDICAP 14 PASSENGER SHUTTLE BUS,
 HANDICAP LIFT WITH 3 WHEELCHAIR LOCK
 DOWNS, NON CDL.

401-434-5900

WWW.ANDERSONMOTORS.COM

EMAIL • SALES@ANDERSONMOTORS.COM

170 AMARAL STREET • EAST PROVIDENCE, RI 02915

HABLAMOS ESPAÑOL



2004 NEW HOLLAND LS180 SKIDSTEER. 3800 Hours, Good Shape, Operated Weekly, No Issues, Come With Bucket, New Tires, Regularly Maintained, Hand-Foot Controls, **\$12,500 OBO.**
401-742-3659

CANDIA TRAILER & TRUCK EQUIPMENT CO

FOR SALE

Successful Turnkey Business

Serving The Truck Body & Equipment Industries for 45 Years

Land, Buildings, And Inventory

603-483-2541



Tight Link Fence Co.

Residential ~ Commercial ~ Industrial

Mark Dillon
774-365-0222

**2011
BOBCAT
S650
SKID
STEER,**

Hours: 3,500,
Enclosed, Hyd
Coupler, Good
Running
Machine,
\$29,900
781-417-3018



**THE
TRAILER
DEPOT**

203-234-7788

1037 Middletown Ave. (Rt. 17)
Northford, CT

**CM
TRUCK BEDS**
AUTHORIZED DEALER



USED FELLING 16' FULL TILT TRAILER.
15.2K, LED LIGHTS, #003775, **\$6,995**



CAM SUPERLINE 15.4K LOW PRO DUMP TRAILER.
6' 9" x 14', High Sides, Dual Telescopic Tilt



**SURE-TRAC 25.9K LOW PROFILE DECKOVER
GOOSENECK TRAILER.** 8'6" x 25' + 5' Beavertail,
Heavy Duty Deck, Pierced Beam Construction, #432778



**SURE-TRAC 9.9K ENCLOSED LANDSCAPE
TRAILER.** 8'6" x 18', 3/4" Pressure Treated Plywood
Flooring, Aluminum Wheels, #430987



CM TRUCK BEDS STARTING @ \$4,500



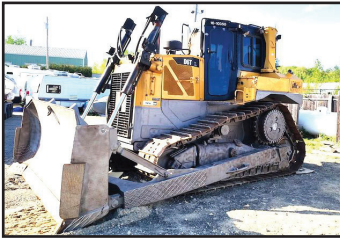
BEHNKE 16K DIRECTIONAL DRILL TILT TRAILER.
6'9" x 22', (2) 8000 lb Torflex Axles, Electric Brakes, Pallet
Fork Holders, #072203

www.thetrailerdepot.com

We'll Hook You Up

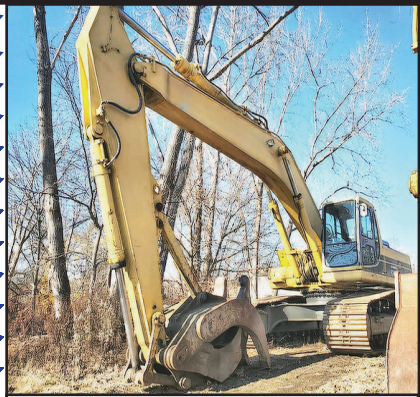
WE DO FEDERAL INSPECTIONS!

EQUIPMENT BODY REPAIR & PAINTING



- Welding
- Sand Blasting
- Exterior Painting
- Expert Fiberglass Repair
- Metal Fabrication
- Rust Proofing & Frame Painting
- Body Repair
- Family Owned
- 38 Years

USA Auto Body & Heavy Equipment
8 Gordon Rd Unit 3 Bow NH
603-223-1757



KOMATSU PC400LC-6LK EXCAVATOR. 3519 Hours, Komatsu Engine, Excellent Bottom, JRB Grapple Available, **\$85,000.**
Call Jesse 401-855-1178



1996 GMC TOPKICK. 22,000 GVW. 241K Mi, CAT Motor, Allison Tranny, Chip Truck, Dump Truck, Removable 2-Pt Hood On Body, Large Utility Box Behind Cab, Tires 80%, **\$17,500.** Call/Text 978-375-1127, Brian



2015 BOBCAT 5600 TOOLCAT, 2350 hours, Hi Flow, Bobtach Hyd. Coupler, Deluxe Road Package 17 MPH, Lights, Directionals, Etc. This Machine Has Never Seen Salt, VG Condition, **\$28,000.** 603-899-2000



2005 INTERNATIONAL 7600 TRI-AXLE DUMP TRUCK, 8LL Trans, 44k Rears, 18k Fronts, Double Frame, Donovan Dump Body, Hendrickson Suspension, Good Shape, 400HP, 710k Miles, **\$54,900,** 781-417-3018

HAYES 
Commercial Truck Center

802-334-6587

SILVER BLACK OR WHITE



2024 T250 MID ROOF CARGO VAN. All Wheel Drive, V6 Gas, Auto, Silver, Black, Or White, 5 Available.
ON SALE



2017 F550 FLATBED DUMP. Diesel, Auto, 4X4, 12 Ft Dumping Flatbed, Headboard For Lumber Or Ladders, Clean, 53,163 Miles, **\$39,900**



2022 F350 XLT CREW CAB. 7.3 V8, 75,541 Miles, 4X4, **#59711 \$39,822**



2014 FREIGHTLINER 3500 CARGO VAN. High Roof, 128,020 Miles, **#61591 \$11,950**



2017 F550 DUMP TRUCK. Municipal Plow, Spreader, 4WD, Diesel, 60,818 Miles, Fully Service, Ready To Work, #686P. **\$52,999**



2024 F600 SWITCH N GO. 7.3 V8 Gas, Auto, XLT Trim, Polish Aluminum Wheels, Tool Box, 4WD, Upfit Switches, Body Choices. **#5987**

WWW.HAYESFORDINC.COM • 439 East Main St Newport, VT



Cherry Hill Construction Co., Inc
51 Ciro Road – North Branford,
CT 203-488-7929

www.CHERRYHILLEQUIPMENT.com



2005 PETERSON PACIFIC HC5410.
 Horizontal Grinder, 6,336 Hours, **Asking \$235,000**



1995 HOGZILLA TC1464P. Tub Grinder,
 1,751 Hours, **Asking \$135,000**



2023 CAT 906 6.4 Hours, Hyd Q/C
 Bucket, AC. **Asking \$99,000**



2018 PETERBILT 389 Tractor, Cummins X15 565, 333,973
 Miles, 46,000 Rears, 18 Speed Manual, Air Trac Suspension,
 Wet Line, New Clutch Installed No Miles On It.
Asking \$125,000



2015 PETERBILT 388 Heavy Haul Tractor, 430,650 Miles,
 18 Spd, Engine Rebuilt a At 370k miles, ISX15 550 HP 1950
 Engine, 20/22/46, New Trans, New Rear, 4:10 Rears, Wet Line,
 Holland 100 Ton Fifth Wheel, **Asking \$145,000**



2004 MACK CV713, Tri Axle Dump,
 506,699 Miles, **Asking \$50,000**



2007 PETERBILT 379,
 Wet Line, 38,000 Rears,
 12,000 Front, **Asking \$42,000**



1999 JOHN DEERE
200 LC. 14,586 Hours,
Asking \$37,000



1997 JOHN DEERE 310E,
 4x4, Extend-A-Hoe,
 10,000 Hours,
Asking \$20,000

American SEMI REBUILDERS

FRAME RAILS, RESTORATIONS & REPAIRS



2-5 YEARS EXPERIENCE - MUST HAVE OWN TOOLS

27 Depot Street, Unit K-2, Center Barnstead, NH 03225

HELP
WANTED
EXPERIENCED
TRUCK MECHANIC

COMPETITIVE WAGES
\$32.00 TO \$38.00 TO START

PAID HOLIDAYS &
VACATION TIME

BOOT & TOOL ALLOWANCE
UNIFORMS

603-269-0046



KOBELCO SK200 MARK 3.

New Bottom, New Computer, Many
New Parts, Runs Great, Asking
\$35,000. 203-464-0121



2012 CASE 580N. 5687 Hrs., 4x4, Joystick Backhoe
Controls, Ext-A-Hoe, Hyd. Thumb, **\$31,000.**
603-899-2000

**2006 EAST TRIAXLE
DUMP TRAILER.** 35'/34'
Alum. Body & Frame, Air Ride With
3rd Lift, Electric S & Go Tarp, Floor
Liner, 12 Alum. Wheels, Straight
Trailer, **\$37,900.** Call Jesse
401-855-1178



TOREKU TRACTOR & EQUIPMENT INC.



4 Littleton Rd, Rt2A & 110, Ayer, MA • 978-772-6619



**2015 KUBOTA
B2650 HSD
TRACTOR.**
Loader & Cab,
60" Bucket, Ag
Tires, Low Hours
86.4,
\$22,500.



**2019 KUBOTA
RTV-X1100W.**
Factory Cab,
Heat & Air
Conditioning,
Frt & Rear Work
Lights, Low Hours
35.2, Can Not
Tell From New,
\$20,000.



**2020 KUBOTA
GR2120-2
TRACTOR.**
Cab, Snow
Blower, 48"
Mower, 4 Wheel
Drive,
21 Hp Diesel,
88.5 Hours,
\$8,995.



**1998 KUBOTA
B20 TLB
LOADER/
BACKHOE.**
Construction
Duty, 7.5' Back
Hoe, 288 Hours,
Great Condition,
\$16,900.

VISIT US AT WWW.TOREKU.COM

QUIRK CHEVY COMMERCIAL**781-917-1151****BUSINESS
ELITE**

2025 4500HG ALUMINUM RACK DUMP. Landscaper Spec, 14' Body, V8 Gas, Auto, 14,500 GVW, #C82505
\$70,550



2024 4500HG LANDSCAPE DUMP. Curb Side Door, I-Pac, 12' Body, V8 Gas, Auto, 14,500 GVW, #C81922 **\$68,140**



2025 4500HG UTILITY. 12' Rockport Body, 3 Bar Ladder Rack, V8 Gas, Auto, #C82868 **\$66,346**



2025 3500HD DUMP. Crew Cab, 4X4, 9' Body, V8 Gas, Load Cover, Pintle Hitch, #C84129 **\$68,495**



2025 3500 SERVICE. Central Locking, 3-Way LED Interior Lights, Rubber Coat Floor, Adjustable Shelves, Cat Walk, Ladder To Roof, C84035, **\$58,990**



2025 3500 UTILITY. 12' Rockport Body, 3 Bar Ladder Rack, V8 Gas, Pass Thru Door, #C83909 **\$56,412**



2025 3500 FREIGHT VAN. 14' Wabash Body, Roll Up Door, DRW, Step Bumper, PW, PL, Cruise, #C84448, **\$54,420**



2025 3500 SERVICE. Central Locking, 3-Way LED Interior Lights, Rubber Coat Floor, Adjustable Shelves, Cat Walk, Ladder To Roof, C83854, **\$59,710**



2025 3500 DOUBLE CAB UTILITY. Knapheide Body, 4X4, V8 Gas, C84762, **\$51,500**



2025 4500HG FREIGHT HAULER. 16' 6" Body, Liftgate, Two Rows E-Trac, V8 Gas, 14,500 GVW #C82572 **\$74,185**



2025 3500HD ALUMINUM SERVICE. 4X4, 9'6" Duramag Body, V8 Gas, Step Bumper, DRW, #C83555 **63,495**



2025 3500 SERVICE VAN. 10' Rockport Body, 3 Bar Rack, V8 Gas, Pass Thru Door, #C83846 **\$56,710**

WWW.QUIRKCHEVY.COM • 444 Quincy Ave, Braintree, MA



11 Commercial Way
Milford, MA 01757

HILLVIEW EQUIPMENT

SALES & RENTALS 24/7 • CALL JUDE 1-508-498-0777

www.HillviewEquipment.com

Excellent Equipment • Outstanding Prices

**FRESH
MACHINES
MONTHLY**

WE HAVE EQUIPMENT!

Rt. 495 to exit 19,
Route 109W,
Left to Birch St,
right to Industrial Dr.
Left to Commercial Way

**FRESH
MACHINES
MONTHLY**



**2022 CAT 313: ONLY 650 HOURS, AXU
HYDRAULICS, BLADE, ALL THE TOYS.
CALL FOR BEST PRICE IN NEW ENGLAND.**



**2019 CAT 312F- LOW HOURS, AUXILIARY
HYDRAULICS, VERY NICE.**



**2018 CAT 311 FL: WITH BLADE
QUICK COUPLER, HYDRAULIC THUMB,
4600 HOURS.....THESE ARE SELLING FAST !!**



**2011 DYNAPAC CA150: ONLY 900 HOURS IN
THIS 66" VIBRATORY ROLLER
CALL FOR THE "GIVE AWAY PRICE"**



**2020 CAT 312F: RUNS AND LOOKS GREAT,
READY FOR WORK
WON'T LAST LONG.....CALL !!**



**2021 CAT 906M-COMES WITH BUCKET & FORKS,
AUTO GREASE,
LOW, LOW HOURS, LIKE NEW....**



**2019 CAT 314 F: ZERO SWING, QUICK COUPLER,
HYD THUMB, 4300 HOURS
CALL FOR BEST PRICE AROUND !**



**2017 CAT 312E- VERY CLEAN, FULLY SERVICED
WITH NEW HYDRAULIC THUMB .. PRICED RIGHT
AND WORK READY.**



**2019 CAT 910 M: I HAVE 10 TO CHOOSE FROM...
MANY WITH COUPLERS & FORKS.
CALL FOR THE BEST PRICE ON THE EAST COAST!**



**2018 CAT 308 E2CR: 4 TO CHOOSE FROM ALL
UNDER 2000 HOURS,
QUICK COUPLER, THUMB....WORK READY !**



**2011 CAT 312D- W/ NEW 45' LONG REACH,
VERY UNIQUE AND VERSATILE
MACHINE....**



**2017 - 2019 CAT 320 NEXT GEN... LOW HOURS,
AUX HYDRAULICS, ALL THE TOYS. PRICES START
AT \$99,000, NO ONE BEATS MY PRICE.....CALL**

****WE GUARANTEE TO HAVE THE BEST SELECTION OF USED EQUIPMENT AROUND****



11 Commercial Way
Milford, MA 01757

HILLVIEW EQUIPMENT

SALES & RENTALS 24/7

www.HillviewEquipment.com

Rt. 495 to exit 19,
Route 109W,
Left to Birch St,
right to Industrial Dr.
Left to Commercial Way



CHECK OUT OUR WIDE ARRAY OF BUCKETS FROM DIGGING TO CLEAN OUT !
DESIGNED TO FIT CAT 307-349 & KOMATSU PC300-450
CALL 508-473-1300 GET DIGGING TODAY !



NOS FINANCIAMOS PARA EMPREITEIROS BRASILEIROS!!
EMAIL JIM GALLAGHER TODAY AT [JGALLAGHER@HILLVIEWEQUIPMENT.COM](mailto:jgallagher@hillviewequipment.com)
****WE GUARANTEE TO HAVE THE BEST SELECTION OF USED EQUIPMENT AROUND****



2009 CHEVY 3500. 6.0 Gas Engine, Auto, 78K Mi, New Tires, Brakes & Battery, 4X4 Dump Truck W/ Stainless Steel Fisher Sander, 9' Fisher Plow. I Have Wood Sides & Tailgate That Go With Truck, Great Shape For The Year, Used Little, **\$20,500.**
Call/Text 978-375-1127, Brian



2006 VOLVO EC460 EXCAVATOR. Geith Grapple, 9,000 Hrs., With Bucket, **\$73,000.** Call Jesse
401-855-1178



TRANS EAST EQUIPMENT INC.
67 Main St Salisbury, MA
CALL DAVE Cell 978-992-7077 Or 978-462-1919

**EXIT 90 Off Rt 95
End Of Ramp**

You Pick Your Container – Over 175 Units

FAMILY OWNED & OPERATED



Serving New England

20', 40', 45', 48' And 53' CONTAINERS.
One Trip & Used Steel Storage Containers
We Deliver
Call Dave The Owner And Get The Best Deal!

CHECK ALL OUR INVENTORY – WWW.TRANSEASTEQ.COM



HILLVIEW EQUIPMENT

Sales & Rentals 24/7

CALL JUDE 1-508-498-0777

Rt. 495 to exit 19,
Route 109W,
Left to Birch St,
right to Industrial Dr.
Left to Commercial Way

Excellent Equipment • Outstanding Prices

"SMART MONEY BUYS HERE!"

FRESH MACHINES MONTHLY, BUNDLE DEALS AVAILABLE

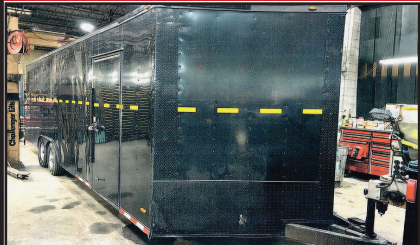


I have 12 of these....
2019 CAT 910M ...hours range from
7 to 1500 all with quick coupler, bucket,
forks....fast runner, ride control, "creeper
gear", A/C, beautiful machines.....best price
in New England prices start at \$99,000.....
Call Jude

NOS FINANCIAMOS PARA EMPREITEIROS BRASILEIROS!!

**ADD-ONS AVAILABLE OR WE'LL FIND IT FOR YOU... SNOW BLOWERS,
SWEEPERS, MULCHERS, ETC.**

****WE GUARANTEE TO HAVE THE BEST SELECTION OF USED EQUIPMENT AROUND****



ENCLOSED TRAILER. 24' V-Nose, 8' Wide,
\$3000 OBO. 413-374-5331



2006 PETERBILT 335 OIL TRUCK. 126,924 Miles, CAT
Engine, Trans Tech Single Compartment Tank, 3600 Gallons,
Neptune E400 Meter, **\$45,000.** 860-639-6432



2006 CHEVROLET GMT K3500. 4x4 1 Ton Service Truck,
263,899 Mi, All New Steel Brake Lines, Blower Motor, & Starter. New
2023 Fisher MM Plow Plowed 1 Season, 50 Gal Fuel Tank, Utility
Body Plenty Of Storage, New Sony Bluetooth Radio, **\$5,000 OBO,**
Marlborough, MA 508-479-5657, dcima1971@gmail.com



**KOMATSU PC400LC-5LC
EXCAVATOR.** 5124 Hours, Cummins,
Excellent Bottom, Plumbed For Hammer,
Grapple Available, **\$65,000.**

Call Jesse 401-855-1178

VIS-POLISH AUTOMATED WHEEL POLISHER MACHINE W/ACCOUNTS-GREAT BUSINESS OPPORTUNITY!



- Automated Rim Polishing Machine
- Restores Aluminum Truck & Bus Rims To A Mirror-Like Finish
- Works With 19.5", 22.5", 24.5" With Tire On Or Off
- Refurbishes Road-Wearry Wheels To Reveal Damage
- Special Bead Cleaning Cycle
- Enclosed System, 76" X 66" X 86"

\$65,000. Complete System With
Some Wheel Accounts

CALL BOB FOR MORE INFO. 603-973-0809

**1987 PETE
10-WHEELER.**
CAT 300, 8LL, 44
Rears, 14' New
Dump & Piston, 8
New Drive, 1997
Eager Beaver 10 Ton,
Good Brakes & Tires,
\$45,000 OBO.
MA 207-256-4652



2014 KENWORTH T-660.
Cummins Factory Reman ISX15 500 HP,
13 Sp With 360K Miles, Recent New Clutch,
DOC, Serviced DPF, Radiator & Frame, Oil
Cooler, Air Dryer, Virgin Rubber, Ready To
Go To Work, **\$32,500.**
North Kingstown, RI 401-829-7008



2001 MACK CL713 10-WHEEL DUMP TRUCK,
467k Miles, **\$24,900**, 781-417-3018

**2018 FORD 250
TRANSIT WITH
ALUMINUM FLATBED
WITH FOLD DOWN
SIDES,** Auto, PW, PL,
Under 10,000 GVW,
80K, One Owner, Fleet
Maintained, Three Available,
\$23,900., Westport, MA
508-636-5050



JG Remillard Equipment Sales.
603-759-5918



1974 Cat D-6C. Winch, Angle
Blade With Tilt. Working Daily
\$19,500



NEW TEREX BUCKETS. Sizes
From 307 To 330 Cats. Many Different
Widths. **Call For Pricing.**



GRADALL 534B TELEHANDLER.
Extending Boom Lift, Runs And Works
Excellent. **\$22,500**



DRESSER TD-20B DOZER. Winch,
Runs Good, Work Ready. **\$11,500**



1985 KOBELCO LK-500. Runs
And Works Well. **\$11,500**



**1998 MACK RD-600 ROLL OFF
HOIST.** 350, 13 Speed. Very Clean.
\$25,000



BOMAG TRENCH ROLLER.
Hatz Diesel. **\$3,500**



1985 GMC 7000 RAMP TRUCK. 366
V8 Gas, 5 +2 Transmission, Air Brakes,
24' Steel Hydraulic Carrier Bed. **\$7,500**



1975 CAT 988A LOADER. Over
\$6k Spent In Recent Repairs. Runs
And Operates Very Well. **\$15,000**



1990 HYSTER 6,000LB FORKLIFT.
Diesel, 3 Stage Mast, Sideshift. **\$8,500**



1978 MICHIGAN 125B. 4 Cubic Yard
Loader, Cummins Power, Runs Well.
\$9,500



TENNANT MODEL 6500 SWEEPER.
AND 255 SERIES II SWEEPER.
Both Run And Work Excellent. **\$4,500.**
Will Separate.

Visit Us jgremillard equipmentsales.com



JACK MADDEN FORD

781-762-4200

EMPLOYEE PRICING.

YOU PAY WHAT WE PAY.

New & pre-owned TRANSIT CARGO VANS. All sizes available.

2017 • 2018 • 2020






2024 E450 10', 12' & 14' WORKPORT UTILITY BODIES. IN STOCK NOW!



NEW E450 XL BAYBRIDGE 16' ATTIC BOX TRUCK: DRW, RAMP, POWER GROUP. ALSO: 15' ATTIC AVAILABLE.



2024 & 2025 FORD E350 & E450 UTILITY VANS IN STOCK NOW!



2024 F550 16' BOX TRUCK. CALL FOR PRICING.



NEW E450 AEROCCELL BOX TRUCK. IN STOCK NOW!

LARGEST STOCKING SUPER DUTY DEALER

JACK MADDEN FORD

825 Providence Hwy Rt. 1 Norwood, MA

781-762-4200

*All prices include incentives for qualified buyers. For trade assist, must have 2017 or new trade. All vehicles require dealer financing. Some prices include snowplow incentives. See dealer for complete details.






JACK MADDEN FORD

781-762-4200

EMPLOYEE PRICING.

YOU PAY WHAT WE PAY.










**2024 F350
READING
UTILITY BODY:
POWER GROUP,
POWER TAIL
GATE. READY
TO GO.**



**NEW SUPER
CAB DUMP
BODY. IN
STOCK NOW!**

see more photos on our website WWW.JACKMADDENFORD.COM



**NEW CAB &
CHASSIS:
350-450-550
SUPER CABS,
REGULAR
CABS.**

READY TO GO



6 IN STOCK

**NEW F550XL
4X4
SWITCH-N-GO
BODY:
GAS & DIESEL
AVAILABLE.
POWER GROUP.**



**NEW F600
LPAC 4-5
YARD DUMP
BODY. CALL.**



**NEW F550 DRW
4X4 DUMP
BODY: POWER
GROUP, IN
STOCK READY
FOR DELIVERY.**

**LARGEST
STOCKING
SUPER DUTY
DEALER**

JACK MADDEN FORD

825 Providence Hwy Rt.1 Norwood, MA

781-762-4200




*All prices include incentives for qualified buyers. For trade assist, must have 2018 or newer trade. All vehicles require dealer financing.
 Some prices include snowplow incentives. See dealer for complete details.



Fowler's Auto Wrecking Inc.

Belldown Recycling Center



860-267-7140 • 24 Old Coach Rd East Hampton, CT

Detroit Series 60 12.7L Engines

EGR DDEC-IV

NON-EGR DDEC-IV

Good Running Take Out Engines

Recent Remanufactured Engines

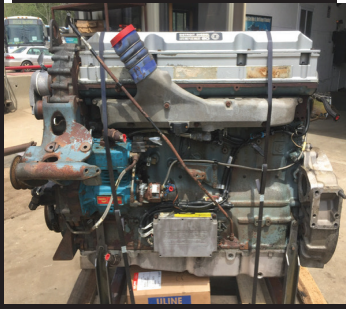
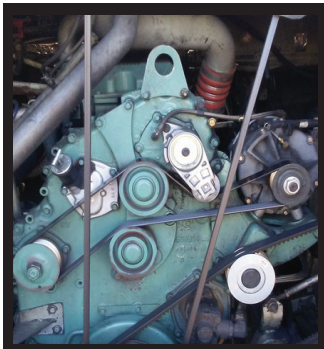
Core Engines

Engine Accessories

6 Month & 1 Year Warranties Available

Call Today For Pricing

CALL: 860-267-7140



Complete Coaches For Parts

- MCI, Vanhool, and Prevost Buses For Parts
- Compressors, Condenser & Evaporator Motors
- Wheels, Tires, Suspension & Brake Parts
- Electrical Parts, Interior & Exterior Lighting
- Tag Axles & Drive Axles
- Compartment, Service, and Entrance Doors
- Fiberglass Body Panels & Glass
- Complete Electric Wiper Conversion Kits
- Radiators, Intercoolers, and Condensers
- Standard 6 Month Warranty On All Parts



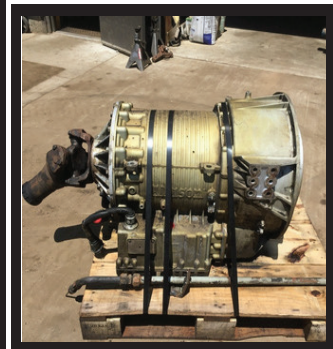
**Buses Are Not Intended
For Resale - Salvage Titles**



Allison B500 Transmissions

- Allison B500 With or Without Retarders
- Good Running Take Outs
- Recent Remanufactured Units
- Core Transmissions
- Allison Shift Pad Selectors
- Allison TCM (Transmission Control Modules)
- Standard 6 Month Warranty
- Call Today For Pricing

CALL: 860-267-7140



2007 NISSAN UD2000.

6 Cyl Turbo Diesel, 580K, 19,500 GVWR,
21' Roll Back, Wheel Lift,
Runs & Operates, Needs TLC,
Asking \$15,500.



2004 INTERNATIONAL 4300 TOW TRUCK.

DT466 W/ 6 Speed Eaton, 282K Miles,
33K GVWR With Wheel Lift,
Ready For Work \$28,000.

CAREY AUTO

INC
TRUCK EQUIPMENT
SALES



37 County Road
Route 106
Plympton MA 02367
PH: 781-582-1378
FAX: 781-585-4438



2006 GMC 4500, V8 168,000 MILES, AUTO
14' RACK BODY WITH TUCKAWAY LIFTGATE
\$8,500.



OMAHA
11' WALK
IN UTILITY
BODY. GOOD
CONDITION.
\$5,500.



GALION DUMP BODIES IN STOCK NOW!
INCLUDES CAB SHIELD & HOIST.
CALL FOR PRICING.



NEW VANAIR
AIR-N-ARC
4 IN 1 UNIT.
300A - 7KW-
40CFM.
\$17,900.



2002 CAT 311C EXCAVATOR:
5,853 HOURS,
\$36,000



READY TO GO COMPLETE TRUCK PACKAGES.
LOTS OF OPTIONS AVAILABLE
New & Used Trucks Ready To Go!



CM ALUMINUM FLATBEDS IN STOCK NOW!
MANY SIZES. CALL FOR PRICING



STEEL FLATBEDS
IN STOCK NOW! MANY SIZES.
CALL FOR PRICING.



2014 KENWORTH T300 W/NEW HAD 185:
CUMMINS DIESEL, AUTOMATIC. HOOK 36"/54". HR
1500 TARP SYSTEM. \$85,000.00

SALES,
SERVICE,
PARTS

CALL TOLL FREE: 781-582-1378
WWW.CAREYTRUCKEQUIPMENT.COM

CUSTOM METAL
FABRICATION
AVAILABLE

CANDIA TRAILER

www.CandiaTrailer.com
& LANDSCAPE EQUIPMENT CO
All Prices Cash & Carry! Installation Available!

SAVE TIME & FUEL • WE SHIP!

1-866-761-0196

NH 603-483-2541 • Fax 603-483-2842

35 High St, Candia 4 Corners, Candia NH
10 Minutes East of Manchester, NH • 1 hour From Boston

TRUCK BODY SOLUTIONS



IN STOCK GALION DUMP BODIES. 8 Ft Thru 16 Ft. Call With Your Specs Today



8 Ft & 6 Ft EZ SLIDE-IN DUMP BODY. Complete Head Board, Tarp, & Hoist.



HARSH HOIST

2.5 to 45 Ton, Single or Double Piston. Convert a Flatbed Body to a Dumping Body.
HOIST & POWER PACK

USA Made



BUTCHER Dump Power Pac with control Gravity Down **\$595**



LOAD COVER

7' X 12' Mesh tarp & Hardware Kit **\$269**



Pintle Plate

\$495



15 Ton Pintle Hook **\$89** – WE SHIP



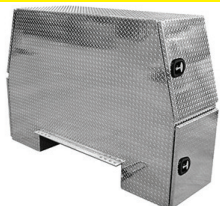
Retractable Step

One Step **\$119**

Two Step **\$129**

Three Step **\$139**

I-PACK TOOL BOX



Diamond, Aluminum, Or Black



HEADACHE RACKS – Aluminum, USA Made, With Or Without Window Cut Out, Hi & Low Profiles, LED Light Options, Sport Series & Pro Series.



Shuttle Door

\$199



CTECH – Drawer Units That Fit Into Your Utility Body



Transfer Tank & Pump. USA Made, 12 Ft Hose Nozzle Gun, 15 gpm, In Stock, We Ship

UNDERBODY TOOL BOXES

Powder Coat Diamond Aluminum Door



Diamond Aluminum Door



CANDIA TRAILER

www.CandiaTrailer.com
& LANDSCAPE EQUIPMENT CO
All Prices Cash & Carry! Installation Available!

SAVE TIME & FUEL • WE SHIP!

1-866-761-0196
NH 603-483-2541 • Fax 603-483-2842

35 High St, Candia 4 Corners, Candia NH
10 Minutes East of Manchester, NH • 1 hour From Boston

**CUSTOM
BODY
SPECIALIST**



DUMP TRAILERS. 12', 14', 16 Ft.
Twin Piston, Powder Coat, Ramps,
Battery, **Ready To Go**



HOMESTEAD Enclosed Trailers.
Stocking 8 Ft – 24 Ft



**ALUMINUM LANDSCAPE
TRAILERS**



7 TON EQUIPMENT TRAILER .
20' Power Tilt, Tandem Axle,
USA Made Also Aluminum Trailers



**DURA MAG ALUMINUM DUMP
BODIES** Complete Sub-Frame,
Power Pac, LED Lights.



ALUMINUM SERVICE BODY

QUIPCAL

The Decal Experts

Decal Sets for your Construction,
Forestry, Ag, Mining & Industrial
Equipment - Old and New.

Prompt • Knowledgeable • Reliable • Experienced

To Check \$ Call: 215-536-5339
& Availability Email: info@CustomServicesCompany.com

Your Next Decal Set Is Here • www.QuipCal.com



**CAT D6H
DOZER.**

Very Good
Condition, Runs
And Operates
Great, 6600 Hours,
\$54,500.
Tom
860-605-6895



**2021 LEEBOY
8510E PAVER.** 3300 Hours,
Most Wear Parts 100% Replaced,
Electric Screen, Built-In Bump,
\$94,000. 401-499-9873

RENTAL WITH OPERATOR

PORTABLE JAW CRUSHER AND IMPACT CRUSHER



**DAY-WEEK-MONTHLY RATES
80' STACKER AND
EXCAVATOR AVAILABLE**

**NEW ENGLAND
CALL KEN
508-328-0028**

 Powerglide Air Test Kit	 Complete Powerglide Pro Tree Transbrake \$279.95	 TH400 Deep Cast Aluminum Pan	 TH400 Billet Direct Drum Spring Retainer & Aluminum Modulator/Solenoid Hold Down	 Powerglide Overhaul Kit	 CAT 225 EXCAVATOR. 76U, 124 HP Engine, 1.25 CU Bucket In Good Shape, Weighs 52,700 Lbs., Long Boom, Mechanical Thumb, Needs To Be Welded On, Bottom Good, Runs And Operates As It Should, Asking \$11,500 OBRO. 508-864-9003
 Powerglide Deep Oil Pan	 Powerglide Reverse Spring Retainer Tool	 Powerglide Bushing Driver Set	 Do-it-yourself Powerglide Pro Tree Transbrake Kit \$164.95	 1.80 Long Powerglide Gear Set	
  Powerglide Handbook written by Carl H. Munroe \$21.95  Powerglide Vent Tanks 1-800-394-5889 179 Belvedere Road Gilsum, NH 03448 WWW.TSR-RACING.COM					
 2002 FORD F350 DRW CAB AND CHASSIS. 12,500 GVW, XL, 7.3 Powerstroke, 239,065 Mi, 4x4, Auto, 9' Knapheide Body, 36 Gal. Transfer Tank W/ Pump, Some Typical Rust For Age On Doors, But All Solid & Functional, Well-Maintained Since New, Possible Trade For Dozer Or Roller, \$10,000. Old Lyme, CT 860-227-5426		 KOMATSU D41 DOZER. Good Condition, 6000 Hours? \$42,500. Call/Text 774-249-1548			

NOW AVAILABLE AIR COMPRESSORS



Full Service Provider of Surface Preparation Equipment,
Supplies and Consumables

NATIONWIDE EQUIPMENT RENTALS, SALES & SERVICE

North Kingstown, RI

El Cajon, CA

Suffolk, VA

Lakewood, WA

RUST NEVER SLEEPS



RAPID PREP

877.529.2124 / rapidprep.com



DIMMICK GROUP PETERBILT
1-800-NEW-PETE
1-800-639-7383



DIMMICK GROUP PETERBILT



2025 LIDDELL 60 TON.
 Flat Deck Detachable, 24.5 Rubber, Aluminum
 Outers, Rear Strobes, 102" Swing/Set-Up For A Neck
 Extension, Lift Axle, Wheel Covers. **In Stock.**



2025 TALBERT 55 TON.
Available In All Our Locations



2024 GALLEGOS.
 92 Yard Scrap Trailer, In Stock -
 Ready To Go!



**2025 ETNYRE 55 TON DROPSIDE
 TRAILER SPECIAL.** Galvanized
 & Painted, 10' Wide Deck, 9 Wide
 Axles,



FELLING TAG TRAILERS.
 Multiple in stock, NH & VT



**2020 PETERBILT 389 PRIDE &
 CLASS.** 238k miles, 20/20/52, Cummins
 X15 605HP, Bow, NH



**2025 55 TON EAGER BEAVER
 PAVER TRAILER.**
 Call For Details, Rooster,



2023 PETERBILT 389.
 Cummins X15 565HP, 18 speed, 46k
 rears, 100k miles, South Royalton
 VT



**NEW PETEBILT 589 & 567 DUMP
 CHASSIS.** In Stock All Locations.
 Call For Complete Details.



2015 EAST 32' DUMP TRAILER.
 Good Rubber Liner & Electric Cover.
\$57,000.



2001 Talbert AC3-25.
\$14,900, Bow, NH

Royalton VT
802-763-2585

Colchester VT
802-654-4420

Bow NH
603-225-6666

Albany NY
518-459-1122

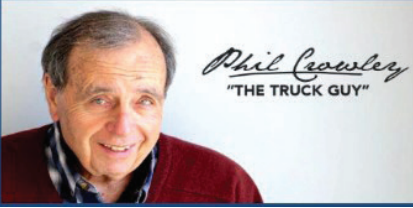
Newburgh NY
845-245-4042

Owego NY
607-687-1200

Rochester NY
585-321-5250

Syracuse NY
315-432-1122

Utica NY
315-732-4300

PLACE MOTOR Inc.*The "RIGHT PLACE" Since 1923***COMMERCIAL TRUCKS**

PHIL CROWLEY
866-449-7482 EXT. 213



19 Thompson Rd.
Rte. 193
Webster, MA.



**NEW 2025 & 2026 FORD 15' E-350
CUTAWAY.**



**2024 NEW FORD E-350
SINGLE REAR WHEEL,
12' BOX TRUCK.**



**NEW 2024 FORD TRANSIT
CAB & CHASSIS, 12' BOX, SIDE DOOR
AND MORE !**



**NEW 2024 FORD TRANSIT VANS
MEDIUM & HIGH ROOF, 2WD & 4WD.**



SPECIAL

**NEW 2024 FORD TRANSIT VANS
250 LOW ROOF, GREEN IN COLOR.**



MANY COLORS

**NEW 2024 FORD F-350 4X4
CAB & CHASSIS, 7.3L GAS ENGINE,
60 CAB TO AXLE. 12 TO CHOOSE FROM !**



**NEW 2023 FORD F-600
4X4, 7.3L V-8 GAS, 4-5 YARD DUMP.
CALL FOR SPECIAL PRICE !**



**NEW 2024 FORD F-350 SUPER-CAB
4X4 CAB & CHASSIS, 7.3L V8 GAS.
PICK YOUR BODY !**



4 AVAILABLE

**NEW 2024 FORD F-600 4X4,
203 WHEEL BASE, DIESEL,
22,000 GRWR AND MORE !**



**MASSACHUSETTS OLDEST FORD
DEALER SINCE 1923**



PLACE MOTOR Inc.

The "Right Place" Since 1923

COMMERCIAL TRUCKS

Call Phil Crowley "The Truck Guy"
866-449-7482 ext. 213



19 Thompson Rd.
Rte. 193 Webster, Ma.



GAS & DIESEL

**NEW 2024 FORD F-250 & F-350
CREW-CAB 4X4
XL, XLT LARIATS AND
PLATINUMS AVAILABLE !**



15 AVAILABLE

**NEW 2025 FORD F-750
CAB & CHASSIS, 158 TO 260
WHEELBASE,
330HP, AIR-BRAKES AND MORE !**



GAS & DIESEL

**NEW 2024 FORD F-250 & F-350
SUPER-CAB 4X4
XL, XLT AND LARIATS AVAILABLE !**



**NEW 2024 FORD F-550 REGULAR
CAB 4X4 DIESEL & GAS, 60 AND
84 CA. AVAILABLE !**



**NEW 2025 FORD F-550 SUPER
CAB 4X4 CAB & CHASSIS, 7.3L V8
GAS, 84 CA.
CALL FOR MORE DETAILS !**



**2023 FORD F-350 SUPER-CAB
4X4, XL TRIM, 7.3L V-8 GAS,
HAULER BODY, LOW MILES.
CALL FOR MORE DETAILS !**



SPECIAL

**2019 FORD E-450 REF BOX
33K FOR MILES.
CALL FOR MORE DETAILS !**



**2023 FORD F-450 4X2,
145 WHEEL BASE, DIESEL,
LOW MILES, XL TRIM
AND MORE
CALL FOR REDUCED PRICING**



**2023 FORD F-450 4X2,
192 WHEEL BASE, DIESEL, LOW
MILES, XL TRIM AND MORE !
CALL FOR REDUCED PRICING**

WWW.PLACEMOTOR.COM



DEJANA
Truck and Utility Equipment



**COMMERCIAL
VEHICLE CENTER**

EQUIP

SALES AND LEASING CORP.

(800) 529-2515
WWW.EQUIP-SALES.COM
NORTH HAVEN, CT 06473



2022 XCMG XE75U

KUBOTA DIESEL, PATTERN CHANGER, HYDRAULIC COUPLER & THUMB PLUMBING. 106 HOURS. LOADED FULL CAB.
\$66,500

**LOADED
FULL
CAB!**



2021 XCMG CV83PDU

473 HOURS, 66" SMOOTH DRUM,
 BOLT ON SHEEP FOOT. **\$68,500**



2006 DEERE 450J LT

RUNS GREAT, WORK READY! 5,600
 HRS. **\$46,500 OBO**



2015 BROCE BB250

TOW BEHIND, KUBOTA DIESEL,
 FRESHLY SERVICED. **\$13,500**



2022 ROCKSTER R1100S

CLOSED CIRCUIT IMPACT CRUSHER. SERVICE RECORDS FROM DAY 1. CAT
 ENGINE, CENTRAL GREASE SYSTEM, REMOTE CONTROL, MAGNET, SCREEN
 BOX, 2 WAY RETURN BELT. 3,580 HRS. EXTREMELY RELIABLE & PRODUCTIVE
 MACHINE. **\$275,000**

**1 OWNER, 1
OPERATOR!**



2008 DEERE 410J TC

PILOT CONTROLS, FRONT Q/C, EXT-HOE, AUX HYD. RIDE
 CONTROLS, 4X4. FLEET MAINTAINED, WORKING DAILY! 4,645
 HRS. **\$45,500**

PARTS • SALES • SERVICE • RENTALS

**1988 DRESSER TD15E.**

2 Speed Steering, International Motor, 85% Bottom, A/C, Heat, 4200 Hours, Asking **\$32,000.**
203-464-0121

**1999 MACK RD688S ROLL-OFF.**

E7-350 E-Tech,
8 Speed Eaton,
Tires 50%,
Brakes 75%,
Runs Great,
\$22,500.
845-505-4770.



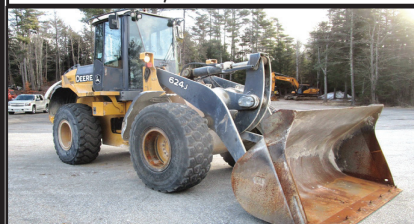
2006 KENWORTH. Cummins WL900
475 HP, Air Ride, Fuller 18 Speed, Wet System, 12K Front, 44K Rears, All New 11R24.5 Tires, 636K Miles, 340K Since Overhaul, Nice Truck, **\$57,000.** Call Jesse, 401-855-1178



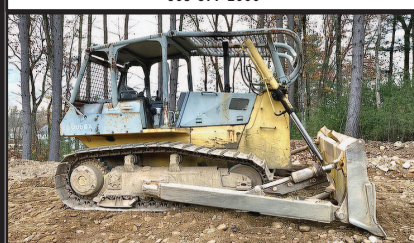
BIG TEX H 60 LANDSCAPER 18 FT TRAILER. 7500 GVW, Double Axle, New Tires, Electric Brakes, Heavy Duty Gate, Tool Rakes, Pintle Hook, 6-Prong Plug, Longstanding Landscaping Closing, **\$2700.** Call/Text Billerica, MA 978-375-1127 Brian



1985 MACK RD686SX.
Great condition, needs nothing, air gate, electric trap, **\$26,999 OBO.**
401-486-8552



2006 JOHN DEERE 624J. 9900 Hrs., 3.5-Yard Bucket, JRB Coupler, Ride Control, 20.5 Radials, NO RUST, **\$65,000.**
603-899-2000



KOMATSU D65 DOZER. Est. 5000 Hours, Good Condition, **\$32,500.** Call/Text 774-249-1548

WANTED!!! MACK TRUCKS

**CAT, DEERE, BOBCAT EQUIP
IN ANY CONDITION
IMMEDIATE PAYMENT**



CALL JOHNNY MACK

**johnnymack107@gmail.com
HARTFORD, CT 860-883-1186**

NICK SCARVALAS
Commercial Sales
857-247-9023 or 617-249-5603



**Commercial
Vehicle Center**

ALL TRUCKS ON SALE NOW



2024 F550 CHIPPER/LEAF BOX.
 12' Enclosed Vented Dump Body,
 4X4, Diesel, Two Tool Boxes, 4WD,
 F212052 **Sale Price \$98,990**



2024 T350HD SERVICE. 12' Rockport
 Van Body, V6 Gas, PW, PLAC, Ladder
 Racks, Ladder To Roof, F211793.
Sale Price \$70,990



2024 F350 DUMP.
 Diesel, Auto, 4X4, Tool Box, Remote
 Start, Plow Prep, UpFit Switches,
 F211387. **Sale Price \$80,990**



2023 F550 ALUMINUM DUMP. Landscaper
 Specs, Removable Side Panels, Diesel, Auto,
 4WD, Payload Up Grade, Remote Start,
 F210248 **Sale Price \$82,990**



2024 F550 DUMP. Remote Start,
 4X4, 7.3 Gas, Tool Box, 19,000
 GVW, F212126. **Sale Price \$79,990**



2024 F550 LANDSCAPE DUMP. 12'
 Body, Curb Side Door, Tool Box, 4X4,
 Diesel, Remote Start, Payload Up Grade,
 F210221 **Sale Price \$81,990**

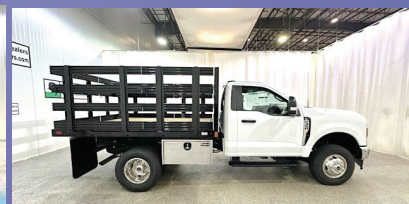
250 COMMERCIAL TRUCKS IN STOCK



2024 F350 DUMP.
 Diesel, Auto, 4X4, Remote Start,
 F210843.
Sale Price \$78,990



2024 F550 STAKE BODY.
 Diesel, Auto, 4X4, Remote Start, Payload
 Upgrade, 12' Knapheide, F212011.
Sale Price \$87,980



2024 F350 STAKE BODY.
 7.3 Gas, Auto, 4WD, Remote Start,
 Interior Work Station, Dual Battery,
 F211161 **Sale Price \$65,990**



2024 F550 ROLL-OFF HOIST.
 Switch N Go, Super Cab, Remote
 Start, 4X4, Diesel, 2 Tool Boxes,
 F211920. **Sale Price \$107,990**



2025 E350 UTILITY VAN. 12' Rockport
 Body, Rear Flood Light, Ladder Racks,
 7.3L Gas, SRW, F212521
Sale Price \$67,990



2024 F550 ROLL-OFF HOIST.
 Swap-Hog, Remote Start, 4X4,
 Diesel, 2 Tool Boxes, F211918.
Sale Price \$104,990

QUIRK FORD
540 Southern Artery (Rt 3A) Quincy, MA
www.quirkfords.com • 617-249-5660

**Business
Financing with
NO Co-signer
Required**

Prices include all available rebates. Rebates include Customer Cash, FMCC Bonus Cash, and Commercial Upfit Bonus Cash. Customer must qualify for rebates. Call for specific details. Prices are subject to change. * In Lieu Of Rebates

NICK SCARVALAS
Commercial Sales
857-247-9023 or 617-249-5603



**Commercial
Vehicle Center**

ALL TRUCKS ON SALE NOW



2024 F550 DUMP. 4X4, Diesel,
 L-Pac Tool Box, Remote Start,
 19,500 GVW, F212120
Sale Price \$94,990



2025 E350 DELIVERY/SERVICE VAN.
 Rockport Body, Poly Lined, Curb Side
 Door, Step Bumper, Ladder Racks, 7.3L
 Gas, SRW, F212245 **Sale Price \$63,990**



2024 F350 XLT UTILITY.
 Duramag Aluminum Body, Poly
 Lined, C 7.3L Gas, SRW, F211548
Sale Price \$76,990



2024 F350 STAKE BODY. 4WD,
 7.3L Gas, Remote Start, 12'
 Knapheide Body, F212601
Sale Price \$73,990



2024 E350 FREIGHT HAULER. 10'
 DuraCube Van Body, 7' Inside Height,
 7.3L Gas, Roll-Up Rear, DRW, 11,500#
 GVW, F211114. **Sale Price \$50,990**



2024 F350 UTILITY. 4X4, 7.3L Gas,
 DRW, Duramag, Remote Start, Skid
 Plate, Work Desk, F211100
Sale Price \$71,990

250 COMMERCIAL TRUCKS IN STOCK



2024 T350 CARGO VAN.
 High Roof, Cargo Wall Protection,
 Privacy Glass, 31 Gallon Fuel Tank,
 F211948.
Sale Price \$52,518



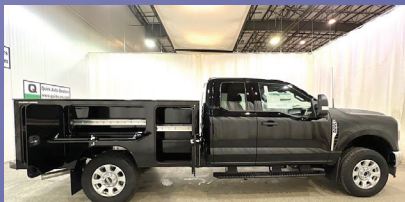
2024 T250 CARGO VAN.
 Load Area Protection Pkg, Mid Roof,
 148" WB, Pwr Heated Mirrors,
 F212338. **Sale Price \$50,695**



**2024 F350 SUPER CAB
SERVICE. Steel Body, V8 Gas,**
 4X4, Remote Start, F211199
Sale Price \$63,490



2024 F550 SERVICE BODY. 16' Van Body,
 Stairway Bumper, 4 Bar Ladder Racks, Ladder
 To Roof, Duel Exterior Cabinets, Work Station,
 Diesel, 4WD, Remote Start, F210946
Sale Price \$96,990



2024 F250 XLT UTILITY. Super Cab,
 V8 Gas, Duramag Body, 4X4, UpFit
 Switches, Pw Slide Rear Window,
 F212013. **Sale Price \$71,990**



2024 T250 CARGO VAN.
 Load Area Protection Pkg, Low Roof, Pwr
 Heated Mirrors, #F212199.
Sale Price \$48,840

QUIRK FORD
540 Southern Artery (Rt 3A) Quincy, MA
www.quirkford.com • 617-249-5660

**Business
Financing with
NO Co-signer
Required**

Prices include all available rebates. Rebates include Customer Cash, FMCC Bonus Cash, and Commercial Upfit Bonus Cash. Customer must qualify for rebates. Call for specific details. Prices are subject to change. * In Lieu Of Rebates

2003 CASE CX 160 EXCAVATOR, Quick Coupler, Bucket & Hammer Available, Approx 5800 Hrs, Good Bottom, Good Shape, Ready to Work!, **\$49,900,** 781-417-3018



2015 KRUZ 36' STEEL DEMO/SCRAP DUMP TRAILER. Auto Tarp – 11R24.5, Good Shape, **\$49,900.** Call Jesse 401-855-1178



202

**TRUCK
&
EQUIPMENT**
603-899-2000

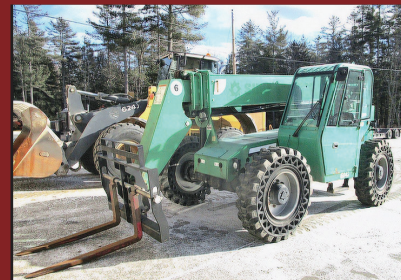
www.202truck.com
RT 202 Rindge NH
SALES & RENTALS - NO SALES TAX
FINANCING & DELIVERY



2013 GENIE GTH1056. 6450 Hours Total, 1 Hour On Brand New Engine, 1 Year Warranty, FF Tire, 10,000 Lb Lift, 56' Height Reach, **\$50,000.**



1998 CAT 320BL. 1 Owner Since New, 16K Hours, Good Bucket Included, Tarmac Hammer, Everything Works Great, Very Good Older Machine, **\$25,000.**



2014 JLG 6042. Cab With Heat, Only 2800 Hours, Solid Cushion Tires, 6000 Lb. Lift, 42 Ft Reach, Serviced, Extra Clean, **\$36,000.**



2013 CASE 721F. 4900 Hrs, 3.5-Yard Q/A Bucket, JRB Coupler, 3rd Valve, 50% Tires, 34,000 Lb. Machine, Title Available, Just Serviced, Go To Work Condition, **\$74,000.**



2003 CAT 320CL. 12,075 Hours, 10 Hours On Rebuilt Motor, Good U.C., Aux. Hydraulic, 42" Bucket, **\$50,000.**



2011 FORD F550 SERVICE TRUCK. 6.8L Gas, 135K Miles, Terex High Ranger (2400 Hours), 37' Bucket, All Inspected and Certified, **\$32,000.**



2005 PETERBILT 379. MATCHED Pair, Rebuilt CAT 550's, 18 Spd, 14+ Full Lock Rear 46, Replaced Double Frame Rails, Wet Line, 800K + 1000K Miles, **\$62,500 Each.**



2014 PETERBILT 337. Paccar PX7 300HP, 26,000 GVW, Air Ride, 10F + 16R On Air Brakes, 138K Miles, Hrs: 6360, 6 New 11R22.5 Tires, Curry Utility Body with Compressor, **\$51,500.**



2001 FRUEHAUF 28' ALUMINUM DUMP TRAILERS. 4 Spring Suspension, 1 Chute In Tailgate, Very Good Liner, 2 Available, **\$14,500.00 Each.**

**WE TAKE
ANYTHING IN
TRADE**

Jolly John's
Truck & Equipment



**FINANCING
AVAILABLE**

WE PAY CASH FOR YOUR TRUCKS & EQUIPMENT



2015 MITSUBISHI FUSO FE160. Mitsubishi F1C 4 Cyl 3.0L Diesel, 161 HP, Automatic Trans, Spring Suspension, 153" WB, Morgan 16' x 96" Wide x 91" High, Completely Serviced & Ready To Go. **\$30,900**



2015 DEERE 310K BACKHOE WITH EXTENDAHOE. 6908 Hours, Local Unit, Well Maintained, Priced To Sell, Everything You Need Extendahoe, Heat & AC, Serviced And Ready For Anything, **\$38,900**

FINANCING AVAILABLE



2022 YANMAR YM342, 10 Year Powertrain Warr, Like New, 8 Forward 8 Reverse, Manual Trans, Skid Steer Coupler, Yanmar 73" Bucket, 2 Mid-Mount Remotes, Rear Remotes, 540 PTO, **\$25,000**



2015 Kenworth T370 4x2 Service Truck, Pacar PX-7 6 Cylinder 6.7L Diesel 280 HP, Allison Auto, Dana Spicer P200605 Drive Axles, PTO, 10' 9" Body, Manual Stabilizers, 2014 IMT 7500-22 7500 lb 2 Section Hydraulic Crane, Wired Remote Control, UNDER CDL, **\$68,900**



2013 FORD F450 XL 4x4 FLATBED WITH CRANE. V10 6.8 L Gas, 200" WB, 11' x 96" Bed, Tiger 2085 Truck Crane 200 lb Capacity, Tool Boxes, Hitch, Ready To Go. **\$21,900**



2011 PETERBILT 365 TRI-AXLE 6x4 DUMP. Cat C13, 6 Cylinder 12.5L Diesel 335 HP, Engine Brake, Allison Auto, 16540 FA, 59500 RA, Air Ride, Steerable Air Lift Pusher Axle, Double Frame, Wet Kit, **\$115,000**



2020 GMC SAVANA G2500 CARGO VAN, V6 4.3 L Gas, Automatic Trans, A/C, Power Windows, Power Locks, Rear View Camera, Freshly Serviced & Safety Checked. **\$24,900**



2019 Ford F-450 XL 4x4 Dump. 11' Rugby Dump Body, V8 6.7L Diesel 330 HP Engine, Differential Lock, 170" Wheelbase, Manual Roll Tarp, Chassis Is Rust Free, **\$59,900**



2015 GENIE Z80/60 ARTICULATING BOOM LIFT. 78' Max Platform Height, 500 lb Max Weight, Jib, Power To Platform, Onboard generator, Deutz 2.9 L4 4 cylinder 74 HP Diesel, Foam Filled Tires. Freshly Serviced & Safety Checked. **\$35,900**



2021 LGMG BOOM LIFT, 46.2' Max Platform Height, 510 lb Max Weight Capacity, Jib, Power To Platform, Deutz D2.9 L4 4 Cylinder, 49 HP 2.9 L Diesel, 315/55D20 Foam-Filled Tires **\$33,900**



2014 JLG 600AJ ARTICULATING BOOM LIFT 60' Max Height, 500 lb Max Capacity, Power To Platform, On Board Generator, Deutz D2011, 49 HP, 3.1 Diesel, 355/55D625 Foam Filled Tires. **\$37,900**

Call Nick 860-861-1326 or Mike 860-861-4199
www.jollyjohnstruckandequipment.com

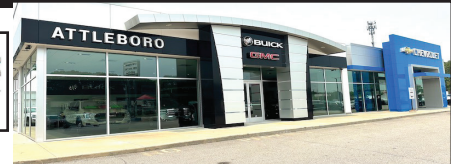
CHEVROLET, BUICK, GMC OF ATTLEBORO

A Priority Automotive Dealership

**ROUTE 1, BETWEEN 95 + 295
SOUTH ATTLEBORO, MA**

508-761-4800

PLENTY OF NEW GMC TRUCKS AVAILABLE



2025 K1500 DOUBLE CAB SLE

SPRAY LINER, TRAILER BRAKE.
#24235G
PRICE INCLUDES GMC LOYALTY INCENTIVE.
\$47,860

2025 SIERRA

CONV. PKG., LOCKING AXLE.
#25082G
\$41,493

2025 K2500 CREW CAB SLE

SLE VALUE PKG., PREFERRED PKG.,
PRO SAFETY PLUS, PLOW PREP.
#25109G
\$67,270

2025 K2500 PICKUP

PLOW PREP, SPRAY LINER,
ASSIST STEPS, 18" WHEELS.
#25060G PRICE INCLUDES REBATE.
\$50,000

**2024 K2500 DENALI
DURAMAX DIESEL**

INCLUDES GOOSENECK 5TH WHEEL PKG.
#242966
\$87,855

**2025 K3500 DENALI ULTIMATE
DURAMAX DIESEL**

5TH WHEEL PKG., PLOW PREP.,
FLOOR LINERS. #25015G
\$99,860

2025 CANYON ELEVATION 4X4

CONV. PKG., ELEVATION PREMIUM PKG.
#25103G
\$47,145

**2025 K3500 CREW CAB
DUMP TRUCK**

14,000 GVW, PLOW PREP.,
CONV. PKG., HITCH COVER. #25106G
\$79,254

2024 SAVANA ONE TON

NICE FLEET SPECS.
#24269G
\$47,000

**2025 K2500 DOUBLE CAB
UTILITY BODY**

10,500 GVW, CONV. PKG., PLOW PREP.,
KNAPHEIDE UTILITY BODY. #25100G
\$77,555

**2025 K3500 CREW CAB
DUALY UTILITY**

14,000 GVW, PANEL TOP COVER,
LATCHMATIC, HITCH. #25014G
\$87,300

**2024 K3500 CREWCAB SLT
DURAMAX DIESEL**

8' BED
SLT PREMIUM PKG., X-31 OFF ROAD
PKG. #24219G
\$83,875

**** PLUS OVER 50 MORE AVAILABLE ****



WWW.CHEVROLETBUICKGMCOFATTLEBORO.COM



SEE OUR OTHER PAGE
ON THE BACK OF THE
CENTER FOLD – PAGE
CF8

HILLSIDE MOTORS

**800-D American Legion Highway (Rt. 177)
Westport, MA 02790
508-636-5050**

Financing
Available
-Others in Stock



Family Owned & Operated Since 1969



W/POWER CRANE

**2017 CHEVY 2500 HD DOUBLE CAB 8' UTILITY W/
POWER AUTO CRANE 4X4. 6.0L V8, Auto, AC, PW, PL,
Rust-Free Southern Truck, 67K, Fleet Maintained, \$36,900.**



SPRAY TRUCK

**2012 FORD F350 12' PLATFORM BODY. Former
Mosquito Spray Truck, Possibly Use For Other
Applications, V8, Auto, AC, PW, PL, Never Driven In Snow,
111K, Pristine Condition, \$22,900.**



84" CA

2 AVAILABLE

**2015 CHEVY 3500 DRW C&C DRW RWD. 6L V8, Auto,
AC, 84" CA, Long Wheel Base, Backup Camera, 13,200
GVW, Georgia Truck, 187K, Fleet Maintained, Excellent
Condition, \$17,700.**



**COMPRESSOR WELDER
GENERATOR**

LUBE TRUCK

**2015 CHEVY 3500 11' UTILITY RWD SERVICE/LUBE
TRUCK. 6L V8, Auto, AC, Vanair Compressor, Welder, Generator,
Lube System w/Reels, 13,200 GVW, 187K, Southern Truck,
\$34,500. Fully Equipped (\$24,500. w/o Equipment)**



OTHERS AVAILABLE

**2020 CHEVROLET SILVERADO 2500 HD CREW
CAB 8' LONG BED RWD. 6.6L V8, Auto, AC, PW, PL,
6-Passenger, 9900 GVW, 116K, Fleet Maintained, One
Owner, Excellent Condition, \$26,900. (file photo)**



16' SHELVING PKG

**2021 CHEVY 4500 16' CUBE W/SIDE DELIVERY DOOR &
ALUMINUM RACKING. 6.6L V8, Auto, AC, PW, PL, 177" WB,
Factory Warranty, 50K, Fleet Maintained,
\$38,700 (Others Available)**



W/ ATTACHMENTS

**JOHN DEERE 4300 WITH LOADER 4x4. 32 HP, Set of Forks &
72" Belly Mower Included, Hydrostatic Drive, 3 Point Hitch, One
Owner, Garage Kept, \$18,900., (file photo)**



9 AVAILABLE

**2021 CHEVROLET 3500 SRW CUBE VAN. Auto, AC, PW, PL,
Walk-Thru Door, Overhead Rear Door, Translucent Roof, Back-Up
Camera, Bluetooth, 9900 GVW, 81,000 Miles, One Owner, Mint
Condition, \$29,900**



Commercial
Vehicle Center



MCGOVERN
AUTOMOTIVE GROUP



**SERVICE CENTER NOW
OPEN. BOOK YOUR
F650 & F750 NOW!**

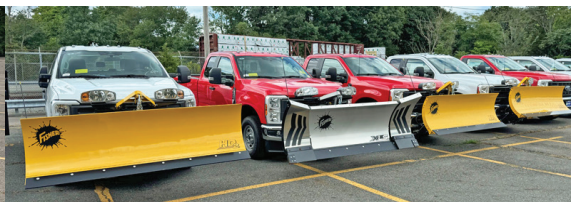


508-532-3200

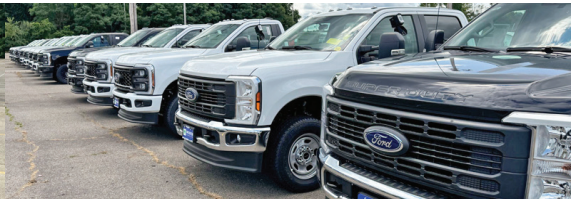
**!! NOW OPEN !!
MCGOVERN'S BRAND NEW COMMERCIAL
BAY SERVICE CENTER FOR YOUR
F650 & F750 TRUCK NEEDS!**



WE HAVE YOUR TRANSITS IN STOCK! READY TO ROLL! CALL WITH YOUR NEEDS!



WE'VE GOT A LARGE SELECTION OF PICKUPS, PLOW TRUCKS, CREW CABS, REGULAR CABS!



ALL TYPES OF WORK TRUCKS READY-TO-GO! GREAT VARIETY OF COLORS, MODELS & BODIES



GREAT SELECTION OF BOX TRUCKS & HIGH CUBES IN STOCK! MANY OPTIONS TO CHOOSE!



NEW FORD F350 & F450 DUMP TRUCKS & UTILITY BODIES IN STOCK!



Commercial
Vehicle Center

**1200 WORCESTER ROAD (Rt.9 East)
FRAMINGHAM, MA 01701**



Commercial
Vehicle Center

www.mcgovernfordofframingham.com



**SERVICE CENTER NOW
OPEN. BOOK YOUR
F650 & F750 NOW!**



**!! NOW OPEN !!
MCGOVERN'S BRAND NEW COMMERCIAL
BAY SERVICE CENTER FOR YOUR
F650 & F750 TRUCK NEEDS!**



2025 FORD F450 XLT SUPER CAB CAB & CHASSIS 4X4: 7.3L V8, Auto, 16,500 GVW, DRW, AC, PW, PL, STK#FM8714, \$65,890.



2024 FORD TRANSIT THERMO KING REFRIGERATED VAN. V6, AUTO, A/C, STK#FM8128, \$85,505.



2024 FORD F-250 XL READING CLASSIC II ALUMINUM UTILITY 4X4. 6.8L V8, AUTO, AC, 10K GVW, CAMERA, STK#FM7848, \$66,115.



2024 FORD F-550 LANDSCAPE DUMP 4X4: 6.7L, POWER STROKE DIESEL V8, AUTO, STK#FM8172, \$86,805.



2024 F550 SWITCH-N-GO REG. CAB DUMP 4X4: 6.7L PWR. STROKE DIESEL, PWR. GROUP, SNOW PLOW PREP. Stk#FM7341, \$92,227



2024 TRANSIT KUV: ALL WHEEL DRIVE, 3.5L V-6, TOW PACKAGE, POWER GROUP. STK.# FM8835. \$89,165



2024 F550 BOX TRUCK 4X4 W/ TOMMY GATE: POWER GROUP, 18,000 GVW. STK.# FM7969. \$108,570



2024 FORD E-450 CUTAWAY CLASSIK 16' BOX. 7.3L V8, AUTO, AC, 14,500 GVW, STK#FM6053, \$65,420.



2024 FORD F-350 XL SUPER CAB READING SL UTILITY BODY 4X4. 6.8L V8, AUTO, 10K GVW, STK#FM8107, \$70,255.



2025 FORD ECONOLINE E-350 CUTAWAY AEROCCELL BOX VAN: 7.3L V8, AUTO, 12,500 GVW, POWER GRP, STK#FM7892, \$62,928



2024 FORD F-550 SWITCH-N-GO LANDSCAPE DUMP 4X4. 6.7L V8, AUTO, 19,500 GVW, STK#FM8271, \$104,700.



2025 FORD F-650 DUMP. 7.3L V8, 335 HP, AUTO, 19K GVW, COVER, PLATE, HITCH, STK#FM8099, \$117,478.



**1200 WORCESTER ROAD
(Rt.9 East)
FRAMINGHAM, MA 01701**

www.mcgovernfordofframingham.com



T-QUIP

SALES & RENTALS INC.

YOUR **1ST** CHOICE IN SALES & RENTALS

SALES & RENTALS

(603) 623-3669 • TQUIP.com
 Londonderry, NH

• OVER 1000 MACHINES & ATTACHMENTS IN OUR INVENTORY! •



2021 KOMATSU WA320-8 A/C, AUX HYD, JRB HYD Q/C, 3.5CY BKT, 165HP TIER-4 FINAL DSL, 4-SPD, RIDE CTRL, REAR CAM, LIGHT & FNDR PKG, 20.5R25 RADIALS, 2540 HRS **\$150,000**



2020 KOMATSU WA270-8 A/C, HYD Q/C, 104" 3CY BKT, TIER-4 FINAL DSL, 4-SPD TRANS, REAR CAM, 20.5R25 RADIALS, 2316 HRS **\$142,500**



2016 DEERE 444K
 A/C, 100" 2.5CY BKT, TIER-3 DSL, 4-SPEED TRANS, RIDE CONTROL, 17.5R25 RADIALS, 5456 HRS **\$65,000**



2016 CAT 926M
 A/C, HYD Q/C, 3CY BKT, 168HP DSL, 20.5R25 RADIALS, 7172 HRS **\$95,000**



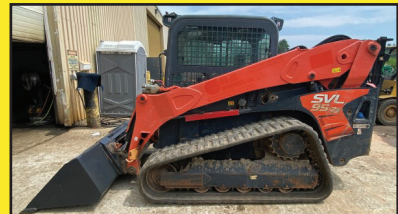
2023 KOMATSU WA200-8
 A/C, 3RD VLV HYD, HYD Q/C, 3CY GP BKT, TIER-4 FINAL DSL, 4-SPD TRANS, RIDE CTRL, 20.5R25 RADIALS, 380 HRS **\$159,000**



2022 HITACHI ZW50-5B
 A/C, AUX HYD, HYD Q/C, 64" 1CY GP BKT, 44HP KUBOTA DSL, 15.5/60-18 TIRES, 1328 HRS **\$39,500**



2019 CAT 908M
 A/C, AUX HYD, HYD Q/C, 1.5CY BKT, TIER-4 FINAL DSL, 2-SPD TRANS, HI-SPD TRVL, ELEC DIFF LOCK, TOOL CTRL, 405/70R20 TIRES, 1125 HRS **\$79,000**



2019 KUBOTA SVL95-2S
 3,200LB OPER CPTY, CAB, A/C, AUX HYD, HYD Q/C, 84" GP BKT, 96HP DSL, 2-SPD, PILOT CTRLS, 18" RBR TRKS, 1690 HRS **\$49,000**



ATTACHMENTS!
 BUCKETS • COUPLERS • HAMMERS • FORKS
 GRAPPLES • THUMBS • BROOMS • RIPPERS
 PULVERIZERS • SHEARS • MOWERS • TIRES & MORE!

CALL JAMES:
603-703-8529



2021 HITACHI ZW370-6
 A/C, 8CY GP BKT, 389HP ISUZU DSL, RIDE CTRL, 5877 HRS **\$199,000**

• ADDING UNITS TO OUR FLEET DAILY FOR YOUR RENTAL NEEDS! •



2020 CAT 349FL
A/C, 11' STK, HYD
Q/C, 60" BKT, 417HP
CAT C13 ACERT TIER-4
FINAL DSL, C/W RMVL
SYS, AUTOLUBE, 36"
PADS, 6559 HRS
\$189,000

SALES & RENTALS INC.
T-EQUIP
YOUR **1** CHOICE IN SALES
& RENTALS

(603) 623-3669
TQUIP.com



**LOOK
NEW
INVENTORY!**

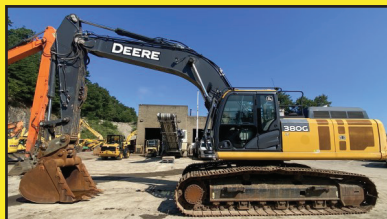
2022 CAT 315GC
A/C, AUX HYD, HYD
Q/C, 36" BKT, HYD
THUMB, 98HP TIER-4
FINAL DSL, BLADE, PTRN
CHNGR, 360° CAMS,
ZERO TAIL, 20" PADS,
1047 HRS
\$149,000



2017 INT'L HX615 8X4, 475HP NAVISTAR
A475, ALLISON AUTO TRANS, 84740LB
GVWR, STRBL AIR LIFT PSHR AXLE, DUAL
STR BOXES, HENDRICKSON HAULMAAX
RBR OVER WALKING BM SUSP, 226" WB,
BEAU-ROC STEEL BODY, 240,701 MI **POR**



(2) 2023 CAT 320
A/C, AUX HYD, HYD Q/C, 48" BKT, 2D
CAT GRD, CAT ASSIST, CAT PAYLOAD, 2D
E-FENCE, 360° CAMS, 32" PADS, 1000 HRS
CALL FOR PRICING



2020 DEERE 380G A/C, AUX HYD W/
ADD'L 2-WAY ROTATOR LINES, ROCK-
LAND TEFRA HYD Q/C, 54" ROCKLAND
BKT, STK-MNTD GRPL PLT, F FCTY WNDW
SCRN, 32" PADS, 2224 HRS **\$179,000**



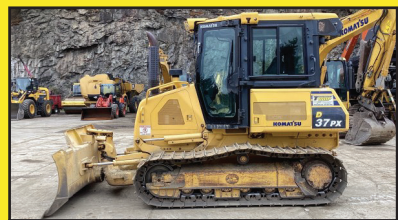
2009 INT'L 7500 ROLLBACK, A/C, 9.3L
MAXFORCE DSL, 10-SPD EATON FULLER
TRANS, 15-TON WINCH, 12K F AXLE, 40K
DRIVE AXLE, 52K GVWR, 11R22.5 TIRES,
122,812 MILES **\$39,000**



2010 KOMATSU D51EX-22
13'W 6-WAY ST BLADE, SWEEPS
DRAWBAR, 30" LGP PADS, 5325 HRS
\$65,000



2022 KOMATSU D51EX-24 A/C, 6-WAY
HYD PAT BLADE W/ ADJ PITCH, 131HP TIER
-4 FINAL DSL, HST TRANS W/ ELEC CTRL,
SNGL PDL, DRAWBAR, PLUS UC, 22" PADS,
768 HRS **\$175,000**



2014 KOMATSU D37PX-23 LGP
A/C, 6-WAY HYD BLADE, TIER-4 DSL,
3-SPD HST TRANS, 28" LGP PADS,
2372 HRS
\$60,000



1997 CAT 988F
CAB, 6.5CY SPADE BKT, 428HP DSL,
35/65R33 RADIALS, 4761 HRS
\$59,000



2016 METSO LOKOTRACK LT106
42"X28" JAW, CAT DSL, OVERBAND
MAGNET, REMOTE CTRL, TRACKED, NEW
JAW DYES, NEW FDR BEARINGS, 4761 HRS
\$285,500



2005 METSO CV100
1'7"x7' SINGLE-DECK SCREEN,
DEUTZ F4L 2.7L
\$45,000

• NOTHING IS OUT OF REACH—CALL US FOR FINANCING OPTIONS! •

**We are cash
buyers for
quality used
trucks and
equipment!**

BROOKSIDE EQUIPMENT SALES

www.BrooksideEquipment.com

978-249-4600



2016 KENWORTH T880: 588,737 Miles, 10 Wheel Daycab, Cummins ISX, 450 HP, Eaton 10 Speed, Air Ride, Wetline, 13.2K F, 46K R, stk#TK043, **\$49,500**



2018 DOOSAN DL220-5: 5,784 Hours, 3.25 Yard, Cab, Hydraulic Coupler W/ 3rd Valve, Backup Camera, 6 Cyl Doosan Turbo, 29K Lbs, stk#LO313, **\$59,500**



2017 LINK-BELT 210 X4: 3,292 Hours, 40" Digging Bucket, Geith Hydraulic Coupler, 2 Way Auxiliary Hydraulics, Backup Camera, 49K Lbs, stk#XC301, **\$87,500**



2014 RHODES RS2660-2: Tandem Axle Dump Trailer, 26 Ft Steel Tub, Steel Frame, Aluminum Wheels, Spring Suspension, stk#TR571, **\$39,900**



2022 CATERPILLAR 320: 1,835 Hours, 52" Digging Bucket, Hydraulic Coupler, Good U/C, A/C, 2 Speed, Backup & Side Cam, 50K Lbs, stk#XC305, **\$144,500**



2020 VOLVO ECR88D: 1,891 Hours, 36" Bucket, Auxiliary Hydraulics, Cab W/ A/C, 91" Blade, 2 Speed, Swing Boom, 4 Cyl Volvo Turbo, Manual Coupler, 21K Lbs, stk#XC078, **\$57,500**



2016 CATERPILLAR 938M: 8,128 Hours, 3.5 Yard, Cab, Hydraulic Fusion Coupler W/ 3rd Valve, 20.5R25 Good Rubber, Backup Camera, 36K Lbs, stk#LO118, **\$79,500**



2016 CATERPILLAR 430F2: 4,546 Hours, 4x4, X-Hoe, Cab W/ A/C, Turbo, Ride Control, Pilot Controls, 4-In-1 Bucket, 24" Rear Jaw Bucket, stk#BH411, **\$52,500**



2021 XCMG XE75U: 104 Hours, 24" Bucket, Hydraulic Thumb, A/C, 4 Cyl Kubota, 2 Speed, 17.5K Lbs, stk#XC050, **\$59,500**



2018 CATERPILLAR 312F GC: 959 Hours, 32" Bucket, Aux Hyd, Good U/C, A/C, Cat C3.4B, 28K Lbs, Stk#XC289, **\$99,500**



2002 MACK CL713: 10 Wheel Day Cab, Mack E7, 460 HP, Mack 18 Speed, Camelback Suspension, 14,060 F, 44K R, Stk#TK194, **\$27,500**



2011 KOMATSU PC88MR-8: 6,705 Hours, 23" Digging Bucket, Cab W/ A/C, Swing Boom, Roadliner Pads, 7'7" Blade, Aux Hyd, Manual WR Coupler, 4 Cyl Komatsu, 18.5K Lbs, stk#XC655, **\$32,500**



2020 CATERPILLAR 279D3: 5,651 Hours, 2220 Lb Lift, Cab W/ A/C, Hyd Coupler, Aux Hyd, Backup Camera, Pilot Controls, 73 HP, 10.1K Lbs, stk#SK424, **\$34,500**



2021 JOHN DEERE 304L: 2,130 Hours, 1 Yard, Cab W/ A/C, Hyd Coupler W/ 3rd Valve, 4 Cyl Yanmar, 12.8K Lbs, stk#LO512, **\$64,500**



1999 PETERBILT 379: 506,700 Miles, Detroit 60 Series, 430 Hp, Fuller 18 Spd, Air Ride, 12K F, 44K R, Engine Rebuild In 2023, stk#TK878, **\$44,500**



2013 MACK GRANITE GU533: 10 Wheel, 15 Ft Steel Body, Front Plow Frame, Allison Automatic, 16.5K F, 40K R, Rubber Block Suspension, stk#TK020, **\$39,500**



2017 KOMATSU WA320-8: 12,179 Hours, 3.7 Yard, Cab W/ A/C, Backup Camera, 6 Cyl Komatsu Turbo, 35K Lbs, Stk#LO101, **\$67,500**



2017 CASE 580SN: 2,694 Hours, 4x4, X-Hoe, Cab W/ A/C, 4-In-1 Bucket, Turbo, Power Shift, Ride Control, Pilot Controls W/ Pattern Changer, 18" Digging Bucket, stk#BH844, **\$59,900**



2019 KUBOTA KX033-4: 4,200 Hours, 24" Bucket, Cab W/ A/C, Auxiliary Hydraulics, Manual Coupler, 61" Blade, 2 Speed, 3 Cyl Kubota D1703, 7.8K Lbs, stk#MX122, **\$29,900**



2021 DOOSAN DX225LC-5: 4,082 Hours, 24" Bucket, A/C, Hydraulic Thumb, 6 Cyl Doosan Turbo, Good U/C, 51K Lbs, Stk#XC129, **\$97,500**

60 STATE RD, PHILLIPSTON, MASS

978-249-4600

EMAIL: KEVIN@BROOKSIDEEQUIPMENT.COM



Commercial
Vehicle Center



MCGOVERN
FORD AT DRUM HILL

Call Mike Smokler 603-493-6561



2024 F650 REFRIGERATED 20' VAN BODY. Thermo King, Maxon Galvanize Liftgate, Rear 3 Section Door, E-Track, Aluminum Floor & Scuff Plate, Diesel, Automatic, #FN4679 **\$153,996.**



2024 E450 14' REFRIGERATED VAN. Thermo King V520 Max 50, Two Rows E-Trac, Step Bumper, 7.3L V8 Gas, PW, PL, FN4553 **\$86,996.**



2024 T250 REFRIGERATED VAN. All Wheel Drive, Dual Battery, V6 Engine, FN5458 **\$83,823**

OVER 75 SUPER DUTIES IN STOCK - COLORS AND CONFIGURATIONS



2023 F600 16' UTILITY BODY. Diesel, Remote Start, 22,000 GVW, 4WD, 5 Ladder Bars, Catwalk, Remote Locking, FN5461 **\$99,996.**



2024 T350 SERVICE VAN. All Wheel Drive, 11' Knapheide Aluminum Body, V6 Gas, Master Locking, Pass Thru Door, #FN5982 **\$87,000**



2024 F550 CREW CAB RACK BODY. 90"x60" Platform Liftgate, Diesel, 4X4, Remote Start, Polish Alum Wheels, #FN5081 **\$101,770**



2024 F600 STAKE BODY. 90"x60" Aluminum Platform Liftgate, Polish Aluminum Wheels, Diesel, 4WD, 22,000# GVW, Remote Start, #FN5155 **\$99,996.**



2024 F550 DUMP. Diesel, Remote Start, 4X4, 9' Body, 4 Speaker Stereo, Tool Box, Payload UpGrade, FN5472 **\$91,796.**



2024 F550 SUPER CAB LANDSCAPER. 4X4, Diesel, Polish Alum Wheels, Heated Seat, Remote Start, FN4986 **\$94,996.**



2024 F350 SERVICE BODY. 11' Knapheide, V8 Gas, 4WD, DRW, Remote Start, 120V/400W Outlet, #FN5242 **\$72,996.**



2023 T350 HD FREIGHT VAN. New, All Wheel Drive, 12' Body, Roll Up Door, 6 D-Rings, Step Bumper, DRW, FN5066. **\$65,000.**



2024 F550 UTILITY SUPER CAB. Heated Frt Seats, Polish Aluminum Wheels, Diesel, 4WD, Remote Start, XLT Pkg., #FN5019 **\$101,996.**



2025 F650 DUMP. 10' Donovan Body, 3 Way Gate, Tool Box, Pintle Hook, V8 Gas, Automatic Trans, #FN5220 **\$94,490**



2024 F550 LANDSCAPER. 12' Dump Body, Super Cab, 4X4, Diesel, Remote Start, Pwr Rear Window, Pintle Ball, #FN5098 **\$89,998.**



2024 TRANSIT WORK VANS. 50 Units Available, Low, Mid, High Roofs, AWD, RWD, Bin Pkg, Cargo Pkg. **Starting @ \$47,996**



Commercial
Vehicle Center

MichaelSmokler@mcgovernauto.com

Authorized Fisher
Snow Plow Dealer



HILLSIDE MOTORS

**800-D American Legion Highway (Rt. 177)
Westport, MA 02790
508-636-5050**

Financing
Available
-Others in Stock

Family Owned & Operated Since 1969



3 AVAILABLE

**COMPRESSOR WELDER
GENERATOR**

2016 FORD F550 16' BOX EQUIP SERVICE TRUCK. V10, Auto, PW, PL, Cruise, Back-Up Camera, 19,500 GVW, Power Gate, Vanair Air N Arc Compressor Generator Welder, 116K, Fleet Maintained, One Owner, **\$34,800.**



POWER GATE

2014 FORD F350 12' RACK BODY W/POWER GATE. RWD, 6.2L V8, Auto, AC, PW, PL, 84" CA, One Owner, Fleet Maintained, 98K, Excellent Condition, **\$19,900. (C&C Only \$17,800.)**



POWER TAILGATE

2017 GMC 1500 REG CAB RWD 8' BED W/ POWER TAILGATE. Auto, 106K, One Owner, Fleet Maintained, **\$14,900. (Will Separate)**



ALUM POWER GATE

2017 CHEVY 3500 SRW CUBE VAN W/ALUM. POWER TAILGATE. Auto, PW, PL, 9900 GVW, One Owner, 142K, Fleet Maintained, **\$13,700.**



DURAMAX DIESEL

2022 CHEVY 3500 HD C&C 2WD. 6.6L Duramax Diesel, Allison Auto, PW, PL, Bluetooth, Heated Seats, Southern Truck, 84" CA, 282K, All Highway Miles, Impeccable Condition, **\$21,900.**



OTHERS AVAILABLE

2018 ISUZU NPR HD 16' BOX TRUCK. 6L V8, Auto, AC, Back-Up Camera, 14,500 GVW, 151K, Fleet Maintained, File Photo, One Owner, **\$14,900.**



FINANCING AVAILABLE

2024 KUBOTA KX 080-5 EXCAVATOR w/Hydraulic Thumb. 122 Hours, Power Angle Blade, Hyd. Pin Grabber, 36" Bucket, AC, Heat, Radio, Telematics, Addl Counter Weight, One Owner/Operator, Pristine, Factory Warranty, **\$109,700.**



OTHERS AVAILABLE

2008 BELMONT 24' EQUIPMENT TRAILER. 14,000 GVW. W/Ramps, Adjustable Beaver Tail, 8 Lug Wheels, One Owner, Nice Trailer, **\$4,600., Others Available**

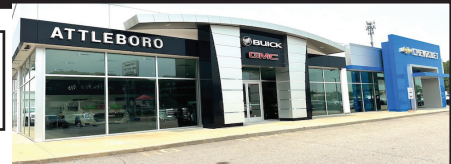
CHEVROLET, BUICK, GMC OF ATTLEBORO

A Priority Automotive Dealership

**ROUTE 1, BETWEEN 95 + 295
SOUTH ATTLEBORO, MA**

508-761-4800

PLENTY OF NEW CHEVROLET TRUCKS AVAILABLE



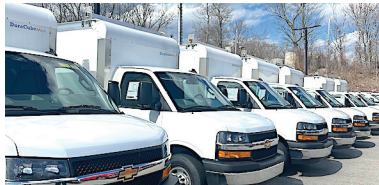
2024 C3500 12' RACK BODY



14,000 LB GVW, GOOD CHASSIS SPECS.,
UPGRADED RACKS, HITCH. #24123H

\$66,000

2025 DURACUBE MAX 12'



9,900 GVW, ELEC. BODY LOCKS,
LADDER RACKS, SHELVING.
#25130H

\$72,400

2025 K3500 12' RACK BODY



14,000 GVW, CONV. PKG., PLOW
PREP., HITCH. #25245H

\$69,278

2024 K3500 DUMP TRUCK



14,000 LB GVW, PLOW PREP., HITCH,
COVER, TRAILER BRAKE. #24340H

\$68,548

2025 DURACUBE MAX 10'



9,900 GVW, ELEC. BODY LOCKS,
LADDER RACKS, SHELVING. #25141H

\$69,000

**2024 LCF 4500
14' BOX + LIFT GATE**



14,500 GVW, POWER MIRRORS,
KEYLESS ENTRY, 14' ALUM. BOX,
2500# LIFT-GATE.

\$91,995

**2024 K3500 12' LANDSCAPE DUMP
DURAMAX DIESEL**



14,000 LB GVW, HITCH, COVER, TRAILER
BRAKE, SIDE DOOR, REAR BARN DOORS.
#24311H

\$84,572

2024 EXPRESS 3/4 TON



8,600 GVW, NICELY EQUIPPED, RANGER
STEEL SHELVING PKG. #24406H

\$49,475

2024 4500 14' BOX



14,200 GVW, FANCY CHASSIS SPECS.,
TRANSLUCENT ROOF, RAMP, TIE-DOWN
HOOKS. #24409H

\$66,000

2024 K6500 DUMP



22,500 GVW, BACKPACK, 9' DUMP
BODY, HITCH, ELECTRIC COVER.
#24351H PRICE INCLUDES REBATE.

\$97,860

2023 K5500 DUMP



17,500 GVW, 11' DUMP BODY,
HITCH, COVER, TOOL BOX.
#23347H PRICE INCLUDES REBATE.

\$87,671

2024 4500 16' BOX



14,200 GVW, NICE CHASSIS SPECS.,
RAMP, TIED-DOWN RINGS. #24408H

\$67,000



WWW.CHEVROLETBUICKGMCOFATTLEBORO.COM



THIS AD IS COPYRIGHTED & OWNED BY TRUCK AND EQUIPMENT POST



2019 GREAT DANE 53'. Tires And Brakes 90%, Swing Doors, Body Is Vented Front And Rear, Title In Hand, New Roof And Top Rail, Logistical Post Interior Air Suspension, Side Air Deflectors, **\$20,000 OBO.**
508-557-0159



AREA HYDRAULICS

810 Quaker Hwy. Uxbridge, MA

508-278-6670



Cylinder Resealing



We Make Hose Assemblies

After Hours Service Available!



**2020 CHEVY 2500 HD
CREW CAB WITH
8' UTILITY BODY
& LADDER RACK RWD.**

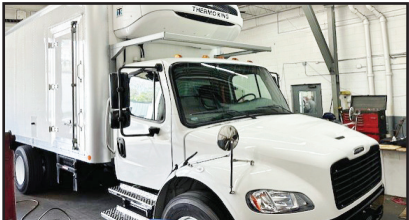
6.6 Gas, Auto, PW, PL, Bluetooth,
Backup Camera, 111K, One Owner,
Fleet Maintained, **\$33,300.,**
Westport, MA 508-636-5050



1962 AMERICAN LAFRANCE FIRE ENGINE. Open Cab, 6 Cyl. Gas Engine, Hyd. Brakes, Standard Trans, Driven Into Garage Approx 4 Years Ago, Apparatus Is Complete, Current CT Registration, **\$6000.** Waterbury, CT 203-232-0921

T & TAYLOR & LLOYD, INC. T &

SEE OUR INVENTORY: WWW.TAYLORANDLLOYD.COM



2023 FREIGHTLINER M2. Cummins, Non CDL, Air Brakes, Allison Auto, 10K Miles, TK Reefer, 2 Side Doors, Inside Sliding Partition, Hours & Reefer Match The Miles. Like Brand New But **\$40,000 Cheaper**



NEW 2024 CV515 SFA 4X2. 6.6L 350 HP, Allison 2750, Call for info

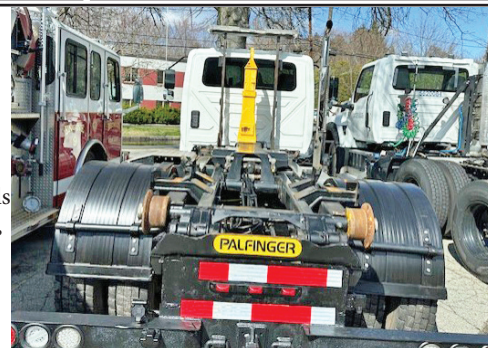


2025 INTERNATIONAL MV 607. Brand New, 254 WB, Allison 3500 RDS, Cummins 300 HP, Air ride



**2021
INTERNATIONAL MV
607.**

Non CDL, 26K GVW,
Allison Auto, Palfinger
Hook Lift, Sander Controls
& Plow Hitch, 17K Miles,
Great Low Mileage Hard
To Find Truck,
HURRY



617-429-3370 CALL JACK COAKLEY • 8 Railroad Avenue Bedford, Ma

T-QUIP
SALES & RENTALS INC.

Londonderry, NH

603-623-3669

www.TQUIP.com

DAILY | WEEKLY | MONTHLY EQUIPMENT RENTALS



TRACKED DUMPERS

ROCK TRUCKS

EXCAVATORS

ROLLERS

DOZERS

BACKHOES



WHEEL LOADERS

SKID STEERS

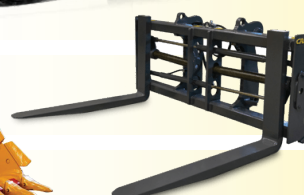
CRUSHERS

SCREENERS

TELEHANDLERS

MOTOR GRADERS

SPECIALTY ATTACHMENTS



WWW.SCRANTONTRUCKS.COM
777 TALCOTTVILLE ROAD VERNON, CT • 860-281-6726



2025 GMC SIERRA 3500 DOUBLE CAB.
 4X4, GAS, READING SERVICE BODY,
 #S9029



2024 GMC SIERRA 3500 CUTAWAY.
 6.6L V8, 16' CLASSIC CUBE BODY, RAMP,
 #R9660, \$57,900



2024 GMC SAVANA 3500 CUTAWAY.
 17' AEROCCELL BODY, 6.6L V8
 AUTOMATIC, RAMP, #R966, \$59,900



2024 GMC SIERRA 3500. 11' SERVICE
 BODY, DRW, 6.6L GAS, 10 SPEED
 ALLISON AUTOMATIC, #R9561 \$72,900



2024 GMC SIERRA 3500. DOUBLE CAB,
 DURAMAX DIESEL, READING SERVICE
 BODY, #R9669 \$75,900



2025 GMC SIERRA 2500 DOUBLE CAB,
 4X4, 6.6L V8 GAS,
 #SS9992



2024 GMC SAVANNA 3500.
 12' DEJANA DURACUBE MAX, SRW,
 #R9724



2024 GMC SAVANA 3500. READING
 SERVICE BODY, 139" WB, BACK UP
 CAMERA, #9869



2025 GMC SAVANA 3500 CARGO VANS.
 4 TO CHOOSE, #R9986

MANY OTHER TRUCKS IN STOCK. CALL FOR DETAILS



WWW.SCRANTONTRUCKS.COM





Burrillville, RI
401-633-4587

- **Full Bucket Rebuilds**
- **Cylinder Resealing**
- **Wear Plates**
- **Adapter Replacement**
- **Hardfacing**
- **General Maintenance**
- **Computer Diagnostics**
- **On Site Hose Replacement**



CHRYSLER/DODGE HEMI MOTORS.
 392 HEMI High Output, Dual Single Carburetors. 354 HEMI w/ Automatic Push Button Trans. 331 Industrial Hemi, 440 Big Block w/ 727 Auto Trans, Call For More Information, 978-369-5514



2016 JOHN DEERE 350G LC EXCAVATOR,
 6173 Hours, Very Clean & Tight Machine,
 42" Digging Bucket, Ready To Work ! Priced To Sell.
\$114,900, 781-417-3018



Custom Gates Hydraulic Hose Assemblies & Fittings

Full Truck Service, Maintenance & Repair

All Makes & Models

Over 20 Years Experience Specializing In Mack's

Marshall Cefole - **978-467-7993**

Randy Rameau - **978-423-2889**

10 Gardner Road, Winchendon MA 01475



2017 FONTAINE 55 TON LOWBED TRAILER. Dropside, Triaxle, 26' Well, 102" Wide, Nice Shape, **\$65,000.** Call Jesse 401-855-1178



Serving You With New Ideas




MILITARY GENERATORS AVAILABLE. CALL FOR MORE INFORMATION.

305 Shaker Rd, East Longmeadow, MA
413-525-6665 • www.wbhill.com

ALL MAKES

EQUIPMENT & PARTS

CONTACT

ROLAND CARTER 603-340-6776 • ANDOVER NH 03216

**EQUIPMENT SALES
EQUIPMENT PARTS
EQUIPMENT
ATTACHMENTS
FINANCING AVAILABLE**



**New & Used
Buckets &
Attachments.**



Rebuilt & Good Used Engines.



**New Undercarriage.
Free Undercarriage Inspection.**



**Equipment
Hydraulic
Parts.**



**Salvage
Equipment
Parts.**

info@allmakesequipmentandparts.com • www.amepinc.com



**2015 CAT
336FL.
7500 Hours,
Nice Unit,
\$134,900.
Call/Text
774-249-1548**



**2000 GALLON CONVAULT
DIESEL TANK. With Pump,
Double Wall, \$7500 OBO.
Call Jesse, 401-855-1178**

R.J. POIRIER

**HEAVY EQUIPMENT
REPAIR, INC.**

**413-245-3882
208 Holland Road
Brimfield, MA 01010**

**Sales Contact: R.J. Poirier
rjpoirier@rjpoirier.com**



2021 CAT 982M.GP, Low Hours.CALL

2017 CAT 988K HIGH LIFT. 10 Yard Spade, Low Hours.\$395,000

2017 VOLVO EC750.Coupler, (2) Buckets, Trimble.CALL

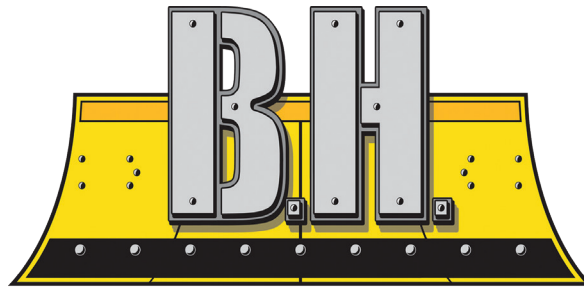
2014 CAT D8T. 8 SU, SS.CALL

2015 CAT 972M XE. 80% Tires, GP Bucket.CALL

www.rjpoirier.com

www.bhtrailersandplows.com

6 Center Parkway
Plainfield, CT
06374
860-949-7863



TRAILERS AND PLOWS

2207 Hartford Ave.
Johnston, RI
02919
401-214-3735



NEW
Inventory
Daily!



For Full
Listing
Please Check
Website



**CM Aluminum Skirted
Flat Bed, Gooseneck
& Receiver Hitch Built In
Starting at \$7,495**



**CM SK Skirted Flat Bed
Gooseneck and Receiver Hitch
Built In, Starting at \$6,995**



**CM RD Beds
Over 100 Beds In Stock!
Starting at \$4,395**



**DURAMAG Short Bed
Loose Sills, 10" Apron
and Lights in Headboard
Cash and Carry, \$3,895**



**BCL 82 x 20
Full Power Tilt, Steel
Deck With 12K Winch
14,000Lb. GVWR, \$10,950**



**SPARTAN 85 x 16
6'6" Tall, Ramp Door
Plywood Interior Walls and
Floor, 9,990Lb. GVWR, \$8,395**



**BIG TEX 14LX 83 x 14Ft.
With Ramps & Tarp Kit
Includes 4 D-Rings
14,000Lb. GVWR, \$8,995**



**DIAMOND C FMAX210 32Ft.
Hyd. Dovetail, Hyd. Jacks, Load
Lights, Solar Charger, 25,000Lb.
GVWR, 16,590Lb. Pload, \$29,995**





2001 MAC 26' STEEL DUMP TRAILER. High Lift Gate, Air Ride, **\$23,000.** Call Jesse 401-855-1178



2012 FORD F750. CDL Hooklift Truck, SL-240 Swaploader Hyd Hook Lift System, US Tarp System, Alum Tool Box, Cummins Diesel, Allison Trans, Air Brakes, Air Ride Seat, Up To 25-Yard Dumpsters Or 18' Long, Ready To Work, **\$65,000.** 203-613-5794



1991 CAT D3-C BULLDOZER. Stored In My Garage 15 Years, 5900 Hours, Bushings Turned On Chains, New Battery And Starter, Water Pump, Runs Great, Turned Cutting Edge & Corners, New Paint, Alt & Filters, Very Powerful, Can Run CAT Forestry Grinder, Used Only To Spread Loom, **\$30,000.** 508-904-8788, Call Tony



ROCKWELL MODEL 14. Vertical Metal/Wood Cutting Band Saw, Good Condition, Call For More Info. 978-369-5514



2004 FORD F-350. 6.0, Auto, 4x4, Lariat, Dually, Runs Excellent, No Rust, Comes With Flatbed And Original PU Body, **\$12,500.** Text Gary, 508-331-7310



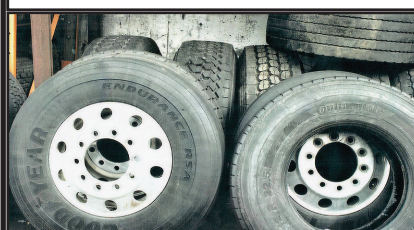
2016 CHEVY SILVERADO 2500 HD. 144,000 Miles, Looks Good, Runs Well, Truck Has Frame And Is Wired For An 8 Foot Fisher Plow, No Blade, **\$15,000.** 508-849-8393



2006 PETERBILT TRI-AXLE DAY CAB, Lowbed, 655K Miles, C15 475 HP MXS52872, CAT OPT Overhaul At 214,807, New CAT Cylinder Head At 486K. Steer 14,320 Lbs.. 11R24.5 Tires, Lift Axle 20K Lbs., New 315/80/22.5 Michelin XZUS2, 46K Rears 3.91, 2-Line Wet System, Clean Title, Georgia Truck, Salt-Free, No Rust, Bought For A Project, Plans Changed, **\$119,000.** 802-839-0552



2012 HONDA ODYSSEY TOURING. 240,000 Miles, Dealer Maintained, Entertainment Center, Sunroof, Minor Scuff Marks, **\$3,600.** 401-533-1673



USED TIRES. 11R-22.5, Some 425-22.5, Some Rims, **\$75 Each OBO.** 413-374-5331



1996 MACK RD690 R MODEL. 10 Wheel Dump, 500K Mi, 52K GVW, 7 Sp Mack Trans, 2 Sp Jake Brake, 11' Power Angle Plow, Plow & Frame Remove Easy W/Pins, Newer Brakes & Drums, All Serviced, Tires 90%, New Bluetooth Stereo, W/Phone Connect, Exceptionally Nice Shape, Used For Landscaping, Carrying Loom, Mulch, Stone, **\$40,000.** Call/Text 978-375-1127, Brian



2000 FINN T330 HYDROSEEDER. 4 Cyl. Deere 3300 Gallon Tank, Mounted On Freightliner FLD12, CAT 3606, 8 Speed, Good Rubber, Unit In Good Shape & Work Ready, 1 Tank Full Of Seed & Mulch Will Hydroseed About 30,000 SF. Asking **\$49,000.** Text Or Call 401-499-4989 For More Pictures



2005 MACK CH TRACTOR. 460 Engine, 18 Speed, AC, Needs Nothing, Runs Great, **\$34,999 OBO.** 401-486-8552

FREE: CLEAN 3" MINUS FILL. We Will Load Your Truck. Delivery For A Fee. East Providence, RI, Call Ken **401-438-3000**

LOCATED IN
BURRILLVILLE, RI.
SERVICING
RI, MA, CT

COMPETITIVE RATES & QUALITY WORK

***ON CALL DURING ALL
SNOW STORMS,
YOU WILL
NOT BE LEFT
STRANDED***



BLUM'S FIELD SERVICE

-ONSITE HEAVY EQUIPMENT & DIESEL REPAIR
-MOBILE WELDING & FABRICATION



METROPOLITAN TRUCK CENTER INC.

1074 Turnpike St. Stoughton, MA 02072

www.metropolitantruck.com

**MAKE YOUR
APPOINTMENT TODAY!**

866-514-1214

EVERYTHING YOU NEED FOR A TRUCK BODY!!!



CUSTOMIZED ALUMINUM BODIES TO FIT YOUR EVERY NEED



**EBY FLEX REMOVABLE
SIDES LANDSCAPE BODY**



ROYAL SERVICE BODY



DURAMAG S-SERVICE BODY



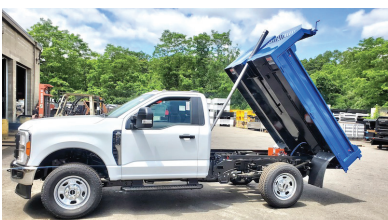
AIR-FLO DUMP BODIES



E-Z DUMPER



RUGBY PLATFORM BODY



CHAMPAGNE DUMP BODY



**TRUCKCRAFT
DUMP INSERTS**



**SWAP HOGG SMOOTH SIDE
CONTAINERS**



NORTHEASTERN PETROLEUM SERVICE & SUPPLY**617-522-8390 Ext 103 • 51 B St. Bay 2 Hanover, Ma****Financing Available - After Hours Call 617-696-1979****We Are Looking For Newer Tank Trucks To List, Dual Equipped, Tandems & Auto. Trans, Can Sell From Your Location****Jerry Mello Cell: 617-799-1461 24/7 Email: jerrym@nepss.com**

2004 FREIGHTLINER TANKER.
CAT C7, 6 Speed, 446,598 Miles, 3000
Gal/4compartments, 1000/500/1000/500,
R22.5 Tires, **\$12,000**



2007 Pete 357 T/A Tanker. Amthor 5000 Gal,
3 Compt, 66,000 GVW, 8 Spd, CAT C-13,
416,049 Miles
\$85,000 MUST SELL, BEST OFFER



2012 FORD TRANSIT CONNECT XLT.
101,557 Miles, Shelves, Serviced And Ready
To Work, Tires 60%, **\$14,900**



SITE TRUCK. 1985 GMC EXTRA THICK
STEEL TANK. Detroit Engine, 5+2 Trans,
1500/500 Gal Compts Testing Top & Bottom
All Liquids, 3" Pump, Good Cond, **\$9,500**



2004 PETE 330. Boston Steel 2700 Gal, 2
Compt 2000 & 700, CAT power, Automatic,
Stainless Steel Reel, M-7 Meter, Bottom Load,
176,783 Miles **\$55,000**



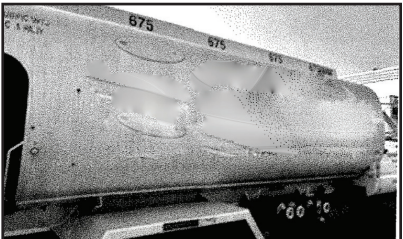
2007 PETE 335. 2800 Gal ALMAC
4 Compt., 800/800/700/500, M-7 2"
Meter, ISC Cummins 260 Hp, 8 Speed,
\$55,000 MUST SELL, BEST OFFER



2007 IH. Automatic, DT466, 156K
Miles, 2 Compt 2000/800 Gal, 4E
Neptune Meter, Repairs Completed,
Go To Work Condition, **\$34,500**



1000 GALLON TANK. Diesel Only, 4'
X 12', 10 GA, UL-142 DW Skid, HD 3/4
HP Pump & Water Absorb Filter Used
One Month On Our Job. **New \$13,500.**
Slightly Used **\$11,900 FOB Hanover**



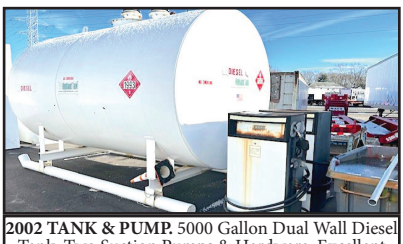
BOSTON 2700 GALLON TANK.
4-Compartment, 675/675/675/675, 4-C
Meter, No Hose, 17' Frame Length,
Mounted On 1996 GMC Parts Truck,
\$11,900



HIGHLAND IN STOCK NEW. 1000 Gal 2 Wall
Skid Tanks. 10-GA, Other Sizes Available



2012 FORD E250 CARGO VAN. Bin Pkg.,
V8 Gas, Auto., 112K Miles, Fleet Maintained,
\$12,000. 617-799-1461



2002 TANK & PUMP. 5000 Gallon Dual Wall Diesel
Tank, Two Suction Pumps & Hardware, Excellent
Condition., Location Braintree, MA.
\$24,500. 617-799-1461

SOME TRUCKS AT CUSTOMER LOCATIONS

ALLEGIANCE

— T R U C K S —



109 Lindberg Ave.
(978) 686-1800

Methuen, Ma 01844
(978) 726-9477



CALL FOR OTHER NEW & USED TRUCKS FOR SALE!



**2020 HINO 195
18' REEFER w/
Curb Side Door,**
19500 GVW, Carrier
40x, 214K Miles,
Roll-Up Rear Door,
stk#327078,
\$29,900.



**2021 ISUZU
NPR-XD. 16000**
GVW, Diesel. 144k,
16' Dry Freight
Body, 2000 Lb
Tuckaway Gate,
PW/L, AM/FM/Aux/
Bluetooth, Ex Warr
Avail! Stk#348039,
\$34,900.



**2020
INTERNATIONAL
MV607.**
119K, Cummins B6.7
240 HP, 26' Dry w/
3000 Lb Tuckaway,
2 Row E-Track,
Stk#349693,
\$54,900.



**2020 ISUZU NQR
CAB CHASSIS.**
Diesel, 17950
GVW, 66K Miles!
109" WB, Ready
For 10'/12' Bodies
And Platforms.
Hard To Find!
Stk#346045,
\$39,900.



**2013 KENWORTH
T370 DUMP. 33K**
GVW, 93K Miles!
325 HP PC-6,
Allison 3500 RDS,
21000 Lb Rear
Axle, 5.57 Rear
Axle, stk#332258,
\$69,900.



**2015
INTERNATIONAL
DURASTAR 4300.**
MaxxForce Diesel.
238K, Allison 2500
RDS Auto, 26' w/
2 Row E-Track,
Drop Step Bumper,
Stk#116908,
\$24,900.



**2017 ISUZU NRR
DIESEL 16' DUMP.**
132K, Auto, 19500
GVW, Florida
Truck, NEW Dump
Assy, Swing Rear
Door, Manual
Tarp, Stk#343326,
\$49,900.



**2022
FREIGHTLINER
M2 106. 83K**
miles! 25999
GVW, 26' Dry
w/ 2500 Lb
Tuckaway,
Ready to work!
stk#339075
\$69,900

Allegiance now has locations in MA, CT, NY, ME, VT, RI, NH, NJ & PA!



For all locations visit our website!



www.AllegianceTrucks.com



BENSON
BY WABASH NATIONAL



ALLEGIANCE

— TRUCKS® —



WABASH

Bangor, ME
207-941-9600

Saco, ME
207-289-6688

Fort Kent, ME
207-834-6186



CALL FOR OTHER NEW & USED TRUCKS & TRAILERS FOR SALE!



2026 INTERNATIONAL HX LOWBED TRACTOR
SEVERE SPEC, BIG POWER, 605HP CUMMINS
X15, 18SPD. MAN TRANS., 20K PUSHER AXLE,
BEAUTIFUL TRUCK. READY TO WORK!
STK#338497

CALL FOR MORE DETAILS



2025 INTERNATIONAL HX DUMP TRUCK
14SPD. TRANS., 515HP, AIR-BRAKES,
DIESEL. READY TO WORK!
STK#335287

CALL FOR MORE DETAILS



2025 INTERNATIONAL MV FUEL TRUCK
4X2, 33K GVW, 6SPD- TRANS.,
330HP, AIR-BRAKES & MORE!
STK#338493

\$196,900



2024 INTERNATIONAL CV DUMP TRUCK,
4X4, 350HP, DIESEL, AUTO, PUT YOUR
CREW IN THIS TODAY! STK#345849

\$113,900



2024 INTERNATIONAL CV PLOW PACKA
4X4, SPRING SUSP., 6SPD-TRANS.,
DIESEL, 350HP, READY TO MAKE YOU \$\$
STK#340388

\$179,900



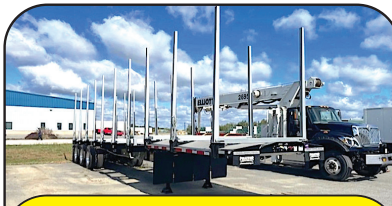
2025 INTERNATIONAL HX TRACTOR
470HP, X15 CUMMINS, 13SPD. TRANS.,
AIR-RIDE SUSP., DIESEL AND MORE!
STK#346992

CALL FOR MORE DETAILS



2024 TROUT RIVER LIVE BOTTOM TRAILER
PRICE DOES NOT INCLUDE FET.
CALL TODAY FOR ALL THE DETAILS!
STK#291987

\$94,900



2025 PMI GRL TRAILER
PRICE DOES NOT INCLUDE FET.
CALL FOR ALL THE DETAILS!
STK#341910

\$77,900



2023 WABASH MSC REEFER
STK#292016
CALL FOR MORE DETAILS!



ALLEGIANCE

— TRUCKS® —

Jericho, VT
802-899-3753

Colchester, VT
800-639-1290



2022 INTERNATIONAL LONESTAR TRACTOR
BEAUTIFUL HEAVY SPEC'ED DAY CAB,
LOADED- BIG CUMMINS WITH 18SPD.,
NICE FANCY TRUCK! STK#160851

\$95,900



2018 PETERBILT 389 TRACTOR
565HP, X15 CUMMINS, AIR-BRAKES,
READY TO GO! STK#349813

\$94,900



2023 INTERNATIONAL CV DUMP TRUCK
4X4, 350HP, DIESEL. READY TO WORK!
STK#277488

\$76,900



www.AllegianceTrucks.com



ALLEGIANCE

TRUCKS®



1400 South Willow St. **Manchester, NH**
603-623-8873

132 Pierce Rd. (Rt. 125) **Barrington, NH**
603-905-9036



CALL FOR OTHER NEW & USED TRUCKS FOR SALE!



2015 WESTERN STAR 4700SB 6X4 FLATBED WITH FASSI CRANE. Detroit DD13 450 HP, 6 Spd 4500 RDS-P, 66K GVW, 208K Miles, stk#341199, **\$189,900.**



2012 FREIGHTLINER M2 106 MED FLATBED RACK. Lift Gate, Toolboxes, Plate, Hitch, 12K Miles, stk#339061, **\$59,900.**



2018 INTERNATIONAL DURASTAR 4300 CREW CAB FLATBED. 25,999 GVW, 92K Miles, stk#100112, **\$39,900.**



2019 INTERNATIONAL WORKSTAR 7500 JERR-DAN RAMP TRUCK 6x4. Cummins 350 HP, 56K GVW, 248K Miles, stk#342718, **\$89,900.**



2022 KENWORTH T880 CONSTRUCTION 17' DUMP. MX13 485 HP, Smooth Sides, 2 Chutes, Pintle, 68K GVW, 96K Miles, stk#348347, **\$199,900.**



2025 INTERNATIONAL MV HOOK-LIFT. Cummins 300 HP, Auto, Palfinger PHY22M 22K LB, 26K GVW, 2,518 Miles, stk#340379, **\$145,900.**



2022 PETERBILT 389 SLEEPER. Cummins X15 500 HP, 18 Spd, 53200 GVW, 320K Miles, Lots of Extras! stk#339351, **\$139,900.**



2019 FREIGHTLINER M2 106 LANDSCAPER W/TEREX BUCKET. Cummins 220 HP Diesel, 5 Spd, 26K GVW, 42K Miles, stk#332213, **\$99,900.**



2025 INTERNATIONAL MV 607 SUPER CAB VAN WITH PEAK. Auto, 25,999 GVW, Side Doors, E-Track, 2K Miles, stk#340276, **\$140,645.**



2021 INTERNATIONAL HX ROLL-OFF. Cummins 485 HP Diesel, 33K GVW, stk#348349, **\$189,900.**



2020 WESTERN STAR 4700SB PACKER. DD14 450 HP, Pac-Mac RLX25 25-Yard Body, 2 Yard Hopper, Cart Tipper, 62K GVW, 60K Miles, stk#336907, **\$189,900.**



2016 KENWORTH T800 24' FLATBED W/PALFINGER CRANE. Cummins ISX 450 HP, 13 Spd, 79,200 GVW, stk#347371, **\$139,900.**

Allegiance now has locations in MA, CT, NY, ME, VT, RI, NH, NJ & PA!



For all locations visit our website!



www.AllegianceTrucks.com

ALLEGIANCE

TRUCKS®



2181 Providence Hwy, **Walpole, MA**
800-225-4808

17 O'Keefe Lane, **Warwick, RI**
800-949-2221



FINANCING & WARRANTIES AVAILABLE ON USED TRUCKS!



2025 INTERNATIONAL MV 607 SWAPLOADER. Cummins 300 HP, Auto, 25,999 GVW, 337 Miles, stk#347946, **\$154,900.**



2025 FORD E450 CUTAWAY 17' MORGAN CUBE VAN W/ATTIC. 7.3L Godzilla, 14,500 GVW, Flat Floor, Ramp, stk#345022, **\$67,201.**



2025 INTERNATIONAL MV 607 SUPER CAB VAN. With Peak & Side Doors, Auto, 25,999 GVW, 2K Miles, stk#341101, **\$140,645.**



2025 INTERNATIONAL MV 607 DUMP. 300 HP Cummins, 2500 RDS-P Auto, 25,999 GVW, 2K Miles, stk#347995, **\$132,900.**



2017 INTERNATIONAL 8600. N13 365 HP, 6 Spd 3000 HS, 52K GVW, Air Ride, 70K Miles, stk#139146, **\$29,900.**



2014 INTERNATIONAL DURASTAR 4400 BUCKET TRUCK W/CHIPPER BODY. 300 HP DT466, 3500 RDS, 36,220 GVW, 51K Miles, stk#135005, **\$64,900.**



2010 INTERNATIONAL DURASTAR 4400 BUCKET TRUCK. DT466, 300 HP, 35K GVW, 177K Miles, stk#134935, **\$12,900.**



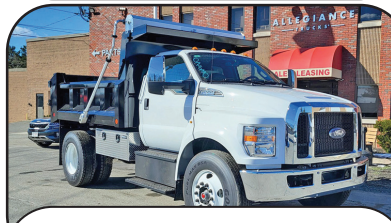
2024 FORD F550 XL 4X4 12' CHIP TRUCK. 6L Powerstroke Diesel, 10 Spd, 19,500 LB GVW, 75 Miles, stk#339385, **\$96,593**



2024 FORD F600 XL 4X4 12' RUGBY LANDSCAPER DUMP. 6.7L Powerstroke. 10 Spd, 22K GVW, Side Door, stk#334697, **\$99,000.**



2024 FORD F550 SUPER CAB 4X4 11' MASTER MECHANICS CRANE BODY. 6.7L Powerstroke Diesel, Crane, Welder, Generator, Compressor, 19,500 GVW, stke#345281, **\$195,723.**



2025 FORD F650 5-7 YD CRYSTEEL 10' DUMP. 7.3L Gas, 25,999 GVW, Hoist, Tarp, stk#339381, **\$106,750.**



NEW 2024 INTERNATIONAL RH 613 6X4 DAY CAB. 410 HP Diesel, Air Ride, 52,350 GVW, 2K Miles, stk#330354, **\$114,900.**

Allegiance now has locations in MA, CT, NY, ME, VT, RI, NH, NJ & PA!



For all locations visit our website!



www.AllegianceTrucks.com

ALLEGIANCE

— TRUCKS® —

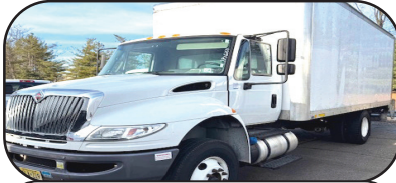


Hartford, North Haven, Franklin, Southbury, & Bridgeport, CT/ W. Springfield, MA

Call Peter Vecchiarelli 860-982-2014



GREAT SELECTION AND PRICE ON ALL USED INVENTORY



2020 IH MV, Cummins 240HP, 118K Miles, Allison Auto, 26x102x97 Box With Gate, #235496, **\$52,900**



2022 INTERNATIONAL MV, Cummins 240 HP Allison Auto, ONLY 99K Miles, Big 26 x 102 x 103 Body, Side Door & Gate, Super Clean Southwest Truck !! #344215, **\$79,900**



2021 PETERBILT 389 EXT HOOD, Cummins 565 HP, 18 Speed, 78" Sleeper, Only 289K Miles, #349795, **\$123,900**



2022 INTERNATIONAL LONESTAR, ISX 525 HP, 18 Speed, 14/46 Axles, 301K Miles, Dual Exhaust & Breathers, Nice Truck, #160851, **\$98,900**



2021 INTERNATIONAL LONESTAR 73" Sleeper, Cummins 505 HP, 13 Seed, Fancy, #164378, **\$59,900**



(4) 2020 INTERNATIONAL Lonestar Heavy Day Cab, ISX 505HP, 46K Rears, 350K Miles, Fancy! #275387, **\$94,900**



2020 INTERNATIONAL HX Tri Axle Dump, ISX 485HP, 8LL, 20K, 20K & 46K Axles, Only 101K Miles, 17' Steel Body, Fancy, #343430, **\$169,900**



2011 IH 7600 Tandem Dump, Rebuilt IH Motor 475 HP, 18 Speed, 14' Steel Dump, 3 Shoots, Tow Plate, Load Cover, Nice Truck, #228409, **\$39,900**



2017 INTERNATIONAL 4300, Brand New 10' Dump Body, Cummins Power, Auto Cover, Tow Plate, Auto, Only 103K Miles, Alum Wheels, Very Nice Truck, #108395, **\$85,900**



2012 IH 4400, Only 164K Miles, 270 HP, Auto 3500RDS, 33K GVW, 20' Box w/ Walk Ramp, 3 Sides Doors!, #104520, **\$7,900 AS IS.**



2022 FREIGHTLINER M2, DD7, Auto, 26' Van with Gate, LOW MILES, Only 85K, Under CDL, Southern Truck Super Clean, #33907, **\$76,900**



2018 KENWORTH DUMP TRUCK, Under CDL, PX7 250 HP, Allison Auto, Only 50K Miles, Ready to Work, Clean! #342485, **\$59,900**



2021 ISUZU NPR XD, 16K GVW, Diesel, Auto 144K Miles, 16' Box w/ Gate, #348039, **\$34,900**



2020 ISUZU NPR HD, 14500 GVW, Diesel, Auto, Only 101K Miles, 16' Box With Gate, Nice Truck, #130235, **\$42,900**



(3) 2020 ISUZU NQR, Diesel 65K Miles, Auto, Hard To Find 109" WB, Clean Nice Trucks, #346044, **\$39,900**

Allegiance now has locations in MA, CT, NY, ME, VT, RI, NH, NJ & PA!



For all locations visit our website!



www.AllegianceTrucks.com

STONEHAM


617-733-0773


2025 F350 14ft VAN BODY. Step Bumper, Pull Out Ramp, Roll Up Door, 7.3L Gas, Pwr Equipt, 55 Fuel Tank, #25172. **Call 617-733-0773**



2025 F750 DUMP. Diesel, Pintle Hook, Automatic, 10' Body, #25167 **On Sale**



2024 F550 LANDSCAPER. 9'6" Dump, Curb Side Door, Rear Swing Doors, 4WD, Diesel, Remote Start, #241203. **On Sale**



2023 E350 FREIGHT VAN. E-Track, Pull Out Ramp, Step Bumper, 7.3L Gas, #23415 **\$45,000**



2024 F350 UTILITY. Reading Steel, Central Locking, 7.3L V8 Gas, 4WD, Remote Start, SRW, #24120. **On Sale**



2025 E450 16 Ft VAN BODY. Roll Up Door, Pass Thru Door, Flat Floor, E-Trac, Step Bumper, V8 Gas, #25051. **\$54,995**



2024 F550 SWITCHN GO. 11' Can, Diesel, Remote Start, Payload Up Grade, 4WD, #241395. **On Sale**



2024 F550 ALUMINUM DUMP. Landscapers Spec Body, Curb Side Door, 4X4, Diesel, Remote Start, #241871. **On Sale**



2024 F350 DUMP. 7.3L Gas, Remote Start, 4X4, #243120, **\$69,795**



2024 F550 CREW CAB LANDSCAPER. 4X4, Diesel, 12' Body, Remote Start, #24985



2025 E350 UTILITY. 12' Rockport Body, 7.3L Gas, Latter To Roof, 3 Bar Racks, #25506. **On Sale**



2024 F550 UTILITY. 90" x 60" Aluminum Platform Liftgate, 16' Van Body, Dual Side Compartments, Diesel, #24855 **\$105,375.**



2024 T350 ROCKPORT SERVICE. 10' Body, ladder To Roof, 3 Bar Ladder Rack, #243002



2024 F550 UTILITY. 9' Body, 4X4, Diesel or Gas, **Call 617-733-0773**



2024 F550 DUMP. 4X4, Diesel, Payload Pkg, Remote Start, Dual Battery, #241881



2024 T350 HD FREIGHT VAN. DRW, Pull Out Ramp, Step Bumper, E-Trac, Air Deflector, #243247. **On Sale**



2024 F550 SNOW FIGHTER. Fisher Plow, SS Spreader, 9' Stainless Steel Dump, Diesel, 4X4, Remote Start, #241900 **Call 617-733-0773**



2024 T350 HIGH ROOF VAN. All Wheel Drive, Transit Trail Package, Roof Vent, #242792, **Call 617-733-0773**



2024 F550 DUMP. 7.3 V8 Gas, 4X4, Graphite, #24195. **On Sale**



2024 F350 DUMP. Diesel, 4X4, Dual Battery, Remote Start, 2-3 Yd Body, #241078, **\$74,599**



Commercial
Vehicle Center

Call Bill Pollack 1-617-733-0773
or billpollack@stonehamford.com



Commercial
Vehicle Center

STONEHAM



617-733-0773

WORK VAN SALE EVENT – BIG OPTIONS!



2024 T250 LOW ROOF WORK VAN. Bin Shelving, Equipment Storage Area, Privacy Glass, V6 Gas, RWD, Heated Mirrors, #241792 **ON SALE**



2024 T250 MID ROOF ALL WHEEL DRIVE. Bin Shelving, Dual Batteries, 110V Outlet, Heated Mirrors, 360 Camera, #243041 **ON SALE**



2024 T250 MID ROOF VAN. Bin Shelving, Equipment Storage Area, Privacy Glass, V6 Gas, PW, PL, Heated Mirrors, #241332 **ON SALE**



2024 T250 MID ROOF VAN. Bin Shelving, Ladder Racks, Privacy Glass, V6 Gas, PW, PL, Heated Mirrors, #241152 **ON SALE**



2024 T250 LOW ROOF VAN. Bin Shelving, Equipment Storage Area, Privacy Glass, V6 Gas, RWD, Heated Mirrors, #241134 **ON SALE**



2024 T350 MID ROOF CARGO VAN. Rear Wheel Drive, Privacy Glass, V6 Gas, PW, PL, Heated Mirrors, Cargo Area Protection Pkg, #242064 **ON SALE**

USED TRUCKS SPECIALS



2023 F550 LANDSCAPER DUMP. Diesel, 5,561 Miles, 4WD, #23118P **\$75,899**



2023 F250 SUPER CAB XLT. 7.3L Gas, 63,111 Miles, #24160A. **\$44,890**



2023 F500 DUMP. 7,019 Miles, 4X4, Boss Plow, V8 Gas, Tool Box, #23091P. **\$74,699**



2023 T250 CARGO VAN. Mid. Roof, Cargo Wall Protection, Cruise, PW, PL, 37,209 Miles, #23115P, **\$42,770**



2022 T150 CARGO VAN. 22,573 Miles, #22179P. **\$35,750**



2023 T250 HIGH ROOF VAN. 39,930 Miles, SRW, Slide Door No Window, #23117P **\$46,290**



Commercial
Vehicle Center

www.StonehamFordTrucks.com

211 MAIN ST. STONEHAM, MA 02180

Mon-Fri 8:30am-8pm Sat 9- 5pm Sunday 11-4

ALL PRICES NET & INCLUDE ALL AVAILABLE REBATES TO DEALER

Call Bill Pollack 1-617-733-0773 or billpollack@stonehamford.com



Commercial
Vehicle Center



ALMAC 2800 GALLON TANK. Brand New And Ready For Install!! On The Ground In Westbrook, Maine, 2-Compartment, Bottom Load, Full Specs Available, **\$66,165.**
207-854-9751, MesserTruckEquipment.com



1973 MACK R685. Way Too Much Work To List It All, 235, 5 Speed, Air Brakes, Power Steering, New Pump, Interior Really Nice, No Rot, Brand New Hardox Floor, 3 Chutes, New Front Springs & King Pins, Strobe Lights, Electric Tarp, Good Rubber, Pintle Hitch, 7-Way Plug, **\$25,000.** Leominster, MA 978-230-1504

2005 PETERBILT 335 DUMP TRUCK, 6 Wheeler, Cummins Motor (ISC300), Auto, Air Brakes, 12k Fronts, 22,700 Rears, 400k Miles, Ratio 4:78. **\$24,900,** 781-417-3018



2008 FONTAINE TH55 LOWBED. 24 Long By 8.6 Wide Deck, 11,000 Lbs., In Great Shape, **\$70,000 OBO.**
Located In Smithfield RI,
Call Or Text 401-641-6803



TOP RATED PRODUCTS FOR YOU

**WASHED STONE
PROCESSED GRAVEL
SAND
TOP SOIL
RIP RAP
FILL**


RHODE ISLAND
—AGGREGATES—

**Please Call for pricing
401-447-2777**


RHODE ISLAND
—AGGREGATES—

508-328-8938**THE TRUCK STORE****Mon-Fri 8:30-5pm
Saturday 8:30-4pm****www.TruckStoreSales.com****1700 Broadway - Rte 138 – Raynham, MA • Take Exit 8 Off Rte 495, East Rte 138, On Your Left**

2017 FREIGHTLINER CASCADIA
Tandem Axle Day Cab. ISX Cummins 450
HP. Auto. 175K Miles. \$69,500.



022 ISUZU NQR. 10,000 Miles,
Reefer Body Available.



2013 PALFINGER MOFFET FORK
LIFT: 900 HOURS.



2002 VOLVO Heave Tri Axle Dump
Chassis: 8LL, Clean Title. Slight Damage.
\$15,000



2012 UD 18 YARD RUBBISH
TRUCK: LOW MILES. CALL.



2022 PETERBILT SINGLE AXLE
TRACTOR. DIESEL. AUTO,
ONLY 5,500 MILES, CALL.



USED MONROE STAINLESS STEEL
SANDER W/CALCIUM TANKS



2002 MACK R MODEL:
TANDEM

**2005 PETERBILT
337 TANDEM
CAB & CHASSIS.**
Cummins, Allison
Auto, Low Miles

**2 USED
HOOK-LIFT
BODIES
IN STOCK.**

**LATE MODEL ISUZU &
HINO CUMMINS DIESEL
4 CYL DIESEL ENGINE &
TRANS,
2006 USED MACK
ENGINES, ALLISON
TRANSMISSIONS.**



2017-2022 INTERNATIONAL REEFERS.
CUMMINS DIESEL, 50K MILES, 16'-26',
MANY AVAILABLE, WILL SEPARATE.

**USED 2015
ROLL-OFF
BODY, CALL.**

**2005 MACK CV 713
CAB & CHASSIS:
AUTOMATIC,
20F/52R,
30K MILES!**

**USED
26' & 18'
FLAT BED BODIES
BED BODY
CALL FOR
DETAILS.**

**2017
INTERNATIONAL
CAB & CHASSIS:
CUMMINS DIESEL,
AUTOMATIC.
LOW MILES.**



2000 MACK RD 688SX 14' Dump Body,
350 H.P., Auto., 18F/58R, LOW miles, Very clean.



2020 + 2022 HINO REEFER VANS.
DIESEL, AUTO, CALL.



**2005 MACK GRANITE SPLIT REAR
LOAD RUBBISH BODY 35K Miles.**



2022 HINO HOOK-LIFT. DIESEL,
AUTO, 38K MILES, \$79,500. (ALSO, 2015
AVAILABLE)



2022 ISUZU REEFER TRUCK.
16,000 Miles.



2021 FORD MOVING TRUCK, Crew Cab,
Auto, Under CDL, 99K Miles.



**2022 PETERBILT C/O. Under CDL, 60K
Miles, Auto, Reefer Or Flatbed Available.**



2022 HINO 268 Flat Bed: Diesel, Automatic,
ONLY 2,000 Miles! Will up fit w/Refer Body
or Van Body. 2 AVAILABLE.



USED 12' to 26' REFER & VAN BODIES
Call with your needs.



**(2) 2020 ISUZU NRR UTILITY BOX
TRUCKS. 18K-30K MILES, DIESEL,
AUTO, CALL.**



2017 FREIGHTLINER M-2: CUMMINS
Diesel, Auto, PTO Accept. Will Separate.



2015 FREIGHTLINER 114 SD WITH NUWAY
SIDE LOAD ONE-ARMED BANDIT. 9L
CUMMINS, AUTO, EXTRA HEAVY DUTY, CALL.



207-623-4239



**1999
CHAMPION
716A GRADER.**
All Wheel Drive,
Articulates, Wing,
\$28,000.



**2012 MACK T/A
TRACTOR.** 46,000
lb Rears, Wet System,
Mack Motor, 10
Speed, Two To
Choose From.



**2015
International
Mechanics
Truck.**
Enclosed
Body, 70,000
Miles. Call



LIEBHERR A912 RUBBER TIRE EXCAVATOR.
Twister Wrist, Hydraulic Thumb, 6,000 Hours,
\$18,000



**2009 MAC
DUMP
TRAILER.**
Tri Axel, Air Ride
Lift Axel, Barn
Door, **\$40,000**



**2012 JOHN DEERE
310SJ BACKHOE.** 4X4,
Full Cab, Expanda Hoe,
Wrist With 3 Buckets,
\$38,000



**1988 FORD L8000
DUMP.** 10 Ft
Dump Body, CAT
Diesel Engine.
\$9,500.



**CATERPILLAR
814.** Semi U Blade,
Very Good Rubber,
\$14,000



**EAGLE PICHER
R80 FORKLIFT.**
6000 LB Capacity,
Side Shift,
\$10,000



**2004
FREIGHTLINER
FUEL TRUCK.**
CAT Power, Two
Compartments,
\$12,000.

Dick's Used Trucks & Equipment
146 River Road, Chelsea, Maine

**1970'S CAT D5.**

Low Hours, Powershift, Tilt
Blade, Direct Start, Great Shape,
\$17,500. Call Fran,
781-248-0736

2021 MACK ANTHEM SLEEPER

2021 MACK ANTHEM SLEEPER.
MP8 Diesel, MDrive Auto Trans,
53,200 GVW, 236" WB, Air Ride,
Very Clean, 192K Miles,
stk#ELAGMM020766, \$72,500.



EquiLinc Auction Group - Claysville, PA
Call Jimmie 770-280-7632
or Brittany 678-371-3724
<https://www.equiplinauctions.com>

**2000 KENWORTH W900L
TRI-AXLE DUMP.**

N14 Cummins 525 HP, 540,250
Miles, 18 Speed, Neway Air Ride,
Double Frame In Good Shape,
VIT Interior, 18.5 Ft Brandon
Body, Owner Operated Since New,
\$95,000. Old Lyme, CT
860-227-5426



(20) STEEL DUMPSTERS. 20 Yards, **\$70,000.**
203-613-5794

**Jukonski****Truck Sales****WWW.TRUCKSELLERS.COM***se habla español*680 NEWFIELD ST. (RT 3) MIDDLETOWN, CONN • **800-378-0342** • MON-FRI 9-5**DON'T MISS OUT: YOUR IDEAL TRUCK AWAITS!****3 AVAILABLE**

BRAND NEW 2025 Hino. L6 26' Box,
Auto, Air Ride, 25,950 GVWR, B6.7,
#T-S5T60910, **\$115,999**



2022 ISUZU NPR HD W/ 11' Dump body,
Diesel, 17K Miles, 14,500 GVWR,
#T-N7014104, **\$62,900**



2019 HINO 155.
16' Box, Auto, Diesel, 14,500 GVWR,
91K Miles, #T-KK007707, **\$35,900**



2020 ISUZU NRR 16' Utility Body,
Diesel, 63K Miles, Auto, 19,500 GVWR,
#T-L7306437, **\$45,999**



2023 CHEVROLET LCF4500 16' Box,
V8 Gas, Auto, 30K Miles, 14,500 GVWR,
#T-PS205295



2016 KENWORTH K270.
22' Reefer, Auto, 6.7L Diesel, 90K Miles,
26K GVWR, #1227, **\$44,900**

**ONLY 4 AVAILABLE**

2024 HINO S5 BRAND NEW,
Diesel, 19,500 GVWR Cab & Chassis,
\$56,999



2017 HINO 195 12' Reefer, Liftgate,
Diesel, 112K, Auto, 19,500 GVWR, #T-
HK006095, **\$32,500**

90 DAY POWERTRAIN WARRANTY AVAILABLE ON ALL CERTIFIED TRUCKS. INCLUDES INJECTORS AND TURBO

R & R INDUSTRIES

**We Buy All
Scrap Metals**

www.RRTrucksAndEquipment.com • Bruce@RandRind.com

195 Rocus Street, Springfield MA 01104

413-733-2118

TOP \$ PAID FOR ALL METALS

*** ALL FERROUS & NON FERROUS METALS***
COPPER/BRASS/ALUMINUM/STAINLESS/IRON
& STEEL* MACHINERY* HEAVY EQUIPMENT*
CARS/TRUCKS*



CLARK C500 FORKLIFT. 10,000 lb Capacity, 6 Cyl Propane, Triple Mast, With Forks, Extra Hydraulic Valve For Attachments, Reduced For Quick Sale, **Only \$4,000**



MELROE BOBCAT SKID STEER LOADER, V4 Wisconsin Motor, Quick Attach Bucket, Remote Hyd For Attachments, Needs A Little TLC, Good Older Machine For A Starter. I'll Replace Tires. **Only \$2,950/BO**



1968 AUTOCAR WRECKER. Twin Booms, Big Winch, 250 Cummins, 10 Speed, No Rust, Always Garaged, **\$18,000/BO**



2004 ORION BUS. 4 Cyl 50 Series Diesel Pusher, Auto, Handicap Lift, Seats Are Removed, Ready To Build Your Tiny Home, Camper Or Food Truck, Runs Great, **Only \$8,950/BO**



LANDOLL SLIDING AXLE RECOVERY TRAILER. 45' x 8', Flip Up Outriggers, 35' Lower Deck, 10' Upper, Rebuilt Deck, **\$10,000 As Is Or \$18,500 Patched & Painted**



FORKS, FORKS, FORKS Send Me A Photo Of Your Machine And I Will Price The Forks, From 1,000 To 20,000 lb Capacity, Many Sizes & Types, **Starting @ \$200**



30 YARD+ ROLL OFF CONTAINERS. For Recyclables, Open Tops, Multiple Dividers For Different Commodities. Good condition. Call For Details. **Only \$5,500/BO**



TIMBERWOLF WOOD CHIPPER Bad Cummins 4BT Motor. Everything Else Is Great. No Time To Fix **Only \$2,995**



JERR DAN 21' STEEL RAMP TRUCK BODY. Wheel Lift, Includes All Controls, Hardware, etc., Very Good Condition, Truck Not Included, **Only \$3,850**



20' LONG SELF ELEVATING PORTABLE CONVEYOR. Heavy Duty, Belt Is 19" Wide, Call For Details, **Only \$2,000**



GRAVELY 16G PROFESSIONAL UTILITY TRACTOR. Kohler Gas Motor, Only 1400 Hours, Hydrostatic Drive, Excellent Condition, Plow Available **\$2,150/BO**



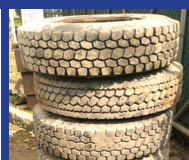
HOLMES 750 WRECKER. Excellent Condition. With Outriggers, Swing Away Booms, To Pick Over The Side. Ready To Mount On Your Truck. Call For More Info. **Only \$3,650**



American Spray Technology Mixer & Spray Unit For Ceiling, Wall Coatings, Gas Motor, Hydraulic, Separate Air Compressor For Spray Unit, Fairly New, Super Clean, **\$1,500/BO.**



GRASSO TRUCK TIRE CHANGER. Electric/Hydraulic, You Gotta See This One, **Only \$500**



(4) 11R x 22.5 Almost New Virgin Drive Tires On Dayton Rims, All 4 For \$750, Many Other Sizes Available, Call



ROTATING HYDRAULIC GRAPPLE Originally Off Forklift, Can Be Adapted To An Excavator. **\$2000/ BO**

QUIRK RAM COMMERCIAL TRUCK CENTER

40 Hallet St, Dorchester, MA **857-309-7651**



4 To Choose



2024 RAM 3500 SERVICE VAN. 12' Rockport, Ladder Racks, Ladder To Roof, SRW, #CJ7740, **\$54,950**

5 To Choose



2024 RAM 2500 HIGH ROOF VAN. Remote Start, Curb Side Door W/ Glass, Rear Doors W/ Glass, SLT Pkg, #CJ7391 **\$45,735**



2025 RAM 1500 4X4. Bed Utility Group, Night Edition Pkg, Tradesman Level 1 Pkg, Diamond Black Crystal Pearl, CJ7837, **\$39,649**



2024 RAM 3500. 5th Wheel Prep, V8 Gas 410 Hp, Tradesman Crew Cab, 4WD, Air Ride Suspension, Rear Pwr Window, Chrome Pkg, NAV, CJ7355, **\$53,480**

www.quirkcdjrdorchester.com

QUIRK GMC TRUCKS

781-228-6851



2025 GMC 3500 BOX VAN. Plywood Line, E-Trac, Roll-Up Rear Door, Pass Thru Door, PW, PL, Cruise, Pw Heated Mirrors, #B2498. **\$40,595**



2025 GMC FREIGHT MOVER. E-Trac, Pull Out Ramp, Attic Space, Pass Thru Door, PW, PL, #B2289 **\$57,996**



2024 GMC 3500 FREIGHT VAN. Two Rows E-Trac, Pull Out Ramp, Pass Thru Door, PW, PL #B1814 **\$47,950**



2024 GMC 3500 HI CUBE VAN. Ten D-Rings, Pull Out Ramp, Pass Thru Door, PW, PL #B2132 **\$50,995**



2025 GMC 3500 FREIGHT VAN. Plywood Line, E-Trac, Swing Rear Doors, Pass Thru Door, PW, PL, Cruise, Pw Heated Mirrors, #B2523. **\$40,620**



2025 GMC 3500HD DUMP. Crew Cab, 4X4, V8 Gas, PW, PL, #B2465 **\$67,045**

442 Quincy Ave. Braintree, MA www.QuirkBG.com



REED TRUCK SERVICES

24/7 Heavy Duty Towing, Accident Recovery & Emergency Road Service



**TRADES
ACCEPTED**

**939 John Stark
Hwy.
Newport, NH**



**287 Washington St.
Claremont, NH**

**HELP
WANTED**

• Authorized International Truck & Cummins • Sales • Service • Parts • Warranty •
All Makes Commercial Truck Parts, Sales, and Service

Email: scott@reedtruck.com • www.ReedTruck.com • 1-800-542-5032



2025 INTERNATIONAL HV507. L9@370 HP, Allison, 20,30 Axles, Due In Soon!



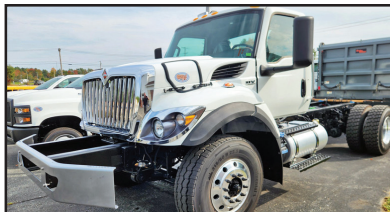
2025 INTERNATIONAL HV507. 20K F/A, 30K R/A, Chalmers Suspension, L9 Cummins, Engine Brake, Allison 3500 RDS, Trailer brakes. Ready To Go!



NEW 2024 INTERNATIONAL HV507. L9 Cummins @370 HP, 8LL Trans, 20 And 26 Axles, Sharp Municipal Truck, Ready For Immediate Delivery!



2024 INTERNATIONAL HV613. A26, Allison 4500, 22 F/A, 46 Locking Rears, Hend HMX Suspension, In Stock!!



NEW 2024 INTERNATIONAL HV 507. 370 HP, L9 Cummins, Allison, 20 And 30 Axles, Being Upfitted With Equipment.



2024 INTERNATIONAL HX520. X15 Cummins, Allison Auto 4500, 20/46 Axles, Air Ride, Aluminum Wheels, Ready For A Dump Body



2024 INTERNATIONAL MV607 REGULAR CAB JERR-DAN CAR CARRIER. Loaded, Ready To Work.



2023 INTERNATIONAL LT625. 13,200 F/A, 40 R/A, Cummins X15 450 HP, 10 Spd Manual, Clean Tractor, 106K Miles, **\$79,900**



2024 INTERNATIONAL CV515 4x4. Fully Equipped With Plow Gear And Dump Body.



2018 INTERNATIONAL 4300. Non CDL, Cummins Engine, Allison Trans, AB, AR, 16' Morgan Body, \$37,500. Will Separate



2021 CHEVY 5500 4X4 READING CONTRACTORS BODY. 19,500 GVW, Like new, Southern Truck, 22,500 Miles, **\$79,500.**



2021 INTERNATIONAL CV515 4X4. 10.5' SS Fisher V, 12' Rack With Lift Gate, Like New, 4,200 Miles, Asking **\$69,900**

**939 John Stark Hwy.
Newport, NH**



REED TRUCK SERVICES

24/7 Heavy Duty Towing, Accident Recovery & Emergency Road Service

FLEETRITE

**287 Washington St.
Claremont, NH**

CLEANING THE BACK ROW! THESE GOTTA GO! CALL FOR MORE INFO. MAKE OFFERS!



2010 INTERNATIONAL 7400 MFDT FLATBED. Needs Exhaust/Emissions Repairs. 8LL, 30K Locker, Viking Plow And Wing Included, \$7,900.



MAKE OFFER
2006 STERLING, 380 HP, 8LL, 18FA, 46 Rears, Pwr Reversible Blade And Wing, Live Floor Sander Dump, Double Spinners, \$22,500.



2016 INTERNATIONAL 4300 Cab & Chassis. AR/AB, Cummins Engine, Allison Auto, non CDL. \$33,500.



3 IN STOCK
2012 INTERNATIONAL 7400 Dump. 16 F/A, Locking 30 R/A, DT300 HP, Eng Brake, Allison, AC, 40,780 GVW, Everest Gear, Plow, Wing, Sander, Air To Rear, \$24,000. - \$36,000.



AUTO
2012 FREIGHTLINER SD114. DD13 Engine, Allison AUTO Trans, Everest 14' Live Floor Body, Truck, Includes Plow And Wing Blades. Well Maintained Muni Trade, \$57,500.



2008 INTERNATIONAL 7400. DT300 HP, 8LL Trans, 30K Locker, 41,100 GVW, Asking \$16,500.



2014 GMC/COLLINS BUS. Gas, Auto, Wheel Chair Lift.



2009 FREIGHTLINER/THOMAS SCHOOL BUS. Cummins Diesel, Allison, Several Other Buses Available

Email: scott@reedtruck.com • www.ReedTruck.com • 1-800-542-5032

2007 FORD F650 XLT SUPER DUTY SERVICE TRUCK. CAT C7 Diesel, 240,638 Miles, 26K GVW, Welder, 100 Gallon Tank + Pump, \$16,500. Call Jesse 401-855-1178



2001 NORDBERG CVD40 SCREENALL. 878 Hours, One Owner, Excellent Condition, Call For Price. 413-531-3538



2018 DOOSAN DX300 LC: AC/Heat, Back-Up Cam., 2,100 Hrs., Nice Machine. \$139,000. Mendon, MA 508-966-4888



2013 CHEVROLET 3500HD. 4X4, 9 Ft. Dump Body, Duramax 6.6L Turbo Diesel, Allison 6 Speed Automatic, Heat, AC, PW, PL, PH Mirrors, Snowplow Prep, LTD Slip Axle, Stored Winters, 4726 Miles, \$68,000 OBO. Moody, ME 207-646-3259

JP RIVARD Trailer Sales Inc

Call Matt - 508-962-4543
JPRivard.com
Locations in Ayer, MA and Devens, MA

We Deliver Storage Solutions

60 PLUS YEARS SERVING THE
NORTHEAST AREA

Over 150 Containers – In Stock
With Choice Odd Sizes & Specs
FAST Delivery Is Available

Always Best Customer Service

40' HIGH CUBE 3 DOOR



3 New One Trip
40' High Cube.
Double Doors
On One End
And 36" Door
On Other \$6,000

40' HIGH CUBE DOUBLE DOORS



40' High Cube
Container,
Doors On Each
End.
\$6,000.
4 Available

SIDE DOOR & WINDOW



(4) 8' & 9'
Container.
New
Condition,
Side Door,
And Window.

LIGHTLY USED 40' HIGH CUBE



(3) 2021 40'
High Cube
Containers,
Very Clean,
Used Condition,
\$4,200

20' 1 TRIP - HIGH OPTIONS



\$3,600

New 20' One Trip Containers
Beige

40' HIGH CUBE 1 TRIP



New 40' One
Trip High Cube
Container,
In Stock, blue.
\$5,200.
2 available

40' HIGH CUBE - 1 TRIP



New
40' One Trip
High Cube
Containers,
In Stock,
FROM \$4,900
5 Available

40' HIGH CUBE 1 Trip, 4 Side Doors



New 40'
High Cube
Containers,
With 4 Side
Doors, In
Stock, \$9,900

SALES TAX IF APPLICABLE + DELIVERY IS NOT INCLUDED

JP RIVARD *Call Matt - 508-962-4543*

Trailer Sales Inc JPRivard.com

Locations in Ayer, MA and Devens, MA

RENT TO OWN 30' - 53' STORAGE TRAILERS



From \$150 Month, Please Inquire

- Rent To Own Up To 24 Months
- Purchase Outright
- Delivery Available
- 30'-53' Storage
- Roll-up Or Swing Doors Available
- Some With Liftgate
- Some Insulated/Refrigerated

28'to 32' TUCKAWAY LIFTGATE



2018 WABASH 28' TRAILER. Single Axle, Spring Susp, Roll Door, 3,000 lb Tuckaway Liftgate, DOT Insp, Buy/Rent/Lease

36' RUNNING REEFERS



2006 Great Dane 36' Refrigerated Trailer. Single Axle, Liftgate

53'x102" CARTAGE TRAILERS



Many 2003-2008 Cartage Trailers In Stock. Swing Doors, Roll Door. Buy, Rent, Or Rent To Own

Kenworth Day Cab, Automatic



2015 Kenworth T680. Pacar Power, Auto Trans, Low Miles, Two To Choose Freight Tractors. **\$24,900**

48'x102" Inexpensive Flatbed



2010 Dorsey 48'x102" Steel Flatbed. Springs, Slider, 11R24.5. Nice Specs, **\$10,500**

28' PUP TRAILER



2018 WABASH 28'X102"X13'0". Single Axle, Roll Door, 3,000 lb Tuckaway Liftgate.

28'x102"x13'6" ROAD TRAILER



2015 Stoughton 28'x102"x13'6". Spring Ride, Aluminum Roof, Pintle Hook, DOT Insp. **\$8,950**

2025 Dorsey 48'x102" Flatbeds



(3) 2025 Dorsey 48'x102". Spring, Slider, Steel Flatbed, Good Specs, **\$38,900.** FET Included

45' Moffet/Princeton Mounts



(1) 2025 Dorsey 45'x102" Steel Flatbed. Moffet/Princeton And Other Forklift Mount Kits, Air Ride, Great Specs, Trades Accepted

36' Moffet/Princeton Mounts



(2) 2025 Dorsey 36'x102" Steel Flatbed. Moffet/Princeton And Other Forklift Mount Kits, Air Ride, Great Specs, Trades Accepted

*** Nationwide Delivery Is Available ***

ALSO - We Have 10 Mechanics Available For Van Bodies & Trailer Repairs, Liftgate Repairs & Installation



SANDER CHAINS
USA Made
All Makes
300 In Stock

S.A. McLean
207-793-4267



622 Elm St, Limerick, ME • www.s-a-mclean.com



13' BENSON.
Aluminum Dump
Body



13' SWENSON.
Stainless Steel Dump
& Sander Body



TRACKLESS. W/
Broom, 4x4, Diesel,
Automatic



350 Gallon High
Pressure Poly Fire
Pump Unit, 23 HP



CAT 613C. 6000 Gallon
Tanker w/Sprayer Unit



13' S.S SANDER. Fenders &
Tanks Ground Cal Control, New
Never Used



HYUNDAI 757-7.
Wheel Loader



1998 INTERNATIONAL 4800.
Four Wheel Drive, Automatic,
14k Miles, 14 Ft Of Frame.



KME 4x4. Auto,
Brush/Structural Unit



FIRE/RESCUE BODY.
Make A Nice Walk In
Service Body Or Camper



FORD F350 DUMP. V8
Gas, 22k Original Miles,
Plow, Wing, 4x4.



STEWART STEVENSON. 4WD,
Automatic Trans, W/Plow And
Wing Frame



6x6 Auto Brush Poly Tank
& Pump Unit.



1994 FORD F700 CAB &
CHASSIS. Cummins, Automatic,
20k Miles, Under CDL



1993 AG MILITARY TRUCK
6X6, Diesel, Automatic, High
Water Response/Forestry Package



1985 MACK 54k miles,
Automatic Trans.



MACK DM. Tandem
Axle, Rock Dump Body



1998 INT'L 2574. 14.5 ft. Of
Frame, Automatic, Cummins,
14k Miles, No Rust.



2004 INTERNATIONAL.
3000 Gallon Tank, Sprayer Unit

Coletta's Sales & Service

For all of your truck, trailer, and truck body needs

- ★ Collision Center
- ★ Vehicle Service & Inspection
- ★ Towing & Road Service
- ★ Equipment Hauling
- ★ Part Sales & Delivery
- ★ Authorized Morgan Truck Body Distributor



250 Niantic Ave, Providence RI 02907
www.colettas.com

401-421-3232

**1995
SUTPHEN
PUMPER
FIRE TRUCK.**
Very Good
Condition, Runs
Great, Everything
Works, **\$9,950.**
860-605-6895



**1988
MACK
TRACTOR.**
AC, Mack
Transmission,
**\$28,999
OBO.**
401-486-8552



2014 CRAFTCO SEALER TANK. Air Comp, Crack Filler
Melter, **\$5500 OBO.** 413-374-5331

**2019 KENWORTH T880 TRI
AXLE DUMP.** 4500 HD, Allison
Automatic, 220K Miles, Brand New Factory
Installed 13L 515 HP Motor From
Paccar Warranty Campaign,
3 Year Warranty On Engine, Stainless
Steel 16.5 Ft Body, **\$159,000.**
Call For More Info, 401-499-9873



BEAM TRUCK & BODY INC.

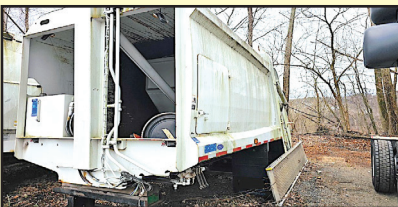
433 CUMBERLAND HILL ROAD, WOONSOCKET, RI 02895

RI Dealer #647

401-767-2639



NEW - USED & RECONDITIONED DISPOSAL EQUIPMENT



20 YARD CURBTENDER
GOOD USED 2017 UNIT.



**GOOD USED 2020 PAKMOR 16 YARD
REAR LOADER.** HAS REEVING SYSTEM,
CANNOT GO ON AN UNDER CDL CHASSIS,
33K OR GREATER.



2010 INTERNATIONAL 7400:
42,000 MILES W/ HEIL 22 YD. AUTOMATED
PACKER. **\$60,000** WILL SPLIT.



2004 KENWORTH T300:
396,914 MILES, AMERICAN 75,000#
ROLL-OFF, CAT C12 W/ FULLER 8LL, 60,000#
GVW CALL FOR MORE DETAILS !



**2000 INTERNATIONAL WITH
2023AMERICAN / PALFINGER 250S**
HOOK-LIFT, LOW MILES.
\$70,000

**IN STOCK READY TO
INSTALL
NEW EQUIPMENT**
* HAD-185-120-36/54"
* T40S AMERICAN
PALFINGER

WWW.BEAMTRUCK.NET



C.N. WOOD co., INC.

Large Selection Of Used Equipment! Call For More Info. 781-315-1680



**2003 KOMATSU PC300LC-7
WITH 8000LB HAMMER.
\$74,000., #C010601**



**84" ERSKINE GRAPPLE
BUCKET. Standard SSL
Attach, \$4950., #C007234**



**MINI SKID STEER FORK.
48" Tines, ASV RT25/30/40
Size, \$950., #C007311**



**2007 GRADALL XL5200. Only
4400 Hours, Good Running
Machine, \$89,000., #C007732**



**2014 CUES CAMERA TRUCK.
Everything Works, \$76,000.,
#E001350**



**2022 QUEST CONCRETE
PULVERIZER. 90MM
Pins, \$19,500., #C009326**



**2003 SEICA 800 JET RODDER
TRUCK. All Works,
\$29,500., #E001341**



**2003
JOHN
DEERE
644H.
Runs Good,
\$35,000.,
#C009877**



**2014 KOMATSU D65WX-17.
Good Shape, \$87,000.,
#C009223**



**2019 CAT
308CR.
Thumb,
Coupler,
\$75,000.,
#C009600**



**1997 CAT D8R. Good
Bottom, Runs Good,
\$115,000., #C009605**



**2006 KOMATSU
PC308USLC-3. No Emissions,
\$95,000., #C008562**

Woburn, MA • Avon, MA • Whatley, MA • Johnston, RI • North Haven, CT
Westbrook, ME • Pine Bush, NY • Holmes, NY • Newington, CT

www.cn-wood.com

ATTENTION CONTRACTORS
Carpenters, Plumbers, Electricians, Masons



2003 CHEVY C4500 UTILITY TRUCK. 81,068 Miles, No Accidents, 6.0L Reg. Gas, Automatic, Light Wt. 7,268 Lbs., Gross Wt. 16,000 Lbs., Purchased New, 1 Owner, **\$12,000.** 860-930-7013



2017 PETERBILT RAMP TRUCK. 300 HP PACCAR Engine, 2500 Series Allison Transmission, 422K Miles, Runs And Drives Excellent, Working Daily, **\$45,000.** Call Rick 401-692-9233



1987 INTERNATIONAL S1900 WITH 2800 GALLON ALUMINUM TANK. DT466, **\$5,000.** Lawrence, MA 603-973-0809



2014 DODGE RAM 5500. 4X4 Dump Body, 6.7 Cummins Diesel, 9' SS Plow W/ Sander, 40K Miles, Inspected And Ready To Work, **\$45,000.** 401-615-3333



2013 ISUZU NPR H.D. 16 Ft Box, Refrigerated, Auto Trans, V8 Gas, **\$7495.** 508-747-0289

**RIVERS
EDGE**

Truck & Trailer Repair

**183 River Road
Uxbridge, MA**

- Financing Available -

Emile 401-692-0780

Scott 401-692-0781

unitransiguere@earthlink.net

www.riversedgetrucktrailerrepair.com



2015 FREIGHTLINER M2 S/A TRACTORS. 5 Units, Miles Range From 330,000 to 400,000, DD-13 Engine, 10 Speed Stick, Ready To Work, **\$12,000 Each**



2016 FREIGHTLINER CASADIA. DD-13 Engine, 10 Speed, Clean, 678,000 Miles, Go To Work, **\$15,000**



2019 PETERBILT 567 SLEEPER. 441,000 Miles, Paccar, Eaton 13 Speed, 3:55 Ratio, Super Clean, Needs Nothing, Oil Changed With Records Every 12,000 Miles, **\$55,000.** 3 Trucks



2001 FREIGHTLINER CLASSIC FLD 120. N-14 Red Top 525 Hp Engine Totally Rebuilt, 5000 Miles Ago Pistons Liners, Bearings, Heads, Turbo Oil Pump You Name It, 18 Speed, New Clutch, Truck Doesn't Need Nothing But A Driver **\$55,000**



2012 PETERBILT 386. Paccar 400-450Hp in Stalled @ 266,077 Miles, All Docs, Eaton 10 Spd, Headache Rack, New Painted Frame, Chrome Bumper, 467,000 Miles On Truck **\$28,000**



2013 PETERBILT 386 SLEEPER. Owner Operator Specs, Cummins Rebuilt At 800,000 Miles, Turned Upped To 550 HP, Vacuum Style Turbo, No Leaks, 13 Speed Automatic, Two Boston Wide Ride II Seats, Well Maintained, **\$31,000**



2013 FREIGHTLINER CASCADA. 10 Speed, DD-13 Engine 380,366 Miles, Frame Repainted, Headache Rack, Truck Is Mint **\$21,000**



2018 KENWORTH T680 SLEEPER. 350,000 Miles, AP Unit, 455 Hp Paccar Engine, Automatic Transmission, Mint Condition, **\$40,000**



2012 VOLVO. D-13 Engine, I Shift Auto., 572,444 Miles, Frame Painted, Clean, Ready To Work, **\$19,000**

COMMERCIAL HOT WATER PRESSURE UNITS

"We Service All Makes And Models"



- Electric Motor – Gas Engine
 - 1725 RPM Motor & Pump
 - Becket Burner
 - TEFCO 120 V Baldor Motor
 - 50 Ft Hose
 - 4' Lance Trigger Gun
 - 1000 to 4000 PSI Options
 - Poly Fuel Tank
- NEW Starting @ \$2,495**
USED Starting @ \$1,295



R & E STEAM EQUIPMENT
Call Earl Warwick **617-899-8775**



2016 KENWORTH T800.

500 HP PACCAR MX13, On Air, Sleeper,
Wet System, 16k Front, 46K Rears,
421K Miles, **\$48,000.**
Jesse, 401-855-1178



2011 FORD F750 BUCKET TRUCK, 56,385 Miles, Cummins, Allison Auto, Brakes good – 75%, Spring Suspension, All Matching Rubber, Outriggers, 2 Man 65ft Alter Boom. **\$39,900**, 781-417-3018



2002 STERLING LT9500 10-WHEEL DUMP, 209K Miles, CAT C10 350HP, 8 Sp, 445 Tires on 20K Front, 11-24.5 On 52K Rear, 72K GVW, 4:89 Ratio, Full Locking Rears, Dual Steering Boxes, 14" Rugged Dump Body, New Radiator, Pintle On Rear, 11" Highway Plow, Easily Removable Harness, **\$38,500 OBR**. 508-269-1515

LS Tractor
25-100HP
With Loaders
BACKHOES AVAILABLE



0% Financing
Up To 120 Months
On Select Models

SALES • SERVICE • PARTS • FINANCING

FOSKETT
EQUIPMENT INC.
TRACTORS & IMPLEMENTS
Woodstock, Ct

Route 171
Woodstock, CT
860-928-5748

www.foskettequipment.com

\$

WANTED

**Construction
Equipment
Excavators,
Loaders,
Backhoes, Etc.**

**Top Dollar
\$ Paid \$
Same Day
Payment
603 505 0905**

SALVADORE

FAMILY OF DEALERSHIPS

442 West Broadway, Gardner, MA

**RAM**#1 RAM CHASSIS CAB
DEALER IN NEW ENGLAND!**978-616-6127****BUSINESS LINK**

The fast lane for small business.

We've Got Your TRUCK

BUSINESS OWNERS
SAVE MORE THAN \$10,000!Dump
Body!**2024 RAM 5500HD
C&C TRADESMAN
REGULAR CAB 4X4**6.7L I6 CUMMINS TURBO
DIESEL ENGINE - 6-SPD
AUTO AISIN AS69RC HD
TRANSMISSION**MSRP: \$99,510**
STK # N24144**SAVE \$5,000!**

Ready for Upfit!

**2024 RAM 3500HD
C&C TRADESMAN
REG CAB 4X4**6.7L I6 CUMMINS TURBO
DIESEL ENGINE - 6-SPD
AUTO AISIN AS69RC HD
TRANSMISSION - 60" CA**MSRP: \$71,655**
NOW: \$66,655
STK # N24073**SAVE \$5,000!****2024 RAM 5500HD
C&C TRADESMAN
CREW CAB 4X4**6.7L I6 CUMMINS TURBO
DIESEL ENGINE - 6-SPD
AUTO AISIN
TRANSMISSION - 84" CA**MSRP: \$80,730**
STK # N24114

Ready For Upfit! 84/CA

**2024 RAM 5500HD
TRADESMAN REG
CHASSIS CAB 4X4**6.7L I6 CUMMINS TURBO
DIESEL ENGINE. 6-SPEED
AUTO AISIN AS69RC HD
TRANSMISSION**New Arrival**
Call For Pricing!**SAVE \$5,500!**

Duramag Service Body

**2024 RAM 3500
TRADESMAN REG
CAB 4X4**
6.4L V8 HEAVY DUTY HEMI
MDS ENGINE - 8-SPD
AUTO TRANSMISSION -
18" WHEELS**MSRP: \$75,305**
NOW: \$69,805
STK # N24062**SAVE \$2,500!**

Reading Service Body

**2024 RAM 3500HD
TRADESMAN REG
CAB 4X4**6.4L V8 HEAVY DUTY HEMI
MDS ENGINE - 8-SPD
AUTO TRANSMISSION -
18" WHEELS**MSRP: \$76,655**
NOW: \$74,155
STK # N24036**SAVE \$5,000!**

16' Rack Body!

**2024 RAM 5500
TRADESMAN REG
CAB -**
6.7L I6 CUMMINS TURBO
DIESEL - 6 SPEED AUTO
AISIN AS69RC HD
TRANSMISSION - 120" C/A**MSRP: \$95,225**
NOW: \$90,225
STK # N24119

High Roof Cargo Van

**2025 RAM
PROMASTER 2500
TRADESMAN**3.6L V6 24V VVT ENGINE -
9-SPD AUTO
TRANSMISSION - GVWR
8,900LBS - 16" WHEELS**Arriving Soon**
Call For Pricing!**SAVE \$2,500!**

Ready For Upfit!

**2024 RAM 5500HD
TRADESMAN REG
CHASSIS CAB 4X4**6.7L I6 CUMMINS TURBO
DIESEL ENGINE. 6-SPEED
AUTO AISIN AS69RC HD
TRANSMISSION - 60" C/A**MSRP: \$79,110**
NOW: \$76,610
STK # N24078**SAVE \$5,000!**

Switch-N-Go Hoist System

**2024 RAM 5500HD
C&C TRADESMAN
REG CAB 4X4**6.7L I6 CUMMINS TURBO
DIESEL ENGINE - 6-SPD
AUTO TRANSMISSION -
84" CA**MSRP: \$107,925**
NOW: \$102,925
STK # N24079

Not responsible for typographical errors. Inventory changes frequently. Please call for pricing and details. Pricing subject to change due to manufacturer rebates. Based on Commercial Ram Coupon availability - while supplies last!

TRUCK MONTH



2000 CHEVY KODIAK. Dump, 33,000 GVW, Standard 6 Spd, 195K Miles, Runs Well, Needs Work But Work Ready, Air To Rear, Pintle Electric Port, Air Brakes, 3126 CAT, Newer Tires, 3 Scuttles, Rust Free, Clean Title, **\$7500 OBO.** 617-293-6598

SMR SYNERGY METALS RECYCLING

1741 Fall River Ave. Seekonk, MA

774-229-2159

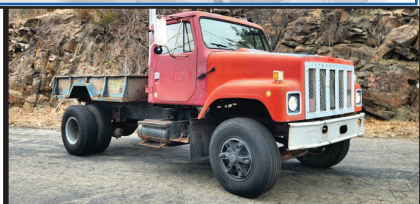
Comprehensive Scrap Metal Services
We Pay Top Dollar For Aluminum, Brass, Copper, Steel and Batteries

Specializing in Catalytic Converters

Synergymetalsrecycling.com



14/2 (16FT) HOOK LIFT FLAT BED. Includes Beaver Tail Rub Rails And Stake Pockets, Diamond Plate Deck, Choice Of 54" Or 36" Hook Height, Call For Pricing. **508-886-7727**



1980 INTERNATIONAL 2554. Runs And Drives Well, Recent PM Service, Not Geared For Highway, New Bostron Air Seat, Alternator, Belts, And Batteries, **\$6,000 OBO.** 860-392-8175

DONOVAN • DONOVAN • DONOVAN • DONOVAN • DONOVAN • DONOVAN • DONOVAN

6 Enterprise Drive
Londonderry, NH 03053
www.donovancompany.com



1-800-458-3867
Local: 603-699-2250
SALES - PARTS - SERVICE



CHIP BODIES



BEAU-ROC DUMP BODIES



ALUMINUM TRASH BODY BY TAFCO



PALFINGER/AMERICAN HOOKLIFTS



STAHL UTILITY BODIES



SWITCH-N-GO HOIST SYSTEMS & INTERCHANGEABLE BODIES

DONOVAN • DONOVAN • DONOVAN • DONOVAN • DONOVAN • DONOVAN • DONOVAN

JOSEPH

EQUIPMENT COMPANY

300 GAY ST • MANCHESTER, NH 03103

SATURDAYS • WE ARE OPEN ALL DAY

PHONE: 603-641-8608

FAX: 603-666-3716



293 NORTH - EXIT 2 -
LEFT ONTO BROWN AVE -
RIGHT ONTO WINSTON ST.- LEFT ONTO GAY ST.
300 GAY STREET ON THE RIGHT



2015 CATERPILLAR 314E LCR EXCAVATOR.
Thumb And Blade, Quick Disconnect, Hrs 4300,
Call For More Information.



2009 KOMATSU PC300HD. With A 400 Bottom, Plumbed For Hammer, Quick Disconnect, One Owner, Excellent Shape, 12,000 Hours. Call For More Information.
Call For More Information.



2015 CATERPILLAR 323 FL EXCAVATOR.
Hours 4737, Plumbed For Hammer, Quick Disconnect, Call For More Information.



2016 CATERPILLAR 335F LCR EXCAVATOR.
Hours 4971, Plumbed For Hammer, Quick Disconnect, Call For More Information.



2016 CATERPILLAR 938M 2V LOADER.
1936 Hours, Forks And Bucket, Call For More Information.



2006 CATERPILAR COMPACTOR CS563E. 2588 Hours, Full Cab, Call For More Information.



2016 CATERPILLAR D3K-2 DOZER.
5688 Hours, A/C, Full Cab, Call For More Information.



2001 CATERPILLAR D8R DOZER.
Full Cab, A/C, 60% Bottom, Call For More Information.



2006 CATERPILLAR 330D L EXCAVATOR.
Plumbed For Hammer, 6651 Hours, Call For More Information.



2011 CATERPILLAR D5K XL DOZER.
Full Cab, A/C, Call For More Information.



2003 CATERPILLAR 325CL.
Plumbed For Hammer, Quick Disconnect, Working Daily, Needs A Final Drive. Call For More Information.



TEREX RETECH TROMMEL
Screen Plant
Call For More Information.

www.josephequipment.com

Trades Welcome • Financing Available

THIS AD IS COPYRIGHTED & OWNED BY TRUCK AND EQUIPMENT POST

JOSEPH

EQUIPMENT COMPANY

300 GAY ST • MANCHESTER, NH 03103

SATURDAYS • WE ARE OPEN ALL DAY

PHONE: 603-641-8608

FAX: 603-666-3716



**293 NORTH - EXIT 2 -
LEFT ONTO BROWN AVE -
RIGHT ONTO WINSTON ST. - LEFT ONTO GAY ST.
300 GAY STREET ON THE RIGHT**



IN STOCK - 2025 FONTAINE MAGNITUDE 60HD-MX.
Deck Extends From 30' To 51', 65 Ton When Closed,
Built To Handle A 60 Ton Load With Ease, 30' Clear
Deck Length Extends To 51', 22" Loaded Deck Height,
6" Ground Clearance, 7 Position Hydraulic Detachable
Gooseneck, 7 Position Air Ride Tridem Bogie, 402 Jeep
Ready, 36" And 83" Flip Box Ready, 60/90 Flip Axle
Ready, EQ2 Spreader Bar Ready, Loaded.
Call For More Information.



**IN STOCK, NO WAITING: 2025 KRUZ 26' STEEL
TUB.** Aluminum Frame Dump Trailer, Air Ride, 2
Axle, Durabrite Wheels, 450 Hardox, 60" Sides,
12 Panel Gate High Lift Gate, Electric Flip N Go
Canvas.



2015 TRAIL KING 55 TON. (4 Available To Choose
From Ranging In Years From 2009 To 2015), Air
Ride, Full Fenders, Hydraulic Power Pack, 25 Foot
Deck, No Rust- Texas Trailer, Lift Axle, Set Up
For 4th Axle, Chain Boxes, Outriggers, 4th Axle
Available, **Call For More Information.**



1998 FONTAINE, MODEL. 50 Ton, Detaches At Both
Ends, 25' Flat Level Deck - 20" Loaded Deck Height,
25' Beam Deck Insert, 20" Loaded Deck Height, Non
Ground Bearing, Air Ride, Boom Trough & Deck Cut
Out, Lift Axle, Outriggers, Aluminum Wheels, Strobe
Lights. **Call For More Information.**



NEW MODEL - IN STOCK NO WAITING. Beat The
Price Increase. Fontaine Magnitude 65 2+3+2 Capable,
28' Drop Side Rail Deck, 3 Axle, Set Up For 4 Axle,
14.75" Deck Height, 102" Wide, 60.5" Axle Spacing,
Eq2 Spreader Bar With Intermediate Axle, Hydraulic
Removable, Non Ground Bearing With 2 Pin Position At
114" And 102", Triple Cylinder, 70" Hydraulic Flip Box,
Heavy Duty Snap In Outriggers, D-Rings, Alum Wheels,
275/70R X 22.5 Tires. **Call For More Information.**



IN STOCK - 2025 FONTAINE LXTN40. 40 Ton
Extendable, 34' Closed - 60' Open. Also Available
29' Closed - 50' Open. Tandem Axle, Set Up For
3rd, Air Ride, Non Ground Bearing, 102" Swing
Clearance, 20" Deck Height, Alum Wheels. In
Stock, No Waiting. Available In Manchester NH And
At The Factory In Springville AL. 3rd And 4th Axles
Available. **Call For More Information.**



2025 FONTAINE WORKHORSE 55LCC FLD. Tri
Axle, Lift On Third, Air Ride, Hydraulic 4th Axle Flip,
Air Lift On Third, 18" Deck Height, 26' Deck, Low
Boom Well, Covered Rear Bogie, Dual Cam Pawl
Assembly With 7 Ride Height Positions. Removable
Kingpin At 108 Inch Radius, Alternate Kingpin At 96"
Radius, Load Scale, Tire Inflation, Air Controls, 275
Rubber, Alum Wheels. In Stock, No Waiting.
Call For More Information.



2019 PUP TRAILERS. (14 Available To
Choose From, 28' Long, 102" Wide, 13'6" High.
Call For More Information.



2017 LIDDELL 60 TON DSR. 4 Axle, 26' DSR
Deck, 9' Wide, 8'6" Bogie, 26' Beam Deck, 4th Axle,
Alum Wheels, Gooseneck Extension, Power Pack,
Excellent Shape, **Call For More Information.**



2016 GREAT DANE 53' X 102" DROP DECK.
Tri Axle, Air Ride, Lift On Rear Axle, Excellent
Condition, Southern Trailer, No Rust.
Call For More Information.



**IN STOCK - NO WAITING - 2025 GALLEGOS
42' FRAME TYPE DUMP TRAILER.**
96 Yard, 102" Wide, 90" Sides, Tri Axle,
Hendrickson Air Ride INTRAXX, ABS Brakes, Lift
On Front Axle, Flip N Go Electric Canvas, LED
Lights, Barn Door. **Call For More Information.**



2019 FONTAINE 53 - 90. Tri Axle, Air Ride, Slider,
Like New Condition, Southern Trailer, No Rust. 3
Available To Choose From Ranging From 2019 To
2016. **Call For More Information.**

www.josephequipment.com

Trades Welcome • Financing Available

THIS AD IS COPYRIGHTED & OWNED BY TRUCK AND EQUIPMENT POST

JOSEPH

EQUIPMENT COMPANY

300 GAY ST • MANCHESTER, NH 03103

SATURDAYS • WE ARE OPEN ALL DAY

PHONE: 603-641-8608

FAX: 603-666-3716



293 NORTH - EXIT 2 -
LEFT ONTO BROWN AVE -
RIGHT ONTO WINSTON ST.- LEFT ONTO GAY ST.
300 GAY STREET ON THE RIGHT



ERIN 165T SCREENER ON TRACKS.
Makes 3 Products, CAT Power, Heavy Duty
Grizzly, Remote Control, Very Good Condition,
Call For More Information.



**100 STORAGE CONTAINERS TO CHOOSE
FROM. 20', 40', and 40' High Cube.
Call For More Information.**



TELESMTIH 3042 CRUSHER. With New Die
Jaws. **Call For More Information.**



**1997 MACK RD. 350, 12 Speed, 44 Rears,
18 Front, Double Frame, 24.5 Rubber, A/C,
Engine Brake, Perfect Condition.
Call For More Information.**



1997 CATERPILLAR 960F WHEEL LOADER.
Sandblasted And Painted, New Decals, A/C, Scale,
23.5 X 25 Rubber, Bolt On Cutting Edge, Very Good
Condition. **Call For More Information.**



2009 CATERPILLAR 308C CR. Full Cab, Blade, Quick
Disconnect, Plumbed For Hammer And Wrist O Twist,
1 Owner, Original Paint, Approx 6000 Hours,
Call For More Information.



2009 CATERPILLAR 336D.
93 Hours On New Motor, New Swing Drive, 3rd
Valve, Hydraulic Thumb, Excellent Shape.
Call For More Information.



1998 BOMAG VIBRATORY COMPACTOR.
8600 Hours, Hydrostatic Transmission, Fleet
Maintained, 24,000 Operating Weight,
Recently Painted, New Oil And Fuel Filters.
Call For More Information.



1998 VOLVO L180C LOADER. 26.5 X 25 Radial
Michelin Tires, One Owner, Working Daily, Excellent
Shape. **Call For More Information.**



2004 VOLVO L150E WHEEL LOADER. One
Owner, Excellent Shape, 6000 Hours On New
Motor And Transmission With Paperwork,
Call For More Information.



2009 CATERPILLAR 924H WHEEL LOADER.
Quick Disconnect, New Motor From CAT With
Paperwork, Very Good Condition.
Call For More Information.



2011 CATERPILLAR 246C XPS. Skidsteer, 2
Speed, Full Cab, A/C, Cushion Tires, Forks And
Bucket, Extra Counterweights, 4,000 Hours, One
Owner, Original Paint. **Call For More Information**

www.josephequipment.com

Trades Welcome • Financing Available

THIS AD IS COPYRIGHTED & OWNED BY TRUCK AND EQUIPMENT POST

JOSEPH

EQUIPMENT COMPANY

300 GAY ST • MANCHESTER, NH 03103

SATURDAYS • WE ARE OPEN ALL DAY

PHONE: 603-641-8608

FAX: 603-666-3716



FONTAINE

293 NORTH - EXIT 2 -
LEFT ONTO BROWN AVE -
RIGHT ONTO WINSTON ST.- LEFT ONTO GAY ST.
300 GAY STREET ON THE RIGHT



1998 MACK RD688SX DUMP TRUCK. 350 HP, Fuller 8 Speed, 58 Rears All Redone By Southeast Truck, 24" Rubber, Rebuilt Engine, Double Frame, Working Daily, Heated Body, New Brakes All Around, New King Pins, New Clutch/Bell Housing, All New Rear Suspension. **Call For More Information.**



2002 MACK GLIDER. 8000 Original Miles, 300, 9 Speed, 44 Rears, 18 Front, 3,600 Gallon Tank Body (Vac Tank), Like New Condition. **Call For More Information.**



2018 WESTERN STAR 4900 (3 AVAILABLE TO CHOOSE FROM). Allison Automatic, 550 HP, DT15 Engine, Full Rears, 2 Line Wet System, Fleet Maintained, Dual Stacks, Alum Wheels, A/C, P/S, Original Paint, One Owner. **Call For More Information.**



1997 KENWORTH T800. Twin Steer Wide Nose, 550 Cummins, 18 Speed, Long Wheel Base, 30' From Back Of Cab To End Of Frame, Newair Ride, Double Frame, 164,000 Original Miles, New Michelin Tires In Back. **Call For More Information.**



2020 WESTERN STAR 4900 (4 Available To Choose From). Allison Automatic, 550 HP, DT15 Engine, 46kK Full Locking Rears, 210" Wheel Base, 2 Line Wet System, Fleet Maintained, Dual Stacks, Alum Wheels, A/C, P/S, Original Paint, One Owner, Approx 316K Miles. **Call For More Information.**



1994 FORD WATER TRUCK WITH CURRY TANK. Hydraulic Driven Pump, Double Frame, Cummins Power, Very Good Condition, Price \$27,500. **Call For More Information.**



1996 MACK CL 713, 350 MACK. 13 Speed Mack, 46k Rears, 4,100 Gallon Two Compartment Tank, Remtec Inc Steel Tank, 1100 X 24.5 Rubber, 270,000 Original Miles. **Call For More Information.**



2015 KENWORTH T880. Miles: 571K, 500 Paccar, Automatic, 3.91 Gear Ratio, 46K Rears, Full Lockers, 24.5 Rubber, A/C, Power Steering, Air Ride, Aluminum Wheels, Fleet Maintained, One Owner, **Call For More Information.**



2019 PETERBILT 389. 605 Cummins Power, 18 Speed, 4 Axle, 46K Rears, Air Ride, 300" Wheel Base, Headache Rack, Full Fenders, 60" Bunk, Loaded, **Call For More Information.**



1998 MACK 350. 8LL Trans, 46K Rears, 18K Front, Double Frame, A/C, Power Steering, Wet System, 129,000 Original Miles, Excellent Condition, **Call For More Information.**



2011 INTERNATIONAL 7400 WORKSTAR. DT570, 12,000 Original Miles, Allison Automatic Transmission, Air Ride, Former Florida Municipality Truck, New Tires, Excellent Shape. **Call For More Information.**



1991 MACK RW753 SUPERLINER. 3406 ATAAC CAT ATAAC Engine, Fuller RO 18 Speed 156 Trans, 46K Mack Rears, 20K Front, Wet System, Dual Power Steering, A/C, Engine Brake, 220" Wheel Base, Tri Axle. **Call For More Information.**

www.josephequipment.com

Trades Welcome • Financing Available

THIS AD IS COPYRIGHTED & OWNED BY TRUCK AND EQUIPMENT POST

JOSEPH

EQUIPMENT COMPANY

300 GAY ST • MANCHESTER, NH 03103

PHONE: 603-641-8608

OPEN
ALL DAY
SATURDAY

FONTAINE

FAX: 603-666-3716



NEW MODEL - 2025 FONTAINE RENEGADE LXLN12 - 12 Inch Loaded Deck Height With 4 Inch Ground Clearance When Fully Loaded, 30 Tons In 16 Feet On Tandem Bogie Or 30 Tons In 20 Feet With 3rd Axle Flip, Low Profile, 3rd Axle Capability, 32 Feet 11 Clear Deck Length. IN STOCK, NO WAITING. **CALL FOR MORE INFORMATION.**



NEW MODEL - 2025 FONTAINE MAGNITUDE 50 Tri Axle, Set Up For 4Th, 50 Ton, Air Ride, 24' Deck, 20" Loaded Deck Height, Alum Or Steel Wheels, Strobe Lights, Outriggers And D-Rings. **Call For More Information.**



2025 KRUZ TERMINATOR, 26' Steel Frame, Single Point Suspension, 2 Way Gate, 11 X 24.5 Tires, Alum Wheels, 2 Speed Landing Gear. **Call For More Information.**



27' FLAT LEVEL DECK - IN STOCK

2025 FONTAINE 55L, 27' Flat Level Deck, Also Available In 25' And 26' Deck Length. Tri-Axle, Air Ride, 3Rd Axle Lift, Alum Wheels, Strobe Lights, Set-Up For 4Th Axle. In Stock, No Waiting. **Call For More Information.**



2025 KRUZ 26' STEEL TUB, Aluminum Frame Dump Trailer, Air Ride, 2 Axle, Alum Wheels, 450 Hardox, 24.5 16 Ply Tires. **TAKING ORDERS**
Call For More Information.



55 TON MODULAR WITH BEAM

2025 FONTAINE 55H MODULAR DSR, Beam Deck Also Available, Tri Axle, 60" Axle Spacing, Hydraulic Removable, Non Ground Bearing, Set Up For Gooseneck Ext, Spreader Bar And 4Th Axle Flip, Air Ride, Alum Wheels, 22.5 Rubber. **Call For More Information.**



2025 FONTAINE 60 TON MODULAR 2+3+1, 26' Dsr, 184" Swing Clearance, Set Up For 2 Axle Jeep, 14" Deck Height, Air Ride, Alum Wheels, 275/70R X 22.5 Rubber, Non Ground Bearing. **Call For More Information.**



2025 FONTAINE RENEGADE LXL, 14" Deck Height, 30' Deck W/6" Ground Clearance, 2 Axle, Set Up For Third, Hydraulic Detachable, Taking Orders
Call For More Information.



2025 KRUZ, 70 Yard, Tri Axle, 70,000 Single Point, Lift On Third Axle, 1/4 Inch 450 Hardox, Floor, Sides, Nose, Gate, 12 Panel Gate, 11 X 24.5 Rubber, Alum Wheels. Taking Orders. **Call For More Information.**



2025 FONTAINE TRAVERSE HYDRAULIC TAIL, 48' Long, 102" Wide, Air Ride, Hydraulic Upper Deck, Hydraulic Winch, Remote Control, Alum Wheels, Dual Controls. Taking Orders
Call For More Information.



2025 FONTAINE 60 TON MODULAR, 26' Dsr, 60" Axle Spacing, 184" Swing Clearance, Set Up For 2 Axle Jeep, 14" Deck Height, Air Ride, Alum Wheels, 275/70R X 22.5 Rubber, Non Ground Bearing. In Stock. **Call For More Information.**



3+3+3

1998 KAYLN SIEBERT, 75Ton 3+3+3, Air Ride, West Coast Bogie, 3 Axle, Air Ride Jeep With Power Tower, 10' Wide Trailer, 60' Overall Length, 48' Of Useable Deck, 275/70 X 22.5 Rubber, Sandblasted & Painted, Excellent Shape, Alum Wheels On Jeep And Booster. **Call For More Information.**

Trades Welcome • Financing Available • www.josephequipment.com

THIS AD IS COPYRIGHTED & OWNED BY TRUCK AND EQUIPMENT POST

TRAILER RENTALS • TRAILER RENTALS • TRAILER RENTALS •

WE RENT STEP DECKS • LOW BEDS • HI FLATS • DEMO/SCRAP • TRAILERS

JOSEPH

EQUIPMENT COMPANY

300 GAY ST. • Manchester, NH 03103

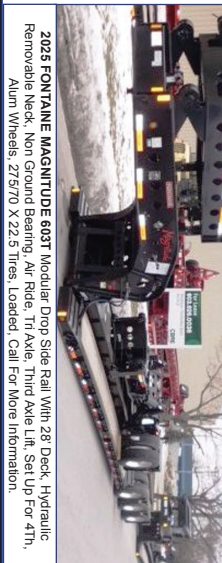
NOW TAKING ORDERS FOR DUMP TRAILERS AND LOWBEDS FOR SPRING AND SUMMER DELIVERY

14" DECK HEIGHT



NEW 2025 FONTAINE RENEGADE LXL, 14' Deck Height, 30" Deck W/ 6" Ground Clearance, 2 Axle, Set Up For 3rd Hydraulic Detachable Or Mechanical Detachable. In Stock. No Waiting. Call For More Information.

IN STOCK, NO WAITING



2025 FONTAINE MAGNITUDE 603T Modular Drop Side Rail With 28' Deck, Hydraulic Removable Neck, Non Ground Bearing, Air Ride, Tri Axle, Third Axle Lift, Set Up For 4th, Alum Wheels, 275/70 X 22.5 Tires, Loaded. Call For More Information.

55 TON EXTENDABLE



2025 FONTAINE MAGNITUDE 59MX, 55 Ton Extendable Trailer, 30' To 50', Modular, Detaches Both Ends, Hyd Removable, Non Ground Bearing, 20' Deck Height, With Take 10' Deck Ext For A Total Of 60', 275 Rubber, Tri Axle, Air Lift On 3rd, Set Up For 4th, Set Up For Goose Neck Ext. Call For More Information.

WE RENT WALKING FLOORS • DUMPS • HIGH FLAT EXTENDABLES • JEEPS



NEW 2025 FONTAINE SPECIALIZED MAGNITUDE 55L, Tri Axle, Air Ride, Set Up Of 4th Axle, Non Ground Bearing, 25' Deck, Led Lights, Aluminum Wheels, Strobe Light Package, Lift On 3rd Axle, 2 Pin Position, Loaded. In Stock. No Waiting. Call For More Information.



2025 FONTAINE 55H MODULAR AIR DROP, Beam Deck, Also Available, Tri Axle, 60' Axle Spacing, Hydraulic Removable, Non Ground Bearing, Set Up For Goose Neck Ext, Spreader Bar And 4th Axle Flip, Air Ride, Alum Wheels, 22.5 Rubber, Call For More Information.



2025 FONTAINE 35 TON LOWBED, Air Ride, Tandem Axle, 29ft Flat Level Deck, Non Ground Bearing, Hyd Goose Neck, Set Up For Future 3rd Axle, In Stock. Call For More Information.

WE RENT STINGERS • SPREADER BARS • DOUBLE DROP EXTENSIBLES TRAILERS

70 TON 2+3+2



2025 FONTAINE 704/2+3+2 DROP SIDE RAIL, 4 Axle, 28' Deck, Hydraulic Detachable, In Stock, No Waiting, Non Ground Bearing, 102' Wide, 65' Flip Box, Spreader Bar And 352L Jeep, Alum Wheels, 275/70R X 22.5 Tires, 28' Beam Deck Available. Call For More Information.



NEW 2025 FONTAINE 55 TON, Drop Side Rail, Tri Axle, Air Ride, Set Up For 4th, Non Ground Bearing, Led Lights, Aluminum Wheels, Strobe Lights, Loaded. In Stock. No Waiting. Call For More Information.



NEW 2025 SPECIALIZED 55 TON BEAM TRAILER, 3+1 Modular NGB, Detach Both Ends, Tri Axle, Air Lift On 3rd, Set Up 4th, Set Up For Goose Neck Extension, Call For More Information.

Trades Welcome • Financing Available • www.josephequipment.com

THIS AD IS COPYRIGHTED & OWNED BY TRUCK AND EQUIPMENT POST

TRAILER RENTALS • TRAILER RENTALS • TRAILER RENTALS •