

**SERVING NEW ENGLAND**

**FREE**

# TRUCK AND EQUIPMENT POST

*What's In Your Tool Box?*



**2020 HINO 268.** 26' X 103" X 102" MORGAN VAN. AIR BRAKES, ALUMINUM WHEELS, CURBSIDE DOOR, 2 ROWS E-TRACK, \$85,805. 978-686-1800



**1959 CATERPILLAR D9D DOZER.** #18A2432, A1 SHAPE, 95 TILT BLADE IS COMPLETELY REBUILT, H29 CABLE CONTROL UNIT, EXCELLENT UNDER CARRIAGE, INCLUDES D9D PARTS MACHINE, \$26,500. 781-344-3278 OR 781-844-9196



**2010 INTERNATIONAL 4300.** DT466-245HP, 70K MILES, ALLISON 3500RDS AUTO, 26K GVW, SPRING SUSP., AIR-BRAKES, A/C, PTO, NEW 10' WARREN DUMP, 1 CHUTE, ELECTRIC TARP, AIR-TO-REAR. \$49,000. 508-429-7678



**2012 MEC 2659ERT ROUGH TERRAIN SCISSOR LIFT.** 26' PLATFORM HEIGHT, ELECTRIC POWER, 4WD, 281 HOURS, \$14,382. 508-856-9171



**2020 TOW BANDIT DECKOVER.** 14,000 GVW, LED LIGHTS, SEALED WIRING, BOLT-ON 12,000 LB. JACK, DEXTER AXLES WITH ELECTRIC BRAKES, 235 80 R16 LOAD STAR TIRES & WHEELS, FINANCING, \$5,900. 508-886-7727

**Optative Group**



**Issue 16-17  
April 22nd, 2020**

**INTERNET & PRINT  
FOR ONLY \$25.00**

**[www.TruckAndEquipmentPost.com](http://www.TruckAndEquipmentPost.com)**

**888-887-0505**



# GENERAL TRUCK CENTER INC.

**Selling Cab Overs Since 1961!!**

109 Lindberg Ave. Methuen MA 01844 • [www.generalttruckcenter.com](http://www.generalttruckcenter.com)

**978-686-1800**

**603-560-0668**

Nights and Weekends

**ASK HOW WE  
CAN LOOK IN YOUR  
MAINTENANCE  
COSTS FOR 6 YEARS  
WITH PMP**



**2014 Hino 268A. 168K.**  
26'x102x103 Body. Curbside.  
3000lb Gate. 2 Rows of E-Track.  
Wood Slats. Cold Package.  
stk#15193 **\$46,900.**



**2020 HINO 268A.** Air Brake. Alum  
Wheels. Chrome Bumper. 26x103x102.  
Curbside Door. 2 Rows E-Track.  
stk#9528, **\$85,875.**



**2013 HINO 338.** 233K. 6sp Man,  
24' Dry w/ 2 Row E-Track, 4000  
LB Gate, stk#15079, **REDUCED**  
**\$22,900!**



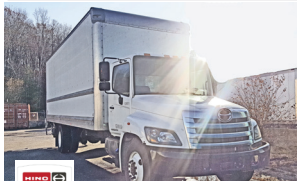
**2016 HINO 195.** Derated to 17950  
GVW, 176K Miles, 138" WB,  
Heated Power Mirrors, Power W/L,  
A/C, stk#15202, **\$26,900.**



**2020 HINO 338 Oil Chassis.**  
Air Brake/Spring Ride, Allison  
3500 RDS Auto, Vertical Exhaust,  
Chrome Package, Cold Package  
And More! stk#9705, **\$81,900.**



**2017 HINO 268A.** 135K. 26' w/3K Lift Gate,  
Heated, P/W/L, Air Brakes, Remain of 5 Yr/250K  
Engine/Emissions Warranty until 10/2021/250K  
Mi., stk#15230, **\$56,900.**



**2016 HINO 268A.** 139K, 26' w/ 3K  
LB Lift Gate w/ Alum Platform, Air  
Brake/Air Ride, Rear Sus Dump  
Valve. stk#15269, **\$49,900.**



**2016 HINO 195.** 170K Miles,  
18'x85x102, Step-Up Rear Bumper,  
Cold Package (Heated Mirrors/  
Block Heater), 102" Mirrors, P/W/L,  
stk#15232, **\$29,900.**



**2015 HINO 268A.** 129K, 97x102x26  
w/Trans Roof, 2 Row E-Track, Maxon  
3000 LB Aluminum Tuckaway, Air Brake/  
Air Ride, Rear Sus Dump Valve, Cold  
Package, stk#15271, **\$49,900.**



**2012 HINO 268A.** 173K, Auto, 24' Morgan  
109'x102", 2500 LB Steel Lift Gate, 2  
Row E-Track/Wood Slats, Back-up Cam.,  
AM/FM/CD, A/C, Rear Dump Valve,  
stk#15239, **\$35,900.**



**2013 HINO 338.** 271" WB, 6 Sp Manual,  
197K Miles, B/U Alarm, AM/FM/CD, Air  
Brake/Air Ride Seat, Heated Mirrors/  
Block Heater, A/C, Exhaust Brake,  
stk#15078, **\$16,900.**



**2015 HINO 268A 26' w/3000 LB Lift  
Gate.** 163K, Air Ride, Rear Suspension  
Dump Valve, Cold Package, Air Horn,  
Roll-Up Door, 2 Rows Of E-Track, Trans  
Roof, AM/FM/CD, stk# 15273, **\$49,900.**



**2013 ISUZU NQR.**  
121K Miles, 132" Chassis, 17950  
GVW, 6830# Front, 14550# Rear  
Axle, stk#15082, **\$23,900.**



**2014 ISUZU NPR-HD.** Diesel, 119K  
Miles! 150" WB, Auto, Includes 3  
YR/90K Isuzu Extended Warranty,  
stk#15100, **\$27,900.**



**2014 ISUZU NPR-HD 16' Alum  
Body.** Diesel, 119K, 1 Row E-Track.  
Metal Roof, AM/FM/CD/Bluetooth/  
USB Radio, P/W/L, Back-Up Alarm  
And More! stk#15100, **\$29,900.**



**2016 Isuzu NPR-HD.** 112K, 14,500 GVW,  
16' Dry Body w/ 2 Rows E-Track, 1500 LB  
Maxon. Includes a 3yr/90,000 Mile Isuzu  
Goldstar Plus w/AT Warranty, A \$3200  
value! Stk#15186, **\$34,900.**



**2014 ISUZU NPR-HD.** 150" WB,  
163K Miles. 6 Sp. Auto, 4 Cyl  
Diesel. P/W/L, A/C, AM/FM/CD/USB  
w/Bluetooth, stk#15169, **\$22,900.**



**2014 ISUZU NPR-HD's.**  
5 To Choose From. 150" WB Ready For 16' Bodies, AM/FM/CD, A/C,  
P/W/L, Heated Mirrors. stk#15040-15062, **\$22,900.**



**2016 Isuzu NPR-HD NEW Alum Stake  
Body w/ Removable Side Stakes.**  
102K, AM/FM/CD, A/C, Inc 3yr/90K Gold  
Star Warr! stk#15252, **\$32,900.**

\*TAXES NOT INCLUDED, 100K MILE LIMIT, .20 CENTS EVERY MILE ABOVE 100K. Dealer is not responsible for errors in price or in description of vehicles





Call us at  
**978-686-1800**  
or Visit us at:  
[www.generaltruckcenter.com](http://www.generaltruckcenter.com)



**FINANCING OPTIONS FOR NEW VEHICLES STARTING AT 1.99% AT 36 MONTHS,  
3.49% FOR 48 MONTHS, 4.49% FOR 60 MONTHS, 5.09% FOR 72 MONTHS.**



**Great Selection of New Isuzu FTR's –  
Refrigerated Trucks & Vans.  
8 Wheelbases  
152" – 248" For Bodies 14' to 30'.  
5.2L Diesel, 25,950 GVW.**



**New Isuzu NPR-HD Dry Freight &  
Reefer Bodies. Gas & Diesel,  
109" to 176" WB, Up to 14,500 GVW,  
10' to 20' Bodies.**

**109 Lindberg Ave. Methuen, MA 01844**



**1985 WESTERN STAR TANDEM AXLE DUMP TRUCK,**  
400 Cat Engine, 13Spd. Trans., 12K Front/40K Rears, 11R 22.5 Tires,  
Single Frame, Hendrickson Spring Suspension. **\$7,500**, Call Today  
781-417-3018

**2010 SEARAY 310  
SUNDANCER.**

Only 179 Original Hours,  
Only Used In Fresh Water,  
Original Owner Manuals,  
**\$24,800. 302-238-6552**



**1998 LEE-BOY 8500.**  
8'-15', Runs Well, Approx. 5000  
Hours, Many New Parts Past Few  
Years, **\$13,000 OBO.**  
Marlborough, CT  
860-798-8702



**2001 BEAST 3680 GRINDER.** 60" In-Feed, 12.5L John Deere  
Power Plant, Recent Rebuild On Engine And Clutch, Color Critter Included,  
**\$19,500 OBO.** Located In Plainville MA. Call Eric 508-212-8710



# ANDERSON MOTORS INC.


**GMC**

**MICRO BIRD**  
by GERRARDIN

**BLUE BIRD BUS SALES OF NEW ENGLAND**
**\* YOUR EXCLUSIVE VOLVO TRUCK DEALER \***

**VOLVO POWER**

2019 VOLVO VHD64FT300-D13, 500HP, I-SHIFT, 14,600# FRONT/ 46,000# REAR T-RIDE. #180159



2021 VOLVO VNR64T300-D13, 435HP, 12SPD I-SHIFT AUTO, 52,000 GVW, AIR-RIDE REGIONAL HAUL TRACTOR. #200014



2019 VOLVO VDH64BT300-D13, 500HP, I-SHIFT TRANS., 14,600# FRONT/ 46,000# REAR T-RIDE, HYD. WET-SYSTEM. #180228



2016 VOLVO VNL64T670-D13, I-SHIFT, VERY WELL MAINTAINED WITH ONLY 241,490 MILES.



2008 GMC T7500, 25,950 GVW, UNDER CDL, 10' STEEL BODY, I-PACK TOOL BOX, DIESEL, AUTOMATIC.



2020 RHODES 26' ALUMINUM DOUBLE WALLED SMOOTH SIDE DUMP TRAILER, ALUM. FRAME, AIR-RIDE.



2020 RHODES 26' STEEL DUMP TRAILER AR450, DUAL HINGE HIGH LIFT-GATE, 70,000# SINGLE POINT, ELECTRIC COVER.



1998 INTERNATIONAL 9100, SERIES 60 ENGINE, 9SPD., AIR-RIDE.



1998 FREIGHTLINER FL70, 33,000 GVW, DIESEL, 6SPD. TRANS., 12' DUMP W/ PLOW, 190K MILES, 12,000# FRONT / 23,000# REARS.



2020 AUTO-CAR ACTT42, SINGLE AXLE HYDRAULIC SPOTTER, CUMMINS B6.7L ENGINE, ALLISON 3000 SERIES TRANS. #190264



2019 FORD E-450 24 PASSENGER COMMERCIAL SHUTTLE BUS, GAS, AUTOMATIC, A CDL LICENSE IS REQUIRED. #190016



2019 FORD E-350 MICRO BIRD, 14 PASSENGER COMMERCIAL SHUTTLE BUS, GAS, AUTOMATIC, NON CDL. #190017

## 401-434-5900

[WWW.ANDERSONMOTORS.COM](http://WWW.ANDERSONMOTORS.COM)

EMAIL • [SALES@ANDERSONMOTORS.COM](mailto:SALES@ANDERSONMOTORS.COM)

170 AMARAL STREET • EAST PROVIDENCE, RI 02915

HABLAMOS ESPAÑOL

ALL  
NEW TIMES  
NEW DATES**3 AUCTIONS IN 1 DAY****JOB COMPLETION • Ferreira Construction Co. ~****CONSTRUCTION & AGGREGATE EQUIPMENT****ESTATE AUCTION • North Fork Farms • John Deere Ag Equip.***Very Late Model Construction, Aggregate Equipment (Crushers Screening Plants), Utility Equipment, Large Quantity Truck Trucks, Attachments, Support Plus (200+) Bucket, Digger Derrick, Utility & Pickup, & Service Trucks*ALL  
NEW TIMES  
NEW DATES**VIRTUAL LIVE AUCTION • RAYNHAM, MA • SAT., APRIL 18<sup>TH</sup> @ 9:30 AM****Equipment Pickup Site 1: 1958 Raynham Park, Raynham, MA 02767 (Pickups, Service, Boom, Bucket and Digger Derrick Trucks)****Equipment Pickup Site 2: 71 Fall River Avenue Rehoboth, MA 02769****(Construction Equipment, from Ferreira Construction Co., John Deere Agricultural Equipment from North Fork Farms)**

**HIGHLIGHTS INCLUDE:** **JAW CRUSHER:** 2008 Pegson XR400, **CONE CRUSHER:** 2008 Pegson 1300(magnet, completely gone thru), **SCREENING PLANT:** Power Screen Warrior 1400, **3 EXCAVATORS:** 2019 Cat 320GC, 2016 Komatsu PC360LC-10, 2012 Komatsu PC200LC-8(2016 Atlas Copco 4,000lb. hammer), **RUBBER TIRED LOADER:** 2014 Komatsu WA470-7, **TRACTOR LOADER BACKHOE:** JD 310C(4x4), **4 SCISSOR LIFTS:** 2013 Skyjack, SJIII3219, 2012 Skyjack SJ16, (2)2013 JLG 1230ES, **2 AIR COMPRESSORS:** 2013 Atlas Copco XATS400, Atlas Copco XAS85, **3 LIGHT PLANTS:** (2)2014 Magnum Pro MLT3060, 2012 Terex RL4, **COMMERCIAL MOWER:** JD X758(4x4), **UTILITY TRACTOR:** JD 2355(4x4), **2 AG TRACTORS:** JD 5083(4x4), JD 3033R(4x4), **6 HAY EQUIP.:** Like New JD 625 Disc Bine, JD 328 Hay Baler, Kuhn GA3200GT Hay Rake, Hammer Blow Snowco Hay Elevator(20in.x22ft.), (2)HS Hay Wagon(16x8x10), **MANURE SPREADER:** H&S Spreader, **WOOD CHIPPER:** Morbark, **74 BUCKET TRKS.:** 2000 IH 4900, 2009-2006 IH 4300, (2)2000 IH 4700, (2)2002-4)2001-2)2000-1999-2)1998 IH 4900, (28)2002-11)2001-8)2000 Chevy 3500, 1999 Ford F450, **19 DIGGER DERRICK TRKS.:** (5)2002-2)2001-1999 IH 4900, (5)2001 IH 4700, **REEL TRK.:** 2002 IH 4900, **VAN TRK.:** Chevy 3500, **3 FLATBED TRKS.:** 2012 IH Terrastar, 1999 Ford F350, GMC 8500 Kodiak(Moffett), **STAKE TRK.:** GMC C6500, **4 TRK TRACTORS:** (3)2000-1998 Freightliner FL112(t/a), **MASON DUMP:** Chevy Silverado K3500(4x4), **UTILITY TRK.:** 2011 Ford F250, **SNOW PLOW TRK.:** 2009 Chevy Silverado(4x4), **28 PICKUPS:** 2005 Chevy K3500, 2009 Chevy 2500, 2017 Chevy 1500 Silverado, 2008-2)2007 Chevy 1500, 2013 Ford F250, (10)2008-2007 Ford F150, **45 VANS:** (14)2012-2008-2006 Chevy 2500, (2)1998 Chevy 3500, (4)2013 Ford Transit Connect, (13)2011-5)2010 Ford E250.

**SITE PH: (508) 769-7010 Joe • MA AUCTION LIC: #295 Paul E. Saperstein Co., Inc.****LATE MODEL RENTAL FLEET CONSTRUCTION EQUIPMENT AUCTION****~ Herc Rentals • Ahern Rentals ~ United Rentals ~***Over 1000 Lots: Ag Tractors, Tractor Loaders, Commercial Mowers, Pickup & Service Trucks, Utility Vehicles, Tagalong Trailers, Large Quantity Support Equipment***TIMED AUCTION • MAYS LANDING, NJ • MON., APRIL 20<sup>TH</sup> @ 8:00 AM – SAT., APRIL 25<sup>TH</sup> @ 5:00 PM****Preview & Pickup: 4501 Leipzig Ave, Mays Landing, New Jersey 08330 (AC Race Track)**

**HIGHLIGHTS INCLUDE:** **3 AG TRACTORS W/LOADERS:** (2)2018-2015 JD 5085E(4x4), **9 TRACTOR LOADERS:** (2)Unused JD 3032E(4x4), Unused NH Boomer-47(4x4), Unused NH Workmaster-55(4x4), (2)Unused Workmaster-40(4x4), Unused Workmaster-35(4x4), Ford 1100(4x4), **3 TRACTOR LOADERS W/MOWERS:** (3)2018 JD 1025R, **7 COMMERCIAL MOWERS:** (3)Unused Hustler FR691, (4)Unused Hustler FR600, **2 GENERATORS:** Coleman 30Kw, Dry Air 10Kw, **WELDER:** Lincoln Ranger 8, **2 LIGHT PLANTS, 2 CONCRETE EQUIP., SWEEPER:** Tennant 3640E, **2 SERVICE TRKS.:** 2012 Ford F550, 2001 Dodge 5500, **9 PICKUPS:** 2013 Dodge 2500, 2013 Dodge 2500SLT, (4)2014 Dodge 1500(4x4), 2008 Ford F250, (2)2014 Ford F150, **9 TAGALONGS:** (9)2020 Delta 27TB(t/a), **UTILITY TRAILER:** 2012 Ditch Witch S2B Trencher Trailer, **57 UTILITY VEHICLES:** Unused Bobcat 5600(4x4), (3)2015 Bobcat 3600, (6)Bobcat 3400, 2015 Cushman Hauler 1200, (15)Cushman 1600XD4, (2)2016-2013 JD Gator 825i, Like New JD 825, 2014 JD 398FM, (4)Club Car Carryall 1700, (2)Club Car XRT, (6)Ez-Go 1600XD, 2014 Kubota RTV1140CPX, (3)Kubota RTV1100CW, **6 GOLF CARTS:** 2015-2012 Cushman Titan, 2015 Cushman Hauler 1200-G, 2015 Cushman Shuttle, 2014 Ez-Go, Customized, **3 MULTI-USE CONTAINERS, 7 CONTAINERS, 14 STORAGE BUILDINGS, 4 PORTABLE BATHROOM STATIONS, 8 ROAD PLATES, 3 TRENCH BOXES, 9 SCRAP RECYCLING, SNOW EQUIP., 47 PALLETS OF STONE, 5 JEWELRY, 92 HEATING EQUIP., 16 PRESSURE WASHERS, 643 NEW SUPPORT EQUIP., 241 SUPPORT EQUIP.**

**SITE PH: (609) 204-3189 Jay • MA AUCTION LIC: #295 Paul E. Saperstein Co., Inc.****UNBELIEVABLE!****VERY LARGE LATE MODEL CAT SNOW MACHINE & CONSTRUCTION EQUIPMENT AUCTION****~ Case Snow Management Inc. ~***Cat Rubber Tired Loaders, Cat Skid Steers, Excavators, Crawler Tractors, Telescopic Forklifts, Aerials, Equipment Trailers, Truck Tractors, Dump Trucks, Pickup Trucks, Snow Accessories & Support Equipment***VIRTUAL LIVE AUCTION • N. ATTLEBORO (Boston), MA • FRI., MAY 1<sup>ST</sup> @ 9:30 AM****Preview & Pickup: 356 John L Dietsch Blvd., North Attleboro, MA 02763 (Case Snow Management Facility)**

**HIGHLIGHTS INCLUDE:** **35 RUBBER TIRED LOADERS:** (2)2019 Cat 930M, (15)2019 Cat 926M(deluxe cab, ride control, 20.5R25 Radials), (2)2019 Cat 918M, (4)2019 Cat 906M(High Flow), (12)2019 Cat 906M, **14 EXCAVATORS:** 2019 Cat 335FLR, 2019 Cat 325FLCR, 2019 Cat 320GC, 2018 Cat 320FL, Unused Cat 320, Unused Cat 318FL, 2015 Cat 312EL, (2)2013 Cat 308E, 2015 Komatsu PC138US-10, 2015 Komatsu PC88MR-8, 2015 Hitachi ZX135US-5, 2017 Hitachi ZX130LC-6, 2017 Kubota KX80-4, 2014 Bobcat E85, **MOTOR GRADER:** JD 772BH, **2 CRAWLER TRACTORS:** (4)2019 Cat D6TXL(cab), **8 RUBBER TRACKED SKID STEERS:** (4)2019 Cat 289D3(High Flow), (4)2019 259D(High Flow), **4 SKID STEERS:** (2)2019 Cat 272D3(High Flow), (2)2019 Cat 246D(High Flow), **TELE. FORKLIFT:** Unused Genie GTH-2506(4x4), **PLUS:** Tractor Loader Backhoes, Boom Lifts, Scissor Lifts, Various Types Snow Trucks, Snow Accessories, Blades and Plows, **4 SCRAP RECYCLING:** New 2-cu. yd. Self Dumping Hopper, (2)New 1.75 Cubic Yard Self Dumping Hopper, New 1.75-yd HD Trash Hopper, **2 HEATING EQUIP.:** 2015 Flagro FVO-1000TR 750K BTU Heater, 2014 Wacker HI770XHD 750K BTU Heater, **4 PRESSURE WASHERS:** (4)New Easy Kleen Magnum Gold, **25 ATTACHMENTS:** (25)Skid Steer, **60 NEW SUPPORT EQUIP.**

**SITE PH: (262) 903-6269 Chad • MA AUCTION LIC: #295 Paul E. Saperstein Co., Inc.****ALEX LYON & SON****SALES MANAGERS & AUCTIONEERS, INC., BRIDGEPORT, NY 13030****Phone: (315) 633-2944 • Fax: (315) 633-5635****Go to [WWW.LYONAUCTION.COM](http://WWW.LYONAUCTION.COM) for a Complete List, Descriptions, and Pictures**



# CERRONE

**A Priority Automotive Dealership**

**ROUTE 1, BETWEEN 95 + 295  
SOUTH ATTLEBORO, MA**

**508-761-4800**

**WE COME TO YOU - GIVE US A CALL !**



**2020 K3500 DENALI  
DIESEL**

DENALI ULTIMATE PKG., 5TH WHEEL TOW PKG.,  
20" WHEELS, PLOW PREP. #20020G  
**WAS \$80,065**

**\$71,875**



**2020 K3500 HIGH COUNTRY  
DUALY DIESEL**

HIGH COUNTRY DELUXE PKG., DARK ESSENTIALS  
PKG., PLOW PREP., 5TH WHEEL PKG. #LF234698  
**WAS \$78,365**

**\$71,995**



**2020 K1500 DOUBLE CAB  
DURAMAX DIESEL**

ELEVATION EDITION WITH PREFERRED PKG., SPRAY-IN-  
LINER, DRIVER ALERT PKG., X31 OFF ROAD. #20141G  
**WAS \$56,885**

**\$49,995**



**2020 K2500'S**

CONV. PKG., H.D. TRAILERING,  
PLOW PREP. #20174G  
**WAS \$43,700**

**\$41,000**



**2019 K2500 DOUBLE CAB**

CONV. PKG., SPRAY-IN-LINER, PLOW PREP.  
INCLUDES GM FINANCE REBATE. #19398H  
**WAS \$44,530**

**\$38,875**



**2019 3/4 TON UTILITY**

CONV. PKG., TRAILER BRAKE. INCLUDES GM  
FINANCE REBATE. #19392H  
**WAS \$48,250**

**\$38,875**



**2020 K1500 CREW CAB  
TRAIL BOSS LT**

CONV. PKG. W/ BUCKET SEATS,  
20" WHEELS, SAFETY PKG. #1,  
CONV. PKG. #2. #200B5H  
**WAS \$55,360**

**\$47,995**



**2020 K3500 CREW CAB SLE**

11,300 GVW, BUCKET SEATS, 5TH WHEEL PKG.,  
PREFERRED PKG., ASSIST STEPS. #20062G  
**WAS \$58,060**

**\$52,995**



**2019 K3500 CREW CAB UTILITY  
DURAMAX DIESEL**

CONV. PKG., PLOW PREP., ASSIST STEPS, SPRAY-  
IN-LINER, STROBES, ELEC. LOCKS, LIGHTED  
COMPART. #19165H  
**WAS \$67,875**

**\$62,995**



**2019 C4500 CHASSIS  
DURAMAX DIESEL**

16,500 GVW, HEATED MIRRORS, POWER  
WINDOWS, LOCKS, TILT/CRUISE, 84" CA FITS  
11-12' BODY. #19386H  
**WAS \$51,772**

**\$46,995**



**2020 3/4 TON VAN**

**10 AT THIS PRICE**

V-8., COMMUNICATION PKG., LOCKING AXLE,  
KEYLESS ENTRY. #20217H  
**WAS \$35,890**

**\$30,944**



**WWW.CERRONEGM.COM**  
**WWW.CERRONETRUCKSALES.COM**

SALES PRICES INCLUDE ALL REBATES INCLUDING LOYALTY, CONQUEST, TRADE-IN

THIS AD IS COPYRIGHTED & OWNED BY TRUCK AND EQUIPMENT POST





# CERRONE

**A Priority Automotive Dealership**

**ROUTE 1, BETWEEN 95 + 295**

**SOUTH ATTLEBORO, MA**

**508-761-4800**

**WE SPECIALIZE IN FLEETS WITH 10+ TRUCKS. CALL US**



**2020 10' DURACUBE MAX**



9,900 GVW, LOCKING AXLE, TILT, CRUISE,  
P-WINDOWS+LOCKS, KEYLESS ENTRY, SHELVEING,  
LADDER RACKS. #20088G  
~~WAS \$52,816~~

**\$45,995**

**2019 10' HI-CUBE**



9,900 GVW, V-8, LOCKING AXLE, POWER  
WINDOW + LOCKS,  
TILT/CRUISE. #19354H  
~~WAS \$45,633~~

**\$36,995**

**2019 14' HI-CUBE**



14,200 GVW, E-TRACK, FULLY LOADED CHASSIS,  
STAND-UP CAB. PERFECT ROUTE DELIVERY TRUCK. #19161G  
~~WAS \$49,250~~

**\$42,995**

**2019 12' HI-CUBE**



12,300 GVW, LOCKING AXLE, POWER  
WINDOWS + LOCKS, TILT/CRUISE. #19365G  
~~WAS \$46,608~~

**\$38,995**

**2019 12' DURACUBE MAX**



9,900 GVW, POWER WINDOWS + LOCKS, TILT +  
CRUISE, LOCKING AXLE. #19148H  
~~WAS \$53,093~~

**\$45,995**

**2019 KUV**



9,900 GVW., LOCKING AXLE, POWER WINDOWS  
+ LOCKS, TILT / CRUISE. #19391H  
~~WAS \$52,443~~

**\$45,495**

## 2020 LCF 4500'S OWNER OPERATOR SPECS



14' DURACUBE MAX  
\*14,500 GVW  
\*DUAL POWER HEATED  
MIRRORS  
\*ENHANCED AUDIO SYSTEM  
\*LANE DEPARTURE WARNING  
\*REAR CAMERA / BLUETOOTH  
\*#20233H

~~WAS \$ 74,455~~

**\$66,995**



12' HIGH CUBE  
\*14,500 GVW  
\*DUAL POWER HEATED  
MIRRORS  
\*ENHANCED AUDIO SYSTEM  
\*FORWARD COLLISION ALERT  
\*LANE DEPARTURE WARNING  
\*REAR CAMERA / BLUETOOTH  
\*#LS800093

~~WAS \$57,280~~

**\$49,995**

**2019 C6500 DUMP**



21,500 GVW, 37,000 GCWR, HITCH, COVER,  
TRAILER BRAKE, NICE SPECS. #19360H  
~~WAS \$75,737~~

**\$65,995**

**2018 DROP SIDE DUMP  
DIESEL**



17,900 GVW, A/C, HITCH, COVER,  
REAR CAMERA. #18364H  
~~WAS \$75,410~~

**\$63,995**

**2019 BACKPACK DROP SIDE DUMP  
DIESEL**



17,900 GVW, A/C, HITCH, COVER, REAR  
CAMERA. #19008H  
~~WAS \$79,068~~

**\$68,995**



**WWW.CERRONEGM.COM**  
**WWW.CERRONETRUCKSALES.COM**

SALES PRICES INCLUDE ALL REBATES INCLUDING LOYALTY, CONQUEST, TRADE-IN

THIS AD IS COPYRIGHTED & OWNED BY TRUCK AND EQUIPMENT POST





# CERRONE

**A Priority Automotive Dealership**

**ROUTE 1, BETWEEN 95 + 295  
SOUTH ATTLEBORO, MA**



**GMC**

BUSINESS ELITE



**508-761-4800**

## CHEVROLET'S MEDIUM DUTY TRUCK CENTER

- \*REGULAR CABS, TILT CABS, CREW CABS 2WD OR 4WD
- \*GVW'S UP TO 25,950 BODY LENGTHS UP TO 22'
- \*DUMPS, PLATFORM/ RACKS, SWITCH-N-GO, CAR CARRIERS, TOW TRUCKS, SERVICE BODIES, MOVING VANS. IF YOU NEED IT DONE, WE CAN DO IT.
- \*NIGHT SERVICE WITH 30,000LB. LIFTS
- \*GM'S #1 FLEET DEALER IN SE MA., RI, CT.

**CALL OUR COMMERCIAL TEAM. "YOU'LL BE GLAD YOU DID !"**

### 2019 K6500 CHASSIS



22,500 GVW, EXTREME USE SPECS., PTO,  
84" CA FOR 11-12' BODY. #19385H  
~~WAS \$62,418~~

**\$58,875**

### 2019 5500 CREWCAB CHASSIS



19,500 GVW, GOOD LANDSCAPE SPECS.,  
FITS 12' BODY. #19364H  
~~WAS \$59,098~~

**\$52,875**

### 2019 5500 CHASSIS



17,500 GVW, SPEC'D RIGHT,  
FITS 14' BODY. #19320H  
~~WAS \$53,207~~

**\$46,875**

### 2019 LCF 4500 18' REEFER



14,500 GVW, GAS, INSULATED, LINED, E-TRACK,  
SCUFF PLATE, REFRIGERATED / HEATED WITH  
STANDBY. #19378H

**\$69,695**

### 2020 LCF 5500 HD CHASSIS



17,950 GVW, DIESEL, DUAL POWER HEATED  
MIRRORS, FITS 14' BODY. #20199H  
~~WAS \$62,037~~

**\$49,875**

### 2019 K5500 RACK TRUCK



17,500 GVW, PLOW PREP.,  
12' RACK, HITCH. #19263H  
~~WAS \$67,024~~

**\$61,875**

### 18' BOX TRUCK DIESEL

- \* 16,000 GVW
- \* REAR RAMP + SIDEDOOR
- \* CD-RADIO-BLUETOOTH
- \* HEATED / POWER MIRRORS
- \* ROOF AIR DEFLECTOR
- \* SAFETY KIT
- \* #17317H

~~MSRP \$75,753~~

**\$58,995**



### 20' BOX TRUCK DIESEL



17,900 GVW, ROLL-UP DOOR, REAR  
CAMERA, TIE RINGS. #17457H  
~~WAS \$77,790~~

**\$57,995**

### 2019 K5500 LANDSCAPER



19,500 GVW, PLOW PREP., 12' LANDSCAPE BODY,  
54" SIDE DOOR, COVER, HITCH, TOOL BOX. #19368H  
~~WAS \$74,087~~

**\$68,875**



**WWW.CERRONEGM.COM**  
**WWW.CERRONETRUCKSALES.COM**



THIS AD IS COPYRIGHTED & OWNED BY TRUCK AND EQUIPMENT POST



**202**

**TRUCK  
&  
EQUIPMENT**  
**603-899-2000**

**www.202truck.com**  
**RT 202 Rindge NH**  
**SALES & RENTALS - NO SALES TAX**  
**FINANCING & DELIVERY**



**2018 VOLVO SD45B. 190 Hours, 54" Drum, \$55,000. 2012 VOLVO SD45D. 691 Hours, 54" Drum, \$38,000. Pad Foot Shell Kit Available, \$1000.**



**2015 JDEERE 50G. 1350 Hrs, Mech. Coupler, Thumb, Go To Work Condition, \$36,000.**



**(2) JLG 1932E SCISSOR LIFTS. Electric, 30" Wide X 52" Long Platform, with Extension, \$3000 Each, Will Rent.**



**2012 DOOSAN DX140LC. 3692 Hrs, Aux. Hydraulics, Clean And Serviced, 36" Bucket, \$45,000.**



**2008 CAT 312 DL. 8' 6" Wide, 36" CAT Bucket, Common Pin Hyd. Thumb, 6750 Hours, 4 New Injectors, \$65,000.**



**2002 CAT 318CL. 11,300 Hrs, 45" Bucket, 9'6" Wide, Runs & Moves Good, 43,000 Lbs., \$36,000.**



**2006 KOMATSU PC138US LC. 10,300 Hrs, Blade, Very Good U/C, Aux. Hyd., Sold W/36" Digging Bucket, \$29,000**



**2012 JDEERE 310SJ. 6800 Hrs, Ride Control, Power-Shift, Aux. Hys. To Rear, New Rear Bucket, New Front Tires, Titled, \$39,000.**



**2013 CASE 621F. 2800 Hrs, 3 Yd Q/C, Very Clean Inside & Out, Ready To Work, \$69,000.**



**2006 KENWORTH W900. 475 CAT, 18 Spd, 20+20 Steer & 46 Chalmers, 70K On Rebuilt Motor, 18 Ft. Alum. Dump W/Liner, Perfect Dbl. Frame, New Brakes On Back, NY Specs, \$62,000.**



**2002 KENWORTH W900. C-15, 475 H.P., 18 Spd, Air Ride, Very Good Dbl. Frame, 59K G.V.W., 4:11 Ratio, Wet Line, ECM 579K Miles, Very Nice Truck, Wheels Have Been Polished, \$39,000.**



**1993 FORD LTL9000. CAT 425, Approx. 500K Miles W/150K On Rebuilt, 1 Owner Truck, Rebuilt 8LL, 16F Dual Steer, Full Lock 46 on Hend., Dbl. Frame, 14'6" Body Pintle Hook, Air, \$19,000.**



**2009 MACK CXU612. MP-7 @ 395 H.P., Fuller 10 Spd., 12 & 23R, Air Ride, 157 W.B., New DPF Muffler & Sensors Just Done, 590K Miles, \$9000.**



**1995 TRAIL STAR. 34 Ft. Alum. Tub & Frame, Very Good Liner, New Brake & Cable Tarp, Air Lift 3rd, \$18,000.**



**2011 MACK CU613. MP-7 @ 395 H.P., 10 Spd, 12F + 40R, Air Ride, Power Divider, Wet-Line, Engine Brake, New DPF Muffler & Sensors, 168 W.B., 497K Miles, \$16,000.**





**CONSOLIDATED TRUCK  
& EQUIPMENT INC.**  
WWW.CTEI.INFO



**YES WE  
ARE OPEN**



**COME VISIT OUR NEW LOCATION. 32 INDUSTRIAL COURT, (RT.6)  
SEEKONK, MASSACHUSETTS. ACROSS FROM SEEKONK SPEEDWAY.**



**4 Available!**

Brand New Challenger Body & Chassis,  
26' Long, 54" & 60" Sides & Gate, Single  
Point 60K suspension, Hardox Body,  
Hi-Lift Gate, aluminum disc wheels,  
electric load cover.

16 Ply Tires.

Please Call For Pricing



HONEST BOB'S GOT TRAILER LOADS OF TRAILERS!  
MAC FLATBEDS TRAILER'S 48' x 102" COME AND GET 'EM.



2016 MAC 53' Aluminum Step Deck. Rear Ramps, Tool Box & Winch.  
Trailer has every option possible. It's only had 2 loads on it. So yeah,  
it's like totally new. \$58,000



**IN STOCK**

MAC 28' ALUMINUM SMOOTH SIDE  
TRAILERS. Air Ride Suspension. Please  
call for pricing.



**Automated Covering Systems**

...Innovative Technology for Transportation.



BRAND NEW EAGER BEAVER 20XPT  
TRAILERS. 6' RAMPS. BEST PRICING  
AROUND. Please give us a call.

## PARTS ROOM SPECIALS !

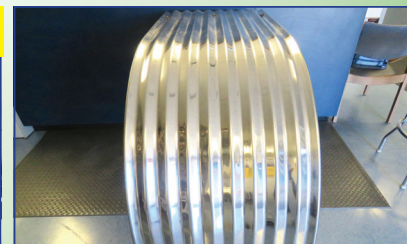


REPLACEMENT HYVACYL HYDRAULIC  
DUMP PISTON, call with your needs!

**SNOW DOGG STAINLESS & STEEL  
SNOW PLOWS**



11x42 & 11x36.  
Call NOW for Great Pricing!



Lifetime 64" Corrugated Fenders,  
\$210. each

**CALL US: AT 508-336-6215 • HOURS: 7:30 -5:30**





**CONSOLIDATED TRUCK  
& EQUIPMENT INC.**  
WWW.CTEL.INFO

**YES WE  
ARE OPEN**



**COME VISIT OUR NEW LOCATION. 32 INDUSTRIAL COURT, (RT.6)  
SEEKONK, MASSACHUSETTS. ACROSS FROM SEEKONK SPEEDWAY.**



**2014 MAC  
48' Step Deck  
TRAILER: AIR  
RIDE. SALVAGE  
TITLE.  
\$6,500**



**NEW MAC  
48' Step Deck:  
Front Axle Slide,  
10' Upper Deck,  
Tool Box. Call for  
price.**



**NEW MAC 53'  
Front Axle Slide,  
36" Deck Height.  
Tool Bx, 10'  
Upper Deck. (it's  
the trailer on the  
bottom).  
Call for Price.**



**2015 MAC  
53' Step Deck:  
10' Upper Deck,  
Front Axle slide.  
Very Good  
Condition. Call  
for price.**



**2002 EAGER  
BEAVER 20  
TON FLAT BED:  
Good Working  
Condition.  
\$4,500**



**2003 CLEMENT  
26' Steel Dump  
Trailer.  
\$9,500**



**1999  
INTERSTATE 20  
TON FLAT BED:  
Good Working  
Condition. \$4,500**



**2006 MANAC  
48' x 102"  
Tri Axle:  
Good Workin  
Condition.  
\$28,500**

**CALL US: AT 508-336-6215 • HOURS: 7:30 -5:30**





**2012 FREIGHTLINER CASCADIA.** Cummins Diesel 450HP, Auto10-Speed, 10 Aluminum Wheels, 5th Wheel Air Slide, Good Truck, Air Ride Cab, Air Brakes, Power Locks & Windows, AC, Inspected, 606,179 Miles, Maintained, **\$34,000.**  
401-641-5553



**CLARK FORKLIFT.**  
12,000 lb Lift, Only 500 Hours,  
**\$8,000,** 413-268-3600 OR  
413-535-7210

**1995 JOHN DEERE 653E FELLER BUNCHER,**  
18" Head, Heat & A/C, 16,200 Frame Hours, Runs Good & Woods Ready!  
**\$34,900**  
Call 781-417-3018



**2011 PETERBILT 40T MANITEX BOOM TRUCK.** C15 CAT, Automatic, Lots Of Tool Boxes, Great Shape, Parked Inside Since New,  
**\$249,900.** Call Jeff  
617-719-1438



**877-761-7888**  
132 Pierce Rd. (Rt. 125)  
Barrington, NH  
(17 miles from Portsmouth)



**LIBERTY**  
**INTERNATIONAL TRUCKS**  
of New Hampshire, LLC



**877-540-3817**  
1400 South Willow St.  
Manchester, NH  
(1 hour from Boston)



**NEW 2020 IH CV Reading Utility.**  
350 HP 6.6L Duramax Diesel,  
Allison Auto, AC, Cruise, PL, 141" WB, 16K GVW, stk#15401

[www.LibertyInternationalTrucks.com](http://www.LibertyInternationalTrucks.com)



**2005 HITACHI 50U - 12,000 # Mini Excavator,**  
Zero Tail Swing, 24" Bkt, Manual Coupler, Hyd Thumb - **\$34,000** CALL DAN AT 203-506-3860



**2004 PETERBILT 330.**  
130K Miles, 3126 CAT Motor,  
Allison Automatic, 2700 Dual Compartment Trans Tech Tank.  
Truck Is In Excellent Condition,  
Asking **\$50,000.** 401-789-2520





**888-263-8050**  
**Call Dan Rott**



**GREAT SELECTION OF NEW & USED HEAVY EQUIPMENT & ATTACHMENTS  
 FINANCING AVAILABLE ON ALL UNITS UP TO 60 MONTHS. CALL FOR DETAILS.**



**BOMBARDIER SW48.**  
 Clean,  
 \$9,950.  
 #CE3654



**2014 VOLVO EC160DL.**  
 Hydraulic Thumb,  
 \$95,000. #CE3421



**2013 KOMATSU  
 PC88MR.**  
 3500 Hours,  
 \$69,000. #CE3655



**1996 VOLVO L90C.**  
 Runs Well, \$42,000.  
 #CE3595



**2012 TAKEUCHI  
 TB250. Very Nice,**  
 \$39,000. #CE3539



**2014 VOLVO DD110B.**  
 \$36,000. #CE3007



**2006 VOLVO L90E.**  
 Good Runner,  
 \$58,000.  
 #CE3656



**2014 VOLVO DD110B.**  
 \$36,000. #CE3288



**2015 MAULDIN 690G.**  
 400 Hours,  
 \$41,000.  
 #MA0067

**WOBURN, MA - AVON, MA - JOHNSTON, RI [www.WoodCoMachinery.com](http://www.WoodCoMachinery.com)**





# JACK MADDEN FORD

## 888-817-7979



Ford COMMERCIAL VEHICLE CENTER

Ford COMMERCIAL VEHICLE CENTER

**WE'RE OPEN!**

# BUILT TO LEND A HAND!

**WE'RE OPEN!**

**-Up to 6 Months Deferred Payments-0% Financing up to 84 Months\*-**



**2019 F250 SUPER CAB.  
4X4:  
W/FISHER HD2 Snow Plow  
6.2L V\*, Power Group.  
Please Call.**



**2020 TRANSIT  
T350 ALL WHEEL  
DRIVE CUTAWAY:  
12' ROCKPORT  
WORKPORT.  
Another One's On  
the Way.  
Reserve Now!**



**NEW 2019 E350  
SERIES CUTAWAY  
176" WB  
6.2L Power Group.  
Stk.#7226**



**2019 FORD F350  
DRW XL 4X4 REG  
CAB READING  
UTILITY BODY:  
Power Group,  
stk#93154,**



**New 2019 E350  
CUTAWAY 158" WB  
6.2L V8, Power  
Group.  
stk.# 36444**



**NEW 2019  
F350XL DRW  
RACK BODY:  
Power Group.  
NAP**



**NEW 2019 F350 XL  
4X4 L PAC DUMP  
BODY: 6.2L V8,  
POWER GROUP, A/C.  
stk.# 61452**

**0% Financing  
on Select Super  
Duties. Call**

**GO TO WWW.JACKMADDENFORD.COM**

# JACK MADDEN FORD

**825 Providence Hwy Rt.1 Norwood, MA**

## 888-817-7979

Ford COMMERCIAL VEHICLE CENTE

Ford COMMERCIAL VEHICLE CENTE

\*All prices include incentives for qualified buyers. For trade assist, must have 2016 or new trade. All vehicles require dealer financing. Some prices include snowplow incentives. See dealer for complete details. 0% some restrictions apply.





# JACK MADDEN FORD



COMMERCIAL  
VEHICLE CENTER

## 888-817-7979



COMMERCIAL  
VEHICLE CENTER

### OVER 50 DUMP TRUCKS IN STOCK

• F350 - F450 - F550 - 2WD - 4WD - GAS & DIESEL

**WE'RE OPEN!**

## BUILT TO LEND A HAND!

**WE'RE OPEN!**

-Up to 6 Months Deferred Payments-0% Financing up to 84 Months\*-



**NEW 2019 F550 SUPER  
DUTY  
XL DRW 4X4:  
Power Stroke Diesel,  
Power Group, A/C.  
stk.# 19028**



**NEW F550 XL 4x4  
Dump Body:  
stk.#A07455**



**NEW 2019 F550  
XL DRW 4x4:  
Landscape Body  
DIESEL,  
Power Group.  
stk.#60220**



**2019 F550 XL DRW  
4X4 SUPER CAB  
DUMP: V10, Gas,  
Power Group,  
stk#28460,**



**NEW F350 XL 4x4  
Dump Body:  
stk.#79370**



**NEW 2019 F550  
4X4 CHASSIS'S  
Available.  
CALL FOR  
INFORMATION**



**NEW F550 XL DRW  
4x4  
11' Dump Body:  
stk#89754**

**GO TO [WWW.JACKMADDENFORD.COM](http://WWW.JACKMADDENFORD.COM)**

**0% Financing  
on Select Super  
Duties. Call**

# JACK MADDEN FORD

**0% Financing  
on Select Super  
Duties. Call**

**825 Providence Hwy Rt.1 Norwood, MA**

## 888-817-7979



COMMERCIAL  
VEHICLE CENTE



COMMERCIAL  
VEHICLE CENTE

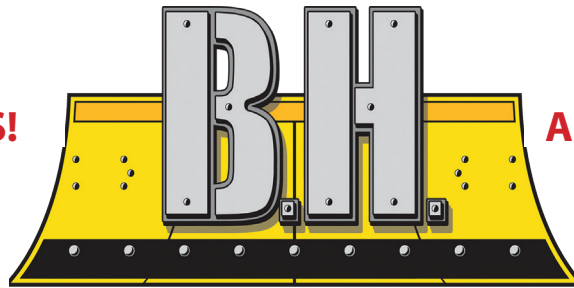
\*All prices include incentives for qualified buyers. For trade assist, must have 2016 or new trade. All vehicles require dealer financing. Some prices include snowplow incentives. See dealer for complete details. 0% some restrictions apply.



# www.bhtrailersandplows.com

**WE ARE  
OPEN  
FOR BUSINESS!**

**6 Center Parkway  
Plainfield, CT  
06374**



**TRAILERS AND PLOWS**

**860-949-7863**

**PLEASE  
CALL FOR  
AN APPOINTMENT!**

**2207 Hartford Ave.  
Johnston, RI  
02919**

***CURBSIDE PARTS PICK-UP---CALL FOR DETAILS!***



**CM PL Flat Bed 8-14 Ft. in  
stock Rack Body Panels  
available Starting at \$1,995**



**DURAMAG Flat Beds  
with 10 inch apron,  
Starting at \$2,325**



**DURAMAG Heavy Duty  
Dump Body with or without  
sub-frame, 9 Foot in stock**



**DURAMAG Landscape Body,  
Extruded Side with side door,  
9 Foot in Stock**



**2020 BIG TEX 14OA 17+3  
Deckover, Stand Up Ramps  
14,000lb. GVWR, \$5,795**



**2020 BIG TEX 14LX 83'x14'  
Dump Trailer w Tarp Kit, Ramps,  
& 4 D-Rings, Limited Time \$7,995**



**2020 LOOK VISION 85'x16'  
Contractor Pro PKG Exterior  
Compartments, Walk On Roof,  
9,990lb. GVWR, \$11,995**



**2020 BIG TEX 10ET 20Ft.  
18+2 w Stand Up Ramps  
9,990lb. GVWR, \$4,495**



**CM RD Beds  
Over 100 Beds  
IN STOCK!!**

**Cash and Carry!  
Starting At  
**\$2,575****



**CM Service Bodies  
All Sizes  
IN STOCK!!**

**Cash and Carry!  
Starting At  
**\$5,995****







**2000 CATERPILLAR 988B WHEEL LOADER.** Factory Rebuild, S/N: 50W75734, 18,250 Hours, 50% Tires, 3408 Engine, 7 Yard Spade Nose Bucket With Teeth, Good Running Condition, **\$38,000.** 860-460-0767



**1997 INTERNATIONAL SANDER.** Closed Loop System, Ready For State Plowing W/Wing On Right Side, **\$7000.** Call Jim, 413-530-5369



**2004 BANDIT BEAST 3680.** Horizontal Grinder, 3900 Hrs., CAT 645 HP, New Conveyor Belt, New Mill, All Books And Receipts, **\$164,000.** 508-284-7917



**2020 PJ TRAILER 36' Gooseneck** Low Pro Flatdeck w/ Duals, 25,000 GVW, 5' Dovetail w/ 2 Flipover MONSTER Ramps, **\$13,295,** Belchertown, MA 413-253-5456



**2011 CAT 924H.** Coupler, 3rd Valve, Ride Controls, 20.5 Radials @ 40%, 10,600 Hours, 26,000 Lb. Machine, **\$45,000.** 603-899-2000



**1996 INTERNATIONAL GARBAGE TRUCK.** 226K Miles, 16 Yard Heil Body With Winch And Cart Tipper, Cummins Engine, Auto Trans, **\$7,500 OBO.** 203-451-9621

## TAYLOR RENTAL OF NORTH KINGSTON

### EQUIPMENT & TOOLS – RENTALS

- Mini Excavators • Backhoe Loader • Skid Steers • Man Lifts • Air Compressors • Paving Breakers • Rock Drills • One Ton Rollers • Sand Blasting • Demolition Hammers • Power Steam Cleaners • Compactors • Jacks – Screw • Jacks - Hydraulic • Generators • Wood Chippers • Transits • Pneumatic Nailers • Floor Nailers • Scaffolding & Ladders • Insulation Blowers • Saws – All Kinds • Drills – All Kinds • Mortar Mixers • Wheelbarrows • Log Splitters • Power Post Hole Diggers • Paint Sprayers • Wall Paper Steamers • Vacuum Cleaners • Pumps – Submersible • Brush Cutters • Lawn Aerators • Tillers • Hand Tools •

**We have the tools you need for every job.**

**401-295-0016 – Serving Southern Rhode Island – Monday- Saturday 7:30-5:00**



### 2000 FREIGHTLINER TRACTOR.

Low Miles,  
Excellent Cond.,  
All New Tires, Very  
Clean, ELD Compatible,  
**\$13,500.**

Call Jim,  
413-530-5369



### USED SKIDDERS FOR SALE.

Call For More Information,  
413-268-3600 OR  
413-535-7210



**1999 MACK CH613 TRACTOR**, 578,732 Miles, Mack 350 Engine,  
44K Rears, 2 Line Wet-System, Rear Pintle W/ Air. **\$15,900**  
Call Today 781-417-3018

**2005 GMC 3500.**  
4x4 Utility Body, Runs And  
Drives Great,  
**\$4000 OBO.**  
401-480-2040



# WANTED!!! MACK TRUCKS

**CAT, DEERE, BOBCAT EQUIP  
IN ANY CONDITION  
IMMEDIATE PAYMENT**



## CALL JOHNNY MACK

**johnnymack107@gmail.com**  
**HARTFORD, CT 860-883-1186**



**2016 KUBOTA L6060 HST:**  
Cab Tractor w/ Loader & 72" Front Flail Mower, Many  
Extras, Upgraded Woods HD Bucket w/ Added Cutting Edge,  
**\$41,800**, Belchertown, MA 413-253-5456



**1998 VOLVO A35C.**  
S/N:A35CV4467, 14,150 Hrs., 35 Ton,  
Good Tires, Good Body, **\$54,000.**  
Chris: 860-460-0767,  
email: chm@terrafirmas.com





**COLONIAL**  
**Ford**  
**OF**  
**PLYMOUTH**  
"America's Hometown Dealership!"



**CALL DOMENIC AT 339-933-9142 • domenic@buycolonialford.com**

**YES!! WE ARE OPEN. PLEASE CALL FOR APPOINTMENT  
PRE SPRING COMMERCIAL TRUCK SALE!!!**

 <p><b>DIESEL</b></p> <p>2016 F550 4x4 9' ALUMINUM DUMP BODY: Color Green, Power Group Tool Boxes. ONLY 37K miles. Stk.# N8540 \$54,985*</p>	 <p><b>DIESEL</b></p> <p>2015 F450 CREW CAB 4x4 9' WARNER SERVICE BODY: Power Group. ONLY 82K Miles. Stk.# N8270A \$39,985*</p>	 <p><b>DIESEL</b></p> <p>2015 F350 4x4 9' IROQUOIS DUMP BODY W/FISHER PLOW: Custom Yellow Paint, Strobe Lights, Tool Boxes. 1 Owner ONLY 84K Miles. Stk.#N8345A SALE PRICE \$29,985*</p>
 <p><b>DIESEL</b></p> <p>2019 F550 Crew Cab 4x4 9' 4-5 Yard Dump Body: Power Group, Blue Tooth, Rear Camera. Available in Red, White &amp; Black. Stk.#N8327</p>	 <p><b>Green</b></p> <p>2019 F550 4x4 9' IROQUOIS 4-5 Yard DUMP BODY: 6.7L Diesel, Power Group, Rear Camera, Shift on the Fly 4x4, Diamond Plate L Pack Tool Box, Many colors to choose from In Stock Now. Stk.# N8536</p>	 <p><b>DIESEL</b></p> <p>2019 F450 XLT 4x4 CREW CAB 9' READING ALUMINUM Service Body: Remote Locks &amp; Lights, Aluminum Wheels, NAV, Rear Camera, White, Black &amp; Red in stock NOW. Stk.# N7799</p>
 <p>2019 F350 4x4 12' LANDSCAPE BODY: 6.2L Gas, Power Group, Bluetooth. Stk.# N8940</p>	<p style="text-align: center;"><b>20 CHASSIS'S IN STOCK</b></p>  <p>2019 F550 4x4 Chassis: Diesel, 84 C.A., Power Group, Blue Tooth, We have Regular Cab, Super Cab, &amp; Crew Cabs available to Up Fit or Build your Own. Available in Gas &amp; Diesel Stk.#N8072</p>	
 <p><b>DIESEL</b></p> <p>2019 F550 Super Cab 4x4 9' READING INCLOSED SERVICE BODY: Power Group, Rear Camera, Shift on the Fly 4x4. Stk.#N8809</p>	 <p>2019 F350 8' READING Service Body 4x4: 6.2L Gas, Power Group, Rear Camera. 20 Single Rear Wheel Service Bodies IN STOCK. Available in Red, Black, White &amp; Blue. Stk.# N8470</p>	<p style="text-align: center;"><b>10 SWITCH-N- GO IN STOCK</b></p>  <p>2019 F550 4X4 SWITCH-N-GO 4X4: 6.8 V10, Power Group, Rear Camera, Extra Battery. GAS &amp; DIESEL In Stock. Stk.#N8886</p>




**11 PILGRIM ROAD**  
**Plymouth, MA 02360**  
**www.BuyColonialFord.com**  
**America's Hometown Dealership**  
\*all rebates to dealer. must finance with Ford Motor Credit. Must Install Snow Plow to qualify for all rebates. Good Till 1/2/19











Chadwick-BaRoss

**1-401-640-9303**  
**WWW.SRISALES.NET**

 31 JAMES P. MURPHY INDUSTRIAL HIGHWAY  
 WEST WARWICK, RI 02893

**SOUTHERN RHODE ISLAND EQUIPMENT**
**FFC • BRADCO • MCMILLEN • MAJOR • SWEEPSTER • HARLEY**
**HARLEY RAKES**

CALL FOR DETAILS &amp; PRICING !

**ROCK BUCKETS**

STARTING AT \$1,625, IN STOCK!!

**72" PICKUP SWEEPER**

72" PICK UP SWEEPERS.. \$4,200

**VIBRATORY ROLLER**

CALL FOR PRICING

**PREPERATOR**

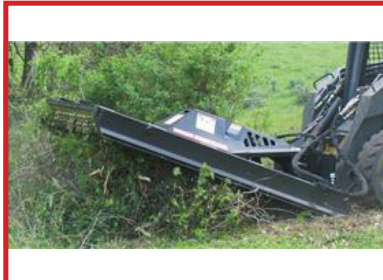
CALL FOR PRICING

**HIGH DUMP BUCKETS**

CALL FOR PRICING

**ROOT RAKE**

CALL FOR PRICING

**BRUSH CUTTER**

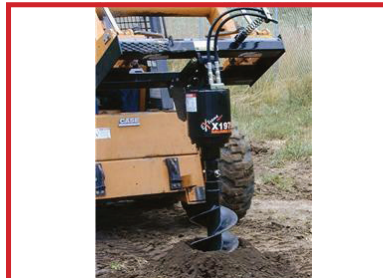
5FT- \$4,900 - 6FT- \$5,100

**5500LB FORKS**

IN STOCK

**SIDE DISCHARGE BUCKETS IN STOCK !**

CALL FOR PRICING !

**AUGER'S IN STOCK**

\$2,150.00

**NEW SKID STEER HAMMERS**
 \$6,200  
 WHILE THEY LAST !!!

**FINANCING AVAILABLE / PALADIN ATTACHMENTS.**
**GO TO PALADINBRANDS.COM FOR FULL LINE OF ATTACHMENTS.**





Chadwick-BaRoss

1-401-640-9303 • 1-401-594-8408

WWW.SRISALES.NET

SOUTHERN RHODE ISLAND EQUIPMENT 31 JAMES P. MURPHY INDUSTRIAL HIGHWAY WEST WARWICK, RI 02893

**DYNAPAC****Husqvarna****MULTIQUIP**

**2013 - 2016  
LINK-BELT 80:  
2,500 / 3,100 HOURS,  
ALL RUN EXCELLENT !  
FINANCE AVAILABLE !  
STARTING AT \$53,000**



**2007 BOBCAT S175: JUST SERVICED, TIRES 70%,  
READY TO GO! \$14,000**



**RUBBER TRACKS  
FOR ALL MAKES  
AND  
MODELS  
CALL FOR  
PRICING !!!**



**2010 TAKEUCHI  
TL230:  
CAB-HEAT-AIR,  
RUNS EXCELLENT,  
FINANCING  
AVAILABLE !  
\$24,000**

**SALES • SERVICE • RENTALS • PARTS  
FULL LINE OF SKID STEER ATTACHMENTS AVAILABLE.  
GO TO WWW.PALADINBRANDS.COM**

**WWW.SRISALES.NET  
WWW.CHADWICK-BAROSS.COM**

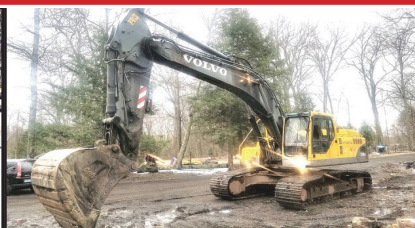
**Takeuchi**  
The Power of Product and Support



**1998 FREIGHTLINER FL70, 33,000 GVW, Diesel  
6Spd. Trans., 12' Dump W/Plow, 190K Miles, 12,000#  
Front/ 23,000# Rears. 401-434-5900**



**JOHN DEERE 440D TURBO. 7300 Hrs, 18.4 X 26 Tires,  
Winch, 1 New Set Of Chains Available, Very Nice Machine,  
\$29,000. 603-899-2000**



**2002 VOLVO EC330B. Excellent Condition,  
Ready To Work, \$55,000. 860-922-9302**



**FLEET  
DISCOUNTS**

**\$75  
& Up**

**ACUSHNET WHEEL  
POLISHING**

Used Rims Available

**508-961-7528**

890 MIDDLE RD.,  
ACUSHNET, MA



**1999 FORD F350.  
4X4, 7.3 Turbo Diesel, Automatic,  
Utility Body, 320K Miles, No Issues,  
Fleet Maintained, \$5900.  
Optional 8.5' Minute Mount Plow,  
\$1000. 508-341-2017**





# SANY

## EXCAVATORS - WHEEL LOADERS

### CHADWICK BAROSS

31 JAMES P. MURPHY  
INDUSTRIAL HIGHWAY  
WEST WARWICK, RI 02893  
401-594-8408

### CHADWICK BAROSS

15 KATRINA RD  
CHELMSFORD, MA 01824  
1-800-804-0775

**PARTS • SALES • SERVICE • RENTALS**



**[www.CHADWICK-BAROSS.com](http://www.CHADWICK-BAROSS.com)**



**1975 CAT 950 LOADER.** Low Hours, Clean  
Tight & Dry, **\$20,000/BO**,  
413-246-0880

#### 2003 INTERNATIONAL

**4300.** Under CDL,  
25,000 GVW, 150K Miles,  
Dumping Flatbed,  
Comes With 100-Gallon Fuel Cell,  
**\$25,000.** Wilmington, MA  
978-265-2220



**CAM 20 TON TRAILER:** Double Break  
Beaver Tail W/40"X80" Air Powered Ramps. Please  
Give Chris A Call For More Details. 781-582-1378.  
Plympton, MA



**2010 MITSUBISHI  
FUSO FE145:**  
Supreme Service Body. 85K Miles.  
Automatic, 14,500 GVW,  
**\$9,900.,** Lawrence, MA  
603-973-0809



# Link-Belt EXCAVATORS

**31 JAMES P. MURPHY**  
INDUSTRIAL HIGHWAY  
WEST WARWICK, RI 02893  
401-594-8408

**CHADWICK BAROSS**  
15 KATRINA RD  
CHELMSFORD, MA 01824  
1-800-804-0775

**PARTS • SALES • SERVICE • RENTALS**



**401-594-8408 • 1-800-804-0775**



**1999 KENWORTH  
T300 CHIP TRUCK.**

Oversized Toolboxes,  
28 Yard Capacity, CAT 3126,  
225 HP, 145,000 Miles,  
Parked Inside Since New,  
**\$38,000.**  
Call Jeff 617-719-1438



**1998 INTERNATIONAL 9100,**  
Series 60 Engine, 9SPD., Air-Ride.  
**401-434-5900**



**HYDRAULIC BOAT TRAILER.** Runs Off Battery  
Charged Through Trailer Plug, Tires/Bearings Good, Hauls  
Up To Most 29' Boats, 7K Lb. Cap. Over Road, 11K Lbs. In  
Yard, Clear Title, **\$8,000.** Hull, MA 781-925-1593



**(2) 2006  
GREAT  
DANES.**  
48"X13'6"X102"  
Air Ride. Slider  
Swing Doors.  
1-888-212-5419

**TOM GARCIA**  
Owner

**ABRASIVE BLASTING**

**Mobile Service**



**"The Future of Surface Preparation"**

**P: 203-687-5464 • F: 203-626-9451 • allcleanblasting@gmail.com**

**CONCRETE  
RUST  
MARINE  
PAINT  
DIRT  
MOBILE  
IN-HOUSE BLASTING**



**MARINE  
GRAFFITI REMOVAL  
SURFACE CLEANING  
AUTOMOTIVE  
HEAVY EQUIPMENT  
STRIPE REMOVAL**





**MASSEY FERGUSON 1523**, Hydro-Diesel,  
Only 309 Hours, 4x4, Good Shape, **\$10,900**  
860-928-5748



**2011 CAT 966H LOADER.** Good Running Loader,  
Good Rubber, Coupler & GP Bucket, Ready To Work -  
**\$88,500 / O.B.O** CALL DAN AT 203-506-3860



**2000 STERLING 9500.**  
Roll-Off Truck, New CAT C12 With  
Only 51K Miles, 8 Speed Eaton Fuller  
Transmission, Many New Parts,  
Meticulously Maintained, Just  
Inspected, Runs Excellent,  
Ready To Make Money,  
**\$35,000 OBO.** 401-738-4127



**SOIL  
CONDITIONER  
RAKE  
ATTACHMENT,**  
Fits On Any Skid  
Steer, Ready To  
Work! **\$6,900**  
Call Today!  
781-417-3018



**Burrillville, RI • 401-633-4587**

- Full Bucket Rebuilds • Cylinder Resealing
- Wear Plates • Adapter Replacement • Hardfacing
- General Maintenance



[www.wbhill.com](http://www.wbhill.com)  
**WB HILL**  
Serving You With New Ideas



**SERVING YOU WITH NEW IDEAS  
THROUGHOUT  
NEW ENGLAND & NEW YORK**



**Stock Truck  
Now Available.  
2800 Gallon  
2 Comp  
TransTech On An  
International.**

Visit  
**[www.wbhill.com](http://www.wbhill.com)**  
For Specs &  
More Photos

For More Tractors, Trailers, Tank Trucks, Pictures & Videos,  
Please Give Us A Call Or Visit Our Website, Facebook, Or YouTube Page!

305 Shaker Rd, East Longmeadow, MA  
**413-525-6665**  
**[www.wbhill.com](http://www.wbhill.com)**





# Fowler's Auto Wrecking Inc.

## Belletown Recycling Center

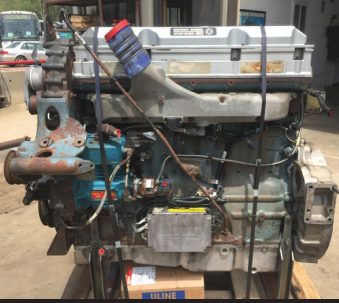
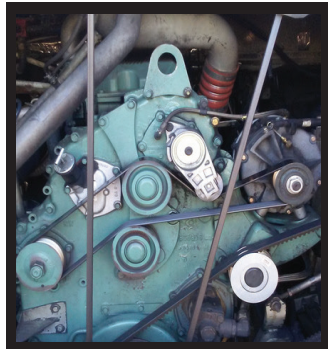


### Detroit Series 60 12.7L Engines

EGR DDEC-IV  
NON-EGR DDEC-IV  
Good Running Take Out Engines  
Recent Remanufactured Engines  
Core Engines  
Engine Accessories  
6 Month & 1 Year Warranties Available  
Call Today For Pricing



**CALL: 860-267-7140**



Telephone: 860-267-7140

### Complete Coaches For Parts

- MCI, Vanhool, and Prevost Buses For Parts
- Compressors, Condenser & Evaporator Motors
- Wheels, Tires, Suspension & Brake Parts
- Electrical Parts, Interior & Exterior Lighting
- Tag Axles & Drive Axles
- Compartment, Service, and Entrance Doors
- Fiberglass Body Panels & Glass
- Complete Electric Wiper Conversion Kits
- Radiators, Intercoolers, and Condensers
- Standard 6 Month Warranty On All Parts



**Buses Are Not Intended  
For Resale - Salvage Titles**



24 Old Coach Rd, East Hampton, CT 06424

### Allison B500 Transmissions

- Allison B500 With or Without Retarders
- Good Running Take Outs
- Recent Remanufactured Units
- Core Transmissions
- Allison Shift Pad Selectors
- Allison TCM (Transmission Control Modules)
- Standard 6 Month Warranty
- Call Today For Pricing



**CALL: 860-267-7140**



BelltownRecycling@yahoo.com

# BELLTOWN MOTORS

## 860-365-0807



1995 GREAT DANE  
REEFER TRAILER.  
Roll Up Door, Clean  
Condition, \$2,000/ BO



2002 FREIGHTLINER  
FL70. 33K GVW,  
18' Box, Roll Up Door,  
Extremely Clean,  
Ready To Work, Annual  
Inspection Done,  
\$7,500



2004 RFP BOX.  
24 x 102, Barn  
Doors, Mint  
Condition,  
\$4,800



2000 48' REEFER  
TRAILER. Reefer Ran  
When Parked, Roll Up  
Door, Clean Condition,  
\$2,700/ BO





37 County Road  
Route 106  
Plympton MA 02367  
PH: 781-582-1378  
FAX: 781-585-4438



2007 FREIGHTLINER  
M2 W/AMPLIROL 54"  
HOOK.18,500LB. CAPACITY:  
CAT DIESEL, 33K GVW.  
\$44,900



HOOK LIFTS IN STOCK NOW!!!  
BIG OR SMALL WE HAVE THEM ALL.  
CALL US TODAY



2007 GMC 7500 SWITCH-N-GO SYSTEM: DIESEL,  
AUTO, UNDER CCDL, READY TO WORK \$34,500.



**BOSS PLOWS  
IN STOCK!  
CALL FOR  
APPOINTMENT**



**END OF  
SEASON  
PRICING.  
CALL US  
TODAY.**

**SALES,  
SERVICE,  
PARTS**

**CALL TOLL FREE: 781-582-1378  
WWW.CAREYTRUCKEQUIPMENT.COM**

**CUSTOM METAL  
FABRICATION  
AVAILABLE**





**CAREY AUTO INC.**  
TRUCK EQUIPMENT  
SALES

37 County Road  
Route 106  
Plympton MA 02367  
PH: 781-582-1378  
FAX: 781-585-4438

## DUMP BODIES & TRAILERS IN STOCK



**DOWNEASTER DUMPS.**  
**9' to 11' BODIES IN STOCK READY TO INSTALL.**  
**CALL FOR APPOINTMENT TODAY.**



**CAM 20 TON TRAILER: Double Break Beaver Tail W/40" x 80" Air Powered Ramps. Please Give Chris a call for more details.**

SALES,  
SERVICE,  
PARTS

**CALL TOLL FREE: 781-582-1378**  
**WWW.CAREYTRUCKEQUIPMENT.COM**

CUSTOM METAL  
FABRICATION  
AVAILABLE

**1998 VOLVO 30 YARD PAK-MOR RUBBISH TRUCK.**  
Cummins L10, Automatic,  
**\$5,000. OBO**  
401-783-3177





**CAT 980 LOADER.** 3406 CAT, 5 Yard Bucket, Tires 90%, Tight, Clean, Dry, **\$15,000/BO**, 413-246-0880

**2005 INTERNATIONAL DUMP TRUCK.**  
52,000 GVW, 2 To Choose From, 385 HP Cummins, 3 Chutes On Tail Gate,  
**\$20,000 OBO.**  
413-374-5331





**2020 TOW BANDIT DECKOVER.** 14,000 GVW, LED Lights, Sealed Wiring, Bolt-On 12,000 Lb. Jack, Dexter Axles With Electric Brakes, 235 80 R16 Load Star Tires & Wheels, Financing Available, **\$5900.** 508-886-7727



**Tight Link Fence Co.**

Residential ~ Commercial ~ Industrial  
**Mark Dillon**  
**774-365-0222**

**2010 CAT D3K XL**  
Open Cab, 8'-6" 6 way Blade, 3000Hrs, Work Ready Machine,  
**\$47,500**  
CALL DAN FOR PRICE AT 203-506-3860







**Lorusso Heavy Equipment, LLC**  
160 Elm St Walpole, MA 02801  
Tel. 508-660-7600



**2017 Hyundai HX330L Excavator.**  
Coupler and bucket included. 650  
hours. \$225,000.00



**2013 Doosan DX420LC-3**  
Excavator. Bucket and thumb  
included. 5183 hours. \$85,000.00



**2015 Hyundai HL757TM-9A**  
Wheel Loader. 3,000 Hours.  
\$90,000.00



**2013 HYUNDAI HL770-9A.** 4022  
Hours, Hyundai Financing  
Available, \$89,000.00



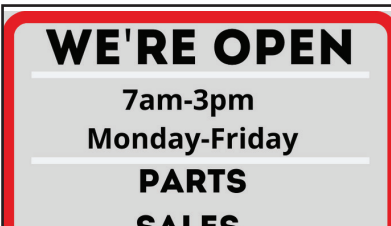
**2018 Hyundai HX130LCRD Excavator.**  
Coupler, 30" bucket and thumb  
included. 202 hours. \$133,000.00



**2014 Hyundai HL757-9A**  
Wheel Loader. 1213 hours.  
\$100,000.00



**2003 CAT 430D Loader/  
Backhoe.** 2617 Hours,  
\$42,000.00



**WE'RE OPEN**

7am-3pm  
Monday-Friday

**PARTS  
SALES  
SERVICE**



**2013 Takeuchi TB285 Mini**  
Excavator. Bucket and thumb  
included. 2620 hours. \$49,000.00



**2000 John Deere 200LC**  
Excavator. 8250 hours.  
\$45,000.00



**2017 HYUNDAI HX160LD.** 36"  
Bkt, Hyd Coupler, and Thumb,  
435 Hours. \$142,000.00



**2016 MECALAC 8MCR w/  
Active Lock Coupler.** 1356  
Hours, \$70,000.00



**2007 DOOSAN MEGA200V**  
Wheel Loader. 5890 Hours,  
\$35,000.00



**2008 CAT 299C Skid Steer.**  
7500 Hours, \$30,000.00



**2008 DOOSAN DL200**  
Wheel Loader. 2215 Hours,  
\$45,000.00

engcon



www.lhequip.com • Call Us for All of Your Rental Needs • www.fb.com/LHELLC







**Lunenburg MA**  
**617-548-1330**



**Stewart Stevenson  
Snow Blower Truck.**  
Works awesome ready  
to roll, 2600 hours  
**\$32,500**



Front Plow Wing  
Front Frame And  
Wing Tower.  
**\$1,995**



**KOBELCO  
LOADER.** Runs  
Awesome, Everything  
Works As It Should,  
**\$16,000**



**1996 FORD L9000.**  
Auto, Miles 122k, State  
Plow Truck, Closed Loop  
Sander With Saddle  
Tanks, Ready To Make  
You Money, **\$12,995**



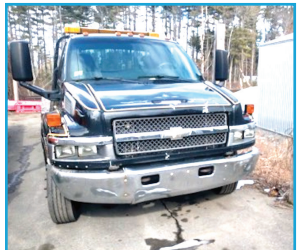
**1998 SAMSUNG  
SL150 LOADER.**  
5,709 Hours, **\$19,995**



**2004  
INTERNATIONAL  
4200 DUMP.** With  
Cap, 82k Miles,  
**\$13,000**



**1992 FORD F800.**  
Sander, Runs  
Awesome, 81k Miles,  
**\$4,495**



**2005 Chevrolet  
C5500 Car Carrier.**  
6.6 Duramax Engine,  
242,000 Miles, Vulcan  
19.6' Ramp, **\$17,995**



**2005 Chevrolet  
C5500 Century**  
**21 Ft Ramp.**  
6.6 Duramax  
Engine, 259,000  
Miles, **\$17,995**



**BOBCAT  
763.** Runs  
Drives, 2100  
Hours,  
**\$8,995**



**1999  
TALBERT  
50 TON  
LOWBED.**  
Trailer, Third  
Lift Axle,  
**\$19,000**



**NEW SKID  
STEER  
PUSHERS.**  
8ft And 10ft  
Available



**POWER  
ANGLE POLY  
PLOWS 10FT.**  
Two To Choose  
From And One  
Steel 10ft  
**\$1,000 each**



**INGERSOLL AIR  
COMPRESSOR.**  
Work Awesome,  
**\$2,995**



## THOMPSON TRACTOR LLC.

**860-963-1918**

"A DL HOLKE COMPANY"

15 RT. 171 WOODSTOCK, CT 06281

DAVE'S CELL 508-864-8874

THOMPSONTRACTORLLC.COM

**ALWAYS A BUYER  
FOR CLEAN  
LATE MODEL  
EQUIPMENT !!**

**\* 2015 DEERE 310-SL**

**\* 2015 HITACHI ZX-130**

**\* 2017 HITACHI ZX-35U**

**\* 2017 HYUNDAI HL 955  
LOADER**

**\* 2013 BOMAG  
BW-177-D**



**2017 DEERE 310 SL: 4X4, EX-HO-RIDE-PILOT-  
FACTORY WARRANTY UNTIL OCTOBER 2020  
\$69,500**

INVENTORY AT \* [WWW.THOMPSONTRACTORLLC.COM](http://WWW.THOMPSONTRACTORLLC.COM)

### 1986 LOAD KING LOWBED TRAILER. 50 Ton

Air Ride Lift Axle, New Deck,  
Sandblasted And Painted, Non  
Ground Bearing, Great Shape,  
Ready to Work, **\$25,000.**

Marion, MA 508-989-6575,  
Call Jim



**2004 CAT D5N XL. 7363 Hours, Very Good U/C, Need  
Nothing To Go To Work, A/C, \$52,000. 603-899-2000**



### 1977 FORD 100 SHORT BED.

Inline 6-300 Intake 4 Barrel Holley,  
Split Header Exhaust Manifold,  
3 Speed On The Floor, Custom Interior,  
Solid Body & Frame, **\$3800.**

978-459-7663

## ALL MAKES

EQUIPMENT & PARTS

CONTACT **ROLAND CARTER 603-340-6776 • EVAN DELANO 603-340-4352 ANDOVER NH 03216**

**EQUIPMENT SALES  
EQUIPMENT CONSIGNMENTS  
ATTACHMENT  
CONSIGNMENTS  
EQUIPMENT FINANCING  
SALE LEASE BACK PROGRAM  
LINE OF CREDIT FINANCING**



**New & Used  
Buckets &  
Attachments.**



**Rebuilt & Good Used Engines.**



**New Undercarriage.  
Free Undercarriage Inspection.**



**Equipment  
Hydraulic  
Parts.**



**Salvage  
Equipment  
Parts.**

[info@allmakesequipmentandparts.com](mailto:info@allmakesequipmentandparts.com) • [www.amepinc.com](http://www.amepinc.com)



**2004 KOMATSU D155A-5 - Closed Cab, Rebuilt  
Engine, Ripper Ready, U/C 65% +/-, 7,500Hrs - CALL DAN  
AT 203-506-3860**



**2010 FORD F550XL SERVICE TRUCK,**  
Miles: 163,000, Automatic, 90% Rubber, Dually, Hackney Service  
Body, Good Condition, **\$7,500**  
Call 781-417-3018 Today!



**1985 CASE 1085 EXCAVATOR. Dig More  
Extenda Hoe, Cummins Motor, 9000 Hours, Tight & Dry,  
Clean, 6 Extra Buckets, \$9,000/BO, 413-246-0880**





**COMMERCIAL  
VEHICLE CENTER**

# FRAMINGHAM



**YES,  
WE ARE  
OPEN!**

**Rt. 9 East Bound • Framingham, Ma 01701 •**  
**[www.FraminghamFord.com](http://www.FraminghamFord.com)**

**AVAILABLE!!! F350- F550 DUMP TRUCKS & CHASSIS**



**F350 SD Super  
Crew 4x4 Cab  
Dump: 6.2L V8,  
Power Group, .  
stk.# 1708F  
\$54,730\***



**2019 F550 XL CHASSIS 4x4: V-8,  
A/C, Power Group. Stk.#17434F**

**CHASSIS AND DUMPS READY FOR DELIVERY NOW!**



**2019 FORD F250 SD 4X4 XL w/  
Fisher Plow. 6.2L, 6 Speed, Power  
Group, skt#17631F, \$46,055.\***



**2019 F350 READING MARUDER  
DUMP: Gas, Power Group.  
Stk.#17087F**



**NEW F350 4x4 READING SERVICE  
BODY: Power Group. stk.#17612F  
\$45,898\***

**SAVE \$6,218**



**2019 F250 XL 4x4 w/FISHER  
PLOW: 6.2L, Power Group.  
Stk.# 17631F. Buy for \$41,837\***

**SAVE \$4,359**



**2019 F350 XL 4x4 UTILITY BODY:  
6.2L, Power Group stk.# 17612F.  
Buy for \$46,393\***



**2019 FORD TRANSIT CUTAWAY, 16' BAY  
BRIDGE BOX TRUCK 350HD, 3.7L, 6 Speed,  
10,360 GVW, Power Group, stk.#17200Y,  
\$40,299.\***



**2019 TRANSIT T350 Walk Through:  
138" WB, Power Group. stk.#17545Y  
MSRP: \$41,372 Buy For: \$37,872\***



**2019 F250XL Super Duty 4x4 W/  
FISHER Plow: Power Group, A/C.  
Ready for SNOW stk.# 17466F.  
Call Chris for details.**



**2019 TRANSIT T250: V-6, Power  
Group. stk.#17611Y \$40,299\*  
Call Brian for details**



**BRIAN T. MCNULTY**  
508-532-3215  
[BRIAN.MCNULTY@FRAMINGHAMFORD.COM](mailto:BRIAN.MCNULTY@FRAMINGHAMFORD.COM)

**CALL TODAY FOR  
YOUR LOWEST DUMP  
TRUCK PRICING!**



**CHRIS UHL**  
617-775-9447  
[christopher.uhl@framinghamford.com](mailto:christopher.uhl@framinghamford.com)

Ford Motor Credit Commercial Lease Available on All Vehicles. Dealer retains all rebates. Customer must qualify for rebates on FMCC Financing. Rebates include Customer Cash, FMCC Bonus, Ford Commercial Connection. Call for vehicle specific details. Price subject to change. Also Competitive Conquest.



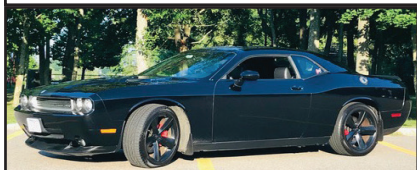


**FULL FABRICATION SHOP. CUSTOM CHIPPER TOP'S & BODIES.  
CUSTOM REAR GATES ALS AVAILABLE. CALL CHRIS  
CAREY AUTO PLYMPTON, MA 781-582-1378**

**HOUGH 65  
LOADER.**  
407 Motor,  
Tires 90%,  
Clean,  
Tight, Dry,  
**\$9,000/  
BO,**  
413-246-0880



**2000 WESTERN STAR 4900 TANDEM AXLE  
TRACTOR,** 46K Front/ 12K Rear, 18 Speed, Cat 3406,  
475HP., Single Turbo, Needs Rubber, Needs Brakes, Engine Fires  
Right Up! **\$15,900** Call 781-417-3018



**2010 DODGE CHALLENGER SRT8,** 6.1L Hemi, Fresh  
Rebuilt Engine with HiPo Goodies, 475HP, 6 Speed With Hurst Old  
School Shifter, Only 43K Miles, Black on Black with Graphite stripe,  
All Options, Over 35K Invested, Have All Receipts. Very Fun Car To  
Drive, Lots of Power! **\$25,900 or Best Offer,**  
Framingham MA, 860-308-6599

**2013 MITSUBISHI  
14' FLATBED,**  
4 Cyl Diesel, 105K Miles,  
New Tires,  
**\$26,000 OBO.**  
401-741-9187



## **TAYLOR RENTAL OF NORTH KINGSTON**

### **LAWN AND GARDEN TOOLS**

### **SPRING CLEANUP TIME IS HERE!!!**

Taylor Rental has hard and garden equipment for every yard and every project. From the do-it-yourselfers to the pros- we have what you need to do the job right!

Some of our most popular rental items include:

- Leaf blowers
- Aerators
- Power Washers
- Mulchers
- Compactors
- Wood Chippers
- Mini-excavators
- Tillers
- Pumps



**We have the tools you need for every job.**

**401-295-0016 – Serving Southern Rhode Island –  
Monday- Saturday 7:30-5:00**



**2003 CAT CS433E.** 4800 Hours, 66" Drum, Everything  
Works As It Should, **\$35,000.** 603-899-2000



**1980 CATERPILLAR 773 OFF  
ROAD TRUCK.** S/N: 63G671, 50  
Ton, Ready To Go To Work,  
**\$19,500**

Chris, 860-460-0767 Or  
Chm@Terrafrirmaus.Com



# COLONIAL WEST

## COLONIAL-WEST CHEVROLET OF FITCHBURG

### TOLL FREE 866-263-8712

ASK US ABOUT COMMERCIAL TRUCK WRITE OFF SECTION 179

**YES! WE ARE OPEN SALES & SERVICE. PLEASE CALL FIRST.**



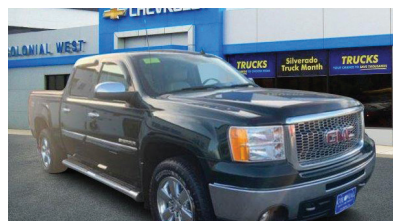
**7 To Choose: LT's,  
WT's, STRAIGHT  
PLOWs, X-BLADES.  
STARTING AS LOW  
AS \$41,500\***



**NEW 2020 CHEVY 2500HD 4x4  
UTILITY BODY:** stk.# 19846 MSRP:  
\$52,580 **BUY FOR: \$43,500\***



**2015 SILVERADO 3500HD CREW CAB DUALY 4X4:**  
HIGH COUNTRY EDITION, 1 Owner Bought here. 6.6  
Turbo Diesel, Allison Automatic, Loaded! Heated/Cooled  
Leather Seating, NAV, Back-Up Camera. 22K Miles.  
Stk.#19915AA **\$52,800\***



**2013 GMC SIERRA 1500 SLT 4x4:** 5.3L  
V8, Every Option you'll ever need and more.  
Stk.#20523A **\$21,350\***



**2016 CHEVY COMMERCIAL EXPRESS  
10' Box w/ TOMMY GATE:** Only 26K  
miles, V8, A/C, pw., pl. #4698 **\$26,800\***



**2017 RAM 2500 4x4:** Chrome Appearance  
Group. Only 49K Miles.  
**REDUCED JUST \$26,900\***



**2018 GMC Cargo Van:** Only 20K Miles,  
Back-Up Camera, Running Boards, Cruise,  
Tilt, WIFI Hotspot, Spotless In & Out,  
stk#4677, **\$20,900.\***



**2012 RAM 1500 Crew Cab 4x4:** Tow  
Mirrors, Tow Package, One Owner. Very  
Clean. #19742A **\$19,900\***



**2016 NISSAN FRONTIER EXT.  
CAB 4x4:** Complete w/Plow. Loaded.  
Stk.#20450A **Just \$25,500\***



**2017 TOYOTA TUNDRA 4x4:** V8, Full  
Power, A/C, One owner. 49K miles Extra  
Clean. #19780A **\$33,500\***

**314 John Fitch Hwy • Fitchburg, Ma 01420**



**WWW.COLONIALWESTCHEVYTRUCK.COM**

**COME SEE YOUR DREAM TRUCK, BEFORE ITS GONE**



Disclosure: all prices include every applicable rebate, lease loyalty, comp lease, com rebate, finance with dealer, tax, title, and dealer fees extra, not responsible for typographical errors, prices subject to change without notice.



**OVER 220  
TRUCKS &  
VANS**

# AUTO TOWNE

**SPECIALIZED TRUCK & VAN SALES**

**TEL: (888) 857-2918**

**WE'RE  
OPEN!  
CALL!**

**\$19,995**



2014 FORD E350 SD Cutaway 12' Supreme Box. 5.4L, Auto, AC, PW, Lift Gate, 82K Miles, stk#8431, \$19,995.

**\$24,995**



2018 FORD TRANSIT 250 Medium Roof Cargo Van. 3.7L, Auto, AC, 9K GVW, 61K Miles, stk#8415, \$24,995.

**\$18,995**



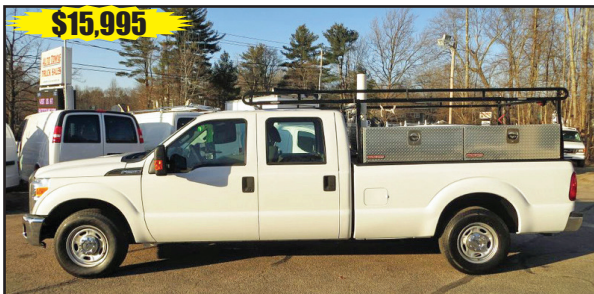
2012 FORD F450 Rack w/Lift Gate. 6.8L, Auto, AC, PW, PL, 1 ½ Ton, 140K Miles, stk#8424, \$18,995.

**\$28,995**



2016 CHEVROLET Silverado 2500 HD Crew Cab Reading Utility 4WD. 6.0L, Auto, Fisher Minute Mount 2 Plow, 91K Miles, stk#8399, \$28,995.

**\$15,995**



2015 FORD F250 Quad Cab 8' Bed. 6.2L, Auto, AC, PW, PL, Toolboxes, Ladder Racks, 10K GVW, 100K Miles, stk#8408, \$15,995.

**\$19,995**



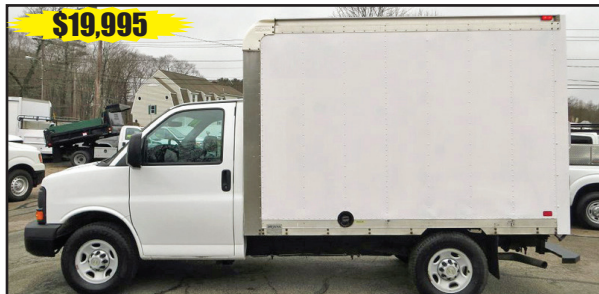
2014 FORD E350 SD KUV Enclosed Utility. 5.4L, Auto, AC, PW, PL, One Ton, 125K Miles, stk#8343, \$19,995.

**\$15,995**



2016 FORD E350 Cutaway 16' Box. 6.8L, Auto, AC, PW, PL, Ramp, One Ton, 140K Miles, stk#8391, \$15,995.

**\$19,995**



2014 CHEVROLET Express Cutaway 10' Box. Auto, AC, PW, PL, One Ton, 72K Miles, stk#8420, \$19,995.

**80  
CARGO  
VANS**

**500 BROCKTON AVE ABINGTON MA . 02351**

**WWW.AUTOTOWNE.COM**

**WE BUY TRUCKS, VANS AND ANY COMMERCIAL VEHICLES**



**OVER 220  
TRUCKS &  
VANS**

# AUTO TOWNE

**SPECIALIZED TRUCK & VAN SALES**

**TEL: (888) 857-2918**

**WE'RE  
OPEN!  
CALL!**



**\$27,995**

**2016 CHEVROLET 3500  
HD Crew Cab Silverado  
Utility 4WD. 6.6L Duramax  
Diesel, Allison Auto, AC,  
PW, 147K Miles, stk#8435,  
\$27,995.**



**QUIGLEY 4x4**

**2 IN STOCK**

**2016 FORD TRANSIT 350 Quigley 4x4  
12-Passenger Van. 3.5L, Auto, AC, PW, PL, 9K GVW, 46K Miles, stk#8332,  
\$35,995.**



**\$19,995**

**2012 FORD E350 Cutaway 12' Box. 5.4L, Auto, AC, PW, PL, One Ton, Walk-  
Thru, 24K Miles, stk#8436, \$19,995.**



**\$25,995**

**2017 FORD F250 Super Cab Knapheide Utility.  
6.2L, Auto, AC, Pw, PL, 10K GVW, 74K Miles, stk#8414,  
\$25,995.**



**\$35,995**

**2015 FORD F350 Dump.  
6.2L, Auto, AC, PW, PL, Plate, Hitch, Air To Rear, One Ton, 25K Miles,  
stk#8426, \$35,995.**



**\$18,495**

**2014 FORD F350 SD Extra Cab Reading Utility. 6.2L, Auto, AC, 10,200  
GVW, 123K Miles, stk#8430, \$18,495.**



**\$32,995**

**2015 ISUZU NPR DRW Utility. 3-Passenger,  
6.0L, Auto, PW, PL, Ladder Racks, 30K Miles, stk#8395,  
\$32,995**

**80  
CARGO  
VANS**

**500 BROCKTON AVE ABINGTON MA . 02351**

**WWW.AUTOTOWNE.COM**

**WE BUY TRUCKS, VANS AND ANY COMMERCIAL VEHICLES**

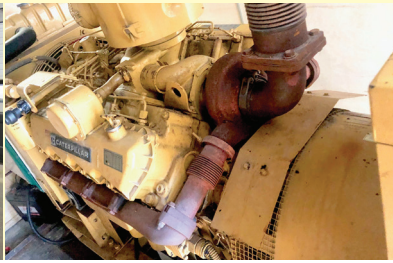


# BIG WHEEL TRUCK SALES

## HEAVY DUTY TOWING AND RECOVERY



**Housed in This Beautiful Trailer is CAT TURBO 3208 DIESEL. 219 KVA 175. Runs Just Fine. Hurry Your Gonna Need This! \$8,500**



**2000 STERLING 22' Steel Flatbed**  
WMOFFETT : 3126 CAT, 8LL, 18F/40R,  
Runs Excellent. **\$11,500.**



**1995 IH 4900 Recent 12'6" BIBEAU DUMP BODY:** DT 466, 6 Speed, 3 Chutes, Hitch Plate, Lift Axle, Non Electric. Runs Great. **Call for more information.**



**2010 FREIGHTLINER CASCADIA:** Detroit 14.7, Eaton Fuller Smart Shift Automatic. 12F/40R, 737K miles. Runs perfect. No codes or problems. **\$18,500.**



**COACHMAN MOTOR HOME:** Racing Seasons almost here. Go to the track in style. 460 FORD Gas. Good Condition. **\$4,000**



**NUMEROUS 48' TO 53' VAN TRAILERS. SOME FOR STORAGE. PRICED TO SELL \$1,200 TO \$6,000. THESE WON'T LAST. CALL TODAY!**



**2017 JCB HT T4 FRONTEND LOADER:** ONLY 535 HOURS, 3.5 Yard Bucket, 20.5X25 Earthmover Tires., Used By Tow Yard Company to Remove Disabled Cars & Trucks Off Flatbed Carriers W/Attachment Forks Only, Forks Not Included. NEVER Used In Any Kind Of Gravel Operation. **\$148,500.**



**2011 IH 26' FLAT BED:** DT 466, 6 Speed, Air Brakes, 33K GVW. Extra nice condition. **\$17,500**



**2007 GMC/ISUZU W5 18' Moving Van:** Isuzu Diesel. Side Door, Barn Doors, Lift Gate. Very Good Condition. **\$10,500.**



**2003 MITSUBISHI FUSO MD II w/ MORGAN 14' Refer Body:** Rollup rear door, Diesel, Automatic, A/C, THERM-O-KING Diesel Refer unit w/stand by. ONLY 124K miles. **\$11,000**



**1997 GMC 5500 RUGBY Dump Body:** Behind Cab Diamond Plate Equipment Box, Hitch Plate. Runs Excellent!

**42 Quanapaug Road, East Freetown, MA**

**508-763-5927 • FAX 508-763-2369**

**www.BIGWHEELTRUCKSALES.COM**

**WE SELL HEAVY DUTY SNOW PLOW EQUIPMENT • WE EXPORT WORLD WIDE • HEAVY DUTY TOWING SPECIALIST**



# R & R INDUSTRIES

**We Buy All  
Scrap Metals**

[www.RRTrucksAndEquipment.com](http://www.RRTrucksAndEquipment.com) • [Sales@RandRind.com](mailto:Sales@RandRind.com)

**195 Rocus Street, Springfield MA 01104**

**413-733-2118**

## TOP \$ PAID FOR ALL METALS

**\* ALL FERROUS & NON FERROUS METALS\***  
**COPPER/BRASS/ALUMINUM/STAINLESS/IRON**  
**& STEEL\* MACHINERY\* HEAVY EQUIPMENT\***  
**CARS/TRUCKS\***



**CHERRY-BURRELL MODEL HCWF Stainless Steel**  
 Milk Tank, Insulated, Double Wall, Ser #2000HCWF55536,  
 Built To 3K Sanitary Standards,  
 Call For More Info & Pricing



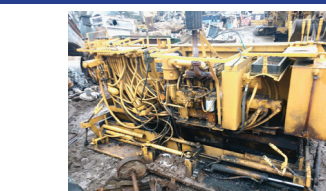
**1980 FORD F750 S/A TRACTOR.** V8 Gas,  
 Allison Auto, Wet Sys, Air Brakes. Only 24K Miles,  
 Zero Rust, 25K GVW, Only \$4,295. Also Available  
 53' Car Trailer \$3,995



**BAKER 5000#  
 CAPACITY  
 FORKLIFT.**  
 Propane Powered,  
 Runs & Works  
 Great, Only  
**\$2,250**, Many  
 Other Forklifts To  
 Choose



**MILLER  
 WELDER CP-  
 300TS.** Good  
 Working Industrial  
 Wire Feed Welder,  
 No Longer Needed,  
**\$795 / BO**



**PUCKETT BROS POWER BOX T650BD.**  
 Asphalt Paver, 3 Cyl Diesel, Track Drive, Runs  
 & Works Well, A Steal!, **\$5,995/ BO**



**RANSOM BOBCAT T3101 COMMERCIAL  
 ZERO TURN MOWER.** Self Leveling Sully,  
 Hydraulic Deck Lift, Only **\$2,495**



**BRADCO 630 TRENCHER.**  
 Skid Steer Attachment, Serial #6SS351,  
 Works Perfectly, Only **\$2,650**



**1970 AMERICAN LaFRANCE LADDER TRUCK.** Only 35,000  
 Miles, 8-V-71 Detroit Diesel, Runs Like The Day It Was New, Allison  
 Auto, Ladder Goes To 130', With Outriggers, Almost New, **\$6,995**



**TRANE COMMERCIAL/ ROOFTOP HEAT/AC UNITS.**  
 Brand New Still In Original Shipping Crates. Many Different  
 Sizes. Call For a Great Deal. Must Go!



**FORD 345-C TRACTOR LOADER.** New Holland  
 Diesel, Enclosed Cab w/ Heat, PTO, 3 Pt Hitch, It  
 Was My Dads, Excellent Condition, Only **\$10,995**



**2009 FORD E250 WORK VANS.** V8, Auto,  
 Ladder Racks, Runs Great, 2 To Choose  
 From, **\$3,295 - \$4,295**



**25' SCHWARTZ ROLL BACK EQUIPMENT  
 BODY.** 25,000 lb Winch, Hyd Tail, Includes  
 Complete Hyd System & Controls, Only **\$3,750**



**1952 BUCYRUS ERIE TD-9** Crawler  
 Tractor Bulldozer, Diesel, Superb Mechanical  
 Condition, Just Out Of Long Storage In  
 Heated Garage, **Original Manuals**  
**\$5,500 OBO**



**GROVE SNORKELIFT MZ116B.** 125'  
 Boom Lift, Deutz Diesel, Runs & Works  
 Perfectly, 4 New Tires, **\$12,250/ BO**



**STORAGE UNITS 12', 14', 16', 18', 20',  
 24', 30', & 40' Storage Or Instant Garage**  
**\$650 & Up**



**DOCK PLATES.** Many Different Sizes &  
 Types, Aluminum, Magnesium & Steel,  
 3' - 8', Various Lengths, **\$150 - \$500**





**1997 MASSEY FERGUSON:** 362 Shuttle 2WD Farm Tractor w/ 838 Loader, Perkins 3.9L 4 Cyl Diesel, **\$18,500**, Belchertown, MA 413-253-5456



**1994 GMC TOPKICK.** 55 Ft Aerial Bucket Truck, Kubota Pup Motor, Gas Engine, Standard Shift, Has Been Used Periodically Over The Last 4 Years as A Backup Truck, Needs TLC, **\$4,000**. Marion, MA 508-989-6575, Call Jim



**1985 LEEBOY 8500 PAVER.** 1800 Hours, Recent Repairs, Good Condition, **\$31,000 OBO**. Call Dan, 845-656-4717



**1997 BANDIT BEAST 3680.** Horizontal Grinder, John Deere Diesel, New Style Mill, New Conveyor Belt, Radio Remote, Magnetic Head Pulley, Serviced And Ready To Run, Books And Parts Receipts Available, **\$74,500**. 508-284-7917

## BEAM TRUCK & BODY INC.

RI Dealer #647

433 CUMBERLAND HILL ROAD, WOONSOCKET, RI 02895



**401-767-2639**



**NEW - USED & RECONDITIONED DISPOSAL EQUIPMENT**



**2012 PETERBILT 388 ROLL-OFF,** 485 CUMMINS, 8 SPEED, 20 FRONT / 52 REARS W/ LIFT AXLE, COVER SYSTEM, CALL FOR DETAILS !

**AVAILABLE NOW!**  
2008 HINO 338: 33K GVW-260HP., HINO ENGINE ALLISON 3500 RDS W/ 175K MILES & AIR LEAF REAR SUSP., HOIST IS A PALFINGER T29MT W/ HYDRAULICALLY ADJUSTABLE HOOK 36"-54", PIONEER 1500 PTO COVER, PINTLE W/ REC., & COMBO HITCH, LED LIGHTS, 11R22.5 RUBBER ON STEEL DISC WHEELS. HOIST IS RATED FOR 29,000# AND WILL HANDLE 12-16' BOXES. **\$65,000**



(3) 2020 PETERBILT 567'S TO CHOOSE FROM - 1 RED - 2 WHITE  
ALL W/ LIFT AXLES, ( 80K GVW ) AND ULTRA SHIFT TRANS., AMERICAN 75K HOISTS,  
(1) W/ COVER / PINTLE, WHITE,  
(1) W/ NO COVER / NO PINTLE, WHITE.



**2019 KENWORTH T800:** ALLISON AUTO, 86,000 GVW, AMERICAN ARB 75-22-TRI HOIST, PIONEER RP-4500-SARG COVER, PLASTIC FENDERS, PINTLE PLATE. CALL FOR MORE DETAILS !

**NOW OFFERING  
BODY FLOOR AND  
HOPPER RELINING !  
EXTEND THE LIFE OF  
YOUR BODY WITH  
A RELINE !**



**2010 INTERNATIONAL 7400:** 42,000 MILES W/ HEIL 22 YD. AUTOMATED PACKER. **\$60,000** WILL SPLIT.



**2007 ISUZU FVR:** UNDER CDL, AIR-BRAKES, 111K MILES, ALLISON AUTO, MOUNTING 2011 10YD NEW WAY SIDE LOADER W/ TIPPER. CHASSIS BLASTED & PAINTED, BODY PAINTED YOUR CHOICE OF COLORS.



**2010 MACK MR 20 & 46 ALLISON W/ NEW WAYNE 40 YD. FRONT LOADER,** 26,351 MILES. **\$164,000 W/ FET**

**WWW.BEAMTRUCK.NET**





# United<sup>®</sup> Rentals

Sales & Rentals

508-856-9171

neurused@ur.com



**\$4,500**

2012  
SKYJACK  
SJIII 3219.  
Scissor Lift  
19' Reach,  
Electric  
Power,  
\$4,500.



**\$33,000**

2014  
TAKEUCHI  
TL10.  
Skidsteer  
Track Loader,  
2,635 + or -  
Hours,  
\$33,000.



**\$14,382**

2012 MEC 2659ERT ROUGH  
TERRAIN SCISSOR LIFT. 26' Platform  
Height, Electric Power, 4WD, 281 Hours,  
\$14,382



**\$38,900**

2013 JD 310K BACKHOE LOADER.  
4WD, Ext-A-Hoe, 3,118 Hours,  
\$38,900.



**\$26,500**

2012 TOYOTA 8FGU30. Warehouse  
Forklift, Propane, 1,152 + or - Hours,  
\$26,500.



**\$8,308**

2012 SKYJACK SJII 4626. Scissor Lift  
26' Reach, Electric Power,  
177 + or - Hours, \$8,308.



**\$38,000**

2012 GENIE S-60X.  
Boom Platform Lift, 4,057 + or - Hours,  
\$38,000.



**\$2,400**

2012 MAGNUM (GENERAC)  
MTL3060. Towable Light Tower,  
6,652 + or - Hours, \$2,400.



**\$12,363**

2013 SULLAIR 49HP. Compressor 185  
CFM, 1,549 + or - Hours, \$12,363.



**\$49,900**

2012 SKYTRAK 6042. Forklift With  
42' Reach, 2,266 + or - Hours,  
\$49,900.



**\$19,500**

2013 TAKEUCHI TB016. Mini  
Excavator, Blade, Rubber Tracks,  
1,131 + or - Hours, \$19,500.

# Buy with Confidence!





**877-761-7888**  
132 Pierce Rd. (Rt. 125)  
Barrington, NH  
(17 miles from Portsmouth)



**877-540-3817**  
1400 South Willow St.  
Manchester, NH  
(1 hour from Boston)

## NEW TRUCK SPECIALS



**NEW 2020 IH HV 24'9" Flatbed with Hiab 425K4.** 6x4, 500 HP, Allison Auto, Engine Brake, 66K GVW, stk#15248



**NEW 2020 IH CV Crew Cab 11'7" Goodwin Dump 4x4.** 6.6L Duramax 350 HP, Allison 6 Speed, Electric Tarp, 22,500 GVW, stk#15404



**NEW 2020 IH CV Reading Utility.** 350 HP 6.6L Duramax Diesel, Allison Auto, AC, Cruise, PL, 141" WB, 16K GVW, stk#15401



**NEW 2020 IH HX C&C 6x4.** X15 Cummins 605 HP, 18 Spd Manual, Engine Brake, Hendrickson HMX460, 66K GVW, stk#15423



**NEW 2020 IH HV 17' Dump 8x4.** 475 HP, Allison Auto, Engine Brake, Hendrickson HMX460, 238" WB, 80K GVW, stk#15342



**NEW 2019 IH CV 21' JerrDan 2-Car Carrier.** 6.6L Duramax 350 HP, Allison Auto, AC, 102"W, 22,940 GVW, stk#14141



**NEW 2020 IH HX 6x4.** Cummins 605HP, 18 Spd, Engine Brake, AC, 60K GVW, 205" WB, stk#15311



**NEW 2020 IH MV American Hook-Lift.** Cummins 325 HP, Allison 3500RDS Auto, Engine Brake, 26K GVW, stk#15183



**NEW 2020 IH HV 24'6" Flatbed.** 102" W, 500 HP, Allison Auto OD, Engine Brake, Moffett Set-Up, 66K GVW, stk#15215



**NEW 2019 IH HX Serco 8500 Loader & Bunks.** Cummins 605 HP, 18 Spd, Engine Brake, 274" WB, 66K GVW, stk#13644



**NEW 2020 IH HV 4,000 Gallon Tank.** L9 Cummins 330 HP, Auto, Engine Brake, Hydraulic Pump, 199" WB, 56K GVW, stk#13980



**NEW 2020 IH HX 17'6" Brandon Dump 8x4.** Cummins 565 HP, Allison Auto OD, 58" Sides, Coal Chute, 86K GVW, stk#15243

[www.LibertyInternationalTrucks.com](http://www.LibertyInternationalTrucks.com)

*You Get The Most With The Post*





**877-761-7888**  
132 Pierce Rd. (Rt. 125)  
Barrington, NH  
(17 miles from Portsmouth)



**877-540-3817**  
1400 South Willow St.  
Manchester, NH  
(1 hour from Boston)

**ALL THESE TRUCKS MUST GO • BEST OFFER WILL BE ACCEPTED!**



2016 IH 7600 16' Dump 6x4. 430 HP, Auto, Engine Brake, Air Gate, Apron, Tarp, 66K GVW, 141K Miles, stk#15373, **\$79,900.**



2016 PETERBILT 389 Cottrell Classic High Rail C12 11 Car Hauler. ISX Cummins 600 HP, 8LL, 53,880 GVW, New Engine w/2 Yr. Warranty, 618K Miles, stk#15450, **\$129,900.**



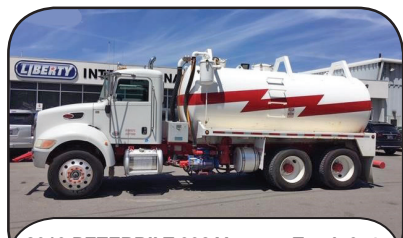
2015 WESTERN STAR 4900 36" Sleeper 6x4. ISX Cummins 500 HP, 18 Speed, Engine Brake, 62K GVW, stk#13859, **\$118,000.**



2017 IH 4300 26' Morgan Alum. Van. Cummins 250 HP, Allison Auto OD, 102"W, 103"H, 25,999 GVW, Tuck-Away Gate, 98K Miles, stk#14171, **\$56,900.**



2011 MACK MRU613 6x4 McNeilus 25 Yard Rear Packer. 325 HP, Allison Auto, 66K GVW, 197K Miles, stk#15376, **\$119,900.**



2013 PETERBILT 338 Vacuum Truck 6x4. 3400 Gal Tank, 350 HP Cummins, Auto, Engine Brake, 54,600 GVW, 130K Miles, stk#14142, **Call**



2016 IH 4300 Crew Cab C&C. ISB Cummins 240 HP, Allison Auto, 26K GVW, 297" WB, Engine Warr. Til 250K or 4/2021, 88K Miles, stk#15266, **\$59,900.**



2017 FREIGHTLINER BUS CLASS M2 106 Morgan 26' Van. ISB Cummins 240HP, Auto, 102" W, Lift Gate, 33K GVW, 38K Miles, stk#15069, **\$69,900.**



2014 PETERBILT 337 26' Van. Paccar 220 HP, Auto, 33K GVW, 102" W, Lift Gate, 187K Miles, stk#14195, **\$41,900.**



2007 WESTERN STAR 6900XD Winch/Oil Field Truck 6x4. CAT C15 625HP, 18 Spd, 87,060 LB GVW, 232" WB, stk#15019, **\$74,900.**



2018 FORD F650 10' Dump. 320 HP, Auto OD, 25,999 LB GVW, Electric Tarp, Chute, Toolbox, 1900 Miles, stk#Con98, **\$67,900.**



2009 PETERBILT 367 22' American Roll-Off Hoist 8x4. ISX Cummins 485 HP, 8LL, Engine Brake, 80K GVW, 306K Miles, stk#15228, **\$84,900.**

**www.LibertyInternationalTrucks.com**





# SALES & RENTALS

(603) 623-3669

www.TQUIP.com

Londonderry, NH | Rutland, VT | Orlando, FL

• OVER 1000 MACHINES & ATTACHMENTS IN OUR INVENTORY! •



**(2) 2018 METSO CV100 BOX SCREENERS**  
2-DECK SCREENER BOX,  
4" TOP SCREENS, 3/4" BOTTOM  
SCREENS, 1200+/- HRS  
**\$95,000 EACH**

**FOR RENT**



**2008 SCALPER 107T SCREENER**  
5'X7' DBL-DECK SHAKER, 3" SCREENS, 42"  
VAR SPD UNDER DECK DISCH BELT, NEW  
FD HPR BLT & COMP SVC, 4200+/- HRS  
**\$65,000**



**2013 MCCLOSKEY C44 CONE CRUSHER**  
TELSMITH 44SBS 44" CONE, AUTO ADJ.  
HYD LVLNG LEGS, 20" PADS, COMPLETE  
CONE REBUILD @ 6800 HRS, 6900+/- HRS  
**\$259,000**



**2009 KOMATSU PC308LC-3**  
A/C, 10'2" STK, AUX HYD, 48" DIGGING  
BKT, HYD THUMB, CTRL PTRN CHNGR,  
AUTOLUBE, 34" PADS, 9900+/- HRS  
**\$79,000**



**2015 CATERPILLAR 336FL**  
A/C, 12'9" STICK, 48" GP BUCKET,  
REAR VIEW CAMERA, 5100+/- HRS  
**\$129,000**



**2013 CAT 336EL**  
A/C, 12'4" STK, AUX HYD, HYD Q/C, 42"  
GP BKT, HYD THUMB, 5000+/- HRS  
**\$139,000**



**2018 CAT 320FL**  
A/C, STD STK, AUX HYD, ROT LINES GRP,  
HYD Q/C, 54" DIGGING BKT, HYD THUMB,  
28" PADS, LONG UC, 1700+/- HRS  
**\$169,000**



**2016 CAT 330FL**  
A/C, 10'7" STK, AUX HYD, 42" GP BKT,  
HYD THUMB, REAR VIEW CAMERA,  
4000+/- HRS  
**\$169,000**



**2015 HITACHI ZX225USLC-5B**  
A/C, AUX HYD, HYD Q/C,  
36" DIGGING BKT, HYD THUMB,  
28" PADS, REAR CAM, 2200+/- HRS  
**\$149,000**



**2014 DOOSAN DX190W-3**  
A/C, 8' STK, AUX HYD, 60" TWIST WRIST  
BKT, FRONT & REAR STABILIZERS, AUTOLU-  
BE, REARVIEW CAMERA, 3900+/- HRS  
**WAS: \$79,500 | NOW: \$69,000**

**PRICE REDUCED**



**(4) 2012-2014 KOMATSU PC290LC-10LRs**  
EROPS, A/C, 7CY GP BKT, DUAL STEER,  
RIDE CTRL, HIGH LIFT, NEW 29.5R25  
BRIDGESTONE RADIALS, 7300+/- HRS  
**STARTING AT \$105,000**



**MOROOKA MST2200VDS**  
A/C, 250HP CAT DIESEL, HST  
TRANS, 12' DUMP BODY, 30"  
RUBBER TRACKS, 30,000LB CPTY  
**STARTING AT \$89,000**

**FOR RENT**

• CALL US TODAY FOR YOUR YEAR-ROUND SALES & RENTAL NEEDS! •





**HOT SALE**

**2010 CAT 140M**  
 EROPS  
 A/C  
 14' MOLDBOARD  
 AUX HYD  
 TIP CTRL  
 4500+/- HRS  
**\$129,000**

**SALES & RENTALS INC.**  
**T-QUIP**  
 YOUR CHOICE IN SALES  
 & RENTALS

**(603) 623-3669**  
**www.TQUIP.com**



**2005 VOLVO G780B**  
 LO-PRO CAB, A/C, MOLDBOARD,  
 HYD SIDE SHIFT, TIP CTRL, 20.5R25 TIRES,  
 PLUMBED FOR GPS, 3700+/- HRS  
**\$59,500**



**PRICE REDUCED**

**2013 CAT TL1255**  
 EROPS, 12,000LB LIFT CAPACITY, 55'  
 REACH, HYD Q/C, 4X4, CAT DIESEL,  
 FRONT STABILIZERS, 4000+/- HRS  
**WAS: \$99,000 | NOW: \$89,000**



**2015 KOMATSU WA500-7**  
 A/C, 7CY GP BKT, DUAL STEER, 29.5R25  
 RADIALS, 1000HR SVC & NEW EGR  
 COOLERS, KOMATSU INSP & OIL SAMPLES  
**\$159,000**



**2014 CAT 950K**  
 A/C, HYD Q/C, GP BKT, RIDE CTRL,  
 REAR VIEW CAM, 23.5R25 TIRES,  
 FULLY LOADED, 7500+/- HRS  
**\$99,500**



**2015 CAT 966M**  
 EROPS, A/C, GP BKT, RIDE CTRL,  
 JOYSTICK STEER, REAR VIEW CAM,  
 26.5R25 TIRES  
**\$109,000**



**PRICE REDUCED**

**2017 VOLVO L50H**  
 EROPS, A/C, AUX HYD, HYD Q/C,  
 3CY GP BKT, AUTO LUBE,  
 17.5R25 RUBBER, 4400+/- HRS  
**WAS: \$75,000 | NOW: \$69,000**



**2005 BOMAG BW211 D-3**  
 OROPS, 84" SMOOTH DRUM, VIBRATORY  
 DRUM DRIVE, 23.1R26 RUBBER, SHELL KIT  
 AVAIL AT ADD'L COST, 2700+/- HRS  
**\$39,500**



**2014 CAT CS54B**  
 OROPS, 84" SMOOTH DRUM,  
 VIBRATORY DRUM, DRUM DRIVE,  
 SHELL KIT AT ADD'L COST, 3000+/- HRS  
**\$65,000**



**(2) 2012 BOMAG BW211Ds**  
 EROPS, A/C, CUMMINS DIESEL, 84"  
 SMOOTH DRUM, VIBRATORY DRUM  
 DRIVE, 2600+/- HRS  
**\$69,000 EACH**



**(2) 2014 INT'L 4300s**  
 MAXXFORCE DT, DP, A/T, A/R SUSP,  
 10,000LB F, 17,500LB R, 153" WB, ACCESS  
 3" PTO PUMP, FRONT/REAR/SIDE SPRAY  
**CALL FOR PRICING**



**2005 KOMATSU HM300-1**  
 A/C, 30-TON CAPACITY, TAILGATE,  
 AUTO LUBE, 750/65R25 RUBBER,  
 5000 ORIGINAL HRS  
**\$79,000**



**2016 CAT 725C**  
 A/C, 25-TON CAPACITY,  
 RETARDER, AUTO LUBE, EMERG STEER,  
 23.5R25 TIRES, 5200+/- HRS  
**\$169,000**

**• HAMMERS • BUCKETS • GRAPPLES • THUMBS • FORKS • BROOMS •**



**We are cash  
buyers for  
quality used  
trucks and  
equipment!**

# BROOKSIDE EQUIPMENT SALES

[WWW.BROOKSIDEEQUIPMENT.COM](http://WWW.BROOKSIDEEQUIPMENT.COM)

## 978-249-4600



**2014 HYUNDAI HL757TM-9A:** 4,313 Hours, 3.5 Yard, Cab W/ A/C, Hydraulic Coupler W/ 3rd Valve, 6 Cyl Cummins Turbo, Backup Camera, 33K LBS, stk#LO015, **\$72,500**



**2012 CATERPILLAR 980K:** 15,810 Hours, 6.5 Yard, Cab W/ A/C, Joystick Steer, 6 Cyl Caterpillar C13 Acert Turbo, Auto Ride Control, 69K LBS, Stk#LO564, **\$89,500**



**2007 JOHN DEERE 410J:** 6,892 Hours, 4x4, X-Hoe, Cab W/ A/C, Hydraulic Front Coupler, Turbo, Powershift, Ride Control, Pilot Controls, 30" Digging Bucket, Pattern Changer, Comes W/ 4 Ft Flip Forks, stk#BH119, **\$33,500**



**2012 VOLVO EC250DL:** 6,159 Hours, 45" Digging Bucket, Auxiliary Hydraulics, Hydraulic Coupler, 6 Cyl Volvo D8H Turbo, 204 HP, 58K LBS, Stk#XC025, **\$69,500**



**2004 JCB 426:** 4,029 Hours, 3 Yard, Cab, Auxiliary Hydraulics, 6 Cyl Cummins Turbo, 142 HP, 25K LBS, stk#LO846, **\$37,500**



**2013 JOHN DEERE 460E:** 9,224 Hours, 46 Ton, 6x6, 6 Cyl John Deere 6135 Twin Turbo, 481 HP, Tailgate, Backup Camera, stk#HT871, **\$124,500**



**2005 KOMATSU HM300-1L:** 12,625 Hours, 30 Ton, 6x6, 6 Cyl Komatsu SAA6D125E-3 Turbo, 335 HP, stk#HT008, **\$52,500**



**2005 KOMATSU PC138USLC-2E0:** 11,701 Hours, 24" Bucket, Auxiliary Hydraulics, Hydraulic Coupler, Reduced Tail Swing, 32k Lbs, Stk#XC849, **\$31,500**



**2015 JOHN DEERE 544K:** 1,515 Hours, 3 Yard Bucket, Hydraulic JRB Coupler, Cab W/ A/C, 6 Cyl John Deere Turbo, 163 HP, 30K LBS, Stk#LO678, **\$119,500**



**2015 CATERPILLAR 336FL:** 7,630 Hours, 62" Bucket, A/C, 2 Speed, 6 Cyl Cat C9.3 Acert Turbo, 318 HP, 86K LBS, Stk#XC420, **\$119,500**



**2009 CATERPILLAR 924HZ:** 5,356 Hours, 2.5 Yard, Cab, Aux Hyd, 6 Cyl Caterpillar Turbo, 25K LBS, Stk#LO592B, **\$49,900**



**2016 CATERPILLAR 336FL:** 5,306 Hours, 56" Bucket, A/C, 2 Speed, 6 Cyl Cat C9.3 Acert Turbo, 318 HP, Pattern Changer, 86K LBS, stk#XC077, **\$129,500**



**2000 INGERSOLL-RAND SD180D:** 5,668 Hours, 100" Smooth Single Drum, Drum Drive, Vibratory, OROPS, 6 Cyl Cummins C8.3C Turbo, 230 HP, Stk#OC899, **\$28,500**



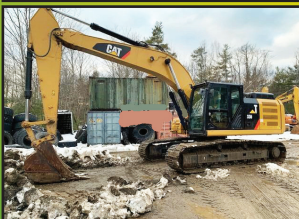
**2013 CATERPILLAR 262D:** 1,582 Hours, 2950 LB Lift, Cab W/ A/C, Pilot Controls, Aux Hyd, 72" Bucket, 4 Cyl Cat C3.3B Turbo, New Tires, Stk#SK272, **\$27,500**



**2004 DAEWOO SOLAR 175LC-V:** Comes W/ 30" & 42" Digging Buckets, Manual Thumb (Missing Stiff Arm), 2 Speed, 6 Cyl Daewoo Turbo, 121 HP, Stk#XC047, **\$37,500**



**2008 JOHN DEERE 643J:** 12,111 Hours, Feller Buncher, Cab W/ A/C, 6 Cyl John Deere Turbo, stk#FO591, **\$39,500**



**2016 CAT 330FL:** 4,392 Hours, 39" Bucket, 2 Speed, A/C, 6 Cyl Cat C7.1 Acert Twin Turbo, New Sprockets, Backup Camera, 70K LBS, stk#XC239B, **\$114,500**



**2003 THOMAS PROTOUGH 400:** 486 Hours, 3 Yard, 1 1/2" Top Screen, 3/8" Slotted Bottom Screen, Kubota Diesel, stk#SC969, **\$27,500**



**2005 BENFORD 6003PSR:** 1,865 Hours, 6 Ton, Swivel, 4x4, OROPS, 4 Cyl Perkins Diesel, 83 HP, stk#DU541, **\$15,500**



**2016 TAKEUCHI TW65-2:** 2,787 Hours, 1 Yard, Cab, Hydraulic Coupler, 4 Cyl Deutz Turbo, 72 HP, 12K LBS, Stk#LO592, **\$49,900**

**60 STATE RD, PHILLIPSTON, MASS**

**978-249-4600**

**EMAIL: [KEVIN@BROOKSIDEEQUIPMENT.COM](mailto:KEVIN@BROOKSIDEEQUIPMENT.COM)**





# MINUTEMAN TRUCKS, INC.

2181 Providence Highway ★ Walpole, MA 02081

**Toll Free: 800-225-4808**

[www.MinutemanTrucks.com](http://www.MinutemanTrucks.com)



**Just as you keep delivering, we will keep delivering for you.  
Whatever you need, from trucks and parts to service,  
Minuteman is *WITH YOU FOR THE LONG HAUL.***



**2019 INTERNATIONAL SBA 4x2**  
Cummins ISB 6-Speed Automatic.  
GVW 26,000. Stock #401551



**2019 INTERNATIONAL RH613 4X2**  
Navistar A26 6-Speed Automatic.  
GVW 32,000. Stock #800120



**2019 INTERNATIONAL CV515 4X2**  
6.6 LD 6-Speed Automatic.  
GVW 19,500. Stock #300060



**2020 INTERNATIONAL MV607 4X2**  
Cummins ISB 6-Speed Automatic.  
GVW 25,999. Stock #401581



**2019 INTERNATIONAL CV515 4X4**  
6.6 LD 6-Speed Automatic.  
GVW 19,500. Stock #300071



**2013 INTERNATIONAL 8600**  
13L Auto/Manual (10 Spd) 160-225k  
miles GVW 80,000. Stock #149544



**2019 Ford F550 XL 4x2**  
6.7L 6-Speed Automatic.  
GVW 19,500. Stock #550857



**2019 Ford F650 XL 4x2**  
6.8L EFI Ford 6-Speed Automatic.  
GVW 25,999. Stock #650593



**New 2019 F550 XL Supercab 4x4**  
6.8L Ford 6-Speed Automatic.  
GVW 19,500. Stock #550760



**2019 Ford F650 XL 4x2**  
Ford 6-Speed Auto  
GVW 25,999. Stock #650598



**2019 Ford E4550**  
6.8L 6-Speed Automatic.  
GVW 14,500. Stock #450243



**2019 Ford F750 Regular Cab**  
Ford 6.7L 6-Speed Auto  
GVW 25,999. Stock #750481

**CALL US TODAY WE ARE OPEN (800) 225-4808**





# PLACE MOTOR Inc.

The "Right Place" Since 1923

## COMMERCIAL TRUCKS

Call Phil Crowley "The Truck Guy"  
866-449-7482 ext. 213

19 Thompson Rd.  
Rte. 193 Webster, Ma.

**\*WE HAVE WHAT YOU NEED\***



NEW 2019 FORD F-550 SUPER-CAB, 4X4, CAB AND CHASSIS, DIESEL, POWER EQUIPMENT GROUP, 195K GVW, 60CA & 84 CA AVAILABLE !



NEW 2019 FORD F-550 CAB AND CHASSIS DIESEL, POWER WINDOWS/LOCKS, 145 WHEEL BASE, 195K GVW PACKAGE !



NEW 2019 FORD F-550 SUPER-CAB DUMP, 4X4, V-10 ENGINE, POWER EQUIPMENT GROUP, 19K GVW PACKAGE !



NEW 2019 FORD F-550 CAB AND CHASSIS, DIESEL & GAS AVAILABLE, 120 CA, 195K GVW PACKAGE !



NEW 2018 FORD F-550 CAB CHASSIS 4X4, 6.7L DIESEL, BLACK IN COLOR AND MUCH MORE !



NEW 2019 FORD F-650 V-10, 26K GVW, 260 WHEEL BASE, TAKE ANY BODY YOU HAVE !



NEW 2021 FORD E-350 12' AEROCELL BODY, POWER WINDOWS, POWER LOCKS, AND MUCH MORE !



NEW 2020 FORD TRANSIT CONNECT VANS ! 8 TO CHOOSE FROM CALL FOR SPECIAL PRICING



NEW 2019 FORD F-350 4X4 W/ DURAMAG UTILITY BODY, PW/PL, 6.2L V-8 ENGINE AND MUCH MORE!

**WWW.PLACEMOTOR.COM**

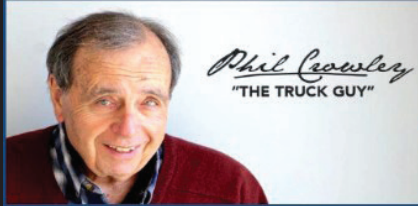


**DEJANA**  
Truck and Utility Equipment



**COMMERCIAL  
VEHICLE CENTER**



**PLACE MOTOR Inc.***The "RIGHT PLACE" Since 1923***COMMERCIAL TRUCKS**

**PHIL CROWLEY**  
866-449-7482 EXT. 213



19 Thompson Rd.  
Rte. 193  
Webster, MA.



2019 FORD F-350 REGULAR CAB, 4X4 XLT TRIM, 6.2L V8 ENGINE, 13K FOR MILES. CALL FOR BEST PRICE ! #9009R



2019 FORD F-250 REGULAR CAB, 4X4 STX TRIM, 1500 MILES, STROBE KIT AND MORE ! \$37,923 #842X



2017 FORD F-350 CREW CAB, 4X4 LARIAT TRIM, POWER MOON-ROOF, 6.7L DIESEL, ULTIMATE PKG. AND MORE! CALL FOR MORE DETAILS !

**WWW.PLACEMOTOR.COM**



2016 FORD F-350 CREW-CAB 4X4, 6.7L DIESEL, LARIAT TRIM, MOON ROOF, 62K MILES HEATED & COOLED SEATS, NAV. AND SO MUCH MORE! CALL FOR BEST PRICE!



2016 FORD F-250 CREW-CAB, 4X4, XLT TRIM, 6.2L V-8 GAS, SUPER CLEAN ! \$35,995 #9281A



2016 FORD F-350 CREW-CAB LARIAT, 4X4, DIESEL, 8' BED, BOSS V-PLOW, ULTIMATE GROUP, NAVIGATION, 52K MILES AND MUCH MORE!

•www.placemotor.com• www.placemotor.com• www.placemotor.com• www.placemotor.com•



2016 FORD F-350 REGULAR CAB 4X4, 6.7L DIESEL, XLT TRIM, 42K MILES. \$35,923



2018 FORD TRANSIT WAGON, 15 PASSENGER, MEDIUM ROOF, RUNNING BOARDS, 15,000 MILES AND MORE! \$29,000 #700R



2019 FORD F-350 SUPER CAB, LARIAT TRIM, 4X4, 2,800 MILES, 6.2L V8 ENGINE AND MORE ! \$47,923 #837X



**MASSACHUSETTS OLDEST FORD  
DEALER SINCE 1923**





## KAWASAKI 8022 LOADER.

3.5 Yd., Cummins  
Powered Solid  
Engine,  
Looking For Love!

**\$15,000.**

For Details  
Call Paul,  
860-212-4846



## 2001 MACK CH613.

427 HP, 458K Miles, 13 Spd, 46  
R/A, Wet System, D.F. 11x24.5,  
**\$19,900.,** Lawrence, MA  
603-973-0809



## 1994 PETERBILT 379 TANDEM AXLE

TRACTOR, Detroit 60 Series, 8 Speed, 2 Line  
Wet-System, Dump Control, 24.5 Tires, Good Frame,  
Work Ready! **\$24,900** Call Today 781-417-3018

**1972 MACK U  
MODEL.** Engine &  
Tranny Recently  
Overhauled, **\$8,000,**  
413-268-3600 OR  
413-535-7210



# HOLLISTON TRUCK

1569 WASHINGTON ST, HOLLISTON, MASS 01746  
WWW.HOLLISTONTRUCK.COM • CALL 508-429-7678

**WANTED :  
GOOD USED  
DUMP BODIES**

## LARGE SELECTION OF UNDER CDL TRUCKS !



**2005 FREIGHTLINER M2:** CAT C7-230HP, PRE-EMISS., 115K  
MILES, ALLISON 3500 RDS AUTO, 26K GVW, SPRING SUSP., LOCK  
DIFF., SINGLE FRAME, 11R 22.5 TIRES, AIR-BRAKES/SEAT, A/C,  
PTO, NEW 14" STEEL DUMP, BARN DOORS, 4" SIDES, PINTLE  
REC., AIR-TO-REAR. **\$34,000**



**1999 PETERBILT 357:** CUMMINS M11-370HP, 80K MILES ON COMPLETE IN-  
CHASSIS W/ PAPERWORK, JAKE BRAKE, 8LL, 66K GVW, 20K FRONT/46K REAR,  
FULL LOCK REAR DIFF, HENDRICKSON SUSP., DBL FRAME, AIR-BRAKES/SEAT,  
A/C, PTO, 14" STEEL DUMP, 1 CHUTE, AIR-GATE, AUTO-TARP BEING INSTALLED,  
PINTLE. **\$43,000**



**2003 MACK GRANITE CV713:** E7-350HP, PRE-EMISS., 211K  
MILES, JAKE BRAKE, ALLISON 4500 RDS AUTO, 77K GVW  
CERTIFIED, 20K FRONT/20K PUSHER/46K REAR, HENDRICKSON  
BLOCK SUSP., FULL LOCK REAR DIFF, DBL FRAME, 150" CA AIR-  
BRAKES, AIR-SEAT, A/C, 19" OF FRAME, PTO. **\$45,000**



**2009 FORD F-650:** CUMMINS ISB-230HP, 88K MILES, ALLISON  
AUTO, 26K GVW, SPRING SUSP., 245/70R 19.5 TIRES, SINGLE  
FRAME, AIR BRAKES, PW/PL, A/C, ELECTRIC LIFT, NEW 11"  
GALION DUMP, TARP, PINTLE. **\$38,000**



**2010 INTERNATIONAL 4300:** DT466-245HP, 70K MILES, ALLISON  
3500RDS AUTO, 26K GVW, SPRING SUSP., 5.64 GEARED RATIO,  
11 R 22.5 TIRES, SINGLE FRAME, AIR-BRAKES, A/C, PTO, NEW  
10" WARREN DUMP, 1 CHUTE, ELECTRIC TARP, AIR-TO-REAR.  
**\$49,000**



**2010 FREIGHTLINER M2:** CUMMINS ISB-245HP, 25K MILES,  
ALLISON AUTO, 26K GVW, SPRING SUSP., AIR-BRAKES/SEAT,  
A/C, BACK UP CAMERA, DUAL PTO, 13" STEEL MONROE  
ENCLOSED UTILITY BOX, ELECTRIC TOOL LIFT, UNDER MOUNT  
AIR COMP, PW INVERTER, AIR-TO REAR, PINTLE. **\$42,000**

## THE DUMP TRUCK SPECIALISTS

*You Get The Most With The Post*





# METROPOLITAN TRUCK CENTER INC.

1074 Turnpike St. Stoughton, MA 02072

[www.metropolitantruck.com](http://www.metropolitantruck.com)

## 866-514-1214

### EVERYTHING YOU NEED FOR A TRUCK BODY!!!



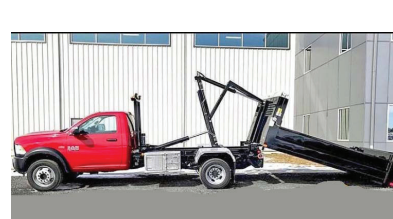
### CUSTOMIZED ALUMINUM BODIES TO FIT YOUR EVERY NEED



**UTILITY BODIES**



**DUMP BODIES**



**KARGO KING CFIVE DS-11-110**



**DROPSIDE DUMP BODIES**



**ALUMINUM SERVICE BODIES**



**COMPOSITE LANDSCAPER**



**S.M.A.R.T. RACKS**



**COMPOSITE PLATFORM BODIES**



**57" AND 75" SINGLE AND DUAL WHEEL**





**NICK SCARVALAS**  
Commercial Sales  
857-247-9023 or 617-249-5603



**COMMERCIAL  
VEHICLE CENTER**

**0% FINANCING FOR UP TO 60 MONTHS**



**SAVE \$12,000**

2019 F550 SUPER CAB LANDSCAPER.  
Diesel, 4WD, 12 Ft Dump Body, Curb Door,  
Payload Up Grade, Pwr Pkg, F202040  
MSRP \$78,475.  
**SALE PRICE \$66,475.**



**SAVE \$12,000**

2019 F550 SUPER CAB 4X4. Diesel, Pwr  
Equip Group, Payload Up Grade, 9' Dump  
Body, F200453 MSRP \$72,770.  
**SALE PRICE \$60,770.**  
Great Financing Available



**SAVE \$12,000**

2019 F550 SERVICE BODY 4X4. Diesel, Pwr  
Equip Group, Payload Up Grade, F200110  
MSRP \$69,690.  
**SALE PRICE \$57,690.**  
Great Financing Available



**SAVE \$10,000**

2019 F550 HD RACK BODY. 12' Knapheide,  
V10 Gas, Auto, Payload Package, PW, PL,  
Cruise, Running Boards, F201993  
MSRP \$57,999.  
**SALE PRICE \$47,999.**



**SAVE \$12,000**

2019 F550 RUGBY DUMP. 4WD, Diesel,  
Power Group, Payload Up Grade, PW, PL,  
F109545  
MSRP \$71,999.  
**SALE PRICE \$59,999.**



**SAVE \$12,000**

2019 F550 ALUMINUM SERVICE BODY.  
Compartment Lights, Central Locking,  
Ladder Rack, SS Wheel Covers, 4WD,  
F200835 MSRP \$73,995.  
**SALE PRICE \$61,995**

**500 COMMERCIAL TRUCKS IN STOCK**



**SAVE \$8,000**

2019 F250 SUPER CAB 4X4. V8 Gas, XLT  
Package, Remote Start, Rear View Camera  
Rear Window Defrost, Fog Lights, F109646  
MSRP \$49,835  
**SALE PRICE \$41,835**



**SAVE \$23,000**

2019 F650 10' VOTH ALUMINUM DUMP.  
Diesel, Automatic, Electric Load Cover,  
Pintle Hook, F108556  
MSRP \$105,999.  
**SALE PRICE \$82,999.**



**SAVE \$12,000**

2019 F550 SWITCH N GO  
4X4, 11" Drop Box, Diesel, Payload Plus Up  
Grade Package, Tool Boxes,  
F201891 MSRP \$84,295  
**SALE PRICE \$72,295**



**SAVE \$11,000**

2019 F550 11Ft DUMP BODY 4X4.  
Diesel, Power Equipment Group, HD Trlr  
Pkg, Power Heated Mirrors, F200945  
MSRP \$72,999.  
**SALE PRICE \$61,999.**



**SAVE \$20,000**

2019 F650 10' TITAN DUMP. V10 Gas, Auto,  
CD Stereo, Pwr Pkg, 5-7 Yard Body, 17 Ton  
Hoist, Electric Load Cover, SS Tool Box,  
F108594 MSRP \$86,999.  
**SALE PRICE \$66,999**



**SAVE \$11,000**

2019 F350 12 Ft RACK BODY.  
4WD, V8 Gas, Power Equip Group, HD  
Headache Rack, Pwr Heated Mirrors,  
F200508 MSRP \$55,960  
**SALE PRICE \$44,960**

**QUIRK FORD**  
540 Southern Artery (Rt 3A) Quincy, MA  
www.quirkford.com • 617-249-5660

**Business  
Financing with  
NO Co-signer  
Required**

Prices include all available rebates. Rebates include Customer Cash, FMCC Bonus Cash, and Commercial Uplift Bonus Cash. Customer must qualify for rebates. Call for specific details. Prices are subject to change.



# NICK SCARVALAS Commercial Sales

857-247-9023 or 617-249-5603



## COMMERCIAL VEHICLE CENTER

**0% FINANCING FOR UP TO 72 MONTHS**



**SAVE \$8,000**

2019 E350 Knapheide SRW.  
Electric Locks, AC, Cruise, CD, PW, PL,  
SYNC Voice, F202120  
MSRP \$56,315.  
**SALE PRICE \$48,315.**



**SAVE \$9,000**

2019 E350 SERVICE UTILITY VAN. V8,  
Electric Locks, 3 Bar Ladder Racks, Pass  
Thru Door, AC, Cruise, CD, PW, PL, SYNC,  
F201294 MSRP \$53,360.  
**SALE PRICE \$44,360.**



**SAVE \$9,000**

2019 E350 10' VAN BODY.  
Roll Up Rear Door, Step Bumper, Pass Thru  
Door, AC, Cruise, CD, PW, PL, SYNC Voice,  
F200626 MSRP \$45,999.  
**SALE PRICE \$36,999.**



**SAVE \$10,000**

2019 T350-HD 12' ROCKPORT BODY.  
Roll Up Rear Door, Pass Thru Door,, Step  
Bumper, AC, Cruise, CD, PW, PL, F200705  
MSRP \$44,999.  
**SALE PRICE \$34,999.**



**SAVE \$7,131**

2019 TRANSIT CONNECT VAN. 4G WiFi, Rear  
View Camera, Cargo Liner, Rear Window  
Defroster, F109827  
MSRP \$27,130.  
**SALE PRICE \$19,999.**



**SAVE \$12,000**

2019 T350 ALUMINUM SERVICE BODY.  
Cabnet Lights, Rear View Camera, Pwr  
Heated Mirrors, Cruise, AC, CD, PW, PL,  
F200784 MSRP \$53,823.  
**SALE PRICE \$41,823.**

## 500 COMMERCIAL TRUCKS IN STOCK



**SAVE \$12,000**

2019 T350 Knapheide UTILITY VAN.  
CD Stereo, PW, PL, Cruise, SYNC,  
Review Camera, Cabinet Lights,  
F201302 MSRP \$55,999  
**SALE PRICE \$43,999.**



**SAVE \$8,651**

2019 T250 CARGO VAN. 60/40 Curd Doors,  
Freight Area Protection Pkg, Rear Camera, 4  
Speaker Radio/Bluetooth, PW, PL, F201126  
MSRP \$37,650.  
**SALE PRICE \$28,999.**



**SAVE \$8,500**

2019 E350 DURACUBE 12' VAN.  
Cargo Rings, Flat Floor, Roll-up Door, 7'  
Inside Ht., V8 Gas, AC, PW, PL, F109974  
MSRP \$45,499  
**SALE PRICE \$36,999.**



**SAVE \$11,119**

2019 T350 ALUMINUM UTILITY BODY.  
Central Locking, Cabinet Lights, 3 Rail  
Ladder Rack, Dual HD Batteries, F200521  
MSRP \$57,118.  
**SALE PRICE \$45,999.**



**SAVE \$10,000**

2019 E450 14' ROCKPORT VAN.  
V10, 6'6" Inside Height, 3 Bar Ladder Rack,  
Central Locking, PW, PL  
F200885 MSRP \$58,999  
**SALE PRICE \$48,999.**



**SAVE \$9,000**

2019 E350 10' VAN BODY. Pass Thru Door,  
Cargo Rings, Roll Up Rear Door, PW, PL,  
Premium CD Stereo, F200645  
MSRP \$45,999.  
**SALE PRICE \$36,999.**

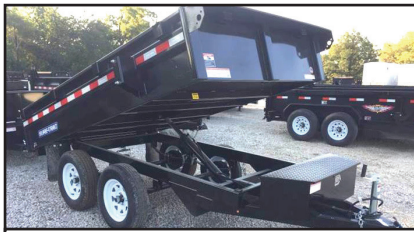
## QUIRK FORD

540 Southern Artery (Rt 3A) Quincy, MA  
[www.quirkford.com](http://www.quirkford.com) • 617-249-5660

Business  
Financing with  
NO Co-signer  
Required

Prices include all available rebates. Rebates include Customer Cash, FMCC Bonus Cash, and Commercial Uplift Bonus Cash. Customer must qualify for rebates. Call for specific details. Prices are subject to change.





**2020 SURE-TRAC:** 72'x10 Deckover Dump Trailer, 7,000 GVW, **\$4,999**, Belchertown, MA 413-253-5456



**DYNAMIC CONEHEAD MODEL 585.** Whole Tree Chipper, Only 400 Hours On Cummins QSX15 Engine W/ 500 HP, Recently Painted, Refurbished Drum, New Updated Drum Shaft, New Drum Bearings, Runs Great, **\$90,000**. 508-776-8811



## AREA HYDRAULICS

810 Quaker Hwy. Uxbridge, MA

**508-278-6670**

Plow Parts & Cutting Edges • Hose Assembly

**WHELEN®**

Available During Storms



**2020 TOWBANDIT LANDSCAPE/ EQUIPMENT TRAILER.** 14K GVW, Can Tag 9990, Comes With Pockets And Rub Rail Removable 12" High Sides, Split Gate Ramps For Mowers Or Equipment, **\$5500**. Finance Available, 508-886-7727

# Lowbed Johnson

**1-800-660-2412**

Moves Construction Equipment

Serving Massachusetts and Southern New Hampshire



**TD 12 DOZER.** Works Well, **\$12,000**. 401-226-1965

## Ballard TRUCK CENTER

Sales Service Parts Leasing Rentals

P: (508) 753-1403

[www.BallardTrucks.com](http://www.BallardTrucks.com)



WORCESTER • WEST SPRINGFIELD • AVON • JOHNSTON • TEWSKURY



**2020 VOLVO VNL64T760:** CONV. SLEEPER, VOLVO D13-455HP, CAN BE PROGRAMMED TO 500HP, 2.93 RATIO, 12.5K FRONT/40K REAR, AIR-RIDE SUSP., 12SPD. WITH OD-I-SHIFT, 219 WB, TV-MICRO-REFRIGERATOR, HEATED & VENTILATED SEATS AND MUCH MORE! CALL FOR BEST PRICE!



**2012 MACK GRANITE GU713:** 3400 HOURS !!! REMAINING FACTORY WARRANTY, 4500 RDS, HEAVY SINGLE FRAME, OX BODY, 76,766 MILES AND MUCH MORE! CALL FOR BEST PRICE!



**2020 HINO 195:** DIESEL, AUTOMATIC, 33 GAL. FUEL TANK, COLD WEATHER PKG., HEATED REMOTE MIRRORS, 16' DURAMAG ALUM. RACK BODY, 2-IN RECEIVER, D-RINGS, TRAILER PLUG & MORE. CALL FOR BEST PRICE!



**2018 MACK GRANITE 64F:** MP8 AUTO, 16' OX STAMPEDE BODY, HIGH-LIFT GATE, ALLISON 4500 RDS, 455HP, CAMELBACK SUSP., 35,027 MILES W/ REMAINING FACTORY WARRANTY. CALL FOR BEST PRICE!



**2013 MACK PINNACLE CXU612:** CONVENTIONAL DAY CAB, MACK MP7 AUTO, 335HP, AIR-RIDE SUSPENSION, 23000 REAR AXLE LBS. AND MUCH MORE. CALL FOR BEST PRICE!



**2020 ISUZU FTR:** 4HK1-TC AUTO, 5.2L-215HP, DIESEL, ALLISON 2550 RDS, FULL AIR-BRAKES, 50 GAL FUEL TANK, INCLUDES HAD185-120-36-54 / 18,500 # CAPACITY HOOK-LIFT, HOT SHIFT PTO FOR AUTO TRANS., LEAF SPRING SUSP., AND MUCH MUCH MORE! CALL FOR BEST PRICE!

HOTTEST HOOK-LIFT TO HIT THE MARKET

**FAMILY OWNED / RELIABLE SERVICE !**

\*w/approved credit-see dealer for details.

*You Get The Most With The Post*





**MCGOVERN**  
FORD AT DRUM HILL

**Call Dan Gauthier 978-836-6139**



**2019 F750 DUMP.**  
Diesel, Automatic, Air To Rear



**2019 F550 CREWCAB SWITCH N GO.**  
15,000lb Roll Off Hoist, Diesel, Auto, PW, PL,  
4X4, Payload Up Grade, FN1310

**OVER 75 SUPER DUTIES IN STOCK – COLORS AND CONFIGURATIONS**



**2019 E450 14ft MASTER TRADE VAN.**  
4 Rail Ladder Rack, Cat Walk, Access Ladder,  
Central Locking, V10 Gas, PW, PL, Rear View  
Camera, FN1319



**2019 F550 12ft PLATFORM BODY.**  
19,500 GVW, V10 Gas, Auto., PW, PL,  
Cruise, Stereo, SYNC, FN12353



**2019 F550 SUPER DUTY 4X4.**  
9 Ft 3-4 Yd Dump Body, Diesel, Auto, Plow  
Prep, Heated Mirrors, PW, PL, FN1329



**2019 F550 SUPER CAB 4X4.**  
4-5 Yard Dump Body, Diesel, Auto, PTO  
Trans, PW, PL 19,500 GVW, FN1075



**2019 F550 SERVICE BODY 4X4.**  
Diesel, auto, Running Boards, PW,  
PL, Heated Mirrors, FN1408



**2019 F550 KMT MECHANICS BODY.** Stellar  
7,500lb Crane, Out Riggers, Air Compressor,  
Diesel, 4WD, Power Equip Group, Payload  
Upgrade, FN1374



**2019 F350 4X4 UTILITY BODY.** V8 Gas, PW,  
PL, 14.5" Cabinet Depth, Rear View Camera,  
Power Heated Mirrors, Hitch Receiver, FN1099



**2019 E350 SERVICE UTILITY VAN.** HD 3 Rail  
Ladder Racks With Cat Walk, Cabinet Lights, Rear  
View Camera, SYNC Voice, PW, PL, Premium  
Stereo, FN1042



**2019 F350 DUMP.** 4x4, Diesel, Auto,  
Power Heated Mirrors, PW, PL, Pintle  
Hook, #FN1123



**COMMERCIAL  
VEHICLE CENTER**

**[dgauthier@mcgovernauto.com](mailto:dgauthier@mcgovernauto.com)**



# CANDIA TRAILER

www.CandiaTrailer.com  
& LANDSCAPE EQUIPMENT CO  
All Prices Cash & Carry! Installation Available!

SAVE TIME &amp; FUEL • WE SHIP!

## 1-866-761-0196

NH 603-483-2541 • Fax 603-483-2842

35 High St, Candia 4 Coners, Candia NH  
10 Minutes East of Manchester, NH • 1 hour From Boston

"Helping  
You With  
The Right  
Fit"



**DURA MAG ALUMINUM FLATBED BODIES.** Industry's Highest Quality, Call With Your Specs. **Starting @ \$2,395.**



**ALUMINUM DUMP BODIES.** Complete Sub Frame, Power Pac, LED Lights, **Starting @ \$7,997.**



**HUGE Load Of Equipment & Landscaping Trailers.** All on Sale Today!



**POWER TILT**  
**USA Made**  
**20 FT POWER TILT 7 TON EQUIPMENT TRAILER \$6,637**



**Aluminum Car Hauler Trailer.** 10,000 GVW, American Made, **Starting @ \$5,895.**



**8' EZ Slide In Dump Body.** With Head Board, Tarp & Hoist, **\$3,295**



**DUMP TRAILERS.** 12', 14', 16 Ft. Twin Piston, Powder Coat, Ramps, Battery, **Starting @ \$6,885**



**LANDSCAPER TRAILERS.** **Starting @ \$2,895**



**GALVANIZED LANDSCAPE TRAILERS.** 5x10, Up To 16', Heavy Duty Split Gate, **Starting @ \$2,265**



**HOMESTEAD Enclosed Trailers.** Stocking 8 Ft – 24 Ft, **Starting @ \$2,795**



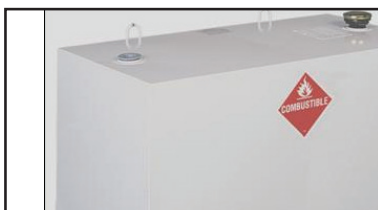
**DURA MAG Aluminum Body With Skirt And Tool Boxes.** All Sizes & Combinations.



**EBW 9' Cattle Body.** Like New Condition, Will Fit Ford, GM, Dodge, 60' CA, All Aluminum, Cost New \$12,000. **Sale Price \$4,900**



**DOT Truck & Trailer Lights.** And Oval Amber Mini Lightbar – WE SHIP



**TRANSFER TANK & PUMP.** Made In USA, 12 Ft Hose, Nozzle Gun, 15 gpm, In Stock – We Ship





# CANDIA TRAILER.COM

& LANDSCAPE EQUIPMENT CO

**1-866-761-0196**

**TAX FREE NEW HAMPSHIRE**

**SAVE TIME & FUEL • WE SHIP!**



## CUSTOM AND STANDARD INSTALLATIONS

### HARSH HOIST

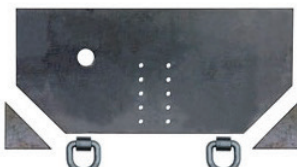


2.5 to 45 Ton, Single  
or Double Piston.  
Convert a Flatbed  
Body to a Dumping  
Body.  
HOIST & POWER  
PACK  
**Starting @ \$1,585**

USA Made



**BUTCHER Dump  
Power Pac with  
control Gravity  
Down  
\$465**



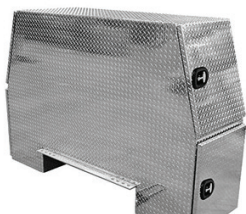
**Pintle Plate \$179**



**15 Ton Pintle Hook \$59 –  
WE SHIP**



**Retractable Step  
One Step \$99  
Two Step \$109  
Three Step \$119**



**Aluminum I-Pack Toolbox \$2690**



**IN STOCK GALION DUMP BODIES. 8 Ft  
Thru 16 Ft. Call With Your Specs Today**



**Shuttle Door  
\$179**

**UNDERBODY TOOL BOXES – Stainless Steel Hinges & Handles  
Powder Coat  
Diamond Aluminum Door  
(black in color)**

**24"x18"x18" \$234  
30"x18"x18" \$254  
36"x18"x18" \$274  
48"x18"x18" \$324**



**Diamond Plate Aluminum  
Underbodies**

**24"x18"x18" \$294  
30"x18"x18" \$309  
36"x18"x18" \$354  
48"x18"x18" \$444**

### LOAD COVER



**7' X 12' Mesh tarp & Hardware Kit  
\$239**



**CANDIA TRAILER.COM****1-866-761-0196****& LANDSCAPE EQUIPMENT CO****All Prices Cash & Carry! Installation Available!**

35 High St, Junction Rte. 27 &amp; 43., Candia NH

10 Minutes East of Manchester, NH • 1 hour From Boston

**DURAMAG.****Gives You The  
Perfect Body**

**Versatile Configurations  
Gives You Power To Organize**



**Duramag Makes It Easier For  
You To Do The Job**



**Single Wheel Aluminum  
Dumping Rack Body**



**Aluminum Dump Body, Always Does  
The Job And Always Looks Good**



**Clean Professional Bodies To Maximize  
Your Trade**



**Best Enclosed Utility Body**





**1996 INTERNATIONAL.**  
Very Clean, Has Traffic Signal Board,  
466, 5&2 Hitch, Air To Rear, A/C,  
213K Miles, **\$14,500 OBO.**  
Marlborough, CT  
860-798-8702



**FLEET DISCOUNTS**

**\$75 & Up**

**ACUSHNET WHEEL POLISHING**  
Used Rims Available  
**508-961-7528**  
890 MIDDLE RD.,  
ACUSHNET, MA



**2006 FORD F-450**  
**RACK BODY W/**  
**CRANE.** Lift Gate,  
V-10 Gas, Automatic, 150K  
Miles, **\$7900.,**  
Lawrence, MA  
603-973-0809



**WESTERN STAR, MACK, KENWORTH,**  
**PETERBILT & VOLVO W/AMERICAN**  
**ROLL-OFFS! 401-767-2639**



**2005 TIGERCAT 822 FELLER BUNCHER,** Recent 8.3 Cummins,  
Recent Pump, New Undercarriage, Nice Straight Machine, Just Fully  
Serviced! **\$99,000** Call Today 781-417-3018



**MIKE'S**  
Truck & Trailer  
Repair inc.

Truck & Car  
Computer  
Diagnostics

**ASE** CERTIFIED

**RI** EMISSIONS  
SAFETY  
TESTING

Full Service Truck and Auto Repair Center.  
447 York Ave, Pawtucket, RI 02861 • (401) 725-2188



**2003 MAC 60 YARD DUMP**  
**TRAILER.** Electric Tarp, New Motor  
On Tarp, Trailer In Great Condition,  
**\$26,000.** Medway, MA  
508-269-1134

**MEDIUM/HEAVY TRUCK & RV SERVICES**  
**FEDERAL DOT & RI STATE INSPECTIONS**

- \*All makes engine repairs
- \*Fuel pumps
- \*Brake work
- \*Electrical repair
- \*Injectors
- \*Oil changes
- \*Trailer repair
- \*Turbo
- \*Lift gate problems
- \*Welding fabrication
- \*Heavy equipment
- \*Front ends
- \*Rear roll-up door repairs
- \*Installation
- \*Wiring circuits

**FORD 6.0 DIESEL POWER STROKE SPECIALIST !**



**FORD 6.0 DIESEL POWER STROKE SPECIALIST !**



visit our website @ [mikestruckandtrailerpawt.com](http://mikestruckandtrailerpawt.com) • RI# 459ca



**The bank has sold the Toll Road business and now surplus inventory and equipment is being sold at auction by Thomas industries on line. The date is postponed due to CoronaVirus.**

**Plows, truck bodies and lifts plus lots of equipment. Photos of the units 50 Meyer Plows, 50 Torwel sanders, 15 Torwel pushers, Truck bodies , Tafco Landscapers, Rugby, Gallion, 20 Duramag bodies, 10 Stahl service bodies, La Rochelle 26,000lbs and up truck plows , Meyer sweepers, Meyer extendable pushers, Tommy Gate lift gates, Truck body Tool boxes,**

**535K of Meyer plows and parts at cost.”  
“Check US out at [ww.Thomasauction.com](http://ww.Thomasauction.com)**

**CALL TO GET YOUR PRE AUCTION QUOTE & TAKE ADVANTAGE OF THESE GREAT CLEARANCE PRICES.**



**Toll Road Truck and Trailer Corp.**  
215 Bedford St. Rt. 18  
Whitman, MA 02382  
[www.tollroad.us](http://www.tollroad.us) • Phone: 1-508-378-3931





**BROOKSIDE EQUIPMENT**

WWW.BrooksideEquipment.com

60 State Road, Phillipston, MA

**978-249-4600**

**2005 KOMATSU PC138USLC-2EO:** 11,701 Hours, 24" Bucket, Auxiliary Hydraulics, Hydraulic Coupler, Reduced Tail Swing, 32k Lbs, Stk#XC849, **\$31,500**



**1985 MACK R MODEL.** 350, 10 Speed, 33K Rear, Only 5,600 Original Miles, **\$15,000/BO**, 413-246-0880



**2006 VOLVO L70E** - One Owner Machine, Hydraulic Coupler, Forks, Side Dump Bucket & 3.0 cu yd GP Bucket!! 28,500 LBS, 151HP, Heat & A/C - **\$52,500** / CALL DAN AT 203-506-3860

**2010 PETE 389 TRACTOR,**  
525 ISX Cummins  
With Approximately  
20K On Rebuild,  
46 Rears, 18Speed,  
26" Bunk,  
Ready To Work!  
**\$59,900**  
Call Today!  
781-417-3018



**2001 FREIGHTLINER FL80.** 3400 GL Techweld,  
6 New Tires, New Real 2y Old. 364K Miles, New Hose.  
New Air Compressor, No Leaks, Blackmar, 6sp, New Spring, New Cross Mers,  
**\$25,000 OBO.**  
Pawtucket, RI 401-473-7669

**YOUR ONE STOP FOR**
 **SALES**
 **PARTS**
 **SERVICE**

Follow us online!

sales | parts | service | [hpfairfield.com](http://hpfairfield.com)

# Don't replace the truck. Replace the **BODY!**

**Call now** for competitive pricing for cash and carry or let us install it for you!



**Learn more** about how cold air blowers can save you time on spring cleanup!

**(860) 228-8258 | 9 ROUTE 66 EAST IN COLUMBIA, CT**



## R & E STEAM EQUIPMENT

## - Steam Cleaning Equipment -

**Used Hot Water Units Starting @ \$1095.**

**New Hot Water Units Starting @ 2295.**

## Rent For 12-24 Months Own It For \$1.00

**(617) 899-8775**

# Earl Warwick



**CAT 225 LC.** 4 CYL., Works Well, \$25,000.  
401-226-1965



**1997 READ 90 SCREENER.** 56 HP Diesel, Rebuilt Motor, 12.5 Opening, 3" Top Screen, 1/2 Slotted Bottoms,  
**\$34,000/BO, 413-246-0880**



**1998 STERLING TRI-AXLE DUMP TRUCK.**  
 Rebuilt CAT 3406 Motor, New Transmission Year Old, New Rear  
 Ends 5 Months Old, 8 LL Speed, New Springs,  
 Many New Up Dates, **\$35,000.** 508-961-7528

**2003  
INTERNATIONAL  
GARBAGE TRUCK.**  
228K Miles, 16 Yard  
Heil Body With Winch  
And Cart Tipper, Rear  
Sweep Needs Work,  
Cummins Engine, Auto  
Trans, **\$6,500 OBO.**  
203-451-9621



**37 County Road  
Route 106  
Plympton MA 02367  
PH: 781-582-1378  
FAX: 781-585-4438**

## 2007 GMC C7500 W/SWITCH-N-GO SYSTEM



**DIESEL, AUTO, 15,000 LB. SWITCH-N-GO SYSTEM.**

**\$34,500**

**SALES,  
SERVICE,  
PARTS**

CALL TOLL FREE: 866-637-4076  
WWW.CAREYTRUCKEQUIPMENT.COM

**CUSTOM METAL  
FABRICATION  
AVAILABLE**



**JOHN DEERE 950 DIESEL 27 HP, 3pth, Good Shape, Recent Service, Only \$5995** 860-928-5748



**2003 LINK-BELT 210LX** - Excellent U/C, Heat, Air,  
Choice of 24" 36" & 42" Buckets, One Owner, 138 HP  
Isuzu Diesel, 44,800 lbs, 9'10" Strick - **\$42,500**  
CALL DAN At 203-506-3860



**2016 VOLVO VNL64T670-D13**, I-Shift, Very Well Maintained With Only 241,490 Miles. 401-434-5900





**1992 WESTERN STAR SANDER.** Closed Loop System & State Ready, 11' Plow, Truck In Excellent Condition, **\$8000.** Call Jim, 413-530-5369



**2001 EAGER BEAVER 20 TON TAG TRAILER.** 19 Foot Flat Deck, 6 Foot Tail Deck, Folding Ramps, Air Brakes, **\$3,900.,** Lawrence, MA 603-973-0809

**1998 CAT 312 BL EXCAVATOR.** Good Condition, Ready To Go, Turn Key And Start Working, **\$49,000.** Hooksett, NH. 603-485-1132



**1994(?) TRAVERSE 6036 TELESCOPING GIRL LIFT.** Cummins 3.9, Tilting Forks And Sliding Carriage, 7800 Hours, Everything Works And In Good Condition For Its Age, **\$15,000.** 860-234-6977



**1996 TIMBERJACK 460 CABLE SKIDDER,** Timberjack Winch, Cummings Engine, Tight Pins, Runs Good & Woods Ready! **\$19,900** Call Today **781-417-3018**

**2000 FRUEHAUF DUMP TRAILER.** 26 Foot Long, Steel Body And Frame, New Brakes And Suspension, Good Shape, Works Daily, **\$14,000.** Marion, MA 508-989-6575, Call Jim



**TOM GARCIA**  
Owner

**ABRASIVE BLASTING**

**Mobile Service**



**"The Future of Surface Preparation"**

**P: 203-687-5464 • F: 203-626-9451 • allcleanblasting@gmail.com**

**CONCRETE  
RUST  
MARINE  
PAINT  
DIRT  
MOBILE  
IN-HOUSE BLASTING**

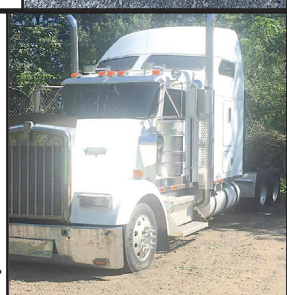


**MARINE  
GRAFFITI REMOVAL  
SURFACE CLEANING  
AUTOMOTIVE  
HEAVY EQUIPMENT  
STRIPE REMOVAL**

**1999 INTERNATIONAL 4900.** DT466E, Cab And Chassis, 231,119 Miles, Previously Am Oil Truck, **\$4500 OBO.** 413-734-7396



**2002 KENWORTH W900 SLEEPER.** CAT N26 Motor 500k Originals Miles, Ten Speed, 12,000 lb Front Axle, 40,000 lb Rears, Needs TLC, **\$35,000.** 508-961-7528





**508-328-8938**

# THE TRUCK STORE

## www.TruckStoreSales.com

**Mon-Fri 8:30-5pm**  
**Saturday 8:30-4pm**

1700 Broadway - Rte 138 – Raynham, MA • Take Exit 8 Off Rte 495, East Rte 138, On Your Left


 2020 INTERNATIONAL 26' BOX  
 TRUCK: Cummins Diesel, Automatic.  
 ONLY 6K miles!

2005 MACK  
 CV 713 CAB  
 & CHASSIS:  
 AUTOMATIC,  
 20F/52R,  
 30K MILES!


 2016 KENWORTH C/O CHASSIS:  
 Cummins Diesel, Allison Auto., Under  
 CDL. 65K miles, Many Bodies available.

 2014 INTERNATIONAL 43 Passenger  
 Bus w/wheel chair lift. Diesel,  
 Automatic. Only 40K miles, Clean &  
 runs great.


100k Miles

 2007 Kenworth T300 Thermo King  
 TS200 Refer body 330 CAT, Allison  
 automatic, 12F/40R.

 2003 FREIGHTLINER M2: 25 Yard  
 Rear Load Rubbish Packer. \$20,000

 2014 IH Ext Cab 10' Dump Body:  
 Diesel, Auto., & 0K mils. Under CDL  
 \$39,995

 2015 INTERNATIONAL DURASTAR 50'  
 Bucket Truck: DT 466, Allison Auto.  
 14F/23R, 29K miles.

 2017 IH 24' Refer Body: Auto.,  
 82k miles. Call

 2009 CHEVY C4500 16' THERMO  
 KING Refer Body w/ Stand-by: Gas,  
 Auto. 89k miles, nice clean truck.

 6  
 AVAILABLE

 2003-2004 & 2007 MOFFET FORK  
 LIFTS. Nice condition. Low hours.

 2007 MACK MR Front Load Rubbish  
 Truck: Diesel, Automatic.



**508-328-8938**

# THE TRUCK STORE

## www.TruckStoreSales.com

**Mon-Fri 8:30-5pm**  
**Saturday 8:30-4pm**

1700 Broadway - Rte 138 – Raynham, MA • Take Exit 8 Off Rte 495, East Rte 138, On Your Left



2004 MACK Tri Axel32 Yard Rear Load Rubbish Truck. 350 HP MACK, Allison Automatic.



2005 MACK Tractors: 460 H.P., 18 speed, air ride, wet system, Jake, 46k locking rears, 350 to 400k Miles. \$25,000



2005 GMC C6500 WAYNE SUPER 6 yard Body. Big DURAMAX Diesel, Allison Auto. Under CDL, Only 90K miles. Very nice, Runs like new.



2016 ISUZU NRR: Diesel, Auto. Low miles. Also 2011 Available. Refer. Bodies in stock too.



USED 12' to 26' REFER &amp; VAN BODIES Call with your needs.



2004 MACK MR: Stainless Steel Tank, Diesel, Auto., 12K miles. Call



2007 INTERNATIONAL 26' Moving Truck. Clean. Call for more info.



1999 MACK HD: 17.5 yard dump, 12 yard SS Sander, room for lift axle, 400HP, Hurry! Snow is on the way. Will sell Sander separately ALSO 12' plow and wing plow.



2000 MACK RD 688SX 14' Dump Body, 350 H.P., Auto., 18F/58R, LOW miles, Very clean.



2013 HINO Refer Body: Diesel, Auto., 3 Available. Many other HINOS available! Excellent Condition.



2016 FREIGHTLINER Cummins Diesel, Automatic, Only 38K miles. Will Sell with or W/O body.



2006 PETERBILT 25 Yard Rear Load Rubbish Truck: Auto., Cummins, 86K miles. Call



2003 MACK ROLL OFF: 75,000 lb. Roll Off. Auto., 58R/20F, 60K miles. Call



2015 IH 26' Tandem Axle Refer: New Refer being installed. Auto., low hours on Refer. call



'05 GMC HEIL Dump Body: Diesel, 60K miles. 35K GVW.

USED 2013 ISUZU 4 CYLINDER DIESEL  
ENGINE & TRANSMISSION.  
CALL FOR DETAILS.

2009 USED MACK ENGINES! ALLISON  
TRANSMISSIONS. ALSO: 2005  
MITSUBISHI 4 & 6 CYLINDER ENGINES.





**2013 Terex TA300, 4500 hours, runs good!! \$139,000**





**YOUR DIRECT FUNDING SOURCE**



### **EQUIPMENT FINANCING**

- A to D Credit Approvals - *Rates Tailored to the Customer*
- 24 Hour Approvals - Simple One Page Applications
- Funding up to \$750,000
- Terms Range 24 to 60 Months
- No Money Down Options
- No Age Requirement on Equipment
- No Minimum Fleet Size
- Start-up Programs



### **WORKING CAPITAL**

- Pledge your equipment to secure the **CASH** you need
- Let us tell you how older equipment can work for your business
- A simple application form is all that's needed

**[UNIVERSALFINCO.COM/CAPITAL](http://UNIVERSALFINCO.COM/CAPITAL)**

**CONTACT US TODAY | 781 417-3018**



# STONEHAM



617-733-0773

## SUPER DUTY ZERO PERCENT FINANCING 60 MONTHS



0% X60

**2019 F550 SERVICE BODY 4X4.**  
Knapheide 11' Body, Diesel, Payload Up grade, Power Equipment Group, PW, PL, Heated Mirrors, #194411.



0% X60

**2019 F450 XLT SUPER DUTY 4X4 CHASSIS.** Diesel, Polish Aluminum Wheels, Rear View Camera, PTO Provision, , #19570



0% X60

**2019 F350 KNAPHEIDE SERVICE VAN**  
Remote Start, Rear View Camera, Navigation, DRW, Diesel, Polish Alum Wheels, #19155.



0% X60

**2019 F550 12' LANDSCAPER DUMP.**  
Diesel, 4X4, Payload Up grade, Power Equipment Group, PW, PL, Heated Mirrors, #194280.



0% X60

**2019 F550 11' HOOKLIFT.** Diesel, 4X4, Payload Up grade, Power Equipment Group, PW, PL, Heated Mirrors, Black, Red, White, Gas Or Diesel #194281.



0% X72

**2019 E350 CONTRACTOR SPECS.**  
V8 Gas, Auto, PW, PL, AC, #194939.

### \* E SERIES & T SERIES 0% FINANCING 72 MONTHS \*



0% X72

**2019 T350 HD ROCKPORT 12' SERVICE BODY.** V6 Gas, PW, PL, Dual Compartments, Interior Shelves, Pass Thru Door, Ladder Racks, #194345



0% X72

**2019 T240 CARGO VAN.** V6 Gas, Auto, PW, PL, Rear View Camera, Cargo Floor Liner, #194308



0% X72

**2019 E350 KNAPHEIDE UTILITY BODY.**  
V8 Gas, Auto, PW, PL, AC, Premium Stereo, Cruise, SYNC, Remote Key, #194930



0% X72

**2019 E350 ROCKPORT 12' VAN BODY.**  
V8 Gas, PW, PL, AC, E-Track, Roll Up Door, Pass Thru Door, #194743



0% X72

**2019 E350 DURACUBE 14' DRY FREIGHT VAN.** Pull Out Ramp, E-Track, Cargo Rings, Roll Up Door, Pass Thru Door, CD Stereo, #194927



0% X72

**2019 E350 KNAPHEIDE UTILITY BODY.**  
V8 Gas, PW, PL, AC, Premium CD Stereo, Cruise, SYNC, Remote Key, Strop Lights, #194932

COMMERCIAL  
VEHICLE CENTER
[www.StonehamFordTrucks.com](http://www.StonehamFordTrucks.com)

211 MAIN ST. STONEHAM, MA 02180

Mon-Fri 8:30am-8pm Sat 9-5pm Sunday 11-4

ALL PRICES NET &amp; INCLUDE ALL AVAILABLE REBATES TO DEALER

Call Bill Pollack 1-617-733-0773 or [billpollack@stonehamford.com](mailto:billpollack@stonehamford.com)COMMERCIAL  
VEHICLE CENTER



**STONEHAM**

617-733-0773

**SUPER DUTY ZERO PERCENT FINANCING 60 MONTHS****0% X60**

**2019 F350 SUPER DUTY LARIAT. V8**  
Gas, 4WD, 4G WiFi, Pwr Moonroof, Lariat  
Ultimate Package, Heated Rear Seat,  
Quad Beam LED, Fancy, #19965

**0% X60**

**2019 F350 SUPER DUTY 9ft**  
**ALUMINUM SERVICE BODY. 4WD,**  
V8 Gas, Power Equipment Group, Pwr  
Heated Mirrors, #194408

**0% X60**

**2019 F350 4X4 LARIAT. 11,300 GVW, Remote**  
Start, Twin Panel Sun Roof, Rear View Camera,  
20" Chrome Aluminum Wheels, Leather,  
Ultimate Package, #191014

**0% X60**

**2019 F350 SUPER DUTY ALUMINUM**  
**LANDSCAPE BODY. Diesel, 4X4, Curb Side**  
Door, Cruise, SYNC, PW, PL, Heated Power  
Mirrors, Plow Prep, Available In White, #192215

**0% X60**

**2019 F350 PLATINUM SUPER DUTY.**  
All The Whistles, V8 Gas, #192346

**0% X60**

**2019 F550 SUPER DUTY 4X4 DUMP.**  
Diesel, Automatic, PW, PL, Snow Plow  
Prep Winter Pkg., 19,500 GVW, SYNC,  
Stereo, Step Rail, #192730

**\* 0% FINANCING 60 MONTHS \* 0% FINANCING 60 MONTHS \*****0% X60**

**2019 F350 SUPER DUTY XL 4X4 WORK**  
**TRUCK. V8 Gas, PW, PL, Tow Hitch,**  
Boss Power Angle Plow, Rear View  
Camera, Michelins All Terrain, #193916

**0% X60**

**2019 SUPER DUTY F350 CREW CAB**  
**UTILITY. V8 Gas, Auto, Preferred**  
Equipment Group, 2WD, Rear View  
Camera, #194245

**0% X60**

**2019 F350 SUPER DUTY 9ft DRAMAG**  
**UTILITY BODY. Diesel, Auto, 4X4, Plow**  
Prep, Power Equipment Group, #194117

**0% X60**

**2019 F550 EXTENDED CAB 4X4 CHASSIS.**  
V10 Gas Power, Auto., Payload Plus Package  
Up Grade, PW, PL, Cruise, Stereo, Plow Prep,  
Running Boards, #194250

**0% X60**

**2019 F550 SUPER DUTY ALUMINUM**  
**DUMP. Landscaper specs, Diesel, 4WD,**  
Auto., Plow Prep, Payload Plus Up  
Grade, Up Fit Switches, #194131

**0% X60**

**2019 F250 XL CREW CAB WORK**  
**TRUCK. Rear View Camera, PW, PL,**  
Step Rails, V8 Gas, 2WD, Automatic,  
#194572

COMMERCIAL  
VEHICLE CENTER**www.StonehamFordTrucks.com**

211 MAIN ST. STONEHAM, MA 02180

**Mon-Fri 8:30am-8pm Sat 9- 5pm Sunday 11-4**

ALL PRICES NET &amp; INCLUDE ALL AVAILABLE REBATES TO DEALER

**Call Bill Pollack 1-617-733-0773 or billpollack@stonehamford.com**COMMERCIAL  
VEHICLE CENTER





**TORNADO SANDER.**  
Like new, **\$2,500 OBO.**  
Marlborough, CT  
860-798-8702

**R & E STEAM EQUIPMENT**

- Steam Cleaning Equipment -

Used Hot Water Units Starting @ \$1095.  
New Hot Water Units Starting @ 2295.  
Rent For 12-24 Months Own It For \$1.00

**(617) 899-8775**  
**Earl Warwick**



**2005 WILDCAT 510 TROMMEL SCREEN.** Hydraulic Tipping Grid, Moved With Pintle Hook, Set Up In Minutes, 1/2 Inch Screens, Maintained Regularly, Great For Compost And Loam, **\$55,500.** Medway, MA 508-269-1134



**KOMATSU WA450-1L WHEEL LOADER,**  
Good Rubber, Strong Runner. **\$29,000**  
Call Today! 781-417-3018



**2000 WESTERN STAR TRI-AXLE DUMP.**  
Cummins, 8 LL Rebuilt Transmission, New Rear Ends, New Brakes, Many New Updates, **\$45,000.** 508-961-7528



**1989 NORDBERG 1352 OMNICON PORTABLE CONE CRUSHER:**  
S/N: 5202-577, Simplicity 6203, 6' X 20', Triple Deck Horizontal Screen, 200 HP, 480 Volt Soft Start Electric Motor, Three Axle Nordberg Carrier, **\$98,000 OBO.**  
Chris, 860-460-0767 Or Chm@Ter-rafirmaus.Com



**2001 FORD F-350.**  
4X4, Diesel 7.3 Turbo, Automatic, Dump, 140K Original Miles, No Issues, Fleet Maintained, **\$6900.**  
508-341-2017



**CM FLATBEDS:** Steel and Aluminum.  
Call for pricing. Plympton, MA 781-582-1378





**2019 ISUZU FTR.** Under CDL, Mounting New 18,500 / 20,000 lb. Hook-Lift. 401-767-2639



**1995 KOMATSU WHEEL LOADER.** 2.5 Yard Bucket, New Tires, Excellent Condition, \$20,000/BO, 413-246-0880

**Powerglide Air Test Kit**  
**Complete Powerglide Pro Tree Transbrake \$279.95**  
**TH400 Deep Cast Aluminum Pan**  
**TH400 Billet Direct Drum Spring Retainer & Aluminum Modulator/Solenoid Hold Down**  
**Powerglide Overhaul Kit**

**Powerglide Deep Oil Pan**  
**Powerglide Reverse Spring Retainer Tool**  
**Powerglide Bushing Driver Set**  
**Do-it-yourself Powerglide Pro Tree Transbrake Kit \$164.95**  
**1.80 Long Powerglide Gear Set**

**Powerglide Handbook written by Carl H. Munroe \$21.95**

**Powerglide Vent Tanks**

**TSR RACING PRODUCTS**  
**1-800-394-5889**  
 179 Belvedere Road  
 Gilsum, NH 03448  
**WWW.TSR-RACING.COM**



**1986 CHEVY EL CAMINO:** Full Power Options, V8, Automatic, Super Clean Classic Beauty. \$14,750. Call Jeff. Fitchburg, MA 866-263-8712



**1994 FORD L8000 DUMP TRUCK,** 20,000 On Odometer, 10' Dump Body, Was Running When Parked, Has Been Sitting For Over 2 Years, Clutch Frozen, Plows Available But Not Included In Price. \$4,500 Call Today! 781-417-3018



**BUSH HOG 16FT BAT WING MOWER.**  
 MODEL TD 1700  
 12-00523, USED  
 VERY LITTLE,  
 978-462-1000,  
[www.WestsideTruckEquipment.com](http://www.WestsideTruckEquipment.com)

**CAREY AUTO INC.**  
**TRUCK EQUIPMENT SALES**

37 County Road  
 Route 106  
 Plympton MA 02367  
 PH: 781-582-1378  
 FAX: 781-585-4438

**SWITCH-N-GO SYSTEMS & CONTAINERS IN STOCK.**



**1986 FORD F700.** 38K Miles, 370 Lima Gas, 5 Spd Manual W/ 2 Spd Split Rear End, Air Brakes, 11 Ft Dump Grain Body, National Crane W/ Built In Outrigger, Fully Functional, \$5500. Call Tony, 781-316-6220



**READY TO GO COMPLETE TRUCK PACKAGES.**  
**LOTS OF OPTIONS AVAILABLE.**  
**New & Used Trucks Ready To Go!**

**SALES, SERVICE, PARTS**

**CALL TOLL FREE: 866-637-4076**  
**WWW.CAREYTRUCKEQUIPMENT.COM**

**CUSTOM METAL FABRICATION AVAILABLE**





**1959 CATERPILLAR D9D DOZER.** #18A2432, A1 Shape, 95 Tilt Blade Is Completely Rebuilt, H29 Cable Control Unit, Excellent Undercarriage, Includes D9D Parts Machine, **\$26,500.** 781-344-3278 Or 781-844-9196



**Burrillville, RI • 401-633-4587**

- Full Bucket Rebuilds • Cylinder Resealing
- Wear Plates • Adapter Replacement • Hardfacing
- General Maintenance



**1996 KENWORTH T800 T/A DUMP.** 60 Series Detroit Power, 811, 44 Rears, Pusher, 24.5 Rubber, Very Good Truck And Body, Call For Details, **\$36,000.** 781-248-8644



**VIBRATORY ROLLER ATTACHMENT,** Fits On Any Skid Steer, Like New! Ready To Work! **\$8,700** Call Today! 781-417-3018



**2020 RHODES.** 26' Steel Dump Trailer AR450, Dual Hinge High Lift-Gate, 70,000# Single Point, Electric Cover. Call 401-434-5900

**BROOKSIDE EQUIPMENT**  
WWW.BrooksideEquipment.com

60 State Road, Phillipston, MA  
**978-249-4600**



**2007 JOHN DEERE 410J:** 6,892 Hours, 4x4, X-Hoe, Cab W/ A/C, Hydraulic Front Coupler, Turbo, Powershift, Ride Control, Pilot Controls, 30" Digging Bucket, Pattern Changer, Comes W/ 4 Ft Flip Forks, stk#BH119, **\$33,500**

Get The New  
**TRUCK AND EQUIPMENT POST**  
as soon as it's available!  
Just send an email to  
ads@TruckAndEquipmentPost.com  
& put in the subject line  
**BAG MY MAG!**

FREE ONLINE SUBSCRIPTION



**2003 FORD F-350 DUMP.** 7.3 Power Stroke Diesel, 6 Speed Standard, New Dump Body, Clutch, L-Pack & Tires, Comes With Seldom Used Fisher 9' Plow, 154K Miles, Original Owner, **\$20,000.** 860-250-0628



**1985 HEIL ALUMINUM 9200 GALLON FUEL TANKER.** 4 Compartment, Vapor Recovery, Bottom Load, 24.5 Hub Wheels, **\$19,000.** For More Info 508-961-7528





**2006 KOMATSU WA400-5L.** Good Tires, 23.5-R25, 4-1/2 Cy Bkt, 11,834 Hours, In Very Good Shape, **\$47,500.**  
603-455-6965 Or 603-939-2462

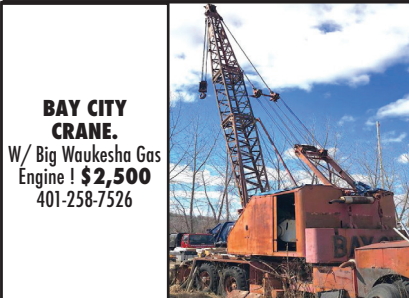


**REMAX RECLAIMER/MILLING MACHINE.** 4' Cutter, 12" Depth. 250 HP CAT Engine, Many Different Uses, Good For Trench Work, **\$25,000 OBO.**  
Marlborough, CT 860-798-8702



**1999 MACK RD 688S TRI-AXLE DUMP TRUCK,** 526,844 Miles, 400Hp., Mack Motor, 8LL Trans., 46K Rears, Pintle W/ Air-To-Rear, Double Frame. **\$15,900**  
Call Today 781-417-3018

**2019 CHEVY COMMERCIAL CUTAWAY:** Full Power. Back Up Camera. Starting As Low As **\$38,999**  
Call Geno, 866-263-8712



**BAY CITY CRANE.**  
W/ Big Waukesha Gas Engine! **\$2,500**  
401-258-7526

**2001 CAT 365BL.** S/N: 9TZ00407, 14,950 hrs., 158,000 lb. Machine, Good Undercarriage, Runs Well, 3.65 CY Bucket, Good Condition, **\$78,000.**  
Chris 860-460-0767, email: chm@terrafirmas.com



**R & R INDUSTRIES**

www.RRTrucksAndEquipment.com • Sales@RandRind.com

195 Rocus Street, Springfield MA 01104

**We Buy All Scrap Metals**

**413-733-2118**



**Truck Tires**  
Many Matched Sets  
Of 4 And 8  
& Rims Too  
295/75/225  
10:00 x 22.5  
11:00 x 22.5  
12:00 x 22.5  
9:00 x 20  
10:00 x 20  
8:25 x 20  
11x20

Call With  
Your Size  
Lots More In  
Stock!

Guaranteed  
Used  
Tires

Virgin Steer,  
Drive &  
Trailer Tires

**2005 PALFINGER KNUCKLE BOOM.** 62 Foot Reach, In Good Condition, Everything Works, Rotating Hook, **\$15,500 OBO.**  
508-699-2067



**2002 INTERNATIONAL 10 WHEELER DUMP.** CAT Motor, 9 Speed Tranny, 46 Rears, 20 Fronts, **\$20,000 OBO,** Plow & Sander Avail. 413-374-5331







**RD OLSON 5x12 TRACK SCREENER**  
- 2100Hrs, Open Throat Feeder Self Cleaning Ball Deck,  
CAT Dsl - **\$129,000** FOR SALE OR RENT  
CALL DAN AT 203-506-3860



**NEW HOLLAND 65HP**, Very Good Condition  
**\$6,500** 860-928-5748

**SAM'S** Tree Service  
"We handle the jobs, the Big Guys turn down!"  
• Licensed Arborist #913  
• Insured  
• Competitive Pricing  
• Free Estimates  
sammal@cox.net  
**401-269-1133**  
• Brush Chipping • Tree Removal  
• Tree Pruning  
• Residential Land Clearing



**FIFTH WHEEL TRUCK & TRAILER.** Under CDL, Holds An Entire House,  
Low Mileage, 6.7 Diesel, Auto, 4x4, Crew Cab, Clean Title, Can Be Hauled By  
SRW Pickup, Asking **\$25,000**. Trades Considered, 617-966-6684



**2014 J DEERE 524K** - 4800 Hrs, Ride Control, 20.5  
Radials, New Cutting Edge, Serviced And Ready To Work,  
**\$76,000**. 603-899-2000



**2008 GMC T7500**, 25,950 GVW, Under CDL, 10'  
Steel Body, I-Pack Tool Box, Diesel, Automatic.  
401-434-5900

**PALFINGER** LIFTGATES **JASON TRUCKS** **PALFINGER** LIFTGATES  
"Español" 857-654-3166 • "English" 617-968-1358  
407 Mystic Ave, Medford, MA 02155 • 3 Miles North Of Boston Rt 93N Exit 29  
Sandblasting, Painting, Frame Modifications, Welding & Fabricating,  
Truck Body & Trailer Collision Repairs, Liftgate Sales & Service



**2014 FRTLNR M2.**  
Non CDL Cummins 240 Hp,  
Automatic, Air Susp, 26' X  
103" X 102" Box, Combo  
Wr/Lg 227k Miles.  
**\$23,500**



**2013 ISUZU NPR HD.**  
Morgan 16' X 91" X 96"  
Refrigerated Van, Flat  
Aluminum Floor, Supra  
660, 200 HP, Automatic, Roll  
Up Rear Door 268K Miles,  
**\$14,500**



**2012 FRTLNR M2.**  
Non CDL, Low-Pro, ISB  
240 HP, Automatic, Air  
Suspension, 18' x 91" x 96"  
Refrigerated, Duct Alum Flr,  
Ovh Dr, Wr, 19.5 Whls, Supra  
640,178k Miles. **\$17,500**



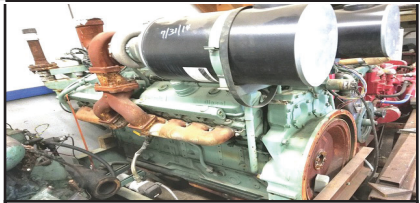
**2012 FRTLNR M2.** CDL ISC  
8.3L 260 HP, 6 Speed, Air  
Suspension, 26' x 103" x 102"  
Box, Ovh Rr Door, Combo  
Wr/Liftgate, 286k Miles.  
**\$14,500**



**2012 HINO 338.** CDL  
260 HP, 6 SPD, Air Ride  
Suspension, 26' x 103" x 102"  
Morgan Van, Roll Up Rear  
Door, Combo WR/LG,  
294K Miles, **\$14,500**



**2013 ISUZU NPR HD**  
14,500 GVWR,  
Auto Trans  
16' Box, Liftgate,  
96k Miles,  
**\$18,500**



**RUNNING TAKEOUT ENGINES.** Chrysler Marine  
360s, Detroit Diesel 16V92T, 12V71T, 371 2-Valve, Cummins  
855 Small Cam. Call For Price/Info  
Goodwinmarine@gmail.com, Hull, MA 781-925-1593



**2004 CAT 315 EXCAVATOR.** Wrist, 4' Grading  
Bucket & Digging Bucket, 5,000 Original Hours, Clean,  
**\$72,000/BO**, 413-246-0880



**2015 CATERPILLAR MODEL 236D SKID STEER,**  
482 Hours, Like  
New, Ready To Work!  
\$34,900 \*Soil Rake  
& Vibratory Roller  
Attachment Available  
For Additional Cost,  
Spring Is Here!  
Call Today  
781-417-3018

[www.jasontrucks.com](http://www.jasontrucks.com) • Financing & Warranties Available

*You Get The Most With The Post*





**2007 JCB 3X4 4X4 BACKHOE.** 86 HP Turbo Diesel, 4 Sp Shuttle, A/C, All Options, Light Pkg., New Rear Rubber, Perfect Glass & Interior, Extend-A-Hoe W/Wainroy, 22" Disc, Bucket, Perfect 4-1 Bucket, Joy Stick Controls, 6K Hours, Always Serviced By Dealer, Garaged Kept, Orig Condition, **\$34,500.** 978-462-1000, [www.WestsideTruckEquipment.com](http://www.WestsideTruckEquipment.com)



**STUMP PROCESSOR.** 30K Lb Drum, Tri-Axle Lowbed Trailer, 800 HP CAT Power Plant, Self Loading, Conveyor Off End Of Unit, Needs Crank, **\$10,000.**  
508-341-2017



**Fowler's Auto Wrecking Inc.**  
Belltown Recycling Center



**DETROIT DIESEL ENGINES SERIES 60 12.7 LITER**  
Good Running Take Outs EGR Engines Available Non-EGR Engines  
**860-267-7140**



**2020 16/4 GRAVITY TILT DECK**  
**14,000 GVW, LED**  
Lights, Sealed Wiring,  
Electric Brakes, Choice Of  
Pintle Or Ball Hitch, Can  
Be De-rated, **\$6500.**  
774-406-6669 Text Or  
Call For More Info,  
508-886-7727



## AREA HYDRAULICS

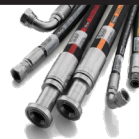
810 Quaker Hwy. Uxbridge, MA

**508-278-6670**

*Plow Parts & Cutting Edges • Hose Assembly*

**WHELEN®**

*Available During Storms*



### What's In Your Toolbox?



- **BUY, SELL, TRADE - FAST**
- **FROM NEW TO USED,**  
**IT'S ALWAYS FRESH**
- **AND A HANDY**  
**RESOURCE, TOO**

**1-888-887-0505**

[www.TruckAndEquipmentPost.com](http://www.TruckAndEquipmentPost.com)



**2006 BLAW-KNOX PF 4410 PAVER.** Rubber Track,  
Omni Electric Screed, 4345 Hours, Original Owner, **\$78,000.**  
Call Dan, 845-656-4717





# NUTMEG INTERNATIONAL TRUCKS

Franklin CT
Hartford CT
North Haven CT
W. Springfield MA
Torrington CT



**50+ QUALITY NEW TO PRE OWNED TRUCKS IN STOCK**

**120 DAY WARRANTY**  
AVAILABLE USED TRUCKS

Call Mike McDonald 860-308-6599

Check Out Our Entire Inventory At [www.nutmegtrucks.com](http://www.nutmegtrucks.com)

All Of Our Retail Trucks Pass A Thorough Inspection & DOT. Ready To Work For You Now!

HABLA  
ESPAÑOL

---

## WORK TRUCK CENTRAL



NEW DUMP BODY

**2015 IH 4300, CUMMINS 250HP, ALLISON AUTO 2500RDS, ONLY 76K MILES, BRAND NEW 5-7 YARD DUMP BODY BEING INSTALLED NOW, LOOKS AND RUNS LIKE NEW, # FH697794U, \$58,800**



NEW NEVER USED

**NEW SENNEBOGEN 718E WITH 27 IDLE HOURS, LOADED W/ EVERY OPTION, EXTRA SET OF TIRES & RIMS, NEVER CUT A TREE! EXTENDED WARRANTY TOO! CALL MIKE FOR PRICING**



HOOK LIFT

**2009 IH HOOK LIFT TRUCK. CDL OR CAN BE DERATED TO 25999 GVW, MAXDT 245HP, ALLISON 3000, ONLY 152K MILES, BRAND NEW 20K LB SWAPLOADER HOOK LIFT SYSTEM, ADJUSTABLE HOOK HEIGHT, \$68,000**



62' BUCKET

**2006 AERIAL LIFT OF CT BUCKET TRUCK. 62' REAR MOUNTED ON 4X4 IH 7300, 5 SPEED, NEW HOSES LAST YEAR, GOOD TIRES, PRE EMISSIONS, 73K, \$62,500/ BO**

THE NUTMEG FAMILY IS TAKING ALL CDC AND WORLD HEALTH ORGANIZATION RECOMMENDED PRECAUTIONS DURING THE COVID 19 CRISIS TO KEEP OUR STAFF AND CUSTOMERS SAFE.

NUTMEG IS DEDICATED TO STAYING OPEN.

TO KEEP YOUR TRUCKS AND AMERICA ROLLING. GOD BLESS AMERICA!



PRE EMISSION TRI AXLE

**2007 IH PAYSTAR 5000 TRI AXLE DUMP. CUMMINS ISX 475HP, 8LL, 420K MILES, 18' BEAUROC DUMP BODY, AUTO COVER, ALL GONE THRU, LOTS OF NEW PARTS, NEW RUBBER & BRAKES, #7J462859U, \$72,800**



TANDEM RACK W/ GATE

**2013 IH 4400 6X4, MAXDT 270 HP, ALLISON AUTO, AIR RIDE, 14/52 AXLES, 24' RACK BODY WITH RAIL GATE, #DH406365U, \$33,800**



CLEAN 6X4 CHASSIS

**2013 IH 4400 6X4, MAXDT 270HP, ALLISON AUTO 3000HS, 14 & 40 AXLES, AIR RIDE, ONLY 165K MILES, DUAL TANKS, POWER, GREAT RUBBER, 254" WB, #DH406364U, \$25,800**



UNDER CDL HOOKLIFT

**2016 IH 4300 HOOK LIFT, CUMMINS 280 HP, ALLISON AUTO 2500RDS, ONLY 98K MILES, UNDER CDL 25999 GVW, AIR BRAKES, BRAND NEW SWAP LOADER 20K LB HOOK LIFT SYSTEM W/ ADJ HOOK HEIGHT, #JTS794, \$84,800**



TRI AXLE

**1999 FONTAINE 24' LOW BOY 3 AXLE TRAILER, EXTRA TIRES & WHEELS, NEW LIFT CYLINDERS, CALL MIKE FOR PRICING**



425 CAT

**1996 KENWORTH TRACTOR, 425 CAT, JAKE, GREAT SHAPE, FRESH PAINT, CALL MIKE FOR PRICING**

WE TAKE ANYTHING IN TRADE,

WE WILL GET YOU FINANCED





# NUTMEG INTERNATIONAL TRUCKS

Franklin CT   Hartford CT   North Haven CT   W. Springfield MA   Torrington CT



**50+ QUALITY NEW TO PRE OWNED TRUCKS IN STOCK**

**Call Mike McDonald 860-308-6599**

**Check Out Our Entire Inventory At [www.nutmegtrucks.com](http://www.nutmegtrucks.com)**

**All Of Our Retail Trucks Pass A Thorough Inspection & DOT. Ready To Work For You Now!**

**120 DAY WARRANTY**

**AVAILABLE USED TRUCKS**

**HABLA ESPAÑOL**

**LIKE NEW 2019 MODELS • LIKE NEW 2019 MODELS • LIKE NEW 2019 MODELS • LIKE NEW 2019 MODELS**



**TANDEM W/ 35K-48K MILES**

IN BOUND 2019 IH 4400 TANDEM CAB & CHASSIS, CUMMINS L9 300HP, ALLISON 3000, AIR RIDE, 242" WB, MILES 35K TO 48K, LIKE NEW TRUCKS, # KH049347U, \$68,800



**TANDEM W/ 35K-48K MILES**

IN BOUND 2019 IH 4400 TANDEM REEFERS, CUMMINS L9 300HP, AUTO, AIR RIDE, MILES 35K - 48K, 24' JOHNSON REEFER, TRI FOLD DOORS, TK UNITS, LIFT GATES, # KH049350U, \$78,800



**LIKE NEW W/ WARRANTY**

(2) 2019 IH MV'S, CUMMINS 260 HP, ALLISON 2500RDS, MILES 79K & 81K, 26X102X103 VANS WITH ALUM GATES, LOOK LIKE NEW TRUCKS W/ WARRANTY OUT TIL 1-23 & 1-24. # KH352032U, \$73,800

**LIKE NEW 2019 MODELS • LIKE NEW 2019 MODELS • LIKE NEW 2019 MODELS • LIKE NEW 2019 MODELS**



**2015 IH 4300, MAXDT 230HP, 251K MILES, AUTO, 33K GVW CDL TRUCK, 26' VAN W/ LIFT GATE, # JTS764, \$19,800**

**LEASE MAINTAINED**



**2015 IH 4300, CUMMINS 240HP, ALLISON AUTO, ONLY 138K MILES, 26' VAN WITH LIFT GATE. \$52,800**

**SUPER CLEAN LOW MILES**



**2012 IH 4300, MAXDT 230HP, 2500RDS ALLISON AUTO, ONLY 165K MILES, AIR BRAKES, 25999 GVW, 26' VAN & LIFT GATE, # CL688058, \$19,800**

**LIFT GATE**



**2016 IH 4300, CUMMINS 240HP, AUTO, 159K MILES, CLEAN SOUTHERN TRUCK, 26X102X103 VAN WITH GATE, #GL109932U, \$52,900**

**SOUTHERN TRUCK W/ GATE**



**2017 IH 4300, CUMMINS 240HP, AUTO, 178K MILES, 26X102X103 VAN WITH GATE, 25,999 GVW #HH432340U, \$52,800**

**LATE MODELS IN STOCK!**



**JUST OUT SERVICED FROM OUR IDEAL FLEET, GROUP OF 2011 IH 4300, UNDER CDL, MAXDT 230HP, AUTO, AIR BRAKES, 26' VANS W/ LIFT GATES, MILES 200K-245K. SOME W/ ENGINE WORK PERFORMED. ALL WORK DONE BY NUTMEG. \$16,000 TO 19,000**

**SEVERAL AVAILABLE**

**THE NUTMEG FAMILY IS TAKING ALL CDC AND WORLD HEALTH ORGANIZATION RECOMMENDED PRECAUTIONS DURING THE COVID 19 CRISIS TO KEEP OUR STAFF AND CUSTOMERS SAFE.**

**NUTMEG IS DEDICATED TO STAYING OPEN.**

**TO KEEP YOUR TRUCKS AND AMERICA ROLLING. GOD BLESS AMERICA!**



**2006 FREIGHTLINER M2, 269K MILES, MERCEDES DIESEL 300 HP, AUTO TRANS, 26K GVW, 20' VAN W/ LARGE FOLD-UP GATE, RUNS WELL DOT READY, #6HV62716U, \$12,800**

**PRICE IS RIGHT**



**S/A TRACTOR ISX**

(3)-2016 IH PROSTAR SINGLE AXLE TRACTORS, CUMMINS ISX 410HP, 10SPD, 160" WB, 2-100GLN TANKS, A/C & POWER, AIR RIDE, MILES 449K, 455K, 495K, NUTMEG MAINTAINED, UNIT#-JTS784, 796, 797. CALL FOR PRICE



**(2) 2013 IH 4300, MAXDT 230 HP, AUTO TRANS, AIR BRAKES, UNDER CDL, 25999 GVW, 211K MILES, 24' VAN W/ STEP SIDE DOOR, LIFT GATE. # JTS728 & JTS729 \$19,800**

**24' W/ STEP SIDE DOOR**



**SHARP PETERBILT 337, PX7 ENGINE, 167K MILES, 2500RDS ALLISON AUTO, 25999 GVW, UNDER CDL, AIR RIDE & AIR BRAKES, ALUM & CHROME, 26'X102"XW103" VAN BODY, # FM274560U, \$49,800.**



**USED BODIES AVAILABLE. CALL MIKE FOR CURRENT INVENTORY.**



**CLEAN TRUCK**

**2013 IH 4300, UNDER CDL, MAXDT 260HP, 195K MILES, AUTO TRANS, AIR BRAKES, 26X102X97 VAN WITH GATE & SIDE DOOR, CLEAN, #ISDH309812, \$18,900**



## 2019 FORD F350 SD DRW CREW SUPER CAB DUMP 4x4. 6.2L V8, Auto, Power Group, Stk#17078F, \$54,730.\*

**\$54,730\***



**FRAMINGHAM FORD - CALL BRIAN 508-532-3215 OR CHRIS 508-532-3219**



**2006 KENWORTH T800 TRI-AXLE DUMP**, Cat C13 Engine, 450Hp., 10Speed, Brand New Body, New Hoist, New Cover, 95% Tires All Around, Floats On Front, Alum. Rims, Air Tail-Gate, Stainless Straight Pipes, Must See! **\$79,900** Call Today! 781-417-3018



**2007 CHEVY 2500HD**. 4x4 Utility Trucks, Duramax Diesel, 6 Sp Auto, A/C, Solid Cabs, Recent Brakes, Batts, Fluids, Good Interiors, Only 50K Mi, Solid 8' Service Bodies, Racks, Hitch, Strobe Lights, Work Ready, W Or W/O Like New Fisher Plows, Multiple Units Avail. 978-462-1000, [www.WestsideTruckEquipment.com](http://www.WestsideTruckEquipment.com)



**1988 AUTOCAR**, Single Axle Dump Truck, Knuckle Boom Crane, Auto Trans., Brakes & Tires Good. **\$7,900** Call 781-417-3018

**ROLL-OFF 2000 KENWORTH T800 TRI-AXLE**, C13 Cat Motor, 85,000 LB GVW, 8Spd. Trans., 75,000# American Hoist, Rebuilt Motor, Clutch Pressure Plate Throw Out Bearing, Rebuilt Rear Ends, New Batteries, New Brakes, Rebuilt A/C, Over \$75,000 Invested! This Unit Needs Nothing. Ready To Work & A Pleasure To Drive. Asking **\$39,000** Call 978-833-6326



**L&K TRUCK BODY, INC.**  
258 Dover Road • Chichester, New Hampshire 03258

**603-798-5500**  
NEW ENGLAND MICKEY BODY DISTRIBUTOR



**2014 KENWORTH T300 24' X 97" X 95"** VAN. PX9-270 Hp, 6 Speed, 33,000 GVW, Lift Gate, **\$17,995**



**NEW VAN BODIES. 12ft - 26ft**  
Micky And Duramax Bodies, On Sale



**NEW RUGBY FLATBEDS. 12ft- 24ft**,  
Hoist And Lift Gates Available, On Sale



**2011 IH 4300 26' X 102" REFRIGERATED** VAN. 225 Hp, Automatic 5 Speed, AC, 10,000 Frt Axle, 19,000 Rear, Power Lift Gate, **\$22,995**



**2016 ISUZU 14' VAN BODY.** Lift Gate, 120K Miles, Automatic, **\$19,995**



**2012 MITSUBISHI FE180 16' REFRIGERATOR** VAN. Carrié 40X, Electric Stand By, New Compressor, 150K Miles, Automatic, 18,000 GVW, **\$14,750**



**2005 CHEVY. V8 Gas Engine**, Needs Transmission Work, Cab & Chassis \$1,500. OR With Van Body **\$2,995.**



**2012 IH C&C. 200K Miles**, Max Force Engine, Automatic, 33,000 GVW, **\$4,500**



**2005 IH 4300 C&C. 26,000 GVW**, DT466, Runs But Has Blow-By, Automatic, **\$2,500.**



**2011 FREIGHTLINER C&C.** Cummins Power, Runs But Needs Work, Allison Automatic, **\$4,995**



**1993 GMC 3500 DUMP.** Automatic, 2-3 Yard Dump, I-Pack Tool Box, 2WD, 130K Miles, **\$8,995**



**2007 MITSUBISHI FE.** Hackney Plumbers Body, 14,500 GVW, Diesel, Auto, 150K Miles, No Codes, New Brakes, Shelving & Ramp, **\$9,995.**

**WE STOCK**

**MICKEY Van Bodies From 12' - 26' &  
KIDRON Insulated Van Bodies 12' - 26'**

*You Get The Most With The Post*





# Jukonski Truck Sales



WWW.TRUCKSELLERS.COM

se habla español

680 NEWFIELD ST. (RT 3) MIDDLETOWN, CONN • 800-378-0342 • MON-FRI 8-6 SAT 8-NOON

**CONNECTICUT'S LARGEST VOLUME HINO ELITE DEALER 7 YEARS RUNNING**



3.99%

**2019 HINO 155 DUMP BODY. I Pack, Diesel, Under CDL, #4295**



Less Than 100 Miles

**2019 MERCEDES BENZ SPRINTER.**  
Less Than 100 Miles, New 16' Morgan Box, Diesel, Almost New, #1294, \$41,900



3.9%

**2019 MITSUBISHI FUSO FE 140**  
With 18' Reconditioned Box, Auto, \$42,900

LAST ONE



CERTIFIED

**2017 FREIGHTLINER M2.**  
Cummins, Allison Trans, 26' Box, Lift Gate, #0068, \$49,900

**2019 Hino 195 & 155: 3.99% APR For 2 Years Or Free Maintenance\***



CERTIFIED

**2015 CHEVROLET EXPRESS. 114K,**  
Nice Clean Cheap Truck, Everything We Sell Is Serviced And Ready To



CERTIFIED

**2013 GMC SIERRA 3500 Crew Cab,**  
Racks And Tool Boxes, 6.0L, #3850, \$19,900



ONLY 10 LEFT

**2012-2016 HINO 268.** Bank Owned, 15 Available, #3341, Starting @ \$19,900



CERTIFIED

**2014 CHEVROLET CUTAWAY.**  
10' Cube, SRW, 78K Miles, Hard To Find, #7886, \$19,900



CERTIFIED

**2016 HINO 195.** 20' Box, Diesel, Allison Transmission, Lift Gate, #3348, \$25,900



CERTIFIED

**2015 ISUZU NPR HD Cab & Chassis.**  
Diesel, Aisin A460, 107K Miles, #3789, \$21,900

90 DAY POWERTRAIN WARRANTY AVAILABLE ON ALL CERTIFIED TRUCKS. INCLUDES INJECTORS AND TURBO





**2020 RHODES.** 26' Aluminum Double Walled Smooth Side Dump Trailer, Steel Frame, 70,000# Single Point. Call 401-434-5900



**2005 PETERBILT 378 TRI-AXLE DUMP TRUCK,** Automatic, 464K Miles, Great Condition, Ready To Work! **\$64,900** Call Today 781-417-3018

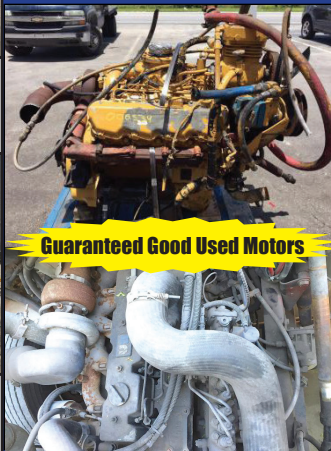
# R & R INDUSTRIES

www.RRTrucksAndEquipment.com • Sales@RandRind.com

195 Rocus Street, Springfield MA 01104

**We Buy All  
Scrap Metals**

**413-733-2118**



**Guaranteed Good Used Motors**

## MOTORS FOR SALE

DD 8V-71	Cummins BT4 - 4 Cyl
DD 6V-71	(2) Deutz Diesel 3 Cyl
DD 12V-71	(4) IH DT466
DD 8V-92	IH Maxx Force
DD 4-53	7.3L Powerstroke
DD 3-71	JD 3 Cyl Diesel
(2) 3208 CAT	Chev 6.2L/ 6.5L
CAT C-7 Ascend	Chev 8.3L/ 8.2L
Cummins 8.3L	Ford 6.0 & 6.6
Cumm 5.9L 24V	



**2003 KENWORTH T300.** 112K Miles, CAT 3126, Allison Automatic, 2800-Gallon Single Compartment Trans Tech Tank, Good Condition, Asking **\$39,000 OBO.** 401-789-2520



**RD OLSON 5x12 TRACK SCREENER**  
800 Hours, Open Throat Feeder, Self Cleaning Ball Deck, CAT Diesel - CALL DAN AT 203-506-3860 FOR PRICING



**RAPID PREP**

Full Service Provider of Equipment,  
Supplies and Consumables

NATIONWIDE EQUIPMENT  
RENTALS, SALES & SERVICE

North Kingstown, RI  
Chula Vista, CA • Chesapeake, VA  
Lakewood, WA

877.529.2124 / rapidprep.com

**RUST NEVER SLEEPS**



ENHANCED PORTABLE BLASTER PACKAGE



DUST FREE  
SLURRY BLASTING



SAFETY EQUIPMENT





**JOSEPH**  
EQUIPMENT COMPANY



**300 GAY ST • MANCHESTER, NH 03103**

**SATURDAYS**  
**WE ARE OPEN ALL DAY**  
**PHONE: 603-641-8608**  
**FAX: 603-666-3716**

293 NORTH - EXIT 2 -  
LEFT ONTO BROWN AVE -  
RIGHT ONTO WINSTON ST.-  
LEFT ONTO GAY ST.  
300 GAY STREET  
ON THE RIGHT



**IN STOCK -**  
**CUSTOM COLORS**

# **2020 KRUZ TRAILER**

**26' STEEL \$52,500**  
**INCLUDES FET & FREIGHT (FOB NH)**



HEAVY DUTY 26' STEEL DUMP TRAILER  
1/4" HARDOX 450 WEAR RESISTANT  
FLOOR, SIDE, NOSE, & GATE  
70,000 LB SINGLE POINT SUSPENSION  
30,000 LB AXLE WITH HUB PILOTED WHEELS  
50,000 LB 2 SPEED MARK V LANDING GEAR  
12 PANEL HIGH LIFT HDTAILGATE  
LED LIGHTS  
55" SIDES

16 PLY 11 X 24.5 TIRES  
POLISHED ALUM WHEELS  
ANGLE IRON TOP RAIL  
CUSTOM TOW HOOKS  
FULL POLISHED ALUM FENDERS  
CUSTOM PAINT AVAILABLE  
ALL SIZE TRAILERS AND SUSPENSION  
OPTIONS AVAILABLE  
ALUMINUM TRAILERS ALSO AVAILABLE  
HEAVY DUTY ASPHALT SPILL APRON

**[www.josephequipment.com](http://www.josephequipment.com)**

**Trades Welcome • Financing Available**

THIS AD IS COPYRIGHTED & OWNED BY TRUCK AND EQUIPMENT POST



**RAVENS****ROGERS****Kruz**

# JOSEPH

## EQUIPMENT COMPANY


**FONTAINE**
**SATURDAYS • WE ARE OPEN ALL DAY****PHONE: 603-641-8608****FAX: 603-666-3716**

293 NORTH - EXIT 2 -  
LEFT ONTO BROWN AVE -  
RIGHT ONTO WINSTON ST. - LEFT ONTO GAY ST.  
300 GAY STREET ON THE RIGHT



**2006 TRAIL KING**, 55 Ton, Air Ride, 3 Axle With Pin On 4th Axle (Never Used), Lift On Third, 26' Deck, 18" Deck Height, Non Ground Bearing, 102" Wide, One Owner, **Call For More Information.**



**2012 TARASPORT 50'** Tandem Spread Axle Step Deck Trailer, Sandblasted & Painted. New Brakes, Seals, Bearings, Hubcaps, Flaps & Decals. Front And Rear Pull Outs To Extend Trailer, Spring Assisted Ramps From Lower Deck To Upper Deck, 12' Alum Pull Out Ramps, Air Ride, 10' Upper Deck, 40' Main Deck, 102" Wide, 22.5 Lo Pro Tires, Excellent Shape, **Call For More Information.**



**2003 FONTAINE TL55, TRI AXLE**, Lift On Third, Air Ride, Long Gooseneck, 2 Pin Position, 25' Deck, 275 Rubber, Working Daily, One Owner. **Call For More Information.**



**2000 ROGERS 50 TON** Quad Axle Lowboy. Air Ride, Hyd Detachable Neck, Air Lift On 4th Axle, 255 Tires. **Call For More Information.**



**2004 FONTAINE 70 TON**, 9' Wide, Original Paint, With 4th Axle Flip, 26' Deck, 26' Beam Insert, Air Ride, Alum Wheels, Lift On Third, 275 Rubber, Detach Both Ends, Hyd Detachable Gooseneck, One Owner. **Call For More Information.**



**2000 FONTAINE SLIDING AXLE**, Landoll Style, Air Ride, 48 X 102, One Owner, Low Miles, No Rust, Needs Minor Work, Original Paint, 17.5 Rubber, 20,000 Lb Winch, Tool Boxes. **Call For More Information.**



**1989 LIDDELL 50 TON BEAM TRAILER**. Non Ground Bearing, Air Ride, Tri Axle, 25' Beam, 102" Wide, Detach At Both Ends, 2 Axle With A Pin On Third Axle, Set Up For 4th, 255/70 22.5 Rubber, Very Good Condition, Southern Trailer. **Call For More Information.**



**2011 DOONAN 53' SPREAD AXLE STEP DECK**, 120 Inch Axle Spread, Air Ride, 10' Top Deck, 38' 6" Lower Deck, **Call For More Information.**



**2003 FONTAINE 4TH AXLE FLIP**, One Owner, Excellent Shape, Alum Wheels, 275 Rubber, Air Ride. **Call For More Information.**



**2000 INTERSTATE PAVING TRAILER**, 10 Ton Tag Along Trailer, Air Brakes, 23' Deck, 7' Beaver Tail, 7' Ramps, No Rust, Very Good Condition. **Call For More Information.**



**2000 ROGERS 50 Ton**, 26' Deck, 102" Wide, Tri Axle, Air Ride, NGB, Lo Pro Tubeless Tires, One Owner, Working Daily. **Call For More Information.**



**2014 Landoll, 35 Ton**, 48' x 102" wide, 32'5" bottom deck, 5' Beavertail, Rear ramps, Pullout alum ramps to upper deck, Central grease system, Tandem axle spring suspension, Trailer is in

# www.josephequipment.com

**Trades Welcome • Financing Available**

THIS AD IS COPYRIGHTED & OWNED BY TRUCK AND EQUIPMENT POST





# JOSEPH

## EQUIPMENT COMPANY

**300 GAY ST • MANCHESTER, NH 03103**

**SATURDAYS • WE ARE OPEN ALL DAY**

**PHONE: 603-641-8608**

**FAX: 603-666-3716**





**293 NORTH - EXIT 2 -**  
**LEFT ONTO BROWN AVE -**  
**RIGHT ONTO WINSTON ST.- LEFT ONTO GAY ST.**  
**300 GAY STREET ON THE RIGHT**



**2003 MACK RD688XS**, 350, 8 Speed, 58K Lb Rears, 18k Lb Fronts, Power Steering, A/C, 3rd Axle Lift, 24.5 Rubber, 60,000 Lbs Roll Off Hoist, Working Daily, **Call For More Information.**



**2002 CAT 430D IT BACK HOE**. 4 X 4, Extend A Hoe, Forks And Bucket, 6,600 Hours, 3rd Valve, One Owner, **Call For More Information.**



**2007 CAT 315CL EXCAVATOR**, Hydraulic Thumb, Long Stick, One Owner, Just Off A Job, Excellent Condition, Ready To Work, **Call For More Information.**



**2002 CATERPILLAR CS-563D**, Full Cab, One Owner, 84" Drum, 23.1 X 26 Tires, Dirt Compactor, **Call For More Information.**



**CATERPILLAR D8L DOZER**, Full Cab, A/C, Straight W/Tilt, Low Hours, 50% Bottom, Excellent Condition, **Call For More Information.**



**1963 MACK B81**. Complete, Original NY Truck, Running, Driving, 65K Rears, 24" Rubber, P/S, Quad Box, **Call For More Information**



**2003 CHEVROLET KODIAK C4500 SERVICE TRUCK**, Duramax Diesel Engine, A/T, Tires: 225/R19 With 70% Tread, Power Steering, Tilt Wheel, Heat, A/C, Heated Mirrors, PW/PL, Good Glass, Good Overall Interior, **Call For More Information.**



**2007 GMC C5500 DURAMAX TOP KICK TRUCK**. Rack Body, 160K Miles, Fleet Maintained, One Owner, Excellent Condition, **Call For More Information,**



**2007 JOHN DEERE 644J WHEEL LOADER**, Forks And Bucket, 16,000 Hours, JRB Coupler, 3rd Valve, A/C, Fleet Maintained, One Owner. **Call For More Information.**



**1996 PETERBILT TRACTOR**, Tri Axle, CAT Power, 8 Speed, 46K Rears, 20K Pusher, Wet System, Pintle Plate, 24.5 Rubber, Long Enough For Dump Body, Air Ride, **Call For More Information.**



**1987 MACK DM686SX WATER TRUCK**, One Owner, 2 Axle, 18 Front, 58 Rears, 22" Tires, Curry 4000 Gallon Water Tank, Spring Ride, Spray Heads Front And Back, Hydraulically Driver Water Pump. **Call For More Information.**



**GROVE 35 TON RT CRANE**, Model RT65S, 2 Winches, 104' Of Useable Stick With Jib, Very Recent Tires, Rebuilt Motor, Same Owner Last 25 Years. Ready To Work. **Call For More Information.**

**[www.josephequipment.com](http://www.josephequipment.com)**  
**Trades Welcome • Financing Available**

THIS AD IS COPYRIGHTED & OWNED BY TRUCK AND EQUIPMENT POST



**RAVENS****Kruz****JOSEPH****EQUIPMENT COMPANY****300 GAY ST • MANCHESTER, NH 03103****F**  
**FONTAINE****SATURDAYS • WE ARE OPEN ALL DAY****PHONE: 603-641-8608****FAX: 603-666-3716**293 NORTH - EXIT 2 -  
LEFT ONTO BROWN AVE -  
RIGHT ONTO WINSTON ST. - LEFT ONTO GAY ST.  
300 GAY STREET ON THE RIGHT

**2020 FONTAINE MAGNITUDE 55LCC FLD**, Tri Axle, Air Ride, Set Up For 4th, Air Lift On Third, 18" Deck Height, 26' Deck, Dual Cam Pawl Assembly With 7 Ride Height Positions. Removable Kingpin At 108 Inch Radius, Alternate Kingpin At 96" Radius, 275 Rubber, Alum Wheels. Not Spreader Bar Or Goose Neck Extension Capable. Available In Black And Red. **Call For More Information.**



**IN STOCK - 2020 KRUZ**, 70 Yard, 2 Axle, 70,000 Single Point Suspension, 25,000 Lb. Axles, 36' Long, 90" Sides, 1/4 Inch 450 Hardox, Floor, Sides, Nose, Gate, Barn Door-12 Panel Gate, Tow Hooks, Led Lights, 11 X 24.5 Rubber, Aluminum Wheels, Ladders Front And Back, Holland Mark V 50,000 Lb. Landing Gear. In Stock, No Waiting. **Call For More Information.**



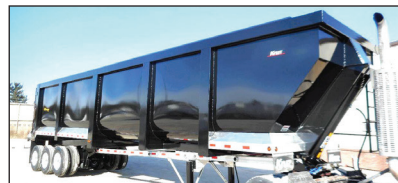
**40 TON EXTENDABLE**  
**IN STOCK - 2020 FONTAINE LXTN40**, 40 Ton Extendable, 34' Closed - 60' Open. Also Available 29' Closed - 50' Open. Tandem Axle, Set Up For 3rd, Air Ride, Non Ground Bearing, 102" Swing Clearance, 20" Deck Height, Alum Wheels. In Stock, No Waiting. Available In Manchester NH And At The Factory In Springville AL. 3rd And 4th Axles Available. **Call For More Information.**



**IN STOCK - NO WAITING - 2020 FONTAINE RENEGADE LXLN12** -12 Inch Loaded Deck Height With 4 Inch Ground Clearance When Fully Loaded, 30 Tons In 16 Feet On Tandem Bogie Or 30 Tons In 20 Feet With 3rd Axle Flip, Low Profile, 3rd Axle Capability, 32 Feet 11 Clear Deck Length. **CALL FOR MORE INFORMATION.**



**IN STOCK - 2020 KRUZ 26' STEEL TUB**, Aluminum Frame Dump Trailer, Air Ride, 2 Axle, Alum Wheels, 450 Hardox, 13,700 Lbs. 24.5 16 Ply Tires. 3 Panel Alum Gate, Taking Orders. **Call For More Information.**



**2020 KRUZ 40' ROUND BOTTOM TRI AXLE DUMP TRAILER**, 85 Yard, Air Ride, Barn Door, In Stock No Waiting. 2 Available To Choose From. **Call For More Information.**



**2020 RAVENS FLEET HAWK**, All Alum Flatbed Trailer, 48 X 102 Wide, Spread Axle, Air Ride, Hub Piloted Wheels, In Stock, Ready To Go, Special Factory Pricing. **Call For More Information.**



**NEW 2019 XL SPECIALIZED**, 55 Ton, 26' Deck, 15" Loaded Deck Height, Tri Axle, Set Up For 4th, Lift On Third, Air Ride, Long Goose Neck, 2 Pin Position, Boom Trough, 275 Rubber, Alum Wheels. Front Flip Ramps, Chain Slots, Weigh Scale, Strobes With Battery Back Up, Strobe Lights, Outriggers, Extra D-Rings. Available In Black Or Red, In Stock, No Waiting. Located At The Factory In Manchester IA And Also Stock In Manchester NH. **Call For More Information.**



**2017 VANTAGE P-42**. 1000 Cubic Feet, 2 Axle Aluminum Pneumatic Bulk Trailer, Air Ride, 295/75R22.5 Tires, No Rust, Trailer From Texas. **Call For More Information..**



**2014 FONTAINE MAG55L**. 55 Ton, 25' Flat Level Deck, 14" Deck Height, Air Ride, Tri Axle, Alum Wheels, 275 Rubber, Hyd Removable Gooseneck, 2 Pin Position, Original Paint, One Owner, Excellent Condition. **Call For More Information.**



**2009 FONTAINE MAG55H**. 55 Ton, Drop Side Rail, Tri Axle, Air Ride, Hyd Removable Gooseneck, 2 Pin Position, Alum Wheels, 275 Rubber, One Owner, Original Paint. **Call For More Information.**



**2004 J & J 26' STEEL DUMP TRAILER**, HIGH LIFT GATE, 2 AXLE, SPRING RIDE, ELECTRIC FLIP N GO CANVAS, EXCELLENT CONDITION, 11 X 24.5 RUBBER, **CALL FOR MORE INFORMATION.**

**www.josephequipment.com****Trades Welcome • Financing Available**

THIS AD IS COPYRIGHTED &amp; OWNED BY TRUCK AND EQUIPMENT POST





# JOSEPH

## EQUIPMENT COMPANY

300 GAY ST • MANCHESTER, NH 03103

PHONE: 603-641-8608



OPEN  
ALL DAY  
SATURDAY

# F

## FONTAINE

FAX: 603-666-3716



**NEW MODEL - 2021 FONTAINE RENEGADE LXLN12** - 12 Inch Loaded Deck Height With 4 Inch Ground Clearance When Fully Loaded, 30 Tons In 16 Feet On Tandem Bogie Or 30 Tons In 20 Feet With 3rd Axle Flip, Low Profile, 3rd Axle Capability, 32 Feet 11 Clear Deck Length. IN STOCK, NO WAITING. **Call For More Information.**



**NEW MODEL - 2021 FONTAINE MAGNITUDE 50** Tri Axle, Set Up For 4Th, 50 Ton, Air Ride, 24' Deck, 20" Loaded Deck Height, Alum Or Steel Wheels, Strobe Lights, Outriggers And D-Rings. **Call For More Information.**



**2021 KRUZ TERMINATOR**, 26' Steel Frame, Single Point Suspension, 2 Way Gate, 11 X 24.5 Tires, Alum Wheels, 2 Speed Landing Gear. **Call For More Information.**

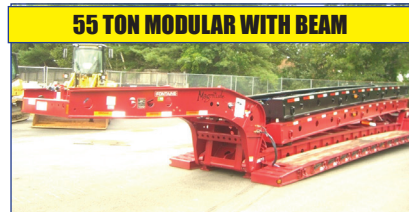


### 27' FLAT LEVEL DECK - IN STOCK

**2021 FONTAINE 55L**, 27' Flat Level Deck, Also Available In 25' And 26' Deck Length. Tri-Axle, Air Ride, 3Rd Axle Lift, Alum Wheels, Strobe Lights, Set-Up For 4Th Axle. In Stock, No Waiting. **Call For More Information.**

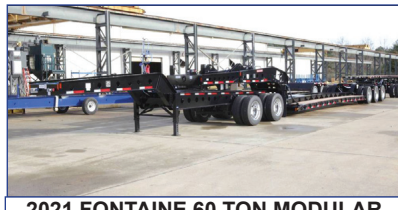


**2021 KRUZ 26' STEEL TUB**, Aluminum Frame Dump Trailer, Air Ride, 2 Axle, Alum Wheels, 450 Hardox, 24.5 16 Ply Tires. **TAKING ORDERS**  
**Call For More Information.**



### 55 TON MODULAR WITH BEAM

**2021 FONTAINE 55H MODULAR DSR**, Beam Deck Also Available, Tri Axle, 60" Axle Spacing, Hydraulic Removable, Non Ground Bearing, Set Up For Gooseneck Ext, Spreader Bar And 4Th Axle Flip, Air Ride, Alum Wheels, 22.5 Rubber. **Call For More Information.**



**2021 FONTAINE 60 TON MODULAR 2+3+1**, 26' Dsr, 184" Swing Clearance, Set Up For 2 Axle Jeep, 14" Deck Height, Air Ride, Alum Wheels, 275/70R X 22.5 Rubber, Non Ground Bearing. **Call For More Information.**



**2021 FONTAINE RENEGADE LXL**, 14" Deck Height, 30' Deck W/6" Ground Clearance, 2 Axle, Set Up For Third, Hydraulic Detachable, Taking Orders  
**Call For More Information.**



**2021 KRUZ, 70 Yard, Tri Axle, 70,000 Single Point, Lift On Third Axle, 1/4 Inch 450 Hardox, Floor, Sides, Nose, Gate, 12 Panel Gate, 11 X 24.5 Rubber, Alum Wheels. Taking Orders.**  
**Call For More Information.**



**2021 FONTAINE TRAVERSE HYDRAULIC TAIL**, 48' Long, 102" Wide, Air Ride, Hydraulic Upper Deck, Hydraulic Winch, Remote Control, Alum Wheels, Dual Controls. Taking Orders  
**Call For More Information.**



**2021 FONTAINE 60 TON MODULAR**, 26' Dsr, 60" Axle Spacing, 184" Swing Clearance, Set Up For 2 Axle Jeep, 14" Deck Height, Air Ride, Alum Wheels, 275/70R X 22.5 Rubber, Non Ground Bearing. In Stock.  
**Call For More Information.**



**1998 KAYLN SIEBERT**, 75Ton 3+3+3, Air Ride, West Coast Bogie, 3 Axle, Air Ride Jeep With Power Tower, 10' Wide Trailer, 60' Overall Length, 48' Of Useable Deck, 275/70 X 22.5 Rubber, Sandblasted & Painted, Excellent Shape, Alum Wheels On Jeep And Booster. **Call For More Information.**

**Trades Welcome • Financing Available • [www.josephequipment.com](http://www.josephequipment.com)**

THIS AD IS COPYRIGHTED & OWNED BY TRUCK AND EQUIPMENT POST



# TRAILER RENTALS • TRAILER RENTALS • TRAILER RENTALS •

WE RENT STEP DECKS • LOW BEDS • HI FLATS • DEMO/SCRAP • TRAILERS



Kruz

**JOSEPH**  
EQUIPMENT COMPANY  
300 GAY ST. • Manchester, NH 03103



PHONE: 603-641-8608

FAX: 603-666-3716



**NOW TAKING ORDERS FOR DUMP TRAILERS  
AND LOWBEDS FOR FALL DELIVERY**

14" DECK HEIGHT



NEW 2021 FONTAINE RENEGADE LXL, 14' Deck Height, 30' Deck W/6' Ground Clearance, 2 Axle, Set Up For 3rd Hydraulic Detachable Or Mechanical Detachable. In Stock No Waiting. Call For More Information.

**WE RENT WALKING FLOORS • DUMPS • HIGH FLAT EXTENSIBLES • JEEPS**



NEW 2021 FONTAINE MAGNITUDE 603T Modular Drop Side Rail With 28' Deck, Hydraulic Removable Neck, Non Ground Bearing, Air Ride, Tri Axle, Third Axle L/R, Set Up For 4Th, Alum Wheels, 275/70 X 22.5 Tires, Loaded. Call For More Information.



NEW 2021 FONTAINE SPECIALIZED MAGNITUDE 55L, Tri Axle, Air Ride, Set Up Of 4Th Axle, Non Ground Bearing, 25' Deck, Led Lights, Aluminum Wheels, Strobe Light Package, Lift On 3rd Axle, 2 Pin Position, Loaded. In Stock No Waiting. Call For More Information.



NEW 2021 FONTAINE 55H MODULAR DSR, Beam Deck Also Available, Tri Axle, 60' Axle Spacing, Hydraulic Removable, Non Ground Bearing, Set Up For Gooseneck Ext, Spreader Bar And 4Th Axle Flip, Air Ride, Alum Wheels, 22.5 Rubber, Call For More Information.

**WE RENT STINGERS • SPREADER BARS • DOUBLE DROP EXTENSIBLES TRAILERS**



NEW 2021 FONTAINE 704/2+3+2 DROP SIDE RAIL, 4 Axle, 28' Deck, Hydraulic Detachable, In Stock, No Waiting, Non Ground Bearing, 102' Wide, 65' Flip Box, Spreader Bar And 352J, Jeep, Alum Wheels, 275/70R X 22.5 Tires, 28' Beam Deck Available. Call For More Information.



NEW 2021 FONTAINE 55 TON, Drop Side Rail, Tri Axle, Air Ride, Set Up For 4Th, Non Ground Bearing, Led Lights, Aluminum Wheels, Strobe Lights, Loaded. In Stock No Waiting. Call For More Information.



NEW ROGERS 55 TON DROPSIDE RAIL, LOWBED TRAILER, 25Ft Steel Deck, Tri-Axle, Air Ride, Lift On Third Axle, Strobe Light Pkg, Covered Bogle, 15' Loaded Deck Height, 2 Pin Position, 4Th Axle Set Up (In Stock), Non Ground Bearing In Stock And No Waiting.

55 TON EXTENSIBLE



NEW 2021 FONTAINE MAGNITUDE 55M, 55 Ton Extendable Trailer, 30' To 50', Modular, Detaches Both Ends, Hyd Removable, Non Ground Bearing, 20' Deck Height, With Take 10' Deck Ext For A Total Of 60', 275 Rubber, Tri Axle, Air Lift On 3rd Set Up For 4Th, Set Up For Gooseneck Ext. Call For More Information.

IN STOCK



NEW 2021 FONTAINE 35 TON LOWBED, Air Ride, Tandem Axle, 29Ft Flat Level Deck, Non Ground Bearing, Hyd Goose Neck, Set Up For Future 3rd Axle, In Stock. Call For More Information.



NEW 2021 SPECIALIZED 55 TON BEAM TRAILER, 3+1 Modular NGB, Detach Both Ends, T/A, Air, Lift On 3rd, Set Up 4Th, Set Up For Gooseneck Extension, Call For More Information.

**Trades Welcome • Financing Available • [www.josephequipment.com](http://www.josephequipment.com)**

THIS AD IS COPYRIGHTED & OWNED BY TRUCK AND EQUIPMENT POST.