

**SERVING NORTHEAST REGION**

**FREE**

# TRUCK AND EQUIPMENT **POST**

**You Get The Most With The Post**



**1994 KENWORTH W900L. REFURBISHED, 272" WB, REBUILT CAT 3406C 425-C, 15 SPEED, 12 FRT AXLE, 40 REARS, 7" CHROME STACKS, MANY UPDATES, GEM CONDITION, \$89,000. 207-431-0909**



**2014 VOLVO EC300DL EXCAVATOR. 3104 HOURS, ONE OWNER, WITH ALL SERVICE RECORDS, 401-300-9041**



**2022 RAM 2500 LARAMIE. 4X4, CREW CAB, 89,340 MILES, CUMMINS, SUPER NICE! \$44,900. 603-347-1386**



**THOMAS 400 SCREENER. 610 HOURS, ONE OWNER, EXCELLENT CONDITION, SAME SIZE AS READ 90 SCREENER, \$39,000. 401-932-8226**



**2009 EAGER BEAVER TRAILER. 25-TON AIR, ALL NEW BRAKES AND COMPONENTS, BRAND NEW OAK DECK, \$13,500. 802-249-2759**

**Optative Group**

**Issue 06-07  
FEB 19th, 2025**

**INTERNET & PRINT  
FOR ONLY \$28.00**

**[www.TruckAndEquipmentPost.com](http://www.TruckAndEquipmentPost.com)**

**888-887-0505**



# HOLLISTON TRUCK & EQUIPMENT • 508-429-7678



**2012 IH 7500 T/A DUMP.** 330 HP, Automatic, 14' Dump, Scuttle Shute, Electric Tarp, Pintle, Air To Rear, Double Frame, 20 Frt, 40 Rears, 28K Miles, **\$60,000**



**2009 IH 7400 SWAPLOADER.** 20 Ton Hoist, 54" Hock Height, 315 HP, Automatic, 250K Miles, Air Brakes, 60,000 lb GVW, Double Frame, Air Seat, **\$55,000**



**2005 JD 310SG BACKHOE.** 4X4, Enclosed Cab, Heat, New Rubber, 4500 Hours, **\$39,000**



**2014 FREIGHTLINER UTILITY.** 13' Monroe Body, Compressor, Air Hose Reels, Generator, Tool Lift, Cummins 250 HP, Automatic, 50K Miles, **\$40,000**



**1995 FORD F800 FUEL TANKER.** 2000 Gallon Aluminum Tank, 2 Compts, Cummins 8.3 240HP, 5 Speed, 45K Miles, 33K GVW, Air Brakes, **\$15,000**



**2010 IH MASONRY DUMP.** DT466-250HP, 79K Miles, Automatic, Air Brakes, 26K GVW, 11' Tafco Body, Fold Down Sides, Crew Cab, Pintle, **\$40,000**



**2011 FORD F650 DUMP.** Cummins 220 HP, Automatic, 26,000 GVW, 10' Body, Load Cover, Tool Box, 113K Miles, **\$40,000**



**2008 IH 4300 DUMP.** DT466-250HP, 42K Miles, Automatic, Air Brakes, 26K GVW, Locking Differential, 9' Body, Load Cover, Pintle, **\$40,000**



**2013 INTERNATIONAL CAB CHASSIS.** Crew Cab, 108" C/A, 59K Miles, DT466 250 HP, Automatic, 26,000 GVW, Air Brakes, PTO, **\$30,000**



**2011 IH 10' ALUMINUM DUMP.** DT466 250 HP, Automatic, 26K GVW, 120K Miles, Locking Differential, Tarp, Pintle, Air Brakes, 1 Chute, Air Gate, **\$38,000**



**2006 INTERNATIONAL DUMP.** DT466 300 HP, Automatic, 48K Miles, Double Frame, 14' Steel Body, 3 Chutes, 56,000 GVW, Air To Rear, Pintle, **\$53,000**

**WWW.HOLLISTONTRUCK.COM - 1569 Washington St (Rt 16) Holliston, MA**



# HOLLISTON TRUCK & EQUIPMENT • 508-429-7678



**2009 IH 7600 T/A DUMP LOG LOADER.** Prentice 120, Rotating Grapple, 22' Reach, Cummins 400PH, 8LL, Double Frame, 256K Miles, **\$55,000**



**1991 JD 444E WHEEL LOADER.** Forks And Plow, Quick Connect Bucket, Enclosed Cab, Heat, Good Rubber, 13,857 Hours, **\$30,000**



**1988 PETERBILT 379 DUMP.** CAT 3406 450 HP, 13 Speed, 441K Miles, Double Frame, 12' Steel Body, 3 Scuttle Chutes, Electric Tarp, Air Brakes, Pintle, **\$45,000**



**2010 FREIGHTLINER DUMP.** 11' Body, Cummins 220 HP, Automatic, 117K Miles, 26,000 GVW, Pintle, Load Cover, **\$40,000**



**2008 FORD F650 DUMP.** 10' Body, 3 Chutes, Electric Tarp, Air To Rear, CAT C7 250HP, Automatic, 103K Miles, 26K GVW, Air Brakes, Pintle, **\$35,000**



**2010 IH 10 Ft ALUMINUM DUMP.** DT466-250HP, 96K Miles, Automatic, Air Brakes, 26K GVW, Locking Differential, Load Cover, 2 Chutes, Pintle, **\$40,000**



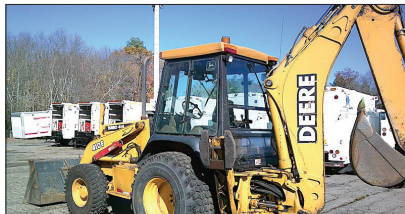
**2019 INTERNATIONAL DUMP.** Cummins 250 HP, Automatic, 26,000 GVW, 12' Body, Load Cover, Load Divider, Tool Box, 175K Miles, **\$64,000**



**2010 FORD F650 DUMP.** 10' Body, 3 Chutes, Electric Tarp, Air To Rear, Cummins ISB 250HP, Automatic, 92K Miles, 26K GVW, Air Brakes, Pintle, **\$40,000**



**2013 INTERNATIONAL ROLL OFF HOIST.** 15 Ton Hoist, DT530 315 HP, Automatic, 42,000 GVW, Air Brakes, Will Take 20 Ft Can, Double Frame, **\$35,000**



**1997 JOHN DEERE 410E.** New Rubber, 4X4, Quick Connect Bucket, Enclosed Cab, Heat, New Rubber, **\$28,000**



**2004 FREIGHTLINER DUMP.** Mercedes 210 HP, Automatic, 199K Miles, 26,000 GVW, Air Brakes, 10' Dump, 3 Chutes, Load Cover, Power Windows & Locks, AC, **\$20,000**

**WWW.HOLLISTONTRUCK.COM - 1569 Washington St (Rt 16) Holliston, MA**





# REED TRUCK SERVICES

24/7 Heavy Duty Towing, Accident Recovery & Emergency Road Service



**TRADES  
ACCEPTED**

**939 John Stark  
Hwy.  
Newport, NH**



**287 Washington St.  
Claremont, NH**

**HELP  
WANTED**

• Authorized International Truck & Cummins • Sales • Service • Parts • Warranty •  
All Makes Commercial Truck Parts, Sales, and Service

Email: [scott@reedtruck.com](mailto:scott@reedtruck.com) • [www.ReedTruck.com](http://www.ReedTruck.com) • 1-800-542-5032



**2024 INTERNATIONAL CV515 4x4.**  
Fully Equipped With Plow Gear And Dump  
Body.



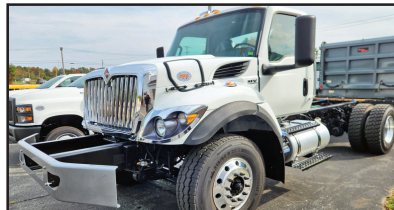
**NEW INTERNATIONAL CV 4x4, AND  
HV 4X2 AND 6X4 MUNICIPAL CHASSIS.**  
Available, Call For Specs!



**IN STOCK**  
**NEW 2024 INTERNATIONAL HV507.** L9 Cummins @370  
HP, 8LL Trans, 20 And 26 Axles, Sharp Municipal Truck,  
Ready For Immediate Delivery!



**2024 INTERNATIONAL HV613. A26,**  
Allison 4500, 22 F/A, 46 Locking Rears,  
Hend HMX Suspension, In Stock!!



**NEW 2024 INTERNATIONAL HV 507.** 370  
HP, L9 Cummins, Allison, 20 And 30 Axles,  
Being Upfitted With Equipment.



**2024 INTERNATIONAL HX520. X15**  
Cummins, Allison Auto 4500, 20/46 Axles,  
Aluminum Wheels, Outfitted With The  
Body Of Your Choice



**2024 INTERNATIONAL MV607**  
**REGULAR CAB JERR-DAN CAR**  
**CARRIER.** Loaded, Ready To Work.



**2023 INTERNATIONAL LT625.** 13,200  
F/A, 40 R/A, Cummins X15 450 HP, 10 Spd  
Manual, Clean Tractor, 106K Miles, **\$79,900**



**2021 CHEVY 5500 4X4 READING**  
**PLUMBERS BODY.** 19,500 GVW, Like new,  
Southern Truck, 22,500 Miles, **\$83,500.**



**2018 INTERNATIONAL 4300.** Non CDL,  
Cummins Engine, Allison Trans, AB, AR, 16'  
Morgan Body, **\$37,500.** Will Separate



**2016 INTERNATIONAL 4300**  
**Cab & Chassis.**  
AR/AB, Cummins Engine, Allison Auto,  
Non-CDL. **\$33,500.**



**4,200 MILES**  
**2021 INTERNATIONAL CV515 4X4.** 10.5'  
SS Fisher V, 12' Rack With Lift Gate, Like  
New, 4,200 Miles, Asking **\$69,900**



**939 John Stark Hwy.  
Newport, NH**



**REED TRUCK SERVICES**

24/7 Heavy Duty Towing, Accident Recovery & Emergency Road Service

FLEETRITE

**287 Washington St.  
Claremont, NH**

**CLEANING THE BACK ROW! THESE GOTTA GO! CALL FOR MORE INFO. MAKE OFFERS!**



**2012 INTERNATIONAL 7500.**  
310 HP, Eng Brake, Allison W Retarder. 16 F/A, 30 R/A, All Options, Air To Rear, Fully Equipped. **Due In Soon.**



**MAKE OFFER**  
**2006 STERLING, 380 HP, 8LL, 18FA, 46 Rears, Pwr Reversible Blade And Wing, Live Floor Sander Dump, Double Spinners, \$24,500**



**2011 INTERNATIONAL 7400.** 315 HP, Allison Trans, 16 F/A, 30 R/A Locker, Pwr Rev Plow. **\$19,500.**



**3 IN STOCK**  
**2012 INTERNATIONAL 7400 Dump.** 16 F/A, Locking 30 R/A, DT300 HP, Eng Brake, Allison, AC, 40,780 GVW, Everest Gear, Plow, Wing, Sander, Air To Rear, **\$24,000. - \$36,000.**



**AUTO**  
**2012 FREIGHTLINER SD114.** DD13 Engine, Allison AUTO Trans, Everest 14' Live Floor Body, Truck, Includes Plow And Wing Blades. Well Maintained Muni Trade, **\$57,500.**



**2008 INTERNATIONAL 7400.** DT300 HP, 8LL Trans, 30K Locker, 41,100 GVW, **Asking \$16,500.**



**2014 GMC/COLLINS BUS.**  
Gas, Auto, Wheel Chair Lift.



**2012 FORD F550 4X4 DUMP.** 6.7 Diesel, Viking Poly Power Angle Plow, Steel Dump Body, 19,500 GVW, Recent Brakes, Solid Truck, **Asking \$37,500.**

**Email: [scott@reedtruck.com](mailto:scott@reedtruck.com) • [www.ReedTruck.com](http://www.ReedTruck.com) • 1-800-542-5032**

**2003 CASE CX 160 EXCAVATOR,** Quick Coupler, Bucket & Hammer Available, Approx 5800 Hrs, Good Bottom, Good Shape, Ready to Work!, **\$49,900,** 781-417-3018



**1994 CAT 320L.** Excavator W/ Hydraulic Thumb, 11K Hours, Long Stick & Long Undercarriage, Good Condition, Good Bottom, Heavy Duty Bucket Rebuilt, 1 Owner, Well Maintained, 6-Cylinder Turbo Diesel Engine, Ready To Work, Heat, Radio, **\$55,000.**  
[johntrucktrader@gmail.com](mailto:johntrucktrader@gmail.com)



**Burrillville, RI • 401-633-4587**

- Full Bucket Rebuilds • Cylinder Resealing
- Wear Plates • Adapter Replacement • Hardfacing
- General Maintenance



**2012 MACK CH613 TRACTOR.** MP8 505 HP Engine, 8LL Trans, 13K Front, 46K Rears, Wet System, New Clutch, 295,000 Miles Since Major Motor Overhaul, **\$45,000.** Call Jesse 401-855-1178



**WE TAKE  
ANYTHING IN  
TRADE**

**Jolly John's**  
Truck & Equipment



**FINANCING  
AVAILABLE**

**We Pay CASH For Your Trucks & Equipment**



**2013 FORD F450 XL 4x4 FLATBED WITH CRANE.**  
V10 6.8 L Gas, 200" WB, 11' x 96" Bed, Tiger 2085  
Truck Crane 200 lb Capacity, Tool Boxes, Hitch,  
Ready To Go. \$26,900



**2015 MITSUBISHI FUSO FE160.** Mitsubishi F1C 4 Cyl 3.0L  
Diesel, 161 HP, Automatic Trans, Spring Suspension, 153" WB,  
Morgan 16' x 96" Wide x 91" High, Completely Serviced & Ready  
To Go. \$30,900



**2015 DEERE 310K BACKHOE WITH EXTENDAHOE.** 6908  
Hours, Local Unit, Well Maintained, Priced To Sell, Everything You  
Need Extendahoe, Heat & AC, Serviced And Ready For Anything  
\$39,900

**MID WINTER CLEARANCE, COME IN TODAY**



**2019 Ford F-450 XL 4x4 Dump.** 11' Rugby Dump Body,  
V8 6.7L Diesel 330 HP Engine, Differential Lock, 170"  
Wheelbase, Manual Roll Tarp, Chassis Is Rust Free,  
\$59,900



**2015 Kenworth T370 4x2 Service Truck,** Paccar PX-7 6 Cylinder 6.7L Diesel 280  
HP, Allison Auto, Dana Spicer P20060S Drive Axles, PTO, 10' 9" Body, Manual  
Stabilizers, 2014 IMT 7500-22 7500 lb 2 Section Hydraulic Crane, Wired Remote  
Control, UNDER CDL. \$69,900



**2011 PETERBILT 365 TRI-AXLE 6x4 DUMP.** Cat C13,  
6 Cylinder 12.5L Diesel 335 HP, Engine Brake, Allison Auto,  
16540 FA, 59500 RA, Air Ride, Steerable Air Lift Pusher Axle,  
Double Frame, Wet Kit. \$118,000



**2019 GMC G3500 4x2 Van Truck,** GM Vortec V8 6.0L Gas,  
Automatic, Spring Suspension, 178" Wheelbase, Supreme Corp.  
16' x 96" Wide x 72" High Body, \$19,900



**2018 GMC G3500 4x2 Van Truck,** V8 6.0L Gas,  
Automatic, Spring Suspension, 178" Wheelbase,  
Morgan 16' x 96" Wide x 72" High Body, \$19,900



**2019 GEHL RT215 Tracked Skid Steer.** 2 Speed, Air  
Conditioning, Heat. Freshly Serviced And Ready To  
Go. \$34,900



**2016 NISSAN FRONTIER 4x2 Extended Cab Pickup,** 4 Cylinder  
Gasoline, Automatic Transmission, Air Conditioner, 4700 lb  
GVWR, 235/75R15 Tires, 6' 1" Bed , Air Conditioning \$8,900



**2012 FORD F550 XL FLATBED WITH RAILS.**  
6.7L Powerstroke Turbo Diesel, Crew Cab,  
12' Body, Liftgate, Gooseneck Trailer Hitch One Owner  
Since New, \$30,900



**2016 FORD F450 XL 4x4 CREW CAB,** Powerstroke V8 6.7 L  
Diesel, 176" Wheelbase, PTO, Knapheide 8' 8" Body, Ladder Or  
Pipe Rack, Remote Control Winch, Low Hours, Must See, \$38,900



**2015 GENIE Z80/60  
ARTICULATING BOOM  
LIFT.**  
78' Max Platform Height,  
500 lb Max Weight,  
Jib, Power To Platform,  
Onboard generator, Deutz  
2.9 L4 4 cylinder 74 HP  
Diesel, Foam Filled Tires.  
Freshly Serviced &  
Safety Checked.  
\$35,900



**2021 LGMG BOOM LIFT,** 46.2' Max Platform Height, 510 lb  
Max Weight Capacity, Jib, Power To Platform, Deutz D2.9 L4  
4 Cylinder, 49 HP 2.9 L Diesel, 315/55D20 Foam-Filled Tires  
\$33,900



**2014 JLG 600AJ ARTICULATING BOOM LIFT** 60' Max Height,  
500 lb Max Capacity, Power To Platform, On Board Generator,  
Deutz D2011, 49 HP, 3.1 Diesel, 355/55D625 Foam Filled Tires.  
\$37,900

**Call Nick 860-861-1326 or Mike 860-861-4199**  
**www.jollyjohnstruckandequipment.com**



**508-328-8938****THE TRUCK STORE****Mon-Fri 8:30-5pm  
Saturday 8:30-4pm****www.TruckStoreSales.com****1700 Broadway - Rte 138 – Raynham, MA • Take Exit 8 Off Rte 495, East Rte 138, On Your Left**

**2017 FREIGHTLINER CASCADIA**  
Tandem Axle Day Cab. ISX Cummins 450  
HP, Auto, 175K Miles, \$69,500.



**022 ISUZU NQR. 10,000 Miles,**  
Reefer Body Available.



**2013 PALFINGER MOFFET FORK**  
LIFT: 900 HOURS.



**2002 VOLVO Heave Tri Axle Dump**  
Chassis: 8LL, Clean Title. Slight Damage.  
\$15,000



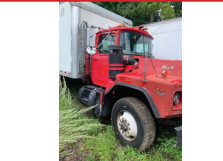
**2012 UD 18 YARD RUBBISH**  
TRUCK: LOW MILES. CALL.



**2022 PETERBILT SINGLE AXLE**  
TRACTOR. DIESEL, AUTO,  
ONLY 5,500 MILES, CALL.



**USED MONROE STAINLESS STEEL**  
SANDER W/CALCIUM TANKS



**2002 MACK R MODEL:**  
TANDEM

**2005 PETERBILT  
337 TANDEM  
CAB & CHASSIS.**  
Cummins, Allison  
Auto, Low Miles

**2 USED  
HOOK-LIFT  
BODIES  
IN STOCK.**

**LATE MODEL ISUZU &  
HINO CUMMINS DIESEL  
4 CYL DIESEL ENGINE &  
TRANS,  
2006 USED MACK  
ENGINES, ALLISON  
TRANSMISSIONS.**



**2017-2022 INTERNATIONAL REEFERS.**  
CUMMINS DIESEL, 50K MILES, 16'-26',  
MANY AVAILABLE, WILL SEPARATE.

**USED 2015  
ROLL-OFF  
BODY, CALL.**

**2005 MACK CV 713  
CAB & CHASSIS:  
AUTOMATIC,  
20F/52R,  
30K MILES!**

**USED  
26' & 18'  
FLAT BED BODIES  
BED BODY  
CALL FOR  
DETAILS.**

**2017  
INTERNATIONAL  
CAB & CHASSIS:  
CUMMINS DIESEL,  
AUTOMATIC.  
LOW MILES.**



**2000 MACK RD 688SX 14' Dump Body,**  
350 H.P., Auto., 18F/58R, LOW miles, Very clean.



**2020 + 2022 HINO REEFER VANS.**  
DIESEL, AUTO, CALL.



**2005 MACK GRANITE SPLIT REAR  
LOAD RUBBISH BODY 35K Miles.**



**2022 HINO HOOK-LIFT. DIESEL,**  
AUTO, 38K MILES, \$79,500. (ALSO, 2015  
AVAILABLE)



**2022 ISUZU REEFER TRUCK.**  
16,000 Miles.



**2021 FORD MOVING TRUCK, Crew Cab,**  
Auto, Under CDL, 99K Miles.



**2022 PETERBILT C/O. Under CDL, 60K**  
Miles, Auto, Reefer Or Flatbed Available.



**2022 HINO 268 Flat Bed: Diesel, Automatic,**  
ONLY 2,000 Miles! Will up fit w/Refer Body  
or Van Body. 2 AVAILABLE.



**USED 12' to 26' REFER & VAN BODIES**  
Call with your needs.



**(2) 2020 ISUZU NRR UTILITY BOX**  
TRUCKS. 18K-30K MILES, DIESEL,  
AUTO, CALL.



**2017 FREIGHTLINER M-2: CUMMINS**  
Diesel, Auto, PTO Accept. Will Separate.



**2015 FREIGHTLINER 114 SD WITH NUWAY**  
SIDE LOAD ONE-ARMED BANDIT. 9L  
CUMMINS, AUTO, EXTRA HEAVY DUTY, CALL.



# TRUCK AND EQUIPMENT POST

**P.O. BOX 6824  
PROVIDENCE, RI 02940  
TEL: 888-887-0505**

**EMAIL:**

**ADS@TRUCKANDEQUIPMENTPOST.COM  
WWW.TRUCKANDEQUIPMENTPOST.COM**




## YOUR INFORMATION

**NAME :** \_\_\_\_\_ **PHONE :** \_\_\_\_\_

**STREET ADDRESS :** \_\_\_\_\_

**CITY :** \_\_\_\_\_ **STATE :** \_\_\_\_\_ **ZIP :** \_\_\_\_\_

**EMAIL :** \_\_\_\_\_

**PAYMENT :** ☐  ☐  ☐ **CHECK** ☐ **DISCOVER** ☐  ☐ **OTHER**

**SIGNATURE :** \_\_\_\_\_ **ACCOUNT NUMBER :** \_\_\_\_\_

**EXP DATE :** \_\_\_\_\_

**PLACE YOUR AD ONLINE AT [WWW.TRUCKANDEQUIPMENTPOST.COM](http://WWW.TRUCKANDEQUIPMENTPOST.COM)**

**STANDARD PHOTO AD # ISSUES**

☐ **\$28 FOR 1 ISSUE (2 WEEKS)** ☐

☐ **\$50 FOR 2 ISSUES (4 WEEKS)** ☐

**JUMBO PHOTO AD**

☐ **\$55 FOR 1 ISSUE (2 WEEKS)** ☐

☐ **\$100 FOR 2 ISSUES (4 WEEKS)** ☐

## PHOTO AD



Your description goes here as follows:  
Year, Make, Model, Features, Price, Town  
& State, Phone

**PAYMENT ENCLOSED \$** \_\_\_\_\_ **EACH ISSUE RUNS FOR 2 WEEKS**

**AD TEXT** \_\_\_\_\_

\*1 item per ad please. We reserve the right to edit or refuse ad content.

**SUBSCRIPTION RATES INCLUDE FIRST CLASS SHIPPING.**

**MAILED TO YOUR HOME OR BUSINESS**

☐ **\$55.00 13 ISSUES** ☐ **\$80.00 26 ISSUES**

**Just email [Ads@TruckandEquipmentPost.com](mailto:Ads@TruckandEquipmentPost.com)  
and type "BAG MY MAG" in the subject line.**

**NEW WE'LL EMAIL THE MAGAZINE TO YOU FOR FREE**

One Item Per Ad Please. Truck And Equipment Post makes every effort to ensure ads are published accurately. Truck And Equipment Post and its staff will not be held responsible or liable for typographical errors or misprints. Truck And Equipment Post reserves the right to edit, abbreviate, remove or refuse any ads/content at its discretion. Copyright of Ads: By agreeing to place an ad with Truck And Equipment Post, you hereby grant Truck And Equipment Post the right to display and publish all or part of the advertisement under United States copyright laws.

# COLONIAL WEST

## COLONIAL-WEST CHEVROLET OF FITCHBURG

### HAPPY VALENTINE'S DAY



**2024 CHEVROLET SILVERADO 3500 DURA-MAG LANDSCAPER DUMP:** 6.6L, ALLISON AUTO, STK#24742, \$75,000.



**2020 GMC SAVANA 2500 CARGO VAN.** 6L V8, CONVENIENCE PKG, REMOTE START, H/MIRRORS, STK#W24559A, \$19,975.



**ONLY 30K MILES**

**2018 FORD E350 14' BOX TRUCK.** 6.2L, V8, POWER GRP, ONLY 30K MILES, EXCELLENT CONDITION, STK#5507, \$34,975.



**2022 CHEVROLET EXPRESS 2500 CARGO VAN.** ONLY 27,000 MILES, AUTO, AC, WiFi, ONE OWNER, STK#5467, \$29,975.



**2024 CHEVROLET SILVERADO 3500 DURA-MAG STAINLESS DUMP:** 6.6L, ALLISON AUTO, STK#24797, \$68,000.



**2021 GMC 2500 SAVANA CARGO VAN.** ONLY 35,000 MILES, 8 CYL., AUTO, ONE OWNER, STK#5469, \$28,975.



**2024 CHEVROLET SILVERADO 3500 REG CAB DUALY W/KNAPHEIDE UTILITY:** DIESEL, ALLISON AUTO, STK#W24737, \$82,000.



**2024 CHEVROLET SILVERADO 3500 CREW CAB DURA-MAG STAINLESS DUMP:** 6.6L, ALLISON AUTO, STK#24750, \$75,000.



**2024 CHEVROLET SILVERADO 3500 CREW CAB W/DURA-MAG LANDSCAPE DUMP:** 6.6L, AUTO, STK#24741, \$75,000.

**314 John Fitch Hwy • Fitchburg, Ma 866-263-8712 [www.Colonial-West.com](http://www.Colonial-West.com)**

Disclosure. all prices include every applicable rebate, lease loyalty, comp lease, com rebate, finance with dealer, tax, title, and dealer fees extra, not responsible for typographical errors, prices subject to change without notice.



# JP RIVARD

## Trailer Sales Inc

*Call Matt - 508-962-4543*

JPRivard.com

Locations in Ayer, MA and Devens, MA

*We Deliver  
Storage Solutions*

60 PLUS YEARS SERVING THE  
NORTHEAST AREA

Over 150 Containers - In Stock  
With Choice Odd Sizes & Specs  
FAST Delivery Is Available

*Always Best Customer Service*

### 40' HIGH CUBE 3 DOOR



6 New One Trip  
40' High Cube.  
Double Doors  
On One End  
And 36" Door  
On Other \$6,000

### 20' 1 TRIP - HIGH OPTIONS



**\$3,700**

New 20' One Trip Containers  
30 + Gray & Beige

### 40' HIGH CUBE DOUBLE DOORS



40' High Cube  
Container,  
Doors On Each  
End.  
**\$6,000.**  
6 Available

### USED 40' HIGH CUBE CONTAINER



Used 40'  
High Cube  
Container,  
Good  
Condition, Dry,  
**\$3,200**

### 40' HIGH CUBE, 2 SIDE DOORS



New 40'  
High Cube  
Containers,  
2 Large Side  
Doors, Gray.  
In Stock  
**\$10,900.**

### 40' HIGH CUBE - 1 TRIP



New  
40' One Trip  
High Cube  
Containers,  
In Stock,  
**\$5,500**  
6 Available

### LIGHTLY USED 40' HIGH CUBE



(10) 2021 40'  
High Cube  
Containers,  
Very Clean,  
Used Condition,  
**\$4,400**

### 40' HIGH CUBE 1 Trip, 4 Side Doors



New 40'  
High Cube  
Containers,  
With 4 Side  
Doors, In  
Stock, **\$10,500**

**SALES TAX IF APPLICABLE + DELIVERY IS NOT INCLUDED**



# JP RIVARD *Call Matt - 508-962-4543*

## Trailer Sales Inc JPRivard.com

Locations in Ayer, MA and Devens, MA

### RENT TO OWN 30' - 53' STORAGE TRAILERS



**From \$150 Month, Please Inquire**

- Rent To Own Up To 24 Months
- Purchase Outright
- Delivery Available
- 30'-53' Storage
- Roll-up Or Swing Doors Available
- Some With Liftgate
- Some Insulated/Refrigerated

### 28'-32' TUCKAWAY LIFTGATE



2018 Wabash Trailer. Three, 28'-32' Single Axle, Spring Susp, Roll Door, 3,000 lb Tuckaway Liftgate, DOT Insp. Buy/Rent/Lease

### 48' RUNNING REEFERS



2008 48' Refrigerated Trailers. Tandem Axle, Liftgate, Rent To Own

### 53'x102" CARTAGE TRAILERS



Many 2003-2008 Cartage Trailers In Stock. Swing Doors, Roll Door. Buy, Rent, Or Rent To Own

### Kenworth Day Cab, Automatic



2015 Kenworth T680. Pacar Power, Auto Trans, Low Miles, Two To Choose Freight Tractors. CALL

### 48'x102" Inexpensive Flatbed



2010 Dorsey 48'x102" Steel Flatbed. Springs, Slider, 11R24.5. Nice Specs, 12 Payments Of \$750, Or \$8,500

### 48'x102" Inexpensive Flatbed



2007 Transcraft 48'x102" Steel Flatbed. Air Ride, Slider, Decent, 12 Payments Of \$665, Or \$7,000

### 28'x102"x13'6" ROAD TRAILER



2015 Stoughton 28'x102"x13'6". Spring Ride, Aluminum Roof, Pintle Hook, DOT Insp. \$8,950

### 2025 Dorsey 48'x102" Flatbeds



(6) 2025 Dorsey 48'x102". Spring, Slider, Steel Flatbed, Good Specs, \$37,900. FET Included

### Moffet/Princeton Mounts



(4) 2025 Dorsey 45'x102" Steel Flatbed. Moffet/Princeton And Other Forklift Mount Kits, Air Ride, Great Specs, Trades Accepted

### Moffet/Princeton Mounts



(2) 2025 Dorsey 36'x102" Steel Flatbed. Moffet/Princeton And Other Forklift Mount Kits, Air Ride, Great Specs, Trades Accepted

\* Nationwide Delivery Is Available \*

ALSO - We Have 10 Mechanics Available For Van Bodies & Trailer Repairs, Liftgate Repairs & Installation



**NICK SCARVALAS**  
**Commercial Sales**  
**857-247-9023 or 617-249-5603**



**Commercial  
Vehicle Center**

## ALL TRUCKS ON SALE NOW



**2024 F550 DUMP.**  
 I-Pac Tool Box, Diesel, Auto, 4X4,  
 Remote Start, F211917.  
**Sale Price \$97,990**



**2024 T350HD SERVICE.** 12' Rockport  
 Van Body, V6 Gas, PW, PL AC, Ladder  
 Racks, Ladder To Roof, F211793.  
**Sale Price \$71,490**



**2024 F350 DUMP.**  
 Diesel, Auto, 4X4, Tool Box, Remote  
 Start, Plow Prep, UpFit Switches,  
 F211387. **Sale Price \$83,990**



**2023 F550 ALUMINUM DUMP.** Landscaper  
 Specs, Removable Side Panels, Diesel, Auto,  
 4WD, Payload Up Grade, Remote Start,  
 F210248 **Sale Price \$85,990**



**2025 E350 SERVICE.** Rockport Van  
 Body, 3 Bar Ladder Rack, Poly Liner,  
 Curb Side Door, Roll-Up Rear, 7.3L Gas,  
 SRW, F212245. **Sale Price \$63,990**



**2024 F550 LANDSCAPE DUMP.** 12'  
 Body, Curb Side Door, Tool Box, 4X4,  
 Diesel, Remote Start, Payload Up Grade,  
 F210221 **Sale Price \$84,990**

## 250 COMMERCIAL TRUCKS IN STOCK



**2024 F350 DUMP.**  
 Diesel, Auto, 4X4, Remote Start,  
 F210843.  
**Sale Price \$81,990**



**2024 F550 STAKE BODY.**  
 Diesel, Auto, 4X4, Remote Start, Payload  
 Upgrade, 12' Knapheide, F212011.  
**Sale Price \$87,980**



**2024 F350 STAKE BODY.**  
 7.3 Gas, Auto, 4WD, Remote Start,  
 Interior Work Station, Dual Battery,  
 F211161 **Sale Price \$69,900**



**2024 F450 SERVICE.** Diesel, Auto, 4X4,  
 Knapheide Steel Body, Remote Start,  
 Plow Prep, HD Trailer Pkg., F211876.  
**Sale Price \$89,990**



**2024 F350 SERVICE CREW CAB.**  
 4WD, V8 Gas, Auto, Aluminum Body,  
 Remote Start, Pwr Rear Slid Window,  
 F211154 **Sale Price \$71,490**



**2024 F350 DUMP.**  
 7.3L V8 Gas, 4x4, Combo Hitch, PW, PL,  
 Tool Box, F211333  
**Sale Price \$69,990**

**QUIRK FORD**  
**540 Southern Artery (Rt 3A) Quincy, MA**  
**www.quirkford.com • 617-249-5660**

**Business  
Financing with  
NO Co-signer  
Required**

Prices include all available rebates. Rebates include Customer Cash, FMCC Bonus Cash, and Commercial Upfit Bonus Cash. Customer must qualify for rebates. Call for specific details. Prices are subject to change. \* In Lieu Of Rebates



**NICK SCARVALAS**  
**Commercial Sales**  
**857-247-9023 or 617-249-5603**



**Commercial  
Vehicle Center**

## ALL TRUCKS ON SALE NOW



**2024 F550 LANDSCAPE DUMP.** Super Cab, Tool Box, Diesel, Auto, 4X4, Remote Start, Payload Up Grade, F210251. **Sale Price \$89,990**



**2024 T350 CARGO VAN.** Load Area Protection Pkg, High Roof, 148" WB, 31 Gallon Fuel Tank, Pwr Heated Mirrors, F212173. **Sale Price \$54,200**



**2025 F650 DUMP.** 5-7 Yard Rugby Body, Diesel, Automatic, **Sale Price \$103,000**



**2024 F350 12 FT RACK BODY.** 4WD, 7.3L V8 Gas, Galvanized Steel Pintle, Remote Start, Skid Plates, **Sale Price \$68,990**



**2024 E350 FREIGHT HAULER.** 10' DuraCube Van Body, 7' Inside Height, 7.3L Gas, Roll-Up Rear, DRW, 11,500# GVW, F211114. **Sale Price \$54,990**



**2024 F350 UTILITY.** 4X4, 7.3L Gas, DRW, Duramag, Remote Start, Skid Plate, Work Desk, F211100 **Sale Price \$64,990**

## 250 COMMERCIAL TRUCKS IN STOCK



**2024 T350 PASSENGER VAN.** 15 Passenger Wagon, Mid Roof, Privacy Glass, PW, PL, AC, F211827 **Sale Price \$59,449**



**2024 T250 CARGO VAN.** Load Area Protection Pkg, Mid Roof, 148" WB, Pwr Heated Mirrors, F212311. **Sale Price \$50,340**



**2024 F350 SUPER CAB SERVICE.** Steel Body, V8 Gas, 4X4, Remote Start, F211199 **Sale Price \$65,990**



**2024 F550 SERVICE BODY.** 16' Van Body, Stairway Bumper, 4 Bar Ladder Racks, Ladder To Roof, Duel Exterior Cabinets, Work Station, Diesel, 4WD, Remote Start, F210946 **Sale Price \$98,990**



**2025 E450 FREIGHT VAN.** Wabash 16'x 85"x 96" Box, Pull Out Ramp, Step Bumper, Poly Lined, F211415. **Sale Price \$68,990**



**2024 T250 CARGO VAN.** Load Area Protection Pkg, Low Roof, Pwr Heated Mirrors, F211718. **Sale Price \$46,360**

**QUIRK FORD**  
**540 Southern Artery (Rt 3A) Quincy, MA**  
**www.quirkford.com • 617-249-5660**

**Business  
Financing with  
NO Co-signer  
Required**

Prices include all available rebates. Rebates include Customer Cash, FMCC Bonus Cash, and Commercial Uplift Bonus Cash. Customer must qualify for rebates. Call for specific details. Prices are subject to change. \* In Lieu Of Rebates





**(800) 529-2515**  
**WWW.EQUIP-SALES.COM**  
**NORTH HAVEN, CT 06473**



**2001 VOLVO G736 VHP**

**6,400 HOURS, ALL WHEEL DRIVE, FULL CAB, A/C, HEAT & RADIO. 14' MOLD BOARD, CUMMINS DIESEL. NICE SNOW TIRES. COMES WITH FRONT BLADE & WING PLOW. CONTACT TREVOR FOR MORE INFORMATION! (860) 478-2838 \$58,000**



**2008 BOMAG BW213DH-40**  
**3,500 HRS, 84" SMOOTH DRUM,**  
**VIBRATORY, 13 TON. \$43,500**



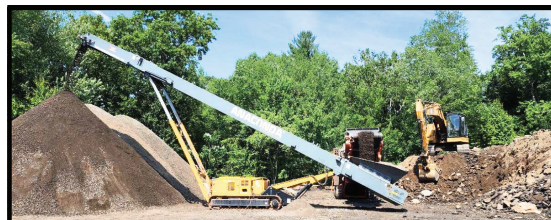
**2006 DEERE 450J LT**  
**RUNS GREAT, WORK READY! 5,600**  
**HRS. \$49,500 OBO**



**2019 VOLVO EC160EL**  
**PIN GRABBER COUPLER & AUXILIARY**  
**HYDRAULICS. 1,630 HRS. \$125,000 FIRM**



**2022 ROCKSTER R1100S**  
**CLOSED CIRCUIT IMPACT CRUSHER. 1 OWNER, 1 OPERATOR! SERVICE RECORDS**  
**FROM DAY 1. CAT ENGINE, CENTRAL GREASE SYSTEM, REMOTE CONTROL,**  
**MAGNET, SCREEN BOX, 2 WAY RETURN BELT. 3,490 HRS. EXTREMELY RELIABLE &**  
**PRODUCTIVE MACHINE. \$275,000 AS OF RIGHT NOW**



**2023 ANACONDA TR6036**  
**60' TRACK STACKING CONVEYOR. 990 HRS. AVAILABLE**  
**FOR PURCHASE OR RENT. CALL FOR MORE**  
**INFORMATION!**

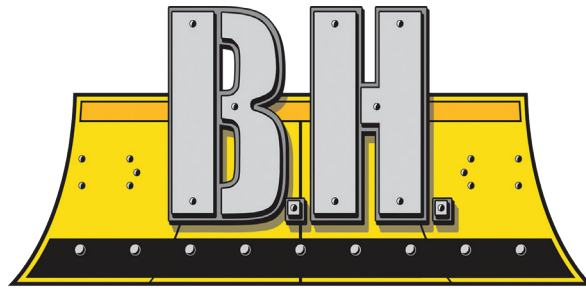
**PARTS • SALES • SERVICE • RENTALS**

**YOU GET THE MOST WITH THE POST**



[www.bhtrailersandplows.com](http://www.bhtrailersandplows.com)

6 Center Parkway  
Plainfield, CT  
06374  
**860-949-7863**



**TRAILERS AND PLOWS**

2207 Hartford Ave.  
Johnston, RI  
02919  
**401-214-3735**



**BOSS**  
SNOWPLOW

**SEASON'S  
END  
CLEARANCE  
SALE!**



**CM Aluminum Skirted  
Flat Bed, Gooseneck  
& Receiver Hitch Built In  
Starting at \$7,495**



**CM SK Skirted Flat Bed  
Gooseneck and Receiver Hitch  
Built In, Starting at \$6,995**



**CM RD Beds  
Over 100 Beds In Stock!  
Starting at \$4,395**



**DURAMAG Short Bed  
Loose Sills, 10" Apron  
and Lights in Headboard  
Cash and Carry, \$3,995**



**BCL 82 x 20  
Full Power Tilt, Steel  
Deck With 12K Winch  
14,000Lb. GVWR, \$10,950**



**SPARTAN 85 x 16  
6'6" Tall, Ramp Door  
Plywood Interior Walls and  
Floor, 9,990Lb. GVWR, \$8,595**



**BIG TEX 14LP 83 x 14Ft.  
W/Ramps, Tarp Kit, Stab  
Jacks, 10GA Floor & Walls  
14,000Lb. GVWR, \$9,650**



**LOAD TRAIL GP22 102" x 30  
25+5 w/Max Ramps, Extra Tool  
Box, Backup Lights, 24,000Lb.  
GVWR, 16,540Lb. Pload, \$17,995**





# ALLEGIANCE

— T R U C K S —



109 Lindberg Ave.  
(978) 686-1800

Methuen, Ma 01844  
(978) 726-9477



**CALL FOR OTHER NEW & USED TRUCKS FOR SALE!**



**2020 HINO 195  
18' REEFER w/  
Curb Side Door,**  
19500 GVW, Carrier  
40x, 211K Miles,  
Roll-Up Rear Door,  
stk#327078,  
**\$29,900.**



**2022 INTERNATIONAL  
MV607.** 2900 Miles!!  
Cummins 6.7 250 HP,  
Allison 2500 RDS 6 Sp  
Auto, 26" Hercules Alum  
Dry Freight 103" T x  
102" W, 2 Rows E-track,  
Alum Wheels, AM/FM/  
Bluetooth/Aux Radio,  
A/C. Power Steering,  
Anthony 3500 Lb Alum  
Tuck, 50"x80" Alum  
Platform, Chrome Mirrors,  
stk#347593, **\$99,900.**



**2023 KENWORTH  
W900.** Tandem,  
83K Miles, 18 Sp  
Eaton Fuller, 605 HP  
Cummins X15, 20K  
Front, 46K Rears,  
22K Helper Axle, 240"  
WB, Stk#339750,  
**\$229,900.**



**2020 ISUZU NQR  
CAB CHASSIS.**  
Diesel, 17950  
GVW, 66K Miles!  
109" WB, Ready  
For 10'/12' Bodies  
And Platforms.  
Hard To Find!  
Stk#346044,  
**\$39,900.**



**2013 KENWORTH  
T370 DUMP.** 33K  
GVW, 93K Miles!  
325 HP PC-6,  
Allison 3500 RDS,  
21000 Lb Rear  
Axle, 5.57 Rear  
Axle, stk#332258,  
**\$74,900.**



**2019 ISUZU  
NPR-HD Gas.**  
101K Mi., 14500  
GVW, 16' Dry w/  
2000 Lb Maxon  
Tuckaway, 2 row  
E-Track, PW/L,  
2 Yr / 60,000 Mi  
Isuzu Ext Warr  
Avail, stk#348292,  
**\$35,900.**



**2017 ISUZU NRR  
DIESEL 16' DUMP.**  
132K, Auto, 19500  
GVW, Florida  
Truck, NEW Dump  
Assy, Swing Rear  
Door, Manual  
Tarp, Stk#343326,  
**\$49,900.**



**2022  
FREIGHTLINER  
M2 106.** 83K  
miles! 25999  
GVW, 26' Dry  
w/ 2500 Lb  
Tuckaway,  
Ready to work!  
stk#339075  
**\$76,900.**

**Allegiance now has locations in MA, CT, NY, ME, VT, RI, NH, NJ & PA!**



For all locations visit our website!



[www.AllegianceTrucks.com](http://www.AllegianceTrucks.com)





**BENSON**  
BY WABASH NATIONAL



# ALLEGIANCE

— TRUCKS® —



WABASH



Bangor, ME  
207-941-9600

Saco, ME  
207-289-6688

Fort Kent, ME  
207-834-6186

**CALL FOR OTHER NEW & USED TRUCKS & TRAILERS FOR SALE!**



**2015 IH 7400**, 350HP., ALLISON 3500RDS, 37780 GVW, ALL SEASON DUMP, FRONT & WING BLADES. UNIT#229444 **\$29,900**



**2015 INTERNATIONAL WORKSTAR 7400** PLOW DUMP, 315HP., DIESEL, AUTO, 82,000 MILES. FRONT & WING PLOWS, READY TO WORK! UNIT #154693 **\$24,900**



**2017 INTERNATIONAL WORKSTAR 7400** PLOW DUMP, 315HP., DIESEL, AUTO, 63,661 MILES, ALL SEASON BODY, FRONT & WING BLADES. UNIT #230016 **\$29,900**



**2019 INTERNATIONAL HX520 FLAT TOP SLEEPER**: 605 CUMMINS, 18SPD. TRANS. AIR-BRAKES, 346,773 MILES. UNIT # 242973 **\$89,900**



**2019 ISUZU NQR** 17950 GVW, ONLY 125K MILES, DIESEL, AUTO, 16' BOX WITH TRI-DOORS. HARD TO FIND! **\$29,900**



**2022 IH LONESTAR ISX 525HP**, 18SPD., 14/46 AXLES, 301K MILES, DUAL EXH & BREATHERS, NICE TRUCK. UNIT#160851 **\$98,900**



**GOING FAST**

**TROUT RIVER TRAILERS.** WE HAVE SEVERAL UNITS IN DIFFERENT COLORS, **CALL FOR PRICING!**



**NEW PMI TRAILERS IN STOCK**

**PMI LOG TRAILERS.** MADE TO ORDER, CALL FOR A QUOTE ON THE SPECS YOU WOULD LIKE.



**WE HAVE NEW AND USED WABASH FLATBEDS, REEFERS AND DRY VANS. CALL FOR PRICING!**



# ALLEGIANCE

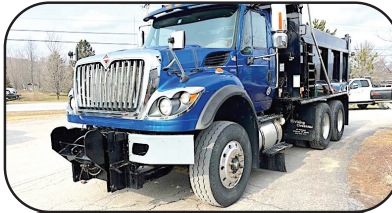
— TRUCKS® —

Jericho, VT  
802-899-3753

Colchester, VT  
800-639-1290



**2020 INTERNATIONAL LONESTAR** HARD TO FIND, BIG CUMMINS POWER 505HP., MANUAL TRANS., 46K REARS, FANCY LOW MILE TRUCK- READY TO WORK! STK#279482 **\$88,900**



**2011 INTERNATIONAL WORKSTAR 7600** NEW ENGINE W/ WARRANTY, 475HP WITH 18SPD. 14' STEEL DUMP, 3 ASPHALT SHOOTS, TOW PLATE, LOAD COVER, VERY NICE TRUCK! STK#228403 **\$43,900**



**2005 INTERNATIONAL WORKSTAR 7400**, PRE-EMISSION DUMP TRUCK, 245HP-DT466, 8LL TRANS, NICE SPECS., FRONT & WING PLOWS, READY TO WORK AND PLOW. UNIT#228236 **\$7,900**



[www.AllegianceTrucks.com](http://www.AllegianceTrucks.com)





# ALLEGIANCE

## TRUCKS®



1400 South Willow St. Manchester, NH  
603-623-8873

132 Pierce Rd. (Rt. 125) Barrington, NH  
603-905-9036



### CALL FOR OTHER NEW & USED TRUCKS FOR SALE!



**2022 INTERNATIONAL MV 602 26' VAN.** Cummins 250 HP, 6 Spd 2500 RDS-P, Lift Gate, 1,854 Miles, stk#347593, **\$99,900.**



**2016 KENWORTH T800 24' FLATBED W/PALFINGER CRANE.** Cummins ISX 450 HP, 13 Spd, 79,200 GVW, stk#347371, **\$139,900.**



**2007 INTERNATIONAL 7500 DUMP 6X4 W/PLOW.** Pre-Emission DT570 310 HP, Allison Auto, 66K GVW, 81K Miles, stk#251042, **\$34,900.**



**2020 INTERNATIONAL 195 18' KIDRON VAN W/CARRIER REEFER.** 205 HP, 6 Speed Auto, 19,500 GVW, 211K Miles, stk#327078, **\$29,900.**



**2019 INTERNATIONAL WORKSTAR 7500 JERR-DAN CARRIER 6x4.** Cummins L9 350 HP, 10 Spd, 56K GVW, 248K Miles, Stk#342718, **\$89,900.**



**2022 VOLVO VNL.** D13 405 HP, I-Shift, 160" WB, Air Ride, 50K GVW, 190K Miles, Clean, Hard to Find! stk#325335, **\$67,900.**



**2022 PETERBILT 389 SLEEPER.** Cummins X15 500 HP, 18 Spd, 53200 GVW, 320K Miles, Lots of Extras! stk#339351, **\$139,900.**



**2019 FREIGHTLINER M2 106 LANDSCAPER W/TEREX BUCKET.** Cummins 220 HP Diesel, 5 Spd, 26K GVW, 42K Miles, stk#332213, **\$104,900.**



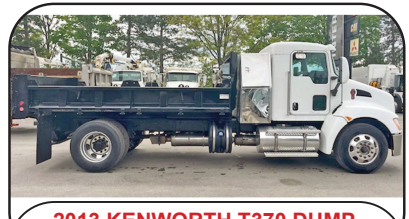
**2017 FREIGHTLINER 114SD MIXER.** Detroit DD13 410 HP, 6 Spd, 68K GVW, 171K Miles, stk#339751, **\$129,900**



**2017 PETERBILT 567 DUMP.** MX-13 405 HP Diesel, Ox Body, Load Cover, 84K GVW, 180K Miles, stk#334616, **\$144,900.**



**2020 WESTERN STAR 4700SB PACKER.** DD14 450 HP, Pac-Mac RLX25 25-Yard Body, 2 Yard Hopper, Cart Tipper, 62K GVW, 60K Miles, stk#336907, **\$189,900.**



**2013 KENWORTH T370 DUMP.** Paccar 325 HP, 6 Spd 3500 RSD w/ PTO, Toolboxes, 33K GVW, 95K Miles, stk#332258, **\$74,900.**

**Allegiance now has locations in MA, CT, NY, ME, VT, RI, NH, NJ & PA!**



For all locations visit our website!



[www.AllegianceTrucks.com](http://www.AllegianceTrucks.com)



# ALLEGIANCE

## TRUCKS®



2181 Providence Hwy, **Walpole, MA**  
800-225-4808

17 O'Keefe Lane, **Warwick, RI**  
800-949-2221



### FINANCING & WARRANTIES AVAILABLE ON USED TRUCKS!



**2024 FORD F650 5-7 YARD CRYSTEEL DUMP.** 7.3L Godzilla Gas, 25,999 GVW, Hoist, Electric Tarp, stk#330516, **\$105,675.**



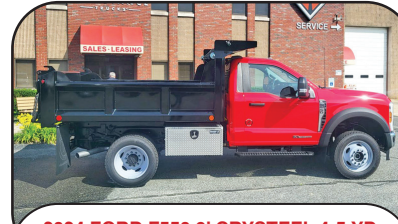
**2025 FORD F650 Cab & Chassis.** 7.3L Godzilla Gas, 25,999 GVW, Dock Height, 212" WB, Ready for 18' Body, #345019, **\$73,795.**



**2023 AUTOCAR XSPOTTER-ON.** Cummins 200 HP Diesel, 3000 RDS-P, 35K GVW, Semi-Trailer Auto Lock System, stk#336970, **\$139,900.**



**2024 FORD F550 SUPER CAB 4X4 11' MASTER MECHANICS CRANE BODY.** 6.7L Powerstroke Diesel, Crane, Welder, Generator, Compressor, 19,500 GVW, stke#345281, **\$195,723.**



**2024 FORD F550 9' CRYSTEEL 4-5 YD DUMP 4X4.** 6.7L V8 Powerstroke Diesel, 10 Spd, 19,500 GVW, Tarp, Pintle, Plate, Toolbox, stk#338631, **\$94,149**



**2025 FORD F650 5-7 YD CRYSTEEL 10' DUMP.** 7.3L Gas, 25,999 GVW, Hoist, Tarp, stk#339381, **\$106,750.**



**2024 FORD F600 11' KNAPHEIDE UTILITY.** 6.7L Powerstroke Diesel, 10 Spd, 22k GVW, Camera, Skid Plates, Stk#334700, **\$96,868.**



**2024 FORD F550 XL 4X4 12' CHIP TRUCK.** 6L Powerstroke Diesel, 10 Spd, 19,500 LB GVW, 75 Miles, stk#339385, **\$96,593**



**2024 FORD F600 XL 4X4 12' RUGBY LANDSCAPER DUMP.** 6.7L Powerstroke. 10 Spd, 22K GVW, Side Door, stk#334697, **\$99,000.**



**2024 FORD F550 XL READING WALK-IN UTILITY 4X4.** 6L Powerstroke Diesel, 10 Spd, 19,500 LB GVW, 55 Miles, stk#345078, **\$108,357**



**2024 FORD F550 XL 4-5 YD RUGBY 9' DUMP 4X4.** 6.7L V8 Powerstroke Diesel, 10 Spd, 19,500 GVW, Pintle, Plate, Toolbox, stk#334694, **\$93,548**



**NEW 2024 INTERNATIONAL RH 613 6X4 DAY CAB.** 410 HP Diesel, Air Ride, 52,350 GVW, 2K Miles, stk#330354, **\$119,900.**

**Allegiance now has locations in MA, CT, NY, ME, VT, RI, NH, NJ & PA!**



For all locations visit our website!



[www.AllegianceTrucks.com](http://www.AllegianceTrucks.com)



# ALLEGIANCE

## TRUCKS®



Hartford, N.Haven, Franklin, CT / W. Springfield, MA

**Call Mike McDonald 860-308-6599**



**GREAT SELECTION AND PRICE ON ALL USED INVENTORY**



**2017 INTERNATIONAL 4300.** Brand New 10' Dump Body, Cummins Power, Auto Cover, Tow Plate, Auto, Only 103K Miles, Alum Wheels, Very Nice Truck, #108395, **\$85,900**



**2020 INTERNATIONAL HX Tri Axle Dump,** ISX 485HP, 8LL, 20K, 20K & 46K Axles, Only 101K Miles, 17' Steel Body, Fancy, #343430, **\$179,900**



**2022 INTERNATIONAL LONESTAR.** ISX 525 HP, 18 Speed, 14/46 Axles, 301K Miles, Dual Exhaust & Breathers, Nice Truck, #160851, **\$98,900**



**2011 IH 7600 6x4 Dump.** 150K Miles, Reman Motor Installed With One Year Warranty! Max15, 475HP, 18 Spd, 20FA, 46RA 66K GVW, 14' Steel Dump, 3 Shoots, Tarp & Tow Plate #228403, **\$42,900**



**2018 KENWORTH DUMP TRUCK,** Under CDL, PX7 250 HP, Allison Auto, Only 50K Miles, Ready to Work, Clean! #342485, **\$59,900**



**2013 IH Side Loader Trash Truck,** Labrie 31 Yard, Dual Drive, 55K Miles, 300HP, Auto, Nice Truck, #102915, **\$19,900**



**2020 INTERNATIONAL Lonestar Heavy Day Cab,** ISX 505HP, 46K Rears, 350K Miles, Fancy! #275387, **\$88,900**



**2022 INTERNATIONAL MV,** Cummins 240 HP, Allison Auto, ONLY 99K Miles, Big 26 x 102 x 103 Body, Side Door & Gate, Super Clean Southwest Truck !! #344215, **\$83,900**



**2017 RAM 5500 Dump Truck With Stainless V-Plow,** Diesel, Auto, Only 135K Miles, Ready To Work, #348058, **\$29,900**



**2012 IH 4400.** Only 164K Miles, 270 HP, Auto 3500RDS, 33K GVW, 20' Box w/ Walk Ramp, 3 Sides Doors!, #104520, **\$7,900 AS IS.**



**2022 FREIGHTLINER M2,** DD7, Auto, 26' Van with Gate, LOW MILES, Only 85K, Under CDL, Southern Truck Super Clean, #33907, **\$76,900**



**2018 FORD TRANSIT,** Gas, Auto, Enclosed Utility body With Shelving, Nice Truck, Only 55K Miles! #347151, **\$32,900**



**2021 ISUZU NPR XD,** 16K GVW, Diesel, Auto 144K Miles, 16' Box w/ Gate, #348039, **\$34,900**



**2020 ISUZU NPR HD,** 14500 GVW, Diesel, Auto, Only 101K Miles, 16' Box With Gate, Nice Truck, #130235, **\$42,900**



**2020 Isuzu NQR,** Hard To Find 109" WB, Diesel, Auto 65K Miles, Ready To Add Tour Body! **\$39,900**

**Allegiance now has locations in MA, CT, NY, ME, VT, RI, NH, NJ & PA!**



For all locations visit our website!



[www.AllegianceTrucks.com](http://www.AllegianceTrucks.com)



# R & R INDUSTRIES

**We Buy All  
Scrap Metals**

[www.RRTrucksAndEquipment.com](http://www.RRTrucksAndEquipment.com) • [Bruce@RandRind.com](mailto:Bruce@RandRind.com)

**195 Rocus Street, Springfield MA 01104**

**413-733-2118**

## TOP \$ PAID FOR ALL METALS

**\* ALL FERROUS & NON FERROUS METALS\***  
**COPPER/BRASS/ALUMINUM/STAINLESS/IRON**  
**& STEEL\* MACHINERY\* HEAVY EQUIPMENT\***  
**CARS/TRUCKS\***



**CLARK C500 FORKLIFT.** 10,000 lb Capacity, 6 Cyl Propane, Triple Mast, With Forks, Extra Hydraulic Valve For Attachments, Reduced For Quick Sale, **Only \$4,000**



**MELROE BOBCAT SKID STEER LOADER, V4** Wisconsin Motor. Quick Attach Bucket, Remote Hyd For Attachments. Needs A Little TLC. Good Older Machine For A Starter. I'll Replace Tires. **Only \$2,950.**



**12' HEAVY DUTY SNOW PLOW.** 4 Way, Excellent Condition, Only \$2,500, Lots More Available 6' To 11' Call Bruce



**HOLMES 750 WRECKER.** Excellent Condition. With Outriggers, Swing Away Booms, To Pick Over The Side. Ready To Mount On Your Truck. Call For More Info. **Only \$3,895 !**



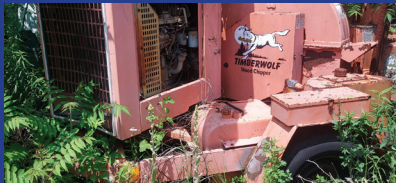
**JOHN DEERE 44" Snow Blower Attachment.** Brand New On Pallet. I Model MO44SBM. All Attaching Hardware Included. A Steal At Only \$600 !



**BOMBARDIER Track Drive Snow Plow.** 6 Cylinder Ford, Runs & Works Like New ! Only 837 Original Hours ! Lights, Heat, Wipers, etc. 4', 4 Way Plow, Larger Blades Available. **Only \$7,500/BO.**



**30 YARD+ ROLL OFF CONTAINERS.** For Recyclables, Multiple Dividers For Different Commodities. Good condition. Call For Details. **Only \$5,500/BO**



**TIMBERWOLF WOOD CHIPPER** Bad Cummins 4BT Motor. Everything Else Is Great. No Time To Fix **Only \$3,850**



**8' FLAT BED DUMP BODY.** SRW, Electric Hydraulic Pump, Removable Wood Sides, Excellent Condition, **Only \$1,500**



**UTILITY TRAILER.** Just Needs A Deck, 10 x 6, Excellent Condition, Only \$250, Many Sizes Available, **Call With Your Needs**



**GRAVELY 16G PROFESSIONAL UTILITY TRACTOR.** Kohler Gas Motor, Only 1400 Hours, Hydrostatic Drive, Excellent Condition, Plow Available **\$2,150/BO**



**GRASSO TRUCK TIRE CHANGER.** Electric/ Hydraulic, You Gotta See This One, **Only \$500**



**American Spray Technology Mixer & Spray Unit** For Ceiling, Wall Coatings, Gas Motor, Hydraulic, Separate Air Compressor For Spray Unit, Fairly New, Super Clean, **\$1,500/BO.**



**SNOW PLOW BLADES.** All Types & Sizes. 6', 7', 8', 9', 10', 11', 12', Call With Your Needs ! Starting At **Only \$200 & Up !**



(4) 11R x 22.5 Almost New Virgin Drive Tires On Dayton Rims, All 4 For \$750, Many Other Sizes Available, Call



**STAINLESS STEEL WORK BENCH/ FOOD PREP.** Non Magnetic, Excellent Condition, Many Sizes And Types To Choose From, **Starting @ 100**



# NORTHEAST TRAILER



20 Business Park Drive  
Smithfield, RI 02917  
Hours: M-F 8:30-4:30

## 401-941-4445



(4) 2009 GREAT DANE Trailers  
53'x 102"x 13'6", Swing Door, Air  
Ride, Alum. Roof, \$7,000 Each



1998 and Up: KENTUCKY  
53'x102"x13'6"  
Drop Frame Vans, Multiple Side Doors  
Great Hay Trailers, Starting at \$4,250



2005-2008 53' ROLL DOORS  
Aluminum Roof, Spring Ride  
\$7,500 Each



2009 53' WABASH  
DURAPLATE ROLL UP  
\$6,500



2009 48' GREAT DANE  
Working Gate, 2 Rows E-Track  
Logistics Post, \$7,500



4,000 GALLON  
ABOVE GROUND FUEL TANK  
\$6,250



2007 48' GREAT DANE with  
Working Tuck-Away Gate, 2  
Side Doors, Air Ride, \$6,500



2011 GREAT DANE  
CARRIER Reefer Unit  
\$7,500



2013 30' STRICK TRAILER  
Working Gate, Aluminum Roof  
Logistics Post, \$5,500



(3) 2022 1-Trip High Cube Shipping  
Containers, 1 With Single Door-\$8,500  
2 With Double Doors-\$9,250 Each



(1) 20 FT. One-Trip CONTAINER  
With Single Door  
\$5,900



4 EXPORT FLATBEDS  
\$3,750 Each

### WWW.NETRAILER.COM



# BALLARD

TRUCK CENTERS

(508) 214-3036  
drive@ballardtrucks.com



Visit us online at [BallardTrucks.com](https://BallardTrucks.com) or scan to view our full inventory.



2024 KENWORTH T880  
DUMP TRUCK  
STK#55934  
**\$224,500**



2019 MACK GRANITE 64FT  
DAY CAB  
STK#3601  
**\$135,500**



2025 ISUZU FTR  
LANDSCAPE TRUCK  
STK#00950  
**CALL FOR PRICE !**



2021 MACK PINNACLE 64T  
DAY CAB  
STK#08140  
**\$129,500**



2025 REITNOUER BIG BUBBA  
SEMI-TRAILER DROP DECK  
STK#T751  
**\$62,000**



2024 TRAIL KING TKLB332  
LIVE FLOOR TRAILERS  
STK#T741  
**\$110,000**



2019 MACK PINNACLE 64T  
DAY CAB  
STK#04043  
**\$67,500**



2024 ISUZU NPR XD  
LANDSCAPE TRUCK  
STK#02476  
**\$75,950**



2024 VOLVO VNL64T300  
DAY CAB  
STK#64521  
**CALL FOR PRICE !**



2015 MACK GRANITE GU713  
GARBAGE TRUCK  
STK#22038  
**\$104,000**



2019 VOLVO VHD64FT300  
DAY CAB  
STK#873305  
**\$77,900**



2016 HINO 195  
FLATBED DUMP  
STK#1146  
**\$34,900**



2025 VOLVO VNR64T300  
DAY CAB  
STK#681231  
**CALL FOR PRICE !**



2020 WESTERN STAR 4700  
DUMP TRUCK  
STK#1948  
**\$184,500**



2025 MACK ANTHEM 64T  
SLEEPER TRUCK  
STK#52059  
**CALL FOR PRICE !**



2024 ISUZU NPR HD  
UTILITY TRUCK  
STK#215705  
**\$92,131**



2015 ISUZU NPR XD  
LANDSCAPE TRUCK  
#K00389  
**\$28,900**



2020 MACK GRANITE 64FR  
DUMP TRUCK  
#14931  
**\$194,500**



2020 PETERBILT 567  
DUMP TRUCK  
STK#35140  
**\$183,000**



2025 VOLVO VHD84B300  
CAB & CHASSIS  
STK#690101  
**CALL FOR PRICE !**





# CONSOLIDATED TRUCK & EQUIPMENT, INC.

**FELLING  
TRAILERS**

**EXTREME  
TRAILERS**



**www.ConsolidatedTruckEquipment.com**

**1727 FALL RIVER AVE, (RT.6) NEAR SEEKONK SPEEDWAY  
SEEKONK, MA**



**2025 MAC 28' ALLUMINUM DUMP TRAILER:** 8 ALLUMINUM RIMS, ALLUMINUM FRAME, AIR RIDE, ½ PLASTIC LINER.



**2025 MAC 26' STEEL DUMP TRAILERS:** Hi-Lift Gate, 24.5 Tires On Aluminum Rims, 60,000 LB Center Point Suspension, Electric Load Cover, Body All ¼" Hardox,



**2025 MAC 27' STEEL BODY ALUMINUM FRAME TRAILER:** Hi-Lift Gate, Air Ride, 11x24.5 Tires On 8 Aluminum Rims, Hardox Steel Body, Full Aluminum Side Skirts, Due In 2 Available, Trades Accepted,



**NEW FELLING 25 TON:** AIR RAMPS, FRONT AXLE LIFT.



**2024 EXTREME 48' X 102 ALL ALUMINUM FLAT BED TRAILER.**  
**\$49,280.**



**FELLING 16' Tilt Deck Equipment Trailer:** 18,400 GVWR. Also: 5' Stationary Deck, Black Locking tool box.



**NEW EAGER BEAVER TRAILERS.**  
20-TON, 21' Deck, 6' Beaver Tail, Call For Details.



**2019 FLEETWOOD 30' CAMPER:** ONLY 7K MILES, IMMACULATE! BOSS NEVER HAS TIME TO USE IT. \$52,500.



**2025 Felling 20 Ton Tilt Deck Tag Trailer:** 25' tilt deck with 4' stationary deck, 36" deck height. Call for price. 2 in stock.

**Visit  
Our  
Parts  
Dept.**



**Hours  
7:30 A.M.  
to  
5:30 P.M.**

CALL US: AT 508-336-6215 • HOURS: M-F 8 to 5:30 • SAT: 9 to 12 Noon





**Cherry Hill Construction Co., Inc**  
**51 Ciro Road – North Branford,**  
**CT 203-488-7929**  
**www.CHERRYHILLEQUIPMENT.com**



**2005 PETERSON PACIFIC HC5410.** Horizontal Grinder, 6,336 Hours, **Asking \$245,999**



**1995 HOGZILLA TC1464P.** Tub Grinder, 1,751 Hours, **Asking \$150,000**



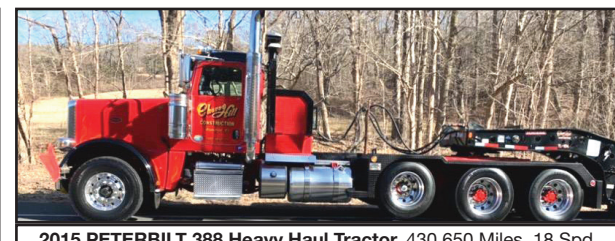
3,973 Miles, 46,000 Rears, 18 Speed Manual, Air Trac Suspension, Wet Line, New Clutch Installed No Miles On It. **Asking \$130,000**



**2018 PETERBILT 389 Tractor,** Cummins X15 565, 333,973 Miles, 46,000 Rears, 18 Speed Manual, Air Trac Suspension, Wet Line, New Clutch Installed No Miles On It. **Asking \$130,000**



**2011 Mack GU713 Triaxle Dump Truck** 456,850 Miles, Maxitorque 10 Speed Manual Trans, 18K Front, 22K Rears **Asking \$75,000**



**2015 PETERBILT 388 Heavy Haul Tractor,** 430,650 Miles, 18 Spd, Engine Rebuilt a At 370k miles, ISX15 550 HP 1950 Engine, 20/22/46, New Trans, New Rear, 4:10 Rears, Wet Line, Holland 100 Ton Fifth Wheel, **Asking \$155,000**



**2007 PETERBILT 379,** Wet Line, 38,000 Rears, 12,000 Front, **Asking \$42,000**



**2012 KOMATSU PC360LC-10** 9,479 Hours, AC, Hydraulic thumb. **Asking \$75,000**



**CAREY AUTO**  
INC  
TRUCK EQUIPMENT  
SALES



37 County Road  
Route 106  
Plympton MA 02367  
PH: 781-582-1378  
FAX: 781-585-4438



2015 KENWORTH T-370W/KNUCLE BOOM:  
CUMMINS DIESEL, AUTO., MANY OPTIONS,  
GREAT CONDITION.



2012 FREIGHTLINER  
DUMP TRUCK:  
Detroit  
Diesel, 127,000  
miles, Auto, 17.6  
Heated Body,  
18 front/46 rears.  
\$79,900



GALION DUMP BODIES IN STOCK NOW!  
INCLUDES CAB SHIELD & HOIST.  
CALL FOR PRICING.



NEW VANAIR AIR-  
N-ARC  
4 IN 1 UNIT.  
300A - 7KW-  
40CFM.  
\$17,900.



2002 CAT 311C EXCAVATOR:  
5,853 HOURS,  
\$36,000



READY TO GO COMPLETE TRUCK PACKAGES.  
LOTS OF OPTIONS AVAILABLE  
New & Used Trucks Ready To Go!



CM ALUMINUM FLATBEDS IN STOCK NOW!  
MANY SIZES. CALL FOR PRICING



STEEL FLATBEDS  
IN STOCK NOW! MANY SIZES.  
CALL FOR PRICING.



2014 KENWORTH T300 W/NEW HAD 185:  
CUMMINS DIESEL, AUTOMATIC. HOOK 36"/54". HR  
1500 TARP SYSTEM. \$85,000.00

SALES,  
SERVICE,  
PARTS

CALL TOLL FREE: 781-582-1378  
[WWW.CAREYTRUCKEQUIPMENT.COM](http://WWW.CAREYTRUCKEQUIPMENT.COM)

CUSTOM METAL  
FABRICATION  
AVAILABLE



# PAT'S TRUCK SALES

Office: 603-347-1386 - After Hrs: 978-490-6197



**2011  
FREIGHTLINER  
DUMP.**  
10,983 Miles,  
Cummins ISM  
300Hp, 8LL Trans,  
10' Body, Pintle  
Hook, Air To Rear,  
**\$47,500**



**2015 FREIGHTLINER  
DUMP.** Detroit 505 HP,  
Allison Automatic,  
51,830 Miles, 14' Body,  
3 Shuts, Pintle Plate,  
Air Rear, 66K GVW,  
**\$123,500**



**2005 STERLING  
LT9500 T/A DUMP.**  
Mercedes 450 Hp,  
Automatic, 75,900  
Miles, 20 Ft Axle,  
46 Rears, Double  
Frame, Many Up  
Dates, **\$79,900**



**2009 IH 7600 T/A  
DUMP.**  
Cummins 410 HP, 8LL,  
83,840 Miles, 20 Ft  
Axle, 46 Rears, 15'  
Body, Double Frame,  
Pre Def Truck, **\$92,500**



**2015 RAM 3500 DUMP.** V8  
6.4L Gas, Auto, 98,762 Miles,  
9 Ft Body, 4WD, Ready To  
Work, **\$24,900**



**2012 Freightliner M2 DUMP.**  
Cummins 6.7L 300 HP,  
Automatic, 112,200 Miles,  
14' dump Body, **\$47,900**



**2005 STERLING LT9500 S/A  
TRACTOR.** Pre Emission CAT  
C9 350 Hp, Automatic, 25,200  
Miles, 37,000 GVW, Super Clean,  
**\$42,900**



**2009 IH 4300 DUMP.** 46K  
Miles, DT466, Automatic,  
10' Godwin Body,  
33,000 GVW, **\$47,900**



**2015 FORD F250 UTILITY.**  
4x4, Plow, V8 Gas, Auto,  
Knapheide Body, 44,067 Miles,  
**\$25,900**



**2007 IH 7600 DUMP.**  
13 Ft Body, Cummins 400 HP,  
8LL Trans, 182,770 Miles,  
60K GVW, **\$74,900**



**2012 IH 4300 DUMP.** DT466,  
Automatic, 79,336 Miles, 33,000#  
GVW, Air Brakes, 10' Body,  
Pintle Hook, **\$47,900**



**2003 CHEV C4500 DUMP.**  
Diesel, Automatic, 135K Miles,  
Serviced And Ready To Work,  
**\$24,900**



**2011 FREIGHTLINER DUMP.**  
Cummins 6.7L, Auto, 99,187  
Miles, 33,000# GVW, Pintle Hook,  
Tool Box, 3 Shutes, Polish Alum  
Wheels, **\$48,500**



**2013 IH 4300 DUMP.** 10 ft  
Stainless Steel Body, DT466,  
Automatic, 66,201 Miles, 33k GVW,  
Electric Tarp, Tool Boxes, **\$49,900**



**2001 PETERBILT 330 HOOK  
LIFT.** Plus Knuckle Boom/  
Crain, CAT 3126, 8LL, 260,588  
Miles, **\$42,900**



**2022 RAM 2500 LARAMIE.**  
4X4, Crew Cab, 89,340  
Miles, Cummins, Super Nice!  
**\$44,900**

**Visit Us - [www.patstrucksales.com](http://www.patstrucksales.com) • 77 Route 125, Kingston, NH**



# SURPLUS EQUIPMENT SALE

## \*\*\*\*\* FLEET MAINTAINED \*\*\*\*\*



**2019 CASE CX57C.** Dig/Grade Buckets, 2,327 Hours, Hydraulic Thumb, **\$52,000.**



**2018 HYUNDAI HX-160LC-9.** 2,300 Hours, Dig/Grade Buckets, Hydraulic Thumb, Blade, Gorilla GXS-120 Hammer, **\$129,000.**



**2020 KAUFMANN 25K TRAILER.** DUAL TANDEM, ELECTRIC BRAKE, EXT RAMPS, SPARE, **\$9,350.**



**2020 FELLING DOUBLE REEL TRAILER.** ELECTRO-HYDRAULIC, 14K, (2) 120" X 66" REELS, 3" SHAFT W/SEPARATE HYDRAULICS, **\$16,750.**



**2019 DYNAPAC CC900G.** SINGLE VIBRATING DRUM, GAS, 85 HOURS, **\$12,250.** ALSO, 7K TILT TRAILER, **\$3,500.**



**2012 INGERSOLL RAND COMPRESSOR.** 1,475 Hours, Diesel, **\$9,200.**



**2018 KUBOTA KX-057-4.** 2575 HOURS, HYDRAULIC THUMB, DIGGING AND GRADING BUCKETS, **\$49,000.**



**2018 BLUE DIAMOND 24" COLD PLANER.** Tilt/Side Shift, 12 Hours Of Use, High Flow, **\$16,500.**



**Twin State Utilities Corp.**  
**40 Harriet Dr. Bristol, NH**  
**603-530-2871**







**USED  
KNUCKLE  
HEAD  
CRANES.**

Plympton, MA  
781-582-1378

# QUIPCAL

The Decal Experts

Prompt • Knowledgeable • Reliable • Experienced

**To Check \$ Call: 215-536-5339**  
**& Availability Email: info@CustomServicesCompany.com**

*Your Next Decal Set Is Here • [www.QuipCal.com](http://www.QuipCal.com)*

**Decal Sets for your Construction,  
Forestry, Ag, Mining & Industrial  
Equipment - Old and New.**



**CAT D6H  
DOZER.**

Very Good  
Condition, Runs  
And Operates  
Great, 6600 Hours,  
**\$54,500.**

Tom  
860-605-6895



**2002 INTERNATIONAL 4900 SERIES.** DT466,  
32K GVW, Muni Truck, 29K Original Miles, New Allison Auto,  
PA SS Plow, **\$48,995.** 401-523-6116

**SAM's Tree Service**  
"We handle the jobs the Big Guys turn down!"  
• Licensed Arborist #913  
• Insured  
• Competitive Pricing  
• Free Estimates  
Samuelmald118@yahoo.com  
**401-269-1133**  
• Brush Chipping • Tree Removal  
• Tree Pruning • Stump Grinding  
• Residential Land Clearing

## \*\*ONLINE ONLY AUCTION\*\*



*Assets located in 2 locations:*

616 Corporate Way  
Valley Cottage, NY 10989

709 Executive Blvd.  
Valley Cottage, NY 19089

**Date: Bidding ends Thursday, February 13th**  
**Inspection: Wednesday, February 12th from 9:00 AM – 4:00 PM**

## PROFESSIONAL MOVING & STORAGE COMPANY



### HIGHLIGHTS

Includes assets surplus to the ongoing needs of Santiago Moving & Storage

Highway Sleeper Tractors

MV Box Trucks

Kentucky Drop Floor Trailers

Material Handling Equipment

(150+) Wooden Storage Vaults

(1000+) Moving Blankets

Safety Equipment

Unclaimed Household Goods &

Furniture in Storage Vaults

Tools, Supplies, Warehouse Equipment,  
& Office Furniture



TERMS: To Be Sold In Accordance w/CRG  
Terms As Published On Web & Auction.



**crgllc.com • 800-300-6852**





**VISIT OUR WEBSITE FOR  
ALL LISTINGS!**

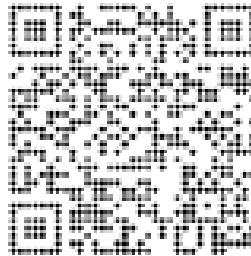
**TRUCKS - EQUIPMENT - TRAILERS**



**CHECK OUT OUR BRAND-NEW AUCTION WEBSITE**

## NEW FEATURES FOR 2025

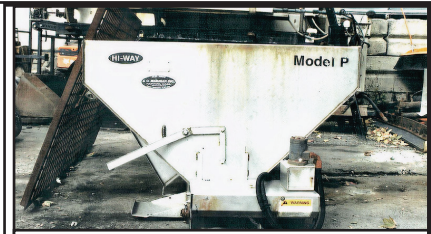
- AI Assist For Precise Searches
- Sleek New Website Functions
- Improved Bidding Interface
- Upgraded Auction Listings
- Bigger Photos and Videos
- Improved Member's Area
- Expanded Southern Inventory



**[www.AuctionsInternational.com](http://www.AuctionsInternational.com)**

**1-800-536-1401**

**NEW INVENTORY  
ADDED EVERY DAY**



**HI-WAY MODEL P SANDER. 8 FT HDY SS,  
\$1700 OBO. 413-374-5331**



**THOMAS 400 SCREENER.**  
610 Hours, One Owner, Excellent  
Condition, Same Size As Read 90  
Screener, **\$39,000.**  
401-932-8226

**DRAINAGE ?  
GRADE IMPROVEMENTS  
BE READY FOR  
THE NEXT BIG STORM  
WASHED STONE  
PROCESSED GRAVEL  
SAND  
TOP SOIL  
RIP RAP  
FILL**



**Please Call for pricing  
401-447-2777**







**2014 FAE RSL/DT 225 SOIL STABILIZER.**  
Just Like New, Asking \$63,000.  
603-455-6965 or 603-939-2462



**2000 FREIGHTLINER FL70 OIL TANKER TRUCK.**  
KME Aluminum 2800 Gallon, 2 Compartments, 2,200 & 600, Top Load, LCD Meter, CAT 3126 Motor, Allison Trans, New Brakes, Recent Serviced, Polish Aluminum Wheels, 180,000 Miles, \$29,000. 508-961-7528



**MASSEY FERGUSON 1528:** Tractor with 982 Hrs., 28HP, Diesel, Hydro. 4x4, \$11,900 860-928-5748

**ALLISON AUTO**



**DETROIT DIESEL**



**2016 FREIGHTLINER CASCADIA DD13 Detroit,**  
Allison Automatic, 388,774 Miles, \$36,000  
Call W.B. Hill For More Info 413-525-6665

# BEAM TRUCK & BODY INC.

RI Dealer #647

433 CUMBERLAND HILL ROAD, WOONSOCKET, RI 02895

**401-767-2639**



**NEW - USED & RECONDITIONED DISPOSAL EQUIPMENT**



**2004 KENWORTH T300:** 396,914 MILES, AMERICAN 75,000# ROLL-OFF, CAT C12 W/ FULLER 8LL, 60,000# GVW CALL FOR MORE DETAILS !



**2000 INTERNATIONAL WITH 2023 AMERICAN / PALFINGER 250S HOOK-LIFT, LOW MILES. \$70,000**



**2010 INTERNATIONAL 7400:** 42,000 MILES W/ HEIL 22 YD. AUTOMATED PACKER. \$60,000 WILL SPLIT.

**IN STOCK READY TO INSTALL NEW EQUIPMENT**

\* HAD-185-120-36/54"

\* T40S AMERICAN PALFINGER

**WWW.BEAMTRUCK.NET**



# STONEHAM


**617-733-0773**


**2025 F350 14ft VAN BODY.** Step Bumper, Pull Out Ramp, Roll Up Door, 7.3L Gas, Pwr Equipt, 55 Fuel Tank, #25172. Call 617-733-0773



**2025 F750 DUMP.** 6-8 Yard Body, Pintle Hook, 7.3L Gas, Automatic, #25034, Call 617-733-0773



**2024 F550 14ft SWITCH N GO.** Diesel, Remote Start, 4X4, Payload Plus Pkg, #24993 Call 617-733-0773



**2023 E350 FREIGHT VAN.** E-Track, Pull Out Ramp, Step Bumper, 7.3L Gas, #23415 \$51,599



**2024 F550 SWITCH N GO.** 11' x 53" CAN, 4x4, Diesel, Remote Start, #241484, \$95,599.



**2024 F250 UTILITY.** V8 Gas, 4WD, Reading Body, Dual Battery, Upfit Switches, #242644 \$58,599



**2024 F550 LANDSCAPER.** 7.3L Gas, 4X4, Payload Upgrade, Remote Start, #24112 On Sale



**2024 F550 LANDSCAPER.** Duramag Aluminum Dump, 7.3L Gas, Curb Side Door, Combo Tailgate/Swing Rear, 4WD, Payload Up Grade, #24220, Call 617-733-0773



**2023 F350 DUMP.** Diesel, 4X4, 9' Body, Tool Boxes, Remote Start, #232265 \$76,599



**2024 F550 CREW CAB LANDSCAPER.** 4X4, Diesel, 12' Body, Remote Start, #24985



**2024 F350 SERVICE.** V8 Gas, 4X4, Reading Body, Remote Start, SRW, Dual Battery, Upfit Switches, Step Boards, #24501, \$62,599



**2024 F550 UTILITY.** 90" x 60" Aluminum Platform Liftgate, 16' Van Body, Dual Side Compartments, Diesel, #24855 \$105,375.



**2024 T350 ROCKPORT SERVICE.** 10' Body, ladder To Roof, 3 Bar Ladder Rack, #243002



**2024 F550 UTILITY.** 9' Body, 4X4, Diesel or Gas, Call 617-733-0773



**2024 F550 DUMP.** 4X4, Diesel, Payload Pkg, Remote Start, Dual Battery, #241881



**2025 E450 FREIGHT VAN.** 14' Rockport, Aluminum Liftgate, E-Tac, #25134



**2024 T250 MEDIUM ROOF VAN.** Bin/Shelving Package, V6 Gas, Auto . AC, PW, PL, #241148 Call 617-733-0773



**2024 T350 HIGH ROOF VAN.** All Wheel Drive, Transit Trail Package, Roof Vent, #242792, Call 617-733-0773



**2024 F350 DUMP.** Diesel, 4X4, Dual Battery, Remote Start, 2-3 Yd Body, #24888 \$76,699



**2024 F350 DUMP.** Diesel, 4X4, Dual Battery, Remote Start, 2-3 Yd Body, #241078, \$74,599



COMMERCIAL  
VEHICLE CENTER

Call Bill Pollack 1-617-733-0773  
or billpollack@stonehamford.com



COMMERCIAL  
VEHICLE CENTER



# STONEHAM



617-733-0773

## WORK VAN SALE EVENT – BIG OPTIONS!



**2024 T250 LOW ROOF WORK VAN.** Bin Shelving, Equipment Storage Area, Privacy Glass, V6 Gas, RWD, Heated Mirrors, #241792 **ON SALE**



**2024 T250 MID ROOF ALL WHEEL DRIVE.** Bin Shelving, Dual Batteries, 110V Outlet, Heated Mirrors, 360 Camera, #243041 **ON SALE**



**2024 T250 MID ROOF VAN.** Bin Shelving, Equipment Storage Area, Privacy Glass, V6 Gas, PW, PL, Heated Mirrors, #241332 **ON SALE**



**2024 T250 MID ROOF VAN.** Bin Shelving, Ladder Racks, Privacy Glass, V6 Gas, PW, PL, Heated Mirrors, #241152 **ON SALE**

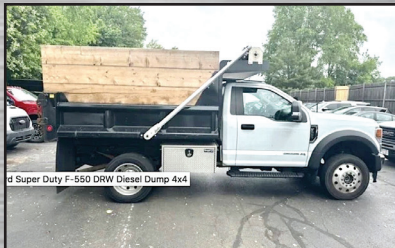


**2024 T250 LOW ROOF VAN.** Bin Shelving, Equipment Storage Area, Privacy Glass, V6 Gas, RWD, Heated Mirrors, #241134 **ON SALE**



**2024 T350 MID ROOF CARGO VAN.** Rear Wheel Drive, Privacy Glass, V6 Gas, PW, PL, Heated Mirrors, Cargo Area Protection Pkg, #242064 **ON SALE**

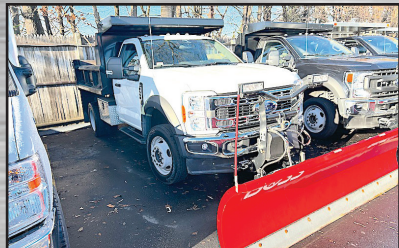
## USED TRUCKS SPECIALS



**2022 F550 DUMP.** Diesel, 4X4, 33,032 Miles, Polish Aluminum Wheels #24199A, **\$66,499**



**2022 F550 DUMP.** 4X4, Boss Plow, 7.3L Gas, 16,480 Miles, #22171P **\$64,499**



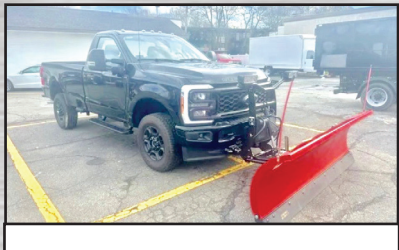
**2023 F500 DUMP.** 7,019 Miles, 4X4, Boss Plow, V8 Gas, Tool Box, #23091P **\$77,900**



**2024 CARGO VAN.**  
10 Miles, #24026P



**2022 T150 CARGO VAN.**  
22,573 Miles, #22179P.  
**\$37,500**



**2023 F350 STX 4X4.**  
125 Miles, Boss Plow, V8 Gas, #23102P,  
**\$51,299**



COMMERCIAL  
VEHICLE CENTER

[www.StonehamFordTrucks.com](http://www.StonehamFordTrucks.com)

211 MAIN ST. STONEHAM, MA 02180

Mon-Fri 8:30am-8pm Sat 9- 5pm Sunday 11-4

ALL PRICES NET & INCLUDE ALL AVAILABLE REBATES TO DEALER

Call Bill Pollack 1-617-733-0773 or [billpollack@stonehamford.com](mailto:billpollack@stonehamford.com)



COMMERCIAL  
VEHICLE CENTER



## RENTAL WITH OPERATOR

### PORTABLE JAW CRUSHER AND IMPACT CRUSHER



**DAY-WEEK-MONTHLY RATES**  
**80' STACKER AND**  
**EXCAVATOR AVAILABLE**

**NEW ENGLAND**  
**CALL KEN**  
**508-328-0028**



**EAGER BEAVER 10 TON TRAILER.** Completely Rehabbed, Air Brakes, Like New,  
**\$11,000 OBO** Takes It Away. 774-488-6535

## 2014 VOLVO E C 300 D L EXCAVATOR



3104 Hours, One Owner, With All Service Records, Plumbed For Hammer And Attachments, S - 2 Coupler. 42 Inch Craig Bucket With New Sweden Combi Teeth, Very Good Condition,  
**\$107,000.** Located In Rhode Island, 401-300-9041



**1968 INTERNATIONAL 1700 STAKE BODY.** V8 Gas, 5 Speed, 65,000 Original Miles, Many New Updates, Go To Work Condition Or Collector, **\$12,500.** 978-992-7077



**2009 MCCORMICK CT41H:** Hydro. w Loader, Skid Steer Mount Bucket, Good Shape, **\$10,900** 860-928-5748



**2018 DOOSAN DX300 LC:** AC/Heat, Back-Up Cam., 2,100 Hrs., Nice Machine.  
**\$139,000.**  
 Mendon, MA 508-966-4888



**1992 FORD L8000.** 7.8 L, 6 speed, 33,000 GVW, 20' Flatbed Needs To Be Mounted, **\$5000 OBO.** Call Gary, 508-331-7310

**2011 BOBCAT \$650 SKID STEER,**  
 Hours: 3,500, Enclosed, Hyd Coupler, Good Running Machine,  
**\$29,900**  
 781-417-3018





# ANDERSON MOTORS INC.


**GMC**

**MICRO BIRD**  
by GERRARDIN

**BLUE BIRD BUS SALES OF NEW ENGLAND**
**\* YOUR EXCLUSIVE VOLVO TRUCK DEALER \***

**INCOMING**

2025 VOLVO VHD84B300-D13, 500HP, 14SPD. AUTO, 18' HEAVY DUTY STEEL DUMP, HIGH LIFT-GATE.


**IN STOCK**

2015 VOLVO VNM64T-D13, 435HP, 10SPD., 12,000# FRONT / 40,000# REARS, 359,337 MILES. #220105A


**IN STOCK**

2025 BOLLINGER B4 ELECTRIC POWERTRAIN, 158 KWH BATTERY PACKAGE, 15,500 GVW, 158"WB, 138" CA.



2025 RHODES RSS2660-2 26' STEEL END DUMP TRAILER, AIR HIGH-LIFT DOUBLE ACTING TAIL GATE, HD SPECS.


**IN STOCK**

2025 VOLVO VNL64T740-D13, 500HP, I-SHIFT, APU INSTALLED. #240155


**IN STOCK**

2025 RHODES RSS2660-2 26' STEEL END DUMP TRAILER, AIR HIGH-LIFT DOUBLE ACTING TAIL GATE, HD SPECS.


**IN STOCK**

2025 VOLVO VHD64B300-500HP, 20,000# FRONTS / 52,000# REARS, I-SHIFT ROLL-OFF CHASSIS. #240085


**IN STOCK**

2000 VOLVO WG64B, 275HP, AUTO, 16,000# FRONT / 40,000# REARS, JOHNSERED 820 CORTU CRANE, 20' DUMP BODY. #210299A


**IN STOCK**

2016 VOLVO VNM64T-D13, 435HP, 10SPD., 12,000# FRONT / 40,000# REARS, #2300110A


**INCOMING**

2024 AUTOCAR ACTT42, SINGLE AXLE, YARD JOCKEY, DIESEL AUTOMATIC, A/C, HYDRAULIC 5TH WHEEL.


**IN STOCK**

2016 VOLVO VNM64T-D13, 435HP, 10SPD., 12,000# FRONT / 40,000# REARS. #230109A


**INCOMING**

NEW 2024 CHEVY COMMERCIAL HANDICAP 14 PASSENGER SHUTTLE BUS, HANDICAP LIFT WITH 3 WHEELCHAIR LOCK DOWNS, NON CDL.

## 401-434-5900

[WWW.ANDERSONMOTORS.COM](http://WWW.ANDERSONMOTORS.COM)

EMAIL • [SALES@ANDERSONMOTORS.COM](mailto:SALES@ANDERSONMOTORS.COM)

170 AMARAL STREET • EAST PROVIDENCE, RI 02915

**HABLAMOS ESPAÑOL**



# CANDIA TRAILER

www.CandiaTrailer.com  
& LANDSCAPE EQUIPMENT CO  
All Prices Cash & Carry! Installation Available!

SAVE TIME &amp; FUEL • WE SHIP!

## 1-866-761-0196

NH 603-483-2541 • Fax 603-483-2842

35 High St, Candia 4 Coners, Candia NH  
10 Minutes East of Manchester, NH • 1 hour From Boston

**CUSTOM  
BODY  
SPECIALIST**



**DUMP TRAILERS.** 12', 14', 16 Ft.  
Twin Piston, Powder Coat, Ramps,  
Battery, **Ready To Go**



**7 TON EQUIPMENT TRAILER .**  
20' Power Tilt, Tandem Axle,  
USA Made Also Aluminum Trailers



**ALUMINUM LANDSCAPE  
TRAILERS**



**DURA MAG ALUMINUM FLATBED  
BODIES.** Industry's Highest Quality,  
Call With Your Specs.



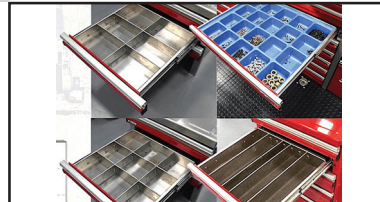
**ENCLOSED UTILITY**



**MOTIONLATCH TECHNOLOGY.** One-  
Hand, One-Motion Drawer Pull. Dual  
Latches Keep Drawers Closed During  
Transit.



**Drawer Tool Organizers – CTECH  
Storage Solutions**



**Divider-Holder Tabs Will Accommodate  
A Wide Range Metal Dividers**



**CTECH – Drawer Units That Fit  
Into Your Utility Body**

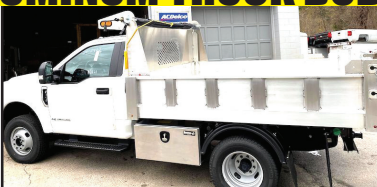


**LANDSCAPER TRAILERS.** Dual Axle  
& Single Axle,  
**Ready To Go**



**HOMESTEAD Enclosed Trailers.**  
Stocking 8 Ft – 24 Ft

## - ALUMINUM TRUCK BODIES -



**DURA MAG ALUMINUM DUMP  
BODIES** Complete Sub-Frame,  
Power Pac, LED Lights.



**CUSTOM ALUMINUM  
FLATBED BODIES**



**TAKE OFF BEDS.**  
Ford – GM – Dodge  
Call With Your Specs



**ALUMINUM SERVICE BODY**



# CANDIA TRAILER

www.CandiaTrailer.com  
& LANDSCAPE EQUIPMENT CO  
All Prices Cash & Carry! Installation Available!

SAVE TIME &amp; FUEL • WE SHIP!

## 1-866-761-0196

NH 603-483-2541 • Fax 603-483-2842

35 High St, Candia 4 Corners, Candia NH  
10 Minutes East of Manchester, NH • 1 hour From Boston

**Best To  
You  
In 2025**



IN STOCK GALION DUMP BODIES. 8 Ft Thru 16 Ft. Call With Your Specs Today



8 Ft & 6 Ft EZ SLIDE-IN DUMP BODY. Complete Head Board, Tarp, & Hoist.



### HARSH HOIST

2.5 to 45 Ton, Single or Double Piston. Convert a Flatbed Body to a Dumping Body. HOIST & POWER PACK

USA Made



BUTCHER Dump Power Pac with control Gravity Down **\$595**



### LOAD COVER

7' X 12' Mesh tarp & Hardware Kit **\$269**



Pintle Plate  
**\$459**

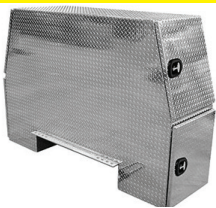


15 Ton Pintle Hook **\$89** – WE SHIP



Retractable Step  
One Step **\$119**  
Two Step **\$129**  
Three Step **\$139**

### I-PACK TOOL BOX



Diamond, Aluminum, Or Black



HEADACHE RACKS – Aluminum, USA Made, With Or Without Window Cut Out, Hi & Low Profiles, LED Light Options, Sport Series & Pro Series.



Shuttle Door  
**\$199**



TRANSFER TANK & PUMP. Made In USA, 12 Ft Hose, Nozzle Gun, 15 gpm, In Stock – We Ship



### UNDERBODY TOOL BOXES

Powder Coat Diamond Aluminum Door



Diamond Aluminum Door







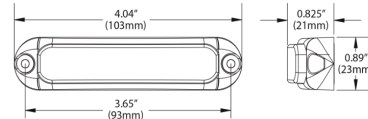
920 W. Chestnut St. Brockton, MA:  
508-586-1666 Mon - Fri 8-5, Sat 8-NOON

42 Winter St. Pembroke, MA:  
781-826-1666 Mon - Fri 8-3  
[EastCoastTruckStuff.com](http://EastCoastTruckStuff.com)

**We deliver!**

# WHELEN

## Micron™ Series Lightheads



4" compact lightheads designed for use in virtually any lighting application.



**\$99.99**  
MCRNA



**\$93.99**  
MCRNF

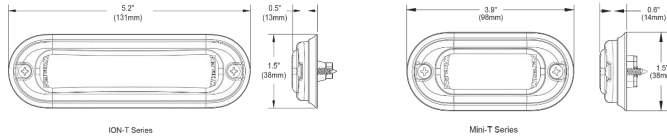


**\$123.99**  
MCRNSCF



**\$113.99**  
MCRNSCA

## ION™ T-Series



The ION™ T-Series™ provides high performance warning or illumination and features a sleek and low profile design, with a depth of only .5".



**\$111.99**  
TL1A



**\$119.00**  
TL1F



**\$124.99**  
TL12F



**\$88.99**  
TL1MA

**More makes/models in stock!**

Special ends 2/15/25



**FEDERAL SIGNAL**  
Maxxima



**ECCO**





ENGINES • TRANSMISSIONS • TRANSFER CASES • DRIVE SHAFTS • REAR ENDS • FRONT ENDS • AXLES • FRAMES • CABS • DOORS • PICK UP BEDS • DUMP BODIES • UTILITY BODIES • WHEELS • TIRES • SEATS • FUEL TANKS

ENGINES • TRANSMISSIONS • TRANSFER CASES • DRIVE SHAFTS • REAR ENDS • FRONT ENDS • AXLES • FRAMES • CABS • DOORS • PICK UP BEDS • DUMP BODIES • UTILITY BODIES • WHEELS • TIRES • SEATS • FUEL TANKS

# TRUCKCOUNTRY.US

## USED TRUCK PARTS



### ONLINE 24-7



INSTALLING NEW AND USED TRUCK BODIES



**12' CHIP BODY.** Tool Box, Very Nice Condition,  
#245894, **\$8,500**



**9' KNAPHEIDE UTILITY BODY.** SRW, 60" CA,  
#245872, **\$3,500**



**9' UTILITY BODY,** 2,000  
lb Crane, DRW, 60" CA,  
Absolutely Rust Free, #245910,  
**\$5,000**



**8' SUPER DUTY PICK UP  
BED,** Absolutely No Rust,  
#255916, **\$3,500**



**9' ALUMINUM DUMPING FLAT  
BED BODY,** DRW, #255914,  
**\$4,000**



**1994- 97 FORD DIESEL  
RADIATOR SUPPORT.**  
Reconditioned, #245853, **\$900**



**1994-97 FORD REGULAR  
CAB,** Absolutely Rust Free,  
#245900, **\$2,500**



**1999-04 FORD SUPER DUTY  
SUPER CAB,** Complete Cab,  
Absolutely No Rust, #245906,  
**\$3,500**



# 1-860-423-6004

Mon-Fri 8-5

Closed  
Sat & Sun

**1535 WEST MAIN STREET, WILLIMANTIC, CT**

AXLES • FRAMES • CABS • DOORS • PICK UP BEDS • DUMP BODIES • UTILITY BODIES • WHEELS • TIRES • SEATS • FUEL TANKS



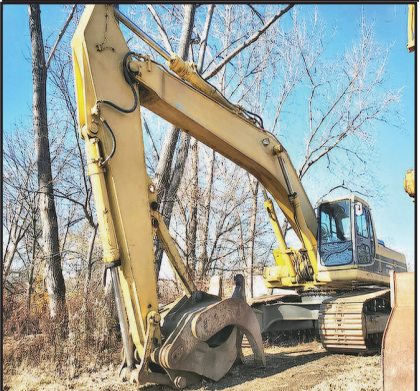
# WANTED!!! MACK TRUCKS

**CAT, DEERE, BOBCAT EQUIP  
IN ANY CONDITION  
IMMEDIATE PAYMENT**

## CALL JOHNNY MACK

**johnnymack107@gmail.com  
HARTFORD, CT 860-883-1186**

**2011  
KENWORTH  
W900L  
TANDEM AXLE  
TRACTOR,**  
Extremely Clean  
Truck, Only 429K  
Miles, CAT C15 Acert  
Engine, Eaton Fuller  
18 Speed Trans, 550  
HP, 50K Rears, New  
Tires, **\$69,500**  
781-417-3018



**KOMATSU PC400LC-6LK  
EXCAVATOR.** Low Hours, Komatsu  
Engine, Excellent Bottom, JRB Grapple  
Available, **\$85,000.**  
Call Jesse 401-855-1178

**HAYES**   
Commercial Truck Center

**802-334-6587**

**SILVER BLACK OR WHITE**



**2025 T250 MID ROOF CARGO VAN.** All  
Wheel Drive, V6 Gas, Auto, Silver, Black,  
Or White, 5 Available.  
Call For Presidents Day Pricing



**2018 F550 VAN BODY.**  
16' Morgan, Curb Side Door, Rear Swing  
Doors, V10 Gas, 97,203 Miles,  
#59001 \$30,999



**2022 F350 XLT CREW CAB.**  
7.3 V8, 75,541 Miles, 4X4,  
#59711 \$39,822



**2014 FREIGHTLINER  
3500 CARGO VAN.**  
High Roof, 128,020 Miles,  
#61591 \$12,950

**NEW UP DATES – WORK READY**



**2017 F550 DUMP TRUCK.** Municipal  
Plow, Spreader, 4WD, Diesel, 60,818  
Miles, Fully Service, Ready To Work,  
#686P. \$52,999



**2024 F600 SWITCH N GO.**  
7.3 V8 Gas, Auto, XLT Trim, Polish  
Aluminum Wheels, Tool Box, 4WD, Upfit  
Switches, #5987

**WWW.HAYESFORDINC.COM • 439 East Main St Newport, VT**





# Fowler's Auto Wrecking Inc.

## Belldown Recycling Center



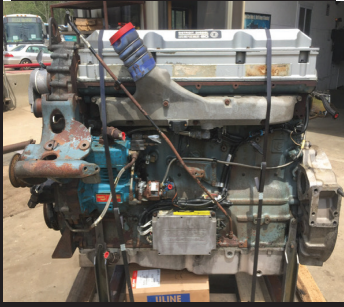
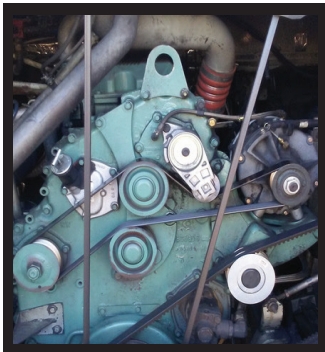
**860-267-7140 • 24 Old Coach Rd East Hampton, CT**

### Detroit Series 60 12.7L Engines

EGR DDEC-IV  
NON-EGR DDEC-IV  
Good Running Take Out Engines  
Recent Remanufactured Engines  
Core Engines  
Engine Accessories  
6 Month & 1 Year Warranties Available  
Call Today For Pricing



**CALL: 860-267-7140**



### Complete Coaches For Parts

- MCI, Vanhool, and Prevost Buses For Parts
- Compressors, Condenser & Evaporator Motors
- Wheels, Tires, Suspension & Brake Parts
- Electrical Parts, Interior & Exterior Lighting
- Tag Axles & Drive Axles
- Compartment, Service, and Entrance Doors
- Fiberglass Body Panels & Glass
- Complete Electric Wiper Conversion Kits
- Radiators, Intercoolers, and Condensers
- Standard 6 Month Warranty On All Parts



**Buses Are Not Intended  
For Resale - Salvage Titles**



### Allison B500 Transmissions

- Allison B500 With or Without Retarders
- Good Running Take Outs
- Recent Remanufactured Units 
- Core Transmissions
- Allison Shift Pad Selectors
- Allison TCM (Transmission Control Modules)
- Standard 6 Month Warranty
- Call Today For Pricing

**CALL: 860-267-7140**



### Freightliner FL70 Box Truck.

CAT 3126 Engine,  
6 Speed Manual,  
33,000 LB GVWR,  
255K Miles, Runs  
& Drives, \$10,500,  
Call Tony @  
Belltown Motors  
860-250-9118





# METROPOLITAN TRUCK CENTER INC.

1074 Turnpike Street • Stoughton, MA 02072

Family Owned & Operated  
Since 1980

**1-800-878-5491**

[www.metropolitantruck.com](http://www.metropolitantruck.com)



**NO MATTER WHAT TRUCK YOU HAVE,  
WE CAN FIND THE RIGHT PLOW FOR YOU!**



**Tempest Poly**

Loaded with upgraded de-icing technology



**Tempest**

Available in chain drive or with the new Helixx shaftless auger system



**StormBoxx**

**Come see the all new  
Fisher StormBoxx  
featuring  
Trace Edge technology**



**WESTERN**  
SNOWPLOWS

**WESTERN PLOWS  
IN STOCK NOW!**

[www.metropolitantruck.com](http://www.metropolitantruck.com)





Commercial  
Vehicle Center



**MCGOVERN**  
FORD AT DRUM HILL

**Call Mike Smokler 603-493-6561**



**2024 F650 REFRIGERATED 20' VAN BODY.** Thermo King, Maxon Galvanize Liftgate, Rear 3 Section Door, E-Track, Aluminum Floor & Scuff Plate, Diesel, Automatic, #FN4679 **\$153,996.**



**2024 E450 14' REFRIGERATED VAN.** Thermo King V520 Max 50, Two Rows E-Trac, Step Bumper, 7.3L V8 Gas, PW, PL, FN4553 **\$86,996.**



**2024 T250 REFRIGERATED VAN.** All Wheel Drive, Dual Battery, V6 Engine, FN5458 **\$86,996.**

**OVER 75 SUPER DUTIES IN STOCK - COLORS AND CONFIGURATIONS**



**2023 F600 16' UTILITY BODY.** Diesel, Remote Start, 22,000 GVW, 4WD, 5 Ladder Bars, Catwalk, Remote Locking, FN5461 **\$99,996.**



**2024 E450 FREIGHT VAN.** 14,500 GVW, 7.3L Gas, Cruise, PW, PL, #FN4090 **\$57,196**



**2023 F450 GOOSENECK UTILITY BODY.** 7.7L Gas, Remote Start, Auto, 4X4, Knapheide Body, #FN4616 **\$71,996.**



**2024 F600 STAKE BODY.** 90"x60" Aluminum Platform Liftgate, Polish Aluminum Wheels, Diesel, 4WD, 22,000# GVW, Remote Start, #FN5155 **\$99,996.**



**2024 F550 DUMP.** Diesel, Remote Start, 4X4, 9' Body, 4 Speaker Stereo, Tool Box, Payload UpGrade, FN5472 **\$91,796.**



**2024 F550 SUPER CAB LANDSCAPER.** 4X4, Diesel, Polish Alum Wheels, Heated Seat, Remote Start, FN4986 **\$94,996.**



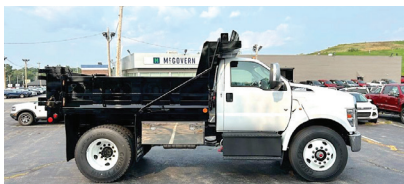
**2024 F350 SERVICE BODY.** 11' Knapheide, V8 Gas, 4WD, DRW, Remote Start, 120V/400W Outlet, #FN5242 **\$72,996.**



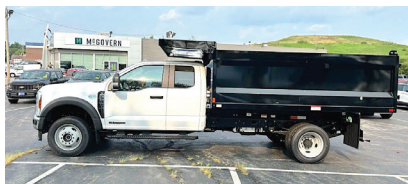
**2024 E450 DRY FREIGHT VAN.** Attic, Roll Up Rear Doors, Step Bumper, 2 Rows E-Track, 7.3L Gas, PW, PL, Cruise, #FN4184 **\$55,996.**



**2024 F550 UTILITY SUPER CAB.** Heated Frt Seats, Polish Aluminum Wheels, Diesel, 4WD, Remote Start, XLT Pkg., #FN5019 **\$101,996.**



**2025 F650 DUMP.** 10' Donavan Body, 3 Way Gate, Tool Box, Pintle Hook, V8 Gas, Automatic Trans, #FN5216 **\$92,996.**



**2024 F550 LANDSCAPER.** 12' Dump Body, Super Cab, 4X4, Diesel, Remote Start, Pwr Rear Window, Pintle Ball, #FN5098 **\$89,998.**



**2024 TRANSIT WORK VANS.** 50 Units Available, Low, Mid, High Roofs, AWD, RWD, Bin Pkg, Cargo Pkg. **Starting @ \$47,996**



Commercial  
Vehicle Center

**MichaelSmokler@mcgovernauto.com**





**1996 HEIL TANK TRAILER.** 9,450 Gallon Capacity, 5 Compartments 3100,1200, 1150, 2800, And 1150 Gallons GVW 68,000, **\$42,000.** 508-961-7528



**LS MT125 TRACTOR:** 25HP, Heated Cab, Loader, 49.1 Hours, **\$18,000** 860-928-5748



**2002 FORD F-550 DUMP.** 7.3 Diesel, Auto, 84,877 Miles, **\$9950.** 401-392-3300



**2011 DOOSAN DX350,** 8,050 Hrs, Plumbed, Coupler, Runs Great, Tight and Dry, **\$69,900,** 781-417-3018

**Powerglide Air Test Kit**

**Complete Powerglide Pro Tree Transbrake \$279.95**

**TH400 Deep Cast Aluminum Pan**

**TH400 Billet Direct Drum Spring Retainer & Aluminum Modulator/Solenoid Hold Down**

**Powerglide Overhaul Kit**

**Powerglide Deep Oil Pan**

**Powerglide Reverse Spring Retainer Tool**

**Powerglide Bushing Driver Set**

**Do-it-yourself Powerglide Pro Tree Transbrake Kit \$164.95**

**1.80 Long Powerglide Gear Set**

**1-800-394-5889**  
179 Belvedere Road  
Gilsum, NH 03448

**Powerglide Handbook written by Carl H. Munroe \$21.95**

**Powerglide Vent Tanks**

**WWW.TSR-RACING.COM**

## TOREKU TRACTOR & EQUIPMENT INC.



**4 Littleton Rd, Rt2A & 110, Ayer, MA • 978-772-6619**



**2019 KUBOTA RTV-X 1100.** 4WD Utility Vehicle, 35.2 Hours, 151 Miles, Like New, **\$20,000**



**2021 KUBOTA B2380 TRACTOR/LOADER.** 112 Hours, Comes With Bucket, **\$14,995.** Add Snow Pusher **\$1,275**



**2001 KUBOTA L4610 HSD TRACTOR.** 3,200 Hours, 46 HP, LA852 Loader, New Rear Tires, Runs Good, Dual Hydraulic Remotes, **\$14,200.**



**2003 KUBOTA L3838 TRACTOR/LOADER.** Low Hours 552, Curtis Cab, **\$18,500**

**VISIT US AT WWW.TOREKU.COM**



Authorized Fisher  
Snow Plow Dealer



# HILLSIDE MOTORS

**800-D American Legion Highway (Rt. 177)  
Westport, MA 02790  
508-636-5050**

Financing  
Available  
-Others in Stock

**Family Owned & Operated Since 1969**



**LOW MILES**

**2021 GMC 2500 HD REGULAR CAB 4X4.** 6.6L, Gas, Auto, AC, PW, PL, Back-Up Camera, Blue Tooth, 10,250 GVW, 67K, One Owner, Super Clean, **\$34,900.**



**77,000 MILES**

**2017 FREIGHTLER MT45 18' ALUMINUM STEP VAN.** 6L V8, Allison Auto, Translucent Roof, Walk-Thru, E-Track, 19.5 Tires, 14,990 GVW, 77K, One Owner, Fleet Maintained, **\$37,900.**



**ONE OWNER**

**2019 CHEVY 1500 LD DOUBLE CAB RWD SHORT BED.** 5.3 L V8, Auto, AC, PW/ PL, Bluetooth, Decked Drawer System, One Owner, 128K, Fleet Maintained, Rust-Free Southern Truck, **\$18,700.**



**2 TO CHOOSE**

**2017 FORD F250 SUPER DUTY 8' ALUMINUM FLATBED.** w/ Fold-Down Sides, RWD, XL Pkg, 6.2L V8, Auto, AC, 3- Pass., 2 To Choose, 95K-105K, One Owner, Excellent Condition, **\$16,400. Or \$13,900. w/o Body**



**PRISTINE**

**2023 SOUTHERN 22' TRAILER.** Pull-Out HD Ramps, LED Lights, 10,400 GVW, D-Rings, Minimal Use, Pristine Condition, **Asking \$6,700.**



**FINANCING AVAILABLE**

**2024 KUBOTA KX 080-5 EXCAVATOR** w/Hydraulic Thumb. 122 Hours, Power Angle Blade, Hyd. Pin Grabber, 36" Bucket, AC, Heat, Radio, Telematics, Addl Counter Weight, One Owner/ Operator, Pristine, Factory Warranty, **\$109,700.**



**4X4**

**3500 ONE TON**

**2016 CHEVROLET 3500 SUBURBAN 4x4.** 11,000 GVW, 6.0L V8, Auto, Dual AC/HEAT, Blue Tooth, Back-Up Camera, P/Seats, 1-Ton, Trailering Pkg, 8-Lug Wheels, 4:10 Gear Ratio, Limited Slip Diff., 8 Pass., Alloys, Privacy Glass, Black/Black Cloth Int, Fully Loaded, Extremely Rare, 85,239 Miles, One Owner, Fleet Maintained, **\$38,900. 2 Available**



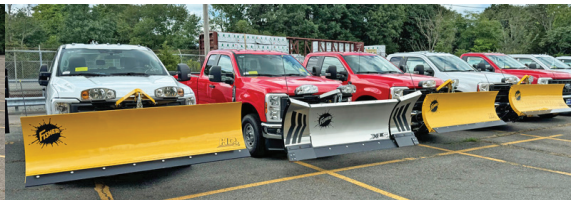


**SERVICE CENTER NOW  
OPEN. BOOK YOUR  
F650 & F750 NOW!**

**!! NOW OPEN !!  
MCGOVERN'S BRAND NEW COMMERCIAL  
BAY SERVICE CENTER FOR YOUR  
F650 & F750 TRUCK NEEDS!**



**WE HAVE YOUR TRANSITS IN STOCK! READY TO ROLL! CALL WITH YOUR NEEDS!**



**WE'VE GOT A LARGE SELECTION OF PICKUPS, PLOW TRUCKS, CREW CABS, REGULAR CABS!**



**ALL TYPES OF WORK TRUCKS READY-TO-GO! GREAT VARIETY OF COLORS, MODELS & BODIES**



**GREAT SELECTION OF BOX TRUCKS & HIGH CUBES IN STOCK! MANY OPTIONS TO CHOOSE!**



**NEW FORD F350 & F450 DUMP TRUCKS & UTILITY BODIES IN STOCK!**



**1200 WORCESTER ROAD (Rt.9 East)  
FRAMINGHAM, MA 01701**



**[www.mcgovernfordofframingham.com](http://www.mcgovernfordofframingham.com)**





**SERVICE CENTER NOW  
OPEN. BOOK YOUR  
F650 & F750 NOW!**



**508-532-3200**



**!! NOW OPEN !!  
MCGOVERN'S BRAND NEW COMMERCIAL  
BAY SERVICE CENTER FOR YOUR  
F650 & F750 TRUCK NEEDS!**



**2024 F-550 REGULAR CAB 4X4 STAKE  
BODY: 7.3L V8, POWER GROUP,  
STK#FM6804, \$67,431**



**2024 FORD TRANSIT-250 REFRIGERATED  
VAN. V6, Auto, Medium Roof, Camera,  
9150 GVW, stk#FM8022, \$84,175**



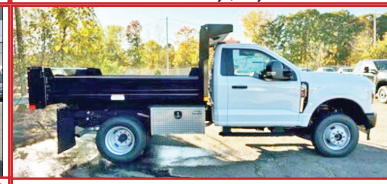
**2024 FORD F350 READING UTILITY 4X4.  
6.8L V8, AUTO, 10K GVW, POWER GRP.,  
STK#FM7753, \$64,280**



**2024 FORD F-550 LANDSCAPE DUMP 4X4:  
6.7L, POWER STROKE DIESEL V8, AUTO,  
STK#FM8172, \$87,805.**



**2024 F550 SWITCH-N-GO REG. CAB DUMP  
4X4: 6.7L PWR. STROKE DIESEL, PWR.  
GROUP, SNOW PLOW PREP. Stk#FM7341,  
\$94,885**



**2024 FORD D350 EXTREME DUMP  
4X4: 7.3L V8, AUTO, POWER GROUP,  
STK#FM7902, \$69,900.**



**2024 F-350 SUPER CAB  
4X4 EXTREME DUMP:  
7.3L V8, POWER GROUP,  
STK#FM6987, \$68,805.**



**2025 FORD E-350 CUTAWAY MORGAN  
BOX. 7.3L V8, 6 SPD, E-TRACK, LIFT  
GATE, WALK-THRU, 12,500 GVW,  
STK#FM7756, \$78,250**



**2024 FORD F350 XL READING UTILITY  
4X4. 6.8L V8, AUTO, POWER GRP, 10K  
GVW, STK#FM7899, \$65,965**



**2024 FORD F350 SUPER CAB XL  
DUMP 4X4. 7.3L V8 GAS, AUTO, PW,  
PL, AC, 14K GVW, STK#FM6987,  
\$70,805**



**2024 F-600 XL REGULAR CAB 4X4  
SWITCH-N-GO ROLL-OFF: 7.3L V8,  
POWER GROUP, SNOW PLOW PREP,  
STK#FM8293, \$95,475.**



**2024 F-650 REGULAR CAB 4X4  
GALION 400 DUMP: 7.3L V8,  
POWER GROUP, STK#FM7230,  
\$94,990.**



**1200 WORCESTER ROAD  
(Rt.9 East)  
FRAMINGHAM, MA 01701**

**[www.mcgovernfordofframingham.com](http://www.mcgovernfordofframingham.com)**





# SALES & RENTALS INC.

## T-QUIP

YOUR <sup>1<sup>ST</sup></sup> CHOICE IN SALES & RENTALS

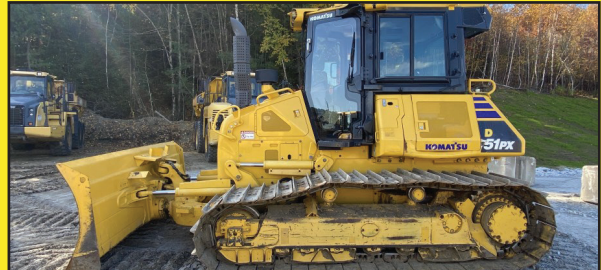
# SALES & RENTALS

(603) 623-3669 • TQUIP.com  
*Concorderry, NH*

• **OVER 1000 MACHINES & ATTACHMENTS IN OUR INVENTORY!** •



**READ RD150B** 12'x7' 2-DCK SCRPN, 5-8YD LOADER CPTY, 18YD UNDER SCRPN CPTY, DEERE DSL, PUNCH PLATE TOP SCRNS, SINGLE-AXLE, 2282 HRS **\$49,000**



**2021 KOMATSU D51PX-24 LGP A/C**, 11' 6-WAY PAT BLADE, TIER-4 FINAL, HST TRANS, 28" LGP PADS, 2899 HRS **\$129,000**



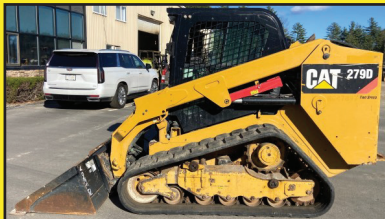
**2019 BOMAG WA211D-5** A/C, 84" SMOOTH DRUM, VIBE DRUM, DRUM DRV, HST TRANS, TIER-4 FINAL DSL, 2-SPD, 23.1-26 TIRES, 1983 HRS **\$79,000**



**2020 CAT 330FL** A/C, AUX HYD, 42" BKT, HYD THUMB, HYD TOOL CTRL, PTRN CHNGR, REAR CAM, LONG UC, 32" PADS, 4678 HRS **\$149,000**



**2022 KOMATSU D71PXi-24** EROPS, A/C, 171"W PAT BLADE, DRAWBAR, INTELLIGENT MACHINE CTRL, AIR RIDE ST, REAR CAM, PLUS UC, 36" SG PADS, 3402 HRS **POR**



**2018 CAT 279D** CAB, A/C, AUX HYD, MNL Q/C, 78" GP BKT, CAT TIER-4 DSL, 2-SPD HST TRANS, 18" RBR TRKS, 3420 HRS **\$42,500**



**2016 CAT CT660S** A/C, CAT DSL, AUTO TRANS, 46K REAR & 20K FRONT AXLES, 16' HARD OX BODY, 11R24.5 REAR & 425/65R22.5 FRONT TIRES, 230,930 MI **POR**



**2016 INT'L 4300 LEDWELL LW2000 STEEL TANK**, A/C, CRS CTRL, 300HP CUMMINS ISB 6CYL 6.7L DSL, AUTO TRANS, 10K LB F & 19K LB R AXLES, 25,999LB GVWR, AIR RIDE CAB, 295/75R22.5 TIRES, SPRING SUSP, 266" WB, BERKELEY PTO DRIVEN PUMP, F/R/S SPRAY BARS, HOSE REEL, 214,620 MI, 7070 HR **\$45,000**



**ATTACHMENTS!**  
 BUCKETS • COUPLERS • HAMMERS • FORKS  
 GRAPPLES • THUMBS • BROOMS • RIPPERS  
 PULVERIZERS • SHEARS • MOWERS • TIRES  
 & MORE!

**CALL JAMES:**  
**603-703-8529**



**2019 FORD F550-XL** FORD V8 6.7L DSL, AUTO TRANS, 7K LB F & 14706LB REARS, 19.5K LB GVWR, 225/70R19.5 TIRES, 169" WB, SPRING SUSP, 14' DAKOTA DK59542 BODY, STELLAR 3315 3200LB 3-SEC HYD CRANE, WIRELESS RMT CTRL, VMAC H40 HYD AIR COMP, AIR HOSE REEL, 104,325 MI, 3715 HRS **\$89,000**

• **ADDING UNITS TO OUR FLEET DAILY FOR YOUR RENTAL NEEDS!** •





**2021 HITACHI ZW370-6**  
A/C, 8CY GP BUCKET,  
389HP ISUZU DIESEL  
ENGINE, RIDE  
CONTROL, 5877 HRS  
**\$189,000**



**(603) 623-3669**  
**TQUIP.com**



**2016 CAT 966M**  
A/C, 6.5CY GP BKT,  
JYSTK STR, RIDE CTRL,  
REAR CAM, AUTO LUBE,  
26.5R25 MATCHING  
RADIALS, ALL OPTIONS,  
6665 HRS  
**\$159,000**



**2018 KOMATSU WA500-8**  
A/C, 8CY GP BKT, KOMATSU DSL, RIDE  
CTRL, 875/65R29 RBR, 5831 HRS  
**\$219,000**



**2016 DEERE 444K**  
A/C, 100" 2.5CY BKT, TIER-3 DSL,  
4-SPD TRANS, RIDE CTRL,  
17.5R25 RADIALS, 5456 HRS  
**\$69,000**



**2018 DEERE 544K-II**  
CAB, A/C, AUX HYD, JRB HYD Q/C,  
3CY GP BKT, TIER-4 FINAL DSL, 4-SPD  
TRANS, 20.5R25 RADIALS, 2112 HRS  
**\$135,000**



**2014 DEERE 744K**  
A/C, 6CY PIN-ON GP BKT, TIER-4 DSL,  
4-SPEED TRANS, RIDE CTRL, DUAL STR,  
REAR CAM, 26.5R25 RADIALS, 8080 HRS  
**\$149,000**



**2021 JCB 409**  
A/C, AUX HYD, HYD Q/C,  
77" 1.3CY GP BKT, 405/70R20 TIRES,  
531 HOURS  
**\$59,000**



**2022 CAT 910**  
A/C, 3RD & 4TH VLV HYD, HYD Q/C,  
2.2CY GP BKT, CAT DSL, RIDE CTRL,  
REAR CAM, 16.9-24 TIRES, 579 HRS  
**\$129,000**



**2015 CAT 914K**  
CAB, A/C, AUX HYD, HYD Q/C,  
94" 2CY GP BKT, AIR RIDE SEAT,  
17.5R25 RADIALS, 5365 HRS  
**\$75,000**

**LOCATED AT T-QUIP**



**2018 KOMATSU PC490LC-11** A/C,  
11' STK, 74" BKT, AIR RIDE ST, TIER-4 DSL,  
36" TG PADS, 7746+/- HRS **\$109,000**



**2019 KAUFMAN TL550**  
TRI-AXLE TAG ALONG TRAILER, 7'X26'  
DECK, RAMPS, DOVETAIL **\$5,900**



**2018 KOMATSU D39PX-24** A/C, 10'8"  
6-WAY PAT BLADE, JYSTK CTRLS, REAR  
CAM, 28" PADS, 4727 HRS **\$69,000**

**• NOTHING IS OUT OF REACH—CALL US FOR FINANCING OPTIONS! •**



**We are cash  
buyers for  
quality used  
trucks and  
equipment!**

# BROOKSIDE EQUIPMENT SALES

[www.BrooksideEquipment.com](http://www.BrooksideEquipment.com)

**978-249-4600**



**2016 KENWORTH T880:** 588,737 Miles, 10 Wheel Daycab, Cummins ISX, 450 HP, Eaton 10 Speed, Air Ride, Wetline, 13.2K F, 46K R, stk#TK043, **\$49,500**



**2018 DOOSAN DL220-5:** 5,784 Hours, 3.25 Yard, Cab, Hydraulic Coupler W/ 3rd Valve, Backup Camera, 6 Cyl Doosan Turbo, 29K Lbs, stk#LO313, **\$59,500**



**2019 CATERPILLAR 289D:** 3,379 Hours, 2660 Lb Lift, Cab W/ A/C, Pilot Controls, 2 Speed, Backup Camera, Aux Hyd W/ High Flow XPS, 10.6K Lbs, stk#SK467, **\$37,500**



**2014 RHODES RS2660-2:** Tandem Axle Dump Trailer, 26 Ft Steel Tub, Steel Frame, Aluminum Wheels, Spring Suspension, stk#TR571, **\$39,900**



**2014 VOLVO SD115:** 5,716 Hours, 84" Smooth Single Drum, Drum Drive, Vibratory, Drops, 4 Cyl Volvo Turbo, 148 HP, 26K Lbs, stk#CO067, **\$39,500**



**2020 VOLVO ECR88D:** 1,891 Hours, 36" Bucket, Auxiliary Hydraulics, Cab W/ A/C, 91" Blade, 2 Speed, Swing Boom, 4 Cyl Volvo Turbo, Manual Coupler, 21K Lbs, stk#XC078, **\$57,500**



**2016 VOLVO L70H:** 7,513 Hours, 3 Yard, Cab W/ A/C, Hyd Coupler W/ 3rd Valve, Backup Camera, Ride Control, 34K Lbs, stk#LO570, **\$87,500**



**2018 CATERPILLAR 304E2 CR:** 3,207 Hours, 18" Bucket, Hydraulic Thumb, Cab W/ A/C, Manual Coupler, 2 Speed, 77" Blade, Pattern Changer, 9K Lbs, stk#MX858, **\$39,500**



**2004 FREIGHTLINER FL80:** 6 Wheel Water Truck, Ledwell 2000 Gallon Tank, Cat 3126, 230 HP, Allison Auto, 14K F, 23K R, Stk#TK194B, **\$29,900**



**2018 CATERPILLAR 312F GC:** 959 Hours, 32" Bucket, Aux Hyd, Good U/C, A/C, Cat C3.4B, 28K Lbs, Stk#XC289, **\$99,500**



**2002 MACK CL713:** 10 Wheel Day Cab, Mack E7, 460 HP, Mack 18 Speed, Camelback Suspension, 14,060 F, 44K R, Stk#TK194, **\$27,500**



**2014 JOHN DEERE 650K LGP:** 5,471 Hours, 6-Way, Cab W/ A/C, LGP, Joystick Steer, Good U/C, Equipped With Leica Icon GPS, 23K Lbs, stk#DZ838, **\$50,000**



**2007 JLG 600AJ:** 3,800 Hours, 60 Ft Knuckle Boom, 4x4, 8 Ft Basket, Jib, Skypower, 4 Cyl Deutz Diesel, 65 HP, stk#AE786, **\$24,500**



**2014 JOHN DEERE 700K LGP:** 6,613 Hours, 6-Way Blade, Cab W/ A/C, LGP, Good U/C, 6 Cyl JD Turbo, 32K Lbs, stk#DZ497, **\$79,500**



**KOMATSU WA380-3MC:** 14,513 Hours, 4 Yard, Cab W/ A/C, 6 Cyl Komatsu Turbo, 40K Lbs, Stk#LO327, **\$44,500**



**2019 JOHN DEERE 410L:** 2,043 Hrs, 4x4, X-Hoe, Cab W/ A/C, 4-In-1 Bucket, Front Hyd Coupler W/ 3rd Valve, Turbo, Power Shift, Pilot Controls, Pattern Changer, 30" New Bucket, Rear Manual Coupler, Hyd Thumb, stk#BH207, **\$69,500**



**2017 KOMATSU WA320-8:** 12,179 Hours, 3.7 Yard, Cab W/ A/C, Backup Camera, 6 Cyl Komatsu Turbo, 35K Lbs, stk#LO101, **\$67,500**



**2017 CASE 580SN:** 2,694 Hours, 4x4, X-Hoe, Cab W/ A/C, 4-In-1 Bucket, Turbo, Power Shift, Ride Control, Pilot Controls W/ Pattern Changer, 18" Digging Bucket, stk#BH844, **\$59,900**



**2019 KUBOTA KX033-4:** 4,200 Hours, 24" Bucket, Cab W/ A/C, Auxiliary Hydraulics, Manual Coupler, 61" Blade, 2 Speed, 3 Cyl Kubota D1703, 7.8K Lbs, stk#MX122, **\$29,900**



**2021 DOOSAN DX225LC-5:** 4,082 Hours, 24" Bucket, A/C, Hydraulic Thumb, 6 Cyl Doosan Turbo, Good U/C, 51K Lbs, Stk#XC129, **\$97,500**

**60 STATE RD, PHILLIPSTON, MASS**

**978-249-4600**

**EMAIL: [KEVIN@BROOKSIDEEQUIPMENT.COM](mailto:KEVIN@BROOKSIDEEQUIPMENT.COM)**



# GALLAGHER

*Mike makes the deals!*

**GMC**

**GMC**  
BUSINESS  
ELITE



## 2022 GMC Savana Cargo 2500

Work Van, Automatic, 6.6L V8 Gas Engine, **PLUS MORE!**  
Stock #: 5211



Out for Service Body

## 2024 GMC Sierra 3500 HD

Pro, 20 Standard Cab, Chassis Cab, 10-Speed Allison Automatic, **PLUS MORE!**  
Stock #: G24121



Crew Cab Chassis

## 2025 GMC Sierra 3500 HD

Chassis Cab Pro, 6.6L Duramax Turbo-Diesel V8 Engine, Automatic, 4WD, **PLUS MORE!** Stock #: G25024



Regular Cab HD

## 2025 GMC Sierra 2500 HD Pro

6.6L V8 Gas Engine, 4WD, Automatic, **PLUS MORE!**  
Stock #: G25057



## 2024 GMC Yukon XL Denali

6.2L V8 Engine, Automatic, 4WD, **PLUS MORE!**  
Stock #: G24200



## 2025 GMC Sierra 1500 AT4

6.2L Ecotec3 V8 Engine, 4WD, Automatic, **PLUS MORE!**  
Stock #: G25039



## 2025 GMC Sierra 3500 HD

Chassis Cab Pro, 6.6L V8 Gas Engine, 4WD, Automatic, **PLUS MORE!**  
Stock #: G25023



Build to Your Spec

## 2024 GMC Sierra 3500 HD

Chassis Cab Pro, HD Pro Duramax 6.6L V8 Turbodiesel, 10-Speed Automatic, 4WD, **PLUS MORE!** Stock #: G24169



## 2025 GMC Sierra 2500 HD

Denali, 6.6L Duramax Turbo-Diesel V8 Engine, 4WD, Automatic, **PLUS MORE!**  
Stock #: G25005

**Call today & SAVE BIG on your next vehicle!**

→ **860-356-4686** ←

FIND THE LOWEST MARKET PRICE → **GALLAGHERAUTOS.COM**

Visit us at 325 Columbus Blvd, New Britain, CT 06051



Authorized Fisher  
Snow Plow Dealer



# HILLSIDE MOTORS

**800-D American Legion Highway (Rt. 177)  
Westport, MA 02790  
508-636-5050**

Financing  
Available  
-Others in Stock

**Family Owned & Operated Since 1969**



**CAT 311 EXCAVATOR W/THUMB.** Pre-Emissions Machine, Tight Machine, 9,465 Hours, Well Kept, Owner/Operator Machine, Ready To Work, **\$31,900.**



**2017 CHEVROLET 2500 HD 4X4 8' ENCLOSED READING UTILITY.** 6L V8, Auto, AC, PW, PL, 233K, Fleet Maintained, One Owner, **\$13,900. (4 Others Available)**



**5 TRAILERS AVAILABLE**

**48' X 96" ALUMINUM FLATBED TRAILER.** 80,000 GVW, Budd Wheels, **\$5,500.**  
(2 Other Steel Flatbeds Available)



**POWER GATE**

**2008 GREAT DANE 48' DRY FREIGHT TRAILER.** W/ Power Tailgate. 102" Wide, E-Track, 68,000 GVW, Budd Wheels, **\$4,400.**



**DURAMAX DIESEL**

**2015 CHEVY 2500 HD 4X4 REG CAB 8' UTILITY.** Duramax Diesel, Allison Auto, Fully Loaded, Alloys, 270K, One Owner, Well Kept, Southern Truck, **\$17,900.**



**UNDER CDL**

**2015 PETERBILT 24' BOX TRUCK w/ Power Gate,** 12' Side Delivery Door, 6.7L Cummins Turbo Diesel, 240 HP, Allison Auto, PTO Capable, 26,000 GVW, Under CDL, 158K, Fleet Maintained, **\$27,900**



**92,000 GVW**

**FRUEHAUF DROP-DECK TRAILER.** Budd Wheels, 92,000 GVW, Fleet Maintained, **\$6,300.**



**REEFER TRUCK**

**2018 CHEVY 1500 4X4 W/8' REEFER BODY.** Thermo-King V-320 Reefer Unit. Works Excellent, Not A Fish Truck, V6, Auto, AC, PW, PL, 233K, One Owner, Fleet Maintained, **\$15,900. Or \$11,900. As C&C.**





LUCKY'S PETERBILT

**THE DIMMICK GROUP**  
**1-800-NEW-PETE**  
**1-800-639-7383**



**2025 LIDDELL 60 TON.**

Flat Deck Detachable, 24.5 Rubber, Aluminum Outers, Rear Strobes, 102" Swing/Set-Up For A Neck Extension, Lift Axle, Wheel Covers. **In Stock.**



**2025 TALBERT 55 TON.**

**Available In All Our Locations**



**2024 GALLEGOS.**

92 Yard Scrap Trailer, In Stock - Ready To Go!  
**In Bow NH 603-553-3000**



**NEW 2025 LANDOLL 440.** All The Options,  
 Call For Pricing **603-553-3000**



**2025 MAC DUMPS.** In Stock, 34', Disc Brakes, Michelin Tires, Tire Maxx Pro Inflation System, Upper & Lower Marker Lights, Liner & Cover, Ready To Go, Special Pricing. **603-533-3000 All Locations**



**2025 55 TON EAGER BEAVER PAVER TRAILER.**  
 Call For Details, Rooster,  
**603-553-3000**



**NEW PETEBILT RAMP TRUCKS.** Medium Duty & Heavy Duty Ramp Trucks Available In Stock Ready To Go! **603-553-3000**



**NEW PETEBILT 589 & 567 DUMP CHASSIS.** In Stock All Locations.  
 Call For Complete Details.  
 Call Cam, **603-670-6848**



**2025 MAC DUMP TRAILERS.** 38', 36' & 34' IN STOCK TODAY! Upper & Lower Marker Lights, Disc Brakes, Liner & Cover, Maxx Pro Inflation System, Michelins, On Sale, **603-653-3000 All Locations**



**2012 EAGER BEAVER 50 TON.** 24' Deck, Air Ride, Lift Axle 75% Rubber & Brakes, Very Good Condition, **\$37,500, Call 603-553-3000**

**Royalton VT**  
**802-763-2585**

**Colchester VT**  
**802-654-4420**

**Bow NH**  
**603-225-6666**

**Albany NY**  
**518-459-1122**

**Newburgh NY**  
**845-245-4042**

**Owego NY**  
**607-687-1200**

**Rochester NY**  
**585-321-5250**

**Syracuse NY**  
**315-432-1122**

**Utica NY**  
**315-732-4300**





**STAN TAGARELIS • 617-610-5540**  
**STAN@WATERTOWNFORD.COM**



**TIM DUFFY • 781-267-5057**  
**TIM@WATERTOWNFORD.COM**



**2025 F-750 DUMP.**  
**6.7L 330 HP DIESEL, AIR BRAKES,**  
**AUTO LOAD COVER, CAMERA, TOW**  
**PLATE, POWER GRP, 25,999 GVW,**  
**STK 25038**



**2024 F-550 4X4**  
**12' LANDSCAPE BODY.**  
**6.7L DIESEL, 19500 GVW, HI -CAP**  
**TRAILER TOW, SIDE ACCESS DOOR,**  
**DUMP TAILGATE W/ BARN DOORS**  
**OVER TOP, REAR CAMERA,**  
**STK 24194**



**2024 F-550 4X4 SWITCH & GO.**  
**6.7L DIESEL, 15500 GVW, 11' DROP**  
**BOX, UNDERBODY TOOL BOX,**  
**STK 24242**



**2024 F-450 4X4 DRW SERVICE BODY.**  
**7.3L GAS, DURAMAG ALUMINUM**  
**BODY, 14000 GVW PLOW PKG**  
**STK 24280**



**2024 F-350 4X4 L- PACK DUMP**  
**7.3 GAS CHROME PKG, PLOW PKG.,**  
**ALUMINUM L-PACK TOOL BOX,**  
**STK 24029**



**2024 F-350 4X4 DUMP.**  
**6.7 DIESEL, CHROME PKG, PLOW**  
**PKG, REAR CAMERA, REMOTE**  
**START,**  
**STK 24188**



**E-350/450 CUTAWAY BOX TRUCKS.**  
**12' 14' 16' IN STOCK.**  
**READY FOR DELIVERY,**  
**STK 24019**



**2023 F-250 4X4 SUPERCAB.**  
**6.8L GAS, FISHER HDX STAINLESS**  
**STEEL PLOW,**  
**STK 23528**



**2024 TRANSIT 350 DRW**  
**CUTAWAY. READING 72' ALUMINUM**  
**SERVICE BODY, LATCHMATIC**  
**LOCKING LADDER RACK W ACCESS**  
**LADDER, REAR CAMERA,**  
**STK 24504**

**625 PLEASANT STREET – WATERTOWN, MA 02472**

**WWW.WATERTOWNFORD.COM**

**VISIT THE WEBSITE FOR MORE COMMERCIAL TRUCKS AND VANS**



**NORTHEASTERN PETROLEUM SERVICE & SUPPLY****617-522-8390 Ext 103 • 51 B St. Bay 2 Hanover, Ma****Financing Available - After Hours Call 617-696-1979****We Are Looking For Newer Tank Trucks To List, Dual Equipped, Tandems & Auto. Trans, Can Sell From Your Location****Jerry Mello Cell: 617-799-1461 24/7 Email: jerrym@nepss.com**

**2005 MACK CXN613.** Boston 3400 Gallon 2000+1400, 2 Reels, Bottom Load, Mack 385 Hp, 10 Speed, 358,476 Miles, T/A 48,000 GVW, **\$59,000**

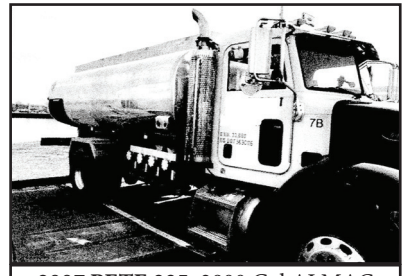


**2007 Pete 357 T/A Tanker.** Amthor 5000 Gal, 3 Compt, 66,000 GVW, 8 Spd, CAT C-13, 416,049 Miles **\$85,000 MUST SELL, BEST OFFER**

**2016 INTERNATIONAL TANKER.**  
2000 Almac,  
One Compartment,  
Automatic Trans, Use Daily,  
**\$69,000**



**2004 PETE 330.** Boston Steel 2700 Gal, 2 Compt 2000 & 700, CAT power, Automatic, Stainless Steel Reel, M-7 Meter, Bottom Load, 176,783 Miles **\$55,000**



**2007 PETE 335.** 2800 Gal ALMAC 4 Compt., 800/800/700/500, M-7 2" Meter, ISC Cummins 260 Hp, 8 Speed, **\$55,000 MUST SELL, BEST OFFER**



**2007 IH. Two Compt.** 2000/800, Automatic, DT466, 156K Miles, 4E Neptune Meter, Repairs Will Be Completed For, **\$34,500**



**2012 FORD TRANSIT CONNECT XLT.** 101,557 Miles, Shelves, Serviced And Ready To Work, Tires 60%, **\$14,900**



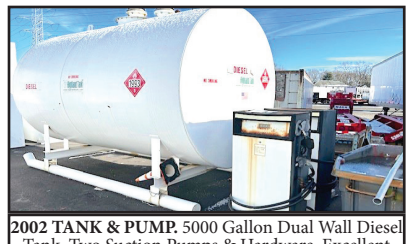
**2000 Frghtliner FL70.** ALMAC 2 Compt. 2000 & 800, CAT 3126, 6 Spd, V-Root STD VR Printer, Suck Line, **\$12,900**



**HIGHLAND IN STOCK NEW.** 1000 Gal 2 Wall Skid Tanks. 10-GA, Other Sizes Available



**2012 FORD E250 CARGO VAN.** Bin Pkg., V8 Gas, Auto., 112K Miles, Fleet Maintained, **\$10,000. 617-799-1461**



**2002 TANK & PUMP.** 5000 Gallon Dual Wall Diesel Tank, Two Suction Pumps & Hardware, Excellent Condition., Location Braintree, MA. **\$24,500. 617-799-1461**

SOME TRUCKS AT CUSTOMER LOCATIONS





**CT BLAST SHOP**  
**860-729-0453**

**\*\* Extra Large Sandblasting & Paint Booths For The Big Jobs \*\***



**30-A Hultenius St, Plainville, CT • ctblastshop@gmail.com**

**1994 FREIGHTLINER  
FL70 2700 GALLON  
ALUMINUM TANK.**

Cummins Diesel,  
6 Speed, **\$12,500.,**  
Lawrence, MA 603-973-0809



**2012 FORD F-150 XLT.** Crew Cab, Automatic,  
4X4, 5-1/2' Bed, Runs Great, 247K Miles, **\$6500.** Call Gary,  
508-331-7310



**2010 CLEMENT 40' STEEL  
FRAMELESS SCRAP/DEMO  
TRAILER.** 89 Cu. Yd., Good Shape,  
**\$36,000.** Call Jesse,  
401-855-1178

# **TAYLOR & LLOYD, INC.**

**SEE OUR INVENTORY: WWW.TAYLORANDLLOYD.COM**

**CAN SHORTEN**



**2022 International  
MV607.** Cummins  
B6.7 220HP, Allison  
2200 RDS, 128,934  
Miles,  
17,500 lb. Rear / Air  
Ride, 10,000 lb. Front,  
272" WB / 204.90  
CA / 112" AF, Can  
Shorten Wheelbase,  
Call for Price



**2025  
INTERNATIONAL  
HV507.**  
330 HP Cummins,  
Allison 3500,  
18K F, 30K R,  
90 CA.



**2025 INTERNATIONAL MV607.** Under CDL (25,999 GVWR) With Air Brakes, Cummins 6.7 250HP W/ Allison 2500 RDS 6 Speed, A/C,  
PW, PL, Air Ride Suspension, Air Driver With 2 Man Passenger, 11.5R 225 Hankook Tires, We Will Shorten Wheelbase If Needed

**781-275-9290 CALL JIM T. • 8 Railroad Avenue Bedford, Ma**





# 207-623-4239



**2015  
International  
Mechanics  
Truck.**  
Enclosed  
Body, 70,000  
Miles. Call



**LIEBHERR A912 RUBBER TIRE EXCAVATOR.**  
Twister Wrist, Hydraulic Thumb, 6,000 Hours,  
**\$18,000**



**VOLVO  
MC90B.** Full  
Cab, Pilot  
Control,  
Hi Flow,  
**\$18,000**



**2004  
FREIGHTLINER  
FUEL TRUCK.**  
CAT Power, Two  
Compartments,  
**\$12,000.**



**MACK B61.**  
Runs And Drives.  
**\$2,000.**



**EAGLE PICHER  
R80 FORKLIFT.**  
6000 LB Capacity,  
Side Shift,  
**\$10,000.**



**1988 FORD L8000  
DUMP.** 10 Ft  
Dump Body, CAT  
Diesel Engine.  
**\$9,500.**



**1992  
MICHIGAN L50  
LOADER.** Bucket  
And Forks,  
**\$14,000**



**2009 MAC  
DUMP  
TRAILER.**  
Tri Axel, Air Ride  
Lift Axel, Barn  
Door, **\$40,000**



**CATERPILLAR 814.**  
Semi U- Blade, Very  
Good Rubber, **\$14,000.**

**Dick's Used Trucks & Equipment**  
**146 River Road, Chelsea, Maine**





# JACK MADDEN FORD

**781-762-4200**

2017 • 2018 • 2020






**NEW & PRE-OWNED TRANSIT CARGO VANS.  
ALL SIZES AVAILABLE.**





**2024 & 2025 FORDS E350 & E450 UTILITY  
VANS IN STOCK NOW!**



**NEW 2024 TRANSIT 350 WORKPORT CUTAWAY  
ENCLOSED UTILITY.**



**NEW E450 AEROCCELL BOX TRUCK.  
IN STOCK NOW!**



**2024 E450 10', 12' & 14' WORKPORT UTILITY BODIES.  
IN STOCK NOW!**



**NEW E450 XL BAYBRIDGE 16' ATTIC BOX TRUCK: DRW,  
RAMP, POWER GROUP. ALSO: 15' ATTIC AVAILABLE.**

**LARGEST  
STOCKING  
SUPER DUTY  
DEALER**

# JACK MADDEN FORD

825 Providence Hwy Rt. 1 Norwood, MA

**781-762-4200**




\*All prices include incentives for qualified buyers. For trade assist, must have 2017 or new trade. All vehicles require dealer financing.  
 Some prices include snowplow incentives. See dealer for complete details.





# JACK MADDEN FORD

## 781-762-4200



Commercial  
Vehicle Center



# Happy Valentine's Day



**NEW F350  
CREW CAB 8'  
READING SRW  
UTILITY BODY:  
AVAILABLE FOR  
IMMEDIATE  
DELIVERY.**



**6 IN STOCK**

**NEW F550XL  
4X4  
SWITCH-N-GO  
BODY:  
GAS & DIESEL  
AVAILABLE.  
POWER GROUP.**

**see more photos on our website [WWW.JACKMADDENFORD.COM](http://WWW.JACKMADDENFORD.COM)**



**NEW F350 XL  
4X4 READING  
SERVICE BODY.  
BLUETOOTH,  
WIFI, POWER  
GROUP.**



**NEW F550 DRW  
4X4 DUMP  
BODY: POWER  
GROUP. IN  
STOCK READY  
FOR DELIVERY.**



**2024 F350  
READING  
UTILITY BODY:  
POWER GROUP,  
POWER TAIL  
GATE. READY  
TO GO.**



**NEW SUPER  
CAB DUMP  
BODY. IN  
STOCK NOW!**

**LARGEST  
STOCKING  
SUPER DUTY  
DEALER**

# JACK MADDEN FORD

825 Providence Hwy Rt.1 Norwood, MA  
**781-762-4200**



Commercial  
Vehicle Center

\*All prices include incentives for qualified buyers. For trade assist, must have 2018 or newer trade. All vehicles require dealer financing. Some prices include snowplow incentives. See dealer for complete details.





**USED TIRES.** 11R-22, Some 425-22.5, Some Rims,  
\$75 Each 080. 413-374-5331

# 401-654-6711

**Insurance experts  
for all your business  
and individual needs**



**A. RICCIOTTI INSURANCE ASSOCIATES, LLC**

START WITH A STRONG FOUNDATION



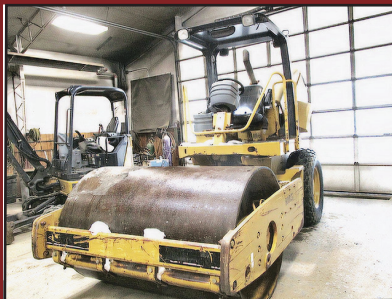
# 202

**TRUCK  
&  
EQUIPMENT**  
**603-899-2000**

**www.202truck.com**  
**RT 202 Rindge NH**  
**SALES & RENTALS - NO SALES TAX**  
**FINANCING & DELIVERY**



**2019 TAKEUCHI TB240.** 2200 Hrs,  
Coupler, Cab, New Hydraulic Thumb,  
18" & 36" Cleanup Bucket, **\$35,500.**



**2005 CAT CS-433.** Nice, Low Hour  
1790 Roller, Runs And Operates Well,  
**\$44,000.**



**2022 JOHN DEERE 306.** 96 Hrs, Cab W/  
AC, Pattern Changer, Pilot Cntrls, 16"  
Bucket & 30" Bucket, Aux. Hydraulics,  
Blade, Coupler, Hyd Thumb, **\$47,500.**



**2023 KUBOTA U55-5.**  
570 Hrs, Angle Blade, Hyd. Thumb,  
Loaded, Coupler, **\$66,000.**



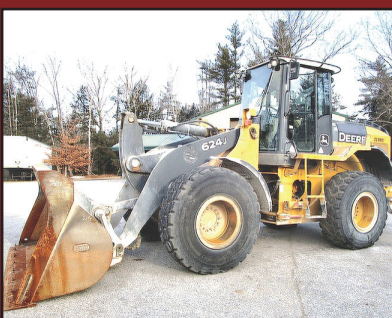
**2014 JLG 6042.** Low Hrs 2868, 19,000  
Lbs., Lift Capacity 6000 Lbs., Solid Tires,  
Very Clean Machine, No Rust, Cab Heat,  
A/C, **\$45,000.**



**2012 CASE 580N.** 5687 Hrs, 4x4, Joy  
Stick Backhoe Controls, Ext-A-Hoe, Hyd.  
Thumb, **\$38,000.**



**2012 JOHN DEERE 624K.**  
7142 Hrs, 3.5-Yard Bucket,  
JRB Coupler, 20.5 Radials, **\$80,000.**



**2006 JOHN DEERE 624J.** 9900 Hrs, 3.5-  
Yard Bucket, JRB Coupler, Ride Control,  
20.5 Radials, NO RUST, **\$65,000.**



**2011 FORD F550 SERVICE TRUCK.** 6.8L  
Gas, 135K Miles, Terex High Ranger  
(2400 Hours), 37' Bucket, All  
Inspected and Certified, **\$32,000.**





11 Commercial Way  
Milford, MA 01757

# HILLVIEW EQUIPMENT

SALES & RENTALS 24/7 • CALL JUDE 1-508-498-0777

[www.HillviewEquipment.com](http://www.HillviewEquipment.com)

Rt. 495 to exit 19,  
Route 109W,  
Left to Birch St,  
right to Industrial Dr.  
Left to Commercial Way

**Excellent Equipment • Outstanding Prices**

**FRESH  
MACHINES  
MONTHLY**

**WE HAVE EQUIPMENT!**

**FRESH  
MACHINES  
MONTHLY**



**2022 CAT 313: ONLY 650 HOURS, AXU  
HYDRAULICS, BLADE, ALL THE TOYS.  
CALL FOR BEST PRICE IN NEW ENGLAND.**



**2019 CAT 312F- LOW HOURS, AUXILIARY  
HYDRAULICS, VERY NICE.**



**2018 CAT 311 FL: WITH BLADE  
QUICK COUPLER, HYDRAULIC THUMB,  
4600 HOURS.....THESE ARE SELLING FAST !!**



**2011 DYNAPAC CA150: ONLY 900 HOURS IN  
THIS 66" VIBRATORY ROLLER  
CALL FOR THE "GIVE AWAY PRICE"**



**2020 CAT 312F: RUNS AND LOOKS GREAT,  
READY FOR WORK  
WON'T LAST LONG.....CALL !!**



**2021 CAT 906M-COMES WITH BUCKET & FORKS,  
AUTO GREASE,  
LOW, LOW HOURS, LIKE NEW....**



**2019 CAT 314 F: ZERO SWING, QUICK COUPLER,  
HYD THUMB, 4300 HOURS  
CALL FOR BEST PRICE AROUND !**



**2017 CAT 312E- VERY CLEAN, FULLY SERVICED  
WITH NEW HYDRAULIC THUMB .. PRICED RIGHT  
AND WORK READY.**



**2019 CAT 910 M: I HAVE 10 TO CHOOSE FROM...  
MANY WITH COUPLERS & FORKS.  
CALL FOR THE BEST PRICE ON THE EAST COAST!**



**2018 CAT 308 E2CR: 4 TO CHOOSE FROM ALL  
UNDER 2000 HOURS,  
QUICK COUPLER, THUMB....WORK READY !**



**2011 CAT 312D- W/ NEW 45' LONG REACH,  
VERY UNIQUE AND VERSATILE  
MACHINE....**



**2017 - 2019 CAT 320 NEXT GEN... LOW HOURS,  
AUX HYDRAULICS, ALL THE TOYS. PRICES START  
AT \$99,000, NO ONE BEATS MY PRICE.....CALL**

**\*\*WE GUARANTEE TO HAVE THE BEST SELECTION OF USED EQUIPMENT AROUND\*\***





11 Commercial Way  
Milford, MA 01757

## HILLVIEW EQUIPMENT

SALES & RENTALS 24/7

[www.HillviewEquipment.com](http://www.HillviewEquipment.com)

Rt. 495 to exit 19,  
Route 109W,  
Left to Birch St,  
right to Industrial Dr.  
Left to Commercial Way



**CHECK OUT OUR WIDE ARRAY OF BUCKETS FROM DIGGING TO CLEAN OUT !**  
**DESIGNED TO FIT CAT 307-349 & KOMATSU PC300-450**  
**CALL 508-473-1300 GET DIGGING TODAY !**



**NOS FINANCIAMOS PARA EMPREITEIROS BRASILEIROS!!**  
**EMAIL JIM GALLAGHER TODAY AT [JGALLAGHER@HILLVIEWEQUIPMENT.COM](mailto:jgallagher@hillviewequipment.com)**  
**\*\*WE GUARANTEE TO HAVE THE BEST SELECTION OF USED EQUIPMENT AROUND\*\***

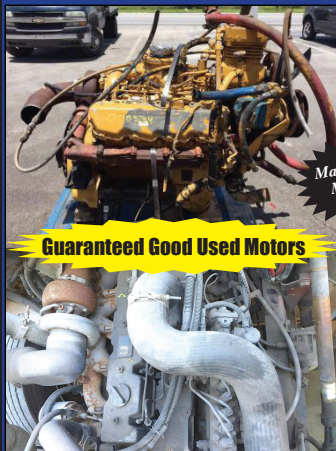
## R & R INDUSTRIES

[www.RRTrucksAndEquipment.com](http://www.RRTrucksAndEquipment.com) • [Bruce@RandRind.com](mailto:Bruce@RandRind.com)

195 Rocus Street, Springfield MA 01104

We Buy All  
Scrap Metals

**413-733-2118**



**Guaranteed Good Used Motors**

### DIESEL MOTORS FOR SALE

Detroit 3-71, 4-71, 6V-71, 4-53

Detroit 6V92/ 8V92/ 6V53/ 8V71

1988 Mack 300

(4) CAT 3208 / 3406B/ 3126

International DT 466 Mechanical

2008 Cummins 6.7L

Cummins 5.9L & 8.3L

Kubota V1305 - Rebuilt

Kubota V1505 - New

Many More  
Motors,  
Call



**1973 MACK R685.** Way Too Much Work To List It All, 235, 5 Speed, Air Brakes, Power Steering, New Pump, Interior Really Nice, No Rot, Brand New Hardox Floor, 3 Chutes, New Front Springs & King Pins, Strobe Lights, Electric Tarp, Good Rubber, Pintle Hitch, 7-Way Plug, **\$25,000.** Leominster, MA 978-230-1504



**2008 TRAIL KING LIVE FLOW BOY TRAILER,**  
Tarp, Tri-Axle, Ready to Work! **\$29,900**  
781-417-3018



**Tight Link Fence Co.**

Residential ~ Commercial ~ Industrial

**Mark Dillon**  
**774-365-0222**





# HILLVIEW EQUIPMENT

Sales & Rentals 24/7

CALL JUDE 1-508-498-0777

Rt. 495 to exit 19,  
Route 109W,  
Left to Birch St,  
right to Industrial Dr.  
Left to Commercial Way

Excellent Equipment • Outstanding Prices

**"SMART MONEY BUYS HERE!"**

**FRESH MACHINES MONTHLY, BUNDLE DEALS AVAILABLE**



**NOS FINANCIAMOS PARA EMPREITEIROS BRASILEIROS!!**

**ADD-ONS AVAILABLE OR WE'LL FIND IT FOR YOU... SNOW BLOWERS,  
SWEEPERS, MULCHERS, ETC.**

**\*\*WE GUARANTEE TO HAVE THE BEST SELECTION OF USED EQUIPMENT AROUND\*\***



**15' BUYERS STAINLESS DUMP BODY**  
**\$5,000.** Plympton, MA, 781-582-1378



**2004 INTERNATIONAL.** Plow, Sander, Wing,  
6-8 Yd Sander, Freedom Computer, Good Tires, Auto, DT466  
Motor, **\$24,500.** 413-374-5331

Keeping you protected so you can  
stay on the road and on time.

**Commercial Auto**  
Be Assured. Be Protected.



**WE INSURE**  
Single Power Units to Fleets  
&  
Cargo Vans to Tractors

**Coverages Include:**

General Liability  
Motor Carrier Liability  
Motor Truck Cargo  
FMCSA Filings  
ELD Discounts

**GET YOUR QUOTE TODAY!**

**(401)654-6711**



**A. RICCIOTTI INSURANCE ASSOCIATES, LLC**

START WITH A STRONG FOUNDATION



## 2000 FINN T330 HYDROSEEDER.

4 Cyl. Deere 3300 Gallon Tank, Mounted  
On Freightliner FLD12, CAT 3606, 8 Speed,  
Good Rubber, Unit In Good Shape & Work  
Ready, 1 Tank Full Of Seed & Mulch  
Will Hydroseed About 30,000 SF. Asking  
**\$59,500.** Text Or Call 401-499-4989

For More Pictures



**1995 MACK 690 6-WHEEL SANDER/PLOW TRUCK,** 7 Speed,  
38k Rears, 10k Fronts, 11' Front Plow, 11' Wing Plow, Mass Hwy Computer,  
150 Gallon Calcium Tanks, 10yd Swenson Steel Sander  
Frame Is Good, **\$18,900,** 781-417-3018



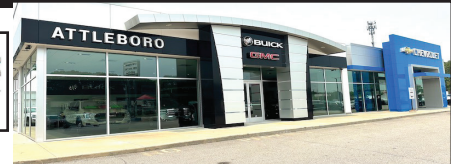
# CHEVROLET, BUICK, GMC OF ATTLEBORO

**A Priority Automotive Dealership**

**ROUTE 1, BETWEEN 95 + 295  
SOUTH ATTLEBORO, MA**

**508-761-4800**

**PLENTY OF NEW GMC TRUCKS AVAILABLE**



**2025 CANYON DENALI**



SUNROOF. #25061G

**\$55,240**

**2025 SIERRA**



CONV. PKG., LOCKING AXLE.  
#25082G

**\$41,493**

**2024 SAVANA ONE TON**



9,600 GVW, LOCKING AXLE,  
TILT/CRUISE, DOOR GLASS.  
#24270G

**\$47,000**

**2024 K1500 DOUBLE CAB**



PRO VALUE PKG., SPRAY LINER,  
LOCKING AXLE. #24303G  
PRICE INCLUDES GMC LOYALTY.

**\$40,625**

**2024 K2500 DENALI  
DURAMAX DIESEL**



INCLUDES GOOSENECK 5TH WHEEL PKG.  
#24296G

**\$87,855**

**2025 K3500 DENALI ULTIMATE  
DURAMAX DIESEL**



5TH WHEEL PKG., PLOW PREP.,  
FLOOR LINERS. #25015G

**\$99,860**

**2024 K2500**



CONV. PKG., SPRAY-LINER, PLOW  
PREP., ASSIST STEPS. #24282G

**\$54,175**

**2025 K2500 DOUBLE CAB**



CONV. PKG., PLOW PREP.  
#25021G

**\$55,680**

**2025 K2500 DOUBLE CAB SLE**



SLE CONV. PKG., REMOTE START,  
PLOW PREP. #25037G

**\$60,315**

**2024 K3500 CREW CAB  
UTILITY**



11,700 GVW., CONV. PKG., PLOW  
PREP., KNAPHEIDE BODY, HITCH. #24316G

**\$74,538**

**2025 K3500 CREW CAB  
DUALY UTILITY**



14,000 GVW, PANEL TOP COVER,  
LATCHMATIC, HITCH. #25014G

**\$87,300**

**2025 K3500 DENALI DUALY  
DURAMAX DIESEL**



DENALI RESERVE PKG., SUNROOF,  
POWER ASSIST STEPS., 5TH WHEEL PKG.,  
PLOW PREP. #25034G

**\$94,860**

**\*\* PLUS OVER 50 MORE AVAILABLE \*\***



**WWW.CHEVROLETBUICKGMCOFATTLEBORO.COM**





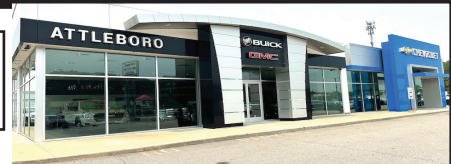
# CHEVROLET, BUICK, GMC OF ATTLEBORO

**A Priority Automotive Dealership**

**ROUTE 1, BETWEEN 95 + 295  
SOUTH ATTLEBORO, MA**

**508-761-4800**

**PLENTY OF NEW CHEVROLET TRUCKS AVAILABLE**



## 2023 C6500 MOVING VAN



23,500 GVW, ALUM. GATE, E-TRACK,  
SIDEDOOR. #23119H  
SALE PRICE INCLUDES REBATE.

**\$99,995**

## 2024 K5500 DUMP



19,500 GVW, BACK-PACK,  
9' DUMP, HITCH, ELECTRIC COVER.  
#24351H PRICE INCLUDES REBATE.

**\$97,860**

## 2024 LCF 4500 18' BOX



14,500 GVW, 2000# LIFT-GATE,  
E-TRACK, POWER MIRRORS.  
#24054H

**\$89,995**

## 2025 K3500 CREW CAB HIGH COUNTRY DUALY DURAMAX



14,000 GVW, 5TH WHEEL PKG., PLOW  
PREP., SUNROOF, POWER STEPS.  
#25099H

**\$93,370**

## 2024 K2500 CREWCAB UTILITY



READING CLASSIC II BODY,  
CONV. PKG., PLOW PREP.,  
SPRAY LINER. #24174H

**\$76,552**

## 2025 BRIGHTDROP 400 AWD



EXTENDED RANGE, HI-VOLTAGE CHARGE  
MODULE, TRANSLUCENT ROOF.  
#25069H

**\$69,995**

## 2024 K3500 LANDSCAPE DUMP DURAMAX DIESEL



CONV. PKG., PLOW PREP.,  
HITCH COVER. #24311H

**\$84,572**

## 2025 SILVERADO EV RST



MAX RANGE, TONNEAU COVER,  
ROCKER LIGHTING. #25091H

**\$101,830**

## 2025 KUV



9,900 GVW, HITCH, LADDER RACK,  
V-8, ALL THE CHASSIS OPTIONS.  
#24407H

**\$69,273**

## 2025 LCF 6500XD CUMMINS DIESEL



**AIR RIDE**  
25,960 GVW, ENHANCED AUDIO  
SYSTEM, HEATED POWER MIRRORS,  
ALUM. WHEELS, FITS 14-16' BODY.  
#25029H

**\$114,830**

## 2023 K5500 DUMP



17,500 GVW, 11' DUMP BODY,  
HITCH, COVER, TOOL BOX.  
#23347H PRICE INCLUDES REBATE.

**\$87,671**

## 2024 LCF 4500 14' BOX + LIFT-GATE



14,500 GVW, POWER MIRRORS,  
KEYLESS ENTRY, 14' ALUM. BOX,  
2500# LIFT-GATE. #24235H

**\$91,995**



**WWW.CHEVROLETBUICKGMCOFATTLEBORO.COM**



THIS AD IS COPYRIGHTED & OWNED BY TRUCK AND EQUIPMENT POST



# CHEVROLET, BUICK, GMC OF ATTLEBORO

**A Priority Automotive Dealership**

**ROUTE 1, BETWEEN 95 + 295  
SOUTH ATTLEBORO, MA**

**508-761-4800**

## CHEVROLET'S MEDIUM DUTY TRUCK CENTER



- \*REGULAR CABS, TILT CABS, CREW CABS 2WD OR 4WD
- \*GVW'S UP TO 25,950 BODY LENGTHS UP TO 22'
- \*DUMPS, PLATFORM/ RACKS, SWITCH-N-GO, CAR CARRIERS, TOW TRUCKS, SERVICE BODIES, MOVING VANS. IF YOU NEED IT DONE, WE CAN DO IT.
- \*FULL SERVICE WITH 30,000LB. LIFTS.
- \*GM'S #1 FLEET DEALER IN SE MA., RI, CT.

**CALL OUR COMMERCIAL TEAM. "YOU'LL BE GLAD YOU DID !"**

**2024 K6500 DUMP**



22,500 GVW, BACKPACK,  
9' DUMP BODY, HITCH, ELECTRIC COVER.  
#24351H PRICE INCLUDES REBATE.

**\$97,860**

**2023 C6500 20' MOVING VAN**



23,500 GVW, ALUM-GATE, E-TRACK,  
SIDEDOOR. #23119H  
PRICE INCLUDES REBATE.

**\$99,995**

**2024 LCF 4500 12' BOX**



14,500 GVW, HEATED POWER MIRRORS,  
ENHANCED AUDIO. #RS213567

**\$83,995**

**2023 C4500 CHASSIS**



16,500 GVW, NICE OWNER OPERATOR  
SPECS. #23390H PRICE INCLUDES  
REBATE. **SAVE \$10,000 OFF LIST !**

**\$55,880**

**2024 LCF 4500**



176" WB FITS 18-20' BODY,  
14,500 GVW, GAS. #24198H

**\$68,000**

**2024 LCF 4500 14' BOX**



14,500 GVW, POWER MIRRORS,  
ALUM. 2500# LIFT-GATE.  
#24235H

**\$91,995**

**2024 K5500 CHASSIS  
CREW CAB**



19,500 GVW., DUMP SPECS.  
#24390H. PRICE INCLUDES GM  
INCENTIVES

**\$71,287**

**2024 C6500 CHASSIS**



22,940 GVW., HEAVY DUTY DUMP  
SPECS., #24332H  
PRICE INCLUDES GM INCENTIVE

**\$69,477**

**2024 LCF 4500 18' BOX**



14,500 GVW, 2000# LIFT-GATE,  
E-TRACK, POWER MIRRORS.  
#24054G

**\$89,995**



**WWW.CHEVROLETBUICKGMCOFATTLEBORO.COM**



THIS AD IS COPYRIGHTED & OWNED BY TRUCK AND EQUIPMENT POST





# Jukonski Truck Sales



WWW.TRUCKSELLERS.COM

se habla español

680 NEWFIELD ST. (RT 3) MIDDLETOWN, CONN • 800-378-0342 • MON-FRI 9-5

**DON'T MISS OUT: YOUR IDEAL TRUCK AWAITS!**



**2022 ISUZU NPR HD W/ 11' Dump body.**  
Diesel, 17K Miles, 14,500 GVWR,  
#T-N7014104, **\$62,900**



**2023 CHEVROLET W4500 Flatbed**  
6.6L Gas, 4K Miles, 14,500 GVWR,  
#PS209501, **\$67,499**



**2019 ISUZU FTR 20' Box, Liftgate, Air Brakes, Diesel, 154K, 25950 GVWR,**  
#T-KSG00333, **\$42,500**



**2020 ISUZU NRR 16' Utility Body,**  
Diesel, 63K Miles, Auto, 19,500 GVWR,  
#T-L7306437, **\$45,999**



**2018 HINO 195 18' Reefer**  
Auto, Diesel, 88K Miles, 19,500 GVWR,  
#T-JK006032, **\$54,900**



**2016 INTERNATIONAL 4300 26' Box Truck, Cummins, 211K, Auto, 25,999 GVWR,**  
Stock# T-GH210787

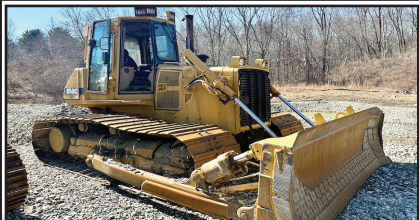


**2024 HINO S5 BRAND NEW,**  
Diesel, 19,500 GVWR Cab & Chassis,  
19 Available, **\$59,999**



**2017 HINO 195 12' Reefer, Liftgate,**  
Diesel, 112K, Auto, 19,500 GVWR, #T-HK006095, **\$32,500**

**90 DAY POWERTRAIN WARRANTY AVAILABLE ON ALL CERTIFIED TRUCKS. INCLUDES INJECTORS AND TURBO**



**1997 JOHN DEERE 850C LGP DOZER:** Well Maintained,  
12ft Blade, A/C Needs New Compressor, 15K Hours,  
Starts Up Instantly, **\$30,000**, 860-949-7863



**KOMATSU PC400LC-5LC EXCAVATOR.** Low Hours, Cummins,  
Excellent Bottom, Plumbed For Hammer,  
Grapple Available, **\$65,000.**  
Call Jesse 401-855-1178



**TRANS EAST EQUIPMENT INC.,**  
67 Main St Salisbury, MA  
**CALL DAVE** Cell 978-992-7077 Or 978-462-1919

**EXIT 90 Off Rt 95  
End Of Ramp**

**You Pick Your Container – Over 175 Units**

**FAMILY OWNED & OPERATED**



**Serving New England**

**20', 40', 45', 48' And 53' CONTAINERS.**  
**One Trip & Used Steel Storage Containers**

**We Deliver**

**Call Dave The Owner And Get The Best Deal!**

**CHECK ALL OUR INVENTORY – WWW.TRANSEASTEQ.COM**





**2006 KENWORTH.** Cummins WL900  
475 HP, Air Ride, Fuller 18 Speed, Wet  
System, 12K Front, 44K Rears, All New  
11R24.5 Tires, 636K Miles, 340K Since  
Overhaul, Nice Truck, **\$57,000.** Call  
Jesse, 401-855-1178



**2016 JOHN DEERE 350G LC EXCAVATOR,**  
6173 Hours, Very Clean & Tight Machine,  
42" Digging Bucket, Ready To Work ! Priced To Sell.  
**\$114,900,** 781-417-3018

**2024 KUBOTA  
KX 080-5 EXCAVATOR**  
W/Hydraulic Thumb. 122 Hours,  
Power Angle Blade, Hyd. Pin  
Grabber, 36" Bucket, AC, Heat,  
Radio, Telematics, Addl Counter  
Weight, One Owner/  
Operator, Pristine, Factory  
Warranty, **\$109,700.,**  
Westport, MA 508-636-5050



**1999 MACK  
RD688S  
ROLL-OFF.**  
E7-350 E-Tech,  
8 Speed Eaton,  
Tires 50%,  
Brakes 75%,  
Runs Great,  
**\$22,500.**  
845-505-4770.



**2004 FORD F-350.** 6.0, Auto, 4x4, Lariat, Dually,  
Runs Excellent, No Rust, Comes With Flatbed And  
Original PU Body, **\$12,500.**  
Text Gary, 508-331-7310



**2007 INTERNATIONAL SANDING TRUCK.** DT466  
Motor, Auto, 6-Yd Sander, 11' Power Angle Plow, 11' Wing, Good  
Tires, Good Brakes, **\$27,500 OBO.** 413-374-5331

PACE INDUSTRIES - CAMBRIDGE

## MAINTENANCE MANAGER AND TECHNICIANS WANTED

- COMPLEX HYDRAULICS SYSTEMS • PLCS
- PRODUCTION EQUIPMENT REPAIRS
- FURNACE AND GAS TRAINS

**CONSISTENT SCHEDULE - NO TRAVEL - FULL BENEFITS  
HOLIDAY, SICK AND VACATION - INDOORS**

**CALL US**  
**978-964-1233**

**VISIT US**  
67 Faulkner Street  
Billerica, MA

**APPLY ONLINE**  
[paceind.com/careers](http://paceind.com/careers)



**2000 INTERNATIONAL OIL TRUCK.** Cummins Engine, 13  
Speed Manual, 172,120 Miles, Bottom Load, Vapor Recovery, GVM  
58,000.4500 Gallon Aluminum Boston Steel Tank With 2 Compart-  
ments 2500 & 2000, LCR Meter, **\$40,000.** 508-961-7528

**FREE: CLEAN 3" MINUS  
FILL.** We Will Load Your  
Truck. Delivery For A Fee.  
East Providence, RI, Call Ken  
**401-438-3000**

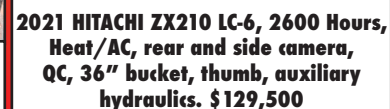


**1994 KENWORTH W900L.** REFURBISHED, 272" WB,  
REBUILT CAT 3406C 425-C, 15 SPEED, 12 FRT AXLE, 40 REARS,  
7" CHROME STACKS, MANY UPDATES, GEM CONDITION,  
**\$89,000.** 207-431-0909





# HAPPY VALENTINE'S DAY





CT • RI • MA • NY

CALL IAN OR JIM  
800-229-9421100 YARD  
STEEL DUMP TRAILERSWE WILL SAVE YOU MONEY ...  
AND PUT A SMILE ON YOUR FACE!**STUMP & BRUSH  
TRANSPORTATION & DISPOSAL****\$1800/LOAD****DEMOLITION DEBRIS  
TRANSPORTATION & DISPOSAL****\$2750/LOAD****SAME DAY DISPATCH  
TOP \$\$ PAID FOR YOUR  
SCRAP STEEL, COPPER, & ALUMINUM!!!****2009 EAGER BEAVER TRAILER.** 25-Ton Air, All New Brakes And Components, Brand New Oak Deck, **\$13,500.** 802-249-2759**2009 CASE IH PUMA 225.** 253 HP, Like New, Has A Buddy Seat, Very Good Shape, **\$70,000.** 603-455-6965 or 603- 939-2462

GOLDEN CAPITAL

YOU FIND IT • WE FINANCE IT.

Sellers/Vendors  
- Let Us Help  
Expedite Sales!**Financing Made  
Easy For Any Equipment,  
Trucks Or Trailers,  
Any Industry!**Golden Capital Equipment Financing  
Is Your Trusted Finance Partner To  
Save You Money And Get The  
Equipment  
And Trucks You Need.WE FINANCE  
EQUIPMENT, TRUCKS  
& TRAILERS**WHY CHOOSE GOLDEN CAPITAL?**

- Any Equipment, Trucks & Trailers – We Finance It All! No Age Restrictions On Equipment
- New, Used, Or Private Party Sales – Flexible Options To Fit Your Situation.
- Quick Approvals - Decisions Within 24 Hours.
- Dedicated Support - Our Team Is Here To Help Every Step Of The Way.
- For All Business Types - No Minimum Time In Business.
- Finance Options For All - No Minimum Credit Score.
- Finance Solutions Tailored To Your Needs - \$5,000 Over \$10,000,000
- Sellers/Vendors – Let Us Expedite Sales!

Don't Let Financing Hold You Back - Grow  
Your Business With Confidence! Let's Help  
You Secure The Equipment You Need!**CONTACT US TODAY!**

314-488-0245

www.Golden-Cap.com





**SANDER CHAINS**  
USA Made  
All Makes  
300 In Stock

# S.A. McLean

## 207-793-4267

622 Elm St, Limerick, ME • [www.s-a-mclean.com](http://www.s-a-mclean.com)



**11' POLY P/A  
PLOW.** 100 Snow  
Plows In Stock



**1994 IH PAYSTAR.**  
Cummins, Auto, 34k  
Miles, 13' Of Frame



**1993 FORD L9000.** 350  
Cummins, 7 Speed, 132"  
Cab To Axle, 22k Miles



**SNO-GO LOADER  
SNOW BLOWER.**  
(122)



**TRACKLESS.**  
With Factory 8' Plow



**13' S.S SANDER.** Fenders &  
Tanks Ground Cal Control, New  
Never Used



**HYUNDAI 757-7.**  
Wheel Loader



**1998 INTERNATIONAL 4800.**  
Four Wheel Drive, Automatic,  
14k Miles, 14 Ft Of Frame.



**1998 FORD EXPEDITION.** 44k  
Miles, 4WD, Absolutely Rust Free



**2017 INTERNATIONAL.**  
Mint Condition,  
Needs Wiring



**OSHKOSH H MODEL.**  
MINT



**STEWART STEVENSON.** 4WD,  
Automatic Trans, W/Plow And  
Wing Frame



**AUTOCAR 4X4.** Auto, Dump  
Sander (126)



**BUCKET LOADER ADAPTER.**  
For Power Angle Plow



**TRACKLESS MT5.** Vee Plow  
& Sander. Have 10 Others



**1985 MACK** 54k miles,  
Automatic Trans.



**MACK DM.** Tandem  
Axle, Rock Dump Body



**1998 INT'L 2574.** 14.5 ft. Of  
Frame, Automatic, Cummins,  
14k Miles, No Rust.



**2004 INTERNATIONAL.**  
3000 Gallon Tank, Sprayer Unit



# OVER 75 NEW ISUZU'S IN STOCK



4.9% Financing

## 2024 ALUMINUM LANDSCAPE DUMP.

Flex Body, 12 Ft, 14,500 GVW, Gas, Chassis  
#1215. **In Stock \$75,750.**

\*All Sale Prices Include Low  
Finance Program Pricing



4.9% Financing

## 2024 12 FT LANDSCAPE DUMP.

Back Pack, 12 Ft, 14,500 GVW, Gas, Chassis  
#1157. **In Stock \$74,950.**

\*All Sale Prices Include  
Low Finance Program Pricing



4.9% Financing

## 2024 NPR HD 12FT STEEL LANDSCAPE DUMP.

Gas, 14,500 GVW, #1226  
**\$74,750.**

**In Stock Now!!**



4.9% Financing

## 2024 20 FT REFRIGERATION BODY.

2024 Isuzu FTR, 20 Ft Morgan Refrigerated  
Van Body, Carrier 50X,  
3,300 lb Tuckaway Liftgate, #1167.

**In Stock, Immediate Delivery.**  
Call For Pricing And Lease Quotes



Hardwood Floors

**2024 NPR HD 20FT DRY FREIGHT  
BOX.** Plywood Lined, Hardwood Floor,  
Pullout Walk Ramp, Gas, 14,500 GVW,  
#1220 **\$72,650.**



4.9% Financing

**2024 NPR HD.** Gas, 14,500 GVW,  
176" WB, Will Take 18' Or 20' Body,  
#1221 **\$50,950.** In Stock Quick Delivery!  
We Handle In House Body Swaps



Hardwood Floors

**2024 FTR 26FT DRY FREIGHT BOX.**  
Cummins 6.7 Diesel, 25,950 GVW, Under  
CDL, Movers Spec, 102" Wide, 102" High,  
Alum Power Tuck Away Tailgate, #1169,  
Call for specs and Pricing

**ISUZU  
TRUCK**

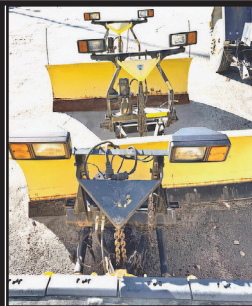
# SALAMI ISUZU TRUCKS

**SALAMISISUZU.COM 124 NORFOLK AVE BOSTON, MA 617-442-1225**

**CALL JOHN CIAMPAGLIA • 781-645-2356 • 7AM-10PM 7DAYS**

\* Ends Sept 15th, 2024





**PLOW FOR SALE.**  
Minimal Wear, Ready  
For Work,  
3 to choose,  
**\$2000-\$3000**  
**OBO.**  
617-840-8478



**2015 PETERBILT 388.** Rebuilt Cummins Engine With 250K  
Miles, 13K Fronts, 46K Rears, 18 Spd. Eaton, 2 Line Wet System,  
**\$42,000.** Boxboro, MA 617-583-3455

## Coletta's Sales & Service

*For all of your truck, trailer, and truck body needs*

- ★ **Collision Center**
- ★ **Vehicle Service & Inspection**
- ★ **Towing & Road Service**
- ★ **Equipment Hauling**
- ★ **Part Sales & Delivery**
- ★ **Authorized Morgan Truck Body Distributor**



250 Niantic Ave, Providence RI 02907  
[www.colettas.com](http://www.colettas.com)

**401-421-3232**

## BAILEY INDUSTRIES LLC

*"Construction, AG and Industrial  
Machinery Repair, ON SITE SERVICE"*

**860-918-6466**

*Mobile Service For CT, MA, & RI*



**2006 INTERNATIONAL 8600 TRI-AXLE DUMP TRUCK,**  
Only 164k Miles, Cummins Engine, 8 LL, Manual Trans,  
16' Body With 54" Sides, Very Clean Truck, Ready To Work.  
**\$79,900** 781-417-3018



**RAPID PREP**

Full Service Provider of Equipment,  
Supplies and Consumables

NATIONWIDE EQUIPMENT  
RENTALS, SALES & SERVICE

North Kingstown, RI  
El Cajon, CA • Suffolk, VA  
Lakewood, WA

877.529.2124 / [rapidprep.com](http://rapidprep.com)

**RUST NEVER SLEEPS**



ENHANCED PORTABLE BLASTER PACKAGE

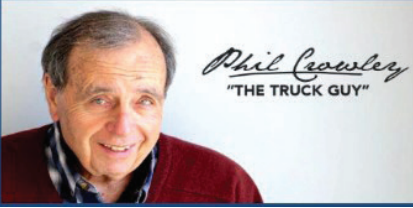


SURFACE PREP  
POWER TOOLS



SAFETY EQUIPMENT



**PLACE MOTOR Inc.***The "RIGHT PLACE" Since 1923***COMMERCIAL TRUCKS**

**PHIL CROWLEY**  
866-449-7482 EXT. 213



19 Thompson Rd.  
Rte. 193  
Webster, MA.

**2 AVAILABLE**

**NEW 2025 FORD E-350 CUTAWAY**  
15' THRU 17' AREOCCELL BODY.



**NEW 2025 FORD E-350 CUTAWAY**  
KNAPHEIDE UTILITY BODY.



**NEW 2024 FORD TRANSIT**  
CAB & CHASSIS, 12' BOX, SIDE DOOR  
AND MORE !



**NEW 2024 FORD TRANSIT VANS**  
MEDIUM & HIGH ROOF, 2WD & 4WD.

**2 AVAILABLE****SPECIAL**

**NEW 2024 FORD TRANSIT VANS**  
250 LOW ROOF, GREEN IN COLOR.

**MANY COLORS**

**NEW 2024 FORD F-350 4X4**  
CAB & CHASSIS, 7.3L GAS ENGINE,  
60 CAB TO AXLE. 12 TO CHOOSE FROM !



**NEW 2023 FORD F-600**  
4X4, 7.3L V-8 GAS, 4-5 YARD DUMP.  
CALL FOR SPECIAL PRICE !



**2024 NEW FORD E-350**  
SINGLE REAR WHEEL,  
12' BOX TRUCK.



**NEW 2024 FORD F-550 SUPER-CAB**  
4X4, CAB & CHASSIS, 6.7L DIESEL,  
84 CA. AND MORE !



**MASSACHUSETTS OLDEST FORD  
DEALER SINCE 1923**





# PLACE MOTOR Inc.

The "Right Place" Since 1923

## COMMERCIAL TRUCKS

Call Phil Crowley "The Truck Guy"  
866-449-7482 ext. 213



19 Thompson Rd.  
Rte. 193 Webster, Ma.



**GAS & DIESEL**

**NEW 2024 FORD F-250 & F-350  
CREW-CAB 4X4  
XL, XLT LARIATS AND  
PLATINUMS AVAILABLE !**



**15 AVAILABLE**

**NEW 2025 FORD F-750  
CAB & CHASSIS, 158 TO 260  
WHEELBASE,  
330HP, AIR-BRAKES AND MORE !**



**GAS & DIESEL**

**NEW 2024 FORD F-250 & F-350  
SUPER-CAB 4X4  
XL, XLT AND LARIATS AVAILABLE !**



**NEW 2024 FORD F-550 REGULAR  
CAB 4X4 DIESEL & GAS, 60 AND  
84 CA. AVAILABLE !**



**NEW 2024 FORD F-350 REGULAR  
CAB 4X4 XLT TRIM 7.3 V8 GAS  
ENGINE, 8.6 XV2 FISHER PLOW  
AND MUCH MORE !**



**NEW 2024 FORD F-250 & F-350  
REGULAR CAB  
XL'S AND XLT, GAS AND DIESEL !**



**SPECIAL**

**2019 FORD E-450 REF BOX  
33K FOR MILES.  
CALL FOR MORE DETAILS !**



**FISHER STORM BOX  
10' TO 14' PUSHER AVAILABLE !  
CALL OUR FISHER DEPT. FOR  
MORE INFO.**



**2023 FORD F-600  
4X4, 7.3L GAS ENGINE, XL TRIM.  
CALL FOR MORE DETAILS !**

**WWW.PLACEMOTOR.COM**



**DEJANA**  
Truck and Utility Equipment



**COMMERCIAL  
VEHICLE CENTER**



**T-QUIP**  
SALES & RENTALS INC.  
Londonderry, NH

**603-623-3669**  
**www.TQUIP.com**

# DAILY | WEEKLY | MONTHLY EQUIPMENT RENTALS



TRACKED DUMPERS  
ROCK TRUCKS  
EXCAVATORS  
ROLLERS  
DOZERS  
BACKHOES  
WHEEL LOADERS  
SKID STEERS  
CRUSHERS  
SCREENERS  
TELEHANDLERS  
MOTOR GRADERS  
SPECIALTY ATTACHMENTS



**WWW.SCRANTONMOTORS.COM**  
**777 TALCOTTVILLE ROAD VERNON, CT • 860-281-6726**



2024 GMC SIERRA 3500. DOUBLE CAB, DURAMAX DIESEL, READING SERVICE BODY, #R9669 \$75,900



2024 GMC SIERRA 3500. 11' SERVICE BODY, DRW, 6.6L GAS, 10 SPEED ALLISON AUTOMATIC, #R9561 \$72,900



2025 GMC SIERRA 3500 DOUBLE CAB, 4X4, 6.6L V8 GAS, #SS9939



2024 GMC SAVANA 3500. READING SERVICE BODY, 139" WB, BACK UP CAMERA, #9869



2024 GMC SAVANNA 3500. 12' DEJANA DURACUBE MAX, SRW, #R9724



2025 GMC SIERRA 2500 DOUBLE CAB, 4X4, 6.6L V8 GAS, #SS9992



2024 GMC SAVANA 3500 CUTAWAY. 17' AEROCCELL BODY, 6.6L V8 AUTOMATIC, RAMP, #R966, \$59,900



2025 GMC SAVANA 3500 CARGO VANS. 4 TO CHOOSE, #S9930



2024 GMC SIERRA 3500 CUTAWAY. 6.6L V8, 16' CLASSIC CUBE BODY, RAMP, #R9660, \$57,900

MANY OTHER TRUCKS IN STOCK. CALL FOR DETAILS



**WWW.SCRANTONMOTORS.COM**





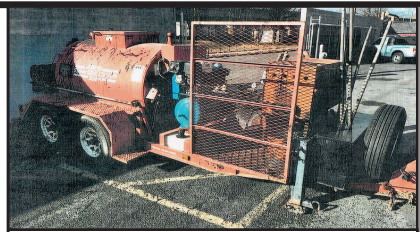


## 2007 FORD F550 FLATBED.

Diesel, Auto,  
12 Tool Boxes,  
2WD, 177,933  
Miles, 17,950 GVW,  
**\$9,595.**  
**603-483-2541**



**2006 INTERNATIONAL  
5500.** Eagle Package, ISX  
475 HP, 8LL Trans, A/C, 100K  
On New Cummins Reman, New  
Rear Suspension, New Trans,  
16' Body, Elct. Trap, Air Gate,  
20K Front, 20K Pusher, 46K  
Rears, **\$90,000.**  
**603-863-1400**



**2014 CRAFTCO SEALER TANK.** Air Comp, Crack Filler  
Melter, **\$8995 OBO.** 413-374-5331



**1988 INTERNATIONAL DUMP.** Twins, 350 Cummins, 13  
Speed, Heavy Rears, Automatic Tarps, Air Gates, One Has A Little  
Rust On Floorboard, The Other No Rust, **\$15,000.00 Each Or**  
**\$25,000** Together. Text Gary With Questions, 508-331-7310



**2004 KENWORTH T-300.** 83 Cummins, 6 Speed, 33K  
GVW, 2300-Gal Trans Tech Tank, L.C. Meter, 268K Miles, Many  
New Parts, Excellent Condition, **\$30,000 OBO.** Call Ray,  
860-346-2833



**RIVERS  
EDGE**  
Truck & Trailer Repair

**183 River Road  
Uxbridge, MA**

**- Financing Available -**

Emile 401-692-0780

Scott 401-692-0781

[unitransgiguere@earthlink.net](mailto:unitransgiguere@earthlink.net)

[www.riversedgetrucktrailerrepair.com](http://www.riversedgetrucktrailerrepair.com)



**2013 FREIGHTLINER CASCADIA.**  
DD 13 Engine, 10 Speed. Disc Brakes,  
Fresh Painted Frame, Super Clean,  
672,000 Miles, New Rods & Mains,  
Go To Work Condition, **\$16,000**



**2013 FREIGHTLINER CASCADIA.**  
DD-13,  
10 Speed, Clean, 913,000 Miles, New  
Dealer Motor Installed at 600,000  
miles, 300,000 On New Motor,  
**\$15,000**



**2019 PETERBILT 567 SLEEPER.**  
441,000 Miles, Paccar, Eaton 13  
Speed, 3:55 Ratio, Super Clean, Needs  
Nothing, Oil Changed With Records  
Every 12,000 Miles, **\$55,000.** 3 Trucks



**2015 GREAT DANE 53'  
CHAMPION SE TRAILER.**  
Barn Doors, Aluminum Roof,  
**\$9,000**



**2012 PETERBILT 386.**  
Paccar  
400-450Hp in Stalled @  
266,077 Miles, All Docs,  
Eaton 10 Spd, Headache Rack,  
New Painted Frame, Chrome  
Bumper, 467,000 Miles On  
Truck **\$28,000**



**2013 PETERBILT 386 SLEEPER.**  
Owner Operator Specs, Cummins  
Rebuilt At 800,000 Miles, Turned  
Upped To 550 HP, Vacuum  
Style Turbo, No Leaks, 13 Speed  
Automatic, Two Boston Wide Ride  
II Seats, Well Maintained,  
**\$32,000**



**2013 FREIGHTLINER  
CASCADA.**  
10 Speed, DD-13  
Engine 380,366 Miles, Frame  
Repainted, Headache Rack,  
Truck Is Mint  
**\$22,000**



**2018 KENWORTH T680  
SLEEPER.**  
350,000 Miles, AP Unit, 455  
Hp Paccar Engine, Automatic  
Transmission, Mint  
Condition,  
**\$40,000**



**2012 VOLVO.**  
D-13 Engine, I Shft Auto.,  
572,444 Miles, Frame  
Painted,  
Clean, Ready To Work,  
**\$20,000**





**ENCLOSED TRAILER. 24' V-Nose, 8' Wide,  
\$7500 OBO. 413-374-5331**



## BLUM'S FIELD SERVICE

-ONSITE HEAVY EQUIPMENT & DIESEL REPAIR  
-MOBILE WELDING & FABRICATION

**LOCATED IN  
BURRILLVILLE, RI.  
SERVICING  
RI, MA, CT**

**CALL PATRICK  
1(401) 309-1960**

\*\*\*COMPETITIVE RATES &  
& QUALITY WORK\*\*\*

\*\*\*ON CALL DURING ALL!  
SNOW STORMS,  
YOU WILL  
NOT BE LEFT  
STRANDED\*\*\*

# KCV Trailer Rentals

**SLedue@KCVtrailers.com**

**(207) 883-5181, x2 Scarborough, ME**



**\$150 or \$200/mo**  
*Delivery Fees Extra*

## 20' or 40' Container Rentals

Various size/colors give extra storage  
for commercial/home projects.



## FOR SALE - 2016 International Prostars

**Three (3)** to choose from, Automatic,  
Day Cab, Single Axle, Cummins engine  
with a Eaton transmissions.

**Make a Reasonable Offer!**



**\$2.5k to 3.5k**

## 20+ Used 40' HIGH CUBE Containers

Units in blue, red, green, and gray.  
Price x 5.5% tax + \$125/hr for delivery.  
*Nine feet high, discount for multiple units sold.*

**CT AXLE**  
& SPINDLE REPAIR

**CT Axle & Spindle Repair Ellington, CT 06029**

**860-281-4454 or 860-375-6045**



**DRIVESHAFT SERVICE  
NOW AVAILABLE**



**BEFORE**

**TRAILER SPINDLE REPLACEMENT  
WELDED IN PLACE**



**BEFORE**

**AFTER**

**TRUCK DRIVE SPINDLE REPLACEMENT  
WELDED IN PLACE**



**AFTER**

• Drive Spindles From 1 Ton To Class 8 Trucks • Trailer Spindles From 3,500# To Class 8 Axles  
Spindles can also be repaired by welding up the worn area and then remachining to factory spec.

**This includes tracing threads or remachining new threads.**

**WELDING AND FABRICATION ALSO AVAILABLE**

**A Completely Mobile Spindle Repair System. We Come To You! Serving CT, MA, RI & the Northeast  
Visit Our Website At: [ctaxleservice.com](http://ctaxleservice.com)**





**2016 EAST 48' WALKING FLOOR.** Good Floor, Keith, 11R24.5 Tires, Good Brakes, Side Roll Tarp, **\$49,900.** Call Jesse, 401-855-1178



**ALMAC 2800 GALLON TANK.** Brand New And Ready For Install!! On The Ground In Westbrook, Maine, 2-Compartment, Bottom Load, Full Specs Available, **\$66,165.** 207-854-9751, MesserTruckEquipment.com



**2025 KENWORTH 990.** 605HP Cummins, 2050 Torque, 18 Speed. 17K Miles, Trailer Available, Very Little Use, **\$229,900 OBO.** Located Near Concord, NH. If Interested Call Adam 603-765-9140



**2005 INTERNATIONAL 7600 TRI-AXLE DUMP TRUCK,** 8LL Trans, 44k Rears, 18k Fronts, Double Frame, Donovan Dump Body, Hendrickson Suspension, Good Shape, 400HP, 710k Miles, **\$54,900,** 781-417-3018

**THE TRAILER DEPOT**

**203-234-7788**  
1037 Middletown Ave. (Rt. 17)  
Northford, CT

**WESTERN**



**BEHNKE 16K DIRECTIONAL DRILL TILT TRAILER.** 6' 9" X 22', 6" Stationary + 16" Tilt, (2) 8,000 lb Torflex Axles, Electric Brakes, #072203



**SUNDOWNER 8K ENCLOSED CARGO TRAILER.** 6' 9" x 16', All Aluminum, 36" Side Access Door With Camper Latch, #CA6190



**CAM SUPERLINE 51.7K HEAVY DUTY DECKOVER.** 8' 6" x 25', 20' Flat + 5' Beavertail, 102" Overall Width, Nominal 2" Oak Decking, #538214



**SURE-TRAC 15.4K PRO SERIES TELESCOPIC DUMP TRAILER.** 7 x 14, Heavy Duty I-Beam Frame And Tongue, #416664



**CM TRUCK BEDS STARTING @ \$4,500**



**USED SURE-TRAC 9.9K LOW PROFILE BEAVERTAIL DECKOVER.** 8' 6" x 17' + 3', Heavy Duty I Beam Frame, #357486, \$6,995

[www.thetrailerdepot.com](http://www.thetrailerdepot.com)

**We'll Hook You Up**  
WE DO FEDERAL INSPECTIONS!



# CENTRAL MASS TRUCK & EQUIPMENT

**Custom Gates  
Hydraulic Hose  
Assemblies &  
Fittings  
Full Truck Service,  
Maintenance &  
Repair**

All Makes & Models  
Over 20 Years Experience  
Specializing In Mack's

• Marshall Cefole •

**978-467-7993**

• Randy Rameau •

**978-423-2889**

10 Gardner Road,  
Winchendon MA 01475



**SNOW PLOWS.** 12' Foil Plow, 11' Straight, And Funnel Plows,  
\$750 And Up. 413-374-5331



**2005 MACK CV700 10-WHEELER.** 186,XXX Miles,  
Steel Body With Swinging Barn Door. Needs Motor Work, Solid  
Truck Overall, **\$28,000 OBO.** Call Mike, 413-246-0185



**\$110 Per  
Wheel Polish**

**ACUSHNET WHEEL  
POLISHING**

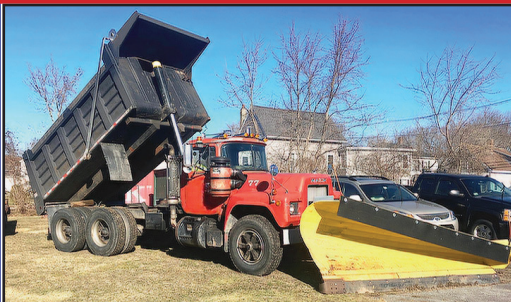
Used Rims Available

**508-961-7528**

62 SOUTH MAIN ST.,  
ACUSHNET, MA



**Service & Mechanic On Site**



**1977 MACK RD PLOW  
TRUCK.** 300 Engine, High  
Low Reverse 5 Speed, 44 Rears,  
Very Clean Frame, No Leaks,  
Ready To Work, 11' Fixed  
Plow, This Truck Is Very Clean,  
**\$25,000.** 802-249-2759

# ALL MAKES

EQUIPMENT & PARTS

CONTACT

**ROLAND CARTER 603-340-6776 • ANDOVER NH 03216**

**EQUIPMENT SALES  
EQUIPMENT PARTS  
EQUIPMENT  
ATTACHMENTS  
FINANCING AVAILABLE**



**Rebuilt & Good Used Engines.**



**New & Used  
Buckets &  
Attachments.**



**New Undercarriage.  
Free Undercarriage Inspection.**



**Equipment  
Hydraulic  
Parts.**



**Salvage  
Equipment  
Parts.**

**info@allmakesequipmentandparts.com • www.amepinc.com**



## COMMERCIAL HOT WATER PRESSURE UNITS

**"We Service All Makes And Models"**



- Electric Motor – Gas Engine**  
 - 1725 RPM Motor & Pump  
 - Becket Burner  
 - TEFCO 120 V Baldor Motor  
 - 50 Ft Hose  
 - 4' Lance Trigger Gun  
 - 1000 to 4000 PSI Options  
 - Poly Fuel Tank  
**NEW Starting @ \$2,495**  
**USED Starting @ \$1,295**



**R & E STEAM EQUIPMENT**  
 Call Earl Warwick **617-899-8775**



**2013 PETERBILT 367 TRI-AXLE DUMP TRUCK,**  
 Auto Transmission, Paccar Engine, Good Tires, 46K Rears,  
 20K Front, 474k Miles, **\$89,900** 781-417-3018



**2013 CHEVY SILVERADO 3500 DUMP TRUCK.**  
 8' Minute Mount 2 Plow, Recent Tires & Brakes All Around, Body  
 Was Just Sand Blasted, New Floor Installed & Painted, Truck Is In  
 Great Condition And Ready To Work, **\$19,500.** 401-641-9000

**2015 HITACHI  
 U50.**

Long Stick, Heat, AC,  
 Hydraulic Thumb, Angle  
 Blade,  
 2550 Hours,  
**\$40,000 OBO.**  
 413-668-6406

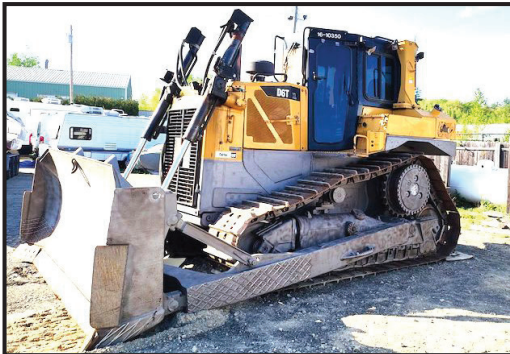


**1989 AUTOCAR.**

400 Cummins, 58,000 Rears,  
 20,000 Front, Newer Dump  
 Body, Good To Excellent  
 Condition, 9 Speed Eaton  
 Fuller Transmission,  
**\$19,500.**  
 401-392-3300



## EQUIPMENT BODY REPAIR & PAINTING



- Welding
- Sand Blasting
- Exterior Painting
- Expert Fiberglass Repair
- Metal Fabrication
- Rust Proofing & Frame Painting
- Body Repair
- Family Owned  
38 Years

**USA Auto Body & Heavy Equipment**  
 8 Gordan Rd Unit 3 Bow NH  
**603-223-1757**





# AREA HYDRAULICS

810 Quaker Hwy. Uxbridge, MA  
**508-278-6670**



Cylinder Resealing

We Make Hose Assemblies

**After Hours Service Available!**




**2018 WESTERN STAR.**

505 HP, Allison 7 Speed  
Auto W/ Low Hole, 390K  
Miles, Auto Grease System,  
Excellent Shape, With 2020  
26' Rhodes Dump Trailer,  
New Brakes, Drums, &  
Springs, Both In Excellent  
Condition., **\$135,000**  
**OBO For Both.**  
774-488-6535

**1999 PETERBILT 330.**

CAT 3126, 6 Speed,  
2800 Gallon  
Aluminum Tank,  
**\$19,500.,**  
Lawrence, MA  
603-973-0809

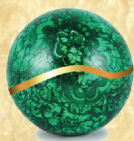


# \$ WANTED

**Construction  
Equipment  
Excavators,  
Loaders,  
Backhoes, Etc.**

**Top Dollar  
\$ Paid \$  
Same Day  
Payment**

**603 505 0905**



## A. RICCIOTTI

INSURANCE ASSOCIATES, LLC

START WITH A STRONG FOUNDATION

**Types of Risks to Insure:**

Trucking for Hire    Fleet Coverage  
Box Trucks  
Tractors  
Dump Trucks  
Flatbeds  
Pickup Trucks  
Trailers

**FMCSA Filings**

Coverages:  
Commercial Auto Liability  
Motor Carrier  
Motor Truck Cargo  
Physical Damage  
General Liability

Landscapers • Snowplow Operators • Garbage

**\* 401-654-6711 \***

Available States: RI • CT • MA • NJ • TX • OH • GA • IN

**1995 SUTPHEN  
PUMPER FIRE**

**TRUCK.** Very  
Good Condition,  
Runs Great,  
Everything Works,  
**\$9,950.**  
860-605-6895

**1995 CASE 1085C RUBBER TIRE EXCAVATOR.**

Extendahoe, Good Condition For The Year, Great For  
A Farm Or Such, Cash Talks! **\$12,500.**  
Call Or Text Michael, 413-246-0185



**SALVADORE**  
FAMILY OF DEALERSHIPS



**RAM**

#1 RAM CHASSIS CAB  
DEALER IN NEW ENGLAND!

978-616-6127

**BUSINESS LINK**  
The fast lane for small business.

**We've Got Your Truck**  
442 West Broadway, Gardner, MA

*Presidents Day  
Savings Are Here!*

**CALL FOR PRESIDENTS  
DAY SAVINGS!**



**2024 RAM 5500HD  
C&C TRADESMAN  
REGULAR CAB 4X4**

6.7L I6 CUMMINS TURBO  
DIESEL ENGINE - 6-SPD  
AUTO AISIN AS69RC HD  
TRANSMISSION

**MSRP: \$81,515**  
**STK # N24144**

**SAVE \$5,000!**



**2024 RAM 3500HD  
C&C TRADESMAN  
REG CAB 4X4**

6.7L I6 CUMMINS TURBO  
DIESEL ENGINE - 6-SPD  
AUTO AISIN AS69RC HD  
TRANSMISSION - 60" CA

**MSRP: \$71,655**  
**NOW: \$66,655**  
**STK # N24073**

**Ready for Upfit!**

**CALL FOR PRESIDENTS  
DAY SAVINGS!**



**2024 RAM 4500HD  
C&C TRADESMAN  
CREW CAB 4X4**

6.7L I6 CUMMINS TURBO  
DIESEL ENGINE - 6-SPD  
AUTO AISIN  
TRANSMISSION - 60" CA

**MSRP: \$77,780**  
**STK # N24068**

**SAVE \$12,000!**



**2024 RAM 3500HD  
C&C TRADESMAN  
REG CAB 4X4**

6.4L V8 HEAVY DUTY HEMI  
ENGINE - 6-SPD AUTO  
TRANSMISSION - 60" CA

**MSRP: \$82,565**  
**NOW: \$70,565**  
**STK # N24128**

**Aluminum Dump Body!**

**SAVE \$5,000!**



**2024 RAM 3500  
TRADESMAN REG  
CAB 4X4**

6.4L V8 HEAVY DUTY HEMI  
MDS ENGINE - 8-SPD  
AUTO TRANSMISSION -  
18" WHEELS

**MSRP: \$75,305**  
**NOW: \$70,305**  
**STK # N24062**

**Dream Service Body**

**SAVE \$5,100!**



**2024 RAM 3500HD  
TRADESMAN REG  
CAB 4X4**

6.4L V8 HEAVY DUTY HEMI  
MDS ENGINE - 8-SPD  
AUTO TRANSMISSION -  
18" WHEELS

**MSRP: \$76,655**  
**NOW: \$71,555**  
**STK # N24036**

**Reading Service Body**

**SAVE \$5,000!**



**2024 RAM 5500  
TRADESMAN REG  
CAB**

6.7L I6 CUMMINS TURBO  
DIESEL - 6 SPEED AUTO  
AISIN AS69RC HD  
TRANSMISSION

**MSRP: \$95,225**  
**CALL FOR SAVINGS!**  
**STK # N24119**

**16' Rack Body!**

**SAVE \$5,000!**



**2024 RAM  
PROMASTER 2500  
TRADESMAN**

3.6L V6 24V VVT ENGINE -  
9-SPD AUTO  
TRANSMISSION - GVWR  
8,900LBS - 16" WHEELS

**MSRP: \$56,500**  
**NOW: \$51,500**  
**STK # N24056**

**Multiple in Stock! High Roof!**

**SAVE \$5,000!**



**2024 RAM 5500HD  
TRADESMAN REG  
CHASSIS CAB 4X4**

6.7L I6 CUMMINS TURBO  
DIESEL ENGINE - 6-SPEED  
AUTO AISIN AS69RC HD  
TRANSMISSION

**MSRP: \$79,110**  
**NOW: \$74,110**  
**STK # N24078**

**Ready For Upfit!**

**SAVE \$5,000!**



**2024 RAM 5500HD  
C&C TRADESMAN  
REG CAB 4X4**

6.7L I6 CUMMINS TURBO  
DIESEL ENGINE - 6-SPD  
AUTO TRANSMISSION -  
84" CA

**MSRP: \$107,925**  
**NOW: \$102,925**  
**STK # N24079**

**Switch-N-Go Hoist System**

Not responsible for typographical errors. Inventory changes frequently. Please call for pricing and details. Pricing subject to change due to manufacturer rebates. Based on Commercial Ram Coupon availability - while supplies last!



# TRUCK AND EQUIPMENT POST

[HOME](#) [BROWSE THE MAGAZINE](#) [LOOKING TO SELL](#) [LOOKING TO BUY](#) [EZ SEARCH](#) [CATEGORIES](#) [CONTACT US](#) [SUBSCRIPTIONS](#)



**PLACE AN AD**

**BROWSE THE  
MAGAZINE**

**SEARCH** 

**SUBSCRIPTIONS**

Truck And Equipment Post is a top choice for buying, selling, or browsing new & used trucks, heavy equipment & trailers throughout New England. Find 1000's of commercial trucks, construction equipment, trailers, truck bodies, truck parts, & other commercial vehicles including pickup trucks, vans, dump trucks, excavators, backhoes, tractors, skidsteers, dump & equipment trailers, truck bodies & more for sale by owner in CT, RI, MA, VT, NH, and Maine.

Truck And Equipment Post is More Than A Magazine. We're a great resource for the truck & equipment industry. It's What We Do!

*Your Local Source For The Trades*





# C.N. WOOD co., INC.

## Large Selection Of Used Equipment! Call For More Info. 781-315-1680



**2018 CAT  
D6K2XL. Clean Machine,  
\$179,000., #C009780**



**2001 KOMATSU WA380-3MC. Coupler,  
Bucket, \$39,000., #C009919**



**2006 CAT D6N XL. Nice  
Machine, \$82,000., #C009948**



**1995 KOMATSU  
PC400LC-5. \$16,000.,  
#C009239**



**2024  
YANMAR  
TL100VS.  
Bucket  
And Forks,  
Only 6  
Hours,  
\$89,500.,  
#C007345**



**2010 ELGIN MEGAWIND  
SWEEPER. \$39,500.,  
#E001369**



**2023 YANMAR VIO35-6A.  
Angle Blade, \$54,000.,  
#C007358**



**2022 CAT 306CR. Coupler,  
2 Buckets, 720 Hours,  
\$58,000., #C009155**



**2014 DEERE 624K. Coupler  
And Bucket,  
\$72,000.,  
#C008573**



**2015 DEERE 50G.  
\$39,000., #C008698**



**2019 DOOSAN  
DX235LCR-5. Straight,  
\$89,500., #C008390**



**1976 SNOGO  
SNOWBLOWER.  
MP3D Wheel Loader  
Mount, \$5,000., #C009080**

Woburn, MA • Avon, MA • Whatley, MA • Johnston, RI • North Haven, CT  
Westbrook, ME • Pine Bush, NY • Holmes, NY • Newington, CT

**www.cn-wood.com**



# JOSEPH

## EQUIPMENT COMPANY

**300 GAY ST • MANCHESTER, NH 03103**

**SATURDAYS • WE ARE OPEN ALL DAY**

**PHONE: 603-641-8608**

**FAX: 603-666-3716**



293 NORTH - EXIT 2 -  
LEFT ONTO BROWN AVE -  
RIGHT ONTO WINSTON ST.- LEFT ONTO GAY ST.  
300 GAY STREET ON THE RIGHT



**2015 CATERPILLAR 314E LCR EXCAVATOR.**  
Thumb And Blade, Quick Disconnect, Hrs 4300,  
Call For More Information.



**2014 CATERPILLAR 321D LCR EXCAVATOR.**  
4330 Hours, Quick Disconnect,  
Call For More Information.



**2015 CATERPILLAR 323 FL EXCAVATOR.**  
Hours 4737, Plumbed For Hammer, Quick  
Disconnect, Call For More Information.



**2016 CATERPILLAR 335F LCR EXCAVATOR.**  
Hours 4971, Plumbed For Hammer, Quick  
Disconnect, Call For More Information.



**2016 CATERPILLAR 938M 2V LOADER.**  
1936 Hours, Forks And Bucket,  
Call For More Information.



**2006 CATERPILLAR COMPACTOR CS563E.**  
2588 Hours, Full Cab,  
Call For More Information.



**2016 CATERPILLAR D3K-2 DOZER.**  
5688 Hours, A/C, Full Cab,  
Call For More Information.



**2001 CATERPILLAR D8R DOZER.**  
Full Cab, A/C, 60% Bottom,  
Call For More Information.



**2006 CATERPILLAR 330D L EXCAVATOR.**  
Plumbed For Hammer, 6651 Hours,  
Call For More Information.



**2011 CATERPILLAR D5K XL DOZER.**  
Full Cab, A/C,  
Call For More Information.



**1998 CATERPILLAR 966F SERIES II.**  
Wheel Loader, Full Cab,  
Call For More Information.



**TEREX RETECH TROMMEL**  
Screen Plant  
Call For More Information.

# www.josephequipment.com

**Trades Welcome • Financing Available**

THIS AD IS COPYRIGHTED & OWNED BY TRUCK AND EQUIPMENT POST



# JOSEPH

## EQUIPMENT COMPANY

**300 GAY ST • MANCHESTER, NH 03103**

**SATURDAYS • WE ARE OPEN ALL DAY**

**PHONE: 603-641-8608**

**FAX: 603-666-3716**



**293 NORTH - EXIT 2 -**

**LEFT ONTO BROWN AVE -**

**RIGHT ONTO WINSTON ST.- LEFT ONTO GAY ST.  
300 GAY STREET ON THE RIGHT**



**IN STOCK - 2025 FONTAINE MAGNITUDE 60HD-MX.**  
Deck Extends From 30' To 51', 65 Ton When Closed,  
Built To Handle A 60 Ton Load With Ease, 30' Clear  
Deck Length Extends To 51', 22" Loaded Deck Height,  
6" Ground Clearance, 7 Position Hydraulic Detachable  
Gooseneck, 7 Position Air Ride Tridem Bogie, 402 Jeep  
Ready, 36" And 83" Flip Box Ready, 60/90 Flip Axle  
Ready, EQ2 Spreader Bar Ready, Loaded.  
**Call For More Information.**



**IN STOCK, NO WAITING: 2025 KRUZ 26' STEEL  
TUB.** Aluminum Frame Dump Trailer, Air Ride, 2  
Axle, Durabrite Wheels, 450 Hardox, 60" Sides,  
12 Panel Gate High Lift Gate, Electric Flip N Go  
Canvas.



**2015 TRAIL KING 55 TON.** (4 Available To Choose  
From Ranging In Years From 2009 To 2015), Air  
Ride, Full Fenders, Hydraulic Power Pack, 25 Foot  
Deck, No Rust- Texas Trailer, Lift Axle, Set Up  
For 4th Axle, Chain Boxes, Outriggers, 4th Axle  
Available, **Call For More Information.**



**1998 FONTAINE, MODEL.** 50 Ton, Detaches At Both  
Ends, 25' Flat Level Deck - 20" Loaded Deck Height,  
25' Beam Deck Insert, 20" Loaded Deck Height, Non  
Ground Bearing, Air Ride, Boom Trough & Deck Cut  
Out, Lift Axle, Outriggers, Aluminum Wheels, Strobe  
Lights. **Call For More Information.**



**NEW MODEL - IN STOCK NO WAITING.** Beat The  
Price Increase. Fontaine Magnitude 65 2+3+2 Capable,  
28' Drop Side Rail Deck, 3 Axle, Set Up For 4 Axle,  
14.75" Deck Height, 102" Wide, 60.5" Axle Spacing,  
Eq2 Spreader Bar With Intermediate Axle, Hydraulic  
Removable, Non Ground Bearing With 2 Pin Position At  
114" And 102", Triple Cylinder, 70" Hydraulic Flip Box,  
Heavy Duty Snap In Outriggers, D-Rings, Alum Wheels,  
275/70R X 22.5 Tires. **Call For More Information.**



**IN STOCK - 2025 FONTAINE LXTN40.** 40 Ton  
Extendable, 34' Closed - 60' Open. Also Available  
29' Closed - 50' Open. Tandem Axle, Set Up For  
3rd, Air Ride, Non Ground Bearing, 102" Swing  
Clearance, 20" Deck Height, Alum Wheels. In  
Stock, No Waiting. Available In Manchester NH And  
At The Factory In Springville AL. 3rd And 4th Axles  
Available. **Call For More Information.**



**2025 FONTAINE WORKHORSE 55LCC FLD.** Tri  
Axle, Lift On Third, Air Ride, Hydraulic 4th Axle Flip,  
Air Lift On Third, 18" Deck Height, 26' Deck, Low  
Boom Well, Covered Rear Bogie, Dual Cam Pawl  
Assembly With 7 Ride Height Positions. Removable  
Kingpin At 108 Inch Radius, Alternate Kingpin At 96"  
Radius, Load Scale, Tire Inflation, Air Controls, 275  
Rubber, Alum Wheels. In Stock, No Waiting.  
**Call For More Information.**

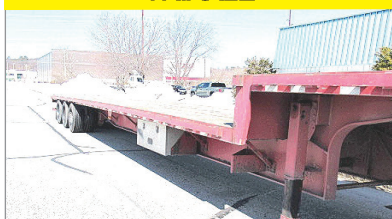


**2019 PUP TRAILERS.** (14 Available To  
Choose From, 28' Long, 102" Wide, 13'6" High.  
**Call For More Information.**



**2017 LIDDELL 60 TON DSR.** 4 Axle, 26' DSR  
Deck, 9' Wide, 8'6" Bogie, 26' Beam Deck, 4th Axle,  
Alum Wheels, Gooseneck Extension, Power Pack,  
Excellent Shape, **Call For More Information.**

### TRIAxLE



**2016 GREAT DANE 53' X 102" DROP DECK.**  
Tri Axle, Air Ride, Lift On Rear Axle, Excellent  
Condition, Southern Trailer, No Rust.  
**Call For More Information.**



**IN STOCK - NO WAITING - 2025 GALLEGOS  
42' FRAME TYPE DUMP TRAILER.**  
96 Yard, 102" Wide, 90" Sides, Tri Axle,  
Hendrickson Air Ride INTRAXX, ABS Brakes, Lift  
On Front Axle, Flip N Go Electric Canvas, LED  
Lights, Barn Door. **Call For More Information.**

### S-T-R-E-T-C-H



**2019 FONTAINE 53 - 90.** Tri Axle, Air Ride, Slider,  
Like New Condition, Southern Trailer, No Rust. 3  
Available To Choose From Ranging From 2019 To  
2016. **Call For More Information.**

**www.josephequipment.com**

**Trades Welcome • Financing Available**

THIS AD IS COPYRIGHTED & OWNED BY TRUCK AND EQUIPMENT POST



# JOSEPH

## EQUIPMENT COMPANY

**300 GAY ST • MANCHESTER, NH 03103**

**SATURDAYS • WE ARE OPEN ALL DAY**

**PHONE: 603-641-8608**

**FAX: 603-666-3716**



**293 NORTH - EXIT 2 -  
LEFT ONTO BROWN AVE -  
RIGHT ONTO WINSTON ST.- LEFT ONTO GAY ST.  
300 GAY STREET ON THE RIGHT**



**ERIN 165T SCREENER ON TRACKS.**  
Makes 3 Products, CAT Power, Heavy Duty Grizzly, Remote Control, Very Good Condition, Call For More Information.



**100 STORAGE CONTAINERS TO CHOOSE FROM.** 20', 40', and 40' High Cube. Call For More Information.



**TELESMTIH 3042 CRUSHER.** With New Die Jaws. Call For More Information.



**2004 CATERPILLAR 966G SERIES II LOADER.**  
26.5 X 25 Radial Tires, Rebuilt Bucket, Complete Rebuilt Motor With Paperwork, 0 Hours Weigh Scale. Call For More Information.



**1997 CATERPILLAR 960F WHEEL LOADER.**  
Sandblasted And Painted, New Decals, A/C, Scale, 23.5 X 25 Rubber, Bolt On Cutting Edge, Very Good Condition. Call For More Information.



**2006 KOMATSU PC35MR-2.** (2 Available To Choose From) Full Cab, Zero Tail Swing, Quick Disconnect, Two Buckets, Third Valve, Blade, Road Liner Tracks, One Owner, Excellent Shape, Original Paint, 6,000 Hours. Call For More Information.



**2009 CATERPILLAR 336D.**  
93 Hours On New Motor, New Swing Drive, 3rd Valve, Hydraulic Thumb, Excellent Shape. Call For More Information.



**1998 BOMAG VIBRATORY COMPACTOR.**  
8600 Hours, Hydrostatic Transmission, Fleet Maintained, 24,000 Operating Weight, Recently Painted, New Oil And Fuel Filters. Call For More Information.



**1998 VOLVO L180C LOADER.** 26.5 X 25 Radial Michelin Tires, One Owner, Working Daily, Excellent Shape. Call For More Information.



**2013 KOMATSU PC360 LC.** 6300 Hours, Quick Disconnect, Recent Pump, Very Good Condition, \$110,000. Call For More Information.



**2009 CATERPILLAR 924H WHEEL LOADER.**  
Quick Disconnect, New Motor From CAT With Paperwork, Very Good Condition. Call For More Information.



**2011 CATERPILLAR 246C XPS.** Skidsteer, 2 Speed, Full Cab, A/C, Cushion Tires, Forks And Bucket, Extra Counterweights, 4,000 Hours, One Owner, Original Paint. Call For More Information

**www.josephequipment.com**

**Trades Welcome • Financing Available**

THIS AD IS COPYRIGHTED & OWNED BY TRUCK AND EQUIPMENT POST



# JOSEPH

## EQUIPMENT COMPANY

300 GAY ST • MANCHESTER, NH 03103

SATURDAYS • WE ARE OPEN ALL DAY

PHONE: 603-641-8608

FAX: 603-666-3716



# FONTAINE

293 NORTH - EXIT 2 -  
LEFT ONTO BROWN AVE -  
RIGHT ONTO WINSTON ST.- LEFT ONTO GAY ST.  
300 GAY STREET ON THE RIGHT



**1998 MACK RD688SX DUMP TRUCK.** 350 HP, Fuller 8 Speed, 58 Rears All Redone By Southeast Truck, 24" Rubber, Rebuilt Engine, Double Frame, Working Daily, Heated Body, New Brakes All Around, New King Pins, New Clutch/Bell Housing, All New Rear Suspension. **Call For More Information.**



**1987 MACK DM6865 SINGLE AXLE DUMP TRUCK.** EM6-285 Engine, 159,436 Miles, Canvas, 10' Long Dump Bed, 54" High Sides, Spring Ride, Working Daily. **Call For More Information**



**2018 WESTERN STAR 4900** (3 AVAILABLE TO CHOOSE FROM). Allison Automatic, 550 HP, DT15 Engine, Full Rears, 2 Line Wet System, Fleet Maintained, Dual Stacks, Alum Wheels, A/C, P/S, Original Paint, One Owner. **Call For More Information.**



**1997 KENWORTH T800.** Twin Steer Wide Nose, 550 Cummins, 18 Speed, Long Wheel Base, 30' From Back Of Cab To End Of Frame, Newair Ride, Double Frame, 164,000 Original Miles, New Michelin Tires In Back. **Call For More Information.**



**2003 INTERNATIONAL DURASTAR 4300.** DT466 Motor, 6 Speed Transmission, 21' Chevron Body, Rebuilt Motor, A/C, P/S, Spring Ride, One Owner, Original Paint, Very Good Condition. **Call For More Information.**



**1994 FORD WATER TRUCK WITH CURRY TANK.** Hydraulic Driven Pump, Double Frame, Cummins Power, Very Good Condition, Price \$27,500. **Call For More Information.**



**1996 MACK CL 713, 350 MACK.** 13 Speed Mack, 46K Rears, 4,100 Gallon Two Compartment Tank, Remtec Inc Steel Tank, 1100 X 24.5 Rubber, 270,000 Original Miles. **Call For More Information.**



**1987 AUTOCAR DK64.** Tandem Dump With J&J Alum Rock Body, Dual Piston, Ledge Gate, Cummins Power, 8 Spd., 58K Rears, 24" Rubber, Spring Ride. **Call For More Information.**



**2019 PETERBILT 389.** 605 Cummins Power, 18 Speed, 4 Axle, 46K Rears, Air Ride, 300" Wheel Base, Headache Rack, Full Fenders, 60" Bunk, Loaded, **Call For More Information.**



**1998 MACK 350.** 8LL Trans, 46K Rears, 18K Front, Double Frame, A/C, Power Steering, Wet System, 129,000 Original Miles, Excellent Condition, **Call For More Information.**



**2011 INTERNATIONAL 7400 WORKSTAR.** DT570, 12,000 Original Miles, Allison Automatic Transmission, Air Ride, Former Florida Municipality Truck, New Tires, Excellent Shape. **Call For More Information.**



**1991 MACK RW753 SUPERLINER.** 3406 ATAAC CAT ATAAC Engine, Fuller RO 18 Speed 156 Trans, 46K Mack Rears, 20K Front, Wet System, Dual Power Steering, A/C, Engine Brake, 220" Wheel Base, Tri Axle. **Call For More Information.**

# www.josephequipment.com

Trades Welcome • Financing Available

THIS AD IS COPYRIGHTED & OWNED BY TRUCK AND EQUIPMENT POST



# JOSEPH

## EQUIPMENT COMPANY

300 GAY ST • MANCHESTER, NH 03103

PHONE: 603-641-8608

OPEN  
ALL DAY  
SATURDAY

# FONTAINE

FAX: 603-666-3716



**NEW MODEL - 2025 FONTAINE RENEGADE LXLN12** - 12 Inch Loaded Deck Height With 4 Inch Ground Clearance When Fully Loaded, 30 Tons In 16 Feet On Tandem Bogie Or 30 Tons In 20 Feet With 3rd Axle Flip, Low Profile, 3rd Axle Capability, 32 Feet 11 Clear Deck Length. IN STOCK, NO WAITING. **CALL FOR MORE INFORMATION.**



**NEW MODEL - 2025 FONTAINE MAGNITUDE 50** Tri Axle, Set Up For 4Th, 50 Ton, Air Ride, 24' Deck, 20" Loaded Deck Height, Alum Or Steel Wheels, Strobe Lights, Outriggers And D-Rings. **Call For More Information.**



**2025 KRUZ TERMINATOR**, 26' Steel Frame, Single Point Suspension, 2 Way Gate, 11 X 24.5 Tires, Alum Wheels, 2 Speed Landing Gear. **Call For More Information.**

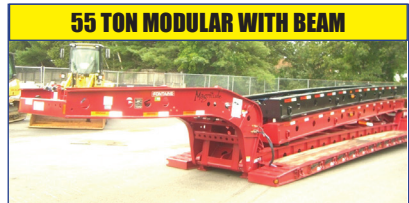


### 27' FLAT LEVEL DECK - IN STOCK

**2025 FONTAINE 55L**, 27' Flat Level Deck, Also Available In 25' And 26' Deck Length. Tri-Axle, Air Ride, 3Rd Axle Lift, Alum Wheels, Strobe Lights, Set-Up For 4Th Axle. In Stock, No Waiting. **Call For More Information.**



**2025 KRUZ 26' STEEL TUB**, Aluminum Frame Dump Trailer, Air Ride, 2 Axle, Alum Wheels, 450 Hardox, 24.5 16 Ply Tires. **TAKING ORDERS**  
**Call For More Information.**



### 55 TON MODULAR WITH BEAM

**2025 FONTAINE 55H MODULAR DSR**, Beam Deck Also Available, Tri Axle, 60" Axle Spacing, Hydraulic Removable, Non Ground Bearing, Set Up For Gooseneck Ext, Spreader Bar And 4Th Axle Flip, Air Ride, Alum Wheels, 22.5 Rubber. **Call For More Information.**



**2025 FONTAINE 60 TON MODULAR 2+3+1**, 26' Dsr, 184" Swing Clearance, Set Up For 2 Axle Jeep, 14" Deck Height, Air Ride, Alum Wheels, 275/70R X 22.5 Rubber, Non Ground Bearing. **Call For More Information.**



**2025 FONTAINE RENEGADE LXL**, 14" Deck Height, 30' Deck W/6" Ground Clearance, 2 Axle, Set Up For Third, Hydraulic Detachable, Taking Orders  
**Call For More Information.**



**2025 KRUZ, 70 Yard**, Tri Axle, 70,000 Single Point, Lift On Third Axle, 1/4 Inch 450 Hardox, Floor, Sides, Nose, Gate, 12 Panel Gate, 11 X 24.5 Rubber, Alum Wheels. Taking Orders. **Call For More Information.**



**2025 FONTAINE TRAVERSE HYDRAULIC TAIL**, 48' Long, 102" Wide, Air Ride, Hydraulic Upper Deck, Hydraulic Winch, Remote Control, Alum Wheels, Dual Controls. Taking Orders  
**Call For More Information.**



**2025 FONTAINE 60 TON MODULAR**, 26' Dsr, 60" Axle Spacing, 184" Swing Clearance, Set Up For 2 Axle Jeep, 14" Deck Height, Air Ride, Alum Wheels, 275/70R X 22.5 Rubber, Non Ground Bearing. In Stock. **Call For More Information.**



**1998 KAYLN SIEBERT**. 75Ton 3+3+3, Air Ride, West Coast Bogie, 3 Axle, Air Ride Jeep With Power Tower, 10' Wide Trailer, 60' Overall Length, 48' Of Useable Deck, 275/70 X 22.5 Rubber, Sandblasted & Painted, Excellent Shape, Alum Wheels On Jeep And Booster. **Call For More Information.**

**Trades Welcome • Financing Available • [www.josephequipment.com](http://www.josephequipment.com)**

THIS AD IS COPYRIGHTED & OWNED BY TRUCK AND EQUIPMENT POST



TRAILER RENTALS • TRAILER RENTALS • TRAILER RENTALS •

WE RENT STEP DECKS • LOW BEDS • HI FLATS • DEMO/SCRAP • TRAILERS

# JOSEPH EQUIPMENT COMPANY

300 GAY ST. • Manchester, NH 03103

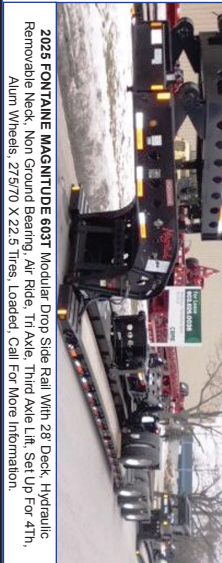
NOW TAKING ORDERS FOR DUMP TRAILERS AND LOWBEDS FOR SPRING AND SUMMER DELIVERY

14" DECK HEIGHT



NEW 2025 FONTAINE RENEGADE LXL, 14" Deck Height, 30" Deck W/6" Ground Clearance, 2 Axle, Set Up For 3rd Hydraulic Detachable Or Mechanical Detachable. In Stock No Waiting. Call For More Information

IN STOCK, NO WAITING



2025 FONTAINE MAGNITUDE 603T Modular Drop Side Rail With 28" Deck, Hydraulic Removable Neck, Non Ground Bearing, Air Ride, Tri Axle, Third Axle Lift, Set Up For 4th, Alum Wheels, 275/70 X 22.5 Tires, Loaded. Call For More Information.

55 TON EXTENDABLE



2025 FONTAINE MAGNITUDE 59MX, 55 Ton Extendable Trailer, 30" To 50", Modular, Detaches Both Ends, Hyd Removable, Non Ground Bearing, 20" Deck Height, Will Take 10" Deck Ext For A Total Of 60", 275 Rubber, Tri Axle, Air Lift On 3rd, Set Up For 4th, Set Up For Goose Neck Ext. Call For More Information

WE RENT WALKING FLOORS • DUMPS • HIGH FLAT EXTENDABLES • JEEPS



NEW 2025 FONTAINE SPECIALIZED MAGNITUDE 55L, Tri Axle, Air Ride, Set Up Of 4th Axle, Non Ground Bearing, 25" Deck, Led Lights, Aluminum Wheels, Strobe Light Package, Lift On 3rd Axle, 2 Pin Position, Loaded. In Stock No Waiting. Call For More Information



2025 FONTAINE 55H MODULAR DSR, Beam Deck Also Available, Tri Axle, 60" Axle Spacing, Hydraulic Removable, Non Ground Bearing, Set Up For Goose Neck Ext, Spreader Bar And 4th Axle Flip, Air Ride, Alum Wheels, 22.5 Rubber, Call For More Information.



2025 FONTAINE 35 TON LOWBED, Air Ride, Tandem Axle, 29ft Flat Level Deck, Non Ground Bearing, Hyd Goose Neck, Set Up For Future 3rd Axle, In Stock. Call For More Information

WE RENT STINGERS • SPREADER BARS • DOUBLE DROP EXTENSIBLES TRAILERS



2025 FONTAINE 704/2+3+2 DROP SIDE RAIL, 4 Axle, 28" Deck, Hydraulic Detachable, In Stock, No Waiting, Non Ground Bearing, 102" Wide, 65" Flip Box, Spreader Bar And 352T, Jeep, Alum Wheels, 275/70R X 22.5 Tires, 28" Beam Deck Available. Call For More Information.



NEW 2025 FONTAINE 55 TON, Drop Side Rail, Tri Axle, Air Ride, Set Up For 4th, Non Ground Bearing, Led Lights, Aluminum Wheels, Strobe Lights, Loaded. In Stock No Waiting. Call For More Information



NEW 2025 SPECIALIZED 55 TON BEAM TRAILER, 3+1 Modular NGB, Detach Both Ends, Tri Axle, Lift On 3rd, Set Up 4th, Set Up For Goose Neck Extension, Call For More Information

Trades Welcome • Financing Available • [www.josephequipment.com](http://www.josephequipment.com)

THIS AD IS COPYRIGHTED & OWNED BY TRUCK AND EQUIPMENT POST

TRAILER RENTALS • TRAILER RENTALS • TRAILER RENTALS •