

SERVING NEW ENGLAND

FREE

TRUCK AND EQUIPMENT

Your Local Source For The Trades



2021 INTERNATIONAL MV STETCO 950 CATCH BASIN CLEANER. CUMMINS L9, AUTOMATIC, 33,000 GVW, CALL FOR COMPLETE DETAILS, 508-668-3112



2011 JOHN DEERE 772GP GRADER. 3,934 HOURS, ALL WHEEL DRIVE, AC, 14' MOLD BOARD, SCARIFIER, \$99,000. 978-249-4600



NEW GM 5500LCF DROPSIDE DUMP. 17,950 GVW, A/C, POWER HEATED MIRRORS, HITCH, LOAD COVER, SALE \$61,495. 508-761-4800



2006 ELGIN EAGLE SC8000 SWEEPER. 22K MILES, REAR JD ENGINE, GOOD BROOMS, \$39,000. 603-860-7875



NEW K-TRAIL 14K GALVANIZED DUMP TRAILER. 6' 8" X 12", SLIPPER INDUSTRIAL SUSPENSION, 15" X 72" RAMPS, ON SALE. 203-234-7788

Optative Group



**Issue 04-05
Jan 27th 2021**

**INTERNET & PRINT
FOR ONLY \$25.00**

www.TruckAndEquipmentPost.com

888-887-0505

SNOW & ICE CONTROL - ONE STOP SHOP

NEW SECOND LOCATION NOW OPEN

105 COUNTY RD, IPSWICH MA

 **PRE-SEASON SALE** 



NEW FUSION EDGE



1-978-745-2500

Ipswich: 978-356-2916

Truck Bodies & Equipment

63 Bridge St. Salem, MA

www.BrakeAndClutch.com

HILLVIEW EQUIPMENT

SALES & RENTALS 24/7

CALL JUDE 1-508-498-0777

www.HillviewEquipment.com

11 Commercial Way
Milford, MA 01757

Rt. 495 to exit 19,
Route 109W,
Left to Birch St,
right to Industrial Dr. Left to
Commercial Way



2007 CAT 315CL:
GREAT SHAPE,
WORK READY
PIECE, REBUILT
INJECTOR PUMP.
**\$70,000
BRO**



2016 CAT 330FL: LOW
HOUR, VERY FAST
MACHINE W/ NEW
BUCKET!
**\$149,000
BRO**



**NEW & USED ROCK BLASTER
HAMMERS**



2011 BOBCAT S630:
LOW HOURS,
OUTSTANDING
MACHINE!
\$39,000 BRO



1999 CAT 345BI: GREAT
MACHINE, USED VERY
LITTLE, COMES W/ 1
YEAR OLD 12K ROCK
BLASTER HAMMER,
THIS MACHINE CAN
POUND ROCK INTO
DUST! **\$199,000
BRO**



2013 CAT 320EL:
VERY NICE
LOW HOUR
MACHINE WITH
QC, AUX HYD.,
CAMERA READY!
**\$129,000
BRO**



2015 KOMATSU PC360: LONG
STICK (13'6")
LONG BOTTOM,
LOW HOUR
MACHINE, PIPE
LAYER DREAM!
\$129,000



2013 LULL 644E-42:
(6) YES I
HAVE SIX VERY
CLEAN.....
**STARTING @
\$49,000**



**EIK LONG
REACH
PACKAGES
FROM
20 TO 160
METRIC
TONS.
READY FOR YOUR
JOB SITE.**

"MONSTER SALE" NEW INVENTORY COMING !



**6 TO CHOOSE
FROM!
PRICES START
@ \$55,000**

2017 CAT 908M:
VERY CLEAN,
LOW LOW
HOURS, GREAT
RUBBER,
COMES WITH 3RD
VALVE, FORKS
AND A BUCKET!



2003 CAT 330CL:
GREAT MACHINE
W/ STRONG
BOTTOM, NEW
CHAINS- JUST
COMPLETED JOB,
FULLY SERVICED W/
HYDRAULIC THUMB.
\$79,000 BRO



**2004 725
TRUCK:**
WELL
MAINTAINED,
WORKING DAILY!
**\$79,000
BRO**



2016 CAT 308E2:
FRESH OUT OF
THE SHOP &
READY TO WORK!
BEST PRICE
AROUND.
CALL!



2008 CAT 321DLR:
FULLY EQUIPPED,
HIGH HOURS,
REBUILT ENGINE,
QC, AUX HYD.,
2 BUCKETS AND
MUCH MORE!
\$85,000 BRO



2013 CAT 314:
VERY LOW HOURS,
BLADE, AUX.
HYDRAULICS, HARD
TO FIND ! READY TO
WORK !
\$129,000 BRO

★ THIS MONTH'S SPECIALS! ★



2011 CAT 924HZ:
VERY NICE
CONDITION
WITH 3RD
VALVE.
**ASKING
\$79,000**



2016 CAT 336FL:
OUTSTANDING
MACHINE WITH
VERY LOW
HOURS,
IN SPOTLESS
CONDITION.
BEST PRICE IN
NEW ENGLAND!
CALL

BIG WHEEL TRUCK SALES

HEAVY DUTY TOWING AND RECOVERY



1990 Chevrolet 8500 10' Steel Sater Dump
Body: 3126 CAT, Automatic, 37,000 GVW.
11' Everest Power Angle Plow, Stainless Steel
Sander. Only 145K Miles. **Call For Details.**



**2004 PETERBILT 330 26 x 102 MORGAN
REFER BOX:**
CAT C-7, Automatic.
Therm-o-King Refer Unit. Call for info.



**2001 MACK RD688 SX TRI AXLE
DUMP:** Low Miles, 8LL, 20F/58R,
Very Good Condition. **Call For Details**



2013 INTERNATIONAL KANN PACKER
BODY: W/Double Trash Holder Lifts. MaxiForce
IH Diesel w/only 10K Miles, Automatic, Only 63K
miles on Truck. Very Clean and Runs Perfect.
ONLY \$35,000.



2002 F350 Crew Cab 4x4 Rack Body:
Recent Rack Body w/Hitch, 6.0L Diesel,
Automatic. Very Clean Inside and Out.
Call for Details.



2015 FREIGHTLINER FL 70 24'x 102"
CARRIER REFER BOX TRUCK: Cummins
Power, Automatic, Air Brakes, Roll up Rear Door,
Aluminum Ramp. Call for Pricing.



**2005 STERLING 24' FLATBED with
PRENTICE TELEDYNE Fork Lift:**
C-13 CAT, 8LL, 20F/46R. Truck and Lift in
Very Good Condition



**2011 MITSUBISHI FE 145 Cab &
Chassis:** Will take 14' Body, 14,500
GVW, 150K miles. **\$9,500**



2001-2003 INTERNATIONAL 4900'S:
24' Aluminum Boxes w/4 Side Doors. 2 Live
Tandems, 5 S/A with Lift Axles. Call.



2007 GMC/ISUZU W5 18' Moving Van:
Isuzu Diesel. Side Door, Barn Doors, Lift
Gate. Very Good Condition. **\$10,500.**



2003 STERLING 26'x102" BOX TRUCK:
CAT C10, 10 Speed Road Ranger, 16F/40R,
24.5 Tires. Runs & Drives Like New. Please
call for more information



**2004 KW T30 20' VAN BODY
w/ 6' SLEEPER:**
CAT 3126 300 HP, 9 Speed. Perfect for Long
Distance Mover. Call.

42 Quanapaug Road, East Freetown, MA

508-763-5927 • FAX 508-763-2369

www.BIGWHEELTRUCKSALES.COM

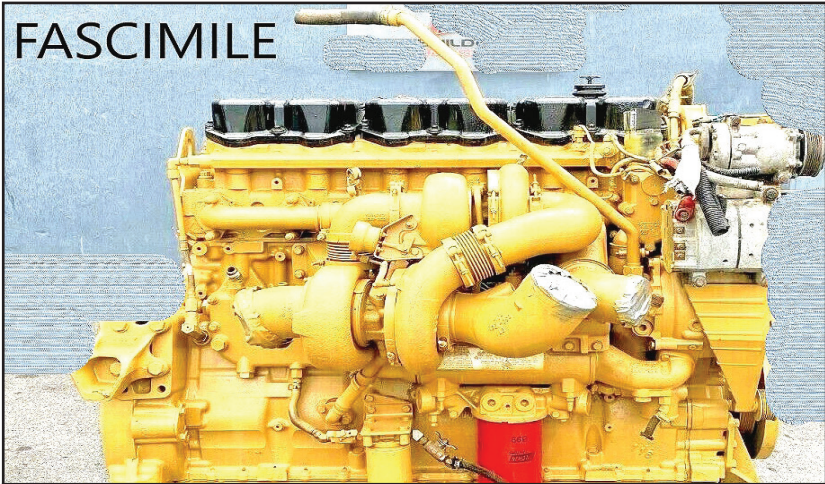
WE SELL HEAVY DUTY SNOW PLOW EQUIPMENT • WE EXPORT WORLD WIDE • HEAVY DUTY TOWING SPECIALIST



1997 INTERNATIONAL SANDER.

Closed Loop System, Ready For State Plowing W/Wing On Right Side, **\$5800.** Call Jim, 413-530-5369

FASCIMILE



2006 CAT C15 ENGINE. CAT Rebuild Last Year For Over \$41,000, 35,000 Miles Since, 475 HP, Dual Turbo, Nice And Clean, Well Maintained, Asking **\$22,500.** Call Earl At 603-355-0818 Or Kathy@Kbsunspaces.com

401-654-6711

Insurance experts
for all your business
and individual needs



A. RICCIOTTI INSURANCE ASSOCIATES, LLC
START WITH A STRONG FOUNDATION



1998-1999 IH 32' BUCKET TRUCKS. DT466, Automatic, **\$5,700 Each**, 860-307-7157



2021 RHODES 26' STEEL DUMP TRAILER,
High Lift-Gate, Steel Frame,
Single Point Suspension. 401-434-5900



2005 INTERNATIONAL 7400.
DT466, Stainless Steel Sander/Dump,
12 Ft. Reversible Plow, 9 Ft. Wing
Plow, Closed-Loop System, 60K Miles,
\$29,000. Thompson, CT
860-234-7340

ALL MAKES

EQUIPMENT & PARTS

CONTACT

ROLAND CARTER 603-340-6776 • ANDOVER NH 03216

**EQUIPMENT SALES
EQUIPMENT PARTS
EQUIPMENT
ATTACHMENTS
FINANCING AVAILABLE**



**New & Used
Buckets &
Attachments.**



Rebuilt & Good Used Engines.



**New Undercarriage.
Free Undercarriage Inspection.**



**Equipment
Hydraulic
Parts.**



**Salvage
Equipment
Parts.**

info@allmakesequipmentandparts.com • www.amepinc.com

PLACE MOTOR Inc.

The "Right Place" Since 1923

COMMERCIAL TRUCKS

Call Phil Crowley "The Truck Guy"
866-449-7482 ext. 213

19 Thompson Rd.
Rte. 193 Webster, Ma.

WE HAVE WHAT YOU NEED



NEW 2020 FORD F-350 4X4
CAB CHASSIS, 6.2L GAS, POWER
WINDOWS, POWER LOCKS AND
SO MUCH MORE !



NEW 2020 FORD F-550 4X4, 6.7L
DIESEL, DUMP !
CALL FOR BEST PRICE.



NEW 2020 FORD F-550 4X4, 7.3L GAS,
STAINLESS & STEEL DUMP BODIES
AVAILABLE !



NEW 2021 FORD E-350 14' AEROCELL
BODY, POWER WINDOWS, POWER
LOCKS, AND MUCH MUCH MORE !



2 AVAILABLE

NEW 2020 FORD F-550 CREW CAB
4X4, DIESEL 84 CA, WHITE & RED
AVAILABLE !



WHITE & RED AVAILABLE !

NEW 2020 FORD F-550 CREW-CAB
4X4, DIESEL, 84 CA.



NEW 2020 FORD TRANSIT
CONNECT VANS.
3 TO CHOOSE FROM !
CALL FOR SPECIAL PRICING !



NEW 2020 FORD TRANSIT CARGO
VAN, LOW ROOF, TONS IN STOCK !



NEW 2020 FORD F-350 4X4 DUMP,
AIR-FLO, STAINLESS BODY !
CALL FOR SPECIAL PRICING !

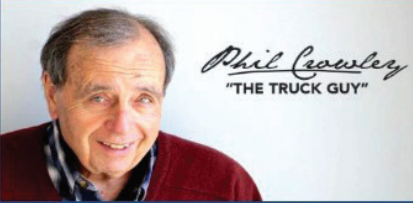
WWW.PLACEMOTOR.COM



DEJANA
Truck and Utility Equipment



**COMMERCIAL
VEHICLE CENTER**

PLACE MOTOR Inc.*The "RIGHT PLACE" Since 1923***COMMERCIAL TRUCKS**

PHIL CROWLEY
866-449-7482 EXT. 213



19 Thompson Rd.
Rte. 193
Webster, MA.



**NEW 2019
FORD F-550
CREW-CAB 4X4,
DUMP, DIESEL
AND SO MUCH
MORE !**

MORE OF WHAT YOU NEED

**NEW 2021 FORD F-350 SUPER-CAB 4X4,
STX PACKAGE, 6.2L, POWER WINDOWS/
LOCKS AND SO MUCH MORE !**



**NEW 2021 FORD F-650 SUPER-CAB, 300HP,
POWER AIR-BRAKES, ALUMINUM WHEELS
& SO MUCH MORE !**



**NEW 2021 FORD F-250 SUPER-CAB 4X4,
6.2L STX PACKAGE, SHORT BED.
CALL FOR BEST PRICE !**

•www.placemotor.com• www.placemotor.com• www.placemotor.com• www.placemotor.com•



**2013 FORD F-350 CATERING TRUCK, ONE
OWNER.
CALL FOR MORE DETAILS !**



**2019 FORD F-150 CREW CAB 4X4 LIMITED
TRIM, 14,000 MILES,
CALL FOR MORE DETAILS !**



**2019 FORD F-150 CREW CAB 4X4, XLT
TRIM, NAV., POWER MOON ROOF
AND SO MUCH MORE !! SPECIAL \$42,723**



**MASSACHUSETTS OLDEST FORD
DEALER SINCE 1923**





Chadwick-BaRoss

1-401-640-9303
WWW.SRISALES.NET
SOUTHERN RHODE ISLAND EQUIPMENT

 31 JAMES P. MURPHY INDUSTRIAL HIGHWAY
 WEST WARWICK, RI 02893

FFC • BRADCO • MCMILLEN • MAJOR • SWEEPSTER • HARLEY
HARLEY RAKES

CALL FOR DETAILS & PRICING !

ROCK BUCKETS

STARTING AT \$1,625, IN STOCK!!

72" PICKUP SWEEPER

72" PICK UP SWEEPERS.. \$4,200

VIBRATORY ROLLER

CALL FOR PRICING

PREPERATOR

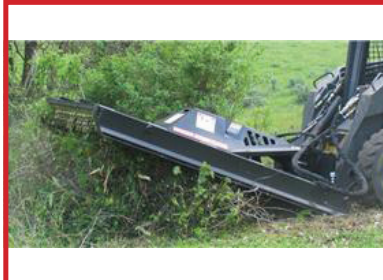
CALL FOR PRICING

HIGH DUMP BUCKETS

CALL FOR PRICING

ROOT RAKE

CALL FOR PRICING

BRUSH CUTTER

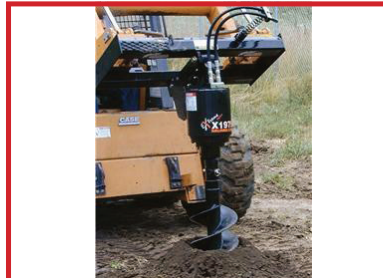
5FT-\$5,100 - 6FT-\$5,300

5500LB FORKS

IN STOCK

SIDE DISCHARGE BUCKETS IN STOCK !

CALL FOR PRICING !

AUGER'S IN STOCK

\$2,150.00

NEW SKID STEER HAMMERS
 \$6,200
 WHILE THEY LAST !!!

FINANCING AVAILABLE / PALADIN ATTACHMENTS.
GO TO PALADINBRANDS.COM FOR FULL LINE OF ATTACHMENTS.



Chadwick-BaRoss

1-401-640-9303 • 1-401-594-8408

WWW.SRISALES.NET

SOUTHERN RHODE ISLAND EQUIPMENT 31 JAMES P. MURPHY INDUSTRIAL HIGHWAY WEST WARWICK, RI 02893

DYNAPAC**Husqvarna****MULTIQUIP****SANY OFFERS A 5 YEAR 5,000 HOUR WARRANTY W/ 0% FINANCING AVAILABLE !**

**2006 BOBCAT
435-ZHS:
ONLY 950 HOURS,
2 BUCKETS.
\$28,000
FINANCING
AVAILABLE !**



**2018 SANY SY215C:
ONLY 980 HOURS,
52,000#, REMAINDER
OF 5 YEAR /5,000
HOUR WARRANTY.
\$125,000
FINANCE AVAILABLE !**



**RUBBER TRACKS
FOR ALL MAKES
AND
MODELS
CALL FOR
PRICING !!!**



**2014 TAKEUCHI
TW40
ONLY 350 HOURS,
CAB, HEAT.
\$33,500
FINANCING
AVAILABLE !**

**SALES • SERVICE • RENTALS • PARTS
FULL LINE OF SKID STEER ATTACHMENTS AVAILABLE.
GO TO WWW.PALADINBRANDS.COM**

**WWW.SRISALES.NET
WWW.CHADWICK-BAROSS.COM**

Takeuchi
The Power of Product and Support



**2002 MACK PLOW
SANDER TRUCK. 14 Yard,
Auto Shift, Ten Wheel, New Rear
Brakes & Air Cans, Plows For
The State, On-Board Computer,
Ready To Go, Snow Is Coming,
\$16,500 OBO.
781-727-9895**



**RD OLSON 5x12 TRACK SCREENER - 1500Hrs,
Open Throat Feeder, Self Cleaning Ball Deck, CAT Diesel-
\$159,500 CALL DAN AT 203-506-3860**



**SNOWPLOWS
\$800 And Up OBO.
413-374-5331**



Powerglide Air Test Kit



Complete Powerglide Pro Tree Transbrake \$279.95



TH400 Deep Cast Aluminum Pan



TH400 Billet Direct Drum Spring Retainer & Aluminum Modulator/Solenoid Hold Down



Powerglide Overhaul Kit



Powerglide Deep Oil Pan



Powerglide Reverse Spring Retainer Tool



Powerglide Bushing Driver Set



Do-it-yourself Powerglide Pro Tree Transbrake Kit \$164.95



1.80 Long Powerglide Gear Set



1-800-394-5889

179 Belvedere Road
Gilsum, NH 03448

WWW.TSR-RACING.COM



Powerglide
Handbook written
by Carl H. Munroe
\$21.95



Powerglide Vent Tanks

GENERAL TRUCK CENTER INC.

Selling Cab Overs Since 1961!!

109 Lindberg Ave. Methuen MA 01844 • www.generaltruckcenter.com

978-686-1800

603-560-0668

Nights and Weekends

ASK HOW WE
CAN LOOK IN YOUR
MAINTENANCE
COSTS FOR 6 YEARS
WITH PSMP



HAPPY NEW YEAR



2016 HINO 195. 17950 GVW. 176K Mi, 14' Steel Flat Body, Stake Pockets Avail, Heated Power Mirrors, Block Heater, A/C, AM/FM/CD, P/W/L, stk#15202, **\$29,900.**



2020 HINO 268A. Air Brake. Alum Wheels. Chrome Bumper. 26x103x102. Curbside Door. 2 Rows E-Track. stk#9528, **\$85,875.**



2020 HINO 195 NEW! Carrier 660 Self-Cont w/ Supreme Kold King XL 16', Freezing Temp Capacity, Roll-up, 91"x96", Insulated, 2 Step Bump, stk#9586, **\$88,900.!**



2020 HINO 195 NEW! Carrier 660 Self-Cont w/ Supreme Kold King XL 16', Freezing Temp Capacity, Roll-up, 91"x96", Insulated, 2 Step Bump, stk#9592, **\$88,900.!**



26' Bodies Available. 26'x103"Tx102"W w/ Step-Up Bumpers, E-Track Available, **\$17,500. Installed.**



2020 HINO 338 Oil Chassis. Air Brake/Spring Ride, Allison 3500 RDS Auto, Vertical Exhaust, Chrome Package, Cold Package And More! stk#9705, **\$81,900.**



2020 HINO 155. 14500 GVW, 16'x91"x96" Body, Step-Up Rear Bumper, AM/FM/USB/Bluetooth. P/W/L, A/C, stk#9794 **\$52,900.**



2013 HINO 268A. 138K. 6 Sp Man, 24x97x96, 2500 Lb Tuck, Heat Mirr, P/W/L, Cruise, A/C, AM/FM/CD, Air Brake/Spring Ride, stk#15237, **\$31,900.**



2016 HINO 195. 170K Miles, 18'x85x102, Step-Up Rear Bumper, Cold Package (Heated Mirrors/Block Heater), 102" Mirrors, P/W/L, stk#15232, **\$27,900.**



2014 ISUZU NPR-HD. 150" WB, 163K Miles. 6 Sp. Auto, 4 Cyl Diesel. PW/L, A/C, AM/FM/CD/USB w/ Bluetooth, stk#15169, **\$19,900.**



2014 ISUZU NPR-HD's. 5 To Choose From. 150" WB Ready For 16' Bodies, AM/FM/CD, A/C, P/W/L, Heated Mirrors, stk#15040-15062, **As low as \$18,900!**



2015 ISUZU NPR-HD. Diesel, 113K, 16' Morgan Dry Body. 1500 Lb Lift Gate, Block Heater, Heater Mirrors, stk#15374, **\$29,900.**



2016 ISUZU NPD-HD. 97K, 16'x91"x96", 2 Row E-Track, P/W/L, A/C, AM/FM/CD, Cruise, 3 Yr/90K Add Mileage Warranty Avail! stk#15333, **\$32,900.**



2014 ISUZU NPR-HD. Diesel, 119k Miles! 150" WB, Auto, Includes 3 YR/90K Isuzu Extended Warranty, stk#15101, **\$22,900.**



2014 ISUZU NPR-HD 16' Alum Body. Diesel, 119K, 1 Row E-Track. Metal Roof, AM/FM/CD/Bluetooth/USB Radio, PW/L, Back-Up Alarm And More! stk#15100, **\$29,900.**



2014 ISUZU NPR-HD 16' Morgan Insulated w/ Tri-Fold Rear Swing Doors. 14500 GVW, 99K!, Carrier 40x. AM/FM/USB, Ext Warr Avail. stk#15040, **\$22,000.**

*TAXES NOT INCLUDED. 100K MILE LIMIT. .20 CENTS EVERY MILE ABOVE 100K. Dealer is not responsible for errors in price or in description of vehicles



Call us at
978-686-1800

or Visit us at:
www.generaltruckcenter.com

ISUZU
TRUCK

**FINANCING OPTIONS FOR NEW VEHICLES STARTING AT 1.99% AT 36 MONTHS,
3.49% FOR 48 MONTHS, 4.49% FOR 60 MONTHS, 5.09% FOR 72 MONTHS.**



**Great Selection of New Isuzu FTR's –
Refrigerated Trucks & Vans.
8 Wheelbases
152" – 248" For Bodies 14' to 30'.
5.2L Diesel, 25,950 GVW.**



**New Isuzu NPR-HD Dry Freight &
Reefer Bodies. Gas & Diesel,
109" to 176" WB, Up to 14,500 GVW,
10' to 20' Bodies.**

109 Lindberg Ave. Methuen, MA 01844



Residential ~ Commercial ~ Industrial
Mark Dillon
774-365-0222



1996 MACK RD688S TRI-AXLE DUMP TRUCK,
Miles: 270K, Mack E7-350HP, 8LL Trans., New Clutch & Transmission,
New Springs, New Radiator, Starter, Trunnion, Bushings.
\$34,900 Call Today ! 781-417-3018



2011 KOMATSU SK820-5N.
Enclosed Cab W/ Heat, Ride Control,
Self Leveling Joy Stick Controls, New Tires &
Rims Including Spare, New: Battery, Bucket,
Cutting Edge, Paint & Decals; Much More,
Only 1200 Hrs, Always Garage Kept, Just
Serviced, **\$20,000 OBO.** Call Anthony,
617-594-3737



**Custom Gates Hydraulic Hose
Assemblies & Fittings**
Full Truck Service, Maintenance & Repair

All Makes & Models

Over 20 Years Experience Specializing In Mack's

Marshall Cefole - **978-467-7993**

Randy Rameau - **978-423-2889**

10 Gardner Road, Winchendon MA 01475



KENT 40G HYDRAULIC HAMMER. Just Rebuilt With Warranty, Bracket Fits A Komatsu PC400, Needs At Least A 330 Excavator, **\$29,500.** Call Jesse 401-855-1178, 401-771-3409

AWP

FLEET DISCOUNTS

\$75 & Up

ACUSHNET WHEEL POLISHING
Used Rims Available
508-961-7528
62 SOUTH MAIN ST.,
ACUSHNET, MA



Service & Mechanic On Site



1996 INTERNATIONAL.
18K Front, 38K Rear, 60K Miles,
1996 Zimmerman 6 Cu.Yd.
Mobile Mixer W/400 Gal. Water,
Rebuilt In 2015, Minimum
Use, Excellent Condition,
\$45,000. 978-265-5974



1994 CATERPILLAR MODEL 325L HYDRAULIC EXCAVATOR, 80% U/C, Engine Rebuilt By CAT Approximately 200 Hours Ago, 36" Digging Bucket - Reinforced, No Cracks Or Welds, Runs Good, 13,895 Hours, Ready To Work ! **\$37,900**
Call Today 781-417-3018

BEAM TRUCK & BODY INC.

RI Dealer #647

433 CUMBERLAND HILL ROAD, WOONSOCKET, RI 02895



401-767-2639



NEW - USED & RECONDITIONED DISPOSAL EQUIPMENT



2004 KENWORTH T300:
396,914 MILES, AMERICAN 75,000# ROLL-OFF,
CAT C12 W/ FULLER 8LL, 60,000# GVW.
CALL FOR MORE DETAILS !



2006 INTERNATIONAL 4300, 345,067 MILES, DT466 OVERHAULED IN 2018, ALLISON 3500 TRANS, REPLACED @248,000 MILES, STELLAR SLIDER 26 W/ ADJUSTABLE HOIST - 35"/54" - PIONEER RP-1500-PTO-COVERING SYSTEM, PINTLE HITCH, 6" STEEL TOOL BOX, 295/75R22.5 FRONT / 295/75R22.5 REAR. CALL FOR MORE INFO !



2010 INTERNATIONAL 7400: 42,000 MILES W/ HEIL 22 YD. AUTOMATED PACKER. \$60,000 WILL SPLIT.



2006 FORD F-750, UNDER CDL, REAR LOADER, 35K MILES, WAYNE 6 YARD REL, CALL FOR MORE INFO !



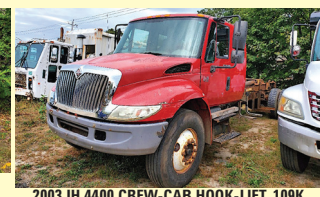
2007 ISUZU FVR: UNDER CDL, AIR-BRAKES, 111K MILES, ALLISON AUTO, MOUNTING 2011 10YD NEW WAY SIDE LOADER W/ TIPPER. CHASSIS BLASTED & PAINTED, BODY PAINTED YOUR CHOICE OF COLORS.



2010 MACK MR 20 & 46 ALLISON W/ NEW WAYNE 40 YD. FRONT LOADER, 26,351 MILES. \$164,000 W/ FET



2003 FREIGHTLINER ROLL-OFF, 66K GVW, MILEAGE UNKNOWN, FULLER 8LL, CUMMINS, CALL FOR MORE INFO !



2003 IH 4400 CREW-CAB HOOK-LIFT, 109K MILES, DT466, ALLISON 3500 RDS, 40K GVW, GAL BREATH 30K HOOK WITH 54/62 HOOK - HEIGHT DOES 16' BOXES, CALL FOR MORE INFO !

WWW.BEAMTRUCK.NET



Cherry Hill Construction Co., Inc
51 Ciro Road – North Branford,
CT 203-488-7929

www.CHERRYHILLEQUIPMENT.com



2004 KENWORTH T800 Roll-off, 600,000 miles, 20K Front, 40K Rears, Fixed Pusher Axle, 8 LL Eaton Fuller (1yr old), C15 475 Engine, Galbreath Hoist, Auto Tarp, Auto Can Lockers. **Asking \$54,000.**



2007 MACK CV713 Granite Roll-Off, 450,000 miles, 18K Front, 40K Rears, Fixed Pusher Axle, AI-427 engine, 8 LL Eaton Fuller, Rudco Hoist, Auto Tarp, Auto Can Lockers. **Asking \$72,000**



1971 MACK DM685S.
 S/N 9104, 14'6" Bibeau Body/ Boards, Richards Tarp, Runs Daily, New Paint **Asking \$16,000**



1995 HOGZILLA TC-1464P GRINDER.
 Cummins K-19 Motor, 1,477 Hours,
Asking \$175,000



2005 TEREX (POWERSCREEN) WARRIOR 1800.
 Rebuilt CAT 3054 Tier 2 Engine, 16' x 5' Screen Deck, Completely Gone Through, Ready For Work, **Asking \$110,000**



1968 JOHN DEERE 570 MOTOR GRADER.
 Good Running Machine, Rebuilt Motor, Ready To Work.
Asking \$15,000



2005 BANDIT 3680,
 CAT C15, New Twin Disc Clutch, Newer Mill Bearings, 60 Tooth Mill, **Asking \$125,000.**



2010 VOEGLER VISION 5200-2.
 Crawler Asphalt Paver, #07740075, Cummins QSG 6.7, Rubber Tracks Carlson EZIV-1019, 10'-19' Hyd Ext Sced, **Asking \$35,000**



1955 CHEVROLET. New 350 Engine, Automatic, Modern Front End, Disc Brakes, Heat, AC, CD, Leather Interior, **Asking \$52,000**

CHRYSLER DODGE Jeep RAM
SALVATORE AUTO
 Family of Dealerships
888-605-4346

**WE ARE YOUR Commercial
 Truck Headquarters**

GET IT DONE IN 2021!

ON THE JOB

BUSINESS LINK
 The fast lane for small business.

2020 RAM 3500 TRADESMEN
COMING SOON!
 CAB AND CHASSIS



BRIGHT WHITE, 6.4L V8 HEMI, REGULAR
 CAB, 60 CA, 4X4
 STK# N20206

**2019 RAM PROMASTER
 BOX TRUCK**
COMING SOON!



TWO AVAILABLE!
CALL FOR DETAILS!

2021 RAM 2500 LARAMIE
SAVE \$5,208!
 CREW CAB



DELMONICO RED 6.7L I6 TURBO
 DIESEL CREW CAB 4X4 6'4" BED.
 STK# N21037

2019 5500 DUMP TRADESMEN
 DUMP BODY
11' DUMP BODY!



BRIGHT WHITE, 6.7L CUMMINS TURBO
 DIESEL, DUMP BODY, 4X4
 STK# N19361

**COME SEE LARRY
 THE TRUCK GUY!**



**More Than 30 Years of
 Commercial Truck Experience!**

2019 RAM 5500 RACKBODY
 CREW CAB
SAVE \$7,702!



BRIGHT WHITE 6.7 L I6 CUMMINS
 TURBO DIESEL, READING RACK
 BODY STK# N19302

2019 RAM 5500 TRADESMAN
SAVE \$7,803
 RACK BODY



BRIGHT WHITE, 6.7 L CUMMINS
 TURBO DIESEL, READING RACK
 BODY, REGULAR CAB STK# N19264

2019 RAM 5500 DUMP BODY
 CREW CAB
SAVE \$8,095



BRIGHT WHITE, READING DUMP
 BODY, 6.7L I6 CUMMINS DIESEL
 STK# N19332

2020 RAM 5500 CHASSIS
COMING SOON!



84 CA " 5500, REG CAB DIESEL,
 STAINLESS DUMP WITH I-PAK
 SYSTEM

442 West Broadway, Gardner, MA 01440 SalvatoreAuto.com

NOT RESPONSIBLE FOR TYPOGRAPHICAL ERRORS. INCLUDES QUALIFYING REBATES. PRICING VALID THROUGH 1/31/21

CHRYSLER DODGE Jeep RAM
SALVADORE AUTO
 Family of Dealerships
888-605-4346

**WE ARE YOUR Commercial
 Truck Headquarters**

GET IT DONE IN 2021!

ON THE JOB

BUSINESS LINK
 The fast lane for small business.

2019 RAM 3500 TRADESMEN

SAVE \$6,445!

CHASSIS REG CAB 4X4



ONLY \$49,995!

BRIGHT WHITE DUMP BODY
 60 CA, 6.4 GAS, 4X4. STK# N19190

2020 RAM 2500 TRADESMAN

REGULAR CAB

SAVE \$4,811!



ONLY \$37,999!

BRIGHT WHITE, , REGULAR CAB, 6.4
 GAS, 4X4. STK# N20181

2019 RAM 3500 TRADESMEN

REGULAR CAB

SERVICE BODY!



**CALL FOR
 DETAILS!**

BRIGHT WHITE 6.4 GAS, SERVICE
 BODY, 4X4. STK# N19357

2020 RAM 3500 TRADESMEN

REGULAR CAB

COMING SOON!



BRIGHT WHITE, 6.4 CA, 4X4, DUAL
 REAR WHEEL, SERVICE BODY
 STK# N20218

**2020 RAM
 5500 TRADESMAN**

COMING SOON!



WHITE CREW CAB, 6.7I
 CUMMINS TURBO DIESEL
 STK#: N19358

**CALL FOR
 DETAILS!**

TOP

**RAM Commercial
 Truck Dealer
 in the Northeast
 Region**

2020 RAM 3500 TRADESMAN

SAVE \$4,838!

REGULAR CAB



**PLOW
 INSTALLED**

ONLY \$59,999!

DIAMOND BLACK, 6.7L I6 CUMMINS TURBO,
 AUTO-LEVELING SUSPENSION, W/ PLOW 8.5'
 58 XV2 STK#N20151

2020 RAM 2500 LARAMIE

CREW CAB

SAVE \$5,515!



ONLY \$61,170!

6.4L HEAVY DUTY V8, NIGHT
 APPEARANCE PKG, SNOW CHIEF
 PKG STK# N20199

2020 RAM 3500 TRADESMEN

SAVE \$3,891!



DELMANICO RED, REG CAB, 6.4L V8
 HEMI, 8' BOX STOCK # N20205

442 West Broadway, Gardner, MA 01440 SalvadoreAuto.com

NOT RESPONSIBLE FOR TYPOGRAPHICAL ERRORS. INCLUDES QUALIFYING REBATES. PRICING VALID THROUGH 1/31/2021

TRUCKCOUNTRY.US

USED TRUCK PARTS



ONLINE 24-7



**9' FLATBED BODY. Dual
Wheel, #205406, \$1,500**



**9' ELECTRIC HYDRAULIC
DUMP BODY.
#205423, \$3,000**



**9' UTILITY BODY. DRW,
No Rust, #205415, \$3,500**



**12' FLATBED BODY. DRW,
No Rust, #205434, \$2,000**



**8' UTILITY BODY. SRW,
Power Tailgate, #205421,
\$2,500**



**1 PACK TOOL BOX. Solid,
#205423
\$1,500**



**8' DUMP BODY. DRW,
#205433, \$2,500**



**12' READING RACK BODY.
With Power Lift Gate, #205336,
\$3,500**



**9.5' FLATBED BODY. DRW,
Solid, #205430, \$1,500**



1-860-423-6004

Mon-Fri 8-5
Sat 9-1

1535 WEST MAIN STREET, WILLIMANTIC, CT



10 FOOT WING PLOW. With Push Frame, Hydraulic,
\$1250. West Warwick, RI
401-640-8884, Ask For Henry



2013 VOLVO VNM64T200-D13, 434HP,
10 Speed, 40,000 LB., Air-Ride,
Fleet Maintained! Call 401-434-5900



**1959 DODGE
400 DUMP TRUCK.** Unique,
V8, 93K, Dual Wheels, PTO,
Engine Rebuilt, Frame Good,
Straight Body,
\$6,890 OBO. Saybrook, CT
860-664-0727



INTERNATIONAL MODEL H60 LOADER.
Used For Snow Removal, Good Tires, **\$12,000.**
Call Or Text 401-648-5950



2016 ROCKSTER 700. 28" Closed Circuit Impactor,
Magnet, Volvo Diesel, POR, CALL DAN 203-506-3860



**8' MARANDA M-170
FIBERGLASS SLIDE INSERT
UTILITY TRUCK CAP,** Space Kap, Dual
Side Doors, Rear Barn Doors. Shelving,
Dual Alum. Drop-Down Ladder Racks,
Cargo Slide Work Tray, Space
Cap Rival, Excellent Condition, **\$6,900.,**
Westport, MA 508-636-5050

STEEER'S

MOBILE WELDING & EQUIPMENT REPAIR

LLC.

Burrillville, RI • 401-633-4587

- Full Bucket Rebuilds • Cylinder Resealing
- Wear Plates • Adapter Replacement • Hardfacing
- General Maintenance • Computer Diagnostics
- On Site Hose Replacement



MIKE'S
Truck & Trailer
Repair inc.



Truck & Car
Computer
Diagnostics



Full Service Truck and Auto Repair Center.

447 York Ave, Pawtucket, RI 02861 • (401) 725-2188

MEDIUM/HEAVY TRUCK & RV SERVICES FEDERAL DOT & RI STATE INSPECTIONS

- * All makes engine repairs
- * Fuel pumps
- * Brake work
- * Electrical repair
- * Injectors
- * Oil changes
- * Trailer repair
- * Turbo
- * Lift gate problems
- * Welding fabrication
- * Heavy equipment
- * Front ends
- * Rear roll-up door repairs
- * Installation
- * Wiring circuits



FORD 6.0 DIESEL POWER STROKE SPECIALIST !



visit our website @ mikestruckandtrailerpawt.com • RI# 459ca

28TH ANNUAL FLORIDA AUCTION

THE GREATEST SALE OF THE YEAR! • 9 DAYS OF SELLING!!

**Construction Equipment, Aerials, Forklifts, Cranes, Dump Trucks,
Truck Tractors, Trailers, Support & Attachments**

SATURDAY, JANUARY 30TH – SUNDAY, FEBRUARY 7TH @ 9:00 AM

12601 AVALON ROAD, WINTER GARDEN (Kissimmee), FLORIDA 34787

**ON-SITE
AUCTION**

ALEX & SON

**ALTA
EQUIPMENT
COMPANY**

THE 28TH ANNUAL 9-DAY FLORIDA AUCTION will be comprised of 3 parts: **Days 1 & 2-** Majority of Support, Attachments and Accessory items will sell Timed. **Days 3-9-** Majority of Construction Equipment will sell Live. **Day 5, Part 2** LearJet will be Timed. Please visit www.lyonauction.com for more information.

HIGHLIGHTS INCLUDE: **Trencher:** Trenchor T1060, **Soil Compactor:** 2017 Cat 815K, **20 Art. Haul Trks:** (2)2018 Cat 745C, 2015-2014 Volvo A30G, (2)2014 Volvo A30F, 2019-2016 Volvo A25G, (2)2018-2017-2016 Bell B30E, **2 Straight Frame Haul Trks:** 2009 Cat 773F, Cat 769D, **4 Long Reach Excavators:** 2017-2016 Cat 326FL(60'), 2018 Linkbelt 250X4, 2018 Linkbelt 210X4(50'), **169 Hydraulic Excavators:** Cat 375L, 2019 Cat 352FVG, Cat 350LC, 2015-2014 Cat 349FL, 2012 Cat 349EL, (2)2020 Cat 336, 2017-2016 Cat 336FL, (3)2014 Cat 336EL, (3)2020 Cat 335FLCR, 2020-(2)2016 Cat 330F, 2017-2016 Cat 326FL, (2)2020-2019-2017-2016 Cat 325FLCR, 2016 Cat 325, Cat 325B, (10)2020-2019 Cat 320, 2020 Cat 320NXT, (5)2018 Cat 320FL, Cat 316EL, (4)2020 Cat 315FLCR, 2020-(2)2018-(4)2017 Cat 313FL, (2)New Cat 313, 2019-(2)2018-(2)2017-2016 Cat 313FLGC, 2015-(2)2014 Cat 312EL, (2)Cat 312E, Cat 312, (3)2018-(2)2017-2016-2015 Cat 308E2CR, (2)Cat 308C, 2015 Cat 305.3ECR, Cat 235C, 2018 Volvo EC480EL, 2018 Volvo ECR355EL, 2017 Volvo EC350EL, (2)2019 Volvo EC300EL, 2018 Volvo EC250EL, 2018 Volvo ECR235EL, 2018 Volvo EC220EL, 2011 Kobelco SK350LC-9, 2019 Kobelco SK85C, 2018 Kobelco SK75SR, (2)2019 Kobelco SK55R, (2)Komatsu PC360LC-10, Komatsu PC300LC, 2018 Komatsu PC228USLC-11, (6)Komatsu PC138US-10, Hitachi ZX470LC, 2014 Hitachi ZX225USLC-5, (2)2019 Hitachi ZX210LC-6, 2015 Case CX470, 2018 Case CX245DSR, 2020 Case CX90D, (2)New Doosan DX225LC, Unused Doosan DX140LCR-5, 2020 Doosan DX65R-3, (4)2020 Doosan DX62R-3, JD 350GLC, JD 135CRTS, (2)2019-(4)2018 Linkbelt 201X4, (2)2018-2017 Sany SY135C, 2020-(3)2018-2017 Bobcat E85, Bobcat 331E, Unused Takeuchi TB2150R, 2017 Takeuchi TB260, Takeuchi TB016, Takeuchi TB014, Takeuchi TB007, NH EC60, NH E33C, (3)2019 NH E37C, Kubota KX121, (2)Kubota KX91, 2017-2014 Kubota KX080-4, (2)2017 Yanmar V1080, **2 Rubber Tired Excavators:** 2018-2014 Volvo EW160D, **3 Material Handlers:** 2009 Fuchs MHL350D, 2008 Fuchs MHL320D, **11 Motor Graders:** 2010 Cat 16M, 2016 Cat 160M, 2018 Cat 140KVHP, 2013-(2)2011 Cat 140M2, 2015 Cat 12M3, 2012 Cat 12M2, 2015 Komatsu GD655-5, (2)2009 Volvo G930, **Motor Scraper:** Cat 621E, **63 Rubber Tired Loaders:** Cat 988F, Demo Cat 980M, 2013 Cat 980K, Cat 980G, 2017 Cat 972M, Cat 972G, Demo Cat 966M, Cat 966G-2, (2)New & 2018 Cat 962M, (2)New-2017-(2)2016 Cat 950M, 2014-2012 Cat 950K, 2018 Cat 950GC, Cat 950F, Cat 950E, Cat 950K, (2)2018-(3)2017-(4)2016-2015 Cat 938M, Cat 938G, (3)Cat 936F, Cat 930, Cat 920, 2018-(2)2016 Cat 926M, Cat 926E, 2020 Cat 910M, Demo Cat 908M, Cat IT18, (2)Unused Liebherr L506C, Komatsu WA500, Komatsu WA420-3, 2007 Doosan Mega 250V, JD 724J, 2014 JD 644KH2, 2014 JD 624K, 2019 JD 544L, Volvo L120E, 2018 Volvo L110H, 2013 Volvo L110G, 2014 Volvo L90G, Volvo L90E, 2019 Volvo L70H, IR WL350, **48 Crawler Tractors:** (2)Cat D10R, Unused-(3)2018 Cat D8T, 2020 Cat D7E, 2019 Cat D6TLGP, 2014 Cat D6TLGP, (3)2018 Cat D6N, (3)2016 Cat D6NGLGP(ripper), 2008 Cat D6NGLGP(winch), 2015-2014 Cat D6K2LGP, (2)2015 D6KLG, (2)2017-(2)2016-(2)2015-(2)2014-2013 Cat D5K2LGP, (2)Cat D5KLG, (2)Cat D4KLG, (2)2019 Cat D3KLG, 2018 Cat D3K2XL, 2019 JD 650KXLT, 2018 JD 550KLG, (3)2019 JD 450KLT, Case 450C, **15 Crawler Dumps:** 2016 Terramac RT14, (2)2018 Terramac RT6, 2014 Morooka MST4000VD, (3)2016-2014 Morooka MST2200VD, (2)Morooka MST1500VD, (5)2014 Morooka MST800VD, **2 Crawler Cranes:** Lima 50-ton, P&H 35-ton, **Rough Terrain Crane:** Terex LRT-110, **Trk Crane:** Grove TM-875, **Pile Driver:** Fundex F12, **15 Backhoes:** 2018 Terex TLB840R(4x4), 2012 Cat 420F, Cat 420F, Cat 416F, (7)2013 JD 310K, 2012 Case 580N, 2009 Case 580SM, **Slip Paver:** Gomaco GT3600, **3 Asphalt Pavers:** Leeboy 8500, Leeboy 1000, Leeboy 100, **Soil Stabilizer:** Bomag MPH454R, **35 Vibratory Rollers:** (2)2017 Cat CS74B, (8)2011 Cat CS74, 2014 Cat CS56B, Cat CS563E, 2015-(2)2013 Cat CS44, (3)2017 Dynapac CA2500D, 2017-2014 Volvo SD115B, (2)Unused Bomag BW213DH-5, 2014 Bomag BW211D-50, (2)Unused Bomag BW177D-5, 2016 Bomag BW145D-5, 2013-(3)2012 Hamm 3410, 2014-2011 Hamm 3307, Demo Hamm H11i, **11 Asphalt Rollers:** (7)Unused Bomag BW120A11-5, Sakai SW850, Dynapac CC142, Ingram, **3 Trench Rollers, 15 Tracked Skid Steers:** Takeuchi TL10R, 2015 Takeuchi TL8, Cat 299D, 2016 Cat 289D, Cat 289C2, 2019 Cat 259D3, (3)2019 Cat 259D, Cat 259B3, 2014 Cat 257B, NH C232, **12 Skid Steers:** Unused JD 318D, (3)Cat 262B, 2018 Cat 232D, (3)2016 Cat 226D3, Mustang, **20 Tele Forklifts:** (2)2016 Cat TL1255D, 2016 Cat 1055D, (2)Cat TL1055, Cat TL943, (4)Unused Skytrak 10054, Unused Skytrak 8042, (2)2013 Skytrak 8042, 2016 Skytrak 6036, 2013-2012 Genie GTH-1056, (2)Genie GTH-5519, IR VR-90B, **Rough Terrain Forklift:** JCB 930, **7 Forklifts:** Taylor TE1805, 2012 Hyster S155FT, Hyster S120FT, (3)Hyster H50FT, Yale GDP050, **40 Boom Lifts:** (2)Genie S-125, (4)Genie S-85(Recond.), Genie Z80/60(Recond.), Genie S-80, Genie Z60/34(Recond.), Genie Z60/34RT, (4)Genie S-60, Genie Z45, 2012 Genie Z40/23N, Genie S40, 2012 Genie Z30/20, Unused JLG 1350, 2017 JLG 1350SJP, (3)JLG 1250AJP, JLG 800S, JLG 600AJN, (2)Unused JLG 460AJ, (3)Unused JLG 450AJ, 2012 JLG E400A, 2009 JLG E400AJPN, (3)Unused JLG 340AJ, Unused JLG E300AJP, **20 Scissor Lifts:** Genie GS-5390, Genie GS-4390, (2)2009 Genie AWP-40S, 2012 Genie GR-15, Genie GS-3232, Skyjack SJ7135RT, 2014 Skyjack SJ114632, 2014 Skyjack SJ114626, (2)2013 Skyjack SJ3226, 2012 Skyjack SJ113219, Skyjack SJ3219, (4)Unused JLG 19R, JLG 1230ES, (2)JLG 20MVL, **4 Air Comp.:** (2)Atlas Copco XAS1600, 2017 Atlas Copco XAS110, IR XP375, **12 Generators:** Cat XQ200, (5)Cat XQ100, (3)Cat XQ60, Himonisa 135Kw, Like New 2011 L3 MEP806B, Like New 2011 L3 OFNW8, **9 Welders:** 2014 Lincoln Vantage 500, Lincoln 305G, Lincoln 300, Lincoln 250, Lincoln Ranger, (3)Miller 300, (2)Miller 250, **13 Light Plants, 4 Conveyors & Stackers:** Rock Screener Conveyor, Soil Pulverizer w/Conveyor, 45ft. Conveyor w/Hopper, 40ft. Conveyor w/Hopper, **18 Ag Tractors:** JD 6115D, Unused JD 5075E, (2)Unused JD 5065E, (3)New NH TS6.120, (10)New NH TS6.110, NH Workmaster-12D, **3 Utility Tractors:** 2018 JD 4044R, (2)JD 1070, **4 Tractor Loaders:** Unused JD 5045E, (2)NH Workmaster-60, Kubota M9960D, **2 Trenching Drills:** Ditch Witch JT2720, Ditch Witch JT4020, **Vac Unit:** Ditch Witch FX30, **2 Mixing Units:** (2)Ditch Witch FM13, **11 Comm. Mowers:** (2)New Bad Boy Outlaw Rebel, (2)New Bad Boy Maverick, New Bad Boy Avenger ZT Elite, New Bad Boy Magnum, (2)New Bad Boy MZ Series, (3)New Hustler Dash(42" 0-turn), **13 Sweepers:** (2)2017 Superior SM80K, 2013 Superior 80CT, (3)2017 Broce CRT350, (5)2016 Terramite Commander, Laymor SM300, 2009 Laymor 8C, **3 Water Tankers:** Cat 769C, Cat 613C, Volvo A30X, **Water Trk:** 2019 Kenworth T370(4000gal), **Distributor Trk:** IH S1900, **Flatbed Trk:** 2005 Ford F350XL, **4 Service Trks:** 2016 Ford F450, 2007 Ford F350, 2008 IH 7300SFA, IH 4800, **Boom & Service Trk:** 1986 Western Star(t/a), **Bucket Trk:** 2010 Freightliner M2(t/a), **Vac Trk:** 2010 IH 7500, **2 Concrete Mixer Trks:** (2)2006 Terex Advance(t/a), **4 Dump Trks:** (2)Unused Peterbilt 567(tr), 1999 Mack RD688S, 2009 Ford F550, **Fuel & Lube Trk:** 2005 Mack CV713, **7 Trk Tractors:** 2016 Mack CHU613(t/a), (4)2015 Mack CXU613(t/a), Mack RW753, 2012 IH 8600(t/a), **2 SUVs:** 2013 Ford Escape, 2003 Ford Expedition, **6 Pickups, 10 Detachable Goosenecks:** 2020 Liddell C55, (9)2021 Witco RG52, **Utility Vehicle:** 2012 Kawasaki 4010T, **600 Attachments, 2084 New Support.**

SALE SITE PHONE: (407) 239-2700 • FL LICENSE: AB-1091 • FL AUCTIONEER: AU-1548 Jack Lyon

ALEX LYON & SON

SALES MANAGERS & AUCTIONEERS, INC., BRIDGEPORT, NY 13030

Phone: (315) 633-2944 • Fax: (315) 633-5635 • Go to WWW.LYONAUCTION.COM for more details

**BID
ONLINE**

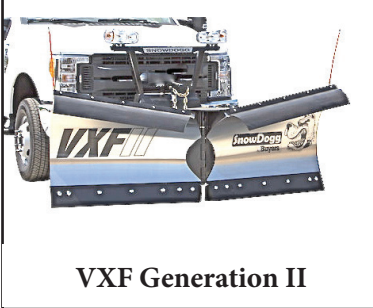
CANDIA TRAILER.COM 1-866-761-0196

& LANDSCAPE EQUIPMENT CO

35 High St, Junction Rte. 27 & 43., Candia NH

All Prices Cash & Carry! Installation Available! 10 Minutes East of Manchester, NH • 1 hour From Boston

**BE READY FOR
THE TOUGHEST
PART OF
WINTER**



VXF Generation II



TE Generation II



**Gen I - MD Series Plow
Starting At \$3680 Installed**



**Heavy Duty Poly 3/4 Cubic
Yard Spreader, \$2,650**



**Commercial 4 Cu. Yd Poly
Spreader. Call For Pre-Season
Price**



**14 Cu. Yd. SS Spreader Tri-Axle
7 Cu. Yd. SS Spreader For 10' Body
1.5 Cu. Yd. SS Spreader Starting @ \$3,895**



1997 MACK SANDER COMBO.

Low Miles, Well-Maintained,
State Ready W/Closed Loop
System, Good Rubber, New
Paint, **\$11,500.**
Call John, 413-522-3729



2004 FREIGHTLINER FLD 120 TRACTOR, Detroit Series 60
Motor, 13 Speed Transmission, 40K Rears / 12K Fronts, Been Pulling
Flat Deck Trailers All Its Life, Needs A Little TLC. **\$13,000**
Call Today! 781-417-3018



L-SHAPED FUEL TANK. 80 Gallons, **\$375.** With Electric
Pump, **\$525.** West Warwick, RI 401-640-8884, Ask For Henry



2001 DAEWOO XL1550 SKID STEER.

Only 1,105 Hours,
4 In 1 Bucket,
Comes With Forks,
New Tires, Comes
With Preparator,
Asking
\$18,000,
203-994-2819



CATERPILLAR 966 PAYLOADER. 4 Yard Bucket, 18 Foot
Protech Snow Blade, Machine Is In Excellent Condition. Start Making
Money With This Year's Snow, **\$28,500 OBO.**
Machine Is Located In Riverhead New York, 516-214-3940



2007 CAT 938G LOADER. 3-1/2 Yard Machine, Low Hours, Nice Tires, Mint Cond., Always Garaged, Air & Heat, Nice, **\$62,500.** 413-530-5369



FORD TRACTOR 5600.
777D Loader, 8-1/2 Ft. Snow Plow
& Frame, New Motor,
\$12,000.
401-524-9421



2005 JOHN DEERE 330C LC - Recently Re-Packed Both Boom & Stick Cylinders, Geith Hydraulic Coupler, A/C, Work Ready - **\$62,500** CALL DAN AT 203-506-3860

2006 LEEBOY 8500T.
Low Deck, New Burners On The Screen, Lays A Beautiful Pad, All Controls Work And Conveyors, 3800 Hours,
\$32,000.
207-289-7828



**1587 Portland Cobalt Rd
Portland, CT 860-342-2600**

See more @ MORINDIESELFORESTRY.COM



2016 DOOSAN DX85R-3.
With New Steelwrist X12
Tilt Rotator System



**CAST SSQ22 WORKY
QUAD STAND** On Mini Skid
Steer, Aux Hydraulics, Perfect
Sidewalk Machine, **\$19,995**



KOBELCO SK70.
Power Packed Excavator With
Mulcher For Sale Or Rent



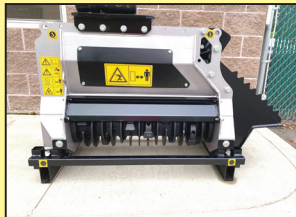
**2017 BANDIT BTC300
FORESTRY MULCHER**
With Stump Grinder,
Only 1300 Hours



2018 JOHN DEERE 160G.
580 Hours, Fully Loaded With
Warranty Through 2021



**2002 Timbco T425-D
22" Quadco,**
8.3 Cummins
\$54,000



FAE BL1 Forestry Mulcher
For 4.5 to 8 Ton Machines
\$19,000



CAST LOADERS.
Kubota Diesel, Telescopic
Boom, Aux Hydraulics



ALLEGIANCE

TRUCKS™

NUTMEG INTERNATIONAL TRUCKS



Franklin CT



Hartford CT



North Haven CT



W. Springfield MA



Torrington CT

50+ QUALITY NEW TO PRE OWNED TRUCKS IN STOCK

Call Mike McDonald 860-308-6599

Check Out Our Entire Inventory At www.nutmegtrucks.com



WE HAVE WHAT YOU NEED FOR OIL & VOCATIONAL TRUCKS

 <p>AT & 2 COMP</p>	 <p>SUPER CLEAN</p>	 <p>NEW SWAP LOADER</p>	 <p>NEW DUMP BODY</p>	 <p>W/ MOFFETT CRADLE</p>
<p>2007 Sterling Oil Truck, Mercedes Engine, 206k miles, Auto trans, 2 Comp, Bottom Load, LC, Runs, drives & Pumps well, #7AX54143, Wholesale as is price \$17,900</p>	<p>1997 IH 4400 OIL TRUCK, DT466-230HP, 7 Speed Manual Trans, 144K Miles, Single Compartment Tech Weld Alum 2700 Gallon Tank, Bottom Load, Multi Wrap Reel, LC, VH449154, \$22,800</p>	<p>2009 IH 4400 Max DT466, 2007 Emissions Engine, Allison 3500RDS, 152K Miles, 33K GVW, Can Be Derated, Brand New Swap Loader, Needs Nothing, \$69,800</p>	<p>2016 IH 4300 DUMP, UNDER CDL, CUMMINS 240HP, 151K MILES, AUTO, AIR BRAKES, NEW 5-7 YARD DUMP, TOW PLATE, AUTO LOAD COVER, #JTS789, \$66,800.</p>	<p>2006 IH 7400 FLATBED, DT570 310HP, ALLISON 3000 AUTO, 250K, ENGINE REBUILT YEARS AGO, NEW INJECTORS 2 YEARS AGO, 26' FLATBED W/ MOFFETT CRADLE. LOTS OF NEW PARTS, LOOKS AND RUNS GREAT! # 61347896, \$37,900</p>
 <p>16' DUMP W/TALL SIDES</p>	 <p>TANDEM W/ 35K-48K MILES</p>	 <p>Clean Tandem Chassis</p>	 <p>TANDEM RACK W/ GATE</p>	
<p>2015 PETERBILT DUMP, PK7 250HP, ALLISON 2500RDS, 167K MILES, UNDER CDL, 2599GVW, BRAND NEW 16' W/ 48" SIDES & BARN DOORS, TOW PLATE, LOAD COVER, GREAT TRUCK, #FM274560, \$66,800.</p>	<p>(2) 2019 IH 4400 TANDEM CAB & CHASSIS, CUMMINS L9 300HP, ALLISON 3000, AIR RIDE, 242" WB, MILES 35K TO 48K, LIKE NEW TRUCKS WITH WARRANTIES, #KH049347U, \$68,800</p>	<p>2015 IH 4400 6x4 CHASSIS, MaxDT 270HP, Auto Trans, 254" WB, 14K & 40K Axles, 54K GVW, Only 153K Miles, Clean Truck, #FH606767, \$25,800</p>	<p>2013 IH 4400 6X4, MAXDT 270 HP, ALLISON AUTO, AIR RIDE, 14/52 AXLES, 24' RACK BODY WITH RAIL GATE, #DH406365U, \$33,800</p>	
 <p>TRUCK OF THE MONTH</p>	 <p>EXT CAB</p>	 <p>RUST FREE FL TRUCKS</p>	 <p>26' TANDEM</p>	
<p>2012 IH 4300. UNDER CDL, MAXDT 230HP, ALLISON AUTO, 192K MILES, AIR BRAKES, 24" WITH PEAK, JTS 698, \$19,900</p>	<p>2014 IH 4300 EXTENDED CAB, MAXDT 230HP, 127K MILES, AUTO 18" VAN W/ GATE, U# JTS762 PRICE \$24,800</p>	<p>JUST IN (2) 2016 IH 4300'S SOUTHERN TRUCKS RUST FREE, CUMMINS 240HP, AUTO, MILES 111K - 120K, 26X102X103 VAN BODIES W/ GATES & RAMPS. \$51,800 TO \$53,800</p>	<p>2016 IH 4400 TANDEM N95CR 315HP, 3000RDS AUTO, 54K GVW 26' VAN, 205K MILES, JTS791, \$49,800</p>	
 <p>LEASE MAINTAINED</p>	 <p>NEW ENGINE</p>	 <p>NEW NEVER USED</p>	 <p>PRE EMISSION DT466</p>	
<p>2015 IH 4300, MAXDT 230HP, 251K MILES, AUTO, 33K GVW CDL TRUCK, 26" VAN W/ LIFT GATE, # JTS764, \$19,800</p>	<p>2013 IH 4300 Cab & Chassis, Max7 (new Engine installed) 300HP, Allison Auto 2500RDS with gear for PTO, 165k miles, 236" WB, Hyd Brakes, Under CDL, \$12,900</p>	<p>NEW SENNEBOGEN 718E WITH 27 IDLE HOURS, LOADED W/ EVERY OPTION, EXTRA SET OF TIRES & RIMS, NEVER CUT A TREE! EXTENDED WARRANTY TOO! CALL MIKE FOR PRICING</p>	<p>2007 IH 4300, DT466, AUTO TRANS, 18" VAN LIFT GATE, PRE-EMISSION, \$16,800</p>	
 <p>S/A TRACTOR ISX</p>	 <p>Only 60K On Motor</p>	 <p>ONLY 85K MILES</p>	 <p>ONLY 67K MILES</p>	
<p>(3)-2016 IH PROSTAR SINGLE AXLE TRACTORS, CUMMINS ISX 410HP, 105PD, 160" WB, 2-100GAL TANKS, A/C & POWER, AIR RIDE, MILES 449K, 455K, 495K, NUTMEG MAINTAINED, UNIT#JTS784, 796, 797. CALL FOR PRICE</p>	<p>2015 IH PROSTAR Tandem Day Cab, Cummins ISX15 425HP, Autoshift, Only 388K Miles, 60K Miles On New Motor, New Rear Brakes, New Bumper, Looks & Runs Great, #FH726157, \$39,800</p>	<p>2012-13 ISUZU NPR HD. DIESEL, AUTO, 14' HACKNEY UTILITY BODIES, 85K & 121K MILES, \$23,800 & \$20,800</p>	<p>2017 ISUZU NRR, 19,500 GVW, Diesel, Auto, 132" WB Cab & Chassis, ONLY 67K Miles, #H7301889, \$34,800</p>	

THE ALLEGIANCE FAMILY IS TAKING ALL CDC RECOMMENDED PRECAUTIONS DURING THE COVID 19 CRISIS TO KEEP OUR STAFF AND CUSTOMERS SAFE.

WWW.TRUCKANDEQUIPMENTPOST.COM

21

**2009 CAT
420E IT.** Low
Hours, EXE-Hoe,
Always Garaged,
Nice Rubber, Tight
Machine, Exc.
Shape, Ready To Go,
\$46,500.
413-530-5369



**1989 NORDBERG 1352
OMNICON PORTABLE CONE
CRUSHER:** S/N: 5202-577, Simplicity 6203,
6' X 20', Triple Deck Horizontal
Screen, 200 HP, 480 Volt Soft Start Electric
Motor, Three Axle Nordberg Carrier,
\$98,000 OBO.
Chris, 860-460-0767 Or
Chm@Terrairmaus.Com

**2006 JOHN
DEERE 753G
FELLER
BUNCHER,**
New U/C, Deere
WF22 Head, Strong
Machine, 15,000
Hours, Ready To
Work!
\$69,900
Call Today
781-417-3018



2000 MACK RD688S. 460 HP,
Eaton 10 Spd., 20 Front, 44 Rear, 20
Lift, 17' Body, Rod & Main Bearings Done
03/01/2016 At 520K Miles, Inner &
Outer Frame Rails, Cross Members, Frog
Leg Assembly, New Tires 06/09/2020,
New Brakes, Drums, Hardware, & Service
10/16/2020, 643,400 Miles, Asking
\$59,900. Call Ted, 603-627-8519



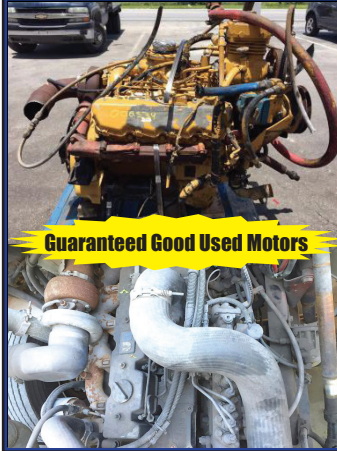
TARPS



www.KaplanTarps.com 888-611-TARP

Roll Tarps • Dump Tarps • Flatbed Tarps • Custom Tarps
Parts - Systems - Service

R&R INDUSTRIES **We Buy All Scrap Metals**
www.RRTrucksAndEquipment.com • Sales@RandRind.com **413-733-2118**
195 Rocus Street, Springfield MA 01104



Guaranteed Good Used Motors

DIESEL MOTORS FOR SALE

Many More
Motors,
Call

Kubota V1305 Rebuilt
 Kubota V1505
 3 Cyl Deutz
 Detroit 3-71 & 4-71
 Detroit 6V92
 (2) CAT C-7
 CAT 3126
 International DT 466E
 International MaxxForce
 Cummins 5.9L 24 Valve



**1980S DRESSER
 LOADER. 520B,
 \$10,000. Kingston, MA
 339-832-2419**

**UNIT
 EXCAVATOR.**
 10,000 Pounds
 With NPK Hydraulic
 Hammer, Runs And
 Operates Well,
 Heavy Duty Setup,
 Can Really Break
 Rocks, Long Reach,
 Needs Paint, Asking
\$22,500.
 203-666-1411



2005 MACK

CH600: Wet

System. Ready To Work.

\$28,500

Call Chris 781-582-1378.

Plympton, MA



DAVE'S ENTERPRISES

42 CHIPAWAY RD. EAST FREETOWN, MA



CAT IT 14B:
 New Engine 200
 Hours. We Have All
 Parts. Great Winter
 Project. \$14,500



2 AVAILABLE

KW T800 25' FLATBED W/ MOFFET: CAT C15, 8LL
 Full Lock, 20F/46R. 24.5 Tires. \$41,500 each.



2007 GMC 6500 Dump Body: Diesel,
 Allison Automatic, Hitch Plate, D-Rings,
 Electric Tarp. \$23,500.



1998 LULL 644 HIGHLANDER: CAT Diesel, New
 Tires. Very Nice. \$19,500



2003 MACK DM 5 STORY FASSI CRANE: 400 HP
 on Camelback Full Lockers, 8LL \$35,000.

508-726-0077

CANDIA TRAILER

www.CandiaTrailer.com
& LANDSCAPE EQUIPMENT CO
All Prices Cash & Carry! Installation Available!

SAVE TIME & FUEL • WE SHIP!

1-866-761-0196
NH 603-483-2541 • Fax 603-483-2842

35 High St, Candia 4 Coners, Candia NH
10 Minutes East of Manchester, NH • 1 hour From Boston

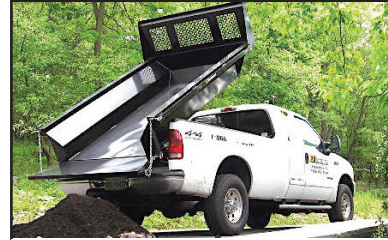
"Helping
You With
The Right
Fit"



DURA MAG ALUMINUM FLATBED BODIES. Industry's Highest Quality, Call With Your Specs. **Starting @ \$2,395.**



ALUMINUM DUMP BODIES. Complete Sub Frame, Power Pac, LED Lights, **Starting @ \$7,997.**



8' EZ Slide In Dump Body. With Head Board, Tarp & Hoist, **\$3,095**



POWER TILT
USA Made
20 FT POWER TILT 7 TON EQUIPMENT TRAILER \$6,637



Aluminum Car Hauler Trailer. 10,000 GVW, American Made, **Starting @ \$5,895.**



CTECH – Drawer Units That Fit Into Your Utility Body



DUMP TRAILERS. 12', 14', 16 Ft. Twin Piston, Powder Coat, Ramps, Battery, **Starting @ \$6,885**



LANDSCAPER TRAILERS. **Starting @ \$2,895**



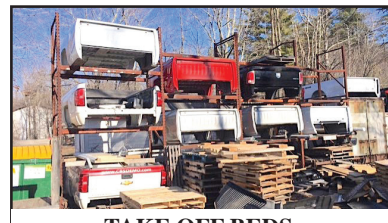
CTECH – High Quality & Durable Drawer Units For Service Body



HOMESTEAD Enclosed Trailers. Stocking 8 Ft – 24 Ft, **Starting @ \$2,795**



DURA MAG SERVICE BODY. All Aluminum, Heavy Duty Ladder Rack



TAKE OFF BEDS. Ford – GM – Dodge
Call With Your Specs

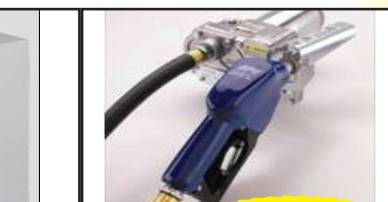


DOT Truck & Trailer Lights. And Oval Amber Mini Lightbar – WE SHIP



Starting @ \$339

TRANSFER TANK & PUMP. Made In USA, 12 Ft Hose, Nozzle Gun, 15 gpm, In Stock – We Ship



\$339

SAVE TIME & FUEL • WE SHIP!**CANDIA TRAILERS.COM**

& LANDSCAPE EQUIPMENT CO

1-866-761-0196**TAX FREE NEW HAMPSHIRE**

Galion

IN STOCK GALION DUMP BODIES.
8 Ft Thru 16 Ft. Call With Your Specs Today

**HARSH HOIST**

2.5 to 45 Ton, Single or
 Double Piston. Convert
 a Flatbed Body to a
 Dumping Body.
**HOIST & POWER
 PACK**

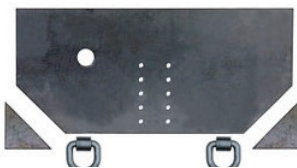
Starting @ \$1,585
USA Made



**BUTCHER Dump Power Pac with
 control Gravity Down \$465**



HEADACHE RACKS – Aluminum, USA Made, Available
 w/ Window Cut Out Or Without, Hi & Low Profiles,
 LED Light Options, Sport Series And Pro Series



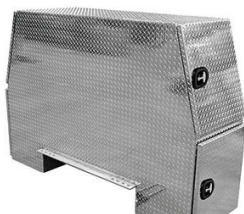
Pintle Plate \$179



**15 Ton Pintle Hook \$59 –
 WE SHIP**



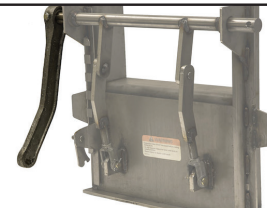
Retractable Step
One Step \$99
Two Step \$109
Three Step \$119



Aluminum I-Pack Toolbox \$2690



**CUSTOM AND STANDARD
 INSTALLATIONS**



**Shuttle Door
 \$179**

UNDERBODY TOOL BOXES – Stainless Steel Hinges & Handles
Powder Coat
Diamond Aluminum Door
(black in color)

24"x18"x18" \$239
30"x18"x18" \$259
36"x18"x18" \$294
48"x18"x18" \$334



**Diamond Plate Aluminum
 Underbodies**

24"x18"x18" \$299
30"x18"x18" \$329
36"x18"x18" \$359
48"x18"x18" \$449

LOAD COVER

**7' X 12' Mesh tarp & Hardware Kit
 \$239**

STONEHAM



617-733-0773

MANY NEW FINANCE OPTIONS AVAILABLE



2020 F550 SWITCH N GO. 4X4, Diesel, Payload Up Grade, Power Equipment Group, Plow Prep, #202799 **ON SALE**



2020 F350 SERVICE BODY. 4X4, Plow Prep, V8 Gas, Power Equipment Pkg, #202841 **ON SALE**



2020 F550 SUPER CAB C&C. Remote Start, Navigation, Polish Alum Wheels, Rapid Heat, Fog Lights, 4G WiFi, 4X4, Diesel, #202319 **\$65,599**



2019 T350 PASSENGER VAN. V6, Auto, AC, PW, PL, Rear View Camera, Running Boards, Bluetooth, Luggage Area, #194401 **\$35,995**



2020 T250 HIGH ROOF CARGO VAN. All Wheel Drive, Rear View Camera, Power Heated Mirrors, #203062 **ON SALE**



2019 E350 CONTRACTOR SPECS. V8 Gas, Auto, PW, PL, AC, #193549 **\$41,000**

MANY NEW FINANCE OPTIONS AVAILABLE



2020 F550 DUMP TRUCK. I-Pac Tool Box, Stainless Steel V-Plow, 7.3 Gas Engine, Auto, PW, PL, Payload Plus Upgrade, #202460 **ON SALE**



2020 T250 CARGO VAN. V6 Gas, Auto, PW, PL, Rear View Camera, Cargo Floor Liner, #202780



2020 F350 SUPER CAB C&C. Remote Start, Navigation, Polish Alum Wheels, Powerscope Mirrors, 4G WiFi, 4X4, V8 Gas, #202331 **\$49,590**



2021 F350 LARIAT CREW CAB. 8 Ft Fisher Plow, V8 Gas, Loaded, #21236 **ON SALE**



2020 F350 DURAMAG UTILITY. 4X4, V8 Gas, 8' Aluminum Body, PW, PL, Plow Prep, #201000 **ON SALE**



2020 F550 LANDSCAPER DUMP. 4X4, 12' Body, Curb Side Door, Payload Plus Upgrade, Diesel, 10 Speed Automatic, Plow Prep, #201105. **\$68,000**

COMMERCIAL
VEHICLE CENTER
www.StonehamFordTrucks.com

211 MAIN ST. STONEHAM, MA 02180

Mon-Fri 8:30am-8pm Sat 9-5pm Sunday 11-4

ALL PRICES NET & INCLUDE ALL AVAILABLE REBATES TO DEALER

Call Bill Pollack 1-617-733-0773 or billpollack@stonehamford.comCOMMERCIAL
VEHICLE CENTER

STONEHAM**617-733-0773****MANY NEW FINANCE OPTIONS AVAILABLE**

2021 E350 DURACUBE 12' VAN.
3 Bar Ladder Racks, Ladder to Roof, Roll Up Rear Door, Pass Thru Door, Cargo Rings, PW, PL, #21028 **\$42,500.**



2020 F350 D/W UTILITY 4X4. V8 Gas, Plow Prep, PW, PL, Up Fit Switches, #20557 **\$50,500**



2020 F350 LARIAT. Ultimate Package, Leather, Remote Start, Twin Panel Power Moonroof, V8 Gas, 4WD, #202665 **ON SALE**



2021 F750 DUMP TRUCK.
Donavan Body, Pintle Plate, Air To Rear, 6.7L – 270Hp, Automatic, #21045



2020 T250 MID ROOF CARGO VAN. Cargo Area Protection Pkg, V6, Automatic, Rear View Camera, 4 Speaker Stereo, SYNC 3, #202975 **\$37,600.**



2020 F450 SERVICE UTILITY. Diesel, 4X4, DRW, Polish Aluminum Wheels, Power Equipment Pkg, #201494 **ON SALE**

MANY NEW FINANCE OPTIONS AVAILABLE

2020 F250 4X4 FISHER.
Power Equipment, Running Boards, HD2 Snow Plow, Rear Camera, Skid Plate, #20343 **ON SALE**



2020 F350 STX SUPER CAB UTILITY.
Remote Start, SRW, Knapheide Body, Electric Locks, FX4 off Road, #202843 **\$56,000**



2020 F350 SUPER CAB 4X4. S/W Knapheide Service Body, Powr Group Pkg, Running Boards, 11,300 GVW, #203078 **ON SALE**



2020 F350 SHORT BED 4X4.
8' 6" Fisher Plow, V8 Gas, 18" Steel Road Wheels, Pwr Equip Group, #20347. **ON SALE**



2020 F350 PLATINUM.
4X4, Diesel, Crew Cab, Loaded, #202646 **\$77,900**



2020 F250 WORK TRUCK. 4X4, 8' Boss Plow, Power Equipment Package, STX Package, 10,000 GVW, #201239 **\$42,199**

COMMERCIAL
VEHICLE CENTER**www.StonehamFordTrucks.com**

211 MAIN ST. STONEHAM, MA 02180

Mon-Fri 8:30am-8pm Sat 9-5pm Sunday 11-4

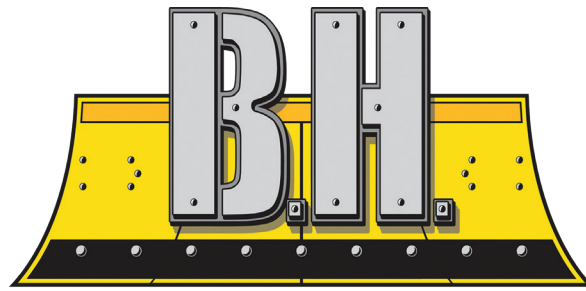
ALL PRICES NET & INCLUDE ALL AVAILABLE REBATES TO DEALER

Call Bill Pollack 1-617-733-0773 or billpollack@stonehamford.com

COMMERCIAL
VEHICLE CENTER

www.bhtrailersandplows.com

6 Center Parkway
Plainfield, CT
06374



2207 Hartford Ave.
Johnston, RI
02919

TRAILERS AND PLOWS

860-949-7863

BOSS SNOW PLOW SALE!



CM PL Flat Bed 8-14 Ft. in
stock Rack Body Panels
available Starting at \$1,995



DURAMAG Flat Beds
with 10 inch apron,
Starting at \$2,695



CM RD BEDS
Over 100 Beds In Stock!
Starting at \$2,695



CM SERVICE BODIES
All Sizes In Stock!
Starting at \$5,995



2021 DIAMOND C HDT 20Ft.
Split Tilt, 16+4 V-Lid Box Fork
Pockets, 14,900Lb GVWR \$8295



2021 BIG TEX 14GN
20+5 w/Flip-Over Ramps
15,900Lb. GVWR, \$7,295



BOSS PLOWS
Straight, Half-Ton, and V-Plows
Limited Stock



BOSS Skid Steer Pushers
Steel and Rubber Cutting Edges
Limited Stock



SPECIAL
2021 BIG TEX
16GN
25+5 With
Mega Ramps
17,500Lb.
GVWR
\$10,695



Is Your Web Site a Clunker?

Jump Start It!

Net Mechanic specializes in

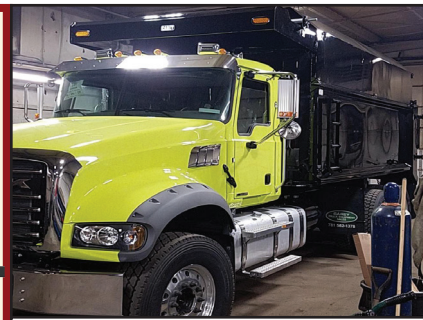
- ✓ New Sites
- ✓ Updates
- ✓ Maintenance

Inspections and Estimates:
www.NetMechanic.net
 401-487-2943

10% off with this ad



Net Mechanic
We Get Our Hands Nerdy!



**FULL FABRICATION SHOP.
 CUSTOM CHIPPER TOP'S &
 BODIES. CUSTOM REAR
 GATES ALSO AVAILABLE.
 CALL CHRIS
 CAREY AUTO PLYMPTON, MA
 781-582-1378**



2006 CAT 730 - 530 Ton, Tailgate, Heat, A/C, Straight Truck, 7,386 Hours - **\$112,500** CALL DAN 203-506-3860



2003 KUBOTA L3430 TRACTOR. Loaded Rear Tires, Rear Remote, 2200 Hours, Hydrostatic Drive, **\$15,500.** 413-247-5564



PETTIBONE MULLIKEN. 4-Yd Bucket, Strong Machine, Used For Snow Removal, **\$14,000 OBO.** Call Or Text 401-648-5950

T & TAYLOR & LLOYD, INC. & T

SEE OUR INVENTORY: WWW.TAYLORANDLLOYD.COM



2020 INTERNATIONAL HV Roll-Off. 475 HP, A26, Automatic, 52K Rears, 22K Fronts And Rudeco 75,000 LB Roll-Off Hoist.



2012 INTERNATIONAL 4300 24' Box. Auto, Air Brakes, Lift Gate, Under CDL, 136K Miles, **\$18,900.** (file photo)



2015 INTERNATIONAL 9900 Heavy Hauler Day Cab. ISX Cummins, 13 Speed, 46K R/A, 14,600 F/A, Full Locking Rears, 22.5 Rubber, 300K miles, Coming Soon!



2007 Isuzu W4500 Supreme Van Body w/ Thermo-King Reefer. Gas, Automatic, 33K Miles, Like New For The Year.



2020 INTERNATIONAL CV. 22K GVW, Allison Auto, Alum Wheels And Premium Interior With Switch-N-Go Multi Lift Cable Hoist.



2021 INTERNATIONAL MV 607. Cummins B7 300HP, Allison Auto, 6 Speed w/OD, Air Brakes, Spring Ride, 25,999 GVW. (Others in stock)

1-617-429-3370

Call Jack Coakley
 8 Railroad Avenue Bedford, Ma



SAM's Tree Service
"We handle the jobs, the Big Guys turn down!"

- Licensed Arborist #913
- Insured
- Competitive Pricing
- Free Estimates

sammal@cox.net
401-269-1133

• Brush Chipping • Tree Removal
• Tree Pruning • Stump Grinding
• Residential Land Clearing



JOHN DEERE 992D EXCAVATOR. Large Bucket (54 Inch), Long Reach, Runs And Operates Excellent, Needs Paint, Asking **\$29,000.** 203-666-1411

THOMPSON TRACTOR LLC.
860-963-1918
A DL HOLKE COMPANY
15 RT. 171 WOODSTOCK, CT 06281
DAVE'S CELL 508-864-8874
THOMPSONTRACTORLLC.COM

**ALWAYS A BUYER
FOR CLEAN
LATE MODEL
EQUIPMENT !!**

- * 2014 JCB 3CX BACKHOE.
- * 2015 BOMAG 145 D-5 ROLLER
- 2018 CASE CX37-C
MINI EXCAVATOR
- * 2017 HYUNDAI HL 955 LOADER
- * 2015 DEERE 318E SKID STEER



LATE MODEL DEERE 310SLs
ALL LOADED WITH WARRANTY REMAINING,
CALL FOR SPECS.

INVENTORY AT * WWW.THOMPSONTRACTORLLC.COM



NEW HOLLAND 256 RAKE & VICON TEDDER. \$1500. 401-624-9421

**2016 JCB
MODEL 300T
TRACK SKID
STEER,** Overall-
Good Shape, Bottom
Is Good, Interior
Clean, Low Hours,
Bucket Is Good,
Ready To Work!
\$34,900
Call Today!
781-417-3018



**MICHIGAN
MODEL 125
LOADER.**
Good Snow
Machine,
\$12,000.
Call or Text
401-648-5950



**V-BLADE
PLOW.** Used,
In Good
Condition,
\$700 OBO.
617-840-8478

McGOVERN
FORD OF FRAMINGHAM

1200 Worcester Road (Rt. 9 East),
Framingham, MA 01701
www.McGovernFordofFramingham.com

**2021 FORD
ECONOLINE E350 SRW
CUTAWAY ENCLOSED
UTILITY. 7.3L V8,
Rear Camera,
Power Group,
stk#17956V**



CHRIS UHL
CELL: 617-775-9447
EMAIL: CUHL@McGovernAuto.com



**1988 ALLIS CHALMERS 45
HYDRO.** 45 Inch Cone, New
Manganese & Hydro Set Seals, 200
HP Electric Motor, 5X16 Triple Deck
Screen, Closed Circuit Conveyors,
Triple Axle Chassis, Serial #C-53463,
\$130,000. Gales Ferry, CT. Chris,
860-460-0767 or
Chm@TerraFirmaus.com



2005 HITACHI 50U - 12,000lb, Mini Excavator, Brand
New Tracks, Zero Tail Swing, 24" Bkt, Manual Coupler, Hyd
Thumb, 3,286 Hrs, Ready to Work - **\$29,500**
CALL DAN AT 203-506-3860

GMC**CHEVROLET****RAM****Ford**

Mercedes-Benz

NISSAN

AMERICAN AUTOMOTIVE AFTERMARKET



Over 50 years of experience!



Call Rob Webster at: 866-783-6222

**NEED TRUCK OR VAN EQUIPMENT? SERVING ALL OF NEW ENGLAND
LET US UPFIT YOUR VEHICLE!**

EQUIPMENT FOR ANY JOB!

- Plows/Sander
- Dump Bodies
- Ladder Racks
- Liftgates
- Tool Boxes
- Shelving & Bin Packages
- Bedliners & Cargo Liners
- Inverters/Electrical Adds
- Solar Panels/Heat & A/C
- Seating for Vans and Box Trucks
- Glass Installation
- Pickup Truck Accessories
- ... and more



Let us take the
WORK
out of your
next work Truck!



50 Dunham Road, Billerica, MA 01821

www.AAAworktrucks.com

**GMC****CHEVROLET****RAM****Ford**

Mercedes-Benz

NISSAN



ARE YOU READY???
STAINLESS STEEL & STEEL HIWAY PLOWS
11X36 & 11X42. OTHER SIZES AVAILABLE.
CALL NOW FOR BEST PRICING. CTE SEEKONK, MA
508-336-6215



1994 FORD L9000. CAT 3170, 9 Spd.,
 34,700 GVW, 10 Ft Dump W/Solid Floor +
 Gate, Pintle Hitch, Air+ Electric To Rear, Good
 Rubber, 11 Ft Plow W/Removable Harness,
 Good Reliable Truck, No Issues,
\$9750 OBO. 508-269-1515,
 No Texts Please

**MINUTE
 MOUNT
 HD2 PLOW.**
 Used, Kept In
 Great Condition,
**\$2000
 OBO.**
 617-840-8478



CAM 20 TON TRAILER: Double Break Beaver Tail W/40"X80" Air Powered
 Ramps. Please Give Chris A Call For More Details. 781-582-1378. Plympton, MA

FORD 5610.
 7210 Loader, Quick
 Connect Bucket,
\$15,000.
 401-524-9421



**2004 GALION 17'6" HIGH TENSILE STEEL
 BODY.** Hoist, Tank, Load Cover Included, New Paint, Needs
 Repair To Reinforce Long Member At Hinge Point, Saddle
 Repair, **\$6000.** 603-899-2000

**1955 JOHN
 DEERE 40C
 DOZER.**
 Recent
 Restoration,
 1270 Original
 Hours, Show
 Condition,
 Everything Works,
\$6500 OBO.
 413-247-5564



**2012 INTERNATIONAL
 TANDEM AXLE.**
 3800 Gallon Single
 Compartment W/ Digital
 LCR Meter, Automatic,
 Only 96K Miles,
\$59,000.
 860-625-4487



What's In Your Toolbox?

• **BUY, SELL, TRADE - FAST**
 • **FROM NEW TO USED, IT'S**
ALWAYS FRESH
 • **AND A HANDY**
RESOURCE, TOO
1-888-887-0505
www.TruckAndEquipmentPost.com



TROJAN 2000 Z. Good Snow Machine, New Paint, Need
 Seals For Master Cylinder Breaks, **\$15,000.** Call Or Text
 401-648-5950



CAT IT. Heavy Duty 10' Plow, Used Very Little, Never Seen
 Salt, **\$6,000.** 781-248-4613



508-879-1320



2020 F250 XL 4x4 FISHER PLOW:
6.2L, Power Group. Stk.# FM1228



20 PLOW TRUCKS IN STOCK!



2020 F550 XL 4x4 Reg. Cab DRW Cab & Chassis: V8 Gas, Power Group. \$SAVE!



2020 FORD F350 XL SUPERDUTY KNAPHEIDE UTILITY. V8, Gas, Power Group, Snow Plow Prep Pkg, stk#S17978F



2020 FORD F350 XL C&C. 7.3L Gas, Power Group, stk#18037F



2020 FORD F350 XL THIEMANN RACK 4X4. DRW, 7.3L V8. Diesel, Limited Slip, Snow Plow Prep, Power Group, stk#17962F



2020 FORD TRANSIT CHASSIS CAB. 3.5L V6, Power Group, Rear Camera, stk#17906Y



2020 FORD TRANSIT COMMERCIAL CREW VAN. 3.5L V6, Power Group, Rear Camera, stk#18014Y



2020 FORD TRANSIT COMERCIAL CARGO VAN. 3.5L V6, Power Group, Rear Camera, stk#18088Y



NEW F250 and F350 DUMP BODIES IN STOCK. CALL CHRIS NOW.



2021 FORD ECONOLINE E350 SRW CUTAWAY ENCLOSED UTILITY. 7.3L V8, Rear Camera, Power Group, stk#17956V



**1200 WORCESTER ROAD
(Rt.9 East)
FRAMINGHAM, MA 01701**

www.McGovernFordofFramingham.com



**CHRIS UHL
617-775-9447**

CUHL@McGovernAuto.com


CONSOLIDATED TRUCK & EQUIPMENT INC.
 WWW.CTELINFO

YES WE ARE OPEN





TRAILERS

COME VISIT OUR NEW LOCATION. 32 INDUSTRIAL COURT, (RT.6) SEEKONK, MASSACHUSETTS. ACROSS FROM SEEKONK SPEEDWAY.



4 Available!

Brand New Challenger Body & Chassis, 26' Long, 54" & 60" Sides & Gate, Single Point 60K suspension, Hardox Body, Hi-Lift Gate, aluminum disc wheels, electric load cover.
 16 Ply Tires.
 Please Call For Pricing



HONEST BOB'S GOT TRAILER LOADS OF TRAILERS!
MAC and EXTREME FLATBED TRAILERS
 48' x 102" COME AND GET 'EM



2012 FELLING FT-40-2: 20 TON TILT TOP TAG TRAILER: 30'X102' Wide floor, Air Tilt, Tires @ 75%, Aluminum Rims. Very Good Condition. **\$18,500**



2016 MAC 53' Aluminum Step Deck. Rear Ramps, Tool Box & Winch. Trailer has every option possible. It's only had 2 loads on it. So yeah, it's like totally new. **\$58,000**



IN STOCK

MAC 28' ALUMINUM SMOOTH SIDE TRAILERS. Air Ride Suspension. Please call for pricing.



SOLD

2002 EAGER BEAVER 35 TON 102 x 22' Deck, Non Ground Baring. One Owner. **\$15,000**



BRAND NEW EAGER BEAVER 20XPT TRAILERS. 6' RAMPS. BEST PRICING AROUND. Please give us a call.

PARTS ROOM SPECIALS !



REPLACEMENT HYVACYL HYDRAULIC DUMP PISTON, call with your needs!



ARE YOU READY?

Steel & Stainless Steel Hiway Plows. 11x42 & 11x36. Other Sizes Available. **Call NOW for Best Pricing.**



Lifetime 64" Corrugated Fenders, \$210. each

CALL US: AT 508-336-6215 • HOURS: 7:30 -5:30



**CONSOLIDATED TRUCK
& EQUIPMENT INC.**
WWW.CTELINFO



FELLING TRAILERS

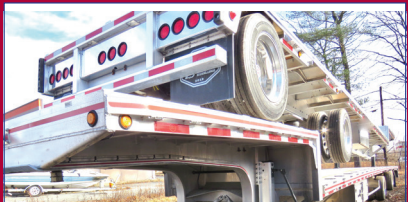
**COME VISIT OUR NEW LOCATION. 32 INDUSTRIAL COURT, (RT.6)
SEEKONK, MASSACHUSETTS. ACROSS FROM SEEKONK SPEEDWAY.**



**NEW FELLING 20 TON TILT TOP
W/AIR RAMPS.**



NEW FELLING TILT TOP 16,000# GVW.



**NEW MAC 53' Front Axle Slide, 36" Deck Height.
Tool Bx, 10' Upper Deck. (it's the trailer on the
bottom). Call for Price.**



**2015 MAC 53' Step Deck:
10' Upper Deck, Front Axle slide. Very Good
Condition. Call for price.**



**2016 MAC 53' 8' ALUMINUM DUMP TRAILER:
Slide 24.5 Air Ride, 24.5 Tires @ 60%, Aluminum
Rims, Liner. Very Nice. \$42,500.**



**1999 TI-BROOK 24' x 54" ALUMINUM DUMP TRAILER:
Steel Frame, Slide-N-Go Manual Tarp, Air Ride, 11x24.5 Tires
@ 75%, Brakes 50%, Steel Floor, Steel Wheels, \$19,500.**



**2006 EAST 48' x 102" Aluminum Flat Bed
Trailer: 11x22.5 Tires. Very Nice Condition.
\$16,500.**



**2005 FONTANE 45' STEEL FLATBED
96" Wide, Moffet Kit,
Sliding Tandem. Good Work Trailer. \$7,500**



**NEW MAC 48' Step Deck: Front Axle Slide,
10' Upper Deck, Tool Box.
Call for price.**



**2006 MANAC 48' x 102" Tri Axle:
Good Workin Condition.
\$28,500**



**NEW FELLING TRAILERS
CALL BOB FOR INFORMATION**



**2003 BENSON 26' Rock Trailer: HiLift Gate,
Center Point Suspension. \$18,500.**



**NEW FELLING TRAILERS
CALL BOB FOR DETAILS**



**1997 J & J 26' STEEL DUMP TRAILER: New Paint,
New Hard Ox Floor, New Piston, 50% Brakes, & 11x
24.5 Tires. Electric Tarp. Ready to work. \$17,500.**

CALL US: AT 508-336-6215 • HOURS: 7:30 -5:30

Later, 2020!



Grab Some BIG Year End Deals!

**Limited Supply*

120" STAINLESS STEEL 4 RIBBED
FULL FENDERS WITH BEADED EDGE

(16 GAUGE)

Designed to fit 43.5" O.D Tires

PN: TFEN-F21



\$599



Freightliner Business
Class 12.25'
Sunvisor

PN: TSUN-F27

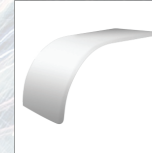
\$385

66" STAINLESS STEEL HALF FENDERS
WITH ROLLED EDGE

(14 GAUGE)

Designed to fit 43.5 or 46.5.5" O.D Tires

PN: TFEN-H54



\$599



Buyers 72" Topsider Black Steel Truck Box, 6x13x72 PN:1702940

\$415



Peterbilt Old School Blind Mount Bow-tie Visor PN: 35600

\$319

HUGE SAVINGS! Minor flaws...



BETTER BUILT® Aluminum Heavy Duty 100 Gallon Fuel Transfer Tank

DENT ON SIDE \$475 Reg \$597



Black Bawer Toolbox 18x18x48

DENT ON DOOR \$320 Reg \$431

While Supplies Last - call 508-586-1666!

920 W. Chestnut St. **Brockton**, MA: Mon-Fri 8 am-5 pm & Sat 8-12 508-586-1666
42 Winter St. **Pembroke**, MA: Mon-Fri 8 am-3 pm 781-826-1666



2011 FORD F-550. 4x4 Dump Truck, 19,500 GVW, 39K Miles, Red Diesel, **\$42,000 OBO.** 401-785-1180



1999 MACK RD688. E7 400 HP, 8LL Manual Transmission, Air Ride Suspension, 40,000 Rears, 13,000 FA, Air Ride Cab, Jake Brake, **\$25,000.** 603-505-6912



HANOMAG LOADER. Articular, Good Snow Or Yard Machine, **\$14,500.** Call Or Text 401-648-5950

2001 CAT 365BL.
S/N: 9TZ00407, 14,950 hrs.,
158,000 lb. Machine, Good
Undercarriage, Runs Well,
3.65 CY Bucket, Good Condi-
tion, **\$88,000.**
Chris 860-460-0767, email:
chm@terrafirmas.com



HOLLISTON TRUCK

1569 WASHINGTON ST, HOLLISTON, MASS 01746
WWW.HOLLISTONTRUCK.COM • CALL 508-429-7678

**WANTED :
GOOD USED
DUMP BODIES**

LARGE SELECTION OF UNDER CDL TRUCKS !



2010 FREIGHTLINER M2: CUMMINS ISB-260HP, EXHAUST BRAKE, 98K MILES, ALLISON 3500 RDS AUTO, 26K GVW, SPRING SUSP., SINGLE FRAME, 11R 22.5 TIRES, AIR-BRAKE/SEAT, A/C, PTO, NEW 12' WARREN DUMP, 1 CHUTE, TARP, PINTLE, AIR-TO-REAR. **\$45,000**



2009 INTERNATIONAL 4300: DT466-260HP, 107 MILES, ALLISON 3500 RDS AUTO, 26K GVW, SPRING SUSP., 5.64 GEARED RATIO, 11R 22.5 TIRES, SINGLE FRAME, AIR-BRAKES, A/C, PTO, 9' STEEL DUMP, 3 CHUTES, AIR-GATE, TARP, PINTLE. **\$37,000**



2010 FREIGHTLINER M2: CUMMINS ISB-240HP, 21K MILES, ALLISON AUTO, 26K GVW, SPRING SUSP., 4.78 GEARED RATIO, SINGLE FRAME, 245/70R 19.5 TIRES, AIR-BRAKES/SEAT, A/C, PTO, 13.5' STEEL DUMP, BARN DOORS, 4' SIDES, TOOL BOXES, PINTLE, AIR-TO-REAR. **\$45,000**



2009 FORD F-650: CUMMINS ISB-230HP, 88K MILES, 26K GVW, SPRING SUSP., 245/70R 19.5 TIRES, SINGLE FRAME, AIR-BRAKES, PW/PL, ELECTRIC LIFT, NEW 11' GALION DUMP, TARP, PINTLE. **\$36,000**



2012 INTERNATIONAL 4400: DT466-260HP, 88K MILES, ALLISON 3500 RDS AUTO, 41K GVW, SPRING SUSP., 5.34 GEARED RATIO, LOCK DIFF., 315/80R 22.5 FRONT-11R 22.5 REAR TIRES, SINGLE FRAME, AIR-BRAKES/SEAT, A/C, PTO, GALBREATH ROLL-OFF, 20,000 LBS., 18' LONG. **\$45,000**



2010 FREIGHTLINER M2: CUMMINS ISB-260HP, NO DEF, 42K MILES, ALLISON AUTO, 26K GVW, SPRING SUSP., SINGLE FRAME, 10R 22.5 TIRES, AIR-BRAKES/SEAT, A/C, PTO, 10' STEEL DUMP, I-PACK TOOLBOX, TARP, PINTLE REC. **\$45,000**

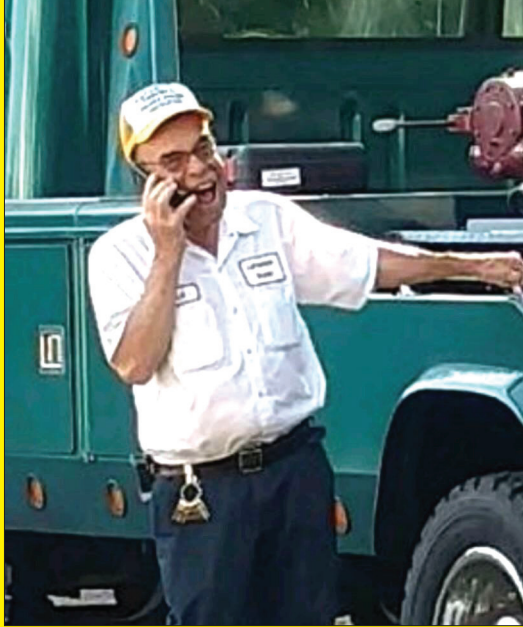
THE DUMP TRUCK SPECIALISTS

WWW.TRUCKANDEQUIPMENTPOST.COM

Daniel's Truck Center

**18 Montcalm St
Chicopee, MA**

**413-563-9944
danielstruckcenter@yahoo.com**



In Loving Memory Of Dick Laflamme Of Laflamme Trucks



2001 ISUZU NPR. 16' Box, Ramp, 4 Cylinder Diesel, 5 Speed Manual, 111K Miles, Fully Serviced, **\$8,500**



ONLY 89K

2007 DODGE DAKOTA EXT CAB. 4x4, Auto, AC, Matching ARE Utility Cap, Ladder Rack, 89K Miles, \$Call



2006-07 FORD E450, V10 Gas, AC, 15' - 17' Bodies, Several To Choose, **Starting @ \$5,500**



1997 IH 4300. DT466, 7 Speed Manual, Century M/D Wrecker Body w/ Wheel Lift, 98K Miles, **\$14,900**



GREAT YARD TRUCK

1987 FORD L8000 S/A DUMP. 3208 CAT, 5 + 2 Speed, 10' Body, Asphalt Chute, Body In Excellent Condition, **\$5,400**



STORAGE BODIES 10' To 24' Available, Clean With Roll Up Doors



ONLY 70K

2006 FORD E350. 12' Box Truck, Diesel, Auto, AC, Only 70K Miles, **\$12,250**



2014 FORD E250 EXT CARGO VAN. V8, AC, Auto, E-Trac, Bedliner, Shelving Available, 139K, **\$14,250**



2008 FORD E350 15 PASSENGER VAN. \$7,850, Several Other Newer Passenger Vans To Choose From



37 County Road
Route 106
Plympton MA 02367
PH: 781-582-1378
FAX: 781-585-4438



JCB 215 BACKHOE LOADER
4X4: REAR QUICK COUPLER,
CLAM SHELL BUCKET.
EXCEPTIONALLY CLEAN.
\$27,900



DOWN EASTER
SANDERS IN STOCK!
GAS, ELECTRIC,
HYDRAULIC. WE HAVE
EVERYTHING YOU
NEED. CALL US WE
CAN HELP.



BOSS PLOWS
IN STOCK
CALL FOR YOUR'S TODAY!



HOOK LIFTS
IN STOCK NOW!!!
BIG OR SMALL WE HAVE THEM ALL.
CALL US TODAY



2007 HINO ALUMINUM
SINGLE COMPARTMENT
TANK: AUTOMATIC,
33K GVWR.
CALL FOR PRICING.

SALES,
SERVICE,
PARTS

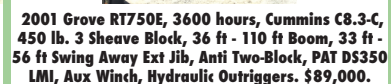
CALL TOLL FREE: 781-582-1378
WWW.CAREYTRUCKEQUIPMENT.COM

CUSTOM METAL
FABRICATION
AVAILABLE

JACK MADDEN FORD**30 Trucks W/Plows Ready To Go!****NEW F350 44 PLOW TRUCK W/8' FISHER PLOW.**Stk.#2824 NAP **\$42,999*** 888-817-7979**1980 CATERPILLAR 773 OFF ROAD TRUCK.** S/N: 63G671, 50 Ton, Ready To Go To Work, **\$15,000**Chris, 860-460-0767 Or
Chm@Terrafrirmaus.Com**2001 INTERNATIONAL.**CAT Motor, Reversible Plow & Wing,
1000 Gal Liquid Sprayer,
\$8,500. Thompson, CT
860-234-7340**2011 JOHN DEERE 544K LOADER.** 3 Yard, 1080 Hours, Garaged, JRB Coupler, New Condition, Tier 3, Will Trade For Lesser Loader, John Deere Or CAT, **\$119,000.** 339-832-2419**2011 INTERNATIONAL 4400 CAB & CHASSIS,** Low Miles:75,000, Automatic Transmission, 10K Fronts, 23K Rears, 33,000 GVW, Good Rubber, 11R 22.5, Frame Is 25' Long, 24' Dump Body Would Fit On Frame! **\$15,900** Call Today! 781-417-3018**2019 ROCKSTER RTT720 TROMMEL** - Like New with 50 Hours, CAT Diesel, Your Choice of 1/2" or 1" Screens - **\$205,000,** CALL DAN AT 203-506-3860**VICON CM217 DISC MOWER.**7' 4" Bar, Needs Work, **\$500.**
401-524-9421**SLIDE-IN TAILGATE SANDER.** With Controls And Screens, **\$2500.** West Warwick, RI
401-640-8884, Ask For Henry**What's In Your Toolbox?**

- BUY, SELL, TRADE - FAST
- FROM NEW TO USED, IT'S ALWAYS FRESH
- AND A HANDY RESOURCE, TOO

1-888-887-0505
www.TruckAndEquipmentPost.com
**2012 VOLVO L220G WHEEL LOADER.** 27,000 Hours, 7 Yard Bucket, Rear Camera, New Front Tires, Rear Tires 85%, **\$99,000.**
860-560-0796





Quality Iron Solutions

709 Keith Ave., Pembroke NH 03275

Call Kevin Buck: 603-860-7875 • email: info@QualityIronSolutions.com

www.QualityIronSolutions.com

**NEW YEAR'S
SAVINGS!**



**JOHN
DEERE
250.**
25 Ton, Call
For Rental.



**LINK-BELT
D30
Off-Highway
Truck.**
7K Hours,
Clean & Tight,
\$56,000.



2000 CAT D3 XL HST Dozer.
4751 Hours, Runs Great, \$26,000.



2012 JOHN DEERE 130G LC. 3600 Hours, Hydraulic Quick Coupler, Hydraulic Aux Lines, Clean Machine, \$78,900.
(Rental Rates: \$450/day, \$1,350/wk, or \$4,000/mo.)



2012 DYNAPAC CA3500D Compactor. 84" Roller, 1523 Hours, Ready For The Job Site, \$52,900
(Rental Rates: \$500/day, \$1,500/wk, or \$4,500/mo.)



**2016 JOHN
DEERE 60G.**
1,692 Hours,
New Bucket &
Hydraulic Thumb,
AC, Good Tracks
& Blade, Very
Clean, \$51,500.
(Rental Rates:
\$300/day, \$850/wk,
or \$2,500/mo.)



**2019 NEW
HOLLAND EC30C.**
24" Bucket,
AC, Radio, Hyd.
Plumbing, Blade,
10 Hours,
\$44,000.
Rental Rates:
\$275/day, \$750/wk,
or \$2,250/mo.



VIBROSCREEN SCM-75 HEAVY DUTY SCREENER

Vibrating Head w/2 Decks, Up to 300 Cubic Yards/Hour, 50 HP Diesel Engine, Ideal For 6 Yard Loader, Fifth Wheel Hitch, Single Axle, Double Wheels, Hydraulic Landing Gear, Gross Weight 22,000 LBS Tongue Weight 8,540 LBS
Rental Rates:

Daily \$700 • Weekly \$2,100 • Monthly \$6,000



2006 ELGIN EAGLE SC8000 Sweeper.
22K Miles, Rear JD Engine, Good
Brooms, \$39,000.



2000 FORD F650 SD Water Truck. CAT 190 HP, 13K Miles, 6 Spd, Mid & Rear Sprinklers, Extra Hoses, Clean, \$29,900.



**1985 CAT
931 TRACK
LOADER.**

Approximately
4000 Hours, In
Good Condition,
New Battery,
\$18,000.
West Warwick, RI
401-640-8884,
Ask For Henry



**2014 CAT 262D
SKID STEER,**

Enclosed, Heat/Ac,
Hours: 429, Excellent
Rubber, Strong Runner,
Excellent Interior,
Like New! Perfect For
Snow! **\$39,900** -
Call 781-417-3018



*Mobile Sign Shop
Heading Your Way!*



VEHICLE LETTERING GRAPHIC DESIGN PINSTRIPING
Serving N. Mass, NH, and So. Maine 603-997-1422 DanTheSignman.com



2001 FORD F450.

Diesel, 4X4, Exc. Shape,
Dump Body New, S.S.
Sander, 9 Ft. V-Plow,
Ready To Go. Asking
\$11,500.
413-530-5369



1998 IH CAB & CHASSIS. DT466, Single Axle, Runs
Great, Manual Transmission, Thin Frame, **\$3,250,**
860-307-7157



2020 RHODES. 26' Aluminum Double Walled
Smooth Side Dump Trailer, Steel Frame, 70,000# Single
Point. Call 401-434-5900



**2000 CATERPILLAR 988B WHEEL
LOADER.**

Factory Rebuild,
S/N: 50W75734, 18,250 Hours,
50% Tires, 3408 Engine, 7 Yard Spade
Nose Bucket With Teeth, Good Running
Condition, **\$38,000.** 860-460-0767

LS Tractor

ZERO DOWN
2.99% For Up To
84 Months!
Call For Special Pricing



SALES • SERVICE • PARTS • FINANCING

FOSKETT
EQUIPMENT INC.
TRACTORS & IMPLEMENTS
Woodstock, Ct

Route 171
S. Woodstock, CT
860-928-5748
www.foskettequipment.com



PORTABLE LINE BORING

WELDING • FABRICATION • REPAIRS

DAVID GOKEY


AFFORDABLE LINE BORING

Serving CT, MA, RI, Southern NH, VT


413-530-0242 Call/Text

davidgokey70@gmail.com

MC, Visa, AMEX, Discover



2009 CATD6K LGP DOZER:
7300 Hours, Enclosed Cab w/AC,
6 Way Blade. **REDUCED \$69,000**
Call Bryn, Hopedale, MA.
855-313-2441



2016 JOHN DEERE 544K - Ride Control, Cab, A/C,
20.5R25 Tires, 2,140 Hours, Former County Machine -
\$114,500 CALL DAN AT 203-506-3860



1989 MACK RD690S TRI-AXLE DUMP TRUCK,
330K Miles, 44K Rears, 20 Pusher, 18K Fronts, Mack 300,
7 Speed, 24.5 Tires, 16' Dump Body. **\$21,900** Call Today!
781-417-3018



J&J ALUMINUM DUMP BODY, 14 Ft. Full Steel
Liner, Complete Except Pump, Nice Shape, **\$6500 OBO.**
607-434-4919



Jukonski Truck Sales



WWW.TRUCKSELLERS.COM *se habla español*

680 NEWFIELD ST. (RT 3) MIDDLETOWN, CONN • **800-378-0342** • MON-FRI 8-6 SAT 8-NOON

3.49% AVAILABLE ON ALL HINO 195'S

<p>NOW IN STOCK</p>  <p>2020 MITSUBISHI FUSO FE140. 16' To 18' Box, Gas, When They Are Gone, They Are Gone, #4473. Starting @ \$42,900</p>	<p>CERTIFIED</p>  <p>2016 FREIGHTLINER M2. Cummins Power, Lift Gate, 26' Box, 79K Miles, #0744, \$39,900</p>	<p>9 TO CHOOSE</p>  <p>2017-18 HINO 195's. Side Doors, 20' Boxes, 9 To Choose, Starting @ \$45,900</p>	<p>CERTIFIED</p>  <p>2017 FORD F650. Only 44K Miles, Easy Entry Body, Hard To Find!, #0047, \$49,900</p>
<p>2019 Hino 195 & 155: 3.49% APR and 2 Years & Free Maintenance*</p>			
<p>20 IN STOCK</p>  <p>2020 HINO 195. 30 IN STOCK. No More Till The End Of The Year</p>	<p>CERTIFIED REEFER</p>  <p>2017 IH 4300. Thermo King Reefer, Cummins ISB, 102K Miles, #3459, Blow Out Price \$35,900</p>	<p>97K Miles</p>  <p>2012 DODGE RAM 2500HD. 4x4, Crew Cab, Flatbed Body, 97K Miles, 5.7L Hemi, Wholesale Truck Is Being Sold As Is In Condition, \$15,900</p>	<p>NEW 2020</p>  <p>BRAND NEW 2020 MITSUBISHI FUSO FE140. With I Pack Tool Box, #4454, \$47,900</p>

NO PAYMENTS NO INTEREST TILL 2021 ON ALL NEW HINO'S

Authorized Fisher
Snow Plow Dealer



HILLSIDE MOTORS

800-D American Legion Highway (Rt. 177)
Westport, MA 02790
508-636-5050

Financing Available
- Others In Stock

Family Owned & Operated Since 1969



DIESEL 4X4

2007 Chevy Silverado /Sierra K3500 Crew Cab 8' Bed. SRW, 4x4, Duramax Diesel, Allison Auto, AC, PW, PL, 6-Passenger, Central Hydraulics, Reelcraft Power Reel, Work Cap, HD Bed Slide w/Drawers, Fleet Maintained, 181K Miles, One Owner, \$20,900. (will separate)



DURAMAX DIESEL

2017 GMC K2500HD Crew Cab 4x4, 6' Bed. Duramax Diesel, Allison Auto, AC, PW, PL, 6-Passenger, XD Wheels, 73K Miles, Black On Black, Gorgeous Truck, \$36,900.



4X4

2001 GMC K3500 CREW CAB 4X4 DRW. Sierra / Silverado, SLE Pkg, 8.1L V8, Allison Auto, PW, PL, Dual Power Buckets W/Console, Fully Loaded, Never Plowed, 171K, Clean Truck, \$12,900.



8' MARANDA M-170 FIBERGLASS SLIDE INSERT UTILITY TRUCK CAP, Space Kap, Dual Side Doors, Rear Barn Doors. Shelving, Dual Alum. Drop-Down Ladder Racks, Cargo Slide Work Tray, Space Cap Rival, Excellent Condition, \$6,900.



DURAMAX DIESEL

2007 CHEVROLET SIERRA K2500HD 4x4 Classic Body. LT Pkg, LBZ Duramax Diesel, Allison Auto, PW, PL, Tilt, Cruise, Hummer Wheels, 168K, One Owner, Beautiful Truck, Never Used For Work, Gorgeous Truck, \$19,500.



4X4

2013 CHEVY K2500 HD 4X4 SILVERADO/SIERRA Cab & Chassis. 6.0L V8, Automatic, AC, One Owner, 169K, \$11,400.



DIESEL 4X4

2016 Chevy 3500HD C&C 4x4. Silverado / Sierra, DRW, Duramax Diesel, Allison Auto, PW, PL, Tilt, 60" CA, 13,400 GVW, One Owner, 314K, All Highway Miles, Super Clean, \$21,900.



2002 CHEVY C3500HD UTILITY w/Altec Bucket & Generator. 8.1L V8, Auto, AC, 84" CA, 15K GVW, 134K, Fleet Maintained, Well Kept, \$13,500. (Will Separate)



SALES & RENTALS

(603) 623-3669

www.TQUIP.com

Londonderry, NH | Rutland, VT | Orlando, FL

• OVER 1000 MACHINES & ATTACHMENTS IN OUR INVENTORY! •



**LOOK
NEW
INVENTORY!**

2015 VOLVO EC350EL

A/C & HEAT, 9'4" STICK,
AUX HYD, HYD Q/C,
54" BUCKET, REAR VIEW
CAMERA, ONLY 3438 HRS

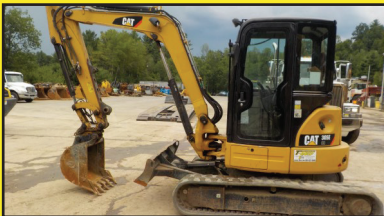
\$159,000



2014 TAKEUCHI TB260

A/C, 6' STK, SWING-AWAY BOOM,
MANUAL Q/C, 24" WB DIGGING BKT,
WB HYD THUMB, 13" RBR TRKS, 4534 HRS

\$46,000



(2) 2014 CATERPILLAR 305ECRs
A/C, AUX HYD, 30" STRICKLAND
DIGGING BKT, HYD Q/C & BLADE,
15" RUBBER TRACKS, 1324+/- HRS

\$49,500 EACH



2015 MCCLOSKEY 512R TROMMEL
3-5 YD CAPACITY, 1/2" SCREENS OR
3/4" SCREENS, 100HP DIESEL, HYD R
ADIAL STACKER, ONLY 1000 HRS

\$135,000



2015 CASE CX55B

A/C, AUX HYD, HYD Q/C, 42" TILT WRIST
BKT, 24" DIGGING BKT, HYD THUMB,
NEW 18" RUBBER TRACKS, 1150 HRS

\$49,000



(2) 2018 METSO CV100s
2-DECK SCREENER BOX WITH 4" TOP
SCREENS & 3/4" BOTTOM SCREENS, 5TH
WHEEL MOUNTED, 1700+/- HRS

\$95,000 EACH



2013 MCCLOSKEY C44 CONE CRUSHER
AUTO ADJUST, 7'x12' FDR, 18'x42" &
30'x42" CONVEYORS, HYD LVL LEGS,
CONE REBUILD @ 6800 HRS, 7956 HRS

WAS: \$245,000- | NOW: \$235,000



2011 LAPRADE R600

4 CYL DIESEL, 36"X11' ROLLER BELT FDR,
30"X60' DISCH FOLDING CONV,
T/A CHASSIS

WAS: \$69,000- | NOW: \$59,000



(2) 2008 KOMATSU HM350-2s
A/C, 6X6, 35-TON CAPACITY,
26.5R25 TIRES, 9887+ HRS

\$99,000 EACH



2012 PETERBILT 386 LOWBED TRACTOR
PACCAR 385 HP, 10-SPD, 38 REARS,
2-LINE AUX HYD, 295/70/22.5 RADIALS,
189" WHEEL BASE, 283,460 MI

\$39,000



2013 CAT TL1255

EROPS, 12,000LB LIFT CPTY, 55' REACH,
HYD Q/C, 48" CAT FORKS, 4X4,
FRONT STABILIZERS, 4359 HRS

WAS: \$89,000- | NOW: \$79,000

• CALL US TODAY FOR YOUR YEAR-ROUND SALES & RENTAL NEEDS! •

**2012 WACKER WL37**

- A/C
- HYDRAULIC Q/C
- 64" GP BUCKET
- 15.5-55R18 TIRES
- 1345 HOURS

\$45,000**8" SNOW PUSHER INCLUDED!****(603) 623-3669****www.TQUIP.com**

2017 CATERPILLAR 907M
 EROPS, A/C, 1.4CY GP BUCKET,
 CAT C3.3B DIESEL ENGINE,
 340X80R18 RADIALS, 2369 HRS
\$65,000



2019 KOMATSU WA200-8
 A/C, HYD Q/C, 2.5CY JRB BUCKET,
 2-SPOOL DIESEL ENGINE,
 20.5R25 RADIALS, 1372 HOURS
\$109,000



2018 CAT 908M
 EROPS, A/C, CAT HYD Q/C, 1.4CY GP
 BKT, 2-SPD TRAVEL, 405X70R20 RBR,
 CAT FORKS AVAIL, ONLY 269 HRS
\$79,000



2010 CATERPILLAR 928HZ
 EROPS, A/C, 2.5CY GP BUCKET,
 20.5R25 RUBBER, 9206 HOURS
\$69,000



2015 KOMATSU WA270-7
 EROPS, A/C, 3CY JRB GP BUCKET,
 2-SPOOL ENGINE, 20.5R25 RADIALS,
 5323 HOURS
\$79,500



2014 DOOSAN DL300-5
 EROPS, A/C, SCANIA 6CYL DIESEL, HYD
 Q/C, 4CY GP BUCKET & 72" HD FORKS,
 RIDE CTRL, 23.5R25 TIRES, 3152 HRS
\$119,000



2016 KOMATSU WA380-8
 EROPS, A/C, HYD Q/C, 4CY BKT, RIDE
 CTRL, NEW 23.5 RADIALS, 72" HD FORKS
 AVAIL, ONLY 4482 HRS
\$149,000



2005 CAT 930G
 EROPS, A/C, AUX HYD, HYD Q/C
 NEW 20.5R25 RADIALS, RECENT \$10K
 ENGINE OVERHAUL, 6144 HRS
\$75,000



2009 KAWASAKI 657V-2
 EROPS, A/C, HYD Q/C, 3.5CY GP BKT,
 20.5R25 RUBBER, 5310 HRS
\$49,000



2015 KOMATSU WA470-7
 EROPS, A/C, 5.5CY GP BKT, RIDE CTRL,
 26.5R25 RADIALS, 4480 HRS
\$139,000



2016 CATERPILLAR 259D
 EROPS, A/C, AUX HYD,
 MECHANICAL Q/C, 72" CAT GP BKT,
 13" RUBBER TRACKS, 626 HRS
\$47,500



2005 VOLVO G780B
 LO-PRO CAB, A/C, 14' MOLDBOARD,
 HYD SIDE SHIFT, TIP CTRL, PLUMBED FOR
 GPS, 20.5R25 TIRES, 3782 HRS
\$59,000

• HAMMERS • BUCKETS • GRAPPLES • THUMBS • FORKS • COUPLERS •



603-905-9036

132 Pierce Rd. (Rt. 125)
Barrington, NH
(17 miles from Portsmouth)



603-623-8873

1400 South Willow St.
Manchester, NH
(1 hour from Boston)

INVENTORY REDUCTION SALE – NO REASONABLE OFFER REFUSED!



2015 IH PAYSTAR 5900 ITI Alum 110 Barrel Vac Tank. Cummins 500HP, 18 Speed, 92,400 GVW, 263K Miles, stk#15479, **\$89,900.**



2016 IH DURASTAR 4300 CREW C&C. Cummins ISB 240HP, Allison Auto, 297" WB, 26K GVW, 98K Miles, stk#15268, **\$54,900.**



2013 VOLVO VNL64T300. 6x4, D13 435HP, 10 Spd, Air Ride, Engine Brake, 48" Slide 5th Wheel, 52K GVW, 319K Miles, stk#14064, **\$25,000.**



2011 MACK MRU613 C&C 6x4. MP7 325HP, Allison Auto, 195" WB, 66k GVW, 212K Miles, stk#Con117, **\$44,900.**



FRESH REBUILT 300HP
2012 IH WORKSTAR 7400 C&C 6x6. Fresh Rebuilt DT 300HP W/Warranty, Allison Auto, 107" WB, 56K GVW, 65K Miles, stk#15271, **\$45,000.**



2016 PETERBILT 567 44" Sleeper. Cummins ISX 425HP, 8LL, Engine Brake, 53,200 GVW, 41K Miles, stk#15728, **\$69,900.**



2006 MACK GRANITE CT713 McNeilus 11 Yard Rear Discharge Mixer. Rebuilt 350HP w/2 Yr Warr., Allison Auto, 66K GVW, 284K Miles, stk#15719, **\$59,900.**



2015 IH PROSTAR Day Cab. Cummins ISX15 425HP, 10 Spd, Engine Brake, 187" WB, 52,350 GVW, 450K Miles, stk#15730, **Call**



2016 IH DURASTAR 4300 20' Reefer Body w/Thermo King T800. Cummins ISB 240HP, 102"H, 97" W, Allison Auto, 25,999 GVW, 202K Miles, stk#15436, **\$40,000.**



2003 MACK DM690S 10.5 Yard Rear Discharge Mixer 6x4. 300HP, 8 Spd, Engine Brake, Camelback, 88K GVW, 197K Miles, stk#15892, **\$44,900.**



FRONT & WING
2010 IH WORKSTAR 7400 Sander Body w/Plow & Wing. DT285HP, Allison Auto RDS, Engine Brake, 98K Miles, stk#15578, **\$34,900.**



FRONT & WING
2004 IH WORKSTAR 7400 10' Dump w/Plow, Wing & Underbody Spreader. Pre Emission DT466 250HP, Allison Auto, 36,220 GVW, 58K Miles, stk#Con 107, **\$25,000.**

www.LibertyInternationalTrucks.com



603-905-9036
132 Pierce Rd. (Rt. 125)
Barrington, NH
(17 miles from Portsmouth)

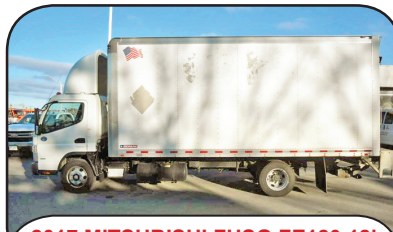


603-623-8873
1400 South Willow St.
Manchester, NH
(1 hour from Boston)

INVENTORY REDUCTION SALE – NO REASONABLE OFFER REFUSED!



2010 MACK GRANITE GU713
10.5 Yard McNeilus Rear Discharge Mixer. MP7 405HP, Allison 4500RDS Auto, 70180 GVW, 71K Miles, stk#15599, **\$92,900.**



2017 MITSUBISHI FUSO FE180 18' Morgan Van. 161HP, Auto, 17,995 GVW, E-Track, 169" WB, 116K Miles, stk#15848, **\$24,900.**



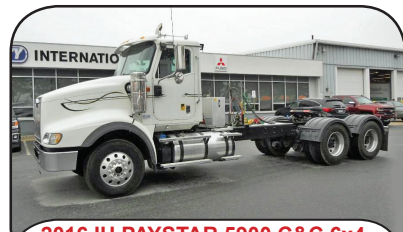
2013 KENWORTH T800. ISX Cummins 550HP, 18 Spd, AC, Engine Brake, 242" WB, 86K GVW, 419K Miles, stk#15727, **\$84,900.**



2016 PETERBILT 579 Tri Axle 18' Alum. Dump 8x4. PX13 485HP, 8LL, 60" Gate, Elec. Tarp, 80K GVW, 220K Miles, stk#15811, **\$124,900.**



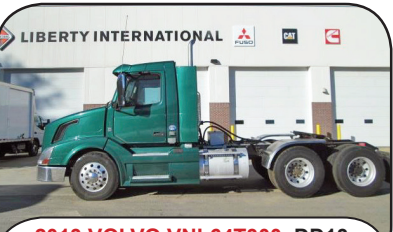
19K MILES
2016 FREIGHTLINER BUS. CLASS M2 112 8'6" Dump. Cummins 300HP, Allison Auto, El. Tarp, Pintle, Air/El. to Rear, 33K GVW, 19K Miles, stk#15809, **\$39,900.**



2016 IH PAYSTAR 5900 C&C 6x4. 475HP, 18 Spd, Engine Brake, 240" WB, 52,350 GVW, 2-Line Wet System, 236K Mile, stk#13857, **\$42,500.**



ALLISON AUTO
2007 PETERBILT 357 C&C 8x4. Cat 335HP, Allison Auto, 222"WB, 79,200 GVW, 166K Miles, stk#15505, **\$42,900.**



2013 VOLVO VNL64T300. DD13 425HP, 12 Spd I-Shift, 52K GVW, Wet Kit, 564K Miles, stk#13477, **\$22,500.**



2009 KENWORTH W900. ISX Cummins 485HP, 10 Speed, Engine Brake, 8 Bag Air Ride, 214" WB, 52K GVW, 224K Miles, stk#15001, **\$33,900.**



2011 MACK MRU613 25 Yard Heil Packer w/Cart & Container Tipper. 6x4, 325HP MP7, Allison Auto, Camelback, 66K GVW, 179K Miles, stk#15631, **\$104,900.**



2014 FREIGHTLINER 114SD 16' Flatbed w/Fassi Knuckleboom. DD13 410HP, 8LL, 12" Removable Sides, 56K GVW, 98K Miles, stk#15705, **\$79,500.**



2017 WESTERN STAR 4900. Detroit DD15 500 HP, Allison Auto, Engine Brake, 62K GVW, 187K Miles, stk#15776, **\$94,900.**

www.LibertyInternationalTrucks.com

**We are cash
buyers for
quality used
trucks and
equipment!**

BROOKSIDE EQUIPMENT SALES

WWW.BROOKSIDEEQUIPMENT.COM

978-249-4600



2014 CAT 420F. 779 Hours, 4x4, X-Hoe, A/C, Pilot Controls, Ride Control, Stk#BH077, **\$62,500**



2012 JOHN DEERE 650K LGP: 3,641 Hours, 6-Way Blade, Joystick Steer, LGP, Good U/C, 4 Cyl John Deere Turbo, 21K Lbs, stk#DZ243, **\$47,500**



2011 HYDREMA M1700C: 2,101 Hours, 30" Bucket, Auxiliary Hydraulics, 8'2" Blade, A/C, 2-Section Boom, 4 Cyl Perkins Turbo, 129 HP, 41K Lbs, stk#WX326, **\$64,500**



2016 CAT 420F2 IT. 2,059 Hours, 4x4, X-Hoe, A/C, Pilot Controls, Ride Control, Power Shift, Hyd Coupler W/ 3rd Valve, Stk#BH005, **\$59,500**



2015 JOHN DEERE 410K. 3,861 Hours, 4x4, X-Hoe, A/C, Side Dump Bucket, Pilot Controls, Ride Control, Power Shift, Stk#BH331, **\$44,500**



2010 JOHN DEERE 310SJ. 6,947 Hours, 4x4, X-Hoe, A/C, Pilot Controls, Ride Control, Power Shift, Flip Forks, Stk#BH846, **\$34,500**



2004 JOHN DEERE 135C RTS. 8,324 Hours, Manual Thumb, A/C, Reduced Tail Swing, 8'6" Wide, 31K Lbs, Stk#XC262, **\$39,950**



2014 JOHN DEERE 35G. 3,129 Hours, Cab W/ Air, Aux Hyd, Blade, Swing Boom, 8.2K Lbs, Stk#MX673, **\$27,900**



2014 BOBCAT T650: 1,967 Hours, 2740 Lb Lift, Cab W/ A/C, 76" Bucket, 4 Cyl Bobcat Turbo, 9.8K Lbs, stk#SK595, **\$31,500**



2012 JCB 507-42. 2,309 Hours, 7K Lb Lift capacity, 42 Ft Lift Height, 4x4, Foam Filled Rubber, Stk#FL153, **\$35,500**



2011 JOHN DEERE 772GP. 3,934 Hours, All Wheel Drive, A/C, 14 Ft Mold Board, Scarifier, Stk#GR642, **\$99,500**



2016 WACKER NEUSON WL38. 300 Hours, 0.8 Yard Bkt, A/C, 4 Cyl Deutz Turbo, Hyd Coupler W/ 3rd & 4th Valve, 9K Lbs, Stk#L0730, **\$54,500**



2016 JOHN DEERE 644K. 9,963 Hours, 4.25 Yard, A/C, Hyd Coupler, Ride Control, Auto Shift, Backup Cam, 42K Lbs, Stk#L0883, **\$79,500**



2015 BOBCAT S510. 1,294 Hours, 1,875 Lb Lift Capacity, Cab W/ Heat, Aux Hyd, 6.2K Lbs, Stk#SK798, **\$23,500**



2017 KUBOTA SVL95-2S. 1,621 Hours, 3,200 Lb Lift Capacity, Cab W/ Heat & A/C, 2 Speed, Aux Hyd, Hyd Coupler, 11.5k Lbs, Stk#SK475, **\$47,500**



2006 JLG 600AJ. 4,050 Hours, 60 Foot Max Height, 39'9" Max Horizontal Reach, 4x4, Jib, 4 Cyl Deutz Diesel, Stk#AE451, **\$23,500**



2017 HITACHI ZX180LC-6N: 3,254 Hours, 40" Bucket, A/C, 2 Speed, 4 Cyl Isuzu Turbo, 43K Lbs, stk#XC018, **\$97,500**



2009 JLG 800AJ. 3,878 Hours, 80 Footmax Height, 51 Foot Max Horizontal Reach, 4x4, Jib, 4 Cyl Deutz Diesel, Stk#AE566, **\$29,900**



2003 ASPHALT ZIPPER AZ480T: 650 Hours, 48" Asphalt Zipper On Williamson Trailer, 6 Cyl John Deere 6068 Turbo Diesel, One Owner, stk#PA114, **\$24,500**



2015 CATERPILLAR CT660S: 173,730 Miles, 10 Wheel Daycab, Cat CT13 Twin Turbo, 475 HP, Fuller 13 Speed, 13,200 F, 46k R, Air Ride, A/C, 198" Wheelbase, stk#TK650, **\$39,500**

60 STATE RD, PHILLIPSTON, MASS

978-249-4600

EMAIL: KEVIN@BROOKSIDEEQUIPMENT.COM

ALLEGIANCE TRUCKS

2181 Providence Highway | Walpole, MA 02081

(508) 668-3112 | (800) 225-4808

www.AllegianceTrucks.com



2020 INTERNATIONAL HV
Cummins ISL, 6-Speed Automatic.
GVW 40,000. Stock #700636



2020 INTERNATIONAL CV
Navistar 6.6LD, 6-Speed Automatic.
GVW 19,500. Stock #300065



2019 INTERNATIONAL CV
Navistar 6.6L D, 6-Speed Automatic.
GVW 19,500. Stock #300071



2021 INTERNATIONAL MV
Cummins L9, 6-Speed Automatic.
GVW 33,000. Stock #401788



2018 INTERNATIONAL RH
Navistar A26, 10-Speed Manual
GVW 52,000. Stock #800127



2021 INTERNATIONAL LT
Cummins ISX15, 10-Speed Auto.
GVW 52,000. Stock # 800132

NOW Locations in MA, CT, ME, RI & NY! For all locations visit our website!



2021 FORD F650
Ford 7.3L EFI, 6-Speed Automatic.
GVW 25,999. Stock #650615



2019 FORD F650
Ford 6.8L, 6-Speed Automatic.
GVW 25,999. Stock #650598



2019 FORD F750
Ford 6.7L, 6-Speed Automatic.
GVW 25,999. Stock #750481



2019 FORD F550
Ford 6.7L, 6-Speed Automatic.
GVW 19,500. Stock #550821



2021 FORD F650
Ford 7.3L EFI, 6-Speed Automatic.
GVW 25,999. Stock #650617



NEW 2019 FORD F550
6.7L Power Stroke, 6-Speed Auto.
GVW 19,500. Stock #550773

2021

Happy New Year from Allegiance Trucks!

*Wishing you and your
family a wonderful year ahead.*

www.AllegianceTrucks.com



Contact us today to learn more!

ASV@CN-WOOD.COM • 781.305.7221



Compact Track Loaders engineered to perform at your level!

All finance subject to credit approval.



RT-25 (48" wide)
3,755 lbs • Cab w/Heat
As low as **\$465/mo**



RT-40 (48" wide)
4,175 lbs • Cab w/Heat & AC
As low as **\$579/mo**



RT-65
7,630 lbs • Cab w/Heat & AC
As low as **\$735/mo**

LEASE PAYMENTS (+ANY APPLICABLE TAX)

0% FINANCE AVAILABLE



VT-70 (vertical lift)
8,070 lbs • Cab w/Heat & AC
As low as **\$755/mo**



RT-75
9,180 lbs • Cab w/Heat & AC
As low as **\$880/mo**



RT-120
11,625 lbs • Cab w/Heat & AC
As low as **\$1,109/mo**

Woburn, MA • Avon, MA • Whately, MA • Johnston, RI • North Haven, CT • Westbrook, ME

www.cn-wood.com

R & R INDUSTRIES

**We Buy All
Scrap Metals**

www.RRTrucksAndEquipment.com • Sales@RandRind.com

195 Rocus Street, Springfield MA 01104

413-733-2118

TOP \$ PAID FOR ALL METALS

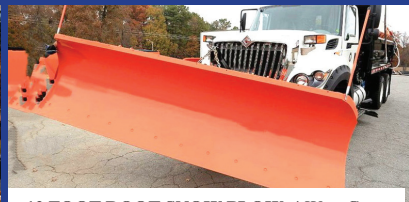
*** ALL FERROUS & NON FERROUS METALS***
COPPER/BRASS/ALUMINUM/STAINLESS/IRON
& STEEL* MACHINERY* HEAVY EQUIPMENT*
CARS/TRUCKS*



1975 BUTLER 5500 GALLON ALUMINUM TANKER TRAILER. Will Carry 58,000 lb Payload, Gas Powered Pump & Metering Sys, Perfect For construction Water Truck, Road Worthy, **Only \$6,500/BO**



10' Super Heavy Duty Snow Plow Blade. For Your Truck Or Bucket Loader, **Only \$1,000.** Lots More Available 6' To 12', Call Bruce Now



12 FOOT ROOT SNOW PLOW. 4 Way, Great Condition, Actual Picture Next Week, Lots More Plow Blades, 6' To 12', **\$150 & Up**



45' FLATBED TRAILER. New Deck, Nice Tires, Lights And Brakes All Work, Steel Headboard, Clear Title, **Only \$3,795**



BIG LOADER BUCKET For CAT 988-992 Loader, Superb Condition, Call For More Info, Part #5K3539 **Only \$4,895/BO**



(2) ISUZU NPR CAB & CHASSIS'S. 4 Cyl Diesel, Auto, Good Motors, Currently Not Running, Export Specials, They Go As A Pair. **Only \$5,500 For Both**



SOLAR GAS TURBINE GENERATOR. 1,000 KVA, 800 KW, Jet Engine Powered, Will Power A Small City, New Cost Over \$750K, Easy Convert To Diesel Motor, **Only \$29,500/BO**



GALION 13.5' STEEL DUMP BODY COMPLETE WITH HOIST, TANK etc, Excellent Condition, Ready To Mount On Your Chassis, **Only \$3,350, Others To Choose**



CLARK C-500 FORKLIFT. 5000# Capacity, No Leaks, Runs Great, Triple Mast, Side Shift, Propane Powered, Only 2100 Hours, **Only \$3,350/BO**



27' FRUEFAUF TANDEM AXLE PUP TRAILER. Roll Up Door, Great Condition, **Only \$2,700/ BO**



NICE STORAGE TRAILERS STARTING @ \$2,500



1939 MACK MODEL EQ. Single Axle Dump. Complete And Ready To Restore. Call For More Info. Let's Make A Deal



NICHOLS TWIN MILL MODEL TM481. Nice Machine, Bought It & Never Used It, Extremely Versatile, Runs On 208, 220, Or 440 Volts, **Only \$2,250/BO**



1996 FORD F350 MECHANICS TRUCK. 7.3L Powerstroke Diesel, 5 Speed, DRW, Only 137K, 6 New Tires, 11' Walk In Service Body w/ Sliding Roof, Lots Of New Parts, **\$6,295/BO**



STAINLESS STEEL TANKS. 3 Separate Sections In One Unit, Each With It's Own Lines & Mixer, About 6' x 12', Great For Beer, Whiskey, Sap Call For Info & Pricing, **Others To Choose**

STORAGE UNITS 12', 14', 16', 18', 20', 24', 30', & 40' Storage Or Instant Garage \$650 & Up



JACK MADDEN FORD

888-817-7979

BUILT FOR AMERICA

**ANNOUNCING!
MEDICAL
PROFESSIONALS
BONUS CASH***



BUILT *Ford* PROUD



30 TRUCKS WITH PLOWS READY TO GO



**NEW F350 4X4 PLOW TRUCK
W/8' FISHER PLOW. Stk.#2824
(NAP) \$42,999***



**NEW F350 XL 4X4 DRW 9' DUMP BODY:
STK#93157. \$56,614***



**NEW F350 SUPER DUTY F350 XL 4x4 Utility Body:
6.2L Gas, Power Group. Stk.#79367 \$46,105***



**NEW F350 SD XL 4x4 Stainless Landscape Dump. DRW,
6.2L, 10 Spd, stk#12019, \$54,728.***



**NEW F550 XL 4X4 Landscape Dump. DRW, 6.7L
Powerstroke Turbo Diesel, stk#60214, \$63,341.***

GO TO WWW.JACKMADDENFORD.COM

JACK MADDEN FORD

825 Providence Hwy Rt.1 Norwood, MA

888-817-7979



*All prices include incentives for qualified buyers. For trade assist, must have 2016 or new trade. All vehicles require dealer financing. Some prices include snowplow incentives. See dealer for complete details.

COMMERCIAL
VEHICLE CENTER

JACK MADDEN FORD

888-817-7979

BUILT FOR AMERICA

**SPECIAL
WINTER
PRICING ON
PLOW TRUCKS.**



BUILT *Ford* PROUD



30 TRUCKS WITH PLOWS READY TO GO



**NEW F350 XL DUMP 4WD. DRW, 7.3L,
V8 Gas, Auto, stk#13009, \$52,401.***



**NEW F350XL DRW 4x4 LANDSCAPE BODY:
6.7L DIESEL. Power Group. Stk.#93162 \$59,072***



**NEW F350 SD SUPER CAB XL 4WD C&C. DRW, 6.2L,
V8, Auto, 168" WB, STK#28622, \$42,493.***



**NEW F550 XL Reg. CAB DRW 4x4 DUMP: 6.8L Gas,
Power Group. Stk.#5990 \$54,132***



**NEW F550 4x4 CHASSIS'S Available.
CALL FOR INFORMATION**



**NEW F550 XL DRW 4x4 11' Dump Body:
CALL FOR INFORMATION**

GO TO WWW.JACKMADDENFORD.COM

JACK MADDEN FORD

825 Providence Hwy Rt.1 Norwood, MA

888-817-7979

COMMERCIAL
VEHICLE CENTECOMMERCIAL
VEHICLE CENTE

*All prices include incentives for qualified buyers. For trade assist, must have 2016 or new trade. All vehicles require dealer financing.
Some prices include snowplow incentives. See dealer for complete details.



**2006 FORD F550
FLATBED BODY.**
Diesel, Good Runner, 90% Rubber
19.5, **\$5,000.**
207-289-7828

Bailey Equipment Repair LLC Heavy Truck and Equipment Service



**Diesel repair/Diagnostics, hydraulic component repair,
Equipment undercarriage repair and welding.**
All services can be done on site.

Haddam, CT

860-918-6466



**8 FT. CHEVY PICKUP
BED, 2017. Took Off When
New, \$2500 OBO.**
John, 617-921-8357



**2006 PETERBILT 379 SLEEPER TRACTOR, 185pd.,
475 CAT Motor, 65% Michelin Rubber, High/Low Pressure Hydraulics,
One Driver, Low Miles-600K, Brakes Good, Ready To Work!**
\$54,900 Call Today 781-417-3018

**THE
TRAILER
DEPOT**



203-234-7788
1037 Middletown Ave. (Rt. 17)
Northford, CT

**DUMP TRAILERS IN STOCK.
WHILE THEY LAST**

WESTERN

Plows & Sanders In Stock



**SCHEDULE YOUR PLOW OR SPREADER
INSTALLATION TODAY!**



**BIG TEX DECKOVER. 8' 6" x 30, 25' + 5" Beavertail,
102" Overall Width, 23,900 GVW, Low Profile Bed, Pierced
Frame, #016674**



**CAM SUPERLINE 51.7K HEAVY DUTY DECKOVER.
8' 6" x 27', 22' Flat + 5' Beavertail, 102" Overall Width, 35"
Deck Height, #509353**



**CAM SUPERLINE LOW PROFILE 11.9K DUMP TRAILER.
6' x 12', Tubular Mainframe, Triple Acting Tailgate, Ladder Ramps,
#5CAM612LPD, Many Dumps In Stock**



**K-TRAIL 14K GALVANIZED DUMP TRAILER.
6' 8" x 12', Slipper Industrial Suspension, 15" x 72" Ramps,
#025850**



**PACE AMERICAN 7K ENCLOSED LANDSCAPE
TRAILER. 7' x 16', Ramp Door With Spring Assist,
32" x 68" Side Door, #012548**

www.thetrailerdepot.com

We'll Hook You Up
WE DO FEDERAL INSPECTIONS!



Lunenburg MA

617-548-1330



**1988 WHITE/
AUTOCAR.**
Ten Wheeler,
370K Miles, New
Sander, Closed
Loop, Standard
Trans, **\$20,000**



**2018
KENWORTH
W900 Tractor.**
500 Cummins,
Loaded, 40 Rears,
12 Front, New
Big Rubber, 240k
Miles, Big PTO
Pump For Live
Floor **\$89,000.**



**2013 MACK CXU613
TRACTOR.** M-Drive
Auto, Mack Motor
450 Horsepower, New
Rubber, Back Rack,
Tool Box, Big PTO
Pump for Live Floor
Trailer, 40 Rears ,
12 Front, Very Clean,
328k Miles, **\$31,995.**



2004 STERLING.
Automatic, 180k
Miles, Works
Great, Has Chip
Top And Gate
Along With A
Dump Gate,
\$11,000



**2011 JOHN DEERE
824K LOADER.**
5300 Hours, Scale
And Quick Attach
Pusher 14 Ft
, Keyless, Runs And
Works Awesome
\$115,000



**1995
FREIGHTLINER
FL 70 ROLL-OFF.**
244k Miles, Runs
Good, 54 Inch
Hook, Comes With
18 Plus Dumpsters,
Some 20', 15' And
10' Yarders, **\$60,000**



1993 OSHKOSH TRUCK SNOW BLOWER AND PLOW.

Drive Motor 3775 Hours And Blower 1298 Hours,
Works Awesome And Drives Great **\$36,000**

CERRONE

A Priority Automotive Dealership

**ROUTE 1, BETWEEN 95 + 295
SOUTH ATTLEBORO, MA**

508-761-4800

WE COME TO YOU - GIVE US A CALL !



**NEW 5500 LCF
DROPSIDE DUMP**
17,950 GVW, A/C, POWER HEATED MIRRORS,
HITCH, COVER. #18364H
~~WAS \$76,830~~

\$61,495



2020 4WD RAMP TRUCK
\$108,000



**2019 5500 LCF
BACKPACK DUMP**
17,950 GVW, A/C, POWER HEATED MIRRORS,
HITCH, COVER. #19008H
~~WAS \$80,620~~

\$64,995



**2021 K2500 CREW CAB SLT
DURAMAX DIESEL**
SLT PREMIUM PKG., GOOSENECK HITCH PKG.,
DRIVER ALERT PKG., PLOW PREP. #21063G
~~WAS \$74,090~~

\$67,995



**2019 4500 11' UTILITY
DURAMAX DIESEL**
16,500 GVW, NICE SPECS.,
PERFECT FOR WHEN YOU NEED MORE
ROOM+CAPACITY. #19386H
~~WAS \$67,898~~

\$61,995



**2020 C2500 DOUBLE CAB
UTILITY BODY**
10,000 GVW, NICELY SPEC'D WITH AN
ALUMINUM BODY. #20233G
~~WAS \$54,260~~

\$49,995

**2021 K2500 CREW CAB LTZ
DURAMAX DIESEL**

OUT FOR A WASH



LTZ PREMIUM PKG., GOOSENECK HITCH PKG.,
PLOW PREP. #MF162746
~~WAS \$74,660~~

\$68,695



2020 K3500 CREW-CAB DUMP
14,000 GVW, COVER, TOOL BOXES, HITCH,
POLY FENDERS. READY FOR WORK. #20381H
~~WAS \$58,288~~

\$53,995



**2020 K3500 CREW-CAB DUMP
DURAMAX DIESEL**
14,000 GVW, CONV. PKG., POWER SEAT, PLOW
PREP. #20359H
~~WAS \$69,848~~

\$63,995

2020 C2500 PICKUPS



9,900 GVW, CONV. PKG.,
TRAILER PKG., SPRAY-IN-LINER. PERFECT FLEET
SPECS. #20154G
~~WAS \$39,668~~

\$34,995



2020 K1500 PICKUPS
V-8, VALUE PKG., LOCKING AXLE, TRAILER
BRAKE. #20104G
~~WAS \$41,005~~

\$36,995



**2021 K1500 DOUBLE CAB SLE
DURAMAX DIESEL**
PREFERRED PKG., DRIVER ALERT PKG.,
X31 OFF ROAD WITH 20" WHEELS.
~~WAS \$52,490~~

\$47,995



WWW.CERRONEGM.COM
WWW.CERRONETRUCKSALES.COM

SALES PRICES INCLUDE ALL REBATES INCLUDING LOYALTY, CONQUEST, TRADE-IN

THIS AD IS COPYRIGHTED & OWNED BY TRUCK AND EQUIPMENT POST



CERRONE

A Priority Automotive Dealership

ROUTE 1, BETWEEN 95 + 295

SOUTH ATTLEBORO, MA

508-761-4800

WE SPECIALIZE IN FLEETS WITH 10+ TRUCKS. CALL US



**2019 20' MOVING VAN
DURAMAX DIESEL**



**23,000 GVW, ALUM. RAIL GATE, SIDE
DOOR, E-TRACK. THE RIGHT SPECS.**

#19373H

WAS \$92,398

\$81,000

2020 12' DURACUBE MAX



**9,900 GVW, ELECTRIC BODY LOCKS,
SHELVING, LADDER RACKS. #20380G**

WAS \$54,472

\$48,995

2020 12' BOX TRUCK



**14,500 GVW, ENHANCED AUDIO SYSTEM,
AIR DEFLECTOR, ROLL-UP DOOR, LINING, ETC.**

#20269H

WAS \$59,680

\$48,995

2019 10' HI-CUBE



**9,900 GVW, ROLL-UP DOOR, PARTITION,
LINING. #19354H**

WAS \$45,633

\$37,495

2019 18' REEFER



**14,500 GVW, HEAT & COOL WITH STANDBY,
SIDE DOOR, NICE UNIT. #19378H**

WAS \$82,337

\$68,995

2020 14' HI-CUBE



12,300 GVW, NICELY EQUIPPED.

#20361G

WAS \$49,353

\$42,495

**2021 CANYON DENALI
TOP OF THE LINE !**



#21049G

WAS \$46,670

\$43,995

2021 CANYON AT4



**SPRAY-IN-LINER, OFF-ROAD ASSIST STEPS,
TRAILERING EQUIPMENT. #21039G**

WAS \$41,720

\$38,995

2021 COLORADO ZR2



NAVIGATION RADIO, SPECIAL ORDER CRUSH

COLOR. #21050H

WAS \$46,175

\$42,995



WWW.CERRONEGM.COM
WWW.CERRONETRUCKSALES.COM

SALES PRICES INCLUDE ALL REBATES INCLUDING LOYALTY, CONQUEST, TRADE-IN

THIS AD IS COPYRIGHTED & OWNED BY TRUCK AND EQUIPMENT POST



CERRONE

A Priority Automotive Dealership

**ROUTE 1, BETWEEN 95 + 295
SOUTH ATTLEBORO, MA**



508-761-4800



CHEVROLET'S MEDIUM DUTY TRUCK CENTER

- *REGULAR CABS, TILT CABS, CREW CABS 2WD OR 4WD
- *GVW'S UP TO 25,950 BODY LENGTHS UP TO 22'
- *DUMPS, PLATFORM/ RACKS, SWITCH-N-GO, CAR CARRIERS, TOW TRUCKS, SERVICE BODIES, MOVING VANS. IF YOU NEED IT DONE, WE CAN DO IT.
- *NIGHT SERVICE WITH 30,000LB. LIFTS
- *GM'S #1 FLEET DEALER IN SE MA., RI, CT.

CALL OUR COMMERCIAL TEAM. "YOU'LL BE GLAD YOU DID!"

**2020 K5500 DUMP TRUCK
DARK GREEN**



DIESEL
19,500 GVW, RUGGED DUTY CHASSIS SPECS., 11' BODY, 20" SIDES, ELECTRIC COVER, POLY FENDERS. #20334H
WAS \$82,487

\$74,995

2019 C5500 DUMP TRUCK



17,500 GVW, DARK GREEN MET., 9' BODY, ELECTRIC COVER. #19359H
WAS \$71,577

\$64,995

**2019 C5500 CHASSIS
CREW CAB**



DIESEL
19,500 GVW, 84" CA. #19364H
WAS \$60,567

\$51,995

2020 K5500 CHASSIS



DIESEL
17,500 GVW, 108" CA. #20155H
WAS \$58,072

\$53,695

2020 K5500 CHASSIS



DIESEL
19,500 GVW, 108" CA. #20285H
WAS \$61,212

\$55,695

**2019 4500 11' UTILITY
DURAMAX DIESEL**



DIESEL
16,500 GVW, NICE SPECS., PERFECT FOR WHEN YOU NEED MORE ROOM+CAPACITY. #19386H
WAS \$67,898

\$61,995

2020 LCF 5500 CHASSIS



DIESEL
17,950 GVW, 132" WB FOR 14'-16' BODY. #20199H
WAS \$62,028

\$48,875

2020 LCF 5500 XD CHASSIS



DIESEL
19,500 GVW, 150" WB FOR 18-20' BODY, DUAL TANKS, PTO., PERFECT ROLL-OFF CHASSIS. #20374H
WAS \$70,745

\$56,995

**2019 LCF 5500XD CREW CAB
12' ALUM. LANDSCAPER**



DIESEL
19,500 GVW, SIDEDOOR, HITCH. #19125H
WAS \$84,270

\$68,875



**WWW.CERRONEGM.COM
WWW.CERRONETRUCKSALES.COM**



THIS AD IS COPYRIGHTED & OWNED BY TRUCK AND EQUIPMENT POST

R & R INDUSTRIES
 www.RRTrucksAndEquipment.com • Sales@RandRind.com
 195 Rocus Street, Springfield MA 01104 **413-733-2118**

We Buy All Scrap Metals



Truck Tires
 Many Matched Sets
 Of 4 And 8
 & Rims Too
 295/75/225
 10:00 x 22.5
 11:00 x 22.5
 12:00 x 22.5
 9:00 x 20
 10:00 x 20
 8:25 x 20
 11x20

Call With Your Size Lots More In Stock!

Guaranteed Used Tires

Virgin Steer, Drive & Trailer Tires



2005 CHEVROLET
26' BOX TRUCK. Isuzu Engine,
 230K Miles, Includes Lift Gate,
\$10,000 OBO.
 617-755-5821



FORD LN 8000: 8.3 Cummins, Automatic Turnkey,
 Many New Parts, Currently Has State Work And Is Transferable,
 Built In Sander W/Closetoop System, **\$8,500 OBO,**
 Call Paul 401-255-6976

2016 ANACONDA
TD516 TRACKED
TROMMEL SCREENER,
 2000 hrs., Variable speed,
 16'9" x 4'7" Drum, Runs
 Good! **\$79,000.** Call
 Bryn, Hopedale, MA.
 855-313-2441



CT • RI • MA • NY



100 YARD
STEEL DUMP TRAILERS

CALL IAN OR LENNY
800-229-9421

WE WILL SAVE YOU MONEY
AND PUT A SMILE ON YOUR FACE!

STUMP & BRUSH
TRANSPORTATION & DISPOSAL
\$950/LOAD

DEMOLITION DEBRIS
TRANSPORTATION & DISPOSAL
\$2150/LOAD

SAME DAY DISPATCH
TOP \$\$ PAID FOR YOUR
SCRAP STEEL, COPPER, & ALUMINUM!!!



Natural Mulch
Landscaping /Erosion Control
\$750 Delivered -
Call For Complete Details



2019 HINO 338 REFRIGERATED TRUCK. Custom Ordered W Many Options, 7500 Miles, Hercules 24 Foot Box With Carrier Supra 760, Roll Up Door, 3000 Lb. Anthony Lift, Upgraded Dual Air Seats, Aluminum Wheels, **\$92,900.** 508-325-3341



1997 PETE 330.
2300 Gal. Vac, Used For Oil Tank Removals, Road Ready, Newer Engine, Good Overall Condition, Asking **\$20,000.** Milford, CT 203-882-9391



2001 ISUZU NPR. 16' Box, Ramp, 4 Cylinder Diesel, 5 Speed Manual, 111K Miles, Fully Serviced, **\$8,500,** Chicopee, MA 413-563-9944

SHIPPING CONTAINERS.
Wind And Watertight.
20', 40' Standard And 40 H/C, Available For Pick Up Or Delivery For A Fee, Call For Price. 203-460-6340



Serving You With New Ideas



2019 BARREL ON 05 SUBFRAME, 12,000 GAL, 5 COMP, TRI AXLE FOR SALE

**SERVING YOU
WITH NEW IDEAS
THROUGHOUT
NEW ENGLAND &
NEW YORK**



Visit
www.wbhill.com

**For Specs &
More Photos**

For More Tractors, Trailers, Tank Trucks, Pictures & Videos,
Please Give Us A Call Or Visit Our Website, Facebook, Or YouTube Page!

305 Shaker Rd, East Longmeadow, MA
413-525-6665
www.wbhill.com



2019 FORD E-450 14 PASSENGER SHUTTLE BUS, Commercial Shuttle Bus, Gas, Automatic, NON CDL Required. Call For More Details! 401-434-5900



CAT M318 WHEEL EXCAVATOR.

Variable Angle Boom, Plumbed, New Coupler, 80mm Pins, Outriggers. Very Good Condition, 9000 Hours, **\$34,500.** Pequabuck, CT 860-605-6895

R & E STEAM EQUIPMENT

- Steam Cleaning Equipment -



Used Hot Water Units Starting @ \$1095.

New Hot Water Units Starting @ 2295.

Rent For 12-24 Months Own It For \$1.00

(617) 899-8775

Earl Warwick



2014 CAT 312E:

11' Stick, QC, A/C Cab,
3000 Hours, **\$83,500.**
Call Bryn. 855-313-2441.
Hopedale, MA

**2018 CAT
242D SKID
STEER,**
Enclosed,
Hours:680, Excellent
Rubber, Strong
Runner, Excellent
Interior, Like New!
Ready For Snow!
\$29,900
781-417-3018



2015 PETERBILT 388 TRACTOR. ISX Cummins,
500 HP, 18 Speed, 20/20/46, Steerable Pusher Axle, Long
Slide 5th Wheel, Ready To Work, 2 To Choose, **\$97,500,**
860-307-7157



1996 MACK TRIAXLE RD6885. E7-350, New 8LL
Trans Clutch, A/C, 268K Miles, 3 Stage Jake, 4 New Springs,
Radiator, Starter, And Floor In Dump Body, With Galvanized Cab,
\$31,500. 978-423-6719



HAPPY NEW YEAR

Dario Diesel
TRUCK CENTER

Truck Sales, Service & Parts Since 1959

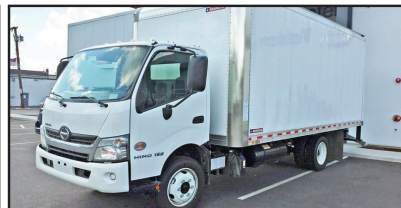
182 SW CUTOFF, RT 20, Worcester, MA



2020 HINO 195, 12' X 96" IROQUIS LANDSCAPE DUMP w/
Back Pack Tool Box, 210HP, Auto, 19,500 GVW, stk#H301



2019 HINO 195 16' MORGAN VAN. 210HP, Auto, 102"W x 97"H.
E-Track, Step Bumper, 19,500 GVW, stk#H304



2020 HINO 195 18' MORGAN VAN. 210 HP, Auto,
150" WB, 96" x 91", 19,500 GVW, stk#305

NEW VOLVO & HINO TRUCKS



2021 VOLVO VNL64T40 70" SLEEPER 6x4, D13
500 HP, 53,200 GVW, 237" WB, 317 Miles,
stk#VN639



2021 VOLVO VNL64T860 Raised Roof Sleeper
6x4, 500HP, 12-Spd, I-Shift, TV, Microwave,
Work Station, 53,200 GVW, stk#VN653



2020 VOLVO VNL64T300, Cummins X15 500HP,
Eaton Fuller 10 Spd AMT Trans, 185" WB, 52K
GVW, 40K R/A, stk#VN624



2021 VOLVO VNL64T740 70" Sleeper 6x4,
D13-500HP, Eaton Fuller 18 Spd, 14,600
F/A, 46K R/A, stk#VN640

Visit www.dariodiesel.com • 877-218-8132

NICK SCARVALAS
Commercial Sales
857-247-9023 or 617-249-5603



**COMMERCIAL
VEHICLE CENTER**

TIME TO GET READY FOR WINTER PLOWING



SAVE \$6,000

2020 F550 DUMP. Diesel, Auto, 4X4, I-Pac Tool Box, 9' Body, Payload Plus, Power Group, F203579 MSRP \$76,325
SALE PRICE \$70,325



SAVE \$6,000

2020 F350 SUPER CAB 4X4. 9' Rugby Dump Body, V8 Gas, 10 Speed Automatic, PW, PL, F202967 MSRP \$58,895
SALE PRICE \$52,885



SAVE \$6,000

2020 F550 SUPER CAB. Switch N Go Container, 4x4, V8 Gas, Pwr Equipt, Payload Upgrade, Plow Prep, F203753 MSRP \$78,925
SALE PRICE \$72,925



SAVE \$7,000

2020 F450 12' LANDSCAPE DUMP. 4X4, V8 gas, 10 Speed Auto, Power Equipt Pkg, 9 Ton Hoist, F202848 MSRP \$63,974
SALE PRICE \$56,974



SAVE \$6,000

2020 F550 FLATBED BODY. V8 Gas, PW, PL, Cruise, Payload Plus Pkg, 10 Speed Automatic, F203755 MSRP \$59,340.
SALE PRICE \$53,340



SAVE \$6,000

2020 F350 SUPER CAB LANDSCAPER. 4X4, Curb Side Gate, PW, PL, Snow Plow Prep, V8 Gas, Auto, F202772 MSRP \$63,130
SALE PRICE \$57,130

500 COMMERCIAL TRUCKS IN STOCK



SAVE \$15,000

2021 F650 SUPER CAB DUMP. 6.7 Diesel 300 HP, Auto, 10 Ft 5-7 Yard Body, Tool Box, Pintle Hook, Electric Load Cover, F203116 MSRP \$108,415
SALE PRICE \$93,415



SAVE \$7,500

2020 F350 SUPER CAB 4X4. 9' Dump Body, V8 Gas, 10 Speed Automatic, PW, PL, Pwr Htd Mirrors, F202783 MSRP \$59,675
SALE PRICE \$52,175



SAVE \$15,000

2021 F650 DUMP TRUCK. Diesel 300 Hp, Automatic, 10' Body, Tool Box, Electric Load Cover, PW, PL, F203209 MSRP \$10,5475
SALE PRICE \$90,475



SAVE \$6,000

2020 F550 9' DUMP TRUCK. V8 Gas, 10 Speed Automatic, Pwr Equipt Pkg, 4X4, Plow Prep, F203749 MSRP \$61,600
SALE PRICE \$55,600



SAVE \$7,000

2020 F350 SUPER CAB 4X4. 9' Landscaper Dump, V8 Gas, SYNC Apple Link, PW, PL, F202845 MSRP \$63,385
SALE PRICE \$56,385



SAVE \$6,000

2020 F350 ALUMINUM SERVICE BODY. Super Cab, Remote Start, Rear Camera, V8 Gas, 4WD, Central Locking, F202824 MSRP \$67,005
SALE PRICE \$61,005

QUIRK FORD
540 Southern Artery (Rt 3A) Quincy, MA
www.quirkford.com • 617-249-5660

**Business
Financing with
NO Co-signer
Required**

Prices include all available rebates. Rebates include Customer Cash, FMCC Bonus Cash, and Commercial Uplift Bonus Cash. Customer must qualify for rebates. Call for specific details. Prices are subject to change. * In Lieu Of Rebates

NICK SCARVALAS**Commercial Sales****857-247-9023 or 617-249-5603****COMMERCIAL
VEHICLE CENTER****GREAT FINANCING ON ALL CUTAWAY VANS****SAVE \$6,000**

2021 E350 ALUMINUM SERVICE. Remote Locking, 3 Bar Ladder Racks, Cabinet Lighting, PW, PL, F203628 MSRP \$59,300
SALE PRICE \$53,300

**SAVE \$5,000**

2021 E350 12' SERVICE VAN. Power Locking System, Pass Thru Door, 3 Rail Ladder Rack, Ladder to Roof, LED Lighting, PW, PL, F202953 MSRP \$56,795
SALE PRICE \$51,795

**SAVE \$4,000**

2020 TRANSIT XLT CARGO VAN. Rear View Camera, SYNC, Remote Entry, Pwr Heated Mirrors, USB Ports, F202660 MSRP \$29,555.
SALE PRICE \$25,555.

**SAVE \$6,000**

2020 T250 CARGO VAN. Equipped W/ Racks And Bins, Smokers pkg, Rear View Camera, PW, PL, F203597 MSRP \$47,400
SALE PRICE \$41,400

**SAVE \$6,106**

2020 T250 CARGO VAN. Rear View Camera, PW, PL, Heated Mirrors, Cargo Protection Pkg, F202635 MSRP \$39,105
SALE PRICE \$32,999

**SAVE \$5,000**

2021 E350 UTILITY VAN. Ladder Racks, Electric Locks, Rear View Camera, PW, PL, Driver Tech Pkg. F202846 MSRP \$58,395
SALE PRICE \$53,395

500 COMMERCIAL TRUCKS IN STOCK**SAVE \$6,000**

2020 T350 HD 12' CARGO BOX. Flat Floor, Roll Up Rear Door, D-Rings, PW, PL, F203334 MSRP \$47,605
SALE PRICE \$41,605

**SAVE \$6,000**

2020 T350 ALUMINUM UTILITY. 11' Reading Body, Ladder Racks, Interior Upgrade Pkg, Rear Camera, F203361 MSRP \$57,615
SALE PRICE \$51,615

**SAVE \$6,000**

2020 TRANSIT 15 PASSENGER VAN. Rear View Camera, USB Ports, 4G Wifi, PW, PL, F202740 MSRP \$45,550
SALE PRICE \$39,550

**SAVE \$5,956**

2020 T250 CREW WORK VAN. 5 Passenger, Privacy Glass, Rear Defroster, Fog Lamps, Rear View Camera, F202837 MSRP \$43,205.
SALE PRICE \$37,249

**SAVE \$6,000**

2020 E350 12 Ft SERVICE VAN. Pw, PL, Cruise, Bucket Seats, Ladder Racks, Central Locking, F202953 MSRP \$56,795
SALE PRICE \$51,795

**SAVE \$6,121**

2020 T250 MID ROOF CARGO VAN. Protect Lined Cargo Area, Anti Theft System, Polish Alum Wheels, Rear Camera, F202293 MSRP \$47,370.
SALE PRICE \$41,249

QUIRK FORD

540 Southern Artery (Rt 3A) Quincy, MA
www.quirkford.com • 617-249-5660

**Business
Financing with
NO Co-signer
Required**

Prices include all available rebates. Rebates include Customer Cash, FMCC Bonus Cash, and Commercial Uplift Bonus Cash. Customer must qualify for rebates. Call for specific details. Prices are subject to change. * In Lieu Of Rebates



**MICHIGAN
MODEL 125A
LOADER.**

Use For Snow
Removal, Good
Snow Machine,
Lots Of Power,
\$14,000.
Call Or Text
401-648-5950

FORD LN8000.

3208, 10 Speed Overdrive
Transmission, 10 Wheeler,
Light Rears, 12 Front, 24'
Flatbed, No Rust, **\$5900.**
339-832-2419



1987 AUTOCAR.
400 Cummins, 8 Speed,
\$15,000 FIRM.
Call For More Info,
401-524-9421

**1997
MACK
CL713,**
44 rears on
air, 2 line
wet system,
\$25,900.
781-953-1321



What's In Your Toolbox?

• **BUY, SELL, TRADE - FAST**
• **FROM NEW TO USED, IT'S**
ALWAYS FRESH
• **AND A HANDY**
RESOURCE, TOO
1-888-887-0505
www.TruckAndEquipmentPost.com



CM FLATBEDS: STEEL AND ALUMINUM. Call With Your Needs.
Call Chris 781-582-1378. Plympton, MA



RI
RHODE ISLAND
— AGGREGATES —

60 Kingstown Road,
Richmond, RI
401-447-2777

2020 PRICE SHEET

STONE (PER TON)

3/8" - \$13.25

1/2" - \$13.25

3/4" - \$13.25

1 1/2" - \$12.75



GRAVEL (PER TON)

3" MINUS - \$10.50

5" MINUS - \$9.75

3/4" PROCESSED - \$12.00

1 1/2" PROCESSED - HOMEOWNER - \$10.00

1 1/2" PROCESSED - DOT SPEC - \$11.00

STONE DUST/BEDDING - \$10.50

FILL

SCREENED - \$8.75

RIP RAP

4" - 6" - \$15.50

8" - 12" - \$16.00



OTHER PRODUCTS: SCREENED STONE DUST \$18.00 • SCREENED STONE \$9.00
TOP SOIL \$22.00

*ALL PRICES ARE FOB, PLEASE CALL FOR DELIVERY PRICING. *STONE AND GRAVEL ARE STANDARD CRUSHER RUN - SIEVE ANALYSIS AVAILABLE UPON REQUEST. *RIDOT SPECS AVAILABLE. *VOLUME DISCOUNTS AVAILABLE.



781-315-1680
Call Dan Rott



GREAT SELECTION OF NEW & USED HEAVY EQUIPMENT & ATTACHMENTS
FINANCING AVAILABLE ON ALL UNITS UP TO 60 MONTHS.
CALL FOR DETAILS.



2004 LINKBELT
 330LX. Coupler /
 Bucket, Hydraulics,
 \$49,000. #CE3784



2014 VOLVO
 A30F. Tailgate, Clean,
 \$179,000. #CE3706



2017 Volvo ECR40D.
 510 Hours, Thumb,
 Dig And Tilt Buckets,
 \$49,500. #CE3783



2005 KOMATSU
 PC750LC.
 Coupler, Bucket,
 \$159,000. #CE3772



2012 Volvo ECR305.
 Blade, Coupler, Bucket,
 Tilt Bucket, \$99,500.
 #CE3427



2013 KOMATSU
 PC88MR. 3850 Hours,
 Hydraulic Thumb, Nice,
 \$65,000. #CE3655



36" JRB DIG BUCKET.
 300 Size, \$1200.
 #CENE748



30" S-2 VOLVO STYLE
 BUCKET.
 \$2400. #CENE471



24" S-2 VOLVO
 Hook Up. \$2900.
 #CENE481

WOBURN, MA - AVON, MA - JOHNSTON, RI www.WoodCoMachinery.com

508-328-8938

THE TRUCK STORE

www.TruckStoreSales.com

Mon-Fri 8:30-5pm
Saturday 8:30-4pm

1700 Broadway - Rte 138 – Raynham, MA • Take Exit 8 Off Rte 495, East Rte 138, On Your Left


 2020 INTERNATIONAL 26' BOX TRUCK:
 Cummins Diesel, Automatic. ONLY 6K miles!

2005 MACK CV 713
CAB & CHASSIS:
AUTOMATIC,
20F/52R,
30K MILES!

 2015 FREIGHTLINER M2: 9L Cummins Diesel,
 Allison 3000 RDS, PTO acceptable, Low Miles,
 Perfect chassis for Dump, Oil Truck etc. W/or With
 out Reefer Body.

 2014 INTERNATIONAL 43 Passenger Bus
 w?wheel chair lift. Diesel, Automatic. Only 40K
 miles, Clean & runs great.

 USED MONROE STAINLESS STEEL
 SANDER W/CALCIUM TANKS

 2015 HINO: Diesel, Automatic, Air Brakes.
 Vertical Exhaust. Will Separate. Excellent
 Condition.

 2014 IH Ext Cab 10' Dump Body: Diesel,
 Auto., &0K miles. Under CDL \$39,995

 2015 INTERNATIONAL DURASTAR 50' Bucket
 Truck: DT 466, Allison Auto. 14F/23R, 29K miles.

 2017 IH 24' Refer Body: Auto.,
 82k miles. Call

 2009 CHEVY C4500 16' THERMO KING Refer
 Body w/Stand-by: Gas, Auto. 89k miles, nice
 clean truck.

6 AVAILABLE

 2003-2004 & 2007 MOFFET FORK
 LIFTS. Nice condition. Low hours.

 2007 MACK MR Front Load Rubbish
 Truck: Diesel, Automatic.

 2004 MACK Tri Axle 32 Yard Rear Load Rubbish
 Truck. 350 HP MACK, Allison Automatic.

 2005 MACK Tractors: 460 H.P., 18 speed, air ride,
 wet system, Jake, 46k locking rears, 350 to 400k
 Miles. \$25,000

 2005 GMC C 6500 WAYNE SUPER 6 yard Body.
 Big DURAMAX Diesel, Allison Auto. Under CDL.
 Only 90K miles. Very nice, Runs like new.

 2016 ISUZU NRR: Diesel, Auto. Low miles.
 Also 2011 Available.Refer. Bodies in stock too.

 USED 12' to 26' REFER & VAN BODIES
 Call with your needs.

 2004 MACK MR: Stainless Steel Tank,
 Diesel, Auto., 12K miles. Call

 2007 INTERNATIONAL 26' Moving
 Truck. Clean. Call for more info.

 1999 MACK HD: 17.5 yard dump, 12 yard SS Sander.
 room for lift axle. 400HP. Hurry! Snow is on the
 way. Will sell Sander separately ALSO 12' plow and
 wing plow.

 2000 MACK RD 688SX 14' Dump Body.
 350 H.P., Auto., 18F/58R, LOW miles, Very clean.

 2020 HINO 258 Refer Body: Diesel, Auto.,
 3 Available. Many other HINOS available! 4K
 miles, New Condition.

 2016 FREIGHTLINER Cummins Diesel,
 Automatic, Only 38K miles. Will Sell with or
 W/O body.

 2006 PETERBILT 25 Yard Rear Load Rubbish
 Truck: Auto., Cummins, 86K miles. Call

 2003 MACK ROLL OFF: 75,000 lb. Roll
 Off. Auto., 58R/20F, 60K miles. Call

 2015 IH 26' Tandem Axle Refer: New Refer being
 installed. Auto., low hours on Refer. call

 2015 KENWORTH TANDEM: 9L
 CUMMINS, Allison Auto PTO Provision.
 Will Separate.

Late model ISUZU 4 Cylinder
Diesel Engine & Transmission.
Call for Details.
2006 USED MACK Engines!
ALLISON Transmissions. ALSO:
2004 MITSUBISHI
4 & 6 Cylinder Engines.



2015 PETERBILT 367 DUMP. 500 Cummins, 18 Speed, 20/20/46, Steerable Pusher, 19' Aluminum Dump Bed, Richards Tarp, **\$92,500**, 860-307-7157



1987 KOBELCO LK900 LOADER. Nissan 6 Cyl Turbo Diesel, 5 Yard Bucket, 3 New Tires, Spare Tire, 7,000 Hours, Very Well Maintained, Completely Dry Bottom, Starts Right Up, Asking **\$32,000**, 203-994-2819

2016 CAT 420F IT. Like New, Always Garaged, New Tires, Low Hours, Tight Machine, Ride Control, EX-Hoe, Nice, **\$53,500**. 413-530-5369



Lowbed  **Johnson**

1-800-660-2412

Moves Construction Equipment

Serving Massachusetts and Southern New Hampshire

1989 CAT E120B EXCAVATOR. Works Great, Good Condition, Has Geith Thumb And New 18" Fleco Bucket, Low Hours, **\$20,000 OBO**. 607-434-4919



2003 FORD F-250. V8, 4x4, 164K Miles, Reading Utility Body, New Tires And Wheels, Excellent Condition, **\$11,500**. Windsor, CT 860-688-1201



2020 RHODES 26' Aluminum Double Walled Smooth Side Dump Trailer, Alum. Frame, Air-Ride. 401-434-5900



2011 REITNOUER TRI-AXLE LIVE FLOOR TRAILER, Heavy Duty Keith Live Floor, Mint Trailer & Floor, Air-Ride W/ Lift Axle, Barn Door And Roll-Over Tarp. **\$57,900** Call Today! 781-417-3018



Ocean State Truck and Equipment

334 Providence St. West Warwick, RI
401-821-3109



**Sales and Service
Trailers
Plows
Truck Bodies**



DOWNEASTER Electric Sanders
7', 8', 9' In Stock,
Starting at \$4,561



ALCOM Truck Beds
7', 8', 9', 10' and 11'
Starting at \$1,995



DOWNEASTER Dump Inserts
With Cab Shield, 6' and 8'
In Stock

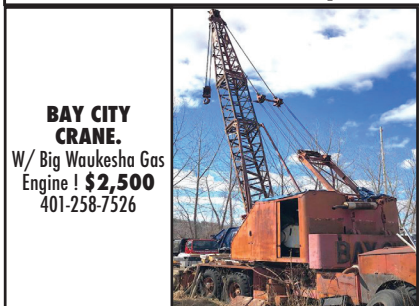
www.oceanstatetruckandequipmentsales.com



2001 JOHN DEERE 644H LOADER. 3-Yard Bucket, Low Hours, Mint Cond., Air Cond., Ride Control, 90 Degree Rubber, Always Garaged,
\$65,500. 413-530-5369



HOLDER C500 SIDEWALK MACHINE. Not All Rotted Out, Good Shape, Good LED Lights, Wipers Work, New Battery Starts Right Up, 65 HP Perkins Diesel, 4x4,
\$10,000, Leominster, MA 978-230-1504



BAY CITY CRANE.
W/ Big Waukesha Gas Engine ! **\$2,500**
401-258-7526



(2) HYUNDAI 760 LOADERS. 4 Yard Buckers, Good Running Condition,
\$25,000/Loader. 860-234-7340



RAPID PREP

Full Service Provider of Equipment,
Supplies and Consumables

NATIONWIDE EQUIPMENT
RENTALS, SALES & SERVICE

North Kingstown, RI
El Cajon, CA • Suffolk, VA
Lakewood, WA

877.529.2124 / rapidprep.com

RUST NEVER SLEEPS



ENHANCED PORTABLE BLASTER PACKAGE



DUST FREE
SLURRY BLASTING



SAFETY EQUIPMENT



JG Remillard Equipment Sales.

603-759-5918



1998 CATERPILLAR D8R. 3406, EROPS with Air Conditioning, Stereo, Semi U Blade, 85% Undercarriage, 3rd Valve for Ripper, New Batteries, Work Ready. **\$109,500**



CLARK RY-180SD FORKLIFT. 18,000 lb Capacity, 453 Detroit Power, **\$6,500**



JOHN DEERE 350 BULLDOZER. With Winch. Diesel, New Tracks. **\$6,900**



CATERPILLAR 980C. 3406, Powershift Transmission with 4 Speeds Forward and Reverse, 29.5-25 Tires, 5 Cubic Yard Bucket, Good Condition, Work Ready. **\$37,500**



2001 CHEVY T-6500 BOX TRUCK. Kold King Insulated Van Body, CAT 3126 Diesel, Automatic Trans, Under CDL. **\$4,500**



2012 INTERNATIONAL 8600 S/A TRACTOR. Maxx Force Engine, 10 Speed, Air Ride, Runs Good. **\$6,500**



1979 CATERPILLAR D3. 3204, Powershift Transmission, 60% Undercarriage, OROPS With Sweeps, Excellent Condition, Working Daily. **\$12,500**



GALION RT-150 ROUGH TERRAIN CRANE. 15 Ton Capacity, 453 Detroit Diesel Engine, 3 Stage Boom, Pin on Manlift Basket, Four Wheel Steer, Four Outriggers, Enclosed Cab. Runs Like New. Steering Cylinders Leak, and Need to be Repacked. **\$12,500**



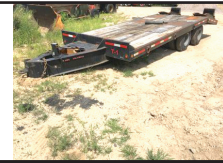
1975 CATERPILLAR 930 LOADER. Bucket And Forks, Work Ready! **\$17,500**



(Two) 1969 GMC S/A DUMP TRUCKS. \$2,500 Each Or \$4,000 For The Pair



1995 JLG CM-2558 SCISSOR LIFT. Works Great! **\$3,000.**



1988 EAGER BEAVER 20 TON TAG-A-LONG TRAILER. Air Brakes, 96" Wide, 17' Deck, 5' Tail and Ramps, Near New 8.25 R 15 TR Tires. Good Condition, **\$3,500**



CAT 120 GRADER. 3306 CAT Engine, Direct Drive, **\$12,500**



1988 MACK RD-600 WATER TRUCK. 350 Mack Engine, 6 Speed, 44 Rears, 4000 Gallon Tank. **\$16,500**



2012 KOMATSU SK-1026 SKID STEER. Bucket And Forks. **\$22,500**



1991 CATERPILLAR CB-434 VIBRATORY ROLLER. Runs Good. **\$8,500**



1989 VOLVO TRACTOR. 365 Cummins, 9 Speed, Wet Kit, Headache Rack, **\$12,500**



CATERPILLAR V80E 8,000LB FORKLIFT. **\$8,500**



CATERPILLAR 980 WHEEL LOADER. 42H Series. Runs Good, **\$12,500**



GMC 7000 DUMP TRUCK. **\$3,500**



14 YARD FERTILIZER SPREADER BODY. Removed From Truck, Good Condition. **\$3,500**



MANITEX M-938 CRANE. Removed From Truck, 9 Ton Capacity, 38' Reach, Super Clean! **\$12,500**



MITSUBISHI MOWER TRACTOR. 4WD. Diesel, Mower, 3pt Hitch. **\$5,900**



1989 FORD L-9000 TANK TRUCK. 7.8 Diesel, 6 Speed, 2,750 Gallon Tank. **\$6,500**

Visit Us jgremillardequipmentsales.com

WWW.TRUCKANDEQUIPMENTPOST.COM

ANDERSON MOTORS INC.


GMC

MICRO BIRD
by GERRARDIN

BLUE BIRD BUS SALES OF NEW ENGLAND
*** YOUR EXCLUSIVE VOLVO TRUCK DEALER ***


2022 VOLVO VHD84B300-D13, 500HP, 14SPD. AUTO, 18' HEAVY DUTY STEEL DUMP, 2 WAY LIFT-GATE. *INCOMING*



2021 VOLVO VHD84B300-D13, 500HP, 18SPD., 17'16" STEEL BODY, PINTLE PLATE & HOOK. #200134



2021 RHODES 26' STEEL DUMP TRAILER, HIGH LIFT-GATE, STEEL FRAME, SINGLE POINT SUSPENSION. #200130



2020 RHODES 26' ALUMINUM DOUBLE WALLED SMOOTH SIDE DUMP TRAILER, ALUM. FRAME, AIR-RIDE.



2013 VOLVO VNM64T200-D13, 435HP, 10SPD, 40,000 LB AIR-RIDE, FLEET MAINTAINED.



2020 RHODES 26' ALUMINUM DOUBLE WALLED SMOOTH SIDE DUMP TRAILER, STEEL FRAME, SINGLE POINT SUSPENSION.



2022 BLUE BIRD 71 PASSENGER SCHOOL BUS, GASOLINE ENGINE, STATE INSPECTION CERTIFIED.



2020 FORD TRANSIT 14 PASSENGER COMMERCIAL SHUTTLE BUSES, GAS, INDIVIDUAL SEATING.



2019 FORD E-SERIES, 14 PASSENGER W/ REAR LUGGAGE COMPARTMENT, NO CDL REQUIRED. #190024



2019 FORD E-450, 14 PASSENGER COMMERCIAL SHUTTLE BUS, GAS, AUTOMATIC, NON CDL REQUIRED. #190017



2019 FORD E-450 24 PASSENGER COMMERCIAL SHUTTLE BUS, GAS, AUTOMATIC, A CDL LICENSE IS REQUIRED. #190016



2019 FORD TRANSIT LA WEST, EXECUTIVE SHUTTLE, 14 PASSENGER. #190319

401-434-5900

WWW.ANDERSONMOTORS.COM

EMAIL • SALES@ANDERSONMOTORS.COM

170 AMARAL STREET • EAST PROVIDENCE, RI 02915

HABLAMOS ESPAÑOL



1997 IH 4300. DT466, 7 Speed Manual, Century M/D Wrecker Body w/ Wheel Lift, 98K Miles, **\$14,900**, Chicopee, MA 413-563-9944



CRAFCRO CRACK-FILLING MODEL E-Z POUR. 200 Gallons, Used During A Summer, **\$12,500**. Call or Text 401-648-5950

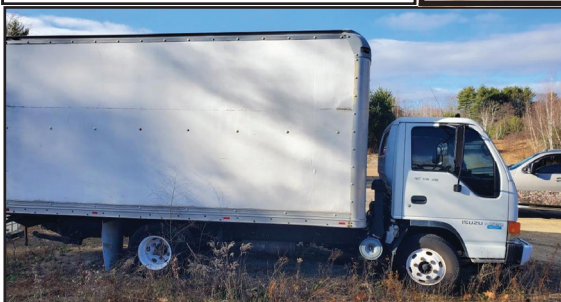
Road Salt, Treated Salt, Sand & Salt Triaxle and Trailer Dump Bulk deliveries to CT, MA, RI Pallet and truck loads of ice melt and MAG pellets

24 HOUR YARD SERVICE DURING WINTER EVENTS IN CHICOPEE MA

Call 1-413-301-7318



Email: Jeremy@jmcservicesllc.com



2000 ISUZU NPR VAN BODY. New Motor Diesel, Tuck A-Way Lift Gate, Clean Truck, Runs Very Well, **\$8,500. OBO** 207-289-7828



2011 CAT 501HD HARVESTER, Hours: 10,650, Good U/C, Good Tracks, Working Daily! **\$109,900** Call Today! 781-417-3018



2017 ROCKSTER R1100DS - Closed Circuit Impact Crusher, CAT Powered, Wireless Remote, Cross Belt Magnet **\$250,000** CALL DAN 203-506-3860



37 County Road
Route 106
Plympton MA 02367
PH: 781-582-1378
FAX: 781-585-4438

SWITCH-N-GO SYSTEMS & CONTAINERS IN STOCK.



14 FT TENCO SANDER DUMP BODY.

In Good Condition,

\$4500.

413-374-5331



READY TO GO COMPLETE TRUCK PACKAGES.

LOTS OF OPTIONS AVAILABLE.

New & Used Trucks Ready To Go!

CALL TOLL FREE 866-637-4076

WWW.CAREYTRUCKEQUIPMENT.COM

**SALES,
SERVICE,
PARTS**

**CUSTOM METAL
FABRICATION
AVAILABLE**



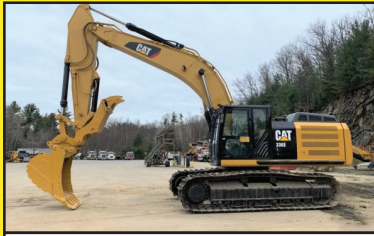
DAILY | WEEKLY | MONTHLY

● RENTALS ●

(603) 623-3669

www.TQUIP.com

603 MAMMOTH RD LONDONDERRY, NH • 239 RANDBURY RD RUTLAND, VT



EXCAVATORS
6,000 - 110,000 LB MACHINES
HAMMER MACHINES AVAILABLE!



WHEELED EXCAVATORS
48,000 LB MACHINES
THREE CAT M322Ds AVAILABLE!



LONG-REACH EXCAVATORS
70,000 - 90,000 LB MACHINES
60' REACH!



WHEEL LOADERS
1.5 - 9 CY CAPACITY
FORKS & JIBS AVAILABLE!



TRACKED DUMPERS
24,000 LB CAPACITY
RUBBER-TRACKED MOROOKAS!



OFF-HIGHWAY TRUCKS
25 - 40 TON MACHINES
CATERPILLAR & KOMATSU!



GRADERS
14' MOLDBOARDS
RIPPERS AVAILABLE!



SKID STEERS
8,000 - 12,000 LB MACHINES
WHEELED & TRACKED!



DOZERS
15,000 - 78,000 LB MACHINES
TWO CAT D8Ts AVAILABLE!



ROLLERS / COMPACTORS
48" - 84" DRUMS
ENCLOSED CABS!



LIFTS / TELEHANDLERS
6,000 - 12,000 LB MACHINES
UP TO 55' REACH!



SCREENERS
1-3 - 6-8 YD CAPACITY
CRUSHERS AVAILABLE!

SPECIALTY ATTACHMENTS AVAILABLE

HAMMERS | SHEARS | BUCKETS | GRAPPLES | MUNCHERS | THUMBS | FORKS | JIBS | TAILGATES | WINCHES | RIPPERS | PLOWS | SWEEPERS



METROPOLITAN TRUCK CENTER INC.

1074 Turnpike St. Stoughton, MA 02072

www.metropolitantruck.com



781-344-8262



PUT YOUR 1/2 TON TO WORK & MAKE SOME MONEY!!



**THE
WESTERN HTS IS
A FULL SIZE,
FULL-FEATURED
SNOW PLOW
DESIGNED
FOR TODAY'S
LIGHTER 1/2 TON
4WD TRUCKS!**

ONE-PIECE POLY HOPPER



**AVAILABLE IN THREE SIZES.
1.5, 1.8 AND 2.5 CUBIC YARDS,
STAINLESS STEEL BOTTOM SILL.
MAKES CORROSION
A THING OF THE PAST**



**OUR WINTER SALE AND INSTALLATION SPECIAL
IS GOING ON NOW PLEASE CALL US FOR YOUR APPOINTMENT**





Lorusso Heavy Equipment, LLC
 160 Elm St Walpole, MA 02801
 Tel. 508-660-7600



MECALAC TA3SH Site Dumper.
 Sale Or Rent,
 Call For Pricing.



AJCE Hammers
 Multiple Sizes Available and
 In Stock Call for Pricing



2015 Hyundai HL757TM-9A
 Wheel Loader. 3,000 Hours.
\$82,750.00



2018 MECALAC 7MWR.
 374 Hours, Call For Pricing.



2018 Hyundai HX130LCRD Excavator.
 Coupler, 30" bucket and thumb
 included. 202 hours. **\$115,000.00**



2014 Hyundai HL757-9A
 Wheel Loader. 1213 hours.
\$92,000.00



JCB 509-455 Telehandler. Forks,
 Loader Bucket. Mint Condition!
 165 Hours. **\$135,000.00**



2000 John Deere 200LC
 Excavator. 8250 hours.
\$45,000.00



2015 HYUNDAI
R160LC-9A
 Excavator.
 4380
 Hours,
\$70,000.00

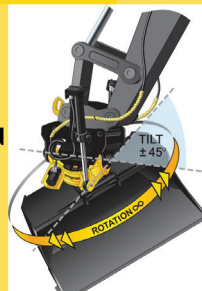


1996 CAT 426B Loader/
Backhoe. \$18,000.00

engcon®

**AUTOMATIC
 QUICK-
 COUPLER
 TILT/ROTATION
 SYSTEMS**

Available for all
 makes and models.
 Call for pricing.



JCB 525-60 Telehandler.
 Call for Pricing.

engcon



www.lhequip.com • Call Us for All of Your Rental Needs • www.fb.com/LHELLC





**UNIVERSAL
FINANCE**

YOUR DIRECT FUNDING SOURCE



EQUIPMENT FINANCING

- A to D Credit Approvals - Rates Tailored to the Customer
- 24 Hour Approvals - Simple One Page Applications
- Funding up to \$750,000
- Terms Range 24 to 60 Months
- No Money Down Options
- No Age Requirement on Equipment
- No Minimum Fleet Size
- Start-up Programs



WORKING CAPITAL

- Pledge your equipment to secure the CASH you need
- Let us tell you how older equipment can work for your business
- A simple application form is all that's needed

UNIVERSALFINANCE.COM/CAPITAL

CONTACT US TODAY | 781 - 417 - 3018

BUSINESS NAME		
BUSINESS OWNER	PHONE	
DATE OF BIRTH	SS#	
EMAIL	OWNERSHIP %	
STREET ADDRESS		
CITY	STATE	ZIP
EQUIPMENT DESCRIPTION		COST
SIGNATURE		

Disclaimer: By signing, I hereby certify that the above information is correct to the best of my knowledge. I authorize Universal Finance Corp. and/or its lenders and assignees, under the Fair Credit Reporting Act, to obtain information from my personal credit report or other information on myself and other principals of the organization; and I authorize my banks and creditors to release any and all credit information needed for thorough evaluation. I understand that I may be required to supply additional information.

Once completed, send a photo of this application to credit@universalfinco.com



508-403-9192

OVER 30 PLOW TRUCKS IN STOCK NOW! ARE YOU READY?

MEDIUM DUTIES IN STOCK



2021 F650 5-7 Yard S&H DUMP BODY: 330 H.P., Air Brakes, Auto Tarp. IN STOCK F650 & F750 Gas & Diesel. Call us.



2019 F350 XL 4x4 9' READING ALUMINUM SERVICE BODY: 6.2L Gas, Power Group Rear Camera, Aluminum Wheels, Remote Start. Stk.# N7643



2019 F550 SUPER CAB XL 4x4 CHASSIS: Only 25K Miles, Blue Tooth, Power Group, Dual Tanks, Goose Neck Set up, stk.#R6733 \$54,985*



2021 E350 UNICELL AEROCCELL CUTAWAY: 7.3L Gas, Power Group stk.# N9460



NEW 2020 F550 XLT DRW 4x4 Dump Body: 6.7L Power Stroke Diesel, Snow Plow Prep, Hitch, Power Group. Stk.#N9200 \$65,735*



2019 F350 4x2 Chassis 84" Cab to Axle: 6.2L Gas, Power Group, Bluetooth, stk.# N8142



2019 F550 XL 4x4 9' 4-5 Yard READING Dump Body: 6.8L V8 Gas, Power Group, Rear Camera, Remote Start. Stk.# N8546



2019 F450XLT Super CAB 4x4 9' READING SERVICE BODY: Navigation, Aluminum Wheels, Power Seat, Power Scope Mirrors, Available in Black, Green, Blue, Red, White. Stk.#N8336



New 2019 F550XL DRW 4x4 12' RUGBY LANDSCAPE DUMP: 6.7L Power Stroke Diesel, Power Group. Stk.# N8626



2019 TRANSIT 350 READING ALUMINUM SERVICE BODY: Remote Locks, Lighted Compartments, Trailer Hitch, Rear Camera, 9,500 GVW Stk.# N8731 LIST PRICE: \$57,939 SALE PRICE \$47,982*



**PLOW TRUCKS IN STOCK!
RESERVE YOURS TODAY.**



2020 F350 XLT Super Cab 4x4 8' READING Aluminum Service Body: 7.3 L Gas, 10 Speed Automatic, Power Group, Rear Camera, Heated Seats, Remote Start. Stk.# N9278. Also available in Black, White, Green & Blue.



**11 PILGRIM HILL ROAD
Plymouth, MA 02360
www.COLONIALFORD.com
America's Hometown Dealership**

*all rebates to dealer. must finance with Ford Motor Credit.
0% financing in lieu of all rebates* Discounts & Dealer Discounts.





MICHIGAN MODEL 75B LOADER. Good Tires, Rebuilt Motor, Good For Use In Yard & Snow Removal, **\$9500 OBO.** Call Or Text 401-648-5950



2019 FORD TRANSIT LA WEST, Executive Shuttle, 14 Passenger. Call For More Details! 401-434-5900



WINTER IS HERE!!



AREA HYDRAULICS
810 Quaker Hwy. Uxbridge, MA
508-278-6670

We have Cutting Edges In Stock!

We carry Fuel Treatment and Air Brake Anti-Freeze!

We have Buyers and Fisher Parts In Stock!

Available During Storms!

WHELEN®

Howes
Lubricator

Buyers
PRODUCTS COMPANY



1980 AUTO CAR DC7344.

Built For Snow, 6 Cyl. Diesel, 5+4 Trans, 4x4, 48K Original Miles, 2nd Owner, Solid Cab, Solid Dump Body, Excellent Tires, No Issues, Comes With 11-1/2 Highway Plow, Will Accept Power Angle Plow, Route Available, **\$14,500 OBO.** Warren, 508-269-1515



1990 FORD L8000 BOOM TRUCK, 33K GW, 155K Miles, 6Spd., 7.8L Straight 6 Turbo Diesel, PTO Driven Hydraulic For Crane, PTO Driven Air-Compressor, Dual Outriggers, 2 Stage Boom, Awesome Truck For Your Lifting Needs. Must See! **\$9,900** Call Today! 781-417-3018



MINUTE MOUNT HD2 PLOW. Used, Kept In Great Condition, **\$2000 OBO.** 617-840-8478



2004 INTERNATIONAL 7600. DT466, Standard, 7 Yard SS Sander, Mass Computer, 11' Wing, 11' Front Power Angle Plow, **\$19,500 OBO.** 413-374-5331

WANTED!!!
MACK TRUCKS

CAT, DEERE, BOBCAT EQUIP
IN ANY CONDITION
IMMEDIATE PAYMENT



CALL JOHNNY MACK
johnnymack107@gmail.com
HARTFORD, CT 860-883-1186



2016 FORD F550 AERIAL BUCKET LIFT. 4X4, Diesel, 6k Miles, Dura Lift, **\$84,999.** 617-733-0773



2007 FREIGHTLINER TANDEM. Reefer Unit Is In Exc. Cond., Low Hours, 26 Foot Body, Lift Gate, Tires 90%, Truck Ready To Work, Needs Nothing, **\$17,500.** 413-530-5369



1989 FORD 755B BACKHOE LOADER. Two Wheel Drive Machine, Excellent Condition, **\$14,900.** Cranston, RI 401-265-6004, Please Text



MID 80'S SCREENING PLANT. New Tires, Runs Well, Diesel Motor, New Tires, Battery, Pintle Hitch To Tow Several Different Screens, **\$9000.** Located In Leominster, MA 978-230-1504

CUSTOM-DESIGNED RADIANT KITS

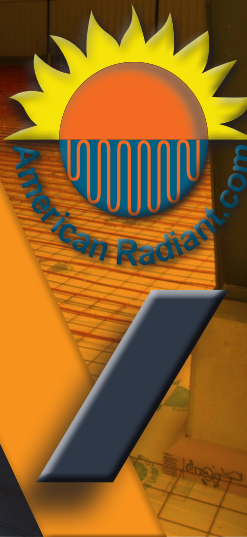
Simple. Efficient. Affordable.

- Radiant Heating
- Radiant Cooling
- Heated Driveways

AMERICAN RADIANT

Technologies & Supplies LLC.

Toll Free: 833-758-2888



2006-07 FORD E450 VAN BODIES, V10 Gas, AC, 15' - 17' Bodies, Several To Choose, Starting @ **\$5,500,** Chicopee, MA 413-563-9944

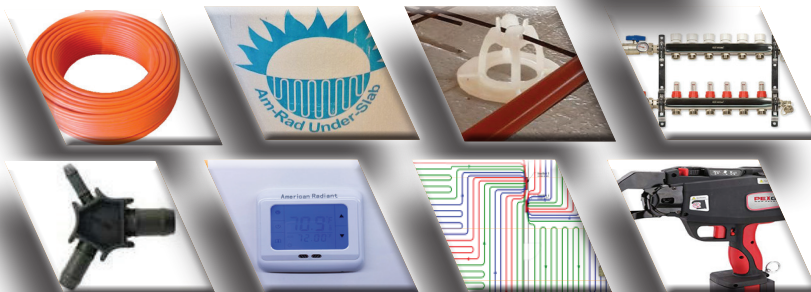
What's In Your Toolbox?



- BUY, SELL, TRADE - FAST
- FROM NEW TO USED, IT'S ALWAYS FRESH
- AND A HANDY RESOURCE, TOO

1-888-887-0505

www.TruckAndEquipmentPost.com



202

**TRUCK
&
EQUIPMENT**
603-899-2000

www.202truck.com
RT 202 Rindge NH
SALES & RENTALS - NO SALES TAX
FINANCING & DELIVERY



1975 CAT D8K. Job Completed, Runs And Operates Well, Has Had Motor Work And Fleet Maintained, \$39,000.



1996 LULL 644B-37. 4322 Hrs, 37 Ft. Reach, 42" Rotating Forks, Tilting Sliding Carriage, Foam-Filled Tires, \$15,000.



2020 HYUNDAI ROBEX 35Z-9A. Heat, A/C, 120 Hrs, Hyd. Thumb, Aux. Hyd., Blade, 24" Bucket, 3 Year, 3000 Hr Warranty, \$44,000.



2001 CAT D6MXL. 11,000 Hrs, Runs & Moves Very Good With Good U.C. And Blade, Needs Door, \$39,500.



2013 CASE 721F. 4600 Hrs, 3.5 Yd Q/A Bucket, JRB Coupler, 3rd Valve, 50% Matched Michelins, \$74,000.



2014 J DEERE 310 SK. 7200 Hrs, E-Hoe, Heat & A/C, Pilot Controls, New Transmission, All New Tires, \$35,000.



2008 CAT 330DL. 14,000 Hours, Fleet Maintained, No Plumbing, \$56,000.



2013 KOMATSU PC210. 5050 Hrs, 42" Bucket, 2-Way Hydraulics, Pattern Changer, Hyd. Thumb, Clean, \$72,500.



2013 KOMATSU 210LC-10. 3550 Hrs, 2-way Hydraulics, Pattern Changer, Clean & Ready To Work, \$78,000.



CAT C-15 MXS. Twin Turbo 475 H.P., 39,000 Miles On A \$41,000 Rebuild W/ Warranty, No Core Required, \$25,000.



2005 WESTERN STAR. 515 Detroit, 8LL, 20+20+46 Full Locking Rears, 18 Ft. Steel Body, Reman Motor & Trans With Paperwork, Drives Like New, \$58,000.



2005 EAST GENESIS, 28'. Single Point Spring Susp., Very Good Brakes, 24.5 Tires, Very Good White Liner, \$22,500.



2009 MACK CXU612. MP-7 @ 395 H.P., Fuller 10 Speed, 12F, 23R On Air, 157" W.B., New DF Filter & Sensors, \$7500.



2005 FREIGHTLINER CL120. Mercedes 450 H.P., 12+40 Air Ride, Very Good Virgin Rubber, 261K Miles, \$9500.



1988 KENWORTH T600. CAT 425 H.P., 14 Spd Eaton Fuller, 12F + 38R On Air, New Everything Brakes, New Tires, 919K Miles, \$9,000.



JOSEPH
EQUIPMENT COMPANY



300 GAY ST • MANCHESTER, NH 03103

SATURDAYS
WE ARE OPEN ALL DAY
PHONE: 603-641-8608
FAX: 603-666-3716



293 NORTH - EXIT 2 -
LEFT ONTO BROWN AVE -
RIGHT ONTO WINSTON ST.-
LEFT ONTO GAY ST.
300 GAY STREET
ON THE RIGHT

END OF YEAR SPECIAL

2021 FONTAINE WORKHORSE 50 FLD 50 TON FLAT LEVEL DECK



2021 FONTAINE WORKHORSE

50 TON Rating In 12' 102" Swing Radius. 24' Flat Level Deck, 20" Loaded Deck Height, 8' 6" Wide, Trailer Length 50' 1". Twelve (12) Pair Of Flip Out Style Out Riggers, Nine (9) Pair Of Lash Rings. Three Axle, Lift On 3rd, Air Ride Suspension On 54 1/2" Axle Spacing, DOT Strobes With Battery Backup, Manual Ride Height Control Valve, (2) Pair Of Flag Holders. Steel Wheels 255/70R 22.5 OEM Rubber, Limited Supply

\$62,500 includes FET and Freight (FOB Factory Springville AL to Manchester NH)
Est. Wt. 18,720 # +/- 3%

CONTACT BRIAN at JOSEPH EQUIPMENT CO. 603-641-8608

EMAIL: josephequipment@aol.com
WEBSITE: www.josephequipment.com

www.josephequipment.com

Trades Welcome • Financing Available

THIS AD IS COPYRIGHTED & OWNED BY TRUCK AND EQUIPMENT POST



JOSEPH

EQUIPMENT COMPANY



300 GAY ST • MANCHESTER, NH 03103

SATURDAYS
WE ARE OPEN ALL DAY
PHONE: 603-641-8608
FAX: 603-666-3716

293 NORTH - EXIT 2 -
 LEFT ONTO BROWN AVE -
 RIGHT ONTO WINSTON ST.-
 LEFT ONTO GAY ST.
 300 GAY STREET
 ON THE RIGHT



IN STOCK -
CUSTOM COLORS

2021 KRUZ TRAILER

26' STEEL \$54,500
INCLUDES FET & FREIGHT (FOB NH)



HEAVY DUTY 26' STEEL DUMP TRAILER
 1/4" HARDOX 450 WEAR RESISTANT
 FLOOR, SIDE, NOSE, & GATE
 70,000 LB SINGLE POINT SUSPENSION
 30,000 LB AXLE WITH HUB PILOTED WHEELS
 50,000 LB 2 SPEED MARK V LANDING GEAR
 12 PANEL HIGH LIFT HDTAILGATE
 LED LIGHTS
 55" SIDES

16 PLY 11 X 24.5 TIRES
 POLISHED ALUM WHEELS
 ANGLE IRON TOP RAIL
 CUSTOM TOW HOOKS
 FULL POLISHED ALUM FENDERS
 CUSTOM PAINT AVAILABLE
 ALL SIZE TRAILERS AND SUSPENSION
 OPTIONS AVAILABLE
 ALUMINUM TRAILERS ALSO AVAILABLE
 HEAVY DUTY ASPHALT SPILL APRON

www.josephequipment.com

Trades Welcome • Financing Available

THIS AD IS COPYRIGHTED & OWNED BY TRUCK AND EQUIPMENT POST

RAVENS**ROGERS****Kruz**

JOSEPH

EQUIPMENT COMPANY


FONTAINE
SATURDAYS • WE ARE OPEN ALL DAY**PHONE: 603-641-8608****FAX: 603-666-3716**

293 NORTH - EXIT 2 -
LEFT ONTO BROWN AVE -
RIGHT ONTO WINSTON ST. - LEFT ONTO GAY ST.
300 GAY STREET ON THE RIGHT



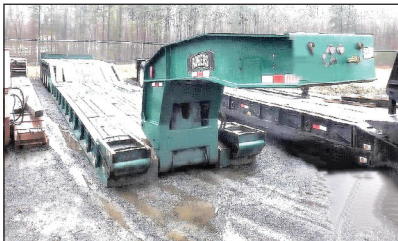
CAT 426B BACKHOE.
4 X 4, Extend A-Hoe, Original Paint,
One Owner, 8000 Hours.
Call For More Information.



IN STOCK - 2020 KRUZ, 70 Yard, 2 Axle, 70,000
Single Point Suspension, 25,000 Lb. Axles, 36' Long,
90" Sides, 1/4 Inch 450 Hardox, Floor, Sides, Nose,
Gate, Barn Door-12 Panel Gate, Tow Hooks, Led
Lights, 11 X 24.5 Rubber, Aluminum Wheels,
Ladders Front And Back, Holland Mark V 50,000
Lb. Landing Gear. In Stock, No Waiting.
Call For More Information.



1983 CATERPILLAR 943 CRAWLER LOADER, 4 In 1
Bucket, 3rd Valve, Full Cab, Excellent Undercarriage,
Original Paint, **Call For More Information.**



2000 ROGERS 50 TON
Quad Axle Lowboy.
Air Ride, Hyd Detachable Neck,
Air Lift On 4th Axle, 255 Tires.
Call For More Information.



CAT D7 DOZER. 17A Series, Direct Electric
Start, Full Hydraulic, Standard Shift, One
Owner, Excellent Shape.
Call For More Information.



2002 WABASH 48 X 102 FLAT BED,
Air Ride, Slider, Hub Piloted Wheels,
Alum Headboard, Southern Trailer,
(6) Available To Choose From.
Call For More Information.



1960 MACK B MODEL. 6 Wheel Dump,
Complete Restoration, New Dump Body, 673
Duplex, Pintle Hook. **Call For More Information.**



2015 JOHN DEERE 260KW TOWABLE GEN
SET, Diesel, 280 Original Hours, Multi Select
Voltage, Built-In Fuel Tank Mounted On Generator.
Call For More Information.



GOODYEAR OMNITRAC MSS II 1200/24
Tube Type Radial Tires - All New - Omnitrac
MSS II - All Positions Front And Rear Tires -
Grippers Tires - Limited Supply.
Call For More Information.



2002 FONTAINE 48 X 102 STEP DECK, Air
Ride, Spread Axle, New Taires, New Wiring
Harness, Original Paint, Southern Trailer, Very
Good Condition. **Call For More Information.**



2010 FREIGHTLINER M2 BUSINESS CLASS,
With Hi-Rail, Ext Cab, 8.3 Cummins, 9 Speed,
IMT Crane And Body, 400 Amp Miller Welder
/ Compressor / Generator, Welding Torch And
Cables, Lift Gate, Hydraulic Outriggers, Full
Hydraulic Hose Reel, 140K Miles, Southern Truck,
Excellent Condition, **Call For More Information**



24" WIDE X 25' LONG
GALVANIZED I-BEAMS.
Approx 120K Lbs., New, Never Used.
Call For More Information.

www.josephequipment.com

Trades Welcome • Financing Available

THIS AD IS COPYRIGHTED & OWNED BY TRUCK AND EQUIPMENT POST



JOSEPH
EQUIPMENT COMPANY

300 GAY ST • MANCHESTER, NH 03103

SATURDAYS • WE ARE OPEN ALL DAY

PHONE: 603-641-8608

FAX: 603-666-3716



293 NORTH - EXIT 2 -
LEFT ONTO BROWN AVE -
RIGHT ONTO WINSTON ST.- LEFT ONTO GAY ST.
300 GAY STREET ON THE RIGHT

IT'S "DEMO TIME" - MANY TO CHOOSE FROM



**NYE GRAPPLE FOR
KOMATSU PC300**



**LABOUNTY GRAPPLE
FOR KOMATSU
PC400-PC490**



**LABOUNTY PC400
PULVERIZER**



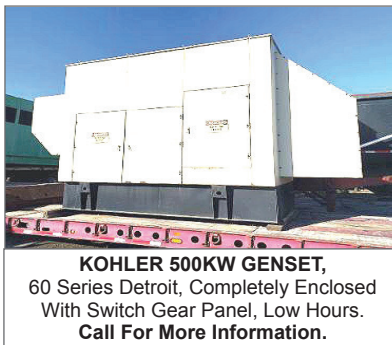
**NYE PC800, PC 750
PULVERIZER**



**NYE PC800
DEMOLITION
GRAPPLE**



**2007 50'
SKYJACK,
MODEL
SJ9250,
4 X 4 Rough
Terrain Scissor
Lift, Diesel,
Hydraulic
Sliding
Platform,
2,700 Hours.
Call For More
Information.**



**KOHLER 500KW GENSET,
60 Series Detroit, Completely Enclosed
With Switch Gear Panel, Low Hours.
Call For More Information.**



**INTERNATIONAL WATER TRUCK, 4000
Gallon, Diesel, Tandem, Curry Tank With
Spray Heads Front And Back, Side Spray
Heads Also, Very Good Condition.
Call For More Information.**



**SABRE PUSH BOATS, Twin Diesel,
Rebuilt Motor, Very Good Condition.
Call For More Information.**



**CATERPILLAR D8L DOZER, Full Cab, A/C,
Straight W/Tilt, Low Hours, 50% Bottom,
Excellent Condition.
Call For More Information.**



**1987 CATERPILLAR 130G GRADER, 8,500
Hours, Articulated, Full Cab, Power Shift, 3304
Diesel Engine, 3rd Valve, Sliding, Tilting. 12'
Moboard Call For More Information.**



**2010 LULL 944E 42 Telescopic Reach Forklift
Telehandler, 7,200 Hours, Extends To 42',
One Owner, Quick Disconnect, Plumbed For
3rd Valve, Sliding Carriage, Original Paint,
Solid Tires. Call For More Information.**



**GENIE S85 MANLIFT,
85'. 4 X 4, Only 4,800 Original Hours.
Call For More Information.**



**1999 FREIGHTLINER FL70 DISTRIBUTOR
TRUCK, Cummins 24V Diesel, 5 Speed Trans,
2000 Gallon Distributor Maximizer Lee Roy
Rosco Body, A/C, P/S, Spring Suspension,
33K GVW, Rear Camera System, 11r22.5
Rubber, Low Miles, Hand Held Wand,
Call For More Information.**

www.josephequipment.com
Trades Welcome • Financing Available

THIS AD IS COPYRIGHTED & OWNED BY TRUCK AND EQUIPMENT POST

RAVENS**ROGERS****Kruz****JOSEPH****EQUIPMENT COMPANY****300 GAY ST • MANCHESTER, NH 03103****F**
FONTAINE**SATURDAYS • WE ARE OPEN ALL DAY****PHONE: 603-641-8608****FAX: 603-666-3716**

293 NORTH - EXIT 2 -
LEFT ONTO BROWN AVE -
RIGHT ONTO WINSTON ST. - LEFT ONTO GAY ST.
300 GAY STREET ON THE RIGHT



1992 STECO END DUMP TRAILER, 60 Yard, 32' Single Point Suspension, Hub Piloted Wheels, Working Daily, Call For More Information.



2000 FONTAINE TA35, 35 Ton, 2 Axle, Non Ground Bearing, Air Ride, 24' Deck, 20" Deck Height, 102" Wide, Original Paint, 255 Lo Pro Rubber, Hub Piloted Wheels, Front Fenders, Many New Parts, Excellent Condition, Call For More Information.



IN STOCK - 2020 FONTAINE LXTN40, 40 Ton Extendable, 34' Closed - 60' Open. Also Available 29' Closed - 50' Open. Tandem Axle, Set Up For 3rd, Air Ride, Non Ground Bearing, 102" Swing Clearance, 20" Deck Height, Alum Wheels. In Stock, No Waiting. Available In Manchester NH And At The Factory In Springville AL. 3rd And 4th Axles Available. Call For More Information.



IN STOCK - NO WAITING - 2020 FONTAINE RENEGADE LXLN12 -12 Inch Loaded Deck Height With 4 Inch Ground Clearance When Fully Loaded, 30 Tons In 16 Feet On Tandem Bogie Or 30 Tons In 20 Feet With 3rd Axle Flip, Low Profile, 3rd Axle Capability, 32 Feet 11 Clear Deck Length. CALL FOR MORE INFORMATION.



2019 FONTAINE MAGNITUDE 55H DSR, 26' Deck, 14.5" Loaded Deck Height, Air Ride, Tri Axle, Lift On 3rd, With Flip 4th, Strobe Lights, LEDS, Alum Wheels, 275/70R X 22.5, Boom Trough. One Owner, Excellent Condition. Call For More Information.



2000 FONTAINE DSR, 50 Ton, Air Ride, Non Ground Bearing, 26' Deck, 14" Deck Height, 275 Rubber, One Owner. Call For More Information.



2020 RAVENS FLEET HAWK, All Alum Flatbed Trailer, 48 X 102 Wide, Spread Axle, Air Ride, Hub Piloted Wheels, In Stock, Ready To Go, Special Factory Pricing. Call For More Information.



NEW 2019 XL SPECIALIZED, 55 Ton, 26' Deck, 15" Loaded Deck Height, Tri Axle, Set Up For 4th, Lift On Third, Air Ride, Long Goose Neck, 2 Pin Position, Boom Trough, 275 Rubber, Alum Wheels. Front Flip Ramps, Chain Slots, Weight Scale, Strobes With Battery Back Up, Strobe Lights, Outriggers, Extra D-Rings. Available In Black Or Red, In Stock, No Waiting. Located At The Factory In Manchester IA And Also Stock In Manchester NH. Call For More Information.



2016 FONTAINE MAGNITUDE 704, 70 Ton, 28' Drop Side Rail Deck, Air Ride, 2+3+2 Capable, Hydraulic Removable Gooseneck 4th Axle Flip, 14" Deck Height, Triple Cylinder, 2 Pin Position, 275 Rubber, Alum Wheels, One Owner, Original Paint, Call For More Information.



2021 GALLEGOS 42' FRAMELESS DUMP TRAILER, 96 Yard, Tri Axle, Hendrickson Air Ride Intraxx, ABS Brakes, Lift On Front Axle, Cramaro Flip N Go Canvas, Steel Wheels, LED Lights, Barn Door. Call For More Information.



2011 DOONAN 53' SPREAD AXLE STEP DECK, 8'6" Wide, 120 Inch Axle Spread, Air Ride, 10' Top Deck, 38' 6" Lower Deck, Call For More Information.



2017 FONTAINE 70 TON, 704 Model, 2+3+2 Capable Or Run As 4 In A Row. New, Never Used, Leftovers, 28' Flat Level Deck. Also Available, 28' Beam Deck. 102" Wide, 60" Axle Spacing, Hydraulic Removable, Air, Non Ground Bearing With 2 Pin Position At 114" And 102", Triple Cylinder, Heavy Duty Snap In Outriggers, D-Rings, Strobe Lights, 275/70R X 22.5 Tires. Both Black In Color, Currently Located In AL. In Stock, No Waiting. Call For More Information.

www.josephequipment.com**Trades Welcome • Financing Available**

THIS AD IS COPYRIGHTED & OWNED BY TRUCK AND EQUIPMENT POST



JOSEPH

EQUIPMENT COMPANY

300 GAY ST • MANCHESTER, NH 03103

PHONE: 603-641-8608



OPEN
ALL DAY
SATURDAY

F

FONTAINE

FAX: 603-666-3716



NEW MODEL - 2021 FONTAINE RENEGADE LXLN12 - 12 Inch Loaded Deck Height With 4 Inch Ground Clearance When Fully Loaded, 30 Tons In 16 Feet On Tandem Bogie Or 30 Tons In 20 Feet With 3rd Axle Flip, Low Profile, 3rd Axle Capability, 32 Feet 11 Clear Deck Length. IN STOCK, NO WAITING. **Call For More Information.**



NEW MODEL - 2021 FONTAINE MAGNITUDE 50 Tri Axle, Set Up For 4Th, 50 Ton, Air Ride, 24' Deck, 20" Loaded Deck Height, Alum Or Steel Wheels, Strobe Lights, Outriggers And D-Rings. **Call For More Information.**



2021 KRUZ TERMINATOR, 26' Steel Frame, Single Point Suspension, 2 Way Gate, 11 X 24.5 Tires, Alum Wheels, 2 Speed Landing Gear. **Call For More Information.**

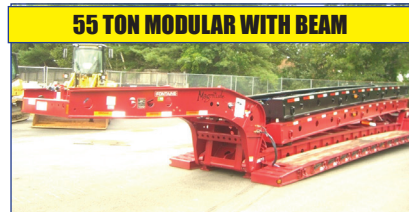


27' FLAT LEVEL DECK - IN STOCK

2021 FONTAINE 55L, 27' Flat Level Deck, Also Available In 25' And 26' Deck Length. Tri-Axle, Air Ride, 3Rd Axle Lift, Alum Wheels, Strobe Lights, Set-Up For 4Th Axle. In Stock, No Waiting. **Call For More Information.**

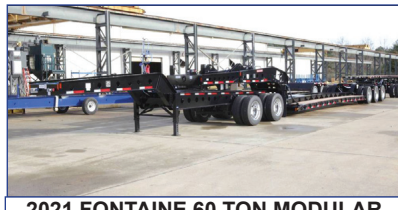


2021 KRUZ 26' STEEL TUB, Aluminum Frame Dump Trailer, Air Ride, 2 Axle, Alum Wheels, 450 Hardox, 24.5 16 Ply Tires. **TAKING ORDERS**
Call For More Information.



55 TON MODULAR WITH BEAM

2021 FONTAINE 55H MODULAR DSR, Beam Deck Also Available, Tri Axle, 60" Axle Spacing, Hydraulic Removable, Non Ground Bearing, Set Up For Gooseneck Ext, Spreader Bar And 4Th Axle Flip, Air Ride, Alum Wheels, 22.5 Rubber. **Call For More Information.**



2021 FONTAINE 60 TON MODULAR 2+3+1, 26' Dsr, 184" Swing Clearance, Set Up For 2 Axle Jeep, 14" Deck Height, Air Ride, Alum Wheels, 275/70R X 22.5 Rubber, Non Ground Bearing. **Call For More Information.**



2021 FONTAINE RENEGADE LXL, 14" Deck Height, 30' Deck W/6" Ground Clearance, 2 Axle, Set Up For Third, Hydraulic Detachable, Taking Orders
Call For More Information.



2021 KRUZ, 70 Yard, Tri Axle, 70,000 Single Point, Lift On Third Axle, 1/4 Inch 450 Hardox, Floor, Sides, Nose, Gate, 12 Panel Gate, 11 X 24.5 Rubber, Alum Wheels. Taking Orders. **Call For More Information.**



2021 FONTAINE TRAVERSE HYDRAULIC TAIL, 48' Long, 102" Wide, Air Ride, Hydraulic Upper Deck, Hydraulic Winch, Remote Control, Alum Wheels, Dual Controls. Taking Orders
Call For More Information.



2021 FONTAINE 60 TON MODULAR, 26' Dsr, 60" Axle Spacing, 184" Swing Clearance, Set Up For 2 Axle Jeep, 14" Deck Height, Air Ride, Alum Wheels, 275/70R X 22.5 Rubber, Non Ground Bearing. In Stock. **Call For More Information.**



3+3+3

1998 KAYLN SIEBERT, 75Ton 3+3+3, Air Ride, West Coast Bogie, 3 Axle, Air Ride Jeep With Power Tower, 10' Wide Trailer, 60' Overall Length, 48' Of Useable Deck, 275/70 X 22.5 Rubber, Sandblasted & Painted, Excellent Shape, Alum Wheels On Jeep And Booster. **Call For More Information.**

Trades Welcome • Financing Available • www.josephequipment.com

THIS AD IS COPYRIGHTED & OWNED BY TRUCK AND EQUIPMENT POST

TRAILER RENTALS • TRAILER RENTALS • TRAILER RENTALS •

WE RENT STEP DECKS • LOW BEDS • HI FLATS • DEMO/SCRAP • TRAILERS



Kruz

JOSEPH
EQUIPMENT COMPANY
300 GAY ST. • Manchester, NH 03103

FONTAINE

PHONE: 603-641-8608
FAX: 603-666-3716

**NOW TAKING ORDERS FOR DUMP TRAILERS
AND LOWBEDS FOR FALL DELIVERY**

14" DECK HEIGHT



NEW 2021 FONTAINE RENEGADE LXL, 14' Deck Height, 30' Deck W/6' Ground Clearance, 2 Axle, Set Up For 3rd Hydraulic Detachable Or Mechanical Detachable. In Stock No Waiting. Call For More Information.

WE RENT WALKING FLOORS • DUMPS • HIGH FLAT EXTENSIBLES • JEEPS



NEW 2021 FONTAINE SPECIALIZED MAGNITUDE 55L, Tri Axle, Air Ride, Set Up Of 4th Axle, Non Ground Bearing, 25' Deck, Led Lights, Aluminum Wheels, Strobe Light Package, Lift On 3rd Axle, 2 Pin Position, Loaded. In Stock No Waiting. Call For More Information.

70 TON 2+3+2

WE RENT STINGERS • SPREADER BARS • DOUBLE DROP EXTENSIBLES TRAILERS



NEW 2021 FONTAINE 704/2+3+2 DROP SIDE RAIL, 4 Axle, 28' Deck, Hydraulic Detachable, In Stock, No Waiting, Non Ground Bearing, 102' Wide, 65' Flip Box, Spreader Bar And 352J, Jeep, Alum Wheels, 275/70R X 22.5 Tires, 28' Beam Deck Available. Call For More Information.



NEW 2021 FONTAINE MAGNITUDE 603T Modular Drop Side Rail With 28' Deck, Hydraulic Removable Neck, Non Ground Bearing, Air Ride, Tri Axle, Third Axle Lift, Set Up For 4th, Alum Wheels, 275/70 X 22.5 Tires, Loaded. Call For More Information.

IN STOCK, NO WAITING



NEW 2021 FONTAINE 55H MODULAR DSR, Beam Deck Also Available, Tri Axle, 60' Axle Spacing, Hydraulic Removable, Non Ground Bearing, Set Up For Gooseneck Ext, Spreader Bar And 4th Axle Flip, Air Ride, Alum Wheels, 22.5 Rubber, Call For More Information.



NEW 2021 FONTAINE 55 TON, Drop Side Rail, Tri Axle, Air Ride, Set Up For 4th, Non Ground Bearing, Led Lights, Aluminum Wheels, Strobe Lights, Loaded. In Stock No Waiting. Call For More Information.



NEW ROGERS 55 TON DROPSIDE RAIL LOWBED TRAILER, 25ft Steel Deck, Tri-Axle, Air Ride, Lift On Third Axle, Strobe Light Pkg, Covered Bogle, 15' Loaded Deck Height, 2 Pin Position, 4th Axle Set Up (In Stock), Non Ground Bearing In Stock And No Waiting.

55 TON EXTENSIBLE



NEW 2021 FONTAINE MAGNITUDE 55MX, 55 Ton Extendable Trailer, 30' To 50', Modular, Detaches Both Ends, Hyd Removable, Non Ground Bearing, 20' Deck Height, With Take 10' Deck Ext For A Total Of 60', 275 Rubber, Tri Axle, Air Lift On 3rd Set Up For 4th, Set Up For Gooseneck Ext. Call For More Information.

IN STOCK



NEW 2021 FONTAINE 35 TON LOWBED, Air Ride, Tandem Axle, 29ft Flat Level Deck, Non Ground Bearing, Hyd Goose Neck, Set Up For Future 3rd Axle, In Stock. Call For More Information.



NEW 2021 SPECIALIZED 55 TON BEAM TRAILER, 3+1 Modular NGB, Detach Both Ends, T/A, Air, Lift On 3rd, Set Up 4th, Set Up For Gooseneck Extension, Call For More Information.

Trades Welcome • Financing Available • www.josephequipment.com

THIS AD IS COPYRIGHTED & OWNED BY TRUCK AND EQUIPMENT POST.