



2013 MACK GRANITE.

All Season Stainless Steel Rear Spreader Body, Plow & Wing, MP8 Mack Diesel, 10 Speed, Only 143K, **\$49,995**



2015 FREIGHTLINER M2 TRACTOR.

12K Front, 40K Rear On Air, Detroit Engine, 10 Speed, Municipal Truck, 159K Miles, **\$29,995**



2015 FREIGHTLINER M2 TRACTOR.

12K Front, 40K Rear On Air, Detroit Engine, 10 Speed, Municipal Truck, 169K Miles, **\$29,995**



NEW HOLLAND TS100.

Diesel, Alamo Boom Axle, Over Rail Mower, 5100 Hours, **\$39,995**



2003 FORD F550 4x4.

Skytel 45' Bucket Truck. Only 7,700 Miles, College Owned, Stored Inside, Super Clean, **\$40,000**



1998 CHEVROLET C7500.

Gas, Auto, 12' Hydraulic Dumping Flatbed, **\$6,500**



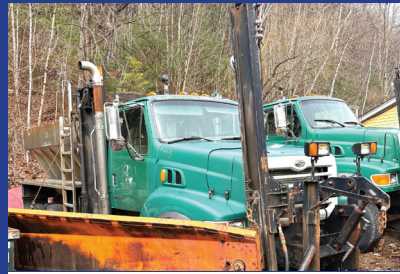
2007 VOLVO 10 WHEEL DUMP.

D12 Volvo, All Season Body, Set Up For Plow & Wing, **\$20,000**



2004 FORD F350 10' RACK BODY.

4x4, V10 Gas, Auto, Low Miles, **\$6,000**



STERLING TANDEM AXLE. 8

Speed, Stainless Steel Sander, Plow & Wing, Dump Body Included, **\$23,500**



1993 INTERNATIONAL

DT466, 5 Speed, Stainless Steel Sander, Brand New Differential, **\$8,500**



2011 INTERNATIONAL SINGLE AXLE DUMP.

All Season Body, **\$12,500**



NEW HOLLAND B95c.

Extenda Hoe, 4 In 1 Bucket, **\$30,000**



2009 IH WORKSTAR S/A DUMP.

Diesel, Auto, **\$12,000**



2013 IH WORKSTAR.

Auto, 56K Miles, All Season Body, Set Up For Plow & Wing, **\$10,000**