



REED TRUCK SERVICES

24/7 Heavy Duty Towing, Accident Recovery & Emergency Road Service



**TRADES
ACCEPTED**

**939 John Stark
Hwy.
Newport, NH**



**287 Washington St.
Claremont, NH**

**HELP
WANTED**

• Authorized International Truck & Cummins • Sales • Service • Parts • Warranty •
All Makes Commercial Truck Parts, Sales, and Service

Email: scott@reedtruck.com • www.ReedTruck.com • 1-800-542-5032



2018 INTERNATIONAL 4300. Non CDL., Cummins Engine, Allison Trans, AB, AR, 16' Morgan Body, \$44,500., Will Separate



NEW INTERNATIONAL CV 4x4, AND HV 4X2 AND 6X4 MUNICIPAL CHASSIS. Available, Call For Specs!



NEW 2023 INTERNATIONAL CV515 4x4. 6.6 Diesel, Allison Trans, Locking Rear, 10' Lanau Hardox Dump, Everest Plow, Wing & Hitch Included, \$149,900.



2012 INTERNATIONAL 7400 Dump. 16 F/A, Locking 30 R/A, DT300 HP, Eng Brake, Allison Trans, Ac, 40,780 GVW, Everest Gear, Plow, Wing, Sander, Air To Rear, \$38,500.



2013 Ford F450 DUMPING FLATBED. Diesel, Sander, Power Angle Front Blade, \$18,500.



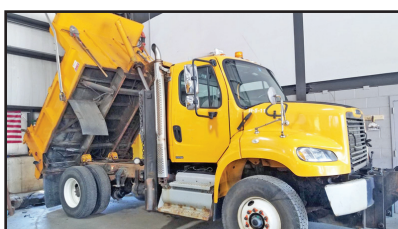
2013 FREIGHTLINER SD114. DD13 Engine, Allison Trans, Everest 14' Live Floor Body, Truck Includes Plow And Wing Blades. Well Maintained Muni Trade. \$59,900.



2005 T800 KENWORTH 18' Alum. Dump. C13 Cat @470 HP, 8LL, 20,20,46 Axles, 83,480 GVWR, One Chute, Air Ride, New Brakes, \$64,500



2016 INTERNATIONAL 4300 Cab & Chassis. AR/AB, Cummins Engine, Allison Auto, Non-CDL. \$42,500.



2011 FREIGHTLINER M2 106. Cummins, Allison Trans, Locking Diff., Reversible Plow And Wing Included, Side Dump, With Dickey John System. \$44,500.



2006 STERLING, 380 HP 8LL, 18FA, 46 Rears, Pwr Reversible Blade And Wing, Live Floor Sander Dump, Double Spinners, \$29,800



2007 INTERNATIONAL 7400 10' (Rough) Dump Body. 14 F/A, DT466, Allison Trans, 30 R/A Locker, 66,000 Miles, Plow Hitch Included, \$12,500



SEVERAL USED 2006-2016 INTERNATIONAL IC SCHOOL BUSES. Most Of These Need Some Work, Priced Starting at \$1,800.