

**939 John Stark Hwy.
Newport, NH**



REED TRUCK SERVICES

24/7 Heavy Duty Towing, Accident Recovery & Emergency Road Service



**287 Washington St.
Claremont, NH**

CLEANING THE BACK ROW! THESE GOTTA GO! CALL FOR MORE INFO. MAKE OFFERS!



4 IN STOCK

2009 FREIGHTLINER BUS.
Cummins, Allison, 2 Full Size Freightliners &
2 International CE300 Buses
Priced From \$1,800-\$5,800.



LIVE FLOOR

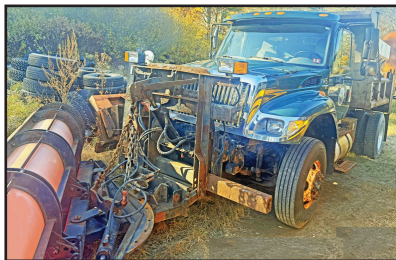
2005 STERLING L8500 DUMP/PLOW TRUCK.
C7 Cat, Allison, 44,000 GVW, Needs some work.
Live Floor Dump.



2006 FREIGHTLINER M2 112 LANAU DUMP BODY. 450 HP Mercedes, 16908LL Trans, 18 F/A, 46 R/A, Solid Truck, Used For Paving. **\$52,500.**



2010 FREIGHTLINER SLEEPER.
14 F/A, 46 R/A, DD15, 18 Spd, Wet System, Clean
Solid Truck, Used In Paving Company. **\$42,500.**



2004 INTERNATIONAL 7400. DT466, Allison,
Locking 30K Rear, Rev Plow, Wing With Or W/O
Newer SS Sander, **Call For Price**



2014 GMC/COLLINS BUS.
Gas, Auto, Wheel Chair Lift, **\$8,900.**
(Other Buses In Stock)

Email: scott@reedtruck.com • www.ReedTruck.com • 1-800-542-5032