

QUIRK CHEVY COMMERCIAL

781-917-1151



BUSINESS
ELITE



2025 4500HG ALUMINUM RACK DUMP. Landscaper Spec, 14' Body, V8 Gas, Auto, 14,500 GVW, #C82505 \$71,550



2024 4500HG LANDSCAPE DUMP. Curb Side Door, I-Pac, 12' Body, V8 Gas, Auto, 14,500 GVW, #C81922 \$68,140



2025 4500HG UTILITY. 12' Rockport Body, 3 Bar Ladder Rack, V8 Gas, Auto, #C82867 \$74,745



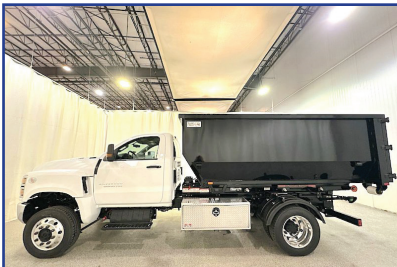
2025 3500HD DUMP. Crew Cab, 4X4, 9' Body, V8 Gas, Load Cover, Pintle Hitch, #C84129 \$68,495



2025 3500 FREIGHT HAULER. 12' Body, Pull Out Ramp, Step Bumper, Roll Up Door, Pass Thru Door, #C83972 \$69,950



2025 3500 UTILITY. 12' Rockport Body, 3 Bar Ladder Rack, V8 Gas, Pass Thru Door, #C83899 \$62,412



2024 5500 ROLL-OFF. 4X4, Diesel, 19,500 GVW, Polish Alum Wheels, Two Tool Boxes, #C82297 \$86,395



2025 3500 SERVICE. Knapheide Body, V8 Gas, Pass Thru Door, Step Bumper, Tow Hitch, #C84104 \$66,985



2024 5500HD DUMP. 4X4, Diesel, 19,500 GVW, Polish Alum Wheels, Tool Box, #C82281 \$71,450



2025 4500HG FREIGHT HAULER. 16' 6" Body, Liftgate, Two Rows E-Trac, V8 Gas, 14,500 GVW #C82572 \$77,685



2025 3500HD ALUMINUM SERVICE. 4X4, 9'6" Duramag Body, V8 Gas, Step Bumper, DRW, #C83555 \$63,495



2025 3500 SERVICE VAN. 10' Rockport Body, 3 Bar Rack, V8 Gas, Pass Thru Door, #C83846 \$61,710