

JOSEPH

EQUIPMENT COMPANY

300 GAY ST • MANCHESTER, NH 03103

SATURDAYS • WE ARE OPEN ALL DAY

PHONE: 603-641-8608

FAX: 603-666-3716



F
FONTAINE

293 NORTH - EXIT 2 -
LEFT ONTO BROWN AVE -
RIGHT ONTO WINSTON ST.- LEFT ONTO GAY ST.
300 GAY STREET ON THE RIGHT



2000 MACK CL713. 17' Steel Body, 460 HP, 18 Speed, 46 Rears, 18 Fronts, 20 Pusher Axle, One Owner Bought New, Has Small Fuel Issue. **Call For More Information.**

NEW MODEL - IN STOCK NO WAITING



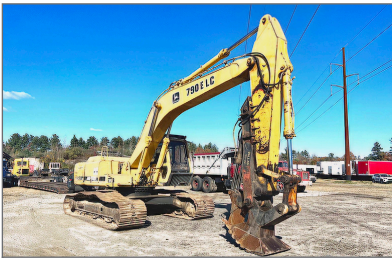
NEW MODEL - IN STOCK NO WAITING. Beat The Price Increase. Fontaine Magnitude 65 2+3+2 Capable, 28' Drop Side Rail Deck, 3 Axle, Set Up For 4 Axle, 14.75" Deck Height, 102" Wide, 60.5" Axle Spacing, Eq2 Spreader Bar With Intermediate Axle, Hydraulic Removable, Non Ground Bearing With 2 Pin Position At 114" And 102", Triple Cylinder, 70" Hydraulic Flip Box, Heavy Duty Snap In Outriggers, D-Rings, Alum Wheels, 275/70R X 22.5 Tires. **Call For More Information.**



IN STOCK - 2025 FONTAINE LXTN40. 40 Ton Extendable, 34' Closed - 60' Open. Also Available 29' Closed - 50' Open. Tandem Axle, Set Up For 3rd, Air Ride, Non Ground Bearing, 102" Swing Clearance, 20" Deck Height, Alum Wheels. In Stock, No Waiting. Available In Manchester NH And At The Factory In Springfield AL. 3rd And 4th Axles Available. **Call For More Information.**



2017 FONTAINE INFINITY. Combo Stepdeck Trailer Model HCITX22RSA, 53 X 102, With Ramp System, Like New Condition, Tandem Axle, Rear Slide, 80,000 Lb. Capacity, Air Ride, Container Locks, Chain Tie Downs, Winches, Approx 4,000 Original Miles, 22.5 Tires. **Call For More Information.**



JOHN DEERE 790 ELC EXCAVATOR. W/ Tree Stump Sheer, Working Daily, Long And Long, Very Good Condition, **Call For More Information**



2016 FONTAINE MAG60 DSR. 28' Deck, 3 Axles With Pin On 4th, 2 Lift Axles, 60" Axle Spacings, Set Up For Gooseneck Extension To 183", One Owner, Original Paint, **Call For More Information.**



1999 TALBERT DSR TRAILER. 25' Steel Deck, 102" Wide, Low Pro Tires, Air Ride, Lift Axle, Non-Ground Bearing, Rear Wheel Pockets, Good Rubber, Working Daily. **Call For More Information.**



2005 LINKBELT 240 LX EXCAVATOR. With Hyd Thumb, Quick Disconnect, Digging Bucket, Hyd Wrist O Twist Bucket, Frost Tooth Bucket, Root Rake Bucket, 9000 Hours, Working Daily One Owner, **Call For More Information.**



NEW MOTOR

1998 FREIGHTLINER. 440 HP, Rebuilt Motor, Automatic Transmission, 18K Front, 58K Rears, 1200 X 24 Rubber, Wet System, A/C, P/S, 100K Orig Miles, Ex-NYC Truck, Loaded, Will Take A 14' Body. **Call For More Information.**



CAT 3208 GENERATOR. 175 KW, 700 Hours, 3 Phase, **Call For More Information.**



2011 INTERNATIONAL 7400 WORKSTAR. DT570, 12,000 Original Miles, Allison Automatic Transmission, Air Ride, Former Florida Municipality Truck, New Tires, Excellent Shape. **Call For More Information.**



2011 FORD F350. Power Stroke Diesel, Automatic, Dual Wheels, One Owner, 123,000 Miles, **Call For More Information**

www.josephequipment.com

Trades Welcome • Financing Available

THIS AD IS COPYRIGHTED & OWNED BY TRUCK AND EQUIPMENT POST