

JOSEPH

EQUIPMENT COMPANY

300 GAY ST • MANCHESTER, NH 03103

SATURDAYS • WE ARE OPEN ALL DAY

PHONE: 603-641-8608

FAX: 603-666-3716


FONTAINE

293 NORTH - EXIT 2 -

LEFT ONTO BROWN AVE -

RIGHT ONTO WINSTON ST.- LEFT ONTO GAY ST.

300 GAY STREET ON THE RIGHT



2013 KOMATSU D155AX-7 DOZER. 8900 Hours, Sigma Blade With 3 Shank Ripper, Rebuilt Fuel Rail, Replaced DPF Sensors, Alternator & Belt, Fan Belt, Recharged A/C, New Compressor, New Batteries, New Corner Bits On Blade, EGR Servo Replaced, DPF Was Baked & Cleaned., Price: \$125,000. **Call For More Information.**



2009 KOMATSU PC300HD. With A 400 Bottom, Plumbed For Hammer, Quick Disconnect, One Owner, Excellent Shape, 12,000 Hours. Call For More Information. **Call For More Information.**



2015 CATERPILLAR 323 FL EXCAVATOR. Hours 4737, Plumbed For Hammer, Quick Disconnect, **Call For More Information.**



2016 CATERPILLAR 335F LCR EXCAVATOR. Hours 4971, Plumbed For Hammer, Quick Disconnect, **Call For More Information.**



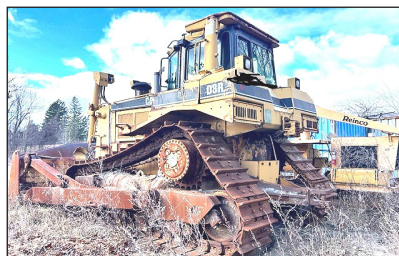
2016 CATERPILLAR 938M 2V LOADER. 1936 Hours, Forks And Bucket, **Call For More Information.**



2008 CATERPILLAR 420 E IT. Extend-A-Hoe, Full Cab, 4 X 4, Quick Disconnect, 3rd Valve On Loader Arms And Backhoe, Pilot Control/Joystick On Backhoe, A/C, Original Paint, Excellent Shape, Working Daily, Excellent Rubber, 5700 Hours, Price \$42,500. **Call For More Information.**



2016 CATERPILLAR D3K-2 DOZER. 5688 Hours, A/C, Full Cab, **Call For More Information.**



2001 CATERPILLAR D8R DOZER. Full Cab, A/C, 60% Bottom, **Call For More Information.**



2006 CATERPILLAR 330D L EXCAVATOR. Plumbed For Hammer, 6651 Hours, **Call For More Information.**



2011 CATERPILLAR D5K XL DOZER. Full Cab, A/C, **Call For More Information.**



2003 CATERPILLAR 325CL. Plumbed For Hammer, Quick Disconnect, Working Daily, Needs A Final Drive. **Call For More Information.**



TEREX RETECH TROMMEL Screen Plant **Call For More Information.**

www.josephequipment.com

Trades Welcome • Financing Available

THIS AD IS COPYRIGHTED & OWNED BY TRUCK AND EQUIPMENT POST