

# JOSEPH

**EQUIPMENT COMPANY**

**300 GAY ST • MANCHESTER, NH 03103**

**SATURDAYS • WE ARE OPEN ALL DAY**

**PHONE: 603-641-8608**

**FAX: 603-666-3716**



**293 NORTH - EXIT 2 -  
LEFT ONTO BROWN AVE -  
RIGHT ONTO WINSTON ST.- LEFT ONTO GAY ST.  
300 GAY STREET ON THE RIGHT**



**1996 BOMAG ROLLER.** Model BW212D-2, 84" Drum Drive, 2400 Hours, Deutz Engine. **Call For More Information.**



**2003 TALBERT 50 TON 9 WIDE TRI AXLE PAVER STYLE TRAILER.** Non-Ground Bearing, Three Axle, Air Ride, Lift On Third, 25 1/2 Foot Long Lower Deck, 5 Foot Slope, Covered Back, Excellent Shape, One Owner, **Call For More Information.**



**1997 CATERPILLAR 960F WHEEL LOADER.** Sandblasted And Painted, New Decals, A/C, Scale, 23.5 X 25 Rubber, Bolt On Cutting Edge, Very Good Condition. **Call For More Information.**



**1997 KENWORTH T800.** Twin Steer Wide Nose, 550 Cummins, 18 Speed, Long Wheel Base, 30' From Back Of Cab To End Of Frame, Newair Ride, Double Frame, 164,000 Original Miles, New Michelin Tires In Back. **Call For More Information.**



**IN STOCK - 2025 FONTAINE MAGNITUDE 60HD-MX.** Deck Extends From 30' To 51', 65 Ton When Closed, Built To Handle A 60 Ton Load With Ease, 30' Clear Deck Length Extends To 51', 22" Loaded Deck Height, 6" Ground Clearance, 7 Position Hydraulic Detachable Gooseneck, 7 Position Air Ride Tridem Bogle, 402 Jeep Ready, 36" And 83" Flip Box Ready, 60/90 Flip Axle Ready, EQ2 Spreader Bar Ready, Loaded. **Call For More Information.**



**1998 FONTAINE, MODEL. 50 Ton,** Detaches At Both Ends, 25' Flat Level Deck - 20" Loaded Deck Height, 25' Beam Deck Insert, 20" Loaded Deck Height, Non Ground Bearing, Air Ride, Boom Trough & Deck Cut Out, Lift Axle, Outriggers, Aluminum Wheels, Strobe Lights. **Call For More Information.**

## NEW MOTOR



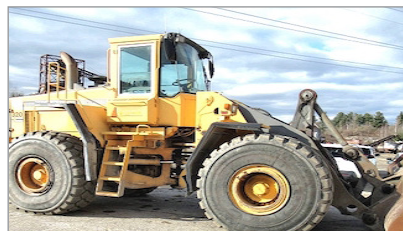
**2009 CATERPILLAR 336D.** 93 Hours On New Motor, New Swing Drive, 3rd Valve, Hydraulic Thumb, Excellent Shape. **Call For More Information.**



**2018 RAMPANT 35 TON TRAILER.** 48' W/Ramps, Excellent Shape, **Call For More Information.**



**2010 SPEC TECH TRI AXLE END DUMP TRAILER.** Alum Frame, Alum Tub, Spring Ride, 2 Way Gate, Liner And Cover, Ready To Work, Excellent Condition. **Call For More Information.**



**1998 VOLVO L180C LOADER.** 26.5 X 25 RADIAL MICHELIN TIRES, ONE OWNER, WORKING DAILY, EXCELLENT SHAPE. **CALL FOR MORE INFORMATION.**



**2003 INTERNATIONAL DURASTAR 4300.** DT466 Motor, 6 Speed Transmission, 21' Chevron Body, Rebuilt Motor, A/C, P/S, Spring Ride, One Owner, Original Paint, Very Good Condition. **Call For More Information.**



**1984 MACK RD686SX.** 300, 6 Speed, 58K Rears, 14' Body, One Owner, 1100 X 24.5 Rubber, 250K Original Miles, Jake, Brake, A/C, Excellent Shape. **Call For More Information.**

**www.josephequipment.com**

**Trades Welcome • Financing Available**

THIS AD IS COPYRIGHTED & OWNED BY TRUCK AND EQUIPMENT POST