

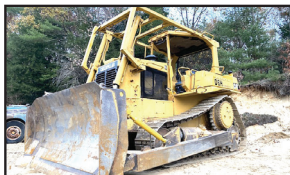


JG Remillard Equipment Sales.

603-759-5918



**2006 TRAIL KING 35 TON
DETACHABLE LOWBED.** Hydraulic
Tail, Winch, 8'6" Wide, 21' Deck, 8' Over
Wheels, 8' Tail. **\$34,500**



1990 CATERPILLAR D-6H DOZER. Runs
And Operates 100% Work Ready. **\$37,500**



MILLER D-4 WELDER. Perkins Diesel,
Runs And Welds Excellent. **\$3,500**



**GRADALL 534B-9 EXTENDING BOOM
FORKLIFT.** Perkins Diesel, 4X4. **\$25,000**



INGERSOLL-RAND 185 COMPRESSOR.
Duetz Diesel Engine, Just Off The Job.
\$6,000



1980 ROGERS 20 TON TAG-A-LONG.
Air Brakes, Very Clean, 96" Wide. **\$4,000**



TOFT HYDRAULIC HAMMERS. Brand New,
Three Available, Fits Caterpillar 312, 307, & 304 Size
Machines **\$5,000.-\$8,500**



TOFT 42" HD EXCAVATOR BUCKET.
Brand New, Fits Cat 315. **\$3,500**



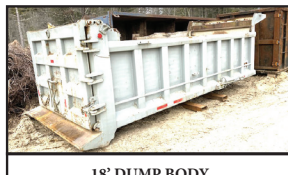
2000 CAT 322BL EXCAVATOR. Manual
Thumb, Plumbed For Hammer, No Welds,
Runs And Works Well. **\$37,500**



1988 CAT D-3C DOZER. 60% U/C, Runs
Excellent, **\$19,500**



READ RD-150 SCREENER. John Deere
Diesel Powered, 4" Top Deck, 3/4" Bottom
Deck, **\$39,500**



18' DUMP BODY.
2 Way Gate, Piston, And Tarp. Very Good
Condition. **\$6,000**

Visit Us jgremillard equipmentsales.com