

We are cash buyers for quality used trucks and equipment!

BROOKSIDE EQUIPMENT SALES

www.BrooksideEquipment.com

978-249-4600



2019 HITACHI XC120-6: 2,353 Hours, 36" Bucket, A/C, Good U/C, Backup Camera, 4 Cylinder Isuzu Turbo, 105 HP, 28k Lbs, stk#XC106, **\$62,500**



2021 DOOSAN DX180LC-5: 1,477 Hours, 44" Bkt, Hyd Doosan Thumb, 4 Cyl Perkins Turbo, Backup Camera, A/C, Good U/C, stk#XC692, **\$99,500**



2008 HAULOTTE HS5388RT: 2,342 Hours, 52 Ft Rough Terrain Scissor Lift, 4x4, 88" Wide, 2 Cyl Hatz Diesel, Stabilizers, stk#AE118, **\$11,500**



2006 PETERBILT 357: 534,839 Miles, Triaxle, 17 Ft Steel Body, Cat C15 Acert Twin Turbo, 550 HP, Fuller 18 Spd, 18740 F, 13.2k P, 46k R, stk#TK261, **\$87,500**



2016 JOHN DEERE 544K: 9,783 Hours, 3 Yard, Cab W/ A/C, Hydraulic Coupler, 6 Cyl JD Turbo, 29k Lbs, stk#LO608, **\$69,500**



2016 FREIGHTLINER BUSINESS CLASS M2: 267,342 Miles, Cummins ISB6.7, 240 HP, Allison RDS 2500 Auto, 25.5k GVW, IMT 8600-22 Crane, stk#TK761, **\$39,500**



2016 CATERPILLAR CB54B: 4,539 Hours, 67" Smooth Double Drum, Vibratory, Caterpillar C4.4, Water System, Orops, 24k Lbs, stk#CO275, **\$24,500**



2012 CATERPILLAR 966K: 11,138 Hours, 5 Yard, Cab, Hydraulic Fusion Coupler W/ 3rd Valve, Backup Camera, New Tires, 54k Lbs, stk#LO510, **\$93,500**



2015 VOLVO L90H: 12,355 Hours, 3.5 Yard, Cab W/ A/C, Hydraulic Coupler, Ride Control, 6 Cyl Volvo Turbo, Very Good Rubber, 34k Lbs, stk#LO120, **\$67,500**



2003 FREIGHTLINER FL112: 377,047 Miles, 10 Wheel, 13'6" Steel Bibeau Body W/ 3 Chutes, Cat C12, 430 HP, Fuller 8LL, 18k F, 46k R, Hitch, Spring Suspension, stk#TK065, **\$37,500**



2018 JOHN DEERE 624K-II: 11,553 Hours, 3.5 Yard, Cab W/ A/C, Hydraulic JRB Coupler, Ride Control, Backup Camera, 6 Cyl JD Turbo, 35k Lbs, stk#LO965, **\$69,500**



2019 TRANSCRAFT 554C: 48 Ft Tandem Axle Step Deck Trailer, 38 Ft Lower Deck, 10 Ft Upper Deck, 8'6" Wide, Air Ride, Aluminum Deck, Aluminum Wheels, stk#TR858, **\$32,500**



2019 JOHN DEERE 824K-II: 13,914 Hours, 7'4" Wicker Machine Co. Grapple, Cab W/ A/C, 6 Cyl JD Twin Turbo, 59k Lbs, stk#LO329, **\$69,500**



2006 CATERPILLAR CS-533E: 2,416 Hours, 84" Smooth Single Drum, Drum Drive, Vibratory, Orops, 4 Cylinder Caterpillar Turbo, 24k Lbs, stk#CO425, **\$49,900**



1997 PETERBILT 379: 1,198,223 Miles, 10 Wheel Sleeper, Cat 3406, 475 HP, Fuller 10 Speed, Wetline, Air Ride, 12K Lb Front, 34K Lb Rear, stk#TK946, **\$27,500**



2017 CATERPILLAR 745C: 12,847 Hours, 45 Ton, 6x6, 29.5R25 Good Rubber, 6 Cyl Caterpillar C18 Turbo, 500 HP, stk#HT667, **\$119,500**



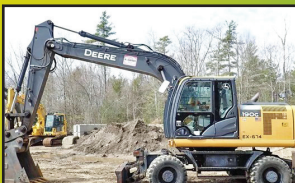
2018 CAT 289D: 4,749 Hours, 2660 Lb Lift, Cab W/ A/C, Hydraulic Coupler, Pilot Controls, 2 Speed, 4 Cyl Cat C3.3B Turbo, 10.6k Lbs, stk#SK287, **\$36,500**



2015 GRADALL XL4300-III: 58" Cleanup Bucket, 9 Ft Blade, Mercedes-Benz Engine, 44k Lbs, stk#WX108, **\$39,500**



2004 DAEWOO SOLAR 225LL: 15,169 Hours, Rotating Grapple, 6 Cylinder Turbo, 23 1/2" Pads, 55K Lbs, stk#XC011, **\$37,500**



2015 JOHN DEERE 190G W: 7,583 Hours, 36" Bucket, 8'4" Blade, Hydraulic Coupler, A/C, Backup Camera, Isuzu Turbo, 172 Hp, 45k Lbs, stk#WX012, **\$69,500**

60 STATE RD, PHILLIPSTON, MASS

978-249-4600

EMAIL: KEVIN@BROOKSIDEEQUIPMENT.COM