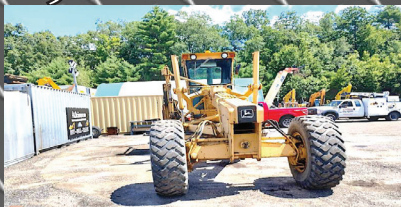


Atkinson Truck & Equipment Sales

Atkinson, NH 978-852-7842



2003 KOMATSU PC128US-3. Hydraulic Excavator, 8K Hours, Komatsu Engine, Heat, AC, Switch Over Controls, Long Track, Long Boom, Zero Turn Swing, Fairly New Under Carriage, 32" Dig Bucket, Needs Teeth, Cab Needs Top & Bottom Glass, Decent Machine, **\$27,500. OBRO**



1993 JOHN DEERE 772A. Motor Grader, AWD, 14' Moleboard, Sliding Tipping Angle Setup, Articulated Center Pin, 14' Wing Plow, 6 Cylinder Deere Engine, 8 Speed, 17.5R x 25 Radial Tires, Work Ready, **\$25,500.**



2017 SNORKEL TB60. Boom Lift, 60' Reach, Cummins, 5,600 Hours, 4x4, 2 Speed, Generator, # Way Entry Basket, New Chains & Hoses, Very Clean, Work Ready, **\$26,500**



2006 KOBELCO SK135SR EXCAVATOR. 5,500 Hours, Cummins, Long Boom, Long stick, Zero Turn Swing, Aux Hyds, Plumbed For Hammer, **\$41,500.**



2015 HITACHI ZANIX ZX75-3US. Excavator, Zero Turn Swing, 1,900 Hours, Isuzu Diesel, Rubber Tracks, Mechanical Thumb, Blade, Heat/AC, Heated Seat, Radio, Go To Work Condition, **\$47,500.**



1999 LANDOLL 317 RECOVERY TRAILER. Full Tilt Bed, 50Klbs Winch, Air ride, LED Lighting, 17.5 Rubber, Hydraulic Hoses Tool Compartments, 48' Long, Heavy Duty Landing Gear, Dock Levelers, **\$27,500**

www.AtkinsonTruckAndEquipmentSales.com